

Council closes street, discusses tax error

A street was closed, state tax error reported and trash pickup for PAVE/PAWS was approved among items of business at last Tuesday night's Eldorado City Council meeting.

A portion of Herman Street, adjacent to Blocks 19 and 20 in the West Addition, was closed to public use and set aside for the Eldorado Golf Club.

Secretary Carolyn Mayo told city fathers that the city's bank franchise tax check for 1985 had arrived, but was incorrect. Mrs. Mayo reported that county appraisal officer Ray Lewis Ballew has called the state comptroller's office concerning the matter.

Apparently the city received \$3,000 more than it should have, while the local school district got \$3,000 less than it should have. Bob Bullock's office told the city to deposit the funds and the

amount will be adjusted in the 1986 allocation. The Eldorado council also approved trash pickup at the PAVE/PAWS radar installation seven miles north of the city. Personnel at the facility had asked for the service several times.

After lengthy discussion the council voted to charge \$45 per trip or \$390 per month.

In other action the council:
--Approved \$250 and installation labor for street sign repairs prior to the Sesquicentennial celebration in August.

--Discussed the May financial report. A brief discussion was held concerning specific areas for budgeting for the 1986-87 fiscal year, paving, vehicles, animal control, fire department, ambulance service and sanitary landfill.

The new budget will include additional funding for animal control to allow for

installation of cages, personnel and related expenses.

--Read and approved the June 1 report from Housing Authority Director Ann Griffin.

--Studied a report from the Schleicher County Appraisal District office concerning new property values in Eldorado. According to the report an increase in values of \$448,000 should be realized.

The new figure will bring the city's total to \$22,686,000 and would mean an effective preliminary tax levy of \$.58141 per \$100 of assessed value.

--Read and approved the city's council minutes and bills for May.

--Talked about the new city map which is currently in the "Correction" state at SK Engineering. Mrs. Mayo said she felt that the

firm had failed to do proper research and that she had spent considerable time checking and correcting the company's errors through courthouse records.

According to the secretary the fourth draft is in process with printing ordered if all corrections are made. The council voted to withhold payment for the maps until it is properly drafted.

--Approved the May tax report.

--Authorized city work crews to pick up debris upon request of homeowners during July in preparation for the Sesquicentennial celebration. No charge will be made for this service.

--Voted to transfer \$2,000 in Federal Revenue Sharing funds for the purchase of asphalt. The material will be used as necessary for street paving work prior to September 1 around the

See COUNCIL Page 3

t.b.

BY TERRY B. NEILL

MAKES SENSE....

We were greatly saddened this week to learn from Austin that Governor Mark White's column will no longer be mailed to us on a weekly basis because (and we quote) "of the state's recent fiscal constraints."

Now, gosh darn we're gonna miss White's weekly views, but at the same time we couldn't help but chuckle a bit when we get this word on Austin's new conservation methods twice in the same week.

That's right, the fellers in Austin mailed us two, three page stories announcing that they

would no longer be sending us anything. That, my friends, is true liberal conservation.

HICCUPS....

An old cookbook, discovered recently, had the following tips for getting over the dreaded hiccups:

--Hold your breath while you drink nine sips of water. (Not too effective.)

--Drink two teaspoons of vinegar. (And throw up immediately!)

--Drink honey and sugar. (Isn't that some kind of toddy?)

--Take a swallow of water, hold your breath,

put your head in a brown paper bag. (And you're a typical Houston Oiler fan!)

--Breathe into a paper sack five times. (If you strike a match and it blows the bag to bits you know you're too drunk to drive.)

MORE FUN....

It's a lot more fun publishing a weekly newspaper in Eldorado than it is working on a big city daily. Daily newspapers, especially in Texas, have their work cut out for them in these times.

A daily must report all the news--good and

See t.b. Page 3

Thursday, June 19, 1986

LEADER

Coming July 3...

a brand new Schleicher County Leader

TA MEMBER 1985
TEXAS PRESS ASSOCIATION

U.S.P.S. 342-470

SERVING SCHLEICHER AND IRION COUNTIES

Volume 1, Number 1

TWO SPECIAL HONORS TOLD

Mias Amigas set here

"Would you look at Harry? He hasn't changed a bit!" That statement could actually be made during Eldorado's 55th annual Mias Amigas gathering, slated for June 27 and 28.

Former students, teachers and administrators of Eldorado Schools prior to 1966 are invited and urged to attend. The event will be staged on the courthouse lawn and in the Memorial Building this year.

"Mark your calendar now. Spouses and children are invited too, and we look forward to seeing each and everyone of you," a spokesman said.

The event begins at 5 p.m. Friday, June 27 with registration on the courthouse lawn. Membership dues will be \$2 each. At 7 p.m. the old school bell will sound and beginning at 7:30 p.m. a sandwich supper and visitation will commence. Those attending are asked to bring their own lawn chairs.

A coffee will kick things off at 8:30 a.m. on Saturday. Set for the Memorial Building, registration and visitation will continue. At 10 a.m. a general assembly will be held with special recognition set for the 'classes of 1935-36 and 1965-66. A business meeting will conclude that portion of the activities.

At 12:30 p.m. barbecue will be served on the courthouse lawn. Those attending are asked to reserve tickets at \$5 each. Saturday afternoon will be free for visitation and class reunions.



4-H SCHOLARSHIP WINNER - Mendy Edmiston, a Schleicher County 4-H member, was presented a \$1,000 Raymond Dickson Foundation Scholarship at the 1986 Texas 4-H Roundup at Texas A&M University, June 10. She is the daughter of Phil and Wanda Edmiston of Eldorado.

DR. BRAME BEING HONORED

Open House scheduled

Members of the Schleicher County Medical Center Auxiliary and governing board are planning an open house this Sunday, honoring Dr. J.B. Brame of Eldorado and showcasing new equipment recently installed at the local health facility.

The open house will be conducted from 3 until 5 p.m. at the hospital. "We would like to invite all Schleicher County residents and others from the surrounding area who are interested in our local facility," a spokesman said.

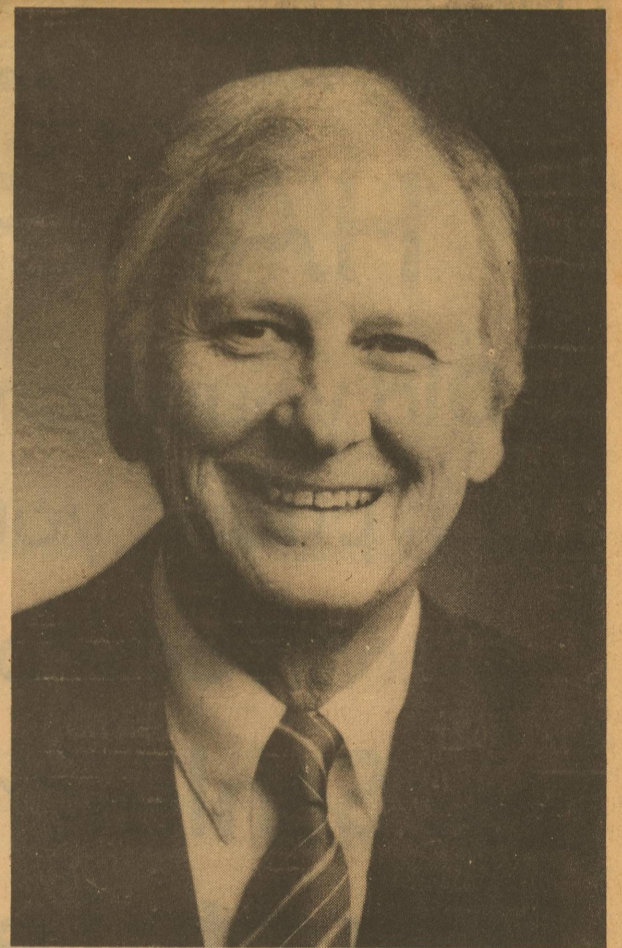
Dr. Brame is being recognized for being named president of the Texas Medical Association, the first time a local physician has held that honor.

The event Sunday will also allow local residents to view the new Lifeline equipment which has recently been purchased by the hospital. Currently installed in 12 local homes, the system is targeted for eight more and eight other units are being ordered.

The Lifeline equipment utilizes the telephone. Persons with medical conditions that require constant monitoring can wear a small button, which trips a box connected to their home phones.

Should they need emergency care, they can push the button, which automatically triggers the telephone and rings the local hospital.

A new x-ray machine has also been purchased and will be on display, along with a new room built to house the unit. A new blood analyzer has been added, as well as home health care for those who need it.



DR. J.B. BRAME

SKEETER ROUBISON GETS 'ALL AROUND'

Keller, Davis show Grand Champion entries

Horses shown by Shane Keller and Tracie Davis were the big winners at last Saturday's Schleicher County 4-H Horse show, held at the Eldorado Rodeo Arena.

"Old Man Weather" cooperated perfectly as "Family Miss" shown by Shane Keller was judged grand champion mare of the show, while "King-o-Roan" was named top gelding.

Reserve champion mare was "Doodlebug Gal", shown by Lori Lancaster. Reserve champion gelding was "Unos Candy Man", exhibited by Bonnie Martin.

Winners of the highly-coveted "all-around" honors were sub-junior, Jake Dingler of Del Rio; junior, Lori Lancaster of San Angelo; and

senior Skeeter Roubison of Eldorado. Miss Lancaster also won the Jess Koy Memorial Trophy.

First place yearling mare was shown by Bonnie Martin, while Shane Keller had the first place registered mare five years and over. Second place five and over was shown by Lori Lancaster and Jake Dingler had the third place entry.

First place registered mare under five was shown by Stacy Jones, with Ashlie Whitten showing the number two entry. Stephen Whitten took first place honors with his grade mare, while Shane Criswell was second and April Preslar third.

The first place gelding yearling was shown by David Preslar. Tracie Davis showed

the first place registered gelding five years and over. Bonnie Martin had the second and Tom Martin the third place entry in the same division.

First place grade gelding was exhibited by Mendy Coates, with second going to David Preslar and third to Jessica Rust.

Winners in the tie-down calf roping were first, Clint Griffin; second, Todd Keller; and third, John Griffin.

In the junior break-away, Todd Griffin was first, Lewis Baker second and Keith Wallace third. Winners in the senior break-away were Clint Griffin, first; John Griffin, second.

In the sub-junior goat tying, Hadley Smith was first and Justin Coates second.

Senior goat tying was won by Skeeter Roubison, first; and Brant Ward, second. Junior goat tying winners were first, Shane Criswell; second, Todd Keller; and third, Lewis Baker.

Participating in this year's show were 56 Schleicher County boys and girls. Other results were as follows:

SUB-JUNIOR DIVISION
Showmanship: Tom Martin, Big Lake, first; Jake Dingler, Del Rio, second; and Cheyene Rust, Del Rio, third.

Western Pleasure: Jake Dingler, first; Tom Martin, second; and Cheyene Rust, third.

Western Horsemanship: Cheyene Rust, first; Jake Dingler, second; and Shelby Fritsch, Del Rio, third.

Pole Bending: Jake Ding-

ler, first; Justin Coates, Uvalde, second; and Jessica Rust, Del Rio, third.

Barrel Race: Cheyene Rust, first; Justin Coates, second; and Misty Williams, Eldorado, third.

Flag Race: Cheyene Rust, first; Justin Coates, second; and Misty Williams, third.

JUNIOR DIVISION
Showmanship: Shane Keller, Sonora, first; Lori Lancaster, San Angelo, second; and Bonnie Martin, Big Lake, third.

Western Horsemanship: Shane Keller, first; Lori Lancaster, second; and Lance Dingler, third.

Reining: Lori Lancaster, first; Lance Dingler, second; and Bonnie Martin, third.

Pole Bending: Lance Ding-

ler, first; Wheless Baker, Sonora, second; and Lewis Baker, Sonora, third.

Barrel Race: Crissi McCormick, Eldorado, first; Lewis Baker, second; and Landon Neal, Ft. McKavett, third.

Western Riding: Bonnie Martin, first; Lori Lancaster, second; and Lance Dingler, third.

Stake Race: Lewis Baker, first; David Preslar, San Angelo, second; and Wheless Baker, third.

SENIOR DIVISION
Showmanship: Chuck Garabedian, Del Rio, first; Leah Brown, Sonora, second; and Brant Ward, Eldorado, third.

Western Pleasure: Leah

See ENTRIES Page 6

TOTAL VALUE PUT AT \$702.6 BILLION

School districts losing money due to oil drop

Two-thirds of the state's school districts experienced a loss in tax base between 1984 and 1985, according to the annual study prepared by the State Property Tax Board (SPTB). The agency's 1985 Property Value Study estimates that Texas school districts contained a total of \$702.6 billion in taxable value as of January 1, 1985.

Ron Patterson, SPTB's executive director, says a low inflation rate coupled with economic problems in agriculture and the oil and gas industry—two of the mainstays of the Texas economy—helped

shrink the tax bases of many districts during this period.

"Our figures may not reflect this year's drastic drop in oil prices until the 1987 study is prepared," he noted.

State law requires SPTB to estimate the taxable value of property annually for each of the state's 1,063 school district.

"A school district's taxable wealth is an important factor in determining how much financial aid it may receive from the state," explained Patterson. The Texas Education Agency will use the 1985 values in calculating education aid allotments for the 1986-87

school year.

"Although our figures show that total taxable values grew by 1.6 percent between the 1984 and 1985 value studies, we believe the actual growth rate was closer to five percent," Patterson said. "This is because the taxable values of nonbusiness vehicles and bank stock were excluded from our 1985 study as a result of changes in state law."

By comparison, statewide taxable values grew by 8.7 percent from 1983 to 1984.

Among the 732 school districts that showed a loss in taxable value during 1984-85

were the Houston and Dallas Independent School District, the state's two largest. In general, many districts that lost taxable value could be eligible to receive more state aid.

Figures from the study show that a majority of the school districts with the largest growth in tax base—20 percent or more—were suburban school districts in the areas surrounding Dallas, Fort Worth, Austin, and San Antonio.

Districts that lost 20 percent or more of their tax bases were located, with few exceptions, in rural counties across the state. "Small rural districts are more directly affected by problems in agribusiness or the oil and gas industry," said Patterson.

"Districts with shrinking tax bases may be forced to increase tax rates in 1986 just to bring in the same amount of local revenue," he added. "The tax burden will also shift away from those types of property that decline in value."

The study estimated the total market value of the school district tax base at

\$830.9 billion. From that total, the study deducted \$97.4 billion to account for special tax treatment for agricultural land and another \$30.9 billion for homestead and other exemptions. The remaining \$702.6 billion represents the taxable value of property statewide.

SPTB released preliminary findings of the 1985 Property Value Study to school districts

in late January. The agency provided an appeals process for reviewing evidence that districts provided to show their preliminary value findings were in error.

After ruling on the appeals, the State Property Tax Board certified the final results to the commissioner of education on May 30.

See SCHOOL Page 4

Entries sought for Eldorado Tourney

Entries are now being accepted for the Eldorado Tennis Tournament, set for June 28 and 29 and sponsored by L.E.O.N. Youth Group, made up of members of the Methodist and Presbyterian Churches in Eldorado.

Any player can enter up to two events. Divisions will be boys and girls 14 and under, singles and doubles; boys and girls, 15-18, singles, doubles and mixed; and men and women 19-30, 31 and over, singles, doubles and mixed.

All entries must be in on or before June 25. Entry fee will be \$7.50 each for singles and

\$15 per team. Fees must accompany entry forms and all checks should be made payable to L.E.O.N.

Trophies will be awarded to all first and second place winners. Events will not be played if there are less than eight entries in that event. Fees will be returned should this be the case. Tennis balls will be furnished.

Interested players can call Bob Helmers at 896-2272 or Ron Sutto at 853-2098 for further information.

Proceeds from the tourney will go to help fund a youth ski trip.

Staci Helmers, partner pick up victory

Staci Helmers of Eldorado and Kelly Whitehead of Sonora won the girls 16-18 doubles title at the Mason Tennis Tournament held on June 14 and 15.

On their way to the finals, the girls defeated Brownwood's team of Sheffield and Henderson 6-1, 6-0 and the Mason duo of Brannis and Spiller 6-2, 7-5. Thier win in the finals was over another Brownwood team of Lowery and Wright 6-4, 6-4.

Staci, a junior at Eldorado High School, and Kelly, a junior at Sonora High, also won second place in the West Texas Rehab. Benefit Tournament in San Angelo on June 7 and 8.

TA

MEMBER 1986 TEXAS PRESS

LEADER

U.S.P.S. 342-470

Published Every Thursday

P.O. Box 790

210 Main St.

Eldorado, Texas 76936

Phone 915-853-3631

Terry B. Neill - Publisher

Mary Jenkins - Office Manager, Typesetter

Second class postage paid at Eldorado, Texas 76936. POSTMASTER: Send address changes to Schleicher County Leader, Box 790, Eldorado, Texas 76936.

Any erroneous reflection upon the character or standing of any person or firm appearing in these columns will be gladly and promptly corrected upon calling the attention of the management to the article in question.

THANKS

to our many customers for making our Grand Opening such a success!

Open Monday-Saturday 10 a.m. 'til 9 p.m.

Specials
Friday & Saturday

Budweiser Only **\$5.98**

12 Pack-12 Oz. Cans

KEGS ON HAND AT ALL TIMES FOR SPECIAL OCCASIONS

Hayloft

Hwy. 277 North

853-2943

HALT RIGHT THERE!

Did you know that you can phone your news and

ads to the

Schleicher County Leader?

That's right, just dial

853-3631

And be sure and not miss the new Leader, coming

Thursday, July 3



LETTER WRITER MAKES POINT

Other side of TECAT fuss

●● COUNCIL

Continued from Page 1

school.

—Heard a report from city superintendent Clay Long on the status of paving on Warner and Louis Streets, the installation of an extended island across from the United State Post Office and mowing work.

Long told the council that there have also been requests for mosquito spraying and that the malathion is on hand when the fire department has time to utilize it. Long said spraying in the dumpsters has made an impact on mosquito and fly problems.

He also reported that the hospital sewer lift station is operational again, but that two water pumps suffered lightning damage. Cost for repairing the pumps as well as repaving West Street from the Mertzson Highway past the E. Center was set at \$6,300.

●● t.b.

Continued from Page 1

bad. That's their job, while us weekly folks can use a little creative license on what you see every Thursday.

We personally believe in telling it like it is, but also think that a positive attitude is important, especially in times of economic or community trouble.

Look at these cheerful headlines from the local daily this week: "State of emergency declared in S. A.rica", "Investigators have 2 suspects in lake assault", "State of emergency declared", "Students charged in bomb attempt", "Plant explosion kills 3, injures 4".

Then we look for optimistic or good headlines. Among the hard news stories we couldn't find any, unless you happen to think "Yanks, Thatcher sip tea" is positive.

We'll be accenting the positive with the Leader. It feels good to be back with a weekly, hopefully working to establish the best paper of its size in Texas and building a new life in a great community.

The people have been tremendous. Both to the new administration at The Leader and to Debbie. Debbie may not be from West Texas, but she has demonstrated the courage and fortitude found in so many of our neighbors.

Our hat is off to her. She takes our best wishes and those of the community with her to her new/old home in Bowie. Thanks Debo and good luck. In the words of an old rancher we once knew and loved, "You're a good 'un!" Enough said.

Perhaps in the midst of the swirling controversy surrounding the TECAT test for the Texas school teachers and House Bill 72, which affects teachers and students, is third side of the triangle, the parents.

Sue Scott mailed the following letter to the editor from the Dallas Times Herald recently to illustrate her feelings concerning the type parent that makes teaching a tough job.

Written by Dorothy Rushing of Garland, the letter points out some interesting points:

To the Editor:
Public education has been traditionally recognized as a three-way cooperative venture of home, state and school boards. Now that the state of education has such a low regard, everyone has blamed the governor, Ross Perot, the teachers and everything but the main source: THE HOME.

The parents, by abdicating their duty to teach morals, ethics, respect, patriotism, self discipline and dedication, have also yielded their right to criticize those who spend more time with the student than does the parent.

I think there should be PECAT (Parental Excellence Cooperation Achievement Tests), such as:

20 points for: Naming the members of your school board, your child's subjects and teachers, who the student's friends are during and after school, or for knowing what H.B. 72 really says.

10 points for: Having attended your child's school during open house or parents' night; for just having contacted the teacher to see how the child is progressing; or for having read the many official papers your child brings home from school which relate to the district policy, changes or requirements.

5 points for: each time last month you personally went over your child's homework with him or her, and if it wasn't clear, contacted the teacher,

for each time you monitored your child's evening activity, insisting on an early bedtime with supervised television viewing; for each time you sent the child to school with a good breakfast.

By the same token, take off:
20 points for: each time you stormed into the school demanding that a teacher be fired for giving your child what he or she probably deserved; for having criticized the school or the district in your child's presence; for having lied for your child by covering up a hooky or a forged signature; giving the child money to avoid spending time with him or her.

10 points for: having thrown away, without reading, the papers sent home from school; for taking the child's word that there is no homework; for insisting that he or she participate in extra-curricular activities without passing the required courses.

5 points for: each time you left the child alone at night; Let the child associate with strangers; let the child watch any and all television, until late hours; no breakfast before school.

Unless you parents can make a 70 on such a test, you should relinquish the deduction you take on the income-tax forms until you successfully pass a successful parenting

course.

If the taxpayers really want a "return to the basics" in education, the school districts must also have a "return to the basics" with motivated, supervised and loved children who receive less money and more time from home, and "return to the basics" parents who are willing to put the interests of their children ahead of their own selfish, indifferent interests.

EDITOR'S NOTE: We invite our readers to share their views on any subject timely and important to residents of Schleicher or Irion Counties or West Texas. Articles and letters to the editor should be mailed to Schleicher County Leader, Box 790, Eldorado, Texas, 76936. Only signed letters to the editor will be published and should be no longer than two typed pages. [T.B.N.]

Eldorado girls attend Wayland Basketball Camp

Some 27 Eldorado girls attended Basketball Camp at Wayland Baptist University at Plainview. Those attending the camp June 8-13 included Cory Barton, Holley Whitten, Caty McGregor, Jana Sterling, Lee Ann Lloyd, Dee Ann Lloyd, Misti and Kimberly Williams, Jennifer McCarson, Mondee Nelson, Lacy Finley, Carissa Porter, Dena Manning, Whitney Fuessel, Angie McGregor, and Katy Hardy.

Others were Teresa Lux, Dena Lloyd, Amy Henderson, Denise Crowder, Angela Rebeck, Lou Ann Crowder, Carrie Sauer, Stacy Jones, Jennifer Torres, and Chris Agüero.

Hustle awards were earned by Katie Hardy, Caty McGregor, Amy Henderson, and

Stacy Jones. Jennifer McCarson was awarded "Most Improved Player" honors.

Cory Barton was elected to the Junior Division All Star Team, and Katie Hardy was elected to the Senior Division All Star Team and placed second in "One on One".

Coach Scott Barton was very pleased with the large turnout and enthusiasm the girls displayed at camp.

SAVING VITAMIN C

According to a Texas A&M University Agricultural Extension Service nutritionist, storing fresh vegetables and then heating or reheating them causes loss of vitamin C.

New policies at Leader reported

Several new policies have been announced for the Schleicher County Leader by new publisher Terry B. Neill.

Letters to the editor are welcome, but no unsigned letters will be published. Letters can be typed or handwritten, but should be no longer than two pages in length. The newspaper reserves the right to edit any portion of a letter which should be considered libelous by the editor.

"Many people believe they can say what they want to in a letter to the editor because they are the only ones responsible for what they say. That is simply not true. The newspaper is liable for any information that appears in it, regardless of who submits it, Neill reported.

"We like letters to the editor, but all of our opinions have our name on them so we think our readers shouldn't be ashamed of standing up for what they think," he added.

General news deadline will be 5 p.m. Tuesday, with society news (weddings, club meetings, etc.) due in by noon Tuesday for inclusion in that week's newspaper.

The newspaper's advertising deadline will also be 5 p.m. Tuesday, with classified ads due in by 3 p.m. each Tuesday.

Ads, both classified and display as well as news articles, can be phoned in, following the same deadlines. The Leader's new phone number is 853-3631. Classified ads must no longer be paid in advance.

Advertising rates will remain the same, but subscription prices will change effective July 1, following three second class mail rate increases in four months. Details will be forthcoming.

"We want the community to utilize their newspaper to the fullest. After all, it really belongs to its readers, and will be only as strong as they want it to be," Neill concluded.

Mias Amigas*

55th Annual Meeting
June 27 & June 28, 1986

Any student or teacher of Eldorado Schools until 1966.

Friday - June 27

Courthouse Lawn

- 5:00 P.M. Registration - Membership Dues \$2.00
 - 7:00 P.M. Ring the Old School Bell
 - 7:30 P.M. Sandwich Supper & Visitation
- Please bring your lawn chairs.

Saturday - June 28

Memorial Building

- 8:30 A.M. Coffee - Registration & Visitation
- 10:00 A.M. General Assembly
- Special Recognitions:
Class of 1935-36
Class of 1965-66
- Business Meeting
- DISMISS TO COURTHOUSE LAWN
- 12:30 P.M. Barbecue - Please reserve tickets \$5.00 each.
- Afternoon visitation - Reunions

Spouse and Children are invited guests!

MARK YOUR CALENDAR NOW

So adequate plans may be made for our meeting this year, please complete and return the attached card.

We look forward to seeing you!



Shown with Optional Deck
Expandable Fiberglass Pool



(Division of Howlett Pools)

Finally A Prestigious and Durable Above Ground Pool

- Lifetime Warranty • Custom-Designed Pools
- Gunite • Foxx Vinyl • Spas
- 3 Operational Pools on Display

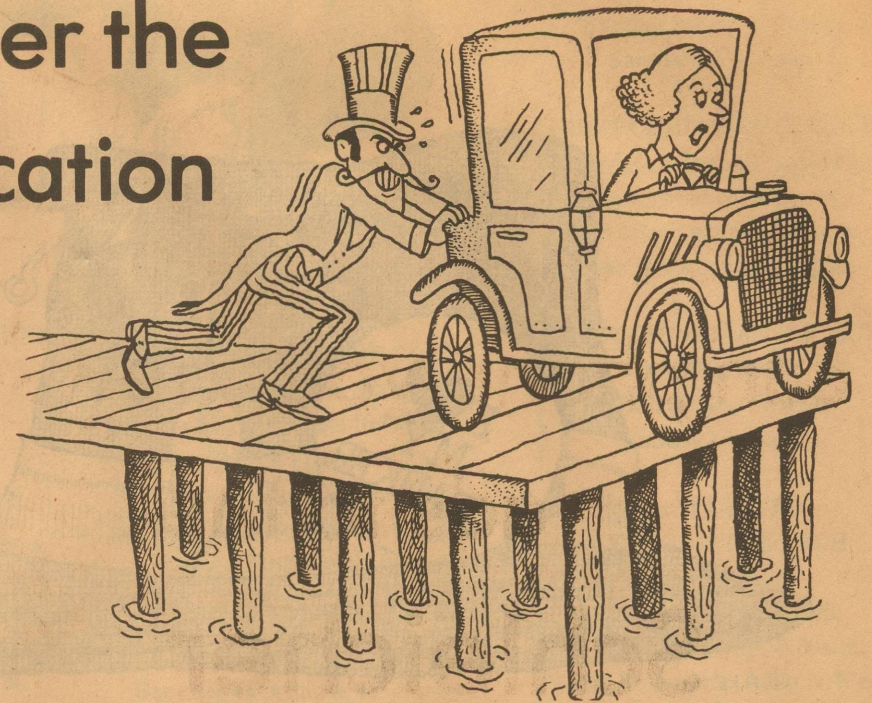
Since 1952

Aaylor-Webb

999 Knickerbocker Rd. San Angelo, Tx 76901

Don't push it over the edge before vacation this year!

Bring the family auto in and let our trained staff get it ship shape for that vacation trip.



- Tune-up --Oil & Filter Change --Complete Mechanic Service
- Air Conditioning System Check

And now we have a new, lower priced line of Bridgestone tires!

WE'RE THE MONEY-STRETCHERS ENJOY THE SAVINGS!



Clark's Exxon

Hwy. 277 in Eldorado 853- 853-2939

24-Hour Road-Tire service!

BECAUSE OF PORTABILITY

Container plants popular

Because of their portability and limited space needs, container plants continue to gain popularity.

Flowering plants as well as vegetable and fruit producing plants can be grown in containers, says Jerry Swift, county agent with the Texas Agricultural Extension Service, The Texas A&M University System.

Container plants have been used for landscape enrichment throughout history. They can be highlighted in a prominent spot when at their peak and hidden from view when not needed or when in less than attractive condition, Swift explains.

Also, a wide variety of plant species have different

cultural requirements may be grown on the same premises since individual soil, watering, pH, fertility, light and other environmental requirements can be provided for each container.

Almost any plant may be used as a container specimen so long as its cultural require-

ments are met, Swift points out. Placing a plant in a container tends to dramatize it and make it more important visually. Deciduous or evergreen trees, shrubs and vines as well as annual and perennial flowers may be used.

The key is to determine where the plant will usually be located and the availability of sunlight, moisture and protection. Annual flowers usually prefer at least a half day's full sun, but most tropicals and evergreens do well with less.

The plant form needed is another consideration, says Swift. Often clusters of similar plants and containers may be preferable to a single specimen plant. A large open-growing plant may look best with a groundcover of gravel or plants such as English ivy or ajuga. It is usually better design to not combine several plant species in a single container since they often compete with one another visually.

When selecting from the wide variety of containers on the market today, choose those of simple design that do not compete with the plant but tend to feature it, suggests Swift. For instance, plants in plain terra cotta clay pots often are featured on beautifully designed terraces, patios and entrances. Fortunately, some of the most appropriate containers such as clay products are often moderately priced.

Container plants usually require more care than those grown in the ground. Frequent watering, often on a daily basis, is necessary for most species, especially during hot weather, emphasizes Swift. Thus arrangements should be made for their care during vacations. Or they can be partially sunk into the ground in a shady, moist area.

Planting media should contain a lot of organic matter such as peat or compost. A good mixture includes five parts garden loam soil, four parts organic matter and one part coarse builder's sand. Most plants need to be repotted every three or four years

in a new media since organic matter tends to break down and decompose.

Once the plant is well established, periodically add small amounts of a complete fertilizer, says Swift. He cautions against heavy applications since they encourage the plant to outgrow its container too soon.

Since all parts of the container plant are above ground, they are more susceptible to cold injury than those growing in the ground. Thus these plants require added protection during periods of extreme cold, Swift adds.

To Report Information On Missing Persons Contact

TEXAS DEPARTMENT OF PUBLIC SAFETY
BOX 4143, AUSTIN, TEXAS 78765-4143

MISSING

Persons Clearinghouse
1-800-346-3243 (IN TEXAS)

LOTS TO CELEBRATE

Partytime in Texas

It's celebration time in Texas. . . And there's lots to celebrate!

Pleasure-loving Texans and visitors to the state will have no trouble locating celebrations this summer. All year long, Texans are having fairs, festivals, fiestas and fun events to mark the state's 150th birthday.

The State Department of Highways and Public Transportation has just issued the Calendar of Texas Events for the months of June, July, and August listing more than 800 opportunities to join in the myriad ways that Texans celebrate everything from classical music to cow-calling.

The Calendar is a guide to races, too: armadillos, crawfish, horses, drag boats, balloons, mules, river rafts, turtles, plus Olympics and fun runs for people. There'll be chicken-flying and frog-jump-

ing contests, as well as a national soaring competition.

Many Texans obviously prefer their competitions of the gastronomic persuasion. Cookoffs will feature such Texas products as peaches, pinto beans, ice cream, barbecue, pasta, hamburgers, black-eyed peas, fajitas, oatmeal, and of course, chili. One chili competition (in Buffalo Gap) will feature "the world's largest" bowl of red.

There'll be Sesquicentennial pageants, art shows and rodeos; vintage cars and vegetables, and dozens of other events proving it's celebration time in Texas!

Free individual copies of the slate of Texas summertime happenings are available at any Texas Tourist Bureau, or by writing Calendar of Texas Events, P.O. Box 5064, Austin 78763.

Services for Mrs. Inez Wilty held

KERRVILLE -- Funeral services for Mrs. Inez Wilty, 85, of Kerrville were held at 3 p.m. last Friday in Kerrville Funeral Home Chapel with the Rev. W.N. Perkins officiating.

Mrs. Wilty died last Wednesday in a Kerrville Hospital. Burial was held in Garden of Memories Cemetery. Mrs. Wilty was a Baptist.

Survivors include her husband, Rex Wilty of Kerrville; three daughters, Mrs. Lois Arnold of San Antonio, Mrs. Thelma Arnold of Ingram and Mrs. Dorothy Patterson of Georgia; three sons, Rex Wilty Jr. and L.R. Wilty of Kerrville and Merle Wilty of Ozona; two sisters, Mrs. Bessie Clifton of Eldorado and Mrs. Katie Lindholm of George West; 20 grandchildren; and 41 great grandchildren.

Jimmy Doyle and Cliff and Bessie Clifton of Eldorado attended the services.

Eldorado

BY EVELYN STIGLER

The Senior Ambassadors of First Baptist Church met Monday night for an ice cream supper.

It was suggested that the group buy a scrap-book and keep pictures of trips that are taken. Virginia Griffin volunteered to buy a scrap-book and keep it.

August 7 and 8 is the date of the trip to Canyon to see the play, "Texas". This group will join with a group from San Angelo to go on the trip. The cost of the trip will be \$55. Deadline for payment is July 3.

WILLIAMS FEEDLOT

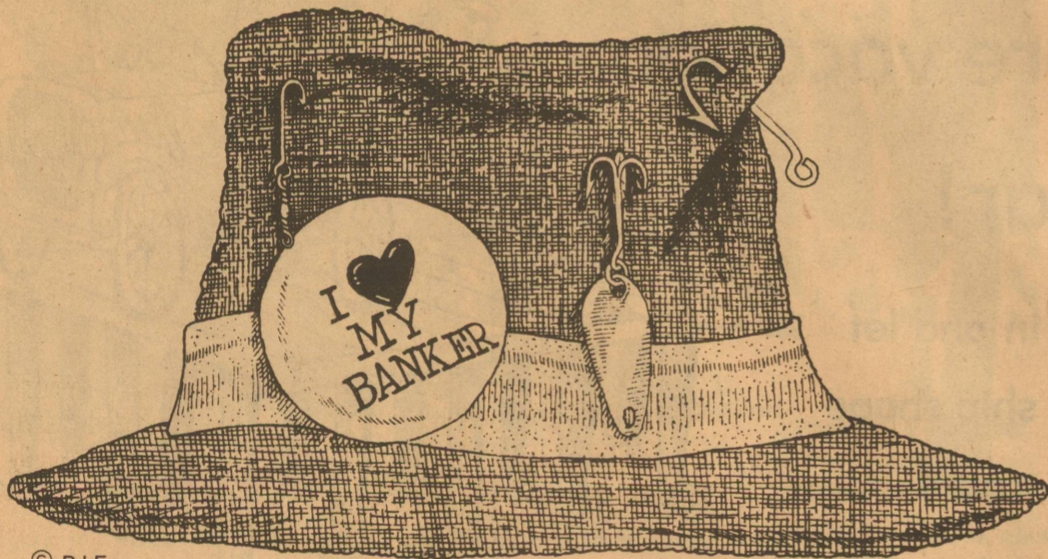
Custom Sheep Feeding

30 Years of Experience



Billy Williams
Rt. 1, Eldorado, TX
(915)853-2492

15,000 Capacity
Buy-Sell Sheep
Contact Day/Night



SYMBOLS OF RETIREMENT

The old fishin' hat is a recognized symbol of retirement, just like your personal IRA.

After spending a lifetime working toward your retirement you deserve to be free of financial worries. Stop in and let us explain the benefits of an IRA. We'll explain the savings and investment oppor-

tunities in terms you can understand.

Your tax deferred individual retirement account will be there when you need it, so you can spend all the time you want at your favorite fishin' hole, worry-free.

See us today, you'll be glad you did.

First National Bank
of Eldorado
Since 1907



Teachers looking at other fields

Four in ten Texas teachers are seriously considering leaving the profession; despite a severe teacher shortage, three-fourths balk at recommending teaching as a career; and almost one-fourth of the teachers moonlight to supplement their salaries, according to a teacher survey released by the Texas State Teachers Association.

The survey, "Moonlighting, Salary and Morale: The Texas Teachers' Story", has been conducted every two years since 1980 to track the conditions of teaching in Texas public schools.

The survey was conducted for TSTA by Dr. David L. and Karen L. Henderson. Dr. Henderson is a professor of education at Sam Houston State University in Huntsville. He teaches educational research, computer literacy, and teaching methods. Karen Henderson is the mathematics coordinator for Huntsville Independent School District.

Eighty-three percent are dissatisfied with the career ladder and the most common reason for leaving is now working conditions rather than salary as found in the three previous studies.

In previous surveys, "money" was listed as the main reason for leaving by 50 percent in 1982. That number dropped to 17 percent in 1986. At the same time, stress, burnout, paperwork and administrative hassles has risen steadily, from 24 percent in 1982 to 68 percent in 1986.

Two-thirds of the teachers support mandated negotiations with the local school board.

The profile of the Texas Teacher in this survey is 41 years old, earns \$24,601 after teaching 14 years and is married to a spouse who also works.

A little over half of the teachers surveyed support "no pass, no play."

The 1986 Survey is the first to reflect teaching conditions since House Bills 72 and 246 were implemented.

TSTA President Charles Beard said the survey was "on target" with the comments he has received from teachers

throughout the state.

"The message is clear that the Texas Legislature has to act in this next session to reduce paperwork and give teachers a meaningful voice in local school district policies, as they relate to the teachers' classrooms," Beard said.

The Texas Education Agency is predicting a shortage of 15,000 teachers when school opens next fall.



Dry ice does not melt. It evaporates.

SCHOOL

Single-family residential real estate accounted for 30.4 percent of the market value total in 1985. Business property, including utility companies and commercial and industrial real estate, equipment and inventories, made up 31.6 percent of the 1985 totals. Oil and gas values accounted for another 10 percent, while rural acreage represented 17 percent of total market value. Patterson noted that two clear trends emerge when figures from past SPTB studies are compared. "Since 1981, residential, commercial and industrial real estate have accounted for steadily growing shares of the school tax base. In the same five-year period, the oil and gas share has steadily declined."

Even though rural acreage

Continued from Page 2

made up 17 percent of the 1985 market value total, most of this land is either agricultural or timber land taxed at less than market value. As a result, the taxable value of acreage amounted to only six percent of the statewide school district tax base.

The findings of the 1985 Property Value Study are based on a SPTB sample of more than 170,000 properties. The agency compares its values for the sample properties with the values on local tax rolls to calculate the value estimates for each school district.

The study was done in conjunction with another study that analyzes the quality of tax appraisals performed by county appraisal districts.

Smart brides start their wedding plans with a visit to Cathy's

HERE'S YOUR CHECKLIST:

- Cake Tops --Bride Books
- Cake Knives & Servers
- Champagne Glasses

WEDDING FLOWERS

Specially priced this month!

We can order your wedding invitations and thank you notes.

Cathy's

Hwy. 277 In Eldorado

Anniversary Candles

853-2645

853-2680

HOME ECONOMIST SAYS

Freezing of fruits, vegetables good idea

Frozen fruits and vegetables spice year-round menus with garden-fresh flavor. But the nutritive value and quality of these fruits and vegetables depend largely on the treatment before freezing, storage temperature and method of cooking and serving.

Most fruit can be frozen satisfactorily, according to Nancy Lester, Home Extension Agent.

Select sound, ripe fruit which is slightly riper than for canning but not soft or mushy. Tree or vine ripened fruits contain more vitamins and a

richer flavor than fruits picked green and allowed to ripen before freezing.

In general fruit is prepared for freezing as for eating, says Mrs. Lester.

Keep fruit cool until it is frozen. Wash it in cold water but do not allow it to stand in the water. Some fruit loses food value and flavor and some gets water soaked, she said.

Some fruits, such as peaches, apricots, apples and pears, discolor easily. Mrs. Lester suggests ways to prevent this.

Ascorbic acid (vitamin C) is available in tablet, crystalline or powdered form. Use 1/2 teaspoon of this per quart of syrup to prevent this discoloration.

If you don't wish to pack the fruit in syrup, sprinkle dissolved ascorbic acid over fruit just before adding sugar. Use 1/2 teaspoon in 1/2 cup cold water to each quart or fruit.

Mrs. Lester said some special commercial antidarkening preparation of ascorbic acid are now on the market.

These materials can be found at drug stores or where other freezing supplies are sold.

Most fruits have better texture and flavor if packed in sugar or syrup. Some may be packed without sweetening for use in special diets.

The way you plan to use the fruit determines the method of packing it. Fruit packed in a syrup generally is better for dessert use; fruit packed in dry sugar or unsweetened is better for most cooking because there is less liquid in the products.

Quickly getting vegetables

from the garden to the freezer is a must for top-quality frozen vegetables. During hot weather, harvest vegetables in the early morning before they absorb much heat, advises Mrs. Lester.

Vegetables at optimum maturity will have best flavor and texture.

If you must store vegetables before freezing, Mrs. Lester recommends spreading them out loosely in a cool, well-ventilated place or packing loosely in the refrigerator.

Prepare vegetables for freezing similar to cooking them. Wash thoroughly in cold water, drain and sort, peel, trim and cut.

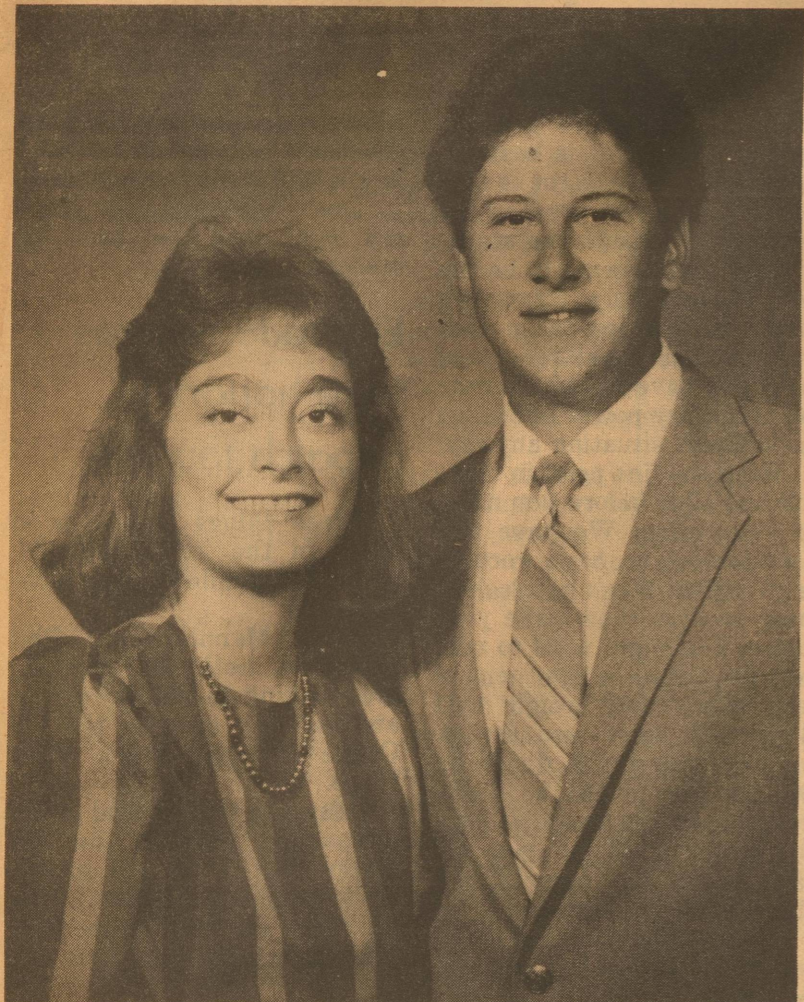
Heat vegetables in boiling water before freezing. Use one

gallon of boiling water to each pound of vegetable. The length of heating time varies with the vegetable.

This kills enzyme action in the product. Mrs. Lester says the enzymes help the plants grow and mature but if not deactivated the vegetables will develop off flavors and often discolor or toughen during freezing.

Place the scalded vegetables immediately into running cold or ice water. When the product is cool to the tongue when tested, it is cool enough to pack.

After the vegetables have been heated, cooled and drained, pack in airtight moisture-vapor-proof containers, leaving 1/2 inch headspace.



SET WEDDING DATE - Mr. and Mrs. A.T. [Sonny] Turner are pleased to announce the engagement and approaching marriage of their daughter, Lou Ann, to Robert Warren Markell of San Angelo. Miss Turner graduated from Eldorado High School in 1981 and Angelo State University in 1985. She is a first grade teacher at Travis Elementary in San Angelo. Her fiance is a 1981 graduate of Eldorado High School and a 1984 graduate of T.S.T.I. in Sweetwater. He is employed by Concho Valley Electric Cooperative in San Angelo. The couple plan an August 23 wedding date at the First Baptist Church in Eldorado.

EMS logs 15 runs during "busy" May

The Schleicher County EMS made 15 emergency runs during the month of May. They are as follows:

- For Unit 1 of the system -
- May 1 - 8:28 p.m. - EMS transferred a medical patient to Shannon
- May 4 - 8:10 p.m. - EMS transported an accident victim to Schleicher County Medical Center (SCMC)
- May 4 - 8:52 p.m. - EMS transported an accident victim to SCMC
- May 9 - 10:13 a.m. - EMS transported an accident victim to Kerbow Funeral Home
- May 10 - 7:57 p.m. - EMS transported an accident victim to Shannon
- May 14 - 6:45 p.m. - EMS transferred a medical patient to Shannon
- May 15 - 7:10 p.m. EMS transported an accident victim to SCMC
- May 15 - 8:30 p.m. - EMS transported a medical patient to SCMC

- May 15 - 11:50 p.m. - EMS transported a medical patient to SCMC
- May 16 - 9:15 p.m. - EMS transported an accident victim to SCMC
- May 16 - 10:21 p.m. - EMS transferred an accident victim to Shannon
- May 16 - 11:10 p.m. - Unit 2 to the EMS transported an accident victim to SCMC
- May 17 - 5:54 a.m. - EMS transferred a medical patient to Shannon
- May 17 - 8:05 p.m. - EMS transported an accident victim to SCMC
- May 29 - 10:07 a.m. - EMS transferred a medical patient to Shannon

To telephone for an ambulance call 853-2507.

IRON ABSORPTION DETERMINES INTAKE

Getting enough iron in your diet is not simply a matter of eating iron-rich foods, says a Texas A&M University Agricultural Extension Service nutritionist. Iron intake is determined both by the amount of iron-rich foods eaten and how well the iron is absorbed into your body, says Dr. Alice Hunt. "Generally, iron added to foods or taken in the form of supplements is not absorbed as well as that which comes from natural food," she explains. Red meats are the best source of iron

Red Wings
RED WING SHOES
McCalla's
Dept. Store
You've earned your Wings!

Schleicher County Medical Center Board
Cordially Invites
all citizens of Schleicher County
to attend a reception
honoring
Dr. J.B. Brame
and
an Open House spotlighting
our new hospital equipment,
from 3:00 to 5:00 p.m.
Sunday, June 22, 1986

Eagles' Point

BY RITA REEVES

Activities at Eagles' Point this summer include movies every Tuesday night. From 7 until 9 p.m. movies rated "G" will be shown, while "P.G." or "P.G.13" films will be seen from 9 until 11 p.m.

Movies set for next Tuesday, June 24 are "Gremlins" at 7 p.m. and "Weird Science" at 9 p.m.

A hamburger cookout and swimming party will be held Friday, June 20 beginning at 6 p.m. at the park. The party will honor recent high school graduates and new members, with all members invited and urged to attend.

A dance is on tap Saturday, June 28 from 9 p.m. until 1 a.m. featuring Deja'Vu Entertainment Company. The event will take place at Eagles' Point, with the public invited to attend. Admission will be \$5 for non-members and \$3 for members and card holders.

FIRST BAPTIST CHURCH

Rev. Chris Graham
Sunday School 9:45a.m.
Morning Worship 11:00a.m.
Evening Worship 7:00p.m.
Prayer Service Wed. 7:30p.m.

TEMPLO GETSEMANI ASEMBLEA DE DIOS

Rev. Noe E. Bargas
Sunday School 10:00a.m.
Morning Worship 11:15a.m.
Evening Services 5:00p.m.
Wed. Family Services 7:00p.m.
Tes. Y.P. Services 7:00p.m.

FIRST PRESBYTERIAN CHURCH

Rev. Ronald J. Sutto
Sunday School 10:00a.m.
Fellowship Time 10:30a.m.
Morning Worship 11:00a.m.
Ecumenical Bible Study 9:30a.m.
Every Monday Morning
Nursery Provided

WESTSIDE CHURCH OF CHRIST

Sun. Morning Service 10:30a.m.
Sun. Evening Service 6:00p.m.
Wed. Evening Service 7:30p.m.

CHURCH OF CHRIST

Sunday Services
Bible Class 10:00a.m.
Assembly 11:00a.m. & 6:00p.m.
Wednesday Services
Ladies Bible Class 10:00a.m.
Bible Class 8:00p.m.

PRIMERA IGLESIA BAPTISTA

Rev. Raul Tirado
Sunday School 9:45a.m.
Morning Worship 11:00a.m.
Training Union 6-7p.m.
Evening Worship 7-8p.m.
Sunbeams Wed. 3:00p.m.
Prayer Service 7:00p.m.



OUR LADY OF GUADALUPE CATHOLIC CHURCH

Louis Moeller
Sunday Mass 9 a.m.
Sunday School 10-11
Thursday Mass 8:15
Monday Spanish Mass 7:00p.m.

AGAPE ASSEMBLY OF GOD

Sunday School 10:00a.m.
Morning Service 11:00a.m.
Evening Service 6:00p.m.
Wed. Bible Study 7:00p.m.
Rev. Ken Otwell

ST. PETERS CATHOLIC CHURCH OF MERTZON

Pastor Fr. James Betzen
Sunday Morning Confession 10:30
Spanish & English
Mass 11:00a.m.
Tues. Mass 7:00p.m.
Tuesday Bible Study 7:30p.m.

MERTZON CHURCH OF CHRIST

Preacher Rueben Stanley
Sunday Bible Class 10:00a.m.
Church 11:00a.m.
Wed. Study 7-8p.m.
Sunday Evening Worship 6:00p.m.
Ladies Thursday 9-10a.m.

PRIMITIVE BAPTIST CHURCH

Elder Duane McCarty Pastor
Services each 2nd & 4th Sunday
10:30a.m. and 2:30p.m.
Also on Sat. Night before 2nd Sun.
Meeting at 7:00p.m.

FIRST BAPTIST CHURCH OF MERTZON

Pastor Randy Messer
Sunday School 9:45a.m.
Sunday Worship 11:00a.m.
Sunday Evening Worship 7:00p.m.
Wednesday Worship 7:30p.m.
Prayer Services

FIRST UNITED METHODIST CHURCH OF MERTZON

Rev. Dale Watts
Sunday School 9:30a.m.
Worship 10:45a.m.
M.Y.F. 5:30p.m.
Adult Bible Study 6:30p.m.

CHURCH OF JESUS CHRIST OF LATTER DAY SAINTS

Bishop Keith Knepp
Priesthood 11:00a.m.
Primary 10:00a.m.
Relief Sec. 11:00a.m.
Sunday School 10:00a.m.
Sacrament 9:00a.m.

FIRST CHRISTIAN CHURCH

Minister James LaRoche
Sunday School 9:45a.m.
Morning Service 11:00a.m.
Wed. Bible Study 7:00p.m.

FIRST CHRISTIAN CHURCH OF MERTZON

Minister Jay Spurlin
Sunday 10:45a.m.

FIRST UNITED METHODIST CHURCH

Rev. John Stukey
Church School 9:50a.m.
Morning Worship 10:50a.m.
Youth Fellowship 7:00p.m. Wed.
Youth Adult Study 7:30

ANTIOCH BAPTIST CHURCH

Sunday School 10:00a.m.
Morning Worship Service 11:00a.m.
No Sunday Night Service

ST. MARY'S EPISCOPAL CHURCH

Rev. Lea Roy Aldwell
Sonora, Texas
Sunday Morning Worship
and Holy Communion

Western Company
Eldorado

Shelton Oil & Gas
Mertzion

Lawdermilk Services Co.
Mertzion

Trey Trucking

Plum Perfect Gifts
Mertzion

Food Center
Sonora

KH&F Fence Company
Mertzion

R&H Well Service
Eldorado

J&L Hardware
Mertzion

B&H Maintenance Company
Eldorado

Southwest Texas Electric Co-op Inc.
Eldorado

First National Bank of Eldorado

Brown, first; Brant Ward, second; and Chuck Garabedian, third.

Western Horsemanship: Leah Brown, first; Chuck

Garabedian, second; and Brant Ward, third.

Reining: Chuck Garabedian, first; Skeeter Roubison, Eldorado, second; and

Brant Ward, third.

Pole Bending: Skeeter Roubison, first; Stephen Whitten, Eldorado, second; and Brant Ward, third.

Barrel Race: Michelle Hooten, Eldorado, first; Vicki Hooten, Eldorado, second; and Skeeter Roubison, third.

Western Riding: Chuck Garabedian, first; Skeeter Roubison, second; and Leah Brown, third.

Stake Race: Stephen Whitten, first; Brant Ward, second; and Skeeter Roubison, third.

SHOW TO HONOR YEATES

The 1986 Texas 4-H Horse Show at Abilene July 21-26 will be dedicated to B.F. Yeates, longtime horse specialist with the Texas Agricultural Extension Service. Yeates, whose career with the Extension Service spans 28 years, has given outstanding leadership to youth and adult horse programs in Texas for the past 20 years, says the Extension Service's state 4-H program leader.

From The Top of The Divide

It always appears that no matter who is in office the other fellow says he can do better. Politicians blame each other for both the things each does and for things over which they have no control. Bill Clements blames Mark White for the present state of Texas' economy.

I am sure Mr. White has very little control of the leaders of OPEC. They also disagree as to which one of them is the friend of education. I guess it depends on how you look at a problem.

Each candidate has a set of figures and facts that support his position. How is it that facts can be so different when they are supposed to cover the same time and situation? It appears to me that we all have a tendency to make the facts fit the outcome that we want.

Politicians shouldn't be any different. It may not make a whole lot of difference anyway. Whoever is our next governor

will not be able to get the Saudis to do what is best for Texas. Maybe we ought to pick the man who will present the best image outside the state.

Like Dad appears to be the head of the family, maybe we should pick a governor that looks good since neither one of them will have anywhere near the necessary power to change the present situation anyway.

Read the fine print in those political adds before you make up your mind. We have two candidates who have records as governor. When you look at those records then make your choice. You might want to take each candidates assessment of each other and weigh that along with their own assessment of themselves, divide by two and you might be somewhere near the truth. It may not be the truth but you will have made the error factor about even for both men.

Well, the rain has helped us and our neighbors to the north. We still have some of the best

summer weather but don't let the word out or all kinds of people will want to move here.

Don't lose hope, your children 'will soon be back in school!!!

Eldorado natives take honors in oilpatch tourney

Since things have slowed down in the Texas oilfields, several Eldorado families have relocated.

Mike Manning and Phil Edmiston, both of Eldorado, are working in Andrews now and recently entered the Oil Capital Masters Track Meet there.

Manning took second in the discus and third in the 100 meter dash in his age group, while Edmiston was first in the 100 meter and third in the long jump, also in his respective age group.

Down Home Diner
and
Bakery

Daily Special **Soup of the Day**

Monday-Chicken Fried Steak	Monday - Chicken Vegetable
Tuesday-Poor Boys	Tuesday - Nacho Cheese
Wednesday-Meatloaf	Wednesday - Broccoli & Cheese
Thursday-Chicken Cutlets	Thursday - Potato
Friday-Chicken Enchiladas	Friday - Cornbread and Beans

Antiques and Handcrafted Items!
Weight Watcher Daily Specials! Menu For June 16 - June 20

853-3022 6 a.m. - Mon - Fri
853-3157 2 p.m. 107 Main

AT YOUR SERVICE

ACE

Auto Care Center Eldorado ...
your Diamond Shamrock dealer!

Wash Jobs 14⁵⁰
Free Pickup and Delivery! inside & out

Full and Self-Service
Open Mon - Sat. 7 - 7

853-2823 Eldorado Hwy. 277 S

Dolan's
ROUSTABOUT

General Oilfield Maintenance

New Battery Completions

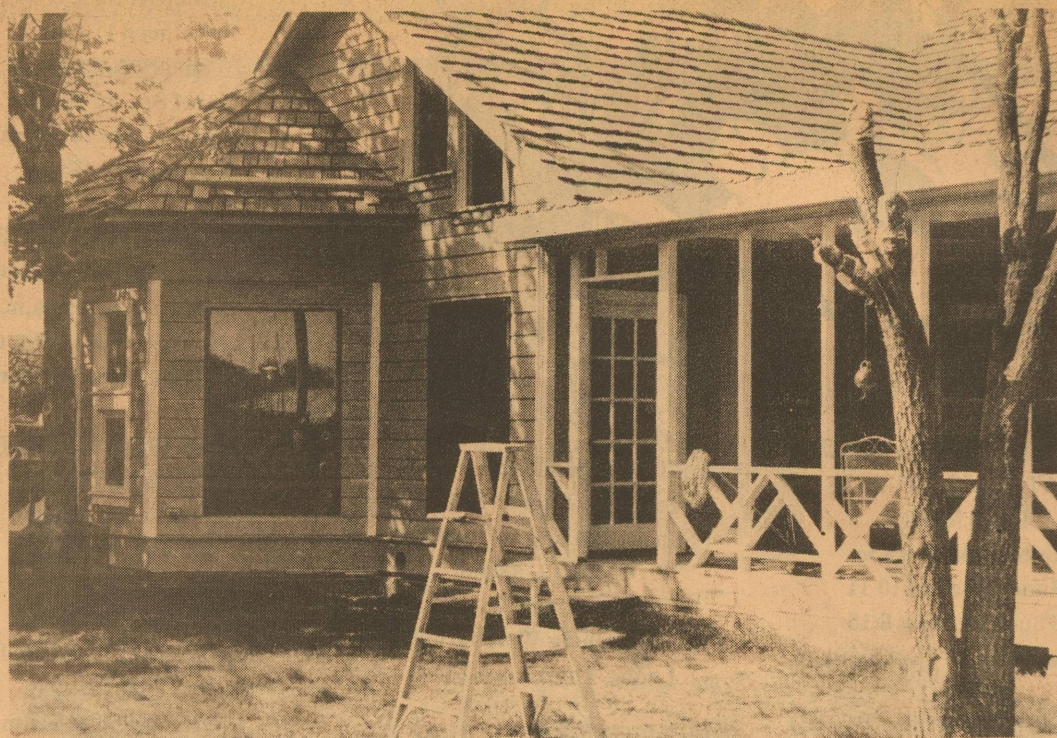
Dump Trucks

Welding

Mertzon 835-5301



Fitts Construction aims to please!



The beautiful home of Mr. and Mrs. Hal Whitten in Eldorado is an example of the quality workmanship done by Milton Fitts, Fitts Construction. The house includes many energy saving features as well as beautiful design.

Designing your dream home can be one of the most important decisions you make in your life. After all, your home is your kingdom and it should be comfortable and designed to your needs, to fit your lifestyle as much as possible. Your ideal home could be a restoration or a new structure or possibly even just that extra room you have been needing.

Whatever the case, Milton Fitts comes to your service fully prepared with all the necessary skills and talents to

make your home into a kingdom. Milton is the owner of Fitts construction in Eldorado and has an extensive background in home design as well as dwelling construction. The project you have in mind will be well served by Milton's prior knowledge of space utilization for any structural purpose as well as an uncanny understanding in value of light in relationship to maintaining a comfortable climate in any area. He has background in passive solar design homes and

renovation of those classic old homes with so much character.

When Fitts is asked to design a home he not only considers the living area, prime use areas such as bathrooms and kitchens, but he also brings into consideration of making each home energy efficient with the use of high-tech airway design and the fine product name of Lennox. If you are seriously considering a renovation or a new home, don't deny yourself the option of calling Fitts Construction at 853-2129.

Thorp's Laundry number one

Thorp's Laundry and Dry Cleaners is an Eldorado MUST! The courteous service you receive when you take your clothes in to the shop at 212 Main will give you a lift. Duge Yates, manager, is always on hand to help with all your laundry and dry cleaning needs. For dependable and expert cleaning, remember Thorp's.

Thorp's also can supply dust control mats, mops and brooms.

Remember Thorp's they're more than a laundry, they're much more! Phone 853-2314.

Kerbow Furniture
214 NE Main

Sonora 387-5500

Kerbow Funeral Home

Eldorado 853-2636 Sonora 387-2266

Fitts Construction Co.

Commercial - Residential

Milton E. Fitts

Box 871 Eldorado, Texas 76936 853-2129

Clark's EXXON

"Ride with confidence"

Expert car care, tire repair, wash and lube.

Your Full Service Exxon Station

Hwy. 277
853-2939 Eldorado Bill Clark, Mgr.

Eldorado Hot Oil Service

Jim Cathey 853-3012

Mittel Insurance

Fire-Auto
Windstorm Casualty

853-2636

Henderson Water Well

Windmill and pump repair
853-3280
Eldorado

Tex-Insulation

Commercial Residential
Free Estimates
Farris Nixon 853-2996

R&H Well Service
Trey Trucks
Division of Norton Well Service

853-2186 Eldorado

Thorp's

Dry Cleaners
Uniform Rental
Dust Control mops and mats

214 S. Main Eldorado 853-2900

Jerry's TV
214 Main
Eldorado
853-2314

Birdview

FOR RENT

New cropland accepted in CRP Program

Almost 280,000 acres of erodible Texas cropland were accepted into the Conservation Reserve Program (CRP) during the second 1986 sign-up period in May.

That total coupled with the 29,052 acres accepted into the new government program in March brings Texas' total to more than 300,000 acres involving some 1,200 farms. Accepted bids on the land statewide averaged just over \$41 per acre for the second sign-up period compared to about \$39 for the first round.

The CRP was created by the 1985 farm bill and is aimed at taking highly erodible cropland out of production to protect it from wind and water erosion.

Texas 4-H Horse Show set

The 1986 Texas 4-H Horse Show at Abilene July 21-26 will be dedicated to B.F. Yeates, longtime horse specialist with the Texas Agricultural Extension Service.

Yeates, whose career with the Extension Service spans 28 years, has given outstanding leadership to youth and adult horse programs in Texas for the past 20 years, says Tom Davison, state 4-H program leader with the Extension Service. Through his efforts the Texas 4-H Horse Show is at the pinnacle of success following its meager beginning on the Texas A&M University campus in 1963.

The Texas 4-H Horse Show is the culminating event for some 13,000 4-H'ers enrolled in the horse project, notes Davison. They have successfully

competed at county and district shows for the opportunity to compete in the state show.

More than 500 4-H boys and girls from throughout Texas now participate in this annual event which, for many, is the highlight of their year's work in the 4-H horse project, Davison points out.

The special tribute to Yeates will include a reunion of past participants in all phases of the 4-H horse program, particularly those who have competed in the previous 22 state shows.

Also, plans are to establish an endowment in honor of Yeates, says Davison. This would provide support for the state 4-H horse program conducted by the Extension Service.

"Our overall objective is to

pay tribute to a man who had devoted his life to working with youngsters as well as adults and their horses through Extension educational programs," adds Davison. "The endowment on his behalf will enable the 4-H horse program to continue to move forward and to be even more effective in helping the youth of our state learn not only about horses and horsemanship but such basics as citizenship, leadership and responsibility."

The 1986 Texas 4-H Horse Show will be at the Taylor County Expo Center in Abilene. A special program honoring Yeates will be the evening of July 25. The program will include an auction to raise funds for the endowment.

Oil production still declining in Texas

Railroad Commission Chairman James E. (Jim) Nugent has reported that 52 refineries in Texas processed 117,066,925 barrels of oil and hydrocarbon blends during February 1986.

The February volume compares to 131,804,987 barrels in January and 113,815,743 barrels in February 1985.

Texas refineries ran 92,423,497 barrels of crude oil in February, compared to 102,863,745 barrels in January and 88,643,332 barrels in February 1985.

Products manufactured in February totaled 117,295,300 barrels, down from 133,853,546 barrels in January and up from

114,252,078 barrels in February 1985.

February manufacture of motor gasoline totaled 52,574,445 barrels, compared to 58,107,307 barrels in January and 49,517,854 barrels in February 1985.

Aviation gasoline manufactured in February totaled 353,826 barrels, up from 274,234 barrels in January and up from 242,706 barrels in February 1985.

Texas refineries manufactured 8,717,601 barrels of home heating oil in February 1986—a decrease of 3,819,589 barrels from the January volume. February 1985 output was 9,850,164 barrels.

You can remove a red-wine spill on your rug with club soda. Leave on until the stain is completely absorbed, then vacuum.

COUNTY AGENT SAYS

Tomatoes tops

Tomatoes are the Number One garden vegetable in Texas but they also cause a lot of headaches for gardeners.

Jerry Swift, county agent with the Texas Agricultural Extension Service, The Texas A&M University System, reviews some of the common tomato problems, along with their causes and cures:

--Young plants dying soon after planting. This is often the result of fertilizer burn or damping off disease. Thoroughly mix fertilizer into the soil and treat seed for diseases. Avoid overwatering.

--Stunted, yellowing plants. Low soil fertility, poor soil drainage, shallow or compacted soil, insects or diseases, and nematodes are among the causes. Fertilize and work the soil well and control insects and diseases.

--Stunted, purple colored plants. Low temperatures and a lack of phosphorus cause this problem. Plant at recommended times to avoid temperature damage and add phosphorus fertilizer.

--Spots, molds, and darkened areas on leaves and stems. These could be caused by many things. If a disease is present, identify it and spray or dust. If there is a chemical burn, use only the recommended chemical at the recommended rate. To avoid a fertilizer burn, keep fertilizer off plant leaves.

--Wilting plants. Common causes are dry soil, overly wet soil, nematodes and diseases. Cures include watering, providing good drainage, and controlling diseases and nematodes.

--Weak, spindly plants. Check for too much shade, too much water, plants too thick or

too much nitrogen.

--Failure to set fruit. Temperature extremes, too much nitrogen, insects and cloudy weather are some of the culprits. Plant at the recommended time, control pests and avoid excess fertilization.

--Tomato leaf curl. Heavy pruning in hot weather as well as insects or diseases cause this problem.

--Blossom-end rot. Low soil calcium and too much as well as not enough moisture are causes. Add calcium-containing material, water regularly and improve drainage.

--Misshapen tomatoes or catfacing.

"Husbands Need To Know"

June 22

Marriage Enrichment Film Series at Mertzon Hwy. Church of Christ 4:00 and 6:00 p.m. Everyone Welcome!

SALE

Schleicher County Medical Center Gift Shop

Pillows	\$5.00
Silk Flower Arrangements	\$3.50
Ivy	\$2.50
Stuffed Animals	\$3.50
Aprons	\$3.50-\$1.00
Childrens' Books	\$1.50
Baby Sets (Rattler, Cornb, Brush)	\$1.50
Baby Announcements	\$1.00
Baby Rattles	50c ea.
Gerns of Wisdom	50c ea.
Large Scribble Tablets	\$1.00

SPECIALS

FREE Glassware By LIBBEY

At Participating Diamond Shamrock Locations

SAVE POINTS AND GET FREE Glassware Good While Supply Lasts

Eldorado Shamrock



Auto Care Center Eldorado Full and Self-Service Islands "Your local Lee Tire Dealer"

Hwy. 277S

Milton Fitts



For Every \$1⁰⁰ of Gasoline or Merchandise Purchased You Receive A Coupon Worth 1 Point



Diamond Shamrock

Know Someone Who Depends on Electricity For Life-Support?



Let WTU Know Who.

Electricity means more than convenience to some people—it means life itself. Their lives are maintained by special, electric-powered equipment, such as breathing and kidney machines.

West Texas Utilities wants to make sure we have a complete list of people who depend on electricity for life-support. In case of an outage or natural disaster, every effort will be made to restore their electrical power first and as quickly as possible.

If you or someone you know depends on electricity for life-support, please fill out the form below and mail it in or just call your local WTU office and give a name, address and telephone number.

LIFE-SUPPORT USER

NAME _____

ADDRESS _____

TELEPHONE # _____



Glidden Foods

(Formerly Hext Foods)
Hours Monday - Saturday 9 a.m. - 6 p.m.
We Accept Food Stamps

853-2892 Prices Good June 12 thru June 18 Eldorado

CHUCK OF ARM
ROAST
99¢
lb

HANDY 12oz
GERMAN
SMOKED SAUSAGE
1 49
pkg

MARKET
SLICED
BACON 1 59
lb

Boneless
SIRLOIN 2 49
lb

CLUB STEAK 2 19
lb

FRYER
LEG
QUARTERS 4 99
lb

1/2 GAL.
GANDY'S
ICE CREAM
1 89

3 LITER
COKE & 7^{UP}
1 29

Ruffles
POTATO CHIPS 1 09

MAGIC
CREAM COOKIES 4/1 00

GALLON
PARADE
BLEACH 79¢

8oz
BANQUET 3/1 00
MACARONI & CHEESE

BOUNTY
PAPER TOWELS 89¢

25 lb.
Generic
Dog Food 3. 99

PARADE
CAN BISCUITS
5/1 00

8oz
DEL MONTE
TOMATO SAUCE
4/1 00

CALIFORNIA
PLUMS 89¢
lb

10 lbs
POTATOES 1 09
ea.

99¢
PT
STRAWBERRIES

CALIFORNIA
NECTARINES 79¢
lb

CALIFORNIA
PEACHES
79¢
lb

LETTUCE
49¢
ea

CLASSIFIEDS

GARAGE SALES

Carport Sale - Saturday, June 21, Starts 9 a.m. Several families. 106 Oak, across from Baptist Church. (1X-6/19/86-cg)

YARD SALE: Sat. June 21, 9 a.m. til ? Brown Doublewide, Old Sonora Hwy. Large assortment. Including furniture, clothes, toys, dishes, heaters, tvs. If it rains, will be held inside. ALL SALES FINAL! (1X-6/19/86-cg)

PUBLIC NOTICES

NOTICE TO CONTRACTORS OF THE FOLLOWING WORK FOR CHRISTOVAL INDEPENDENT SCHOOL DISTRICT CHRISTOVAL, TEXAS

Christoval I.S.D. will be receiving bids for air conditioning six classrooms until June 30, 1986.

Specifications may be obtained from Gary Donaldson Architects & Planning Consultants, 223 S. Bryant, San Angelo, Tx 76903. (915) 655-4805. (2X-6/19/86-cg)

NOTICE OF INCORPORATION

Notice is hereby given that Williams Feed Lot, whose principal business is at 1973 Bell Lane, Eldorado, Schleicher County, Texas, and whose principal business office is in Schleicher County, Texas, has on January 1, 1986, become incorporated under the same or similar corporate name, Williams Feed Lot, Inc.

Jim B. Brame
23-24-25-26-c

David's Upholstery

--Free estimates--
--Free pickup & delivery--

853-2054

FOR RENT

MOBILE HOMES FOR RENT One 3 bedroom and one two bedroom. Call 835-3601 and ask for Molly. 24-25-26-c

FOR RENT one bedroom, air-conditioned, apartment. \$200.00 per month plus electric bill. \$75.00 deposit required. 853-2065. (2X-6/19/86-p)

HOMES FOR SALE

FOR SALE: 3 bedroom on two lots. Ref. and stove and washer and dryer and air cond. See to appreciate. \$16,000 firm. 309 Hill. 24-25-26-p

HOUSE FOR SALE: 3 bedrooms. \$11,500. 207 West. Call 853-2429. 22-tfc-c

J&R Properties

Restricted Residential Lots for sale

east of Sunset Acres
All City Utilities
Cable T.V. available
Call 853-3345
18-31-p

THANK YOU

I want to thank all my friends and relatives for attending my graduation and for making my special day even more meaningful.

To my aunt and uncle and cousins Mr. and Mrs. Alan Monson, Jill and Amy of Madison, Minnesota and to my friend Sam Christy of Albuquerque, N.M. thank you, again for being with me and my family.

Jennifer Stensby
(1X-6/19/86-cg)

NOTICES

Part Time Take Inventory in Eldorado stores. Daytime hours. Car Necessary. Send phone number, work experience to: ICC S466, at, 3 University Plaza, Suite 505, Hackensack, N.J. 07601. 23-24-25-c

NOTICE - I will sew summer clothes for children and young adults, jams, shorts, short-sets, sundresses, etc. Phone 835-3103. Mertzon. (2X-6/19/86-cg)

NOTICE - Need a babysitter? Call Blanca at 853-2021. (1X-6/19/86-p)

REWARD OFFERED for return of three month old Weimeramer. Dark gray, rope collar, last seen at swimming pool last Thursday. Reward \$25. 853-2727. (TFN-6/19/86-pd)

MISC. FOR SALE

FOR SALE: 1976 Chevrolet Vega. Best offer. Also 8' pickup camper, sleeper only with a.c., ice box. Best offer. Call 853-3433. (2X-6/19/86-pd)

HAY FOR SALE: Fertilized and irrigated coastal and alfalfa. 915-396-2635 evenings. 20-31-p

FOR SALE: 1984 Ford pickup XLT, 3/4 ton, low mileage. Excellent shape. \$7,000. Call 853-3239. (2X-6/19/86-cg)



When the Statue of Liberty was built in 1886, she cost \$250,000.

NOW ENROLLING

students for painting class.

Anyone interested in knitting

or crochet please call.

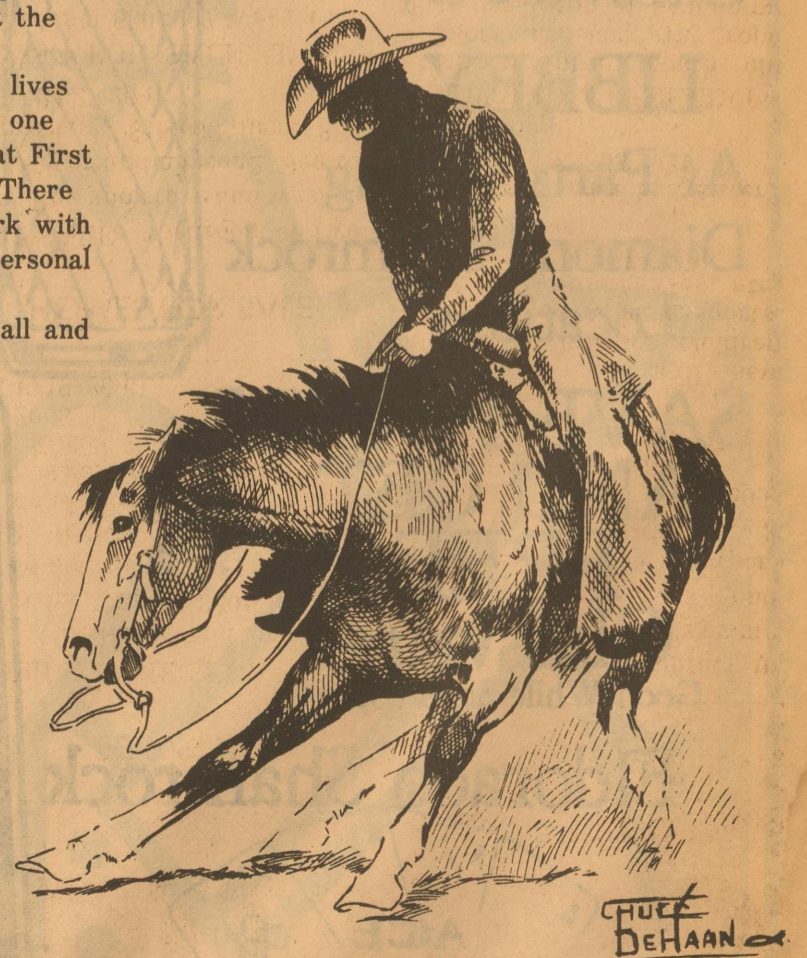
Elizabeth Taylor IOWNA 853-2094

Sometimes it takes two to get the job done.

When our great grandfathers settled this part of Texas long ago, they had the vision to see that much more could be accomplished by working together to get the tough jobs done.

It's a tradition that still lives in the Good Country -- and one that we live by every day at First National Bank of Mertzon. There are many ways we can work with you to help you meet your personal financial goals.

Come see us soon. Or call and we'll come see you.



The First National Bank of Mertzon

Member Federal Deposit Insurance Corporation

Serving West Texas Since 1910