

The McLean News

Serving McLean and the Area Since 1903

VOLUME 76 McLEAN, GRAY COUNTY, TEXAS THURSDAY, JANUARY 18, 1979 PRICE 20¢ NUMBER 3

from the
distaff side
by Linda Haynes

One of the reasons we run historical pictures in the paper is that there is usually an interesting story behind each picture.

Several people called to give us some information about the picture of Joe Lofton's wreck, which appeared in last week's paper. The date was placed in 1913, so we were able to find a story in the old files of The McLean News. The story was so interesting I thought you might enjoy reading this example of "old-time" journalism. From THE McLEAN NEWS, July 25, 1913:

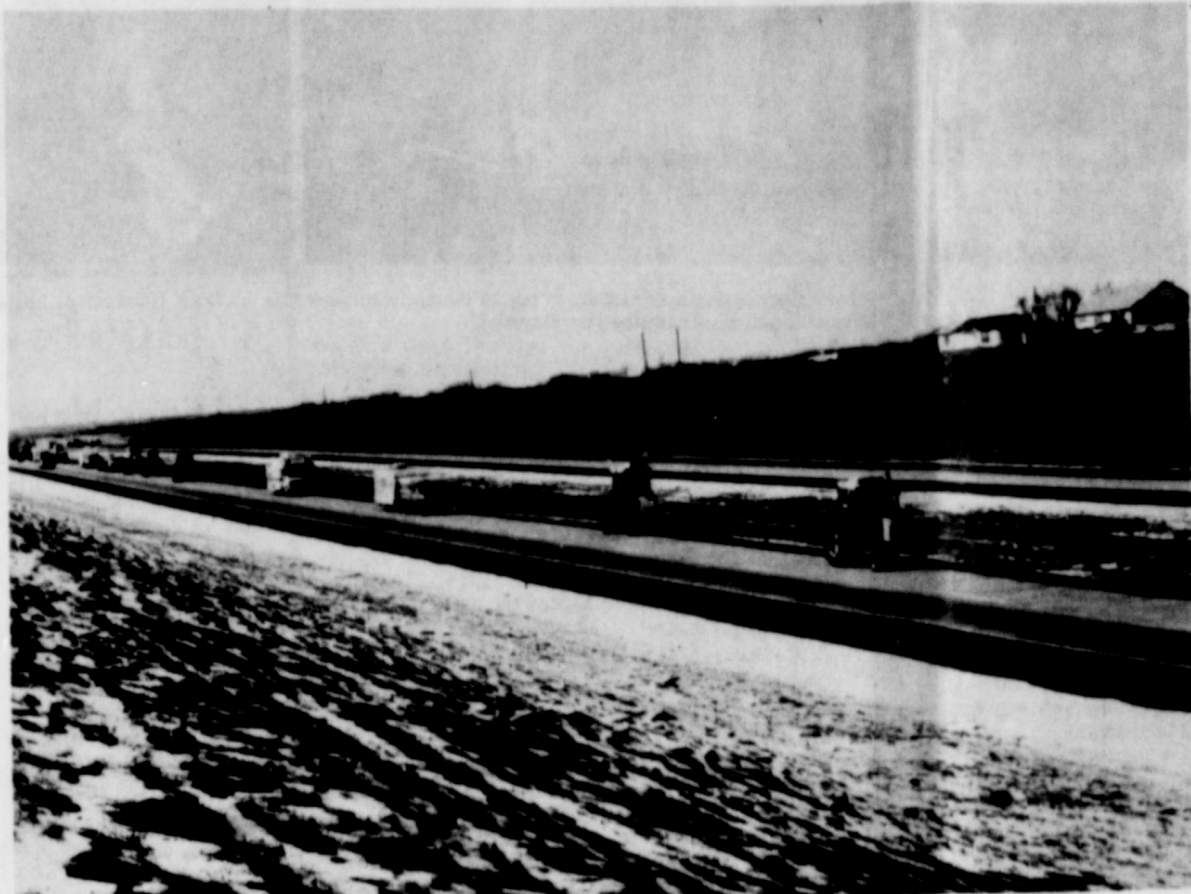
"In an automobile accident, which occurred just east of the Fred O'Dell place on the Alanreed road last Monday evening about ten o'clock, Miss Mildred Bundy sustained injuries that almost proved fatal. Besides breaking the socket bone of her left hip, she suffered internal injuries and a severe bruise on the right side of her head. At this writing she is not considered out of danger but there is great hope of her recovery." (Note: Miss Bundy later married Ross Biggers, another occupant of the car, and although she lived over her injuries, she was crippled from the broken hip. She died about two years ago.)

"The automobile was occupied by Misses Mildred Bundy, Olive Haynes and Annie Dalrymple and Messrs. Ross Biggers, E. B. Guertin and Joe Loftin, the latter being at the wheel. They had taken a little jaunt out the Alanreed road after church and were returning when Mr. Loftin discovered a cow almost across the road. He swerved the car as much as possible to the right but just as he did so the animal undertook to cross right in front of him and the consequence was a collision which threw the car out of balance and just as he was getting it back under control it smashed into a calf that had managed to get right in the way. This threw the car into the air and turned a complete somersault and finally stopped right side up but facing the opposite direction to which it was headed at the time of the collision. All of the occupants were thrown from the machine but in just what manner none of them could say. All, except Mr. Guertin, sustained bruises about the face and limbs, but none were seriously hurt except Miss Bundy."

One of the party went to the nearest phone and called Dr. Donnell, who responded immediately, coming in his auto to take the party back to town. At first it was not known that Miss Bundy's injuries were so serious but later developments awakened grave fears for her life. Dr. Rogers, a specialist of Clinton, Okla., was called into consultation with Drs. Donnell and Ballard to assist with an operation on the skull, but this plan was abandoned when it was found that a blood clot that had formed on the brain was gradually passing away.

From the information that I received from my callers, Joe Lofton himself was an interesting person. He owned the Buick dealership in Alanreed, and the car that he was driving was a Buick Model #25, an open touring car with an acetylene tank on the running board to power the headlights. Lofton apparently sold several Buicks to families in the McLean area, but since automobiles were so new then, he had some difficulty convincing people that they could learn

See DISTAFF, Page 2



THE TRACTORS ARE COMING - A "tractorcade" stretching 12 miles long moved through McLean Monday. Members of the American Agriculture movement were driving the tractors on the way to Washington to protest low farm prices. (Photos Courtesy of the SHAMROCK TEXAN)

American Ag Tractorcade Moves Through McLean

Eighty-nine tractors, several campers, a fuel truck, and several supply trucks belonging to cavalcade of farmers passed through McLean Monday.

The group, a part of the American Agriculture movement, is traveling to Washington to protest low farm

prices. Each tractor carried at least a bushel of wheat to sell in the capitol.

The group plans to reach Washington Feb. 2.

By the time the cavalcade reaches the capitol, they hope to have between 10,000 and 20,000 vehicles, according to Gerald McCathern of Hereford, spokesman for the group.

The farmers are carrying their own food, fuel, and repair parts for their vehicles.

"We don't want to spend any money in Washington," one of the group said.

"We're trying to save a way of life," one man said. "We're not just fighting for the farmers now; we're fighting for all businessmen who are fed up with the mess in Washington. Approximately 500 people were in the group which came through McLean."

Ex-Students Begin Plans For Reunion

Class meetings, a dance, a fiddler's contest, a rodeo, a barbeque, and a celebration of McLean's 70th birthday are among the events tentatively planned for the McLean Ex-Student Homecoming next summer.

Members of the McLean Ex-Students Association met Monday night at the United Methodist Church to begin making plans for the June meeting.

June 16 and 17 are the tentative dates set for the festivities, if Rodeo Club members are able to schedule the annual McLean 66 Roundup and Rodeo for that weekend.

Tentative plans call for a registration of all ex-students Saturday morning followed by a barbeque in the city park. Following the barbeque there will be a fiddlers' contest, games for children, and an observance of the city's anniversary.

Members of the McLean All-Time Superstar Football team will also be honored at that time.

A dance Saturday night, following the rodeo, has also been tentatively set. Sunday, the ex-students will meet for a general get-together at the McLean senior citizens center at 2 p.m., followed by individual class meetings at 3 p.m.

Planners of the event also hope to schedule an art and crafts show Saturday, and other activities for the celebration.

The Ex-Student Association will meet Monday Jan. 29 at the Sam Haynes home to begin addressing letters to all former students. All ex-students are invited to

attend the meeting to finish plans for the celebration.

Blood Pressure Clinic To Be Today At 1 P.M.

The Texas Department of Public Health will sponsor a diabetic screening and blood pressure clinic Thursday, Jan. 18, from 1-4 p.m. at the McLean Young-at-Heart Club.

This is a free clinic, with everyone invited to participate.

Three Companies Now Vying For Hospitals

Three corporations are now interested in leasing or replacing Highland General Hospital, according to an article by Dan Lackey in The Pampa News Sunday.

According to the article, the Gray County Commissioners Court wants a new hospital to replace Highland General and a lease agreement for at least 25 years.

Gray County Judge Carl Kennedy said "We're determined that the county needs a long term commitment for the operation of the hospitals, rather than a short term lease agreement."

"We're looking for a proposal which includes construction of a new facility to replace Highland General as well as a commitment to keep open the hospital in McLean," he said.

The three corporations, American Medical International, (AMI), Hospital Corporation of America (HCA), and Hospital Affiliates International (HAI), have all expressed interest in the county hospitals.

"The thing that has delayed a commitment so far," Kennedy said, "is our concern with the length of the lease. In 15 years the county will still have the same problems it has now with the hospitals, despite the improvements made by a corporation, if you allow for depreciation."

Kennedy said the court was also committed to keeping open the McLean Hospital. "We think that hospital provides an important service to that section of the county," he said.

AMI was the first corporation to show interest in the county hospitals, and com-

missioners earlier signed a letter of intent in investigating the possibility of leasing the county facilities to AMI.

The corporation has proposed leasing the facilities for five years, with the option to renew every fourth year up to 15 years, and making payments up to 1.2 million for the first five years, in the form of improvements to Highland General.

But with the court's decisions Friday, negotiations have been put on a new ground, said Kennedy. HCA and HAI have not submitted written proposals to the Court.

McLean Tourney Finals Moved To Saturday

Final games for the McLean Junior High Tournament were cancelled last Saturday because of the blizzard, but all games have been re-scheduled for this Saturday, according to Dorman Thomas, grade school principal.

Shamrock and McLean girls will play for the championship at 6 p.m., Saturday. Shamrock and Quail boys will play for the championship at 7:15 p.m.

In the consolation round, Clarendon and Hedley girls will play at 1 p.m., and Clarendon and Allison boys will play at 2:15 p.m.

Mobeetie and Allison girls will play for third place at 3:30 p.m., and Mobeetie and McLean boys will play for third place at 4:45 p.m.

Other teams who participated in the tournament last weekend were Esteline and Quail.

City Receives No Sales Tax

Austin, Texas--State Comptroller Bob Bullock Monday said the January allocation of the local option one percent sales tax to Texas cities will exceed \$18.1 million.

This month's rebate is about \$300,000 less than the state paid to some 900 Texas cities during the same one-month period last year.

Texas cities received a record \$424.8 million during 1978 as their share of the city sales tax, an increase of 17 percent over the previous year, according to Bullock.

The City of McLean received no payment this period. Last year at this

See CITY TAX, Page 2

Three File For City Positions

Incumbents Dale Glass, Ruth Magee, and Sam Haynes filed for re-election Monday at the City Hall. Glass and Mrs. Magee both filed for city council, and Haynes filed for the mayor spot.

Glass and Mrs. Magee are both completing their first term as councilmen. Haynes has been mayor of McLean for six years.

MHS Teams Lose Two Games To Lakeview

McLean High School basketball teams dropped two close games to Lakeview Jan. 9 in the McLean gym.

The Tigerettes made up an 8 point deficit at half-time to pull within 2 points in the final few minutes of the game, but lost by 5, 39-34.

Jill Trew was high-scorer for the girls with 8 points. The Tigerettes made only 6 out of 14 free throws. Judy Trew scored 6 points, and

Jamie Trew, Diane McAnear and Sally Haynes each scored 4; Ann Skipper and Sherry Glass scored 2 each.

The Tigerettes led Lakeview through three quarters of play, but fell behind in the final stanza, to lose the game 57-54.

High-point man for the Tigers was Randy Suggs 25. Tom Eck scored 15; Brad Melton, 6; Bill Skipper 3, and Tim Killham, 4.

Joe Burr Benefit Planned Jan. 26

The Hedley Lions Club has announced that a pancake supper will be held Jan. 26, with the proceeds going to the Joe Burr family to help meet the extensive medical expenses that have been incurred.

The event, which has been dubbed the Joe Burr Benefit pancake supper, will be held at 5:30 p.m. in the Hedley School Cafeteria.

See BURR, Page 2



Thursday, Eric and Jackie Boyce of Sevierville, Tenn. (Dolly Parton's hometown) were ferrying this helicopter to the Las Vegas helicopter convention when they saw the McLean Dairy Queen sign from the air. The couple landed in the large parking lot, creating a new twist to the word "drive-in" (Photo by Linda Haynes)

DIXIE RESTAURANT
'Dinner For Two'
 TO BE GIVEN AWAY EACH WEEK
 TO THE LUCKY WINNER OF A
 DRAWING EACH THURSDAY

—RULES—
 Any adult may register between the hours of 11:45 p.m. and 1:30 p.m. each evening. The more times you register, the more chances you have of winning.
 The dinner will be any item served on our menu, your choice. You will have one week to claim your free dinner.

NO PURCHASE NECESSARY
DIXIE RESTAURANT
 OPEN 6 DAYS A WEEK 6 A.M. - 9 P.M.
 CLOSED SUNDAY
 OWNED AND OPERATED BY THE MIDDLETON FAMILY

COMMUNITY CORNER

Young At Heart Club Needs Donations UIL One-Act Play Cast Announced

The Young-At-Heart Club, McLean's senior citizen group, is issuing an urgent plea for donations to enable the group to buy the building that they are now renting.

Vela Young was appointed as temporary vice-president of the Young-At-Heart Club during its regular monthly meeting Jan. 11. Mrs. Young will serve until Mrs. Ruby Tibbetts returns from the hospital.

Volunteers will keep the senior citizen center open in the future, according to Eula Morrow, secretary. Mrs. Lena Bailey Freeman will open the center Monday, and Mr. and Mrs. Frank Reeves will open it on Friday.

Members of the club will quilt every Tuesday, and anyone who likes to quilt is invited to attend. The club plans a covered dish supper the last Saturday night of every month, in addition to their regular game nights on Thursdays and Saturdays.

The club, which was formed several years ago for McLean citizens over 55, has been receiving federal grants to maintain operation of the club, but they were informed recently that they would not receive a grant this year.

Anyone wishing to make donations to this group, can send their gifts to the American National Bank, McLean News Office, or the Young-At-Hearts Club.

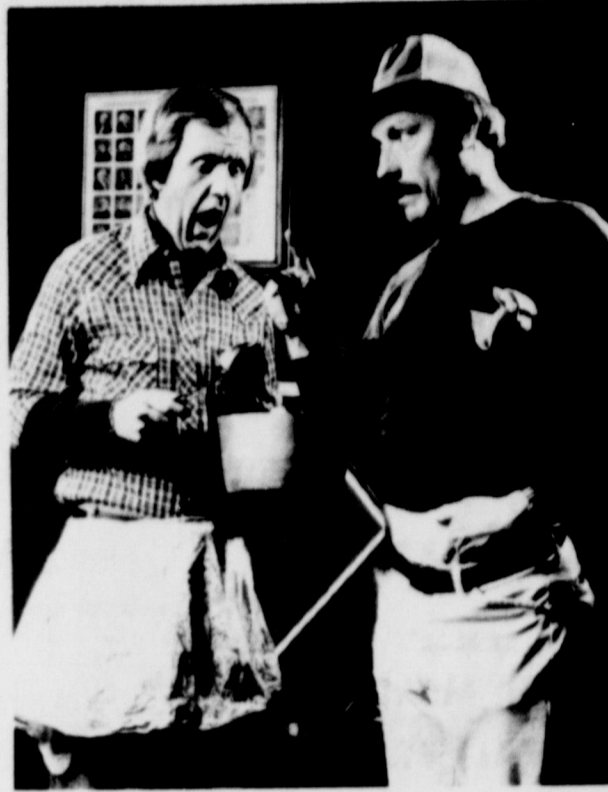
All donations are tax-deductible.

The club has been serving dinners for the public every Thursday to raise funds for the club, and now plans to expand that service to serve dinner on Tuesdays also. The public is invited to attend these lunches. Price for adults is \$2 and \$1 for children. A steak dinner is planned for next Tuesday.

The cast for the University Interscholastic League One-Act play was chosen recently, according to Mrs. Jacque Riley, director. The play, "Of Winners, Losers, And Games" will depict the game of life.

Cast members are Randy Suggs, Jeanette Brown, Sherry Glass, Kelly Moore, Sherry Swaner, Rachel Glenn, Trudy Stewart, Matt Davis, Brett Simmons, Glenda Pharis, Kara Daniels, La-Donna Keeton, and Leslie Cunningham.

Play contest will be in Clarendon Mar. 20.



Audiences are laughing away cold winter weather with "The Odd Couple" at Amarillo's Country Squire Dinner Theatre. Jim Slaughter has the role of the super-neat man who shares an apartment with a happy-go-lucky sportswriter played by Archie Dwyer, a former McLean resident. The comedy will run Tuesdays through Saturdays through Feb. 10.

Wink Gideon
 IS NOW TAKING SUBSCRIPTIONS
 FOR THE PAMPA NEWS

CALL 779-2705

SUBSCRIPTION PRICE
 FOR HOME DELIVERY IS \$3.25 a month
 payable at the first of the month.

NOTE TO CURRENT MAIL SUBSCRIBERS!
 For bookkeeping accuracy, Wink can not throw you at home until Feb. 1. You will continue to get the Pampa News through the mail until that time.

Please continue to pay the PAMPA NEWS as you have been.

QUARTERLY - \$9.75
 SEMI-ANNUALLY - \$19.50
 YEARLY - \$39

THE PAMPA NEWS

McLean 4-Hers Attending Amarillo Stock Show

Several Gray County 4-H members are attending the Amarillo Stock Show and Rodeo this week at the Tri-State Fair Ground in Amarillo. The show, which began Tuesday, continues through Monday.

Steer judging is scheduled for tomorrow beginning at 8 a.m., Barrows of the Chester White, and Yorkshire breeds will be judged tomorrow at 5 pm.

All other breeds of barrows

will be judged beginning at 8:30 a.m. Saturday.

A Junior Beef Heifer Show will begin Saturday at 9 a.m.

At 1 p.m. Monday, an auction sale will sell a predetermined number of eligible stock show entries.

McLean area 4-Hers include Candi Carpenter, Elson Rice, Jim Ann Rice, Stephen McAnear, Donna McAnear, Susie Billingsley, Rhonda Woods, Teresa Woods, Deb Crockett, Stacie Smith, and Donnie Smith.

Fund Drive Volunteers To Meet

Volunteer workers for the McMurry Annual Fund will gather for a dinner at 7 p.m. on Tuesday, Jan. 23 in the Memphis First United Methodist Church to kick off the 1979 campaign in McLean, says Dr. Thomas Kim, McMurry College President.

This fund-raising effort provides sustenance for the teaching effort of McMurry College, a four year liberal arts college established in 1923 in Abilene.

McMurry is owned and operated by the Northwest Texas and New Mexico Conferences of the United Methodist Church, which includes the McLean area.

Maridale Glass On Dean's List

Maridale Glass, daughter of Mr. and Mrs. Dale Glass of McLean, was named to the Dean's Honor Roll at West Texas State University in Canyon for the fall semester.

The Dean's List represents students who have a semester grade point average of 3.25 to 3.84 for a completed semester load of 12 hours or more.

Miss Glass is a sophomore.

"Never cut what you can untie." Joseph Joubert

District Governor Speaks At Lions Club Monday

District Governor Al Tremble of Dumas spoke to the McLean Lions Club Monday night at their regular monthly meeting. Tremble, the governor of District 2-TL, informed Lions about events in the district, and gave a report on the High Plains Eye Bank and the Crippled Children's Hospital.

Coach Bill Coward also

discussed the Coach's Clinic to be held Feb. 17. The McLean Lions will prepare the noon meal.

Vice-president Thacker Haynes presided in the absence of Boss Lion Jim Allison, who was out of town.

Twenty-one members and four guests, Tremble, Coward, Buel Wells, and Al Yount of Borger, were present.

McLean Briefs

Martina (Giesler) and Fred Hergenrother left yesterday for Incirlick, Turkey, where Master Sgt. Hergenrother will be stationed with the U.S. Air Force.

Mrs. Hergenrother, a former teacher in the McLean schools, hopes to teach in the American base school in Turkey.

Mary and Kathleen Gately attended the Wayland University of Texas women's basketball game Friday at Plainview.

Among those attending the basketball game at Wayland Baptist College Friday night were Jenny and Ricky Evans and their children Chris and Jackie from Lubbock; and Mr. and Mrs. John M. Haynes, John C. Haynes; Gladys Smith; Mike Haynes; David Haynes; Sammy Don Haynes; and Morse Haynes, all of McLean.

Visiting in the W.R. Ferguson home over the weekend were their grandchildren Pamela and Larry Strasser and their baby Larry Lee, from Abilene.

Mr. and Mrs. Dale Greenhouse of Pampa visited Mr. and Mrs. Odell Mantooth last weekend. Mrs. Mantooth is home from the hospital recovering from a fall on the ice.

Buck Henley is a patient in an Amarillo hospital this week.



Carrots, parsley, celery, parsnips, dill, anise and caraway are all part of the same plant family.

Beta Sigma Phi Sets Valentine Dance

The Beta Sigma Phi sorority met for its regular meeting Monday night at the library for two programs.

Freda Holland presented a film on the modern life of the pygmies, and Evelyn Shaw presented a program on love.

President Linda McDonald presided during the business session. Feb. 3 was chosen as the date of the annual Valentine Ball at the McLean Country Club, and Brenda Dickinson, Sonia Heasley, Billie Kingston, Linda McDonald, and Jeanne Smith were nominated as queen candidates.

Susan Barker, hostess, served refreshments to Cheryl Smith, club sponsor, and members Nancy Billingsley, Brenda Dickinson, Mary Lou Glass, Janet Glass, Sonia Heasley, Charlotte Hefley, Freda Holland, Sandra Joiner, Billie Kingston, Susie Lee, Sue Marsh, Barbara Matheny, Linda McDonald, Margaret Milam, Ann Pierce, Jacque Riley, Evelyn Shaw, Frankie Smith, and Jeanne Smith.

School Menu

- Fri., January 19
Fish
Cole Slaw
Maccaroni & Cheese
Tarter Sauce
Bread
Fruit
- Mon., January 22
Chalupas
Pinto Beans
Tossed Salad
Fruit
- Tues., January 23
Bar-B-Que on Bun
Pickles
Onions
French Fries
Strawberry Shortcake
- Wed., January 24
Roast Beef
Brown Gravy
Mashed Potatoes
Blackeyed Peas
Hot Rolls
Butter & Jelly
- Thurs., January 25
Spaghetti with Meat
English Peas
Salad
Garlic Bread
Jelly Salad

Potatoes refrigerated for a week may develop a sweet taste because some of their starch changes to sugar. To improve flavor, store them at a higher temperature for one or two weeks before using.

In the Kitchen BY LINDA HAYNES

If you're not an "Bacon and eggs" addict, you probably like to vary your breakfast menu. I love pancakes (mostly because my husband is the pancake specialist at our house).

I once asked a friend for her recipe for pancakes and waffles after I had tasted her delicious concoction. In whispers, she confessed that while her husband thought they were homemade, her pancakes came "from a box."

Try hers. She used the recipe on the box of Pioneer Biscuit mix, and they're great!

I also like French toast. This recipe is delicious.

SUNDAY FRENCH TOAST
 8 slices French bread,
 3/4 inches thick

4 eggs
 1 c. milk
 2 T. orange juice
 1 T. sugar
 1/2 tsp. vanilla
 1/4 tsp. salt
 2 T. butter
 Powdered sugar (optional)

The night before, place bread in single layer in 12x8 baking dish. In bowl, with rotary beater, beat eggs with milk, juice, sugar, vanilla and salt until well blended. Pour over bread. Turn slices to coat evenly.

Refrigerate, covered overnight.

Next morning, in hot butter in skillet, saute' bread until golden - about 4 minutes on each side. Sprinkle with powdered sugar or serve with maple syrup.

Hospital Report

DISMISSED SINCE JAN. 9

Maude Nall
 Tom Enright
 Mildred Mantooth
 Buck Henley, transferred to Amarillo High Plains Hos. IN THE HOSPITAL THIS WEEK

Elizabeth Wilson
 Walter Williams

We're Still The Way We Were.

An elegant revival of times past, the Celebrity always adds a touch of warmth to its surroundings. Available in ivory with gold-colored trim or powder blue with silver-colored trim. It's small enough for a bedside table.

And, of course, it's genuine Bell. Which means you're getting top quality and you never have to worry about repairs. Since the working components are owned by the Bell System, we'll fix them anytime there's a problem. Without additional charge.

The Celebrity is now appearing at your nearest Phone-Center Store, where you can also choose from a variety of other colorful and attractive styles. Or call your local Southwestern Bell business office. Choose a phone that's genuinely you and genuine Bell.

The Celebrity. \$16 a month for five months or a one-time charge of \$80.
 Prices do not include taxes or, if applicable, installation and recurring charges.
 If necessary hearing aid adapters are available from your telephone company.

Southwestern Bell

THE CHOICE IS YOURS. BE CHOOSEY.

Let Your Savings Stack Up

at the
American National Bank in McLean

SUPERIOR DRY CLEANERS
 of Shamrock
 UNDER NEW OWNERSHIP
 We Will Appreciate Your Patronage
 New Customers Welcome

Open Weekdays:
 7:30 a. m. - 5:30 p. m.

Open Saturdays:
 7:30 a. m. - 2:00 p. m.

George and Willie Bea Hooten
 118 W. 2nd St.
 Shamrock, Texas
 Phone: 256-2591

**McLEAN CATTLE
 COMPANY, INC.**

**PUCKETT'S
 GROCERY**

WIL-MART

**BOYD MEADOR
 REAL ESTATE**

**COWBOY
 DRIVE IN**

**AMERICAN
 NATIONAL BANK
 IN McLEAN**

TERRY'S

APPLIANCES

**LAMB'S
 FLOWER SHOP**

**CITY OF
 McLEAN**

**WINDOM'S
 AUTO SUPPLY**

PARSON'S DRUG

**MULLANAX'S
 MENS WEAR**

**JOE'S
 SHAMROCK**

**THE
 POT POURRI
 SHOP**

CAREY DON, CHERYL,
 STACIE AND DONNIE

TEXACO SUPPLY

CUSTER AND RUTH LOWARY

**ODELL'S
 CHEVRON**

**DIXIE
 RESTAURANT**

**SIMPSON'S
 MARKET**

**Mc DONALD'S
 GARAGE**

BARKER'S

REDI-MIX

**BENTLEY'S
 FERTILIZER**

JOHNNIE F. MERTEL

BOOT SHOP

COLLEEN AND JOHNNIE F. MERTEL

JOHN M. HAYNES

RANCH

**WILLIAMS
 APPLIANCES**

**HAMBRIGHT'S
 BUILDING SUPPLY**

**JANE SIMPSON
 AGENCY**

**STEWART'S
 TEXACO**

**HAYNES
 TRIANGLE RANCH**

McLEAN

HARDWARE

**THE
 McLEAN NEWS**

**ALBERTA'S
 HAIR FASHIONS**

CASH OIL CO.

DISTRIBUTOR OF
 SHAMROCK GASOLINE

**MORGAN'S
 LAUNDRY**

**CURRY'S
 PROCESSING**

**J.R. GLASS
 OIL CO.**

DOCTOR HEREFORD

THE HESSES

CORINNE'S

STYLE SHOP

↑ **These McLean Businesses Urge You To Support The McLean Basketball Teams** ↑



WATCH FOR THESE GAMES

TIGERS AND TIGERETTES

GROOM THERE JAN. 22

CLAUDE HERE JAN. 23

CUBS AND CUBETTES

ALLISON THERE

JAN. 19



BUDGET-HELPING FOOD VALUES

Borden's round carton ICE CREAM 1/2 gal.	\$1.49	Lipton's TEA bags 48 count	\$1.29
CRISCO 3 lb. can	\$1.89	Van Camp PORK and BEANS 300 can	3 for 93c
Food King OLEO 1 lb. quarters	2 for 85c	Post Corn TOASTIES 18 oz. box	85c
Hunt's TOMATO SAUCE 8 oz. can	3 for 67c	Ellis TAMALES 2 1/2 can	85c
WESSON OIL 38 oz. bottle	\$1.65	Shurfine PEARS 303 can	59c
COKES 2 - 32 oz. No Return	for 89c	ALCOHOL 25¢ 16 oz. bottle Reg. 43¢	BONUS Special MAALOX \$1.45 12 oz. bottle Reg. \$2.39
Shurfine Whole Kernel CORN 303 can	3 for 89c	Campbell's TOMATO SOUP	4 for 89c
Shurfine Cut GREEN BEANS 303 can	3 for \$1	Shurfine APPLESAUCE 303 can	2 for 69c
Pink Beauty SALMON tall can	\$1.69	Shurfine SWEET PICKLES 22 oz. jar	89c
Old Favorite PEACHES 2 1/2 can	59c	Shurfine Medium Small PEAS 303 can	2 for 79c
Carnation TUNA	89c	JELLO 3 oz. pkg.	4 for 89c
Sunshine CHIPAROOS 12 oz. pkg.	69c	Thrift King CRACKERS 1 lb. box	2 for 99c

FRESH PRODUCE

LETTUCE head	39c
yellow ONIONS 2 lbs. for	29c
BANANAS 5 lbs. for	\$1

Always **LOW PRICES**

Job Squad TOWELS Large Roll	69c
KLEENEX 200 count	63c
TIDE Giant size	\$1.49
DOWNY 32 oz.	\$1.19
Cottonelle TOILET TISSUE 4 roll pac	89c

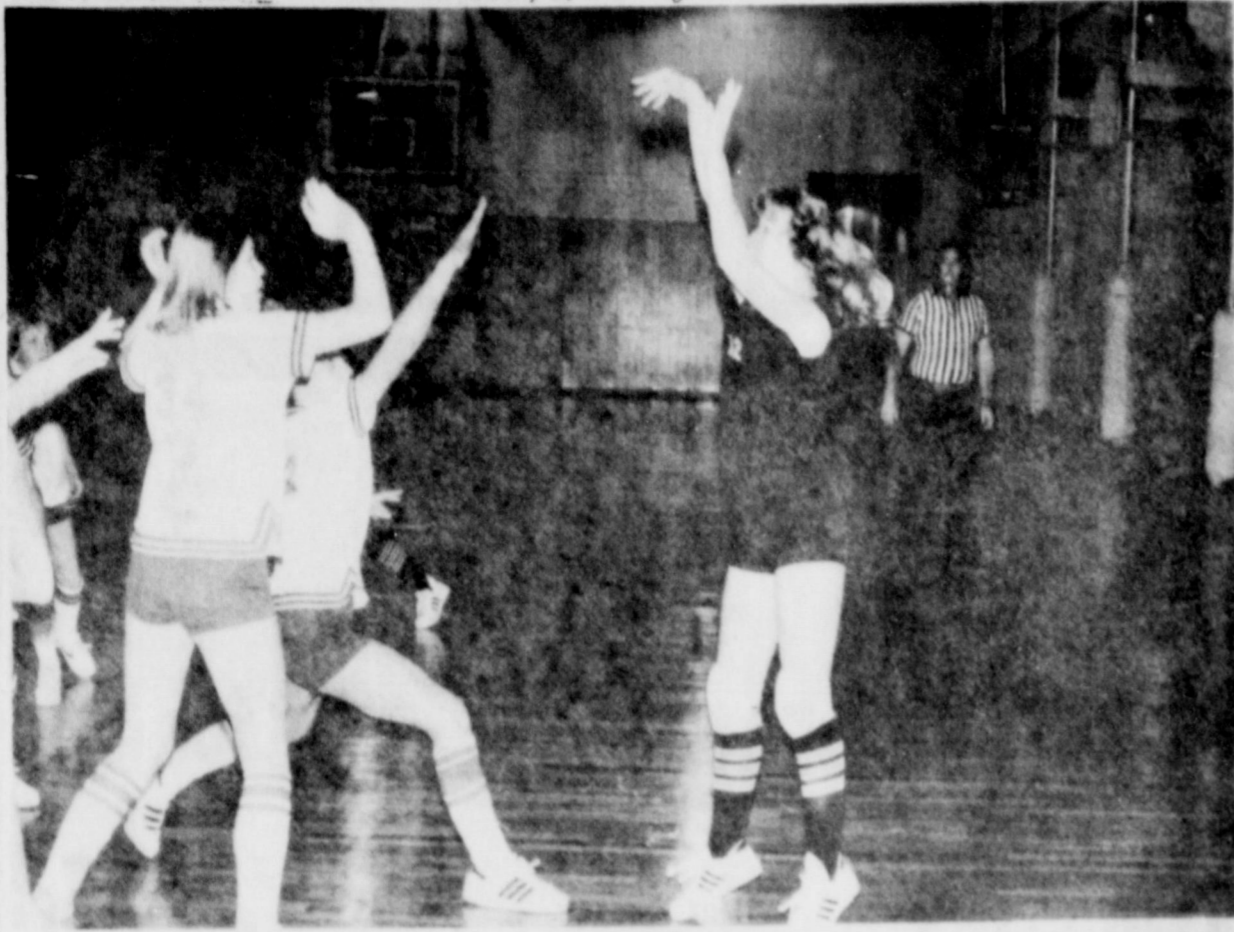
save more of your **FOOD DOLLARS** HERE

Wilson's Korn King BACON 2 lb. pkg.	\$2.79
Kraft Jalapeno CHEESE 1 lb. pkg.	\$1.29
12 oz. pkg. All Meat FRANKS	89c



SPECIALS GOOD JAN. 11 through 13





Queens Win Three ; Top Fifth-Ranked Texas

By Mike Haynes

Wayland Baptist College rolled up three victories last week to start its post-holiday basketball schedule, including a revenge win over the Lady Longhorns of the University of Texas.

The Queens' first two games of 1979, set for Jan. 5-6 at Southeastern Louisiana and Louisiana Tech, were canceled because of recent winter weather. The Louisiana Tech game has been rescheduled for Feb. 11; Wayland defeated Southeastern Louisiana earlier in the season, in the Plainview Queens Classic.

Both Wayland and Northwestern Oklahoma State University of Alva traveled to Forgan, Okla., Jan. 9, where, after leading only 24-20 at halftime, the rusty Queens put away the Ranger Women by 70-42 score.

Wayland found more success offensively Jan. 11 at Hutcherson Center in Plainview against the Lady Choc-taws of Mississippi College. This season's edition of the Queens eclipsed the century mark for the first time in a 104-71 thrashing of the Lady Chocs.

The Texas Lady Longhorns, ranked No. 5 nationally,

invaded Hutcherson Center last Friday, having upset WBC 69-64 in the Dallas South Oak Cliff Classic in December. This time, the No. 9 Queens played closer to their potential and held on for an 81-76 win after being up by as many as 11 points.

Jill Rankin of Phillips topped the Queens in scoring in each of the three games, tallying 18, 39, and 34, respectively. Sheri Haynes of McLean contributed 4, 10, and 8 points while seeing sporadic action.

Haynes played with a brace on her right knee after a sprain forced her to miss the last five games before Christmas.

Kathy Harston of South-lake also played last week's contests with a brace on her right knee. She saw her first action of the season following a severe water skiing injury in the summer.

Wayland was slated to meet Texas for the third time Wednesday (Jan. 17) at the Special Events Center in Austin. The second rematch was moved back a day to make room for one of Gov. Bill Clements' inaugural balls, which took place Tuesday night in the

See QUEENS, Page 7



Damage From Ice Storms Deductible, IRS Says

Dallas, Texas --The last two days of 1978 brought destructive ice storms to much of North Central Texas. Tax-payers whose property was damaged by the storms may be able to deduct some or all of their losses on their Federal income tax return this filing period.

Losses to business property are generally deductible in full. Personal property loss deductions, however, are limited to the amount of loss exceeding \$100 for those tax-payers who elect to itemize deductions.

To claim a personal casualty loss for damage to ornamental trees and shrubs, taxpayers must establish that there has been a decrease in the total value of the real estate. In general, the amount lost is the decrease in fair market value, limited to the adjusted basis, and reduced by any insurance or other reimbursement.

Decrease in the fair market value is the difference between the value of the property immediately before and immediately after the casualty.

It is not necessarily the cost of replacing or repairing the property.

The difference between the fair market value of the property immediately before and immediately after the casualty should be ascertained by competent, independent appraisals. Choose an experienced and reliable appraiser. The appraiser's knowledge of sales of comparable property and conditions in the area, familiarity with your property before and after the casualty and method of determining the amount of loss are important elements in proving a casualty loss.

In addition to obtaining appraisals, you will want to consider photographing the damaged property. Photographs of your property before it was damaged will be helpful in showing the condition and value of the property prior to the casualty. Photographs taken after the casualty

See STORMS, Page 7



McLean's Cubettes battled through the early rounds of the McLean Tournament to gain a spot in the championship game set for Saturday night at 8 p.m. (Photos by Lisa Patman)

NEWS OF SPORTS

WE'RE #1?

Even during the fierce competition of the Super Bowl, there will be some players who don't feel that winning is everything, and who don't believe that being No. 1 is the only thing.

During the week when Americans, seized with Super Bowl fever, wait to see who becomes No. 1 in Pro Football, an unusual TV documentary will air. The program, focusing on sports and business, examines our competitive values.



Terry Bradshaw, quarterback for the Pittsburgh Steelers, who is ranked high by many people, is featured in this special program. Yet, Terry doesn't equate his past completion statistics with his self-worth. Instead, like growing numbers who are concerned with meaningful values to live by, Terry measures his self-worth by his faith, his talent and his understanding of how to use that talent.

This program, "We're #1?" is the first in a unique series

of four documentaries, produced by the American Lutheran Church. It offers an alternative perception of self-worth; namely, it is god's love that establishes the self-worth of all people.

"We're #1?" will be shown on Super Bowl Sunday, January 21, 1979 or a day during the week preceding that Sunday. Check your local TV listings for time and station.

QUOTABLE QUOTES

Things are in the saddle, /And ride mankind.
Emerson
Ability wins us the esteem of the true men; luck that of the people.
LaRoche-foucauld
When we cannot act as we wish, we must act as we can.
Terrence
The man who has not

anything to boast of but his illustrious ancestors, is like a potato - the only thing belonging to him is under ground.
Sir T. Overbury

To be angry is to revenge the faults of others upon ourselves.
Pope
The empty vessel makes the greatest sound.
Shakespeare.

Cotton Producers Meeting Set

The annual meeting of the Directors of the Green-belt Cotton Producers, Inc. will be Jan. 27 at 2 p.m. at the USDA Cotton Classing Office in Memphis.

The election of officers and directors and a resume of the past year's business will be among the items on the agenda.

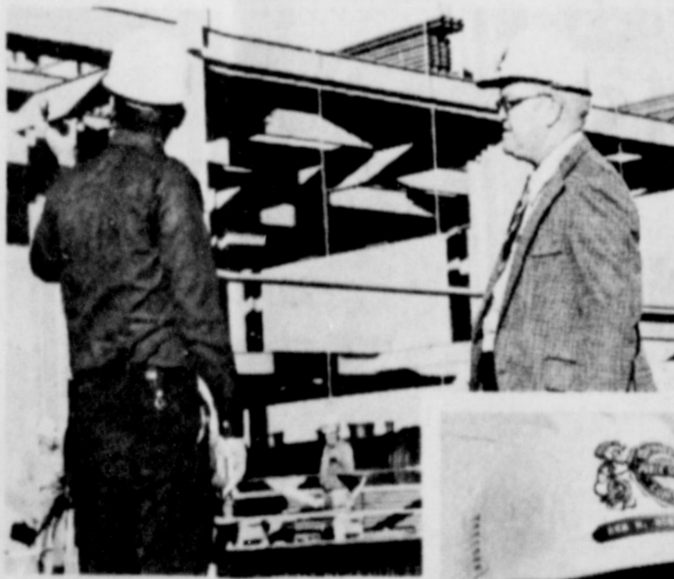
Officers and directors currently serving are J.J. McDaniel of Memphis, president; Roger Bruu, son

of Quitaque, vice president; A.J. Garland of Clarendon, secretary-treasurer; and directors D.D. Pennington of McLean, Bert Degan of Turkey, Leonard King of Childress, Hubert Rhodes of Clarendon, Forrest Creamer of Paducah, Doug Coleman of Shamrock, Roy Bob Keith of Guthrie, J.R. Hefley of Twitty; and Mrs. Johnny Farnsworth of Memphis, executive secretary.

McLean Junior Livestock Boosters Will Have A Farm Sale At The Ag Farm South Of Town On The 2nd Weekend Of February. To Make Donations Or Consignments. Or For More Information, Call Jim Rice, Gerald Tate, Jerrel Russell, or David Woods. 50-tfc

Powerful anti-itch drug you can buy without an Rx!

Stop itching fast of external, vaginal, rectal, and other skin conditions. Doctors find even severe itching can be treated with a special drug. You can now get this anti-itch drug ingredient with no prescription in BiCOZENE*. Use only as directed. The medically proven cream for itching. **BiCOZENE**



A pleasure . . . and a challenge!

That's the way Ben McMullin, PRINCIPAL STRUCTURAL ENGINEER for Southwestern Public Service, sees his job . . . his role in the boy scouts . . . and life!

"You know, I've got some 30 years in scouting. I've done it all . . . workin' with the boys and the adult leaders. Lookin' back, I think the highlight in scouting for me was taking 11 boys to the National Jamboree in Idaho. Now that was an experience! It's been a pleasure . . . and a challenge. Same as my job at SPS. I'm the Principal Structural Engineer in charge of the power plant group . . . that's the steel and concrete that holds up the place, you might say. It's very exacting work. We combine past experiences with research on new and better materials and products . . . trying to make the next power plant we build more efficient than the last one. It's a real challenge but that's what it's all about . . . keeping the costs down for everybody. I've been at it 25 years now and I'm glad to be part of that team. We're doing the job we set out to do.

SPS has encouraged me in my job and in all my civic activities. You bet I'm proud to work for SPS . . . and for my community. For me, it's hard to imagine one without the other."



LINES by LEM O'RICKK



The Steelers with Joe Green the Mean
Will find Sunday's pickin's quite lean.
Randy Roger and Cliff
I'm sure will knock 'em stiff...
Pokes twenty-four, Steelers thirteen!

NEWS FROM THE CAPITOL

By Foster Whaley
A lot of HISTORY is being made in the 66th Legislature. One member, Richard Slack, Pecos, has completed 26 years in the House. This sets a record for the longest continuous service. This will be the first time the legislature will serve with a Republican Governor in 105 years. The Honorable Bill Clayton was elected to an unprecedented third term. As for me, I have the distinction of serving in the 66th Legislature for the 66th District. A new electronic voting machine was completed just one day before the session opened. However, the bugs are not out of the machine yet. While the Governor was giving his address in the joint session on Tuesday he accidentally put pressure on the desk and it set off a short that lighted

up a button on my desk that says "FRONT". This signal means you are wanted at the Speaker's stand. I froze in position hoping it was a short. Can you imagine my embarrassment had I acted on the command of a light that was shorted out. Yesterday someone hit the wrong button after a vote had been taken that changed all votes to yes. A recount had to be taken. Another precedent is being set in that a contest has been made on seating one of the recently elected Representatives. This trial is to be held in the House on Monday, January 15. This is the first time this has occurred in thirty-four years. You can contact me in Austin by mail as follows: Foster Whaley, State Representative, P.O. Box 2910, Austin, Texas 78769.

NEWS OF HEALTH

Tooth decay is actually a disease called dental caries. Caries are produced by colonies of bacteria in the mouth. When we eat, small deposits of food accumulate between the teeth, in the grooves and on the chewing surfaces. Bacterial enzymes acting on food starches and sugars produce lactic acid.

This acid dissolves tooth enamel and produces cavities. But by keeping your teeth smooth and polished, you can reduce the effect of the bacteria. Water containing minute amounts of fluoride can reduce dental caries—but only in children during the years when their teeth are forming.

LOOSE MARBLES BY LISA PATMAN

I hope you saw the showing of the Sun Bowl on television recently. If you did, you probably saw me—I was one of only 30,000 people who waved colored napkins during the halftime activities. Mine was blue. I have yet to get the significance of the colored napkins, except that it was part of an extravagant, though confusing, tribute to Mickey Mouse on his fiftieth birthday. In this particular program there were dancing girls, colored balloons, loud music, beautiful floats, and of course, 30,000 of us waving those stupid napkins around, feeling like idiots. There were even tape recorded messages to Mickey Mouse broadcast over the loudspeakers in the stadium. Such notables as Lucille Ball, Carol Burnett, and Mary Tyler Moore had their voices piped to millions as they not only wished Mickey a happy birthday, but spoke of the great contributions he had made to the world.

This has had me thinking for awhile now. Somehow I find it personally insulting that a mouse, and an animated one at that, should be so honored. What about you and me? Most of us have lived decent, law abiding (except for that occasional speeding ticket), moderately productive lives. And part of that time has been spent trying to kill the very rodent they were honoring. What will be next—the Bicentennial Cockroach Celebration?

I have nothing personal against Mickey Mouse, you understand. It's just that a fellow who dates a girl for over forty years, and still hasn't asked her to marry him must be some kind of a male chauvinist rat. Either that or he is one of those funny guys that Anita Bryant doesn't like. (He does wear short pants, gloves, and tails

in a rather high voice. And I suspect he wears panty hose.) What I'm getting around to is this—Why don't we have special days for the rest of us poor slob who are just trying to get by. I have some ideas, if you are taking notes.

How about "People Who Can't Make Ends Meet" Day, "United Women With Waxy Yellow Build-Up" Day, or "It's Okay, Everybody is a Little Bit Crazy" Day for those of us who find it difficult to cope with life. Then there could be a "Closet Screamer" Day for people who put up a good front in public, but are a threat to the eardrums in private. Or a "National Failure" Day for those of us who have successfully failed almost everything we have attempted. (This could also be dubbed "National Loser" Day). Perhaps an "I May Not Be Her Prince Charming/His Ideal Woman, But At Least I Showed Up At The Altar" Day.

If we really worked at it, I think we could fill out the calendar with days to honor all of us run-of-the-mill people who will never be acknowledged for any "great" achievements. We'll have to remember, though, to save one day to honor a much forgotten group. We must not omit the day to honor "People Who Haven't Been Honored On Any Other Day." I think they'll probably need it the most.

WINTER OVERCOAT.



Don't Go Out Without It.

IT'S A FACT!

The rate for most major crimes in the U.S. declined in recent years. Some of the decrease may be due to the efforts of a San Francisco jewelry store: it has a tarantula and a sign noting "this area is patrolled by a tarantula."



To reduce crime further, particularly at its service stations, where robberies are still a serious problem, rewards of \$1,000 and \$25,000 are being offered by the Atlantic Richfield company to the first person furnishing information leading to the arrest and conviction of individuals committing a robbery at an ARCO station or a crime which results in the death or permanent disablement of anyone at a station.

News from your County Agricultural Agent

By Joe Van Zandt

TIME TO CONTROL CATTLE LICE!

Lice cost U.S. cattlemen more than \$50 million annually, so it's important to control them.

Lice begin to reproduce rapidly with the onset of cool weather, so peak populations on cattle occur in late winter and early spring. Uncontrolled lice can soon infest a whole herd because with cold weather, cattle tend to bunch up more so that the pests can move easily from one animal to another. Heavy hair coats on animals during cold weather also afford protection for the parasites and allow for increased reproduction.

Both types of lice—blood-sucking and biting—infest cattle. Sucking lice pierce the animal's skin and suck blood while biting lice feed on particles of hair, scale, scab and skin exudation.

Lice infestations irritate animals, causing itching, scratching and rubbing on fences or anything else available. This produces denuded areas, bruises and lacerations on the affected animal. Heavily infested animals will have an unthrifty appearance and will suffer weight reduction, decreased milk production, anemia or even death. Lice infested animals may also be more subject to infectious diseases. Heavy lice infestations often stunt calves.

Spraying or dipping infested animals with the proper insecticide is the most effective means of controlling lice. However, properly placed and maintained dust bags offer effective control and save both time and labor. Position dust bags prior to lice buildup so that cattle

can become accustomed to using the bags. A dust bag station should serve about 30 head. Depending on cattle size, place the bags so that they hang 18-24 inches above the ground. Forced-use of dust bags where they are placed so that cattle must pass under them to get feed or water, begin to control lice sooner than those used free-choice. By allowing a two-to-three week adjustment period, free-choice bags can be about as effective as forced-use types.

In a spraying or dipping program an animal must receive a thorough soaking in each of two applications 14-18 days apart to effectively control lice. The second spray or dip will kill any lice hatching from eggs that were laid prior to the first spraying. When spraying, use a high pressure (250 pounds per square inch) and thoroughly wet animals to the skin.

For a list of effective insecticides for controlling lice, obtain a copy of "Suggestions for Controlling External Parasites on Livestock and Poultry" at the

County Extension Office. Check the label on the insecticide container and pay particular attention to warnings, restrictions and waiting periods, especially if some of the cattle are being prepared for slaughter. TAX CREDIT FOR ENERGY-SAVING HOME IMPROVEMENTS:

Certain energy-saving home improvements can qualify for tax credits on your 1978 income tax return. Eligible items include insulation, exterior storm (or thermal windows) or doors, caulking or weather stripping, furnace replacement burners, devices for making flue openings on heating systems more efficient, electrical or mechanical furnace ignition systems, automatic setback thermostats, and meters displaying the cost of energy usage.

VACCINATE CALVES AGAINST BRUCELLOSIS:

Vaccination of all heifer calves provides good protection against brucellosis or Bang's disease. The proper age for vac-

cination is from two to six months for dairy heifers and from two to ten months for beef heifers.

Producers should be particularly interested in the vaccination program since this can be done at no cost. All the producer has to do is contact an accredited veterinarian. Under the new fee-based vaccination program, the veterinarian will be reimbursed when the calves are reported to the Texas Animal Health Commission.

Calves that are properly immunized against brucellosis should have more resistance against the disease and should therefore be more valuable for herd replacements. In addition, more states are now requiring that all female dairy animals entering the state be only officially vaccinated. Other states require that all non-vaccinated heifers over six months of age be tested and have a negative test.

It's just good insurance to have your heifer calves vaccinated against brucellosis, especially now that the vaccination can be done at no cost to the producer.

BLIZZARD of FOOD VALUES

SHURFINE PINK SALMON \$1.59	SHORTENING CRISCO \$1.89
GLAD IOLA WHITE OR YELLOW 7 oz. pouch CORNBREAD MIX 2 for 39c	EL CHICO FROZEN MEXICAN STYLE ENCHILADA DINNERS box 69c
NESTEA 3 oz. jar \$1.99	
SHURFINE PIECES AND STEMS 4 oz. can 59c	CALIFORNIA AVOCADOS 4 FOR \$1
POPS RITE YELLOW 2 lb. bag 69c	YELLOW ONIONS lb. 15c
ORE-IDA FROZEN 2lb. bag 89c	CENTRAL AMERICAN BANANAS lb. 25c
SHURFINE TOMATO 32 oz. 89c	<i>Meat Buys</i>
CATSUP 32 oz. 89c	WILSON'S ALL MEAT BOLOGNA lb. 99
SHURFINE FROZEN LEMONADE 6 oz. can 5 for \$1	WILSON CERTIFIED BACON 2 lb. pkg. \$2.59
MARYLAND CLUB COFFEE lb. \$2.43	
WELCH GRAPE JELLY 4 lb. jar \$1.69	
SHURFINE ORANGE DRINK 46 oz. can 2 for 99c	
SHURFINE No. 2 can CHERRY PIE FILLING \$1.09	

SHURFRESH MILK FOR GOODNESS SAKE

LOWEST EVERYDAY FOOD PRICES MARKET

Tender crust Bread and Bakery Products SPECIALS GOOD Jan. 19 & 20, 1979