

John C. Haynes 1
Box 400
McLean Texas 79057

The McLean News

Serving McLean and the Area Since 1903

Volume 80 McLean, Gray County, Texas 79057 Thursday, February 10, 1983 Price 25¢ Number 6

from the distaff side



A good snow storm certainly provides a break in the normal routine of our lives, doesn't it? Although the storm caused many problems for those who have to work outside, and for all of us who were required to go out of town during the week, there were some pleasant aspects, too.

I have heard dozens of stories of neighbors helping neighbors. Strangers stopped to pull others out of the snow, friends ran errands and shopped for their elderly neighbors, and people opened their homes to stranded travelers. Maybe something in the snow brings out the best in us. At least everyone seemed willing to do what he could to help others. Do you suppose that's why we always associate Christmas with snow? That same feeling of holiday good will and helpfulness seemed to permeate McLean last week.

We owe a special debt of gratitude to Sam and Ada Whatley, who deliver the Pampa News to McLean every day. They arrived in McLean Tuesday, just as we had finished preparing our paper for the press, and they kindly took our copy to Pampa for us. That allowed me to wait until the roads were relatively clear Wednesday afternoon before I had to make the trip. We really appreciate them helping us out.

Several stranded travellers were grateful to the Methodist Church in McLean, because the doors of that church were opened for all travellers. The report we heard was that about 16 people spent the night in the church basement. And Joe King and his crew at the Dixie Restaurant certainly went above and beyond the call of duty when they kept the restaurant open around the clock for 48 hours so that several people could have a warm place to stay.

A pleasant change in our routine occurred Monday night, when Neil Middleton called to ask if we would let six travellers stay in a small room over our garage. When the group arrived, we realized that the little room with one single bed would not accommodate the three couples, so we invited them to stay with us.

The Oklahoma travel- See DISTAFF, Page 2



Date	High	Low
2-1-83	28	19
2-2-83	34	22
2-3-83	29	13
2-4-83	28	21
2-5-83	34	27
2-6-83	32	20
2-7-83	32	13

Precip for week - Snow 12 1/2" = 1.25"

Snow Storm Hits McLean ...Again



FRIDAY'S SNOW LEFT eight more inches on top of the five inches from Monday, and scenes like this were common all over town. [Photo by Linda Haynes]

McLean suffered along with the rest of the Panhandle last week as two snow storms three days apart dumped 13 to 14 inches of snow on the area. A blowing snow storm paralyzed the area Monday with 5 inches of the white stuff, closing the schools Tuesday and Wednesday.

The weather cleared Thursday allowing classes to resume, but early Friday morning the snow began again, this time bringing 8 inches and closing the schools Friday. A lack of wind Friday kept the situation from getting extremely serious, but the second snowfall on top of the earlier, packed snow made driving extremely hazardous. The Department of Public Safety reported numerous minor accidents during both storms, with a major wreck with a fatality recorded after the roads had begun to thaw and then refroze Saturday night.

Stranded tourists filled the motels rapidly during each storm, with several staying in the basement of First United Methodist Church and several staying in private homes. Joe King, manager of the Dixie restaurant, said that he kept the restaurant open all night Wednesday and Thursday night to accommodate stranded travellers. "We had all the booths full of sleeping people, plus lots of coffee drinkers," he

said. The restaurant ran out of food and closed most of Saturday and all day Sunday, he said.

Because of the school cancellations last week, the students will not finish the six weeks this Friday, according to McLean High School principal Ron Cummings. Students will take six-weeks tests next week, and school will be dismissed at 2:30 p.m. Feb. 18. Basketball games with Estelline and Lefors were cancelled last week, but the Lefors games were made up Thursday night. The Estelline

games will not be rescheduled.

Although the heavy snowfall is the largest recorded in the McLean area in several years, area cattlemen reported that livestock was not seriously hurt. "We just had a harder time taking care of them," said Ed Patman, of the McLean Cattle Co. "We really encountered no unusual problems, and had no weather-related death loss," he said. Several area ranchers reported that they had some difficulty reaching cattle to feed them, but had sus-

tained no major death losses, as is sometimes reported during a heavy snow.

"This really couldn't have been classified as a blizzard," according to Sam Haynes, who is the official National Weather Service observer in McLean. "The winds were not strong enough, and were not sustained long enough to call this storm a blizzard," he said. Haynes said that McLean received a total of 1.28" of moisture from the two storms.

Miss McLean To Be Crowned

Miss McLean of 1983 will be crowned Saturday night to conclude the annual beauty pageant at McLean High School. Twenty-four MHS beauties will be judged in street wear and formal wear during the public presentation. The girls will meet with the out-of-town judges for interviews prior to the pageant.

Dorman Thomas will be the master of ceremonies for the event. Miss McLean 1982, Missy Billingsley, will crown the winner.

Contestants and their sponsors are Jana Harris, American National Bank; Sharla Todd, Mullanax Men's Store; Roxie Littlefield, Foshee's Texaco; Teresa Woods, Woods

Veterinary Clinic; Candi Carpenter, McLean Cattle Co.; Stacie Smith, McLean Variety; Anna Jean Lamb, Johnnie Merte's Boot Shop; Judy Stewart, McLean News; Amber Kingston, McLean Jr. Fire Dept.; Patricia Rodgers, Corinne's Style Shop; Kristie Thompson, Jake Hess II; Sherry McLain, Lamb Funeral Home; Karen Wilson, Smitherman Tax Service; Diane Connors, Puckett's Grocery; Mel-

anie Billingsley, McLean Hardware; Lee Ann Tate, Pioneer Real Estate; Wendy Kniffen, Parson's Drug Store; Wendy McDowell, Alberta's Beauty Shop; Michelle Nobles, B&B Turbine; Gina Gardner, Jane Simpson Agency; Eva Anderson, Cowboy Drive In; Stefanie Houdyshell, McLean Lion's Club; Vicki Armbrister, Todd-Smith Kennels; Tracie Beck, Ham-bright's Cabinet Shop.

Alanreed Sets April Election

The Alanreed School Board has set April 2 as the election date to choose one board member. In accordance with the Texas Education

Code, article 23.18, the board has set the election to fill the unexpired term of Larry Mayo, a board member who resigned after he moved out of the district.

The term of office for the board member elected will end March 31, 1984. School administrator Billy Bob Adams said that the Alanreed Board had changed to a five-member board last year, and would not see SCHOOL, Page 2

Truck Driver Killed Near McLean In Four-Truck Crash

An Oklahoma City truck driver was killed and his friend was critically injured following a bizarre string of collisions on Interstate 40, 6.8 miles west of Alanreed at 8:30 p.m. Saturday night. L. G. Keith, 60, was killed, and Joe L. Miller, 64, was the injured trucker. Keith and Miller had worked together for over 30 years, both working for the Fox-Smythe Transport Company of Oklahoma City.

The incidents began when a blue Freightliner Transcon truck, driven by Hubert H. Ferguson of Seminole, Okla., ran off the road and became stuck in the heavy snow. Ferguson left the truck and hitchhiked to Groom to call a wrecker, about 8:20 p.m. Miller, driving a green cabover truck, saw the Transcon truck, stopped his truck in the middle of the road, and ran across to check on the first truck.

At that time, Keith, driving a green International truck, ran into the rear end of Miller's truck, killing Keith instantly. His body was thrown out of the truck, but the truck continued on west and ran over Miller, dragging his body about 225 feet before the truck came to rest. This truck jackknifed and blocked the entire roadway.

Don Harvie Kimes of Alma, Ariz., driving a 1981 Peterbilt truck, saw Keith hit Miller's truck. Kimes lost control of his truck after he hit the

brakes. His truck jackknifed and ran over Keith's body, and then hit the first truck (the Transcon).

Miller was taken to Shamrock Hospital by private vehicle, and then transferred to Amarillo to St. Anthony's Hospital by the Med Evac helicopter.

Traffic was backed up for several miles while officials cleared the road, according to investigating officer, Department of Public Safety trooper John Holland.

A series of minor wrecks were reported near McLean during the two snow storms of last week by DPS trooper Ron Shank. On Feb. 1, at 1:15 a.m., 1.8 miles east of McLean on I-40, Steven Earl Rackley of Muskogee, Okla., driving a 1979 cabover truck, lost directional control of his vehicle and jackknifed. The tractor came to rest on the right shoulder, facing east, and the trailer was sitting across both west bound lanes. The accident occurred during a blowing snow storm.

Later that day at 11 a.m., 2.5 miles east of Alanreed, Lewis Sowards of Moore, Okla., driving a 1978 cabover truck, lost control on the icy road, and his truck jackknifed, and came to rest off the road to the left.

At 3:40 p.m. that day, 1.9 miles west of McLean, a 1979 Ford truck, driven by Rodney Clemens of Langley Air Force Base, Virginia, slid on the ice into the rear of a

Texas Highway Department truck. The state truck, driven by Thomas D. Wall of Groom, was sitting parked in the left lane of travel, facing east. The Ford slid into the rear of the state vehicle. No injuries were reported at the time.

At 5:15 p.m. that same day, 2 miles east of McLean, Richard Crudg- ington of Hurst, driving a 1981 truck, lost directional control on the icy road, went off the paved part of the road way to the left, hit the soft dirt, and came to rest in the median. The trailer overturned.

On Feb. 2, at 4 a.m., 5.4 miles west of Alanreed on I-40, James Dellenbaugh of Yukon, Okla., lost control on the snow-packed roads and hit soft dirt. The cabover truck he was driving turned over on its side. He was not injured.

At 11:45 a.m., 1.9 miles west of McLean on I-40, John Alvin Batton of Spiro, Okla., driving a 1981 White cabover truck, lost control of his

Volleyball Association Will Meet

The McLean Volleyball Association will organize for the year in a meeting Sunday afternoon at 2 p.m. in the Hospitality Room of the American National Bank. Officers will be elected. Anyone interested in volleyball should attend the meeting.

vehicle and jackknifed in front of a 1974 Ford truck driven by Edward J. Rovsak of Brooklyn, Mich.

On Feb. 3 at 7:15 p.m.

Douglas Reeves of Lefors, driving a 1969 Chevrolet pickup, 6.7 miles north of McLean, ran into a six-year-old horse. The horse was

killed in the accident. It was the property of Bill Beck of McLean. Extensive damage was done to the front of the pickup.

Wayne Bybee Files For Mayor's Job

A second candidate has filed for the office of McLean City mayor. Wayne Bybee filed for the office Monday. He joins F. Jake Hess, who filed for the office last week, according to City secretary Stella Lee. In-

cumbent mayor Sam Haynes has announced that he will not seek re-election.

Two offices are open on the McLean City Council, but no candidates have filed. Councilmen Charles Milam and Dale

Glass will not seek re-election, according to information released earlier.

The final filing date for the April 2 election will be March 2. Absentee voting will begin March

14 and end March 29. In addition to the City election, three school board members will be chosen in a school election the same day. The terms of Jim Allison, J. C. McAnear, and Lloyd Hunt are expiring.



THE MOST ORIGINAL snow sculpture during the recent snowfall has to be this snowdog and his

snowdog on the leash. The ice works are located in front of the home of Mr. and Mrs. Mike Bybee. [Photo by Linda Haynes]

OPINIONS

VIEWS ARE WRITTEN BY LINDA HAYNES UNLESS OTHERWISE NOTED-IF YOU HAVE AN OPINION ON ANY CURRENT SUBJECT WE WELCOME YOUR SIGNED LETTERS.

Will Anyone Come Forward To Run For School Board Or City Council?

Will the McLean school board and the McLean city council be dissolved for lack of interest? Legally, I suppose that is impossible. But every two years, when the filing period opens for candidates for those boards, we wonder if any public spirited citizens will step forward, willing to do their share.

To run for one of the three positions open on the McLean School Board, you must be a registered voter, and you must reside in the school district.

To run for one of two positions on the McLean City Council, you must be a registered voter, and you must live within the city limits of McLean.

The "running" is the easy part. To serve on one of those boards, you must be willing to volunteer your time for meetings, conferences, and phone calls from your constituents. You must be willing to study and learn about new laws affecting the governing body. You must be able to listen to complaints about problems that are not your fault, and hold your temper when you are upbraided by the complainers.

You must be interested in helping your fellow man by maintaining these boards as examples of integrity and honesty. You must be able to withstand the stress of making tough decisions, and you must not expect to hear a "thank you" from the people you have worked so hard to serve.

Why, then, would anyone volunteer for such a job? We hope that those who come forward will do so because of a desire to serve, to promote the best interests of our town and school, and to take part in the democratic process.

If you have never thought that you had the talent to serve on one of these boards, think again. If you are willing to serve, willing to learn, and willing to stand up for what you think is right, you may be the perfect candidate. Think about it.



DISTAFF

lers were headed to California, pulling a horse trailer with a thoroughbred horse in it. They were taking the horse to Los Angeles to race. As we sat and visited, I kept thinking that one of the women looked very familiar, and we finally begin comparing life stories. I learned that she and I had attended college at Southwestern

at the same time, and that her roommate was a friend of mine. We had an interesting time catching up on the last few years and all the changes in our lives.

The following night we received another call from stranded travellers, and this couple turned out to be people who had lived next door to Sam's

parents 40 years ago! After our experience, I wondered how many other such examples of "what a small world it is!" had occurred during the snow storm.

Although the snow did give us a change, I think everyone was glad to see some melting Tuesday. Several of us compared stories of the symptoms of "cabin fever" and found that we had reacted similarly to

five days of confinement in the house. Our main symptom seemed to be an inordinate craving for chocolate, and a desire to sleep. Those two factors added together caused several long faces at the News office Monday morning when each of us stepped on our trusty digital scale.

Hopefully, as the snow begins to melt away, some of our extra inches will follow suit, but if we get snowed in again for five days.....

Continued From Page 1

Senator Bill Sarpalius Reports



Reports



WHITE SETS PRIORITIES

AUSTIN -- Governor Mark White recently told the 68th Legislature that he has been hearing voices -- your voices.

As he explained in his State of the State address, the voices have come from overcrowded school rooms, unemployed farmworkers and laborers, victims of crime, taxpayers and many others.

You have not been shy about telling us what you want -- safe streets, quality schools, reasonable utility rates, fair and open government, decent job opportunities and a fair profit for your goods and services.

We believe your expectations are reasonable, and we are encouraged by White's positive approach to the problems at hand.

The new governor says education is his first priority. In fact, he has even declared teacher salaries an emergency issue so the Legislature will consider it first.

In the past, education has been at the end of the line, taking whatever "leftover funds" it could get. This session, it looks like education may get one of the first slices of the pie.

We think that's important when you consider that the population of Texas has increased more than 25 percent in the last decade. Experts say that the state should maintain an annual 5 percent increase in the number of new teachers to keep up with the number of students enrolling in Texas schools. Unfortunately, the

state has seen a decrease of 7 percent instead, as those who might have become teachers accept higher-paying jobs in business and industry. That is disturbing news, and we are well aware that the steps we take today toward improving education may well determine the success or failure of our future.

Governor White was also positive in his attitude toward agriculture. We realize that not all agriculture problems can be solved by the state. However, we can do more, and White addressed that very issue.

The governor indicated his willingness to work with various commodity associations. He said he wants to promote on a state level more foreign markets for Texas agricultural products, as well as allocate more state money for agricultural research and development. He further supports increased emphasis on water recovery technology.

That certainly sounds like good news for our district. In addition, Governor White promised to work with both the Legislature and you by maintaining an open, responsive and courteous administration.

Along those same lines, we want to be accessible to you. Please let us know what your priorities are and which state programs are most important to you. Write to Sen. Bill Sarpalius, P. O. Box 12068, Austin, Texas, 78711.

On Your Payroll

SENATOR BILL SARPALIUS, P.O. Box 12068, Austin, Texas 78711 or P.O. Box 7926, Amarillo, Texas 79101, or call 512/475-3222
 REPRESENTATIVE FOSTER WHALEY, Texas House of Representatives, P. O. Box 2910, Austin, Texas 78769, or call 1/800-692-1389.
 REPRESENTATIVE JACK HIGHTOWER, 13th District, Room 2348 Rayburn Building, Washington, D.C. 20515.
 SENATOR LLOYD M. BENTSEN, Room 240, Russell Building, Washington, D.C. 20510
 SENATOR JOHN TOWER, Room 142, Russell Building, Washington, D.C. 20510

THEN and NOW!

Credit Cards: How They Began

In 1950, a couple of bright business people came up with a concept destined to overcome the hassles of carrying cash and called it the Diners Club card. It established instant credit for its possessor and in a number of different establishments. The beginnings were modest. There were only 200 cardmembers that first year and a mere 28 restaurants honoring the card.

Thirty-two years later, over four million cardmembers may use their cards in more than 550,000 establishments worldwide.

At the beginning, Diners Club was "the only game in town" but its success made imitation inevitable. Credit cards proliferated. It seemed that anyone with a product or service to sell issued a credit card.

Then the classic "thinning out" process began. The weak cards folded and the viable ones remained. Diners Club was among the survivors.

About a year and a half ago, Citicorp, one of the world's largest and most prestigious financial services institutions, acquired Diners Club.

Over 25,000 new establishments have been signed, according to Herbert H. Myers, senior vice president in charge of Establishment Marketing and Sales. "We've concentrated on offering our cardmembers

the widest range of restaurants, hotels, motels and retail stores from which to choose," Myers says. "For instance, we've recently signed not only the prestigious La Côte Basque Restaurant in New York but the Rusty Scupper chain of popular restaurants."

In the retail area, Diners Club is honored by Bonwit Teller, I. Magnin and Saks--some of America's premier specialty shops--as well as the 1,500 outlets of Radio Shack.

"It is this broad establishment base that has contributed to a doubling, in the last year, of the U.S. corporations whose employees are issued the Diners Club card exclusively for their travel and entertainment expenses," he said. Recent corporate signings include IBM, United Technologies, NCR, Proctor & Gamble, Allstate Insurance and Federated Department Stores.

It's no exaggeration, says Myers, that Diners Club changed the American way of life.

SCHOOL

Continued From Page 1
 have had to have an election this year if it had not been for the resignation.

SUBSCRIBE TO

The McLean News

IN-COUNTY RATE \$12 per year
 OUTSIDE GRAY COUNTY \$14 per year
 SPECIAL 9-MONTH STUDENT RATE \$9

You can subscribe by mail by completing the form below and mailing with your check or money order to:
 THE McLEAN NEWS
 P.O. DRAWER H
 McLEAN, TX. 79057

NAME _____
 ADDRESS _____
 CITY _____
 STATE _____ ZIP CODE _____

LINES
 by
 LEM
 O'RICKK

From all bad habits I resign,
 And from henceforth, I'll walk the line;
 I'll try always to smile,
 And work hard all the while;
 'Cause I'm hunting a Valentine!

Senator
 Lloyd Bentsen

Watching Washington

The label "unreliable" is slapped on U.S. farmers in world trade markets. It's not our farmers who are unreliable, though. You can count on them. The fault lies with the U.S. Government and the disruptive effects of its embargoes and threats of embargo. This costs our farmers, the most efficient food producers in the world, their valuable export markets. They pay a very high price. During fiscal 1982, for the first time since 1969, the total value of U.S. agricultural exports declined, by a hefty 10.7 percent. Our export markets have gone sour even as the Agriculture Department has been touting export sales as the answer to our farmers' financial troubles. And the blame lies with State Department "experts" who have, down through the years, forced the American farmer to pay the bill for this nation's foreign policy. For example, a 1973 embargo on soybean exports to Japan spurred the Japanese into developing a thriving soybean industry in Brazil. Before, the U.S. soybeans had comprised more than 90 percent of world soybean trade. Brazil now holds a major part of the world market. Before the 1980 embargo on grain sales to Russia, the U.S. had 70 percent of the Russian market. We now have 30 percent. The Administration's refusal last year to negotiate a long-term grain agreement with Russia amounts to a "defacto embargo" and will continue to place a great strain on U.S. farmers. Time after time it has been vividly demonstrated that agricultural embargoes don't work. I have consistently opposed them no matter which President, Democrat or Republican, has suggested them. In an effort to help our farmers, I introduced a bill last September that would at least give them a chance to prepare for any future embargoes. My bill guaranteed that for nine months after an embargo is declared, export contracts signed before the embargo would still be honored. This sanctity of contract provision means that, in most cases, an embargo would not go into effect for 270 days after it is declared. It gives a needed period of grace that will make the United States a more reliable supplier of farm goods in the eyes of our customers in foreign countries. I am pleased to report that my proposal was included in a bill recently signed into law by the President. Although this bill won't get rid of embargoes, it is a big step in the right direction. Guaranteeing our export contracts will allow more aggressive marketing of U.S. farm products and will combat our reputation as an "unreliable supplier."

PAMPA RAPE CRISIS CENTER

CALL 665-3721
 24 hours

COW POKES By Ace Reid

"I just found out I'm not only underfinanced, but I'm over obligated!"

"COWPOKES" is brought to you by the friendly folks at the
**American National Bank
 In McLean**

779-2461
 201 N. Main
 McLean, Texas

The McLean News
 USPS 336-260
 LINDA HAYNES,
 EDITOR AND PUBLISHER
 LISA PATMAN, ASSOCIATE EDITOR
 201 N. Main P.O. Drawer H
 McLean, Texas 79057

TEXAS PRESS ASSOCIATION
 1982
 McLean, Gray County, Texas
 Published each Thursday
 (except the last week in December)
 Second class postage paid at McLean, Texas 79057
 POSTMASTER: Send address changes to:
 THE McLEAN NEWS
 P.O. DRAWER H
 McLEAN, TEXAS 79057

SUBSCRIPTION RATES:
 \$12 per year in Gray County
 \$14 per year outside Gray County
 ADVERTISING RATES:
 \$2.00 per column inch National Rate
 \$1.85 per column inch Open Retail Rate

McLean, Texas
 Population 1183 [1970 Census]

MEMBER 1983
TEXAS PRESS ASSOCIATION



PANHANDLE STATE UNIVERSITY students have recently returned from the Sunlight Ski Area at Glenwood Springs, Colorado. The group of 48 was enrolled in HPER 2011 Skiing. They received instruction based on their ability level. The ski class is a yearly event for the PSU students. Those Texas Panhandle students taking the ski class

were, front row left to right: Kathy Woolsey, Stratford; Cindy Miller, Groom; Tracy Adams, Amarillo; and Rhonda Slaughter, Perryton. Back row left to right: Frank Craig, Sunray; Matt Crowley, El Paso; Tom Eck, McLean; Jim Cabbell, Quail; and Darrell Dowd, Quitaque. [Photo Courtesy of Panhandle State University.]

Sherrod, Kramer Named Outstanding Women

The Board of Advisors for the Outstanding Young Women of American Awards Program announced this week that Sherry Glass Kramer of Skellytown and Georgania Brown Sherrod of Odessa have been selected for inclusion in the 1982 edition of Outstanding Young Women of America.

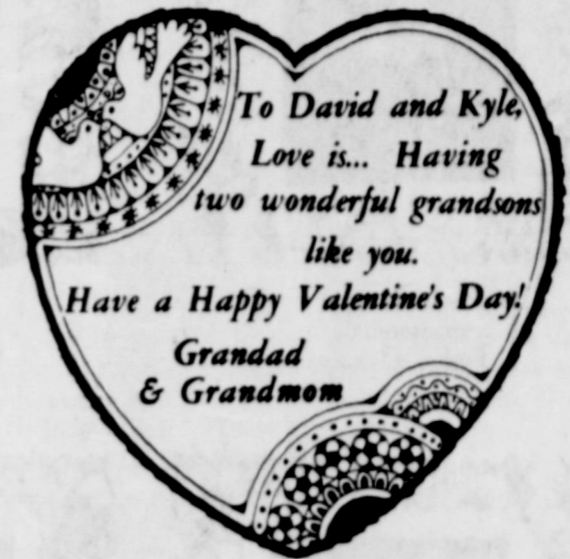
The program is designed to honor and encourage exceptional young women between the ages of 21 and 36 who have distinguished them-

selves in their homes, their professions and their communities. Accomplishments such as these are the result of dedication, service, and leadership.

The women named, along with approximately 23,000 fellow Outstanding Young Women from across the United States, will be presented in the prestigious annual awards volume. In addition, they are now being considered for one of the fifty-one state awards to be presented to those

women who have made the most noteworthy contributions in their individual states. Mrs. Kramer is the daughter of Mr. and Mrs. Dale Glass of McLean. Mrs. Sherrod is the daughter-in-law of Mr. and Mrs. Bob Sherrod of McLean.

Happy Valentine's Day
To The
Best Parents Ever
Rosie Lee, Billie,
James, Barbara



To David and Kyle,
Love is... Having
two wonderful grandsons
like you.
Have a Happy Valentine's Day!
Grandad
& Grandmom

Quotable Quotes

Put not your trust in money, but put your money in trust.

Oliver Wendell Holmes Deeds, not stones, are the true moments of the great.

John L. Motley What's in a name? That which we call a rose by any other name would smell as sweet.

William Shakespear Nature creates ability; luck provides it with opportunity.

Francois de la Rochefoucauld A newspaper should be the maximum of information, and the mini-

mum of comment.

Richard Cobden. The foolish and the dead alone never change their opinions.

James Russell Lowell An optimist is a man who has never had much experience.

Don Marquis We never know the love of the parent till we become parents ourselves.

Henry Ward Beecher The passions are like fire, useful in a thousand ways and dangerous only in one, through their excess.

Christian Nestell Bovee

Vick Back Dies February 4

Victor Spencer (Vick) Back died Feb. 4 at 6:20 p.m. in St. Anthony's Hospital in Amarillo.

Services were Monday at 1 p.m. in the McLean Church of Christ. Officiating were David Fultz, minister of Lefors Church of Christ, and Allen Green, minister of the McLean Church of

Christ. Back was born in Anna Feb. 25, 1900. He moved to McLean from Anna in 1905. He worked as a ranch hand, and retired from the Amarillo Air Force Base. He was a veteran of World War II. Survivors include two brothers, Johnny Back of Dumas and Jack Back of Pampa.

Little Valentine



Nicole LeAnn Mason
Daughter of Eldon & Sherry Mason
granddaughter of Wesley & Jody Swaner

LIBRARY NOTES

by Sam Hines

Golf My Way

Jack Nicklaus with Ken Bowden This new book by the generally acknowledged "King of Golf," will no doubt be a best seller all over the world, as golf fanatics attempt to learn the secrets which have made Jack Nicklaus the foremost golfer of our time.

Tommy Armour's "How to Play Your Best

Golf All the Time," and Ben Hogan's "Power Golf!" have been the two recognized classics of golf instruction, and this new offering by Nicklaus will no doubt be the third of the extremely popular and used books on the subject.

Three previous books have been offered with Nicklaus's name affixed, but this will be the only one which covers the en-

tire technique of his game from A to Z, and even presents the scholarly dedication he brings to his game, including portions of the book which will surprise those of us who have read other golf instruction books.

Ken Bowden collaborated in making the writing of the manuscript professionally graceful,

but every word of the incredibly specific golf instruction and every detail of the brilliant 70 odd-page and double-spread

illustrations, which are in two and four colors, were outlined, dictated, reviewed and re-checked by Nicklaus himself.

Jack Nicklaus feels that this book is his personal testament and an effort to repay to golf something of what the game has done for him, and we

golfers who have access to the publication, will no doubt be the ones to benefit. "Golf My Way" is now available at Lovett Memorial Library.

Loose Marbles

by Lisa Patman

A HOUSEWIFE'S LAMENT ON VALENTINE'S DAY

Saint Valentine, you dirty louse,
You've never once been to my house.
You've never showered me with candy,
furs or diamonds, nothing dandy.

You've never even sent me cards
with love and kisses, nor regards.
No posies came from you to me.
No poems, odes, nor rhymes I see.

Just what is it with you, St. Val?
Can't you decipher a true pal?
Don't you know that my love's true?
See how my heart yearns for you?

Help me, sweet Saint Valentine.
Let me know that I am thine.
Just give me a little something
(Rabies, sable--some such dumb thing.)

Just to let me know you're zealous
(And to make my girlfriends jealous!)
Send me one nice little bauble
or some chocolate I could gobble.

But you know best, I guess, dear saint.
I'm sure if you came through I'd faint.
On second thought, I take that back.
My luck, I'd have a heart attack!

Renowned Author Will Speak At Canyon Luncheon In April

Colette Dowling, author of the best seller *The Cinderella Complex*, will speak in Canyon April 16 at the West Texas State University Dining Hall under the sponsorship of the Returning Student Program. Her topic will be "Women Aware."

A graduate of Trinity, a Catholic women's college in Washington, D.C., and a 1958 guest editor for

Mademoiselle Magazine, Colette Dowling has been writing compellingly about women's issues for many years. Part personal, part reportorial, her pieces have always brought huge quantities of reader mail to the magazines that publish them: *Harper's*, *The New York Times Magazine*, *New York* and *Redbook*.

McLEAN BRIEFS

Billy Bob Adams was scheduled to enter an Amarillo hospital Wednesday to undergo tests.

Ann Pierce has been a patient at High Plains Baptist where she underwent surgery last week.

The Beta Sigma Phi banquet, which was cancelled last Saturday night, has been rescheduled for Feb. 19. The place of the annual Sweetheart Banquet will be announced later.

Mr. and Mrs. J.I. Martindale and Mr. and Mrs. Cliff Jones visited Mrs. Jones in the nursing home Sunday.

Lucille Cullison returned home from St. Anthony's Hospital last Wednesday.

DR. JACK L. ROSE
OPTOMETRIST
121 Main - Shamrock, Texas
Phone 256-1281
Tuesday 9-5
Friday 2-5

BUY YOUR OWN TELEPHONE!

DESK PHONES,
WALL PHONES,
CORDLESS PHONES...



YOU'LL FIND THE BEST AT
WILLIAMS APPLIANCES

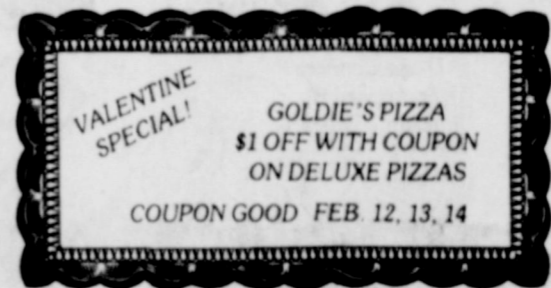
218 N. Main McLean, Texas
779-2351

GOLDIE'S PIZZA

779-8893 [Left at Light] McLean, Texas

HOMEMADE PIZZA
SUBMARINE SANDWICHES
SALAD
CHILI
SPAGHETTI
GARLIC TOAST
COFFEE
TEA
COKES
DR PEPPERS

TAKE OUT ORDERS, TOO!
CALL 779-8893



Public Notice

In order to implement prior orders of the Public Utility Commission of Texas in Docket No. 3957, notice is hereby given of Southwestern Bell's proposal to implement a new schedule of intrastate long distance rates, effective April 1, 1983, unless otherwise determined by the Commission.

It is expected that the proposed rate schedule will not increase the company's net intrastate revenues, but rather, the increased rates will offset increased settlements paid to certain other telephone companies.

A complete copy of the new rate schedule is on file with the Public Utility Commission at Austin, Texas, and is available for inspection in each of the company's public business offices in Texas.

Notice to Customers of Other Telephone Companies

Changes in intrastate long distance rates would also affect customers of other telephone companies because such companies provide intrastate long distance service in accordance with rates specified in Southwestern Bell's tariffs.

Aviso Público

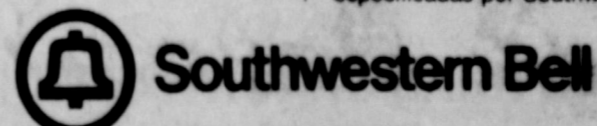
Southwestern Bell, con el objeto de cumplir con el decreto previo del Public Utility Commission (Comisión de Servicios Públicos) del Estado de Texas, Acta No. 3957, por la presente hace saber su intención de establecer un nuevo arancel de tarifas para servicio intraestatal de larga distancia, con vigencia a partir del 1o de abril de 1983, a menos que la Comisión haga otra determinación.

Se espera que el nuevo arancel de tarifas que Southwestern Bell se propone establecer no aumentará sus ingresos netos intraestatales, sino que servirá para compensar el aumento de los ajustes que se les paga a algunas otras compañías de teléfono.

Una copia completa del nuevo arancel de tarifas se ha archivado en las oficinas del Public Utility Commission (Comisión de Servicios Públicos) en Austin, Texas, y esta disponible para inspección pública en todas nuestras oficinas en el Estado de Texas.

Aviso a los Clientes de Otras Compañías de Teléfono

Cambios en las tarifas para servicio intraestatal de larga distancia también afectarían a clientes de otras compañías de teléfono porque dichas compañías proveen servicio intraestatal de larga distancia en conformidad a tarifas especificadas por Southwestern Bell.



THE GAME ROOM
Now has DEFENDER!
We're open 'til Midnight
7 days a week
Bring the Whole Family to the GAME ROOM
[located across from Wil Mart]

for sweethearts young or old
HALLMARK VALENTINES
RED & WHITE FENTON ART GLASS
LEFTON LITTLE CHRISTOPHER FIGURINES
STUFFED TOYS
VALENTINE DOLLS
CANDLES & PARTY GOODS
The Potpourri Gift Shop
212 N. Main McLean
779-2251



Roxie Littlefield
Sponsored By
Foshee's Texaco



Karen Wilson
Sponsored By
Smitherman Tax Service



Michelle Nobles
Sponsored By
B&B Turbine



Sharla Todd
Sponsored By
Mullanax Men's Store



Wendy Kniffen
Sponsored By
Parson's Drug



Jana Harris
Sponsored By
American National Bank



Anna Jean Lamb
Sponsored By
Johnnie Mertel's Boot Shop



Melanie Billingsley
Sponsored By
McLean Hardware



Kristie Thompson
Sponsored By
Jake Hess II



Patricia Rodgers
Sponsored By
Corinne's Style Shop



Diane Connors
Sponsored By
Puckett's Grocery



Amber Kington
Sponsored By
McLean Junior Fire Department

MISS McLEAN
BEAUTY PAGEANT
SATURDAY,
FEBRUARY 12
7 p.m.
McLEAN HIGH SCHOOL
AUDITORIUM



Tracie Beck
Sponsored By
Hambright's Cabinet Shop



Vicki Armbrister
Sponsored By
Todd-Smith Kennels



Judy Stewart
Sponsored By
McLean News



Sherry McLain
Sponsored By
Lamb Funeral Home



Lee Ann Tate
Sponsored By
Pioneer Real Estate



Candi Carpenter
Sponsored By
McLean Cattle Company



Eva Anderson
Sponsored By
Cowboy Drive-In



Gina Gardner
Sponsored By
Jane Simpson Agency



Teresa Woods
Sponsored By
Woods Veterinary Clinic



Stefanie Houdyshell
Sponsored By
McLean Lion's Club



Stacie Smith
Sponsored By
McLean Variety



Wendy McDowell
Sponsored By
Alberta's Beauty Shop

Nursing Center News

Sunday Gib Welch was here to sing and play his guitar. Bob Ford danced with Etoyle Best. In the afternoon Brother Archie Cooper was here to conduct church services.

Monday morning our residents started making their valentines. Our

volunteer helper was Greta Thompson. In the afternoon residents playing Bingo were Maggie Morris, Ethel Meador, Annie Eudey, Leon Burch, Ruby Bidwell, Bill Shaffer, Earl Tolleson, Lula Sheegog, Lona Jones, Kittle Hessey and Alma Fandal. Our helpers were Bertha Smith, Juanita Smith, Loree

Barker, Ruby Boyd and Mildred Giesler.

Tuesday morning residents making valentines were Leon Burch, Earl Tolleson, P.L. Ledgerwood, Bob Ford, A.L. Welch, Drucie Dwyer, Alma Fandal, Lona Jones, Lula Sheegog, Annie Eudey and Kittle Hessey. Those assisting were Betty Lowe and

Grace Hanner. Hot cinnamon rolls were served by Isabelle Cousins. In the afternoon we had our Birthday party for the month of January, those celebrating were Clara Smith, Ruth Kemp, Ethel Meador, Frank Solomon and Boyd Reeves. Our entertainment was furnished by Mr. J.T. Trew and Lois Myers, along with one of our residents, Mr. A. L. Welch playing his harmonica. We played "Name That Tune" and the residents played their percussion instruments....Ruby Cook did a recitation and sang a solo, "I'm A One Mans Woman". Cake was furnished by Cecil Fields. Corsages were furnished by Creed and Wanda Lamb. Those

serving were Frankie Smith, Isabelle Cousins, Pauline Miller and Cecil Fields.

Wednesday members of the Pentecostal Church were here for a Bible Study and returned Thursday for a Sing-A-Long.

Friday Martha Parker was here with her excellent movies.

The Thomas Nursing Center Ladies Auxiliary met Friday afternoon. It was decided the ladies would meet at the Home February 9 at 10 a. m. to sort out the valentines, also to serve at the Valentines party scheduled for Saturday Feb. 12 at 2:30 p.m.



JUDGES ATTEND SEMINAR: 145 justices of the peace attended a 40-hour Texas Justice of the Peace Training Center seminar Jan. 9-14 in Huntsville. Among the judges attending were, left to right, Harold Tippie of Fentress, Caldwell County, Precinct 3; R. C. Parker of McLean, Gray County, Precinct 4, Place 1; Sharon Harper of Skellytown, Carson County, Precinct 6, Place 1; and W. W. Lovelady of Clarendon, Donley County, Precinct 2, Place 1. [SWT News Service Photo]

Homemaker News

February is Potato Lover's Month! Potatoes are American's favorite vegetable. They are also one of the most versatile vegetables around - great for breakfast, lunch, dinner, and snacks.

Nutrition-wise, potatoes provide good nutritional return for the calories. A medium-size potato (one-third pound or 50 grams) has only about 100 calories. For a real potato lover, a medium-size potato may not be enough of a good thing. But even a 250 gram (a little over 1/2 pound) has only about 160 calories. The potato is a good nutrition source providing 35 percent of the U. S. RDA of Vitamin C, 20 percent of Vitamin B6, and 10 percent of Niacin and Iron. In addition, potatoes are a good form of complex carbohydrates that are the body's primary source for fuel for energy. And believe it or not, potatoes are virtually fat-free.

To help you celebrate Potato Lover's Month, here are some serving suggestions for you:

Serve an entree that is just pennies per serving on Feb. 12, Lincoln's Birthday. Try Hot Diggety Dogs - frankfurters served in fluffy baked potatoes with a blanket of cheese.

On Valentine's Day, serve someone you love this elegant hor d'oeuvre: top halved cooked little potatoes with a dollop of sour cream and a sprinkling of your favorite chopped vegetable.

On Washington's birthday, remember the traditional baked potato with only 100 calories. Top it with chive-spiked cottage cheese or yogurt to keep calories low.

For those rippy winter days - try Potato Hand Warmers that heat the tummies too! Split open the end of a hot potato, stuff with a wedge of cheddar cheese. Wrap in a paper napkin for great eating out-of-hand.

Declare a French Fry Day. For a spicy taste change, blend grated cheese, salt, spicy chili powder and red cayenne

pepper and shake over homemade fries.

For an unusual salad, skewer cooked potato chunks with cherry tomatoes and zucchini slices. Drizzle with a spicy, 10-calorie dressing if desired.

Potato skins are all the rage. Halve baked potatoes lengthwise; scoop out potato leaving 1/4 inch of potato skins. Brush skins with oil; season to taste. Bake at 475 degrees F. 15 to 20 minutes until crisp and browned around edges. Top with cheese, bacon or sour cream.

Pizza potatoes are a cinch. Start with processed hashed browns. Cook according to directions then, top with seasoned tomato sauce, cheese, and favorite pizza toppings. Slip under the broiler to heat through.

Combine diced cooked potatoes with crisp-tender broccoli flowerets. Heat Italian style salad dressing and toss with the hot vegetables for a zesty side dish.

Launch a couple of fried or poached eggs on a raft of crisp hash browns. Dust with grated Parmesan cheese and serve with spicy sausage links.

Mix leftover mashed potatoes and a vinaigrette seasoned with herbs, mustard and black pepper. Serve as a savory dip for crunchy raw vegetable chunks.

Next time you're having boiled potatoes, add a squeeze of lemon or lime before serving them.

No wonder we're celebrating potato lovers' month, because potatoes are good nutrition-wise and budget-wise! SO - potato lover's - enjoy yourself.

Educational programs conducted by the Texas Agricultural Extension Service serve people of all ages regardless of socio-economic level, ages, regardless of socio-economic level, race, color, sex, religion, handicap or national origin.

What better way to pass the time when you're snowed in than by cooking some old favorite recipes? I spent one morning of our recent blizzard going through my recipe file to see if there were any wonderful dishes that I had not shared with you. Around our house, I tend to cook a favorite dish until we're tired of it and then I put it back and sometimes forget it. Here are three such recipes that were favorites of ours a few years ago, and will be again.

Green Enchilladas
1 can cream of chicken soup

1 can cream of mushroom soup
1 lg. can condensed milk
1 can chopped green chiles
2 cans boned chicken
2 pkg tortillas (dip in hot grease and drain)
1 lb. velveeta cheese
In sauce pan, combine soup, milk and chiles. Heat slowly; when hot, melt 1/2 of cheese in soup mixture. Add chicken. In large baking dish put layer of tortillas (torn) and cover with layer of soup-cheese mixture. Then add another layer of tortillas, then soup until all is used. Cover top with grated cheese. Cover baking dish with foil

and bake in 350 degree oven for 20 to 30 minutes.

Mexican Grits
4 c. boiling water
1 c. grits
1/2 onion, chopped
1 can green chiles
1/2 lb. cheese, grated
1/2 stick oleo
2 eggs, well beaten
salt
garlic powder
pepper
Cook grits according to directions on the box. Combine all other ingredients and pour into a well-greased casserole. Bake at 325 degrees for 45 minutes to an hour.

Mexican Pizza
Crust: 2 c. biscuit mix,
1/2 c. cold water. Mix with fork. Knead 6 or 7 times. Roll out on heavily greased pan.

Brown 1 lb. ground beef. Drain off fat. Add 3/4 c. water, 3 T. chopped green chiles, 1 envelope taco seasoning mix. Cook fifteen minutes.

Spread one 15 1/2 can refried beans on crust. Top with meat. Bake at 450 degrees for 20 minutes. Top with 1 cup shredded cheddar cheese. Return to oven to melt (about 4 minutes).



In The Kitchen

by Linda Haynes

IT'S THE MOST!

The most popular place to place advertisements is in the newspaper. U.S. newspapers sold more advertising last year than did television and radio combined. More than a quarter of all appeared in newspapers.



Lieberman ads run appeared in newspapers.

By Candace Lieberman
North American Press Syndicate

For most people advertising seen in newspapers is more believable than advertising seen anywhere else, polls show.



Halley's Comet's spectacular tail is about 37 million miles long.



More people than ever before may be reading weekly newspapers this year. Total weekly circulation tops 45 million.

Accent On Health

Texas Department of Health
Robert Bernstein, M.D., Commissioner

Forty-two rabid cats exposed more than three times as many Texans to rabies last year than 536 rabid skunks, reports the Texas Department of Health.

The danger of rabies in pets was pointed out by Dr. Foy V. McCasland, who said 120 persons were exposed to rabies by cats. In contrast, only 36 humans were exposed through contact with rabid skunks, said Dr. McCasland, Chief of the Bureau of Veterinary Public Health of the TDH.

If all the humans exposed to rabid cats during 1982 received post-exposure treatment, the cost would have been some \$60,000 - \$500 per person. Almost 1,500 persons started the anti-rabies injection series last year using vaccine obtained through the Texas Department of Health.

The first defense against rabies, a virtual death sentence in humans, is the vaccination of all pets. This is especially true for dogs and cats, because they are closely associated with humans and represent a much greater danger of rabies transmission to people.

Even though state law requires annual rabies vaccination of dogs and cats, a much lower percentage of cats than dogs is actually vaccinated.

"This situation is unfortunate because cats, being predatory animals, are more likely to come in contact with

wild animal rabies," said Dr. McCasland. While dogs may be confined by fences, cats are able to climb fences and range widely throughout a neighborhood.

All pet owners are urged to have their cats, as well as dogs, vaccinated against rabies. It not only protects the animal but also protects the pet owners, friends, neighbors, and relatives who may come in contact with the pet.

HIGH HEATING BILLS?
CENTRAL HEAT & AIR
Reduce Bill by 20%
Texas Energy
Management Systems
779-2143

OIL SALE



NON-DETERGENT OIL
10, 20, 30, 40 WT.
\$15 PER CASE
TROP-ARTIC 30 WT
\$21 PER CASE

66-20 OIL
\$18 PER CASE

ATF FLUID-DEXRON II & F
\$18 PER CASE

1-155 HD 40

\$2.50 PER GALLON PLUS BARREL

1-155 NON-DETERGENT 30 WT.

\$2.40 PER GALLON PLUS BARREL

CASH ONLY!

DALE'S 66

217 W. 1st

McLean, Texas

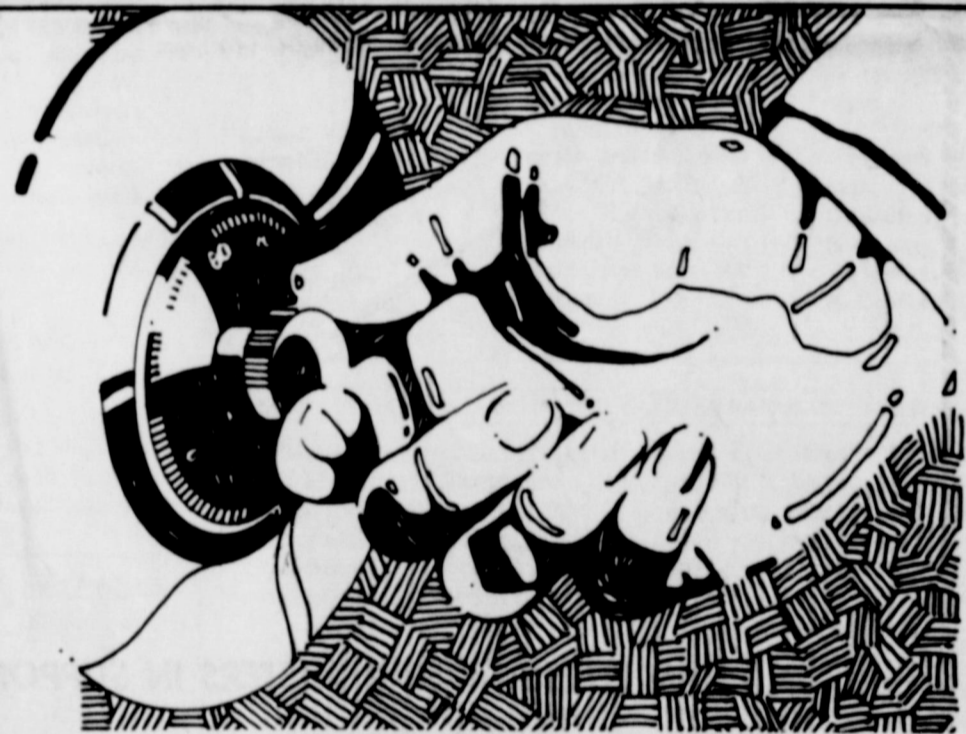
779-2181

Let a Local Agent Help
Handle Your Claims:

Hospitalization-Cancer
Medicare Supplements-Burial

CALL

Jerry Corbin



Seeking the right combination
for your investment needs?

The American National Bank in McLean
Is Now Offering Its Customers An Opportunity For
Increased Earnings
On Investor-Type Accounts.

Investigate the Advantages Of Our New
McLEAN FUND

\$2500 minimum deposit and balance required.

Call Or Come By
For Specific Details
And Requirements

779-2461

AMERICAN NATIONAL BANK IN McLEAN



basketball !



CUBETTE JEM ANN RICE scores during the McLean-Phillips game Monday night in McLean. [Photo by Kathy Carter]

See the last games of the season:

Tigers and Tigerettes
At Claude Friday

Cubs and Cubettes
At Miami Thursday
At Groom Monday

JOIN THESE TIGER BOOSTERS IN SUPPORTING THE McLEAN TIGERS BY ATTENDING THE GAMES:

McLean Hardware

**David Brown's
Water Well Service**

Parson's Rexall Drug

Judy's Atex

Corinne's Style Shop

Magee Ranch

Doctor Herefords
F. J. and Leta Mae Hess

**Hambright's
Building Supply**

**Gately's Cafe,
Gas, & Grocery**

Terry's Electric

**McLean Cattle
Company, Inc.**

Ted & Sue Simmons

**B & B Turbine
Engine Service**
Wayne, Sonie, Billy, and Vonda

Curry's Processing

Denworth Line Camp
Johnny & Joyce Haynes

Dairy Queen

McLean Atlas Plumbing
Jerry Don Cook

Foshee's Texaco

**American National Bank
in McLean**

**Hallum's
Backhoe Service**

Martinez Ranch

**Johnnie & Colleen
Mertel Boot Shop**

**Jane Simpson
Insurance Agency**

Thomas Nursing Center

Cowboy Drive In

Bentley's Fertilizer

McLean Variety

L & P. Chevron

**Windom's
Auto Supply**

**Haynes
Triangle Ranch**
Sam & Thacker Haynes

Barker Redi-Mix

McLean Veterinary Clinic

Dixie Restaurant

Jerry Corbin Insurance

Puckett's Grocery

Lamb's Flower Shop

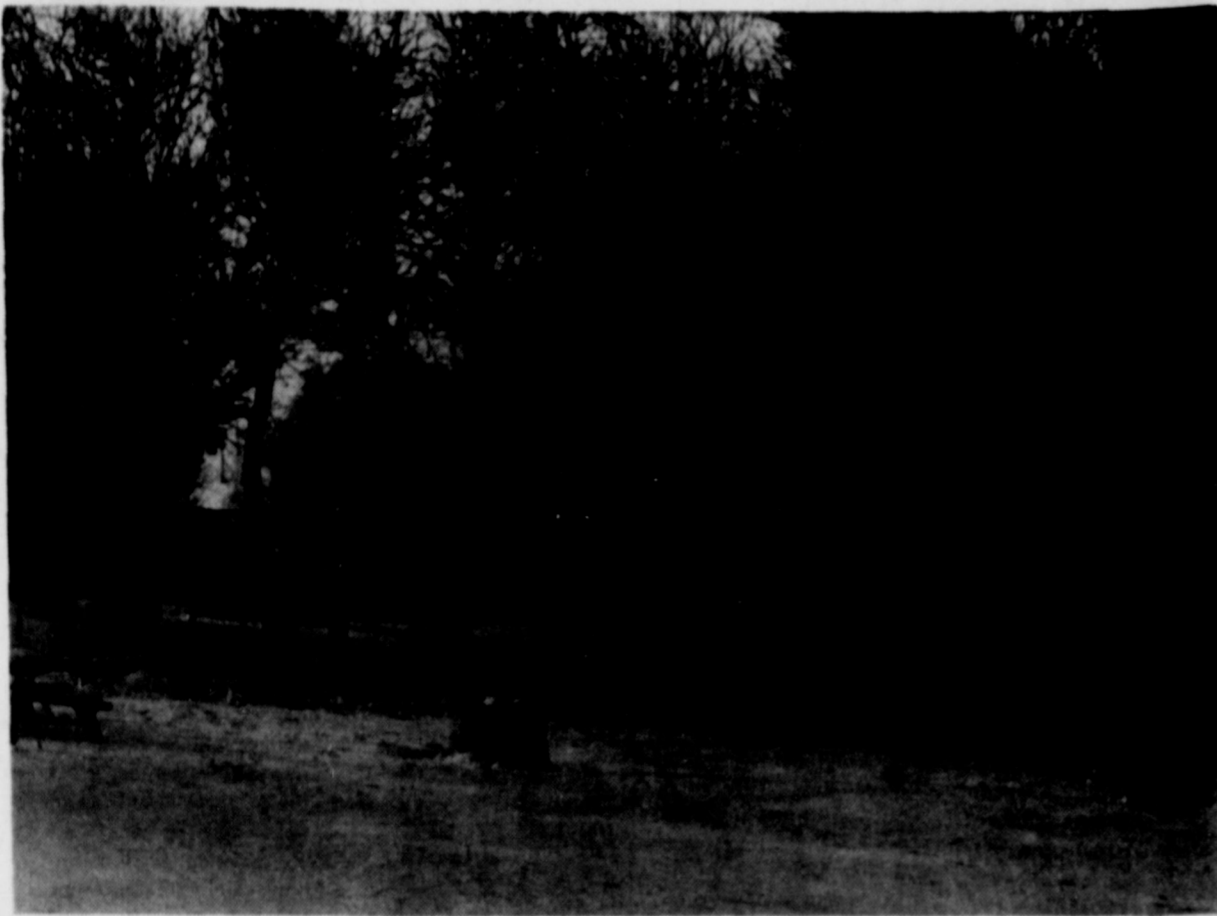
**The Potpourri
Gift Shop**

Jake Hess II Family
Jake, Ida, Tres, Tanner,
and Heather

City of McLean

The McLean News
Linda, Lisa, Sam and Kathy

John Nash Texaco



FOG HUNG OVER the city Monday morning as the residents began to dig out from previous week's snow. (Photo by Linda Haynes)

NEWS FROM YOUR COUNTY EXTENSION AGENT

by Joe VanZandt
IRS Information Returns - Penalties

Farmers, ranchers and others who made payments last year in excess of \$600 for services to individuals (other than employees) and partnerships (but not corporations) must file certain information forms. Failure to do so will result in increased penalties under the Tax Equity and Fiscal Responsibility Act (TEFRA) of 1982.

Several different information forms in the 1099 series are used in filing these returns.

Interest payments of \$600 or more made for rents, royalties, prizes, awards and other payments that are not for services should be made on Form 1099-MISC.

For 1099-NEC is for reporting payments of \$600 or more for fees, commissions, prizes, awards or any other compensation for services paid to persons who are non-employees.

The minimum penalty for failing to file the necessary information returns without reasonable cause has been raised from \$10 to \$50 per failure to file.

There is also a \$50 minimum penalty per failure to provide a taxpayer identification number (Social Security or employer's identifying number) to another person or to include the taxpayer identification number of another on documents such as returns and statements filed with respect to others.

The Form 1099 series information returns are prepared on a calendar-year basis, with statements due recipients by Jan. 31. Copies of all Form 1099s along with a summary sheet Form 1096 must be filed with the IRS by the last day of February.

The Texas Agricultural Extension Service has a book called the "Financial Record Book for the Agricultural Producer" which can help farmers and ranchers with their 1099 reporting requirements. For instance,

records of expenses such as machine hire, rent and contract labor should include the income recipient's name, address and taxpayer identification number.

Further information about the Form 1099 series is available in "1982 Package X: Information Copies of Federal Tax Forms". I suggest you contact your CPA or accountant for copies of these information returns. The main thing is to remember the February 28 deadline to IRS and get the returns to the recipients as soon as you can after obtaining their own taxpayer identification number.

Estate Planning Seminar
A two-day Estate Planning Seminar will be Feb. 14 and 15 in Pampa at the Coronado Inn. This is similar to the program held last year. We heard many nice comments about the value of the ideas and tax savings methods discussed.

Dr. Wayne Hayenga will present the program. He is Extension Economist and Project Group Supervisor in Farm Management. In addition, he is an attorney and has an excellent background to assist farmers, ranchers and agri-business people in developing estate plans to save taxes. He will give you several ideas and methods to lower your estate tax burden. The program will start at 9 a.m. and conclude around 4:30 p.m. each day.

The registration fee is \$10 which includes both noon meals, refreshments and materials, and can be paid at the door. Pre-registration is needed by February 11. Please call 669-7429 or come by the County Extension Office.

Crop Insurance - A Way to Lower Production Risks

Production and financial risks facing Texas farmers in 1983 take on greater significance during the current difficult times for agriculture.

A crop insurance program is one means available to farmers to counteract the production risks they face every

year. There is a cost for such crop protection, and each farmer will need to look at his particular situation to evaluate crop insurance.

The All-Risk Crop Insurance program is available to provide some protection against reduced crop yields from natural causes. The program allows farmers to choose among three levels of coverage. These are either 50 percent, 65 percent or 75 percent of the yield established for their farm unit.

In addition, farmers may choose among three levels of price protection for their insured crop. For example, grain sorghum producers in Texas may choose either \$2/bu. or \$2.60/bu. as the settlement price for any loss in production.

Many farmers have indicated that the area yield established for a crop on their farm does not accurately reflect their production and thus the protection they would like to have. The Individual Yield Coverage program addresses this concern. Thus, a farmer with 3 years of verifiable production records may be eligible to have the yield coverage increased for his farm unit by certifying those records with the county Agricultural Stabilization and Conservation Service (ASCS) office at least 15 days before the insurance sales closing date.

Crop insurance coverage will be increased for farmers participating in the recently announced

Payment in Kind or "crop swap" program. Yield coverage increase of 6 percent, 8 percent or 10 percent will apply depending upon the level of a farmer's participation in the Payment in Kind program. These higher yield guarantees are applied with no increase in the crop insurance premium rate.

To participate in the All-Risk Insurance program, a farmer must sign an application before the established deadline. In the Texas Panhandle, South Plains and Rolling Plains, the deadline will be April 15.

Farmers should contact their local All-Risk crop insurance agent about yield guarantee and premium information for their farm unit.

Since these factors vary for each individual situation, insurance is one risk management tool that farmers should carefully evaluate.

To see what is right, and not to do it, is want of courage, of principle.
Confucius

(806) 779-2713
(806) 779-2111

Penegen
THE ULTIMATE SKIN TREATMENT
Mary Lou Garrison & Oleata Westbrook
Skin Care Consultants
McLean, Texas 79057

FOR YOUR CONVENIENCE THE COWBOY IS NOW OPEN 7 DAYS A WEEK 9 a.m. - 8 p.m. COWBOY DRIVE IN

109 N. Cedar
McLean, Texas 779-2315

LIFE FIRE AUTO LIABILITY CROPS
THANK YOU!

LARRY INGRUM
GRAY COUNTY FARM BUREAU
"Your Insurance Man"

1132 S. Hobart Office Phone 665-2389
Pampa, Texas 79065 Home Phone 665-4183



DOWN MEMORY LANE

10 YEARS AGO...
E. M. Bailey, Ed.

Funeral services for David (Dave) Henderson, 87, a resident of McLean since 1947, were held at 3 p.m. Friday in the First Baptist Church. Rev. Herman W. Bell, pastor, and Rev. Robert Brown, pastor of McLean United Methodist Church, officiated.

Visiting Mrs. Birdie Golightly this week is her daughter, Mrs. Hazel Gantz of San Antonio.

20 YEARS AGO...
Jack Shelton, Ed.

Jerry G. Wood, son of Mr. and Mrs. R. T. Wood of McLean, is now serving in the U.S. Navy in Hawaii aboard the Pearl-Harbor-based USS Savage Seaman Apprentice Wood, a former student at McLean High School, reported aboard Savage on Jan. 22.

Guests during the weekend of Mrs. W.R. Cooper, Mrs. Susie Trout and Mrs. Minnie Erwin were Mr. and Mrs. James Fulton and son of Pampa, Mr. and Mrs. Butch Pierce and son and Mr. and Mrs. Mary Dutton of Amarillo.

Mr. and Mrs. Edward Dwyer and children visited the first of the week with his mother, Mrs. John W. Dwyer. The Dwyers are moving from Canyon to Commerce where he will enter East Texas State College to work on his PhD.

30 YEARS AGO...
Lester Campbell, Ed.

Mr. and Mrs. W.C. Simpson and Mrs. Jim Simpson were Sunday guests in Wellington in

the home of Rufus Sweatt.

Ann Terry attended a birthday party in Shamrock Sunday in honor of her cousin, Charlotte Campbell.

Mr. and Mrs. Oran Back and son Johnnie Reed of Dumas, and Miss Mary Ann Back, student at ACC in Abilene, spent the weekend in the home of their parents, Mr. and Mrs. Johnnie Back.

Mr. and Mrs. Lester Bailey and family of Goodnight were visitors in McLean Monday.

40 YEARS AGO...
T. A. Landers, Ed.

Miss Ruby Cook has accepted a position with the Pampa radio station and has two programs under her direction daily. Miss Cook writes her own script and has complete charge of her programs.

Miss Verna Rice has moved the McLean Flower Shop to her home, where she will give the same prompt service on floral orders.

Mr. and Mrs. Leo Gibson and son Robert; Mrs. George Humphreys and son, Jack; accompanied by Mrs. C.E. Hunt, went to Pampa Monday, the boys leaving for induction into the armed forces.

Lloyd Whitfield, ward school principal, had the misfortune to break a knee-cap this week.

50 YEARS AGO...
T. A. Landers, Ed.

C. O. Greene, man-

ager of the R.F.C. work in McLean reports that for the week ending February 4, 1933, 95 men were used in work in the cemetery, on the streets and the graveling of the street between the pavement on highway 66 and the grade school building. Five ladies were used in the Red Cross sewing. The total pay roll was \$365.40. Of this amount \$128.40 was paid in grocery orders and \$237. in cash.

The Sigma Gamma met Monday evening with Misses Turner and Kennedy as hostesses, in the home of Mr. R. L. Appling.

Even though the inclement weather prevented several members from being present, an interesting program was enjoyed. The subject for the evening was "Famous Women Musicians." Each member present participated in the program. Special numbers were a piano solo by Jewel Shaw and a vocal duet by Aline McCarty and Isabel Bailey. Refreshments of cookies and punch were served.

After extended discussion, Gray county commissioners have fixed the maximum wage scale for the county at 30c per hour for common labor, \$4.00 a day for a man and two horses, \$5.00 a man and three horses, and \$6.00 for a man and four-horse team. The maximum for expert bridge carpenters was set at 50c per hour.

Henry Kinard of Dalhart visited home folks here last weekend.

60 YEARS AGO...
T. A. Landers, Ed.

On Tuesday a Mr. Keene of Dalhart, who has been working on the railroad here, was in the section motor car when it ran off the rails, throwing him off and running over him, bruising and cutting him severely. The wounds were dressed here and the patient taken to Amarillo for treatment.

Mr. and Mrs. Joe Hindman and son returned Tuesday from a visit with relatives in Mexico.

Misses Vera Taylor and Julia Mae Barnhart and Oscar Castleberry of Alanreed attended the show at McLean Friday night.

Mr. and Mrs. J.B. Paschall left Tuesday for Breckenridge to visit relatives.

R. O. Dunkle, Leonard L. Baxter and Miss Margaret Miller motored to Clarendon Sunday to meet Miss Ruth Alexander.

A. G. Richardson, Ed. Have you seen the new lights at the school building. Attend the Mother's Club entertainment next Friday night and see them. Proceeds to go towards paying for them.

FOUND...some money in McLean. Owner may have same by identifying and paying for this notice...S. A. Cousins.

ML LIFE AGENCY INC. INVITES YOU TO AN IMPORTANT FREE SEMINAR

We invite you to discover a remarkable retirement investment - one that combines the advantages of high interest rates, tax deferral, and the safety of principal under insurance company sponsorship.

All three come with an ironclad guarantee covering tax-deferred interest rates. No market risk. Return of principal. Even lifetime income, if you choose.

At this special seminar, you'll

learn how annuities work to make your retirement income grow faster. And about their unusual flexibility - while your money accumulates, and after you start receiving payments.

If you're concerned about future financial security for yourself and your family, don't miss this seminar. It's free, but reservations are essential. To make yours, mail the coupon or call today.

THE IRONCLAD RETIREMENT PLAN - GUARANTEES YOU THE BEST OF THREE WORLDS.

DATE: Thursday, February 10th TIME: 7:00 p.m.

PLACE: Pioneer West Museum, 201 N. Houston, Shamrock

SPEAKER: Kelly Forehand

Mail to: ML Life Agency Inc., 905 S. Filmore, Suite 100, Amarillo, TX 79101
Or call: Kelly Forehand at 1-800-692-4085

YES, I plan to attend your free seminar on "Ironclad Contract Annuities." Please reserve _____ seats.

NO, I cannot attend. Rush me your free booklet.

Name _____

Address _____

City _____ State _____ Zip _____

Business Phone _____ Home Phone _____

Merrill Lynch customers, please write name and office address of your Account Executive _____

Merrill Lynch
ML Life Agency Inc.
A broad apart.

American National Bank Begins Computer System February 1.



LAVERNE BACK, ASSISTANT vice-president at the American National Bank, calls up an account

record on the CRT terminal at the bank which became operational Feb. 1. [Photo by Linda Havnes]

The American National Bank in McLean went "on line" with its computer system Feb. 1, culminating work which

began in November, according to Roger McCracken, vice-president of the McLean financial institution.

The local bank began preparing for the conversion to the computer system last November when each customer received complimentary copies of personalized checks with the customer's new account number coded in. The new system requires that each check and each deposit slip have the coded account number, eliminating the counter check and counter deposit slips which McLean customers had grown accustomed to through the years.

counting requires an accounting for all expenses and income on a daily basis, he said.

One advantage to the customers, McCracken said, is that the system now allows the local bank to offer a "McLean Fund" account. This fund is designed to compete with the money market accounts, and will offer interest rates considerably higher than the pass-book savings accounts.

In addition to the requirement for account numbers on checks and deposit slips, ANB customers will probably notice little difference from the change, McCracken said, except that all correspondence from the bank will be in a different format. Monthly statements, notices of savings balances, loans, and money market balances will all be in a slightly different format.

The new system will insure an extremely accurate accounting for the customer, according to McCracken, and will speed up all his transactions with the bank.

Officials at the bank can now make entries through telephone lines to Western Data Systems in Amarillo. The local workers use a CRT terminal to record deposits, checks, loans, savings - all the transactions of the bank.

"Federal regulations requiring accrual accounting for all banks with deposits over \$10 million have forced us to go to a computer-type system," McCracken said. The regulations were effective Jan. 31, with all regulatory reports required beginning March 31. Accrual ac-

McCracken said that most of the banks in the surrounding towns have already converted to the system or are in the process of beginning conversion to a computer-type system. Even the smaller banks (those with deposits of less than \$10 million) will be required to change to accrual accounting by Feb. of 1984.

Cubettes Win Second Place In Shamrock Tournament

The McLean Junior High Cubettes beat Canadian after five overtimes in the Shamrock Tournament last week to put the McLean girls in the championship game. The Cubettes had beaten Shamrock in the first game of the tourney by a score of 17 to 13 to get to the game with Canadian.

In the championship game, the tired Cubettes faced Kelton, and fell behind 25 to 5 in the first half. The McLean girls lost 36 to 15, to take second in the tournament.

The final buzzer sounded at the Canadian game with the score tied at 19, and after five grueling overtimes the Cubettes won 30 to 27. Jem Ann Rice led the McLean girls with 15 points.

The McLean boys lost to Shamrock 27 to 22 in the first game of the tournament, with Clint Herndon scoring 8 and Darren Johnson scoring 6 for the Cubs. In the second game Wellington beat McLean 29 to 19, with Darren Johnson scoring 10 points for the Cubs.

McLean Junior High Teams Host Phillips Monday Night

The McLean Junior High Cubs and Cubettes hosted Phillips Monday night, but lost both games to the visitors.

The girls fell behind 20 to 7 after the first half, but played better in the second half. Phillips won 33 to 24, with Jem Ann Rice scoring 9 points.

The McLean boys played Phillips an even first half, as that period ended with the score tied at 20. The tight second half ended with Phillips edging out the Cubs 37 to 33. Darren Johnson led the scoring with 17 points.

Tigers, Tigerettes Beat Lefors Thursday

The McLean High School Tigers and Tigerettes hosted Lefors to two make-up games Thursday night between snow-

storms. The Tigerettes trailed Lefors 6 to 2 at the end of the first quarter,

but the host team came alive in the second quarter, and ended the first half with a score of 40 to 17 for McLean. The one-sided battle ended with McLean winning 78 to 37. Maria Eck scored 28 points for McLean.

The Tigers played an even first half with the Pirates, with the score at half-time 29 to 28 for McLean. McLean pulled ahead 45 to 39 in the third quarter, and won the game 58 to 53. Leading the scoring for the Tigers was Robert Swaner with 20 points.

BIRTHDAYS

- FEBRUARY 10
H. V. Ballard
Archie Hibler
Curtis Jack Evans
- FEBRUARY 11
James Barker
- FEBRUARY 12
Mrs. J. A. Darnell
Doyle Clark Lee
Anna Jean Lamb
Jimmy Baker
Jim Barker
Brenda Galley
Teresa Cheatham
Charlie Wayne Carter
- FEBRUARY 13
Mark Bailey
Mrs. Ada Simmons
Chris Evans
- FEBRUARY 14
Val Smith
Mrs. Oba Kunkel
Mrs. Ed Jones
Gay Martin
Sandy Blackshear
Frank Hulsey
John Glass
Andy Eck
- FEBRUARY 15
Paul M. Bruce
- FEBRUARY 16
G. C. Prock
Ricky Willis
Phillip Gibson
Mabel Rives
Joetta Bailey
Gina Ann Layne
Rose Steel

SCHOOL MENUS

LUNCH

- FRIDAY, February 11
Roast Beef, Mashed Potatoes, Green Beans, Brown Gravy, Hot Rolls W/ Butter & Honey
- MONDAY, February 14
Hamburgers, Lettuce, Tomatoes, Onions, Pickles, French Fries, Fruit Pudding
- TUESDAY, February 15
Tacos, Tossed Salad, Ranch Style Beans, Cinnamon Rolls, Fruit
- WEDNESDAY, Feb 16
Lasagna, Salad, Fried Okra, Bread, Chocolate Cookies

THURSDAY, Feb. 17

- Bar BQ on Bun, Pickles, Onions, Potato Salad, Cake, Fruit

BREAKFAST

- FRIDAY, Feb 11
Cold Cereal, Toast, Juice, Milk
- MONDAY, Feb. 14
Pancakes, Sausage, Juice, Milk
- TUESDAY, Feb. 15
Hot Cereal, Toast, Juice, Milk
- WEDNESDAY, Feb. 16
Creamed Beef on Toast, Juice, Milk

NEWS FOR PARENTS

Is Your Child Hyperactive?

A bright child with a short attention span, lack of self-control, perceptual difficulties, regular frustration and learning problems, may be hyperactive. The child's doctor should be consulted.



A bright child with difficulty in school may be hyperactive—and can be helped.

Hyperactivity is a learning disability, ranging from mild to severe, affecting an estimated five percent of all grade-school-age children in the United States.

The causes are not yet fully understood, but may include genetic, biological, physiological, social and environmental factors.

Its symptoms sometimes lead parents and teachers to consider a child "bad" or "uncontrollable." That can lead to inadequate learning opportunities. In addition, the hyperactive child suffers considerable emotional pain while struggling to learn in an environment which hinders rather than helps.

A hyperactive child can sometimes be helped with medicine or with a diet change. A restructured educational environment—shorter lessons, greater understanding and reinforcement may help, too.

Of the three to four million children in the U.S. who may be suffering with hyperactivity, under ten percent have been identified and are being medically treated or specially educated.

To help all hyperactive children, their parents and teachers, the Center for Hyperactive Child Information was created. It is a clearinghouse for research and provides a free referral service for parents looking for help from special schools and other organizations. It also maintains an ongoing nationwide campaign to tell parents and teachers about hyperactive children and the help they need. It is supported by voluntary contributions and all its services are provided free of charge.

People interested in a free booklet "Helping the

THEN NOW

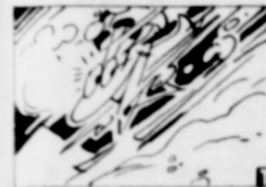
When it comes to cups, people have had some interesting ideas over the years.

THEN: In ancient times, some people believed that the right kind of cup could save your life. Drinking wine from cups made of semi-precious stones, they thought, could make them invisible to their enemies.

NOW: Today, we can see through such beliefs, but many people are getting more advantage from cups than they realize. People who patronize fast food places, for instance, have found that when they get their cold drinks served in foam cups, their drink stays colder longer, report the experts at the Society of the Plastics Industry. That means they have more to drink since the ice melts more slowly and they can enjoy the refreshing drink longer.

NEWS OF SPORTS

Paraskiing is a relatively new sport that is hitting—literally—ski slopes in some of the most treacherous mountain ranges of the United States.



Paraskiing is an unlikely combination of two sports—skydiving's jumping-for-accuracy and skiing's giant slalom racing. Sometime's called the "hit and ski" sport, paraskiing will debut this winter at the Camel Ski Adventure events at 28 ski resorts in the United States.

Jumping out of airplanes flying at 2,500 feet, paraskiers try to hit a 5 centimeter disk in the center of a 5 meter target area. They quickly put on their skis and then race down a giant slalom course.

Some jumpers go barefoot, but most wear sneakers. The cold snow can cause numbing frostbite—a liability that could prevent skiers from competing again.



It was once believed that if a person dreams of a river, it means that something stands between him and his wishes.

Teams Now On Schedule

Despite the cancellation of the McLean High School basketball games Friday night with Estelline, the Tigers and Tigerettes are caught up on their schedule, according to high school principal Ron Cummings. The Estelline games, which were not district games, will not be made up, he explained.

The junior high was set to play Phillips here Monday night, and then plans called for the scheduled game with Hedley Thursday night to be cancelled. The junior high will travel to Miami to make up a game, and then play Groom there Monday night to finish up the junior high season.

Mary Kay COSMETICS

Linda Sue Meador
Beauty Consultant

Box 657 (806) 779-2102
McLean, Texas 79057

"Happiness Is Having A Mary Kay Facial"

SAVE NOW ON HOMEOWNERS INSURANCE!

TEXAS HOMEOWNERS INSURANCE RATES HAVE DECREASED SINCE LAST YEAR! CHECK WITH US TO FIND OUT ABOUT THE SAVINGS!

JANE SIMPSON INSURANCE AGENCY

106-A N. Main McLean, Texas 779-2451

Valentine Flowers

CORSAGES, BUD VASES,
GREEN PLANTS, TULIPS, HYACINTHS,
SPRING BOUQUETS, ROSES, POTPOURRI

LAMB FLOWER SHOP

LAMB FLOWER SHOP
McLean, Texas

1009 N Main 779 2611

A special thank you to the dedicated people who worked long and hard to help the community during the recent snow storm:

To the members of the McLean Fire Department, the McLean Ambulance Service, the Gray County road crew, the State of Texas Highway Department crew, the City of McLean crew, the officers of the Department of Public Safety, the Gray County constable, and all the others who performed difficult, and sometimes hazardous duty.....

We are grateful.
The Citizens of McLean

CLASSIFIED ADS sure to get results

CLASSIFIED RATE
\$2.00 minimum
15 cents per word
CARD OF THANKS \$3
All ads cash, unless customer has an established account with The McLean News-Deadline for Want Ads-Noon-Tuesday. Phone 779-2447.

The McLean News cannot verify the financial potential of these advertisements. Readers are advised to approach any "business opportunity" with reasonable caution.

FOR SALE
FOR SALE: SIDE by Side 20-ft. Frigidaire Refrigerator with new compressor -- \$285 at Williams Appliances. 6-2c

RUBBER STAMPS ARE an inexpensive way to bring more efficiency to your business operations. We will design stamps to your specifications. Fast Service. THE McLEAN NEWS. 46-tfc

REMEMBER YOUR SWEETHEART with flowers from Lamb's. Let us help make this year's Valentines Day the best ever. Lambs Flower Shop. 779-2611. 5-1c

COLOR BRIGHT SALE ends Feb. 15. Great values on all linens. Stock up now while on sale. Good Selection of towels and assorted linens. The Potpourri 6-1c

FOR SALE: 16-ft used Frigidaire Frost-proof Refrigerator -- \$175 at Williams Appliances 6-2c

CASABLANCA CEILING FANS, lamps, lampshades, lighting fixtures, gift items, curio & gun cabinets, lamp parts & bulbs. Unique items for your home! Lights and Sights, 107 N. Cuyler, Downtown Pampa. 665-8341. 3-tfc

FOR SALE: LIKE new Minolta 110 camera with a zoom lens. In excellent condition. When new, sold for more than \$280. You can buy it for \$140. Also small Nikon electronic flash which fits camera \$40. Come by The McLean News or call 779-2447, or 779-2947 after 5 p.m. 3-tfc

FOR SALE: GOOD used washer -- \$100 at Williams Appliances 6-2c

TEA KETTLE SALE. Beat the dry heat by keeping a pretty tea kettle on the stove. It's decorative, it adds moisture, and it's on Sale. Reg. \$22. Now \$16.50. The Potpourri 6-1c

FOR RENT
HOUSE FOR RENT: 20 Acres - \$350 a month. Available by the end of the month. Call 779-2577 evenings. 6-tfc

FOR RENT: 4 Bedroom house - 2 bath - \$250. per month. \$150. deposit. Call 779-2538. 2-tfc

BABYSITTING
WILL DO BABYSITTING in my home. Evelyn Raines. 317 Gray Street. 4-tfc

HELP-WANTED
THOMAS NURSING CENTER is now accepting applications for Nurses Aids - all Shifts... Contact the Director of Nursing in person. 33-tfc

REAL ESTATE FOR SALE

CARD OF THANKS
Three bedroom home on 20 acres. Outside city limits. 779-2461 779-2649

PIONEER REAL ESTATE
IDA HESS, BROKER 779-2641
108 N. MAIN McLEAN, TEXAS

LYNDEL ORCUTT
AGENT
GRAY COUNTY FARM BUREAU
Office 806/665-2389 Home 806/665-2681
1132 S. Hobart Pampa, Texas 79065

FOR SALE: SOUTH 160 acres of the old Pugh place. 10 miles northeast of McLean. Call 915/381-5699. 3-4c

FOR SALE: 4 bedroom, 2 bath home. \$27,500. Owner 779-2538. 46-tfc

JIM ALLISON REALTY
Farms, Ranches, Residential, Commercial, Oil and Gas

LARGE two bedroom brick on Main - Very Nice
TWO nice two bedroom - Good Locations 160 Acres - live water, Apple orchard, quail, dove, deer and turkey. BEAUTIFUL! COMMERCIAL property. Store, station... **Alanreed, on I-40**
1976 Nashua two bedroom mobile home. 14 x 70 - with all appliances
160 Acres Lovegrass on pavement - cross fenced. 779-2461 779-2649

FOR SALE: 14 x 40 Trailer House. 1 Bedroom 1 bath. Call 779-2702. 5-tfc

FOR SALE: TWO bedroom house - By Owner 779-2666. 48-tfc

LOST & FOUND

FOUND: HAND SAW. Call 779-2107 and describe. 3-tfc

FOUND: SET OF post-office keys. Claim at the McLean News Office. 5-tfc

LOST: PAPERBACK BOOK - Blue Adept by Piers Antony. If found, please call 779-2447 or 779-2818, or return to McLean News Office. 6-1c

BUSINESS

SMITH'S TAX SERVICE
SATURDAYS
9 a.m. - 6 p.m.
303 N. Main
across from the library
McLean

FOR SALE:
Stocker Calves & Yearlings
Cutting Bulls
Wheat Grazed Out Cows & Calves
Tommy Turner Cattle Co.
(806) 995-4006
(806) 995-2515
Tulia, Texas

Call Jerry Cook at ATLAS Plumbing 779-2784 Water-Gas-Sewer

SADDLE AND BOOT REPAIR
HANDMADE SADDLES
McLEAN SADDLE CO.
111 McCarty St. McLean, Texas 779-2339

NOTICES
MASONIC LODGE REGULAR MEETING second Thursday, 7:30 p.m. Practice nights First, Third, and Fourth Thursdays at 7:30 p.m.

SERVICES
GALLEY'S CARPET CLEANING. Free estimate. 779-2629. 1-tfc

ACTIVE KIDS NEED EXTRA FLUIDS

Whether your kids are into skating, sledding, skiing, or just shuffling around in the snow this winter, make sure they get plenty of liquids. When the temperature drops, we bundle them up with additional sweaters, mufflers and caps. But

keeping young, active bodies properly hydrated in cold weather is as important as keeping them warm. It doesn't take a football game or tennis match in the hot sun to raise body temperature and cause water loss. Young snow enthusiasts, just like young ball players, need extra fluids to rehydrate during and after an active day. An extra glass of water, cider, or isotonic beverage like Gatorade* thirst quencher, formulated for effective, easy absorption into the system, may be helpful to prevent dehydration. Professional athletes in all seasons often use isotonic drinks like Gatorade* to quench their thirsts, help replace fluid loss, and help maintain critical energy reserves and electrolytes. Your kids will enjoy and benefit from the drink of the superstars, too, all year long. It's refreshing after a hard day at play, and it has no caffeine. Serve it hot this winter with a cinnamon stick or fruit slice for a special taste treat.



VIN AIGRE
The name vinegar comes from vin aigre, French for "sour wine" which is what vinegar is, or was originally.

The McLean News BUSINESS DIRECTORY

<p>DON MILLER RADIATOR SERVICE "Is Our Business" Not a Sideline •New & Rebuilt Radiators •Gas Tanks & Heaters Repaired 376-666 612 S. JEFFERSON AMARILLO, TEXAS</p>	<p>Foshee's Texaco Your full-service station Earnest & Maurine Foshee Owners 779-2621 McLEAN NEWS ADS HELP YOUR BUSINESS SALES. 779-2447</p>	<p>WATER WELL SERVICE SUBMERSIBLE PUMP SALES & SERVICE DAVID BROWN 806-774-2678 BOX 273 MCLEAN, TX 79057</p>	<p>GERMANIA Farm Mutual Insurance REASONABLE SOUND INSURANCE PROTECTION FOR YOUR HOME AND OTHER PROPERTY DON WILSON 779-3174</p>	<p>NATIONAL AUTO SALVAGE 665-3222 or 665-3962 1 1/2 miles west of Pampa on Highway 60 Large selection of used auto parts We appreciate your business CALL 779-2447 AND GET YOUR BUSINESS IN THE McLEAN NEWS BUSINESS DIRECTORY</p>	<p>DIANN DALTON'S Country Cut BEAUTY SHOP 779-2413 Open Tuesday through Friday and Saturdays until noon 1 mile south of McLean on FM 3143</p>
<p>BARKER REDI-MIX READY-MIX, CONCRETE BACK-HOE SERVICE AND FINISHING WORK PHONE 779-2703 OR 779-2869</p>	<p>McLEAN HARDWARE complete hardware line -DISHES-PAINT-TOOLS-GIFTS- 779-2591</p>	<p>GLENN HALLUM BACKHOE SERVICE Commercial or Individual Fully Insured Alanreed, Texas 779-3138</p>	<p>Johnnie F. Mertel Boot Shop Tony Lama, Texas, Acme, Justin Leather Goods Shoe Repair phone 779-2161</p>	<p>Expert DRY CLEANERS BRING YOUR CLEANING WHEN YOU SHOP IN PAMPA PICK IT UP THE SAME DAY! One Hour Martinizing</p>	
<p>Bug Baggers Pest Control Inc. TERMITE SPECIALISTS COMPLETE PEST CONTROL STATE LICENSED IN YOUR TOWN WEEKLY CALL COLLECT 855-0090 CANTON, TX</p>	<p>For all your Purina Feeds: BULK FEED BAG FEED BENTLEYS FERTILIZER 301 E. Foster McLean, Texas 779-2209</p>	<p>Lowrance Plumbing Fast and reliable service Licensed 24-hour Service Call 779-2563 or 779-2065 Serving McLean and surrounding areas</p>	<p>DALE'S SERVICE STATION PHILLIPS 66 217 W. 1st McLean 779-2181 779-2181 THE McLEAN NEWS IN COUNTY - \$12. OUT OF COUNTY - \$14. NINE MONTH STUDENT SUBSCRIPTION - \$9</p>	<p>B&B ELECTRIC Parts & Service •ELECTRIC WORK •APPLIANCES •TV ANTENNAS •HEATING AND AIR CONDITIONING PHONE Loyd Bybee 779-2607 EMERGENCY 779-2517 2 BLKS NORTH OF I-40 ON PAMPA HWY I WILL APPRECIATE YOUR BUSINESS</p>	<p>LAMB FLOWER SHOP 779-2611 ASK ABOUT OUR REGULAR FRIDAY SPECIALS</p>

WHO'S NEWS

Meet Yasuhiro Nakasone, New Japanese Prime Minister

The new Prime Minister of Japan brings to his office a wide range of abilities and interests. In addition to being a skilled politician and highly capable administrator, he is an authority on science, technology, nuclear energy and defense. He also enjoys traditional haiku poetry, oil painting, classical music and sports such as swimming, tennis and golf.

His 64 years sit lightly on the shoulders of Yasuhiro Nakasone. His youthful face belies the fact that this is a man who has already spent 35 years in political service to his nation.

His first elected office was to the House of Representatives of the National Diet when he was only 28. Mr. Nakasone remembers those days as a mixture of grimness and hope.

"People were beset by hunger, living in makeshift shacks. Yet they began to embrace the ideal of Japan as a country of culture and welfare. I came to the Diet threading my way between



Yasuhiro Nakasone

rubble and black market peddlers."

Even today he remembers those scenes. A country of culture and welfare, he points out, built on the aftermath of destruction, was a new value for people freed from the wartime structure of military priorities and constraints on freedom.

In the decades since then, Japan has grown into the second largest economic power in the Free World.

Yasuhiro Nakasone has

played an important role in these decades. Known in his early years as a "young Turk," he has been re-elected to the Diet 13 consecutive terms. He was named a cabinet member in 1959. Although only 41, he became Director General of the Science and Technology Agency and, concurrently, chairman of the Atomic Energy Commission.

Serving in subsequent administrations, he earned high praise from business leaders for his successful efforts to pull Japan through the first oil crisis and became known for his strong leadership and candor.

The new Prime Minister and his wife have three married children and are the proud grandparents of five.



The first real word in the average American dictionary is *oo*. It is the name for a spongy kind of lava.



The belief that the "hair of the dog"—another drink—is a cure for a hangover has its origins in ancient times. The Romans believed that the best antidote for a dog bite was the burned hair of the dog that had attacked you.

Quotable Quotes

"Talk not of wasted affection; affection never was wasted."
Longfellow

"One kind word can warm three winter months."
Japanese Proverb

"Truth is within ourselves."
Robert Browning

"It is good to be merry at meals."
English Proverb



LOVE STRUCK?

TREAT YOUR SWEETHEART WITH A LOVELY HEART-SHAPED SATIN-COVERED BOX OF PANGBURN'S CHOCOLATES FROM PARSON'S DRUG

117 N. Main McLean, Texas 779-2442

Fancy These VALENTINE DAY FOOD VALUES!

Skinners Jumbo or Large



ELBO MACARONI
12 oz bag 59c

Giltedge ICE CREAM (Vanilla Only)
1/2 gal. \$1.68

DelMonte Cut GREEN BEANS
16 oz can 2 for 79c



CHEERIOS
15 oz box \$1.59



Pink Beauty SALMON
15 oz can \$1.89

DelMonte Golden CORN
17 oz can 2 for 89c

WESSON OIL
48 oz bottle \$2.19

Hormel VIENNA SAUSAGE
5 oz can 2 for 98c

Del Monte PINEAPPLE
15 1/2 oz can 2 for \$1.09

DelMonte SPINACH
15 oz can 2 for 89c

Hormel Chunk CHICKEN
6 3/4 oz can 89c

DelMonte SAUERKRAUT
16 oz can 2 for 85c

Van Camp PORK & BEANS
16 oz can 37c

Imperial Powdered or Brown SUGAR
2 lb bag 98c

Gold Medal FLOUR
5 lb bag 95c

DelMonte SWEET PEAS
17 oz can 2 for 89c

I.G.A. TUNA
6 1/2 oz can 79c

MILNOT
tall can 2 for 89c

Taste of the West PEACHES
29 oz can 69c



Zesta CRACKERS
1 lb box 89c

COKEs, 7UP, TAB, or DIET COKE
12 oz can-6 pack \$1.58

Keebler CHIPS DELUXE
12 oz bag \$1.39

Popsrite POPCORN
2 lb bag 69c

Morton FROZEN DINNERS
11 oz 65c

Good Value Soft Spread MARGARINE
2 lb. 99c

Hersheys CHOCOLATE SYRUP
24 oz squeeze bottle \$1.39

T.V. ONION RINGS
16 oz box \$1.19

Festival COTTAGE CHEESE
24 oz ctn 99c

White ONIONS 4 lbs for 89c
BANANAS 3 lbs. for 89c

Page PAPER TOWELS
large roll 39c
BOUNCE Fabric Softener
60 count \$2.89

T.V. ORANGE JUICE
6 oz can 39c

Giltedge BUTTERMILK
1/2 gallon 88c

Washington Red Delicious APPLES 10 for \$1

King Size TIDE
35c off \$3.59

Giltedge ICE CREAM
pt. 49c

Pucketts LOWFAT MILK
1 gallon \$1.69

AVOCADOS 4 for 89c
Texas CABBAGE 9c lb.

Corn Beef BRISKET \$1.98 lb.
Boneless CHUCK ROAST \$1.98 lb.

Corn King BACON
2 lb. pkg for \$3.49

Wilsons Certified BACON
2 lb. pkg. for \$3.98

Oscar Mayer FRANKS
1 lb. pkg. \$1.59

Corn King Boneless HALF HAMS
\$3.19 lb.

Picnic SHOULDERS
\$1.27 lb.

