

The McLean News

Price 10c

Serving McLean and the Area Since 1903

VOLUME 70

McLEAN, GRAY COUNTY, TEXAS - THURSDAY, AUGUST 2, 1973

NUMBER 31

College Offers Touch Machine Shorthand Course

The Business Division at McLean State College will offer a new Touch Machine shorthand course this fall. The course will meet each day evening at 6:30 p.m. in the Hamilton Building, Room 308.

The Touch Machine Shorthand course is for shorthand what the writer did for handwriting. Students will be working on a light weight, silent shorthand machine, where a syllable, word, or phrase is printed on a paper in an easy-to-read English script.

For further information, contact the Office of the Registrar, the Division of Business at McLean State College, McLean, Oklahoma. Preliminary is presently being held for the class and regular enrollment is August 27 and the first class meeting is scheduled for September 4.

Seminar To Be Held Aug. 10

The North Rolling Plains Recreation Conservation and Development Project Area is sponsoring a seminar on August 10, to discuss grants and planning available for planning, acquisition and development of outdoor recreation areas and facilities.

This seminar will be held in the Agriculture Building of the Gray County Courthouse Annex on Highway 60, east of McLean. It will start at 10:00 a.m. and end at 3:00 p.m. The seminar will be conducted by officials from the Wildlife Department, Soil Conservation Service, and Panhandle Regional Planning Commission.

The North Rolling Plains Recreation Project Area includes Gray, Collingsworth, Donley, Gray, Hall, Hemphill, and Wheeler Counties. Gray County sponsors the seminar. Other sponsors include Gray County Soil Conservation District, Gray County Commission, Gray County Courthouse and the City of McLean.

Interested officials are invited to attend the seminar.

Pre-School Band Begins

The McLean Tiger Band will begin its 1973-74 marching season next Monday, August 6. Rehearsals are scheduled daily from 7 p.m. to 9 p.m.

Quibodeaux, director, said "It is important that each member of the band attend each rehearsal. We have a completely new formation planned for the upcoming season and will need all of our extra pre-school rehearsal members to learn the new music and formations."

This year's marching band consists of grades 8 - 12.

High Rate Of S. S. Benefits Paid In Gray Co.

Social Security benefits were being paid to residents of Gray County at a rate of \$605,000 a month at the close of 1972, Howard L. Weatherly, social security manager in Pampa, said today.

Of the social security beneficiaries living in Gray County, 2,866 are retired workers and their dependents. Another 964 are receiving benefits as the survivors of workers who have died, and 353 are getting benefits as disabled workers or their dependents.

Mr. Weatherly pointed out that although most social security beneficiaries are older people, about one out of every four is under age 60. In Gray county, 673 people under the age 60 are collecting social security payments each month. Nearly 325 are under age 18, receiving payments because a working father or mother has died or is getting social security disability or retirement benefits. Most of the 76 beneficiaries in Gray county between 18 and 22 years of age, are getting student's benefits under a provision in the social security law permitting the continuation of a child's benefits beyond his 18th birthday, and up to age 22, if the child is attending school full time.

Also in this 18-22 age group, Weatherly said, are some other types of beneficiaries, illustrating the broad family protection that the social security program provides workers of all ages. Some are children of retired, disabled, or deceased workers who became disabled before they reaches 22 and who will probably never be able to work and become self-supporting. The monthly benefits of these young people, severely handicapped by physical or mental disabilities, will continue indefinitely. Benefits are also payable to the mother if the disabled son or daughter is in the mother's care.

Mr. Weatherly said that another relatively small but significant group of youthful social security beneficiaries are those who are receiving benefits as disabled workers.

Area Receives Rain

McLean and the surrounding area have received some good rains in the past two weeks, which gave the farmers and ranchers a lift in spirits.

The crops are looking better and even the yards in town are looking greener.

Women comprise 22.5 percent of the Nation's 254,930 full-time college and university faculty members on nine- and 10-month contracts, the U.S. Office of Education reports.

June Savings Bond Sales Are \$32,553

June sales of Series F and H United States Savings Bonds amounting to \$32,553 in Gray County were reported today by County Bond Chairman George B. Cree. Sales for the first six months totaled \$228,024 for 51% of the 1973 goal of \$450,000.

Sales in Texas during the month amounted to \$16,998, 554-- while sales for the first half of 1973 totaled \$719,984,282 with 55% of the yearly goal of \$216.6 million goal achieved.

Immunizations Must Be On Record

Mrs. Nell Fulbright, business manager of Alanreed School, reminds parents of Alanreed school students that immunization records for each student must be completed and on file in the office of the grade school before the students can enroll in school this fall 1973-74.

All students are urged to get their immunizations up to date in order to prevent confusion this fall.

Students whose immunization records are not complete will not be able to enroll for the fall school term.

The records must be on file in the school office in order to comply with a state law, passed by the last session of the Texas Legislature.

The following immunizations must be completed in the first through sixth grades:

Diphtheria, Pertussis (whooping cough), Tetanus (DPT), Tetanus and Diphtheria (TD) at least three doses of DPT or TD, of which at least one dose received since fourth birthday.

Oral Polio, at least three doses of Oral Polio, of which at least one dose received since fourth birthday.

Measles (red), one dose or history of measles illness.

Rubella (3 day), one dose of vaccine.

HOSPITAL NOTES

ADMITTED
Billy Endley
Mary Robinson
Etta Carmichael
Willie Boyett
Ruth Garvin
Steve Trew
Eva Marrs
Myrtle Kiser
Joe Leonard
Raymond Glass
Barbara Bradley
Faye Oakley
Clinton Brown

DISMISSED
R. T. Dickinson
Amy Myers
Greg Willis
Jewel Meacham
Ivy Bruce
Bryan Roby

Top O'Texas Rodeo Is Underway

Pampa's annual Top o' Texas Rodeo will get underway Wednesday, August 1st at 8:00 p.m. for a four night run.

The rodeo, which is sanctioned by the Rodeo Cowboys Association will attract some of the top cowboys and cowgirls from throughout the nation.

Rodeo stock is being furnished by the Sonny Linger Rodeo Company of Miles City, Montana. Linger, a veteran in rodeo business will direct the arena in a fast moving two hour performance.

As a special added attraction, Vonnie Dean and the Southern Belles from Las Vegas will appear each night at the rodeo and play for dancing in the Armory building on the rodeo grounds.

Lin Helton, popular rodeo announcer, will describe the action, and the Pampa High School Rodeo Band will furnish the music. Top flight special attractions will include Frank and Judy Strout with their highly trained Sheep Dogs and Brahma Bull acts. Buck LeGrand, one of the worlds most popular rodeo clowns will perform nightly.

A Pony Express race will be run each night with four top teams competing. Teams running include the Wheeler Riding Club, White Deer Riders, Clarendon Junior College and the Leather and Lace Family Riding Club of Pampa.

A junior "gold rush" will take place each evening at 7:45 just prior to the Grand Entry. Three light calves will be turned loose in the arena with tags on their tails worth money. Boys and girls between the ages of 8 and 12 years may try for the money. No entry fee is required, \$15 will ride on the calves each night.

The rodeo parade will be held Wednesday afternoon at 4:00 p.m. and everyone is invited to participate or be on hand as a spectator.

Reserved seat tickets will be on sale at the rodeo office in the Chamber of Commerce until 5:00 p.m. daily and at the gate at 6:30 p.m.

WISH I'D SAID THAT



"Nowadays a lucky coin is any coin you still have."—Lee R. Call, Star Valley (Wyo.) Independent.

"You should learn from the mistakes of others. You can't live long enough to make all of them yourself."—Dale Holdridge, The Langford (S.D.) Bugle.

"Carry only today's burden, don't add to it the burden of yesterday and the day before."—Mrs. Gary Hiott, The Pickens (S.C.) Sentinel.

Homer G. Jefferson August Is Nat'l New Superintendent Sandwich Month

Homer G. Jefferson was recently hired by the McLean School Board Trustees as superintendent for McLean Schools. Mr. Jefferson has been vice principal at Dumas for the past six years, and replaces Samuel Gayton, who resigned at the close of the past school year.

Born in Sulphur, Okla., he received his grade school and high school education at Borger and Weatherford, Texas. He has a Master's Degree from Sul Ross University at Alpine. Jefferson has 21 years experience in various capacities in the teaching field in Texas.

Moving to McLean with Mr. Jefferson will be his wife, Elinor, a son, Dave, who will be a ninth grader and a daughter, Rita, a sixth grader. They plan to move to McLean in the near future.

In visiting with the new superintendent, he said, "I'm looking forward to the upcoming school year and am looking forward to working with the young people of this area."

Students Return To Classes Aug. 21

Classes in the McLean Schools will begin Tuesday, August 21 for the school year 1973-74. The schedule for the school year that has been released is as follows:

- AUG. 20-Teachers Work Day
- AUG. 21-Classes Begin
- SEPT. 3-Labor Day, Holiday
- OCT. 30-End of 1st Six Weeks
- OCT. 8-Teachers In Service, No School
- NOV. 9-Teachers Meeting TSTA, No School
- NOV. 15-End of 2nd Six Weeks
- NOV. 22, 23-Thanksgiving Holidays, No School
- DEC. 24-Jan. 1 (inclusive) Christmas Holidays
- JAN. 10-End of 3rd Six Weeks
- End of Semester
- JAN. 11-Teachers Work Day, No School
- JAN. 14-Teachers In Service, No School
- FEB. 4-Teacher In Service, No School
- FEB. 26-End of 4th Six Weeks
- MARCH 4-Teachers In Service, No School
- APRIL 10-End of 5th Six Weeks
- APRIL 12-15-(inclusive) Easter Holidays
- APRIL 22-Teachers In Service, No School
- MAY 27-Last Day of School
- MAY 28-Teachers Work Day

June and Randy Suggs have returned from a two week vacation in California. While there they visited with Ben and Eileen Chilton in Mojave, Mr. and Mrs. Rodger Smith in Pacific Grove, Mr. and Mrs. Fred Cooper in Orange and Mr. and Mrs. Dale Dorsey in Riverside. While in Pacific Grove they went to San Francisco for a day of sightseeing.

August is "Sandwich Month" More than 300 million of this winning table item and restaurant menu leader are now being consumed daily. As a tribute, under the leadership of the Wheat Flour Institute nationally, and the Texas Wheat Producers Board and the Panhandle Restaurant Association in Texas, a month-long promotion of the sandwich is being carried out.

Highlight of the "Sandwich Month" activities is the naming of the "Top 20 Award-Winning Sandwiches" in a National Sandwich Idea Contest in which the versatility of the sandwich is demonstrated as food service professionals send their entries in to be judged.

These sandwiches carry taste tantalizing names such as those in the top ten, "Peanutty Fruit Grill", "Canadian Mushroom", "Hawaiian Surf-wich", and the "Kansas Auctioneer". A booklet of the "20 Award-Winning Sandwich Recipes" has been provided by the Texas Wheat Producers Board to the individual restaurant members of the Panhandle Restaurant Association for distribution to their customers during the month-long sandwich promotion. Many of the restaurants are featuring special sandwiches during August.

So during August, join the fun, join the 300 million crowd--take a sandwich to lunch.

Dedications To Be Held Aug. 19

The Texas State Historical Survey Committee and Gray Co., Historical Survey Committee will hold a historical market dedication program at 3 p.m. Sunday, August 19.

The dedication will be held at the site of the marker, which is located 14 miles north west of McLean and 10 miles east of Lefors on State Highway 273.

The public is invited to attend.

Thoughts

From The Living Bible

How prosperous Israel is — a luxuriant vine all filled with fruit! But the more wealth I give her, the more she pours it on the altars of her heathen gods; the richer the harvests I give her, the more beautiful the statues and idols she erects. The hearts of her people are false toward God. They are guilty and must be punished. God will break down their heathen altars and smash their idols. Then they will say, "We deserted the Lord and he took away our king. — we don't need one anyway!" Hosca 10:1-3

QUALITY FOODS



AT A SAVINGS!

IMPERIAL PURE CANE

SUGAR

10 LB. BAG

\$13

CRISCO OIL

24 OZ.

69

SHURFINE CRUSHED

PINEAPPLE

NO. 2 CAN

2 FOR 79

SHURFINE PEELED

TOMATOES

303 CAN 4 FOR

\$1

JUMBO

EACH

CANTALOUPE

4 FOR

SHURFINE

303 CAN

FRUIT COCKTAIL

3 FOR

\$1

LARADO

PLUMS

LB.

35

GEBHARDTS

CHILI WITH BEANS

24 OZ. CAN

69¢

PRE-SLICED SLAB

BACON

LB.

\$139

SHURFINE CHOCOLATE - WHITE

FROSTING & CAKE MIX

3 FOR \$

BUNTE CANDY

ORANGE SLICES

LB. PKG.

3 FOR \$

ORANGE JUICE

SHURFINE

46 OZ. CAN

2 FOR 79

SHURFINE HAMBURGER SLICED 16 OZ.

DILL PICKLES

2 FOR

79¢

DETERGENT

OXYDOL

KING SIZE

\$13

DOW

HANDI WRAP

200 FT. ROLL

59¢

ALL PURPOSE CLEANER

409

64 OZ.

\$13



SIMPSON'S

LOWEST EVERYDAY FOOD PRICES

MARKET

Tendercrust Bakery Products

SPECIALS GOOD

DOW

ARS AGO

members

volunteer

attended

an's School

as A&M C

from var

the McLe

en on the

st week.

on Chris

School voc

er, will p

e-wide Ins

Workshop

ational) ag

6-9 in Dal

ree light sh

d the hot, d

the weeken

es were sh

in at mid

ald E. Wo

nd Mrs. Ju

an, is amo

172 fresh

ix weeks a

Adjunct ne

and Mrs.

nce the en

approaching

ir daughter

ude Hendr

and Mrs.

ARS AGO

dding vows

ulbright, d

and Mrs.

of McLean

, son of M

of Austin,

ly 25, at 7

in the fall t

McLean sc

students a

Mon

9

Extra Charge for GROUPS

SHI

PH

WILLI

DOWN MEMORY LANE

30 YEARS AGO
Members of the McLean volunteer fire department attended the annual Panhandle School last week at A&M College. Teachers from various causes at the McLean volunteer school on the run much of the week.

20 YEARS AGO
Son Christie, McLean School vocational teacher, will participate in the State-wide Inservice Education Workshop for teachers (National Agriculture) at A&M College in Dallas.

15 YEARS AGO
Free light showers interested the hot, dry weather the weekend, but temperatures were shooting back up at mid-week.

10 YEARS AGO
Mild E. Woods, son of Mrs. June Woods of McLean, is among the 172 freshmen enrolled six weeks at the Texas A&M Adjunct near Junction.

5 YEARS AGO
Mr. and Mrs. James Hintor announced the engagement of their daughter, Donna Hendricks, son of Mrs. James Hendricks, to Mr. and Mrs. Leo Gibson of McLean, is now in training at the State Teachers College in Fau Claire, Wisconsin, for army air force instruction.

40 YEARS AGO
The McLean schools will open the 1943-44 term Monday, August 30, Sept. Carl Chaudoin announced today.

50 YEARS AGO
Mr. and Mrs. Claude Hinton made a business trip to Amarillo Tuesday.

60 YEARS AGO
The F.F.A. Boys are having a night school in progress every Wednesday night for

1 1/2 hours, where all standard poultry questions are being submitted.

When County Agent Ralph R. Thomas received his supply of emergency blanks last Saturday, it was found that all triplicate blanks had been omitted, and it was only by having the blanks printed by The News that farmers were allowed to plow up cotton this week.

Boyd Meador and father were in Pampa Friday, the latter receiving medical treatment.

Miss Jewel Cousins is visiting the World's Fair this week in Chicago.

The first wagon load of watermelons for this season were brought in Thursday by Arthur Hunt.

Plans for the big free picnic offered for the children of McLean by the Frank Wofford dry goods store are about complete.

Miss Richey's expression class will put on a high class rural comedy drama next Monday night.

A party of Missourians, who visited Mr. and Mrs. C.E. Francis last week, were loud in their praise of McLean.

The new ice municipal ice plant is one of the busiest places in town.

Arrangements are being made for the Second Annual Banquet of the Panhandle students and ex-students of Texas A&M College.

We will be in our new building by the last of the week and have Mr. Van Wey of Texarkana with us to look over your wants.

Contrary to the usual custom of fruit countries the crop in this section has not made a decided failure in the past several years and this season's offering, which is beginning to move in considerable quantities, promises to be above the average in excellence, although the quantity is a little short.

Roy R. Rice, at present assistant cashier of the Citizens State Bank of this city will go to Jericho Saturday where final arrangements will be completed for the organization of a State Bank.

high school will be greeted with a newly decorated building.

Farmers in the local area, as well as many in most other Panhandle areas, were being kept busy in their fields during the past week following the more or less general rains which fell ten days ago.

Mrs. R.T. Dickinson visited in Amarillo Friday with Mrs. Nancy White.

There is some talk of outlawing hogs in the city limits following an inspection of stock pens by the city and county health officers last week.

Thomas W. Beck is another McLean boy to graduate from the Army Air Forces, receiving the silver wings of a fighting pilot July 29, and commissioned a second lieutenant.

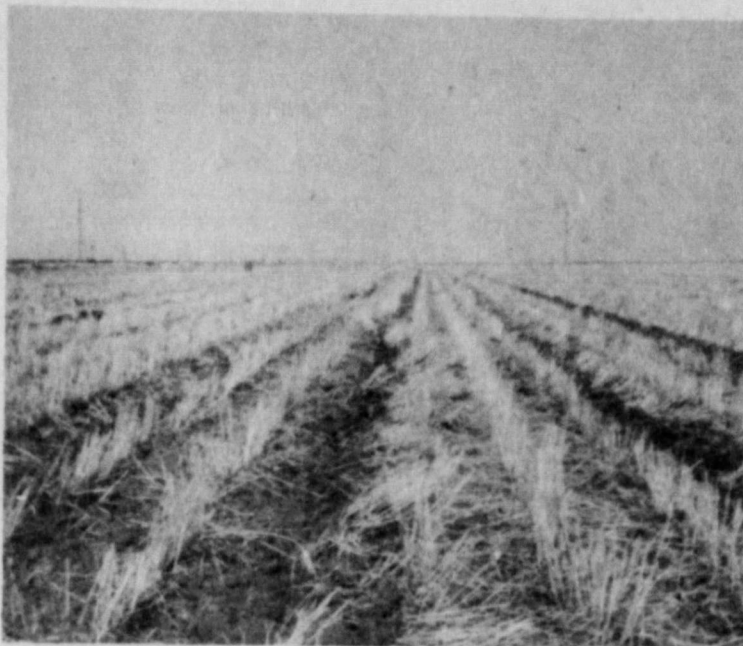
Robert P. Gibson son of Mr. and Mrs. Leo Gibson of McLean, is now in training at the State Teachers College in Fau Claire, Wisconsin, for army air force instruction.

The McLean schools will open the 1943-44 term Monday, August 30, Sept. Carl Chaudoin announced today.

Mr. and Mrs. Claude Hinton made a business trip to Amarillo Tuesday.

The F.F.A. Boys are having a night school in progress every Wednesday night for

Good Cover Helps Prevent Erosion



TOPSOIL AT HOME OR ABROAD? MANAGING CROP RESIDUE ON THE SOIL SURFACE WILL KEEP TONS OF PRICELESS TOPSOIL AT HOME.



For the protection of cultivated land against wind and water erosion, nothing can take the place of continuous cover, states Rodney Hyatt, soil conservationist. This is true regardless of location, rainfall, soil type, or kind of farming.

Producing annual crops, however, makes soil protection a two-sided job, reports Hyatt. First, the crops grown must yield high amounts of residues. Secondly, the residues must be managed in a way to protect the soil until a new crop can emerge to cover the land.

Burning off or plowing under residues destroys nature's protection; encouraging both wind and water erosion. According to Hyatt, residues alone will not always protect the land, and may need to be supplemented with terraces. When sufficient crop litter is produced it should be managed where it will do the best job, on the soil surface.

Residues left on top of the land reduce compaction and splash erosion by lessening the impact of rain, consequently, increasing moisture penetration. Evaporation is also reduced since surface litter keeps the soil at a cooler temperature.

When high residue producing crops are not a part of the cropping system, cover crops or mulches should be used to protect the soil.

Remember, continuous cover is the best protection for the land and plowing the soil buries residue.

Monday, August 6

KING SIZE WALLET CREATIVE COLOR PORTRAITS FOR ONLY

99¢

NO LIMIT

Extra Charge for GROUPS

GET PICTURES MADE OF GRANDPA, GRANDMA, DAD, MOM AND ALL THE LITTLE ONES AT THESE SAME LOW PRICES!

SHUGART COLOR PHOTOS

WILLIAMS APPLIANCE

218 N. Main

ASK About Our FREE 8 x 10 OFFER

HEARD NEWS

Mr. and Mrs. A. W. Lankford, Mrs. K. S. Rippey visited in Shamrock Wednesday evening with Mr. and Mrs. H. S. Rippey and Mrs. Lucille Hulls and Mrs. Hull's sister and husband Mr. and Mrs. Marvin Luther of Madison, Wisconsin.

Mr. and Mrs. O. O. Tate visited Tuesday evening with his sister, Mrs. Ruby Best who is a patient in St. Anthonys Hospital in Amarillo.

Mrs. Mary Clay of Hedley visited her sister, Mrs. Bob Bidwell last week.

Miss Jana Davis of Pampa is visiting her parents, Mr. and Mrs. Ott Davis this week.

Mr. O. O. Tate attended an area masonic meeting and barbeque at the Bob Andes ranch Saturday night. Mr. Tate visited her sister, Mrs. Jessie Cannon in Pampa.

Visitors in the A. W. Lankford home Sunday were Mr. and Mrs. Dawson Jackson and Stacy of Borger; Mrs. K. S. Rippey and Mrs. Lucille Hulls of Shamrock. Mrs. Jackson and Stacy remained for a longer visit.

Mr. and Mrs. Ellerd of New Mexico visited her brother Mr. and Mrs. Carl Phillips last week.

The Jimmy Don Morris family of Amarillo visited her parents, Mr. and Mrs. Arlie Grigsby over the weekend.

Mr. and Mrs. Orville Tate of Clinton, Okla. visited his brother, Mr. and Mrs. O. O. Tate Sunday. They all went to Amarillo to visit their sister, Mrs. Ruby Best. Mrs. Richard Norman and Mrs. A. L. Grigsby were in Pampa Monday.

Mr. and Mrs. Ott Davis and Jana were in Pampa Monday evening to attend a baseball game. Jana is the coach of one of the teams that played.

Mrs. Robert Matheny and children visited in Borger last week.



it's a woman's WHIRL

by MARY LEE THOMPSON

Morning coffee is almost as much of a waker-upper as the alarm clock. At least, some 90 per cent of coffee drinkers consider their a.m. cup a necessity, according to a leading maker of coffee appliances.

Enjoying coffee goes back a long time, too, into the 16th century. It was about that time that coffee originated in Arabia. At first it was sipped strong and black, but later on the Turks added cinnamon, cloves, or sometimes a drop of ambergris to their brew. It wasn't until coffee became popular in Western Europe in the 17th century that sugar was added.

Among some of the interesting facts not generally known about that favorite morning brew is that coffee is a fruit. Similar to a cherry, the so-called coffee "bean" is actually one of two seeds found inside the fruit.

The coffee tree is a shrub, varying in size from six to 30 feet tall. At maturity, when the plant is about five years old, it produces delicate white blossoms, similar to jasmine. When the flower drops, the coffee berry is formed.

Coffee must be picked by hand to make sure that only the ripe "cherries" are selected. The fruit does not ripen all at once, so that a six-year-old tree may yield from one to 12 pounds of green coffee.

Nearly every cup of coffee

It takes less than half as many hours of work to "earn" a new appliance today as it did in 1955, according to the Association of Home Appliance Manufacturers.

We drink is a blend of coffees chosen for specific qualities, such as aroma, body, acidity, or flavor. The trick is to find the blend you like best.

Then to make consistently good tasting coffee, always use the recommended grind for your coffee maker - and keep that coffee pot scrupulously clean.

Always use fresh coffee and fresh cold water (cold water sets the coffee maker's thermostat). Never boil coffee - remember, coffee boiled is coffee spoiled.

Mr. and Mrs. Edward Mac Stewart

request the honour of your presence

at the marriage of their daughter

Karon Kay

to

Mr. John M. Hunt

on Saturday, the Eleventh of August

nineteen hundred and seventy-three

at seven-thirty o'clock

First Baptist Church

McLean, Texas

Reception Following

WEDDING GIFT REGISTRY

For Shower Gift Service

Call 779-2251

Veral Lynn Gift Shop

Free Gift Wrap & Delivery

STATE CAPITAL Highlights AND Sidelights



by Bill Boykin

TEXAS PRESS ASSOCIATION

Texas may be better off under its present type of government than the so-called cabinet form being advanced in preparation for constitutional revision, according to Texas Research League.

League staff members in a new report to the Constitutional Revision Commission point to advantages of the present system and offer these key observations:

While there is room for improvement, Texas government is not the "administrative jungle" portrayed by critics. There are 174 legal entities which might qualify as state agencies, but fewer than 30 of them control 99 per cent of money and personnel in state government.

Texas still has one of the most economical big state governments in the nation. Ohio and Missouri rate slightly lower, but Texas spends more in support of its schools than those two states. Major suggestions by the League for economies have been in the areas of education and welfare financing. Overhead administration and control functions cost 1.9 per cent of Texas' total budget, while the national average is 2.6 per cent.

Major Texas agencies such as the Highway Department, Education Agency, Department of Corrections and Department of Public Safety rate high nationally. The League found few agencies in other states "clearly superior" to Texas counterparts.

While advocates of the cabinet theory claim it provides for holding the governor accountable for all aspects of government administration, political realities dictate that he can be held accountable at the polls only once or twice. Further, it is difficult for voters to assess thousands of acts by the chief executive during any four years.

Whether authority to appoint 20 cabinet officials but no sub-cabinet-level personnel would strengthen the governor in policy-making is debatable. Merit system employment to insulate state employees from the spoils system is considered part of the cabinet theory. This means echelons below the cabinet level are beyond the governor's control.

The present pattern of part-time boards, according to the League, provides opportunity for participation in government by many key citizens, who, in turn, provide a powerful reservoir of support for a governor's policies. The League suggests more fiscal power for the governor and authority to order governmental reorganization subject to legislative veto.

TOP 100 PRESCRIPTIONS STUDIED

Computers are being used by the Texas Pharmacy Board to determine the top 100 prescription drugs being sold in this state.

Under new state law, H.B. 750, druggists must post the prices of the 100 most prescribed drugs at their counters this fall.

The new law will also prohibit advertising about "whole sale" cut-rate prices, and limit drug stores to advertising about services, keeping "family records" and dangers

of mixing certain types of drugs.

Consumers will be able to check the prices of the top 100 most common drugs at each prescription counter, state Joe Arnette, Texas Pharmacy Board, who is using the computer method to make the state-wide survey.

AUTO RATES CUT

True to its promise, the State Board of Insurance ordered an average statewide reduction of 4.3 per cent in private auto coverage premiums, estimating 90 per cent of motorists will save at least \$25 million. New rates are effective August 27.

Further, according to Board Chairman Joe Christie, the competitive rating law September 1 will mean further savings for many. Christie said one company has indicated it will ask authority to cut its rates 15 per cent across the board when the competitive rating law takes effect.

Another law passed by the legislature this year, however, may cancel out the savings for some and actually bring a slight increase. The personal injury protection coverage of at least \$2,500 for medical expenses and lost earnings or services due to accident, regardless of who was at fault, will be added to all policies automatically unless motorists reject it in writing.

Christie said even rejections written on "brown paper sacks" will be considered valid. P.I.P. coverage costs \$22 to \$44, but many will substitute it for medical coverage which already costs \$15 to \$22 a year.

WATER QUALITY STANDARD APPROVED

Texas Water Quality Board agreed on compromise standards hopefully tailored to meet federal Environmental Protection Agency approval.

If the EPA rejects the state standards, presumably it would take over issuing waste discharge permits, leaving the state agency little to do but take samples and offer recommendations.

A main point at issue is whether the state's fines for violators are high enough to amount to a "substantial economic deterrent." The Texas maximum civil penalty is \$1,000 a day, and the federal agency wants civil penalty fines up to \$25,000 a day and maximum criminal penalties of \$10,000 a day.

The state Air Control Board's proposed standards have been rejected by EPA. COURTS SPEAK

A Palestine packing plant worker who was fired from light work as a supervisor after he was injured in his earlier job cannot force his employer to keep him on, the Supreme Court held. The worker accepted the supervisory job as part of an agreement not to seek workmen's compensation.

In other actions, the high court held:

A cigarette distributor whose stock was stolen from his warehouse is entitled to review of his case for state tax forgiveness.

Grown sons and daughters of a Dallas woman are entitled to \$10,000 damages

each from an undertaker whose work embalming her body "shocked and revolted" them.

AG OPINIONS

Occupants of a boat floating in tidal water, even

though over submerged private property, are not trespassing, Attorney General John Hill stated.

Hill's opinion held private property submerged by lake or waterway construction,

in absence of some special provision affecting title, remains private property, however.

In another recent opinion, Hill concluded a bill abolishing the office of Culberson

County auditor is an unconstitutional special or local law "attempting to achieve what must be achieved by general legislation."

PRICES SOARING
Distortion of normal

is pushing p...
up to the lev...
cuts of beef...
ment of Agr...
news analy...

ter prices are

HOLIDAY BONELESS

HAM

LB. \$1.89



2 LB. LOAF

\$1.39

COUNTRY FRESH

BISCUITS

FOR

99¢

10 M
¢



30 OZ.

75¢

LIPTON 3 oz. INSTANT

NOW WITH THIS COUPON

Redeemable only at PUCKETT'S FOOD STORES
Expires 8-10-73

TEX SUN

GRAPEFRUIT JELLY

CRISCO



3 LB. CAN

95¢

1-pound Can of Maryland Club Coffee

75¢

Cash value 1/20¢

Limit one per customer

COUPON EXPIRES 8-18-73

YOUR CHOICE HAMBURGER

KEITHS KRINKLE CUT FROZEN

POTATOES 3 FOR \$3.99

2 LB. BAG

Puckett's

FOOD STORES
McLEAN, TEXAS

Specials Good Friday and Saturday, August 3, 4, 1973



is pushing poultry up to the level of cuts of beef, Texas Department of Agriculture's news analysts report—

to reach the 80-cent bracket this week, according to the department's projections. "Hoarding" and "panic buying" are contributing to run-away prices, commented Mike Walton, Agriculture

Department market news chief. Walton said a return to normal buying habits will help return prices to more-normal levels.

Department market news chief. Walton said a return to normal buying habits will help return prices to more-normal levels.

advisement along with suggestions of 3,000 advisory committee members in 19 areas. Actual voting by the full, 37-member commission on matters for inclusion in its report to the legislature will begin next month. Meanwhile, House and Senate planning committee members held their first joint meeting in preparation for the 1974 constitutional convention, JOB AID PROMISED

Disaster unemployment assistance will be paid to those unemployed as a result of storms and flooding in Jefferson, Orange, Red River and Upshur counties last March 23-March 30.

Governor Dolph Briscoe advised those who think they are eligible to apply to their nearest Texas Employment Commission office. Applications must be filed within 30 days of July 24 when Briscoe made his announcement of the assistance offer.

SHORT SNORTS
Mills Cox of Houston has been named special supervisor-manager for lo-vaca Gathering Company in new court action. His job is to try and get additional gas supplies for 400 big customers.

President Nixon recently declared flooded Matagorda and Newton counties as major disaster areas. Nixon earlier declared Jefferson, Orange, Upshur, Red River, Brazoria, Galveston, Hardin, Harris, Jasper, Liberty, Montgomery, Polk, Tyler and San Jacinto counties in that category. Briscoe has asked Nixon to add San Patricio county to the list.

Texas Water Rights Commission approved annexation of Richardson by the North Texas Municipal Water District.

The second annual Texas Folklife Festival will be held at the Institute of Texan Cultures in San Antonio September 6-9.

A runoff election for the 14th state senate district vacancy in Travis, Blanco, Burnet, Caldwell and Hays counties has been set for August 14.

Be a Volunteer



A young man stared into the mirror one morning, and noting his bloodshot eyes resolved never to go into a bar again. "That television," he muttered, "is ruining my eyes."

A bachelor is a sportsman who plays at the game of love and manages to retain his amateur rating.

"Where did you get that black eye?" "For kissing the bride after the ceremony."



"Isn't that the usual custom?" "But this was three years after the ceremony."

"Repeat the words the defendant used," said the lawyer. "I'd rather not. They were not fit words to tell a gentleman."



"Then," said the attorney, "whisper them to the judge."

Gossip is like mud thrown against a clean wall. It may not stick but it leaves a mark.



The teacher asked Perry to tell her what a hypocrite is. Replied Perry, "It's a boy who comes to school with a smile on his face."

FOR 9c

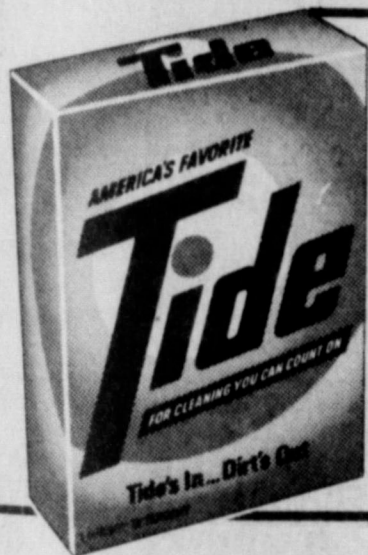
IMPERIAL SUGAR
Pure Cane
EXTRA FINE granulated

SUGAR

10 LB. BAG \$1.35

COTTONELLE

TISSUE 4 ROLL PKG. 39c



GIANT SIZE 79c

FAMILY SIZE \$2.89



FAMILY SIZE \$1.69

46 OZ. 45c

PREMIUM **CRACKERS** LB. 45c

WAGNERS **DRINK** QUART 3 FOR 89c



5 LB. BAG 69c

59c

ISSUE 200 COUNT 3 FOR \$1

NTALOUPE EACH 39c

ACHES POUND 29c

WE ARE YOUR TOP STAMP REDEMPTION CENTER



NONE MORE VALUABLE

Doctor in the Kitchen
by Laurence M. Hursh, M.D. Consultant, National Dairy Council

WEIGHT CONTROL FALLACIES

In the past year I have, for some reason, received several letters inquiring about the same thing—a column I wrote in 1971 in which I listed common fallacies concerning weight control. The American Dietetic Association had collected data on food misinformation that were in wide circulation in the United States. And I published some of the fallacies listed by the association. My correspondents this past year remembered the columns but wanted the list. This got me thinking that it might be a good idea to repeat the list this week.

People Go For Fads

It certainly is true that the subject of weight control is surrounded by fad diets. I would say there is generally better information published now than a few years ago. But still, people seem to go for exotic and "far-out" presentations on the subject.

The special foods that some diets require can be expensive. But the biggest objection to fad diets is not just that they are not sound, but that they confuse people and do not lead to the retraining of eating habits that usually is necessary if a person is to reduce and stay reduced.

So, to help clear the air, here is a list of statements that are commonly-held fallacies. All are false:

1. Obesity is due entirely to heredity.
2. In the experience of some people, all foods turn to fat.
3. Meal-skipping is a good way to lose weight.
4. You can eat all you want and still lose weight if you take "reducing pills."
5. Special low-calorie bread should be used in reducing diets.
6. Toast has fewer calories than bread.
7. One must not drink water when trying to lose weight.
8. Candy enriched with vitamins may be eaten when a person is reducing.
9. Washing rice after cooking reduces calories.
10. Sugar is not as fattening as starch.
11. High-protein foods and fruits have no calories.
12. Gelatin dessert is non-fattening.
13. Milk should not be included in a weight reduction diet.
14. "De-starched" potato chips do not have calories.
15. Meat burns its own calories.
16. Margarine contains fewer calories than butter.
17. For reducing, eat high-protein foods for a week; then eat anything you want for a week.
18. Grapefruit will reduce a person.

Remember the statements are all false, not true.

A Weekly Report Of Agri-Business News

Farmcast

Compiled From Sources
Of The Texas Department of Agriculture
John C. White, Commissioner

Only Six ... Egg Production Declines ... Livestock Slaughter Increases ... Sheep on Feed Down Again.

Of the more than 200 different commodities produced in Texas, only six are above effective parity, according to records of the Texas Crop and Livestock Reporting Service.

"This is something we need to keep in mind when we hear all those glowing stories about increasing farm prices," Texas Agriculture Commissioner John C. White notes. "It's good that farm prices are increasing, but let's keep them in their proper perspective. The fact remains that farm parity is still lagging about 20 per cent behind the rest of the economy," he said.

The six commodities above effective parity--or equality of income with the rest of the economy--are oats, hogs, beef cattle, calves, sheep and lambs.

Hog prices at an average of \$34.40 per 100 pounds in Texas are \$1 per 100 pounds above parity. Beef cattle at \$42.50 are \$2.20 per 100 pounds above parity. Calves at \$56 per 100 pounds are \$7.20 above parity. Sheep at \$16 are \$4.70 above parity, and lambs at \$36.30 are \$5 above parity.

For crops, only oats are above parity. Oat prices averaged \$1.08 with parity at \$1.05 per bushel.

During the past month, most grain prices showed declines. Wheat averaged \$1.99 per bushel, down 41 cents from a month ago; corn averaged \$1.70 per bushel, down eight cents; barley was down four cents per bushel; grain sorghum was up four cents.

EGG production in Texas during January declined 17 per cent compared to a year ago while nationwide the decline was six per cent.

Egg prices to producers as of Feb. 15 averaged 46 cents per dozen, which is down six cents from a month ago.

Texas layers totaled 11,300,000, down 11 per cent from a year ago. Texas eggs laid daily per 100 hens averaged 55.8 compared with 61.3 nationwide. Egg-type chicks hatched in Texas during January is down 15 per cent from last year.

COMMERCIAL production of red meat throughout the nation during January was up six per cent from year ago. The number of cattle slaughtered was up seven per cent.

Pork production showed an increase of four per cent from a year ago, while a decrease of two per cent in lamb and mutton production was reported.

In Texas, the total of red meat production amounted to 193,900,000 pounds. Cattle slaughtered numbered 296,000, calves 11,300, hogs 168,000 and sheep and lambs 101,000. Average live weight of cattle was 952 pounds, calves averaged 566 pounds, hogs 250 pounds, and sheep and lambs 99 pounds.

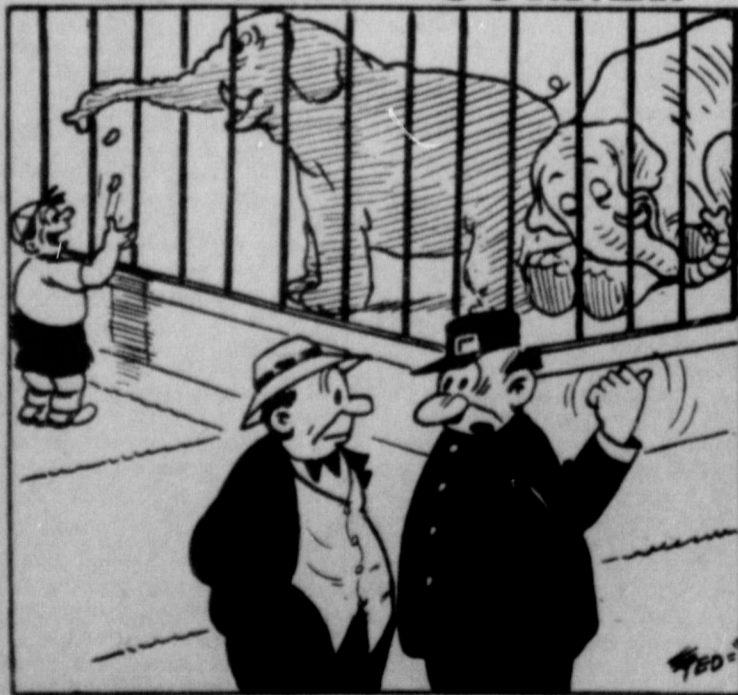
NUMBERS of sheep and lambs on feed in Texas is 18 per cent below a month ago and three per cent below the number a year ago.

Current intentions to market include: March 31,000; April 30,000 and May 13,000.

WEATHER conditions over much of Texas continue to slow field activity in many areas. Cotton planting continues behind schedule in the Rio Grande Valley. Corn and grain sorghum planting time is at hand in south and south central Texas.

GET YOUR horse vaccinated as soon as possible to avoid an outbreak of VEE disease this year, authorities recommend. No case was reported in 1972 in Texas, and now is the time to get your animal vaccinated to prevent any outbreak during 1973.

CHUCKLE CORNER



"THIS TEMPERAMENTAL ONE WON'T WORK FOR PEANUTS!"

A weekly public service feature from
the Texas State Department of Health

Accent on Health

J.E. PEAVY, M.D., Commissioner of Health

There is something new under the sun--flame resistant fabrics in the sleepwear of small children and in mattress pads and mattresses.

Children's sleepwear garments through size 6X must pass the test for flammability if manufactured after July 29. Some mattresses and mattress pads currently being manufactured meet the required standard. All such items manufactured after June 21 of this year must either meet the standard or be prominently labeled with a 40 square inch label to show that they do not pass the flammability test. This labeling provision is available for a period of not more than six months and is designed to permit plants to complete arrangements for testing facilities.

Arriving at garment standards, as well as procedures for testing various materials, has been a long struggle--one which has taken the cooperation and efforts of fabric manufacturers, clothing manufacturers and government agencies. Rules and testing procedures to cover all types of fabrics going into children's sleepwear were tried over and over again to produce the most effective ones.

Industry and the government have been aware of deaths and injuries caused by fabric ignition, and new regulations, in effect, are preventive medicine for those most likely to be the victims of burns.

The sleepwear standards are included in the Texas Hazardous Substances Law. In Texas the State Health Department's Bedding and Product Safety Division is charged with enforcement of flammability standards.

The annual toll of fabric ignition fires in this country, says this Department of Health, Education and Welfare, is between 3,000 and 5,000 deaths, along with 150,000 to 250,000 injuries. Directly-related financial losses exceed a quarter-billion dollars.

Incident after incident in Texas pointed to the need for flame resistant fabrics--not only in clothing for children but for adults and the elderly. In clothing, it is the quick-ignition fabric which causes the greatest human loss. Usually you'll find this soft, highly-flammable material in children's clothing as well as in nightgowns and robes worn by adults.

Tests have shown that flimsy, night apparel burns faster, for instance, than the body-fitting knit garments when worn. Thus, the sleepwear may become more of a torch than regular clothing when ignited. And, in many cases, trim on the garments led to quicker ignition than similar garments without trim. In tests, it made a difference whether a garment was tested on a mannequin

Stomach Upset by Gas and Acid?

Di-Gel™ with Simethicone quickly relieves both acid and gas.

This unique discovery breaks up and dissolves trapped gas bubbles. Your relief is more complete because Di-Gel takes the acid and the gas out of acid indigestion. When you eat too well, demand Di-Gel. Tablets, liquid. Product of Plough, Inc.

or a clothes hanger, which varies the amount of oxygen circulating freely around the fabric.

Now the manufacturers must produce flame resistant garments in smaller sleepwear, what comes next?

"Larger sizes in sleepwear," says Harold R. Ray, director of the Health Department's Bedding and Product Safety Division. A year from now, he says, sleepwear in sizes 7 through 14 must be of flame resistant fabric when manufactured. The federal Consumer Product Safety Commission sets compliance dates for manufacturers.

Ray says some of the clothing on the market now will be carry-over items which aren't flame resistant. "These may take a few months to cycle out, but they will have a label stating they don't comply if manufactured in the past 12 months," said Ray.

How can a person determine if fabrics are flame resistant? Ray says manufacturers may be able to tell by touch, but that the average person can't. "There may be less frills, but you won't be able to tell by the looks," said Ray. He suggests that you look at the packaging labeling since some items already have labels stating they are of flame resistant materials. If still unsure, ask the clerk, he

News From ALAN REED

By Mrs. P.M. Gibson
Visiting the P.M. Gibsons Sunday was their daughter and son-in-law, Mr. and Mrs. Don Bednorz of Amarillo. Joe Leonard is still on the sick list.

The Robert Stubbs have been visiting his folks at Waco, the Bill Stubbs. The Robert Bruces have been away on a two week fishing trip.

The Charlie Vineyards returned to their home at Glen Rose Saturday after visiting a week with her parents. Charlie is the son of Mr. and Mrs. P.M. Gibson of Alanreed.

The rainy, cloudy weather and dews are nice on the gardens, which are looking nice and beginning to bear.

Little Kenneth Sanders of Johnson Ranch, suffered a fall last week from a horse.

In synthetics, flame resistant qualities are built into the fibers. In cotton garments, the fabric may have been treated. In addition, the weave of the fabric along with hemming, stitching and trim affect flammability. Loosely-knit garments, for instance, go up in flames faster.

ATTENTION

I have asked Mrs. Harris King to be in charge of the reception and if you wish to help, contact her at 779-2962.

Mrs. Wm. B. Layne

There's a Church You Ought To Know

This church pleads for the restoration of the New Testament church; practices the unity of all Christians on the basis of God's Word; has no creed but Christ; and preaches no "isms."

This church seeks to present Christianity as intelligent as science, as appealing as art, as vital as the day's work, as intimate as home, and as inspiring as love.

OUR FOUNDATION - "For other foundation can no man lay than that which is laid, which is Jesus Christ." (1 Cor. 3:11)

OUR CREED - "Thou art the Christ, the Son of the Living God" (Matt. 16:16)

OUR RULES OF FAITH AND PRACTICE - "Every Scripture inspired of God is also profitable for teaching, for reproof, for correction, for instruction which is in righteousness: that the man of God may be complete, furnished completely unto every good work." (2 Tim. 3:16-17)

OUR NAME - "The disciples were called Christians first in Antioch." (Acts 11:26) "The churches of Christ salute you" (Rom. 16:16)

OUR WORSHIP - "And they continued steadfastly in the apostolic teaching and fellowship, and in breaking of bread, and in prayers." (Acts 2:42)

OUR MISSION - "Go ye therefore, and teach all nations, baptizing them in the name of the Father, and of the Son, and of the Holy Ghost: teaching them to observe all things whatsoever I have commanded you." (Matt. 28:19-20)

OUR PRAYER - That the disciples of Christ may all be one that the world may believe God sent Him. (John 17:21)

OUR INVITATION - "Come unto me, all ye that labour and are heavy laden, and I will give you rest. Take my yoke upon you and learn of me: for I am meek and lowly in heart: and ye shall find rest unto your souls. For my yoke is easy, and my burden is light." (Matt. 11:28-30)

We earnestly invite the cooperation and prayers of all who endorse these divine principles.

CHURCH OF CHRIST

Fourth and Clarendon
McLEAN, TEXAS

CLASSIFIED * ADS *

CLASSIFIED

Phone 779-3447

FOR SALE

Two bedroom house, garage, storage room, 3 1/2 miles south of West Fifth, 87 West Fifth, phone 835-2810. 31-1p

Travelers checks - if lost, American Bank in McLean. 7-tfc

Room house, garage, car, storage room, room. Call 779-2486. 31-4c

Summer apples, apples for jellies, 3 1/2 miles south of W.O. Hommel. 30-tfc

1972 Kawasaki motorcycle, contact Randy Kennedy. 30-2p

MELONS for sale out of 508 N. Donley. 31-1p

BUSINESS - Selling with Reason, ONLY STORE in community, 2456 Pingel, 2316 Amarillo, Texas. 30-2c

A membership home at San Spur Lake. Bedford Harrison State, First National Building, Shamrock, Texas, phone 256-2441. 31-3c

Brick building in center of downtown, good commercial, good rent property. Bedford Harrison Real Estate, First National Bank, Shamrock, Texas, 256-2441. 31-3c

FOR SALE: 3 bedroom with basement and 17 lots; good location. 2 bedroom; new carpet; extra large lot.

2 bedroom with partly finished den and another bedroom; good storm cellar, 1488 acres near Dozier; 2 irrigation wells; about 600 acres in cultivation, balance grass land; running water; 3/4 minerals.

404 acres between McLean and Hedley; extra good grass; 1/2 minerals. Boyd Meador Real Estate Broker 31-tfc

FOR SALE-- Five room frame house in Alanreed, Texas. Twelve lots included, good-water well and cellar. Former residence of L.H. Earthman. \$3,500 cash. Contact Mrs. C.A. Farley, 5408 33rd St., Lubbock, Texas. Pho. 795-2581. 31-3c

BLACKKEYED peas for sale south of town. Boyd Reeves. 31-1p

FOR RENT

APARTMENT for rent. Massey Apartments. Bill paid. Call 779-2531 or 779-2768. 19-tfc

FOR RENT- One bedroom apartment. 703 N. Walnut. Call Mary Dwyer 9-2128 or Monta Jean Smitherman, 9-2595. 28-tfc

FOR RENT-Furnished apartment, Bill paid. Elite Courts, McLean, Texas. 30-4c

MISCELLANEOUS

McLEAN LODGES 889. A.F. and A.M. Regular meeting second Thursday each month-- 7:30 p.m. All members urged to attend. Practice first and third Tuesday nights each month. 23-tfc

SIGHT & Sound Electronics. Color, black & white or anything electronic. Phone 779-2946. 23-tfc

BACK YARD SALE- Friday and Saturday, 601 N. Pine. Coolers, dishes, clothes and all kinds of good junk. 31-1p

GERT'S a gay girl--ready for a whirl after cleaning carpets with Blue Lustre. Rent electric shampooer \$1. McLean Hardware. 31-1c

FURNITURE of all kind repaired. D.L. Jones, Rt. 1 McLean, 779-2992. 36-tfc

FREE registered 2 yr. old female Weimaraner to give away. Papers, shots, Dr. A.C. Wood. 31-1p

CHECKING Accounts-Saving Accounts - All types of Loans Full Service Bank. American National Bank in McLean. tfc

WILL have ice available in a vending machine 24 hours at Cunningham Gulf, Highway 66 West across from Marie Foundations. 23-tfc

SAFE, SOUND, SATISFACTORY Accommodating. Appreciate you business. American National Bank in McLean. Deposits insured by Federal Deposit Insurance Corporation. tfc

NOW AVAILABLE-Plenty of new large and small safe deposit boxes. Low annual rent rates-\$4.50 to \$6.00 per Year. PROTECT YOUR VALUABLES. American National Bank. 38-tfc

SEE Dewey Pennington for left handed water melon thumpers. 31-1p

WANTED

WANTED - Painting interior or exterior. Journeyman painter 25 years. Experienced. Joe Robertson, 508 N. Donley, McLean. 31-1p

The West African nation of Nigeria supplied the U.S. with more crude oil last year than any other country, except Canada and Venezuela.

WANTED- Fruits and vegetables for canning and freezing, 9-2771. 31-2c

WANTED- A woman to clean house one day a week. Beginning August 15. Call 779-2947. 29-3p

WILL CARE for elderly person in my home. Gladis Andrews, 517 N. Clarendon, Phone 779-2592. 25-2p

WANTED hay hauling, Glen Waldo, 806-256-2847. 24-tfc

CUSTOM SWATHING. Baling and loose stacking. Trew 779-2015 or 779-3164. 24-tfc

WANT TO BUY: 38 joints of (5 in X 30 ft) aluminum main line pipe with Bands & Latches. Call or write Joe White 806-537-3673 or Bx 1432 Panhandle Tx. 79068 31-1c

LOST & FOUND

LOST male white poodle. Weighs five pounds and answers to Deano. Lost approximately 12 miles north of McLean. \$50 Reward, Bill Webb. 31-1c

CARD OF THANKS

I want to thank the girls who helped in my home while I was in the Shamrock Hospital and for the flowers, cards and prayers. 31-1c

BIRTHDAYS

- AUGUST 3 Douglas Crockett
- AUGUST 4 Tommy Boston
- AUGUST 5 Charles McCurley
- AUGUST 6 Sidney Kunkel Vicki Jo Hill Eddie Bailey
- AUGUST 7 Emory Crockett Nelson Christie Mrs. Howard Gipson
- AUGUST 8 Fred Johnston Mrs. Charles Patton Gerald Tate Arthur Vineyard
- AUGUST 9 Debbie Blackshear Lindsey Gilbreath

The Old Timer

"What society calls the smart thing to do is often pretty dumb."

NEWS

County Agricultural Agent Texas A. & M. College Extension Service By FOSTER WHALEY

RAIN
Rains have been spotted over the county but most everyone has received at least one good rain. More is needed on the range land. I've heard a few wheat farmers say they would like for it to dry up for a few days so they can kill the volunteer and get land ready to plant for the coming fall. Wheat sowing time is just around the corner.

CHIEF CHACTAW
We have had a lot of comments, all favorable on our recent news article about the chaos created by the price ceilings. Yesterday I took the time to talk with three typical agri-business people in the channel of trade in food products. First I talked with Rex McAnellv. mgr. Moody Farms. Rex says this is the most chaotic conditions he has ever seen. Gray market is sitting in. Everything getting out of hand. There are cases setting in where packers are custom killing cattle. I was not able to determine who was buying the cattle. There is nothing illegal in selling cattle direct to the Cafe trade, an individual or anyone at any price. The packer can negotiate any price he wishes for his custom kill service. One packing house that was closed down in the corn belt has begun to do just this in order to stay in business. There will be more Gray deals develop as long as the ceiling is left on beef. We predict the black market deals will follow the Gray deals.

There are several important points. The Cost of Living Council is over looking-everytime another packer is forced to close it throws many of the lower income out of work and on to welfare. Since beef is the only meat with a ceiling left on it, house wives are buying the scarce meat in large quantities. Beef looks cheap today compared to chicken at 75 cents and bacon at \$1.58 per lb.

There are no heavy cattle in the feedlot. The cattle feeder has never been in a better position to hold his cattle for another forty two days (until Sept. 12). Today cattle feeders play a tough poker game, even when the government is his opponent sitting across the table.

There are two classes of cattle feeders today. One class represents the older type cattlemen that has suffered drought, blizzard, depression and hundreds of other types of hazards. The other is bankers, accountants, oil men and a host of other hard nosed businessmen. They don't scare easily. They don't panic. They have the guts it takes to ride out a crisis.

They don't panic. They have the guts it takes to ride out a crisis.

This is what is being done. The talk is out that fat cattle could get to sixty cents when the lid is removed. They are going to set on these cattle until Sept. 12. I talked to one fellow that has a string of trucks. They buy stocker calves and import them from Mississippi. They buy fat cattle and haul back to small packers in that area. He said you can't get anyone to price fat cattle at any price.

There is no doubt --the cattle market would never have gotten out of hand if ceiling prices had not been placed on them. This is true of all other agri-products.

Placing the ceiling on this products in the grocery store has the same disrupting effect as though the ceiling had been placed on raw agricultural products.

The dealing served as a discouragement to production. Production was drastically curtailed and much quicker than was anticipated by any observer.

In my opinion the American consumer will suffer the most from this grave mistake. If all controls directly or indirectly were lifted today it will take from one to two years to over come this serious mistake.

The Old Timer



"Punctuality is a device for getting some time to yourself."

Easy on You! Easy on Your Lawn!



HOMELITE Riding Mowers

- Brand New Oh.p. Rider
 - Anti-Scalp Mowers
 - New Shuttle Transmission Shift From Forward to Reverse Without The Clutch
- For your nearest Homelite Dealer Call Toll Free 800-243-6000

GREAT NEWS

August 11 Coronado Center

Have another Market Sale Saturday, August 11. Load up your goods and Ends and the house and bring them to the Coronado Center in Pampa, Texas and take advantage of the large crowd to use your goods. Reserve space, just write Coronado Center, Box 100, Pampa, Texas 79065, Jim Stallings, 669-1111. All Groups Welcome.

CROSSWORD

Answer

1. Concern	3. Property (L.)	5. Savory	7. Thin	9. Stylish (colloq.)	11. Tenant (jaw)	13. Trap	15. Booths	17. Floating platform	19. Exists	21. Secure	23. Bread	25. Great multitude	27. Dull	29. Worshipping	31. Wading bird	33. Is obligated	35. Play things	37. Lobster's pincer	39. Chief Teutonic gods
2. Soapstone	4. Before	6. Wild buffalo of India	8. Welsh seaport	10. Of an area	12. German state	14. River of Asia	16. Like carrot roots	18. Simpleton	20. Swiss river	22. Breat	24. Parrot (N.Z.)	26. Negative word	28. Eagle's claw	30. Dredges, as a harbor	32. Snarl up (army slang)	34. Negative word	36. Eagle's claw	38. Dull	40. Chief Teutonic gods

AGONIZING PAIN FROM INGROWN TOENAIL?

Get Outgro for fast relief

Why suffer the agony of ingrown toenail pain when Outgro can give you fast, temporary relief? Outgro toughens irritated skin, eases inflammation, reduces swelling without affecting the shape or position of the nail. Outgro gives you fast pain relief and makes it easier to cut out the nail - cut out the pain caused by ingrown toenail. Stop ingrown nail pain fast with Outgro.

How to get your refrigerator to cook things.

Stir the right things into Jell-O® Brand Gelatin and your refrigerator will fix crunchy salads, interesting fruits and new side dishes. For over 250 exciting ideas, send 25¢ (in coin) with your name, address and zip code to: Joys of Jell-O, Box 8074, Kansas City, Missouri, 64114.

Jell-O is a registered trademark of the General Foods Corporation.

Kids Help Animals Thru 4-H Vet Science



"Kids love animals and they want to make sure that their animals stay normal and healthy," says T. W. Thompson, assistant director, National 4-H Service Committee. And he makes his point by noting that thousands of young people involved in the national 4-H veterinary science program do just that.

With the supervision of the Cooperative Extension Service and the assistance of The Upjohn Company, youths in the program learn to identify normal characteristics of healthy animals. The 4-H'ers are encouraged to observe habits, attitudes and behavior of their pets and other animals and to note changes from normalcy.

The budding young scientists may accompany local veterinarians on their rounds, and, observe how he treats afflicted animals. The 4-H'ers

also may assist with rabies clinics and other community service projects allied with the 4-H veterinary science program.

Experience gained in the program increases some 4-H'ers interest in careers as veterinarians and other related veterinary science fields.

Assisting these young people, with incentive and recognition for their work in the 4-H veterinary science program, is The Upjohn Company. The company provides up to four medals of honor to 4-H'ers in each county. A \$50 U.S. Savings Bond is awarded to one winner in each state and sixteen of these honorees are named national winners. Chosen by the Cooperative Extension Service they receive expense-paid trips to National 4-H Congress in Chicago, Nov. 25-29, cour-

tesy of Upjohn.

During the National 4-H event, six national winners of \$700 scholarships are announced.

Tagging along as her local veterinarian made his rounds gave a 1972 national winner in the 4-H veterinary science program, a first hand view into veterinary science. Cindy Reich, of Boulder, Colo., traveled with her local vet for over five years, helping him worm horses, take X-rays, administer inoculations and conduct animal pregnancy tests. Currently working on an advanced manual for future 4-H'ers in the program, the \$700 scholarship winner plans a career in veterinary science.

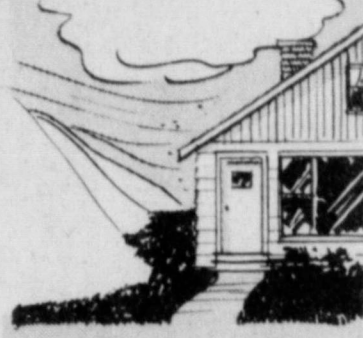
For more opportunities offered in the 4-H veterinary science program, contact the county extension office.

THE FAMILY LAWYER

Invisible Fence

Barbed-wire fences may be harder to climb, and wooden fences harder to see through. But for sheer versatility, nothing beats the invisible fence erected around every piece of property by the laws of trespass and nuisance. Consider an example:

The Benson family lived next door to a vacant lot on which the owner kept a large pile of sand. Whenever the wind blew from that direction, sand would seep through the doors and windows of the Benson house.



Finally Benson sued the neighbor on grounds of nuisance. In court, the neighbor argued that he could not be blamed for what the wind did. But the court held it was unlawful—a breach of the invisible fence—for him to allow his sand to invade the Benson premises.

Other courts have taken a similar attitude toward leaves dropped from an overhanging tree, vines spreading into a lawn, eaves jutting over a boundary line (by a matter of inches), and sound waves from a neighbor's howling dog.

And, of course, the invisible

ITCHING LIKE MAD?

Get this doctor's formula! Zemo speedily stops torment of externally caused itching... of eczema, minor skin irritations, non-poisonous insect bites. Desensitizes nerve endings. Kills millions of surface germs. "De-itch" skin with Zemo—Liquid or Ointment.

fence also bars anyone from walking across your property without permission.

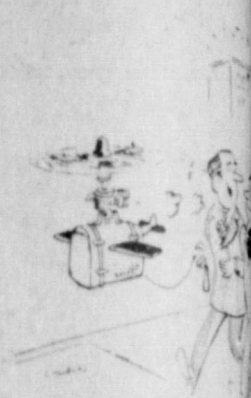
How high does the fence extend? Courts used to say it extended all the way up to heaven—a theory that, if enforced literally, would make every airplane flying overhead a trespasser.

Nowadays, your invisible fence extends only to a "reasonable" height. But still, your protection goes higher than the average housetop.

In one case a telephone company strung a wire 30 feet above a man's back yard, contending it was using only the "free and open" air. However, a court ordered the wire removed, since space that close to the ground might well be used someday by the owner himself.

"The space occupied by the wire," said the court, "was a part of his land. The law protects it from hostile occupation."

My Neighbor



"Not only a great saver, but a great protection piece and ice box"

Helps Shrink Swelling Of Hemorrhoidal Tissues

caused by inflammation. Doctors have found a solution that in many cases prompts, temporary relief, pain and burning itching hemorrhoidal tissues. Then it helps shrink swelling of tissues caused by inflammation. The answer is Preparation H. No prescription is needed. Preparation H. Ointment, suppositories.

SHUGART COUPON WILLIAMS APPLIANCE

Monday, August 6



9 WALLET SIZE COLOR PORTRAITS 99¢

ASK About Our FREE 8 x 10 OFFER

Market Report

Food prices will stay relatively high because of three factors, according to Mrs. Gwendolyn Clyatt, consumer marketing information specialist, Texas Agricultural Extension Service, Texas A&M University System.

She cited "increased production costs, strong consumer buying and the general inflation we are experiencing," as food-cost boosters.

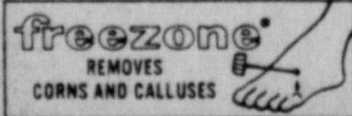
Fryer chickens and eggs, released from the price freeze will undoubtedly have price increases in order to reach a better balance between production and marketing these items, the specialist predicted.

DR. JACK L. ROSE OPTOMETRIST

121 Main Shamrock
Phone 256-3203
Tues.: 9-5 Fri.: 2-5

Freezone is for corns that hurt.

Absolutely painless. No dangerous cutting, no ugly pads or plasters. In days, Freezone eases the hurt... safely helps ease off the corn. Drop on Freezone—take off corns.

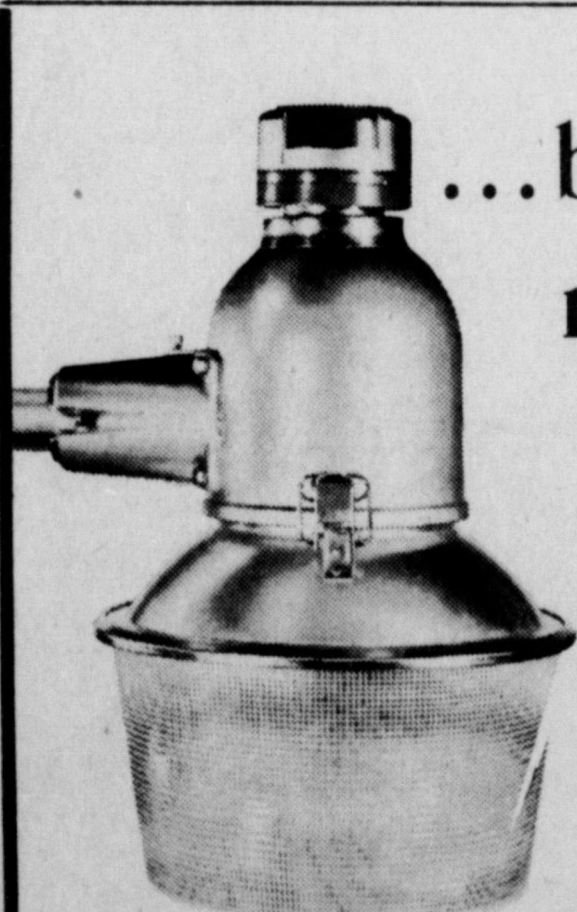


Help the Band Boosters

Coors Co. will pay the BAND BOOSTERS 10¢ a lb. for seamless aluminum cans.

Help clean up our Community and also help the BAND. Take your cans to the Clarence Pierce Home East of Town.

Bald Tires Cause Accidents



GUARD AREA LIGHT

Equal Opportunity Employer

...business men, farmers,

ranchers - LIGHT UP

your property every

night for only \$4.00

a month!

Reddy installs the light, maintains it and even furnishes electricity to operate it. Guard lights are automatic, too... at night when you want light and off by day. Guard lights discourage prowlers, make night outdoor work safer and give a business-like prestige to commercial establishments.

* Plus Applicable Sales Tax.

ASK ANY PUBLIC SERVICE EMPLOYEE



Modern ELECTRIC Lighting

FOR SO MANY PEOPLE