

Foreman Company
P.O. Box 68
Muleshoe, Texas



BAILEY COUNTY JOURNAL

'The Community of Opportunity-Where Water Makes the Difference'

20¢

WEATHER

June 10	107	63
June 11	92	67
June 12	99	63
June 13	93	61

Volume 19, No. 24

14 Pages Today

Published Every Sunday at Muleshoe, Bailey County, Texas 79347

Sunday, June 14, 1981

Around Muleshoe

Late Thursday, clouds dumped from 1/2 to 2 inches of rain and hail in the Lazbuddie area. Some farmers sustained a large amount of damage, while others were lucky enough to escape the hail. Most of the hail was in the northerly direction from the town of Lazbuddie. Proper assessment of damages were not possible at press time.

Three students from Muleshoe received their degrees at Texas A&M University's spring commencement exercises. Receiving undergraduate degrees were Nicky C. Bamert, agricultural economics; Gary R. Gunter, agricultural economics and Robert E. Martin, animal science.

Navy Seaman Recruit Blas Alvarado, Jr., son of Maria R. Alvarado of 620 S. Main, Muleshoe, Texas, has completed recruit training at the Naval Training Center, San Diego, California.

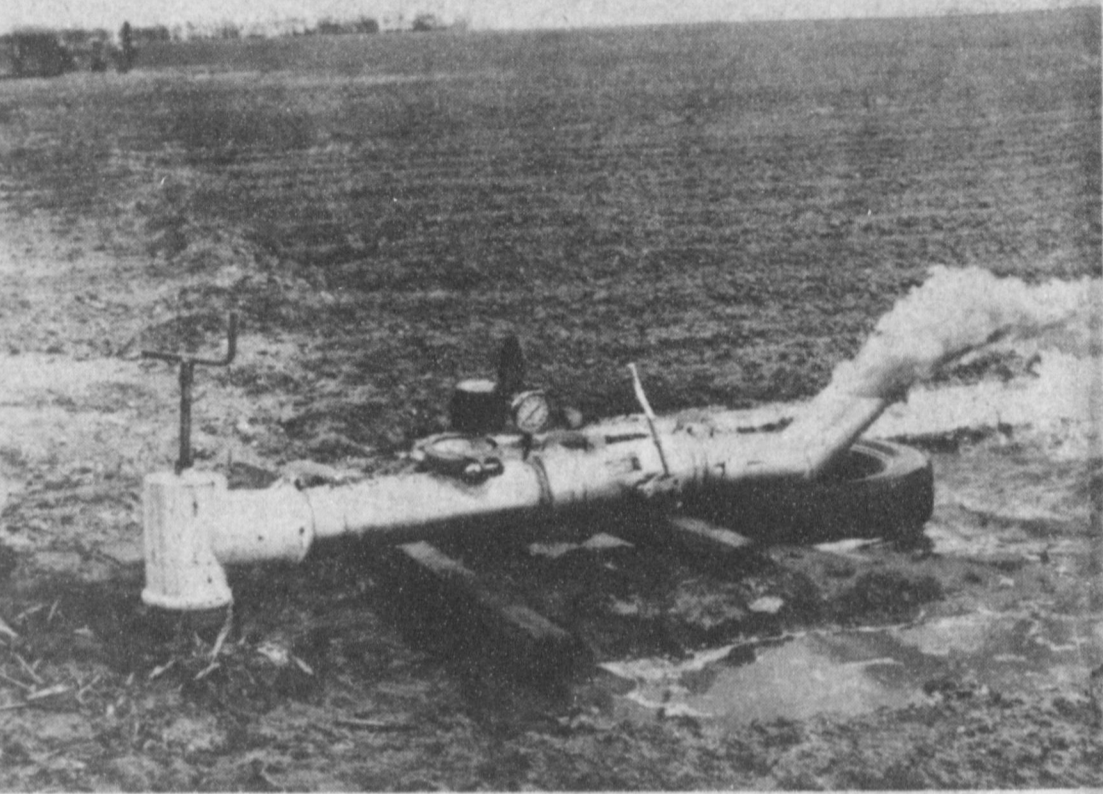
Swimming lessons will begin June 22nd at the City Pool. For more information please contact Cont. Page 6, Col. 3

Town's First Police Chief Dies Thursday

W.F. "Buck" Creamer, 73, a longtime Bailey County resident, died at



"BUCK" CREAMER



TESTING FOR ENERGY EFFECTIVENESS.....Irrigation well output being tested on the Boyd Magby farm. With the equipment shown above both GPM and pressure is determined to obtain the performance of the well in the background.

Energy Efficiency Analysis Available

The relatively short supply of both energy and water has caused local irrigators to take a closer look at how cost effective their pumping plants are. Since pumping is now a major overall irrigation ex-

pense it is more important than ever for the irrigation pump and power unit to be properly matched and designed to fit the irrigation conditions found on each individual field. Several area irrigators are working with the Soil Conservation Service in an effort to increase productivity and lower costs through testing of individual pumping plants.

4:42 a.m. Thursday, June 11 in the West Plains Medical Center.

He moved to Muleshoe January 1, 1949 from Earth moving there from Paducah in 1948.

A retired law enforcement officer, Mr. Creamer was Muleshoe's first police chief. He worked as manager for Western "66" Butane Company at the Needmore Store, retiring December 1, 1970.

Creamer was born April 19, 1908 in Cottle County, Texas and married the former Ina Myrtle Davidson November 6, 1927 in Paducah.

He was a member of the Senior Citizens, board Cont. Page 6, Col. 1

Among the items that determine the power and energy requirements of an irrigation pumping plant are: the quantity of water being pumped in gallons per minute when a pumping unit is in use, the depth from which water is lifted to the discharge point of the pump in feet, and the efficiency of the pump expressed in percent.

The distance water is lifted plus the pressure at the pump discharge is expressed as total lift in feet. The distance the water is lifted to the pump discharge is measured in feet. Then, to convert the pressure reading (psi) as shown on the pressure gauge to

feet, multiply by 2.31. Adding these two figures will give the total lift in feet.

Efficiency of an irrigation pumping plant is an indicator of the ability of the total unit to deliver a quantity of water at a required lift using the least quantity of energy. However, no pumping plant is Cont. Page 11 Col. 1

Commissioners Approve Tax Collection Contract

The Bailey County Commissioner's Court met on June 1 and June 10 for consideration of business.

Spencer Tanksley, County Agent, and Joyce Holmes met with the Court regarding the use of the Civic Center on August 27, 28, and 29 for the annual Bailey County Fair. Permission was granted for use with the provision that the building will be cleaned up on completion of the fair. The Court also voted to purchase rosette ribbons as prizes for the fair again this year.

Tanksley also requested

the Commissioner's to consider purchase of a gas tank to replace a used gas tank from Shipman Body Shop.

Chief Appraiser for the Bailey County Appraisal District, Dale Jones met with the Commissioners in regard to the collection contract between the two for collection of all taxes, including delinquent taxes. This contract was approved and will become effective August 1, 1981.

County Agent Spencer Tanksley requested funds for taking 4-H'ers to State Roundup this year. Two vehicles were involved. The Court declined this request.

In further business, the Commissioners are now working on a proposed change of Commissioner's precincts within the City of Muleshoe. This will be

decided on at the next meeting.

\$1500 was transferred from the general funds to the Aging Program for the expense of the senior citizen's van. \$10,000 was transferred from general funds to officer salary funds.

A refund in the amount of \$139.43 was made to Robert Green, Inc. for the county's part of double assessment in 1978-79.

Tommy Gunstream met with the Commissioners representing the Tennis Association on rental reduction rates for the Civic Center. The Court took no action on this matter, except to instruct him to contact Joyce Holmes, manager of the Center on regular rates.

The Commissioner's Court will meet again July 2, 1981.

Roping Club To Sponsor "Miss Rodeo Muleshoe"

The Muleshoe Roping Club will sponsor a "Miss Rodeo Muleshoe" contest in conjunction with the annual July 3 and 4 Rodeo.

Contestants will be judged on personality, appearance, poise, knowledge of rodeo activities and horsemanship by three different judges.

Judging of the contestants will begin on July 2nd. Entry forms may be picked up at the Journal office beginning June 15.

Winner of this contest will be eligible to participate in the Miss Rodeo Texas or Miss Teen Rodeo Texas contests which are held in November.

All wives of Roping Club members are asked to attend a special organizational meeting at the Coral Restaurant, scheduled for June 15 at 8 p.m. All details and committees will be worked out at that time. Those wishing to work with this contest, but unable to

Area Specialist Says Cotton Crop "Good"

Wheat Field Day Spotlights Hybrids

A breakthrough in the development of wheat hybrids and research on limited irrigation and fertilizer needs for wheat were featured during the annual Wheat Field Day at the US Department of Agriculture Conservation and Production Research Laboratory in Bushland.

Some 150 producers and agribusiness representatives took part in the program and tour of research projects at the facility on Interstate 40. The event May 28 was sponsored by the Science and Education Administration of USDA, the Texas Agricultural Experiment Station, Texas Agricultural Extension Service and Texas Wheat Producers Association.

Dr. Kenneth B. Porter, Experiment Station wheat breeder, displayed 60 irrigated wheat hybrids being evaluated in two tests. Hybrid seed is produced by growing sterilized strips between desirable pollinators, Porter explained.

The research scientist said many of the hybrids he is testing were produced by using a chemical hybridizing agent. When wprayed on wheat in proper amounts at the right stage of growth, it makes the wheat male sterile, he explained.

Cont. Page 6, Col. 4

Bible School Begins Monday

First Baptist Church, Muleshoe, will have Vacation Bible School from 9:00-11:30 a.m. each morning beginning Monday, June 15, through Friday, June 19. All children ages three through junior high are welcome to attend. The emphasis in classes will be "The Bible; God's Word," with Junior High classes concentrating on "The Teachings of Christ." Those attending will be able to participate in a variety of activities, including Bible study, recreation and crafts. Refreshment. Cont. Page 6, Col. 2

On Tuesday, Dr. James Supak, Area Cotton Agronomist with the Texas A & M Extension Service of Lubbock, met with County Agent Spencer Tanksley to assess the cotton situation in Bailey County.

Tanksley reported that Supek was favorably impressed with the general condition of the county crops. This was more emphasized in the Southern part of the county.

The specialist stated, "Although this area is basically dry land cotton, it is some of the best I have seen in the general area. Also some of the irrigated cotton ranks high."

Tanksley in remarking about the county situation said, "Trips are starting to cause some damage to our cotton crop in the county. They can be controlled by applying an insecticide during cultivation."

"While cotton is generally good, there is definitely some seedling disease; however, if these seeds can put on new good

feeder roots where moisture can be picked up and moved to the leaf surfaces the cotton affected by the disease will probably come on out and make a stand," Tanksley stated.

The opinions of both the specialist and the county agent is that the yield potential of the seedling disease damaged to cotton has definitely been hurt. Tanksley anticipates that a few acres will be plowed up and replanted with soybeans.

"Good weather and dry conditions the past week have helped the cotton respond in a favorable fashion, with farmers being able to get in the fields and aerate with cultivation," Tanksley stated.

"Cotton is looking good in the Pleasant Valley area, around Clay's Corner, Lariat and on towards Parmer County. Most of the damaged cotton is in a line running from southwest to northeast starting at about the intersection of FM 1731 with FM 1760," said Tanksley.



SHARP SHOOTERS.....These three youth were top winners in the 4-H Hunter Education and Gun Safety course.

Youngsters Complete Hunter/Gun Safety

Twenty eight Bailey County youngsters completed a five-day training in Hunter Education and Gun Safety here last week. The Hunter Education and Gun Safety course is a new part of the Bailey County 4-H program and was sponsored by the Adult Leaders Association and the 4-H Council of Bailey County.

The course utilized materials and information compiled by the Daisey Company of Rogers, Arkansas. Youngsters used B-B guns to learn the various types of guns, the types of ammunition, and gun safety rules.

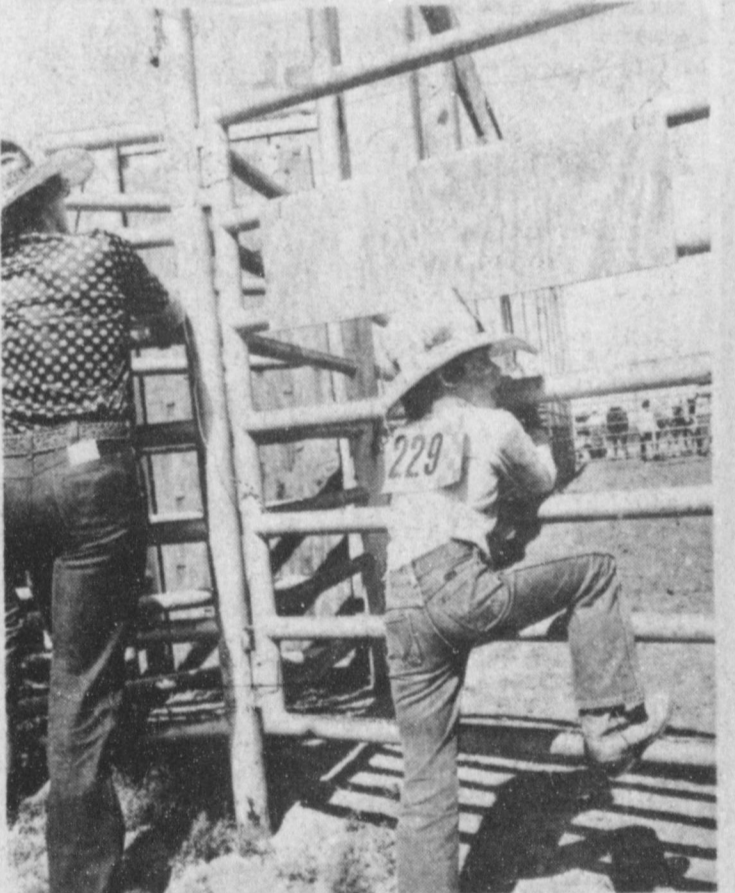
The youngsters also received instruction in the basic firing positions:

gun and received practice in firing on a five meter range.

A marksmanship contest culminated the training Friday. Twenty six youngsters competed for a trophy and medals in the marksmanship contest. Michael Garza of Muleshoe was the winner of the trophy with a score of 145 in the three Cont. Page 6, Col. 6

Rotary Will Sponsor Pro Wrestling

Harmon Elliott of the Muleshoe Rotary Club has announced that the Rotary Club will again sponsor Pro Championship Wrestling in Muleshoe.



WISHFUL THINKING.....This young cowboy is waiting his turn hoping to ride like the big boys do.

Two Jailed In Theft/Burglary

Upon locating a stolen Oklahoma auto, Bailey County Sheriff's office discovered items reported stolen from a farm residence late Thursday.

A theft from the Dennis Williams residence north of Progress was discovered at 11:30 p.m. June 11. Williams reported the theft to the Bailey County Sheriff's office about 12 midnight. Several articles were taken by intruders entering through the unlocked back door of the home. Deputy Tony Wallace took the report of the theft.

Early June 12, the Sheriff's office received a call from a man in Oklahoma City who had traced his stolen auto to Progress.

the suspected persons, Deputy Hal Bynum and officers from the Parmer County Law office proceeded to the described location of the vehicle.

Inside the vehicle the officers found items from the Williams' home, along with several unidentified articles and three extra license plates. After taking suspects into custody, the officers searched two separate houses, finding other stolen articles.

Two Hispanic males in their late teens to early twenties were questioned and placed under arrest in connection with the theft of the auto and burglary of the Williams' home. They were taken to Parmer



WEATHER

June 10	107	63
June 11	92	67
June 12	99	63
June 13	93	61

BAILEY COUNTY JOURNAL

'The Community of Opportunity-Where Water Makes the Difference'

20¢

Volume 19, No. 24

14 Pages Today

Published Every Sunday at Muleshoe, Bailey County, Texas 79347

Sunday, June 14, 1981

Around Muleshoe

Late Thursday, clouds dumped from 1/2 to 2 inches of rain and hail in the Lazbuddie area. Some farmers sustained a large amount of damage, while others were lucky enough to escape the hail. Most of the hail was in the northerly direction from the town of Lazbuddie. Proper assessment of damages were not possible at press time.

Three students from Muleshoe received their degrees at Texas A&M University's spring commencement exercises. Receiving undergraduate degrees were Nicky C. Bamert, agricultural economics; Gary R. Gunter, agricultural economics and Robert E. Martin, animal science.

Navy Seaman Recruit Blas Alvarado, Jr., son of Maria R. Alvarado of 620 S. Main, Muleshoe, Texas, has completed recruit training at the Naval Training Center, San Diego, California.

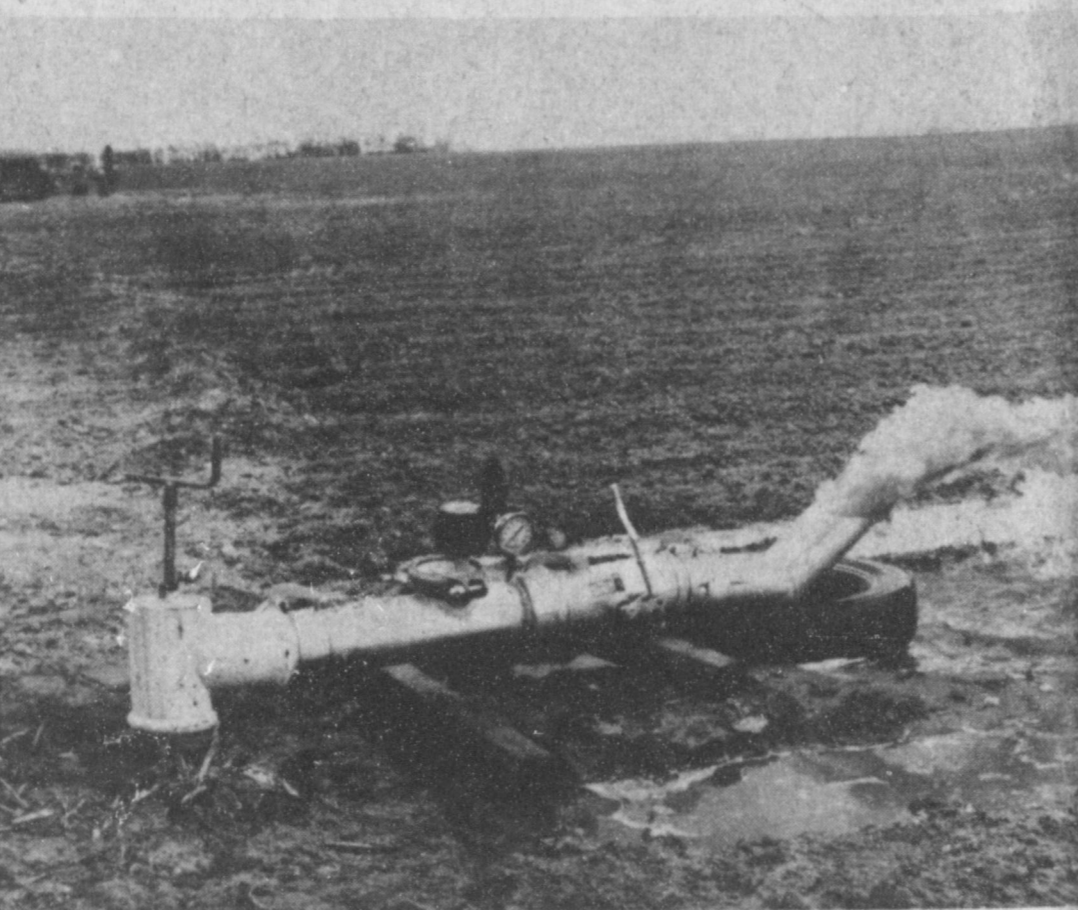
Swimming lessons will begin June 22nd at the City Pool. For more information please contact Cont. Page 6, Col. 3

Town's First Police Chief Dies Thursday

W.F. "Buck" Creamer, 73, a longtime Bailey County resident, died at



"BUCK" CREAMER



TESTING FOR ENERGY EFFECTIVENESS....Irrigation well output being tested on the Boyd Magby farm. With the equipment shown above both GPM and pressure is determined to obtain the performance of the well in the background.

Energy Efficiency Analysis Available

The relatively short supply of both energy and water has caused local irrigators to take a closer look at how cost effective their pumping plants are. Since pumping is now a major overall irrigation ex-

pense it is more important than ever for the irrigation pump and power unit to be properly matched and designed to fit the irrigation conditions found on each individual field. Several area irrigators are working with the Soil Conservation Service in an effort to increase productivity and lower costs through testing of individual pumping plants.

4:42 a.m. Thursday, June 11 in the West Plains Medical Center.

He moved to Muleshoe January 1, 1949 from Earth moving there from Paducah in 1948.

A retired law enforcement officer, Mr. Creamer was Muleshoe's first police chief. He worked as manager for Western '66' Butane Company at the Needmore Store, retiring December 1, 1970.

Creamer was born April 19, 1908 in Cottle County, Texas and married the former Ina Myrtle Davidson November 6, 1927 in Paducah.

He was a member of the Senior Citizens, board Cont. Page 6, Col. 1

Among the items that determine the power and energy requirements of an irrigation pumping plant are: the quantity of water being pumped in gallons per minute when a pumping unit is in use, the depth from which water is lifted to the discharge point of the pump in feet, and the efficiency of the pump expressed in percent.

The distance water is lifted plus the pressure at the pump discharge is expressed as total lift in feet. The distance the water is lifted to the pump discharge is measured in feet. Then, to convert the pressure reading (psi) as shown on the pressure gauge to

feet, multiply by 2.31. Adding these two figures will give the total lift in feet.

Efficiency of an irrigation pumping plant is an indicator of the ability of the total unit to deliver a quantity of water at a required lift using the least quantity of energy. However, no pumping plant is Cont. Page 11 Col. 1

Area Specialist Says Cotton Crop "Good"

Wheat Field Day Spotlights Hybrids

A breakthrough in the development of wheat hybrids and research on limited irrigation and fertilizer needs for wheat were featured during the annual Wheat Field Day at the US Department of Agriculture Conservation and Production Research Laboratory in Bushland.

Some 150 producers and agribusiness representatives took part in the program and tour of research projects at the facility on Interstate 40. The event May 28 was sponsored by the Science and Education Administration of USDA, the Texas Agricultural Experiment Station, Texas Agricultural Extension Service and Texas Wheat Producers Association.

Dr. Kenneth B. Porter, Experiment Station wheat breeder, displayed 60 irrigated wheat hybrids being evaluated in two tests. Hybrid seed is produced by growing sterilized strips between desirable pollinators, Porter explained.

The research scientist said many of the hybrids he is testing were produced by using a chemical hybridizing agent. When sprayed on wheat in proper amounts at the right stage of growth, it makes the wheat male sterile, he explained. Cont. Page 6, Col. 4

Bible School Begins Monday

First Baptist Church, Muleshoe, will have Vacation Bible School from 9:00-11:30 a.m. each morning beginning Monday, June 15, through Friday, June 19. All children ages three through junior high are welcome to attend. The emphasis in classes will be "The Bible; God's Word," with Junior High classes concentrating on "The Teachings of Christ." Those attending will be able to participate in a variety of activities, including Bible study, recreation and crafts. Refresh. Cont. Page 6, Col. 2

On Tuesday, Dr. James Supak, Area Cotton Agonomist with the Texas A & M Extension Service of Lubbock, met with County Agent Spencer Tanksley to assess the cotton situation in Bailey County.

Tanksley reported that Supek was favorably impressed with the general condition of the county crops. This was more emphasized in the Southern part of the county.

The specialist stated, "Although this area is basically dry land cotton, it is some of the best I have seen in the general area. Also some of the irrigated cotton ranks high."

Tanksley in remarking about the county situation said, "Thrips are starting to cause some damage to our cotton crop in the county. They can be controlled by applying an insecticide during cultivation."

"While cotton is generally good, there is definitely some seedling disease; however, if these seeds can put on new good

feeder roots where moisture can be picked up and moved to the leaf surfaces the cotton affected by the disease will probably come out and make a stand," Tanksley stated.

The opinions of both the specialist and the county agent is that the yield potential of the seedling disease damaged to cotton has definitely been hurt. Tanksley anticipates that a few acres will be plowed up and replanted with soybeans.

"Good weather and dry conditions the past week have helped the cotton respond in a favorable fashion, with farmers being able to get in the fields and aerate with cultivation," Tanksley stated.

"Cotton is looking good in the Pleasant Valley area, around Clay's Corner, Lariat and on towards Parmer County. Most of the damaged cotton is in a line running from southwest to northeast starting at about the intersection of FM 1731 with FM 1760," said Tanksley.

Commissioners Approve Tax Collection Contract

The Bailey County Commissioner's Court met on June 1 and June 10 for consideration of business.

Spencer Tanksley, County Agent, and Joyce Holmes met with the Court regarding the use of the Civic Center on August 27, 28, and 29 for the annual Bailey County Fair. Permission was granted for use with the provision that the building will be cleaned up on completion of the fair. The Court also voted to purchase rosette ribbons as prizes for the fair again this year. Tanksley also requested

the Commissioner's to consider purchase of a gas tank to replace a used gas tank from Shipman Body Shop.

Chief Appraiser for the Bailey County Appraisal District, Dale Jones met with the Commissioners in regard to the collection contract between the two for collection of all taxes, including delinquent taxes. This contract was approved and will become effective August 1, 1981.

County Agent Spencer Tanksley requested funds for taking 4-H'ers to State Roundup this year. Two vehicles were involved. The Court declined this request.

In further business, the Commissioners are now working on a proposed change of Commissioner's precincts within the City of Muleshoe. This will be

decided on at the next meeting.

\$1500 was transferred from the general funds to the Aging Program for the expense of the senior citizen's van. \$10,000 was transferred from general funds to officer salary funds.

A refund in the amount of \$139.43 was made to Robert Green, Inc. for the county's part of double assessment in 1978-79.

Tommy Gunstream met with the Commissioners representing the Tennis Association on rental reduction rates for the Civic Center. The Court took no action on this matter, except to instruct him to contact Joyce Holmes, manager of the Center on regular rates.

The Commissioner's Court will meet again July 2, 1981.

Roping Club To Sponsor "Miss Rodeo Muleshoe"

The Muleshoe Roping Club will sponsor a "Miss Rodeo Muleshoe" contest in conjunction with the annual July 3 and 4 Rodeo.

Contestants will be judged on personality, appearance, poise, knowledge of rodeo activities and horsemanship by three different judges.

Judging of the contestants will begin on July 2nd. Entry forms may be picked up at the Journal

Winner of this contest will be eligible to participate in the Miss Rodeo Texas or Miss Teen Rodeo Texas contests which are held in November.

All wives of Roping Club members are asked to attend a special organizational meeting at the Corral Restaurant, scheduled for June 15 at 8 p.m. All details and committees will be worked out at that time. Those wishing to work with this contest, but unable to

Youngsters Complete Hunter/Gun Safety

Twenty eight Bailey County youngsters completed a five-day training in Hunter Education and Gun Safety here last week. The Hunter Education and Gun Safety course is a new part of the Bailey County 4-H program and was sponsored by the Adult Leaders Association and the 4-H Council of Bailey County.

The course utilized materials and information compiled by the Daisey Company of Rogers, Arkansas. Youngsters used B-B guns to learn the various types of guns, the types of ammunition, and gun safety rules.

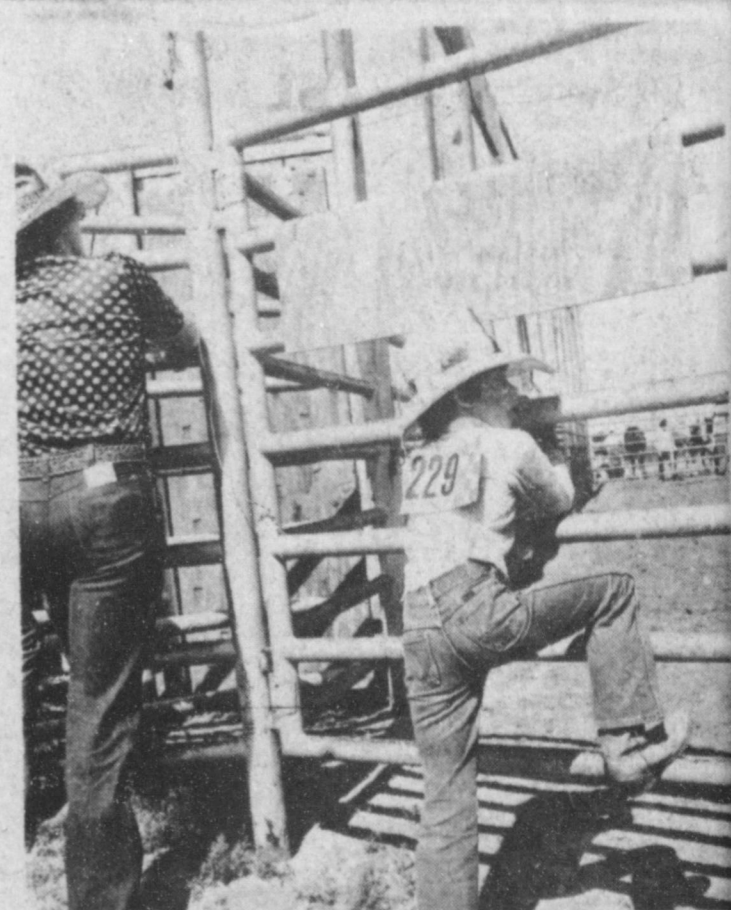
The youngsters also received instruction in the

gun and received practice in firing on a five meter range.

A marksmanship contest culminated the training Friday. Twenty six youngsters competed for a trophy and medals in the marksmanship contest. Michael Garza of Muleshoe was the winner of the trophy with a score of 145 in the three Cont. Page 6, Col. 6

Rotary Will Sponsor Pro Wrestling

Harmon Elliott of the Muleshoe Rotary Club has announced that the Rotary Club will again sponsor Pro Championship Wrestling in Muleshoe.



WISHFUL THINKING....This young cowboy is waiting his turn hoping to ride like the big boys do.

Two Jailed In Theft/Burglary

Upon locating a stolen Oklahoma auto, Bailey County Sheriff's office discovered items reported stolen from a farm residence late Thursday.

A theft from the Dennis Williams residence north of Progress was discovered at 11:30 p.m. June 11. Williams reported the theft to the Bailey County Sheriff's office about 12 midnight. Several articles were taken by intruders entering through the unlocked back door of the home. Deputy Tony Wallace took the report of the theft.

Early June 12, the Sheriff's office received a call from a man in Oklahoma City who had traced his

the suspected persons, Deputy Hal Bynum and officers from the Parmer County Law office proceeded to the described location of the vehicle.

Inside the vehicle the officers found items from the Williams' home, along with several unidentified articles and three extra license plates. After taking suspects into custody, the officers searched two separate houses, finding other stolen articles.

Two Hispanic males in their late teens to early twenties were questioned and placed under arrest in connection with the theft of the auto and burglary of the Williams' home. They were taken to Parmer





ENSEMBLE GROUPS PERFORM.....Two ensemble groups will represent Muleshoe Music Teacher's Association at the Texas Music Teacher's Association Convention June 15. (L-R) back row, Ken Craft, Elaine Damron, Chante Robinson; front row, Dorinda Shafer, Kristin Miller, and Lisa Hamilton.

Piona Students To Entertain At Convention

Two piano ensemble groups will be representing the Muleshoe Music Teacher's Association this year at the convention of the Texas Music Teacher's Association to be held at the Civic Center in Lubbock. For the first time this year there will be a High School Ensemble Group performing, as well as the Junior High School Ensemble Group that has gone in the past.

Members of each group were selected on their performing merits as well as on the prerequisite requirement by the state association of having passed the state theory test on their school grade level. The junior high group will be playing on the Texas and American Composer program Monday morning, June 15 at 8 a.m. The high school group will play on the high school ensemble program Monday afternoon

at 3 p.m.

The number that the high school group will be playing is "Canzona No. 1" by Fresco-Baldi. The junior high group will play "Donkey Ride" by Olive Dungan, Elaine Damron, piano and organ teacher of Muleshoe, will be directing both ensemble groups and accompanying them to the convention. The junior high ensemble members are pupils of Terri Hahn and Elaine Damron. The high school ensemble members are pupils of Gail Smith of Morton and Elaine Damron of Muleshoe.

The high school ensemble will be composed of the following pupils: Glenn Craft, Stacey Campbell and Kelly Hamblen of Muleshoe, also Kristie Rowland and Kayla Gardner of Morton. Kristine Miller, Chantel Robison, Dorinda Shafer, Lisa Hamilton, and Ken Craft are the pupils making up the junior high ensemble group. Many family members will also be accompanying the students to Lubbock.



Barbara Elizabeth Morris

Marshall and Elaine Morris of Atlanta are the grandparents for the first time. Their son Mark and his wife, Kerna Morris of Shreveport are the proud parents of a daughter born June 9 at 2:21 p.m. in Bossier Medical Hospital in Shreveport.

The young lady weighed seven pounds and 15 ounces and has been named Barbara Elizabeth.

She has a great aunt and uncle, Barbara and Buddy Blackman in Muleshoe.

Arnold and Grace Morris now have three great granddaughters.

NOTES-- --COMMENTS

Every citizen complains about the taxes that he has to pay.

The way to build business is to make it easy for customers to buy.

A partisan is a man used by smarter men to advance their purposes.

The average individual takes it for granted that he knows a great deal.

Hate to throw away lipstick knowing some is left in the bottom of the tube?

Scoop the last bit of lipstick from the tube, mix with petroleum jelly and put it in a small container to use as a tinted gloss for lips, says Nancy Brown, a clothing specialist.

Ms. Brown is on the home economics staff of the Texas Agricultural Extension Service, The Texas A&M University System.

Dad will LOVE these Gifts

For The Dad That Has Everything...

A Personalized Cap!

Ann's T-Shirts

800 W. Amer. Blvd. 272-5633

MULE KICKING PRICES



SHOP RITE

Open Daily 8 am to 9 pm
Open Sunday 9 am to 8 pm

501 W. Amer. Blvd. 272-4739

BOX CHICKEN 39¢ lb.	Afficated Homogenized MILK Plastic Gal. Reg. \$2.99 \$1.99
24 oz. Always Fresh BREAD 2/89¢	CANTA LOUPES 3/\$1
3 lb. or more GROUND BEEF 99¢ lb.	Shurfine 8 oz. POTATO CHIPS 69¢
Save 90¢ 6-12 oz. cans PEPSI \$1.19 Reg. \$2.09	Fresh PEACHES 39¢ lb.
Shurfine 5 lb. SUGAR 79¢ with a *10 purchase	Shurfresh 8 oz. BISCUITS Sweetmilk Buttermilk 6/\$1

Prices Good Thursday, June 11, Thru Wednesday, June 17



SPECIAL FACTORY INCENTIVES MEAN SPECIAL PRICES AND SPECIAL DEALS NOW THROUGH JULY 18

Buy now! Save now on America's favorite front-wheel-drive car. Our special price includes tinted glass, mats F&R, DLX exterior, body side moldings, Air, sport mirrors, P.S., cruise, 4 cyl., automatic, tilt wheel, P.S., radial w/w, AM/FM stereo, custom cloth beach. Stock #C-106 List \$8,651.93.

\$7,725.



Citation 2-Door Hatchback Coupe

COME ON IN AND MAKE A MONEY- SAVING CITATION DEAL

THORNTON CHEVROLET INC. MULESHOE

COUPON SAVINGS 100 FREE STAMPS WITH A *10 PURCHASE GOOD MON - TUES & THUR ONLY	COUPON SAVINGS 200 FREE STAMPS WITH A *10 PURCHASE GOOD MON - TUES - THUR ONLY
--	--

DOUBLE STAMPS

Tena Landers Installed Rainbow Worthy Advisor

Miss Tena Landers was installed as Worthy Advisor of the Muleshoe Assembly No. 161 Order of the Rainbow for Girls Monday, June 8. The installation was held in the Masonic Lodge.

Officers installed in addition to Miss Landers were Worthy Associate Advisor, Kristi Henry; Charity, Tori Hunt; Hope, Vana Pruitt; Faith, Tammy Nowell; Drill Leader, Shelly Sain; Love, Twila Downing; Nature, Heather Merritt; Fidelity, Debra Neiman; Confidential Observer, Kristy Landers; and Mother Advisor, Linda Lee.

Installing officers were Officer, Debra Stevens; Marshall, Kanetha Foster; Recorder, Nelda Hunt; Chaplain, Pam Young; and Musician, Gayla Wagnon.

After the meeting refreshments were served downstairs of the lodge.

Evidently

Brown eyes are an indication of a weak will; black eyes, of a weak defense.

-Mainsheet, Bainbridge.



RAINBOW OFFICERS.....Installation of officers was held Monday evening at the Rainbow meeting (L-R) back row, Twilla Downing, Kristi Henry, Tena Landers, Tori Hunt, Pam Young and Kaetha Foster; front row, Vana Pruitt, Deborah Neiman and Deborah Stevens.

Bailey County Journal USPS 690-200
 Established March 21, 1963. Published by Muleshoe Publishing Co., Inc. Every Sunday at 304 W. Second, Box 469, Muleshoe, Texas, 79361. Second class postage paid at Muleshoe, Texas, 79361.

MEMBER 1981
TEXAS PRESS ASSOCIATION

L.B. Hall - President
 James Woods - Vice President
 Shirley Farnsworth - News
 Evelyn Harris - Society
 Holly Millap - Advertising
 Ronni Benson - Bookkeeper

SUBSCRIPTIONS
 Muleshoe Journal and Bailey County Journal
 Bailey and surrounding counties.....\$15.50
 Muleshoe Journal and Bailey County Journal
 Elsewhere in Texas.....\$19.95
 Muleshoe Journal and Bailey County Journal
 Outside of Texas.....\$22.95
 Yearly by Carrier.....\$11.50
 Monthly by Carrier.....\$1.95
 Advertising rate card on application

Supergifts FOR A SUPER DAD

Whatever You Choose, Dad Deserves The Best.

Select A Gift With Care From Our Wide Selection Of Merchandise.

Puzzled About His Size? Give A Gift Certificate!

Albertson's Shop For Men

228 Main 272-3000

321 Main Street
 Muleshoe, Tx.
 Open 9 to 6

Anthony's
 C. R. ANTHONY CO.

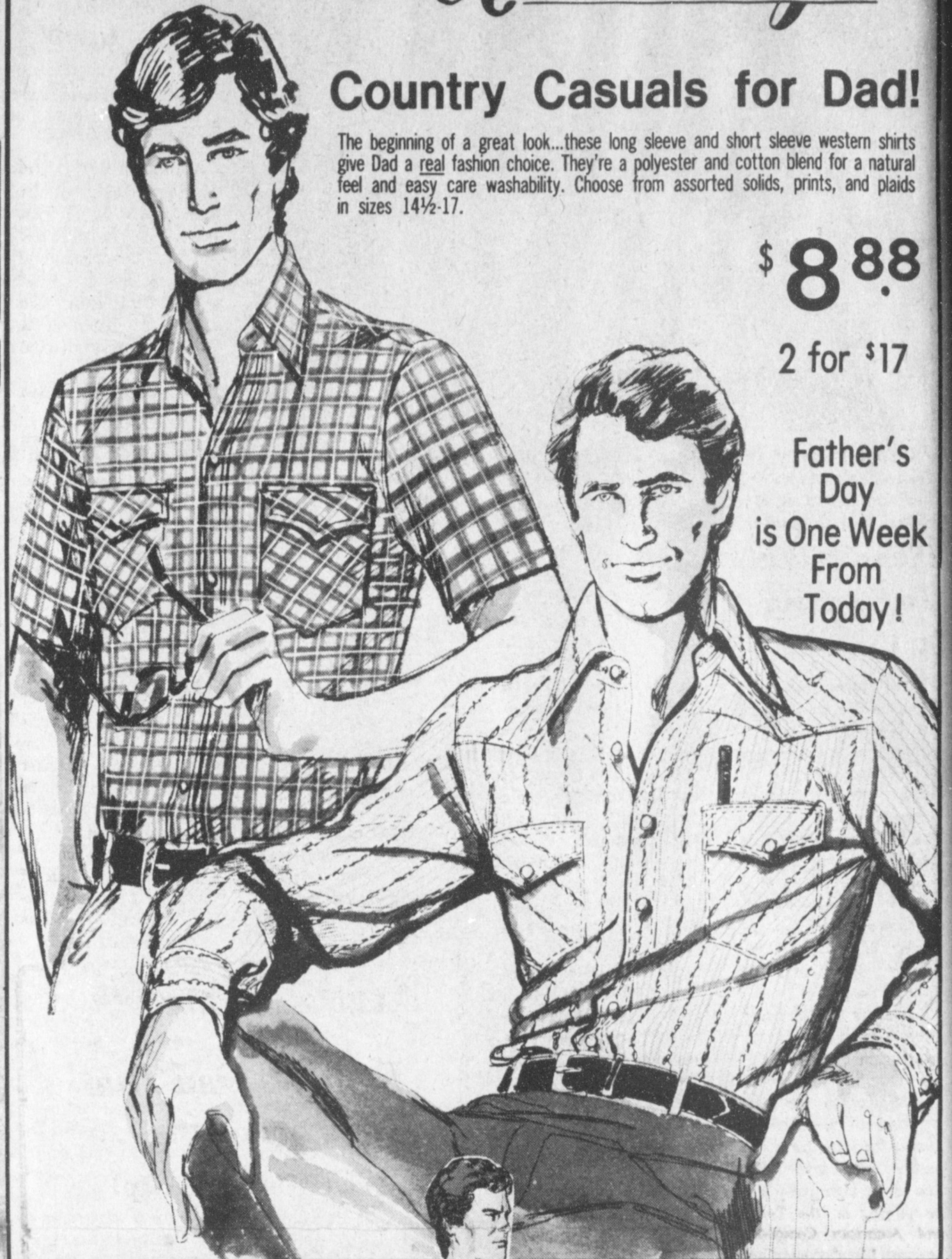
Country Casuals for Dad!

The beginning of a great look...these long sleeve and short sleeve western shirts give Dad a real fashion choice. They're a polyester and cotton blend for a natural feel and easy care washability. Choose from assorted solids, prints, and plaids in sizes 14 1/2-17.

\$ 8.88

2 for \$17

Father's Day is One Week From Today!



Mens DRESS SHIRTS

\$4.88

2 for \$9

\$7.88

2 for \$15

Mens HAGGAR SLACKS

\$14.88

Assorted Styles
 Special Purchase

Mens VELOUR BATH ROBES

1/2 Price

Wrangler®
 Jean
 \$14.88

The toughest jeans in all the west! Wrangler® boot-cut jeans for men are 100% cotton "No-Fault"™ denim, so they won't wrinkle, shrink, or pucker. The 5 pocket styling and rivet trim will make 'em your favorites! Choose from slim or regular cut in sizes 28-40.

Anthony's

DROP EVERYTHING!

DON'T MISS OUR BIG WEST TEXAS CHEVY TRUCK SELL-A-THON!



AT THORNTON CHEVROLET

3 DAYS. THUR., FRI., SAT.

LONGER HOURS! BIG SELECTION! GREAT TRADES!

It's three days of excitement that you won't want to miss! We're out to move every truck in stock!

For your convenience, we'll be open longer so that you can take a good long look at the new Chevy trucks. We'll have a big selection to make it

easy to find the truck that meets your needs. And we'll have right smart deals on new Chevy Pickups, LUVs, Vans, Suburbans and El Caminos, the whole Chevy truck line.

And you'll be surprised at how much your old truck is worth in trade at the big

Chevy Truck Sell-a-thon! But don't delay, you've only got three days—this Thursday, Friday and Saturday. So drop everything! Hightail it down to our place. And get yours while the gettin's good!



Westexas
 MEMBER CHEVROLET DEALERS ASSOCIATION

THORNTON CHEVROLET, INC.

MULESHOE, TEXAS 272-4521 or 272-4449

Longer Hours : Until 8:00 pm Thursday and Friday,



MRS. STEVEN EDWARD BICKEL [nee Gwendolyn Sue Crouch]

Candlelight Ceremony Unites Miss Crouch, Bickel

In a candlelight ceremony, Miss Gwendolyn Sue Crouch and Steven Edward Bickel were united in marriage Saturday, June 6, in the First Baptist Church at Post. Rev. Glen Reece officiated at the ceremony.

Parents of the couple are Mr. and Mrs. Garland Crouch of Lamesa and Mr. and Mrs. Bill Bickel of Houston, all formerly of Muleshoe.

The couple stood

WOTS Weekly Meeting

The WOTS (Women of Tolk Station) group met Thursday, June 11 in the community room of Tri County Savings and Loan for their weekly covered dish luncheon.

Faye Wellborn and Millie Mitchell were hostesses for the day. A heart shaped birthday cake centered the dessert table in honor of Theresa Todd and JoAnn Flannary, who's birthdays were recognized early.

Further plans were made concerning a forthcoming family picnic, July 11 has been set as the tentative date.

Members present were Kay Madry, Zelma Toler, Millie Mitchell, Lois Martinec, Faye Wellborn, Mary Ann Ramirez and David, Nora Flannary, Jo Ann Flannar, Amy and Sean, Tammy Fletcher and Tiffany, and Theresa Todd. New members are Dolores Scott and son, Jake and Josh, and Ann Vinson. Guests present were Dex Mitchell, grandson of Millie Mitchell, and Melissa Penn.

The next covered dish luncheon will be at Tri County on June 18 with Zelma Toler, Kay Madry and Lois Martinec as the hostesses.

For more information on WOTS you may call Mildred Williams at 272-5260 or Lois Martinec at 272-3019.

beneath an archway decorated with greenery accented with a coral bow. The archway was flanked by twin candelabras which were also decorated with greenery and a coral bow. An identical decorated unity candle stood in front of the first left pew.

Mrs. Bo Jackson sang "The Rose," "Longer Than," "The Wedding Song," and "We've Only Just Begun." She was accompanied by Mrs. Glen Norman at the organ.

Escorted by her father, the bride wore the traditional white formal gown of satin overlaid with silk organza. The Victorian neckline featuring a see-through yoke and bishop sleeves were accented by chantilly lace and baby lace medallions.

From the empire waistline, the a-line skirt fell into a chapel train. Covering the train was a chapel length veil trimmed by identical baby lace medallions, and was held in place by a caplet of seed pearls and lace.

The bride carried a cascading bouquet of peach daisies and white stephanotis accented with greenery and a white satin bow and streamers. She presented her mother with a coral rose during the procession, then presented the groom's mother with an identical rose during the bridal recession.

Mrs. Mike Williams of Lubbock served as matron of honor. Bridesmaids were Miss Lana Thomas of Lubbock, Miss Jill Ellzey, Miss Nancy Vaughn, and Miss Consuelo Flores, all

of Post.

They wore identical a-line peach formal length gowns accented with an off-the-shoulder ruffle. They carried long stemmed azalia blossoms of pale yellow edged in coral and trimmed with a coral bow and streamers. They wore identical blossoms in their hair.

Serving the groom as best man was Steve Glover of Ft. Worth. Groomsman were Clifton Meyers, Mike Williams, David Smith and Robert Robles, all of Lubbock.

David Bickel of Houston and John Bickel of Lubbock brothers of the groom, seated the guests. Guests were registered by Miss Connie Daniels of Lubbock.

Following the ceremony a reception was held in the fellowship hall of the church. Guests were served wedding cake, punch, mints and nuts. Attending the bridal table were Miss Starla Stewart of Post, Mrs. Buddy Miller of Winters, sister of the

bride, and Mrs. Terry Measot of Andrews, sister of the groom.

The bride is a graduate of Muleshoe High School and Texas Tech University. She has been employed by the Post Independent School District as a teacher for the past three years.

Bickel is also a graduate of Muleshoe High School and Texas Tech University. Since receiving his associate degree in electronics from Texas State Technical Institute in Amarillo, Bickel has been employed by Welx Corporation of Hobbs as an electronic logging engineer trainee.

Following a wedding trip to Lincoln National Park and other points of interest the couple will reside in Hobbs.

The groom's parents hosted a rehearsal dinner Friday night in the fellowship hall of church.

The bride was honored with a bridal shower May 2, in the home of Mrs. Bo Jackson of Post.

Guests were served fruit squares, sausage balls, nuts, mints, coffee and punch.

Hostesses were Miss Nancy Vaughn, Miss Lana Thomas, Miss Consuelo Flores, Miss Starla Stewart, Miss Jill Ellzey and Mrs. Bo Jackson.

They presented the bride with a broiler toaster oven.

Special guests included the mother of the bride, Mrs. Garland Crouch of Lamesa and Mrs. Buddy Miller of Winters, sister of the bride.

Six Flags Figures Show Strong Trend

Six Flags Over Texas has begun daily operation following a spring season which saw average daily attendance up more than 16 percent over last year.

The theme park's general manager, Ray Williams, said more than a half million visitors were counted through Memorial Day. "In 1980 we had an average of 11,260 guests per day," he noted, "and this year the daily average is up to 13,433. This indicates to us that prospects for the summer season are extremely strong."

He added, "When you consider the unusual amount of weekend rain we have had this year, the numbers are even more

impressive. We'd say the state's tourism outlook is excellent. Our attendance is traditionally one of the best barometers."

For the summer months, Six Flags Over Texas is

adding a nightly fireworks show to its entertainment lineup. The fireworks spectacular will be presented at 9:30 each evening through Labor Day.

His Prize
Minister—I hope, my boy, you are carrying away from college something worth while.

Seniro—Yes, sir, the prettiest co-ed in the place.

Society Deadlines Set

Weddings must be in the office by Monday noon for the Thursday paper and by Thursday noon for the Sunday paper. Any wedding more than two weeks old must be edited and only the basic information included.

No shower picture will be taken without a 24 hour notice and copy must be in the office by Monday at 5 p.m. for the Thursday paper and by Thursday at 5 p.m. for the Sunday paper. An honoree's picture will be taken at only one shower.

All club stories for following edition of paper must be in the office 10 a.m. on Tuesday and Friday preceding the next issue of the paper.

You Are Invited

To A 50th Wedding Anniversary Reception

Honoring Rev. & Mrs. Gene H. Davis

Sunday

June 14

2:30-5pm

720 E 6th

Muleshoe

(No Local Invitations Are Being Mailed.)

St. Clair - White Tournament

Date Set

The Muleshoe Ladies Golf Association will meet June 17 at 12 (noon) for their regular monthly luncheon.

Tee off time for the annual Naomi St. Clair-Marie White Memorial Tournament has been set for 1 p.m. There will be a five dollar entry fee.

Winners will be announced and refreshments served in the ladies locker room. Refreshments will be served at 5:30 p.m. for non-golfers, a two dollar fee will be charged.

"Ladies come out and help us make this the best memorial tournament possible.

FOR ALL PROUD FATHERS

Family Album

POCKET KNIFE

by Anson



Custom-set simulated stones signify the children's birth-months. Makes a perfect gift for grandfather, too! In yellow finish, in fine gift-box. Why not let us engrave it with his name, initials, or a special message?

Lindsey's Credit Jewelers 202-Main

FATHER'S DAY GIFT IDEAS

- Boots
- Suits
- Jeans
- Buckles
- Leather Coats & Vests
- Shirts
- Dress Slacks
- Sport Coats
- Belts
- Hats
- Wallets
- Hot Accessories

ee's WESTERN WEAR

Expressions Of Love For Fathers Day

Open 10-5:30 Mon-Sat

Expressions 272-5393

Espre

aloe vera based natural, organic

For a complimentary non-surgical lift demonstration and revolutionary new complexion care system that helps to slow down the aging process (806) 272-4931

25% off All Espre Cosmetics & skin care

Aloe Vera Juice \$16.95 Gal.

June 15-16-17 Ernestine Little

502 W. 20th-Muleshoe

THE BENTLEY IS BACK!

\$279.00 Plus Light Kit

Model IG Bentley

No Hum - Ceiling Fan with Reversible Engine

So quiet you don't know its running. Cuts your utility bills.

This beautifully designed die-cast housing is available in several finishes. The Bentley has an elegant turn of the century look engineered for modern day efficiency — its a contemporary classic.

- 235 RPM
- Approximately 10,000 CFM
- Hanging weight 35 lbs.
- A real energy saver

SG-7 Mini Fan Reversible

White with natural cane insert fan blades. Reversible switch in nose of fan. Hanging weight 25 lbs. Also available in 48" and in brown or almond. RPM 235; CFM 10,000; with optional snap-on lite kit.

Just \$99

48 inch Reversible Five Speed

\$159.

CLIP THIS COUPON

Bring This Coupon To Johnson Furniture And Register For FREE Fan To Be Given Away

June 30, 1981

NAME _____

ADDRESS _____

PHONE _____

"Great For Father's Day"

Recliners As Low As \$179.

THE BACK FORTY by Lex Graham

"You used to be broad minded and narrow waisted, but you sure have changed."

Johnson Furniture

Miss Dupler, Layton Repeat Wedding Vows

Miss Beverly Kay Dupler of Andrews and Jarrol Alan Layton of Enochs were united in marriage June 12 at 7 p.m. in the Enochs Baptist Church. Rev. Charlie Shaw of Seminole read the double ring vows.

Parents of the couple are Mr. and Mrs. Leon Dupler of Andrews and Mr. and Mrs. J.E. Layton of Enochs.

A white arch decorated

with greenery, blue bows and streamers stood in the background. Seven branch candelabras decorated with greenery and blue ribbons were placed on either side.

Teresa King of Levelland sang the traditional "Bridal March" and "There Is Love." She was accompanied by Susan Nichols of El Paso on the organ.

Given in marriage by her father, the bride wore a white gown featuring a

Queen Anne neckline and a seed pearl bodice of chantilly lace, with the skirt ending in two layers of chantilly lace and ruffles draping into a chapel length train. The long full sleeves and finger tip length veil were trimmed in matching lace and pearls.

She carried a silk flower bouquet featuring blue roses and baby's breath accented with bridal pearls

and blue streamers.

Sandy Dupler, sister of the bride, served as maid of honor. Penny Dupler, neice of the bride of Andrews, and Kelly Foley of Goodland were bridesmaids.

They wore identical gowns of baby blue silk organza featuring a Queen Anne neckline and sheer sleeves. A ruffle draped from the back waist ending in two rows of ruffles at the hemline. They carried a long stem blue silk rose with blue streamers and

baby's breath.

Janice Fine of Midland was flower girl. She wore a long blue dress similar to the bridesmaids dresses. She carried a white basket of tiny blue silk flowers.

Keith Layton, brother of the groom, served as best man. Groomsmen were Robert Layton, cousin of the groom of Dell City and Jackie Dupler, brother of the bride of Mt. Vernon.

Chris Dupler of Andrews, nephew of the bride, and Terry Burris, cousin of the groom of Wellman served

candlelighters and ushers.

For her daughter's wedding, Mrs. Dupler chose a medium blue long pleated skirt (with light blue flowers) and a bloused bodice. Mrs. Layton mother of the groom chose a pale burgandy long pleated skirt with a bloused bodice. They both wore a blue rose corsage.

A reception was held in the fellowship hall of the church following the ceremony. Shirley Dupler registered the guests.

Shirley Dupler, Joy Dupler and Margie Dupler were the servers at the bride's table. Serving at the groom's table were

Sheryl Waltrip and Nancy Burris.

The bride's table was covered with a white lace over blue table cloth. A white three tiered wedding cake with blue roses and trim, pineapple punch and mints were served from crystal appointments.

A white lace over blue tablecloth covered the groom's table. The groom's cake was a three layered German Chocolate. Coffee was served from a silver coffee service.

After a wedding trip to Ruidoso, the couple will make their home in the Enochs community.

For traveling, the bride

chose a blue linen dress with matching jacket, accented with a blue rose corsage.

The bride graduated from Three Way High School in 1979. She received an associates degree in applied science from South Plains College at Levelland in 1981.

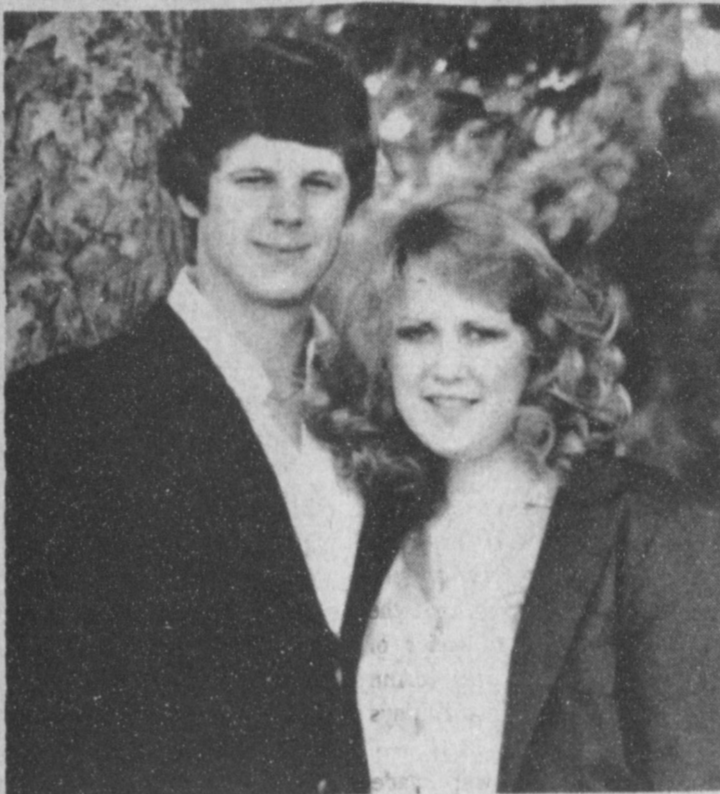
Layton is also a 1979 graduate of Three Way High School and received an associates degree in applied science in 1981 from South Plains College.

The groom's parents hosted a rehearsal supper at 6 p.m. Thursday at K-Bob's in Littlefield.

Cause For Pause
"How do you cure your husband from staying late at the club?"
"When he came in late one night, I called out, 'Is that you, Jim' and my husband's name is Frank."



MRS. JARROL ALAN LAYTON (nee Beverly Kay Dupler)



AUGUST PLANS REVEALED... Mr. and Mrs. Joe Richard Noland of Floydada announce the engagement and approaching marriage of their daughter, LaDelle, to David Gowens of Muleshoe, son of Elder and Mrs. Bernard Gowens of Friona. The couple will exchange wedding vows Saturday, August 1 at the Floydada Primitive Baptist Church. Miss Noland is a graduate of Floydada High School and attended the Fashion and Art Institute at Dallas. Gowens is a graduate of Friona High School and West Texas State University. He is employed by Southwestern Life Insurance Company in Muleshoe.

A New Toss-Up Tip For Summer Salad



Serve Chicken Slaw in a bowl or in cups of cabbage leaves.

Here's an unusual departure from the ordinary chicken salad. It's a crunchy combo of onion, cabbage and bacon bits with caraway seed tossed in for Bavarian character.

Swanson canned Chunk Chicken is the convenient ingredient that transforms a summer side dish into a delicious and easy to make main dish for two.

GERMAN CHICKEN SLAW
2 c. cabbage cut in long thin shreds
1/2 c. thinly sliced onion
1/4 c. bottled creamy Russian dressing
2 tbsp. real bacon bits
1 tsp. caraway seed
1 can (5 oz.) Swanson Chunk Chicken
Shredded mild process cheese

In bowl, lightly toss all ingredients except cheese; chill. Garnish with cheese. Makes about 2 cups, 2 servings.

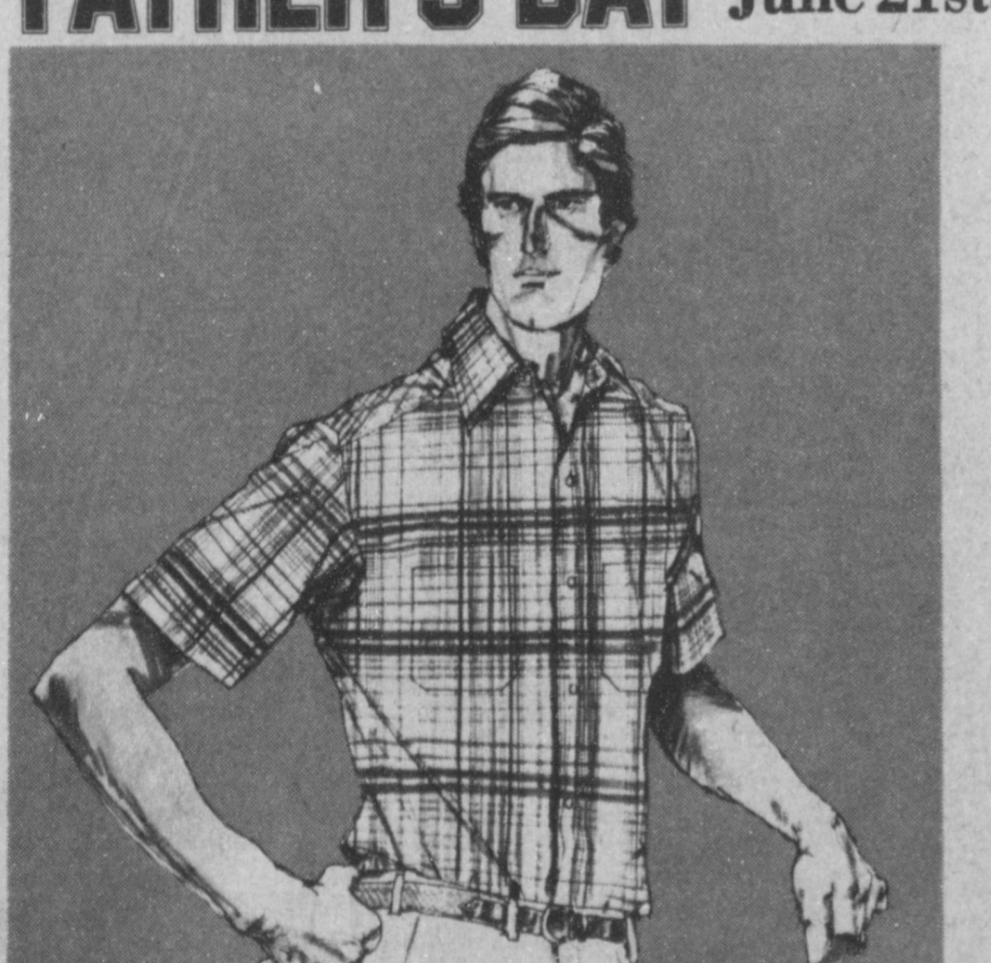
FREE ICE WATER
WALL, S.D. -- For the last few years, free ice water was more than just an advertising slogan at Wall Drug. Not only were customers getting free water, the drugstore was, too. Five million gallons have been used since 1976, at a cost of \$9,000.

"Pop Pleasin" Pocket Watches



\$29.95
WG/Railroad Design
Lindsey's Credit

A Large FATHER'S DAY June 21st.



Beat the heat in **SUMMER LIGHTS** from Arrow

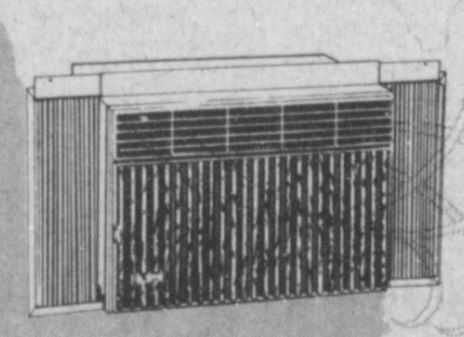
BOARDWALK—a lightweight, sport shirt designed to help you keep your cool when the energy-conscious cut back the air conditioning. Fabulous styling, exciting patterns in cooled-down colors to make you look cool as well. Easy-care convenience, of course.

The first great designer label worn by half the men in America.

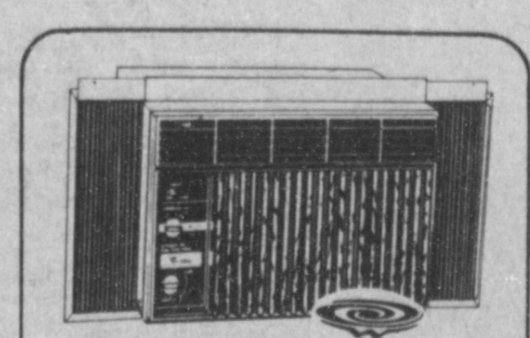
Short Sleeve \$12⁰⁰

St. Clair's

Say Ahhh....



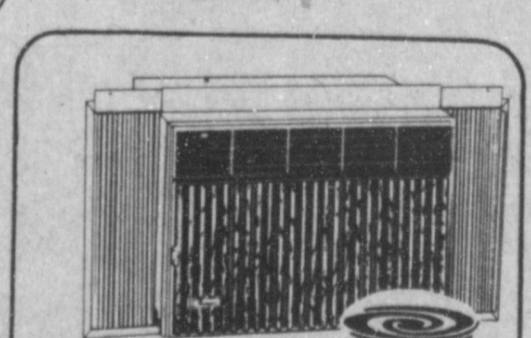
WITH THESE **Whirlpool** ROOM AIR CONDITIONERS!



7,500 BTU/Hr.
• 115 volt • 2-speed fan • 2-way air direction • Exhaust control • Energy Saving Options (intermittent fan and adjustable thermostat) • COMFORT GUARD™ control helps maintain comfort level you select • Insta-Mount™ for fast installation
Model AHJ-075-2 *Tmk.

NOW GOING FOR A COOL

\$289⁹⁵



10,000 BTU/Hr.
HIGH EFFICIENCY • 115 volt • Deluxe Front • 3-speed fan • Energy Saving Options (intermittent fan and adjustable thermostat) • 2-way air direction • Exhaust control • Insta-Mount™ for fast installation • COMFORT GUARD™ control helps maintain comfort level you select *Tmk.

Model AHF-100-2 NOW GOING FOR A COOL

\$399⁹⁵

We Have A Trained Technician To Service Our Products

Wilson

Store Hours Mon. - Sat. 8:00 - 6:00

Theft...

Cont. From Page 1

Peace Smith and placed under \$10,000 bond each. Positive identification of the two was not made at the time of this report.

The two suspects are presently secured in the Bailey County jail, pending further identification and information.

Wrestling...

Cont. From Page 1

that "the turn-out previously showed great interest and provided much entertainment to the people of the community."

Negotiations are now underway with promoter Nick Roberts of Lubbock for "name" wrestlers for this event.

These wrestling events are scheduled for July 23 at 8:30 p.m. at the Bailey County Civic Center. More details will be available as the negotiations proceed.

Creamer...

Cont. From Page 1

member of the American Association of Retired Persons, Needmore Community Singers and the Muleshoe Primitive Baptist Church since 1977.

Funeral services were held at 2 p.m. Saturday in the Muleshoe Primitive Baptist Church with Elder Bernard Gowens, pastor, officiating assisted by Elder Hulan Bass, pastor of the Lubbock Primitive Baptist Church.

Interment was in the Bailey County Memorial Park under the direction of Ellis Funeral Home.

Survivors include his wife, Mrytle; five daughters, Cleta Williams of Muleshoe, Mrs. Sue Kemp of Amarillo, Mrs. Phyllis Champlin of Las Vegas, Mrs. Carolyn Harrington of Cozad, Nebraska, Mrs. Monnie McBride of Plano and Mrs. Jan Schneider of Cozad; four sons, Forest L. of Dallas, Charles H. of Los Angeles and Travis L. of Farmers Branch, Texas; one sister, Mrs. Syl Kos of Portales; one brother, Luther of Portales; 20 grandchildren and 15 great grandchildren.

School Board Names Seven New Personnel

The Muleshoe Independent School District Board of Trustees hired seven new employees and accepted resignations from seven at the regular meeting June 8.

The Board has also called a special meeting from June 15 at 12 noon to consider personnel and approve the annual update of the five year plan of accreditation.

In other action, Harold Horne, superintendent, gave the Board an update on legislative measures effecting education including salaries and funding for school districts. Horne also gave an update on plans for renovating the school buildings in Muleshoe.

The Board approved Keystone insurance Company of Dallas as the carrier for student and football accident insurance and Tom Jinks, assistant superintendent, received approval to place used school buses on sale and solicit bids.

Bids were opened for roof repair at the Dillman Elementary Cafeteria, the Athletic Field House, and the Junior High School. Lydick Roofing Company of Lubbock was the low bidder and received the contract.

The Board was treated by a group of teachers and the Muleshoe Junior High School principal with ice cream and cake.

Bible School...

Cont. From Page 1

ments will be provided each day.

Friday, June 19, there will be a general meeting at 11:00 a.m. for all classes in the auditorium. Awards and special recognition will be given. At 11:30 a.m. the group will go to the Civic Center for lunch, roller skating and games.

Children will assemble each morning at the front entrance of the church before going to classes. All children of the community are invited to attend this week of Bible study and fun.

Muleshoe...

Cont. From Page 1

Shelly Dunham at 272-3091 Eugene Porras at 272-3740 or Benton Glaze at 272-4743.

The Youth Activities Committee will hold their regular meeting on Monday, June 15 at 7:30 p.m. at the Bailey County Civic Center. All members and interested persons are urged to attend.

Visitors in the Arnold Morris home Sunday afternoon were Edward and Reba Reasor of Lubbock.

The Muleshoe Tennis Association will meet at 7:30 p.m. Tuesday, June 16 in the high school cafeteria to elect a board of directors.

A weekend fun tournament will be planned and all interested persons are urged to attend.

South Plains Association of Governments and the Texas Department of Health are sponsoring an Animal Control Seminar on June 25 beginning at 1 p.m. in the SPAG Conference room. The seminar is open to the public.

Three area students attending Angelo State University in San Angelo, are listed on the Dean's Honor Roll for the spring semester at the University.

Those listed on the 3.50 to 4.00 honor roll include Judy Ann Lust of Muleshoe, Natalie Gayle Dollar of Farwell, and Sheryl Renae Dunham.

The spring 1981 Dean's Honor Roll at Wayland Baptist University includes Joel L. Bratcher of Muleshoe.

Bratcher, a freshman, posted a 4.00 grade point average on a 4.00 scale for the recently-completed term. He is the son of Mr. and Mrs. Charles Bratcher of Muleshoe.

John Stennis, Senator, (D-Miss), on military budget: "If inflation can't be reduced, the cost of these weapons is going to go out of the sky..."

Field Day...

Cont. From Page 1

Porter said this is a breakthrough in hybrid production, because all future generations will be fertile, with male sterile wheat lines.

Some of the hybrids are expected to produce almost 100 bushels an acre, he said.

Porter also guided visitors through nursery test plots where more than 200 varieties and experimental lines are being evaluated for yield and other characteristics. Oat, barley and a limited number of triticale are also being tested.

Tests to evaluate limited irrigation, plant water stress and water use efficiency of TAM 101 wheat and Post barley were explained to visitors by Jack Musick, USDA agricultural engineer at the laboratory. Eight water treatments involving amounts and timing of application, were applied.

During the past two good wheat seasons, Musick said, 90 to 100 bushels an acre were produced with two spring irrigations.

"The most important irrigation has been late boot to heading and the least important has been to irrigate during early spring vegetative growth," he said. The need for a grain-filling irrigation during late May can vary a lot depending on late spring rainfall and whether or not hot dry winds occur, he noted.

Progress in the first year of a study of fertilizer needs and the interaction of fertilizer and water treatments was reported by Dr. Harold V. Eck, USDA soil chemist. The experiment with TAM 105 wheat is studying two planting dates, six fertilizer treatments and four water treatments.

It is designed to determine proper fertilizer elements and rates for maximum production of high yielding, short strawed wheats; effects of drought stress during different growth stages on yield, and interacting effects of fertilizer and water treatments on growth and production.

Prior to the tour, Ross Wilson, Executive assistant with the Texas Wheat Producers Board, stressed the need for increasing export markets and explained the marketing efforts of US Wheat Associates. USWA is the market development arm of the wheat industry.

Wilson said the domestic use of wheat has not changed much in the past decade. Noting that the US produces 40 percent of the world wheat supply, Wilson said that in 1960, one acre in 10 in the US was produced for export. Today he said, two acres in every three of US wheat is for export.

"We still don't have enough export markets," he said, stressing that such

markets have to be developed.

A special feature of the field day was a bread baking demonstration by home economics agents of the Texas Agricultural Extension Service. Mrs. Irene Keating, Potter County agent, and Mrs. Barbara Fowler, Randall County agent, explained that similar demonstrations and baking workshops are being conducted throughout the state by Extensions agents to teach men and women the skills and the ease of baking homemade bread.

Other top stops included wind energy research, weed research, pine tree drought tolerance nursery, alfalfa variety trials, sunflower breeding and genetics, trials of Jose tall wheatgrass for forage, evaluation of high and low pressure center pivot irrigation systems, conservation bench terraces, dryland alfalfa seed production and beef cattle research.

Helmut Schmidt, W. German Chancellor, to leftist in his party:

"You have to stop letting yourself be fooled into believing the Americans are our enemies and the Russians our friends."

Wayland BB Camp Still Open

Youngsters still interested in attending the 25th annual Boys Summer Basketball Camp at Wayland Baptist University should

Safety...

Cont. From Page 1

positions of firing. Second and winner of a medal was Chris Faulkner with a score of 143. Holly Huckaby also winner of a medal placed third with a score of 136.

Other top ten shooters were Sean Shipman, with a score of 130; Donnie Nowlin, 129; Jerry Mendoza, 126; Matthew Madrid, 125; Glen Flowers, 122; Colin Tanksley, 121; and Zanna Huckaby, 120.

Also completing the course were Daryn Bratcher, Troy Watson, Kasey Whatley, Shain Berry, Alan Faulkner, Lisa Noble, Scotty Spies, Jeff Whatley, Edmund Clements, Chad Garlington, Timmy Shipman, Cooper Black, Allan Vinson, Doug Chitwood, Ramon Sanchez, Robert McCormick, and Chuck Bartholf.

All participants were awarded a certificate of completion from the 4-H organization.

make their reservations immediately, according to Camp Director Ron Mayberry.

Open to boys between ages of 8-15, this year's three week-long sessions are scheduled for July 5-10, July 12-17 and July 19-24.

The oldest boys' basketball camp in Texas features five-game league competition, offensive and defensive drills, and an All-Star game at the end of each session. Fundamentals are taught by Mayberry as well as WBU Assistant Coach Steve

Ratheal, noted high school coaches and members of Wayland's Pioneer basketball team.

Cost for each session is \$100 per resident camper and \$50 for commuters. Residents will receive dormitory, meals, tuition, entertainment, insurance, awards and a personalized camp shirt.

Interested persons may contact Mayberry or Rathel at (806) 296-5521 to make reservations. Enrollment is limited in all three sessions and a \$25 deposit is required at the same time application is made.

Here's a sensible weight-loss program that really works!

LOSE WEIGHT QUICKLY SAFELY, PERMANENTLY! NO PREPACKAGED FOOD NO SHOTS•NO DRUGS NO CONTRACTS

CALL TODAY

HOW TO WIN AT THE LOSING GAME

DIET CENTER

"The Natural Way to Lose Weight!"

Trade Wind Plaza
272-5487

COUPON \$50.00 NON-SURGICAL FACE LIFT WITH THIS COUPON

UNIQUE *Espreel* SKIN CARE

Muleshoe, Texas 272-4931

FREE COMPLIMENTARY SKIN CARE ANALYSIS

COUPON

True Value
HARDWARE STORE

FATHER'S DAY

GIFT IDEAS

<p>Q. Beam</p> <p>1400 Super Spot 30.95 23.21</p> <p>1601 Blue Max 36.55 27.41</p> <p>While Supply Lasts</p>	<p>BLACK & DECKER® DUAL 29" WORKMATE®</p> <p>A vise, work bench and sawhorse all in one. 29" vise jaws open to 5 1/4" wide. Swivel grips hold odd shapes and lumber up to 12" wide, up to 21" diagonally. Holds wedge shapes, pipe, etc. Folds for storage. 79-001</p> <p>5.96</p>	<p>10 lb. 1 can of Starter Fluid FREE With Cooker</p> <p>39.99</p> <p>STRUCTO SQUARE COVERED COOKER</p> <p>350 sq. in. chrome-plated cooking grid. 5-position positive grid adj. Adjustable draft control. Black</p>
<p>5.96</p> <p>WISE GRIP SET</p> <p>The original locking pliers. Use a vise clamp, wrench, wire cutters, etc. 5" and 10".</p>	<p>5.88</p> <p>PICNIC JUG 014 Bee</p> <p>1-gallon jug is lightweight and rustproof. Urethane insulated. Spout model.</p>	<p>20% off</p> <p>All Case Knives</p> <p>Pocket - Hunting - Cutlery - Sets</p>
<p>50.99</p> <p>ELECTRIC TRIMMER EDGER</p>	<p>9.44</p> <p>HIP ROOF TOOL BOX</p> <p>16-in. enameled steel box contains a full-sized tote tray with socket divider. 615</p>	<p>6255</p> <p>INSECT KILLER 93.99</p> <p>No spray or odor, black light lures flying insects. Runs on house current, no moving parts, safe for birds, bees and people.</p>

EXTRA SPECIAL, SPECIAL

Five Point

DOG FOOD

50 LB BAG 25 LB BAG

9³⁶ 5¹⁵

A&M

FARM AND RANCH SUPPLY

Alert Cat Food

3⁴⁵

10 LB. Bag

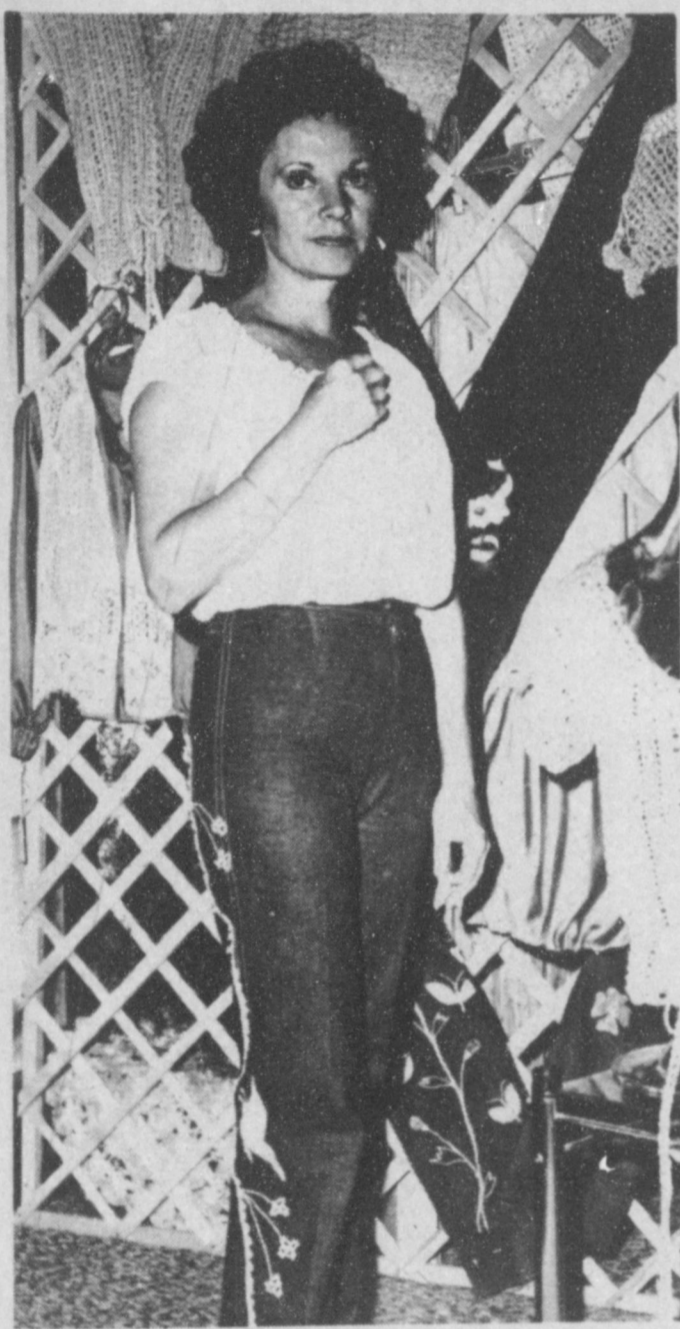
If Not N.O.W. When?

If you haven't yet combined your savings and checking accounts into a Muleshoe State Bank N.O.W. Account, you're losing interest—fast!! The N.O.W. Account acts like a regular checking account—there when you need it. Open a N.O.W. Account—now and watch your interest grow!!

MULESHOE STATE BANK

Member FDIC 272-4561

Women In Business: A vital part of the community



CHARLIE HANKS OF CHARLIE'S ORIGINALS

A reoccurring television commercial for a perfume depicts a woman who can "Bring home the bacon(money) fry it up in a pan, and never, never, let you forget you're a man...."

Perhaps a little over done, this commercial tries to capture the many faces of women who not only handle the frying, cooking, and cleaning and nurture the husband and children, but are also successful members of the business community.

Today more and more women are not only entering the business world as managers, but entering as bosses and even owners.

Locally, we have witnessed this influx of women bosses into perhaps a one of a kind operation at the Tradewinds Plaza on American Boulevard.

What once housed a lumber yard, with a great deal of imagination and hard work and desire, now houses eight businesses owned and managed primarily by women.

Charlie Hanks, initiator-owner of the mall had outgrown her building where her business, Charlie's Originals was and along with her husband, purchased the former lumber yard "because it was the right thing to do." Charlie opened her custom clothing shop in the plaza a year ago.

"You have to have a lot of desire behind it, along with hard work."

At Charlie's, each customer gets clothing just the way she wants them. Under Charlie's design and direction, clothing and accessories are chosen beginning with the cloth or thread and yard. Crocheted tops, embroidered and painted jeans and purses made by women of this community and other items from Dallas and Oklahoma are all part of the unique business offered by Charlie.

"I want to offer them (customers) something that they can't get somewhere else," she said, adding, "I want to dress an individual so she looks nice in a pair of jeans... and they fit her."

Customers at Charlie's come from all over the state, "some of them come and spend the night while I'm fitting them, this is a benefit to the community." Charlie also holds style shows out of town.

"You have to have a lot of desire behind it, along with hard work," is Charlie's secret to making a business work. "Every day is a new challenge to me and it keeps work interesting."

Starting this challenge was a hard experience for Charlie. "Men don't think women can handle it and this is a disadvantage to women." But Charlie feels that most women want to be independent and when money is a little freer there will be even more women business owners.

"Men don't think women can handle it, and this is a disadvantage to women."

Ruby Willman, who runs Charlie's Espre, has worked in business since 1934. Ruby bought into the cosmetics business in December of last year and she loves working with the public. "I borrowed the money so I had faith in it." Faith not only in the business but in herself as a businesswoman.

"I Finally Got It Together, But I Forgot Where I Put It" is one of the favorite T-shirt transfers at Ann's T-Shirts in the Plaza, but owner Ann Williams, doesn't wear it. Ann Williams opened the business in November and has been going great guns ever since.

"We do shirt lettering for individuals and groups and have over 200 transfers in stock and we also have transfers custom made."

Ann's customers are all sizes and ages and they find an owner who really likes people. "You have to."

Her husband, Marshall Catfish, and her three daughters encouraged Ann to start the business. "I didn't face many problems except getting the business in my name. You have to work at meeting the budget, but it is the same thing as running a home." Her daughters, Suzanne, Kim and Marsha are a big help to her.

Good help at home is another key in making a business a success according to Sherry Shipman, owner of The Wallflower. "My husband is a big help and my kids have learned there are some things they can do for themselves. Garry is a very active father and has a sense of responsibility to his family."

But Sherry adds that not all men are like her husband. They think it is her (the wife's) job to take care of the family and keep the home fire burning.

But there is a drawback for Sherry. "I love this work but sometimes I feel like I am missing things at home." Sherry and her husband have three sons and one foster son. "I love my home, but my thing is to be around people. Sherry and Garry have three sons, Sean, Timmy and Tod and a foster son, Kent Reynolds.

"I love this work but sometimes I feel like I am missing things at home."

Starting her business on a "wild hair," Sherry took the challenge of converting a lumber bin into an attractive store providing home accessories of wall hangings, shades, shutters, woven woods and art works from artists in this area.

An interior designer, Sherry is concerned with the economy today, but so far, "I have been able to handle it."

"A small business is the hardest thing to get going....you have to work hard....and sell that business," advises Jama Brown, who runs the Diet Center in the Plaza.

"Before a woman gets into business she has to decide if it is what she needs and wants to do," she added.

"Before a woman gets into business, she has to decide if it is what she needs and wants to do."

"But once a woman gets into a business, she should never hold back but go at it full blast! It is just like anything else you do you have to put the best into it you know how."

According to Jama, Muleshoe is starting to accept the businesswoman more. "They have grown accustomed to the fact that the women's place is in the community."

Jama is planning a move to Midland and she is going at it full blast. "Everyday you learn something if only we could remember what we learn."

But this learning is not only learning about oneself and the business but also learning about your partner.

Expressions Gift Shop owners Marsha Watkins and Louise Engelking, have learned to help each other.

"It is so much better to have a partner," said Marsha. "I not only have a built-in babysitter in Louise's daughter, but if we are undecided about something one of us eventually decides."

Marsha opened the business which features china and glassware, cards and gift items in September of last year and Louise became her partner in January of this year.

"We try to stock items that are different and are affordable. Although shopping downtown is more convenient, we want to make it worth the trip out here."

Marsha and Louise were friends before becoming partners but making the business work takes more than being friends.

"You have to keep your life in perspective. The family comes first...always."

"You have to keep your life in perspective. The family comes first....always. We are lucky our hours are flexible and we help each other," said Marsha. But the two also depend on friends, who step in when needed.

"If you put your family first, everybody will be happy," she added. "The kids all help....they can whip up a mean sandwich." Marsha and her husband, Glen, have two children, April, 7 and Jon Robin, 6.



SHERRY SHIPMAN OF THE WALLFLOWER

"I have an understanding farmer....he takes the kids places and doesn't fuss if he doesn't get a big lunch," said Louise. She and her husband, Jerry, have two children, Chandra, 13 and Britt, 8. "They get a list of things to do when I go to work and they check them off as they go. Things may not be perfect, but they are done."

The two partners did not experience many problems in starting the business. "Our husbands names are on the business and that had an influence," said Louise. "I don't think we would have gotten it if we had been single," added Marsha.

But the business is theirs and they are going to make the best of it. "You have to keep your spirits up. It is a new day each morning and you have to do the things that have to be done," advises Marsha. The partnership is working contrasting Marsha's free spirit and sense of humor with Louise's sense of perfection and concern.

So businesswomen are taking their place in the Muleshoe area. These women along with Rheata Peeler White Art Studio, Betty Campbell and Imagination Plus, Sherry Stevenson and Sherry's Art Shack are just a sampling of the 37 women business owners and six husband-wife teams in Muleshoe. They are a sampling that shows the many faces of a woman can be worn successfully and much can be accomplished with desire, determination, hard work and plenty of help and understanding in the businesswoman's world.

Businesswomen: Contact the Muleshoe Chamber of Commerce and Agriculture for information about the new Women's Division



MARSHA WATKINS AND LOUISE ENGELKING OF EXPRESSIONS



TRADWINDS PLAZA ON AMERICAN BOULEVARD

STATE CAPITAL HIGHLIGHTS

By Lyndell Williams
TEXAS PRESS ASSOCIATION

AUSTIN—The 67th Texas Legislature adjourned and went home last week, ending a colorful and hard-working session . . . but the Governor promised to recall them soon for a special session for unfinished business.

High on the list of special session priorities will be congressional redistricting, higher education funding, tax reform, licensing of medical doctors and state water projects.

If it was a hard-working session, it was also hard fought. More than one incident involved lost tempers and impolite words, mostly over the redistricting issue.

One reporter described the redistricting process as, at best, a political knife fight in a dark room. Sometimes near fighting occurred in broad daylight.

The congressional districts in Dallas appear to be the real sticking point. Governor Bill Clements has stated publicly that two Democrat congressmen from his hometown must be left vulnerable (Jim Mattox and Martin Frost) and threatened to veto any bill to the contrary. He also wants Frost's district to be redrawn as a minority district.

The plan which failed would have created three districts, but was attacked as unfair gerrymandering by both liberal Democrats and GOP party officials. And that's not the only incidence of displeasure from the far right and far left.

Dallas State Rep. Paul Ragsdale nearly got into a fight with a Dallas labor leader outside chamber doors, and Houston State Rep. Craig Washington had security guards arrest a man from a GOP-coalition group who had grabbed him in the foyer. Both legislators escaped unharmed.

In both shouting incidents, the citizens were angered over so-called back-room deals involving the

Dallas redistricting process. Ironically, both Ragsdale and Washington had earlier in the session argued for a bill allowing legislators to carry handguns.

Bob Bullock

The Legislature did approve redistricting plans for state senators and state representatives, much to the disappointment of Comptroller Bob Bullock. Had those bills failed, the redistricting task would have gone to a five-member board which would have included Bullock.

The Comptroller apparently was relishing that sort of power. More than one legislator complained Bullock appeared on the House floor in something of a state to threaten them with political annihilation.

When Atty. Gen. Mark White issued a legal opinion last week indicating the legislative redistricting plans did not violate any voting rights, he, too, drew Bullock's ire.

Bullock, now left out of the redistricting process entirely, called White "lily-livered" and said the opinion was a "politically expedient copout."

Approved Bills

Bills which were approved by the Legislature and sent to Gov. Bill Clements to be signed into law included:

—A \$26.6 billion state budget for 1982-83 fiscal years.

—Legalization of wire-taps and microphone bugging in felony drug trafficking cases.

—Raising the ceiling on most consumer loans to 24 percent.

—Permitting a pharmacist to substitute generic drugs for more expensive, brand-name drugs.

—Raising the legal drinking age to 19.

—Requiring motorists to have liability auto insurance.

—Prohibiting ticket scalping at college sports and entertainment events.

—Creating low-level nuclear waste dumps in Texas.

—Outlawing the sale of drug paraphernalia.

—Imposing a \$1,500 annual license fee for adult book-firm stores.

ing at college sports and entertainment events.
—Creating low-level nuclear waste dumps in Texas.
—Outlawing the sale of drug paraphernalia.
—Imposing a \$1,500 annual license fee for adult book-firm stores.

Proposed Amendments

The Legislature also approved seven proposed constitutional amendments to be submitted to the voters, but only three of them will be on a special election ballot next Nov. 3. The other constitutional changes won't be up for voter approval until the general election of 1982.

Amendments on this year's Nov. 3 ballot would have the following effects:

—Allow local option exemptions of as much as 40 percent of appraisals on homesteads for three years, dropping to 30 percent for the next three years and 20 percent for the one year after that.

—Allows livestock and poultry to be exempt from property taxation, along with some farm products.

—Sets up a seven-member executive and legislative committee to exercise limited budget controls after the appropriations bill is passed, such as to allocate federal aid if the Reagan Administration wins its fight for "block" grants to substitute for categorical kinds of aid.

ALL IS PURPLE

NEW BRUNSWICK, N.J.—Dozens of vehicles were dyed "Easter egg" purple and a 15-mile section of the New Jersey Turnpike was closed for six hours recently after a tractor-trailer spilled a dye that was activated by rainfall, police said.

ON BABY FORMULA

GENEVA, SWITZERLAND—In a stinging rebuke to the United States, the World Health Organization voted almost unanimously for a set of intricately drafted guidelines that propose strict regulations on how baby formula is marketed.

Three Way News

By Mrs. H.W. Garvin

Mrs. Bulah Toombs spent Wednesday in Morton visiting her daughter, the Bob Vinsons.

Mr. and Mrs. George Tyson were in Amherst Tuesday night to entertain the senior citizens.

Mrs. H.W. Garvin was in Clovis Wednesday to attend the graduation of her grandson, Wayland Fox, who graduated from Garris Junior High with an outstanding award for singing in the chorus. Wayland Fox came home with his grandmother for a visit.

The Three Way home room was the scene Sunday afternoon for a bridal shower honoring Judy Morgan, bride elect of Dee Sanderson.

Mr. and Mrs. George Tyson spent Thursday and Friday in Lubbock with their daughter, the Tommy Durhams.

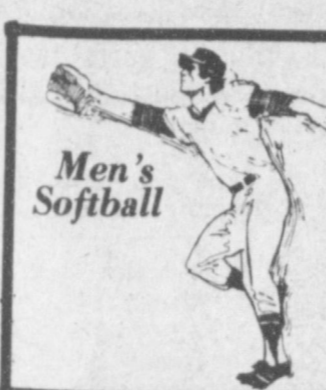
Guests in the home of Mrs. H.W. Garvin for lunch Sunday were Rev. and Mrs. Marvin Gregory and daughter from Morton and Mrs. Kenneth Fox and son from Clovis.

Christen and Millasa Green from Shallowater is visiting their grandparents, the Jack Furgesons this week.

Vacation Bible School started at the Three Way Baptist Church Monday morning.

Mrs. D.A. Williams and son, Dewayne, from Enochs and Mrs. H.W. Garvin from Maple were dinner guests in the George Tyson home Sunday.

Dinner guests in the Robert Kindle home Sunday were Mr. and Mrs. Bobby Kindle and girls, Mr. and Mrs. Bobby Foley and family, the James Kindle family, the Joey Kindle family and Cliff



Friday, June 5
Aztecs, 3, Cudas, 4;
WAK, 11, Western 66 Marauders, 24; Stars, 2, WAK, 9; Western Sprinkler, 27, Stars, 2.

Monday, June 8
WAK, 7, AVI, 10; Cudas, 11, Enochs, 7; Missouri Valley II, 6, Aztecs, 17.

Tuesday, June 9
Leal's, 20, Western Sprinkler, 17; Three Way, 17, Missouri Valley II, 10; Missouri Valley I, 3, Western 66 Marauders, 18.

Thursday, June 11
WAK, 19, Enochs, 5; Aztecs, 15, Western 66 Marauders, 19.

Hindrick from Lubbock.

Mr. and Mrs. Jimmy Wheeler from Lovington, New Mexico visited the Joe Wheelers Thursday.

"You must cooperate," often means, "Let me have my way."

A lot of youngsters will start appreciating summer freedom soon.

So far, no one has developed a way to develop a business without someone putting in hard work.

Faith and patience are great assets and wonderful aids if you have them when you need them.

Principle must be above expediency if our political system is to endure.

Successful living, which few of us acquire, depends upon simple things.

ON PERSONAL INCOME
WASHINGTON -- In a new indication the national economy is slowing down, the Commerce Department reported recently Americans' personal income and spending rose in April by the smallest percentages since last spring.

The Averaged Billing Plan From Southwestern Public Service.

"A PLAN FOR ALL SEASONS"



"My fixed income got a big break now that I'm on the Averaged Billing Plan."



"Averaged Billing makes it easier to make ends meet because it smooths out the highs and lows of your monthly electric bill. Like your friends, you can have it too. Depend on it to help... just give me a call at SPS."



"I know just about how much my electric bill will be each month... there are no more surprises."



We changed to Averaged Billing with one phone call to SPS. And now, our family budget is easier to plan."



SOUTHWESTERN PUBLIC SERVICE COMPANY

930.1



FIRE LEVELS WHEAT FIELD.... Approximately 35 acres of wheat were lost to fire Thursday afternoon. The field, which is located about 3 1/2 miles west of Needmore, belonged to Randy Marlow. A combine left running in the field was the apparent cause of the fire.

True Value
BARGAIN OF THE MONTH

now 4.99

24-Hour VARIABLE TIMER
The Supercop™ will make any lamp, radio or TV go on and off at the same or slightly different times each day to create a lived-in look. D711

True Value
HARDWARE VALUE OF THE MONTH

now 3.99

24-in. WIDE OUTDOOR BROOM
Heavy-duty natural Palmyra bristles sweep mud, leaves, sawdust, more. Molded plastic block won't splinter, crack or mildew. 25-3819

Quantities Limited
While Supplies Last

Summer Tire Sale

Cordovan All Season STEEL BELTED RADIAL Premier IV

OUR BEST

STOCK NO.	SIZE	REG.	SALE	FET
23C45	P21575R15	81.24	66.95	2.58
23C49	P22575R15	85.96	70.95	2.74
23C64	P23575R15	89.29	73.95	2.85

FREE MOUNTING * FREE BALANCING
*** NO-TRADE REQUIRED**
*** FULL ROAD HAZARD GUARANTEE**
*** OPTIONAL COMPUTER BALANCE ONLY \$3.50 EA**
*** ADDITIONAL MOUNTING CHARGE ON ALL SPLIT RIMS**

A & M

FARM & RANCH SUPPLY
1601 S. AVE. D. PORTALES

Jet Star 120
4 Ply Polyester Cord

Stock No.	Size	Reg.	Sale	FET
17C11	A78-13	33.75	27.95	1.50
17C14	B78-13	34.99	28.80	1.61
17C15	C78-13	36.71	30.50	1.79
17C38	C78-14	36.82	30.50	1.68
17C39	D78-14	37.43	30.95	1.77
17C40	E78-14	39.95	32.95	1.75

Two super strong belts of steel cord under the tread provide bruise resistance and stability for long wear.

Radial body plies of polyester cord give a smooth ride with flexibility and strength in the sidewalls, and help to save gas.

Aggressive tread design with thousands of biting edges for good traction on both wet and dry pavement.

Hi-Traction tread rubber compound flexible at temperatures below freezing to maintain good traction.

Special tread design contributes to low noise level while providing great gripping action.

Tapered shoulder design with deep grooves produces good traction on curves and hills.

New P-Series sizes for low profile appearance and excellent driving performance.

Stock No 45CII
Size P165-80R13
Regular 4382

\$36 Plus 1.68 FET

Stock No.	Size	Reg.	Sale	FET
45C13	P175/80R13	48.31	39.95	1.74
45C38	P185/75R14	53.99	44.50	2.52
45C39	P195/75R14	55.02	45.50	2.06
45C41	P205/75R14	58.56	48.50	2.34
45C60	P215/75R14	61.76	50.95	2.49
45C66	P225/75R14	63.53	52.50	2.62
45C34	P205/75R15	60.04	49.50	2.46
45C45	P215/75R15	63.93	52.75	2.62
45C49	P225/75R15	65.96	54.50	2.79
45C64	P235/75R15	70.60	58.50	2.95

Courthouse News

WARRANTY DEEDS

Sallie Mae Schuster to Jack Schuster--The East 133.22 Acres of Labor 16, League 191, Ector County School Lands, Bailey County, Texas.

All of Labor 17, League 191, Ector County School Lands, containing 177.10 Acres more or less.

Sallie Mae Schuster to Dorothy Crow--All of the (E/2) of Section 118, Block A, Melvin Blum and Blym Subdivision, Bailey County, Texas.

All of Labor 13, League 188, Ector County School Lands, Bailey County, Tx.

All of the Northeasterly 10 ft. 3 inches of Lot 14, Block 12, of the Original Town of Muleshoe, Bailey County, Texas.

Sallie Mae Schuster to Joannah S. Gartin--All of the West 22.49 Acres of Labor 16, League 191, Ector County School Lands, Bailey County, Texas.

The (N/2) of Section 131, Block A, Melvin Blum and Blum Subdivision Bailey County, Texas.

All of Lot 5, Block 2, Hillcrest No. 2, Addition to the Town of Muleshoe, Bailey County, Texas.

Billie E. Bickel and wife, Priscilla Kay Bickel to Samuel A. Scott and wife, Dolores C. Scott-- The Northwesterly 72.58 feet of Lot Number (137), Rich-

land Hills Addition to the City of Muleshoe, Bailey County, Texas.

Emmett W. (Fee) Dean to H.J. (Jesse) Leal--All of Lots (1), (2), (3), (4), (5), (6), (7), (8), (9), (10), and (11), in Block Number (1), Legion Addition to the Town of Muleshoe, Bailey County, Texas.

Joe Copley and wife, Lela Copley, Darrell Wade McDaniel and wife, Rebecca Lynn McDaniel--All of the (E/2) of the (N/2) of Tract (4), Alesworth Acres, out of Tract (10) Milroy Subdivision, out of the (SW/4) of Section (32), Block Y, WD & FW Johnson Subdivision, Bailey County, Texas.

H.P. Bonner and Hershel Bonner to Daniel L. Navejar and wife, Sandra B. Navejar--All of Lots Numbers (17) and (18), in Block Number (19), Original Town of Muleshoe, Bailey County, Texas.

Gene Kistler to Beulah K. Hobbs--The East 115 feet of Lots Nos. (9), (10), (11), and (12), Block (40), of the Original Town of Muleshoe, Bailey County, Texas.

Ethel Arwine to Beulah K. Hobbs--The East 115 feet of Lots Nos. (9), (10), (11), and (12), Block (40), of the Original Town of Muleshoe, Bailey County, Texas.

Merle Kistler to Beulah K. Hobbs--The East 115 feet of Lots Nos. (9), (10),

(11), and (12), Block (40), of the Original Town of Muleshoe, Bailey County, Texas.

T.L. Glasscock to Glenna Gregory--The (E 46') of Lot Number (12) and the (W 25') of Lot Number (13), in Block Number (4), Highland Addition to the Town of Muleshoe, Bailey County, Texas.

Robert David Goodwin and Deborah Juanita Waters to Homer Allgood--The (E'ly 10') of Lot Number (102), Richland Hills Addition to Muleshoe, Bailey County, Texas.

H.G. DeLoach and wife, Karen S. Harris--A 19.47 Acres Tract of Land being the East one-half of the Northwest Quarter of the Northeast Quarter of Section 21, Block Y, WD & FW Johnson's Subdivision No. 2, in Bailey County, Texas.

Jack Kemp, James Kemp, Ida Mae Shofner and Ruby Faubus to Frank Kemp and wife, Margie Kemp--All of Lot Number (10), in Block Number (30) Original Town of Muleshoe Bailey County, Texas.

DISTRICT COURT
Reymundo DeLaRosa Falcon and Maria Virginia Falcon -- DV

Tri County Savings and Loan Association VS Josemaria S. Orozco and Robert Orozco -- Judgement
COUNTY COURT
Samuel Mark Peden -- Order granting misdemeanor probation

Ance! Ashford, DBA Muleshoe-Electric VS Rocky Gore -- Judgement
J.L. Green -- Worthless Check -- Four Dollars
Jacobo Rivas -- DWI -- \$125 Fine and 3 Days Jail
David Gross -- DWI -- \$125 Fine and 3 Days Jail

Habib continues to try to defuse missile crisis.

Mrs. Truman responding to treatment.

Joan Baez barred from performing in Brazil.

More bombs found in New York.

Anniversary of Mt. St. Helens blast passes quietly.

Pope celebrates 61st birthday in hospital.

Eloise Gray Services Held Here Monday

Funeral services for Eloise Gray, 66 were held at 11 a.m. Thursday in the Ellis Chapel of the Chimes with David Cox, minister of the Muleshoe Church of Christ, officiating.

Interment was in the Bailey County Memorial Park under the direction of Ellis Funeral Home. Mrs. Gray died Tuesday at 5:45 p.m. in Lubbock General Hospital.

She was born November 2, 1914 in Hoffman, Oklahoma and moved to the Muleshoe area in 1934 from Lorenzo.

Survivors include a sister, Mrs. Ida Mae Pearson of Port Isabel, Texas.

Pallbearers were Ross Goodwin, C.B. Howard, Bob Byrd, Rance Williams, James Meason and Willard Rainwater.

Ellis Funeral Home
24 Hour Ambulance Service
Ph. 272-4574 Muleshoe

Nursing Home News

By Joy Stancell

Thursday afternoon Mrs. Shipp, Mrs. Pugh, Mrs. Taylor, and C.W. Wilhite came to play 42 and dominoes with Alma Henley, Russ Dunca, Edith Bruns, Bertie Hendrix, and Rosemary Pool. Several of the residents looked on the games. Refreshments of pop corn was served to the residents and visitors.

We wish to thank Muleshoe Floral for furnishing the fresh flowers for our special dinner.

Sunday morning E.B. Wilson came to have Bible study with the residents.

The Independent Baptist came to have a sing along with the residents Sunday

afternoon.
Tuesday one of the auxiliary ladies gave the residents manicures.

The Spudnut Shop brought Spudnuts to the Nursing Home Monday.

Mrs. J.U. Dawson visited the Nursing Home Tuesday. Jerry Hutton visited Monday.

Willie Steinbock went out visiting with his family this week.

Bertie Hendrix was visited by Jerry Hutton, Leean, Hilbert and Judy.

Lula Embry was visited

by Joe, Floyd, Calvin, Lula Mae and their families.

Mrs. Messiner was visited by Mrs. Krigel, Calvin, Mrs. Bertha Arcia, and Mr. and Mrs. Ramm.

Ona Riffie was visited by Mrs. Chambless and Mrs. Odom.

Alma Henley was visited by Mrs. Opal Pugh, Mrs. Taylor, Mrs. Shipp, Carol and Mabel.

Reagan, Schmidt discuss arms talks with Soviets.

UMW president: no progress in soft coal dispute.

Gunmen seize hostages in bank in Spain.

American Life & Accident Insurance Company
Cash Burial Cancer N S C A Group
Hospitalization Life Insurance
Specialist in the 100% Medicare Supplement

Robert Wilson
Local Branch Office
Box 431 Phone 272-4069 #7 Briercroft Ofc. Park
Muleshoe, Texas 79347 Suite 110 Phone 806 765-8985
Lubbock, Texas 79412

West Plains Medical Center Report

ADMITTED
June 8, Mary Wortham, Gumerindo Aguirre, Pat Randolph, Eva Wooley, Velma Fried

June 9, Karen Trieder, Anzelma Vella, Elias Cantee, Barbara Reeder

June 11, Iva Vinson, De Witt Precure

DISMISSED
June 8, Rafael Rodriguez

June 9, Raquel Sierra, Barbara Randolph, Nettie Long, Iva Smith, Jack Harper, Marshall Head, Randolph Wiedebush, Annie Brown, Terry McCamish, Fadine Wooley

June 10, Carol Sexton and baby girl, Melvin Griffin, Maria Alvarado and baby girl, Joel Lambert, Jana St. Clair and baby boy, Karen Treider

June 11, Patsy Chance, Barbara Reeder, Minnie Ellis, Velma Fried, Maggie Bruns, John Drake, Pat Randolph and baby boy, Anzelma Vella and baby

agri-facts

By Bill Wooley

The fate that befell Humpty Dumpty is hurting egg producers according to the U. S. D. A. which reports although the average U. S. laying hen produced a record 243 eggs last year, that total could have been as high as 260 per hen, had the shells been just a fraction sturdier. Not only a direct cash loss to the producer, shell breaks also cause additional problems in terms of appearance, for example. One broken egg in a carton can soil the others, classifying the entire contents as "dirties". Shells too fragile for mechanized gathering systems result in a 7 percent loss even before they leave the hen house, according to some estimates. Studies completed in 1970 indicated that up to 11.8 percent of eggs were cracked or smashed between nest and carton. Research continues for a solution which will toughen up shells while not causing any reduction in the quality of the egg itself.

Wooley International, Inc.
W. Hwy 84
272-5514

ATTEND THE CHURCH OF YOUR CHOICE

MULESHOE ASSEMBLY OF GOD
517 S. First
Rev. James Golaz

EMMANUEL BAPTIST CHURCH
Iglesia Bautista Emmanuel
107 E. Third
Isaia Cardenas, Pastor

RIGHLAND HILLS BAPTIST CHURCH
17th and West Ave. D
Brock Sanders, Pastor

SPANISH BAPTIST MISSION
Rev. Aradio Gonzalez
East Third and Ave. E

TRINITY BAPTIST CHURCH
314 Ave. B
Don Knight, Pastor

LONGVIEW BAPTIST CHURCH
B.C. Stonecipher, Pastor
Phone 946-3413

SIXTEENTH AND AVE. D CHURCH OF CHRIST
James Johnson, Pastor
Sunday - 10:30 a.m.
Evening - 6 p.m.
Wednesday - 8 p.m.

PROGRESS BAPTIST CHURCH
Progress, Texas
Danny Jackson

NORTHSIDE CHURCH OF CHRIST
117 E. Birch Street

SPANISH ASSEMBLY OF GOD
East 6th and Ave. F
Rev. Hipolito Pecina

UNITED PENTECOSTAL GOSPEL LIGHTHOUSE
207 E. Ave. G
George Green, Pastor

MULESHOE BAPTIST CHURCH
8th and Ave. G
Bob Dodd, Pastor

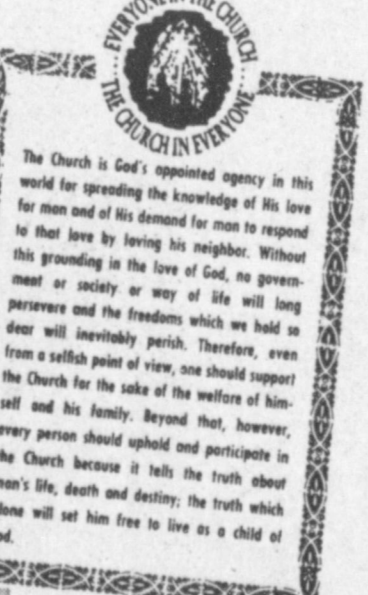
FIRST BAPTIST CHURCH
Rev. J.E. Meeks

CHURCH OF THE NAZARENE
Ninth and Ave. C
Rev. David Gray, Pastor



A NEW BIBLE...
for ME!

She really is delighted because her church is presenting her with a new Bible. She understands and appreciates this gift, because in earning it she has committed many verses to memory, and thus learned to value God's word. The churches desire that all would study and learn to love God. Plan to attend church and share in this knowledge and joy.



FIRST CHRISTIAN CHURCH
130 W. Ave. G
Rev. Walter Bartholf
Sunday School - 10 a.m.
Worship - 11 a.m.

LATIN AMERICAN METHODIST MISSION
Ave. D and Fifth Street
R.Q. Chavez, Pastor

THE COMMUNITY CHURCH
H.D. Hunter, Pastor
Morton Highway

CALVARY BAPTIST CHURCH
James Williams, Pastor
1733 W. Ave. C

PROGRESS SECOND BAPTIST CHURCH
Clifford Slay, Pastor
1st and 3rd Sundays

FIRST UNITED METHODIST CHURCH
Rev. Bill Kent
507 W. Second, Muleshoe

ST. JOHN LUTHERAN
Lariat, Texas
Herman J. Schelter, Pastor
Sunday School - 10 a.m.
Worship - 11 a.m.

PRIMITIVE BAPTIST CHURCH
621 South First
Elder Bernard Gowes

MULESHOE CHURCH OF CHRIST
David Cox, Minister
Clovis Highway

JEHOVAH WITNESS
Friona Highway
Boyd Lowery, Minister

IMMACULATE CONCEPTION CATHOLIC CHURCH
Father Patrick Mahar
Northeast of City in Morrison Addition

ST. MATTHEW BAPTIST CHURCH
Corner of West Boston & West Birch
Rev. M.S. Brown, Pastor

Father's Day Specials!

Come by and see our specials for Father's Day and let Dad sit back under the cool breezes of his new ceiling fan.

952 WA

52" full feature Parlour Fans beginning at **\$199**

Whether its the Broadway Limited Edition Casablanca or the 3-Blade Encon utility fan, we've got the fan for you. Eastern New Mexico's largest selection of quality ceiling fans.

ENERGY EMPORIUM
114 W. 21st.
Clovis Ph. 762-4238
(across from)

Muleshoe Home Center, Inc.	Lee's Western Wear Inc. 1910 W. Amer. Blvd. 272-4663	COX 401 S. First 272-4511	Dairy Queen Margie Hawkins Manager 272-3412
Muleshoe Co-op Gins	White's Cashway Grocery Where Friends Meet and Prices Talk	Bratcher Motor Supply 107 E. Ave. B 272-4288	Western Sprinklers Inc. ZIMMATEL 272-4544
Robert Green Inc. Your Oldsmobile, GMC, Pontiac, Buick Dealer W. Hwy. 84 272-4588	Dent-Rempe Implement Co. John Deere Dealer Muleshoe	Western Drug 114 Main	Muleshoe Body
Main Street Beauty Salon	Kemp's Discount	Muleshoe	Muleshoe Body

Tax Seminar Scheduled For Farm/Ranch Heirs

Steps for passing on to heirs an operating farm or ranch business and at the same time lowering the estate tax burden will be detailed at a special estate planning seminar in Lubbock June 18-19.

The seminar has been especially designed by economists in management with the Texas Agricultural Extension Service to help people in agriculture who want to pass on their farm operation to the next generation, said Marvin O. Sartin, area Extension economist.

The two-day program at the Holiday Inn, 6624 Avenue H at South Loop 289, will be limited to the first 50 persons to register. This will provide participants maximum opportunity to discuss specific problems and opportunities with the speakers, Sartin said. Each day will begin at 9 a.m. and conclude at 4:30 p.m.

Registration forms may be obtained from county Extension offices or by writing to Sartin, Texas A&M University Agricultural Research and Extension Center, Rt. 3, Box 213AA, Lubbock, Texas 79401. The registration fee of \$50 includes seminar

Energy...

Cont. From Page 1

100 percent efficient, not even a perfectly designed new unit. Energy is lost within the electric motor or internal combustion engine because of operating characteristics.

Once in use, the pumping plant efficiency will generally decrease due to normal wear. When efficiency goes down, the energy required to pump the water goes up...but how rapidly the pumping plant efficiency may change will depend on many factors. Yet by maintaining as high of an efficiency as possible, pumping costs will be lowered resulting in higher net profits for the irrigator.

Two devices on an irrigation system that can be valuable equipment for an irrigator are a water meter and a pressure gauge.

A water meter is often not sold with an irrigation pumping plant unless requested by the irrigator. Most water meters provide an instantaneous reading of the quantity of water that is being pumped. A change in the meter reading during the season may indicate wear in the pump, change in water levels, wear in sprinkler equipment or some other problem. Early indication of problems can often be obtained from water meter readings. Also a pressure gauge at the pump discharge can serve as an indicator for trouble when pressure readings change in an irrigations system.

Keeping records of water meter readings, pressure gauge readings, and the quantity of energy utilized can serve as an excellent guide to the irrigator for maintaining and keeping the system operating at the highest performance and efficiency.

The Soil Conservation Service, in cooperation with the High Plains Underground Water Conservation District, has the equipment necessary to evaluate pump energy costs as well as measuring the efficiency of water being applied throughout a given sprinkler or furrow system. For further information on any aspect of irrigation management contact the Soil Conserva-

materials which will help participants set up their own estate plans, lunches both days and refreshments.

The seminar will begin with a discussion on estate taxes, including tax rates, deductions and expenses. A special segment will help farmers and ranchers provide fair treatment for heirs who want the business and others who don't. Another segment the first day will provide detailed information on estate planning tools for agriculture. This will deal with corporations, partnerships and selling part of the business to heirs.

The second day of the program will focus upon special estate tax rules for agriculture. These include farm land valuation, rules

for deferred estate tax payment, life insurance, "flower bonds" and other property.

Conducting the seminar will be Sartin, Dr. Wayne A. Hayenga and Norman Brints. Sartin, an Extension economist - management for 10 years, also is a certified public account-

tant and was formerly with the Federal Land Bank. Hayenga is project group supervisor in farm management with Extension, and an attorney. He has experience in commercial banking and economic research and maintains farming and banking interests. Brints is Extension area economist - management at Vernon, where he has served since 1964, working with farmers and others on tax planning.

Outdoors & Travel

by E. L. "Buck" Rogers

When it comes to preferences in fish, I have found most anglers to be very opinionated.

Bass fishermen, once they become inoculated with the mania, are literally fanatics on the subject. Most won't fish for crappie, and some of them can't even spell the word trout. They collect bags of plastic worms in every shade, style, and flavor. Would you believe there's a color called "motor oil" and fruit-flavored worms, as well. They drive "bass boats," spend most of their time peering in little electronic boxes for underwater "structure," have a language all their own, and wouldn't be caught dead on a golf course.

Trout fishermen, especially fly rodders, are equally opinionated. North country trout fishermen completely ignore the presence of wall-eye, smallmouth, and northern pike in the same waters. Those "back east" are brookie addicts. Western anglers chase rainbows.

Ed Zern and I, he's the fishing editor of Field & Stream, recently hopped a Braniff jet and flew to Tierra del Fuego. There we got acquainted with sea-run brown trout, and a normally unprejudiced man became as opinionated as the vocal majority.

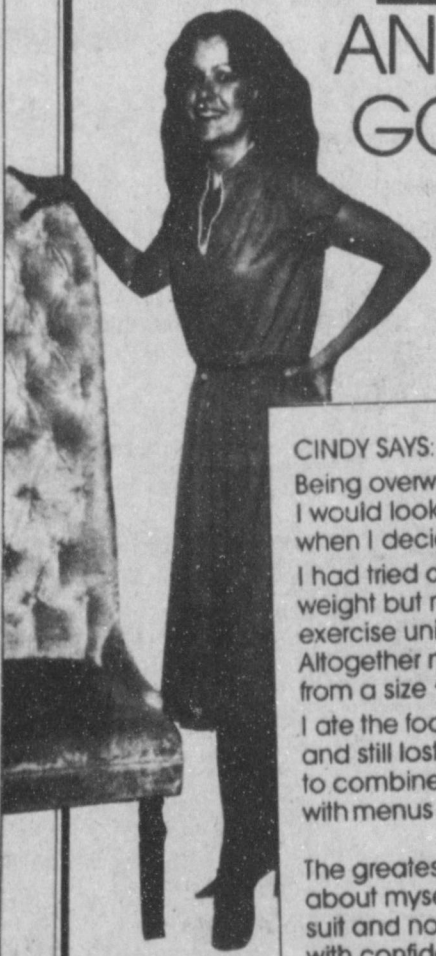
Pope forgives man who shot him.



CORN AS HIGH.....Not quite as an elephant's eye....but growing area corn producers stand to make a good crop this year if weather and moisture holds.

LOSING 49 POUNDS AND 79 INCHES, GOING FROM SIZE 18 TO SIZE 5!

Truly a dream come true for Cindy Hernandez.



AFTER PAT WALKER'S

CINDY SAYS: Being overweight most of my life I used to dream of how I would look were I thin. Well, my dream came true when I decided on Pat Walker's.

I had tried different fad diets and was able to lose weight but never inches. In using the Pat Walker's exercise unit I lost 11 inches the first week. Altogether now I have lost over 79 inches and went from a size 18 dress to a size five.

I ate the foods I liked on the program and still lost weight. I learned how to combine my foods, never got bored with menus and I even ate good desserts!

The greatest thing is how I now feel about myself... I bought myself a swim suit and now lounge around the pool with confidence. Shopping is no longer an embarrassment since there is a variety of clothes from which to select my new size.

Pat Walker's program taught me good eating habits which now make it possible to keep the weight off. Pat Walker's really works! Cindy Hernandez Houston



BEFORE PAT WALKER'S

DREAMS ARE NOT JUST FOR DREAMING... they do come true for the decision makers and first step takers.

Your first move in the right direction is to reach for that telephone right this minute while it's on your mind. Make your appointment for your no-obligation figure analysis and first passive exercise session. We'll plan your own program, outline its duration and cost based on a per session fee of only \$5.00. It's your decision! CALL NOW, TODAY!

Pat Walker's
Figure Perfection Salons International

Hours: Monday-Friday 8 A.M. - 8 P.M.

Saturday- 9 A.M. - 12 Noon

119 E. Ave. C.

272-4591

Redistricting Will Affect Bailey County

Redistricting of the Texas House of Representatives will impact the 74th Legislative District, which includes the counties of Oldham, Deaf Smith, Parmer, Bailey, Cochran, Castro, and Lamb.

The district has been served by Representative Bill Clayton for 20 years, the last eight with additional duties as Speaker of the House.

"Although I am not running for re-election, my interest is in protecting and helping the citizens of our area," Clayton said.

Our area is affected because the population growth has not kept pace with other areas of the state. The state's growth in population now causes a representative's district to contain 94,200 people, whereas in 1970 a district needed only 76,000.

"While the counties of the district I serve will be moved into other districts, the type of representation will not be affected. Our district, although divided under the new plan, will maintain similar back-

grounds and communities of like interest," Clayton said.

The district will be divided into areas now served by four members of the House. Oldham County will be among 12 counties in the Northern Panhandle served by Representative J.W. Buchanan of Dumas.

Deaf Smith County will be paired with Randall County in the district of Representative Bob Simpson of Amarillo.

Parmer, Bailey and Cochran Counties will be meshed in an eight-county district served by Representative Jim Rudd of Brownfield.

Castro and Lamb Counties will be matched with Swisher, Hale and the rural portion of Lubbock

County in the district of Representative Pete Laney of Hale Center.

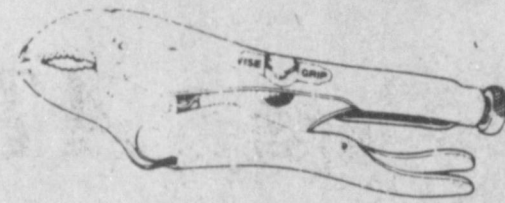
"It was inevitable the district had to be divided; however, I was concerned that the best interests of the counties involved be met. I believe that in every instance we have been able to protect those interests and each county can be ensured of good representation," Clayton said.

Robert Dole, Senator, (R-Kan.), on Social Security program: "I think you're going to see a lot of compromise on the president's program."

Swimming is excellent exercise if you follow the rules.

Favorite Gifts For Father

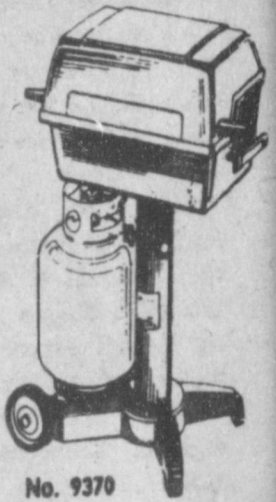
VICE-GRIP® Locking Pliers Model 7WR



Curved Jaws with Wire-Cutter

\$4.49

STRUCTO GAS GRILL WITH ELECTRIC STARTER

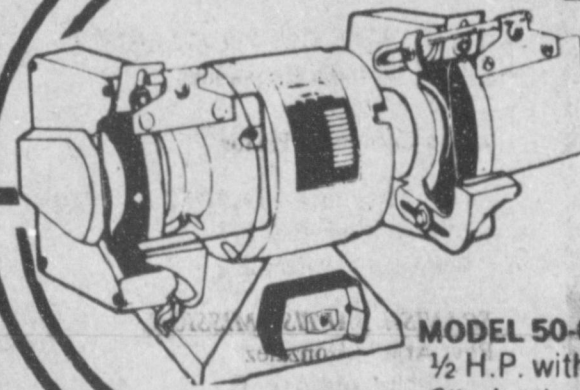


STRUCTO DOUBLE BURNER OUTDOOR GAS GRILL

For those who love all-season outdoor cooking, Structo makes this deluxe cast aluminum grill with double burner (separate controls). Side handle for easy mobility. 20-lb. LP gas cylinder (included) attaches to grill. 245 sq. in. cooking grid. (Black)

REG. 151.75 **134.95** SPECIAL

All Ball Bearing Bench Grinders



MODEL 50-6
½ H.P. with 6" wheels

79.95 Reg. 95.99

The Duracraft Grinder is quiet running and powerful. Standard features include: eye shields, dust ejector, push/pull switch, spark deflectors, adjustable tool rest and heavy cast iron construction.

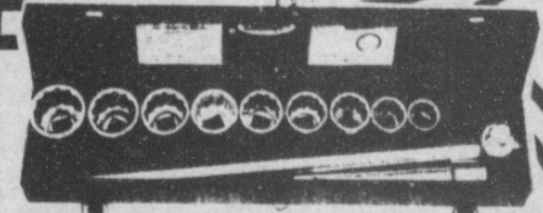
Jackson Welding Cart



Overall height...38½"
Overall width...25½"
Platform base...20" wide, 10½" deep

Tool tray, cylinder retainer chains. Carries tanks in following standard combinations:

39.95



NO. 6612 True Craft ¾" Drive

Socket Set G912C MECHANIC'S BASIC SET (11 PCS.)

Same as G911C Starting Set including 20" Reversible Ratchet Handle instead of Sliding T Handle. Weight per set - 19 lbs.

12 pt sockets
1/16", 1/8", 1/4", 3/8", 1/2", 5/8", 3/4", 7/8", 1"

8" Extension, 20" Sliding T Handle. Packed in Heavy Duty Metal Box. Weight per set - 18 lbs.

Reg. 80.25

Sale

69.95



Stor-All Cross Bed

Tool Box

For Wide Bed & Compact Models

REG. 82.50 **74.95** SPECIAL



Model SK-160

Our largest - 16 inch cut with Automatic Line Feed, Torque Booster Switch for extra power. Our toughest with a 750 HP Paramount Magnet Motor. Includes Adjustable Helper Handle - Power to spare for the toughest cutting - heavy weeds and grasses.

Allegretti Edger

REG. 69.45 **49.95** SPECIAL



STANLEY POWERLOCK® RULE

12" x 3/4" wide blade protected for long wear. Power return. 16", 20" lengths available. PL312

REG. 9.25

7.95

A&M
FARM & RANCH SUPPLY

1401 S. Ave. D. Portales

Prenuptial Shower Fetes Miss Brenda Dodd

Miss Brenda Dodd, bride elect of Keith Hawkins, was feted with a prenuptial shower Saturday, June 6 from 10-11:30 a.m. in the home of Mrs. Paul Poynor.

Mrs. Eugene Hawkins, Mrs. Bob Dodd, Mrs. Paul Poynor and the honoree greeted the guests. Guests were registered by Susan Glover and Debbie Fred.

The serving table was covered with a white linen cloth and accented with a pink silk floral arrange-

ment. The honoree's corsage was a spring floral.

Charli Hawkins served nut breads, fruit plate, juice and coffee from copper appointments.

Special guests were Mrs. Bob Dodd, mother of the bride, Mrs. Don Puckett, sister of bride, Mrs. Eugene Hawkins, the prospective groom's mother, and Mrs. Doyle Turner, grandmother of the prospective groom.

The hostesses gift was a vacuum cleaner. Hostesses

for the occasion were Mrs. Dan (Millie) Throckmorton, Mrs. Paul (Patsy) Poynor, Mrs. Betty Bryant, Mrs. Ronnie (Sue) Holt, Mrs. Ken (Phyllis) Angeley, Mrs. Ronnie (Donna) Black, Mrs. Haney (Faye) Poynor, Mrs. Max (Pat) King, Mrs. Dave (Clara) Suddeth, Mrs. Willie (Laverne) James, Mrs. Calvin (Gereta) Meissner, Mrs. Barney (Lucille) Scheller, Mrs. Tim (Tommy) Black and Mrs. Gary (Glenda) Dale.

The Dieting Dumps Detour

That bikini in the store window would look so good if it weren't for this roll here and that lumpiness there....

A bathing suit and bulges is like a chocolate cake with chicken gravy. Unappetizing. There's just no way that flab and good looks can go together. Yet it's nearly time to put on our swimsuits and bravely parade our winter-white, slightly over-padded selves

along the beach and beside the pool. But millions of Americans, determined to look more glamorous, will torture themselves with all sorts of crazy, illogical diets -- from periodic starvation to eating only grapefruit or hot dogs and bananas -- in the attempt to lose those extra pounds. Moderation, not starvation, is the key to losing weight and staying healthy, says the Texas Medical Associ-

ation. In most cases crash diets lead only to bad nutrition and even vitamin deficiencies. Merely taking vitamin pills won't stop you from developing dangerous vitamin and mineral deficiencies while on a crash diet. Some vitamins must be eaten naturally in food to be effective, and others must be taken in combination with certain foods for the greatest benefit.

Crash diets also can lead to self-pity. After a few days on one of these strict and boring diets we feel so sorry for ourselves that we blow the diet and go on a binge. Then we go right back to our previous eating patterns. So much for the diet and the bikini.

The reason many people have to go on diets in the first place is simply because they consume too many calories for their body to use each day. Calories not used as energy are stored in the body as fat. Despite what the books and magazines may say, the only sure way to lose that fat safely and keep it off is to get more exercise and to quit eating so much.

The best diet is one which is lower in calories but consists of a conventional mix of the four basic food groups: milk, meat, vegetable and fruit, breads and cereals. Try to select low-calorie fruits and vegetables over higher-calorie red meats, however.

What dieters often don't realize is the essential role of portions in dieting. The

overweight person may actually eat more low-calorie foods than the slender one. But the slender person may eat a small salad and be satisfied, whereas the chubby person may eat a whole head of lettuce and a couple of tomatoes and still be hungry. The problem is eating too much.

To lose weight permanently you have to be aware of the number of calories you eat, not only in kinds of foods but in quantities as well.

Train yourself to push away from the table before you get that "filled up" feeling. By that time you are already stuffed, not merely filled. Use a small plate instead of a large one to eat from. A little bit of food will look like a lot more. Even try eating with child-sized utensils to make each mouthful seem like more. Never take seconds -- even of salad. Eat five smaller meals each day instead of three big ones. Drink lots of water while dieting. And if you have a lot of weight to lose, remember to see your doctor for a check-up before starting off on the new you.

Most people eat more than their bodies need. When you cut down on portions, remember not to cut down on the quality of your nutrition. Make every single calorie work for you.

Israelis, Syrians still in war-threatening crisis.

Masonry work
AUSTIN, Texas (Spl.)—The University of Texas is one of the largest researchers in masonry in the U.S. and one of only a few institutions offering masonry engineering courses.

Many UT civil engineering faculty members conduct masonry research on cracking due to expansion from heating and freezing; on the deformation phenomenon known as "creep," and on acid rain experiments.

Lecturer Tom Grimm says one of every 3.6 architect-engineering firms will be sued each year because some building failed to perform. About half of those failures are due to masonry design errors, he says.

KAIL
DESTROYS INCOME
Protect your farm income NOW

National Farmers Union Insurance Companies
FOR COMPLETE INSURANCE NEEDS

See **J.M. FLOWERS**
Life • Home • Business • Blue Cross / Blue Shield

Off. (806) 272-5040
Res. (806) 272-5040



BRENDA DODD



GOLF CLINIC PARTICIPANTS....The Muleshoe Country Club Jr. Golf Clinic is well underway. The clinic is being held each Tuesday through the month of June, beginning at 10 a.m. Pictured from left, back row, A.J. Liles, Caroline Liles, Amy Harrison, and Ken Garrison, golf pro at the country club; front row, Troy Watson, Pollie Harrison, Stacy Haley and Allen Ford.



TEE OFF TIME....(Back row from left) Allan Finney, Preston Scoggin, Donnie Barry and Sean Shipman; (front row) Kirt Miller, Loy Triana, and Wes Garman are participants in the Muleshoe Country Club Jr. Golf Clinic underway in Muleshoe.

Announcing...

Henry Insurance Agency is growing to better serve you. We now represent Allstate Insurance Companies in Muleshoe and vicinity. Allstate is a welcomed addition to the agency to join with other companies such as Transamerica, St. Paul, American States, United States Fidelity and Guaranty and American Indemnity Insurance Companies. The Allstate addition to the agency is a plus for the people of Muleshoe. Allstate writes automobile, homeowners, fire, boats, and life insurance. Phone 272-4581, or come by our office at 111 West Avenue B, Muleshoe to get maximum protection at a minimum cost thru a nationally known and reliable company.

Henry Insurance Agency
111 W. Ave. B
272-4581
Muleshoe, Texas

Allstate
You're in good hands.
Allstate Insurance Co. - Northbrook, IL

Every Proud Father will love it

Family Album™ by Anson
TIE TACK

Accepts 1 to 6 simulated gens signifying the birth-months of the children.
15.00 in Gift box.

Lindsey's Credit Jewelers
202-Main

Nu-Flex
Surface Ditch Irrigation

- Free Installation For 1st Time users.
- Backed By 7 years Experience
- 1320'x12" 7 Mil. At 27¢ Per. Ft. Compare At 29¢ For 950'

Sales & Service For Less!!
Bob Bomer
272-5175 or Mobile 965-2232

24 HOUR WEEKEND SERVICE

URBAN COWBOY

JOHN TRAVOLTA grabs the bull by its mechanical horns and delivers an electrifying performance as a sizzling hot hero. Showtime presents URBAN COWBOY just as you'd see it in the movies—uncut and commercial free.

SHOWTIME

Call Muleshoe Antenna Co. 272-3310
Special Installation Fee: \$5.00 for the Month of June.

Britain plans to slash defense spending. South Florida battles four wildfires.

FARM SERVICE YOU CAN TRUST

For prompt service, Call: 272-3420

SHOOK TIRE & SERVICE

301 N. First • 272-3420

Welcome To Muleshoe

REV. AND MRS. JIMMIE WILLIAMS, APRIL, JOHN, AND JAMES

This week Muleshoe would like to welcome the Rev. and Mrs. Jimmie Williams and their three children, April, 4, John, 3, and James, 22 months. Jimmie and Sharon come to us from Colorado where he attended Nazarene Bible College. Williams is now associated with the Nazarene Church here in Muleshoe. Jimmie and Sharon now reside at the Nazarene parsonage at 9th Street and Avenue C.

James Crane Tire Co.
GOOD YEAR
322 N. 1st. 272-4594

Henry Insurance **Damron Rexall**