

Society and Clubs

Social Affairs to Honor Cowgirl Sponsors During Fair

Eleven o'clock Breakfast Sunday and Dance, Following Rodeo, Monday Night Are Principals in Gay Hospitalities

In true Western fashion, Midland is preparing to welcome the almost three-score cowgirl sponsors who will gather here to represent as many towns of Texas and New Mexico during the eight-day Midland Fair, opening October 19.

Plan Entertainment for Sponsors



Mrs. Foy Proctor, left, and Mrs. Clarence Scharbauer right, with Mr. Roy Parks compose the chamber of commerce committee for entertainment of the sponsors from Texas towns who will attend the Midland Fair, October 19-26.



Mrs. Foy Proctor, left, and Mrs. Clarence Scharbauer right, with Mr. Roy Parks compose the chamber of commerce committee for entertainment of the sponsors from Texas towns who will attend the Midland Fair, October 19-26.

Midland, Monahans Girl Scouts Hold All-Day Rally

Thirty girls of the Sand Hills troop, Girl Scouts, of Monahans arrived in Midland Saturday for an all-day rally as guests of the Chaparral and Mesquite troops here. The girls were led by Mrs. Lang and Mrs. Ingham, and were traveling in a school bus.

Announcements

Monday - Circles of the Methodist missionary society will meet Monday afternoon at 3:30 as follows: Laura Haygood circle with Mrs. John Andrews; Mary Scharbauer circle with Mrs. K. C. Minter; Belle Bennett circle with Mrs. W. C. Maxwell.

Belmont Bible Class To Celebrate Sixth Birthday with Party

The Belmont Bible class met Friday afternoon with Miss Anna Lee King, 610 S. Colorado. Mrs. J. M. King taught the lesson. Present were: Mmes. W. G. Ataway, J. C. Pogue, C. E. Strawn, H. H. Nicholson, Roy McKee, J. B. Crawford, Herbert King, C. E. Nolan, G. B. Brock, Barney Hightower, W. P. Collins, J. M. King, and the hostess.

Graham, R. W. Hamilton, Harvey Johnson, W. B. Harkrider, Frank Johnson, C. A. Mix, Paul Oles, Geo. Farley, Geo. Barham, Paul Osborne, Paul Schlosser, M. D. Self, Johnson Phillips, Fred Wright, Joe Pylon, O. C. Harper, Stacey, Jordan, Pat Riley, Purzer. Women's Day will be held each Friday at the club.

RETURNS HOME - Mrs. Ed Dozier, returned to her home Saturday after treatment in a Midland hospital. James Dale, a hospital patient, was reported doing well Saturday.

FORD SUNDAY EVENING HOUR Presents JULIUS HUEHN, Bass-Baritone Guest Soloist with THE FORD SYMPHONY ORCHESTRA AND CHORUS VICTOR KOLAR Conducting

COME ON! LET'S EVERYBODY ENJOY THE MIDLAND FAIR October 19-26

Our Modern Homes Last week the argument went on and on into the night between the House that needed repairs and the Owner; now let's see what the morning following brings us.

Neill's Plumbing-Sheet Metal Works Bonded Roofers Midland, Texas P. O. Box 458

Mrs. W. T. Waggoner II, Fort Worth; Miss Bennie Sue Ratliff, Midland; Mrs. Johnnie Ratliff, Monahan; Miss Mollie Sears, Abilene; Miss Polly O'Brien, Wickett.

Barron Sisters Are Honored at Birthday Party on Friday

Honoring her daughters, Marjorie, who was seven years old, and Dorothy, who was five years old, Mrs. Ralph M. Barron entertained with a party at her home, 411 N. Loraine, Friday afternoon from 4 o'clock until 6 o'clock.

Doris June Bayless Complimented at Party Saturday

Doris June Bayless was honored on her eighth birthday with a party at the home of her parents, Mr. and Mrs. L. D. Bayless, 405 N. Colorado, Saturday afternoon from 4 o'clock until 6 o'clock.

Mrs. Howe Hostess At Party for the Lucky Thirteen

Mrs. John Howe entertained the Lucky Thirteen club at her home, 1311 W. Holloway, Friday afternoon at 3 o'clock.

Nina Mae Brock Leader of World Friendship Club

Mrs. Frank Prothro, director of the World Friendship club of the Methodist church, has announced the following program to be presented under the leadership of Nina Mae Brock this evening at the church.

Rotary Anns Will Not Meet Thursday

Because of the joint luncheon meeting of Rotarians and Rotary Anns, scheduled for Monday, Oct. 21, members of the Rotary Ann club will not hold their regular luncheon Thursday noon.

Date for Entering Exhibits in Flower Show Announced

Entries for the flower shows to be sponsored by the Garden club during the Midland Fair must be in not later than 11 o'clock Saturday morning, October 19, officials of the club have announced.

Welcome to the Fair October, 19-26 WE'LL APPRECIATE A VISIT BY YOU Fall Showing of COATS and SUITS in Styles and Fabrics that are Distinctive Priced at \$16.75 to \$59.75

IT'S COMING THE DELICIOUS NEW LOAF of Unsurpassed Quality Made by Master Bakers

Exceptional Dresses That are smartly styled in silks, sheer wools and velvets. Sizes 12 to 20 For sports, afternoon and evening \$7.95 to \$29.75

Knitted Wear by Lampl (As seen in Vogue) Stunning Hats Felts - Velours - Velvets \$1.95 to \$6.95

UPHAM FURNITURE CO. 615 WEST WALL PHONE 451 A COMPLETE STOCK OF POPULAR PRICED FURNITURE, STOVES, RUGS, LINOLEUM, Etc.

SLIP BREAD THE DELICIOUS NEW LOAF of Unsurpassed Quality Made by Master Bakers

Kaydelle SHOP MIDLAND Next Door to Post Office

Study and Altruism Combined in Mothers' Self Culture Club

The Mothers' Self Culture club was organized in May, 1925, with a membership of 25 women...

Junior Wednesday Club's First Year Combines Work, Play

January 17, 1934, sixteen girls met with Mrs. J. M. Caldwell at the residence of Mrs. Al Reese...

The above picture shows the adult reading room in the county library in the courthouse...



WITH MORE THAN 7,000 VOLUMES, COUNTY LIBRARY SERVES CITIZENS THROUGH MAIN LIBRARY, STATIONS

The Midland county library closed the sixth year of its existence in March, 1935, with a circulation for the fiscal year of 51,654 volumes...

History Fine Arts Club Shows Variety Of Accomplishments

The Fine Arts club was organized at the home of Mrs. Roy Parks, September 10, 1926. The object of the club is to stimulate intellectual and cultural development...

BEGUN IN 1928, EXTENSION WORK AIDS MIDLAND COUNTY FARM WOMEN

Extension work was started in Midland county in September, 1928, with Miss Genevieve Derryberry as county home demonstration agent...

Play Readers Club Concentrates Upon Current Dramas

The Play Readers club was organized on September 12, 1930, for the purpose of reading and discussing modern plays. A limit of twenty members was set...

PUBLIC HEALTH MINDED CITIZENRY IS GOAL OF COUNTY HEALTH BOARD

"Aiming at our goal of a public health minded citizenry, the Midland County Public Health Board has in the five years of its existence succeeded in improving community health by the prevention of disease..."

Wednesday Club Is Pioneer Among The Town's Study Groups

Pioneer among the study clubs, Midland is the 'Woman's' club which was organized in 1903 and became a federated club the same year...

LET'S CELEBRATE COME TO THE BIG FAIR OCTOBER 19-26 While here, we'll be glad to see you... Visit our shop HOTEL SCHARBAUER BARBER SHOP PAUL JONES - MIDLAND, TEXAS

WELCOME TO THE MIDLAND FAIR OCTOBER 19-26 This institution has been closely connected with the growth of Midland and this area for almost half a century... The First National Bank MIDLAND, TEXAS

Mt. Locke Work for Year Nears Finish FORT DAVIS (P).—Erection of a dwelling, a power house, a five car garage and a water tank at the Mount Locke site of the McDonald Observatory is nearing completion...

WE KNOW THAT YOU'LL ENJOY THE GREAT RACING AND RODEO EVENTS TOGETHER WITH THE AGRICULTURAL EXHIBITS AND THE BREEDER-FEEDER CATTLE AUCTION. When You Need Quality Groceries, Vegetables and Meats Priced Right--See Us PIGGLY WIGGLY GROCERY & MARKET Midland, Texas

"UNCLE WALTER" COCHRAN, PRIOR TO HIS RECENT DEATH, RELATED THE EARLY HISTORY OF MIDLAND COWMEN

Editor's Note: The late W. C. "Uncle Walter" Cochran, early trail driver of Texas and for many years a prominent Midland citizen, wrote the following account of the early days of the cattle industry in this section a few months before his death. His son, J. C. Cochran, allowed its use in the Midland Fair edition of The Reporter-Telegram and the staff expresses appreciation herewith to him and to Mrs. W. C. Cochran for the interesting data now released to the public.

By W. C. COCHRAN
In writing this article I shall not attempt to be correct as to dates, as history of any part of Texas would be incomplete without making mention of the first men on the plains and Midland country.

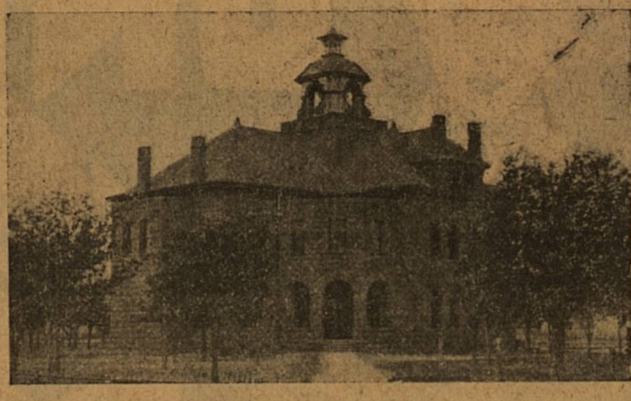
After the disappearance of the Indians, like in all western country, came the buffalo hunters, then the antelope hunters. George Pemberton claims to have killed and shipped more antelope than any other antelope hunter on the plains, not including Lurii Meadlin. Henry Cummins is the last one of the old buffalo hunters left in the country. He hunted buffalo around Monument in the winter of 1884. The early settlers in Midland county were sheep men. H. N. Garrett, Al Garrett and a man by the name of Zakers were the first men to locate in Midland county in 1882. H. N. Garrett had his first sheep camp where the first National bank now stands. He was a man by the name of Zakers were the first men to locate in Midland county in 1882. H. N. Garrett had his first sheep camp where the first National bank now stands. He was a man by the name of Zakers were the first men to locate in Midland county in 1882. H. N. Garrett had his first sheep camp where the first National bank now stands. He was a man by the name of Zakers were the first men to locate in Midland county in 1882.

After the disappearance of the Indians, like in all western country, came the buffalo hunters, then the antelope hunters. George Pemberton claims to have killed and shipped more antelope than any other antelope hunter on the plains, not including Lurii Meadlin. Henry Cummins is the last one of the old buffalo hunters left in the country. He hunted buffalo around Monument in the winter of 1884. The early settlers in Midland county were sheep men. H. N. Garrett, Al Garrett and a man by the name of Zakers were the first men to locate in Midland county in 1882. H. N. Garrett had his first sheep camp where the first National bank now stands. He was a man by the name of Zakers were the first men to locate in Midland county in 1882. H. N. Garrett had his first sheep camp where the first National bank now stands. He was a man by the name of Zakers were the first men to locate in Midland county in 1882.

The cowmen of today do not know anything about what the first men and women in the country had to go through with. In settling up this country it used to take three to five days in an old wagon to make a trip to town after a little grub from any of the ranches, while today you can make the trip from any ranch to town and back in a day. The women lived in dug-outs and dirt houses. Mrs. John M. Cowden lived at one time in the dug-out on the wagon bed for a house. Mrs. George Cowden lived in a dug-out at the edge of the sand hills. One day one of the old Palo Pinto milch cows fell in the dug-out on the bed. George Cowden had to dig the bank off the dug-out to get the cow off the bed.

The men ran horse powers night and day to water their cattle, as this was before ground tanks and gas-

Midland County \$300,000 Court House



The Midland Court House, erected in 1930 at a cost of \$300,000 to the county. With trees and a spacious lawn it is one of the most beautiful of any in the state. In the building are located offices of all county officials, also the Midland county library. At the left is the old red stone court house building that was torn down to make room for the new, modern one pictured above.

line engine days. If there is such a thing as a hereafter I doubt if the old timers in this country will ever make the trip, the way they used to punish the old pump horses, working them night and day, and lots of them without a change in twenty-four hours.

C. C. Slaughter was the first man to locate on the plains. He started the "Long S" ranch on the head of the Colorado and Tobacco Creek in 1879 about fifty miles northeast of Midland, and in 1887 and 1888 Slaughter branded fifteen thousand calves on the "Long S" ranch each year. Cowden Brothers (W. H. Geo. E. Jno. M. and Buck) were the first men to locate west of Midland. They located in the upper sand hills about 30 miles north of Monahans near the line of New Mexico in the fall of 1883.

Midland County's \$300,000 Court House "Far Cry" From The First Frame One Built in 1885 at Cost \$2,934

The present Midland county Court House is a "far cry" from the first one ever built here. A clipping from a newspaper published September 10, 1885, announces that a Midland county Court House was to be erected and that a contract had been awarded to Hunter and Weller, Dallas contractors, for \$2,934. The building was a two-story frame building and was the first court house for the county.

With the growth of the town it was found necessary to build another larger court house shortly after the turn of the century. It was built at an estimated cost of \$30,000 and was a four story, red sandstone building. A two story building of the same material was built adjacent to it and was used

both as jailer's quarters and as a jail. The jail was on the second floor while the living quarters for the jailer was on the ground floor. It was in 1929, in the midst of Midland's largest building boom, that county officials once more decided that they needed more spacious living quarters. In September that year an election was held and the people of the county voted unanimously for the building of the new court house.

After the bonds had been passed it became necessary for the county commissioners to find some way of getting rid of the old building. After all other acknowledged methods had failed the commissioners finally decided to auction the building off--and did. In a called sale the build-

Cowden was the first foreman. Fred and Dock Cowden moved from Palo Pinto county and bought a well twelve miles west of Monahans from Cowden Bros. and turned their cattle loose in the summer of 1885. The summer of 1886 was awfully dry and since Fred Cowden is one of these smooth easy going men that takes everything just as it comes. He never was known to fight a dog. Fred was out for a few days and his cows were leaving the ranch going east hunting for water. Fred told Dock to get the monkey wrench and go on top of the windmill and fix a pump. When Dock got down off the mill Fred took his Winchester and shot two sections out of the windmill and said, "Now I can't guess you'll pump". Fred told Dock to get his horse and try to stop the cows before they got to Colorado. Fred has never seen anything but water since that day. Fred and Dock moved from their Monahans ranch to New Mexico in 1888. They ranged in New Mexico several years, then moved to Texas, this side of the sand. Fred bought the M Bar ranch in 1895. Dock bought the old Draper sand ranch in 1886. O. B. Holt came to Midland and located his first ranch about thirty miles northwest of Midland, in the C pasture. He owned a third interest in two hundred dogies when he came to Midland. He soon moved north of Midland about fifteen miles and ranged there a few years, then bought his present ranch, twenty-five miles north of Midland. You hear the cowboys say they haven't got time to raise a dog. Fred Holt has got time. He never bought but one bunch of cattle to put on his ranch. He bought eight hundred two-year-old calves and each outfit took their own cattle home.

A. W. Wight dug the first well ever dug west of Midland, in Ector county in 1881. The old well is now in B. H. Blackman's pasture. Taylor Brown was moving from the drough of 1894 and gave A. W. Wight 47 dogie calves out of his herd. Wight had a few milch cows on the ranch. He hekked these dogie calves together and raised them. Wight then raised a good herd of cattle from these dogies. Uncle Bill Ramsey dug the next well west of Midland at the edge of the sand hills about fifty miles west of Midland and after you left the Pecos until you got to Ward's Wells about seventy-five miles northwest of Midland and not enough water there to commence to water the big herds that were driven back from the Pecos. At Ward's Wells the cattle were all divided and each outfit took their own cattle home.

Come to the Fair

OCTOBER 19-26

8-DAYS-8

OF REAL WESTERN HOSPITALITY

RACES--RODEO

FEEDER CATTLE AUCTION

AGRICULTURAL EXHIBITS

♦

We'll Take Care

OF YOUR

Appetites

WE FEATURE

FRESH SEA FOODS

DELICIOUS STEAKS

COURTEOUS SERVICE

HOTEL SCHARBAUER

COFFEE SHOP

The Pride of West Texas

GEO. D. PHILLIPS & MIKE COSTON

MIDLAND, TEXAS







WELCOME TO THE Fair

OCT. 19-26

YOU'LL ENJOY EVERY MINUTE DURING THE EIGHT THRILLING DAYS

We Join all Midland in a Sincere Invitation to You to Come

And we extend an invitation for you to visit our store, which has been completely remodeled and restocked.

WES-TEX FOOD MKT.

The Most Complete Food Store in West Texas
Midland, Texas

They're Off!



6 Days Of Racing

SMART
AT ANY
RACE
TRACK
**PRINTZESS
COATS**

And you're lucky to
need one when they're
priced at only

\$29.75

To

\$59.75



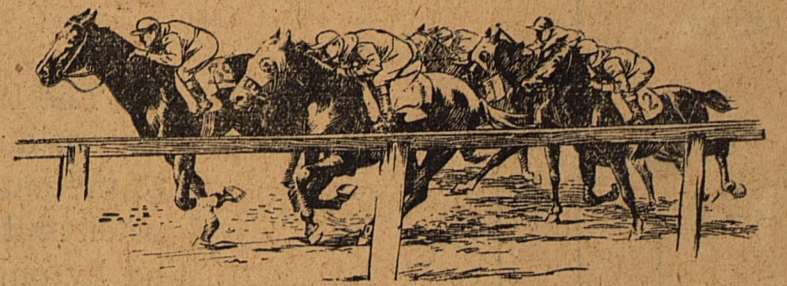
WE SEND OUR
WELCOME
TO THE WIDE WORLD
TO VISIT THE
MIDLAND FAIR
OCTOBER 19-26

Ride 'em, Cowboy



AND SLAP HIM WITH ONE OF OUR NEW
STETSONS AT \$6.50 AND UP

They're Off!



YOU'LL SEE THE
FASTEST HORSES IN ACTION

Here's A Tip! ON A REAL WINNER



We are presenting as
large a stock of

**MEN'S
SUITS**

As you will find
in West Texas

Made & Styled by

CURLEE

New Fall Styles and
Colors

\$29.50

WITH 2 PAIRS PANTS

KNITS ARE "TOPS"



And we are presenting a brilliant
array of them
You'll want several at
\$6.95 and
up

Beautiful BELLE SHARMEER HOSE

They fit you properly
\$1.00-\$1.35-\$1.95

LADIES' HATS



Modestly
priced
but
expensively
styled
\$2.95
and
\$4.95

LADIES' SHOES

We have your size,
the style you want
and the color you
want.
\$3.95
\$4.95
\$5.95

For Office or
Sports Wear

SWEATER COATS

Brushed wool
Novelty backs
Button & zipper
styles

\$2.95 to \$5.95

FIELD & STREAM LEATHER JACKETS

As large a presentation as you will find in
West Texas
\$11.50 to \$16.50 Other makes
priced as low as **\$4.95**

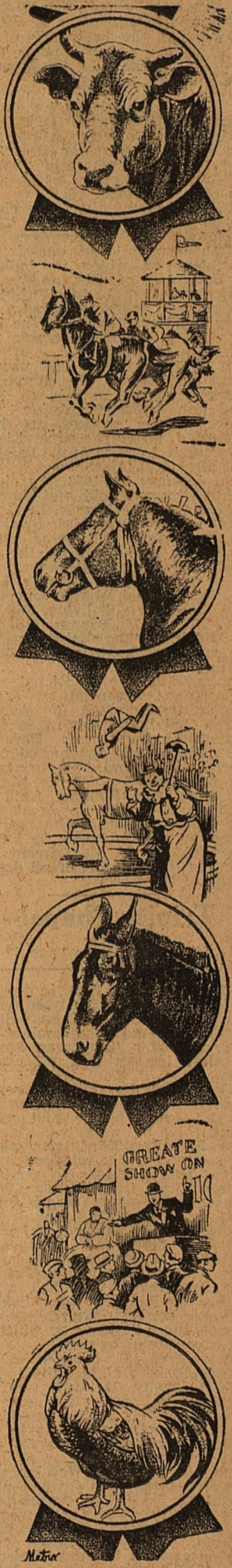
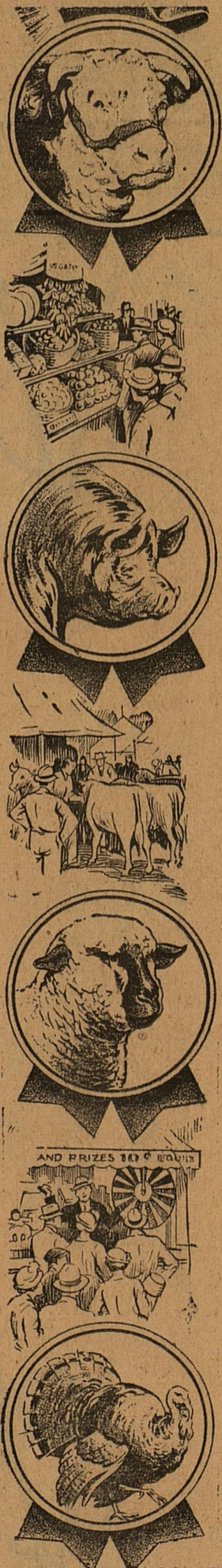
CURLEE OVERCOATS



You'll find none
better at this price.
Quality & style up-
permost.

\$24.50

In
the
season's
newest
styles
and
colors



WILSON DRY GOODS CO.

MIDLAND, TEXAS

MIDLAND COUNTY EXHIBIT TO BE MADE UP FROM PRELIMINARY FAIR HELD FRIDAY; PRIZES ARE POSTED

Midland county will make up a composite exhibit from a preliminary fair to be held on Friday, October 18, the day before the Midland Fair opens. Individual prizes and premiums, separate from those of the Fair proper, will be given and the winning items will go into the county exhibit.

- 1. Entries for County exhibits will close at 6 p. m. October 18th, and all exhibits must be in place until 9 a. m. October 19th. Any exhibit not in place and completed by that time will be penalized 25 points. All exhibits must remain in place until 8 p. m. October 23rd.

Mutuel Betting Simple If You Keep In Mind Straight, Place and Show

Editor's Note: John Patrick Kinney, certified public accountant, who recently conducted an audit of the Midland County budget and who has audited the county's records since 1926, contributed the following treatise on pari-mutuel wagering for the benefit of readers of The Reporter-Telegram.

As Presented by JOHN PATRICK KINNEY Certified Public Accountant With horse racing soon to return to San Antonio, with the opening on April 23rd of the new and beautiful Alamo Downs Race Track, racing fans are freshening their memories on the certificate or pari-mutuel form of wagering which will be in effect locally "Straight", "Place" and "Show".

Let us pass on to "Show" betting. In playing a horse to "show" you play the horse to run third. It does not matter if that horse wins or runs second or third. YOUR BET IS GOOD IN ANY EVENT. In other words you must play a horse no farther back than the position in which he runs, but if the horse runs ahead of where your bet is to run, your ticket is good. Confusing? Not in the least. However, take a mythical race as an example:

Chances: Water, Lightning Bug, and Oo La La run first, second, and third in the race. You are on hand with two other friends. You have played the Water to win the race. Very well! You share in the "Straight" pool and receive an amount of money in excess of the amount invested, because of your ability to pick the fastest horse. Your friend, Paul, has a show ticket on Lightning Bug. Again very well! Lightning Bug having run second and, therefore, ahead of the position in which he was played to finish, Paul shares in the show pool and also realizes a profit. Joe thought was rather high on the chances of Oo La La (probably because of the French miss he met the night before) and has purchased a place ticket on the nag. He is at liberty to frame that ticket, tuck it away in a Safety Deposit vault, or tear it into confetti. As an investment, this has just ceased to be. Why? Because he played Oo La La to run second, but the horse, in finishing third, ran behind the position in which he was played to finish, and Joe lost his bet. You understand, however, if he had played Oo La La to "show" he would have cashed the ticket.

Health Official Warns Against Insect Menace

"Insects spread disease in two general ways, biologically and mechanically," reports Louis Weiner, vital statistician of the New York City Department of Health. "If a period of incubation in the insect is necessary before the parasite can be transmitted, the method is spoken of as biological transmission. Yellow fever is an example of this. So is malaria, which is spread by a different type of mosquito. If on the other hand, insects convey infection at once without a period of incubation in the insect, the transfer is a mechanical one. The ordinary house-fly can transfer typhoid fever mechanically. Typhoid fever is transmitted by body lice. Rat fleas are usually responsible for transmission of bubonic plague to humans."

Table with columns for Horse, Money Bet, and Odds. Includes entries for Flying Ebony, Black Gold, Zev, Morvich, Behave Yourself, Paul Jones, Sir Barton, Exterminator, Omar Khayyam, Geo. Smith, Regret, and Old Rosebud.

Dog Obeys Traffic Light

EDMONTON, Alta. (U.P.)—Edmonton has a dog which obeys traffic signals. It is a little wire-haired terrier. When it goes romping around in the downtown area, the pup stops abruptly when the red traffic light flashes and waits for the green before crossing the street.

WELCOME TO THE FAIR Come to See Us While Here \$50,000 TIRE FINANCE FUND AVAILABLE ONLY AT BROADWAY GARAGE

Examples of our Time Payments on GENERAL TIRES. 4.75-19 6-ply 54¢ a week, 5.50-17 6-ply 69¢ a week, 6.00-17 6-ply 79¢ a week. Includes image of a tire.

IT'LL BE A GREAT EVENT THE MIDLAND FAIR OCTOBER 19-26 We extend our invitation to you to come to it. This organization is closely connected with the activities of Midland and this area... Farmers Co-Operative Gin Midland, Texas

1936 WE INVITE YOU TO ATTEND THE FAIR and WE INVITE YOU TO SEE the New Dodge NOW ON DISPLAY It is the Beauty Winner Of 1936. It Will Be the Money-Saving Sensation of the Year. See It at MACKEY MOTOR CO. Midland, Texas



THE CITY OF MIDLAND AWAITS YOUR VISIT TO THE FAIR WITH OPEN ARMS. WE WANT YOU TO SEE THE NEW \$50,000.00 FAIR GROUNDS --- THE RACES, RODEO, CATTLE, AGRICULTURAL EXHIBITS, ETC.

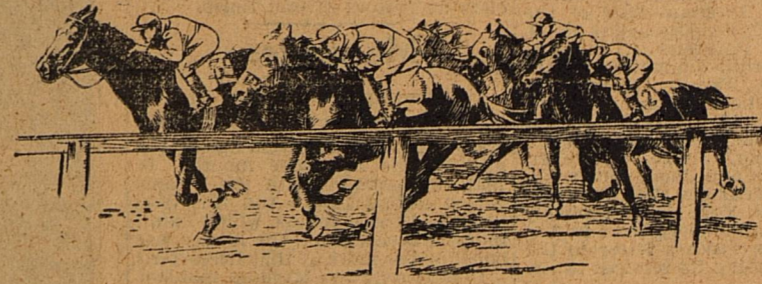
8 Great Days
October 19-26

THE REPORTER-TELEGRAM

The Only Daily Newspaper in the Heart of the Permian Basin

F. Paul Barron, Editor

MIDLAND, TEXAS



THRILLS! THRILLS!

YOU'LL GET

THOUSANDS

OF THEM AT THE

MIDLAND FAIR

OCTOBER 19--26

And Here Are Some Thrills for Your Pocketbook

Pre-Fair Grocery and Meat Specials for All Week

FREE 1 10¢ pkg. Super Suds with purchase of 5 Giant Bars of Crystal White for 21¢.

APRICOTS NO. 2½ CAN DEL MONTE IN HEAVY SYRUP	23¢
KRAUT NO. 2½ CAN CRAWFORD BRAND	8¢
SALMON DEL MONTE NO. 1 TALL ALASKA RED	21¢
CATSUP MONARCH, RICHELIEU, CROSS & BLACKWELL	19¢
PEACHES NO. 2½ CAN NILE BRAND, YELLOW CLING	14¢
GREEN BEANS NO. 2 CAN STRINGLESS	7¢
POTATO CHIPS SMALL PKG. 8¢ LARGE PKG.	19¢
RICE COMET BRAND 2-LB. PKG. 12-OZ. PKG. 7¢	15¢
SUGAR CONFECTIONERY OR BROWN, LB. PKG.	7¢
CHERRIES NO. 2 CAN PITTED RED SOUR, 2 CANS	25¢

WE SELL FOR CASH ONLY—WHICH MEANS A SAVING FOR YOU Please do not ask us to make charge or hold tickets

SHORTENING	POTATOES
MRS. TUCKER'S, 4-LB. CARTON	10 LBS. NO. 1 COLORADO WHITE
54¢	10¢
GRAPES THOMPSON SEEDLESS AND FLAME TOKAY, LB.	CRANBERRIES EAT MORE BRAND 1-LB. PKG.
5¢	16¢
LEMONS, 2 DOZEN	ORANGES SMALL BUT JUICY, DOZEN
25¢	10¢
MOTHER'S OATMEAL PREMIUM IN EVERY PKG.	MIRACLE WHIP
23¢	SALAD DRESSING, PINT 21¢
TOMATO SOUP, 3 CANS FOR	QUART 31¢
23¢	SANDWICH SPREAD, PINT . . . 22¢
KELLOGG'S WHEAT CRISPIES, PKG.	QUART 33¢
11¢	BLUE BARREL SOAP, 6 BIG BARS
NAPKINS 1,000 COUNT WHITE PLAIN	23¢
34¢	OXYDOL, LARGE PACKAGE
PARD DOG FOOD, 3 CANS	20¢
23¢	BORAX WASHING POWDER 2 PKGS.
LARGE PKG. MELLO	5¢
16¢	
CIGARETTES CHESTERFIELD, LUCKY STRIKE, CAMEL, PKG.	
14¢	

DIAMOND MATCHES

CARTON OF 6 5¢ BOXES 26¢

BLUE STAR MATCHES

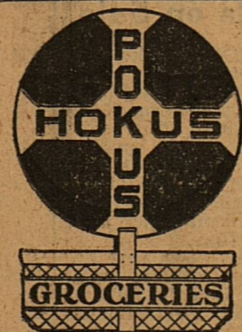
CARTON OF 6 4¢ BOXES 19¢

MARKET SPECIALS

OYSTERS MARYLAND PINT	35¢
SLICED BACON ARMOUR'S STAR, LB.	39¢
CHILI OUR OWN MAKE IT IS BETTER, LB.	23¢
CHEESE LONGHORN POUND	18¢
CHEESE KRAFT'S VELVEETA ½-LB. PKG.	15¢
PORK SAUSAGE OUR MAKE POUND	15¢
GROUND VEAL, LB.	11¢

HOKUS POKUS

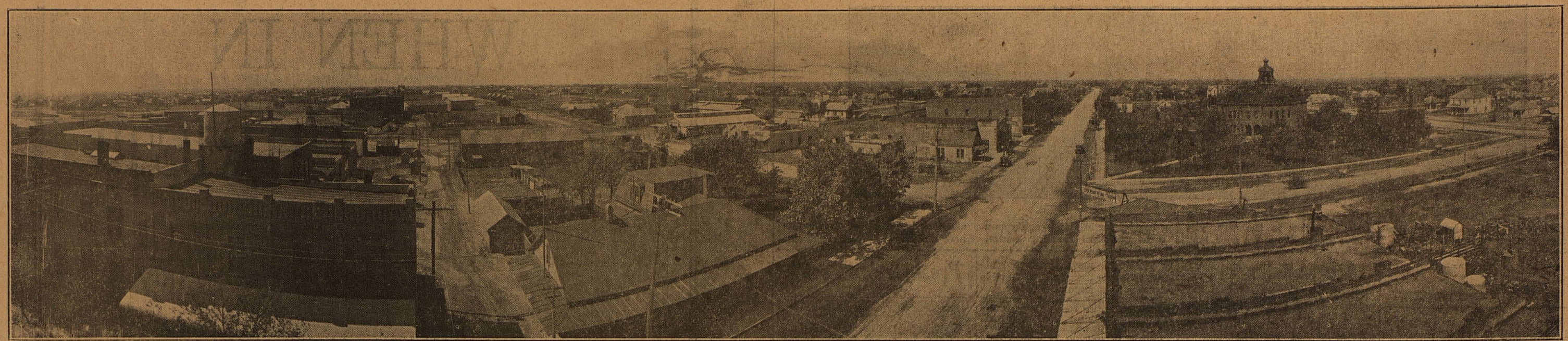
BILL & ELLIS CONNER



GRO. & MKT.

MIDLAND, TEXAS

Old Timers Will Find Themselves at Home in This Street Scene



The Reporter-Telegram is indebted to Fred Wemple, proprietor of the Ever-Ready Auto Service, for this panoramic view of a part of the Midland business section in 1923. Wemple, coming here late in 1922, founded his present business at the corner of Wall and Loraine streets when the present site of Hotel Scharbauer was the home and office building of the late Dr. W. K. Curtis, pioneer Midland physician. Note the shady court house block and the frame cottages where the 12-story Petroleum Building now stands.

HOME DEMONSTRATION CLUBWOMEN TAKE ACTIVE PART IN EXHIBITS PLANNED FOR THE MIDLAND FAIR

Clubwomen of Midland county will take an active part in activities of the Midland Fair, Oct. 19-26. The Midland county home demonstration council will have a decorated car or float in the Grand Parade opening the Fair on Oct. 19. Exhibit booths in the Agricultural hall will be entered by each of the four active home demonstration clubs in the county, North Midland, Prairie Lee, Valley View, and Cottage Flat.

In the canned products display special attention will be called to the standard pack of the product. A standard pack is where the product is so placed in the jar that there will be no wasting of space, keeping a uniform pack and at the same time keeping the required amount of liquid in the container.

Table with 4 columns: Premium No., Item Name, 1st Prize, 2nd Prize, 3rd Prize. Includes categories like Canned Vegetables, Canned Fruits, Pickles, Preserves and Jellies, Clothing, Sewing, and Canned Products.

Government And The Public Library (By Doris Wood, San Angelo, Texas) As an activity of government the public library is limited and inconspicuous. Evidence of this fact can be seen in the relatively small proportion of public funds devoted to its use as compared with funds devoted to other activities of local government.

Now that State and Federal governments are coming to the financial aid of local government in so many ways, it is the time for libraries to tie themselves up with these larger units. Texas will have to bridge a gap between the laws under which we are now functioning and the new laws that will have to be adopted before this relationship can be realized.

Tool Capital of West Texas



The Hughes Tool company plant in Midland, one of the four plants of that widely famed company. The plant was first opened here in 1931 but was closed down during the years 1932-34 due to the fact that there was little drilling for oil being done in West Texas. The plant was reopened January 1, this year and has been working at peak production since that time. The other three plants of the Hughes company are located at Houston, Oklahoma City and Los Angeles.

One Of West Texas' Finest



The Scharbauer hotel, built by Clarence Scharbauer and wife and formally opened to the public April 13, 1928. At first a hotel of 150 rooms, after being open for only one year 100 more rooms were added to facilitate handling of the large crowds inevitably in attendance at the building. It was erected by Scharbauer and wife at an estimated cost of \$750,000.

come to the conclusion that the only solution for most of them lies in education—the kind that promotes disinterested thinking and suspended judgments. Any community which maintains a well-administered, adequately supported public library, provides one of the best means for acquiring such education.

WELCOME TO THE FAIR OCT. 19-26 D. H. Roettger Jeweler Diamonds--Watches--Clocks Jewelry--Silverware FIRST NATIONAL BANK ANNEX IN MIDLAND SINCE 1909

Officials Named For Fall Meet At Arlington Downs

ARLINGTON DOWNS, Oct. 12.—One of the most popular of the Texas Jockey club's official families at Arlington Downs soon to swing into the center of the turf spotlight with the start of its pretentious fall meeting on October 23, with a purse distribution of \$175,000 headed by the \$15,000 Waggoner Handicap, and eight stellar stakes, is Charles J. McLennan, a youthful but very efficient racing secretary. McLennan is currently at Suffolk Downs, a palatial Boston track, which assignment he assumed following his duties at Park de Grace and Arlington Park, Chicago. Only thirty years old McLennan has packed a lifetime of real experience in racing into those years. He was rearer in a racing family, his father, the late Joseph McLennan, having earned fame as one of the most talented racing secretaries in the sport.

Under the elder McLennan's able tutelage, Charlie soon learned the many difficult angles to his father's job, and quickly became a valued assistant, serving with his father at many of the tracks with which the elder McLennan was associated. When Joseph McLennan died two years ago, race tracks which had been under his supervision began casting about for someone to assume the late sportsman's duties, and the younger McLennan was engaged by most of the tracks. Once in the saddle as racing secretary, Charlie revealed that he was perfectly able to fill his father's shoes with distinction, and since then has progressed rapidly into the ablest in his field.

In addition to his duties at Arlington Downs and Suffolk Downs, McLennan is racing secretary at Washington Park, Havre de Grace, Arlington Park and Hialeah Park, Florida, which keeps him on the go the year around.

Big Spring To Join In Rotary Meet During Fair

Rotarians of Big Spring and Midland will hold an inter-city meet during the Midland Fair, with a joint luncheon of Rotarians and Rotary Anns of both towns at Hotel Scharbauer on Monday noon, October 21. The meeting was the outgrowth of an invitation extended at Big Spring by a Midland committee early last week, and is expected to be attended by from 100 to 150.

After the luncheon, the group will attend the Midland Fair races in the afternoon, many remaining over for the rodeo finals that night. Albert M. Fisher is chairman of the Big Spring committee working up a large delegation and the Rev. Winston P. Borum is program chairman for the local club.

Possibility that Fort Worth will send a delegation to the Midland Fair by special pullman or special bus was expressed in a letter late in the week from Chas. G. Cotten, manager of the trade extension of the chamber of commerce.

October 19-26 8 Great Days Live Stock Agricultural Products Fair Big Snow Horse Races Rodeo

SPECIAL FOUNTAIN PRICES JUMBO ICE CREAM SODA 5c MILK SHAKE 5c (With Ice Cream 10c) MALTED MILK 15c TOASTED SANDWICHES 15 & 25c PANGBURN'S SWEET CREAM ICE CREAM Pint 15c Quart 25c Visit Us While in Midland Midland Drug Co. L. A. ARRINGTON

WELCOME FAIR VISITORS



To The First Annual Midland Fair

OCTOBER 19-26

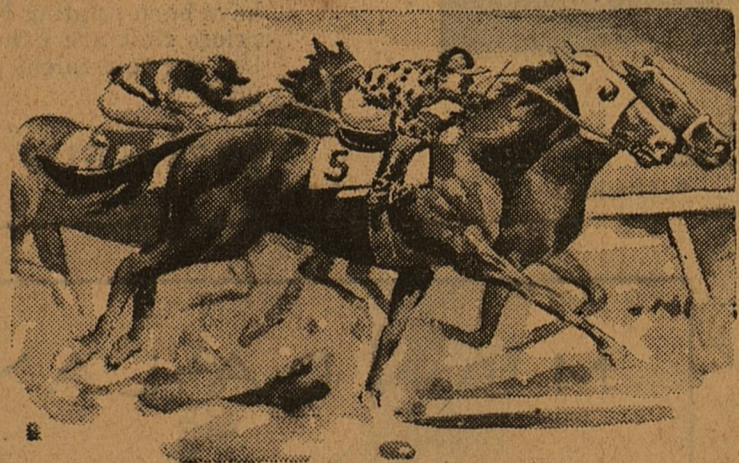
AND

Congratulations Midland

on the

50th Anniversary Celebration

We urge you to join in the celebration of Midland's 50th Anniversary and to welcome the many visitors to Midland's First Annual Fair. It is anticipated this year's fair will far exceed the expectations of its directors.



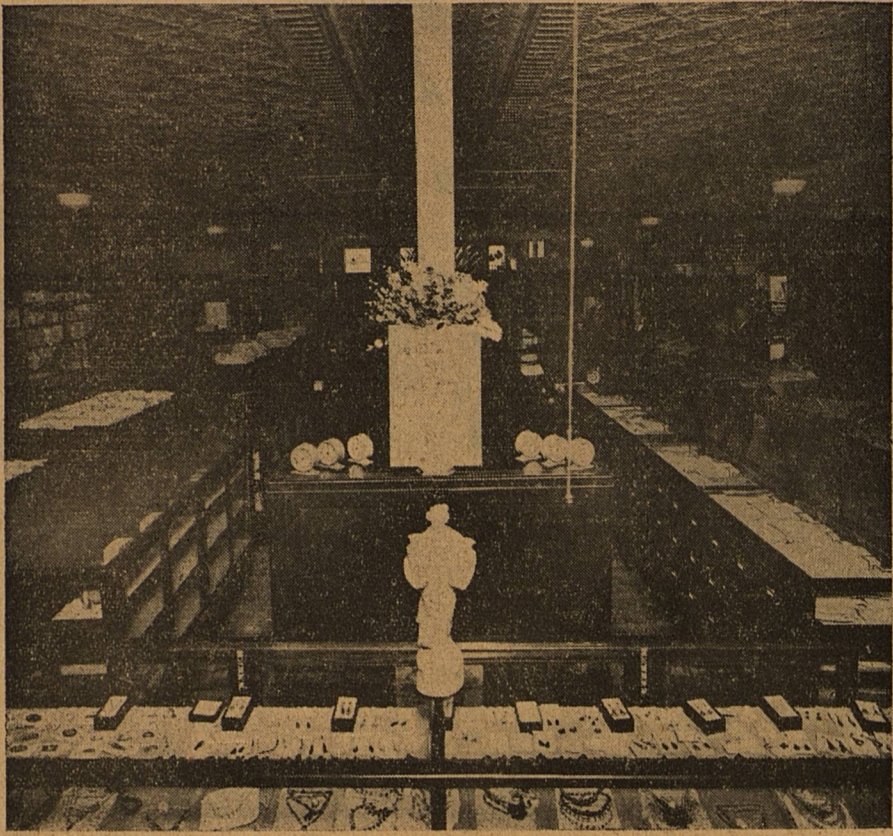
The standard of exhibits to be shown will equal those of any other fair in the Southwest. In every department whether agricultural products, livestock, poultry or in other divisions--competition will be keen.

Coupled with all of these interesting displays are entertainment features, rodeo and horse racing, which belong properly to the best in entertainment. May we say welcome and hope you enjoy the fair.

West Texas Gas Company

GOOD GAS WITH DEPENDABLE SERVICE

Interior View of Addison Wadley Co.



The Store that has served West Texans with reliable merchandise for more than a quarter century!

It is with much pride and satisfaction that I look back over the years of service that this store has catered to the wants of West Texans. In the olden days and right up to the present time, it has been the undying aim of this store to handle only such merchandise as we could stand squarely behind, telling you frankly that you will get a full dollar's value for every dollar spent; and whenever you buy anything here, whether it be at a clearance sale or in a regular way, that doesn't prove satisfactory in every respect, we want it back.

With this aim constantly before us, we have surrounded ourselves with a host of reliable brands of merchandise. . . . names that will mean something to you when you see them, whose reputations have been built by years of fair dealing in reputable merchandise.

Let us take a short resume of these lines.

In our ready-to-wear you will find such well-known names as Dobbs, Gage and Patricia hats; Marinette, Nativit and Bradley knitted wear; Levine, Ellen Kaye, Co-Ed, Jean Carol and Nelly Don dresses; Starling coats and Eastern Isle lingerie.

In the piece goods you will find all of the products of Marshall Field Co., Chicago; such as Wearwell sheets and pillow cases; LaFrance hosiery; Opportune crepe, Fieldale woolens, Wearwell blankets and comforts and other brands by this reputable concern.

Delving deeper into this department, you will find Kayser hosiery and underwear, Meeker bags, Vanity Fair underwear and brassiers, Formfit foundations, Munsingwear, Vanta baby garments, North Star blankets, Kenwood blankets, Fostoria glassware and literally dozens of others that space does not permit us to mention.

Going on into the shoes you will find Red Cross, International, Daniel Galt, Peters, Weatherbird, Mrs. Day's Ideal baby shoes. . . . for men, Florshiem, Friendly, City Club and Fortune. . . . all with years of experience in building reliable footwear.

Then over on the men's side you find Hart, Schaffner & Marx and Devonshire clothes, Lampher Skinner leather coats, Arrow shirts, Wilson shirts, Holeproof and Interwoven socks, Cheney cravats, Hansen gloves, Munsing underwear, Fools and Dickies work clothes, Pioneer belts and braces, Dobbs, Stetson and Stylepark hats and lots of others that you will recognize on sight.

By handling these well-known brands, we can tell you frankly that your every purchase here must be satisfactory. And in conclusion, may I add a word about the personnel of this store. A large group of experienced salespeople, consisting of 13 ladies and 8 men, who are anxious to serve you intelligently and speedily, taking your slightest wish as their command.

We are anxious to serve you.

ADDISON WADLEY

DOBBS YOUR ASSURANCE OF DISTINCTION

Smart women wear Cross Country with most types of clothes. It keeps its look of newness for months. In leading stores. Other Dobbs headsize hats, \$7.50 to \$20.

DOBBS CROSS COUNTRY \$7.50

You'll look like a portrait in these New EVENING FASHIONS

Revel in these charming frocks for your gayer hours, for they are sure to bring you romance—with their rich flowing lines in soft velvets, clinging satins and crisp taffetas—they are unprecedented in neckline accomplishment, giving each an individual touch—

accessories too! 10.95 to 22.50

- ◆ High Necklines
- ◆ Metal Fastenings
- ◆ Full Sleeves
- ◆ Italian Wine
- ◆ Olivine
- ◆ Sierra
- ◆ Black
- ◆ Damson
- ◆ Crepes
- ◆ Camel-Suede

MIDLAND FAIR - Oct. 19th to 26th

Come -- and make this store your headquarters while here.

Swagger Fashions

that will be in evidence throughout the FAIR SEASON

These clever sport coats by Britemore of California will be much in evidence at the track. In a smart array of swagger designs of plaids and solids in Homespun and Camels Hair—soft shades of tan, rustic green, blues, browns and blacks—Detailed to give that fashionable appearance as only Britemore can accomplish—Attractively priced at \$11.85 to \$29.00.

A soft tan Camels Hair sport coat by Britemore with tie belt and pleated back—\$19.85

Fashion Favorites

for Afternoon Wear

THESE are the clothes you will wear to tea, and the matinee. They will mingle in the best circles, because they are distinctively styled, and make you look extravagantly lovely. Figure flattery for every type.

for Women and Misses

10.75 to 19.75

Some very clever woolen frocks with short coats—luxuriously furred in rough woollens.

Showing the Largest Selection of

FUR COATS

in West Texas

A really fine display of gorgeous fur coats—In luxurious Kidskin, Eel Gray and Blue Fox, Caracul, Brown, Black and White Lapins and Silver Muskrat—shown in short, long and swagger lengths—Buy that coat you have been wanting Now! At prices that are exorbitant. Use our convenient payment plan.

◆ Kidskins

◆ Caraculs

◆ Lapin

◆ Muskrat

29.75 to \$139

Just Received!

Smart FOOTWEAR

for the Lady of discriminating taste

Imagine a shoe similar to the one above with the wide strap lazily crosswise on the foot, in an all over brown suede, perfectly plain except for the tiny bit of Moire trim that circles the vamp and swoops to an arch on the outside, and you have an outstanding shoe at \$5.00.

AAA to B—3 1/2 to 8

Phone 17

Clever New BAGS

In a large array of styles—large pouch zippers and there are those that are perfectly plain except for one large ball. A most complete showing in all price ranges.

2.95

others 1.00 to 5.00

MANDALAY

\$1.25

Mandalay! Kayser's new dark brown hosiery shade that's different! Its rich warmth is flawlessly clear, too, for it's "Mir-O-Kleer."