







# BONUS Opportunity DAYS

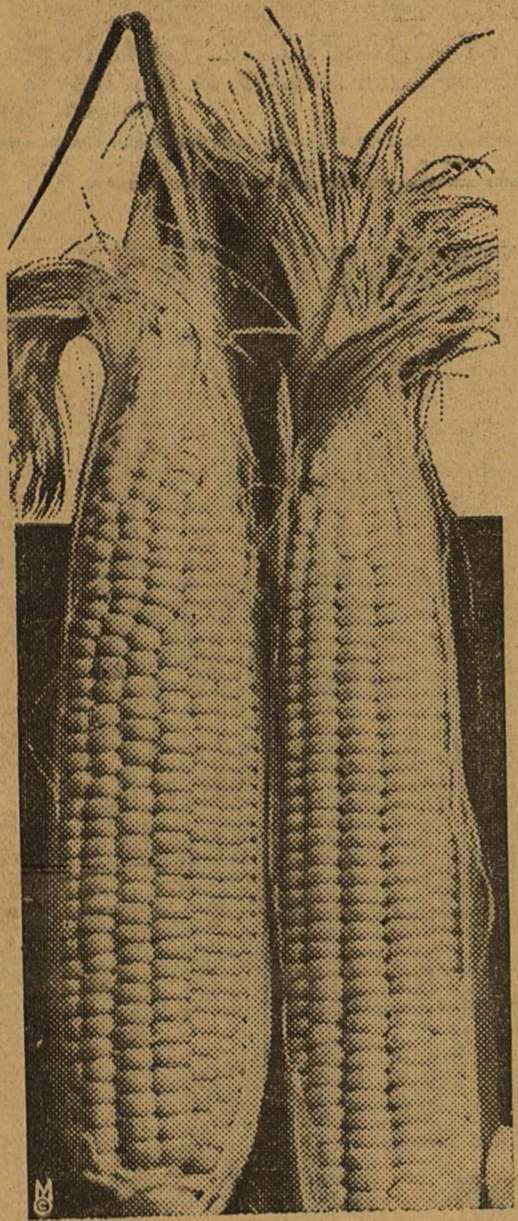
SPECIALS FOR  
**FRIDAY, SATURDAY**

JUNE 19th and 20th  
AT THE

## WES-TEX FOOD MARKET

MIDLAND

TEXAS



# CORN

DOZEN

FRESH LARGE  
EARS OF CORN  
BUY EARLY  
WHILE IT IS  
FRESH

# 10c

FRESH  
BLACKEYED  
**PEAS**  
Pound **2c**

GREEN  
**BEANS**  
Pound **5c**  
OKRA—POUND **10c**

KEEP COOL WITH  
OUR ICE CREAM  
SPECIAL  
SHERBETS  
LIME,  
LEMON,  
ORANGE,  
QUARTS **15c**



**Uncle Sam  
Pays off, and  
we in turn  
offer to you  
these food  
values that  
will cut your  
budget and  
and save you  
many dol-  
lars**

**BUNCH VEGETABLES Each 1c**  
**Lettuce** CRISP HEADS, EA. **5c**  
**Oranges** EACH **1c**



FRESH TEXAS GROWN

POUND  
**TOMATOES 3c**

### MARKET SPECIALS

**BACON** Fancy Sliced POUND **25c**  
**ROAST** Baby Beef Chuck lb. **13c**  
**GROUND MEAT** 2 lb. **15c**  
**BOLOGNA** Large Size, 2 LBS. FOR **25c**  
**BACON** Armour's Star POUND **33c**

U. S. INSPECTED MEATS

- Canada Dry GINGER ALE— 2 FOR **19c**
- MAXWELL HOUSE 1 LB. CAN **24c**
- Welches GRAPE JUICE — QUART **23c**
- PORK & BEANS 16 oz. Can **4c**
- Armour's Vegetole COMPOUND 4 Lb. Carton **42c**
- Libby's TOMATO JUICE 3 Cans For **22c**
- POST TOASTIES 2 Pkgs. For **19c**
- JELLO All Flavors — Package **5c**
- Del Monte APRICOTS No. 2 1/2 Can **21c**
- Del Monte PINEAPPLE No. 2 1/2 Can **18c**
- NUCOA — LB. PKG. **17c**
- Polar Bear FLOUR 6 Pound Sack **21c**
- El Food SALAD DRESSING — QT. **27c**
- Race Land SALMON No. 2 Tall, 2 FOR **19c**
- CRACKERS 2 Lb. Saxet, BOX **14c**
- Sour or Dill PICKLES — QTS. — 2 FOR **25c**
- VINEGAR — QUARTS **10c**

**JUST ARRIVED**

A FULL CARLOAD OF PROCTER & GAMBLE SOAPS

THIS IS YOUR CHANCE TO FILL UP YOUR CUPBOARDS WITH THESE QUALITY PRODUCTS AT ECONOMY PRICES

**SOAP CHIPS**

the soap of beautiful women

4 BARS FOR **19c**

5 POUND BOX **25c**

6 BARS FOR **19c**

**OXYDOL** LARGE SIZE **17c**

Quicker Suds—Makes clothes whiter

**Jail Comforts Induce Indians to Flaunt Law**

NEW DELHI, India (U.P.)—Indian railway authorities are baffled by thousands of "bikers"—who want to be arrested.

Beggars for a long time have been making a practice of traveling on railways without tickets so that arrest will lead them to the "comforts" provided in the prisons.

Officials are almost at their wits' end to deal with this "racket". Now they propose amendments of the law to obtain harsher punishment

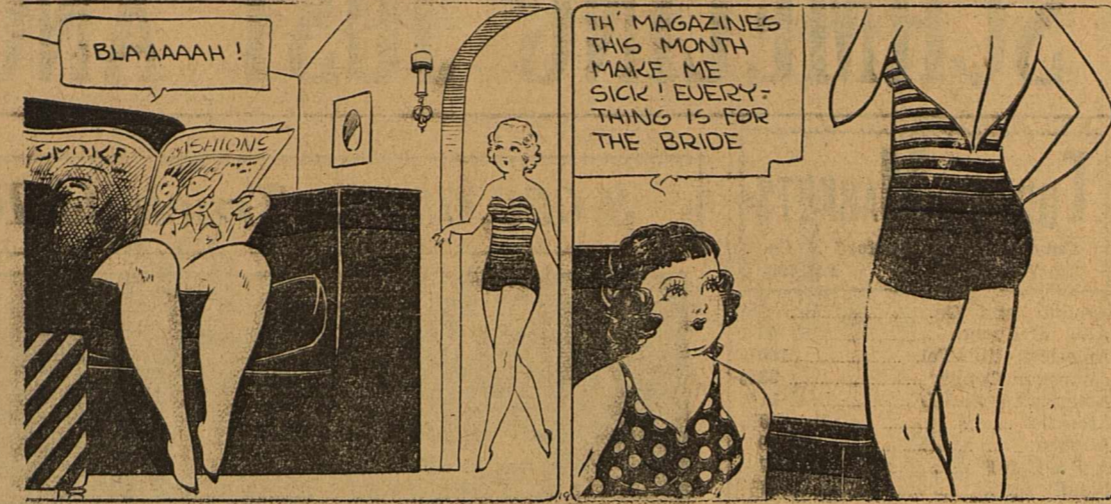
for ticketless travelers.

They estimate that 2,700,000 persons have been getting free rides on trains annually, representing a loss to the railways of nearly \$2,000,000.

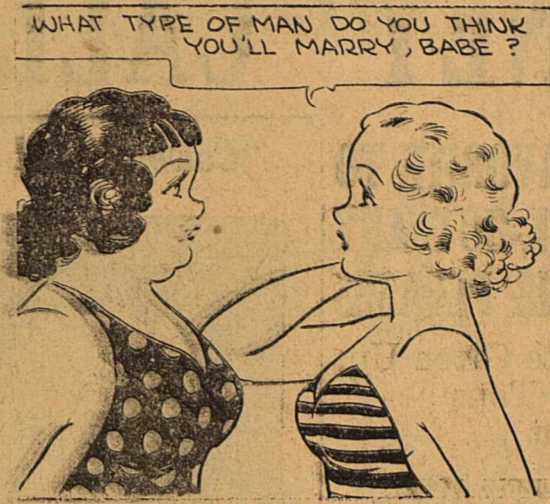
**Keyboard Criticized**

TOLEDO, (U.P.)—The most used letters in the English alphabet are e, a, r, t, o, and s; the least used are v, k, x, j, q, and z, according to Dr. Jesse L. Ward, associated professor of secondary education at the University of Toledo. On this basis, Dr. Ward has proposed a revision of typewriter keyboards.

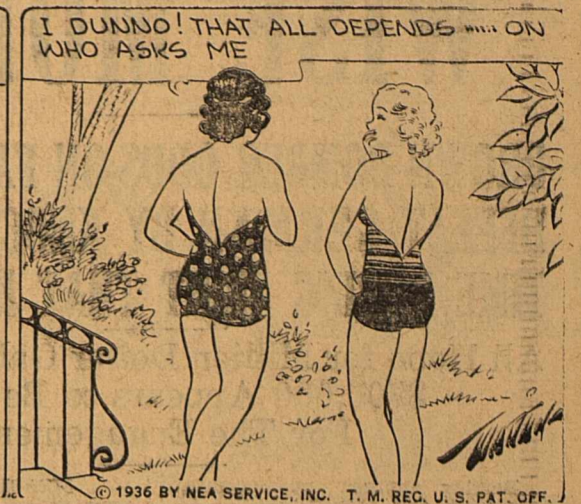
**BOOTS AND HER BUDDIES**



Oh!



By MARTIN



**CLASSIFIED ADVERTISING**

**RATES AND INFORMATION**

CASH must accompany all orders for classified ads, with a specified number of days for each to be inserted.

CLASSIFIEDS will be accepted until 12 noon on week days and 6 p. m., Saturday for Sunday issues.

PROPER classification of advertisements will be done in the office of The Reporter-Telegram.

ERRORS appearing in classified ads will be corrected without charge by notice given immediately after the first insertion.

**RATES:**

2¢ a word a day.

4¢ a word two days.

5¢ a word three days.

MINIMUM charges:

1 day 25¢.

2 days 50¢.

3 days 60¢.

FURTHER information will be given gladly by calling 7 or 8.

**8—Poultry**

**BABY chicks and milk fed fryers for sale; live or dressed. Fresh butter and eggs. Midland Hatchery, Phone 9003F2.**

**9—Automobiles**

**BEST USED CAR BARGAINS IN MIDLAND**

**Special Prices for This Week**

- 1934 CHEVROLET 4-DOOR SEDAN
- 1933 PONTIAC 4-DOOR SEDAN
- 1935 CHRYSLER 4-DOOR SEDAN
- 1933 PLYMOUTH COACH
- 1933 PLYMOUTH SEDAN
- 1934 FORD TUDOR
- 1935 FORD COUPE

On the following reconditioned cars. They are all clean with practically new rubber. See them before you buy and get our prices:

**Scruggs Motor Co.**  
114 East Wall  
Phone 644

**10—Bedrooms**

NICE cool south bedroom for refined gentleman. 305 East Kentucky. 87-3

SOUTHEAST bedroom, private entrance. Suitable for one or two men. Call 480-W. 88-3

**11—Employment**

WANTED: White woman to do house work. Call 360. 86-3

**Storage**

PLENTY OF ROOM  
115 South Main  
SHELTON-COLEMAN  
PAINT & PAPER STORE  
Phone 43

**Buddy's FLOWERS**

PHONE 1083  
MIDLAND, TEX. 1200 W. Wall

**0—Wanted**

WANTED to rent 4 or 5 room unfurnished house. Mrs. Carr at 421 West Missouri. 86-3

COUPLE will store piano for use of same. Mrs. L. C. Thomas, phone 691W. 86-3

**2—For Sale**

60-ACRE farm, excellently improved, close in; 4 room and 2 room modern homes. Also desirable city lots. Write Mrs. Robt. Currie, General Delivery. 86-6

SILVER plated soprano saxophone in good condition. Post Office Cafe. 87-3

FOR SALE or trade: Air motor windmill, tower tank. H. A. Jesse. 88-1

**7—Houses for Sale**

SMALL home for sale. See Bill Knox at Scruggs Motor Co. 86-3

LARGE 4-room house to be moved and put in. All for \$200. Mrs. W. N. Connell, 121 N. Big Spring. 88-2

**For That GOOD SCRUGGS DAIRY MILK PHONE 9000**

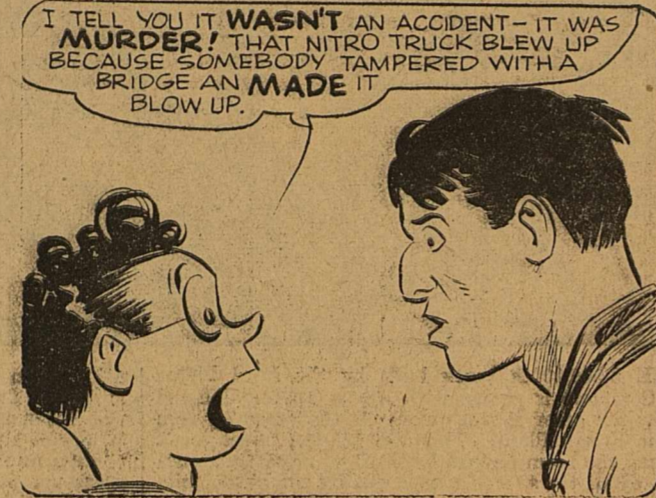
**UPHAM FURNITURE COMPANY**

615 West Wall Phone 451  
New and Used Furniture at Reasonable Prices

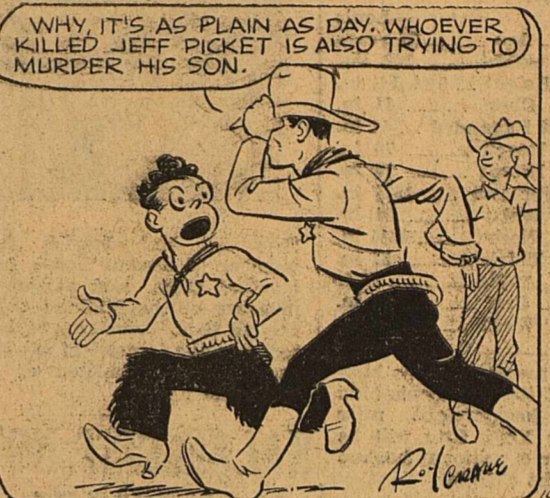
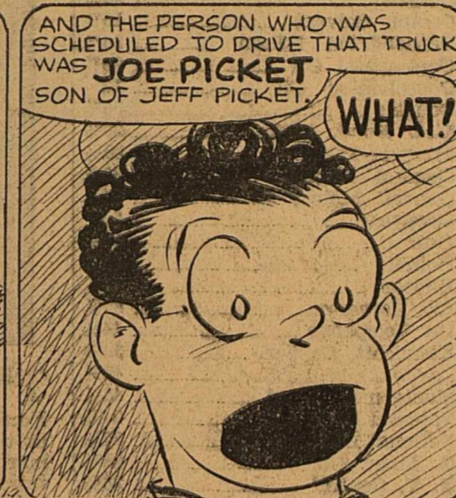
**POLITICAL ANNOUNCEMENTS**

- Subject to the action of the Democratic Primary Election July 25, 1936. Advertising rates: For State, District and County Offices, \$15; for Precinct Offices, \$7.50. Cash with order.
- For State Senator:** (29th District of Texas)  
H. L. WINFIELD (Re-Election)  
BENJAMIN F. BERKELEY (Brewster County)
- For State Representative:** (88th District)  
S. M. SWEARINGEN (Marfa, Texas)
- For District Attorney:** (70th Judicial District)  
CECIL C. COLLINGS (Re-Election)
- For District Clerk:**  
NETTIE C. ROMER (Re-Election)  
MRS. E. E. STEVENS
- For County Judge:**  
E. H. BARRON (Re-Election)
- For Sheriff, Tax Assessor and Collector:**  
A. C. FRANCIS (Re-Election)  
LEONARD PROCTOR
- For County Attorney:**  
MERRITT F. HINES
- For County Clerk:**  
SUSIE G. NOBLE (Re-Election)  
J. H. PINE
- For County Treasurer:**  
LOIS PATTERSON  
MARY L. QUINN (Re-Election)  
MRS. JOSEPHINE K. LIGON
- For Justice of Peace:** (Precinct No. 1)  
J. H. KNOWLES (Re-Election)  
B. C. GRIDLEY
- For Constable:** (Precinct No. 1)  
C. B. PONDER (Re-Election)  
W. P. (Bud) ESTES
- For County Commissioner:** (Precinct No. 1)  
J. C. ROBERTS (Re-Election)
- For County Commissioner:** (Precinct No. 2)  
W. V. JONES  
B. T. GRAHAM (Re-Election)  
W. T. BRYANT
- For County Commissioner:** (Precinct No. 3)  
D. L. HUTT (Re-Election)  
TYSON MIDKIFF
- For County Commissioner:** (Precinct No. 4)  
CARL SMITH (Re-Election)  
R. G. PEACH  
W. M. STEWART

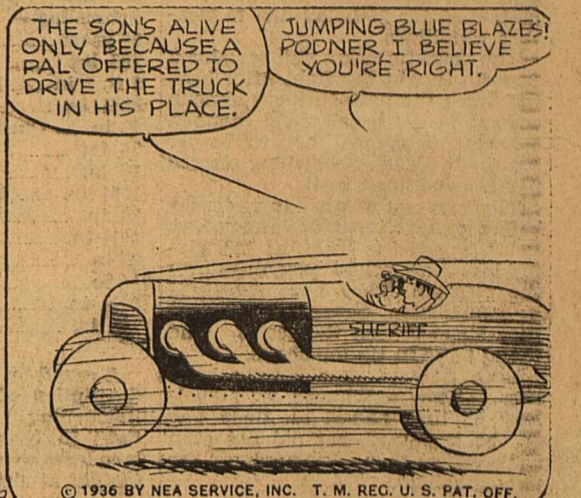
**WASH TUBBS**



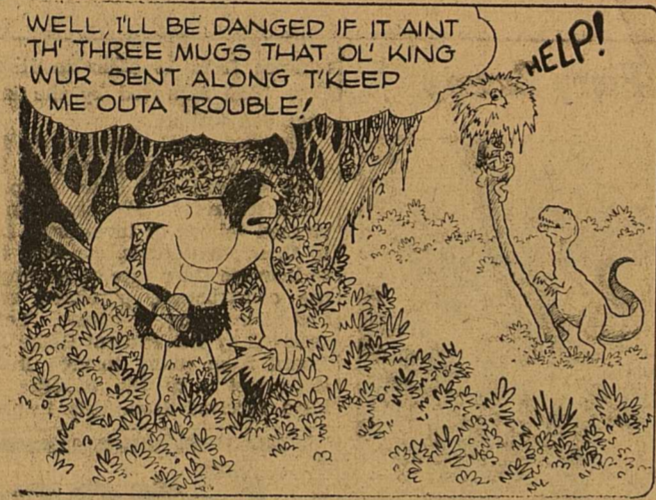
Easy Is Convinced



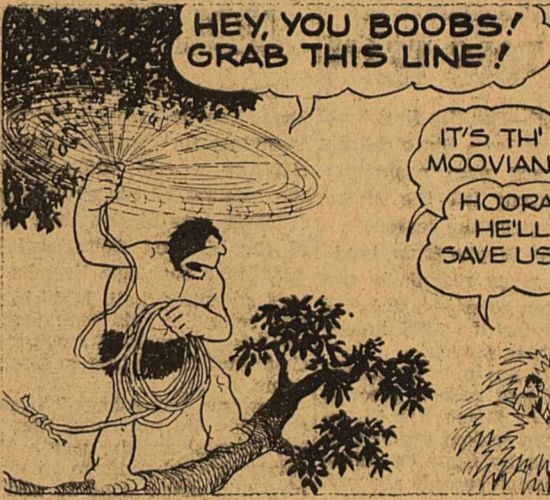
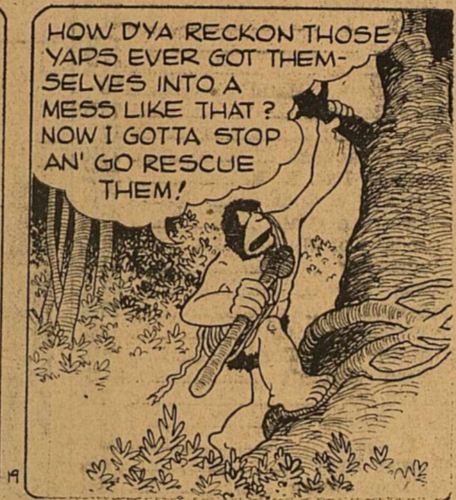
By CRANE



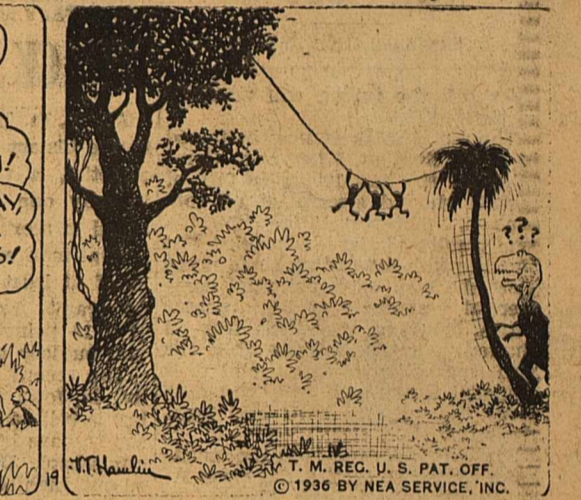
**ALLEY OOP**



He'd Do as Much for a Dog



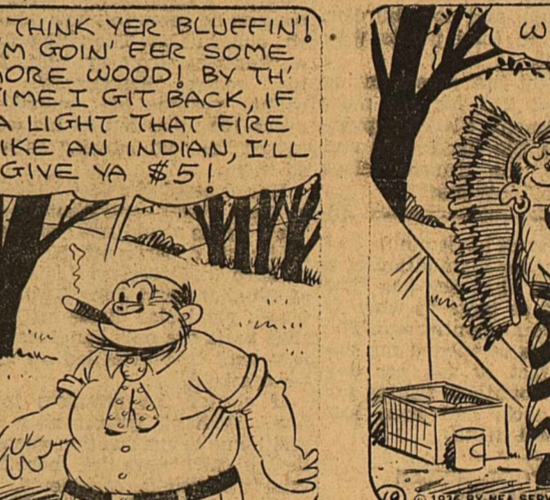
By F. MLIN



**SALESMAN SAM**



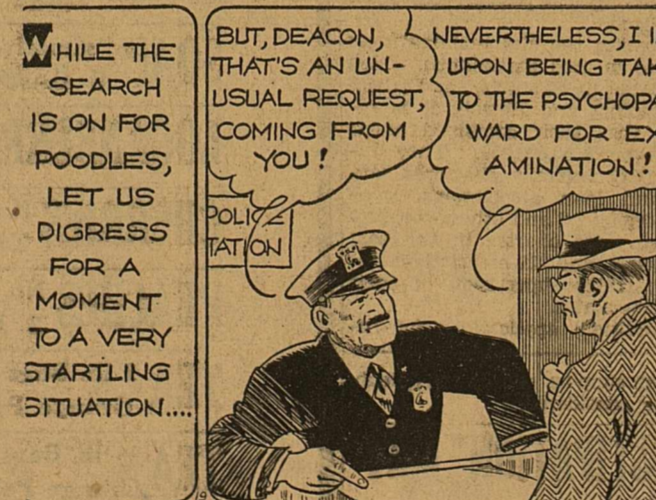
It Isn't So Hard, at That



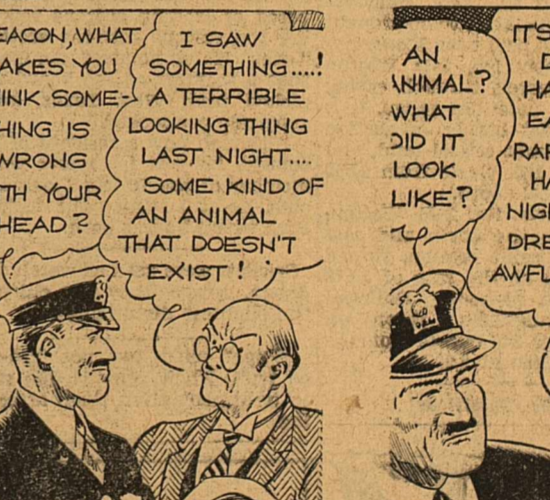
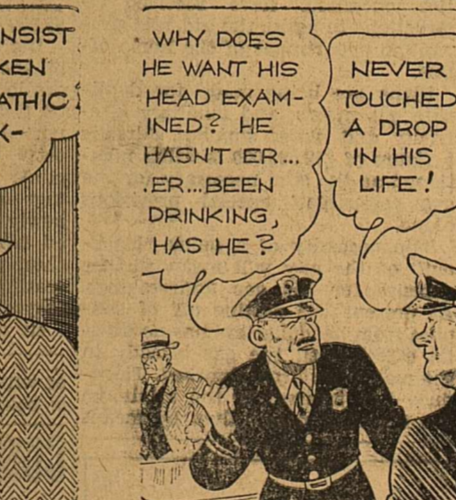
By SMALL



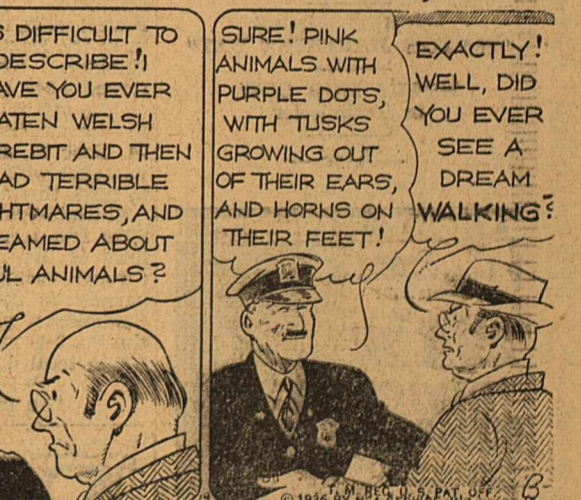
**FRECKLES AND HIS FRIENDS**



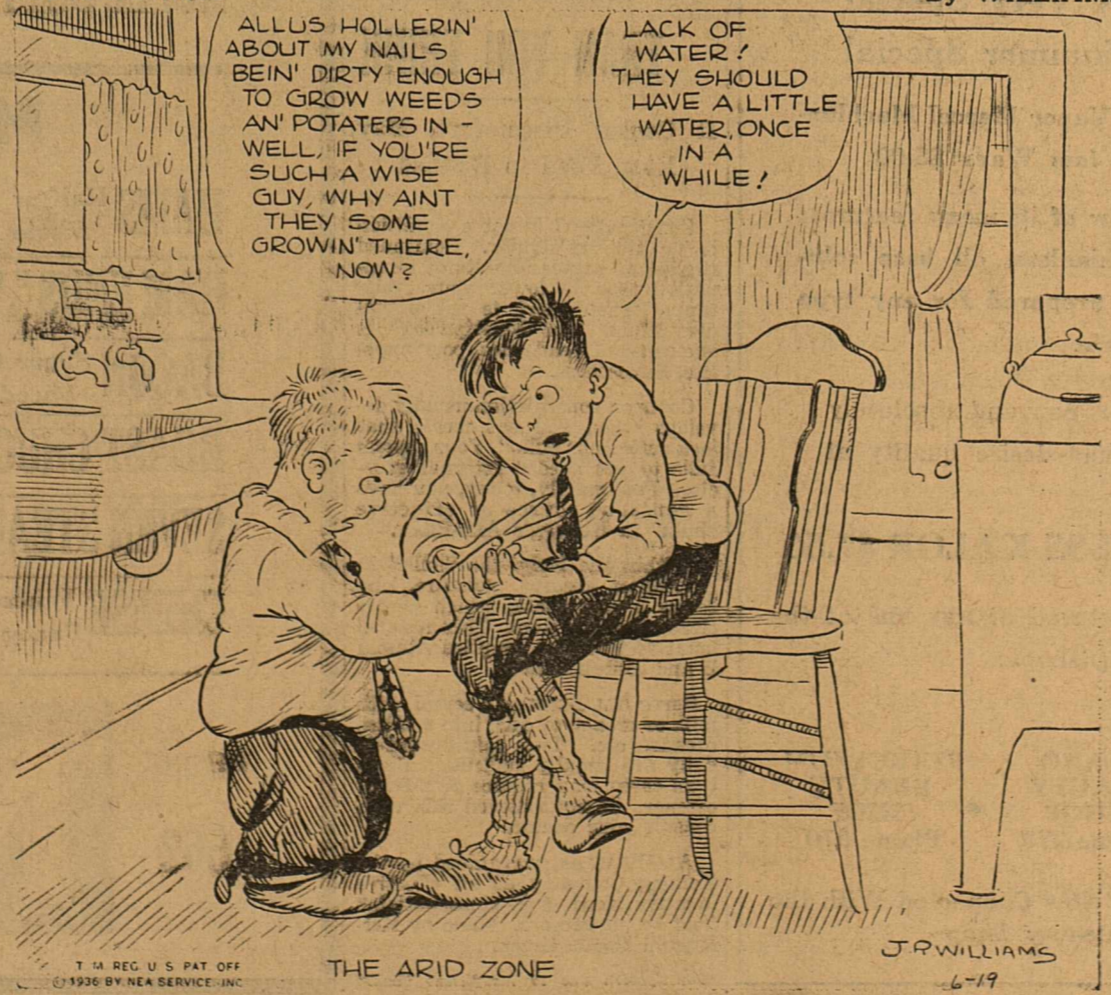
In the Flesh



By BLOSSER

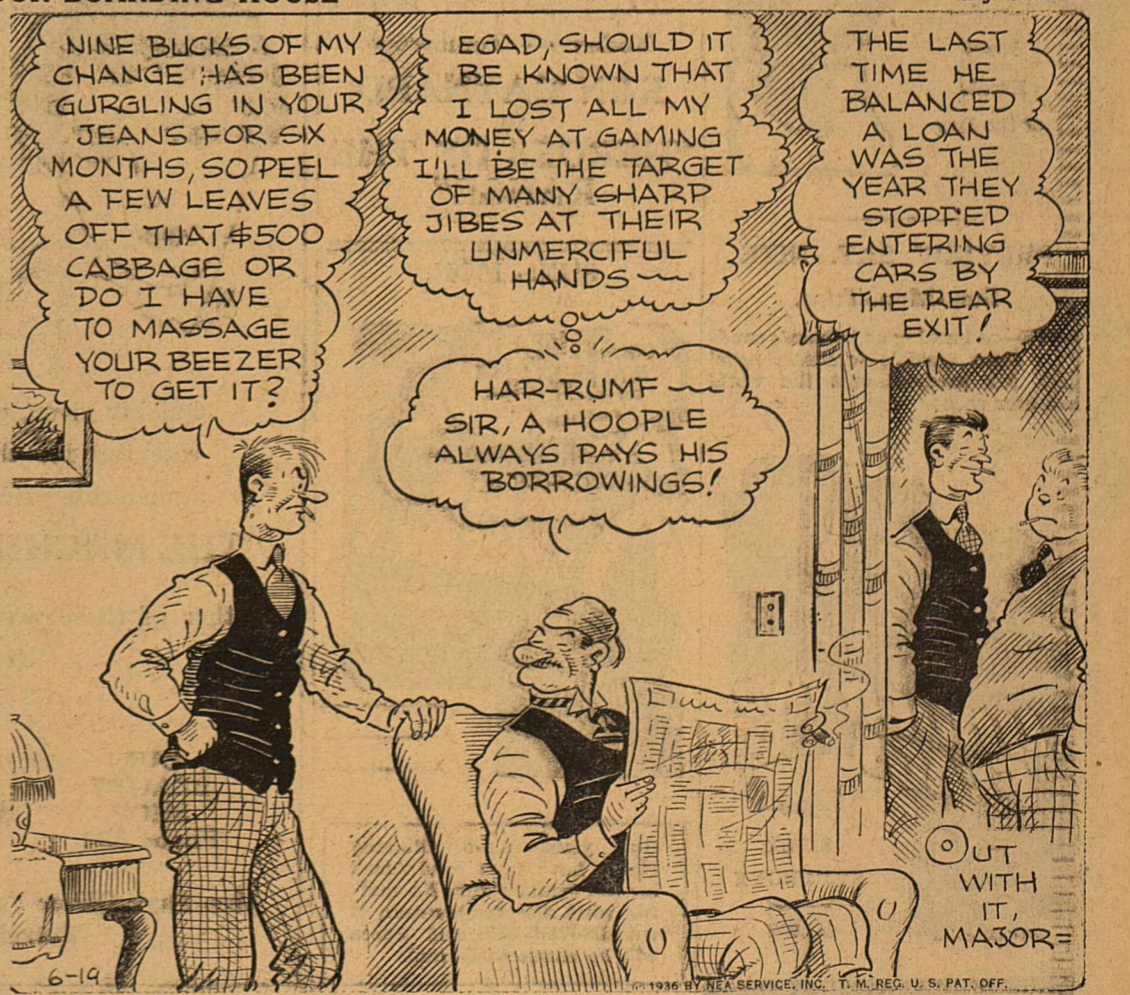


**OUT OUR WAY**



By WILLIAMS

**OUR BOARDING HOUSE**



By HEARN

