

Be Prepared
To Vote

THE REPORTER-TELEGRAM

THE DAILY REPORTER (Consolidated March 10, 1929) THE DAILY TELEGRAM

THE FORECAST

WEST TEXAS: Fair in the north and cloudy in the south tonight and Thursday.

VOLUME VIII

[(P) MEANS ASSOCIATED PRESS]

MIDLAND, TEXAS, WEDNESDAY, JULY 22, 1936

[(U.P) MEANS UNITED PRESS]

No. 116

Important Battle Raging In Toledo

Baby Mexican Girl Is Victim of Wreck Accident

CAR OVERTURNED AFTER BEING HIT BY ONE FROM BACK

Instant Death Fate
Of Infant, Parents
Are Injured

DRIVER IS HELD Pecos Mexicans Being Detained Pending Investigation

Elvita Pieda, 15-month-old Mexican baby girl, was instantly killed about 10:30 this morning when the car in which she was riding with her father and mother was overturned after being struck from the rear by another car.

Manuel Pieda, father of the baby, and his wife were returning to their home in Big Spring after a trip to Pecos and had started to turn into a filling station about a mile west of Midland when the car was hit.

In the second car was Francisco Valencia and two other Mexican men of Pecos.

Officers who investigated the accident said that Pieda told them he had passed the car being driven by Valencia about a mile down the road and was driving approximately 50 feet in front of it when he started to turn off for gas.

According to Pieda, he was almost entirely off the road at the time the other car struck him. As his car was struck it immediately was turned over, and the baby was crushed, dying almost instantly.

Rafael Comanche, Ranger Mexican who was hitch-hiking, was near the scene of the accident and added his testimony to that of the drivers of the cars that neither was driving fast.

C. B. Lyne, local man, was one of the first persons to reach the scene of the accident. Immediately after he reached the accident and called an ambulance. He said that the squealing of brakes just before the impact of the cars attracted his attention from where he was working nearby and that he rushed to the scene as soon as possible.

The small baby was still living as he arrived at the scene of the accident but died soon afterward.

Valencia told investigating officers that he had either lost or left at home his driver's license and was using that of his brother at the time of the crash. He was remanded to jail until officers completed a check up on his story.

GOOD RAINS FALL IN VARIOUS PARTS MIDLAND COUNTY

Raggett Farm Home
Wrecked by Twister
Tuesday Evening

The series of small "twisters" which have struck Midland and vicinity during the past year was continued Tuesday evening when a cyclonic wind accompanied by heavy rain wrecked the farm home of O. A. Raggett in the Prairie Lake community and destroyed chicken houses there and on the Leon Arnett farm just north.

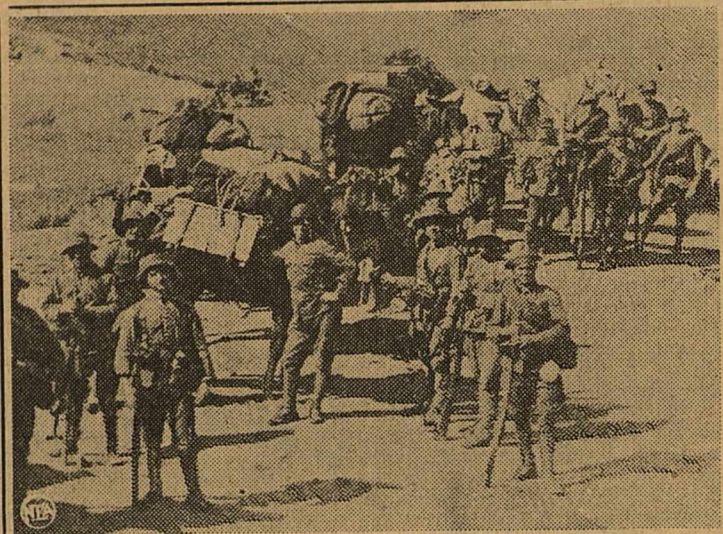
The Raggett home was blown off the blocks, part of the north wall was blown off and windows and doors were carried out by force of the wind. Mr. and Mrs. Raggett were in the house when the damage was done but were not injured.

The twister struck between six and seven o'clock in the evening. No other damage was reported from the winds but rain was received over various other portions of the county. The Scharbauer ranches all reported good rains and good precipitation was received in the vicinity of the Whitmore farms.

The Tyson Midkiff ranch, 25 miles south of town, received about an inch of rain. On the T. O. Midkiff place, about half an inch of rain fell, accompanied by heavy wind which, however, did no damage.

According to the gauge at Southern Ice company, Midland itself received only .41 inch while the airport reported .65 inch rain falling accompanied by high winds. Heavy thunder accompanied the rainfall here.

Spanish Troops On The March



Returning from a march under the blazing tropical sun, Foreign Legionnaires like these prematurely set off a well planned military coup when they attacked a group of jeering socialists at Melilla, Spanish Morocco. Comrades in the Canary Islands joined in the insurrection.

SCREW WORM FLY; STOCKMEN'S ENEMY IS NOT NEW TO SOUTHWEST RANCHMEN

Research Information Basis for Control
Program Centered In West Texas

The screw worm fly arch-enemy of stockmen is not new to ranchmen in the Southwest. In general, the purpose of the screw worm control campaign is to convey to livestock raisers that information which has been made available by research workers—information that has been found to be practical and economical in treating screw worm cases and in controlling the screw worm fly.

This campaign is being conducted by the United States Department of Agriculture, Bureau of Entomology and Plant Quarantine, in cooperation with the extension services of the agricultural colleges and other state agencies in the states affected. South Carolina, Georgia, Florida, Alabama, Mississippi, Louisiana, Texas, Arizona, New Mexico, Oklahoma, California and any other states where screw worm flies may migrate this year are included in the program.

The control of the screw worms is essentially connected with better animal husbandry practices, according to R. A. Roberts, regional supervisor of screw worm control work in the southwestern United States, and all recommendations made concerning screw worm control will first be tested under range conditions. For this purpose demonstration units or ranches are being set up in different states; three of the units are in Texas. These ranches will represent different range conditions and will cover experiments with cattle, sheep, goats, horses and hogs. On these ranches various animal husbandry practices will be tried.

The District Screw Worm Supervisors are men of practical ranch experience who are employed by the Bureau of Entomology and Plant Quarantine. They are stationed in various counties, where they not only will disseminate information concerning screw worm control, but will collect all available data on the pest.

The campaign on screw worm control is under the direction of Dr. W. E. Dove, 1010 Travis Building, San Antonio, Texas. Each state organization will be advised as to condition in various parts of the state and as to the type of work needed by a State Screw Worm Control Committee.

Through the district, state and regional screw worm supervisors, the following program will be conducted:

(1.) A series of demonstrations and educational talks will be held.

(2.) Practical demonstrations on animal husbandry will be made under range conditions.

(3.) Estimates will be obtained of the number of screw worm cases and the number of deaths resulting. See (SCREW WORM FLY) Page 6

GENERAL STRIKE IS THREATENED BY MEXICO STRIKERS

Quick Settlement Of
Quarrel Demanded
By Leaders

MEXICO CITY, July 22 (P)—A threat of a general strike of the national federation of electrical workers in event the capital power strike is not settled within ten days was announced today by the federation.

All states except Sonora, Tabasco, Chiapas and Lower California would be without lights in that case.

A conference between representatives of strikers and the Mexican light and power company at the presidential palace drew nearer hopes of a quicker ending of the present walkout.

TOPEKA SCENE OF MASS GATHERING BY REPUBLICANS

Notification Of His
Nomination To Be
Given Landon

SPEECH IS READY Campaign Strategy To Be Discussed By Leaders

TOPEKA, Kans. July 22 (P)—Republican hosts, headed by Representative Bertrand Snell, New York, chairman of the national convention converged on Topeka today to notify Governor Alf Landon tomorrow night of his nomination for the presidency, with his acceptance speech ready. Landon planned to greet the visitors as they arrive.

John Hamilton, national committee chairman, is expected to arrive tomorrow to discuss campaign strategy.

Ceremonies of the formal notification will open at 8 o'clock CST Thursday evening and will be broadcast over NBC and CBS.

The program will include: Invocation; introduction of Rep. Bertrand Snell by National Chairman John Hamilton; notification by Rep. Snell; Landon's acceptance address; benediction.

Blocks away from the decorated and holiday-spirited downtown Topeka, Gov. Alf M. Landon spent most of Tuesday in his executive mansion, enjoying his family's homecoming and a few hours of rest before Thursday's notification ceremonies.

The address in which he will accept the Republican party's formal notice of his nomination for the presidency was completed Monday but after a night's sleep Landon came again went over his 3,500 words.

After this check-over, a close adviser said that in addition to probable emphasis on farm relief, unemployment, federal spending and taxation, and the constitution, the Republican nominee was likely to touch on labor problems, outlining his views on what the government's attitude should be toward the labor movement.

BIG SPRING MAN ADDRESSES CLUB

W. T. (Tanlac) Strange
Principal Speaker
At Luncheon

W. T. (Tanlac) Strange, secretary of the Big Spring chamber of commerce, was the guest speaker at the regular weekly luncheon of the Midland Lions club in the assembly room of the county courthouse today noon.

The capable and much sought after speaker, during his address into two divisions—humorous and serious. The visitor from Big Spring launched his address in an exceptionally humorous manner, relating numerous stories which kept the large number of members and guests in attendance in a constant fit of laughter.

Then switching to a more serious vein, Mr. Strange spoke on "Opportunities For Investments Offered in Service Clubs." The investments mentioned were not of a financial nature, but were investments of service to humanity from which returns are far greater than material gains.

Mr. Strange enumerated the major objectives of the Lions club and said that each club member has an opportunity for service, the rewards of which will bring satisfaction of service well rendered. The speaker also stated the need of cooperation between Big Spring and Midland, and said that if one of the two towns, both will grow, and that as a result this section will also grow.

Musical Program Enjoyed
On the musical part of the program, Lion J. W. (Doc) Bailey rendered two beautiful vocal solos, "Alone," and "After Sundown," being accompanied at the piano by Mrs. DeLoe Douglas. Following the vocal solos, Lion Thomas Inman was featured in two clarinet solos. Mrs. Holt Jewell accompanying him at the piano. The musical numbers were greatly enjoyed.

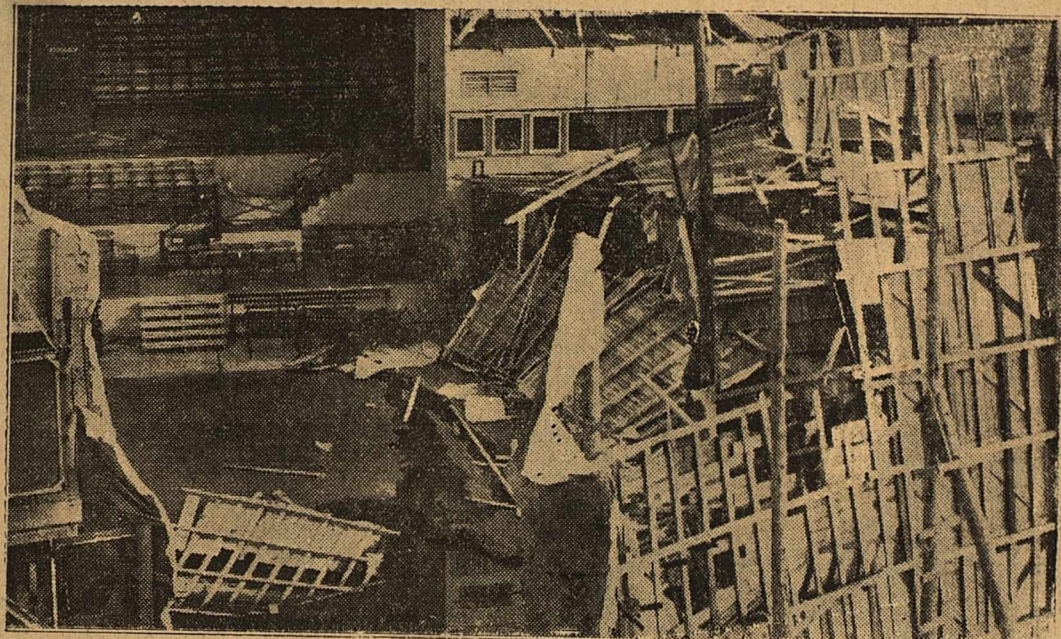
Frank Stubbeman was in charge of the program.

Guests present at the luncheon included Grover C. Durbam, Big Spring Lions club member and president of the Big Spring chamber of commerce, Mr. Evans of Sweetwater, L. O. Taylor of Dallas, and Dr. Barganier, Bob Scruggs and W. D. Anderson of Midland.

The delicious fried chicken dinner was served by the members of the Busy Bee club.

OPENS CLASSES
Miss Lydia G. Watson opened her summer session piano classes at Courtney community in Martin county today. She will give lessons there one day each week.

After Windstorm Hit Cavalcade Of Texas



This is what is left of the \$250,000 Cavalcade of Texas set at the Texas Centennial Central Exposition at Dallas after a 65-mile-an-hour gale struck the place Monday night. The set was ripped apart, torn and damaged by fire after lightning struck it. It was one of a number of places in the Centennial grounds that suffered damage, estimated there alone at \$100,000. Workmen immediately began rebuilding the Cavalcade set and repairing other damage. The damage at Dallas was estimated at \$1,000,000.

WIDE LABOR SPLIT FORESEEN AFTER SPEECH BY LEWIS

Says Members Of His
Group Will Not Go
On Trial

WASHINGTON, July 22 (P)—John L. Lewis defiantly told the American Federation of Labor's executive council Tuesday night that members of his committee for industrial organization would refuse to stand trial for "insurrection" and that the committee would "carry on."

Labor men generally interpreted this announcement, made in behalf of the 12 unions in the committee, as making all but certain a wide split in the federation.

The executive council had "invited and requested" the 12 unions seeking to organize all the workers in each big industry into one big union to appear before it and answer charges they were violating A. F. of L. law by disregarding rights claimed by craft unions in attempting to organize workers along craft lines, such as carpenters and machinists.

The council took this action after peace makers had blocked a move, favored by a majority of the union members, to suspend the council immediately. Lewis, president of the United Mine Workers, contends the council has the right neither to try nor to suspend the unions associated with him.

GOLDSMITH POOL WELL COMPLETED

Gulf Producer Is Gauged
At 1.42 Barrels
Per Day

By FRANK GARDENER
Gulf Oil Corporation has completed another large well in the Goldsmith pool of Ector county, its No. 5 Goldsmith, 2,200 feet from the north and 1,320 feet from the east line of section 22, block 44, township 1 south, T. & P. survey. The well flowed 1,412 barrels of oil on the 24-hour potential test. It was treated with 5,000 gallons of acid earlier in the week, being allowed to clean itself of all cut acid and oil load before starting the actual gauge. Gas volume after acid tested 26,000,000 cubic feet.

The No. 5 Goldsmith drilled to a total depth of 4,200 feet and had been showing natural production of from 300 to 500 barrels daily while cleaning out caving hole over a period of several weeks.

Grisham and Hunter No. 1 R. B. Cowden, northwest Ector wildcat in section 10, block 45, township 2 north, T. & P. survey, was last reported drilling at 3,450 feet in anhydrite. Farther west, in section 8, Grisham and Hunter No. 2 R. B. Cowden was drilling anhydrite at 3,010 feet.

RACING OF DOGS TRIAL DATE SET

Betting In State Will
Be Reviewed By The
Supreme Court

AUSTIN, July 22 (P)—An appeal of two cases to determine the validity of the pari-mutuel wagering on dog races in Texas today was set for submission October 6 before the supreme court. The action indicated the decisions could not be made before three months.

Navy Ship Lands; Stinson Leaves

One navy ship, an SLP, commanded by Lieut. Allen landed at Sloan Field today en route from El Paso to Dallas.

A Stinson plane of the Humble Oil company left for Wichita Falls. The pilot was W. L. Deed.

R. R. COMMISSION DECISION CALLED INVALID BY COURT

Permits For 3 Wells
To Drill In Gregg
Ruled Out

AUSTIN, July 22 (P)—The supreme court ruled today that the Railroad Commission's order attempting to grant permits to drill sixth, seventh, and eighth oil wells on a tract of 8.61 acres in Gregg county under an exception to rule 37 was invalid because of improper notice. A hearing was not afforded the interested parties.

Permission for a new process production company to drill was denied an order dated May seventh, 1934, the opinion stated, while on June 29, the same year, a second order was issued without notice of a hearing and granted an application.

GEOLOGISTS WILL GATHER IN ANGELO

Regular Meeting Of The
Society To Be Held
Saturday Night

The regular monthly meeting of the West Texas Geological Society will be held in the Green Room of the St. Angelo Hotel, San Angelo, Texas, Saturday night, July 25th at 8:00 p. m.

Dr. F. B. Plummer of the University of Texas will deliver a paper entitled "Experiments on the Flow of Fluids Through Sands, and Their Applications to Geological and Production Problems."

This paper should be of particular interest to all persons engaged in the oil business. Petroleum engineers are particularly invited to hear it.

Dr. Plummer may be accompanied by Dr. Noe, paleontologist of the University of Chicago, who if present will speak of his experiences on a recent geological trip through Mexico.

JOINER WINKLER TEST TO DRILL DEEPER

Shut down for several days at 5,005 feet, five feet below contract depth, Joiner Oil Corporation No. 1 Evans-Cowden, wildcat located in section 46, block 73, public school land, northeast, Winkler county, is reported preparing to drill deeper. No oil showed in commercial amount in the test in drilling to its present depth.

Gulf No. 13 Keystone in the Keystone pool of Winkler flowed 108 barrels of fluid during the last 24-hour test through tubing, 44 bar-

See (OIL NEWS) Page 6

LUMBER COMPANY TO HOLD OPENING 2 DAYS THIS WEEK

A. and L. Extending
Open Invitation
To Public

The A. and L. Lumber company, Midland's newest industry is to hold a grand opening Thursday and Friday with the entire public invited to attend.

The new company is located at the site of the old Cragin Lumber company on Texas street. The old building has been completely remodeled and enlarged to care for the new firm.

H. B. Lancaster and George Abell, Midland's newest industry are the owners of the new firm and H. R. Heckendorf, Liberal, Kansas, is in charge of everything at the present.

Lancaster announced today that everything needed in the building of a home could be purchased at the new place. Electrical, plumbing and yard supplies will be handled along with lumber, and other supplies.

Particular attention of the public is called to the large display of Lincoln paints, one of the best know brands. Paint for any and all purposes can be purchased at the office.

The new firm adds much to the growing industries of Midland, the weekly payroll aggregating \$1500, according to Lancaster. It is expected that this will be increased as soon as the place gets settled into its regular routine.

BIDS REQUESTED ON HIGHWAY WORK

Surfacing of Number One
In County Among
Improvements

AUSTIN, July 22 (P)—The highway commission Tuesday called for bids July 30-Aug. 1 on more than 600 miles of asphaltic surfacing on many highways estimated to cost about \$1,000,000. There were 32 jobs bids previously were called for those dates on about \$2,250,000 of work on which federal funds will be used and \$50,000 of state maintenance jobs.

Projects included: By counties: July 30: Andrews, Ector, Martin and Winkler, 48.3 miles of sealed double asphalt surface treatment in Midland and Ector counties and asphalt seal coat in Andrews, Martin and Winkler counties on highways 51, 1 and 82 from Ector county line to Andrews; from east city limits of Odessa east 1.9 miles and from 4.7 miles east of Odessa to Warfield; from Howard county line to Midland county line, and from Kermit to New Mexico state line.

UNIQUE VEHICLE BUILT

TOLEDO, (U.P.)—Thirty-year-old Lester Ulmer, a victim of spinal meningitis, never has walked a step but he moves around town in a vehicle of his own design. It is a three wheeler, built close to the ground, which he propels by pushing and pulling the steering wheel. Equipped with a brake, the vehicle can attain a speed of 12 miles an hour.

WARSHIPS RACING AGAINST TIME TO AID AMERICANS

Rebels And Militia
Meet In Vital
Clash

MADRID QUIET Situation Tense In Capital As War Spreading

WASHINGTON, July 22 (P)—As officials anxiously watched the race against time by two United States warships to rescue Americans in war-torn Spain, the Madrid embassy flashed word today of an important battle near Toledo between armed militia and rebel troops.

Eric C. Wendelin, third secretary at the embassy, reported to the state department that all Americans at Madrid were safe. He said that the situation at Madrid at noon today, (Spain time) was quiet but tense and that the battle at Toledo was still raging.

Consul William Corcoran, Vigo, reported that rebel military and civilian fascists were in control of the city. Corcoran said that calm was restored in the principal Galician cities completely dominated by the rebels.

The government ordered two warships to the waters of Spain last night, when reports indicated that the rebel military forces were sweeping to new victories. The commanders of the vessels were ordered to evacuate the 1,582 Americans in Spain if necessary.

SHIPS ORDERED TO SAIL TO BILBOA

CHERBOURG, France, July 22 (P)—The United States battleship Oklahoma was ordered today to sail to Bilboa, Spain, at midnight tomorrow to pick up any American refugees. The heavy cruiser Quincy, en route to England, was ordered to proceed to Gibraltar for the same purpose.

Midshipmen aboard the Oklahoma were transferred to other vessels including the Arkansas and Wyoming.

U. S. MAY ESTABLISH EUROPEAN NAVAL BASE

WASHINGTON, July 22 (P)—Possibility that the generally unsettled European situation might impel the United States to re-establish a naval squadron in European waters was indicated today by Secretary of State Hull. His suggestion was in response to questions of newsmen concerning the dispatching of two vessels to the strife-torn European country.

LONG SUPPORTERS BACK ROOSEVELT

Leche Promises Farley
Group Will Back Him
100 Per Cent

NEW YORK, July 22 (P)—Governor Richard Leche, Louisiana, conferring with chairman James Farley at democratic headquarters today, gave assurance that the state political organization built by the late Huey Long "will go along with President Roosevelt 100 per cent."

Leche said "those whom Huey fought are now for Landon. We are for the president because the principles of the new deal are closest to the social security and welfare principles for which Huey fought."

FLAPPER FANNY SAYS:



It's when your blood is richest that you're apt to be in poor health.

THE REPORTER-TELEGRAM

Evenings (except Saturday) and Sunday Morning
MIDLAND PUBLISHING COMPANY, PUBLISHERS
112 West Missouri, Midland, Texas

T. PAUL BARRON Publisher
Entered as second class matter at the postoffice at Midland, Texas, under the Act of March 30, 1879

Subscription Price
Daily, by Carrier or Mail
Per Year..... \$5.00
Per Month..... 50¢
Advertising Rates
Display advertising rates on application. Classified rate, 2¢ per word; minimum charge 25¢ Local readers, 10¢ per line.

Any erroneous reflection upon the character, standing or reputation of any person, firm or corporation which may occur in the columns of The Reporter-Telegram will be gladly corrected upon being brought to the attention of the firm.

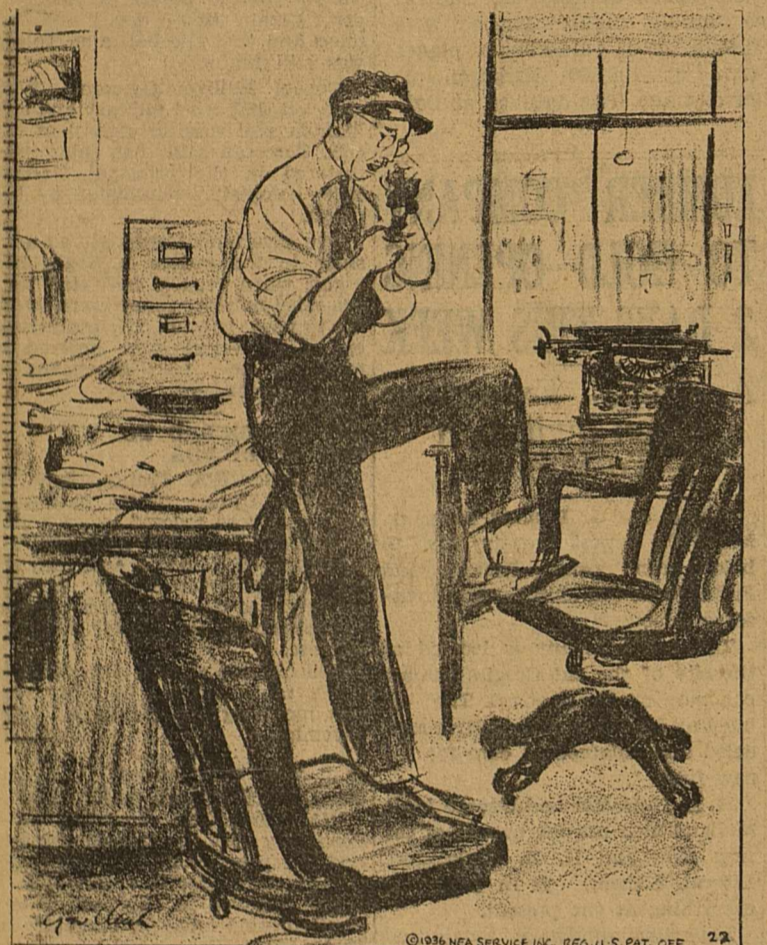
BEHIND THE SCENES IN WASHINGTON

By **RODNEY DUTCHER**
Reporter-Telegram Washington Correspondent

WASHINGTON, July 22—Although Congressman Lindsey Warren of North Carolina seems to have the inside track now in competition for the post of comptroller general, following expiration of John R. McCarl's 15-year term, there is a strong movement within the administration for appointment of Secretary Harold L. Ickes. The PWA administrator is not known to have displayed any interest, but it is believed that he would take the job if it were offered. The chances also are that he could have it if he asked for it, as he will be used so much in the Roosevelt campaign for re-election that he would be in excellent position to get what he wanted.

Progressives who want Ickes to succeed McCarl are arguing for him that he is not a member of any party machine, that his party affiliation has always been republican until this year, and that he has a widespread reputation as an honest man who gets things done. Appointment of an old-line party politician, the president has been told, would do nothing to bolster confidence of a country jittery about heavy federal expenditures. Careful checks by new dealers have shown that "Honest Harold" comes closer to 100 per cent popularity over the country than any

Side Glances by Clark



"I'll be here late, dear, the boss got back today, gave me a lot of extra work, and then spent the whole afternoon telling me about his vacation."

other cabinet member or major administrator—much closer, incidentally, than most of them.

His friends admit that Ickes could be depended on not to interfere with many progressive minded new deal projects, as they accused McCarl of doing. But they insist his record shows that the government would get every last nickel's worth out of its dollar spent.

Spar Over Ship Board Choice
Heavy backstage pulling and tugging is also preceding appointment of the five man maritime authority (new shipping board).

An especially hard drive has been launched from the merchant marine industry against selection of Karl Crowley, solicitor in the postoffice department.

Crowley drafted most of the new merchant marine act, with its many safeguards against exploitation and failure to build ships in return for government funds. He knows all about the industry and its ocean mail contracts.

Hence, it would be more or less logical to appoint him to the board and Roosevelt has had his name under consideration. The most important thing about any new administration is installation of personnel which will understand its functions under the act and will build up an organization in the interest of the public rather than for the benefit of any special group.

Snipe At Crowley
A whispering campaign has been started against the solicitor. One item charged against him is that he bungled the celebrated affair of the airmail contract cancellations, although Crowley's friends insist that he merely took the rap on that like a good soldier, the real fancy bungling having been done, they say, by the department of justice.

Some of the shipping lobbyists openly assert that the kind of men needed for chairman is a lawyer who will know how to get around the law.

The shipping companies have no trouble getting their point of view through to the president, thanks to White House Secretary Marvin McIntyre and Roosevelt's close friends, Vincent Astor and Kermit Roosevelt, both shipping magnates.

Roosevelt is above all anxious that the merchant marine be built up because he knows as well as anyone that it's needed as an auxiliary to the navy. One side assures him that the best way to get no merchant marine is to appoint Crowley; the other side vice versa.

Byrd's Blue Threatened
Surprising news comes from adjacent Virginia to the effect that Senator Harry F. Byrd's powerful democratic machine—or at least the senator's hold on it—may be broken this year.

Lieutenant Governor James H. Price is running for the gubernatorial nomination without even asking Byrd's permission and the senator is powerful sore. It looks very much as if Price would be the next governor and get hold of all state patronage and the state treasury, which would make Price, instead of Byrd state boss.

It's the first time the Byrd machine has been seriously challenged in many years, but already many organization leaders are defying the senator by declaring for Price. Whether Price would be open for a deal with Byrd at this time is unknown.

Workers Get 1927 Pay

SAN FRANCISCO. (UP)—Back overtime became an asset for 35 members of the Ferryboatmen's union when the United States Court of Appeals awarded them \$77,000 for overtime since 1927 when an 8 hour day and a six-day week was made legal.

Matches, with few exceptions, are the same today as they were 100 years ago.

South Americans' Song Bird



Dolores Anderson, member of the celebrated South American orchestra headed by Jose Manzanera, appears regularly at the Texas Centennial in the Ford Exposition building. The orchestra has established an enviable reputation for an unusual type of music and Dolores is the vocal soloist and cellist for the group.

Ambitious to climax a vocal career by reaching the grand opera stage, Dolores Anderson, cellist and soloist with Jose Manzanera and his South American orchestra, is an industrious person completely wrapped up in the study of music. She is an important member of the celebrated musical group appearing in nightly concerts in the court of the Ford building at the Texas Centennial in Dallas.

Dolores was born in Oakland, California. She attended school there and was considered a good student. Her first job was as a stenographer in San Francisco and it was there that she met Jose Manzanera.

Able to speak in Spanish, Dolores also can sing in five languages. They are Spanish, Italian, Russian, French and English.

Although Dolores appears mostly in the role of singer and cellist, she is an able pianist and arranger.

cause it is the type of hole made by meteors and because several large meteorites and innumerable pieces of meteorites have been found in the hole or nearby between 1922 and the present. At least three of four of these meteorites have weighed around 20 pounds, Dr. Stenzel stated.

This is the location of what is known as the Odessa fall, one of the 38 recorded meteor falls in Texas. Most of the meteorites taken from here are now placed in out-of-state museums. The University has only two very small pieces from the fall. These are now on exhibit.

OFFICIAL HOLDS 30 JOBS
NEW LISKEARD, N. (UP)—Wallace McGinn, Halleybury police chief has been given another job his 30th. He was holding down 29 different positions when the town council decided he didn't have enough to do and appointed him official town weed inspector.

Model of Big Meteor Cradle Is in Exhibit

AUSTIN.—A large model of the only known meteor crater in Texas has been built for the University Centennial Exposition by William J. Walther of Houston who did so much of the work for the Humble Exhibit at the Centennial Exposition in Dallas. Dr. H. B. Stenzel, supervisor of the division of geology, has announced. The model is now being displayed by the division in Gregory Gymnasium, main exhibit hall of the Exposition.

The scale model is a complete reconstruction of a crater located near Odessa, Ector county, in West Texas upon a high plane. It is a hole in the ground 14 feet deep and ranging from 500 to 650 feet, from rim to rim. The rim is slightly raised and the entire plain is rock strewn and covered with mesquite.

Scientists know that this is a meteor crater, Dr. Stenzel said, be-

Clam Exhibit One Of Features At Univ.

AUSTIN.—A well-prepared exhibit showing the structure and the uses of fresh-water and marine clams is being displayed in the division of zoology of the University Centennial Exposition. One of the most interesting features of this exhibit is a plaque showing the stages in the production of pearl buttons from the shells of fresh-water clams, probably the greatest use of fresh-water clams today. The river clam is edible and had a prominent place on the menu of certain Indian tribes but it is not used extensively as food in the present.

Dissections of fresh-water clams, especially a large river clam from the Colorado, and large models reveal the structure of the clams showing the size and location of internal organs. The clams belong to the mollusca, a large group of soft-shelled animals usually bearing a shell of limestone as a protecting shield. Oysters and snails are familiar members of this group.

One of the most primitive molluscs shown is the Chiton whose back is protected by an armor plate of eight overlapping shells. This animal clings to rocks in the sea.

The chambered nautilus, featured in a famous poem by Oliver Wendell Holmes, is shown as a small-bodied animal with several short tentacles and a large spiral shell.

As the nautilus grows it enlarges its shell and builds a wall between its shell and the old one.

The octopus, the cuttlefish, and the squid are three queer marine molluscs included in the exhibit. These forms do not have shells but rely for protection on the strong arm-like tentacles, their rapid movement through the water, and their ability to squirt out dense clouds of ink-like fluid. The three animals are used as food by various people. Alaskan Indians are quite fond of boiled and sliced octopus tentacles, even though this delicacy has many of the qualities of Indian rubber.

Other forms on display are the razor clam, the garden slug, the edible scallop, and the ship worm. The ship worm is a great problem in that it is capable of riddling wood with its burrows and often thus destroys the pilings of wharves and the timbers of ships.

Recalls Early Days In Texas History

MASON. (AP)—Mrs. George Bird, who recently observed her 90th birthday, remembers the slaying of her father, Thomas Milligan, first sheriff of Mason county, by Comanche Indians when she was 15 years old.

"Father had agreed to keep the stage miles for the San Antonio to El Paso stage lines," she said. "The mules were not accustomed to staying at our place and wandered back to the former keeper's ranch. Late one afternoon father went to bring them home. He was surprised by a band of Comanches about 300 yards from our house and was shot by an arrow. Mother rushed us children into the house and closed the wooden shutters when she heard father fire his pistol and scream. Father's body was found the next day when the stage arrived," she said.

Although Mrs. Bird's health is good she cannot read nor work but spends much time playing solitaire, which she says she does not particularly like, but, "I cannot sit down without my hands doing something."

The Town Quack



(Reserves the right to "quack" about everything without taking a stand on anything).

News item: Miss Kathleen Elland is back in town.

There should be some law about untruthful news reports being circulated. For about six hours yesterday the telephones here were kept ringing by persons who wanted to know all about the "cyclone" in Dallas. The most prominent report had approximately 40 dead and damage at \$1,000,000.

The rain here last night and this morning did not exactly rival that of earlier in the month for volume but it helped the spirits of the citizens just as much or more. The total of the latest was 41 of an inch and many a person that has been busy the last few days mopping

sweat from his brow today is finding things much more comfortable. A few more showers like the latest and Midland county will make the largest crops this year in the history of the county.

James H. Goodman may not be able to tell who will be elected governor this year but he has definite ideas on who will be in the '38. I'm not calling any names, but the initials are E. O. T.

We will stage our usual "election party" Saturday night here at the office. Results will be posted as they come in. But to get complete results on the county races be sure to read the Reporter-Telegram Sunday morning. We'll be waiting for the final count and as soon as it is issued we'll start grinding.

ECZEMA ITCHING

Quickly soothe burning, torment and promote healing of irritated skin with -

Resinol

JOIN

The Midland County Motor Transport Association

Help Us To Improve Freight Service

UPHAM FURNITURE COMPANY

615 West Wall Phone 451

New and Used Furniture at Reasonable Prices

To break the monotony of long Summer days, go

BEAUTY SHOPPING

It Will Correct You and Refresh You

We invite you to anyone of the following shops

OUR BEAUTY SHOP Phone 822

LLANO BEAUTY SHOP Phone 273

PETROLEUM BEAUTY SHOP Phone 970

Dr. Jno. B. Thomas

Of The MIDLAND CLINIC-HOSPITAL

Announces

The Association Of DR. J. H. BARGANIER

European Ruler

HORIZONTAL

1. 4 78-year-old monarch
2. Withered
3. Boundary
4. Orchid tubers
5. Golf device
6. Ulcer
7. Domestic slave
8. Upon
9. Pal
10. Form of "a"
11. To groan
12. South
13. Musical note
14. Body of knights
15. Within
16. Skirt edges
17. To affirm
18. Like
19. Native metal
20. Cravats
21. Chaos
22. Behold
23. Iniquities
24. Student at West Point
25. Food containers

Answer to Previous Puzzle

VENUS DE MILO
RAVES BRAT ARENA
DREW VENUE KEEL
IN MISSING SR
RAMBAM DOT OO
ETHER CUP DEMUR
VEAL POSES NISI
ODELIBERATED G
LET TO AT SI
LOW G VENUS R PEN
TRA E DE TIARA
NERO MILO PITAL
GREEK PARIS

VERTICAL

12 His country has many
1 Sharp

14 His country is part of the Scandinavian
16 Persian ruler
19 Cogwheels
20 Breakwater
21 Asiatic
22 Jester
23 Eras
26 Roman Emperor
27 Class of birds
33 Prong
36 Rescued
37 Cavern
38 Part of "be."
39 To accomplish
40 Eagle's claw
41 Sleeveless cloak
42 Short nail
44 Unless
45 A line
46 Half an em.
47 Age
48 Postscript
49 Preposition
50 Myself
51 Corpse

Waiting For Definite Word

Save your Energy and Time!

Why waste loveliness, ruin posture and develop cranky lines of tiredness from bending over a steaming tub and wielding a heavy iron! I send my laundry to

MIDLAND STEAM LAUNDRY

For rapid perfect service. My laundry is returned immaculate, free from any conceivable impurity, sterilized, cleaner and whiter.

Just Phone 90

MIDLAND STEAM LAUNDRY

Society and Clubs

Bridgette Meets Tuesday Evening With Mrs. Knight

The Bridgette club was entertained Tuesday evening by Mrs. W. P. Knight at her home, 1002 West Missouri. Flowers carried out the color scheme of pink and white.

Prizes were presented to Mrs. E. D. Richardson for high score and Mrs. W. N. Thurston for second high.

Club guests were Meses. Tom Nance and W. N. Thurston of Big Spring.

Club members present were Meses. S. C. Cooper, Don Davis, A. E. Horst, J. J. Kelly, H. B. Prickett, Richardson, Bill Van Huss, S. M. Warren, L. A. Tullos, R. R. Cowan, and the hostess.

Young People Have Watermelon Feast

The young people's department of the First Baptist church was entertained Tuesday night with a watermelon feast on the church lawn.

Among those present were Misses Betty Avara, Harriett Rogers, Morgan, Texas, Dorothy Hines, Lola Livingston, Nora Mae Bizzell, Olga Edwards, Zena Lee Jones, Lorine Jones, Claudia Moon, Lou Nell Hudman, Audrey Adams, Boerne Kidwell, J. D. Robison, Donnell McGuire, Kenneth Webb, Harvey Kiser, Norman Swain, Lowell Webb, Louis Wallace, Everett Milam, Messrs. and Meses. Eddie Frank Connor, Dick Denham, J. C. Hudman and F. J. Middleton, and Mrs. Josephine Ligon.

Mr. and Mrs. N. G. Oates and family have returned from a vacation trip to Dallas, Galveston, Houston and San Antonio.

Speeches Named For Church Rally

Program for the mid-summer rally at the First Christian church Sunday July 26, has been announced by Rev. J. E. Pickering, pastor.

Rev. Patrick Henry, secretary of state missions, will speak at 10 a. m. on "Texas Missions." Rev. J. E. Holmes will bring a message at 11 a. m. on the subject "Am I a Child of the King?" At 2 p. m. Rev. Winston F. Borum will lead the devotional followed by an inspirational sermon by Rev. G. C. Shurman of Big Spring.

Mrs. Lee Cornelius will have charge of the music. Lunch will be served at 12 on the church lawn.

Mrs. Bohannon Teaches Class

Mrs. A. G. Bohannon taught the lesson for members of the Women's Bible class meeting at the Church of Christ Tuesday afternoon. The twenty-fifth chapter of Matthew was discussed, various members of the class taking topics describing the trial of Christ and other subjects.

Present were: Meses. T. H. Bass, Raymond Hines, Lewis Bewley, Paul Jackson, L. E. Jones, W. F. Hejl, and Bohannon.

Three Couples Have Picnic at Cloverdale

Oblivious to the weather, three couples went to Cloverdale Park Tuesday evening for a picnic supper. After the meal was served, they attended the Ritz theater.

The group included: Jack Harrison, Dan Greene, and Jack Cusack; Meses Dorothy Cummings, Mary Fitzgerald of Tulsa, and Edna Maye Etkin.

FEMININE FANCIES

BY KATHLEEN EILAND

There's nothing like an absence from work to convince one that he is only a very minute wheel in the machinery of the world. One way to keep one's spirit properly humble. Come to think of it, there are an enormous number of things on this terrestrial sphere which tend to do that very thing—keep one humble. Oh well, maybe it is all for the best. Though, being human, we admit we'd enjoy the privilege of feeling very self-satisfied now and then.

As this column has indicated before, paper dishes hold an odd fascination for us. Perhaps because they indicate a release from that old-man-of-the-sea which burdens every homemaker—washing dishes three times a day three hundred sixty five days a year.

The needs of the up-to-date housewife are reflected in some of the newer paper conveniences now appearing. There are, for instance, the smaller-sized napkins for cocktail serving. Attractive in red and white.

Also available are the cocktail cups in clever designs. Just right for the serving of drinks and doing away with the necessity of accompanying the dishpan for hours—or at least long minutes—after the party.

Maybe not the seventh heaven but at least an approach to it for the average woman is to spend an hour or two wandering through the china department of a big store.

We like the flower holders which feature a series of small globular glass containers, joined in a row. They may be had in colored glass.

Something always mars the perfection of an occasion. Like having a dress which one had planned to wear all summer suddenly go all to pieces like the wonderful one-hoss shay in the middle of a vacation. But then, when one is on a vacation, he doesn't worry about such little happenings, in the way that he would if he were home, watching the clothes budget go haywire.

Sandwiches Make the Tea Tray the Center Of Guest Attraction

By MARY E. DAGUE
NEA Service Staff Writer

Well, well—here's a note on my desk saying that in New York hotels and restaurants men actually are crowding women away from the tea tables.

I don't know whether or not it's true. However, I DO know a number of men who find that a cup of tea in the afternoon brings a restful and refreshing pause in a busy day.

The fresher the bread, the more delicate the sandwich. If you slice fresh bread with a very sharp hot knife you can cut it thinly and evenly with very little trouble.

Toasted sandwiches are made ready to be toasted at the last minute while the tea draws. Cucumber sandwiches must be made at the last minute, but even these can be prepared for speedy assembling. Tomato sandwiches made with a well seasoned tomato jelly in place of fresh tomatoes, may be made and stored for an hour or longer.

Tea after tennis matches is an old and revered custom. If you're to be the hostess on such an occasion, think about your men guests when planning what you're to serve. There are some sandwiches men like particularly. If you include several of these varieties on your trays I'm sure the party will be a success, for women will like them, too.

Make Sandwiches Early

You can make afternoon tea sandwiches early in the day—at least some varieties—if you store them in a tightly closed tin box and put them in the refrigerator.

The following recipes have been developed especially for men.

The Ham Sportsman

Slice fresh bread very thin. Spread with deviled ham, mixed with mustard. When wanted to serve, place in hot oven under broiler until lightly browned.

Anchovy Twist

Slice bread very thin and cut in oblongs. Place anchovies side by side until bread is covered. Roll and press edges together with lightly moistened finger, much as you brush the edge of the lower crust of a pie before putting on top crust. Place under hot broiler and toast and turn until all sides are brown.

Devilled Lobster

Mash lobster meat with a fork and mix with lemon juice and English mustard. Add minced parsley if wanted and put between slices of buttered brown bread.

Fillet of Herring

Cut thinly sliced bread into finger sized pieces. Put herring through the center and sprinkle with lemon juice and onion juice. Put under broiler until toast is brown.

Minced corned beef combined with horseradish is another good combination.

Finely chopped chicken and celery, moistened with mayonnaise, always is a favorite.

Thinly sliced breast of chicken between thin slices of buttered white bread is one of the most delectable sandwiches. Chopped hard-cooked egg and shredded lettuce with mayonnaise is another good mixture.

Before you begin to make any kind of sandwich you must cream the butter. Let it stand in a warm

End Of Season Creation



This two-piece town dress of navy silk marquisette is worn over a navy silk taffeta slip. The blouse has a short peplum, puff sleeves and bands of silk braid. The skirt is slenderizing. Black shoes, a white hat and white gloves complete the picture.

Shield Skin With Foundation Lotion

BY ALICIA HART
NEA Service Staff Writer

Modern foundation lotions and creams are a far cry from those pore-clogging, old-fashioned vanishing creams that were so difficult to blend. Today, a foundation—important as powder itself—is creamy and light colored delicately to match your skin and a real protection against sun and wind.

You don't want to wear regular suntan cream or oil except when you are on the beach. For golf, tennis, motor trips in an open car, riding and wishing you had a foundation lotion generously before you put on makeup, or if you like, use one of the special combination suntan and foundation creams.

The ideal foundation or texture lotion is one which dries completely, but not too quickly. If it remains moist for a few moments, you'll have much less trouble blending cream rouge. Besides, your powder will have a smooth mat finish.

Never put lotion on over stale cosmetics. Cleanse face and neck then apply it. One new variety, in a pale cream tone to match the average skin, feels as soft and light as a good cleansing cream, is easy to blend and dries not too rapidly.

Three or four drops of this are adequate.

If you get a greaseless foundation that looks and feels like a liquid powder, take enough time and trouble to learn to get it on correctly. Always apply it from the base of the throat upward over your face to your hairline. This is one time when you must pay as much attention to your neck as you do to your face.

British Wages Rise

LONDON (UP)—Half the workers of Britain have received increases in wage rates during the past 18 months. Not since the post-war boom years, up to 1920, have earnings moved upward with so wide a sweep.

DAVID M. ELLIS

Palmer Graduate

CHIROPRACTOR

11 Years in Midland

306 North Main St.

Office Phone 822 Residence Phone 1084



Inman's Jewelers

CRYSTALS FITTED WHILE YOU WAIT

If your watch is out of order—or if it is not keeping perfect time, bring it to us. We have the facilities and the most expert repair service in West Texas.

We have in stock a fine assortment of the latest styles in watch chains and all the latest styles of watch bracelets for summer. See them!

34 Years in Midland

INMAN'S

“Protection”

When you step out of the picture, let the Praetorians take your place. Give your family a monthly income as long as they need it.

The highest indorsement that can be demanded of INSURANCE is provided for YOU by THE PRAETORIANS in their record of more than THIRTY-EIGHT years of constant service, with policy holders from COAST TO COAST.

Full line of juvenile policies, also complete adult coverage including retirement income and endowment policies to suit your individual needs.

There is a reason . . . That reason is: PRAETORIAN PAYS SEVENTEEN WAYS

J. WRAY CAMPBELL, Dist. Mgr.
601 Petroleum Bldg.—P. O. Box 908
Midland, Texas
Phone 111

ROADS

By Helen Welshimer

THE roads that hunt for Heaven
Are never thoroughfares,
But crooked little by-paths
That take you unawares.

I REMEMBER one road,
A half a year ago,
A lovely rather slow road,
I thought we'd always know.

A VERY long and dear road,
And one we didn't tire,
Because it led to Heaven . . .
We knew—we saw a spire.

BUT when I wandered backwards
Along that road today,
I couldn't find a tower—
Our Heaven's moved away!

Personals

A. E. Horst made a business trip to Big Spring Tuesday.

Mr. and Mrs. J. E. Bucy and son of Wink were in Midland Tuesday.

Mrs. V. C. Hendricks of Odessa was in Midland shopping Tuesday.

Mrs. W. N. Thurston of Big Spring visited here Tuesday night.

Mrs. W. L. Holmesley and son, Jack are expected to return from Comanche tonight.

Aldridge Estes, Jr. returned last night from visiting his uncle and the Centennial at Dallas.

Child Has 9 Grandparents
ROBINSON, III (UP)—Raymond Bruce, infant son of Mr. and Mrs. Mel Davis, of LaMotte Prairie, has nine living grandparents, including a great-great-grandmother.

Closeup and Comedy



WRS STOCK BOY IN DIME STORE.

SWEEPSTUDIO STAGE ROOFS BEFORE GETTING SCREEN CONTRACT.

VEGETARIAN SIX DAYS OF THE WEEK, BUT EATS BIG STEAK ON SUNDAY

MICHAEL WALEN
HEIGHT, 6 FEET, 2 INCHES.
WEIGHT, 170 POUNDS.
BROWN HAIR, BLUE EYES,
BORN, WILKES-BARRE, PA.,
JUNE 30, 1908.
REAL NAME, JOSEPH SHOVLIN.
MATRIMONIAL SCORE: 0-0.

THIS CURIOUS WORLD

By William Ferguson

GREAT BRITAIN OWNS ABOUT ONE-FOURTH OF ALL THE LAND ON EARTH

“THE WARBLER” FAMILY OF BIRDS, WHEN TAKEN AS A WHOLE, ARE MEDIOCRE SINGERS.

EARTH-WORMS WALK ON THEIR HAIR! TINY HAIRS PROJECTING FROM THE SKIN, PULL THE WORM ALONG AS IT ALTERNATELY CONTRACTS AND EXPANDS / 72/

THE British Empire consists of Great Britain and Northern Ireland, Channel Islands and Isle of Man, the Irish Free State, India, and the numerous British dominions, colonies, protectorates, and dependencies. It covers an area of 13,226,749 of the earth's 52,000,000 square miles of land surface, and has a population of more than a fourth that of the entire earth.

We are Pleased to Announce That

MIDLAND BEAUTY SHOP

Is now under new management. We are prepared to take care of all your beauty requirements

MARIE EIDSON
MARGARET WHITE
109 South Loraine Phone 800

Announcements

Thursday
The Senior B. T. U. of Odessa, Texas has invited the Loyal Workers B. T. U. of Midland to be their guests at a weiner roast Thursday evening in Odessa. Cars will leave the church at 7. About 25 or 30 members are expected to go.

The meeting of the Thursday club scheduled for Thursday afternoon at the home of Mrs. John Cornwall has been postponed.

Friday
The Lucky 13 club will meet Friday at 8 o'clock with Mrs. J. C. Hudman, 413 W Indiana. Husbands will be guests.

The 3B Booster Band of the First Baptist church will meet Friday afternoon at 5 o'clock at the church.

Saturday
The regular weekly story hour for children will be held Saturday morning at 10 o'clock in the children's library. Mrs. J. R. Ashley will be in charge.

Mmes. R. W. Hamilton and Frank Stacey will be hostess for the Milet Club dance Saturday night at the country club. Dude Vance's orchestra will play. The dance will be informal.

Sunday
Zone I of the Associational B. T. U. will meet Sunday afternoon at 3 at Courtney. Mrs. Frank Conner will have charge of the program. Cars will leave the church at 2:30.

Buddy's FLOWERS

MIDLAND, TEX. PHONE 1083 1203 W. Wall

IS YOUR VISION CLOUDED?

T. J. INMAN Optometrist

Glasses Fitted Correctly

A full line of frames and mountings. Broken lenses quickly and accurately replaced.

Broken Frames Repaired

104 NORTH MAIN ST.

LOST: A KEY!

— BUT — ANOTHER CAN BE MADE BY CODE WHILE YOU WAIT!

CALL ON TIFFIN AT 95

AFTER ALL, it is an Event!

EVEN IN THESE MODERN DAYS, ONE DOESN'T GET MARRIED, JUST LIKE THAT.

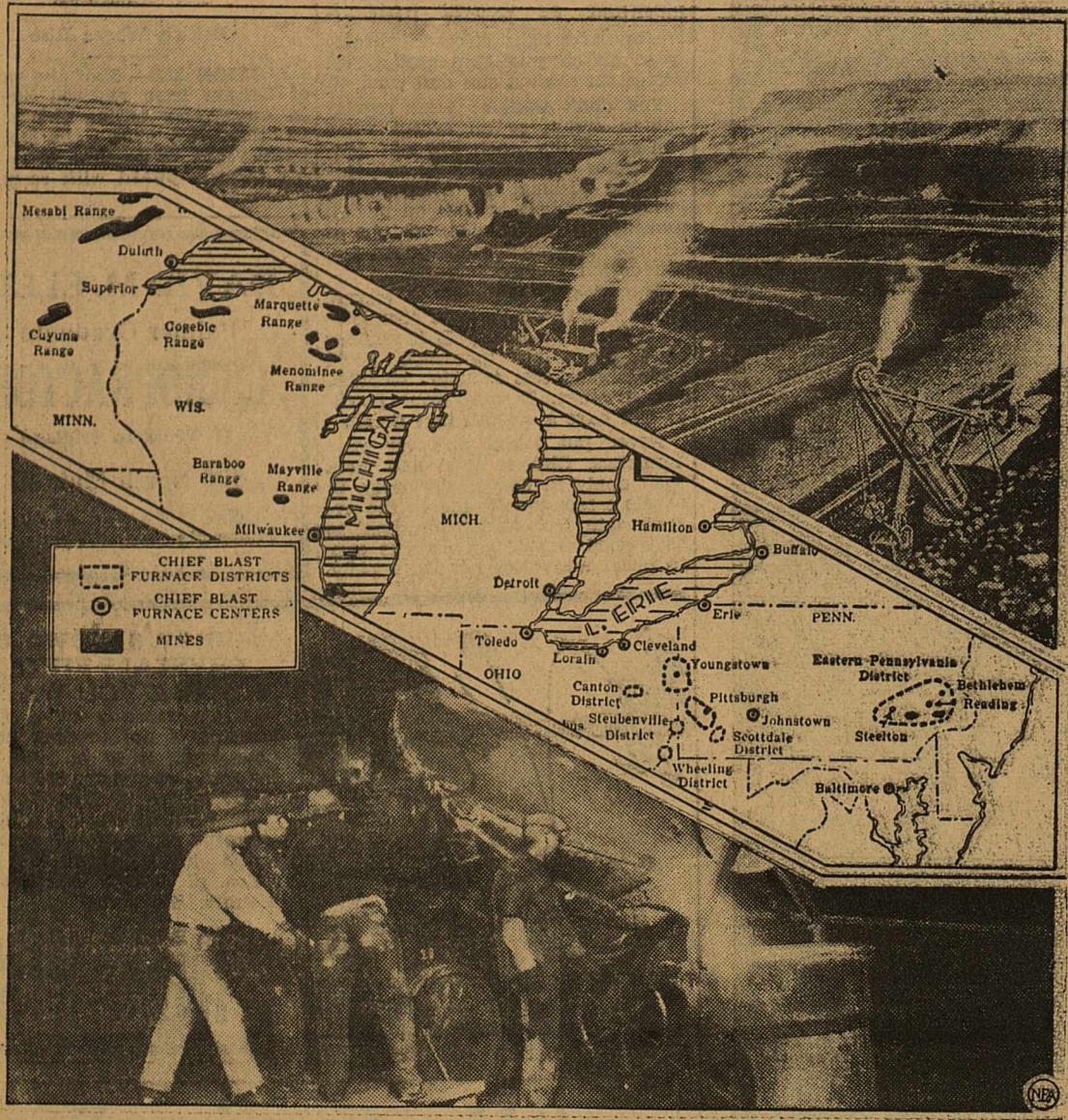
AND FRIENDS DO LIKE TO KNOW. APPRISE THEM, CLEVERLY, WITH THE NEW “ART-POINT” ANNOUNCEMENTS, CREATED BY THE APPROVED THERMOGRAPHIC PROCESS. OUR SAMPLES INCLUDE BOTH “FORMALS” AND “INFORMALS.”

... as little as \$4.75 for 25 or \$8.00 for 100 ...

COMMERCIAL PRINTING COMPANY
PHONE 8

No Light or Dark Letters . . .
an Even, Smooth, Velvety “Raise”

Union Fight Overshadows Race For President In Steel and Coal Areas



A kingdom of steel extends from the iron ore regions of the upper lakes to the fire mills of Pennsylvania.

AMERICA, too, has its "Ruhr"—a vast, rich area where ore and raw materials are turned into steel, automobiles, tires and a thousand articles for industrial and domestic use. There also is being forged a labor crisis that promises to color the country's future. So into America's Ruhr went famed Frazier Hunt, now on tour for NEA Service and The Reporter-Telegram, to sound off voting sentiment from coast to coast. He has emerged with four revealing and impartial articles on "Listening to the American Ruhr." The first article, surveying the Pennsylvania and Ohio political scene follows.

BY FRAZIER HUNT

PITTSBURGH, July 22.—Both economic history and political history are being made in western Pennsylvania at this moment.

The present attempt to unionize the strongest citadel of the "open shop"—the great steel industry—has ramifications, loaded with dynamite that reach into every part of American life.

If the 500,000 steel workers of the American Ruhr—western Pennsylvania and eastern Ohio—and the Chicago and Birmingham districts can be brought into one great industrial iron and steel union, it will mean that all industrial labor in America can be unionized.

Another 500,000 in steel fabrication plants; 500,000 in motors and allied industries; 60,000 in rubber; several hundred thousand still unorganized in textiles—all will come under the economic and political wing of John L. Lewis.

Add to these the 1,250,000 men and women already in the industrial union (which include both skilled and unskilled workers in mass production) in the mining, clothing, textile, printing, and other labor fields and you get some idea of the potential power of this new and mighty giant.

All these latter million and a quarter workers have pledged their war

cheats and their loyalty to this unprecedented fight to join steel and iron to their industrial union ideal. They have handed \$500,000 in cash to their C. I. O.—Committee for Industrial Organization—and they stand prepared to put up 10 times that amount if necessary to break down what they like to call "the steel barons."

New Order Threatens

WITHIN union labor itself is yet to be fought to a conclusion the clash of personalities and purposes of President William Green, of the A. F. of L., backing his crafts union ideas, and John L. Lewis, of the Mine Workers of America, trail-breaker and spokesman of his single-union-for-a-whole industry idea.

Not since the bursting of America's prosperity balloon has there been many industrial story comparable to this one. If the fighting forces behind Lewis should win, and the steel industry be unionized, it would mean that a new economic set-up would follow almost immediately—with a whole new political set-up in its wake.

The power that industry and its owners and leaders have exercised in the nation's economic and political spheres for the last 50 years would be broken. The new dictators and real masters would be the men who make the steel, dig the coal, manufacture the cars, tools, and clothing, pave the streets, and build the dwellings.

They would then try to enlist with them the men who grow the food and transport it.

Today the overwhelming majority of these men and women in industry are for Roosevelt. Union voters, I estimate, are 80 per cent or more for him. Unorganized workers have less Roosevelt pressure brought on them, but I believe most of them will vote for him.

Labor Party In Embryo

If this industrial unionization

program succeeds, it may be that this present November election will be the last one in which organized labor—plus the organized, small farmer, tenant, share-cropper, and farm laborer—does not have its own full ticket and party.

Already this future party idea is being given form and substance in some localities under the rather vague name of Farmer-Labor party.

It is a somewhat nebulous organization at present, but it is beginning to put its roots deep down in scores of industrial center. It is, to date, largely a protest against both old parties—and, as well, a definite radical bid for the future.

For instance, in Akron, Ohio, I spent an hour or more in the temporary headquarters of the local Farmer-Labor party. At a convention called on June 7 by the Summit County (Akron) Central Labor Union, 349 delegates from the Fourteenth Ohio congressional district attended. They organized their party, wrote a platform, and unanimously decided to run candidates for Congress, state senate, state house of representatives and the office of county sheriff. But they did not enter the national arena.

"Most of us will be for Roosevelt this time," an organizer and official of the group told me in Akron. "We are not affiliated with any national group. We are simply using the name Farmer-Labor party as a symbol of our revolt and our future hopes. Of course we are thinking of 1940."

Communists Seek Advantage

But it is not always as simple as this. The leaders of the small but active and highly disciplined Communist Party of America (with 51,000 front-line members) have decided that party members must join with union labor and all liberal groups in a United Front, against the possibility of a Fascist threat.

And it is evident that secretly they have advised their labor members—from within to help form as many of these loose and independent Farmer-Labor groups as possible.

The Communists apparently do not feel that the time is ripe to back a national Farmer-Labor party, but that as much dissatisfaction as possible should be created.

But the battle to control this possible future industrial and farm workers' party is yet to be fought. If the party is formed, and such men as John L. Lewis and Sidney Hillman, of the United Clothing Workers, and genuine farm leaders go into it in the next four years, they will have their own ideas as to who shall head it and be its real masters.

Certainly they will have no idea of surrendering it to the American Communists. They are willing to join in the United Front but they propose to control it. So it simmers down to a question of "who can use whom."

Labor Revolt Began in '32
But to get back to this mighty struggle going on in iron and steel. This economic and union war does have a definite political side.

Let me quote a very wise and experienced Pittsburgh newspaper man who has been watching this steel drama for many years, and through it all has kept a level keel:

"For 40 years, until 1932, the operators of the steel mills and the coal mines could vote their workers as they wished. Largely due to the Republicans and in the industrial and mining centers the Democratic vote was negligible.

"In '32 labor revolted. Its bitterness against Hoover ran over the threats and demands of the managers and bosses, and most of the steel and coal country went to Roosevelt.

the old Republican strongholds of eastern Pennsylvania and the industrial centers of Ohio."

My friend went on: "Labor today is restless and determined. With Section 7A of the NRA, the workers felt that at last they would have their chance to break through the anti-union intimidations, threats, and bullying tactics of the steel companies, and, under government protection, form their own unions."

"But the companies beat them again and forced company unions down their throats. The workers saw provisions of both 7A and the subsequent Wagner Labor Act flouted, disobeyed and laughed at by owners and managers."

"Roosevelt was able to capture their imagination and spur their hopes—but the U. S. Supreme Court and the industrial leaders dashed these hopes. So it is that today labor is determined to re-elect Roosevelt and demand that its guaranteed rights be respected."

"This is labor's first independent, affirmative political step. If it succeeds in organizing now and once grasps the significance of its political power, it will, with the rest of labor in industries and on farms, either capture the Democratic party or form a new one of its own."

Third Party Fades

In the fury and hate being engendered in this historic industrial situation, Father Coughlin, Candidate William Lemke, Dr. Townsend, and the other Third Party-ites all but fade out of the presidential election picture.

They will have definite influences on local congressional, and even state elections this fall, but the chances are that in the purely national issue between Landon and Roosevelt their influence will largely disappear here in the industrial sections.

Certainly in this national election feelings are already running high. Pennsylvania, Ohio and Michigan—the three great states of the American industrial Ruhr Valley, where this labor war is bitterest—are unquestionably key political states.

If Landon could land these three, he would have an excellent chance of being elected.

If Roosevelt could add them to his Solid South, New York, and other almost sure state, he would unquestionably win.

Pennsylvania—and its 36 electoral votes—is still no-man's, or rather anybody's, land. The Pittsburgh steel, iron, coal country, bitter and aroused, is definitely on Roosevelt's side, and will send him into the eastern portion of the state with considerably more than 100,000 majority.

If Roosevelt can capture Philadelphia—or even hold down the normal Republican lead—Pennsylvania may be his.

The chances today are that he will do just that. For labor in revolt will be strongly on his side.

TYPEWRITER RIBBONS

Sold by us are delivered and installed free in the business section of Midland. Call us for this added service.

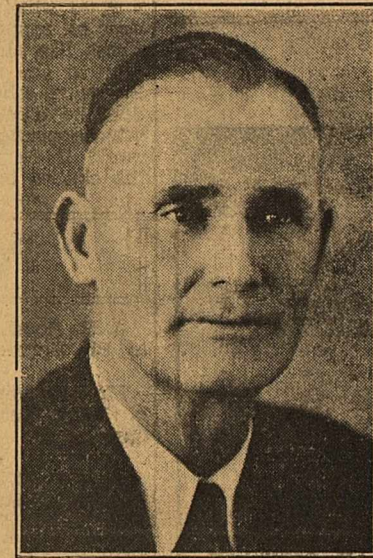
West Texas Office Supply
Phone 95

VOTE FOR

A. C. FRANCIS

FOR

Sheriff, Tax Assessor and Collector



A. C. FRANCIS

Sheriff Francis is one of the most experienced and respected law enforcement officers in West Texas. His record for apprehension of criminals and their arrest is outstanding in the entire State of Texas.

This veteran officer has co-operated 100 per cent with the citizenship of Midland County on every legitimate request and his candidacy is not and has not been backed by any faction or clique. We believe that he is the choice of a majority of the people in all walks of life—both rich and poor.

Midland is an oil and cattle town and as such it will compare most favorably with any city in West Texas for law and order.

LET'S KEEP AN EXPERIENCED MAN AS SHERIFF

(This advertisement paid for by friends of A. C. Francis)

We Have Moved

From The Corner of East Wall and Baird

TO

107 SOUTH COLORADO

In the building recently vacated by Elder Chevrolet Company

See Us For

EXPERT TOP AND BODY WORK

WASH JOB 75c

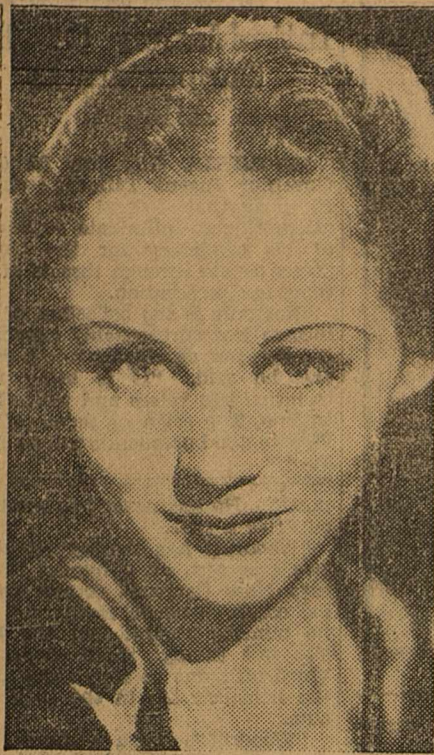
555 Body Works

JIMMIE HOOVER, Proprietor

PHONE 555

Closeup and Comedy

by ERSKINE JOHNSON-GEORGE SCARBO



GAIL SHERIDAN
 HEIGHT, 5 FEET 5 INCHES.
 WEIGHT, 116 POUNDS.
 BROWN HAIR AND EYES,
 BORN, SEATTLE, WASH.,
 JAN. 11, 1910.
 REAL NAME, GAIL MINGINS.
 MATRIMONIAL SCORE, 0.



ENJOYS OCEAN BATHING WITH AID OF INNER TUBE.



STILL LIVES TO SKIP ROPE.



DANCED IN NIGHT CLUBS BEFORE FILM DEBUT.

Miss Lorena Gann returned Tuesday from Pecos where she spent the weekend with her family.

CLASSIFIED ADVERTISING

RATES AND INFORMATION
 2c a word a day.
 4c a word two days.
 6c a word three days.
MINIMUM CHARGES:
 1 day 25c.
 2 days 50c.
 3 days 60c.
 CASH must accompany all orders for classified ads, with a specified number of days for each to be inserted.
 CLASSIFIEDS will be accepted until 12 noon on week days and 6 p. m., Saturday for Sunday issues.
 PROPER classification of advertisements will be done in the office of The Reporter-Telegram. ERRORS appearing in classified ads will be corrected without charge by notice given immediately after the first insertion. FURTHER information will be given gladly by calling 7 or 8.

WANTED

WANTED: buy producing royalty Ward and Winkler counties, Seth Cockrell, Worth Hotel, Monahans, Texas. (112-6)

WANT some one to put in a clothes cleaning plant in Midland; 50c cash and carry per suit. Others get \$1.00. Clean up for someone. Classified Box B, Reporter-Telegram, Midland. (112-6)

WANTED: experienced beauty operator; apply Gladys's Beauty Shop or phone 438. (114-3)

LOST AND FOUND

LOST: Male screw tail Boston bull dog; brown; answers to name of "Wimpy"; reward; if found phone 700. (116-3)

LOST: A box of clothes near high school building. Phone No. 8. (115-3)

FOR SALE

ONE boy's bicycle; radio; dinette suit. Phone 807 or phone 396 after 7 p. m. (115-3)

MISCELLANEOUS

IS YOUR refrigerator working improperly, if so call 35, experienced servicemen on all makes of household and commercial refrigeration. Radio Sales & Service, 111 South Main street. (8-1)

CARD reading and palmistry; know the truth, Madam Russell at 305 East Wall. (114-6)

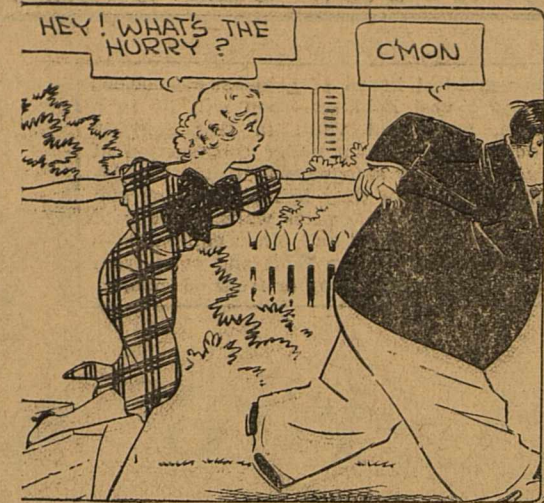
POLITICAL ANNOUNCEMENTS

Subject to the action of the Democratic Primary Election July 25, 1936. Advertising rates: For State, District and County Offices, \$15; for Precinct Offices, \$7.50. Cash with order.

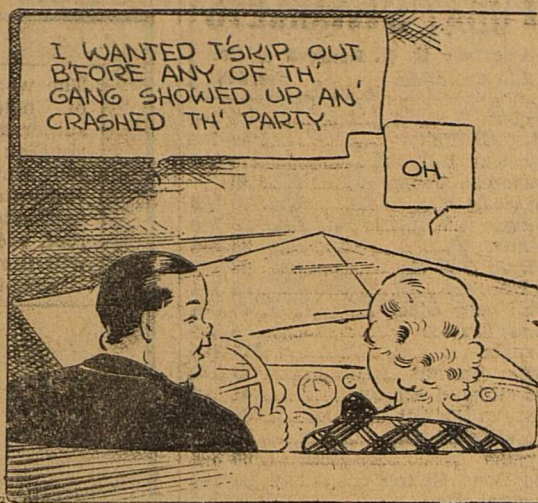
- For State Senator: (29th District of Texas) H. L. WINFIELD (Pecos County) BENJAMIN F. BERKELEY (Brewster County)
- For State Representative: (88th District) S. M. SWEARINGEN (Marfa, Texas)
- For District Attorney: (70th Judicial District) CECIL C. COLLINGS (Re-Election)
- For District Clerk: NETTIE C. ROMER (Re-Election)
- For County Judge: MRS. E. E. STEVENS
- For County Judge: E. H. BARRON (Re-Election)
- For Sheriff, Tax Assessor and Collector: A. C. FRANCIS (Re-Election) LEONARD PROCTOR
- For County Attorney: MERRITT P. HINES
- For County Clerk: SUSIE G. NGBLE (Re-Election) J. H. PINE

- For County Treasurer: LOIS PATTERSON MARY L. QUINN (Re-Election) MRS. JOSEPHINE K. LIGON
- For Justice of Peace: (Precinct No. 1) J. H. KNOWLES (Re-Election) B. C. GRIDLEY
- For Constable: (Precinct No. 1) C. B. PONDER (Re-Election) W. P. (Bud) ESTES
- For County Commissioner: (Precinct No. 1) J. C. ROBERTS (Re-Election)
- For County Commissioner: (Precinct No. 2) W. V. JONES B. T. GRAHAM (Re-Election) W. T. BRYANT
- For County Commissioner: (Precinct No. 3) D. L. HUTT (Re-Election) TYSON MIDKIFF
- For County Commissioner: (Precinct No. 4) CARL SMITH (Re-Election) R. G. PEACH W. M. STEWART

BOOTS AND HER BUDDIES

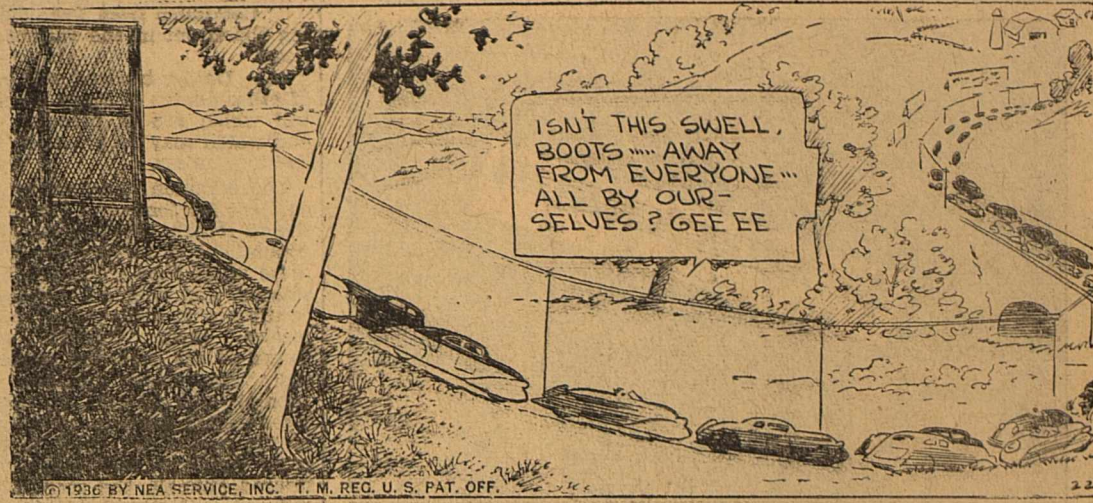


HEY! WHAT'S THE HURRY? C'MON



I WANTED TO SKIP OUT BEFORE ANY OF TH' GANG SHOWED UP AN' CRASHED TH' PARTY. OH

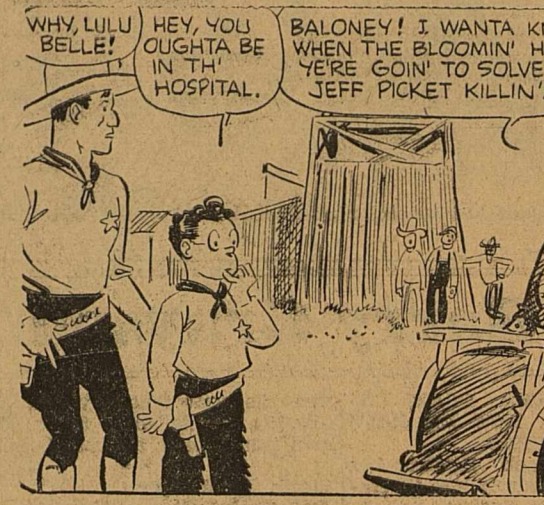
Aren't Folks Funny?



ISN'T THIS SWELL, BOOTS AWAY FROM EVERYONE ALL BY OUR SELVES? GEE EE

By MARTIN

WASH TUBBS



WHY LULU BELLE! HEY, YOU OUGHTA BE IN TH' HOSPITAL. BALONEY! I WANTA KNOW WHEN THE BLOOMIN' HECK YERE GOIN' TO SOLVE THE JEFF PICKET KILLIN'.



YOU'RE JUST IN TIME, WE'RE ABOUT TO CAPTURE TH' MURDERER. IT'S HIGH TIME YERE CAPTURIN' SOMEBODY YE WORTHLESS DOODLEBUGS. NOW, NOW LULU BELLE, ZARAT! A KILLER WE GOT TO BE CAREFUL

Rubbing It In



HUMPH! YERE A PACKA DAD BLAMED SISSIES. WILLIE ZARAT'S FLAT ON HIS FACE WHERE I SMACKED 'IM.



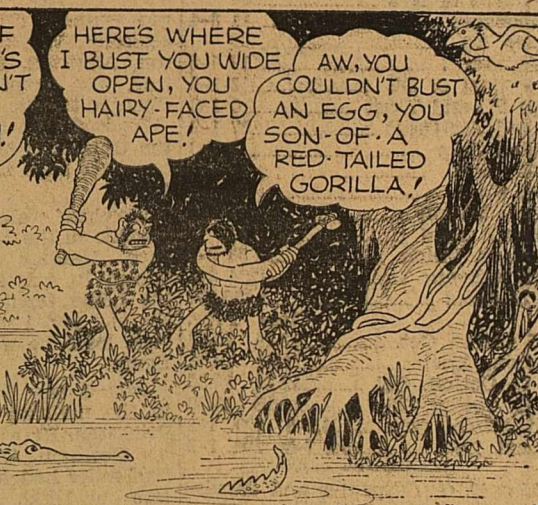
WELL, I'LL BE! IT'S COMIN' TO A PRETTY PASS WHEN A DAME IN A WHEELCHAIR HAS TO RUN DOWN YER BLOOMIN' CRIMINALS FOR YE. YE OUGHTA BE ASHAMED.

By CRANE

ALLEY OOP

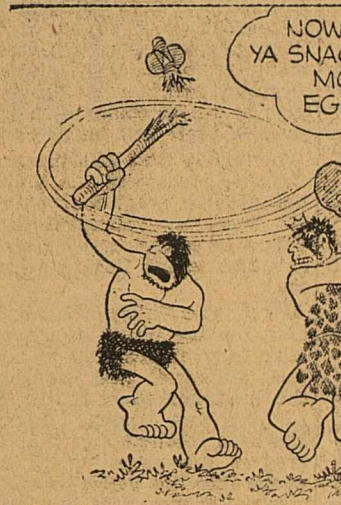


C'MON-LES GIT BACK OVER THERE AN' GIVE ALLEY A HAND. NO-DONT DO THAT-HELL TAKE CARE OF THIS AFFAIR ALL RIGHT. YEH-MEBBE-IF KING WURS OPEN, YOU HAIRY-FACED APE!

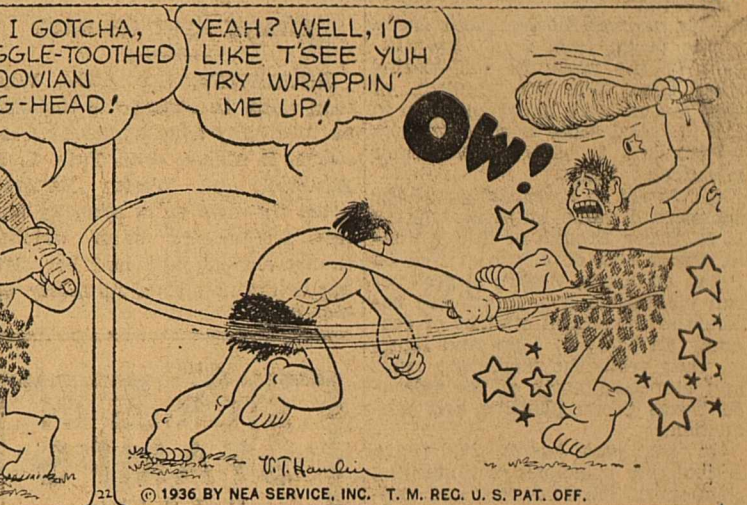


HERE'S WHERE I BUST YOU WIDE OPEN, YOU HAIRY-FACED APE! AW, YOU COULDN'T BUST AN EGG, YOU SON-OF-A-RED-TAILED GORILLA!

A Painful Weapon, If Not Lethal



NOW I GOTCHA, YA SNAGGLE-TOOTHED MOOVIAN EGG-HEAD!



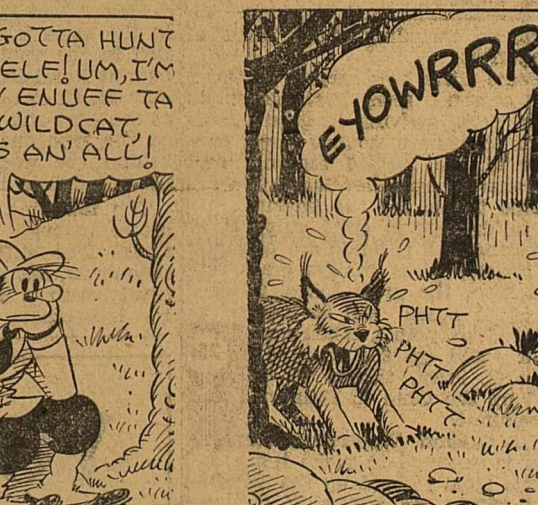
YEAH? WELL, I'D LIKE T'SEE YUH TRY WRAPPIN' ME UP!

By MLIN

SALESMAN SAM

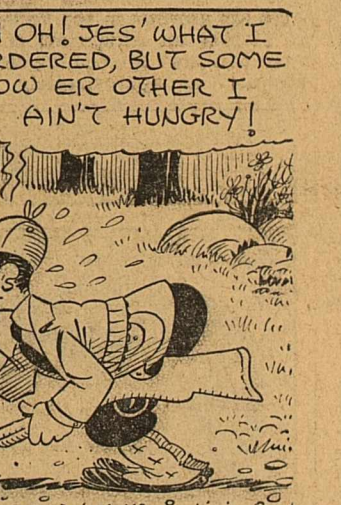


WELL, DUZZ HAS GONE HOME, BUT IT WAS SWELL O'HIM TA LEMME STAY A COUPLA MORE DAYS!

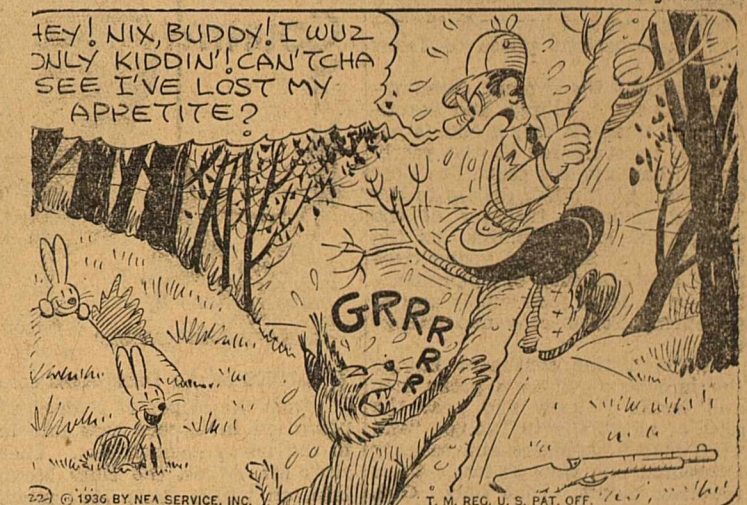


NOW I GOTTA HUNT BY MYSELF! UM, I'M HUNGRY ENUFF TA EAT A WILD CAT, CLAWS AN' ALL!

The Cat Still Has His



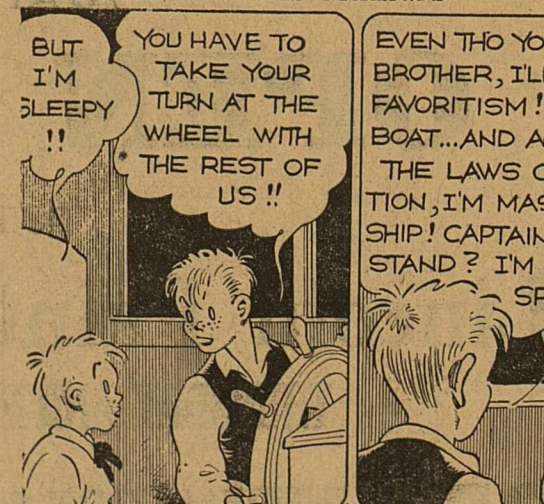
OH OH! YES' WHAT I ORDERED, BUT SOME HOW ER OTHER I AIN'T HUNGRY!



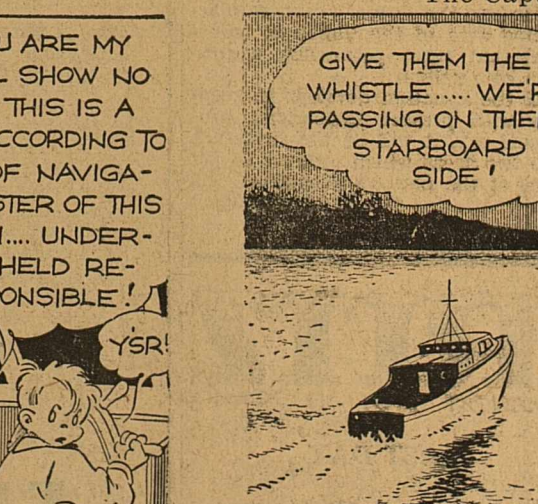
HEY! NIX, BUDDY! I WUZ JULY KIDDIN'! CAN'TCHA SEE I'VE LOST MY APPETITE?

By SMALL

FRECKLES AND HIS FRIENDS

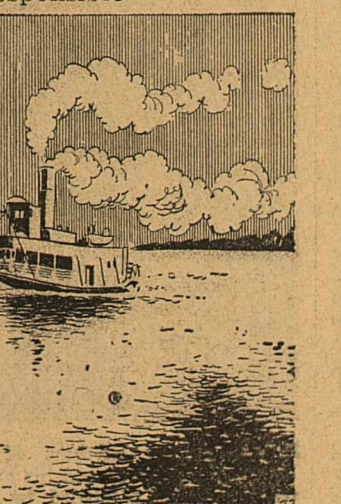


BUT I'M SLEEPY!! YOU HAVE TO TAKE YOUR TURN AT THE WHEEL WITH THE REST OF US!!

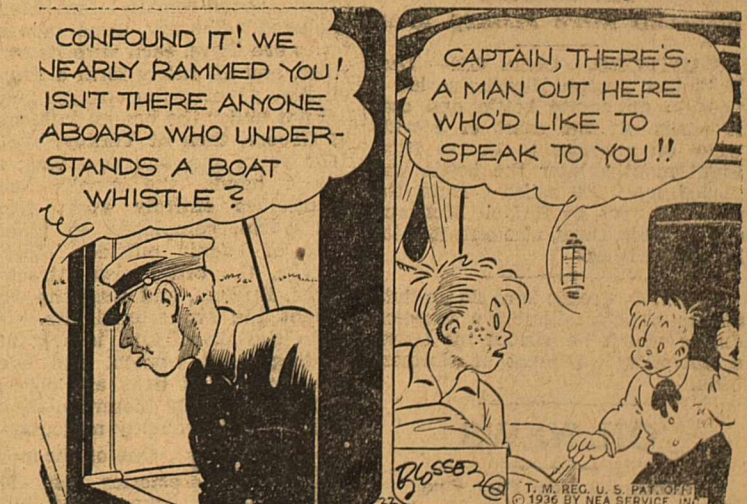


EVEN THO YOU ARE MY BROTHER, I'LL SHOW NO FAVORITISM! THIS IS A BOAT...AND ACCORDING TO THE LAWS OF NAVIGATION, I'M MASTER OF THIS SHIP! CAPTAIN... UNDERSTAND? I'M HELD RESPONSIBLE!

The Captain's Responsible



GIVE THEM THE WHISTLE... WE'RE PASSING ON THEIR STARBOARD SIDE!



CONFOUND IT! WE NEARLY RAMMED YOU! ISN'T THERE ANYONE ABOARD WHO UNDERSTANDS A BOAT WHISTLE?

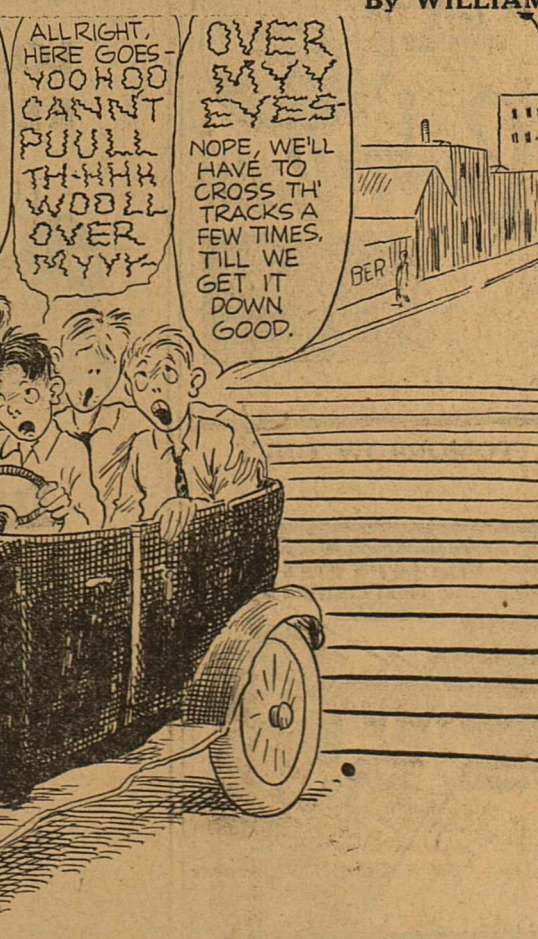
CAPTAIN, THERE'S A MAN OUT HERE WHO'D LIKE TO SPEAK TO YOU!!

By BLOSSER

OUT OUR WAY



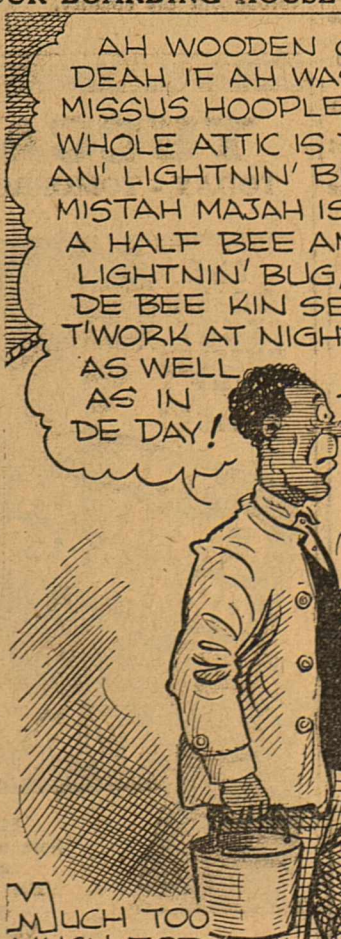
WHEE-THAT SO, I'D-ED GREAT. TURN AROUND AND GO BACK AGAIN.



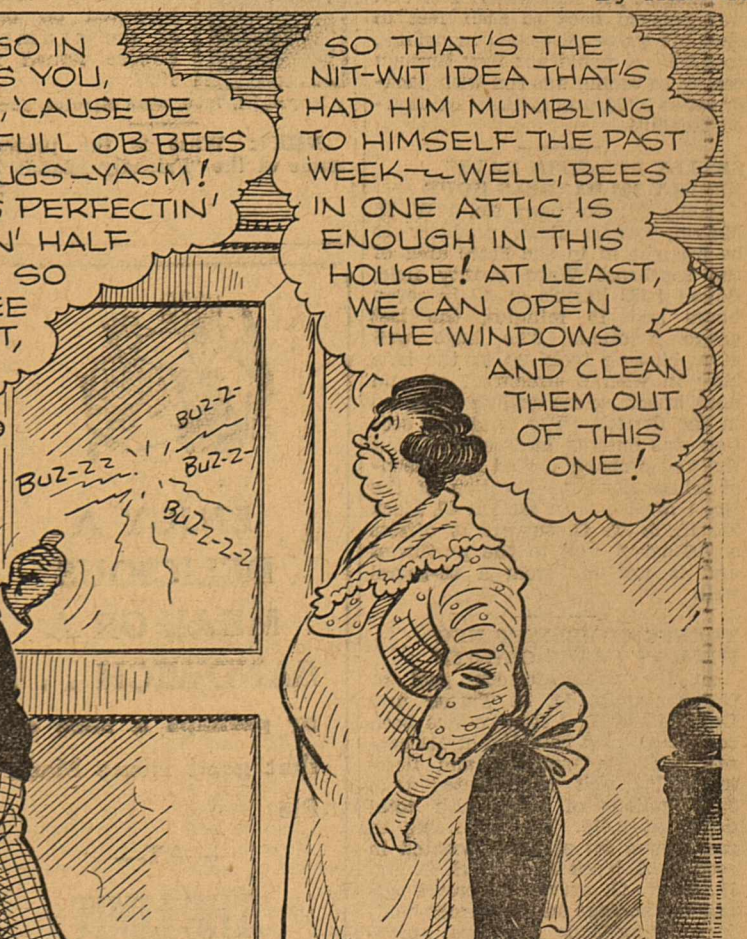
NO LETS TRY IT WITHOUT, FIRST. IF WE CAN GET THAT WITL-OUT A RAIL-ROAD CROSSING, WE GOT SOMETHIN'.

By WILLIAMS

OUR BOARDING HOUSE



AH WOODEN GO IN DEAH IF AH WAS YOU, MISSUS HOOPLE, 'CAUSE DE WHOLE ATTIC IS FULL OB BEES AN' LIGHTNIN' BUGS-YASM!



SO THAT'S THE NIT-WIT IDEA THAT'S HAD HIM MUMBLING TO HIMSELF THE PAST WEEK--WELL, BEES IN ONE ATTIC IS ENOUGH IN THIS HOUSE! AT LEAST, WE CAN OPEN THE WINDOWS AND CLEAN THEM OUT OF THIS ONE!

By HEARN

7-22 J.R. WILLIAMS THE RAIL BIRDS © 1936 BY NEA SERVICE, INC. T. M. REG. U. S. PAT. OFF.

MUCH TOO MUCH FOR MARTHA © 1936 BY NEA SERVICE, INC. T. M. REG. U. S. PAT. OFF.

Pecans--Large, Growing Industry of Texas



Pictured above, world's oldest pecan tree, as designated by U. S. Department of Agriculture, and variously estimated as being in excess of 500 years old.

"But only God can make a tree!" And man can enjoy its poetic beauty and use its bountiful fruits.

The pecan tree, most magnificent of the perennial nut-bearing trees, exemplifies the grandeur of time and nature's handiwork.

Quicken to a realization of the commercial value of pecan culture is R. Bruce Brough of San Antonio, owner and developer of Tex-La Pecan Orchards, world's largest pecan plantation.

At present the average consumption of pecans, in raw and manufactured forms, is only 4 ounces per person, as compared to the yearly limited harvest, the pecan has added almost ten million dollars to the annual financial turnover of the state.

"What a fine sentiment imbues the impulse to plant a pecan tree and watch it grow and bear the gifts of nature," says Brough, "and what added happiness and security is assured one who possesses these towering giants, that only God, through time and nature, can make for man."

WARTFORD, Conn. (U.P.)—Last November Joseph Rosetta sealed a note in an empty bottle and cast it adrift off the coast of Florida while on a cruise to Puerto Rico.

Eight months later the bottle was picked up, 1,000 miles from the spot, by Rafael Mongano of Caibarien, Cuba, who sent Rosetta his best wishes.

OIL NEWS

Continued from Page One
rels of which were water. The previous 24 hours it tested 84 barrels of fluid, 31 per cent water. The well was plugged back to 3,501 feet to shut off water developed in drilling to 3,525. It would not flow through casing, so tubing was run with packer set at 3,184, and it has since flowed steadily.

SKELLY 1 MARTIN RATES NEARLY 200 BARRELS HOUR

Skelly Oil Company No. 1 W. H. Martin, newest flush producer to be brought in in the Estes area of the southeast Ward county field, flowed 1,383 barrels of oil in seven hours and 15 minutes, the last gauge reported. The huge well after blowing tools up in the hole blew in with a stream of oil and mud, knocking the drilling string up in the derrick. The sand pay section was entered at 2,502 feet, but the well probably drilled itself deeper while blowing. Location of the No. 1 Martin is in section 40, block 34, H. & T. C. survey. It offsets a 700-barrel well to the northwest and is not far from a 55-barrel well.

TURNER COMPLETES NEW WELL IN CRANE-COWDEN

In the Crane-Cowden pool of Crane county, M. F. Turner and Dan Easter, N. 2 Hughes has been completed for a potential of 411 barrels per day, pumping and flowing. The well was treated with 2,000 gallons of acid, with total depth at 2,415. The oil string of casing was set at 2,320. Located in section 88, block 10, C. C. S. D. and R. C. N. G. survey, it proves additional acreage on the Turner holdings, being four locations north-east of his No. 1 well which was good for 362 barrels.

Screw Worm Fly--

Continued from Page One
ing therefrom in the various countries.

(4) Demonstrations will be held of other phases of screw worm control which are of practical value and which may be practiced by the livestock raiser.

The adoption and regular use of methods for control of screw worms should inhibit development of large populations of screw worm flies in areas where they are active for long seasons, and should serve to delay occurrence in areas which normally receive them through gradual spread of the pest.

It is requested that stockmen having screw worm cases give the records of them to the screw worm supervisor in his district or to his county agent. The supervisor in this district is Mr. Marcus Gist, with headquarters at Odessa, Texas.

The United States Department of Agriculture recommends benzol to be used in killing screw worms in wounds. Following this treatment, the wound should be coated with dehydrated pine tar oil, specific gravity 1.065. This hastens healing of the wound and aids in repelling further attacks of the fly.

TEXAS FRUITERS VIE FOR EASTERN SALES

BROWNSVILLE, Texas, (U.P.)—The Lower Rio Grande Valley and Florida, which have bowed to limitations of transportation and for many years amicably divided the domestic market, seem likely to engage in stiffer competition for disposal of their 1936 citrus crop.

The middle west long has been the exclusive market of the Valley and the Atlantic coast that of Florida, but water transportation from the Valley threatens invasion to Florida's best selling field, growers here say.

For months Valley orchardists have been making plans, in view of the huge crop in prospect, to lay their 1936 grapefruit and oranges upon the great markets of Baltimore, Philadelphia and Boston.

It is believed more grapefruit trees are growing in the Valley than in Florida and a shipment of citrus from this area the coming season is forecast at approximately 20,000 carloads, including about 16,000 of grapefruit.

Some citrus was carried by water last season from Port Isabel to New York, arriving in good condition. Shippers announce larger crops in the 1936-37 season and Brownsville and Port Isabel are expected to bid for the business.

Florida reports state shippers at Lakeland and Orlando are planning to charter three shallow-draft vessels from the great lakes. Cargoes of 500 boxes will be loaded at West Coast points, taken across the Gulf and up the Mississippi to Keokuk, Iowa, thence to Chicago, and up the Ohio to Evansville and Cincinnati.

The Inland Waterways corporation is expected to make test shipments from Florida up the Mississippi within six weeks. If the experiment is successful a way will open the way for Florida perishables into the former exclusive marketing area of the Valley at transportation rates permitting aggressive competition.

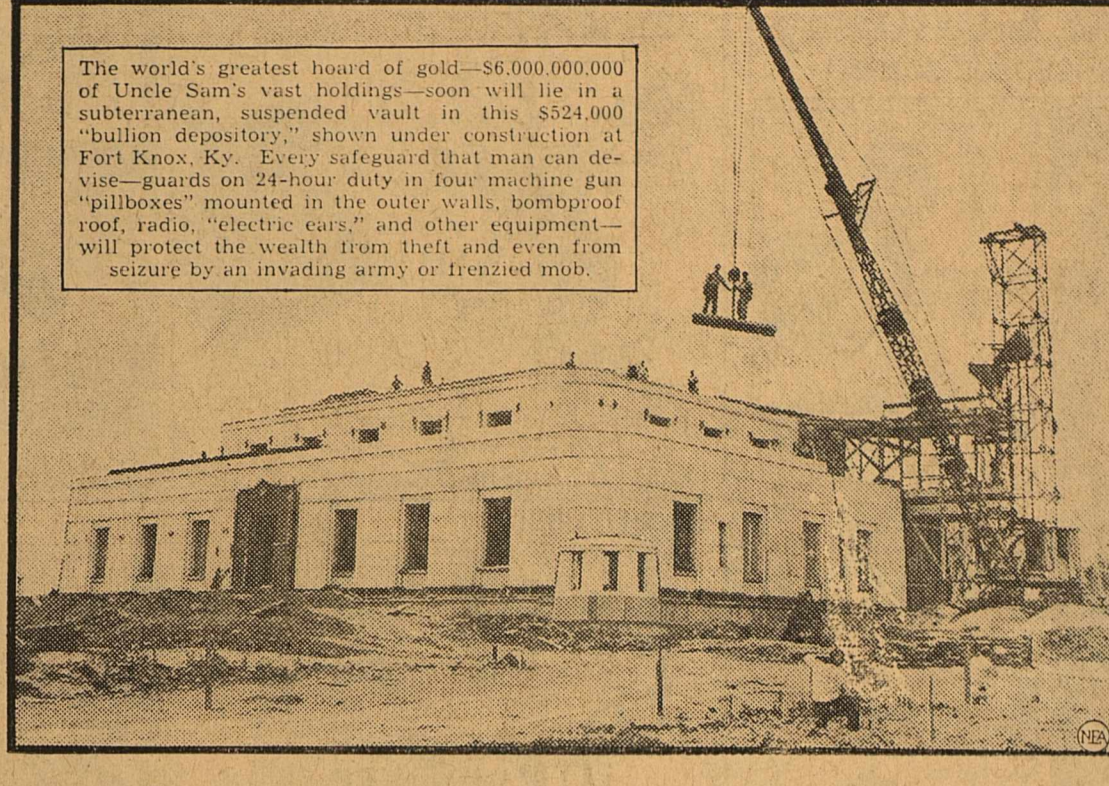
If the situation develops in keeping with present indications, producers say, it will be the first time the two areas which produce 95 per cent of the nation's grapefruit, will join battle for the country's largest markets.

TODAY'S MARKETS

Courtesy H. O. Bedford & Co. 320 Pet. Bldg. Tel. 408

Table listing market prices for various commodities including Armour & Co, Allis Chalmers, American Tel Tel, Anaconda Copper, American P & L, Atlantic, Auburn, A T & S P, Bendix, Bethlehem Steel, Cities Service, Chrysler, Comm Solvent, Consolidated Edison, Continental Oil, Consolidated Oil, Douglas, Elec Bond Shares, Freeport-Tex, General Elec, Goodyear, Gulf, Humble, Hudson, Int. Harvester, Int. Telephone, Kennicott Copper, Lewis, Montgomery Ward, Nat'l Dairy, Nat'l Distillery, N Amer Co, N Y Central, Ohio Oil, Packard, Pennsylvania R R, Phillips, Pure, Radio, Remington Rand, Sears Roebuck, Shell, Socony Vacuum, Southern Pac R R, Standard Brands, Standard of Cal, Standard of N J, Studebaker, Texas Co, Tidewater, T. P. Coal & Oil, T. & P. Land Trust, United Air Craft, United Corp, U S Rubber, U S Steel, Curtis Wright, Warner Bros, Western Union, Westinghouse, Total Sales, Close Prev, NY Cotton Oct., Cotton, Dec., N. O. Cotton, Oct., N. O. Cotton, Dec., Chi. Wheat, Sept., Wheat Dec., Mrs. E. G. Carpenter and daughter, Betty June, of Waynoka, Okla., are the guests of her sister, Mrs. Paul Jackson.

Uncle Sam's New 'Safe' Soon Will Guard Billions



The world's greatest hoard of gold—\$6,000,000,000 of Uncle Sam's vast holdings—soon will lie in a subterranean, suspended vault in this \$524,000 "bullion depository" shown under construction at Fort Knox, Ky.

Every safeguard that man can devise—guards on 24-hour duty in four machine gun "pillboxes" mounted in the outer walls, bombproof roof, radio, "electric ears," and other equipment—will protect the wealth from theft and even from seizure by an invading army or frenzied mob.

By Harry Grayson

PITT FRESHMAN'S FORM UNORTHODOX, BUT HE EATS UP 800 METERS.

AMERICA'S Black Brigade has taken Johnny Woodruff into its fraternity as its baby star.

The United States supremacy in track and field rests with these Negro runners and jumpers—Owens, Metcalfe, Williams, LuValle, Johnson, Albritton, Pollard and Woodruff, who swept six events in the Olympic tryouts.

Woodruff, the Shooting Shadow of the University of Pittsburgh, is this country's hope in the 800 meters in Berlin.

Woodruff walked up to the starting line in the eastern trial at Harvard Stadium on June 27 little known in major track outside of his home territory. He dug in at the gun and 1 minute and 51.3 seconds later he was an international figure.

July 4 saw Woodruff competing in the national A. A. U. meet at Princeton. He was whipped by Charley Beetham, Ohio State's sterling half-mile runner to cover the 800 meters in 1:50.3 to lick Woodruff, Johnny was just a step behind and coming fast.

Blazin' Ben Eastman was placed in the same trial heat with Woodruff in the semi-final Olympic tryouts at Randall's Island Stadium on July 11. Once again Johnny dug in at the start and this time he bested the tape one-tenth of a second behind the world record, covering the 800 meters in 1:49.9.

The following day saw Woodruff breeze through to triumph in the finals. The stifling heat kept his time down, but he won without difficulty with a creditable mark of 1:51.1. Beetham his lone conqueror.

TALMADGE SAYS FEDS WORKING TO CAUSE HIS LOSS

Intimidation Of His Supporters Is Alleged

MOULTREE, Ga., July 22 (U.P.)—Governor Eugene Talmadge charged today that federal agents are attempting to intimidate supporters of his candidacy for the United States senate through threats of income tax prosecution.

"Not only is the collection of the income tax unreasonably expensive, but it is fast developing into a racket," he said. "It is being used to intimidate voters and whip them in line. The reign of terror of the Washington bureaucrats will be short-lived."

Woodruff has the longest stride I've ever seen on a human being," says Nate Cartmell, former Olympic coach. "Choque Hornbostel is no mincing stepper, but the Hoosier was taking three strides to Woodruff's one as they came down the home stretch in the final tryouts."

"Woodruff's form violates all the copybook rules, but who cares for style when a fellow has a stride like that ducky's? No wonder Eastman, off to a bad start, got discouraged chasing that black panther."

"Woodruff is the most unorthodox and spectacular strider I've ever seen," asserts Tom Keane, the Syracuse coach, who was disappointed by the failure of his protégé, Eddie O'Brien, to survive the tryouts. "Woodruff is as unorthodox as Jesse Owens is smooth."

From a poor family, Woodruff had no personal funds for his trip to Germany. Connellville friends came to his rescue. A neighborhood newspaper helped.

Young in big time competition, Woodruff has the world at his feet. It would not be surprising to see the big fellow romp home a winner in Berlin with a new world record.

Olson attempted to change Woodruff's style. The shift slowed up the big fellow and the Pitt tutor permitted him to return to his unorthodox form. He runs with his head thrown back, breathing through his nostrils.

He is fast developing into a racket, he said. "It is being used to intimidate voters and whip them in line. The reign of terror of the Washington bureaucrats will be short-lived."

He is fast developing into a racket, he said. "It is being used to intimidate voters and whip them in line. The reign of terror of the Washington bureaucrats will be short-lived."

He is fast developing into a racket, he said. "It is being used to intimidate voters and whip them in line. The reign of terror of the Washington bureaucrats will be short-lived."

He is fast developing into a racket, he said. "It is being used to intimidate voters and whip them in line. The reign of terror of the Washington bureaucrats will be short-lived."

He is fast developing into a racket, he said. "It is being used to intimidate voters and whip them in line. The reign of terror of the Washington bureaucrats will be short-lived."

He is fast developing into a racket, he said. "It is being used to intimidate voters and whip them in line. The reign of terror of the Washington bureaucrats will be short-lived."

He is fast developing into a racket, he said. "It is being used to intimidate voters and whip them in line. The reign of terror of the Washington bureaucrats will be short-lived."

He is fast developing into a racket, he said. "It is being used to intimidate voters and whip them in line. The reign of terror of the Washington bureaucrats will be short-lived."

He is fast developing into a racket, he said. "It is being used to intimidate voters and whip them in line. The reign of terror of the Washington bureaucrats will be short-lived."

He is fast developing into a racket, he said. "It is being used to intimidate voters and whip them in line. The reign of terror of the Washington bureaucrats will be short-lived."

He is fast developing into a racket, he said. "It is being used to intimidate voters and whip them in line. The reign of terror of the Washington bureaucrats will be short-lived."

He is fast developing into a racket, he said. "It is being used to intimidate voters and whip them in line. The reign of terror of the Washington bureaucrats will be short-lived."

He is fast developing into a racket, he said. "It is being used to intimidate voters and whip them in line. The reign of terror of the Washington bureaucrats will be short-lived."

He is fast developing into a racket, he said. "It is being used to intimidate voters and whip them in line. The reign of terror of the Washington bureaucrats will be short-lived."

He is fast developing into a racket, he said. "It is being used to intimidate voters and whip them in line. The reign of terror of the Washington bureaucrats will be short-lived."

He is fast developing into a racket, he said. "It is being used to intimidate voters and whip them in line. The reign of terror of the Washington bureaucrats will be short-lived."

He is fast developing into a racket, he said. "It is being used to intimidate voters and whip them in line. The reign of terror of the Washington bureaucrats will be short-lived."

He is fast developing into a racket, he said. "It is being used to intimidate voters and whip them in line. The reign of terror of the Washington bureaucrats will be short-lived."

STORIES IN STAMPS

By I. S. Klein

COUNTRY OF MALES



NETS-RAIDED BY A WINDLASS-ARE THE ONLY MEANS OF REACHING SOME OF THE MONASTERIES

ECHOES OF THE DARK AGES

come from the slopes of a mountain peninsula in Greece that juts into the north Aegean Sea. There rises Mt. Athos, the Holy Mountain, on which some 7000 monks have joined in a sort of unique religious republic, from which all females, even female animals, are excluded.

BOTTLED NOTE FLOATS AFAR

WARTFORD, Conn. (U.P.)—Last November Joseph Rosetta sealed a note in an empty bottle and cast it adrift off the coast of Florida while on a cruise to Puerto Rico.

OIL NEWS

Continued from Page One
rels of which were water. The previous 24 hours it tested 84 barrels of fluid, 31 per cent water. The well was plugged back to 3,501 feet to shut off water developed in drilling to 3,525. It would not flow through casing, so tubing was run with packer set at 3,184, and it has since flowed steadily.

SKELLY 1 MARTIN RATES NEARLY 200 BARRELS HOUR

Skelly Oil Company No. 1 W. H. Martin, newest flush producer to be brought in in the Estes area of the southeast Ward county field, flowed 1,383 barrels of oil in seven hours and 15 minutes, the last gauge reported. The huge well after blowing tools up in the hole blew in with a stream of oil and mud, knocking the drilling string up in the derrick. The sand pay section was entered at 2,502 feet, but the well probably drilled itself deeper while blowing. Location of the No. 1 Martin is in section 40, block 34, H. & T. C. survey. It offsets a 700-barrel well to the northwest and is not far from a 55-barrel well.

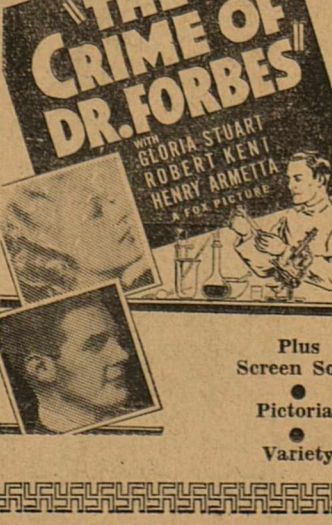
Plays Swing Rhythms



THE swiny rhythms of Bob Crosby (above) and his orchestra are being presented by Ford dealers in a new series of transcriptions, broadcast over radio stations throughout the country.

YUCCA TODAY - TOMORROW

THE CRIME THAT PUZZLED THE NATION!



RITZ COOLEST SPOT IN TOWN

LAST DAY

FAST AND FUNNY! LOVE CONQUERS ALL!



TOMORROW ONLY



YOU ARE CORDIALLY INVITED

TO ATTEND OUR

OPEN HOUSE

AND SPECIAL

Lincoln Paint Demonstration

THURSDAY AND FRIDAY, JULY 23 - 24

FREE INFORMATION for HOME OWNERS ON LOANS FOR REPAIRING and REPAIRING YOUR HOME

UNDER PROVISIONS OF THE FEDERAL HOUSING ACT

You no longer need to defer that coat of Lincoln Climatic House Paint for your home. The Federal Housing Act will help you to finance needed painting and repairing NOW at a very low interest rate, with a long time to pay.

If your home needs paint, whether outside or inside, now is the time to get a loan—after all you save when you paint and when you save on an investment, it is thrifty and economical.

LINCOLN PAINT VARNISH ENAMEL FINISHES

A. L. Housing & Lumber Co.

Corner West Texas and Carrizo—Block West of The High School

Your Support Will Be Appreciated

JOSEPH M. NEALON of El Paso County

—Candidate for— Chief Justice, Court of Civil Appeals (8th Supreme Judicial District)

Has practiced law in El Paso since 1903. Former president of El Paso Bar Association. Former partners: Congressman R. E. Thomason, former Congressman Claude B. Hudspeth, Judge Joseph McGill. Though only five years his opponent's senior, he has had sixteen (16) years more experience, mostly civil practice—the best training for this office.



Has practiced law in El Paso since 1903. Former president of El Paso Bar Association. Former partners: Congressman R. E. Thomason, former Congressman Claude B. Hudspeth, Judge Joseph McGill. Though only five years his opponent's senior, he has had sixteen (16) years more experience, mostly civil practice—the best training for this office.

Has practiced law in El Paso since 1903. Former president of El Paso Bar Association. Former partners: Congressman R. E. Thomason, former Congressman Claude B. Hudspeth, Judge Joseph McGill. Though only five years his opponent's senior, he has had sixteen (16) years more experience, mostly civil practice—the best training for this office.

Has practiced law in El Paso since 1903. Former president of El Paso Bar Association. Former partners: Congressman R. E. Thomason, former Congressman Claude B. Hudspeth, Judge Joseph McGill. Though only five years his opponent's senior, he has had sixteen (16) years more experience, mostly civil practice—the best training for this office.

Has practiced law in El Paso since 1903. Former president of El Paso Bar Association. Former partners: Congressman R. E. Thomason, former Congressman Claude B. Hudspeth, Judge Joseph McGill. Though only five years his opponent's senior, he has had sixteen (16) years more experience, mostly civil practice—the best training for this office.

Has practiced law in El Paso since 1903. Former president of El Paso Bar Association. Former partners: Congressman R. E. Thomason, former Congressman Claude B. Hudspeth, Judge Joseph McGill. Though only five years his opponent's senior, he has had sixteen (16) years more experience, mostly civil practice—the best training for this office.

Has practiced law in El Paso since 1903. Former president of El Paso Bar Association. Former partners: Congressman R. E. Thomason, former Congressman Claude B. Hudspeth, Judge Joseph McGill. Though only five years his opponent's senior, he has had sixteen (16) years more experience, mostly civil practice—the best training for this office.

Has practiced law in El Paso since 1903. Former president of El Paso Bar Association. Former partners: Congressman R. E. Thomason, former Congressman Claude B. Hudspeth, Judge Joseph McGill. Though only five years his opponent's senior, he has had sixteen (16) years more experience, mostly civil practice—the best training for this office.

Has practiced law in El Paso since 1903. Former president of El Paso Bar Association. Former partners: Congressman R. E. Thomason, former Congressman Claude B. Hudspeth, Judge Joseph McGill. Though only five years his opponent's senior, he has had sixteen (16) years more experience, mostly civil practice—the best training for this office.

Has practiced law in El Paso since 1903. Former president of El Paso Bar Association. Former partners: Congressman R. E. Thomason, former Congressman Claude B. Hudspeth, Judge Joseph McGill. Though only five years his opponent's senior, he has had sixteen (16) years more experience, mostly civil practice—the best training for this office.

Has practiced law in El Paso since 1903. Former president of El Paso Bar Association. Former partners: Congressman R. E. Thomason, former Congressman Claude B. Hudspeth, Judge Joseph McGill. Though only five years his opponent's senior, he has had sixteen (16) years more experience, mostly civil practice—the best training for this office.

Has practiced law in El Paso since 1903. Former president of El Paso Bar Association. Former partners: Congressman R. E. Thomason, former Congressman Claude B. Hudspeth, Judge Joseph McGill. Though only five years his opponent's senior, he has had sixteen (16) years more experience, mostly civil practice—the best training for this office.

Has practiced law in El Paso since 1903. Former president of El Paso Bar Association. Former partners: Congressman R. E. Thomason, former Congressman Claude B. Hudspeth, Judge Joseph McGill. Though only five years his opponent's senior, he has had sixteen (16) years more experience, mostly civil practice—the best training for this office.

Has practiced law in El Paso since 1903. Former president of El Paso Bar Association. Former partners: Congressman R. E. Thomason, former Congressman Claude B. Hudspeth, Judge Joseph McGill. Though only five years his opponent's senior, he has had sixteen (16) years more experience, mostly civil practice—the best training for this office.