

Elegance this Fall

With the graciousness of a queen . . . with the poise of a screen star . . . and the dignity of a prima donna . . . greet this new season of courtly fashions . . . Fall, 1936.



Make every little party a grand occasion! Surround yourself with dignity in your home, and the poise that must come with the wearing of elegant fashions.



Mold your waistline until it's as tiny as the Empress Josephine's! Puff out your shoulders and let your skirts sweep grandly, so that your waistline looks even tinier. This fall, it's Elegance you'll be striving for; in fabrics with sheen and eloquent texture; in colors that make every fashion setting a pageant of subtle brilliance; in styles that make you feel so regal, you'll carry your head a little higher, walk in shorter, more feminine steps. This fall, it's Elegance you'll achieve, and bid a cheery goodbye to the hoydenism of yesterday!



Elegance is, largely, a state of mind. But mostly, it is the intrinsic value, the hidden importance of quality. Don't let a shoddy fabric come near you. Don't let a jagged hemline go by. Be critical . . . fussy . . . cautious . . . when you buy your clothes, and you'll have nothing to think of but your elegant appearance when you wear them!

Everything is New in Fall Dresses; Empire of Directoire Influence Seen

There can be no complaints this year on the score of "not enough newness in fashion" because from every angle, from basic lines to color tones there is a complete departure from the trends of last season, and of last year. The silhouette itself, is a creature of many moods, giving us not one predominating fashion, but rather a few important types from which we will select on a basis of becomingness.

The most obvious thing in dresses is the fact that Empire or Directoire influence is definitely felt, as restrained as its interpretation may be. Effects are gained by means of higher waistlines, also giving us an interesting means of using two fabrics rather than one. Satins with crepes, crepes with velvets, satins with thin wools, and thin wools with heavy wools, are interestingly developed.

One piece dresses for the most part follow these lines, and also give the Princess silhouette which is firmly fitted through bodice and waistline, gradually widening to a flared hemline. Whether belted or unbelted, this is a fashion to be worn by the slender, but adapta-

tions of it are also wearable for every figure, particularly in tunic types. And the tunic is probably the most gratifying of all fashions, because its variety of versions makes it wearable by the woman who wants to conceal bust fullness or to exaggerate it . . . to slim hips or to give them greater breadth. Whether very full and flared at the skirt, or slenderly flaring from a fitted bodice of princess trend, the tunic may be open down the front like a coat, or without a dividing line. The skirt of tunic frocks must be pencil slim to do justice to the tunic itself.

Our third outstanding fashion type is the costume suit, which combines a jacket with a one piece dress. In many instances the jackets are so short that they just about reach the waistline, and hang straight and boxy from the shoulders. In other instances they suggest a redingote, and in more elaborate interpretations they are fingertip-to-full-length coats, which may serve over other dresses as well.

Color Guard

It is interesting to notice that the costume colors for dresses are not the same in woollens as they are in silks; a fact which may be accounted for by the fact that it is anticipated that woollens will be worn less formally. There are, of course, the true brown and black that are the foundation in every wardrobe. There are rusts, lighter in wool than silk, there's a brilliant blue, a little more electric in wool than in silk, and the wine tone in silk is just a little redder than the crushed grape color in wool. Similarly, the wool green is more vibrant than the silk green, and woollens also include a copper brown, a battleship gray, peacock blue, a real scarlet red, and a subdued gold lustre. More high fashion colors which you will decide on for your most elegant dresses include coronation red, which is a very pink interpretation of wine, stone blue which is a soft, slate tone, and new spruce blue, which is a flattering blue-green tone.

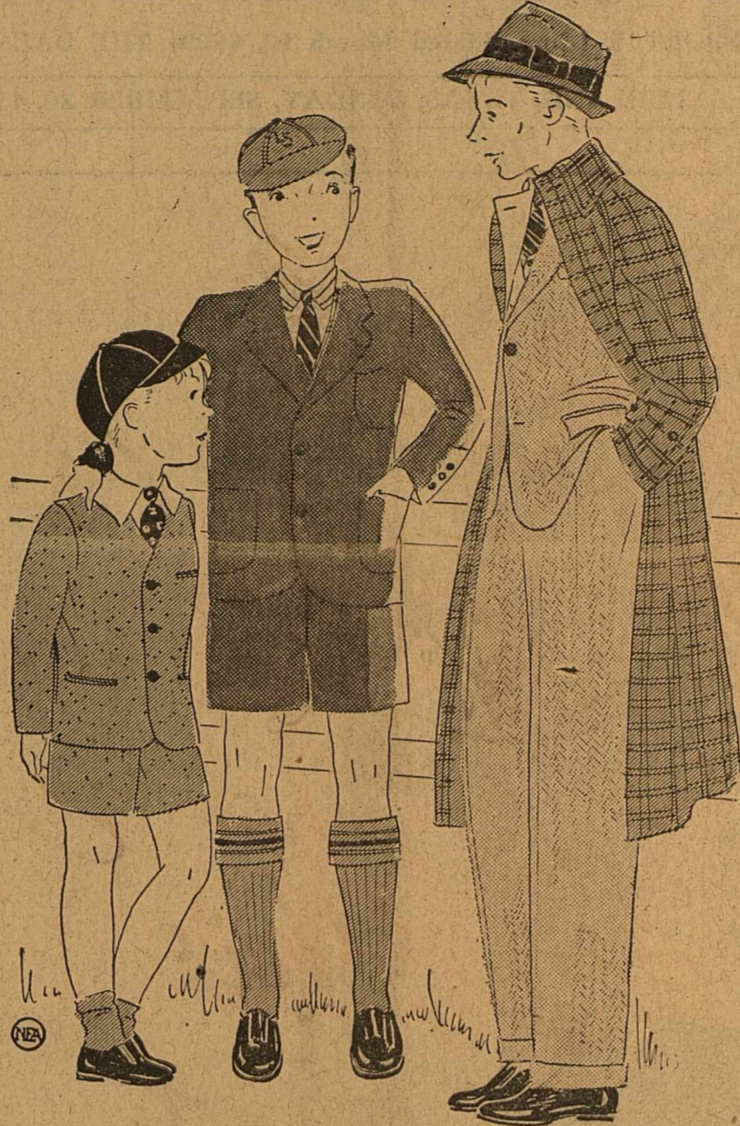
When you select your dresses for this fall and the coming winter, do so with an eye to impressive elegance and refinement. You will be happier with three superbly made, exquisitely fitted dresses, than you will with a dozen poorly made, really cheap fashions. And you will find that quality pays you back many times, in self-confidence, admiration from others, and enduring good fit and appearance.

Four Japanese Set Out To Reach Everest's Peak

SINGAPORE (U.P.)—Having succeeded in so many other fields formerly monopolized by the Occidental, the Japanese are now turning ambitious eyes toward Mount Everest.

Four Japanese climbers are enroute to the Himalayas to begin an attempt on Nanda Kot, the 22,530-foot mountain. They hope that if they succeed in this climb they will be able to organize an attempt on Everest.

Manly Appearance Suits Boys Best



"Meet the kid brother. He's just six today," says smartly dressed Master Ten to his collegiate-looking fourteen-year-old pal on the right. Kid brother is wearing his new collarless suit with an Eton collar dressing up the plain neckline. Master Ten in the center wears the popular montrose suit in herringbone tweed. The popular herringbone is also seen in the cheviot suit of the big fellow, who sports a snap brim felt hat and a topcoat of reversible tweed and gaberdine.

NEW LABORATORY OUTFIT GIVES TEXAS UNIVERSITY SCIENTIFIC RESEARCH WORK

AUSTIN, Texas, Sept. 11.—Preparatory to opening a new field for experimental work in the field of the manufacture of vacuum tubes, incandescent lamps and gaseous tube illumination, the department of electrical engineering at the university of Texas has purchased a complete laboratory outfit and will this fall offer courses in one of the newest and broadest lines of scientific research.

During the past few years, several educational institutions have followed the pioneering footsteps of Massachusetts Institute of Technology in establishing courses in this field of work, but in most cases their equipment has consisted of second-hand purchases or gifts from commercial laboratories or has been makeshift equipment devised in their own workshops, according to Dr. J. A. Correll, professor of electrical engineering at the university. Prior to M. I. T.'s entry into this branch of work four years ago, all research and experiment with vacuum tubes and neon tubes were carried on in commercial laboratories.

A natural and highly desirable trend has been to expand the laboratory work at educational institutions to include all branches of scientific experiment, so that students may have the opportunity to gain actual experience in their professions at the same time they are learning basic fundamentals.

Last year, the electrical engineering department at the university of Texas offered a lecture course in the principles of vacuum and gaseous tubes. This fall, laboratory work to supplement this course will be offered under the direction of E. H. Schulz, new instructor in electrical engineering. Schulz received his bachelor of science degree from the University in 1935 and his master of science degree in June of this year. This summer he spent at M. I. T. to receive special training in the field of vacuum and gaseous tube manufacture and use.

In the university laboratory, students will learn to blow glass tubes into the shapes they desire, to remove the air from the tubes, and to fix electrodes into the tubes; they will learn what mishaps can occur when tubes are improperly connected and how to correct the defects; and—a matter of great importance—they will be able to carry on individual original research that may quite possibly result in some new discovery that will revolutionize or at least prove of tremendous value in the vacuum or gaseous tube field.

Some fifteen or twenty students can be accommodated in the present laboratory, and additional equipment will be purchased from time to time, principally in duplicating the instruments the department already possesses, to enable more students to work. Equipment already on hand cost approximately \$1,100, and an additional \$500 will be spent this year.

The department of electrical engineering has already firmly established scientific experimental work in the fields of power and communication, largely by means of outright gifts of equipment from commercial concerns. Professor Correll estimates the value of the department's laboratory equipment to be approximately \$150,000. There are approximately 200 students in the department, and each year the graduates of the department find their ways into positions that afford them the opportunity to be of great service to scientific progress.

Insects never grow old. They die in full vigor, when their work is done.

Return to Clothes Rivals Football in Thrills of Autumn

The approach of autumn has more according to Miss Bertha McGrew of the Kaydelle Shop, than football to recommend it. Schools open, of course, and that's exciting—until teacher dishes out the customary cold water. Palates renew an affectionate acquaintance with pumpkin pies, and there's a scudding to brilliant colors of leaves urged by Jack Frost snapping at their heels. It is the "Return to clothes" that gives fall its real place on the seasonal map.

It is the relief from the revealing skimp of summer clothes, and a mad dash to veiling clothes again. Apparently out of deference to hips which need no artificial emphasis, broad shoulders are dropped into the upper sleeve. Molded down from this perfect balance is the natural silhouette—bosom curved but not outlandishly pointed; torso lithe, slender; hips smooth enough for a pep-lum flare.

There's very apt to be one—a pep-lum—or in its stead a tunic. Cut properly there is nothing quite so slimming (and carrot diet) as a whirl of tunic above a snug-tight skirt. Makes, too, a symmetrical complement to puffed-out shoulders.

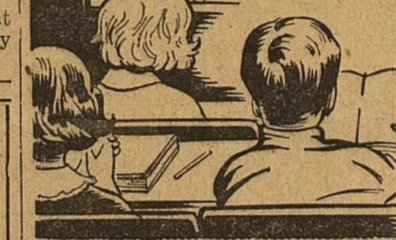
Black and more black is the early autumn cry. The warm copper tones, forest greens, wine and plum variations and deep browns follow closely.

The dog's head butterfly has an excellent likeness of a dog's head on each of its front wings. Even the eye spots are in the right places.



Teacher who tell you the importance of the proper eyesight for your child. Ask her whether your child doesn't need them.

DR. W. L. SUTTON
Optometrist
203 Thomas Bldg.
Office Phone 146
Residence Phone 810-J



Buddy's FLOWERS
MIDLAND, TEX. PHONE 1083
1200 W. Wall

FALL HATS in colorful felts



BUY a good hat, and you'll be glad of it all season! Here are the "toppers" that the best dressed men all over the country are buying. They're in shape!

STETSON \$5 and up
The LEESTON \$3.50
The LEE WATERBLOCK \$4.95

Nunn-Bush
Ankle-fashioned Oxfords
\$7.50 for MEN \$8.75
The Nunn-Bush Is Exclusive At

WILSON
Dry Goods Co.
IN MIDLAND

Curlee

IS A LEADER in STYLE WORKMANSHIP and MATERIAL



Even though there have been advances in the wholesale cost . . . We are still selling these Curlee Suits at the same price as last year and year before last . . .

\$29.50 with 2 pants And a New and improved QUALITY

CURLEE CLOTHES



Jayson SHIRT

Next to a dog... a man's best friend is his

JAYSON SHIRT WITH JAYSONIZED NO STARCH . . . NO WILT COLLAR

\$1.95

Always faithful is your JAYSON shirt . . . always neat . . . always comfortable . . . thanks to the miracle Jaysonized collar that always feels soft and looks stiff, without starching, through wearings and washings.

• We are ready with the new JAYSONS . . . in a variety of patterns, colors and collar styles . . . at only \$1.95.

*Jaysonized collar features: No starch . . . No wrinkles . . . No crush . . . No wilt . . . No stays . . . No stiffness . . . No shrinkage.

* Licensed under Ceianese patents

FIELD AND STREAM LEATHER JACKETS



And you've never seen a more complete stock in West Texas . . . all styles . . .

\$8.95 TO \$16.50

BRUSHED WOOL SWEATERS

AND TWIN SWEATER SETS Are Up-To-The-Minute in Style and Comfort You'll find them mighty handy this winter.

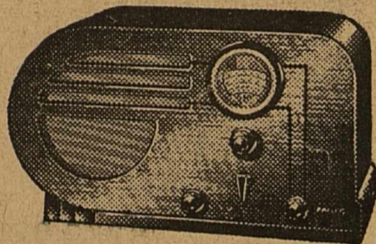
\$1.95 TO \$4.95

WILSON Dry Goods Co. MIDLAND

IT'S SMART..IT'S NEW

... and the price of this compact 1937 Philco is only \$49.95 Less Aerial

PHILCO 810T—Many new features including Philco Foreign Tuning System, with 50 per cent greater short-wave station separation.



For convenience, performance, compactness and value—no set can match this new Philco, with Philco Foreign Tuning System! 3 Tuning Ranges covering standard American Broadcasts . . . State and Municipal Police . . . Aviation . . . Ship . . . First-Class Amateur Bands. Your present set in trade . . . easy terms on the balance. Phone for free demonstration.

CARNETT'S

RADIO SALES & SERVICE

115 E. WALL

PHONE 133

Exquisite Creations for Fall

Dresses . . .

Selected for the fineness with which they are made, for the superiority of their fabrics and for the leadership of their styles.

Silks and Woollens \$10.00 TO \$35.00

The tunic is very popular—with smocking at the shoulders

Knitted Wear by Lampl

—As Seen In Vogue— \$10.00 TO \$18.50

And it's going to be a Season of Knits

Coats & Suits . . .

Both Tailored and Fur Trimmed . . . Fall's Newest Styles and Materials . . . An Excellent Selection at

\$16.75 TO \$50.00

Hats . . .

In the decided trend of high and shallow crowns

\$2.95 TO \$8.50

Gloves . . . Bags . . . Hosiery

To complete the costume

Choose your entire Fall Wardrobe during one shopping trip from our carefully selected presentation

Kaydelle SHOP



**Dazzling Fall Styles Rivalled Only
By the Wealth of New Fall Fabrics**

This is the month when all the new fabrics are on view says Mrs. Ruth Ramsell at the Wilson Dry Goods Company; and what we see that interests us and will perhaps interest you are the following:

Lovely printed satins, and black lacquered satins that would be perfect for your winter dance frock to carry on excursions to the city this winter, or wear to your own home club or hotel dances.

There are also crush-resisting velvets that get along beautifully without a lot of bathroom steaming, a velvet that water will runoff of leaving no spot—an inspired idea for evening wraps for this country where it only rains when you have some gala occasion in progress.

There is more to write about concerning winter coats than there has been for ages. It is true that the voluminous tweed swaggers is still the sports coat, and would be the grand thing to wear to our own West Texas high school football games and the college bouts this fall. However, the coat that is taking everyone's eye is the princess refter. The top is so fitted and the bottom so flared that the middle looks small enough to be encircled with two hands. And that is the way the waistline should look these days.

Suits are also one of the most important items of dress, and one that comes up at all seasons of the year. There is the tunic suit, and the tailored suit, and the swagger suit. And now, the box-coat suits that are the top in popularity. Suit-like frocks are also very smart, and will continue to be so because suits are smart. They are very practical for the country where many of our winter days are warm and pleasant, but fashion restricts us from coming out in summer weight clothes which would be in accord with the temperature.

Glace kid gloves are back in fashion. These, and the faulle suede gloves, are irresistible in the new dark colors that actually make them look different. The right colors are dark green, wine, navy, rust, brown, and egg-plant. They are perfect with town suits.

**Fastest Boats Tuned Up
For Races on Potomac**

WASHINGTON, (UP)—Many of the most famous boat racers in America have entered the annual Presidents Cup Regatta to be held here Sept. 24, 25, 26, and 27.

Melvin Crook of New York will drive his Betty V in the American Speed Boat Championship race the course in the Potomac River. The Betty V, a single-engined hydroplane, has attained a speed of 82 miles an hour, a world record.

Jack Dunn of Miami, Fla., who has thrilled Gold Cup spectators with his daring driving, will drive his speedy Jay Dee in an effort to capture the President's Cup. He has also entered the 225 hydroplane class with his Jay Dee II.

The Snail II, one of the highest ranking boats in the 225 hydroplane class, has been entered by its owner, George O'Connor of Rockledge, Fla., and Lester Cleak, of New York, will drive his Lady Gen II in the Class I races.

Of all the millions of birds that cross the Gulf of Mexico every year, only a few swallows take the Florida-Cuba route. Most birds cross the gulf at its widest part.

**Military Campaigns
Nothing New For The
State, History Shows**

FORT SAM HOUSTON, Sept. 18.—Military campaigns are not new to Texas, where the Third Army Command Post Exercise is being conducted this month, near Fort Sam Houston.

In fact, its colorful history dates back four-hundred-and-fifty years to the landing of the Spanish Conquistadors, bedecked in armor and jewel-studded robes, attempting to subdue the American Indian and reach a fabled "City of Gold." And on down through the centuries to the war with Mexico in 1836, when Sam Houston, Crockett, Travis and a mere handful of battle-worn, poorly-armed valiants fought a desperately triumphant battle to win the independence of the Lone Star state, the folklore of Texas has been crimsoned by bloody battles.

And what could be more fitting than that the scene of this military problem, involving the defense of the Southern half of the United States, now being conducted by over five hundred command and staff officers of the Regular Army, National Guard and Organized Reserves, should be in the very shadow of the historic Alamo. "Shrine of Texas Liberty," exactly a hundred years after that famous battle, and during a year all Texas is commemorating its most successful defense of its soil by a series of state-wide Centennial Celebrations.

By a peculiar co-incidence, the tactical situation outlined by Major General Frank Parker, Commander of the Third Army, and the 8th Corps Area, has some points in common with the situation a hundred years ago. Both the forces of the Third Army and the Republic of Texas faced the problem of repelling an invasion from the Southern borders of Texas, and both chose San Antonio as headquarters and chief source of supply.

It is assumed in the problem that General Parker has arranged to provide training for commanders and their staffs, that a mythical "Black" European power has landed on our Gulf Coast, near Brownsville and Corpus Christi, and is pushing grimly northward.

But there the analogy ends. Instead of a mere handful of hearty pioneers, defending their home against the army of Santa Anna, the officers conducting this imaginary war will command six Infantry divisions with two cavalry divisions attached, and conduct a mythical defense of the southern half of the United States contained within the Fourth and Eighth Corps Areas.

Where the defenders of Texas Independence truged miles in well-worn boots, or rode a pinto pony when fortunate, according to plans, the 156,000 men involved in this military modern war will be moved by high-speed trucks, well sheltered and well fed.

Smoke signals flashed from a mountain top, and the romantic figure of a horseman riding oftunes twenty-four hours at a stretch to deliver a message to the commander gives way in this Third Army tactical exercises to plans for a complicated network of telephones, telegrams, two-way field radio and the myriad advantages of communication that could be furnished by a complete Air Corps.

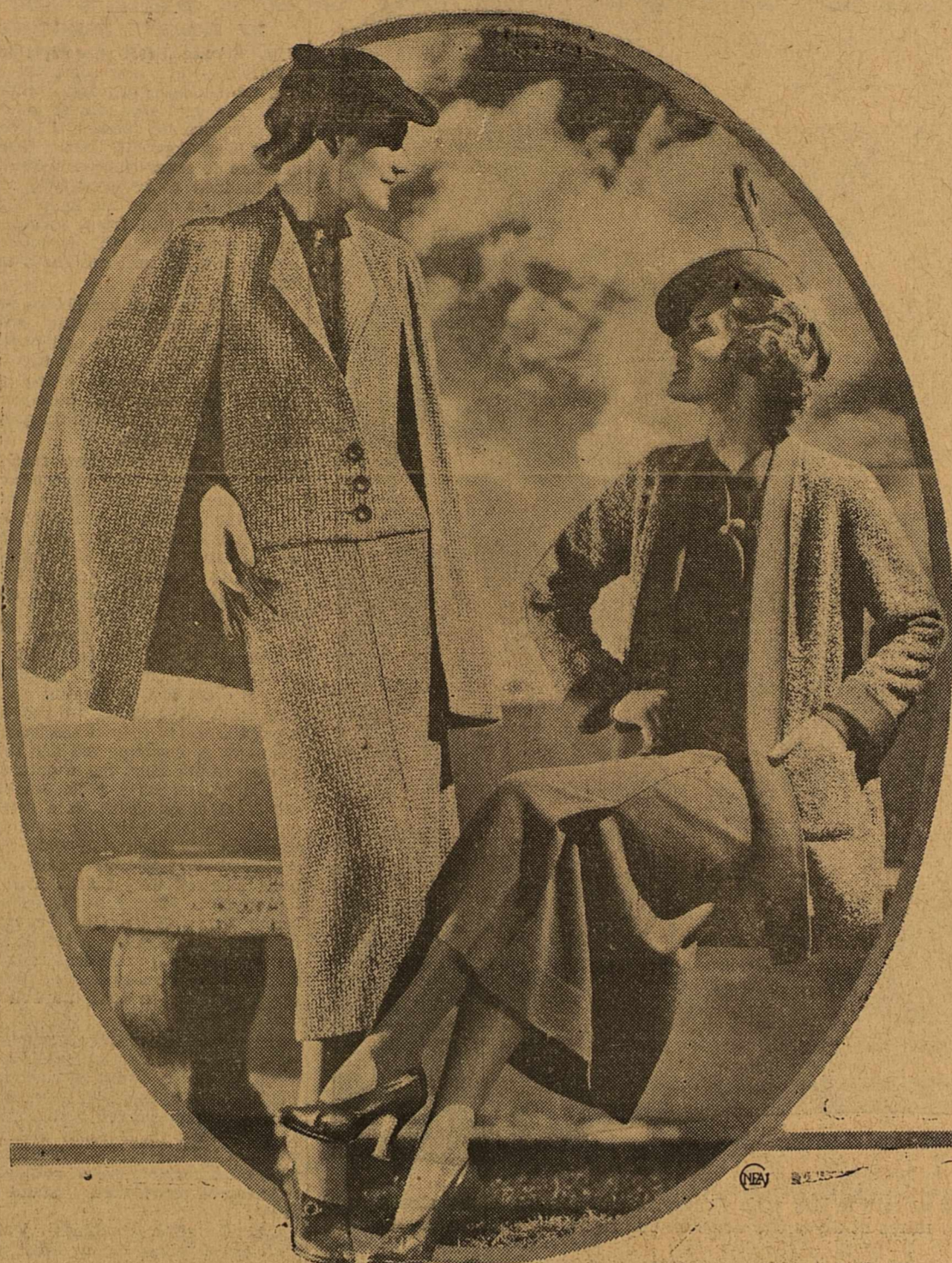
In place of the rusty carbines and muskets that once defended Texas soil, the Third Army plans for the defense call for the equipment of its forces with modern rifles, automatic rifles capable of firing 25 shots a minute, French and English 75 millimeter field guns; 155 millimeter Howitzers and three-inch anti-aircraft guns.

Yes, the method changes, but the theme remains the same.

The "Queen Mary", newest transatlantic liner, weighs 80,773 gross tons and has a speed of approximately 30 knots.

The United States imports more than 7000 quill pens from England every year.

Popular Styles For Co-Eds



The striking cape costume (left) in soft green, beige and brown tweed knit is teamed up with a brown rib knit blouse and is lovely for the more formal moments of a co-ed's life. The other outfit (right) includes a jacket of vari-colored tweed, lined with needlepoint-knitted wool to match the smart dress in red earth, a new color.

**Satin Lingerie
Is Very Popular**

Lingerie follows consistently in the trend for more feminine, more elaborate apparel, and satin is fast becoming the favored fabric, either used alone, or embroidered or trimmed with deep ecru lace. The desire for luxuriousness is most fully expressed in the nightgown made of crepe-back satin, the satin used inside to touch the body, the crepe forming the outside, with elaborate satin applique.

It is in handsome lingerie that we see the most exquisite detailing, and so many of the Philippine and Chinese imports are available at really moderate prices, that no woman need deny herself the joys of thoroughly feminine, fine lingerie. In these too, satin is preferred, and many pajama and gown sets are matched for sleep and lounge wear, with dark colors introduced most effectively. A blush satin set, for instance, is bound with deep wine color, at a little high neckline and flaring peplum outline. Other bright shades used include aqua, coral every conceivable pink tint, several blues, and a number of these pastels are printed all over with dark dots. Yoke outlines corked in fagoting and hemstitching, and embroidery are feminine, and when little puffed sleeves aren't used, shoulder bands are very often formed of braided shoe string strips in contrasting colors.

With fashions following such interestingly fitted and detailed new silhouettes, the slip becomes a most important garment in the wardrobe, and authorities insist that the straight slip is by far the most flattering to the figure, as it conceals bumps and bulges more thoroughly than does a bias slip which pulls up and clings to the body. Another achievement in slips is the stressing of the high waistline, which is strategically achieved by means of warts, little shirred sections, and tucks, so that when a high waisted dress is put over the slip it falls more sleekly into the desired body outlines.

Truly the newest thing in underwear is the introduction of the culotte slip, and culotte panties, which are cut exactly like the divided skirt used for sportswear. With woolen culottes so important in the campus wardrobe, it follows that the correct underwear will prove far more comfortable, and at the same time eliminate the possibility of "itching" fabrics.

**6 High School Teams
Play In Cotton Bowl**

DALLAS, Sept. 19—Six powerful high school football teams, among them the Greenville High Lions, 1935 state champions, will open their 1936 campaigns in the Cotton Bowl at the Texas Centennial exposition during the week.

The Cotton Bowl's first double-header is scheduled for Saturday night, September 19. South Park of Beaumont and Sunset of Dallas will meet in the evening's first game to be followed by Sherman high and Woodrow Wilson of Dallas in the night cap.

Greenville's Lions will go into action against the Technical high school team of Dallas Friday night. The first major college game of

**Hose Tones for Year
Are Lighter Shades**

It doesn't sound natural to hear "fall stocking colors will be lighter"—insofar as in the past, the lightest shades have been in the spring and summer and the warmer, deeper shades in the fall and winter. However, the coming season is seeing a reversal of so many fashion inclinations that you shouldn't be surprised at this hoisery news. Everything about these new colors has been especially created with the costume colors of the fashion's season's definitely in mind. For instance, the more subtle beiges will do admirably with the eggplant and wine tones, the cinnamon shades and some of the browns which look metallic, will prove stunning when worn with bronze leather shoes, which are gaining acceptance rapidly.

Taking the colors one by one, let us consider those which have been sponsored and approved by the Textile Color Card Association, and which we can ask for in any hosiery shop. First in prominence is Leather Tan, quite light and golden, which will be worn with similar browns, in russet tones, as well as with yellow greens, dark turf colors, and black. A spicier tone is cinnamon Brown, which will be worn with rusts, any of the greens, as a sharp contrast with black, and with the many spicy brown tones which will be seen in spectator fashions. Cafe clair is a third brown, which is considerably lighter, and will be worn with darker costume shades, and with the darker wine, rust, and green tones, as well as with black. Our last smart brown has a bronze cast, and will be smartest with dark brown, green wine and black.

The newest beige tones start with Debonair heading the list in lively tone, and to be worn with rosy, vintage tones, blues, grays, and black, as well as with the eggplant shades as mentioned above. Most neutral of all is Jaunty, which can be worn with the same costume colors as can Debonair, but a little warmer in tone is Saunter, definitely a town shade appropriate to wear with browns, greens, grays, and the many multi-tone tweeds which will be worn in tailored themes. Lastly, we have three individual tones—Smoketone, which is a medium gray and quite wintry, Burnt Ochre, particularly good for evening wear, and Burnt Copper, which you may wear with your most vividly colored tweeds and sport clothes.

**Honolulu Zoo Buys 40
Monkeys of Formosa**

HONOLULU, (UP)—Forty Formosa monkeys soon will reach Honolulu to become new additions to a bird park and zoo planned in Wai-kiki. Gray furred with golden spots of color, the monkeys will be housed on a special island, which will be made to resemble their natural habitat as much as possible.

**A STEP
AHEAD
in a
Snyderknit**



Ultra Smart For The Season in 2-Piece Suits and 3 Pieces With Blouse Dresses With 7/8 Length Coats

This Knitwear Featured in Plaids • Stripes Checks • Plains
\$18.50 To \$35.00
WILSON Dry Goods Co. Midland

Hats...

HAVE HEIGHT and SMARTNESS FOR FALL



Your Hat... It can make you a paragon of smartness and style leadership. It can give you a new personality. It can be in one of many moods. We have selected the hats that will stand out on every fashion page... in every smart gathering.

\$1.95 TO \$5.95
WILSON DRY GOODS CO. MIDLAND

These Models "Fashion - Right"



Perfect for the college girl is this lovely boxy swagger coat of soft gray squirrel. Full sleeves which narrow down at the wrists and a pert Johnny Collar are fashion-right details.

Correct for campus, classroom or weekends in town, this smart fall outfit is of flatknit woolen striped in black, wine and gray. The black Astrakhan knit jacket is lined with striped fabric.

COATS

of distinction...

By PRINTZESS

We have had one of the best coat seasons we have had in many years, attesting to the popularity of Printzess Coats. Even though our sales have been heavy, we have replenished our stocks and you still have the opportunity of selecting your coat from a wide variety.

\$27.50 To \$69.75

GLOVES

Are an important accessory in the fall ensemble... and we gave detailed consideration in our purchases. We have an excellent selection in kid and suede at the pair.

\$1.95 and \$2.95

PURSES

Purses, too, will play an important part in correct attire this season. We are well pleased with our presentation and are sure that you will be delighted with it. They are priced from

\$1.95 TO \$4.95



Dresses

With an Air of Romance...



There's a double thrill for the thrifty soul and the smart dresser in our selection of fall dresses... all the new shades... all the new styles... and for all occasions. And sizes: we have them for the trim little miss on up to those who fall into the stout category.

\$10.95 To \$29.75

When in Midland for the Fair and Race Meet, make it a point to visit our store. We shall be pleased to make your acquaintance.

WILSON Dry Goods Co. MIDLAND

Black Leads in Fall Wardrobe

Black is important in the fall and winter wardrobe, according to Mrs. J. C. Smith of the J. C. Smith ready-to-wear store, who pointed out that in the recent Paris opening the superiority of black was confirmed in collection after collection. Fashion magazines, likewise, put definite emphasis on this significant color. Black alone, and with new color affinities in glittering bronze, in smoky reds and in varicolored prints. Black in dresses you will live in now. Black in a silk crepe with

a high neck and extended and slightly exaggerated shoulders to concentrate the attention, thus making the figure appear to be very slim and straight. A dinner dress in black alpaca crepe and cut with long sleeves and draped with lavish folds that hide light and reflect it. Only a black dress can show such lines of quiet, wonderfully pleasing grace. Mrs. Smith adds that your fall wardrobe would be incomplete without at least one black dress, which, besides being practical, is the smartest affect in fashion this year.

Style and Quality Will Be Paramount Over Cost for Fall Buyers, It Is Predicted

Mrs. Norma Patterson at Every-body's says, "We believe that buyers will be looking for smarter fashions, and finer quality, rather than price, this season, which is a sure sign that prosperity is on its way. The new fall styles and materials are more beautiful than ever, and our show rooms are brimful of attractive fall garments for junior misses and women."

They are making a specialty of the black costume—because they consider it one of the "important" of the new season. They believe in the future of black with gold and bronze touches, black dashed with color, black enriched by handsome fur. The fitted tunic costume is beautiful made up in wool and enriched by fur.

Another striking costume in perennial and chic black, and significant for the Persian feeling that is Paris, is the dress of black Lintin tweed with satin yoke and sleeves. The jacket furled with a minaret pelum of Persian lamb, moulded by a sloping, satin-draped waistline.

Three piece suits are very popular this year, especially attractive are those in tweed and trimmed in fur. Skirts are short but not shorter than last spring, and the coats are all fitted snug over the bust and slim about the waist. There will be dinner dresses galore but hardly a full evening dress in sight and black wool evening dresses, tweed evening coats, and lace evening gowns.

The shops and, streets, are overflowing with tunics, scotch plaid suits and skirts, black and then black again, with touches of bright color at the neck. Wool suits and pixie caps twisted into every conceivable shape, and blouses in everything from white ottoman to satin of the most dangerous danger red.

'Swing' Music Credited To Ancient Polynesians

HONOLULU, (U.P.)—Ancient Polynesians had "swing" music centuries before the present American revival, according to Timothy Makalei Montgomery and Frederick M. Beckley Kahea, who are preparing to revive it with the own instruments of native materials and after the ancient native manner.

Demonstrations are to be held at the Honolulu Academy of Fine Arts, Kamehameha School and the Hawaii Products Show.

As a result of their efforts to revive the original Polynesian swing music, a boy's club at Kamehameha School is organizing an orchestra of large sharkskin drums, coconut drums, conch shells, rattel gourds, nose flutes, gourd and bamboo percussion instruments.

Toronto Gives 90 Days To Millionaire Beggar

TORONTO, Ont. (U.P.)—Joe Bevan, Toronto's "millionaire beggar," is in jail again.

Bevan, who has money in various savings banks in the city, and who always carries a good supply of cash, has been arrested scores of times for begging during the past 20 years. Until a short time ago Bevan always paid his fine by check, but the courts have stopped giving him an alternative to a jail sentence in the way of a fine. This time he got three months.

America Has Largest Steam Rail Locomotives

WASHINGTON, (U.P.)—The Association of American Railroads reports that the largest steam locomotives in the world are in operation in the United States. The boiler of one of these locomotives, if all tubes and other obstructions were removed, is large enough to permit any standard automobile to be driven through with room to spare.

No caffeine is contained in the coffee grown on Grand Comoro Island, off South Africa.

Granite is a finely-formed rock, which has been exposed to great heat and pressure deep in the earth.



ABOVE: Suave black makes the dress on the left with flaring, circular skirt, short sleeves and fitted bodice. Just as smart with no flares at all is the dress on the right, cut on slender, moulded lines. It is also black.

LEFT: Newest version of the shirtwaist dress is this one with Ascot tie, patch pockets and carved wooden buttons. The sleeves, snug at the wrist, are pleated at the shoulder to give the popular squared silhouette.

Paris Favors Checks, Plaids And New Square Silhouette

BY ROSETTE HARGROVE
NEA Service Staff Correspondent

PARIS.—The new sport ensembles are decidedly gay and comfortable. The up-to-the-minute silhouette is square. No question of streamlining here. Topcoats, usually three-quarters or seven-eighths in length, are inclined to be excessively full, swinging out about the figure from a yoke back and front, giving a broad-as-long effect that is emphasized by low, or heel-less shoes and boots.

Often these coats are shown over a two-piece suit with the jacket hip-length, semi-fitted and fastening rather high to carry out the new raised waistline effect. Skirts are straight and slim, with kick-pleats at the front, back, or both for greater walking comfort.

Colotte skirts are seen rarely—probably because they have become altogether too popular. The few noted in the collections are more like wrap-over skirts. In any case, these are confined to the active sports type of suit for shooting, golf or bicycling and will not be seen elsewhere.

Pleats Are "In" Again

The all-around pleated skirt is making a bid for favor. Molyneux uses a good deal of pleating and a new form of creasing in the all-around effect of only at the back of the skirt. A charming red and navy pleated tartan skirt has a snug fitted waist of navy blue. Another attractive ensemble shows a seven-eighths topcoat, swinging from the shoulders but moderately wide, over a pleated skirt of brown, beige and brick checked wool fabric. This is topped by a jumper blouse of fine brown jersey. A scarf of the same fabric as the skirt and a brown felt hat trimmed with brick-colored grosgrain complete an ensemble suitable for a morning in town as well as country wear.

Lucien Lelong favors monotone two-piece suits under topcoats, hood check or tartan tweed. A medium-weight rust brown suit with slim skirt, a double-breasted, belted jacket with white pique collar and revers and the new cutaway front goes with a comfortable brown and beige knee-length coat with stand-up collar.

Chanel often combines jersey with plain fabric for a dress and coat ensemble suitable for the country and traveling. For the coat, he favors a heavy lamagne, something like the pilot cloth used for men's overcoats.

Gadgets for Fullness

The woman who can afford to wear extremes of fashion will find Alix's collection exactly suited to her taste. She has a sports ensemble composed of a seven-eighths coat of a huge navy and white check over a huge navy and white check over a navy persey dress. The coat has two immense gadgets back and front and the dress has a great deal of the fullness amassed at the front. With this are worn heel-less, Robin Hood suede boots in navy blue, and a wide-brimmed "bravado" felt.

Robert Piquet also has striking color combinations to offer in his spectator sports clothes. A long, flared topcoat of navy blue pilot cloth is lined with Etruscan red lamagne. This is worn over a dress, the front of which is navy and the entire back Etruscan red, with the side seams laced in vivid green wool from underarm to hem. A navy hat, trimmed with the red, and red gloves complete this unusual outfit.

Coats Vary in Length

Piquet favors bold checks and tartans for simple dresses worn under long or three-quarter redingote coats. Blackberry and a deep bishop's purple, dark green, rust red and a new range of browns are the newest colors for sports clothes. Dark gray and burned coffee—Vera Borea's color for the coming season—are also good, and vivid tweeds in checks, tartans or flecked designs, are the latest for topcoats. A few have touches of fur at the collar, but the majority are made with neck lines buttoning close to the front or lapels that can be fastened across the front for protection.

Scarfs are still seen, but, as nearly all blouses have high necklines, their role is one of adornment rather than necessity. Molyneux finishes off the necklines of many of his sports dresses with thick wool ropes complete with tassel.

Difficult Schedule Is Facing Panthers

BY BERNARD J. NILLES
United Press Staff Correspondent

PITTSBURGH, (U.P.)—The University of Pittsburgh's gridiron squad is being groomed for one of the most difficult schedules yet arranged for Coach Jock Sutherland to conquer.

Of the squad of more than 50, eighteen are lettermen, eight of whom were starting regulars last year. Thirteen others were on the squad last year and 21 or sophomores moving up to the varsity after one year on the freshman squad.

When Sutherland, his assistants and players walked on the practice field near the campus, they were well aware that they must get into

cross the finish line to beat Charles Evans Hughes by a nose in 1916."

Covered Buttons Made To Order
Mail Orders Promptly Filled
Mrs. Horace Newton
110 E. Dakota
Phone 635-W
MIDLAND, TEXAS

Roosevelt Cuts Landons Lead With More West-South Returns In Digest Voting

Roosevelt cuts Landon's lead slightly to approximately 3 1/2 to 2 as new returns are reported from three more southern states and one more farm state in The Literary Digest's national Presidential poll.

The vote tallied from thirteen states gives Landon 153,360 to Roosevelt's 88,815 and Lemke's 10,374 out of a total of more than a quarter of a million votes.

The new states reported in a copyrighted article in the current issue of the magazine include Arkansas, Louisiana, Mississippi and Iowa.

The southern states give the President whopping pluralities—more than 3 to 1 in Arkansas, nearly 3 to 1 in Louisiana and almost 9 to 1 in Mississippi.

Iowa votes or Landon over 3 to 2 in the latest poll returns.

The addition of over 150,000 votes to the previous week's returns increases Landon's lead in Indiana, New Jersey, New York, Ohio and Texas, while the voting in Maine, Minnesota and Pennsylvania is a week's tabulation.

Oklahoma increases its plurality for Roosevelt sharply.

An analysis of how the same voters voted in 1932 shows that 27,288 who voted for Roosevelt, four years ago will vote for Landon and that 13,726 who were for Hoover in the last Presidential election will switch this year to vote for President Roosevelt.

On a division in the Electoral College vote from the ballots received so far from thirteen states Landon would receive 166 votes, Roosevelt 62 and Lemke none.

Lemke continues to receive his largest vote in Minnesota, about 9.5 per cent of the state total to date.

his rebellion to his own state of Louisiana. More than once the halls of Congress rang with his boast that he would "take charge" in neighboring Arkansas and Mississippi.

More than once the Kingfish Senator had offered to thrash Joe Robinson of Arkansas and Ted Bilbo of Mississippi—either at the polls or in some convenient cloakroom, or both.

In 1930, Robinson had carried every county in Arkansas, rolling up a majority of 130,000. Could such a one man be beaten by a man from outside the state?

This week, Arkansas's Poll figures show, 3,391 for Roosevelt; 1,023 for Landon.

Mississippi register 2,163 for the President; 244 for the Governor.

And Louisiana, where Long's word once was law, gives 2,197 to the New Yorker; 742 to the Kansan.

With the passing of the Kingfish, apparently, these three states dropped back into line with the Party that was their own before the War between the States.

But no such tradition binds Iowa, which gave 14,942 to Landon on first returns; 9,133 to Roosevelt; 1,231 to Lemke.

Four years ago this typical farm state squeaked 58 per cent of its popular vote into the Roosevelt column.

Will Iowa, whose chief and logical interest is in agricultural, be forced to look to other issues, where there is greater divergence between platforms for the decision? Will the state slip back into its historic role as a Republican stand-by?

These and other factors make the returns week by week from Iowa particularly interesting. But it will not be possible to assess the true feelings in this or any other state until the final count is made.

Meanwhile, as more and more Mid-western farm state returns pour in, shrewd observers will be watching the Lemke fortunes closely. Will the North Dakotan cause either of the major candidates trouble in critical states?

The total Lemke vote to date is unimpressive.

In 1924 Robert M. La Follette, drawing his chief strength from substantially the same states as might be expected to support the Union Party candidate, polled 4,822,865 votes—one-sixth of the nation's 1924 total.

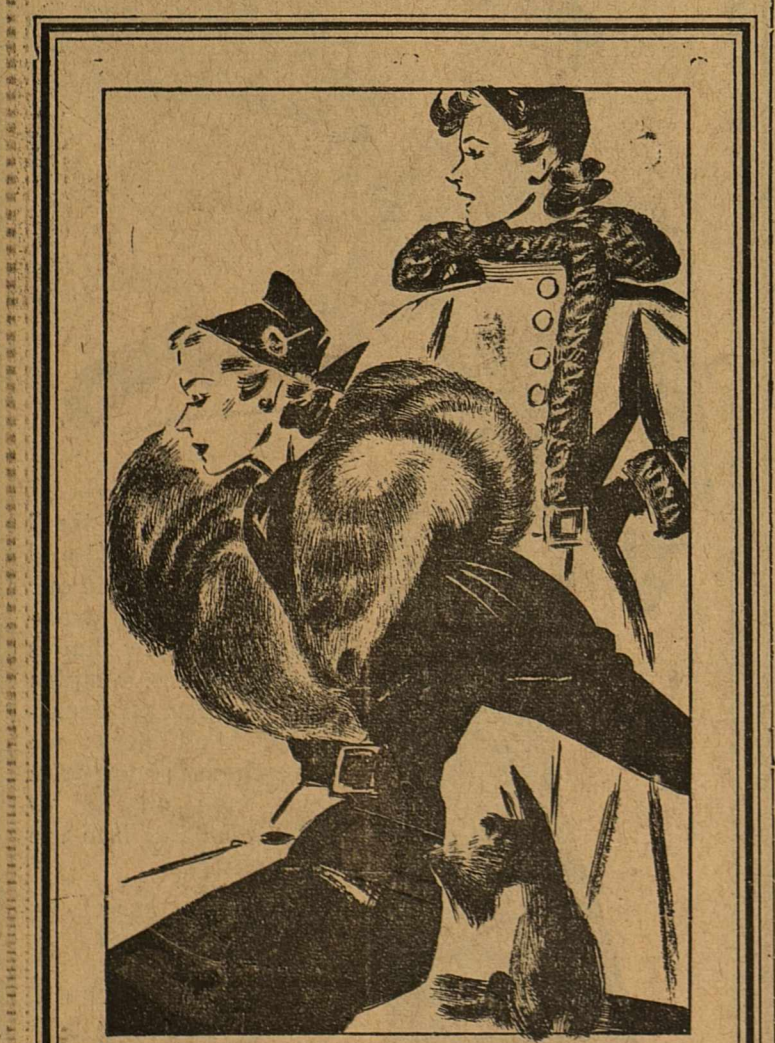
On a percentage basis, Lemke is running far behind the pace. Unless the North Dakotan steps up his ratio sharply by November, he will finish with something like a million and a half.

There is, however, another aspect to the Union Party vote. No fewer than 6,989 of Lemke's backers in this week's tabulations voted for Roosevelt in 1932; only 1,885 for Hoover. If that ratio were maintained throughout, the Democrats would lose a million or more votes, as against less than half that number for the Republicans.

A specific instance is Minnesota. Second tabulations from this state give Landon 13,598; Roosevelt 9,352, and Lemke 2,417. If the latter's votes were returned to the Parties from which he took them, the totals would be; Landon, 13,923; Roosevelt, 11,133—an entirely different picture.

But there are few voters to be reckoned with, and next week there will be new states, new totals. The challenger is in the lead and riding hard, but experts have agreed that this will be the most exciting race since Woodrow Wilson flashed a

McCLINTIC BROS.
Authorized Fairbanks-Morse Dealers
Moved to 310 West Texas
Eclipse Windmills, Hammer Type Feed Mills, Water Systems, Electric Light Plants, Electric Refrigerators, Dexter Washers, Wagon and Stock Scales, The Z Engines, most dependable for all purposes.



ROTHMOOR COATS
"It's a Rothmoor." Women say it with pride. "It's a Rothmoor"—that means traditionally famous quality—something like saying it's a Rembrandt or a Rolls Royce.
\$79.50
OTHERS AT \$29.50 UP
J. C. SMITH READY-TO-WEAR
MIDLAND, TEXAS

Make your dollars "go the limit"
KUPPENHEIMER
CRUSADER WORSTED SUITS
Put some idle money to work—make it pay extra dividends—select a Kuppenheimer Crusader suit. It will bring you new pleasure. These worsteds lead in value because their quality means enduring smartness. Beat rising prices—come in now.
\$34.50
We also have Varsity Town and Under Grad suits and overcoats for young men.
J. C. SMITH
Ready-To-Wear—Midland

GULF STATES LIFE INS. CO.
DALLAS, TEXAS
VETERANS
Your Opportunity to Protect Your Family Is Here See Us Now
HARKRIDER AGENCY
Branch Managers
Room 240 Scharbauer Hotel Phone 481

Presenting
Fall's FIRST AND FOREMOST FASHIONS
The Fall styles are enchanting! From head to foot they lend an elegance that pleases something different and yet not radically different. We are pleased to present our Fall Showing and suggest that you choose early from our selection of dresses, suits, hats and the necessary accessories.
EVERYBODY'S
Midland, Texas

the other halfbacks who won letters last season.
Quarterbacks Not Lacking
The Panthers are well supplied with quarterbacks, with John Michelson, Ambridge, Pa., Robert McClure, Greenville, Pa., and Arnold Greene, Huntington, Pa., all lettermen, on hand. Michelson is considered the better ball carrier and probably the better field general. But McClure and Greene carry plenty of weight and are ideal for blocking—one of the main duties of Pitt quarterbacks.

The Panther wall will have plenty of speed and experience with Frank Souchak, Berwick, Pa., end; tackles, Tony Malisi, Endicott, N. Y., and Aveell Daniel, Pittsburgh, and guards, William Glassford, Lancaster, Pa., and Dante Dalle Tezze, Jeannette, Pa., beating the brunt of the work.

Souchak and Dalle Tezze are junior who starred defensively last year.

If there are any weak points it will be at center and in reserve strength.

It has been found that better bacon is obtained from quickly grown pigs than from those of slower development.

L. M. HEDGES
Portable Arc and Acetylene Welding, Boiler Work and Garage
406 E. Tennessee
Midland, Texas

Large Number Entries to Crowd Stable Accommodations

OVER 300 HORSES EXPECTED BEFORE MEET OPENS OCT. 2

\$1,000 Handicap Big Lure to Owners Of Country

Midland Downs will be taxed to take care of the race horses October 2-10. It was learned by Tom Nance, director of racing, in a telephone conversation Friday afternoon with Mason King, director of the Tri-State Fair meet at Amarillo.

The opening day of the Amarillo meet found over 250 horses ready to fill the eight races daily there. With hardly an exception, all will be entered at the Midland meet and numerous others also will be sent here. King made reservation for twelve stalls for Bert Graham of Spokane, Wash., who could not reach the Amarillo meet but will race at Midland and Kingsville.

Numerous horses from the north will be in Texas just in time for Midland Downs, attracted by the \$1,000 added Merchants Handicap and the other substantial purses.

Nance said late in the week that preparations probably will have to be made for as many as 300 horses, guaranteeing plenty of competition for each event of the eight day meet.

Besides the \$1,000 added Merchants Handicap, to be run over the mile route on the closing day, Oct. 10, there will be the \$500 handicap Oct. 3 and a full program of races with no purses less than \$100 and no distance less than a half mile.

Contributors to the \$1,000 race, to which nomination and starting fees totalling \$30 per horse will be added, are as follows: Scharbauer Coffee Shop, Hotel Scharbauer, Midland Recreation Club, Addison Wadley Co., J. C. Penney Co., Midland Hardware & Furniture Co.

Broadway Camp, Elder Chevrolet Co., Shipley Wholesale Drug Co., Midland Feed Store, Mackey Motor Co., Wes-Tex Food Market, Texas Electric Service Co.

J. C. Smith, Wilson Dry Goods Co., M System Grocery & Market, Burton Lingo Co., Lowe's Service Station, A & L Housing & Lumber Co., Gulf Oil Corporation, Ever-Ready Auto Service.

Magnolia Petroleum Co., Humble Oil Co., Rockwell Bics. & Co., Continental Service Station No. 1, Silver Grill Cafe, H. B. Dunagan, Minute Inn, Butler Hurley, Phillips Electric, Harvey Conger.

Vance One-Stop Service Station, Flynt-Hubbard Motor Co., El Campo Cafe, Russell Distributing Co., Texan Club, The Reporter-Telegram and Commercial Printing Co., Post-office Cafe, Big Ed's Sandwich Shop.

Hotel Pharmacy, Midland Drug Co., City Drug & Petroleum Pharmacy, Ritz and Yuca Theatres, George Friday Boot Shop, McClinthic Bros., C. E. Trammell, Liano Hotel, My Bakery.

W. P. Foster, The United Dry Goods Co., Hekus-Pokus Grocery & Market, Barrow Furniture Co., Texaco Station No. 1, Gulf Service Station No. 1, Humble Station No. 36, Midland Auto Service, Petroleum Service Station, Jack's Gulf Service Station.

Formality Now Rules at Night

This season's formal fashions are destined to be impressive—from the first moment we see them, until a successful season of social gaiety is completed. Regal splendor seems to have been revived in fashions expressed in rich fabrics, interpreted in the Directoire silhouette which makes every wearer a queen of loveliness. The easiest way to describe these evening gowns is to say that they are picturesque—lending in the wearer the grandeur of a portrait.

Several influences have combined to make the new formals elegant, such as the revival of interest in the Directoire period, the impending coronation in England, and the vivid pageantry of the picture Mary of Scotland. It is influences such as these which herald the return to formal gown with sleeves, and the brief, puffed sleeve is a favorite. However, long sleeved dinner gowns come in for a share of smartness too, and despite their elegance the new gowns are very simply styled, with the newest silhouette innovation that which firmly fits the bodice, and then permits sweeping fullness to flare at the hem, gradually increasing from a tiny waistline.

We see glamour, too, in the ubiquitous jacket dress, which appears at its youthful best with a peplum interpretation, whether it matches or contrasts with the frock itself. . . . whether it is removable, or merely simulated. Increasingly smart is the tunic gown, the tunic being a removable coat, in elaborate brocade or other fabric to contrast with the simple gown beneath it. An elongated interpretation of the jacket dress is the redingote type, which really gives two costumes in one.

The two most simple trends in formal gowns are the slenderly fitted gown with "bras" or wide jeweled shoulder straps and jeweled girdles. . . . and the tunic dress, in which instance the tunic is not removable, and may match or contrast with the skirt. In both these fashions, the covered shoulder is frequently seen, making sleeves both as flattering to the woman as they are fashionable for the youthful miss.

Notes on Formals As always, it is the detail which makes the fashion, and this winter's formality has inspired much hand-

For Gay Evenings



Colorful and gay is this page's cap by Rose Valois. Of dark brown velvet, it is trimmed with tiny yellow, green and lighter brown feather fanics.



The all-around pleated skirt and scarf of this Molyneux sport suit are made of beige brown and brick plaid. The bodice and topcoat are brown and the brown felt hat is banded with brick red.

Knitwear Fashions Are More Detailing

In a season when all fashions are becoming more feminine, more smartly detailed, and more attractively styled, even knitwear dresses up, and this knitted fashion is a wardrobe essential in every price range. Among the interesting things which have been done with this year's knitted dresses, are the combination of the knit with woven materials, the addition of fur accents and touches of leather.

In the actual styling of the diverse knitted fashions, we find the flared skirt taking hold, being achieved by gores, and even fan pleated sections are introduced. The straight skirt still persists of course, in the more conservative styles, and will be preferred for wear under tunic length coats which flare at the hemline. Most interesting in knitted fashions, are the colorful dresses, which will be purchased particularly for school and college wardrobes, and by the smarter set to whom summer does not mean the end of week-end vacations and golf.

Sleeves, too, come in for their share of interest, and the puffed shoulder is a dramatic, flattering change. In knitwear the shoulder only is elaborated, and the sleeve itself remains tight-fitted from below the shoulder to the wrist. When the sleeve is not puffed, it is very often padded and is outlined with contrasting rows of stitching. Most high fashion of all knitted clothes, are the suits which have accompanying capes, very often squared at the shoulders, and slightly shirred to suggest a coat sleeve silhouette. More generally wearable, however, are the charming knitted suits with swagger coats, very often with tuxedo revers of contrasting color or weave.

The very interesting thing about the new knitwear is that it is not definitely sports in character, but is dressed up for every variety of daytime wear, and even in its most tailored form, is carefully styled with the finest of dressmaker detailing. The tunic occurs very frequently, either quite flared, or very straight, and often in coat styling with buttons all the way down the front. Jacket dresses smart enough to wear from the football game to the tea party, are also seen, and weavers themselves are so interestingly new, completely doing away with any possibility of stretching, sagging and rushing. In other words—knits deserve a salute!

Lively Lines In Topcoat



As vivacious in detail as its wearer, this lovely topcoat of smooth, dark gray woolen molds the figure flatteringly. It's worn with a gray Persian hat and muff which matches the tailored collar.

There were no Seminole Indians before 1775. They are members of a band which deserted the Creek tribe and moved to the Florida country.

The head of a sperm whale contains an immense tank, in which whale oil, or spermaceti, floats in liquid form. Whalersmen dip it out in buckets.

Carnival Night At Centennial Sept. 19

DALLAS, Sept. 19.—The night of September 19 has been designated as Centennial carnival night, and the Texas centennial exposition is ready to make way for hours of merry-making.

A parade of brilliantly decorated and lighted floats, each of which will require enough electricity to service a town of 10,000, headed by the Camp Stephen F. Austin military band and military units from the camp, and carrying comely queens will move slowly through the exposition's avenues. Seven of the floats will represent as many nationalities, the other the centennial exposition. Nationalities to be represented by queens who will vie for honors as queen of the centennial carnival are: American, French,

Italian, Spanish, German, Czechoslovakian and Scandinavian.

Hundreds of persons, humorously costumed, will compete for prizes and dances in exposition avenues. The music of Jose Manzanera, and Ligon Smith. The lady adjudged as wearing the most humorous costume will be awarded a beautiful ring. The winner in the man's division will be given a watch. Other prizes will be awarded.

Star performers of the exposition will be heard in simultaneous and continuous shows held on three centrally located stages and broadcast through the grounds by the Gulf Centennial radio system.

The exposition grounds will blaze with color during the carnival days. Its brilliant lighting, always impressive, will become the predominant part in a great comingling of colors accentuated by flags and pennants and showers of confetti.

They've Arrived!

MIRRA-LINE

NEW FALL DRESSES

\$4.98

We've just unpacked them—and they're stunning! See the new Princess styles, the "swing" skirts, and all the details that make them outstanding! Sizes 14 to 20.



10.90 16.50 24.75

We Have Every Important Winter Fashion in COATS

Here are the coats you'll need for the coming sport events, for town and dress wear, for country wear! Beautifully made of fine woolens with interesting textures! Self trimmed styles as well as models with lovely furs! Don't miss seeing these while the assortment is new—and size ranges complete!

Roman Mosaic Floors Uncovered in London

LONDON, (U.P.)—Beautiful mosaic floors of old Roman London were discovered during excavation at All Hallows by the Tower, the shrine of the first Toc H Lamp of Maintenance.

To show the floors to advantage an undercroft has been designed as a permanent part of the church. The first Toc H Lamp, which burns perpetually in the church, was given in 1922 by King Edward, then Prince of Wales, in memory of his comrades who fell in the Great War. From this lamp the lamps of any new branches of Toc H are lighted.

The underground tuber of the "old man of the earth," a dainty plant, weighs from 10 to 15 pounds.

trains (to be worn only by women with exquisite posture), and portrait-like back fullness.

MIRRA-LINE presents

new DRESSES that are

"FASHION FIRSTS"

6.90

Mirra-Line consistently offers the very newest, most up-to-the-minute styles obtainable in the market! You'll enjoy every minute spent in one of these charming frocks! All the new deep Fall colors. Sizes 14-20.

Midland, Texas

PENNEY'S

J. C. PENNEY COMPANY, Incorporated

Midland, Texas

Furniture Styled for the Family

The American home—still the nation's most important institution—steps into the spotlight in the week of October 10 when the rest of the United States will observe National Furniture Week, dedicated to the 25,000,000 homes in which are centered the activities of the nation's families.

One Purpose
Furnishings of all kinds—fresh from the industry's factories—are ready for the fall season, when America, after a summer of outdoor recreation, returns home for the winter months. From the basement to the attic, from the living room to the kitchen... for the farm home and the Park Avenue pent-house... for the two-room kitchenette and the forty-room mansion... nothing has been overlooked.

"National Furniture Week has only one purpose," it was asserted in headquarters at Chicago, "and that is to focus attention everywhere on the importance of the American home and its furnishings."

Factories Busy
Cooperating with the four national furniture associations, are thousands of factories producing literally tens of thousands of items that go into the furnishing of the modern home and the furniture and department stores of the nation, bringing these new creations to every city and town in the country.

Buying Advantages
"If you need new furniture, buy it now, but whether you invest a cent in new furnishing, devote some thought to your home this week," the home makers of the nation were advised. "Attend the displays arranged by furniture dealers. You will find new ideas, new furniture, or both. Make America's homes this fall better places in which to live and in which to rear Americans of the future," is the word.

Price Rise Ahead
Prices for furniture and related lines have risen little from the depression low, it was pointed out, thus affording an opportunity to accomplish much, at relatively small cost, that may not be repeated. By next January, according to forecasts by authorities in the industry, prices will be 10 per cent higher, due to steadily increasing costs for raw materials and the continuation, practically throughout the industry, of NRA wages and hours.

Years Bring Changes
The last few years have brought great changes in the home furnishings field, leaders have pointed out. The well-furnished home 1936 model, bears a little resemblance to its predecessor of ten years ago as do the modern motor cars compared to 1926 models. While certain general styles, favorites for generations, continue in vogue, as always, there have been countless improvements and modifications, making furniture more useful, as well as more beautiful.

See The Difference
"The man who has never driven a modern motor car doesn't know what he is missing," it was said at Furniture Week headquarters, "and in the same way, the man or woman who hasn't even been inside a furniture store or furniture section since the depression can't realize what a vast difference there is in the new furnishings."

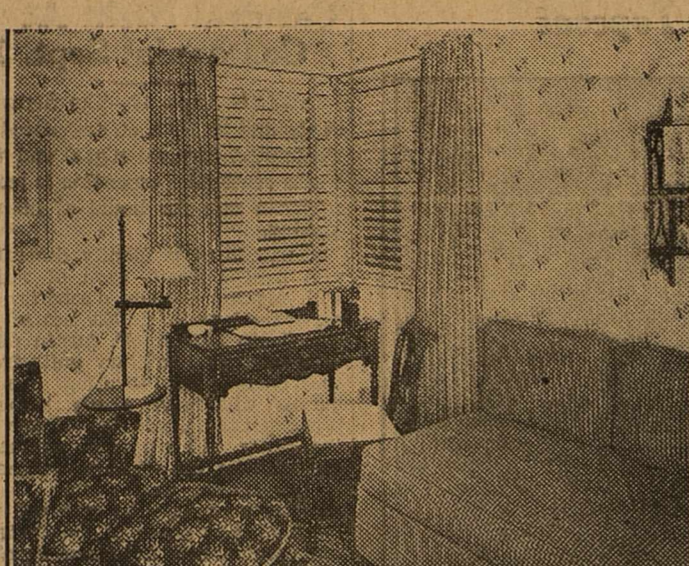
Cooperative
Cooperating in presenting National Furniture Week throughout the nation are the National Retail Furniture Association, the National Association of Furniture Manufacturers, the Southern Furniture Manufacturers' Association, the National Wholesale Salesmen's Association, and the Institute of Carpet Manufacturers of America, Inc.

Bride Looks Forward
Almost every bride confidently locks forward to a home of her own as a place of shining perfection. "Why shouldn't it be? She is starting from scratch and for the first time in her life, perhaps, she is free to follow her own taste, in the things she buys. Seldom is she aware of the pitfalls which crowd the path toward making her bright dream come true. Too often, with the best of intentions, she is defeated by the ignorance of inexperience.

Everything Right
To begin with she must be careful that in her effort to have everything just right she does not lean toward pretentiousness. She should realize that whereas simplicity is disarming, pretentiousness invites criticism. Too, evidently studied efforts impel the observer to stand back and weigh them. In an obviously informal and unassuming little house or apartment, however, the visitor in his gradual awareness of all its small perfection, is surprised and increasingly delighted.

Having decided against ostentation, the bride's next step is to make up her mind to buy furniture and rugs of the very best quality she can honestly afford! A contradiction? Not at all, since pretentiousness is almost entirely a matter of style, not quality. The reason for choosing good furniture is not only that it is likely to be "cheaper in the end." There are other considerations which make it usually the wisest provision for the new family's vast future. If dark days come the beautiful furniture is an even greater joy than in more prosperous times, proclaiming to the children and to the world the family's fundamental standards of quality and integrity should the future prove bright, the first furniture, if it be truly good, will fit into the later elegance.

Fortunately for the bride, there is a variety of furniture styles ideally suited to the working out of her problems—styles of simplicity and strength, yet of grace and refinement, too. Most of them have come down from the eighteenth century and are known by the names of



A simple, inviting guest room, with double studio-bed, chaise lounge, writing desk, comfortable chair and a reading lamp.

their originators—Sheraton, Hepplewhite, and Duncan Phyfe. Besides fitting into either a modest or a sumptuous interior, this type of furniture can be used with modern pieces.

A detailed knowledge of period style is not necessary to furnish a home correctly and attractively. What is essential is an eye for harmony—of woods, contours, and textures. It is important that all of the key pieces in a room—cabinets, tables, chairs—express the same ideas.

Budget It
Making a list of the furniture required with an estimate of how much she can spend on each piece is a good thing for the bride to do before she starts on her shopping tour. If her budget is strictly limited she would do well to slight accessories a little in order to get quality in the furniture itself. She can be quite sure of receiving cash trays and possibly a lamp or two, a magazine rack, or a small table as shower and wedding presents. Instead of buying drapes and glass curtains, she can get along well at first with crisp ruffled curtains of good quality.

They would actually contribute to the effect of informality and cheer at which she is aiming. With the simple curtains, colorful figured wallpaper—a green lattice design with white dots, a red toile de jouy pattern—would add life and interest to the rooms. As the months passed the bride would probably find that by clever management she could occasionally buy a lamp or a hearth broom or a rack for plants, and each addition would be more discriminatingly selected and far more keenly appreciated than if she had it in her initial investment.

Be Cautious
A common and distressing plight for a bride is to find when the furniture is delivered that one piece dwarfs all the rest or that the pieces which she has assigned to various parts of the room simply will not fit. Great pains to keep all the furniture in scale with the small rooms, and careful measurement of the wall spaces and of each and every bit of furniture before it is bought, will prevent these difficulties.

Rich Traditional Beauty
Wood paneled rooms are as old as English history, and soon after Colonial architecture was established, wood paneling was adapted to New World homes, because most of the Colony settlers were of English origin and brought with them, not only their traditions, but in some instances the very panels that filled their English walls. This first, seventeenth century woodwork was very simple, offering practically no variety in design, and the lack of molding and ornaments is very obvious in the study of this early period. Only the fireplace broke the simplicity of style, and this was often rather crude in detail.

Actually, this early form of woodwork was not paneling in the truest sense of the word, but rather a simple use of wooden blanks, boarding, or sheathing, with no particular attention paid to the width of the wood which was invariably white pine, with the edge of each board neatly mounded. Although we usually think of a paneled room as one in which all four walls are paneled, for the most part our Colonial ancestors had three sides of the room in plaster, with only the fireplace wall boarded. As crude as we today may think this woodwork to have been, it was nevertheless appropriate for the furniture of the period as it could be. And in line with this general decorative trend, doors were usually of the broken style made up of two or three vertical boards mounded to exactly match the wall boarding, but given a door appearance by means of cross members toward the top and bottom of the door.

Later in the seventeenth century, try new designs of woodwork were made known, consisting of elevated wood panels with moulded stiles and rails, which actually form the paneling. It was here that the American woodworker gave entirely new spirit to what was originally inspired by his forebears, and from this time on, we find that each generation made more beautiful and more elaborate the wood work in its homes, gradually refining details, and fireplaces were made increasingly decorative, with mantels receiving growing attention and more graceful treatment.

Decorative
As more attention was paid to the little fine points that would make these wood paneled walls more graceful and charming, there was a growing use of cornices, exquisitely worked mouldings, pilasters, and ornamental medallions, so that at the time of the late-eighteenth

century, traditional form of decoration, it is nevertheless, one which is appropriate with every type of furniture, including the most modern types which have been developed within the past ten years. There is, too, such a wide diversity of woods which may be chosen, that a suitable background for any type of furniture can easily be formed. For the most part, these woods, are not costly, including such simple types as white pine, snotty pine, poplar (you hear this word called white wood), cypress, chestnut—and oak, whether white or cherry in color. Other woods which are a little more costly, and less frequently used, include butternut, walnut, cherry, redwood, white cedar, and hardwood.

Both poplar and white pine are splendid woods to use, whether they are going to be stained, or painted—and both of them take paint smoothly and beautifully, and are flexible enough to lend themselves well where it is desired to have a great deal of delicate carving and elaboration. Oak is of course, one of the finest woods, and lends itself to a more formal type of room, whether it is kept light in tone or made very dark. Although, for a time, there was a strong tendency to the more colorfully painted woods, our aesthetic interest in the natural beauty of the grains themselves have caused a return to interest in the natural wood, with only a stain to lend it color.

Consider Your Family When Buying Furniture! Satisfy Members, Guests

Since at last the children seem to be reaching the age of discretion (and the dining room chairs are falling to pieces) it is time to refurbish the dining room. What furniture shall you buy?

The four most popular styles just now are classic, modern, early American and eighteenth century. The classic style would seem rather too elegant and formal for the average family of growing children. If the children all vote for modern and you are agreeable, perhaps that is the choice you should make. Early American has an appealing atmosphere about it and can make a dining room with more variety in its furnishing than can the other types. Ladder back chairs for example, could be used with a square drop-leaf table and an old fashioned high chest or a "dresser." This kind of furniture, however, insists rather severely on the simplest service. A lace tablecloth and silver candlesticks and a silver tea service do not seem to fit into an Early American room very well. Another point to be considered is that people in general seem to be swinging toward lighter, more refined types of furniture. So perhaps eighteenth century is right for you, after all, combining as it does simplicity with grace and refinement. A Duncan Phyfe table perhaps, and Sheraton or Hepplewhite chairs. And buy the best quality you can—besides added beauty in lines and finish you will be getting the durability which will make your furniture investment a sound one.

Dining Hints
A figured rug is a good choice from both the decorative and the practical point of view. A dining-room can stand lots of pattern and color because the furniture is absolutely or nearly uniform in design. For a household where there are children an oriental which can be sent away at intervals to be washed is perfect.

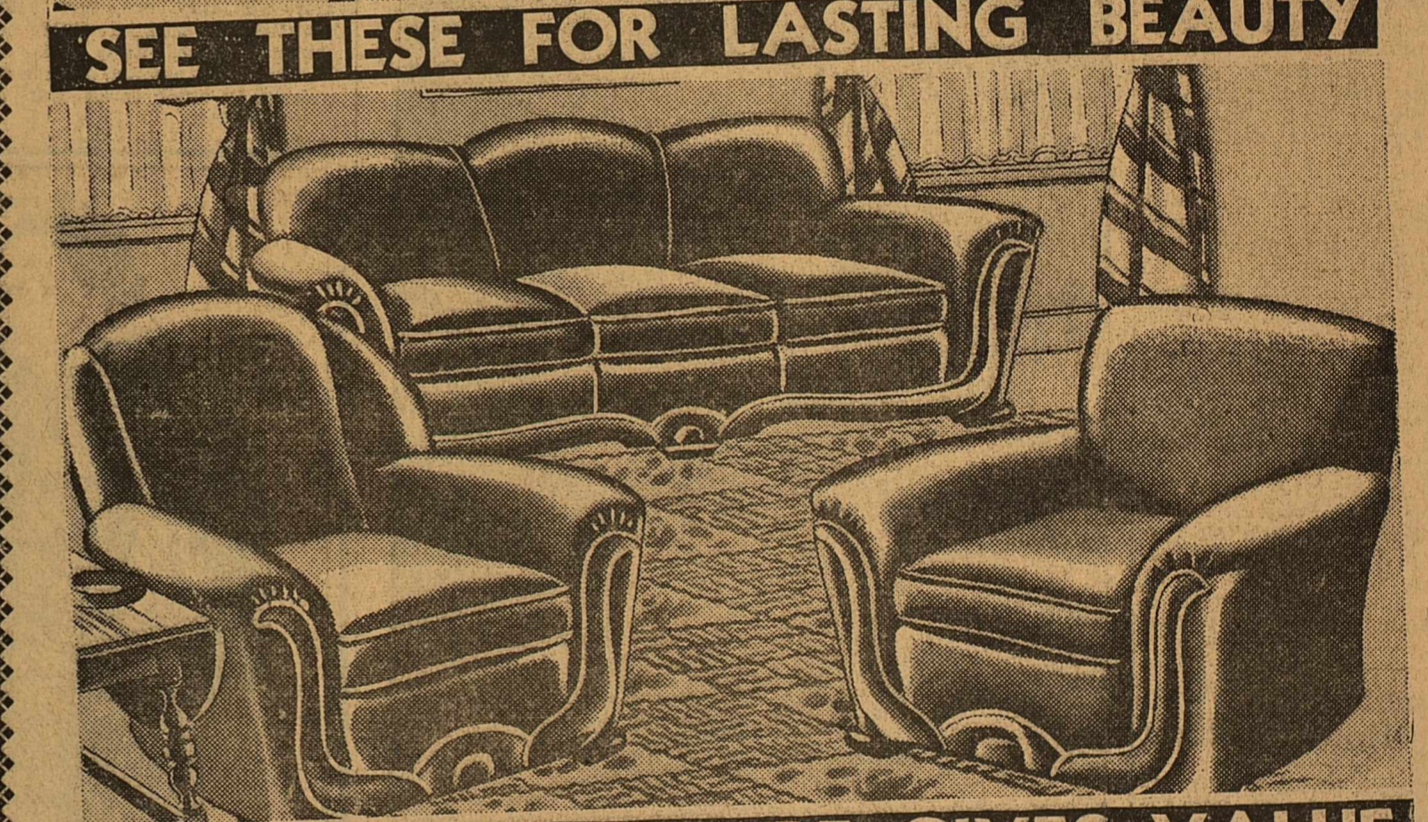
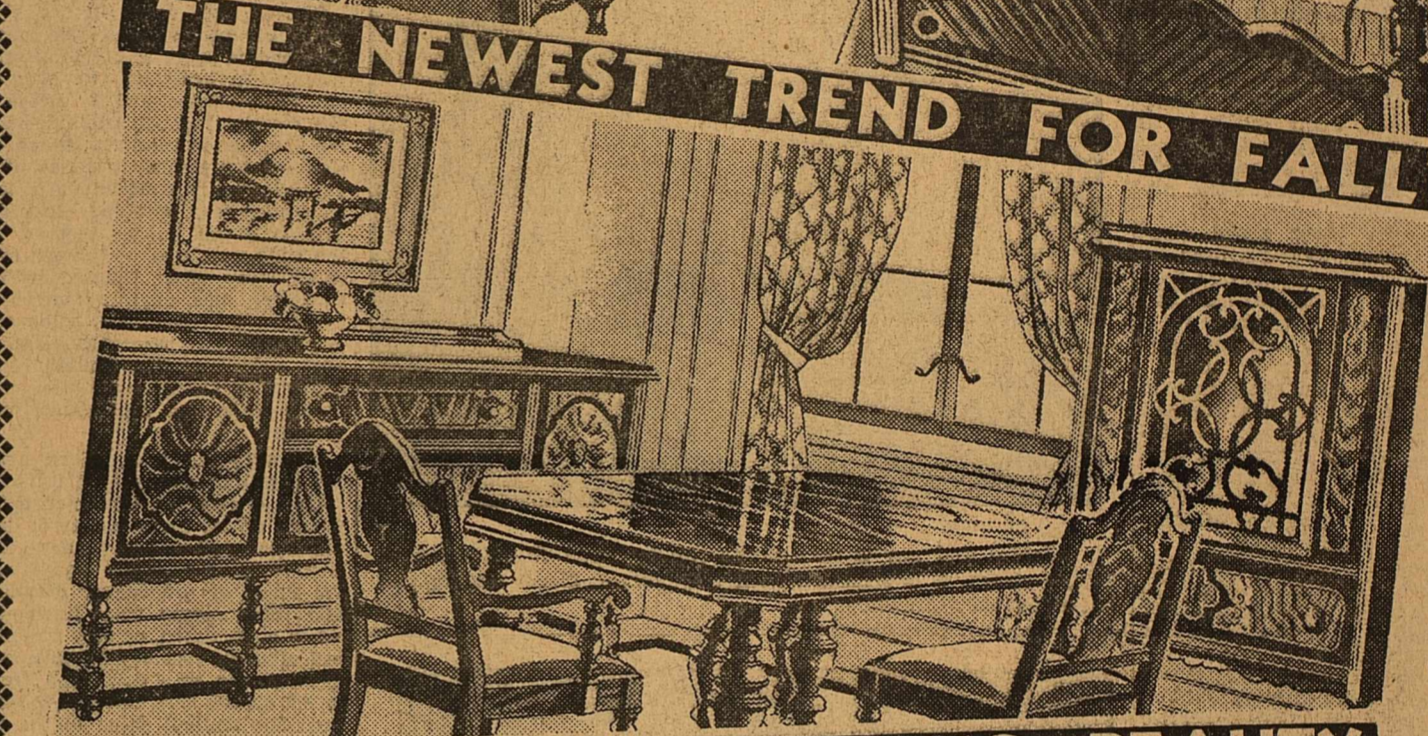
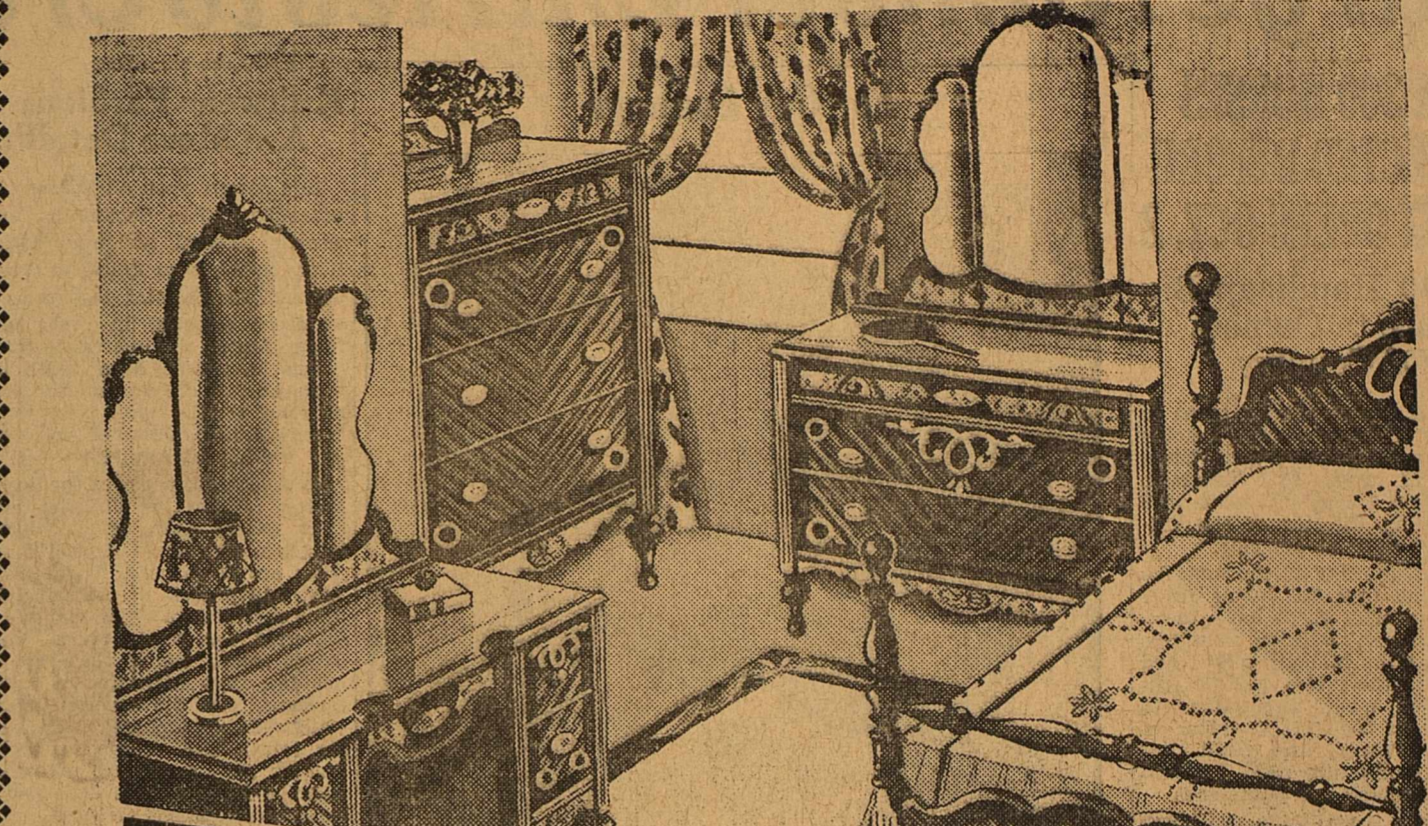
Colored, transparent glass globes filled with ivy and phylodendron plants growing in water can be hung in sunny dining room windows with delightful effect. Phylodendron, growing in a transparent globe filled with water and set upon a small mirror, makes a pretty, fresh centerpiece for every-body.

Pleasant Dreams
The 1936 bedrooms rate four stars. With their lightness and brightness, the simple grace of their furniture and their sophisticated employment of just the right decorative detail, this year's bedrooms embody present-day decorative ideas at their best.

It does not seem to matter much which of currently popular furniture styles—eighteenth century, classic, or modern—the decorator uses to get his effect. The secret seems to lie in his treatment of backgrounds, his use of light-colored accessories, and his strict exclusion of extraneous ideas. The smooth perfection of the new bedroom makes the ruffled and beehived bolster of a few years back look as inept as an outmoded motorcar.

Modern Simplicity
The simplicity of the modern bedroom would approach austerity if it were not for their textures and heavenly colors. Turquoise and robin's egg blue and a dulled robin's egg called "sea blue" are favorites, as are yellow and tangerine and coral. All of these tones are used in conjunction with large surfaces of neutral white, buff, and grey. One sees again and again that most luscious of tints, ripe-peach (pinkier and deeper than regular peach). The range of colors with which ripe-peach is combined successfully is amazing. It includes besides all the neutrals, brown, black, yellow, orchid, green, blue and especially the whole gamut of green blues.

One lovely room, easy to copy, had ripe-peach, buff modern furniture, a brown carpet and a single brown silk diaphane hung across the window and looped high at one side. Glass curtains were white and the bedspread was simply fashioned of the same sheer fabric over ripe-peach. Twin flower pictures painted on coral, above the bed, contributed the sparkle characteristic of modern rooms.



Always: Quality Merchandise Priced Right

- Our reputation for quality furniture priced right has been well known for years in this territory. We feature the best known brands moderately priced, together with other brands to make our selections more complete. . . .
- BEDROOM SUITES \$45.00 to \$162.50
- DINING ROOM SUITES \$39.50 to \$125.00
- LIVING ROOM SUITES \$49.50 to \$150.00

PEOPLE FROM ALL OVER WEST TEXAS HAVE BEEN BUYING FROM US FOR YEARS... THEY ARE SATISFIED CUSTOMERS, TOO.

WE HAVE RECEIVED A RECENT SHIPMENT OF

Studio Couches

SIMMONS PRODUCTS AND SEALY PRODUCTS

\$39.50 and \$59.50

You will be delighted with the beauty and sturdiness of these couches.

WE WELCOME YOU TO MIDLAND'S FALL RACE MEET AND FAIR

Midland Hardware AND Furniture Company

MIDLAND, TEXAS

Black is Fashion Winner in Season's Added Style Handicap—Others in Money

Swing is the newest fashion note. There is a new tempo in fashion as well as music! This is the observation of Carl Mayfield, manager of The United Dry Goods.

Fashion Go-Round

Shades of Napoleon—they're going to your head this fall, in the earliest hats, fashioned after the Little Emperor's own headgear. Your milliner has done them in felt, velvet, and petersham, and they combine smartly extreme lines with a simplicity that's perfect for afternoon wear with your satins and velvets.

What woman doesn't feel the need for a good dark ground print dress to wear right now? We've completed our search, at your dress shop, where there are numerous wine, apricot, black, brown, and spruce green dresses with tiny prints of dots, notes, mushrooms, and we styled flowers. Tailored or dressy styles to choose.

With college for a background, a girl's wardrobe has to be carefully selected, and since sports clothes form the majority of any campus outfit, we suggest an immediate visit to your sportswear shop, where we've just been! They do things with knitted fashions that are different—woven with bright nubs, and newly detailed.

Skin Always Needs Thorough Cleaning

By ALICIA HART, NEA Service Staff Writer

Despite all that is said in favor of soap and water, many women always clean their faces and throats with cream. Recently I talked to a Washington woman who never since infancy has had soap on her face. Her skin is smooth, clear and unlined. It appears, therefore, that it matters not how you clean your skin if you clean it thoroughly.

To clean properly with cream, smooth a thin layer of a quick-melting or an all-purpose variety from the base of your throat upward to the hairline. Use rapid rotary strokes to dislodge surface dust and dirt. Then, with cleansing tissues, remove every trace of the cream. Smooth on another coat, patting and slapping this into your skin. Don't stop slapping until your face glows. Remove with tissues, and don't be too gentle while you are doing it. It is important that you remove all of the cream and that you stimulate circulation while you are about it.

If your skin is oily and you do not want to use soap, always clean first with cream, then with a greaseless liquid cleanser.

In the morning, use only one layer of cream and remove this with a rough wash cloth which has been dipped in very hot water. Wring out the cloth and repeat two or three times. This removes all of the grease, opens up lazy pores and leaves your skin fresh, glowing and ready to receive foundation and makeup.

Business women ought to keep liquid cleansers in the office. There are several greaseless as well as oily types, both of which are to be poured on cotton pads, then whisked over the skin before one applies fresh cosmetics.

Air conditioning is the process by which air is heated, dehumidified, cleaned and circulated in winter, and cooled, humidified, cleaned and circulated in summer.

TYPEWRITER RIBBONS
Sold by us and delivered and installed free in the business section of Midland. Call us for this added service.

PAY CASH AND PAY LESS SUITS And Plain DRESSES
Cleaned - Pressed

50c
Cash and Carry Sheen-Glo Is Better Dry Cleaning

Sheen-Glo
SUPER-CLEANING
Sanitary Revitalizing Deodorizing

PETROLEUM DRY CLEANERS
210 N. COLORADO
First Door North of Yuca Theater
Phone 1010

If you realize the importance of accessories in making you a complete fashion picture, you'll waste no time getting to your little shop to select a matching handbag and pair of gloves. We're voting for suede chic first, in black, Marrona brown, spruce green, the subtle new sapphire shade, and gray for smart neutrality.

Anyone who's planning an October wedding, had better be sure of getting the ring on time! Your jeweler has been showing us some exquisite solitaires in stunningly simple mountings, and there's a wedding band to match every engagement ring. These jewels look costly, and are copied from expensive originals—but they are reasonable.

It's just a matter of days until you'll be starting back to college, and don't forget that your first appearance in school should be met by critical eyes. You'll want to be equipped with smart luggage, and you can get it most reasonably at your leathergoods shop. They specialize in lightweight, sturdy pieces you'll like.

Now that you're getting ready to move to a new home, you'll want a few smart pieces of furniture to do the place justice. Your furniture store is featuring some handsome arm, wing, pillow-back, Charles, and cogsell chairs, as well as smaller occasional chairs, at prices that represent very worthwhile reductions for everyone.

You need a little jacket dress to wear right now—and it should be of thin wool. Choose it from the large selection at your dress shop, with a variety of styles to select from—including very short, box jackets with shoulder straps, as well as a number of hip-length, medium jackets, and longer princess types. From \$12.95.

Don't wait for a frost to set in, and you start shivering—order your fur coat right now, from your furrier, who will design a coat especially for you, in Persian lamb or genuine seal, or flat carcass, for \$295. You enjoy the privilege of free storage until November 15th, and you can be sure of having a glorious garment.

We have never known a season when suits were so fashionable. Of course you're going to have one, and you'll want an effective variety of blouses to make it like a complete wardrobe. Your blouse shop has just received the stunning new metal blouses for afternoon suits, and they have more tailored types as low as \$1.95.

Good light makes for good reading, and you'll be able to read or study, sew or knit for hours, without feeling eyestrain. Your lamp shop has the newest designs in lamps scientifically built at a correct height to benefit your eyes. Particularly for the children's homework hours, you'll want one or two of these decorative lamps.

A bride should be naive—but not about the etiquette and correctness of wedding planning! For announcements and invitations that are really smart, visit your stationer. He has the newest in formal announcement designs, quite reasonably priced. And you can have the copper plate of your engraving converted into a jewelry tray.

They're selling autumn by the yard at your fabric shop, in exquisite designs for immediate wear, gleaming satins and lustrous velvets for the new elegance in fashions, and the richest, supplest wools we have ever seen... whose colors are perfectly brilliant. This shop is famous for quality—and inexpensive prices.

Set a beautiful table in your new home, this fall, with the wonderful china and glassware you can buy at great savings during your gift shop's sale! You'll want many of their complete sets, and add pieces such as fish dishes and cake plates for yourself, and for gifts. Why not start laying away Christmas Gifts now?

Gov. Cochran Irked; Dog Wears Sunflower
LINCOLN, Neb. (U.P.)—Someone played a trick on Stubby, Gov. R. L. Cochran's pet Scotty terrier, and caused the governor to reflect on this matter of loyalty in dogs. Stubby followed a stranger away from the executive mansion and when the canine was returned, a Landon sunflower emblem was attached to his collar. His master is an ardent Democrat.



For shipboard, golf or any outdoor activity this knitted outfit allows the utmost freedom of movement. The extremely full sun-ray pleated skirt is dark green and the high-collared waistcoat is heavily embroidered in a brighter shade of green and yellow. The waistcoat has an "action back" for additional freedom.

Stratosphere Flight In Australia Planned

SYDNEY (U.P.)—Australia probably will be the site of the next attempted flight into the stratosphere by a body of scientists, headed by the famous Picard brothers. First approaches have been made to the Commonwealth government for the necessary cooperation. The flight will be carried out in the Australian summer.

The men most interested in the ascent are Dr. Jean Picard, Prof. August Picard and Prof. W. F. G. Swann, director of the Bartol Research Foundation, a noted British-American physicist.

Cabinet Maker Prefers Coffin of Own Making

NEW PHILADELPHIA, O. (U.P.)—C. Fremont True, 78, retired New Cumberland farmer and cabinet maker, built his own coffin two years ago from three chestnut boards he borrowed with the intention of making furniture.

True, an alert, husky man, has no objections to showing the coffin to "intimate friends," but he is afraid the general public might misunderstand his plans. He has only displayed the casket a few times.

The Pony Express was not run by ponies, but by the most virile breed of horses.

Simple Frocks, Cut On Slim Lines, Ideal For Slender Purposes

MY MARIAN YOUNG

NEA Service Staff Correspondent
NEW YORK — Princess dresses with skirts that swing and sway in the breeze-trim, straight ones under jackets with widened shoulders and flaring backs—tunics galore—your old friend, the shirt-waister, looking neat as ever—frocks to wear now and later, never have been more varied or more intriguing.

And You Have New Costume
Simple black dresses are as important to a well-groomed woman as sweaters and skirts are to a college girl. If you can have an extensive wardrobe, it's a fine idea to go ahead and lay in a supply of nice wine, coronation red, coronation blue and other colorful frocks. But if you haven't—if you are one who must get along with about two—then know that rather plain black models are your best bet. By having several sets of accessories, especially belts and bags, you will lock smart all the time and you won't tire of the sight of yourself.

A full-skirted, short-sleeved, sheer black woolen frock with a tight bodice will flatter your figure and give you a little-girl look. One especially nice model of this type is shown here today. Developed in suave black crown rayon, it has a swinging circular skirt, rather high waistline, short sleeves, form-fitting bodice and an upstanding collar, edged with white pique.

The other model (right) on the page of the book is a shining example of the slim silhouette for fall. Also of black crown rayon, it molds the figure, has almost no fullness at the neckline, long, tight sleeves and a tailored neckline. College girls or town women will like pearls or white china beads with this. The hat is a new high-crowned type with feather that creates an illusion of even greater height.

Shirtwaist Dresses Still Favorite for School, Office
The shirtwaist dress (left) comes in wine, rust, slate blue and olive green as well as black and brown. Perfect for college classroom, country weekends and busy days in the office, this is finished with huge patch pockets, an assort. animal buttons of carved wood and narrow kick pleats. The high felt hat is trimmed with a white gardenia and a bit of velvet ribbon.

Napoleon nearly was born an Englishman. It was just before his birth, in 1769, that the controversy between England and France over possession of Corsica was settled in favor of France.

Railroads Rely On A New Type Ferret Car

CHICAGO, Sept. 19 (U.P.)—Although they will never win the coveted Carnegie award for life-saving, Western railroads' detective cars are aiding in saving lives as they cruise over thousands of miles of rail track. But instead of the familiar and heroic rescue act which brings nationwide recognition, these "detectives" go quietly about their task of preventing deaths and accidents by discovering faulty rails.

Unheard of is the Sperry Detector, an invention of the late Dr. Elmer A. Sperry. It is a gasoline-powered vehicle carrying electrical "fingers" that "feel" internal weaknesses in rails. In the rear of the car is a dynamo that shoots 3,000 amperes of two-volt current into the rails as the vehicle ambles along at seven miles an hour.

Entering the steel tracks through a series of brushes the current travels about five feet, establishing a magnetic field in that area. Then it leaves the rail through another set of brushes. A coil situated between the two brushes meanwhile registers the magnetic impulses given by the steel. Any flaw in the rail automatically affects the coil and a fluctuation is recorded by a pen on a paper roll.

With discovery of such a clue the electrical detective opens fire with a paint gun on the enemy of public safety, rendering it easy prey to closer scrutiny by an operator with a hand detector.

Rails Marked for Crews
Following a thorough "cross-examination" in which the area of the rail crack is accurately charted, a maintenance crew replaces the entire rail with flawless steel.

Meanwhile the detective car continues its "beat," policing the vast network of rails in search of similar menaces.

Last year on Western railroads, according to the Western Association of Railway Executives, a fleet of these cars inspected 61,000 miles of track and discovered 11,000 fissured rails.

A child is born with all its muscles in place. Every muscle fiber that the child ever will have is produced before birth.

Lower Age Level Shown Among Youths in CCC

WASHINGTON, (U.P.)—The New Deal amateur foresters are becoming younger.

Robert Fechner, director of Civilian Conservation Corps work, has made public the results of a survey conducted by the Department of Labor to determine the age distribution of 238,846 young men between the ages of 17 and 28 who were selected for enrollment in the CCC corps between Oct. 1, 1935, and July 31, 1936.

This survey, covering the selection of all young men enrolled in the CCC since the minimum age limit of 17 was set, showed that more than one-half of the men came from the 17 to 18 year age groups. The survey also disclosed that 75 per cent were in the 17, 18, 19 and 20 year age brackets. Not more than 17.22 per cent of the applicants were above 21 years of age when selected.

A live lobster is green. Due to a chemical change in boiling, the color changes to red.

A diamond mine in South Africa, known as the "Kimberly Pipe," has been worked to a depth of almost three-quarters of a mile.

Optical Specialists

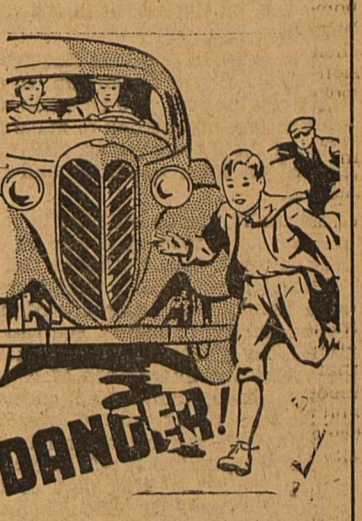
YOUR EYES— Have you had them examined recently? If not, let Dr. Inman examine them the NEW TWENTY-ONE POINT WAY. Then you, too, will understand why so many people go there for complete eye service—Inman's specializes in the eye and its errors of refraction—Let Dr. Inman, at his convenient 104 North Main Street location, make a chart of your visual problem today.

DR. T. J. INMAN
Optometrist—Midland

Retired 'Chute Jumper' Hurt as Paperhanger

GALVESTON, Tex. (U.P.)—W. C. Baker, 55, thrilled thousands with spectacular parachute jumps during a career of barnstorming from 1897 to 1912. A parachute failed to open but a tree broke his fall. He escaped with several broken ribs, a fractured arm and leg, and became a paperhanger.

A few days ago, he fell four feet from a ladder while papering a room. His leg was broken, but he will not change his vocation again, he said.



Yes, you may have an accident which will place you liable for heavy damages. Let us help you work out an insurance program which protects you from every hazard.

SPARKS AND BARRON
General Insurance Abstracts
Phone 79

UNITED Brings You The Leaders in Fall and Winter Fashions

MARY QUEEN OF SCOTS IS REINCARNATED IN MOIRE \$16.95

FROM THE PAGES OF SIXTEENTH CENTURY ENGLISH HISTORY, COMES THE INSPIRATION FOR THIS VERY TWENTIETH CENTURY FROCK From Joseph Zuker

THE SWING SILHOUETTE IS CARRIED THROUGH IN THIS SET OF CREPE DRESSES FROM MODERATE PRICED DEPARTMENTS \$3.98 to \$7.95

NEW TUNIC FROCKS IN TOWN COLORS! HERE IS A "FIND" THAT WILL SEND SMART YOUNG THINGS FLOCKING! DISTINCTIVE NEW TUNIC FROCKS CHOICE FULL OF SMART DETAILS IN THE HIT COLORS OF THE SEASON \$10.95

TINY SATIN RIBBON BOWS ON RHINESTONE EDGED DIAMONDS CHASE EACH OTHER DOWN THIS PRINCESS LINE DRESS--THE BACK IS SLIT AND BELTED \$16.95 From Patricia Perkins

NEW BLOCK TRYLEANS OFF THE FACE SCOTTISH INFLUENCE IN BLACK, RUST, WINE, GREEN AND BROWN \$1.00 \$1.98 \$2.98

The UNITED

Men! it's time to get ready for Fall!

MEN'S DRESS SHIRTS 98¢
NEWEST FANCY FALL PATTERNS FEATURING DUKE OF KENT BUTTON-DOWN AND FUSED COLLARS IN FANCY CHECKS, STRIPES AND SOLID COLORS SIZES 14 TO 17

MEN'S NEW FALL SOX 25¢
LATEST FALL PATTERNS IN PLAIN AND FANCY DESIGNS NEW SELECTION OF ANKLE SOCKS IN NEW FALL PATTERNS

MEN'S BATTLE AXE PANTS 1.49
MEN'S HEAVY "SANFORIZED" WHIPCORD PANTS, THE BIGGEST BARGAIN OF THE SEASON

MEN'S CORDUROY PANTS 2.69

GENUINE FUR FELTS FOR YOUNG MEN 1.98 to 3.50
PLAY BOY MODEL, STREAMLINE MODEL, THE DOWNS MODEL AND ALL NEWEST SHAPES IN ALL DESIRED COLORS

GENUINE LEATHER SWEATS

FALL JACKETS
ALL THE NEW SUEDES, GRAINS IN ZIPPER AND BUTTON FRONTS AND FANCY BACKS A LARGE SELECTION From \$3.98 up

MEN'S DRESS PANTS 1.98 and up
ALL THE LATEST MODELS, PATTERNS AND COLORS TO SELECT FROM

The UNITED

Trim Hips, a Full Chest and Slender Waist Line Flattering in Fall Styles

New fall clothes call for trim hips, a full chest and says Mrs. Ethel Estes of Addison Wadley Company, a slender waistline. A form-fitting princess gown is not flattering if the figure under it is bulky in spots. A skirt that molds the hips, then flares outward below them is not for one with fat hips and thighs. This is a season when every dress you own will show every curve of your body.

This is the season for you to be hipped on the subject of your figure. Unless you are in the best form, the glamorous fall modes with their higher waistlines, slim hip-lines and princess dresses and coats simply cannot shape up as flatteringly as they look on the models in the store windows.

It is important to look flat across the stomach and diaphragm, to nip the waistline and give the subtle accent to the bust needed to make the most of the Empire gowns, which are washed on thick waistlines and flat chests.

Naturally, you do not have to be as slender as a reed or a size 12 to look lovely in new clothes or old.

Provided you hold yourself erect, step lightly and look curved and round instead of lumpy, you can be lovely, though stout. Everyone should recognize the importance of a perfectly fitted foundation garment, under an expertly tailored dress, especially with the fashion trend as it is this year, and as it will affect the plump woman in this part of the country where silk, which is much more revealing, is worn almost exclusively under fur wraps instead of wool, as in the north.

There are practically only two distinct kinds of wolves in America—the large gray timber wolf and the coyote, or prairie wolf.

The fox wraps his tail about him like a comforter when he goes to sleep.

ANNOUNCEMENT
Mrs. J. B. Leonard announces that her classes in piano and voice will open about the middle of October or the first of November at her home, 129 West Indiana. She holds the Masters Degree in Piano, has had 29 years teaching experience, has studied with the leading teachers of Texas and has had special work in the University of Kansas. For further information phone 357.



Why Worry About Burglars?

Our burglary insurance makes good the loss if thieves break in and steal. Let us do the worrying and you are free to think of other things.

MIMS & CRANE
COMPLETE INSURANCE SERVICE
BONDS
TELEPHONE 24
111 W. WALL ST., MIDLAND, TEX.



George Friday
EXPERT BOOT MAKING AND SHOES REPAIRING
THE BEST MATERIALS—QUALITY WORKMANSHIP
SADDLERY AND LEATHER GOODS
SECOND DOOR EAST OF MIDLAND DRUG

CHURCHES

ST. GEORGE'S CHURCH
The Rev. Edw. P. Harrison, O. M. I.
Sunday morning mass for English speaking people at 10 o'clock and for Mexicans at 8 o'clock.
Sunday evening services at 7:30 o'clock.
Daily mass will be held at 8 o'clock.

PENTECOSTAL HOLINESS CHURCH
10:00 a. m.—Sunday school.
11:00 a. m.—Preaching.
8:15 p. m.—Preaching.
Rev. O. W. Roberts is conducting the revival services.

CHRISTIAN SCIENCE CHURCH
Services will be held at 11 o'clock Sunday morning in the private dining room of the Hotel Scharbauer. A cordial welcome to attend is extended to all.

CHURCH OF CHRIST
10:00 a. m.—Sunday morning Bible study.
11:00 a. m.—Morning worship and sermon.
6:00 p. m.—Sunday evening service.
3:30 p. m. Tuesday Women's Bible class.
8:00 p. m. Wednesday—Midweek Bible study and prayer service.

TRINITY CHAPEL
Protestant Episcopal
P. Walter Henckell, Minister in Chg.
Richard E. Gile, Lay Reader
11:00 Sunday service will be conducted by Rev. E. Gile.

MEN'S CLASS
Hotel Scharbauer
The Men's class will meet at 9:45 a. m. in the Crystal ballroom. Mayor M. C. Ulmer is teacher.

FIRST PRESBYTERIAN CHURCH
W. J. Coleman, Minister
"The Friendly Church"
J. L. Kendrick, Church School Supt.
Mrs. W. J. Coleman, Minister of Music
9:45 a. m. Sunday school.
11:00 a. m. Divine worship and sermon by the pastor. He will bring the message on "God Our Refuge." Psalm 9-11.
6:15 Vesper service.
7:30 Divine worship and sermon by the pastor. He will bring the message on "Christ's Concern For His Tempted Followers." Luke 22 v. 31-32.

FIRST CHRISTIAN CHURCH
J. E. Pickering, Pastor
H. G. Bedford, Supt. Bible School
Mrs. Lee Cornelius, Director Of Music
9:45 a. m.—Bible school.
10:50 a. m. Preparation for Lord's Supper.
11:00 a. m. Lord's Supper. Worship sermon. Subject: Where The Devil Hangs Out in Midland.
4:30 p. m. Junior Endeavor.
7:00 p. m. Intermediate and Senior Endeavors.
8:00 p. m. Worship. Sermon subject: Using Our Gifts For God.
3:30 p. m. Monday. Rijnhart circle.

FIRST METHODIST CHURCH
Chf. M. Epps, Pastor
W. Hy Pratt, Sunday School Supt.
Mrs. DeLo Douglas, Choir Director
9:45 a. m.—Sunday school.
11:00 a. m.—Morning worship and sermon by the pastor.
6:30 p. m.—World Friendship club meets at the church under direction of Mrs. Frank Prothro.
6:45 p. m. Young People's Fellow-

Double Breasted Trend Goes Forward In Types of Men's Fall Appearances

Men's clothes this fall are getting simpler, and acquiring more of an air of formality, which is best evidenced by the return to favor of the double breasted suit. And even in sport types, you will see less and less of fancy backs, with pleats, shirring, yokes, and tucks used in a very restrained manner. Although the Duke of Kent jacket was introduced as a very high fashion, and a very flattering one, its appeal seems to have been limited, and designers have caught on to the idea of cutting double breasted jackets so that they may be worn either in the conventional way, or with only the very lowest button closed.

Even in fabrics we see something of a trend to get away from the very fanciful ones, and although there is still plenty of novelty and interest in suitings, they don't go in for the garish things they'd been inclined to, and we find that stripes are subtle in tone, checks and plaids are softened in shading, and monotone fancies are more discreet. And although not every man can wear a single breasted suit smartly—man can wear the double breasted, so that by a happy marriage of style and fabric, you can expect to wear well suited in assembling a full wardrobe.

Detail Man

Having sent our scouts around to find out just what's what in suits, we have finally been able to compile our report, and one by one, we will explain to you the high spots in suits, and even give you a look ahead at overcoats. In the double breasted suit, the longer jacket with moderate draping through the waist, but with the little front padding, is leading. For the man who wants his clothes a little more fitted however, the drape may be emphasized, the shoulders cut a little broader, and the notched lapels set a little higher. It is questionable as to which are smarter—the flap pockets with the extra ticket pocket, or the welt-edge pockets; both are worn by equally well dressed men. Another detail often seen in better clothes, is the rope shoulder construction, which builds up the shoulder height, and is always accompanied by the typical drape.

Many business men prefer to wear the single breasted suit, and it is interesting to see even the three button, single breasted suit returning to favor in some wardrobes.

Although tailors have had a hard time introducing the peaked lapel, it has taken hold finally, and more and more of the smart snops are snoving peaked lapels on single breasted suits, adding details such as the slanting flap pocket, or the welt edge pocket. The most striking difference in single breasted suits, however, is the distance of opening from the jacket hemline up to the lowest button. In some suits the distance is negligible, and in others it is a wide span. From the point of view of appearance the most important thing for a man to consider in being fitted with a single breasted suit is the fit of the waistline which should be shapely but not tight, and the set of the shoulders.

With patterns offering a complete range in stripes, plaids, and checks, herringbones, and chevrons, our interest now, centers mostly on colors, and we find that grays are way in the lead, with the lighter tones better liked than the darker or oxford tones seen in previous autumn seasons. Blues too, are increasingly popular, and even these tend to the more subdued, grayed types. Brown is about as well liked as it was last year, often lightened by the introduction of yellowish, rust, or reddish threads. As for greens however, they seem to be passe, with the exception of those which are more blue than green.

Coaterie

Briefly, there are a number of overcoat styles to choose from, and there are so many individual treatments, that it will probably be difficult to choose. The ulster is increasingly in popularity, and looks interesting with four sets of buttons, shapely waist, and flap pockets, invariably with the extra ticket pocket. Wide skirted effects are also interesting in some overcoats, and one smart model has welt edge patch pockets, turned-back cuffs, and the two-piece belted back. Most men like their overcoats very roomy, and this characteristic is achieved in draped coats, as well as in the very sporty types. Fleece fabrics will be as popular as ever, because of the warmth and lightness of weight that they combine, and clever things have been done to dye them rich, dark tones. For formal evening wear, the semi-drape, fly-front model in midnight blue will be predominately smart, with black grosgrain forming the lapels, sleeve cuffs and even the pocket flaps.

ship and League Services.
7:45 p. m. Evening worship and sermon by the pastor.

FIRST BAPTIST CHURCH
Winston F. Borum, Pastor
9:45 a. m.—Sunday school.
11:00 a. m. Morning worship by pastor, subject: "Garden of Eden."
3:0 p. m. Special business session pertaining to the church's building program. All members urged to attend.
6:45 p. m. Training service.
8:00 p. m. Evening worship by the pastor, "Graven Images." Also music, congregational singing and orchestra selections.

NAOMI CLASS
Hotel Scharbauer
The Naomi Inter-denominational class for women will meet at 9:45 o'clock in the private dining room of the Hotel Scharbauer. Mrs. J. Howard Hodge is teacher.

Danes Struggled for Many Years to Win Farm Purchase Laws

This is the third of three articles on what is being done by the Resettlement Administration to assist tenant farmers to become landowners.

Denmark has been quoted many times as an example of a nation that changed its farmers from tenants to landowners, and thereby built itself a remarkable prosperity. Now that the resettlements administration is pioneering a movement in the United States by which tenant farmers may be enabled to become owners, it is worthwhile to note that the farmers of Denmark had to struggle for many years to obtain the governmental aid which brought them to their present fortunate condition.

When Denmark's present land policy was initiated by the act of 1899, some sort of change had become imperative, just as it is in the United States today. In Denmark it was so bad that farmers were leaving the country as fast as they grew to manhood and womanhood. The wages which they could

earn as tenants or laborers had become so much less than they could earn by going to America that the emigration was equal to the entire increase of adult population in the rural districts. To stop this emigration, which was draining Denmark of the best of its rural population, a country life commission was appointed in 1894, whose object, as officially announced, was "to devise a plan by which, on favorable terms, parcels of land can be made available for rural workers."

When the act of 1899 was passed, the conservative element in parliament forced a limitation which would allow purchase of not more than five acres. They feared a labor shortage and desired that the holdings be so small that the holders would still have to obtain work as hired hands in addition to laboring on their own farms. The home-steader was required to make a down payment equal to ten per cent of the value of the land, buildings and livestock. The interest rate was fixed at three per cent and the maximum loan was 3,000 kroner, equal to about \$1,000.

Five years later, farmers had gained more power in the Danish parliament and were able to have the loan maximum increased to 5,000 kroner. They gained still more power by 1909, when they succeeded in having the maximum increased to 6,500 kroner. By this time, it was generally agreed that the purpose of the act should be to encourage holdings large enough for

workers to become self-sustaining on their own farms. A few years later the maximum loan was again increased, this time to 8,000 kroner, or about \$2,500.

The chief objection raised by the conservatives when all this legislation was being enacted was that the government was undertaking too large a financial risk. But this fear proved entirely unfounded. During the twenty-five years after passage of the act of 1899, the Danish government financed the purchase of 11,451 farms. During that entire period, the total loss to the government from failure of the clients to meet their payments was only \$9,085, which amounted to only 35c for every \$1,000 which the government had advanced.

Mortgage Loans In State Increasing

FORT WORTH Sept. 17.—Each month of 1936 continues to show an increase in applications for insured mortgage loans, according to a statement by E. T. Stearns, district director of the federal housing administration. "August was the best month of the year," said Stearns. "During the month, the Fort Worth office received 92 applications amounting to \$243,850. Over one half this amount is to go into new residential construction; the balance for buying existing houses and for the refinancing of old mortgages." The following is a partial list of towns in the northwestern district of

Texas from which applications were received: Fort Worth, San Angelo, Lubbock, Wichita Falls, El Paso, Floydado, Big Spring, Littlefield, Abilene, Mineral Wells, Cleburne, Roscoe, Midland, Ballinger, Barnhart, Dalhart, Brownfield, Dublin, and Antton.

"This steady increase in applications for federal housing insured mortgage loans is proof to us that the public is fully aware of and appreciative of the advantages to the borrower offered under the appraisal system of the federal housing administration," continued Stearns. "The examination of plans, specifications and the property by our impartial and trained appraisers is the best protection to the borrower in the most important transaction of his whole life, the building of a home."

Homes financed with insured mortgages must be well planned

and well constructed of sound materials. They must be located in attractive environments, and in neighborhoods free from influences impairing their desirability as homes and their value as investments.

Another matter of importance to the borrower, points out Mr. Stearns is the reasonable interest rate charged on insured mortgages and the resulting low monthly payments extended over a long period of years, thereby making unnecessary the costly renewals every three or five years under the old style short-term mortgage.

Cashew and pistachio nuts belong to the same family group of plants as poison ivy.

A year's collection of refuse from houses of London, England, would cover an area of 33 acres to a depth of nine feet.

PREPARE FOR YOUR RETIREMENT NOW

By investing in a PRATORIAN RETIREMENT INCOME POLICY that will start paying you a monthly income for life, starting when you reach the age of 55, 60, or 65. Men and Women Insured on Equal Terms. THE SOONER YOU PLAN YOUR FUTURE THE BETTER YOUR FUTURE WILL BE.

J. WRAY CAMPBELL, Dist. Mgr.
601 Petroleum Bldg.— P. O. Box 908
Phone 111 Midland, Texas

Dependable Fall Opening

The Beauties Of Autumn

Describe autumn in eight words . . . brisk, crisp, colorful, gay, buoyant, breezy, bright, fresh. There you have it . . . this glorious season that brings a new thought in apparel . . . that means the first opportunity in months to dress for splendor alone.

Your Fall Coat

Let it be one of our smart Furs as created by Herman and Ben Marks or a superbly tailored coat by Hirschmaur. There is a double thrill for the smart dresser in this array of fall coats. Everything about them is new!

Flared Hemlines
Princess Silhouettes
Dramatic Sleeves
Shiny Woolens
Slub Weaves
Belts, Scarfs
Finer Furs

A large selection of casual coat styles
Princess and fitted lines in dress models

In These Colors:
Black
Brown
Leather
Green
Wine
Grey

Spectator
Travel
Sport Styles

If you know and have worn Marks Furs or Hirschmaur Coats, you know of the exceptional care that goes into their manufacture . . . even the little things like seams and buttons, finishing and trimming, have been made with unusual perfection, which assures you that their beauty and high styling lies not only on the surface. If you haven't worn one, do yourself a favor and see them soon. You will find it to be most advantageous to purchase your coat early.

Fur Coats

\$39.00 TO \$139.00

Hirschmaur Coats

\$19.85 TO \$22.50

ADDISON WADLEY CO.
"A Better Department Store"
Midland, Texas

Dependable

- Marienette Knitwear
- Bradley Knitwear
- Le Vine Frocks
- Nelly Don Dresses
- I. Miller Shoes
- I. Miller Bags
- Kayser Hosiery
- Dobbs Hats
- Your entire wardrobe under one roof.

7 Saved at Coleman by Crews In Boats

Hurricane In East Swings Out Over Atlantic

DESIGNATE SPECIAL DAYS AT THE FAIR TO NEIGHBORING TOWNS

Numerous towns and cities of the Southwest will have "special days" at the Midland Downs fall race meet here October 2-10, according to announcement by the Midland chamber of commerce, handling publicity for the meet.

Large delegations will be given invitations through cooperation of newspapers and chamber of commerce in various towns, and dates have been arranged to coincide as nearly as possible with convenience for the different places.

The two Fridays are being set aside for towns coming here for night football games, Pecos on October 2 and Kermit on October 3. The complete schedule follows: Friday, October 2, Pecos, Monahans and Odessa day. Saturday, October 3: Big Spring, San Angelo and Stanton day. Monday, October 5: McCombs, Crane, Iranan and Rankin day. Tuesday, October 6: Andrews, Seminole, and Lea County, N. M.,

Wednesday, October 7: Fort Worth, El Paso and Amarillo day. Thursday, October 8: Lubbock, Lamesa and Brownfield day. Friday, October 9: Kermit, Wink, Grand Falls and Fort Stockton day. Saturday, October 10: Abilene, Colorado and Sweetwater day.

October 7 and 8 also are set aside as Cowmen's days, with the feeder calf show and sale to be held October 7 and the executive committee meeting of the Texas & Southwestern Cattle Raisers' association on October 8.

Saturday, October 3, will be the day of the six furlong \$500 handicap race in which the best sprinters will run.

Saturday, October 10, will find the outstanding distance sleds contest for the \$1,000 added Merchants Handicap, a semi-annual event which draws from the southwest's leading thoroughbreds.

CONSOLIDATION IN HUMBLE COMPANY ANNOUNCED HERE

Roswell Office Is Transferred To Midland

The divisional offices of the Humble Oil and Refining Company here have announced the recent consolidation of the land and geological department of the West Texas and New Mexico divisions, the consolidation resulting in the moving of the company's Roswell office to Midland. J. Ben Carsey, chief geologist of the West Texas division for the past 10 years, will now be in charge of the land and geological activities of both West Texas and New Mexico.

The production department of the West Texas division has handled the New Mexico production program since oil was first discovered in Lea county. W. T. Doherty is the general superintendent of the West Texas division. The recent change brings all of the company's New Mexico activities under the supervision of the West Texas division. The consolidation and closing of the Roswell office has resulted in several transfers among the personnel of the Roswell office. Morgan J. Davis, who had served as chief geologist of the New Mexico division for several years, has been transferred to Houston where he will become chief geologist of the Gulf Coast division of the Humble Company. Milward Miller and William E. Cox, geologists, were moved to Hobbs where Miller will serve as district geologist, with Cox acting as geological scout. Weldon Cartwright, microscopic geologist, and Miss Floyd Hassell, secretary, have been transferred to the Midland office. J. S. Griffith, land man, will remain in Roswell.

RAILROAD MEN IN WALKOUT AS 500 QUIT POSITIONS

Trains Continuing To Operate On Schedule

GREENVILLE, Sept. 19. (AP)—Five hundred union engineers and trainmen of the Louisiana-Arkansas-Texas and the Louisiana-Arkansas lines struck Saturday over a complaint that the companies had failed to reinstate agreements recognized as standard pay rates, rules and working conditions.

There has been no disorders despite a move by railway officials to replace striking crews and continue operations. Guards are patrolling the yards.

A strike of the employees of the transportation department of the Louisiana-Arkansas railroad system started Saturday morning, according to a report from Shreveport, company headquarters.

All trains are operating on schedule, however, and the number of employees going out has not been ascertained.

New Orleans also reported a train crew had not reported to work.

Italy's 'Big 3'



Rarely photographed together are these three "top men" of Italy—Premier Mussolini, right; King Victor Emmanuel, center; and Crown Prince Umberto. They formed a symbol of Italy's unity as they stood beneath the Italian flag, watching recent army maneuvers at Iripinia, Italy.

ALL SHIPPING IS WARNED TO DODGE TERRIFIC STORM

Death Toll Small As Much Property Is Destroyed

DAMAGE HEAVY Millions of Dollars Worth of Homes Are Lost

NEW YORK, Sept. 19. (AP)—One of the worst hurricanes in history swung out to sea northeast of New York Saturday, and all vessels were warned to get out of the way.

Despite violence over 1,000 miles of Atlantic coastline, only seven are known dead and missing. However, the death toll yesterday was revised when 37 members of the crew of the ship Long Island in the Delaware bay were rescued. Three are known dead and four missing.

Disrupted communications prevented an accurate estimate of the property damage, but reports indicate that it will be in the millions.

The hurricane's coastal onslaught affected both Carolinas, Virginia, Maryland, Delaware, New Jersey and New York.

Where Strike Perils \$11,000,000 Lettuce Crop



A strike of lettuce pickers, delayed shipment of an \$11,000,000 lettuce crop in Salinas county, California, turned into series of riotous battles when strikebreakers were imported to pick the crop. At top, strikebreakers are seen at work, a scene which infuriated pickets and led to fighting. During rioting vigilantes looted tear gas, lower left, driving men and women to cover. Sheriff Carl Abbott, lower right, drafted all able-bodied men in the county to help quell the trouble, which arose originally from union wage demands.

MRS. CHILDS GIVEN 25 YEARS FOR HER PART IN SLAYING

Lover's Trial Will Be Started Monday At Greenville

CARTHAGE, Sept. 19. (AP)—Mrs. Reable Childs was found guilty Saturday in the rifle slaying of her husband, Marlie Childs, former Shelby county treasurer, at Center April 23, and was given 25 years in the penitentiary. Childs was shot to death while in the kitchen of his home.

Terrance Bramlett, admitted lover of Mrs. Childs, charged jointly in the slaying, will go on trial Monday.

The state charged that the two plotted the killing and asked the death penalty for the woman.

Dawson Wildcat Is The Chief Topic of Discussion

Varied Reports Of Status Heard In City

The Dawson county well of Ray Albaugh No. 1 Robinson, the chief topic of discussion among oil men as the week closed, with varied reports as to its status trickling into Midland. The consensus was that the well had 1750 feet of oil standing in the hole, with no water present. It was shut down at 4,978 feet because of heavy rains in the area. A later report said that the well was drilling ahead below 4,981 with 2,800 feet of oil in the hole, but this had not been confirmed.

4-H CLUB CALVES OF 10 COUNTIES TO APPEAR FOR SHOW

Expect 100 Entries At Affair Here October 7

Four-H club calves from at least ten counties are expected to be shown in competition here October 7, the same dates as the feeder calf show and sale, with prizes of \$250 and possibly a dozen Midland calves as awards. County Agricultural Agent S. A. Debnam predicted that 100 calves, on feed since early in the year, will be shown.

Classes will include calves over 850 pounds, calves under 850 and possibly a group under 750. Counties which probably are to be represented include Tom Green, Dawson, Taylor, Crane, Ector, Andrews, Martin, Borden, Fisher and Midland.

NEW GOVERNMENT SYSTEM REFUSED BY SPAIN CHIEFS

Reorganization Is Not Among Plans Of Leaders

MADRID, Sept. 19. (AP)—Spanish Socialists and Communists turned down a syndicalist ultimatum to recognize the government into a region committee independent of the Madrid administration Saturday.

The ultimatum called for decentralization of the government to give workers a direct share in public shares and compulsory conscription of all able-bodied men in the country.

Meanwhile, Fascists accused the Spanish government forces of killing 800 hostages at Ronda. An insurgent general said that over 500 bodies had been identified.

White House Says Notorious Editor Backs False Talks

WASHINGTON, Sept. 19. (AP)—A statement from the White House Saturday said that it had learned of a "planned attempt, led by certain notorious newspaper owner," had been made to give the impression that President Roosevelt "passively accepts the support of all organizations hostile to the American form of government."

Stephen Early, secretary to the president, said "the articles were conceived in malice and framed to give a false impression."

The newspaper was not named.

BUTLER TO HEAD CAMPAIGN COMM.

Democratic Quota In The County Designated At \$416

It was announced Saturday that J. P. Butler had been appointed chairman of the finance committee of the democratic party in Midland, and that he will accept all donations to the national campaign party for this county.

The Midland county quota has been set at \$416 as a part of the state quota of \$250,000 to be raised in the state by leaders of the party.

All persons desiring to donate to the campaign fund of the party in the county are asked to give money to Butler. He can be contacted during the day at the First National bank.

Health Program For Negroes Continues

The health work among the negro population of Midland and Midland county continues under the supervision of the Midland County Health Board and Miss Elizabeth Wilson, county health nurse.

At the present, a house to house survey is being carried on by Annie Mae Mathes, itinerant nurse.

Sunday afternoon, September 20th, a reorganization of the colored Health Committee will be held at the Colored First Baptist church at 4 o'clock. Better health conditions for the benefit of the community will be discussed.

Other programs to follow will be a mass meeting at the courthouse September 27th.

25 Planes at Port Friday, Saturday

A total of 25 planes landed at the Midland airport Friday and Saturday, members of a flight of 14 army bombers and four army observation planes spending last night here. Two A-17 model ships were here overnight Friday. They were being flown by army officers Blackburn and Calhoun, enroute from El Paso to Dallas.

An O-38 flown by Major Post and one flown by Major Douglas were among those stopping at the port. Post was on a flight from El Paso to Dallas while Douglas was enroute from San Antonio to El Paso. Two navy planes enroute from San Diego to Dallas were at the port Friday night.

Hawaii Library Sends Books Over 3,000 Miles

HONOLULU, (UP)—The Library of Hawaii circulates books on regular schedule over a greater distance than any other institution of its kind in the United States.

Books are sent 3,000 miles west by Clipper to the Wake Islands airbase; 1,500 miles northwest by steamer to Midway... and 1,300 miles south to Fanning Island cable station, also by steamer.

AMERICAN LEGION MEETING SLATED

Committees Named To Go To Van Horn Session October 2-3

American Legion and Legion Auxiliary committees have been appointed by Woods W. Lynch post commander, Jas. H. Goodman, to attend the sixteenth district meeting of the Legion in Van Horn October 2-3, Goodman announced Saturday.

Earl Moran is chairman of the Legion committee, composed of Horace Newton, O. Kelly, I. C. Watson, Fred Middleton, Percy Mims, Goodman, I. G. Prager, and Moran.

The auxiliary committee is composed of Mrs. Watson, Mrs. Kelley and Mrs. Wright.

JAP POLICEMAN SHOT IN HANKOW

New Complications Are Aroused By Crime In China

HANKOW, Sept. 19. (AP)—A member of the Japanese consular police at Hankow was shot to death by an unidentified Chinese today.

A native of Korea was also reported attacked by Chinese in an anti-Japanese demonstration on a train.

Japanese naval forces anchored here in connection with the slaying of the consular policeman and established emergency patrols in the national concession where the killing occurred.

Roy McKee left Saturday for Dallas where he will meet his wife, who has been visiting in Homer, Louisiana, for the past two weeks. They will attend the Centennial exposition and return to Midland in about a week.

Jax Cowden Home Is Damaged By Waters

Jax M. Cowden, San Angelo citizen whose riverside mansion was among those damaged by the floods late in the week, was here Saturday morning and said he had not yet been home to ascertain his total damage. Family members reported, however, that the water rose four or five feet up in the lower floor, damaging walls and floors. Practically all of the furniture was moved to the upstairs floors and was saved from damage.

Salesman Sam Is Out; Nurse Subs

Hereafter, "Salesman Sam" one of the daily comic features of the Reporter-Telegram, will be discontinued and the cartoon "Myra North, Special Nurse" will be substituted. Also, Flapper Fanny, daily feature picture on the front page of the paper will be discontinued. The changes were made necessary by the NEA service, firm from which we procure the features, discontinuing them.

COLORADO ON THE WORST RISE EVER RECORDED THERE

Hundreds are Forced To Flee Homes As Waters Rise

PROPERTY LOST \$50,000 Bridge Swept Downstream At Winchess

COLEMAN, Sept. 19. (AP)—Rescuees by boatmen prevented loss of life Saturday as the Colorado river, on its worst rise in history, inundated thousands of acres of farm

Petitions were circulated here yesterday, securing funds for relief of destitute families at San Angelo, the condition having been brought on by the floods there late in the week. At 3 p. m., the fund had reached a total of \$764.47.

In addition to those carried by committee, petitions were left at both banks here and the public was invited to make calls there to leave donations.

Checks may be made to "San Angelo Relief" and will be handled through the local banks.

Numerous poor families, including whites, Mexicans and negroes, had their homes ruined or washed away, losing all household belongings, it was reported.

Clothing for all ages and sizes is needed, it was reported, and may be left at the chamber of commerce, or will be called for if calls are made to the chamber.

land in four counties and drove hundreds from their homes. Seven persons were taken from the tops of buildings.

The \$50,000 bridge on the Frisco line at Winchess was washed away where the river had fallen to a point believed to be where the crest had passed.

Crop destruction and property damage amounted to thousands of dollars as the river flooded southern Brown and Coleman counties and northern McCulloch and San Saba counties.

The river is falling slowly at Rockwood. Nearly 11 inches of rain have fallen in the Coleman area recently.

Meanwhile, San Angelo residents started rehabilitation work in the city, much of it under water for two days due to the Concho river bursting its bounds, flooding streets and property. The damage in San Angelo alone was estimated to be in excess of \$2,000,000. At least 400 persons were left homeless as the rushing waters swept homes downstream.

FAMED AVIATOR KILLED IN CRASH

Tom Campbell Black Dies When Plane Hits Another

LIVERPOOL, Sept. 19. (AP)—Tom Campbell Black, one of the winners of the England to Australia air race several years ago, was killed Saturday when his plane collided with another here.

Black was teamed with C. W. A. Scott in the famed derby.

Mrs. James H. Chappel and small daughter, Victoria, have gone to Los Angeles for a two week's visit with relatives.

A. & M. STUDENTS LEAVE

Bill Pratt, who will be enrolled as a second term sophomore in Texas A. & M. this fall, left for College Station Friday morning. He is majoring in pre-law, and is enlisted in the field artillery, battery B.

Murray Fasken, who will be a junior this year, is majoring in pre-law also, and he left Friday night accompanied by F. H. Lanham, who will attend S. M. U. this year. Lanham will be enrolled as a junior business administration major. Fasken is in the Calvary, company C.

RETURNS FROM EL PASO

Mr. and Mrs. Earl B. Powell passed through Midland this morning enroute to Colorado to the home of his parents, Mr. and Mrs. Ray Powell.

They have been in El Paso six weeks where Mr. Powell has been in the Masonic hospital with cellulitis of the right arm. They live on the bar X ranch north of Stanton.



When the party you've been roped in on is dull you're fit to be tied.

THE REPORTER-TELEGRAM

Evenings (except Saturday) and Sunday Morning MIDLAND PUBLISHING COMPANY, PUBLISHERS 112 West Missouri, Midland, Texas

T. PAUL BARRON Owner and Publisher

Entered as second class matter at the postoffice at Midland, Texas, under the Act of March 30, 1879

Subscription Price Daily, by Carrier or Mail Per Year \$5.00 Per Month .50c

Advertising Rates Display advertising rates on application. Classified rate, 2¢ per word; minimum charge 25¢. Local readers, 10¢ per line.

Any erroneous reflection upon the character, standing or reputation of any persons, firm or corporation which may occur in the columns of The Reporter-Telegram will be gladly corrected upon being brought to the attention of the firm.

Oil News--

(Continued from Page 1)

Water Increase

An increase in water above the 13 barrels per day it had been carrying and a slight oil showing were logged in Gulf No. 2 McKnight, western Crane Tubb area wildcat. It is now drilling at 3,525 in hard gray lime.

Gulf No. 2 W. N. Waddell and others, Ordovician test in section 18, block B-21, public school land, Crane county, is coring at 6,784 feet in hard gray lime. The test topped

the Simpson, middle Ordovician, at 6,003 feet.

Drilling Salt

R. H. Henderson et al. No. 1 Parker, three-quarters of a mile from Fuhrman pool production in Andrews county, is drilling at 1,900 feet in salt. It topped anhydrite at 1,760 and salt at 1,865. Location is in section 11, block F, scrap file 10440.

In Gaines county, Humble No. C. H. Eubanks, wildcat test in section 6, block AX, public school land, is plugging to abandon. It reached a total depth of 6,192 feet in lime and failed to encounter oil in sufficient quantity to make a producer, although it was acidized.

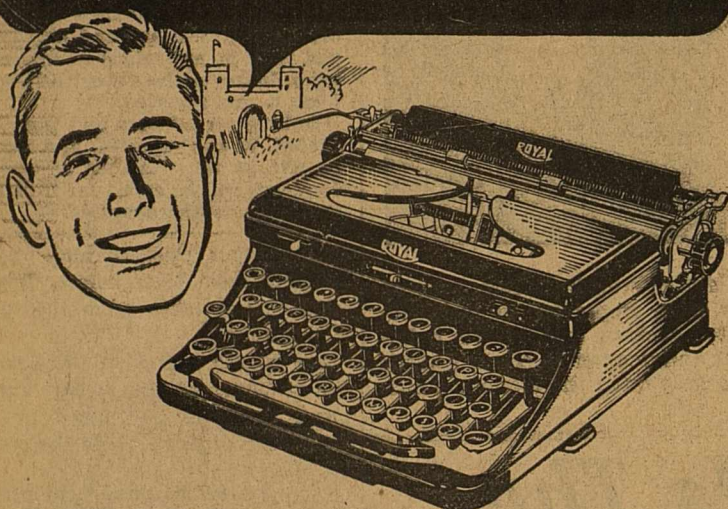
The Texas Co. No. 1 Bob Slaughter, southwest Hockley wildcat in

We keep West Texas money in West Texas. Deposits carried in local banks. Excellent opportunities available for agents in West Texas.

ROY McKEE, MIDLAND, TEXAS District Manager

The Great American Life Insurance Co. "Old Line Legal Reserve"

"To WIN and HOLD Honor Grades... I recommend a ROYAL PORTABLE!"



THIS YEAR more students than ever are using Royal Portables, using them because they know that the boy or girl with the New Royal Portable invariably wins better marks and has far more spare time!

if you've never typed a single word. COSTS NO MORE TO OWN A ROYAL. With all its amazing advances in design and construction, the New Royal is priced the same as other portables. And the New Special Educational Budget Plan enables anyone to own a Royal immediately. Choose from three handsome models. All are reasonably priced.

West Texas Office Supply

116 West Wall Phone 95 Midland, Texas



You - Are - Invited

TO BE A REGULAR VISITOR AT OUR NEW

"STREAMLINE FOUNTAIN"

All The Delicious Sodas And Sundaes Served In the Most Appetizing And Most Sanitary Way

E-V-R-Y DISH, GLASS AND SPOON CAREFULLY STERILIZED After Each Use For Your Protection

WHEN YOU COME TO MIDLAND FOR THE FAIR AND RACE MEET MAKE MIDLAND DRUG YOUR DOWNTOWN HEADQUARTERS

Breakfast Specials

20c Club Breakfast 20c One Egg, Bacon Buttered Toast Jelly Coffee Cereals with Pure Cream 15c Buttered Toast, Jelly and Coffee 10c Orange Juice 10c Tomato Juice 5c Sweet Rolls, Coffee 10c

Sandwiches on Buttered Toast with Salad 15c Bacon and Tomato Boiled Ham Fried Ham Home Made Chicken Salad Cheese

MIDLAND DRUG CO.

PHONE 258... BARNEY GREATHOUSE

Race Purses Exceed \$8,000 for 8-Day Fall Meet at Midland Downs, Oct. 2-10

Distance Horses Are At Advantage On Race

Headed by the \$1,000 added Merchants' Handicap race October 10, closing day, the \$500 Handicap October 3, purses exceeding \$8,000 have been posted for the eight days of racing at Midland Downs, October 2-10, inclusive.

It will be the third meet held since reconstruction of the new \$60,000 plant of Midland Fair, Inc., and all races will be over the fast three-quarter mile track, regarded as the best of its size in the southwest, in front of the steel grandstand which comfortably seats 5,500 spectators. The pari-mutuel system, supervised by the Texas racing commission, will be used and C. H. McMillan, with his staff gate will be starter. Other officials include Foy Proctor, president of Midland Fair, Inc., J. Homer Epley, pari-mutuel manager; Tom Nance, director of racing; Steve Brodie, paddock judge; Nance, Fred Turner Jr., and A. C. Francis, racing committee.

In addition to the regular mutual windows, the daily double-again will be used at the meet. No races will be less than a half mile in length and no purse will be less than \$100. The \$1,000 added Merchants' Handicap, with nomination fee of \$10 and starting fee of \$2 per horse, will be over the mile route. Purses will be divided 60, 30 and 10 per cent for win, place and show, except for the Merchants Handicap which will be \$600 plus added fees to winner, \$300 place and \$100 show.

FIRST BAPTIST CHURCH

Winston F. Borum, Pastor 9:45 a. m.—Sunday school. 11:00 a. m.—Morning worship by pastor, subject: "Garden of Eden." 3:30 p. m.—Special business session pertaining to the church's building program. All members urged to attend. 6:45 p. m.—Training service. 8:00 p. m.—Evening worship by the pastor, "Graven Images." Also music, congregational singing and orchestra selections.

NAOMI CLASS

Hotel Scharbauer The Naomi (inter-denominational) class for women will meet at 9:45 o'clock in the private dining room of the Hotel Scharbauer. Mrs. J. Howard Hodge is teacher.

labour 83, league 38, Zavalla county school land, is fishing for bit at 2,910 feet in salt and anhydrite.

Plugs Back

North Central Glasscock county's new pool opener, Dodson and Duffey No. 1 Carter, section 8, block 33, township 3 south, T. & P. survey, is reported to have shut off water by plugging back two feet from total depth of 2,669. Delivery of 7-inch casing was expected at the rig Saturday, and it will be run today. Later, the well will be treated with acid to increase its natural rating of 32 barrels per day.

The other Glasscock test, California et al. No. 1 Calverly, section 25, block 35, township 3 south, T. & P. survey, was scheduled to start drilling after a shut-down because of rains. Total depth is 2,571 in red sand.

"Last of The Mohicans" Super Film Showing At Yucca Theater for 3 Days

The producers of Reliance Pictures have chosen to bring to the screen with a magnificent cast, "The Last of the Mohicans," James Fenimore Cooper's immortal classic of the hand-to-hand struggle for a nation yet unborn and have turned out another unforgettable picture which is topnotch entertainment as well as a film of truly epic proportions. The audience at the Yucca Theatre where it had its local premiere last night, thrilled to a glorious experience, and, in the opinion of this reviewer, the picture cannot fail to prove a monumental item on the cinema list of the millions of lovers of the book as well as those unfamiliar with the stirring story of pioneer men and women who faced death and danger and glorious adventure side by side for the country they both loved.

Great Cast

As depicted by one of the greatest casts in the memory of this reviewer, Cooper's colorful characters come to a warm and pulsating life on the screen. Brilliant performances are turned in by Randolph Scott as Hawkeye, the primitive man of the forest,

whom Cooper made his hero; lovely Binnie Barnes, who is ideally cast as Alice Munro the British Colonel's daughter, who loves him; Henry Wilcoxon, who plays the gallant Major Duncan Heyward, Hawkeye's rival for the heart of Alice; Bruce Cabot, who with shaved scalp and scallock makes a perfect Magua, the renegade Indian spy; pretty Heather Angel as Cora the sister of Alice, whose death leap from the heights of Lover's Cliff is one of the big thrills of the picture; and Phillip Reed as Uncas, the "Last of the Mohicans."

Unforgettable Moments

Unforgettable moments in this unforgettable picture are the canoe chase, with Uncas guiding Cora to safety through a shower of enemy arrows; the French attack on Fort William Henry, last stronghold of the British and Americans; and the savage war-dance of the Huron tribe. "The Last of the Mohicans" is one of the great epics of the screen. To miss it is to skip a glowing and glorious page in film history—and to cheat yourself of a memorable evening's entertainment. The picture is showing today through Tuesday at the Yucca Theatre.

Dynamic Drama, "White Angel," Now At Ritz Theatre Here for Two-Day Stay

What is heralded as one of the outstanding productions of the screen, "The White Angel," a First National Picture portraying the life story of the immortal nurse, Florence Nightingale, is showing today and tomorrow at the Ritz Theatre, with Kay Francis in the stellar role. The picture paints in fiery drama the fight of Florence Nightingale, a wealthy English society girl, to remedy conditions in army field hospitals and the neglect of dying soldiers. All the tragedy and pathos of the battlefield is pictured in the film, as well as the beauty of the life of sacrifices of Florence Nightingale and her specially picked nurses.

The film is set in the middle of the last century during the Crimean war, and the most thrilling scenes take place at the base hospital at Scutari, a small Turkish town on the north shore of the Bosphorus, and at Balaclava, where the immortal six hundred of the Light

Brigade rode "into the jaws of death."

No more powerful nor romantic theme could have been selected by First National than that of the life of the great nurse who gave her all to humanity by revolutionizing the hospitalization system of the world, and whose efforts laid the groundwork for the establishment of the Red Cross.

The picture is enacted by an exceptionally talented cast of principals, with more than one thousand persons in extra roles. Ian Hunter, famous on the London stage and in films, and Donald Woods have the two leading masculine roles. Others in the cast include actors famous in America and abroad both on the stage and screen, among them being Nigel Bruce, Donald Crisp, Henry O'Neill, Billy Mauch, Charles Croker-King, Phoebe Foster, George Curzon, Georgia Caine, Ara Gerald, Halliwell, Hobbes, Ely Malynn, Lillian Cooper and Egon Brecher.

Midland High School Ranks High In Scholastic Standing, Survey Reveals

Comparison with representative high schools of the state reveals remarkable scholastic rating for the Midland institution, reference to the bulletin of the state department of education issued July, 1936 shows.

A compilation of entrance credits and enrollment of 46 schools from various sections of Texas, released recently by Midland school authorities, follows:

Table with 2 columns: School Name and Percentage. Includes Cre. H. S. En., Midland, Goose Creek, Marshall, McAllen, Wichita Falls, Brownwood, Texarkana, Nacogdoches, Cisco, Laredo, Kilgore, Longview, Big Spring, Plainview, Corsicana, Denton, Harlingen, Vernon, Iraan, Childress, Coleman, Henderson, San Angelo, Lamesa, Temple, Fort Stockton, Mineral Wells, Greenville, Colorado, Odessa, Ranger, Sweetwater.

GUARD AGAINST UNCERTAINTY PROTECT YOUR FAMILY with a GULF STATES LIFE INSURANCE POLICY. Money created by life insurance WILL PAY CURRENT BILLS, free your home of INDEBTEDNESS, give your wife a MONTHLY INCOME for a definite period and EDUCATE YOUR CHILDREN should YOUR FAMILY be left without YOU. PLAN YOUR LIFE INSURANCE PROGRAM TO FIT HARKRIDER AGENCY Branch Managers Scharbauer Hotel Phone 481

BOOSTING AND BUILDING FOR MIDLAND AND WEST TEXAS. And we join the other citizens of Midland in extending a cordial invitation to everybody to come to Midland October 2-10 for the Big Fair and Race Meet. ROCKWELL BROS. & CO. Midland, Texas

The Town Quack



(Reserves the right to "quack" about everything without taking a stand on anything).

We are branching out today, circulating this newspaper in a number of Permian Basin and New Mexico towns. We feel like we have just cause for this additional circulation. Our merchants are telling about their wares, which are not to be sneezed at. Our fair and race meet will soon be started and we draw heavily in attendance from the towns we are visiting today. Midland is a neighborly town and wants to play host to the people of other neighborly and neighboring towns. Come and see us neighbors. Be sure to come and see the races.

Midland—federal building under construction—streets being paved—a score of houses under construction costing from \$3,500 to maybe a hundred grand a piece—stores being brightened up—quarter of a million dollar's worth of new fall merchandise for sale—things fixing to pop open out at the race track—First National almost ready to move into new home, one or the most attractive banks in the state—school enrollment held down only by shortage of houses to take care of the would-be citizens.

J. W. McMillan went to Dallas and Fort Worth Saturday.

VISIT NICK'S CAFE Will Be Open DAY and NIGHT During The RACE MEET GOOD FOOD RIGHT PRICES 118 So. Main Midland, Texas

Yucca-Ritz Calendar YUCCA Today thru Tuesday "Last of The Mohicans" With Randolph Scott, Binnie Barnes. Wed. & Thurs. "The King Steps Out" With Grace Moore, Franchot Tone. Fri. & Sat. Gene Raymond, Ann Southern in "Walking On Air" RITZ Today and Tomorrow Kay Francis in "The White Angel" Tues. & Wed. "Three Married Men" with Roscoe Karns, Lynn Overman. Thursday "Don't Turn 'Em Loose" Fri. & Sat. Gene Autry in "The Singing Cowboy"

FIRST METHODIST CHURCH Chft M. Epps, Pastor W. Ily Pratt, Sunday School Supt. Mrs. DeLo Douglas, Choir Director 9:45 a. m.—Sunday school. 11:00 a. m.—Morning worship and sermon by the pastor. 6:30 p. m.—World Friendship club meets at the church under direction of Mrs. Frank Prothro. 6:45 p. m. Young People's Fellowship and League Services. 7:45 p. m. Evening worship and sermon by the pastor.

CHURCH OF CHRIST 10:00 a. m.—Sunday morning Bible study. 11:00 a. m.—Morning worship and sermon. 6:00 p. m.—Sunday evening service. 3:30 p. m. Tuesday Women's Bible class. 8:00 p. m. Wednesday—Midweek Bible study and prayer service.

Table with 2 columns: Name and Percentage. Includes Waxahachie, Cleburne, McCamey, Weatherford, Palestine, Wink, Crane, Eastland, Big Lake, Marfa, Pecos, Rankin, Monahans, Stanton.

Firestone IS THE PLACE TO HAVE YOUR CAR PREPARED FOR Fall Driving. LUBRICATION COMBINATION \$1.75 CHANGE TO FALL AND WINTER LUBRICANTS 25¢ PER LB. BRAKE COMBINATION \$1.95 You never saw so much tire for so little money! BATTERIES Firestone Batteries last longer—perform better and give economical service. 58¢ PER WEEK. BRAKE RELINE Positive brakes in any weather with long wearing Firestone Brake Lining. AS LOW AS 66¢ PER WEEK.

Welcome to Midland's Fair and Race Meet October 2-10 Firestone Auto Supply AND SERVICE STORES M. H. CRAWFORD, Manager 624 West Wall Midland, Texas Phone 586

Mrs. Billy Smith Honored By Mesdames Parks and Peck

Tea Shower Saturday Afternoon Is Compliment To Recent Midland Bride

The home of Mrs. Roy Parks was the scene of a lovely tea shower Saturday afternoon at 4 o'clock when Mrs. Hal Peck and Mrs. Roy Parks, as co-hostess, honored Mrs. W. C. Smith, formerly Miss Eddie Blanche Cowden, who was married to Mr. Bill Smith of Odessa over a week ago in Carlsbad, New Mexico.

The house was beautifully decorated in a profusion of cut flowers. Roses of various hues and pink dahlias predominated the floral setting for the table with its vases of deli-

cate pink rose buds, babies breath, and fern. The dining table, with its embroidered Venetian lace cloth, was an exquisite setting with the crystal candelabra holding long, white tapers whose lights were reflected in the lovely silver tea service.

As the bride entered, Mrs. Holt Jowell softly played a selection from Lohengrin's "Bridal March." Mrs. Foy Proctor sang "Love's Old Sweet Song," and "I Love You Truly."

The bride was charming in a black princess silhouette afternoon frock ornamented with rhinestone drops at the neck. Her accessories were black.

Little Jerelen Jowell, dressed like a miniature bride in trailing satin with a long veil and a bridal bouquet, presented the bride with a bolt of white ribbon, saying:

"Follow the ribbon and go to the back. And there you may find a great big pack."

After the gifts had been viewed, tea was served to the guests. Miss Ida Beth Cowden, who was dressed in an orange crash linen evening gown, embroidered in yellow, poured. She was assisted by Misses Evelyn Phillips and Margaret Miles.

The invitation list included Mesdames. Fount Armstrong Sr., B. H. Blake, Jessa Mae Cole, Harvey Conger, Hugh Corrigan, Clyde Cowden, Elliott Cowden, Frank Cowden, R. B. Cowden, Chunky Cowden, J. Crump, John Dublin, C. C. Duffey, Hayden Miles, Terry Elkin, Andrew Faskan, J. Fitzgerald, Fred H. Fur-

man, B. C. Girdley, C. M. Goldsmith, Fred Girdley, George Glass, Suzie G. Nobles, O. B. Holt, Barron Kidd, George McEntire, J. O. Nobles, Ben Black, George Phillips, Foy Proctor, Holt Jowell, Ida Rogers, Clarence Scharbauer, J. M. Speed, Thomas Lee Speed, Earl Ticknor, Bill Barbre, J. Tippet, Allen Tolbert, Harry Tolbert, Marvin Ulmer, Fred Wilcox, R. S. York, Joe Youngblood, Addison Wadley, Henry Wolcott, Mammie Stokes, Donald Hult, Charles Klapproth, Walter Cowden, A. C. Francis, Ralph Barron, Jay Magee, Glen Allen, Nash Tucker, and Mrs. Ellis Cowden, mother of the bride, and Mrs. Cal Smith, mother of the groom.

Misses Jean Bruer, Edna Mae Elkin, Jenny Elkin, Jessie Lou Armstrong, Elma Graves, Fannie Bess Taylor, Cordelia Taylor, Annabelle Youngblood, Lotta Williams, Leona McCormick, Mary Sue Cowden, Ida Beth Cowden, Margaret Miles and Evelyn Phillips.

Mrs. Lester Hostess To Bible Class

The Belmont Bible class met at the home of Mrs. A. W. Lester Friday afternoon.

Mrs. W. L. Fickett taught the lesson from the tenth chapter of Romans.

It was announced that the class would meet at the J. M. King ranch for an all-day picnic Saturday week and they urged that all the members be present.

Those who attended the Friday meeting were Mesdames W. L. Fickett, J. M. King, W. G. Attaway, Jimmie Gee, C. E. Strawn, Paul Smith, C. O. Fredregill, A. W. Lester, W. P. Collins, and the hostess.

Mr. and Mrs. J. H. McClure are the parents of a five pound, eleven ounce son, Joseph Hugh, who was born Saturday morning in a Midland hospital.

Miss McCormick Is Named Leader At Story Hour

The Story Hour met at 10 o'clock Saturday morning in the Junior Library of the County Court House, under the supervision of Miss Leona McCormick, who is succeeding Mrs. J. R. Ashley, who has moved from Midland.

Dan L. Del Homme told a story, Betty Ruth Pickering played a piano solo and told a story, and Charles Giles and Kathryn Carolyn Sensibaugh both told stories.

Those who attended were Patsy Ann Riley, Betty Jean Painter, Jane McCain, Pauline Wyrick, Billie Joyce-McCain, Eleanor Clarie Eastham, John Smith Cassleman, Carol Cassleman, Mary Nell McClure, Charlie Patterson, Jane Patterson, Billy Elkin, Walter Lee Sutton, Dan L. Del Homme Jr., Robert Edwin Sutton, Charles Wayne Sutton, Kathryn Carolyn Sensibaugh, Mary Martha Sivalls, La Verne Vaughan, Joan Vaughan, Jeanette Vaughan, Lily Jean Vaughan, Margaret Mims, Betty Ruth Pickering, Joan Eloise Bond, Charles Giles, Wilda Bond and Peggy Sue Riley.

Roy Holloway has returned from Dallas and Mineral Wells. He was accompanied by Burger Byant, who remained in Dallas.

North Ward P. T. A. Elects New Officers

The North Ward P. T. A. met Friday afternoon for their first organization and business meeting of the year.

The following officers were elected for this year: Mrs. R. W. Hamilton, president; Mrs. J. P. Butler, vice-president; Mrs. Earl Moran, Secretary; and Mrs. Ralph Barron, treasurer.

Mrs. Hamilton, the new president opened the program, and expressed appreciation for the services that Mrs. Harvey Harrison rendered during the past year during her presidency.

The problem of traffic in front of the school was discussed, and a committee was appointed to arrange for the street safety. It consisted of Mesdames J. L. Greene, Bob Norris, and Harvey Harrison. Mrs. Alma Thomas, principal of the school, reported on the business affairs left over from 1935, and Mrs. R. W. Hamilton read a paper on "Parentship of School and Home."

The following heads of committees were appointed: Program: Mrs. Bob O'Rourke. Membership: Mrs. J. J. Kelley. Publication and Publicity: Mrs. T. D. Klmbrough. Hospitality: Mrs. Don Sivalls. Finance: Mrs. Bob Tucker.

Miss Leona McCormick
Teacher of Expression
Specializing in Pre-School Children
Studio 217 West Tennessee Telephone 271

DELICIOUS DELICATESSEN MENU

FOR Monday, September 21

- BARBECUE, Boneless, delicious flavor, lb. 30¢
- SHORT RIBS, Per pound 25¢
- MACARONI & CHEESE, Carton 15¢
- BAKED APPLES, Cinnamon flavored, each 5¢
- STUFFED PEPPERS, Baked a golden brown, lb. 20¢
- GREAT NORTHERN BEANS, Pint 15¢
- HOME MADE CHILI, Mexican style, pound 23¢
- FRESH GREEN BEANS, Pint 15¢

WES-TEX FOOD MARKET

Phone 228 • We Deliver



THOUSANDS OF MIDLAND PEOPLE

Enjoy the comforts and added pleasures afforded them by sending their laundry to us.

WE WANT YOU TO KNOW THAT WE APPRECIATE YOUR PATRONAGE

PHONE 90
MIDLAND STEAM LAUNDRY
Fastest and Best Service in West Texas

325 Rooms

--- Dedicated To Your Pleasure



The NUECES

Largest and finest of hotels in South Texas. This beautiful hotel is ideally located in the heart of the city and right on the edge of Corpus Christi Bay. It is the center of civic and commercial activities, unrivalled in appointments and with a standard of excellence in accommodations that has met with the approval of the public for many years . . . WEST TEXAS VISITORS, WE WELCOME YOU . . .

Dining and Dancing

Best Wishes for Midland's Fall Fair Race Meet and Feeder Calf Show

every night at the Nueces Hotel to the Music of Dub Stewart's Nueces Hotel Orchestra. The far famed culinary department of this hotel is known from coast to coast . . . and you need pay no more for the enjoyment of dancing to the sweet music of this excellent dance band while you enjoy a fine meal, charmingly served. Adjacent to the hotel is the ever famous Tropical Garden where your evening meal is served out on the lawn 'neath a canopy of moon and stars amid the tropical plants.

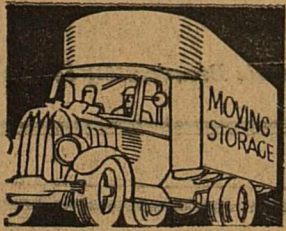
NUECES HOTEL

CORPUS CHRISTI, TEXAS

"Your Host on the Coast"

Arthur G. Jury, Manager

WHEN YOU MOVE DO IT THE MODERN WAY



JUST PHONE 400

Midland, Texas

For One Of J. B. ROCKY FORD'S MODERN VANS

BONDED And INSURED

LOCAL and LONG DISTANCE MOVING

We shall be glad to have you inspect our modern vans at

111 West Wall Midland

We Offer The Best in Beauty Services



at Most Moderate Prices

- Finger waves . . . 25¢
- Soap Shampoo . . . 25¢
- Oil Shampoo (with Massage) 50¢
- Tonics 25¢
- Rinses 25¢
- Lemon Rinse (highly concentrated) 10¢
- (Vinegar Rinses used freely)
- Arch 25¢
- Eyebrow, eyelash dye (with arch) . . . \$1
- Facials (beginning at) \$1
- Manicure (Revlon Cream Enamels used) 50¢
- Permanents from \$7.50 to \$2.00
- End-Curl Ringlets, each 25¢

For HENNA PACKS and CLAIROIL TREATMENTS

Call for Information.

BE BEAUTY WISE AND BEAUTY SERVICED

At one of the following shops:

- OUR BEAUTY SHOP Phone 822
- LLANO BEAUTY SHOP Phone 273
- PETROLEUM BEAUTY SHOP Phone 970



PROFITS through CREDIT...

MANY individuals and firms are finding that they can use bank credit profitably today to finance their seasonal requirements, to discount their bills, or to take care of other legitimate needs.

This Bank has money to lend and is actively seeking loans in accordance with sound banking principles that consider the safety for the depositor foremost—but also the welfare of the community, profits for the borrower and earnings for the bank, each in its proper light. Why not discuss your requirements with us—we may be able to make some useful suggestions.

THE MIDLAND NATIONAL BANK
Midland, Texas



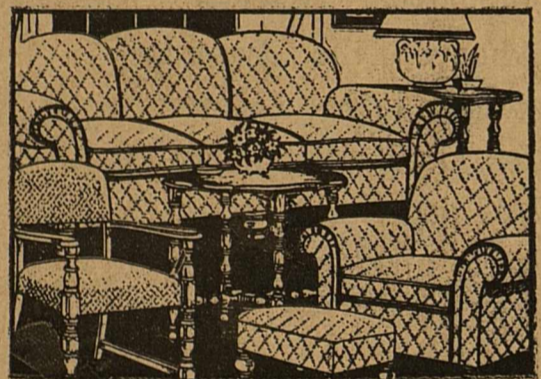
We Especially Invite You...

TO COME TO THE
FAIR & RACE MEET
October 2-10

And while in Midland, we extend a most cordial welcome to you to visit our board room... our high-speed ticker brings you the latest market quotations... our statistical information supplies you with the latest markets... we shall be glad to give you advice and recommendations.

H. O. BEDFORD & CO.

EDW. P. LAMAR, Resident Manager
302 Petroleum Bldg. Phone 408



FURNITURE AT "NEAR FACTORY PRICES"

Special arrangements have been made whereby Sample Suites and Odd Pieces from several factories and wholesale houses may be shown on our floors and sold as "Factory Samples" at prices which will mean a saving to you from 20 to 40 per cent.

• Every piece of furniture shown is of the very latest pattern and only by seeing this display can you appreciate the great saving you can make. Here are a few items...

- BED ROOM SUITE, consisting of Vanity, Bench, Chest and Bed. A heavy well-made suite finished in walnut, artistically designed and a suite that usually sells for around \$40.00. Our "Factory Sample" **\$29.95**
- LIVING ROOM SUITE, Divan and Club Chair in very good grade Mohair all over except Jacquard reverses on cushions, an \$87.50 value. Our "Factory Sample" **\$49.75**
- SIMMONS INNERSPRING MATTRESS, heavy blue and white stripe ticking, both full size and Half size **\$14.95**
- OCCASIONAL CHAIRS, both sag seats and spring seats in nice assortment of covers. **\$4.95**
- DINETTE SUITES, extension table and 4 chairs in walnuts, Oaks and Maples **\$14.95**
- Priced at \$29.75, \$21.50, \$19.75 and
- LINOLEUM RUGS, 9x12 size **\$5.95**
- (Other room sizes in proportion)
- LINOLEUM BY THE YARD, Both 6 feet, and 9 feet width **49c**
- BREAKFAST ROOM SUITES, Table and 4 chairs, up from **\$8.95**

Perfection Ranges and Heaters, Boone Kitchen Cabinets, Lawson Gas Heaters, and many other well known brands of Merchandise at Bargain prices. Come, see and be convinced.

We Deliver to Nearby Towns
Upham Furniture Co.
On The Highway • 615 West Wall

FORTUNE PLACES CITY IN MIDDLE OF ALL ACTIVITY

Only 23 Miles From Production In Ector

Geographically located practically in the center of the West Texas and Southeast New Mexico Permian Basin oil fields, the City of Midland accordingly enjoys the distinction of being the headquarters for oil operations in this region, in area the largest oil-producing district in the world.

Twenty-three miles from the nearest producing oil wells, those in the Foster pool near Odessa in Ector county, Midland has attracted professional workers in all branches of the oil industry with the exception of the drillers and helpers employed on drilling wells. The Midland telephone directory lists more than fifty oil companies, including almost every major company operating in West Texas as well as a number of independent oil operators. The Petroleum Building and the Thomas Building rent the great majority of their office space to oil companies. The major companies operating out of Midland and many of the smaller ones, maintain complete staffs here in their land, geological, production and scouting departments.

A favorite gathering place for traders and lease men, the lobby of the Scharbauer Hotel is the scene of oil deals involving millions of dollars annually. At almost an hour of the day or night, the Scharbauer lobby may be found crowded with oil men—and their compatriots, the cattlemen.

As one approaches Midland from the east, he is impressed by the rows of oil tanks maintained in tank farms by three of the major pipe-line companies. At one time,

Society and Clubs

Junior League Has Program Sunday

The Junior League of the First Methodist church will meet at 6 o'clock at the church Sunday evening for their weekly program.

The leader of the program for this week will be Kenneth Taylor. The program will begin with a psalm, No. 229, scripture, 23 and 23 psalm and prayer.

Noreen Barber will tell a story, Louise Pitman will read a poem, and Juanita Boyette will tell a story. The program will close with a song on page 25, the roll call, and benediction.

Evangel Class Meets For Business Lunch

The nine officers of the Evangel class of the First Baptist church met with Mrs. Leggett at her home for a luncheon and a business meeting Friday. They discussed the plans for the coming year.

The Midland tank farm of the Magnolia Pipe Line Co. had the greatest storage space of any in the world.

Among the many businesses directly connected with the oil industry in Midland may be found the following: Abstractors, oil well acid-treating companies, oil lease attorneys, blue-printing and map companies, drilling-contractors, nitroglycerin and torpedo companies, oil well supply companies, tool companies, derrick companies and tank companies.

With its tremendous proven reserves and many oil pools yet to be discovered, the Permian Basin will continue, according to observers, for years as one of the major oil provinces of the world. Recent discoveries have indicated that the area will continue to undergo development as intense as any in its history.

Announcement

Monday
The Presbyterian Auxiliary Bible Study will meet at the Presbyterian church at 3:30 Monday afternoon. Mrs. O. L. Wood will be the teacher.

The Mary Scharbauer circle of the First Methodist church will meet Monday afternoon at 3 o'clock for Watson.

The Belle Bennett circle of the First Methodist church will meet at the home of Mrs. J. H. Rhoden, 1402 W. Ohio Monday afternoon at 3 o'clock for Mission Study lesson.

All circles of the W. M. U. will meet at the First Baptist church Monday afternoon at 3 o'clock for the regular business session and election of officers for the year. The time is changed from 3:30 to 3 o'clock in order that those ladies who wish to attend the lecture at the Christian church may do so.

Tuesday
The Delphin Study club will meet at 9 o'clock Tuesday morning in the private dining room of the hotel Scharbauer.

The Lucky 13 club will meet at the home of Mrs. H. S. Collins Tuesday evening at eight o'clock. They will entertain their husbands at this social.

Wednesday
Mrs. Joe Ballanfonte will entertain the Bien Amigos club in the private dining room of the Hotel Scharbauer at 2:30 p. m.

Saturday
The Story Hour will meet in the Junior Library at 10 o'clock Saturday morning.

Collared lizards can run on their hind legs for a distance of 30 yards or more.

CHURCH OF CHRIST

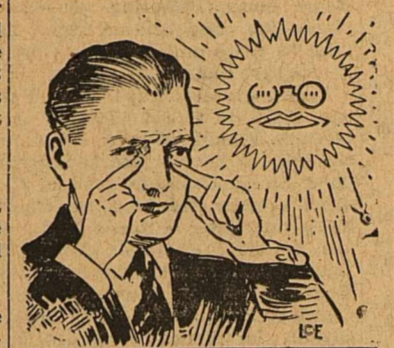
10:00 a. m. Sunday morning Bible study.
11:00 a. m. Morning worship and sermon.
7:30 p. m. Sunday evening service.
3:30 p. m. Tuesday Women's Bible class.
8:00 p. m. Wednesday, Midweek Bible Study and prayer service.

It is said that two-thirds of all known kinds of creatures can glide or fly through the air.

Great fires sometimes create clouds and enough rain to extinguish themselves.

James H. Goodman

Attorney-At-Law
512 Petroleum Bldg. Phone 620
Midland, Texas



POINTING OUT THE TROUBLE

Delays are dangerous to the eyes and to your health. Our examination is one that is dependable because it is scientific and analytical.

Dr. W. L. Sutton

OPHTHOMETRIST
203 Thomas Bldg.
Office Ph. 146—Res. Ph. 810-J

TONIGHT! THE FORD SUNDAY EVENING HOUR

JOHN CHARLES THOMAS, BARITONE
GUEST ARTIST

SYMPHONY ORCHESTRA OF 70
FRITZ REINER, Conductor
TALK BY W. J. CAMERON
7 to 8 o'clock, C. S. T.

KMOX

COMING SOLOISTS

- September 27 : : : : : Mischa Elman, *Violinist*
- October 4 : : : : : Josephine Antoine, *Coloratura Soprano*
- October 11 : : : : : Kirsten Flagstad, *Soprano*
- October 18 : : : : : Gladys Swarthout, *Mezzo-Soprano*
- October 25 : : : : : Richard Bonelli, *Baritone*
- November 1 : : : : : Harold Bauer, *Pianist*
- November 8 : : : : : Lily Pons, *Coloratura Soprano*
- November 15 : : : : : Jose Iturbi, *Pianist*
- November 22 : : : : : Richard Crooks, *Tenor*
- November 29 : : : : : Ezio Pinza, *Basso*

Coast to Coast • Columbia Broadcasting System

BUILDING PERMITS IN CITY DURING YEAR RIVAL 'BOOM DAY' ERA HERE

25 Issued In Less Than Month Sends Total Soaring to New High

Building permits in Midland have probably been higher in the last year than any town approximating it in size in the state.

Business houses and residences have acquired permits for rebuilding or remodeling at a rate that has reached one a day at times.

Within the past 34 days 25 construction permits have been issued totaling \$63,750. And many more buildings now under construction have yet to file for their permits.

The permits are not a necessity until registering for utility installations and many persons wait until that time ere demanding the permits.

Several "show place" residences are being built in the town. The construction permit alone on the Turner residence in West Midland calls for \$30,000 and several \$7,500 and \$10,000 residences are being built while others are contemplated.

One company in the city is contemplating the erection of 30 residences at an approximate cost of \$90,000, thereby bringing the total for the year to one of the highest yet recorded.

Permits have yet to be recorded on the new postoffice, a \$60,000 structure, and on the new school building. While work has not yet begun on the school building, it is expected to be a \$75,000 structure as bonds for that amount were voted by Midland county voters.

Prices on the various houses being constructed in the various parts of town range from \$500 "shacks" to \$30,000.

The general cost of the many residences being constructed in the city averages approximately \$3,000. Most of them are of frame or stucco material, however, many higher priced brick homes are being built in various parts of the city.

More than three fourths of the land in the United States is subject to soil erosion, due to its slope. Mistletoe was known to the Druids as "all-heal"; they regarded it as a cure for all diseases.



The New Hats are Revealing... Only a Meticulous Hair-Dress Can do your new hat justice. Our Permanents and finger waves are the answer—

- DUART
- EUGENE PERMANENT
- NU-PAD
- NUTRI-TONIC
- KALOR MACHINELESS

GLADYS BEAUTY SHOPPE
517 EAST HIGHWAY PHONE 438

TRI-STATE FAIR

Amarillo, September 21-26
FREE GATE

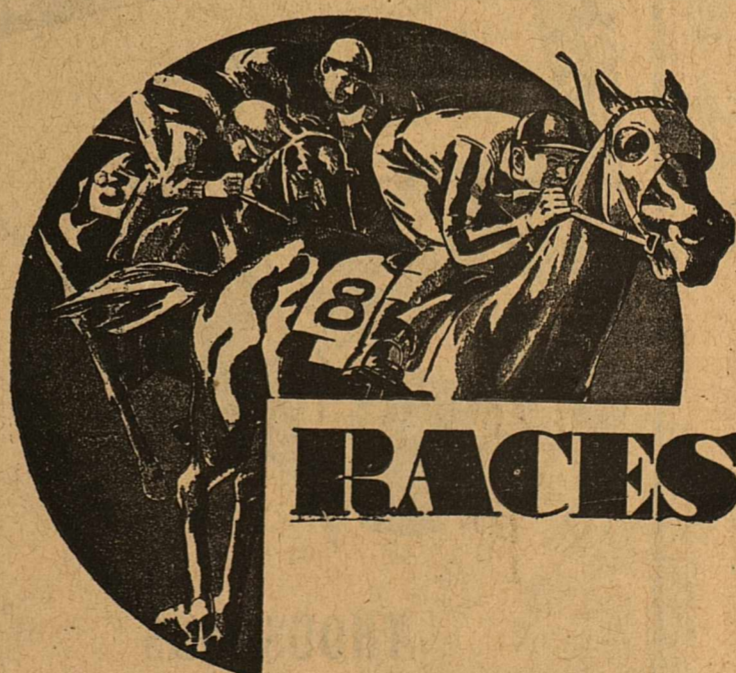
Texas' Biggest Regional Fair
UNITED SHOWS
On The Midway!
Largest carnival in history... new shows... new rides... new thrills!

HEREFORD SHOW
Exhibit of America's finest beef cattle — \$5,000.00 in cash premiums.

HORSE RACES
SEPT. 18-26 (Excepting Sunday) 8 BIG DAYS
8 races daily—\$10,000.00 in purses — 400 fine horses. Post time, 2 P. M. Legalized wagering. Admission to grandstand, 50c.

GIGANTIC EXHIBITS
Livestock, poultry, agricultural, merchandise, machinery, domestic art and school displays.

BIGGER AND BETTER THAN EVER
GENE HOWE, Pres. O. L. TAYLOR, Secy.-Mgr.



RACES

8 Big Days OF RACING
\$8,000.00 IN Purses
FEEDER CALF SALE

IT WILL BE THE BIGGEST MEET EVER HELD IN WEST TEXAS

WHEN YOU ARE IN MIDLAND

We shall appreciate it very much if you will come into our store... We want to make your acquaintance and show you in particular our ultra-modern Market...

Wes-Tex Food Market

MIDLAND, TEXAS

Cattlemen to Hold Sway October 7-8 at Fair Here

THOUSAND HEAD CALVES GO THE AUCTION ROUTE

Executive Committee
Of Cattle Ass'n.
To Meet Here

AWARDS LISTED

Races, Dance, Chuck
Wagon Feed to Be
Entertainment

Approximately 1,000 head of feeder cattle, mostly steer calves, from leading range herds of the Midland section, will be shown and sold in car load lots at the annual feeder calf sale of Midland Fair, Inc., October 7. Twenty loads or more of choice calves will be in the sale, with Earl Gartin serving as auctioneer.

The cattle will be typical of 20,000

head which are available on ranches of the Midland area, and cattlemen have announced that they will be glad to drive visitors to any ranch to inspect additional herds.

Coupled with the sale will be "Cattlemen's Days" at the fair's fall race meet. The meet begins October 2, with eight days of racing through October 10, and the dates of October 7 and 8 have been designated to honor visiting cattlemen from a wide territory.

Program Outlined

The executive committee of the Texas & Outwestern Cattle Raisers' Association will hold its meeting, and the cattlemen's program has been mapped out as follows:

Wednesday, October 7: 10 a. m., feeder calf sale (Midland Fair auction ring); 2 p. m., horse races; 10 p. m., Cattlemen's dance, Crystal Ball Room, Hotel Scharbauer.

Thursday, October 8: 9 a. m., Meeting of executive committee Texas & Southwestern Cattle Raisers' Association, Hotel Scharbauer; 12 noon, chuck wagon dinner, honoring visiting cattlemen, Roy Parks ranch; 2 p. m., horse races.

It was expected that all calves for the sale would be signed up this week. Those already entered follow: Steer calves, Scharbauer Cattle Co., two loads; calves, W. W. Brunson,

one load; Roy Parks, one load; Rattiff and Bedford, one load; Midland Farms Co., one load; Foy Proctor, one load; Free Bird, one load; George W. Glass, one load; O. B. Holt, one load; and H. H. Wilkinson, Fort Worth, one load from his ranch between Midland and Big Spring.

Heifer calves, Donald Hutt, one load; E. B. Dickenson, one load. Yearlings, Leonard Proctor, one load of steers; Wilson Bryant, one load of steers and one load of heifers, produced by Guy Cowden.

Prizes Listed

Prizes in the feeder cattle show to be held the same morning as the sale, follow:

Steer calves—first and grand champion load, \$100 saddle donated by the Agricultural Livestock Finance Corporation, Fort Worth; second, \$75 suit of clothing given by Stonestreet & Davis, Fort Worth; third, 3-foot Axtell windmill given by The Axtell Co., Ft. Worth.

Heifer calves—first, \$75 watch given by First National Bank, Ft. Worth; second, 5-x Beaver Stetson hat.

Steer Yearlings—first, 1,000 doses of Globe blackleg serum, given by Globe Laboratories, Fort Worth; second, first quality Gladstone bag.

THE SPORTS HORN

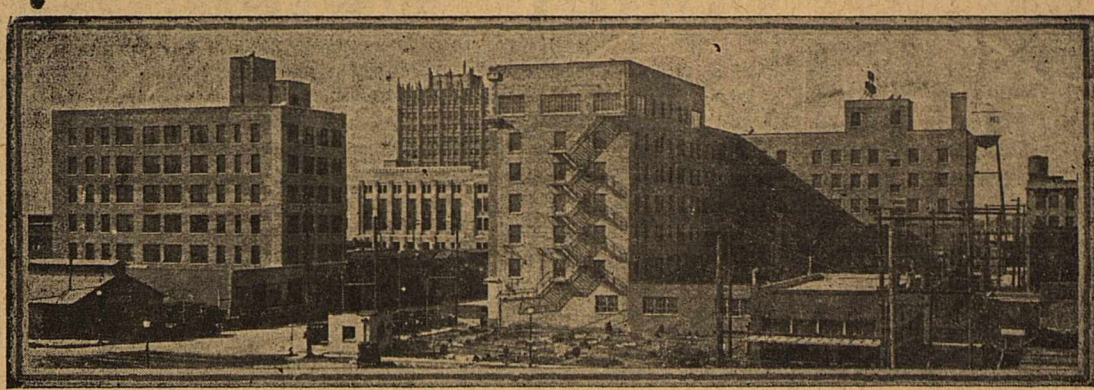
BY JESS RODGERS

SPORTS FODDER

"King Football" is about to take the throne again! In a poll of eastern gridiron tutors and almost unanimous opinion was found that this coming season will see a decided movement toward more deceptive plays, more spread formations, and more forward and lateral passes. Last season more than 45,000,000 tickets were sold for college and high school games and there are reasons to believe this figure will be surpassed in the coming season. Tommy Armour and Bobby Cruickshank, who have made golfing history in this country, were boyhood pals in Scotland and met frequently as the No. 1 boys of their

respective school teams—Harold (Speed) Johnson, whose "Who's Who in Baseball" books are well known to every fan, was "top" baseball scribe for the Chicago American newspaper for years and years. New York sports scribes back from Berlin, Germany, where they "covered" the recent Olympic Games, seem to have caught the "black shirt" craze over there. Water golf played from tiny boats was first introduced in the swimming pool of the Miami Biltmore Country Club in the Coral Gables, Fla.—The Cubs have won 14 games on Thursday this season—Johnny Wood, Pittsburgh's "pinch-kicking" back, can outkick most of the other booters on Jock Sutherland's squad bare-footed! Italian sporting fans in this country can get ready to cheer another star from Italy this fall—Tazio Nuvolari, racing driver who will compete in the 400-mile Vanderbilt cup race at the new Roosevelt Raceway here Columbus Day—George Jacobus, president of the P. G. A., in 1925 held the unofficial world's record for long driving, a 392-yard poke made just after a heavy rain storm. In a recent article Coach Charles (Trusty) Tallman, of West Virginia University, and Charles Atlas, noted authority on care and physical development of the body, urged more stringent and extensive tests of the physical qualifications of high school boys as football candidates to reduce deaths and injury tolls—Henry Picard is pro at four separate golf courses at Hershey, Pa., one of which is exclusively for boys and girls, the only one of its kind in the country. New York department stores are reported to have purchased \$1,000,000 in equipment with expectations of a boom in the ski sport—Jack Dempsey's taking up golf and his tutor is Babe Ruth! Pop Warner starts his forty-second season mailing out calls to Temple gridiron regulars—Bob Wilson S. M. U. All-American halfback, has been signed by the Brooklyn Dodgers pro eleven—Racegoers wagered \$580,436 on the final days at Arlington Park—Johnny Buckley, manager of Jack Sharkey, says that the Boston Gob grossed almost \$3,000,000 in the ring—For the first time in Temple's football history a gridder will sport No. 13 this fall—And the jersey goes to Pete Smith, leading candidate for the left halfback position.

The London directory contains the names of about 250 dealers in catmeat.



THE City of Midland Chamber of Commerce

Extends
A
Cordial Invitation
To You

TO COME TO MIDLAND
OCTOBER 2-10

FOR THE
Feeder Calf Sale
AND
Fall Race Meet

THE WORLD'S FINEST
HEREFORD CALVES
WILL BE SOLD AT AUCTION IN CARLOAD LOTS

8 DAYS OF RACING
\$8,000.00 IN PURSES

\$1,000.00 Added Merchants'
Handicap

SATURDAY, OCTOBER 10

MIDLAND AFFORDS YOU

The Very Best Hotel and Restaurant Accommodations for Your Visit During
The Fair!

Yucca TODAY THROUGH TUESDAY

ALREADY HAILED AS THE MOST OUTSTANDING

MID-TEX DINNER CLUB

Halfway Between Midland and Odessa

SUNDAY MENU

- \$1.00 TABLE D'HOTE DINNER \$1.00
- COCKTAIL
- CELERY AND MIXED OLIVES
- ENTREES
- MID-TEX SPECIAL STEAK BROILED
- HALF SPRING CHICKEN FRIED (Mama Hand Style)
- VEGETABLES
- GARDEN PEAS IN BUTTER
- DEMA FRENCH POTATOES
- HOT ROLLS
- SALAD
- LETTUCE AND TOMATO—1000 ISLE DRESSING
- DRINKS
- COFFEE TEA MILK
- DESSERT
- JELLO
- ROQUEFORT, CAMENBERRY and SWISS CHEESE
- WATER CRACKERS

Fall Dry Cleaning AT Fair Prices

Cash and Carry Prices

- Plain Dresses Cleaned and Pressed 50¢
- Ladies' Plain O'Coats, Cleaned and Pressed 50¢
- Bath Robes, Cleaned and Pressed 50¢
- Plain Skirts, Cleaned and Pressed 25¢
- Swagger Suits, Cleaned and Pressed 75¢
- Fur Trimmed Coats, Cleaned and Pressed and Fur Oiled and Glazed \$1.00
- Suede Jackets, Cleaned and Pressed \$1.00
- Men's Suits, Cleaned and Pressed 50¢
- Trousers, Cleaned and Pressed 25¢
- Top Coats, Cleaned and Pressed 50¢
- Heavyweight Overcoats, Cleaned and Pressed 75¢
- All other prices in proportion

Take advantage of these Low Prices and give your wardrobe a thorough cleaning. Sheen-Glo Quality.

PETROLEUM DRY CLEANERS

First Door North of Yucca Theater
PHONE 1010

RITZ TODAY AND TOMORROW

MERCY MADE HER
Immortal!
Her nation gave her glory!

KAY
FRANCIS
portraying the great Florence Nightingale in
"THE WHITE ANGEL"

with
Donald WOODS
Ian HUNTER
Warner Bros.-First National Picture

Added
Popeye The Sailor
—in—
Never Kick a Woman
also
Paramount News

WAFFORD LEADS BULLDOGS TO 26-6 WIN OVER BIG LAKE OWLS

Ginning At Standstill Over Week-End After Picking Delayed by The Rains

Midland county cotton which has been opening briskly for two weeks, came to a standstill in the fields on account of the rains and no ginning was done at all for the latter part of the week. Ginner's predicted that

the open cotton would dry out enough for picking to be resumed Monday, unless further rains set in. Previous optimistic estimates of the year's crop set at approximately

5,000 bales, were beginning to rise in street talk heard Saturday after all the farming area had received rains of from two to five inches. Although some cotton was damaged by the wet spell, most of it was given a chance to grow larger bolls and longer staple, thereby substantially increasing the income of the farmers of this section. Total ginnings at Midland last year exceeded 6,000 bales and it was believed that the late rains would give the 1936 crop an opportunity to approach that mark, with strong possibility of turning greater revenue in to the growers.

Ginnings of 1936 cotton, up to the time the rains set in Thursday, were as follows:

Farmer's Co-Op Society	81
Midland Co-Op Society	66
Williams and Miller	60
Total (Bales)	207

Fifty thousand people are occupied in the radio industry in England.

As a mode of greeting, Israelites of old bowed to the ground seven times.

The Chinese sometimes use grated raw potato as a substitute for soap.

ACCOUNTS FOR ALL SCORES OF LOCALS DURING THE GAME

Mates Pave Way With Hard Blocking, Tackling

Wafford 26, Big Lake 6.

That just about sums up the initial football game of the season here Friday night between the Midland Bulldogs and the Big Lake Owls.

The giant Midland quarterback was a human battering ram all night and nothing the invading club could do was able enough to stop his rampaging. He made 256 yards, three times as much as the entire Owl backfield!

Wafford made the entire Midland total, plowing over and around the Big Lake line for four touchdowns and kicking a couple of extra points across.

He had a lot of assistance from his mates, particularly from Adams and English, but whenever he got to the line of scrimmage he used brute strength to fight his way into the clear, and once there, there was very little light but hard-fighting Owls could do about it.

The visitors made their best impression the first time they got their hands on the ball, driving from their own 37 to the Midland 20 before the locals could stop the speed tactics of Morton and Whitney. But from that time on they were kept strictly on the defense and never making a serious threat to cross the goal except for their touchdown. This came late in the last quarter when Harris, Big Lake end, intercepted one of Wafford's long heaves and raced 45 yards for the tally.

The Bulldogs scored in every quarter, the first score coming about midway of the first period when Wafford and Barber advanced the ball to the Big Lake 4 on a series of line plunges and end runs with Wafford going over the middle of the line for the pay-off.

Wafford's punting was the direct cause of the second tally. He placed a well directed boot into the ball and bounced it out on the three yard line of the invaders, Whitney then kicked out of bounds on his own 33. On his first play Wafford went around his right tackle, cut back into the center of the Big Lake second line, wiggled loose from several would be tacklers, stiff-armed others and raced across the goal. He bucked across the extra point.

Rettig set the ball up for the third score when he returned one of Whitney's punts from Big Lake 45 to 32. It took Wafford exactly one play to travel from that point across the goal. Once more the plowed through for the extra tally.

The last Midland tally came when Wafford and Barber once more advanced the ball to shadows of the goal, Wafford plowing across from the 5 yard stripe.

The Bulldogs failed to cash in on their opportunities several times, in their anxiety to roll up the score drawing no less than six 15 yard penalties and five for five yards.

Bulldog ball carriers did not often have the blocking needed after reaching the opposing secondary, but the line was opening large holes for the backs almost on every play.

Lack of experience was demonstrated by the linemen and back but all indicators point to their developing into one of the best clubs Midland has had in several years.

Several substitutes rushed into the game at various periods by Baumgarten showed just as much stuff as did the so-called regulars; and no particularly weak spots on the club were noticeable.

Wafford was wild with his passes several times but that is a matter that time will straighten out. On all attempts he received perfect block-

Pecos, Kermit Will Oppose 'Dogs During Midland Fair Week

Two important, league football games, both of which will doubtless have a direct bearing on the outcome of this district will be played on Lacker Field here during the staging of the fall race meet of Midland Fair, Inc., October 2-10, thereby adding to the feature attractions of the fall celebrations.

The tiffs, which will match the Midland Bulldogs against the fast Pecos Eagles and the strong Kermit club, will both be played at night on the well lighted athletic field of Midland high school.

The first of the two tussles will be played on Friday evening, October 2, the opening day of the race meet, the potentially strong Midland Bulldogs of Coaches Maurice 'Dutch' Baumgarten and Bud Taylor defending their own backyard against the invading Pecos Eagles of Coach Buddy Withers. On the following Friday evening, October 9, the Kermit eleven will come to the local grid for a bout with the Bulldogs. Special days have been designated at the race meet to honor the visiting race horse and football fans of Pecos and Kermit on the days of the two games, October 2 having been designated Pecos Day, and October 9 having been designated as Kermit Day. Large crowds are expected to flock here from the two towns on their special days.

The Pecos Eagles have always been strong contenders for championship honors in this district, and this year is apparently no different from the rest. Coach Withers has a veteran team back this year, and the Pecos fans are seeing visions of district and perhaps bi-district honors.

Friday's Results

CLASS B FOOTBALL

- May 0, Rising Star 21.
- Troup 0, Winsboro 12.
- Marfa 6, Ft. Davis 14.
- Aransas Pass 12, Beeville 0.
- Mart 22, Teague 0.
- Van 33, Forney 0.
- Hamlin 6, Winters 19.

ing from his mates, never being rushed to any noticeable degree. Inability of the eligible receivers to get into the open was the cause of several attempts failing.

Line-ups, scoring.

The starting line-ups:

Lawson	L.E.	Harris
Adams	L.T.	Cooper
Mitchell	L.G.	Pettit
Wimberley	C.	Maxwell
Cowan	R.G.	Parish
English	R.T.	Carr
Rountree	R.E.	Thorn
Wafford	L.H.	Lindley
Barber	R.H.	Morton
Taylor	F.B.	Whitney
Rettig	Q.B.	Rackley

OFFICIALS:
Referee: Taylor M. Rushing—Northwestern University, Georgetown.

Umpire: B. C. Henderson—Austin College, Sherman, Texas.

Head Linesman: K. D. Starnes—Sul Ross, Alpine, Texas.

Score by periods:
Midland 6 7 7 6—26
Big Lake 0 0 0 6—6

Scoring touchdowns, Wafford (4) —Harris (1). Points after touchdown, Wafford (2).

Yards from scrimmage: Midland 305, Big Lake 86. Midland attempted 14 passes, completed 5 for 55, intercepted 3. Big Lake attempted 11, completed 3 for 25, intercepted 1. First downs: Midland 17, Big Lake 6.

Midland punted five times for an average of 38 1/2 yards; Big Lake punted six times for an average of 30 yards.

Penalties—Midland 10 for 125 yards; Big Lake five for 35 yards.

MONAHANS TURNS POWER ON RANKIN FOR 67-0 VICTORY

MONAHANS, Sept. 19. (Spl.)—The Monahans high school Lobos turned the power on the Rankin district eight team here Saturday afternoon, defeating them by the overwhelming score of 67-0.

The outstanding star of the game was Leroy Hary, all-district quarterback last year, who scored four touchdowns on dashes of 30 yards or more.

Elithorpe scored once, Donaldson three times and Yates once. The club scored three touchdowns in the first quarter, three in the second and two each in the last two periods. The Monahans second string played the entire second half of the game.

The game was the first for the year for both teams.

- Rockport 0, Refugio 39.
- Tahoka 0, Littlefield 43.
- Farwell 13, Amherst 6.
- Levelland 0, Brownfield 8.
- Loraine 0, Post 13.
- Olton 0, Lamesa 45.
- Olney 7, Newcastle 0.
- Graham 24, Jacksboro 0.

CLASS A FOOTBALL

- Breckenridge 6, Paschal 6.
- Mineral Wells 12, Eastland 0.
- Central High, Okla. City 26, Pampa 0.
- Plainview 27, Tulia 6.
- Greenville 0, Dallas Tech 6.
- Harlingen 6, Corpus Christi 25.
- Plano 0, McKinney 13.
- London 0, Kilgore 21.
- Jacksonville 6, Tyler 26.
- Stripling (Fort Worth) 18, DeWitt 9.

- Masonic Home 6, Wichita Falls 0.
- Quanah-Eldorado, Postponed.
- Electra - Cisco, Postponed.
- Mexia 0, Waco 32.
- Austin 6, Cleburne 19.
- Jeff Davis 7, Temple 33.

The sun is 750 times as great as the combined mass of all solar planets and their satellites.

Gopher Coach Is Worried Over Who Will Direct Club

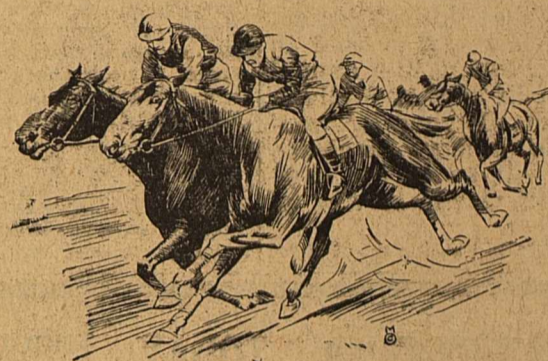
MINNEAPOLIS, (U.P.)—The mighty Golden Gophers of the University of Minnesota enter the 1936 grid campaign minus seven of last fall's veterans but with an abundance of power and reserve material.

Theoretically, it will be difficult for Coach Bernie Bierman to catch up the reins where they fell last autumn, when the Norsemen annexed their second consecutive national title by drubbing Wisconsin, 33 to 7.

Dick Smith, all-American tackle, Vernon Oech, guard, and Dale Rennebohm, center, are missing from the forward wall, while George Roscoe, Vernal Le Voir, Sheldon Beise and Glenn Seidel are gone from the backfield.

Come To Midland

OCTOBER 2-10

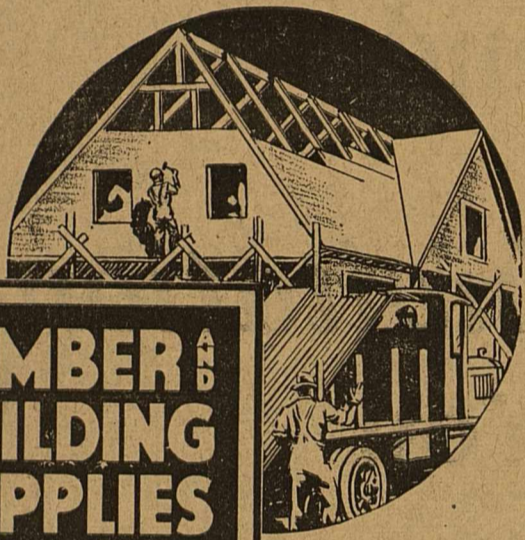


appetizing lunches or short

VISIT THE CRAWFORD Coffee Shop

Open All Night

BIG SPRING, TEXAS



TO ANSWER EVERY BUILDER'S NEEDS

A Reference And Price File On Hundreds of Special Items.

BUILD IN MIDLAND

"The Oil Hub of Western Texas"

Good Schools, Churches and Mercantile Stores. Let us Build it for You.

A. & L. HOUSING AND LUMBER CO.

Phone 149

Corner Texas & Carrizo Streets



ENJOY YOUR MEALS

At this pleasant cafe, conveniently located at the West entrance to Midland

Specializing In
SUNDAY DINNERS
SHORT ORDERS
PLATE LUNCHES
GOOD SANDWICHES

EL CAMPO CAFE

Revel & McBride
Howard Revel, Mgr.

BUILDERS AND BELIEVERS IN MIDLAND!

WE WELCOME YOU

TO THE

MIDLAND FAIR & RACE MEET

OCTOBER 2 TO 10

Let's Go Forward!

Burton-Lingo Co.

MIDLAND, TEXAS

Banks Believe

—in finding reasons for trusting people.

THE banks of this country are now lending some seven billion dollars to borrowers in what are generally classed as "unsecured loans" for business purposes.

This means that no tangible form of wealth such as real estate, stocks, bonds, or commodities have been pledged by the borrowers to secure repayment of these loans. They are, however, secured by a far more valuable pledge than tangible wealth. Back of each loan is the proven integrity, the good faith and determination of the borrowers to carry through to a successful conclusion the purposes for which they made these loans.

This bank is always seeking new business friendships with men whose character and abilities entitle them to credit.

THE FIRST NATIONAL BANK

Midland, Texas



DEVELOPMENT

... Has been unusually rapid. This reflects the progressive spirit of its citizens.

Since the first of the year your Gas Company has installed many extensions of gas lines in this city to keep in step with Midland's growth.

There is nothing like good Natural Gas, free from hydrogen sulphide, for cooking, refrigeration, water heating and house heating. Gas cooks faster, better and cheaper.

No city in Texas has as low a gas rate as Midland at even one-third the distance Natural Gas is transported. The rate fixed by the Railroad Commission, and put in effect by the Company, is lower than the rate in 591 other towns and cities of Texas having gas service.

Forward With Midland
Since 1928

West Texas Gas Co.

Good Gas With Dependable Service

CLASSIFIED ADVERTISING

RATES AND INFORMATION

2c a word a day
4c a word two days
6c a word three days
MINIMUM charges:
1 day 25c.
2 days 50c.
3 days 75c.
CASH must accompany all orders for classified ads, with a specified number of days for each to be inserted.
CLASSIFIEDS will be accepted until 12 noon on week days and 6 p. m., Saturday for Sunday issues.
PROPER classification of advertisements will be done in the office of The Reporter-Telegram. ERRORS appearing in classified ads will be corrected without charge by notice given immediately after the first insertion. FURTHER information will be given gladly by calling 7 or 8.

11 EMPLOYMENT 11

MAN wanted to handle distribution of famous Watkins Products in Midland, selling and serving hundreds of satisfied customers. Excellent opportunity for right party. No investment. Write J. R. Watkins Company, 70-76 W. Iowa Ave. Memphis, Tenn. (167-1)

12 Situations Wanted 12

EXPERIENCED stenographer, ten years abstract, insurance and bookkeeping wants employment; excellent references. Write classified Box E, Reporter-Telegram. (167-3)

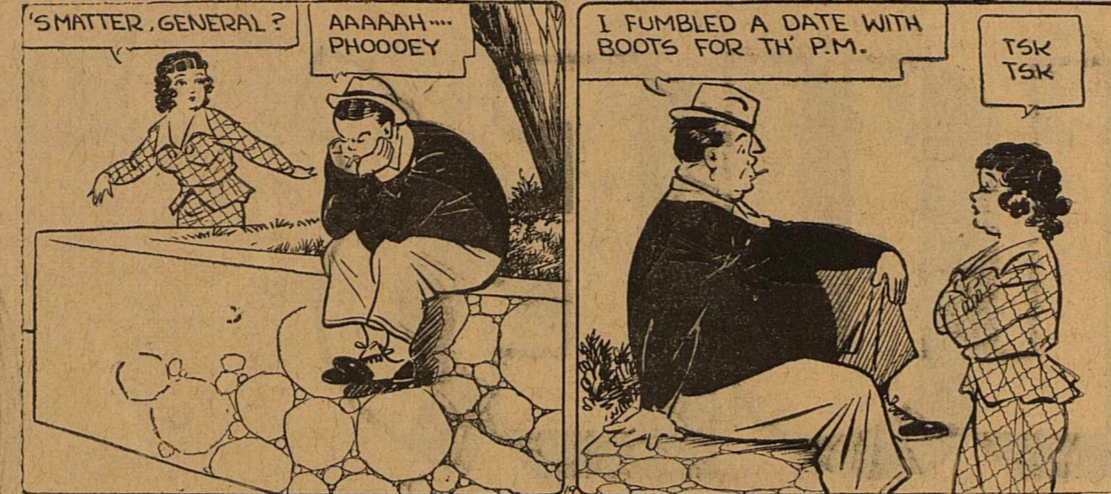
15 MISCELLANEOUS 15

STOP in and see my beautiful new fall yarns. Instructions free. 407 North A. (167-4)

Simon Bolivar is called the father of five countries; Bolivia, Colombia, Ecuador, Peru, and Venezuela.

The music of "America" also is the music of the national anthem of the British Empire, Denmark and Switzerland.

BOOTS AND HER BUDDIES



It's Ferd's Off Day, Too

I THOUGHT YOUR EXPEDITION INTO TH FOREST PRIMEVAL WAS T'PROVE AMONG OTHER THINGS, YOUR RESOURCEFULNESS

YEAH! YEAH, THAT'S RIGHT... AN' I PROVED IT, TOO, BY GUMMY

SURE... SO JIMMY IS TAKIN' BOOTS TO TH' DANCE!!! I DUNNO... MEBBE IT'S MY OFF DAY... I JUST DONT SEEM T' CATCH ON

AW WWW



By MARTIN

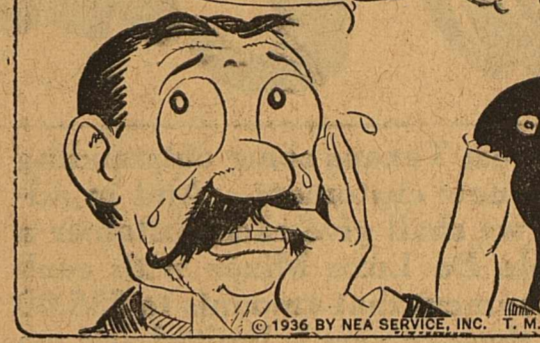
WASH TUBS



Gangway for Junior

OH, MY PET! SURELY YOU WOULDN'T SEND MY OWN SON - TO A COMMON HOSTELRY. AND, BESIDES, YOU'RE OVERDRAWN AT THE BANK.

WELL, I GUESS THERE AINT NO OTHER WAY OUT. RUN OVER TO TH' STORE, SONNY, AND GIT JUNIOR A BED.



By CRANE

2 FOR SALE 2

FOR SALE: 900 two-weeks old chicks; 12c each. 504 N. Weatherford. (163-5)

JUST A FEW LEFT

Kelvinators and General Electric Electric Refrigerators

33 1-3 to 50 Percent Off

Demonstrators Slightly Used

Lowe's Service STATION

Phone 700

TWO-piece overstuffed living room suite, 5-piece mahogany breakfast suite. 902 South Loraine. (166-3)

2-a FOR TRADE 2-a

WILL trade good used car for desirable Midland lots. Phone 20. (167-3)

WILL trade white enameled gas range in good condition for young milch cow; also sell breakfast set. 810 South Baird. (165-3)

3 FURNISHED APTS. 3

1-ROOM furnished garage apartment; also south bedroom for gentlemen. 305 East Kentucky (167-1)

SMALL 2-room apartment; modern conveniences; close in; couple only. 315 North Baird. (167-3)

7 HOUSES FOR SALE 7

FOR SALE: Modern 5-room stucco house, completely furnished. J. C. Brewer, Jr., Wes-Tex Food Market. (165-3)

FIVE-room and bath residence at 802 South Loraine. D. W. Montgomery, Pagoda Cafe. (167-1)

13-ROOM house; one block west Petroleum Bldg., and court house. 121 North Big Spring. (167-1)

8 POULTRY 8

WANTED: HATCHING EGGS Custom hatching; fryers and baby chicks for sale. MIDLAND HATCHERY

10 BEDROOMS 10

SOUTH bedroom in brick house; outside entrance; adjoins bath. 810 South Baird. (165-3)

BEDROOM for rent; private entrance; call after 6 p. m., except Sunday. 617 West Indiana. (167-3)

BEDROOM private home; near boarding house; one or two gentlemen. Phone 295. (167-3)

NEWLY furnished room in brick house. 2 blocks of depot; one or two gentlemen. 311 S. Weatherford. (167-1)

11 EMPLOYMENT 11

WANTED: Experienced woman for ready-to-wear department. Leave written credentials at Reporter-Telegram. (165-3)

WANT boys for newspaper route deliveries; must have bicycles; work after school. Apply Reporter-Telegram. (164-6)

Furniture of all kinds, both New and Used. Stoves, Linoleum, Simmons Beds and Mattresses
UPHAM FURNITURE COMPANY
615 West Wall St. Telephone 451
Also MATTRESS FACTORY in connection.
One Day Service on Renovating

Is Your Home Securely Locked?



If not, don't delay longer—have the best locks installed at once by Tiffin... estimates gladly given.

L. H. TIFFIN

118 WEST WALL PHONE 166

STORIES IN STAMPS

By I. S. Klein

Temple of The Pharaohs



ON the aging stone walls and columns of a massive temple in Egypt, archeologists today read the story of the feudal nobles and the Pharaohs of perhaps the greatest empire in ancient times. It is the huge temple of Karnak in Thebes, ancient Nile city of Egypt.

For nearly 2000 years this massive edifice, nearly a quarter mile long, was built, its oldest portions by the feudal kings of some 4000 years ago, and newest, the front wall, by the Greek kings, the Ptolemies, who ruled about the third century B. C.

This temple of Karnak contains the greatest colonnaded hall ever erected by man. The columns of the central aisle are 69 feet high, and atop each column there is room enough for 100 men. Temples like this, connected by avenues of imposing sphinxes, were erected in the glorious days of the Pharaohs, and Thebes became the first great "monumental city" ever built by man. A picture of the huge gateway to this temple city is shown on an Egyptian stamp issued in 1914.

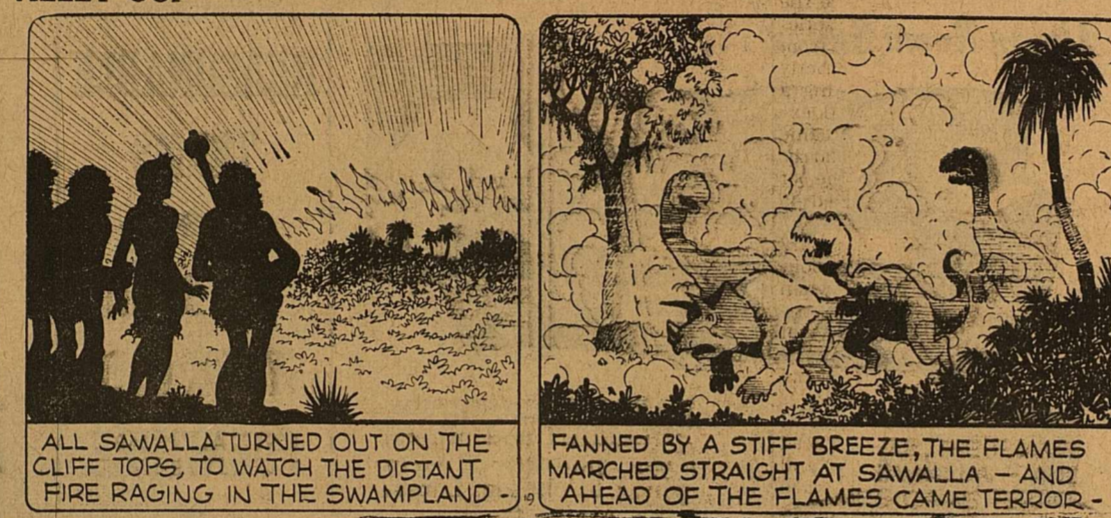
(Copyright, 1936, NEA Service, Inc.)

DAVID M. ELLIS

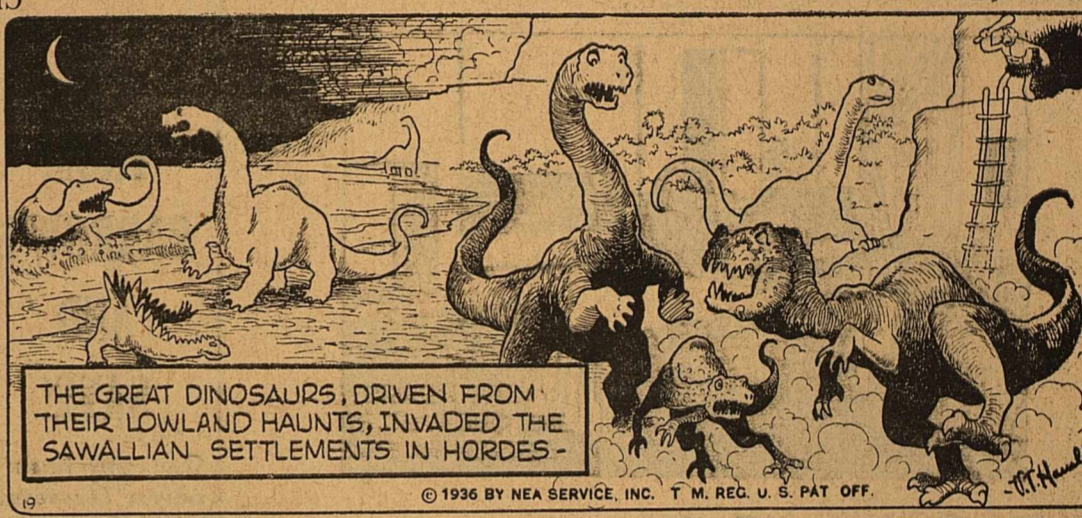
Palmer Graduate
CHIROPRACTOR
11 Years in Midland
306 North Main St.
Office Phone 822 Residence Phone 1094

For That
GOOD SCRUGGS DAIRY MILK
PHONE 9000

ALLEY OOP



SOBQ

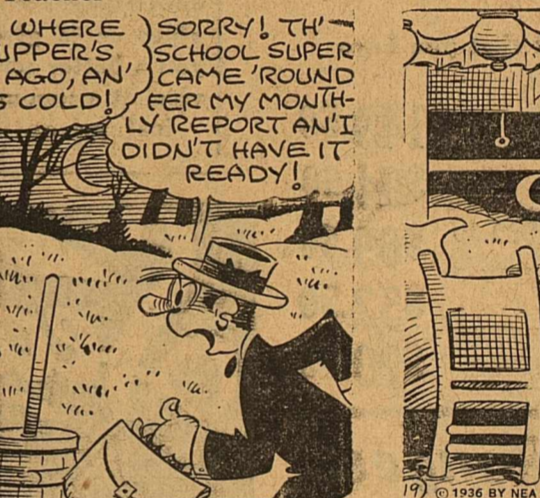


By 'MLIN

SALESMAN SAM

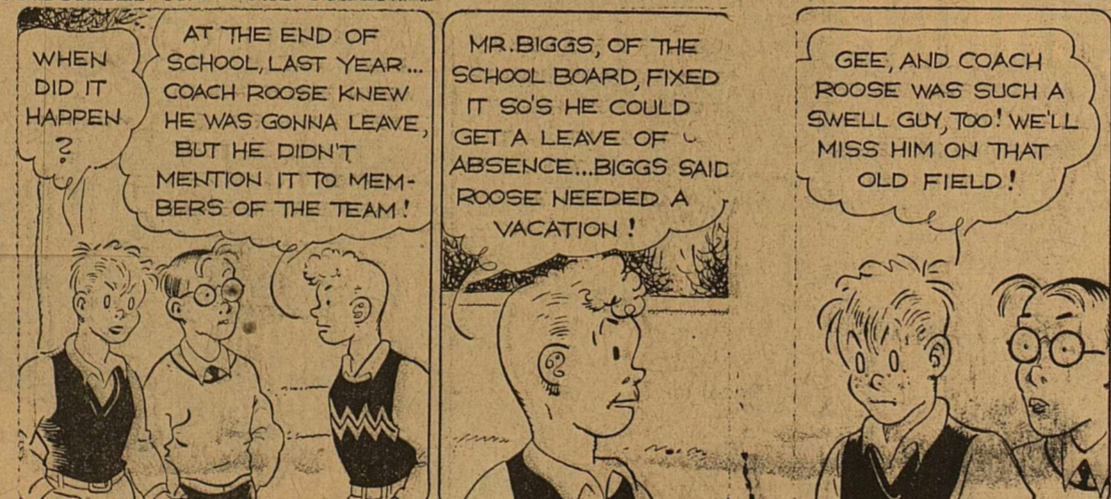


Naughty Teacher

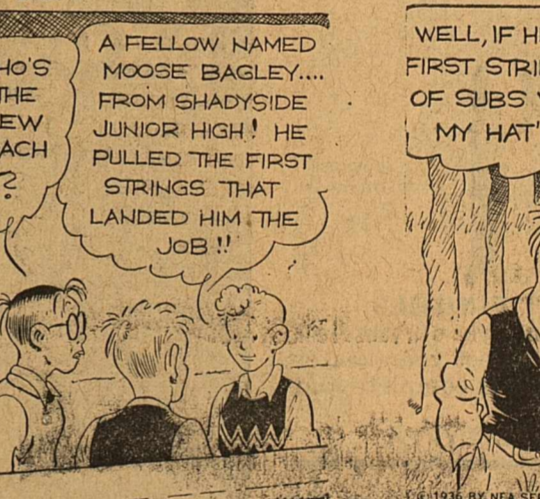


By SMALL

FRECKLES AND HIS FRIENDS



A New Pilot



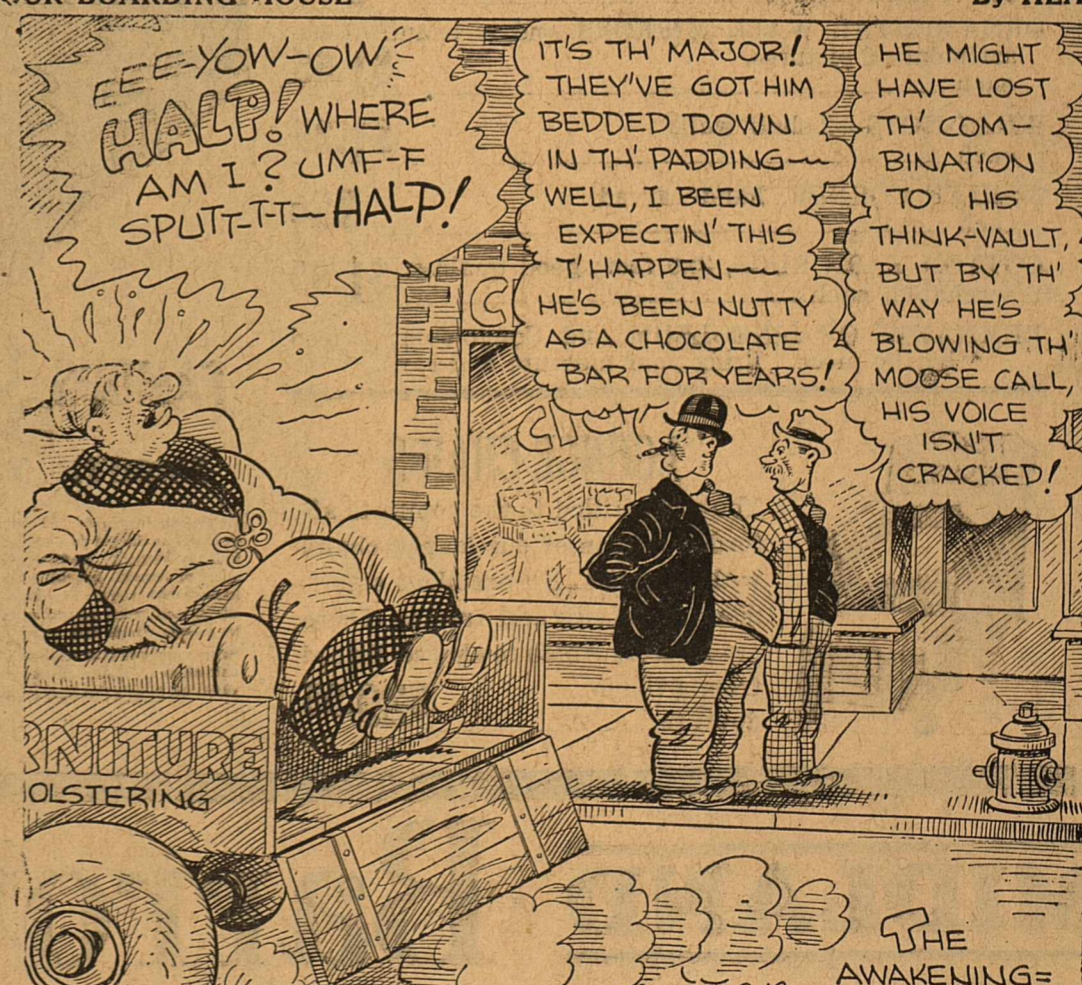
By BLOSSER

OUT OUR WAY



By WILLIAMS

OUR BOARDING HOUSE



By HEARN

THE 'NOBODY

J. WILLIAMS

THE AWAKENING

9-19

More VALUES

TO REACH OUR GOAL FOR
New Customer's

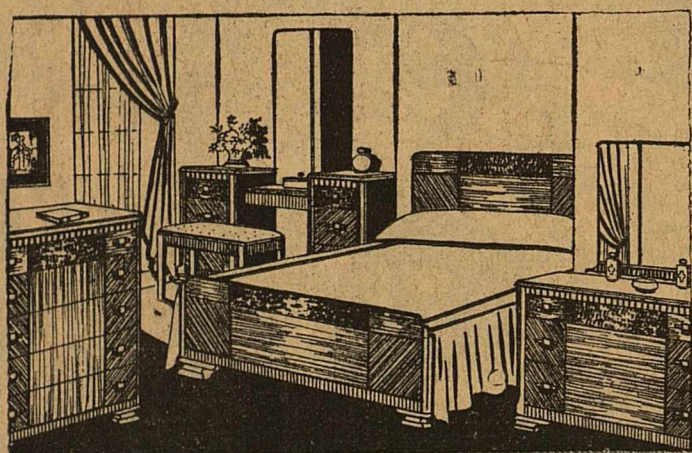


FREE
This \$14.95
De Luxe Mixer
Given Away With
Every Purchase
of \$35.00 or over.
Limited Quantity
For a Limited
Time Only

We are offering West Texans some outstanding bargains in our goal for new customers. And in addition to these bargains, we shall give each customer a beautiful and serviceable De Luxe Mixer with each purchase or down cash payment that amounts to \$35.00 or more. The supply of these mixers is limited and we

suggest that you come to our store early Monday to make your purchases and get your free mixer . . . We are offering real bargains in all of our departments and you'll find the suite or piece of furniture that you want at the price you want. **DON'T DELAY—TAKE ADVANTAGE OF THIS OUTSTANDING EVENT!**

The above offer is good only so long as the supply lasts where down payment or the cash purchase is \$35.00 or more, but does not apply on the Sealy Bonus Sale.



Bedroom Suites...

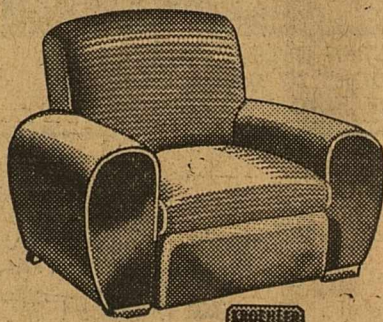
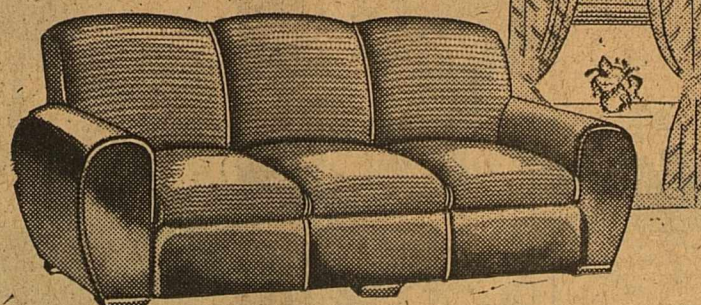
We are showing the best assortment that you have ever seen.

- 100 per cent Solid Mahogany Suite priced at **\$149.50**
- One group of values priced to \$129.50 to go at **\$94.50**
- Another group of real values priced to \$89.50 to go at **\$69.50**
- An assortment of honest-to-goodness real values priced at **\$52.50**
- Other Suites priced from \$225.00 down to **\$29.95**

BUY FROM BARROW'S AND SAVE!

Our purchasing power for seven West Texas furniture stores enables us to give you a better service at economical prices.

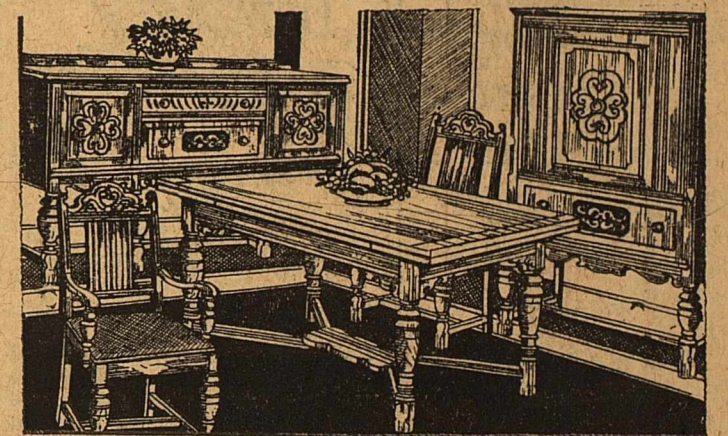
Living Room Suites....



KARPEN, KROEHLER, PULLMAN and others. Fifty patterns from which to choose. Latest fabrics and frames.

Priced From **\$325.00** Down to **\$39.50**

REASONABLE TERMS
TRADE IN YOUR OLD FURNITURE
FREE DELIVERY

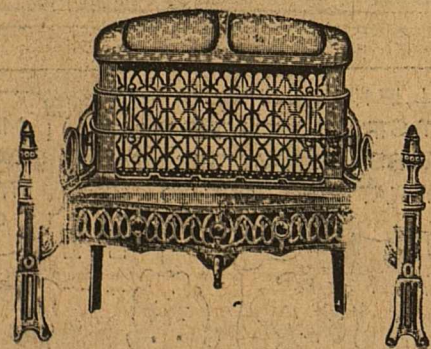


Dining Room and Dinette Suites....

Modern and period styles in oak, mahogany, maple and walnut . . . We have the suite for your particular room at prices you are willing to pay.

Priced From **\$325.00** Down to **\$59.50**

Gas Heaters and Ranges..

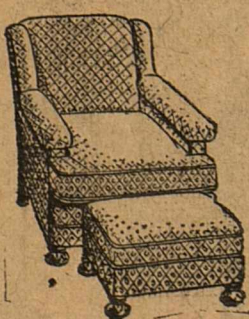


BRASS, MAPLE AND WALNUT FINISHES

We are showing 48 samples from two of the best known factories . . . Now is the time to select your heater for the winter . . . Choose while our stock is complete and be prepared.

ALL PRICES—ALL SIZES—ALL TYPES

- LAMPS—Close out of odds and ends to make room for new shipments; values to \$10.00 for **\$1.95**
- ORNAMENTAL WALL MIRRORS and a beautiful assortment of pictures, each **\$1.65**
- WHAT-NOTS—2-shelf wall, each **\$1.25**
- 3-SHELF CORNER, hand carved, each **95c**
- COTTON YARN RUGS, 3x6 feet; good quality; washable, each **\$1.95**
- REMNANTS OF LINEOLEUM and Congoleum; priced by the piece. Bring your measure and save.



LOUNGE CHAIRS

You are entitled to the comforts afforded by one of our lounge chairs with ottoman. An excellent assortment of fabrics and frames. There are 25 from which to choose. Priced from \$75.00 down to **\$29.95**

Sealy BONUS Sale

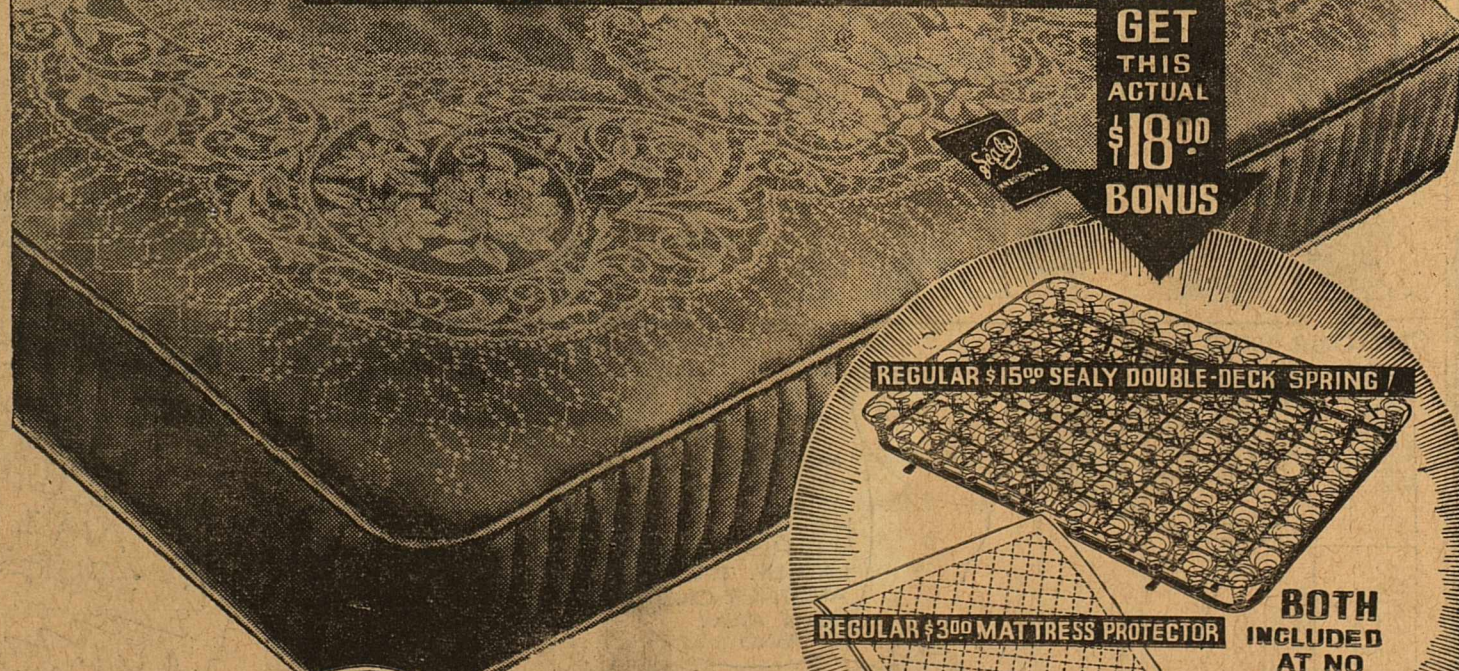
AN ACTUAL \$18.00 BONUS WITH THIS

Sealy INNER-SPRING MATTRESS

A SENSATIONAL MATTRESS SALE BY THE VETERAN MATTRESS MAKER

BUY YOUR MATTRESS NOW... AND

GET THIS ACTUAL \$18.00 BONUS



REGULAR \$15.00 SEALY DOUBLE-DECK SPRING

REGULAR \$3.00 MATTRESS PROTECTOR

BOTH INCLUDED AT NO EXTRA COST

FAMOUS Sealy INNER-SPRING SMOOTH TUFTLESS MATTRESS

Honeymoon, June Brides. Old customers and New . . . are eligible to share in these bonus savings right along with the Veterans. SEALY, the veteran mattress maker of America, has declared a bonus. For one amazing week, you can buy the famous Sealy \$39.50 tuftless inner spring mattress at the regular price and get a Sealy double deck bedding and a full size mattress protector as an actual \$18.00 bonus. See the mattress, see the springs, see the protector. . . see the sensational bargain that Sealy is offering.

Only a limited number of these mattresses are available under this special BONUS OFFER. When these are gone the offer must be discontinued. This is a fair warning to place your order early and avoid disappointment. This marvelous mattress is the companion mattress to the world famous Sealy Tuftless all cotton mattress . . . Same quality construction, same wonderful comfort; same lasting service built-in . . . the only difference is that this is Sealy's finest type INNER SPRING construction . . . Built so perfectly that it needs no tufts.

YOU GET ALL 3 FOR ONLY \$39.50

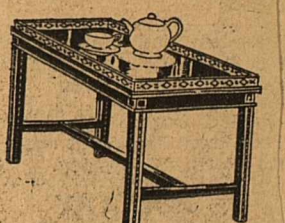
HERE'S HOW YOU SAVE!
Sealy Inner-Spring Mattress . . . Regular Price \$39.50
Sealy Double-Deck Spring . . . Regular Price 15.00
Sealy Mattress Protector . . . Regular Price 3.00
TOTAL VALUE \$57.50
You Pay Only \$39.50 . . . You Save \$18.00

\$100 DOWN DELIVERS

VISIT OUR USED FURNITURE DEPARTMENT
You Might Find Just The Thing
You Are Looking For

COFFEE TABLE

We are offering a beautiful imported Japanese decorated coffee table at **\$3.95**



(One to a customer)

Occasional Tables

Solid Walnut and Maple
Roman Gold
Various Types, Sizes and Finishes
Priced From **\$37.50** Down To **\$3.95**

One of the Best Assortments Ever Shown In Midland.

Occasional Chairs

We have a group of beautiful occasional chairs very similar to the illustration to the right. Solid birch frames, 9-coil spring seats and made by the world's foremost chair factory. A \$15.00 value for **\$11.45**
Others from \$49.50 down to \$5.95

