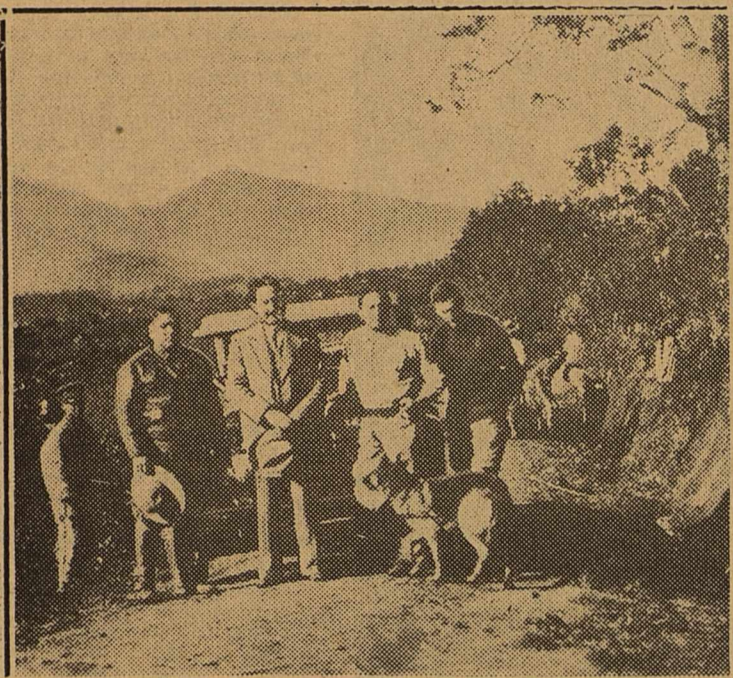


Wind to Replace Blown Out Lands

DALHART, Dec. 29 (U.P.)—Winds on the Great Plains, for many years used to raise sub-surface water in windmills and recently harnessed to generate electricity, are being used to rebuild that which they destroyed—the farm lands.

Trio Blaze Rio-U. S. Motor Trail In Eight Years of Toil and Peril



High in the interior highlands of Ecuador, with Cruz at left and Oliviera and Fava at right of a local government official. The picture shows one of the dogs who died en route, and men at work clearing the roadside of roots and obstructions.



Immediately after a near-tragedy! The car at the right had just done an over-and-over roll down the hill at the left, with Mechanic Fava at the wheel, before this picture was taken. Local residents have come to the aid of the party. Nobody was hurt, but it didn't do the Model-T's headlamps and radiator any good, as you can see. Despite scores of small mishaps, not a single serious accident marred the 14,000-mile jungle tour.

BY JACK PARK

NEA Service Special Correspondent DALLAS, Tex., Dec. 29.—Way back in 1928 B. C. (Before the Crash), eight years and eight months ago, three men started on a motor trip.

They are just finishing it. For the first time they have succeeded in uniting Rio de Janeiro, Brazil, with the United States by a continuous auto journey.

The 14,000 miles they traveled, nearly 6000 of it over mere cattle, pack, and foot trails across mountains and through jungles, will some day be traveled by means of a continuous improved auto road, the Pan American Highway.

Eventually it will run from Alaska down through Canada, Mexico, Central and South America.

But today only 784 miles are improved road, with 500 more under construction, in the section from the United States southward.

So Commander Leonidas Borges de Oliveira, Observer Francisco Lopez de la Cruz, and Mechanic Mario Fava had to hack, blast, push, ferry, and fight their way to make the trip in eight years and eight months which ended with their arrival at the international border at Laredo, Texas.

They mapped and charted the entire route as far north as Mexico City. It is practically complete from there to Laredo.

OFTEN CHEAT DEATH They had a hundred narrow escapes from death.

They killed wild hogs and rendered their fat for motor lubricant when stalled in the jungle with no oil available.

They cajoled kerosene and alcohol from natives when the gasoline ran out, and made their cars run with this fuel.

They hacked their way through jungles and blasted their way through mountain passes with dynamite.

They rafted their two Model-T Fords over rivers, and fought death in the form of dysentery, yellow fever, malaria, and wild animals.

Their pet dogs all died of snakebite or disease.

They learned Spanish to supplement their native Portuguese, and Oliviera proudly acquired a wife in Mexico City.

SCOFF AT OBSTACLES Starting with government sponsorship, that backing was withdrawn when revolution swept their native Sao Paulo, and they had to push on with their own resources, together with such backing as was given by the countries through which they passed.

Yet these three intrepid Brazilians accomplished their mission without a major accident or illness, and contributed a splendid step forward in the uniting of the Americas.

Oliviera is a reserve officer in the Brazilian army, a military col-



Indians were mainly friendly, but were often terrorized by the "devil machines." Here is Commander Oliviera making friends with a group of them. The venerable Indian beside him claimed to have passed the century mark by several years.



The route of the intrepid Brazilians from Rio de Janeiro to Washington. Long stretches are now jungle, but the future Pan-American highway will some day follow approximately this route.

lege graduate and engineer. Cruz is a skilled topographer, and Fava and expert mechanic.

During the entire trip they made three general highway maps. In addition, they made maps of each region, on which they recorded rainfall, altitude, angle of ascent or descent, crops, topographic records, and other information that will be vital to road-building engineers when they get around to constructing the highway.

STARTED IN 1928 Their invaluable data will be turned over to the Pan American Union in Washington, which will use it to help further actual construction of the road.

The three men started from Rio de Janeiro on April 16, 1928. Their job was to work northward along projected routes of the Pan American Highway through Brazil, Paraguay, Argentina, Bolivia, Peru, Ecuador, Colombia, Panama, Costa Rica, Nicaragua, Honduras, El Salvador, Guatemala, and Mexico.

Actual roads soon gave out, and the three men found themselves hacking their way through jungles, and driving their cars over crumbly mountain ledges where death on jagged rocks thousands of feet below was only inches away from their wheels.

PRIESTS HELPED EXPLORERS It was the padres, or priests, through the uncivilized regions of South and Central America, who helped most when the expedition appeared to be stalled. The priests would speak to their Indian charges in their native dialects, explaining that the "three great doctors" were helping to build a road over which the natives could travel to market and make more money.

That would bring out 200 native Indians the next morning with tortillas and frijoles, and plenty of labor to help clear the way.

In the more remote regions, the natives had never seen a "devil machine," and as soon as the motors started, they fled precipitately into

the jungle.

They never offered the slightest harm to members of the expedition. The friendly Brazilians, grinning broadly, said they feared the natives only in sections where they had been in contact with civilization.

MOSQUITOES WERE HORROR In jungle and swamp regions, it was necessary to keep a huge fire burning all night, one member of the party staying up each successive two hours as a watch.

The mosquitoes were a nightly horror, and the mountainous passes of the Andes it was necessary to drain radiators each night and build a fire under the motor each morning to thaw out the crank-case oil.

The adventurers were enthusiastically greeted at the capital of each country through which they passed, receiving lusty ovations and other valuable gifts. Dozens of rafts were built to float the cars across deep rivers where there were no bridges.

Hundreds of photographs were made, but almost all the negatives were lost when one of the cars turned over in the Andes. Fortunately, the prints were not lost.

In Nicaragua the three adventurers were photographed with Augustino Sandino, the "rebel general," only 48 hours before he was shot

Valley Schools Enter Class 'A'

WESLACO, Dec. 29. (U.P.)—Class A high school football teams of Texas will be swelled three in number by the acceptance of applications of three Class B schools to become members of District 16-A.

The Mission High School Eagles, winners of the District 14-B title this season, Donna High School Indians, runners-up in 44-B and Mercedes High School Tigers, holders of third place in 44-B will take their places among the enlarged District 16-A.

Other schools of the district now are McAllen, Edinburg, Pharr-San Juan-Alamo, Weslaco, Harlingen, San Benito and Brownsville.

Under the new consolidation, District 16-A will be split into two divisions, based on enrollment. In one division will be Brownsville, McAllen, Edinburg, San Benito and Harlingen. Members of the second division will include Pharr-San Juan-Alamo, Mission, Donna, Weslaco and Mercedes.

Each division will play its own schedule, each school in its division being required to play each other school in the same division, or four divisions games each season. The winners in each division will meet for the district championship. The games between schools not in the same division will not be counted in district standings, except for the championship district game.

Edinburg, in its second year of Class A football, won the district title this season.

Mr. and Mrs. O. R. Jeffers and son, Owen, have gone to California where they will visit at different points and attend the Rose Bowl game before returning home.

Mr. and Mrs. Ben Rogers returned from Fort Worth Monday where they have been visiting during the holidays.

to death, and in Mexico they likewise posed with General Calles only a few days before he was executed.

GIFTS IN MEXICO President Cardenas welcomed the expedition to Mexico City in regal style, presenting the explorers with a new car and a purse of \$1400. It was here that Oliviera won the greatest prize of the whole trip, a wife.

He wooed and won Senora Maria Buenaventura Gonzales Aguilar de Oliviera, a pretty University of Mexico graduate. She joined the expedition as it moved north from Mexico City.

On Oct. 26, 1936, the augmented and happy party crossed the United States line at Laredo, the 15th country visited.

The remainder of the trip to Washington will be a comparative holiday, closing the first automobile link between Rio de Janeiro and the capital of the north.

FOR POSTERITY



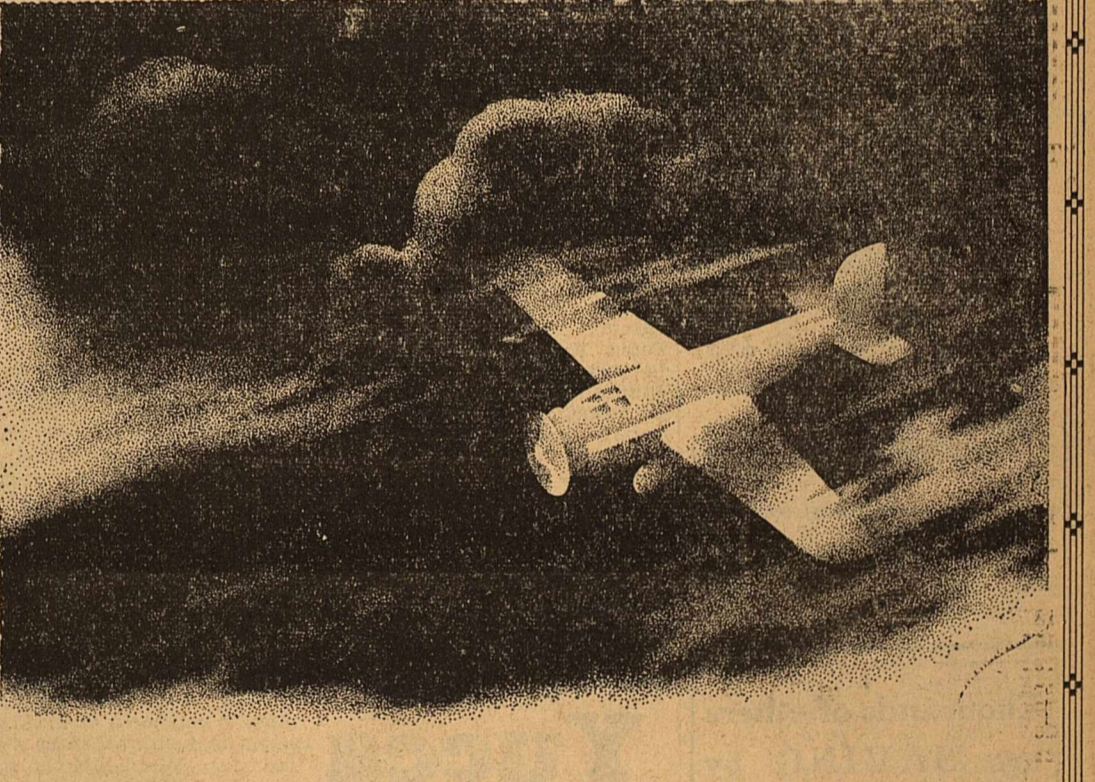
Where you see one big Maine landlocked salmon here, in a few years you'll see about 3000—if they succeed in evading anglers' lures. This adult fighter, along with other salmon, was stripped of 3000 eggs in a Maine state hatchery, and the eggs, along with 6,000,000 others, are to be hatched and planted in the state's waters next spring. Note the woolen glove on the worker's hand used to strip the eggs.

LOOK Your Best



For that New Year's party... have your clothes "quality" cleaned and pressed at—

CITY CLEANERS Phone 89



BLIND FLYING IS SAFER THAN BLIND BUYING

When an aviator, soaring high above the clouds, is flying blind, the radio beam that science has developed for him, guides him like a talking magnet, safely through. And there is a "beam" that you can follow in your buying in Midland. Every issue of this newspaper takes the blindness out of buying. It puts it on the scientific basis that means economy and quality for the buyer day in and day out. Readers of The Reporter-Telegram have learned that it is wise to follow the advertisements in its columns... and the leading merchants know that their daily newspaper is the Rock of Gibraltar of advertising.

"TOUR" EUROPE with this New 1937 PHILCO! Here's your radio guide through Europe—South America—the whole world of colorful foreign reception. It's the amazing Philco Color Dial—which names and locates foreign stations in color... and it's a part of the Philco Foreign Tuning System of this new 1937 Philco 630X*. Other big features, too! Come in for free demonstration. CARNETT'S RADIO SALES 210 East Wall—Midland

HUNTERS RATED POOR SHOTS

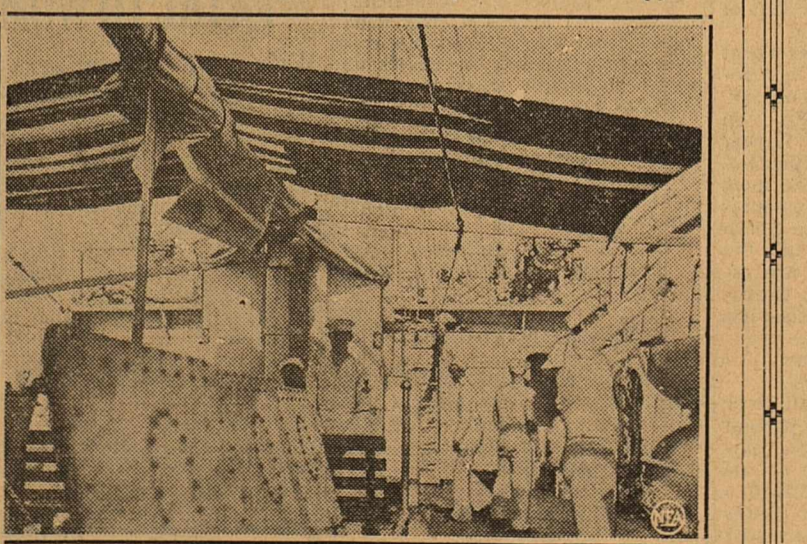
CARLSBAD, N. M. (U.P.)—W. J. Pinson, U. S. forest ranger, says that New Mexico hunters are such poor shots that deer and wild turkeys in the region have a 40 to 1 chance to escape whenever a hunter takes aim. Pinson checked 450 hunters and found the average man fired nine shots while in the field. The group brought back only 65 deer.

CALIFORNIA SECOND IN TAXES

SAN FRANCISCO (U.P.)—California tax authorities have been notified by the Treasury Department that the state has the second largest tax load in the union, being exceeded only by New York.

DAVID M. ELLIS Palmer Graduate CHIROPRACTOR 11 Years in Midland 306 North Main St. Office Phone 822 Residence Phone 1094

Bombproofing Warship With Flag



So that Spanish aviators could have no excuse for "accidentally" bombing the U. S. S. Hatfield while it was on its mission of removing refugees from war-torn Spain, the huge American flag was stretched above the deck where it could be plainly seen from the air. Aviators took the hint, dropped their bombs elsewhere.

only by New York. Its eight primary revenues are taxes on gasoline, estates, individual incomes, corporation income, tobacco, liquor, general sales and motor vehicle registration.

RODGERS RETURN

Mr. and Mrs. Jess Rodgers returned Monday from a holiday visit spent in Marlow, Okla., with Mrs. Rodgers' parents.

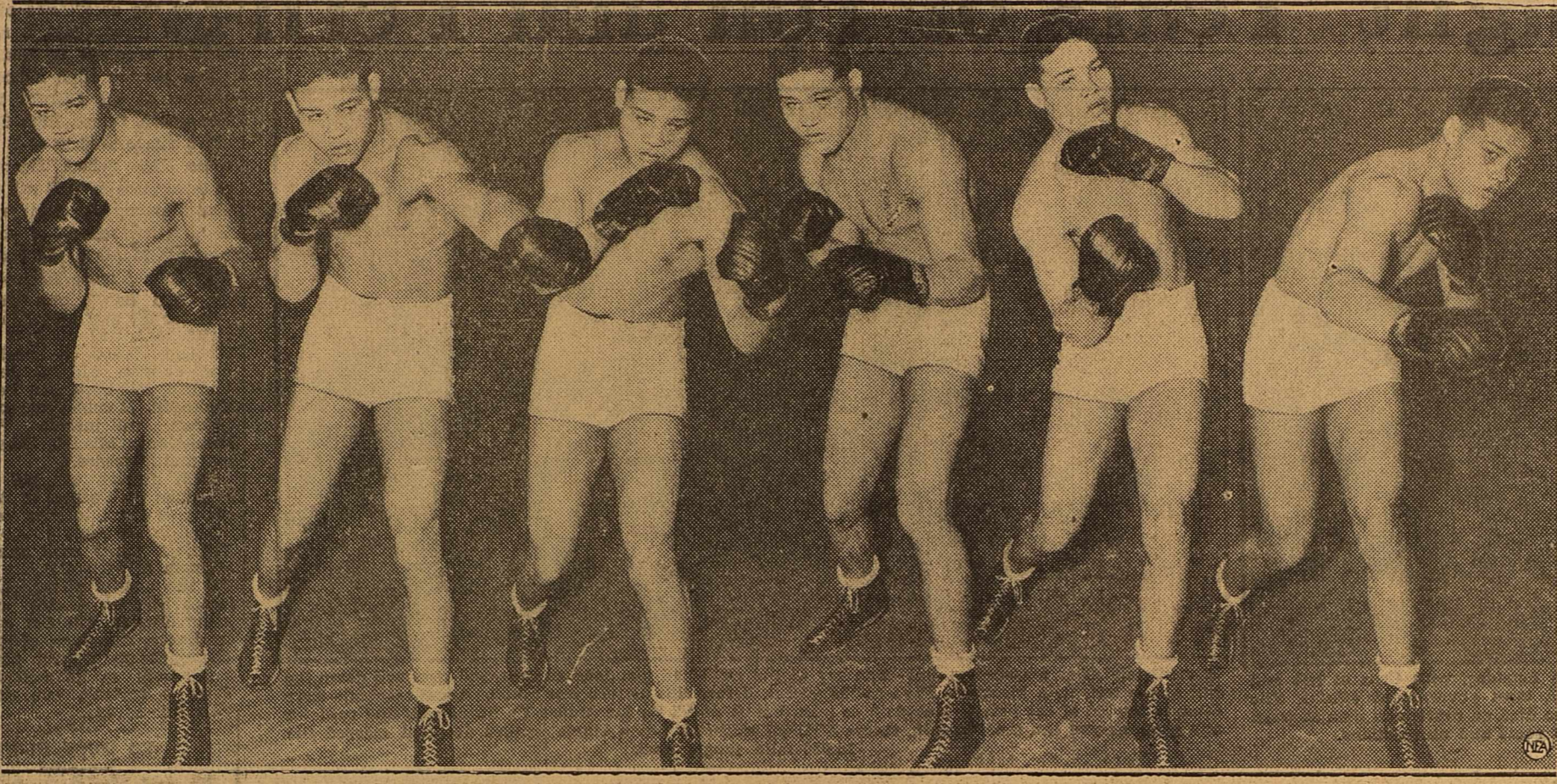
4400 CCC Enrollees To Be Chosen Soon

FORT SAM HOUSTON, Tex. Dec. 29.—During the period January 1 to 20, 1937, 4400 new Civilian Conservation Corps enrollees will be enrolled to bring the strength of the CCC in the Eighth Corps Area to total of 47,400 enrollees, it was announced at Eighth Corps Area headquarters here today.

As Brown Bomber Prepares to Blast Another From Pat h to Championship of World

A Look at Joe Louis' Left--

--Reviewing His Right



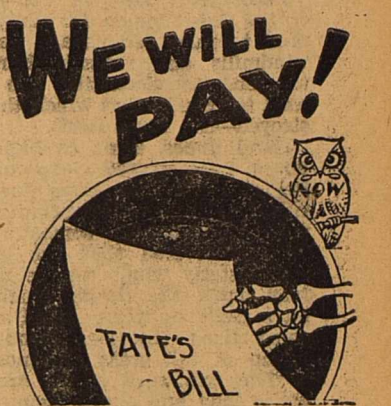
Feint Jab Hook Punch Uppercut Mary Ann

Oil News--

(Continued from Page One)

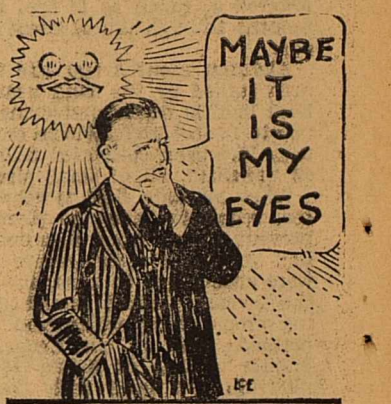
shot with 250 quarts of solidified from 4,100 to 4,200, the total depth, flowing 615 barrels in 12 hours after the charge went off. Potential gauge is being taken today. It is in section 10, block 44, township 1 south, T. & P. survey.

New Year's Eve dance at Hotel Scharbauer. (251-3)



When Fate's skeleton hand presents the bill for an auto accident, it makes a big difference who does the paying. If we provide your Public Liability and Property Damage Insurance, you will have able lawyers to fight for you and if you lose the company pays the bill.

HIMS & CRANE BE WISE COMPLETE INSURANCE SERVICE BONDS TELEPHONE 24 111 W. WALL ST., MIDLAND, TEX.



WE'LL FREE YOU FROM DOUBT

You perhaps do not know whether you need glasses or not, but we can tell you. The examination we make—the tests to which we subject your vision—are infallible. Do not delay any longer.

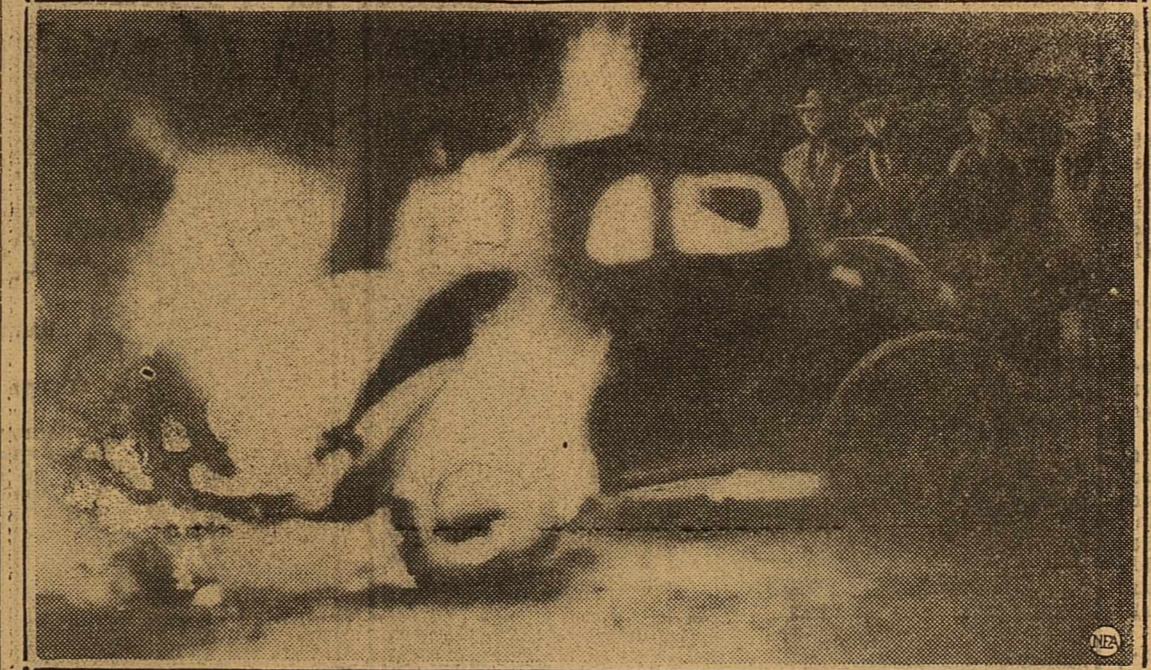
Dr. W. L. Sutton OPTOMETRIST 203 Thomas Bldg. Office Ph. 146—Res. Jh. 810-J

TOTAL VALUE OF TEXAS CROPS PLACED 5.5 PERCENT HIGHER THAN FOR 1935

On the basis of preliminary estimates of prices for the 1936 marketing season, the total value of principal Texas crops is estimated at \$384,062,000, an increase of 5.5 percent above the revised 1935 value of \$364,137,000.

The yields per acre of all Texas crops, excepting wheat and Irish potatoes, are below 1935 yields, the combined yield per acre of all crops being 89 percent of the 10-year average compared with 104 percent last year.

As Two Burned to Death Before Would-Be Rescuers



With would-be rescuers held at bay by flames, two hapless motorists were imprisoned in this blazing coupe when this dramatic photo was taken by an autoist passing the scene of the tragic collision on the highway near Memphis, Tenn.

BYRD SHIP WINTERS ON ERIE

CLEVELAND (UP)—The ship, City of New York in which Rear Admiral Richard E. Byrd made his first trip to Little America, Antarctica, is wintering on the Lake Erie shore here.

Mr. and Mrs. W. T. Moreland spent the holidays with Mr. and Mrs. Bob Miles in Hobbs, N. M.

Mr. and Mrs. J. D. Bodkin and daughter, Jean, will leave today for San Angelo, where they will visit until Wednesday.

RITZ TODAY and TOMORROW

What happens on the waterfront after dark?

Advertisement for RITZ theater featuring 'Night Waitress' starring Margot GRAHAM and Gordon JONES.

New Year's Eve dance at Hotel Scharbauer. (251-3)

Thousands of others are SAVING by bringing their Dry Cleaning to Us—

OUR LOW PRICES Men's Suits C. & P. 25c Ladies' Coat Suits and plain dresses, C. & P. 35c MEN'S HATS 45c C. & B.

Most Modern Plant—Experienced Help—Excellent Service— TULLOS CLEANERS "Growing With Midland"

'General Spanky' Is Coming to The Yucca

Kid Cupid seems to be active on the Hal Roach comedy lot 'General Spanky,' opening at the Yucca, Wednesday through Thursday, stars Spanky McFarland with Phillips Holmes, Ralph Morgan, Irving Pichel and Rosina Lawrence in featured roles of an exceptionally fine cast.

Its story laid in Civil War days, combines drama, laughs and blends romance in an entertainment that will prove diverting to youngsters and adults alike.

Yucca STARTS TOMORROW THRU THURSDAY

70 Minutes of Grand Entertainment

Advertisement for 'General Spanky' featuring Spanky McFarland and other cast members.

Join in the fun at the Biggest Watch Party in town at our GALA NEW YEAR'S EVE PREVIEW Thursday nite, 11:15 p. m.

TYPEWRITER RIBBONS Sold by us are delivered and installed free in the business section of Midland. Call us for this added service. West Texas Office Supply Phone 95

SIT-DOWN STRIKE CALLED BY GROUP

Fisher Body Plant in Cleveland Halts All Labor

CLEVELAND, Dec. 29. (AP)—A "sit-down" strike staged by members of the United Automobile Workers' Union halted all operations Monday in the Cleveland plant of the Fisher Body company, a General Motors subsidiary.

"I'll bet that within 48 hours you hear that the whole General Motors is shut down completely," said Louis F. Spisak, president of the union's local No. 45, in addressing a general meeting of the employees.

Spisak claimed the department employees had protested that wages ranged from \$35 to \$50 a week on three assembly lines and the union sought to obtain what it termed equitable adjustments.

Night shift employees assembled at plant entrances late in the afternoon but did not enter. Idle day workers called to them from open windows.

"We'll stick here until New Year's if necessary," one "sit-downer" shouted.

TO BRING THE total returns to farmers to \$9,530,000,000 compared with \$8,508,000,000 last year.

STORES TO CLOSE ON NEW YEAR'S DAY

Business Section Will Shut Up Solidly, Indicated

On the list of "closing" holidays, New Year's day will be observed by Midland merchants Friday with the business section closed up practically solid, it was indicated today.

A petition, circulated recently by the chamber of commerce, was signed almost unanimously by merchants of the city, to include New Year's in the holiday list.

Some merchants were preparing to stage their regular week-end selling events for Wednesday and Thursday, in order to accommodate customers wanting to stock up for the week-end.

FIRE AT SUDAN IS FATAL TO WOMAN

Wife of Manager At Green Theater Suffocates

SUDAN, Dec. 29. (AP)—Mrs. G. W. Chester was suffocated today in a fire which caused \$25,000 damage to two buildings.

The body was found in an apartment above the Green theatre, one of the buildings burned. Mrs. Chester was the wife of the theatre manager.

MANY THANKS For your wonderful patronage during the holiday season! I still have plenty of fruits and confections. J. B. "ROCKY" FORD At Rear of 1111 West Wall—Phone 400

Moffett Released Under Bail of \$200

WICHITA FALLS, Dec. 29. (AP)—Milton (Speedy) Moffett, head football coach at Greenville high school, Monday was under \$200 bond to appear in city court in connection with an automobile accident here Saturday night.

Police Chief George H. Hodgins said further investigation will be made as to the cause of the wreck in which Moffett's automobile is supposed to have crashed into another machine. Moffett was released from a hospital Monday.

Speedy Moffett, former assistant football coach at Big Spring, figured in an automobile collision at Wichita Falls Saturday night in which James Beasley, 18, of that city, also was injured. The mishap occurred at a traffic light stop.

Mrs. Myrtle Stephens has returned from Itaska, Texas, where she visited with her parents, Mr. and Mrs. D. O. Morris, during the holidays.

Some merchants were preparing to stage their regular week-end selling events for Wednesday and Thursday, in order to accommodate customers wanting to stock up for the week-end.

Yucca LAST TIMES TODAY

Advertisement for Yucca theater featuring 'College Holiday' with Jack Benny, George Burns, and other stars.

Dr. and Mrs. T. C. Bobo and daughter have returned from a holiday trip to Fort Worth, Dallas and other points.

MANY THANKS For your wonderful patronage during the holiday season! I still have plenty of fruits and confections. J. B. "ROCKY" FORD At Rear of 1111 West Wall—Phone 400

Advertisement for PIGGLY WIGGLY Grocery & Market, featuring 'START THE NEW YEAR RIGHT' and 'SPECIALS FOR WEDNESDAY, DEC. 30'.

Advertisement for Yucca theater featuring 'LAST TIMES TODAY' and 'COLLEGE HOLIDAY' with a list of showtimes and prices.

Advertisement for Yucca theater featuring 'LAST TIMES TODAY' and 'COLLEGE HOLIDAY' with a list of showtimes and prices.

A Complete Typewriter Service

Authorized Underwood Sales and Service

L. H. TIFFIN

118 W. WALL

PHONE 168

YOUR HOME

There is No Place Like Home and a Life Insurance Policy Will Keep It Intact

A PRAETORIAN POLICY covering the mortgage on your home, means security for your family. The home which is theirs today can be theirs always—thanks to your foresight in providing against the unexpected. Protect what you have. A policy for every need. See, phone or write—

J. WRAY CAMPBELL, Dist. Mgr. 601 Petroleum Bldg. — P. O. Box 908 Midland, Texas

CLASSIFIED ADVERTISING

RATES AND INFORMATION RATES: 2c a word a day. 4c a word two days. 5c a word three days. MINIMUM charges: 1 day 25c. 2 days 50c. 3 days 75c. CASH must accompany all orders for classified ads, with a specified number of days for each to be inserted. CLASSIFIEDS will be accepted until 12 noon on week days and 6 p. m., Saturday for Sunday issues. PROPER classification of advertisements will be done in the office of The Reporter-Telegram. ERRORS appearing in classified ads will be corrected without charge by notice given immediately after the first insertion. FURTHER information will be given gladly by calling 7 or 8.

WANTED

WANTED to rent small furnished or unfurnished house or apartment. See Fred Dea at My Bakery. (252-1)

LOST AND FOUND

LOST: Black and white wire haired terrier with black harness. Reward. Phone 1089. (251-3)

FOR SALE

ONE-HALF royalty on 6300 acres in Guadalupe county; New Mexico; write Box 378, Stanton. (252-3)

HEAVY overcoat, size 36, good condition, \$10. T. Paul Barron, at Reporter-Telegram. (248-3)

WANT offer west half section 40 block 46, township 1, T. & P. survey. Will lease fee or half mineral. Winkler county, S. L. West, Abilene, Texas. (250-9)

FOR SALE: Pigs; Rhode Island red roosters; bundle heifers. F. C. Dale. (250-3)

FOR SALE: 1934 Plymouth coupe; reasonable. Phone 142. (252-3)

FOR FRUIT, shade and ornamental trees and all kinds shrubbery, see or write M. S. Hines, 501 South Main St., Midland, Tex. (241-12)

OR TRADE: Two pool tables and 1 snucker table; R. A. White, 321 South Baird. (251-3)

LARGE 3-wheel trailer; excellent condition. Haley Hotel. (251-3)

FURNISHED APTS.

LARGE one-room furnished apartment. 305 East Kentucky. (250-3)

TWO room furnished apartment; adults; 1104 North Main, phone 891. (250-3)

TWO room furnished apartment; \$20.00 month. 401 South Pecos. (252-3)

TWO room furnished apartment; utilities furnished; inquire at George's Eat Shop. (252-3)

UNFURNISHED APTS.

4-ROOM unfurnished apartment. Adults only. 1501 Holloway St. (252-2)

HOUSES FOR SALE

SMALL modern house; 710 South Fort Worth. (251-6)

SEVEN room stucco house; well located; west end; reasonably priced next few days. See Sparks & Barron. (252-3)

AUTOMOBILES

BARGAINS In Used Cars

1934 Pontiac 6 wheel coach. Motor reconditioned. New paint. Good oversize tires. Prestone in radiator. This car exceptionally clean throughout.

Also: 1936 Ford pickup; 1934 Ford pickup; 1934 Ford four-door sedan; 1931 Ford coupe.

Our cars can be bought with small down payment on easy General Motors monthly payments. See and drive these cars at

FRANK ADAMS MOTOR CO.

First Door South of Post Office

Phone 784

1-8-37

AUTOMOBILES

REAL BARGAINS: 1929 Ford coupe; 1933 Chevrolet coupe; 1935 Chevrolet coupe; 1934 Dodge pickup. Jack Hawkins, Midland Motor Co., 203 East Wall, phone 454. (250-3)

MISCELLANEOUS

ANYONE going to Tulsa or nearby last of week, young man would like to share expense. Call 210. (251-1)

Buddy's FLOWERS 1083 MIDLAND, TEX. 1203 W. WALL

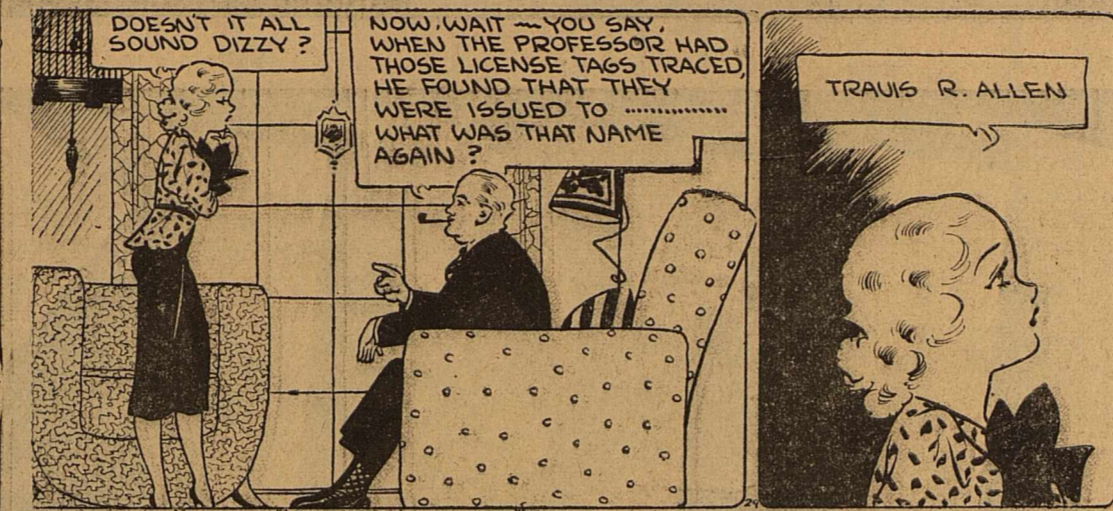
WOOD-COAL J. V. GOWL Wood and Coal Yard 312 West Indiana

For That GOOD SCRUGGS DAIRY MILK PHONE 9000

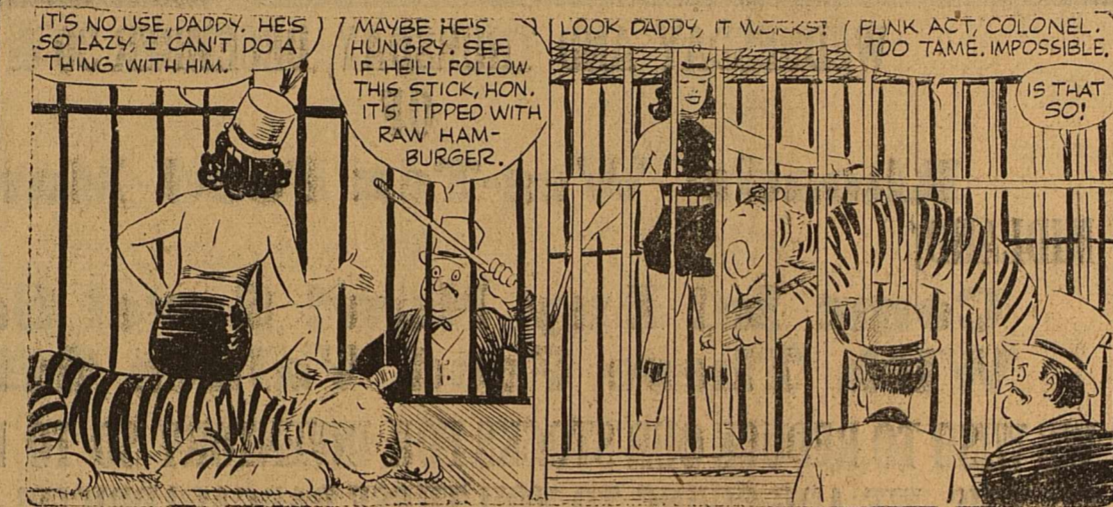
Expert Auto BODY REPAIR WORK Reasonable Prices Immediate Service SOUTHERN BODY WORKS H. L. Hoover 216 South Main

PABCO Feltbase Rugs and Linoleum See the New Designs in Our Window Here are Linoleums designed in totally new motifs and color contrasts. Just to see them is to feel refreshed. And to have your preferred one in a room in your home—there is a home-decorative thrill! And they are priced so low too... See them at once. UPHAM FURNITURE COMPANY 615 W. Wall Phone 451

BOOTS AND HER BUDDIES



WASH TUBBS



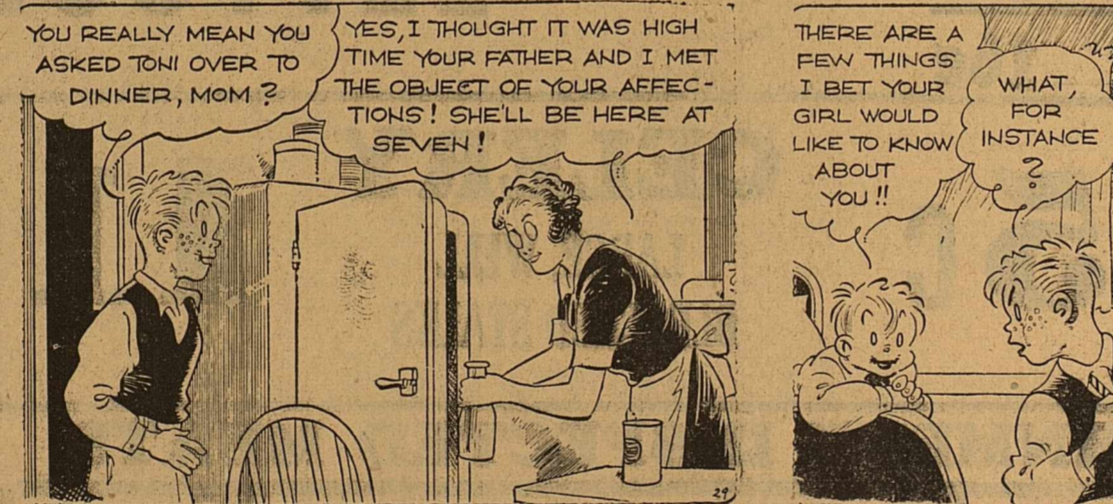
ALLEY OOP



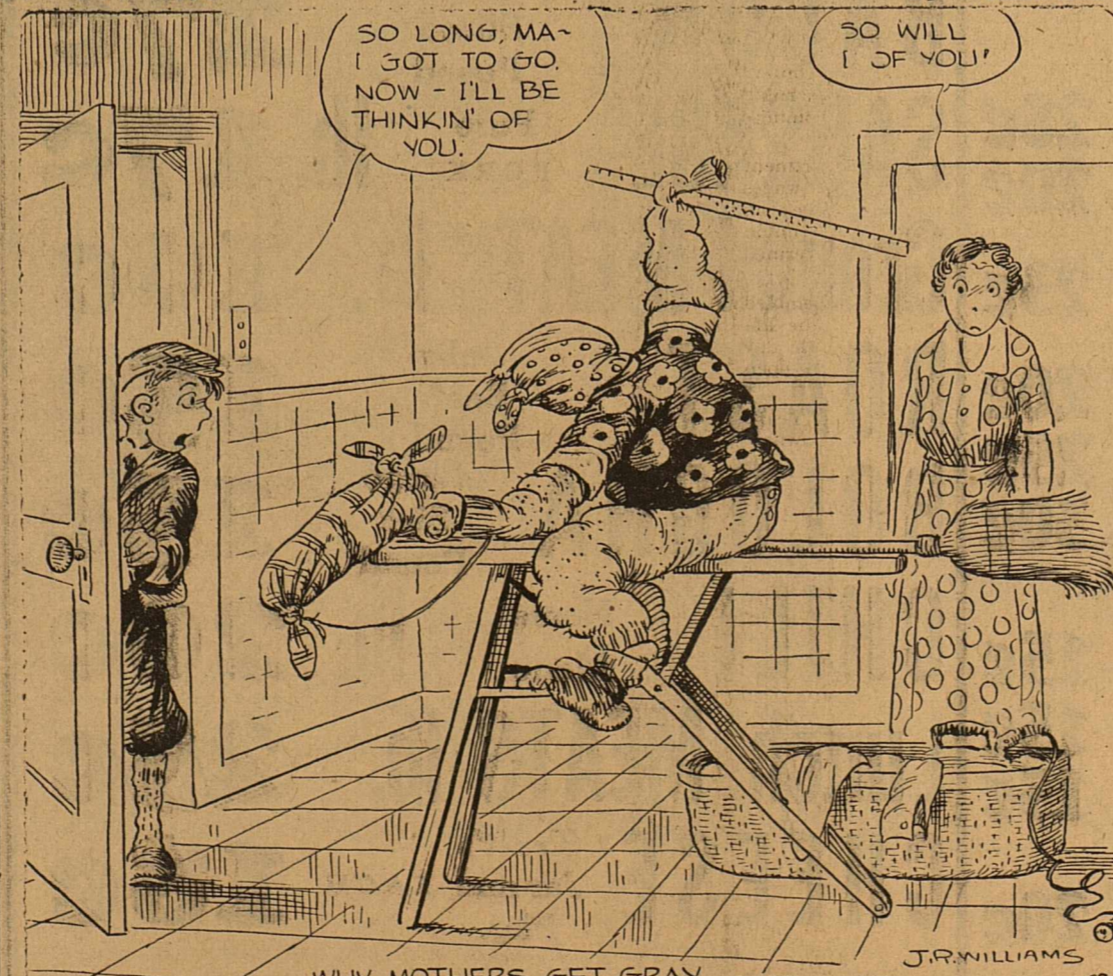
MYRA MORTH, SPECIAL NURSE



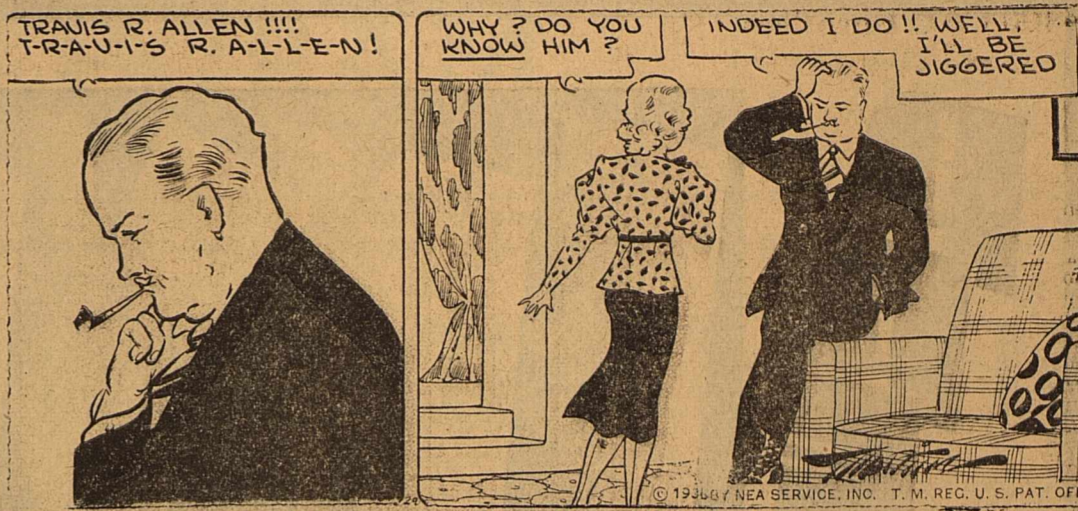
FRECKLES AND HIS FRIENDS



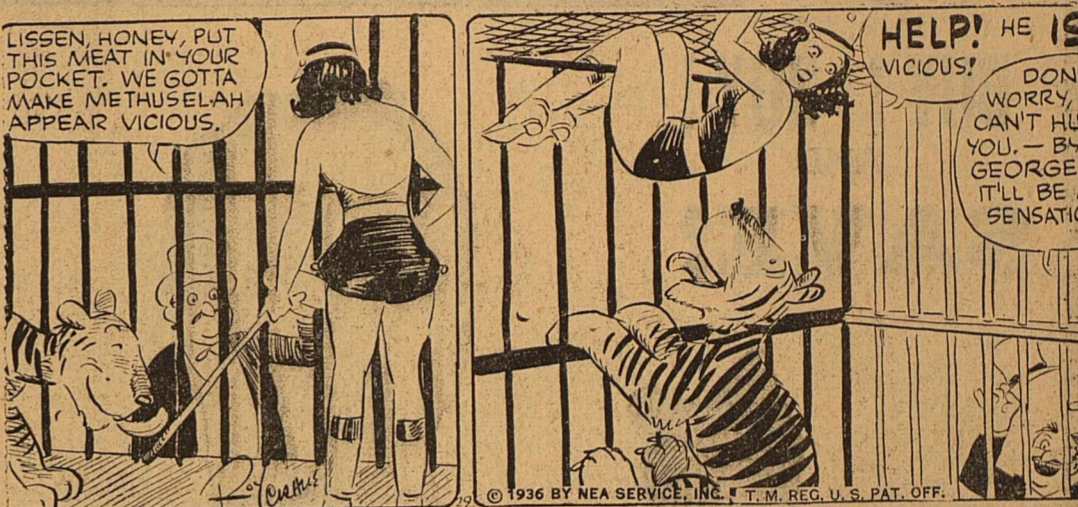
OUT OUR WAY



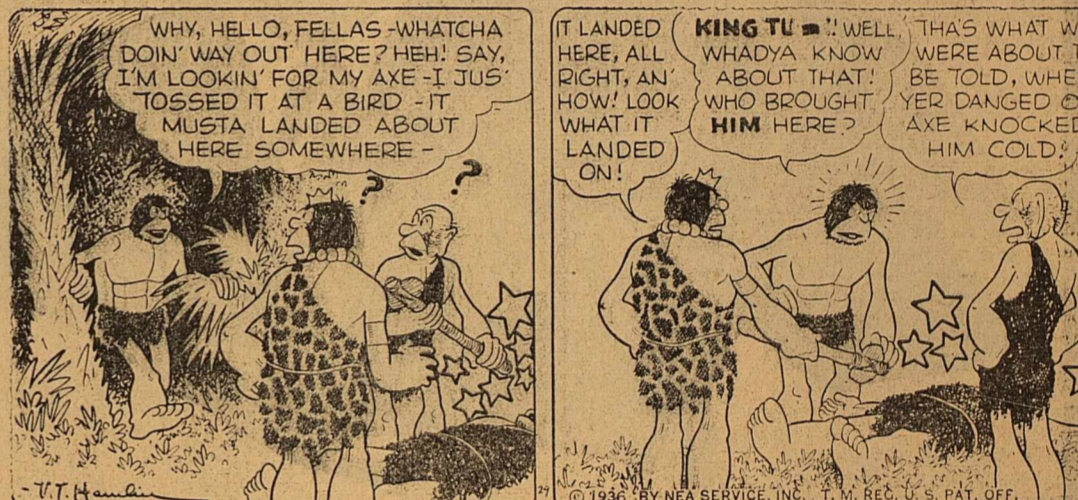
Hard to Believe



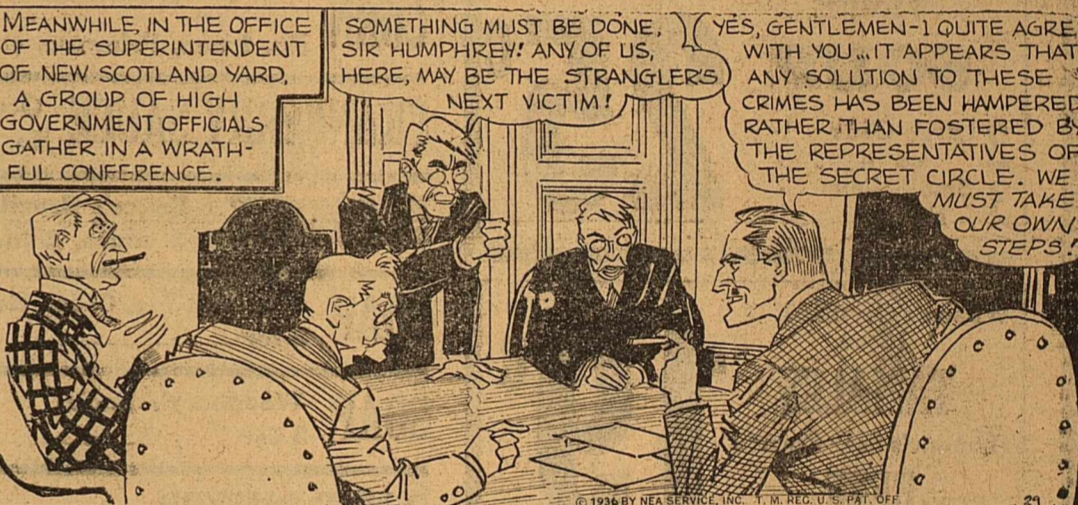
A Ham-Burger Act



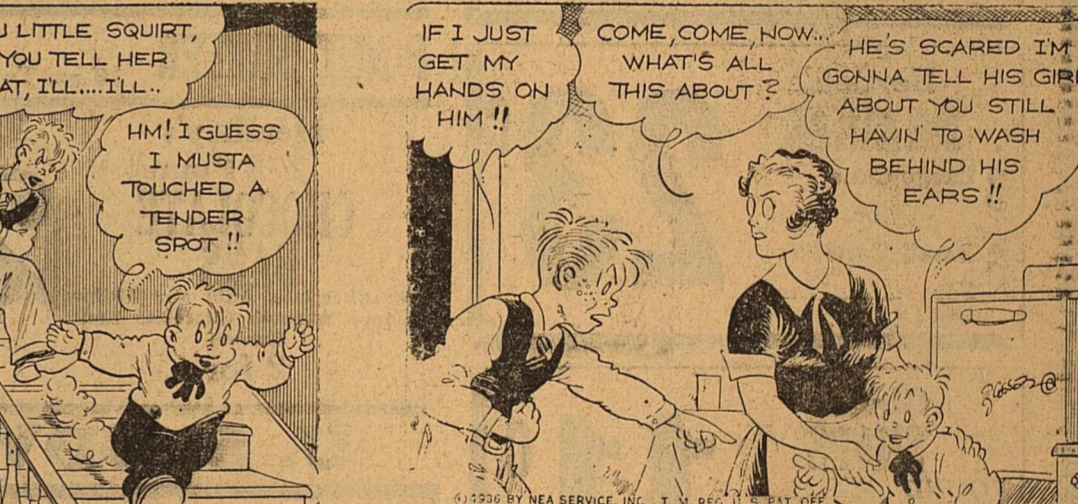
Nice Covering Up



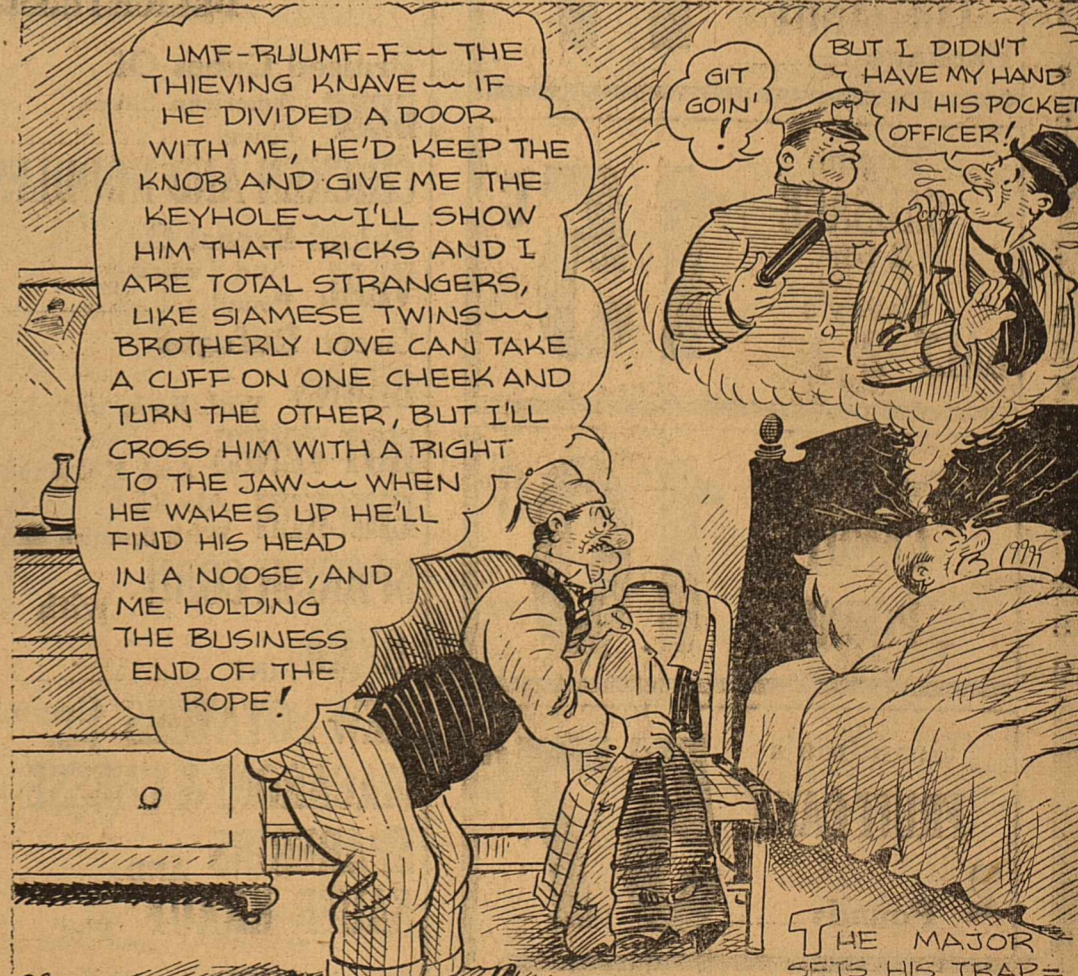
The Conference



A Typical Kid Brother



By WILLIAMSOR BOARDING HOUSE



By MARTIN

By CRANE

By HAMLIN

By THOMPSON AND GOIL

By BLOSSEN

By HEARN

DE

INVENTORY

SALE

WEDNESDAY AND THURSDAY, DECEMBER 30 & 31
OF

Rhoads' Wes-Tex Food Market

MIDLAND,

TEXAS

**Come In! Buy Now! Save! Save!
With These Food Values Offered!**

WE WISH TO REDUCE OUR STOCKS FOR INVENTORY SO TO ENABLE US TO DO THIS, WE ARE GIVING TO YOU THESE BARGAIN PRICES!

**BUY! BUY!
AND
SAVE!**



SPINACH Green Crisp Leaves
GREEN BEANS
SQUASH White or Yellow
BELL PEPPER

P
O
U
N
D

8c

**YAMS--
SWEET YELLOW
ONIONS**

P
O
U
N
D

4c

LETTUCE 3 for 10c

Heinz **SOUP** **25c**
2 Large Cans or 3 Small Cans For

Wilson's Certified 16 oz. **TAMALES** Armour's Star Corned **BEEF** Each **19c**

Borden's **MILK** **23c**
3 Large Cans or 6 Small Cans For

Ginger **SNAPS** POUND **11c**
Baker's Sweetened **COCOANUT** Package

Vienna **SAUSAGE** 2 for **15c**
Carey's **SALT** 2 For

Fancy Mix **CANDY** POUND **10c**

Grandma's **FRUIT CAKE** 2 Pounds **57c**

CORN No. 1 can, Primrose, each **9c**

CRANBERRY SAUCE Ocean Spray No. 1 can **18c**

COCOANUT Baker's Brazil Shred 3 ounce, 2 for **9c**

SOAP Jergens King, Cocoa Hardwater 2 for **15c**

SOAP Woodbury's Facial 2 for **17c**

P-NUT BUTTER S. W. Quart **27c**

P-NUT BUTTER 16 oz. Tasty **16c**

Hershey's 1/2 Pound **CHOCOLATE BARS** **25c**
Milk Chocolate, Mild and Mellow, Honey Almond, Chocolate and Almond 2 for

Visit our Vegetable Department this week, we have a very nice variety for you to choose from. Our assortment includes Turnips, Mustard, Beets, Radishes, Onions, Potatoes, Bell Peppers, Squash, Avocados, Beans, Broccoli, Endive, Cauliflower, Apples, Oranges, Bananas, Tangerines, Limes, Lemons.

CELERY **11c**
LARGE, WELL BLEACHED STALKS

FOLGERS Coffee **29c**
ONE POUND

U. S. GOVERNMENT INSPECTED MEATS

DELICATESSEN
Braised Cubes Of **BEEF** American Sauce Pound **28c**
CHICKEN AND NOODLES Pt. **20c**
Baked Breast Of **VEAL** And Dressing Pound **23c**
Green Ruffagee **BEANS** With Pork, pound **20c**
HOT VENES And Hot Sauce, Lb. **25c**
CHICKEN Ala King With Spanish Sauce, Lb. **30c**
SPANISH CORN with **OKRA** PINT **15c**
NEW POTATOES Creamed Pint **15c**
MACARONI & CHEESE Pint **15c**
SPARERIBS AND **SAUER KRAUT** Pint **20c**

BACON Lakeview Sliced Pound **27c**
SAUSAGE Pure PORK lb. **17c**
Ground MEAT lb. **10c**
ROAST Baby Beef Pound **15c**
BOLOGNA Large Size Pound **15c**
CHILI Home Made lb. **20c**
Lunch MEATS lb. **25c**
CHEESE Kraft's Jar and EACH Pkg. **18c**

DOG FOOD Ideal 3 for **23c**
CHILI No. 2 Can Wolf's, each **23c**
CORN No. 2 can Del Monte Cream Style G. B., 2 for **29c**
PICKLES Quart Ma Brown Sweet **31c**
PEAS No. 1 can El Food, Fresh Snapped and Shelled, 3 for **25c**
PUMPKIN No. 2 can, each **10c**
PRESERVES Ma Brown, 4 pound jar **76c**
SARDINES No. 1 Tall Can, 3 for **25c**
VINEGAR Heinz, Quarts **18c**
SALAD DRESSING El Food, Quart **29c**
LUX FLAKES Small size **9c**
DATES 1 1/2 pound **21c**
CHILI No. 1 can, Wolf's, Each **9c**