

BUY CHRISTMAS SEALS NOW

# THE REPORTER-TELEGRAM

The Best Investment for Your Advertising Dollars

FORECAST  
WEST TEXAS: Fair, colder in the north.

VOLUME VIII

[ (P) MEANS ASSOCIATED PRESS ]

MIDLAND, TEXAS, WEDNESDAY, DECEMBER 16, 1936

[ (U) MEANS UNITED PRESS ]

NO. 242

## Edward Considers Reply to Archbishop of Canterbury

### RADIO ATTACK OF CHURCH HEAD MAY ANSWERED SOON

Former King Said To Be Stirred By Speech

### TO DEFEND SELF Conduct of Friends Will Be Upheld By Edward

ENZELFELD, Austria, Dec. 16. (P)—Edward, abdicated British king, may reply to a radio attack by the Archbishop of Canterbury, it was reported today.

Baron Rothschild, at whose castle Edward is staying, said the latter was deeply stirred by the rebuke to himself and his friends.

Wallis Simpson, for whom Edward quit the throne, remained at Cannes, France.

The Archbishop of Canterbury's strong castigation of Edward's "social circle" was interpreted as a reference to the so-called "fast international set" with which Edward delighted to fraternize. It includes several wealthy American women who have wed members of the British nobility.

"Let those who belong to this circle know that today they stand rebuked by the judgment of a nation which had loved King Edward," the Archbishop contended. "I have shrunk from saying these words, but I have felt compelled for the sake of sincerity and truth to say them."

## TP ASKS TRUCKING PERMIT BETWEEN REEVES, HOWARD

### Witnesses Testify In Hearing At Big Spring

BIG SPRING, Dec. 16.—A number of witnesses testified Tuesday in a hearing here on an application of the Texas & Pacific Motor Transport company to operate a co-ordinated rail-truck service between Pecos and Big Spring.

The afternoon session was heard when Sam Lancaster of Dallas, attorney for the Texas & Pacific, and son of its president, objected to a statement by Joe Stehman, representing the railway brotherhoods, that "this (proposed) service is not a convenience. It is a general case of public nuisance in crowding highways for a few hundred pounds of freight."

The protesters placed four witnesses on the stand by consent of the applicants.

A number of witnesses testified faster delivery would be better for business. Some said the present service cost them business.

Mark Marshall, director of the railroad commission motor transportation division and examiner in the case, urged against prolonging the hearing.

He suggested there was no need of adjourning the hearing after Frank H. Rawlings of Fort Worth, attorney for the Merchants Fast Motor Lines, asked a later hearing at O'essa.

The attorney tentatively withdrew the request after the examiner said he would order the hearing continued in O'essa, probably Thursday, if it is necessary.

## AMERICAS FAVOR ROOSEVELT PLAN

### Consultations To Be Held In Case Peace Menaced Within, Without

BUENOS AIRES, Dec. 16. (P)—The Inter-American conference today approved the United States proposal for consultation among American republics if peace is menaced within or without.

A clause was added to make the pact effective for an indeterminate period, giving signatories the right to denounce with a year's notice.

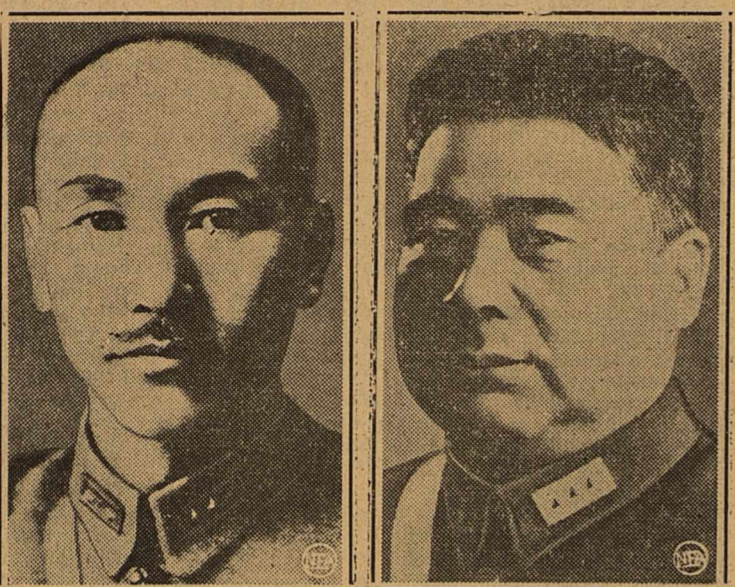
## First Babies' Hospital Celebrates 25th Year

PHILADELPHIA, (U)P.—The famous Babies Hospital forerunner of scores of similar institutions in the United States, has celebrated its 25th anniversary.

Although it is known as a hospital, the institution is primarily concerned with public health and child welfare. A staff of field nurses visits homes to teach young mothers proper care of their infants. An outpatient department takes care of children to the age of 6, and the hospital includes an active maternity department.

A few beds are maintained in the hospital buildings for seriously ill infants.

### In China Army Kidnaping



In an odd effort to bring about an amalgamation of Chinese military forces to wage a campaign for the recovery of Manchuria from Japan, Nanking's generalissimo Chiang Kai-shek, (left), was kidnaped in a mutiny at Sianfu by Marshal Chang Hsueh-liang. General Feng Yu-Hsiang (right), long known as the "Christian general," was given command of the Nanking armies in the emergency.

## Masonic Lodge To Hold Anniversary Celebration

### Representative Of Oil Co. Moves Here

Raymond Miller and wife, formerly of Owensboro, Ky., have moved to Midland where he will represent the Snowden-McSweeney Oil Co., it was announced today. Principal offices for this district are at Fort Worth. The company has holdings in various Permian Basin fields.

## Garage Foundation Nears Completion

Excavation was practically completed today for the foundation of the garage building to be erected in connection with the Hotel Scharbauer garage. The entire 100 by 100 foot site just south of the hotel will be covered by the building. It will be fire proof throughout, of brick, tile, concrete and steel construction.

## MORE DIVIDENDS ARE DISTRIBUTED

### Largest Week in History Of Industry Seen By New Gifts

NEW YORK, Dec. 16. (P)—Distribution began today in one of the greatest seven-day dividend distributions in the history of American industry.

Five hundred, thirty million dollars are going to many thousands of shareholders in extra, increased and regular payments. They represent the half year-end distribution.

## LIONS ANNOUNCE PLANS FOR PARTY

### Gathering Will Be Held At Court House Next Wednesday

Two vocal solos by E. E. Paris, accompanied at the piano by R. B. McAlister, featured the program at the regular weekly luncheon of the Midland Lions club in the assembly room of the county court house today noon. Lion L. E. Jones being in charge of the program.

The annual Christmas party for club members, their wives, sweethearts and guests, will be held at the court house next Wednesday evening at 7:30 o'clock, according to an announcement made by Chairman George J. Phillips. There will be no regular noon-day luncheon on next Wednesday. The Christmas party will be in the form of a banquet, with a special program having been arranged. Santa Claus is expected to make his appearance during the banquet.

Lion R. B. McAlister reported on the Sunday afternoon sing-songs being sponsored by the Lions club and stated that the O'essa high school glee club will be presented in a cantata during next Sunday afternoon's program. The sing-songs are held each Sunday afternoon at 5:00 o'clock in the Crystal Ball Room of the Hotel Scharbauer.

A report on the Christmas party to be staged at the Yucca theater for the kiddies of this section by the Lions and Rotary clubs of Midland was made by J. Howard Hodge.

Club members voted to present five needy families of the city with Christmas baskets, the families to be selected from the list at the chamber of commerce office.

## MADRID BOMBED BY 20 INSURGENT PLANES TODAY

Three Reported Dead In Raid on City, 10 Injured

### OTHER AREAS HIT Heavy Casualties Are Reported By Loyals

MADRID, Dec. 16. (P)—Twenty insurgent planes bombed suburban Madrid and outskirts today, killing three and wounding ten at Majadahonda. Other planes were reported to have bombarded Bou. Franco-Spanish border town.

Government officials said the planes were of Italian manufacture.

Heavy casualties were recorded in the capital's Cuatrocaminos district. Government forces wiped out the rear guard of the Fascists attacking Madrid while the insurgent commanders threw German troops into their front lines, defense officers declared Tuesday night.

A government announcement said Gen. Francisco Franco's troops were whipped and destroyed in flank action at Fresnedillas, twenty five miles west of Madrid.

The insurgents were lured almost to the Socialist line before the government militiamen launched a counterassault, with machine guns, mortars and rifles, and drove them back, the official statement asserted.

At the same time the Fascists were repulsed in an attack on Valdemorillo, east of Fresnedillas, the government said.

Defense officers asserted they observed German troops in the front line of the Fascists attacking Boadilla del Monte, about nine miles west of the capital. The presence of the Germans, they said, was duly checked.

## SCHLUMBERGER TO BE RUN IN NORTH WARD DISCOVERY

### Finley & Cherry Test Flowing Sulphur Water

BY FRANK GARDNER  
A Schlumberger electrical survey will be run this afternoon in Finley & Cherry No. 1 Sealey Estate, north Ward wildcat promising a new productive spot. The well is flowing an estimated 190 barrels of sulphur water daily believed to have been encountered in sand in an upper horizon from 3,026-34, but the possibility that water may be coming from other horizons as well resulted in the decision of operators to run the Schlumberger test. The electrical method of well surveying definitely logs all section of uncased hole which show porosity, oil, gas or water.

An occasional "slug" of oil present in the flow of water indicates that the well has a good chance of making a producer when the water has been shut off. Should the water be found to be coming only from the upper horizon, a string of 1 1/2 inch casing will be set to shut it off. After setting 7-inch pipe at 2,886, the well was cored deeper from old depth of 3,200, recovering cores to 3,204 1/2 showing good porosity and saturation. Another core was taken to 3,205 1/2, the present depth, which also showed saturation and porosity but graded off into hard sandy lime. The well showed several oil-bearing streaks above 3,200, but the amount of free oil in returns was negligible. Location of the prospective discovery is in the northeast corner of section 54, block F, G. & M. B. B. A. survey, four miles west of the O'Brien pool.

Preparations are being made today to shoot the R. H. Henderson et al. No. 1 Argo-Edwards, a test in the Waddell pool of northern Crane county. Drilling was stopped last night at 3,654, with oil shows reported from 3,626-38 and 3,652-54. The well had been carrying 490 feet of light-colored oil struck in the uppersands whereas that encountered in the lower showing was black in color. Tentative plans this morning were to shoot with 160 quarts from 3,160 to 3,250 and with 100 quarts from 3,500 to 3,654. After breaking up the section with the shot, operators plan to acidize the well. It is a quarter-mile northeast of Tide Water No. 1 Edwards, a 4,000-barrel well, and location is 990 feet from the north and 1,650 feet from the west line of section 2, block B-23, public school land.

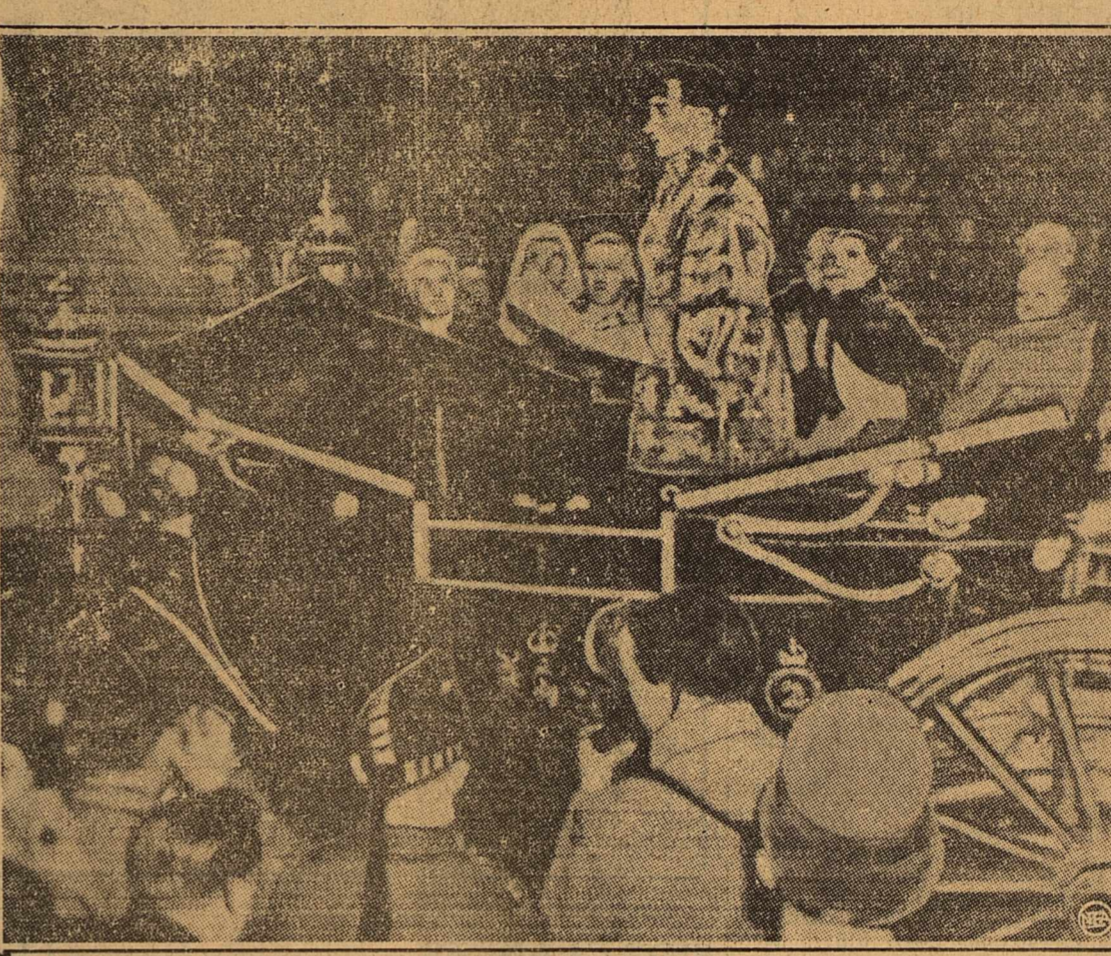
Farther northeast, Magnolia No. 8 Edwards, south offset to Steve Currie's producer, is drilling lime at 3,538 feet. It had a small oil showing at 3,223-35. Location is 3,538 feet from the north and 1,634 feet from the east line of section 2.

Gulf No. 16 Waddell, in section 11, block B-23, is drilling lime at 3,431 feet.

Makes Oil Head  
Devonian Oil Company No. 1 Scharbauer, mile-sat extension to the north end of the Goldsmith pool  
See (Oil News) Page 6

## Central Government to Send Army To Either Avenge or Rescue Shek

### Acclaiming George VI King of England



ABOVE: Fog and drizzle did little to dull the ancient pageantry observed in proclaiming King George VI's accession to the throne of England. Brightly dressed heralds rode to the four corners of the old city to announce to throngs of Londoners what they already knew. Pictured is the Norroy King-at-Arms in his carriage at Temple Bar during the ceremony.

"To the King!" United States Ambassador Robert Worth Bingham (left) joins with English officials, including the Lord Mayor of London, Sir George Broadside (right), in the first toast to the newly proclaimed monarch, George VI.



## GLASS WORKERS' STRIKE THREAT TO AUTO INDUSTRY

### Walkouts Called At 3 More Points Today

(By Associated Press)  
Extension glass workers' strike in three hitherto unaffected centers was threatened today to curtail the automobile industry.

Walkouts were called at Toledo, Charleston, West Va., and Shreveport, and support to demands of union recognition and salary adjustments called.

Six thousand Pittsburgh plate glass company employees and 1,300 Libby - Owens - Ford workers in Ottawa, Illinois, are already idle.

## Santa Quits Labors Tonight to Make His Visit Here Friday

Information received by the Midland chamber of commerce today from Santa Claus stated that the beloved gentleman will leave his North Pole home and work shop sometime tonight and will arrive in Midland about 4:30 o'clock Friday afternoon for his annual pre-Christmas eve visit with the children of Midland and surrounding territory. Santa Claus had planned on leaving his toy factory the first of this week, visiting several other towns enroute, but due to increased orders he has had to alter his plans, and will travel directly here by plane.

The extremely cold weather prevailing in the north land makes flying very hazardous, but Santa is of the opinion that he can make the flight successfully. Mrs. Santa Claus this morning gave her consent to the trip by air so that the Midland children would not be disappointed Friday. An experienced pilot has been secured to fly Santa Claus' private plane, which is used only in emergencies. Santa, himself, is a capable pilot, but due

See (Santa Quits) Page 6

## DOUBT PREMIER SLAIN BY CHANG AS HE REPORTED

### Executive Council Head Replaces Captive

### REVOLT FEARED Japanese Interests Threatened By Crisis

(By Associated Press)  
The central government voted to send an army to the northern Shensi province to avenge generalissimo Chiang Kai-shek if he is dead, or to rescue him if he is alive, it was reported today.

Officials debated authenticity of a reported broadcast by mutinous Marshal Chang Hsueh-Liang that he had killed the premier and several ranking military leaders.

Dr. H. Kung, acting head of the executive council, took the place vacated by the kidnaping of Chiang after martial law had been declared.

The government saw possibilities of a revolt, communist-inspired, and a crisis that might threaten Japanese interests.

TOKYO, Dec. 16. (P)—Reports reached here indicate General Chiang Kai-shek, China's strong man, may be still alive, the prisoner at Sianfu, Shensi province, of his rebellious subordinate, Marshal Chang Hsueh-Liang.

Serious doubts that he and several of his generals were executed at Sianfu, as Marshal Chang was reported to have told China in a radio broadcast, were raised by later dispatches reaching Tokyo.

The Chinese Ambassador to Tokyo, Hsu Shih-ying, said he had received a telegram from his government today stating that W. H. Donald, Australian adviser to the Nanking Regime, was on his way back to Nanking from Loyang bringing Chang Hsueh-Liang's terms for the release of General Chiang. This message made no mention of the supposed executions.

The Domei (Japanese) news agency early this morning stated categorically in dispatches from Shanghai and Nanking that Marshal Chang had announced the executions of his prisoners.

Later, however, it published an account of Donald's return to Loyang from Sianfu, published in Nanking by the Central News Agency, which tended to contradict Domei's earlier account of Marshal Chang's shocking announcement. The Central News Agency is the organ of the Chinese government.

A mysterious silence of both official and unofficial use of communications with interior provinces was denied all except officials attempting to settle the crisis.

## WISITS SISTER

Mrs. C. I. Kuykendall of Lubbock has been here for a brief visit with her sisters, Mrs. Rayne Carroll and Miss Ike Ethridge.

## STEPLADDER 24 FEET HIGH

OREGON CITY, Ore. (U)P.—Residents here believe a specially built stepladder constructed for Oregon City high school is the largest ever built in the west. It is 24 feet high, built of spruce and weighs 119 pounds.

## Construction of Magnolia Station Here Is Announced

Construction of a new Magnolia Petroleum Company station at Wall and Colorado streets, on the site of the former Midland library, was started today, the site having been leased recently by Fred Wemple, Magnolia agent, for a ten year period.

Of modernistic architecture, the station will be novel in every respect, with all new measures for efficiency incorporated, company representatives said. M. Kay, construction forman for the company, is here from Dallas to superintend the building project.

The building will be of brick, tile and stucco, finished in light color, with the main building, the concrete drives and beautiful grounds covering the 50 by 140 foot lot.

The foundation was being run today, with exception that the building will be completed in fifty working days.

## Aycock Makes Sale Of Hereford Bulls

B. N. Aycock last week sold and delivered 24 head of young bulls from his registered herd of Herefords.

Andrew Fasken bought fourteen head of bull calves to be placed on his ranch southeast of Midland. W. H. Cowden bought six head, taking them to his ranch near Kent. Jess Grammer of the Pecos river country bought four head of yearling bulls.

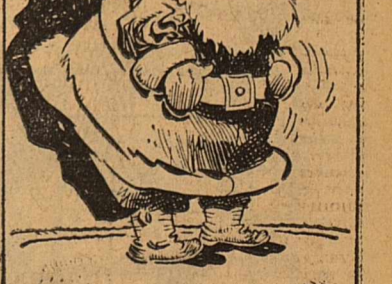
Aycock says he now has one of the finest crops of young bulls he has ever produced and is selling them at satisfactory prices. Although he has not exhibited show herds for several seasons, the Aycock Herefords are known throughout the country for their high quality and type.

## BULLETIN

An unidentified man was taken from an eastbound freight train about 3:30 this afternoon, being either sick or in a stupor. He was taken from the train by members of the crew and rushed to a hospital. It was thought at first by Midland citizens who rushed to the Main street crossing that the man had been run over by the train. However, this was in error.

## A Visit From St. Nicholas

By Clement Clarke Moore



XXI  
He had a broad face and a little round belly,  
That shook, when he laughed,  
Like a bowlful of jelly.

(Continued in Next Issue)

ONLY 7 MORE SHOPPING DAYS TILL CHRISTMAS

THE REPORTER-TELEGRAM

Evenings (except Saturday) and Sunday Morning
MIDLAND PUBLISHING COMPANY, PUBLISHERS
112 West Missouri, Midland, Texas

F. PAUL BARRON Publisher
Entered as second class matter at the postoffice at Midland, Texas, under the Act of March 30, 1919

Subscription Price
Daily, by Carrier or Mail
Per Year \$5.00
Per Month 50c
Advertising Rates
Display advertising rates on application. Classified rate, 2c per word; minimum charge 25c. Local readers, 10c per line.

Any erroneous reflection upon the character, standing or reputation of any persons, firm or corporation which may occur in the columns of the Reporter-Telegram will be gladly corrected upon being brought to the attention of the firm.

BEHIND THE SCENES IN WASHINGTON

By RODNEY DUTCHER
Reporter-Telegram Washington Correspondent

WASHINGTON, Dec. 16. — Your correspondent covered the convention of the National Restaurant Association in Washington—after a fashion.

The scheduled speech of Mr. John E. Ebersole on "New Ideas for the Restaurant" sounded as if it might have possibilities. Mr. Ebersole had about completed a 15,000-mile trailer trip on which the Ebersole family ate its way around the country, picking up new ideas in other people's restaurants.

Meanwhile, it was being bruited about that the NRA banquet would be the "finest meal ever served." Chef Nicholas Marchitello of the Mayflower, who prepared it, has fed most of our presidents and other statesmen in the last few years.

The restaurateurs successively ate a couple of honeysweet melons and hot-house grapes topped with zucchini; crablike gumbo soup Louisiana—made of crab bouillon and white meat, rice, celery, tomatoes, okra, white wine, and spices; then there was broiled heart of filet mignon on Smithfield ham with bordelaise sauce (smothered and slightly brown chopped shallots in butter, add a good burgundy wine, add a brown sauce made with marrow bone, add chopped marrow, chives, salt, red pepper and a fresh-ground cayenne mushrooms in a sauce of olive oil, chives, shallots and bread crumbs); new peas in sweet butter, Idaho potatoes O'Brien au gratin.

And then fresh lemon sherbet with creme de menthe, chilled tomato farci Santa Maria (tomato stuffed with fresh fruit, with bar le due dressing and unsweetened whipped cream decorated with sliced orange and English walnuts); salines, cream cheese and guava jelly, and an eggnog pistachio meringue with a cherry sherbet top. Plus demitasse.

Other things your correspondent learned. That few restaurateurs know government-graded beef, U. S. prime, is always tops if you can get the butcher to carry it. That, according to a large sign displayed, "There's a 20 per cent profit in spaghetti sales." That there are 200,000 waitresses in the United States and every so often one of them marries the proprietor.

RARE NEWSPAPER ON WALL
SALEM, Ore. (U.P.)—Fragments of one of Oregon's earliest newspapers, the Oregon Argus, were found on the walls of a pioneer home here here. It was dated Nov. 5, 1853. The year Oregon was admitted to the Union.

Farm Animal

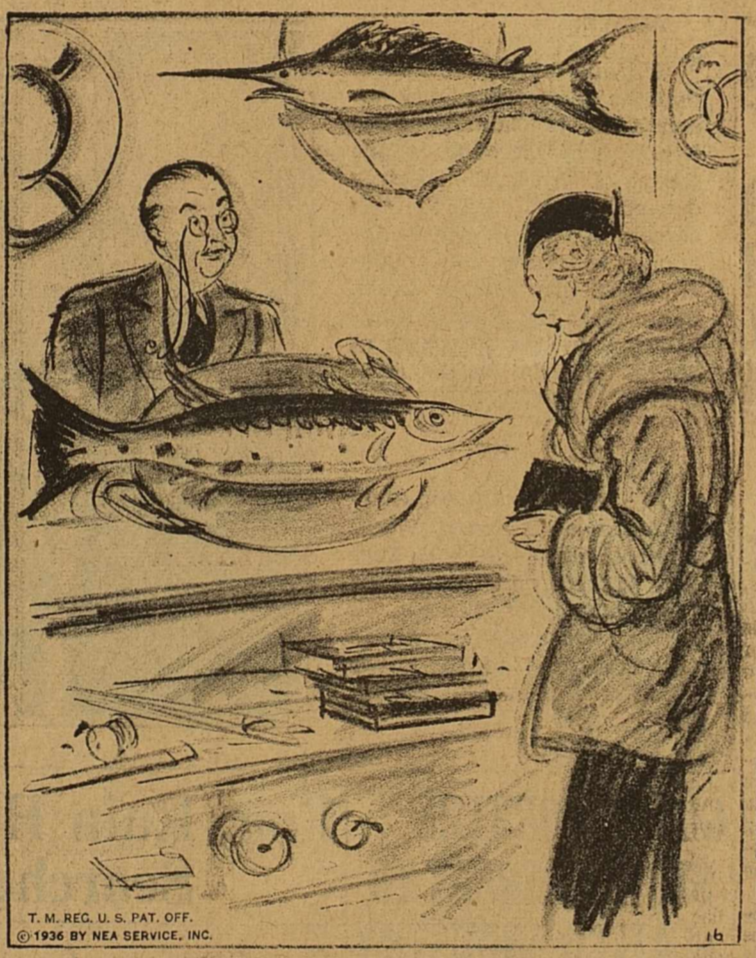
Horizontal Answer to Previous Puzzle
1 Domestic hog.
5 It is a...
10 Killer whale.
11 Drove.
12 Tiny.
14 Musical note.
16 Child.
17 Totals.
19 Leprous person.
21 All right.
22 Neuter pronoun.
23 To sin.
24 And.
26 Restoration.
32 Its... is a favorite food.
33 Passages.
34 Its favorite food.
35 Married.
37 Food container.
38 Still.
39 Credit.
41 To hurry onward.
43 Heavenly body.
45 Like.
20 To obtain.
21 Pertaining to osmium.
25 Frongs.
26 Uncooked.
27 Musical note in scale.
28 Scabies.
29 Afternoon meal.
30 Coffee pots.
31 Negative.
36 Club fees.
38 Curries.
40 Wireless receiving set.
42 Decorous.
44 Became weary.
45 To make amends.
47 Song for one.
48 Tevel.
50 To prick.
51 Tree.
53 Within.
54 Upon.
56 X.
58 Preposition.
60 Laughter sound.

Vertical
1 Adult female
46 Valuable property.
49 Not apt.
51 Bustle.
52 Mariners.
55 To decay.
57 Fodder vat.
59 Silly.
60 To sharpen a razor.
61 It is a... animal.
62 To blunt.
VERTICAL
18 Those who diet.
20 To obtain.
21 Pertaining to osmium.
25 Frongs.
26 Uncooked.
27 Musical note in scale.
28 Scabies.
29 Afternoon meal.
30 Coffee pots.
31 Negative.
36 Club fees.
38 Curries.
40 Wireless receiving set.
42 Decorous.
44 Became weary.
45 To make amends.
47 Song for one.
48 Tevel.
50 To prick.
51 Tree.
53 Within.
54 Upon.
56 X.
58 Preposition.
60 Laughter sound.

Geel! It's Nice to Be Remembered By Somebody



SIDE GLANCES By George Clark



'Oh! I'm sure that's what he wants. He's been trying to catch one for years.'

New Grandeur Cloaks Capital As 7-Year Expansion Program Creates "Triangle"

WASHINGTON, Dec. 15. — The national capital today reveals the matured beauty intended by its founders in the 18th century, as construction projects and park plans are being rushed to completion in advance of Congress opening.

Seven years of depression were accompanied by steady progress toward realization of the plans for a monumental city conceived long ago when the French landscape architect L'Enfant, inspired by the parks at Versailles, counseled George Washington.

A Federal buildings program started before the New Deal, Civil Works project, and the urgent necessity of housing an enlarged government business kept this city from stagnation in years of national depression, and brought it to new grandeur as the country approaches a period of relative prosperity.

The year 1936 with the re-election of President Roosevelt meant for Washington the assured security of 100,000 Federal jobs.

Truly World Capital
The one-time "country town" on the Potomac now is frequently commented upon by foreign observers, and pictured by European photographers as truly a world capital, inviting comparison with other great governmental cities. Its French antecedents received striking reminder in November when a memorial bench in Rock Creek Park was dedicated to Jules Jusserand, distinguished ambassador here in the period of the World War.

The past year saw virtual completion of the huge block of departmental buildings in the "Triangle", bounded by Pennsylvania Avenue, the Mall and Fourteenth Street. At the apex of this triangle stands the huge Greek filing-cabin-

net known as the Archives Building.

On the south side of the Mall, 600 feet in width and two miles long, carpenters and masons worked through the year on expansion of the Department of Agriculture.

A one-time small red brick building has grown during the depression into a large marble administration building, connected by bridges across a street to "South Building," said to be the largest office building in the world.

Old Avenue Dimmed
Pennsylvania Avenue, famed "Street of Parades," has lost this distinction to the new Constitution Avenue, which runs beside the Mall, flanked by the Archives building, Department of Justice, Post-office Department, Labor Depart-

ment and Commerce.
One side of the historic Pennsylvania Avenue is now lined entirely by government buildings or parks, while the other side has changed strangely, with the disappearance of many old commercial buildings and hotels.
Capitol Hill also has undergone a metamorphosis in the last seven years and only in 1936 arrived at a stage of architectural and park-completeness.
Facing the Capitol across a park, the Greek classical whiteness of the new Supreme Court building vies with the ornate Renaissance architecture of the Library of Congress, while a short distance beyond the Shakespeare Museum brings British traditions into the American national scene.
To the left of the Capitol, facing eastward, is the Senate office building recently enlarged into a quadrilateral building surrounding a 0 monument to Thomas Jefferson in the vicinity of the Mall.
In front of the Capitol at this season is the ceremonial speakers' stand built for use at the inauguration ceremonies on Jan. 20. Weather permitting, a crowd of 150,000 or more will assemble for the inauguration ceremony, the first held in mid-winter. The 20th Amendment to the Constitution, effective Feb. 6, 1933, changed the older date of March 4.

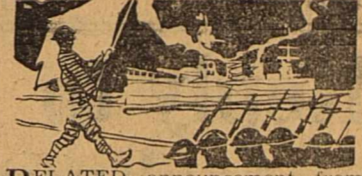
Diplomatic sections of Washington, no less than political, have changed rapidly in seven years. Massachusetts Avenue and Upper 16th Street still are rival neighborhoods for diplomatic favor. British, Japanese, Chilean, Brazilian and Austrian establishments had cast their lot with the newer Massachusetts district, but the Italian, Mexican, Cuban, and Polish Embassies and the chancery of the French still uphold the prestige of 16th street.

DEER CRASHES INTO SHOP

NEWBERG, Ore. (U.P.) — Henry Barnes was repairing shoes in his shop in this town's business district. He heard a crash and a clatter of hooves. A half-grown doe ran through the room and collided with a plate glass window. He and a customer captured the deer.

Stamp News

By I. S. Klein



RELATED announcement from Washington affords collectors very little time to prepare covers for first day issue of the first of the Army-Navy series of stamps. Word comes at last that the one-cent values will be placed on sale in Washington, Tuesday, Dec. 15.

Those who still can get in under the wire should prepare their self-addressed envelopes, leaving sufficient room in the upper right corner for application of three stamps, each the size of the present special delivery. There should be one set of covers for the one-cent Army stamp and another set for the one-cent Navy stamp, and since postage is 3 cents, there must be at least three of these stamps on each envelope. Provision for a block of four would be advisable.

Send not more than 10 of each kind, with money order covering exact amount of postage, to the Postmaster, Washington, D. C. Do this today, and you may still get your first day covers in on time. The Army stamp will bear the portraits of George Washington and Nathaniel Greene. The Navy stamp will portray John Paul Jones and John Barry, with the famous "Bon Homme Richard" and the "Lexington," battleships of the early days, in the background.

Aden, the new country for collectors, is preparing its first issue of stamps, to be released soon. There will be 12 values.

Radio taxes in foreign countries have produced a type of stamp unknown in the United States. It is the radio tax stamp. France issues these, a new one each year. (Copyright, 1936, NEA Service, Inc.)

The Town Quack



(Reserves the right to "quack" about everything without taking a stand on anything).

do a job like this in the biggest way, but sometimes waits until the last minute. The good seats at the Rose Bowl are going fast.

Eight shopping days until Christmas, all my money spent and nothing selected, let alone bought. What a plight to be in.

There's one point about the recent great football season of which Midland fans should not lose sight. And that is the good sportsmanship of Pecos citizens. If they made any sort of holler about the decision in favor of Midland in the tie game (I mean after the decision was made final by the district committee), I didn't hear of it. At any rate they didn't voice any public disapproval. Pecos had a great team. They had a star of whom they think as much as we think of Wafford. But they took the verdict standing up and they didn't protest. Some fans here went so far as to expect Pecos to protest the game after Midland defeated Odessa, but Pecos took the original decision and apparently left it to the Bulldogs to go as far as they could.

The Bulldogs went as far as the interscholastic league permits. They won the district, the bi-district and the regional championship. If there had been such a thing as a class B state champion, I firmly believe the Bulldogs would have gone right on and annexed the flag. And my pick for the next best team is Pecos, if there's any difference in the two.

Shuffler's boys gave us a mighty battle Turkey day, but the Bulldogs didn't play anything like the game they played at McCamey and against Littlefield, and the Bronchos played a better game than they played all season.

In a survey of the best ten teams in five districts covered by his paper, Tony Slaughter of the San Angelo Times named Midland first, Pecos second and Odessa seventh.

This Rose Bowl business is going to have to be put through pretty soon now. Midland never falls to

I remember last year when Wink beat Roscoe here for the regional championship. Some Wink boys were playing around on the mezzanine floor of Hotel Scharbauer. "This is a swell town," one said, "why don't they have a good football team?" "Oh," replied his companion, "they teach 'em to sing over here."

HERE'S RELIEF for Sore, Irritated Skin

Wherever it is—however broken the surface—freely apply soothing Resinol

IS YOUR VISION CLOUDED?



Would you know the perfect peace and comfort of perfect vision? Then allow us to make a scientific examination into the condition of your eyes.

IS YOUR SUN OF HAPPINESS CLOUDED?

Dr. W. L. Sutton
OPTOMETRIST
203 Thomas Bldg.
Office Ph. 146—Res. Ph. 810-J

LOW HOLIDAY RATES Everywhere
EXAMPLE OF ROUND TRIP FARES FROM MIDLAND

Table with columns: TO—, CHAIR CARS AND COACHES, SLEEPER (Berth Extra)
Chicago \$36.30 \$48.35
Dallas 10.20 13.60
El Paso 9.30 12.35
Fort Worth 9.25 12.35
Los Angeles 36.70 45.45
Memphis 24.25 32.35
New Orleans 26.15 34.40
Shreveport 16.00 21.30
St. Louis 29.10 38.75

TICKETS Now on Sale to all points in the West Daily and until Jan. 1... Limit 30 Days

Also low Holiday rates to all points in the North and East... effective daily, December 12th to January 1st... limit 30 days.

A trip to the Roosevelt Inauguration at Washington, D. C., January 20th, would make a Wonderful Christmas Gift.
The Official All-Texas Victory Jubilee Special Pullman Train will leave Dallas Sunday night, January 17th... arrive home, following Sunday... 3 1/2 days in Washington. All expenses paid except meals while in Washington... A Great 7-Day Trip with rates as low as \$91.95 per person (two in lower)... Ask your nearest T. & P. Agent for booklet describing this outstanding trip.

THE TEXAS AND PACIFIC RY. FAST • SAFE • COMFORTABLE

Ten Important Reasons Why Our Policy Is So Valuable

- 1. Protects your time.
2. Guarantees an income when disabled.
3. Relieves you of financial worry.
4. Provides hospital coverage.
5. Waiver of premium in event of permanent total disability.
6. Covers all accidents.
7. Provides doctor's fees for injuries.
8. Benefits paid every month.
9. Protects you on or off duty.
10. Liberal sums paid for loss of life, limb or sight.

Mutual Benefit Health and Accident Association, Largest Exclusive Health and Accident Association in The World.
United Benefit Life Insurance Company, An Old Line Legal Reserve Stock Company.
Known as America's fastest growing life insurance company. Has many special featured policies not found in the average life insurance contract.
J. G. HARPER, District Manager
213 Petroleum Bldg. Phone 830 Midland, Texas

# Society and Clubs

## Mrs. George Barham Is Hostess Tuesday At Bridge-Luncheon In Crystal Ballroom

Mrs. George Barham was hostess at a bridge-luncheon Tuesday at 1:00 o'clock in the afternoon in the Crystal ball-room of the Hotel Scharbauer.

The Christmas season was emphasized in the unique table center pieces of red poinsettias and green fern which blended in with the Yuletide colors carried out in the table appointments, tallies, and novel designs of the red and green prize packages. Brilliant red colored chrysanthemums were arranged in attractive displays throughout the Mezzanine floor.

Beautiful gift prizes of Guerlain perfume were presented to Mrs. George McEntire Jr. for high score. Mrs. Harry Adams for high cut, and Mrs. David S. Goozins for low score.

The invitation list included Mesdames E. H. Ellison, George McEntire Jr., Fred Wilcox, Frank Cowden, O. B. Holt, M. C. Ulmer, J. L. Crump, George Glass, E. W. Cowden, Joe Youngblood, Clyde Cowden, W. T. Walsh, R. E. Kinsey, D. C. Sivals, Elliott Cowden, James Fitzgerald, Charles Klapproth, J. R.

Norris, A. J. O'Rourke, George Shelton, Allan Hargrave, John Shipley, A. N. Hendrickson, H. B. Prickett, R. W. Bowden, W. E. Wallace, R. B. Cowden, P. F. Brown, H. F. Johnson, D. J. Finley, D. C. Hensel, Harvey Conger.

Mesdames L. G. Mackey, W. M. Simpson, Fred Wright, T. B. Flood, C. A. Mitchell, Glen Lewis, David Goozins, F. F. Winger, Charles Brown, O. R. Brewer, R. L. Saunders, M. D. Self, I. C. Watson, B. C. Harper, C. A. Mix, C. C. Duffey, A. W. Thomas.

Mesdames W. L. Morrison, Hugh Corrigan, I. E. Daniel, J. L. Rush, J. R. Martin, A. S. Donnelly, Fred H. Fuhrman, James H. Chapple, John House, J. W. Jordan, R. W. Patterson, H. C. Wheeler, E. F. Aldrich, J. K. Elder, George Farley, J. M. Armstrong, Rae Sindorf, Joe Ballantone, Hal Peck, Leger Smith of Colorado, C. Crammer, D. C. Edlington of Big Spring, E. Pistole of Big Spring, D. C. Pickering, H. T. Hatfield, H. E. Branfield, F. Hamplin, J. M. Mayse, E. J. Adams, Pat Hurley.

## Christmas Dinner Party Entertains Business Women

The Business and Profession Woman's club entertained at a Christmas dinner in the private dining room of the Scharbauer Hotel, December 14, at 7:30 o'clock.

The dining table had a clever center piece of a miniature Christmas tree which contrasted with the

big Christmas tree decorated with lights, glittering adornments, and Yuletide gifts.

Miss Fanny Bess Taylor, president, acted as hostess at the dinner, and Mrs. Susie G. Noble was "Santa Claus."

Miss Maria Spencer was in charge of the program, which consisted of Christmas carols led by Miss Marguerite Bivens, assisted by Miss Lydie G. Watson at the piano. Miss Lucille McMullan gave an excellent presentation of "The Christmas Story."

The dinner guests included Mesdames G. Noble, J. H. Harrison, Addison Young, L. A. Denton, Eva Noyes, Berrie E. Mitchell, and Miss Frances Stallworth, Fanny Bess Taylor, Norene Kerby, Laura Jesse, Clara Jesse, Jerry Edwards, Bertha McGrew, Elma Graves, Juanita Peckins, Lucille McMullan, Marguerite Bivens, Lydie G. Watson, Kneeland, Elizabeth Wilson, Dru-cilla Lord.

The pupils of Mrs. Lee Cornelius will be presented in a musical recital at 7:30 Thursday evening in the auditorium of the First Christian church. The public is cordially invited.

Mrs. John House will be hostess to the Bien Amigos club Thursday afternoon at 2:30 o'clock in her home.

The B. T. U. class of the First Baptist church will have a Christmas party in the Baptist annex Thursday evening at 8 o'clock.

FRIDAY

The Joie De Vie club will be entertained with a Christmas party Friday evening at 7:30 in the private dining room of the Scharbauer hotel.

The Edwilese club will meet with Mrs. J. L. Crump at 2:30 in the afternoon.

The Thursday club will be entertained at the Scharbauer Hotel Saturday evening at 7:30. Mrs. R. W. Hamilton and Mrs. Harris Eastham will be hostesses at dinner and bridge.

## Dr. Ryan Speaks To North Ward P. T. A. At Tuesday Program

The North Ward Parent-Teacher Association met Tuesday afternoon in the school building for their regular session.

The program was opened with two numbers by the rhythm band. Dr. W. E. Ryan, guest speaker, presented an interesting and instructive talk on the common cold, illustrating the various infections of the head with a sectional skull.

Mrs. R. W. Hamilton, president, appointed a committee of Mrs. L. E. Jones, and Mrs. Walter Anguish to fill the Christmas stockings which the P. T. A. gives to the children each year.

Mrs. Alma Thomas invited all parents, especially the fathers to hear the children sing Christmas carols at 12:45 until 1:00 o'clock on Wednesday and Thursday in the upstairs hall.

The room attendance prize was awarded to Miss Ruth Anderson's room. Forty five teachers and parents were present.

## Announcements

**THURSDAY**

The Home Art club will meet at the home of Mrs. Ray Parker on Thursday evening at six o'clock.

Mrs. R. W. Patterson will be hostess to the Thursday club Thursday afternoon at 3:30 o'clock at her home.

The Belmont Bible class will have its Christmas party in the home of Mrs. Herbert King Thursday afternoon at 3:30. All members are asked to bring their contributions to the Christmas basket the class will give to a needy family.

Mrs. W. A. Sherrod will be hostess to the Lois class of the First Baptist Church Thursday afternoon at 2:30 o'clock at a business and social meeting at her home at the Magnolia Tank Farm.

**FRIDAY**

The Friendly Builders class of the First Methodist Church will meet at the home of Mrs. Iva Noyes, 215 N. Colorado, Friday evening at 8:00 o'clock for their Christmas party.

The Naomi class will meet Friday in the private dining room of the Scharbauer Hotel at 7:30 in the evening for their Christmas theater party.

The Junior Wednesday club dance will be held in the Scharbauer Hotel at 9:00 o'clock.

Mrs. R. C. Crabb will be hostess to the Escondida club at 2:30 in the afternoon.

The 1928 Club will be honored with a party Friday afternoon at 2:30 at the home of Mrs. Joe L. Crump.

The Delphian club will have a called meeting Tuesday, 15, at 9:00 o'clock in the morning in the dining room of the Hotel Scharbauer.

**Saturday**

The Edwilese club will meet with Mrs. J. L. Crump at 2:30 in the afternoon.

The Thursday club will be entertained at the Scharbauer Hotel Saturday evening at 7:30. Mrs. R. W. Hamilton and Mrs. Harris Eastham will be hostesses at dinner and bridge.

## Give Yourself Time To Make Up Right



BY ALICIA HART  
NEA Service Staff Writer

Your makeup when dressing for a formal evening is just as important as your coiffure and the gown you wear. Allow time enough to get it on perfectly before you start for any holiday party or dance.

If you can't possibly spend more than one hour dressing for a formal function, better budget your time so you won't have to powder face and neck at the last minute and apply lipstick as you rush down the stairs to greet your escort.

Allow at least twenty minutes for a bath and a brief facial. While the tub is filling, clean your face and throat and smooth on a rich tissue cream or a quick-drying mask. Then bathe. If you are very tired, relax in the warm water for five or six minutes. Afterward, remove cream or mask, smooth cold skin tonic or splash ice water on your skin and smooth on foundation lotion.

Application of cream rouge is the next step. Keep it above an imaginary line from corner of the mouth to tip of the ear, and blend it outward until there are no rough edges. In other words, put it where natural color would normally be and try to attain a natural effect.

worked closely with car engineers. With almost every important change in body design, a compensating change was effected in the radio.

This results in good radio performance with a minimum of car interference. It provides long-distance reception and strength of signals without requiring too much power from the car battery. Noises at the lower frequency end of the broadcast band have been diminished, and ignition noises have been greatly reduced without the use of suppressors. The set has a new shielded lead-in which serves to reduce inherent set noises.

Most prominent of the changes in the new Ford radio is the adjustable position outside aerial. With the use of a one-piece steel top in the car, antennae were removed from the roof. Tests showed that an outside aerial attaching above the windshield was most practical. In the downward position the aerial is in line with the center strip of the new V-type windshield, and in this position it is used for local reception.

The position of the aerial is controlled by an inside knob on the header panel above the windshield to the right of the driver. By turning this knob, the driver places the aerial in the upward position—where it automatically locks. This position is preferable when reception of distant stations is desired, and it is ordinarily employed during country driving.

Within the aerial is a 12-inch rod for reserve use which may be extended when it is desired to increase the intensity of broadcast signals. The aerial and extension have a total length of 30 inches. The antenna assembly is made of rustless steel and there is no loss in efficiency when it is wet. This style aerial is advantageous also in that it in no way interferes with the driver's vision.

The Ford radio speaker is concealed behind the header panel and is larger this year. It is placed at the "ear-line," where it is most effective acoustically. The set also has a new three-position switch-type tone control, tones ranging from mellow to brilliant.

Installation of the new Ford radio no longer requires removal of the ash tray in the center of the instrument panel, provision having been made for the new radio control panel just above the ash tray.

The dial has been made more attractive by new indirect lighting which also serves to make the dial symbols easier to read at night. Kilocycle readings appear in a band surrounding an inner, rotating dial on which a "V-8" symbol appears. The inner dial moves as the tuning knob is turned, the tip of the V indicating the station to which the set is tuned. The inner dial is carefully fitted so that an undistorted kilocycle reading is given from any angle of view.

Peter the Great, staid hippopotamus of the Bronx zoo, weighs two and a half tons, and is 33 years old.

## Lucky 13 Honored At Christmas Dinner And Forty-Two Party

Mr. and Mrs. J. T. Walker entertained the Lucky 13 club Tuesday evening at a Christmas dinner and "42" party at their home at 7:00 o'clock.

A Christmas theme was carried out in the decorations, with novel Christmas spray of holly berries and evergreen leaves as the center piece, and the selected colors of red and green stressed in the place cards and the prize wrappings.

High score for the ladies went to Mrs. W. N. Cole and high score for the men went to Mr. J. A. McClurg.

A beautifully decorated Christmas tree hung with Yuletide presents for the club members was presided over by "Santa Claus" John Howe.

Those who attended were Messrs. and Mesdames, Ellis Conner, J. A. McClurg, C. M. Hays, S. C. Hall, John Howe, J. E. Baker, J. C. Hudman, O. H. Jones, H. S. Collings, W. N. Cole, and the host and hostess.

## Bundle Babies in Cellophane



When babies at the Memphis, Tenn., Baptist hospital go "calling," they are bundled in a cellophane tally-ho and trundled out before fond parents and friends. The tally-ho is a wheeled rack with an eight-baby capacity. Each infant has a compartment, cellophane-covered to prevent infection. Above, a nurse has just placed a baby in its berth in the vehicle.

## To Spend Christmas Vacation At Home

Miss Evelyn Phillips, attractive daughter of Mr. and Mrs. George Phillips, will arrive Saturday, December 19, from Dallas where she is a popular student at Hockaday Junior College.

Miss Phillips is treasurer of Sophomore House, dormitory for sophomore boarding students, and she is a member of the Kodak club; she has been extensively entertained with the college set in Dallas. Miss Phillips will spend the Christmas holidays with her parents, returning to Dallas Sunday, January 3, to resume her studies at Hockaday.

## Caught a Cold?

To help end it sooner, rub throat and chest with VICKS VAPORUB

## Christmas Special



\$5 Oil Permanent \$4.00  
Other Permanents \$3.50 to \$7.50  
Shampoo and Set 50¢  
Set 35¢  
Manicure 50¢

## December Thru New Years



Our Beauty Shop  
Phone 822  
Ethel Robison, Manager

## TYPEWRITER RIBBONS

Sold by us delivered and installed free in the business section of Midland. Call us for this added service.

## West Texas Office Supply

Phone 95

Thousands of others are SAVING by bringing their Dry Cleaning to Us—

## OUR LOW PRICES

Men's Suits C. & P. 25¢

Ladies' Coat Suits and plain dresses, C. & P. 35¢

MEN'S HATS C. & B. 45¢

Most Modern Plant—Experienced Help—Excellent Service—

## TULLOS CLEANERS

"Growing With Midland"

## HOME INSULATORS TO LEAVE SOON

Mr. R. F. Currin, sales manager for the Modern Home Insulators, Inc., Dallas, is loud in his praise of the progressiveness of Midland people. His company has contracted thirteen home owners for insulation and many more will buy this week.

Mr. Currin says his company will complete its work in Midland before Christmas and he would like to contact those interested in insulation this week if possible, so that a date can be arranged for their homes to be insulated. The insulating machine will be moved to Big Spring after Christmas.

Call Mr. Currin at Hotel Scharbauer for appointment. Surveys and prices are made without any obligation whatsoever. Now is the time to make your home comfortable both for summer and winter. And the good part about insulation is that it pays for itself in fuel-savings. Ask anyone about it who has had his home insulated. (Adv.)

## Ford Radios Offer New Outside Aerial

Equipped with a newly developed outside aerial designed to provide maximum reception efficiency, the improved Ford radio for 1937 is expected to set a record for new car installations in the coming year.

The percentage of Ford cars equipped with radios in 1936 was considerably greater than in 1935, and a continuance of this upward trend in the popularity of the Ford car radio is anticipated for 1937.

Performance of the new six-tube set is greatly enhanced by the method of installation. Extensive tests showed the importance of having the radio set engineered for the car—and the car for the set. In the course of the development of the 1937 Ford car, radio engineers

## CHRISTMAS SPECIAL

Permanents from

\$3.00 TO \$7.50

## LLANO BEAUTY SHOP

PHONE 273

## DELICATESSEN MENU

for

THURSDAY, DECEMBER 17

Smoked Herring with Buttered Sauce

Pot Roast and Brown Potatoes

Baked Short Ribs of Beef

Giblets with Spanish Sauce

Lamb Stew with Peas and Potatoes

Boiled Spinach with Bacon

Oyster Dressing with Egg Sauce

Macaroni and Cheese

Country Pork Sausage

Apricot Cobbler

## WES-TEX FOOD MARKET

Phone 228 • We Deliver

## LOOK! EVERYBODY

Just received a carload of fresh California Navel Oranges, also glazed California fruits, figs, green and ripe olives and many other Christmas gift packages.

## J. B. "ROCKY" FORD

At Rear of 1111 West Wall—Phone 400

## HOLIDAY SPECIALS—PERMANENT WAVES

\$3.50 Avacado and Nu Pad \$3.00  
\$5.00 Duart and Nestle \$4.00  
\$6.00 Eugene Plain \$5.00  
\$6.50 Nu Ray Machineless \$5.50  
\$6.50 Eugene Oil \$5.50

Permanent Waves given after 6 o'clock to working girls.

These specials will be on up to January 1st.

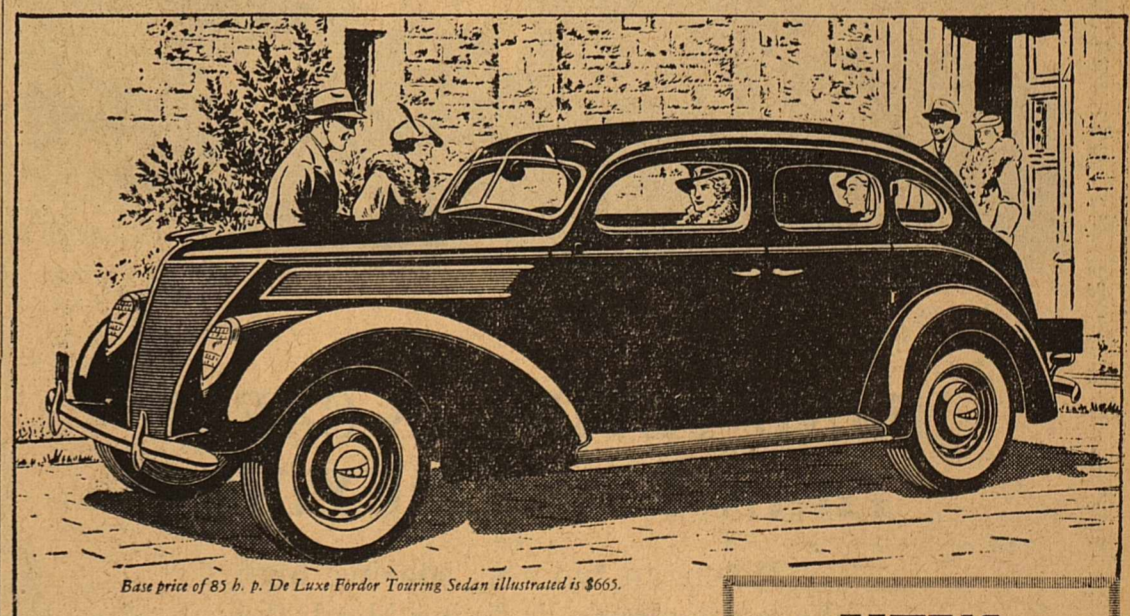
Mrs. Pat Brewer will take appointments at the Petroleum Beauty Shop up to January 1st.

## PETROLEUM BEAUTY SHOP

Phone 970 for Appointment Mrs. Eula Kincaide

# SWEEPING IMPROVEMENTS

in Economy... Brakes... Beauty... Comfort!



Base price of 85 h. p. De Luxe Fordor Touring Sedan illustrated is \$665.

Decidedly more miles per gallon in many models... All models have same wheelbase and same body size.

**NEW EASY-ACTION BRAKES!** Self energizing operation—found in no other car at the price—gives greater stopping power with easier, softer pedal action.

**NEW ALL-STEEL SAFETY BODIES!** Steel top, steel sides, steel floor... reinforced with steel throughout and welded into a single all-steel unit.

**STILL FINER RIDING QUALITY!** Rear seat now 7 inches forward of rear axle for easier riding.

**AUTHORIZED FORD FINANCE PLANS—**\$25 a month, after usual down payment, buys any model 1937 Ford V-8 car. Ask your Ford dealer about the easy payment plans of the Universal Credit Co.

## NEW FORD V-8'S

The Brilliant '85'

The Thrifty '60'

Base Prices \$480 AND UP AT DEALER PLANT

Taxes, Delivery and Handling, Bumpers, Spare Tire and Accessories additional.

## THE QUALITY CAR IN THE LOW-PRICE FIELD

Built in Texas by Texas Labor

# The SPORTS HORN

BY JESS RODGERS

And now comes a letter from Ed McKeever, referee of the Midland-Littlefield regional championship game, clearing up a couple of disputed decisions made during the game.

The epistle is directed to Clint Lackey, long-time friend of both McKeever and Crites, the field judge.

Dear Clint:

Again I wish to thank you for the hospitality which you gave me while I was in Midland last Friday to call the Midland-Littlefield game, and also for obtaining the ride back for both Crites and myself.

I personally thought it was a fine ball game. Clean, fast and hard-fought. Littlefield showed a hustling team but could not withstand the power which Midland put on them.

In such an important game as this there is always the possibility that a close decision or a wrong decision may turn the tide of battle. A referee must not only know the rules but he should also know the situations which must be applied to the rules so that he can give his decision in a split second.

Concerning the touchback which I gave Midland on an intercepted pass, the rules are quite clear governing that situation: "A TOUCHBACK is made when a free ball or a ball legally in possession of a player guarding his own goal becomes dead, any part of it being on, above, or behind the goal line, provided the impetus which sent it to or across the line was given by an opponent."

Rule 3, Section 37, page 12. If Midland had touched the ball down when it was intercepted it would also have been a touchback. The boy never got by the goal line so the only rule that could apply was a touchback. However, if he was able to run the ball out to the three yard line and was tackled at

that spot the ball would have remained on the three yard line. In other words he gambled when he ran with that ball because the ball would be put in play wherever it was declared dead on the field of play.

IT COULD HAVE ONLY BEEN A SAFETY IN ONE WAY: Say after he intercepted the ball he carried it across the goal line on to the field of play and THEN BACK ACROSS THE GOAL LINE and was tackled back there. HE WOULD BE THE ONE WHO HAD LAST PUT THE IMPETUS ON THE BALL.

A touchback is put in play from scrimmage at the 20 yard line. A safety by a kick-off from the 20 yard line.

The other close decision on which they may have not understood: Littlefield punter and their end touched the ball as it was rolling. The Midland safety man, for no good reason, fell to the side of the ball kicking it as he did so. Littlefield fell on the ball and claimed possession. But Midland was the one who had the option. IT IS A FOUL TO TOUCH OR KILL THE BALL BY THE KICKING TEAM BUT THIS FOUL IS NOT SUBJECT TO PENALTY. However, say after Littlefield had touched the ball a Midland man clipped a Littlefield player THIS WOULD NOT CARRY A 15-YARD PENALTY but one foul would offset the other, the down would remain the same and the ball put in play at the point of the previous down. If Littlefield had not touched the ball and then recovered after Midland had touched it naturally it would be a recovered fumble.

I enjoyed very much working the game. I called them as I saw 'em and tried to keep the game fast and enjoyable to watch. If I failed to do this it was my own fault.

and I am the one to be blamed.

## Sharp Claw Of Panther



WASHINGTON'S GREAT RUNNING ATTACK GETS ITS SUPREME TEST IN THE ROSE BOWL GAME, NEW YEAR'S DAY, WHEN IT STACKS UP AGAINST AVERELL DANIELL, PITT'S ALL-AMERICA TACKLER.

Your friend,

ED.

The safety-touchback angle of the play mentioned probably caused more comment than any decision of the season other than the Pecos claim of a penetration.

For some reason Kerrville seems to be a unanimous favorite over Port Arthur this week. Should the dopsters be right maybe the state final will be a good game after all. The University of Amarillo only beat Port Arthur 21-10 in an early season game. But there will be plenty

of persons wanting to get on the Sandies and give points.

Wanderings—If all the screen stars (females only) don't turn out to welcome the Bulldogs when they hit California the boys are going to be disappointed. The club went through 12 games without dissension but now it is racked by it. . . . And all over who gets to take Ginger Rogers out for an evening. . . . Frexy Anderson of Abilene Reporter-News says Alan Gould (AP editor) would probably have left Car Eubell off a National League all-star team because the great pitcher in the game could not hit like a batting champion. . . . He was commenting on Gould's statement that Sammy Baugh was left off the AP All-American because he was not a super ball-carrier. . . . With an un-dependable line and an erratic backfield Baugh has done fairly well this year. . . . Ask Santa Clara!!! Baugh could have gained far more publicity by playing in the East-West all-star game New Year's day than by playing in the TCU-Midland quiet Cotton Bowl game but he put the personal side of it away to make the last stand with his mates. . . . The last news reel at the Yucca theater here gave action scenes of several players named for All-America. . . . Not more than three of them received serious consideration. . . . Bill Collins, a darned good chamber of commerce secretary and likewise sports writer, will make the California hop with the Bulldogs. . . . Wish Angelo had beaten Abilene so they would have had to play Amarillo. . . . Imagine how Cross' "weeping well" column would look this week. . . . The San Angelo superintendent is attempting to get the transfer rule for players raised from one to two years. . . . Evidently thinks the Tom Green county boys could hold their own if only home talent was allowed to play. . . . McCamey News Jimmie Martin 'lows as how McCamey will have a real basket ball club. . . . Offhand, we'll pick Fort Stockton to win that dis-

## AGGIES LINE UP TOUGH SCHEDULE FOR 1937 SEASON

COLLEGE STATION, Dec. 16.—A coast to coast "hockey" including four inter-sectional battles and games with each of the other six Southwest Conference member schools is in prospect for the Texas Aggies on the gridiron in 1937. Only seven of the ten games allowed under conference rules have been scheduled definitely but negotiations are under way for the remaining three. The Aggies will play a return game with the Manhattan College Jaspers, whom they defeated 13-6 this year, Oct. 2 at New York City. They also are dickering for a return to played Dec. 4 on the Pacific Coast.

The Aggie schedule, as tentatively arranged, will include neither a "warm-up" nor a "breather" for the first time in their modern grid history. They will revert to the former custom of playing a game before their traditional Thanksgiving Day game here with the University of Texas Longhorns and will go from Nov. 13 to Nov. 25 without a game.

Negotiations are pending for an opening game Sept. 25, with Centenary as a possible opponent. If scheduled, this game probably will be played at College Station, giving the Cadets a home schedule of four games. The games with Baylor, Southern Methodist and the University of Texas also will be played here.

The Aggies also are negotiating for a game to be played Oct. 9 with Mississippi State. This tilt, if and when scheduled will be played at Tyler as a feature of the annual Rice Festival there.

Site for the Aggie-Arkansas game of Oct. 30 has not been definitely settled. The game will be played, however, in Fayetteville or some other Arkansas city. The tentative 1937 Aggie schedule is as follows: Sept. 25—Centenary at College Station (tentative).

Oct. 2—Manhattan at New York.

Oct. 9—Mississippi State at Tyler (tentative).

Oct. 16—Texas Christian at Fort Worth.

Oct. 23—Baylor at College Station.

Oct. 30—Arkansas in Arkansas.

Nov. 6—Southern Methodist at College Station.

Nov. 13—Rice at Houston.

Nov. 20—No game.

Nov. 27—University of Texas at College Station.

Dec. 4—Game on Pacific Coast (tentative).

## Too Warm Houses Is Winter Hazard

AUSTIN, Dec. 16.—It is an illogical fact that many people complain about the heat of Texas summers and yet sit indoors during the winter months in a temperature about as high as that about which they complained in the summer season, in view of Dr. John W. Brown, state health officer.

"If the average person would realize the definite hazard in developing and maintaining an indoor temperature about 70 degrees, or at most 72 degrees, when the outside thermometer registers around freezing," he said "there would be fewer colds, less bronchial conditions, and less pneumonia than there are today."

"Fresh air is one of the body's basic needs and no amount of luxury or artificial pleasure can be substituted for it. It may be a comfortable feeling to be warm, especially in the winter months, but it is a good hardwood courts five."

From Collyer Parris' Sportome-trium column in the Lubbock Avalanche-Journal:

Your Reporter witnessed another important game over on the "highway of America" last week-end, the Region 2 Class B championship contest between Midland and Littlefield. There were disappointments and broken hearts and flat pocketbooks after that brush, too, Midland partisans collection.

Littlefield's Wildcats fought valiantly, and put the fear of the Lord into Midland's soul early in the contest. But Midland has a long, lanky, spindle-legged quarterback named Dave Wafford—so Midland has the regional championship, its first.

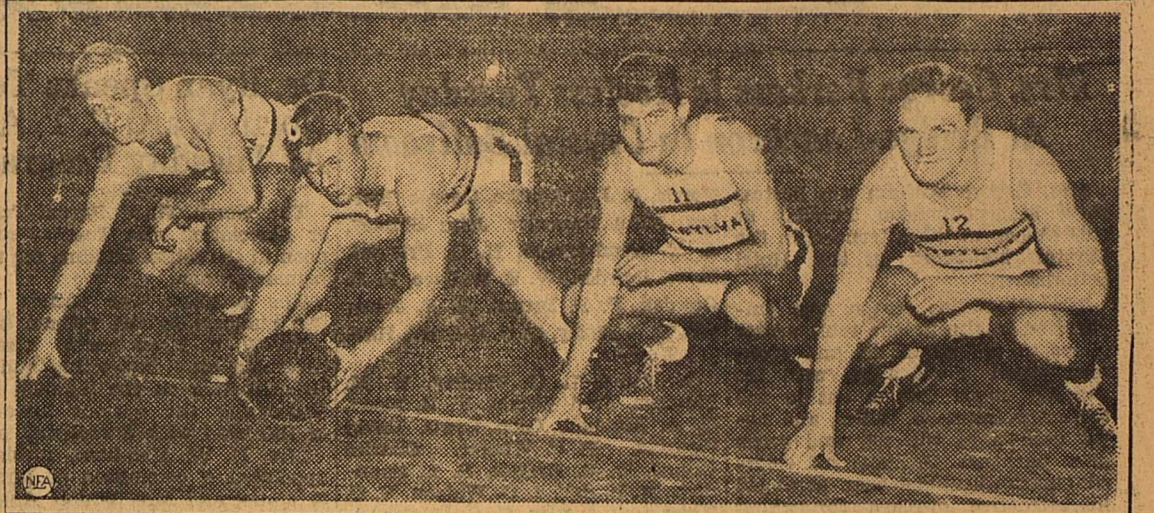
This Wafford guy circles the ends and busts the middle something like Jim Neill, only he'll never make the college player. Neill made. He's heavier, taller, and bigger, from the belt line up, and he can run fairly fast and fall three yards every time he's tackled. He is quarterback, and he knows who to call the plays for. He carries the ball twice, gives it to a mate, then carries for first down or touchdown.

Littlefield's plucky little Lloyd Neeley, a more finished, a smoother and better all-round player than Wafford, played himself a mighty fine ball game against Midland, and he got fine support. Littlefield's line play was smart and sparkling but manpow was lacking. The beefy Midland club, which could give many of the Class A teams some real scraps, had too many pounds and too many reserves.

As a reward for their regional victory, the Midland Bulldogs are to be taken to the Pasadena Rose Bowl game.

It was sort of like old home week at the Midland game. Three of the officials were former Texas Tech grid luminaries, Ed McKeever and Harold Crites, of the Tech coaching staff and Toby Greer, assistant coach at nonchans. Tom Coleman was the fourth. A lot of other Lubbock and South Plains folks were there, and Clinton Lackey and Judge Goodman and Oscar Sensabaugh were trying to make them feel at home.

## Signals Over! This Is Basketball Season



These University of Pennsylvania basketball players just can't seem to remember that football season is over. The quartet played a big part in the Quakers' gridiron destinies this year, and now are members of the cage squad. They are, left to right: Anton Mischo, forward, who played end on the football squad; Jim Hauze, cage guard and football center; DeWitt Ricketts, center in basketball and pigskin lineman, and Franny Murray, cage guard and backfield ace of the grid team.

## Must Balance Income Against the Outgo, Professor Says In Last Farm Article

Dean W. R. Woolrich, who at the beginning of the current session of the University of Texas became a member of the staff of that institution as head of the College of Engineering, has made a study of the economic situation of the south especially as it relates to cotton, its principal product. In a series of five articles, of which this is the fifth and last, Dean Woolrich has analyzed the situation which confronts the people of Texas and other cotton producing states and points out the obstacles to their development and progress.

By W. R. WOOLRICH, Dean College of Engineering, University of Texas

Fundamentally, every area of America—whether it is our own backyard, our county, state or nation—must learn the principles of balancing their income against their outgo. The very moment our income is less than our outgo, our purchasing power is threatened. In our rural counties of America we cannot continue indefinitely expending our principal in the form of soil fertility, of forests, and of mineral resources, and expect to have a suitable area to pass on to posterity.

Our American cities must learn that they have a great responsibility for the rural area in which they are located. In the new order, every city in their rural areas must recognize that they are just as dependent and responsible for the rural community life as those who accept their residence on the farms. Together, the city and rural community must jointly accept the responsibility of raising the standard of rural life. They must pool their interests and resources, adopting the fundamental principle that both city and county are responsible for its development. Together, they should mutually approve the rate schedules for utility services that can economically be carried to the rural homes in the community.

Any city's major responsibility is not in coaxing more people within the boundaries of her city limits, many of whom will eventually have to be cared for by the ever increasing community chest demand. That city should be very much more interested in developing her rural areas to have a type of rural home life

pecially with the consciousness of the tough weather outdoors, but it is quite another matter to achieve this comfort at the probable cost of health.

"Winters in the Temperate Zone are sufficiently trying upon the human system with their sudden and sharp temperature changes, without adding to the burden by making a hot-house of one's home. Of course, colds and other respiratory affections can be acquired in many different ways, but one of the easiest methods of becoming victims of such hazards is the overheated house."

"To become overheated and perspire, though the latter condition may not be perceived, and in this softened state to brave the cold winter blasts, is to take a thoroughly unwarranted chance with health."

"The wise householder therefore will check up on his artificial heat problem. He will resolve to keep his thermometer within safe limits."

PHONE 1083

Buddy's FLOWERS

MIDLAND, TEX. 1200 W. Wall

A Suggestion For A CHRISTMAS GIFT

That will give months of pleasure

A Copy of HUMOROUS STORIES and QUOTATIONS by

Dr. Jno. B. Thomas

The book that has received such favorable comment by The Dallas News, The New York Times and many other outstanding publications.

\$2.00 Priced in U. S. A.

On Sale At

Red Cross Pharmacy

## Coloratura Soprano Will Appear in Hobbs

On Monday, December 21, Miss Emily Hardy, Coloratura Soprano, will appear at the Walton Auditorium in Hobbs, N. M., under the auspices of the Parent Teachers Association.

Miss Hardy is one of the leading young singers in the world today. Having climaxed a career which began some years ago with her victories in California in Atwater Kent Auditions in both piano and voice, she continued through higher stages in radio, Los Angeles Philharmonic Orchestra, San Francisco Grand Opera, and finally to the Metropolitan Grand Opera in New York during the Spring Season. Of her New York appearance, the New York Evening Journal had the following to say:—

"Emily Hardy, young radio and opera star who created a sensation singing the 'Mad Scene' from Lucia—Metropolitan Opera Company, Popular Season, 1936. She met her big chance in the solo of the second act with poise and agility, and soared to her top notes with the ease of a bird. After that the house was hers. Not even Adelina Patti, who in 1859 electrified the town with her amazing ease of song in this same work, received as much applause as the young singer who last night essayed the vocal decorations of the Donizetti Opera."

MONTEREY, Cal. (U.P.)—Robbing a gambling house sometimes involves almost as big odds as playing. A man who knows was fined \$100 for stealing only \$5.75 from a Chinese gaming table.

**Y-O-U-R-H-O-M-E**

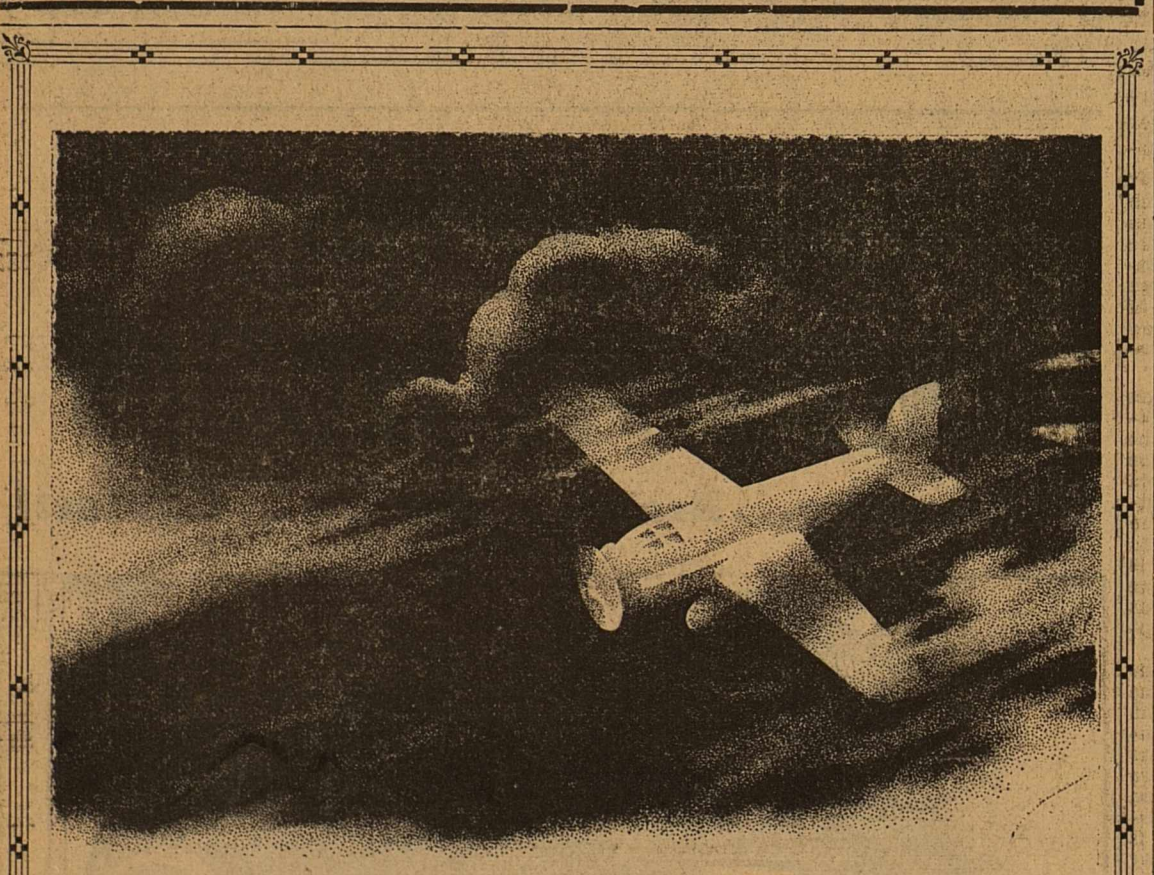
There is No Place Like Home and a Life Insurance Policy Will Keep it Intact

A PRAETORIAN POLICY covering the mortgage on your home, means security for your family. The home which is theirs today can be theirs always—thanks to your foresight in providing against the unexpected. Protect what you have. A policy for every need. See, phone or write—

**J. WRAY CAMPBELL, Dist. Mgr.**  
601 Petroleum Bldg. — P. O. Box 908  
Phomes: Office 111—Res. 859-M Midland, Texas

**Budweiser**

YOUR CHOICE—SOONER OR LATER



**BLIND FLYING IS SAFER THAN BLIND BUYING**

When an aviator, soaring high above the clouds, is flying blind, the radio beam that science has developed for him, guides him like a talking magnet, safely through. And there is a "beam" that you can follow in your buying in Midland. Every issue of this newspaper takes the blindness out of buying. It puts it on the scientific basis that means economy and quality for the buyer day in and day out. Readers of The Reporter-Telegram have learned that it is wise to follow the advertisements in its columns. . . and the leading merchants know that their daily newspaper is the Rock of Gibraltar of advertising.

**ALL THIS WEEK**

Swagger Suit, C. & P. **50c**

Lady's Light Weight Overcoat, C. & P. **40c**

**2 MEN'S SUITS** OR **2 PLAIN DRESSES** Cleaned & Pressed **60c**

**1 MAN'S SUIT** Cleaned & Pressed AND **1 MAN'S HAT** Cleaned and Blocked **75c**

Cash and Carry

**PETROLEUM DRY CLEANERS**  
210 N. COLORADO  
First Door North of Yucca Theater  
Phone 1010

**APPLES**

APPLES—Jonathan—They are fine color this year, fine flavor, too, and good size—in fact, this is the best crop of Jonathans we have seen for several years.

Nice Size Dozen **21c**

**SPECIALS FOR THURSDAY, DEC. 17**

PECANS, shelled	48c	BUTTER	Fresh Country, Lb.	29c	
Halves, pound	52c	SUGAR, pure	Cane, pound	52c	
SPUDS, No. 1	26c	COFFEE, Break O' Morn, pound	17c	CHILI CON CARNE, No. 2 can	14c
10 pounds	26c	NUCOA	Pound	24c	
COFFEE, Break O' Morn, pound	17c	ASPARAGUS	Monarch, Lb. can	26c	
NUCOA	24c	Monarch	MINCE MEAT	9 oz. box, 2 for	22c
ASPARAGUS	26c	Marshmallows	1 lb. celo bags	15c	
Monarch	MINCE MEAT	Fancy Cream MEAL	10 lbs. 5 lbs.	34c 20c	
Marshmallows	1 lb. celo bags	Belle of Wichita FLOUR	48 lbs 24 lbs 12 lbs 6 lbs	1.83 93c 49c 27c	
Fancy Cream MEAL	10 lbs. 5 lbs.	Dressed Hens	Pound	20c	
Belle of Wichita FLOUR	48 lbs 24 lbs 12 lbs 6 lbs	Bacon	Sliced, 1 lb. pkg.	27c	
Dressed Hens	Pound	Picnic Hams	4 to 6 lb. average	23c	
Bacon	Sliced, 1 lb. pkg.	Cured Ham	Center Cut, lb.	40c	
Picnic Hams	4 to 6 lb. average	Pork Shoulder	Roast, lb.	21c	
Cured Ham	Center Cut, lb.				
Pork Shoulder	Roast, lb.				

**PRODUCE and QUALITY MEATS**

East Texas Yams 10c  
Tender Squash 5c  
Egg Plant 5c  
New Potatoes 5c  
Tangerines 15c

**WE DELIVER PIGGLY-WIGGLY** PHONE 205

Whistles Urged as Aid For Blind Pedestrians

ALBANY, N. Y. (U.P.)—Blind Frank Leeming whose cane has led him over Albany streets for the last 11 years, advocates whistles for blind men.

"With a whistle," he says, "we could give motorists notice when we cross streets."

For 53 years Leeming's eyes were normal. Then some plaster fell in his eyes while repairing a Freeport, L. I. home. He lost his sight.

Leeming points a white cane in the direction he wants to go. There is a reason for the white cane.

Last year a bill was introduced in the state legislature requiring motorists to yield the right of way to a blind man pointing a white cane in a specific direction.

Professor Brings Out Four Books at Once

BOSTON (U.P.)—Guillermo Hall, 75-year-old professor at Boston University who once told his male students to marry only a "perfect 36," has completed four books, each on a different subject, and had them ready for publication all at the same time.

The books embrace philosophy, foreign language, history and sociology.

SIGNS The Better Kind PYLANT SIGN CO. 113 East Wall Anderson Garage Bldg.

Expert Auto BODY REPAIR WORK Reasonable Prices Immediate Service SOUTHERN BODY WORKS H. L. Hoover 216 South Main

A Complete Typewriter Service Authorized Underwood Sales and Service L. H. TIFFIN 118 W. WALL PHONE 166

CLASSIFIED ADVERTISING RATES AND INFORMATION 2c a word a day, 4c a word two days, 6c a word three days.

DAVID M. ELLIS Palmer Graduate CHIROPRACTOR 11 Years in Midland 306 North Main St.

F. H. A. LOANS TO BUILD REFERENCE REPAIR O. E. Ausban & Co. Dial 4621 Cactus Hotel Bldg. San Angelo, Texas

1 LOST AND FOUND 1 SMALL brown card purse containing \$15.85. Finder return to Reporter-Telegram. (241-2)

2 FOR SALE 2 FOR FRUIT, shade and ornamental trees and all kinds shrubbery, see or write M. S. Hines, 501 South Main St., Midland, Tex. (241-12).

PLANT NOW Evergreens, flowering shrubs; roses all kinds, best graft, 25c. Shade and fruit trees a leader. WEST-TEXAS NURSERY 410 West Wall Phone 759-J. R. O. Walker, Prop. 12-25-36

9 AUTOMOBILES 9

BARGAINS In Used Cars 1934 Pontiac 6 wheel coach. Motor reconditioned. New paint. Good oversize tires. Prestone in radiator. This car exceptionally clean throughout.

1934 Ford De Luxe Tudor. Equipped with radio. Tires like new. Body and motor in excellent condition.

FRANK ADAMS MOTOR CO. First Door South of Post Office Phone 784 1-8-37

BEDROOMS 10 THREE desirable bedrooms; connecting bath; in new home; phone 111 or 859-M. (238-6)

12 Situations Wanted 12 PRACTICAL nursing; take cases with housekeeping; prices reasonable. Mrs. Richardson, phone 1027. 12-21-36

14 PERSONAL 14 MADAM Russell; daily readings; know the truth! 305 East Wall St. (241-3)

15 MISCELLANEOUS 15 DIRT work done; have team and implements; reasonable. A. C. Blackburn, 210 West Kansas. (240-3)

BOOTS AND HER BUDDIES

HONEY, YO ISNT SAID NOTHIN' LATELY 'BOUT YO MISTAH BROTHAH BILLY NO-I GUESS NOT, I HAVEN'T HEARD FROM HIM IN AGES

A Good Idea Gone Wrong

SHUCKS! AH WAS GONNA HINT DAT SHE OUGATTA RUN DOWNS 'N VISIT 'IM FO A SPELL! AH FIGGAHS THINGS HEAH MIGHT WORK OUT A HEAP BETTAH WITHOUT HER AROUND

By MARTIN

DAT'S WHEAH A TEAKITTLE AM DIFFERINT FROM SOMETHIN' LIKE DIS MISTAH WHO'SIT AFFAIR! DE CLOSAH YO WATCHES DE LAST, DE MO APT IT AM TO BILE UP RIGHT IN YO FACE

WASH TUBS

WOW! HE LICKED THREE GUYS AT ONE TIME. YOU'RE THERE KID. OBOY! EASY, WOTTA FIGHT! BAH!

Bow Wow Has Another Plan

WELL, MY FRIEND, I WIN. WHERE'S MY \$200? GONFOUND YOU! GONFOUND YOU! THERE'S ONLY \$198.11 IN THE ENTIRE TICKET WAGON.

By CRANE

COME ON! I WANT THAT 200 BUCKS. LISTEN, HONEY, CAN YOU SPARE \$1.89? GEE! I WAS SAVING THIS \$2 FOR CHRISTMAS, DADDY.

Embarrassing

THAT'S TRUE, ALL RIGHT, BEYOND A DOUBT—BUT SAY—HOW'D YOU FIND ALL THIS STUFF OUT? YEH, OOP—THAT'S WHAT I WANTA KNOW—HOW'D YOU KNOW WHAT KING TUNK'S PLANNIN' 'I DO?

By HAMLIN

TH' GRAND WIZER? WHY, HE COULDN'T HAVE KNOWN ANYTHING ABOUT WHAT TUNK'S PLANS ARE—HE'S BEEN IN TH' PIT ALL OF TH' TIME—

ALLEY OOP

ALARMED BY THE THREATENING CONDITION OF THE FOREIGN SITUATION, KING GIZZLE CUT SHORT HIS VISIT IN SAWALLA AND HURRIED HOME TO SEE TO THE MOOVIAN DEFENSES.

Myra North, Special Nurse

WORKING IN THE WELL-EQUIPPED LABORATORY OF NEW SCOTLAND YARD, MYRA EXAMINES THE MOLLAGE MASKS UNDER A POWERFUL LENSE.

Empire Has An Attack

I—I—IT'S NOTHING... I'M QUITE ALL RIGHT—I'VE A BAD HEART CONDITION—I DIDN'T SLEEP MUCH LAST NIGHT—

By THOMPSON AND COLL

INSPECTOR EMPIRE! YOU'RE A SICK MAN! LET ME CALL A PHYSICIAN—

He Tells No Lies

IT...IT BROKE DOWN ON THE WAY OVER HERE... I HOPE IT'S FIXED BY THIS TIME!!

FRECKLES AND HIS FRIENDS

WE CAN DROP YOU AND YOUR GIRL OFF, IF YOU'D LIKE, NUTTY! NO THANKS, PAL... I'LL TAKE MY PUNISHMENT LIKE A MAN... I'LL TAKE HER HOME MYSELF!

OUR BOARDING HOUSE

HAR-B-UMPH... BROTHER OWLS, YOU KNOW IT IS THE CUSTOM OF ALL CLUBS OF DISTINCTION, SUCH AS OURS, TO GIVE CHRISTMAS DINNERS TO THE POOR—KA-FF-KOF—AS PRESIDENT OF THE OWLS CLUB, I SUGGEST WE RAISE A FUND FOR THAT PURPOSE

By BLOSSER

I DUNNO! THE CONDUCTOR SAID THE TROLLEY WAS ALWAYS SLIPPING OFF THE WIRE!!

OUT OUR WAY

YAYS, THET OL' FELLER IS TH' COOK! AFTER YUH BEEN OUT IN THIS HEAH COUNTRY FER YEARS, LIKE ME AN' TH' REST O' TH' BOYS HEV, YUH GET HARDENED AN... WELL... YA KIN JUST ABOUT STAND ANYTHIN'!

By WILLIAMS

NOW, DON'T YOU START TO WORRYIN'! YOU'LL BE EATIN' UP AT TH' HOUSE WITH TH' MISSUS

By HEARN

I HAVE AN IDEA, GENTS! WE'LL HAVE A LITTLE BETTING SPORT AMONG OURSELVES! EACH MAN WILL DONATE \$5 AND PICK A HOSS IN TH' SWAMBOGI SWEETSTAKE. I'LL HOLD TH' STAKES, FOR A NOMINAL FEE, AND TH' WINNER AGREES TO DONATE \$50 TO TH' OWLS CLUB CHRISTMAS FUND!

For That GOOD SCRUGGS DAIRY MILK PHONE 9000

WOOD-COAL J. V. GOWL Wood and Coal Yard 312 West Indiana

MODERN MATTRESS RENOVATING Modern Mattress Renovating Old Mattresses Made New When your mattress becomes lumpy and uncomfortable due to the layers of filling working out of place, as we call for it and renovate it our modern way. We'll restore the filling to its former fluffiness and put back into the mattress the comfort giving qualities it possessed when new. Our charge will be moderate.

UPHAM Furniture Company Phone 451 615 West Wall

FOOD FOR THOUGHT. J.R. WILLIAMS T.M. REG. U.S. PAT. OFF.

FOR A GOOD CAUSE

Fireman Collects 3,500 Fire, Police Badges

SANDUSKY, O. (U.P.)—In full regalia, Willie Ashley Williams "the wandering fireman," wears enough badges to outfit a convention. And he has more at home.

Safety Awards Given By Greyhound Co.

Driving a bus for seven years over tens of thousands of miles, in all kinds of weather without having a chargeable accident of any kind is the safety record just established by twenty-two Greyhound drivers in the southwestern district.

The names of these twenty-two drivers are: Jim Coke, Fred Robinson, E. A. Brown, W. P. Corning, J. E. Doherty, R. H. Honnoll, D. C. Ellis, W. L. Shepherd, Ford Barnes, James Gibson, August T. House, J. J. Smith, Chas. Cottrell, Clarence Cox, J. P. Friend, Ray Lunte, E. P. Martin, Frank Mayer, Pat Rowland, E. H. Scouter, Walter F. Wama, and F. B. Wells.

The Southwestern Greyhound Corporation, through its president Paul W. Tibbetts, is recognizing the wonderful safety records achieved by these twenty-two drivers by presenting each with a bronze plaque, a platinum pin and \$60.00 in cash.

With such safety records being set in the southwestern district it is easy to understand why the national Greyhound system has won the national inter-city but fleet safety trophy, awarded by "Bus Transportation" magazine, every year since it has been awarded.

Walker did not stand for re-election this year. Completion of his term ended 38 years service in the land office. Prior to election as commissioner, he served 31 years, more than 20 as chief clerk.

Walker said he would live in Austin and, although his plans for the future were not definite, would continue to work.

Reviewing his tenure, he said he believed expansion of the oil industry, in which the land office played a large part, was the outstanding development.

His final biennial report showed that at the end of the last fiscal year, royalty was being paid through the office on 948 wells under 233 leases covering 34,238 acres of school land.

On university land, royalty was coming from 585 wells under 63 leases covering 18,141 acres. Also the school fund was getting royalty from 197 wells in river beds and from 56 wells covering 2,253 acres of submerged land.

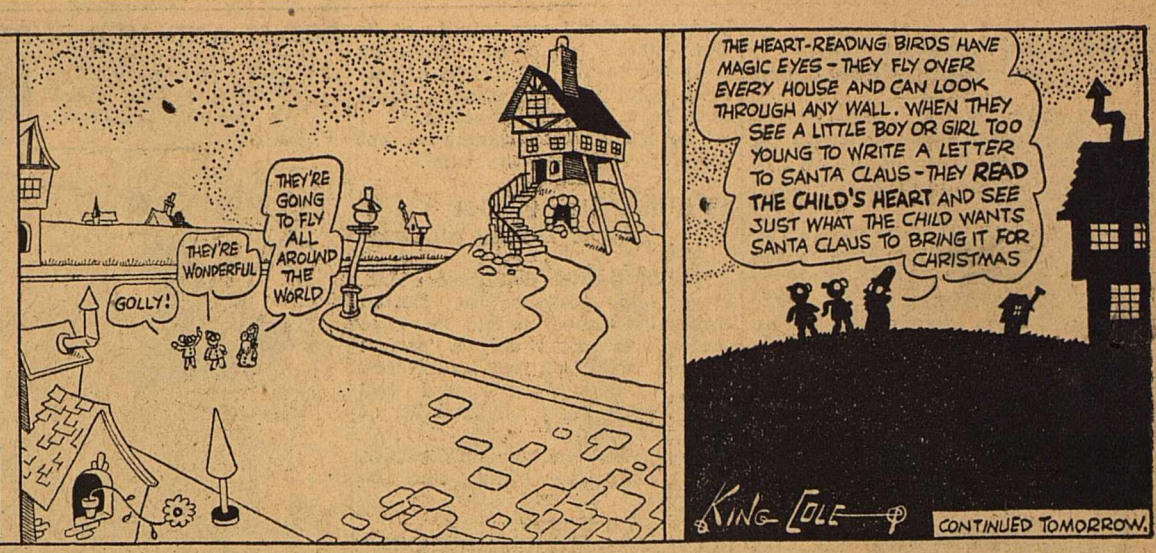
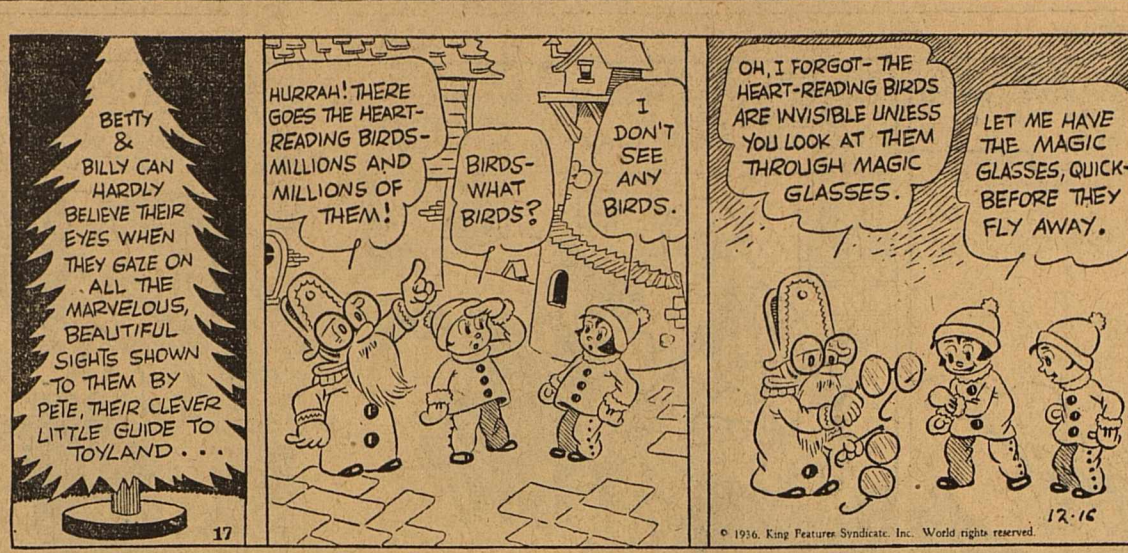
In the past two years, Walker said, receipts of the permanent school fund were \$6,831,765, of which \$3,533,588 was in bonus and rental on mineral leases, \$1,708,167 in royalties and \$1,689,009 as purchase payments.

McDonald was administered the oath of office by his old friend, District Judge George L. Davenport of Eastland. The indication climaxed a dinner in his honor given by Sen. Wilburn B. Collier and Rep. George Davison, Jr., of Eastland.

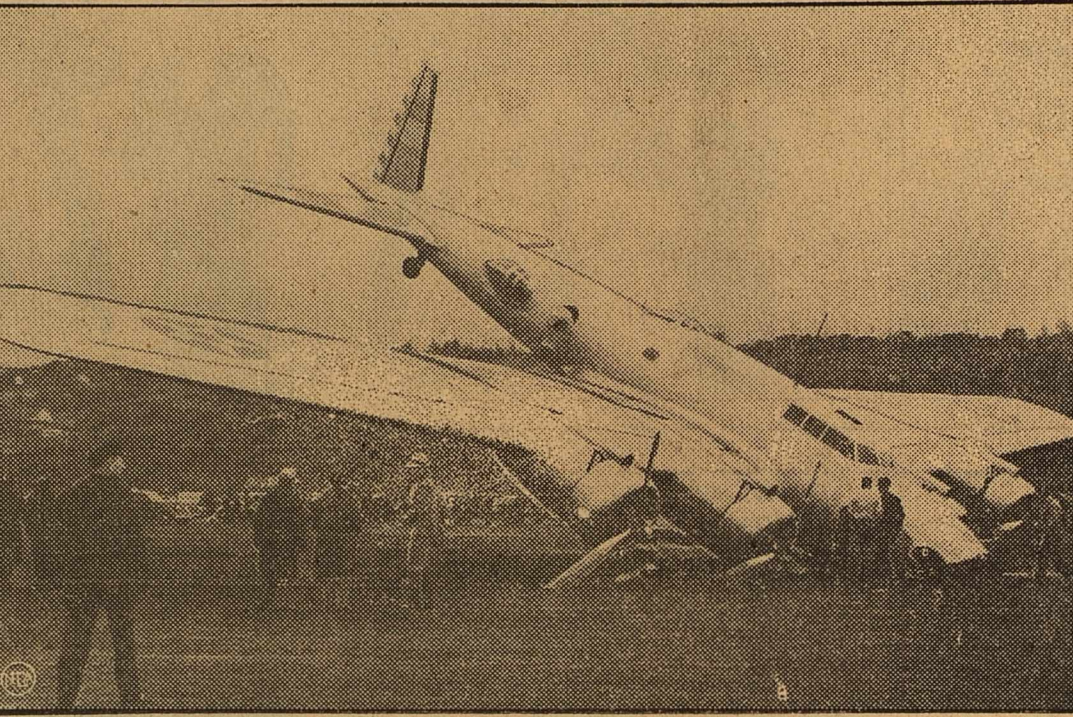
TEXAS LEAGUE--

(Continued from Page One) experience before graduating to leagues of higher classification.

Promise to end a man with years of experience to Midland and other West Texas cities to aid in promotion of a league was promised by Garvin if the towns indicate they would once more be interested in a league.



Crash Perils Plan for Army Super-Bomber Fleet



When this 16-ton "Flying Fortress" nosed over in landing at Seattle, Wash., the U. S. Army program calling for construction of 13 of the enormous bombers appeared to be threatened.

Ford Exposition at Centennial Host to Millions This Year

Doors are Locked and Exhibits are Removed From Building

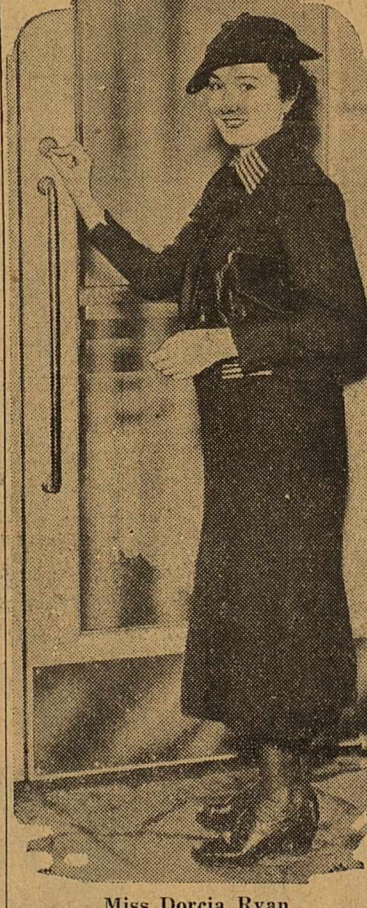
When the doors of the huge Ford exhibit building were officially closed for the last time at the Texas Centennial Central Exposition in Dallas, an accurate check disclosed that 59 per cent of the more than 6,350,000 visitors to the exposition had passed through the Ford exhibit.

Since the exposition opened June 6, day by day totals have been kept as to the number of persons who visited the building, the number carried for rides on the "Roads of the Southwest" and those who were taken in buses from the exposition to the Dallas assembly plant.

Equipment in the Ford building is being shipped to several points as there are co-exhibitors whose plants are not in Dearborn, Mich. All machinery used in demonstrations and tests will be removed.

A check of the registration book in the Ford lounge shows that many distinguished visitors to the Exposition were guests.

She's "Locker-Upper" at Ford Exposition



Miss Dorcia Ryan

When the doors of the huge Ford exhibit building were officially closed for the last time at the Texas Centennial Central Exposition in Dallas, an accurate check disclosed that 59 per cent of the more than 6,350,000 visitors to the exposition had passed through the Ford exhibit.

Toy Matinee Will Be Held Tomorrow

A special toy matinee will be staged at the Ritz theater Thursday afternoon from two to five o'clock, all children bringing and presenting used toys at the ticket window being admitted to the show free of charge.

The toys thusly secured will be taken to the Masonic building where they will be repaired and repainted by members of the local Boy Scout troops. The renovated toys will be distributed to the needy children of the city on Christmas eve.

The toy repair movement is being sponsored by the Midland Lions club in cooperation with local Boy Scouts and the management of the Ritz theater.

HORSES TO BE SCARCE BY 1940

FARGO, N. D. (U.P.)—The low point in the downward trend in the number of all horses and mules on U. S. farms is expected to be reached in 1940, according to husbandry experts at the North Dakota Agricultural college.

LETTERS TO SANTA CLAUS

Dear Santa Claus: I want a B. B. gun and a chemical set, and an electric burner for drawing pictures. A race track with two cars and two tracks that we saw at the hardware store.

Oil News--

(Continued from Page One) in Ector, made an oil head when opened up after standing for a week bottomed at 4,184 while storage was erected.

Humble No. 1 Cowden, test between the Cummins and Goldsmith pools, failed to flow through 2 1/2-inch tubing set at 4,263, 12 feet off bottom, and is now standing. Last week, it headed 32 barrels at five-hour intervals following shot of 300 quarts from 4,185 to 4,275, the total depth.

Meranda No. 3-A Averitt, Seminoe discovery which drilled into sulphur water when deepened from 5,029 to 5,054, will be plugged back to the old depth and completed, it has been announced. At 5,029, it was good for 200 barrels daily after acidizing.

SANTA QUILTS--

(Continued from Page One)

to the fact that he is greatly in need of rest, the experienced pilot was engaged by Mrs. Claus.

Santa Claus' toy factory is being left in charge of his first assistant, Schartzartarkesbwpywagzky, a capable gnome who has been connected with the factory for hundreds of years.

Whales have the largest brains of all mammals.

Still time for Christmas Photographs. If more convenient, make a night appointment for that sitting-picture framing, also, Kinberg Studio, 109 South Main. (Adv.)



For HOLIDAY PARTIES AND DANCES Wear clothes Cleaned Right By CITY CLEANERS Phone 89



For those whom you wish to please particularly, you could make no better choice than these lovely Mojud Clariphane. Exquisitely clear and sheer they have the added glamour of being the "stockings the movie stars wear"...

Wadley's Midland, Texas

'Hideaway Girl' New Comedy at the Yucca

Madcap, Martha Raye, that ultra-violent Raye of the air waves shows today and tomorrow in "Hideaway Girl" at the Yucca Theater in Paramount's latest musical mystery and to borrow one of her own expressions—"Oh Boy!"

Fresh from captivating the nation in "Rhythm on the Range" and "The Big Broadcast of 1937," the irrepressible Martha adds another leaf to her rapidly accumulating store of laurels and takes a large pace ahead in her rapid march toward top stardom.

The parade being arranged by the chamber of commerce in honor of the distinguished visitor will leave the high school Friday afternoon at 4:30 o'clock and will traverse the downtown streets. Santa Claus is bringing plenty of candy and will distribute it to all children along the line of march.

YUCCA TODAY TOMORROW

Raye! Raye! Raye! Here's that gal again!



Plus Comedy Cartoon

DIAMONDS

The Gift of Gifts • Diamond Solitaire • Diamond Ear-Screws • Diamond Set Watches • Diamond Wedding Rings

Inman's Jewelers Midland—Since 1901

DINE AND DANCE

At The Blue Lantern 3020 FREDERICKSBURG ROAD At The City Limits SAN ANTONIO, TEXAS Frances Spiars Former Operator of Fran's Cottage on West Highway in Midland

RITZ

Pick of the Pictures—always!

LAST DAY



HEY, KIDS! LOOK TOY BENEFIT MATINEE

Thursday Afternoon from 2:00 to 6:00 p. m.

Any child bringing a new or used toy to the Ritz tomorrow afternoon will be admitted free.

Sponsored by Boy Scouts Your toy may make some less fortunate child happy this Christmas!

On The Screen Tomorrow



HOLIDAY Excursion FARES

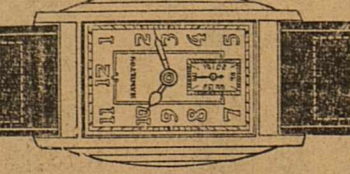
Round Trips 1 1/2 TIMES ONE WAY FARES By GREYHOUND

30-Day Return Limit... on Sale Daily Through January 1 Some Exceptions

Sample Round-Trip Fares: PECOS \$ 2.70, EL PASO 8.70, ABILENE 4.30, DALLAS 9.90, ST. LOUIS 23.95

GREYHOUND TERMINAL Hotel Scharbauer Bldg. Phone 500

SOUTHWESTERN GREYHOUND Lines



Only \$37.50... yet it's a HAMILTON through and through

A 17-jewel movement, a precious metal case—Hamilton in quality through and through.

D. H. ROETTGER JEWELER First National Bank Annex