

# THE MIDLAND REPORTER

AND GAZETTE EXAMINER

VOLUME XXXII.

THE MIDLAND REPORTER, FRIDAY, JANUARY 6, 1928.

NUMBER 29

## FEBRUARY 6 IS DATE SET FOR CITY'S BIG BOND ELECTION

PROPERTY TAX PAYING VOTERS TO DECIDE ON TWO BOND ISSUES AGGREGATING ALMOST \$200,000.00

Date for voting on the two bond issues to be submitted to property tax paying voters of the city of Midland has been set by the City Council on February 6, as will be seen in the detailed orders of election elsewhere in this issue of The Reporter.

One election is to decide on the issuance of refunding bonds in the amount of \$68,999.64 to take up warrants which have been issued to cover the cost of improvements made during the last year, including the paving of Texas avenue, construction of the new water tank and tower, taking up six-inch water mains and replacing with eight-inch in the business section, and for other purposes outlined in the election order. These warrants are drawing 6 per cent, whereas the bonds to be voted on would draw only 5 1-2 per cent.

The other issue is for bonds of \$130,000 to cover the proposed construction of improvements and extensions to the water works system, including the building of a pipe line from Cloverdale, the half section of land four miles southeast of town on which the city's big wells are located.

The election will be held at the county court house, with J. M. Gilmore as election judge.

## H. AND B. BEER OFFICE IN MIDLAND OPEN FOR BUSINESS

MARKET REPORTS, BONDS, COTTON, GRAIN AND ALL MARKETS REPORTED HERE CONTINUALLY. OFFICE IN BASEMENT OF LLANO

Midland now has a full time cotton and stock exchange, H. & B. Beer having located a branch office in the basement of the Llano building, with R. L. Darden, formerly of Abilene, manager.

Complete market reports are being received in Midland throughout the day, Mr. Darden states, and the service will be increased as time goes on.

Liverpool markets, New York curb reports, information on grain, cotton and all stocks and bonds are covered.

Mr. Darden says Midland people are beginning to avail themselves of the service from the start, and he believes it will be worth much to the city.

## Less Tax to Carry Bonds Than Warrants

The annual tax to pay the interest and to retire the bond issue of \$68,999 which is proposed by city officials to take up warrants now in existence would be less than that which is used to retire the warrants, according to information given The Reporter.

The warrants were issued to cover cost of municipal improvements and have been sold. They draw 6 per cent and run over a period of from one to ten years, while the bonds will draw 5 1-2 per cent and will run over a period of from one to forty years.

## Another Man With Tidal Oil Co. Here

W. B. Royer has moved to Midland where he is now connected with the land department of the Tidal Oil Co. C. L. Jackson has been located here for some time, having his office in the Thomas building, and others are likely to join the force as its operations increase.

## New Stucco Home for Mrs. Ragsdale

Mrs. J. T. Ragsdale will build another Spanish style stucco home, just east of the one recently completed adjoining the Ragsdale residence on Marienfield, according to J. C. Brahear who has the contract and will start next week.

Barney Hubbs and wife were here yesterday morning from Pecos. Mr. Hubbs is co-publisher of the Pecos Enterprise, and is owner of several oil field papers and printing plants.

Dr. and Mrs. H. H. Kennedy of San Angelo were in Midland New Year's Day, visiting Dr. and Mrs. David M. Ellis.

## Orson Leases New Building

The lower floor of the new building being completed by Frank Orson on Main and Missouri streets has been leased to Chas. McCook, who will conduct the Oldsmobile sales and service business here.

Show room will be equipped in the front part, and service room in the rear of the building.

The second floor of the building is to be occupied as apartments, having four complete living quarters there.

## McCall To Build Two Story Brick Building On Main

Erection of a two story brick building on his lots on Main street, just north of the Cowden Motor Company is planned by Dr. C. G. McCall, according to reports.

The building is to have a fifty foot front and will run the entire length of his lots, 140 feet.

The building is to be of brick, according to reports, and will be one of the most attractive on Main Street.

## Editor Rode in New Ford

The Reporter editor was treated to a ride in the new Ford yesterday afternoon, being allowed to drive it, kick it, shove on the brakes, "supe it" over rough bumps, and to try it out as he saw fit.

This is no advertisement, but the new Ford is O. K.

## DANCE AT CACTUS

A dance will be staged at the Cactus Saturday night, according to W. J. Burt, with a new orchestra which is engaged full time by Mr. Burt.

## MRS. QUINN SEEKS TREASURER OFFICE

RUNNING FOR THIRD TERM FOR COUNTY OFFICE ON PAST RECORD

Mrs. Mary L. Quinn, present county treasurer, authorizes the announcement of her candidacy for re-election. Mrs. Quinn is now serving her second term in the office, and states that she is glad to have her record investigated.

Since her books have been audited, she has received compliments on the efficient manner in which they have been kept. She points out that former holders of the office filled it for three terms, and she is asking the voters or their serious consideration.

## BROOKS LEE SEEKS TREASURER OFFICE

FORMER OFFICE HOLDER SEEKS ELECTION TO FORMER POST

Brooks Lee, former county treasurer here, announced yesterday that he will be a candidate for that office again, subject to the July primaries.

Mr. Lee held the office four years, and states that his record is open for investigation, and that he will greatly appreciate the support of the voters.

The candidate is one of Midland's oldest citizens, and enjoys a wide acquaintance in this section of West Texas.

## MIDLAND MEN BUY VALUABLE PROPERTY

THREE LOTS AT LORAIN AND MISSOURI ARE SOLD THIS WEEK

Three business lots at the southeast corner of Loraine and Missouri streets were sold this week by Katherine Sinnige of San Diego, Cal., to Leon Goodman and W. B. and F. F. Elkin of Midland. The deal was handled through W. R. Chancellor.

The lots have 140 feet facing Missouri avenue, on the pavement, and 75 feet facing Loraine street which runs along the west side.

No definite plans for development of the property have been announced by the purchasers, although Mr. Goodman intimated that they plan to erect a building there sooner or later.

The property is one block south of the Hotel Scharbauer.

## D. F. BAKER OF LORAIN DIED

TWO SONS AND ONE DAUGHTER LIVE IN MIDLAND

D. F. Baker, prominent citizen of Loraine, passed to his reward Wednesday night, and was buried there Thursday. He was the father of Messrs. A. P. and Bill Baker and Mrs. H. M. Drake of Midland.

Other sons live in Sweetwater and one lives in California. The deceased was a pioneer resident of Mitchell county, and was one of its most revered citizens.

He visited in Midland during the recent holidays and had many friends here among the people who have moved from Mitchell county.

Ray B. Garrett, golf professional of the Midland Country Club, is back from a pleasant Christmas trip to Mineral Wells and other points.

Clayborn Bruce, S. M. Hedges and James Basham were injured Wednesday evening when the car in which they were riding turned over on the highway in the east part of Midland. Bruce sustained a broken leg and the others were badly cut and bruised.

## SHELBURNE IS OUT FOR RE-ELECTION

HAS SUCCESSFULLY HELD OFFICE OF CLERK THIS TERM

J. M. Shelburne, now holding the office of county and district clerk for his first term, authorizes the announcement of his candidacy for re-election.

Entering the office in what is reported to have been its busiest year, he has kept the instruments recorded in order, and the books in shape at all times, with a minimum of delay.

By employing efficient help, with extras in the office when needed, he has never allowed the office to get behind.

The past year has been peculiar, according to Mr. Shelburne, in that there will be extra heavy runs of filing instruments for short periods, and then the rush will drop off.

Mr. Shelburne, who is an ex-service man, was wounded while fighting in France. He has been a resident of Midland for many years, and is well known throughout this section of the country.

## JUDGE M. R. HILL CANDIDATE AGAIN

EFFICIENT COUNTY JUDGE ASKS VOTERS FOR SECOND TERM

County Judge M. R. Hill announces today that his hat is in the ring for re-election to his office. He is now serving his first term, and his record has been commended repeatedly on account of the business-like conduct of the county's affairs.

Taxpayers of Midland county have been heard upon many occasions to praise the judge and commissioners for their progressive, yet conservative policies. Many new roads have been added where they were needed, lanes have been built, all departments of the county's work have been carried forward systematically, and the books show a healthy condition on each report.

Judge Hill has proven himself to be a successful business man prior to holding the office, and the past year has proven that he is giving Midland county a business administration.

## Brookman Buys Printing Plant At Coleman

J. I. Brookman, formerly of Midland, has purchased a printing business and plant at Coleman, and is taking charge this month. John Brookman is also associated with him.

## Walton Well Blows Out With Much Gas

Fifty million cubic feet of gas is the estimated yield of the Amerada Petroleum Corporation No. 1 Walton well in Winkler county after it blew out yesterday, wrecking the rig.

A fishing job has been in progress there for the past few weeks, with the hole down to 2,408 feet, and the blowout happened when casing was being unscrowed.

The well is located on section 48, block 26; and an offset being drilled by the Southern Crude is now down below 2,000 feet.

The land is owned by J. B. Walton, prominent cattleman of Winkler county, who transacts most of his business in Midland. The well is just northeast of the production in the Hendricks pool.

## Visitors Decided to Move to Midland

Mr. and Mrs. Edwin Farr, who came to Midland a few weeks ago to visit her brother, Fred Wemple, and his family, have decided to move here and Mr. Farr is now connected with the Ever-Ready Auto Service.

Mr. and Mrs. Dewey Pope are back from a pleasant visit at Itasca.

## ANNUAL REPORT OF COUNTY AGENT SHOWS BIG WORK IN AGRICULTURE

H. L. ATKINS JUNIOR HAS BEEN OF GREAT VALUE TO FARMERS OF MIDLAND COUNTY ALTHOUGH DRY YEAR PREVENTED GETTING BEST RESULTS

Numerous activities and accomplishments are included in the record of H. L. Atkins Junior, county agricultural agent, for the past year as is seen in his annual report just sent to the extension department at A. & M. college and to the state and federal agricultural departments.

The report itself contains 18 closely typewritten pages, but following is a brief summary of the year's work:

## RYAN APPOINTED HEALTH OFFICER

CITY OFFICIALS URGE SMALLPOX VACCINATION AT ONCE

Immediate vaccination of every citizen as a precaution against an outbreak of smallpox in the city is urged by city officials, according to Mayor B. Frank Haag.

Dr. W. E. Ryan has been appointed city health officer, and arrangements have been made whereby those who are too poor to afford the vaccination may secure his services free, and the city will furnish the vaccine. Mayor Haag states that the city does not wish to have this privilege abused, but they are offering it to those who cannot afford to pay for the service, rather than to take care of patients if they catch smallpox.

Doctors agree that smallpox can be completely obliterated when vaccination becomes general, and city officials are anxious that this be done to prevent further spread of the disease.

## CLOVERDALE WATER HAS STRONG FLOW

ELEVEN DAY TEST GAVE EXCELLENT RESULTS, MAYOR SAYS

An eleven day test conducted by the water department of the city of Midland a short time ago showed that the wells at Cloverdale have a flow stronger than the average used in any city.

On the eleven day test, pumping one of the wells 24 hours per day, a yield of 665 gallons per minute resulted. When the test started, the water level was 40 feet below the surface of the ground, and it fell to 54 feet, but when the test was conducted four or five days, it had risen six inches, showing that the water must be lifted only 53 1-2 feet for general use.

The water can be put in the mains at a cost of not to exceed 6 1-2 cents per thousand gallons, whereas the cost at the present city water supply is 22 cents.

The water tests much purer than the present supply also. The bond issue to be voted on February 6 calls for the issuance of \$130,000 in serial bonds drawing 5 1-2 per cent interest, to run from one to forty years, the money to be used in building a pipe line from Cloverdale, making extensions and improvements in the water works system of the city.

## Livestock Exchange Official Publishes Book on Financing

Forrest Lorrimer, manager of the Des Moines office of the Livestock Exchange, Inc., has recently written a book on livestock financing which has received recognition and high compliments from the president of the Federal intermediate bank who has asked bank officials under him to get a copy of the book and read it.

Mr. Lorrimer has been associated with Leon Goodman, president of the corporation for several years, and has done much research work in cattle financing, although he is scarcely over 30 years of age.

Conducted campaigns for thick planting of cotton and control of cotton-leaf worm which reflected additional profits of \$184,000.

Culled flocks of poultry aggregating 6,000 hens, removing 1,200 culls. Recommended better practices on feeding, housing, disease and parasite control to more than 100 poultry raisers.

Conducted club work with 34 members completing their project and producing \$2,228.51 worth of crops and livestock. One pig club project brought national publicity and resulted in more than 50 farmers adopting better feeding practices.

Assisted farmers and dairymen in securing two car loads of good dairy cows. Brought about the T. B. testing of more than 200 cows, assisted 30 farmers with dairy feeding and other problems.

Stopped two outbreaks of cholera in hogs and personally treated more than 200 hogs to prevent cholera. Assisted numerous farmers in control of round worms in swine, and other hog problems.

Contributed more than 100 news articles to local and state newspapers, state and national farm magazines.

Distributed pure-line grain sorghum seed and certified cotton seed through co-operation with the Chamber of Commerce and Midland National Bank.

Conducted a campaign against rabbits, rats and ravens resulting in enough poison being distributed to destroy 30,000 rats, 20,000 rabbits, and 10,000 ravens.

In co-operation with Leon Goodman, began investigations on the control of mineral deficiency in beef cattle.

Spent 221 days in the field, 81 days in the office. Made 349 farm visits, 91 meetings. Traveled 6,627 miles to 157 different farms. Wrote 575 letters. Had 1,049 office visits, miles in conducting extension work.

## T. D. Mize Buys Barber Shop Here

T. D. Mize has bought the Jones & Johnson Barber Shop with which he has been connected for the past few years, the deal having been consummated yesterday.

Tom Jones, who has been operating the business, will remain there until he opens his new shop in the Hotel Scharbauer. M. D. Johnson, proprietor of the Llano Barber Shop, was the other partner.

Mr. Mize enjoys a wide acquaintance and will continue to enjoy a large patronage with the business.

## Atlantic to Drill Test South of Here

Advises received by Leon Goodman, president of the Livestock Exchange, Inc., from Victor H. Martin of Winfield, Kan., state that he has made an agreement with the Atlantic Oil Producing Company whereby they will take over his drilling contract on the Livestock Exchange ranch in Upton county, just south of the Midland county line.

The lease was sold to Mr. Martin by the Livestock Exchange, with a contract for drilling. The contract and its extensions call for the test to be spudded in by February 1, 1928.

Superintendent Finley and Engineer D. C. O. Wilson, state highway supervisor on District No. 6, were in Midland yesterday and reported the Bankhead highway through their section in good shape. Mr. Finley is stationed at Balmorhea and Mr. Wilson at Ft. Stockton.

### oman Arrested in Colorado Charged With Truck Theft

A young woman, giving her name as Mrs. Winchester, was arrested here Wednesday by Chief of Police Dick Hickman upon advices of officers of Midland and held for the Midland officers on charges of stealing a truck. The woman was driving a new Chevrolet truck which she admitted she stole in Midland Wednesday morning. Midland officers arrived here for the prisoner Wednesday night.—Colorado Record.

### CHEVROLET HAS ADDED MANY NEW FEATURES

Wildfire enthusiasm kindled throughout the country last week when the display took particular account of the new Chevrolet line for 1928.

Outstanding developments in the engine and chassis that received wide-spread endorsement were the increased speed and power of the new car, easier steering, four wheel brakes of new design, shock absorber springs marking an advanced trend toward riding comfort, and smoother engine performance.

The last mentioned feature was achieved by the use of constant clearance alloy "invar strut" pistons which make for smoother, more efficient motor performance. Further contributions toward this end were gained by raising the compression tiara and by stepping up the valve lifts. Through these changes maximum power is developed.

Other changes in the engine are the addition of a breathing system to eliminate the annoyance of engine fumes; a new two-port exhaust, and a silencing engine enclosure.

The four-wheel brakes are of non-locking design—the product of Chevrolet laboratories plus the facilities of General Motors laboratories and proving grounds. Front brakes are two-shoe unenergized internals, while the rear brakes are the energized external, self wrapping type. Front and rear brakes have been proportioned to prevent side drag or pull. Each brake has an individual adjustment at the wheels, while "stops" have been provided to make the adjustment process especially easy. Easy initial peddle application throws the front brakes into action. Further application throws front brakes harder into action and also brings the rear brakes into full play, so that it is possible to slide the rear wheels on dry pavement by using full pressure but not the front wheels.

The springs also are of extraordinary interest. Realizing that all uncomfortable spring action is the result of rebound after striking a bump, Chevrolet engineers set about to increase the friction of the springs and thus check the rebound.

This end was achieved by equipping the springs with special rebound checks. Two checks are on each spring located half way between the center spring shackle and the spring end. These rebound checks are inverted bow shaped steel leaves assembled under high pressure against the top of the spring leaf, the end pressing against the top of the leaf, increasing the resistance.

So much has the spring friction been increased by this new device that the car is said to ride 50 percent better than with old type springs. The rebound checks also offer greater resistance to bumps. Greater ease of steering was made possible by adopting a ball bearing worm and gear steering mechanism, including ball bearings in the steering knuckles, and by increasing the steering ratio from 8. to 9.5 to 1. The four inch increase in wheelbase contributes greatly to the riding quality of the car, with less pitching and better road holding ability.

The front axle has been enlarged and strengthened to accommodate the new brake attachment. A fan shroud has been added for more efficient cooling, and a host of other details combine to make the Chevrolet for 1928 the best performing, most efficient and dependable mechanical unit ever built by the company.

J. R. Sale of Stanton was in Midland Wednesday transacting business.

E. W. Cowden and family returned the first of the week from Stephenville where they spent Christmas with his daughter, Mrs. Ward.

Miss Evelyn Scarborough, who spent Christmas with W. F. Scarborough and family, returned the first of this week to Lubbock, where attends the Tech College.

Chan C. Mason is in Dallas this week, attending a convention of agents of the Harvester Life Insurance Company.

### Town of Iraan Coming to Front

The new town of Iraan, in the heart of the Yates pool of Pecos county, is reported to be building up, and has just been granted a U. S. post-office.

Owners of the Minute Inn Cafe of Midland, and associates, are preparing to put in a cafe there, and they state that the outlook is good for a town at Iraan.

### Surveying Strip In Turner Suit

J. J. Goodfellow, a veteran surveyor, and another surveyor, are surveying the contested strip of land in the Yates oil field, which land is involved in the Turner vs. Lea suit. Vacancy is claimed by the plaintiff and the object of the survey is to determine whether it in fact exists.

It will be a matter for the jury to determine as to boundaries in case the suit comes to trial. The land involved is said to be not more than 100 acres, and has a big value, being situated as it is, in the Yates Pecos county oil field.—Ft. Stockton Pioneer.

### Subscribers Say "Keep It Coming"

Subscribers to The Reporter have started in to renewing their subscriptions, and say "Keep it coming."

R. O. Brooks says he has been taking The Reporter too long to try to do without it now, and paid up his subscription last Saturday.

Ernest McCall dropped in next and kept his subscription in good standing.

J. Wiley Taylor, who was here from Best the first of the week, not only paid up his subscription but had The Reporter sent to his daughter, Mrs. Eddie McCrocklin, who lives in Toledo, Oregon.

Other subscribers who renewed the first of the week were Mrs. Phil Scharbauer and Sheriff A. C. Francis of Midland, Hon. Lee Satterwhite of Amarillo.

New subscribers were W. T. Forehand and O. L. Rifner, both of Midland.

The Reporter does Job Printing.

### Frank Logan of Roxana Is Now In Carlsbad, N. M.

Offices of the Roxana Petroleum Corporation for New Mexico, formerly located at Roswell, have been moved to Carlsbad, according to the Current-Argus of that city. Frank Logan, formerly scout for the company at Midland, is in charge of the office at Carlsbad, moving over there from Roswell.

A road is being built to connect with the road from Carlsbad, leading to the Marland's new location near Jal, N. M.

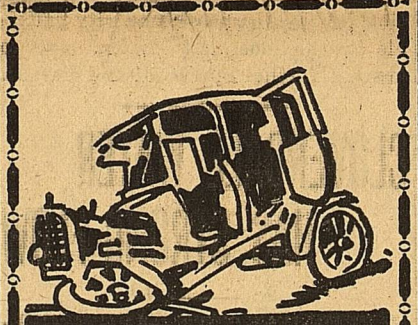
Carlsbad is taking advantage of eastern New Mexico oil play, and Midland is wise in making preparations to get a connecting road from this city to the New Mexico fields.

### Master Farmers of 1927 Announced

Winners in the Progressive Farmer Master Farmer Contest for 1927 were recently selected at the Texas A. & M. college by the final committee composed of Dr. T. O. Walton, Chas. H. Alvord, H. H. Williamson, Miss Mildred Horton, M. R. Martin and Paul Huey. The final selections were made possible after a careful study of descriptions of a large number of farms contained in score cards which were prepared in detail for each farmer. The fifteen selected as Master Farmers for 1927 are:

R. B. Gary, Floyd county; R. F. Alfrey, Johnson county; Douglas Pounds, Lubbock county, M. L. Cadwallader, El Paso county; H. Rueter, McLennan county; W. W. Dollahite, Blanco county; John Impson, Bee county; H. F. Wurzbach, Medina county; M. F. Orr, Cameron county; A. M. White, Kleberg county; L. H. Hensarling, Madison county; R. D. Windham, Shelby county; J. R. Wright, Morris county; Cal McCurdy, Wise county; J. A. Moore, Dallas county.

Mr. and Mrs. B. W. Floyd returned the first of the week from Brownsville and other points in the lower Rio Grande Valley, where they spent the holidays.



### Stolen first and then wrecked

Thieves stole this limousine and in the furious chase by the police which followed, the car was hurled over a precipice to destruction.

Theft Insurance makes good your loss when your car is stolen. Don't take chances. The automobile thief is clever.

Call on this agency for all forms of Automobile Insurance.

Telephone or call  
**SPARKS & BARRON**  
Insurance and Abstracts  
Phone 79  
Midland Texas



When you feel a dryness of the throat, tightness of the chest, and a rasping cough, you have a condition that needs the relief afforded by

**REXALL CHERRY BARK COUGH SYRUP**

It contains no opiates or narcotic drugs and can be given to children with absolute safety.

**CITY DRUG STORE**  
Telephone 33  
The Rexall Store

**FOR SALE**  
Five Chair Barber Shop Equipment, High Grade Stuff, First Class Condition  
**\$1200.00 Buys it**  
**C. E. HOWARD**  
1108 Avenue L, Lubbock, Texas

for Economical Transportation  
**CHEVROLET**  
**Bigger and Better**  
See the **New Chevrolet** now on display!

Today, Chevrolet presents the crowning triumph of sixteen years' continuous progress—a great new automobile so impressive in appearance, performance and staunchness that it marks the opening of a new era of luxurious transportation at low cost.

Built on a 107-inch wheelbase—4 inches longer than before—the Bigger and Better Chevrolet is impressively large, low and racy. Its new Fisher Bodies are finished in new Duco colors and offer rich new upholstery and handsome appointments. Its improved valve-in-head engine has numerous impressive features such as alloy "invarstrut" pistons, hydro-laminated camshaft gears, mushroom type valve tappets, AC oil filter and AC air cleaner. The chassis also has been redesigned. As a result, the new Chevrolet provides delightful smoothness throughout the entire speed range—a wide margin of power for hills—

click-of-the-heel acceleration—the ability to maintain 50, 55 and 60 miles an hour without the slightest sense of forcing or fatigue—the safety of four-wheel brakes—the steering ease that can only result from a ball bearing worm and gear steering mechanism—and comfort over all roads at all speeds due to semi-elliptic shock absorber springs—84% of the wheelbase.

Every feature of advanced design demanded in the finest cars now offered in the New Chevrolet! Read this partial list.

- Improved valve-in-head motor.
- New stronger frame 4 longer; wheelbase 107".
- Thermostat control cooling system.
- New alloy "invar strut" pistons.
- New instrument panel, indirectly lighted.
- New two-port exhaust.
- New ball bearing worm and gear steering.
- Semi-elliptic shock absorber springs; 84% of wheelbase.
- Safety gasoline tank at rear. Larger balloon tires 30" x 4.50".
- New streamline bodies by Fisher.
- Alemite pressure lubrication. New Duco colors.
- Theft-proof steering and ignition lock.
- AC oil filter.
- AC air cleaner.
- Single-plate dry disc-clutch.
- New crankcase breathing system.
- Heavy one-piece full-crown fenders.
- Vacuum tank fuel supply.
- Improved Delco-Remy Distributor ignition.
- Combination tail and stop light.
- Large 17" steering wheel, spark and throttle levers located at top.
- Fisher "VV" one-piece windshield on closed models.
- Automatic windshield wipers on closed models.
- Semi-floating rear axle.

**"Prices Reduced!"**

|                     |       |           |       |                      |       |
|---------------------|-------|-----------|-------|----------------------|-------|
| The Roadster.....   | \$495 | The COACH | \$585 | The Sport Cabriolet  | \$665 |
| The Touring         | \$495 |           |       | The Imperial Landau  | \$715 |
| The Coupe           | \$595 |           |       | Light Delivery Truck | \$375 |
| The Four-Door Sedan | \$675 |           |       | Utility Truck        | \$495 |

All prices f. o. b. Flint, Michigan  
Check Chevrolet Delivered Prices  
They include the lowest handling and financing charges available

**Nobles Motor Co.**  
Midland, Texas  
**ODESSA GARAGE**  
Odessa, Texas  
QUALITY AT LOW COST

**FEEDING AND MANAGING THE WINTER TON-LITTER**

The one thing to keep in mind in producing a ton litter, regardless of whether it be a summer or winter ton-litter, is that the pigs must be kept comfortable. To make the summer ton-litter comfortable it will be necessary to provide good shade, hog wallow, and fresh drinking water. To make the winter ton-litter comfortable it will be necessary to provide a dry, warm place to sleep. Drinking water should also be kept before the pigs at all times.

The winter ton-litter should also have pasture—this may be oats, barley, wheat, clover, alfalfa, rape, etc. There may be times when there will be nothing to graze, due to the frozes killing down the pasture crop. This cannot be helped. Provide the pasture anyway. The pigs will at least have a place to take exercise. The pigs need exercise to give them a good appetite.

During extremely cold weather the pigs will have a tendency to lie in bed all the time and not take enough exercise.

To overcome this, fix the feeding place a hundred yards or so from the sleeping quarters. During extremely cold weather the pigs will usually not drink enough water. To overcome this, give them their feed in slop form, and make the slop a little thinner than is done for summer. Use warm water or fresh skimmed milk to make the slop. We recommend the use of yellow corn fed meal and protein supplement. First, mix the corn feed meal and protein supplement dry, and then add the warm water or warm skimmed milk. For summer, we recommend that this slop be about like thick buttermilk, but for winter we recommend that the slop be just a little thinner than this. For winter we recommend that the pigs be fed this slop three times per day. Be sure to give the pigs all that they will eat at each feed.

For summer we recommend that the pigs be fed only twice per day after they attain 150 pounds in weight. Feeding in the middle of the day in hot weather gets the pigs hot and this does more harm than the feed does good. In cold weather the warm slop in the middle of the day will add to the pigs' comfort, and also cause the pigs to eat more and the faster they eat, the faster they gain.

Be sure that the hog house or shed is fixed so that the rain cannot blow in and get the bedding wet. Also, so that the water cannot run in under the bedding. The bedding must be kept dry. The shed should be large enough to prevent the pigs piling up. Provide plenty of straw or

**A WEED DRAG**

A very handy device for dragging weeds into a plowed furrow is to attach a chain to the plow beam and fasten the free end to the end of the doubletree. Leave enough slack so that the chain will drag in the furrow. This will drag the grass and weeds into the furrow and they will be covered up completely. C. A. Cole, in The Progressive Farmer.

**Toxin Antitoxin**

Listen! There is the hope of a new day when diphtheria will be banished from the earth by the new remedy, Toxin Antitoxin is a simple, safe, practically painless, and almost sure remedy. It is given by your doctor or health officer in three small doses protects about 85 per cent of those treated. After about five months have the doctor give your child what is known as the Schick test to see if he is immune to diphtheria. If it is found that he is not immune, have the doctor give another series of three doses, one week apart.

You do not get immunity from Toxin Antitoxin in less than two to four months after taking. Do not wait until cases of diphtheria are in the neighborhood. It will be too late to get action then. Do it now. Having had a case of diphtheria does not protect a child from another case.

The next time you lock your auto, let it be at the doctor's office, while you go in to have your baby protected against diphtheria.—Dr. F. M. Register, in The Progressive Farmer.

Reports on gasoline taxes show that the District of Columbia and all but four of the states levied gasoline taxes in the first six months of this year ranging from 1 cent to as high as 5 cents a gallon. The total of taxes collected after allowing for refunds was slightly more than \$100,000,000 collected from users of nearly 4,000,000,000 gallons of gasoline. The four states that did not tax gasoline—Illinois, Massachusetts, New York and New Jersey—are estimated to have consumed 947,000,000 gallons, bringing the total gasoline consumption used for motor vehicles in the first six months to nearly 5,000,000,

otherwise the pigs will pile up to, keep warm.

Keep a close watch for lice. Lice are very often worse in winter than in summer, due to pigs being in bed a greater length of time and lying close together. If the pigs get lousy mop or dip them with crude oil, or the oil drained from the crankcase of car or tractor. Do this on a warm day.—E. R. Eudaly, in The Progressive Farmer.

**Big Hereford Show In San Antonio To Be Held March 3-8**

San Antonio, Texas, this spring will figure largely in Hereford affairs through the medium of the new livestock exposition now planned to be held at that place March 3 to 8. This is to be the beginning of an annual exhibition which its sponsors are confident will rank with the best shows of the country.

The commercial interests of San Antonio are working in conjunction with the cattlemen of that district, and have formulated ambitious plans so far as finances and buildings are concerned. W. T. Montgomery, the well-known Hereford breeder, is one of the most active of the Hereford men in promoting the show, and is fortunate in having an enthusiastic organization working in complete harmony with him.

Ample funds are said to be available, the exhibition ground has been secured, and there remains now only the actual construction of the necessary buildings to house the displays. The detailed premium lists are not at hand, but there will be a total of approximately \$5,000 in premiums for registered Herefords. Other breeds will be represented, both in breeding cattle and steers.

This March 3-8 show will be held the week prior to the big Hereford show at Fort Worth, closing on Thursday so that exhibits may be sent on in good time for the show at Fort Worth.—American Hereford Journal.

Texas ranks first among the states both as to total production of sorghum and as to the number of varieties grown. The most phenomenal crop development in Texas in the last 15 years has been in the introduction of grain sorghums.

**New Bus Line to Connect Oil Play With the Big Bend**

Announcement last week by W. E. Howell of his bus line from Midland to Alpine, by way of the oil fields south of here, has brought forth much favorable comment from those interested in oil operations.

The bus line will help connect the play and drilling operations of the Midland area with those of Brewster county and the Big Bend country.

Communication between the various fields will be made easier, and people who do not go about in their own cars will find the new through bus lines very convenient.

**Organization of Old Settlers Is Needed in Midland**

A proposal was made some time ago by Dick Lee that old settlers of Midland enter into some kind of a permanent organization, not for the purpose of discriminating against the new people, but for keeping alive the old traditions of the country, holding annual picnics or get-together meetings, and for providing a means of re-uniting the old-timers of West Texas.

This action would be in line with that of various other places. Big Spring has its annual old settlers picnic, Roswell has such a day during the cotton carnival, and now the Old Settlers' Association of Brewster county has been organized at Alpine. This organization will hold gatherings at which time square dances and other sports will be indulged in.

Midland needs an old-timers' organization.

Good Job Printing at Reporter Office

J. W. B. Hogan, cattle raisers' inspector, is back from a trip to Laredo and other South Texas points.

H. M. (Senator) Hill was here Wednesday from his place near Florey.

Horace Hamilton of Stanton was a business visitor to Midland Wednesday.

Pearl Rankin of Rankin has been in Midland this week, transacting business.

**Again... Haymon Krupp & Co.**

El Paso

The Southwest's Largest Manufacturer of Utility Clothes

Choose

**The Midland Reporter**

to tell this section of West Texas about

**Leadall Products**



**Leadalls make good on every job**

Every pair of Leadall pants or breeches; every suit of Leadall overalls or coveralls; every garment on which the Leadall label is placed represents generous value in sturdiness of material, in careful designing, in full, roomy cut and superior workmanship. When you buy clothes for work, school or outdoor wear, it will pay you well to be certain that you find the Leadall label.

**Overalls, Coveralls, Breeches, Pants for Men and Boys—for Work and Play**

In addition to overalls and coveralls, the Leadall line of utility clothes includes breeches and work pants made of a wide variety of wear-resisting materials. It includes play suits for small boys and girls, and clever "longies" for boys. Attractive novelty "collegiate" numbers such as the Leadall Balloon Denim, the Leadall "Snuggler" and the Leadall "Jeanell" are favorites with young fellows for school and sport wear.

Ask your dealer for Leadalls

MADE BY  
**HAYMON KRUPP & CO.**  
EL PASO, TEXAS

The Southwest's Largest Manufacturers of Utility Clothes

**LEADALL UTILITY CLOTHES**

May Be Bought At the

**West Texas Dry Goods Company**

We recommend

**Leadall Utility Clothes**

because of their downright

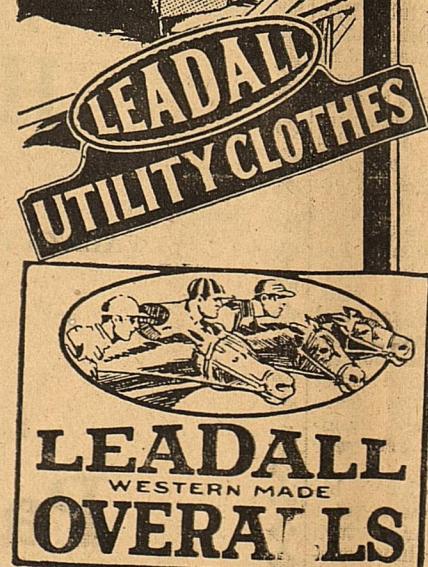
honest

**Value!**

WEST TEXAS DRY GOODS CO.

A. P. Baker, Mgr.

Midland, Texas



### THE MIDLAND REPORTER

"And Gazette-Examiner"  
Subscription price in Midland, Martin, Howard, Andrews, Ector, Upton, Reagan and Glasscock Counties \$2.50 per year.

All other localities, \$3.00 per year.  
**Published Every Tuesday and Friday**

Official Newspaper and Advertising Medium for Midland and Surrounding Territory.

Entered at the postoffice at Midland Texas, as second class matter, under act of March 6, 1879.

T. PAUL BARRON,  
Editor-Owner  
A. E. HORST,  
Advertising Manager

#### ADVERTISING RATES

Display advertising rates on application. Classified rate, 5c per line, minimum charge 25c. Local readers rate, 10c per line.

Any erroneous reflection upon the character, standing or reputation of any person, firm or corporation which may occur in the columns of The Reporter will be gladly corrected upon being brought to the attention of the firm.

### Political Announcements

Subject to the action of the Democratic Primary, July, 1928.

For County Judge:  
**M. R. HILL**  
(For Re-Election)

For Sheriff and Tax Collector:  
**A. C. FRANCIS**  
(For Re-Election)

For County and District Clerk:  
**J. M. SHELBURNE**  
(For Re-Election)

For County Treasurer:  
**MARY L. QUINN**  
(For Re-Election)  
**BROOKS LEE**

### Church Announcements

#### METHODIST CHURCH

Morning worship, 11 o'clock.  
Epworth League, 6 p. m.  
Evening worship 7:30 o'clock.  
Stanley Haver, pastor.  
Sunday school 9:45 a. m.

#### THE FIRST BAPTIST CHURCH

George F. Brown, Pastor

Program for January 8, 1928: Sunday school at 10 a. m. Last Sunday was a disappointment. Let us redeem ourselves and have a full attendance this time.

Public worship 11 a. m. Subject, "Signs of the Times." The pastor is exceedingly anxious for every member to hear this message. Strangers are also urged to attend.

Hon. W. J. Losinger, assistant superintendent of the Anti-Saloon League will speak at night.  
We most cordially invite a full attendance at all these services.

#### PRESBYTERIAN CHURCH

Thos. D. Murphy, Minister

On account of the pastor's absence from the city, there will be no preaching services Sunday morning or evening.

Sunday school service at the usual hour.

Christmas tree and service at the Church on Friday evening.

#### St. Ann's Catholic Church

Every third Sunday; Mass 9 a. m. for the English speaking.  
10:00 a. m. for Spanish Speaking  
Rev. F. X. Gagnon, O. M. I., Pastor.

#### NEW TERM JUST STARTING

Make sure of a good position within a few weeks by beginning the world-famous Draughon Training NOW. More calls than graduates—scores of positions every month. Write today for Catalog M and Special Holiday Offer. Address Draughon's College, Abilene, Dallas, or Wichita Falls, Texas. 27-1tp

**DR. K. F. CAMPBELL**  
Dentist

Announces the removal of his offices from the Midland Mercantile Building to Suite 304, Thomas Building, and the additional a Dental X-Ray.

A. D. Martin left last night for Abilene to attend the managers' meeting of the Barrow Furniture Company stores.

### School Enrollment Has Reached 1,092

Reports from the five principals to the superintendent's office today show a total enrollment in the city public schools of 1,092. These reports show thirty-six new pupils admitted during the present week, an average of about seven per day. This week closes the fourth month of the present session, and indications are that the enrollment will pass the 1,100 mark before mid-term examinations begin, week after next.

Reports on vaccinations from the various rooms show that all the pupils are being vaccinated as fast as the doctors of the city have been able to do the work. Several rooms lack only one or two of having 100 per cent. Present indications are that practically all rooms will be able to report 100 per cent by Monday of next week.

Reports on enrollment from the various principals to the superintendent's office today are as follows:

|                                 |              |
|---------------------------------|--------------|
| Senior High School,             |              |
| D. D. Shifflett, Principal..... | 182          |
| Junior High School,             |              |
| D. H. Starling, Principal.....  | 145          |
| North Ward School, Miss         |              |
| Flora D. Murphy, Principal..... | 217          |
| South Ward School,              |              |
| C. S. Hereford, Principal.....  | 301          |
| Mexican School, Mrs. Golden     |              |
| Donovan, Principal.....         | 47           |
| <b>Total</b> .....              | <b>1,092</b> |

### Manager Here for Exchange Fur. Co.

R. R. Sims, formerly of Donna, Texas, is now located in Midland and will be manager of the Exchange Furniture Company which will occupy the new Wilkinson building now under construction on Texas avenue.

The Exchange Furniture Company is owned by the J. D. Young Corporation, also owner of the Home Furniture Company here. The Exchange Furniture Company, according to Mr. Sims, will have a complete line of both new and used furniture.

#### MOTHERS

Watch for symptoms of worms in your children. These parasites are the great destroyers of child life. If you have reason to think your child has worms, act quickly. Give the little one a dose or two of White's Cream Vermifuge. Worms cannot exist where this time-tried and successful remedy is used. It drives out the worms and restores the rosy hue of health to baby cheeks. Price 35c. Sold by The City Drug Store.

#### CLASSIFIED ADS

DO YOU WANT a Barred Plymouth Rock cockerel for breeding purposes, large and vigorous, 9 months old, I have four of them left, \$5.00 each. Also some two months old cockerels, \$1.50 each. All out of J. W. Parks, Altoona, Penn., strain. F. C. Stubbe, 6 1-2 miles west on highway. 27-2t

FOR RENT—Two business houses near depot, just off Main Street. See W. J. MORAN & SON, Midland, Texas. 27-3t

LOST—Planter Box last summer, when I was trailing a P. and O. planter from town to Cloverdale, I lost the box off of it. The finder, not knowing whose it was, probably still has it in his possession. Please notify E. M. Snodgrass, and he will call for it. 27-4t

WANT to buy a good used office and typewriter desk. Kuykendall Motor Co. 29-1tp

FOR SALE—Poland China Pigs. M. S. Hines, 2 1-2 miles southwest of town. 29-1f

THE CHINESE ELM and other nursery stock kept in first class nursery. For prices and other information in regard to trees suited to this climate see or write M. S. Hines, Midland. 29-1f

WANTED—Modern 3-room, furnished apartment. Call 526. 29-3t

BEDROOM FOR RENT, four blocks out on South Main street, also garage. Gentlemen preferred. Phone 199. 29-2tp

FOR SALE OR TRADE—Tractor and tractor tools at a bargain. H. H. Meeks. 29-4tp

FARM for rent, tools and teams for sale to renter. H. H. Meeks, Box 752, phone 327. 29-4tp

FOR RENT—3-room and bath stucco apartment, light and water connection, unfurnished; new and modern; garage. \$45 per month. Call or see F. A. Fannin. Phone 33. 29-4tp

### Work Under Way On the Airport

Work is progressing rapidly on the Midland airport, the home of the resident mechanic, Hall DeGarmo now being under construction. This home, the service station, service cars, conduit for U. S. government inspected gasoline, and other expenses which are calculated to run to \$6,000 to \$8,000 will be paid personally by Sam Sloan, originator of the airport.

The \$2,500 Midland citizens are putting up is to pay for the four-plane hangar, and clearing and leveling the ground. Midland citizens who subscribed to this fund are asked to send in their checks at once, or else pay Miss Pearl Wimberly, official collector. The checks should be made out to the C. of C. Airport Fund. Subscribers to the fund are urged not to delay paying, so the work on the airport may progress unimpeded to give Midland the first great airport between El Paso and Fort Worth.

Ellis (Big Sam) Hill was here yesterday from the McElroy ranch, his old "stomping" ground. He has been living out west of here for several years, but returned to the Y's since Fount Armstrong has been manager.

Mrs. F. A. Wemple of Blossom is visiting her son, Fred Wemple, and his family.

Mrs. T. Jeff Haynie is in Sweetwater this week, visiting relatives and friends.

Mrs. J. M. Shelburne, who went to San Angelo last week to visit her mother, is ill in a hospital there.

Mrs. A. W. Marshall, who has been visiting J. M. Caldwell and family, has returned to her home in Deming, New Mexico.

Mr. and Mrs. C. L. Sweatt and daughter returned Wednesday to their home in Golden City, Mo., after visiting for a few weeks with W. M. Pyle and family.

Misses Susan Cowden and Jennie Elkins returned Tuesday night to Dallas where they are students in

Aldredge Estes and family are back from San Antonio and other points where they spent the holidays.

Miss Ruth Norwood left Wednesday to return to her work at T. W. C. Ft. Worth, after spending the Christmas holidays with her parents, Mr. and Mrs. T. C. Norwood.

Miss Retta Young, left Wednesday to resume her work in T. W. C., Fort Worth.

Miss Dora Wall left Wednesday for Fort Worth, after spending the holidays with her mother Mrs. Barbara Wall. She is attending Business College there.

#### CITATION

The State of Texas. To the sheriff or any constable of Midland County—Greeting:

You are hereby commanded to summon Ruby Hildebrand, if living, but if dead, then the heirs and legal representatives of the said Ruby Hildebrand; and Mrs. S. J. Hildebrand, if living, but if dead then the heirs and legal representatives of the said Mrs. S. J. Hildebrand, by making publication of this Citation once in each week for four consecutive weeks previous to the return day hereof, in some newspaper published in your County, if there be a newspaper published therein, but if not, then in the nearest County where a newspaper is published, to appear at the next regular term of the District Court of Midland County, to be holden at the Court House thereof, in Midland, on the 1st Monday in February, A. D. 1928, the same being the 6th day of February, A. D. 1928, then and there to answer a petition filed in said Court on the 6th day of January, A. D. 1928, in a suit numbered on the docket of said Court No. 2049, wherein Georgia Grammer is plaintiff, and Ruby Hildebrand, if living, but if dead, then the heirs and legal representatives of the said Ruby Hildebrand, and Mrs. S. J. Hildebrand, if living, but if dead then the heirs and legal representatives of the said Mrs. S. J. Hildebrand are Defendants, and a brief statement of plaintiff's cause of action, being as follows:

Plaintiff sues in trespass to try title to recover title and possession of Lot Number Nine (9), in Block Sixty-Eight (68), Original Town of Midland, in Midland County, Texas, and also alleges that she has had peaceable, continuous and adverse possession, cultivating, enjoying and using the same for more than ten years prior to the filing of this suit. Plaintiff claims title under the ten year statute of limitations.

Herein fail not but have before said Court, at its next regular term, this writ with your return thereon, showing how you have executed the same.

Given under my hand and seal of said Court and issued at office in Midland, Texas, on this 6th day of January, A. D. 1928.  
J. M. Shelburne, Clerk, District Court, Midland County, Texas.  
By Virgie Ringo, Deputy.  
29-4t-(T)

### McCall Building to Have Hotel

Information given out this morning by Dr. C. G. McCall is to the effect that his new building on Main street will be occupied by a business house on the lower floor and will have a 32-room hotel on the second. Edw. A. Nolan & Sons are preparing the plans. The building will be 50x140 feet, according to reports, and is to be located on Dr. McCall's lots adjoining the Cowden Motor Company on the north.

Corpus Christi's cotton export shows increases from 41,000 bales for 1926 to 208,000 bales for 1927.

Trapping industry assuming large proportions in Burleson County. About \$10,000 worth of furs will be shipped out of county this season.

Desdemona—Nunn and Haynes will drill oil well in Desdemona field.

Corpus Christi—Rubber traffic signs being installed near local school building.

Wharton—Road construction work in Wharton County being rushed to completion.

Sugarland—Palms will be planted along Old Spanish Trail two miles on each side of Sugarland.

Lockhart—\$15,000 subscribed toward establishment of creamery here.

Bloomington—Electric light service initiated here.

Richmond—Houston Pipe Line Company supplying this place with natural gas.

Miles—90 cars of small grain shipped from this place during 1927.

### Directors of C. of C. to Meet

Directors of the Midland Chamber of Commerce and any member who wishes are asked to meet Monday night at 7:15 at the office of the organization. Plans for 1928 will be discussed at the meeting.

Dr. T. C. Bobo has been seriously ill this week.

### Prohibition Man to Speak Sunday

W. J. Losinger, nationally known authority on the prohibition question, and formerly connected with enforcement work, will speak at the Methodist church Sunday morning and again at the Baptist church Sunday night.

Midland people who are interested in a serious crisis now facing the nation are urged to hear him.

**PALACE THEATRE**

Friday  
"THE FOURTH COMMANDMENT"

Saturday  
"FRENCH DRESSING"

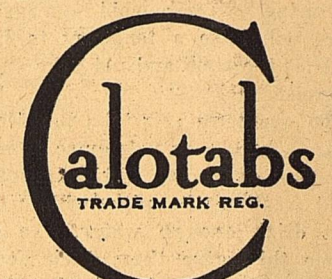
**IDLEHOUR THEATER**

Saturday  
"The Wild Horse"  
in  
"WILD BEAUTY"

**BEST PICTURES**

El Paso's Newest and Finest  
**HOTEL HUSSMANN**  
"On the Plaza"  
EL PASO TEXAS  
*You'll be surprised*  
100 Rooms - 300 Baths - All Outside - \$2.50 up

For colds, grip and flu take



Relieves the congestion, prevents complications, and hastens recovery.

## Announcing---

### The Sanitary Barber Shop

I have just bought the Jones & Johnson Barber Shop, hereafter to be known as the Sanitary Barber Shop.

My several years connection with the Jones & Johnson Barber Shop has made for me many friends. I solicit a continuance of their patronage, and invite those who do not know us to come and get acquainted.

You may expect the same quality workmanship and pleasing service that you received under the old management.

**T. D. (Slim) MIZE**

## Sanitary Barber Shop

T. D. ("Slim") Mize, Prop.

## Our Greatest SALE!

### Smashing Reductions!

Every section of the store contributes to the price slashing event.

This is our first Sale in six months in Midland. We do not feature Sales often. You will find this Sale worth your attendance.

Every article in the store reduced.

**FREE PRIZES Given Away Daily Come and Participate**

*Scheinberg's*  
"A Little Better for a Little Less"

## NOW . . .

you can get the famous toilet preparation of

# Helena Rubinstein

World's Foremost Beauty Specialist

VALAZE WATER LILY CREAM  
VALAZE BEAUTIFYING SKIN FOOD  
VALAZE SKIN-TONING LOTION  
VALAZE PASTEURIZED FACE CREAM

LET US SHOW THIS WONDERFUL LINE TO YOU

## Patteson's Pharmacy

In Thomas Building J. W. Patteson, Prop. Phone 550  
**FREE DELIVERY**

## ATKINS ARTICLE ON REMEDY FOR "CREEPS" APPEARS IN "CATTLEMAN"

DISCOVERIES OF LEON GOODMAN, PRESIDENT OF THE LIVESTOCK EXCHANGE, SET FORTH IN ARTICLE BY MIDLAND COUNTY AGRICULTURAL AGENT

Feeling that everyone interested in the cattle industry will be interested in the splendid article which County Agent H. L. Atkins Jr. has written about the "creeps", cattle disease, based on discoveries made by Leon Goodman, president of the Livestock Exchange, The Reporter is reprinting the following story from the January issue of "The Cattleman":

It must be understood at the beginning of this article that it is of a preliminary nature, but none the less, the writer feels that the solution of the problem of "Creeps" or mineral deficiency disease in cattle is about to be solved in a logical and economical manner.

Some three years ago Leon Goodman, president of the Livestock Exchange of Des Moines and Midland, and part owner of large ranch holdings in the Midland section, took notice of the presence of cattle suffering from (what we know now as) mineral deficiency. It is characterized in the early stages by a depraved appetite evidenced by the chewing of bones, wood, rock, etc.; and at a later stage the cattle become emaciated, lifeless, and with marked soreness of the bones and joints. This condition causes the animal to creep along—hence the trouble has come to be known to the ranchman as "Creeps."

Upon checking over the situation, Mr. Goodman learned that the disease often caused death and was a direct cause of slow breeding and attendant short calf crop of poorly developed calves. Cows nursing calves showed most signs of actual lameness, and emaciation, but all showed evidence of badly depraved appetite.

Acting upon the theory that the depraved appetite indicated a shortage of some element in the grass ration, Mr. Goodman sent samples of Black Gramma, Curly Mesquite, Toboso, and other grasses to the Iowa State College for analysis. Results showed all the grasses deficient in phosphorus, with Black Gramma testing highest and Toboso lowest in total phosphorus content.

Following these analysis, spent boneblack mixed with salt in the proportion of 100 parts boneblack to 60 of salt was put out before cattle showing marked evidences of depraved appetite. At the end of two weeks time all apparent craving for bones and rocks had ceased.

**Cause by Deficiency of Phosphorus**  
During the late spring of the current year, Mr. Goodman and the writer discussed the findings outlined above and came to the conclusion: That, the use of spent boneblack mixed with salt suggested a practical and economical remedy for "Creeps" in cattle under range conditions. The writer secured bulletins from the Minnesota Experiment Station, bearing on the subject, and noted that, after extensive tests, they had reached the conclusion that the disease was caused chiefly by a deficiency of phosphorus in the ration and could be cured or prevented by the use of steamed bone meal or spent boneblack, although, only bone meal had been used in their experiments. Since spent boneblack is more concentrated in phosphorus than the bone meal and sells at a lower price we concluded that it is the more logical of the two forms to use under usual ranch conditions.

The presence of mineral deficiency disease in a large number of cattle, in this section, during the present fall and winter, has given us a good opportunity to start tests which are apparently proving the worth of spent boneblack.

**Ranchmen Conduct Experiments**  
On the 18th of November, L. M. Estes, a local ranchman, divided 20 head of cattle badly affected with "Creeps" into two equal lots, feeding one lot two pounds of cottonseed cake per head daily allowing plain salt, and the other lot an equal amount of cake but with access to a mixture of one part salt and two parts of boneblack. At the present time those receiving the spent boneblack are showing a marked improvement in appearance and condition over those given plain salt, although both lots are still lame. The original intention in the experiment was to have one lot on grass, salt and spent boneblack, with the other on cottonseed cake and plain salt, but pastures were so dry it was necessary to feed both lots on cake.

Mr. Ed Dixon, of Stanton, began using spent boneblack and salt, in equal parts, with part of his herd about December 1. He reports that

these cattle have about stopped all signs of depraved appetite and he is now supplying his entire herd with the material. The writer made a trip to the Dixon ranch on December 12, and saw more than 200 head of Dixon's Herefords. The black mouths of the cattle would indicate that 95 per cent of them are eating the mixture, which shows the material quite palatable.

During the present year, cattle on the Houston ranch, in Martin county, have received steamed bone meal, with free access at all times, and while neighbors have had cattle showing "Creeps" to the point of marked lameness, Houston's cattle have been entirely free from the trouble. This gives indication that bone meal is effective, but with spent boneblack selling at less than half the price of the bone meal and furnishing a higher per cent of phosphorus, we are unable to see logic in using bone meal in preference to boneblack.

Mr. Goodman and the writer are now preparing to have analysis made on both grass and water from several ranches in the area affected and the findings should prove of interest and benefit to ranchmen everywhere. What we want is a simple, economical, and adaptable remedy for the prevention and cure of mineral deficiency—this, in turn, will result in a larger percentage of better calves. We think we have such a remedy in spent boneblack.

**NOTICE**  
Dairymen and Milk Dealers  
As a safeguard against the spread of smallpox or any other communicable disease, the Public Health Officer has ordered that all milk bottles left where there is such disease shall remain until quarantine is lifted, and that all bottles must be thoroughly sterilized.  
(Signed):  
W. E. RYAN,  
Public Health Officer.  
29-3t

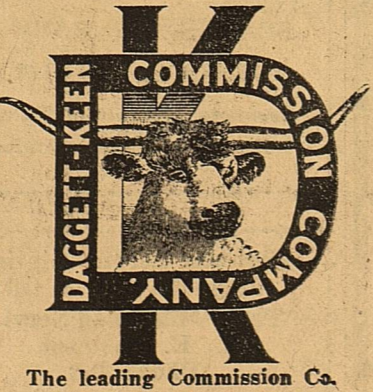
**SIGNS YOU CAN BELIEVE IN**  
If your breath is bad and you have spells of swimming in the head, poor appetite, constipation and a general no-account feeling, it is a sign your liver is torpid. The one really dependable remedy for all disorders in the liver, stomach and bowels is Herbine. It acts powerfully on the liver, strengthens digestion, purifies the bowels and restores a fine feeling of energy, vim and cheerfulness. Price 60c. sold by The City Drug Store.

ency—this, in turn, will result in a larger percentage of better calves. We think we have such a remedy in spent boneblack.

**Midland Mattress Company**  
On Illinois Avenue  
We are in position to do more and better work  
**ONE DAY SERVICE**  
We call for and deliver. All work guaranteed  
Phone 476  
"We make it easy for You to Lie"

PHONE 575  
**DE LUXE TAILORS**  
With our modern machinery and efficient help, we can give you—  
**ONE DAY SERVICE**  
Across Street From First National Bank  
We Call For and Deliver

**WATCH**  
**--the Crowds!**  
They are Going to the  
**Minute Inn Cafe**  
They Know Why  
**... Do You?**  
**Minute Inn Cafe**  
East of Main on Highway

  
The leading Commission Co. on the Fort Worth Market.  
**DAGGETT KEEN COMMISSION CO.**  
"We're Our Own Salesman"  
PROMPT EFFICIENT DEPENDABLE  
Established 1909  
Fort Worth Texas  
Represented at Northern Markets

**EATS SAUERKRAUT NOW, FEELS YEARS YOUNGER**  
"Now I eat even sauerkraut and sausage and feel fine. Adlerika ended stomach gas and I feel 10 years younger."—Mrs. M. Davis.  
Just ONE spoonful Adlerika relieves gas and that bloated feeling so that you can eat and sleep well. Acts on BOTH upper and lower bowel and removes old waste matter you never thought was there. No matter what you have tried for your stomach and bowels, Adlerika will surprise you. City Drug Store.

Eastland—G. A. Davison No. 3 oil well down 3500 feet.  
Chillicothe—Bank of Chillicothe install latest model posting machine.  
Chillicothe—Four new residences under construction in East Chillicothe

Chillicothe—Southwest Telephone Company purchases Chillicothe Telephone system.  
Stinnett—\$75,000 school building and \$300,000 courthouse under construction here.  
Sagerton—New house of worship and parsonage completed here.  
Crowell—Work being rushed on new school building here.  
Baird—Market for cream and dairy products established here.  
Chillicothe—Colonial Building & Loan Association, of Ogden, Utah, opens branch office here.  
Perryton—Drilling operations resumed at Three-Way test well 25 miles northwest.

Dallas—Establishment of airport here advocated.  
Austin—Contracts will be awarded January 16 for road construction projects in six counties costing approximately \$1,000,000.  
Falfurrias—Contracts awarded for construction of new service station at Rice and St. Marys Street.  
Johntown—Work will begin shortly surfacing 2-mile stretch of Highway No. 40 between Johntown and Sulphur river.  
Greenville—New Greenville Telephone Streets formally opened.  
Ellis County produced 107,000 bales of 1927 cotton.  
Gonzales—25 carloads of turkeys shipped from here up to recent date.

27th in 1924, 18th in 1925, 9th in 1926  
4th in 1927

**---3rd in 1928**

National Automobile Chamber of Commerce sales records place Chrysler third for 1928.

In 42 months Chrysler, due to public endorsement, has come from 27th to 3rd place.

All but two makes, far longer established, have been outsold by Chrysler. There can be no more impressive public endorsement of Chrysler.

**Kuykendall Motor Company**  
Midland, Texas

**TODAY!**

Friday, January 6

**Hassen Co.**

... Start Their

January

**"CLEARANCE SALE"**

**SAVE!**

One-Fourth - One-Third  
One-Half

**Hassen Co.**

Midland, Texas

NOTICE OF ELECTION

THE STATE OF TEXAS, City of Midland, County of Midland. WHEREAS, the City Council of the City of Midland, Texas, deems it advisable to issue bonds of the said City for the purpose hereinafter mentioned;

Table with 3 columns: Date, Number, Purpose. Rows include 10-3-27 3378 Waterworks, 12-1-26 3386 Int. & Expenses, etc.

and all of which outstanding warrants aggregate in amount the total principal sum of SIXTY-EIGHT THOUSAND NINE HUNDRED NINETY-NINE DOLLARS AND SIXTY-FOUR CENTS (\$68,999.64);

That the said election shall be held at the Midland County Court House, in the City of Midland, Texas, and the following named persons are hereby appointed managers of said election and authorized to hold the same;

That said election shall be held under the provisions of Chapter 1, Title 22, Revised Statutes, 1925, and the Constitution and Laws of the State of Texas, and none but resident qualified property tax-paying voters of the City of Midland, Texas, shall be allowed to vote.

That all voters who favor the proposition to issue said bonds shall have written or printed upon their ballots the words:

NOTICE OF ELECTION

THE STATE OF TEXAS, City of Midland, County of Midland. WHEREAS, the City Council of the City of Midland, Texas, deems it advisable to issue bonds of the said City for the purpose hereinafter mentioned;

THEREFORE, BE IT ORDERED by the City Council of the City of Midland, Texas, that an election be held on the 6th day of February, 1928, at which election the following proposition shall be submitted: "SHALL the City Council of the City of Midland, Texas, be authorized to issue bonds of the City of Midland, Texas, in the sum of ONE HUNDRED THIRTY THOUSAND DOLLARS (\$130,000.00), payable serially within any given number of years not to exceed forty years from the date thereof, bearing interest at the rate of FIVE AND ONE-HALF PER CENT (5 1-2 per cent) per annum, payable semi-annually, and to levy taxes sufficient to pay the interest on said bonds and provide a sinking fund sufficient to pay the bonds at maturity, said bonds being issued for the purpose of constructing improvements and extensions to the WATERWORKS SYSTEM, within and for said City, as authorized by the Constitution and General Laws of the State of Texas, particularly Chapters 1 and 7, Title 22, Revised Statutes, 1925?"

The said election shall be held at the Midland County Court House, in the City of Midland, and the following named persons are hereby appointed managers of said election, to-wit: J. M. Gilmore, Lotta Williams, Cordelia Taylor, Joe Youngblood and J. V. Stokes Jr., and the said J. M. Gilmore shall be presiding judge, and the said Lotta Williams and Cordelia Taylor shall be judges, and the said Joe Youngblood and J. V. Stokes Jr. shall be clerks at said election.

That all voters desiring to support the proposition shall have written or printed upon their ballots the words—"FOR THE ISSUANCE OF WATERWORKS BONDS."

And, those opposed, shall have written or printed upon their ballots the words—"AGAINST THE ISSUANCE OF WATERWORKS BONDS."

The manner of holding said election shall be governed by the laws of the State governing General Elections.

A copy of this order, signed by the Mayor of the City of Midland, and attested by the City Secretary of said City, shall serve as a proper notice of said election.

per annum, payable semi-annually, for the purpose of refunding, cancelling and in lieu of a like amount of the legally issued and outstanding Six Per cent (6 per cent) CITY OF MIDLAND FUNDING WARRANTS, SERIES 1927, aggregating FIFTY THOUSAND DOLLARS (\$50,000.00), authorized by ordinance adopted June 28, 1927; and Six Per Cent (6 per cent) CITY OF MIDLAND PAVING WARRANTS, SERIES 1927, aggregating FOURTEEN THOUSAND ONE HUNDRED EIGHTY-EIGHT DOLLARS AND TWO CENTS (\$14,188.02), authorized by ordinance adopted June 28, 1927; and Six Per cent (6 per cent) CITY OF MIDLAND PAVING WARRANTS, SERIES 1927, aggregating FOURTEEN THOUSAND ONE HUNDRED EIGHTY-EIGHT DOLLARS AND TWO CENTS (\$14,188.02), authorized by ordinance adopted August 9, 1927 and September 19, 1927, and December 19th, 1927; and in addition thereto, other warrants of said City heretofore issued and now outstanding, as follows:

Table with 3 columns: To Whom Issued, Amt. Rows include Dellone Const. Co. \$1,778.88, 1st Nat'l Bk. of Midland \$43,005, etc.

"FOR THE ISSUANCE OF REFUNDING BONDS AND THE LEVY OF A TAX IN PAYMENT THEREOF."

And, those opposed, shall have written or printed upon their ballots, the words:

"AGAINST THE ISSUANCE OF REFUNDING BONDS AND THE LEVY OF A TAX IN PAYMENT THEREOF."

That the manner of holding said election shall be governed by the laws of the State of Texas, regulating general elections.

That a copy of this order, duly signed by the Mayor of the City of Midland, and attested by the City Secretary, shall serve as the proper notice of said election.

The Mayor is authorized and directed to cause notices of the election to be posted at three public places in the City of Midland, one of which shall be at the Midland County Court House (the place herein designated for holding said election), for at least THIRTY (30) days prior to the date of said election.

The Mayor is further authorized and directed to have said notice of election published in the Midland Reporter, which is a newspaper of general circulation in the City of Midland, and which notice shall be published once each week for five weeks, the date of the first publication being not less than thirty (30) days prior to the date of the election.

Mayor, City of Midland, Texas. (SEAL)—Attest: J. C. HUDMAN, City Secretary, City of Midland, Texas. 29-5t-(T)

The Mayor is further authorized and directed to have said notice of election published in the Midland Reporter, a newspaper of general circulation published in said City, and which notice shall be published once each week for five weeks, the date of the first publication to be not less than thirty (30) full days prior to the date of said election.

PASSED AND APPROVED, on this the 3rd day of January, 1928. B. FRANK HAAG, Mayor, City of Midland, Texas.

ATTEST: J. C. HUDMAN, City Secretary, City of Midland, Texas. (CITY SEAL) 29-5t-(T)

CITATION

The State of Texas. To the sheriff or any constable of Midland County—Greeting:

You are hereby commanded, that you summon, by making publication of this Citation in some newspaper published in the County of Midland if there be a newspaper published therein, but if not, then in a newspaper published in the nearest County to said Midland County, for four consecutive weeks previous to the return day hereof, Walter Rollins whose residence is unknown, to be and appear before the Hon. District Court, at the next regular term thereof, to be holden in the County of Midland at the Court House thereof, in Midland, Texas, on the first Monday in February, A. D. 1928, the same being the 6th day of February, 1928, there and there to answer a petition filed in said Court, on the 5th day of January, A. D. 1928, in a suit numbered on the Docket of said Court No. 2046, wherein Evie Rollins is plaintiff and Walter Rollins defendant. The nature of the plaintiff's demand being as follows, to-wit: Suit for divorce and restoration of plaintiff's maiden name.

Herein fail not, but have you before said Court, on said first day of the next term thereof, this Writ, with your endorsement thereon, showing how you have executed the same.

Given under my hand and seal of said Court, at office in Midland, Texas, this, the 5th day of January, A. D. 1928.

J. M. Shelburne, Clerk District Court, Midland County, Texas. 29-4t-(T)

CITATION

The State of Texas, To the sheriff or any constable of Midland County—Greeting:

DENVER MAN PAYS WEST TEXAS WORTHY WORDS OF TRUTH

H. F. Hines, general manager of Hines & Co., Denver brokers returned last week from a trip through Western Texas with reports that that section was in the best condition in years.

"There is no boom in West Texas," said Hines, "Conditions are the result of a healthy growth.

"Of course oil is doing big things for the territory, but if there were not a drop of oil, West Texas would be in a very prosperous condition. High prices are being received for cattle, sheep and cotton, and I have never seen the distric look better."

Hines rode on a bus from Amarillo to San Angelo and had an opportunity to talk to many persons in the territory.

"It is West Texas' biggest year," he said. "Prosperity is everywhere." —Sydney Times-Signal.

J. M. Caldwell returned the first of this week from a trip east.

You are hereby commanded to summon Charles Hughes, if living, but if dead, then the unknown heirs of Charles Hughes, deceased, by making publication of this Citation once in each week for four consecutive weeks previous to the return day hereof, in some newspaper published in your County, if there be a newspaper published therein, but if not, then in the nearest County where a newspaper is published, to appear at the next regular term of the District Court of Midland County, to be holden at the Court House thereof, in Midland, on the first Monday in February, A. D. 1928, the same being the 6th day of February, A. D. 1928, then and there to answer a petition filed in said Court on the 5th day of January, A. D. 1928, in a suit, numbered on the docket of said Court No. 2048, wherein Paul Reiger is plaintiff, and Charles Hughes, if living, but if dead, then the unknown heirs of Charles Hughes, deceased, are Defendants, and a brief statement of plaintiff's cause of action, being as follows:

Suit in trespass to try title and possession of Block Twenty-Two (22), Midland Heights Addition to the Town of Midland, Midland County, Texas, plaintiff alleging that his title is as follows, to-wit:

Patent from the State of Texas, to J. A. Haley and F. F. Elkin; Deeds from J. A. Elkin and F. F. Elkin to R. Holgate and Nick Alley; and from Nick Alley and wife, Mattie Alley, and Robert Holgate and wife, Bernice Holgate to W. L. Allen; and from W. L. Allen and wife, Dora Allen to Erv Allen and from Era Allen to Charles Hughes; Deed of Trust from Charles Hughes to L. O. Dunn as Trustee for James M. Dye and W. A. Dunn, beneficiaries, said Deed of Trust being dated December 10th, 1910, due December 1st, 1911. Deed from L. O. Dunn as trustee to W. A. Dunn in foreclosure of said Deed of Trust and deed from W. A. Dunn to the plaintiff; each of the above mentioned instruments conveying the land hereinabove described. Herein fail not but have you before said Court, at its next regular term, this writ with your return thereon, showing how you have executed the same.

Given under my hand and seal of said Court and issued at office in Midland, Texas, on this 5th day of January, A. D. 1928.

J. M. Shelburne, Clerk District Court, Midland County, Texas. By Virgie Ringo, Deputy. 29-4t-(T)

TRADE Your Old Furniture in for NEW Exchange Furniture Co.

The New CHEVROLET is Here! See it This Week Nobles Motor Company Midland, Texas

Beginning January 1st All Blacksmith Work and Machine Shop Work has been placed on a Cash Basis J. V. PLISKA

Moving -- Packing -- Storing NOT HIGHER JUST BETTER FLOOD & DAUGHTRY Transfer Company PHONE 216 WOOD and COAL

PROFESSIONAL CARDS

David M. Ellis CHIROPRACTOR PALMER GRADUATE Three Year Course Phone Res. 246—Office 164 N. Main St. on Pavement

Dr. A. L. Cantrell, D. C. N. D. Formally with Grogan Sanitarium Appointments Nights and Sundays Office 370—Phone Residence 583

Telephone 520 DAVID S. CASTLE CO. Architects and Engineers 405 Thomas Bldg. Jas. C. Jones, Mgr. MIDLAND

McCLINTIC BROS. City Real Estate a Specialty In Midland 26 Years. Office with George Glass, Wall Street, Llano Bldg. Phone 505.

GRAFA-GARLINGTON REALTY CO. Real Estate—Oil Properties Phone 356 Midland Mercantile Bldg.

Removal Notice DR. L. B. PEMBERTON Now has offices in Rooms 501-2 Thomas Bldg.

Public Stenographer Notary Public Located first door east Llano Hotel entrance. Phones, office 55, residence 35 and I will call at your office for dictation. Mrs. M. W. Stanton

Andrews Abstract Co. R. M. Means, Mgr. "Reliable Abstracts Since 1907" Andrews, Andrews County, Texas

Samuel K. Wasaff Attorney and Counselor At-Law General Practice Midland, Texas Midland Mercantile Bldg. Phones 133—468

DRS. RYAN and BOBO Announce Removal of Their Office of Fifth Floor Thomas Bldg.

USE GOOD MILK Your Dairy Business Will Be Appreciated. Also have good milk cows for Sale at all times. Our cows are tubercular tested by a State Veterinarian. JOHN WADDELL

Crane County Abstract Co. Complete Abstracts Crane Co. Odessa and Crane, Texas Better Be Sure Than Sorry

C. D. ADAMS Electrical Contractor Phone—36 Midland, Texas

EDW. A. NOLAN & SON Architects Rooms 313-14-15 Thomas Building Phone 584

T. D. Kimbrough Attorney At-Law Oil Exchange Building Midland, Texas

DR. D. K. RATLIFF Dentist Office Over City Drug Store Phone 149 Midland, Texas Res. Phone 521

ODESSA ABSTRACT CO. SPARKS AND BARRON ODESSA and MIDLAND Complete Abstract of Title to Ector and Crane counties

B. W. FLOYD Land and Livestock Cheapest good land in Texas Oil Leases and Royalties, Breeder of Polled Herefords. Office over City Drug Store PHONE 190

Highway Service Station Magnolia Gas & Oil Three Mile Road Service L. E. Robinson Phone 388

Real Estate WILSON BROTHERS Leases & Royalties Andrews, Texas

LLANO BARBER SHOP M. D. JOHNSON Proprietor Courteous Expert Workmen Sanitary Specialties Beauty Parlor in Balcony Phone 273

FOR YOUR NEXT HAIRCUT, SHAVE OR SHAMPOO Come to the JONES & JOHNSON Barber Shop Across Street From Post Office

Good Commercial Printing at Reporter Office

**New Insurance Firm Is Formed**

George W. Glass, who for the past few years has been active in the sale of life insurance here, and Clint Myrick who has been with the Midland National Bank have formed a partnership and are now engaged in the business of general insurance, having their office in the Llano building with a Wall street entrance.

Fire insurance, automobile, life, casualty and other lines will be handled.

**Midland National Makes Good Report**

The Financial statement issued by the Midland National Bank at the close of business December 31, 1927, showed deposits of \$702,197.80.

A semi-annual cash dividend of five per cent was paid to stockholders, \$10,000 cash was transferred to the surplus fund bringing it up to \$40,000; and \$9,266.01 was left in the undivided profit account.

The bank has a capital stock of \$75,000.00.

**Everything Bigger By 100 Per Cent**

A little more than 100 per cent or a little under, was the way nearly everything increased in Midland during 1927, records compiled at the end of the year showed.

For example, population increased 103.7 per cent, postal receipts 90 per cent, school enrollment 94; telegraph business, 100; retail business, 100; electric current connections 100 per cent. Building permits, however, did not hover anywhere near the 100 per cent mark. Midland building permits in 1927 were 6,000 per cent greater than in 1926.

**Contractors Have Yard and Storage Warehouse Here**

The office of Anderson and Sundquist, contractors of Midland, has been moved to the lumber yard and storage warehouse which they have recently constructed at the intersection of Kentucky and Marienfield streets.

The lumber yard is only for their own use, and is for the purpose of facilitating their construction jobs.

This firm of contractors has handled a large number of business and residence jobs here in the past few months.

A residence is also being built on the property and will be occupied by Mr. Sundquist and his family. The residence which they constructed in north Midland has been rented to R. W. Patteson.

**Does Not Favor Poisoning Coyotes**

Holly E. Roberts, county commissioner, states that he does not favor a wholesale campaign to poison coyotes, although he does believe it advisable to poison those which hang around chicken yards and close to farms.

"A coyote is worth his weight in gold," Commissioner Roberts stated, "because of the jack-rabbits he kills."

He says it has been proven time and again that only a few "pet wolves" kill chickens, and when these are shot there is seldom any trouble for a long time.

While a few calves are killed by packs of coyotes, the number of these animals has become so small that very little trouble comes from that course, he stated. Most of the coyotes are raised up in the sandy country, and drift this way.

As this is a matter which concerns all farmers and ranchmen, letters or statements from others will be gladly received.

**REFINERY FOR PYOTE**

E. T. Griswold and H. T. Jones, president and superintendent, respectively, of the Valley Refining Company, came to Pyote this week to begin active operations on the Pyote plant of the Valley Refining Company, of Wichita Falls, Texas.

The Valley Refining Company has obtained a site directly west of the pipe line station of the American Petroleum Company.

According to reports, machinery is already being shipped to Pyote, and work on the plant is scheduled to begin today. The operators declare their intention is to begin refining of Winkler county crude oil by February 1.—Pyote Signal.

The Reporter does Job Printing.

**New County Road Now Being Used**

The county road which has been constructed during the last few months, leading northwest from Midland to connect with the Andrews county line and with the road from there to Andrews, has been in use for some time and is being carefully maintained by the county, according to Holly E. Roberts, commissioner of

precinct in which the road is located. There is a strip about two miles long on this end of the line which is not yet completed, but the entire length of the road is in use every day.

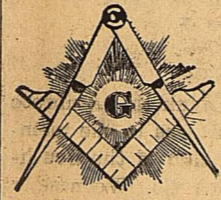
Steel cattle guards, constructed from steel rails that were formerly a part of the Midland & Northwestern railroad, are very substantial and are not phased when the tractor and road machinery crosses them.

Mr. Roberts states that Midland

people are urged to drive out on the new road and help wear a good surface on it. Much of the road is through somewhat sandy country, and lack of moisture made it hard to put a finish on the grade for several months.

The grade is fifty feet wide from ditch to ditch.

MIDLAND LODGE NO. 623, A. F. & A. M.



Regular meeting nights second and fourth Thursdays each month at 7:30 p. m. A cordial welcome to all visiting Masons.

**Now...**

AT THE BEGINNING OF THE NEW YEAR, LET US CHECK OVER YOUR PLUMBING EQUIPMENT. WE WOULD BE GLAD TO GIVE YOU ESTIMATES ON REPAIRS OR ADDITIONAL EQUIPMENT.

**HOWE & ALLEN**  
Licensed and Bonded Plumbers  
Phone 232 Midland, Texas

**The Balance Sheet---**

Balance sheets have been drawn up for the closing year, business will look backward, to get foundation for future growth and profits.

Whether your business is large or small, the complete balance sheet is valuable. It will tell you why you gained or lost; it will show you the way to more satisfactory earnings in the future.

More and more, balance sheets are the index to profitable financing, and are thus a basic credit factor.

Without them you cannot KNOW exactly where your business stands, what progress it has made, or how to direct its future.

**Midland National Bank**  
United States Depository  
"There Is No Substitute For Safety"

**"Notice The Lighting Equipment"**

**In the New Year...**  
RESOLVE TO TAKE ADVANTAGE OF THE UNLIMITED SERVICE ELECTRICITY IS CAPABLE OF GIVING WE HAVE THE APPLIANCES.

**BLACK ELECTRIC COMPANY**

"Anything Electrical" C. of C. Bldg. Phone 438

**Purpose...**

Our professional purpose is to minister to your needs with quiet thoughtfulness and an appreciation of every needful detail. Ours is a courteous competence.

**Barrow Funeral Parlors**

AMBULANCE SERVICE  
DAY PHONE 502 NIGHT PHONE 560

**ALEX. TURNER & CO.**

Income Tax Consultants  
Accountants and Auditors  
(Practicing before the Treasury Dept.)  
Wilson Bldg., Dallas

**Wanted!**

**CLEAN Cotton Rags**

5 cents per pound

*The Midland Reporter*

You Can't **BEAT OUR MILK**

But you can **WHIP OUR CREAM**

**Waddell Dairy**  
PHONE 255-A

**Finance Your Home**

WITH THE **MUTUAL BUILDING & LOAN ASSOCIATION**

Easy monthly payment—includes interest and principal.

\$1000.00 pays back \$14.30 per month  
\$2000.00 pays back \$28.60 per month

We loan to build, remodel, buy or re-finance homes. See our representative,

**A. HARRY ANDERSON**  
OIL EXCHANGE BLDG. MIDLAND, TEXAS

**First National Bank**

"The Bank of Personal Service"  
For Over 36 Years  
Capital and Surplus \$200,000

**Special Bargains!**  
---for ten days only

Beginning January the 1st. and extending to January the 10th. inclusive we are offering:

Superior White House Paint per gallon **\$3.60**

Pure White Zinc-O-Lith House Paint per gal **\$3.25**

Our large stock of Wall Paper consisting of many beautiful and latest patterns going at

**33 1-3 per cent off**

during this sale; a rare chance to brighten up your premises.

We also carry a large stock of Duco Enamels, Valspar Varnishes, a paint for every purpose is our motto

**Higginbotham-Bartlett Company**  
A FRIENDLY STORE PHONE 445

This Tire Will Be  
**PROTECTED**  
FOR ONE YEAR

Against  
ACCIDENTS-NEGLECTANCE  
CUTS BRUISES  
BLOWOUTS RIM CUTS  
WHEEL UNDER-  
ALIGNMENT INFLATION  
or ANY road hazard

**EVER-READY  
AUTO SERVICE**  
SEIZING ALL-TREADS

**Society Y**  
By Mrs. Paul T. Vickers  
Phone 436

**WEDNESDAY CLUB WITH  
MRS. FASKEN**

The Wednesday club met in the home of Mrs. Andrew Fasken last Wednesday afternoon with Mrs. J. M. Caldwell leader. The general topic for discussion was "Bible Lands." Mrs. J. M. Caldwell gave an excellent talk on "Footsteps of Paul"; Mrs. Andrew Fasken gave a splendid paper on "Holy Land in Bible Time"; Mrs. Sam Preston gave a most interesting talk on "Urest in the Near East."

The next meeting will be with Mrs. Homer Rowe on Wednesday afternoon, January 18th.

**MRS. W. I. PRATT HOSTESS TO KOLONIAL KLUB**  
Mrs. W. I. Pratt was hostess to the members of the Kolonial Klub and two guests on Wednesday afternoon at her home.

Two tables of bridge were assembled in a room banked with a profusion of winter flowers from California, and pot ferns and other green growing plants. In the midst of these were set two bird cages with little yellow "singers" caroling throughout the afternoon.

The tallies and score paws for the games were traced in the vari-colored flowers.

Delicious home made candies were passed throughout the afternoon, and at the close of the games a dainty salad plate was passed, of cheese and pineapple salad with a jelly base, wafers, olives, loaf cake and tea with spiced lemon.

Mrs. J. A. Finlayson held high score for the afternoon games.

Club members present were Mesdames Dick Knox, J. O. Garlington, B. G. Graf, E. V. S. Lowerre, Ray Sindorf and guests were Mrs. Paul T. Vickers and Miss Lydie Watson. Misses Evelyn Garlington and Mary Belle Pratt entertained with several numbers at the piano.

**FINE ARTS CLUB TO MEET WEDNESDAY**

Members of the Fine Arts club will please take notice that the club will hold the first meeting of the new year next Wednesday afternoon at the home of Mrs. Elliott F. Cowden. The program to have been given before Christmas and the regular program will be combined at the meeting.

**LATIN CLUB HOLDS SECOND MEETING**

The members of the Latin club of Midland high school met in the club rooms at the school building on Tuesday of this week. Miss Jeanette Waddell, president, was in charge of the meeting. Club colors selected were white and green, and the flower was white carnation.

Constitution and by-laws were ac-

cepted as reported by Misses Lucile Thomas and Jeanette Waddell.

Program for the next meeting was read as follows:  
Roll call—Answered by famous Latin quotations.

Song in Latin—Freshman girls.  
Talk About Latin—C. C. Foster.  
Piano Solo—Lucille Thomas.  
Twinkle, Twinkle (In Latin)—Ida Beth Cowden.

America (In Latin)—Club.

**THRIFT CLUB AT 6 O'CLOCK DINNER**

Mr. and Mrs. Kenneth Ambrose were host and hostesses to the members of the Thrift club of the Southern Ice & Utilities Co. Wednesday evening.

Bowls of blooming narcissus were placed at vantage points about the reception and dining rooms. Place cards used were cut out figures with appropriate verses for each guest.

The menu consisted of turkey and dressing, gravy, mashed potatoes, creamed peas, perfection salad, cranberry jelly on orange, pickles, olives, plum pudding and hard sauce and coffee.

Miss Edna Nolan graciously assisted the hostess in serving.

Those present were Clarence Cloninger, Dewitt Stevens, N. I. Dalton, M. C. Breeden of Odessa, Ernest Broughton of Odessa, E. P. Whitson, and Miss Mary Voliva.

**FIRST PARTY OF NEW YEAR ELABORATE**

The initial party of the new year at the Country Club was beautiful and elaborate, when Mr. and Mrs. R. B. Cowden and Mr. and Mrs. R. Edd Cowden entertained with dancing and bridge on Wednesday evening. The guests were greeted at the door by Mr. R. B. Cowden and Mr. R. Edd Cowden and presented to Mrs. R. Edd Cowden who was wearing an exquisite model in purple tulle, shaded to a delicate lavender shade with uneven hem line and velvet trim, and Mrs. R. B. Cowden, wearing a bouffant style in rose taffeta with lace and cut work trim and uneven hem line.

Punch was served throughout the evening and the well known orchestra that Midlanders have learned to appreciate; Cato and his jazzers, furnished music.

# EVERYBODY'S

... Annual January

## "Clearance Sale"

Beginning

# FRIDAY, JANUARY 13th

and Closing

## Saturday Night, January 21

Closing Our largest and most successful year of business we are offering real values in good high grade merchandise during this Sale.

Remember the Date and . . . Be Here!

# Everybody's Store

MIDLAND, TEXAS

# LAST CALL!

Friday and Saturday, your last chance to buy furniture and household goods at

## 25 - 35 & 50 per cent Reduction

Take no chances — come see with your own eyes quality furniture at unheard of prices.

| SPECIAL SATURDAY                                    |        |
|---|--------|
| \$1.50-\$2.25 Smoke Stands, Sale Price              | 95c    |
| \$2.50 Smoke Stands, Sale Price                     | \$1.25 |
| \$1.50-\$2.00, 10x16 Polychrome Mirrors, Sale Price | 95c    |

| SPECIAL SATURDAY                       |        |
|--|--------|
| \$2.00 Imported Tapestries, Sale Price | \$1.25 |
| \$7.50 Imported Tapestries, Sale Price | \$2.95 |
| \$5.75 Telephone Table, Sale Price     | \$3.50 |

"We Sell for Less"

# Home Furniture Co.

Cor. Texas and Main St.

VICTROLAS

RECORDS

In the bridge games Mrs. Harry Tolbert scored high and was given a reward a silver sandwich plate, and Mr. David Blevins won high for the men and received white golf cuff links. At 11 o'clock a buffet luncheon was served consisting of turkey sandwiches, olives, potato chips, cake and coffee. Dance programs and tallies were traced in mid-winter shoppers with gay packages.

The guest list for this charming party included Mr. and Mesdames Clyde Cowden, Guy Cowden, Ellis Cowden, Elliott Cowden, Carrol Hill, J. V. Stokes Jr., Roy Parks, Clifford Hill, Harry Neblett, Yoe Youngblood, Harry Tolbert, Allen Tolbert, Homer Rowe, Leon Goodman, E. H. Stafford, Donald Hutt, Dave Smith, Fred Hogan, Chan Mason, J. M. Patteson, Virgil Cole, David M. Ellis, Ed Cole, Will Elkin, Paul T. Vickers, Charles Goldsmith, Joe Crump, B. H. Blakeney, Jno. B. Thomas, Marvin Ulmer, Addison Wadley, Jack Hazeltine, W. G. Whitehouse, W. A. Yeager, Harry Dales, L. Vaughan, Hugh Corrigan, Foy Proctor, W. R. Chancellor, John Dublin, Leon Bryant, Andrew Fasken, Robert Estes, Bob Hill, J. M. DeArmond, Clarence Scharbauer, Earl Moran, M. R. Hill, Misses Lula Elkin, Clifford Heath, Juliette Wolcott, Opal Pyle, Messrs. Tom Patterson, Geo. D. McCormick, Allen Cowden, Fred Wilcox, David Blevins and Joe Hogan.

**CHRISTIAN LADIES MEET IN RANKIN HOME**

The members of the Christian Ladies Missionary society met in the home of Mrs. Porter Rankin yesterday for a social meeting. Mrs. Erikson made a splendid talk, "Inspiration for the New Year."

At the close of a happy social hour the hostess served sandwiches, potato chips, olives, hot tea and cake.

**PYLE-HOGAN WEDDING SOLEMNIZED**

Miss Opal Pyle and J. W. B. Hogan were married yesterday afternoon in Odessa, and left immediately for El Paso where they will spend several days honeymooning before returning to Midland where they will be at home to their many friends.

The bride wore a blue and grey ensemble with close fitting hat and other accessories to match.

Mrs. Hogan came to Midland sev-

eral years ago with her parents from the north, and has made a wide circle of friends in Midland. She was member of the social club called J. U. G.

Mr. Hogan is one of the youngest inspectors for the Texas and Southwestern Cattle Raisers' Association, but is one of their best. He is well known throughout the southwest.

**PRESBYTERIAN SOCIETY CHANGES MEETING**

Ladies of the Presbyterian church will please take note that the meeting date has been changed from Thursday to Monday. It will meet in the new home of Mrs. Fred Turner next Monday afternoon with Mrs. P. P. Montgomery as leader.

**J. U. G. CLUB WITH MISSES WHITMIRE**

Miss Lenora and Myrtle Whitmire were hostesses to the members of the J. U. G. club and a few guests last evening when they entertained with several tables of "42"

Victrola music of classic selections were enjoyed while the delightful refreshments of chicken a la king, potato chips, olives, cakes and hot tea were served.

Guests of the club present were Miss Lois Brunson, Miss Velma Winborne, Mrs. Carl Ratliff and Mrs. Kenneth Ambrose.

Victoria—Tract west of river will be developed as amusement and tourist resort.

Total value of all Texas farm crops this year estimated at \$100,000,000 more than that of 1926.

Total building contract awards for first nine months of 1927 in Texas were \$169,357,000.

Levelland—Santa Fe Railway's home and farm demonstration train will be in this city February 14th.

Corpus Christi—Preliminary work in progress for port improvement to be made here.

Sherman—Burnham well No. 1 on Texas Nursery Company land 14 miles northwest of here spudded in.

Proving up of vast oil acreage in Pecos, Winkler, Crane, Upton, Howard counties insures steady drilling campaign.

### LIBRARY

"Grandmothers" by Glenway Wescott. This is the Harper's prize novel. Through the eyes of a grandson of today the author recaptures a segment of American life, a span of human experiences, stretching from the pioneers and the Civil war down to the present time. It is a novel of great hopes and frustrations of great loves and hate, of anxious longing and serene joys.

"Why We Behave Like Human Beings" by George A. Dorsey. This is a graphic and fascinating revelation of the amazing discoveries of modern science that so vitally concerns our happiness and destiny. All that recent investigations and experiments can contribute to the understanding of human life is set forth in an easy and vivid style that make a dry fact sparkle and read like fiction.

Library open Mondays, Thursdays and Saturdays, 3 to 5 p. m.

### ONE IN TEN

Neglecting a little wound, cut or abrasion of the flesh may in nine cases out of ten cause no great suffering or inconvenience, but it is the one case in ten that causes blood poisoning, lockjaw or chronic festering sore. The cheapest safest and best course is to disinfect the wound with liquid Borozone and apply the Borozone Powder to complete the healing process. Price (Liquid) 30c, 60c and \$1.20. Powder 30c, and 60c. Sold by The City Drug Store.

Our entire stock of hats at greatly reduced prices. **GREY ROSE MILLINERY & GIFT SHOPPE**, 29-24

Miss Margaret Caldwell has returned to Freeport where she teaches in the public schools, after spending the Christmas holidays with J. M. Caldwell and family.

Mr. and Mrs. Chas. G. Morrison are here this week from El Paso where they have spent several weeks. They will return there soon to spend the rest of the winter.

Houston—Transcontinental Oil Co. will buy land for tank farm as terminus of Pecos County Pipe line.

Texas Company will build 25-mile pipe line from Hendricks Pool to Monahan's.