

City sells well field

■ Council feels they no longer need the land

By RICK WHITE
Managing Editor

Feeling the revenue could be put to better use, the Muleshoe City Council sold nearly 5,000 acres of ranch land to the Caswell Cattle Co.

Caswell's bid of \$934,994 (\$191.90 per acre) for 4,872 acres of city property commonly referred to as the East Well Field was one of six bids considered during Tuesday's city council meeting.

It was for all land and water rights on the property that straddles the Bailey-Lamb County line north of U.S. Highway 84.

"It will be good for both sides," Councilman Larry Kirk said. "The buyers will be able to put the land to better use than the City could. It was just sitting out there while we were making payments on it."

The city purchased the land for slightly more than \$1 million in 1994 as a future source for drinking water, according to City Mayor Robert Montgomery.

see CITY on page 2



JOURNAL PHOTO BY RICK WHITE

Say cheese

Three Way Elementary School students (from left) Kyle Drew, Angelica Salamanca, Pricilla Perez and Gabby Estrada sing Thursday during a performance of "The Mice Before Christmas."

PAGE ONE

A QUICK READ OF THE NEWS

Vacation starts next week

Local schools will be dismissed for Christmas vacation on Friday, Dec. 18.

Muleshoe Independent School District will dismiss classes an hour early on Friday.

Teachers will return on Monday, Jan. 4, for preparation day. Students will return and classes will resume on regular schedule on Tuesday.

Three Way ISD will dismiss classes at 2 p.m. on Friday and will resume its normal class schedule on Jan. 4.

Lazbuddie ISD will have its normal school schedule on Friday before dismissing students and will resume school on Jan. 4.

DPS holiday office hours

The Texas Department of Public Safety driver's license office in Muleshoe will be closed the following dates: Dec. 18, Dec. 21, and Dec. 23-25.

The office will be opened on Dec. 22 from 8:30 a.m. to noon and from 1-5 p.m.

Renewals, duplicates and applications (written tests) for driver's licenses and I.D. cards will be handled in the morning. Road test applicants must call to make appointments for that afternoon.

Livestock help available

The Bailey County Farm Service Agency office in Muleshoe is taking applications for the Livestock Assistance Program.

Ranchers who were forced to reduce livestock numbers or purchase more than the normal amount of feed because of the 1998 drought are eligible for the program.

LAP applications must be filed with the FSA office by Jan. 8, 1999.

For more information or eligibility requirements, contact the Bailey County FSA office at (806) 272-4538.



Sort of busy

Postal worker Jan Smith sorts the mail Thursday at the Muleshoe Post Office. The Christmas season is the busiest time of the year for the U.S. Postal Service.

No time like the present

■ Deadline nears for getting Christmas packages mailed

By LESLI RADFORD
Journal staff writer

The Christmas rush is on at the post office. Muleshoe Postmaster Lionel Garcia said the post office received more than 300 packages on Monday. They usually average about 150 packages a day.

"We've gotten approximately 1,200 packages since the first of December," said Garcia. "This is our busiest season of the year."

"Right now, if people will send their packages fourth class (partial post), their presents

will be received right before Christmas," Garcia said. "If they wait, it might be after Christmas unless they send it by priority mail."

Garcia gave some tips on making shipping easier.

■ Include the address inside the package in case the address on the outside of the package gets damaged.

■ Avoid red and green envelopes because they have to be processed by hand, therefore delaying your mail. If you do use dark color envelopes, bundle them with a rubber band for easier handling.

■ Write in block lettering (large capital letters)

see POST OFFICE on page 2

Agriculture commissioner names staff

AUSTIN — Agriculture Commissioner-elect Susan Combs last week formally announced key staff appointments for her incoming administration at the Texas Department of Agriculture.

Combs named Lisa Woods as TDA chief of staff. Matt Brockman was appointed TDA special assistant for producer relations. Combs also announced that Carla West will serve as the agency's assistant commissioner for Intergovernmental Affairs and Trey Powers as deputy assistant commissioner for that division. TDA's

Intergovernmental Affairs Division acts as a liaison with local, state and federal governmental entities on behalf of the Texas agricultural industry.

"Each of these individuals brings a wealth of experience and knowledge that will serve the people of Texas well," Combs said. "In addition, each shares my commitment to promoting Texas agriculture and ensuring it is poised to meet the challenges of the next century."

Woods served as chief of staff for Combs' legislative office in the Texas House of Representatives where she focused on agricultural and natural resource initiatives.

Brockman is a Graham native who has served as TDA assistant commissioner for Marketing and Agribusiness Development since 1996, assisting Texas agribusinesses in marketing their products around the world. As TDA special assistant for producer relations, Brockman will act as the agency's liaison with producer and commodity groups throughout Texas.

West comes to TDA from the National Cotton

see STAFF on page 2

LOCAL WEATHER

	High	low	Pre.
Tuesday	53	20	—
Wednesday	47	18	—
Thursday	40	28	—
Prec to date	14.2 inches		

EXTENDED FORECAST

Fair and warm Sunday and Monday with highs in the 60s and lows in the 30s. Slightly cooler Tuesday with highs in the 50s and lows in the 30s.

Experts urge safety while putting up Christmas decorations

COLLEGE STATION — It's time for holiday decorating, so make sure plugging in those Christmas lights makes the tree twinkle — instead of burning the house down.

"Each year, about 1,300 people are treated in hospital emergency rooms for injuries related to holiday lights and trimmings," warns Janie Harris, a housing and environment specialist with the Texas Agricultural Extension Service.

And according to the Consumer Product Safety Commission, Christmas trees are involved in about 500 fires annually, resulting in an average of \$20 million in property loss and damage each year.

According to Harris, consumers can take steps to help avoid decorating disasters.

When purchasing an artificial tree, look for one labeled fire resistant. Although this label does not mean the tree won't catch fire, it

does indicate the tree will resist burning and should extinguish quickly, Harris said.

When purchasing a live tree, check for freshness. A fresh tree is green, needles are hard to pull from branches and when bent between your fingers, needles do not break. The end of the trunk should be sticky with resin, and when bounced on the ground, the tree should not lose many needles. Once the tree is home, keep it outside or

in a cool spot until it can be decorated. Cut off the base, one to two inches, and place it in a stable holder.

"When setting up the tree at home, place it at least three feet away from fireplaces, radiators, space heaters, heating vents or other source of heat. Because heated rooms dry live trees out rapidly, be sure to keep the stand filled with

see SAFETY on page 2

School lunch menus

FOR WEEK OF DEC. 14 - 19

MULESHOE

High School & Junior high

Monday
Breakfast— French toast, fruit or juice and milk. **Lunch**— Sloppy joes, french fries, pineapple tidbits, chocolate chip cookies and milk.

Tuesday
Breakfast— Pancake, fruit or juice and milk. **Lunch**— Chicken enchiladas, pinto beans, peaches, cornbread and milk.

Wednesday
Breakfast— Sausage biscuit, fruit or juice and milk. **Lunch**— Glazed ham, sweet potatoes, black eyed peas, hot roll and milk.

Thursday
Breakfast— Scrambled eggs and toast, fruit or juice, and milk. **Lunch**— Corn dog, veg. soup, cinnamon roll, mixed fruit and milk.

Friday
Breakfast— Cherry turnover, fruit or juice and milk. **Lunch**— Steak sandwich, lettuce, tomatoes, mixed veg., pear halves and milk.

DILLMAN & DESHAZO
Monday
Breakfast— French toast sticks, fruit or juice and milk. **Lunch**— Sloppy joes, french fries, pineapple tidbits, chocolate chip cookie and milk.

Tuesday
Breakfast— Pancakes, fruit or juice and milk. **Lunch**— Chicken enchiladas, pinto beans, peaches, cornbread and milk.

Wednesday
Breakfast— Sausage biscuit, fruit or juice and milk. **Lunch**— Glazed ham, sweet potatoes, black-eyed peas, hot roll and milk.

Thursday
Breakfast— Ham & cheese toast, fruit or juice and milk. **Lunch**— Nachos, Spanish rice, corn, apple slices and milk.

Friday
Breakfast— Cherry turnover, fruit or juice and milk. **Lunch**— Steak sandwich, lettuce, tomatoes, mixed veg., pear halves and milk.

LAZBUDDIE
Monday
Lunch— Subs, pizza, *chicken Teriyaki, carrots, green beans, rice, fruit salad, juice and milk.

Tuesday
Lunch— Tacos, *burritos(PK-1), enchiladas, pinto beans, Spanish rice, hominy, fruit, salad, jello and milk.

Wednesday
Lunch— Corndogs, egg rolls, *hamburger helper, mixed veg., squash, fruit, salad, jello and milk.

Thursday
Manager's Special

Friday
 *Hamburgers and milk.
THREE WAY
Monday
Breakfast— Oatmeal blueberry muffin or assorted cereals, graham crackers, juice and milk. **Lunch**— Chopped steak w/gravy, potato sticks, sweet peas, fruit cup, rolls and milk.

Tuesday
Breakfast— Cinnamon rolls or assorted cereals, graham crackers, juice and milk. **Lunch**— Taco Bell burritos, green salad, corn, orange quarter and milk.

Wednesday
Breakfast— Breakfast pocket or assorted cereals, graham crackers, juice and milk. **Lunch**— Turkey/dressing, mashed potatoes, green beans, rolls, strawberry sundae and milk.

Thursday
Breakfast— Donuts or assorted cereals, graham crackers, juice and milk. **Lunch**— Pizza, mixed veg., green beans, apple and milk.

Friday
Breakfast— Ham & cheese w/ biscuits or assorted cereals, graham crackers, juice and milk. **Lunch**— Hot ham & cheese sandwich, lettuce, tomato, pickle, assorted chips, fruited gelatin and milk.

POST OFFICE

from page 1

ters).

Because traditional Christmas paper is delicate, wrap packages in brown packaging paper to protect the original wrapping.

Sondra Wilson, a local rural route mail carrier, said that anyone who needs help getting their packages into town can either leave a note in their mail box or call and she will come and pick the package up.

As far as letters to the North Pole, Garcia ensures that Santa will receive any letter sent to him. Santa will even return a letter to let each child know their letter was received as long as there is a return address. No stamp is necessary.

The post office also carries Christmas stamps and a variety of Christmas cards and wrapping paper.

STAFF

from page 1

Council in Washington, D.C., where she has worked in governmental affairs for the past eight years as an advocate for the cotton industry.

She also has previous legislative experience representing the Texas Farm Bureau from 1988 through 1990 and as a legislative assistant to Congressman Larry Combest (R-Lubbock).

Powers has served as a legislative aid to State Senator Tom Haywood (R-Wichita Falls) since 1995 where he researched and advised the senator on legislation.

Combs' term as agriculture commissioner begins January, 1999. She will serve as the state's 10th commissioner of agriculture and is the first woman elected to the office in the agency's 92-year history.

Beauty For Your Christmas Season

Red, White and Pink Poinsettias
6", 8" & 10"

Christmas Cactus
4" and basket

Gift Items!

Kristy's Plants
710 E. American Blvd.
272-5536

Dayhoff's Shoes

SEMI-ANNUAL CLEARANCE SALE!

Sale Starts 8:30 a.m. Monday Dec. 14th

Shop at Santa's Favorite Store



Large Group
LEATHER HANDBAGS
30% OFF

Largest Selection in Eastern New Mexico & West Texas!

WOMENS & TEENS SHOES

30%-50% OFF

Women's Group of
BOOTS & SHOES
20% OFF

MEN'S GROUP
30% to 50% OFF

Put yourself in our shoes

DAYHOFF'S SHOES
403 MAIN • 762-1174 • DOWNTOWN CLOVIS, NM

SAFETY

from page 1

water. Place the tree out of the way of traffic, and do not block doorways," she noted.

Whether they're indoors or out, use only lights that have been tested for safety by a recognized testing laboratory. Use weatherproof outdoor lights and cords for outdoors.

Check each set of lights, new or old, for broken or cracked sockets, frayed or bare wires, or loose connections. Discard damaged sets.

Almost everyone uses an ex-

tension cord or three when decorating.

Just remember to use no more than three standard size sets of lights per extension cord.

"Turn off all lights when you go to bed or leave the house. The lights could short out and start a fire. Never leave light strings and other electrical decorations operating unattended," she cautioned.

Fireplaces also require caution during the holidays.

Never burn wrapping papers

in the fireplace. A flash fire may result as wrappings ignite suddenly and burn intensely.

Do not burn trees in the fireplace. Evergreens burn rapidly and throw sparks which can set the roof on fire or cause a flue fire.

In addition to decorations, general safety rules should be followed.

Make sure your home is equipped with working smoke detectors and fire extinguishers.

"Don't forget to install, test and maintain these devices in accordance with the manufacturer's instructions," Harris added.

CITY

from page 1

Montgomery and Councilman Juan Chavez, the only current members of the city council of 1994, disagree on whether buying the land was a mistake.

Chavez has no doubts. "I was against it then and I'm glad we got rid of it," Chavez said.

Montgomery felt the city did the right thing at the time by purchasing the property.

"I thought it was important that we provided an adequate water supply for future generations," Montgomery said.

Montgomery said he became interested in selling the land after a study conducted by city engineers estimated that it would take at least \$5 million to recover the water.

"I think by selling it we best utilize our resources, and I feel

we can obtain water rights in closer proximity to the city," Montgomery said.

Several Councilmen said that being able to recoup most of the original investment played a large role in selling the land.

"I feel there is good water available under the city that we can purchase," Councilman Cliff Black said. "But I didn't want the city to lose money if we sold the land."

The city owns nearly 7,000 acres of land with water rights. A recent in-house study predicted that even without the East Well Field the city's water supply would last 75-85 years under normal conditions.

The East Well Field property includes 54 wells, but most of them have to be capped, which would have cost the city \$7,000 to \$10,000 per well.



Buck and Carolyn Johnson say, "There's no place like home for the holidays." And there is no place quite like their home with three rooms transformed into a unique Christmas store full of many one-of-a kind gifts and decorative items.

NO RUN-OF-THE-MILL ARTICLES FOUND AT

Carolyn's Christmas Creations

Hand Crocheted Santas, Reindeer & Angel Ornaments

These adorable hand-crocheted characters have marvelous detail and are starched for long lasting durability. They are sure to become a treasured heirloom that will last forever.

Register to win a Large Custom Painted Santa to be given away Christmas Eve (\$250 value)

Hand-Painted Ceramic Art
 From the most whimsical to the most elegant, each is a treasure of originality

Glass Oil Lamps
 Hand blown and hand painted in Starburst Design or Gilded Snowflake.

Hand-made Gifts For The Furry Family Members
 Dog and Kitty Gifts that can be customized.

Hand-carved Wooden Santas and Bears
 Delight in the face of Santa carved into a wood log or Primitive Bears hand-carved with jointed legs and arms

Santa Beverage Bottle Covers
 Handcrafted fabric Santas with hand painted faces make any gift of spirits especially festive. Definitely not the same old, same old in bottle covers!

Quilted Angel Banners
 Against a dramatic night sky, this holiday quilt banner is a work of art

If you have an eye for the unique and finely made— You'll find it at Carolyn's Christmas Creations!

218 W. 18th Street - Muleshoe OPEN DAILY THE WEEK OF CHRISTMAS

Open Wed. — Sat.
 10 am to 6 pm

Bailey County Journal USPS 040-200
 Established March 31, 1963. Published by Triple S Publishing, Inc.
 Every Sunday at 304 W. Second, Box 449, Muleshoe, TX 79347.
 Second Class Postage paid at Muleshoe, TX.
 POSTMASTER: Send address changes to the Bailey County Journal, P.O. Box 449, Muleshoe, TX 79347.
 We are qualified members of:
 Panhandle Press Association, National Newspaper Association,
 West Texas Press Association and Texas Press Association

WEST TEXAS PRESS ASSOCIATION
 MEMBER 1998

PPA
 Panhandle Press Association

Scot Stinnett, Publisher
 Lisa Stinnett, Vice-President/Comptroller
 Rick White, Editor
 Mari Guadalcasar, Classifieds
 Leah Bell, Advertising

© 1990

SUBSCRIPTIONS: Muleshoe Journal and Bailey County Journal
 By Carrier Yearly - \$22.00
 Bailey County — by mail - \$24.00
 Elsewhere - \$26.00
 Advertising Rate Cards on Application

Advertisers should check their ad the first day of insertion. The Journals will not be liable for failure to publish an ad or for a typographical error or errors in publications except to the extent of the cost of the ad for the first day of insertion. Adjustment for errors will be limited to the cost of that portion of the ad where the error occurred.

Church youth group holding toy drive

By LESLI RADFORD
Journal staff writer

The First Assembly of God Church's youth group is holding a toy drive to help less fortunate families have a merrier Christmas.

"It's important to remember those who will be without this Christmas," said Michelle Garcia, youth director at First Assembly of God. "This is our way of showing that people in the community care."

The group has set up a donation box at Family Dollar General Store for used toys that are in good condition or new toys. Donations can also be dropped off at the church Monday through Thursday from 9 a.m. to 4 p.m. Donations will be accepted until Dec. 18.

"God gives you the best; you should be able to give the best, too," said Michelle's husband, Anthony, who is also a youth minister at the First Assembly of God. "This is something these people will remember you for the rest of their lives."

Michelle said that the youth group will distribute the gifts to local children.

"We want them to be grateful for what they have and what they have to offer," she said. "We often take things for granted."

She explained that the group discussed what kind of project they wanted to do for the community.

"There were so many doing food drives, and while food is important, it's also important for children to have toys," she said.

The couple said they expected a good turn out and hope to make the toy drive an annual project.



Holiday cheer

Marlene Cantu (left) and Brittany Cuellar took part in the Three Way Elementary School student's production of the "Mice Before Christmas" Thursday in the school cafeteria.

Study shows land use influences climate changes

A study presented to the American Geophysical Union on Wednesday says that wholesale changes in land use coincide with increasing temperatures, and play a role equal to that of industrial emissions in affecting climate changes.

Intensive farming, logging and other landscape changes play a major role in the world's climate, according to University of Wisconsin climatologist Jonathan Foley.

The findings suggest that international efforts to control climate change by limiting in-

dustrial emissions may also need to target farmers, loggers and developers.

Foley studied the Amazon River basin and found that rainforest destruction reduced the amount of carbon dioxide that can be stored. As a result, annual rainfall has decreased by 20 percent in some areas.

The Massachusetts Institute of Technology found that in Southeast Asia, north Africa and other areas, land that is stripped of vegetation — which once held heat — releases energy into the atmosphere. This

causes an upset of climate balance, according to the researchers.

Scientists say more study is needed to determine how farming and logging activities have contributed to climate shifts over the long term.

Lazbuddie FBLA holding food drive

The Lazbuddie Future Business Leaders of America are conducting a food drive.

Donation sites include Muleshoe and elevators, fertilizer plants and gins in the Lazbuddie area.

Donations will be accepted until Dec. 18.

'Moderation' key to healthy holiday season

"The holidays are not a time to try to lose weight, because festivities are often centered around lots of food and drinks," said Lynne Scott, a registered dietitian and director of the Diet Modification Clinic at Baylor College of Medicine in Houston. "By simply maintaining your weight during the holidays, you should consider yourself successful."

Scott recommends eating before you go to parties to avoid snacking on refreshments that are usually high in calories and fat. She suggests that you survey the entire buffet table before making your selection and choose moderate portions.

Santa Sez:

You'd better watch out... Or you'll miss a great deal!

1998 FORD RANGER XLT V-6, CD player.....	only	\$15,995
1997 LINCOLN TOWN CAR loaded, low miles.....	only	\$24,995
1996 NISSAN XE KING CAB 4x4, was \$14,995.....	now	\$12,995
1994 CHEVY ASTRO was \$14,995.....	now	\$12,995
1993 CHEVY BLAZER was \$13,995.....	now	\$11,995
1996 CHEVY CORSICA was \$9,995.....	now	\$6,995
1982 CHRYSLER NEW YORKER was \$2,995.....	now	\$1,995
1990 DODGE D-150 CLUB CAB was \$9,995.....	now	\$7,995

Portales' Premier Pre-Owned Vehicle Headquarters

TRADER HORN MOTOR COMPANY

620 S. Ave. C • Portales, NM • (505) 359-0947 or (505) 359-1775

Break Away From The Ordinary-
Give Something Unique For Christmas From

DIMINUTIVE DESERTS
DISTINCTIVE DISH GARDENS

Custom Designs On Request
Alice Liles corner of Joliet and Juniper 272-5200

TONY'S Great Prices. Great Gift Ideas.

RANCH HAND EQUIPMENT HEADQUARTERS

DAD WANTS WHAT?
GIFT CERTIFICATES

Tool Boxes * Running Boards
* Custom Hitches * Grill Guards
* Window Tinting * Bedliners
* Nerf Bars * Bumpers * Winches

Chrome • Chrome • Chrome

Compare Our Prices! One Day Service

TONY'S PICKUP OUTFITTERS

109 S. Maple St.
Clovis, NM • (505) 762-3315
Behind Long John Silver's

McCathern pens second novel; it's a doozy!

Hereford native Gerald McCathern, author of the best-selling historical novel *Horns*, has branched out into murder/mystery in his latest novel, *Quarantine!*

After just three months on the shelf, *Quarantine!* has already reached the number one best-sellers list in Lubbock for all hard-back fictions.

Both *Horns* and *Quarantine!* are available at the Journal. Each book is \$21 and both would make the perfect Christmas gift.

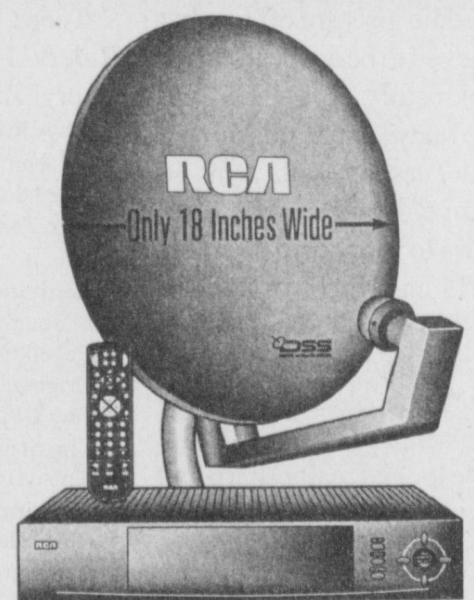
Great gift ideas for the Christmas season!

RCA DS5120RB
RCA Digital Satellite System

- Compact Receiver • 18" Wide Antenna Dish
- Universal Remote • Over 200 Channels
- Super Quality Picture • One-Touch Tuning

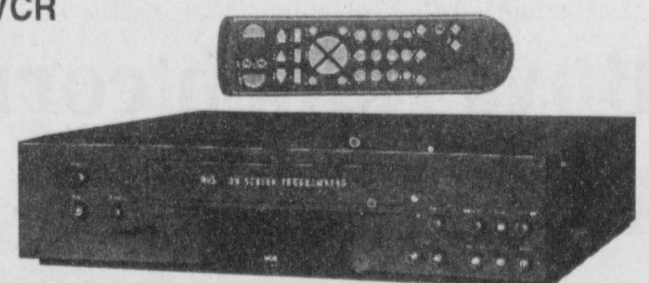
Tune directly to a program highlighted on the program guide with the touch of one button. (Features by StarSight®)

\$149.95
- \$50.00 In-Store Rebate
\$99.95



GE VG2042
2-Head VCR

- Universal Remote
- 8-Event/1-Year Programmable Timer
- On-Screen Programming



ONLY \$99



RCA P60920BL
HOME THEATRE™
60" Projection Stereo TV

- Digital Focus
- 900 Lines of Horizontal Resolution
- High Output, Liquid Cooled-and-Coupled Picture Tubes

\$1999

WILSON APPLIANCE

117 Main St. • Muleshoe, TX • 272-5532

Bobcats outlast Muleshoe 70-62

Mules fade in 4th quarter

Muleshoe came out on fire Tuesday in a big pre-district showdown with longtime nemesis Dimmitt at WJHS gym.

The Mules rained in seven 3-pointers in the first quarter while racing out to a 27-17 lead.

The funny thing is Dimmitt had the Mules right where it wanted and MHS coach Ralph Mason knew it.

"I told them at the end of the quarter that they better not get too happy because they're going to come back," Mason said.

After hanging within striking distance through three quarters, Dimmitt waltzed past the tired and tentative Mules in the fourth quarter and away with a convincing 70-62 win.

The Bobcats outscored Muleshoe 18-5 in the fourth quarter in handing the Mules (3-3) their third-straight loss.

"We looked really good until the fourth quarter started," Mason said. "Then they turned it up a notch and we didn't react very well."

Senior guard Carlton Lewis had a career-night for Muleshoe with 20 points, seven

assists and three steals. He was a perfect 5 of 5 from 3-point range.

Dustin Cleavinger added 19 points and Mason Sinclair finished with 17. Cleavinger, the Mules' leading scorer and rebounder, fouled out with 2 1/2 minutes left and the Mules trailing by three.

Dimmitt was led by the one-two scoring punch of Jerry Thomas (25 points) and Derek Buckley (21 points, four 3-pointers).

Dimmitt took its first lead of the second half on Wes Wright's 3-pointer two minutes into the fourth quarter.

After Kyle Hahn's free throw tied the score at 60, the Bobcats scored the next 10 points to put the game away.

Muleshoe didn't score again until there were less than 30 seconds left in the game.

Dimmitt (70) — Thomas 105-825, Buckley 73-321, Larra 30-09, Wright 30-09, Mathews 20-04, Sanders 10-02, Prieto 00-00. Totals 268-1170.

Muleshoe (62) — Lewis 6-3-3 20, Bruns 0-0-0 0, Sinclair 7-0-2 17, Hodge 0-0-0 0, Mason 0-0-2 0, Hahn 0-1-2 1, Cleavinger 8-0-19, Turney 2-1-5. Totals 235-1262.

Dimmitt 17 16 19 18 70

Muleshoe 27 10 20 5 62

3-pointers: Dimmitt 10 (Buckley 4, Larra 3, Wright 3), Muleshoe 11 (Lewis 5, Sinclair 3, Cleavinger 3).



Drivin' hard

Muleshoe senior Carlton Lewis concentrates on the rim while Dimmitt's Derek Buckley goes for the block Tuesday in a non-district game at WJHS.

JOURNAL PHOTO BY RICK WHITE

2nd-half rally pushes Bobbies past MHS 57-42

Muleshoe was only half as good as it needed to be Tuesday in a pre-district matchup with Dimmitt.

After a near-perfect first half, the Lady Mules crumbled in the final two quarters of a 57-42 loss at WJHS gym.

Carol Summers and Shawna Kenworthy both drained a pair of fourth-quarter 3-pointers and Dimmitt forced 21 second-half turnovers while rebounding from a 10-point halftime deficit.

Despite not scoring for the first six minutes of the second half, Muleshoe still led 31-29 after three quarters before Dimmitt went wild.

"We panicked a little bit in the second half," Muleshoe coach Jim Gruhkey said. "We didn't do a good job of meeting passes against the press and we had some defensive mistakes."

Lindsey Field led Muleshoe with 12 points. Erin Wilhite had eight points and eight rebounds while Myndi Heathington added seven points as the Lady Mules (3-9) lost their third-straight game.

Tonya Robertson led a balanced Dimmitt (5-4) attack with 14 points. Summers finished with 12.

The Lady Mules played at Levelland Friday.

Dimmitt (57) — Hinojosa 1 2-2 4, Merritt 0 0-1 0, Summers 4 2-4 12, Black 1 2-2 4, Fuentes 1 0-0 2, Kenworthy 3 0-0 6, Robertson 0 0-0 0, Schutte 2 0-0 5, Wise 4 0-0 8, Robertson 7 0-3 14, Ortiz 0 0-0 0, Traylor 0 2-2 2. Totals 228-1457.

Muleshoe (42) — Black 2 0-3 4, Field 5 2-3 12, Torres 0 2-4 2, Copley 1 0-0 2, Morris 0 1-2 1, Heathington 3 0-0 7, Williams 1 0-0 2, Wood 1 2-2 4, Wilhite 3 2-3 8. Totals 169-1842.

Dimmitt 9 6 14 28 57

Muleshoe 12 13 6 11 42

3-pointers: Dimmitt 5 (Kenworthy 2, Summers 2, Schutte), Muleshoe 1 (Heathington).

Lazbuddie off to record start

LAZBUDDIE — The Lazbuddie girls are off to what is believed to be the best start in school history.

The Lady Longhorns moved to 9-0 Tuesday with a 69-46 romp over Boys Ranch.

Laura Jo Via scored 15 points for LHS and Kia Morris added 14 in the one-sided contest.

Lazbuddie coach Carey Sudduth was pleased his starters took care of business early.

"We looked really sharp and executed well," said Lazbuddie coach Carey Sudduth, who played his reserves most of the second half.

Lazbuddie led 46-23 at half-

time.

Teena Wheeler led the Lady Riders (1-4) with 18 points and Cheryl Zamora added 10.

Boys Ranch (46) — Brewer 0 1-2 1, Graham 3 1-4 7, Hilliard 3 0-0 6, Taylor 1 0-0 2, Wheeler 7 4-6 18, Bell 0 2-3 2, Zamora 5 0-4 10. Totals 188-1946.

Lazbuddie (69) — Foster 1 0-0 3, Kimbrough 0 0-0 0, Hernandez 0 0-0 0, Engelking 1 3-4 6, Brown 3 2-3 8, Rodriguez 3 0-0 8, Black 2 0-0 4, Turner 1 1-2 4, Via 7 1-2 15, Morris 6 1-4 14, Sharp 0 0-0 0, DeLeon 3 1-3 7, Gallman 0 0-0 0. Totals 279-1869.

Boys Ranch 8 15 12 11 46

Lazbuddie 20 26 6 17 69

3-pointers: Lazbuddie 6 (Rodriguez 2, Foster, Engelking, Turner, Morris). Records: Boys Ranch 1-4, Lazbuddie 9-0.

Boys Ranch corrals Longhorns 56-51

LAZBUDDIE — Lazbuddie continues its up-and-down ride.

Fresh off the tournament championship at the FM 211 Shootout, Lazbuddie went cold in the second half of Tuesday's 56-51 loss to Boys Ranch.

The Roughriders (3-5) doubled the Longhorns by a 32-16 count in the second half after trailing by 11 at intermission.

"We were taking decent shots. We just didn't make any," Lazbuddie coach Rich Powers said. "But we weren't making good decisions and were forcing passes."

Powers said the Roughriders kept Lazbuddie off the offensive boards and did a good job in transition defense.

Brandon Foster led Lazbuddie (6-3) with 15 points and Cade Morris added 13.

Justin Ward had three 3-pointers and 14 points for the Roughriders.

The Longhorns started play in the Smyer Tournament on Thursday.

Boys Ranch (56) — Ward 4 3-6 14, Williams 3 3-8 9, Jobe 3 3-6 9, Hawkins 4 0-2 8, Taylor 3 1-2 7, Garcia 3 0-0 6, Gerillory 1 1-2 3. Totals 211-2656.

Lazbuddie (51) — Foster 3 8-10 15, C. Morris 5 1-4 13, J. Morris 2 4-9 13, Black 2 0-0 4, Seaton 1 2-4 4, St. Clair 1 0-0 2, Ronek 1 0-0 2, Gartin 0 2-5 2. Totals 1517-2751.

Boys Ranch 13 11 13 19 57

Lazbuddie 14 21 4 12 51

3-pointers: Boys Ranch 3 (Ward 3), Lazbuddie 4 (C. Morris 2, J. Morris, Foster). Records: Boys Ranch 3-5, Lazbuddie 6-3.

TOURNAMENTS

I-27 TOURNAMENT BOYS

Thursday

First round

MHS 81, LUBBOCK JV 31
Muleshoe 17 18 19 27 81
Lubbock 13 5 11 2 31

Leading scorers — Muleshoe: Cleavinger 30, Mason 15, Sinclair 11. Lubbock JV: Holly 13.

Littlefield 69, Crane 44
Idalou 52, Nazareth 31
Tulia 68, Cooper 44
Hale Center 54, Happy 46
LCHS 56, Abernathy 54
Whiteface 85, Shallowater 82

Friday

Muleshoe 82, Whiteface 80

SMYER TOURNAMENT BOYS

First round

LORENZO 62, LAZBUDDIE 53

Lazbuddie 15 15 12 11 53

Lorenzo 14 25 12 11 62

Leading scorers — Lazbuddie: J. Morris 26; Lorenzo: Aycock 27, Roth 13.

Floydada 82, Southland 31

Seagraves 66, Amherst 34

Smyer 72, Spade 55

GIRLS

LORENZO 45, LAZBUDDIE 43

Lazbuddie 6 15 16 6 43

Lorenzo 9 10 9 17 45

Leading scorers — Lazbuddie: Via 17, Brown 11; Lorenzo: Parker 26, Wall 13.

Floydada 56, Southland 12

Seagraves 38, Amherst 22

Smyer 94, Spade 37

WHITHARRAL TOURNAMENT BOYS

Thursday

First round

SHALLOWATER JV 59

THREE WAY 52

Shallowater 10 16 20 13 59

Three Way 12 8 9 23 52

Leading scorers — Shallowater: Stone 16, DeLeon 12, Janssen 10; Three Way: Perez 15, Reeves 14.

Klondike 54, Morton 50

House, N.M. 57, Whitharral 54

Cotton Center 53, Olton 52

First round

Grady, N.M. 50, Three Way 36

Olton 66, Cotton Center 22

Klondike 56, Morton 47

Whitharral 64, House, N.M. 20

TERMS: CASH, CHECK, MASTERCARD & VISA

LARGE ESTATE

AUCTION

of Elbert Nowell

1525 W. AVE. C, MULESHOE, TEXAS

SATURDAY, DEC. 19, 1998 • 10:30 CT

We have been commissioned to auction the following items of the Elbert Nowell estate



REAL ESTATE: Auctioned at 1 pm - property at 1525 Ave. C. 3 bedroom, 2 large walk-in cedar lined closets, lots of storage, 2 full baths, formal living room, den and dining area w/fireplace, kitchen, glassed in porch on back, double garage, UT room, fenced back yard, carpet, quiet neighborhood, all brick 2 storage bldgs. in back, approx. 2700 sq. ft. heated area. **10 DOWN DAY OF AUCTION, BALANCE ON CLOSING. Ronald Bryd real estate TX#265381. Call for appointment to see before auction. 481-3846 or 1-800-822-1243**

All of this furniture and appliances are in excel. condition. Very good quality. Heirs have not picked over this estate. **BEDROOM:** 5 pc. bedroom suite (HR), Maple Spraque-Carlton chest, dresser, bed & 2 night stands, Birds Eye maple dresser (HR), maple chest, night stand, bed, 5 pcs. cherry wood king bedroom suite, chest, dresser, bed, 2 night stands, swing apart bed, box spring/mattress king, full, (good), walnut bookcase, rocker, Waterfall 1930s design cedar chest, 2 mahogany record player in cabinet, tall book case **FORMAL LIVING ROOM:** Broque matching couch and chair, 2 floral matching chairs, Provincial tables - round and oblong w/marble tops, entryway mirror and table, brass easel, Provincial living room tables, Provincial long couch and chair, recliners, end tables/coffee table, round lamp table **DINING:** HR maple dining table and 5 rolling chairs, long walnut harvest table and 2 chairs, HR maple drop front desk **APPLIANCES:** Upright Gibson and chest deep freeze, S/S GE ref. w/ice in door, Maytag washer and dryer, microwave MISC.: Household items, sheets, towels, blankets, spreads, table clothes, pillows, cup towels, pots, pans, dishes, glassware, flatware, baking pans **PAINTINGS:** Lots of gold leaf mirrors, gold leaf framed paintings **APPROX. 50 TO 75 PAINTINGS** - Most signed oil paintings of western subjects, also lamps of all kinds, bedroom, living room pole lamps, table lamps, wall lamps, misc. other wall dec., crystal and brass living room lamps w/prisms **LARGE VICTORIAN PAINTING - COLLECTIBLES:** Several everyday good old quilts - hand sewn and quilted, copper pot on legs, brass swans, collections of bells, 4 china hand painted bedroom lamps, 2 sets, pink depression pieces, Roseville pieces, 663-5 vase, bowl 7-10, crock/churns, pitcher/bowl set, oak chair, bras fern stand, several kerosene lamps, oak kitchen clock, Big Ben west clock, ruby and brass cigarette stand, carnival pieces, blown glass, sea shell hanging, figurines dated 1911 & up, Lofton pieces, Homco pieces, Ozard swag vase, red wing Dutch girl cookie jar, hurricane lamp, old black telephones, table cloths, windmill mini, old table from doctor's office, carnival glass pitcher w/daisies, butter dish carnival, approx. **72 PIECE SET OF BAVARIAN GERMAN CHINA,** cape cod glass, cobalt blue pieces, lots of crystal, iris butter dish, red/blue/yellow Pyrex ref. dishes, gold leaf framed hand painted plates, carnival glass hen on nest, clothes pin bag, Frankroma pieces, large quilt box, porcelain coffee pot, Ridgeway grandfather clock, rugged look picture frames, corn sheller, cast iron wash pot, hames, several file cabinets assortment **TOOLS:** Sanders, saws, vise, funnels, bench grinder, sprinkler tractor, elec. edger, ladder, wood bench, plant holders, saw horses

For a long list www.3lefties.com/priest or email us at priest@3lefties.com

All purchases must be paid for on day of sale. While descriptions are believed correct, the Auctioneers or Owners make no warranties or guarantees as to the genuineness, authenticity of, or defect in any lot and will not be held responsible for advertising discrepancies or inaccuracies. All sales are final, when awarded to successful bidder. Buyer accepts full responsibility for all purchases made and holds the Auction Company and Owners free of any liability in the event of theft or disappearance of any items purchased.

ANY ANNOUNCEMENT MADE BY AUCTIONEER SUPERSEDES ANY PRINTED MATTER PERTAINING TO THE AUCTION

Inspection All Day Friday & Saturday Prior to Auction

James Priest & Associates W & J Auction

"OUR KNOWLEDGE IS YOUR SECURITY"

AUCTIONEERS: James Priest, Butch Priest, Gid Priest

TX LIC. # 11077 & 9474

1-800-822-1243



Clovis NM (505) 763-7311

Las Vegas NM (505) 454-8026

4205 South Prince Clovis, New Mexico

www.3lefties.com/priest



Artesia, NM

McCaul, Black All-South Plains

Marvin McCaul and Seth Black received more recognition in the South Plains than they did close to home.

McCaul, a sophomore running back at Three Way, and Black, a senior wide receiver at Lazbuddie, were named to the *Lubbock Avalanche-Journal's* Six-Man All South Plains team after being regulated to second team in their own district.

Three Way senior Jonathan Kindle was also named to the *Journal's* elite team at tight end.

Nine local players were honored on the All-South Plains or the All-District 3-A teams.

Highlighting the all-district team were two-time first team quarterback Josh Morris of Lazbuddie, senior defensive line-men Gerald Perez of Three Way and Adam St. Clair of Lazbuddie, and junior linebacker Jeffery Seaton of Lazbuddie.

Kindle was a two-way selection at tight end and linebacker and Lazbuddie sophomore center Landon Parham was a surprise pick.

Monty Kirby of Three Way and Black earned first-team honors at punter and kicker respectively.

The 5-11, 185-pound McCaul was a workhorse for the Eagles in his first year as a full-time starter, rushing for 1,991 and 31 touchdowns on 273 carries.

Black (5-11, 195) was the area's second-leading receiver with 32 catches for 573 yards and eight touchdowns.

Kindle (6-1, 195) caught 17 passes for 459 yards and 10 touchdowns.

Morris earned honorable mention at quarterback on the South Plains squad.

A-J SIX-MAN ALL-SOUTH PLAINS

PLAYER OF THE YEAR		COACH OF THE YEAR	
Jeremy Holt, Sr.	Silverton	Billy Barnett	Sands
OFFENSE		DEFENSE	
RB Jeremy Holt, Sr.	Silverton	L Casey McDonald, Jr.	Wilson
RB Marvin McCaul, So.	Three Way	L Justin Sullivan, Sr.	Whitharral
QB Colt McCook, Sr.	Borden County	LB Fernando Baeza, Sr.	Borden County
WR Seth Black, Sr.	Lazbuddie	LB Jeremy Harlan, Sr.	Wellman-Union
C Brandon Kidd, Sr.	Jayton	DB Greg Landfried, Sr.	Highland
TE Jonathan Kindle, Sr.	Three Way	DB Matt Mood, Sr.	Amherst
K Zeb Land, Sr.	Cotton Center	P Colby Floyd, Jr.	Sands

Honorable mention — Josh Morris, QB, Lazbuddie

Senior running back Jeremy Holt of Silverton was named the South Plains Player of the Year and Billy Barnett of Sands earned Coach of the Year.

Holt led the area in rushing (2,257 yards), receiving (33 catches) and scoring (345 points), including 10 touchdowns in one game.

All-District

Morris capped a stellar high school career by completing 114 of 177 passes for 1,968 yards and 20 touchdowns. He helped the Longhorns average 464.8 yards and 49 points a game.

In addition to his receiving skills, Kindle was described as the best blocking tight end in the South Plains by his coach. Parham hauled in 14 passes for 292 yards and three touchdowns.

Local players on the second team offense were McCaul and St. Clair (1,366 yards, 22 TDs) at running back and Black at wide receiver.

St. Clair and Seaton were the mainstays in a Longhorn defense that allowed 294.6 yards and 32 points a game. St. Clair recorded

SIX-MAN ALL-DISTRICT 3-A

OFFENSE

First team
Spreadback — Steven Lopez, Whitharral, soph; **Quarterback** — Josh Morris, Lazbuddie, Sr.; **Running Back** — Jeremy Holt, Silverton, Sr.; Victor Cueto, Amherst, Sr.; **Receiver** — Matt Hood, Amherst, Sr.; Joe Burns, Whitharral, Sr.; **Tight End** — Jay Arnold, Silverton, Sr.; James Collins, Amherst, St.; Jonathan Kindle, Three Way, Sr.; **Center** — Landon Parham, Lazbuddie, Soph.; **Kicker** — Dusty Miller, Amherst, Sr.; Joe Burns, Whitharral, Sr.; Seth Black, Lazbuddie, Sr.

Second team

Spreadback — Zeb Land, Cotton Center, Sr.; **Quarterback** — Dusty Miller, Amherst, Sr.; **Running Back** — Marvin McCaul, Three Way, Sr.; Adam St. Clair, Lazbuddie, Sr.; **Receiver** — Seth Black, Lazbuddie, Sr.; Jeremy McFerrin, Cotton Center, Jr.; **Tight End** — Justin Sullivan, Whitharral, Sr.; Jarred Rackley, Amherst, Sr.; **Center** — Brian Chandler, Amherst, Sr.

DEFENSE

FIRST TEAM

Linemen — Sullivan, Whitharral, Sr.; Gerald Perez, Three Way, Sr.; Casey Hardin, Amherst, Sr.; St. Clair, Lazbuddie, Sr.; Jay Hicks, Silverton, Sr.; **Linebacker** — Victor Cueto, Amherst, Sr.; Jonathan Kindle, Three Way, Sr.; B.J. Reynolds, Whitharral, Sr.; Jeffery Seaton, Lazbuddie, Sr.; **Safety** — Hood, Amherst, Sr.; **Punter** — Tommy Sherrill, Amherst, Sr.; Monty Kirby, Three Way, Sr.

Second team

Linemen — Collins, Amherst, St.; Burns, Whitharral, Sr.; Parham, Lazbuddie, Soph.; Cliff Barcheers, Cotton Center, Sr.; **Linebackers** — Oscar Gonzales, Amherst, Sr.; Richard Miller, Amherst, Jr.; Greg Cirilo, Whitharral, Soph.; **Safety** — Kyle Dunlap, Whitharral, Sr.

106 tackles and recovered seven fumbles while Seaton was in on 76 tackles and had three interceptions.

Perez (6-2, 210) and Kindle

were key players on an Eagle defense that allowed 311 yards and 35 points a game.

Parham was also a second-team selection on the defensive line.

MULESHOE BOX SCORES

GIRLS

FRESHMAN

MHS 62, SHALLOWATER 60
Shallowater (60) — Simmons 2, Sharpe 6, Sewell 12, Timms 10, Salddivor 12, Alvarado 7, Barbare 6.

Muleshoe (62) — Bell 1, Gartin 14, Carpenter 7, Glover 3, Barrett 2, Hodge 25, Hutto 10, Felan, Herington, Messenger, Rempe, Wood.

Shallowater 16 14 17 13 60
Muleshoe 17 10 17 18 62

3-pointers: Shallowater 1 (Alvarado), Muleshoe 4 (Hodge 3, Gartin). Records: Muleshoe 5-1.

8TH GRADE

SHALLOWATER 47, WJHS 18
Shallowater (47) — Ellis 11, Marmin 2, Karr 9, Williams 4, Moses 14, Broome 6.

WJHS (18) — Pylant 2, Flores 5, Cleavinger 2, Bailey 1, Henderson 3, Adrian 5, Kitchens, Rasco, Allison, Hawkins, Locker, Barrier.

Shallowater 6 13 9 18 46
WJHS 4 3 4 7 18

3-pointers: Shallowater 1 (Ellis). Records: WJHS 4-3.

7TH GRADE

SHALLOWATER 22, WJHS 20
Shallowater (22) — Rojas 6, Ellis 3, Dazek 2, Sowell 1, Neighbors 2, Dudley 6, Townsend 2.

WJHS (20) — Mason 6, Benham 6, Whalin 1, Glover 2, Perez 4, Lopez 1, Obenhaus, Hancock, Black, Hamilton, Hernandez, Rudd, Morgan.

Shallowater 2 3 8 9 22
WJHS 2 8 3 7 20

3-pointers: none. Records: WJHS 3-4.

BOYS

FRESHMAN

SHALLOWATER 47, MHS 46
Muleshoe (46) — Atwood 8, Riley 19, Norman 9, Dominguez 6, Johnson 4, Lopez, Mount, Kerby, Buhman, Luna, Shelburne, Turney.

Shallowater (47) — Blair 6, Christy 13, Hughes 2, Mullins 2, Sanders 3, Bewley 8, Crosthwaite 13.

Muleshoe 12 14 7 13 46
Shallowater 6 15 12 14 47

3-pointers: Muleshoe 2 (Riley, Atwood), Shallowater 6 (Christy 3, Blair, Sanders, Crosthwaite). Records: Muleshoe 5-2.

8TH GRADE

SHALLOWATER 37, WJHS 19
WJHS (19) — Pena 2, Broyles 5, Powell 2, Field 10, Hunt, Sanchez, Dale, Colunga, Clark.

Shallowater (37) — Kitchens 15, Nowlin 4, Darden 5, Garcia 2, Gates 6, Wilson 6.

WJHS 4 5 6 4 19
Shallowater 6 9 9 13 37

3-pointers: none. Records: WJHS 1-3.

7TH GRADE

SHALLOWATER 78, WJHS 10
WJHS (10) — Agundis 2, King 2, Heathington 2, Gear 4, Altman, Campolla, Scott Pacheco, Zapata, Marricle, Nunez.

Shallowater (78) — Lopez 8, Massero 6, Masson 17, Guitierrez 2, Richardson 16, Kitchens 2, Auna 7, Gomez 11, Roberts 4.

WJHS 4 0 4 2 10
Shallowater 25 26 10 12 73

3-pointers: Shallowater 1 (Masson). Records: WJHS 0-4.

Dimmitt sweeps Muleshoe JV

Dimmitt jumped out to a nine-point halftime lead and beat Muleshoe 44-34 Tuesday in a boys junior varsity game.

Moises Garcia had two 3-pointers and eight points for Muleshoe (2-3) while Clint Black added seven points.

Dimmitt (44) — Hardwick 1 0-0 3, Harkins 3 2-3 9, Pasada 1 0-2 3, Larra 5 0-2 11, Sandoval 2 2-2 6, Velo 2 3-6 7, Salazar 2 1-4 5, Totals 16 8-19 44.

Muleshoe (34) — Williams 2 0-0 4, Posadas 0 0-0 0, Baeza 0 0-1 0, Latham 1 0-0 2, Black 1 2-2 5, Garcia 3 0-1 8, Vela 0 0-0 0, Lewis 1 1-2 3, McClanahan 2 2-4 6, Chavez 2 0-1 4, Totals 13 5-11 34.

Dimmitt 13 15 5 11 44
Muleshoe 5 14 5 10 34

3-pointers: Dimmitt 4 (Hardwick, Harkins, Pasada, Larra), Muleshoe 3 (Garcia 2, Black).

Lady Mules fall 55-42

Dimmitt raced out to a 16-point halftime lead and held on for a 52-44 win against Muleshoe in a girls junior varsity game.

Muleshoe (2-5) rebounded from an abysmal first half to make it interesting. The Lady Mules outscored Dimmitt 31-23 in the second half.

Tommie Hernandez and Michelle Toscano led Muleshoe with 11 points each.

Dimmitt (52) — Bradley 1 0-0 2, Welch 0 2-2 2, Norman 0 2-2 2, Vick 0 0-1 0, Kenworthy 2 7-8 11, Webb 3 1-1 9, Saenz 6 2-2 15, Robertson 5 0-1 0, Salinas 0 1-4 1, Totals 17 15-20 52.

Muleshoe (44) — Flores 0 0-0 0, Johnson 1 1-2 5, Benham 1 2-4 4, Robertson 1 2-0 5, Gonzales 1 0-0 2, Locker 0 0-0 0, Garcia 0 0-0 0, Hancock 0 0-0 0, Tipps 1 0-0 2, Toscano 5 1-2 11, Hernandez 3 5-8 11, Totals 16 11-19 44.

Dimmitt 12 17 9 14 52
Muleshoe 5 8 13 18 44

3-pointers: Dimmitt 3 (Webb 2, Saenz), Muleshoe 1 (Robertson).

JOURNAL SPORTS

We know the game

Bring your family to join our musical family for

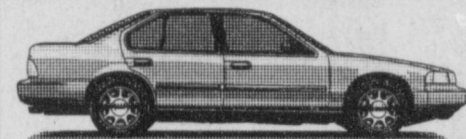
A FAMILY CHRISTMAS



Sunday, December 13, 1998

6:00 p.m.

First Baptist Church, Muleshoe



Come Check Our Rates!

WE HAVE MONTHLY AUTO INSURANCE

Delton E. Wilhite & Associates INSURANCE AND FINANCIAL SERVICES

1631 West American Blvd. • 272-3652 or 272-5988

Our God Is a "God With Skin On"

In worship on a Sunday just before Christmas several years ago, I found myself gazing at the front of the sanctuary watching silhouetted shepherds themselves gazing upward in wonder, one of them pointing toward a brightly shining star. The fact that the star itself was just a few feet away from the cross also displayed before us was a poignant reminder that in God's

take care of you." But the boy isn't satisfied, and he shouts back, "I know God loves me and that he'll take care of me, but right now I need somebody with skin on."

Our world did, too. And so God came "with skin on." Immanuel. God with us. God sharing fully in the human situation from the trauma of birth to the violence of death. God feeling everything a human being can feel.

Christmas assures me that the God I worship is no absentee landlord who lives a million miles off leaving the poor tenants to aimlessly "do their own thing."

Nor is our God an emotionless lawgiver, a heavenly bureaucrat lost somewhere on a cloud shuffling paper and handing down rules to complicate a situation he knows nothing about.

God is not the sort of military officer who proposes brave and daring offensives but whose idea of "leading" the charge is sitting safe and warm in a command post moving markers and flags on a map.

Christmas assures me that God has been at the front. He's seen the blood. And the most precious of all was His.

The wondrous story of Christmas is that with those stunned shepherds all the angels and the universe itself watched in utter amazement at the depth of God's love as he became what we needed most—Immanuel, a God with skin on.

Daddy replies, very truthfully, "Oh, son, God loves you and he'll



Focus On Faith Curtis Shelburne

wisdom Bethlehem and Golgotha are forever linked, two sides of the same wondrous story of God's love.

The Baby of Bethlehem drawing his first breath of air in the world he had spun into existence eons before was more than a baby. He was Immanuel, God with us, God in the flesh, God who came into this world laying aside the robes of royalty, willingly clothing himself in the garment of humanity to fully experience our joys and our sorrows, our triumphs and our tears.

I love the story told by author John Drescher about a little boy lying awake terrified by a storm late one night. From his dark shadowy room he cries out to his father, "Daddy, come, I'm scared."

Daddy replies, very truthfully, "Oh, son, God loves you and he'll

Curtis Shelburne is minister of the 16th & D Church of Christ in Muleshoe.

Thank You Muleshoe for your support.

1998 Bi-District Football Champions, Coaching Staff & Muleshoe Athletic Booster Club

Three Way loses pair on road

Three Way dropped a pair of road games in the past week. Wellman-Union edged the Eagles 46-45 Tuesday, which followed a 58-49 loss at Seagraves on Dec. 4.

Alberto Valderas had two 3-pointers and 14 points for the Eagles (3-5) against Wellman-Union.

Daniel Reeves scored 13 points and Jonathan Kindle and Michael Soliz added 11 each for Three Way against Seagraves.

WELLMAN-UNION 46, THREE WAY 45

Three Way (45) — Perez 10-0-2, Kindle 2 3-6 7, Valderas 4 4-4 14, Reeves 1 3-5 6, Pollard 10-0-2, Davis 10-0-3, Kirby 20-0-5, Weekes 00-0-0, Soliz 1 0-1 3, McCaul 1 1-2 3. Totals 14 11-18 45.

Wellman-Union (46) — Kelcy 7 0-2 14, Harlan 00-0-0, McGuire 00-0-0, Webb 3 1-3 7, Rivas 1 0-1 2, Chrestman 4 4-6 12, Burris 3 1-2 7, Dyer 0 4-4 4. Totals 18 10-18 46.

Three Way 12 11 4 18 45
Wellman-Union 12 14 11 9 46
3-pointers: Three Way 6 (Valderas 2, Soliz, Davis, Reeves, Kirby). Records: Three Way 3-5. JV score: Three Way 40, Wellman-Union 22. (Dec. 4)

SEAGRAVES 58, THREE WAY 49
Three Way (49) — Perez 4 1-3 9, Kindle 3 5-9 11, Valderas 0 2-2 2, Reeves 5 2-3 13, Pollard 0 0-0 0, Davis 00-0-0, Kirby 1 0-0-3, Weekes 00-0-0, Soliz 3 3-4 11, McCaul 00-0-0. Totals 16 13-25 49.

Seagraves (58) — Bandy 2 0-0 4, Davis 4 3-4 11, Cavazos 0 0-2 0, Bryant 6 3-4 15, Gallegos 1 4-4 6, Vasquez 1 0-0 2, Tidwell 4 3-5 11, Luckey 4 1-3 9. Totals 22 14-22 58.
Three Way 10 7 7 25 49
Seagraves 11 13 15 19 58
3-pointers: Three Way 4 (Soliz 2, Reeves, Kirby). Records: Three Way 3-4.

TWJHS loses 22-8

Three Way Eagles went to Whitharral Dec. 7 with a 1-1 record in district looking for their second win.

The junior high Eagles fell

short by the final score of 22-8. Whitharral's Brandon Hoskins finished with 10 points on the night to lead all scorers.

Chris Kindle, Rigo Rodriguez, Sammy Castillo and Antonio Jasso each pitched in two points for the Eagles.

Jordan Gray Special to the Journal Lady Eagles fall

The Whitharral Panthers defeated Three Way 30-22 in a girls junior high game.

After trailing 5-0, the Panthers pulled ahead in the second quarter with a 10-point run to lead 10-5 at the half.

The Eagles came back fighting in the third period but could not regain the lead.

Sarah Furgeson, Kaylie James and Ashley Layton of Three Way each had 4 points. Gonzales of Whitharral lead all scorers with 10 points.

Monica Walker Special to the Journal

POLICE LOG

ARRESTS MULESHOE PD

Nov. 21 — Arleen Theres Keithley, 18, 15 counts aggravated perjury and possession of marijuana.

Nov. 25 — Jesus Chavez Tarango, 21, failure to identify.

Nov. 26 — Samuel Ramirez, 18, evading arrest and family violence.

Nov. 27 — Laura Flores Orozco, 30, possession of marijuana.

Nov. 27 — Sandra Kay Faulkner, 20, possession of marijuana.

Nov. 29 — Manuel Daniel, 31, public intoxication.

Dec. 4 — Jerry Lee Lowe, 31, unauthorized use of a motor vehicle.

Dec. 6 — Hector Javier Flores, 26, family violence.

Dec. 9 — Marie J. Rodriguez, 19, motion to revoke probation.

Bailey County SO

Nov. 19 — Mirko Petrovic, 20, organized criminal theft.

Nov. 27 — Javier Meza Garcia, 31, driving while intoxicated.

Dec. 1 — Ronna Cadenhead, 30, theft by check.

Dec. 2 — R.G. Bennett, 33, motion to revoke probation.

Dec. 3 — Jose Martinez Juarez Rivera, 30, Lamb county warrant for motion to revoke probation.

Dec. 4 — Freddy Coleman, 20, motion to revoke probation.

Put Some "Jingle" In Your Pockets For Christmas!

Continental Credit

Loans from

\$100 to \$446

Let Jackie or Norma Play Santa For You!

Phone Applications Welcome
272-3673

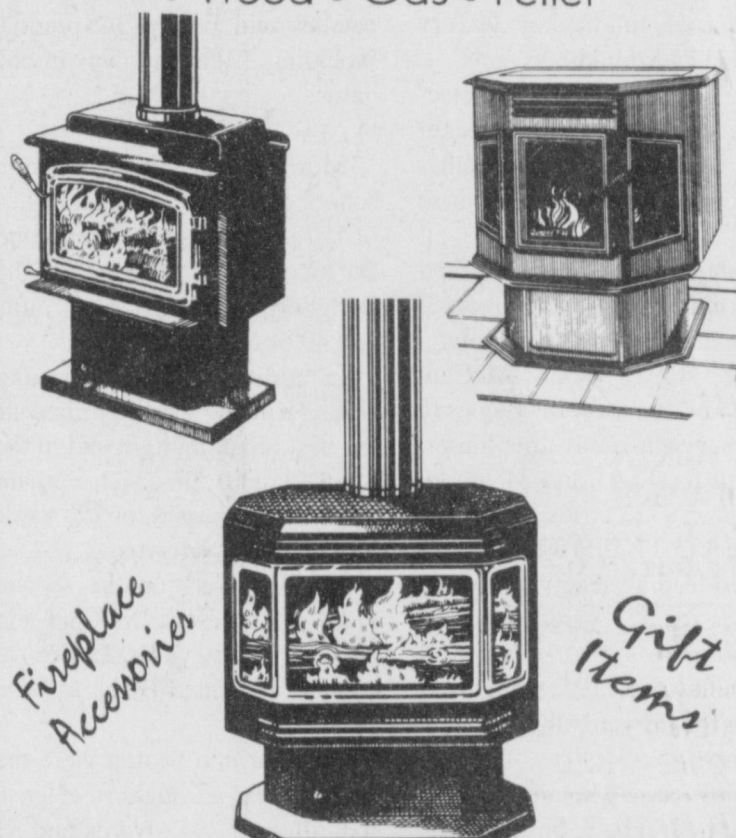
Open: Monday—Thursday 9 am to 5 pm
Friday—9 am to 6 pm

206 South Main Street • Muleshoe



BEAUTIFUL HEAT

• Wood • Gas • Pellet



Fireplace Accessories Gift Items

Fitz Heating and Air Conditioning

1440 N. Main, Clovis, NM (505) 763-6915



Food drive volunteers

Members of the WJHS Student Council who helped out during a recent Christmas food drive were (back row, from left) Cydni Vandiver, Andrew Reeves, Bailey Barrier, Gradee Adrian, Sara Benham, Ashley Lopez, Lilia Flores, Joni Garcia and Miguel Castorena. (Middle) Erin Hancock, Jodi Hawkins, Daniel Campolla, Isiah Pacheco and Casey Barrier. (Front) Jami Wedel, Marlie Black, Megan Mason, Brady Broyles, Amanda Lopez, Amber Cowart, Trent Black, Joel Cowart and Barry Morris.



Top class

Mrs. Green's class collected the most donations during a Christmas food drive at WJHS. Class members who took part in the food drive were (back row, from left) Bonnie Martin, Juan Nunez, Ashley Beggs, April Morgan, Mrs. Green, Gina Allen, Kelsey Beggs, Brenda Caraveo and Laura Ramirez. (Front) Jeremy Copley, Esther Mendoza, Amber Cowart, Jessica Hall, Kayla Spradling, Erin Gallman, Cristobal Almanza and Brant Wedel.

BIRTHS

TAYLOR SCOGGIN

Justin and Kim Scoggin of Chandler, Texas announce the birth of a daughter, Taylor Belle Scoggin.

Taylor was born at 2:59 p.m. on Sunday, Dec. 6, 1998 in Tyler and weighed 7 pounds, 13 ounces and was 20 1/2 inches long.

Paternal grandparents are Verlyon and Jewellene Scoggin of Alamogordo, N.M. Maternal grandparents are Don and Dottie Morris of Prescott, Ariz. Great grandparents are Lewis and Mary Scoggin and Irene Dilts, all of Muleshoe.

Great, great grandmother is Allene (Gran Gran) Bell of Carlsbad, N.M.

Muleshoe Country Club Restaurant

Connie Dominguez's Homestyle Cuisine

ONE DISH BUFFET

(Served Tuesday thru Friday)

Tues.—Hamburger steak, mashed potatoes & gr. beans
Weds.—Homemade stew, salad and sandwiches
Thurs.—Pork chops, fried potatoes & black eyed peas
Fri.—Chicken fried steak, mashed potatoes & gr. beans
The buffet comes with salad, dessert & a drink

DINE-IN OPEN TO PUBLIC
Non-members welcome!!

OPEN TUESDAY—SATURDAY
Lunch—11:30 am to 1:30 pm
Dinner—6 pm to 9 pm
WEDNESDAY NIGHT is "Steak Night"
Dinner—6 pm to 9 pm

BREAKFAST SERVED
Saturday's Only
7:30 am

Rip's Christmas Specials

IN TEXICO 482-3363

Open Sunday 1:00 - 5:00 p.m. CST
Monday - Saturday 9:00 a.m. - 7:30 p.m. CST

NEW GROUP! 17" Top Boots

Full Quill Ostrich Boots\$399.98
Oiled Sharkskin Boots\$229.00
Children's Justin Boots\$49.98 & up

Kakadu Oil Skin Dusters20% off
Carhartt Work Clothing.....20% off
Pendleton Shirts & Sport Coats20% off

All Ladies Holiday Apparel.....30% off
All Other Ladies Apparel.....20% off
All Lawman Jeans.....30% off

Don't Forget Items

For Him
Leather Roper Gloves Boot Bags Boot Jacks
Leather Belts (Customized Free) Fragrance
Custom made Chaps and Chinks

For Her
New Aromatherapy Fragrance and Bath
Gift Sets from Brighton
Beautiful Jewelry Clocks Key Chains

For Kids
Stick Horses Ropes Spurs Chinks
Customized Belts Black Felt Hats
Jeans and Shirts

Lay-a-ways Welcome -- Gift Certificates
Free Gift Wrapping

We accept




BAILEY COUNTY DEVOTIONAL PAGE

1315 W. American Blvd.
272-3333
Muleshoe, TX 


Decorators Floral & Gifts
616 South First 272-4340
Muleshoe, TX

TINO'S
104 W. American Blvd.
272-7528 • Muleshoe, TX
Daily Specials Owners: Tino & Linda Campoya

MULESHOE AREA HEALTHCARE Center
"Committed to Caring"
106 W. Ave. H Muleshoe 272-7578

SHERLEY-ANDERSON LAZBUDDIE ELEVATOR
965-2922 Lazbuddie, TX

Leal's Tortilla Factory, Inc.
"Serving West Texas since 1957"
107 E. Ash 272-5772 Muleshoe, TX


TERRA DISTRIBUTION
Hwy. 84 • 272-4203
Muleshoe, Texas 
Bruce Bruns - Mgr.

MULESHOE FEED BARN
311 W. American Blvd.
Muleshoe, TX 272-5626 


Shipman's Body Shop
Auto Painting • Wrecker Service • Free Estimates
Tractor Glass & Windshields
410 N. 1st Muleshoe, TX
272-4408 FAX 272-3366

MAPLE COOP GIN
927-5501
Maple, Texas

Two locations to serve you
1900 W. American Blvd. 272-5337
107 E. American Blvd. 272-3978
Muleshoe, TX 

Christian Center Church
Morton Hwy. South 272-3877
Senior Pastor 
Reydon Stanford Sun. 10:00 AM
Wed. 7:00 PM

WEST CAMP GIN, INC.
Better Ginning & Courteous Service
 Route 2 Box 1000 • 925-6681
Muleshoe, TX
James Shepard / Phyllis Shepard

PINNACLE THERAPY SERVICES
Speech/Language, Physical & Occupational Therapies
 305 5th St. • Farwell, TX • (806) 481-CARE

BRUCE, INC.
HEATING & AIR CONDITIONING
Hwy. 214 North • Muleshoe • 272-5114 

BAILEY GIN COMPANY, INC.
946-3397
Sudan, TX
Peanut Hawkins, MGR

Henry Insurance Agency, Inc.
"Serving You Since 1964"
 111 West Avenue B 272-4581
Muleshoe, TX

DALE OIL COMPANY, INC.
413 W. American Blvd.
272-5576
Muleshoe, TX 

WINKLES TRUCKS, INC.
Box 757 (806) 247-2724
Friona, TX 

Lowe's MARKETPLACE
515 W. American Blvd.
Muleshoe 272-4406
401 W. American Blvd.
Muleshoe 272-4585 

Facts About The BIBLE BY JOHN LEHTI

ACTIVATING A BATTLE

BEFORE ENTERING BATTLE THE ISRAELITES GENERALLY HAD A NUMBER OF PREPARATIONS TO BE COMPLETED. SPIES HAD TO BE SENT INTO ENEMY TERRITORY TO SEEK OUT THEIR WEAKNESS. THE SOLDIERS WHO WOULD BE LIABLE FOR DUTY HAD TO BE CHOSEN FROM THE ONES WHO WERE EXEMPT FROM THIS PARTICULAR BATTLE SUCH AS, THOSE WHO WERE FAINTHEARTED, THOSE WHO HAD BUILT A NEW HOUSE AND HAD NOT LIVED IN IT YET, PLANTED A VINEYARD BUT HAD NOT HARVESTED IT, BETROTHED A WIFE BUT NOT MARRIED HER. (DEUT. 20:2-9, II CHRON. 20:23, 27, 28), INVOKING THE DEITY'S HELP BY PRAYER AND SOMETIMES BY SACRIFICE. THEN AND ONLY THEN.....

...A SUDDEN COMMAND IS SHOUTED - AND THE TROOPS RUSH FORWARD.





THE BATTLE IS JOINED, AS FOE MEETS FOE, AND THE AIR BECOMES THICK WITH WAR CRIES, THE CLANG OF SWORD UPON SHIELD, AND THE SCREAMS OF THE WOUNDED....

JOHN LEHTI

SAVE THIS FOR YOUR SUNDAY SCHOOL SCRAPBOOK

This devotional & directory is made possible by these businesses who encourage all of us to attend worship services.

- | | |
|---|---|
| <p>ASSEMBLY OF GOD
FIRST ASSEMBLY OF GOD
521 South First Street • 272-3017
Jack Stone, Min. • 272-3984
S.S. 9:45 a.m., W.S. 11 a.m. & 6:30 p.m., Wed. 7:30 p.m.</p> <p>EL BUEN PASTOR
415 E. Ave. F • 272-5455 • Pastor Felix Cadena
S.S. 9:45 a.m., W.S. 11 a.m. & 6 p.m., Wed. 7 p.m.</p> <p>BAPTIST
CALVARY BAPTIST
1733 W. Ave. C. Rev. Jeff Coffman</p> <p>CIRCLE BACK BAPTIST
Intersection FM 3397 & FM 298
Jessie Shaver, Min • 946-3676</p> <p>FIRST BAPTIST
220 West Ave. E.
Stacey Conner, Min.</p> <p>FIRST BAPTIST
Lazbuddie • 965-2126</p> <p>PRIMERA IGLESIA BAUTISTA
223 E. Ave. E., Rev. Greg Guzman</p> <p>PRIMITIVE BAPTIST
621 South First
Elder Cleveland Bass, Min.</p> <p>PROGRESS BAPTIST
Progress, TX</p> <p>PROGRESS SECOND BAPTIST
Arthur Hays, Min.
1st & 3rd Sundays</p> <p>RICHLAND HILLS BAPTIST
17th & West Ave. D
George Malis, Pastor</p> <p>ST. MATTHEWS BAPTIST
Corner of W. Boston & W. Birch
Floyd R. Monroe, Min.</p> <p>THREE WAY BAPTIST
927-5467</p> <p>TRINITY BAPTIST
314 E. Ave. B
Robert Brown, Min.</p> <p>CATHOLIC
IMMACULATE CONCEPTION
CATHOLIC
805 E. Hickory
Joseph Augustine, Min.</p> <p>CHRISTIAN
THE CHRISTIAN CENTER
Morton Hwy. • 272-5105
Reydon Stanford, Min.</p> <p>CHURCH OF CHRIST
LARIAT CHURCH OF CHRIST
Sam Billingsley, Min.
S.S. 10 a.m.; W.S. 11 a.m. & 6 p.m., Wed. 7 p.m.</p> | <p>LAZBUDDIE CHURCH OF CHRIST
Nathan Crawford, Min.
S.S. 9:30 a.m.; W.S. 10:20 a.m. & 5 p.m.; Wed. 7 p.m.</p> <p>MULESHOE CHURCH OF CHRIST
22nd & W. American Blvd.
John Knox, Min.
S.S. 9:30 a.m.; W.S. 10:20 a.m. & 6 p.m.;
Wed. 7:30 p.m.</p> <p>16th & AVE. D CHURCH OF CHRIST
Curtis Shelburne, Min. • 272-4619
W.S. 10:30 a.m. & 1:30 p.m.;
Wed. 7:00 p.m.</p> <p>LUTHERAN
ST. JOHN LUTHERAN
Lariat, TX
Richard Greenhauer, Min.
S.S. 10:30 a.m.; W.S. 9:30 a.m.</p> <p>METHODIST
FIRST UNITED METHODIST
HISPANIC MINISTRIES
E. 5th and E. Ave. D
Pastor Benito Cavazos</p> <p>FIRST UNITED METHODIST
507 W. 2nd St.
Pastor Brad Reeves</p> <p>LAZBUDDIE METHODIST
965-2121</p> <p>EL DEVINO SALVADOR
814 W. Ave. C, Muleshoe, TX
Guadalupe Ballinas, Min.</p> <p>NAZARENE
NEW VISION CHURCH OF THE NAZARENE
814 W. Ave. C • 272-3622
Hugh Hayes, Interim-S.S. 10 & 11 am; W.S. 7 pm</p> <p>PENTECOSTAL
UNITED PENTECOSTAL LIGHTHOUSE
207 East Ave. G • 1-800-454-6051
Pastor McKibben, 10 am Sunday Service
Thursday, 7 pm Bible study</p> <p>INTER DENOMINATIONAL
NEW COVENANT
Plainview Hwy. Jimmy Low, Min.
Steve Claybrook, Assoc. Pastor
W.S. 10 a.m.; Wed. 7 p.m.</p> |
|---|---|

SAIN IRRIGATION & MACHINES
Complete Pump Service
W. American Blvd. 272-4397
Walt Sain Muleshoe, TX 272-4148

Springlake Potatoes, Inc.
P.O. Box 280 • Springlake, TX
262-5542

WESTERN DRUG
114 Main 272-3106 Muleshoe

WES-TEX FEED YARDS, INC.
Custom Cattle Feeding
272-7555 Muleshoe, TX

Muleshoe Area Medical Center
"Your Hospital"
708 S. First St. • 272-4524
Muleshoe, TX

"THE FIVE AREA TELEPHONE COOPERATIVE ORGANIZATION"
West Plains Telecommunications Co.
Five Area Systems, Inc., Plateau Cellular Network
Five Area Long Distance - Five Area Internet
302 Uvalde Muleshoe, USA (806)272-5533

JAMES CRANE TIRE CO., INC.
107 Main 272-4594
Mike Hahn Muleshoe, TX

IRRIGATION PUMPS & POWER
ZIMMATIC CENTER-PIVOTS
W. Hwy. 84 272-4483

O & C
Erection Sprinkler Ser.
Repair & Assemble
Lupe Olivarez 272-5018

OSONS
Welding & Repair
909 W. American Blvd.
272-3475

AMERICAN AVIATION INC.
West Hiway 84
272-4266
Muleshoe

1ST BANK MEMBER FDIC
202 South First 272-4515

Thou shalt guide me with thy counsel, and afterward receive me to glory.
-Psalm 73:24

FIRST TEXAS FLBA MULESHOE
"Serving Farmer & Bailey Counties"
272-3010 • Fax 272-5388
316 Main • P.O. Box 424 • Muleshoe, TX

PACO FEED YARD, INC.
Commercial Cattle Feeders
P.O. Box 956 265-3281
Friona, TX
Feller Hughes-Mgr.

NEEDMORE Co-op Gin Company
946-3361 • Sudan, TX

Silver Screen Video
VCR, PSX, V-64 & Camcorder Rentals
803 W. American Blvd. • 272-5540 • Muleshoe, TX

MULESHOE PEA & BEAN, INC.
RR 2 Box 297 272-5589
Muleshoe, TX

DAMRON DRUG, INC.
308 Main St. 272-4210
Muleshoe, TX

MULESHOE LIVESTOCK AUCTION
Muleshoe, TX • Sale Every Saturday
Clayton Myers • 272-4201

A fool's wrath is presently known: but a prudent man covereth shame.
-Proverbs 12:16

SIMNACHER NATIVE GRASSES
Darwin Simnacher (505) 762-7817
Vince Simnacher (806) 946-3461
Thomas Simnacher (806) 285-2491

MENDOZA IRRIGATION SERVICE
272-5511
Sprinkler Erect, Repair & Move Muleshoe, TX

LEO'S BLACKSMITH & MACHINE SHOP
310 W. AMERICAN BLVD.
272-4418
MULESHOE, TX

FARWELL CONVALESCENT CENTER
"In Christ's Love, Everyone Is Someone Special"
305 5th St.
481-9027 • FARWELL, TX

MULESHOE MOTOR CO.
1225 W. American Blvd. 272-4251



Dillman Super Kids

Chosen as Super Kids at Dillman Elementary for the month of December are (back, from left) Nicole Crandell, Heather Moore, Ramon Pena, Ray Ramirez. Front, A.J. Martin, Belinda Pacheco, Cassidy Lowe and Hector Granados.

TOYS ON SALE!
 FREE COLLECTOR TRADING CARDS WITH ANY TOY PURCHASE!
Dent & Co.
 2800 W. American Blvd.
 Muleshoe • 272-4296

OBITUARIES

BOB GAGE

Bob Gage, 63, of Muleshoe passed away Dec. 9 at Muleshoe Area Medical Center.

A chapel service was held Saturday at Ellis Funeral Home Chapel with Rev. Oscar Newell of Lubbock, officiating. A cremation service followed.

Mr. Gage was born January 17, 1935 in Circle Back. He had lived in Muleshoe several years before moving to Lubbock and moved back to Muleshoe in 1997. He was a member of Circle Back Baptist Church and a member of the Odd Fellows Lodge. He was in the Home Construction Remodeling Business.

He is survived by his three sons, Eddie Gage of Tulsa, Bill Gage of San Antonio and Donnie Gage of Lubbock; two sisters Mat Hanna of Sudan and Gereta Meissner of Mule-

shoe; one brother Raymond Gage, Jr. of Hobbs, NM; and five grandchildren.

J.W. "JOE" CASEY

J.W. "Joe" Casey, 72, of Tecumseh, Okla. passed away Dec. 9 at Veterans Medical Center in Oklahoma City, Tex.

A graveside service and burial was held Saturday at Muleshoe Memorial Park Cemetery with Rev. Gene Hawkins, Interim Pastor of First Baptist Church of Ralls, officiating.

Mr. Casey was born March 28, 1926 in Abilene to W.Q. and Lena Casey. He married Maxey Burson in Haskell in 1943. He married Rae Catoe in Dimmitt, 1979.

He graduated from Haskell High School. He was a 12 year veteran of the US Air Force, serving during WWII and the Korean Conflict, where he

completed 26 Combat Missions. He farmed in the Muleshoe area and was a painter and carpenter in Dimmitt for many years. Upon retiring he moved to Tecumseh, Okla.

He is survived by his four sons; Grady Casey of Bethel Acres, Okla., Richard Catoe of Dimmitt, Paul Catoe of Eastland and Alex Catoe of Hamilton; three daughters; Rhea Lyn Newton of Ralls, Marty Catoe of Albuquerque and Patti Lohn of The Woodlands

Also surviving are a sister, Beverly Page of Clovis, NM, one nephew, Don Heathington of Muleshoe; fifteen grandchildren and ten great grandchildren.

He was preceded in death by his parents and one niece, Donna Heathington.

HOSPITAL ADMISSIONS

Muleshoe Area Medical Center reported admitting the following patients:

Dec. 3 — Lora Dale, Margarita Hernandez, Joe Jennings, Gloria Montes, Joe Shipman, Ellis Sterling and Chloe Walker.

Dec. 4 — Margarita Hernandez, Joe Jennings, Amanda Miller, Gloria Montes, Ricky Perez, Ellis Sterling, Norman Brantley and Chloe

Walker.

Dec. 5 — Norman Brantley, Joe Jennings, Ricky Perez, Ellis Sterling and Chloe Walker.

Dec. 6 — Victor Godinez, Joe Jennings, William Miller, Gloria Montes, Ellis Sterling and Chloe Walker.

Dec. 7 — Joe Jennings, William Miller, Ellis Sterling, Chloe Walker, Elvira Trevino, Lora Dale, Miguel Acevedo and D. Jones.

Dec. 8 — Miguel Acevedo, Francisco Cruz, Eula Howard, Joe Jennings, Lendon Jones, William Millen, Elvira Trevino and Chloe Walker.

Dec. 9 — Miguel Acevedo, Francisco Cruz, Joe Jennings, John Maddox, Felix Reyes, Elvira Trevino and Chloe Walker.

Dec. 10 — Miguel Acevedo, Francisco Cruz, Joe Jennings, John Maddox, Felix Reyes and Elvira Trevino.

REBEKAH NEWS

Noble Grand Bernie Marts opened lodge with 10 members answering roll call. It was reported that Sister Bonita's father-in-law was killed in a traffic accident in Ohio.

We will be having a Christmas gathering Tuesday, December 22. Bring a wrapped gift (White Elephant) and come join us for a night of fun.

We missed those that weren't able to make it to lodge this week. Hope to see you next week. The lodge was closed by Acting Chaplain Les Lambert.

Letters to Santa
 North Pole Express

ATTENTION KIDS OF ALL AGES!

Santa has named the Muleshoe Journal as an official drop-off location for your Santa letters!

Please send your Santa letters to:
Muleshoe Journal
 P.O. Box 449
 Muleshoe, TX 79347

Or bring them by our office at:
304 W. 2nd St. in Muleshoe

We must have your letters by 5 p.m. on Dec. 17th
 so that we have time to publish them and then ship them to Santa!

Letters will be typed in AS WRITTEN and published in the December 20 and 24 editions of the Journal. Letters will not be returned.



Holiday Specials from Your Hometown Company.

What's the perfect gift idea for your family, friends, and of course, yourself this holiday season? Wireless products and services from Plateau Wireless! At Plateau Wireless you'll find great new rate plans and a variety of holiday specials!

Give the Gift of Security and Convenience.

- Free Activation (\$25.00 value)
- Also, when you activate a phone in December, Plateau Wireless will pay your monthly service fee for January.* (up to a \$29.95 value)

With Plateau's NEW rate plans, you pay for what you use!

With Plateau's dynamic new rate plans you no longer have to worry about having enough airtime. And, with these new rate plans, you pay for what you use after the initial included airtime.

Already a Customer?
 Plateau has something for you,
 so COME IN TODAY!

PLATEAU
 Wireless

PEOPLE YOU KNOW. COMMUNICATIONS YOU TRUST.

Offer available in select participating locations.

Five Area Telephone Cooperative
 302 Uvalde
 Muleshoe, TX
 (806) 272-5533

Authorized Agents
Wilson Appliance
 117 Main • Muleshoe
 (806) 272-5532

Farm Equipment Co.
 Levelland Hwy. • Morton
 (806) 266-5517

CALL TOLL-FREE
1-877-PLATEAU
 (752-8328)

MULESHOE INDEPENDENT SCHOOL DISTRICT

Combined Statement of Revenues, Expenditures, and Changes in Fund Balances All Governmental Fund Types Year Ended August 31, 1998

	Governmental Fund Types		Total (Memorandum Only)	
	General Fund	Special Revenue Funds	August 31, 1998	August 31, 1997
REVENUES:				
Local and Intermediate Sources	\$3,706,646	\$422,471	\$4,129,117	\$3,390,026
State Program Revenues	5,932,258	70,718	6,002,976	5,802,232
Federal Program Revenues	21,250	1,019,680	1,040,930	1,007,727
Total Revenues	\$9,660,154	\$1,512,869	\$11,173,023	\$10,199,985
EXPENDITURES:				
Current:				
<i>Instructional & Instructional Related Services</i>				
Instructional and School Leadership	675,595	45,431	721,026	710,397
Support Services-Student (Pupil)	799,845	571,674	1,371,519	1,394,142
Administrative Support Services	407,801	—	407,801	402,334
<i>Support Services-Nonstudent Based</i>				
Ancillary Services	928,705	—	928,705	856,493
Capital Outlay	4,658	28,703	33,361	35,587
Intergovernmental Charges	1,213,321	—	1,213,321	574,290
Total Expenditures	276,187	252,523	528,710	—
	\$9,459,270	1,510,498	10,969,768	9,455,746
Excess (Deficiency) Revenue Over (Under) Expenditures	\$200,884	2,371	203,255	744,239
Other Resources	12,028	—	12,028	—
Other (Uses)	—	—	—	—
Excess (Deficiency) of Revenue and Other Resources Over (Under) Expenditures and Other Uses	\$212,912	\$2,371	\$215,283	\$744,239
Fund Balance-Sept. 1 (Beginning)	5,862,645	76,908	5,939,553	5,195,315
Fund Balance-August 31 (Ending)	\$6,075,557	\$79,279	\$6,154,836	\$5,939,554

Read It First In The Journal!

NURSING HOME NEWS

Pastor David McIntire, Glenda Jennings and Clara Lou Jones directed the memorial service for Rosie Sneed Thursday morning.

Nancy Lemons directed the Ceramic class Thursday, with Bootie Tiller, Jackie Davenport, Florence Harvey, Nettie Quesenberry, Helen Tinskey, Kathryn Hancock, Winnie Orcutt and Hazel Riddle participating. Harold and Mary Jo Burge assisted the residents to and from the class. Dorothy Beevers, Mrs. Riddle's daughter, also assisted the residents.

The residents assisted with decorating the day room of the Healthcare Center Thursday afternoon. Many thanks go to Aline Locke and Grace Scarbrough, who worked many hours. We invite you to

come see us and our decorated home.

Melvin and Wanda Griffin and Harold and Mary Jo Burge directed Saturday's bingo games, while Clark Price baked and brought cookies for refreshments.

Jean O'Brien brought us a movie to watch Friday afternoon and the laughter did roll.

Each Sunday morning the American Blvd. Church of Christ directs the Lord's Supper Communion service. Willie Maye Graves assisted the residents to and from the service.

Clara Lou Jones taught the Bible study Sunday morning.

The United Methodist Church conducted its monthly singing, music and Communion service.

The Calvary Baptist Church came by on the first Sunday afternoon of the month for church services.

The local A.A.R.P. made a donation to the Healthcare Center.

Melvin and Wanda Griffin, Terri Brown, Ruth Kitchens, Dorena Proudfoot, Karen Cook, and Joy Stancell went with the residents on a holiday shopping spree, which included the hospitable Dollar Store and a little something to eat at McDonald's. Residents going on the outing were Mollie Johnston, Bootie Tillie, Jackie Davenport, Aline Locke, Grace Scarbrough and Nettie Quesenberry.

Volunteers Pat Watson and Claudine Embry and the Activity Dept. shampooed and

set the ladies hair and gave nail care Tuesday afternoon. We were happy to see Velta Fyie, our "sunshine lady," who came by to visit.

Joe Embry visited the residents and Anna B. Lane visited her mother Nettie Quisenberry on Tuesday.

Our heartfelt sympathy goes to the family and friends of Arnold Beckett. We too, shall miss him.

We appreciate and excited about all the special programs, gifts and visits that our community has planned to make our Christmas the best ever.

Guy Kendalls' son and daughter-in-law, Mr. and Mrs. Terry Kendall of Houston, visited him over the weekend.

Frank and Betty Wuerflein sent a beautiful amaryllis plant.

The Honeycomb gave the residents a stunning poinsettia. Ruby Reed was visited by Norma Ave Wednesday morning.

Harold and Mary Jo Burge, Buster and Wanda Kittrell served coffee, juice and donuts to the residents Wednesday morning. Harold led the discussion group. Steve Claybrook, Buster Kittrell and Loyce Killingsworth directed our sing-spiration time.

Our Christmas Card project is well underway and we are sincerely grateful for the nice response.

Glenda Jennings and Jackie Scoggins entertained with a sing-a-long and puppet show on Wednesday afternoon.

The Truth Seekers Sunday

School Class of the First Baptist Church donated to the Care Center.

TOPS NEWS

Fourteen members were present December 3 for the TOPS #34 meeting at the American Blvd. Church of Christ.

Laverne James presided and Alma Robertson led the opening song.

The Best Loser was Alma Robertson. Aurora Mata was first runner-up and Janie Hughes was 2nd.

The minutes were read by Janie Hughes. Laverne James was Best Loser for November and Aurora Mata was 1st runner-up.

Weight recorders are Betty Jo Davis and Alene Bryant.

Journal Classifieds

Deadlines are 5 p.m. Monday and Thursday

Call 272-4536

Deadlines are 5 p.m. Monday and Thursday

STOP & SHOP

LEGAL

Sealed bids for mowing highway right of way will be received at the Texas Department of Transportation, 135 Slaton Rd., Lubbock, TX., 79404. Bailey County, Highway SH0214, Estimate \$110,812, Project Number, RMC 603547001. Pre-bid Meeting on December 3, 1998 at 9:30 a.m. Lubbock District Conference Room, 135 Slaton Rd., Lubbock, TX., 79404. This meeting is not mandatory, but is highly recommended that bidders be in attendance. Guaranty, \$2,300. Only a cashier's check, money order, or teller's check on a state or National Bank, on a State or National Savings and Loan Association or a State or Federally Chartered Credit Union for the guaranty amount listed above will be accepted. The Proposal Guaranty must be in the amount stated and may be payable at or through the institution the instrument or may be drawn on a non-bank and payable at or through a bank. The Department will not accept personal checks, certified checks, other types of money orders and bid bonds. Bids received until 1:40 p.m. December 17, 1998. Bids will be publicly opened and read at 1:40

LEGAL

p.m., December 17, 1998. Mail proposals to Attn. Ann Finley, Texas Department of Transportation PO Box 771 Lubbock, TX. 79408-0771. Deliver proposals to Attn. Ann Finley, Texas Department of Transportation, 135 Slaton Rd., Lubbock, TX., 79404. Approximate limits of work are north county line to south county line and east county line to west county line. Plans are required for this project and may be obtained from plan companies. Questions regarding this proposal may be addressed to Steve Perez, Area Engineer, PO Box 21, Littlefield, TX., 79339 or call (806) 385-3661, or Ann Finley, Contract Tech at (806) 748-4403. Bidding proposal are issued to pre-qualified bidders only. Pre-qualification information and questionnaire may be obtained from the Maintenance Division, Austin, (512) 416-2496 or from the district maintenance office, Lubbock at (806) 748-4403. Bid proposals may be requested from the Maintenance Division, Austin, by telephoning (512) 416-2496 or by contacting the district maintenance office in Lubbock at (806) 748-4403. Published in the Bailey County Journal on November 22 and 29, December 6 and 13, 1998.

LOST

Brownish gray Chihuahua. White under neck and feet w/ purple collar. 272-5915.51s-11ch

Male Australian Shepherd (Red Merle)
One blue eye. Lost in YL-Pleasant Valley Community.
Call
965-2917 or 965-2959

REAL ESTATE

In Muleshoe Good Location
3bedroom 1bath home w/central heat & evaporative air 1 car attached garage and fenced backyard.
Call Daren Sudderth at
JB Sudderth Realty (806) 481-3288
471-11c

Nice 3-1-1 brick home, Country Club addition, central heat and refrigerated air, new roof, wooden deck, 272-5879 evenings or leave message.36t-11c

Brick Home in Earth. 3 bdrm, 2 bath, double garage, storage house and cellar. 272-5009 or 257-3787.50s-6tpd

House to be moved! 3 bedroom, 2 bath, call 272-3970 or leave message.49s-9tpd

SERVICES

Sewing & Alterations All types.
One day service on most.
310 W. 16th • 272-6764

B&B Agritech GRASSSEED & DRILLING

Custom Farming AerWay Plows
Kem Eric Bales (806) 272-5400
Cell # 946-7255
Doug Bales (806) 272-4419
P.O. Box 104 • Muleshoe, TX

HENDERSON SERVICE CO.

Major Appliance & Minor Home Repairs
272-4450

CALL 272-4536 FOR ALL YOUR CLASSIFIED NEEDS!

REAL ESTATE

Country Living at It's Best - 6 miles west of Muleshoe on Highway 1760. Approx. 3500 sq. ft. Gorgeous 3-3-3 Brick home with lots of built-ins, fireplace, central heat, ref. air, sunroom with hot tub, lots of storage, large family room and utility room, every woman's dream. All on 2



1/2 acres. Also 30x50 metal barn with corals. If you want it, this place has it! **PRICE DROPPED \$5,000!!**

South of Clay's Corner-160 acres, 2-8" irrigation wells, electric sprinkler system, lays well. Reasonably Priced. Call for more details!!

(806) 481-3846 • Toll Free: 1-888-999-3846
Ronald Byrd, GRI Licensed Broker
Home: (806) 481-9318
Crista Bass, Sales Associate • Home: (806) 925-6464

James F. Hayes & Co.

AGRICULTURAL REAL ESTATE SERVICES

320 Acres North of Muleshoe Lays good, good soil, 2 center pivot sprinklers, modern home.
320 Acres with exceptional 3 or 4 bedroom home. Large barn, 2 center pivot sprinklers adjacent to above farm. HOUSE, BARN & ACREAGE CAN BE SOLD SEPARATELY.
181 Acres, Bailey County, Center pivot, 2 wells, fronts U.S. Highway 84. Joins 320 acre tract above.

450 Acres - Arch, New Mexico area. C.P. sprinklers. Modest home.*

C.R.P. - 2069 Acres Deeded in Cochran County. 1992 Acres in C.R.P. 9 years remaining.

157 Acres - Outstanding farm, lays perfect, center pivot, 2 wells, very good water. Northern Bailey County.

* In cooperation with a New Mexico Broker

Vic Coker, Agent

310 Main St. Suite 103 Muleshoe
Office 272-3100 Home 965-2468
WHEN LAND INVOLVES COWS AND PLOWS

HELP WANTED

Care Janitorial is hiring. Position available Mon-Fri. evenings, from 5p.m.-12. Come by for application at 801 W. Ave J.50t-2tch

Pizza Hut is now hiring for waitstaff and delivery drivers. Apply on Mondays from 1 to 5 pm.37t-11c

AVON Representatives Needed in this area! For an exciting opportunity call Misty 272-3713.49s-11c

FOR RENT

2 bedroom 1 bath apt. Central heat and cooling. Good location. \$350 per month, 272-4889.48t-11c

FOR LEASE

Large, 3 bdrm 2 bath home. In nice area. \$425 per month. 272-4480 or (602) 816-4003.45s-11c

FOR SALE

500 gallon propane tank, 250--20-40. \$300. (806) 797-4462.51s-11ch

400 Bushel Scoutwheat Seed. Cleaned in bulk. \$4.10 per bushel 946-3451.49s-4tch

Thursday, December 17, 1998 - 10:00 A.M.

LOCATED: MULESHOE, TEXAS: From Intersection US 70 & Texas Hwy 214, 7 miles North on Hwy 214 to Road DD, then 2.5 miles east. OR from

FRONZA, TEXAS: 22 miles south on Texas Hwy 214 to Road DD, then 2.5 miles east. Watch for Signs.

LOCAL BANKS & OTHERS

The Following will be sold at Public Auction

For More Information, Call Auctioneer - John Tannahill - (806) 250-3338 or (806) 285-7902

TRACTORS & LOADERS

- 1-1986 John Deere 4450 MFWD Diesel Tractor, Cab, AC, Hr, PS, Trans, 2 Hyd, 18.4 R X 36 Rubber 85%, 14.9 X 26 Front 80%
- 1-1980 International 1486 Diesel Tractor, Cab, AC, Hr, TA, 2 Hyd, 18.4 X 38 Rubber
- 1-1978 John Deere 4430 Diesel Tractor, Cab, AC, Hr, PS, Trans, 2 Hyd, 18.4 X 38 Rubber, needs repair
- 1-1982 John Deere 4640 Diesel Tractor, AC, Hr, QR Trans, 2 Hyd, 20.8 X 38 Rubber, Duals
- 1-1979 International 1486 Diesel Tractor, Cab, AC, Hr, TA, 2 Hyd, 18.4 R X 38 Rubber 90%, (Clutch is Out)
- 1-1977 Case 1570 Diesel Tractor, Cab 2 Hyd, 20 X 38 Rubber
- 1-1971 John Deere 4620 Diesel Tractor, Cab, 8 Sp Trans, 2 Hyd, 18.8 X 38 Rubber
- 1-International 60 Loader
- 1-Koyker K-5 Front End Loader

EQUIPMENT

- 1- John Deere 7100 8 Row 30" Plateless Insect Boxes
- 1- John Deere 7100 8 Row 40" Plateless Planter, Insect Boxes
- 1- John Deere 825 8 Row 30" Cultivator
- 1- International 140 4 Bottom Mouldboard
- 1- Bigham Bros. 8 Row 40" Rodwooder, New Style Bar, GW
- 1- Roll-A-Cone 5 Shank Inner Row Ripper, GW, NN
- 1- Lelison 8 Row 40" Rolling Cultivator, 4 Tine, BB
- 1- Yetter 8 Row Rotary Hoe
- 1- M&W 8 Row Rotary Hoe
- 1- Hamby 12 Row 30" Round Rig, GW
- 1- SM 20' 90 Bls 36' Hoat
- 1- Hamby 7 Row Lifter, GW
- 1- Hamby T5E 6 Row Lifter GW
- 1- International 760 10 Onvs, Dui
- 1- Big Dix 5 Shank Ripper, GW
- 1- Hamby D50 3 Hk Rodwooder
- 1- Alf Bottom Mouldboard
- 1- Flow Pacifier
- 1- Hamby 15 Shank Sweep Plow, GW
- 1- Big 12 Cum-Packer 6 Row
- 1- Roll-A-Cone 21' Fertilizer Rig, GW
- 1- Caldwell 8' Blade
- 1- John Deere D18 Grain Drill
- 1- Hozes 8 Row Cultivator, GW
- 1- Hamby T5B 21' Toolbar, GW
- 1- Krause 14' Offset Disc
- 1- International 480 21' Tandem Disk
- 1- JD 709 7' Shredder
- 1- Caldwell 6' Shredder

IRRIGATION

- 1- 100 HP Electric Motor
- 3- Ford 460 CI Engines
- 3- Chrysler 413 CI Engines, salvage
- 2- Gearheads
- 100- jts Irigalino Gated Pipe
- 8- Walman Hydrants
- 1- Lot Pipe Filings

LIVESTOCK EQUIP.

- 1- Easley Goose Neck 18' SA L/S Trailer, 1/2 top, Slat Front-Nice
- 1- 16' Cattle Feeder On Skids
- 27- SM Feed Bunks
- 1- 20' Portatile Loading Chute
- 2- SM Wire Rollers
- 1- Lot Fencing Equip

TANKS

- 1- 500 Gal. Propane Tank 200 PSI On Trailer
- 2- 500 Gal. Poly Tanks
- 1- 1000 Gal. Tank
- 1- 500 Gal. Diesel Tank on Trailer

NON-CLASSIFIED

- 2- Fertilizer Injection Pumps
- 8- SM 3 Pade Oalers
- 1- Lee Car. II Guck Hitch

More Equipment by Sale Day
Not Many Small Items • Please Be On Time

Not Responsible for Accidents

PLEASE BE ON TIME FOR THE SALE - WE ARE AGENTS AND AGENTS ONLY. Any Announcement Sale Day Takes Precedence Over All Other Announcements. Written or Otherwise. We appreciate and solicit Your Business! Please Bring Your Own Checkbook.
JOHN TANNAHILL - (806) 250-3338 (9154)

READ THE CLASSIFIEDS!

Nieman Realty

116 E. Ave. C • George Nieman, Broker • 272-5285 or 272-5286

RICHLAND HILLS - PARK RIDGE

- We have several single and multi-family lots in this area!!!!
- NICE 3-2-2 Brick, Cent. A&H, built-ins, FP, cov. patio, fenced yd. \$50's!!
- NICE 3 bdrm. 2 bath w/3 car detached garage/workshop-storage, Elec. Heat Pump, built-ins, FP, 2,380' lv. area, auto splkr., fenced yd., More!!! RH-2

HIGHLAND AREA

- Very Nice 3-2 Mobile Home 2 car port, Cent. Heat, Evap. Air, built-ins, workshop, storage, fenced yd., MORE!!!
- 3-2-2 Brick, Cent. A&H, built-ins, gas log FP, fenced yd., stor. bldg., MORE!!! Price Reduced!! HL-5
- 2-1-1 carport home, wall furnace heat, evap. air, DW, 5 fans, cov. patio, gas grill, fenced yd., MAKE OFFER!!!
- 3-2-2 Brick Home, corner lot, wall furnace heat, Cent. Evap. Air, fenced yd., stor. bldgs., MORE!!! HL-4

LENAU - COUNTRY CLUB AREA

- 2-2-2 Brick Home, Cent. A&H, nice carpets, fenced yd. \$40's!!! L-4
- PRICE REDUCED 2-1-1 Carport Home, wall furnace, nice carpet, storm shelter, stor. bldg., fenced yd. \$19K!!!CC-3
- 2-1-1 Home, floor furnace, win. ref. air, fenced yd., stor. bldg., \$18,500!!! L-1

COMMERCIAL

- Six Unit Apartment Complex (4-2 bdrm. & 2-1 bdrm. units)!!!
- 100' x 140' tract, approx. 7,400' business & warehouse building on American Blvd., PRICED TO SELL!!!
- Established Business: Land, Bldg. & Equip., \$75K!!
- 56' x 140' tract, approx. 4700' bldg., \$35K!!!
- NICE R.V. STORAGE, 14' X 40' metal bldg. 12' doors, 50X140 corner lot!
- SNACK SHACK - Lot, Buildings, furniture & fixtures!!!

HIGH SCHOOL

- Nice 3-2-2 Brick, built-ins, heat pump, 5 fans, nice carpet, stor. bldg., fenced yd., MORE!!! \$60's!!! HS-3
- 2-2-2 BRICK, Cent. A&H, built-ins, corner lot, approx. 1800' lv. area!!! PRICE REDUCED! MAKE OFFER!!!HS-4
- 3-1/2-1 Home on corner lot, fenced yd., storage bldg., MORE!!! \$20's!!! HS-9

NEWLY REMODELED 3-1-1 Home, cent. A & H, new carpet & vinyl, fenced yd., MORE !!! \$30's !!! HS-2

- VERY NICE 3-1-1 Brick, Heat pump, DW, nice carpets, fenced yd., MORE!!! \$30's !!! HS-1
- NICE 2-1-1 Brick, Heat Pump, nice carpets, well insulated, storm windows & doors. \$30's!!! HS6
- VERY NICE 3-1-1 Home, nice carpets and vinyl, heat pump, fans, fenced yd., stor. bldgs., MORE!!! \$30's!!! HS-5
- 3-2-1 Brick, Heat Pump, built-ins, fans, screened porch!!! \$30's!! HS-7
- JUST LISTED- 2-1-2 CP Home, corner lot, metal siding, storm win. & doors, stor. bldg. \$20K!! HS-8
- 1-14' x 60' and 1-12' x 40' Mobile Home on a 98' x 75' lot, both have cent. heat, evap. air, stove, & ref., cov. patios, fenced yd.!!! \$20k!!!

RURAL

- PRICE REDUCED- NICE 3-2 home, 40 acre tract, Geo. Heat Pump, built-ins, 5" irrig. well, Hi-Pres. lines, sprinkler pipe, barn, pens, tractor & equip!!! \$69K!!!
- W. of SUDAN-NICE 3-3-2 Brick Home, 5 acre tract on Hwy. 298, Cent. Air & Heat, built-ins, large Quonset Barn, MORE!!!! \$95K!!!
- 5 Acre tract on pavement close to town!
- LONGVIEW AREA - 140 acre in CRP other 2 out of CRP) PRICE TO SELL!!!!
- FOR BID: Approx. 4,870 acres (Bailey and Lamb Co.), water rights negotiable, 54 wells (only 2 pumps and motors), approx. 33 circular center pivot pads, 1 wooden black barn, 40'x100' Quonset barn w/elec., 20'x30' shop, 3 sets pipe corrals, 2 sets wire corrals! Bid ends 12-6-98
- LAZBUDDIE-PRICE REDUCED-NICE 3-2-2 Brick Home on pavement, 2200' Lv. area, Cent. A & H, built-ins, FP, large sunroom!! \$70's!!
- Approx. 108 acres on Hwy. 70, approx. 2100' office area, 16,900' of commercial bldg. w/loading dock, 3,400' warehouse!! 2,800' runway!!
- LARIAT- 240 acres, 3 wells, underground tile, good productive land!!! PRICE REDUCED-2

BUY IT - SELL IT IN THE JOURNAL

Pre-Season Christmas Sale

PRICES EFFECTIVE DECEMBER 9-15, 1998

MEAT

- LIMIT 2-ADDITIONAL PURCHASES 97¢ LB. BONELESS
- BAR S WHOLE HAM**.....LB **77¢**
 - HORMEL CURE 81
 - SPIRAL CUT HALF HAM**.....LB **\$1⁹⁹**
 - PREMIUM SELECT BEEF BONELESS
 - TOP ROUND ROAST**.....LB **\$1⁵⁹**
 - PREMIUM SELECT BEEF BONELESS
 - TOP ROUND STEAKS**.....LB **\$1⁷⁹**
 - FARM RAISED RAW UNBREADED
 - CATFISH NUGGETS**.....LB **\$1⁴⁹**
 - JUMBO PACK PILGRIM'S PRIDE
 - DRUMSTICKS OR THIGHS**.....LB **69¢**
 - RAW SEASONED READY TO COOK
 - PORK ASADO**.....LB **\$1⁶⁹**
 - BONE-IN
 - PORK BUTT ROAST**.....LB **88¢**
 - TENDER
 - BEEF FOR STIR FRY**.....LB **\$2⁸⁹**
 - MARKET MADE
 - BEEF STEAK FINGERS**.....LB **\$2⁹⁹**
 - SMALL PACK PILGRIM'S PRIDE
 - DRUMSTICKS OR THIGHS**.....LB **89¢**
 - SUPERB QUALITY GROUND BEEF
 - GROUND ROUND**.....LB **\$1⁸⁹**
 - MARKET MADE
 - BEEF CUBED STEAKS**.....LB **\$2⁶⁹**
 - HORMEL
 - SMOKED PORK CHOPS**.....LB **\$2⁸⁹**
 - ASSORTED BLACK LABEL
 - HORMEL BACON**.....1 LB **\$1⁹⁹**
 - DECKER REGULAR OR THICK SLICED
 - MEAT BOLOGNA**.....12 OZ. **99¢**
 - DECKER
 - CHOPPED HAM**.....10 OZ. **\$1⁶⁹**
 - DECKER
 - COOKED HAM, SMOKED OR OVEN ROASTED**
 - WHITE TURKEY**.....1 LB **\$2²⁹**
 - HORMEL REGULAR OR HOT
 - LITTLE SIZZLERS**.....12 OZ. PKG **77¢**

PRODUCE

- TEXAS
- GRAPEFRUIT**.....18 LB. BAG **\$3⁹⁹**
- TEXAS
- NAVEL ORANGES**.....18 LB. BAG **\$3⁹⁹**
- CALIFORNIA
- NAVEL ORANGES**..... **10/\$1**
- ICEBERG CELLO
- LETTUCE**..... **2/\$1**
- BAGGED WHOLE
- CARROTS**.....1 LB. PKGS **4/\$1**
- GREEN SKIN
- AVOCADOS**..... **5/\$1**
- SALTED OR ROASTED
- PEANUTS**.....1 LB. PKG **\$1³⁹**
- WASHINGTON EXTRA FANCY
- ROME APPLES**.....LBS **2/\$1**

FROZEN & DAIRY

- HOMESTYLE OR BUTTERMILK
- EGGO WAFFLES**.....11 OZ. BOX **99¢**
- CREAMY
- BLUE BONNET SPREAD**.....48 OZ. TUB **\$1³⁹**
- TASTES GREAT!
- BLUE BONNET**
- QUARTERS**.....16 OZ. PKGS **2/\$1**
- SHURFINE ASSORTED
- TEXAS STYLE**
- BISCUITS**.....12 OZ. CANS **2/89¢**
- ASSORTED
- EXCLUDES OVEN RISING & STUFFED CRUST
- TOMBSTONE**
- 12" PIZZA**.....19.4 TO 23.6 OZ. PKGS **2/\$6**
- ASSORTED FROZEN
- MINUTE MAID**
- ORANGE JUICE**.....10 TO 12 OZ. CAN **99¢**
- ASSORTED
- BANQUET**
- FRIED CHICKEN**.....19 TO 25 OZ. BOX **\$2⁹⁹**
- ASSORTED
- BANQUET POT PIES**.....7 OZ. PKGS **2/\$1**
- CRISPERS! OR ASSORTED TATER TOTS
- ORE-IDA POTATOES**.....20 TO 32 OZ. PKG **\$1⁸⁸**
- ASSORTED
- BANQUET**
- FAMILY ENTREE**.....28 OZ. BOXES **2/\$4**



*At Lowe's...
We're Wrapping
Up Holiday
Savings For You!*

- REYNOLDS®
- STANDARD FOIL**.....25 SQ. FT. ROLL **75¢**
- ALL TYPES
- PEPSI-COLA**.....6 PACK-12 OZ. CANS **99¢**
- ALL TYPES
- PEPSI-COLA**.....2 LITER **79¢**
- ALL TYPES
- DR. PEPPER**.....12 PACK-12 OZ. CANS **\$2⁹⁹**
- ALL TYPES
- DR. PEPPER**.....3 LITER **\$1³⁹**
- 4 PACK
- FRAPPACINO**.....9.5 OZ. BTLS **\$2⁹⁹**
- REGULAR OR HOT-NO BEANS
- HORMEL CHILI**.....19 OZ. CAN **\$1⁰⁹**
- FROSTED MINIWHEATS, MARSHMALLOW MATEYS, CORN BURSTS, COLOSSAL CRUNCH, COLOSSAL CRUNCH BERRY, APPLE ZINGS OR TOOTY FRUITY
- MALT-O-MEAL**
- CEREAL**.....14 TO 19 OZ. BAGS **2/\$3**
- 15 CT. DINNER/COMPARTMENT OR 12 CT. PLATTER
- CHINET 10" PLATES**.....YOUR CHOICE **3/\$5**
- SMUCKER'S ASSORTED
- JAM, JELLY**
- OR PRESERVES**.....12 OZ. JARS **2/\$3**

- ASSORTED
- LITTLE HUGS**.....8 OZ. BTLS **10/\$1**
- WESTERN FAMILY
- FIRELOG**.....5 LB. LOG **99¢**
- AMERICAN BEAUTY ELBO-RONI OR
- LONG/THIN SPAGHETTI**.....24 OZ. PKG **99¢**
- ASSORTED
- SHURFINE**
- SPAGHETTI SAUCE**.....26.5 OZ. CAN **69¢**
- KEEBLER
- HOLIDAY**
- TOWN HOUSE**
- CRACKERS**.....16 OZ. BOX **\$1⁹⁹**
- MARDI GRAS
- NAPKINS**.....120 CT. PKG **79¢**
- SOFT'N GENTLE
- BATH TISSUE**.....12 ROLL PKG **\$2¹⁹**
- REYNOLDS® TURKEY
- OVEN BAGS**.....2 CT. PKG **\$1¹⁹**
- COLOR
- REYNOLDS®**
- PLASTIC WRAP**.....100 SQ. FT. **\$2²⁸**
- REYNOLDS®
- HEAVY DUTY FOIL**.....50 SQ. FT. ROLL **\$1⁸⁸**

- SHURSAVING 2 PLY
- PAPER TOWELS**..... **3/\$1**
- ASSORTED REGULAR OR BAKED
- TOSTITOS®**
- TORTILLA CHIPS**.....13.5 TO 15.5 OZ. BAG **\$1⁹⁹**
- BEST MAID
- BABY DILLS, BABY KOSHER DILLS**
- OR SWEET RELISH**.....22 OZ. JAR **3/\$5**
- KEEBLER
- HOLIDAY RAINBOW**
- CHIPS DELUXE**.....16 OZ. PKG **\$2²⁹**
- SELECTED VARIETIES INCLUDING-BETTER CHEDDARS, RITZ AIR CRISPS, ORIGINAL WHEAT THINS, TRISCUIT
- NABISCO**
- CRACKERS**.....6.75 TO 10 OZ. BOXES **3/\$5**
- KEEBLER
- HOLIDAY E.L.**
- FUDGE COOKIES**.....15 OZ. PKG **\$1⁸⁸**
- ASSORTED
- NABISCO**
- SWEET CRISPERS**.....7 OZ. BOX **3/\$5**
- WITH BEANS
- HORMEL CHILI**.....19 OZ. CAN **99¢**

See ya at
LOWE'S

WESTERN MONEY UNION TRANSFERSM
"The fastest way to send money"

Lowe's

MARKETPLACE

401 W. American Blvd.
Muleshoe 272-4585

**515 W. American Blvd.
Muleshoe 272-4406**

WE RESERVE THE RIGHT TO LIMIT QUANTITIES IN TEXAS