

Donald H. Smith Resigns As Spearman Postmaster

Spearman Postmaster Donald H. Smith has resigned his post as head of the local post office.

Smith's resignation became effective at the close of the business week Friday, Feb. 19. Postal Inspectors were in the

Post Office Friday making an audit and at the end of the day, Smith officially stepped out as Postmaster.

Smith served as head of the local office for 11 years and four days. He officially assumed office February 15,

1954.

He said Saturday morning he would now devote his time to operating his farm in Colorado. He and his family will continue to live in Spearman though.

During the 11 years Smith has served as Postmaster, he guided the office through a period of rapid growth and expansion.

Gross receipts for the office in the 1953 business year were approximately \$12,000. Receipts from the 1964 business year were \$51,000, Smith said.

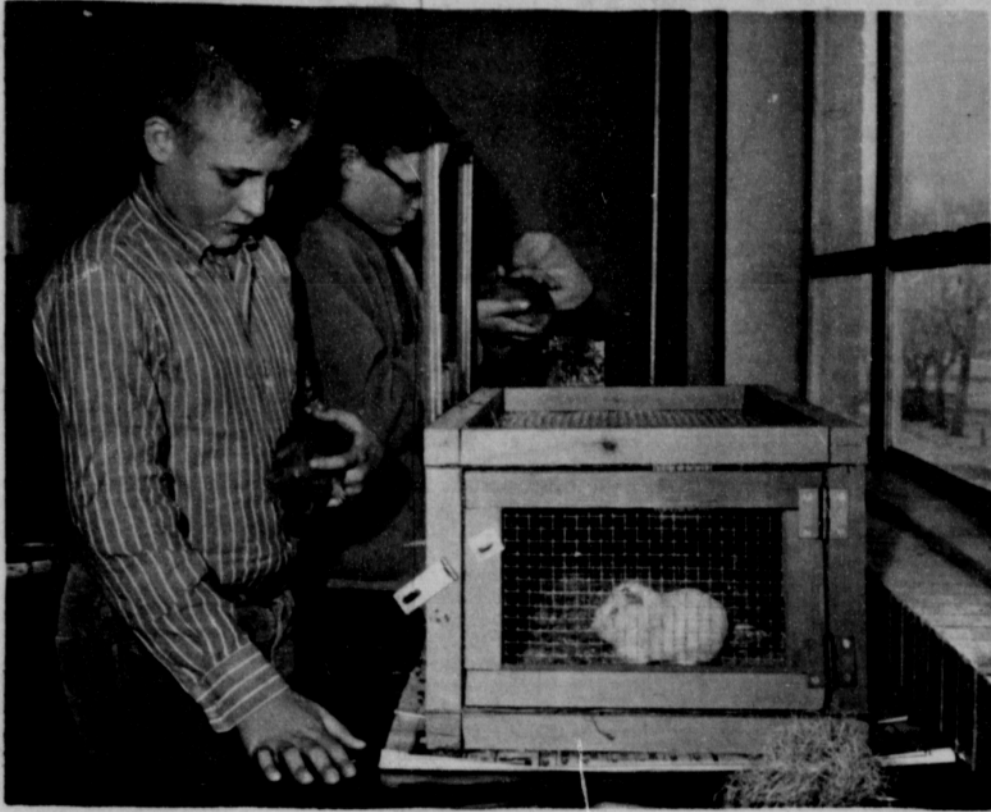
In 1958 the Post Office was moved into a new building and the facility has been enlarged in 1962 and again in 1964.

City delivery was added in 1960 with two men working as mail carriers.

Smith said the office was operated with the same number of employees now as it had when he became postmaster with the exception of the two city delivery carriers.

Assistant Postmaster Elmon Jacobs is now in charge of the office. Jacobs has worked in the local office for eight years and was promoted to Assistant Postmaster Sept. 2, 1961.

Smith said he would like to express his gratitude and thanks to local postal patrons and he hopes they feel they received the service to which they were entitled.



EXPERIMENTS—Two Junior High Scientists, Richard Booth, (left) and Frank Wilmet examine the guinea pigs being used in experiments for the Science Fair which will be held here March 4, 5 and 6. Plainsman photo

Science Fair To Feature Varied Research Exhibits

A giant county-wide Science Fair will be the concluding feature in Spearman of Public School Week March 1-6, in the Spearman Community Building.

Fair Director Robert Barker, head of the Spearman Science Department, is expecting the fair to be larger than last year with a number of displays from the Spearman and Gruver schools.

Students will begin setting up their displays Thursday. A

team of judges from Panhandle A & M College at Goodwell, Okla., will begin judging the exhibits Friday morning.

After the judging is completed the fair will be opened to the public Friday afternoon and night. It will be opened again Saturday.

Winners in this fair will go on to competition in other fairs in the area. In past years Spearman entries have scores high in the Panhandle Science Fair in Amarillo.

HANSFORD COUNTY'S LEADING NEWSPAPER



The Hansford Plainsman



VOLUME VI., NO. 35

SPEARMAN, HANSFORD COUNTY, TEXAS 79081

SUNDAY, FEBRUARY 21, 1965

Incumbents Announce for City Offices

Two incumbents have filed for re-election to the Spearman City Council. The election will be held April 6.

James K. Hicks, mayor pro tem and councilman Robert Skinner filed for re-election late this week.

Hicks, Skinner and E. J. Callaway are completing their two-year terms of office this year.

Hicks and Callaway have served on the council since 1959 when they were named in a special election. Skinner is completing his first term of office.

Girls Lose

Gruver Greyhounds Win District Basketball Crown

The Gruver Greyhounds and the Stratford Elkettes wrapped up the district 1-A championships in Gruver Friday night.

The two teams had won the round robin half of the district race and then took the district tournament crown.

The Greyhounds finished the district round robin tied with Panhandle, then beat them in a play-off game and finally ripped the Panthers in the finals of the tournament 76-59.

Sparked by the fantastic Sam Tipton, the Greyhounds were

red hot with their outside shooting and rebounding, controlling the boards against the taller Panthers.

Panhandle is still looking for someone to guard Tipton as he scored almost at will, ringing up 28 points.

A tall, fast group of Stratford Elkettes killed the Gruver girls' hopes of advancing to the play-offs with a close 45-40 win.

A double guard on Gruver's Anita States by the Elkettes held her until the late minutes of the game. She was able to

get only 19 for the night.

The taller, faster Elkettes were able to get the rebounds on Gruver's outside shooting. In the final minutes, Judy Bayless and States started scoring but time ran out.

Stratford scored with a fast, quick-moving offense that either broke players clear under the bucket or let them hit from the outside.

Stratford had won the round robin half of the district race and Gruver had to win the tournament to force a play-off.

Drain Ditch Is Purchased

The City of Spearman and the LaMaster family of Perryton have reached an agreement on land for a larger drain-
age way at the east edge of Spearman.

The two parties agreed to the purchase of three acres of land to be used for a 25-foot wide drain ditch from Seventh Street north to Kenneth and then one-half mile east along FM Highway 759 to the dry-weather lake.

The total distance is approximately one mile.

The right-of-way is needed to move the water out of the residential area in the south-east part of town.

The State Highway Department will now put culverts under FM Highway 760 which borders the east side of Spearman and this will allow the water to drain away faster.

The city drainage problem is aggravated by excess water from farm land draining into the east side of town from five or six miles south.



CROWDED- It got a little crowded near the bucket Friday night as Gruver and Panhandle battled for the District 1-A title. Here a Greyhound goes up with a rebound for a shot through a couple of Panthers. Only the hand of one Panther can be seen. Plainsman photo

Mule Train Plans Trip To Guymon

Spearman's famed Rolling Plains Mule Train will warm up for its 18-day trip to the dedication of the Cowboy Hall of Fame in Oklahoma City by making a short three-day run to Pioneer Days in Guymon, Okla., May 1.

The Guymon Chamber of Commerce has invited the Mule Train to attend the annual celebration and take part in the parade and other activities.

Train President Johnnie Lee says the train has agreed to have at least 15 wagons on the trip to Guymon.

This year the train will have two night camps on the trip. Wagon Master Gerald Hoffman said the train made the trip in just two days last year, but it was too hard on the teams.

Hoffman said this will be a good opportunity for the train to shake out all the wrinkles and get ready for the Oklahoma City trip.

City To Try To Absorb Gas Increase

Spearman residents will not have an increase in gas rates as a result of the rate increase granted this week to the city supplier, High Plains Gas.

City officials said this week that the city will try to absorb the increase in price and keep the burnertip rate to local users at 60 cents per thousand cubic feet of gas.

This is the same rate local buyers have had for many years in Spearman.

The city, which owns the gas and water utilities, agreed this week to grant High Plains Gas a three cent per thousand cubic feet increase. It will become effective in gradual steps from March 31, 1965 until 1971.

The first increase of one cent will become effective on March 31, 1965, the second of one-half cent will be effective Sept. 30, 1967, a third increase of one-half cent will be effective Sept. 30, 1969 and the final one cent increase will be effective on Sept. 30, 1971.

The contract with High Plains expires on March 19, 1984.

Annual Back To School Day Planned for March 1

The annual Back To School Day will be held in the Spearman Public Schools on Monday, March 1.

The day and night activities will be the opening event of the annual Public School Week which will be March 1-5 this year.

Parents and others interested in the school are invited to visit the high school during the day, March 1. Principal Frank Cockrell says everyone is invited to visit the school and have lunch with the students at noon.

He requests anyone wishing to have lunch with the school,

call the school, so extra food may be prepared by the cafeteria staff.

Monday night the Junior High School and Elementary Schools will have open house in conjunction with the Parent-Teacher Association meeting.

The meeting begins at 7:30 p.m. and the open house will follow the meeting. All of the teachers will be in their rooms and students work will be on display.

Members of the Hansford Masonic Lodge of Spearman will serve refreshments during the open house.

BUY WANT ADS SELL

FOR SALE

DECORATED CAKES-For All Occasions. Call 659-2295. Mrs. J. V. Barker. 29-tfc

FOR SALE-3 bedroom house, 1 1/2 bath, 1117 S. Haney. Ph. 2073. 32-4c

FOR SALE: 10 ft. windmill, 180 feet, 2 inch well casing, 1200 gallon storage tank, propane tank. Collard Real Estate. 23 tfc

FOR SALE-3 bedroom home. 623 S. Bernice. Call 659-2887. Daniel Sheets. 30-tfc

FOR SALE - Industrial lots and acreage. Financing available. Cecil Crawford. Two good lots in town. Phone 659-2409. T43-tfc

FOR SALE: New Lake Pump and Aluminum pipe, Pat Westfield, Gruver, F17-2700. S44-T43-tfc

FOR SALE-Four houses. Nothing down on two and small payment on two. \$50, \$60, and \$70 payments. Call at 206 Main or Phone 2464 at night. L.S. McLain. 32-8c

FOR SALE-1957 Ford Pickup. 4-speed, V-8, Western Auto. Phone 659-3344. 32-tfc

FOR SALE-Adorable white toy poodle puppies, 8 weeks, registered AKC, papers furnished. 428 S. Bernice. 34-tfc

FOR SALE-A 1962 Hay Baler with rake, mower and tractor. Rake like new. All John Deere equipment. \$2500.00. See or call Mrs. Cora Helton, Briscoe, Texas, Ph. DR5-2317. 34-6c

FOR SALE-22 cu. ft. upright deepfreeze. 423 W. 5th or see Bill Weaver at Spearman Radiator. 35-2c

SERVICES

FOR LIFETIME MUFFLERS-Clarence Pettitt Garage. No premium prices. Amarillo Daily News & Globe Times home delivery. Call 2685. T14-tfc

Alterations, replacing zippers, machine made buttonholes and belts. Mrs. F.S. Ayers, 1001 S. Bernice, 659-3052. 26-tfc

SERVICE-Ditches from 3-12 inches, any desired depth. S. D. Jones 659-2809. Harold Shaver 659-3474. T17-s18-tfc

POODLE GROOMING by appointment. See Mrs. Burks at 117 Townsend after 4 p.m. 11-tfc

Land Leveling to SCS specifications. General dirt work with Hancock carryalls. Willis Sheets, 659-2256. T46-S46-tfc

WANTED

WANTED-Ironings to do. \$1.50 a dozen. 102 Wanda Drive. 34-2p

Mrs. Gandy Hosts Hi-Lo Bridge

The Hi-Lo Bridge Club met Thursday night in the home of Mrs. W.H. Gandy.

Mrs. Sam Graves had high score and Mrs. Jimmy Hicks had low score.

Attending were Mrs. Mmes. Graves, Vi Whitson, Major Lackey, Vester Hill, and members, Mmes. Hicks, Leonard Jameson, Faye Lynch, and the hostess.

LL Registration Now At Cates'

Boys who expect to play in Little League this year may register any time now at Cates Men and Boys Wear. The last day for registration is April 3.

All boys must register and bring their birth certificate, whether or not they have played in prior years.

To be eligible to play in Little League a boy must be 8

by August 1, 1965 and cannot be 13 before August 1, 1965.

Mrs. W.L. Row and Miss Peggy Devers left for Ponca City Friday. Peggy will visit friends and relatives and Mrs. Row will visit her daughter, Mrs. Don Baker and family and her sister Mrs. Paul Baker. Mrs. Row will be leaving soon to make her home in Ponca City.

Mrs. Clyde Lehenbauer of Borger visited this week in the home of her sister, Mr. and Mrs. R.H. Gray.

YOU'RE INVITED...

Twice A Week

Spearman Merchants Extend

You An Invitation To Shop

In Their Stores!

Through The Advertisements In

The Issues Of The Plainsman Newspapers,

Progressive Spearman Merchants

Tell And Show You

The Merchandise And Services

Their Firms Offer.

SAVE STEPS... SHOP

THE PLAINSMAN ADVERTISEMENTS

FOR THE MERCHANDISE

AND SERVICES YOU NEED.

WHICH TWIN HAD THE HEART OPERATION?



LIVING VALENTINE is posed by 8-year-old twins Sandy and Cindy Vilmer of Independence, Mo. They are identical save for the fact Sandy (left) was born with a heart abnormality, corrected surgically in September, 1958. Their mother, Mrs. Larry Vilmer, is serving her third successive year as local Heart Sunday Chairman. Nationally, more than 1,750,000 volunteers will visit their neighbors on the week-end of Heart Sunday, February 21, to distribute heart-guarding information and to receive Heart Fund contributions.

Hansford Plainsman

Hansford Plainsman
Publishers Inc.

JIM O. DAVIS
BURL G. McCLELLAN



County-wide independent newspaper published every Thursday and Sunday at 209 Main in Spearman, Texas. Second class postage paid in Spearman, Texas.
Editor . . . Burl McClellan
NOTICE: Any erroneous reflection upon the character, standing or reputation of any person, firm or corporation which may appear in the columns of The Hansford Plainsman will be corrected gladly upon its being brought to the attention of the publishers.



MOUNTED AND FRAMED- W. L. Steiner (left) and Bob Witcher, an O.B.U. student, son of Mr. and Mrs. A. R. Witcher of Spearman, are shown with a copy of a newspaper one hundred and fifty years old which Bob framed which working at Davis Point in Shawnee, Okla. The newspaper has been in the same family for generations but is just now being mounted and framed in order to preserve it. Oddly enough, the story of the assassination did not even take up the front page of the paper, a New York Herald Extra.

**Irrigation Increases Yield
Approximately \$40 Acre**

Economists have estimated that an acre-foot of water, when applied for irrigation, will increase the yields above dryland yields about \$40 worth of product. (Average of wheat, grain sorghum and cotton grown in the Parmer County Area). Therefore, the average of 80 acre-feet of irrigation tail water recovered would have a potential net value of \$3,200.

On three farms, the water from the irrigation wells was measured to determine the percentage of water salvaged. This study showed almost 20 percent of the water pumped from the irrigation wells was recirculated by the return system. It is conceivable, then, that if the irrigation tailwater salvaged results in 20 per cent less pumped from storage, then every five years, one year would be gained on the life on the reservoir. For example, if the expected life of the water in the reservoir was 20 year, then the benefits of salvaged water could result in four additional years of irrigation.

The greatest benefits will be to the landowner from this salvaged water, for the life of his investment will be extended. The tenant will be the next greatest recipient of benefits. He can be more assured of a return on his investment when farming under irrigation than by dryland farming. The community and area will also be helped by these individuals foresight. It has been estimated by economists that each dollar's worth of farm product adds seven dollars to the economy of the area before the product is consumed.

For completed information on a tail water system for your farm contact Darrell Renfroe with the North Plains Water Conservation District, which is located in the basement of the Hansford County Court house.

Mrs. Ruth Caro had the misfortune to fall Friday morning and break a bone in her foot. She was taken to Amarillo to a bone specialist.

**Tail Water Loss
Discussed By
Water Expert**

What value do you place on your tail water, asks Darrel Renfroe, Field Rep., North Plains Water District.

According to a recent tail water study conducted by the High Plains Underground Water District, tail water losses average 100 GPM (gallons per minute) per well. Calculations from the most reliable records available shows that from 44 to 160 GPM were lost per well. Mr. Renfroe estimates that the tail water losses in Hansford & the surrounding counties is greater than the figures shown above, because of generally higher pumping levels.

This study shows that 1-800 GPM well will lose 6,000 gallons per hour, or during the course of the season when four irrigations are applied, 37 feet of water would be enough to put 1-6" application on 74 acres, or enough to water 18 acres entirely with tail water.

**Golf Club
Sets Meet
Wednesday**

Plans for the installation of grass greens on the Spearman Golf Course and the costs to members will be explained at a meeting of the organization at 7:30 p.m., Wednesday in the hospitality room of the First State Bank.

Club President Jimmy Hicks said plans for financing the improvements, the membership shares and dues will be explained at the meeting.

Hicks urged all members and others interested in the course to attend the meeting.

**Graveside Rites
For Twin Girls**

Graveside services were held Friday, Feb. 19 in Hansford Cemetery for Annette and Lannette Lawson, twin daughters of Mr. and Mrs. Charles Lawson of Morse.

The infants were stillborn at Hansford Hospital Wednesday, Feb. 17.

Charles Milner, minister of the Church of Christ, officiated at the services.

Survivors other than the parents are maternal grandparents, Mr. and Mrs. J. E. Meeks of Skellytown, and the paternal grandparents, Mr. and Mrs. Henry Lawson of White Deer.

**Lynxettes Top Rockettes
In Game Here Thursday**

An all-around scoring effort and strong defensive work was needed Thursday night for the Spearman Lynxettes to beat the tough, speedy Wellington Rockettes 54-49.

Spearman had to come from behind several times and a 22-16 halftime score was the largest they were able to muster.

Wellington's towering, speedy Betty Courtney was unstoppable most of the night around the basket as she put in 31 points with a flying hookshot and close-in lay-ups.

Susan Hutchison drew the job of trying to stop Courtney and fouled out at the job.

The one-girl attack was not enough to overcome the three pronged attack launched by the Lynxettes.

Vicki Wilde demonstrated her outside as well as inside shooting touch as she led the team with 19 points. She got big help from Phyllis Patterson, who hit 16 points and Johnny Vernon, who pumped in 13.

Spearman could not buy a goal in the opening minutes of the game and Wellington jumped off to an 8-1 lead before the Lynxettes started hitting.

They cut it to 7-10 at the end of the first quarter. Some strong work by guards Hutchison, Robbie Ownbey, Bethany Donnell and Kathi Pattison in

the second quarter slowed the Rockettes and Spearman drew ahead to 22-16 at halftime.

Wellington took the lead again in the third quarter on some stolen passes and strong rebounding to lead 42-39. Courtney was hitting consistently during this surge.

In the fourth quarter, Ownbey stole the ball several times on rebounds under the basket, Pattison blocked some shots, and Spearman pulled back into the lead. They went into a stall and Wellington intentionally fouled Vernon. She hit two free shots. As the game ended, Wellington fouled again and Patterson added two more points.

BOX SCORE				
Name	fg	ft	r	tp
Patterson	6	4	3	16
Wilde, V.	7	5	1	19
Wilde, B.	3	0	0	6
Vernon	5	3	0	13
Donnell				4
Pattison				2
Ownbey				2
Hutchison				5
Totals	21	12	17	54
W. Totals	18	13	16	49

**Sixth Person
Files for
Board Posts**

A sixth person has filed as a candidate for the Board of Trustees of the Spearman Independent School District.

Edward Dear filed Thursday as the sixth candidate for the board. Dear is a life insurance salesman and has been active in civic affairs as a member of the Junior Chamber of Commerce.

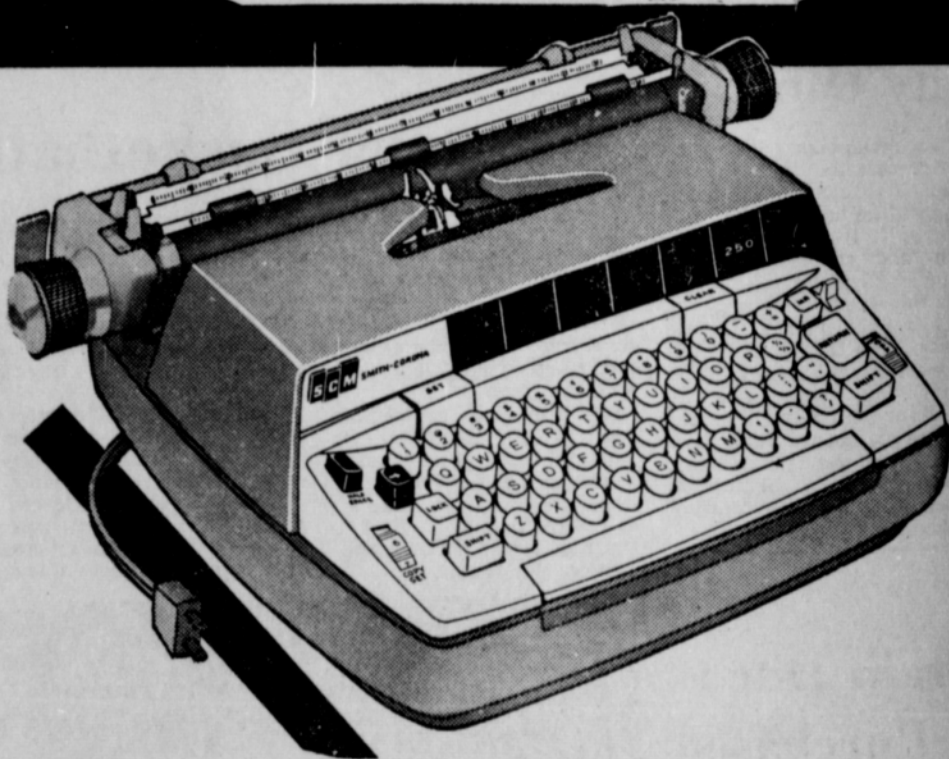
Two incumbents and three other men have filed earlier as candidates. The incumbents are Lloyd Buzzard and Dr. D. E. Hackley. Others who have filed are James Lair, Carl Archer and Bill Massie.

**Too Late
To Classify**

FOR SALE: Three bedroom brick fenced backyard, corner lot. Phone 2578 or 2903.

35 tlc
FOR RENT: Furnished efficiency apartment. Call 3074 or 2747. 35-3p

**BREAKING
THE PRICE BARRIER
IN ELECTRIC OFFICE
TYPEWRITERS**



**INTRODUCES THE NEW
SMITH-CORONA
COMPACT 250**

FOR \$250
PLUS F. E. T.

A full-featured, fully electric office typewriter available at the price of a manual.

- Full-size keyboard • King-size carriage • Selection of colors
- Automatic carriage return • Automatic repeat characters
- Electric back-space key • Choice of type styles • Half-space key

Engineered compactness cuts weight and bulk but never sacrifices ease, speed and quality performance of electric typing. See this rare combination of price and performance at

Plainsman Office Supply

209 Main

HUBBARD



for \$1.

Shurfine 2 lb. Can

\$1.39

lb. Print Bag

\$1.79

Shurfine 303 Can

Spinach 7 for \$1.

Shurfine Frozen Krinkle Cut 32 oz.

Potatoes 2 for \$1.

Shurfine Halves Bartlett 303 Cans

Pears 4 for \$1.

Catsup

Shurfine 20 oz.

4 for \$1.

Chili

15 oz. With Beans Shurfine

5 for \$1.

Fruit Cocktail

Shurfine 303 Can

5 for \$1.

Cheese Spread

Shurfresh 2 lbs.

69¢

Shurfine 303 Can

Apple Sauce

6 for \$1.

Shurfine 12 oz.

Luncheon Meat

3 for \$1.

Shurfine Halves or Sliced Y.C. 2-1/2 Can

Peaches 4 for \$1

ONIONS

YELLOW DANVER



LB.

5¢

APPLES

RUBY RED ROME LB.

10¢

Shortening

Shurfine 3 lb. Can

69¢

Shurfine Fresh Pack 16 oz.

Cucumber Chips

4 for \$1.

Shurfine Early Harvest Sweet 303 Can

Peas 5 \$1.

Shurfine Solid Pak 303 Can

Tomatoes

5 \$1.

Shurfine 300 Can

Pork & Beans

9 for \$1.

SALAD DRESSING

Shurfine Qt.

39¢

SPAGHETTI OR MACARONI

2 for 29¢

Shurfine Tall Can

Milk 8 for \$1.

Shurfine R.S.P. 303 Can

Cherries 5 for \$1

Pickles

Shurfine Whole Sweet 22 oz.

2 for 89¢

Grape Juice

Shurfine 24 oz.

3 for \$1.

Shurfine Whole 3 Quart Can

Potatoes 3 for \$1.

Shurfine 18 oz.

Grape Jelly 3 for \$1

CUT RATE GROCERY

SURE SIGNS OF SPRING SAVINGS!

YOUNG MOTHER SALE




Shurfresh Sweetmilk or Buttermilk 8 oz.

BISCUITS

13 for \$1

Shurfine Asst'd. Flavors 19 oz.

CAKE MIXES

4 for \$1



Tuna Fish Shurfine Chunk Style 6-1/2 oz. **4 for \$1**

Coffee Regular or Drip Shurfine

Flour Shurfine 25 lb. Pr

Shurfine Cut Green Spears 300 Can
Asparagus 4 for \$1.

Shurfine 303 Can
Sauer Kraut 7 for \$1.

Shurfine 4 oz.
Vienna Sausage 5 for \$1.

Shurfine 12 oz.
Peanut Butter 2 for 79¢

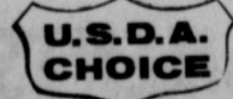
Shurfine Crushed 2 Can
Pineapple 4 for \$1.

Bleach Energy 1/2 Gal. 3 for \$1.

CHUCK ROAST



USDA CHOICE LB. **49¢**



ARM ROAST

USDA CHOICE LB. **59¢**

Okra Shurfine Frozen Cut 10 oz. 5 for \$1.

Shurfine Frozen Chopped 10 oz.
Broccoli 7 for \$1.

Shurfine Vac-Pak W.K. Golden 12 oz.
Corn 6 for \$1.



Shurfine Strawberry 18 oz.
Preserves 2 for 89¢

Waffle Syrup Shurfine Quart 2 for 79¢

Dog Food Roxey Tall Can 13 for \$1.





SHARE CROPPER LEAGUE		
TEAM	WON	LOST
First State Bank	22	6
Northern Natural	17	11
Heath Food	16	12
Riley Bros. TV	15	13
Gruver State Bank	13	15
Gruver Farm Sup.	10	18
B&C Pump	9 1/2	18 1/2
Hansford Imp.	9 1/2	18 1/2

HIGH TEAM GAME		
TEAM	WON	LOST
Heath Food Store	832	
Gruver Farm Supply	821	
Northern Natural	821	
Riley Bros. TV	821	
Northern Natural	813	

HIGH TEAM SERIES		
TEAM	WON	LOST
Northern Natural	2327	
Heath Food	2324	
First State Bank	2279	

HIGH INDIVIDUAL GAME		
TEAM	WON	LOST
Pinkerton	200	
Tanner	186	
Tanner	185	

HIGH INDIVIDUAL SERIES		
TEAM	WON	LOST
Duryee, Gene	521	
Brown & Delk, Irwin	506	
Vernon, Ed	501	

BALL & CHAIN LEAGUE 2-17-65		
TEAM	WON	LOST
Taylor-Evans	13	7
Spearman Grain	11	9
Gordon's Drug	11	9
Gruver-Texaco	11	9
The Duds	10	10
Cates Mens & Boys	4	16

HIGH TEAM GAME		
TEAM	WON	LOST
Spearman Grain	621	
Cates Men	610	
Gruver-Texaco	609	

HIGH TEAM SERIES		
TEAM	WON	LOST
Spearman Grain	1844	
Cates Men	1761	
Taylor-Evans	1665	

HIGH INDIVIDUAL GAME		
TEAM	WON	LOST
Herb Shields	199	
Herb Shields	194	
Tito Ramirez	190	

HIGH INDIVIDUAL SERIES		
TEAM	WON	LOST
Herb Shields	560	
Tito Ramirez	546	
Judy Creacy	450	

Seven Local Scouts Are On Flag Rules Committee

Seven members of Spearman Girl Scout Troop 90 will be in charge of the rules for the flag burning ceremony at the International Festival of the Yucca Girl Scout Council in Guymon Feb. 26 and 27.

The Senior Planning Board of the Council is having the festival in Hotel Dale with Mrs. E.E. Shackelford as chairman.

Scouts from Spearman participating in the festival will be Lynda Hall, Gail Upchurch, Helen Collard, D'dee Collard, Arbeta Tackett, Leslie Anne Crooks and Terry Hudson. Mrs. Wade Tackitt is leader of the troop.

Six councils have been invited including Amarillo, Panhandle, Dumas, Quivera Girl Scout Council of Pampa; Tumbleweed Girl Scout Council of Garden City, Kansas; and Cherokee Strip Girl Scout

Council of Enid.

Those participating in the Festival include Senior Girl Scouts and adults from Guymon, Boise City, Keyes, Oklahoma; Liberal, Moscow, Hugoton, Elkhart, Kansas; and Perryton, Spearman and Darrouzett.

Activities begin with registration at 5:30 p.m. in the Hotel Dale, 118 West 6th St. followed by an international buffet dinner. Troop No. 135 Guymon is providing the main dish which will be Mexican-tacos, tamales, etc. Side dishes will be provided by other troops. Dishes will come from Denmark, Switzerland, Great Britain and India, plus other countries. Dress will be from the country the troop is representing. Each troop will teach a game or song from their country.

Saturday the Girl Scouts will convene in group sessions with speakers relating their experiences in other countries. The main speaker will be Mr. Butefish, teacher from Perryton. A style show will be featured during the luncheon with clothes from Harrison's, Jan and Jeans, Mrs. D's and Esther's Dress Shop of Guymon.

Charlene Place will be the narrator. Mrs. Chet Nash has instructed the girls with make-up and Mrs. Esther Houser has instructed the girls with modeling techniques. Girls from other troops will also model costumes from the country they represent.

The closing event of the festival will be a Public Flag Burning Ceremony beginning at 1:30 p.m. at the Guymon High School Patio, between the auditorium and cafeteria. Girl Scouts Troop No. 135 will demonstrate how a flag should be burned.

A set of 62 flags representing foreign countries made by Keyes Girl Scouts will be on display.

The public is invited to the Flag Burning ceremony from 1:30 until 2:00.

Advisors of the Senior Planning Board are Mrs. Vernon Witt of Perryton and Miss Carolyn Collard of Guymon and Spearman.



LAY-LEADER- Max B. Mobley of the Fort Worth District West, Methodist Churches, and son of Mr. and Mrs. A.W. Mobley of Spearman, will be featured Daily Bible Lecturer for the Laymen's Retreat to be held at Lake Murray State near Ardmore, Okla., March 5-7. The Spiritual Retreat is for Methodist laymen and Ministers in an eight-state area.

King of Hearts Is 'Prince of Wails'

The age and origin of a vase or bowl can be shown by burning just a few milligrams of its glass dust in a spectrograph.



We'd have less trouble in this country today if the Indians had had stricter immigration laws.

1965 HEART FUND'S "King of Hearts" is 2-year-old Paul Bourque of Waltham, Mass. A distinguished heart surgery "first," he underwent open heart surgery at the age of 7 days in Boston. He's really grateful to the Heart Fund, whose research programs helped make possible for him a normal life. But his face doesn't show it!

KNAPP SHOES

KENNETH BAILEY
212 N. James
Phone 659-2458
Spearman, Texas

FOR CUSHIONED COMFORT

Cummings

Refrigeration
HEATING
AIR CONDITIONING
REFRIGERATION
SPECIALIST
SALES & SERVICE
659-2721
SPEARMAN

HARP'S CLEARANCE SALE

Frankoma Pottery 20% Off

45 pc. Serv. For 8
Reg. \$44.00



50 pc. Serv. For 8
Reg. \$59.95

Community Stainles 20% Off

W.M. Rogers Silverplate

Reg. \$45.95

20% Off

Serv. For 8 Reg. \$84.95

1847 Rodgers Silver

20% off

Buy Now

For Graduation

All Watches

25% Off

Longines-Wittnauer
Elgin Bulova

Battery Operated
Clocks 20% Off

From \$29.95

By Bulova
Clocks Radios

From \$29.95

20% Off

Stereos 20% Off

From \$59.95

Travel Alarms

Reg. \$5.98

10% Off

By Bulova
Transistor Radios

20% Off

From \$15.95



1-CARAT

DS 635—28 ct. center diamond with two .12 ct. side diamonds. Four .12 ct. diamonds in wedding band.

Reg \$275.00

All Diamond Goods

25% Off

Diamond Pendant
From \$17.95

Mens Cuff Links

20% Off

Mens & Ladies
By Meecker & Billpack

Billfolds

20% Off

From \$6.95

Stone Rings

20% Off

Charlene Bulls

INTERIOR
DECORATOR

659-3202

1105 Townsend
Spearman, Texas

Dahlia Club Will Open Year With Tea Monday

The Dahlia Flower Club will open its club year with a tea Monday, March 1 at 3 p.m. in the home of Mrs. Deta Blodgett. Mrs. Jess Womble is co-hostess for the tea.

TOP DRESS WHEAT

WITH



GOLDEN URAN

WITH THE AVAILABLE MOISTURE

You Can Make Money By Top Dressing Your Dryland Wheat As Well As Irrigated Wheat! All the grazed out wheat and late wheat need fertilizer to insure fast growth. We have the equipment to put

GOLDEN URAN

WHERE you want it . . . WHEN you want it !

STRAWN FARM & RANCH SUPPLY

Spearman

Gruver

310 Main

659-2700

Harp's Credit Jewelers

REGISTERED DIAMONDS
FOSTORIA CRYSTAL
BULOVA WATCHES

FRANKOMA POTTERY
COMMUNITY SILVER
SYRACUSE CHINA

Dramatic Gains Made

Heart Research Reversed Deadly Trend

EDITOR'S NOTE—This is the last of a 4-part series of articles on heart disease by Dr. R.L. Kleeberger, M.D. President of the Hansford County Heart Association.

As we have seen, dramatic gains have stemmed from the nationwide effort set in motion by the first Heart Fund Campaign in 1949 and the onset of massive cardiovascular research programs in 1950. With your Heart Association as the spearheading force, we have in 15 years moved faster and farther along the road of cardiovascular progress than during any comparable period in history. Since 1950 we seem to have reversed an upward trend in the cardiovascular death rate among American men in their prime years—45 through 64. Other notable achievements have been made.

But we still have a formidable task before us to break through the walls of ignorance surrounding the vast complex of heart and blood vessel diseases. Among them are heart attack, high blood pressure, hardening of the arteries, stroke, heart failure, inborn cardiac defects and many others. All told, these diseases claim nearly 1 million Americans annually, accounting for about 54 per cent of all deaths. They affect some 10 million living citizens, causing an annual production loss which exceeds four billion dollars.

Big gaps remain in our present knowledge of these diseases. Although we can successfully treat most cases of high blood pressure, we do not know exactly what causes them. Nor do we know precisely how the inner lining of

the arteries becomes roughened and hardened, setting the stage for circulation-blocking clots or plaques such as are responsible for most heart attacks and strokes. Nor do we know had and why streptococcal infections sometimes trigger rheumatic fever, leading to heart damage. Still inadequate is our knowledge regarding the mechanisms responsible for inborn heart abnormalities.

In the 15 years since the major research assault was launched we have moved into a position where major breakthroughs are imminent in supplying answers to these major "unknowns". Once we know the underlying causes, we will be in a position to establish methods of prevention and even cures, as well as improved methods of treatment. Our quest, therefore, is probably history's most challenging research as-

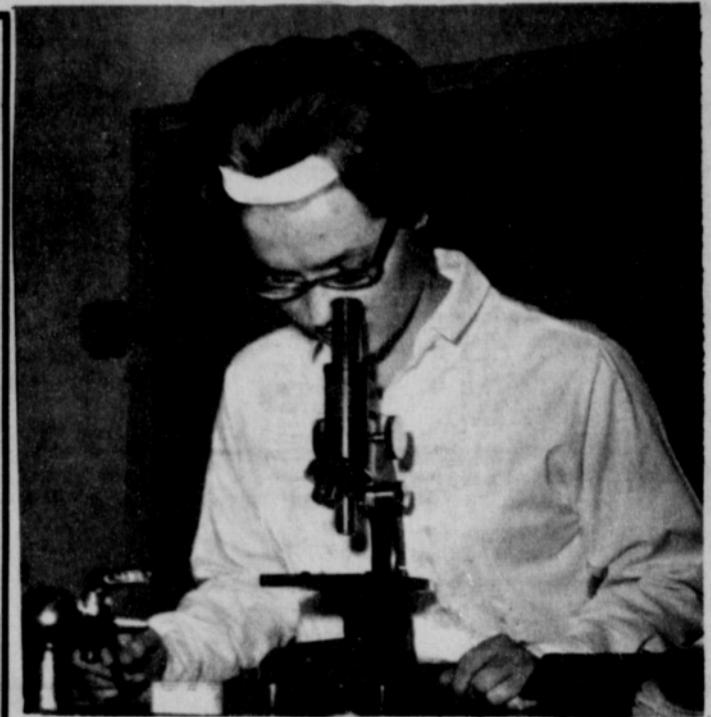
signment. Medical research is of course the main essential. Funds must be adequate to underwrite both continuing and new research projects. The momentum we have built to date must be sustained and increased. Furthermore, we must bring to the public life-saving information through programs of education and community service.

Much information of great value is now available. This knowledge can help us wipe out rheumatic fever, reduce the risk of heart attack and restore a great many stroke victims to productive life through new rehabilitation techniques. Early diagnosis and prompt treatment can benefit patients suffering from all other forms of heart and circulatory disease.

The people of this state can advance these programs by gen-



GETTING READY—Willie Reneau (left) and Larry Holt are using a spectrometer to measure light in getting their exhibit ready for the Science Fair March 5-6.



HELEN COLLARD—works on her exhibit for the Spearman Science Fair which is scheduled for March 5 and 6. Robert Barker, high school science teacher is director of the fair. Plainsman photo

Better Food For Less

IDEAL FOOD STORES

REGULAR PIZZA 02
HICKORY FLAVORED

HUNT'S CATSUP
14-OZ. 2 for 35¢

MORTON HOUSE
BAKED BEANS
3 24-OZ. CANS 1.00

CAMPBELL'S MEAT VARIETIES SOUPS
6 10-OZ. CANS 1.00

VISTA THIN, CRISP
Saltines 1-lb. BOX 19¢

CUDAHY PLUMP, TENDER
COOKED PICNICS

WHOLE PICNICS 29¢
SLICED PICNICS 33¢

FRESH HAND-CUT FRYER PARTS!

PICK OF THE CHICK BREASTS, LEGS AND THIGHS 59¢
FRESH FRYER BREASTS 59¢
FRESH FRYER THIGHS 49¢
FRESH FRYER LEGS 45¢

FLORIDA VINE RIPENED
TOMATOES 2 29¢
U.S. #1
Russett POTATOES 10# 89¢

IDEAL HICKORY SMOKED
SLICED BACON
THICK CUT 1.09
2-lb. PKG.

IDEAL'S "FLAVOR RICH"
HALF and HALF 25¢
PINT CARTON

KRAFT SALAD DRESSING
MIRACLE WHIP 49¢
QUART JAR

FOOD CLUB
TOMATO JUICE 46-OZ. CAN 4 for 1.00
MANDALAY CRUSHED
PINEAPPLE 5 18-OZ. CANS 1.00
GIRARD'S LARGE
RIPE OLIVES 3 1-lb. TALL CANS 1.00
ALLEN'S—READY TO HEAT AND SERVE
WHOLE CHICKEN 89¢
ELNA
PEARS 29¢
KRAFT CORN OIL
MARGARINE 1-lb. CTN. 39¢
MIRACLE CORN OIL
MARGARINE 1-lb. CTN. 39¢
KRAFT MIRACLE
MARGARINE 1-lb. CTN. 39¢

PRICES EFFECTIVE THRU WED, FEB. 24, 1965

What Would You Do?

A FRONT TIRE BLOWOUT! WHAT WOULD YOU DO?

First, most drivers feel that they would know how to handle a front tire blowout. Second, they feel like it can't or won't happen to them.

Suppose one of your front tires blows out, what would you do?

A blowout on a front tire "steers" the front wheel away from the path of the car's center of mass. The center of mass is the point around which the weights of all parts of the car are in balance. The retarding force of the blowout tires causes the center of mass to swing forward around the blowout wheel, which acts as a pivot. As the center of mass goes forward, the lateral distance between the pivot wheel and the center of mass becomes greater. The greater this distance becomes the more difficulty a driver will have in preventing the car from changing ends.

After the blowout, a driver's first and main job is to steer against the pull in order to keep the center of mass behind the blowout wheel. He must do this quickly and firmly, keeping the car headed in the same general direction. If a left front tire blows out, the car will be on the shoulder before long. You should try to keep it from going into the "barrow ditch."

Surprise Party

For Mrs. Windom

Mrs. Sonny Windom was honored with a surprise birthday dinner Wednesday evening, Feb. 17 in the home of Mr. and Mrs. Bobby Nollner.

After dinner bridge was played by the group.

Attending were Messrs. and Mmes. Bob Hohertz, Jim Fox, Don McLain, Don Floyd, Ed Dear, Lawrence Brown, Don Seymour, Jett Mason, Herb Butts, Sonny Windom and the hosts.

Mr. and Mrs. Nelson Turnbull spent last weekend at Medicine Lodge, Kans. visiting friends.

Your HEART FUND fights them all



Heart Attack
Stroke
High Blood Pressure
Rheumatic Fever
Inborn Heart Defects

erously supporting the 1965 Heart Fund Campaign, which will be conducted here throughout the month of February.



Party Honors Mrs. Schubert

Mr. and Mrs. Fred Groves entertained with a surprise birthday dinner for her mother, Mrs. Fendorf Schubert Tuesday evening, Feb. 16.

The dinner was served buffet style. The table was covered with a white cloth and the centerpiece was a white birthday cake decorated with yellow jonquills and candles.

Various games were played during the evening and visiting was enjoyed by those attending.

Attending were Mrs. Schubert's mother, Mrs. Grace Lovett and her sister, Mr. and Mrs. Bill McClanahan, both of Perryton. Mr. and Mrs. Burton Schubert and Margie, Louise Mullins, the Fendorf Schuberts and Buddy and the hosts.

NOT AFRAID-Contrary to popular opinion, not all girls are afraid of rats and mice. Here Frances Nollner puts one of her experimental white rats in its cage. It is a Science Fair Project. Plainsman photo

Mrs. Stephen Mathews Is Bridal Shower Honoree

Mrs. Stephen Mathews was honored Thursday evening, Feb. 18 with a bridal shower in the Hospitality Room of the First State Bank.

Hostesses for the courtesy were Mmes. Raye Gibson, Joe Dan Bryan, Ray Phelps, Jerry Sparks, James Sparks, Sam Watson, Joe Day, Bill Sheets, Freeman Barkley, Everett Tracy, and Mike Ballew of Perryton.

The serving table was laid with a white linen cloth and centered with an arrangement of pink roses and mock orange flanked on either side with white tapers in silver holders. Silver and crystal completed the setting.

Mrs. Sam Watson presided at the coffee service and Mrs. Jerry Sparks served the punch with white cake squares decorated with pink rose buds.

The honoree was presented a corsage as were Mrs. Virgil Mathews, mother of the groom and the two grandmothers,

Maude Mathews and Mrs. W. W. Cypert.

Mrs. Virgil Mathews introduced her daughter-in-law and assisted her in unwrapping her gifts.

Mrs. Mike Ballew of Perryton presided at the guest book.

Public Invited To Open House

Open house will be held today from 2 until 5 p.m. in the home for the Church of Christ minister.

Charles Milner, minister of the church, extends a welcome to everyone to visit the house at 721 Gibner Drive in Blodgett and Linn Addition.

Besides the minister and church officials, builder Roscoe Nelson will be there to show visitors through the new house.

T.G. & Y. WASHINGTON'S BIRTHDAY SALE
 5¢ TO \$1.00 STORES
 A Division Of City Products Corporation

UNBELIEVABLE BARGAINS . . . INCREDIBLE VALUES . . . CHOPPED PRICES!
 ONE DAY ONLY! EARLY SHOPPERS GET FIRST CHANCE AT THESE BARGAINS!

29¢ VALUE LIMIT 1 PER CUSTOMER
KALEIDOSCOPE **17¢** Each

PADDLE BALL GAME 15¢ VALUE "George's Father's Favorite Pastime!" **6¢** Each
 Complete with rubber ball and rubber string. LIMIT 1 PER CUSTOMER

LIQUID BUBBLES **3¢** Each
 4 Oz. Size. Bubble wand and instructions. Hours of fun and enjoyment!
 LIMIT 2 PER CUSTOMER

KITE 10¢ VALUE "George Told Ben To Go Fly His!" **6¢** Each
 36" Plastic. 2-stick style. Assorted designs. LIMIT 4 PER CUSTOMER

PLASTIC FRAMED PICTURES 8 X 10" SIZE
 Beautiful Assorted Scenes. New Verplex Finish.

49¢ VALUES "Martha Could Never Resist These!"
27¢ Each
 LIMIT 2 PER CUSTOMER

22 Qt. Swing-Top WASTE BIN

Colorful . . . Convenient . . . Easy-to-clean! Made of Durable Poly Plastic. For Early Shoppers — Quantity Limited!

\$1.79 VALUE "George's Birthday Special!" **66¢** Each
 LIMIT 1 PER CUSTOMER

ENVELOPES

14 Count. 6 3/4" Woven. Fine Quality.

10¢ VALUES "Revolutionary Bargains!" **3¢** PKG.
 LIMIT 2 PER CUSTOMER
 100 PER STORE

Sorry We Cannot Accept Any Mail Orders, Phone Orders, Or Layaways On This Merchandise!
 (QUANTITIES LIMITED ON MANY ITEMS)

OPEN MONDAY - FRIDAY 8:30-6:00
 OPEN SATURDAY 'TIL 8 P.M.

Close-Out On Fall & Winter Wearables On One Counter Many Items

Up To 75% Off

Fall & Winter Material 1/2 Off Our Discount Price

Wood Framed Pictures Values To \$3.98 37¢

10 Roll Pkg. Toilet Tissue 98¢ 37¢

Sofa Pillow Values To \$1.98 47¢

Value Plastic Crystal Waste Baskets \$1.87 47¢

COLORING BOOKS

Bright and attractive heavy paper cover. Assorted titles.

Price Chopped! **3¢** Each
 LIMIT 4 PER CUSTOMER

CHERRY CHOCOLATES **22¢** Box
 "Tree Shaking Value!" 6 Oz. Box
 39¢ VALUES LIMIT 2 PER CUSTOMER

CANDY BARS **3¢** Each
 5¢ VALUES "Fresh From Martha's Candy Kitchens!"
 LIMIT 6 PER CUSTOMER

POCKET or RATTAIL COMBS 5" Pocket and 8 1/2" Rattail Comb. Assorted Colors.

"EVERCEL" CELLOPHANE TAPE 5¢ VALUES "Wig Flipping Buys!"

Self-adhesive tape. Good for thousands of jobs! It's quick, clean and economical 1/2" x 108" Size.

15¢ VALUE "By George, What A Value!" **7¢** Each
 LIMIT 1 PER CUSTOMER

2 Qt. Poly MIXING BOWL

Convenient Pouring Spout and Hand Grip. Assorted Colors.

49¢ VALUE **17¢** Each
 LIMIT 1 PER CUSTOMER
 20 PER STORE

