



The Hansford Plainsman



VOLUME V., NUMBER 50

SPEARMAN, TEXAS

THURSDAY, SEPTEMBER 24, 1964



PIONEER MANOR--The public is invited to inspect the new Pioneer Manor home Sunday from 2 until 6 p.m. according to G.E. White, administrator. The Business and Professional Women's Club will act as hostesses for the open house and will serve refreshments during the afternoon.

PLAINSMAN PHOTO

All Dealerships Set To Show New Cars

The coffee is made and the cookies and donuts are fresh. It is new car weekend in Spearman and you can see new models (cars) and get refreshments at every dealership in town today and tomorrow.

Today is General Motors day. Tomorrow, Friday will be Ford and Chrysler day.

Today you can see the new Chevrolets, Oldsmobiles, Buicks and Pontiacs. Tomorrow the Fords, Chryslers and Plymouths will be shown.

Excel Chevrolet-Olds is having open house today to display the Chevrolet lines and the different models of Oldsmobiles. There will be refreshments and favors for all who attend the opening. The local radio station will do its broadcasts from the Chevrolet-Olds Showroom.

Manager Jimmy Shield-knight said the show day will also be the firm's birthday celebration. Excel completed its sixth year of business on Sept. 1, but delayed its celebration until show day.

The new Buicks and Pontiacs and their compact lines will have their show day today at North Plains Truck and Implement Inc., on Highway 15.

North Plains Manager Doug Connelly said there will be a good display of the new cars and refreshments for all. He added that Buick and Pontiac have made some changes this year which will be of interest.

Friday Joe Trayler Ford will be displaying the Ford line. There will be refreshments for everyone. Ford,

like all of the others have made some major styling changes this year and Trayler invites everyone to see the new Ford.

Also on Friday, Spearman Motors will be showing the Chrysler and Plymouth lines. There will be refreshments there, also. Wilbut Hull stressed the fact that Chrysler products will also have new styling.

Every dealer was pleased with what they have seen of the new models. They all feel that the 1965 model year will be another banner sales year for cars.

None of the dealerships will have a full line of the many models, but each said they would try to have variety, so visitors could get a general look at the lines.

Baptists Open Open House Sunday Fall Revival Here Sunday At Pioneer Manor

Spearman's First Baptist Church will begin its Fall Revival Meeting Sunday, Sept. 27 and the meeting will continue through the following Sunday, Oct. 4.

The Rev. Bill C. Haggard is the evangelist for this meeting. He is pastor of the Highland Hills Baptist Church in Oklahoma City.

He was the church's first pastor when it began as a mission. He is a graduate of Southwestern Seminary and has served churches in Texas and Oklahoma.

Music director for the two-day services will be Frank McDonald. He is Youth and Music Director at the First Baptist Church in Perryton. He is a graduate of New Orleans Seminary.

Services will be at 7:30 p.m. each evening and at 10 a.m. Monday through Friday. Friday night will be Youth Night with a Youth Fellowship to follow.

A nursery will be open for all the services.

The long awaited opening of "Pioneer Manor" will be held this Sunday according to G.E. White, Administrator of the home.

An Open House will be held from 2 until 6 p.m. by the Business and Professional Women's Club of Spearman. The women of the organization will act as hostesses for the afternoon and serve refreshments.

Slow arrival of fixtures for the Senior Citizen's Home has delayed the official opening a few weeks. White had hoped to have the opening sometime late in August, then it was postponed until early September, then late September.

The building, constructed by Didlake and Trout of Borger, has been completed for some time.

White says the building has passed the state inspection and he expects to receive the license for the home soon.

The long, low colonial style building is at the corner of Eleventh and Roland. It is

built to accommodate 36 persons in private, semi-private and four bed wards.

One Club Tourney Set

What's your favorite golf club? If you are a member of the Spearman Golf Club, pick out that club and enter the Tournament Sunday at 2 p.m.

The play Sunday will be a "One Club Tournament". You pick whatever club you prefer, but you use that club all the way around the course.

This tournament is open to members only. Entry fee is \$1 which will also purchase a golf ball.

Tax Statements Indicate Growth

Another mark of the continued growth of Hansford County was revealed this week in the number of tax statements prepared by the County Tax office.

It was learned that 4,110 tax statements were prepared for mailing by the office. This is a new record.

Last year the office mailed out 3,888 statements.

The statements will go in the mail Oct. 1.

Spearman Misses Rainfall Again

Spearman received another "big soaking" rain Sunday. If it had all been collected it might have soaked a wash cloth.

Mrs. Pat Cates, official weather observer, measured .05 of moisture from the drizzle.

Farm Group To Organize

All young men interested in organizing a Young Farmers Chapter here should meet at the Vocational Agriculture Dept. of Spearman High School at 7:30 p.m. Tuesday, Sept. 29.

Walter Labay, Area Vocational Agriculture Supervisor from Plainview and an officer of the Gruver Young Farmers will be at the meeting to discuss the organization.

There will also be a slide show on what other chapters in the state are doing.

Jerry Jackson, Vocational Agriculture teacher here, says the men should be 18 to 36 years of age and interested in farming.

Jackson urges all qualified men to attend the meeting and learn about this organization.

Tough Stratford Elks Opposing Lynx Gridders Friday Night

Bruises from the Gruver game will hardly be healed before the Spearman Lynx meet the tough Stratford Elks in Stratford Friday night.

The Lynx received no permanent damage from the "rock'em-sock'em" game Friday. However, they are going to need every ounce of their ability to handle Stratford.

The Elks have lost two and tied one this season, but their schedule has been real tough. Dalhart dropped the Elks 35-0, in the opener, but two or three of the Wolves' scores were gratis. Stratford and a good Texhoma team fought to a 0-0 stand-off, then last week Stinnett won a squeaker.

Stratford has six regulars returning, including regular quarterback Jim Hudson, a good pitcher, and fullback

Terry Mathews, a punishing runner. Up front tackle Harry Hamilton leads the pack of experienced lettermen.

Spearman scouts report that Stratford has good uniform size, speed and are extremely tough.

Last year the Class A Elks went all the way to Regional before losing to state champion Petersburg.

Coach Don Seymour said except for a few bruises all of the Lynx will be ready to go Friday night. He said he was well pleased with the way his defensive units worked Friday night.

Lynx who show consistently aggressive play get a purple stripe on their helmets. Seymour said he could have stripped all of the defensive helmets Friday night.

There will be action all

over the district.

Boys Ranch will be in action again after having an open date last Friday. The Riders play Sunday at the Ranch.

Dalhart will be on the road. They go to Perryton to meet the Rangers in what should be a real fine game.

Sanford-Fritch will also be traveling when they go to Memphis to meet the big, fast Memphis Cyclones.

Phillips will probably retain their 40 or more points per game average when they go to Canyon to take on the Eagles.

Shamrock should rack up another victory when they go to Clarendon to play the Broncs.

Stinnett will have its hands full when it comes to Hansford County to play the rapidly improving Gruver Greyhounds.

Junior Teams In Action Here and at Boys Ranch

If you want a full dose of football, the Spearman teams are making an effort to fill the order. Only one of the five organized teams in the school system will be idle this week.

Everyone is playing except the B-team which has an open date in its schedule.

The Seventh and Eighth grades will open the weekend by entertaining Gruver here Thursday night. Both teams will play.

The Seventh grade will open its season when it meets the

Gruver Seventh grade. After the Seventh grade, the two Eighth grades will battle.

The Spearman Eighth graders will be seeking their second victory in two starts for this season. Last week the Eighth graders beat Sunray 12-0.

While the two grade school teams are battling here, the Freshmen will be at Boys Ranch for that squad's second game of the year.

The freshmen won their first game two-weeks ago against White Deer.



DEFENDER---Lynx defensive leader Jim Ownbey is going to have his work cut out Friday in Stratford. Ownbey set up the lone Lynx score against Gruver when he recovered a punt that had been touched.

PLAINSMAN PHOTO

Accent on Health

J. E. PEAVY, M.D., Commissioner of Health

When should your child have a gun—play football—or drive a car?

The decision, naturally, is up to you, the parent, but the Texas State Department of Health reminds you to bear some important factors in mind.

If your son is eager to have a gun for the coming hunting season, you will want to consider other things as well as age. Since all youngsters vary in maturity, age alone cannot determine a child's readiness to possess a gun. You must judge your youngster's degree of responsibility.

If, around the age of 12, he exhibits responsibility in other areas and has had gun training by an adult, he probably can be

trusted with a gun.

The safest gun for a beginner probably is a .22 rimfire single-shot rifle.

But most important, be sure your child is trained in gun safety. Check with your local health department or gun dealer about organized gun instruction clubs.

Football is the roughest and most dangerous of boys' sports, not because of fatalities but because of injuries. Few players die in football—an average of 15 a year—but about one in 12 can expect to be injured. Most injuries are minor, but others cause permanent damage.

Boys want to play, and despite its ruggedness, football under the right conditions can be a safe sport. It's up to parents to see that conditions are right.

Before your boy plays on a team, be sure he passes a thorough physical examination, wears good-fitting and adequate equipment and plays on a smooth, rock-free field against boys of comparable size.

Body protection is essential, too. All pads should incorporate shock-absorbing material, and cover the intended area properly. The fit of the pants must assure effective positioning of the thigh and knee pads.

To insure foot and ankle protection, all players should have their ankles routinely wrapped with non-elastic bandage, two and one-half to three inches in width. Cleats should be kept short, if used. Rubber heels without cleats may be preferred.

Whether it is football on the corner lot or organized athletics, a boy playing contact sports needs a mouth protector as a part of his regular equipment.

If your young son wants a football helmet like the big leaguers, be wary of the low-priced helmets sold as toys. These are not suitable for real play. The suspension or internal padding provides little or no protection on impact.

So your teenager wants to drive a car. You will need to consider first, of course, whether or not he—or she—is of legal age and possesses a learner's permit or license. But once again, you must judge his responsibility and obedience.

Teenagers in general have the worst records on our highways. However, they can be excellent, responsible drivers. One question to ask yourself is: "Does my child in general respect the rights of others, and is he trustworthy in following instructions?" If so, he's likely to be courteous on the highway.



Like all 1965 full-size Oldsmobiles, the 1965 Starfire is completely new, with a roomier body and a distinctive tapering roofline. The Starfire differs from other Oldsmobile models in the design of the front and rear end, and in its side moldings which end in functional dual exhaust

outlets. This sports model is powered by a new 425 cubic inch Starfire engine which, combined with the new Turbo Hydra-Matic transmission, provides almost unbelievably smooth, instantaneous response.



Chrysler cars for 1965 are completely new automobiles with a longer wheelbase, increased interior room, more powerful engines and improved riding comfort. Long and low, the 1965 Chrysler line consists of 17 models in three series—New Yorker, the Sports 300, including the 300L, and the Newport. This is the New Yorker two-door hardtop. All engines in the new Chrysler cars have refinements in carburetor control

mechanisms, ignition systems and electrical components designed to extend reliability and provide quiet, trouble-free operation. Among the fresh styling features are extra side windows in the New Yorker and Newport four-door Town Sedans, both new models for 1965, giving them a total of six side windows. The 5-year or 50,000-mile warranty on engine and drive train components is continued on the 1965 Chrysler.

"I can see yet without spectacles and I see no such matter."

...Much Ado about Nothing...

Act 1 Scene 1



CARTOONS—These cartoons using quotations from Shakespeare were part of a clever display at the high school library, made by Miss Dorothy Roden, high school librarian.

"You blocks, you stones, you worse than senseless things!"

Julius Caesar Act 1 Scene 1



"But now, I am cabin'd, cribbed, confined, bound in."

Macbeth Act 3 Scene 2



Damage from Midge Relatively Light

Research studies conducted by James Harding, Entomologist, and Shelby Newman, Agronomist, at the South Plains Research and Extension Center at Lubbock and Norris E. Daniels, Entomologist, at the Southwestern Great Plains Field Station at Bushland show that damage from Sorghum Midge will be relatively light on grain sorghum in the 1964 crop.

Sorghum midge research is underway to determine the complete life cycle, including habitats, host plants, migration, nature of buildups of damaging infestations, overwintering and methods of cultural and chemical control. The research studies were made possible by cooperation and support provided by the Grain Sorghum Producers Association.

Results of present studies comparing midge emergence from infested grain sorghum heads subjected to different cultural practices indicate that midge emergence took place not only from those infested heads left on the soil surface, but also from those disked and plowed under. Land preparation methods compared were mold-boarding sorghum residues 8 to 10 inches deep, disking 3 to 4 inches deep and leaving the sorghum heads on top of the ground.

Harding's experiments took place under natural field conditions. Sorghum heads, left on the surface and those buried, were undisturbed throughout the winter. Cages were placed over the different land preparation sites in early May to trap early emerging midge.

Midge started emerging from sorghum heads at each of the cage sites in June. Small traps on each of the cages "caught" the midge and offered Harding a means of determining midge emergence. Most of the midge emergence took place between June 3 and June 25.

When sorghum heads known

to contain midge larva were plowed under to a depth of 8 to 10 inches, emergence--on a per acre basis--was 10,219,176. Where disked up to 3 to 4 inches deep, the per acre count was 9,552,708. And where the infested sorghum heads were left on the surface, the per acre emergence count was 14,884,452 midge.

"What we have so far is only one year's data with these tests," says Harding. He pointed out that these tests are being conducted to learn what affect different cultural practices might have on overwintering of the midge in grain sorghum heads. "Under farm conditions the high per acre midge emergence noted in these carefully conducted tests would not exist," he says.

Women Attend Camelot

Barbara McClellan, Elizabeth Holton, Helen Watson and Elaine Floyd attended the performance of "Camelot" in Amarillo Sunday night.

Beard Backfired

LUDLOW, Ky. —William Boese's beard, grown for Ludlow's centennial parade, kept him from taking part in the event.

He was driving with his wife and son when their car stalled. Trying to start the vehicle, Boese poured gasoline into the carburetor. Swoosh! The gas flamed, setting fire to Boese's whiskers.

Two pedestrians threw him to the ground and beat out the flames. Boese spent the day of the parade in the hospital.

Wife Heeded Warning

LOUISVILLE — Louisville policeman Rodney Ortkiese warned his wife to beware of purse snatchers in an area where she waited nightly for a bus to take her home from work.

The warning was worth \$15. Before going to work a couple of days later, she gave her husband most of her money. Waiting for the bus that night, she had her purse stolen. The loss: only a few cents in change.

The Hansford Plainsman



Hansford Plainsman Publishers, Inc.
Jim Davis Burl McClellan

County-wide independent newspaper published every Thursday at 209 Main in Spearman, Texas. Second class postage paid in Spearman, Texas

Editor.....Burl McClellan
Production Mgr.....Jim Davis

NOTICE: Any erroneous reflections upon the character, standing or reputation of any person, firm or corporation which may appear in the columns of The Hansford Plainsman will be corrected gladly upon its being brought to the attention of the publishers.

Hansford Farm News

Seed Protectants Can Prevent Many Diseases

Chemical seed protectants can prevent many disease problems on small grain caused by fungal and bacterial organisms on the seed coat.

With the fall planting season here, Wendell Horne, Extension plant pathologist, advises growers who save their own seed or buy untreated seed to apply such protectants before planting to insure a vigorous and

healthy stand. Most commercial seed companies use a seed treatment.

Seed-borne fungi and bacteria destroy the seed in the soil or attack seedlings as they struggle through the soil. Such diseases are referred to as seedling blights, says Horne, and often result in a significant loss of stand.

Mercury-type seed treatments such as Cerasan and Panogen have been highly effective as protectants for small grain seed. These materials may be applied in a rotary seed treater made from a 50-gallon drum or they may be applied with machinery devised for that purpose.

Some fungi are also borne within the seed and are not affected by chemical treatment. Loose smut of wheat and barley is an example of this type of disease, the pathologist points out. A water-soak method must be used to control this condition.

Most seed-borne disease of small grain can be inexpensively controlled with chemical seed protectants, says Horne. For more information on seed treatment, Horne sug-

1964 Agriculture Yearbook Issued

Farmer's World is the title of the 1964 Yearbook of Agriculture released this week by the U.S. Department of Agriculture.

The new edition joins a long list of other yearly volumes which have been widely used and treasured by agriculturists and others because of the wealth of information contained and also for their value as reference books.

The 1964 edition surveys in depth the United States' stake in world agricultural trade and aid. During fiscal 1964 American agricultural exports exceeded \$6 billion, the largest export operation ever carried out by one nation in a single year. The new record speeded up by four years the export timetable previously set up in earlier USDA projections.

Secretary of Agriculture Orville L. Freeman in the foreword said, "This book reveals the vital stake everybody in the United States has in a healthy export trade for American agriculture."

He suggests a visit with the local county agricultural agent.

Consider Many Factors In Selecting Winter Feed

Beef cattle producers will soon be concerned with selecting feeds for their supplemental winter feeding program, and several factors should be considered for a profitable and economical operation.

Of real concern to farmers and ranchers are feeds which supply low cost protein and low cost energy, says Uel D. Thompson, Extension animal husbandman, Texas A&M University. Grain is considered the cheapest energy source and protein supplements should be chosen on the basis of their protein content and cost. A mixture of different sources of vegetable protein has little to offer since cattle make their own amino acids.

Before purchasing a supplemental protein feed, note the price per 100 pounds, percentage of crude protein supplied by the oil seed protein meals, percentage of equivalent protein from non-protein nitrogen, crude fat and crude fiber content. Higher fiber content feeds should be cheaper.

A protein supplement is bought primarily for its protein, Thompson points out. Cost of this protein may be determined on a per pound basis by dividing the price per 100 pounds by the percent protein. Thus, range cubes with 20 percent crude protein at \$3 per 100 pounds would supply crude protein at a cost of 15 cents per pound.

Herd protein supplemental

feeding should be based at .8 pound of digestible protein daily per cow. Therefore, it would take four pounds of a 20 percent product such as range cubes to satisfy this requirement.

Of course, methods of feeding and individual preferences determine the form of supplement to be used—meal, cakes, cubes, crumbles or pellets. Self-limiting mixtures of protein mineral blocks, Urea-molasses or other liquid supplements, and combinations of salt and cottonseed meal may affect savings in labor and provide more even herd consumption. However, the unit cost of protein may be high, Thompson indicates.

Mixtures of salt and cottonseed meal have had extensive use, the percentage of salt varying from 15 to 50 percent of the mixture. Ground sorghum grain or ground ear corn is often mixed with salt and cottonseed meal and fed free choice. Common mixtures contain about one-third of each. Water should always be available nearby when these amounts of salt are fed.

Selection of a supplement may also be influenced by the amount and quality of roughages available. Cattle performance is directly related to forage quality and quantity, explains Thompson. Where forage is limited, a feed including both protein meal and grain may be more useful than a straight protein supplement.

A Vitamin A fortified supplement should be fed where production is likely to be affected by Vitamin A deficiency. Adding synthetic Vitamin A to mineral mixtures or high salt feed mixtures and leaving it exposed to sunlight, air and heat is not advisable.

Aside from cottonseed meal or cake and Urea-molasses, other high protein supplements include guar meal, corn gluten meal, milo gluten meal, peanut meal, sesame meal, sorghum gluten meal, soybean meal and tankage.

Heart Disease High in County

The Hansford County Heart Association held its first meeting of the 1964 series last Thursday in the meeting room of the First State Bank. The Board of Directors elected officers and authorized a full affiliation agreement with the Texas Heart Association.

R. L. Kleeberger, M.D. was re-elected president. A Gruverman, Paul Westerfield was elected vice president and Clay Gibner was re-elected treasurer. Joan McClellan was chosen for an acting secretary, but is to be replaced, at her own request, in a future meeting.

Dr. Kleeberger indicated a stepped up campaign of public and professional education was necessary. His views were based on the extremely high incidence of cardiovascular disease in Hansford County.

The State Department of Health reports that the 1962 figures show 425 persons in Hansford County were afflicted with cardiovascular disease. Dr. Paul Dudley White, famed cardiologist has called this America's number one epidemic.

A feature of the meeting was the presentation of a film centered around an open heart operation performed on a seven year old girl. The operation saved the little girl's life. Surgeons stopped the youngster's heart for fifteen minutes while the repairs were made to her vital organ. The famed Heart Lung machine which sustains life while the heart is stopped for surgery was used during the operations.

Members of the Board of Directors in addition to the officers are Claude Owens, Jack Oakes, Mrs. Louene Hutchinson, Jane Meek, Linda Webb and Bradford M. Beedy.

Bankers Attend Banquet, Game

Among the bank personnel in this area who were guests of the Amarillo National Bank Saturday were Mr. and Mrs. Paul Hazelwood, Mr. and Mrs. Freeman Barkley, Mr. and Mrs. Woodrow Gibner and Mr. and Mrs. Peyton Gibner. They attended a banquet at the El Toro Restaurant in Amarillo and the West Texas-Ohio State football game in Canyon Saturday night.

Correction

In the Cut Rate Grocery advertisement in the Sunday Plainsman, Sept. 20, there was a mistake on the price of the Lilt Home Permanent. It was incorrectly priced at \$1.00. The ad should have read \$1 Size Liquid Prell free with each Lilt Home Permanent.

Tole Painting Class

FOR INFORMATION CONTACT

Ruth Bryan

659-2337

or

Elsie Mathews

659-2681

FULL COLOR 3-D STEREO SLIDES



A new package of 5 different full color Stereo slides every week at 29c each. Start your set today. Now you and your family can enjoy living room tours of all the famous sights of the world!

HELP YOUR CHILD IN SCHOOL complete his reference library

THE NEW GOLDEN BOOK PICTURE ATLAS OF THE WORLD

BOOK ONE ONLY 49c
ALL OTHERS 79c

Start today!

A complete 8 volume set for less than \$8.00 (\$4.44)

6 MAGNIFICENT VOLUMES

Completely new and up-to-date. More than 1,000 maps and photographs. Glorious full color illustrations. Latest population information.

BUY A BOOK A WEEK/COMPLETE YOUR SET NOW ON SALE

Hunts

Catsup Big Tomato Flavor 14 oz. Bottle 15c

Apple Bay 303 Can

Apple Sauce 8/\$1.

Van Camp 300 Can

Pork & Beans 8/\$1.

Cudahy's Whole Picnics (Fully Cooked) lb. 29c

Cudahy's Sliced Picnics (Fully Cooked) lb 33c

Grade A Fresh FRYERS Dressed Cut Up lb. 39c

BREASTS Fryer Parts lb. 59c

LEGS Fryer Parts lb. 49c

THIGHS Fryer Parts lb. 55c

Fryer Parts (Legs, Thighs, Breasts) PICK of the CHICK lb. 59c

Cudahy's Bar "S" (Bolo., P&P., Macaroni and Cheese, Spiced) LUNCHEON MEATS 6 oz. pkg. 29c

FISH H&S Whiting 3 pkgs. \$1.

Cudahy's Virginia Reel SAUSAGE Pure Pork 2 lbs. / \$1.29

"Values Good Fri. & Sat., Sept. 25 & 26."



Ideal 28 oz. Jar

Apple Butter 25c

Banquet Meat Pies 6/\$1.

Patio Enchilada 12 oz. Pkg.

Dinners Frozen 49c

Ideal 1/2 gal. Ctn.

Sherbet Assorted Flavor 49c

Enriched Gold Medal 5 lb. Bag

Flour With \$2.50 or more purchase. 39c

Just Arrived

New Autumn Bridge & Entertaining Supplies

By Hallmark

Bridge Cloths Tallies

Napkins In All Sizes

Pigskin Party Entertaining Supplies

PLAINSMAN OFFICE SUPPLY

SAVINGS

We Give



THIS WEEK'S FREE
DISH: 1 elegant
"Gold Crown" China
CUP
With \$7.00 purchase
or over

Come Easy at

Cut Rate

with \$2.50 purchase or over otherwise 49¢
Salad Dressing Quart

Miracle Whip 39¢

Buccaneer
Stamps
Shurfresh
Ovenready
Biscuits 4 for 25¢

Campbells Tall Can
CHICKEN NOODLE Soup 2 for 33¢

Hi-C
Grape or
Orange Drink 4 for \$1
46 oz. Cans

Sweet-Juicy
-Golden-Delicious lb. **13¢**

Maryland-Sweet
Yams New Crop lb. 13¢

Medium-Sweet
Onions Spanish lb. 5¢

Pick-O-Morn-Pkg.
Tomatoes Pkg. 17¢

Lean Northern Cut
Picnic Cut
Pork Roast lb. 29¢

Lean Northern
Semi-Boneless
Nice & Lean
Pork Steak lb. 39¢

Sliced Swifts Premium
Bacon Sweet Smoked 59¢ lb.

Festival
Fully cooked-Boneless
Hams 1/2 or Whole lb. 98¢

Mortons Frozen 24 oz. Size
PIES Apple-Cherry-Peach 29¢

Mortons Frozen
MEAT PIES All Varieties 2 for 33¢

Chef-Boy-Ar-Dee Tall Can
CHILI with Beans 2 for 49¢

Chef-Boy-Ar-Dee Tall Can
TAMALES 2 for 49¢

Hunts Buffet Size
TOMATO SAUCE 2 for 19¢

Hunts 46 oz. Cans
TOMATO JUICE 2 for 49¢

Hunts no. 2 1/2 can
APRICOTS Whole 2 for 49¢

Krafts 18 oz. Tumbler
GRAPE JELLY 2 for 59¢

Shurfresh
MARGARINE CORN OIL lb. 29¢

Bordens Mellorine Half Gallon
CHARLOTTE FREEZE 45¢

Salad Oil 38 oz. Bottle
CRISCO OIL 59¢

Hunts Clings Tall Can
Peaches 6 for \$1

Hunts Solid Pac Tall Can
TOMATOES 2 for 29¢

Shortening
CRISCO 69¢
3 lb. Can

Maryland Club
COFFEE 79¢
lb. Can

Shurfine
Whole Kernal
Corn 2 for 29¢
303 Can

Shurfine Whole
Sweet Pickles 37¢
22 oz. Jar

Ken-L-Ration
DOG FOOD 3 for 39¢
Tall Can

Crowns 400 Count Box
Facial Tissue ZEE 4 for 89¢

Cut Rate

Week-End Values for Fri. & Sat. Sept. 25 & 26.

College Cost Increased

Continued increases in college costs are shown in a new nationwide survey by the U.S. Office of Education, reports Mrs. Wanda Meyer, Extension Service home management specialist.

Median tuition charges--the halfway mark between those that are higher and those that are lower--increased \$206 in private universities and colleges and \$49 in state and other publicly supported schools, the survey shows.

The median tuition in private institutions rose from \$534 for the 1958-59 school year to \$740 for 1962-63. The median at publicly supported institutions increased from \$134 to \$183 in comparison.

During the four-year period, tuition and student fees were upped by 98 percent of the private institutions, while in state-supported colleges and universities, 81 percent raised tuition and fees for state residents, and 91 percent increased charges to out-of-state students.

The latest survey does not reflect additional increases in tuition and fees effective in many institutions of higher learning with the beginning of the new academic year in September. These changes range from small amounts to "considerable" amounts.

The Office of Education did not report on charges for room rent and meals, Mrs. Meyer said. These costs reflect less change than tuition and vary less among private and public universities.

An earlier survey a year ago showed these annual averages: Public universities and colleges, \$189 for room and \$350 for board; private schools, \$231 for room and \$415 for board.



SCATTER PIN LEAGUE
Sept. 17, 1964

STANDINGS

TEAMS	WON	LOST
Anthony Elec.	8	0
Gruver Agency	8	0
Equity	6	2
G&G Foodliner	5	3
Millers	4	4
Floyd Lockers	1	7
Gruenwald	0	8
Bowl Mor	0	8

HIGH TEAM GAME

Miller	596
Equity	594
Anthony Electric	559

HIGH TEAM SERIES

Equity	1700
Millers	1656
Anthony Electric	1637

HIGH INDIVIDUAL GAME

Helen Dry	203
Ellen Reynolds	172
Kate Farris	167

HIGH INDIVIDUAL SERIES

Helen Dry	522
Jane Meek	453
Ellen Reynolds	434

PIN BENDERS LEAGUE
September 18, 1964

TEAM	WON	LOST
Lyon Insurance	7	5
The Malls	7	5
Lee Oil	5	7
Bowl Mor	5	7
Gruver Motors	5	7
Holiday Drive Inn	5	7
First State Bank	Incomplete	
McClellan Grain	"	

HIGH TEAM GAME

Lee Oil	469
Lyon Insurance	467
First State Bank	435

HIGH TEAM SERIES

Lee Oil	1337
Lyon Insurance	1259
Gruver Motors	1199

HIGH INDIVIDUAL GAME

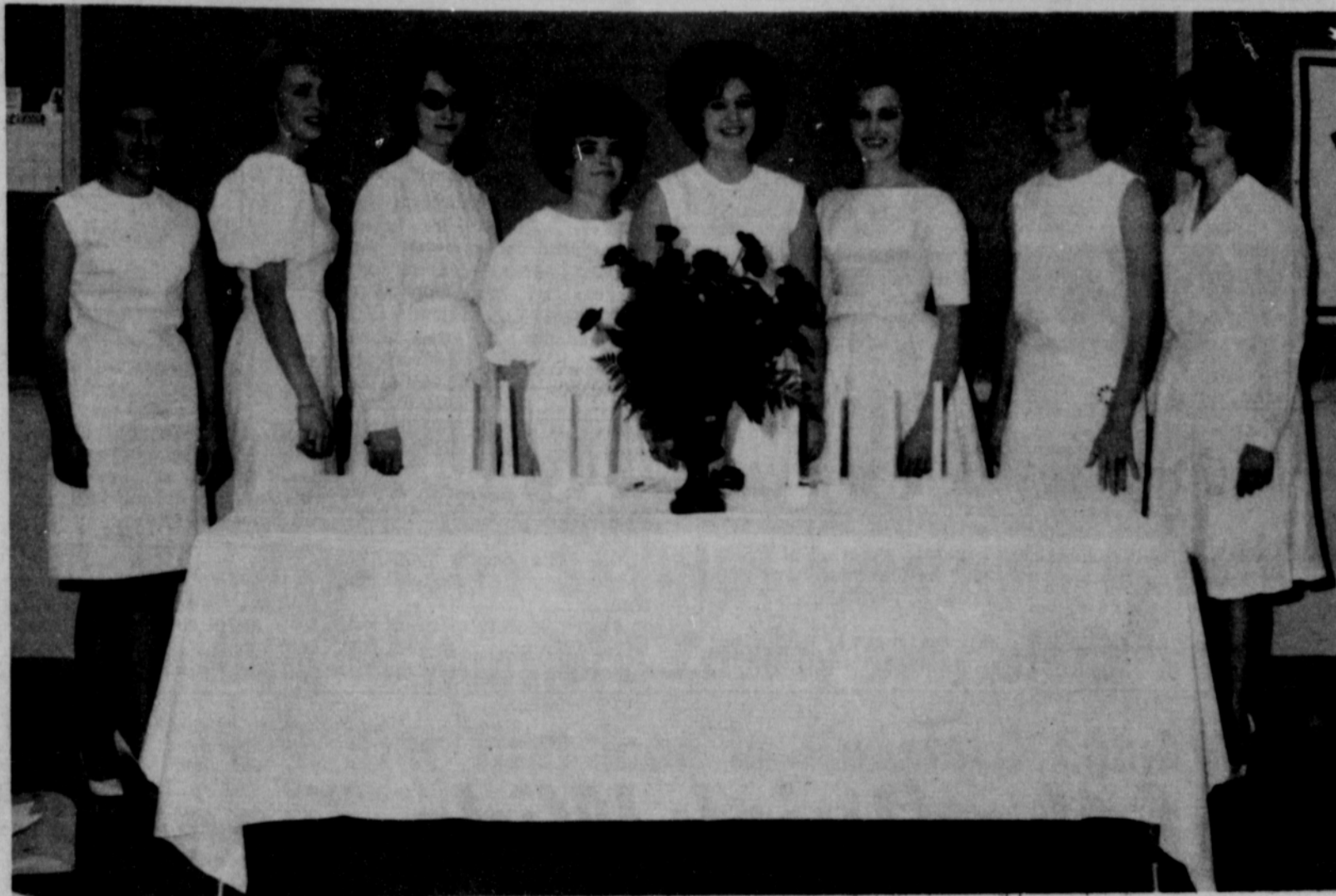
Velma Sanders	201
Gwen Reed	177
Gwen Reed	171

HIGH INDIVIDUAL SERIES

Gwen Reed	476
Velma Sanders	465
Ann Sanders & Helen Shapley	437

You can usually count on a large lime yielding two table-spoons of juice.

Of Interest to Women



FHA OFFICERS---These girls were installed recently as officers of Future Homemakers of America at Spearman High School. They are (left-right) Phyllis Davis, parliamentarian; Marnell Simmons, reporter; Dorothy Smith, treasurer; Shirley Ayers, vice-president; Linda Lesly, president; Susan Hutchison, secretary; Kyra Crum, historian, and Patsy Kinglsey, song leader. Mrs. Frances Hudson is sponsor of the group.

PLAINSMAN PHOTO

Poisonous Plants Studied As Gladiola Club Program

The Gladiola Flower Club met Thursday, September 17 at the Hospitality Room of the First State Bank with Jackie Banks as hostess.

The president, Sylvia Robertson, presided at the business meeting. Roll call was answered by naming a poisonous plant grown in your own backyard.

Jo Larson won the borrowed floral arrangement with rose colored baby zinnias in a wicker basket.

Jackie Banks presented the program on "Poisonous Plants in Your Backyard" naming as poisonous, peach tree leaves, rhubarb leaves, tomato plant leaves, mistletoe berries, poinsettia leaves, potato plant leaves, cherry tree leaves and many other common plants.

Attending were Dorothy Faye Baggerly, Jackie Banks, Wanda Brown, Coleen Brummett, Betty Jean Davis, Dorothy Haner, Estelle Jackson, Gloria Knox, Jo Larson, Sherry Parridge, Sylvia Robertson, Alice Snyder and Gwen Smith.

Mrs. Barnes Gives Program

The Happy Homes Home Demonstration Club met Thursday, Sept. 17 in the home of Mrs. F.B. Schubert.

The program was presented by Adalyn Barnes.

Attending were Mmes. Barnes, Kenneth Evans, Johnny Gaither, Fred Groves, Harold Groves, Johnny Vardel, two guests, Mmes. James Roy Patterson and Don Hendricks, and the hostess.

46 Girls Compete In State Fair Dress Revue

Forty-six girls will compete in the 1964 State 4-H Dress Revue in Dallas, Oct. 16 and 17 in conjunction with the State Fair of Texas.

The 4-H girls have qualified for the state finals by being judged winners in their respective Extension Service districts of Texas.

Judging will take place Oct. 16. Two public presentations of the dress revue will take place at 10 and 11 a.m. Oct. 17 in the Women's Building of State Fair Park.

Mrs. Jessie Southworth, fashion coordinator for Sanger-

Rummage Sale

Rho Rho Chapter of Beta Sigma Phi is sponsoring a rummage sale Saturday, Sept. 27 in the old city hall building. The sale will open at 8:30 a.m.

Anyone who would like to contribute rummage to the sale should call Delores Healer at 3304 or Donna Conrey at 3080, and the rummage will be picked up.

Harris, Dallas, will again serve as commentator for the fashion show. Escorts for the contestants will be 4-H Club boys who are this year's State Fair of Texas Honor Award winners.

The state dress revue winner will be awarded an all-expense trip to the National 4-H Congress in Chicago, Nov. 29-Dec. 3, and will model her ensemble in the national 4-H Dress Revue. Donor for the dress revue award program is the Simplicity Pattern Company.

A special award will be made to the 4-H girl with the most outstanding cotton garment. The Texas Cottonseed Crusher's Association will present a \$50 certificate for the purchase of cotton fabric and accessories to this winner.

Finalists in the state dress revue, determined on a percentage basis, represent approximately 15,790 girls enrolled in clothing work this year. The enrollment figure reflects a slight upward trend in membership over last year.

Day by Day

One of the cutest parties I've been to in a long time was the suitcase rush party last week given by Rho Rho Chapter of Beta Sigma Phi, planned by Beth Fox, Caulene Mason, Bobbie Novak, Kay Nollner and Marva Hohertz.

The highlight of the morning was when everyone donned whatever apparel they found in the suitcase with the number they drew. Mary Kathryn Parris looked exactly like a Beverly Hillbilly in an old-fashioned dress, bonnet, little glasses down on her nose and huge plow shoes. Lucile Lewis won the prize in a baseball outfit and another who was very funny was Caulene Mason in an ancient band uniform, brought incidentally by Helen Watson, (naturally).

I drew the suitcase brought by Jane Meek and among other things she packed a fur collar (she said it had been in the basement for years and was one she took off to college). To go with it she searched until she found a striped jersey bathrobe, red beret and high heels.

While we were eating lunch and talking about the delicious cornbread sticks that were served with the meal, someone said she wished she could make good cornbread.

That's sort of a family joke at our house because when I married that's the only thing I knew how to cook. I could just about make cornbread to perfection but for a steady diet, it got a little dull.

Anyway, I said I'd put my cornbread recipe in my column and that I will. For those who prefer cake-like cornbread though, let me warn you not to try my recipe. It's crisp and tastes best baked in sticks and served piping hot.

CORNBREAD STICKS

1 egg
1/2 cup sweet milk
1 tsp. baking powder
1 tsp. salt
1 cup yellow corn meal.

Grease cornbread stick pan and put over heat to let grease get hot enough to smoke. Mix ingredients and fill sticks about 3/4 full. Bake at 400 degrees for 15 minutes or until golden brown.

In case this recipe isn't the type cornbread my friend had in mind, here's another recipe I found in a cookbook of old Southern recipes printed in 1936 and dating back, I judge, much, much further than that. It has a different texture and taste.

CORNBREAD

1 cup buttermilk
1/2 tsp. soda
1 cup cornmeal
1 egg
1/4 cup flour
1 tbs. melted fat

Mix and bake in shallow pan or skillet in hot oven.

In looking at this book "Selected Southern Recipes" published by Progressive Farmer magazine, I found many recipes for foods I'd always heard of, but never tasted. Like hoecakes, short'nin' bread, terrapin stew and 'possum and sweet taters.

Many of them I'd like to try, others, to me, sound plain gruesome. The instructions for skinning the terrapin for the stew, for an example, sent me rushing on to another page.

One thing I did notice though about the recipes. They list the ingredients but give very few instructions. I guess Southern cooks figured everyone knew the right way to stir up a cake or cook a pie.

Mrs. Brock Discusses Democratic Platform

The Xi Zeta Upsilon Chapter of Beta Sigma Phi met Monday, Sept. 21 in the home of Dorcas Collard.

The coming birthday of little Robert Madding, whom the chapter sponsors at the Denton

State School, was celebrated by bringing useful gifts for him. The Candy Strippers, high school girls interested in nursing, who are sponsored by the chapter will soon be receiving their pins and uniforms. Most of them are working to complete their hours for this award.

President Elsie Mathews introduced the program at the conclusion of the business meeting.

The study was "The Democratic Party and Platform" and was given by Mary Brock. The review included the basic points of the Democratic platform, comparisons of key points between the Democratic and Republican platforms. An interesting summary by Judge Max Boyer, of his trip to the national convention as an alternate delegate was read. Other sources of information were J.D. Helms, County Democratic Chairman and H.M. Baggerly, Tulsa Herald editor.

Attending were Mmes. Elsie Mathews, Ruth Skinner, Lois Gibner, Helen Watson, Joan McClellan, Gertrude Jones, Elvona Davis, Mona Beth Windom, Alberta Jefferies, Ruby Lair, Betty Brown, Mary Brock and the hostess.

Spanish American Study Continued

The Mary Martha Circle of WSCS met September 16 in the parlor of the First Methodist Church with Freda Sheets as hostess.

The meeting was opened with prayer and the business session was conducted by Minnie Jones. Mary Sansing read the minutes from the last meeting. Members needing to renew their subscription to the "Methodist Woman" were asked to do so by October 15. The circle voted to buy prayer books for each member.

Grace Lyon gave the devotional on talents and Dorcas Collard continued the study on Spanish Americans through the use of a floor arrangement of articles picturing the culture of Spanish people. A group discussion was held following the program. Background Spanish music was played throughout the program and discussion.

Refreshments were served by the hostess to Vera McClellan, Williams, Lyon, Sansing, Jones, Collard, and Mary Lee.

Homemaking Notes

by Linda Webb

Your household equipment and furnishings represent a major investment to you, so to protect your investment you need to give it the care and protection it deserves.

Today I have some hints for you in caring for these investments.

Appliances, such as electric blenders, mixers, toasters, roasters, and even washing machines, should be protected with plastic covers tailored for the individual piece.

Wash equipment after each use, and keep it clean until it's needed again.

Most homes don't have sufficient cupboard space for everything, so washable dust covers are good insurance for longer equipment life.

RECIPE

Breakfast is (or should be) the most important meal of the day. Starting off with a good meal makes the entire day brighter. Breakfast appetites quite often get dull on the "same old thing". Here is a new recipe which might brighten up breakfast at your house.

DOUBLE-MAPLE MUFFINS

1 1/2 cups sifted all purpose flour
1/4 cup sugar
3 teaspoons baking powder
1/2 teaspoon salt
1/4 cup shortening
3/4 cup Quaker or Mother's Oats (Old fashioned or quick)
1 egg beaten
1/2 cup milk
1/2 cup maple-blended syrup

Sift together flour, sugar, baking powder and salt. Cut in shortening until mixture resembles coarse crumbs. Stir in oats. Add egg, milk, and syrup. Stir only until dry ingredients are moistened. Fill greased medium sized muffin cups 2/3 full. Bake in pre-heated hot oven 400 degrees for 18 to 20 min.

GLAZE

Combine 1 tablespoon soft butter, 1 tablespoon maple syrup and 1/4 cup sifted confectioners sugar. Beat thoroughly. Drizzle over hot muffins.

Attending were Mmes. Guy Fuller, C.A. Gibner, Joe Trayler, Freeman Barkley, Nolan Holt, F.J. Daily, Fred Hoskins, a guest, Bessie Seiz from Pilot Point and the hostess.

The next meeting will be held September 25 in the cabin of Mrs. F.J. Daily in Valle Escondido at Taos, N.M.

Club Meets In Hospitality Room

The Northern Natural Ladies Club met Tuesday afternoon in the Hospitality Room of the First State Bank. Marilyn Webb and Jackie Banks were co-hostesses for the meeting.

Jay Reimund, president, presided at the business meeting and Patty Spoonemore, secretary, read the minutes of the previous meeting.

Final plans were made for the club to host the Senior Citizen's party Monday night, Sept. 28 in the HD Clubroom.

Refreshments were served to Patty Spoonemore, Frankie Grange, Fern Welch, Mary Brown, Jay Reimund by the hostess.

Women Give CWF Program

The Christian Women's Fellowship met in the Fellowship Hall of the First Christian Church September 16.

The meeting was opened with the CWF prayer. A business session was held after which Dorothy Haner led with prayer.

Margaret Evans gave the devotional from Ephesians.

Lucy Mundy and Ada McLain presented the program on "Thine is the Kingdom".

The meeting was closed with the CWF benediction.

The Tuesday Night Circle served refreshments to the following: Lucy Mundy, Kay Vernon, Dorothy Haner, Margaret Evans, Coleen Brummett, Ada McLain, Eleanor Reed, Virus Wilbanks, Estelle Jackson, Hazel Wilbanks, Betty Davis, Nan Nicholson and Sandra Russell.

Art Guild Meets In Russell Home

The Arts and Craft Guild met Friday, September 18, in the home of Mrs. W.L. Russell.

The afternoon was spent china painting.

Community Building.

Social Calendar

Thursday, September 24, 1964

Rho Rho Chapter of Beta Sigma Phi will meet at 1:00 in the home of Joyce Lackey.

The Rebekah Lodge will meet at 7:30 p.m. in the IOOF Hall.

The Rainbow Girls will meet at 7:30 in the Masonic Lodge.

Friday, September 25, 1964

The Arts & Craft Guild will meet in the cabin of Mrs. F. J. Daily near Taos, N.M.

Meeting of Child Evangelism Leaders at First Christian Church at 2 p.m.

Good News Bible Club for boys and girls will meet at 4 p.m. at the L.M. Womble home, 1010 Blodgett Drive.

Saturday, September 26, 1964

Rummage Sale sponsored by Rho Rho Chapter of Beta Sigma Phi to be held in the Bill Russell building beginning at 8:30 a.m.

DoSiDo Club will have a club dance at 8:00 p.m. in the

Sunday, September 27, 1964

Open house at Pioneer Manor from 2 to 6 p.m. sponsored by the B&PW Club

Monday, September 28, 1964

Hansford County HD Club will meet at 2:00 p.m. in the home of Mrs. H.H. Chevalier.

Delphinium Flower Club will hold its annual patio dinner at 6:30 at the Sam Henderson home. Films will be shown.

The Dahlia Flower Club will hold its annual dinner at Grunewald's Restaurant at 7 p.m. J.D. Helms will be the speaker.

Tuesday, September 29, 1964

Lions Club will meet at noon at Grunewald's Restaurant.

Toastmasters Club will meet at 7:30 at Grunewald's Restaurant.

Wednesday, September 30, 1964

General meeting of WSCS to be held at Methodist Church parlor at 9:00 a.m.

Thursday, October 1, 1964

Jaycees meet at 6:30 a.m. at Grunewald's Restaurant.

Catechism Classes

Begin Sunday

Catechism classes for 40 children of the Sacred Heart Catholic Church parish began Sunday, Sept. 20. These classes will continue to be held each Sunday after mass throughout the school year.

The classes and their teachers are: First Communion Class—Mrs. C.A. Davis, Jr.; Second and Third Grades—Mrs. Jack Moran; Fourth, Fifth and Sixth Grades—Mrs. Battenhorst; Seventh and Eighth Grades—Mr. John Hickey; High School—Mrs. Frank Porter. The classes are using material published by the confraternity of Christian Doctrine. The high school group will undertake an extensive study of the Liturgy.

Brunch for the parish will be held October 4, immediately after Holy Mass. The members of the Altar Society will have baked goods for sale at this time.

Altar Society meeting will be held Tuesday, October 6 at 7:30 p.m. The program will

United Nations

Program Given

The Susannah Wesley Circle of WSCS met Sept. 16 with Myra Grimes as hostess.

The devotional was given by Judy Martin and Mary Brown.

The lesson was given by Barbara McClellan and Verna Strawn. The study is "The United States and The New Nations".

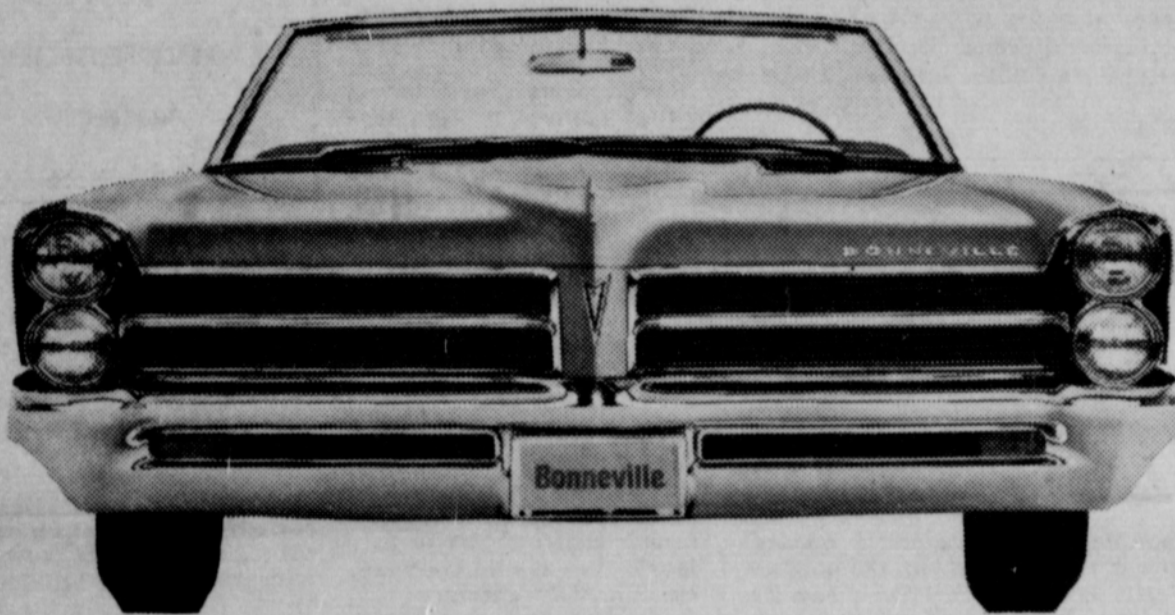
Attending were Joan McClellan, Verna Strawn, Bette Brummett, Barbara McClellan, Sherry Partridge, Myra Grimes, Virginia Head, Judy Martin, Mary Brown, Louene Hutchison, Virginia Trindle and Donna Bowen.

Mr. and Mrs. Will Douglas attended the golden wedding anniversary of her aunt and uncle, Mr. and Mrs. E.C. Huddleston, in Forgan, Okla.

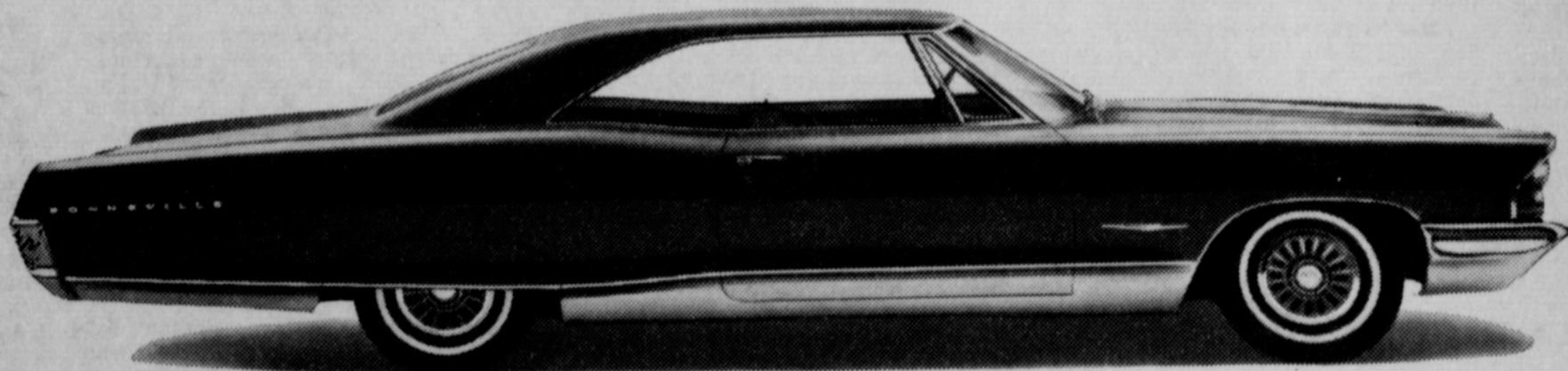
be presented by the Youth Committee. Members will bring wet mops and cartridge fountain pens for the Panhandle Children's Home.

Today is '65 Pontiac Day.

1965: The year of the Quick Wide-Tracks

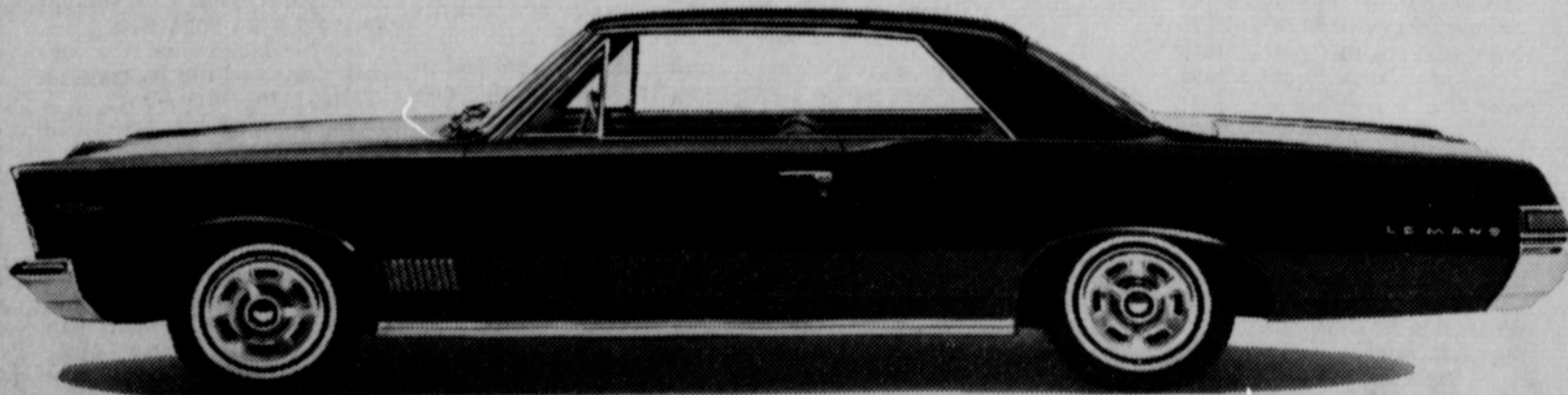


What do we mean by "quick"? Just this: A new-all-over Pontiac Pontiac offering a new Turbo Hydra-Matic—the silkiest, swiftest-shifting automatic transmission you ever touched a toe to; eager new Trophy V-8 power; new steering agility; a surer-footed Wide-Track ride. And a new Pontiac Tempest that's become even more of a Pontiac with new style, new length and Pontiac-quick reflexes to match. You never knew cars could be so beautiful, and so keenly alert to your touch. This is your year to drive a Wide-Track—quick!



'65 Pontiac Pontiac

How does the success car outdo itself for 1965? Beautifully, just beautifully. But this Pontiac has no intention of getting by on looks alone, though it could. So there's new quickness, Pontiac style. A new nimbleness. New fuel savings. A smooth, easy new ride. Drive a '65 Pontiac and see how one success leads to another.



'65 Pontiac Tempest

Tempest's even more of a Pontiac now, and what more could a car be than that! The '65 Tempest looks like a Pontiac, as you can see. Rides like a Pontiac on Wide-Track. Goes like a Pontiac, too: a 140-hp six is standard. Or you can get a quick V-8, up to 285 hp. You'll wonder how we can keep the price so low on so much car.

SEE THE NEW BONNEVILLE, STAR CHIEF, GRAND PRIX, CATALINA, LE MANS AND TEMPEST—AT YOUR AUTHORIZED PONTIAC DEALER

NORTH PLAINS TRUCK & IMPLT., INC.
HIGHWAY 15 SPEARMAN, TEXAS

what is a friend worth ?

We at PERRYTON SAVINGS have tried to be a friend to our friends & neighbors in Hansford County ever since we opened for business in March of 1959. Our first loan in Hansford County was made in July of 1959.

HERE IS OUR RECORD OF SERVICE SINCE THAT TIME —

YEAR	LOANS MADE
1959	\$45,000.00
1960	\$76,500.00
1961	\$150,200.00
1962	\$330,850.00
1963	\$220,600.00
* 1964	\$199,800.00

* The 1964 figure covers loans and commitments through Sept. 15 - 8 1/2 months

IN ADDITION TO THE ABOVE LOANS, A NUMBER OF HOME IMPROVEMENT LOANS HAVE BEEN MADE TO HELP PEOPLE LIVE BETTER IN HOMES THEY ALREADY OWN.

OUR FRIENDS

IN HANSFORD COUNTY HAVE BEEN GOOD TO US & WE THINK YOU'RE WORTH FIGHTING FOR --

WHAT DO YOU THINK?

Perryton Savings & Loan Association

214 S. Main

Perryton, Texas

Come to Church

Church Directory

Apostolic Faith Church
Roland Haney, Pastor
Sunday School 10:00 a. m.
Morning Worship 11:00 a. m.
Evening Worship 7:00 p. m.
Thursday Fast and Prayer Service 9:30 3:00

Assembly of God Church
Rev. Vance Barker, Pastor
Sunday School 9:45 a. m.
Morning Worship 11:00 a. m.
Evening Worship 7:30 p. m.
Wed. Bible Study 7:30 p. m.

Church of Christ
Charles Milner, Minister
Sunday School 10:00 a. m.
Worship 11:00 a. m.
Worship 7:00 p. m.
Wed. Ladies Bible Class 9:30 a. m.
Wed. Bible Study 7:30 p. m.

Fellowship Baptist Church
W. S. Herring, Pastor
Sunday School 10:00 a. m.
Preaching Service 11:00 a. m.
Sunday Evening Service 7:30 p. m.
Wed. Evening Service 7:30 p. m.

First Christian Church
Rev. W. Graham Pugh, Minister
Sunday School 9:45 a. m.
Morning Worship 11:00 a. m.
Youth Meetings 6:00 p. m.
Evening Worship 7:30 p. m.
Wed. Choir Practice 7:30 p. m.

First Baptist Church
Rev. Luther M. Berry, Pastor
Sunday School 9:45 a. m.
Morning Worship 10:45 a. m.
Training Union 5:30 p. m.
Evening Worship 6:30 p. m.
Wed. Evening Prayer Hour 7:30
Wed. Choir Rehearsal 8:45 p. m.

Oslo Lutheran Church
18 Mi. N. W. of Gruver
Robert L. Cordes, Pastor
Sunday School 9:45 a. m.
(includes adults)
Worship Services 11:00 a. m.

First Methodist Church
Brother Charles Gates, Minister
Sunday School 9:45 a. m.
Morning Worship 11:00 a. m.
M. Y. T. 6:30 p. m.
Evening Worship 7:30 p. m.
Women's Society of Christian Service Wednesday 3:00 p. m.
Choir Rehearsal 7:30 p. m.

First United Presbyterian Church
Everett H. Cain, Jr., Pastor
11th and Cotter Drive
Sunday Church School 9:45 a. m.
Morning Worship 11:00 a. m.
Evening Study Group 7:30 p. m.
Wed. Choir Practice 7:30 p. m.

Pentecostal Church
Sunday School 9:45 a. m.
Morning Worship 11:00 a. m.
Evening Worship 7:30 p. m.
5th & Hazelwood

Sacred Heart Catholic Church
Rev. Fr. Fred Hyland
Sundays 10:00 a. m.
Catechism Classes 11:00 a. m.
Week Days
Mon., Tues., Fri., Sat. 8:00 a. m.
Holy Days of Obligation 7:30 a. m.
First Friday of Month 7:00 a. m.

Spearman Lutheran Mission
Farm Bureau Bldg. - Spearman
Robert Cordes, Pastor
Worship Services..... 9:00 a. m.
Sunday School..... 10:00 a. m.

Union Full Gospel Church
Rev. George R. Bollinger, Pastor
Sunday School 10:00 a. m.
Morning Worship 11:00 a. m.
Bible Classes, Sunday 6:45 p. m.
Evening Worship 7:30 p. m.
Wed. Bible Study 7:30 p. m.

THE WAY I SEE IT

Robert Cordes, Pastor Oslo & Faith Lutheran GUIDANCE NEEDED
A party started to ascend Mt. Washington, when the motel proprietor urged them to take a guide. They said, "We are determined to find our own way to Tip-Top House." "But," the guide said, "I'll guide you for nothing." "No, we won't have you, even for nothing; we want to do something that will astonish our friends." "But it is very dangerous." "We are strong and will risk it."
Near the top a snowstorm swirled down upon them. "Oh, how I wish we had that guide now!" said one. Darkness

came on, and they were lost in the deep swirling snow. Two ladies, who could not walk another step, sank down in the deep cold snow. In the morning the storm cleared away, and as the keepers of the house looked out, they saw, only a little way off, the half-buried party. They went to them at once, but it was too late to save one lady, who had frozen to death during that awful night; and all because she, with the rest, said, "We don't want the guide."
How many persons today in the Texas Panhandle are like those people. As they...or you...go on life's journey, they too are offered a "Guide"

Attend Meeting
Mines. Pete Fisher, Deta Blodgett, Ned Turner and Moody Womble of Morse attended the Annual Grand Chapter Sessions of the Colorado Order of Eastern Star last week in Colorado Springs.
Mrs. Deta Blodgett is the Grand Representative of Texas to Colorado.

without any cost. The "Guide" would make our pathway so much easier to walk. But, too many shake their heads and merrily go on their way without accepting the Divine Guide. In so doing things of the world overtake and life--- spiritual life---is snuffed out. Such persons never reach the blessed haven where "The Guide" Jesus Christ is patiently waiting to receive with open arms.

Jesus said to them, "I am the bread of Life; he who comes to Me shall not hunger, and who believes in Me shall never thirst. (John 6:35)
Have you accepted Jesus as your Spiritual guide, even your Savior? Why stumble in the snowstorms of life? Why do it yourself? "There is no other name given under heaven by which men may be saved."
Are you stubborn? Allowing other things to interfere? Come, says Christ, I am the Good Shepherd. I lead My sheep to green pastures.

FOR ALL YOUR FLORAL NEEDS
PHONE
659-2593
Spearman
FLORAL GIFTS
YOUR FULL SERVICE FLORIST PLAINS SHOPPING CENTER



HAVE A DREAM KITCHEN WITHOUT REMODELING!



NOW! BEAUTIFUL ELECTRIC RANGES THAT LOOK LIKE BUILT-INS, FIT ANY KITCHEN

If you've longed for a more modern kitchen but would like to avoid inconvenience and expense of extensive remodeling, this is for you. Smart new styling in dependable, flameless electric ranges makes it possible to quickly and easily transform your kitchen into something very special. And because electricity is flameless, you have the cleanest and coolest cooking method available today. With accurate, automatically controlled heat on all four surface units and in the large oven, you are assured perfect results every time you cook. Put new beauty and carefree cooking in your kitchen with a flameless electric range. See your dealer soon!



Sponsored By These Progressive Merchants

R.L. McClellan Grain Co., Inc.

B & B Grain Co., Inc.

First State Bank

Member F.D.I.C.

**MORSE
CODE**

now! the beautiful shapes for '65

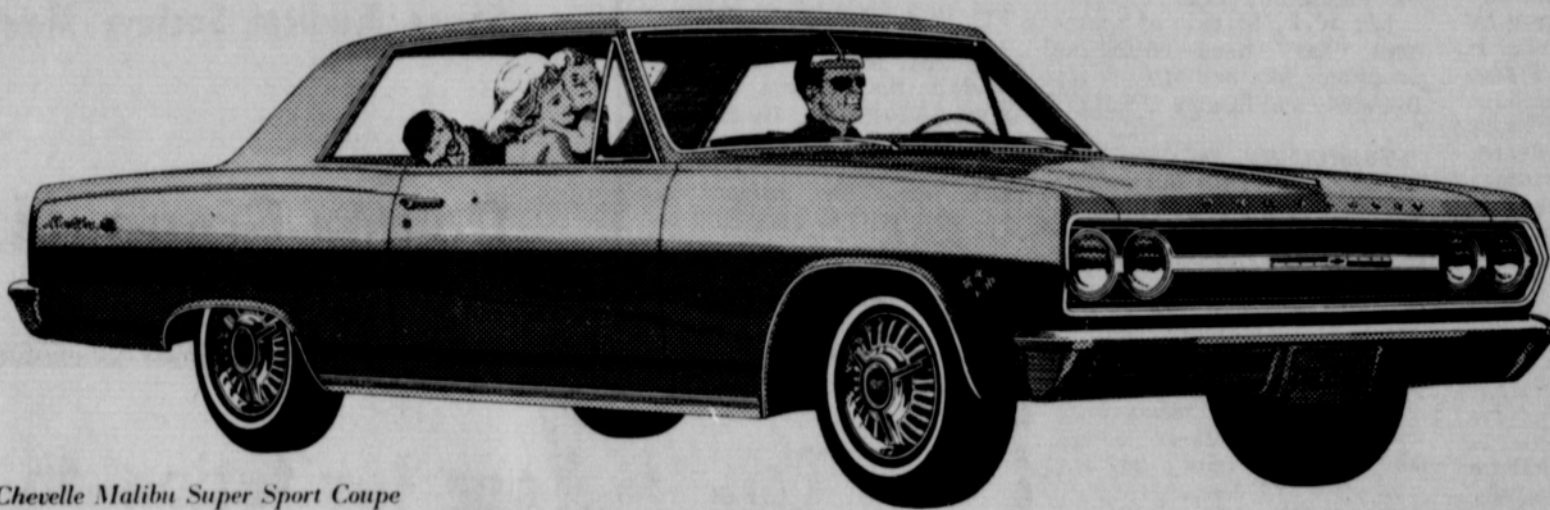


'65 Chevrolet Impala Sport Sedan

**Chevrolet
Impala '65**

It's longer, lower, wider—with comforts that'll have many an expensive car wondering why it didn't think of them first. More shoulder room, more leg room up front. Curved side windows, an

instrument panel that's a conversation piece. In fact, just about everything's new right down to the road. And even that'll seem newer because the Jet-smooth ride is smoother than ever.



'65 Chevelle Malibu Super Sport Coupe

**Chevelle
Malibu '65**

Here's all that made Chevelle America's most popular new-sized car—plus some new surprises. Like those cleaner, bolder lines. Like the silky way its new ride skims over the choppiest roads. Like

V8 power that'll make you think we stole some of Corvette's stuff—which we did. All told, five engines are available from a quieter six to a V8 that comes on 300 horses strong.



'65 Chevy II Nova 4-Door Sedan

**Chevy II
Nova '65**

It may be the expensive-est looking thrift car you've laid eyes on. But thrifty it is. The big difference being that Chevy II's marvelous mechanical efficiency now wears a debonair new look. And

offers a new range of engines, including a new 300-hp V8. You could get the idea that saving you money was the last thing we had in mind—if it weren't for that price sticker on the window.



New top-of-the-line Corvair Corsa Sport Coupe

**Corvair
Corsa '65**

How's this for sport with an international flair! The longer, wider design gives all closed models a hardtop roof, along with more shoulder and entrance room. And to go with the racier look,

there's up to 180 hp available in the new Corsa series, up to 140 hp in the Monza and 500 series. Also a flatter riding independent suspension, more responsive steering and a wider road stance.



See 5 beautiful shapes for '65—Chevrolet, Chevelle, Chevy II, Corvair & Corvette—at your dealer's

42 8055

EXCEL CHEVROLET

SPEARMAN, TEXAS

120 MAIN

659-2541

4-H CLUB SUNDAY
Sept. 25 through Oct. 3 is National 4-H Club week. The Morse 4-H clubs will observe Sunday, Sept. 27, as 4-H Sunday by holding church services at the Morse School Auditorium at 7:30 p.m.

Rev. Harold Fleming will bring the message and 4-H junior leaders will be in charge of the service.

Everyone is invited to attend.

YOUTH REVIVAL

On Monday and Tuesday nights, Sept. 28 and 29, Rev. Kenneth Wyatt, pastor of the Paducah Methodist Church, will be at the Morse Methodist church to hold a youth revival.

Meeting time is 7:30 p.m. and this is community wide for youth only.

LIONS GIVE TO EYE BANK

Morse Lions Club was the first club in District 2T1 to contribute 100% to the Hi Plains Eye Bank. There are over 60 clubs in this district.

The Eye Bank is holding a glaucoma detection clinic for persons over forty years of age, on Oct. 1 at 7 p.m. in the Potter-Randall Medical Bldg., 411 Austin, Amarillo.

If any person is having any eye difficulties, they are welcome to have this examination. For further information contact Paul Preall, director of Eye Bank, at Morse.

GOOD NEWS CLUB TO MEET

Good News Club will meet each Wednesday afternoon at the home of Mrs. Tom Dortch. Pre-schoolers and first graders will meet from 3 to 4 p.m. and older children from 4 to 5 p.m.

Mrs. Roberta Kelly underwent surgery on her eye at St. Anthony's Hospital last week. She is recovering nicely and expects to be home by the end of the week.

Mrs. Mary Brown, speech teacher in Morse school, has organized an art class which is meeting each Monday night at the school. This will be a series of ten lessons.

Ray Kelly is in New York City where he is attending the Art Student's League.

Mr. and Mrs. Tom Dortch were dinner guests on Sunday of her parents, Mr. and Mrs. A.L. Blankenship of Gruver.

The Mustangs will go to Forgan, Okla., this Friday night to play football.

Lynn Davis, finance chairman of Morse Lions Club, reports the trap shoot held Sunday afternoon was a success. The money will be used to finance Lions projects throughout the year. Plans call for a shoot once a month.

Lions L.M. Womble, H.B. Parks, Dan Ruttman and Grant Miner visited the Dumas Evening Lions Club Thursday, Sept. 17.

On Sunday afternoon Lions H.B. Parks, Grant Miner and Paul Preall went to the Zone meeting at Borger.

Saturday a group of Lions worked on the water stand. The stand has been made more solid and will have proper drainage so as to prevent freezing during the winter when needed most by ranchers. Those participating were Lions Davis, Bontke, Bynum, Scribner and Kid Womble.

Sunday afternoon Alta Fisher, Deta Blodgett and Faye Palmer attended a tea given in Borger for Mrs. Robble Yates, Grand Examiner of the Order of Eastern Star, from Stratford.

Mr. and Mrs. P.A. Lyon and Mr. and Mrs. Freeman Barkley visited Sunday in Dalhart. They attended the services of the new Lakeview Methodist Church and visited with Mr. and Mrs. Frances McClesky and Mr. and Mrs. Howell McClesky.

Mrs. Nettie Phelps is visiting this week with her sons, Jack Phelps in Weatherford, Okla., and Clifford Phelps in Yukon, Okla.

Prospects Improving On Needed Amendment

Prospects seem improved, at this writing, for approval by Congress this year of a Constitutional amendment to permit one of the two houses of a State legislature to be based on representation factors other than population. A two-thirds vote of each House of Congress would be necessary to send a Constitutional amendment to the States, where ratification by three-fourths of the States' legislatures would be necessary before it could become part of the Constitution.

As I have stated before, no Federal action in recent years poses a greater threat to sound State government than does the June 15 decision of the U.S. Supreme Court requiring that both houses of State legislatures be structured on population grounds, in accordance with the Court's "one man, one vote" dictum.

It is estimated that in our State of Texas, carrying out the intent of the Court decision would concentrate 17 of the State's 31 State Senators in only five of the 254 Texas counties. Similar concentrations would occur in State after State. It is easy to envision under such circumstances an absence of responsiveness in State legislative halls to all problems save those in which big cities have a direct stake.

I have commented before on trends that have occurred in the national legislature, the U.S. Congress, sapping the strength of what was once known as the "farm bloc." The "farm bloc" was a cohesive force of representatives from rural and semi-rural constituencies who banded together in the 1930's to advance programs returning America's agricultural economy from the grip of severe depression. They were the men who best understood the problems of America's farmers, small towns, and small cities and were able to bring an end to

years of punishment America's farmers had suffered at the hands of other segments of the U.S. economy.

There is no longer a "farm bloc" in Congress because America's population has shifted to urban and suburban areas and representation in Congress has generally followed this shift. It is now estimated that seven out of ten members of the U.S. House of Representatives come from primarily urban areas. In order to obtain the support of these so-called city members for farm legislation, they have required steady salesmanship to know that a sound agricultural economy is essential to a sound national and non-agricultural economy. But it is becoming increasingly difficult to obtain support from city members on needed farm legislation.

I cite two examples in this 88th Congress: One is the so-called "bracero" program by which seasonal farm labor is brought to the United States from Mexico to assist in harvesting highly perishable crops. Last year the program was extended by narrow margin. Obtaining another extension is being made extremely difficult because of city opposition. Another problem reflecting the weakened voice for agriculture is that involving allocations of the U.S. sugar supply. A substantial allocation to American farmers of the right to produce additional sugar for American tables would provide a helpful stimulus to the U.S. farm economy. However, interests aligned against permitting domestic expansion possess great strength in Congress.

Congress is concerned, in the main, with two prime national responsibilities: national defense and national economic vitality. The states have sought many forms of assistance from the Federal gov-

Holt News

Mr. and Mrs. Wesley Jenkins were Monday night guests of some former Spearman residents, Mr. and Mrs. Walter Good of Hereford.

Mrs. Richard Gaines was honored with a birthday party Sept. 15. Gifts were presented to the honoree and refreshments were served to Mmes. Raymond Kirk, Berda Holt, Bertha Jenkins, C.W. Kirk, Owen Pendergraft, Charles Davis, Phil Jenkins, Travis Reger, Oliver Jones and Maude Rosson.

Mrs. Raymond Kirk attended a coin show Saturday in Guymon.

Mr. and Mrs. Forrest Francis of Kenton, Okla. were Monday night guests of Mr. and Mrs. Dan Jackson. They were enroute to Cheyenne, Okla. to do some fishing.

Mrs. Bertha Jenkins spent the weekend visiting her daughter, Mr. and Mrs. Bob Tevebaugh and Robert at Claude.

Mr. and Mrs. Doyle Jackson attended a Tupperware Party Thursday in the home of the Bob Phelps at Forgan, Okla.

Mrs. W.L. Mackie of Spearman has been visiting her daughter, Mr. and Mrs. Buddy Dickens and family at Baker, La.

Guests of Mr. and Mrs. T.I. Harbour are his brother, Walter Harbour of Mineral Wells, and two sisters, Mrs. May Bradley of Quanah and Mrs.

ernment, including help in the form of grants-in-aid for specific programs. The States desire to administer these programs themselves. Handling grants-in-aid has become one of the functions of State legislature and State administrative agencies. Should State legislative power be concentrated through "boss rule" in a few areas, it is easy to conceive of situations in which decisions on grant-in-aid programs could become tools for solidifying political monopoly, and no effective counter voice could be raised from areas where representation is scattered.

Smith Shows Art at PAMC

GOODWELL. Currently showing in the Gallery of the No Man's Land Historical Museum is a 28 panel show of watercolors of Colorado's high country by Sam Smith, Albuquerque artist.

Mr. Smith's painting will remain in the Gallery throughout September and will be shown in the Gallery of the Panhandle-Plains Historical Museum at Canyon, in October.

The artist is a member of the faculty of the College of Fine Arts at the University of New Mexico. He was born in West Texas and grew up in the Texhoma, Dalhart area and in Albuquerque. His paintings have been exhibited at the White House, the Pentagon, National

Vallie Leflett of Pampa. Mr. and Mrs. Richard Gaines and family were Sunday afternoon callers of the Bill Brown's at the Spearman Phillips Booster Plant.

Sunday afternoon guests of Mrs. B.C. Holt were Mmes. Annie Harris, Lorene Williams, and Vera Anderson of Morse.

Mr. and Mrs. John Campbell and Mrs. Medlin Patterson attended the funeral of Edgar Neal Thursday afternoon at Dumas.

Monday night guests of Mr. and Mrs. Dan Jackson were Mr. and Mrs. George Ferguson of Lubbock.

Holt Community received .80 inches of rain the past week.

Museum, Corcoran Gallery and the Metropolitan Museum of Art in New York City.

Sunday night dinner guests of Mr. and Mrs. Tom Sutton were Mr. and Mrs. Jimmy Gilliam from Pampa.

Protect your credit, pay your accounts promptly.
RETAIL CREDIT
CORP. OF SPEARMAN

My office will be closed

Sept. 29

Through

Oct. 4

while I attend the FAA Aero

Space Medical Society Meeting.

Damon Gregg, M. D.

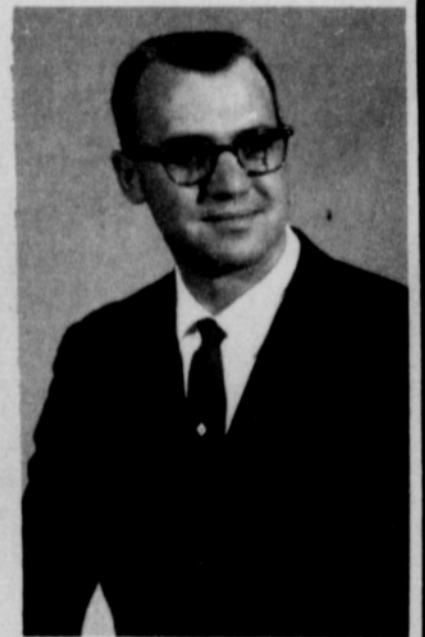
This is Your Invitation to Hear Christ Proclaimed



Guy V. Caskey
Pampa, Texas

Sept. 28

Oct. 4



Bill Blackstone
Groom, Texas
SONG DIRECTOR

Services:

10:00 a.m.

7:30 p.m.

Church of Christ

Second & Haney
Spearman, Texas

"Come, Let us Reason Together, saith the Lord . . ."

Come See

1965 Fords

Sept.

25

Friday

JOE TRAYLER FORD

**HANSFORD
HOSPITAL NEWS**

Patients in Hansford Hospital this week are Carrie B. French, Georgia Horry, Jenna V. Ownbey, Linda Byrd and son, Penny Thomas and twins, Vern Osborn, Ray Nunley, John Bishop, Maude Mathews, Nora Cowart, Barbara Walters and son and Thelma Webb and daughter.

Dismissed were Alma Kizziar, Linda Kay and Brenda Lee Red, Cecil Wright, Louise Cleveland and son, Jimmy Chapel, Kevin Ruark, Tammy Chesner, Jerry Gumfory, Donna Marshall and daughter, Jo Nell Sheets and son and Steve Glassey.

**Future Readers
Of
The Plainsman**

Mr. and Mrs. Tommy Ray Marshall are the parents of a daughter, Deltra Jean, born Sept. 17 and weighing 6 lbs. 6 1/2 oz.

Mr. and Mrs. Claude Sheets, Jr. are the parents of a son, Claude, III born Sept. 15. He weighed 8 lbs. 6 oz.

Mr. and Mrs. Leslie Ray are the parents of a son, Randy Ray, born Sept. 15. He weighed 7 lbs. 9 oz.

Mr. and Mrs. Jim Dale Thomas are the parents of two sons, Gary Dale and Teri Dean born Sept. 21. Gary Dale weighed 6 lbs. 1/2 oz. and Teri Dean weighed 6 lbs. 5 1/2 oz.

Mr. and Mrs. William E. are the parents of a son, Robert Deacon, born Sept. 21 and weighing 7 lbs. 6 oz.

Mr. and Mrs. Leon Spence Webb are the parents of a daughter born Sept. 22. She weighed 7 lbs. 4 oz.

**Examination
Set in Borger**

An examination for proficiency in Masonic ritual has been set for Saturday, Sept. 26 at 9:00 a.m. in Isom Lodge 1242 in Borger. The examination will be conducted by Bob G. Andis, a Pampa teacher and a member of the Texas Masonic Grand Lodge Committee on Work. The meeting is scheduled for all day Saturday.

Masons in this area who qualify in the examination will be granted certificates of proficiency in the Masonic ritual at the Annual Communitation of the Masonic Grand Lodge of Texas to be held in Waco, Dec. 2.

**Mrs. Baggerly
Gives Review**

The Junior Book Club met Monday night, September 21, at the home of Dorothy Faye Baggerly.

Dorothy Faye Baggerly also gave the review. Refreshments were served to Johanne Blodgett, Lois Gibner, Eloise Renner, Dorcas Collard, Barbara McClellan, Verna Lee Schnell, Faye Lynch, a guest, Marilyn Cain by the hostess.

**Rainbow Girls
Collecting Hose**

The Rainbow Girls are having a charity project of collecting old nylon hose. These will be sent to a home for the aged, where they use them in handicraft work.

If you have any would you please call Terry Hudson at 2153 and she will pick them up.

**Young Homemakers
Will Organize Here**

A meeting will be held Thursday, Oct. 1 at 2:30 p.m. in the High School Home-making Department to organize a Young Homemakers of America Club.

The club is open to all young

homemakers from high school to thirty six years of age. It is under the sponsorship of the State Department of Vocational Home Economics Education. Mrs. Frances Hudson, Home-making teacher, will be the

advisor.

The club will have opportunities for service work, as well as study of homemaking arts. It will serve as a big sister organization to the high school Future Homemakers of America. There will also be social activities as a group and with the Young Farmers Club which is being organized. Field trips are planned.

All interested young women are invited to attend the meeting October 1 when Mrs. Pat Reed of Clarendon, area president and State First Vice Pre-

**Spearman
Newcomers**

Mr. and Mrs. Jim Johnson are new residents of Spearman, moving here from Kismet, Kansas. He is employed by

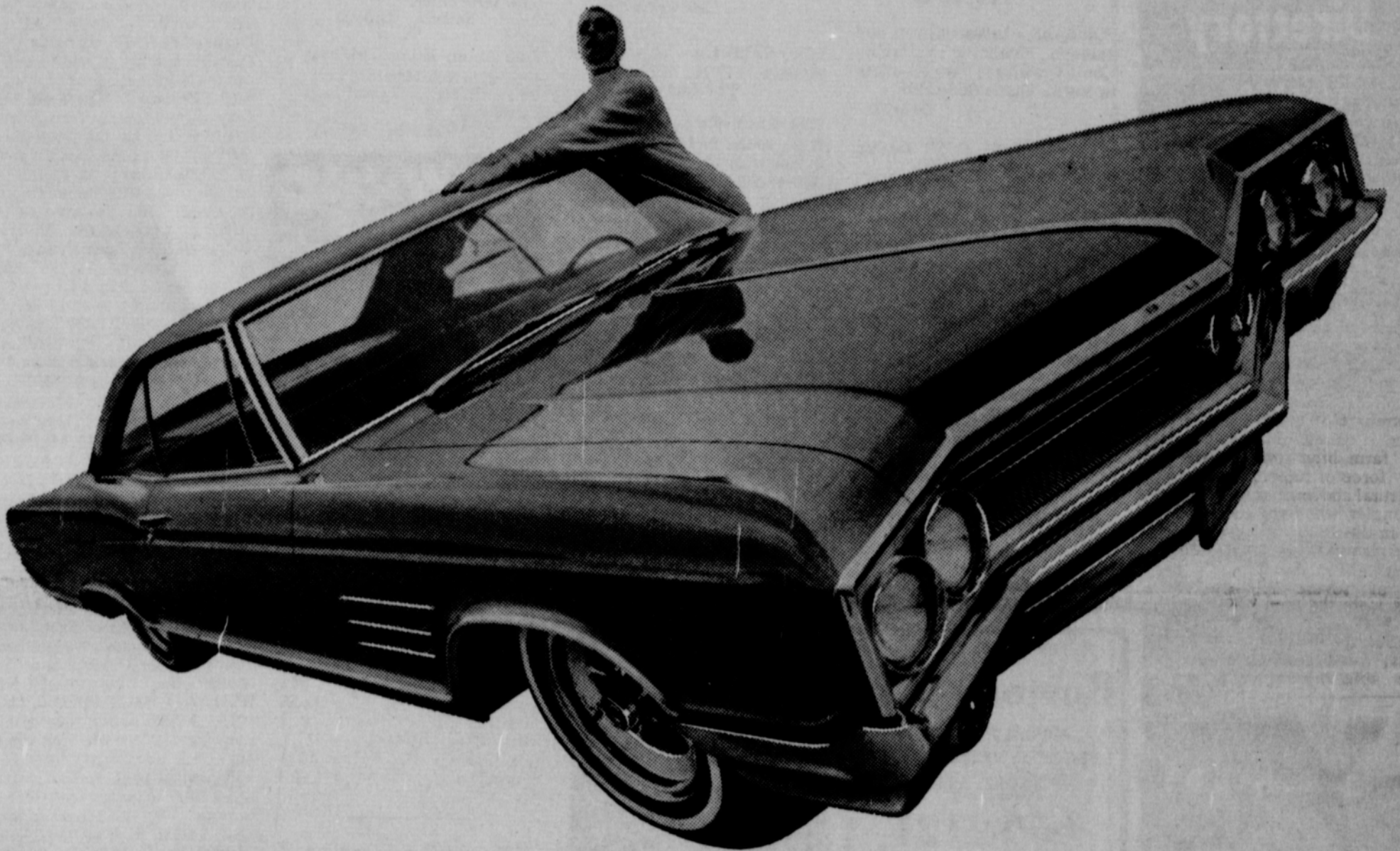
Bob's Sales & Service. Mr. and Mrs. Billy Gene Lawry of 308 S. Hazelwood, recently moved in from the country. They have two children.

Mr. and Mrs. James H. Landrum of 606 S. Bernice are new residents from Hillsboro.

Mr. and Mrs. Tom Allen has returned from a two weeks trip to Oklahoma City, Ardmore, Fredrick, Okla. and Bridgeport.

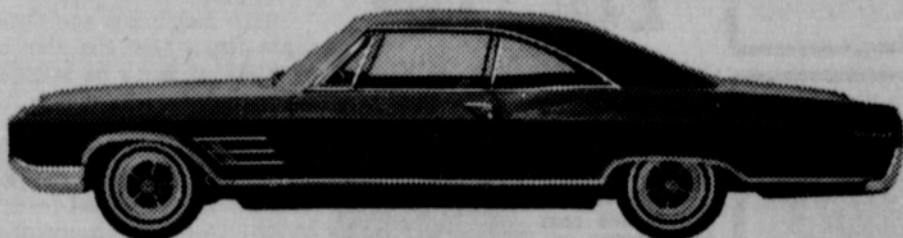
will be present to give additional information about organizing. Homemaking girls will serve refreshments.

**Buick
'65
Buick**



We changed the Buick a lot this year. And you may never be the same again yourself.

We doubt you'll want to be the same. Not once you set eyes on our new Buicks. On the Buick Special and the Skylark. The LeSabre, Electra 225, Riviera. And on the sleek, modified fastback of the wild, wilder, Wildcat in the picture. True, there's a new high-style touch. But that's hardly all. Engineering still has the emphasis. It's a Buick tradition. So are the extras Buick spends a little extra on. Like finned brake drums that do a little better. And smoother drivelines. A tuned suspension to smooth ribcage roads. Now add Buick's Super Turbine transmissions—and you have an idea of what Buick owners have always liked about Buick. We think you'll feel the same.



Wouldn't you really rather have a Buick

SEE YOUR LOCAL AUTHORIZED BUICK DEALER. AUTHORIZED BUICK DEALER IN THIS AREA:

NORTH PLAINS TRUCK & IMPLT., INC.
HIGHWAY 15
SPEARMAN, TEXAS

BUY SELL CLASSIFIED ADS TRADE LEASE

**Call 2266
To Report
Local News**

E. C. Groene & Sons Agency
Real Estate-Loans
Insurance-Cattle
Aluminum Pipes

410 Davis Spearman
Phone 659-2587

City Directory
CLEANERS
CLEANING
PRESSING
CARPET
CLEANING SERVICE
COIN OPERATED
DRY CLEANING
FREE
PICK UP & DELIVERY
PHONE 659-2511
Wardrobe Cleaners
Oscar Donnell
302 MAIN ST.
SPEARMAN, TEXAS

DENTISTS
F. J. Daily D.D.S.
16 SW COURT STREET
SPEARMAN

PHYSICIAN
D. E. Hackley D.O.
CLINIC
702 S. ROLAND
659-2556
659-2385

ELECTRICIAN
Anthony Electric
Industrial, Commercial
and House Wiring
Heating and
Air Conditioning
Contracting
and Repairs
Fully Insured
PLAINS
SHOPPING CENTER
PHONE 659-2441
BOX 727
SPEARMAN, TEXAS

FOR SALE
FOR SALE-Niemeyer's three bedroom brick home. Air conditioned. Carpeted. Phone Conrey's 3080.
T47-S47-tfc

Looking for used furniture? See Beedy Furniture now. Plains Shopping Center. Phone 3044.
S44-T45

FOR SALE: Flute and saxophone. Terms if you wish. Phone 659-2409.
S48-T49-tfc

FOR SALE-AKC Registered Poodle Puppies. Mrs. Burke, 117 Townsend St. after 3 p.m.
T48-S48-tfc

FOR SALE - Industrial lots and acreage. Financing available. Cecil Crawford. Two good lots in town. Phone 659-2409.
T43-tfc

FOR SALE-8' x 22' trailer house. Phone 659-2551.
T49-S49-tfc

FOR SALE-35,000 BTU Heating Stove, 3 inch flue. See at 1114 S. Dressen.
T49-2p, S49-2p

FOR SALE-4 room house, large room and bath, new carport. Phone 659-3469.
S45-T45-tfc

KNAPP SHOES
Kenneth Bailey
212 N. James
Phone 659-2458
Spearman, Texas

FOR CUSHIONED COMFORT
YOUR PHILCO DEALER
Burton's T.V.
WE REPAIR COLOR & BLACK & WHITE T.V.'S AND ALSO, RADIOS
659-2121
20 South Archer
Spearman

Spearman Radiator & Supply
Radiator Sales & Service
Auto & Industrial
Highway 15
Phone 659-2446
Home 659-2654
Spearman
Doyle McBride

FOR SALE-95 acres of farmland southeast of Spearman. 1/2 mineral rights and good producing gas well. Cecil Crawford. Phone 659-2409.
T43-S43-tfc

SERVICE-Ditches from 3-12 inches, any desired depth. S. D. Jones 659-2809. Harold Shaver 659-3474.
T17-s18-tfc

FOR LIFETIME MUFFLERS-Clarence Pettitt Garage. No premium prices.

FOR SALE: New Lake Pump and Aluminum pipe, Pat Westfield, Gruver, Fi7-2700.
S44-T43-tfc

FOR SALE-Lot with Trailer Hookup. 117 N. James.
T47-S47-tfc

FOR SALE-Nice, clean electric range and Servel refrigerator with freezer across top. \$25 each. 658-2185.
T48-3p

FOR SALE-42 x 8 Schult 2 bedroom mobile home. Outside needs painting. Inside very nice. \$1995. 659-2185.
T48-3p

FOR SALE-One mare with extra good colt, Jimmy Greene. Phone 3196.
T50-S50-4c

Cummings Refrigeration
HEATING
AIR CONDITIONING
REFRIGERATION
SPECIALIST
SALES & SERVICE
659-2721
SPEARMAN

Piano Tuning & Repairing
NOW AVAILABLE
SPEARMAN & VICINITY
COMPETENT & EFFICIENT
RATES REASONABLE
Call 2295

Part of all you earn should be yours to keep.
ED DEAR,
703 Cotter Drive
Spearman, Texas
Office
659-3444 Phone: 659-3073

WANTED
Want to buy good level farmland in irrigation district. Call or write Troy Ray, Box 223. Priona, Texas.
T43-8p

Land Leveling to SCS specifications. General dirt work with Hancock carryalls. Willis Sheets, 659-2256.
T46-S46-tfc

Yards worked and seeded. Gardens worked. Fertilizing done. Shrubs planted. Don Schmehr, 659-2858.
T23-S23-tfc

Piano Lessons -Classes for beginners and advanced students. Call 659-2393.
S49-2c, T50-2c

Four room house with bath to give away. Must be moved off farm. Collard Real Estate.
T50-1c, S50-1c



PINTOPPLERS LEAGUE

TEAM	WON	LOST
Jim Neely's	10	2
Baker & Taylor	9	3
Boxwell's	7	5
Ivan's	7	5
Massads	7	5
Blodgett & Linn	4	8
Spearman S.S.	3	9
DeVonna's	1	11

HIGH INDIVIDUAL GAME

Jane Meek	199
Jane Meek	182
Jane Meek	175

HIGH INDIVIDUAL SERIES

Jane Meek	556
Tommie Arbsland	441
Joyce Jones	416

HIGH TEAM GAME

Jim Neely's	706
Boxwell's	699
Jim Neely's	692

HIGH TEAM SERIES

Jim Neely's	2079
Boxwell's	2028
Ivan's	1831

Do-Si-Do Club
Plans Dance
The Spearman DoSiDo Club will have a club dance Saturday, Sept. 26 at 8 p.m.
There will be a meeting following the dance for members. It will be necessary for all club members to attend in order to get a fair vote on the issues to be discussed

Ever add grated lemon rind to a white cake mix?

Beauty... without bother
DU PONT LUCITE WALL PAINT

Available in new Colors!
Goodbye to drip, dribble and spatter. Farewell stirring and thinning. "LUCITE" is quick and clean. Covers better than before. Dries beautifully in 30 minutes. Brushes clean with just soap and water.

OWENS SALES
118 N. MAIN
Spearman, Texas
659-2506

LEGAL NOTICES

NOTICE OF SALE
THE STATE OF TEXAS
COUNTY OF HANSFORD
By virtue of an Order of Sale issued out of the Honorable District Court, 150th Judicial District of Texas, in and for Bexar County, Texas, on the 3rd day of September, 1964, by the Clerk thereof, in the case of FIRST OF TEXAS CORPORATION VS LEONARD DeARMONDE AL, and being number F-155,930 on the docket of said Court, and to me, as Sheriff, directed and delivered, I will proceed to sell the hereinafter described tract of land to the highest bidder, for cash, between the hours of 10:00 o'clock A.M. and 4:00 o'clock P.M. on October 6, 1964, it being the first Tuesday of said month, at the Courthouse door of Hansford County, Texas, in the City of Spearman, Texas; said tract of land having been levied on by me on the 8th day of September, 1964, and to be sold to satisfy a judgment rendered in the above described cause on the 5th day of March 1964, and recorded in the Minutes of said Court in Volume 20, Pages 615-617. Said judgment was in favor of Plaintiff, FIRST OF TEXAS CORPORATION, establishing its debts against the Defendants, LEONARD DeARMOND, ARNOLD DeARMOND, EVA DeARMOND PATTERSON, CAROLE DeARMOND SMITH, MYRTLE R. DeARMOND, BILLY N. DeARMOND, DON DeARMOND AND ADA DeARMOND MIZAR, for the sum of EIGHT HUNDRED NINETY SIX AND 98/100 (\$896.98) DOLLARS, together with interest on the sum of SEVEN HUNDRED NINETY TWO and 48/100 (\$792.48) DOLLARS thereof at the rate of eight per cent (8%) per annum, and interest on the sum of ONE HUNDRED FOUR AND 50/100 (\$104.50) DOLLARS thereof at the rate of six per cent (6%) per annum from March 5, 1964, until paid, and all costs of suit, together with foreclosure against the Defendants, LEONARD DeARMOND, ARNOLD DeARMOND, EVA DeARMOND PATTERSON, OTIS PATTERSON, JESSE WAYNE DeARMOND, JACK DeARMOND, NANCY DeARMOND GROUNDS, NEIL GROUNDS, CAROLE DeARMOND SMITH, DAVID SMITH, MYRTLE R. DeARMOND, BILLY N. DeARMOND, DON DeARMOND, ADA DeARMOND MIZAR AND FRED MIZAR, and all those claiming under said Defendants, whose claims originated since the filing of Plaintiff's Notice of Lis Pendens with the County Clerk of Hansford County, Texas, on the 30th day of September, 1963, of a certain lien securing Plaintiff's debt upon the following described property, to-wit:

Lot 7, Block 20, First Addition of the City of Spearman, Hansford County, Texas;
Said Judgment and Order of Sale direct that the above described property be seized and sold as under execution in satisfaction of said judgment, and the proceeds of sale applied: First, to the satisfaction of all costs of court and sale; second, to the payment of said judgment in the amount of EIGHT HUNDRED NINETY SIX AND 98/100 (\$896.98) DOLLARS, together with interest that may be due thereon.
GIVEN UNDER MY HAND AND SEAL OF OFFICE on this, the 8th day of September, 1964.
S/ J. B. Cooke
Sheriff, Hansford County, Texas
T48-3c

There are 18 new assistant coaches throughout the National Football League this year.

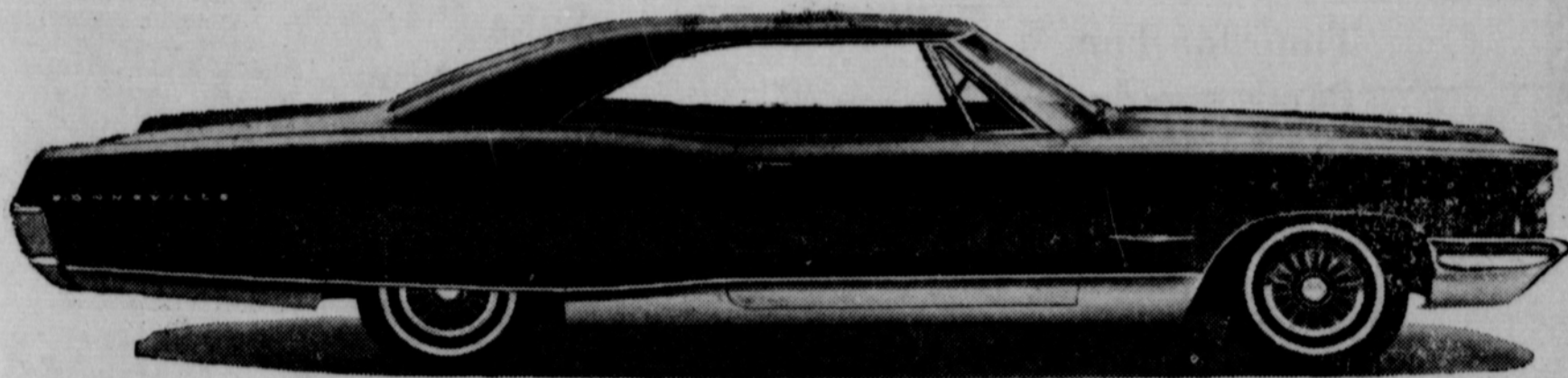
Beverly Heath Represents County At Bake Show

In 1964, the Home Demonstration Agents trained 127 40H leaders. These leaders gave 208 meetings to 4-H girls in District i, says Miss Wilson. Each county held a Bake Show and more than 1,000 people attended the 19 shows.
The winner representing Hansford County at the Fair this year is Beverly Heath of Gruver. The Hutchinson County winner is Diane Brindle. Mary Jane Macias represents Ochiltree County and Glenna Ellison Sherman County.
"Purpose of the 4-H Bake Show is to teach 4-H girls the principles of better baking and the place of bread and cereal in the diet, says Miss Wilson. "Since we are in a wheat growing area, wheat growers cooperate in this program of learning to do more with wheat," she continues.
Each year, the 4-H girls participating in the bake program find different wheat products are featured. This year, products are Quick Loaf Bread and Bar Cookies. Last year, products were Butter Cakes and Wholewheat Rolls. Cinnamon Rolls and Muffins were the products in 1962.
A number of Panhandle area 4-H girls are taking an active part in a 4-H Bake Show at the Tri-State Fair this week.
According to Miss Edith Wilson, Extension District Agent, Amarillo, 19 young women--each representing an area county--is displaying products of her baking skill at a special exhibit at the Fair.
Judging to select the prize-winning entries on a District basis was held Saturday, Sept. 19. Each entrant in the contest was a county winner earlier in the year.

THE HOUSING AUTHORITY OF THE CITY OF SPEARMAN, TEXAS

INVITATION FOR BIDS
The Housing Authority of the City of Spearman, Texas will receive bids for the furnishing of INSURANCE on Housing Project TEX-156-1, 10 dwelling units; one administrative, and maintenance building; until 7:30 o'clock p.m., Monday, Sept. 21, 1964 in the office of the Housing Authority located at 201 S. Brandt, Spearman, Texas.
The Bids will be received by the Housing Authority from Insurance Companies for insurance covering the building and other properties in the Project, owned by the Housing Authority of the City of Spearman, Texas.
The desired coverage will include the following:
a. Fire and extended Coverage for Project TEX-156-1.
Proposal forms and information relative to the Project required by the various insurance agencies desiring to submit proposals, is available and may be obtained at the office of the Authority at 201 S. Brandt, Spearman, Texas.
The Housing Authority of the City of Spearman, Texas, reserves the right to reject any and all bids, or to waive any informalities in the bidding.

HOUSING AUTHORITY OF CITY OF SPEARMAN, TEXAS
By: Iris Dortch
Executive Director
Date: Sept. 1, 1964
T50-1c



'65 Pontiac Pontiac How does the success car outdo itself for 1965? Beautifully, just beautifully. But this Pontiac has no intention of getting by on looks alone, though it could. So there's new quickness, Pontiac style. A new nimbleness. New fuel savings. A smooth, easy new ride. Drive a '65 Pontiac and see how one success leads to another.

Canadian Wins Play Day Trophy

The Canadian Riding Club won the High Point Trophy at the Spearman Riding Club Play Day here Sunday afternoon. The Canadian riders piled up 128 points to take the top

honors. Although many of the events were run in the rain, but it did not scare the riders, since members of the local riding club say this was the best Play

Day held here. The Spearman Club will go to Canadian Oct. 11 to compete in a Play Day there. Everyone is invited to go with the club.

Mrs. Alma Davis of Pampa spent the weekend in the Cy Ainsworth home. Mr. and Mrs. W.L. Moore, also of Pampa, were also Sunday visitors.

One Wreck Investigated

The Highway Patrol investigated one rural traffic accident in Hansford County during the month of August, according to Sergeant W.J. McLean, Highway Patrol Supervisor of this area.

These wrecks accounted for an estimated property damage of \$800.

The rural traffic accident summary for Hansford County from January through August shows a total of 5 crashes resulting in no persons killed, three persons injured, and an estimated property damage of \$4,695.00.

The statistics compiled as a result of these accidents and their consequences are very alarming. However, they are increasing and more people are being killed or injured each year as a result of someone's inadequate driving procedures. In addition, crimes of all kinds including murder, rape, armed robbery and burglaries are increasing at an alarming rate nationally as well as in our own state of Texas.

In order to try and save some of the lives lost each year and help combat the increasing crime rate, the Patrol Sergeant requests everyone to encourage eligible young men to inquire about a position with DPS as a law enforcement officer.

According to the Sergeant there are over one hundred vacancies in the Patrol Services of the Department and a training school is scheduled to start in November. Men between the ages of 21-35 years who have a high school education and desire more information about a career in law enforcement are invited to contact any member of the DPS for the additional requirements as well as job benefits and an application form.

The Sergeant stated that examinations will be given the second Saturday in October, throughout the State, for the November training school.



You saw this beautiful room in the October issue of House and Garden . . . now see it on display in our window.

Nettle Creek

has the bedspread of your dreams

luxuriously quilted with Celanese Fortrel . . . at a price you can afford. This spread of 100% cotton is lavishly quilted with extra high puff hand-guided quilting with exquisite artistry.

Just think how elegantly Nettle Creek will dramatize your bedroom.

A Collection of Fashion Colors

- * Avocado
 - * Gold
 - * Red
 - * Blue
 - * Aqua
 - * White
- * Twin Size \$49.95
 - * Double Size \$59.95
 - * King Size \$69.95

LET US SHOW YOU OUR SPANISH IMPORTS



Officers Named By Junior MYF

The Jr. High MYF met in the Methodist Fellowship Hall Sunday at 6 p.m.

The class elected officers. The new officers are: President-Sue Sloan, Vice President-Penny Sanders, Secretary-Treasurer-Ya Vonne White, Reporter-Becky McClellan, Game Chairmen-Ronald Howeter and Phil Sanders, Party Chairmen-Barbara Bramlett, Patsy Powell and DeAnna Sheets, and Parliamentarian-Lynne Hohertz.

Cookies and punch were served to Sue Sloan, Penny Sanders, Phil Sanders, Ronald Howeter, Marsha White, Patsy Powell, Barbara Bramlett, Toni Hudson, YaVonne White, Becky McClellan, DeAnn Sheets, Lynne Hohertz, Mmes. Perry Coursey and Troy Sloan.

Count on heavy cream doubling in volume after it is whipped.

GENE W. LEWIS

ALL-STATE INSURANCE AGENT

WILL BE AT

SEARS

EACH TUESDAY AFTERNOON

PHONE 659-2573
PLAINS SHOPPING CENTER

EDITORIALS

Dutch Treat

There was once a chicken farmer who was too tight to keep a rooster for his hens, yet he was furious because there were no new chickens around. Finally, he got all the chickens together and told the hens, "All right, you produce lots of eggs and hatch out some fine chicks, then I'll get you a rooster."

This goofy story makes as much sense as the way many in Spearman are treating the Chamber of Commerce. "You start some major projects and get some industry then we will join or pay our dues."

Do you know what the major project of the Chamber manager and his secretary the final few days of each month? They have to go out and collect enough dues to pay their salaries and buy a little postage for necessary correspondence.

Some of the very businesses and people who will profit the quickest from any growth or expansion in the town refuse to join the Chamber or do more than possibly pay an individual membership for a year---\$12.

It is time we pull our head out of the sand, before the irrigation water drowns us. We must realize that although growth and progress are being forced upon us, we must have organization and planning to reach our potential.

The Lions Club cannot do it, the Women's B&PW Club cannot do it nor can the lodge. Businesses and industries looking for new locations are swamped with offers from towns. We must put a recognized team in the battle and that is a Chamber of Commerce and its Industrial Committee.

We cannot do this with a Chamber of Commerce which is financed with leftovers and empty promises. It takes money to send delegations to meet prospects. It takes money to prepare surveys on the potentials of our town and area. It takes money to pay a competent manager and staff a salary, so they can work on projects instead of trying to get enough money for their salaries.

The Chamber manager and some local men have spent their own money on trips to check out possible industrial and business prospects. This is not right. We need the men out, but the butcher, baker and candlestick maker should pay his share of the tab. This is a dutch treat. Everyone is supposed to pay for getting part of the cake.

This paper has said it before and we will say it again. Spearman has a far above average Chamber manager for a town our size. We are cheating ourselves when we do not provide a decent budget with which this man can work. He cannot do all the work alone, but with a decent budget he and his committees can do the town much good.

The funds are going to have to come from businesses being willing to pay decent dues, the city restoring much of the Board of City Development funds, and more individual memberships.

The towns over the Golden Spread who are willing to pay the costs of attracting new businesses and industries are booming. The rest are sitting wondering when it is going to rain.

THE TALL TEXAN



We extend our sympathy to the staff at Hansford Hospital this week. They have had that coffee-drinking prankster from the east end of Main Street as a patient this week. After John Bishop has been in the hospital for a few days, it will never be the same.

It has been learned on good authority that the gals at the drug store are working on a fund to pay for keeping him in the hospital a few extra days. They are enjoying the peace and quiet.

John sure did put one over on everyone by slipping into the hospital so secretly. He just slipped in there and no one knew he was going until Main Street was so quiet Monday and coffee consumption dropped so drastically at the drug store.

Really, John. You do not want to loaf out there at Bob's hotel too long. Things are sure quiet around town without you. Also, you are missing hundreds of good stories that are going around about your experiences out there.

Rennie Berry, one of Spearman's little football sparkplugs, was giving his buddy, Mike Morris, a hard time Sunday about getting clobbered good after he thought he signaled a "fair catch" in Friday's game.

Berry said it was an easy mistake for the officials to make, they just thought he was waving at his mother in the stands.

The junior halfback says you'll never see him signalling for a fair catch, "I can't get my hand high enough for the officials to see it."

Friday night was one of the few times we have seen Berry come off second best in a game. Generally, the little guy racks the opposition good. But, he made the mistake of making like a fullback while blocking for a punt.

He took his position in front of punter Johnny Crawford. The ball was snapped. Here came one of Gruver's biggest linemen and Berry hit him hard, but the Greyhound was bigger and Berry went way up and a long way back. However, the block did give Crawford the time he needed.

It would appear that campaigning for public office is a good way to get a nice suntan. Notice Barry Goldwater had a good tan from speaking at all the open air meetings over the country. It must have been rather warm at Potter County Stadium Tuesday, the way some of the platform guests were using the handkerchiefs.

The television cameras occasionally picked up a state highway patrolman in the background paying no attention to Barry. We thought there were nothing but Democrats in the highway patrol until it soaked through our dome what the men were doing. They were watching the buildings and fences surrounding the park. Even the candidate for President gets protection.

Noticed the other day that Senator Ralph Yarborough said Texas did not need a Connecticut Yankee representing the state in the Senate.

That seems a little odd for a good Liberal like him to be saying, when it seems to be the theory of his kind to wipe out all state and national boundaries and have one or two all wise governments take care of all our problems.

Personally, we prefer a Connecticut Yankee who lives and works here to represent us over a native Texan who does not represent us.

Time for Fun Party Monday

The September "Time For Fun" party will be held Monday, Sept. 28 at 7:30 p.m. in the Home Demonstration Club Room.

Northern Natural Ladies Club

OLD FASHIONED REMEDY

Speaking of tranquilizers, even back in grandpa's time, there was something to make you sleep. They called it work!

-Santa Fe Magazine

is sponsoring the party. All interested persons are cordially invited to attend.

Waka P-TA Opens Year

The Waka P-TA will have their first meeting of the 1964-65 year this coming Monday night, Sept. 28 in the Waka School Cafetorium.

An executive board meeting was held Tuesday, Sept. 22 at

the school library with Bob Mosier, president, presiding. Present at this meeting were Bob Mosier, Mr. and Mrs. Bill Shelby, Mmes. Sandra Ladd, David Wilson, Herman Wiebe, and B.J. Turner.

Officers are Bob Mosier, president; Alvin Buschman, vice-president; Mrs. David Wilson, secretary; Dean Leighnor, treasurer; Mrs. J.R. Stump, historian; and Bill Shelby, parliamentarian.

T.G.&Y.

5¢ TO \$1.00 STORES

PRICES GOOD THURS., FRI., & SAT. WHILE QUANTITIES LAST!

STRETCH TERRY SLEEPER

For Sleep or Play. One Piece Style with Feet . . . Nylon Front Zipper Opening . . . Assorted Solids and Prints.

\$1.67

SIZE 6 To 12 Mo.



HIGH CHAIR

Soft and Comfortable . . . Washable Padded Seat and Back. Chrome Finish on Heavy Gauge Steel Tubular Legs. Auto Type Safety Belt Holds Baby Safe . . . Can Not Slide Out.

\$8.88

Molded Plastic

TODDLER'S KNITTED SLEEPER

SIZES 0-3



Interlock Super Soft Cotton. 2-Pc. Sleeper . . . Gripper Closure . . . Plastic Dot Feet . . . White and Pastels.

97¢

\$1.59 VALUE PR.

SWEATER

Hand-Made Infant Sizes



Two Assorted Styles . . . One in Nylon and One in Wool. Hand Embroidered. White with Assorted Pastel Color Trims.

97¢

Compare At \$1.98

SLEEP OR PLAY SET



2-Pc. Interlock Set. Gift Boxed. Sacque and Adjustable Matching Diaper Cover. Nursery Prints in Assorted Pink and Blue on White.

\$1.17

\$1.59 VALUE

ASSORTED WATERPROOF BABY PANTS



Make Your Selections Now! Plastic, Rayon or Terry Cloth Materials. Terrific Values!

29¢ TO 69¢

EACH

BABY OIL

Mineral Oil with Lanolin. Keeps Baby's Skin Soft and Clear. 2-oz. Size.

31¢

PLUS MANY OTHER BABY ITEMS!

ANIMAL SHOW MOBILE



Six Pert and Puffy Pets Swingin' in the Rain . . . Kept High and Dry By A Colorful Polka Dot Plastic Umbrella. Mar-Proof Bracket Can Be Attached to Crib or Wall.

\$1.97

\$2.98 VALUE

ROMPER SET

Pullover with Open Shoulder & Romper Pants. Sizes 6 to 18 Months.

\$1.99

"2 in 1" BLANKET SPREAD

"Fantasia" Screen Printed with Novelty Farm Scene. Use As A Blanket With The Soft, Fluffy Side or As A Spread on the Printed Side. Rayon, Nylon Blend. 26" x 50" Size.

\$2.27

Save 71¢ \$2.98 VALUE

"EVENFLO"® ALUMINUM STERILIZER



Large 8 Bottle Capacity . . . Handy Rust-Proof Bottle Rack . . . Sturdy Heat-Proof Bakelite Cover Knob. Automatic Steam Release Valve. Finest Quality Sterilizer at this Outstanding Low Price!

\$2.97

Save \$1.02 \$3.99 VALUE

STORE HOURS

MONDAY - FRIDAY 8:30 A.M.-----6:00 P.M.

SATURDAY 8:30 A.M.-----8:00 P.M.

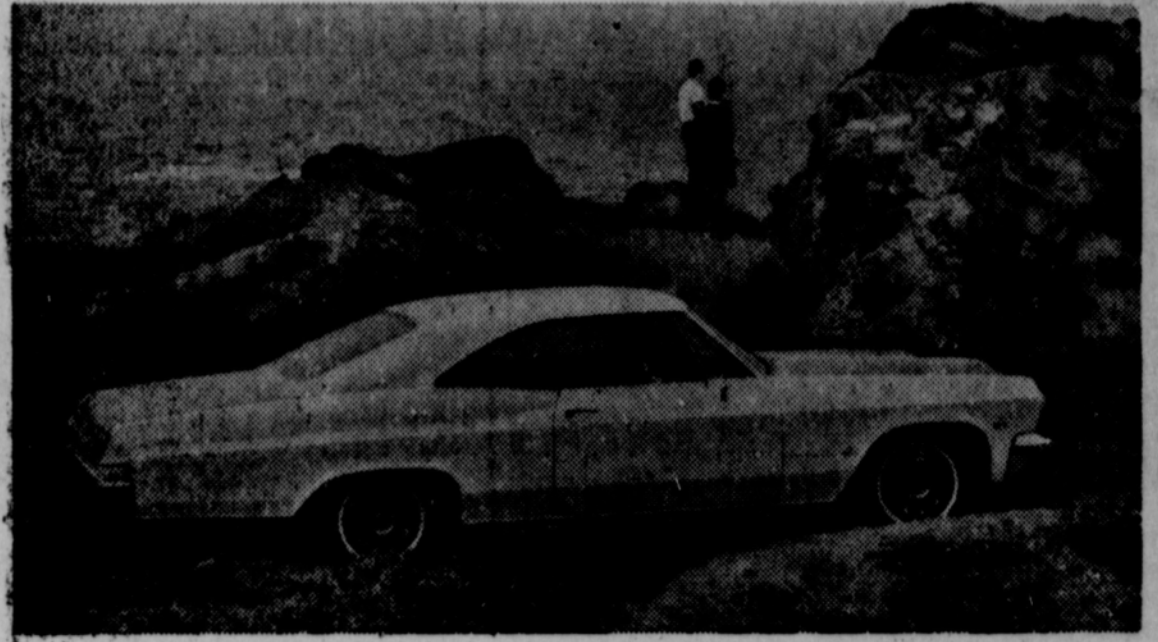


350 T.G.&Y. IN 13 STATES



The 1965 Ford is the most-changed in the 15-year history of Ford Division. The traditional, round Ford taillight is replaced by a modernistic hexagonal shape in keeping with the crisp, elegant look of the new Ford. Luxury styling is combined with a luxury car ride described as so smooth and so quiet the heater and air conditioner fans had to be moved into the engine compartment because their low-toned whirr was distracting. A luxurious new Ford Galaxie 500 LTD series (above) features an interior of quality and style previously obtainable only in higher-priced cars. Five separate roof lines are offered with interior and exterior trim features to give greater distinctiveness to each of the 17 models than ever before.

The complete line of 1965 Fords — two- and four-door hardtops, sedans, convertibles and station wagons — will be introduced in Ford dealer showrooms on Friday, September 25.



Leading the beauty parade of 1965 cars is the elegant Chevrolet Impala Sport Coupe (above) with new flowing lines, new roominess and a distinctive grille. Stylish roof lines and curved side windows blend with the gracefully contoured rear quarter

panels. The new Impala Convertible features an inward folding top with tempered glass rear window. The regular-size Chevrolet is available in 15 models in four series. The public announcement date for all Chevrolet-built passenger cars is September 24.

No Free Substitution For Football Teams

Football this fall won't be two-platoon as it was known 12 years ago when the maneuver was knocked out by the rules committee. The impression that there could be a return to the days when full teams could be sent when necessary is a fallacy. This despite reports from the meeting of the rules committee last winter that the two-platoon

system was being restored. People on the rules committee wanted a boy to be coached both ways, so they got the substitution rule to say that a full team could be sent in only when time was out. In 1952—the last year of two-platoon football—entire teams could be substituted when the ball changed hands. That meant that a coach could get

his defensive team in as soon as the offensive team gave up the ball.

But now time isn't out when the ball changes hands. The only instances when the clock is stopped come after scores, incomplete passes, kicking out of bounds, an intercepted pass that is run out of bounds or a run that goes out of bounds.

Of course, a team still has four free timeouts per half and can use them to change full complements. And faked injuries can stop the clock but the rules committee so trusts the coaches now that it didn't even put in a rule that would thwart such a maneuver—forcing substitution only for the injured man, so that platoons could not be sent in.

There are other rules changes of interest. One of them intrigu-

es as much as the free substitution rule. How many times was there a dispute when a field goal was tried? If the ball goes over the goal posts it sometimes is difficult to determine if it went between the posts.

The rules committee decided it would remove the controversy by allowing the goal posts to be raised. The posts have been 20 feet from the ground—10 feet to the crossbar and 10 feet above.

serted this: "The goal posts must be at least 20 feet." In other words, they must be 20 feet but they can be any height above 20.

Many schools will raise the goal posts to say 30 feet. Field goal tries seldom are higher than that. Thus, it can better be seen if the ball has gone between the goal posts.

Flint is a variety of quartz.

Girls Of All Ages

And Grandmothers Too....

Find their favorite clothes for fall right here in our store. We feature the brands you know and trust in sizes to fit everyone, from pre-schoolers to teenagers, you'll find the latest styles for young ladies in fall outfits that please mother and daughter alike.



Knits & Knit Suits

Shoes By Town & Country

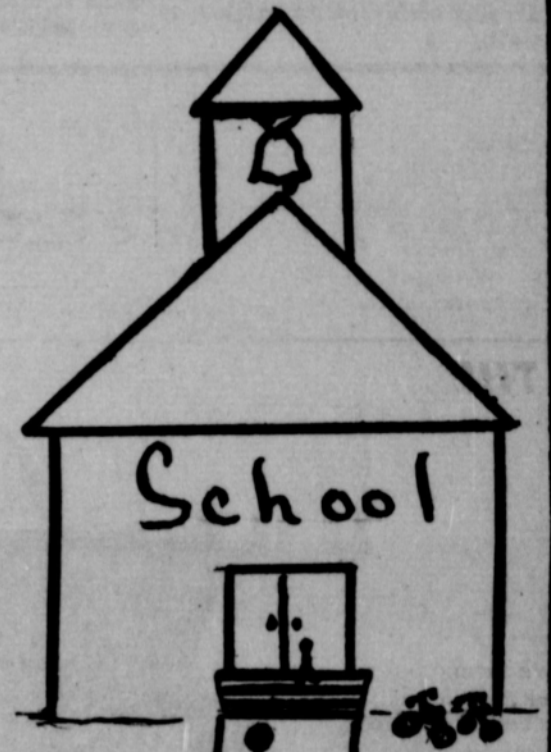
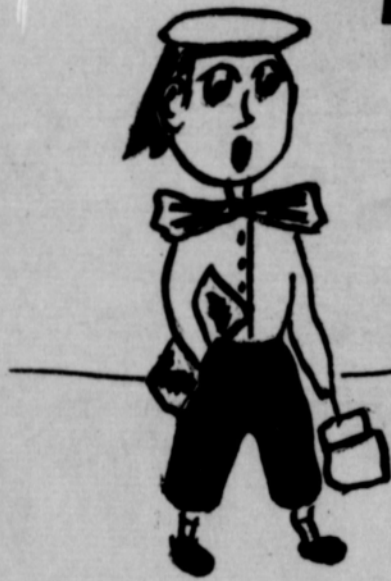
and Connie

Choose Your Winter Coat Now

Massad's
Your Headquarters
For The
Latest Styles For Fall

We Are Celebrating Our Birthday

We're six now and go to school, but Ma kept us home



TODAY to show the 1965

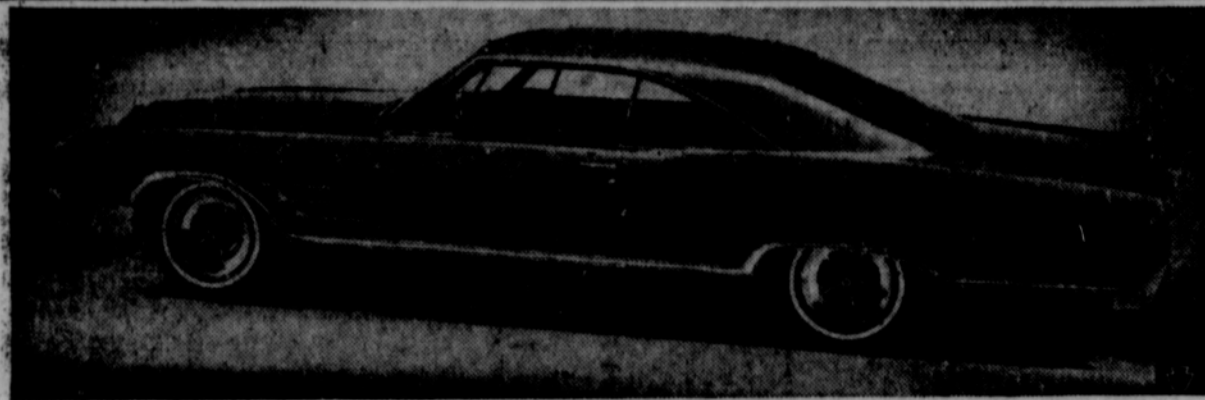
Chevrolet & Oldsmobile

Sept. 24

We have refreshments and favors for all.

Excel Chevrolet - Oldsmobile

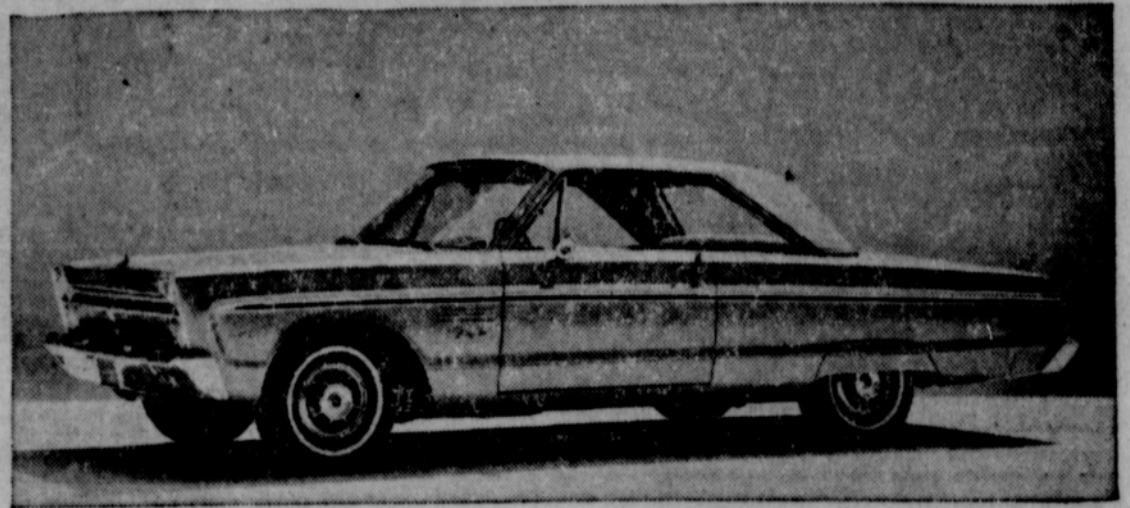
BUICK WILDCAT FOR 1965



The semi-fastback styling of two-door models in Buick's 1965 line is epitomized in the Wildcat with its longer hood, lower, longer rooflines and short rear deck. Three inches have been added to the hood by increasing the wheelbase from 123 to 126 inches for improved riding and handling. Overall length remains approximately the same as last year. A new cross-flow radiator design permits lowering the hood line on all models in LeSabre, Wildcat and

Electra 225 series. The stainless steel five-spoke wheels shown on the Wildcat are optional equipment. The Wildcat is powered by a 401-cubic inch high compression V-8 engine with four-barrel carburetor. Optional power plants—for outstanding performance—include a 425-cubic inch engine with either one or two four-barrel carburetors. The Super Turbine 400 torque converter transmission or floor-mounted four-speed gear box are optional on the Wildcat.

New, Bigger Plymouth Fury For 1965



Plymouth's new entry in the low-priced, full-sized car field, the 1965 Fury, has a completely new body, a new, longer wheelbase of 119 inches, wider front and rear tread, and greater over-all width. There are 22 Fury models in four different series: Fury I, Fury II, Fury III, and Sport Fury. New Fury sedans are the longest-wheelbase Plymouth sedans ever produced. Large new Fury station wagons are on a 121-inch

wheelbase. The 1965 Fury styling accentuates its increased size as shown in this picture of the Fury III two-door hardtop. Body lines are crisp and angular. There is a choice of five engines, ranging in displacement from the 225 cubic inch economy six to the 426 cubic inch high-performance V-8. Plymouth continues to provide a 5-year or 50,000 mile warranty on engine and drive train components for all lines of 1965 cars.

District Court In Session Here

District Court and the Grand Jury have both been in session this week at the Spearman Courthouse. At noon Wednesday the jury was still out in a civil suit of Cox versus Morstain. This was a suit involving an irrigation well.

The Grand Jury has been in session two days. Officers say this is the first time the Grand Jury has required two days to take care of all the cases in many years.

They All Read 'Peanuts'

WICHITA, Kan. —A sign at the coffee urn in a Wichita State University cafe read: "Happiness is a cup of coffee." Beneath the words, a campus wag wrote: "Security is having your own cup."

Putting a man on the moon is a \$20 billion effort involving some 20,000 companies, 300,000 employes and the National Aeronautics and Space Administration's 10 major centers and most of its 300,000 technicians.

The American Indian is believed to have migrated to this country from Asia during the Ice Age.

In June 1957 Hurricane Audrey hit the Gulf coast causing 395 fatalities.

meet current demands, a study by Resources for the Future recommends.

The present 750,000 acres of city and county parks should be doubled in size immediately to

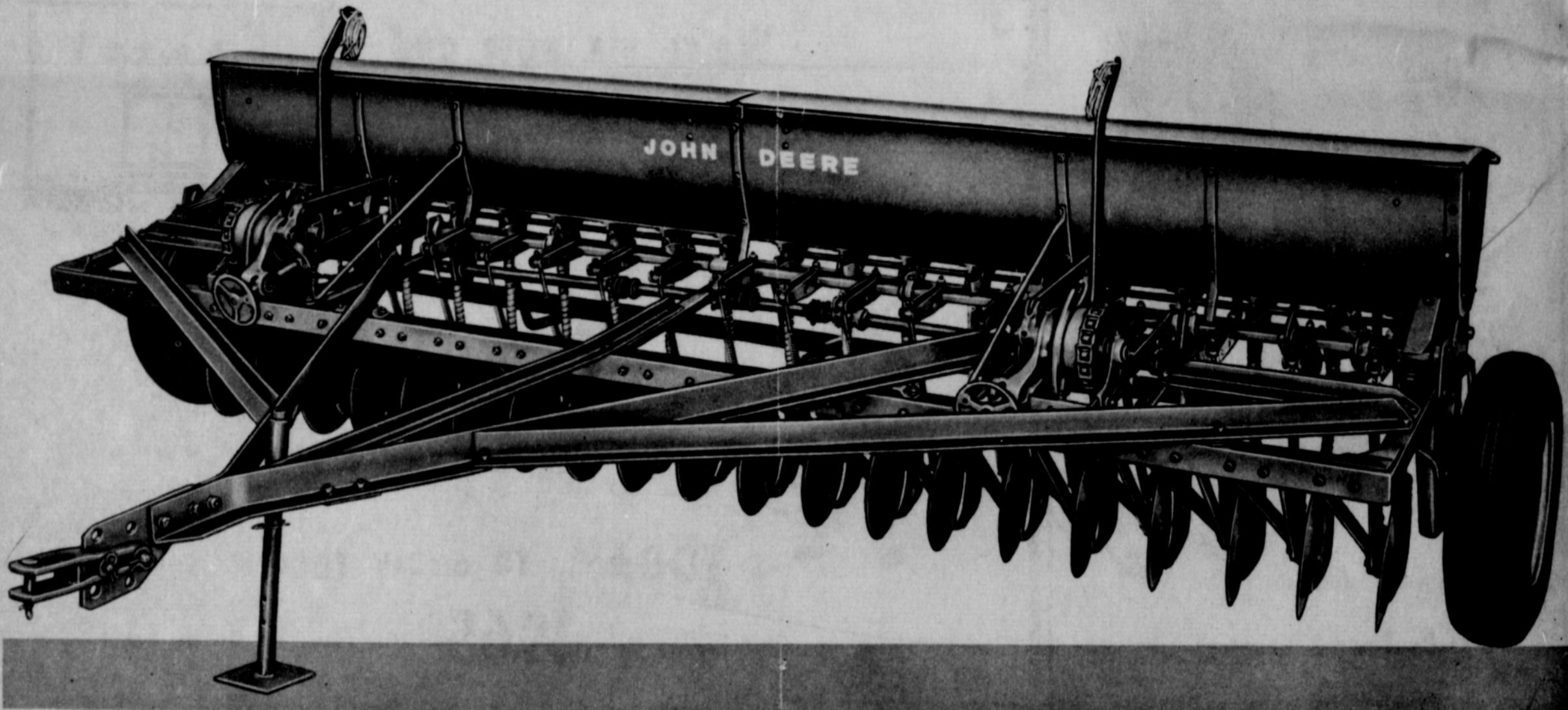
Sliced tomatoes taste particularly good accompanied by a French dressing made with taragon vinegar.

Listed among the Magna Carta's provisions were feudal rights and privileges, definitions and limitations concerning the spheres of king, nobles, church, merchants, town and vague benefits to seep down from ruling to dependent groups.

John Deere DR - A Grain Drills

Are Popular Because They Are Better

(We Haven Sold 38 New Drills This Year, But Still Have Some Left)



John Deere Engineering Makes Them Better, Look At The Features

Anti-Friction Bearings Discs, Jackknife Spring Pressure,

High Floatation Wheels, By Capacity Grain Box And Many Others.

SEE US TODAY FOR COMPLETE DETAILS



HANSFORD

IMPLEMENT