

HANSFORD COUNTY'S LEADING NEWSPAPER



The

SUNDAY The Hansford Plainsman



VOLUME VII., NUMBER 47

SPEARMAN, HANSFORD COUNTY, TEXAS 79081

SUNDAY, APRIL 3, 1966

Farm Bureau Selects Queen



MISS SUSAN DIXON



MISS JUDY BAYLESS
1966
HANSFORD COUNTY
FARM BUREAU
QUEEN



MISS MELINDA PEARSON



MISS JAN ROPER



MISS MARY ETLING

-Plainsman photos

Miss Judy Bayless was crowned Queen of the Hansford County Farm Bureau in ceremonies Friday night in Gruver. These five girls were contestants. (See story inside)

County Postpones Law On Herbicide Question Mrs. Emmett R. Sanders Named to Head Campaign

Hansford County Commissioners have postponed until Monday, the decision on invoking the herbicide law in Hansford County.

A hearing on putting the law into effect in the county was held here this week, and when some questions of law and administering the law could not be answered, the court postponed action until Friday.

The court decided to visit Farmer County where the law is being used, to settle some questions about its use, before reaching a decision.

Two questions were raised at the hearing concerning the law. One question was if the commissioner's court put the law into effect could it revoke the law if it was unsatisfactory. The second question involved the bonding of equipment used by a farmer to spray his own crops.

Judge Johnnie Lee said he contacted the Attorney General's office for answers to the

questions. Judge Lee said the legislature would have to revoke the law, once it is put into effect in the county. Farmers using their own equipment to spray their own crops do not have to be bonded.

The question of putting the law into effect in the county came up last year after most of the cotton in the county and other broadleaf crops were damaged or destroyed by weed sprays used on wheat and maize.

Grain farmers contend the spray is the only way to economically control weeds in their feed crops. Other farmers contend the county must have the law if any crops other than grain are to be grown here.

Senator Franklin Spears, candidate for Attorney General of Texas, today announced the appointment of Mrs. Emmett R. Sanders as his "Blow The Whistle On Crime" campaign manager in Hansford County.

Mrs. Sanders is a native of the Texas Panhandle and attended public schools in the counties of Lipscomb, Ochiltree and Hansford. She holds an A.A. degree in Liberal Arts. Emmett and she have two small children, a girl named Kellie Rhea and a boy named Alan Roger. They live at 315 S. Endicott in Spearman.

Mrs. Sanders said, "I am happy to be associated with Senator Spears in this campaign. Not only does he have the knowledge and experience to successfully carry out the

top legal job in the state, he is a man of personal integrity." Senator Spears has long had an interest in good law enforcement. Texas needs a strong man like Spears to do something about the rising tide of crime sweeping our state.

Want To Build a New Home, Remodel or Repair Your Home ?

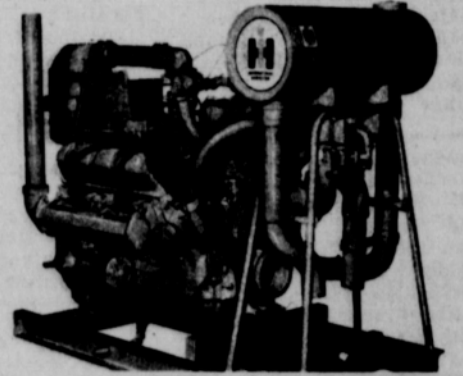
CALL R. L. UPTERGROVE

Out of Town, Call Collect

For Sale :

3 Bedroom House-Several Lots - Commercial Buildings

BUY POWER THAT PAYS



UV-549 ENGINE

IT IS ENGINEERED FOR IRRIGATION

IT IS A COMPACT MODERNLY DESIGNED V8 VALVE-IN-HEAD ENGINE BUILT FOR HEAVY DUTY WORK.

NORTH PLAINS TRUCK & IMPLEMENT

HOUSEHOLD HINTS

To stiffen lace curtains so they will hang straight and stay clean longer, add a tablespoon of borax to a large pan of starch.

Do not choose a humid day to wax the floor, as it will take longer to dry.

KNAPP SHOES

KENNETH BAILEY

212 N. James
Phone 659-2458
Spearman, Texas

For Cushioned Comfort

Mrs. Kelly Receives Diploma

Mrs. Desmond Kelly of Morse received a diploma from the Child Evangelism Fellowship School in Amarillo at the Margaret Wills Cafeteria March 25.

Mrs. Kelly has worked some eight years through correspondence and attendance at various schools to complete her work. A part of the textbooks consisted of administration and of Bible study. Mrs. Kelly is director of the work in Hansford County and is now qualified to teach any of the textbooks and fully conduct the work in any capacity she might be called upon.

NEW 1966 GMC 1/2 Ton PICKUP

With Heater and Defroster, Seat Belts, Back up lights, Two speed wipers, Windshield Washer, Rear Bumper.

\$1,888

A.&B. GMC

801 FLORIDA-EAST BY-PASS
PHONE BR 3-3771
BORGER TEXAS

Linda Invites You To See

PHILCO'S COLOR TV'S !

WE NOW HAVE A LARGE SHIPMENT OF COLOR SETS

WE CAN SHOW YOU THE 19" - 23" - 25" Screen Sizes



This is the big 25 inch screen model

These are Philco's RECTANGLE PICTURE TUBES that give you so much more picture in a smaller cabinet. Come in a see the best in COLOR TELEVISION.



Here Linda shows the 23 inch screen



This is the 19 inch portable color set

BURTON'S TV

106 E. 11th

PHONE 659-2121

Stock Show Committee Expresses Appreciation

The Hansford County Stock Show Committee would like to express its appreciation to everyone and every business firm that helped with the show and sale.

Without the assistance of these public service minded people and businesses, it would be impossible to have the show each year.

We wish to thank John R. Collard Jr., First State Bank, Byrd Texaco of Gruver, Rod Washburn Welding, Hansford County Parts and Supply, Jones Pipeline Construction and Troy Sloan, Gifford-Hill Western and Amarillo-Borger Express for buying the trophies and ribbons.

These firms for donating panels, Cates Men and Boys Wear, Hansford Implement, Excel Chevrolet, R.L. McClellan and Sons, J.L. Brock Agency, B&B Sales, North Plains Truck and Implement, R.L. McClellan Grain Co. and Buddy Murrell.

These men's help was greatly appreciated by the committee: Garland Head for the loan of a truck, L.M. Patterson, Jr. for the loan of cattle panels, Charles Gilliam for arranging special lighting, Bob Cluck, J. C. Harris and Ed Dear for being sale ringmen, Marvin Wilson, Archa Morse and Preston Smith for auctioning the show animals, Weldon Green, Paul Hazelwood, Orville Latham and Freeman Barkley for being clerks at the auction.

HANSFORD HOSPITAL NEWS

Hoots Martin, Otis Blundt, Jerry Darnell, Luis Reyes, Linda Umphress, Martha Ann Davis, Wanda Burks, T.I. Harbour, Helen Pracher, Eileen Sutherland, Doris Crum, James Malone, Joe Trayler, Joe Day, Mae Garrett, Lois Ferguson, Barbara Howe.

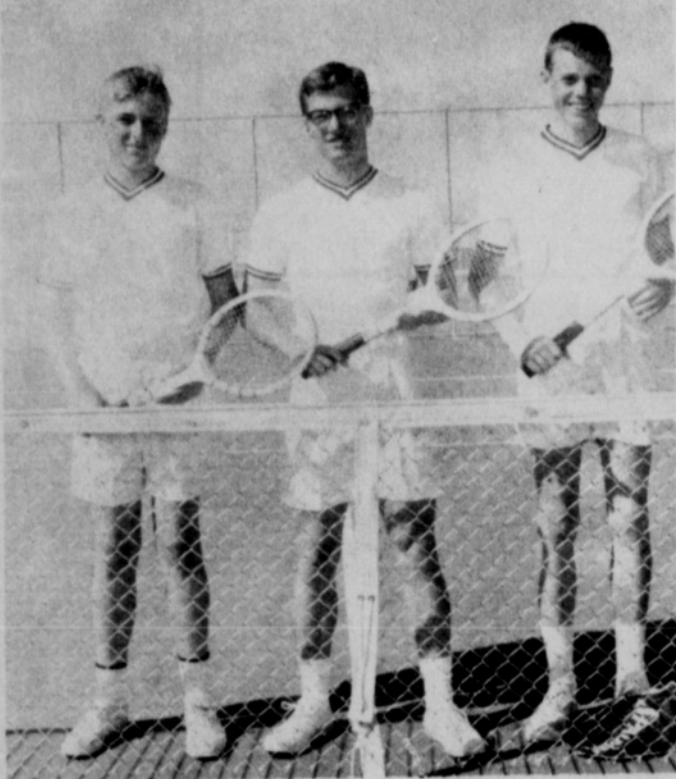
Dismissed were Micky Cook, Betty Mooney, Judy Johnson and daughter, Carl Atkison, Elizabeth Underwood, Carolyn Thompson, Susan Barnes, Richard Barnes, Altha Deere, Peggy Bibb, Blane Simmons, Mary Lou Barnes, Wm. Curtis Crouch, Jr., Reba Phillips, Gwenfred Lackey, Don Hastings, Jesse G. Vera, J.B. Patterson, David Linde, Sharolyn Barkley and Allen Rhodes.

Construction Up in 1966

New home construction in Spearman totalled \$84,500 during the first quarter of 1966, according to the building permits issued by the City of Spearman.

This total figure was for five residential homes in Spearman.

There was one permit issued in February and four in March. The February permit totaled \$27,000 and the four permits issued in March totaled \$57,500.



LYNX VARSITY TENNIS- Richard Booth and P. A. Lyon, III, left and right, are the Lynx tennis doubles team this year, Gary Cates is the singles entry. They are coached by Perry Coursey. Plainsman photo



LYNXETTE VARSITY TENNIS- These three girls have been battling to hold their positions as the Lynxette Varsity Tennis team. They are (left) Gail Upchurch, Linn Ann Robinson and Jeanette McAdams. -Plainsman photo

Mrs. Pope Gibner returned home Thursday evening from Northwest Texas Hospital in Amarillo after spending several days for a physical check-up and undergoing minor surgery.

Mr. and Mrs. B.J. Garnett, Mrs. Stanley Garnett and Mrs. Tovrea Umphress were in Amarillo Tuesday visiting Mrs. Umphress' sister, Miss Jayme Garnett, who is a patient in an Amarillo hospital.

Farmers Invest In Second Irrigation Wells

Hansford County irrigation farmers are adding that second and third irrigation well this year, according to figures compiled in the North Plains Water District Office here.

Miss Dallasene Reynolds reports that permits for 29 wells were issued to farmers in the county during the first quarter of 1966.

Miss Reynolds said practically all of the wells were being drilled on farms that already had one or more wells in operation.

The county now has a total of 795 completed wells or permits pending on wells. Of this total number, 719 are now water producing wells.

Irrigation moved into the county in a big way in 1963 and 1964 when more than half of the wells now in production were drilled. Last year the drilling pace slowed down as

farmers learned to use the wells they drilled during the rush years.

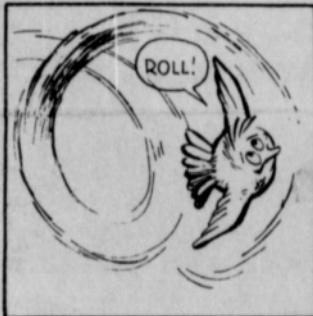
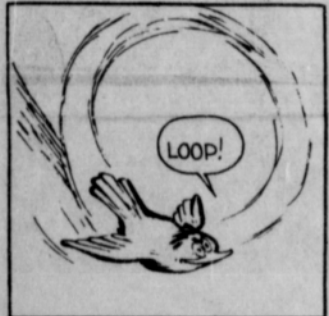
Until the two rush years the irrigated acres in the county accounted for a small part of the agricultural income.

Alton Ellsworth is home after spending two weeks in an Amarillo Hospital.

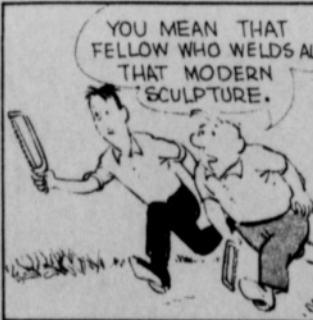
THRIFT TIP

Use the better part of worn-out towels for padding in home-made pot-holders. Cut squares or rounds of desired size from the towel, cover with print material, and stitch.—Mrs. Fay L. Newton, Panhandle, Tex.

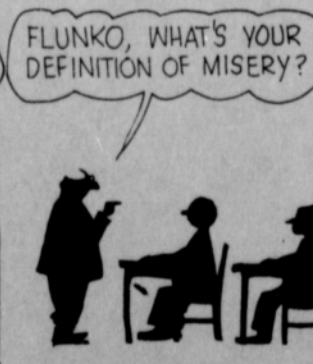
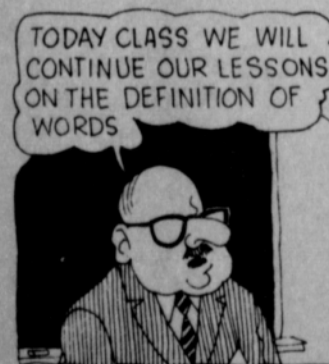
SMALL WORLD



OUR TOWN



FLUNKO



CYNTHIA



CROSSWORD PUZZLE

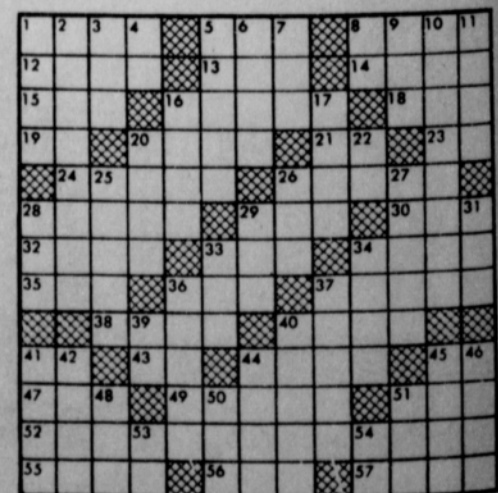
- ACROSS
1-Evergreen tree
5-Hard-wood tree
8-Word of sorrow
12-So be it!
13-By way of
14-Gull-like bird
15-Likely
16-Warms
18-Large bird
19-Note of scale
20-Damage
21-Parent (colloq.)
23-Symbol for silver
24-Looks condescendingly
26-Waver in opinion
28-Place in line
29-Stroke
30-Possessive pronoun
32-Communists
33-Edible fish
34-Girl's name
35-Dutch town
36-Policeman (slang)
37-Heals
38-Baker's product
40-Lean to
41-Symbol for calcium
43-Exist
44-Vegetable
45-Hebrew letter
47-Number
49-Chief artery
51-Sailor (colloq.)
52-Announcements
55-Youngsters
56-Golf mound
57-Liberate

- 5-Declares Asia
7-Chapeau
8-Near
9-Confederate general
10-Movable part of motor
11-Comfortable
16-Rabbit
17-Blemish
20-Chickens
32-Symbol for gold
25-Downy duck
26-Parent (colloq.)
27-Piece of cut lumber
28-Exist
29-Parent (colloq.)
31-Ethiopian title
33-Mountain pass
34-Fat about the kidneys



SOLUTION

- 36-Tidy glass
37-Swindle
39-River in Siberia
40-Bristles
41-Jacket
42-Girl's name
44-Kind of cheese
45-Sheet of glass
46-Gaelic
48-Goat
50-A month (abbr.)
51-Rocky hill
53-Pronoun
54-Supposing that



- DOWN
1-TV personality
2-Urged on
3-Openwork fabric
4-Printer's measure

Buy, Sell, Trade Hire, Rent, Find THROUGH THE **WANT ADS**

NOTICE

The Dale Carnegie meeting will be at 7 p.m. April 8 in the Farm Bureau building. The meeting was postponed from April 1 because of the flu epidemic.

Even the toughest bottles and jars come open much easier if a piece of sandpaper is held in the palm of the hand while you are trying to untwist the lid.

Fasten one end of the measuring tape with a thumb tack to a large-sized empty spool. Roll the tape on the spool and fasten the loose end with a bit of cellophane tape. This will lengthen the life of the tape measure and make for a neater look in your sewing basket.

WANTED-We are looking for a young man to work in our shop. Must be mechanically inclined and want to learn a trade. Apply at Permian Corp. 42-6p

POLITICAL ANNOUNCEMENTS
The following persons have authorized this newspaper to announce their candidacy for the following offices in the Democratic Primaries, May 7, 1966.

STATE REPRESENTATIVE
83RD DISTRICT
A.C. Hallmark
U.S. REPRESENTATIVE
18TH CONGRESSIONAL DIST.
Walter Rogers
STATE SENATOR
31ST SENATORIAL DIST.
Grady Hazlewood
COUNTY, DIST. CLERK
Mrs. Keesee Richardson
Donald Heath
COUNTY TREASURER
Mrs. Juanita Kemper
Mrs. Selma Dahl Reneau
REPUBLICAN CANDIDATE
STATE REPRESENTATIVE
83RD DISTRICT
Jack H. Hart.

Cummings

Refrigeration

HEATING

AIR CONDITIONING

SALES & SERVICE

SPECIALIST

659-2721

SPEARMAN

FOR SALE

FOR SALE-1963 American-Westwood 2 bedroom mobile home. Excellent condition. 119 N. Brandt. Phone 659-2454 after 6 p.m. 24-tfc

FOR SALE-Two bedroom house, corner lot, excellent location. Phone Mrs. Wilburn McGuire 2359 after 5:30 p.m. 29-tfc

Will make feather flowers and arrangements; corsages and centerpieces, any color. Dorothy Groves, 3027. 42-

FOR SALE--4-wheel drive Jeep pick-up \$250.00. 1954 Chevrolet 2-Door hardtop, \$125.00. This week only. Call 659-2186. 44-2c

FOR SALE-3 bedroom house, garage and fenced yard with low equity. Call 659-2967 or 659-2294. 40-tfc

FOR SALE by owner, 3 joining lots including 1 corner lot. Paved front and sides, lot 4-5-6, Block 54, Corner 2nd & Brandt. \$2,250.00. Call 659-2668 after 5:30. 40-tfc

FOR SALE-1962 Bonneville Pontiac 2 dr. loaded. Phone 659-2441, after 6 p.m. 659-2408. 40-tfc

FOR SALE-3 bedroom house, Blodgett Linn addition, one bath. Phone 659-2441, after 6 p.m. 659-2408. 40-tfc

FOR SALE-Blonde Everett Piano, \$400. Call 659-2747 or see at 505 S. Haney. 46-tfc

All kinds of Easter party goods, by Hallmark of course, at Plainsman Office Supply. Also a nice selection of beautiful Easter cards. Choose yours today!

GARAGE SALE-Clothes, odds and ends, Friday and Saturday, 1104 S. Dessen from 9 to 5. 44-1c

FOR SALE OR RENT-One bedroom home, Contact Collard Real Estate, 659-2501. 46-4c

FOR SALE-Two bedroom brick veneer house. Will sell or trade on good terms for smaller house. Phone 659-2464. L.S. McLain. 36-tfc

FOR SALE-1951 Chevy-2 Door Hardtop. Runs good. Phone 659-2617. 46-tfc

FOR SALE-3 bedroom house, redwood fenced backyard. 1010 S. Haney. Call 659-3103 or 659-2754. 25-tfc

FOR SALE-16 ft. self-contained travel trailer. May see at Baker Hotel. 46-tfc

FOR SALE-14 Volume set of Junior Classics and 20 Volume set of Collier's Encyclopedias. Phone 659-3067. 36-tfc

FOR SALE--4-wheel drive Jeep pick-up \$250.00. 1954 Chevrolet 2-Door hardtop, \$125.00. This week only. Call 659-2186. 44-2c

FOR SALE-640 acres 17 miles west Stratford, Texas, section 35, block 47 1/2 Dallam County. Irrigation possible, natural gas at fence line. 1/2 mineral. Write both Karolina Forbau, Box 45, Higgins, Texas and B. Forbau, 3417 Asbury, Dallas, Texas, 75205. 47-8p

FOR SALE-1 USED 3001-6" Peerless Pump-W70 HP Gearhead, 1-USED-400"8" Peerless Pump-without gearhead. R.L. McClellan & Sons, Inc. 659-2156, Spearman, Texas. 47-tfc

LOST-Black and white English setter. Answers to name of Josie, contact Bus Sims, 2345. 47-1c

FOR SALE OR LEASE-Large home on 150 ft. corner lot, 822 S. Barkley. References required if leased. Phone F16-8618 in Amarillo or 659-2350. 47-tfc

TO SETTLE ESTATE-160 acres, prime farm land in high producing irrigation district, including minerals. All land in cultivation and level. Will guarantee plenty of water. Located approximately one mile Southeast of Spearman, Texas. Paved road on East side. Excellent allotments. Possession of milo acreage now. Wheat acreage after harvest. Clear title guaranteed. For further information call or write, Raymond Sparks, Box 633, 659-2330, Spearman, Texas. 47-8c

WANTED: One or two men, experienced, reliable, for yard work, starting NOW. Needed one or two days each week. Own equipment desirable. Call 659-2804 anytime or contact R.L. Kleeberger, M.D. 905 S. Barkley St., Spearman, Texas. 43-2c

Mrs. Jim Neely who has been a patient in the Shattuck hospital is expected to come home this weekend.

SERVICES

Amarillo Daily News & Globe Times home delivery. Call 2685.

14-tfc
SERVICE-Ditches from 3-12 inches, any desired depth. S. D. Jones 659-2809. Harold Shaver 659-3474.

17-tfc
WANTED---Rototilling yards and gardens. 659-2498. 46-7p

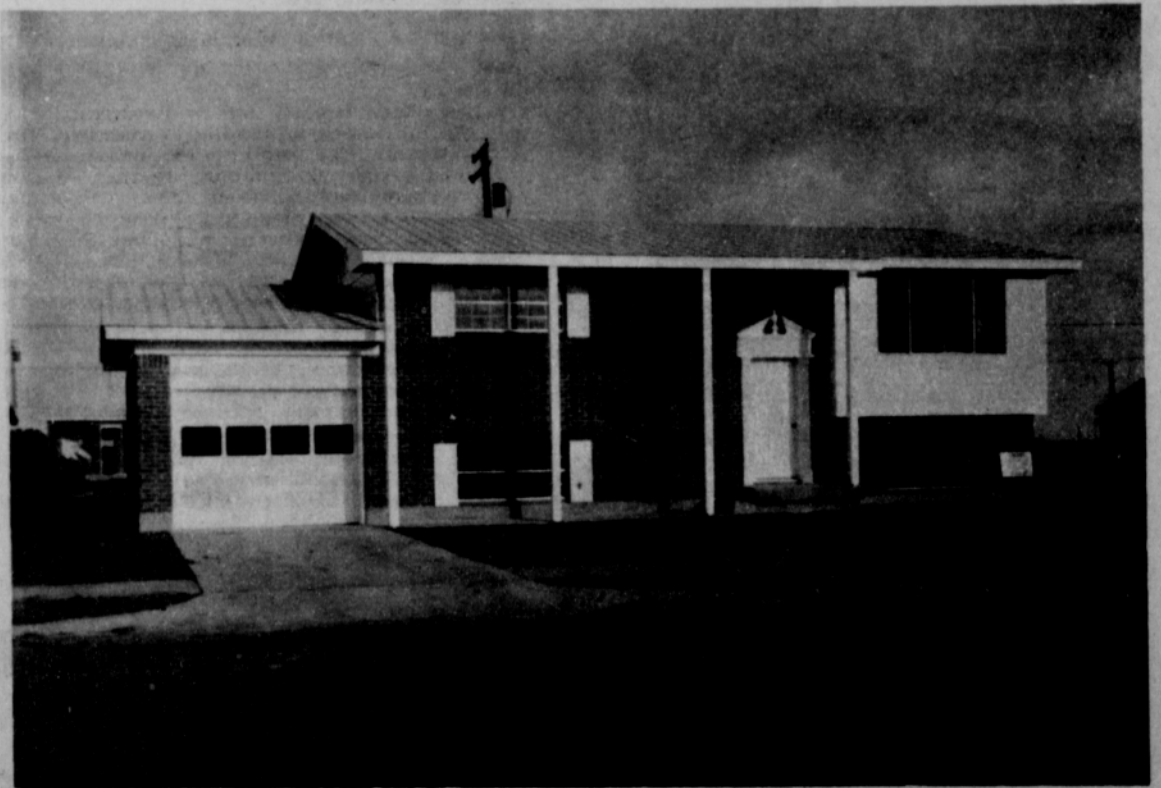
44-tfc
WANTED-Yard and garden rototilling. Peewee Kizzlar, 310 S. Brandt.

46-1p
VERY PROFITABLE!!!! Earn up to \$10.00 per hour in your spare time: Service and collect from your own route of coin operated units. No selling; we establish all routes; car and Ref. desirable. Investment of \$985.00 to \$1,785.00 req. For personal interview in your area, write King Dist. Co., 2500 39th Ave. N.E., Minneapolis, Minn. 55421. Include phone number.

OPEN HOUSE

New Home in Spearman Open for Inspection. The Public is invited to inspect this new home just completed on 1111 Townsend in the Glover Addition:

Sunday, April 3,
2:00 until 5:00 P.M.



We are especially proud of this lovely home and know that you will be surprised in how nice it is.

It is a split foyer with 2 ceramic tile baths, built in cooking unit, deluxe kitchen, lots of storage space, central heat, sizeable garage, and the very latest refinements in home building are to be found in this fine home. The choice location adds much to this home. This fine house has been sold to the Paul Kings, but they have agreed to let us show it. They are thrilled with their new home and are happy to share it with you.

We will be on hand between the hours of 2:00 to 5:00 P.M. April 3 to answer questions and show this home.

MACIAS CONSTRUCTION CO.

Complete Building Service-

Perryton, Texas

NOW . . .

RUST FREE

Coleman



ONLY Water Heater backed by 10-year \$500 warranty bond!

Vit-Rock

GAS

WATER

HEATER

-Come in today for complete details-

White House Lumber Co.

Hansford Plainsman
Publishers Inc.

Jim O. Davis
Burl G. McClellan



County-wide independent newspaper published every Thursday and Sunday at 209 Main St., Box 668, Spearman, Texas 79081. Second Class postage paid in Spearman, Texas 79081. Editor . . . Burl McClellan

Mrs. Cy Ainsworth visited in Amarillo from Wednesday till Friday with her daughter and husband, Mr. and Mrs. Dan Collins.

Mrs. Kate Gray of 317 S. Archer celebrated her 88th birthday Saturday. She lives with her daughter, Mrs. Frances Sim.

City Elections

Open Tuesday

Spearman voters will go to the polls Tuesday to elect a Mayor and two City Councilmen. There are contests in each election.

The election will be held in the City Hall and all qualified voters living in the city of Spearman are qualified to vote.

Incumbent Bob Vaughn is being opposed for the Mayor's position by Clarence Pettitt.

Incumbents Richard Holton and E.J. Copeland are seeking re-election to the council. Joel Lee Lackey is also seeking one of the two seats on the council.

Mrs. B.J. Garnett spent a couple of days last week visiting her sisters, Mrs. Claude Alexander and Miss Lula Deck at San Marcos.

Want Ads Pay

Roy Russell, Jr. Wins Drag Trophy

If you are not a drag racing fan, or know your automobiles, his talk is a little hard to understand, but actions speak louder than words.

The actions of Roy Russell, Jr., and his Pontiac GTO were enough last Sunday to set a new Class C record at the Amarillo Dragway, to win the Class C stock division and the class trophy.

Russell set the strip record by covering the quarter mile from a standing start in 13.97 seconds and this figures out to a speed of 103.98 miles per hour.

To win the class trophy, Russell had to beat out 17 other entries. Since it was elimination, he only had to beat eight other cars.

"I ran one guy four times before he was satisfied," Roy said. "I ran my first race and won, then came back to run him. My car was hot and he beat me, but the officials found out

he had not run his first race, so we had to run again. I beat him and he was mad because he had won the first race. I ran him again and beat him, then ran him the fourth time just to show him I could beat him again.

Drags are fast and quick, because it does not take the cars

long to cover the quarter mile.

Russell described it this way, "You just get settled back after the start and get your eyes on the tach (tachometer) when it is time to change gears. By the time you change, it is time to change again, then again and it is over. By the time you make the quarter, that engine is wound as tight as it will go. I don't think you could squeeze another rpm out of it."

Russell has done practically all of his own mechanic work on his GTO. It is stock, but he says it has had everything done to it that can be done and it still be stock.

The only work he did not do was the reworking of the heads. He did not have the shop or the tools needed for the work.

In 1960, Russell was the winner in a model car building contest. Just two years later he was doing his first drag racing and has been at it ever since.

He has to tow his car to the drag races because of the low speed rear end he has in it.

"You can't drive it around, because at 50 miles per hour on the road, the engine would be wound up like you were driving 100," he said.

It might take him an hour to drive from here to Borger, but the first quarter mile would be at record speed.

PET PEEVE

My pet peeve is the supermarket shopper who parks her cart in the cashier's line, then disappears to finish her shopping.—Mrs. Mary Parker, Maize, Kans.

Mrs. Don Jones, Wanda and Billie spent the forced school vacation visiting her parents in Pampa.

PANGBURN'S
ANOTHER Great Gift Idea FROM YOUR DRUG STORE
Pangburn's Prize Eggs
—Slice-N-Serve



PANGBURN'S PECAN DIVINITY EGG

Slice-N-Serve
Delightful dessert or party refreshment. Pangburn's fluffy white Pecan Divinity covered with luscious Pecans.

3 Delicious Varieties

- * Pecan Divinity
- * Millionaires
- * Fruit & Nut

TWO SIZES \$1.59 & \$2.59

SPEARMAN REXALL DRUG

T.G.&Y.
5¢ TO \$1.00 STORES

Easter Values

TREASURE HUNT EGGS 10¢ EACH
SEE-THRU-TOP Each egg contains one playtoy and a small bag of candy Easter eggs.

EASTER GREETING CARDS 10¢ TO 25¢ EACH

Brach's Multi-Pack CANDIES 29¢ EACH
Chocolate Covered Marshmallow Treats

Marshmallow PEEPS 10¢ PKG.
4 in Pkg. Assorted Marshmallow Novelty Treats

Store Hours
Mon.-Fri. 8:30 to 6:00
Sat. 8:30 to 8:00
Prices Good April 4th - 9th
PRICES GOOD IN ALL STORES THRU SATURDAY WHILE QUANTITIES LAST!

Get ready for **FUN!**

Hear the best on radio

Top 40 Country-Western Easy Listening

Variety FOR YOU EVERY DAY!

KBMF-FM

98.3 on your dial

25' Tall BEGGING BUNNY

Giant Plush Bunny in Assorted Colors with White. Satin Print Lined Floppy Ears. Satin Ribbon Bow Around Neck. Tremendous Value!

\$1.98 VALUE
Bargain Priced
\$1.66 EACH



Filled Easter BASKETS & NOVELTIES 39¢ TO \$1.98 EACH

Assortment Varies By Store

Choose from our wide selection of MADE UP Easter Baskets and Novelties!

Royal Deluxe Paper Service. Beach Party
TABLE NEEDS 35¢ PKG.
Decorative Easter Ensemble.

TABLE COVER MATCHING—54" x 96" 49¢

Emer's GOLD BRICK EGGS

Delicious Milk Chocolate Filled with Choice Pecans. Treat the whole family today with this tasty candy. Individually wrapped. Perfect for Parties!

6-in-Box
59¢ BOX

T.G.&Y.'s BIG BUY



MEDIUM PANNED EGGS

Brachs Favorite Easter Treat! Delicious!

Marshmallow Centers in Sugar Shells. Assorted Colors and Flavors. Ideal for Easter Egg Hunts!

11 Oz. BAG
LOW PRICED
27¢ PKG.



EGG DYES 10¢ TO 49¢ PKG.

- So Easy to Use
- Brilliant Pure Food Colors
- Transfers and Cut-Outs

EASTER GRASS
Ideal Basket Filler! Shredded Cellophane. 1 1/2 Oz. to 3 1/4 Oz. Size.
15¢ TO 29¢ PKG.

PLASTIC EGG FILL 'N THRILL
Fill them with surprises! Non-toxic plastic eggs in beautiful Easter colors to delight the children.
59¢ BOX
Carton of 12

BRACH'S COLORFUL JELLY BIRD EGGS

Sparkling Sugar Jackets of Assorted Colors and Flavors with Smooth-Textured Jelly Centers! Party Favorites! Kiddies Love Them!

1 LB. BAG
TERRIFIC VALUE
27¢ PKG.





PLANTING ROSES- Miss Phyllis Davis and Miss Susan Hutchison, officers in the Spearman Future Homemakers of America, plant the first roses in the FHA rose garden to mark FHA Week at Spearman High School. Chapter members and chapter mothers watch the planting. -Plainsman photo

Lions Will Honor Lynxettes

A girls basketball coach with a long record of winning, will be the speaker Thursday night when the Spearman Lions and their Ladies honor the State AA Champion Spearman Lynxettes with a banquet.

C.F. Crofford of Claude, who has coached several state champions and has had a consistent winner over the years, will be the speaker.

The banquet will be held in the Fellowship Hall of the First Methodist Church.

There will be no regular Tuesday meeting of the Lions Club this week because of the Ladies' night.

Willie Mathis has returned to the Veteran's Hospital in Amarillo after spending a month at home. Mrs. Mathis took him to Amarillo Thursday.

Train To Have Guymon Guests

Committeemen from the Guymon, Okla., Pioneer Day Celebration will meet Thursday with the members of the Rolling Plains Wagon Train at 7:30 p. m. in the Home Demonstration Club Room.

This will be the regular meeting of the organization and all women will be asked to bring pies for refreshments. The Guymon delegation will be here to invite the Train to the celebration early in May.

Mrs. Wesley Garnett attended a regional church library conference at the Trinity Baptist Church in San Antonio March 21-22. On March 23 she and Mrs. B.J. Garnett attended the First Governor's Conference on Libraries in Austin. Enroute home they stayed over in Temple and visited Ann Garnett at Waco.

F.L. Largent and Cy Ainsworth spent a couple of days

in Oklahoma City attending a Humble Oil Federation meeting. They returned home Wednesday.

Mr. and Mrs. George Dick who have resided at 1015 S. Roland have recently moved to Perryton. Mr. Dick is Field Superintendent for Humble Oil Co.

TOMMY GOOCH AGENCY
FARM BUREAU INSURANCE
Spearman, Texas

MOONLIGHT TV

Specializing in Minor TV Repair.
EVENINGS & SATURDAY
Sorry-No Sunday Calls
Phone 659-2792 or 659-3321

Service Calls - \$2.50

Judy Bayless Named 'Miss Farm Bureau'

A tall, poised blonde high school senior is the new Queen of the Hansford County Farm Bureau.

Miss Judy Bayless, a former Miss Hansford County, was selected by a panel of three judges over four other entries in the Queen's contest which was revived this year by the Farm Bureau.

First runner-up in the contest was Miss Susan Dixon of Morse, a junior in Morse High School. The other contestants were Miss Melinda Pearson, a junior in Spearman High School, Miss Jan Roper, a junior in Gruver High School and Miss Mary Etling, a senior in Gruver High School.

Each girl was introduced by master of ceremonies Joel Combs. He then talked to each girl, asking questions about her farm life and why she was glad her parents were in Farm Bureau. After the interview, each girl was introduced by name.

Miss Bayless, daughter of Mr. and Mrs. Ted Bayless, will represent the Hansford Farm Bureau in the District Queen's contest in Amarillo in August.

Miss Bayless has acquired a long list of honors since she won the Miss Hansford County contest two years ago as a 16-year old. She was drum major of

the Gruver High School Band, Band Queen, delegate to Girls State, secretary of the senior class, and a member of the one-act play cast that won district.

Miss Bayless will enroll at Southern Methodist University in Dallas this fall.

A good crowd attended the contest which was held in the Gruver High auditorium. Entertainment was by the New Folk Three, Tom Gibner, Donna Seymour and Lloyd McWhirter, of Spearman.

The contest was planned and directed this year by the women of the Farm Bureau.

They were successful in reviving a contest which had not been held in a number of years. An effort to hold the contest was made two years ago, but not enough girls entered the competition.

Mrs. Mollie Fountain of Langdon, Kan. who has spent the past two months with her daughter and family, Mr. and Mrs. Ray Lackey, returned to her home Tuesday.

Gift Box Memo:

Those shipments of new merchandise are beginning to stack up. We have more and more new merchandise.

We unpacked candles all one day this week. We cannot believe we bought this many candles at market. There are candles of all sizes, colors, aroma, and shapes. Come pick one you like.

Did you know that one lighted candle will help purify the air in a smoke-filled room. Try it.

All you toile painters. We have a new shipment of undecorated toleware for all of you who want to do your own decorating.

Before Christmas we had some large glass cake covers that everyone seemed to like. They sold quickly. We have some more and we hope you are still wanting large glass cake covers.

Don't forget, we have a watch repair service. Guaranteed.

The Gift Box



SPEND A LITTLE... SAVE A LOT!

IDEAL CAN MAKE A HAPPY DIFFERENCE IN YOUR FOOD BUDGET WITH RELIABLE EVERYDAY LOW PRICES PLUS ADVERTISED SPECIALS. SHOP TODAY AND SAVE!



FREE... Sandalwood COFFEE CANISTER

ADD TO YOUR SET TODAY WITH COUPON NO. 4 FROM LAST WEEK'S IDEAL FOOD AD.

MEADOWDALE FROZEN STRAWBERRIES 4 10-oz. Pkgs. \$1.00
THE REAL THING FROM FLORIDA ORANGE JUICE 6 6-oz. Cans \$1.00

ALL FLAVORS JELL-O DESSERT 4 3-oz. Pkgs. 39¢
FOOD CLUB GELATIN DESSERT 4 pkgs. 29¢

IDEAL'S REGULAR 49¢ Angel Food Cake 8-Inch Size 45¢

IDEAL ICED OR PLAIN Raisin Bread 1-lb. Loaf 25¢

PILLSBURY OR Ballard Biscuits 3 8-oz. Cans 29¢

FOR SALADS OR COOKING Kraft Oil Quart 65¢

MOUNTAIN GROWN Folger's Coffee 3-lb. Can \$2.19

Prices effective thru Wednesday April 6, 1966. Limit Rights Reserved.



CAKE MIXES 4 19-oz. PKGS. \$1.00

EXTRA FANCY RED DELICIOUS APPLES 3 1-lb. Bag 39¢

TEXAS RUBY RED GRAPEFRUIT 5 1-lb. Bag 39¢

CENTER CUT RIB PORK CHOPS lb. 89¢

TENDER FIRST CUT PORK CHOPS lb. 59¢

IDEAL "CHEF-CUT" SPECIAL FILLET MIGNON 69¢

LOADED WITH MEAT! COUNTRY SPARERIBS lb. 69¢

FRESH GROUND BEEF lb. 49¢

Food Club Frosting White or Chocolate 14-oz. Pkg. 29¢
Wishbone Dressing Golden Italian 8-oz. Btl. 39¢
Wishbone Dressing Regular Italian 16-oz. Btl. 69¢
Hunt's Tomato Puree 2 8-oz. Cans 29¢
Hunt's Tomato Paste 2 6-oz. Cans 29¢
Hunt's Tomato Sauce 8-oz. Can 12¢
Hunt's Tomato Sauce With Cheese 2 8-oz. Cans 29¢
Ranch Style Beans 6 300 Cans \$1.00
Pink Beauty Salmon Tall Can 79¢
Pillar Rock Red Salmon No. 1 Can 69¢

SO THEY SAY



and made straight for BURTON'S TV. Somebody set her straight by telling her about the complete stock of reasonably priced TV, Radio and Hi-Fi sets in this store, backed up by reliable service.



106 E. Kenneth Spearman, Texas

MERCHANTS! IS PLANNING THE RIGHT ADVERTISING FOR YOUR STORE A PROBLEM?

READ WHAT A TOP PUBLISHER SAYS:

The COUNTRY EDITOR

By H. M. BAGGARLY

THE TULIA HERALD

RETAIL STORES have a wealth of sales instruction available absolutely free of charge. If we had a department store, particularly a "prestige" store, we'd let White & Kirk, Hemphill-Wells, Blackburn Bros., and even Neiman-Marcus foot the bill for being our advertising adviser.

These concerns have high priced advertising staffs that do nothing but apply science to advertising. They learn what advertising is effective and what isn't. They discover which ads take the slumps out of business. They are able to eliminate after-Christmas slumps for department stores and after-Thanksgiving slumps for food stores. They know beyond doubt when to advertise what.

We have credit cards from all these out-of-town concerns. It is so convenient to clip a coupon from the ads in the Lubbock, Amarillo, or Dallas papers and order something on credit. Wonder how many Tulia stores have furnished credit cards to Happy, Kress, Nazareth residents, particularly new residents who haven't yet formed buying habits. Credit bureaus and references are available to sift out the customers a store would like to have.

OR, IF WE HAD a store catering to the masses of customers, we'd study the advertising habits of Fedway.

Every local business has its counterpart in the city. All can learn from the more experienced. There is no necessity for costly experimentation to discover what others have already learned. Why engage in costly research in an effort to determine whether or not advertising pays when this mystery has already been discovered by others. If K-Mart, Fedway, Sears & Roebuck, White & Kirk, Hemphill-Wells have found advertising to be a necessity, who are we to think we are better merchants than they?

Once in a while, due to very unusual circumstances, somebody beats the odds. Once in a while an "incurable" cancer patient survives. But by and large, business failures are the result of somebody's trying to beat the odds, somebody's trying to prove that the big boys don't know their business.

The newspaper strikes in New York City cost New York stores millions of dollars in a matter of days. . . because the stores couldn't advertise.

OUR ENTIRE STAFF AND FACILITIES

ARE READY TO HELP YOU SEEK MORE CUSTOMERS!

 **The Hansford Plainsman** 



The MEATIEST BUYS of the WEEK

That's right--you get more good eating meat per pound and per penny at CUT RATE because we trim off excess bone and fat BEFORE WEIGHING. No wonder so many satisfied families say "CUT RATE'S meats please in every 'weigh'--tastewise and THRIFT-wise, too!" You'll like the way we cut our meats to cut your cost.

BABY BEEF - TENDER -

LIVER LB. 39¢

PORK RIBS
LEAN NORTHERN PORK
COUNTRY STYLE 69¢
FAMILY PAK
QUARTER LOIN, END &
CENTER CUT RIB CHOPS
2 1/2 & 3 1/2 lb. PKGS.
PORK Chops lb. 79¢

AF BRAND - ALL MEAT LB FRANKS 59¢

LEAN NORTHERN PORK - SHOULDER CUT

PORK ROAST lb. 49¢

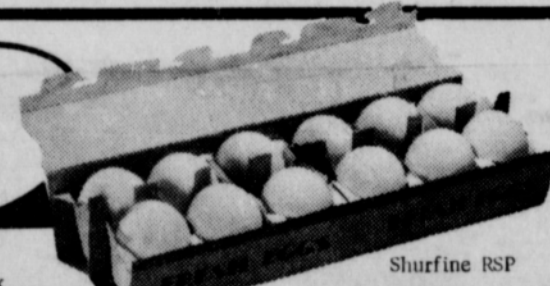
LEAN NORTHERN PORK

PORK STEAK lb. 59¢

AF BRAND HICKORY SMOKED SLICED BACON 2 lb. pkg. \$1.49

Heavy Aged USDA CHOICE BEEF RIB STEAK lb. 79¢

AVI Grade A EGGS Large 53¢ Dozen



Mortons Frozen "Ready to Eat" 9 oz. Box

HONEY BUNS 25¢

Shurfine RSP CHERRIES 303 Size Can 2 for 37¢

CANDY EASTER EGGS Shurfresh Candy lb. Bag 29¢

EASTER EGG DYES and COLORING KITS Paas 10¢

Libbys Early Garden 303 Size PEAS 2 for 37¢

Shurfine Evaporated Tall Can MILK 2 for 25¢

POWDERED OR BROWN SUGAR Imperial Pure Cane lb. Pkg. 2 for 29¢

INSTANT COFFEE Folgers 6 oz. Jar 69¢

Hunts Tall Can TOMATO JUICE 10 for \$1.00

Krafts Velveeta 2 lb. Loaf CHEESE SPREAD 88¢

Nabisco 12 oz. VANILLA WAFERS 33¢

Hunts Solid Pac Whole Tall Can TOMATOES 2 for 37¢

Mortons "All Varieties" Frozen Your Choice TV DINNERS 39¢

INTRODUCTORY OFFER!

7¢ OFF REGULAR SIZE 15¢ OFF GIANT SIZE 25¢ OFF KING SIZE

REGULAR SIZE ONLY 28¢
GIANT SIZE ONLY 68¢
KING SIZE ONLY \$1.14
New Swedish Modern Design Glasses

TIDE King Size 99¢

"Mid-Week Values for Tuesday & Wednesday April 5 & 6"

Tender, Fresh, Green ONIONS } 3 BUNCHES 19¢
Fresh, Crisp, Red RADISHES }
Texas Cello Bag CARROTS BAG 10¢
Florida Ruby Red GRAPEFRUIT 2 LBS. 29¢

Shurtine Layer CAKE and/or 4 for \$1.00 FROSTING MIX Mix or Match



Cut Rate GROCERY



Women Hear Gov. Connally On Libraries

Mrs. Wesley Garnett and Mrs. B. J. Garnett recently returned after attending two library conventions in South Texas.

Mrs. Wesley Garnett attended the Church Library Convention in San Antonio and then she and her mother-in-law attended the first Governor's Conference on Libraries in Austin.

Mrs. Wesley Garnett is librarian of the First Baptist Church Library and a member of the Hansford County Library Board as a representative of the Twentieth Century Club.

Governor Connally told some 3,000 delegates that Texas Public Library conditions present "an embarrassing and almost defeating picture."

The Governor said the problem can be summarized as widespread substandard library services; too small, poorly paid, inadequately trained staffs; impoverished book collections and library buildings that damage community pride.

Connally asked "Can Texas inform its people and train its future leaders with public library resources which offer less than one whole book per person?"

Former Governor Price Daniel said there is not a pot of gold into which we can dip to solve our local library problems. We must examine our local resources carefully and determine whether we are contributing our fair share, then if we are, we can look for matching help.

It was pointed out that the rest of the nation averages spending \$1.50 per capita for public libraries, while in Texas we spend 84 cents per person.

Robert Vosper, president of the American Library Association, told the delegates that Texas is "book poor by measure."

"Inadequate" local and state support has resulted in increasing federal aid to libraries. "Purely local support has resulted in shocking gaps in our library services, producting intellectually depressed areas in thinly populated rural areas and in some parts of our great cities."

Governor Connally said that books cast off by citizens in a book drive will not meet the demands of people who want to understand the new age in which they live.

Size Is No Handicap

DENVER — Don Day, coach of Thomas Jefferson High's Denver League football champions, had only one boy on the squad who was not bigger than himself. Day is 5 feet 6 and weighs 153, yet he won two letters in football at the University of Denver.

For Quick Courteous Service

Chevron Gasolines
Atlas Tires & Accessories
Washing-Greasing

QUICK, COURTEOUS SERVICE

Loren Simmons

SIMMONS CHEVRON SERVICE

Phone 659-9985
Plains Shopping Center