



# The SUNDAY Hansford Plainsman

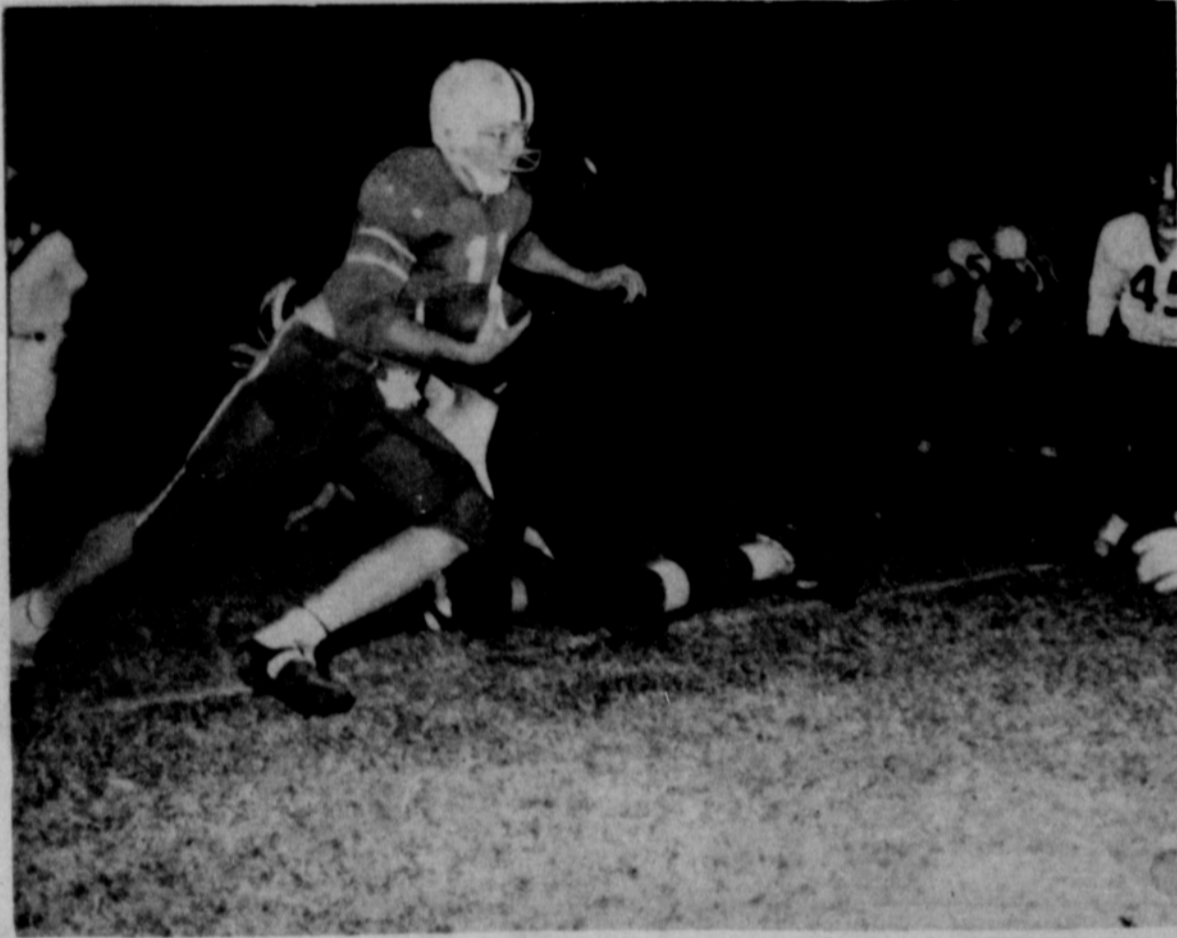


VOLUME VI., NUMBER 4

SPEARMAN, TEXAS

SUNDAY, NOVEMBER 1, 1964

## Hawks Drop Lynx 28-16



### Greatest Effort Falls Short

Superior speed and size kept the Phillips Blackhawks undefeated Saturday night as they dropped the Spearman Lynx from the undefeated ranks 28-16 in Phillips.

Playing before a capacity nomenclature crowd of approximately 5,000 fans, the Hawks ran up a 21-0 margin before the Lynx got on the scoreboard with a 44-yard pass from quarterback Johnny Crawford to wingback Ken Shufeldt in the third quarter.

Although outweighed 20 pounds per man in the line, the Lynx threw up a rugged first half defense that held Phillips to a 7-0 halftime score.

Phillips controlled the ball the first quarter with a grinding ground game led by big, hard-running Lynn Johnson and Freddie Banes. The fullback and wingback carried the ball on all 20 running plays by the Hawks during the first quarter.

Spearman stopped the first Hawk effort in midfield, but a punt and a five yard penalty put the Lynx back on their four yard line. Crawford boomed a 46 yard punt out and Phillips started on what looked like the first scoring drive.

Banes and Johnson battered the ball to the Spearman three where they had a first down. Johnson blasted into the middle of the line. He was hit hard and the ball came loose. Shufeldt recovered in the end zone to kill the threat.

Just as the second quarter

started, Duke McNeese intercepted a Crawford pass and Phillips started its first scoring drive.

When the Lynx defense got tough on the ground, Phillips went to the air. Shufeldt broke up the first long pass, then a near interception set up the score. Leroy Callaway almost intercepted a Larry Lewis pass, but the ball bounced off his fingers. Johnson got the deflected ball and went to the Lynx 14.

Three running plays netted five yards and on fourth down Lewis passed to Johnson who hurried in for the score.

| STATISTICS        |          |
|-------------------|----------|
| Spearman          | Phillips |
| 125 yards rushing | 296      |
| 177 yards passing | 53       |
| 22 passes         | 6        |
| 15 passes comp.   | 2        |
| 0 passes int.     | 1        |
| 12 first downs    | 13       |
| 3-33 punts        | 2-37     |
| 5-45 penalties    | 7-55     |

McNeese kicked the point after to make the score 7-0.

Spearman came right back and missed a possible touchdown by two inches. Crawford sparked a 58 yard drive that was stopped on the two.

The big quarterback led the drive with two good runs and a 20 yard pass. On the third play, Crawford went back to pass, then ran for 19 yards for a first on the fifty. Morris and Shufeldt were stopped for no gain, then Crawford picked up nine more. Morris bowled over two tacklers for a first down and the drive was kept moving.

After three running plays picked up four, Crawford went to the air again and hit Shufeldt. The pass and run covered 20 yards and got a first on the 15.

Three running plays were short and on fourth and needing four, Shufeldt went wide. When the play was measured, he lacked two inches having the first down.

A 15 yard penalty just after the second half opened had the Lynx back on their own 11. Crawford punted out to the Lynx 40 and Johnson ran the ball back to the Lynx 24. It took the Hawks only five plays to score. Lewis scored from the seven and then McNeese added the PAT to make the score 14-0.

A few plays later Phillips turned disaster into defeat. Lewis was hit behind the line and almost downed. He tore loose, found a hole and went 27 yards from his 26 to the Lynx 47. Phillips was penalized 15 yards for holding and on the next play, Banes broke free and ran 65 yards for a score. McNeese added the point to make it 21-0.

With the third quarter about gone, Crawford went to the air and found the Hawks' weakness. The scoring drive covered 75 yards in nine plays of which four were passes.

The first one was a six yard throw to Butts for a first down. One play later, he completed a flat pass to Morris which lost one. The next play was a 29 yard completion to Shufeldt. Spearman was penalized

back to midfield for clipping.

Two running plays put the ball on the Phillips 44, then Crawford unloaded the big play. He threw about 25 yards to Shufeldt. He was almost shoved down before the ball got to him, but he caught the ball and his balance and raced the rest of the way for the score. He was hit just as he crossed the goal.

Dave Clement went in at quarterback, pitched to Crawford who threw on the run to Ron McDonald who made the great running catch for the two points.

Spearman kicked off as the third quarter ended. On the second play, Banes broke free and went 68 yards for a score. McNeese added the final Hawk point.

Both teams traded short drives with Spearman marching from the Lynx 33 to the Hawk 31 before their drive died. Phillips tried the air but could not hang on to the pass and punted it away to the Lynx 24.

Crawford and his receivers put on a show seldom seen in high school circles. They marched 76 yards on 12 plays. Seven plays were passes, the first five completed in a row for a total of 51 yards.

From the 24, Crawford threw to Shufeldt for 11 yards. Shufeldt was knocked out of the game and was replaced by McDonald. He caught the next one for 20 yards. The next one went to Callaway for 11, the next to Morris for five, and the next to McDonald for four.

Morris then picked up five from the Hawk 24. Crawford went back to the air. He hit Butts who got clear at the two. The throw was perfect, but the usually sure-fingered end let it get away from him as he tried to turn and step into the end zone.

Crawford went right back to Butts for five more yards. Clement took over the quarterback duties and Crawford started running. He got five and a first after ramming through three tacklers for the last yard.

He picked up two more on the same play, then Morris tried to go inside and was stopped. Crawford was running to the right on the previous dashes; then on the last scoring play, he followed good blocking to the left and raced in for six yards to score.

Clement passed to Butts for the two points and the final score was 28-16.

Phillips put in its second unit for the last two plays.

Crawford put on his finest exhibition of the year. He ran for 80 yards and completed 14 of 21 passes for 177 yards.

This was Spearman's finest game, even in defeat. The superior speed of Hawks Banes and Johnson made the difference.

Carrying the Lynx offensive and defensive load for the night were linemen Leroy Callaway, Randy Moore, Mart Brillhart, Larry Babbs, Wesley Brinkley, Richard Smith, Skipper Robinson, Lynn Buzzard and Larry Butts, backs Johnny Crawford, Mike Morris, Ken Shufeldt, Dave Clement, Clayton Cochran, Ron McDonald, and Jim Ownbey.

### Absentee Vote Big

Hansford County voters are going to the polls in a record number Tuesday, if absentee voting is any indication of interest in the election.

County Clerk Keese Richardson said Friday afternoon that 110 absentee ballots had been cast at noon Friday. She said this was the biggest absentee voting she has seen locally.

A check of the list of absentee voters shows a large number of college students and servicemen casting ballots.

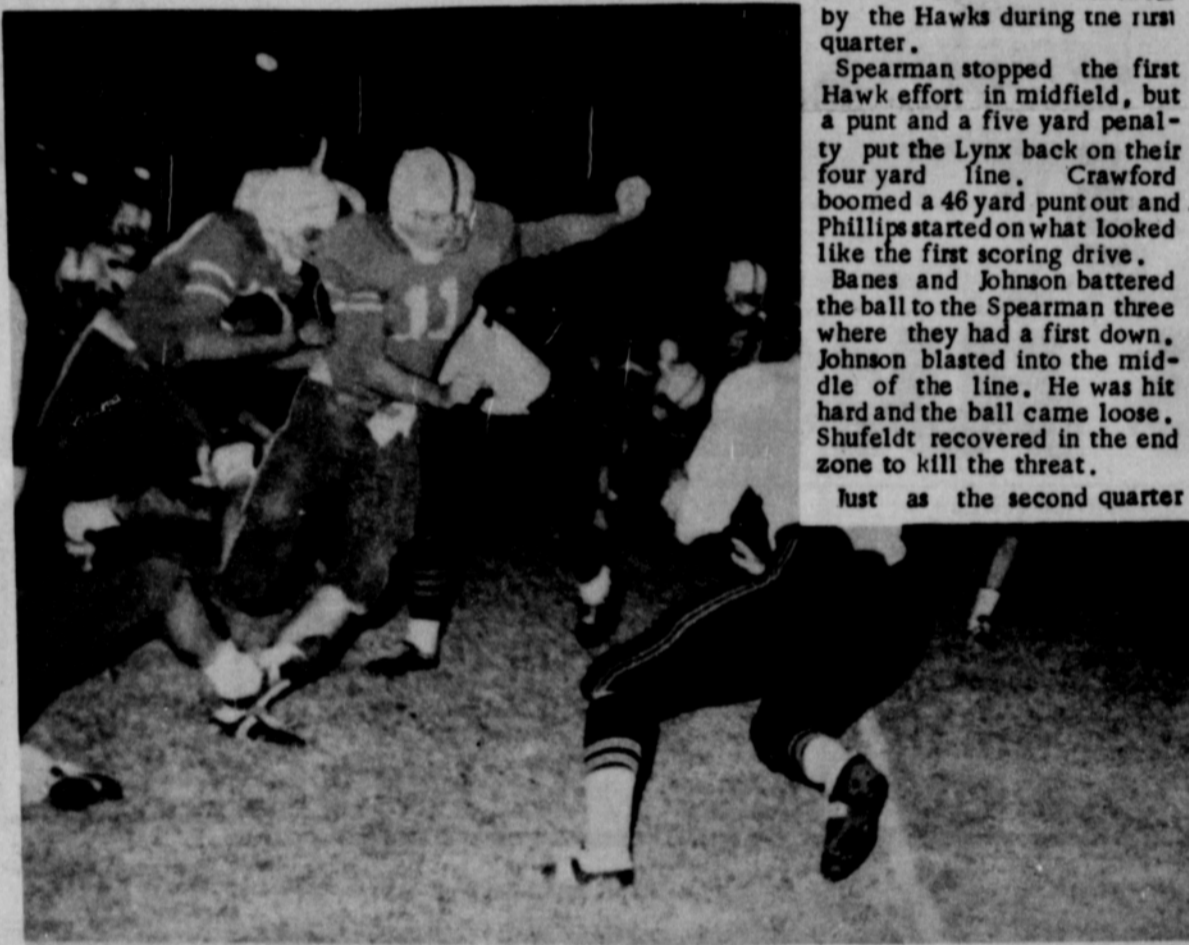
This year Hansford County had its first real taste of two party campaigning as both Republican and Democratic party organizations worked vigorously for the past several weeks.

More federal and state office seekers have visited the area this year in search of votes.

Voters will have a choice of three parties to vote upon, the Democratic, the Republican and the Constitution parties.

Texas voters will have three constitutional amendments to decide upon. One amendment want to stop the transferring of money from the permanent school fund to the available school fund. The second amendment seeks certain requirements relative to enactment laws affecting particular conservation and reclamation districts. The third amendment will give the Legislature power to authorize payment of medical care for persons over 65 who do not receive old age assistance.

The voting places in the county are: Precinct 1, Courthouse; 2, Kimbell in the home of R. D. Tomlinson; 3, Gruver Elevator; 4, Gruver School; 5, Hitchland; 6, New Hope School; 7, Oslo Church; 8, Phillips Plant; 9 Morse School; 10 Spearman Jr. High School.



GAINERS — Big Johnny Crawford picks up some of his 80 yards rushing on this this play as he leaves a tackler spralling in the grass. Things get a little crowded in the bottom pictures as Ken Shufeldt follows Crawford through a small hole. Crawford goes after one tackler as another closes in. Phillips won 28-16.

PLAINSMAN PHOTOS

### Walter Rogers Visits Leaders

Congressman Walter Rogers and his son, Walter Jr., visited with local Democratic party leaders here Thursday afternoon.

A group met with the Congressman in the lounge of the Blodgett and Linn building to discuss the approaching election and political questions.

The 18th Congressional District Representative said his latest information on the coming election showed President Johnson to be leading in all but twelve states. One of those is Arizona. He said it would be no surprise in political circles if Johnson carried Arizona.

When questioned about Hubert Humphrey and his political philosophy, Rogers said the vice-presidential candidate has a sharp, quick mind and is an able senator.

Rogers said Humphrey has changed some of his stands since he is now seeking a national office and will be representing all the people.

Rogers pointed out that Humphrey comes from an area of Minnesota which has very liberal and progressive ideas.

Rogers said the national debt is no problem, since it represents only about 50 percent of the national product. He said that in 1932 our national debt was only \$22 billion dollars, but the gross national product was only \$37 billion dollars.

He added that agriculture cannot be expected to operate on a free market without government programs as long as all other phases of the American economy are protected.

The Congressman said the minimum wage law, foreign

aid, defense contracts and other government spending are nothing more than subsidies to the American economy.

In defense of government spending, Rogers said money goes into programs which help the economies of many areas and the nation and therefore helps make more tax dollars for the government.

Rogers contended there is little waste in our general government, since it requires only about two percent of the federal budget to operate. He says the waste is in government contracts to private industry and therefore the people benefit from the waste they complain about.

The Congressman left Spearman for a rally Thursday night in Stratford.



# SHURFINE SAM FOR PRESIDENT

Shurfine 3 lb. can

**Shortening 59¢**

**Flour** Shurfine 25 lb. print bag **\$1.79**

**Beets** Shurfine Sliced 303 can **7 for \$1.**

**Asparagus** Shurfine Cut All Green 300 can **4 for \$1.**

Shurfine 19 oz Ass't. flavors

## CAKE MIXES 4 for \$1.

Shurfine R.S.P. 303 can

## CHEERRIES 5 for \$1.

Shurfine Whole Irish 303 can

**Potatoes 8 for \$1.**

Shurfine 300 can

**Pumpkin 8 for \$1.**

Shurfresh Buttermilk or Sweetmilk 8 oz.

**Biscuits 13 for \$1.**

Shurfine Evap. Tall Can

**Milk 8 for \$1.**

Shurfine Frozen 6 oz.

## ORANGE JUICE 4 for \$1.

Shurfine 24 oz.

**Grape Juice 3 for \$1.**

Shurfine 300 can

**Pork & Beans 9 for \$1.**

Shurfine Whole Sweet No. 3 Squat can

**Potatoes 3 for \$1.**

Shurfine 303 can

**Tomatoes 5 for \$1.**

Shurfine Strawberry 18 oz.

**Preserves 2 for 89¢**

Shurfine 8 oz. can

**Tomato Sauce 12 for \$1.**

Shurfine Red Alaska 16 oz.

**Salmon 98¢**

Shurfine Med or Wide 12 oz. pkgs.

**Noodles 2 for 49¢**

Shurfine with beans

### Chili

**4 for \$1.**

15 oz.

**Shurfine SPECIAL**

Colorado Red Rome

## APPLES

2 lbs. **25¢**



Firm, Fresh, Tender Heads 1b.

### Cabbage 5¢

Texas Sweet Juicy 5 lb. bag

### Oranges 59¢



# Shurfine GARRIN OF 19

HISTORY'S GREAT

Shurfine

## MAR

## 6

## PI

Shurfine

Shurfine Chunk Style flat can

### Tuna

**4 for \$1.**

Special

Shurfine Grape 18 oz.

### Jelly

Shurfine Quart

### Salad Dressing

Shurfine Whole Sweet 22 oz. jar

### Pickles

Shurfine 303 can SAUER

**Kraut 7 for \$1. Olive**

Shurfine 46 oz. can PINEAPPLE-GRAPEFRUIT or PINEAPPLE-ORANGE

**Juice 3 for \$1. Tis**

## C Cranbe

Shurfine 303 can

**Spinach 7 for \$1.**

Roxey Tall Can

**Dog Food**

**13 for \$1.**



**BUY SELL CLASSIFIED ADS TRADE LEASE**

**FOR SALE**

FOR SALE-Niemeyer's three bedroom brick home. Air conditioned. Carpeted. Phone Conrey's 3089. T47-S47-tfc

FOR SALE-1955 Chevrolet. Rebuilt motor. Phone 659-3427. T2-S2-tfc

FOR SALE-Saxophone, terms. Phone 659-2409. S52-T1-tfc

FOR SALE-1 female poodle puppy. Also poodle grooming by appointment. See Mrs. Burke, 117 Townsend after 4 p.m. S1-tfc, T2-tfc

FOR SALE - Industrial lots and acreage. Financing available. Cecil Crawford. Two good lots in town. Phone 659-2409.

FOR SALE-New Lake Pump and Aluminum pipe, Pat Westfield, Gruver, F17-2700. S44-T43-tfc

FOR SALE-4 room house, large room and bath, new carpet. Phone 659-3469. S45-T45-tfc

FOR SALE-8' x 22' trailer house. Phone 659-2551. T49-S49-tfc

FOR SALE: Cushman 1958 motor scooter. Call 659-2177 or see at 19 N. Hazelwood. S2-1p

FOR SALE: 95 acres of farmland southeast of Spearman, 1/2 mineral rights and good producing gas well. Cecil Crawford. Phone 659-2409. T43-S43tfc

FOR SALE: New Lake Pump and Aluminum pipe, Pat Westfield, Gruver, F17-2700. S44-T43-tfc

**WANTED**

STRAYED from Hix Wilbanks place 1 light gray 475 lb. calf branded O on right shoulder. If seen call Mansel Bryan, 659-2337. T1-S1-tfc

Yard worked and seeded. Gardens worked. Fertilizing done. Shrubs planted. Don Schmeitz, 659-2858. T23-tfc, S23-tfc

SERVICE-Ditches from 3-12 inches, any desired depth. S. D. Jones 659-2809. Harold Shaver 659-3474. T17-S18-tfc

Land Leveling to SCS specifications. General dirt work with Hancock carryalls. Willis Sheets, 659-2256. T46-S46-tfc

Lost-Part Chihuahua dog. Last seen 100 block S. Endicott. Reward. Phone 2200. T3-1c, S3-1c

LOST-Ladies beige shoulder strap bag. Reward. 422 W. 4th Trailer 1. S2-tfc, Tw-tfc

**Piano Tuning & Repairing**

NOW AVAILABLE SPEARMAN & VICINITY COMPETENT & EFFICIENT RATES REASONABLE

Call 2295



GOING DOWN -- Freshman Lynx Hal Shufeldt finds the going a little sticky after picking up 15 yards in a late drive Thursday night. Plainsman Photo

**8-8 Freshmen Team Loses To Ranchers by 1 Yard**

A last minute scoring drive by the Spearman Freshmen Lynx fell one yard short of victory here Thursday night as Spearman and Boys Ranch tied 8-8.

The last minute scoring drive was sparked by the running of Hal Shufeldt and the passing of Charles Shieldknight.

On the last play of the game, Shieldknight passed to Steve Jordan. The little wingback, starting his first game, took the pass away from a defender only to be tripped up just one yard short of the goal. The horn sounded as he hit the ground. The pass was good for about 15 yards.

Jordan had a great night with Shieldknight's pinpoint perfect passes. He caught four of five thrown to him. The lone Lynx score came on a Shieldknight to Jordan pass in the first half. Shufeldt carried over for the two points to tie the game.

The little wingback kept the final drive going when he latched on to a Shieldknight pass for 10 yards and a first down at midfield with just a

minute left to play.

He then threw the key blocks that sprang Shufeldt for three good sweeps that put the ball on the Rancher 15. From his wingback position, Jordan jammed the Rancher corner man down the line and allowed the long striding Shufeldt to scamper down the sideline and go out of bounds when hit, stopping the clock.

With less than 30 seconds to play and no time-outs left, Shieldknight went to the air. Two throws slipped through the hand of Bruce Brown, stopping the clock on each play. Then, on the last play Shieldknight went to Jordan with a throw, but the play was just short of victory.

Mrs. Bob Baley and Mrs. Bert Briley spent Thursday shopping in Borger.

Mr. and Mrs. Bryce Steele visited in Beaver, Okla. Saturday with Mr. and Mrs. Delbert Brennon and girls.

Mrs. Burl McClellan was in Amarillo Thursday visiting friends.

Guests of Mr. and Mrs. R. H. Gray Thursday were Mrs. Clyde Lehenbauer and Mrs. Thad Tubbs of Borger.

I saw it in the Plainsman.

Beauty . . . without bother

**DU PONT LUCITE WALL PAINT**

Available in new Colors!

Goodbye to drip, dribble and spatter. Farewell stirring and thinning. "LUCITE" is a job and a clean. Covers more, covers better than before. Dries beautifully in 30 minutes. Brushes clean with just soap and water.



Large Selection Of New & Used FURNITURE  
Large Selection Of Carpets  
Carpet Installation  
REAMY UPHOLSTRY

**OWENS SALES**

118 N. MAIN Spearman, Texas 659-2506

Hear

**Senator Barry Goldwater**

**MONDAY NIGHT NOVEMBER 2**

**8:30 p.m.**

**ON CHANNEL TEN KFDA-TV, Amarillo**

Pol. adv. paid for by Hansford County Republican Party, S. B. Hale, chairman

**Cummings Refrigeration**

HEATING AIR CONDITIONING REFRIGERATION SPECIALIST

SALES & SERVICE

659-2721

SPEARMAN

**VANITY FAIR**

See Our Exciting New Lingerie By Vanity Fair

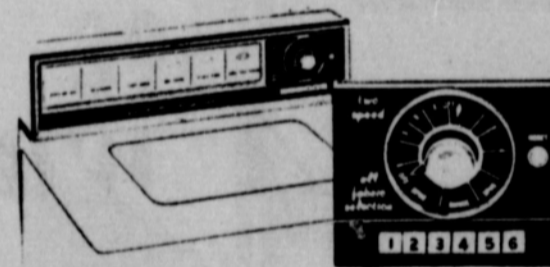
- \* Short Slips
- \* Short Half Slips
- \* Pettiskirts
- \* Gowns
- \* Brassieres
- \* Girdles
- \* Long Leg Panties
- \* Pajamas

Petite Short Slips and Half Slips



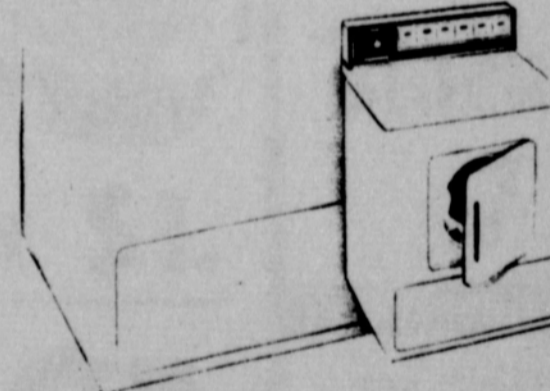
*Lady Fair*  
Plains Shopping Center

**Save Money On Appliances See Our Wizard Line Before You Buy**



Select the Correct Time, Temperature and Speed for Any Fabric . . . Washing is So Easy with W.A.'s Wizard Imperial Automatic Washer

5-Cycle Washer \$222.95 with trade



Select Fluff, Wear, Iron or Fold Drying Temperatures \$147.95 Elec.

Both gas and electric models match Imperial washer. Has a complete selection of drying temperatures for all known modern fabrics. Dries up to a 28 lb. wet load. Has 6 dial-the-fabric cycles. UL and AGA approved.

**You'll Find Enlarged Stock of**

Guns-Tires-Batteries T.V.'s-Steros-AM,FM Radios-and other good buys

Lay-A-Way Toys, Bicycles Tricycles, Wagons, Sporting Goods For Christmas.



Freezer Below Refrigerator

14.57 Cu. Ft. Refrigerator-Freezer. Giant 4.8 cu. ft. bottom freezer holds a whopping 171 lbs. of food in constant no-frost freshness.

\$342.95 with trade

**Western Auto Assoc. Store**  
Fred Jackson, Owner





FLYING NURSE -- Former resident Joye Allen is shown with a patient on a flying ambulance. She flies all over North America

Mrs. John Berry visited friends and relatives in Oklahoma City, Nevada, Mo. and Springfield, Ark., recently. Mrs. Frank P. Jones of Springfield returned with her for a visit.

Mr. and Mrs. Roscoe Nelson visited in Clovis, N.M. Sunday with Mr. and Mrs. L. D. Burns and daughter and Mr. and Mrs. Finis Moody.

Visiting this weekend with Mrs. A. W. Mobley are Mr. and Mrs. Nelson Fikes and Irene McDorman of San Angelo.

Guests of Mr. and Mrs. Everett Tracy Sunday and Monday were Bryce Calder and his son, Curtis, from Dallas.

and a crew of three. When a patient is being moved by plane members of his family can accompany him.

Mrs. Allen makes a trip almost every day. Recently her ambulance plane landed in Amarillo but she was not able to leave the plane since she had five patients aboard.

Mrs. Allen attended the local schools while a grade school student.

Mr. and Mrs. Major Lackey visited in Clovis, N.M. Sunday with Mr. and Mrs. Jack Murphy and other relatives.

Protect your credit. pay your accounts promptly.

RETAIL CREDIT CORP. OF SPEARMAN

Bulova Watches

Longines Watches

We Sell Them - We Repair Them

Keepsake Diamonds  
Guaranteed Watch Repair

Harp's Credit Jewelers

Temporarily Located At Reamy Furniture

## Former Resident Is Registered Nurse

A former Spearman resident probably covers more territory caring for patients than many other Registered Nurses in the country.

Mrs. Hubert Allen, the former Joye Close of Spearman, is a Registered Nurse flying with the Shaefer Ambulance Service from Van Nuys, Calif.

Mrs. Allen is the daughter of Leland Close of Spearman and Mrs. Zela Close of Van Nuys, Calif., and the granddaughter of Mrs. Hettie Davis of Spearman.

Mr. and Mrs. Allen and

daughters, Sheri and Debra, live in Roseda, Calif.

As a member of the flight crew on the ambulances she flies all over the United States, Canada and Mexico, caring for patients in flight.

The planes are equipped with emergency equipment including an aspirator and oxygen and paraphernalia necessary for intravenous feeding and medication. She also serves meals to patients and passengers on the flights.

The largest plane can carry five patients, five passengers

**FOR SALE**

**23 two bedroom houses  
to be moved from former  
Panhandle Eastern Pipeline Company, Sneed Camp,**  
located 10 miles west, 2 1/2 miles south of Stinnett.

**Priced from \$1250 to \$2550.**

Telephone TR8-3091, Stinnett.

# FROM THE COURT HOUSE TO THE WHITE HOUSE

*A helping hand,*

*A warm heart,*

*And an open mind.*

## Vote Democratic on November 3.

Paid for By Hansford County Democrats-J. D. Helms, Chairman



\*\*\*\*\*  
**CARNIVAL**  
 1964

GREATEST BRAND ELECTION!

**MARGARINE \$1.**

**PEACHES 4 FOR \$1.**

**5 for \$1.**

**2 for 79¢**

**3 for \$1.**

**39¢**

**2 for 89¢**

**2 for 89¢**

**12 rolls \$1.**

**BERRY SAUCE 4 FOR \$1.**

Shurfine VP Reg. or Drip 1 lb. can  
**COFFEE 69¢**

Shurfine 10 lb. paper bag  
**FLOUR 79¢**



Shurfine 12 oz. can  
**Luncheon Meats 3 for \$1.**  
 Shurfine SPECIAL



**BOLOGNA ALL MEAT**

Top O' Texas or Sunray Sliced 1 lb. pkg.  
**BOLOGNA 49¢**

**Sausage 59¢**  
 Blue Morrow 1b.

**Pork Roast 39¢**  
 Fresh 1b.

**Pork Chops 49¢ / 69¢**  
 Fresh & Lean FIRST CUTS 49¢  
 CENTER CUTS 69¢



Shurfine Fresh Pak 16 oz.  
**Cucumber Chips 4 for \$1.**

WE GIVE BUCCANEER STAMPS!



Shurfine  
**CARNIVAL SPECIALS**

Shurfine Cream Style or Whole Kernal Golden 303 can  
**Corn 7 for \$1.**

A VOTE FOR SHURFINE IS A VOTE FOR QUALITY!

Shurfine 303 can  
**Fruit Cocktail 5 for \$1.**

VOTE FOR SAVINGS! VOTE FOR SHURFINE!

Shurfine 46 oz. can  
**Tomato Juice 4 for \$1.**

SHURFINE! THE PEOPLES CHOICE!

Shurfresh 2 lbs.  
**Cheese Spread 69¢**

VOTE FOR QUALITY! VOTE FOR SHURFINE!

Shurfine Fresh Shelled 300 can  
**Blackeyed Peas 7 for \$1.**

SHURFINE! FOR GOODNESS SAKE!

Shurfine 14 oz. bottle  
**Catsup 6 for \$1.**

STRIKE UP THE BRAND! SHURFINE!

Shurfine 303 can  
**Apple Sauce 6 for \$1.**

Shurfine 12 oz.  
**Peanut Butter 2 for 79¢**

Shurfine 4 sv. cut Blue Lake 303 can  
**Green Beans 5 for \$1.**

**Cut Rate**  
 • SPEARMAN, TEXAS •



AFFILIATED



### Mrs. Berry Is Circle Hostess

The Alma Reid Circle of the First Baptist Church met with Mrs. Luther Berry October 28. Wanda Brown read the prayer calendar and led in prayer. Wren Holt taught the lesson on "How All Things Came To Be". Those attending were Wanda Brown, Ernestine Gray, Ruth Lackey, Joan Gilley, Marie Berry, Ratsy Gates, Pat Denham, Wren Holt, Hazel Loftin and Edrie Jones.

Recent dinner guests of Mr. and Mrs. Johnnie Pipkin were Mr. and Mrs. Ronald Dieball of Perryton.

Mr. and Mrs. M. D. McLaughlin were in Amarillo on business Friday.

Mr. and Mrs. Everett Tracy had as their guest Saturday, Bill Logos of Dallas. They attended the football game in Canyon Saturday night.

### Mrs. Novak Is Study Leader

The Louise Mitchell Circle of the First Baptist Church met Wednesday morning at the church with Mrs. Arthus Adkison as hostess.

Mrs. Jerry Jackson, chairman, presided at the business meeting.

The Bible study from the book of Genesis was led by Mrs. Joe Novak assisted by Mrs. Carl Archer, Mrs. Jerry Jackson and Mrs. Dick Kilgore.

Attending were Mmes. Jerry Jackson, Joe Novak, Dick Kilgore, Carl Archer, a guest, Mrs. Ray Devers, W.M.U. president, and the hostess, Mrs. Adkison.

### CANASTA CLUB MEETS WITH MRS. MOBLEY

The Canasta Club met Tuesday in the home of Mrs. A. W. Mobley.

Members attending were Mrs. Ora Bagley, Mrs. Jessie Bratton, Mrs. Tressie Maize, Mrs. M. E. Jagers and Mrs. W. A. Neilson.

### Circle Meets In Beam Home

The Kezzie Mae Circle of the First Baptist Church met Wednesday in the home of Mrs. Don Beam.

The prayer calendar was read by Mrs. H. H. Chevalier and Mrs. Roy Lee Uptergrove gave the lesson.

Attending were Mmes. H. H. Chevalier, Roscoe Nelson, Ed Hutton, D. W. Hazelwood, R. E. Bradford, James Landrum and the hostess, Mrs. Beam.

### Missionary Message Studied

The "Missionary Message of The Bible" was the topic of study for the Betty Morris Circle of the First Baptist Church when members met Wednesday morning.

The circle met in the home of Mrs. Wesley Garnett and the study was led by Mrs. Bryce Steele, Mrs. Wesley Garnett

### Group Tours Pioneer Manor

Betty Fancher was hostess Wednesday morning to the Mary Giles Circle of the First Baptist Church.

Donna Helms, chairman, presided at the business session. The group toured Pioneer Manor during the morning.

Attending were Donna Helms, Doralee Burrell, Wanda McIver, Doris Holderman, Linda McAllister, Doris Perkins, Alberta Jeffries, Eleanor Douglas, Omega Chisum, Karen Lane, Zula Lane and the hostess, Betty Fancher.

and Mrs. Leland Gollightly. Mrs. Steele presided at the business meeting in the absence of the chairman, Mrs. Herb Howe.

Attending were Mmes. Jerry Day, Woodville Jarvis, Durland Sheets, George Tope, Bryce Steele, a guest, Mrs. Tommy Reger and the hostess.



We've all heard the wailing of "why don't they do something about government spending? Why are they raising taxes again? Why don't they do something to help the working man? The housewife? The property owner? The father of four children, etc., etc."

Why don't they? Because we and they are the same people — the American public. If we are not satisfied with the job they do, then it's our job to elect better officials.

Many of us exercise our time-honored right to do as little as possible toward electing good government in our local, state and federal contests. We have the right to gripe about our government only if we exercise our right to vote.

This is a major election year. In fact, next month on Nov. 3 is when we will have the privilege of picking people to serve in many capacities: mayors, aldermen, governors, state and U.S. senators and representatives as well as the President and Vice President of the United States.

That's when we can correct the wrong or reward the right as we see it. It's our dutiful privilege.

What's more this is the time we can become they!

The man who always complains about they usually just doesn't care or think. He would rather watch TV than read a newspaper editorial. He'd rather go bowling than attend a political meeting. He'd rather discuss new cars than even think about highway programs.

And he's a real chameleon because he thinks he's not qualified to discuss the issues. He'll tell you that his one vote doesn't matter anyway — or one political party or one candidate is the same as another. And when it comes to politics and government, he is a firm believer in doing as little as possible be-

cause "you can't win, anyway." With that attitude, you sure can't!

Then there's the other fellow who has his mind already made up. For example, he'll vote "like my dad voted." He'll cast his ballot for the person who promises the most to the working man, the farmer, the businessman — without regard for what else the candidate stands for.

If he's Irish, he'll vote for an Irishman; if he's Polish, he'll vote for the candidate with the Polish name. In politics this man's mind is a closed book and there's no point in confusing the issue with facts. He is the conformist professional politician bank on when they talk about solid blocks of votes on their side.

Another of our citizens is the one who screams the loudest of all. He'll tell you that they are ruining "this country" or "this city" or "this state." But when you ask him how he voted, he'll back off a bit, then sadly explain that "I didn't have time to register."

Meanwhile, back at city hall, the they complainers would find that they run the government to satisfy the people who elected them. They are not compelled to respect the wishes of those who couldn't even find the time to vote.

They have a mandate from a majority of the voting public, and they'll do their best to give the people what they voted for. After election day it's too late.

It takes just a few minutes to vote. So be sure you've registered, then make sure you vote. And don't forget the 19th Amendment, your wife can vote, too.— Retail Lumberman.

**"Better Food For Less"**  
**IDEAL FOOD STORES**  
**FREE!**  
 10 oz. *Parisienne* GOBLET RIMMED WITH RICH PLATINUM WITH YOUR MAILER COUPON.

ADD ELEGANCE TO YOUR TABLE WITH IMPORTED FINE CHINA DINNERWARE!

Behold the beauty of genuine imported fine China!—Luxuriate in it's "ring of quality," it's elegant simplicity of design! Now Ideal helps you realize your dream of years... makes it possible to own Platinum Banded Fine China and matching Parisienne Stemware, at a fraction of it's true value! See this beautiful service on display at your favorite Ideal Store. Start your set today and receive a matching 10 oz. Parisienne Goblet FREE!

**4-PIECE PLACE SETTING**  
 Only **1.49**  
 PLUS FREE 10-oz. GOBLET WITH MAILER COUPON

LOVELY COMPLETE PIECES ALSO ON DISPLAY AT IDEAL

PRICES EFFECTIVE THRU WED. NOV. 4, 1964 - LIMIT RIGHTS RESERVED

**APPLES**  
 COLORADO... GOLDEN DELICIOUS  
 EXTRA FANCY  
**10¢**  
 lb.  
 WASHINGTON BARTLETT...  
**PEARS**  
**2 - lbs. 29¢**

Swift's Premium Proten  
**ROUND STEAKS**  
 FULL SLICES  
**89¢**  
 lb.  
 CUT FROM MATURE CHOICE CATTLE...

SWIFT'S PREMIUM...OVEN READY  
**BAKING HENS** **39¢**  
 SWIFT'S PREMIUM SKINLESS FRANKS **2 - 1-lb. Pkgs. 1.00**  
 BROWN 'N SERVE SWIFT'S SAUSAGE **2 - 8-oz. Pkgs. 1.00**  
 IDEAL HICKORY SMOKED SLICED BACON **2-lb. Pkg. 1.00**

MUSSELMAN'S SLICED APPLES **5 cans 1.00**  
 MT. MESA WHOLE APRICOTS **4 cans 1.00**  
 LADY BETTY CUCUMBER PICKLES **1/2 gal. 19¢**  
 ALLEN'S...WHOLE AND CUT SWEET POTATOES **2 cans 25¢**  
 SACRAMENTO SPICED GRAPES **303 cans 29¢**  
 BLUE PLATE MEDIUM SHRIMP **5-lb. cans 63¢**  
 HERSHEY'S...INSTANT COCOA MIX **1/2 lb. Pkg. 39¢**  
 HERSHEY'S...INSTANT COCOA MIX **1-lb. 47¢**  
 HERSHEY'S...INSTANT COCOA MIX **2-lb. Pkg. 98¢**  
 NINE LIVES CAT FOOD **2 cans 31¢**  
 MODGLIN EZE WAX APPLIERS **Each 79¢**  
 MODGLIN EZE WAX APPLIER REFILL **Each 29¢**  
 HOT SHOT BUG KILLER **1 Pint 69¢**

WASHDAY MIRACLE...  
**TIDE DETERGENT**  
 GIANT 912E BOX **69¢**  
 MAYFLOWER SLICED ELBERTA PEACHES **NO. 2 1/2 CANS 4 For 1.00**  
 WHITE OR COLORS WALDORF TISSUE **4 - ROLL PACKS 3 For 1.00**  
 HI PLAINS PEELED TOMATOES **NO. 303 CANS 8 For 1.00**

**V-DAY, 1964**  
 Be sure to VOTE TUESDAY!

**KNAPP SHOES**  
 Kenneth Bailey  
 212 N. James  
 Phone 659-2458  
 Spearman, Texas

**Spearman Radiator & Supply**  
 Radiator Sales & Service  
 Auto & Industrial  
 Highway 15  
 Phone 659-2446  
 Home 659-2654  
 Spearman  
 Doyle McBride

FOR CUSHIONED COMFORT

THE HANSFORD SUNDAY PLAINSMAN, Hansford Plainsman Publishers, Inc., Jim Davis, Burt McClellan, County-wide independent newspaper, published every Thursday and Sunday at 209 Main, in Spearman, Texas, Second class postage paid in Spearman, Texas.  
 editor, Burt McClellan; Production manager, Jim Davis. NOTICE: Any erroneous reflection upon the character, standing or reputation of any person, firm or corporation which may appear in the columns of this newspaper will be corrected gladly upon its being brought to the attention of the publishers.

**Don't Forget! V-Day is Tues. VOTE!**

FOR ALL YOUR FLORAL NEEDS  
 PHONE 659-2593  
**Spearman FLORAL GIFTS**  
 YOUR FULL SERVICE FLORIST  
 PLAINS SHOPPING CENTER