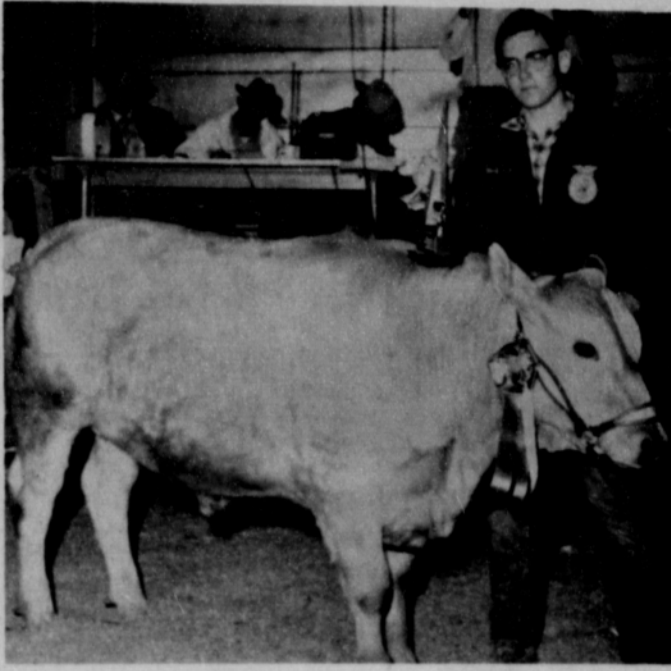




ENGLISH CHAMPION - Dee Green of the Gruver FFA showed the champion English breed of the show. His Hereford weighed 694 and sold for \$1.00 per pound to Texas Livestock Marketing Assoc. Plainsman photo



COMMERCIAL CHAMPION - Jock Lee of the Spearman FFA showed the champion commercial steer of the stock show. The 883 pound steer sold to Ideal Food Store of Spearman for 60 cents a pound. Plainsman photo



FIRST SALE - Richard Laird of the Spearman FFA brings in his champion barrow of the show to begin the auction of animals. KT&M Drilling Co. bought the barrow at \$1.60. Plainsman photo

Buyers Give FFA, 4-H Feeders Good Bonuses For Livestock

HANSFORD COUNTY'S LEADING NEWSPAPER

SUNDAY The Hansford Plainsman

VOLUME VI., NO. 41

SPEARMAN, HANSFORD COUNTY, TEXAS 79081

SUNDAY, MARCH 14, 1965

Moved To Amarillo

Gruver Man Critical; Injured In Car Wreck

A Gruver man is in critical condition in Memorial Hospital in Guymon with injuries received in a one-car accident Friday night.

Ronnie Riley was reported Saturday to be in critical condition with fractures of the skull, internal injuries and

fractures of both legs.

Riley was transferred to an Amarillo hospital Saturday.

The second person in the car, Mart Hart, a senior in Gruver High School, was reported to have escaped the accident with minor injuries.

According to the Oklahoma State Highway patrol, the accident happened 3.5 miles south of Guymon on Highway 136 at 11:59 p.m. Friday.

The officer reported the car was traveling south when it left the highway and traveled 600 feet in a barrow ditch before striking a tree.

Riley is a graduate of Gruver High School, is married and has a child. Hart is his wife's cousin and is a senior in Gruver High School. He was a member of the Greyhound basketball team that recently played in the state tournament.

Play Scheduled Monday Night

Scenes from "The Miracle Worker" will be presented by the Spearman High School Speech Department Monday, March 15 at 7:30 p.m. in the High School auditorium.

Adult tickets will be 50 cents and students and children, 25 cents.

Mrs. Frank Porter is directing the play.



Guy Orbison

Church of Christ Opening Revival

A gospel meeting will begin at 7:30 p.m. Monday in the Spearman Church of Christ, with Guy Orbison, minister of the Church of Christ in Cedar Hill, as the evangelist.

The six night services will begin at 7:30 p.m. and the five morning services will begin at 10 a.m. Tuesday. Sunday services will be at the regular times.

Moisture Washes Dirt From County's Airways

Hansford County folks had three weeks of blowing dust washed from their eyes and lungs this week with more than a half-inch of rain, snow, fog and drizzle.

The rain started Thursday, then turned to snow that night, Friday morning at 7 a.m., the U. S. Weather observer here, Mrs. Pat Cates, measured .55 of an inch of water.

The moisture continued in light forms all day Friday into Friday night. Saturday morning the 24-hour total was .13 of an inch to bring the two day total to .68.

Little or not moisture fell Saturday, but the clouds continued overcast and little evaporation took place.

The value of the moisture cannot be measured accurately. Wheat farmers and others say it will save many acres of wind damaged dryland wheat and also will be a big assistance to irrigated wheat.

The moisture also cleaned

dust from all the plants and grasses and also soaked much of the dusty blow dirt down so it will not blow with every breeze.

Hackley Forced To Withdraw

The withdrawal of one candidate this week, left seven men seeking the three open positions on the Spearman Independent School District Board of Trustees.

Dr. D.E. Hackley, a member of the board for six years, and who has served as President of the Board this year, withdrew from the race this week. Dr. Hackley was hospitalized early this week with a heart ailment.

Other candidates for the position are: (Con't. on back page.)

Hansford County Future Farmers and 4-H club members received \$21,723.08 for 103 head of show animals in the annual Hansford County Junior Livestock Show and Sale held Friday in Gruver.

Young feeders showed and sold 40 steers for a total price of \$16,105.10 for an average of 53.37 cents per pound.

There were only 21 lambs in the show but they sold for \$1,375.18. This made the pound average 74.5 cents.

The 42 barrows in the show sold for \$4,242.80 and the feeders averaged 50.3 cents per pound.

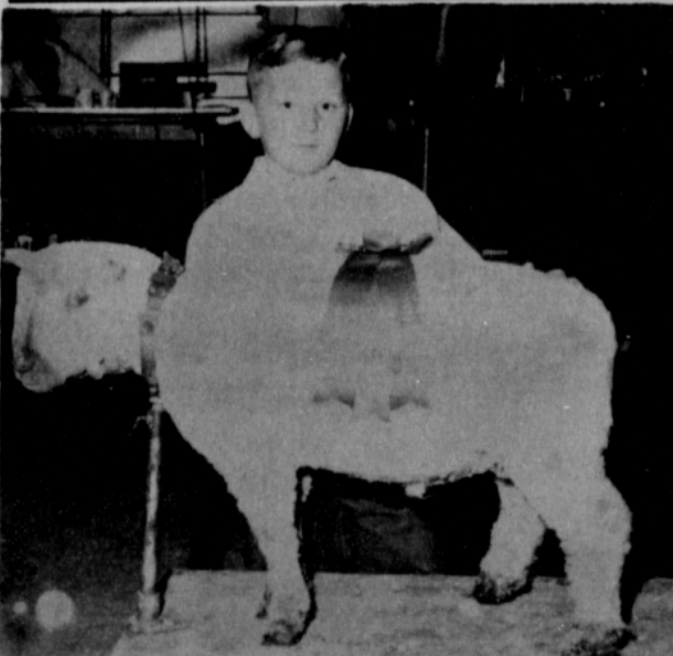
Observers estimated that the snow and rain which fell Thursday night and all day Friday in Gruver just about doubled the prices paid for the animals.

This year's sale was a vast improvement over last year's windblown, dusty affair where the reserve champion barrow sold for 18 cents per pound. The entire average last year was far below that set in most years.

Champion banners in the biggest division of the show, fat steers, was divided this year into two classes, commercial steers and English breeds.

Dee Green, a Gruver FFA boy, showed the champion of the English breeds. His Hereford was selected by Milton England of Panhandle A&M College, as the best in the show. Green sold the steer to Texas Livestock Marketing Assoc., for \$1.00 per pound. The selling weight was 694 pounds.

Jock Lee of the Spearman FFA Chapter had the champion commercial steer, a crossbred steer. Judge Ralph Durham of Texas Tech picked the 883 pound steer as the winner. It sold to Ideal Food (Con't. on back page.)



CHAMPION SOUTHDOWN - Andy Hoel of the 4-H club showed the champion Southdown lamb of the show. He received \$1.60 per pound from the Gruver State Bank. Plainsman Photo



CHAMPION FINE WOOL - Lynn Kemper of the Spearman FFA showed the champion fine wool lamb. He sold the lamb to H&H Water Well Service for \$1.00 per pound. Plainsman photo



CHAMPION CROSSBRED - This champion lamb was shown by Gail Beck and was sold to Equity for 50 cents per pound. Plainsman photo

Mrs. Arthur Adkison returned home Wednesday after spending a week with her daughter and family, Mr. and Mrs. R.E. Lee of Odessa. Mmes. Lee and Adkison attended Parents Day at Hardin-Simmons University where Marla Adkison is a student.

Emergency Situations Require Careful Driving

RUN OFF ROADWAY! WHAT WOULD YOU DO?
Most drivers feel that they know how to handle an emergency situation that might arise. But when suddenly faced with the emergency situation requiring quick action they find they don't know as much as they thought they did.

Here is an emergency situation. Suppose at high speed your right wheels should drop off a pavement that has a low or rough shoulder. What would you do?

Here is what the defensive driver would do. Avoid any quick movements of controls and especially do not attempt

Sulphuric acid was first produced in America in 1793 by a young Philadelphia chemist, John Harrison and sold for 40¢ a pound.

Charlene Bulls

INTERIOR DECORATOR

659-3202

1105 Townsend

Spearman, Texas

to jerk your car back onto the pavement. Maintain control straight ahead and reduce speed, driving to the right just enough to straddle the pavement edge. When your speed is slow enough and there is no vehicle meeting or overtaking close behind, turn back onto the pavement at a place that is not rough. If you cut back before you slow down you may overshoot your traffic lane and turn over trying to recover control. If a vehicle is meeting you, you may cause a head-on collision or cause the other driver to turn over trying to avoid you. If you are on a four-lane road, you might overshoot the first lane and strike a vehicle in the inside lane.

Cutting the wheels at an angle to a pavement edge which is higher than the shoulder enables your wheels to roll up on the pavement without hanging on the edge of the pavement. If the shoulders are low and rough as far ahead as you can see, reduce your speed to approximately 10 miles per hour, shift to second gear, clear traffic and ease back over the pavement edge slowly.

If traffic is heavy or a driver is so close behind you that he may start to overtake and pass you, you should slow down and drive off the pavement. When traffic is clear, make a normal entry onto the road.

G.A.'s Attend Canadian Meet

A group of GA girls from the Baptist Church and their sponsors attended the GA associational meeting at Canadian Friday and Saturday.

There were approximately 39 girls and their sponsors attending.

Ernestine Gray is the director and counselors are Mmes. Don Denham, Eddie Reed, Warren Chisum and Lawton Guthrie and Peggy Devers.

Rites In Borger

For Mrs. Thompson

Mrs. M.E. Thompson, sister of Mrs. R.E. Bradford of Spearman, died at Borger this week.

Funeral services were held at 4 p.m. Thursday afternoon at the Presbyterian Church in Borger with the Rev. Roy Byrd officiating. Interment was at Highland Park with Minton Funeral Home in charge.

Mrs. Thompson was 66 years of age and had been employed at the school cafeteria for several years.

Mrs. Larry Combest and daughter, Tonya Lee of Amarillo came Wednesday and visited till Friday with her parents, Mr. and Mrs. Jesse Davis.

Mrs. Strawn Is Circle Hostess

The Susannah Wesley Circle of the WSCS met Wednesday morning in the church parlor with Verna Strawn as hostess.

Judy Martin conducted the business meeting and also gave the devotional.

The lesson "The Christian Family and Its Money" was given by Freda Sheets, assisted by Maylynn Schubert and Marie Hays.

Attending were Verna Strawn, Patty Sheppard, Maylynn Schubert, Judy Martin, Marie Hays, Virginia Head, Myra Grimes, Betty Brummett, Freda Sheets, Dona Raxter, Donna Bowen.

L.T. Dossert has been a patient at Northwest Texas Hospital in Amarillo for several days and underwent surgery on Friday morning.

Mr. and Mrs. P.A. Lyon, Jr. and Mr. and Mrs. Perry Coursey took the contestants from Spearman to Lubbock for the tennis tournament Friday and Saturday.

Rev. and Mrs. Luther Berry, Florene Devers and Mary Boyd attended funeral services for Mrs. M.E. Thompson in Borger Thursday.

The Theodosian Code of Rome specified the maximum loads that could be carried by the various vehicles in use in A.D. 438.

LYRIC

THEATRE
Sun.-Mon.-Tues.
and Wed

STRANGE

BEDFELLOWS



Rock Hudson

Gina Lollobrigida
Gig Young

TECHNICOLOR

Thursday, Friday,

Saturday

STAN GETZ - ASTRUD GILBERTO



GUEST STARS
THE DAVE CLARK FIVE

GET YOURSELF
A COLLEGE
GIRL.

Rug & Carpet Cleaning

AT ITS BEST

In the Home Or We Will Pick-Up.

BUD KING

Phone 659-3107

-FREE ESTIMATES-

Cummings

Refrigeration

HEATING

AIR CONDITIONING

REFRIGERATION

SPECIALIST

SALES & SERVICE

659-2721

SPEARMAN

Mid-Week Values for Tuesday & Wednesday March 16 & 17

SAVE PLENTY O'GREEN ST. PATRICK'S DAY FOOD SALE

Libbys 46 oz. **Tomato Juice 4 for \$1.** Speas Quart Bottle **Apple Juice 29¢**

Florida-Ruby Red **Grapefruit lb. 13¢**

Fresh-Tender-Crisp lb. **Cucumbers 15¢**

Large-Sweet-Crystal Wax **Onions lb. 13¢**
Shurfresh Milk is Really Delicious! Save Valuable

Welchs 12 oz. Can frozen **Grape Juice 29¢**

Facial Tissue 400 Count All Colors **Kleenex 5 for \$1.**

County Kist V.P. 12 oz. Cans **CORN 2 FOR 25¢**
Ranch style Tall Can **BEANS 2 FOR 25¢**

Fresh & Lean **Pork Roast lb. 39¢**
Lean & Meaty **Spare Ribs lb. 49¢**

TIS A GREAT DAY FOR SAVING

J & L Grade A Large. **Eggs Dozen 39¢**

Shurtine Vac. Pack'd **Coffee 2 lb. Can Only \$1.29**

Shurfine with Beans Tall Can **CHILI 2 FOR 39¢**
Shurfresh Saltines 1b. box. **CRACKERS 19¢**

Free Sports Equipment Coupons. Save this valuable coupon & receive, absolutely free, sports equipment for the entire family. A perfect way for a team or club to obtain equipment. No age limit. Ask all your friends to save these coupons for you. 1 coupon with each 1 1/2 lb. loaf of tender crust or Shurfresh white bread & 1/2 gallon of Shurfresh milk. 2 coupons with each gallon of Shurfresh milk.

Libbys # 303 **Fruit Cocktail 4 for \$1.**
Bathroom Tissue 4 roll Pak All Colors—**DELSEY 39¢**

CUT RATE GROCERY AFFILIATED

One Rural Accident In County During February

There was one rural traffic accident in Hansford County during the month of February.

according to Sergeant W.J. McLean, Highway Patrol Supervisor of this area

This crash resulted in two persons injured and an estimated property damage of \$1,200

The rural traffic accident summary for this county for the first two months of 1965 shows a total of two accidents resulting in no persons killed, four persons injured, and an estimated property damage of \$2,200.

Yes, the old adage is true "the best defense is a good offense." However, there is one exception where a good defense comes before a good offense. The exception is driving a motor vehicle. Defensive driving is the technique of driving to avoid accidents by anticipating all hazardous situations created by unsafe acts of other drivers, adverse weather, or road conditions. The defensive driver is always ready for the other driver or pedestrian to do the wrong thing. He never takes anything for granted

Another good defense is to see that you have a safe-operating vehicle by having it safely inspected. The Sergeant reminds all motorists that April 15 is the deadline for obtaining the 1965 inspection sticker. Anyone operating a motor vehicle requiring a 1965 Texas inspection sticker without same after this date will be in violation of the law.

St. Patrick's Dinner Set

St. Patrick's Day Dinner will be served by the women of the First Christian Church Wednesday March 17, at the First Christian Church.

They will serve between the hours of 11:30 a.m. and 1:30 p.m. and 5:30 p.m. and 7:30 p.m.

The cost of the meal will be \$1.50 for adults and 75¢ for children.

The public is invited.



NIGHT OWL LEAGUE 3-8-65

TEAM	WON	LOST
Harvey's Aerial	69	27
Rexall Drug	67	29
Universal Oil	51	45
Beedy Furniture	49	47
Hansford Grain	40	56
M&M Shamrock	11	85
HIGH TEAM GAME		
Harvey's Aerial	752	
Rexall Drug	693	
Beedy Furniture	679	
HIGH TEAM SERIES		
Harvey's Aerial	2069	
Rexall Drug	1943	
Beedy Furniture	1915	
HIGH INDIVIDUAL GAME		
Booth	178	
Wood & Creacy	164	
Nicholson	158	
HIGH INDIVIDUAL SERIES		
Booth	450	
Wood & Creacy	446	
Nicholson	444	

Play Set At Waka P-TA Meeting

A three act play "For Beauty's Sake" will be presented at the March meeting of the Waka P-TA Monday night at 7:30 at the Waka School Cafetorium. The play is being presented by the ladies of the community in observance of the annual Ladies Night.

Mmes. Ralford Clark, David Burger, Emmitt Drake, Carl Scroggs, Eldon Gurley, Dean Leighnor, David Wilson, Le Roy Reeves and Sandra Ladd are cast members.

The social and gym supervisors for the evening are Mmes. J.R. Stump, Carl Carter, Dean Leighnor, and G.A. Burger. The public is cordially invited to attend.

Mr. and Mrs. Bill Devers of Canyon were Saturday overnight guests and Sunday dinner guests of his parents, Mr. and Mrs. Ray Devers and Peggy.

KNAPP SHOES

KENNETH BAILEY

212 N. James

Phone 659-2458

Spearman, Texas

FOR CUSHIONED COMFORT

Get Ready For Spring Yard Work

BY REPAIRING YOUR WATER HOSE

* Water Hose Repair Parts

* Couplings

* Hosemaster Spray Nozzles

* Double Faucet Couplings

Put Your Water Where You Want It

... Don't Waste It!

SPEARMAN HARDWARE

Gruver Class Play Tuesday

The senior class of Gruver High School will present "Me and My Shadow", a comedy in 3 acts, March 16 at 7:30 p.m. in the Gruver Auditorium.

Admission is \$1 for adults and 50¢ for students. All pre-school age children will be admitted free.

Everyone is invited.



BALL & CHAIN LEAGUE 3-10-65

TEAM	WON	LOST
Spearman Grain	21	11
Taylor-Evans	20	12
The Duds	15	17
Cates Menswear	14	18
Gruver-Texaco	14	18
Gordon's Drug	12	21
HIGH TEAM GAME		
Spearman Grain	647	
The Duds	615	
Spearman Grain	602	
HIGH TEAM SERIES		
Spearman Grain	1850	
The Duds	1776	
Taylor-Evans	1644	
HIGH INDIVIDUAL GAME		
Herb Shields	207	
Danny Kingsley	196	
Bill Sparks	191	
HIGH INDIVIDUAL SERIES		
Herb Shields	590	
Danny Kingsley	492	
Tito Ramirez	463	

STRIKE OUT LEAGUE 3-11-65

TEAM	WON	LOST
Ideal Food	19	9
B&B Sales	18	10
Corner Service	17	11
Super Service	15	13
Behne Electric	14	14
Consumers Sales	11	17
Waka Bunch	10	18
Gordons Drug	8	20
HIGH TEAM GAME		
B&B Sales Co.	870	
Behne Electric	867	
Corner Service	828	
HIGH TEAM SERIES		
Behne Electric	2492	
B&B Sales	2484	
Corner Service	2406	
HIGH INDIVIDUAL GAME		
Jack Stuart	217	
Wayne Cox	211	
Ernest Butler	208	
HIGH INDIVIDUAL SERIES		
Ernest Butler	574	
Leonard Chisum	569	
Wayne Cox	534	

Hansford Plainsman

Hansford Plainsman Publishers, Inc

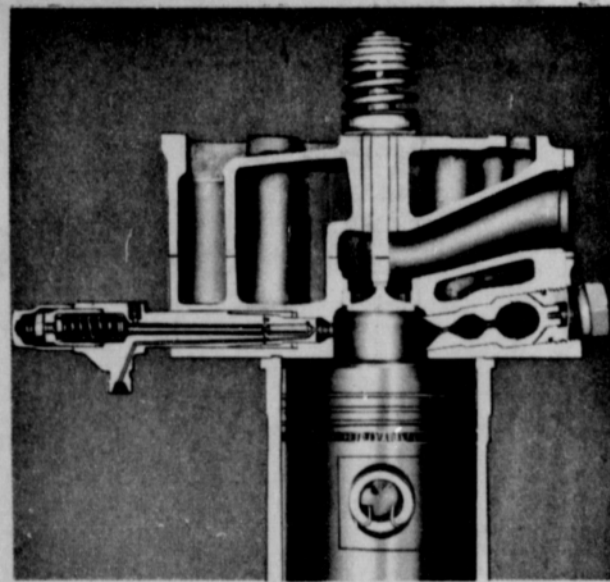
JIM O. DAVIS
BRIAN G. McCLELLAN



County-wide independent newspaper published every Thursday and Sunday at 209 Main in Spearman, Texas. Second class postage paid in Spearman, Texas.

Editor Burl McClellan
NOTICE: Any erroneous reflection upon the character, standing or reputation of any person, firm or corporation which may appear in the columns of The Hansford Plainsman will be corrected gladly upon its being brought to the attention of the publishers.

THREE REASONS YOU'LL LIKE YOUR CASE 930 ROW CROP DIESELS



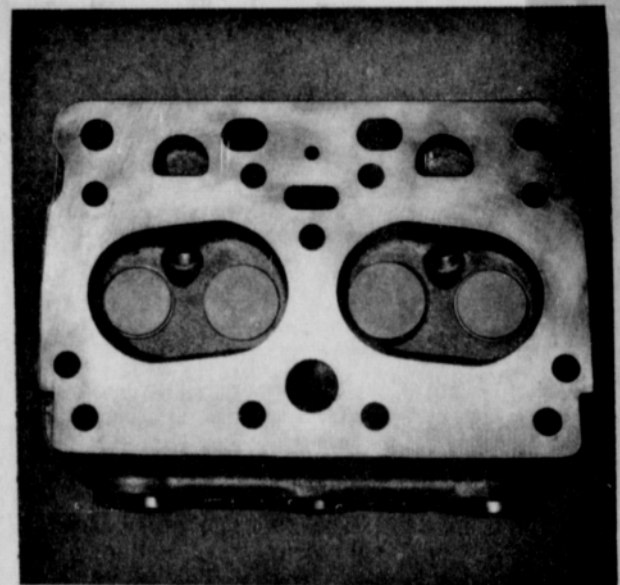
More power per fuel dollar with Case Powrcel diesels

In a Case Powrcel diesel, a metered amount of fuel is injected across the center of the main combustion chamber into the Powrcel . . . is fed back in a burning gaseous state to prolong combustion. This controlled combustion provides outstanding fuel economy, easy starting on diesel fuel, smooth power.

Case gasoline or LP-gas engines are built with diesel strength — the same husky 7-bearing crankshaft and heavily-ribbed block. Displacement is a big 377 cubic inches — up to 25% more than some comparably-rated tractors.

Best news of all to the man who has a big day's work ahead of him is the big 48-gallon diesel fuel tank mounted behind him. He has fuel enough to last a normal working day . . . no time-wasting trips with the truck to refuel this tractor in the field.

R. L. McClellan & Sons, Inc.



Diesel strength construction



48-gallon rear-mounted fuel tank

Light and Fluffy

When mashing potatoes, add a pinch of baking powder to make them light and fluffy.

Fluffy gingerbread, crisp ginger cookies and spicy molasses sponge cake all make delicious accompaniments for applesauce.

JEST A MINUTE

A budget is a family's attempt to live below its yearnings.

Everything you ever wanted in a pickup...is in the new INTERNATIONAL action-packed line



There's an INTERNATIONAL Pickup for every job—two styles—three sizes—forty models. All-steel bodies won't warp, rot or splinter. And they're built low to make loading easier. Cabs are wide and roomy. Controls are easy to reach. Instruments are easy to read. Every engine is built to do a truck job. Choose the economy 4 cylinder model or

bigger 6's and V8's—get up to 193 hp. Tough steel channel frames and rugged axles add extra strength. Makes them tougher from the ground up. You'll see every feature, every option, everything you ever wanted in a new pickup. And you can buy one (or a whole fleet) for much less than you expected to pay.

NORTH PLAINS TRUCK & IMPLT., INC.

Highway 15 Spearman, Texas

INTERNATIONAL PICKUP HEADQUARTERS



PARTY SPECIAL—A perky garnish of slivered almonds tops rich chocolate cakes which bake atop an almond-flavored chocolate sauce.

Pudding Cups

Dessert Accents Chocolate

For those who really love chocolate there is nothing to beat it — except twice as much chocolate served twice as often. Double - Chocolate Pudding Cups will give a delightful double dose of chocolate, first in rich little chocolate cakes and again in the chocolate sauce they bake atop. These little desserts, which cost just a few pennies per serving, are attractive and delicious enough to serve for a party with their hint of almond flavoring and a sprinkle of slivered almonds for a perky garnish.

The cake-like topping is mixed like basic muffins, adding cocoa and vanilla. And the sauce is as simple as blending commercial chocolate syrup, boiling water and almond extract.

DOUBLE CHOCOLATE PUDDING CUPS

- 1 cup chocolate syrup
- 1 cup boiling water
- 1/2 teaspoon almond extract
- 1 1/2 cups sifted flour
- 1/2 cup sugar
- 3 tablespoons cocoa
- 2 teaspoons baking powder
- 1/2 teaspoon salt
- 1 egg, beaten
- 1/2 cup milk
- 3 tablespoons melted shortening or oil
- 1 teaspoon vanilla extract
- 2 tablespoons slivered blanched almonds

Set out 8 individual souffle or 6-ounce custard cups. Pre-

heat oven to 425 degrees.

Blend chocolate syrup, water and almond extract; our 1/4 cupful into each cup and set aside. Into medium sized mixing bowl sift together flour, sugar, cocoa, baking powder and salt. Blend egg, milk, shortening or oil and vanilla. Add liquid all at once to flour mixture, stirring until well blended.

Drop by heaping tablespoonfuls over chocolate sauce. Sprinkle with almonds. Bake 18 to 20 minutes or until cake tester comes out clean. Serve warm. Serves 8.

Beagle Beards Ordered

INNSBRUCK, Austria — Male students here were told they could wear long Beagle hairdos to school only if they also wore mustaches or beards. "We want to be able to tell the boys from the girls," explained teacher Gustav Metzger. Boys too young to grow their own mustaches have begun to wear falfies.

INEFFICIENT PROGRESS

BAY CITY, Mich., March 3 — Automation is a "dismal failure" as far as City Manager Casimer Jablonski is concerned. Jablonski says computers used to figure out water bills here haven't contributed "one iota of efficiency." In fact, he says, it takes longer to get the bills out than it did when mere people did the work.

Prevent Picture Marks

Prevent picture marks on your walls by sticking a thumb-tack on each corner of the back of the frame. Allow the tacks to extend about 1/4 of an inch. This will allow circulation of air behind the frame and prevent picture marks.

Talent Show Thursday At High School

A talent show will be staged in the High School Auditorium at 1 p.m. Thursday, March 11.

Anyone wishing to perform in the show should call 3387, after 4 p.m., for an audition.

The show now has the High School Christy Minstrels to sing. Debra Brock will be a soloist. There will also be poetry readings and a square dance exhibit.

Admission is 25 cents and everyone is invited to attend.

Miss Uptergrove Has GA Program

The GA's of the First Baptist Church met Wednesday March 3 at the church.

A hymn "He Lives" was sung by the group and led by Valorie Uptergrove followed by the reading of the prayer calendar by Suellen Womble and prayer by Debbie McCoy.

The program "Sweet Land of Liberty" was conducted by Valorie Uptergrove.

The meeting was dismissed by the GA hymn and prayer by Delores Guthrie.

Refreshments were served to Debbie McCoy, Sabrina McIver, Suellen Womble, Valorie Uptergrove, Janese Thomas, Delores Guthrie, Pat Denham, and a visitor, Mary Lee Ooley by the hostess Lee Ann Smith.

Mrs. Bryan Is Bridge Hostess

Mrs. Joe Dan Bryan was hostess to the Hi-Lo Bridge Club Thursday night in the hospitality room of the First State Bank.

Mary Lee had high score and Faye Lynch had low.

Attending were Mmes. Vera Beth Hicks, Mabel Jameson, Carrie Marie Berry, Kubah Gandy, Freda Sheets, Faye Lynch and the hostess.

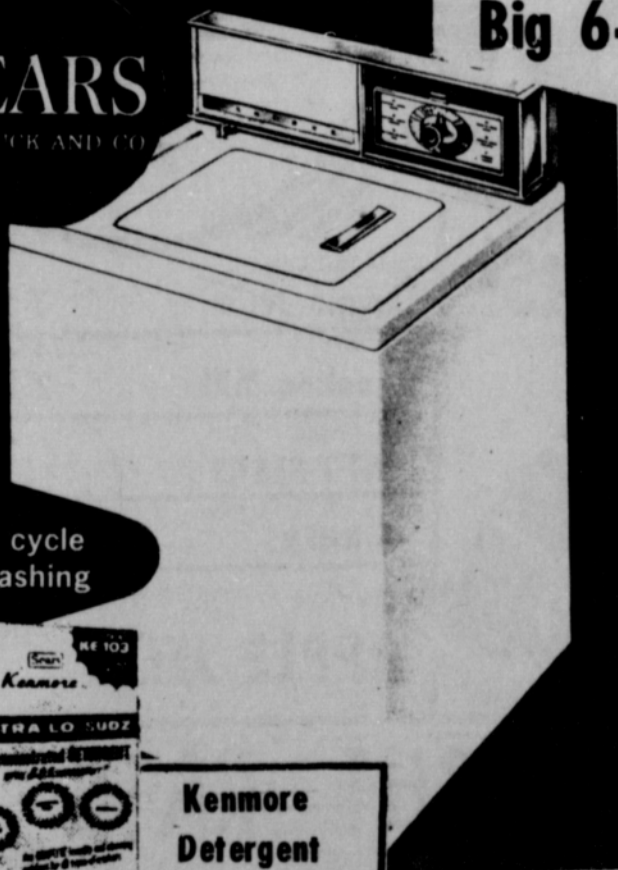
Sanders Host Couples Bridge

Mr. and Mrs. Rue Sanders were host Tuesday night to the Couples Bridge Club.

Carl Archer had high score for the men and Ann Sanders had high for the women.

Attending were Messrs. and Mmes. Carl Archer, Ralph Blodgett, Jimmy Hicks, Richard Holton, R.L. McClellan and the hosts.

SEARS
ROEBUCK AND CO.



6 cycle washing



Kenmore Detergent
25 lb. \$4.99

Lab tested with 4 of the leading brands, Kenmore outperformed them all! And you use up to 50% less. SAVE!

Big 6-Cycle Washer Cut \$35.

Exclusive Self-Cleaning Lint Filter
... Automatic Bleach Dispenser

Acrylic Finish

\$179.95

NO MONEY DOWN

Was \$214.95. Just dial the fabric on this terrific KENMORE AUTOMATIC...proper time, temperature and speed is automatically selected for you! Wash-and-wear cool-down before spinning helps prevent spin-set wrinkling. Water-level control lets you save up to 14 gallons on small loads. Big family-size capacity. See it today!

MATCHING ALL-FABRIC DRYER
With "Soft Heat"

Cut \$20. **\$134.95**

Was \$154.95. Automatically selects proper heat for fabric then tapers it off as clothing dries to reduce baked-in wrinkles. Has no-heat air tumble for drying plastics and fluffing sweaters. An outstanding value...save today!

Shop at Sears Satisfaction Guaranteed or Your Money Back

and Save

SEARS

PLAINS SHOPPING CENTER
659-2573

MONDAY THROUGH WEDNESDAY

LYRIC THEATRE
SPEARMAN, TEXAS

Sunday, Monday, Tuesday, Wednesday

7 8 9 10

ALBERT R. BROCCOLI and HARRY SALTZMAN present SEAN CONNERY as AGENT 007

"GOLDFINGER"

TECHNICOLOR

GERT FROBE as GOLDFINGER HONOR BLACKMAN as PUSSY GALORE

Thursday, Friday, Saturday

11 12 13

STANLEY KRAMER PRODUCTION

YUL BRYNNER

"INVITATION TO A GUNFIGHTER"

JANICE RULÉ BRAD DEXTER ALFRED RYDER MIKE KELLIN GEORGE SEGAL CLIFFORD DAVID and PAT HINGLE ELIZABETH and RICHARD WILSON RICHARD WILSON

COLOR BY DELUXE UNITED ARTISTS