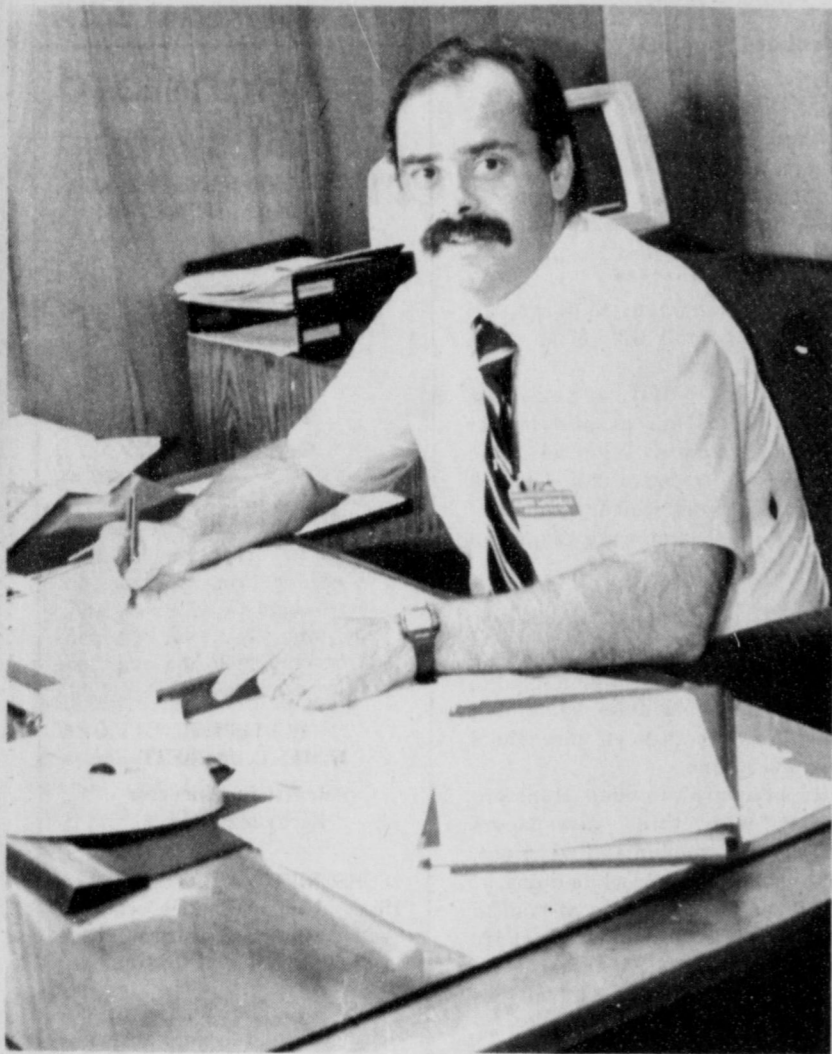


HANSFORD LIBRARY  
120 MAIN ST.  
SPEARMAN

Former administrator returns to helm . . .

## La Rochelle handles hospital job



AL LA ROCHELLE  
Hansford Hospital Administrator

The past few months onerous task of budgeting and tracking down what has appeared to be a flood of bad news flowing precipitously forth from the Hansford County Hospital District has fallen into the capable hands of a former -- and now re-hired -- administrator Al La Rochelle.

La Rochelle -- who served as administrator for the hospital district from 1981 through 1985 -- took over the helm of the struggling medical complex in Spearman again this spring.

Since that time, he's been busy lining out the business office and reporting procedures as well as preparing a budget which will bring about the largest of all tax increases in Hansford County this

fall -- 14.7 cents per \$100 of valuation.

"I get tired of being the bearer of bad news," the Hansford Hospital administrator admits. "And, sometimes, the truth is painful. But you can't shade it and it's gone past the point of ignoring it."

La Rochelle is a plain spoken man, reaching the point of conversation quickly, then moving on to whatever other topics present themselves in the course of the subject at hand.

And the soon-to-be 37-year old business manager of Hansford's only medical complex brings a solid background to his position -- a background which would appear to be of inestimable value to the future of the hospital district.

Born and raised in Lancaster, New Hampshire, the veteran business administrator came to Texas courtesy of Uncle Sam through the U.S. Air Force.

La Rochelle served in the Air Force from 1969 through 1973, stationed in the states at Berkstrom Air Force Base in Austin until 1971. He served his overseas stint in Tokyo, Japan.

While in Texas, the amiable Yankee was forced to develop a quick wit among his Texas counterparts. Now, almost 19 years later, he proudly displays a "Liar's Club" award from the Lions Club.

"I got it because I told people in Austin that I was from West Texas," he laughs with an obvious Northern accent. "They told me at

Lion's club that if I went around telling people that, then I deserved the "Liar's Club" award."

His background in the medical profession got its start in Texas as well with La Rochelle earning his Associate of Applied Science degree from Odessa College in Radiology Technology in 1975.

By this time, he had met and married a Texan girl from Big Spring. Now he and his wife, Sheila, have three children.

All three of them will be in school this fall with Alisha, at 11-years old and in the sixth grade, the oldest.

Next in line is Amber, an 8-year old third grader, followed by young Albert, III, who is six and will be in

See "LA ROCHELLE", p-2

### THE HANSFORD REPORT

by JAMES JARRETT



I have to admit that deep down I have just a small tendency to be somewhat of a practical joker. I say this for those of you who have had the good sense not to notice that yet.

Of course, a good practical joke doesn't mean anything unless the world knows about it. But to be fully appreciated, it does need a little setting up.

First of all, I should explain that I'm a hacker. Not on the golf course, but on computers. What hacker means here for those not familiar with the term, is that I am self taught in computer programming and pay little attention to the conventions of proper programming etiquette.

Now, combine that with a slim trace of practical jokery and you have the setting for a good practical joke -- especially if you find someone who isn't all that familiar with computers anyway.

You know, somebody like T. Ray Robertson, Spearman's erudite postmaster.

You see, I built this program which will tell you how much money you'll have, the tax savings you'll get, and so forth, if a person puts a given amount of money into an IRA each year.

(Yes, Virginia, I really was an insurance agent at one time).

Embedded in this program is another program which makes the computer appear as if it has gone into a self-diagnostic routine -- a simply amazing feature on a 64K computer.

It isn't, but it appears as if it is. Then, it finds what is "wrong" -- there is a "malfunction" of the supply transformer and the computer "monitors abnormal temperature increases".

Then it "locks" down amid an ear-splitting, continuous beep of some three or four seconds -- right before it begins flashing the following message on the screen: "WARNING -- IMMEDIATE FIRE AND EXPLOSION HAZARD".

And, again, it beeps and flashes and looks fairly frightening. I ought to know. I worked hard at building that program.

I have run former football players -- now grown men -- completely out of the room with that program. I have made women cringe in despair.

T. Ray just laughed.

It makes one pause to consider just what kind of warped personalities the post office hires.

Admittedly, T. Ray is probably an exception. Possibly even a throwback. I actually believe he didn't know he was supposed to be frightened.

Then again, it was my computer. Maybe he just didn't care.

Having been born and raised in Texas, I have been spared the cruelties of having my persona warped by too many dealings with our countrymen from the north -- better known as Yankees and, still

in some circles as simply, carpet-baggers.

And, I'm beginning to wonder what recessive gene I inherited from my parents -- and, from which one -- for I have discovered a Yankee whom I am beginning to like.

True, a bold confession from one who finds himself before the public, if not in person, then at least in print, all too often.

Since Hansford County doesn't exactly have a plethora of Yankees on hand, most will know who I refer to -- none other than the county's token Yankee, Al La Rochelle.

There's more to Al than meets the eye -- please, hold back your Amens, I am trying to be serious for a moment.

In a recent interview with the hospital administrator, he showed a side which few men will ever show -- whether they're Yankees or Texans or something inbetween.

Al spent some time, before moving back to Spearman, at Seton Hospital in Austin. Seton is a Catholic hospital run by a group of nuns known as the Daughters of Charity.

He came out of that position with a new outlook, a new philosophy. Possibly, even a new maturity.

Al shared with me his philosophy, one taught him by these dear sisters in Austin. It's been their code of conduct for over 100 years. He's adopted it himself, it impressed him so.

"We shall treat every patient as if it were Christ Himself we are caring for." This is, indeed, a code to live by.

His own personal philosophy reflects what is also important to him.

"I want to be honest," he says. "I don't care if people like me, but

See "REPORT", p-2

## Hansford Hospital District holds first in series of public meetings

The first of a series of meetings will be held by the Hansford County Hospital District this Thursday as they move toward raising the tax rate from a current level of 26.2 cents per \$100 valuation to a proposed 40.9 cents per \$100 level.

The 14.7 cent increase is a raise of 56 percent over the current level and a raise of almost 113.5 percent above the effective tax rate which is established through a complicated formula prescribed by state law.

The meeting will begin at 7 p.m. in the hospital board room at the Hansford Hospital facility in Spearman.

The proposed rate will give the hospital district the first balanced budget the governmental entity has had in two years.

In dollars and cents, the pro-

The last few days of summer are slowly ticking off for some 825 Spearman school students this week as last-minute preparations are completed and registration of students set for this coming Friday.

For the first time, junior high students -- grades five through eight -- will be required to report for registration. This will take place at 9 a.m. in the junior high auditorium.

"This is something new for our junior high," reports Allen Alford, principal. "By doing this we will be able to meet for classes on the first day of school without any interruption."

Elementary students will report to their grade levels also, beginning at 9 a.m. Friday morning.

The 1987-88 school year will begin Tuesday, Sept. 1 at the Spearman schools. Some 575 students are expected to register at the elementary and middle school complex while another 250 are expected at high school.

Seniors for the 1987-88 school year will register in the high school auditorium, as will all underclassmen.

Senior registration begins at 8 a.m. and runs until 9:30 this Friday. Juniors will register from 9:30 until 11 o'clock while sophomores and freshmen register in the afternoon from 1 to 3 o'clock and 3 to 5 o'clock, respectively.

All students are requested to bring writing materials to their separate registration group meetings.

The 1987-88 school year has 17 scheduled holidays -- 11 days of those scheduled days off coming before the first of the year.

The first holiday of the school year comes after only four school days with the Labor Day observance on Monday, Sept. 7. School will be let out for three days in November -- the 25th through the 27th for Thanksgiving.

The next break comes beginning Dec. 23 and will run through the New Year. Classes will resume Jan. 4, 1988.

Students will then settle down See "REGISTRATION", p-2

### County court to convene

Hansford County commissions will meet in special session Monday to take care of several routine matters.

Commissioners are expected to amend precinct 3 and precinct 4 road and bridge funds to bring the current budget into line with actual expenditures. Both precincts experienced higher expenses than anticipated in paving and caliche work for the 1986-87 fiscal year.

In other action, commissioners will hear a request for a road easement from General Telephone and will receive the treasurer's quarterly report.

The meeting will begin at 10 a.m. Monday in the commissioner's court room in the Hansford County courthouse.

posed tax increase would result in a home valued at \$50,000 raising from \$131 to \$204.50 in hospital district taxes.

The Hansford Hospital District will be going into the new fiscal year with a deficit in excess of \$800,000. The new tax rate is expected to balance the budget by the end of the upcoming fiscal year if revenue projections are met by both the hospital and the Hansford Manor.

Under current tax laws, Hansford residents will have the opportunity to voice their opinions on the proposed tax increase during a series of meetings which are mandated by Texas laws whenever a taxing entity proposes a tax rate in excess of an eight percent cap.

Thursday's meeting is the first of those steps toward enacting the new, higher tax rate.

At this meeting, input from the public is sought by the hospital district and, at this point, they must decide whether to officially set the tax rate at the 40.9 cent levy.

Currently, all the district has done is stated their intent to establish the 1987-88 rate at the new figure.

A second meeting -- which will be called at the conclusion of Thursday's special hearing -- board members must decide and vote the new tax rate into effect.

See the new tax rate is above eight percent figure of 20.6939 cents per \$100 valuation -- less than half of the amount needed to balance the budget.

Under the eight percent rollback option, tax revenues would be dropped from a proposed \$1,512,286 to \$765,161, a loss of \$747,125.

As final days of summer wane . . .

## School registration slated Friday



SCHOOL PERSONNEL ARE BUSY putting on the finishing touches as the long, hot summer winds down to just a few days. Here an elementary class gets a last bit of grooming in preparation for registration of students next Friday. School starts officially a week from Tuesday, on Sept. 1, when some 825 Spearman students report for the first day of classes.

## City to hold revenue sharing public hearing

Spearman city councilmen will hold a special Revenue Sharing hearing at their regular meeting Tuesday evening at city hall. The meeting will begin at 8 p.m.

A total of \$8,247 will be earmarked for community programs at the special hearing Tuesday, with input from city residents requested as to what uses the federal revenue sharing funds might go.

The city council will also award a contract for group life and medical insurance along with consideration of a resolution authorizing Mayor Ralph Blodgett to make emergency repairs to the T-Hangers at the city airport.

Richard Kelly, district manager for General Telephone, will also present a report to the council on the telephone company's installation of fiber optics in the area.

The Hansford  
**Plainsman**  
Volume 18 No. 42      YOUR HOMETOWN NEWSPAPER      Sunday, August 23, 1987

25¢ Per Copy  
6 Pages

continued from p-1

## La Rochelle heads Hansford Hospital District

the first grade this year.

With his degree in radiology, La Rochelle took his first medical job at Brownfield where he worked for over four years.

From there he moved to Borger in order to pursue business courses at Frank Phillips College and an extension school from Plainview's Wayland Baptist College which was being held in Amarillo.

He actively pursued those goals while working full time at the

Golden Plains Hospital in Borger.

After working in the Hutchinson County Hospital for just over a year, La Rochelle was approached by his former employer in Brownfield -- now an independent businessman who offered management services to hospital districts -- to take the administrator's position in Spearman.

After some consideration, he made the move and took over the reins at the Hansford Hospital in the latter part of 1981.

It was a busy time for the new administrator. Not only was he moving into a new position, but he continued his studies both at Borger and Amarillo in the evenings and on weekends.

Finally, in 1983, La Rochelle graduated from Wayland Baptist University with a BS in Occupational Education. During his schooling, the industrious X-ray tech turned administrator had carried a double major -- radiology technology and business management.

In 1985, La Rochelle was promoted within Capital Medical Resources -- the company providing Hansford with hospital management -- to Stamford, a 75-bed hospital in Central Texas.

However, the medical community was moving at a fast pace and the management company which

had provided the management service for Hansford and other community hospitals began to fall behind.

La Rochelle began noticing problems as well, and after only four months at Stamford, he gave his resignation and went to work for a physicians group as their business manager.

Later, he was given the opportunity to return to hospital management when Seton Hospital in Austin hired him as assistant director in their business office.

The Austin hospital is the fourth largest employer in Texas' capital city with 1,300 employees and carries accounts receivable in excess of \$20-million.

"I got a lot of experience I wouldn't have gotten elsewhere," notes the Hansford administrator. "I wouldn't trade the time I spent there for anything. I wish I could have spent another six months there."

But La Rochelle was approached by the Hansford Hospital board when it was learned that Capital Medical Resources was being forced into bankruptcy. In February, this year, La Rochelle gave notice to Seton Hospital. In March, he took back the desk he had vacated just over a year ago.

La Rochelle admits that many things have changed in that short time -- most of all his outlook and approach to other people.

"I see things over the next 10 years improving greatly for this hospital," he states. "I see this community being ahead of area communities because of the foresight of the people here . . . the Manor may well carry this hospital."

The Hansford administrator notes that community hospitals across the nation are turning to ancillary business in order to keep their local hospitals in the black.

The medical facility in Spearman which serves Hansford County is now only one of two community hospital districts in the Texas Panhandle to own and operate a nursing home.

Coon Memorial in Dalhart has operated a nursing home for at least the past three decades. And another community hospital district -- in Moore County -- now has a skilled nursing home facility under construction.

Meanwhile, La Rochelle heads up the Hansford medical complex which includes about 100 employees, a 28-bed hospital and an 84-bed nursing home.

The Hansford Hospital administrator carries some deep convictions as to his duty to the hospital and the district which supports it.

"When I make a decision, it's based on what's best for the hospital district," he remarks. "And quality care is as important here as it is in any of the Amarillo, or Seton or hospitals anywhere . . . I won't settle for less. Because this hospital is in Spearman is no excuse to give less than what would be expected and demanded at High Plains or any other medical institution."

It's a basic philosophy which La Rochelle has been quietly weaving into the very fabric of the Hansford Hospital district. And, it's one which will benefit not only the district, but those who utilize its services as well.

continued from p-1

## REPORT

I want them to respect me as an honest person. I want to be fair."

It speaks well for him and bodes well for any and everyone who utilizes the Hansford Hospital.

\*\*\*\*\*

To err is human, to forgive is divine. And only Billy Miller calls everybody "coach".

In fairness to Billy, we poked just a smidgin of fun at him in our Thursday column. What he -- and everybody else doesn't know is that two paragraphs which were complimentary to him were taken out and thrown away because of lack of space.

Fortunately, Billy can take a joke and a little jest thrown his way. But he also deserves a good deal of respect, for he's done something which few small-town publishers have ever done.

He not only provided Hansford County with three newspapers every week, week in and week out, but he made a living while doing it.

It takes a special kind of man to accomplish either one of those feats, much less all of them.

Billy Miller did it. And he has my respect and admiration for doing so. I know. I've been trying to do it myself. It isn't easy.

\*\*\*\*\*

Our final thought: Custom reconciles us to everything. -- Edmund Burke.

continued from p-1

## REGISTRATION

for a fairly steady work pace until March when there will be a 4-day break, March 2-4 and on March 18.

Students will get a long weekend in April with a Friday-Monday combo holiday that has them out of school April 1 through 4.

The only in-service date slated during the week for the 1987-88 school year will fall on January 18 with teachers reporting for in-service training while students are allowed time off.

The school year winds up Friday, May 27 with the end of the sixth six weeks reporting period.

## The Hansford Plainsman

PUBLICATION (USPS 2346-6000)

SPEARMAN, TEXAS 79081

213 main

Box 458

659-3434

OWNED AND OPERATED BY

Texas Independent

Newspapers Inc.

\*\*\*\*\*

Second Class postage paid at Spearman, Texas 79081.

Any erroneous reflection upon the character of any person or firm appearing in these columns will be gladly and promptly corrected upon being brought to the attention of the management.

PUBLISHER

JAMES C. JARRETT

Advertising Director

Kirby McAdams

SUBSCRIPTION RATE: Hansford, adjoining counties, combination with the Spearman Reporter, \$19.95 out of county \$24.95.

POSTMASTER: Send address changes to Hansford Plainsman, Box 458, Spearman, Texas 79081.

A newly hatched alligator is just eight inches long. It will grow about a foot a year until it reaches the average adult length of six to eight feet.

## DE'S R.V. REPAIR

"Specializing in Motor Home & Travel Trailer Repair"

### "All Makes & Models"

★ ★ Free Estimates ★ ★

★ ★ Insurance claims welcome ★ ★

★ ★ All work guaranteed ★ ★



511 Ama. Blvd. East

372-1263

372-1380

## Graveside services

### held for Kayce Bass

Graveside services for Kayce Jo Bass, 23-day old daughter of Danny and Mindy Bass of Gruver, were held Monday morning at Gruver Cemetery.

The infant died Friday. Rev. Larry Miller, pastor of First Baptist Church in Gruver officiated. Burial was by Boxwell Brothers Funeral Home.

Survivors include her parents, a twin sister, Kayla, of the home; two brothers, Jesse and Joshua, both of the home;

Her grandparents, Mr. and Mrs. Leroy Bass and Mr. and Mrs. Bill Hall, all of Felt, Ok., and Mr. and Mrs. Chock Climber of Amarillo.

## Career Opportunity

The largest distributor of First Aid cabinets and supplies has a commission sales position available in the Perryton, Spearman, and Canadian area.

No first aid or medical experience required.

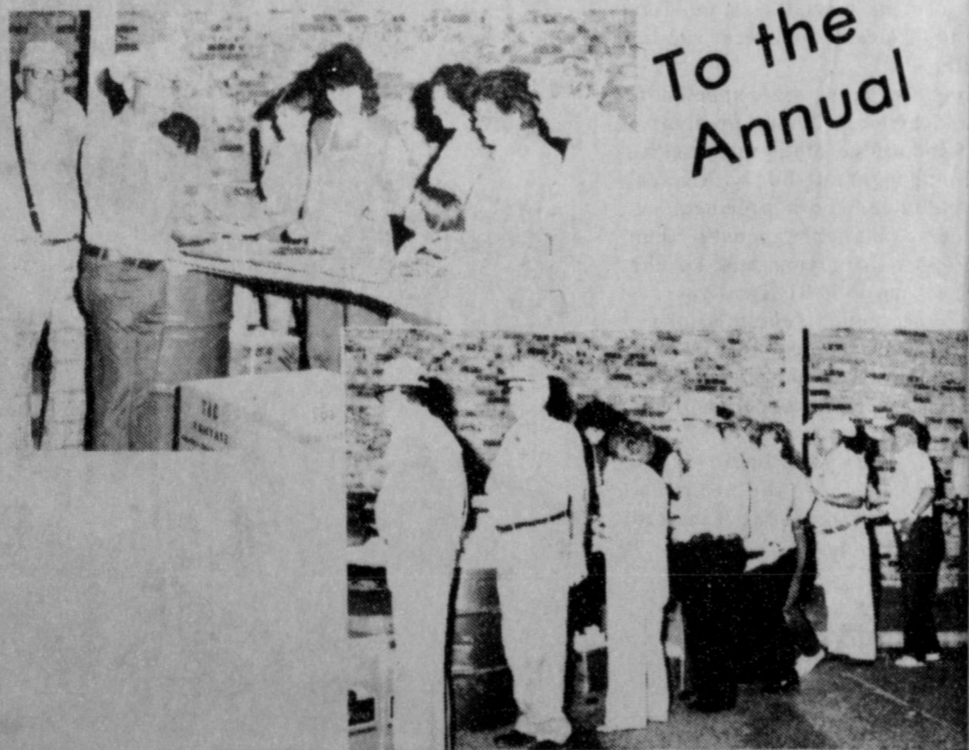
Outside sales experience required.

Van & supplies provided.

Benefits include: Incentive bonus, protected territory, travel allowance, insurance, generous pension plan.

**Send Resume to: Zee Medical Services  
115 Pennsylvania Northwest  
Albuquerque, New Mexico 87108**

# YOU'RE INVITED



To the Annual

Wheatheart of the Nation

## UNITED Free BREAKFAST

Served on our spacious parking lot located at  
2802 S. MAIN

**SATURDAY, AUGUST 29, 1987**

6:00 A.M. till 9:00 A.M.

### The Menu ...

- Orange Juice
- Sausage & Bacon
- Hot Rolls & Butter
- Milk • Chocolate Milk
- Eggs
- Jelly
- Coffee



In appreciation for the growing business from the people of Perryton and surrounding area.

SPONSORED BY UNITED SUPERMARKET IN CONJUNCTION WITH THE JAYCEES



**RIBBON CUTTING CEREMONY . . .** members of the Spearman chamber of commerce were on hand at a special ribbon cutting ceremony Friday morning to celebrate the grand opening of Spearman's newest business, Jack and Jill Supermarket, on West

Kenneth. Cutting the ribbon is Vance McGee [center] manager of the Spearman store. Jack and Jill owner, Bob Downing [immediate left] helps with the ribbon cutting chores.

**Brother of Spearman women dies Thursday**

George E. Meathenia, 56, brother of Pauline Staggs of Spearman, died Thursday. Services were pending at presstime Friday.

Mr. Meathenia, born at McLean, moved to Shamrock in 1940. He moved to Pampa in 1951 and had lived at Boise City, Okla. the past 28 years.

Survivors include a daughter, Debbie Jones of Amarillo; a son, Jerry of Amarillo; his mother, Ethel Meathenia of Pampa; two sisters Bonnie Schaub of Pampa and Pauline of Spearman; two brothers, L.A. of Pampa and Kenneth of Bloomfield, N.M.; and six grandchildren.



Low-flying insects are said to be a sign of impending bad weather.

**10 new teachers greet SISD students this fall**

A total of 10 new teachers and aides will greet students in the Spearman Independent School District when classes resume Sept. 1, with two new faces in the elementary school, six at high school and two who will split duties either between junior high and high school or elementary and junior high.

Cynthia Clyburn will be handling a first grade class at Spearman Elementary. The new Spearman teacher is a graduate of Sul Ross and has taught school for three years at Eagle Pass.

Brenda Pierson will be teaching a second grade class and holds her teaching certificate from Amarillo College and West Texas State University. A Spearman high graduate, Mrs. Pierson has taught school in Amarillo.

Phyllis Kirkland will be working with those students who have learning and listening disabilities in kindergarten through eighth grade.

Mrs. Kirkland is a graduate of WTSU and a former Spearman grad. She has taught classes in Sudan, Canadian, Silverton, Kaufman, Claude, Frenship and Spade.

Taking over responsibilities for both junior high and high school choir will be Mike Mobley. Mobley is from Amarillo and is a graduate of West Texas State in Canyon.

H.M. Garrett will be handling the boys basketball team for the 1987-88 season. In addition, he will also be teaching world history at high school.

High school math will be handled by Susan Kidder, a former Spearman graduate with a teaching certificate from WTSU. She moves to Spearman from Gruver.

Coaching girls basketball this season will be Jim Kirkland, a former Spearman grad and WTSU alumni. He will also teach biology on the high school campus.

John Pond will be taking over vocational agriculture duties at the

high school. Pond graduated from high school in Clyde and is a graduate of Texas Tech at Lubbock.

He has taught school at Kelton, Pampa, Ralls and Rule.

Sophie Garrett will help in the high school as an aide. She has attended Eastern New Mexico University with a background in business and savings and loans.

The high school speech department will be instructed by Susie Pond who has received extensive training at Texas Tech, WTSU and McMurry College. A graduate of Olton high school, Mrs. Pond has taught classes in Kelton, Shamrock and Pampa.

**YOUR MONEY**

**A Lesson From The Past**  
By Helen Leonard

About a hundred years ago, a very simple form of life insurance was popular. It was called the assessment society. A group of people, often a fraternal organization would agree to provide death benefits for its members. When someone died, the group was assessed for the cost of the payment. Everyone paid the same, regardless of age, health or anything else. It sounded like a great idea—but it wasn't.



Leonard

The answer to this was, and is, to charge people for insurance according to the risk they want to insure. Life insurers generally charge younger people less and older people more in exchange for the promise of a death benefit should they die while insured. That helps make sure the price is the best possible for everyone and that the insurance company can afford to stay in business long enough to pay off when it has to. Many would assess that as a big improvement over the old assessment society.

**Ice cream social honors teachers, merchants**

The Women's Division of the Spearman Chamber of Commerce held its first meeting after a summer layoff this past Wednesday at the Cattleman's.

The meeting was called to order by Patti Schnell with Cora Queener offering the invocation.

Schnell reported that the Women's Division will be sponsoring the Ice Cream Social which will honor teachers and retail merchants.

The social will be held Thursday evening, beginning at 7:30 at the Swimming Pool Park. In the event of bad weather, it will be held inside the Y building, she notes.

Each member of the Women's Division is requested to bring one freezer of ice cream, labeled with its flavor to the park by 7:15, reports Schnell.

Plans for the annual membership drive were reported by Sheri

Benton. She requested each member to come up with one name for the drive by the next meeting date.

Queener asked that Women's Division members consider nominees for the Board of Directors for the Chamber. There will be four vacancies to be filled.

Guest for the meeting was Adela Lopez. Thank you notes from Kellie McWhirter, Cindy Womble and Cora Queener were presented to the membership.

Members present for the meeting were Queener, Benton, Schnell, Martha Boyd, Beraice Callaway, Hazel Stumpf, Muriel Boyd;

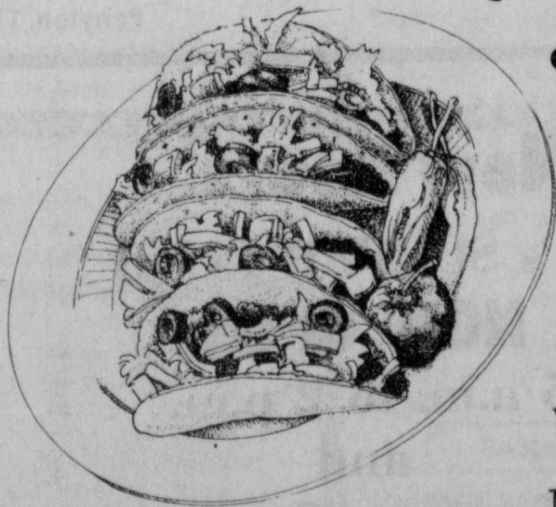
Arbeta Nobles, Kathy Boyd, Linda Davis, Frankie Donnell, Nancy Graves, Kari Schumann, Judy Nelson, Sharon Swan, Eddie Largent, Norma Mackie and Altha Townsend.

**MOVING?**  
The best Interstate Rates and quality moves  
CALL Collect 274-2228  
**Bruce & Son Van & Storage Co.**  
Serving the Panhandle since 1936

**Mexican Food as you like it . . .**

We at, **Dos Caballeros** would like to welcome the residents of Spearman to the opening of our newest Restaurant.

Your business is appreciated and we plan to serve the community with a variety of great Mexican food for many years to come.



Take Out Orders available

And we do have American food also.

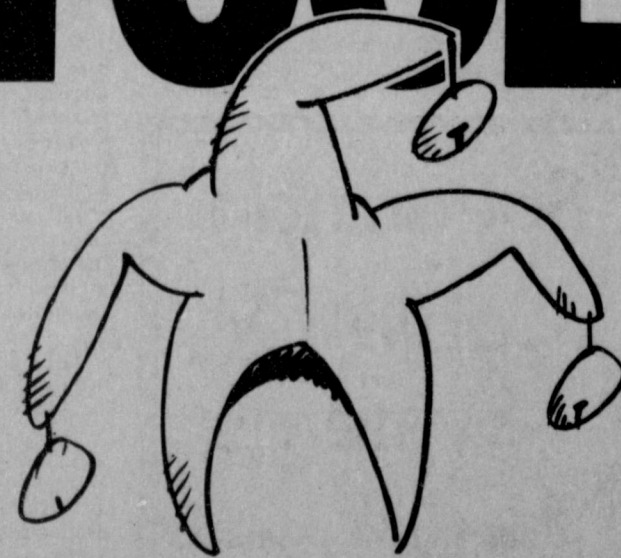
**Dos Caballeros Restaurant**

Hours: Tues. - Sunday 11:00 a.m. - 9:00 p.m.

806-435-3597

16 S.E. 15th Perryton, Texas

**HEY FOOL!**



**Drugs aren't cool.**

And if you think they are then you're just fooling yourself. They'll destroy your mind, ruin your health and drain your bankroll... and that's only if you're one of the lucky ones. The not-so-lucky drug users don't live to tell about it. It

doesn't take a college education to get smart about staying away from drugs. So wise up and put your foot down. Drugs are bad news, and anyone with a head on their shoulders can figure it out. Don't let drugs play you for a fool.

A message from

Your Hansford Law Enforcement Agencies

Hansford Co. Sheriff's Office

Spearman Police Dept.

## Among the Neighbors

By Helen Fisher

Juanita Tucker, Marie Beck and Mr. and Mrs. R.L. Huse attended the Dixon family reunion at Sulphur Springs last Saturday.

Sid Beck's family and the first reunion in many, many years.

Out of the original 11, there are only two brothers living, one is 82 and the other is 90, and both were present.

The Reverend and Mrs. Todd Dyess with Laura and Wesley spent last week at Monument Lake, Co. They were joined by his parents, the Raymond Dyess', of Stratford.

Ignoring minor obstacles like crutches and walkers, Hollie and Earl Riley took to the mountains in their camper the early part of August.

The first weekend they enjoyed meeting old friends at the XIT celebration in Dahart.

They traveled with friends from Amarillo and spent a few days at each of several cool locations, including Red River, Cimmaron, and Tres Riatas. They returned Tuesday.

Returning home on Sunday, Ginger Turner, as well as Jennifer and Christopher, are well aware of the contrast in temperatures.

They have been at their cabin at El Valle Escondido in the mountains. Their guests were Dallas Trospier and Matt Jones of Morse.

Golf, fishing and enjoying the climate were their main activities.

Prior to their going, Jewell and Ned Turner had spent a few days there as her brother and his wife of Myrtle Beach, S. Car., are summering there.

Certainly Spearman and all of Hansford County are indebted to the Peoples Natural Gas Pipeline Company, and to Charles Little, local manager, for their generous contributions recently.

On Friday, Mr. Little presented a check in the amount of \$500 to Nina Hendricks for use by the Spearman Fire Department.

An additional check for \$450 was donated to the H&S Ambulance, E.M.S. This was received by Vickie Bullard, director.

There are few, if any, organizations more capable, dependable and ready to serve than these two. The citizens of the entire county extend thanks to this fine company and to Mr. Little for such consideration.

Don Henricks is back at work now after a slow recovery from a severe illness. His mother, Mrs. Bertha Henricks of Deming, N. Mex. was with the Henricks for several days during his confinement.

His sister and brother-in-law, Diana and John Youngblood of Dallas, were here also.

## Accent On Health

More than any other preventive health care practice, immunizations begun in childhood and kept current, save money, misery, and lives. In the U.S., an estimated \$1 billion are saved annually in would-be medical costs because of immunizations against polio, tetanus, measles, rubella (German measles), mumps, and diphtheria.

In Texas proof of vaccinations for these six communicable diseases is required by law for all children registering for day care or public school. In addition, pertussis vaccine is required for children less than 5 years old in day care and public school. The Texas Department of Health (TDH) and the American Academy of Pediatrics recommend pertussis (whooping cough) vaccine for most children through six years old as well.

Wes Hodgson of the TDH Immunization Division, said, "Today's parents of young children are sometimes too young themselves to remember a time when immunizations were neither available nor required. But a few decades ago, outbreaks and epidemics of killer diseases such as polio and diphtheria not only threatened every child but were occurring more frequently every year."

Hodgson said because of vaccinations, polio and diphtheria are now rare in Texas. In the past ten years, only six cases of diphtheria and four cases of polio, one of them fatal, were reported in the state.

"What some young parents may not realize is that although outbreaks of vaccine preventable diseases are now less frequent in Texas, the diseases can still spread among us. Children are not born immune to these diseases," Hodgson said. "It is important that their

parents follow their physicians' advice in scheduling all the necessary vaccinations and boosters, and in keeping accurate records for each child," he added.

Some preventable diseases persist, mainly because parents often do not take them seriously enough to ensure their children's immunizations are up-to-date. In 1986, TDH recorded sporadic outbreaks of measles (398 cases), mumps (239), pertussis (112), rubella (78), and tetanus (12) in the state. Victims included unimmunized children as well as adults who had allowed their own immunizations to lapse.

Hodgson said, "Parents who are not sure that their children's vaccinations are current should begin now to update their records, to be ready for the coming school year. Their family physicians should be able to advise them on any booster shots that are due. Parents who have no family physician, or who cannot afford a private doctor should check with local public health clinics."

(For more information, contact Wes Hodgson, Administrator of Technical Programs, Immunization Division, at 512/458-7284, or Margaret Wilson, Public Information Coordinator, Public Health Promotion Division, at 512/458-7405.)

## DPS issues Labor Day warning

The Labor Day weekend is a sure sign of things to come. Among them is the fact that another summer is about to pass. It also represents the last three-day weekend before cooler weather sets in for many Texans, which has both local and state public safety officials concerned.

"We anticipate a large number of Texas motorists will take advantage of an extra day off to make that one last summer trip before winter," stated Major V.J. Cawthon, Regional Commander for the Texas Department of Public Safety. "This means Texas drivers will be sharing the roadways with more vehicles being driven more miles than usual, by drivers who are probably more fatigued than usual," he added.

Even though safety officials remain optimistic that this can be a safer Labor Day holiday, they also realize that people will die needlessly on the state's highways during this period. "The tragic part of our traffic fatality picture is the fact that most of these accidents are caused by driver error, and definitely are preventable," Major Cawthon continued.

This underlines the importance of obeying all traffic laws. Studies have shown that when a traffic law is violated, property damage, injury and even death will many times be the result.

Major Cawthon concluded by asking Texas drivers to do their part in making this a safe holiday by remaining alert, adjusting your speed to match the existing road conditions, avoid the use of alcohol and please use your safety belt, no matter how short the trip.

## Range field day to be sponsored by Roberts-Ochiltree extension

The Roberts and Ochiltree County Extension Range and Beef Committees will sponsor a Range Management Field Day, Thursday, September 3, according to Herman Boone and Layton Barton, Roberts and Ochiltree County Extension Agents, respectively.

The Field Day will be held at the Roberts County Project Center on the east side of Miami, Texas, with registration beginning at 8:30 a.m. and the program at 9:00 a.m.

A slate of speakers are lined up for this Field Day, including from the Department of Range and Wildlife Management of Texas Tech University, Lubbock. Bill E. Dahl, Ph.D., Associate Professor, Planning for Wildlife in a Rangeland Operation; Harold L. Schramm, Jr., Ph.D., Assistant Professor, Pond Management for a Rangeland Operation.

Representing the Texas Agricultural Extension Service will be John C. McNeil, Ph.D., Extension Beef Cattle Specialist, speaking on Planning Your Beef Herd Health

Management; Stephen H. Amosson, Ph.D., Extension Economist, Amarillo, Alternative Production and Marketing Strategies; and James F. Caddenhead III, Extension Range and Brush Control Specialist, Vernon, Texas, Noxious Plant Control with Herbicides; L. Leon New, Extension Agriculture Engineer, Amarillo, Monitoring Range Moisture; Dave Hutcheson, Ph.D., Associate Professor, Texas A&M University, Research Center, Amarillo, on Specialization in Ruminant Nutrition - Supplementation of Cattle.

The noon lunch will be catered and donated by Guy Bell, Sales Representative for Velsicol Chemical Corporation.

If you plan to attend this event, please contact either the Roberts County Extension Office at 806-868-3191 or the Ochiltree County Extension Office at 806-435-4501 by August 31, 1987 so that they may have a count for the catered lunch.

## THA accepting federal tax credit applications under Texas program

The Texas Housing Agency will begin accepting applications on August 17, 1987 for a new cycle of federal tax credits available under a homeownership assistance program for low to moderate income Texans.

"The purpose of the program is to give individuals of families who are now living in rental housing a chance to move into a house of their own," said Dan A. McNeil, Executive Administrator of the Texas Housing Agency.

The Mortgage Credit Certificate Program increases a family's disposable income by reducing its federal tax obligations. This tax savings, which can amount to as much as \$2,000 a year, provides a family with more available income to qualify for a home mortgage and to apply towards the monthly mortgage payments.

For example, a family who plans to purchase a home for \$56,000, and receive a loan of \$53,000, at 9.5 percent interest for 30 years will pay the lending institution \$5,020 in interest during the first year. Under the MCC Program, the family will be eligible for a tax credit of \$1,004 in the first year of that loan.

"In each succeeding year for the life of the mortgage loan, the family can claim an income tax

credit for 20 percent of the mortgage interest paid to the lender, up to \$2,000," McNeil said.

To qualify for the program, a family must be a first-time homebuyer or not have owned a home during the past three years, and their current household income may not exceed \$35,075 (a slightly higher limit is permitted in certain metropolitan areas). In general, a homebuyer may pay up to \$74,790 for a previously-owned home and \$90,360 for a new home. During the first 30 days of the program, applications will be processed only on homes priced \$80,000 or less.

The Texas Housing Agency will issue the certificates to eligible families through a network of more than 200 participating lending institutions throughout the state. Approval to participate in the program must be obtained prior to purchasing a home. Families may obtain a list of lenders and a program brochure by contacting the Agency at (512) 472-7500.

The Texas Housing Agency was created by the Texas Legislature in 1979 to provide affordable housing opportunities for low and moderate income families. The Agency fulfills its purpose, in part, by issuing tax-exempt bonds to finance single family and multi-

family housing throughout Texas and by issuing tax credits to qualified homebuyers and rental housing sponsors. The Agency receives no state or federal appropriations; its programs are self supporting.

"In the Dallas PMSA, a homebuyer may pay up to \$103,140 for an existing home and \$110,430 for a new home. During the first 30 days of the program applications will only be accepted on homes priced \$80,000 or less.

## VA Questions and Answers

Q -- My Spouse and I are veterans of the armed forces and plan to use our GI Bill education benefits to attend school. May we claim each other as dependents.

A -- Yes. Any veteran may claim his/her spouse as a dependent for education benefits, provided a certified copy of the marriage certificate appears in both VA files.

Q -- I am 80 years old and I receive a VA pension. Do I still have to make an annual report of income?

A -- Yes. Everyone receiving VA pension benefits, based on age or a non-service-connected disability must make an annual report of their income. Any change in income should be reported immediately so that adjustments can be made.

Q -- I am not a veteran but would like to purchase a repurchased VA home. Is this possible?

A -- Yes. VA-owned homes are available for the general public purchase. A listing of these homes is available at your local VA regional office, or you may contact a real estate broker of your choice. VA pays the brokers' sales commission.



Believing that marriage is ordained by God Judge and Mrs. Roy Lee McClellan request that you share in the joy as their daughter Jean Ann is united in marriage to Stephen Kary Holston son of Reverend and Mrs. Wilton Holston on Saturday, the twenty-ninth of August at seven o'clock in the evening First United Methodist Church 407 South Haney



### Spearman Cable TV Systems

308 Main 659-3363

**End of Summer Coupon Special!**

Offer expires Aug. 31, 1987.

**Bring this AD in for**

- ★ Free Installation New subscribers only!
- ★ Free Security Deposit on first converter New premium subscribers only!
- ★ New premium subscribers can pay 3 months for 1/2 normal price!

## Announcing New Hours

At the **CATTLEMAN'S SUPPER CLUB**

**NOW OPEN**

5 a.m. to 2 p.m.  
and  
5 p.m. to 9 p.m.

Monday thru Saturday

6 a.m. to 1:30 p.m. Sundays  
Club Open 4 p.m. to 10 p.m.  
(Members and Guests only)

**Week Night Specials**

Beginning at 6 p.m.

<b>Wed. Nite</b>	<b>Thurs. Nite</b>	<b>Fri. Nite</b>	<b>Sat. Nite</b>
Mexican Food	Fried Chicken	Catfish	BBQ Ribs

**CATTLEMAN'S**

HWY 207 South

**Supper Club**  
Spearman

Call Us ...  
For All Your

# JOB PRINTING

Needs!

- Letter Heads
- Announcements
- Envelopes
- Invitations
- Circulars
- Job Resumes
- Catalogues
- Reports
- Flyers
- Business Forms
- Pamphlets
- Booklets
- Layout/Design
- Typesetting
- Business Cards

**We See The Job Through,  
From The Initial Conception  
To The Finished Product!**

Pickup & Delivery

## PERRYTON PRINTING CO.

435-3106

109 S. Ash
Perryton, TX

# Your Home Is Full Of Hidden Dollars



Call 659-3434



Turn idle items into cash fast with a Want Ad

**CLASSIFIED RATES**

Regular . . . Per Word-\$0.13  
 Display . . . Per col. Inch-\$4.20  
 Double rate for blind ads  
 Minimum charges  
 Cash . . . . . \$4.00  
 Charge . . . . . \$4.50

**CASH IN ADVANCE ADS**

•Work wanted••Trailers for Sale•  
 •Business Opportunities••No longer Responsible••Political Advertising••Child Care•  
 •Baby sitting••Garage Sales•  
 •Out-of-county Ads unless advertiser has established credit with •The Spearman Reporter•

**DEADLINES**

To place or cancel ads  
 Friday - 12:00 p.m. . . . Sunday edition.

Tuesday - 12:00 p.m. . . Thursday edition

The Spearman Reporter reserves the right to reject, edit, revise and properly classify all advertising submitted for publication. The Spearman Reporter also reserves the right to cancel any advertisement at any time.  
**THE SPEARMAN REPORTER**  
 213 Main, P.O. Box 458  
 Spearman, Texas 79081

**WEIGHT WATCHERS:** meets each Monday at 6:00 p.m. at the Home Demonstration Building, Spearman Texas.

**PANHANDLE CRISIS CENTER:** 101 S.W. Porth, Perryton, Texas 79070, 806-435-5013. Help is available at no charge for domestic violence and sexual assault. Call Panhandle Crisis Center, receive support during a difficult time. Counselors on call 24 hours a day. Call for help.

**TOPS 1245, SP** meets every Tuesday night at 7:30 p.m. at the Girl Scout House located at 22 S. Endicott. Drop by and join TOPS.

**Real Estate**

**FOR SALE:** Small frame house for sale. To be moved. \$1250.00  
 Call: 659-2895 or 659-3736.  
 s42-4t

**HOUSE FOR SALE:** No Down Payment. Payments less than \$200.00 to those who qualify. New 3-bdr. homes, all brick, central heat and AC. To be built in Spearman and Gruver. Equal Housing Opportunity. 658-4676-658-9628 after 5:00.  
 s42-4tp

**For Rent**

**FOR RENT:** Three large bedrooms with 2 baths and 2 living areas. Has built ins and central air. Ideal for couple with grade school children (1/2 block from school). 659-3448 or 435-6794  
 39:rtm

**FOR RENT:** Trailer space in Spearman. All utilities, fenced and concrete walk ways. Call 435-5080.  
 42:rtm

**Mobile Homes**

Remodeled - 3 bedroom 2 bath Mobile Home only \$176.41 - 84 months 12.77 APR \$700.00 down free delivery and set up. For more information call Art at 806-376-5363.

**FOR SALE** To be moved 14x80' Lancer Mobile Home 2 bedroom 2 bath very nice call; 659-3157.  
 S 40-8tc

\$99.00 down only \$235.15 144 months 12.75 APR. Completely remodeled mobile home. Call Frank at 806-376-5363.

Beautiful Tiffany double wide - front bay window with formal dining room spacious 3 bedroom 2 bath mediterranean style kitchen with built in name brand appliances. Call Bruce 806-376-5363.

**FOR SALE:** 1983 Bonneville Mobile Home, 16 x 80. 3 bedroom, 2 full baths, fireplace, spacious bi-level kitchen. Skirting and stairs go with it. Must see to appreciate. Call 659-2354 after 5:30 p.m.  
 s42-9tc

**Lots and Acreage**

**!!REPO!!** Colorado Mountains, 40 acre ranch, trees, views. Low down, assume. Ellis, 303-846-9824, 303-846-4004. SOUTHERN COLORADO REALTY.  
 s40-8tp

**Garage Sales**

**GARAGE SALE** Saturday, August 22 1118 Linn Drive Open at 9 a.m.  
 42S - 1tp

**Help Wanted**

**PART TIME LVN, RN or EMT.** to take health history for insurance co. Reply To: Port-A-Medic, P. O. Box 6705, Lubbock, Tx 79493 include telephone no.  
 s42-2tc

**GOOD JOB OFFER:** Free personal image profile & color analysis. Make over & deliveries today. Book a clinic & learn how you can make \$18. - \$30. an hour, & get a special gift too. Call Edna Gosnell at 806/435-9191 before 10:00 or after 5:00.  
 s41-s-only-3t

**HELP WANTED** Two ladies for Spearman and surrounding towns, 3 hrs., 5 days, can earn \$125.00 weekly. Stanley Home Products Call or write 273-7767.  
 Lois Pelifer, 504 Bois D'Arc Berger, Tx. 79007.  
 S24tc

**Special Notice**

**CUSTOM FARMING AND HAY BALING**

Professional service. Contact Henderson Custom Farming and Hay Baling. 733-5214 or 733-2517.  
 s39-8tc

Excellent Income for Home Assembly Work. For Info Call 504-646-1700.  
 Dept. P-1039.  
 s40-6tp

**SERVICES: Spinkler Systems** We will design and install your systems. Should you already have a system call us for any repairs.  
 806/435-3585 Tx. Lic. 2729  
**Guaranteed work.**  
 s41-13tc

**FOR SALE:** Certified Seed Wheat - TAM101 & TAM105. Certified post barley available. Call: 733-2203.

**For Sale**

**FOR SALE:** Sweet corn, black-eyed peas, okra and squash. Available in Gruver at 9:00 at Texaco and at Spearman at 3:00 at the court house on Wednesdays. To pick your own call: 733-2203.  
 s406trtn

**FOR SALE:** Certified seed wheat TAM101 & TAM105. Call 733-2203  
 s4012trtn

**FOR SALE:** 10' Iron Mesh Sattelite. Remote control can be seen at 510 S. Barkley after 6:00. Call 659-2587 or 659-2704, before 6:00 call: 806/435-4264.  
 s42-4tc

**FOR SALE:** New crop of prairie hay in stack. \$2.20 a bail. Call Sheets bailing. 659-2085.  
 S41 10tc

**FOR SALE:** Pontiac Grand Prix Brougham auto, air, tilt, cruise, elec. seats & windows & locks. Excellent condition. Call: 659-2354 after 5:30 p.m.  
 s42-9tc

**FOR SALE** 1984 Plymouth Turismo 33,000 Miles. Good tires. Still in warranty. Call 659-3024 or 659-3711.  
 S42S2tp

Own your own Apparel or shoe store, choose from: Jean/Sportswear, Ladies Apparel, Men's, Children/Maternity, Large Sizes, Petite, Dancewear/Aerobic, Bridal, Lingerie or Accessories Store. Add Color Analysis. Brands: Liz Claiborne, Gasoline Healthtex, Levi, Lee, Camp Beverly Hills, St Michele, Chau, Outback Red, genesis, Forenza, Organically Grown, over 2000 others. Or \$13.99 one price designer, Multi Tier Pricing Discount or Family Shoe Store. Retail Prices Unbelievable for quality shoes normally priced from \$19. To \$80. Over 250 Brands 2600 styles, \$14,800 to \$26,900: Inventory, Training, Fixtures, Grand Opening, Airfare, etc. Can open 15 days. Mr. Keenan (305)366 8606.

**Markets**

**WHEAT** \$2.19  
**MILO** \$2.90  
**CORN** \$1.90  
**BARLEY** \$1.45

**Hospital Report**

Patients in the Hansford Hospital are Roy Seitz, Eldon Boese, and Lena McCrory.

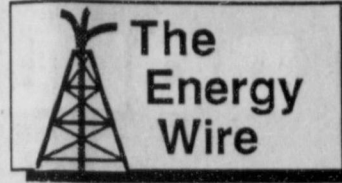
Patients dismissed from the Hansford Hospital were Robbie McFarlin and Joe Dee whitaker.

**ad deadlines set**

advertising and news story deadlines are as follows:

**SPEARMAN:** Thursday publication--Advertising copy and news copy deadline is 10 a.m. Wednesday preceeding issue.

**SPEARMAN:** Sunday publication--Advertising copy and news copy deadline is 10 a.m. Friday preceeding issue.



By Bill Garland

**WASHINGTON --** A new energy educational foundation has planned "blitzes" of major U.S. cities outside the traditional oil patch to try to increase public awareness about the need for a strong domestic energy industry.

The Jefferson Energy Foundation -- so named because President Thomas Jefferson was a strong advocate of private ownership of mineral rights -- was organized early this year and plans to begin city-by-city "educational" campaigns this fall.

Although the foundation grew out of early support from the Independent Petroleum Association of America, the private organization has a national steering committee consisting primarily of non-oil officials.

The foundation advocated better utilization of all the country's natural resources -- including oil, gas, coal and uranium -- to put the country in a better posture in coming years against foreign energy disruptions or shortages.

An initial effort by the foundation had been placement of public service announcements on northern TV stations, according to Howard G. McClintic, the Washington-based organization's executive director.

Those messages, presented by noted officials of well-known celebrities, tell viewers that oil imports have "reached an unhealthy and imprudent level which must be reversed and can be reversed by the exploration and development of the abundant domestic energy resources we possess." He said the service announcements currently are on 100 TV stations nationally.

A more unusual effort by the foundation will use a two-pronged approach. First, foundation representatives will visit local newspapers, radio and TV stations to discuss energy issues with the media.

Following those visits, the foundation plans to stage a large

"townhall meeting," co-sponsored by one of the city's major industries, in which community leaders and the general public will be exposed to a forum on energy.

The foundation hopes to draw a crowd locally by having well-known members of the steering committee, such as former U.N. ambassador Jeane Kirkpatrick, on the agenda.

The theme will be that the public should not be "lulled into a false sense of security by way of the low prices that they've enjoyed at the pump in the recent past," said McClintic. The public should regard possibly higher prices for energy as "a down payment" on the development of U.S. resources, he said.

"Once we cut our teeth in Pittsburgh . . . then the blitz is on," said McClintic, although he said success in Pittsburgh will determine much of the future agenda.

The foundation thus far had raised several hundred thousand dollars, but hopes to operate eventually on a \$2.5 million annual budget, McClintic said.

**WASHINGTON --** Oil futures prices have behaved like a yo-yo between the \$20 to \$22 per barrel range for many weeks on the basis of the latest tensions in the Persian Gulf.

But one well-informed Washington analyst said the longer-term key to oil prices is related only marginally to whether oil-laden tankers nudge the tips of floating mines and set off explosions in both the gulf and worldwide media.

G. Henry M. Schuler, a noted Middle Eastern energy analyst with Georgetown University's Center for Strategic and International Studies, acknowledged that Persian Gulf violence will continue to cause short-lived "blips" in oil pricing levels, unless of course a military catastrophe closes the oil shipping lanes.

Such an outright catastrophe, according to most analysts who consider such an event unlikely, would cause prices to do flips rather than blips and leap toward the \$30 or even \$50 range.

Short of that, Schuler said prices have a good chance in the next year to rise more steadily toward \$23 to \$24 in spite of predictions by many

analysts that worldwide overproduction will tend to dampen prices.

The reason for the price increase, according to Schuler, is related to Persian Gulf violence and violence in the Middle East generally but not to any single attack or act of terrorism.

As so often in the past, Saudi Arabia will be the pivotal influence, he said.

He said the Saudis, in light of heightened Persian Gulf terrorism, have only two real choices in the murky world of Middle Eastern international politics.

Saudi Arabia and other oil-producing Gulf Arab nations can rely on the United States to thwart increasingly bitter terrorist activities by Iran. Or Saudi Arabia and the other countries can move toward an "accommodation" with hawkish Iranian policies.

A major policy difference between Iran and Saudi Arabia is oil prices. Saudi Arabia and other moderates in the Organization of Petroleum Exporting Countries want prices near the current official OPEC price of \$18 to keep oil demand high. Iran wants prices nearer the \$28 mark, in part to fuel its war with Iraq.

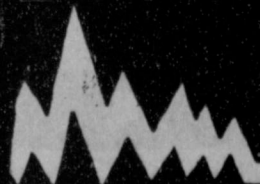
"How that comes out is influenced by their view of whether they can rely on the United States," said Schuler. "Is the United States willing and able to be their backstop? We are showing that we simply cannot meet all the terrorist possibilities."

The result, said Schuler, makes and "accommodation more likely" with Iran that will lead to compromise prices of about \$24 as soon as next year -- all to keep the Middle Eastern tinder box from igniting further with Iran lighting the match.

He said the U.S. naval presence in the Persian Gulf is meant to demonstrate to Saudi Arabia and the other moderate Gulf Arab countries that U.S. protection can bring stability to the Gulf area.

"If we fail at that, which I think we will, then we leave them with no choice but to try to reach an accommodation with Iran," said Schuler.

Without advertising a terrible thing happens ...



nothing

**OSGOOD MONUMENT CO.**

Amarillo, Texas  
 Dealers of Rock of Ages Granite, as well as all colored granites, marble and bronze memorials.

represented by

**BOXWELL BROS. FUNERAL HOME**

519 S. Evans  
 659-3802

**L&M Body Works**

1501 Hwy 15  
 659-2775

Tailpipes - \$29.95  
 Mufflers - \$39.95  
 Most Duals \$160.00 complete

Texas Carpet Cleaners - for free estimates on carpet, upholstery, cars, R.V's, and Suburbans. Scotch Guard. Call 733-2612 or 733-2046.  
 42-rtm 38-rtm

**STEAM RINSE & VAC** - Rinse and Vac Shampooer for rent at Gordons Drug. \$10.95 up to 24 hours.

**APPLIANCE REPAIR** - Call Jim Nobles at 659-3528.

**NOTICE**

Wallace Monument Co. Monuments, Curbings, Grave Covers  
 Local Representative  
**LEONARD JAMESON**  
 Spearman, Texas

**HANSFORD COUNTY**

Planned Parenthood  
 412 Davis  
 659-2483  
 Spearman, Tx.  
 Monday - Friday  
 8:30 - 12:30

**ALCOHOLICS ANONYMOUS MEETING**

Hansford County Library (Upstairs)  
 122 Main-Spearman  
 Open meeting 2nd Tuesday

**AL ANON**

Tuesday  
 8:00 P.M.

# Shop Spearman U. S. A.

## WHERE YOUR DOLLARS MAKE CENTS!

### The "Big One" is Back!

Available ON THESE NEW CARS!

Chevrolet	Oldsmobile
Caprice • Celebrity	S-10 Blazer
Corsica • Baretta	Cavalier • Camaro
Sprint • Sectrum	Firenza Custom Cruiser Wagon
	Cutlass Ciera • Calais
	Delta 88 • Olds 98

OR up to \$800 CASH BACK ON SELECT CHEVROLETS  
and up to \$1000 CASH BACK ON Olds.

**1.9%**  
APR  
Financing  
From GMAC



**GILLASPIE CHEVROLET-OLDS.**  
HWY 207 South

Spearman



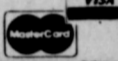
**AROMATIQUE™**  
Potpourri &  
Room Spray

THE SMELL  
OF  
PEACH

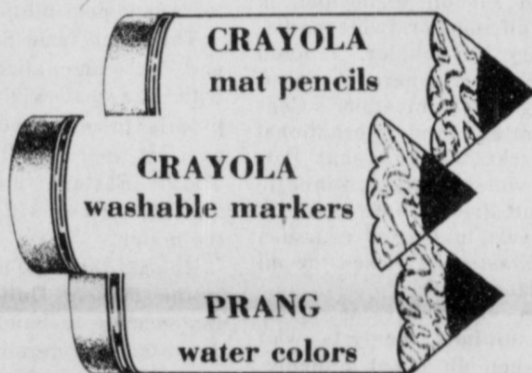
Embrace the magi-  
cal fragrance of  
orchards at dawn,  
now and forever.

**Cha Lor's**  
"The Wedding Store"

214 Main



### BACK TO SCHOOL



**COUNTRY  
STITCHES**

715 W. 7th

Spearman

**70% off**  
*Summer Wear*  
**Little Girls, Jrs, and Ladies**  
**Wrangler Jeans**  
in stock now

**The Bunkhouse**

210 Main

Spearman

### Monday Night CATFISH DINNER SPECIAL

served with  
cole slaw, fries  
texas toast

**\$5.75**

per plate

CALL US FOR YOUR  
CATERING NEEDS  
806-659-5151



Served inside  
or to go

1020 S. Hwy 207

Family Owned and Operated

Coming to  
**Knack  
Shoppe**  
October 14th



Will Special  
order tapes  
for purchase

Over 800 selections

**PLATOON**  
The first casualty of war is innocence.

MEMORABLE FILM CORPORATION  
An HANFORD KAPPELSON Production An OLIVER STONE Film PLATOON. TOMMY REYNOLDS. WILLIAM DAFOE. CHARLIE SHEEN. Music by GEORGE'S OFFICER.  
Co-Producers: R. W. HANFORD, M.D. Executive Producers: JOHN STAY and EDWARD GIBSON. Produced by HANFORD KAPPELSON. Written and Directed by OLIVER STONE.  
R RESTRICTED  
HANSFORD KAPPELSON  
OLIVER STONE  
HANSFORD KAPPELSON  
OLIVER STONE

**THE KNACK SHOPPE**

for your best video selections

Open Daily 9 a.m. - 11 p.m. 317 Main

### TAX LAWS COME & TAX LAWS GO...

But interest on a Home  
Equity Loan is still  
Deductible!

Writing off interest payments is a thing of  
the past, but that doesn't necessarily apply  
to mortgage interest. Since home equity  
credit lines are considered mortgage  
loans, you can write your own loan and  
still receive the tax benefit. It's the smartest  
way to borrow money today. Why not talk  
to our loan officer and get all the facts?



**Interstate Savings**

AND LOAN ASSOCIATION

Member Federal Savings and Loan Insurance Corporation  
Member Savings and Loan Foundation, Inc.

Check our prices on  
your electrical supplies  
before you buy!!

**Spearman  
Auto Supply**

**UniRoyal Tires**

HWY 207 S.

659-2588



**Hair Loft**  
"2100"

310 Main

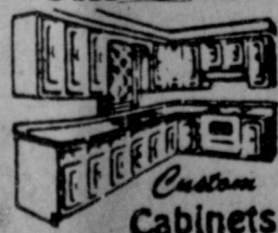
**\$25**

Basic Short Perms

Check our specials on Spiral Perms

Call 659-5161

### Gordon's Custom Cabinets



We Specialize In Kitchen Remodeling  
and Formica Tops  
Stop by Today!!!

Rick Gordon

659-3467

659-3648

### SAM'S SHOE CLINIC

BOOT & SHOE REPAIR



Custom Hand Made Boots  
by  
Sammy C.

SAMMY C. PIERSON  
BUS: (806) 659-3234  
HOME: (806) 659-3987

P.O. BOX 1074  
307 W. DAVIS  
SPEARMAN, TX. 79081