

HANSFORD PLAINSMAN
120 MAIN
SPEARMAN, TEXAS 79081

Dr. McClellan To Leave
SpearmanPage 7

Faye's Daze Is Back
Teenagers....Page 4

Stock Show Animals
Being Groomed....Page 8

THE Hansford PLAINSMAN

24 hr. prayer
service 659-2911

Volume 16, Number 18

The Hansford Plainsman, Spearman, Texas 79081

Sunday, March 10, 1985

MOST HANSFORD FARMERS PREPARING TO PLANT

Sign-Up Time Extended For Farm Programs

Hansford farmers will have more time to decide whether to sign up for federal farm programs, according to Hansford ASCS manager Keith Martin.

The March 1 deadline for sign-ups has been extended to April 1 in the hope more farmers will go with the program.

ASCS received the notice this past week.

The 30 day extension gives the wheat farmer another month to observe his wheat crop and he may want to change his mind about going into the program.

MARKETS

WHEAT	\$3.09
MILO	4.25
MILO	2.95

Band is selling candy for trip

The Spearman High School Band is selling 'Worlds Finest' candy through next Thursday to earn money for their trip to Austin the first weekend in June.

The Band earned the chance to

compete at Austin, with their first place rating they earned when they entered the U.I.L. Solo and Ensemble Contest at Canyon.

The band is selling almond bars, chocolate with almonds, and mint

candies for \$1.00 a bar or box.

We encourage anyone who would like to purchase candy and support the band to contact any band member or Mr. Daniels.

PDRA calls for election

The Palo Duro River Authority met Wednesday, March 6 in regular session.

The board considered the bills and heard the financial report.

The PDRA called an election for Ochiltree County annexation and 6 cents maintenance tax for April 6.

Dr. Muthali is not leaving

Dr. Muthali informed the newspaper that he does not plan to leave Spearman.

He has his home here and he and his wife intend to make Spearman and Hansford County their per-

manent home.

He intends to continue to practice in Hansford Hospital and may possibly move into Dr. McClellan's building in the near future.

Ideal Store is sold

In confirmation of the persisting rumors in Spearman, the Spearman Ideal Food Store has been sold. The Spearman supermarket is one of 44 Ideal and Humpty stores in Texas, Oklahoma, and Kansas to be sold by Allied Supermarkets Inc., the Detroit-based chain.

Allied's 20 Ideal supermarkets in the three states are being acquired by Nash-Finch Co., a Minneapolis-based wholesaler, or by independent retailers affiliated with Nash-Finch. It is thought attempts are being made to operate the Spearman store on an independent basis, although it is unknown whether local independent concerns can come up with the necessary revenue.

In any case, it is thought the new operation will not allow for union-scale wages nor perhaps even employment which leaves local store employees in a cloud of uncertainty.

Nash-Finch Co. has a regional operation in Liberal.

Allied's 24 Humpty supermarkets in Oklahoma are being acquired by independent retailers affiliated with Fleming Companies Inc., an Oklahoma-based wholesaler. Allied's 300,000 sq. ft. office, warehouse and distribution complex in Oklahoma City is being placed on the market for sale or lease, with Fleming temporarily renting the complex pending its disposition.

By mid-month, Allied intends to suspend business operations in the 44 stores and expects all of the dispositions by the end of the month.

The announcement was made by David K. Page, chairman and chief

executive officer of Allied, and Lon D. Makanoff, president and chief operating officer.

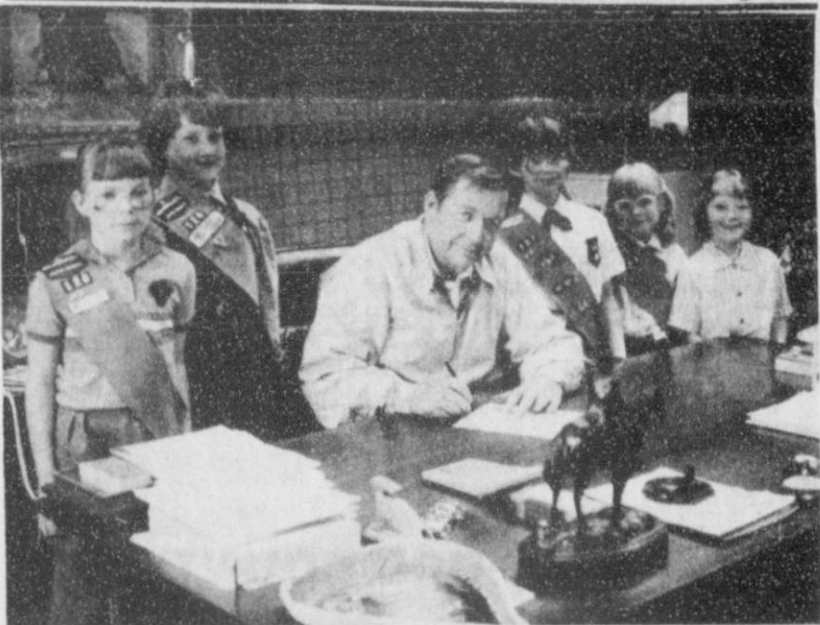
In a statement issued from Allied corporate headquarters in Detroit, Page and Makanoff said: "These transactions and related provisions should result in a book loss of not more than \$2 million. Net cash proceeds of over \$22 million will be generated and Allied's cash reserves will increase to over \$37 million. If current union negotiations in Michigan produce acceptable labor costs and working conditions, we intend to spend some of this cash to improve and expand our Great Scott! Supermarket chain and our Abner A. Wolf wholesale business in Michigan. Other investment opportunities will be explored as well.

"We regret having to withdraw from the Oklahoma, Kansas and Texas market where our company has been a factor for so many years. However, recent losses and competitive conditions in those areas made it prudent to redeploy those assets into other areas of our business and into potential new business opportunities. Most of the stores being sold will continue to serve their communities through independent store operators. We are hopeful that a number of our valued employees will secure positions with the buyers of these stores."

Upon completion of these transactions, Allied will operate 19 Great Scott! Supermarkets in Michigan, one K-Mart Food store in South Dakota, six Family Drug stores in Michigan, the Abner Wolf Company and eight Abner Wolf Cash & Carry wholesale outlets.



Don McLain is congratulated by Brice McRee of Agco after winning the trip for two to Las Vegas that was given away at the Agco Winter Fair held Thursday, March 7.



Girl Scout Week proclaimed... shown above are Lorie Wattier, Regina Biggers, D'Edra Martin, Kathy Hansen and Lacie Baker as Mayor Blodgett signs the proclamation.



Looking on as Mayor Blodgett proclaims "Older Worker Week" are Ernest Newcomb, Floyd Dean Gatin, Alma Remy and Virgil Floyd.

City of Spearman
P.O. Box 37 • 806-659-2524
Spearman, Texas 79081

PROCLAMATION

"GIRL SCOUT WEEK"
March 10 - March 16, 1985

TO THE CITIZENS OF SPEARMAN, TEXAS:

WHEREAS, Girl Scouts of the U.S.A. observes the 73rd anniversary of its founding on March 12, 1985; and

WHEREAS, Since 1912 Girl Scouting has helped more than 49 million members enjoy wholesome activities; and

WHEREAS, Girl Scouting is an important way for girls to become self-reliant, productive and self-confident women; and

WHEREAS, Girl Scouting is an investment in tomorrow's leadership; and

WHEREAS, This year, Girl Scouts welcome their newest members, kindergarten-age Daisy Girl Scouts; and

WHEREAS, Girl Scout Week will be celebrated in our community from March 10 to 16;

NOW, THEREFORE, I, C. RALPH BLODGETT, by virtue of the authority vested in me as Mayor of SPEARMAN, hereby proclaim March 10 through 16, 1985, as

"GIRL SCOUT WEEK"

in Spearman, Texas, and I do further call upon all citizens of SPEARMAN to recognize and support the contributions made by Girl Scouts and adult volunteers toward improving the quality of life in our community.



IN WITNESS WHEREOF, I have hereunto set my hand and caused to be affixed the great seal of the City of Spearman, Texas.

DATED the 1st day of March, Nineteen Hundred and Eighty Five.

C. Ralph Blodgett
MAYOR OF SPEARMAN, TEXAS

Proclamation

Over 2.5 million Texans are 55 years of age or older. They have worked hard and have made important contributions to our state and nation. They continue to represent an era of talent and experience which should be acknowledged.

For more than two decades the Senior Community Service Employment Program, through organizations such as Texas Farmers Union Green Thumb, has worked to assure that the abilities of our mature work force are recognized and has encouraged both public and private sector employers to utilize this valuable resource.

THEREFORE, I

C. Ralph Blodgett
(Name)

Mayor

OF Spearman, Texas

(Title)

(City or County)

DO HEREBY PROCLAIM THE WEEK OF MARCH 11-16, 1985 AS

OLDER WORKER WEEK IN Spearman, Texas

(City or County)

I urge all state and local officials and citizens to join me in this effort to increase public awareness of the employment needs and concerns of older workers and to assist those persons in finding meaningful and gainful employment opportunities in our communities.

LEGALS

NOTICE TO CONTRACTORS

Sealed proposals for sealcoating approximately 66,300 S.Y. of City Streets and 2,960 S.Y. of public parking lot for the City of Spearman will be received at the office of City Manager, City Hall until 2:00 p.m., March 19, 1985 and then publicly opened and read.

All proposals shall be accompanied by a cashier's or certified check written upon a national or state bank in the amount of five (5%) per cent of the total maximum bid price payable without recourse to the City of Spearman, or a bid bond in the same amount from a reliable surety company, as a guarantee that the bidder will enter into a contract and execute a performance bond within ten days after notice of award of contract to him. Bids without check or bid bond will not be considered. Bids not exceeding \$25,000 will not require a performance bond.

The low bidder shall supply the names and addresses of major material suppliers and subcontractors when requested to do so by the Owner.

Inspection trips for the prospective bidders will be as requested.

The City reserves the right to reject any or all bids, to waive informalities and to accept the bid deemed to be the most advantageous to the City. All bids received after the above closing hour will be returned unopened.

Plans, specifications and bidding documents may be secured from the office of McMorries and Glover, Inc., P.O. Box 977, Dumas, Texas 79029, on deposit of Thirty (\$30.00) Dollars per set, which sum so deposited a total of Fifteen (\$15.00) Dollars will be refunded, provided: (1) All documents are returned in good condition to McMorries and Glover, Inc., not later than 48 hours prior to the time of receiving bids; or (2) The Contractor submits a bid and all documents are returned in good

condition to McMorries and Glover, Inc., not later than five days after the time that bids are received.

City of Spearman, Texas
By Ralph Blodgett
Mayor

17s-2tc s-only

Pringle-Morse School plans open house and spaghetti supper

Pringle-Morse School will be holding open house and the PTA will be sponsoring a spaghetti supper on March 14.

The spaghetti supper will be from 6 to 7:30 p.m. in the school cafeteria. Price for 5th graders and older will be \$2.00 and 4th graders and younger will be \$1.00.

The best part's (still) the fun

The popular image of a typical Girl Scout of just a generation ago would bear only a slight resemblance to the Girl Scout of 1985. Today's Girl Scouts are mastering computer technology, learning about the enforcement and the ecological balance, exploring the universe by telescope and getting on-the-job training through Girl Scouting's career education projects.

It's a full, rich life for Girl Scouts in the 1980's. But girls will still be girls. So, in all those exciting ventures the accent is still on plain old, girl-size FUN!

In fact, the theme for Girl Scout Week this year -- March 10-16 -- is "The Best Part's the Fun." It reminds us that, in Girl Scouting,

"fun" is still number one! It's the lure that continues to bring millions of girls into Girl Scouting's worlds of new discoveries, expanded personal horizons, community service and happy friendships.

During Girl Scout Week, we're reminded, too, that Girl Scouting's value-centered program is still helping girls grow up to be happy, strong, contributing citizens. That makes this special week a time for all citizens, in communities across the U.S.A., to salute the Girl Scouts for the enrichment they add to girls' lives -- and for never forgetting that "The Best Part's the Fun."

Happy birthday, Girl Scouts, and best wishes for another 73 years of growth and progress.

Student Council taking donations

This week members of the student council of Spearman High School will begin collecting donations from local citizens and businesses to enable them to send representatives to Girls State and Boys State this June. Carlee Dixon, Shelly Duniho and Linda Evans, alternate, have been elected to attend Girls State. Thad Reid, Tim Willis and Michael Lopez, alternate, have been elected to attend Boys State.

Students are elected on the basis of leadership, scholarship and character. Students are asked to sign up if they want to be considered to go to Girls State and

Boys State, then the student council votes on which students they feel should represent Spearman School. The final selection is then approved by a faculty committee.

The final dates have not been set, but Boys State will be in Austin and should begin around the first of June. Girls State will be in Seguin in the second or third week of June. This is an educational experience that teaches the students about the workings of the government.

Senior members of the student council are Cole Ivey, JoAnne Odegaard, Tiki Jackson and Kevin Slaten. Junior members are Thad Reid, Shelly Duniho, Linda Evans,

and Dean Greene. Sophomore student council members are Carrie Guthrie, Nita Burger, Jill McLain and Jesse Lozano. Freshmen members are Chris Lopez, Kevin Nelson, Paige Pittman and Norman Scroggs. Wanda Jones is the chairman of the student council. Anyone wishing to make a donation to this project may contact any student council member, Mrs. Jones, or they may mail their donation to the student council. Any and all donations will be appreciated.

New Arrival

Mr. and Mrs. Rod Sims of Enid, Okla. announce the birth of their son, Perry Joseph Sims on Feb. 22, 1985 at 5:53 p.m. He weighed 11 lbs. 5 oz. and was 24 inches long.

Paternal grandparents are Mr. and Mrs. E. R. "Buss" Sims of Oklahoma City, formerly of Spearman. Maternal grandparents are Mr. and Mrs. Clay Vaughan of Vic, Okla. Mr. and Mrs. Gary Davis of Spearman are Perry's great uncle and aunt.

Benefit dance set for YMCA

There will be a Benefit Dance March 23 from 8 p.m. to midnight at the YMCA. This will be a fund raiser for the birthing bed for Hansford Hospital.

Music will be by Ken Freeman's P.M.E.
Everyone is welcome.

THE Hansford Plainsman

PUBLICATION (USPS 2346-6000)
SPEARMAN, TEXAS 79081

213 Main Box 458 659-3434

Published Weekly at 213 Main Street

Spearman, Texas 79081

Owner-Publisher..... William M. Miller
Editor..... Faye Lynch
Second Class postage paid at Spearman, Texas 79081

Any erroneous reflection upon the character of any person or firm appearing in these columns will be gladly and promptly corrected upon being brought to the attention of the management.

POSTMASTER: Send address changes to Hansford Plainsman, Box 458, Spearman, Tx. 79081.

SUBSCRIPTION RATE: Hansford, adjoining counties, combination with the Spearman Reporter, \$25.00.
Other points, \$30.00.

MEMBER

texas press association

Non-profit transit system

Panhandle Transit, a rural transportation program providing door-to-door transportation to the 26 counties of the Texas Panhandle is now in operation, according to Ms. Nanc Harvey, Special Projects Director for the Texas Panhandle Community Action Corporation. It is being contracted through the State Department of Highways and Public Transportation with funding through the Urban Mass Transit Administration, and will operate as a non-profit transit system through T.P.C.A.C.

Routine service will be open to the general public and especially suitable for senior citizens and handicapped persons, and will have flexible schedules in order to meet passenger needs.

Regular service will include trips for medical, shopping or essential business purposes, and to visit senior citizens centers and nutrition sites.

A Panhandle Transit vehicle will pick up and return passengers to their

homes. Various purchase-of-service contracts will make possible a cost free service to persons who are eligible for other programs such as: A.F.D.C., Food Stamps, S.S.I., Medic-aid, J.T.P.A., Head Start, housing and butter and cheese.

All other passengers will be charged 50 cents for a one-way, in-town service; and 25 cents per mile, one way, outside of the city limits.

Drivers have been professionally trained in defensive driving, passenger assistance techniques, first-aid, and C.P.R. Drivers will assist passengers in and out of the vehicle, and with packages and groceries.

Scheduling for Hansford and Moore counties must be made 24 hours in advance through Moore County Community Action.

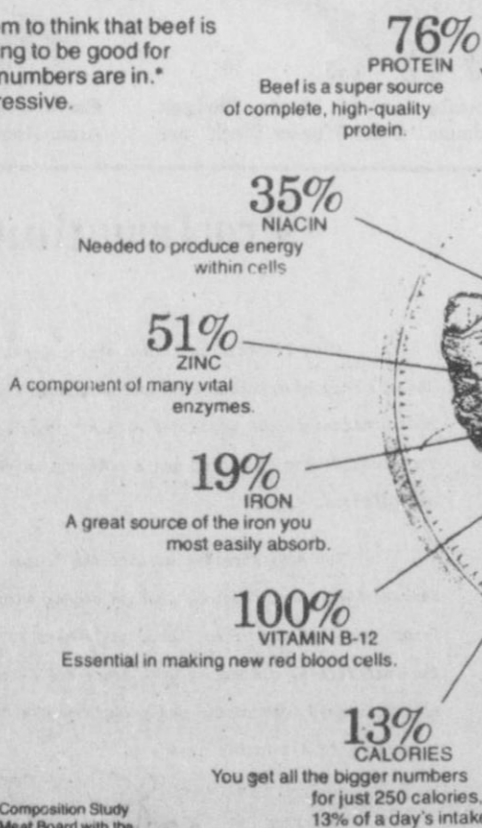
To request further information, or to schedule Panhandle Transit, please call 935-5551 or 935-2342.

THERE'S STRENGTH

in numbers...

in facts.

Some people seem to think that beef is just too good tasting to be good for you. But the new numbers are in. And they are impressive.



MYTH: The fat in beef is saturated fat.

FACT: Beef fat contains only about 47-49% saturated fatty acids. The rest is unsaturated fatty acids, including significant amounts of polyunsaturated fatty acids.

MYTH: Beef contains more cholesterol than most other animal-source proteins.

FACT: Three ounces of cooked lean beef contain 73 mg. of cholesterol; 3 ounces of roast chicken, 76 mg.; 3 ounces of flounder 52 mg.; 3 ounces of shrimp, 128 mg.; 3 ounces of pork, 79 mg.; 3 ounces of turkey, dark 72 mg.; light 59 mg.

MYTH: Heart disease risk can be reduced by reducing intake of saturated fat and cholesterol.

FACT: The current trend in the scientific literature is away from thinking that reducing heart disease risk is simply a matter of cutting down on foods high in saturated fatty acids and cholesterol. More scientists are now saying that more scientific answers are needed before marked changes in diets can be recommended for the general population.

MYTH: Dietary cholesterol has a direct effect on blood cholesterol level.

FACT: In most persons, dietary cholesterol and blood cholesterol are not closely related. In fact, in most persons, heredity and weight or amount of fatty tissue in the body are more important than diet, including dietary cholesterol, in determining blood cholesterol level. If a person keeps his weight at recommended levels, odds are that his blood cholesterol will not be above normal.



HANSFORD COUNTY

JUNIOR LIVESTOCK SHOW and SALE

March 15 & 16, 1985
Spearman, Texas

Clubs and Chapters Participating in the Show
Gruver FFA Spearman FFA
Gruver 4-H Spearman 4-H
Morse 4-H



BEEF GIVES STRENGTH.

Frontier Feed Yards, Inc.

Bronc May

Phone 806-882-4251



Case IH dealers convene for historic meeting

It was agricultural history in the making last week in Las Vegas when Case IH dealers from around the country joined forces for the first time.

Dick Elbert, owner of North Plains International, Spearman's new Case IH agricultural equipment dealership, North Plains International, joined nearly 2,200 other dealers principals for the formal kick-off of the expanded JI Case agricultural equipment operation. On January 31, 1985, the U.S. Justice Department gave the final green light to Tenneco Inc.'s purchase of International Harvester's agricultural equipment business, which has now been merged into Tenneco affiliate, J I Case, headquartered in Racine, WI.

A high point of the dealer meetings was the unveiling of colors and graphics for the new Case International product line. Displayed on a Case IH 2096 tractor, the new graphics feature a major IH hallmark -- the characteristic IH red.

The new logo retains the best of both traditions, putting the two established logos side by side -- Case IH. This fresh look will soon be a familiar sight across the continent.

"There was a terrific feeling in the air," said Dick Elbert. "The entire Case IH dealer organization was excited -- excited to see the equipment, excited about the new look, the new logo, the new colors -- and excited to be a part of the new Case IH Agricultural Equipment dealer network."

"Our Case IH dealers can offer the most complete product line in the industry, backed by the financial strength of Tenneco," he said.

Case IH dealers participated in intensive training seminars on product features such as the Case IH Intelligence Center, CDC engines and power transmissions. The seminars also profile equipment lines including combines, hay and forage tools, planters and tillage equipment.

In addition to product information, dealers learned of new financing programs, warranties, parts availability and other information vital to farm customers.



"I think our customers will be delighted the way things are shaping up," said Dick Elbert. "Both Case and IH warranties will be fully honored, parts availability will be excellent -- and Case financing, warranties and service will just be outstanding," he said.

New Case IH dealers carry two and four-wheel drive agricultural tractors up to 400 gross engine horsepower, plus a full line of planting, harvesting, tillage and other agricultural equipment. The equipment line reflects the technological expertise of two strongly innovative companies.

Early Riser Cyclor Air planters and Axial-Flow combines offer unparalleled productivity and ef-

iciency. The Case IH Intelligence Center, standard on most tractor models, is the industry's most comprehensive electronic monitoring system.

New Case state-of-the-art diesel engines, already featured in the Case 96 Series tractors, will gradually be phased into all of the company's agricultural and construction equipment.

Case is a worldwide manufacturer and marketer of construction and agricultural equipment.

Tenneco Inc., with headquarters in Houston, is a \$15-billion, multi-industry company with major operations in integrated oil, natural gas, pipelines, construction and agricultural equipment, automotive components, chemicals, shipbuild-

ing, packaging, life insurance and agricultural/land management.



Faye's Daze

You know what they say, a bad penny always turns up again. So here I am. This is my first week at work this year, and I seem to have more cobwebs than usual in my head.

Seriously I want to thank all my friends for their cards, flowers, calls and visits while I was in High Plains Baptist Hospital in Amarillo and since coming home.

Since we are presumably on an austerity budget: here are a few little tidbits you may not have heard.

There are 190 "pampered officials" who receive this service now, up from 160 in 1977. This is an annual cost of \$32,000 for each chauffeured official...a total of \$3.4 million for the taxpayers in 1982 alone.

Sixty of these are from the Pentagon.

It's time for these people to drive their own car to work or get on the subway.

Just think of the money we could save if they fired them all.

Here is a funny you may not have heard.

A preacher's 15-year-old son asked, "Dad, when are you going to let me have the car keys?"

"When you do three things," was the response. "Get that long hair cut, bring all your grades up to B's, and start reading the Bible every day."

Knowing that Dad meant what he said and determined to earn the honor of having the family car occasionally, the teenager began his task. Some time later he again approached his dad and asked the same question. This time he explained the hard work toward the goal. "All my grades are B's and some are even A's, and I've made it a habit to read the Bible every day." He even quoted several scriptures to prove his point. Noticing Dad's raised eyebrows and question-

ing look at his still uncut hair, he added, "And the Bible says that Jesus had long hair!" "Yes," Dad agreed, "and Jesus WALKED everywhere he went!"

CPR course planned at Pringle-Morse School

A CPR course will be offered at Pringle-Morse School on March 24 and 26. Paramedic Michele Davis of Spearman will teach the course which will be held at 2 p.m. on March 24 and at 6 p.m. March 26th.

There will be no charge and anyone interested in the course should call the school office 733-2507.

The course is sponsored by the Pringle-Morse PTA.

HOSPITAL

Patients in Hansford Hospital are Oliver Barnes, Jewel Cummings, Benny Vaughn, Ella Hull, Minnie Jones, Pete Bayless and Bill Henderson.

Dismissed were Ruby Lair, Magdalena Estrada and son, Glen Dobneier and Irwin Delk.

Major Seed Company

needs dealers in Spearman, Tex. and surrounding area.

LARRY SKINNER
911 Shamrock Drive,
Dumas, Tx 79029.
806-935-3355.



NOTICE OF TRUSTEE ELECTION' (AVISO DE ELECCION DE REGENTES')

The SPEARMAN Independent School District Board of Trustees hereby gives notice of an election to be held on April 6, 19 85, for the purpose of electing two Trustees for a full three year term.

(Por la presente la junta de regentes del distrito escolar independiente da aviso que se lleva a cabo una eleccion el dia 6 de abril de 19 85 con el proposito de eleger dos regentes escolares por tres anos

ABSENTEE VOTING by personal appearance will begin on 18th (day) March, 19 85, and continue through 2nd (day) April, 19 85, from 8:00 a.m. to 4:30 p.m. on each day which is not a Saturday, Sunday, or an official state holiday. (VOTACION POR AUSENCIA en persona comenzará el 18 (dia) de Marzo (fecha) de 19 85 y continuará hasta el 2 (dia) de Abril de 19 85 desde las 8 a.m. hasta las 4:30 p.m. en todos los días que no sean sábado, domingo, o día oficial de vacaciones estatales.)

Absentee voting in person shall be conducted at Spearman School Business Office - 403 E. 11th Street - Spearman, Texas 79081

Applications for absentee ballots by mail should be mailed to Orville Latham, 403 E. 11th Street - Spearman, Texas 79081

(Votando por ausencia personal va ser conducido acerca de Oficina de negocios escolar, 403 E 11 avenida, Spearman, Texas 79081

Solicitudes para una boleta de ausencia por correo deben dar vuelta por correo al Orville Latham, 403 E. 11 Avenida, Spearman, Tx. 79081

The POLLING PLACE(S) designated below will be open from 7:00 a.m. to 7:00 p.m. on the day of the election. (Los sitios de votación indicados abajo se abrirán desde las 7:00 a.m. to 7:00 p.m. el día de la elección.)

Pct. No. (Núm. de precinto) Location (Colocación)
SPEARMAN HIGH SCHOOL BUILDING
edificio de escuela secundaria

TAYLOR

501 West Kenneth
Friendliest place
in Spearman



PETROLEUM

Spearman, Texas
Fast, Friendly
Courteous Service

Prices effective Sunday through Sunday

Owens
Sausage & Biscuit

79¢ PKG. of two

TIDE OR CHEER

84 oz. BOX \$3.99

Steffen's
Milk
Homo. or Chocolate
pt. 39¢

Chili and Cheese
Dogs
2 For \$1.00

Men or Women's
LCD Quartz

Watches \$3.99 each



Delicious
COKE, 7-UP, or
DR. PEPPER

\$1.69 6 pack

KRAFT
SINGLE SLICED CHEESE

8 OZ. PKG. \$1.25
SAVE 28¢

KRAFT
MIRACLE WHIP

32 oz. jar \$1.99

Anything goes. Any item in this store can now be purchased on your Diamond Shamrock Credit Card up to \$25.00 per sale on items in addition to your fuel and oil purchases.

When in a rush call us! Call-in-Food orders Call 659-3417 For all of your fast food needs. We have air for your convenience to serve you better!

Delicious fresh sandwiches made to order. Ice provided at no charge for Churches, Civic Organizations, and Charity Benefits.

Musical Nivens family 'enticed' by Bob Wills

A mini-reunion in Dumas last week of a family brought together four brothers and a sister whose music bears a distinct resemblance to that produced by the famed Bob Wills.

And well it might — the Nivens family grew up in the same part of the country — Turkey — where the Wills family began, as neighbors.

The brothers, Wes, Bud, Ben and Doice Nivens and their sister, now Bertie Ayers, got together last week here and the music they produced is reminiscent of the Wills era.

Ben and Doice Nivens live in Dumas, Wes Nivens makes his home in Truth or Consequences, N. M., Bud is from the Fort Worth area and Mrs. Ayers also lives in Fort Worth.

Wes Nivens, the acknowledged leader of the family musical group, is president of the National Old-Time Fiddlers Association.

The Nivens family credits the late Bob Wills and his father, John, as well as others in that family with "enticing" the Nivens brothers and sister into music, and with teaching them initially.

Bob Wills may have become more famous than his long-time neighbors ever would have imagined, but his title — the king of country swing — is well suited by the standards of the Nivens family.

"He definitely was the king, I'll tell you that any day," Wes declares.

"I am very proud of Bob Wills and his success and thoroughly enjoy the memories of what we had when we were growing up and learning his music," adds Mrs. Ayers.

And, up until Bob Wills' death about 10 years ago, the Nivens group kept in close contact.

"I saw Bob a few years before his death and it was real good to see him. He and his father and the brothers got us interested in music and taught us how to play some of the instruments," says Wes, who once played on a Bob Wills recording.

Wes adds that the Nivens bunch and Wills family would get together and play or teach each other new cords and tunes the other had learned.

The Nivens brothers also took it upon themselves to learn new tunes. On one such occasion, Wes was on the verge of driving his brothers crazy as he learned "Maiden's Prayer."

"We'd been up to the windmill listening to the radio and 'Maiden's Prayer' came on. I whistled that tune all the way home and then got Ben to play it on the guitar until I learned it on the fiddle," explains Wes, 68.

"He kept telling me 'don't let me forget it, just keep on playing it until I get it right,'" Ben declares.

In addition to the Wills family teaching the Nivens how to play instruments, their own parents were musically inclined and could "bang out a few notes."

But, when their father wasn't in the mood to hear their music, he let them know in a hurry.

"Sometimes we'd be making some noise, which I guess was music, and when our father would get tired of it, he'd bang on the door and say 'that's enough of that racket,'" explains Bud, a retired building official for Haltom



THE NIVENS BROTHERS ... from left, Ben, Wes, Bud and Doice.

City.

In the beginning, the siblings didn't have an easy time making music, they recall.

They bought their first guitar, which remains in the family, as a joint effort. Their original guitar belongs to Bud.

"All five of us picked cotton for two weeks straight to buy a \$17 guitar. We all paid for it and all shared it," recalls Mrs. Ayers.

Each of the Nivens children is able to play several instruments, but each also has a preference.

Wes plays the fiddle, Mrs. Ayers is at the piano during their sessions, Ben has taken up the bass fiddle, Bud is on rhythm guitar and Doice plays the steel guitar.

The youngest of the family, Doice, who had to retire as a

Moore county farmer three years ago after a massive heart attack, continues to enjoy the music of a rhythm guitar, but plays a steel guitar.

"Since my heart attack and inability to work, I've been practicing a lot. It would be nicer, though, if we could all play like we used to," Doice, 59, says.

His brothers also wish that they could live closer together and play on a regular basis rather than at family reunions once a year.

They admit that the last time they "played seriously together" was about 30 years

ago, when the four brothers lived in or near Moore county.

Wes has continued to play and has received recognition for his efforts.

This month, Doice, Wes and the latter's daughter, who also plays fiddle, will go into a recording studio to record his seventh release.

He also is featured on a song by Bob Wills and confesses that he likes to follow his mentor's style.

Wes has a prized possession, a fiddle that was given him by a school chum of his mother.

"Ol' Sal" is between 150

and 200 years old, but carries age well. It was made by Francois Salzard and has the sweetest tune you'll ever hear," say the Nivens brothers.

"I take her with me everywhere and use her for all of my recordings. I have another one, but the music isn't the same," explains Wes.

Although the Nivens family is musically talented and has developed into quite a group — they play at many socials and "fun" gatherings — they are slightly disappointed that very few of their children have followed in their footsteps.

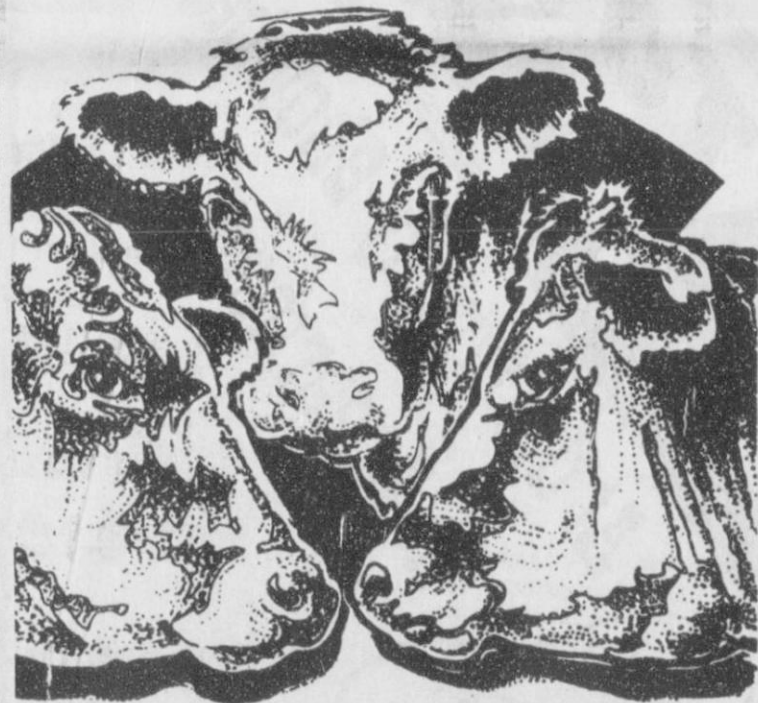
"It would be real nice if they could play along with us, but they don't seem to have much interest or they have too many other commitments," Bud says.

"Our grandchildren all have a lot of talent and some of the others could do real good if they'd take the time, but things have changed since we started," adds Ben, a long-time employee of Dumas Independent School District.

Despite their children's lack of interest, the Nivens brothers and sister agree that they have enjoyed learning and being able to play as long as they have. And, they hope to continue to do so as long as possible.

"I find real enjoyment from my piano and I'm sure the others enjoy playing their own instruments. I plan to do so as long as possible," Mrs. Ayers sums up.

Wes Nivens is formerly of Spearman



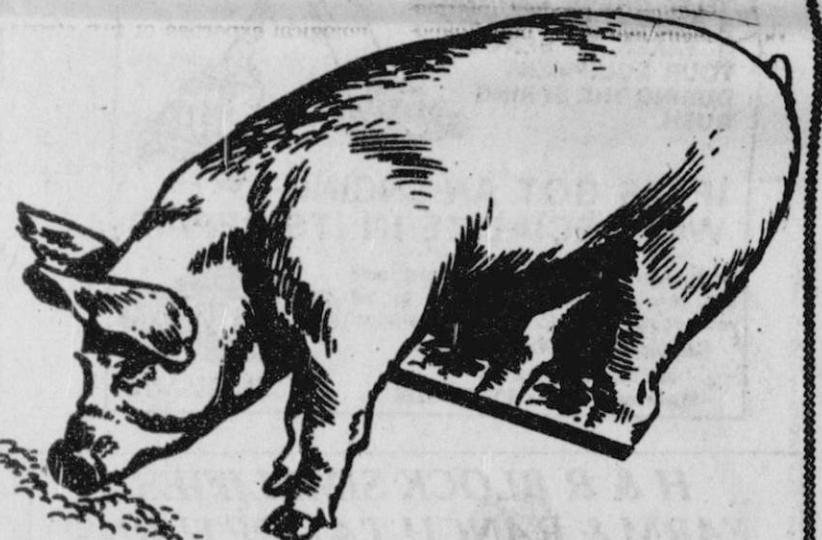
Let's

Go

To The

Hansford County

LIVESTOCK SHOW



March 15 & 16, 1985

Spearman, Texas

TOP BUYS

MICHELIN
WE PUT AMERICA ON RADIALS!

Automotive, Tractor - Parts & Supplies Firestone Tires - Irrigation Supplies

GRUVER FARM SUPPLY

Phone 733-2427 or 733-2882 Gruver, Texas

Owner: Roy Byrd

coming at you with
MICHELIN
Tires In Stock

Candidates File For April 6 Elections

Candidates who have filed for city alderman include incumbents. Burl Buchanan and Wilson McClellan. Also Donald E. Reed, Robert Queener, Jr., and Mike Cudd.

The following have filed for school board, incumbents Kent Guthrie and Mike Garnett. Joe Clement has also filed.

In Gruver, school board incum-

bents Billy Logsdon and Tony Shapley have both filed for re-election.

W. C. Womble and Allen McCloy, both incumbents, have filed for re-election to a three year term for Pringle-Morse School board.

Absentee voting will begin March 18 and run thru April 2 at the various offices.

Defensive driving course

A defensive driving course will be held March 26 & 27 from 6 to 10 p.m. both nights.

John R. Collard, Jr. will be the instructor, and on successful completion of the course you will be allowed

a 10% deduction on your car insurance.

The course is sponsored by the Hansford Association of Insurance Agents. Cost is \$20.00 per person.

UIL eligible track, field, and tennis students

Eligible SHS boy's track and field contestants include Steve Burke, Karl Bynum, Brian Caison, Danny Cazarez, David Cazarez, Bob Cook, Brett Davis, Brian Davis, Richard Espinosa, Jerry Garcia, Lenard Garrard, Damon Goodheart, Jeff Graves, Dean Greene.

Also Tony Herndon, Dusty Hill, Kyle Keim, Chris Lopez, Micheal Lopez, Mack McLain, Allen Mires, Monte Morris, Junior Ochoa, Mike Pearson, Terry Phillips, Mike Ross, Norman Scroggs, James Smith, Scott Swan and Chris York.

SHS girls track and field contestants eligible include Mary L. Baker,

Sara Blackburn, Lisa Cazarez, Lynette Dial, Cayla Eaton, Sandy Hill, Kim Jenkins, Shannon Jenkins, Patty McGuire, Jill McLain, Stacy Nitschke, Donda Pool, Carol Poole, Kathy Poole, Jennifer Sintas, Crista Urban, Cindy Womble, and Jennifer Yarbrough.

Students eligible in Boys' tennis are Alan Beeson, Will Black, Bob Cook, Ross Donahue, Mark Pearson, Carl Urban and Tim Woolley.

Girls eligible for tennis include Jan Allen, Karen Cook, Carrie Guthrie, Shalynna Harris, Anne Marie Jarvis, Deana Turner, Shari Vernon and Connie Woolley.

DID YOU KNOW

THAT GRASS CAN GROW 6 INCHES IN THE TIME IT TAKES TO SERVICE YOUR EQUIPMENT DURING THE SPRING RUSH.



IF ITS GOT AN ENGINE— WE SPECIALIZE IN ITS REPAIR

Our trained mechanics use special tools and genuine replacement parts to put your equipment into running operation.
Complete Small Engine Repair
5th and Drexler St.
Spearmen, Texas 806-659-3826



H & R BLOCK SIMPLIFIES FARM & RANCH TAX RETURNS

H & R Block Tax Preparers are specially trained to help Farmers and Ranchers with the new tax laws and regulations. The Block personal interview assures quality and accuracy backed by the Worldwide Block name.

Block stresses early filing for Farmers and Ranchers with depreciable items listed. Block also prepares returns for farm employees. No tax return is too large or too small and you will receive every deduction to which you are entitled.

If you have questions on investment credit, oil and gas leases, unearned income, crops or livestock, or other farm related tax items, see or call H & R Block today. For one low fee, H & R Block offers accurate tax preparation assistance year round, with or without an appointment. H & R Block offices are located throughout Texas.

307 W. DAVIS
SPEARMAN, TEXAS 79081.
PHONE 806-659-2310.

Out of State
1-800-338-5871



Office
405-338-3378

GUYMON
LIVESTOCK AUCTION
Box 879 - Guyton, Oklahoma 73042

Home Owned and Home Operated

SALE EVERY THURSDAY
AT 10:00 AM

Farmers Union is taking consignments for their Annual Farm Sale April 2. Consignments must be in by March 18 to be on Sale Bill. Call: Joe Morris - 733-2132; Burton Schubert - 659-2667; Glen Lealy - 659-2928; or R. C. Porter - 659-2035.

GEBO'S
Go to the Stockshow with Gebo's

HANSFORD COUNTY STOCK SHOW



Friday & Saturday
March 15 & 16

TO CROW
ABOUT!

At the County Showbarn
in Spearman

SOMETHING...



GEBO'S
... the kind of store you remember.

Local Doctor moving to Temple

To the Editor and the residents of Hansford County,

We wish to take this opportunity to say THANK YOU to all our friends and our patient clients in Spearman, Gruver and the surrounding area for the support and the confidence you have placed in our medical practice for the last five and one-half years.

As many of you know, we have accepted an offer from Scott & White Clinic in Temple, Texas as a senior staff physician to work as a family physician in one of the new satellite clinics in the Temple area. It has been a difficult, soul-searching decision for us to consider a move away from hometown, family and friends, however, five years of trying unsuccessfully to recruit a compatible physician to join the practice as an associate have taken their toll on our personal and family life. We feel it necessary at this

time in our lives to join a group practice situation. We want you to know that we are not leaving Spearman, we are leaving solo practice, since we have not been able to establish a group here.

We would like to express our sincere and heartfelt thanks to each of you who have allowed us to serve as your physician. We also would like to say a big Texas Thank You to one of the finest hospital nursing and professional staffs I have had the pleasure to work with. Special thanks to each of the members of the Hospital Board of Directors who served during the past 5 1/2 years, to Kaye McFarlin, R.N., Director of Nurses, Mr. Al La-Rochelle, Administrator, Mr. Dan Powers and Y.D.P. Associates, Mrs. Sharla Diffie, A.R.T., Mr. Ray Wasil and Mrs. Deloris Guthrie, LVN and the staff of Hansford Manor. In addition, a sincere

thanks to my excellent office staff, Mrs. Betty Pugh, Mrs. Jo Ann Lee, and Mrs. Carole Fletcher, R.N. Working with these people has been a joy and a privilege.

The people of Hansford County have a very fine health care facility, run by an excellent governing board, administration, and professional staff. A special thanks to Dr. Dave Muthali, my friend and colleague, who can well remember the trying year after Dr. Kleeberger's death when we were the only two physician's in practice in the county.

It is our desire to assist our patients in whatever way we can to make the transition of your health care to another physician of your choice as smooth as possible. Should you wish a copy of your medical records transferred to another physician, please send us a

letter or come by the office and sign a release form. We must have a WRITTEN request SIGNED by the patient or guardian to release records to another physician.

Our office will remain open and we will be available to see patients through Friday, May 17, 1985. We plan to move to Temple on or about June 1, 1985.

Many Thanks again. Good Bye. May God add his richest blessings to this community.

Sincerely yours,

David & Ginger McClellan

P.S. Don't forget to BUCKLE UP for safety!

Extracurricular Events Calendar

Extracurricular activities for high school students begin next week on Tuesday with a dual tennis meet at 2:30 and a band clinic from 7 to 9.

March 15 will be a holiday so students may attend the Hansford County Stock Show.

Boys will compete at the track meet at Canadian and the girls track meet will be at Perryton. Tennis will be at Perryton.

Tax Counseling for the Elderly

A program providing local tax assistance for older taxpayers. Check with the IRS for a location near you.



A PUBLIC SERVICE MESSAGE FROM THE INTERNAL REVENUE SERVICE

John F. Lackey
SPEARMAN — John F. "Johnny" Lackey, 87, died Friday.
Services will be at 2:30 p.m. Monday in First Christian Church with the Rev. Martin Foster, pastor, officiating. Burial will be in Lieb Cemetery by Boxwell Brothers Funeral Home.
Mr. Lackey was born in Hutchinson County and had lived near Spearman all his life except for 1962 to 1979, when he lived in Sunray. He was a retired farmer, rancher and Realtor. He was a member of First Christian Church. He married Alice Huffman in 1927 in Medford, Okla. He was a 32nd Degree Mason, past master of Hansford Lodge 1040 and a member of Golden Spread Senior Citizen Center.
Survivors include his wife; a daughter, Donna Sheets of Spearman; a brother, Major of Spearman; three granddaughters; and a great-grandson.



SPEARMAN CHURCH DIRECTORY

APOSTOLIC FAITH CHURCH:
Leland Grimmer, Pastor
824 South Dessen
Sunday School: 10:00
Morning Worship 11:00
Evening Worship 7:00
Wednesday Service 7:30
659-2870

CHURCH OF THE BRETHREN:
Milton Robinson, Pastor
Waka, Texas
Sunday School 10:00
Morning Worship 11:00
No Evening Services
435-4598

CHURCH OF CHRIST:
Gaylord Cook & David Fultz,
Co-ministers
121 South Haney
Sunday School: 9:45
Morning Worship 10:35
Evening Worship 6:00
Wednesday Service 7:30
659-3244

FAITH LUTHERAN CHURCH:
William Schardin, Pastor
1101 South Bernice
Sunday School 9:45
Morning Worship 10:45
No Evening Worship
659-2252

FELLOWSHIP BAPTIST CHURCH
Jim Jones, Pastor
1102 South Archer
Sunday School 10:00
Morning Worship 11:00
Evening Worship 7:00
Wednesday Service 7:30
659-2782

FIRST ASSEMBLY OF GOD:
David Nuckels, Pastor
401 North Bernice
Sunday School 9:45
Morning Worship 11:00
Evening Worship 7:00
Wednesday Service 7:00
659-2295

FIRST BAPTIST CHURCH [SOUTHERN BAPTIST]:
Russ Gibbs, Pastor
Jerry Don Davis,
Minister of Youth
123 South Bernice
Sunday School 9:45

FIRST CHRISTIAN CHURCH: [DISCIPLES OF CHRIST]:
Martin Foster, Pastor
29 South Bernice
Sunday School 9:30
Morning Worship 10:50
Evening Worship 6:30
659-2036

SACRED HEART CATHOLIC CHURCH:
Father Raymond Crosier, Priest
Saturday Evening Mass 7:00
Friday Mass 8:30 AM
Sunday Mass 8:00 AM
Thursday Mass 6:30 PM
659-2166

FIRST UNITED PRESBYTERIAN CHURCH:
Leland McCullough, Pastor
1021 Cotter
Sunday School 9:45
Morning Worship 11:00
No Evening Services
659-2033

FIRST UNITED METHODIST CHURCH:
Lane Boyd, Pastor
407 South Haney
Sunday School 9:45
Morning Worship 11:00
Evening Worship 7:00
659-3220

SPEARMAN UNION CHURCH: (Inter-Denominational):
Steve Rogers, Pastor
31 South Endicott
Sunday School 9:45
Morning Worship 10:45
Evening Service 6:30
Wednesday Service 7:30
659-2644

SPEARMAN-GRUVER SPANISH BAPTIST MISSION:
Romeo Reyes, Pastor
502 E. 7th
Sunday School 9:45
Morning Worship 11:00
Church Training 6:00
Evening Worship 7:00
Wednesday Service 7:00
659-3948

Morning Worship 11:00
Church Training 6:00
Evening Worship 7:00
Wednesday Service 7:00
659-5557
Intercessory Prayer Line 659-2911

Not much of a world—when you consider all its human imperfections. Yet it's the world we are giving our children—the world in which they must grow up and find their destiny. And we keep hoping that theirs will be a finer generation—one able to improve this world.

What our children eventually do with the world depends upon our spiritual resources and how we share

these truths and ideals with them. By encouraging faith and showing them right from wrong, our children can become the finest generation, destined to change the world—for the better.

Is there a church in your life? There should be!



Church page compliments of:

INTERSTATE SAVINGS & LOAN

322 Main Spearman 659-2559

1st NATIONAL BANK

201 S. Main Perryton 435-3676

BOXWELL BROTHERS

519 Evans Spearman 659-2212

THE HANSFORD PLAINSMAN

BAKER & TAYLOR

Gruver Hwy. Spearman 659-2503



Youth Groom Animals For Annual Livestock Shows



Hansford County Livestock show and sale will be held March 15 and 16 in the County Barn at Spearman.

Clubs and Chapters participating in the show will be the Spearman FFA, Spearman 4-H, Gruver FFA, Gruver 4-H and Morse 4-H.

The 1985 bookkeepers and auctioneer will be Jimmy Greene, Roger Odegaard, Alan Shields, Morse, Mary Burnam, Gruver, Cathy Boone, Gruver, W.B. Dickenson, auctioneer of Olton and Joe T. Venneman, Announcer.

Department superintendents will be Jerry Williams, Charles Eaton

and D.A. Cator, Sheep, Carl Kunselman, Buddy Murrell, and Bill Strawn, Swine, Glen Ray Mackie, Ricky Thompson, David Armes, Lynn Davis and James Schnell.

1985 judges include Ed Standlee, Dimmitt for the sheep, Steve Williams, Seward County College, Liberal, Kans. for the swine and Tracy Haymes, Canyon will judge the steers.

Board of directors of the Hansford County Livestock show are Chairman, D.A. Cator, Vice Chairmen, Carl Kunselman, secretary, Burt Williams, treasurer, Roger Odegaard, and Assistant Treasur-

er, Norma Jean Mackie.

Directors include David Armes, D.A. Cator, Carl Cooper, J.C. Harris, George C. Lowe, Jr., Buddy Murrell, Ricky Thompson and Jerry Williams, all of Gruver, Charles Eaton, Jimmy Greene, Carl Kunselman, Glen Ray Mackie, Roger Odegaard, James Schnell, and Bill Strawn, Spearman, Lynn Davis and Charles Reid of Morse.

Vocational Agriculture Teachers are Gary York and David Scott of Spearman and Craig Solomon of Gruver. Burt Williams, extension

service, Spearman is the 4-H sponsor.

Beginning on Friday, March 15, 1985 at 8 a.m. swine and sheep will be weighed and from 10 a.m. to 12, steers.

The grand opening of the show will be at 1:45 p.m. The Lamb Show will begin at 2 p.m. followed by the Swine Show.

On Saturday, March 16, judging of steers will begin at 9:30 and the judging contest will be at 12. At 6 p.m., floor prices will be auctioned with presentation of Showmanship

Trophies awarded.

Immediately following presentation of awards the auction sale of lambs, swine and steers. Livestock will sell in order, 1 lamb, 1 swine, 1 steer, etc.

Donor of Grand Champion Trophy-Steer, Gruver State Bank, Gruver; Donor of Reserve Grand Champion Trophy-Steer, Gruver Ford, Gruver; Donor of Grand Champion Trophy-Swine, Hansford Co. Parts and Supply, Gruver.

Donor of Reserve Grand Champion Trophy-Swine, Nelson Build-

ers, Spearman; Donor of Grand Champion Trophy-Lamb, First National Bank (In organization), Spearman; Donor of Reserve Grand Champion Trophy-Lamb, Brock Insurance agency; Donor of Animal Husbandry Award, Hansford County Farm Bureau, Spearman; Donor of Steer Showmanship Award, First State Bank, Spearman; Donor of Lamb Showmanship Award, Double D Ag Center and Donor of Swine Showmanship Award, Gruver Lumber Co., Gruver.

"America: Stayin' Alive-Winning the Battle"

More than 50,000 Americans die each year in auto accidents and hundreds of thousands more suffer life-long consequences. A mini-documentary focusing on automobile safety, accident prevention, advances in the treatment of trauma victims and a variety of other related topics will be shown on Monday and Tuesday at Cattleman's Supper Club in Spearman.

The film is sponsored by the

Independent Insurance Agents of America (IIA) and will be presented by IIA member John R. Collard, Jr.

Titled "America: Stayin' Alive-Winning the Battle" and hosted by television personality Tony Randall, the mini-report will examine some of the major causes of auto accidents--including drunk-drivers and ill designed highways--and will review the efforts being made to rid the roads of such potentially dangerous drivers

and hazardous driving conditions. Included in this segment will be an interview with Candy Lightner, founder of Mothers Against Drunk Driver (MADD) who will review their efforts to bring about stiffer state penalties for driving under the influence.

The report will also take the viewer into an auto test track used to gauge the effectiveness of automobile safety features such as air bags and safety

belts, and will bring the viewer up-to-date on the development of newer safety features, including roll bars and laminated windshields. Additionally, the report will feature a segment on defensive driving class aimed at helping drivers maintain control of their vehicles when they encounter trouble on the road.

The report also points out that when an auto accident does occur, trauma centers staffed by experi-

enced surgeons and support personnel can often save lives and reduce the effects of serious injury. In "America: Stayin' Alive" the viewer will be given a close-up look at such a trauma team in action.

"America: Stayin' Alive" will offer the viewer a comprehensive, state-of-the-art presentation on a major, nationwide problem," said Collard. "This country has responded to accidental deaths more slowly than to

any other cause but, as this report makes clear, we are now beginning to awaken," he added.

John R. is one of the more than 220,000 agents and their employees countrywide who comprise the membership of the Independent Insurance Agents of America. IIAA is the nation's largest independent producers association and its members offer all lines of insurance--property, casualty, life and health.

Our Heritage of Faith

Holy Communion as a meal: Holy Communion is the fellowship meal of believers. It is also a witness to our faith. "As often as you eat this bread and drink this cup, you proclaim the life and death of Christ for the forgiveness of sins." (1 Corinthians 10:16-17).

Next Topic: Presence of Christ in Holy Communion.

Bill Schardin, Pastor
Faith Lutheran Church
Spearman, Texas

You're Cooking

Savory Ham-Cheese Stacks

Need a different lunch for the youngsters or a quickie entree for an evening meal before bowling or night school?

Top some raisin bread, whole wheat bread or English muffins with hand-dingers (preformed ham slices), horseradish mustard, cheese and pineapple. The flavor combinations should please your most finicky eaters.

Serve with a mixed fruit drink, mixed green salad or cup of soup.

SAVORY HAM-CHEESE STACKS
1 (16-ounce) can fully cooked hand-dingers
2 tablespoons horseradish mustard

4 slices of cheese
1 (8-to-12-ounce) can of crushed pineapple
4 slices raisin bread, toasted
Butter (optional)

Arrange 4 hand-dingers in shallow baking pan. Spread top of each with about ¼ teaspoon of mustard. Top the hand-dingers with cheese. Spread about ¼ teaspoon of mustard over one side of each of the remaining 4 hand-dingers. Place, mustard side down, on top of the cheese. Secure the hand-dingers with wooden sticks. Portion about 2 tablespoons pineapple and juice over each stack of hand-dingers. Bake at 425 degrees for about 10-12 minutes, until cheese begins to melt. Spread butter on raisin toast if desired. Serve one stack of hand-dingers on each slice of raisin toast. Makes 4 hearty servings.

There will be an area wide Livestock Judging Clinic at the Spearman County Barn on Saturday, March 9, 1985 at 10:00 A.M. Lamb and Steer Judging will be discussed and several classes will be judged. The clinic will be finished by 3:00 p.m. Dr. John McNeill, area Beef Cattle Specialist and Robert Devin, 4-H Specialist will conduct the clinic. If you plan to judge livestock at the County Show or District 4-H Show this would be an excellent training session.

4-H meetings will not be held next week in Gruver or Spearman because of the County Show.

A Judging Contest will be held on Saturday, March 16 at 12:00 Noon with the County Stock Show. All county 4-H'ers are encouraged to judge in this contest.

Entry Cards and Entry Fees for the County Show should be returned to the Extension Office by Friday, March 8, 1985 at 5:00 p.m.

HANSFORD COUNTY

JUNIOR LIVESTOCK SHOW and SALE

March 15 & 16, 1985

Spearman, Texas

Clubs and Chapters Participating in the Show
Gruver FFA Spearman FFA
Gruver 4-H Spearman 4-H
Morse 4-H



**OLE'S
GRAIN
COMPANY**

Spearman 659-3990

Perryton 435-5449

228 Collard Spearman, Texas

Livestock Show

March 15 & 16, 1985

Spearman, Texas



Over 100 animals members show in county show at Houston

F.F.A. and 4-H youth who are entered thus far in the Hansford County Livestock Show to be held March 15 and 16 are: Bart Baker, Brandon Babitzke, Jason Babitzke, Berry Beck, Brooks Beck, Edward Beck, Monte Beck, Chris Brooks, Brandon Close, Michelle Cook, Mary Cook, Shannon DeArmond, Clint DeArmond, Joy Gafford, Stephanie Friemel, Chad Gardiner, Stacy Gardiner, Lance Hamish, William Hamish, Nancy Ivey, Tiki Jackson, Bonnie Jarvis, Anne Marie Jarvis, Karla Latta, Julie Latta, Leslie Latta, Tommi Latta, Joanne Odgaard, Cody Pipkin, Greg Reimer, Randie Renner, Clint Sasser, Ginger Sasser, James Tindell, Sonya Tindell, Deana Turner, Cinda Turner, August Vargas, Brandon White, Scotty Wilkerson, Kevin Williams, Lynette Williams, Jay York, Crista Urban, Mac Sheppard, Temp Sheppard, Pam Fluke, Carla Greene, Heather McRee, Heidi McRee, Kevin Nelson, Kyla Nelson, Nikki Strawn, Chris Strawn, Ty Martin, Todd Martin, Clint Patterson, Will Black, Mark Pearson, Mike Pear-

son, Rhonda Ross, Mark Brown, Tracy Thompson, Brandi Schneider, Carrie Pearson, Laura Pearson, Misty Savage, Michele Savage, Sara Sanders, Suzanne Sanders, Ross Donahue, Tracy Scribner, Beverly Burton, Carla Burton, Paul Trooper, Dallas Trooper, Chad Davis, Edward Mayfield, Dee Mayfield, Eva Babbs, Shell Babbs, Kim Boone, Laneida Burnam, Davonna Cator, Loyd Cator, Tina Cator, Tasha Haight, Brian Hoel, Mathew Hoel, Rod Karlin, Melanie Morris, Michael Park, Theron Park, Brady Pool, Shannon Pool, Rex Ralston, Jill Schell, Gina Schell, Kalee Shook, Chris Spivey, Kevin Spivey, Brent Stedje, Tim Stedje, Holly Venneman, Clint Venneman, Ashley Wagner, Brent Wagner, Trevor Williams, Raquel Mathews, Ryan Mathews, Carey Kauffman, Chris Kauffman, Misty Payne, Lisa Payne, Brian Payne, Marci Roberts, Brooke Roberts, Debbie Burton, Christie Burton, Crystal French, Lance Sparks, Lee Bob Harper, Janelle Haefner, Jason Haefner, Stephen Groce, Paul Groce, Tek Ferguson, Lee Stedje, and Krista Stedje.

Several FFA members from Spearman recently participated in the Houston Livestock Show. Those placing their animals were Mark Allen with an 11th place medium weight Spotted Poland China barrow and Kris York with a 15th place light weight Hampshire barrow.

Kevin Nelson also participated in the calf scramble at the Houston Rodeo. He easily caught and haltered a calf for which he will receive prize money to purchase a heifer calf to be returned to Houston next year for showing.

Other FFA members that traveled to Houston and exhibited livestock in the Houston Livestock Show were Larry Dunn, Kirby Taylor, Bryan Caison, Scott Swan, Kevin Nelson, and Dusty Hill. Sponsors for the trip were Mr. and Mrs. Dennis Nelson, Mr. and Mrs. David Scott and Mr. and Mrs. Gary York.

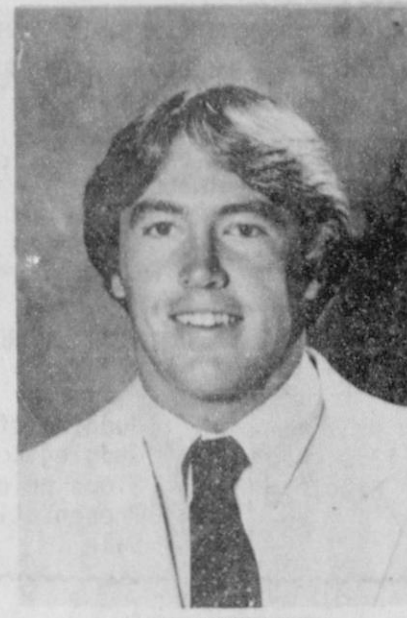
Everyone enjoyed the trip and gained much practical and interesting information about other parts of the state as well as all different types of livestock.

Attention citizens of Hansford County

Citizens of Hansford County Our names are James Tindell and Keith Clark. We are members of Boy Scout Troop 551. As a Star project, we are asking you to help us save the most powerful symbol of our nations liberty. It is in a most serious state of despair. That's why we are asking you to join with us in one of the most historic endeavors of our time. We have placed cans in several businesses in town for this collection. Your contribution will be listed in the Statue of Liberty Register of Contributors as Boy Scout Troop 551 and Citizens of Hansford Co.

Thank You For Your Support,
Scouts James Tindell
Keith Clark
Troop 551
Scoutmaster Dwight Sumner

James Whitaker is ordained



JAMES WHITAKER

February 10, 1985 on Sunday evening an Ordination Service was held for James Whitaker at the

Spearman Union Church. James received his ordination through the "World Bible Way Fellowship" in Dallas, Texas. This association is made up of over 2000 Independent Ministers and Churches that share a common goal of seeing their world won to Jesus Christ.

In attendance at this special service were James' wife Renee and her parents, Mr. and Mrs. Sherman Kitch from Borger, Texas. Also attending were James' parents Wes Whitaker of Gruver and Helen Melton of Spearman and their respective spouses, Anne Whitaker and Richard Melton.

Currently James and his wife Renee make their home near Gruver and are very active in the program and ministries of Union Church. James works on a regular basis in a family cattle and farming business.

Prudence lies in breaking out your spring coat in February — but keeping earmuffs in the pockets.

Guest Editorial . . .

John Smith, pulpit minister for the Vandelia Church of Christ in Lubbock, is not only an exceptional speaker and song leader, but from the following article, you will also conclude along with me that he is an excellent writer. After reading the following editorial, I am sure that you will want to be added to his bulletin mailing list. — Ken Dye

ON SENSITIVITY

She was a part-time clerk, hired for the Christmas rush. She was nineteen maybe—a college freshman home for the holidays. She was trying to earn a few dollars to buy some gifts and maybe have a little to take back to school. She was small, unsure of herself, unfamiliar with the computerized cash register and very vulnerable. She didn't know where lay-away was, or the catalog department. Her department manager was gone on break and she was surrounded by a growing circle of impatient, demanding, querulous people who all wanted a piece of her simultaneously.

The person confronting her was a rather tall, large, angular woman dressed in a stylish, but old stylish manner. "You advertised this item on sale. I'd like to know where it is?" The tone was accusing and caustic. The clerk, biting her lip, "Honestly, ma'm, I don't know. If you'll just wait for the department head to return I'm sure he can help you." The angular lady sensing triumph over the subdued clerk got a little louder. "I have no time to wait on department heads. When you advertise an item you should have it. Why don't you know where it is, you work here don't you?"

The little clerk, with her voice trembling and showing a little extra water around the eyes said, "Yes, ma'm, but I just started two days ago and they just moved me here this morning, and I don't know much about this (her words were pouring out in a torrent now) and if you'd just be patient . . ."

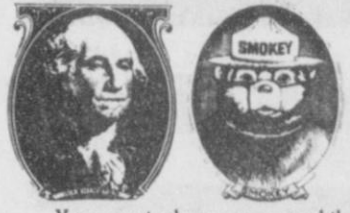
"Patient!" The angular woman interrupted her.

"Patient! My dear little know-nothing. I marvel at your generation of snotty-nosed, sniveling, quiver-lipped, spineless apologizers. When I was your age miss, I had two children, I hoed, picked, cooked, washed, tended, mended, fixed,—and you can't even tell me where the mixer bowls are!"

Feeling guilty for watching for so long, I mustered my best smile and stepped forward, right between the clerk and the angular lady. "Hi," I said. I was really trying to sound cheerful and reassuring. Much to my chagrin the little clerk looked into my beaming face, filled with goodwill, and she dissolved into tears. The angular lady "harumphed" and stormed off with a parting, "Well, I never." The rest of the crowd, some sheepishly, some indignant, melted away when it became obvious that their needs were not going to be met. I as left along with a sobbing salesclerk.

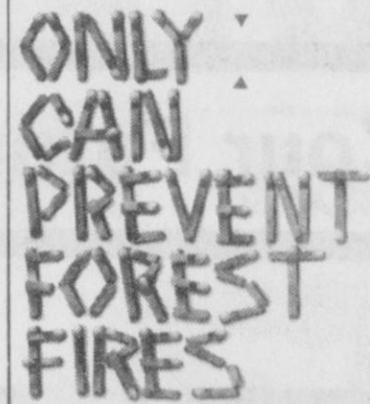
"Why can't they be patient? Why can't they understand? I try so hard to be pleasant and kind and they just step on me." I reflect on that scene and it occurs to me that the angular lady was probably telling the truth about herself. I'll bet she could do all those things and the world is a better place because of people like her, but it didn't give her the right to shatter the fragile framework of this delicate personality. It's probably true that kids are more fragile today. Their environment has made them so. Both their mental and physical constitutions lack the sturdiness of earlier generations. They break more easily, they give in more quickly. They are less self-assured. It does occur to me that what the angular lady, and much of the crowd who supported her, was missing was humility and the sensitivity which seems to always accompany it. Must we always purchase our victories, affirm our superiority, at the expense of someone else's dignity?

These guys want you to stop wasting your tax dollars.



Yet every single year, over one billion in tax dollars goes up in smoke. That's what it costs to protect our nation's resources and fight wildfires. So, think of these famous faces next time you're in the great outdoors. And remember, only you can prevent forest fires.

Place a match between the arrows and read to yourself.

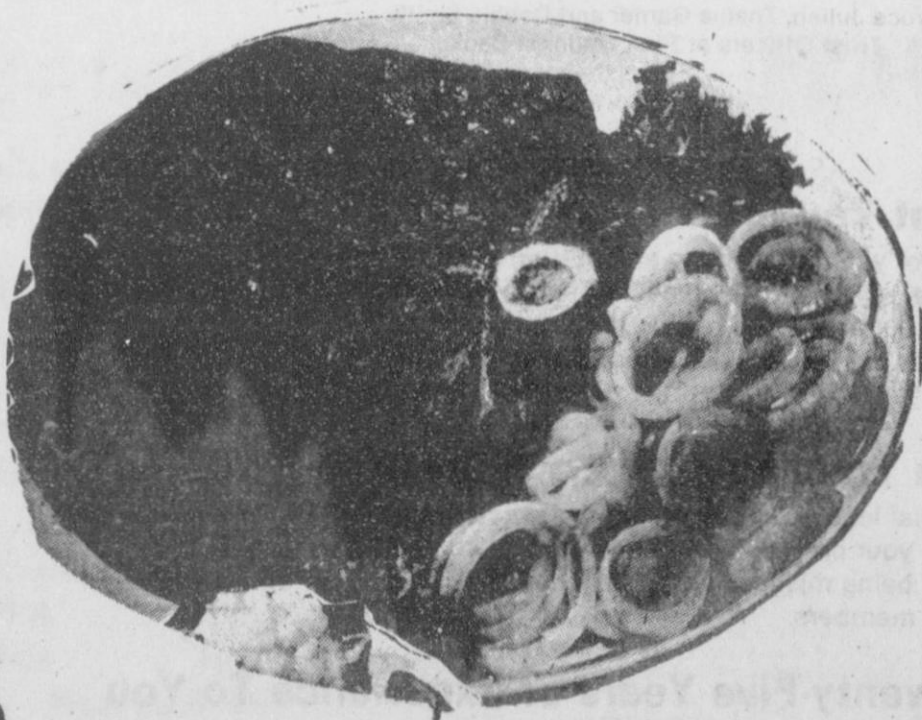


A Public Service of This Newspaper & The Advertising Council

VITA
is a Volunteer Income Tax Assistance program. Its volunteers may be able to help you to complete your tax return. Check with the IRS for details.

A PUBLIC SERVICE MESSAGE FROM THE INTERNAL REVENUE SERVICE

Clubs and Chapters Participating in the Show
Gruver FFA Spearman FFA
Gruver 4-H Spearman 4-H
Morse 4-H



JUNIOR LIVESTOCK SHOW and SALE
March 15 & 16, 1985
Spearman, Texas



PERRYTON FEEDERS, INC.

Viril LaMunyon, Owner



Perryton, Texas 806-435-5466

Lonnie Winterrowd, Manager 435-4130



BEEF GIVES STRENGTH.

AGENDA

Spearman ISD
Board of Trustees
March 11, 1985
7:00 p.m.

- I. Establish quorum
- II. Hearing of any group wishing to come before the board
- III. Reading of minutes
 - a. regular meeting of Feb. 11, 1985
- IV. Business Manager's report
 - a. ratification of bills
 - b. financial report
 - c. tax report
- V. Communications
 - a. organization approved by the Commissioner of Education to participate in extra curricular activities program and the 10 day rule
 - b. letter from Jim Pollard, Supt. of Canadian ISD
 - c. legislative update from Texas Assn. of Community Schools
 - d. letter of thanks from the Chamber of Commerce
 - e. letter from Rep. Luna concerning HJR33
 - f. new State Board rule for (1) Texas Education Assessment of Minimum skills (2) Promotion and alternatives to social promotion
- VI. old business
 - a. board action on Textbook Committee report
 - b. board action on staff recommendations for 1985-86, as presented by the Principals and Athletic Director. A closed meeting as provided for in Article 6252-17 Sec. 2 (g) may be necessary.
- VII. New business
 - a. board action on transfer fee for 1985-86 school year will be \$2,158.51
 - b. election of E.S.C. board of directors
- VIII. Superintendent's Report
 - a. cafeteria's report for February
 - b. High school calendar for March
 - c. Librarian's report for Jr. High
 - d. Enrollment chart
 - e. school board election for April 6
 - f. elementary newsletter for March
 - g. board breakfast March 26th
 - h. 4th six weeks high school failures

HANSFORD COUNTY STOCK SHOW SCHEDULE

FRIDAY, March 15, 1985

Weighing will begin
8:00 a.m. - 10:00 a.m.
10:00 a.m. - 12 Noon
2:00 p.m.
Swine Show will follow completion of Lamb Show

Swine & Sheep
Steers
Lamb Show starts

SATURDAY, MARCH 16, 1985

9:30 a.m. Judging of Steers
12:00 Noon Judging Contest
6:00 p.m. Floor prices will be auctioned
Presentation of Showmanship Trophies Sale

"The Prodigal" to open March 22

The film, THE PRODIGAL, which is due to open at the Ellis Theatre on March 22-28, was previewed to Perryton community leaders at a special showing last Tuesday, Feb. 12 at 2:30 p.m.

THE PRODIGAL, produced by World Wide Pictures, Billy Graham's film organization, is a modern-day allegory of the biblical story that intimately probes the interactions of one American family. Set in a contemporary urban framework, writer-director James F. Collier's screenplay examines the gradual spiritual and emotional breakdown of the Stuart family as each member searches for his identity in a world of conflicting values and changing life-styles.

Outstanding actors and actresses make up the cast of THE PRODIGAL. John Hammond, who plays the prodigal, starred in the television mini-series "The Blue and the Gray." His mother is played by noted actress Hope Lange, who won two consecutive Emmy Awards as Best Actress for her television series, "The Ghost and Mrs. Muir." The father is played by Broadway award-winning actor John Cullum. The other brother in the family is played by Arliss Howard, who makes his motion

picture debut in THE PRODIGAL.

Those attending this special preview of THE PRODIGAL have been asked to organize groups from their churches, clubs and schools.

Harrol Waterbury, Eddie Neel from the Full Gospel Church serve on the local committee which is involved in bringing the film to Perryton and the surrounding area.

James Robison to share God's word



JAMES ROBISON

James will share a bold message from God's Word. It is exciting to see how God is using him to bring healing and deliverance to the Body of Christ, as well as to preach the stirring salvation message to the lost.

Don't miss this chance to hear James Robison in person. Your life will be changed.

Join James Robison for an exciting time of ministry Monday, March 25, 1985 at 7 p.m. at the Amarillo Civic Center Auditorium, Third & Buchanan Streets, Amarillo.

You will be blessed by the praise and worship and the annointed biblical teaching.

YOUR DECISION IS EASIER NOW.



ARE PESTS GIVING YOU THE CREEPS?

BILL'S PEST & TERMITE CONTROL
Perryton Licensed & Insured 435-9993

Free Termite Inspection

Let's talk about your tree & lawn problem. Now is the time to spray dormant oil for scale insects.

Professional Tree Trimming & Topping

We offer year round service on all pest problems at reasonable prices. Come see us, across from the Post Office

Heart Answers



WHAT IS STROKE?

A stroke occurs when the blood supply to part of the brain is halted by either a clot, a ruptured vessel or pressure on the blood vessel by a tu-

mor. Strokes are more likely to occur when arteries leading to the brain have been previously damaged by a disease process called hardening of the arteries. Warning signs of a possible stroke may include temporary

loss of speech, loss of vision or double vision, unexplained headaches or dizziness. Regular medical checkups are the best protection against strokes. Contact your local American Heart Association for more information.

Libraries and IRS

Most local libraries provide audio tapes to take you step-by-step through completion of your tax return, a reference set of the IRS free publication series, and reproducible tax forms.



A PUBLIC SERVICE MESSAGE FROM THE INTERNAL REVENUE SERVICE

The right color makes a difference...

INVITING YOU TO COME AND LEARN

- the importance of color and enhancement of your personal appearance and job success;
- the benefits you gain from color application and job power;
- the techniques of individual color analysis and make-up application.

Thursday, March 14th

5:30 p.m.-7:00 p.m.

Dr. Liz Carter, Management Consultant
Ms. Cathi Lake, Certified Color Consultant

Register for weekly drawing of FREE color analysis and make-up application
March 11 - April 6.



j. Winston

WOMEN'S FASHION . . .
MORE THAN TRADITIONAL
2701 PARAMOUNT - AMARILLO

We'll Help Keep Your Future Safe.



Bruce Julian, Thalua Garner and Debbie Smith
Trust Officers at First National Bank

Protect What You Own

You spend most of your life working and putting together important assets. An estate includes your home, farm and ranch property, investments, life insurance and some cherished personal belongings. Have you prepared to pass on those hard-earned assets to people important to you?

How Does a Trust Protect Your Estate?

A Trust is a special legal way to protect your assets from certain taxes. It can help prevent your property from being tied up in court. It even guards your estate from being mishandled by well-meaning, but inexperienced friends or family members.

We Offer Twenty-Five Years of Experience To You

Our Trust Department has been helping people take hold of their future for twenty-five years. Bruce Julian, Thalua Garner, and Debbie Smith are Trust Officers who can meet with you at the bank or in your home. There's no cost to talk with them about your needs ... whether you're hard at work today, or ready to retire. Call us.

We'll Help You Take Hold of Your Financial Future



First National Bank
Perryton, Texas
806-435-3676
Member FDIC

Consignment sale held

The Great Plains Hereford Association's 41st Annual Consignment Sale was held recently at the Guymon Livestock Auction Company Yards with good weather prevailing and a good crowd. A useful set of purebred Hereford Cattle went through the auction ring with Tommy Barnes of Edmond, OK, handling the sale as auctioneer.

The top bull, Lot 38, consigned by Wayne Maddox, Miami, Tx., sold at \$1050 to Beasley Hereford Ranch, Texhoma, Ok., with Lot 53, a two year

old consigned by Summerour Ranch of Dalhart, Tx., going to Morris Turner of Keyes, Ok., at \$975. Consigners and buyers of other top bulls were Harland Herefords, Texhoma to Leland Christian, Texhoma; Maddox to Marshall Cator of Sunray,

Tx.; Delbert McCloy, Sunray, Tx., to Ron Fox, Plains, Ks.; Robert Wilson, Boise City, Ok., to Scott Farms, Guymon, Ok.; and Ron Fox; and Joe Warner, Boise City, Ok. to Galen Lee, Elkhart, Ks. and Marshall Cator. Top females were purchased by

Carrol Gribble, Goodwell, Ok.; David Harbour, Stinnett, Tx.; and Ed Buttons, Johnson, Ks.

Volume buyers were: M. Cator-10 bulls, Galen Lee-6 heifers and 2 bulls, Ron Fox-4 bulls, Ed Button-3 bulls, Isgrum Estate-2 bulls and Beasley Herefords-1 bull and 1 heifer.

Elected officers are: President-Poe Keener, Stratford, Tx.; Vice President-Jerry Harland, Texhoma, Ok.; Secretary-Milt England, Goodwell, Ok. New directors elected are: Wayne Maddox, Don Depew and Ray White.

Gruver State Bank new employees



Pictured above left to right are Todd Tittle, Jodie White and

Laurie Boyd, Gruver State Bank employees.

If you have seen a few new faces at Gruver State Bank, perhaps it is because you are not familiar with our new employees, Todd Tittle and Jodie White.

Todd began working for Gruver State Bank in January of this year. He and his wife, Tanya, moved to Gruver from Lubbock where they attended Texas Tech University. Todd graduated with a degree in Agricultural Economics and was active in many organizations on campus. Tanya was studying journalism and is currently employed at City Hall. They have been married almost two years and are living in

the Etling apartments here in Gruver.

Todd has been training as a loan officer for the Gruver State Bank Ag Credit Corporation and was recently appointed to the Assistant Vice Presidency of the Corporation.

Jodie began working for Gruver State Bank this past summer. She and her husband, Doug, are from Colorado, where they recently graduated from Colorado State University. Both were active in Livestock judging and enjoy riding and showing horses.

Doug works for Caprock Industries, where he is in their manage-

ment training program. Jodie is the computer manager here at Gruver State Bank and has been doing a wonderful job here. Please come by and meet Todd and Jodie so that they can get to know you in order to better serve you.

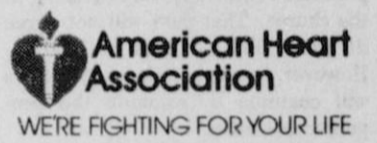
Also, Laurie Boyd, who has worked for Gruver State Bank for almost two years deserves mention. She has recently been promoted to the Assistant Cashier position here and works very hard at her new job. Congratulations Laurie!

Heart Answers



WHAT IS CONGENITAL HEART DISEASE?

Congenital heart disease is the abnormal development of the heart before a child is born. A congenital heart defect may be diagnosed at birth or it may be discovered at some time during childhood in a routine physical examination. Some defects may be caused by drugs taken during pregnancy or exposure to German measles (rubella) during pregnancy. They may be inherited, or the cause may be unknown. Congenital heart defects may require only minimal medical supervision or they may require corrective surgery to avoid complications later in life. Some congenital heart defects can be prevented by vaccination of the mother against rubella prior to pregnancy and by following a doctor's advice while taking medications during pregnancy. Contact your local American Heart Association for more information.



LET'S GO TO THE...



LIVESTOCK SHOW

Bank²⁴

HANSFORD COUNTY

March 15 & 16, 1985

Spearman, Texas



First State Bank

1 NE Court

Spearman, Texas

659-5565

For your convenience,
24 hour banking.



HANSFORD COUNTY JUNIOR LIVESTOCK SHOW and SALE

March 15 & 16, 1985

Spearman, Texas

Clubs and Chapters Participating in the Show
Gruver FFA Spearman FFA
Gruver 4-H Spearman 4-H
Morse 4-H



"A Woman's Work Is Never Done"

That's what people used to say, in the days of the wood stove, the hand pump and a pedal-operated sewing machine worked by the light of a kerosene lantern.

Those were the days when irons really were made of iron and an ice box meant just that.

Rural electrification changed all that.

But it wasn't easy. Electricity didn't magically appear in the hills and valleys, the great plains, the deserts and mountains of our nation's countryside. Organizing and building rural electric systems like ours took lots of time and hard work from the men and women who lived in the country.

It was worth it.

It was rural electrification that made "woman's work" so easy that today, even the men can do it. Now rural electric systems like ours provide reliable electric power to more than 25 million rural Americans... and together, we make life just a little easier.

... and the work goes on.

North Plains Electric Cooperative, Inc.

Operating in ...

Ochiltres Lipscomb Wheeler Hutchinson
Roberts Hemphill Hansford

Support the Livestock Show

Friday and Saturday March 15 & 16

Spearman County Barn

SHARE YOUR SKILLS
BE A LEADER!



Good luck to all



White House Lumber Co.

306 Davis

659-3792



Two Bit Sermons

by James D. Jones pastor Fellowship Baptist Church
Marks of a New Testament Church

On many things a lot of different people may agree, but when it concerns when the church began, all this begins to change. I personally believe that Jesus began the church during his life. It is not hard to believe that Jesus personally called out the men who he would have to begin his church. These men he trained, taught, and desciplined personally. Is it so strange to believe that Jesus, who loved his church so much to die for it, would leave it to mere men to begin? I would like to look at the day of pentecost and show some things that Christ did not give to the church of that day.

It is not my intent to detract from the great event in the upper room. It was and still is imperative for the Holy Spirit to empower the church as it was for the Glory of God to fill the temple in II Chronicles 5:14. I do not say that nothing happened on this day, only that the church was not begun during it.

Acts 2:41 says that the church was added to on the day of pentecost. In order for an organization to be added to, it must already exist. When a church holds an organizational meeting, one is not added to the role. On this day, the roll must be made up. Acts 1:15 states that a membership roll was already in the possession of the disciples. There were about 120 names on it. In order for new disciples to be added, this church must have already been in existence.

In Matthew 4:18-22, I find that a body had already been called out by our Lord. These disciples will do all that is required of a church. They will hold regular meetings, observe both ordinances, even to the point of making converts and discipling them. These disciples did indeed constitute the early church.

Again, there are many varing positions concerning the beginning of the church. That men will not agree till our savior comes is certain. However, for the next few articles, we will continue to examine the pentecost church.

LUNCH MENU

ELEMENTARY & JR. HIGH LUNCH MENU

MONDAY, MARCH 11
STEAK FINGERS
WHOLE KERNEL CORN
POTATOES/GRAVY
HOT ROLLS
PEANUT BUTTER BLEND MILK

TUESDAY, MARCH 12
HAM SANDWICH
TOASTED BUN
FRENCH FRIES
GREEN PEAS
PEACHES N SYRUP
MILK

WEDNESDAY, MARCH 13
FRIED CHICKEN PATTIE
MACARONI/CHEESE
CHOPPED SPINACH
BREAD SLICE (opt)
CHOCOLATE MOUSSE
MILK

THURSDAY, MARCH 14
CHEESEBURGER/BUN
FRENCH FRIES
SHREDDED LETTUCE
PICKLE/ONION
COOKIE
MILK

FRIDAY, MARCH 15
NO SCHOOL!!!!!!
HOLIDAY!!!!!!
NO SCHOOL!!!!

HIGH SCHOOL MENU

MONDAY, MARCH 11
POCKET SANDWICH
SHOESTRING FRIES
SALAD BAR
CHERRY COBBLER
MILK

TUESDAY, MARCH 12
CHICKEN PATTIE
SALAD BAR
POTATOES/GRAVY
JELLO/FRUIT
MILK

WEDNESDAY, MARCH 13
CHEESEBURGER/BUN
BEEFY FRIES
SALAD BAR
SPICE CAKE
MILK

THURSDAY, MARCH 14
2 PIGS IN BLANKET
MACARONI & CHEESE
SALAD BAR
FRUIT
MILK
FRIDAY, MARCH 15
NO SCHOOL!!!!!!
STOCK SHOW
NO SCHOOL!!!!!!

Mexican Dinner Planned

The Sacred Heart Church will have its Mexican Dinner Sunday, March 24th from 11:30 - 2:30 at the Parish Hall at 901 S. Roland.

The menu will consist of enchiladas, beans, Spanish rice, salad, home-made salad dressing, tostadas, sopapillas, hot sauce, honey, tea or coffee, pie or cake.

The meal tickets will be Adults - \$5.50, Children - \$3.75, Under 6 will be free.

Take out orders will be available beginning at 11:30. Please call 9-2166.

Girl Scout Week Proclaimed

Mayor C. Ralph Blodgett has proclaimed March 10 - 16 as Girl Scout Week in Spearman.

In a special proclamation, the mayor asked all citizens to recognize and support the contributions made by Girl Scouts and adult Girl Scout volunteers toward improving the quality of life in the Spearman area.

The mayor cited Girl Scouting as an important way for girls to become self-reliant, productive and self-confident women through wholesome and enjoyable activities. He also praised Girl Scouting as an investment in tomorrow's leadership and included a special welcome to Girl Scouting's newest members, Daisy Girl Scouts, who are five years old or in kindergarten.

Holt Extension Club meets

The Holt Extension Club met Tuesday, March 5 in the rural home of Maudine Patterson with Mary K. Harbour, president, presiding. Roll call was answered with "Something special about my home state."

Jana Pronger, Hutchinson County Agent, gave the program on "Sewing Tips" and letting each member fill out a chart on "What Have You Spent today to Get Dressed?"

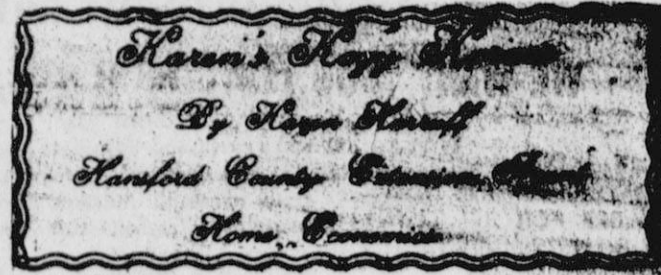
Members in attendance were: Audene Beck, Marie Harbour, Mary K. Harbour, Louise Holt, June Jackson, Mary Jo Jackson, Ruth Ann Jones, Mae Wofford, Maudine Patterson, hostess, and Jana Pronger, Agent. Guests were Jacob and Lena Harbour.

A potluck supper is planned at the Holt Schoolhouse for Saturday, March 23, 6:30 p.m. and all interested persons are invited.

The next meeting will be March 19 with Teresa Kirk as hostess.



The first practical typewriter was built in 1808 by an Italian, Pellegrine Turri, to help a blind friend correspond with him.



"Sewing for the \$500 look"

- Do your clothes have that "loving hands at home" look?
- Do your collars have "bumps" at the front edges?
- Do your facings play "peek-a-boo" and have "lumps" at the tops of zippers?
- Do you have problems with the lapel notch?

Solve these and many other problems by attending a Sew Smart Seminar.

Clotilde, well known author and lecturer, will be with us to give a three hour "Sew Smart Seminar". The Session will be "Sew for the \$500 Look" covering manufacturer's tricks of the trade and designer techniques not shown in pattern instruction sheets. Whether you've sewn 3 months or 30 years, you will learn dozens of useful and practical sewing tips to give your clothes the professional look of the finest ready-to-wear.

Clotilde currently resides in Fort Lauderdale, Florida. She learned her sewing tricks working for 20 years for the 20th Century Fox, where she mended and altered expensive and extravagant costumes. Later, she sewed for an exclusive Beverly Hills boutique.

Come to Perryton at the Ochiltree Expo Center on Tuesday, March 19. The session will start at 7:00 p.m. and end around 10:00.

The cost is \$5.00 in advance or \$7.00 at the door. You can get tickets by contacting Hansford County Extension Agent, Karen Harruff. Her office numbers are

659-2030 or 733-2901 or call and come by Cochran's Fabrics - 659-2080.

This is being sponsored by Hansford County, Ochiltree County and Lipscomb County Extension Service. Hope you can join us.

CHEAP GAS

MARTINEZ, Calif. (AP) — Landfill-derived methane gas is coming into wide use across the country as recovery firms and users are beginning to capitalize on this relatively cheap source of gas for industry use, says Energy User News.

Methane gas is produced through natural decomposition of the organic matter in a landfill and is drawn from the ground by a vacuum.

There are roughly 2,000 to 3,000 landfills with potential for large-scale methane gas recovery throughout the country, reports the energy-oriented journal, adding that 27 recovery plants are in operation.

One example cited was the 125-acre landfill in Martinez in northern California. It has been providing 1.3 million cubic feet of gas to the Contra Costa County Waste Water treatment plant for boiler fuel to drive waste water equipment, and last year it reported saving more than \$300,000 over local gas utility rates.

Outfielder Edd Roush, a member of the Baseball Hall of Fame, sat out the entire 1930 season in a contract dispute with New York Giant Manager John McGraw.



It's
SHOW TIME

We're
Looking
Forward To....



HANSFORD COUNTY

Livestock Show

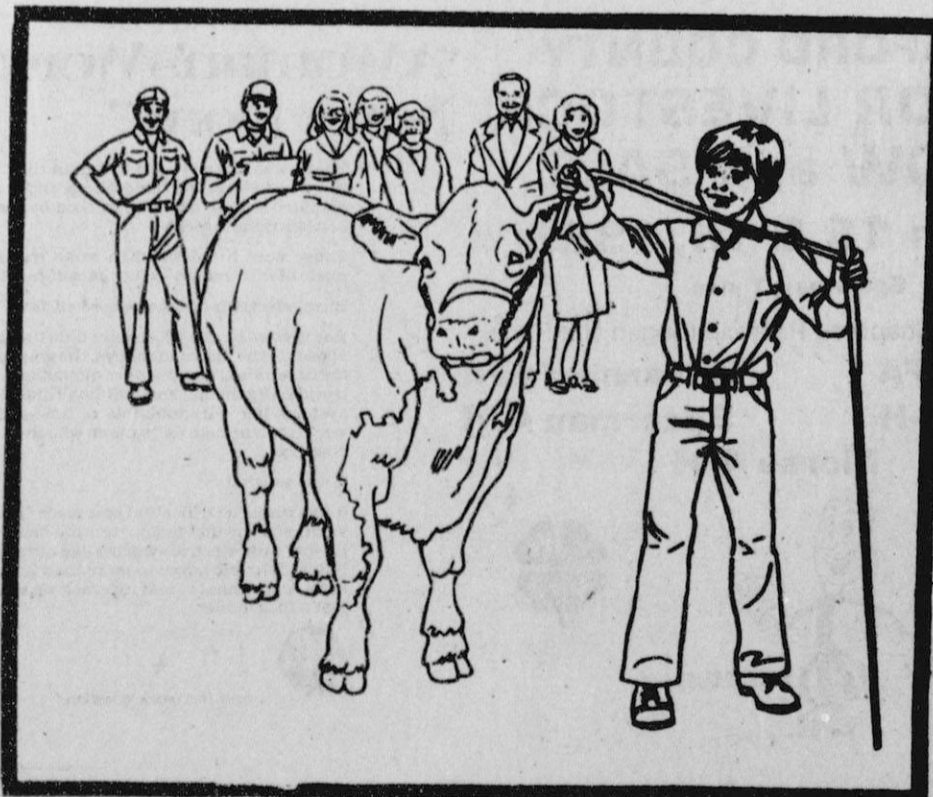
HANSFORD COUNTY

JUNIOR LIVESTOCK SHOW and SALE

March 15 & 16, 1985

Spearman, Texas

Clubs and Chapters Participating in the Show
Gruver FFA Spearman FFA
Gruver 4-H Spearman 4-H
Morse 4-H



First National Bank
Perryton, Texas
806/435-3676
Member FDIC

Sponsored by