

Lynxettes Win State Title, 61-58



The Hansford Plainsman

VOLUME 8, NO. 18

THE HANSFORD PLAINSMAN, SPEARMAN, TEXAS 79081

SUNDAY, FEBRUARY 27, 1977

Lynxettes Drop Red Oak, Trek For Championship

The Spearman Lynxettes prowled the varnished floor of Gregory Gym in Austin Thursday, sharpening their claws on Red Oak Mojo Hawks 58 to 45 in a prelude to taking the Waco Robinson Rockettes to court in the postdawn hours this morning on their way to the State AA Girls Basketball Championship.

The championship game tips off at 8:30 a.m. Saturday with the Lynxettes, with about two hours more breathing time than their foes, geared up for their go against the 69-54 winners of the second semi-finals game Thursday against Devine.

The Saturday morning sports menu is nothing new to basketball fans who ride herd on such items. Back in 1972, the Lynxettes took a 1-point victory en route to the state championship as a sort of a leveling act after the Waco area basketweavers in 1970 had stymied the Spearman drive for the state's top girls basketball banner 57-49.

Lynxettes are sharp-eyed and agile and the Spearman team in its outings to date has fielded a gathering of sophomores and juniors who are giving warning of things to come in their world of basketball.

It was a Carla Harper and Christy Collier duo Thursday which accounted for Spearman's success at the basket with the ball being fed to one or the other while Debbie Greene, Carrie Clark and Tracie Keetch accounted for their appearances when either Miss Harper or Miss Collier were otherwise occupied.

The Lynxettes added 22 points in the second period, just one less than the Mojo Hawks were able to collect in the first half, to come out for the halftime breather leading 34-23.

It was a Harper-Collier shooting spree with the able and energetic backup of the others on the squad. Christy Collier who collected two points in the opening minutes of the game, added three field goals and two charity throws during the second period.

Opening up the second half of play, Tracie Keetch lighted up the first two points for the Lynxettes during the first two minutes of play in the third period as the Mojo Hawks, coming off their 23 points at the midpoint, racked up seven points. But when the score hit 36-30 for Spearman, Carla Harper and her teammates began to take control and widen the margin to 44-34 by the end of the period and that 10-point lead was never smaller for the remainder of the game.

The opening minutes of the third period were active ones with a number of turnovers by both contenders.

In the waning seconds of that stanza, the Lynxettes bounced away the seconds until just before the buzzer, Debbie Greene saw to it that a Carla Harper toss was good for two points.

In the final eight minutes, Spearman jumped out to a 12-point lead which the Red Oak bunch managed to narrow to 10 points until the Lynxettes in the final three minutes picked up four free throws, two each by Carla Harper and Carrie Clark, to cap off the victorious effort 58-45.

So 25 is still the magic number and the Lynxettes have only one more game to win this season before packing all the honors away and waiting until next season when everybody will again have a crack at the, hopefully, State AA Champions hip.

The Lynxettes (now 24-6) got another aggressive performance from Miss Harper, a 5-7 senior who popped in 14 of 24 field-goal shots (58.3 per cent) en route to a game-high 32 points.

While Miss Harper's aggressive driving opened up shots for her or her teammates on crisp passes. Miss Comegys, a 5-11 sophomore, was equally effective defensively...or rather devastatingly.

Miss Comegys was given the task of guarding 5-8 Debbie Muirhead (the defending state high jump champion) averaging 28 points, and she was effective.

Miss Muirhead hit just five of 11 first-half inside shots, then moved outside in the second half and finished with 14 points, half her average.

"She's the only guard who's been able to stop Debbie all year," said Red Oak coach Charlene Atkinson, who guided her team to a 31-2 season that ended in the state tournament for the first time in school history.

"She's one of the best guards in the state. Her timing is so good, and she can't be faked. In the second half, we were trying to work the ball in to 30, (Renee Muirhead, who sank 19 points)."

Miss Comegys also pulled down eight rebounds to lead Spearman to a 30-16 edge in that department. Miss Comegys helped slow a Red Oak offense averaging 67 points, but Spearman's offense made a shambles of Red Oak's defensive mean of 39 points a game.

Spearman hit 54.5 per cent of 44 shots, while Red Oak sank 16 of 40 for 40 per cent. "Not being able to hit the

good percentage shots was one of the biggest things," said Coach Atkinson. "We usually shoot better free shots, too. It was 25 (Miss Harper) and big guard that made the difference."

Spearman broke open a 12-12 first-period standoff in the second quarter with better movement and better shooting to lead, 34-23 by halftime. Red Oak cut an early third period of 13 points to six, then Spearman moved back in front by as many as 16 at the end (56-40 and 58-42) by hitting free shots.

"The difference was defense," said Spearman coach Ralph Newton. "Good team defense. JoNell had another good one. After she blocked four shots, it had that girl looking up. I told our coaches if they have to go outside to beat us, we're in good shape."

"I got concerned when they cut it six points. We

missed two shots we should not have been shooting, but Carla re-established herself and took control again. And our defense took control again."

Saturday's state championship appearance will be Spearman's seventh in history.

Red Oak 12 23 34 45
Spearman 12 34 44 58
RED OAK - Debbie Muirhead 7-0-14; Renee Muirhead 5-9-19; Jo Beth Mitchell 1-1-3; Kasha Haney 3-3-9. **TOTALS:** 16-13-45. **GUARDS:** Brenda Bisor, Debbie Bisor, Diane Correll, Kendra Goodloe.

SPEARMAN - Carla Harper 14-4-32; Debbie Green 2-0-4; Christy Collier 7-4-18; Carrie Clark 0-2-2; Tracie Keetch 1-0-2. **TOTALS:** 24-10-58. **GUARDS:** Debbie Greene, Denise Ware, Cindy Gressett, Lori Adams, JoNell Comegys.

TOTAL FOULS: Red Oak

Keim Initiated Into Honor Society



Glen Keim of Spearman, a student in Veterinary Medicine at Texas A&M University, was honored on February 14 by initiation into the University Chapter of Gamma Sigma Delta, a national honor society in agriculture. The society has chapters located in thirty six of the major agricultural universities of the nation.

Membership in the Society is restricted to faculty and

staff members and students with outstanding performance records in agriculture or veterinary medicine.

Dr. Herman D. Brown, President of the Texas A&M University chapter, offered his congratulations to new members and charged each with responsibility for continued outstanding work in academic and professional pursuits.

School Board Trustees Election Set

Notice of election of trustees for the County School Board has been posted in the Hansford County Courthouse. The election is set for April 2.

Voting at Pringle is to elect a trustee from Precinct 4.

Voting at Spearman High School will be to elect trustees from Precincts 1 and 3.

Voting at Morse will be to elect a trustee from Precinct 4.

Voting at Gruver will be for the election of trustees from Precincts 3 and 4.

Polls will be open at the voting places from 7 a.m. to 7 p.m. on election day, according to the announcement.

Hospital News

Patients in Hansford Hospital are Idabelle Edwards, Gary Taylor, Geneva Gilman and son, Mac Sutor, Becky Evans, Beth Fox, Ed Pinkerton, Jr., Ann Thom,

Elpedia Diaz, Ella Cypert and Robert Gray.

Dismissed were William Powell, Stan Hudson, Jeanette Hollis, Edna Richardson, Sandra Stroud and daughter, and Nohehi Rosales and daughter.

World Day of Prayer Set

World Day of Prayer will be observed in Spearman March 4 at the First United Methodist Church, it has been announced. Women from all churches in the city

are invited to participate in the observation which begins at 9:30 a.m. with a coffee in the fellowship hall of the church to be followed at 10 with the program.

SHS Musical Production Was Lively Stage Fare

The plight of the trothless ones was never so interestingly unfolded as was done in the auditorium at Spearman High School February 21 when "Once Upon A Mattress" came to life under the sponsorship of the SHS Drama and Choral Departments.

There was some fancy footwork by all cast members as well as some pretty intriguing repartee between all concerned as the story of a dominated king and prince, through circumstances beyond their control, came to a happy ending with the arrival and survival of Winnifred the Woebegone.

The production was directed by Travis Angel and Miss Becky Stockdale.

Pianist was Mrs. Forrest Stockdale. The stage crew included Paul Welch, supervisor and Brad Guthrie, Kelly Mahaney and Kermit Mahaney.

Choreography was by Miss Stockdale and Angel assisted

by Annette Faulkner and Jamie Morley.

Percussionists were Stephanie Reed, John Reneau, Alfonso Garza and Alonzo Garza.

Here, in the order of their appearance, is the cast of characters

Linda Lewis was in charge of tickets and publicity.

The book was by Jay Thompson, Marshall Barer and Dean Fuller and music was by Mary Rodgers with lyrics by Barer.

Looking forward to the next one!

Minstrel.....Robin Denham
Princess No. 12.....Kelly Shaver
Wizard.....Stinson Gibner
Lary Larken.....Kelly Rylant
Queen Aggravain.....Lanita Greene
Prince Dauntless.....Brent Biles
King Sextimus The Silent.....Greg Price
Jester.....Tony Truelove
Sir Studley.....Kelly Davis
Sir Luce.....Troy Thompson
First Knight.....Jay Comegys
Second Knight.....David Rosser
Third Knight.....Linn Vernon
Lady Rowena.....Denise Ware
Lady Merrill.....Brenda Bowling
Lady Lucille.....Kelly Shaver
Sir Harry.....Ed Pogue
Emily The Kitchen Wench and
Lady In Waiting.....Denise Cope
Princess Winnifred.....Debbie Greene
Lady Mabelle and Lady in Waiting.....Sabre McCoy



Junior contestants Mary Kenney, Karen Kenney, Pam Porter and Stacey Poole stir things up in preparation for the District 1 4-H Food Show in Amarillo.



Senior contestants preparing for the District 1 4-H Food Show in Amarillo next month are Cathy West and Tamara Scroggs giving a look at Cathy's cake entry.

Six Girls To Enter District Food Show

Six Hansford County youths who won top honors in county competition last November will match their skills and knowledge in food preparation against those of youths from 19 other counties March 5 in Amarillo in the annual District 1 4-H Food Show at Amarillo High School.

Theme of this year's show is Gourmet Foods and about 150 youths are expected.

Two seniors and four juniors from Hansford County are competing County Extension Agent Peggy Marrs has reported. The six are from

Spearman. The seniors are Tamara Scroggs and Cathy West.

Juniors include Karen Kenney, Pam Porter, Stacey Poole and Mary Kenney.

Competing in four food classes, the seniors will be vying for the right to represent the 20-county Extension District 1 in the State 4-H Food Show in June at Texas A&M University. There is no further competition for junior winners beyond the district level, according to Miss Marrs.

According to District Extension Agent Sue Farris and food show Chairman Alby Peters, judging will begin at 8:45 a.m. with the awards program starting at 1:15 p.m. Food will be on public display after awards ceremonies at AHS, 4224 Danbury in Amarillo.

Senator Max Sherman with a sales representative for Morrison Milling Co. will present ribbons to all contestants and special awards to top winners.

Judging will focus on knowledge of nutrition, meal planning, food buying and

meal service as well as ability to prepare food, Miss Marrs reported.

Gourmet dishes prepared by contestants for the show include: Tamara's "Baked Chicken Breast Supreme," Cathy's "Angel Berry Cake," Karen's "Stuffed Pork Chops," Pam's "Frozen Salad," Stacey's "Sugar Cookies and Hot Chocolate" and Mary's "Blackberry Swedish Tea Ring."

The District 4-H Food Show is conducted each year by the Texas Agricultural Extension Service, Texas A&M University System.

Let's All Welcome The Lynxettes Home

A big welcome home will be staged for the Spearman Lynxettes on Main Street in front of Chambers Department Store at mid-afternoon Sunday. At the time of this writing, the results of the championship game are not known, but win or loss, everyone is extremely proud of this fine team and their coaches and this will be a great way to express our congratulations to the homecoming team whether they are the state champion AA team or the runner-up AA team in the state. Everyone is urged to be present and show this great basketball team how proud we all are of their performance this year.

REMEMBERING...

DAY'S END

While growing up one of my favorite times of the day was evening. That's the time when the whole family was usually together. It would be after dark when Dad got home from the fields and all of our chores would be done. We'd all get to the house about the time Mother would be setting the supper table. She'd yell, "Come and get it before I throw it out!" She had heard that expression somewhere and she would laugh everytime she used it. There was no need to call us twice, I can tell you, because appetites were good on the farm.

After supper dishes were done we would all sit around in the living room. Dad would read his paper or the Farmers Stockman and Mom would busy herself with mending and such.

Finally, Dad would say, "Wonder who's goin' to help me get these old boots off." I

don't know now why it was so much fun to try to pull off his boots but it was something we looked forward to each evening. We would jump up and start tugging. I would straddle his leg and push while my brother pulled. Dad would laugh and say, "You boys 'er just not strong enough, maybe your sister better do it." That would make us tug harder than ever, then all of a sudden, the boot would shoot off, causing us to tumble to the floor laughing.

Dad wasn't one to hang his clothes up, a trait I seem to have inherited. Mom tried for years to get him to put his boots and hat away in the closet at night but he never would. Said he couldn't see the point of that since he'd just be getting them out again the next morning. "But, what if company comes unexpectedly late at night?" Well, if company comes I'll just put my boots on, sure don't aim to be walking around barefoot with company here." So the boots would stay by his favorite chair till the next

By BILL D. BROOKS



DAY'S END

day. Day's end was a time when we talked. We shared what we did that day and planned on what we would do tomorrow. Before the lamps were blown out a Bible story

was always read and memory verses recited. Come to think of it, I remember very few unhappy evenings I spent as a child and for that I will always be grateful to my parents.

provement such as: reduce it from a five year to a one year emergency bill; increase its effectiveness by expanding it to include "farm allotted acres planted to wheat" instead of just "wheat allotted acres" or even more effective in reducing potential production by making it available simply to "acres planted to wheat". The Association President further recommended that "no non-conserving crops could be planted or harvested from the participating acreage", in order to prevent corn, milo or soybeans or other cash crops from going back on the land, yet would allow for conserving crops to be established for wind, water or erosion control.

The Texas official testified on behalf of similar organizations in New Mexico, Oklahoma, Kansas and Colorado.

Social Security

People who tend to think of social security as a retirement program sometimes forget that it does more than pay retirement and health insurance benefits in old age. An equally important purpose of the social security program is to protect the family against the loss of a breadwinner's earnings if certain events happen to him at any age.

The fact is, social security has never operated as "just a retirement program". From the time the first benefits were paid in 1940 the emphasis has been on family protection. Benefits are paid to a worker's dependents if he becomes disabled at any age, to his dependents when he retires, and to surviving dependents when he dies.

The first benefits paid in 1940 went to retired workers, their wives at age 65, children under 18, widows with minor children in their care, or at age 65, and dependent parents 65 or older. This was a result of a Congressional change in the original 1935 social security act. It had become clear that in order to fulfill its objective of preventing the kind of widespread economic dependency and poverty that come out of the depression, the emphasis had to be on the family unit. Those who depended on the

worker's earnings for their support needed insurance against the loss of those earnings as much as did the individual worker.

The disability insurance program started in 1956, and the Medicare program initiated in 1966, expanded this concept of family protection.

Disability benefits are paid at any age to the worker and his dependents if the worker has worked long enough under social security and suffers a severe disability which is expected to prevent him or her from working a year or more or to result in death. Many families can't afford the cost of private insurance for what they may view as only a remote possibility.

Medicare helps pay hospital and doctor bills to persons age 65 and over and to people disabled for two years or more. The high cost of health care in old age or during a prolonged illness has traditionally threatened family financial security.

If you have any questions regarding the social security benefits or Medicare, please contact your nearest Social Security Office. The Pampa Social Security Office is located at 1541 North Hobart Street, phone



Insurance Corner

HOMEOWNER'S BOAT COVERAGE

Today's encompassing homeowner's policy covers a multitude of risks - fire, theft, damage - for the owner's home and personal property including boats and outboard motors. But before you go off on a carefree jaunt on the merry waves, you should first check to see what the limits of this coverage are and if it is ample in your case or if you should have additional coverage for certain conditions.

In regard to theft, unless specifically insured, your boat is covered ONLY if stolen from your premises, for up to \$500 [including trailer and outboard motor]. It is not covered for theft when it is off your premises. The great temptation offered to thieves has compelled the companies to exclude from the policy, theft of unattended prop-

erty from your boat, unless the property is taken by forcible entry into a securely locked compartment. This coverage is available at an additional charge.

If your boat damages property or causes personal injury, you are covered - if your boat has a motor not exceeding 25 horsepower. If your motor is in excess of 25 horsepower it is a simple matter to have an endorsement added to the policy for a small extra charge.

This information has been brought to you as a public service by John R. Collard, Jr. your one stop answer to complete business and personal insurance protection. Life, home, auto, group insurance, and profit-sharing plans. See John R. Collard, Jr., 405 Davis St., Telephone 659-2501.

Get Carpets Clean, Fresh, ODOR-FREE!

Now, you can Deodorize while cleaning

RINSEVAC's Odor Neutralizer combines with the RINSEVAC cleaning solution to remove dirt, grime, residues, and at the same time eliminate pet and other objectionable odors.

RENT RINSEVAC

Cleans—and deodorizes—the way professionals do, at a fraction of the cost



RENT for only \$12.00 a day



521 S. Hwy 207 Plains Shopping Center

Wheat Producers For Graze-Out Bill

A Bill (HR 3367) which would authorize the payment of \$1.00 per bushel on established yields to producers who elect to graze-out (or make hay or silage) up to 40 percent of their wheat allotted acreage received endorsement by Winston Wilson, President of the Texas Wheat Producers Association today in hearings held by the House of Representatives, Committee on Agriculture, Sub-Committee on Livestock and Grains.

The sub-committee is chaired by Texas veteran Congressman Bob Poage of Waco and 13th District Congressman Jack Hightower, who serves an area that produces up to 70 percent of Texas' commercial wheat area, is a member.

Wilson presented informa-

tion prepared for educational purposes by the Texas Agricultural Extension Service, which showed that at current grain-cattle situations, that a slight advantage exists in most cases favoring saving wheat for grain harvest unless there is an incentive to do otherwise, such as the \$1.00 per bushel payment would do.

In supporting the legislation the Association officer pointed to the 1 billion-plus bushels of wheat carryover projected for this June (a full two year U.S. food wheat supply or one full year export supply at current rates) and even greater price depressing carryover in prospect for June 1978 unless the potential supply can be reduced such as this bill would do. He said it would also relieve the hay and forage shortage to livestock producers in dry areas where lack of winter

growth and severe weather has depleted supplies, and the stocker cattle market on sales from the beleaguered ranching industry would be stimulated.

Wilson also said that it would be cheaper for the Federal Treasury to pay \$1.00 per bushel now, rather than to pay \$2.25 for a loan it may take over later and then to also be faced with possible deficiency payments to the producer if average market prices should be below the target price the first five months following harvest. It would also be helpful in alleviating what may become a critical storage situation as harvest approaches with large supplies of corn, milo, and wheat from previous crops still in farm and commercial bins.

While supporting the Bill in its present form, Wilson offered suggestions for in-

Easter seal drive, light-bulb sale

Between now and March 14, if a lightbulb burns out in your house, don't replace it unless absolutely necessary and then on that date or March 15, when you are contacted by a member of the Fellowship of Christian Athletes, purchase a lightbulb from them.

On those two days next month, members of the Spearman FCA Chapter will be involved in their annual sale of bulbs to provide funds for the summer camps they sponsor in Colorado, it has been announced by Spearman High School Coach

Gregg Sherwood.

Sherwood added the FCA drive will hopefully provide enough funds to take as many boys to camp as want to go this year.

Also in March, the Lynx football team will be out trying to defend their state title as champion Easter Seal Sales Champions.

State District 1AA Team Members Bo DeArmond and Terry Lathan will be co-chairmen of this year's drive.

it has been announced.

As defending champions of their Easter Seals sales record, the Lynx will be out to take in money which is used to aid and assist crippled children.

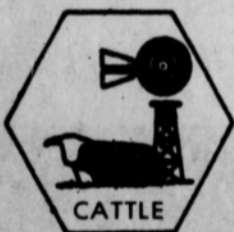


Between 1880 and 1890, 5,246,613 immigrants entered the United States.

Bulletin Board

Chamber banquet postponed

The annual Spearman Chamber of Commerce Banquet has been postponed to a later date it has been announced by officials, due to the appearance of the Lynettes in the State basketball finals this week. A new banquet date will be announced. Tickets are now on sale at the Chamber of Commerce office or they are available from any Board of Director member of the Chamber for \$6.50 each.



Congratulations to the Lynettes

"We don't want to get bigger, We want to get better!"

Spearman Perryton

Canadian

Amarillo

Cheyenne, Oklahoma



WANT ADS

Boxwell Bros.
Funeral Home and Flower Shop
FUNERAL HOME--659-3802
FLOWER SHOP--659-2212

YOUR LOCAL USED COW DEALER: SPEARMAN BI-PRODUCTS. Seven days a week dead stock removal. Please call as soon as possible. 659-3544. 8-rtn

Hansford Lodge
1040 A.F.&A.M.
W.M. George Young
Sec. Cecil Biggers
2nd & 4th Mondays

SERVICES

Hansford County Planned Parenthood
26 S. Haney
659-2483
Spearman Mon.-Fri.
8 a.m. to 12 noon
305-rtn

PORTABLE DISC ROLLING call
DAVID MCINTYRE
659-3782
118 1/2 N. James
Spearman, Texas 79081
14S-rtn

TREE SURGEON: Winter spray-Dormant Oils, for healthier trees and shrubs. Free-estimates. Bob Welsh. Farnsworth, Texas. 95-rtn

STEAM RINSE & VAC: \$11.00 per day. Shampoo or defoamer, \$2.98. For reservation call 2141. after 7 p.m. 3437. 12S-rtn

ED MARY KAY COSMETICS. Call 2751 after 5:00 p.m. 305-rtn

SEXTON IRRIGATION REPAIR
Underground Pipe Sales
Leak Repair
Backhoe & Ditching
In Farnsworth
call Bill Sexton
435-5542
14-rtn

Rawleigh Black Pepper Sale. Call 659-2631. 12S-7c

STUD SERVICE AVAILABLE--Two year old apricot miniature poodle at stud. Call 659-3838 after 5 p.m.

GENERAL PLUMBING
Phone 733-2912
Gruver
Call Collect
Steve Phillips
"Licensed"
10 Years Experience

KIRBY SALES & SERVICE of Spearman, 912 S. Bernice. 659-2797. 30-rtn

SERVICE: Pits cleaned, wet or dry. Dragline or loader. Also, dozer, grader, carry-all service. LeeRoy Mitchell, 806-733-2384, Gruver, Texas, 79040. 9-rtn

CARMON LAIRD
ALL BREED
GROOMING &
BOARDING
118 N. James - 659-2105
13S-rtn

FOR ALOE VERA Cosmetics: JoAnn Kell, 659-2211. 13S-5c

For Expert Horse Breaking, call 659-2491. 15-2tp

Miscellaneous FOR SALE

FOR SALE: Split pinon firewood. 733-2439 or 733-2066. 13S-4c

Reduce safe & fast with GoBese capsules & E-Vap "water pills". Spearman Drug. 13-8tp

FOR SALE-1971 Chevy 3/4 ton with utility box and camper. Best Offer. Also Ditchwitch ditching machine with trailer. See at 509 Richardson in Gruver any- "ne. 14S-rtn

Control Hunger and Lose Weight with New Shape Diet Plan and Hydrex Water Pills at Spearman Rexall Drug. 14-3tp

FOR SALE: Galvanized steel enclosed water storage tank, 6 feet wide, 8 feet high - in good condition, \$100.00. Phone 435-3520, Perryton, Texas. Sibley Jines. 15-2c

FOR SALE: 24x52 Trailer House, carpeted, AC., skirting. 733-2439 or 733-2066. 13S-4c

FOR SALE: 14 ft. Aluminum Boat with canopy and trailer. Also 30 hp Johnson motor. \$400.00, 659-3336 after 5 p.m. 15-2tp

FOR SALE-Couch and Chair. Call after 5:30 p.m. 3385. 15-2c

FOR SALE: Used only two weeks an electro-char-B-Q with lifetime lava rock. Chair-back vibrator-heater used only twice. 220 S. James after 6:00 p.m. 659-3344.

FOR RENT

FOR RENT: 1 bedroom carpeted, furnished apartment. During day, 2723; after 5, 2274. 15S-rtn

FOR RENT: Furnished apartments. Call 2811. 15-4c

FOR RENT: VA approved trailer space. 659-3000 after 5:00. 39S-rtn

LBL Trailer Spaces: \$40 monthly. 50' x 150' lots. Trailers also for rent. Call Manager, 659-3551, 206 S. Bernice. 40-rtn-T only

Real Estate For Sale

OFFERED BY:
Emmett R. Sanders
Realtor

Brick office building at 7th and Roland. ***

3 bedroom, 2 bath home, den and office, nice carpets, paneling, on E. Kenneth St. ***

Older 3 bedroom house with basement, on 2 lots. ***

100 ft. Crawford Add. lot on Gruver highway, improved with small building. ***

EMMETT R. SANDERS
REALTOR
659-2516
659-2601 [nights]

FOR SALE: 5 acres in Waka. 435-5246. 5-rtn

FOR SALE: Three 2 bedroom houses, 659-2927 after 6:00 p.m. 11S-rtn

FOR SALE: Wright's Diner, Hwy. 207. Completely equipped. See or call Bob Wright at Wright's Steak-house - 659-9988. 10-rtn

FOR SALE: Nice 3 bedroom, 2 bath brick home, den with fireplace, electric kitchen with disposal, central heat and air, carpets and drapes, fenced yard. Shown by appointment only. Emmett R. Sanders, Realtor, 659-2516, nights 659-2601. 11S-rtn

FOR SALE-REDUCED-3 bedroom brick home, 1 1/2 bath, carpet throughout, built in kitchen, central heat, attacheu garage. Extra lot adjoining plumbed for 2 house trailers \$24,000 or without lot \$22,000 selling for health reasons. Located at 213 N. Brandt. Phone 659-3667 days, 659-3633 after 7 p.m. 12S-rtn

John Mayfield - Broker
435-6528
Ruby Lair - Salesperson
659-2188

3 bedroom, 1 1/2 baths, has been redecorated with new carpet, paneling, wall paper, paint inside and out, new appliances in kitchen, large lot, storm cellar, attached garage, large utility room. Fenced landscape yard. Blodgett Linn addition. ***

3 bedroom, 1 3/4 baths, completely redecorated inside and out, nice yard in Glover Terrace Addition. ***

2, two bedroom, 1 bath, fully carpeted homes on one lot. Good location. ***

125x180 feet lots for sale in Crawford addition. ***

Acreage for sale east of Waka. ***

Commercial building on Hiway 15 with a metal building. ***

Good Commercial site on Hiway 15, with 2,190 sq. ft. metal building, office space, 2 baths and metal shed. Lot size 186x295 ft. ***

Commercial building on Main Street for sale. Now occupied. Under Short term lease. 15-rtn

FOR SALE: Very nice 3 bedroom, bath & half home near elementary and junior high schools. Attached garage, utility room, central heat & air, carpets & drapes, humidifier, other extras. Appointment only. Emmett R. Sanders, Realtor, 659-2516, nights 659-2601. 5S-rtn

FOR SALE: Choice Glover Place residential building site. Emmett R. Sanders Realtors. 659-2516, nights, 659-2601. 14-rtn

ED WHEELER
REAL ESTATE
Homes - Farms
Commercial

659-2613
659-2951
Days
Nights

Large lot with nice two bedroom home in front, nice one bedroom house in the back. Double garage with efficiency in the rear. One year rental on one bedroom house paid at time of sale. ***

3 bedroom corner lot large fenced yard. 911 Haney. ***

3 bedroom, 2 bath, brick den fireplace, living room carpeted, electric range/oven, dishwasher, central air/heat, storage shed. ***

3 bedroom, brick house, attached single garage. 1 bath. 309 W. 12th. ***

FOR SALE: Story and half brick home; 5 bedrooms, 2 baths, central heat and air. Nice kitchen with dishwasher, fenced yard, located on nice quiet street. By appointment only, Emmett R. Sanders, Realtor, 659-2516, nights 659-2601.

LOST

LOST: Gold ring with ruby sets. Big Reward Offered. Call 659-3087. 15-2tp

To Give Away

TO GIVE AWAY: Border collie pups - 659-3334 or 659-2135. 15-2c

Card of Thanks

I wish to express my appreciation to each of you for your consideration and prayers during my stay in the hospital.

A special thanks to Dr. Kleeberger, Dr. Son and the hospital staff.

May God's wishes be on each of you.

Mae Floyd and Family
County Agent

News

Doing a careful job of controlling broadleaf weeds in winter wheat will pay big dividends. The secret to success is knowing what to do at the right time. These were the opening remarks by Dr. A.F. Wiese, Texas Agricultural Experiment Station weed researcher from Bushland, Texas, at the Agricultural Chemicals Conference at the Hilton Inn in Oklahoma City on January 25.

Controlling tansy mustard in wheat has been the objective of research at the USDA Research Center at Bushland since 1954. Tansy mustard was easily controlled with 0.5 pound per acre of 2,4-D applied by either ground or aircraft sprayers. "Research also showed that 2,4-D could injure wheat if not applied at the right time", Wiese stated. Small wheat that 2 to 10 tillers is most susceptible to injury from 2,4-D. Spraying untilled seedlings or fully tillered plants is the safest way to use the herbicide. Reduced yield caused by both decreased tillering and headweight may result when 2,4-D is applied at the wrong stage, the scientist pointed out.

Wheat planted in late August or early September is usually fully tillered by November 15. Later plantings are not fully tillered until after spring growth begins about March 15. Spraying too late, on the other hand, lets weeds compete with wheat and weeds are hard to kill.

Research at Bushland shows that tansy mustard should be sprayed when wheat is fully tillered. This may be in late November, during February or the first half of March. Occasionally, thick stands of tansy mustard come up at the same time as early planted wheat. Under these conditions, plowing and re-planting or spraying with 2,4-D is the only choice. If the wheat stand is good, applying 2,4-D before tiller initiation is the best choice.

"Proper application of 2,4-D is very profitable", the Texas A&M University scientist stated. In 1973, 2,4-D applied near the end of November to early planted wheat increased forage yield from 1.1 to 1.8 tons per acre. Wheat grain yield in the same test was increased from 9 to 19 bushels per acre. There were four mustard plants per square foot.

Other experiments showed that one uncontrolled tansy mustard plant per square foot will reduce yield 10 percent. On a dryland crop with a yield potential of 10 bushels per acre, spending 2 or 3 dollars per acre to gain 1 bushel of wheat is not profitable. In irrigated wheat or for dryland, in good years, spraying to kill one weed per square foot is profitable, Wiese continued.

Treacle mustard is another tough competitor to wheat that is a problem in fields in Western Oklahoma. Wiese stated that he and Dr. Frank Petr, Agronomist with the Texas Agricultural Extension Service in Amarillo, have cooperated to develop methods of controlling this weed. Experiments have been

conducted since 1968 on the Dale Coleman, Jim Dowdy, and Jim Clemments farms near Dumas, Texas. "We have looked at a lot of herbicides, but 2,4-D and MCPA at 0.5 to 1 pound per acre control the weed as well as anything", Wiese continued. The key to success is early application. In early studies, herbicides were applied from March 15 to April 1 and nothing killed the weed. Research in 1974 and 1975 showed that treacle mustard was easily killed when herbicides were applied when weed rosettes were no larger than a half dollar. Applications made during February will get the job done because weeds are still small.

SERVE YOUR COUNTRY IN YOUR COMMUNITY.

Chances are your local Army Reserve center has immediate part-time job openings. Call to see what's available. It's listed in the white pages of the phone book under "U.S. Government"



THE ARMY RESERVE.
PART OF WHAT YOU EARN
IS PRIDE.

Cattle Scabies On Rise

Cattle scabies is on the rise this winter, with a total of 18 reported outbreaks during January, in Colorado, Iowa, Kansas, Nebraska, New Mexico, Oklahoma and Texas. U.S. Department of Agriculture (USDA) officials are concerned about the continued spread of this disease.

In Colorado, one case was reported in Weld county. Iowa's one case was in Linn County. All three cases reported in Oklahoma were in Texas county. Kansas had one case each in Smith and Haskell counties. Nebraska had one case reported in Garfield county. New Mexico has one case each in Luna and Union counties. Texas had a total of eight cases with one each in Deaf Smith, Hansford, Lamb, Parmer, Potter, Randall, Swisher and Taylor counties.

January's 18 outbreaks compare with 4 in January a year ago, and 17 last December.

Scabies is caused by tiny, parasitic mites that puncture the skin of cattle and feed on the body fluids released from the wounds. Heavy infestations result in the formation of large, crusty scabs, hence the name scabies. The mites are spread through contact between animals.

USDA's Animal and Plant

The Hansford Plainsman

SPEARMAN, TEXAS 79081
213 Main Box 456 659-3434
Published Weekly at 213 Main Street
Spearman, Texas 79081

Owner-Publisher.....William M. Miller
Second Class Postage paid at Spearman,
Texas, 79081

Any erroneous reflection upon the character of any person or firm appearing in these columns will be gladly and promptly corrected upon being brought to the attention of the management.

SUBSCRIPTION RATE: Hansford, adjoining counties, combination with the Spearman Reporter, \$10.92, Tax included.
Other points, \$15.12, Tax included.

MEMBER

1977 TEXAS PRESS ASSOCIATION

"One kind word can warm three winter months." everything is wanting. Japanese Proverb Benjamin Franklin

HELP WANTED

We are presently taking applications for a fulltime clerical position. We require good typing and shorthand skills and offer good benefits and excellent salary. Please inquire in person at the Baker & Taylor Office on the Gruver Highway

BAKER & TAYLOR

SPEARMAN, TEXAS 79081 PHONE 806-659-2503

Things Aren't What They Used to Be...

But Some Things Get Better

Full Service Banking... the More You Use It, the More It Does for You...

- Savings Accounts
- Checking Accounts
- Mortgage Loans
- Auto Loans
- Personal Loans
- Safety Deposit
- Bank by Mail



Cost of living going up? As your family grows, so do bills... and so does the need for sound financial planning. This full service bank stands ready to help you stretch your dollars, use them wisely, make them earn more. With modern banking services, things are always changing... for the better.

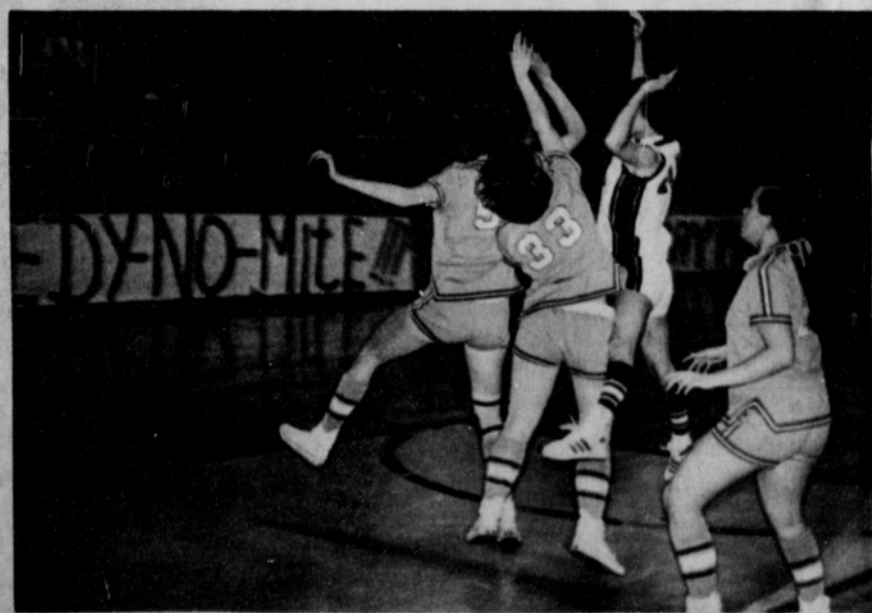
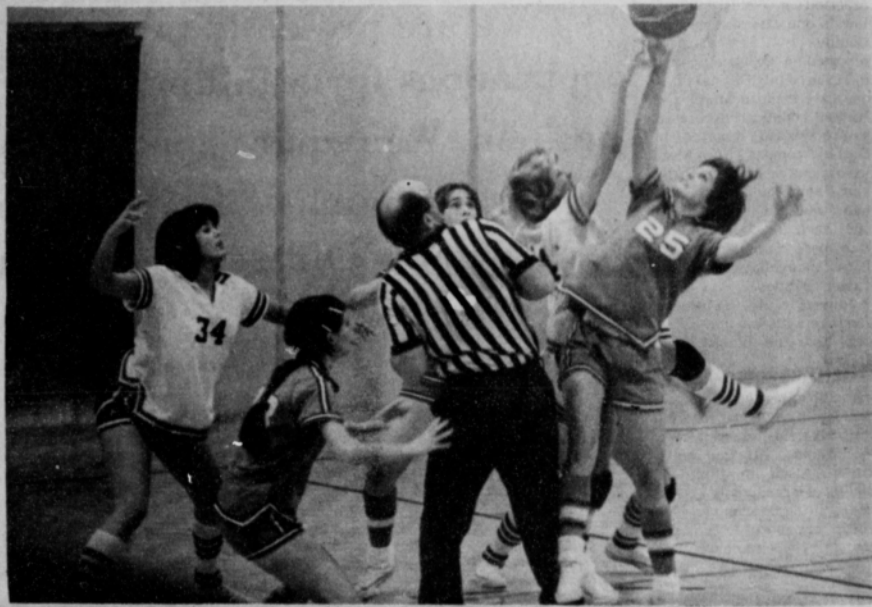
Gruver State Bank



3 Main Plaza
733-5061

"The most Bank for your money"

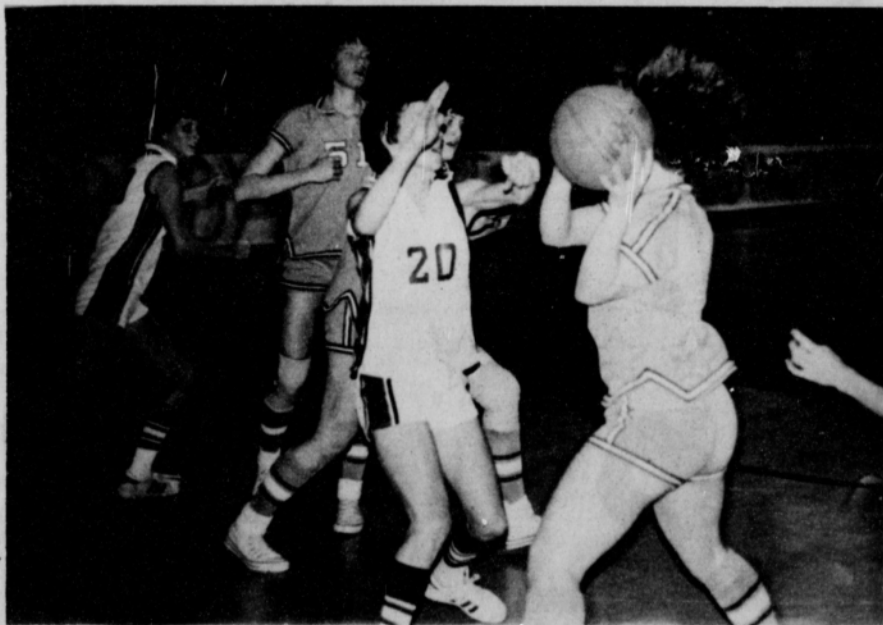
Lynxettes Winning Ways To Championship Finals



Congratulations Regional 1-AA

<p>Cates Men & Boys Wear 221 Main 659-3426 Spearman, Texas</p>	<p>Martin's Steak Garden Hwy. 207 659-2664 Spearman, Texas</p>	<p>Consumer Sales Co. 421 W. Kenneth Ave. Spearman, Texas</p>	<p>Hansford Implement Co. Hwy. 207 659-2712 Spearman, Texas</p>
<p>Western Ag. Sales Co., Inc. Home Phone-AC 806/659-3927 Office Phone-AC 806/659-2596 Spearman, Texas</p>	<p>Lil' Lynx Shoppe 312 Main 659-2608 Spearman, Texas</p>	<p>Hi-Plains Conoco Complete Tire Service-Auto Truck- Tractor Gas-Oil-Grease Wholesale-Retail 659-3555 Spearman, Texas</p>	<p>Jr. Lusby "Cats" 659-3766 W. Gruver Hwy. Spearman, Texas</p>

Go Lynxettes Win State



Champion Spearman Lynxettes

**North Plains
International, Inc.**
Hwy. 207
659-2421
Spearman, Texas

Equity Elevators
659-2420
104 Collard
Spearman, Texas



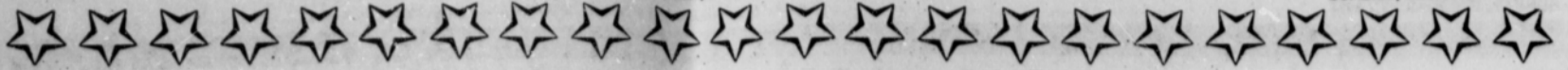
Speartex Grain Co.
659-3711
514 Collard

**Bakers Dept.
Store**
216 S. Main
659-3213
Spearman, Texas

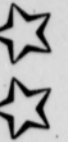
Gruver State Bank
733-5061
Gruver, Texas

Wright's Diner
108 N. Main St.
806-659-9988
Spearman, Texas 79081
Robert W. Wright,
(Owner, Operator)

**Ellsworth Oil
Co.**
500 Collard
659-3033
Spearman, Texas



BASKETBALL



District 1-A Champions, the Gruver 8th Grade Girls. Top row from the left, Londa Barber, Shelly Lackey, Cheryl Nelson, Coach Eldon Steelman, Terri Hart, Lisa Johnson, Margaret Dillow, Mary Cazares. 2nd Row, Rona Kelly, Linda Garcia, Lisa Stepp, Margaret Garcia, Cindy Hartranft. Kneeling, Kristi Holt, Mary Bonham, Melinda Gammon, Devyn McLain, Diane Byrd, Belinda Cassidy, Tanya McNally.



Gruver 7th Grade Girls with their trophy following the Gruver Junior Tournament. From the left, top row, Julie Sparks, Shalyn Barkley, Lisa Seider, Dana Wilson, Elizabeth Dunlap, Sheri O'Brien (two 8th grade boosters, Margaret Dillow, and Tanya McNally). Kneeling, Cheryl Stepp, Jana Spivey, Shelene Tumer, Kathy Nelson, Marva Winger, Cheryl Mitchell.



Gruver 7th Grade Boys with their trophy following the Gruver Junior High Tournament. Top row, from the left, Warren McClenagan, Brian Sparks, Greg Ammons, Alan Gilbreath, Todd Winders. Kneeling, Jody Woods, Rickey Finley, Kirt Castor, Johnny Hinton, and Ty Williams.



Gruver 8th Grade Boys who had a most successful 1976-77 season, top row, from the left, Todd Williams, Jeff Ewing, Tom Brandvik, Scott Andersen, Mike Stuck, Darrell Messer, Jimmy Womack. Kneeling, Clifton Peddy, Jody Bradford, Ray Morrison, Jim Harris, Russell Tiner, Mike McKee.

PASS IT ON!



GRUVER

Gruver
Statesman

Universal Oil
Company
Box 688
Phone 733-2463
Gruver, Tex.
79040

Gruver State
Bank
3 Main Plaza
733-5061

Gruver John
Deere Service
Center
733-2043
Gruver Tex.

THE
SPEARMAN
REPORTER

Hergert Pontiac
Buick GMC
So. Hwy. 207
Phone 659-3722
Spearman, Texas

Double "D"
AG Center
733-2459
Gruver, Tex.

El Vaquero
425 Main
733-9407
Gruver Tex.

Gruver Tractor
& Equipment
433 Main
733-2432
Gruver, Tex.

Gruver Texaco
Service
733-2411
Fletcher
Petroleum
Products
733-2511



TOP GRADUATE in the Baylor University School of Law winter quarter class was Marvin Winston Jones (second from right), son of Mr. and Mrs. Marvin Jones of Spearman. Baylor University President Abner V. McCall (center) presented juris doctor degrees to Jones and 18 other graduates, including (left to right) Thomas Eugene Garner and Johnny George Gotes of Waco and Michael Edwin Jones of Tulsa, Okla.

Marvin Jones Highest Ranking Graduate- School of Law

WACO--Marvin Winston Jones of Spearman was the highest-ranking graduate among the 19 men and women who received juris doctor degrees from Baylor University School of Law Saturday, Feb. 19.

He and one other class member graduated cum laude. Jones, son of Mr. & Mrs. Marvin L. Jones, is a 1969 graduate of Spearman High School. His undergraduate study was done at the University of Houston and Baylor.

Baylor President Abner V. McCall, alumnus and former dean of the law school, and Angus S. McSwain Jr., current dean, presented the diplomas. Dr. H.J. Flanders, professor of religion and law, delivered the invocation.

"You graduates today have a much harder time than the law graduates of previous generations," Dr. McCall told the juris doctor recipients. He noted that with numerous and complex public laws.

Added Schooling Boosts Local Earnings

From a purely financial standpoint, what is the value of an education to a young man living in Hansford County?

How much is it worth to him, in annual and lifetime earnings, to go through high school and college?

The whole question of the benefit of higher education, from a money point of view, is under review at the present time. What is being asked is whether there is an adequate return for the effort, the years of study and the cost involved.

According to national studies made by the Department of Commerce, by the Ford Foundation and others, the investment is very much worth while.

Their findings are that there is a close connection between education and income. With each added year in school the earning prospects of the average person rise measurably.

Their figures indicate that, although the college graduate's earning advantage over the high school graduate has been narrowed in recent years, it still is considerable.

Based upon national figures from the Commerce Department, the average Hansford County man who has had four years of college has the prospect of earning 58 percent more during his lifetime than someone who has not gone beyond high school.

Local high school graduates, by the same token, can expect to earn about 39 percent more than those who have gone no further than elementary school.

Since the figures are based upon averages, they do not reflect the fact that some people with limited education often make more than most college graduates do.

Expressed in dollars, the latest Commerce Department study of lifetime incomes shows men with college degrees earning \$279,000 more during their lifetime than those with high school diplomas. High school grads, in turn, have a \$135,000 advantage over elementary school grads.

Hansford County residents appear to be aware of the value of education. The median years of schooling being acquired locally is 12.3 as compared with the 1960 median of 11.9.

Some 53.5 percent of those over 25 are listed as high school graduates and 8.5 percent as college graduates.

Defensive Driving Course Set

A defensive driving course has been scheduled for March 5, 1977, in the Home Demonstration Clubroom on North Bernice in Spearman, it has been announced.

The one-day session, from 8 a.m. to 5 p.m. with an hour for lunch, is being sponsored by these insurance agents of Spearman, John R. Collard, Jr., P. A. Lyon, Jr., J. L. Brock, and Ed Wheeler.

The cost for the course is \$10. Those who have completed the course are involved in 32 percent fewer accidents, it was noted in making the announcement.

Two Civil Cases Filed

For the week ending at noon February 25, two civil cases had been filed in 84th Judicial District Court in Spearman, Court Clerk Marie Gould reported.

SVFD Treasurer Named

Members of the Spearman Volunteer Fire Department Thursday, February 24, elected on the basis of ballots cast in the election.

Mike Slater was elected to permanent membership in the department. At the meeting it was announced that an extrication course will be held next month. Tentative dates are March 10, 11, 14, 15, and 17 and the course material will be taught between 7 and 10 p.m. each meeting.

Extrication courses have been completed in Canyon, Hereford, and Wheeler. Dalhart will complete the course March 8 and the course currently is being taught at Memphis.

Additional information about the course here will be announced. Training class at Thursday's meeting was on the structure and organization of the department under City ordinance.

Shooting Competition Held In Gruver

The second round in a series of three elimination contests to determine the four seniors and juniors will be on the Hansford County 4-H Rifle Team was held February 25 at the Gruver County Show Barn.

Two alternates will also be selected for the senior and junior teams to work out with the team in the event somebody cannot attend the district contest in April.

Junior members, 9 through 13 years of age, began shooting at 6 p.m. and senior members, 14 through 19 began at 7:30 p.m.

The first county elimination contest was held Friday, February 18 in Gruver with the following results:

Senior Members	
Scott Henderson	131
Jimmy Nicholson	149
Roger Kennard	146
Cole Umphress	141
Junior Members	
Jody Bradford	139
Jon Garnett	129
Roger Buchanan	138
Rodney Clawson	135
Rex Shook	146
Will Jarvis	110
Melanie Morris	67
Don Dillow	142
Dirk Umphress	131
Jeff Nicholson	116
Greg Thiele	133
Hadley Reed	121
Mickey Scarborough	126
Scott Dahl	129

Hot Rod Contest Being Proposed

The Sunflower Bracket Nationals are to be held in Liberal, Kan., March 26-27 at the 5-State Raceway, Inc., it has been announced.

Eight brackets are slated. Entry fee is \$50 and entries must be received by March 1 or the event will be cancelled, according to the announcement. Information about the event can be obtained the 5-State Raceway, Inc., offices in Amarillo or in Liberal.

Weather

Feb. 16	63	28
Feb. 17	71	33
Feb. 18	71	28
Feb. 19	64	30
Feb. 20	70	29
Feb. 21	79	27
Feb. 22	78	44



Caesar salad is named, not for the Roman ruler, but for its creator, a Tijuana chef.

First Lynx Relays Slated March 5

As of February 21, less than two weeks before the starter's gun, 11 teams including the Spearman A and B track and field units, were listed for competition in the Lynx Boys Relays on March 5 in Spearman, it has been announced.

There is a definite possibility of a twelfth team by the time the activity begins in the one-day meet.

Field Events: 9:15 a.m. High School Shot (N.W. Ring), Long Jump (Football Field), Pole Vault.

8th Grade Discus (Practice Field), High Jump.

7th Grade Long Jump

10:15 High School High Jump

8th Grade Long Jump, Shot (N.W. Ring), Pole Vault.

7th Grade Discus (Practice Field).

11:15 High School Discus (Practice Field).

7th Grade High Jump, Shot (N.W. Ring).

11:45 7th Grade Pole Vault

Track Events: Preliminaries 9:30 High School

440 yard Relay 8th Grade

440 yard Relay 7th Grade

440 yard Relay 9:50 High School

120 yard High Hurdles 8th Grade

60 yard Intermediate Hurdles 7th Grade

60 yard Intermediate Hurdles 10:20 High School

100 yard dash 8th Grade

100 yard dash 7th Grade

100 yard dash 10:50 High School

440 yard dash 8th Grade

440 yard dash 7th Grade

440 yard dash 11:30 High School

220 yard dash 8th Grade

220 yard dash 7th Grade

Finals: 2:00 High School

440 yard Relay 8th Grade

440 yard Relay 7th Grade

440 yard Relay 2:15 High School

880 yard Run 8th Grade

880 yard Run 7th Grade

880 yard Run 2:30 High School

120 yard High Hurdles 8th Grade

60 yard Intermediate Hurdles 7th Grade

60 yard Intermediate Hurdles 2:50 High School

100 yard dash 8th Grade

100 yard dash 7th Grade

100 yard dash 3:05 High School

440 yard dash 8th Grade

440 yard dash 7th Grade

440 yard dash 3:20 High School

330 yard Intermediate Hurdles. 8th Grade

100 yard low Hurdles 7th Grade

100 yard low Hurdles 3:40 High School

220 yard Dash 8th Grade

220 yard Dash 7th Grade

220 yard Dash 3:55 High School

Mile Run 4:15 High School

Mile Relay 8th Grade

880 yard Relay 7th Grade

McMurry College Fund Raising Campaign

Gene Cudd of Spearman, district chairman for the McMurry College Annual Fund, says that Pampa district launching breakfast will be held Feb. 28 - March 2 in Memphis, Pampa and Perryton.

Dr. W. A. Appling, Pampa district superintendent for the United Methodist Church, is cochairman with Cudd in the fund raising effort.

The McMurry Annual Fund provides financial sustenance for the Abilene College which belongs to the Northwest Texas and New Mexico Annual Conferences of the United Methodist Church.

McMurry is a four year liberal arts college now more than 54 years old. It has an enrollment of 1300 students. Larry Parks of Memphis is a subdistrict chairman. He is in charge of the 7 a.m. Feb. 28 breakfast which will be held at Memphis United Methodist Church.

Also attending the Memphis event will be workers from Clarendon, Groom, Hedley, Lakeview, Wellington, McLean, Heald, Shamrock, Kelton, and Glen Davis.

R. W. Curry of Pampa is also subdistrict chairman. He is supervising the 7 a.m. March 1 breakfast which will be hosted by the Pampa First United Methodist Church.

Harold Hudson of Perryton is the third subdistrict chairman. Hudson is arranging the 7 a.m. March 2 breakfast in the First United Methodist Church of Perryton.

The Perryton breakfast will also be attended by workers from Booker, Canadian, Darroutzet, Higgins, Spearman, Gruver and Follett.

Open House

There will be Open House the 12th of March at the Girl Scout House in observance of Scout Week. Everyone is welcome to come and enjoy. The Scouts will be selling cookies from door-to-door this year.

MARKETS

Wheat	\$2.45
Milo	3.44
Corn	2.29

4-H Workshop Held February 19

Saturday, February 19, 1977 was a day of work, play, and new learning experiences as 41 4-H youth, parents and leaders from across Hansford County took advantage of the 4-H workshop held at the Spearman County Barn.

Martha Couch, area 4-H & Youth Specialist for the Texas Agricultural Extension Service, conducted the day long workshop.

The morning session consisted of training for keeping 4-H record books. Major changes have been made this year so it was a learning experience for everyone.

Many of those present enjoyed a sack lunch at noon and a recreation break in the afternoon.

The afternoon session focused on preparation for Method Demonstrations, a major activity that offers development in the area of public speaking and the excitement of competition. Video tape presentations of state winning demonstrations were the highlight of the session.

Miss Couch completed the

day with a short training session for the 4-H Organizational Leaders, wherein recreation ideas and themes for community club meetings were discussed.

Those attending the workshop included: Phil Ormon, Rodney Clawson, Marshall Cator, Kyle Williams, Scott Henderson, Durward Cator, Bobby Bates, Roy Don Gammon, Pamela Doty, Denise Doty, Anita Walker, Melane Morris, Mrs. Lewis Henderson, Mrs. Rodney Clawson, and Mrs. V.P. Morris, all of Gruver.

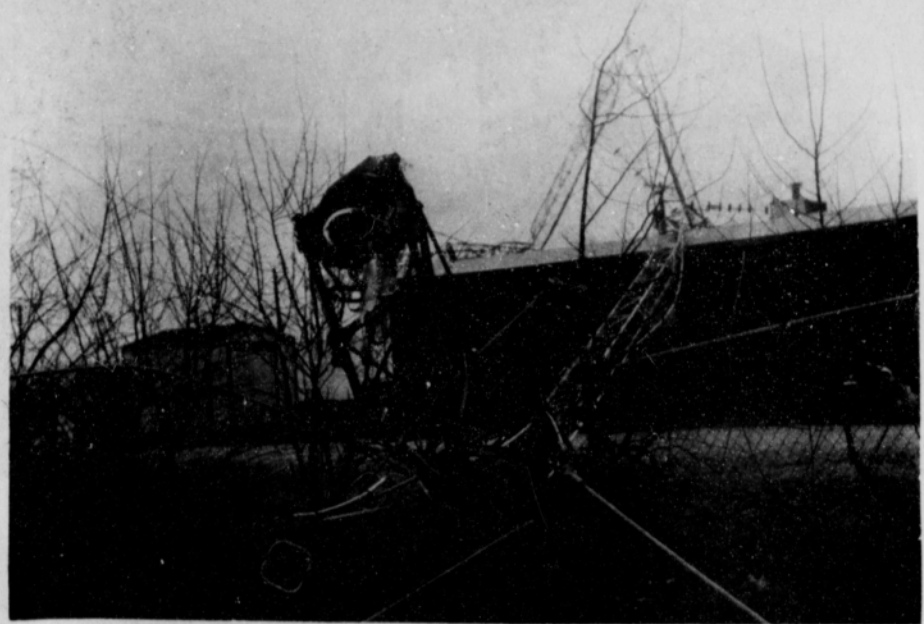
Attending the workshop from Spearman were: Roger Buchanan, Jon Garnett, Pat Steele, Joel White, Will Jarvis, Stacey Poole, Joanna White, Andrea Archer, Lesa Scroggs, Julie Farr, Tamara Scroggs, Cathy West, Karen Kenney, Mary Kenney, Kayla Russel, Angela Francis, Mrs. Byron Kenney, Mrs. Burl Buchanan, Mrs. Britt Jarvis, Mrs. Bob Farr, Mrs. Nan Nicholson, Mrs. Wilma Francis, Joe Bob White, Jim Kuykendall and Peggy Marrs.

Chan Foster In Houston Hospital

Chan Foster, son-in-law of Mr. and Mrs. Earl Riley of Spearman, is in George Hermann Hospital in Houston, undergoing treatment. Mrs. Riley said the problem was apparently adhesions and not a recurrence of the malignancy which he was operated on for a few months ago.

Bowling News

TUESDAY NIGHT MIXED LEAGUE		Bowling Mor Lanes	
Won	Lost		
John's Hairstyles	21 11	Panhandle Eastern	45 39
Bunkhouse	20 12	Ideal	36 48
H&H Water Well	19 13	Wy Tex	34 50
Lyon Ins.	18 13 1/2	Hansford Impl	31 1/2 52 1/2
Spearman Auto	17 15	HIGH TEAM SERIES	
Hi Plains Auto	14 1/2 17 1/2	Cates Men & Boys	2287
Cates Mens Wear	10 22	Doug Outs	2116
R&S Cattle Co.	8 24	Wardrobe Cleaners	2114
HIGH TEAM SERIES		HIGH TEAM GAME	
John's Hairstyles	2187	Cates Men & Boys	804
Spearman Auto	2180	Cates Men & Boys	751
H&H Water Well	2150	Wardrobe Cleaners	747
HIGH TEAM GAME		HIGH SERIES MEN	
John's Hairstyles	777	Ted Benge	503
Spearman Auto	753	Verlin Behne	499
John's Hairstyles	746	Millard Tucker	497
MENS HIGH SERIES		HIGH SERIES WOMEN	
Charlie Greenwood	543	Sharon Mauk	506
Jerry Hayes	541	Pat Donnell	453
Gary Faries	521	Joan Farr	445
WOMENS HIGH SERIES		HIGH GAME MEN	
Shirley Greenwood	542	Ted Benge & Jim	195
June Lee	506	Bob Farr	185
Rita Reed	485	Cody Alexander	178
MENS HIGH GAME		HIGH GAME WOMEN	
Jerry Hayes	212	Sharon Mauk	174
Gary Faries	211	Jane Meek	171
Charlie Greenwood	207	Sharon & Pat	165
WOMENS HIGH GAME		THURSDAY NIGHT MIXED LEAGUE	
Rita Reed	208	Won Lost	
Shirley Greenwood	197	Dairy Queen	20 1/2 7 1/2
June Lee	179	Callaway Const	18 10
Wednesday Morning Glories 2-23-77		Anthony Electric	18 10
Won Lost		Davis Oil	15 13
Rexall	67 25	Baker & Taylor	15 13
First State Bank	65 27	Hansford Impl	9 1/2 18 1/2
H. & H. Water Well	50 42	Kenda & Jines	9 1/2 18 1/2
White's Auto	49 43	Hergert Motors	6 1/2 21 1/2
York Electric	47 1/2 45 1/2	HIGH TEAM SERIES	
Hansford Parts	31 57	Callaway Const	2283
Gordon's Drug	29 63	Kenda & Jines	2226
Wright's Diner	28 1/2 62 1/2	Dairy Queen	2136
HIGH TEAM SERIES		HIGH TEAM GAME	
Rexall	1334	Kenda & Jines	797
White's Auto	1285	Callaway Const	780
First State Bank	1283	Dairy Queen	770
HIGH TEAM GAME		HIGH IND. SERIES	
Rexall	508	Tom Reger	596
White's Auto	479	Jim Mercer	527
First State Bank	474	Verlin Behne	504
HIGH IND. SERIES		HIGH IND. GAME	
Nita King	478	Miriam Mercer	464
Millie Craig	474	Judy Everson	443
Georgann Washington	465	Jenny Jines	431
Judy Everson	465	HIGH IND. GAME	
HIGH IND. GAME		Tom Reger	224
Nita King	210	Tom Reger	203
Millie Craig	177	Jim Mercer	195
Gloria Kingham	172	Carlos Kenda	195
WEDNESDAY MIXED DOUBLES		Miriam Mercer	196
Won Lost		Brenda Russell	168
Wardrobe Cleaners	51 33	Jenny Jines	167
Doug Outs	49 1/2 34 1/2		
Cates Men & Boys	45 39		



This radio transmission tower couldn't send out a Mayday February 22 after buffeting by the strong wind which raked Spearman and immediate vicinity. Transmission by KBFM-FM in Spearman was only momentarily interrupted by this trouble.

You are invited to a
Wedding Shower honoring
Don and Carol Hergert
 March 5, 1977
 3:00 P.M. to 4:00 P.M.
First Christian Church
 Fellowship Hall
 Hostesses: Mmes.
 Mary Brown Joan McClellan
 Rosa Lee Butt Betty Jean Davis
 Evelyn Mackie Diane McLain
 Linda Sanders Cindy Schneider
 JoAnn Lee Bobbie Novak
 Gwen McLain
 15S-2tp

Near-Average Soil Moisture Levels Revealed

LUBBOCK—A survey of soil moisture levels over the Texas High Plains reveals an erratic pattern of moisture deficiencies, but on the whole point to what could be another productive crop year for farmers.

That optimistic outlook by Agricultural Meteorologist Oliver Newton of the National Weather Service sets the stage for spring planning on the High Plains. It means that generally growers will need an average to slightly above average rainfall from now through May to saturate the top five feet of soil, where plant roots extract moisture.

Each year for the past 10 years, Newton, who is based at the Texas A&M University Agricultural Research and Extension Center at Lubbock, surveys some 90 locations on farmlands in 14 counties, ranging from Swisher County on the north to Borden County on the south.

"This information serves two purposes: one, to provide year to year and area to area changes, and second, to indicate the current soil moisture needs for the coming season," Newton said. This provides a basis for planning needed preplant irrigations and give the farmer his best chance for producing a profitable crop.

"The survey just completed shows a higher level of variability than has been the case in recent years," he reported. "This was undoubtedly due to the erratic rainfall distribution as well as irrigation and crop deficiencies."

Newton said the driest soils showed deficiencies of up to six inches, while some of the wetter areas were down by no more than one inch. About 20 percent of the 14 counties was deficient by two inches or less, while about 30 percent needed from two to four inches.

"The average for the 90 readings made over the 14 counties was minus 3.3 inches," the meteorologist reported. "This may mean very little to the individual farmer, but when we compare this to the minus 3.2 inches average for last year and the minus 6.0 inches average for the 1973-74 survey, it does indicate that the area is not critically short. In fact, the deficiency for this year is only slightly higher than the average for the area's more productive years. It does mean, however, that most sections will need average to above average rainfall if we are to expect a productive agricultural production year."

Soil moisture carry-over from the previous crop season is like money in the bank, Newton said. The amount of moisture that can be carried over from one season to the next is dependent on the water holding capacity of the soil.

"Usually, we consider the top five or six feet for most crops," he indicated. "San-

Wednesday Morning Glories 2-23-77		Won Lost	
Rexall	67 25	Callaway Const	2283
First State Bank	65 27	Kenda & Jines	2226
H. & H. Water Well	50 42	Dairy Queen	2136
White's Auto	49 43	HIGH TEAM GAME	
York Electric	47 1/2 45 1/2	Kenda & Jines	797
Hansford Parts	31 57	Callaway Const	780
Gordon's Drug	29 63	Dairy Queen	770
Wright's Diner	28 1/2 62 1/2	HIGH IND. SERIES	
HIGH TEAM SERIES		Tom Reger	596
Rexall	1334	Jim Mercer	527
White's Auto	1285	Verlin Behne	504
First State Bank	1283	HIGH IND. GAME	
HIGH TEAM GAME		Miriam Mercer	464
Rexall	508	Judy Everson	443
White's Auto	479	Jenny Jines	431
First State Bank	474	HIGH IND. GAME	
HIGH IND. SERIES		Tom Reger	224
Nita King	478	Tom Reger	203
Millie Craig	474	Jim Mercer	195
Georgann Washington	465	Carlos Kenda	195
Judy Everson	465	HIGH IND. GAME	
HIGH IND. GAME		Miriam Mercer	196
Nita King	210	Brenda Russell	168
Millie Craig	177	Jenny Jines	167
Gloria Kingham	172		

WEDNESDAY MIXED DOUBLES		Won Lost	
Wardrobe Cleaners	51 33		
Doug Outs	49 1/2 34 1/2		
Cates Men & Boys	45 39		

Vehicle Extrication Training Course Set

The PEMSS Training Committee of the Panhandle Regional Planning Commission has scheduled a Vehicle Extrication Training Course to be conducted from 7 to 10 p.m. nightly on March 10, 11, 14, 15 and 17.

The course will be given at the Spearman Home Demonstration Building.

The course will train emergency personnel that work on vehicle accidents in the PEMSS area, and to provide more professional help to the victims of the accidents. PEMSS is making available to all area fire departments, rescue squads, ambulance services, and all law enforcement agencies its new course on Crash Victim Extrication.

The course will total sixteen hours of instruction including both classroom and field demonstration and practice. There is no charge for textbooks or the course.

Instructors have been obtained from area fire and rescue services that prove the service of crash victim extrication.

This is another course provided in an effort to carry out the EMS slogan "A System To Save A Life".

All volunteer firemen will receive credit in rescue training for their certification program.

Microfilm helps school-children, too. One of the first public schools to use microfilm as a teaching aid was in Keene, New Hampshire. Now it is used in schools and libraries all across the United States.

Everyday, business, government, educational institutions and libraries are using micrographics as a more efficient and less costly means for storing, indexing and retrieving vast amounts of information required to conduct our daily lives.

Bi-District AT BAT

Spearman fans welcome players and fans from Channing and Darrouzett to the Spearhead of the North Plains March 1 when the two teams meet in basketball competition in Spearman. Everyone is urged to turn out for this bi-district contest.

Channing's boys' basketball team, winner of the District 1-B title, has scheduled two warmup games this week, according to coach Jim Zaring.

The Eagles will play Spade beginning at 7:30 p.m. today at Happy and will take on Wheeler at 7:30 p.m. Friday in White Deer.

Channing and Darrouzett, N.J., winds up for the pitch. Robbie, who was born with open spine, is paralyzed from the waist down. The March of Dimes is working toward the day when all children can be born free from the threat of birth defects.



USED CARS

1972 Chevrolet Impala 4-Door	P.S.-PB-A. Cond.-Cruise	\$1,645
1973 Chevrolet Impala 4-Door	A. Cond.-Tiltwheel-Cruise P.S.-PB-	2,075
1973 Oldsmobile 88 4-Door	A. Cond.-Tiltwheel P.S.-PB-	2,250
1976 Buick Custom Le Sabre Cpe.	P. Window-Divided Front Seat-Tape 12,000 Miles	5,795
1976 Chevrolet Silverado 1/2-Ton	P.S.-P. Brakes, Chrome Grill Guard, Tiltwheel 27,000 Miles	5,275
1975 Chevrolet Scotsdale 3/4-Ton	P.S.-PB-Air Cond.	4,450
1971 Ford Pickup 1/2-Ton	Air Cond.-58,000 Miles	1,650

Excel Chev.-Olds Co.

27 pounds later, I'm proud of myself and my size 6 clothes.

Hazel Taylor's True Story

In my fat days, 27 pounds ago, all I did with my time was sit at home, watch television—and eat.

One day, I went shopping for a new dress, and the store had only one size that would fit me—a 16! You can't imagine how upset I was. I walked out of there and into the Pat Walker's salon next door. That very day, I joined the Pat Walker's program and began treatments on the passive exercise unit.

The treatments are really enjoyable—not work at all. You don't take off your clothes. No one disturbs you. And when you're finished, you feel so relaxed.

Buying new clothes began to be fun again. I could actually wear a blouse tucked in, instead of hanging out to hide my fat places.

The most exciting part of it all was that losing weight encouraged me to get a job in a dress shop. The woman I work for likes her employees to look slim and fashionable, and she says I fill the bill!

Now I weigh just 113 pounds. I've lost 41 1/2 inches, and I can wear size 6's. Imagine how you would feel if you'd been carrying around a 27-pound sack of potatoes for years, and finally put it down... that's how good I feel!

Call for your free figure analysis and sample treatment. I've recommended Pat Walker's to so many of my friends that I know you'll like it, too.



Six years ago, I hid my weight under an overblouse.

Pat Walker's

Figure Perfection Salons, International

of Perryton, Tx., and Liberal, Ka.

DIAL 435-2423

514 S. MAIN * PERRYTON, TX

8 a.m. - 7 p.m. Monday thru Friday

* 9 a.m. - 12 Noon Saturday *

BANKAMERICAN
 master charge

Senior Citizen Activities

A Senior Citizens Party is to be held March 1 at the Home Demonstration Club Room and everybody 55 years of age or older is cordially invited to attend the 6 p.m. covered-dish session. It has been announced. There will be table games.

Some sound advice if you're in the market for a radio receiver is not get swayed by chrome rather than chromatics. A receiver that looks like the control panel of a 747 may be pretty to look at, but one with a simple exterior and accurate music reproduction is what you should look for.



OFFICERS ELECTED - New officers were elected for the 57th annual session of the Panhandle Pastors' and Laymen's Conference which will be held in February, 1978, on the Wayland Baptist College campus. They are (left to right) secretary-treasurer Charles Bassett, business manager, Wayland; president-elect Dr. Fred Meeks, pastor, First Baptist Church, Brownfield and a Wayland trustee, and vice president Glen Harris, a farmer at Gruver, and music director at First Baptist Church in Spearman. The annual two-day program attracts several hundred ministers and laymen from across the Texas Panhandle.

Harris Is Elected VP In Conference

Mr. Glen Harris, Director of Music at the First Baptist Church, Spearman, was elected Vice President of the Panhandle Pastors and Lay-

mens conference, in its annual session, on Tuesday February 22. The conference has met annually for 56 years. Each year a Pastor

and a Layman are elected to serve for one year. Dr. Pat Cummings, First Baptist Church in Brownfield will serve as President.

Glen Harris farms near Gruver, Texas, and has served as Music Director of the First Baptist Church, Spearman, for the last seven years. The conference will meet February 20, 21, 1978 on the Wayland College Campus, Plainview, Texas.

Intensive Coronary Care Nursing in March

The course, to be taught by Mrs. Twinkey Reid, R.N., head nurse in the Intensive Care unit at the hospital, is tentatively set to begin the first week in March. Enrollment is being taken now.

Fee for the course is \$5, plus an approximate cost of \$30 for books.

The course will offer concept and example of intensive coronary care nursing. Classes will be held Monday through Friday, for four weeks.

Interested persons should contact Mrs. Haag, at North Plains Hospital.

Intensive Coronary Care Nursing Course Offered

Frank Phillips College, in co-operation with North Plains Hospital, will offer a



Hot dogs can be frozen for up to two months.

Agricultural Land May Be Reassessed For Taxation

FORT WORTH TEXAS

Feb. 14, 1977--Ranchers and farmers who want their land reassessed for taxation on productivity instead of market value are urged by J.A. Whittenburg III, president of the Texas and Southwestern Cattle Raisers Association, to do so before April 30, 1977, the deadline in most Texas counties for tax assessors.

More farmers and ranchers now qualify for this reassessment because of a 1976 Texas Supreme Court ruling in O.L. Gragg vs. Cayuga Independent School District.

Before the landmark case, assessors interpreted the Texas Constitution's section on agricultural valuation to mean that a rancher or farmer must derive 51 percent of his net income from agriculture to have his land valued on productivity. However, in the Gragg case, Supreme Court Justice Price Daniel ruled that a rancher's gross agricultural income has to be larger than the gross income does not need to be more than 50 percent of his total gross income to qualify for agricultural valuation.

"He needs to go to each tax assessor who has jurisdiction over the area in which he has property and make application to him. This includes property that's subject to county tax, city tax, school tax, hospital tax or whatever," says Whittenburg. The application will vary from one assessor to another. There is no standard statement or form on which to apply.

Whittenburg says the time for a rancher to request a reassessment is from Jan. 1 to April 30, or the rendition period as it is called. The law says each individual that owns property has to go to the tax assessor and tell him what his property is worth.

After that if the assessor wants to take a request for reassessment he can, but he

does not have to do so.

To qualify for this reassessment on agricultural productivity, the individual ranchers must supply the right information to the assessor and this is very important, Whittenburg says. Some of the more pertinent things he must supply are accurate information showing the land has been used for agriculture, the landowner is an individual and not a corporation, and that, in addition to actually owning the land, he has agriculture as his primary occupation and source of income.

Whittenburg emphasizes that the rancher must have the appropriate legal papers to back up his request. The individual should provide his sources of earned income, proof of occupation and information showing that the land is located within that assessor's jurisdiction. In most cases, he says, receipt of any annuities, retirement income, pension, royalties, social security payments or old age assistance are not counted as income to be weighed against agricultural income.

Many assessors may ask for your income tax return although that's a sore spot with many people. Some may think that is a private affair not open to the assessors, but then again he has to prove that the applicant's primary occupation and source of income is from agriculture, says Whittenburg.

"This information should be enough," says C.W. Whitford of the Texas Comptroller of Public Accounts' ad valorem tax division in Austin. "While we do not recommend it (giving one's tax return to the assessor), there is nothing wrong that we can find in asking for the income tax return, but the assessor has no business looking anywhere beyond the gross income. That's all he needs to make a determina-

tion on and that's all that guy would really be obligated to provide."

If the rancher is turned down by the assessor for reassessment, he can appear before his county's or school's board of equalization. Usually, this means the county commissioners or the local school board, Whitford says.

In some cases, the answer the rancher will get from his assessor is "wait until the equalization board meets." Unfortunately, if one does that, he may very well miss his chance for reassessment. All is not lost if one gets this answer, however, says Whittenburg. The TSCRA will send to the tax assessor free a copy of "Agricultural Use-Valuation," a detailed book from Bob Bullock, comptroller of Public Accounts, State of Texas, Austin, Texas 78774. "If all of this does not work, the rancher should see a lawyer," Whittenburg says.

The Comptroller's ad valorem tax division has a toll free telephone number that anyone may call to get additional information. For landowners living in Texas the number is 1-800-252-5555 Station 138. Ask for C.W. Whitford.

PSU Sets Pre-Enrollment

Pre-enrollment dates for graduating high school seniors have been set for this spring and summer at Panhandle State University. Students are encouraged to pre-enroll because they get a better selection of courses as well as the day and time the course is offered. Pre-enrollment eliminates much confusion and standing in line during the regular fall enrollment.

University faculty will advise students during Pre-enrollment. Dates scheduled for pre-enrollment are Satur-

day, April 2; Friday, April 15; Wednesday, April 27; Friday, June 3; Monday, June 20; Saturday, July 9; Monday, July 18; Friday, July 29; and Thursday, August 25.

Registration starts at 9:00 a.m. except for the April 27 date, and it starts at 1:00 p.m.

Students should contact the Registrars Office for a reservation to pre-enroll.

Summer School Schedules Ready At PSU

Summer school schedules for the two five sessions at Panhandle State University are now available at the Registrar's office.

Pre-enrollment for summer school will be held April 12 and April 15. Regular enrollment for the first five week session will be Tuesday, May 31 in the Student Union Ballroom. This session will end Friday, July 1. The second session enrollment will be Tuesday, July 5 and will end Friday, August 5.

The ACT test will be given on Saturday, May 28 in room 127, Hamilton Hall. Students attending summer school for the first time should have an application for admission, medical form, transcript and ACT test results.

Workshops scheduled include Creative Teaching with Minorities, June 1,2,3; Reading & Math, June 6-10; Reading Fanfare, June 13-17; Kindergarten and Early Childhood Learning, July 6-8 and 11-14; and Exceptionality in Children, July 18-22.

For summer school schedules or workshops contact the Office of the Registrar, Panhandle State University, Goodwell, OK 73939, or call (405) 349-2611, EXT. 223.

"Silence makes no mistakes." French Proverb

NOTICE

HOMESTEAD EXEMPTION FOR RESIDENTS OF SPEARMAN OVER AGE 65

IF YOU ARE OVER 65 YEARS OF AGE, AND OWN A HOMESTEAD LOCATED IN THE CITY LIMITS OF SPEARMAN, YOU ARE ELIGIBLE FOR A HOMESTEAD EXEMPTION ALLOWANCE ON YOUR AD VALOREM TAXES FOR 1977

APPLY AT CITY HALL BY APRIL 1, 1977



Member F.D.I.C.

P.O. Box 949

BORGER, TEXAS 79007

273-6461

ALL OF US AT PANHANDLE BANK AND TRUST, WISH TO CONGRATULATE THE LYNKETTES AND THEIR FINE COACHING STAFF, AND THE ENTIRE STUDENT BODY OF SPEARMAN HIGH SCHOOL, ON THE FINE SEASON THAT SPEARMAN boys and girls have enjoyed this year.

GO LYNKETTES - WIN STATE AT AUSTIN

1977 Regional 1-AA Champs

The 1976 Lynxettes--left to right, bottom row; Paige Mitchell, Carrie Clark, Lori McAdams, Tam Robertson, Connie Vernon, Carla Harper. Top Row; Christy Collier, Beth Ann Flowers, Debbie Greene, Tracie Keetch, Denise Ware, Cindy Gressett, JoNell Co-megs.



PANHANDLE BANK & TRUST CO.

531 North Deahl

Borger, Tex.

Member F.D.I.C.

United Presbyterian Church News

Every Sunday there is a good, interesting, well prepared Bible lesson taught at the level of understanding of each age group at 9:45 a.m.

"Following Difficult Instructions" will be the subject of Pastor Ed Freeman's children's sermon and "The Choice You Make May Be Your Own" will be the subject of his adult sermon at the service for the public worship of God on Sunday, February 27, at 11:00 a.m.

Presbyterian Women will have an arts and crafts workshop day on Wednesday, March 2 at 9:30 a.m.

"Light Versus Darkness" will be the subject of the Lenten Bible Study on Wednesday, March 2 at 7:30 p.m.

Presbyterians will participate in the World Day of Prayer observance on Friday, March 4 at 9:30 a.m. at the First United Methodist Church.

Friday, March 4 is also a Fast Day when Christians pray for President Jimmy Carter, his cabinet and staff, the Congress, and all who work in government at every level.

People without a church home in Spearman are especially invited to try the warm, Christian fellowship of the First Presbyterian Church.

U.M.W. Meets

United Methodist Women met February 23 for a luncheon with Mrs. Dick Countiss presided over the meeting.

The Methodist Church will be host March 4 for "World Day of Prayer".

The Program was presented by Mrs. Marcus Connelly. She gave a 'chalk talk'. Mrs. Doug Steger and Mary Gary Woolley sang a duet, "My Wonderful Lord" and Mrs. Connelly sang a solo, "All My Days".

The talk and songs were accompanied by Mrs. Steger on the piano.

Hostesses Mrs. P. A. Lyon and Mrs. Jimmy Shield-knight served refreshments to guest, Mrs. Marcus Connelly and to members, Mesdames: Perry Dixon, Claude Smith, H. M. Shedeck, Gayle Brown, Doug Steger, Russell

Townsend, Monty Blackman, Roy Jones, Gary Woolley, J. B. Buchanan, Dick Countiss, Kenneth Williams, Dennis Nelson, Kent Guthrie, Tom Latta and Ed Garner. The next meeting will be March 23.

Girl Scout News

Junior Troop #76 met Monday, February 21 at the Girl Scout House.

Mrs. King served refreshments to: Beckey Evans, Penny Cummings, Teri Thomas, Lelia Goodman, Yvonda Scroggs and assistant leader, Mrs. Larry Evans and guest, Mrs. Evan's mother.

Beckey Evans and Yvonda Scroggs demonstrated stitches by memory, doing excellently.

For part of their Needlecraft Badge, they worked out on graph paper a simple design for needlepoint.

The next meeting will be February 28.

Brownie Troop #42 met February 22 in the Girl Scout House with Dana Irlbeck serving refreshments.

The troop visited the radio station and showed much enthusiasm.

Then they filled out questionnaires for the girls' interests, which were distributed through the Girl Scout Club.

Mary Ann Evans will serve refreshments at the next meeting Tuesday, March 1.

Those present were Sheila Brand, Mary Ann Evans, Angelia Gaither, Dana Irlbeck, Carla Nickles, Tammy Ring; leaders, Mrs. Bill Gaither.

Baptist Women Meet

The Baptist Women Study Group met February 23 at the church at 9:30 a.m. with a covered dish luncheon served.

The group cut blocks to make quilts, packed for the missionary, and sewed.

Members present were Mesdames: L. L. Anthony, Russell Pogue, Ed Hutton, J. L. Denman, Altha Groves, Johnny Wagner, F. J. Hoskins, Glen Hiller, Roscoe Nelson, Mable Edwards, Joe Novak, Willie Wallis, Woodville Jarvis, and Arthur Adkinson.

The next meeting will be March 2.



Wedding Is Planned

The engagement and approaching marriage of Miss Suan Marie Barber to Charles Randal Lynn is announced by their parents, Mr. and Mrs. Clyde Barber of 1104 Mills and Mr. and Mrs. O. J. Lynn of 422 Beard, both in Dumas.

The couple will be married at the First Street Church of Christ, May 28, 1977, in Dumas.

Miss Barber, who is a 1974 Gruber High School graduate, received her Associate of Arts degree from York College in York, Nebraska, and is presently attending Lubbock Christian College, majoring in Elementary Education.

The prospective bridegroom is a 1972 Dumas High School graduate and will graduate from Texas Tech University this spring with an Electrical Engineering Degree.



Williams-Phillips Vows Read

Cheryl Williams, daughter of Mr. and Mrs. Rex Williams of Gruber and Chet Phillips, son of Mr. and Mrs. Charles Phillips, also of Gruber, were united in marriage Thursday, January 27, 1977.

Vows were exchanged before a small group of friends and relatives in the Firelight Room of the First Baptist Church in Gruber with the Reverend John Denton officiating.

The bride chose a golden corduroy suit for the service and the groom was attired in a black leisure suit. Present for the marriage rites were the bride's parents, Mr. and Mrs. Rex Williams, Laurie, Kyle, and Katie Jo; the groom's parents, Mr. and Mrs. Charles Phillips; and Mr. and Mrs. Harley Murrell.

The young couple are now residing in Spearman.



Engagement Announced

Mrs. Nelda McDade and Walter T. McDade would like to announce the engagement and approaching marriage of their daughter, Robbie Lee, to Mr. Rex L. Cook, son of Mr. and Mrs. Ben Cook. Wedding vows will be exchanged at 3:00 p.m., April 20 at the First Christian Church, Spearman, Texas.

OES Friendship Night Held

Spearman Chapter #721 O.E.S. held its annual friendship night affair Saturday, February 19th at the Hansford Lodge Hall.

Dinner was served at 6:30 P.M. in the dining hall, beautifully decorated in a patriotic motif. The table was graced with red, white and blue hats and flower arrangements.

Judith Black, Worthy Matron, hosted the after-dinner program by first recognizing the approximately 7 different O.E.S. Chapters represented.

The entertainment was provided by the Spearman Music Club under the direction of Mary Brock. Special music was presented by Rosemary Burkhart, as soloist; Bonita Reimer and Anne Sanders, a piano duet; Deborah Brown, a soloist; and a piano selection by Anne Sanders. Several lovely songs were presented by the group which consisted of Kathleen Sutton, Colleen Schaffer, Wilma Clark, Janie Kunselman, Carol Pack, Phyllis Shedeck, DeAnn Dunnihoo, Fran Glass, Betty Freeman, Sherry Burnett, Donna Dupree, and Audrey Leighnor.

Cake and coffee were served following the program. Approximately 90 were in attendance.

Bridge Clubs

The Ladies Duplicate Bridge Club met Monday, February 21 with Mrs. Rosalie Butt serving as hostess.

Mrs. Betty Porter and Mrs. Charlotte Pearson won high.

Those present were guests, Mrs. Tom Sutton and Mrs. Grady McCormack and members, Mesdames: Dennis Nelson, Bill Strawn, Albert Baker, Kent Guthrie, Herb Butt, Dan Pearson, Chalmers Porter, Helen Etter, Bob Meek, Richard Holton.

Mrs. Dick Countiss will be

hostess at the March 21st meeting. Mrs. Faye Lynch was hostess for the Bid-A-Bit Bridge Club Thursday evening in her home. Enjoying dinner and bridge were guests, Mmes. Preston Scott and Bill Gandy and members, Mmes.: John Berry, Leonard Jameson, W. L. Russell, Gwenfred Lackey, Gertrude Archer and the hostess. Mrs. Leonard Jameson had high score and Mrs. Gwenfred Lackey had second high.

Dahlia Club To Open Meetings

The Dahlia Flower Club will open the year with a meeting, Monday, March 7 at 3 p.m. at Martin's Steak Garden with Mrs. Earl Riley hostess.

New officers include Mrs. Riley, president; Mrs. Ned Turner, vice president; Mrs. Gary Evans, secretary; Mrs. Ceril Batton, treasurer; Mrs. Hazel Loftin, parliamentarian. The yearbook committee is Mrs. Virgil Floyd, chairman and Mmes. Deta Blodgett, Ned Turner and Frankie Walker.

Book Review Club Meets

The Book Review Club met Tuesday, February 22 with hostess, Mrs. Tom Etter.

The guest reviewer was Mrs. Bert Sheppard on "The Control of Candy Jones" by John Bain.

Those present were members, Mesdames: O. C. Holt, Clay Gibner, John Berry, Fred Hoskins, Joe Traylor, Frank Hefner, and Tom Etter.

The next meeting will be with Mrs. John Berry serving dinner with Mrs. R. E. Lee reviewing their next book on March 22.

9 Students Receive Scholarships

The following students from Spearman High School have received a Regents Scholarship for \$300.00 from Panhandle State University. The scholarship is based on academic and/or leadership abilities.

The seniors are Raymond Porter, Pamela Archer, Rebecca Brown, Carolyn Byers, Carrie Cope, Lonita Greene, Vickie Owens, Karen Tope, and Gwenna Wilson.

Christian Men's Fellowship Set

The Christian Men's Fellowship of the First Christian Church will meet Thursday evening, March 3rd, at 7:00 p.m. for supper. Following supper the film "A Man & His Men" will be shown. This film is about Tom Landry and his men, the Dallas Cowboys. It exhibits a Christian coach and his impact on those he works with. How faith is shared. You are welcome to this fellowship anytime.

Square Dance Club To Host Dance

The Spearman Spinners Square Dance Club will host a Dance the 17th of March at the County Barn at 8:00 P.M.

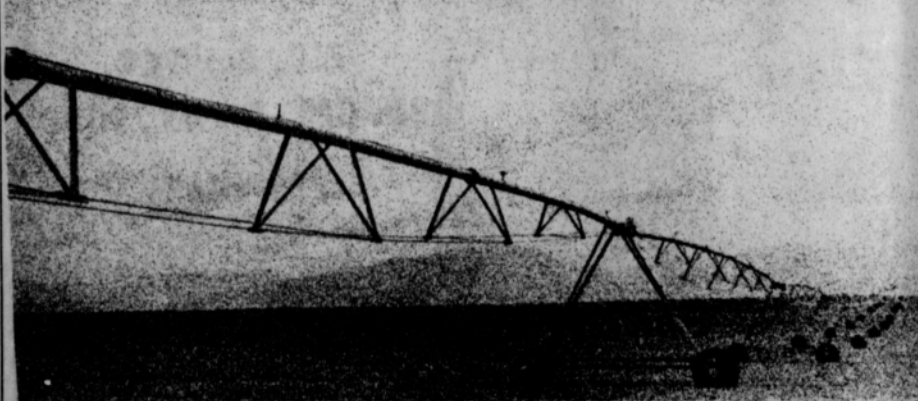
Mr. Paul Lopez will be the caller at this gala event.

All square dancers are invited and the public is invited to come and watch. Come one, come all!

CROSSWALK PATROL SCHEDULE

- MONDAY Afternoon-Betty Morrison
- TUESDAY Afternoon-Marilyn Groves
- WEDNESDAY Afternoon-Ony Moyer
- THURSDAY Afternoon-Frances Garrison
- FRIDAY Vicky Bullard

IRRIGATE YOUR WIDE OPEN SPACES WITH OUR 360 THRIFTY-RAIN PIVOTAL SPRINKLER SYSTEM.



If you have relatively level land, and you've been putting off buying an electric-drive pivotal system because of price, we've got just what you've been waiting for. The new Gifford-Hill 360 Thrifty-Rain™

Finally, there's an electric-drive system that's within the budget reach of farmers who would ordinarily buy either hydraulic or water-drive systems. The 360 Thrifty-Rain™ is a "long span" version of our classic 360. The basic difference being the distance between towers (164 ft. on the Thrifty-Rain™ 124 ft. on the standard 360).

The 360 Thrifty-Rain™ 164 ft.

The standard 360 124 ft.

By using longer spans, we reduced the number of towers necessary to cover the same

acreage. That means less cost to manufacture. And less cost to you!

The 360 Thrifty-Rain™ is also equipped with heavy duty drive systems. Both the original 360 and the 360 Thrifty-Rain™ feature a unique computer-designed sprinkler head spacing and nozzling concept that provides uniform water distribution and reduced pumping costs. Both systems use heavy-walled 6" O.D. pipe for extra strength.

Consequently, the 360 Thrifty-Rain™ is structurally stronger than other "long span" systems on the market today. It operates efficiently even under high wind conditions, and can handle up to 10% grades.

Standard 360 spans are interchangeable with 360 Thrifty-Rain™ spans. That means you can use standard spans to allow flexibility of tower location and accommodate special terrain problems.

So if you've got wide open spaces to irrigate, and you don't want to pay for capabilities you don't need, get a Gifford-Hill 360 Thrifty-Rain™. And save yourself some money to boot.

Western Ag. Sales Co., Inc.

CONTACT WILTON GREEN, SALESMAN-MANGER (806) 659-2596 SPEARMAN, TEXAS



Calendar Of Events

MARCH						
S	M	T	W	T	F	S
	1	2	3	4	5	
6	7	8	9	10	11	12
13	14	15	16	17	18	19
20	21	22	23	24	25	26
27	28	29	30	31		

MONDAY, FEBRUARY 28, 1977

- Junior Troop #76 - Girl Scout House
- Duplicate Bridge Club - Home of Mr. and Mrs. Albert Baker
- Rotary Club - Martin's Steak Garden
- Blue Monday Bridge Club - Home of Mrs. Ruth Hill
- Hansford Lodge #1040 A.F.&A.M. - Hansford Lodge Hall
- K.I.D.S. Wrestling (Jim Ivey - 7 p.m.) - Community Building
- K.I.D.S. Boxing (John Sutterfield, D. A. Cator - 7 p.m.) - Community Building

TUESDAY, MARCH 1, 1977

- Brownie Troop #42 - Girl Scout House
- Spearman Volunteer Fire-Ettes
- Lion's Club - Martin's Steak Garden
- Tuesday Bridge Club - Home of Mrs. Tom Sutton
- Baker & Taylor Women's Association - Home Demonstration Club Room
- Spearman Ministerial Fellowship Meeting - Union Church
- Old Hansford Home Demonstration Club - Home of Mrs. Irwin Delk
- Holt Home Demonstration Club - Home of Mrs. Major Lackey
- Town & Country Home Demonstration Club - Home Demonstration Club Room
- Night Owls Home Demonstration Club
- Home Demonstration Council - Home Demonstration Club Room
- K.I.D.S. Wrestling (Jim Ivey - 7 p.m.) - Community Building
- K.I.D.S. Boxing (John Sutterfield, D. A. Cator - 7 p.m.) - Community Building
- K.I.D.S. Girls Basketball (Kind.-2nd Grade - 3:30-4:30, Carol Stumpf, Judy Everson) - Community Building
- K.I.D.S. Girls Basketball (3rd-6th Grade, 4:30-5:30, Carol Stumpf, Judy Everson) - Community Building

WEDNESDAY, MARCH 3, 1977

- Brownie Troop #101 - Girl Scout House
- Mary Martha Circle of the U.M.W. - Methodist Church
- Baptist Women Study Group - First Baptist Church
- C. W. F. - Christian Church
- Baptist Young Women - First Baptist Church
- Susannah Wesley Circle of the U.M.W. - Methodist Church
- K.I.D.S. Wrestling (Jim Ivey - 7 p.m.) - Community Building
- K.I.D.S. Boxing (John Sutterfield, D. A. Cator - 7 p.m.) - Community Building

THURSDAY, MARCH 3, 1977

- Junior Troop #65 - Girl Scout House
- Hi-Lo Bridge Club - Home of Mrs. Faye Lynch
- Thursday Dessert Bridge Club - Home of Mrs. Claudine Clark
- Happy Homes Demonstration Club - Home of Mrs. Nan Nicholson
- Spearman Spinners Square Dance Club - County Barn
- K.I.D.S. Girls Basketball (Kind.-2nd Grade - 3:30-4:30, Carol Stumpf, Judy Everson) - Community Building
- K.I.D.S. Girls Basketball (3rd-6th Grade - 4:30-5:30, Carol Stumpf, Judy Everson) - Community Building

FRIDAY, MARCH 1, 1977

- Junior Troop #120 - Girl Scout House
- Arts and Crafts Guild
- K.I.D.S. Wrestling (Jim Ivey - 7 p.m.) - Community Building

