

A Search For The Past

The Hansford County Historical Society is making plans to reconstruct the Zulu Stockade in detail on the north side of the Stationmaster's House Museum here as a tourist attraction.

The Zulu Stockade was the first trading post located north of the Canadian River in the Texas Panhandle, and was built in 1875 by Jim and Bob Cator. Historians say the name "Zulu" was attached to the stockade because the Cator brothers, who came to Texas from England, associated the Indian threat on the High Plains with the threat of Zulu warriors to British Empire outposts in Africa.

Zulu was a trading post at first for the country north of the Canadian River and became a post office in 1876 after a military road connecting Fort Dodge and Fort Bascom was opened up.

The building itself was a two room house made out of pickets in such a fashion that tree limbs could be stacked across them. Anthropologists from Panhandle-Plains Historical Museum are at work at the site which is located on land now owned by Hansford County Deputy Sheriff Billy Jeff Hawkins. They are combing deep with test pits and trenches in efforts to locate Zulu and have found round nails and square

nails, but are not finding any pickets yet. Two other houses were erected on the property at one time and then were removed making the search more difficult. The trading post itself vanished after 1912.

Curator Bill Harrison said they expect to be at the site for seven more weeks.

Harrison spent six years excavating Adobe Walls site in northern Hutchinson county and doing the final reports on its discovery.

All artifacts uncovered at Zulu will be displayed later at the museum as well as the replica of the first trading post in Hansford County.



The late Lee McClellan identified this old picture which had been in the editor's family for many years. He said it was built by F.H. & Bob Cator in 1875 on the Hart Ranch. The "Zulu" trading post and stage coach stop later became the Post office. When this picture was made and who the people are is not known.

Lynx & Lynxettes Win

The Spearman Lynx and Lynxettes were hosts, and very good hosts at that, to the Sunray Bobcats. The Bobcats came in to beat the Lynx and Lynxettes, but the Lynx and Lynxettes had another thing for the Bobcats.

The Lynxettes and Lynx both won, and won big over the Bobcats. The JV Lynx and Lynxettes did not play against Sunray.

The Lynx and Lynxettes will travel to Phillips to meet up with the Blackhaws and Blackhawettes this Monday, November 23.

WEATHER

DATE	HI	LO	PREC.
Nov. 10	63	28	
Nov. 11	63	31	
Nov. 12	66	37	
Nov. 13	67	35	
Nov. 14	63	38	
Nov. 15	67	42	
Nov. 16	72	40	
Nov. 17	74	38	
Nov. 18	71	41	
Nov. 19	66	37	.02

MARKETS

MARKETS	
Corn	\$2.77
Wheat	3.87
Milo	4.10

There will be more details in Thursday's Spearman Reporter.



HANSFORD PLAINSMAN

MEMBER 1981
TEXAS PRESS ASSOCIATION

VOL. 12 NO. 5

THE HANSFORD PLAINSMAN, SPEARMAN, TEXAS 79081

SUNDAY, NOVEMBER 22, 1981

School tax payments behind last year

Payment of school district taxes -- the money that runs the school system -- is running some 35 percent behind last year at this time and the situation may force the district to borrow operating funds from the bank at current high interest rates.

That was the word, Friday, from School Supt. James Cunningham.

Cunningham noted that at the end of October, 1980, 63 percent of taxes due the district had been paid. Currently, only 28 percent of taxed due have been paid.

"The private citizens of the district have paid their taxes, hence the 28 percent collections," Cunningham said. "Falling behind this year is industry operating within the school district, specifically the 'oil patch.'"

Cunningham emphasized that he did not think this was an overall bad economic sign nor neglect on the part of industry.

"At the current exorbitant interest rates, the three percent discount for early payment is

virtually no incentive to do so," Cunningham observed.

Across the state, the early payment discount was adopted to encourage private citizens -- who have no specific fiscal year governing their finances -- to pay coincidental with the start of the school year in the Fall giving the school system some of its operating budget at the beginning of the term.

The eccentric dates of a school term have posed no problem heretofore because, by and large, business and industry operating in the school district has a fiscal year concurrent with the calendar year. In times past, these companies have paid early to reap the three percent early payment discount.

It would seem that, if this non-early payment of school taxes becomes a regular occurrence, the amount of interest paid on monies borrowed would have to become a budgetary item.

Across the state, in the past most school systems forced to borrow short term operating

funds at the start of a school year, could absorb the interest with contingency funds or other surpluses because interest rates were more rational.

Today, it is a dirrrent story. Some school systems have had to make possible interest on operating fund loans a budgetary item. Thus far, it has not been a critical item in the operation of the Spearman Independent School District.

On the subject of taxes, at the last regular school board meeting, votes were cast to elect the five directors nominated earlier to the Hansford County Appraisal District board.

Final tallies were Lynn Hart and Joel Lee Lackey, 346 votes each; Thane McCloy, Jimmy Shieldknight and Everett Tracy, 347 votes each.

Each taxing entity in the county is allotted so many votes in the action and administration of the Appraisal District.

This was the only action item beyond the routine measures for the day-to-day administration and operation of the school system.

In Gruver....

Kidnap Suspects Caught

Two of four men who reportedly abducted a 21-year old girl at Hereford early Friday morning, were taken into custody at a residence at Gruver and the kidnap victim freed unharmed.

Making the arrests were Hansford County Sheriff R.L. McFarlin, Deputy Gary Evans and Gruver Police Chief Jim Ratliff assisted by Spearman Police Chief Ron Robinson and

Officer Jim Stephens providing "backup."

According to Hereford authorities, the young woman was on her way to work at a Hereford bank shortly before 9 a.m. Friday, when two men jumped out of a car, grabbed her and forced her into the vehicle then sped away.

Evidently the quartet split up. Two of the kidnap suspects were arrested at Hereford. All points bulletins were issued and

one just before noon, Friday, described a different vehicle with license number provided and the information that the suspects were believed headed for Gruver.

Officers quickly located the vehicle at a Gruver home. They accosted another group of people arriving at the house in another car and instructed them to tell those inside to give themselves up.

Taken into custody and lodged in Hansford County jail awaiting arraignment were Charles Kirkpatrick and Julian Zamora, both listed as Hereford residents. Following arraignment the alleged kidnapers will be picked up by Hereford authorities.

"We had to bide our time and

be careful," Sheriff McFarlin said. "When you do not know the character nor the mood of the suspects, the safety of their hostage must be prime consideration. We consider ourselves fortunate that they surrendered without resistance."

At press time there had been no word from Hereford authorities as to possible motives nor why the four split up. Nor were there any details immediately as to events of the arrest of the pair there.

Law decrees that suspects must be arraigned in the area of apprehension before they can be returned to the point where warrants were issued.

Judge J. P. Vernon fixed bond at \$20,000 each for Zamora and Kilpatrick.

Rube Faus Services Held

Services were held Friday, Nov. 20 at the Union Church here for Rube Faus, 77, who died Tuesday in Hansford Hospital.

The Rev. Steve Rogers, pastor, officiated at the 2 P.M. service. Burial was in Ochiltree Cemetery by Boxwell Brothers Funeral Directors.

Mr. Faus was born in Range, Okla. He moved to Spearman in 1910 and was the owner and operator of Rube's Boot Shop since 1932.

Survivors include five daughters, Rosa Steele of Vernonia, Ore.; Juanita Pierce of Spearman, Phyllis Mann and Bertha Elene Willison, both of Gage, Okla. and Ruby Saltman of Amarillo; a son, Harry Faus of Fountain Valley, Calif.; a sister, Ella Bushman of Alex, Ark.; 26 grandchildren and 17 great-grandchildren.

Pallbearers were grandsons of the deceased, Mike Pierce, Richard Pierce, Tylon Pierce, and Lynn Pierce, David Oakley, John Willison, Jody Willison, Kem Mann, Tracy Mann and Ruben Mann.

Host Stratford

The Lynxettes will host the Stratford Elkettes following the JV boys game. The Lynx will follow the varsity girls game and host the Stratford Elks. These will be good games, and the Lynx and Lynxette teams appreciate the support.

Police activity

Driverless car causes wreck

Spearman Police Chief Ron Robinson detailed three accidents that occurred during his reporting period ending Thursday at midnight.

No injuries were reported in any of the mishaps.

At 7:35 a.m., Monday, in the 300 block of Hancock a vehicle left running while the driver went into the post office, managed to become engaged in gear and moved driverless in a counter-clockwise circle to strike the left rear quarter section of another car parked nearby.

Chief Robinson noted that this was not the first such incident in the city and emphasized that there is a state law against leaving the motor running in an unattended vehicle.

An insurance adjuster explained that it is also very difficult to get an insurance company to pay in such cases since the action is illegal and could open the absent owner to considerable personal cost depending on the damage his or her unattended vehicle inflicted.

The second mishap occurred at 4:24 p.m., Wednesday, at the intersection of Kenneth and Barkley streets. There, a vehicle driven by Roy Seitz was in

collision with one driven by Danny Goodson. Damage was nil and there were no injuries.

The third accident was a hit-and-run affair. Sometime between 7 p.m., Wednesday and 1:30 a.m., Thursday, in the 100 blk. of W. Ninth, a parked vehicle owned by Billy Snider was struck. Driver of the offending vehicle is being sought for failure to stop and leave information at the scene.

In other police activity, a Spearman resident was arrested Friday night for public drunkenness and traffic offenses. He was hailed into municipal court and fined.

Some time between 7 p.m., Saturday and 9 a.m., Monday, Earl's TV and Appliance suffered several BB holes in a front window.

Theft of a bicycle was reported during this police activity period. The bike was recovered soon after it was reported missing.

Owner of some pigs running at large at Crazy Corners this past week was found and the porkers rounded up and penned once again.

With the promise of cold weather, Chief Robinson emphasized again the matter of leaving unattended vehicles running.



Future masked rider, Blake Todd Beedy, son of Mr. and Mrs. Jeff Beedy of Spearman, gets first hand briefing from the current Texas Tech masked rider, Kurt Harris of Stratford, Texas. Todd Brock of Spearman, member of the Texas

Tech Saddle Tramp organization arranged for Blake to meet the masked rider and mascot Raider Red during half time ceremonies recently at the Texas Tech-Washington football game.



Spearman students at W.T.S.U. who performed last Saturday night in the production "Fiddler on the roof" are Kelly Davis, Mrs. Davis, Paul Welch and Gerri Maize.

Lynxettes Defeated by Phillips

The Spearman Lynxettes, coached by Ralph Newton, began their 1981-82 season against the tough Phillips Blackhawkettes. The Lynxettes have a lot of new talent, and the new talent was used in Tuesday nights', November 17, game. The game was played at Lynx Varsity Gym.

The Phillips Blackhawkettes put 15 points on the board for the first quarter. The Lynxettes, on the other hand, put 10 points on the board. Since this was the first game, each coach could see what to work on during work outs. The Lynxettes came right back and outscored the Blackhawkettes, 17-15, in the second quarter, but at halftime the Blackhawkettes had a 30 to 27 lead.

The 2nd half of action was the hottest second half a team could have had. The Blackhawkettes scored 31 points and made sure that the Lynxettes score only 11 points. After 3 quarters of play, the Phillips Blackhawkettes had a commanding 61-36 lead. The final quarter was very close in point-wise. The Lynxettes were outscored once again 18 points to 16. The Lynxettes lost their first game to the Phillips

Blackhawkettes by the score of 79 to 52.

The Lynxettes had only one person in double figures, Mary Ann Martin, she is a Senior and had 17 points for the night. She scored 8 field goals-in basketball a field goal is worth 2 points--and was 1 of 2 from the free throw line. Janet Reed and Lea Ann Gibner both had 8 points. Janet and Lea Ann had 3 field goals and were both 2 of 3 from the Charity stripe. Susan Davis had 6 points on the night--2 field goals and was perfect from the Free Throw line--2 of 2. Jan Davis had 5 points for the night. Jan had 1 field goal and was 3 of 7 from the Free Throw line. Cindy Young, who fouled out before the game was over, had 4 points on the night--scored 1 field goal and made 2 of 2 from the Charity Stripe. Jean Davis scored 2 points for the Lady Lynx--both of which came from the Charity Stripe. Johnnie Eaton, another Senior, scored 2 points--this came on a field goal. Lana Paul missed 2 free throws. All in all, the Lynxettes will be ready for the Phillips Blackhawkettes this Monday, November 23. This will be a

good game, because by Monday both teams will have improved more.

What the Lynxettes will try to do will be to stop Lora Williams, Judy Spikes, Corrina Woods and Sara Bush, because they were all in double figures--Lora had 29 points, Judy had 14 points, Corrina had 13 points, and Sara had 11 points.

Go on over to Phillips and "Catch the Lynxette Spirit"!!!



THANKSGIVING MEAL IN 1777 FOR SOLDIERS IN GENERAL WASHINGTON'S ARMY WAS ONE-FOURTH PINT OF RICE AND A TABLESPON OF VINEGAR!



Don't store leftover vegetables more than a day or two. After cooking, they lose their Vitamin C rapidly... as much as one-third in only two days.

Lynx Bow to Phillips

The Spearman Lynx played the Phillips Blackhawks in a game that was dominated by the Blackhawks. This was the first game for the Spearman Lynx. The game was played at the Lynx Varsity Gym. F.G. Crofford is the Coach for the Spearman Lynx.

The final score of this game was Phillips 59 and the Lynx 37. Jay Pack was the only Lynx in double figures, Jay had 12 points--he had 6 field goals and was 0 of 1 from the Charity Stripe. Stephen Tindell scored 5 points for the Lynx--3 of the 5 points were from the Free Throw line. Kyle Brack scored 5 points on the night--he had 2 field goals and just had a cold, cold night from the Free Throw line--he was 1 of 7. Monte George scored 2 field goals--the total being 4 points. Scott Dunlap scored 4 points for the

Lynx, also. Scott had 1 field goal and was 2 of 2 from the Free Throw line. Darren Goodheart scored 3 points--1 field goal and was 1 of 1 from the Charity Stripe. Pool was 2 of 4 from the Free Throw line--scoring 2 points for the Lynx. Scott Alfrod 1 field goal for a total of 2 points and Cam Collinsworth missed a field goal opportunity.

Meanwhile, the Phillips Blackhawks had 3 guys in double figures--Danny Watson had 20 points on the night, Kyle Lynch had 12 points, and Joe Estes had 11 points. The Lynx will have to stop Danny, Kyle and Joe in order to beat the Blackhawks.

The next game for the Lynx will be Monday, November 23, at Phillips. The Jr. Varsity Lynx and Lynxettes will also be in action. Go on over and support the Lynx.

JV Lynx & Lynxettes Beat Phillips

The Jr. Varsity Lynx and Lynxettes opened their season with a win over the Jr. Varsity Blackhawks and Blackhawkettes.

Coach Terry Crocker is the coach for the Jr. Varsity Lynxettes. At press time, I didn't have the scorers for the JV Lynxettes but I did get the score--the Lynxettes won 40 to 35. The JV Lynxettes will be in action this Monday, November 23, against the same, but more improved Phillips JV Blackhawkettes at Phillips. The game will begin at 4:00 p.m. Then on Tuesday, November 24, the JV Lynxettes will face the tough

Stratford JV Elkettes beginning at 4:00 p.m. at the Lynx Varsity Gym.

The JV Lynx' coach is Gary Rambo. Coach Rambo's Lynx won 37-19, although at press time there were no news of the leading scorer. The JV Lynx will be in action against the JV Phillips Blackhawks at Phillips this Monday, November 23, following the JV Lynxettes game. The following day, Tuesday--November 24, the JV Lynx will face the JV Stratford Elks--following the JV girls game. Go on out and support the JV teams--they are the future Varsity Lynx and Lady Lynx.

7th, 8th & 9th Lynx to Host Canadian

The 7th, 8th and 9th Lynx will host the 7th, 8th and 9th Canadian Wildcats at the Little Gym.

The 7th grade game will begin at 4:30 p.m. The coach for the 7th grade Lynx is Dan Shaver. The 8th grade game will follow the 7th grade game.

Coach Tom May will be coaching the 8th grade Lynx. The final game of the night will have the 9th grade Lynx going up against the 9th grade Canadian Wildcats. The 9th grade coach is Coach Ricky Smith. Go on out and support the 7th, 8th and 9th Lynx.

7th, 8th, & 9th Lynxettes to Travel to Canadian

The 7th, 8th and 9th Lady Lynx will travel to Canadian November 23. This will be the first game of the season for the 7th, 8th and 9th Lynxettes.

Coach Terry Crocker will be coaching the 7th and 8th Lynxettes. The 7th Lynxettes will begin play at 4:30 p.m., and

the 8th grade will follow. The Freshman Lynxettes are coached by Robin Travis. The Freshman Lynxettes will play the final game of the night. If at all possible, try and go to Canadian and support the 7th, 8th and Freshman Lynxettes to VICTORY!!



MODERN ARMY HAS MORE THAN 20,000 FOOD SERVICE PERSONNEL WITH ARMY-TAUGHT SKILLS SUCH AS COOKING, BREAD BAKING, MANAGEMENT, FOOD SERVICE SUPERVISION AND HOSPITAL FOOD SUPERVISION!

THERE'S A NEW COOK IN THE KITCHEN

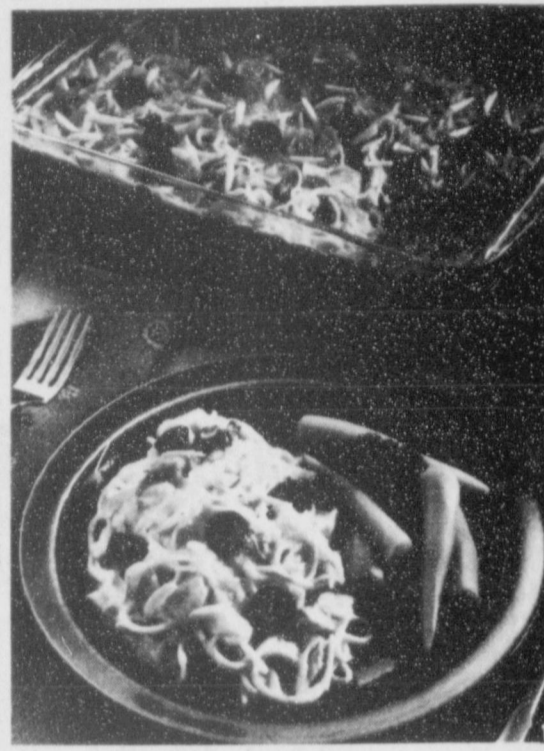
There's a new cook in the kitchen... a cook who's preparing food for fewer people (often only himself or herself), has less time to spend over the stove and who can select from a multitude of food options other than "home-cooked" to get dinner on the table. This new cook is a reflection of the changing structure of the American household.

Since the beginning of the century, the average household size has declined from 4.76 to 2.81 and is expected to drop to 2.6 by 1985. While the female member of the family is still likely to do most of the cooking, she now has less time to spend in the kitchen. Today, 60% of women, ages 20 to 64, work outside the home. And 53% of these women also have children.

Today's consumer has the option of selecting from an increasing variety of convenience foods. In 1900, all bread was homemade. Frozen food made an entrance in 1929. And, the first cake mix was introduced only 30 years ago.

These changes mean families do less home cooking and, therefore, purchase staples, such as flour, in smaller packages. In 1930, the 25-pound sack of flour was the best selling size. Today, it's the 5-pound sack. Many consumers prefer even smaller sizes, such as the 2-pound sack and 13.5-ounce shaker of Gold Medal Wondra® flour.

While home cooking hasn't ceased, recipes must be quick and easy. Here's one that makes good use of leftover turkey or chicken. A real time-saver comes from using Wondra flour, which lets you mix the creamy sauce in seconds because it dissolves instantly and lump-free in cold water.



TURKEY TETRAZZINI

- 1 package (7 ounces) thin spaghetti
- 2 cups turkey or chicken broth (cool)*
- 2 cups half-and-half or milk
- 1/2 cup Gold Medal Wondra® flour
- 1/4 cup margarine or butter
- 1 1/4 teaspoons salt
- 1/4 teaspoon pepper
- 2 cups cut-up cooked turkey or chicken
- 1 cup sliced pitted ripe olives
- 1/2 cup slivered almonds
- 1 cup shredded Cheddar cheese (about 4 ounces)

Cook spaghetti as directed on package; rinse under running cold water and drain. Heat oven to 350°. Mix broth, half-and-half, flour, margarine, salt and pepper in 3-quart saucepan. Heat to boiling over medium heat, stirring constantly. Boil and stir 1 minute. Stir in spaghetti, turkey, olives and almonds. Spread in ungreased rectangular baking dish, 12x7 1/2x2 inches. Sprinkle with cheese. Bake uncovered until hot and bubbly, 25 to 30 minutes. 6 servings.

*Chicken broth can be made by dissolving 2 chicken bouillon cubes in 2 cups boiling water. Or use canned broth or broth from cooked chicken breast meat.

FALL BREAKAWAY

HANDLE WITH CARRIER

FROM HIGH HEATING COSTS! CHOOSE A CARRIER DELUXE GAS FURNACE!

Replace that old, worn-out energy-waster with today's gas furnace technology. Electronic ignition means no gas-wasting continuous pilot flame. Standard high-efficiency fan motor saves electricity. Add our automatic vent damper accessory for even bigger gas savings!

FREE BONUS!

Buy a Carrier furnace before Dec. 31, 1981 and receive a deluxe Carrier humidifier FREE. Quiet, efficient, ends winter dryness problems. More than \$200 suggested retail. Easy on electricity and generous with moisture.

Call today! Find out how much you can save on a Carrier gas furnace. No obligation!

Offer available from participating dealers only, expires Dec. 31, 1981. Restricted to single-family homeowners. Void where prohibited.

WALLER PLUMBING, HEATING & AIR CONDITIONING
 701 E. Brillhart • Perryton, TX
 435-5226

Satellite

11th Annual

ART & CRAFT FESTIVAL

SPONSORED BY PERRYTON LION'S CLUB.

KELLEY ACTIVITIES CENTER

410 S. ETON - PERRYTON

Saturday, Nov. 21..... 9 a.m. to 9 p.m.

Sunday, Nov. 22..... 9 a.m. to 5 p.m.

OVER 100 EXHIBITORS THIS YEAR

10% of all sales go to the Satellite MR Center

NIGHT WATCHMAN ON DUTY

EVERYONE WELCOME

• For information, Contact Wanda Estes, 435-4970 •

DPS Asks For Caution For Holiday

LUBBOCK- Major C. W. Bell, DPS Regional Commander, is asking drivers to be cautious during the Thanksgiving holidays.

"Thanksgiving is a time for us to rest and be grateful for many things. Each individual has his own feelings about Thanksgiving, but those drivers who practice good driving habits can be truly thankful that they were not involved in a traffic accident during the year," he said.

Major Bell pointed out that Texas is well on its way to a record number of traffic fatalities this year. "Last year 4,424 people were killed and 1981 is going to be another record year unless motorists take special precautions to protect themselves and others," he said.

"Many of these deaths could have been avoided if people would stay sober, drive at reasonable speeds and use their seat belts," said Bell. "Putting on a seat belt only takes a few seconds, but that simple act can add years to one's life," he emphasized.

DPS statistics show that last year, about 1200 lives would have been saved if all drivers and their passengers would have clicked their seat belts on. "It's better to be safe than sorry," Bell concluded.

During last year's Thanksgiving holiday period, 63 persons were killed in traffic accidents in Texas. The DPS regional commander said that the Operation Motorcade traffic death count is not conducted during Thanksgiving, but that doesn't mean that drivers should be less cautious. Bell said DPS Troopers would be active during the holiday trying to cut down on needless traffic fatalities.

If you are tired of exporting our grain to foreign consumers below the cost of production, do your part. Cut out this petition, sign and mail to:

Thanksgiving Petition,
 Box 69, 100 Maryland Avenue NE, Washington, D.C. 20002

Thanksgiving Grain Petition

WE, THE UNDERSIGNED, PETITION the Congress and the Department of Agriculture to intervene in the export grain market to stop sales at prices that are below the farmers' cost of production. At such prices, export sales have grown to over one-third of U.S. production. This **under-priced grain** goes to such wealthy trade competitors as Japan and OPEC countries, and event the Soviet Union.

IT IS FITTING THAT THIS IS A THANKSGIVING PETITION. Let's be more responsible and respectful of God's gifts. Present policies are **destroying** both family farm agriculture and our irreplaceable topsoil. We are not mindless of the world's hunger. U.S. grain sold to poor countries at low prices discourages their agriculture.

A PROPOSAL by Congressman Weaver, of Oregon, would have authorized setting a floor price on grain exports. It was defeated in the House of Representatives on October 20, after opposition from the Department of Agriculture and multi-national grain traders. We **urgently** petition the administration and the Congress to reconsider the **facts** of our agricultural and export policies that make the Weaver proposal so important.

NAME PRINTED _____

SIGNATURE _____

COMPLETE ADDRESS _____

CUT OUT AND MAIL BY DECEMBER 1 TO:

THANKSGIVING PETITION, BOX 69, 100 MARYLAND AVE. NE,
 WASHINGTON, D.C. 20002

Pd. for by MORRIS BROTHERS SEED CO.,
 Gruver, Tx. Rt. 3, Box 31, Gruver, Texas 79040

EARL'S TV

MICHROAVE cooking school will be held at EARL'S TV - Dec. 9th, 2 p. m. to 5 p. m. Public invited to attend.

WANTED ADS

CAPROCK MONUMENT CO.
Dealers of Georgia Granite, Georgia Marble, Colorado Granite, & Bronze.

represented by

BOXWELL BROS. FUNERAL HOME

519 S. EVANS
659-3802

Hansford County Planned Parenthood
26 S. Haney
659-2483
Spearman
Mon.-Fri.
8:30-12:30

NOTICE
Wallace Monument Co. Monuments, Curbing, Grave Covers
Local Representative
LEONARD JAMESON
Spearman, Texas
20-rtn

STEAM RINSE & VAC
Steam Rinse-and-Vac Shampooers; \$10.95 for up to 24 hrs. available at Gordon's Drug; also at Freddie Largent's 716 Cotter Dr. after 4 p.m. and Saturdays and Sundays.

Monuments
Save Agents and Undertakers Profits
If it is inconvenient for you to visit our large display, please phone collect (405) 327-0626 or write and we will call on you.
Alva Monument Works, Inc.
Alva, OK 73717

Town & Country all Steel Bldg. 7'x8'x14'
Colored Walls; Galv. Roof 2-20'x14' Framed Openings 1-30'x6'8" Steel Walk Door \$13,680.00
1-806-435-3107
35-rtn

REAL ESTATE FOR SALE

FOR SALE: 3 lots on corner of Ave. C and Endicott. 659-3321 or 3667. Serious inquiries only. 25-rtn

FOR SALE: Faith Lutheran Parsonage, 205 Lonita Drive. Call: Cecil Biggers - 659-3505; Steve Krug - 659-3901; or Charles Elliott - 659-3854. 495-rtn

FOR SALE: 2 bedroom house, storm cellar, Good Buy. 14' N. Hazelwood. 659-2660 or 659-2493. 43s-rtn

FOR SALE: 1965 12' x 67' Trailer House on 80' x 200' lot in Crawford Addition. Call 659-2288 or 733-2293. 15-rtn

HOME FOR SALE. CUSTOM BUILT. 723 So Townsend, 9% assumable mortgage. SHOWN BY APPT. ONLY. PHONE GARY SIMS. 659-3966. 2-2tp

WANTED

OFFICE CLERK
Perryton, Texas
Job requires typing, filing, cash transactions, customer contact, reports and records. Call (806) 435-4077 for interview appointment. Texas-New Mexico Power Co. An Equal Opportunity Employer. 2-2tc

TEXAS REFINERY CORP. offers PLENTY OF MONEY plus cash bonuses, fringe benefits to mature individual in Spearman area. Regardless of experience, write A.N. Sears, Pres., Texas Refinery Corp., Box 711, Fort Worth, Texas 76101. 2-2tc

Dependable teenager will babysit evenings and weekends. 9-2889 ask for Angella. 1S-4tp

Would like to rent a 2 bedroom furnished apartment or mobile home. Call after 6 P.M. 659-3900. 2-4tp

Need Wheat Pasture for 1200 light cattle. Call Chuck Chapman 504-338-7307. 1S-4tc

TRUCKS NEEDED: I need to lease trucks for OIL FIELD Hauling. Shirley Ladd, LADD TRUCKING CO. Canadian, Tx. Phone 806-323-8142. 25-rtn

LOST & FOUND

LOST: Beige male pekinese dog, answers to Fluffy, strayed from 702 Steele Drive a week ago. Reward offered. Call 659-2709 or V1 at 659-3858. 25-1tc

LOST: Greyhound--Orange spots, goes by the name "Rex". Has a Rabie-shot Tag. If found, PLEASE call 659-2833. 1-rtn NC

NOTICE

Not responsible for anyone's debts except my own. Billy Dave Hand. 51-8tc

CARD OF THANKS

I would like to express my sincere appreciation to the H&S Ambulance Service members who were so quick and efficient following the wreck I was involved in recently. We are indeed fortunate to have such highly trained and dedicated people in this community.
Fred VanBuskirk

I would like to express my deep appreciation for your prayers and support while I was in the hospital. Your concern will always be remembered. Also, a special thanks to Dr. Chris and the nurses.
Mabel Edwards

Thank you for the cards, letters, flowers and visits while I was in the hospital. Also, we appreciate the food that was brought to our house.
A special thanks to Dr. Kleeburger and the nurses at Hansford Hospital for their excellent care.
Martha Haden

FOR SALE

FOR SALE: 1973 Chevrolet pickup, automatic, long wide bed, good condition. Red cab height pickup topper. Large oak library table, recently refinished. Buddy Benton, 659-2620 after 4. 2s-2tc

FOR SALE: House to be moved. Built by Bob's Ready Built, Lubbock. 6 years old. 3 bedrooms, 2 bath, utility, free standing fireplace, central heat/air, lots of storage. \$35,000. Larry Holt 659-2640. 1-rtn

MUST SELL 1972 Chevrolet 1/2 ton customized van with many extras and 1967 Ford Galaxie. Call 733-2366. 25-4tp

FOR SALE: six dark pine captain's chairs, need refinishing. \$35 each. Ping pong table - \$45. Call 659-3398. 25-4tc

Reduce safe & fast with GoBese Capsules & E-Vap "water pills" Spearman Drug. 2s-3tp

MARY KAY COSMETICS
JAN DUNN
Independent Beauty Consultant
FOR FREE FACIAL
CALL: 806-659-5052

Peliculas Mexicanas

'El Gran Perro Muerto'

Los Lunes, porque nomas pagan \$2.00, pero todos los que van a ver una Pelicula Mexicana to-das salen en los Domingos--ti-enen que pagar el regular.

Los actores y actoras para esta Pelicula son Jorge Rivero, Isela Vega, Andres Garcia, Chuck Connors, Maria Jose Contudo, Enrique Novi, Miguel Angel Farriz, Ana De Sade, John Ireland y Michael Conrad.

La Pelicula Americana para la semana de 18 hasta el 24 de Noviembre se llama "Continental Divide". Esta Pelicula se va a tratar de una mujer que vive en las montañas y le encanta estar afuera. Un hombre, que es de un pueblo grande, va lllir a campar, se va ser amigos con la mujer. Va ser buena--va ser triste, curiosa y hay en becos loquita.

Cuando ballan para el cine en los Domingos en la tarde o por la noche; el Miercoles por la noche; el Jueves por la noche; el Viernes por la noche o el Sabado por la noche, los "Gran"-Adul-tos--los que tienen 60 hasta los que tienen 100--pagan \$2.50; los Adultos--los que tienen 59 hasta los que tienen 13--pagan \$3.50 y los Jovenes--los que tienen 12 hasta los que tienen 6--pagan \$2.00. Pero, si van pa el cine el Lunes o Martes nor la noche todos--Los "Gran"-Adul-tos, Adultos y los Jovenes--pa-gan nomas \$2.00 cada quien. Mucha jente va a ver una Pelicula en los Martes o si no en



Great-Tasting Garnish For Turkey

Food decorations that just look pretty on the platter are "out." Serve something with your holiday turkey that doesn't get pushed aside like a piece of parsley. Raisin Stuffing in Orange Cups is as tasty as it is good-looking.

The taste is in the cornbread or chicken flavor stuffing mix that's in the hollowed-out orange halves. Because the mix has a vegetable/seasoning packet that is separate from the crumbs, it does not need to be cooked in the bird for flavor. That makes this side dish quick, as well as eye-appealing. Choose walnuts, pecans, almonds or peanuts for extra crunch.

RAISIN STUFFING IN ORANGE CUPS

3 medium oranges
1 package (6 oz.) Stove Top cornbread or chicken flavor stuffing mix
1 tablespoon sugar
1/4 cup raisins
1/4 cup chopped nuts

Cut oranges in half, using an apple corer for scalloped edge or small sharp knife for zigzag edge. Remove orange sections and reserve. Squeeze the juice from the membrane and add water to make 1-1/2 cups. Prepare stuffing mix as directed on package, using measured liquid, adding sugar with the vegetable/seasoning packet, and adding raisins, nuts and orange sections with stuffing crumbs. Spoon mixture into orange cups. Serve with roast turkey, if desired. Makes 6 servings.

SCHOOL LUNCH MENU

BREAKFAST MENU
Monday, Nov. 23
Grape Juice
Dry Cereal
Milk
Tuesday, Nov. 24
Mixed Fruit
Texas Toast & Jelly
Milk
Wednesday, Nov. 25
IN SERVICE DAY
STUDENT HOLIDAY
Thursday, Nov. 26
Friday, Nov. 27
THANKSGIVING HOLIDAY
LUNCH MENU
Monday, Nov. 23
Roast & Gravy
Buttered Rice
Green Beans
Combination Salad-Dressing
Peanut Butter Blend
Hot Rolls-Butter
Milk
Tuesday, Nov. 24
Pizza
Fried Taters-Catsup
Shredded Lettuce-Dressing
Fruit
Cookies
Milk
Wednesday, Nov. 25
IN SERVICE DAY
STUDENT HOLIDAY
Thursday, Nov. 26
Friday, Nov. 27

METRIC MEASURES

Helpful Information From The U.S. Metric Board

Q. What is government doing about metric conversion?

A. Most federal agencies have representatives on the Interagency Committee on Metric Policy and have established their own internal structures to consider metric conversion. The Department of Defense, for example, uses the metric system in some activities involving European Allies, as well as in procurement of some products from the private sector.

The U.S. Metric Board is a government agency which does planning, research and coordination in connection with voluntary usage of the metric system.

FOR SALE: 1978 Dodge Customized van. Call 659-2675. 2S-2TC

FOR SALE: 1965 Case Combine, runs and looks good. Call 659-2883. 2S-2tc

FOR SALE: 1978 Dodge Customized van. Call 659-2675. 2S-2TC

RECIPE
By Sarah Anne Sheridan

The holidays are fast approaching and it is time to start finding recipes. Here are two that you might like. Try them.

Turkey Dressing

2 c flour
2 c corn meal
2 t baking powder
1 t soda
1 t salt if broth isn't salty.
6 large onions, chopped
1 stalk celery, chopped
1/2 lb. oleo or butter
9 eggs
Black pepper or poultry seasoning to taste.

Combine all ingredients in large mixing bowl. Make soft batter by mixing with buttermilk. Pour into well greased baking dish. Bake at 400 degrees until done. Remove from oven. Stir to crumble. Pour broth or giblet gravy over the dressing. Return to hot oven and brown. This recipe can be divided, one-half makes enough for an average family meal.

Autumn Fruit Cake

2 sticks oleo
2 c sugar
5 eggs
1 lb. box Graham cracker crumbs
1 can coconut
1 can crushed pineapple (drained)
1 c chopped nuts
1 t baking powder

Cream butter and sugar. Add eggs, one at a time, beating well after each addition. Add other ingredients except nuts. Mix thoroughly, add nuts. Bake in a greased tube pan for one hour and ten minutes at 325 degrees.

EARL'S TV
MICKROWAVE cooking school will be held at EARL'S TV - Dec. 9th, 2 p. m. to 5 p. m.

WIFE Meeting at First State Bank Hospitality Room Monday, Nov. 23 at 7:30 p.m.

"Thou therefore endure hardness, as a good soldier of Jesus Christ."

Answer to Bible Verse

- To Timothy, a young preacher of the Gospel.
- By Paul, the Apostle.
- Jewish women, named Eunice and Lois, respectively.
- II Timothy 2:3.

Survive The Hunt

The hunting season is approaching its height, and millions of Americans look forward to it.

Whether it be deer, dove, duck, quail, or other

game, it's good to enjoy cooler weather, outdoors, and the hunt, which appeals to males.

Hunting accidents, however, occur because of carelessness. When they involve shotguns, it's often a result of carrying loaded guns in cars, crossing fences with loaded guns, etc.

As a final guide, one should never point a gun at anyone. In short, we hope all hunters will keep in mind this advice for the 1981-82 hunting season.

MEMBER TEXAS PRESS ASSOCIATION

PUBLICATION (USPS 243-660) SPEARMAN, TEXAS 79081
213 Main Box 458 659-3434
Published Weekly at 213 Main Street Spearman, Texas 79081
Owner-Publisher...William M. Miller
Editor.....Faye Lynch
Second Class Postage paid at Spearman, Texas 79081
Any erroneous reflection upon the character of any person or firm appearing in these columns will be gladly and promptly corrected upon being brought to the attention of the management.
POSTMASTER: Send address changes to Hansford Plainsman, Box 458, Spearman, Tx. 79081.
SUBSCRIPTION RATE: Hansford, adjoining counties, combination with the Spearman Reporter, \$15.00.
Other points, \$20.00.

THANKSGIVING FEAST

Thanksgiving Supper at Moose Lodge

Saturday, November 21 5 p.m.

Members & Guests, bring family

Let Us Give Thanks

Heap high the farmer's wintry hoard,
Heap high the golden corn,
No richer gift has Autumn poured
From out her lavish horn...
And now with Autumn's moonlit eyes
Its harvest time has come,
We pluck away the frosted leaves
And bear our treasure home.
O, let the good old crop adorn
The hills our fathers trod,
Still let us, for our golden corn,
Send up our thanks to God.

—John Greenleaf Whittier:
The Corn Song

CONSERVE ENERGY

North Plains Electric Co-op Association

CONSERVE ENERGY

About Coke

The latest federal study shows that cocaine-known as coke but not to be confused with the popular soft drink-is now a bigger item in the drug world than marijuana.

Drug enforcement officials report an explosive increase in the use of this drug in the last four years. (During these four years, Carter Administration years, several of the president's aides were involved in drug charges and one resigned as a result. Another was tried and acquitted.)

The increase, federal officials say, has resulted partly because of the widespread impression that the use of cocaine is relatively harmless. But Dr. Everett Ellingwood, a Duke University School of Medicine psychiatrist, warns this is an illusion.

He was recently quoted as saying frequent use of cocaine, or high dosage, can be just as harmful as benzedrine and almost as harmful as heroin. It can cause paranoia, hallucinations, delusions of grandeur and manic depression.

In addition to all this, it is extremely expensive. Those hooked on cocaine often spend thousands weekly to supply their habit. Addicts sniff it or inject it in their veins or smoke it-sometimes mixed with other drugs. Dr. John Graboski of the National Institute of Drug Abuse says smoking it is the most dangerous form of use.

The drug works on the brain for only about an hour. Thus users often need a steady supply-at enormous cost. A recent survey showed that 12 percent of high school students questioned had tried it. Obviously our churches, newspapers and social workers need to stress the dangers and disadvantages of this drug more. It's not harmless but a very real threat to any victim's future happiness and health.

The Dixie Democrats

A vital decision to be made in the immediate future, in the national Democratic Party, is whether the traditionally conservative wing-southern Democrats-continues to find a place in the party.

Congressmen like Phil Gramm, one of the leaders of conservative Democrats in the U.S. House, known as Boll Weevils, is doubtful. He sees some Democratic members of Congress from the South moving leftward, and some conservatives in the party leaving it to turn Republicans.

This trend weakens the solidity of the conservative bloc in the party. Gramm notes, for example, that the conservative southern bloc in the House today doesn't contain a single member of the North Carolina delegation. "Tennessee," he says, is a "throw-away state." Yet from the Texas delegation, nine members are currently Boll Weevils. "Georgia and Alabama are our most solid states," Gramm says. (The Boll Weevils count but one member from Mississippi in their camp.)

In the recent crucial AWACS vote in the Senate, eight Dixie senators, who traditionally support U.S. foreign policy, opposed the president and supported the Israeli line-Bentsen, Bumpers, Chiles, Heflin, Hollings, Pryor, Sasser and Hawkins.

While the AWACS vote was not strictly a Dixie bloc issue, it was nevertheless indicative of the change which has come over Dixie delegations in recent years-especially in such states as Arkansas and Tennessee.

The bigger issue, with long-term political implications, is whether the left wing of the national party will be tolerant enough to live with a conservative element. "Southerners are the only conservatives in the national party now," Democrat Gramm says. And as liberals get more and more dominant, and perhaps strident, will they force conservative southern Democrats to turn to the G.O.P.?

This question can vitally affect the party's future. Veteran congressional leaders like Tip O'Neill, House speaker, don't want the younger liberals to make it so uncomfortable that more southerners leave the party. He sees the great diversity of the party as one of its strengths.

But many younger Democrats in the House, and many state parties, are not so broad-minded. They prefer a more single-minded party. With Jimmy Carter removed from the scene, who is to draw in the reins on a zealous liberal majority element?

Doctor Talk

By Dr. Harold B. Ligon

It's time to talk some more about the common cold. We've entered the time of cooler weather-unpredictable clothing situations-that is, the fall season; and that's the time many people come down with colds.

Predisposing factors, such as host resistance, nutrition, chilling, enlarged tonsils, etc., have not been specifically identified; but these factors and other concepts have been theorized as causative. They are not medically substantiated. Strangely, one school of thought is that many people catch colds on a psychological basis. This is a theory supported by many physicians, and they preach cold prevention via "mind over matter" ideas-and often succeed!

There's something to this, but, in my opinion, if you get a sufficient dose of the causative virus, you're going to catch a cold! There are about a hundred causative viruses-including rhino and adenoviruses, influenza and parainfluenza viruses, the echo and coxsackie viruses. You'll catch a cold because there are so many microbes-so easily spread around-and

exposure in such abundance during a "cold epidemic". In the cool and rainy and unpredictable fall weather, feet get damp and cold, and people go out over or under-dressed. The coxsackie and adeno and rhinoviruses are picked up by victims on tables, desks, flat surfaces, window sills, bannisters, etc. Airborne spread is very common.

The best defense is prevention. I've had many patients tell me that the flu shot protected them from both the flu and colds. There may be something to that, too!

Wash your hands, avoid oral and airborne exposure, and stay warm and dry. Also, during cold (and flu) epidemics, it's best to stay out of crowds.

Thanksgiving Service Set

This coming Sunday, November 22nd at 7:00 P.M., the Ministerial Alliance will be sponsoring the Annual City-Wide Thanksgiving Service. The Church host this year will be Faith Lutheran Church, located at 1101 Bernice. Russell Pogue, Pastor of the First Baptist Church will be this year's speaker. The Spearman Ministerial Alliance extends a warm invitation to the entire community to come together and thank the Lord for the many blessings we have enjoyed this past year. A Nursery will be provided.

Hospital News

Patients in Hansford Hospital are Inez Holland, Michael Davis, Arthur Adkison, Margaret Cole, Amy Cole, Brian Beck, Betty Behne, Felix Lopez, Tony Barrera, Robb Dennis, Bell Crawford, Christine States, Dennis Monk, Pauline Johnson, Guy Remy, Teresa Madison, Lester Howell and Lemmie Russell.

Dismissed were Beatriz Vargas, Marilyn Gaines, Doris Pyle, Guadalupe Garcia and Blanche Davis.

ON GOLD STANDARD
Members of the U.S. Gold Commission indicated recently they will steer clear of any recommendation that the nation return to a direct gold standard, one in which paper money will be only a substitute for the precious metal.

ON B-1 RESEARCH
The Defense Department admitted that it has been promoting the B-1 manned bomber program to Congress without disclosing that it ex-

pects to incur up to \$1 billion in additional costs.

BLOCK & LEGISLATION
Agriculture Secretary John R. Block said recently that the administration's position on new farm legislation is unchanged despite official reports that farmers are going to see another poor financial year in 1982.

ON STATE TAX
State taxes have increased 186 percent since 1970, with the average an-

nual collection in 1980 amounting to more than \$600 for every man, woman and child in the United States, the Tax Foundation reports.

U.S. & BOLIVIA
The Reagan administration is preparing to announce the resumption of full diplomatic relations with the military government of Bolivia, ending a 15-month absence of a U.S. ambassador in the country and continuing the administration's pattern of improving relations with

Latin America's authoritarian rulers.

TO RETURN FUNDS
Two federal agencies have demanded the immediate return of more than \$600,000 in federal funds that government auditors have accused Cesar Chavez and the United Farm Workers (UFW) of misappropriating.

PRESIDENT & TAXES
President Reagan is taking another look at the

stalled budget and tax proposals he sent to Congress in September and may seek a compromise with congressional leaders in hopes of restraining the burgeoning deficit.

ASIAN PARASITE
CHICAGO -- A group of World War II veterans formerly held prisoner by the Japanese in southeast Asia have been sick for almost 40 years with an uncommon Asian parasite that could have been treated earlier if it had been diagnosed, a researcher says.



Thanksgiving

STARTS WITH ALL THE GOOD FIXING FROM YOUR

IDEAL
FOOD STORES

PRICES EFFECTIVE THRU
NOVEMBER 25, 1981.
QUANTITY RIGHTS
RESERVED

FRESH SHOULDER CUTS
Pork Roast
\$1.49
LB.

FROZEN FOODS

Mrs. Smith's MRS. SMITH'S GOLDEN DELUXE
Pumpkin Custard Pie
\$2.08
48-OZ. PIE

Mrs. Smith's
Cool Whip Topping
63¢
8-OZ. CTN. LIMIT 2

PET RITZ 9-INCH
Pie Shells..... \$1.43
GREEN GIANT IN CHEESE SAUCE LIMIT 2

Broccoli OR CAULIFLOWER..... 83¢
READY TO BAKE

Rhodes Rolls..... \$1.19
2 DOZ. PER

FRESH DAIRY

KRAFT PHILADELPHIA
Cream Cheese
68¢
8-OZ. BOX LIMIT 3

CAMELOT GRADE 'A'
Medium Eggs
84¢
DOZEN LIMIT 2

KRAFT PARKAY
Margarine..... 48¢
LIMIT 3

STEFFEN'S FRESH
Whipping Cream..... 53¢
STEFFEN'S REG. OR CHIVE

Sour Cream..... 99¢
2 4-OZ. CTNS.

OUR GOURMET SELF BASTING
Hen Turkeys
10 TO 14-LB. AVG.
65¢
LB.

Boneless Hams
\$1.98
3-4 LB. AVG.

Little Sizzlers
\$1.29
12-OZ. PKG.

Sausage & Biscuits
\$1.59
9 1/2-OZ. PKG.

Pork Sausage
\$3.37
2-LB. PKG.

BUTCHER BLOCK BEEF BONELESS
Chuck Roast
\$1.49
LB.

BONELESS HAMS
\$1.89
7 TO 9-LB. AVERAGE

Farm Fresh Produce
FROM GREEN MARKET STREET

Bananas
GOLDEN RIPE
LB. **29¢**

TENDER CRISP
Celery..... 29¢
LB.

FRESH CRISP - RED DELICIOUS
Apples..... 1.00
4 lb. bag

U.S. NO. 2 RUSSET
Potatoes..... \$1.39
10-LB. BAG

U.S. NO. 1 - YELLOW
Onions..... 29¢
LB.

Potatoes
U.S. NO. 1 SWEET
LB. **39¢**

SHOP IDEAL... WHERE THERE'S MORE VALUE IN



DOUBLE



GUNN BROS. STAMPS EVERY WED.

Local energy savings impressive

Things learned and conclusions reached in a seminar and workshop on conservation of energy last summer have been paying off for the Spearman school system, according to Supt. James Cunningham. "We can make no great boast about money saved because of rising rates," Cunningham explained. "But we have had highly significant reductions in kilowatts of electricity used and in the cubic foot consumption of

gas -- a definite record of significant energy conservation and that was the name of the game when we undertook the measures deemed necessary and effective." In September, 1980, Spearman schools used 320 kilowatts of electricity. In September, 1981, only 218 kilowatts were used ... a reduction of 47 percent. In October, 1980, 629 kilowatts were recorded against 281

for the same period in 1981 ... a reduction of 181 percent! In November, 1980, 662 kilowatts were metered against 522 for the same period in 1981 ... a reduction of 21 percent. In natural gas usage, September, 1980 saw 120 MCF metered to the school system. During the same period for 1981, only 35 MCF were used ... a 71-plus percent reduction. For October, 1980, it was 156 MCF against 129 for 1981 ... a

17 percent conservation. November, 1980 -- a period of severe cold -- saw 581 MCF metered compared to 216 MCF in 1981 ... a conservation of 159 percent! Differences in total metering month to month were due to seasonal variables such as the onslaught of winter's cold and in the case of electric usage -- the darkness of both shorter days and lowering skies of bad weather.

Supt. Cunningham emphasized that the conservation figures do not represent a crackdown on waste for there is always a year-to-year program against common waste. Rather, the savings represented various programs and adjustments that Cunningham summed up as "...working at it." Not only were conservation figures significant compared to the previous year but they were impressive compared to other

school systems implementing similar efforts to curtail usage of vital energy.

Plainview Firm Gets Highway Bid

AMARILLO -- High Plains Pavers Inc. of Plainview is the apparent low bidder to seal coat 65.2 miles of Texas Panhandle highways during the summer of 1982, including a section of State Highway 15 in Hansford County. S.H. 15 will be seal coated from the railroad tracks in Gruver 13.4 miles to the Sherman County line. The Plainview firm's bid of \$774,696 was the lowest of 12 bids submitted on the seal coat

work to the Texas State Highway and Public Transportation Commission. Seal coating S.H.15 will preserve the investment in this roadway and prevent further deterioration due to traffic use and adverse weather conditions. H.L. Gallegly of Dalhart will be the State Department of Highways and Public Transportation engineer in direct supervision of the seal coat work.

Profitable Management of Stocker Cattle

Prospects for grazing wheat pasture are extremely good due to timely fall rains. Producers who plan to place stocker cattle on wheat pasture should carefully consider how to best manage the cattle in order to maximize the return on their investment. Many variables influence the profitability of a grazing operation. Producers should determine which factors have the most economic impact and concentrate their management efforts on those over which they have some degree of control. The following seven (7) variables were selected to show how they affect the net return per head of a typical set of 400 pound Medium Frame No. 1 steers that could have been purchased during October. All management factors such as interest rate, production costs, daily gain and death loss were based upon industry averages. The last column shows the influence on net profit per head if each production variable changes by the interval shown and all other factors remain the same. Production Variable - Unit of Change - Influence on Net per Head: Purchase Price - +\$1.00/cwt. - \$4.32; Death Loss - +1/2% - \$1.64; Interest Rate - +1% -

\$1.01; Pasture Cost - +\$.24/cwt./month - \$.52; Average Daily Gain - +.1 lb./head/day - \$9.70; Sale Shrink - +1/2% - \$2.06; Sale Price - +\$1.00/cwt. - \$612. It may not be feasible to positively influence all of these variables by the degree shown, but it is evident that if all or part of them are influenced to some degree that the cumulative effect can have a profound impact on the net return per head. For example, average daily gain can be influenced by several factors such as genetic ability of the cattle to gain, forage availability, weather conditions, whether or not the cattle are implanted and whether or not the cattle are fed a high energy supplement while on pasture. Producers should examine various management alternatives available to them and determine which combination of management factors offers the most potential for profit. The Texas Agricultural Extension Service offers a Stocker Cattle Budget Analysis service which utilizes a computer to determine which total management system best meets each individual's needs. Data input forms are available at your local County Extension Agent's office.

Dinner IDEAL FOOD STORE!!

Meat Bologna ^{BAR-S SLICED} 1-LB. PKG. \$1.49
Meat Franks ^{BAR-S SKINLESS} 12-OZ. PKG. 98¢

Honeysuckle Turkeys



ALL FLAVORS STEFFEN'S Prestige Ice Cream \$2.38
1/2-GAL. CTN.

THANKSGIVING MEATS FROM IDEAL

BUTCHER BLOCK BEEF
Boneless Chuck Steaks.....1-LB. \$1.59

EXTRA LEAN
Fresh Ground Chuck.....1-LB. \$1.79

RANDOM WEIGHTS -- SMOKED
Sliced Slab Bacon.....1-LB. \$1.29

JIMMY DEAN
Pork Sausage.....1-LB. PKG. \$1.69

BAR-S
Sliced Bacon.....1-LB. PKG. \$1.49

A FAVORITE Eagle Brand Milk.....14-OZ. CAN \$1.07
OCEAN SPRAY STRAINED OR WHOLE Cranberry Sauce.....2 1/2-OZ. CANS 96¢
DEL MONTE CUT OR FRENCH Green Beans.....16-OZ. CAN 39¢
DEL MONTE WHOLE OR CREAM STYLE Golden Corn.....17-OZ. CAN 42¢
DEL MONTE Sweet Peas.....2 1/2-OZ. CANS 85¢

ASS'D. COLORS Job Squad.....JUMBO BELL 86¢
KRAFT Marshmallow Creme.....2 1/2-OZ. CANS \$1.13
HEAVY DUTY Reynolds Wrap.....25' ROLL 99¢
SWANSON Chicken Broth.....2 1/2-OZ. CANS 61¢
NESTLE REAL Chocolate Chips.....12-OZ. PKG. \$1.76

ALL BRANDS Powdered or Brown Sugar 2-LB. BAG 76¢
LIMIT 2

PURE VEGETABLE Crisco Shortening 3-LB. CAN \$2.06
LIMIT 1

GOLD MEDAL Enriched Flour 5-LB. BAG 85¢
LIMIT 1

ALL GRINDS Folger's Coffee 1-LB. CAN \$1.99
LIMIT 1

ALL FLAVORS BETTY CROCKER Layer Cake Mix 18 1/2-OZ. BOX 75¢
LIMIT 3

CAMELOT Brown & Serve Rolls 12-CT. PKG. 44¢

FOR THAT TRADITIONAL PIE Libby's Pumpkin 16-OZ. CAN 46¢

SLICED, CHUNK, OR CRUSHED DEL MONTE Pineapple In Juice 15 1/2-OZ. CAN 51¢
LIMIT 3

Sonic Watches \$10.99
ULTRA THIN LCD QUARTZ DIGITAL WATCHES MENS AND LADIES STYLES IN GOLD TONE OR SILVER TONE
WITH A \$20 PURCHASE \$19.99 WITH NO PURCHASE

14-Carat Gold Heart With Each Gold Chain Purch. 14-CARAT - 16" LONG Gold Chain \$10.99
WITH \$20 PURCHASE \$19.99 WITH NO PURCHASE

free Ideal Food Stores
Food Stamps Buy More At Ideal...

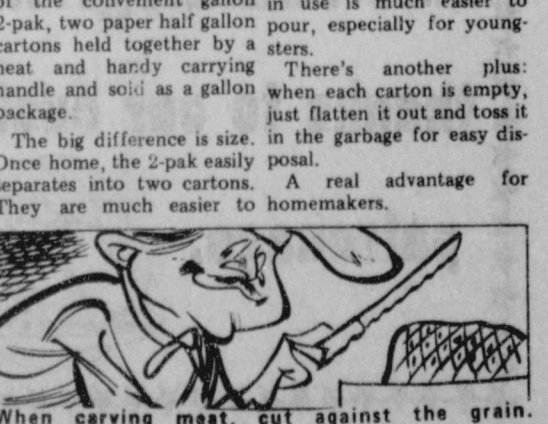
Holiday Hints

A Gift To Suit Many Tastes
With cookbooks the best sellers all over the country, they make great gifts to tuck under the Christmas tree. One volume that may interest cooks of many tastes is the new "Complete Book of Salads" from Ortho Books. Attractively illustrated with color photographs, the book runs the gamut of salads from appetizers through main dishes to desserts, even to salads that are hot or cold. For an unusual and picturesque "presentation," arrange the book in a pretty basket surrounded by some very special salad ingredients, such as fragrant Italian olive oil, aromatic vinegar from France and a ceramic jar of Dijon mustard.

As if made to order, the book includes a recipe that makes imaginatively delicious use of leftover Christmas turkey:
HOT SWISS TURKEY SALAD
1/4 cup each mayonnaise and sour cream
1 tablespoon dry sherry
2 teaspoons Dijon mustard
1/4 teaspoon dried tarragon
3 cups diced or shredded cooked turkey
1 stalk celery, finely chopped
4 green onions, thinly sliced
1 cup shredded Swiss cheese
1/2 cup sliced almonds
Mix mayonnaise, sour cream, sherry, mustard and tarragon until smooth. Lightly combine this dressing with turkey, celery, green onions and cheese. Divide mixture into four to six individual greased shallow baking dishes. Top with almonds. Bake uncovered at 400 degrees for 15 to 20 minutes until salads are bubbly and almonds lightly browned.

Hints for HOMEMAKERS

Information To Help You
Buying milk in a Gallon 2-pak package can keep it fresher than buying that same amount in a gallon jug. Although the trend for some years has been towards purchasing milk in economy-size gallon jugs, consumers have been unhappy with unwieldy sizes and problems of keeping such a large amount fresh. Now come answers to these problems in the form of the convenient gallon 2-pak, two paper half gallon cartons held together by a neat and handy carrying handle and sold as a gallon package. The big difference is size. Once home, the 2-pak easily separates into two cartons. They are much easier to



GUNN BROS. DOUBLE GUNN BROS. STAMPS EVERY WED. GUNN BROS. STAMP

Faye's Daze

Thanksgiving is almost upon us and to me this is one of the nicest holidays we have. It is wonderful to be able to sit down with friends and family and partake of a bountiful Thanksgiving dinner and fellowship and to give thanks that we live in the U.S.A. Admittedly we have lots of problems in our country but as far as I am concerned it is still the best place to be.

As I was glancing through the Amarillo paper this morning an ad caught my eye. The ad was from an individual who was offering a \$2000 reward for information leading to the arrest and conviction of the person responsible for the theft of a wedding ring and diamond drop from his mother's body as it was lying in state Nov. 11, 1981. This ad brought to mind that among the other things that I am thankful for this Thanksgiving is that I live in a nice little town in the Texas Panhandle where crime is at a low ebb. I am thankful for our fine churches and pastors, for our public officials, for our fine school system, for our farmers who keep on producing despite tremendous pressures, for friends, new and old, for restored health, for my family and for the many people in this community who give of themselves in many ways to help their fellow man.

I am typing this column this morning on a new typewriter. So you see there is a Santa Claus...

The excavation of the old Zulu Stockade is exciting, and the building of a replica of this first building and business in Hansford County to be located on the museum grounds is something to look forward to. Congratulations to the hardworking members of the Historical Survey committee on this project, on our first history book and for the second volume of the history which is underway at this time.

By the way if you didn't get your family story in the first volume, you have until Dec. 15 to make the next one.

Christmas Show At Discovery Center

"STAR OF WONDER," the planetarium show at the Don Harrington Discovery Center, is both a miracle and a mystery. This traditional program, showing for the first time in Amarillo, uses the planetarium instrument to take visitors back in time to view the sky at that magical moment, discusses several possible explanations for the "STAR OF WONDER" and retells the traditional Bible story of the Baby's birth.

"STAR" is designed for the entire family. Music of Christmas past and present, a magical Christmas tree, Santa and his famous reindeer all combine for a memorable experience.

How did the night sky appear to the three wise men nearly two thousand years ago? What was that fortuitous "star of the

east?" Could a comet explain the wondrous heavenly sight? Could it have been a conjunction of several planets, or a supernova? Is it possible this phenomena can't be explained by astronomical accounts? Was it indeed a miracle?

Each visitor will draw his own conclusion based on personal beliefs. The important facts that can't be altered are that Jesus was born, that He dwelt on earth for a time and that His teachings have altered the history of the world.

"Star" starts the first weekend after Thanksgiving and runs until Christmas. Programs are scheduled on Saturdays at 2:00, 3:00, and 8:00 P.M. and on Sundays at 2:00, 3:00, and 4:00 P.M. Admission prices are \$1.50 for adults, \$1.00 for students and senior citizens.

MHA Collects \$383 Here

Stephanie Brock raised \$383.80 in the October drive benefiting the Mental Health Association in Texas.

Bellringer workers collected house-to-house during the October campaign.

Proceeds benefit the non-profit, non-governmental agency whose members are dedicated to fighting mental illness while working on behalf of the mentally ill and their families.

"The Mental Health Association exists entirely on donations, such as those raised in the October drive," said Virginia Barlow, state president.

Barlow thanked Ms. Brock and the Bellringer workers in Spearman, Texas, calling them an important team in the movement to promote mental health in the state.

Catholics to Have Mass

The Sacred Heart Catholic Church of Spearman will be celebrating Thanksgiving with a Mass at 10:00 a.m.

The Mass will be Thursday, November 26. (What a way to begin Thanksgiving Day!)

Misa Para Catolicos

La Misa, de la Iglesia Catolica Sagrado Corazon de Jesus, para el Dia de dar Gracias va ser el Jueves 26 de Noviembre a las diez de la manana. La Misa es muy bonita.

You are cordially invited to a

Bridal Shower honoring

Suzanne Pepin bride-elect of Mark Cunningham

Spearman Bank Hospitality Room
Saturday, Dec. 5, 1981
2:00 P.M. to 3:30 P.M.

hostesses

Wanda Jones Anita Clemmons
Betty Porter Joyce Lackey
Betty Uptergrove Bonnie Crofford
Fern Newton Ruth Ann Jones
Pat Denham

25-2tp S only

TV COMMENTARY

By Bente Christensen

JANE Wyman--ex-wife of President Ronald Reagan--is to be seen beginning in December in a new CBS series during prime time, called **Falcon Crest**. It's about a wine producing family in California.

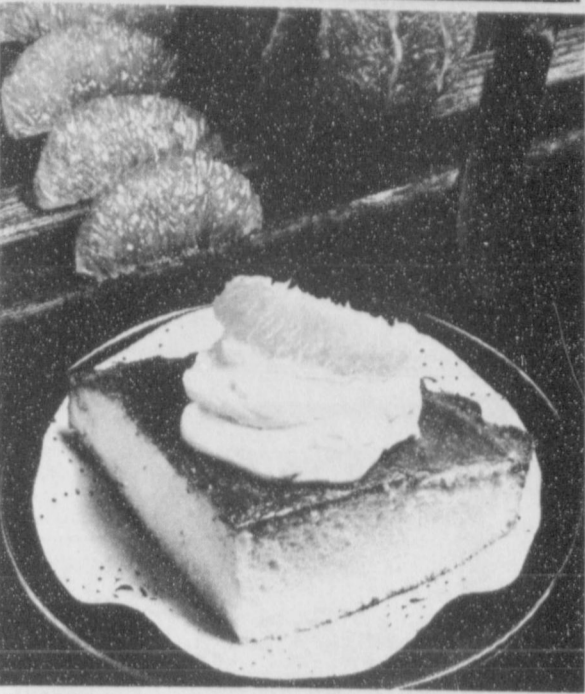
THE 67-year-old ex doesn't comment on Reagan, nor has she ever offered her opinions in public on the president, even when he was Governor of California. They were married in 1940, remained married eight years. They had a daughter, also in 1940, who is now running for a Senate seat in California at age 41.

THE Reagans of 1940-48 adopted a son in 1944. She gave birth to a daughter prematurely in 1947, the daughter living only one day (she was three months premature). Jane Wyman had been married before her husband Reagan and had divorced her husband. She and Reagan were divorced in 1948. She married a third time and divorced her third husband also.

LIZ Taylor, said to be a

- ### AGENDA
- #### TUESDAY, NOVEMBER 24, 1981
- ##### 7:30 p.m.
1. Pledge and Invocation.
 2. Consideration of the minutes of Regular City Council meeting held on November 10, 1981.
 3. Consideration of Resolution #9-81 a Resolution of the City of Spearman, Texas, authorizing Texas-New Mexico Power Company to replace the tariff for the current purchase power cost adjustment, to provide that the tariff does not constitute a rate increase, or an increase in rate revenue to Texas-New Mexico Power Company and providing for an effective date.
 4. Consideration of awarding purchase contract for Type III, Class I, Floor Plan A, Aluminum Modular Ambulance.
 5. Consideration of appointing Ed Williamson as Director of H&S Emergency Medical Service for a two year term.
 6. Other.
 7. Adjourn.
- SOAP OPERAS
- BOSTON -- Americans who watch a lot of television--particularly soap operas--are more likely to have a "live-for-today" attitude, poor health-care habits and overly high confidence in doctors, a study by the Annenberg School of Communications at the University of Philadelphia reports.

From the TAP Kitchen



GRAPEFRUIT SEASON is here again and Texas growers are reporting a record crop. All you need to make an excellent grapefruit breakfast is a spoon, but when sectioned there is a whole new world of possibilities for the versatile grapefruit. It's not just for breakfast!

TEXAS GRAPEFRUIT TOPPING

- 1 9-in. pound cake
- 2 grapefruits, sectioned
- 3 C. fresh whipped cream
- 1 1/2 C. confectioners sugar

Combine cream and sugar and spoon on top of cake. Top with grapefruit sections.

HOW TO SECTION GRAPEFRUIT

The Texas Department of Agriculture has developed a very fast way of sectioning grapefruit. With this method of separating the fruit from its skin, grapefruit is doubly enjoyable.

First, rest the grapefruit on its side. With a very sharp fruit knife cut off the top of the grapefruit so that the fruit is exposed and the peel, pulp and skin are cut away.

Next, cut a slice off the other end of the grapefruit and set it upright. The top and bottom will have a slice out of them, going from the top to bottom, cut off the peel a slice at a time. As you slice, follow the contour of the grapefruit. Continue until you have removed all of the peel and skin, except between the sections.

With the blade of the knife inserted between the skin and pulp, cut between the two. Do not cut through the center of the grapefruit where the slices are jointed together. Instead, turn the knife when you get to the center and run it between the skin and the sections. As you do this, flip the fruit away from the skin. Continue around the fruit until all the sections have been removed.

Spearman Music Club

The Spearman Music Club met Tuesday evening, November 17, 1981, at the First Christian Church. Our program was given by Denise Blackburn and Greg Meek. They performed some of the songs from "South Pacific."

A special thanks went to Charlotte Angel for setting up the program. Altha Townsend gave a study on the background of the play "South Pacific." We have a short business meeting which included a report by Janie Kunselman of the First District Music Club Meeting in Amarillo in November 7, 1981. We then adjourned to practice Christmas songs.

Those members present were Charlotte Angel, Myrna Biggers, Charlene Bryan, Nita Bynum, Fran Glass, Celia Mirmann, Janie Kunselman, Miriam Mercer, Bonita Reimer, Margy Schoenhals, Phyllis Shedeck and Altha Townsend. We also welcomed a new member Vicki May and a guest Ruth Bryan. The next meeting is scheduled for December 1st, at 7:30 p.m. at the First Baptist Church. Hostesses will be Mary Brock and Peggy Reynard.

Pheasant Hunters

Breakfast Planned

Alpha Mu Psi will have a pheasant hunters breakfast Saturday, December 12 from 5 to 8 A.M. in the Gruber United Methodist Church Fellowship Hall.

Tickets are \$5 for all you can eat.

Breakfast will consist of: bacon, ham, sausage, homemade biscuits, gravy, scrambled eggs, orange juice and coffee.

Advance tickets are available. Also there will be a drawing for a Browning Citori 12-gauge shotgun, over and under. Tickets for the drawing are \$5 each and may be purchased from any member.



One pound of raw potatoes, unpeeled, makes about two cups when mashed.

You are cordially invited to attend a

Lingerie Shower Honoring

Jennifer McLain
(Bride-elect of Kyle Nollner)

Saturday, November 28

From 7 to 9 p.m.

at 421 S. Endicott

HOSTESSES

Leslie Piatt Alicia Davis
Selections at J.G.'s

2-1tp

A Well-Bred Goose For Thanksgiving



Succulent roast goose is becoming a favorite of the American holiday table. Today's well-bred birds are meatier, juicier and save time and work since the goose is self-basting.

A few simple steps can insure a memorable meal--correct oven temperature in two stages, use of a meat thermometer (should register 180° F.) and frequent removal of rendered fat.

Thaw bird according to package instructions. Follow the table below for correct roasting times. If you cook the bird unstuffed, cooking time will be slightly shortened.

Ready-to-Cook Weight (Pounds)	Time at 400° F. (Hours)	PLUS		Total Roasting Time (Hours)
		Time at 325° F. (Hours)	Roasting Time (Hours)	
8 to 10	1 hour	1-1/2 to 2	2-1/2 to 3	3 to 3-1/2
10 to 12	1 hour	2 to 2-1/2		

WILD RICE STUFFING

- 2/3 cup wild rice
- 2 cups water
- 1/2 teaspoon salt
- 6 cups day-old white bread cubes (crusts removed)
- 1/2 cup finely chopped onions
- 1 teaspoon powdered sage
- 1/2 teaspoon salt
- 1/2 cup melted butter

Rinse rice thoroughly. Bring to boil in saucepan with water and salt. Reduce heat and simmer 30 minutes or until just tender. Combine bread cubes, onion, sage, salt and cooked rice. Add melted butter and toss to mix. Stuff goose lightly in neck and body cavities. Makes enough to stuff an 8 to 10 pound bird.

Fasten the neck with a skewer and tie legs together.

PRESENTING . . .

PANHANDLE PLUMBING & REMODELING

Plumbing Repair - All Types
Sewer - Drain Cleaning

Remodeling
Baths - Kitchen
Floors - Rooms
Add Ons

Roofing Repair and Asphalt Shingling

We Can Handle Your Job

CALL DAY OR NIGHT 659-3901

659-5086

The Dairy Queen

will be closed **Thursday, November 26** and **Friday, November 27** so that we may give thanks for our many blessings this Thanksgiving. We also give thanks to our customers for your patronage.

Te
The
ment
Board
effort
to Texas
develop
made to
Legislat
range su
needs.
The
Departm
will be
Govern
Force
and Co
Our
update
time to
recomm
session
when it
1983.
The
comple
large n
ing reco
rights.
interest
water
786 m
approx
ply cor
major
tens of
farmers
state
private
interest
course
Speci
given
water-r
* W
* Fl
* W
* W
* W
* Be
in
rest
bet
riv
dise
dist
Or
wat
wat
nee
ma
sou
fin
* E
wat
Cite
Texas
urgent
which
stater
threat
perity
orderly
the De
water
sewag
contro
next 2
price
billion
to be
custon
exam
36 ne
year;
now-
jected
ments
500 se
built,
turn o
2200
need
\$11.5
Fed
the p
f nece
Texas
finan
water
tion
of Te
futu
tions,
about
grow
year;
grow
strair
suppl
Grow
assoc
and
been
conti
stron
provi
oppo
of al
depe
educ
can
publ
supp
is es
level
mee
futu
M
and
unde
our
find
prob
priv
are
poli
reso
one
men
urg

Hansford County Historical Society
30 South Townsend Spearman, Texas 79081



Dear Friend:

Hansford County, Volume II is well underway. Don't get left out of this beautiful book. This volume will give those of you who missed Volume I a last chance to be included at no charge.

The ground rules for Volume II are different in some areas, so read carefully.

Volume I included many of our oldtimers, so Volume II's emphasis will be to get those few oldtimers who missed Volume I but mainly to include everyone else in the County, including the newest newcomer.

500 Free Words

If YOU don't take action now to preserve your family's story, chances are very great that no one else ever will. As a present or former resident of Hansford County, you are eligible for 500 words of free space to tell your story in the family history section of the Hansford County History Book, Volume II being compiled as a non-profit endeavor by the Hansford County Historical Society.

Family Story Plus 1 Photo

Along with your story, you also may submit one family photo (preferably black and white) for NO CHARGE. Please include a caption for the picture indicating the date taken, the place, the event, and peoples' names. We are interested also in any pictures you have of early days in Hansford County which we would like to run in a special section of the book. The Hansford County Station Masters House Museum is the place to deliver your family histories if you do not mail them.

Book Contents

Family stories, comprehensive index of Volumes I and II, business and organization histories, and additional general data and facts will be featured in this forthcoming collector's book.

Who Is Eligible?

To produce such a book for the education and enjoyment of future generations, materials are needed for the family history section from Newcomers as well as Oldtimers, and from present residents as well as those who formerly lived in the area. Each eligible living family unit is entitled to the free space, whether they have lived in Hansford County 1 day or 80 years. REMEMBER—A NEWCOMER TODAY IS HISTORY TOMORROW. So, if you have living brothers or sisters, aunts or uncles, cousins, grandparents, parents or other relatives who have lived in Hansford County at one time, or are presently living here, be sure they write their family story and submit a photo.

How To Include Your Ancestors

By encouraging your living family members to write their own family stories and use their 500 free words, you help insure your family will be well represented in the book. Each family unit can tell something different about their ancestors in addition to items about their immediate family. For example, pretend you have 3 married sisters and 1 married brother, all of whom have lived in the area at one time. This means you 5 children can write something about your parents, grandparents, early family life, etc., in each of the 5 stories. In this way each of you can still devote the major part of the story to your own marriage, children, career, family activities, hobbies, and other items of interest. Of course, if your parents and grandparents are still living, they can use their free space, too, to give further depth to the total family picture. Be sure to include the arrival date of your earliest ancestor to Hansford County.

Additional Space Is Available

If you or other family members need more than 500 words, additional space may be purchased at the rate of \$15.00 per hundred words. In addition, purchased space will be available for you to say "I love you" in a special way with words and photos to a parent or other loved ones—living or deceased—in the form of a memorial or tribute. Additional photo space will be available for \$20.00 per photo.

How To Write Your Story

Your family story and pictures should be sent in as soon as possible and no later than December 15, 1981. Please deliver your photos early while you are still writing your family history. Tell your story as if you were telling it to your children or grandchildren in reminiscence, and others will enjoy reading it also. This letter contains tips for writing your story, including sample histories and a list of items you may want to include.

Where To Send Story

Please bring your photos to the Hansford County Station Masters House Museum at 30 South Townsend, Spearman, Texas. You may mail your stories to the same address.

Type Of Book

By submitting these materials, you are helping to create the Hansford County History Book, Volume II, a one-of-a-kind family heirloom to pass from generation to generation. Being 8½ x 11 inches in size, the book will contain several hundred pages of content bound into a durable hardback leatherette cover featuring the emblem shown on the letter. A chart for recording your family tree will be included in the book on the back end-lining paper.

Reason For Pre-Sale

There are no more copies of Volume I, and there have been requests offering to pay many times more than the book sold for originally.

Reasons To Buy Books

Submitting your family story does not obligate you in any way to buy books, but we encourage you to do so for several reasons: 1) Each of your children and grandchildren will treasure owning a copy to share with their future families; 2) Consider several for an investment. Because there is a limited quantity, most counties' books double in value within the first year; 3) Your orders placed early generate the money necessary to allow our group to enhance the book with more content and photos.

Book Cost And How To Order

The books will be sold for a limited time only during the pre-sale for \$44.00 plus tax, plus \$3.00 postage if the book is to be mailed. To order your copies of the Hansford County History Book, Volume II, simply complete and return the enclosed order form along with your check or money order made payable to the Hansford County Book Fund. All money received will be deposited in a local bank for payment to the publisher at a later date.

The book staff and a list of area representatives to help you with your family history and answer questions is listed. Please feel free to call upon them.

Sincerely, *Marilyn Groves*
Book Chairman

Postscript Concerning The Mailing List

These letters are being mailed to rural Hansford County addresses and to as many out-of-county names and addresses as the Historical Society's Committee has been able to gather. If you did not receive this letter through the mail, please do not feel neglected. All residents and former residents are invited—urged—to enter their stories.

Please do not mislay this letter. Probably it will be the only one you will receive from the Society regarding the Hansford County History Book, Volume II. Please act now!

We need anyone who would like to help on this exciting project to contact Marilyn Groves at 659-2283 or 659-3008 in Spearman or contact Frances Kilgore at 659-2351, Sylvia Robertson at 659-2692, or Ruby Jo Wilbanks at 659-3084.

Jacob Hazelwood Fund Established

A Jacob Hazelwood Fund has been established at the First State Bank in Spearman. Jacob is the son of Billy Paul and Kathy Hazelwood of Amarillo and grandson of Paul and Bette Hazelwood of Spearman.

Jacob was born June 3, 1981 in Amarillo with congenital heart disease and taken right to Dallas Childrens Medical Center. At that time, the odds that Jacob would live were small. After 5½ months of medication, doctors visits, heart catheterizations, tests, and parental care,

Jacob has progressed to the point that surgery may help. Open heart surgery is scheduled for Wed., Nov. 11th in Dallas at Childrens Medical Center.

Mounting medical bills and travel expenses back and forth to medical facilities and doctors in Dallas have become staggering to this young family.

Donations may be sent to: The Jacob Hazelwood Fund, % First State Bank, Box 247, Spearman, Texas 79081, or taken to same.

NOTICE: We will print the basketball schedules as soon as we get them completely sold...

THE REPORTER

The first shorthand system known to the modern world was published by Dr. Timothy Bright, under the title "Characterie: The Art of Short, Swift and Secret Writing," London, 1588. Despite the author's claims to the contrary, it was as difficult to learn as would be a foreign language.

INFLATION-FIGHTING IDEAS

A new book is out that offers hundreds of ideas for around-the-house inflation beaters plus do-it-yourself projects that can save you countless dollars and provide an extra bonus of self-satisfaction.

You don't need a whetstone to keep kitchen knives at their peak of sharpness. Try an old clay flower pot. Using the rim of the pot, you can hone a knife to the proverbial razor's edge.

Don't throw out that half-used steel wool pad. You can save it from rusting by submerging the pad in a solution of water and baking soda. The soda acts as a rust inhibitor.

If you have a workbench vise that is worn from long use, don't despair. The thread action can be tightened by merely stretching a screen-door spring around the stationary jaw and hook-

ing the ends to the rear corner.

A neat little barbecue grill can be made by propping an upside-down metal

garbage can lid on four empty beverage cans. Pour in some charcoal and place a grate on top. Line the lid first with aluminum foil for greater heat and easier cleanup.

Outdoor lights for porch, garden or patio can be easily protected from the weather with screw-top jars. The jar lid can be installed between the screw-shell ring and the fixture. All that's needed is cutting a hole in the lid to fit the fixture.

Everybody's Asking HOW DO WE DO IT?

Economic uncertainties are now creating substantial investment opportunities for you in the commodity futures market.

Contact the pros at:
C & C COMMODITIES
Agent of Heinold Commodities, Inc.

for the latest quotes and trades on all commodity exchanges.

Call 806-435-6886 Collect
Nights 806-435-2892

We assure you that we will do everything in our power, using Heinold Commodities Research expertise to assure you of the high degree of service necessary to make your account profitable.

Open Monday Thru Friday — 8:30 a.m. - 3 p.m.
415 S. Main • Perryton, Texas

Ideal FOOD STORES

DEAR IDEAL CUSTOMER
This week we have introduced a new and exciting way to give you extra savings on your groceries!

HERE IS HOW THE PROGRAM WORKS

1 Pick up a free SAV-A-CHEK at our check-out counter.

3 Paste 36 SAV-A-CHEK COUPONS on the back of your SAV-A-CHEK.

2 You receive one SAV-A-CHEK COUPON for each dollar you spend.

4 When you check out, present one filled SAV-A-CHEK for each SAV-A-CHEK Special you select.

"CHEK" OUT THIS WEEK'S CHOICE OF 8 SAV-A-CHEK SPECIALS ONE DOZEN GRADE A LARGE EGGS . . . DOZ 18¢

with one filled SAV-A-CHEK or use the valuable free bonus SAV-A-CHEK in this week's newspaper ad

TV WEEK



MARY POPPINS (Julie Andrews) and her friend Bert (Dick Van Dyke) watch the dancing chimney sweeps in a scene from Walt Disney's musical fantasy classic, "Mary Poppins," to be broadcast for the first time on network television Sunday, Nov. 22 on CBS.

SUNDAY



Roger Moore plays the famous James Bond and Lois Chiles plays the mysterious woman who is never what she seems in "Moonraker," to air Sunday, Nov. 22 on ABC.

(Stations reserve the right to make last-minute changes.)



Chopped dried fruits make a tasty enrichment for cooked cereals (skip the sweetener), fruit salads, vegetable salads, rice, cookie and cake batter. Add to yogurt or cottage cheese for breakfast or lunch.

Raul Roa Kouri, Cuba's Ambassador to U.N. "I believe that there is a danger of either a U.S. naval blockade, or economic actions, or of persecuting the companies that do business with us..."

Dmitri F. Ustinov, Soviet Defense Minister on military superiority: "We shall not allow creation of such a superiority over us. Such attempts, and talks with us from a position of strength, are absolutely devoid of prospect."

CINDY SAYS

New role for Raquel; New flick for Moore

By Cindy Adams
NEW YORK — Raquel Welch is in New York and she's been knocking the big orange, saying she's glad to get out of there. She's stepping in for Lauren Bacall, for a couple of weeks, in the Broadway show "Woman of the Year"... Dudley Moore is starring in a newie, "Romantic Comedy." He'll have the love interest... Milton Berle, Frances Langford, Bob and Ray made it into the National Broadcasters Hall of Fame this year... The star of "Chanel Solitaire," Marie-France Pisier, is back in France playing her next role, the Russian countess in Thomas Mann's "The Magic Mountain."

We should go back to elephant jokes. I've never seen an elephant whose nose was out of joint."



Grace Kelly



Loretta Swit

Loretta Swit: "I'm Polish and Polish jokes bother me."

On ABC's new special "Night of Stars," Grace Kelly and Celeste Holm were reunited for the first time since '56 when they worked together in "High Society"... Bjorn Borg is a fan of Peter Ustinov. Ustinov also plays tennis but that isn't why Borg is his fan. Borg's a freak for the TV series Ustinov emceeds, "Omni: The New Frontier"... Jackie Gleason and Mac Davis star in "The Next Sting," which is filming in Santa Cruz. The new movie is written by the author of "The Sting"... Richard Harris' "Camelot" will appear on Home Box Office.

James A. Baker, White House chief of staff: "The United States is committed to only one plan for peace in the Middle East, and that's the Camp David peace process."

"Food prices are expected to rise 5 to 9 percent in 1982, the third straight year of single-digit increases."

SUNDAY CONT.

SUNDAY 11/22/81		11/19/81-11/25/81									
CABLE	[3]	[4]	[5]	[7]	[8]	[9]	[10]	[11]	[12]		
AM	OETA	KAMR	TMC	KVII	CBN	WGN	KFDA	WTBS	CNN		
	Oklahoma City	Amarillo	Movie Channel	CH.7 Amarillo	Christian Network	CH.9 Chicago	CH.10 Amarillo	CH.17 Atlanta	Cable News Ntwrk		
7:00		James Robison Amazing Grace Bible Class	Movie: 'Magee and the Lady'	Gospel Jubilee	Lesson - To Be Announced	Faith 20 - 3-Score What's Nu?	Faith for Today Crystal Cathedral	Three Stooges	News/Sports/Weather - Fred Saxon		
8:00		Day of Discovery Larry Jones Ministry		Kidsworld	Kenneth Copeland	Mass for Shut-ins Chicagoland Church Hour	Religious Townhall First Baptist Church	Lost in Space	From Hollywood		
9:00		Odyssey - Rex Humbard - Oral Roberts	Movie: 'Five Masters of Death'	Big Blue Marble Kids Are People Too	Changed Lives - American Religious	Robert Schuller Sgt. Preston	Sunday Morning	Hazel	Movie: 'Since You'	News/Sports/Weather - Fred Saxon	
10:00		Cosmos - Baptist Church		This Week	In Touch	Tarzan		Went Away	News/Sports/Weather - Ag-culture		
11:00		Nova - Jimmy Swaggart	Movie: 'Caddie'	Issues & Answers College Football '81	Independent Network News This Week on Wall Street	Cisco Kid - Lone Ranger	Face the Nation Movie: 'Walking'		Sports Week - Inside Business		
12:00		Washington Week/Review Wall Street Week	NFL Football: Pittsburgh at Cleveland	News - Weekend	James Kennedy	Movie: 'Charlie Chan: Shadow over China'	Tell		Dear CNN - News/Sports/Weather		
1:00		Reach Out	Movie: 'Sunday Lovers'	Jacques Cousteau	To Be Announced	town - Movie: 'Nevada'		Movie: 'The Garden of Allah'	From Hollywood		
2:00				It Takes a Thief	E. J. Daniel - Zola Levitt Live	Smith - Tom Landry Show NFL Today		Movie: 'The'	News/Sports/Weather - Fred Saxon		
3:00		Mile Post 407	NFL Football: San Diego at Oakland	Movie: 'Water Babies'	Wild, Wild West	Your New Image Lahayas	Movie: 'When The'	NFL Football: Washington at Dallas	Incredible Mr. Limpet	Freeman Reports	
4:00		Julia Child and Company Candid Campus		Nashville Music Sportsbeat	Jewish Voice - Jimmy Houston	North Wind Blows		Championship Wrestling	News/Sports/Weather - Week in Review		
5:00		Firing Line	Movie: 'Massacre at Central High'	ABC News - News	American Trail George		Little House		Nice People - Inside Business		

SUNDAY 11/22/81		11/19/81-11/25/81									
CABLE	[3]	[4]	[5]	[7]	[8]	[9]	[10]	[11]	[12]		
PM	OETA	KAMR	TMC	KVII	CBN	WGN	KFDA	WTBS	CNN		
	Oklahoma City	Amarillo	Movie Channel	CH.7 Amarillo	Christian Network	CH.9 Chicago	CH.10 Amarillo	CH.17 Atlanta	Cable News Ntwrk		
6:00		Soundstage - CHiPs	Prog Cont'd - Movie: 'The Longest'	Code Red	Priority One Internet! Larry Jones Ministry	Prog Cont'd - Wild Kingdom	60 Minutes	Movie: 'Rescue from Gilligan's Island'	Sports Sunday		
7:00		Nova - Bob Hope's Stand Up and Cheer for the National	Yard	Today's F.B.I.	In Touch	In Search of... People to People	Movie: 'Mary Poppins'		News/Sports/Weather		
8:00		Masterpiece Theatre - Football League's 60th year	Movie: 'Sunday Lovers'	Movie: 'Moonraker'	American Trail Children on the Run	Lawrence Welk		Atlantic City Alive	News/Sports/Weather		
9:00		Appointment With Destiny	Sinatra, The Man and His Music		John Ankerberg	News		TBS Evening News	News/Sports/Weather		
10:00		John Callaway Interviews	News - Movie: 'Million'	News	The King Is Coming Contact	Kung Fu	News - 700 Club	Caribbean Nights Open Up	Sports - Inside Business		
11:00		Sign Off - Dollar Face	Movie: 'Water Babies'	ABC News - Movie: 'Paper Lion'	Michigan Football Sign Off	Movie: 'Task Force'		Movie: 'Five Miles'	Take 2		
12:00		Sign Off	Movie					to Midnight	News/Sports/Weather - Here's How		

DAYTIME CONT.

SUNDAY 11/22/81		11/19/81-11/25/81									
CABLE	[3]	[4]	[5]	[7]	[8]	[9]	[10]	[11]	[12]		
AM	OETA	KAMR	TMC	KVII	CBN	WGN	KFDA	WTBS	CNN		
	Oklahoma City	Amarillo	Movie Channel	CH.7 Amarillo	Christian Network	CH.9 Chicago	CH.10 Amarillo	CH.17 Atlanta	Cable News Ntwrk		
7:00		News/Weather Over Easy	Today	Prog Cont'd	Good Morning America	Romper Room - Gary Randall Show	Bozo's Circus	Wake Up with the Captain Morning with Charles	I Dream of Jeannie My Three Sons	CNN Morning Report	
8:00		Sesame Street				Faith 20 - Westbrook Hospital	Bewitched	Kurat	Movie		
9:00		Electric Company Instructional Programs	Las Vegas Gambit Blockbusters		Hour Magazine	700 Club	Movie	Donahue			
10:00			Wheel of Fortune Battlestars		Love Boat			Price Is Right	Movie		
11:00			Password Plus		Family Feud	Independent Network News	Donahue	News - Young and the Restless		Take 2	
12:00			Doctors		Richard Simmons	Movie					
1:00			Over Easy		News		Prisoner Call Block H Inn		Movie		
2:00			Instructional Programs		Joker's Wild			As the World Turns			
3:00					One Life to Live	It's a Great Idea Faith 20	Dick Van Dyke	Search for Tomorrow		CNN Afternoon	
4:00					General Hospital	700 Club	I Dream of Jeannie Scooby Doo	Guiding Light	Super Station Fantime Flintstones		
5:00					Edge of Night		Popeye	Carol Burnett and Friends All in the Family	Munsters		
6:00					Bugs Bunny	Movie: 'A Great'	Bugs Bunny		Leave It to Beaver		
7:00					Gomer Pyle	Romance	Scooby Doo	Waltons	Brady Bunch		
8:00					Happy Days Again		Pink Panther Show		Beverly Hills		
9:00					Laverne and Shirley ABC News	Ross Bagley	Welcome Back Katter Muppets	Berney Miller CBS News	Andy Griffith Gomer Pyle	News World	

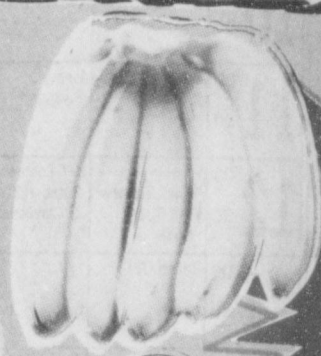
PRICES GOOD THRU NOV. 25TH



DOUBLE GREEN STAMPS HOLIDAY FOOD SAVINGS...

All United Supermarkets Will Be Closed Thursday, Nov. 26TH.

POLAROID SX-70 FILM
SINGLE PACK
Time-Zero Supercolor
\$5.49



GOLDEN RIPE BANANAS

25¢ LB.



SUNKIST NAVEL ORANGES & WASH. RED DELICIOUS EXTRA FANCY APPLES

3 LBS. FOR 99¢



DeVille HAND PAINTED STONEWARE on our plan

FREE

FREE 5-piece Place Settings in your choice of patterns—consists of: Dinner Plate, Cup, Saucer, Dessert, Bread & Butter
PLUS GREAT SAVINGS ON COMPLETER PIECES



NO. 1 YELLOW ONIONS
NO. 1 EAST TEXAS YAMS

29¢ LB.

39¢ LB.

LARGE GREEN STALKS CELERY
29¢ EACH

PLAINS WHIP CREAM
39¢ 1/2 PINT

UNITED GRADE A EGGS
EXTRA LARGE
85¢ DOZEN

PILLSBURY ROLLS
CRESCENT BUTTERFLAKE PARKERHOUSE 8 OZ.
PLAINS BUTTER **79¢**
1 LB. QTRS. PLAINS SOUR CREAM **\$1.89**
8 OZ. **2 FOR 89¢**

CHIFFON DINNER NAPKIN 60 CT. **69¢**
LESEUR "VERY TINY" GOLDEN CORN 17 OZ. **2 FOR 1**
BAKERS "CHOCOLATE FLAVORED" CHIPS 12 OZ. **98¢**
SUGARY SAM CUT YAMS 24 OZ. **69¢**
MRS. CUBBISON'S DRESSING AND STUFFING MIX **69¢**

OCEAN SPRAY CRANBERRY SAUCE
JELLIED OR WHOLE **2 FOR 89¢**
FINE FARE BISCUITS BUTTERMILK OR SWEETMILK **5 FOR \$1**

UNITED BROWN 'N SERVE ROLLS
39¢ LIMIT 4

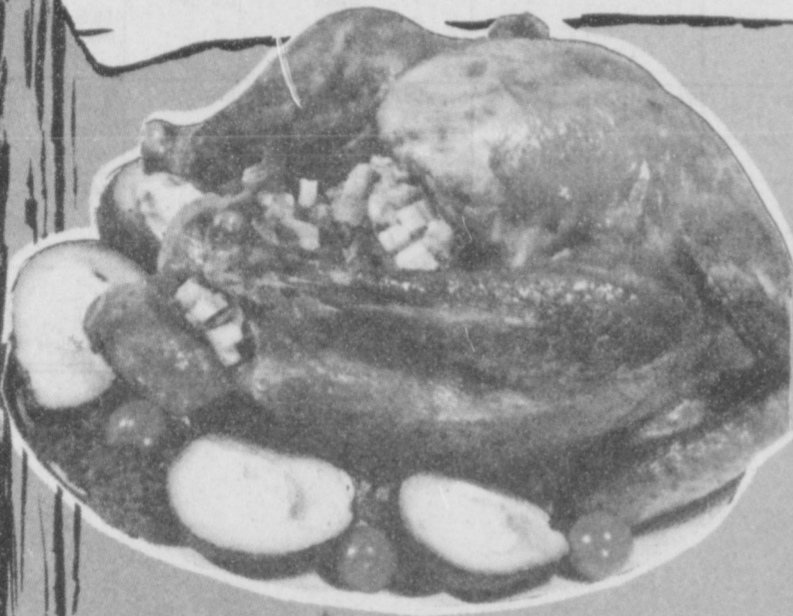
PET RITZ PUMPKIN PIES
89¢ 26 OZ.

BELL RED RING ICE CREAM
\$1.39 1/2 GAL.

SUN. MON. TUES. & WED. NOV. 22, 23, 24 & 25TH

A TRADITION AT UNITED!

We At United Would Like To Wish Everyone A Happy & Safe Thanksgiving!



UNITED TRU TENDR OR CHOICE BONELESS ARM ROAST **\$1.89** LB.

UNITED TRU TENDR OR CHOICE PRIME RIB LARGE END ROAST 2-4 LB. AVG. **\$1.98** LB.

TYSON CHICKEN LIVERS 8 OZ. PKG. **49c**

TYSON CHICKEN GIZZARDS 1 LB. PKG. **\$1.09**

SWIFT TENDR LEAN PORK ROAST BOSTON BUTT LB. **\$1.19**

8 OZ. PKG. FINE FARE CREAM CHEESE **69c**

UNITED TRU TENDR OR CHOICE TOP ROUND ROAST BONELESS LB. **\$1.98**

SHOP UNITED FOR THESE HOLIDAY ITEMS: BUTTERBALL AND HONEY-SUCKLE TURKEYS; WRIGHT DAY CURED HAMS; ARMOUR BONELESS TURKEYS; IOWA CAPONS, AND COUNTRY PRIDE GESE, DUCKS, SMOKED TURKEYS, SMOKED TURKEY BREASTS AND BASTED TURKEY BREAST.

FINE FARE GRADE A TOM TURKEYS WHILE SUPPLY LASTS **48c** LB. 16-22 LB. AVG. SELF BASTING

FINE FARE HEN TURKEY 10-14 LB. AVG. 59c LB.

WILSON WHOLE HAMS WATER ADDED **\$1.79** LB. 5-8 LB. AVG.

WILSON HALF HAMS 2-4 LB. AVG. \$1.98 LB.

UNITED TRU TENDR OR CHOICE SHOULDER ROAST BONELESS LB. **\$1.59**

FINE FARE WHIP TOPPING 8 OZ. **59c**

PET RITZ MINCE PIES 26 OZ. **\$1.19**

PET RITZ DEEP DISH PIE SHELLS 2 CT. PKG. **69c**

VLASIC SWEET PICKLES 16 OZ. **98c**

ORLEANS WHOLE OYSTERS 8 OZ. **98c**

HOLSUM THROWN STUFF MANZ OLIVES 5 OZ. **79c**

FINE FARE CRUSHED, CHUNK OR SLICED PINEAPPLE 15 1/2 OZ. **53c**

FINE FARE FRUIT COCKTAIL 16 OZ. **53c**

LESEUR PEAS 17 OZ. CAN **49c**

SWANSON'S CHICKEN BROTH 14 1/2 OZ. CAN **4 for \$1**

SPILLMATE TOWELS JUMBO ROLL **59c**

KRAFT MAYONNAISE QUART **\$1.49**

14 OZ. EAGLE BRAND MILK **98c**

6 PK. 32 OZ. COKE + DEPOSIT **\$1.89**

U

UNITED

Supermarkets

MONDAY



Elvera Roussel and Christopher Bernau (Hope and Alan Spaulding) taped special sequences on the Canary Islands for "Guiding Light," airing Monday through Friday on CBS.

(Stations reserve the right to make last-minute changes.)

TUESDAY



Ed Asner plays a police detective and Jean Simmons plays a sociologist, both of whom have gone undercover, in "A Small Killing," to air Tuesday, Nov. 24 on CBS.

(Stations reserve the right to make last-minute changes.)

MONDAY CONT.

MONDAY 11/23/81 11/19/81-11/25/81

Table with 12 columns (CABLE, OETA, KAMR, TMC, KVII, CBN, WGN, KFDA, WTBS, CNN) and 12 rows (6:00-12:30) listing TV programs and channels.

TV TATTLE

Peanuts holiday

The Peanuts gang add their own special flavor to America's oldest holiday when Charlie Brown and his peers get together to celebrate "A Charlie Brown Thanksgiving," to be rebroadcast Monday, Nov. 23 on CBS.

Van Dyke, David Tomlinson and Glynis Johns, will be broadcast for the first time on network television, Sunday, Nov. 22 on CBS.

Miss Andrews was awarded an Oscar as best actress for her portrayal of the magical governess who brings enchantment and joy to a stuffy London family.



Frank Sinatra

Blue eyes medley

Frank Sinatra will star in a television special based entirely on selections from the more than 100 albums he has recorded during 42 years in show business.

A 50-piece orchestra including 30 strings will accompany Sinatra throughout the show. Count Basie will be one of the performers joining Sinatra.

Sinatra's 64th birthday and 40th anniversary in show business were celebrated Dec. 12, 1979 at a Caesars Palace "love-in" for the singer.

Mary Poppins magic

The 1965 Walt Disney musical fantasy "Mary Poppins," starring Julie Andrews, Dick

John Schneider loves his work and his fans

One youngster, digging into her pocket money, got enough to mail him a bar of soap (with which he bathed). Another girl dispatched a gold chain (which he wears). Every present is an expression of love.

"It takes just as much work — far more work, in fact — to be a successful doctor or lawyer. I try to make that clear to the kids I talk to."

And he does talk to them. Once, in Tulsa, Schneider spent a whole morning and afternoon signing autographs on behalf of a children's hospital. That night, he sang in front of 12,000 people.

It all gives Schneider a terrific kick. And it's the reason he loves the business so much.

"I'm very fortunate," Schneider says, "to be doing what I love doing every day. Most people can't say that."

"I happen to be an actor. But a doctor or a fireman — anyone can feel the same way. That's what I try to get over to kids. When they say to me, 'Wow! You're neat. You're good,' I say, 'Everybody who's working toward a goal is in the same boat.'"

"When I first started out," he says, "I used to entertain sick kids. I was 10 or 11 years old, but I could see that I was capable of making another kid in a wheelchair smile. It was probably the only time he smiled that day. Or that week. I said to myself, 'This is what I want to do with my life.' And, so far, I've been able to do just that."

WEDNESDAY



William Katt stars as Ralph Hinkley (r.) and Dennis Burkley guest stars on "The Greatest American Hero," to air Wednesday, Nov. 25 on ABC.

(Stations reserve the right to make last-minute changes.)

IN FOCUS

MacNeil/Lehrer goal: the most complete story

By Peter Meade

Now in its sixth year, the "MacNeil/Lehrer Report" is one of the most popular regularly scheduled programs on PBS.

Robert "Robin" MacNeil and Jim Lehrer devote 30 minutes each night to one topic from the day's headlines.

The "MacNeil/Lehrer Report" gets below the surface only scratched by network news.

Attracting a nightly audience of over 4 million viewers, the show has proved to the major networks that a one-subject-a-night news program can succeed.

The networks sense that news must be more than a headline service for the public," MacNeil says.

MacNeil and Lehrer's brand of in-depth, at-length journalism doesn't give viewers indigestion from taking in too much news at once or telling them what to think.

"Our job is to help inform the people and to get the point across," Lehrer explains. "It is not hard to remain neutral. My views are irrelevant."

"Reporting is still and will always be reporting," Lehrer says. "Who, what, where, when, why, how remains the same. There has to be more news, more information, more debate."

Lehrer believes that to achieve more news coverage the news must be reported in "magazines," with programs concentrating on specific interests.

Recently they formed a production company with the Gannett Co., to continue working together to offer more innovative approaches for television.

"This will help us to develop more as a team," MacNeil says.

Both have received many offers from commercial television. The lure of better pay, fatter production budgets and the larger commercial network audiences have not outweighed their love of their jobs and the carte blanche editorial freedom.

MacNeil says: "It is up to television to offer a wide variety of things to watch, including a wide variety of news. What people watch is their choice. We're giving them something to choose."



Robert MacNeil (l.) and Jim Lehrer

TUESDAY CONT.

TUESDAY 11/24/81 11/19/81-11/25/81

Table with 12 columns (CABLE, OETA, KAMR, TMC, KVII, CBN, WGN, KFDA, WTBS, CNN) and 12 rows (6:00-12:30) listing TV programs and channels.

WEDNESDAY CONT.

WEDNESDAY 11/25/81 11/19/81-11/25/81

Table with 12 columns (CABLE, OETA, KAMR, TMC, KVII, CBN, WGN, KFDA, WTBS, CNN) and 12 rows (6:00-12:30) listing TV programs and channels.