

Hansford County roars through the 1920's

EDITOR'S NOTE: This article is the fourth of our ten-part series on Hansford County's one hundred year history, covering roughly the years 1920 to 1930. Due to length of the article, more of the story of the decade will appear in next week's article of the Hansford Plainsman. All readers who would like to contribute in any way to the future articles in the series are invited to call the Reporter at 659-3434.

by Jean Ann Behney

"He always called this 'God's Country' and said it was the best place to live."

These are the words of Helen Gruver Shapley. "He" was her grandfather, Joseph Hekziah ("Uncle Joe") Gruver, for whom the present-day town of Gruver was named in the late 1920's. The establishment of this town was one of the main events in Hansford County's fourth decade of history.

By 1920, the majority of the businesses and homes in Old Hansford, located north of the cemetery between Spearman and Gruver, had been or were being moved to Spearman. Spearman was the site of the first railroad in the county, as readers will recall from last week's article on the years 1910-1920.

Old Hansford remained the official county seat for some years, however, and Perren Lyon, Jr. can remember the frequent trips his father made to this town from Spearman for A. F. Barkley's abstract company to obtain courthouse records. "I'd tag along with my dad," he reminisces, "and while he was in the courthouse, I'd play on the stair at the windmill right outside." Lyon Jr. was a small boy at this time. (He explains that the well had a fence

built around it to keep stray animals out of the tank, and people wishing to get water climbed over this stair to get to it. The more pristine folks didn't relish getting their drink after the neighborhood dog had taken his bath in the tank!)

The early 20's were years of steady growth for Spearman, which boasted a two-block Main Street with six lumberyards! These lumberyards were supported by the Santa Fe Railroad, which freighted in cattle, hogs, farm equipment, and most importantly, oil field supplies. Oil had been discovered in Hutchison and Potter Counties by the mid-20's.

Spearman was incorporated by 1921, with Hugh James as first mayor. The first city clerk was Lee McClellan, who also served as an alderman. L.M. Womble, M.C. Head, Tom Kerr and Fred Brandt were the other four aldermen serving Spearman. Incorporation allowed the town to get protection from fire, and to acquire street cleaning, zoning, and speed limits, according to a 1920 newspaper campaigning for this legal status.

Local residents had quality schools and modern conveniences as their top priorities in these early days of the town. The three-story school building in Old Hansford was laboriously moved to Spearman in 1920, consolidating the Hansford, Happy Jack and Micou districts. (It burned in 1923 and a new school, today's middle school, was built in its place.) Within a very few years, the school had over 175 students enrolled. Spearman petitioned the state of Texas to become a school district in 1920 and won this right, thanks to the efforts of A.F. Barkley and others, who traveled to the legislature in

Austin.

By 1924, Spearman had a light plant and an ice plant, and water mains were being installed on Main Street. Piped water was not available in time to douse either of two devastating fires on Main Street in 1922 and 1924, however, as J.B. Buchanan recalls. "Without any real fire-fighting equipment, a bucket brigade from the windmill just couldn't control these fires," he explains. The first city fire had been in 1920, in fact, and caused the total destruction of one resident's home. Oil stoves left unattended were the cause of the first two fires.

Most of the buildings on Main Street which were burned to the ground in the 1924 fire, such as Hale Drug, were rebuilt as brick structures. The city purchased its first real fire truck and fire fighting equipment in 1927. The fire truck was a Reo Speedwagon and cost a whopping \$3,600. "It was hard, paying it off, but we had to have it," J.B. says. He was the first Spearman official in charge of the fire truck and even slept with it in this capacity.

The discovery of two "gushers" at the site of present-day Borger in 1926 had a profound effect on Hansford County in two ways. The nearest railroad to the Borger site at that time was in Panhandle, but the Spearman Santa Fe line was also kept busy freighting in oil rig equipment from the time of this Borger boom. (These shipments were taken by wagon and truck to Borger from Spearman.) A

second effect the Borger boom had on the county was that Borger's main developer, Asa ("Ace") P. Borger, started looking around at other Panhandle areas as prospective town sites.

The land of present-day Gruver was owned by the Cooper family prior to this time. Borger purchased the land from Mrs. J.H. Cooper in 1927, although she retained her home and a few blocks around it. (The old Cooper home still stands at 314 Cator Street.) Interestingly, the new town was to have been named "Cooper," but "Gruver" was chosen in its place as there was already a town in Texas called "Cooper."

Helen Gruver Shapley tells the story of why the town was named after her grandfather. "Not a lot of people realize that 'Gruver' wasn't picked just because my grandfather was a well-known, successful farmer and rancher. He had actually been one of the main people to help the Rock Island get its right-of-way, and the railroad officials named the switch after him," she says.

As Gruver residents inform us today, one of the main attractions of their area for Ace Borger was its coming railroad.

In 1928, C. Ed Hudson came to the Gruver area from his native Missouri to be townsite manager for Ace Borger. Don Hudson, Ed's son, who has always lived in



Gruver's second brick house was built in 1929 by the J.H. Gruvers. Located at Broadway and Womble, the elegant home is owned today by family descendants.

see "1920's", p.5

Council awards contract

The City of Spearman met in regular session in the council chambers of City Hall on April 25 with Mayor Bob Pearson and aldermen Wilson McClellan, Burl Buchanan, Mike Cudd, Don Reed and Bob Boxwell present. Other staff present were City Manger Jim Murray, City Secretary Cheryl Gibson, Director of Public Safety Joe Raper, Fire Chief Bill Porter, Director of H&S Emergency Medical Services Michele Davis and Police Sergeant Steve Schmidt-Witcher and several visitors present.

In opening the meeting, the minutes of the last council meeting were read and approved. Next on the agenda, the council considered the awarding of a property and liability insurance coverage from May 1, 1989 to April 30, 1990. The City's consultant on evaluating the bids, Bill Stephens of Stephens Management Consultants, Inc., prepared and presented information on the bids received for the coverage. A lengthy discussion was held. Kim Brock of Brock Insurance Agency was present to answer questions from the council. The council decided to award the contract to Penco, contingent upon them providing a landfill policy to the city. The Penco coverage would

cy of Spearman. If Penco does not provide a landfill policy then another decision would be made upon the coverage.

Next council heard representatives from the Spearman Chamber of Commerce ask for the City's financial support in purchasing some new Christmas decorations for the city. No action was taken by the council on the matter.

Councilmembers then heard a status report from the council's committee reviewing the Spearman Volunteer Fire Department's organization. The committee members and various members of the Spearman Volunteer Fire Department traveled to Clarendon on April 27 to observe and visit with their department. A report of that visit will be heard at the next council meeting scheduled for Tuesday, May 9 at 8 p.m.

Consideration of a change order #1 with Lewis Construction Company was next on the agenda. The proposed to increase their contract from \$42,721.99 to \$48,437.99 for the 1989 sealcoat. The council approved the change order after hearing that the sealcoating should provide further preventative maintenance.

Bids from two companies were then reviewed in the council's consideration of a purchase con-

tract for a front-mount riding tractor/mower for the Parks Department. Bids were submitted by Five Star Equipment and Hansford Implement Company. Recommendations were made to

the council for the Hansford Implement tractor/mower because the size of the tractor/mower should save time and expense in its primary use as a mower. Council awarded the purchase contract to Hansford Implement in the amount of \$9,800 less the \$2,000 trade-in.

The professional services of Brandt Engineering were considered for design and inspection of an animal control shelter for the City. The City entered into an agreement with Brandt Engineering Inc., in the amount of \$4,000 for the service.

Next the City heard the monthly revenue and expense report and it was approved. The meeting was adjourned at 10:18 p.m.



Jim Baker's custom harvesting crew shows off the 1989 combines they'll be operating on the 15,000 acres of wheat they'll be harvesting in Arizona next week. Pictured are [l-r] Guy Swanda of Oklahoma

City, Ray Koontz of Pampa, Jeff Giberson of Fairfield, Iowa, Spearman's own Bart Baker, James Skinner of Pampa and Shannon Newsome. Staff photo

The Hansford Plainsman

25¢
Per Copy

6 Pages

Volume 19 No. 26

YOUR HOMETOWN NEWSPAPER

Sunday, April 30, 1989



Mike Cudd shakes hands with Dick Gillaspie during the ribbon cutting ceremony in which Gillaspie celebrates their name change to Gillaspie Truck and Automotive Center.

Mayor Pearson proclaims "Pet Week" May 8-13

The mayor of Spearman, Bob Pearson, has signed a proclamation naming May 8-13 as "Pet Week" in Spearman. This comes in conjunction with National Pet Week, May 7-13.

As part of the plans for the week, the Hansford County Veterinary Hospital and the City of Spearman Animal Control Department will conduct a week long rabies/vaccinations clinic.

The clinic will be held at the Hansford County Veterinary Hospital located at 405 S. County Road #1. Hours for the clinic will be 8 a.m. to noon and 1 to 5 p.m. May 8 through 12, and 8 a.m. to noon on May 13. During this time, discounted fees for the vaccinations and tests for dogs and cats will be offered. Rabies vaccination will be \$7, Distemper-Parvo - \$13, Parvo - \$7, Feline Leukemia - \$11.50, Feline Distemper - \$9, Cytotab (Feline

Rabies & Distemper) - \$14, Heartworm check - \$11.50, and Feline Leukemia test - \$14. City tags will be available for \$2 for males and spayed females and \$5 for female dogs and cats.

The City of Spearman and the

Hansford County Veterinary Hospital are cosponsoring the clinic to encourage pet winners to help control any outbreak of disease by having their pets vaccinated during this clinic.

Students win in academics; awarded scholarships at PSU

Four Spearman High School students were among the winners of the 66th Scholastic Excellence Contest held recently at Panhandle State University in Goodwell, Okla.

Pat Shields won first place in the Math-Science contest. Tony Pacheco and Clint Patterson split

second place. All three were offered full tuition of their freshman year if they choose to attend Panhandle State University.

Daryl Hawkins of Spearman tied for first place in the Computer Literacy contest with Anne Garner of Elkhart, Kan. Hawkins was awarded a \$300 scholarship to PSU.

Old newspapers act as time machine

by Jean Ann Behney

Old newspapers "literally" take a person back in time. For a given year on a given date, a local history buff can discover what the weather was like that week, what joyous tidings or crisis situations were crying out from the headlines, what shoes and tractors cost, and even the fads and jokes of the day.

I have had the privilege of reading through old *Spearman Reporter* issues from the 1920's these past two weeks. They have become my best "non-human" sources (nothing beats a one-on-one interview with someone who was really there!) for this Centennial Series.

Although many of my facts thus gleaned appear in today's main article, I cannot resist including a few tidbits as a side dish to this

entree for all to enjoy. I also cannot resist the impulse to editorialize for just one or two lines. These old newspapers are yellowed and crumbling. Turning a page, no matter how carefully, makes pieces of the printed paper come apart and almost disintegrate in one's hands. Could some Hansford County group undertake the project of getting these priceless newspapers on microfiche so as to properly preserve them?

QUOTABLE QUOTES from 1920 Spearman Reporters
 "Prohibition is here to stay."
 (Wrong!— although this county has never been "wet.")
 "Texas will someday be divided into two or more states." (Wrong again! There was interest in the

early 20's in creating a separate state of Northwest Texas, however.)

"Tom, Tom the Piper's son, Left the school and away he run. He left to stay That very day The teacher had starved and blown away." (Rhyme which was part of a state-wide campaign for better Texas schools in 1920.)

"We have plenty of water and the only object is to get it out to where it is needed."

"Land in Spearman will never sell for less than it is selling today." (from a land promotion campaign)

"The man who wrote 'Go slow and easy' must have been trying to stay on Spearman's improvised

sidewalks on a dark night."

QUOTABLE QUOTES from 1927 Spearman Reporters

"The oil business comes and goes, but agriculture and stock-raising will be here when the cows come home."

"A girl that once was homely Today is passing fair, She uses rouge and lip-stick She curls and waves her hair."

A headline reported that Babe Ruth's new contract with the New York Yankees netted him a salary of \$70,000 per year.

An advertisement urges fellows to take their favorite girl out for a Coca-Cola.

The Hansford Plainsman

Your Hometown Newspaper
 Spearman, Tx. 79081

USPS 2346-6000
 213 Main, Box 458, 659-3434
 Published Weekly at
 213 Main, Spearman, Texas

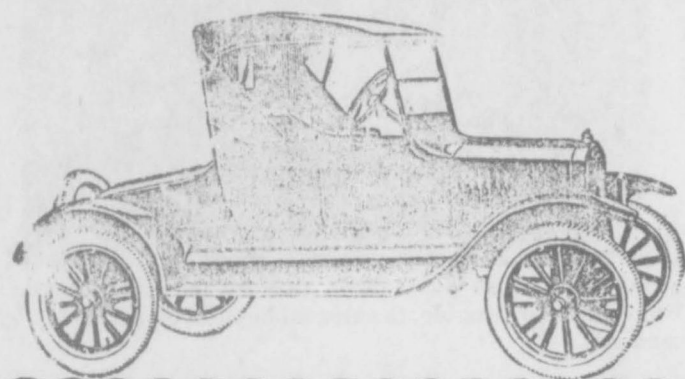
Panhandle Press Association
 1988 Award Winner

Owned and Operated by:
Texas Independent Newspapers, Inc.
 19906 Encino Grove, San Antonio, Tx 78259
 Second class postage paid at Spearman, Texas 79081.
 Any erroneous reflection upon the character of any person or firm appearing in these pages will be gladly and promptly corrected upon being brought to the attention of the management.
PUBLISHER - Karen Goodman

Subscription Rate: Spearman, adjoining counties, combination with the *Spearman Reporter*, \$19.95; non-adjoining counties, \$24.95 annually.
Postmaster: Send address changes to *Hansford Plainsman* Box 458, Spearman, Tx. 79081.
 The publisher reserves the right to revise or reject at its option any advertisement which it deems objectionable, either in subject or phraseology, or which it may deem detrimental to its business.

Hansford County "on the line":

A Timeline of Historical Events



1921 - Spearman incorporated
 Spearman Chamber of Commerce estab.
 Spearman Union Church and Church of Christ estab.
 Early 1920's Oil discovered on north side of Canadian River

1921

1926 - Discovery of oil brings birth to Borger, Tx.
 First Christian Church estab. in Spearman
 1st combines arrive in Hanford County to R.L. McClellan Grain Elevator.

1926

1928 Future town of Morse begins to consolidate country schools
 Battle for County Seat begins among Spearman, Old Hansford and Gruver
 Ed Hudson comes to be Gruver Township Manager
 Building in Gruver

1928

1930 Morse Chamber of Commerce estab.
 Gruver builds new 2-story school
 Gruver incorporates
 Townsite lots sold in Morse
 Santa Fe Railroad receives permit to build line from Spearman to Morse
 Dust Bowl days begin

1930

1918 1st Productive oil wells drilled in the Panhandle (near Amarillo)

1920

1920 - First Baptist Church estab. in Spearman
 Finley Theatre estab. (silent movies)
 Hansford School moves to Spearman
 American Legion Post estab. in Spearman
 early 1920's W.A. Clark has 1 of 1st radios in the county
 Gasoline-Powered tractors appearing in county

1922, '23, '24

1922 Main Street fire in Spearman
 1923 Spearman School burns to the ground
 1924 - Spearman light plant and ice plant estab.
 1st elevator in Spearman estab. by Albert Liste
 1st water system installed in Spearman
 Main Street fire in Spearman
 1st County Agent, Sam W. Martin

1927

1927 A.P. Borger and Partners compose the townsite of Gruver, Tx.
 Gruver Post office estab.
 Main Street bricked in Spearman
 James H. Cator, Hansford Pioneer, dies at 75 years of age
 Hansford County 20th Century Club estab.
 1st irrigation well drilled on Palo Duro Creek
 Hansford County's 1st fire truck purchased

1929

1929 Bumper crop year for wheat
 Spearman wins battle for county seat by a 2/3 majority vote
 Morse Post office estab.
 1st Rock Island train comes to Gruver
Hansford County News Published
 Gruver Methodist Church estab.
 First Baptist Church of Gruver estab.
 Gruver consolidates rural schools
 First State Bank of Gruver estab.
 The *Morse Monitor* estab.

Automobile pictured is taken from an old *Spearman Reporter* advertisement. It is a 1924 Ford Runabout, the sale price of which was \$265 in that same year.

Hansford County Historical Trivia

Did you know that citizens in Hansford County had to pay an annual poll tax of \$1.50 in order to exercise their right to vote? Poll taxes were later declared uncon-

stitutional in this country. Around election time, the newspaper ran repeated reminders for voters to make sure their poll taxes were paid in advance of election day.

Quiz Time! Quiz Time!

Two quiz questions are posed each week as part of our Centennial Series and the two questions from the previous week are answered in this column. Readers can respond to quiz questions by calling the *Spearman Reporter* at 659-3434. Correct respondents will be named the following week and their answers provided. Answers may or may not be found in Centennial Series' articles.

THIS WEEK'S QUIZ!
Short Quiz Question: Why does the original Gruver school, built in 1930, feature one dome with a seemingly missing dome on the opposite side?

"Think About It" Question: What caused the dust storms of the "Dirty Thirties"?

How about some new respondents this week? The same half-dozen people are doing all the hard thinking! (Actually, if J.B. Buchanan, Woody Gibner and Buddy Etling don't phone us, we are going to be mightily disappointed)

LAST WEEK'S ANSWERS:
 These were reported in the paper last week, as our article on the county's third decade of history ran in two week's issues.

JR. BABE RUTH SEASON TO OPEN

All interested ballplayers, coaches, and umpires wishing to participate in the 13-15 year old Jr. Babe Ruth Baseball League, please contact Curtis Davis by May 6 at 659-2912.

NEW DIRECTOR NEEDED

Director for YMCA-type Activity Center with skills in public relations, program directing, management and bookkeeping.

Application deadline 6-1-89.
 Send resume to Box 929, Perryton, Texas 79070.
 Attn. Tim Cooper.



"An ocean of wheat" . . . This 1920's wheat field is the background for a classic father-son photograph as P.A. Lyon Sr. and P.A. Lyon Jr. pose. Lyon Jr. owns Hansford Abstract Company in Spearman.

Hansford County Trivia

Hansford County Historical Trivia . . . By the end of the 20's, the following items were for sale in Hansford County, Edison phonographs, Coca-Cola, various brands of cigarettes, "flapper" dresses, combines and gas-powered tractors, Chevrolets and Fords, and battery-operated radios. County residents were building garages

for their cars, getting election returns on the radio, following the triumphs of Babe Ruth's baseball career, having their hair bobbed (women) and in some cases dyed black, playing a mean game of basketball at the high schools (both girls' and boys' teams), drilling for oil and gas and even getting divorces!

AUCTION!!!

Senior Class of 1989

Sunday, May 7 at 2 p.m.

If you have anything you would like to donate call 3653, 2662, 2867 or 2767.

We will pick it up.

cakes and homemade ice cream will be sold

Location:

Old Taylor Petroleum Bldg.

BRIDAL SHOWER

You are cordially invited

to a bridal shower honoring

Teri Thomas

bride-elect of

Steve Hunter

on Thursday May 4

7:30 to 9:30 p.m.

Hospitality Room

First State Bank
 Selections-Chalor's-Sacks

BREAST CANCER DETECTION UNIT

available to area women!

SPONSORED BY: SPEARMAN CHAMBER OF COMMERCE

FRIDAY, MAY 5, 1989
 FIRST NATIONAL BANK PARKING LOT
 SPEARMAN, TEXAS
 Sponsored By:
 Spearman Chamber of Commerce

Call 659-5555 for appointment

According to the American Cancer Society, one out of ten women will develop breast cancer sometime in her lifetime. It is currently estimated

that over 37,000 women die each year as a result of breast cancer. Ninety percent of breast cancers are diagnosed by women or their physicians finding a lump in the breast. Women who are diagnosed with a lump large enough to feel have a 50 percent five year survival rate. A woman who is diagnosed as having breast cancer by mammography, before a lump can be felt, has a 97% five year survival rate and a 90% 10 year survival rate. (The cost is only \$55.00)
 A mammogram can detect a cancer this small, even before it can be felt.

VOTE MAY 6

It has become quite apparent over the past several months that the morale of our teacher is extremely low. I don't care if you are a farmer, a teacher or a housewife -- you want and need support and a pat on the back when you've done a good job. If someone thinks you are not performing your job to the best of your ability, you want to know and to perhaps receive advice on how to improve your performance. These are simple courtesies, but these "simple courtesies" are not being extended to our teachers by many in the administration. It is up to the school board and, by association, their employees -- the administrators -- to support our teachers.

School board members must be fair. They must be fair to teachers: they must be fair to parents; but, above all, they must be fair and do what is right for the children, because the children are who the system was created for and what the system is all about.

Let's work together to get back the positive attitude we once had in our school system, and it will undoubtedly reflect back with positive results in our children.

I would appreciate your vote on May 6. I will be available at any time for questions, comments, and complaints.

Thank you for your support,
 Craig Schumann

Letter to the Editor

Today, Scouting reaches more youth in more places through fun filled, educational activities and teaches them a value system worth supporting. In the city of Spearman, we have one Cub Scout Pack: Pack 578 is chartered by Hansford Implement of Spearman. The Pack has 63 boys and 19 adults enjoying Scouting. There are 16 boys and 13 adults involved in Boy Scout Troop 551. The Troop is chartered by the Spearman Noon Lions Club. The Scout leaders of Spearman are serving 35% of the available Cub Scout age boys grades 1 - 5. They are serving 12% of the Boy Scout age boys grade 5 - 8. Along with the adults in the units there are many more who work on Council and District levels; as well as merit badge counselors for the Scout Troop.

In order for the Golden Spread Council of the Boy Scouts of America, which covers the Texas and Oklahoma Panhandles, to annually serve over 10,000 youth, we need our financial support. Parents, Scouters, friends, businesses, and former Scouts and leaders have a vested interest in the Council because of its services, such as:

- Direct field assistance to Cub Packs, Scout Troops, and Explorer Posts.

- Year round maintenance and operation of Council camping facilities.

- Operation of program materials and adult leaders training courses.

- The conducting of multi-unit activities, such as Camporees, Scout Skill Shows, Cub Scout Day Camps, and Boy Scout Summer Camps.

You can not assign a dollar value to a program that develops character building, citizenship, training, and personal fitness. The benefits that will ultimately accrue to the individual community, state and nation are incalculable.

Scouting is unique in its ability to provide these qualities through its programs, but there is an ever increasing cost. Sustaining Membership Enrollment provides the necessary funds to meet these costs. It is approved as a way for former Scouts, Scouters, and Explorers families, as well as others, to support Scouting. We hope you will welcome our campaign workers, who will be coming around starting May 1 - May 15, and give them what you can to help Scouting grow in Spearman as well as in the whole Golden Spread Council area.

Golden Spread Boy Scout Council Local Scoutmaster: Harry Stumpf

THESE SPEARMAN JUNIOR HIGH STUDENTS BROUGHT THE SCHOOL A FIRST PLACE IN THE UNIVERSITY INTERSCHOLASTIC LEAGUE LITERARY DISTRICT CONTEST HELD AT HIGHLAND PARK RECENTLY.



Back row [l-r] Clayton Hergert, Kelly Shieldknight, Andrea Aldridge; [front row] Laci Baker and Carrie



[L-r] Alisha LaRoche and Elizabeth Pipkin



Back row [l-r] Andrea Barrerra, Misty Vigil, Josh Winegarner; [front row] Oscar Rojas and Wendell



[L-r] Leslie Swan and Regina Biggers



Back row [l-r] Tiffany Bruning, Kristina Poole, Molly Blackmon, Kortney Henton; [front row] Stuart Riggins, and



[L-r] Sammy Graham and Nikki Strawn



[L-r] Robert Needham, Kimbre Townsen, and Amber Cates



Tanning Special

Get your Wolff tan today!

One month
of unlimited
tanning for \$50



Call 659-2238 or come by for your appointment
717 W. 7th

LAND FOR SALE IN CENTRAL TEXAS

Average annual rainfall 38 in.

Tracts range in size from 300 acres to 1300 acres.

Prices range from \$475.00 to \$650.00 per acre.

Ideal for oat or wheat winter pasture or grain production.

For more information: Contact
Guy Durham Real Estate
P.O. Box 67
Groesbeck, Tx. 76642.

CAROLYN GRESSETT

I am a candidate for one of three positions on the Spearman ISD Board of Education to be selected by the voters on May 6. I ask for your vote for the following reasons.

Since I have had three children graduate from Spearman Public Schools, I feel qualified to offer my viewpoint of the educational needs of our children. I do not work outside my home; therefore, I have sufficient time to become an informed board member. Since I have no children in the system, I can pledge total objectivity.

My educational priorities are as follows:

1. I want higher quality education and will seek to achieve it by making academics my number one priority.
2. I think a better fine arts program is essential and begins in elementary and junior high. Two of my children were in band, and all three participated in the fine arts program in the Spearman Schools.
3. All of my children participated in sports at SHS, and I know the value of them. However, when it comes to budget decisions, my priority will be academics, which benefits ALL STUDENTS, K - 12.

Making academics a budgetary priority will serve to improve them. Our three libraries need increased funding; we need a playground and equipment at the elementary campus.

Does this mean that I am insensitive to the needs of the taxpayer? Absolutely not. I will strive for the lowest possible tax rate.

I believe that by close study of the budget, listening to our teachers, asking pertinent questions, etc., I can offer alternatives to some of the choices before the board that will give our students a better education at the same price.

I request this of you. Study my candidacy. Feel free to question me on my viewpoints. Question what is going on in your district. If you see a need for a change, particularly in emphasis for academic learning in our district's schools, then vote for me. I will be responsive, responsible and dedicated to quality education.

Carolyn Gressett

VOTE MAY 6

GRAND OPENING

May 1st - Free Coffee & Donuts

Kay's Cafe

210 Main Spearman, Texas


Full Line Menu

Salad Bar 11:00 a.m. - 9:00 p.m.

Buffet Lunches 11:00 a.m. - 2:00 p.m. Daily

Georgie will be making her famous cream pies!

Open:
5:00 a.m. - 9:00 p.m. - Mon. - Sat.
5:00 a.m. - 2:00 p.m. - Sun.




drive friendly

CARMON'S CANINE CLIP - JOINT

Dog & cat grooming and boarding. Clipper blade sharpening. 314 Industrial Road, Perryton 435-2569

Office 9-5 Mon. thru Fri. 435-2121 Home.

\$23S 4tc



UNITED Supermarket

DOUBLE SEALS ON WEDNESDAY
IT TAKES 24 SEALS TO FILL A SAVER FOLDER
ONE SEAL ISSUED FOR EVERY \$5 EXCLUDING TOBACCO PRODUCTS



WE'RE COOKIN' UP A

Cookout

PRICES GOOD THRU MAY 6 IN PERRYTON ONLY

Grocery



DEL MONTE FRUIT
•YELLOW CLING PEACHES SLICED OR HALVES •FRUIT COCKTAIL •PEARS REG. OR LITE
16 TO 17 OZ.
.69



DUNCAN HINES LAYER CAKE MIX
ASST.
18.5 OZ.
.69



TEXSUN GRAPEFRUIT JUICE
46 OZ.
.99



NABISCO CRACKERS
ASST. 16 OZ.
.89



CRISCO
REG. OR BUTTER
3 LB. CAN
\$2.29



COKES OR 7 UP
6-12 OZ. CANS
\$1.69



DEL MONTE KETCHUP
REG. 32 OZ. OR SQUEEZE 28 OZ.
.89

BOUNTY TOWELS
ASST. JUMBO ROLL
.79

DOWNY FABRIC SOFTENER
45" OFF LABEL REG. OR SUNRINSE 64 OZ.
\$1.99

BAN ROLL ON
2.5 OZ.
\$2.69

Dairy

Frozen

NO SALES TO DEALERS

Produce

QUANTITY RIGHTS RESERVED



BLUE BONNET OLEO QUARTERS
2 1 LB. PKG.
\$1



PLAINS ICE CREAM
REG. OR GOLD RING
1/2 GAL.
\$1.79

PATIO MEXICAN DINNERS
ASST. 12 TO 13.25 OZ.
.89



CRISPY ICEBURG LETTUCE
TRIMMED LB. .39
UNTRIMMED 3 LBS.
\$1

DOLE GOLDEN RIPE BANANAS
2 LBS.
.89

Meat



UNITED PREMIUM QUALITY BACON
REG. OR MESQUITE
1 LB. PKG.
\$1.19



UNITED TRU TENDR OR USDA CHOICE CHUCK ROAST
BLADE CUT
SUPER VALU PAK
SINGLE PAK \$1.19
LB.
\$1.09



PORK SPARE RIBS
EXCELLENT FOR COOKOUT
SMALL 3 1/4 LBS & DOWN
LB.
\$1.29



POTTERS WHOLE HOG PORK SAUSAGE
REG. OR HOT
2 LB.
\$2.98



RAMIREZ CORN TORTILLAS
32 CT. PKG.
.68

Classifieds

For Sale

FOR SALE: Mita Copier. Good condition. Call 659-2541. S26 2tc

FOR SALE: Window type evaporative air cooler. Like New. For more information call 659-3039. S26 RTN

FOR SALE: 14' STARCRAFT 65 Hp Mercury. \$600.00. 910 Haney - 659-2960. S26-4tp

USED AUTO PARTS FOR SALE: Located 4 miles west of Hooker, Ok. on highway 54. Muss Cat Auto Salvage. (405) 652-2400. S10-rtm

FOR SALE: Champion Mobile Home, 3 Bdr. Located at 204 N. Hazelwood and lot. Call: (405) 254-3888. S26S 7t

FOR SALE: Brick house on 2 acres in Gruver, 3 Bdr, 2 full baths & 2 large water heaters, 4 car garage, large shop, horse barn & lots of trees, \$70,000. 205 E 10th. Call 733-2129, 733-2002, or Norma Swink at 733-2421 or 733-2136 nights. S19-RTN

FOR SALE: Totally remodeled home, 3 bedroom, 1 bath, rock fireplace, central air, utility room, large fenced corner lot at 361 South Hazelwood. Call 659-3633 after 5:00 p.m. S26S-rtm

Business Opportunities

READ BOOKS FOR PAY! \$100 a title. Write: PASE - P3134, 161 S. Lincolnway, N. Aurora, IL 60542 S25-4tp

For Rent

FOR RENT: Trailer space in Spearman, fenced yard, underground utilities, close to High School and swimming pool. Call 435-5080. S23-RTN

Help Wanted

HELP WANTED: Part-time janitorial service. Must be able to lift heavy objects. Apply in person. High Plains Auto Supply. S26 RTN

PRECISION AIR SEEDING

Proven: Personal 3 yr. avg. - 2986 # 1A (+ 300 A)
Rapid: One tillage operation
Moisture efficient
Economical: \$6/A (+ 200A-\$5.50/A)
Easy: just call Bob Williams - 435-4835 S25-6tc

GARAGE SALE: Saturday, May 6 9 a.m. to 3 p.m. 1030 S. Dressen. S26S-2tp

WANTED

Old photographs taken in Hansford County from the 20's, 30's, and 40's. We at the **Spearman Reporter** will take good care of any photo loaned to us. Photos are featured with each article of the Centennial Series and are, of course, returned to their owners.

Flame Fellowship to begin meeting

Top of Texas Flame Fellowship will begin meeting May 5 in the Home Demonstration Building and every first Friday of each month following. Meetings will begin with coffee and fellowship at 7 p.m. Speaker for the May 5 meeting will be Barbara Murrell. She has been involved in jail ministry for women, Women's Ministry at Beverly Hills Baptist Church, Ladies Home Care Ministry at Church on the Rock, Woman to Woman, and Sharing Our Life, Inc. The meetings are interdenominational and everyone is welcome to attend.

OSGOOD MONUMENT CO.

Amarillo, Texas
Dealers of Rock of Ages Granite, as well as all colored granites, marble and bronze memorials.
represented by
BOXWELL BROS.
FUNERAL HOME
519 S. Evans
659-3802

TOGETHER WE CAN "MAKE THE BEST BETTER"

EDUCATION PREPARES CHILDREN FOR LIFE.

ATTITUDES ARE LEARNED ABOUT HONESTY, RESPECT FOR OTHERS, AND SELF-ESTEEM GOOD CITIZENSHIP DEVELOPS.

TEACHERS AND ADMINISTRATORS OF TODAY NEED SUPPORT. A GREAT BURDEN OF RESPONSIBILITY HAS BEEN PLACED ON THEM.

SCHOOLS NEED TO BE RUN AS EFFICIENTLY AS ANY BUSINESS, BUT IT IS IMPORTANT TO REMEMBER THE EDUCATION OF OUR CHILDREN IS THE FIRST RESPONSIBILITY.

LINDA H. JARVIS
CANDIDATE FOR SPEARMAN SCHOOL BOARD
VOTE SATURDAY, MAY 6

QUALIFIED TO SERVE

PAST, PRESENT, AND FUTURE INTEREST IN OUR SCHOOL SYSTEM

DEDICATED, WITH TIME AND ENERGY BUSINESS EXPERIENCE

Paid Political Advertisement: LINDA H. JARVIS

menu

HIGH SCHOOL MENU MAY 1 - MAY 5

- MONDAY**
TACOS
PINTO BEANS
SALAD BAR
SOPAPILLAS-HONEY MILK
- TUESDAY**
CHILI DOG
FRIES
SALAD BAR
PEACH COBBLER MILK
- WEDNESDAY**
PIZZA
SPAGHETTI/SAUCE
SWEET PEAS
SALAD BAR
BIRTHDAY CAKE MILK
- THURSDAY**
HOT TURKEY SANDWICH
MASHED POTATOES/GRAVY
SALAD BAR
HOT ROLLS/BUTTER
PEARS
MILK
- FRIDAY**
HAMBURGER
TATOR TOTS
SALAD BAR
COOKIE MILK

JR. HIGH-ELEMENTARY MENU MAY 1 - MAY 5

- MONDAY**
TACOS
PINTO BEANS
SPANISH RICE
LETTUCE/TOMATO SALAD
SOPAPILLAS/HONEY MILK
- TUESDAY**
CHILI DOG
FRIES
PORK 'n BEANS
PEACH COBBLER MILK
- WEDNESDAY**
PIZZA
SPAGHETTI/SAUCE
SWEET PEAS
MIXED FRUIT
BIRTHDAY CAKE MILK
- THURSDAY**
CHICKEN PATTIE
MASHED POTATOES/GRAVY
GREEN BEANS W BACON
HOT ROLLS/BUTTER
PEARS
MILK
- FRIDAY**
HAMBURGER
TATOR TOTS
LETTUCE-TOMATO
PICKLE-ONION
COOKIE MILK

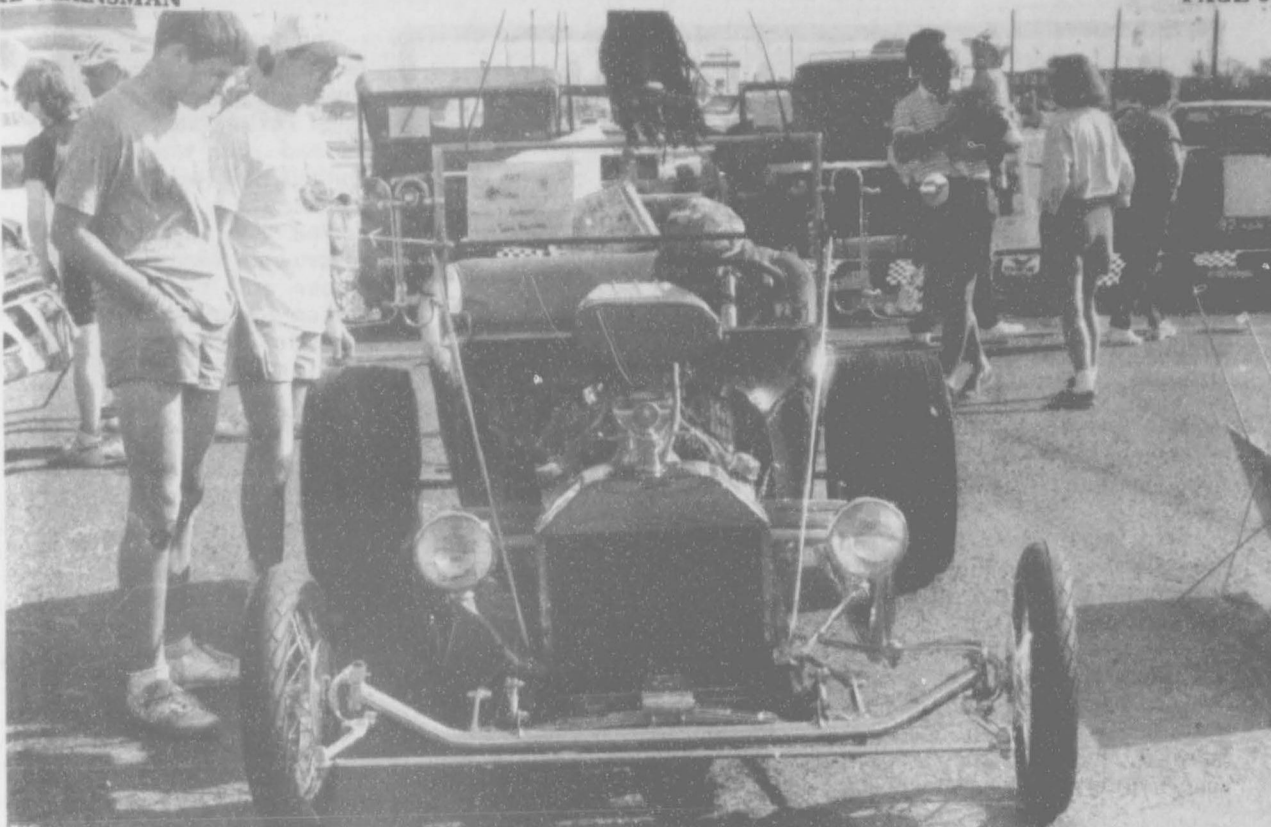
"1920's", from p.1

Gruver, reports that his father came ahead of the rest of his family to sell lots and manage the site. Hudson and Borger had become acquainted in the Missouri Ozarks some years earlier, where both had grown up as farm boys.

Gruver's first building was the combination townsite office and post office, a sheet metal structure where Hudson first lived with his family. Newspaper accounts claim that \$30,000 worth of townsite lots were sold on opening day. By 1929, Gruver had three lumber companies, three gas stations, three grain elevators, and three

grocery/general merchandise stores. Several small country schools were brought to Gruver and consolidated, to be replaced by the new brick school building in 1930.

In later years, the Hudson parents returned to Missouri, but Don Hudson has never left Gruver except during his World War II stint. He points out that the town was barely off to a start when the Great Depression hit, only to be followed by the Dirty Thirties. He attributes Gruver's tenacity to the fact that the town managed to get a good school going right away and to its central location to county ranching and farming interests. "Gruver had good crop years in 1929 and 1930, too," he adds. Irrigation and oil and gas finds pumped new life into the town over subsequent decades, as later articles will illustrate.



Pete Mauk (left) and Stan Brandt admire Sam Abston's Roadster at the Hansford County Spring Shine & Show last weekend at Gillaspie Truck and Automotive parking lot.

Blood Pressure Clinic

Wednesday, May 3, 9:00 a.m. until 1:00 p.m.

Free

(806) 659-5565



One NE Court
Spearman, TX
79081

FIRST STATE BANK - REPORT OF CONDITION
PUBLICATION COPY - COMMERCIAL BANK

STATE 035 (3-88)

LEGAL TITLE OF BANK
First State Bank
Box 247
Spearman, Texas 79081
CITY COUNTY STATE ZIP CODE
Spearman Hansford Texas 79081

STATE BANK NO.
1107-37
FEDERAL RESERVE DISTRICT NO.
11 13 17844
CLOSE OF BUSINESS DATE
March 31, 1989

		Dollar Amounts in Thousands			
		Bi	Mil	Thou	
ASSETS					
1. Cash and balances due from depository institutions:					
a. Noninterest-bearing balances and currency and coin			3	144	1.a
b. Interest-bearing balances			1	100	1.b
2. Securities			34	195	2
3. Federal funds sold and securities purchased under agreements to resell in domestic offices of the bank and of its Edge and Agreement subsidiaries, and in IBFs:					
a. Federal funds sold			5	555	3.a
b. Securities purchased under agreements to resell				0	3.b
4. Loans and lease financing receivables:					
a. Loans and leases, net of unearned income	26	326			4.a
b. LESS: Allowance for loan and lease losses		320			4.b
c. LESS: Allocated transfer risk reserve		0			4.c
d. Loans and leases, net of unearned income, allowance, and reserve (item 4 a minus 4 b and 4 c)			26	006	4.d
5. Assets held in trading accounts				0	5
6. Premises and fixed assets (including capitalized leases)				974	6
7. Other real estate owned				57	7
8. Investments in unconsolidated subsidiaries and associated companies				0	8
9. Customers' liability to this bank on acceptances outstanding				0	9
10. Intangible assets				0	10
11. Other assets				1	770
12. a. Total assets (sum of items 1 through 11)				72	801
b. Loans deferred pursuant to 12 U.S.C. 1823 (j)				0	12.b
c. Total assets and losses deferred pursuant to 12 U.S.C. 1823(j) (sum of items 12.a and 12.b)				72	801
LIABILITIES					
13. Deposits:					
a. In domestic offices:				60	791
(1) Noninterest-bearing	7	277			13.a.(1)
(2) Interest-bearing	53	514			13.a.(2)
b. In foreign offices, Edge and Agreement subsidiaries, and IBFs:					13.b
(1) Noninterest-bearing		0			13.b.(1)
(2) Interest-bearing		0			13.b.(2)
14. Federal funds purchased and securities sold under agreement to repurchase in domestic offices of the bank and of its Edge and Agreement subsidiaries, and in IBFs:					
a. Federal funds purchased				0	14.a
b. Securities sold under agreements to repurchase				49	14.b
15. Demand notes issued to the U.S. Treasury				0	15
16. Other borrowed money				0	16
17. Mortgage indebtedness and obligations under capitalized leases				0	17
18. Bank's liability on acceptances executed and outstanding				0	18
19. Notes and debentures subordinated to deposits				0	19
20. Other liabilities				551	20
21. Total liabilities (sum of items 13 through 20)				61	391
22. Limited-life preferred stock				0	22
EQUITY CAPITAL					
23. Perpetual preferred stock (No. of shares outstanding	0			0	23
24. Common stock (No. of shares a. Authorized	200,000				
b. Outstanding	200,000			1	000
25. Surplus				2	000
26. Undivided profits and capital reserves				8	410
27. Cumulative foreign currency translation adjustments					
28. a. Total equity capital (sum of items 23 through 27)				11	410
b. Losses deferred pursuant to 12 U.S.C. 1823 (j)				0	28.b
c. Total equity capital and losses deferred pursuant to 12 U.S.C. 1823(j) (sum of items 28.a and 28.b)				11	410
29. Total liabilities, limited-life preferred stock, equity capital, and losses deferred pursuant to 12 U.S.C. 1823(j) (sum of items 21, 22, and 28.c)				72	801
MEMORANDA: Amounts outstanding as of Report Date:					
1.a Standby letters of credit, Total				0	1.a
1.b Amount of Standby letters of credit in memo 1.a conveyed to others through participations				0	1.b

NOTE: This report must be signed by an authorized officer(s) and attested by not less than three directors other than the officer(s) signing the report. We, the undersigned officer(s), do hereby declare that this Report of Condition has been prepared in conformance with official instructions and is true to the best of my (our) knowledge and belief.

SIGNATURE OF OFFICER(S) AUTHORIZED TO SIGN REPORT
Robert C. Schnell
DATE SIGNED
4-20-89
NAME AND TITLE OF OFFICER(S) AUTHORIZED TO SIGN REPORT
Robert C. Schnell, Assistant Vice President
AREA CODE/PHONE NO.
(806) 659-5565

We, the undersigned directors, attest the correctness of this Report of Condition and declare that it has been examined by us and to the best of our knowledge and belief has been prepared in conformance with official instructions and is true and correct.

SIGNATURE OF DIRECTOR
Alma Shirley
SIGNATURE OF DIRECTOR
John Shirley
SIGNATURE OF DIRECTOR
Don Baker
State of Texas County of Hansford ss:

(MAKE SURE THIS SEAL IS Sworn to and subscribed before me this 21st day of April, 1989. NOTARY PUBLIC IRENE BAKER, Notary Public, State of Texas, My Commission Expires 1-2-93.

Signature Notary Public

Among the Neighbors

by Helen Fisher

Family and friends of Johanne Blodgett are very relieved to learn that she is recovering from major and extensive surgery, and all reports are clear. She underwent surgery at High Plains Baptist Hospital Tuesday morning and is in good spirits and receiving callers.

Her room is 331 and her private telephone number is 358-5331.

Last weekend Pearl Pierce and Emma Lou Collins enjoyed a trip to Emporia, Kan. They attended a birthday party for Emma Lou's brother.

The eastern part of Kansas is showing signs of late rains and the pastures are very green and lush; however, the western part has some mighty sad wheat prospects.

In spite of the many rumors, it is learned that John Roller, formerly of Spearman, was not seriously injured recently. He was in a hospital in Springfield, Mo., after suffering a crushed sinus and broken nose, but had no skull or brain damage. He was struck by a ball in the men's league softball game.

Interesting visitors in Spearman this week are Doris and Jack McKay. They are visiting relatives

and friends while headquartered with Pearl Pierce, her cousin.

Enroute here from their home in La Mirado, Calif., they spent some time in Denton with her sister, Jackie. Jackie and Doris are now the surviving members of the Reuben Birdwell family, long-time residents of Spearman.

They also stopped in Lubbock for a visit with Jack's sister, Betty and Arnold Richardson.

Doris and Jack have recently sold their grocery store and are contemplating retiring at Cedar Lake near Dallas where they own property. They enjoyed some wonderful fishing there last week.

Their three children all live in California.

Those who read Putt Powell on the Sports section of **The Amarillo News Globe** were impressed by a recent column, but since it was the afternoon edition, some may have missed it.

In listing his choice for an all-time Texas Tech team, Powell leads off with Garland Head for 1947. After he names several other players, he follows with this paragraph:

"I've never seen a better long shooter than Garland Head. He was shooting three pointers long before they counted three points.

The tougher the pressure the better he shot. He was the hero in several of the classic games with West Texas State in the 1940s.

Head also was a starter in football. He was a center and a linebacker."

Well, now, he is referring to Spearman's own Garland Head, farmer and rancher, and also former Spearman coach before going to Dumas about 30 years ago.

Fisher reports

(FHTNC) - Navy Petty Officer 1st Class Timothy D. Fisher, son of Mr. and Mrs. R. C. (Pete) Fisher of Spearman, recently reported for duty at Naval Construction Battalion Center, Gulfport, Miss. He joined the Navy in March 1970.

GLADIOLA FLOWER CLUB

The Gladiola Flower Club met in the home of Margarette Evans on April 20. President Myra Berner called the meeting to order. Roll call was answered with "Tips on Planting a Garden."

Minutes of the last meeting were read and approved, and the treasurer's report was given. Home tour plans were then discussed.

Estelle Jackson, Jo Larson, and Betty Jean Davis were appointed to the Hansford Roundup Committee. The group voted to make donations of \$50 to the Station Master's House Museum and to the Golden Spread Senior Citizens Center.

Mike Hergert presented a program on a tour of the Lyndon Baines Johnson Ranch and area.

Estelle Jackson gave a brief description of "This Was My Life." This was assigned to her because her birthday was this month.

Margarette Evans was the winner of the potted plant specimen.

Other members present at the meeting were Wanda Brown, Virginia Head, June Jackson, Lorene Kunselman, and Gwen Smith. The next meeting will be in the home of Virginia Head.



Back row [l-r] Cody Pipkin and Sylvia Rosales; [front row] Brad Butler and Cass Lasater



Back row [l-r] Sandi Rich, Mica Pipkin, Reagan Boxwell; [front row] Cory Butler, Mandi Lair, and Haley Farber



Back row [l-r] Mike Hager, Chris Hornsby, Alisha Gardner; [front row] Brad Butler and Chad LaRoche



[l-r] Brent Collins, Alvin Harbour, and Amy McCubbin

Girl Scouts to be recognized May 4

for year's activities

Spearman Girl Scouts will hold their annual Court of Awards on Thursday, May 4 at 7 p.m. at the Lyric Theatre. Daisy, Brownie, Junior, and Cadette Girl Scouts will receive recognitions for activities done during the last year. Girls advancing to the next level of Girl Scouting will participate in a "Bridging" ceremony.

Everyone is invited to attend this Court of Awards and hear about all of the exciting things Girl Scouts in Spearman are doing.

Inch by Inch

Induced Rhythmic Motion Exercise

MAY

Unlimited

sessions

\$58.85



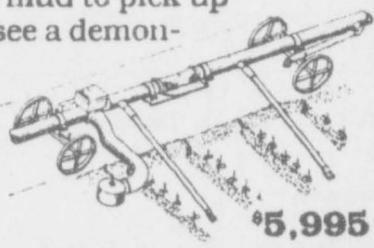
"The Ultimate in Body Toning"

Call 659-2238 for appointment
717 W. 7th

TIRED OF LIFTING IRRIGATION PIPE AND GETTING MUDDY?

With A Raintrain (Pat 4,726,529) you can row water and change pipe settings from your turn row without walking into your field. It is now old-fashioned to get in the mud to pick up pipe and surge units. To see a demonstration, call us.

MMS Inc.
293-1304
3201 N.W. CANYON ST.
PLAINVIEW, TEXAS



\$5,995

School is what WE make it!

* VOTE MAY 6 *

RANDY KIRK

Candidate for Spearman School Board

CREDENTIALS: Born in Borger, Tx. and raised in the Spearman and Borger area. Began elementary school in Pringle and later moved to Borger where I finished high school. Attended Texas Tech University and McMurray College. I have been engaged in farming and ranching in the Holt Community since 1973. I have been married for 14 years and have two sons attending the Spearman Elementary School. I am a member of First Baptist Church where I am active in the choir and teach 3rd and 4th grade Sunday School. I have several years of board experience having served as a deacon at Faith Covenant Church in Borger and for the past two years as President of Spearman PTA. I presently serve on the board of West Texas Child Evangelism Fellowship and Hansford County Activity Center. I offer to you a candidate who is:

CONCERNED:

Children are the future and because of this their education is of prime importance. I am concerned for my children, but also all the children of this community. I believe in the uniqueness of each child and am concerned that individual needs of children are recognized and met in our school system.

I am concerned about what our children learn and how they are taught. We should all be concerned about the influences placed upon our children and about the ideals that are placed before them.

I feel the concern that the school board and parents as partners with teachers be motivating youngsters to feel positive about school and learning.

CARING:

I care about seeking to provide a high quality public education that will foster the highest welfare of children and youth.

I care that in the partnership between the home and the school that each have a systematic program for exchanging information and involvement in the school policy-making process.

My mother taught school for 20 years. Therefore, I care deeply about the teaching profession and am well-acquainted with the concerns of teachers.

COMMITTED:

To the best of my ability I will serve this community and be willing to answer for the decisions made by the school board.

I am willing to work as a partner with teachers, students, and parents and to act to best represent the needs of all concerned.

I will not make personal promises nor take any private action which may compromise the school board.

I will support and protect school personnel in the proper performance of their duties.

I will vote to appoint the most highly qualified personnel available.

I will hold confidential all matters pertaining to the school which, if disclosed, might needlessly injure individuals or the school.

I will be responsive to the desires of the community and to the needs of children.

* VOTE MAY 6 *

FOR SALE: 167 black and black baldy cow/calf pairs. Calfhooed vaccinated. Also 6 registered Brangus bulls, 3-4 years old.

Contact

LOGSDON CATTLE CO.

733-2676 or 733-2803