



# The Hansford Plainsman



VOLUME V., NUMBER 29

SPEARMAN, TEXAS

THURSDAY, APRIL 30, 1964

## PRIMARIES ARE SATURDAY



It is time to vote again and no one should fail to vote. It does not matter whether you vote for a winner or loser, the sheer number of votes has a very strong effect on office holders.

When there is a great number of voters, the office holders know the people are watching them closer. They are going to work much harder to represent the wishes of all the voters and not just the few special interests when the vote is big.

There are very few legitimate excuses for passing your obligation to vote. Vote your convictions, but make them known.

The name calling between McLendon and Yarborough has really reached strong proportions. It looks like from here if either side has any truth in their charges there are grounds for some hot legal battles.

Ralph Yarborough has been running for some office as long as we can remember. We have heard him make speeches at both ends of the state and in-between.

There is one thing we have found, he seems to always have just the things his particular audience wants. He is strictly an office seeker with little to offer.

Nor, can we see any great amount of statesmanship emitting from McLendon. He does have some funny commercials, (Con't. on page 2.)



CONSERVATION COMMUNITY— Conservation farmers like James Stedje made Oslo the best Soil Conservation Community in the state. Stedje is using pipe for irrigation. The Oslo Lutheran Church is in the background. PLAINSMAN PHOTO

### No Local Contests In Either Primary

Hansford County Democrats and Republicans go to the polls Saturday in party primaries to select the candidates for the general elections in November.

With the Republicans showing more strength each year the Democratic primary victories do not insure election to office.

For the first time there are serious contests in the Republican party for party nomination. The contest that is drawing the most attention among the Republican races is the one for the party nomination to the Senate.

Four men seek the office. They include George Bush, Jack Cox, Dr. Milton V. Davis and Robert Morris.

The only other Republican race is local in nature where Bob Price of Gray County is opposing Frank Hinkson of Farm-

er County for the party nomination to oppose Walter Rogers for Representative from the 18th District.

There is a Presidential Preference on the Republican ballot. The candidates on the ballot are Barry Goldwater, Nelson Rockefeller, Margaret Chase Smith and Harold Stassen.

In the Democratic primaries there are no local races. None of the incumbents in local offices have opponents, nor do state representatives, senators or Congressman Walter Rogers.

The biggest race in the Democratic race is the bitter battle between Ralph Yarborough and Gordon McLendon for the Senate nomination.

Don Yarborough is opposing John Connally for Governor, but the race is generating little heat.

Several liberal democrats would like to remove Joe Pool from his Congressman-at-large job, but he seems to be running in the front of that race.

Democrats will vote at the 10 regular polling places over the county. The Republican voting booth will be in the courthouse, in Justice of Peace office.

The Democratic polling places in Spearman are the courthouse for precinct one and the Junior High School for Precinct 10.

The polls are open from 7 a. m. to 7 p. m.

### Richardson Rites Today

Funeral services for Robert McAlpine (Alvino) Richardson, 72, will be conducted at 2 p. m. Thursday in the First Christian Church of Spearman. The Rev. Graham Pugh, pastor, and the Rev. Charles Gates, pastor of the First Methodist Church, will conduct the services.

Boxwell's will be in charge of interment in Hansford Cemetery.

Mr. Richardson died at 3:00 p. m. Tuesday, April 28, in Coon Memorial Hospital where he has been a patient for several weeks.

The retired bookkeeper was born Aug. 27, 1891, in El Paso, Texas, the son of Mr. and Mrs. Robert M. Richardson. He and his family came to Hansford County in 1902. He was a member of the Hansford Masonic Lodge.

Mr. Richardson served as Sheriff of Hansford County during the late 1920's when Spearman was a booming shipping point for equipment to the Hutchinson County oil fields. He was the last living (Con't. on page 2.)

## Oslo and Pastor Receive Awards

Hansford County and the Oslo Community are the only county and community to have two state winners in the Fort Worth Press' Soil Conservation Contest this past year.

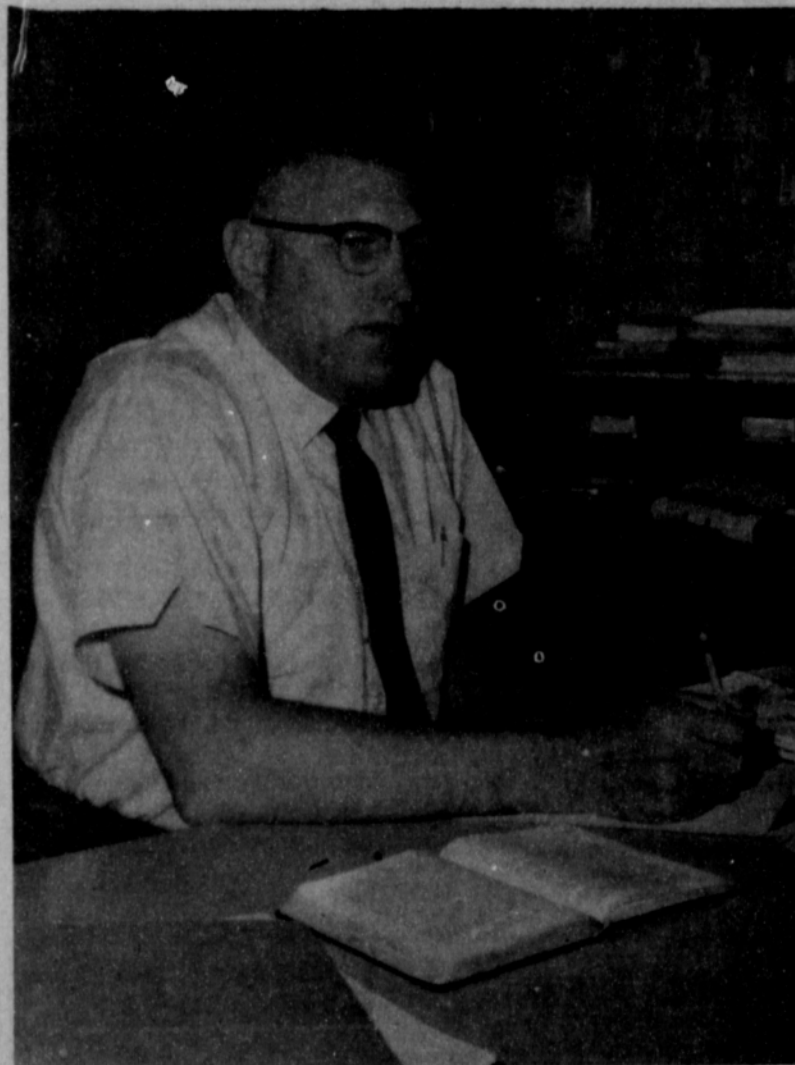
The Oslo Community was selected as the state winner in overall soil and water conservation work in a community. The Rev. Robert L. Cordes has been selected as the outstanding individual in soil and water conservation among non-farmers in the state.

Eighteen state awards will be presented in Fort Worth Saturday night to the state winners and the Rev. and Mrs.

Cordes, Mr. and Mrs. Bill Johnson, Mr. and Mrs. Willard McCloy, Mr. and Mrs. Bob Ferguson, and Mr. and Mrs. Gordon Stedje will be there to receive the two awards.

Soil and Water Conservation in the Oslo Community is not a "johnny-come-lately" thing for the community settled in the early part of this century by Norwegians.

SCS Work Unit Conservationist Wayne Chapman says the abundance of soil and water conservation practices carried out on each farm is quite conspicuous. The farmers in the community are good cooperat-



CONSERVATION PASTOR— The Rev. Robert L. Cordes, pastor of the Oslo Lutheran Church, has done more than any other non-farming individual to promote conservation. PLAINSMAN PHOTO

ors in conservation work and carry their programs through to completion.

Not only do the farmers in the community use conservation practices on their farms, but they have planted windbreaks around their homesteads and also in fields and pastures for protection of wildlife.

There are approximately 30 families in the Oslo Community and there are only five farms that do not now have irrigation.

The farmers are careful with their water and many have already installed underground pipe, and tailwater catching systems to get the most use (Con't. on page 2.)



CONSERVATION— Joel Stavlo and the Rev. Robert Cordes look at some bordered land that will be planted to grass to utilize tailwater from irrigation. PLAINSMAN PHOTO



**The Hansford Plainsman**



Hansford Plainsman Publishers, Inc.

Jim Davis Burl McClellan

County-wide independent newspaper published every Thursday at 209 Main in Spearman, Texas. Second class postage paid in Spearman, Texas

Editor.....Burl McClellan

Production Mgr.....Jim Davis

NOTICE: Any erroneous reflections upon the character, standing or reputation of any person, firm or corporation which may appear in the columns of The Hansford Plainsman will be corrected gladly upon its being brought to the attention of the publishers.

**Davis Named Boss Lion**

Jessie Davis, pharmacist, civic worker and long time member of the Spearman Lions Club has been elected the new President of the local organization.

Davis has held memberships in various Lions Clubs for the past 30 years and has been a member here for approximately 20 years he said.

Davis will replace Jim Davis as the head of the local club. A Lions Ladies' Night installation program for new officers is being planned for May.

Officers to serve with Davis include First Vice President, Brad Beedy; Second Vice President, James Bramlett; Third Vice President, Jerry Day; Treasurer, Charles Gilliam, Secretary, Don Floyd; Tail-twister, Frank Massad and Greeter, Jack Oakes.



TRACK STAR— Nancy McCullough, a Spearman High School freshman, helped her team win the Girls' Track Meet Tuesday by making 22½ points. Nancy's broad jump of 13 feet won first place for her in that event. PLAINSMAN PHOTO

**McCullough Has Best Track Score**

Freshman Nancy McCullough walked off with individual scoring honors in the girls' track meet held Tuesday among the girl athletes of Spearman High School.

McCullough scored 22½ points to lead the Team Three to 43 winning points. Team Two scored 24 and Team One scored 22 points.

McCullough won the broad jump with a 13' leap, the high jump at 4'2", the 100-yard dash in 13.2, the 50 yard dash in 7.2 and was on the winning relay team composed of McCullough, Smith, Donnell and Hutchison.

**Oslo . . .**

(Con't. from page 1.)

from their water.

About half of the land in the community is farmed by renters, but most of the farmers renting land also own farm land.

The Rev. Cordes says there are some farmers who have been renting the same land for 30 years.

Community problems are solved by community efforts. A community organized gas cooperation has been formed to provide low cost natural gas for irrigation wells. To help solve recreation problems the community has developed a picnic park on the Clifford Stedje farm.

This kind of cooperation dates back over the years. In the late 40's when the community built a new Lutheran Church it was destroyed by fire after it had been used three Sundays. The present beautiful stone building was completed just six months later.

Good farming is very close to the heart of the Rev. Cordes. He grew up in Northern Iowa and farmed for six years before entering the Lutheran ministry.

"I had a farm that needed lots of conservation," the big preacher remembered.

He still loves farming and if he were not in the ministry would return to farming.

"The farmer has too low of an opinion of his profession. He is too quick to be on the defensive about farming instead of considering it one of the world's top occupations," Rev. Cordes pointed out.

The minister's interest in conservation has grown over the years, from his years as a farmer.

"I have actually done very little to help conservation. I

have been on most of the conservation tours just to see the farming," he claims.

SCS specialist Wayne Chapman says the Rev. Cordes is quick to preach the value of conservation from his pulpit, in his newspaper writings and in everyday contacts.

The Rev. Cordes and his wife, Elaine, have seven children; daughters, Lael, Leah, Naomi, Rebecca and Deborah; and sons, Loren and Joel.

He has been pastor of the Lutheran Church for six years. He considers it an ideal pastorate for him because of the closeness to agriculture. The church has an attendance of about 150 each Sunday. It has now established a mission in Spearman and the Rev. Cordes conducts services here at 9 a. m. each Sunday, then drives back to Oslo for his 11 a. m. service.

**Tall Texan . . .**

(Con't. from page 1.)

but cannot say that makes him an outstanding selection for Senator.

In fact, there is little evidence Texas is going to be blessed with a great Senator from the current elections. We do not think the Republicans can elect a Senator from the Democratic President's home state.

...

There is nothing funnier than a bunch of high school kids slipping back just a few years to smaller kids. Wednesday was Kid's Day at Spearman High School and it was a scream.

We are supposed to have some pictures in Sunday's paper.

**Richardson . . .**

(Con't. from page 1.)

ex-sheriff of the county.

Survivors include his wife, Keesee of the home at 315 Barkley, a sister, Mrs. P. A. Lyon of Spearman and a step-daughter, Mrs. Jess French of Spearman.

Pallbearers will be Emmett Sanders, Richard Holton, Chesta Lieb, Freeman Barkley, Ted Voiles and Lloyd Buzzard.

Read The Want Ads!



"I always say there's nothing like a good, clean break when one decides a friendship has run its course."

**Pre-School Day Set Here May 6**

Spearman Elementary school will have pre-school for all of next year's beginning students at 1 p. m. May 6.

There will be a short meeting of parents in the music room at 1 p. m. Children will attend classes from 1 p. m. until 2:45 p. m.

**MORSE GETS SECOND IN IMPROVEMENT CONTEST**

It was learned Wednesday morning that Morse has placed second in the Division Two Community Improvement Contest.

Morse finished second to Fairview in Armstrong County. This community has been a winner for many years in community improvement.

**PAPER ALWAYS WELCOMES LOCAL NEWS ITEMS**

The Plainsman wants your news! When you have company or a party, when you go visiting or have any other news, phone The Plainsman and let us know about it. We are always happy to have local news items. Phone 659-2466 or 659-3258 with your news any day of the week.

**A Mans Best Friend?  
HIS DOG  
A Ladys Best Friend?  
ELECTROLUX  
J. V. BARKER  
Vacuum Cleaner  
sales & service  
659-2295**

Plant **PIONEER.**  
BRAND  
sorghum for high yields and smooth, low-loss combining.

**PIONEER. BRAND SORGHUM**

B & B GRAIN CO., INC.  
SPEARMAN  
BILL LOGSDON  
GRUVER

**Take a Vacation from WASH DAY DRUDGERY**



**LET US DO YOUR LAUNDRY CHORES**

No need for you to get hot and bothered when our service costs so little. Call us now.

Pick-up and Delivery

**BERRY CLEANERS**

Phone 659-3122  
412 Davis

**BENZAC for BINDWEED**  
-----**NOW**-----

IS THE TIME TO KILL BINDWEED

**CUSTOM APPLICATION**

**Strawn Farm & Ranch Supply**  
Spearman Gruver

**Mother's Gift**



IF YOUR MOTHER

could choose her own gift- it's a fact, she'd come to The Gift Box to browse and enjoy making a selection from our vast array of gift merchandise!

The Latest In

\*BEST SELLERS, fiction & non-fiction

\* Better Homes & Gardens Cookbooks

Household accessories  
Kitchen Helpers  
Poppy Trail Pottery

Pictures  
Wall Hangings  
Beautiful Lamps

(And countless other gifts of all descriptions)



# Hansford Farm News

659-2466

VOTE  
SATURDAY  
MAY 2

## New Voluntary Wheat Law Enacted

Legislation enacted April 11, 1964, has given wheat farmers a new voluntary wheat program for their 1964 crop. The legislation amends the law under which the wheat program was to have operated this year.

The new voluntary program offers wheat growers who participate (1) diversion payments for shifting wheat acreage to conservation uses (similar to the feed grain program), (2) price support loans averaging \$1.30 a bushel nationally, and (3) marketing certificates--with a cash value of 70 cents per bushel for domestic and 25 cents for export--for a large part of the farm's 1964 wheat production.

The Chairman explained that wheat producers who wish to take part in the new voluntary program will need to sign up at their ASCS County Office--there will be no "automatic" participation. Only those wheat

producers who sign up and carry out provisions of the program will be eligible for the program benefits. The signup now is underway and will extend through May 15, 1964.

Winter wheat growers, as well as spring wheat growers, will be eligible to take part in the 1964 program, Vanderburg pointed out. This will be particularly easy for those growers who have planted within their 1964 allotments, since they have already met one of the conditions necessary for participation. Such growers will need to fulfill other conditions for qualifying as a "Participant," however, such as devoting acreage diverted from wheat to conserving uses, keeping within other crop allotments, and maintaining their normal conserving base acres.

"Signing up is the first step to taking part in the 1964 wheat program," the Chairman em-

phasized. "Because the season is so late, there will be no advance payments made this year, but the diversion payments will be made and the certificates issued as soon as possible after performance has been checked."

While wheat growers may take part in the program or not, just as they choose, only those wheat producers who sign up and participate in the program will be eligible for diversion payments, marketing certificates on most of their wheat production, and price support loans on all their 1964 crop wheat, the Chairman declared.

The diversion payments under the voluntary wheat program will be made for planting within the acreage allotment and putting to conserving use an acreage at least equal to 11.11 percent of the farm allotment in addition to maintaining the normal acreage in conserving uses and meeting other program provisions.

The payments will be based on 20 percent of the county price support loan rates times the farm normal yield. Provision is also made for diverting additional wheat acreage under the program.

As in previous years, all the wheat produced on a participating farm will be eligible for price support loans, based on a national average of \$1.30 per bushel. This is about 4 cents per bushel higher than the loan rate would have been without the new program. In addition, marketing certificates, with a cash value of 70 cents per bushel for domestic and 25 cents for export, will in general be available for 90 percent of the normal production of the farm allotment--but not more than the normal production of the allotment acres actually planted for harvest.

Vanderburg reminded wheat growers that the farm wheat allotment and farm normal yield to be used under the 1964 voluntary wheat program are those issued prior to the marketing quota referendum held in May of last year.

The Chairman suggested that wheat growers who have questions about the voluntary new wheat program get in touch with the ASCS County Office so that they may complete their production plans well in advance of the May 15 deadline for the program signup.

## County Agent's Report

You can tell a gentleman by the way he treats people who can't possibly do him any good.

**DISTRICT 4-H CONTEST**

Hansford County 4-H members made a good showing at the District I 4-H Elimination Contest held in Canyon Saturday, April 25. The placings the 4-H members made are in a special article in this paper.

**AGENT'S AGENDA**

I will be out of the office all of next week May 4-8. I will be on annual leave attending the Southwestern Recreation Leader's Laboratory. This is a lab for adult leaders of youth groups. I will be back in the office on May 11.

**CHANGING AGRICULTURE**

How times have changed! Not too long ago, when you thought of the agricultural industry, you thought of the farmer. Kenneth Wolf, Extension economist-agribusiness, points out that today, the agricultural industry is a network of interdependence. In fact, of each 10 Texans employed, four are in agriculture, but three of the four are off the farm.

On one side of the farmer and rancher, Wolf explains, are such businesses as chemical, farm equipment, fertilizer, financial, utility and many others. Each year, in Texas, they supply agricultural producers with \$1.8 billion worth of things needed to grow the products. The products grown are then sold for about \$2.4 billion.

On the other side of the farmer and rancher, he adds, are those businesses engaged in marketing the product. A few of these are storage warehouses, textile plants, railroads and trucking lines, packing plants, wholesale grocers and super markets. These off-farm businesses add about \$3.9 billion

to the value of the products raised by the farmers and ranchers.

This changing picture of agriculture has resulted in changes not thought possible 30 years ago. In 1930, for example, one farm worker produced enough to feed 10 people. Today he produces enough to feed 28. The average wage earner had to work 60 hours 15 years ago to buy a month's food supply for his family. Today it takes him 38 hours, Wolf says.

Business management in our present agricultural industry has played a major role in making the industry so efficient, believes the economist.

## Women Plan Bake Sale

Mrs. Claude Jackson presided at the Home Demonstration Council meeting held April 28. Mrs. Frank Davis gave the devotional.

Mrs. W. B. Barnes, delegate to T. H. D. A. District meeting held in Perryton recently, gave her report. Mrs. Jack Crowl of Morse gave a report of the workshop on safety from the same meeting.

The HD women of the county will sponsor the Heart Fund Drive May 5 thru 16. On May 4 at 7:30 p. m. at the high school auditorium, four films will be shown on diseases of the heart. A bake sale will also be held at that time and proceeds will go to the heart fund.

Attending were Meses. Jack Johnson and Jack Crowl, both of Morse, W. B. Barnes, Gordon Cummings, W. H. Tarbox, W. A. Ellsworth, B. J. Garnett, Claude Jackson, Fendorf Schubert, Frank Davis, and the agent, Miss Linda Webb.

## Rogers Announces Panhandle Opinions

The response was heavy to the questionnaire I distributed recently as part of this weekly newsletter. More than 1,300 Panhandle area residents gave me their views on the issues I presented by returning newsletter copies they had marked or by sending me marked clippings from the several area newspapers whose editors were kind enough to reprint the newsletter questions. In addition, many persons wrote letters to me explaining in detail the policies they believe the Government should follow. Having received all these expressions is indeed helpful.

To all who took the time to send me their opinions in these matters, my sincere thanks.

The results of the questionnaire are as follows:

1. The sale of United States wheat to Russia, 278 favor, 1,109 oppose, 28 no opinion.
2. Continuing our foreign aid program, 282 favor, 973 oppose, 35 no opinion.
3. Cutting of aid to nations trading with Cuba, 1,068 favor, 159 oppose, 54 no opinion.
4. Military action to bring freedom to Cuba, 716 favor, 454 oppose, 109 no opinion.
5. Our continued membership in the United Nations, 587 favor, 632 oppose, 85 no opinion.
6. Withdrawing U. S. troops from Europe, 249 favor, 867 oppose, 127 no opinion.
8. Direct intervention in the Viet Nam war, 459 favor, 553 oppose, 256 no opinion.
9. Admission of Red China to the United Nations, 75 favor, 1,180 oppose, 47 no opinion.
10. Building a canal to replace the Panama Canal, 391 favor, 749 oppose, 141 no opinion.

### DOMESTIC AFFAIRS

1. Repealing Federal excise taxes, 656 favor, 487 oppose, 218 no opinion.
2. So-called "medicare" legislation proposals, 171 favor, 1,103 no opinion.
3. The U. S. man-to-the-moon program, 497 favor, 641 oppose, 164 no opinion.
4. An accelerated public works program, 263 favor, 886 oppose, 140 no opinion.
5. Federal participation in urban renewal, 125 favor, 1,078 oppose, 89 no opinion.
6. Changing the Presidential succession act, 584 favor, 509 oppose, 215 no opinion.
7. Federal development of new recreation facilities, 378 favor, 861 oppose, 70 no opinion.
8. Federal aid to education, 225 favor, 1,028 oppose, 38 no opinion.
9. Speeding construction of interstate highways, 663 favor, 454 oppose, 160 no opinion.
10. Federal aid to cities in developing mass transit, 129 favor, 970 oppose, 164 no opinion.

The fact that so many persons answered the questionnaire reinforced my convictions that Americans are giving close attention to the problems confronting the country and the Congress. There has been no time in our history when the United States was free of problems of a complex and difficult nature, and finding solutions to them--in a free, democratic Republic--requires that the citizens who are the Government be well informed.

## Morse Club Sends Four Teams to State Roundup

Four 4-H Club demonstration teams from the Morse Junior Leaders will go to the State 4-H Roundup in College Station June 2-4 as District Demonstration Team winners.

The county winners in both Junior and Senior divisions competed in the District 4-H contests held in Canyon Saturday.

All senior teams winning first or second will go to the roundup.

Two of the Morse teams won firsts and two finished second. Allen McCloy and Bill McCloy won first with the "Feedlot Profits or Losses" demonstration. Sharon Parks and Patricia Henderson won a first with their "Lawful Drivers are Survivors" entry.

Second place winners include Sylvia Parks and Suzanne Dixon with their electric demonstration on "Adequate Circuit Protection". Evelyn Kelly and Don Kelly won a second with their forestry demonstration on "Windbreaks".

Two Junior entries won firsts in the district contests, but the junior winners do not go to the state roundup.

Rebecca Hutchison won first in the Bread and Cereal Division of the Favorite Foods division. She is a member of the Spearman 4-H Pals.

Gail Brothers of the Morse Community 4-H won a junior first with a "Beef for Fitness" demonstration.

Lynda Webb and Douglas Messer of the Gruver Community 4-H won a second in an electric demonstration "Rewire a Lamp--Be A Lamp Detective".

The Junior Share-the-Fun entry "Magic Interlude" with Wade Parks and Carolyn Henderson of the Morse Community

4-H won a third.

"Feedlot Profits or Losses" presented by Juniors Doug McCloy and Mark McCloy of the Morse 4-H placed second.

"Safe Water for Survival" presented by David Johnson and Judy Gillispie of the Morse Junior Leaders placed third in the senior division.

Kay Johnson of the Morse Community 4-H placed third with a Clothing Educational Activity "Let Wee Willie Help You" in the junior competition.

The junior rifle team of Bob Womble, Monte McCloy, Alva Henderson and Phillip Fleming placed second. The senior rifle team of Alan Dixon, Gerald Scribner, James Scribner and Mike Johnson placed third.

## Friendship Is Roll Call Topic

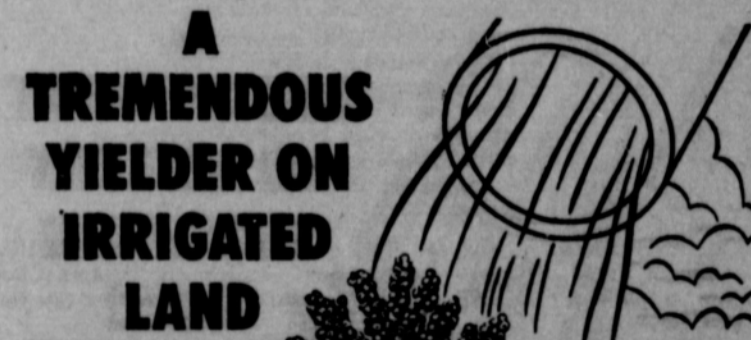
Mrs. Frank Davis was hostess to the Spearman Home Demonstration Club Friday, April 24.

Mrs. W. H. Tarbox presided at the business session. Roll call was answered with "What Is A Friend?"

Each member came dressed in costumes and pictures were made in the backyard of Mrs. Davis' lovely country home.

Refreshments were served to Lula Deck, W. A. Ellsworth, H. H. Crooks, A. D. Reed, B. J. Garnett, Carl Hughes, W. H. Tarbox by the hostess.

Dr. and Mrs. W. C. Davis of Memphis were weekend guests in the homes of Mr. and Mrs. Jim Davis and Mr. and Mrs. Burl McClellan.



## DEKALB F-63

A full-season variety rapidly taking hybrid sorghum leadership in the irrigated Southwest. Has more of everything you want. Widely adapted... A top Hybrid with amazing yield potential under irrigation.

## DEKALB HYBRID Sorghum

Planted by More Farmers Than Any Other Brand

Doug Moore

659-2881

R.L. Porter  
Grain Co.

659-3062



### District Prexy Visits Here

The Rebekah Lodge 290 met April 23 in the IOOF Hall. The business meeting was conducted by Noble Grand, Caro Lee Frantz.

The devotional was given by Inez Holland, Chaplain. Mrs. Roberta Moulton, District Deputy President, made an official visit.

Members attending were Caro Lee Frantz, Deanna Kenney, Ruth Caro, Ethel Lou Ellsworth, Ina Longley, Mary Lou Walker, Mildred Chamberlain, Gladys Richardson, Jackie Hall, Inez Holland, Thelma Kenney, Myrtle Russell, Ethel Black, Frances Jones, Dorothy Longley, Zina Longley, Thelma Scott, Gowonda Golightley, Margaret Kirk, Ina Mae Hughes and seven guests from Perryton Lodge #225 Roberta Moulton, Ruby Tillman, Clara Stubblefield, Essie Kulow, Eva Fisher, Willie Hulsey and Hazel Allen.

### Bowling Beat

#### STRIKE OUT LEAGUE

TEAM	WON	LOST
Blodgett & Linn	39	17
Swydens	30	26
Sparks	27	29
Southwell	26½	29½
B&B	23	33
Lee Oil	22½	33½

#### HIGH TEAM GAME

Blodgett & Linn	902
Sparks & Swyden	867
Sparks	860

#### HIGH TEAM SERIES

Blodgett & Linn	2537
Sparks	2524
Swydens	2489

#### HIGH INDIVIDUAL GAME

Dan Faries	236
Bob Hohertz	223
Buch Behne	215

#### HIGH INDIVIDUAL SERIES

Bob Hohertz	584
Russell Townsend	562
Dan Faries	547

## THE MORSE CODE

Morse Lions Club is sponsoring a "High Plains Talent Show and Pancake Supper" May 8 at the school auditorium and cafeteria. The pancake supper will be held from 6 to 7:30 and the talent show will begin at 8:00 p. m.

There will be three divisions in the talent show: open, high school and grade school. Anyone desiring to enter any division should contact Rev. Vance Zinn, Box 111, phone FI-2757.

Prices are \$1.00 for the supper and \$1.00 for the talent show for adults, or a combination price of \$1.75. Children's tickets may be purchased for 50¢ for each event, or a combination price of 90¢.

#### HONOR ROLL

The honor roll for the fifth six weeks has been released by the Morse School.

High school students are Sharon Parks, Joyce Schick, Allen McCloy, Patricia Henderson, David Johnson, Elaine Schick, Sylvia Parks and Del-

bert McCloy.

Grade school students are Peggy Giblin, Alva Henderson, Judy Reising, J. D. Schick, Katharine Schmidt, Gayle Brothers, Monte McCloy, Linda Brothers, Don Seaton, Blanche Escamilla, Katina McCloy, Greg Brothers, Teresa Dortch, Rhonda Zinn and Ronnie McCammond.

#### HD CLUB MEETS

Mrs. Jack Johnson, Sr. was hostess for the Morse Home Demonstration Club Thursday afternoon. Reports were given concerning the district meeting by the various members who attended the workshops.

LaVerne Parks presented the demonstration on "It's on the Label." Recreation was led by Joyce Brown.

Those present were Leslie McCloy, Lela Dortch, Besse Henderson, Rosie Crowl, Joyce Brown, LaVerne Parks, Mary Gillispie and the hostess.

#### ATTEND CONTEST

A number of people from Morse attended the District 1 4-H elimination contest held in Canyon Saturday. Those attending, besides the 4-H members were Fay Gillispie, Wilma Johnson, Willard McCloy, Nan McCloy, Nell Henderson, LaVerne Parks, Gene Dixon, Georgia Jones, Lutheria Dixon, Sue McCloy, Gene and Betty Brothers, and Virgie Kelly. The Morse 4-H boys and girls brought home a total of seven blue ribbons, five red ribbons and one white ribbon.

Mr. and Mrs. Ben Gillispie and family of Arnett, Okla. were guests in the home of his mother, Mrs. Mary Gillispie Sunday. Calling in the afternoon were the Wilson McCloy's, the Thane McCloy's, the Earl Hendersons and the Jack Gillespies.

Mrs. Besse Henderson and Mrs. M. W. McCloy went to LaJunta, Colo. Tuesday to attend the funeral of Mrs. Grace Chassells, sister-in-law of Mrs. Henderson.

## THE WAY I SEE IT

Robert Cordes, Pastor  
Oslo Lutheran Church

It hurts and I'm glad. This sounds brutal. But I'm serious. More and more it hurts farmers to see their soil swirl away in dust clouds. Farmers are becoming more concerned with the soil layer entrusted to them by The Almighty God.

I'm glad farmers are hurt when they realize their soil is moving. It is causing them to use good conservation practices. Whenever a person's conscience hurts, that person will seek to ease the pain. This results in good farming.

This spring the breezes have gotten out of hand. And the sparse rainfall has added to the ominous clouds of dreaded dust filtering into city homes and cars. City persons too are interested in good farm practices.

Have you noted the good conservation farmers? Many fields have had no soil removed by these hard winds. These farmers have used surface tillage, keeping trash on top to hold the soil. They have been out quickly chiseling and stirring the powdery top. These farmers have been rewarded by seeing their land remain for them and their sons to farm.

But some farmers are careless. They abandon their farms to the battle of the wind. Some may live miles away and not take the effort to travel with equipment to stir up "mother earth".

Yes, farmers conscience are hurting more and more as they see the soil blow, or water run

off after a huge rain. And I'm glad these men are beginning to conscientiously take their task of farming seriously.

The Panhandle winds will blow. We will get periods of sparse rainfall. But thanks to modern day farmers, we won't have a mass exodus of our precious topsoil--topsoil that must be preserved for generations to come.

I'm glad it hurts farmers when they see their poor soil conservation practices. I'm glad because they are now progressing into good stewardship of soil and water. Does it hurt you?

Mr. and Mrs. Charles Hutchison and Mr. and Mrs. B. D. Hutchison of South Haven, Kans. spent the weekend with the Carl Hutchisons. Added Sunday evening dinner guests were Mr. and Mrs. Craig Hutchison, and Mr. and Mrs. Dwight Hutchison.

### LET'S STOP THE TRANSFER OF CASES FROM THE AMARILLO COURT OF CIVIL APPEALS TO THE AUSTIN AND WACO COURTS

## Herbert C. Martin



CANDIDATE FOR

Associate Justice  
Court of Civil Appeals

#### ELECT HERBERT C. MARTIN ASSOCIATE JUSTICE BECAUSE MARTIN:

- ... is an experienced trial lawyer;
- ... is of proven judicial temperament;
- ... is of sound and impartial judgment;
- ... is diligent and dependable;
- ... will cooperate fully with the present Chief Justice and Junior Associate Justice in disposing of cases promptly. (Two of the three Justices cannot promptly adjudicate all cases.)

#### RETIRE ERNEST O. NORTHCUTT BECAUSE NORTHCUTT:

- ... will be 79 years old before the end of the third term he is now seeking;
- ... is now drawing maximum Social Security of \$127.00 per month plus his \$16,000 salary;
- ... is now eligible for full payment of judicial retirement;
- ... consistently renders Court opinions not based on sufficient legal authority;
- ... spends a large portion of his office hours in outside diversions while the Court docket suffers.

FOR THE FIRST TIME IN THE HISTORY OF THE COURT, on June 4, 1957, 10 cases were transferred to the Austin Court. Again, on January 11, 1964, 13 cases were transferred to the Waco Court, to-wit:

Amarillo Globe-Times - - Tuesday, April 21, 1964  
WACO JUDGES HELP APPEALS COURT HERE

The Texas Supreme Court, apparently feeling that the docket of the Seventh Court of Civil Appeals in Amarillo is overloaded, has directed the 10th Court of Civil Appeals in Waco to lend a helping hand.

Two members of the Waco court are in Amarillo today hearing oral argument in the cases allotted them. The two judges are Chief Justice Frank G. McDonald and Associate Justice Frank M. Wilson.

The Texas Supreme Court in equalizing the dockets of the civil appeals courts in the state has assigned 13 of the appeals filed in Amarillo to the Waco court.

Under statute the cases must be heard in the court in which they are filed. For this reason the Waco judges are hearing arguments in Amarillo.

Elmo Payne, clerk of the Amarillo court, says the Amarillo judges heard oral arguments in nine cases on April 6-7 and currently are working on their decisions in those cases.

The Seventh Court of Civil Appeals in Amarillo encompasses the largest Supreme Judicial District in the State of Texas - - with 46 counties, Payne explained.

### VOTE FOR HERBERT C. MARTIN FOR ASSOCIATE JUSTICE OF THE COURT OF CIVIL APPEALS

(Pol. Adv. paid for by Herbert C. Martin)

### School Menus

MONDAY, MAY 4

Tomato Meat Loaf  
Mashed Potatoes  
Seasoned Spinach  
One-Half Apple  
Cinnamon Rolls  
Bread  
Milk

TUESDAY, MAY 5

Seasoned Pork on Bun or Chicken Salad Sandwich  
French Fries-Catsup  
Buttered Corn  
Cole Slaw-Sour Cream Dressing  
Chocolate Cream Pie  
Milk

WEDNESDAY, MAY 6

Beef Roast and Gravy  
Buttered Rice  
Seasoned Green Beans  
Combination Tossed Salad  
Apple Sauce  
Hot Rolls  
Butter  
Milk

THURSDAY, MAY 7

Baked Wieners  
Chili Sauce-Buns  
Beans Seasoned with Pork  
Mandarin Orange Jello  
Brownie Bars  
Milk  
FRIDAY, MAY 8  
Hamburger-Mustard or Tuna Salad Sandwich  
Potato Gems  
Sliced Tomato, Pickle, Onions  
Butter Cake and Strawberries  
Milk

... Re Elect ...

JOHN C. WHITE  
TEXAS  
COMMISSIONER  
of AGRICULTURE

\* EXPERIENCED  
\* QUALIFIED  
\* DEMOCRAT  
\*



John C. White  
will keep Texas  
FIRST!

(Pol. Adv.)

I Will Be Out  
Of My Office  
APRIL 29-MAY 2  
attending the  
TAOPS  
Convention in Dallas  
DR.  
D. E. HACKLEY

Beauty . . . without bother

DU PONT  
**LUCITE®**  
WALL PAINT

Available in new Colors!

Goodbye to drip, dribble and spatter. Farewell stirring and thinning. "LUCITE" is quick and clean. Covers more, covers better than before. Dries beautifully in 30 minutes. Brushes clean with just soap and water.



OWENS SALES

118 N. MAIN  
Spearman, Texas  
659-2506

### BEEF Specials

Kimbell's 3 lb.  
**Shortening**  
59¢

Kimbell's Sweet or Sour - 1 quart  
**Pickles**  
29¢

Rib Steak	lb.	<b>69¢</b>
Beef Ribs	lb.	<b>29¢</b>
FRANKS	Top O' Texas 1 lb. pkg.	<b>43¢</b>
Bacon	Sunray 1 lb.	<b>49¢</b>
Coffee	69¢	<b>3/25¢</b>
Radishes	6 oz. cello bags	<b>3/25¢</b>
Dad's Old Fashioned <b>Root Beer</b>	1/2 gal.	<b>49¢</b>

**PRODUCE**

TOMATOES  
Carton

## M & M Shamrock

We give Buccaneer Stamps      Ice House Now Open



**A Toothy Smile**

GILLETTE, Wyo. — A \$200,000 fire which destroyed an apartment house and surrounding buildings had its bright moment for Fred Tysor.

When firemen allowed people to reenter the building, Tysor ran into his charred apartment and came out smiling.

His false teeth, left on the bathroom sink, were unharmed.

**A Straight Farm Boy**

LANCASTER, Ky. — The youngsters attending a class on physical education were asked how to obtain good posture.

"I know," said one little boy. "Keep the cows off it and let it grow."

Bjorn Staib, 25-year-old Norseman from Oslo, will lead an expedition of skiers attempting to make the first traverse by foot over the top of the world.

**Dry Services Held Tuesday**

Funeral services for Mrs. Otis Dry, 50, were conducted at 2 p. m. Wednesday in the Assembly of God Church with the Rev. J. V. Barker, pastor and the Rev. W. V. Bently, pastor of the Assembly of God Church of Cactus, in charge of services.

Burial was in the Hansford Cemetery with Boxwell's in charge of arrangements.

Mrs. Dry died at 3 a. m. Sunday in a Joplin, Mo. hospital. She was fatally injured in a car wreck Thursday night near Columbus, Kan.

Mr. and Mrs. Dry were enroute to Fairland, Okla., to attend the funeral services for his father.

Mr. Dry received minor injuries and was released from the hospital Friday.

Mrs. Dry was born March 25, 1914 at Fairland, Okla. She had lived in Spearman since 1941.

Besides her husband, she is survived by one son, Floyd of Spearman; one daughter, Mrs. Betty Goodwin of Spearman, her mother, Mrs. Rose Chapman of Wyandotte, Okla.,; three sisters, Mrs. Edith Hall of San Francisco, Calif., Mrs. Margaret Young of Dallas and Mrs. Martha Crowson of Tulsa, Okla.; two brothers, Alfred and Arthur Chapman of Wyandotte, Okla., and eight grandchildren.

Mrs. Flavel Ayers was called to Panhandle Monday due to the death of her grandfather, O. M. Cummings. Mr. Ayers went to Panhandle Wednesday for the services. Mr. Cummings was 94 years old.

**Card of Thanks**

We want to thank our friends in Spearman for the checks we have received. We wish we could say to each one personally just how very, very much they were appreciated. We also want to express our gratitude to Bob Skinner and J. D. Wilbanks for flying Daddy to Rochester and to Louis Schnell for his part in flying us to Rochester. We also want to say thank you again to those who have done so much for Daddy, bringing food and sending flowers, also to those who have offered to do so much any time we need them. May God bless each one of you.

Mrs. Marvin Chambers  
Mrs. Bobby Nollner.

Mr. Fred Mull and Mrs. Pearl Riley of Ashland, Kans. aunt and uncle of Maude Matthews, spent Sunday in her home. Added guests were her family, Mr. and Mrs. Don Smith and family and Mr. and Mrs. Dick Smith and family.

Mr. and Mrs. Charlie Hipp and daughter of Graham visited last week with the E. D. Clements and attended the rodeo and celebration.

**Wagon Train Rolls Today**

There will be fun for everyone when the Rolling Plains Wagon Train campson the Hitch Ranch on Coldwater Creek tonight on its way to Pioneer Days in Guymon, Okla., this weekend.

The wagon train will leave Spearman at 7 a. m. today and cover the 35 miles to Coldwater before camping tonight.

At the campsite there will be a chuck wagon supper served to everyone. It will be catered by Zebee's of Pampa. It is \$1.25 for adults and less for children. The meal will be served from 6:30 until 8 p. m.

Square dancers from Spearman and Guymon clubs will be there for square dancing and there will also be some hootenanny music.

To get to the campsite go west on the Gruver highway 10 miles to the Guymon turn on highway 282, then go north to the Hitch ranch.

The Wagon Train invites everyone to come up and join the fun and eating.



The Do-Si-Do Square Dance Club held a dance Saturday night, April 25, at the Community Building. Robert Adamson was the caller for the evening.

A business meeting was held following the dance and refreshments. Last minute plans for the dancing April 30 at the Rolling Plains Wagon Train campsite at Hitch ranch were discussed. Everyone is looking forward to this evening of good fun and fellowship.

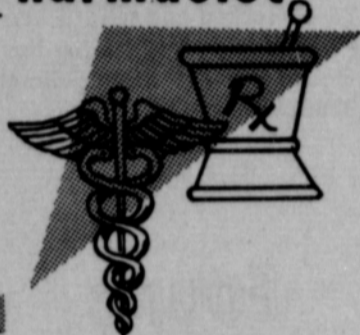
The next dance here will be May 9 at 8:00 p. m. with Woody Turley from Fritch calling. Woody is a fine caller and is well known by most clubs in the Panhandle. A good turnout from out of town as well as local people are expected. Mark this date on your calendar and come out to the square dance.

Mrs. J. A. Tipton of Amarillo was a guest of Mr. and Mrs. Everett Tracy and Richard Friday.

**VOTE NOW...**

IT MAY BE YOUR LAST CHANCE - -

**Choose your Pharmacist as you would choose a doctor**



**HE HAS ALL FACILITIES**

Our pharmacy has every facility needed for modern prescription preparation — everything to help you toward better health! Depend on us.



**GORDON & LEE'S DRUG**

659-2141

**Mustang: \$2368\***

F.O.B. Detroit  
Mrs. suggested price

\*Manufacturer's suggested retail price. Destination charges and state and local taxes, and fees, if any, not included. Options such as whitewall tires are extra cost. See your Ford Dealer for his selling price.

And here's what you get...

- Deep-foam bucket seats . . No charge!
- Sporty 3-speed floor shift . No charge!
- 170-cu. in. 6-cyl. engine . . No charge!
- All-vinyl interiors . . . . . No charge!
- Wall-to-wall carpeting . . . No charge!
- Padded instrument panel . No charge!
- Front seat belts . . . . . No charge!
- Full wheel covers . . . . . No charge!
- Sporty steering wheel . . . . No charge!

**PLUS:** cigarette lighter, 2 automatic courtesy lights, glove box light, wrap-around front bumper with bumper guards front and rear, heater, curved side glass, twice-a-year (or 6000-mile) service schedule, self-adjusting brakes.



Ford Mustang Hardtop

SEE THE MUSTANG AT YOUR FORD DEALER'S

**Joe Trayler Motor Co.**

659-2829

Spearman, Texas

321 Main

**"How soon do we eat?"**



**"Very soon, thanks to fast ELECTRIC cooking!"**

Cooking meals for your family is faster and easier, once you change to an electric range. Surface elements fit snugly against pan bottoms for speedy heat transfer. And, since an electric range is flameless and needs no air flow for combustion, oven heat stays inside for fast, efficient baking and roasting. Cooking is cooler in summer, too — and clean-up after meals is easier — with a flameless electric range. See the new models at your dealer's soon. And ask about the liberal wiring allowance available to CPS customers.







Let us go unto  
the house of the Lord."

**C  
h  
u  
r  
c  
h  
  
D  
i  
r  
e  
c  
t  
o  
r  
y**

**Apostolic Faith Church**  
Roland Haney, Pastor  
Sunday School 10:00 a. m.  
Morning Worship 11:00 a. m.  
Evening Worship 7:00 p. m.  
Thursday Fast and Prayer Service  
9:30 3:00

**Assembly of God Church**  
Rev. Vance Barker, Pastor  
Sunday School 9:45 a. m.  
Morning Worship 11:00 a. m.  
Evening Worship 7:30 p. m.  
Wed. Bible Study 7:30 p. m.

**Church of Christ**  
Charles Milner, Minister  
Sunday School 10:00 a. m.  
Worship 11:00 a. m.  
Worship 7:00 p. m.  
Wed. Ladies Bible Class 9:30 a. m.  
Wed. Bible Study 7:30 p. m.

**Fellowship Baptist Church**  
W. S. Herring, Pastor  
Sunday School 10:00 a. m.  
Preaching Service 11:00 a. m.  
Sunday Evening Service 7:30 p. m.  
Wed. Evening Service 7:30 p. m.

**First Christian Church**  
Rev. W. Graham Pugh, Minister  
Sunday School 9:45 a. m.  
Morning Worship 11:00 a. m.  
Youth Meetings 6:00 p. m.  
Evening Worship 7:30 p. m.  
Wed. Choir Practice 7:30 p. m.

**First Baptist Church**  
Rev. Luther M. Berry, Pastor  
Sunday School 9:45 a. m.  
Morning Worship 10:45 a. m.  
Training Union 5:30 p. m.  
Evening Worship 6:30 p. m.  
Wed. Evening Prayer Hour 7:30  
Wed. Choir Rehearsal 8:45 p. m.

**First Methodist Church**  
Brother Charles Gates, Minister  
Sunday School 9:45 a. m.  
Morning Worship 11:00 a. m.  
M. Y. T. 6:30 p. m.  
Evening Worship 7:30 p. m.  
Women's Society of Christian Service  
Wednesday 3:00 p. m.  
Choir Rehearsal 7:30 p. m.

**First United Presbyterian Church**  
Everett H. Cain, Jr., Pastor  
11th and Cotter Drive  
Sunday Church School 9:45 a. m.  
Morning Worship 11:00 a. m.  
Evening Study Group 7:30 p. m.  
Wed. Choir Practice 7:30 p. m.

**Pentecostal Church**  
Sunday School 9:45 a. m.  
Morning Worship 11:00 a. m.  
Evening Worship 7:30 p. m.  
5th & Hazelwood

**Sacred Heart Catholic Church**  
Rev. Fr. Fred Hyland  
Sundays 10:00 a. m.  
Catechism Classes 11:00 a. m.  
Week Days  
Mon., Tues., Fri., Sat. 8:00 a. m.  
Holy Days of Obligation 7:30 a. m.  
First Friday of Month 7:00 a. m.

**Spearman Lutheran Mission**  
Farm Bureau Bldg. - Spearman  
Robert Cordes, Pastor  
Worship Services..... 9:00 a. m.  
Sunday School ..... 10:00 a. m.

**Union Full Gospel Church**  
Rev. George R. Bollinger, Pastor  
Sunday School 10:00 a. m.  
Morning Worship 11:00 a. m.  
Bible Classes, Sunday 6:45 p. m.  
Evening Worship 7:30 p. m.  
Wed. Bible Study 7:30 p. m.

**Oslo Lutheran Church**  
18 MI. N. W. of Gruver  
Robert L. Cordes, Pastor  
Sunday School 9:45 a. m.  
(Includes adults)  
Worship Services 11:00 a. m.

**SPONSORING FIRMS:**

**Western Auto Assoc. Store**  
Home Owned

**R.L. McClellan Grain Co., Inc.**

**B & B Grain Co., Inc.**

**First State Bank**  
Member F.D.I.C.



**LET WANT ADS  
WORK FOR YOU**

**FOR SALE WANTED FOR RENT**

**LOT FOR SALE:** 1007 S. Archer. Call 659-3448 after 5 p. m.  
25T-tfc

**FOR SALE-Industrial lots and acreage.** Financing available. Cecil Crawford. Phone 659-2409.

**SERVICE-Ditches from 3-12 inches,** any desired depth. S. D. Jones 659-2809. Harold Shaver 659 3474.  
T17-s18-tfc

**FOR SALE:** new three bedroom brick, 1 3/4 bath, all electric kitchen, one car garage, F. H. A. or VA loan. 1105 Townsend Spearman, Tex., phone 435-5464, Macias Construction Company, Perryton, Texas.  
T-25-tfc

**For Lifetime Mufflers,** Clarence Pettitt Garage. No premium prices.

**FOR SALE:** Complete V8 GMC Engine. See at 1017 Haney after 4 p. m. or call 2104.  
T28-2c, S28-2c

**FOR SALE-Nice 800 Case Row-crop Tractor** with wide front end, and propane. 625-8861, Beaver, Okla.  
T24-tfc

**FOR SALE-Two bedroom house** at 116 Haney. 659-2681.  
T24-4p

**FOR SALE-Four 50 foot lots facing Colvard Street, Block C.** Colvard Real Estate.  
T19-S19-tfc

**FOR SALE:** New Lake Pump and aluminum pipe, Pat Westfield, Gruver. Fi 7-2700  
S44-T43tfc

**FOR SALE-1956 Manor Trailer,** 8 x 43, 2 bedroom, Miller Trailer Court, E. W. Kibler.  
T28-lp

Dirt Moving, Land Leveling, Silos Dug, General Dirt Work with a John Deere 4010, 10 yd. Hancock Carryall, D6 Caterpillar. See Willis Sheets or call 2256 or 2712.  
T41-S43-tfc

**FOR RENT-2 bedrooms** with kitchen privileges. 906 Dresden. 659-2425 after 5 p. m.  
T6-S7-tfc

**FOR RENT-2 room** furnished apartment. Call 3239.  
T28-1c

Yards worked and seeded, Gardens worked. Fertilizing done. Shrubs planted. Don Schmehr, 659-2858.  
T23-tfc, S23-tfc

**FOUND**

**FOUND-Black steer** weighing about 650 lbs. branded on right shoulder. Call 659-2385.  
S23-T24-tfc

Subscribe Today To  
The Plainsman  
"Bringing you News  
About people you know."

**ROCK OF AGES**

**ROGER R. WALTON**  
DISTRICT REPRESENTATIVE  
OSGOOD MONUMENT CO.  
1313 SO. AMHERST ST. - 435-3298  
PERRYTON, TEXAS

**STONE ETERNAL**

**E.C. Greene & Sons Agency**

Real Estate-Loans  
Insurance-Cattle  
Aluminum Pipes

410 Davis Spearman  
Phone 659-2587

Plainsman Classified Ads get results.

**YOUR PHILCO DEALER**  
**Burton's T.V.**

WE REPAIR COLOR & BLACK & WHITE T. V. 'S AND ALSO, RADIOS

**659-2121**

20 South Archer  
Spearman

remember every  
special occasion  
with a  
**HALLMARK  
CARD**  
from  
Plainsman  
Office Supply

Part of all  
you  
earn —  
should be  
yours  
to keep.

**ED DEAR,**

**703 Cotter Drive**  
Spearman, Texas

Phone: 659-3073

If you want to drink that's your business-If you want to stop drinking... that's our business !!

**Inquire Box 383**

Meetings - Tuesday, 8 p. m.  
Second Floor - Court House  
Open to Public  
Every Fourth Tuesday.

**City Directory**

**CLEANERS**

CLEANING  
PRESSING  
CARPET  
CLEANING SERVICE  
COIN OPERATED  
DRY CLEANING  
FREE  
PICK-UP & DELIVERY  
PHONE 659-2511

**Wardrobe Cleaners**  
Oscar Donnell  
302 MAIN ST.  
SPEARMAN, TEXAS

**DENTISTS**

**F. J. Daily D.D.S.**  
16 SW COURT STREET  
SPEARMAN

**PHYSICIAN**

**D. E. Hackley D.O.**  
CLINIC  
702 S. ROLAND  
659-2556  
659-2385

**ELECTRICIAN**

**Anthony Electric**  
Industrial, Commercial  
and House Wiring  
Heating and  
Air Conditioning  
Contracting  
and Repairs  
Fully Insured

PLAINS  
SHOPPING CENTER  
PHONE 659-2441  
BOX 727  
SPEARMAN, TEXAS



## Postal Service Change Made

The limited adjustments in some postal services ordered in Washington March 10 by Postmaster General John A. Gronouski to save \$12.7 million will begin to take effect in Spearman and other cities May 4, Postmaster Donald Smith said today.

Service changes planned locally include the following, Smith said:

Parcel post deliveries will be limited to a 5 day service week, there being no parcels delivered to the business or residential areas of town on Tuesday of each week. May 5 will be the first non-delivery day. Parcels will continue to be delivered as usual on the star routes to rural patrons, as these are under contract and not affected by the service adjustment.

Effective Saturday, May 9, the following window service adjustments will also go into effect, on Saturdays only: No Domestic Money Orders will be sold, no box rent collections, no inquiries or damage claims handled, no postage meter settings or trust fund deposits accepted. All other Saturday service remain the same, including windows open from 8:30 a. m. to 12 noon. All patrons are respectfully requested to transact the above mentioned business items on weekdays.

The Postmaster emphasized that no essential major services are affected under the orders. There will be no change in home delivery or special delivery, for example. Regular business mail deliveries will continue as usual. Letters and other first-class mail will be handled with the same priority as ever.

The economy step, Smith explained, is in line with President Johnson's programs under which the recent Federal income tax cut was provided.

Bill Logan of Dallas, who is with Horizon Oil and Gas Co., was a business visitor in Spearman Thursday.

JIM LANGDON

..... is such a big man  
..... we couldn't get him....  
all in one column.....

FOR  
RAILROAD  
COMMISSIONER

a **BIG  
MAN**

FOR A

**BIG  
JOB**

For ALL  
the People!

(Pol. Adv. --

Paid for by Jim Langdon  
Campaign Committee, Charles Langdon,  
Chmn.)

## HOLT NEWS

Mr. and Mrs. Owen Pendergraft, Mr. and Mrs. C. W. Kirk and Maude Rosson were Thursday night guests of Mrs. Georgia Allen and other relatives at Mangum, Okla.

Mr. and Mrs. Charley Davis were Sunday dinner guests of Mr. and Mrs. Lewis Jackson at Gruver.

Mrs. Yevie Dodson of Dalhart was a weekend guest of Mr. and Mrs. Vernie Rosson of Spearman. On Sunday Vernie Rosson and Bill Evans visited relatives in Erick, Okla.

Paul Lambert of Crane visited Saturday with Mrs. Bertha Jenkins and Phil, Owen Pendergrafts, the C. W. Kirks and Maude Rosson.

Mrs. B. C. Holt was a Sunday guest of Mrs. Annie Harris and daughters at Morse.

Linda Holt of Texas Tech visited her parents, the Nolan Holts, over the weekend.

Mr. and Mrs. Ira Harbour and family were Sunday guests of Mr. and Mrs. Bill Sloan at Dumas.

Mrs. Dan Jackson recently visited Mr. and Mrs. Bob Phelps and family at Forgan, Okla.

Mr. and Mrs. Howardine Stephens of Buena Vista were dinner guests Saturday of the Dan Jacksons

## Heart Disease Remains Nation's Top Killer

Despite all the work and research which has gone into fighting heart disease, this health menace remains the nation's number one killer. 54% of all deaths in the United States are caused by heart and blood vessel diseases. This is more than all other causes of death combined.

May 4-16 will be declared "Texas Heart Weeks" for Hansford County. The Heart Fund Campaign this year is being sponsored by the Hansford

County Home Demonstration Council.

Kicking off the Texas Heart Fund Campaign will be a presentation of films on different types of heart diseases from the Texas Heart Association. Especially featured will be information on effects of high blood pressure, rheumatic fever, heart attacks, and misconceptions about heart diseases.

The general public is cordially invited to attend the showing of these films Tuesday,

May 5, 1964, at 7:30 p. m. in the Spearman High School Auditorium. There will be no charge for admittance. A Baked Goods Sale will be held in conjunction with the Heart Film Presentation, with all proceeds from the sale going to the County Heart Fund.

To find out more about heart diseases, which could strike anywhere at any moment, bring your entire family to the Hansford County Heart Fund Promotion Program.

"Help your heart fund-help your heart!"

Carla Brinkley came home from WT on Friday and spent the weekend in the hospital. She was dismissed Tuesday.

## VOTE SATURDAY

AND ATTEND YOUR DEMOCRATIC PRECINCT CONVENTION

RE-ELECT GOVERNOR JOHN

**CONNALLY**

FOR A GREATER TEXAS!



—paid pol. ad.

# FREE KITCHEN

ASK US ABOUT THEM TODAY

# TOOLS

BUILD A COMPLETE SERVICE

OF BLUE PROVINCIAL KITCHEN TOOLS F-R-E-E WITH VALUABLE COUPONS.

Ideal Enriched 1 lb. loaf

**BREAD** ..... **10¢**

Early Garden Variety Del Monte

**PEAS** 303 size **4 / 89¢**

Del Monte 303

**Green Beans**

**4 / \$1** **MIX-MATCH** **4 / \$1**

Del Monte Fancy 303

**Fruit Cocktail**

Del Monte Crushed

**Pineapple** No. 2 can **3 / \$1**

Birds Eye pkg.

**Vegetables** **6 / \$1**

Cudahy Fully Cooked Hams 14/18 lb. av.

**Whole** lb. **47¢**

**Shank** Portion lb. **35¢**

**Butt** Portion lb. **47¢**

**Center Slices** lb. **89¢**

Cudahy's Chuck Wagon

**Bacon** 2 lbs. **89¢**

**FIRST CUT PORK CHOPS** lb. **35¢**

**CENTER CUT PORK CHOPS** lb. **59¢**

**WAFER THIN PORK CHOPS** lb. **69¢**

**POTATO SALAD OR COLE SLAW** **29¢**

H. & G. Whiting **FISH 1 1/2 lb. pkg.** **3 / \$1.00**

Del Monte Made with Distilled Pineapple Vinegar 14 oz. bottle

**Catsup** ..... **15¢**

**Pork & Beans**

Van Camps No. 2 size

**6 / \$1.00**

Better Food For Less

# IDEAL

FOOD STORES



# Alaskan Earthquake Described By Nephew of Spearmanites

The following story is excerpts from a letter received recently by Mr. and Mrs. W.J. Lewis from a nephew, F.B. Craig of Anchorage, Alaska. It describes the earthquake in Anchorage.

"First I will say we are all o.k., didn't get a scratch, but really got the h---scared out of us when it happened. Lew's house, as most of the other well built houses in his neighborhood, had no damage at all. My apartment house withstood the shock, except for the opposite end from my apartment which collapsed due to the street caving out from under it. The building has been condemned.

"At 5:36 the day it happened I was walking across the living room to change a record on the player when the deep rumble started and the building began swaying. I said to myself--'here goes another one of those pesky earthquakes'. They generally last from 20 to 40 seconds, but after this one didn't taper off, but got steadily worse, I knew very well that this was no ordinary earthquake.

"I stayed on my feet and didn't try to leave the building since I was on the second floor and was actually more concerned with saving my stereo record player and new TV set. I hung on to the record player o.k. and then began to get just a trifle scared. I still don't know how I stayed on my feet; Dishes were crashing out of the cabinet onto the floor, and I could hear the stuff spilling out of closets and the medicine cabinet and I don't want to ever hear another sound like that as long as I live. After the quaking continued to increase and after the first minute or so, I began to do some tall praying; as you know, the tremor lasted almost 3 full minutes, but it seemed much longer--I didn't think it would ever stop. When it finally did, I grabbed a jacket and headed for the stairs and finally got down and outside. The yard and streets were full of people in shock and my neighbor's wife was standing out there with just a light dress on and saying her right wrist hurt when she fell. I gave her my jacket, ran back up stairs and got some bandage and tape and bound her wrist tightly (later it proved to be broken in two places). Across the street buildings had cracked wide open and some had caved in--on three sides of my building the streets had just sunk down from 10 to 20 feet. By now you have seen pictures of all the devastation around the city.

"Casualty wise it could have been much worse and

some of the experts still shake their heads and say it is a miracle there were not more people injured or killed. The only thing mother and I lost were glasses and dishes. After I had collected my wits, I nearly hit the panic button--I was fearful that Lewis had been driving when it hit and may have fallen into one of the streets that caved in--also, I was afraid for mother and Ella and those wonderful kids. Traffic was nearly paralyzed--water, and electricity went out, so did telephone service. I got another jacket and put my overshoes on (naturally, it had to be snowing) and lit out for Lew's house on foot, about 3 miles from the downtown area. Had to walk about 10 blocks past gaping holes, cracks, devastated buildings, broken glass all over the place and cars blocked in the streets. Finally got a cab on the outskirts of town and he managed to get me to Lew's house over some pretty big cracks in the road. I'm telling you, my heart was in my throat all the way til I got there and found them all safe, including Lewis who had gotten home just as fast as he could. After seeing they were all o.k. I high-tailed it out to the hospital and found mother safe but shook a little. The hospital was on auxiliary power so they had lights and heat. Got back to Lewis' house and they had candles going. The heat was out so its a darn good thing his house has that fireplace. Got a good fire going, 3 of our friends dropped by to sleep on the floor that night since their heat was completely gone. We all sat up till 4:00 a.m. listening to emergency radio broadcasts--even picked up stations in Canada, Seattle, Portland, and Sacramento. I didn't get much sleep as I stayed awake as much as possible to keep the fire going. Next day we found a store open for the emergency and bought more candles, fuel for camp stoves, flashlights, etc. I tried to get back to my apartment to start clearing out the mess, but Fort Richardson had sent in two companies of crack infantry troops to establish guard in dangerous areas and to prevent looting--believe me, those soldiers were a welcome sight even though they wouldn't let me into my apartment area without a pass, and the police wouldn't give me a pass at that time. Anyway, though I was irritated about it, I wasn't about to argue with a GI carrying a rifle with a bayonet on it. The power came back on Sunday evening, also the water though it had to be boiled for safe use. Since then I have managed to move most of the stuff out of the apartment, including all the furniture, but still have to get most of mother's clothes, kitchen utensils, rugs and such. Am going to try to get off this afternoon, now that the roads have been completely filled in and smoothed over.

"Several of the downtown blocks are still restricted--Penney's new building is being torn down as is the one adjoining our offices. Half our building has been condemned, but we have doubled up on office space and are using the back half. We have had several severe earth tremors since the big one (but not near as long or hard) and everyone's nerves are still pretty well frayed. The geological team now testing the area say there will be more of minor intensity during the coming weeks as the earth below gradually settles into a more stable condition. It's funny now, but not a few days ago, the way people would jump if a door slammed or a building would crack.

"The repair crews and volunteer workers have done a magnificent job repairing utilities, re-establishing order--the old town is gradually returning to normal on the surface, but the real impact on the economy won't be felt for at least another month. Thank Heaven Lew and I work for the federal govt. and are needed so much at present. Lewis has been on emergency call with the Corps of Engineers since the quake. They have really put him through the paces. The Air Force Hospital here was hit real hard and he and two other engineers just last night finished estimating and evaluating the structural damage to it.

"As you also know, several of our native villages got hit hard by big tidal waves from the earthquake and we of the Bureau of Indian Affairs have been working around the clock--survey crews have been out evaluating the damage and

## Future Readers Of The Plainsman

Mr. and Mrs. Harry Robert Cheney are the parents of a daughter, Glenda Kay, born April 23 in Hansford Hospital.

Mr. and Mrs. Larry James Smith are the parents of a daughter, Lavonna Rene, born April 26 in Hansford Hospital.

Patients in Hansford Hospital this week are Joseph Logan, Ethel Walberry, Jack Gordon, Vernie Caldwell, Sandra Smith and daughter, Juanita Boxford, Albert Tucker, Kate Gray, James Ownbey, Sam Barr, Floyd Degraffenreid, Marjorie

evacuating homeless natives into Anchorage. The Red Cross got here quick and set up shelters for everyone needing this. I pulled a 9 hour day last Tuesday in State Civil Defense Headquarters as liaison agent for BIA--worked with Red Cross and Salvation Army officials in tabulating and trying to confirm reported casualties all around the state and furnishing what information I could to CD officials. That was darn near worse than the quake--what confusion!"

Stanley Home Products  
**JOAN GILLEY**  
210 N. Snider  
659-3279



Announcing  
New Plumbing Co.  
**P & B**  
Plumbing  
Co.  
For Repair Work  
Call 659-3264  
if no answer call  
659-3414  
Licensed Plumbers

Oates, Etta Harolson, Berniece Weant, Myrtle Mae Blodgett, and Bob Hays.

Dismissed were Earl Riley, Nina Miller, Ike Richardson, Adelia Cheney and daughter, Fern Welch, Eileen Sutherland, Jeff Beedy, Pamela Buzzard, Carla Brinkley, Ann Sparks and son.

Read The Want Ads!

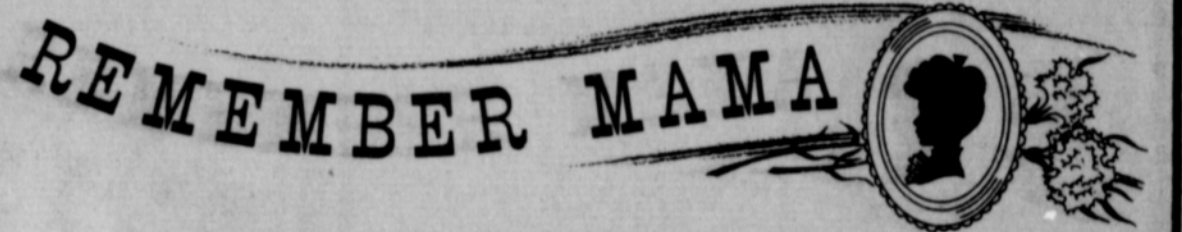
### IRRIGATION WELL SERVICE

- \* Bailing
- \* Completions
- \* All Sizes

New & Used Wells  
Largest Bailing Unit  
In The Panhandle

### CONTACT

**H. H. CHEVALIER**  
Perryton 435-2822  
Spearman 659-2504  
659-2598  
Amarillo Dr-33271  
Dr-38307



## with a meaningful Hallmark MOTHER'S DAY CARD

- \* SENTIMENTAL CARDS
- \* SPECIAL CARDS FOR CHILDREN TO SEND
- \* SPECIAL CARDS TO SEND GRANDMOTHERS, FAVORITE AUNTS, ETC.
- \* BEAUTIFUL VERSES, UNIQUE DRAWINGS, AND SPECTACULAR PHOTOGRAPHS
- \* A CARD TO SUIT EVERYONE ON YOUR LIST

## Remember . . .

SEND A HALLMARK CARD  
"When you care enough to send  
the very best"

## PLAINSMAN OFFICE SUPPLY

209 Main 659-2466

For No - Stick Cooking . . .

## TEFLON FINISHED COOKING UTENSILS

You'll Enjoy The Easy,  
No - Scour Cleaning.

- \* Baking & Roasting Pans
- \* Loaf Pans
- \* Cookie Sheets
- \* Muffin Pans
- \* Skillets



WE  
APPRECIATE  
YOUR  
BUSINESS

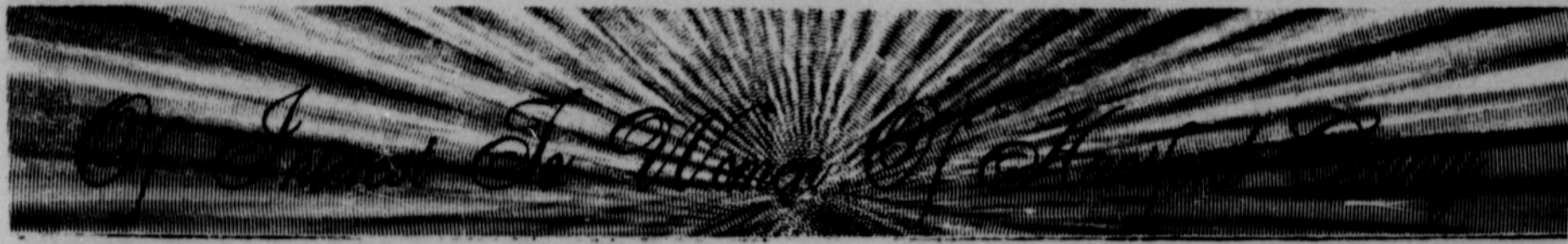
Vance Snider

And Invite You To Stop  
By For Complete Car  
Care and Good Texaco  
Products.

"Trust Your Car To The  
Man Who Wears the Star"

**SNIDER TEXACO**





## Art Class To Exhibit In Perryton

The Peanut Art Class, students of Nelda Sheets, have been asked to exhibit their paintings in the Perryton Library during the month of May. Approximately 75 oil paintings will be on exhibit.

Students are Meg Conrey, Becky McClellan, Kathy White, Bonnie Seymour, De Anna Sheets, Stephan Sheets, Russell Witt, James Ray Lyon, Douglas Porter, William Porter, Larry Williams, Ronnie Head, Billy Giles, Billy Pettit, Mike Cudd and Randy Col-lard.

## Day By Day

We're always having some sort of unusual and unbelievable weather up here in the top of the Panhandle, but Monday evening's siege of dirt was weird even to the natives. Who ever heard of a dirt storm without any winds!

Everytime high winds blow and the dirt gets all churned-up and in action, I wish for my father-in-law. For all his trips "out west" from East Texas, he's never seen a sandstorm.

Not that our sandstorms are anything to brag about, but they are a little unusual to those poor unfortunates who have never felt one blow by.

Right in the midst of one of our worst windy, dirty days recently, I was delighted to find a letter in the post office. Delighted, that is, until I read these words. "We had a slow, all-night rain and it's still coming down." It's hard to read something like that without becoming envious any more.

That night though, on some television show, there was an honest-to-goodness rain storm and the sound effects were hard to recognize-but delightful. I felt like writing a similar letter until I went outside the next morning.

A lot of advice on rearing children appears in publications real often, but an item appearing in a recent "Scouting" turns the tables. It goes like this: Pointers on Parent Training.

1. DON'T EXPECT TOO MUCH. If a parent seems slow at mastering a new game--if he takes more time eating than you'd like--allow him to set his own pace. Pushing him faster than he can go at his age will only frustrate him and make him stubborn.

2. BE CONSISTENT. Establish a point and stick to it. You can't throw a fit when told to take a bath one night, then turn around and run the water without being asked the next. This will naturally confuse a parent and destroy his sense of security.

3. BE PATIENT. A parent is quick to forget things he has been told. He may need to have your reasons for wanting to stay up after bedtime explained over and over before he appears to understand. Even then, don't hesitate to repeat your request, using a loud, clear tone.

4. DON'T RELY PRIMARILY ON THREATS TO ACHIEVE RESULTS. A parent who barks flatly at harsh words may be won over by a simple show of love. Encourage him when he does a good job. Show him you're proud of him. Often, that's all the incentive a parent needs. ---D. G. Lloyd.

## Club To Have Salad Luncheon

The Kimberly Junior Women's Study Club will meet Friday, May 1 at 11:30 at the Home Demonstration Clubroom for a Salad Luncheon. Everyone is to bring a salad.

Mrs. Dick Kilgore will be the guest speaker. Installation of new officers will also be held.

Mmes. Bill Jackson and Claude Pearson will be co-hostesses.

## Club Meets In Skinner Home

Ruth Skinner was hostess to the Short Club Bridge Club April 28 in her home.

Ruth Skinner had high score and Doris Wilmeth won second high.

Attending were Mmes. Pat Donnell, Helen Etter, Elizabeth Holton, Vera Beth Hicks, Helen Watson, Doris Wilmeth, a guest Lucile Lewis and the hostess.

## Mrs. Womble Hosts Guild

Mrs. J. E. Womble was hostess to the Arts & Craft Guild, April 24 in her home.

Attending were Mmes. Bruce Sheets, Pope Gibner, Ned Turner, C. A. Gibner, Garrett Allen, Fred Hoskins, Bill Russell, Guy Fuller, Deta Blodgett, Freeman Barkley and the hostess.

The next meeting will be May 1 in the home of Mrs. Fred Hoskins.



SERVING REFRESHMENTS--These women, members of the Rolling Plains Wagon Train, served refreshments this week to the Guymon Pioneer Days Boosters as they came through Spearman. They are (left-right) Mmes. Harry Shedeck, Lois Pearson and Johnny Lee.

## Local Artists Study With Renowned Woman Sculptor

"Eating is a luxury; art is a necessity."

With this maxim, America's greatest woman sculptor, Louise Nevelson, transmitted her own dynamic involvement with creativity to a group of area artists in a recent three-day workshop at Dord Fitz Gallery in Amarillo. Among the artists participating in the workshop were four Spearman women, Vera Beth Hicks, Nelda Sheets, Launa Pearson and Ruth Skinner.

Louise Nevelson's work first won international acclaim in 1962 when she won the Venice Biennial Exhibit. Her work is in Collections of the Museum of Modern Art, the Whitney Gallery and Carnegie Institute, as well as private collections.

To Louise Nevelson, whose works are beautifully photographed in the February issue of Vogue, artists learn through their creative efforts to affirm their beliefs, to learn what to look forward to, to find directions.

"Art is the last frontier where man is still free. It is the place of livingness, where man is most alive. People have everything today; we have more wealth than is necessary; we are even on the verge of controlling space. Yet people say 'I don't know why I'm not happy.' They lack creativity--the great necessity."

From her Amarillo workshop, Miss Nevelson visited some branches in the Panhandle area

Mrs. C. B. Dodson of Dalhart as a weekend visitor of Mr. and Mrs. V. E. Rosson.

Don Bennett of Al Hembra, Calif., brother of Mrs. Cecil Crawford and Mrs. F. K. Bannister, came Sunday to be with his mother, Mrs. J. D. Miller, who is a patient in St. Anthony Hospital in Amarillo. Mrs. Miller underwent surgery Monday and is progressing nicely.

Vernie Rosson and Bill Evans visited relatives in Erick, Okla., Sunday.

before going on to the University of Chicago for some lectures. In June she will leave for Kassel, Germany where she and painter Mark Tobey will represent America in an international invitational exhibit held every five years.

## Amusing Skit Presented For Delphinium Club

Mrs. P. A. Lyon was hostess to the Delphinium Flower Club April 27 in her home.

Mrs. Medlin Patterson, president, conducted the business session. Roll call was answered with "A Tip on Blooming Flowers".

An amusing skit "Enthusiasm For Her Iris" was presented by Mrs. Medlin Patterson and Mrs. Raymond Kirk.

Mrs. John Bishop reviewed duties of each committee for the flower show to be held in May.

Mrs. Raymond Kirk brought an arrangement of lilacs and wild grapes in a blue vase. Mrs. Lyon also had an arrangement of blue and red lilacs in a rose

## Art Exhibit Opens May 1

An exhibition of water colors by Miss Henrietta Jones, art instructor at Panhandle A&M College is slated to start in the Art Gallery of the No Man's Land Historical Museum on May 1 and continue throughout the month.

The exhibit is an annual showing of Miss Jones' work and has been held since she joined the staff at Panhandle in 1953. Miss Jones is a native of Hutchinson, Kansas, was granted her B. F. A. degree from Bethany College, received the M. F. A. from State College of Washington. She did additional graduate work at the Kansas City Art Institute and School of Design.

## Mrs. Lair Hosts Bridge Luncheon

Mrs. James Lair was hostess to a bridge luncheon April 28 in her home. Darlene Linn had high score, Mona Beth Windom second high and Norma Jean Mackie won the traveling prize.

Attending were Peggy Dawson, Darlene Linn, Mona Beth Windom, Betty Davis, Ruth Ann King, Jerry Kees, Norma Jean Mackie and the hostess.

container on a copper base. Specimens were brought by Mmes. Kirk, Patterson, Bishop, and Eleanor Reed.

Attending were Mmes. Bishop, Patterson, Reed, Kirk, Claude Smith, W. A. Ellsworth and the hostess.

The next meeting will be May 11 at the home of Mrs. Raymond Kirk.

## Bowen Pupils Have Recital

Mrs. LaDwain Bowen presented her students in a recital Sunday, April 26, at 3:00 p. m. in the Methodist Church in Spearman.

Students playing in the recital were: Debbie Sheppard, Marcia Larson, Dixie Sheppard, Greg Banks, Janna Robinson, Rhonda Linn, Jim Linn, Debra Brock, Kandy Vaughn, Patty Barker and Tony Hester.

Guest pianist was Cherry Lewis from Wellington.

Mr. and Mrs. Don Cruce and family of Tulia were weekend guests of her parents, Mr. and Mrs. Cecil Crawford. Added Sunday evening guests were the Archa Morse's, Sam Henderson's, and Jack Whitson's.

Mr. and Mrs. Harry Highland of Spokane, Wash. came Saturday to visit in the Cecil Crawford home. Mr. Highland is a cousin of Cecil.

## Mmes. Sheets, Reed Honored At Time for Fun Party

The Time for Fun Party held in the Home Demonstration Clubroom April 27 was sponsored by the Dahlia Flower Club.

The serving table was covered with a lace cloth and centered with a bouquet of lilacs and snowballs.

The birthdays celebrated for the month were those of Mrs. Nannie Sheets and Mrs. Eleanor Reed. The ladies received the beautifully decorated birthday cake baked by Mrs. H. M. Shedeck. They were also presented with a gift from the hostesses.

Games of 42 and bridge were played by the group and cookies, coffee and cocoa were

## Club Enjoys Japanese Theme

Mrs. R. E. Lee was hostess to the Bid-A-Bit Bridge Club April 23 in her home.

The tables were decorated with dolls Mrs. Lee brought back from Japan. Other decorations were in the Japanese motif.

Mrs. Winfred Lewis had high score and Mrs. Gwenfred Lackey had second high.

Attending were one guest, Mrs. Dan Pearson and members, Mmes. John Berry, Ralph Blodgett, Oscar Donnell, Tom Etter, Bill Hutton, Leonard Jameson, Gwenfred Lackey, Winfred Lewis, W. L. Russell, Vi Whitson and the hostess.

The next meeting will be with Mrs. Winfred Lewis.

served.

Attending were Mmes. W. H. Neilson, M. M. Jagers, Nannie Sheets, Abbye Ownbey, Ben Maize, Vora Woody, Myrtle Russell, D. W. Hazelwood, Eleanor Reed, Nan Prutsman, Bob Morton, E. D. Clement, Deta Blodgett, Earl Riley, and Messrs. and Mmes. J. E. Womble, H. H. Crooks, Frank Davis, and Messrs. R. C. Birdwell, H. M. Shedeck, and George Stewart.



JUNIOR PLAY--Playing the lead roles in "The Courtship of Eddie's Father" Monday were (left-right) Doris Slaughter, Mike Morris and Doug Lackey. Mrs. Hazel Simmons (extreme right) directed the play.

PLAINSMAN PHOTO



### Madden Rites Held Monday

Funeral services for Sgt. Charles Madden, 22, of Spearman were conducted at 4 p. m. Monday in the Union Church of Spearman.

Services were conducted by the Rev. Calvin Springer, the Rev. Ralph Durham and the Rev. George Bollinger. Boxwell's were in charge of interment in Hansford Cemetery.

Sgt. Madden is the son of Charles Madden of Spearman and Mrs. Marie Madden of Amarillo. He attended Spearman Schools before joining the Army in 1960. He served three years in Germany and after re-enlisting had been stationed at Fort Hood.

Sgt. Madden and four other soldiers were killed when the small car in which they were riding collided with a big truck near Waco.

Besides his parents he is survived by two brothers, Wayne of Guymon and Billy of Spearman and a sister, Mrs. Mary Miesner of Spearman.

Military graveside services were conducted by a unit from Amarillo Air Force Base.

Pallbearers were Eddie Martin, James Martin, Larry Kingsley, Jerry Black, Tommy Lovett and Donnie Mackie.

Honorary Pallbearers were Bryan Jones, Lowell Turner, Danny Kingsley, James Maxwell, James Roy Patterson and Bob Meek.

### Waka P-TA Sees Films

The topic, "The Family: Wholesome and Happy", was portrayed in two films at the April meeting of the Waka PTA, Monday, April 27. Following the film, an open discussion was led by the president, Mrs. Herman Wiebe.

The meeting was postponed to April 27 from April 20 due to the District meeting in Spearman.

During the business meeting, Bob Mosier announced that the annual school trip will be to Alabaster Caverns, Freemon, Okla. May 22. Dinner will be spread at Boiling Springs. The PTA will furnish the drinks.

An invitation for the District 19 Fall Board Meeting was extended to Bob Marshall, district president.

March 13 is set up for the School of Instruction in Spearman.

Mrs. David Wilson gave highlights of the District 19 Conference held recently.

The school band under the direction of Glen Truax played several numbers. Solos and ensembles were featured.

Social and gym supervisors for the evening were the B.J. Turners and Leroy Thompsons.

### Cummings

#### Refrigeration

HEATING  
AIR CONDITIONING

REFRIGERATION  
SPECIALIST

SALES & SERVICE

659-2721

Spearman

**Every Card IS A WINNER..**  
when you play...

**Grand Prize**

BE SURE TO GET YOUR CARD TODAY.

Your Card May Be Worth  
**One Million**  
Buccaneer Stamps

WEEKEND VALUES  
GOOD FRI.-SAT. MAY 1 & 2  
We Give Valuable

Bordens Mellorine Half Gallon  
**CHARLOTTE FREEZE**  
**39¢**

Shurfine Frozen  
**ENGLISH PEAS** 10 oz. Pkg. **15¢**

Shurfine Frozen Cut  
**OKRA** 10 oz. pkg. **15¢**

Tendercrust  
**VANILLA WAFERS**  
15 oz. Bag **39¢**

**ONE LB. Bananas**  
**Free** WITH EACH BAG VANILLA WAFERS

Del Monte Flat Can  
**TUNA FISH** **25¢**

Nabisco RITZ 1b. Box  
**CRACKERS** **37¢**

Shurfine Clings no. 2½ Can  
**PEACHES** 2 for **49¢**

Shurfine Early Harvest 303 Can  
**ENGLISH PEAS** 2 for **39¢**

CALIFORNIA EXTRA FANCY PINT  
**Strawberries** **29¢**

Fresh Large Bunches Bunch  
**Mustard Greens** **9¢**

<b>Oranges</b> California Valencia <b>15¢</b> lb.	<b>Squash</b> Tender Yellow <b>13¢</b> lb.
--	---

Shurfine 3 lb. Can  
**SHORTENING** **59¢**

Viking 25 ft. x 12 in.  
**ALUMINUM FOIL** **25¢**

**CUT RATE GROCERY**

**DOWN GO PRICES** On Fresh Meats

SUNRAY'S  
**HAMS** HICKORY SMOKED 12-16 LB. WHOLE **39¢** LB.

PINKNEY'S JUMBO PAK  
**FRANKS** 3 LB. BAG **89¢**

TOP O' TEXAS  
**BACON** 2 LB. PKG. **79¢**

CHECK OUR NEW EVERYDAY LOW BEEF PRICES

Shurfine 6 oz. Can  
**Lemonade** 2 for **19¢**

BROWN 'N SERVE Tendercrusts "new item" "Twin Pak"  
**Bread** "Bake it hot when you want it" "Ready in 7 minutes" **29¢**

Skinnors Cereal 10 oz. Pkg.  
**RAISIN BRAN** **25¢**

Gold Medal 10 lb. Bag  
**Flour** **93¢**

Shurfresh  
**Salad Oil** 24 oz. Bottle **29¢**

Mortons "All Varieties" Your Choice  
**T.V. Dinners** Each **37¢**

Liptons Brisk  
lb. Box  
**TEA**  
**\$1.47**