

HANSFORD COUNTY'S LEADING NEWSPAPER



The

SUNDAY The Hansford Plainsman



VOLUME VII., NUMBER 31

SPEARMAN, HANSFORD COUNTY, TEXAS 79081

SUNDAY, FEBRUARY 6, 1966

Lynxettes Beat Stinnett To Win Sixth District Crown



The sixth consecutive district championship was won Friday night by the Spearman Lynxettes, but it may have been costly.

The Lynxettes ripped the Stinnett Rattlerettes 45-21, but Bethany Donnell, a starting guard, injured a knee early in the game. She could be lost for the season.

It was a slam-bang ballgame with Stinnett staying close in the first quarter. Spearman opened with a lead, saw it whittled away, then rubbed the Rattlerettes out.

Donnell was injured early in the second quarter, with the Stinnett six close on the heels of the Lynxettes. Then, the Lynxettes went to work and had a 17-10 lead before Stinnett could get the ball down court. They stretched the lead to 20-10 before Stinnett scored a field goal.

At the half the Lynxettes were leading 25-12. They stretched the lead to 35-17 at the end of three periods.

With Donnell out of the game, Coach Weese went to freshman Marcia Shieldknight at forward and sent hustling Susan Hutchison to guard.

The threesome of Hutchison, Robbie Ownbey and Nancy McCullough kept the Rattlerettes racing around the outside.

Karen Gibson, Barbara Wilde, and Shieldknight carried the scoring punch. Each hit fair field goals. Wilde had eight free throws to make her total 16 points. Gibson had seven free throws for 15 and Shieldknight had one free throw for nine points. Hutchison had hit two field goals in the first quarter for four points. Lynn Robinson had one point.

Spearman hit 14 field goals and 17 of 26 free shots. They committed only seven fouls against Stinnett's 18.

Spearman's Lynx out-shot and out-rebounded the Stinnett Rattlers for a quarter Friday but fell 53-60.

Stinnett could not find the range in the first quarter as the
(Continued on Page 2)

SIXTH CHAMPIONSHIP TEAM -- These Spearman Lynxettes won the sixth consecutive district basketball title for Spearman her Friday night by beating Stinnett. They were undefeated in district play. They are (left, back row) Managers Phyllis Davis and Susan Holt, Karen Gibson, Linn Ann Robinson, Nancy McCullough, Kathi Pattison, Barbara Wilde, Susan Hutchison, Coach Dean Weese, (front row, left) Kay Schroder, Judy Jones, Bethany Donnell, Robbie Ownbey, Cecilia Wilson and Marcia Shieldknight.
C&B Photo

Sliding Car Knocks Hole in Gregg Home

A car went out of control Thursday night, skidded across a vacant lot, a street and a front yard and slammed into a house.

A car driven by Kenneth Faries, 18, of Spearman, slammed into the garage wall of the home of Dr. Damon

Gregg.

The impact of the collision knocked a large hole in the brick wall. It broke the framework of the wall, knocking the sheer rock off the inside of the garage wall.

Police said the car apparently went out of control on

East 11th Street on ice, skidded 110 feet into the Eleventh Street curb and jumped it onto a vacant lot. It skidded across it sideways across Wilmeth Drive, into the Gregg yard and into the house. Officers said the car skidded 176 feet after hitting the curb.

Officers credited the sideways skid of the car with keeping the driver and his passenger, Geir Overland, from being hurt.

The police said the ground was apparently frozen hard

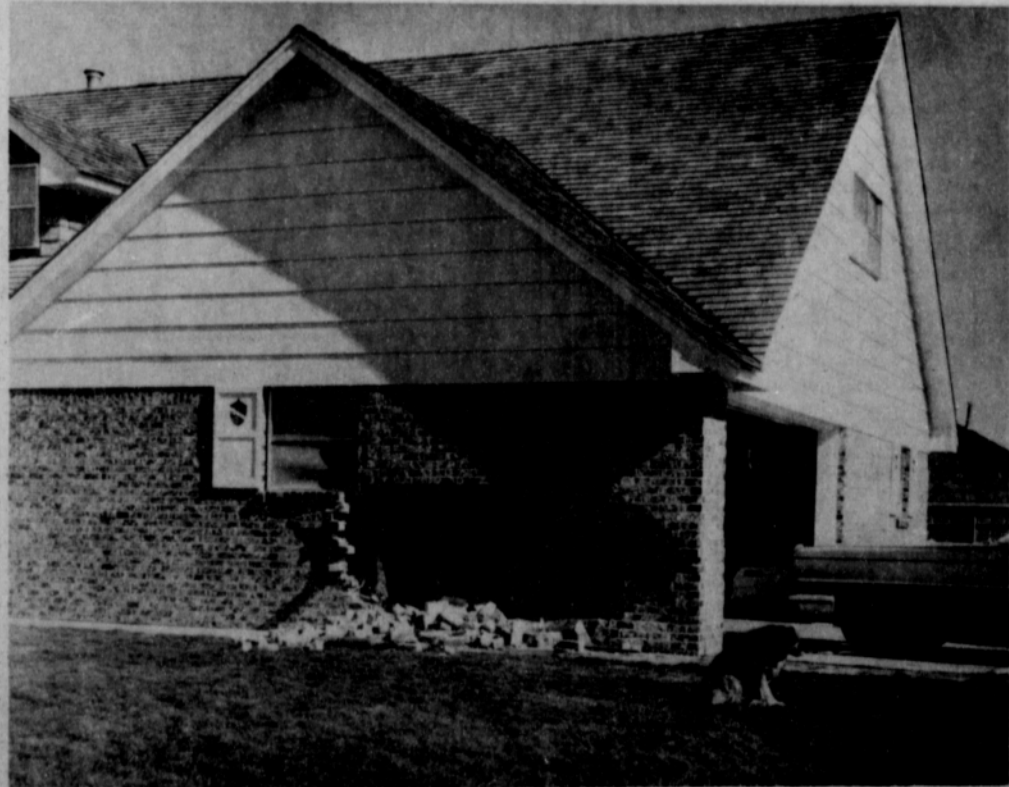
(Continued on Page 2)

Another Man Files for Office

A new candidate has filed for the Spearman City Council this week.

Joel Lee Lackey filed this week as a candidate for councilman.

(Continued on Page 2)



HOLE IN THE WALL--An out of control car driven by Kenneth Faries left this hole in the garage wall of the home of Dr. Damon Gregg Thursday night. No one was injured, but the car and the house were heavily damaged.
Plainsman Photo



NEW TAGS--Sheriff J. B. Cooke tells Melinda Pearson about the new license plates now on sale. Persons can get the regular plates or for an extra fee can get personalized plates such as the one ordered by A. R. Bort of Gruver. Titles and license receipts are necessary for purchasing the new plates.
Plainsman Photo



"FB WEEK" PROCLAIMED---Governor John Connally is shown signing a proclamation designating Feb. 7-12 as "Farm Bureau Membership Week" in Texas as Texas Farm Bureau Queen Cherri Lee Norman of Tahoka and TFB President C.H. DeVaney of Waco look on. During the special week, thousands of voluntary membership workers will call on their neighbors and ask them to join Farm Bureau. The state farm organization has a goal of 100,500 members in 1966.

Mrs. Fred Hoskins Is Book Club Host

Mrs. Cecil Crawford gave a very interesting program for the Spearman Book Club when it met Tuesday, Jan. 25 in the home of Mrs. Fred Hoskins for the regular meeting and salad supper.

Mrs. Crawford started her review "Down Memory Lane" by taking excerpts from books by Zane Grey and O'Henry for identification by the group.

Mmes. Clay Gibner, E.J. Copeland and Bruce Sheets read parts of "Death of A Hired Man" by Robert Frost. Mrs. O.C. Holt read Rachel Vachal Lindsey's "Lincoln Walks at Midnight" followed by "The Congo" read by Mmes. John Berry, Tom Sutton and Fred Hoskins.

Mrs. R.E. Lee read "The Crowd in the Plaza" and Vera Campbell gave "Invictus."

Mrs. F.K. Banister concluded the program by read-

ing "Night Flight" an original poem written by Mrs. J.D. Miller of Spearman, mother of Mrs. Banister and Mrs. Crawford.

Sewing Time Saved By Planning Ahead

It takes up so much time to cut a garment when you are anxious to get to sewing it. Why not have just a cutting day, if you are one who sews a lot?

Cut out a number of garments, place each along with the pattern and suitable thread in a plastic bag. Then when you get ready to sew, the cutting is already done. Also, the cleaning up of the mess made cutting is behind you.

Bag Fried Potatoes

When making a large batch of fried potatoes, put the first batch into a large, clean, brown paper bag and shake to get rid of excess grease. Then put the bag into a warm oven. Keep adding potatoes as each batch is finished.

Large Boxes Better

Never make the mistake of making wooden porch or window boxes too small. Flowers just will not do well in tiny ones. Make them large enough to hold enough soil and moisture for the plants.

DELUXE ESCORTED
CONTINENTAL TRAILWAY TOUR
TO FLORIDA AND THE AZALEA TRAIL,
A 16 DAY TRIP BEGINNING FEB. 25.

Reservations must be made by Feb. 10.

FOR INFORMATION
Call **MRS. SAM GRAVES**
659-3446 SPEARMAN

Do-Si-Do Club Begins Square Dance Lessons

Beginning lessons for persons wanting to learn to square dance are being planned by the Do-Si-Do Square Dance Club of Spearman.

At the club's regular meeting Tuesday a salad supper was planned for 7 p.m. Sat-

urday, Feb. 26 in the Community Building.

Guests at this supper will be all persons who think they would like to learn to square dance.

Robert Adamson will teach the class and at the supper the time for the lessons each week will be set.

Persons wanting more information about the club and lessons should call Robert Adamson, Mrs. R.T. Faries, Jack Gilbert or Mr. Sam Rhodes.

The only cost for the lessons will be a part of the cost for renting the Community Building one night per week for each person taking lessons.

Cool It at Night

Most house plants will do well in daytime temperatures between 65 and 75 degrees, but need temperatures at night—between 50 and 55 degrees. Porous clay pots, whose walls absorb less heat, will help keep plant roots cool. In overheated houses, it's a good idea to keep plant collections on tables with wheels, which can be moved easily to cool locations at night.

Well Worth The Trip... Well Worth The Price...

THAT'S WHY SHOPPING IDEAL IS
Twice As Nice!

Prices good Tues. & Wed., Feb. 8-9
LIMIT RIGHTS RESERVED

Better Food For Less
IDEAL
FOOD STORES

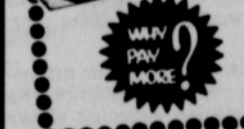
ENJOY EXTRA SAVINGS
Every Day With Valuable, Free
GUNN BROS STAMPS
DOUBLE STAMPS EVERY WED.
WITH \$2.50 PURCHASE OR MORE



IDEAL'S HOLLAND DUTCH STYLE BREAD 1 LB. 19¢
IDEAL'S DELICIOUS CHEWY CINNAMON BARS 49¢ PKG. 43¢



SPECIAL LABEL
GIANT TIDE
59¢
BOX
WITH \$5.00 OR MORE PURCHASE



SWNSDOWN CAKE MIXES
ORANGE, CHOC. CHIP, LEMON FLAKE
WHITE CHOCOLATE OR BANANA
3 20-oz. PKGS. \$1.00

LUNCHEON MEAT WILSON'S MOR 12 oz. CAN 59¢
LUNCHEON MEAT WILSON'S BIF 12 oz. CAN 59¢
COUNTRY OVEN REAL EGG CUSTARD 2-oz. PKG. 35¢
FOR SALADS OR COOKING KRAFT OIL Qt. Jar 65¢



FRESH, LEAN
GROUND BEEF
49¢
LB.

EXTRA LEAN GROUND CHUCK 1 lb. 69¢
ALL MEAT BOLOGNA COUNTRY KITCHEN SLICED 1-lb. PKG. 65¢
BOSTON BAKED BEANS COUNTRY KITCHEN PINT CTN 39¢

GOLDEN RIPE
BANANAS
10¢
U.S. NO. 1 OKLAHOMA GOLDEN YAMS LB. 10¢

CALIFORNIA
AVOCADOS
FINEST FOR SALADS
Each 10¢

KRAFT SPECIAL LABEL
Noodles Romanoff 7 oz. PKG. 39¢

PILLSBURY OR
Ballard Biscuits 3 8-oz. CANS 29¢

QUICK
3-Minute Oats 42-oz. BOX 49¢

AUSTEX
Chili WITH Beans 3 NO. 300 CANS \$1.00

SKINNER'S
Raisin Bran 2 15-oz. PKGS. 69¢

RED OR GOLDEN
Hawaiian Punch 2 46-oz. CANS 69¢

STALEY'S
STA-FLO LIQUID STARCH SPECIAL LABEL HALF GALLON 45¢

STALEY'S
STA-FLO SPRAY STARCH SPECIAL LABEL 22-oz. CAN 59¢

ATTENTION ARTISTS
We Now Handle
Grumbacher
ART SUPPLIES
INTERIOR DECORATOR
CHARLENE BULLS
212 Hancock

FOR MEN ONLY
SAMPLE.....
King's DELICIOUS CHOCOLATES
FREE AT OUR CANDY DEPARTMENT
Monday, February 7

GORDON'S DRUG
314 Main

The Hansford Plainsman Publishers Inc.

Jim O. Davis
Burl G. McClellan



County-wide independent newspaper published every Thursday and Sunday at 209 Main St., Box 668, Spearman, Texas 79081. Second Class postage paid in Spearman, Texas 79081. Editor . . . Burl McClellan

Prayer Day Meeting Set

All churches that plan to join in the World Day of Prayer observance are asked to have a member present at a meeting Wednesday, Feb. 9 at 2 p.m. at the Methodist Church. Plans will be made for the observance which will be held in the Methodist Church this year. Mrs. Sid Beck is spiritual chairman of the church.

Coffee Honors Mrs. Davidson

Mrs. Jim (Betty) Davidson was honored recently with a farewell coffee given in the home of Mrs. Hugh Banks. Co-hostesses were Mmes. Granville Boyd, Jerry Morris and Dick Reimund. The serving table was laid with an ecru lace cloth centered with an arrangement of orange, amber, brown and green and flanked with bayberry candles in amber holders. Lemon pound cake and coffee were served to approximately 20 friends and neighbors. The Davidsons left Jan. 23 for Farmington, Minn. where Mr. Davidson will assume new duties with Northern Natural Gas Co.

Girl Scouts Have Meeting

Cadette Troop No. 180 of Girl Scouts met February 1 at the Scout House. Refreshments were served by Diane Gregg and Ann Lackey and the girls then went into separate patrols to work on badges. Attending were Melinda Crooks, Cheryl Craig, Betty Nixon, Cindy Hutchison, Toni Delozier, Deon Dortch, Ann Lackey, Karen Waggoner, Bonnie Seymour, Rita Simmons, Cindy Dear and helper, Leslie Crooks, and the leader, Mrs. Harold Crooks.

Donnell In Oklahoma City For Examination of Knee

Lynxette Bethany Donnell was taken to Oklahoma City Friday night for an examination of an injured knee, by a specialist.

Donnell injured the knee Friday night in the Spearman-Stinnett basketball game.

Donnell said after the game she was trying to keep from going out of bounds when the knee popped and she fell. She said she did not remember being pushed or shoved.

Another Lynxette, Kathi Pattison, who injured a knee in the Duncanville Tournament at Christmas will undergo surgery this week in Oklahoma City.

The loss of Donnell and Pattison leaves Coach Dean Weese with six experienced players on his team to fight for a place in the state play-offs. The Lynxettes have less bench strength this year than in several years.

Weese said he would bring up some B-teams to help bolster the squad. The coach will have about two weeks to get some help ready.

Half a million children under 5 years of age accidentally consume poisonous substances every year. About 500 of them die.

Dip a cotton swab in ammonia and use for easy cleaning under your telephone dial.

"I don't know if a team with just six experienced players can go all the way, but if it can be done, these girls will do it," Weese said.

Candidate Here Tuesday

The first state office candidate of the current campaign will be in Spearman at 4 p.m. Tuesday. State Senator Franklin Spears of San Antonio, a candidate for Attorney General of Texas will be here.

A coffee is planned at 4 p.m. in Gruenwald's cafe in Plains Shopping Center. Everyone interested in meeting the candidate is invited to attend.

Monday is the deadline for filing for county and state offices in the Democratic Primary on May 7.

Another . . .

(Continued from Page 1)

This brings the total city candidates to five. Two men, incumbent Bob Vaughn, and Clarence Pettitt are seeking the mayor's post. Incumbents Richard Holton, E. J. Copeland and Lackey are seeking the two council jobs.

Sliding . . .

(Continued from Page 1)

enough to let the car slide and not turn over. Damage to the Gregg house was extensive. The side of the car was heavily damaged.

Officers investigated two minor accidents Thursday, also. Louis Miesner and Ruby Burger were the drivers of two vehicles involved in an accident.

Damage to both vehicles was very light, according to officers.

No one was injured, but damage to a car and pick-up was estimated at \$450 in a collision at the intersection of N. Dillon and E. Davis streets at 7:55 a.m. Thursday.

The pick-up was driven by Mike Stewart and the car was driven by Leland Wood.

City Police said Wood was on N. Dillon street and Stewart was on E. Davis. Officers said Stewart had stopped at a stop sign, then proceeded into the intersection.

Both vehicles were driven from the scene of the accident.

Lynxettes . . .

(Continued from Page 1)

Lynx defense kept them on the outside. The Lynx were controlling the rebounds and scoring. Spearman led 13-9 at the end of the first eight minutes.

Stinnett found the range in the second period and forged ahead 30-25. In the third period the officials just turned the game loose and it became a battle of the strongest.

Stinnett was the strongest and was leading 44-32 at the end of the third quarter.

With players running over each other, hacking, pushing and anything else they wanted to do, Spearman was able to whittle the lead.

Ken Shufeldt and Dave Clement pushed in several driving lay-up shots and were knocked down on several other attempts.

Shufeldt led the scoring with nine field goals and one free throw for 19 points. Carl Close had five field goals and one free throw for 11. Larry Butts and Clement each had three field goals and three free shots for nine points each. Monte Black had three and Charles Shieldknight had two.

High School Releases Latest Honor Roll

Principal Jim Cherry announced the following students are on the high school honor roll for this six weeks:

- SENIORS
Ceedell Anderson
Mart Brillhart
Bethany Donnell
Gwen Hanners
Kate Kilgore
Geir Overland
James Ownbey
Kathi Pattison
Frances Whitson
- JUNIORS
Cheryl Bollinger
Dorcas Collard
Jean Harbour
David McClellan
Marcena Scroggs
Donna Seymour
Linda Spoonemore
Debbie Standerfer
- SOPHOMORES
Debra Brock
Dallas Haner
Debbie Hazelwood
Rebecca Hutchison
Jimmy Kunkle
Susan Uptergrove
Darlene Waggoner
- FRESHMEN
Thelma Deniel
James Lemons
- HONORABLE MENTION
Linda Benga
Lynn Buzzard
Kenneth Faries
Karen Gibson
Susan Holt
Susan Hutchison
Robbie Ownbey
Linda Smith
Genie Warren
- JUNIORS
Sharon Archer
Janice Buchanan
Gary Cates
Lynne Garnett
Linda Hand
Steve Jordan
Pat Massad
Sharon Mauldin
Stephanie Patton
Melinda Pearson
Hal Sanders
Janice Trindle
Linda Gail Upchurch
Barbara Wilde
- SOPHOMORES
Steve Baggerly
Patty Barker
Cloetta Fullbright
Janice Gilbert
Toni Hester

- Kay Jackson
Jock Lee
Catherine Lyon
Donna Ownbey
Clay Schnell
FRESHMEN
Glenda Adkison
Glen Baker
Mike Banks
Phil Blythe
Linnie Bollinger
Randy Collard
Toni Hudson
Debra Largent
Penny Sanders
Dallen Scroggs
Connie Trindle.

Devers Accepts Church Post

A Spearman man has been named music director for the First Baptist Church of Canadian.

The Rev. Troy Noland, pastor, announced last week that Bill Devers, a student at West Texas University in Canyon has accepted the director's post.

Devers is a senior at West Texas. He will be in Canadian each Sunday to direct the choir and assist with services.

He is the son of Mr. and Mrs. Ray Devers and is a graduate of Spearman High School.

Thieves Hit 2 Pick-ups

Thieves hit two pick-ups parked on South Brandt Street Friday night.

Tools were taken from the pick-ups owned by Roy McBride and Clarence Mitchell. Mitchell and McBride are next-door neighbors.

Officers are investigating the thefts.

Miss Linda Gilliam, a student at Hillsboro Junior College, has been a recent visitor in the home of her parents, Mr. and Mrs. Charles Gilliam.

T.G.&Y.

5¢ TO 10¢ STORES

OYSTER BOWLS

Stock Up Now on this Household Essential. Sensational Buy!

6 for 77¢

Reg. 19¢
Discount Price

Values good Mon.-Tues. -Wed.-Feb. 7-8-9

STORE HOURS

MON. - FRI.
8:30 A.M. to 6:00 P.M.
SATURDAY 8:30 A.M. to 8:00 P.M.

THROW RUGS

High Pile Decorator Colors
Latex Backing
\$2.49 Value

\$1.99

Pepperell Colored
Size 27" X 48"

Cavalier Cups

19¢ Value

6 FOR 67¢

Discount Price

"Handy Queen" Round MEXICAN BASKET

Handy for a multitude of everyday uses. Every home needs one or more. Made of highly selected, extra heavy, split, tough bamboo. 14" Height . . . 18" Top Diam.

98¢ VALUE NOW...

67¢

SHEETS & PILLOW CASES

Full & Twin Size
Fitted & Flats
Irregulars of 1st quality

Sheets \$2.44

Pillow Cases \$1.44

Limited Quantities

AUTO MATS

Front only, one piece rubber, ass't. colors

\$3.49 value

\$2.44

PLASTIC DRAPES

Florals & Solid Colors
79¢ to 98¢ values

Discount Price

2 for \$1.00

Palmolive Aerosol RAPID SHAVE

1 1/2 oz. Rich Lather!

\$1.29 VALUE

or
Colgate
Instant Shave

2 for 88¢

Ayers
Brake & Alignment
Service
Is Back in

SPEARMAN

Irrigation Engine Repair
Pick Up and Delivery

Specializing in
Wheel Alignment
&
Brake Service

BRAKE DRUM LATHE
WHEEL BALANCING & TIRE TURNING
MOTOR TUNE-UP

'We appreciate your business'

AYERS BRAKE & ALIGNMENT SERVICE

Spearman
Womble Building Box 761 Phone 659-2213

Lynxettes Wrap Up Sixth Consecutive District Title

Spearman's Lynxettes wrapped up their sixth consecutive district title Friday night by beating Stinnett.

The Spearman girls have dominated the District 1-AA basketball race since 1961 when they won their first district title.

That year the Lynxettes battled Wellington to a tie in the district race, then beat them in a play-off. The team that year went on to finish second in the state tournament.

Since then the Lynxettes have rolled on almost untested in the district race. For two years after going to state, the Lynxettes failed to get past the bi-district battle.

In 1962 the Lynxettes lost to Hamblin in a bi-district game in Abernathy. The next year the Lynxettes met Tulia in Amarillo College gym and fell again.

The Lynxettes broke the bi-district jinx in 1964 when they beat Abernathy in the West Texas Fieldhouse. It was a squeaker. The Lynxettes fell to Friona in the first round of the regional tournament.

Last year the Lynxettes had little trouble with Iowa Park in bi-district, but again found Friona too tough in regional.

Before meeting Stinnett Friday night Spearman had played 30 games and had won 27 and lost three. The Lynxettes lost twice to Tulia and once to Stratford.

In the thirty games the Lynxettes have scored 1448 points and have allowed their opponents 945. This averages 48.25 points for the Lynxettes and 31.5 for the opponents.

Four guards have emerged as

the stoppers this year for Coach Dean Weese. He started the season with Robbie Ownbey, Bethany Donnell and Kathi Pattison, all letterwinners forming a tough defensive unit.

Pattison was lost for the season when she injured a knee in the Duncanville tournament. Utility girl Nancy McCullough has filled the spot. McCullough started the season playing both ends of the court, but since Pattison has been hurt, she has come along fast as a defender against the tall girls on the post.

In district competition the Lynxettes have outscored their opponents over two to one. The Lynxettes have scored 407 points to their opponents 184. The forwards have averaged 50.8 per game to their opponents 23.

Spearman has won their games with field goals. They have scored 546 field goals and 356 free throws out of a total of 628 free throw attempts.

Junior Barbara Wilde has been setting the scoring pace for the Lynxettes and probably season scoring records. The tall, fast moving girl has scored 668 points in 29 games. She is averaging 23 points per game.

Two seniors team with Wilde and can take the scoring lead if a team bunches their defenses. Karen Gibson, a consistent outside shooter has hit 354 points in 30 games. She has a 11.8 average. Susan Hutchison, the playmaker has had good scoring nights when needed. She has scored 200 points in 30 games for a 6.6 average.

Freshman Marcia Shield-knight is the fourth forward who

regularly sees action.

She has been in all 30 games, but it was the fourth game before she broke into the scoring column. The fast, jumper is pushing her points and had 172 for the season. She has a 30-game average of 5.7 per game.

The Spearman Lynxettes will play Electra for the bi-district title. Electra has won the 2-AA district. The time and place will be decided this week by school officials.

Church Honors Mrs. Foshee

Mrs. Wayne Pierce was hostess for a neighborhood coffee Thursday morning at 9:30 in her home honoring Mrs. Darce Foshee. The Foshees have recently moved to the neighborhood and now reside in their new home at 723 Steele Drive. Enjoying coffee and doughnuts were Mmes. Martha Straw, Barbara Gober, Linda Umphress, Sally Desimone, Coleen Schaefer, Rose Cummings, Jay Riemund, Carolyn Wood, Fern Welch, Rima Bosoecker and the hostess and honoree, Mrs. Pierce and Mrs. Foshee.

Mr. and Mrs. Bernard Barnes were in Ulysses, Kan. last week to attend a kick-off banquet for the Ford Philpot Crusade to be held in the fall. They spent the night with Mr. and Mrs. Dick Allison of Ulysses.

Engineer Says Stored Grain Needs Checking

COLLEGE STATION — Damaged grain can result from moisture migration this time of year. W. S. Allen, Extension agricultural engineer at Texas A&M University, says now is a good time to check your stored grain.

Deterioration may be found near the top center of the grain bin, he adds, if damage is due to moisture migration. Grain will show evidence of spoilage if it has not been properly aerated. (This assumes grain has been properly dried and is insect free.)

What causes migration of moisture? Normally, explains

Ungreased Pie Pan

Don't grease pie pans. The pastry dough is rich enough to be placed in an ungreased pan.

Joan Hays Enjoys Fourth Birthday

Mrs. Larry Hays honored her daughter, Joan with a party on Thursday, Feb. 3 celebrating her fourth birthday.

CHICKEN DIABLE

Chicken Diable has an added snap for cold weather suppers. Sprinkle chicken halves with salt and paprika, broil skin side down for 20 to 25 minutes. Remove from broiler and spread with a thin layer of mustard, dip in seasoned bread crumbs and return to broiler for five minutes or until browned. Chili sauce may be added.

Every year the female salmon lays 10,000 eggs. Comes Mother's day and not one lousy card.

The little guests arrived at 3 and played games and watched Joan open her gifts. Balloons were used as decorations and party favors of sailboats, horns and bubble gum were given.

Refreshments of birthday cake, ice cream and punch carrying out the valentine motif were served.

Present were Lonita, Debbie and Sherry Greene, Tammy and Kevin Rook, Leon, Verla, Valorie, Robert and Kathy Hagerman, Tammi and Terri White, Janabeth and Roger Buchanan, Jeanie and Suzie Close, Larry Widener, Mark Hays and the honoree. Mothers present were Mmes. Jimmie Greene, George Rook, Verlin Hagerman, Leonard Hagerman, Tommie White, Burl Buchanan, Ted Widener, and the hostess.



EARLY BIRD SALE on



\$1 OFF

It's the best price we've had on TURF BUILDER, America's favorite lawn fertilizer. So low, in fact, you'll probably want several bags. Just give us a call. We'll deliver right to your garage door.

8.95 10,000 sq ft 7.95

4.95 5,000 sq ft 4.45



SPEARMAN HARDWARE

HALLMARK

Valentine Cards

SAY 'I LOVE YOU' BEST



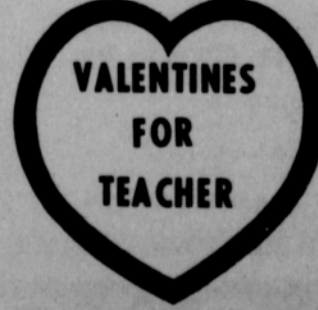
VALENTINES

FOR

SPECIAL FRIENDS

& RELATIVES

- * 'Filly' Valentines
- * 'Monster' Valentines
- * Comic Valentines



Party Items

- INVITATIONS
- NAPKINS
- PLATES
- TALLIES
- PLACE MATS
- CUPS

CENTERPIECES



Plainsman Office Supply

659-2466

209 Main

WANT ADS

FOR SALE

FOR SALE: General Electric washer, yellow, excellent condition, \$85.00. Call 2466 weekdays 9 to 5.
29-tfc

FOR SALE—Two bedroom house, corner lot, excellent location. Phone Mrs. Wilburn McGuire 2359 after 5:30 p. m.
29-tfc

FOR SALE—1963 Chevrolet pick-up. Phone Mrs. Wilburn McGuire, 2359 after 5:30 p. m.
29-tfc

FOR SALE: Tract 1: Lot 7, Block 14, Original Town of Spearman, Hansford County, Texas, on Main Street.
Tract 2: The South 132 1/2 feet of W 1/2 of Out Lot 6, lying adjacent to town of Spearman, Hansford County, Texas.

Sealed bids will be taken separately on each tract until 2:00 p.m. on February 28, 1966, when bids will be opened. Tract 1 to be sold with title as is, Deed without warranty of title to be given on tract 1. Abstract furnished on Tract 2 and Warranty Deed given. 10 days to examine abstract. Cashier's check for 10% of each bid must accompany bid. Money will be returned on bids not accepted. Not necessary to be present at opening of bids. Bids accepted will be accepted subject to being able to secure all signatures necessary to convey the property. Right is reserved to accept or reject any and all bids. Balance of purchase price on bids accepted will be due on delivery of deed. Mail or deliver bids to Mary Sparks, 220 West 5th Avenue, Spearman, Texas, where bids will be opened.
28-9c

FOR SALE—7 room, 2 bath, good sturdy built house, 301 N. Hoskins, Sam Condo, Call 659-2368.
1-tfc

FOR SALE—3 bedroom house, redwood fenced backyard, 1010 S. Haney, Call 659-3103 or 659-2754.
25-tfc

FOR SALE—Reasonable equity in 3 bedroom, 1/2 brick, carpeted house, fenced, 904 S. Dressen, 659-2173.
23-8c

FOR SALE—Unfinished 3 bedroom house, Central heating unit, Paving. 27 N. Hoskins, 659-2685.
24-8c

FOR SALE—1964 Studebaker, loaded, less than 9000 miles. Contact B.L. Rogers, Farnsworth, Box 15.
26-6p

FOR SALE—Personal 1964 Impala sports sedan, 11,000 miles, \$4,000 car, will take \$2,395. Call Bud Beeson, 659-3130.
29-4c

FOR SALE—3 bedroom brick veneer, 1102 S. Haney.
14-tfc

FOR SALE—Two registered wire haired terrier puppies, Irvin Boyd, Star Route, Guymon, Okla.
31-4p

FOR SALE—14 Volume set of Junior Classics and 20 Volume set of Collier's Encyclopedias. Phone 659-3067.
23-tfc

FOR SALE—1963 American Westwood 2 bedroom mobile home. Excellent condition, 119 N. Brandt. Phone 659-2454 after 6 p.m.
24-tfc

WANTED

WANTED—Secretary, experience and shorthand required. Call 659-3430.
26-tfc

FOR SALE: Come select those Hallmark Valentines now from the complete selection at Plainsman Office Supply, 209 Main.

Card of Thanks

We wish to express our heartfelt thanks and appreciation to everyone for their help, words of sympathy, flowers, food and many other acts of kindness during the illness and loss of our loved one.
The Edgar Fite Family

Fruit Trees Need Cold to Bear Better

COLLEGE STATION —Texas fruit growers will need much more cold weather to produce a crop this year. Blueford Hancock, Extension horticulturist at Texas A&M University, said chilling requirements for peach and plum trees, prior to the current cold, were running only half the average for this time of the year.

The chilling requirement vary with varieties, he explained. Each variety requires a certain number of hours, usually from 750 to 950 hours of temperatures below 45 degrees F., to bring them through what Hancock called a rest period. If the required cold hours are not logged prior to normal spring

weather, then several things can happen, he said.

Because of the mild weather up to mid-January, fruit trees have not been hardened off by cold and recurring light freezes. Heavy damage to the trees could occur if temperatures suddenly drop into the teens and lower 20's, he said.

Unless a tremendous number of cold hours—below 45 degrees

KNAPP SHOES

KENNETH BAILEY

212 N. James
Phone 659-2458
Spearman, Texas

For Cushioned Comfort

Service

Chevron Gasolines
Atlas Tires & Accessories
Washing-Greasing

QUICK, COURTEOUS SERVICE

Loren Simmons

SIMMONS CHEVRON SERVICE

Phone 659-9985
Plains Shopping Center

SERVICES

Amarillo Daily News & Globe Times home delivery. Call 2685.
14-tfc

SERVICE—Ditches from 3-12 inches, any desired depth, S. D. Jones 659-2809, Harold Shaver 659-3474.
17-tfc

Stock water hauling. Dependable service. Olin Sheem, 659-3167.
4-tfc

Borger Lock & Key—Be in town Feb. 22 at Spearman Hardware. Safe opening-keys by code, 3 keys-lock in shop \$1.50. Bob Shuler, 1021 Lee Ave. Borger, Phone BR3-5924.
24-8c

Give Curtains Body

To stiffen lace curtains so they will hang straight and stay clean longer, add 1 tablespoon of borax to a large pan of starch.

Iron On Lace Patch

Never try to darn or stitch a worn place in a lace curtain. Instead, iron a piece of starched net over the hole. The patch will then hardly be noticeable.

—are clocked in the next 45 to 60 days, the rest period of many of the state's peach and plum trees will not be satisfied, Hancock emphasized. This could mean that a number of peach varieties would produce no fruit in 1966 and that trees could be seriously weakened, some probably beyond recovery, he said.

The weather so far registered results in an erratic bloom pattern for fruit trees and numerous reports from South Texas bear this out, the horticulturist said. Low-chilling plum and peach varieties in that section are showing bloom and one report from the Gulf Coast area said fruit the size of marbles had been noted on a plum tree.

Another possible trouble area, he noted, could arise with the early blooming of the low-chilling varieties. Spring frosts or freezes would wipe them out, he said.

Hancock has made an extensive study of the situation and the information collected shows that from here on to spring it will take a lot of hours below 45 degrees and good spring conditions to insure even a reasonably good crop.

SO THEY SAY

HE HANDED HER A LOT OF BALONEY



that she might buy the wrong TV set. Then Burton's helped her pick a good set to fit her budget, explained why it was a good value, assured her of reliable, prompt service when needed.

Burton's TV
Your PHILCO Dealer

106 E. Kenneth
Spearman, Texas

Talent Show Entries Are Being Sought

Entries are now being accepted for the annual Pancake Day Talent Show, which will be held Tuesday, February 22, in Rindom Hall in Liberal. The show this year, as in the past is under the direction of the Liberal Kiwanis Club, with Don Daniel, General Chairman for the event. There will be well over \$300.00 in prize money given to the winners. The contest is open to all non professional entertainers seven years and older.

In event a group should enter, the age will be determined by group. All contestants will be required to participate in the eliminations which will be held Saturday, February 19, at 1:00 p.m. in Rindom Hall. From this, eight contestants will be selected for each age group to perform in the finals Tuesday night.

Prizes for the Sr. Division will be, First Prize—\$125.00, Second Prize—\$75.00 and Third Prize—\$25.00. In the Jr. Division, First Prize will be \$50.00, Second Prize—\$25.00 and Third Prize \$15.00. All entries must be in no later than 1:00 p. m. February 19. Entrants will be deemed professional if they have earned \$150.00 or more entertaining during the past year. All entries should be sent to Don Daniel, Pancake Talent Show, Box 1227, Liberal, Kansas, or sent to the Liberal Jaycee Office, Box 665, Liberal, Kansas.

Container It Again

Picnic foods, such as soft fruit and hard-boiled eggs, can be carried easily to an outdoor picnic without being crushed if packed in cardboard containers that eggs come in. As these egg cartons are divided into sections, each one provides individual protection to the food placed in it.

POLITICAL ANNOUNCEMENTS

The following persons have authorized this newspaper to announce their candidacy for the following offices in the Democratic Primaries, May 7, 1966.

STATE REPRESENTATIVE
83RD DISTRICT
A.C. Hallmark
U.S. REPRESENTATIVE
18TH CONGRESSIONAL DIST.
Walter Rogers
STATE SENATOR
31ST SENATORIAL DIST.
Grady Hazlewood
COUNTY, DIST. CLERK
Mrs. Keesee Richardson
COUNTY TREASURER
Mrs. Juanita Kemper
Mrs. Selma Dahl Reneau

Card of Thanks

I would like to say thank you to the hospital staff and Dr. Damon Gregg for the excellent care during my recent stay in the hospital. To those who visited, sent cards and flowers, I really did appreciate them. May God's richest blessings be with each of you is my prayer.
Abby Ownbey

TOMMY GOOCH AGENCY

FARM BUREAU INSURANCE

Spearman, Texas

Farm-Ranch Loans

Improving—Refinancing
Developing—Purchasing
Long Term—Competitive
Interest—No Appraisal Fee

BROOKSHIRE-ELLIOTT LOAN & REALTY CO.

'We make loans anywhere'

COME BY
211 East 7th St.
OR Telephone
806-935-3325
Dumas, Texas 79029

Amount Of Fertilizer Is Good Farm Question

COLLEGE STATION —“How should I fertilize in 1966?”

This important question will be asked frequently by Texas farmers during the next few weeks, says Dr. C. D. Welch, Extension soil chemist, Texas A&M University.

Welch says two factors must be considered when answering the question. First, the level of fertility already in the soil, and second, the desired yield.

A soil test is the best way to determine fertility already in the soil, he said. Results of a soil test indicate the level of all major plant nutrients. Results are expressed in one of five levels: very low, low, medium, high, and very high.

When evaluating fertility level of a soil it's important to consider nitrogen, phosphorus, and potassium separately, says Welch. For example, a soil may be deficient in N, while having adequate P and K. Or

it may be deficient in P and K and have adequate N.

In arriving at an expected yield figure, production, management and climatic factors should be evaluated. Moisture already in the soil, irrigation possibilities, and estimated rainfall will need careful attention.

Past yields and management practices should receive due consideration in arriving at a realistic yield goal.

When deciding how to fertilize in 1966, consider the fact that the cost of fertilizer has increased about 6 per cent during the past 15 years, while the cost of other production items has increased over 50 per cent.

If you have not had your soil tested, see your county agricultural agent for information, suggests Welch, and you're on the right track for fertilizing in 1966.

Cummings Refrigeration

HEATING
AIR CONDITIONING
SALES & SERVICE

SPECIALIST

659-2721

SPEARMAN

Southwestern Life Insurance Co.

LIFE INSURANCE
IS MY ONLY BUSINESS...

LET ME HELP YOU

PLAN YOUR NEEDS

DON KNOX

Phone 659-3294
Spearman

You're Invited

To Hear the best on radio.

LIKE CUPID, We Aim To Please

With bigger and better things coming in 1966. Talents, Music Just a little of everything.

Love that kbmf.

Featuring the best

3 TYPES OF MUSIC
Easy Listening
Country-Western
Top 40

...IT'S A SWEETHEART

KBMF-FM 98.3 on your dial

Variety FOR YOU EVERY DAY!

Mrs. Schnell Has Xi Zeta Program

Barbara Schnell presented the program, "Window Treatment", for the Wednesday evening meeting of Xi Zeta Upsilon Chapter of Beta Sigma Phi when members met in the home of Charlene Bulls.

Presenting the history of different types of drapes and curtains, Mrs. Schnell closed her program by showing the group material and hardware samples of different types. A question and answer session followed.

Dorcas Collard, chairman, reported that the Mothers' March was very successful and thanked members for their cooperation.

Coconut pie and coffee were served to Dorcas Collard, Helen Etter, Elaine Floyd, Joyce Lackey, Barbara McClellan, Day McClellan, Ruth Skinner, Ola Sparks, Helen Watson, Mona Beth Windom, Charlene Bulls, Pat Dear, Caulene Mason and Barbara Schnell.

The chapter plans a trip to Amarillo on Feb. 17 to visit the Bob McKinzie Studio and Art Colony.

Club Makes Plans For Hat Show

Mrs. Larry Hays presided at the meeting of the Town and Country Home Demonstration Club when they met Tuesday, Feb. 1 at the Hospitality Room of the First State Bank. Mrs. Jan Rinker gave the devotional.

Plans were made for the spring hat show, tentatively set for March 8 and Mrs. Nedra Hays was elected as a delegate to District Meeting. Kay Dean Jackson gave the council report. Toni Archer brought the auction and it was bought by Linda Bodey. Mrs. Bodey brought the surprise package which was won by Nedra Hays.

The program titled "New Foods on the Market" was presented by Nellie Buchanan and refreshments were served from convenient packaged foods by Linda Bodey.

Present were Mrs. Hays, Bodey, Buchanan, Lenora Beagle, Louise Hawkins, Jackson, Rinker, Donetta Greene and a guest, Barbara Bell.

Dr. Fiscus To Speak Feb. 10-12

Dr. Walter J. Fiscus of Fort Worth will deliver five messages in the First Christian Church of Spearman on Feb. 10, 11 and 12.

Dr. Fiscus will speak on Thursday and Friday at 10 a. m. and 7:30 p. m., and at 10 a. m. Saturday.

He is an ordained minister who has made a special study in the field of prayer. He has devoted many years to helping people develop their prayer life.

Dr. Fiscus has found a depth and richness in his own individual prayer life and desires to share their experience with others who are trying to find God's truth and grace in new ways.

Miss Donna Nelson, daughter of Mr. and Mrs. Roscoe Nelson, has finished a course in cosmetology and is now employed at Boyd's Beauty Salon.

Your Shoe Width

Shoe widths are designated by letters for width based on the girth at the ball, waist and instep of the foot.

Bring your **BUCCANEER COUPONS** TO OUR STORE, & DURING THE NEXT 4 WEEKS, ACCUMULATE UP TO.....

U.S. #1 Colorado-Red-McClure

5,000 FREE BONUS STAMPS

POTATOES 20 lbs 79¢

50 (\$5.00 WORTH) FREE BUCCANEER STAMPS

With Purchase of **COFFEE 1 lb.** Shurfine or Folgers

Coupon Good Feb. 7 through Feb. 13, 1966

75 (\$7.50 WORTH) FREE BUCCANEER STAMPS

With Purchase of **Gerbers Baby Food 12 Cans** Any Assortment

Coupon Good Feb. 7 through Feb. 13, 1966

75 (\$7.50 WORTH) FREE BUCCANEER STAMPS

With Purchase of **Fruit Cocktail 4/No. 303 Cans** Shurfine or Hunts

Coupon Good Feb. 7 through Feb. 13, 1966

75 (\$7.50 WORTH) FREE BUCCANEER STAMPS

With Purchase of **Pie Cherries 4/No. 303, RSP** Shurfine

Coupon Good Feb. 7 through Feb. 13, 1966

100 (\$10.00 WORTH) FREE BUCCANEER STAMPS

With Purchase of **TUNA 4 Cans** Shurfine or Del Monte

Coupon Good Feb. 7 through Feb. 13, 1966

75 (\$7.50 WORTH) FREE BUCCANEER STAMPS

With Purchase of **Broccoli Spears 3/10 oz. size, frozen** Shurfine or Libbys

Coupon Good Feb. 7 through Feb. 13, 1966

50 (\$5.00 WORTH) FREE BUCCANEER STAMPS

With Purchase of **Kotex Sanitary Napkins**

Coupon Good Feb. 7 through Feb. 13, 1966

100 (\$10.00 WORTH) FREE BUCCANEER STAMPS

With Purchase of **LYSOL 12 oz. Regular**

Coupon Good Feb. 7 through Feb. 13, 1966

Arrow Brand

PINTO BEANS 49¢

4 lb. Bag

Food King - Sliced Sweet

STRAWBERRIES 19¢

10 oz. Box

Mortons Frozen

HONEY BUNS 25¢

Pkg.

Krafts Salad Dressing

MIRACLE WHIP 49¢

Quart

MID-WEEK SPECIALS

Tuesday & Wednesday Feb. 8th & 9th

Tendercrust Pkg. of 6 buns

HAMBURGER BUNS 15¢

Shurfresh Ovenready

Biscuits 23¢

Ready to Bake 3 cans

Make Sure Your Children drink the best... **SHURFRESH MILK**

Folgers Instant

COFFEE 77¢

6 oz. Jar

Del Monte Clings - sliced or halves -

PEACHES 57¢

2 1/2 size can 2 FOR

USDA Choice Beef

RIB STEAK 79¢

lb.

75 (\$7.50 WORTH) FREE BUCCANEER STAMPS

With Purchase of **Potato Chips 59c Bag**

Coupon Good Feb. 7 through Feb. 13, 1966

75 (\$7.50 WORTH) FREE BUCCANEER STAMPS

With Purchase of **Dog Food 6/No. 1 Tall Cans**

Coupon Good Feb. 7 through Feb. 13, 1966

75 (\$7.50 WORTH) FREE BUCCANEER STAMPS

With Purchase of **EASY OFF Window Spray 15 oz.**

Coupon Good Feb. 7 through Feb. 13, 1966

75 (\$7.50 WORTH) FREE BUCCANEER STAMPS

With Purchase of **Tooth Paste King Size**

Coupon Good Feb. 7 through Feb. 13, 1966

100 (\$10.00 WORTH) FREE BUCCANEER STAMPS

With Purchase of **Red Plum Jam Bama 3/18 oz.**

Coupon Good Feb. 7 through Feb. 13, 1966

75 (\$7.50 WORTH) FREE BUCCANEER STAMPS

With Purchase of **Hi-C Orange Drink 3/46 oz.**

Coupon Good Feb. 7 through Feb. 13, 1966

75 (\$7.50 WORTH) FREE BUCCANEER STAMPS

With Purchase of **SPAM 2 Cans, 12 oz.**

Coupon Good Feb. 7 through Feb. 13, 1966

Crisco Shortening 79¢

3 lb. can

FRANKS \$1.09

Pinkneys Jumbo Pak 3 lb. pak



Cut Rate GROCERY

