

HANSFORD COUNTY'S LEADING NEWSPAPER



# The Hansford Plainsman



VOLUME VII., NO. 48

SPEARMAN, HANSFORD COUNTY, TEXAS 79081

THURSDAY, APRIL 7, 1966



SCIENCE FAIR WINNERS---These four Spearman High School students had exhibits that placed in the Amarillo Science Fair last weekend. They are: Debbie Standefer, Rebecca Hutchison, David McClellan and Bethany Donnell.

Plainsman Photo

## One Vote Is Mighty Important!

The importance of one single vote is being illustrated here this week as county officials and the Texas Attorney General's office tries to solve the

question of what to do when no one votes. In the County School Board election Saturday L.L. Edge was on the ballot unopposed

for re-election from Precinct Two.

No one voted for Edge and no one wrote in a candidate. So no one was elected to the board from that precinct.

County Judge and ex-officio County School Superintendent Johnnie Lee did not know what action to take, so this week he turned the problem over to the Texas Attorney General's office. The office that is supposed to have the answers to the legal problems in the state.

What was their answer? "We have never heard of such a thing happening and can find no record of any decision made in such a situation in the past."

The state office did tell Judge Lee that since the candidate did not get a vote, he was not elected to office. However, under state law he is to serve until his successor is sworn into office.

Another question brought up concerns the appointing of Edge to another term by the board. That, also, has to be answered.

All of these problems never would have been brought up if only one person had bothered to vote in the election.

## Board Approves Plan For Special Class

Approval was given Tuesday night to a proposed new program in the Spearman schools and a new position was filled by one of the present faculty. The school board gave its approval for Dr. Bill Reeves to go ahead with plans for a special education class for mentally retarded children for next year.

State approval of the plan must be given before the state will pay a majority of the cost of the program.

Dean Weese has been named Activities Co-ordinator for the school. Dr. Reeves told the board, Weese will be assistant to Principals Jim Cherry and James Pendergraft.

Besides his duties as Lynxette basketball coach and history teacher, he will be in charge of scheduling activities, contests, tournaments, meetings, athletic events, Interscholastic League meets and arrangements and other activities in cooperation with coaches and sponsors.

He will also be in charge of establishing eligibility reports for all participating students, making transportation arrangements for all activities of the school program, and other duties as assigned by the administration.

Dr. Reeves said the new co-ordinator would be required to go to school to get his administrator's certificates, since this work is in the administration field.

After the election was can-

vassed and found to be correct, the new board members, Roy McClellan and Hershel Jones were sworn in.

The board was then re-organized with Lloyd Buzzard being re-elected President, Roy McClellan Vice President and Max Baggerly as Secretary.

## Class Sets Junior Play April 14

"Down to Earth" will be presented Thursday April 14 at 7:30 p.m. in the high school auditorium by members of the Junior class of Spearman High School. It is under the direction of Bob Barker.

"Down to Earth" is a comedy-fantasy in three acts, and is a play of subtle humor and quiet charm, blended with the inimitable Bettye Knapp's light-hearted touch.

The prologue starts the story on its merry way with two angels descending to earth to pick up a couple of elderly souls. However, their mission is complicated when a mischievous, would-be angel, Philone by name, joins them in a kind of heavenly hitch-hike.

Members of the cast are:

(Con't. on page 2.)

## Jacobs Named Postmaster

Elmon Jacobs, who has been acting Postmaster in Spearman for over a year was notified late Wednesday that his nomination as Postmaster has been approved by the Senate.

In a telegram Sen. Ralph Yarborough notified Jacobs that his nomination as Postmaster of Spearman has been confirmed Wednesday by the Senate.

Sen. Yarborough sent his congratulations to Jacobs.

## McClellan, Jones, Vaughn, Holton And Copeland Win Elections

With few issues to excite the voters, the balloting was light in the Spearman Independent School Board and the Spearman City elections held Saturday and Tuesday.

In the county school board

### Students Win Honors at Science Fair

Spearman science students acting on their own, won five awards in the Amarillo Science Fair last weekend.

The students had to enter the fair on their own initiative, because all school sponsored activities were cancelled for the week when school was closed Tuesday afternoon because of the flu epidemic.

A junior high student won a first and four high school students placed as high as second.

DeAnna Sheets placed first in the Junior Girls Medicine and Health division.

Two high school entries placed second. David McClellan placed second in Medicine and Health and Debbie Standefer placed second in Botany. Rebecca Hutchison placed third in Zoology. Bethany Donnell received an honorable mention for her Medicine and Health entry.

Recently at the Panhandle A&M College Science Fair, four junior high students had excellent ratings and three had good ratings for their exhibits.

Students with excellent exhibits were DeAnna Sheets, Kandy Vaughn, Susan Brillhart and Lewis Conner.

Students showing good exhibits were Robert Barker, Sandra Fowler and Glenna Sanders.

election no votes raised a legal question to be solved. At Morse there were eight men who received votes for the school board.

Saturday there were only 316 voters in the school board election and Tuesday there were only 288 in the city election.

One new man was elected to the school board and the incumbents were returned to office in the city elections.

Hershel Jones was elected to the school board replacing Ira Harbour. Roy McClellan, the other incumbent seeking re-election was returned.

McClellan led the ticket with 252 votes as he was returned for his second term of office. Jones received 192 votes

and Harbour 140.

In the city election Tuesday Mayor R.E. Vaughn received 211 votes, Clarence Pettitt received 66 votes and there were three write-in votes. James Evans, Lee Keys and Bruce Sheets each received one write-in vote.

Incumbent aldermen R.B. Holton and E.J. Copeland were re-elected. Holton led the ticket with 206 votes, E.J. Copeland received 198 and Joel Lee Lackey received 126 as he sought a seat on the council.

In the County School Board election Ott Crawford was re-elected as a member from the county-at-large. A legal question has been brought up on L.L. Edge. Not a vote was cast in Precinct Two, where he was on the ballot for re-election.

County officials are awaiting a ruling by the Attorney General of Texas on what action to be taken concerning the Precinct Two post.

At Morse eight men received votes to places on the School Board, Gerald Scribner with 43 and Charles Reid with 33 were elected.

Grant Miner received 31, Charles Johnson 19, Wilson McCloy three write-in votes and Robin Giblein, H.B. Parks and Tom Dorch each received one write-in.



WINNER--DeAnna Sheets won first in the girls junior division of the Amarillo Science Fair.

## Clean-up Week Considered Successful

A lot of trash and garbage was hauled out of Spearman during Clean-up Week, the Chamber of Commerce Chairman, Bus Simms said this week.

Not counting tree limbs, grass and leaves, the trucks hauled 40 loads of trash and debris out of town Friday, Saturday and Sunday.

Simms said the city had two trucks hauling Monday and Tuesday trying to complete the job.

United Mud Co. trucks helped the city trucks over the weekend.

Simms said he wished to thank the Boy Scouts for their help in picking up trash, the Jaycees, Steve and Rod Simms and Randy Foshee who worked all weekend on the trucks and to all the city employees for their extra hours of work on the trash trucks.

Simms said the job was a long way from complete, but there were lots of weeds cut and burned, and lots of trash hauled to the dump grounds.

He added that if everyone will just continue to work at the job and keep cleaning and picking up around their homes and businesses, Spearman will look better every week.

High winds late last week scattered trash and paper over areas that had been cleaned, but the campaign was considered successful by Chamber of Commerce and City officials.

## A 21 Gun Salute To Farmers And Ranchers

The business and professional people of Spearman give an arousing 21 gun salute to the farmers and ranchers of this area! Your industrious habits and knowledge of agriculture animal husbandry have made our area one of the most profitable agricultural sections of the state.

The business and professional people of Spearman look with pride on their ability to supply your needs and utilize your diversified products.

Farmers and ranchers can be assured that they will receive top market value for all their produce, grain, livestock and poultry here in Spearman.

Spearman's elevators and farm supply houses are always willing and eager to give you professional and scientific assistance in the feeding and care of your land, crops, fowls and livestock.

The Spearman lumber yards, co-ops and farm supply people are glad to assist you with your feed and shelter problems. You can consult them with confidence at any time for free information and estimates.

We are proud now you can shop Spearman for all your farm and family needs.





## Mrs. Womble Is Hostess For Dahlia Club Meeting

Mrs. J. E. Womble was hostess for the Dahlia Flower Club meeting in her home Monday afternoon.

Deta Blodgett gave the program. The first part was on gardening "Stay Ahead of the Bugs", giving varied ways of controlling pests in the garden. The second part was the story of the life of Leonardo da Vinci, the artist.

Two arrangements were displayed. Mrs. Hollie Riley won first on her forsythia and Mrs. Major Lackey placed second with a miniature arrangement of pussy willow and forsythia. Mrs. Womble served refreshment trays carrying out the Easter motif to members Deta

Blodgett, J. W. Walker, Garrett Allen, H. W. Bagley, Ervin Hester, Harold Shaver, Olin Sheets, Jimmy Davis, Irvin Delk, Earl Riley, H. H. Crooks, Major Lackey, Frank Davis.

The next meeting will be April 18 in the home of Mrs. H. H. Crooks.

Recent Sunday dinner guests of Mr. and Mrs. J. L. Brock and family were his mother, Mrs. Veatrice Brock, Mr. and Mrs. L. S. McLain and Polly, Mr. and Mrs. Don Money and son from Denver and Don and Gwen McLain from Gruver.

# The Plainswoman

THURSDAY, APRIL 6, 1966



"RESUSCITATE ANNE"---is the dummy in this picture to which Marilyn Wilson of Waka, is administering artificial resuscitation. Max Comer of Southwestern Public Service, Amarillo, gave the program "Breath of Life" for Spearman Study Club, with each member trying mouth to mouth resuscitation on the dummy.

## Easter Sunrise Services Set by Local Ministers

The Ministerial Alliance announced this week that Sunrise Easter services will be at 6 a.m. in the Community Building.

Lewis Tilford and the high school choir will provide the music and Rev. Lawrence Lehman of the Waka Church of the Brethren will be the speaker.

The alliance urges everyone

to attend this sunrise service and the regular Easter services in the churches of their choice in the community.

## Guild Meets In Hoskins Home

The Arts and Craft Guild met Friday April 1 in the home of Mrs. Fred Hoskins for an afternoon of china painting.

Attending were Lemmie Russell, Hazel Gibner, Freda Sheets, Grace Lyon, Kubah Gandy, Deta Blodgett, Mildred Daily and the hostess.

The next meeting will be April 8 in the home of Mrs. Nolan Holt.

## Mrs. Copeland Reviews Book

Mrs. E. J. Copeland reviewed "Bigamy Jones" by Frank X. Tolbert at the March 29 meeting of the Spearman Book Club. The meeting was in the country home of Mrs. F. K. Banister.

Attending were Mmes. Clay Gibner, Fred Hoskins, John Berry, Bruce Sheets, O. C. Holt, E. J. Copeland, Miss Vera Campbell and the hostess.

## HOMEMAKING NOTES

By Linda Webb  
Home Demonstration Agent

### "MEAT MAKES THE MEAL"

While that long-lived adage may not be entirely accurate, it's true that festive occasions call for a meat entree that enhances the meal, and gives it that gala touch.

Family traditions and preferences usually prevail when the shopper selects her meat, for Easter as for other holidays.

The Easter ham, or a pork roast, is tradition in many homes. Roast turkey or chicken ranks high, too. A good beef roast always scores. Or, how about a savory meat loaf, trimmed to Easter perfection?

Fortunately, in America, available supply does not limit our meat selection. There's enough of any kind of meat you choose.

Cost will be a deciding factor for many families, even though Easter is a good time to have something special.

Prices per pound alone is far from telling the full story of cost of any food, especially meats. Bone and fat waste, plus cooking shrinkage, are important. And, it's the meat on your plate that determines real value.

Ground beef, always popular, shrinks 25 to 30 percent or more, especially if it contains a lot of fat. Ground pork shrinks even more. Bacon loses two-thirds of its weight in cooking. Cooked poultry holds its own. Almost half the weight of a whole fryer gets to your table as cooked edible meat. At 29 cents a pound, the cost per pound of cooked fryer meat is 58 cents.

At least half the weight of a large turkey reaches your table as cooked meat. And it usually follows that the larger the turkey, the more cooked meat for each pound of dressed bird. Meats already cooked when you buy them are often a better buy than their cost per pound indicates. Frankfurters, for example, have only around 2 percent loss when heated. And sandwich meats, not even heated, reach your table at the price you pay at the market.

The same principle applies to the ever-popular Easter ham. A tenderized ham yields about half its weight in cooked edible meat when you count out cooking, boning and trimming losses. So you can afford to pay almost twice as much per pound for a carefully trimmed, fully cooked boneless ham. Of course, if you heat a cooked ham 10 minutes to the pound, there's some additional shrinkage.

No matter what kind of meat you choose for Easter, it's a good rule to cook it at a low or moderate temperature. This will allow it to cook more evenly, be more tender and have less shrinkage.

### CONSUMER QUIZ

What a wide range of decisions you must make each time you shop in the supermarket. If you are on a budget, or should be, and consider yourself well-endowed with common sense, take this quiz to see just how wise a shopper you really are.

1. The least expensive cuts of beef come from which part of the carcass? (1) Round (2) Loin (3) Chuck (4) Rib

2. Your store is selling a dozen Grade A Large eggs for 56 cents and a dozen Grade A Medium eggs for 47 cents. Which is the better buy in terms of getting the most egg for your money?

3. Which of the following is the best preparation for your regular food shopping spree? (1) make a list and buy only what is on it (2) check the ads to see what and where the best buys are (3) walk around the store and buy whatever appeals to you (4) don't keep a regular pattern of shopping.

4. Your market is having a sale on ground round at 89 cents a pound. The store also sells ground chuck at 59 cents a pound and plain ground beef at 39 cents a pound. You'd like to stock up on chopped beef and use it for meat loaf, spaghetti sauce, chili and casseroles. The best buy, in terms of nutrition and economy, is the (1) ground round; (2) ground chuck; (3) plain ground beef.

5. The best way to store chicken in your refrigerator is (1) leave it in the original wrapping (2) remove the original wrapping, then cover loosely with waxed paper (3) remove the giblets and store uncovered.

ANSWERS: (Score 20 points for each correct answer.)

(1) Chuck-knowing your cuts of meat can save a lot of trouble, time and money. Since meat takes up a good part of your food bill, you would do well to study information on meats. (2) The grade A Medium eggs are the better buy. A rough rule of thumb to judge egg prices on the spot is this; take either one-eight or 7 cents (whichever is easier) from the price of Large eggs. Medium eggs of the same grade category below this price are a better buy. (Remember, size has nothing to do with quality.) In this example, Grade A Large are selling for 56 cents. Therefore, Grade A Medium eggs would have to sell for 49 cents to be equal in cost.

(3) The best answer is (2) check the ads to see what and where the best buys are. Supermarkets often buy up large quantities of meat or other products and sell them as "specials". This is to attract customers to the store, but specials usually work to your advantage. Food ads also tell what products are the best buys and are most plentiful that week.

Follow the other practices too. They are all good. You should definitely make out a list before you shop, but make it flexible. Do take advantage of the unadvertised specials in the store, but don't rely on impulse buying. It can be expensive.

It is also a good habit to read the columns of food editors in newspapers and magazines. (4) Number 3, ordinary

## Safety Engineer Speaks To Spearman Study Club

Max R. Comer, personnel safety supervisor of Southwestern Public Service Co. of Am-

### Miss Davis Is Bride of Ruben Garcia

Miss Marilyn Rae Davis, daughter of Mr. and Mrs. Ray Davis became the bride of Ruben Garcia in a double ring ceremony solemnized by Bro. Steve Coronado Sunday March 27 in the Spanish Assembly of God Church in Amarillo.

The bridegroom is the son of Mrs. Refugio Garcia of Amarillo. The couple are at home at W. 4th in Spearman.

### Dinner Honors Mrs. Thorpe

A birthday dinner given by Mr. and Mrs. Albert Thorne at their ranch home near Canadian Sunday honored his mother, Mrs. W. Q. Thorne on her 81st birthday. Mr. and Mrs. Thorne are former residents of this area.

The group enjoyed a bountiful dinner, took pictures and visited, recalling many experiences of when they all lived in the same community.

Attending were Mr. and Mrs. W. J. Thorne, Stan and Steve, Mr. and Mrs. Alvin Dickerson, all of Amarillo, Mrs. Willa McDaniel and Dale and Mrs. E. W. McJunkin of Pampa, Mrs. Ella Jones, Messrs. and Mmes. Virgil Hull, Larence Dossett and Frank Davis, all of Spearman, the honoree and her husband, and the hosts.

ground beef is fine for these uses. Ground chuck is recommended when you want hamburgers for the small fry. Ground round is used on special occasions. (5) Remove the original wrappings, cover loosely with waxed paper. Poultry, like other raw meats, is very perishable and should be stored in the coldest part of the refrigerator. The store wrappings should always be removed or punctured, and poultry should be stored loosely Covered. Do remove the giblets and store separately since they will spoil more rapidly than the rest of the bird. Poultry should be used within two days.

If you score 80 to 100--excellent! You don't need too much extra help. Chances are you've had a lot of experience in shopping for food.

Marketing Bulletin No. 15, "U.S. Grades for Beef," marketing Bulletin No. 13, "Tips on Selecting Fruits and Vegetables," and Leaflet No. 442, "How to Buy Eggs" can be obtained from your County Extension office on request.

arillo, was the guest speaker for the Spearman Study Club, Monday, April 4 in the home of Mrs. Kenneth Evans.

Mr. Comer, a member of the American Society of Safety Engineers, showed a film titled "Breath of Life", showing the proper method of mouth to mouth resuscitation. Each club member tried the mouth to mouth resuscitation on the dummy used by Comer in the demonstration.

After the program Judy Martin conducted the business meeting.

Attending were Margaret Adamson, Judy Martin, Patty Sheppard, Marilyn Wilson, Barbara Pendergraft, Donna Baxter, Sandra Ladd, the guest speaker, Max R. Comer, and Robert Adamson, county agent, and the hostess.



## Day by Day

by Day McClellan

It's our state all right, but we're a long way from some of the historical spots in Texas.

Someday though, I want to see the Bayou Bend Collection of the Houston Museum of Fine Arts, Bayou Bend, in the River Oaks section, is the home of Miss Ima Hogg, philanthropist, who assembled a fantastic collection of American antiques. She has given her home to the museum and it was dedicated last month in the hope that future generations will find just cause to enjoy and value the selections, to delve more deeply into our American heritage and be inspired to have greater respect for our forefathers.

Displayed in settings authentic for each period are examples of furnishings made in America between 1660 and 1820, and a Texas Room, circa 1850.

The Texas Room is paneled in cedar reproduced exactly from Sam Houston's home in Independence. Furnished as would have been done by wealthy 19th century Texans, the room includes a display of Texian Campaign china and glass flasks commemorating Mexican war heroes.

Miss Hogg, at 83, whose contributions to the general well-being and enlightenment of Texans have made her a legend in her own time, is engaged now in restoring Winedale Inn, a stagecoach stop in southeast Fayette County. The inn has been deeded to the University of Texas for study of the impact of German and Central European emigration on Texas culture.

Well anyway, admission to the Bayou Bend Collection is by advance registration only. Reservations, if you're interested, can be made by writing the office of curator, Bayou Bend Collection, 2940 Lazy Lane, Houston. The fee is \$1.50 per person and minimum age for admission is 16.

Oh yes, and women should wear flat heeled shoes or they will be required to change into slippers provided.

Now the only other information you'll need to know is that the museum is closed on holidays and during the month of August.

If you're going to Houston, here's something else you'll want to visit besides the celebrated Astrodome.

Easter is a beautiful holiday, it has more meaning to me than all the others.

"The holiest of holidays are those kept by ourselves in silence and apart; The Secret anniversaries of the heart..." -Longfellow

Here are some other thoughts I like. "The useful type of successful teacher is one whose main interest is the children, not the subject." -Sir Walter Raleigh. And, "He is a benefactor of life who contracts the great rules of life into short sentences, that may be easily impressed on the memory, and so recur habitually to the mind." -Samuel Johnson.



Mrs. Kate Gray

## Party Honors Mrs. Kate Gray

### Mrs. Kate Gray

Mrs. Kate Gray celebrated her 88th birthday Saturday with over 40 friends and relatives calling at her home.

Mrs. Gray has been a Spearman resident for many years. Mrs. Frances Sim, daughter of Mrs. Gray, with whom she makes her home, served cake, coffee and iced tea to the callers.

Out of town guests were her granddaughter, Mr. and Mrs. James Markle and Alvin Dale of McPherson, Kans.

## Comer Speaks To Girl Scouts

Max R. Comer, personnel safety supervisor of Southwestern Public Service Co. of Amarillo, was the guest speaker at the Monday meeting of the 2nd and 3rd year Jr. Girl Scouts.

The meeting was held at 4 p.m. in the fellowship hall of the First Christian Church.

Seventeen girls were present and participated in the mouth to mouth resuscitation demonstrated by Mr. Comer, and viewed the film shown.

Mr. Comer is a member of the American Society of Safety Engineers.

Leaders are Margaret Evans, Kathryn Farris, and Helen Watson.

## CWF Enjoys Outdoor Party

The Christian Youth Fellowship of the First Christian Church met Sunday evening in the J. L. Brock hangar at the airport for a spring outdoor get-together.

The group enjoyed singing, playing games, a wienner roast and their regular lesson.

Mr. and Mrs. Orvil Brummett are sponsors for this high school group.



Wrap chunks of frankfurter in bacon; place on a rack in a shallow baking pan and bake in a moderate oven for about half an hour. Serve at snack-time.

For Sunday brunch, heat drained canned hominy in heavy cream and serve with eggs and bacon or ham. Add hot muffins and currant jelly and you'll have a wonderful main course.

# Calendar of Events

- THURSDAY, APRIL 7
  - Happy Homes HD Club-Nina Hendricks
  - Rainbow Girls-6:30-Masonic Hall
  - Gladiola Flower Club-Lil Turner
  - Lenten Service-8 p.m., Faith Lutheran Church
  - Rolling Plains Mule Train-7:30-Farm Bureau Building.
- FRIDAY, APRIL 8
  - Spearman HD Club-Mrs. Eleanor Reed
- SATURDAY, APRIL 9
  - Do-Si-Do Club
- MONDAY, APRIL 11
  - Delphinium Flower Club-Mrs. Virgil Hull
- TUESDAY, APRIL 12
  - Lions Club
- WEDNESDAY, APRIL 13
  - Pheleo Circle 9:30 First Christian Church
  - Faith Lutheran Circle 7:30 p.m. at the church
- THURSDAY, APRIL 14
  - Rho Rho-Mrs. Bob Parris
  - B&PW Luncheon
  - Roundtable Club-Mrs. J.D. Helms
  - Twentieth Century Club Home Science-Mrs. C.A. Kleeberger
  - Fine Arts-Mrs. Woodville Jarvis



**FINEST STEAKS**

Good Food  
Good Service  
Good Menus

**GUESTS OF THE WEEK for Sunday Dinner**

Mr. & Mrs. Joel Lee Lackey & family & Mrs. Gwenfred Lackey

Watch each week for new names in this space.

**CATTLEMEN'S CAFE**

Rock & Georgia McLeod

When your actions speak for themselves, it's best not to interrupt.

The man who rolls up his sleeves is not likely to lose his shirt.

## Cancer Drive Set April 12

A door-to-door fund campaign for the Cancer Crusade will be conducted in Spearman and Morse on April 12. The drive in Spearman will be headed by Mrs. Marcus Larson and Mrs. M.D. McLaughlin. They are presidents of the Spearman Study Club and the Jonquil Flower Club. Members of the clubs will conduct the campaign. Mrs. Elva Gene Dixon is chairman of the drive in Morse. Mrs. Ted McClellan and Mrs. James Stedje are chairmen of the Gruver campaign.

### Class . . .

(Con't, from page 1.)

Augusta, D'dee Collard; Agnes, Janice Buchanan; Wilfred, Gary Ellsworth; Philone, Doug Lackey; Diana, Donna Seymour; Ruthie, Sharon Mauldian; June, Penny Gaither; Baxter, Randy Moore; Millie, Stephanie Patton; Herman, Brenton Hayworth.

Good rule to remember: in rolling out pastry for the bottom of a pie, cut the dough an inch larger than the top outside edge of the pie plate. Fit gently into the plate.

Three-quarters cup of chopped cranberries and a teaspoon or so of grated orange rind may be added to a package of nut-bread mix to vary it. Just stir the cranberries and orange rind into the batter.

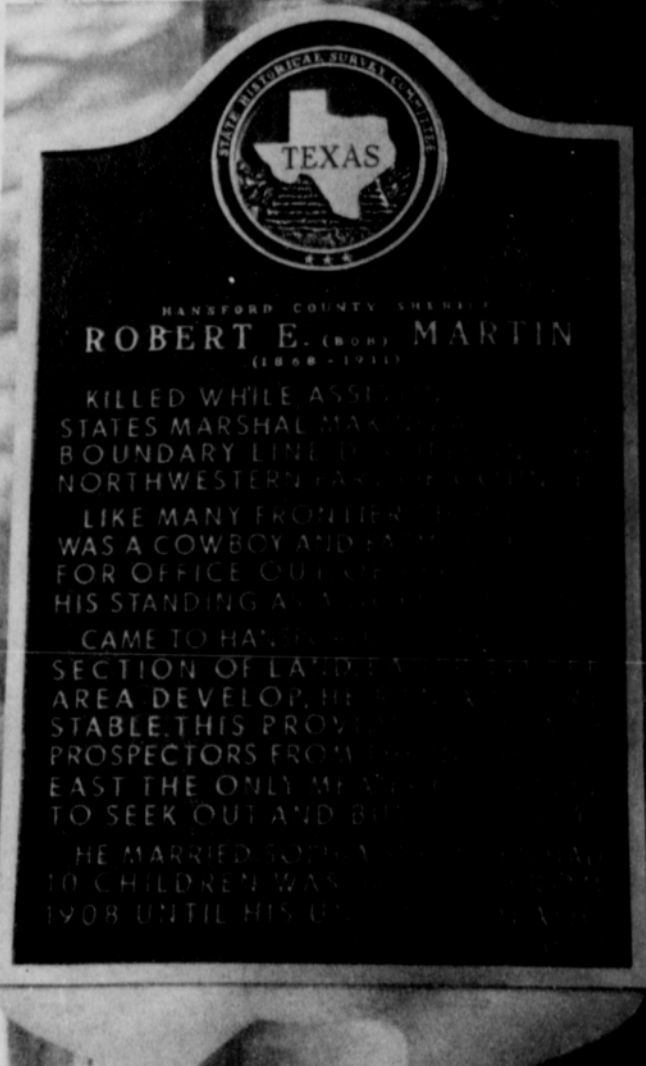
The Hansford Plainsman

Publishers Inc.

Jim O. Davis  
Burl G. McClellan



County-wide independent newspaper published every Thursday and Sunday at 209 Main St., Box 668, Spearman, Texas 79081. Second Class postage paid in Spearman, Texas 79081. Editor . . . Burl McClellan



STATE HISTORICAL MARKER TEXAS

HANSFORD COUNTY SHERRIFF

**ROBERT E. (BOB) MARTIN**  
(1868-1911)

KILLED WHILE ASSISTING STATES MARSHAL MAX BOUNDARY LINE NORTHWESTERN TEXAS

LIKE MANY FRONTIER WAS A COWBOY AND FOR OFFICE QUICK HIS STANDING AND CAME TO HAVE SECTION OF LAND AREA DEVELOP STABLE THIS PROSPECTORS FROM EAST THE ONLY MEN TO SEEK OUT AND HE MARRIED SOMETHING CHILDREN WAS 1908 UNTIL HIS

**HISTORICAL MARKER --** This historical marker was erected this week on the courthouse lawn in Spearman by the county historical committee.

Plainsman Photo

The smallest and most slippery space known is that allotted to a man who insists on standing on his dignity.

To report news, call 3258 or 2466.

Plainsman want ads get results. Try them.

**PLUMBING CONTRACTING - REPAIR**

**R. E. Bradford**

202 S. Brandt

659-2484  
659-3222

WHERE EVER YOU ARE --

WHATEVER YOU'RE DOING --

LIFE IS MORE ENJOYABLE WHEN YOU LISTEN TO

**KBMF-FM**

**98.3** on your dial

Everything else is growing. So why not you?

**Move up... Move now...**



300 2-Door Hardtop

Grow a little this spring. It's easy. Five full-sized Chrysler Newports are priced just a few dollars a month more than you'd spend on one of the most popular smaller cars, comparably equipped. With automatic transmission, power steering, power brakes, radio, heater and a big V-8. Move up to Chrysler. Driving will never be the same.

**Buy Chrysler**

AUTHORIZED DEALER CHRYSLER MOTORS CORPORATION

**SPEARMAN MOTOR CO.**

316 W. Kenneth Av.

Spearman, Texas



# THE MORSE CODE

**SCHOOL NOTES**

Morse School will dismiss for the Easter holidays Thursday (today) at 2:40 and return to classes Tuesday morning.

Students participated in a number of interscholastic league events last week. On Monday and Tuesday grade school and high school tennis teams went to Higgins for the tennis tournament. On Thursday night the one act play was given in competition with three other schools at Booker. Miss Patricia Henderson was listed on the all star cast.

Monday of this week the grade school volleyball teams entered the North Plains Volleyball tournament at Pringle.

Future interscholastic league events scheduled this month are the literary events for District I-B which will be at Follett April 15 and the district track meet to be held at Perryton April 14.

This week marks the end of the fifth six weeks at Morse School. Tests will be given throughout the week.

**BACKBOARDS DONATED**

Two glass backboards for the school gym have been donated by businessmen from Morse and Stratford, Jerald Scribner, manager of the R.E. Lee Oil Co. of Morse, and the First State Bank of Stratford have donated these items. Tom Dortch of the Morse Implement Co. is donating his time for the installation of the boards.

Appreciation of the community and school is expressed to the above named individuals.

**ELECTION RESULTS**

Voters in the Morse School district elected two men to serve on the board of trustees Saturday in an election held at the Morse School.

Winning teams were Jerald Scribner with 43 votes and Charles Reid with 33. Others on the ballots and their votes were Grant Miner 31, and Charles Johnson, 18.

...

Congratulations are extended to the Hansford County 4-H teams who entered the district eliminations at Canyon Saturday.

Teams from Morse earned six blue ribbons and two blue ribbons were won by Spearman 4-H members. 4-H boys and girls going to state from the county include Bill, Mark and Doug McCloy, Delbert McCloy, Sylvia Parks, Patricia Henderson of Morse; Connie Trindle and Rebecca Hutchison of Spearman.

The rifle team from Morse will compete in district competition on April 16. Boys on this team are Jimmy Dale Womble, Alva Henderson, Monte McCloy, Bob Womble and Mike Johnson. They are coached by Jim Womble.

Adults from Morse attending the 4-H events at Canyon were Bea McCloy, Dora Womble, Charlotte Hurley, Nan McCloy, Nell Henderson, Jim and Delores Womble, Laverne Parks, Frank Lewis.

...

L.M. and Margaret Womble of Spearman were hosts for a bridge party held at the Morse Community building Saturday night. Winners of the high scores were Mr. and Mrs. Charles Reid.

Other guests were Messrs. and Mmes. Grant Miner, Al Carter, Lynn Davis, H.B. Parks, Tom Dortch and Gene Dixon and Perry Dixon.

...

On Thursday several adults from Morse attended the state conference for child evangelism workers held at Hidden Falls near Wayside.

Attending were Mr. and Mrs. Desmond Kelly, Mr. and Mrs. Tom Dortch, Mrs. John Thompson and Mrs. Wilbur Wilson of Sunray.

C.D. Whitaker, music teacher in the Morse Schools has returned to his home in Morse after undergoing surgery in a Groom hospital.

Earl Henderson is in Amarillo this week attending a school for Angus cattle breed-

and Mrs. Desmond Kelly and Evelyn of Morse left Tuesday to spend the Easter holidays with Elaine Kelly who attends the Bob Jones University in South Carolina.

A Morse girl, Miss Suzanne Dixon, placed as runner-up in the Farm Bureau queen's contest held in Gruver Friday night.

ers. Mrs. J.B. Craig of Plainview, Mrs. Mack Dortch, Mr.

## School Menu

TUESDAY, APRIL 12  
 Corn-dog-Mustard  
 Seasoned Blackeye Peas  
 Mashed Potatoes  
 Carrot Sticks  
 Fruitcup with Bananas  
 Hot Roll-Butter  
 Chocolate or Plain Milk

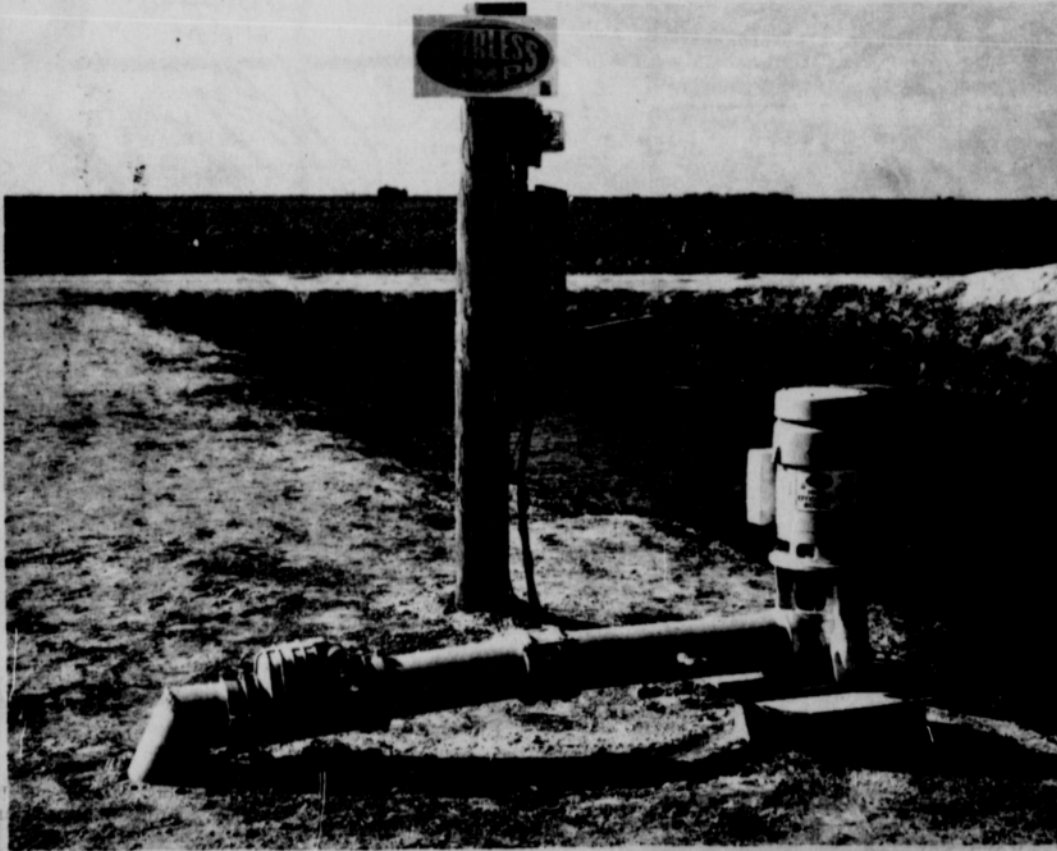
WEDNESDAY, APRIL 13  
 Barbecue on Bun  
 Potato Salad  
 Buttered Corn  
 Orange Whip  
 Oatmeal Cake  
 Chocolate or Plain Milk  
 THURSDAY, APRIL 14  
 Meat Balls and Spaghetti  
 Buttered Pinto Beans  
 Combination Green Salad  
 Fruit Salad  
 Cornbread-Butter

Chocolate or Plain Milk  
 FRIDAY, APRIL 15  
 Grilled Cheese Sandwich or  
 Peanut Butter Sandwich  
 Vegetable Soup  
 One-half Orange  
 Spice Cake  
 Chocolate or Plain Milk

When some golfers talk about their scores, you don't know the half of it.

# SALVAGE WASTE WATER!

## ... SAVE YOUR MONEY!



**CLARENCE R. BYRD  
 WHO FARMS  
 SOUTH OF KRESS**

Irrigated 20 acres of grain sorghum and 60 acres of cotton - - each three times from this tailwater installation

### Grain Yielded 5,200 Lbs. Per Acre And Cotton Made 102 Bales - All Without Fertilizer!

**MR. BYRD STATES**

"In 1964, without using my tailwater, I made only 3500 lbs. of grain per acre and 57 bales of cotton on the same ground. The system paid for itself in one year and I plan to install another Peerless Tailwater Pump in 1966."

### "My Cost To Irrigate With My Peerless Tailwater Pump Was 10¢ Per Acre."

**Only Peerless Builds A Pump Especially Designed To Reclaim Irrigation Tailwater**

\*100 to 1200 GPM

\*Never needs priming

\*Cannot freeze

\*Available in electric or engine drive

\*ADJUSTABLE FLOW impellers are set for amount of water entering pit or lake

See Your Underground Pipe Distributor Or

# PEERLESS PUMP

AMARILLO HWY. -PLAINVIEW







NEW P-TA OFFICERS--Supt. Bill Reeves installs a new slate of officers for the Spearman Parent-Teacher Association. They are (left to right) Mrs. Marcus Larson, Mrs. Bill Reeves, Bill Massie, president, Dr. Reeves, Mrs. J.W. Pipkin, Mrs. Wallace Berner and Mrs. E.J. Callaway, Jr.

Plainsman Photo

## Family Farm's Future Looks Bright Says A&M Specialist

Is the family farm on the way out? "Far from it," reports Tom Prater, Extension farm management specialist at Texas A&M University.

"In fact," said Prater, "according to the 1964 census of agriculture, the number of family farms in the U.S. is growing--and the future looks even brighter."

A 1964 estimate of farm numbers shows that family-operated farms make up about 60 percent of the total. They also account for about 75 percent of all farm marketings,

said Prater.

Another optimistic note: the most rapidly expanding part of the farm economy, says Prater, is family farms producing \$10,000 or more in gross sales, 88 percent are family farms. These family farms account for 67 percent of the national farm production.

And among larger farms--those with \$40,000 or more in annual sales--the rapid increase in family farms is even more noticeable. Estimates are that family farms make up some 40 percent of these larger units and are growing every day.

The number of all farms in the U.S. is declining, but those which have disappeared were small units, said Prater. Most of those which have dropped from the scene produced less than \$2,500 annually in sales. This means production will be concentrated on a smaller number of larger farms.

During the next five years, Prater sees the number of farms in the \$10,000 plus category continuing to grow. Since these are mainly family farms, the bulk of the nation's food and fiber will be produced by farm families who operate and manage their own business.

## Car Shortage Can Penalize Elevators

Because of a technical situation between the commercial grain warehouse industry and the government's Commodity Credit Corporation, grain producers of Texas are being advised by directors of the Texas Grain and Feed Association that some Texas grain warehousemen, through no fault of their own, may be unable to accept 1966 grain under the CCC support program.

The Kansas City office of CCC-USDA has for some months warned grain warehousemen that it will suspend from its approved list any warehouse which fails within 90 days to comply with orders to load out CCC grain. In the meantime a nation-wide shortage of boxcars has become critical enough to provoke a series of I.C.C. service orders and has made it virtually impossible for some warehousemen to comply fully with the loading orders. Thus it is technically possible that some warehouses may be suspended from the government's approved list at harvest time, in spite of any efforts the warehouseman may make in the meantime to comply. Seven Texas grain warehouses are now under this technical suspension.

Directors of the Texas Grain and Feed Association point out that suspension under the above conditions would not necessarily imply any physical, financial or ethical weakness on the part of the warehouseman and should not be considered by his customers as any form of discredit.

The Texas Association's Board of Directors considered a proposal that they consider court action in the case of any Texas warehouse which, at harvest time, is suspended from normal competition by this action of CCC-USDA, and where good faith of the warehouseman has been established. The action was held up pending other representations to be made by the trade group to government officials, in the hope that a reconciliation could be effected well ahead of harvest time.



By--Vern Sanford

### A good gun can last a lifetime.

Such a guarantee--covering defective material & workmanship--now goes to every purchaser of Browning's O/U shotguns. But there is little reason why most any good gun can't last well beyond the life of its owner. All it takes is a little care.

Too many of us get careless with guns. We fail to clean and oil them properly. We toss them around in the back seat of an automobile, or store them away for several months of the year in some damp spot where rust can develop.

In the olden days much better care was taken of fowling pieces. In the first place, a gun was essential to a man. He needed it for taking food and sometimes for protection. He used black powder, with mercuric primers that would cause corrosion.

Back in those days when the hunter came home he swabbed out the tubes of his shotgun with soap suds, or wiped his rifle barrel clean with a good commercial cleaner capable of eliminating the mercury flakes from the primer.

Then along came the non-mercuric primers. Black powder gave way to smokeless and we were told it was no longer necessary to clean a gun after every shoot.

Some believed this. As a result their guns became pitted. Not from the effects of the primer and powder, but from handling and moisture that got into the barrels.

If you are shooting a gun every day, it still is a good idea to clean it often. It should be wiped thoroughly with a silicone cloth after every handling.

I know a fellow who has a cabinet containing a dozen or more fine guns. They are behind a locked glass door, away from easy handling. But occasionally some friend does get to look them over. Before they are put back into their rack they are wiped over with the silicone cloth. This prevents any possibility of barrel rust from damp fingers, or handprints.

This chap has one gun in his case that is 60 years old. It has been used a lot under almost every condition. First shells shot in it were black powder with mercury primers. But today that gun is just as shiny as it can be. It has no rust spots, even though the blue is worn thin in places. And the wood still retains its polish.

There are many agents on the market today for cleaning guns. Some are solvents, some are inhibitors which can be applied under pressure. Then there are the old reliable oils, any of which will do a good job.

Many gun owners find that a 15¢ can of household lubricant available in any service station is adequate. It certainly is better than nothing at all.

If you treat your gun properly you won't care whether it is guaranteed for your lifetime or not. It still will be shooting good when it passes into the hands of your grandson.

## P-TA Installs New Officers

The Spearman P-TA met in the high school auditorium April 4 at 7:30 p.m.

Girl Scout Troop 253 gave the flag ceremony.

Invocation was given by Mrs. L.L. Laws.

Dr. Reeves installed the new officers for 1966-67.

Randy Watson, Susan Holt and Danny Knox each played solos on their band instruments.

Mrs. Bill Sheets 4th grade room won the room count.

Refreshments were served in the cafeteria by the third grade mothers.

## Presbyterians Set Easter Service

Easter services will be held at 9 a.m. at the First Presbyterian Church with the Rev. William Johnston of Perryton, conducting the services.

The public is invited to attend.

## Heart Association To Meet Monday

Hansford County Heart Association will have a meeting Monday evening, April 11 at 7:30 in the bank building.

Officers will be elected at this meeting and a report on the recent heart drive will be given.

All interested persons are invited to attend.

## Rummage Sale Announced

Rebekah Lodge #290 will have a rummage sale Friday and Saturday, April 8 and 9 in the old Jim Neely building. They will begin selling at 9 a.m.

## Public Invited To Measure Candidates

A "Measure-The-Candidate" meeting and pie supper will be held at the Morse School auditorium Saturday, April 23. This event is being sponsored jointly by the Hansford and Hutchinson County Farm Bureaus and the Morse Home Demonstration club.

Candidates running for offices in both counties and on the district and state levels have been invited to participate in this meeting.

Each candidate will be given an opportunity to state his position or opinion on a number of issues on which Farm Bureau has adopted policies. Information on how each candidate stands on each issue will be released to the press.

The Farm Bureau does not endorse any candidate for any political office. The meeting is being held for the purpose of permitting the public to learn more about all candidates.

Willard McCloy is president of the Hansford Farm Bureau, Herbert Kirk is head of the Hutchinson Farm Bureau

and Mrs. Jack Johnson, Sr. is president of the Morse HD Club.

## The New and Different COTTON

Bred for

- EARLY MATURITY
- FAST GROWTH
- HIGH GERMINATION
- DISEASE RESISTANCE
- IMPROVED STAPLE
- STRONG FIBER
- HIGH YIELDS
- HYBRID VIGOR

Extra Vigor and Better Germination Help Cut Planting and Labor Costs!

the BIG SWING is to

## DEKALB COTTON

"DEKALB" is a Brand Name.

Direct From the Breeder

TROY SLOAN

659-2954

RAY MOORE

659-2886

## HANSFORD HOSPITAL NEWS

Patients in Hansford Hospital this week are Phyllis Cook, Allen Martin, Rafaela Robles, T.I. Harbour, Joe Traylor, Mae Garrett, Blanche Arnold, Denver Arnold, Sadie Gonzales, Jerry West, Maxine Cook, George Martin, Manuela Nunez.

Dismissed were Barbara Howe, Boots Martin, Helen Pracher, James Malone, Jerry Darnell, Wanda Burks, Charlene Bulls.



The time of year to send that one of your choice

- Easter Lilies
- Cut Flowers
- Corsages
- Potted Plants
- Artificial Arrangements

## Spring FLOWERS



Call 659-2212

Call in your order today so you can choose from our complete selection of Easter Flowers

## BOXWELL FLOWERS



## Plymouth Belvedere I



2-Door, 6 cylinder, radio, heater, tinted windshield, standard transmission, white wall tires and standard safety package.

**Just \$2,199.**

Windshields & Automotive Glass Installed

**Spearman Motor & Marine Co.**

Make Your Selection Early  
— Lay-Away A  
**La-Z-Boy**  
for  
**Mother's Day**  
While Our Selection Is Complete.  
Many Models & Fabrics  
Nothing Down,  
36 Months to Pay



**BOON FURNITURE CO.**  
PLAINS SHOPPING CENTER  
659-3044  
Spearman, Texas

# T.G.&Y.

5¢ TO 51¢ STORES



## ROSE BUSHES

2 year old-field grown  
Reg. 69¢ value #2 Grade  
Ass't. Colors  
Climbers-Bushes

Discount Price

**44¢**

#1 1/2 grade-2 year old TG&Y Price  
**ROSE BUSHES** Expired Patents **99¢**

#1 Grade-2 year old TG&Y Price  
**ROSE BUSHES** Expired patents **88¢**

Prices Good Thursday, Friday & Saturday,  
April 7-8-9

STORE HOURS

Monday-Friday 8:30 a.m. to 6:00 p.m.  
Saturday 8:30 a.m. to 8:00 p.m.

## In - Field Service

Portable

Steam Cleaning Service

Tractor Tire Repair Service

## Motor Tune-Ups



Check  
Our Tire Prices!

**Snider-Pearson  
Texaco**

"Service Is Our Biggest Product"

SHOP THIS PAGE...

FOR  
**SALUTE OF  
VALUES**

"ALL MERCHANDISE GUARANTEED AS ADVERTISED"

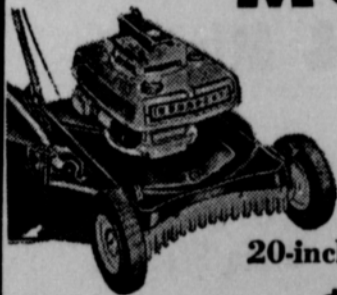
## From Hallmark

- \* Childrens "Story-Cards"
- \* Stationery
- \* Spring Party Goods
- \* Note Paper
- \* Easter Party Goods
- \* Easter Cards

\* TREASURE CARDS-Little Booklets of poems & thoughts for a complete variety of occasions, only 60¢

**PLAINSMAN OFFICE SUPPLY INC.**

Sears **POWER MOWER SALE**



20-inch Push-Type Rotary

only **\$78<sup>50</sup>**

- new type fuel system
- new automatic compression release

Just two features that make this mower easy to start, easy to operate, easy to adjust.

SHOP AT SEARS AND SAVE

**Sears**  
SEARS, ROEBUCK AND CO.



**AQUA-NET**

13 oz.

2 FOR **98¢**

**LISTERINE**  
MOUTHWASH REG. \$1.00

**79¢**

**KLEENEX**

200's

**4/88¢**

**Gordon's Drug**

314 MAIN Prescriptions 659-2141



*Your Home*

★ WILL LAST LONGER

★ BE MORE BEAUTIFUL

When You Protect It With Proved

**REGAL LITE LATEX HOUSE PAINT**

Only \$0.00 per gal.

★ Easy Working

★ Long Lasting

★ Low Lustre Finish

**STERLING 12 PAINT**

**White House Lumber Co.**



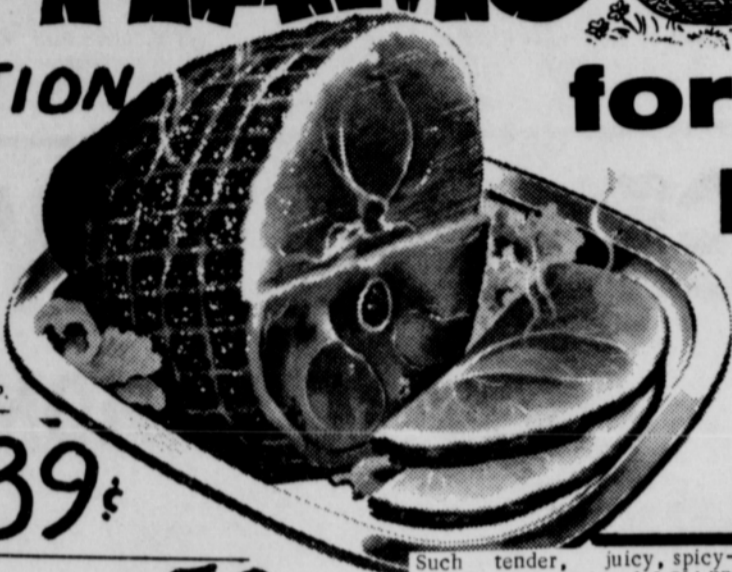
# Easter HAMS



**WHOLE HAM**  
lb. 59¢  
**SHANKLESS SHANK PORTION** 63¢ lb.

**BUTT PORTION**  
**59¢ lb.**

**for Happy Feasting**  
**CENTER SLICES**  
SUNRAY HICKORY SMOKED HAM  
**89¢ lb.**



FRESH DRESSED USDA GRADE A  
**FRYERS 35¢ lb.**  
FRESH DRESSED USDA GRADE A  
**FRYERS lb. 39¢**  
-PAN READY-

FRESH **FRYER BREASTS 59¢ lb.**  
U.S.D.A. CHOICE BEEF  
**ROUND STEAK 89¢ lb.**

Such tender, juicy, spicy-sweet HAMS... and such LOW PRICES! Amazing? It's HAM-azing, but true!



Del Monte WK/Golden 303 CORN 2 FOR 35¢

SHURFRESH Whipping Cream "The Perfect Topping" 25¢ Half Pint

MORTONS Cream Pies 3 for 89¢ All Flavors FROZEN 8-INCH New Detergent-Giant Size BOLD... 59¢

Hunts Heavenly Clings Sliced or Halves - No. 2 1/2 can  
**Peaches 4 for \$1.00**

**EGGS**  
AVI'S GRADE A  
LARGE **47¢ DOZEN**

ONE DOZEN EGGS

Del Monte 303 Size ENGLISH PEAS 2 FOR 43¢

SHURFRESH Homogenized MILK Low Everyday Price

HALF GALLON 49¢  
GALLON 97¢

Shurfresh "Low-Calorie-2%" Fortified Skim MILK Half Gallon 47¢

Liptons Brisk TEA 39¢ 1/4 lb. pkg.

Shurfine Quart SALAD DRESSING 37¢

Gelatin All Flavors Heavy Duty Alum. Foil-Reynolds WRAP 25' x 18" ..... 59¢

**JELLO** 3 oz. pkgs. 3 for 25¢

Bama Pure 18 oz. tumbler PEACH PRESERVES 35¢	Shurfine Dill or Sour PICKLES 25¢	Campbells Tall Can TOMATO SOUP 11¢	Shurfine Frozen 6 oz. can ORANGE JUICE 2 FOR 33¢
Dessert Topping Large 8 oz. box DREAM WHIP 69¢	A. F. Brand All Flavors BEVERAGE 28 oz. 13¢	Maryland Club lb. can. COFFEE 73¢	<b>FLOUR</b> Gold Medal 5 lb. bag 49¢
Bakers Premium Shreu 4 oz. box COCONUT 21¢	Eagle Brand Sweetened Condensed 15 oz. MILK 35¢	Shurfine 3 lb. can SHORTENING 67¢	Tendercrust Pkg. of 12 <b>BROWN &amp; SERVE ROLLS 19¢</b>

Freshest Produce In Town!

California Extra Fancy **STRAWBERRIES** 3 Pints \$1.00

Large Bunches-fine for salads California Tender cello pkg. **CELERY HEARTS 29¢**

Fresh Tender Kentucky Wonder Beans lb. 39¢ Washington Fancy Winesap Apples lb. 15¢

Colorado U.S. No. 1 Red McClure **POTATOES** 10 lbs. 39¢

LANE'S Ice Cream Half Gal. 69¢

SHURFRESH Cottage Cheese Sparkling White Fully Creamed lb. ctw. 29¢

Shurfine Whole Fancy SWEET POTATOES No. 3 squat can 33¢

**SUGAR** Imperial Pure Cane 5 lb. bag 49¢

APPLE SAUCE Shurfine Fancy 303 size 3 FOR 49¢

**Cut Rate GROCERY**

Baby Prepared Formula-Tall Can ENFAMIL. 4 FOR \$1.00

White Syrup KARO 1 1/2 lb. bottle 29¢



It's  
**Easter**  
 Give **PANGBURN'S**  
*Western Style*  
**CANDY**

See our beautiful selection of gift candies!



ANOTHER Great Gift Idea™  
 FROM YOUR DRUG STORE

**Spearman Rexall Drug**

PHONE FOR FREE DELIVERY

659-2226 Two Registered Pharmacists



the prettiest  
 Easter frocks

are waiting just for you  
 at Massad's!

For  
 \*ladies  
 \*juniors  
 \*young girls

**Easter Coats**

Pretty Easter Pastels

**Massad's**

214 Main Street

**New---**

**Oldsmobiles  
 & Chevrolets**

A good selection to choose from.

Come in and see what good

deals Excel will offer you.

**Excel Chevrolet Co.**

UP' VALUES WHEN WE FIRE  
 RS AND RANCHERS!



Get your farm equipment  
 ready  
 for the Spring work

WITH CO-OP TIRES,  
 BATTERIES, OILS  
 & GREASES.

Call or See

**Consumers Sales**

WHEAT PROSPECTS ARE  
 GOOD ---

**PROTECT YOUR  
 CROP**

& YOUR INCOME  
 WITH  
**CROP - HAIL  
 INSURANCE**

J. L. BROCK AGENCY  
 Insurance

Complete Insurance Needs  
 Spearman 659-2514

TAKE ADVANTAGE OF YOUR  
**Catalogue Order Center**

JUST CALL YOUR ORDERS IN  
 from your Western Auto catalogue...  
 or bring them in. Either way you get  
 service deluxe!

**Coleman Lanterns**

**Benzomatic Butane Lanterns**

Safari Lights

Air Mattresses

Camp Stoves

Approved Life Jackets For Boats  
 All Weather Utility Storage Buildings.

**Western Auto  
 Assoc. Store**

For  
**Easter**

Send Lilies

or

Beautiful

Cut Flower

Arrangements

**Spearman  
 FLORAL  
 GIFTS**

PLAINS SHOPPING CENTER  
 Phone 659-2593



America's  
 favorite lawn fer-  
 tilizer.

10,000 sq ft

**\$8.95**

5,000 sq ft

**\$4.95**

ALL KINDS OF



**Spearman Hardware**





## Butte Knits

### SUITS & SHIRTS

New Spring Styles & Materials

Buttelene 100%

Textured Fortrel Polyester

Chambers Dept. Store

## — THIS IS THE YEAR —

Now is the time to top dress your wheat with—

### - GOLDEN URAN - NITROGEN SOLUTION

Quick & easy & spreads uniformly, covers all parts of the swath evenly.

Both dryland and irrigated that have been grazed will benefit from a Top Dressing of Golden Uran! Why Golden Uran? Golden Uran has 3 types of nitrogen. It is chemically constituted so that it does not volatilize into the air before mixing into the soil or being watered in. The 3 types of nitrogen are nitrate nitrogen, ammonia and urea.

You can boost your wheat yields with a small investment. We will supply or furnish you the equipment.

### Strawn

Farm & Ranch Supply

Spearman



CHAMPLIN KEEPS THINGS MOVING

ALL MOTORS LUBRICATED WITH OUR OILS - GUARANTEED

THERE IS NO TIME LIMIT.

-OILS FOR EVERY PURPOSE-

Oils & Greases

Davis Oil Co.

Phone 659-2025

## THIS IS IT !



### THE FRIENDLIEST PLACE IN SPEARMAN !

where your business is appreciated and your friendship cherished!

Convenient - Quick

DRIVE-IN BANKING

First State Bank

Member Federal Deposit Insurance Corporation

### MY PRAYER AS A BUSINESSMAN:

JESUS, I WANT YOU TO BE A PARTNER IN MY EVERY BUSINESS TRANSACTION. I WANT YOUR APPROVAL ON EACH ACT THAT I PERFORM AND ON EVERY CONTRACT THAT I ENTER INTO. HELP ME TO DO EACH JOB WELL. LET ME NEVER TAKE UNFAIR ADVANTAGE OF ANYONE. HELP ME TO FULFIL MY PART IN EVERY CONTRACT. THAT I ENTER INTO. GIVE ME PATIENCE TO BEAR WITH ANY THAT FAIL ME. FOR, I HAD RATHER BE A GODLY WITNESS THAN TO MAKE UNJUST GAIN.

GEORGE YANCY

Yancey Welding & Machine Shop

...THOUSAND OF 'BANG-UP' V  
A SALUTE TO FARMERS A



FOR THAT EXTRA TV....

Portable **ZENITH**



SET AS LOW AS

**\$139.95**

WITH TRADE  
FREE STAND

(\$14.95 VALUE)

The TOURNEY • N2000C-6  
The Slim Line Series

New lightweight, slim 19" portable TV in compact cabinet. Charcoal color and Off-White color. Deluxe Video Range Tuning System. 20,000 Volts Picture Power. Monopole Antenna. Cabinet size: 16 3/4" high, 22" wide, 12 3/4" deep.



**Bob's** SALES and SERVICE

WE SELL THE BEST and SERVICE THE REST  
SPEARMAN, TEXAS

Phone 659-3222

BE A SMART BUNNY!



Shop Cates'

FOR **EASTER**

We have everything for men and boys for Easter!



- Suits
- Slacks
- Jackets
- Shirts
- Ties
- Shoes
- Socks
- Jewelry
- Handkerchiefs

-We have the clothes you want for Easter.-

Cates Men & Boys Wear

Feed Grinding & Mixing

Fertilizers - Applicators

Grain Storage

We Buy & Sell Grain

We appreciate the opportunity of serving you.

Hansford Grain Inc.





**Make It  
A New  
FORD**

- \*Falcons
- \*Fairlanes
- \*Mustangs
- \*Galaxies
- \*LTD Fords

You'll find service to back up your Ford... 24 months or 24,000 miles on your new Ford

at

**Joe Trayler Motor Co.**



**Peaches  
& Cream  
DRESSES**



**The Go-Go** . . . Delightfully chic! Princess line Dress with a full flounce at bottom. Designed in Dacron®/Cotton Voile Batiste with flocked dots. Fully lined with full lace trim petticoat under flounce. Back zip. Blue, Maize, Pink.

**\$8.95**



**JUST BEAUTIFUL FOR EASTER**

**Jim Neely's**

**YOUR JOHN DEERE DEALER VOLUNTEERS...**

- to deliver a new model John Deere Tractor to your farm for a free, no-obligation test drive.
- to put you on your own with the tractor so you can test it to your satisfaction.
- to work out a new tractor financing plan tailored to your requirements.

**YOUR JOHN DEERE DEALER PLEDGES...**

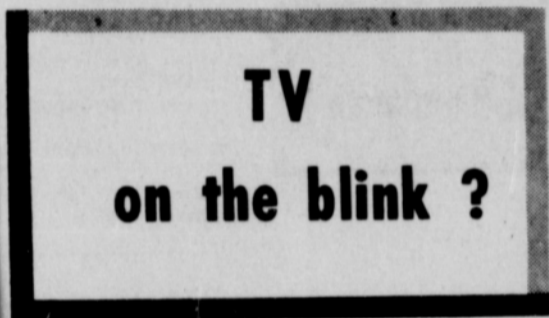
- prompt service on all work covered by the John Deere new tractor warranty . . . a one-year or 1,500 hour warranty (whichever occurs first), covering defects in materials and workmanship—with no exception for custom operation.
- availability of service for as long as you keep your John Deere Tractor.

**JOHN DEERE**

Moine, Illinois



**Hansford Implement**



**TV  
on the blink ?**

TRUST YOUR REPAIRS TO A TRAINED PROFESSIONAL TECHNICIAN

TV problems might be just a tube or the bad tube could be caused from more serious trouble. Let us take care of all your repairs and you can be sure everything is checked... and working properly.

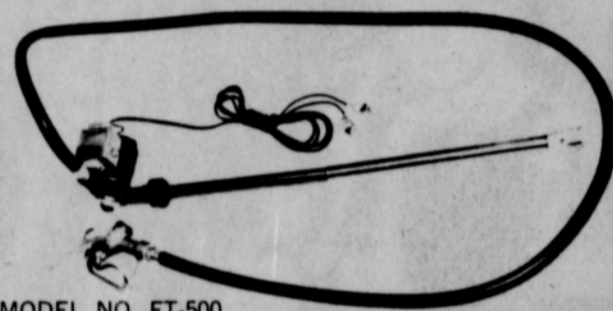


06 E. Kenneth Spearman, Texas

SHOP THIS PAGE...

**FOR  
SAVINGS OF  
VALUES**

"ALL MERCHANDISE GUARANTEED AS ADVERTISED"



MODEL NO. FT-500  
**FUEL TRANSFER PUMP**

Completely assembled for use in a fifty-five gallon drum or custom fuel tank. Including a 12-volt DC Motor, 10' flexible hose with 3/4" male fittings, aluminum nozzle, 15' cord and battery clips, automatic pressure switch with manual "on" and "off" control, 18" to 36" adjustable suction pipe and bung adapter, aluminum foot valve.

Self-priming, capable of pumping continuously 8 1/2 gallons per minute of diesel fuel, gasoline or water. For transfer of higher viscosity fluids flow will drop from 8 1/2 gallons per minute to 1 1/2 gallons per minute depending upon weight & viscosity, not to be run continuously under this use. List: \$84.00

Our Price \$67.50

**B & B Sales**

Spearman - Perryton - Guymon

**PICK A BARGAIN**

- Portable-Bronze Tone Top  
**Folding Table \$7.44**  
3 cu. ft. Sturdy Construction
- Wheelbarrow \$7.44**  
2 HP Engine-White Gasoline
- Edger-Trimmer \$46.00**  
3 HP Rotary-Cuts 24 inches wide
- Riding Mower \$117.00**  
Hard Shell 1/2 gal. Size
- Turtle Wax 99¢**  
36" sections
- Picket Fence 22¢** Reg. 39¢

**Whites Auto**

PROVEN QUALITY . . .  
. . . . PERFORMANCE THRU RESEARCH



**hybrid-sorghums**

WE HAVE THESE VARIETIES:

505 707  
B-52 TEXAS 660  
RS 608 CHOWMAKER A

Quality Proven



R. L. McCLELLAN GRAIN CO.

**We Do Anything  
to Hold onto  
Our Customers**



We even give you two papers a week, for the price of one. Just our way of saying thank you for your support!

The Hansford Plainsman



**SAVE MORE ON LUMBER AND BUILDING SUPPLIES**

Lumber — Plumbing Supplies

**Anchor Paints**

( ) Brushes ( ) Rollers

Hardware Fixtures  
of All Kinds

- Roofing Materials
- Sheetrock
- Plywood
- Pipe & Steel

**Callaway Lumber Co.**

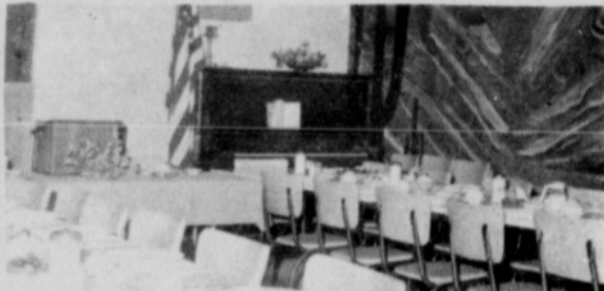
Highway 15



**Just the Best Food in Town!**

OUR COOK

That's exactly what we offer... Complete dining room facilities for all occasions and delicious food, EVERY TIME YOU VISIT US!



**Pioneer Restaurant**

**"Windy Weather Special"**



-MATCHED PAIR-

850-A-Washer

& 820-A-Dryer

**WASHER & DRYER**

Fully automatic 2-Speed Washer with Mini-Basket. Both Washer & Dryer handle a 14 lb. washing load.

**BOTH REG. \$488.00 PAIR**

**-Special- \$389.00 PAIR**

**Anthony Electric**

Plains Shopping Center



In at North Plains for a Real Buy

A LARGE SELECTION OF LATE MODEL CARS TO CHOOSE FROM ALL MAKES & MODELS

**5 Stationwagons**

1964, 1963, 1962, 1961 & 1957 MODELS

FOR THE BEST SERVICE, BRING YOUR EQUIPMENT TO US

**North Plains Truck & Implement Co.**

SHOP THIS PAGE...

**FOR SALUTE OF VALUES**

"ALL MERCHANDISE GUARANTEED AS ADVERTISED"



**Clean/Easy/Quick**

Lucite<sup>®</sup> doesn't drip or run because it's thick and creamy. Goes on easier and faster because your brush or roller holds more paint. You dip less.

**No Stirring/No Thinning**

Just lift the lid and start painting. No priming either—not even over spackle. And Lucite<sup>®</sup> hides tiny cracks.

**Fast Dry/Easy Clean-up**

Dries in 30 minutes to a flat, velvety finish that's washable. Clean-up is a snap with soap and water.

**OWENS**

**SALES COMPANY**

659-2506

118 Main

659-2507

**Farm Bureau Insurance Agency**

307 Davis

Phone 659-3133

TOMMY GOOCH, AGENCY MANAGER

**Life, Fire & Casualty Insurance**

We appreciate the opportunity of serving you.

**Ruth OF CAROLINA**

**The Costume Look**  
Navy textured rayon and silk, a bright red embroidered Eagle on its white yoke. \$17.98 set

**Young Fashions**

**ELECTRIC RATES REDUCED**

While other items in the cost of living continue to go up, the price of electric service has come down. A reduction in local electric rates averaging 7.4% for residential customers & 9.5% for commercial users, has been approved by the City Council and will be reflected in the next electric statements you receive. Always an outstanding value, electric service is now more than ever your biggest budget bargain!

**COMMUNITY PUBLIC SERVICE**  
Your Electric Light & Power Company







PICTURE MEMORY TEAM--This group won first in the Spring Grade School Literary Meet in Fritch. They are (left to right) Becky Farris, Robert Cochran, Brenda Raney, Dixie Sheppard and Kathy Dear.

Plainsman Photo

### Club Meets In Head Home

Mr. and Mrs. Garland Head were hosts for their bridge club Friday night, April 1.

Chalmers Porter and Virginia Head had high score and Billie Miller had a 9 high hand.

Attending were Messrs. and Mrs. Chalmers Porter, Billie Miller, Don Knox, guests, the Don Smiths, Pat Cates and the hosts.

### Card of Thanks

I wish to take this opportunity to thank everyone for all the cards, letters, calls, visits, prayers and words of encouragement during my stay in Hansford Hospital. Your thoughtfulness will be remembered always. May God Bless each of you.

Barbara Howe

Mr. and Mrs. Clyde Phillips of Amarillo were Sunday dinner guests of her son and family, Mr. and Mrs. Robert Brandt.

Pam Wysong spent from Wednesday till Saturday of last week with her aunt and uncle, Mr. and Mrs. Larry Combest at Canyon.

Mr. and Mrs. Arthur Adkison and Susie spent Friday and Saturday in Abilene visiting their daughter and sister, Miss Darla Adkison, a student at Hardin Simmons.

Mr. and Mrs. Ned Turner returned to Spearman Monday after flying to Panama City, Fla. for several days vacation. They were met in Florida by her brother and wife, Mr. and Mrs. W.P. Branch of Myrtle Beach, S.C. and all enjoyed 4 days of sightseeing before returning to Myrtle Beach with Mr. and Mrs. Branch. The Turner's had expected to find warm sunny weather in Florida but reported it was chilly while they were there.



Bill W. Barton

## Barton Is Candidate for Representative

Bill W. Barton, a resident of the Borger area for 16 years has authorized the Hansford Plainsman to announce his candidacy for the office of State Representative from the 83rd District, subject to the action of the Democratic Primary.

The district encompasses the six counties of Hutchinson, Hansford, Moore, Sherman, Dallam and Hartley.

Barton came to the area in 1949 and is a 1955 graduate of Phillips High School. He attended Frank Phillips College from 1955 to 1957, going on to receive his pre-law degree from Texas Technological College in 1959. He received his LLB degree from the University of Texas Law School in 1962.

After one year of law practice in Spearman, with the firm of Linn and Helms, Barton moved to Borger in February

## Meeting Announced for Pre-Schoolers, Parents

Allen Alford, principal of Spearman Elementary School, announced this week that a meeting for pre-school chil-

dren and parents will be held Wednesday, April 13 at 12:30 p.m. in the elementary building.

The children will attend classes from 12:30 p.m. until 2:45. There will be a short meeting of the parents in the Jr. High Auditorium at 1 p.m. First grade classes will be dismissed at noon April 13.

Mr. and Mrs. John R. Miller and Sandra were Saturday evening supper guests of Mr. and Mrs. Oscar Mullins at Guymon. They later attended Masonic Lodge to see Roger Mullins receive his 3rd degree.

1963 and entered into private practice.

In 1964 he was appointed assistant county attorney and in that capacity has prosecuted cases in county and domestic courts.

He is a member of the American, Texas and Borger Bar Associations, and presently holds the office of secretary of the Borger Bar Association.

Barton is a member of the Borger Jaycees and is a past president of the Phillips Alumni Association. At present he is treasurer of Borger Boys Club, and chairman of the 1966 Hutchinson County Cancer Crusade.

Married to the former Judy Norman, a native of Borger, they have two children, Laura, 6 and Clay 2.

The Bartons are members of the First Baptist Church of Borger and reside at 106 Garrett in Borger.

Barton said, "My main objective, if I am elected, is to give the Panhandle a stronger voice in our state government and to work for the future growth and development of our area."

"I am qualified by training and experience to serve the people of the 83rd District and I will deeply appreciate the vote and support of everyone during my campaign for State Representative."

## Gift Box

### Memo:

Just in time for the warm weather, or late snows, we have a new shipment of beautiful ice buckets. These are very decorative.

If you don't like your drinks cold, then have your hot coffee in some pretty coffee mugs. We have some more of those decorated mugs that you have liked in the past. Also, to cut down on the washing, we have some mug racks where you can hang them between coffee breaks.

We do not have them up yet, but we do have a new shipment of large pictures that you have admired before. Now is the time to buy one for your home.

Merchandise just keeps coming in, so there is something new to see almost every day. You will enjoy browsing around.

## The Gift Box



SPELLING TEAM--Lee Watson (left) and Patricia Schnell tied for first in spelling with Stinnett at the Spring Grade School Literary meet in Fritch.

-Plainsman Photo

## Grade School Finishes 2nd in Literary Meet

Spearman Grade School students finished second in the Spring Grade School Literary meet held in Fritch recently by only one-half point.

Shamrock won the meet with 45 points, Spearman had 44 1/2, Phillips 42, Boys Ranch 22, Stinnett 15 1/2 and Sanford-Fritch 7.

Spearman entries had two firsts, a tie for first, three thirds and one second in the competition.

The picture memory team of Dixie Sheppard, Brenda Raney, Kathy Dear, Robert Cochran and Becky Farris won first. They were directed by Mrs. Bill Sheets.

Lonita Johnson under the direction of Mrs. Wilbur Hull won first in story telling.

The spelling team of Patricia Schnell and Lee Watson tied for first in spelling with Stinnett. Mrs. Blanton McGee was their instructor.

Joe Clement, coached by Kenneth Thomas finished third in number sense, Lynn Brock under the direction of Mrs. Eddie Reed finished third in ready writing.

Steve Spoonmore placed third in boys declamation. His instructor was Mrs. Doris Crum. Mrs. Eula Goodall directed Rosemary Burkhart to a second in Girls Declamation.



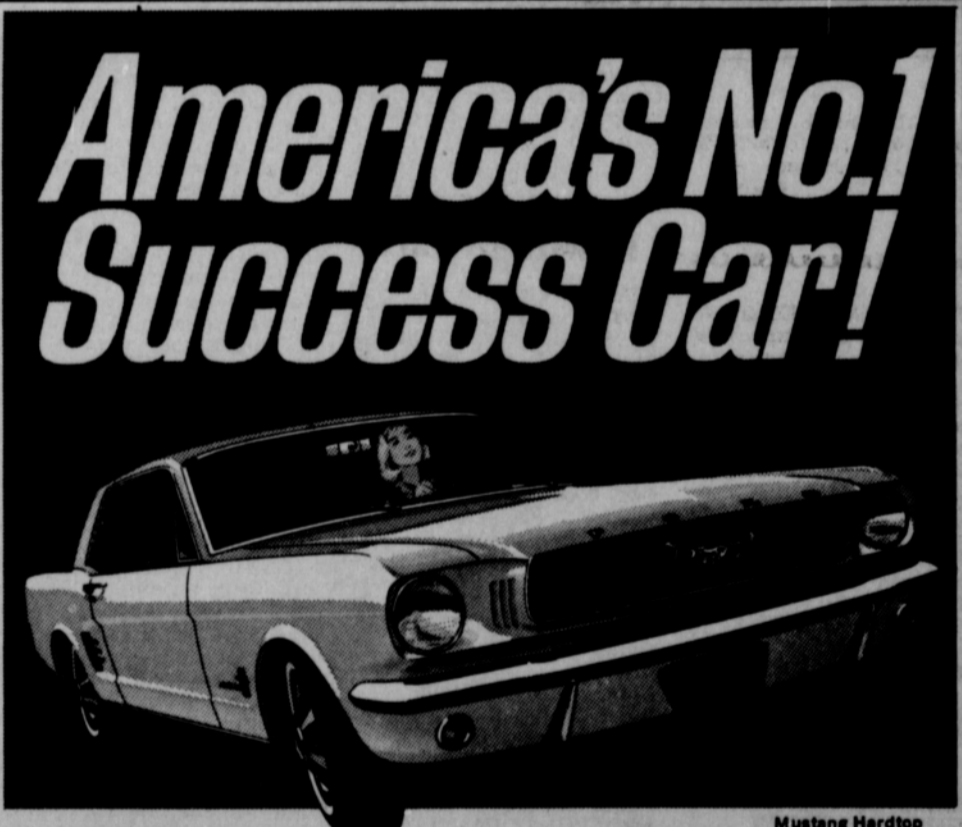
### BU-TUF Irrigation tubing is a portable ditch

- Stops seepage and evaporation
- Puts water where you want it . . . when you need it
- Economical
- Easy to install and retrieve
- Take it with you when you move
- Ends ditch maintenance

Bu-Tuf® Irrigation Tubing on Your Farm Is Like Money in the Bank

## B & B Sales

Spearman, Texas



Mustang Hardtop

## Mustang Stampede now on at Oklahoma Ford Dealers

Now's the time to lasso some real savings on a '66 Mustang! Choose from three optional V-8's--up to 271 horsepower! Join the crowds storming our showrooms for these once-in-a-lifetime deals. Hurry!



Mustang Convertible

## Joe Trayler Motor Co.

321 Main Street ° Spearman, Texas



# Take your problems to Church this week — millions leave them there!

## Chamber of Commerce Newsletter



Sponsored By

**R. L. McCLELLAN  
GRAIN CO., INC.**

**FIRST STATE BANK**  
Member F.D.I.C.

**B & B GRAIN CO., INC.**

The Hansford Plainsman

CLEAN-UP CAMPAIGN-The Chamber of Commerce office would like to thank everyone who helped to make this Clean-up Campaign a success. It was a lot of hard work for the FEV that helped. THANK YOU.

This office has received an article on "The Church and the Chamber of Commerce". This article tells how the roles of the church and the chamber are molded fittingly together. It is written by Dr. W. Jackson Wilson, Pastor, First Community Church, Joplin, Mo. Very Inspirational.

PROGRAM OF WORK-Our Ten at Ten meetings have been very successful. We may not have very many to attend but they are full of ideas and GOOD ONES. We will have our last Ten at Ten meeting for this year next Thursday in the Chamber office at 10 a.m. Plan to attend.

A Short Course in Human Relations

The six most important words: I ADMIT I MADE A MISTAKE

The five most important words: YOU DID A GOOD JOB

The four most important words: WHAT IS YOUR OPINION

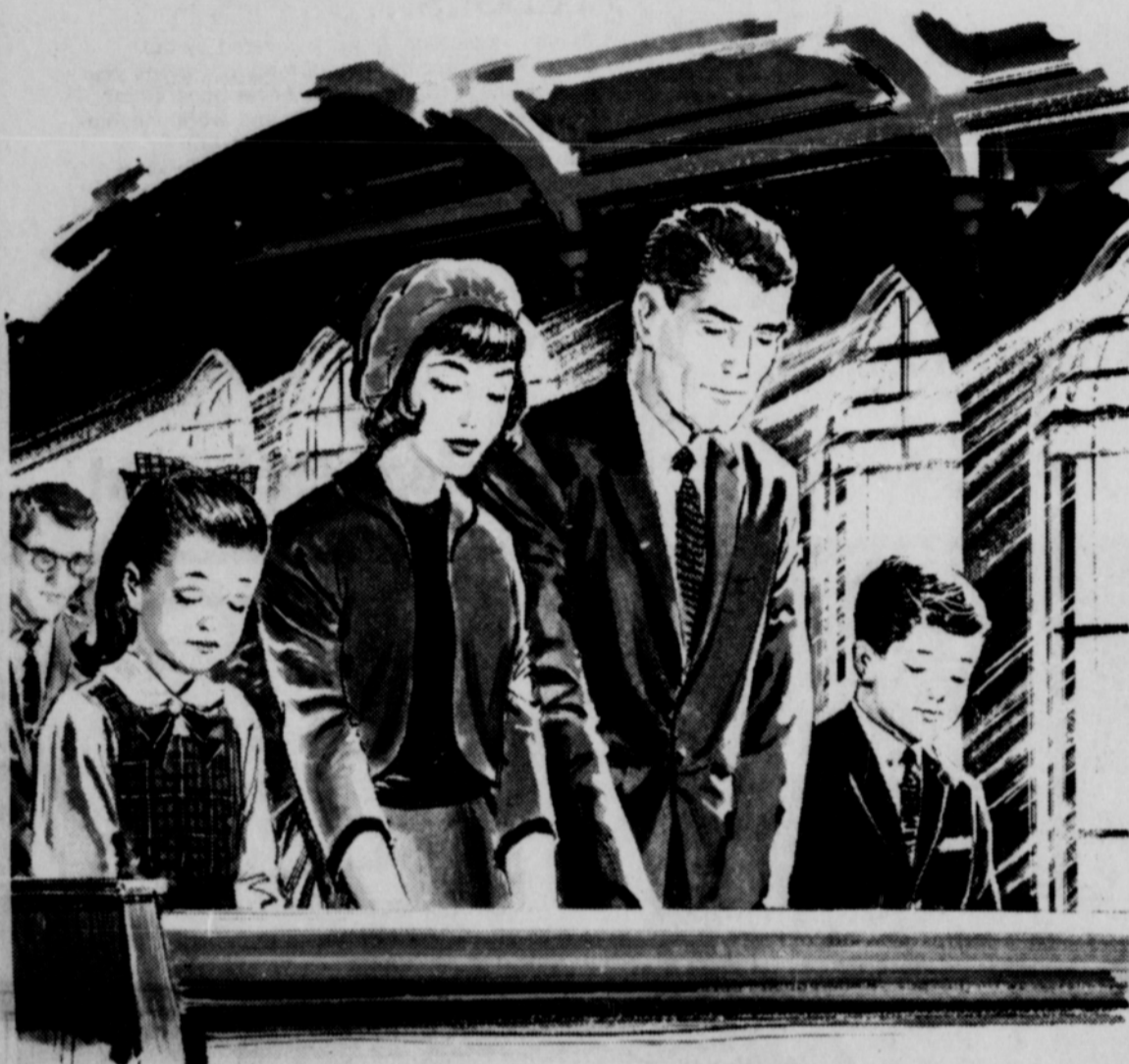
The three most important words: IF YOU PLEASE

The two most important words: THANK YOU

The one most important word: WE

The least important word: I

Thanks to the Moorhead, Minnesota C of C



## Attend

## The Church Of Your Choice Sunday

—Weekly Opportunities For Worship—



"Do not be afraid; for I know that you seek Jesus who was crucified. He is not here; for He is risen as He said . . ."

Matthew 28:5-6



### Apostolic Faith Church V. E. (Hap) Blythe, Pastor

9th & Dressen  
Sunday School 10:00 a.m.  
Morning Worship 11:00 a.m.  
Young People 6:30 p.m.  
Children's Church 7:00 p.m.  
Evening Worship 7:30 p.m.  
Thurs.:  
Ladies Bible Study 2:00 p.m.  
Prayer Meeting 7:30 p.m.

### Assembly of God Church Rev. T. J. Taylor, Jr.

403 N. Bernice  
Sunday School 9:45 a.m.  
Morning Worship 11:00 a.m.  
Sunday C.A.'s 6:30 p.m.  
Evening Worship 7:30 p.m.  
Wed. Bible Study 7:30 p.m.

### Church of Christ Charles Milner, Minister

121 S. Haney  
Bible Class 10:00 a.m.  
Worship 10:50 a.m.  
Teen Age Class 6:00 p.m.  
Worship 7:00 p.m.  
Wed. Ladies Bible Class 9:30 a.m.  
Wed. Bible Study 7:30 p.m.  
Daily Television on Channel 3, Mon. thru Fri. 10:15 a.m.

### Our Lady of Guadalupe

Mission Sunday Mass Gruver 4:00 p.m.

### First Christian Church

29 S. Bernice  
Sunday School 9:45 a.m.  
Morning Worship 11:00 a.m.  
Youth Meetings 5:30 p.m.  
Evening Worship 7:30 p.m.  
Wed. Choir Practice 7:30 p.m.

### Fellowship Baptist Church

11th & Archer  
Sunday School 10:00 a.m.  
Preaching Service 11:00 a.m.  
Sunday Evening Service 7:30 p.m.  
Wed. Evening Service 7:30 p.m.

### Union Full Gospel Church

Rev. George R. Bollinger, Pastor

1st & Endicott  
Sunday School 10:00 a.m.  
Morning Worship 11:00 a.m.  
Bible Classes Sunday 6:45 a.m.  
Evening Worship 7:30 p.m.  
Wed. Bible Study 7:30 p.m.

### Pentecostal Church

Sunday School 9:45 a.m.  
Morning Worship 11:00 a.m.  
Evening Worship 7:30 p.m.

### First Methodist Church Rev. Wesley Daniel, Pastor

407 S. Haney  
Sunday School 9:45 a.m.  
Morning Worship 11:00 a.m.  
M.Y.F. 6:30 p.m.  
Evening Worship 7:00 p.m.  
Women's Society of Christian Service Wed. 3:00 p.m. and 9 a.m.  
Choir Rehearsal 7:30 p.m.

### Waka

### Church of the Brethren Lawrence Lehman, Pastor

Sunday School 10:00 a.m.  
Morning Worship 11:00 a.m.  
Evening Service 7:00 p.m.  
Choir Practice Wed. 7:30 p.m.

### Oslo Lutheran Church Robert L. Cordes, Pastor

18 mi. N.W. of Gruver  
Sunday School 9:45 a.m. (includes adults)  
Worship Services 11:00 a.m.

### Faith Lutheran Church Robert L. Cordes, Pastor

11th & Bernice  
Worship Services 9:00 a.m.  
Sunday School 10:00 a.m.

### Sacred Heart Catholic Church Rev. James C. Gurzynski

901 S. Roland  
Sunday Mass 9:00 a.m.  
Wednesday & Friday 8:00 p.m.  
Saturday Mass 8:00 a.m.  
Other Days Mass 7:30 p.m.

### First Baptist Church Rev. Luther M. Berry, Pastor

123 S. Bernice  
Sunday School 9:45 a.m.  
Morning Worship 10:55 a.m.  
Training Union 5:30 p.m.  
(Oct. 1-Apr. 30)  
Training Union (May 1-Sept. 30) 6:00 p.m.  
Evening Worship (Oct. 1-Apr. 30) 6:30 p.m.  
Evening Worship (May 1-Sept. 30) 7:00 p.m.  
Wed. Evening Prayer Hour 8:00 p.m.

### First United Presbyterian Church

1021 Cotter Drive.  
Sunday Church School 9:45 a.m.  
Morning Worship 11:00 a.m.  
Evening Study Group 7:30 p.m.  
Wed. Choir Practice 7:30 p.m.

## NEWS FROM HOLT

Mr. and Mrs. Bob Phelps and family of Forgan, Okla., Mr. and Mrs. Ira Harbour, Mr. and Mrs. Doyle Jackson and boys were Sunday afternoon callers of Mr. and Mrs. Dan Jackson.

Mr. and Mrs. Owen Pendergraft met his nephew, Mr. and Mrs. James Beck of Enid, Saturday for a short visit in Woodward, Okla.

Mrs. B.C. Holt's daughter, Mrs. Charles Farrington of Houston had major surgery Friday and is getting along as well as can be expected.

Mr. and Mrs. Claude Jackson spent Wednesday night visiting relatives in Mangum, Okla.

Mrs. Mildred Chamberlain of Spearman, Bertha Jenkins and Maude Rosson were Sunday afternoon callers of Mr. and Mrs. Lex Board, Mrs. Annie Harris and Lorene Williams of Morse.

Mr. and Mrs. Britt Jarvis and Will of Dallas were Sunday luncheon guests of Mr. and Mrs. Nolan Holt and Larry.

Attending an Order of the Eastern Star Friendship Night in Miami Saturday night from Spearman were Deta Blodgett, Hazel Wilbanks, Virus Wilbanks, Minnie Jones, Nina Hendricks, Millie Craig, Mary Brock, Thelma Scott, Preston Scott, and Mrs. Davalene Schroeder, a member of the Miami chapter and Mrs. Denham, a member of a California chapter.

Mr. and Mrs. Preston Smith, Archie, Daniel and Anita went to Amarillo last Friday to visit their daughter and sister, Dorothy, who attends Western Republic College in Amarillo. They all later joined Mr. and Mrs. Alvin Cator, Amy, Angie, Mr. and Mrs. Theo Mayo, Thesa and Lisa at Amarillo Air Force Base to visit with Bill Cator, before his departure to Sheppard Air Force Base in Wichita Falls.





LITERARY WINNERS--These students were part of the group that won second in the grade school contest at Fritch recently. They are (left) Rosemary Burkhart, Joe Clement, Steve Spoonmore and Lynn Brock.

Plainsman Photo



WITH CELEBRITY---A1C Roy L. Devers (center) talks with actor Tony Curtis (right) who was making the film "Not With My Wife You Don't". Devers is the son of Mr. and Mrs. Ray Devers of Spearman. His wife is the former Sue Long, daughter of Mr. and Mrs. J.D. Beeson, also of Spearman.

USAF Photo

## Electric Group To Feature Cheyenne Entertainer

What began as a hobby now fills many hours in the busy life of Mrs. L.L. Males, Cheyenne, Okla., who will be a featured entertainer at the 22nd annual meeting of the North Plains Electric Cooperative, Inc. in Perryton, April 25. A versatile entertainer, she makes the piano talk, recites poetry, gives impersonations, bits of drama and comedy all rolled into one. She has been called "A

One Woman Show" and has the ability to keep the audience laughing and then crying. Hers is an understanding heart.

Her lifetime has been spent in developing this talent, as a teacher and later as an entertainer. She has entertained organizations of all kinds and always has a sparkling evening of entertainment that is especially planned for the special group and for a certain evening.

She comes of a pioneer family who settled in Roger Mills County and later moved to Beaver County where her parents, Mrs. Savage and the late E.B. (Bernad) Savage, ran the pioneer Savage Mercantile at Forgan, Beaver City and Lakemp. No doubt it was this pioneer heritage that has recently turned her interest to collecting and writing stories of Oklahoma and Indian lore. Presently several local papers of the Cheyenne-Arapaho Indian country publish her stories and she has done much to arouse the people to the color and beauty that is theirs.

## First Baptist Reschedules Spring Revival

Dr. Winfred Moore of the First Baptist Church of Amarillo will open revival services in the Spearman First Baptist Church Monday.

The revival that was cancelled last Tuesday because of the epidemic of flu in Spearman has been rescheduled for April 11-16, Monday through Saturday night. Services will be at 10 a.m. and 7:30 p.m.

Dr. Moore will be assisted in the services by Jerry Malone of Dallas. He will direct the music.

This is the team that opened the revival services here on Monday, March 28, but were able to conduct only three services, two Monday and one Tuesday morning, before church officials voted to halt the services at the request of the County Health Officer.

Neither of the revival team members will be here for Sunday services because of earlier plans for their home churches. However their churches have agreed to permit them to return for the week day and night services.

## Help Needed at Golf Course

Help is wanted all day Saturday at the Spearman Golf Course.

The pay is guaranteed to be high in gratitude.

All members are urged to report for working on the new greens.

Mrs. L.C. Owens has been hospitalized in Hutchinson, Kan., at the bedside of her father, N.W. Middleton, who suffered a heart attack last weekend.

To get the best of an argument, stay out of it.

## Methodists Set Youth Revival

A Youth Revival with meals will be conducted Thursday night, Friday night and Saturday morning at the First Methodist Church, April 14, 15 and 16.

The Rev. Hugh Daniel of Idalou, brother of the Rev. Wesley Daniel, will conduct the services.

Services on Friday and Saturday nights will begin at 6 p.m. for supper.

## LL Tryouts April 8 - 9

All boys who were not members of a Little League major league team last year are requested to attend the Little League tryouts at 5 p.m. Thursday and Friday.

Manager and coaches of the teams will be there to select boys to play on their teams this year.

The player auctions will be held April 17 and the major league season will begin April 25. The minor league season starts May 2.

## County 4-H'ers Bring Home Variety of District Honors

Winners were named Saturday at West Texas State University in the District 1-4-H Club elimination contests. Senior Blue Ribbon winners will compete for state honors at the Texas 4-H Roundup on the Texas A&M campus June 8.

Winning Senior Blue Ribbons were Rebecca Hutchison - Clothing Educational Activity; Sylvia Parks and Patricia Henderson in Cooperative Demonstration; Connie Trindle in Public Speaking; Delbert McCloy, Doug McCloy, Mark McCloy, Bill McCloy in Soil Evaluation Team Contest.

Junior Blue Ribbon winners were Nancy McCloy and Caroline Henderson in Electric Demonstration; Wade Parks - Farm and Ranch Management Individual Demonstration; Rex McCloy in Public Speaking and W.C. and Danny Pool in Soil and Water Conservation Demonstration.

Janice Trindle, Senior in Foods and Nutrition Educational Activity received a white ribbon.

Sherlee Maupin, Junior in Foods and Nutrition Education-

al Activity received a red ribbon.

Terry Womble and Lynn Parks also entered a Junior Electric Demonstration and Morse Community Club in Junior Share-the-Fun stunt for District competition.

Mr. and Mrs. Lee Keys spent the weekend in Oklahoma. They visited her mother, Mrs. M.A. Robison in Ponca City and on Sunday in Oklahoma City they visited his uncle and other relatives. They returned to Spearman Monday evening.

Mr. and Mrs. C.S. Wishon and Charles Wishon of Crowell and Ann Bruce of Memphis visited Mr. and Mrs. Jim Neely over the weekend.

She's mad for  
The Boston Pops,  
The Keystone Cops,  
&  
**HOWARD WOLF**

\$30.00

"Coquette"

---

Fashion flirts up a storm in Howard Wolf's wind-swept crepe with soft skirt and softly stunning white band accents on the waist, hem and skirt. Navy, toast, pink, blue. Sizes 3-15.

As seen in Mademoiselle  
February 1966

---

*Lady Fair Shop*

PLAINS SHOPPING CENTER

# BUY

## POWER THAT PAYS

# IH UV-549 ENGINE

## IT IS ENGINEERED FOR IRRIGATION

IT IS A COMPACT MODERNLY DESIGNED V8 VALVE-IN-HEAD ENGINE BUILT FOR HEAVY DUTY WORK.

# NORTH PLAINS TRUCK & IMPLEMENT



Buy, Sell, Trade  
Hire, Rent, Find  
THROUGH THE

# WANT ADS

## FOR SALE

FOR SALE-1963 American-Westwood 2 bedroom mobile home. Excellent condition. 119 N. Brandt, Phone 659-2454 after 6 p.m. 24-tfc

FOR SALE-Two bedroom house, corner lot, excellent location. Phone Mrs. Wilburn McGuire 2359 after 5:30 p.m. 29-tfc

Will make feather flowers and arrangements, corsages and centerpieces, any color. Dorothy Groves, 3027. 42-

FOR SALE-1 USED 3001-6" Peerless Pump-W70 HP Gearhead, 1-USED-400'8" Peerless Pump-without gearhead. R.L. McClellan & Sons, Inc. 659-2156, Spearman, Texas. 47-tfc

FOR SALE-3 bedroom house, garage and fenced yard with low equity. Call 659-2967 or 659-2294. 40-tfc

FOR SALE by owner, 3 joining lots including 1 corner lot. Paved front and sides, lot 4-5-6, Block 54, Corner 2nd & Brandt, \$2,250.00. Call 659-2668 after 5:30. 40-tfc

FOR SALE-1962 Bonneville Pontiac 2 dr. loaded. Phone 659-2441, after 6 p.m. 659-2408. 40-tfc

FOR SALE-3 bedroom house, Blodgett Linn addition, one bath. Phone 659-2441, after 6 p.m. 659-2408. 40-tfc

FOR SALE-Blonde Everett Piano, \$400, Call 659-2747 or see at 505 S. Haney. 46-tfc

FOR SALE BY OWNER-100 ft. front with stuccoed 22' x 26' garage, modern, a 12 x 44 addition for trailer on pavement. Call 659-2304. 42-3p

FOR SALE-3 bedroom house, redwood fenced backyard. 1010 S. Haney. Call 659-3103 or 659-2754. 25-tfc

FOR SALE OR LEASE-Large home on 150 ft. corner lot, 822 S. Barkley. References required if leased. Phone FI6-8618 in Amarillo or 659-2350. 47-tfc

FOR SALE-14 Volume set of Junior Classics and 20 Volume set of Collier's Encyclopedias. Phone 659-3067. 36-tfc

FOR SALE-2 bedroom house with basement and 1 1/2 acres of land. 607 E. 10th. Gruver, Texas. Call FI7-2732. 37-8c

FOR SALE-640 acres 17 miles west Stratford, Texas, section 35, block 47 1/2 Dallam County. Irrigation possible, natural gas at fence line, 1/2 mineral. Write both Karolina Forbau, Box 45, Higgins, Texas and B. Forbau, 3417 Asbury, Dallas, Texas, 75205. 47-8p

TO SETTLE ESTATE-160 acres, prime farm land in high producing irrigation district, including minerals. All land in cultivation and level. Will guarantee plenty of water. Located approximately one mile Southeast of Spearman, Texas. Paved road on East side. Excellent allotments. Possession of milo acreage now. Wheat acreage after harvest. Clear title guaranteed. For further information call or write, Raymond Sparks, Box 633, 659-2330, Spearman, Texas. 47-8c

## Bowling Beat

SCATTER PINS LEAGUE		
TEAM	WON	LOST
Equity	76	28
Anthony Electric	73	31
Taylor-Evans	60	44
Pioneer Restaurant	55	49
Gruver Motor	48	56
Grunewalds	48	56
G&G Foodliner	40	64
Ideal	16	88
HIGH TEAM GAME		
Equity	637	
G&G	613	
G&G	600	
HIGH TEAM SERIES		
Equity	1743	
G&G	1722	
Anthony Electric	1660	
HIGH INDIVIDUAL GAME		
Tommie Arbsland	177	
Kate Farris	175	
Peggy Robinson	161	
Agnes Mayhew	185 (sub)	
HIGH INDIVIDUAL SERIES		
Tommie Arbsland	488	
Bertie Frazier	463	
Marcella Chisum	463	
Tubby Hays	445	

FOR SALE-1951 Chevy-2 Door Hardtop. Runs good. Phone 659-2617. 46-tfc

All kinds of Easter party goods, by Hallmark - of course, at Plainsman Office Supply. Also a nice selection of beautiful Easter cards. Choose yours today!

FOR SALE OR RENT-One bedroom home. Contact Collard Real Estate, 659-2501. 46-4c

FOR SALE-Two bedroom brick veneer house. Will sell or trade on good terms for smaller house. Phone 659-2464, L.S. McLain. 36-tfc

## THE WAY I SEE IT

Robert Cordes, pastor  
Oslo & Faith Lutheran

A well dressed man paused before a display window of a store looking at a painting of the Crucifixion of Christ.

As he stood there, a little boy in dirty jeans also paused. Pointing to the picture, the man asked the boy: "Do you know who that is, hanging on the cross?" "Oh, yes, sir," came the quick response, "That's the Savior."

The man didn't seem to understand the scene. The boy added: "Them's the soldiers, the Roman soldiers and that woman crying there is His mother." After another brief moment of silence he added: "They killed Him, mister. They killed Him."

The man tousled the boy's hair affectionately and walked down the street.

He had turned the corner and walked half a block when he heard the boyish voice: "Hey, mister! Mister!" The man turned and waited for the boy to catch up. Almost out of breath, the boy panted in an excited voice: "I wanted to tell you, He rose again! He rose again!"

What a message!  
No greater thing can be told--no rocket on the moon, or a space walk will ever provide more real headlines than "Hey, mister! He rose again!"

God's greatest message to man is the message of His Son sent to earth to deliver humans from their guilt and sin. But the message often is minimized, not really understood by many and relegated to the back pages of life.

People forgetting to worship this risen Savior because they don't really understand their own self and condition before God. And God came and offers us life--now---& Eternal life in a perfect heaven. Why do we often minimize it and fail to thank God?

But you will allow God's Spirit to move your conscience and body this year--not only on Easter but daily to meditate on this message: He died-but He lives--and by faith in Jesus' work, we too live!

## SERVICES

Amarillo Daily News & Globe Times home delivery. Call 2685. 14-tfc

SERVICE-Ditches from 3-12 inches, any desired depth. S. D. Jones 659-2809. Harold Shaver 659-3474. 17-tfc

WANTED---Rototilling yards and gardens. 659-2498. 46-7p

Retired person wanted to assume responsibility for home and care of male semi-invalid in Perryton; live in, living expenses furnished plus salary. Apply in writing, giving personal background. Box 197, Perryton. 42-4c

WANTED-We are looking for a young man to work in our shop. Must be mechanically inclined and want to learn a trade. Apply at Permian Corp. 42-6p

WANTED-Yard and garden rototilling. Peewee Kizziar, 310 S. Brandt. 44-tfc

## Newcomers To Spearman

Mr. and Mrs. John Louis Hisey of 220 S. Roland are newcomers from Kearney, Neb. He is employed by Hansford Implement and they have a 1 1/2 year old daughter.

Mr. and Mrs. Irvin Raymond Calkins of 111 Fifth Ave. moved here from Canoga Park, Calif. They are retired.

Carol Deliose Willis is a new resident from Carnegie, Okla. and is employed by Bob's Sales & Service.

Mr. and Mrs. James E. Markle and Alvin Dale of McPherson, Kan. spent the weekend with her aunt and grandmother, Mrs. Frances Slin and Mrs. Kate Gray. Mrs. Gray celebrated her 88th birthday Saturday.

Mrs. Veatrice Brock of Crowell spent a week recently visiting in the home of her son and family Mr. and Mrs. J.L. Brock.

**TOMMY GOOCH AGENCY**  
FARM BUREAU INSURANCE  
Spearman, Texas

## MOONLIGHT TV

Specializing in Minor TV Repair.  
EVENINGS & SATURDAY  
Sorry-No Sunday Calls  
Phone 659-2792 or 659-3321  
Service Calls - \$2.50

Want To Build a New Home, Remodel or Repair Your Home?

CALL  
**R. L. UPTERGROVE**

659-2677 Spearman

Out of Town, Call Collect

For Sale:

3 Bedroom House-Several Lots-2 Commercial Buildings

## Notice

LEGAL NOTICE  
By order of the Board of Education of the Spearman Independent School District:

Sealed bids will be received at the office of Superintendent of Schools at Spearman, Texas, not later than 5:00 P.M., April 12, 1966, for furnishing the gasoline requirements for Spearman Independent School District. Two separate bids will be required to cover the following periods:

From date of bid until May 30, 1966, approximately 3000 gallons regular grade required.  
From September 1, 1966, to May 30, 1967, approximately 17,000 gallons regular grade required.

All gasoline to be delivered to overhead tank located at 403 East 11th, Spearman, Texas.

The Board of Trustees of the Spearman Independent School District reserves the right to reject any and/or all bids. 48-2c

NO! We didn't move again! That was a typographical error in last week's ad. We're still in our new location at 106 E. Kenneth with the finest products anywhere..... PHILCO-Stop by and look over our Color TV's and other fine Philco products. Burton's TV. 48-1

STRAYED-One steer about 600 pounds, branded Bar quarter circle B on right hip. Max Baggerly. Phone 659-2662. Spearman. 48-tfc

Sunday afternoon guests of the Guy Remys were Mr. and Mrs. Oscar Mullins of Guyton, former residents of Spearman. Later in the afternoon they all visited with Mr. and Mrs. Fred Fewin at the Skelly Plant and with Mr. and Mrs. John R. Miller and Sandra.

**Burton's TV**  
Your PHILCO Dealer  
106 E. Kenneth  
Spearman, Texas  
Phone 659-2121

## Everett E. Greene AGENCY

Real Estate-Loans  
Insurance-Cattle  
Aluminum Pipes

410 Davis, Spearman  
Phone 659-2587

## For Quick Courteous Service

Chvron Gasolines  
Atlas Tires & Accessories  
Washing-Greasing

**QUICK, COURTEOUS SERVICE**

Loren Simmons

**SIMMONS CHEVRON SERVICE**

Phone 659-0985  
Plains Shopping Center

The County Council of P-TA is postponing their school of instruction that was to be held this week until May 11.

Mrs. L.O. Mayo of Galena Park will teach the course which will be held in Spearman.

Mr. and Mrs. Ron Money and son have recently visited in the home of her parents, Mr. and Mrs. L.S. McLain.

**INSTANT READER RESPONSE**



**The Plainsman**

## City Directory

## CLEANERS

CLEANING  
PRESSING  
CARPET  
CLEANING SERVICE  
COIN OPERATED  
DRY CLEANING

FREE  
PICK-UP & DELIVERY  
PHONE 659-2511

## Wardrobe Cleaners

Oscar Donnell  
302 MAIN ST.  
SPEARMAN, TEXAS

## DENTISTS

## F. J. Daily D.D.S.

16 SW COURT STREET  
SPEARMAN

## ELECTRICIAN

## Anthony Electric

Industrial, Commercial  
and House Wiring

Heating and  
Air Conditioning

Contracting,  
and Repairs  
Fully Insured

PLAINS  
SHOPPING CENTER  
PHONE 659-2441  
BOX 727  
SPEARMAN, TEXAS

## Cummings

Refrigeration

HEATING  
AIR CONDITIONING  
SALES & SERVICE

SPECIALIST

659-2721

SPEARMAN



PART OF ALL YOU EARN... SHOULD BE YOURS TO KEEP

Ed Dear

703 Cotter Drive  
Spearman, Texas

Office 2516  
Home 3073





Spanish writer Salvador de Madariaga complained in a commentary published by the Catholic daily "Ya" that infusions of Anglo-Saxon words are making the Spanish language "an English colony."

They're TREASURES... those Hallmark book-cards filled with poems, pictures etc. You will find them an ideal inexpensive gift! Plainsman Office Supply.

### Jimmy Talley Services Set

Funeral services will be conducted at 10 a.m. Friday in the First Baptist Church of Amarillo for Jimmy Talley, 28, husband of the former Shirley Sparks of Spearman.

Mr. Talley died Tuesday afternoon in an Amarillo hospital.

He was employed by All-State Electronic Services.

Survivors include his wife and a daughter Zantee of the home at 4115 Bonham in Amarillo.

Mrs. Talley is the sister of W.E., James and A.D. Sparks, all of Spearman.

### Holiday Begins Friday Afternoon

Easter holidays for Spearman Public Schools will not begin until the end of the regular school day Friday, Superintendent Bill Reeves said this week.

School will be out Saturday, Sunday and Monday. Classes begin Tuesday morning.

One day was taken off the holidays because of the forced three-day suspension of school last week. The school was closed because of the flu epidemic.

Because of some extra days in the original school calendar, only one day will have to be made up.

### MAUNDY THURSDAY SERVICE TONIGHT

Maundy Thursday Communion Services will be held tonight at 7:30 p.m. in the First Christian Church of Spearman.



SCIENCE FAIR WINNERS--These junior high students recently had exhibits at the Panhandle A&M College Science Fair that placed excellent or good. They are: (left) Sandra Fowler, DeAnna Sheets, Robert Barker, Glenna Sanders, Lewis Connors, Kandy Vaughn and Susan Brillhart.

Plainsman Photo



Can't find time to write? Phone home for no more than one dollar.

After 8 PM and all day Sunday, call long distance (station to station) anywhere in the Continental United States for no more than a dollar for the first 3 minutes. Alaska and Hawaii excepted. Taxes not included.

**GENERAL TELEPHONE**

A Member of the GT&E Family of Companies

### Blend in River

The muddy waters of the Missouri River meet the clearer Mississippi north of St. Louis, but each river retains its identity for more than 35 miles before blending into a uniform color.

Overheard: Everything I like is either illegal, expensive, fattening—or married."

### TOPE WATCHERS

The U.S. Treasury Department in 1927 set up a Prohibition Bureau to handle violations of the 18th amendment.

  
**Hallmark**  
 Cards  
**PLAINSMAN**  
**OFFICE SUPPLY**  
*Gifts - Greeting Cards - Stationery*  
 Phone 659-2466 - Spearman

## Presenting the 1966 Spearman High School Seniors

### Equity

- Grain Storage
- Feeds
- Fertilizers
- Insecticides



**BARBARA KATHRYN KILGORE**  
Band 1,2,3,4; Choir 2,3,4; vice president 4; Choir Council 4; Tri-State 4; FTA 2,3,4; Dist. Officer 4; FHA 4; NHS 3,4; Pep Squad 1,2; Science 2,3; Ready Writing 4.



**JAMES LINUS OWNBEY**  
Band 1; Mr. Intellect 3,4; Who's Who 4; Track 4; Science 3,4.



**DONNA JAYLENE LOVE**  
Band 1,2,3,4; Choir 1,4; FNA 1,2,3; Pep Squad 1,2,3.



**JAMES WILLIAM ROBINSON**  
Football 1,2,3,4; Basketball 1,2,3; Track 1; Tennis 2,3; Vo Ag 1,2,4; Band 1,2,3,4; Volleyball 3,4; Honorable Mention All-Dist. Football 4; Co-Captain 4.

"Trust Your Car To  
 The Man Who Wears the Star"

**Snider-Pearson**

**Texaco**

Compliments Of

**Horizon**

**Oil & Gas**

**North Plains**

**Truck & Implt Co.**

Your Buick, Pontiac & International Dealer



**DONNA GAYLE GILLEY**  
Band 1; Pep Squad 1,2; Speech Club 3.



**TERRY KAY HUDSON**  
F.H.A. 1,3,4; Pep Squad 1,2,3,4; Secretary 4; Choir 2; Band 1,2,3,4; All Regional 4; Tri-State 4.



**DARREL GENE ADKISON**  
Basketball 1,2,3; Football 3; Volleyball 3; Senior Play 4; Choir 2,4;



**GARY LYNN GRAY**  
Basketball Mgr. 2,3; Football 3, mgr. 2; Choir 2, 3; Men's Glee Club

Compliments Of

**Stanley**

**Garnett**

**First State Bank**

Member F.D.I.C.