



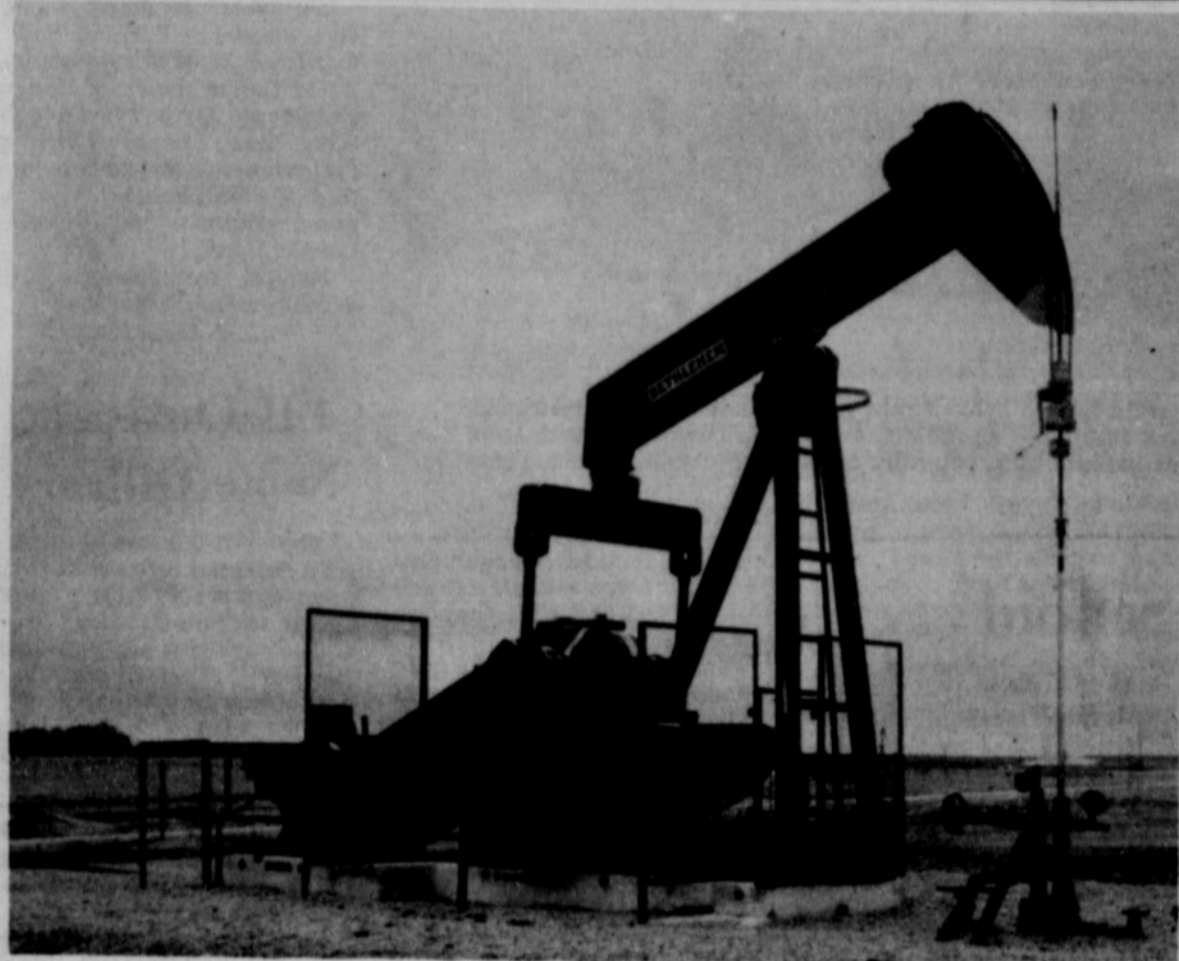
The Hansford Plainsman



VOLUME V., NUMBER 49

SPEARMAN, TEXAS

THURSDAY, SEPTEMBER 17, 1964



PUMPS ECONOMY--Hundreds of oil and gas wells pump over \$16 million into Hansford County each year. Allied industries add more to the economy. The industry pays more than half of the three school districts' tax bills.

PLAINSMAN PHOTO

Oil and Gas Industry Provides \$16.9 Million Into Our Economy

A \$16.9 million a year ingredient in the prosperity of Hansford County is the production of oil and gas, the Texas Mid-Continent Oil & Gas Association says in its current survey of economic factors stemming from petroleum operations here.

Using just-published U.S. Bureau of Mines figures as a base, the Association has projected what oil and gas activities mean in this county. In 1962 Hansford County was producing more than 2.7 million barrels of crude oil and 72 billion cubic feet of natural gas. The oil was valued at \$8.1 million; the natural gas at \$8.8 million.

Hansford County ranks 68th in the state as total value of oil and gas production.

"Demand for Texas crude picked up enough last year to give us an increase of about 3 per cent over 1962 on a statewide basis. This slightly improving trend seems to be holding this year as more autos are put on the road and nationwide business conditions accelerate," said James L. Sewell, President of the Association. "It will be several months, however, before we know to what extent individual counties are participating in the current market."

The dispersion of oil dollars through Hansford County business channels and the healthy effect given property values by petroleum industry activity are indicated by several figures published by the Association.

It is estimated that royalty payments to Hansford County landowners who are fortunate enough to have producing wells on their property create a "crop" worth about \$2.1 million annually. These and other farmers and ranchers who have leased acreage for exploration receive additional rental and bonus payments, but sufficient current data is not available for measuring the amount.

Oil and gas operators invested an estimated \$4 million in Hansford County last year in the search for new fields and in the development of zones where production has been found. The Oil and Gas Journal reports that 36 wells were drilled in the county in 1963, resulting in 5 oil wells, 15 gas wells, and 16 dry holes.

Drilling operations included one wildcat well in which operators hunted oil in new territory or at new depths. About \$1.8 million of the drilling expenditures was lost to dry holes, the Association estimated.

Petroleum industry payrolls contribute about \$2.1 million a year to the county, according to Texas Employment Commission records. They show about 300 persons directly employed in oil and gas operations.

The state government's financial interest in Hansford County operations is measured by the \$990,000 a year which the operators and royalty owners provide the state government in production taxes.

These payments are in addition to those paid to local units of government and schools as property taxes. Oil and gas property taxes are reflected in local support of many Texas school districts. For example, 64.6 per cent of the local taxes for the Gruver School District comes from oil and gas operations; 63.5 per cent at Morse; and 64.9 per cent at Spearman.

Among the county's industrial operations is the processing of oil and gas. Two natural gasoline plants are operated to recover butane, propane, natural gasoline and other liquids from natural gas. They have a capacity of 520 million cubic feet a day.

Spearman Board Planning School Improvement Needs

Items and the costs for a proposed school bond issue were the big items discussed at the regular meeting of the Spearman School Board Tuesday night.

The discussion covered many items ranging from grass and paving around the new high school to repairs and improvements on the junior high school.

A long list of items needed or wanted in the school was made up by the board, then the members started discussing and cutting and adding items to the list.

Some of the items placed on the necessary and which will probably make the bond question include paving some of the grass areas at each end of the

High School, putting a lawn and sprinkler system in front of the school, seeding the field behind the high school for a practice field for the band and football teams and outside class area for physical education. Repairs and improvements to the junior high school building.

Board members took the long, proposed list under advisement and will decide on the items to go on the bond issue at the October meeting.

The bond assumption and maintenance tax election between the Spearman and New Hope School Districts was canvassed. The matters carried. There were 36 ballots cast.

(Con't. on page 2.)

Hansford Gets Short Drink As Panhandle Gets Soaking

Another short, but welcomed drink of water was spread over Hansford County Monday and Tuesday.

It was far short of the one and two inches reported in some areas close by, but was a large rain when compared to

what the county has been receiving.

Mrs. Pat Cates, weather observer here, measured .11 at 7 a.m. Tuesday morning and .45 at the same time Wednesday morning.

J.C. Harris reported a total

of .6 at Gruver for the same time.

Approximately one-half inch have been the amounts from most of the area.

A heavy, wet layer of clouds blanketed the area Monday night and Tuesday. No one could find the trigger to dump the large amounts of moisture which apparently passed overhead.

The area was without long distance telephone service much of Tuesday because of storm damage to long distance toll lines between here and Amarillo in the Pampa-Groom area.

A spokesman for General Telephone said the Bell Telephone cables were broken by a storm in that area and nothing but emergency calls could be handled until the cable was repaired.

Farmers said every bit of moisture helps, but the long dry land needs much more moisture. Some who had seeded some wheat on the earlier showers, said this would be a big help to the crop.

Spearman vs. Gruver

County Football Title At Stake Here Friday

Both coaches sum their teams up as being too small and too slow, but that makes little difference to the fans because all dope sheets go out the windows when Spearman and Gruver meet.

The county competitors meet Friday night at 8 p.m. in Lynx Stadium.

In pre-season interviews both coaches said they did not have the size or speed to be contenders in their districts this year.

With this the third game of

this season approaching Spearman has a 2-0 record with impressive wins over Sunray and Booker. Gruver opened by routing Clarendon, then bowed to a strong and big White Deer team Friday.

This will probably be the only time this season that the two teams will be playing against opposition of about their sizes. The lines will be about equal according to listed weights, but Spearman will have a weight advantage in the backfield.

Both teams have more depth this season than when Gruver took a spine-tingling 12-8 thriller from Spearman in Gruver last fall.

Quarterbacking the Greyhounds is Sam Tipton, a youngster who likes to throw the ball. He will be joined by a new backfield made up of Sammy Arnold, Gary Wilson and Don Mathews.

In the past eight years Gruver has tripped the Lynx in every game, with last year's 12-8 decision being the closest contest in several years.

Spearman will go with its usual offensive and defensive starters.

In other games for Spearman this week, Stratford goes to Stinnett to tangle with the undefeated Rattlers. Spearman plays Stratford Sept. 25 in Stratford.

The other 1-AA district members will all be active. Boys Ranch plays Vega. Dalhart goes to Friona, Sanford-Fritch will be busy entertaining White Deer. The No. 1 rated Phillips Blackhawks will go to Tulla. Shamrock goes after its third win against an old foe, Wellington.

New Church Is Formed

Faith Lutheran will be the name of the new Lutheran congregation being formed in Spearman. At their last congregational meeting this name was made final by the voting of the people.

Faith Lutheran began as a Lutheran mission last February and has grown steadily. Approximately 60 persons are attending service and Sunday School held at 9 a.m. in the new Farm Bureau Building. Sunday school classes are being held for every age group including adults.

A young people group known as the Luther League will be meeting twice a month where there will be topics, Bible studies, games, food and fellowship.

The congregation will be officially organized the latter part of the year in connection with The American Lutheran Church.

At present Faith Lutheran is being served by Pastor Robert Cordes who also serves Oslo Lutheran northwest of Gruver. Later it is planned that a pastor can be obtained for Faith Lutheran and reside in Spearman.

Land is being secured for a building site. Present plans call for a first unit educational wing and worship center to be erected in 1965.

Thus a group of believers in Jesus Christ put their faith in Him and His salvation. Allowing God to work in humans is described as faith. Thus Faith was chosen as the name of this young group.

Anyone is always welcome at any service.

Pampa Man Is Evangelist For Revival

A Church of Christ Minister from Pampa will conduct a series of gospel meetings in the Spearman Church of Christ from Sept. 28 through Oct. 4.

Guy V. Caskey, minister of the Mary Ellen and Harvester Church of Christ in Pampa is the speaker. He will preach sermons at 10 a.m. each week day and 7:30 p.m. each evening. Sunday services will be at the regular time.

Bro. Caskey has been preaching for several years and is a noted evangelist.

Congregational singing will be conducted at each service by Bill Blackstone, minister of the Church of Christ in Groom.

Charles Milner, minister of the local church, will open the evangelistic service, Sunday, Sept. 27. His subjects will be "The Great Salvation" and "To Obey is Better than Sacrifice".

County Tax Rate Same

The county tax rate for this tax year will remain the same. The rate was set by the County Commissioners this week.

The rate breaks down this way: State tax 42 cents, County \$1.00, Special Road Tax 30 cents, Road District Three 70 cents, Road District Four 70 cents and Water Conservation District No. 2 five cents. The New Hope School District Tax will be \$2.30. This is the last year for this tax as the district is now in the Spearman district.



Guy V. Caskey



Stand by boys, the days in the old fashioned barbershop are drawing to a close--that's what the fashion experts are predicting. Within five years, according to the x-spurts, men will be having their hair shaped and colored just like the women.

According to the leaders in styles, a man's hair will be shaped and colored to fit his personality. That may be fine for the most topped individuals, but those of us with wide parts will get nothing but "fringe benefits" out of the matter.

We missed the Saturday meeting with Bob Price, the Republican Candidate for Congress from this District. He did not make an early meeting and we did not get to the late one. However, we have received enough news releases from his headquarters that we believe we know most of his beliefs.

There is one point the Republicans in the cow country keep dwelling upon that sure contradicts their stands.

The Republican farm policy is for more freedom for the farmer and doing away with the binding controls of the farm programs. They want the farmers to be able to operate in a free market. That may be fine. However, the candidates then advocate a strong fight for a meat import quota on meat products.

The meat market is operating in the supply and demand situation. It has not been very popular.

We can see no reason for agriculture to operate on world market prices while most other industries work behind a protective tariff. World-wide, agriculture is the only industry that is not protected by tariffs. This is not true in many countries. High tariffs on imports have been some of the biggest problems in expanding markets for our agriculture products.

Personally, it appears protective tariffs would be simpler than the farm programs, but our legislative abilities earn us just as much as our coaching job does---nothing.

We are glad we are not in the position of liberal editor H M. Baggerly of Tulsa trying to shout down all the charges brought against Johnson and Yarborough.

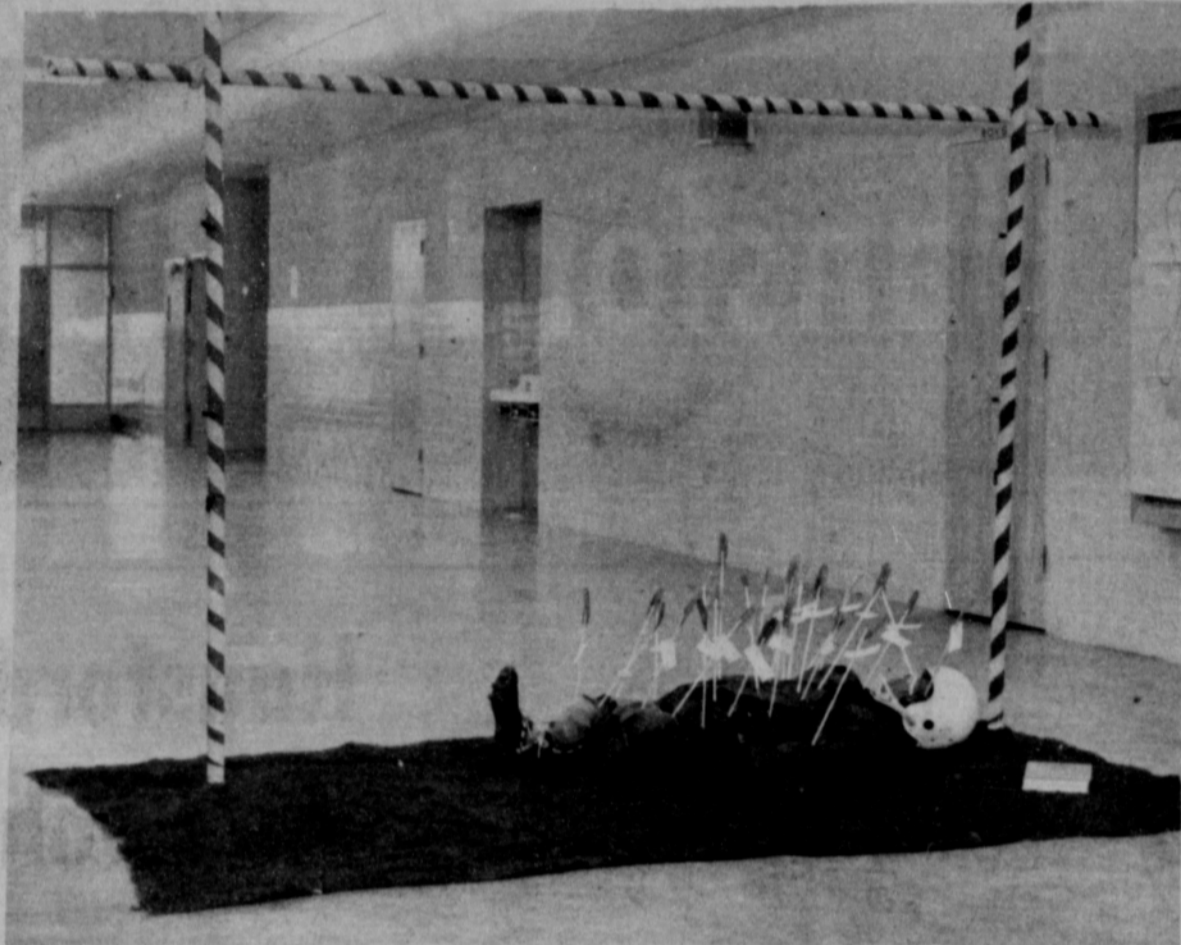
Being a small, tabloid paper with only two issues a week we would just not have the space.

We are naive and have only been to one or two county fairs, but it seems to us that a man holding an office of public trust, be it justice of peace or president, should not need so much protection on his past activities.

We read a defense the other day that based its whole point on the fact that President Johnson has been in public office for many years.

That is not a defense of the President, but an indictment of the lowering standards of conducts among office holders and the voters who put them there.

Spearman's Lynx found a big, fast and good football team waiting for them in Booker last Friday night. Right in the mid-



IT WORKED--To bolster morale for the Lynx-Kiowa game last week Miss Deere and the Pep Squad constructed this dummy of an Indian, felled by an arrow for each Lynx on the team. The display was made for the pep rally Friday. The Lynx won the game 36-12.

PLAINSMAN PHOTO

Too Late To Classify

FOR SALE-35,000 BTU Heating stove, 3 inch flue. See at 1114 S. Dressen. T49-2p, S49-2p

Two out of three first quarrels between honeymooners concern money.

dle of the Booker line was a 203 pound giant who gave Spearman plenty of trouble.

Lynx guard Lynn Buzzard, who weighs about 140, had the job of blocking on this big boy most of the night. Buzzard commented after the game that he would hit the big boy just as hard as he could, it would check him for just a second, then the big Indian would just push Buzzard in the mud.

He must not have pushed him under too quick, for the Lynx won 36-12 and the Kiowas were not stepping aside and asking Spearman to score.

School . . .

(Con't. from page 1.)

The bonded indebtedness election carried 35-1 and the maintenance Tax was approved 34-2.

After discussing the kinds of shop or vocational training programs needed in the school, the board decided to contact the state vocational depart-

ment and make arrangements to visit some schools and see what type programs they are using.

A program to recognize outstanding academic students was implemented. The type of awards to be given students who meet the standards will be decided upon later.

The board voted to send the Elementary and Junior High Principals and any math teachers to a class on modern math. It will begin in October.

Don Denham was granted permission to use 15 of the fifth and sixth grade football uniforms not being used now in the school programs. Denham is director of the Royal Ambassador Club for boys.

A method of repelling the bats that get in the breezeways at the junior high building was discussed with Orkin Representatives. The firm says the bats are coming from somewhere besides the school. They claim to have killed the bats in the attic of the building.

Principal Frank Cockrell was instructed to work out an area at the high school so the Lynx band can practice marching at the school instead of the football field each day.

This action was taken after the board reported receiving complaints from persons living in Blodgett and Linn about students speeding on the streets between the school and the football field.

Alternate recommendations included taking the students to the field in buses or marching them to the field. There are not enough drivers available to use buses. It would take six to haul the 150 piece band.

Man Returned From Colorado

Sheriff J. B. Cooke returned a man here from Lamar, Colo., this week to face a worthless check charge.

Being held in county jail on a felony charge of swindling with a worthless check is Gilbert Huff.

Haden Rites In Panhandle

Graveside rites for George D. Haden, 88, of San Bernardino, California were held at 2 p.m. Wednesday in Panhandle.

Mr. Haden is the father of J.E. Haden, who lives east of Spearman in Ochiltree County.

Mr. Haden was a long-time resident of Carson County. He farmed near Panhandle from 1919 until 1949. That year he retired and moved to San Bernardino.

Survivors include his wife, five sons, R.K. of Napa, Calif., J.E. of Spearman, G. R. of Dallas, Lewis of Denver and George D. Jr.; two daughters, Mrs. Lonie Griffith of Plainview and Mrs. Robert Prater of San Bernardino; nine grandchildren and 15 great-grandchildren.

Funeral services were conducted in San Bernardino.

4-H Clovers Name Officers

The 4-H Clovers of Spearman elected officers at their meeting Sept. 11 in the Home Demonstration Building.

The officers are President DeAnna Sheets; Vice President Cindy Hutchison, Secretary Jan Jones, Reporter Lynna Mackie, Song Leader Jyniece Callaway, Game Leader Deborah Jackson, Council Delegates Becky McClellan and Lynn Hohertz, Refreshment Chairmen Marilyn Smith and Vicki Rosenbaum.

County Home Demonstration Agent Miss Linda Webb discussed the subject matter groups available to the club members.

Members present were Jan Jones, Deborah Jackson, DeAnna Sheets, Cindy Hutchison, Jyniece Callaway, Becky McClellan, Lynn Hohertz, Marilyn Smith, Vicki Rosenbaum and Vickie Mackie.

Huff is alleged to have purchased an Edsel car and paid for it with a worthless check.

He is being held in lieu of \$1,000 bond.

Officers also arrested three drunks and one fugitive for Hereford.

DENNIS THE MENACE Hank Ketcham



Complete Selection Of Bookkeeping & Office Supplies

Hallmark Thoughtfulness Albums

Hallmark Wedding & Anniversary Books

Guest Books

Bibles

Montag Stationery



Hallmark Cards

When you care enough to send the very best



Hallmark Playing Cards

Hallmark Thought O' You Cards

Plainsman Office Supply

209 Main

659-2466

The Hansford Plainsman



Hansford Plainsman Publishers, Inc. Jim Davis Burl McClellan

County-wide independent newspaper published every Thursday at 209 Main in Spearman, Texas. Second class postage paid in Spearman, Texas

Editor.....Burl McClellan Production Mgr.Jim Davis

NOTICE: Any erroneous reflections upon the character, standing or reputation of any person, firm or corporation which may appear in the columns of The Hansford Plainsman will be corrected gladly upon its being brought to the attention of the publishers.



Mrs. Clifford Wayne Nunn

Coffee Opens New Season For Club

A coffee for the 20th Century Study Club at the First Christian Church opened the fall season for the club on Sept. 10. Mrs. D. E. Spoonmore, president, presided. With the importance of each women's efforts in mind, plans were made for a fruitful season.

Mrs. Tom Sutton and Mrs. J. D. Wilbanks presented a piano duet "Qui Vive!" by W. Ganz also "The Witches Flight" by H. M. Russell.

Breakfast was served from a table appointed in silver and crystal. The club's colors of green and white were carried out in the gladioli and chrysanthemum centerpiece and in the outstanding bowl of fruit.

Hostesses for the occasion were Mmes. C. U. Pope, P. A. Lyon, Bill Massie, C. J. Renner, Joe Trayler and D. E. Spoonmore.

Members present were Mmes John Allen, Carl Archer, Deta Blodgett, George Buzzard, Lloyd Buzzard, Frank Davis, J. W. Davis, R. C. Fisher, Guy Fuller, Fred Hoskins, O. C. Holt, Dwight Hutchison, Wayne Hutchison, J. R. Keim, V. N. King, C. A. Kleeberger, Johnny Lee, L. S. McLain, Jack McWhirter, T. D. Samsing, Olin Sheets, J. R. Stump, Tom Sutton, Everett Tracy and a guest, Mrs. J. D. Wilbanks.

Mrs. L. S. McLain and Mrs. Wesley Garnett recently returned home after visiting in Houston with Mr. and Mrs. L. T. Hamilton.

Guests of Mr. and Mrs. Granville Boyd Sunday and Monday were her parents, Mr. and Mrs. R. N. McMahan from Amarillo.

Mrs. Hall Jones recently returned home after visiting in Ulysses, Kansas, with her mother, Mrs. Alice Winger.

Mr. and Mrs. M. D. McLaughlin had as their guest for three days last week Margaret Ochiltree from Long Beach, Calif.



Mrs. Bob Leland

Copeland - Leland Vows Read Sunday Afternoon

Double ring wedding vows were pledged by Miss Joe Lynn Copeland and Bob Leland of Amarillo, with Rev. C. R. Hankins of Wellington, former pastor of the bride, performing the ceremony on Sunday, September 13th at 3 o'clock in the afternoon at the First Methodist Church.

The bride is the daughter of Mr. and Mrs. E. J. Copeland of Spearman. The groom is the son of William Leland of Denver, Colo. and the late Mrs. Leland.

Vows were exchanged before a seven branched candelabra which held white tapers and were flanked by baskets of white stock. The tapers were lighted by Joe Lynn Clifton, the bride's namesake of Clayton, N. M. and Cassie Pearson of Perryton, cousin of the bride. Misses Gayla Raye Osborne of Perryton and Barbara Ann Brown of Farnsworth, cousins of the bride, were flower girls. Lindy Osborne of Perryton and Kelly Brown of Farnsworth, cousins of the bride, carried the rings.

Traditional wedding marches were played by Joe Mack Hill, organist, who accompanied Coy Palmer, vocalist, as he sang "O Perfect Love", and "The Lord's Prayer."

The bride was attended by her cousin, Mrs. Selwyn Palmer of Dumas as matron of honor. Bridesmaids were Miss Sallie Rivers of Amarillo and Miss Barbara Jo Brothers of New Orleans, La.

Ushering were Kim Copeland, brother of the bride, W. E. Anderson, of Denver, Colo., brother-in-law of the groom, and Kengle and Bob Pearson of Perryton, cousins of the bride.

C. F. Gish, Colorado Springs, Colo., served as best man. Groomsmen were Phillip Benton and George Young, both of Amarillo.

Given in marriage by her father, the bride wore a formal wedding gown of pure silk organza over taffeta, designed with Chantilly lace bodice re-embroidered with iridescent sequins and bridal pearls. The gown featured a scalloped sabbina neckline. Lace motifs were repeated on the bouffant organza skirt with fullness extending to a chapel train, which was edged with clipped lace. Her multi-tiered veil of silk illusion was attached to a tiara crown of bridal pearls and iridescent sequins.

She carried a cascade bouquet of white roses accented with fern leaf atop a white Bible.

The bride followed the tradition of "something old, something new, something borrowed, something blue, and a sixpence in her shoe." For something old, she wore an heirloom necklace of pearls belonging to her aunt, Mrs. H. C. Brown, Jr. Her veil and dress were something new and something borrowed was the white Bible belonging to a friend, Mrs. Sam Watson, on which rested her bridal bouquet, and something blue was the blue garter which she wore.

The matron of honor and bridesmaids wore identical floor-length gowns of French violet taffeta fashioned with a rounded neckline and bell skirts, and three-quarter length sleeves. They wore matching French violet halo hats. They each carried a long stemmed white rose.

Completing the scene were the two little flower girls who wore long French violet dresses featuring rounded necklines and short puffed sleeves, fashioned of the same fabric as those of the bridesmaids. They wore matching bow headpieces and carried baskets of rose petals.

Mrs. Lyon Hosts Guild

The Arts and Craft Guild met in the home of Mrs. P. A. Lyon Friday afternoon.

The afternoon was spent china painting.

Attending were Mmes. Joe Trayler, Fred Dily, Clay Gibner, Ned Turner and the hostess.

The next meeting will be held in the home of Mrs. W. L. Russell on Sept. 18.

The bride's mother chose a jacket dress of mauve silk with marching hat. Her accessories were also mauve. She wore a corsage of white sweetheart roses.

After the ceremony, the bride's parents hosted the reception in Fellowship Hall of the church. The bride's table was laid with a white net cloth accented with purple seafoam stative and white pom-pom flowers. White tapers in amethyst candelabra completed the decoration.

The three-tiered wedding cake was decorated with purple and silver flowers and topped with a miniature bride and groom. Punch was served from a punch bowl fashioned of ice and colored purple, surrounded by purple seafoam stative and white pom-poms. The bowl was made for Joe Lynn by Mrs. Charles Gates.

Members of the houseparty were Miss Carolyn Colard of Guymon, Mrs. Clark Woodridge of Lubbock, Mrs. Perry Coursey and Mrs. Roger Odegard of Spearman, and Miss Karen Stockdale of Gruver.

After the reception the couple left on a wedding trip to Nassau, in the Bahamas. For travel the bride selected a suit of nubbed cranberry silk; worn with black accessories. Her corsage was taken from her bridal bouquet.

On their return they will be at home in Amarillo where the groom is employed by Phillips Petroleum and the bride works for the Child Welfare Department.

Out of town guests for the wedding included Mrs. Lyle Lacey, Mr. and Mrs. J. O. Koontz, Charles W. Young, Mr. and Mrs. Phillip Benton, Mr. and Mrs. Paul Fulton and sons, Mrs. Mary Bascus, Miss Betty Sell, Mr. and Mrs. M. B. Tyson, Mrs. Jewel Juergens, Misses Lola and Kay Rivers, Mr. John Hornstra, Mr. and Mrs. Harold Logsdon, Mr. and Mrs. J. W. Rivers, Mrs. Fern Roland, and Bobby Williams of Amarillo; Mr. and Mrs. Max E. Johnson of Enid, Okla., Mr. and Mrs. John Virtue, Mr. and Mrs. W. E. Anderson, Christy and Gary, Mr. William Leland, all of Denver; Mr. and Mrs. C. F. Gish, Colorado Springs; Mrs. Betty Swearingen, Canyon; Mr. and Mrs. Walter Leland, Wanego, Kans.; Mrs. Carleton Cooper, and Karen Kay, St. John, Kans.; Mr. and Mrs. Clark E. Woodridge of Lubbock; Mr. and Mrs. Selwyn Palmer, Mr. and Mrs. Victor Juarez and Mona, Mrs. Elizabeth Copeland of Dumas; Mrs. Grace Higley, Cummings, Kans.; Mrs. Newell Higley, Muscotah, Kans.; Mr. and Mrs. Richard K. Price, Hereford; Mrs. Myrl Jones, Canyon; Mrs. Grady Yeary, Mr. and Mrs. Leo Shuler, Mr. and Mrs. Roy Osburner, Mrs. L. R. Conner, Mr. and Mrs. O. R. Truax, Mr. and Mrs. Roger Pearson, Mrs. H. C. Brown, Sr.; Mr. and Mrs. Lowell Sheets, and Mr. and Mrs. Raymond Juarez of Perryton; Mrs. Oran Kelly, Mr. and Mrs. H. C. Brown, Jr., and Mr. and Mrs. Allan Dennison of Farnsworth; Mr. and Mrs. Mack Dortch, Mr. and Mrs. Henry Reid, Miss Elaine Kelly, Mrs. D. vid Reid and Randy, Mr. and Mrs. Charles Reid, Tammy and Clay, Mr. and Mrs. D. H. Kelly, Mr. and Mrs. L. R. Gamertsfelder, Mrs. Erlis Pittman, and Bill Pittman of Morse; Mrs. C. W. Stockdale and Karen of Gruver and Mr. and Mrs. Jake Clifton of Clayton, N. M.

Miss Smith Is Married To Clifford Wayne Nunn

In a double ring ceremony at 7:00 p.m., September 12, in the First Baptist Church, Nieta Faye Smith, daughter of Mr. and Mrs. W. W. Smith, exchanged wedding vows with Clifford Wayne Nunn, son of Mr. and Mrs. Fred W. Nunn of Amarillo.

Rev. Luther M. Berry officiated at the ceremony before an arch decorated with greenery and white bows. Vases of white gladioli and stock and a seven branched candelabra with tapers completed the setting.

Mrs. Marvin L. Jones presented traditional wedding selections and accompanied Mr. Richard Fancher as he sang "The Lord's Prayer" and Mr. Bob Barker as he read the poem "How Do I Love Thee?" by Elizabeth Browning.

The bride, given in marriage by her father, wore a formal gown of white peau de sole, designed with a fitted bodice overlaid with white lace and scalloped at the neckline. The bodice was trimmed with seed pearls and iridescent sequins. The long sleeves tapered to petal points at the wrists. A crown of seed pearls secured her fingertip veil. The bridal bouquet was of gardenias and stephanotis.

Maid of Honor was Miss Janice Smith, sister of the bride, and bridesmaid was Miss Carolyn Nunn of Amarillo, sister of the groom.

The attendants wore identical dresses of nylon sheer peacock blue with matching shoes and circlet hats. They each carried a bouquet of white pom pom mums.

The bride's mother chose a blue and brown two piece dress with brown accessories. She wore a corsage of pink rosebuds.

The mother of the groom wore a peacock blue two piece dress with matching accessories and a corsage of pink rosebuds.

Ushers were Richard Spies of Phillips and Gary Hedgecock of Amarillo.

At the reception in fellowship hall, the table was laid with a blue net tablecloth trimmed with white bows over a blue cloth. The table was decorated with bouquets of white pom pom mums and the wedding cake was three tiered, decorated with wedding bells and topped with a miniature bride and groom.

Mrs. Jim Davis of Spearman and Miss Dotty Jones of Gruver presided at the serving table.

The bride is a graduate of Spearman High School and is a senior at Hardin-Simmons University where she is a member of Alpha Chi.

The bridegroom is a graduate of Amarillo High School and is also a senior at Hardin-Simmons University. He is a ministerial student and pastor of a small Baptist church near Abilene where the couple will make their home.

Pre-nuptial courtesies extended the bride include a shower given by Mmes. Stanley Garnett, Bill Sheets, E. D. Mundy, Jack Taylor, A. R. Witcher, Marvin Jones, Eddie Gates, M. W. Walker, M. W. Lackey and Fred Holt.

Day by Day

I was surprised to read that too much furniture polish or wax can dim the beauty of wood finishes on furniture. According to the American Walnut Manufacturers Association, the best cleaning care is to wash furniture with suds and water.

They say to wash furniture once or twice with a cloth wrung out of warm soap or detergent suds, then wipe all surfaces with a clean damp cloth and rub dry. All wood pieces, modern or antique, thrive on this basic cleaning, as suds remove various types of soil which are not affected by simply applying another coat of oil, polish or wax.

The manufacturers say polishes or waxes applied too often tend to build up a film which reduces the beauty of the original finish. Authorities recommend that most furniture be waxed only once or twice a year.

In this area where we have to dust and polish furniture continually, I wonder what they suggest. Surely not a daily scrubbing with soap and water. ...

The first edition of this year's Lynx Claw was printed in our shop last week. A lot of credit for an improved school paper should go to the sponsor, Miss Pat Howard and the editor, Sandra Kitchens.

These two and several others on the staff studied at Texas Tech this summer in order to improve the paper with hopes of making it an Interscholastic League contest winner. It looks like they've made a good start. ...

I've already heard some people say they were going to the game Friday night an hour early so they could be sure to get a seat. And those were people with reserve seats. I wonder how early the crowd will start gathering.

It might be a good idea to go early Friday night for another reason though; the Lynxettes are going to sell concessions and will be serving things like hot dogs, Frito pies, candy apples and the like. This will be a good chance to get our fixing supper and also to help the girls with their efforts to raise funds so they can attend the Duncanville Tournament during the Christmas holidays.

Republican Platform Is Studied by Xi Zeta Upsilon

Members of Xi Zeta Upsilon, Beta Sigma Phi, met Monday, Sept. 14 at 8 p.m. in the home of Fat Donnell. Helen Watson presented an interesting program on "The Platform of the Republican Party", giving information on the current GOP presidential candidate, vice presidential

nominee, plus various phases of the national GOP platform.

Attending the session were the following members: Barbara McClellan, Mary Brock, Gertrude Jones, Nelda Sheets, Joan McClellan, Dorcas Collard, Helen Watson, Mona Beth Windom, Ola Sparks, Betty Brown, Ruby Lair, Elsie Mathews, Elizabeth Holton; honorary member, Ada McLain; a transfer, Alberta Jeffries; a guest, Elaine Floyd; and the hostess.

The next meeting date of the chapter will be Monday, Sept. 21. It will be held in the home of Dorcas Collard at 1:30 p.m.

Junior Leaders Meet at Morse

The Morse Junior Leaders met Wednesday, Sept. 9 for their first meeting of the 64-65 4-H club year.

The following new officers were elected: President—Patricia Henderson, Vice President—Delbert McCloy; Secretary—Treasurer—Sylvia Parks; Council Delegates—Suzanne Dixon and Bill McCloy; Song Leader—Evelyn Kelly; Parliamentarian—Allen McCloy; Reporter—Doug McCloy.

Subject matter groups for the year were decided on.

In place of a program, we practiced for an appearance on Cotton John's Show which was broadcast on KGNC-TV Saturday, Sept. 12.

Eddie Martin Is Honored

Mr. and Mrs. R.E. Martin and Charles Lynn entertained Saturday night in their home with a "going away" party for their nephew and cousin, Eddie Martin.

Refreshments of ice cream and cake were served to the guests.

Attending were Mr. and Mrs. Howard Keyser and family, Doris Weston and family, Granny Reef, Bob Barton from Amarillo, Mr. and Mrs. James Martin, Mr. and Mrs. Elvin Martin, Mr. and Mrs. Orville Fullbright and Cloeta, Mr. and Mrs. J.H. Martin and Eddie, Virginia Goodrich from Gruver, Mr. and Mrs. Billy Miller and the hosts.

Eddie left Sunday afternoon for Canyon where he is to enroll for the fall term at WTSU.

RUMMAGE SALE

The Home Demonstration Council is sponsoring a rummage sale Saturday, Sept. 19 in the W.L. Russell Bldg. starting at 9 a.m.

Mr. and Mrs. Don Cruce of Tulia visited this past weekend with her parents, Mr. and Mrs. Cecil Crawford.

Spearman Newcomers

Mr. and Mrs. James Robert Langford of 403 S. Hazelwood are newcomers from Pampa. He is employed by Transwestern Pipeline Co. and they have one child.

Mr. and Mrs. Tona Harder 619 S. Evans are new residents from Del City, Okla. He is employed by Phillips Oil Co. and they have one son, 18 years old.

Mr. and Mrs. Billy L. Boatwright of 701 Lee Drive are new residents from Kress. He is a farmer and they have a boy eight years old and a girl six.

Mr. and Mrs. Fred F. Van Buskirk of 1004 S. Evans are newcomers from Liberal. He is employed by Graham Michaelis and the couple have three children.

Mr. and Mrs. James H. Riley of 205 W. 12th St. are newcomers. He is employed by the city and they have been living in the country. They have three girls.

Mr. and Mrs. Delbert Wilson of 15 N. Endicott are new residents from Gruver. He is employed by Excel Chevrolet.

Mr. and Mrs. Henry H. Heidelberg are new residents from Borger. He is employed by M. M. Travis. They have a girl 16 and a boy 14.

Social Calendar

Thursday, September 17, 1964

Gladiola Flower Club will meet at 2:00 p.m. at the Hospitality Room of the First State Bank

Friday, September 18, 1964

The Arts & Craft Guild will meet at 2:30 p.m. in the home of Mrs. W.L. Russell.

Sunday, September 20, 1964

Home Tour from 2-5 sponsored by the Spearman Study Club.

Monday, September 21, 1964

Xi Zeta Upsilon meets at 1:30 p.m. in the home of Dorcas Collard.

Tuesday, September 22, 1964

Lions Club meets at noon at Grunewald's Restaurant.

Toastmasters Club meets at 7:30 p.m. at Grunewald's Restaurant.

Thursday, September 24, 1964

Rho Rho Chapter meets at 1:00 p.m. in the home of Joyce Lackey.

Rebekah Lodge meets at 7:30 p.m. in the IOOF Hall.

Rainbow Girls meet at 7:30 p.m. at the Masonic Hall.

Bus Schedule Is Changed

The local bus station announces a change in the bus schedule. The bus now leaves Amarillo at 1:15 p.m. and arrives here at 3:35 p.m., go-

ing to Liberal, arriving there at 5:15. The bus leaves Liberal at 5:45 and arrives back here at 7:20 p.m.

The effective date of these changes is Sept. 17.

Want ads in The Hansford Plainsman get results.

Mr. Albert Jacobs of Pampa, father of Elmon Jacobs, recently suffered a stroke and is in the Worley Hospital in Pampa.

LONGER NIGHTS AHEAD!

Now is the time to fill those empty light sockets

(and put spare bulbs on the shelf)

The coming of fall means more hours of darkness and that means you'll need plenty of good light throughout your home so you can read, study and work in comfort. Better check your portable lamps and lighting fixtures now. Fill empty sockets and replace blackened bulbs with bright new bulbs of the correct size. And keep a supply of spare light bulbs on hand, so you'll always have good light when you need it.

See your light bulb dealer soon!



SPECIAL!!! SPECIAL SPECIAL!!!

FINAL

Close-Out

SPECIAL!!! SPECIAL SPECIAL!!!

30% Off On All Small Appliances

30% OFF
on all
REVERWARE
Cake Caddies
Paper Caddies

30% OFF
on all
CANISTER SETS
40% OFF
on all
Pyrex

40% Off on all Silverplate
and Stainless Steel Flatware
and Serving Pieces

40% OFF ON ALL PFALTZGRAFF POTTERY

No Gift Wrap Please

Beedy Gift Gallery

High Plains Finds Means Weed Control To Control Sorghum Midge Makes Cycle

The High Plains Research Foundation has made a major breakthrough in controlling the grain sorghum midge, which is costing the growers several million dollars each year.

Being a private enterprise approach to agricultural research, the Foundation, in an extensive research study during the past winter and spring has shown the use of our commonly used tillage practices actually aid the overwintering of the sorghum midge.

The study was conducted by Loyd Langford, Assistant Agronomist at the Foundation. He found that the midge can only over-winter in grain sorghum fields if the heads in which the midge hibernates are buried at least two inches or more below the surface.

The midge cannot over-winter due to wide temperature fluctuations and dry winds. Cold temperature in itself will not destroy the midge. A combination of dry winds and cold weather in a fluctuating pattern is what killed the midge.

On November 16, the long term study on over-wintering habits of the sorghum midge was put into effect at the Foundation. The object of the study, according to Langford, was to find conditions which the midge over-wintered so that the habitat for winter survival could be destroyed by sorghum farmers.

It has been thought in the past that the High Plains weather conditions were too cold and dry for over-wintering; for an infestation to occur, the midge would have to migrate each spring from the South and Southeast.

Through the laboratory procedures at the Foundation, it has proven over-wintering does occur in the fields. Under what specific conditions and where over-wintering occurred was not known prior to the study.

Several tests were started in November to find cold resistance, humidity difference, and effect of temperature fluctuations in regard to the over-

FB Welcomes New Members

Hansford County Farm Bureau would like to say welcome to the following new members who have joined our organization in the past few months.

Mrs. Davida V. Bednarz, Dick Doyle, Godfrey W. Frische, Wayne Pierce, Dr. Damon Gregg, Kirby Clawson, S. & S. Farms, Inc., Raymond Sparks, Mrs. Arthur Bernstein, Harold R. Bowen, Julian J. Schaub, Pat Westerfield, Sam Wyson, North Plains Truck & Implement, Inc.

Our Meeting Room has been used this past month by the following persons and organizations: Lutheran Mission Church, Reunion of the Class of '44, Spearman Art Class, Mrs. Bob Vaughn, Mrs. Zack Fisher and Mrs. Don Floyd.

President Robert Novak announced at the board meeting that our Annual Hansford County Farm Bureau Convention will be Oct. 12. The speaker will be Joe Ed Sullivan, former field man of District 1 and is now agency manager of Hale County Farm Bureau. This convention will be held in the Spearman Jr. High Cafeteria. Dinner will be prepared by the Union Church Ladies and serving will begin at 6:45 p.m.

Tickets will be available soon. Watch your local papers for more news concerning this convention.

wintering conditions which affect the tiny midge larvae. The larvae form a cocoon in late fall and spend the winter inside the floret or seed husk.

Since discovery (in 1961) of the midge on the High Plains, entomologists have recommended plowing under or destroying all refuse where grain sorghum is threshed. This was to be done before the midge emerged in the spring.

It appears from the Foundation's replicated tests that the turning under of sorghum residue furnishes the midge ideal conditions for over-wintering. Thus, farmers are raising their own crop of midge for the coming year.

Over-wintering can be inhibited by leaving sorghum residue on top of the soil until February. This exposes the tiny larvae to fluctuating temperatures, and dry winds. The larvae actually dry up and die.

Research has shown that the ideal way to control the over-wintering of the sorghum midge is to shred the stalks. Use a tillage tool to sever the roots of the plant. This leaves the residue as surface mulch. If a farmer feels that he cannot follow these recommendations and must use a tandem disk, he should be aware that he will not receive full benefit of this control practice.

Disking or plowing in any method will cover the midge with enough protection to allow over-wintering.

Langford recommends that the mulch be left in the field until February for the best results.

Good Season For Worms

Texas farmers and ranchers should take special precautions in handling their livestock during the coming weeks to prevent new attacks by the screwworm fly.

Stepped-up vigilance by livestock producers is important, not only to protect their animals from becoming infested, but also because an impending shortage of funds for the screwworm eradication program may limit emergency control measures that can be taken.

Eradication authorities pointed out that in past years, the livestock pest has always made large, rapid gains during the fall months when wet, cool weather is extremely favorable for insect development, and an increase in livestock management practices produces an abundance of wounds attractive to the insect.

Infestations have been rare this summer, with only two dozen cases reported by livestock producers in Texas. Only one case was detected during August.

Eradication officials warned, however, that the screwworm fly can migrate great distances when conditions are favorable and failure of stockmen to be alert to the danger could result in a sudden explosion of cases.

Infestations have been rare this summer, with only two dozen cases reported by livestock producers in Texas. Only one case was detected during August.

Eradication officials warned, however, that the screwworm fly can migrate great distances when conditions are favorable and failure of stockmen to be alert to the danger could result in a sudden explosion of cases.

Infestations detected, treated and reported during the early stages of development

Flame cultivation as a means of weed control has made the full cycle, from research to the farmer, Harold Hinkle of Plainview, working with his local LPG dealer, has worked toward complete weed control using the research information developed by the High Plains Research Foundation. Now the High Plains Research Foundation has been able to see research go from the experimental to the applied.

Hinkle, a 26-year old farmer located 9 miles north and one and one-half miles west of Plainview, has been flaming his crops for the past three years. His objective is toward total weed control.

Harold has been farming the same quarter section for seven years and reports that he has been able to cut his weed control costs in cotton from \$20.00 per acre to \$8.97 using both flame and hand hoeing. Hinkle states that on his present cotton crop, his cost for weed control is: \$5.71 per acre for hoe labor and with two flaming, the first of which cost him \$0.36 per acre and the second cost him \$0.90. Harold feels that he must then add a cost of \$1.00 per acre per flaming for the cost of his flame cultivator.

On the other crops that are grown on his farm, the cost breakdown indicates that it cost \$10.00 to \$12.00 per acre for weed control with conventional tillage tools as compared with a cost of \$1.45 lay-by with his flame cultivator. With grain sorghum, Hinkle, who did not practice any type of weed control stated, "when I did not use flame, all I had was a grown up mess!" Now, using heat as an economical means of weed control in the grain sorghum crop, his cost is: for the first flaming \$0.45 plus \$1.00 for the use of the flame cultivator and \$0.81 for the second flaming.

One other full cycle from the High Plains Research Foundation that can be found on the Hinkle farm is the HINN soybean. The HINN developed by the Foundation is the first soybean developed for this area of Texas. Hinkle, a supporter of the Foundation, has planted the HINN bean to complete one more step going from the Foundation and its research to the farmer.

The planting of the HINN soybean, as an example of the new crop research for the area, combined with other research at the Foundation helps the farmer produce better crops more efficiently and economically.

can be quickly and easily controlled, officials said.

Eradication activities may have to be reduced because of recent action by Congress in trimming a budget request for \$5 million to carry the program through the current fiscal year. Only \$2.75 million will be made available by the federal government, and \$2.5 million of this cannot be spent unless it is matched by non-federal money.

Practically all of the \$6 million contributed voluntarily by farmers and ranchers and appropriated by the State of Texas will be expended by Dec. 1, campaign authorities said.

The Southwest Animal Health Research Foundation, which spearheaded the producer fund drive, along with industry and government leaders, is studying ways of getting the program out of its financial straits. In the meantime, livestockmen-through careful management of their animals-can prevent an upsurge in screwworm cases that could cause even more difficulties for the eradication project.

ACHIEVEMENT PROGRAM

The Morse 4-H Club had their annual achievement program on Cotton John's Farm and Home TV show Saturday, Sept. 12. The Morse 4-H Club had an outstanding year in 4-H and presented their achievements on TV. Junior and Senior Team Demonstration winners were announced as well as District Award winners in the 4-H record book competition. 4-H members appearing on the TV show were Kaye Johnson, Mark McCloy, Doug McCloy, Steve McCloy, Nancy McCloy, Bob Womble, Monte McCloy, Wade Parks, Carolyn Henderson, David Johnson, Judy Gillispie, Mike Johnson, Jerald Scribner, Roy Scribner, Alan Dixon, Evelyn Kelly, Patricia Henderson, Sylvia Parks, Suzanne Dixon, Allen McCloy and Bill McCloy.

On behalf of the Morse 4-H members and leaders, I would like to thank Cotton John for his cooperation in this achievement program.

FEDERAL GAS TAX REFUND

This is a reminder that farmers may file for return of Federal Tax on gasoline. Form 2240, U.S. Treasury Dept., 1964 is to be used in making this request.

Farmers or ranchers can get these forms from their nearest Internal Revenue office.

The gasoline to be included would be gasoline purchased before July 1, 1964 which was used on a farm or ranch after June 30, 1963 and before July 1, 1964 for farming or ranching purposes.

The federal rate of tax on gasoline is at the rate of four cents per gallon. This claim will be allowed only if filed on or before Sept. 30, 1964.

GRAIN SORGHUM DAMAGE

I sent off some damaged grain sorghum heads the other day for examination. These heads were not filled out at the top but had grain on the bottom. Don Rummel, Area

Entomologist, gave this report. "After examining the grain sorghum heads you submitted, I can safely say the damage was not caused by the sorghum midge. I think a good portion is bird damage. However, we have received many such blasted heads on which the damage cannot be attributed to either midge or birds. As yet no one has determined exactly what does cause this damage."

Feed Grain Payments Are Same

Congressman Walter Rogers of Pampa said recently the Agriculture Department is announcing that minimum and maximum acreage diversion provisions for the 1965 feed grain program will be unchanged from the program in effect for the 1964 crop.

The announcement was designed to help winter wheat producers make better 1965 crop plans, Congressman Rogers said.

The diversion provision in the program permits wheat to be grown on feed grain base acreage or feed grains to be grown on wheat allotment acreage. The minimum diversion permitted is 20 percent of the feed grain base. The maximum diversion is up to 50 percent of the feed grain base or 25 acres, whichever is larger.

Mr. and Mrs. Paul Thompson of Westaco are visiting with Mr. and Mrs. Marvin Chambers.

Mr. and Mrs. Frank Reger of Stinnett were Friday night guests of their son Travis Reger.

Mr. and Mrs. Phil Jenkins and Kathy were Saturday night guests of their son, Mr. and Mrs. Steve Jenkins of Lubbock.

Mr. and Mrs. Raymond Kirk recently spent Sunday visiting relatives in Pampa.

Mr. and Mrs. Jake Lamb of Spearman were weekend guests of their son, Ervin Lamb and family of Springer, N.M.

Mrs. Bruce Fiedler of Raton, N.M. spent the past week visiting her parents, Mr. and Mrs. C.W. Kirk and other relatives. The Kirks and her sister, Mrs. Travis Reger and D le took her home Friday. The Fiedlers have moved to Missoula, Montana.

Mr. and Mrs. Austell Burrus, Donna and Nelda of Pringle were Sunday night dinner guests of Mr. and Mrs. Richard Gaines and family. Donna and Nelda spent the weekend with the Gaines.

Mr. and Mrs. Vernie Rosson of Spearman visited Saturday in Texhoma with Mr. and Mrs. Ted Berry and family.

Linda Holt, daughter of Mr. and Mrs. Nolan Holt, returned Sunday to Texas Tech at Lubbock.

Mr. and Mrs. Mike Holt returned to Tarleton State College at Stephenville Friday.

Mr. and Mrs. Kent Guthrie left Tuesday for Denton. They are students at North Texas State.

Mr. and Mrs. Glen Rumley and Steve recently returned home after vacationing in Illinois and visiting relatives.

Mr. and Mrs. John Wilde and family visited in Graham over the weekend with Mrs. Lucy Wilde.

Check With Us Before Buying Seed Wheat

- * Registered & Certified Caddo
- * Certified Kaw
- * Tascosa
- * Kaw

Select Improved Triumph

ELBON RYE NORTEX OATS ROGERS BARLEY

MAKE AN APPOINTMENT to have your own SEED WHEAT CLEANED & TREATED

B & B GRAIN CO., INC.

Western Auto
Associate Store
The Family Store

GO-GO-GO

Cates Grocery

We Close At 7 p.m. Friday
To Support The Lynx

LYNX

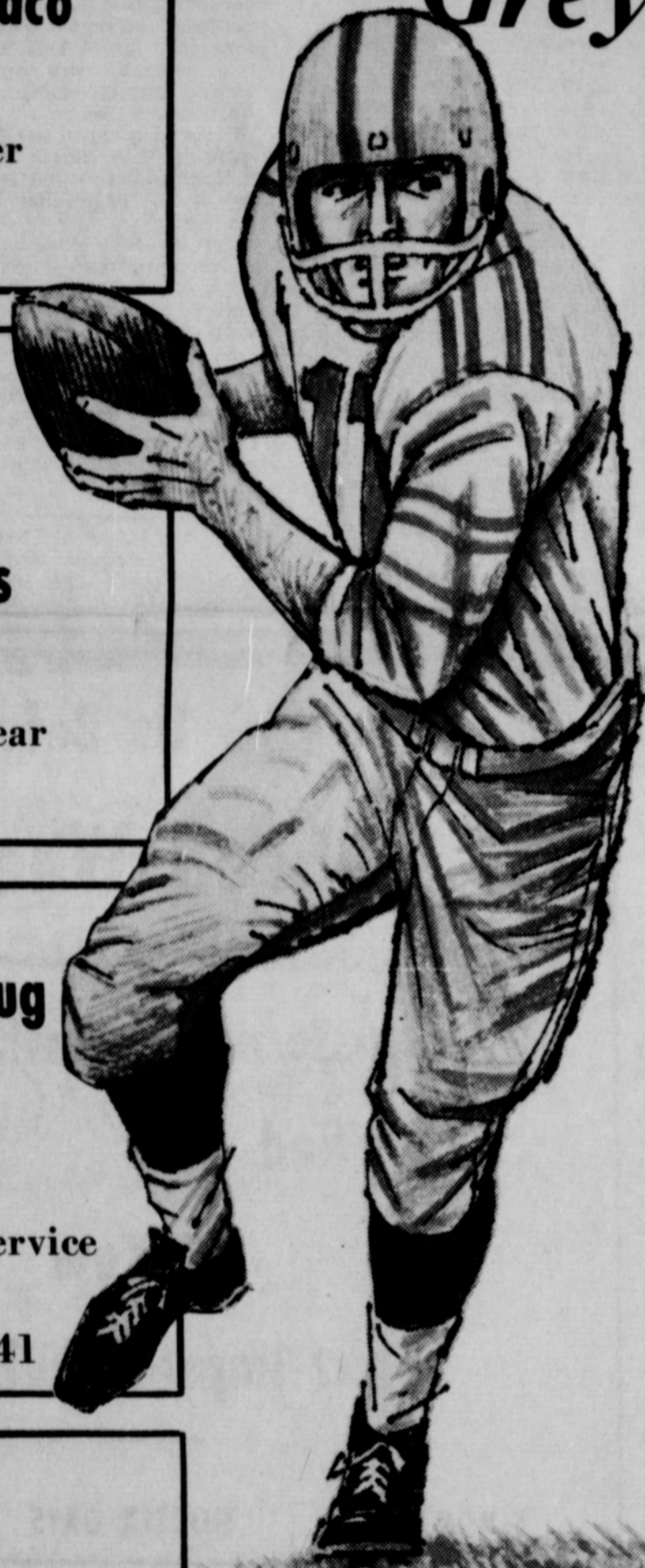
*Beat Those
Greyhounds*

Junior Lusby Cats

Snider Texaco

Vance Snider

GO TEAM GO



★
*Let's
Make
It
Three
In
a
Row*

Massad's

Ready To Wear

**The Sunday
Plainsman**

bringing you an accurate
play-by-play account of the
games every week.

Gordon's Drug

Prescriptions
Gifts
Fountain Service
Phone 659-2141

Anthony Electric

Commercial
Industrial
Residential
Electrical Contracting
Plains Shopping Center

First State Bank

Member F.D.I.C.

**Jim's Fina
Service Station**

Fine Gasoline
Regular 29.9
Ethyl 32.9

Sponsored By These
Proud Lynx Boosters

DID YOU KNOW

that

**PERRYTON SAVINGS
And Loan Association**

Has Invested More Than

ONE MILLION DOLLARS

In Loans In

HANSFORD COUNTY

**Loans for Homes, Churches, Apartments and
Business Buildings.**

It's True ---

This money has been paid to Builders, Brick Layers, Carpenters, Concrete Finishers, Electricians, Painters, Plumbers and Others Who have in turn used this money to buy groceries, Clothing, Medicines, furniture, Appliances, Cars and many other items.

We, at Perryton Savings are proud of our part in developing the growth of Hansford County and we want the opportunity to continue to help our friends and neighbors.

MAY WE HAVE THIS OPPORTUNITY ?

Perryton Savings & Loan Association

214 S. Main

Perryton, Texas

David Johnson Speaks for Clubs

In demand as a speaker for events at Morse is David Johnson, son of Mr. and Mrs. Jack Johnson, Jr.

David was one of the delegates to the Citizenship Seminar sponsored by the Farm Bureau and held at Huntsville in August.

Since his return from the seminar, David has addressed the Hutchinson County Farm Bureau, the Morse PTA, the Morse Lions Club, the civics class at Morse High School, and is scheduled to present the program for the Morse 4-H Club in October.

David is a junior in Morse High School and won the masonic award and outstanding boy award last year.

David speaks mostly on communism and the threat of this evil to America. He tells his audiences about the necessity of learning about our American heritage and preserving our way of life.

Mr. and Mrs. V.E. Rosson had as their guest last weekend their nephew, C.B. Dodson, Jr. Mr. Dodson was on his way to Norman, Okla., where he will attend law school.

THE MORSE CODE

4-H MEMBERS ARE TV STARS

Morse 4-H clubs presented the program on Cotton John's Farm and Home Show Saturday afternoon in Amarillo. This was quite an experience for many of these boys and girls. Several of them had never been in a TV studio and most of them had never been on camera before.

Cotton John and Royce Bodiford welcomed the group and put everyone at ease by letting them watch the taping of the baby animal show. By the time the Morse group went on the air, they were accustomed to the bright, hot lights and went through their parts like pros.

The 4-H'ers asked this correspondent to express, through this column, their appreciation to Cotton John and KGNC-TV for letting them present their achievement program on the Farm and Home Show. MUSTANGS PLAYED TYRONE

Fortified by a most rousing pep rally Friday afternoon, the Morse Mustang football squad met the Tyrone Bobcats there Friday night. Although our Morse boys came out on the short end of the score, they turned in a most creditable performance and one that all loy-

al patrons were proud to watch. Allen McCloy, Alva Henderson, Alan Dixon and Mickey Cook all received injuries in the game, but they would hobble about on the sidelines, use the heat and liniment treatment and be back in the game as soon as possible. Of course, the next day when some of the boys appeared on TV, it was a good thing they did not have to walk, for they were limping quite noticeably.

The Tyrone squad is favored to take their conference this year.

This Friday night will be the first home football game. It will be played against Balko, Okla. and will be under the new stadium lights that have just been installed. Coach Graves says our boys have a good chance to win this one, so everyone in the community should turn out to support our team and school.

The cheerleaders, Suzanne Dixon, Sylvia Parks and Patricia Henderson, schooled evidence of attending the cheerleader's school at SMU this summer.

for the first pep rally last Friday afternoon was a rousing success. They conducted it in the form of a political convention demonstration. Members of the pepsquad introduc-

ed football members by means of leading an aisle demonstration for them.

Teen town will be held at the Community Building right after the ballgame Friday night. Balko football members and pep squad will be guests. Mr. and Mrs. Jim Womble and Mr. and Mrs. H.B. Parks will be sponsors.

SCHOOL DISMISSES FOR FAIR
Morse School will dismiss Tuesday, Sept. 22 for the Amarillo Fair. No buses will be taken. Parents will be responsible for taking children to the fair.

HEAD-LION-ER PUBLISHED

Morse Lions Club has started publication of a bulletin to be issued twice monthly on the second and fourth Mondays.

Purpose of this bulletin is a source of information for Lions and patrons of the community concerning the aims, intentions, activities and accomplishments of the Morse Lions Club and of District 2T1 of Lions International.

The HEAD-LION-ER will carry announcements of organizations in the community and will also carry ads for the cost of \$15.00 per year or \$1.00 per issue. Bulletin editor is Grant Miner and you should contact him concerning advertising, news or announcements.

The first issue came out last week and was received with appreciation by patrons in the community. Nine businesses took advantage of the advertising. The bulletin is to be mailed to approximately 100 families.

TRAP SHOOT SCHEDULED

Morse Lions Club has scheduled a trap shoot Sunday, Sept. 20, at 1:00 p.m.

The event will be held at the trap shoot range in Morse and the prizes given will be hams.

COLLEGE STUDENTS

A number of young people from here have returned to their respective colleges.

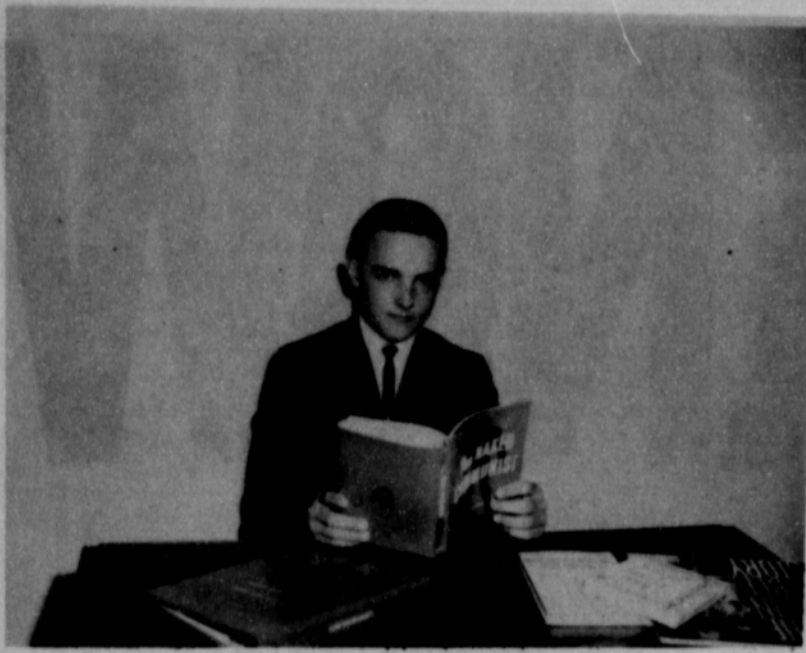
Going to McMurray was Donna Cator; to Hardin-Simmons University was Tommy Womble; Frank Pittman and Jack Giblein to Panhandle A&M; Britt and Jon Jarvis to Texas A&M; Wayne Board to WTSU at Cnyon; Joyce Schick, Sharon Parks, Bill Pittman and Bob Gillispie to Texas Tech; Peggy Powers to Sayre Jr. College.

Sharon Parks participated in rush week at Texas Tech last week and pledged Alpha Chi Omega sorority.

Mr. and Mrs. Carson McCloy of LaJunta, Colo. were weekend guests of Mrs. M.W. McCloy.

Mr. and Mrs. H.B. Parks and family went to Lubbock Sunday. Enroute home they visited with Gene and Betty Brothers at Hereford.

Mr. and Mrs. Dave Schick and family took Joyce to Lubbock Sunday where she will enroll as a business major in Tech.



David Johnson

FOR ALL YOUR FLORAL NEEDS

PHONE

659-2593



Spearman
FLORAL
GIFTS

YOUR FULL SERVICE FLORIST

PLAINS SHOPPING CENTER

September Is Our Birthday Month,

We were "born" Sept. first but we like to celebrate with the new models... This year —

September 24



WE'RE CELEBRATING OUR BIRTHDAY AND SHOWING THE NEW CHEVROLETS & OLDSMOBILES On September 24th

So Come See The 1965 Chevrolets & Oldsmobiles

AND HELP EXCEL CHEVROLET CELEBRATE ITS SEVENTH BIRTHDAY!

WE'RE PROVIDING THE REFRESHMENTS AND GIFTS

You Just Come To The Party!

Radio KBMF will broadcast all regular programs Sept. 24 from our showroom.

Excel Chevrolet - Oldsmobile

Kindergarten Begins For 29 Students

Kindergarten began Monday for the group of students taught by Mrs. Sada Hoskins. This year Mrs. Hoskins has two sessions; a morning session from 8:30-10:30 and an afternoon session from 1:00-3:00.

Enrolled in the morning session are: Deanie Beagle, Brent Biles, Jody Burrell, Leslie Cain, Calvin Conrey, Janice Field, Walter Gooch, Susan Gregg, Margaret Hill, Bradley Holdeman, William Hopper, David Lesly, Kevin Pendergraft, Daryl Roles, Dennis Scroggs, Edward Sulzar, Stewart Sutton and Allen Uptergrove.

Enrolled in the afternoon session are: Brenda Cook, Glenda Cook, Mike Crawford, Danny Dry, Cynthia Hamilton, David Jeffries, Debbie Mathews, Jody Moran, Matt Sheets, Collette Smith and Colleen Smith.

LOOK YOUR BEST



Trust us with your coats, suits, sweaters, dresses or skirts; we'll treat them like our very own. All spots and stains carefully removed... thorough cleaning... pressed to perfection.

Phone 659-3122 For Pick-Up And Delivery

BERRY CLEANERS

WE APPRECIATE YOUR BUSINESS

And Invite You To Stop By For

Complete Car Care

and Good

Texaco Products.

"Trust Your Car To

The Man Who Wears

The Star"

SNIDER TEXACO

Vance Snider
Owner

**Mrs. R. E. Lee
Guest Speaker**

The Dahlia Flower Club met in the home of Mrs. Garrett Allen, Monday, Sept. 14. The chairman, Myrtle Davis, presided at the business meeting. Mrs. R. E. Lee, guest speaker, showed slides and gave a talk on her recent trip to Africa. Refreshments were served to Mrs. Ethel Bailey, Detalodgett, Eleanor Crooks, Myrtle Davis, Mattie Davis,

Coise Gates, Louise Mullins, Hollie Riley, Margaret She-deck, Verna Hutchison, Edith Sheets, Mary Lee by the host-ess. The club's annual dinner will be held Sept. 28 at Grunewald's Restaurant at 7 p.m. J.D. Helms will be the speaker. **EVERYONE IS WELCOME!** Spearman Riding Club Playday SUNDAY SEPT. 20-1:30 P.M. SPEARMAN RODEO ARENA Mr. and Mrs. R.C. Bannister and children visited over the weekend with Mr. and Mrs. F.K. Bannister and Mr. and Mrs. Pete Vernon.

THE WAY I SEE IT

Oslo & Faith Lutheran
Robert Cordes, Pastor

DO YOU BELIEVE IN MIRACLES

"Jesus said, 'Take away the stone.' Martha, the sister of the dead man, said to Him, 'Lord, by this time there will be an odor, for he has been dead four days.' John 11:39 'It won't do any good,' she said. 'Let's not make things worse than they are. The smell will be terrible; Lazarus has been dead four days.' What Martha said was right according to everything she knew. Modern embalming methods were not employed at that time. What she did not take into account was the fact that Jesus was there. He said, 'Take away the stone!'

Many people have buried things in their past. Every once in a while it troubles them, and then they forget it again. Some of us have almost repented. We have admitted part of our sin, but not all of it. Selfishness, jealousy, lust, and bitterness, and dishonesty can be such a messy thing. We find it hard to "take away the stone" and even admit to ourselves the deadness and sin that has been hidden away. Any honest examination of our past and our present mind locates sin and evil that we may even be trying to hide from neighbor, husband, wife or God. Thus these deeds and thoughts ferment in our mind, causing us to be ill at ease, to feel the suppressed burden of our soul. It would, we errone-

ously think, be better to keep them hidden, buried. The guilt however still worries us. We are not free of these past sins. Someone has concluded that we make cemeteries out of our churches. When we worship we are moved to make promises that our life will change. But we bury our good intentions under the pews and go home. Jesus says, "Take away the stone."

Of course we cannot make good intentions and change. We need to allow God's Holy Spirit to move us, to give us new directions and the power to alter our course of evil. Come Lord, take away the stone and give us new life.

**Basketball Girls
Sell Concessions**

The basketball girls will have the concession stand at the football game Friday night.

Proceeds from the sale will be used for the team to attend the Duncanville Tournament during the Christmas holidays.

Hot chocolate, coffee, cold drinks, hot dogs, pop corn, brownies, candy apples, lemon sticks, dill pickles, Frito pies, candy and gum will be sold both at the concession stand and in the stands.

**Oil and Gas Still Large
In Texas Economic Scene**

In its annual survey of the economic impact of oil and gas on Texas counties, Texas Mid-Continent Oil & Gas Association turned up these superlatives:

Eleven counties have crude oil production with an annual value in excess of \$50 million. As usual, Andrews County is No. 1 with \$196 million.

Nacogdoches County is the first with recorded oil production from wells dug by man, 1866.

Navarro County boasts the oldest commercial oil field, Corsicana, producing since 1896.

The largest field in the state is East Texas, which covers parts of Smith, Upshur, Gregg, Rusk and Cherokee Counties.

Three counties have produced more than a billion barrels of oil: Gregg (1.9 billion), Rusk (1.3 billion), Ector (1.1 billion). These with Andrews (855 million) and Harris (821 million) are the top five in all-time production records.

Wichita had the most wells drilled in 1963, according to The Oil and Gas Journal, but the most footage was recorded in Ector County (1.9 million) with second place going to Kleberg County (1.7 million). The estimated \$25.2 million spent on drilling in Ector is also a record. Most wildcat wells were drilled in Runnels County (82) and Pecos (75).

Deepest well in Texas (or anywhere) is a 25,340-foot dry hole in Pecos County drilled in 1959. Deepest well producing oil is a 16,347 foot well in Freestone County put down in 1949. Pecos holds the record for the deepest gas producer, a 1963 well at 20,750 feet.

Jefferson County's six refineries give it the greatest number and the greatest capacity, some 1,117,500 barrels a day, or slightly less than the total recorded for the United Kingdom.

Harris County leads the state in oil industry payroll, according to the Texas Employment Commission: 39,840 employees with a \$325 million payroll. Harris has many oil company headquarters, refineries, and production. Jefferson's refinery operations boost their total to \$135 million. Dallas with no production and no processing plants but with many headquarters and laboratories is in third place with \$84 million. Others in order are Midland (\$59 million), Nueces (\$49 million) and Ector (\$36 million).

Value of Crude Oil Production 1962

County	Value
Andrews	\$196,448,980
Ector	169,739,310
Crane	116,649,720
Scurry	89,054,160
Gaines	86,138,910
Gregg	84,545,240
Winkler	75,461,620
Ward	66,213,550
Harris	61,208,290
Rusk	52,555,230
Refugio	50,172,200

Value of Natural Gas Prod. 1962

Brazoria	\$40,357,161
Winkler	32,763,141
Nueces	30,362,304
Moore	28,012,020
Hidalgo	25,904,415

**Women Give
WMU Program**

The WMU of the First Baptist Church held a Royal Service Program Wednesday morning at the church.

Mrs. Fred Holt presided at the business meeting. Mrs. Don Jones read the scripture and prayer calendar.

An inspirational report was given by Mrs. Ray Devers, Verna Jarvis and Ernestine Gray on the WMU Houseparty held recently in Waco.

Betty Thomas presented the program on "Race Relations" and the following members gave parts: Mrs. Richard Fancher, Dick Kilgore, Holt, Luther Berry, Don Jones and R.E. Bradford.

Sept. 13-18 will be the Mary Hill Davis week of Prayer for state missions. On Sept. 16, the prayer retreat program will be held instead of the week of prayer program and this program will be held at the church.

On Sept. 22 a district 10 workshop will be held from 9:30 to 2:00 at the First Baptist Church in Amarillo.

Oct. 7 there will be a mission book study from 9:30 until 12 noon at the church. A salad luncheon will be held at noon and installation of officers will follow.

Attending were Mrs. Arthur Adkison, Barbara Howell, Joe Novak, Donna Helms, Richard Fancher, Glen Hiller, Holt, Devers, Berry, Kilgore, Thomas, Jones, A.F. Loftin, Bradford, Gray, Jerry Jackson, Roena Day, Wesley Garnett, Major Lackey, Jarvis, Abbye Ownbey and Don Denham.

Mr. and Mrs. Mike Crawford returned to Canyon over the weekend to begin the fall term at WTSU. Mike is planning to take graduate courses and will teach in the geology department.

**LIABILITY - LIFE - AUTO
CROP HAIL - FIRE**

**YOUR FARM
BUREAU AGENTS**

Tommy Gooch Zack Fisher

OFFICE:
307 Davis 659-2522 & 659-3133

RESIDENCES:
1017 S. Bernice 59-2790 703 S. Bernice 659-2833

**BIGGER SELECTION OF
Quality Foods
PRICED RIGHT!**

**FULL COLOR 3-D STEREO SLIDES
PACKET NUMBER 1 FREE
Wonders of the World
PACKET NUMBERS 2 & 3 29¢ EACH**

**WITH PURCHASE OF STEREO
Slide Viewer 29¢**

MIX OR MATCH SALE

**Del Monte 303 can
Green Beans 4/\$1**

**Campbells Meat Variety save 6¢ No. 1 can
Soups 6/\$1.00**

**Breakfast Mix or Match
Cereals 3/\$1.00**

Swift's Premium Hens (Grade A) Baking lb. 39¢

Swift's Premium Proten Chuck Roast (First Cut) lb. 55¢

Swift's Premium Proten Swiss Steak (Arm Cut) lb. 69¢

Cudahy's Bacon Chuck Wagon lb. 55¢

Cudahy's Bar "S" Franks (All Meat) lb. 55¢

DAK Canned Picnics 2 lb. can \$1.79

DAK Canned Ham 1 1/2 lb. can \$1.79

Gortons Fish Sticks lb. 59¢

Blue Morrow Steaks Quick Fixen 20 oz. pkg. 79¢

Ideal Assorted 18 oz. jars
Preserves 3/\$1

Strained Fruits & Vegetables
Gerber jars 10/\$1.00

Ellis 300 cans
Beans 10/88¢

These Values Good
Friday and Saturday,
September 18 and 19, 1964.

"Better Food For Less"

**IDEAL
FOOD STORES**

KCIUQ!

Oops, we mean "Quick!"—see the quick '65 Wide-Tracks Sept. 24 at

**North Plains
Truck & Implt., Co.**

**BUY
SELL**

CLASSIFIED ADS

**TRADE
LEASE**

**E. C. Greene
& Sons Agency**

Real Estate-Loans
Insurance-Cattle
Aluminum Pipes

410 Davis Spearman
Phone 659-2587

**City
Directory**

CLEANERS

CLEANING
PRESSING

CARPET
CLEANING SERVICE

COIN OPERATED
DRY CLEANING

FREE
PICK-UP & DELIVERY

PHONE 659-2511

Wardrobe Cleaners

Oscar Donnell

302 MAIN ST.
SPEARMAN, TEXAS

DENTISTS

F. J. Daily D.D.S.

16 SW COURT STREET
SPEARMAN

PHYSICIAN

D. E. Hackley D.O.

CLINIC

702 S. ROLAND

659-2556

659-2385

ELECTRICIAN

Anthony Electric

Industrial, Commercial
and House Wiring

Heating and
Air Conditioning

Contracting
and Repairs

Fully Insured

PLAINS
SHOPPING CENTER

PHONE 659-2441

BOX 727

SPEARMAN, TEXAS

FOR SALE

FOR SALE-Niemeyer's three bedroom brick home. Air conditioned. Carpeted. Phone Conrey's 3080.
T47-S47-tfc

Looking for used furniture? See Beedy Furniture now. Plains Shopping Center. Phone 3044.
S44-T45

FOR SALE: Flute and saxophone. Terms if you wish. Phone 659-2409.
S48-T49-tfc

FOR SALE-AKC Registered Poodle Puppies. Mrs. Burke, 117 Townsend St. after 3 p. m.
T48-S48-tfc

FOR SALE - Industrial lots and acreage. Financing available. Cecil Crawford. Two good lots in town. Phone 659-2409.
T43-3p

FOR SALE-8' x 22' trailer house. Phone 659-2551.
T49-S49-tfc

Registered Tascosa seed wheat from foundation seed \$3.00. Certified improved early Triumph Seed Wheat \$2.00. Dean Slaughter, 435-4338. Perryton, Texas.
S47-3p, T48-3p

FOR SALE: 95 acres of farmland southeast of Spearman. 1/2 mineral rights and good producing gas well. Cecil Crawford. Phone 659-2409.
T43-S43tfc

FOR SALE-4 room house, large room and bath, new carpet. Phone 659-3469.
S45-T45-tfc

SERVICE-Ditches from 3-12 inches, any desired depth. S. D. Jones 659-2809. Harold Shaver 659-3474.
T17-s18-tfc

FOR LIFETIME MUFFLERS-Clarence Pettitt Garage. No premium prices.

FOR SALE: New Lake Pump and Aluminum pipe, Pat Westfield, Gruver, Ft7-2700.
S44-T43-tfc

FOR SALE-Lot with Trailer Hookup, 117 N. James.
T47-S47-tfc

FOR SALE-Nice, clean electric range and Servel refrigerator with freezer across top. \$25 each. 658-2185.
T48-3p

FOR SALE-42 x 8 Schult 2 bedroom mobile home. Outside needs painting. Inside very nice. \$1995. 659-2185.
T48-3p

FOR SALE: Saxophone and flute Terms if desired. 659-2409.
S46-T47-tfc

Need a serviceable old tractor at a cheap price. See W.W. Smith after 5 p.m. 612 S. Evans or call 659-2639.
T49-lp

KNAPP SHOES

Kenneth Bailey
212 N. James

Phone 659-2458

Spearman, Texas

FOR CUSHIONED COMFORT

YOUR PHILCO DEALER

Burton's T.V.

WE REPAIR COLOR & BLACK & WHITE T.V.'S AND ALSO, RADIOS

659-2121

20 South Archer
Spearman

**Cummings
Refrigeration**

HEATING
A/C CONDITIONING

REFRIGERATION
SPECIALIST

SALES & SERVICE

659-2721

SPEARMAN

Large Selection
Of New & Used
FURNITURE

Large Selection
Of Carpets

Carpet Installation
**REAMY
UPHOLSTRY**

FOR RENT

FOR RENT-4 room house. 706 Bernice, phone 2069.
T49-lc

FOR RENT-Apartments, furnished and unfurnished. Phone 2119.

FOR RENT-Two bedroom furnished house at 422 S. Townsend. Call 2900 after 5:00 p.m.
T47-S47-lp

FOR RENT-Four room furnished apartment. 821 S. Haney. 659-2084.
T47-lp, S47-lp

WANTED

want to buy good level farmland in irrigation district. Call or write Troy Ray, Box 223, Friona, Texas.
T43-8p

Land Leveling to SCS specifications. General dirt work with Hancock carryalls. Willis Sheets, 659-2256.
T46-S46-tfc

MANAGEMENT PERSONNEL NEEDED to keep pace with booming motel industry and our own growing chain of King's Inn Motor Hotels. See our ad under EDUCATION or INSTRUCTION. KING'S INN MANAGEMENT CO.

Yard worked and seeded. Gardens worked. Fertilizing done. Shrubs planted. Don Schmehr, 659-2858.
T23-tfc, S23-tfc

SERVICE-Ditches from 3-12 inches, any desired depth. S. D. Jones 659-2809. Harold Shaver 659-3474.
T17-s18-tfc

Puppies to give away. Call 3374 or come by 804 S. Bernice.
T49-lc, S49-lc

"Let us have peace" are the words inscribed on the tomb of General Ulysses S. Grant in New York City.

William Muldoon was known as the father of American wrestling.

Frank Gotch was one of the greatest wrestlers of all time.

Henry VIII had six wives.

Beauty . . . without bother

**DU PONT
LUCITE®
WALL PAINT**

Available in new Colors!

Goodbye to drip, dribble and spatter. Farewell stirring and thinning. "LUCITE" is quick and clean. Covers more, covers better than before. Dries beautifully in 30 minutes. Brushes clean with just soap and water.



OWENS SALES

118 N. MAIN
Spearman, Texas
659-2506

LEGAL NOTICES

Notice is hereby given that application has been made to the Savings and Loan Commissioner of the State of Texas for the approval of a branch office for North Plains Savings and Loan Association, of Dumas, Texas, such branch office to be located at: Corner of Main and Davis Streets, Spearman, Texas.

A hearing will be held on the application at 9:00 o'clock A.M., on the 30th day of September, 1964, at the office of the Savings and Loan Department of Texas, Austin, Texas.

If no written notice of intention to appear in person or by attorney to protest said application is received by the Savings and Loan Commissioner from one or more persons on or before Sept. 20, 1964, the hearing will be dispensed with unless otherwise ordered by the Savings and Loan Commissioner.

**NOTICE OF SALE
THE STATE OF TEXAS
COUNTY OF HANSFORD**

By virtue of an Order of Sale issued out of the Honorable District Court, 150th Judicial District of Texas, in and for Bexar County, Texas, on the 3rd day of September, 1964, by the Clerk thereof, in the case of FIRST OF TEXAS CORPORATION VS LEONARD DeARMOND ET AL, and being number F-155,930 on the docket of said Court, and to me, as Sheriff, directed and delivered, I will proceed to sell the hereinafter described tract of land to the highest bidder, for cash, between the hours of 10:00 o'clock A.M. and 4:00 o'clock P.M. on October 6, 1964, it being the first Tuesday of said month, at the Courthouse door of Hansford County, Texas, in the City of Spearman, Texas; said tract of land having been levied on by me on the 8th day of September, 1964, and to be sold to satisfy a judgment rendered in the above described cause on the 5th day of March 1964, and recorded in the Minutes of said Court in Volume 20, Pages 615-617. Said judgment was in favor of Plaintiff, FIRST OF TEXAS CORPORATION, establishing its debts against the Defendants, LEONARD DeARMOND, ARNOLD DeARMOND, EVA DeARMOND PATTERSON, CAROLE DeARMOND SMITH, MYRTLE R. DeARMOND, BILLY N. DeARMOND, DON DeARMOND AND ADA DeARMOND MIZAR, for the sum of EIGHT HUNDRED NINETY SIX AND 98/100 (\$896.98) DOLLARS, together with interest on the sum of SEVEN HUNDRED NINETY TWO and 48/100 (\$792.48) DOLLARS thereof at the rate of eight percent (8%) per annum, and interest on the sum of ONE HUNDRED FOUR AND 50/100 (\$104.50) DOLLARS thereof at the rate of six percent (6%) per annum from March 5, 1964, until paid, and all costs of suit, together with foreclosure against the Defendants, LEONARD DeARMOND, ARNOLD DeARMOND, EVA DeARMOND PATTERSON, OTIS PATTERSON, JESSE WAYNE DeARMOND, JACK DeARMOND, NANCY DeARMOND GROUNDS, NEIL GROUNDS, CAROLE DeARMOND SMITH, DAVID SMITH, MYRTLE R. DeARMOND, BILLY N. DeARMOND, DON DeARMOND, ADA DeARMOND MIZAR AND FRED MIZAR, and all those claiming under said Defendants, whose claims originated since the filing of Plaintiff's Notice of Lis Pendens with the County Clerk of Hansford County, Texas, on the 30th day of September, 1963, of a certain lien securing Plaintiff's debt upon the following described property,

Call 2266
To Report
Local News

School Menus

- MONDAY, SEPT. 21
Corn Dogs-Mustard
Seasoned Blackeyed Peas
O'Brien Potatoes
Dill Pickle Spears
Apple Sauce
Honey-Peanut Butter Spread
Hot Rolls-Butter
Chocolate or White Milk
TUESDAY, SEPT. 22
Barbeque on Bun
or Ham Salad Sandwich
Seasoned Pinto Beans
Buttered Corn
Cole Slaw-Sour Cream Dressing
Butter Cake with Lemon Sauce
Chocolate or White Milk
WEDNESDAY, SEPT. 23
Swiss Steak
Buttered Rice
Lyonnaise Carrots
Seasoned Spinach
Fresh Onion Rings
Spicy Peach Cobbler Bread
Chocolate or White Milk
THURSDAY, SEPT. 24
Chicken Short Cake
Mashed Potatoes
Seasoned Green Beans
Tossed Green Salad
Ice Cream Bars
Cornbread-Butter
Chocolate or White Milk
FRIDAY, SEPT. 25
Hamburger-Mustard
or Tuna Salad Sandwich
French Fries-Catsup
Baked Beans
Lettuce-Tomato Salad
Dill Pickle Slices
Spicy Apple Bars
Chocolate or White Milk



**Strike Out League
Sept. 10, 1964**

TEAM	WON	LOST
Corner Service	7	1
Consumers Coop	6	2
Super Service	4	4
Behne Electric	4	4
Waka Bunch	4	4
Ideal Food	3	5
B&B Sales	2	6
Gordon's Drug	2	6
HIGH TEAM GAME		
Corner Service	846	
HIGH TEAM SERIES		
Corner Service	2421	
HIGH INDIVIDUAL GAME		
O. E. Drake	215	
HIGH INDIVIDUAL SERIES		
Maurice Hamlett	570	

to-wit:

Lot 7, Block 20, First Addition of the City of Spearman, Hansford County, Texas;

Said Judgment and Order of Sale direct that the above described property be seized and sold as under execution in satisfaction of said judgment, and the proceeds of sale applied; First, to the satisfaction of all costs of court and sale; second, to the payment of said judgment in the amount of EIGHT HUNDRED NINETY SIX AND 98/100 (\$896.98) DOLLARS, together with interest that may be due thereon.

GIVEN UNDER MY HAND AND SEAL OF OFFICE on this, the 8th day of September, 1964.

S/ J. B. Cooke
Sheriff, Hansford County,
Texas

Come to Church

Church Directory

Apostolic Faith Church
Roland Haney, Pastor

Sunday School	10:00 a. m.
Morning Worship	11:00 a. m.
Evening Worship	7:00 p. m.
Thursday Fast and Prayer Service	9:30 3:30

Assembly of God Church
Rev. Vance Barker, Pastor

Sunday School	9:45 a. m.
Morning Worship	11:00 a. m.
Evening Worship	7:30 p. m.
Wed. Bible Study	7:30 p. m.

Church of Christ
Charles Milner, Minister

Sunday School	10:00 a. m.
Worship	11:00 a. m.
Worship	7:00 p. m.
Wed. Ladies Bible Class	9:30 a. m.
Wed. Bible Study	7:30 p. m.

Fellowship Baptist Church
W. S. Herring, Pastor

Sunday School	10:00 a. m.
Preaching Service	11:00 a. m.
Sunday Evening Service	7:30 p. m.
Wed. Evening Service	7:30 p. m.

First Christian Church
Rev. W. Graham Pugh, Minister

Sunday School	9:45 a. m.
Morning Worship	11:00 a. m.
Youth Meetings	6:00 p. m.
Evening Worship	7:30 p. m.
Wed. Choir Practice	7:30 p. m.

First Baptist Church
Rev. Luther M. Berry, Pastor

Sunday School	9:45 a. m.
Morning Worship	10:45 a. m.
Training Union	5:30 p. m.
Evening Worship	6:30 p. m.
Wed. Evening Prayer Hour	7:30
Wed. Choir Rehearsal	8:45 p. m.

Oslo Lutheran Church
18 Mi. N. W. of Gruver
Robert L. Cordes, Pastor

Sunday School	9:45 a. m.
(Includes adults)	
Worship Services	11:00 a. m.

First Methodist Church
Brother Charles Gates, Minister

Sunday School	9:45 a. m.
Morning Worship	11:00 a. m.
M. Y. T.	6:30 p. m.
Evening Worship	7:30 p. m.
Women's Society of Christian Service	
Wednesday	3:00 p. m.
Choir Rehearsal	7:30 p. m.

First United Presbyterian Church
Everett H. Cain, Jr., Pastor
11th and Cotter Drive

Sunday Church School	9:45 a. m.
Morning Worship	11:00 a. m.
Evening Study Group	7:30 p. m.
Wed. Choir Practice	7:30 p. m.

Pentecostal Church

Sunday School	9:45 a. m.
Morning Worship	11:00 a. m.
Evening Worship	7:30 p. m.
5th & Hazelwood	

Sacred Heart Catholic Church
Rev. Fr. Fred Hyland

Sundays	10:00 a. m.
Catechism Classes	11:00 a. m.
Week Days	
Mon., Tues., Fri., Sat.	8:00 a. m.
Holy Days of Obligation	7:30 a. m.
First Friday of Month	7:00 a. m.

Spearman Lutheran Mission
Farm Bureau Bldg. - Spearman
Robert Cordes, Pastor

Worship Services	9:00 a. m.
Sunday School	10:00 a. m.

Union Full Gospel Church
Rev. George R. Bollinger, Pastor

Sunday School	10:00 a. m.
Morning Worship	11:00 a. m.
Bible Classes, Sunday	6:45 p. m.
Evening Worship	7:30 p. m.
Wed. Bible Study	7:30 p. m.

Sponsored By These Progressive Merchants

R.L. McClellan Grain Co., Inc.

B & B Grain Co., Inc.

First State Bank

Member F.D.I.C.

Program Given On Fashion

The Hansford County HD Club met Monday afternoon in the home of Mrs. Gordon Parish.

Mrs. L.W. Rosenbaum presided at the business meeting in the absence of the president, Mrs. Ellzey Vanderburg.

Roll call was answered with written suggestions for the 1965 yearbook.

Miss Linda Webb, HD Agent, presented the program on "Fabrics and Fashions".

Attending were Mmes. Rosenbaum, Herb Howe, Clyde Whitehead, Daniel Sheets, H. H. Chevalier, Miss Webb and the hostess.

The next meeting will be Sept. 28 in the home of Mrs. Chevalier.

Future Readers Of The Plainsman

Mr. and Mrs. Winston Tommy Cleveland are the parents of a son, Harold Eugene, born Sept. 14 in Hansford Hospital. He weighed 5 lbs. 12 3/4 oz.

Mr. and Mrs. Claude Sheets Jr. are the parents of a son born Sept. 15 in Hansford Hospital. He weighed 8 lbs. 6 oz.

Group Hears Mrs. Garnett

Roundtable met Thursday morning in the home of Mrs. J.D. Helms.

Mrs. Wesley Garnett reviewed "Ocean in a Teacup" by Ray A. Hauserman, Jr., an inspiring biography of one of the world's great spiritual leaders, a man of extraordinary intelligence and keen insight, a physician, scientist, mystic and a man of love and service.

Attending were Mmes. Woodville Jarvis, Eddie Gates, Richard Fancher, Glen Hiller, Betty Beam, Abbye Ownbey, Rex Sanders, Sr., Luther Berry, Ray Devers, Don Jones, Jerry Day, Jerry Jackson, Wesley Garnett, Sr., and the hostess.

HANSFORD HOSPITAL NEWS

Patients in Hansford Hospital this week include Joe Nell Sheets and son, Jenna V. Ownbey, Kevin Ruark, Louise Cleveland and son, Vern Osborn, Maude Mathews, Steve Glassey, and Jimmy Chappell.

Dismissed were Dorothy Litterell, Kathy Crawford, Ted Machado, Dock Allen Martin, Pat Francis, Homer Allen, Eileen Red, Joyce Reimund and son, Donna Harvey and daughter, Juanita Jackson, Joe Cordie, Juanita Boxford, Grant Becker.

Mmes. F.S. Ayers, James Cummings and Ellzey Vanderburg are in Houston this week attending a THDA meeting.

Mr. and Mrs. Orville Fullbright had as their guest last Friday Mrs. Clara Hill from El Paso.

Miss Carolyn Collard from Guyton, visited over the weekend with her parents, Mr. and Mrs. John R. Collard.

Mrs. Golightly Hosts Rebekahs

The Rebekah Lodge No. 290 met Thursday, Sept. 10 in the IOOF Hall.

Presiding officer was Carol Lee Franz, Noble Grand.

Wanda Golightly was hostess for the evening and served refreshments to the following members present: Corrine Hughes, Ethel Lou Ellsworth, Dorothy Longley, Zina Longley, Jackie Hall, Ruth Caro, Inez Holland, and Ina May Hughes.

The next meeting will be Sept. 24 at 7:30 p.m.


Mr. and Mrs. Ben Maize of Phoenix, Ariz. have been visiting his mother, Mr. and Mrs. A. Cookston and other relatives here for the past two weeks. Added weekend visitors in the Cookston home were her daughter, Mrs. Johnny Pierce and children, Ricky, Maureen and Mike of Beggs, Okla.



goes thru the skin to kill muscle pain at its source **THRU**

Soothing THRU begins to penetrate within 30 seconds, to bring relief from muscular sprains, stiffness... even brings temporary relief from minor rheumatic pain.

Cooling or Warming liquid
2 fl. oz. **1.49**



Get relief that can last all day... or night!

REXALL **TIMED ACTION HAY FEVER ALLERGY CAPSULES**

Each capsule contains hundreds of tiny pellets of medication which dissolve at timed intervals to give you sustained relief for up to 12 hours.

12's **1.09**

Spearman Rexall Drug

New Suits and Sports Coats



**AN OUTSTANDING
COLLECTION OF
MEN'S SWEATERS**

Madras Traditional Belts For The Young Man

Cates Men's & Boy's Wear



Libby's



THIS WEEK'S FREE DISH:
1 elegant "Gold Crown" China
BREAD & BUTTER PLATE
With \$7.00 purchase or over



HARVEST of VALUES

"Weekend Values Good Friday and Saturday Sept. 18 & 19."

Bananas Golden-Ripe	lb.	13¢
1-lb. Cello pkg.		
Carrots	2 pkgs.	19¢
Missouri--Jonathan		
Apples	2 lbs.	25¢
Large-Thick-Meated-Bell		
Peppers	lb.	10¢

Libbys	303 Can	
Peas Garden Sweet		2 for 47¢

Libbys	Tall Can	
Pink Salmon		63¢

Libbys	14 oz. Bottle	
Catsup Tomato		6 for \$1.00

Del Monte	No. 2 Can	
Pineapple Crushed		29¢

Deer Brand	303 Can	
Tomatoes		11¢

Krafts	14 oz. Jar	
Cheez Whiz		49¢

Krafts	Pint	
Miracle Whip Salad Dressing		33¢

Hersheys	8 oz.	
Cocoa		33¢

Instant Tea		
Nestea Regular \$1.69 size		\$1.29

Shurfine	6 oz. Jar	
Coffee Instant		87¢

Bama	18 oz. Tumbler	
Preserves Peach or Apricot		3 for \$1.00

Krafts	lb.	
Margarine Parkay		23¢

Libbys

Fruit Cocktail	303 Can	3 for 89¢
-----------------------	---------	------------------

Libbys	46 oz. can	Libbys Cut	303 Can
Tomato Juice	2 for 57¢	Green Beans	2 for 47¢

APRICOT NECTAR	Libbys	
	29 oz. can	2 for 75¢

Libbys Whole Kernal or Cream Golden	SHURFINE	
CORN	303 Can	6 for \$1
		COFFEE lb. Can 67¢

Imperial Pure Cane

Sugar		
5 lb. Bag		39¢

"with \$7.00 purchase or over"

Food King		
Peaches		
"Freestone"		
No. 2 1/2 can		
4 for \$1.00		

Patio Beef	2 for \$1.00
Enchilada Dinner	
Frozen Lge. Pkg.	

Shurfine	4 for \$1.00
Orange Juice	
Frozen 6 oz. Can	

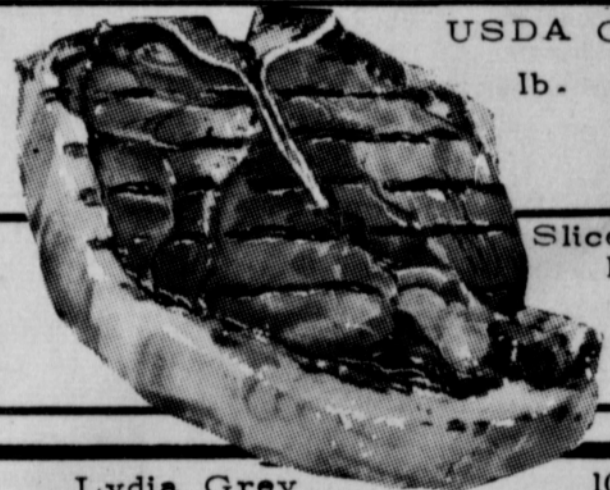
U.S.D.A. CHOICE

Round Steak	Tender Aged lb.	89¢
--------------------	-----------------	------------

Loin Steak	Tender Aged lb.	89¢
-------------------	-----------------	------------

T-Bone Steak	USDA Choice lb.	98¢
---------------------	-----------------	------------

Bacon	Corn King Sliced lb. Pkg.	49¢
--------------	---------------------------	------------



Lydia Grey	10 roll pak	
Tissue Bathroom		77¢

Big Top	18 oz.	
Peanut Butter		49¢

Chili Chef Boy Ar Dee	Tall Can	37¢
------------------------------	----------	------------

Crackers Shurfresh Saltines	lb. Box	21¢
------------------------------------	---------	------------

Flour Shurfine	10 lb. Bag	67¢
-----------------------	------------	------------

FROZEN FOOD

SHURFINE	"Mix-or-Match"
*****	Your Choice
Golden Cut	
CORN 24 oz. Bag	} 3 for 89¢
Baby Cut	
OKRA 20 oz. Bag	
Small New Whole	
POTATOES 24 oz. Bag	

Cut Rate
SPEARMAN, TEXAS



Homemaking Notes

by Linda Webb

Miss Beverly Heath, 4-H member in Gruver, will represent Hansford County this weekend in the District 4-H Bake Show held during the Tri-State Fair in Amarillo.

Beverly will enter her record book and her products, a quick loaf bread and bar cookies, Saturday in the contest. This is the beginning of Beverly's second year in 4-H Club work, and we wish her lots of luck in her first district competition.

All interested persons in the county, both men and women, are invited to attend the Medical Self-Help Training Course which will be held throughout October.

Nine two (2) hour sessions, are to be held each Monday and Thursday in October starting Thursday, Oct. 1. They will be instructed by Dr. D.E. Hackley. Meetings will begin promptly each evening at 7:30 p.m. in the Elementary School Cafeteria.

The Medical Self-Help Course is much more than First-Aid training. It will be an excellent opportunity for men and women in the county to learn about emergency survival aid, which can be put

Tour of Homes Sunday Sponsored by Study Club

The Spearman Study Club announced this week the homes that may be visited on their home tour Sunday, Sept. 20.

to use in many daily situations where emergencies arise. Won't you plan to attend?

The County Home Demonstration Council will sponsor a rummage sale in the old Chambers building in Spearman, Saturday, Sept. 19 from 8:30 a.m. to 5:00 p.m. Rummage may be brought Friday afternoon to be tagged and set up for sale.

I am still looking for entries in the "Make-It-With-Wool" contest. Entry forms are available from the County Extension office. There are four divisions for entries, which are: (1) 10-13 years old; (2) 14-17 years old; (3) 18-21 years old; (4) adult over 21 years old.

Each county may send 10 contestants to the district contest—three from each of the first 3 divisions, and one adult. So lets' have those entries from Hansford County. They are due in this office by November 1.

Tickets may be purchased at any of the homes listed, and persons may visit any of the homes at any time between the hours of 2 and 5.

Following is the list of homes that may be seen on the tour: Deta Blodgett, 719 Gibner Drive; Lloyd Buzzard, Hwy 15; Mrs. J.R. Collard, Sr., 104 S. Barkley; Kenneth Evans, Farm Road 760, 7 miles south and one mile east of Spearman; J.D. Helms, 1010 Blodgett Drive; and Ernest Wilmeth, Hwy 15, 7 miles south of Spearman.

Do-Si-Do Club Plans Dance

The Spearman Do-Si-Do Club had a wonderful turn out for their salad supper and dance Saturday night.

The club thoroughly enjoyed the presence of the many out of town guests, and hope to see everyone at the club dance Saturday, Sept. 26.

Turners Attend Design School

Mr. and Mrs. Billy Turner of Spearman Floral and Gifts and Edna Dragoun of Edna's Flowers in Perryton attended the South Plains Floral Design School held at the Caprock Hotel in Lubbock over the weekend. The school was sponsored by the wholesale florists in Lubbock and featured guest designers from Boulder, Colo. and from Fort Worth.

Mr. and Mrs. Merl Guy Jones of Canyon have been here visiting over the weekend. He is teaching at West Texas State University. He was employed with the Department of Interior, Washington, D.C. this summer.

Mrs. H.M. Shedeck visited this past week with her daughter and family, Mr. and Mrs. N.C. Sikes and children in Portales, N.M.

Judy Owens of Amarillo visited over the weekend with her parents, Mr. and Mrs. Claude Owens.

It pays to read the classified ads in The Hansford Plainsman.

Riding Club Sets Play Day Sunday

All horse lovers who like to watch horses and riders compete against each other in the Play Day events can be entertained here this weekend.

The Spearman Riding Club is having a Play Day at the local rodeo grounds at 1:30, Sunday, Sept. 20. The events will begin at 1:30 p.m.

Floyd Dry of the Riding Club said eight clubs are expected here to participate in the riding events.

Rummage Sale

Rho Rho Chapter of Beta Sigma Phi will hold a rummage sale in the old city hall Saturday, Sept. 26 beginning at 8:30 a.m.

Mr. and Mrs. Flavel Ayers were in Oklahoma City last week where their son Glen enrolled at Oklahoma Christian College for the fall term.

Protect your credit, pay your accounts promptly.

RETAIL CREDIT CORP. OF SPEARMAN

We Have Moved To A Temporary Location

AT 315 MAIN

NEXT DOOR TO BOB'S SALES & SERVICE

Spearman Cable T. V. System

OUR PHONE NUMBER IS THE SAME, 659-3363



GENEROUS SHOULDERS

LONGER LAPEL ROLL

TWO BUTTONS

TRIM WAIST

TRIM HIPS

TRIM TROUSERS

-THE BRAND NEW

Athlete

SUIT... BY

Marx Made

If you're the "athletic type", even the arm chair variety, these new 2-button Athlete suits will help you look, and feel, right up to the minute fashion-wise. Not only does the styling give the impression of custom-tailoring but also the fabrics... the season's very latest in colorings and patterns... all more than you'd ever expect to find at such a modest

\$50.00 to \$75.00

Chambers

Starting September 15th
Big travel bargain for cities along Santa Fe



It's Chico Bargain Fare time again on the Santa Fe,—from September 15, 1964 to April 30, 1965.

For example, a regular round-trip ticket costing \$100 will be sold at the off-season bargain fare of \$80. Round-trips costing \$75 now will be only \$60, and similar reductions will apply for round-trip tickets from all stations except for local trips within the State of California.

No matter where you travel on Santa Fe trains round-trip bargain fares will save you approximately 20%. Tickets on sale every day with a return limit of 30 days. Yes, bargain fares apply for both round-trip coach and first class tickets.

Now you can leave the car at home and save money traveling by Santa Fe.

See the Santa Fe Agent in your home town for complete information

When War Was Hell

—Archie House, who was only 16 when he joined Company I of the 3rd Michigan Volunteers and sailed for Cuba to help fight the Spanish-American War, recently recalled his landing near Si-boney.

The greatest danger wasn't enemy bullets, he said, but his own equipment.

"It was June 27," House said. "It was hot, maybe 80 degrees. We landed wearing long underwear, heavy blue woolen jackets and trousers, leggings that came

up to your knees over the trousers. We had the Springfield 45-70—it carried a bullet so big they used to call it the light artillery, that rifle. It'd kick you over a 10-rail fence."

Each man, he said carried a 50-pound pack and ammunition belts holding 40 to 50 rounds of the finger-sized bullets.

House is national commander of the 18,000 surviving veterans of that war.

The symbol of the Fourth of July is fireworks; of Memorial Day, flowers,

City Census Set Sunday

Spearman's Ministerial Alliance will sponsor a city-wide Religious Census Sunday afternoon, Sept. 20.

Alliance President, the Rev. Charles Gates said this week that in every community a religious census is needed at least once every other year.

This year the alliance hopes to have enough workers so the entire city can be canvassed from 1:30 until 4:30 p.m.

This will require 15 team captains and six or eight workers for each captain. The Rev. Gates is general chairman and is assisted by vice chairman the Rev. George Bollinger, vice president of the alliance.

A committee is working with the alliance to prepare the census. This committee is Richard Fancher, Orvil Brummett, Orville Fullbright and Frank Buzzard.

Chairman Fancher is mapping out the areas to be covered by each team captain.

A copy of the census card will be published in the papers before the census and persons can speed the census by filling the cards out in advance and having them ready for the census takers, or pinned to the door, if the householder is not going to be at home.

Black profile portraits, popular in the 18th Century because they were inexpensive, were nicknamed "silhouettes" after Etienne de Silhouette whose drastic economies as public finance controller under Louis XV caused wits to use his name for anything cheap.

An El Paso, Tex., collector of complete sets of National Geographic magazines has bound his set in such rare materials as mink, original paintings and Pancho Villa's saddle blanket.

FAMILY CENSUS CARD
(USE DIFFERENT CARD FOR EVERY FAMILY NAME) HOME TELEPHONE _____

FAMILY NAME	DATE OF BIRTH			CHRIS. DENOM.	CHURCH MEMBER WHERE	LOCAL CHURCH PREFERRED	ATTEND	
	DAY	MO.	YEAR				S. S.	T. U.
FATHER								
MOTHER								
CHILDREN								
OTHER PROSPECTS								

The religious census card is for YOU if you fall in the following category:

1. Will not be home September 20th
2. Do not want to be bothered
3. Will be a census taker

Please fill the card out and clip it on your mail box

SPEARMAN MINISTERIAL ALLIANCE

Our quotable notables: "The most important thing a father can do for his children is to love their mother" — the Rev. Theodore Hesburgh, Notre Dame president.

It was Bruce Barton who observed, "Conceit is God's gift to little men."

It takes the harvest of 50 coffee trees to supply one American family its yearly intake.



WELCOME YOUR NEW NEIGHBORS

James & Ruby Riley

Who have purchased a new home at 48th 12th St.

Robert & Sherran Lohkamp

Who have purchased a new home at 107 Wanda Dr.

Mr. & Mrs. Richard A. Baxter

Who have purchased a new home at 508 S. Barkley

E. C. Greene & Sons Agency

look what we **Cooked up** for fall

Del Monte 303 Can Peas Early Garden 2 for 37¢

Del Monte 303 Can Corn W. K. 2 for 33¢

Del Monte 303 Can Spinach 2 for 29¢

Del Monte 14 oz. Catsup 2 for 29¢

Del Monte Cut 303 Can Green Beans 2 for 49¢

Campbell's Tomato Soup Can 10¢

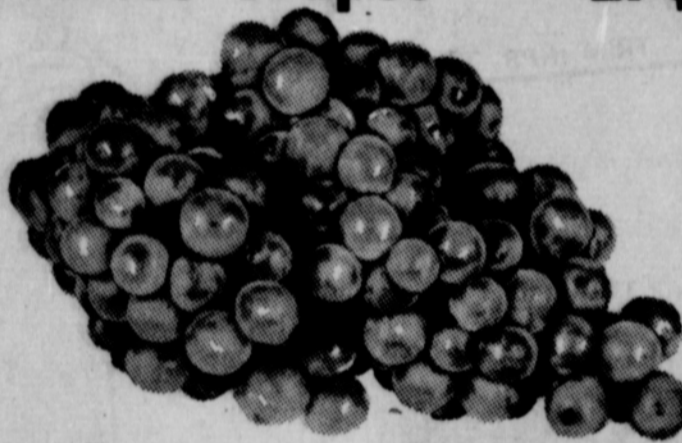
Sunshine 1 lb. Crackers 29¢

Del Monte 303 Can Fruit Cocktail 2 for 49¢

Del Monte 46 oz. Can Tomato Juice 2 for 65¢

Del Monte 46 oz. Can Pineapple-Grapefruit 2 for 65¢

Thompson Seedless Grapes lb. 27¢



Honey Boy Salmon Tall Can 49¢

Van Camp Tuna Light Grated 6 1/2 oz. 19¢



WE GIVE BUCCANEER STAMPS.



We Will Close at 7 p.m. Friday for the Football Game.

Rib Steak lb. 69¢

Beef Ribs lb. 19¢

Fryers lb. 29¢

Homemade Sausage 3 lbs. \$1.

Ground Beef lb. 39¢

Boneless Stew Meat lb. 59¢

Sudden Beauty Hair Spray plus tax 69¢

Open 7 days for your convenience

M & M Grocery

And Shamrock Station

Station - 659-9986

Store - 659-3234