

HANSFORD PLAINSMAN  
120 M  
SPEARMAN, TEXAS

### Boy Scout troop now selling Christmas trees

Boy Scout Troop 551 has received their shipment of Christmas trees. They will be sold out of the round top quonset next door to Blackburn Flowers on Hancock St. Trees will be sold from 1:00 p.m. to 7:00 p.m. Monday thru Friday, and 9:00 a.m. to 6:00 p.m. on Saturdays. After hours, please call Dwight Sumner 659-3469 or Jimmy Vanlandingham 659-2835. The trees will be sold beginning Saturday, Nov. 26th.

**24 hr. prayer service  
call 659-2911**

Ex-Student  
Directory due

DID YOU KNOW?

The Ex-student Association directory goes to print Dec. 15, 1983. Don't be left out-send your name and address change to us now... Thanks.

Judy Martin  
716 Gibner Dr.  
Spearman, Tx. 79081



# HANSFORD PLAINSMAN

Volume 14, Number 4

THE HANSFORD PLAINSMAN, SPEARMAN, TEXAS 79081

Sunday, December 4, 1983

MEMBER

TEXAS PRESS ASSOCIATION

## Merchants offer \$1,500 in Yule cash

The Spearman Retail Merchants Committee of the Spearman Chamber of Commerce are, once again, giving away \$1,500 in Christmas Cash.

Registering begins MONDAY, November 28, at these 38 participating businesses:

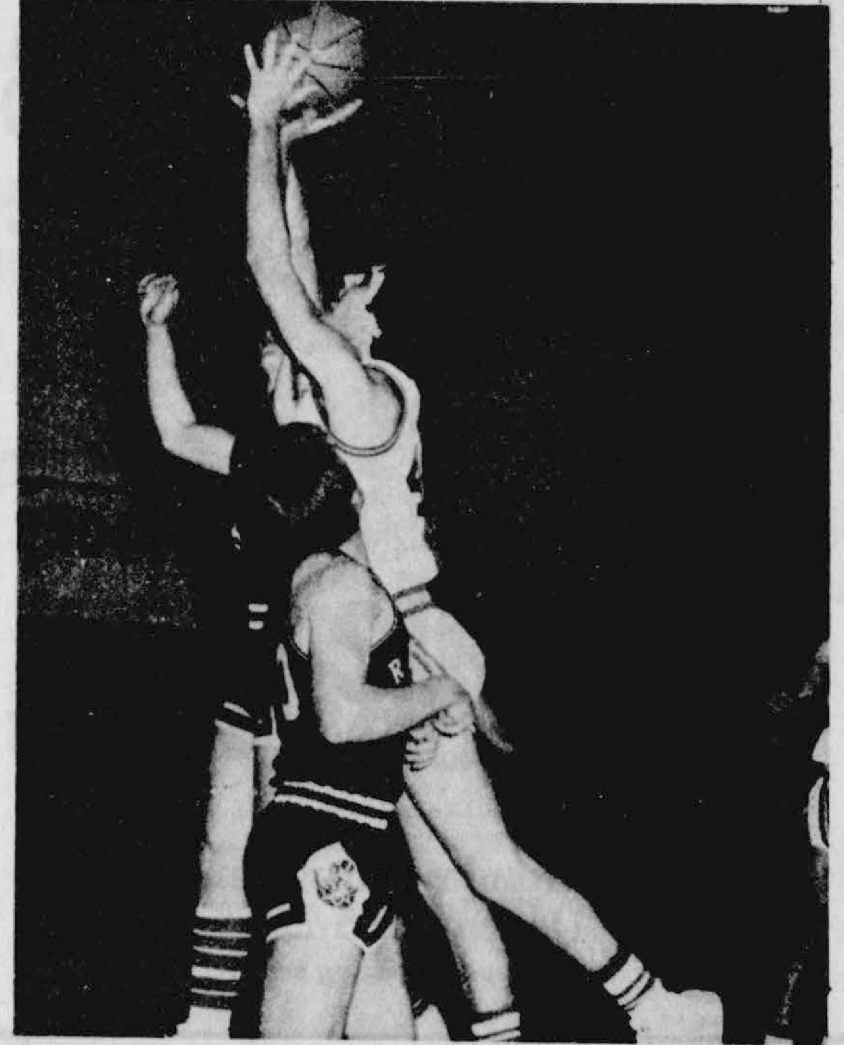
Jan's Nearly New Fashions, Anthony Electric, Gordons Drug, Gift

Box, Collard Insurance, Bakers, Brock Insurance Agency, Hi Plains Auto, The Bunkhouse, Spearman Reporter, Trudy's Fashions, Cates Men & Boys Wear, Wardrobe Cleaners, The Desk Set, JG's, Interstate Savings & Loan, Boyd's Family Shoes, Hickerson Jewelers, Cochran's Fabrics, Thriftway Grocery, Spearman Pizza Hut, TG&Y

Store, Sacks Third Ave., The General Store, Spearman Super Service, First State Bank, Nelsons Builders Supply, Earl's Tv, Cattleman's Restaurant, Dairy Queen, Beedy Furniture, Boxwell Brothers, Crawford Motor, Lady Fair, KRDF-FM, Kids Stuff, A&L Printing and Spearman Auto Supply.

The first drawing will be Monday,

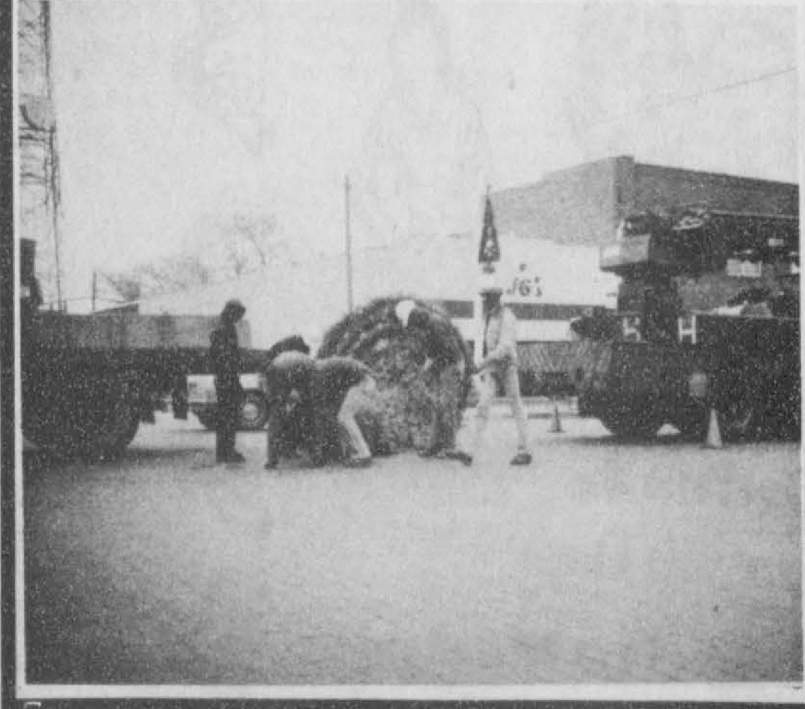
December 5, for \$100 and a drawing will be held each day, Monday through Friday, until December 16. You MUST register at one or all of these participating businesses to be eligible to win. On Monday, December 19, 5 drawings for \$100 will be held. Have a very Merry Christmas from your Spearman businesses.



Truckin' on through--Mark Pearson [44] puts up 2 points for the Lynx.



Texas New Mexico Power Company next to the U.S. Post Office, while employees were busy Friday, moving their Main Street location into their modern new home [above]. Texas-New Mexico crew was busy putting up the huge Christmas Tree decoration above Main Street.



## Operation Christmas Greeting underway

Every year during December, the members of the Hansford Hospital Auxiliary ask the community to give the money they would spend on Christmas cards to the "Operation Christmas Greeting Fund." The entire proceeds from this fund are

used solely for Hospital equipment and this is the only fund raising campaign the Auxiliary does.

This fund raising method has been used by the Auxiliary since 1974 and the citizens of the County have responded very well. In 1983,

## Lynx, Lynxettes cagers advance

Choking off a Guymon Tiger "B" rally, the Spearman Lynx pulled steadily away in the fourth quarter for a 78-56 victory in the opening round of the three-day Spearman Invitational basketball tournament Thursday night.

The Spearman Lynxettes drew a first round bye because the team they were supposed to play Thursday--the Pampa Lady Harvesters--dropped out of the tournament.

Friday night, after press deadline, the Lynx were scheduled to take on the Clarendon Broncos, 54-37 first round winners over the Stinnett Rattlers, and the Lynxettes faced the Sanford-Fritch Eaglettes, 59-30 winners over Phillips.

In other first round boys action, the powerful Sanford-Fritch Eagles raced past the Gruver Greyhounds,

82-49, and the Phillips Blackhawks slipped past the Canadian Wildcats, 39-33.

Girls first round play saw the Canadian girls edge the Lady Greyhounds in a 53-49 thriller, and the Clarendon girls slip past Stinnette, 35-33.

The Guymon "B" Tigers brought a 19 man squad to the tournament, and definitely had upset in mind as they took on the Lynx, one of the tourney favorites, in the Thursday first round finale.

Shorter, but quick, the Tiger "B's" matched the Lynx basket for basket in the early going, running a fast, circling offense.

Burned early by the speed, dribbling ability and shooting accuracy of the Lynx high scoring point guard, Ross Donahue, the Tigers

started to double team him. Donahue's point production tailed off some in the late first and second quarters, but the Lynx capitalized by working the ball inside to big Steve Burke and Billy Ray Haden.

By the end of the first quarter, the Lynx had forged ahead 19-16. In the second quarter the Spearman boys opened up a 10 point advantage and Coach F.G. Crofford sent in the reserves.

Guymon then proceeded to whittle away at the Lynx lead and at the halftime break Spearman only led by 4, 37-33.

The Lynx again worked the ball well into their big men and once more took a 10-point lead in the early third quarter action. Scrambl-

[See LYNX, page 2]

## Hazel Harriet Meek dies, buried Friday

Hazel Harriet Meek, 82, died in Phoenix, Arizona Nov. 25, 1983.

She was the daughter of Mr. and Mrs. Robert E. Meek.

Born in Miller, Nebraska Dec. 12, 1899, she grew to maturity in Bonaparte, Iowa, graduating from High School in 1917. She attended Phillips University in Enid, Okla. She moved to Southern California in 1929 where she resided until 1982, moving to Phoenix, Arizona where she resided at death.

Survivors are two nieces, and two nephews: Mary Page Taylor, Lake Aswego, Oregon, Judith Meek Martin, Spearman; Robert S. Meek, Spearman; and Robert W. Page, Phoenix, Arizona.

Interment was Nov. 30, 1983 at Hansford County Cemetery.

## Rattlers 'defanged'

Going 3-0 is excellent, whether the game's ping pong or marbles. It's not so bad in basketball either--just ask Spearman Lynx and Lynxette fans.

Tuesday night, the Spearman Lynx rolled to their third impressive, lopsided victory in as many starts as they flattened the Stinnett Rattlers here 67-47.

A little earlier, the Lynxettes made it three in a row without a loss, but with a little more difficulty, as they hung on to survive a Stinnett rally for a 42-41 victory.

The Lynx roared away to a 14-7 first quarter lead, and never looked back, although the Rattlers made it close by the first half's end, 28-24, as Lynx Coach F.G. Crofford sent in

the reserves to close out the second quarter.

A second half spurt made it 50-38 by third quarter's end.

Ross Donahue with 18 and Mark Pearson with 16 paced led the Spearman attack. Kelly Wilson with 16 and Mark Dalton with 13 were the Rattler's top scorers.

The Lynxettes battled to a two point, 11-9 first quarter lead, and kept firing away for a 25-14 halftime margin. Still dominating, they were ahead 35-28 at the three-quarters mark but they had to choke off a whirlwind Lady Rattler rally in the fourth quarter to preserve the win.

Shelly Cook and Robbie Heinrich

[See RATTLERS, page 2]



Poetry in motion--Kelly Crawford [45] shows perfect form as she fires off a jumper against Stinnett Tuesday night.

some \$3300 was sent in and all of it was donated to the Hospital for a Plasma Freezer which the Hospital had been needing. The Auxiliary asks your support

[See OPERATION, page 2]



### LYNX... (from page 1)

ing, pressing full court and fast breaking on offense, the Tiger "B's" rallied to take a 47-47. Fast breaking Guymon forged ahead again 49-47 with 49 seconds left in the third quarter, but that was it for the Guymon team. Donahue intercepted a Tiger pass and Buddy Pool sank two free throws to bring the score to 49-all at quarters end.

In the fourth quarter, the Tigers scrambling press backfired on them, as the Lynx broke the press frequently to score, and converted free throws as the Tigers fouled repeatedly trying to get back in the game.

Burke with 23 points wound up as high point man for the Lynx. Donahue, hot from the field and the free throw line in the late Spearman surge, finished with 18 points.

Mike Pearson, another key performer in the fourth quarter rally, added 16. Haden scored 10 points, most on rebounds. Pool, who sparkled on defense and clutch passing, tallied six points and Johnny Rogers came off the bench to add 5.

Fritch's Eagles showed their muscle early as their defense held the Greyhounds to 8 first quarter points, while the "race-horse" offense rolled up 22 points.

By halftime the Eagles lead had ballooned to 45-16 and at the three-quarters mark it was 57-32. Fritch. Key to the Eagles success was the rebounding of 6-8, Ed "Too Tall" Cunningham, who time-after-time hauled down rebounds to fuel the fast break led by S. Rich and B. Francis.

Rich and Francis wound up with 24 points each, and Cunningham made it three Eagles over 20 points as he hit for 21.

Junior post, Kelon Morley led Gruver with 14 points and Brian McClanaghan hit 10, Rodney Clawson and Rod Been 7 each, Johnny Shipp, Doug Garrett and Steven Fry 3, Luke Pittman 2 and Chad Logsdon 1.

Eastes with 15 points and Newcomb with 10 fueled Canadian's win over Phillips. The Blackhawks were led by Bessire and Beebe with 8 points each.

Arlis Thomas with 18 points and Johnny Gaines with 10 led Clarendon past Stinnett, despite a 12-point performance by Mike Williamson.

The Canadian-Gruver Lady Hounds game was close all the way. The score was knotted 11-11 at first period's end at halftime, the Lady Wildcats led by a narrow 28-25 margin.

The third quarter-ending buzzer caught the score at 41-39, Canadian.

Mica Shapley led the Lady Greyhounds with 16 points. DeNetta Booth tallied 14, Melanie Morris 12, Tamra Stedje 4 and Jackie Sparks 3. The balanced Canadian attack was led by K. Schoenhals 11 points.

C. Garman with 13 and Linda Weatherly with 10 paced Clarendon's win over Stinnett. Deanna Shelton with 17 and Kim Wasson with 10 teamed to lead Fritch past Phillips.

### JV Lynx drop thriller

Plagued by fourth quarter fouls, the Spearman Lynx Junior Varsity was not able to overcome a late Gruver rally and fell 43-41 in the opening round of the Gruver Junior Varsity Invitational Tournament Thursday night.

The Lynxette JV's also lost, by a wider margin, to the Gruver JV girls.

Both the seventh and eighth grade Spearman girls teams won to advance in the winners bracket of the Canadian junior high tournament. The seventh grade girls topped host A Canadian in a defensive duel, 9-6, and the eighth grade girls edged past Perryton 16-14.

Other details on these tournaments were not available at press time.

### RATTLERS... (from page 1)

with 6 points each paced the balanced Lynxette scoring. Rhonda Gibson, Tiki Jackson and Andrea Mires scored 5 points each, Jill McLain and Nita Baker 4, and Kelly Crawford and Carri Ann Guthrie 2.

Stinnett was led by Donna Herring's 10 and Georgina Robinson's 9.

### OPERATION.... (from page 1)

for this Fund for another year. It will be greatly appreciated. Please send your contributions marked "Operation Christmas Greeting" to Helen Etter, Box 1045, Spearman, Texas, 79081, and list your name the way you wish it to appear in the Christmas Card list which will be published in the paper each week through December.

# Texas T-Brand Tacos



**3 sale FOR \$1.49**

Extra meaty. Extra crunchy. Extra fresh. And now an extra good deal. Come taste the tacos Texans love.



Monday thru Sunday, December 5-December 11. "Just keeps on getting better."™

© Copyright 1983 by D.Q. Co. Dairy Queen is a registered trademark of D.Q. Co. Dairy Queen is a registered trademark of D.Q. Co.

Your free 1983 Christmas Catalogue is ready for you at



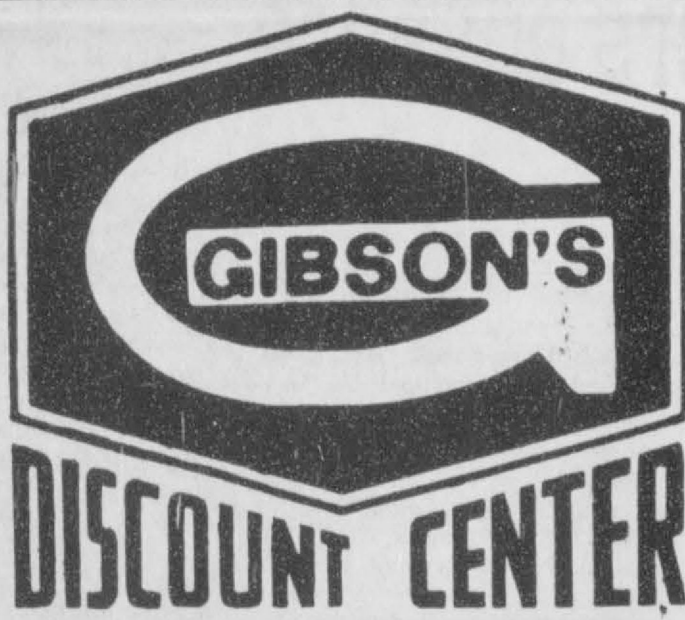
Come by and receive your complimentary catalogue. Sample our gourmet delights and see our Christmas gift selections

Open til 8 p.m. Thursday nights until Christmas

Theresa Brillhart  
(806) 435-9427

219 S. Main  
Perryton, Tex.

-----  
Poll shows Mondale gains support in South.  
-----  
Syrians fire on U.S. jet.  
-----  
U.S. troops in Grenada may be home soon.  
-----  
First major winter storm sets records in Rockies.  
-----  
House rejects dairy price support cuts.



"YOUR FAMILY SAVINGS CENTER"  
NO EXCHANGES WITHOUT CASH REGISTER RECEIPT.

Perryton, Texas  
EXPANDED HOLIDAY HOURS  
FOR YOUR SHOPPING PLEASURE.  
MONDAY THRU SATURDAY - 9 A.M. - 9 P.M.  
SUNDAY - 12 P.M. - 6 P.M.



Gourmet Gift Boxes To Keep Or Send To Family & Friends Far Away

## YOUR Christmas FANTASIES AT A DISCOUNT PRICE

THESE ARE A FEW ITEMS FROM OUR CURRENT CHRISTMAS FANTASIES CATALOG. IF YOU DID NOT RECEIVE ONE, PLEASE STOP BY ANY CHECK STAND AND PICK ONE UP.

PRICES EFFECTIVE THRU DECEMBER 10, 1983. SHOP EARLY WHILE SUPPLIES LAST



Our Brass Collection Has Something For Everyone



Handmade Kitchen Wall Plaques



Collectible Treasures For Everyone On Your Gift List



Toys to Delight the Little Ones on Your List

LIVE CHRISTMAS TREES NOW AVAILABLE AT DISCOUNT PRICES!

"We're Working Harder To Make You Happy!"



Call  
659-3434

# BUY, SELL, TRADE OR RENT THROUGH THE CLASSIFIED ADS

**SERVICES**

**Hansford County Planned Parenthood**  
26 S. Haney  
659-2483  
Spearman  
Mon.-Fri.  
8:30-12:30

**NOTICE**  
**Wallace Monument Co.**  
Monuments, Curbing,  
Grave Covers  
Local Representative  
**LEONARD JAMESON**  
Spearman, Texas  
35SR7N

**STEAM RINSE & VAC**  
Steam Rinse-and-vac Sham-  
poers; \$10.95 for up to 24  
hrs. available at Gordon's  
Drug; also at Freddie Lar-  
gent's 716 Cotter Dr. after 4  
p.m. and Saturdays and  
Sundays.

**SERVICE:** Pits cleaned, wet  
or dry. Dragline or loader.  
Also, dozer, grader, carry-  
all service. Lee Roy Mitch-  
ell, 806-733-2384, Gruver,  
Texas 79040.  
12-rtn

New to area?  
Give us a try  
Call your local  
**USED COW DEALER**  
As soon as Possible.  
659-3544  
659-3545  
1-800-692-4043  
17S-rtn

**MONUMENTS**  
**Save Agents and Undertakers Profits**  
If it is inconvenient for  
you to visit our large  
display, please phone col-  
lect (405) 327-0626 or write  
and we will call on you.  
**ALVA MONUMENT  
WORKS, INC.**  
Alva OK 73717

**SPEARMAN ELECTRIC**  
Licensed and Bonded  
New work and rework  
Phone 659-2636  
11-rtn

**OSGOOD  
MONUMENT CO.**  
Amarillo, Texas  
Dealers of Rock of Ages  
Granitem as well as all  
colored granites, marble  
and bronze memorials.  
represented by  
**BOXWELL BROS.  
FUNERAL HOME**  
519 S. EVANS  
659-3802

**DOG GROOMING** at prices  
you can afford. Also provide  
boarding service. Call Jodie at  
659-3937.  
50-rtn

**FOR SALE**

**FOR SALE:** 6 ft. artificial  
Christmas tree. Like new. 112  
S. Dresen.  
3-2nc

**FOR SALE:** Dry pinon fir  
wood. For information call  
505-278-3213.  
47S-RTN

**FOR SALE:** Old English Sheep  
Dog. Call 733-2517.  
1S-rtn

**FOR SALE:** Girls new fur pile  
coat with hood. Rust color.  
Size 12. Machine washable.  
\$25.00. Call 659-2739 or come  
by 1118 S. Haney.  
45S-rtn-nc

**Cabbage Patch Dolls.** \$50.00.  
**The Knack Shoppe,** 317 Main,  
Spearman, Texas 659-3469.  
4S-rtn

**FOR SALE:** Mercury Snow-  
mobile. Call R.L. Uptergrove.  
659-2677.  
4S-1tc

**PIANO IN STORAGE**  
Beautiful spinet-console  
stored locally. Reported like  
new. Responsible party can  
take at big saving on low  
payment balance. Write Joplin  
Piano, Inc., Joplin, Missouri  
64801. Include home phone  
number.  
4-1tp

**FOR SALE:** L-shaped sectional  
couch with end table, \$300.00;  
chair and ottoman, \$125.00.  
Call 9-2678.  
4-4tc

**FOR SALE:** Microwave space  
saver stand, \$75.00; refrig-  
erated air conditioner, 1983  
model, \$450.00; dishwasher,  
\$200. 659-5216--call anytime.  
712 Wilbanks.  
2S-rtn

**MISC. FOR SALE:** Waterless  
cookware stainless, multi-ply.  
Heavy home demonstration  
kind, Never opened. Normally,  
\$695, selling, \$295. 1-303-685-  
9092.  
4S-3tp

**FOR RENT**

**FOR RENT:** 2 bedroom apart-  
ment. 659-3937.  
4-RTN

**FOR RENT:** 3 bedroom house,  
furnished or unfurnished. Call  
659-2392 or 659-3181.  
4S-2tc

**FOR RENT:** 2-bedroom partially  
furnished mobile home in  
nice location--across from  
YMCA ball park--2 car off-  
street cement parking area;  
6-ft. wood privacy fence. Call  
3519--leave message.  
2S-rtn

**RENT REDUCED--nicely** furn-  
ished 1 bedroom apart-  
ments. No pets. Call 9-3471  
afternoons & evenings.  
52S-rtn

**FOR RENT:** 1 bedroom furn-  
ished brick apartment across  
from swimming pool. Call  
659-2274 or 9-3522. Spearman.  
4S-rtn-8tp

**HOUSE FOR RENT--unfurn-  
ished,** 2 bedroom with washer  
and dryer hookup at 910 S.  
Bernice.  
1S-rtn

**FOR RENT:** nice 2 bedroom  
with den and fenced back  
yard. Unfurnished. Call  
9-2162.  
1S-4tc-5only

**REAL ESTATE  
FOR SALE**

**Spacious Country Living--5 mi.**  
South of Spearman. 3,191 sq.  
ft. well constructed home on  
11 acres - 3 bedroom-2 bath-2  
car garage--plenty of storage  
and special features. Make  
this home one of quality.  
\$149,900. Call 659-2823 for  
appointment.  
4S-24tc

**HOUSE FOR SALE:** to be  
moved from Phillips Sher-Han  
Camp. 20 miles North of  
Gruver Hwy. 136. Newly Re-  
modeled. 733-5213.  
2-8tc

**FOR SALE:** 3 bedroom, 1 bath  
home with new patio. Located  
at 205 Lonita. Is fenced and  
has underground utilities. Call  
659-2369.  
42-rtn

**HOME FOR SALE:** 3 bed-  
room, 2 bath, 1,750 square  
feet. Large rooms, huge kit-  
chen and den. Built-ins. 708  
Townsend. 659-2868.  
49S-rtn

**MOBILE HOMES  
FOR SALE**

**FOR SALE:** double wide, 3  
bedrooms, 2 full baths, with  
fireplace, and dining room,  
bar and extra large living  
room. Phone 435-6434. Take  
over payments, low equity.  
Will take anything of value on  
trade for equity. Call Spear-  
man 659-3721, ask for Dan.  
3S-4tp

**DEALER REPO!** 3 bedrooms,  
2 baths, 14 x 80 mobile home.  
Wood siding, storm windows,  
garden tub, etc. Assume pay-  
ments of \$272.70 with ap-  
proved credit.

**QUALITY AFFORDABLE  
MOBILE HOMES**  
HWY. 60 W.  
PAMPA, TX.  
665-0715

**\$1000 FACTORY REBATE!**  
Name brand 2 or 3 bedroom.  
Mobile home. If down pay-  
ment is a problem, we can  
help! **WE TAKE TRADES -  
ANYTHING OF VALUE.**  
Large selection. E-Z terms!  
**QUALITY AFFORDABLE  
MOBILE HOMES**  
HWY. 60 W.  
PAMPA, TX. 79065  
665-0715  
1S-8tc

**ALL Steel Buildings**  
Sales & Erection  
Feed lot repairs & construction  
All types of welding  
&  
Feed mill repair  
Corrals & pens  
No job too large or small  
Double D Construction  
Dan Seale David Davis  
405-888-4667 405-888-4402  
Nite 405-888-4510

**NOTICE**

**FRESH** baked goods every  
Wednesday. Taking orders for  
Pumpkin Pie, Pecan Pie,  
Cheese Cake, & Pumpkin Roll  
for X-mas or anytime. Call  
659-3469, 659-3873 or 659-  
2309 or come by 317 Main St.  
The Knack Shoppe.  
4S-6tc

**BUSINESS  
OPPORTUNITIES**

**GOVERNMENT JOBS -** Thou-  
sands of vacancies must be  
filled immediately. \$17,634 to  
\$50,112. Call 716-842-6000,  
Ext. 31716.  
3S-9tp

**HIDE AWAY & FABRIC  
MART** has crafts, china, oils,  
toil paints, stained glass, sup-  
plies and lessons in each. 112  
Main, Perryton, Tx. 435-3806.  
2S-12tc

**Super savings on all Homes...on our lot for a  
limited time only...Up to \$4,000.00 off on selected  
homes. Now is the time to buy at these fantastic  
prices, and get air conditioning, skirting, and  
tie-downs free of charge.**  
**LIBERAL MOBILE HOMES**  
HWY. 54 E.  
LIBERAL, KANSAS 67901  
PHONE 316-624-1981

**PUBLIC NOTICE**

The Cowboy Sub-Chapter of  
the F.C.A. meets the fourth  
Saturday of every month at  
7:30 p.m. at the Home Demon-  
stration Building, Spearman,  
Texas.

Weight Watchers meets  
each Monday at 6:00 p.m. at  
the Home Demonstration  
Building, Spearman, Texas.

**WANTED**

**CARPET CLEANING,** dry  
foam. Lester Leatherman,  
phone 435-4305.  
2-rtn-Tonly

**The Hansford Plainsman**  
PUBLICATION (USPS 2346-6000)  
SPEARMAN, TEXAS 79081  
213 Main Box 458 659-3434  
Published Weekly at 213 Main Street  
Spearman, Texas 79081  
Owner-Publisher.....William M. Miller  
Editor.....Faye Lynch  
Second Class Postage paid at Spearman,  
Texas 79081  
Any erroneous reflection upon the character of  
any person or firm appearing in these columns  
will be gladly and promptly corrected upon being  
brought to the attention of the management.  
POSTMASTER: Send address changes to  
Hansford Plainsman, Box 458, Spearman, Tx.  
79081.  
SUBSCRIPTION RATE: Hansford, adjoining  
counties, combination with the Spearman  
Reporter, \$15.00.  
Other points, \$20.00.  
**MEMBER**  
**TEXAS PRESS ASSOCIATION**

**Watson ministry**

He began his full-time ministry of  
music in December 1972, singing  
all across the country. He has  
appeared with Andrae Crouch and in  
a Billy Graham Crusade in Lubbock.  
He has produced three records, the  
latest of which is entitled, "It's  
Beginning to Rain."  
We are happy to extend an  
invitation to everyone to hear  
Johnny Ray Watson at the First  
Christian Church, December 4,  
10:50 a.m., youth at 4:00 p.m.,  
everyone again at 7:00 p.m.

**Police Report**

On November 23, 1983, at approx-  
imately 5:15 p.m., a complainant  
contacted the Spearman Police  
Department and related that a black  
pickup was on 4th street in front of  
her house driving the pickup in a  
reckless manner. The complainant  
related that the subject driving the  
pickup started his pickup from a  
dead stop squealing his tires,  
leaving tire marks, then stopped the  
pickup and repeated the same  
action. An officer responded to the  
complainants address, however the  
subjects vehicle had departed. A  
measurement of the tire marks on  
4th taken. The first set was 41 feet  
long and the second was 43 feet  
long. A check of the vehicle license  
number was made. Information on  
the vehicle was passed on to other  
officers, if they saw the vehicle in  
question with the operator, to bring  
him to the Spearman Police Depart-  
ment and to contact the Chief of  
Police. At approximately 6:00 p.m.,  
Chief of Police was contacted and  
advised that the subject was at the  
Spearman Police Department. At  
6:15 p.m., the subject was advised  
of his rights and was asked why he  
was driving in the manner he was.  
Subject related that he was showing  
off and that it would not happen  
again. The subject was informed  
that charges would be filed for  
Exhibition of Acceleration and for  
him to appear before the Judge  
on the 28th of November.

On November 25, 1983, a com-  
plainant entered the Spearman  
Police Department and related that  
sometime during the night of  
November 24, 1983, 3 dogs entered  
his back yard and killed 10 hens, 1  
rooster and 4 baby chicks. The  
complainant gave a description of  
the dogs to the Animal Control  
Officer.

On November 28, 1983, a com-  
plainant entered the Spearman  
Police Department and related that  
on Thursday November 24, 1983,  
someone had removed 4 wire spoke  
hub caps from her vehicle while it  
was parked in the 1100 block of  
South Archer.

On December 2, 1983, com-  
plainants entered the Spearman  
Police Department and advised that  
a subject had thrown a rock  
through the back window of one of  
the complainants vehicle. Complai-  
nants further stated that they were  
sitting in front of the residence and  
that one of the complainants was  
talking with his ex wife and that  
they began arguing. The subject  
then came out of the house and  
threw a rock through the back win-  
dow of the vehicle, striking the  
female subject in the back. One of  
the complainants signed a complaint  
against the subject for damages to  
his vehicle.

**ACCIDENT REPORT**  
An accident was reported at 600 S.  
Archer. A 1979 chev. pickup was  
backing from a driveway and failed  
to see a 1983 silverado pickup  
parked across the street. The parked  
vehicle was struck in the right front  
fender. A citation was given.  
D.J. Alberts  
Chief of Police

**First Christian**

Everyone is invited to a special  
event on December 4, as Johnny Ray  
Watson comes to share his faith and  
love of Christ with us. He will bring  
the message in word and song at the  
Morning Worship service at 10:50  
a.m. There will be Youth Rally at  
4:00 p.m. the kids will share Christ  
and Pizza with Johnny Ray. At 7:00  
p.m. he will be In Concert in the  
Sanctuary.  
Johnny Ray brings a necessary

**Valley National  
Dealer Days**  
DEC 8, 9, 10

**Free IBM PCjr**  
With every Valley pivot  
purchased or leased December 8, 9, 10

Here's the chance of a lifetime to get the new IBM PCjr computer absolutely free. Purchase a new Valley center pivot, corner system or linear on the 8th, 9th or 10th and receive a gift certificate for a free IBM PCjr redeemable at your participating Valley dealer.

The IBM PCjr includes computer unit and keyboard with 64K memory plus valuable software. Delivery when available in 1984.

Offer limited to participating Valley dealers.

**Valley National Dealer Days begins  
on December 8 and closes 5:00 p.m.  
EST on December 10, 1983.**

**PRIZES  
Just register to win.**

An IBM Personal Computer XT or  
 An IBM Personal Computer

IBM Personal Computer XT includes keyboard, monitor and hard disk drive.  
IBM Personal Computer includes keyboard, monitor and standard drive.

Offer limited to participating Valley dealers. You must be at least 18 years old to enter.

**You don't have to be present to win  
and no purchase is necessary.**

If you're planning on a new pivot for 1984, this is a real chance to have the top of the line -- Valley, plus a new IBM PCjr.

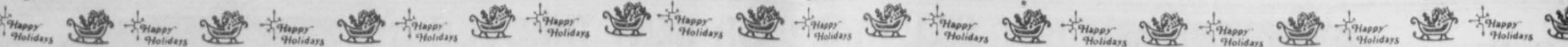
Take advantage of the ITC this year and be ready to go in '84 with a tough reliable Valley -- the world's largest selling center pivot for more than 30 years. Also, choose from a variety of custom-tailored finance plans.

Com in and let's talk it over. Refreshments will be served.

**T & R VALLEY SERVICES, INC**  
at Oglesby International, Inc. (806) 935-7077  
Hwy. 287 North 935-1104  
Dumas, Texas 79029 Visit with: Tommy Armstrong  
or Ray Oglesby

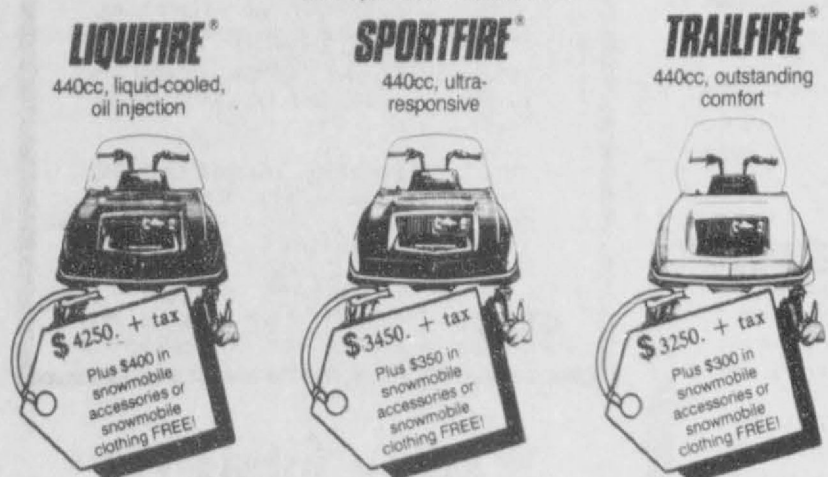
**DEC 8, 9, 10**





# JOHN DEERE SNOWMOBILE SALE!

- Save Big Dollars on All Models!
- 24 Months to Pay—Interest FREE!  
With approved credit and a normal down payment.
- \$250 to \$400 in Clothing and Sled Accessories FREE\*!  
\*With the purchase of a new snowmobile.



Hurry, offers good while dealer inventory lasts.  
Sale ends January 31, 1984.

## Hansford Implement Co.



Hwy. 207 S.

Spearman - 659-2568

Gruver - 733-2088

### NOW OPEN SIX DAYS A WEEK

Evelyn is celebrating going back to work by giving specials on permanents during December.

**\$25.00 perms**

**Merle Norman Cosmetics**

**\$25.00 order**

a free gift \$10.00 to \$12.50

**\$50.00 order**

free gift of \$12.50

**Special on ear piercing**

**\$15.00**

**Barbara** Monday, Tuesday, and Saturday

**Evelyn** Tuesday thru Saturday

**Pat** Wednesday, Thursday, and Friday

**Carolyn** Tuesday thru Friday

## EVELYN'S Beauty Salon

107 Main

Spearman, Texas

659-2813

On November 30 at 7:30 p.m. the Women of the First United Methodist Church met for their regular 5th Wednesday Fellowship. In a beautifully decorated Fellowship Hall they celebrated the beginning of Advent by sharing Christmas Traditions of their families. Judy Nelson presented a devotional designed to help busy women get their priorities straight in this busiest and yet most joyful of all seasons.

Hostesses for the delicious meal were Eulalia Blankenship, Frances Cudd and Virginia Head. Others present were Judy Nelson, Linda Latta, Judy Martin, Fred Sheets, Frances Hudson, Alene Low-

der, Ila Mae Buchanan, Lucille Allen, Altha Townsend, Alva Garner, Patty Sheppard, Betty Womble, Helen Melton, Irene Baker, Dixie Smith, Gaye Woolley, Doris Kitchens, Maylynne Schubert, Marva Hohertz, Tamara Boyd, Marie Beck and Ruth Shaver.

Also joining the ladies for the meal as special guests were members of the Finance committee of the United Methodist Church, Lane Boyd, Dennis Nelson, Garland Head, Kent Guthrie, Ed Garner, Gene Cudd, Roy Bulls, and Monty Blankman.

The next 5th Wednesday night fellowship for all the Women of the Church will be February 29, 1984.

### Serendipity

#### Club met

Serendipity Club met Nov. 22 in the club room with Mary Baker calling the meeting to order in the absence of the president.

Roll call was answered to "Something I would like to change in my kitchen." Minutes of the previous meeting were read and the treasurer's

report was given. Raffle was won by Pam Edwards.

Gayle Sith gave the council report. Items discussed were the score cards kept on each club and the hiring of a cleaning lady to clean the club room on a regular basis. It was also mentioned that the Recreation chairman from each club will decorate the Christmas tree at the club room.

Karen Harruff gave the program on "Face Lifts for

Cabinetry" with ideas on decorating and refinishing.

Sharon Archer served refreshments to members: Carolyn McLeod, Judy Speck, Mary Baker, Pam Edwards, Gayle Smith, Kay Snider, Sharon Archer and Jan Morgan.

Next meeting will be our Christmas Salad Supper and gift exchange on December 13 at 7:30 in the club room.

### Safety Driving Course

Dec. 12 & 13

at the Ochiltree County Court House

6:00 p.m. to 10:00 p.m.

(Must be there both nights.)

\$10.00 fee

Contact:

Jan Hair

Darrell Hickey

435-3247

or

Dean Stumpf

659-3601

Just in time for Christmas shopping.

Stinnett Arts & Crafts Sale

Dec. 3 & 4

Sat. 9 - 6 p.m.

Sun. 12:00 - 5 p.m.

Stinnett School Cafeteria

600 Stewart

Stinnett Senior Citizens will benefit.

There's another  
**First**  
Convenience on the  
horizon

access

First of Perryton is the leader in Convenience Banking in the area. And we plan to continue by offering you round-the-clock banking soon. Beginning after the first of the year, First of Perryton will become part of the Access/Pulse network all across Texas. You'll have 24-hour banking right at our mini-bank where you do your motor banking now.



**First National Bank**

Perryton, Texas

806/435-3676

Member FDIC



Letters

Prisoner seeks family

Dear Editor:

I was born in Dimmitt, but my parents moved away from there when I was small. My parents were killed in an automobile accident when I was 6, and I have lived in and out of foster homes until I was 15. I am in prison now and have never felt so all alone.

I believe some of my relatives may still live in or around Dimmitt. I was hoping you could find the kindness in your heart to publish my letter in your newspaper in hopes my relatives or someone who may know of them would read it and write to me. I would also like, very

much to correspond with anyone as a pen pal. I'm a lonely young white male, but loneliness picks no certain age or color, so if there is anyone who would like to share a smile from time to time, please write. All letters will be answered.

I must ask could you please enclose a stamp for I'm locked in a cell 24 hours a day with no way to get any.

Thank you, Editor, very much for your time.

Sincerely,  
Eddie Blankenship  
Ef-524270  
P.O. Box 98 D-4  
Rock Springs, Ga. 30739

Artist of the Month



MRS. JEWEL (BETSY) WARD

Mrs. Jewel (Betsy) Ward is the Hansford County Library Artist of the Month. Betsy has a fine display of oil paintings at the library. Much of her artwork depicts area scenes such as windmills, pronghorn antelope, range cattle, and Medlin barn. Her paintings include landscapes, stillifes, and wildlife. She has taken lessons from numerous area artists. She took from Ruth Hutton for three months prior to Ruth's retirement. She also studied under Lometa Sparks, Verta Harper of Lipscomb, Celia Meaders, James Ivey Edwards, and Harold Scott. Betsy was born in Hansford County at Oslo. She lives nine miles west of Spearman, five miles southeast of Gruver. She has two children, J.W. Ward and Ann McClure and three grandchildren.

HOSPITAL

Patients in Hansford Hospital are Opal Shaffer, Leon Easley, Mamie Dry, Ruby Lieb, Elena Salazar and son, Grace Kirk, Josephine Kirk, William Powell, Josephine Gruver, Jesse French, Beulah Pevelar, and Calvin Dorman.

Dismissed were Roy Collins, W.E. Jones, W.O. Groves, Rosa Solis, Ruby Inez Kirk, Nita Bynum, Rita Archer, Suzanne Kemp and Mary Brown.

-----  
Former TMI operator indicted by grand jury.

-----  
Gantt elected as Charlotte's first black mayor.

**Hansford Co. Electric**

- ★ Commercial
- ★ Residential
- ★ Oilfield

Call  
**806/733-5224**

24 Hour Service  
HOME--659-2780  
PHONE--659-5243

Licensed . Bonded

Kyle Nollner      Lee Shaver

508 Main • Box 1114  
Gruver, Texas 79040

**GUYMON LIVESTOCK AUCTION**

SALE EVERY WEDNESDAY  
Starting 12:00 P.M.

We sell both cattle & hogs  
"A FAST GROWING MARKET"  
Phone us about your consignment office 405-338-3378

For out of state call Toll Free 1-800-338-5871

WE ARE ALWAYS WORKING FOR THE STOCKMAN'S INTEREST

Gary Cobb  
Cattle & General Manager  
Res. Phone 405-545-3470

Clif Augustine  
Cattle & Public Relations  
Res. Phone 303-336-2512

Santa Letters



"Hi Kids! Once again the merry little elves at the Reporter-Plainsman have agreed to help me with collecting and publishing letters from all my friends in the Hansford County area.

This surely helps me out during the Christmas rush. It helps me cut down on overtime for my elves at the North Pole and lets me have time to get my reindeer and sleigh ready for my Christmas eve visits (I've got an awful lot of places to go that night, you know).

So write down what you want me to bring you, take it by the Reporter office, 213 Main, or mail it to me in care of The Spearman Reporter at Box 458, Spearman, 79081.

The Reporter-Plainsman elves will make sure letters get to me in time for my deliveries and they'll even publish your letter in the newspaper.

So get your pencils and paper and get busy. Christmas will be here before you know it...and I surely want to know what to bring you this year."

Your friend,  
SANTA CLAUS

**K. Dale Johnson, D.D.S., Inc.**  
3102 Garrett Drive  
Perryton, Texas 79070  
435-6364

Special **christmas sale!**

**1984 3-WHEELERS**

YT60L Reg. \$629.00, Sale... \$ **599<sup>00</sup>**  
YT125L Reg. \$1049, Sale... \$ **959<sup>00</sup>**  
YTM200E Reg. \$1779.00, Sale... \$ **1595<sup>00</sup>**  
YTM225L Reg. \$1849.00, Sale... \$ **1659<sup>00</sup>**

**1983**

YT125K Reg. \$1049.00, Sale... \$ **899<sup>00</sup>**  
YT175K Reg. \$1349.00, Sale... \$ **1079<sup>00</sup>**  
YT200K Reg. \$1429.00, Sale... \$ **1229<sup>00</sup>**

ALL MOTORCYCLES ALSO AT SALE PRICES!

**YAMAHA**  
Built for the fun of it.

**EAGLE CYCLE SHOP**  
717 S. Main -- 435-3594

**IMPORTANT TAX NOTICE ABOUT YOUR BANK ACCOUNTS**

When You See This Envelope ...

In a few days, you may be receiving this envelope in the mail. Open it immediately. It is a "Certification of Taxpayer Identification Number". In other words, it verifies your social security number. Please fill in the spaces, sign it, and return the form right away to the bank in the postage-paid envelope.

It's A Federal Requirement

Recent federal laws require that you provide the bank with your **correct** Taxpayer Identification Number. There are two types of taxpayer numbers: the social security number for individuals and the employer identification number for businesses.

Even if the bank already has your number, it has to be verified in writing this month.

By law, failure to provide the information could result in a \$50 penalty by the Internal Revenue Service, plus your interest could be subject to 20% withholding, starting January 1, 1984. Those are tough penalties.

So Let's Help Each Other

If you send back the Certification form with the correct social security number, we keep our records straight and keep you out of trouble with the IRS.

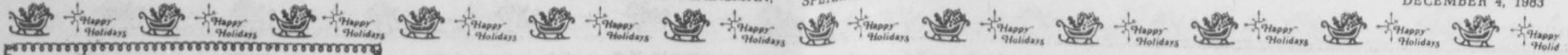
In the case of a joint account, we need the name and social security number of only one person — usually the first person named on the account.

If you **don't** have a social security number, contact the local Social Security office.

Thanks for your cooperation.

**First National Bank**  
Perryton, Texas  
Member FDIC





## Faye's Daze

Santa's helpers have certainly been busy in the local stores and in window decorations also. I came to work Tuesday morning after not being here since before Thanksgiving and was delighted with all the beautiful Christmas decorations. Also the Christmas lights have been installed and if all this doesn't give you a little Christmas spirit, you must be a 'scrooge'.

The promotion award of the year should go to the people who came up with the cabbage patch doll.

What's so amazing about the cabbage doll??? It certainly isn't pretty, can't cry, wet, walk or wave, however, it does come with adoption papers. Maybe you can use them as a dependent on your tax form.

At any rate, they are so popular, that they say they are hard to find, personally, I don't know because I haven't looked for one.

I don't know why I can't have an idea for something that will catch on and sell like this doll.

I hope all the football fans got enough over the weekend. I like football too, but when you flip all the channels, and there is only one channel not showing a game, that is a bit much.

My granddaughter, Lauryn, kept me well entertained over the Thanksgiving holidays. She talks a mile a minute and moves about that fast. She must have realized she was going too fast for grandma, because when she would leave a room where I was she'd say "I be back". Anyway I stored up a lot of memories that should keep me until I get to see her again. She saw her first snow Saturday and decided that snow is cold. From what the weather forecasters say and the way it looks outside it is going to be that way this weekend too.

Seek out the poor, the lonely, the hungry. It is there that you will find Jesus. Mother Teresa.

### Pvt. William Roper completes basic

Pvt. William R. Roper, son of Lovida A. Giblin and stepson of Jack R. Giblin of Morse, Texas, has completed basic training at Fort Jackson, S.C. During the training, students received instruction in drill and ceremonies, weapons, map reading, tactics, military courtesy, military justice, first aid, and Army history and traditions. He is a 1983 graduate of Stinnett High School, Stinnett, Texas.

#### NOTICE

On page 8 of this week's TG&Y Circular we inadvertently transposed the descriptive copy and price on the Quick Stick Deluxe Joystick and the Video Game Joystick. Therefore, they do not appear under the correct photograph. The Quick Stick Deluxe Joystick is 7.84 and the Video Game Joystick is 4.86. We regret this error and any inconvenience caused.

**TG&Y**  
family centers

**Wrangler**  
BRAND  
**Wrangler**  
BRAND

**Get the Famous Wrangler Fit**

Wrangler New Horizons come in a "Fit for Every-Body". Three proportions that let you fit your shape as well as your size.

Choose from Junior, Misses Regular or Misses Full. In pre-washed 100% heavy-weight cotton denim.

Redeem your Wrangler coupons out of the Amarillo paper here!!

**The Bunkhouse**

210 Main Spearman, Texas

## "A Centerpiece"

By: Alma Remy

Well, our snow finally came but not nearly as bad as was predicted. On Saturday the flakes were beautiful, so fluffy they seemed to be dancing around everywhere, carried first one way then another by the gusts of wind - then settling down to rest quietly on a big white drift. It was so pretty to watch from inside, but quite a different story if one had to be out for some time.

It could have been much worse and we're thankful for the moisture it gave us.

The Center was closed from Wednesday afternoon until Monday morning.

For those of us who work everyday, it gave us a chance to rest and also do some Christmas shopping. The stores are gay with Christmas decorations, Holly and Mistletoe, Garlands and decorative trees and toys galore for the youngsters - with all this, it's beginning to look like Christmas.

In all our hurry buying gifts, let us pause to remember the true meaning of Christmas, the Birthday of Jesus and how he lived and died that we might have eternal life. So let each of us give thanks for this, not only on this day, but each day throughout the year.

Our director, Pearl spent the Thanksgiving holidays with her son Mike, wife and family in Arkansas. She reported that the weather was great until they got back to Dallas and knew there was snow in Amarillo. All flights were running late, but all went well and she arrived home about 3 a.m. Monday morning.

Volunteer leaders came Monday afternoon and quilted, finishing the Dresden Plate being quilted for the past several weeks. This is a beauty as well as the Log Cabin which will be given away during the Holiday Season. Do pick up your tickets for a chance to win. They can be picked up at the center or from any member of the Golden Spread Center. One chance to win for a \$2.00 donation or 3 chances for \$5.00. These are going quite fast so contact your center.

Drop in for a cup of coffee and to rest and visit a spell with us when downtown.

We'll be glad to help you and look forward to your visits. Also let us remind you that on Tuesday, Dec. 6 at 6:30 Sue Robinson will be here to take Blood pressure. Be sure to have yours checked.

Hope to see you then.

Alma

### Immunization clinic Dec. 5

An immunization clinic offering vaccines for protection against several childhood diseases is scheduled for Dec. 5 from 2 to 4 p.m. at the Spearman Elementary School, 511 S. Townsend.

Protection is against polio, diphtheria, lock jaw (tetanus), whooping cough (pertussis), measles, rubella, and mumps. There will be no charge.

*Karen's Logy Korner*  
By Karen Harruff  
Hansford County Extension Agent  
Home Economics

#### Pickle History

Pickles have been popular for centuries having been first recorded in history in 2030 B.C. when inhabitants of Northern India introduced cucumber seeds to the Tigris Valley. Historical records show that early settlers grew cucumbers. These pickled vegetables were one of the few green foods available during the winter before the development of modern transportation and storage of fresh vegetables. Although we no longer depend upon pickled vegetables as a source of green vegetables during the winter months, pickles remain a popular item. HOME CANNED PICKLES ADD CRUNCH

Pickles add zest and excitement to meals, not to mention eye appeal, flavor and an irresistible crunch! Scores of Texans make their own pickles each year from cucumbers grown in their own gardens, given to them by friends or purchased from local farmers markets.

Pickles fall into three basic categories: fresh pack, salt pack or brined and genuine dill.

Fresh pack pickles are made

climate and the bringing process is lengthy. However, brined pickles do have a unique and delicious flavor.

Genuine dill pickles are cured in salt, dill and other spices and have a unique mellow flavor which is different from quick dill varieties.

There are a number of steps home picklers should take to assure a quality home-prepared pickle. First, select a cucumber that is a pickling variety such as National Pickling, Explorer, Salty or Crispy. Do not make the mistake of trying to pickle salad cucumbers by selecting the fruits when they are small. Small salad cucumbers are immature fruit and will not yield a quality product.

Process as soon as possible after pickling. If fruits and vegetables cannot be packed immediately, store them in the refrigerator and pickle within 24 hours. Use high quality, four to six (40 to 60 grain)

vinegar, fresh spices and soft water. Heat processing in a waterbath canner is recommended for all pickle products to destroy spoilage organisms and enzymes.

Whether you enjoy making your own pickles or prefer to purchase them at your local supermarket, refrigerate them after opening to maintain their best quality.

EDUCATIONAL PROGRAMS CONDUCTED BY THE TEXAS AGRICULTURAL EXTENSION SERVICE SERVE PEOPLE OF ALL AGES REGARDLESS OF SOCIO-ECONOMIC LEVEL, RACE, COLOR, SEX, RELIGION, HANDICAP OR NATIONAL ORIGIN.

Senate approves nerve gas funds again.

Kentucky elects first woman governor.

Reagan tells Japan trade war must end.

## AMARILLO PRODUCTION CREDIT ASSOCIATION

ANNOUNCES PART TIME OFFICE IN SPEARMAN

Representatives to be in the offices of

BRITT JARVIS at 124 West Kenneth

on Tuesday of each week

Phone: 659-3517

Gaines Franks, Administrative Assistant, will be available each Monday to discuss the Association's credit services. We invite you to come in and discuss your short term agricultural credit needs.

## AMARILLO PRODUCTION CREDIT ASSOCIATION

Offices: Amarillo and Dumas

Give a Gift that will last a lifetime, a gift of color. Your personal color scheme translated onto a color chart and a pocket-sized guide for your shopping convenience.

Color I Associates Inc.

Annett McCloy-color consultant

Rt. 1, Box 4,  
Morse, Tx. 79062

878-3474

## Money Market Investor's Guide

| Choose the Certificate of Deposit You Want | \$2,500 | \$10,000 | \$25,000 | \$50,000 | \$100,000 |         |
|--|---------|----------|----------|----------|-----------|---------|
|  |         |          |          |          | Rate      | Yield** |
| 31 DAYS                                    | 8.80%   | 8.90%    | 9.00%    | 9.15%    | 9.35%     | 9.799%  |
| 90 DAYS                                    | 9.00%   | 9.10%    | 9.20%    | 9.35%    | 9.55%     | 10.019% |
| 180 DAYS                                   | 9.25%   | 9.35%    | 9.45%    | 9.60%    | 9.80%     | 10.294% |
| 1 YEAR                                     | 9.45%   | 9.55%    | 9.65%    | 9.80%    | 10.00%    | 10.515% |
| 18 MONTHS*                                 | 9.55%   | 9.65%    | 9.75%    | 9.90%    | 10.10%    | 10.626% |
| 7 DAY ACCT.                                | 8.80%   |          |          |          |           |         |

**1ST** First National Bank  
Perryton, Texas  
806/435-3676  
Member FDIC

Rates Effective  
Thru December 5, 1983

\*Available with \$500 Minimum Deposit  
\*\*Annual Yield Based on Daily Compounding

All Deposits Insured to \$100,000.

Substantial Penalty for Early Withdrawal.



**MONDAY**

**TUESDAY**

MONDAY 12/5/83

TUESDAY 12/6/83

| CABLE | [2]  | [3]                 | [4]                           | [5]                               | [7]                                | [8]                   | [9]             | [10]                    | [11]                                   | [12]                     |
|-------|--|---------------------|-------------------------------|-----------------------------------|------------------------------------|-----------------------|-----------------|-------------------------|--|--------------------------|
| PM    | ESPN   | OETA                | KAMR                          | TMC                               | KVII                               | CBN                   | WGN             | KFDA                    | WTBS                                   | CNN                      |
|       | Sports Network                                   | Oklahoma City       | CH.4 Amarillo                 | Movie Channel                     | CH.7 Amarillo                      | Cbn Cable Netwr       | CH.9 Chicago    | CH.10 Amarillo          | CH.17 Atlanta                          | Cable News Ntwr          |
| 6:00  | SportsCenter                                     | Business Report     | News                          | Prog Cont'd                       | News                               | Alias Smith and Jones | Barney Miller   | News                    | Carol Burnett                          | Moneyline                |
| 6:30  | ESPN's SideLines                                 | Report              | M*A*S*H                       |                                   | Family Feud                        |                       | Jeffersons      | Three's Company         | Hogan's Heroes                         | Crossfire                |
| 7:00  | NFL's Greatest Moments: 'Best Ever Quarterbacks' | Cosmos              | Family Ties                   | Movie: 'The Man from Snowy River' | Best Christmas Pageant Ever        | I Spy                 | Solid Gold      | Scarecrow and Mrs. King | Movie: 'The Wackiest Ship in the Army' | Prime News               |
| 7:30  |  |                     | Mr. Smith                     |                                   |                                    |                       |                 |                         |  |                          |
| 8:00  | Caesar's Tahoe Billiards Classic                 | Great Performances  | Movie: 'Choices of the Heart' |                                   | NFL Football: Minnesota at Detroit | 700 Club              | Salute!         | AfterMASH               |  |                          |
| 8:30  |  |                     |                               |                                   |                                    |                       |                 |                         |  |                          |
| 9:00  | World Sportsman                                  | Glory of the Garden |                               | Movie: 'Porky's'                  |                                    |                       | Blondie         | News                    | Emerald Point N.A.S.                   | Freeman Reports          |
| 9:30  |  | Blake Edwards       |                               |                                   |                                    |                       |                 |                         |  |                          |
| 10:00 | SportsCenter ESPN's Ringside Review              | Dr. Who             | News                          |                                   |                                    | Angier Life           | Sop             | News                    | All In the Family                      | Sports Tonight Crossfire |
| 10:30 |  | Latenight America   | Tonight Show                  |                                   |                                    | Dobie Gillis          | Love Boat       | Hart to Hart            | Catlins                                |                          |
| 11:00 |  |                     |                               | Movie: 'What a Way to Go'         | News                               | Burns & Allen         |                 |                         | Movie: 'Gambir'                        | Newsnight                |
| 11:30 | 1983 500 'CC'                                    | Sign Off            | Late Night with David         |                                   | Thicke of the Night                | Jack Benny Show       | Movie: 'Inside' | Columbo                 |  |                          |
| 12:00 | World Championship 1983-84 Big                   | Letterman           |                               |                                   |                                    | I Married Joan        | Daisy Clover    |                         |  |                          |
| 12:30 |  | Muppet Show         |                               |                                   |                                    | Love That Bob         |                 |                         |  |                          |

| CABLE | [2]   | [3]                                      | [4]                   | [5]                            | [7]                     | [8]                     | [9]                                      | [10]                          | [11]                               | [12]                     |
|-------|---|--|-----------------------|--------------------------------|-------------------------|-------------------------|--|-------------------------------|------------------------------------|--------------------------|
| PM    | ESPN  | OETA                                     | KAMR                  | TMC                            | KVII                    | CBN                     | WGN                                      | KFDA                          | WTBS                               | CNN                      |
|       | Sports Network                                | Oklahoma City                            | CH.4 Amarillo         | Movie Channel                  | CH.7 Amarillo           | Cbn Cable Netwr         | CH.9 Chicago                             | CH.10 Amarillo                | CH.17 Atlanta                      | Cable News Ntwr          |
| 6:00  | SportsCenter                                  | Business Report                          | News                  | Prog Cont'd                    | News                    | Alias Smith and Jones   | Barney Miller                            | News                          | Carol Burnett                      | Moneyline                |
| 6:30  | Top Rank Boxing from                          | Report                                   | M*A*S*H               |                                | Family Feud             |                         | Jeffersons                               | Three's Company               | Hogan's Heroes                     | Crossfire                |
| 7:00  | Atlantic City, NJ                             | Nova                                     | A Team                |                                | Just Our Luck           | I Spy                   | Charlie's Angels                         | Billy Graham Crusade          | NBA Basketball: Phoenix at Atlanta | Prime News               |
| 7:30  |   |  |                       | Movie: 'The Challenge'         | Happy Days              |                         |  |                               |                                    |                          |
| 8:00  |   | Vietnam: A Television History            | Remington Steele      |                                | Three's Company         | 700 Club                | NCAA Basketball: Western Michigan vs. De | Movie: 'Winter of Discontent' |                                    |                          |
| 8:30  |   |  |                       |                                | Oh Madeline             |                         |  |                               |                                    |                          |
| 9:00  | Auto Racing '83: SCCA Nissan Trans-Am         | Four Corners: A National Sacrifice Area? | For Love and Honor    |                                | Movie: 'Table for Five' | Barbara Walters Special | Blondie                                  | Paul                          |                                    | Freeman Reports          |
| 9:30  |   |  |                       |                                |                         |                         |  |                               |                                    |                          |
| 10:00 | SportsCenter This Week in the NBA 1983-84 Big | Dr. Who                                  | News                  |                                |                         | Another Life            | News                                     | News                          |                                    | Sports Tonight Crossfire |
| 10:30 |   | Latenight America                        | Tonight Show          |                                |                         | Dobie Gillis            | Magnum P.I.                              | Catlins                       |                                    |                          |
| 11:00 | East Preview WinterWorld Series ESPN's        |  |                       |                                |                         | Burns & Allen           | Love Boat                                |                               | Movie: 'Mirage'                    | Newsnight                |
| 11:30 |   | Sign Off                                 | Late Night with David | Movie: 'Same Time, Same Place' | Thicke of the Night     | Jack Benny Show         | McCloud                                  |                               |                                    |                          |
| 12:00 | Sidelines Gymnastics: USGF Single Elimination | Letterman                                |                       | Next Year                      |                         | I Married Joan          | Movie: 'Merrill's Marauders'             |                               |                                    |                          |
| 12:30 |   | Muppet Show                              |                       |                                |                         | Love That Bob           |  |                               |                                    |                          |

**Spearman Church Directory**

- APOSTOLIC FAITH CHURCH:** Leland Grimmer, Pastor  
824 South Dressen  
Sunday School: 10:00 Morning Worship 11:00  
Evening Worship 7:00  
Wednesday Service 7:30  
659-2870
- CHURCH OF THE BRETHREN:** Steve Bailey, Pastor  
Waka, Texas  
Sunday School 10:00 Morning Worship 11:00  
No Evening Services  
435-4598
- CHURCH OF CHRIST:** Gaylord Cook, Pastor  
121 South Haney  
Sunday School: 9:45 Morning Worship 10:35  
Evening Worship 6:00  
Wednesday Service 7:30  
659-3244
- FAITH LUTHERAN CHURCH:** William Schardin, Interim Pastor  
1101 South Bernice Street  
Sunday School 9:45 Morning Worship 10:45  
Evening Worship --None  
659-2252
- FELLOWSHIP BAPTIST CHURCH:** Jim Jones, Pastor  
1102 South Archer  
Sunday School 10:00 Morning Worship 11:00  
Evening Worship 7:00  
Wednesday Service 7:30  
659-2783
- FIRST ASSEMBLY OF GOD:** David Nuckels, Pastor  
401 North Bernice  
Sunday School 9:45 Morning Worship 11:00  
Evening Worship 7:00  
Wednesday Service 7:00  
659-2295
- FIRST BAPTIST CHURCH (SOUTHERN BAPTIST):** Bruce Chesser, Pastor  
Jerry Don Davis, Minister of Youth  
123 South Bernice  
Sunday School 9:45 Morning Worship 11:00  
Church Training 6:00 Evening Worship 7:00  
Wednesday Service 7:00  
659-2445 Intercessory Prayer Line 659-2911
- FIRST CHRISTIAN CHURCH (DISCIPLES OF CHRIST):** Martin Foster, Pastor  
29 South Bernice  
Sunday School 9:30 Morning Worship 10:50  
Evening Worship 6:30  
659-2036
- FIRST UNITED PRESBYTERIAN CHURCH:** Leland McCullough, Pastor  
1021 Cotter  
Sunday School 10:00 Morning Worship 11:00  
No Evening Services  
659-2033
- FIRST UNITED METHODIST CHURCH:** Lane Boyd, Pastor  
407 South Haney  
Sunday School 9:45 Morning Worship 11:00  
Evening Worship 7:00  
659-3220
- SACRED HEART CATHOLIC CHURCH:** Father Raymond Crosier, Priest  
Saturday Evening Mass 7:00PM Friday Mass 8:30AM  
Sunday Mass 8:00AM Thursday Mass 6:30PM  
659-2166
- SPEARMAN UNION CHURCH:** (Inter-Denominational):  
Steve Rogers, Pastor  
31 S. Endicott  
Sunday School 9:45 Morning Worship 10:45  
Evening Service 6:30  
Wednesday Service 7:30  
659-2644

**Real Estate**

**HOMESTEADS AVAILABLE**

**ONLY 240,000 MILES FROM TIMES SQUARE!**

If you are one of those who are looking for a nice acreage tract with a lot, it's 15 acres.

Plenty of cheap land for hardy pioneer families. Would you like to be among the first to stake out a claim? Free transportation in the fastest, most modern vehicle an added inducement. Bring your own air and water.

Not interested! That's just as well—we're talking about the moon.

Far more, we need earnest men and women eager to explore the earth's spiritual frontiers . . . people who will seek courageously for Christian answers to the complicated problems progress has created . . . families trying to enrich their homes and their world with faith and love.

The Church is the homestead of such pioneers. Its grasp encompasses heaven and earth . . . from the throne of God to the depths of a little child's soul.

It cannot fathom the mysteries of outer space. But it will reveal to any man the Center of this universe.

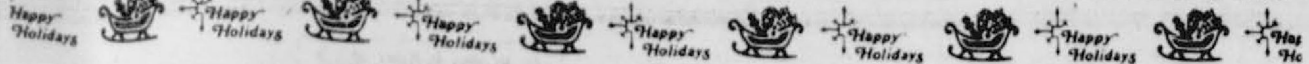
|                            |                               |                             |                                    |                                 |                               |                           |                                    |
|----------------------------|-------------------------------|-----------------------------|------------------------------------|---------------------------------|-------------------------------|---------------------------|------------------------------------|
| Sunday<br>Acts<br>15:14-17 | Monday<br>II Samuel<br>7:8-16 | Tuesday<br>Psalms<br>2:1-12 | Wednesday<br>Psalms<br>89:3, 28-37 | Thursday<br>Ezekiel<br>34:23-31 | Friday<br>Zechariah<br>14:1-9 | Saturday<br>Acts<br>1:6-7 | Saturday<br>Revelation<br>19:11-16 |
|----------------------------|-------------------------------|-----------------------------|------------------------------------|---------------------------------|-------------------------------|---------------------------|------------------------------------|

**SPEARMAN-GRUBER SPANISH BAPTIST MISSION (SOUTHERN BAPTIST):**  
502 E. 7th. Romeo Reyes, Pastor  
Sunday School 9:45 Morning Worship 11:00  
Church Training 6:00 Evening Worship 7:00  
Wednesday Service 7:00  
659-3948

Church page compliments of:

|  |  |   |
|--|--|---|
| <b>Boxwell Brothers</b><br>659-2212-519 Evans-Spearman, Texas  | <b>Interstate Savings &amp; Loan</b><br>322 Main 659-2559 Spearman | <b>Nelson's Builders Supply</b><br>659-3668 308 Main Spearman |
| <b>Louis Schnell Electric</b><br>208 Hancock 659-3433 Spearman | <b>Brock Ins. Agency</b><br>659-2514-206 Main-Spearman, Texas      | <b>1st National Bank</b><br>435-3676-Perryton, Texas          |
|  |  | <b>Baker &amp; Taylor</b><br>Gruber Hwy.-659-2503-Spearman    |





# OUT...OUT... OUT!!!

We're Closing Our Doors December 24 ...

If Not Sooner!

Watch For New Business In This Location!

Prices Cut For The  
Last  
Time!

Please Pick Up  
Your Lay-A-Ways  
By  
December 15

Men's  
**SHIRTS**  
Dress-Casual-Western  
Short Sleeve  
Sizes S-M-L-XL-2XL  
**5<sup>00</sup>**  
Each

SEDFIELD  
MEN'S  
**JEANS**  
Waist Size 31-54  
Not All Lengths

**11<sup>00</sup>**

One Group  
**MEN'S SUITS** **40<sup>00</sup>**

One Group  
**SPORT COATS** **19<sup>96</sup>**

Men's  
**DRESS PANTS** Waist Size 32-54 **5<sup>00</sup>**  
Each

Men's Wrangler  
**JEANS** Waist Size 31-50 **10<sup>00</sup>**  
Not All Lengths

SAVE!  
Do Your  
Christmas  
Shopping  
Now!

Wrangler Student  
**JEANS** Waist Size 25-30 **9<sup>00</sup>**  
Not All Lengths

## J & O CLOTHING

220 S. Main • 435-2737  
Perryton, Texas

## Lifeline emergency program to be discussed here

Do you need a LIFELINE to hang in? Do you need reassurance?

Lifeline, a personal emergency response program will be held in Spearman Tuesday, December 6, at 10:00 a.m. at Faith Lutheran Church. The guest speaker is Linda Clayton, Director of the Emergency Response System/Lifeline from Northwest Texas Hospital.

Lifeline is a community-based program that is provided by your hospital. In a three-year study funded by the U.S. Department of Health the Human Services, Lifeline was proven to be an effective response program for both medical and environmental emergencies. The study showed that it was particularly useful to frail and elderly and

handicapped people who live alone. Lifeline provides reassurance to the users and their families that help is available when needed.

Lifeline consists of three parts:

1) Electronic equipment located in your home. A portable help button and home unit linked to your telephone are used to summon emergency assistance.

2) An emergency response center, located at the hospital, where trained personnel provide 24 hour/day coverage.

3) People who have agreed to respond to your call for help. They're sent immediately in the event of an emergency.

Lifeline/The Emergency Response System program serves the 25 counties of the Texas

Panhandle. Clients are served in emergencies by their local EMS ambulance and are taken to the hospital of their choice.

Lifeline has three types of payment based on income: private, semi-private, and the Texas Department of Human Resources.

The purpose of this meeting will be the formation of a Lifeline Task Force so that Lifeline will be able to serve the communities of Spearman, Gruver, Waka, Farnsworth, and Perryton.

If there are any questions, please contact Rev. Bill Scharidin of Faith Lutheran Church; ph. 659-2252. All are welcome! Come and save a life; maybe your own!

### MARKETS

|       |        |
|-------|--------|
| WHEAT | \$3.27 |
| MILO  | 5.00   |
| CORN  | 3.45   |

### SCHOOL MENU

#### HIGH SCHOOL MENU

DEC. 5 - DEC. 9

MONDAY, DEC. 5

Spaghetti & Meat Sauce

Salad Bar/Cheese Stick

Garlic Bread

Fruit

Milk

TUESDAY, DEC. 6

2 pigs in a poke

Tator Tots

Salad Bar

Plain Jello

Milk

WEDNESDAY, DEC. 7

Burger Pattie

Bombardier Bun

Pearl Harbour Potato

Submarine Salad Bar

Commodore Cobbler

Mighty Milk

THURSDAY, DEC. 8

Beef/Bean Burrito

Steak Cut Fries

Salad Bar/Cheese

Cookie

Milk

FRIDAY, DEC. 9

Chicken Fried Steak

Potatoes/Gravy

Salad Bar

Hot Rolls

Peanut Butter Blend

Milk

ELEM. & JR. HIGH MENU

DEC. 5 - DEC. 9

MONDAY, DEC. 5

Steak Fingers

Potatoes/Gravy

Diced Carrots

Hot Rolls/Butter

Chocolate Pudding

Milk

TUESDAY, DEC. 6

Macaroni & Cheese

Green Beans

Seasoned Beets

Hot Rolls

Peanut Butter Blend

Milk

WEDNESDAY, DEC. 7

Burger Pattie

Bombardier Bun

Pearl Harbour Potatoes

Submarine Salad

Pickle & Onion Slices

Commodore Cobbler

Mighty Milk

THURSDAY, DEC. 8

Spaghetti & Meat Sauce

Seasoned Spinach

Mixed Vegetables

Bread Sticks

Fruit

Milk

FRIDAY, DEC. 9

Pancake Pups

Tator Tots

Sugar Peas

Cheese Sticks

Cookie

Milk

## PBT @ RATES

ASSETS OVER \$128,000,000

Rates Effective December 2, 1983

**IMMA** INSURED MONEY MARKET ACCOUNT **9.42%**  
(Subject to change daily)

**SUPER WIN ACCOUNT** **7.00%**  
(Subject to change daily)

### RATES FOR C.D.'s OVER \$100,000

**7-30 DAYS** **9.25%**

**31-91 DAYS** **9.50%**

**92-180 DAYS** **9.75%**

**181 DAYS-1 YEAR** **10.00%**

RATES SUBJECT TO CHANGE DAILY

FOR RATE INFORMATION CALL 273-6461

**PANHANDLE  
BANK  
& TRUST CO.**

DOWNTOWN BORGER MEMBER F.D.I.C.

ESTABLISHED 1936

"PBT...THE ONE TO WATCH"



## YMCA winter classes start Monday

Monday, December 5 will mark the beginning of the Winter quarter of classes at the Hansford County YMCA. Classes will run for twelve weeks and end on February 24.

The Y will again offer fitness classes for several interests.

There will be co-ed classes offered Monday thru Friday at 12:12 Noon and at 5:30 P.M. Also a co-ed class will be offered on Tuesday and Thursday nights at 7:30. This class will also meet at 10:00 a.m. Saturdays. In addition to the co-ed classes the Y will have classes for women at 9:00 a.m. M, W, F. The Y will again offer the popular aerobic dance classes for the women at 6:30 T, Th & 9:00 a.m. Sat. This class will be the National YMCA program of Fitness Fantasia and our instructor, Wanda Archer, is now nationally certified.

The Winter will also feature special interest programs. These programs include wo-

men's weightlifting, racquetball instruction, & racquetball leagues. The Y will also be offering special interest clubs for the first time. These clubs will include a ski club, running club and a fencing club.

Of special interest to mothers in the Hansford County area will be that the Y is starting a Mother's Day Out program. The program will begin on Thursday, December 8 for children potty trained to first grade. The program will be from 8:30 a.m. until 5:00 p.m. The program will be directed by a certified teacher will emphasis in early childhood development. Children will need to bring a sack lunch if staying during the lunch hour.

All residents of Hansford County should have received Y's Winter Quarter brochure in the mail. If you did not receive one, call the Y at 9-2591 for more information on these and other programs at the Y this winter.

## 24 runners compete in turkey day races

Thanksgiving Day was cold, but 24 runners came out to run a 5KM course from the Y. The race was called the Turkey Trot and most of the runners had to do more than trot to keep warm in the 21 degree temperature.

Kip Coulter from Spearman won the Men's Division with a time of 18:31 on the 3.1 mile course. Ginger McClellan, also of Spearman, won the Women's Division in 23:32. Ginger was also the 6th finisher over-all. Chris Boyd, 8 years old, won the trophy for the youngest finisher and Lloyd Buzzard received the trophy as the oldest finisher. Bob Shoemaker and his son, Josh, were recognized for travelling the furthest to run in the race. They were from Richmond, Va.

Both events were big successes and the Y is planning on making both annual events.



A filly becomes a mare at five years of age.



A single flash of lightning has been estimated to carry a charge of 100 million volts.