

# Sheriff Takes Evidence To Austin

Sheriff J.B. Cooke returned this week from Austin where he took the evidence in the Mickey Westerfield murder case.

Cooke said the evidence would be run through the Department of Public Safety Laboratory and the findings prepared for trial.

The Sheriff said he wished to extend his thanks to everyone who worked with officers last week-end to help in the solution of the Westerfield murder.

The work of the volunteers in helping drain the tailwater pit and finding the pistol in the mud, was a great help to officers in gathering evidence in the case.

# Grand Jury To Reconvene

The September Session of the Grand Jury will be reconvened here Thursday, March 11.

District Attorney Bob Gallaway of Borger notified Sheriff J.B. Cooke to call the Grand Jury back into session.

Cooke said he did not know just how many or which of the pending cases will go before the group.

Reconvening of the old panel came as a surprise since the new March Grand Jury will convene March 22.

# Edition Early

This edition of the Hansford Plainsman is being published early, Friday afternoon and Saturday morning; completed details of the Lynxettes play at the regional tournament and the Science Fair will be in Thursday's Plainsman.

HANSFORD COUNTY'S LEADING NEWSPAPER



VOLUME VI., NO. 39

# The Hansford Plainsman

SPEARMAN, HANSFORD COUNTY, TEXAS 79081

SUNDAY, MARCH 7, 1965

# Voters Have Choice in City, School Races

## Faculty Games To Benefit Pep Squad

Two basketball games will be played here Monday at 7:30 p.m. for the benefit of the Spearman High School Pep Squad.

There will be two games. The men faculty members of the High School will be pitted against the men faculty members of the Junior High School.

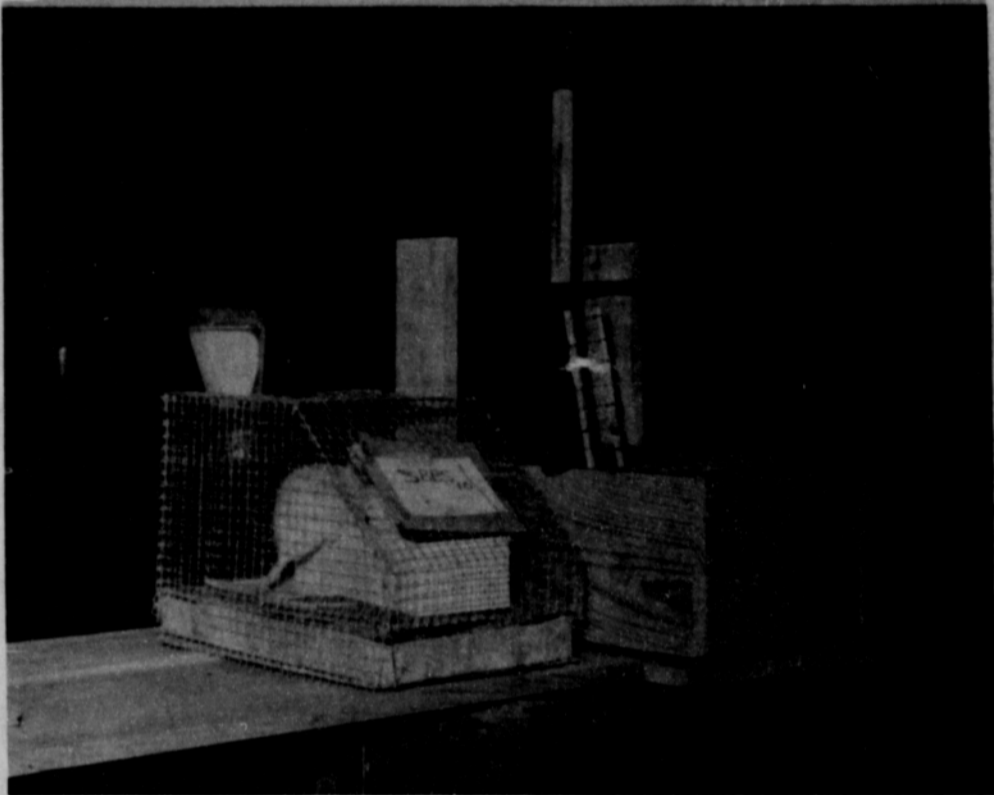
In the other contest the women faculty members of the school will be playing the wives of the men faculty members.

Admission will be 75 cents and 25 cents. The money will be used by the Pep Squad to pay for the annual athletic banquet.

THIS IS NATIONAL GIRL SCOUT WEEK

See the displays by local Girl Scouts in

Cates Men's & Boys' Wear  
Jim Neely's  
C & B Studio



TRAINED- A high school student trained a rat to climb a ladder from the box to a first level and get food, then pull a string that would raise the ladder and let the rat go to the next level to get more food. This was one of the exhibits at the Science Fair.

PLAINSMAN PHOTO

# Hounds Are Third in State

Gruver's hustling Greyhounds took third place in the Texas Class A basketball race Friday afternoon with a 43-39 win over Whitesboro in Austin.

The game was close until the final quarter when Gruver managed to pull away and held on to the lead.

Gruver was without the services of Billy Lieb who reinjured a sprained ankle late in the opening game with Woodsboro. Wayne Leatherman replaced Lieb in the line-up.

Sam Tipton was again the top Gruver point maker with 25 points.

Gruver was leading 18-14 at the half, but saw the lead vanish in the third quarter and Whitesboro took the lead 26-25 at one point late in the quarter. However, Gruver quickly got the lead back and pulled away to win.

In the closing minutes of the game Tipton started stalling with a dribbling exhibition and was fouled twice.

Too much height and red-hot shooting by the Woodsboro Eagles knocked Gruver out of the chase for the title Thursday afternoon when Woodsboro won 83-69.

Woodsboro burnt the nets in the first half with a 65.3 per cent shooting average and controlled the rebounds with their superior height.

With four boys towering over six feet, Woodsboro shut the rebound door on the Greyhounds on the Hounds end of the court. Gruver seldom got more than one shot, if they missed Woodsboro had the ball.

The shorter Hounds were more successful rebounding on defense. They were able to block out the towering Eagles and came up with numerous Eagle misses.

Gruver's inside men had trouble shooting against the height as Woodsboro defenders blocked numerous shots of the Hounds post and wingmen.

Woodsboro pulled away to a 17-12 first quarter lead then built it to a 21-14 spread early

(Cont. on back page)

There will be contests in both the city and school board elections this year.

The contest in the city offices was created Thursday when Clarence Pettitt filed for one of the alderman's positions.

There are eight candidates seeking to fill the three vacancies on the Spearman Independent School District Board.

The school trustees will be elected on Saturday, April 3, in an election held in the Junior High School building. The city election will be held the following Tuesday, April 6, in the City Hall.

Candidates seeking the city offices are incumbents Jimmie Hicks, E.J. Callaway and Bob Skinner, and the new candidate Clarence Pettitt.

Pettitt is making his second bid for city office. He sought the office of Mayor in last year's election.

City candidates serve two year terms.

Eight men are seeking the three positions on the school board which are open this year. These will be three year terms.

Seeking the offices are incumbents Dr. D.E. Hackley, Jack Lovett and Lloyd Buzzard. New candidates are Marvin Jones, Edward Dear, Carl Archer, Bill Massie and James LaIr.

The deadline for filing for school offices passed at midnight Wednesday. The city deadline for filing was midnight Saturday.

# Men's Bowling Tourney Set At Bowl Mor

The Hansford County Mens' Bowling Tournament will be held in Bowl Mor Lanes here March 20 and 21 and March 27 and 28.

All entries for the tournament must be in by March 13.

A meeting of the Mens' Bowling Association will be held at 7 p.m. March 8. Ed Vernon, President of the Hansford County Bowling Association, urges all male bowlers to attend this important meeting.

# First Chance To See Lake Meredith

The Borger Boat and Ski Club is having its second annual Boat Show on March 20 and 21. It will be the first chance for the public to boat on Lake Meredith.

Many of the area boat dealers are going to have demonstration boats on a special marked area of the lake and there will be demonstration rides for the public.

The show will have a parade, two style shows, and many other events.

FAT STOCK SHOW

coming up

Friday, March 12

in Gruver



GIRL SCOUT WEEK- These 10 Girl Scouts represent all 10 Girl Scout organizations in Spearman, from Brownies to Senior Scouts. They are (Left to right, front row) Gina Bulls, Stacy Pendergraft, Margaret Larson, Vickie George, Becky Whitehead, Leann Shieldknight, Judy Craig, Terry Hudson, Margaret Hall and Cindy Dear.

PLAINSMAN PHOTO

M B 3615

**BUY WANT ADS SELL**

**FOR SALE**

DECORATED CAKES-For All Occasions. Call 659-2295. Mrs. J. V. Barker. 29-tfc

FOR SALE-8 x 48 ft. 1957 Great Lake 2 bedroom trailer home. Call 659-2657. 36-tfc

FOR SALE-3 bedroom bath and half brick home at 1103 Dressen. Carpets, drapes, fenced, many other extras. Selling because we have purchased a larger home. Call Emmett Sanders, 2516 or 2601. 36-tfc

FOR SALE: 10 ft. windmill, 180 feet, 2 inch well casing, 1200 gallon storage tank, propane tank. Collard Real Estate. 23 tfc

FOR SALE-3 bedroom home 823 S. Bernice. Call 659 2887. Daniel Sheets. 30-tfc

OR SALE - Industrial lots and acreage. Financing available. Cecil Crawford. Two good lots in town. Phone 659-2409. T43-tfc

FOR SALE: New Lake Pump and Aluminum pipe, Pat Westfield, Gruver, F17-2700. S44-T43-tfc

Private trailer lot for sale or rent. Inquire at 117 N. James. 39-tfc

**Wagon Train Sets New Date For Departure**

A new starting date for the second cross-country trip by the Rolling Plains Mule Train of Spearman has been set. Twenty or more wagons of the organization will leave Spearman for the Cowboy Hall of Fame in Oklahoma City on June 8. The group will be on the road 16 days and have two Sundays for resting. They will arrive in Oklahoma City at the Cowboy Hall of Fame on June 25. They will be there June 26 and 27 for the dedication ceremonies. The group had planned to leave Spearman May 12 and be in Oklahoma City for Memorial Day and the dedication. However, a delay in the completion of the Hall of Fame postponed the dedication and the trip. This is the second long trip for the Wagon Train. Last summer they traveled 500 miles to Graham for the dedication of Fort Belknap. The trip took 32 days.

**County Ranks Among Leaders**

Hansford County is going to be one of the highest ranking counties in the nation in per capita contribution to this year's March of Dimes fund campaign. The county contributed 66 cents per person living in the county and the national average is 12 cents per person. This information was learned this week by a delegation of local workers attending a March of Dimes conference in Pampa. Those attending were County Chairman, Mrs. Virgil Matthews, Mrs. Leon Chapman, Mrs. Ralph Bort and Mr. and Mrs. Ed Dear.

FOR SALE-Electrolux vacuum cleaner with power attachment for carpet. Like new. Call 659-2621. 39-4c

FOR SALE-3 bedroom brick. Available June 1. Phone 659-3459. 36-tfc

FOR LIFETIME MUFFLERS-Clarence Pettitt Garage. No premium prices.

FOR SALE-Two bedroom home. Collard Real Estate. 659-2501. 40-2c

**SERVICES**

Amarillo Daily News & Globe Times home delivery. Call 2685. T14-tfc

SERVICE-Ditches from 3-12 inches, any desired depth. S. D. Jones 659-2809. Harold Shaver 659-3474. T17-s18-tfc

POODLE GROOMING by appointment. See Mrs. Burke at 117 Townsend after 4 p.m. 11-tfc

Land Leveling to SCS specifications. General dirt work with Harlock carryalls. Willis Sheets, 659-2256. T46-S46-tfc

FOR RENT-Unfurnished 3 bedroom house on pavement 1 mi. from town. Call 2082. 40-tfc

FOR RENT-Furnished apartment, 611 S. Haney. Call Mrs. Nolan Holt, 659-2447. 37-1c

FOR RENT: Furnished efficiency apt. Call 3064 or 2747. 41-2p

**Buyer...**

(Con't. from page 1.) Store of Spearman for 60 cents a pound. Alva Henderson of Morse had the second place English bred steer and Glenn Blodgett of Spearman FFA had the second place commercial steer. Spearman FFA members made a clean sweep of the swine show. They won the champion and reserve champion honors and the next nine places in the show.

Richard Laird had the champion barrow and he sold the 215 pound Hampshire to KT&M Drilling Co. for \$1.60 a pound. Rickey Hendricks showed a Duroc to the reserve champion position and he sold the 211 pound animal to John Deere Fertilizer Co., for \$1.80. Three champions were selected in the lamb show.

Lynn Kemper showed the champion fine wool lamb and sold it to H&H Water Well Service Co., of Spearman for \$1.00 per pound. It weighed 87 pounds.

The champion crossbred lamb was shown by Gail Beck and it sold to Equity of Spearman for 80 cents per pound. It weighed 95 pounds.

The champion Southdown lamb was shown by Andy Hoel and it sold to Gruver State Bank for \$1.60 per pound. Hoel's lamb weighed 76 pounds.

Taylor - Evans Farm Store of Gruver added a premium to all animals brought to the show whether they were sifted or won a championship banner. The firm paid a premium of two cents per pound on all lambs, one cent on all swine and one-half cent on all steers.

Awards were given on record books, showmanship and animal husbandry.

Awards for the best records on the animals showed went to Mack Hoel of the Gruver FFA, Alfred Ralston of the 4-H clubs and George Odom of the Gruver FFA.

In swine showmanship, first place went to James Schnell of the Spearman FFA, second to Lynn Stedje of the Gruver FFA and third to Ricky Hendricks of the Spearman FFA.

The best lamb showman was Gail Beck of the Spearman FFA, then Dennis Mandell of the Gruver FFA and Monte Black of the Spearman FFA.

Wald Parks of the Morse 4-H was the best steer showman. Bailey Patterson, another 4-H member was second and Sheryl McCloy of the Morse 4-H was third.

The showmanship trophies were given by Byrd Texaco, Gruver Motors and Gruver State Bank.

The animal husbandry award was presented by the Hansford County Farm Bureau and the award was given to a member of each FFA Chapter and the 4-H clubs of the county. Bailey Patterson won the 4-H award, Jerry Gumfroy won the Gruver FFA award and Jimmy McLeod won the Spearman FFA award.

**Week Of Prayer For Home Missions Held By W.M.U.**

The Annie Armstrong Week of Prayer for Home Missions was observed March 8-12 at the First Baptist Church.

The theme for the week was "From Ocean to Ocean." The program Monday "Obey Thy Sovereign Word" was presented by the Kezzie Mae Seawright Circle. Leader was Mrs. Don Jones, assisted by Betty Uptergrove, Marie Berry, Betty Thomas and Florene Devers.

Tuesday, the Alma Reed Circle conducted the program "Thyself In Us Revealed" led by Edrie Jones, assisted by Wren Holt, Marie Berry, Ruth Lackey, Pat Denham and Ernestine Gray.

The Mary Nell Giles Circle was in charge of the program Wednesday "Proclaim Thy Gospel Day" led by Betty Fancher, Doris Holderman, Deloris Guthrie, Linda McAlister and Edith Ann Cage.

The Betty Morris Circle had charge of the program Thursday. It was titled "Guide

Where We Should Go" led by Rowena Day, assisted by Verna Jarvis, Barbara Reger and Florene Devers.

The Louise Mitchell Circle presented the program "Our Land Shall Own Thee Lord" Friday. It was led by Eva Adkison, assisted by Marilyn Jackson, Peggy Archer, Lorraine Reed and Frances Kilgore. The song leader for the week was Marie Berry and pianist was Verna Jarvis.

**Hackley...**

(Cont. from page 1.) sitions are incumbents Jack Lovett and Lloyd Buzzard, and new candidates Edward Dear, James Lair, Carl Archer, Marvin Jones and Bill Massie. The school election will be held Saturday, April 3, with the polling place being the Junior High School building.

**A REAR TIRE BLOWOUT! WHAT WOULD YOU DO?**

Most drivers feel that they could handle the situation if it ever happened. However, many drivers feel it can't happen to them.

Suppose one of your rear tires blows out, what would you do?

A blowout on a rear tire starts a pendulum motion of the rear end. The flat tire will create a drag force which originates behind but to the side of the center of mass. The center of mass is the point around which the weights of all parts of the car are in balance. The flat tire which creates a dragging force and the center of mass both try to assume a position between the two front wheels.

To compensate for this the driver should steer as nearly straight ahead as he can, keeping to the right side of the roadway when possible, steering clear of other vehicles. The main danger in a rear tire blowout is oversteering-turning the wheel too far to compensate for the whip of the rear end. The front wheels turn hard in a front tire blowout. They turn easy in a rear tire blowout.

**Early in the Week FOOD BUYS**

FRESH LEAN COUNTRY STYLE lb. **Pork Ribs 59¢**

SEA NORTH TALL CAN **SALMON 49¢**

BILOXI BAY CUT COVE 8 OZ. **OYSTERS 25¢**

TOM THUMB 6 OZ. **Pecan Pieces 49¢**

RED OR GOLD 46 OZ. CAN **Hawaiian Punch 3 / \$1.**

DEL MONTE 46 OZ. CAN **Fruit Drink 2 / 69¢**

RED RIPE **Tomatoes 35¢**

LONG SLENDER. 1 lb. bag **CARROTS 2 / 15¢**

IDEAL **Cottage Cheese 39¢**

GIANT DETERGENT **TIDE 59¢**

VAL VITA YELLOW CLING NO. 2 1/2 **Peaches 4 / \$1.**

FOOD CLUB NO. 303 SIZE CAN **Spinach 8 / \$1.**

THESE VALUES GOOD TUESDAY & WEDNESDAY MARCH 16-17

**IDEAL FOOD STORES**

### Mrs. Groves Is Hostess For Happy Homes

The Happy Homes HD Club met March 5 at the HD Club Room with Mrs. Harold Groves as hostess.

Nell Cummings presided at the business meeting and for the devotional the group prayed the club prayer.

The auction was brought by Louise Mullins and was bought by Marilyn Groves. Nell Cummings won the mystery box.

Maylynn Schubert was in charge of the program and gave an interesting talk on "Better Storage Arrangement for the Kitchen."

Present were Mmes. Schubert, Groves, Vaye West, Adalyn Barnes, Cummings and the hostess.

If your hair is falling out and you wonder what you should use to keep it in, a paper bag is as good as anything.

### Luncheon Opens Year For Gladiola Flower Club

The Gladiola Flower Club opened their 1965 club year with a salad luncheon held in the home of Mrs. Max Baggerly

Thurs. March 14. The group met at noon and heard a talk by Kay Nollner on the new spring fashions.

The quartette tables were laid with white linen and were centered with arrangements of spring flowers in milk glass. The place cards were white with spring flower trim.

Hostesses for the luncheon were Mmes. Jo Larson, Wanda Brown, Jackie Banks, Dorothy Faye Baggerly, Bodil Hutchinson, Sherry Partridge, Colleen Brummett and Beth Fox. Others attending were Betty Davis, Estelle Jackson, Sylvia Robertson and Barbara Schnell.

Tim Lackey was able to return home from the hospital Thursday.

### Woolen Ironing Tip

When ironing woollens be sure to use moist heat and a light hand. A steam iron and pressing cloth is best, and always iron on wrong side of cloth.

### Vinegar Wash Additive

Add a quarter cup of vinegar to the last rinse when washing socks. It removes the last bit of soap, helps to remove lint and makes the socks softer.

## BUY WANT ADS SELL

### FOR SALE

DECORATED CAKES-For All Occasions. Call 659-2295. Mrs. J.V. Barker. 29-tfc

FOR SALE-8 x 48 ft. 1957 Great Lake 2 bedroom trailer home. Call 659-2657. 36-tfc

FOR SALE-3 bedroom bath and half brick home at 1103 Dressen. Carpets, drapes, fenced, many other extras. Selling because we have purchased a larger home. Call Emmett Sanders, 2516 or 2601. 36-tfc

FOR SALE: 10 ft. windmill, 180 feet, 2 inch well casing, 1200 gallon storage tank, propane tank. Collard Real Estate. 23 tfc

FOR SALE-3 bedroom home. 623 S. Bernice. Call 659-2887. Daniel Sheets. 30-tfc

FOR SALE - Industrial lots and acreage. Financing available. Cecil Crawford. Two good lots in town. Phone 659-2409. T43-tfc

FOR SALE: New Lake Pump and Aluminum pipe, Pat Westerville, Gruver, Ft7-2700. S44-T43-tfc

FOR SALE-Four houses. Nothing down on two and small payment on two. \$50, \$60, and \$70 payments. Call at 206 Main or phone 2464 at night. L.S. McLain. 32-8c

FOR SALE-1957 Ford Pickup. 4-speed, V-8, Western Auto. Phone 659-3344. 32-tfc

FOR SALE-Shovels, Rakes and Hoes. Briley Blacksmith. 38-2p

FOR SALE-3 bedroom brick. Available June 1. Phone 659-3459. 36-tfc

Private trailer lot for sale or rent. Inquire at 117 N. James. 39-tfc

FOR SALE-1100 gal. water tank equipped with fenders & 2 in. discharge pipe. In excellent condition. Call 2833. 39-2c

FOR SALE-Electrolux vacuum cleaner with power attachment for carpet. Like new. Call 659-2621. 39-4c

FOR SALE-A 1962 Hay Baler with rake, mower and tractor. Rake like new. All John Deere equipment. \$2500.00. See or call Mrs. Cora Helton, Briscoe, Texas, Ph. DR5-2317. 34-6c

SERVICE-Ditches from 3-12 inches, any desired depth. S. D. Jones 659-2809. Harold Shaver 659-3474. T17-s18-tfc

POODLE GROOMING by appointment. See Mrs. Burks at 117 Townsend after 4 p.m. 11-tfc

Land Leveling to SCS specifications. General dirt work with Hancock carryalls. Willis Sheets, 659-2256. T46-S46-tfc

### Circle Discusses Upcoming Study 'New Nations'

The WSCS of the First Methodist Church met in a general meeting Wednesday, March 3 for a "Day Apart" service in the parlor.

Coise Gates gave the opening prayer and Freda Sheets presided at the business session.

The group discussed the up-coming study "The New Nations and the Kingdom" to be taught by Myra Grimes beginning March 31 at the church. This will be a joint circle study.

Marie Beck was in charge of the service. Patty Shepard reviewed the book "Beyond Ourselves" by Katherine Marshall.

Attending were Mmes. Sheets, Gates, P.A. Lyon, Bill Strawn, R.E. Lee, Beck, Fendorf Schubert, John Sell, Grimes, Shepard and the hostesses, Mmes. Hubert Hays and Garland Head.

### Program Given On Assuming Responsibilities

The Kezzie Mae Searight & Louise Mitchell Circles met jointly Wednesday in the home of Frances Kilgore.

The calendar of prayer was read by June Conner, who also led in prayer.

The program "Assuming Personal Responsibilities" was given by Addie Novak, Alma Bradford, Peggy Archer and Marguerite Nelson.

Attending were Marilyn Jackson, Dana Hazelwood, Florene Devers, Novak, Conner, Bradford, Archer, Nelson and the hostess.

### SERVICES

Amarillo Daily News & Globe Times home delivery. Call 2685. T14-tfc

Alterations, replacing zippers, machine made buttonholes and belts. Mrs. F.S. Ayers, 1001 S. Bernice, 659-3052. 26-tfc

FOR LIFETIME MUFFLERS-Clarence Pettitt Garage. No premium prices.

## IDEAL FOOD STORES

GLAMOROUS WENDY FASHION DOLLS Only 88¢ WITH COUPON

SAVE ON WENDY'S OUTFITS TOO! Clip 'N Redeem At Ideal For Your WENDY DOLL ONLY 88¢ COUPON



2nd WEEK IDEAL COUPON Good Mar. 8 thru Mar. 13 1965 ANY 18 WENDY DOLL FASHION OUTFIT ONLY 59¢ WITH THIS COUPON

EXCLUSIVE!

DIRECT FROM THE MANUFACTURER RECORD SALE

MOST SENSATIONAL HI-FI AND STEREO RECORD OFFER EVER MADE IN A FOOD STORE! 12-INCH STEREO OR HI-FI INTRODUCTORY OFFER FOR LESS THAN 1/3 THE PRICE YOU WOULD EXPECT TO PAY!

HI-FI ONLY\* 59¢ Each \* STEREO . . . 79¢ Each MORE THAN 100 RECORDS TO CHOOSE FROM!

HI-C BEVERAGES CHOICE OF 7 FLAVORS 3 46-OZ CANS 1.00

TOMATO HEINZ SOUP 10 10-OZ CANS 1.00

VAN CAMP'S PORK & BEANS 8 300 CANS 1.00

ELNA CREAM STYLE GOLDEN CORN 8 303 CANS 1.00

## SWIFT'S PROTEN BEEF AT IT'S BEST!

HERE'S THE TENDER, JUICY BEEF THAT DELIVERS MORE EATING PLEASURE BITE AFTER SAVORY BITE / U.S.D.A CHOICE HEAVY BEEF, NATURALLY AGED FOR TENDERNESS AND FLAVOR! BUY TODAY AND SAVE!

SWIFT'S PROTEN ROUND STEAK 89¢ lb  
SWIFT'S PROTEN RUMP ROAST 69¢ lb  
SWIFT'S PROTEN T-BONE STEAK 98¢ lb  
CHUCK WAGON BRAND SLICED BACON 59¢ 1-lb PKG.

SWIFT'S PREMIUM BONELESS Canned Hams \$3.89 FULLY COOKED EASY TO CARVE CAN  
HYGRADE OVEN BROWNED Sliced Ham 69¢ 5-OZ. PKG.

## FREE! SPRING CREST NYLON HOSIERY WITH PURCHASE OF TOPCO SPRAY STARCH 69¢ 22-OZ CAN

FOOD CLUB PRUNE JUICE 40-OZ BTL 49¢  
ELLIS VIENNA SAUSAGE 4-OZ CANS 5 for 1.00  
JIFFY CAKE MIXES 8 1.00 PKG.  
ELNA SALAD DRESSING QUART 39¢  
TOM THUMB PECAN PIECES 6-OZ PKG. 49¢

PRICES EFFECTIVE THRU WED., MARCH 10, 1965 LIMIT RIGHTS RESERVED  
WASH FANCY RED DELICIOUS OR WINESAP  
FRESH APPLES FROM WASHINGTON STATE!  
APPLES YOUR CHOICE 3 39¢ lb. BAG  
WASH. HOT HOUSE RHUBARB 29¢ lb.

LIQUID CLOROX BLEACH 39¢ 1/2-GAL PLASTIC  
DILLARD EGG RED SALMON NO. 12 CAN 69¢  
PINK BEAUTY SALMON TALL CAN 59¢  
GOLD STANDARD SALMON TALL CAN 53¢  
UNDERWOOD'S DEVILED HAM 5 2 1/2-OZ CANS 1.00  
UNDERWOOD'S DEVILED HAM 4 1/2-OZ CANS 39¢  
GEBBER STEAINED BUTTER FOR SALADS OR COOKING BABY FOODS 10 JAN 1.00  
PILLSBURY COZ KRAFT OIL QUART 59¢  
BALLARD BISCUITS 3 29¢  
CHUN KING MEATLESS CHOW MEIN NO. 2 1/2 CAN 49¢  
CHUN KING BEEF CHOP SUEY FAMILY SIZE 99¢  
CHUN KING CHICKEN CHOW MEIN 4 1/2-OZ CAN 99¢

### Bargains

4 Re-Upholstered Hide-A-Beds - New Mattresses, Matching Chairs With Some

3 Studio Couches

Several Odd Chairs

New & Used Bedroom Suites

Maple & Chrome DINING ROOM SUITES

For Best Results See

## Reamy Upholstry

UPHOLSTRY, DRAPERIES & CARPET

311 Main

659-3391

### Gates Attend Dedication

The Rev. Charles Gates was in Hale Center last Sunday where he attended the dedication services of the Methodist Church there Sunday morning. The service was conducted by Bishop Slater, which was followed by a banquet. Rev.

Gates preached at the evening services.

The Hale Center church burned to the ground in 1959 and the new building was started as soon as plans could be made. The new church was opened in March of 1960. Rev. Gates was the pastor there during the time of the construction of the new church.

In the absence of Rev. Gates, James Roy Patterson conducted the morning service at the local church.

### Rug & Carpet Cleaning

AT ITS BEST

In the Home Or We Will Pick-Up.

**BUD KING**  
Phone 659-3107  
-FREE ESTIMATES-

### Cummings Refrigeration

HEATING  
AIR CONDITIONING  
REFRIGERATION  
SPECIALIST  
SALES & SERVICE

**659-2721**  
SPEARMAN

### Gruver...

(Cont. from page 1)

in the second quarter. Gruver started closing the gap and got within three points when trailing only 24-21, but then Woodshoro spurted away again and led 40-29 at the half.

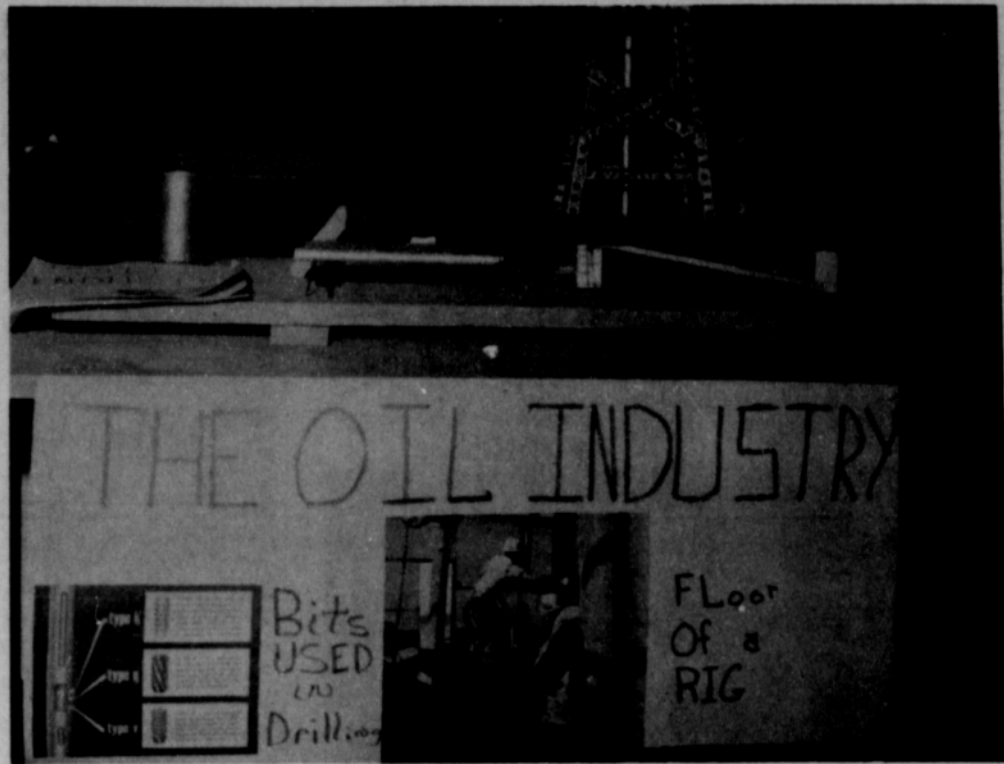
In the third quarter Gruver got within seven points when they made the score 45-38, but again the Eagles took flight

### Charlene Bulls

INTERIOR DECORATOR

659-3202

1105 Townsend  
Spearman, Texas



OIL WELL- The oil industry was selected for study by one grade school student. He built a model of an oil well drilling rig. This just one of the exhibits in the Science Fair held this weekend. PLAINSMAN PHOTO

Hansford Plainsmen

Hansford Plainsmen Publishers Inc.

JIM O. DAVIS  
BURL G. McCLELLAN



County-wide independent newspaper published every Thursday and Sunday at 209 Main in Spearman, Texas. Second class postage paid in Spearman, Texas. Editor . . . . . Burl McClellan  
NOTICE: Any erroneous reflection upon the character, standing or reputation of any person, firm or corporation which may appear in the columns of The Hansford Plainsmen will be corrected gladly upon its being brought to the attention of the publishers.

### KNAPP SHOES

KENNETH BAILEY

212 N. James

Phone 659-2458

Spearman, Texas

FOR CUSHIONED COMFORT



the FRESHER the BETTER

Sunkist-Juicy

**LEMONS** lb. **13¢**

Colorado-Yellow-Danver **3 lbs. 19¢**

**Onions** **19¢**

Extra-Fancy Red Delicious **2 lbs. 33¢**

**We've Gone HAWG WILD ON PRICES!**

Breast o Chicken Flat Can **TUNA** 3 FOR **79¢**

Shurfine "Tattered Toms" No. 2 1/2 Can **Peaches** 3 FOR **79¢**

Shurfine Chopped Frozen 10 oz. Pkg. **Broccoli** 2 FOR **29¢**

**SALAD OIL** Shurfine 1 1/2 Quart **89¢**

**BAKERITE** Shortening 3 lb. Can **67¢**

Viking 12" x 25 ft. **ALUMINUM FOIL** **19¢**

Blue Morrow Hot or Mild **Pork Sausage** lb. **53¢**

Fresh & Tender **Pork Steak** lb. **39¢**

Blue Plate 10 oz. Pkg. **Breaded Shrimp** **63¢**

**TREND** Liquid Quart **69¢**

Tendercrust Pkg. of 12 "Mid-Week Values for Tuesday & Wednesday March 9 & 10"

Brown-N-Serve **Rolls** 2 FOR **39¢**

Bordens Mellorine Half Gallon **Charlotte Freeze** **43¢**

SHURFRESH MILK IN THE HANDY GALLON CARTON **97¢**

Shurfresh Indv. Wrapped 6 oz. Pkg. **Cheese Slices** 2 FOR **39¢**

Folgen 1b. Can **Coffee** **73¢**

Hunts Tall Can **Tomato Juice** 3 for **25¢**

Tall Can **Carnation Milk** 2 for **27¢**

Arrow Brand **PINTO BEANS** 2 lb. Bag **29¢**

Macaroni or Spaghetti **SKINNERS** 7 oz. Box 2 for **25¢**

Bama 18 oz. Tumbler **APPLE JELLY** **25¢**

**CUT RATE GROCERY** AFFILIATED