



The Hansford Plainsman



Storm Damage Wide-Spread



PALO DURO HIGH--Palo Duro was out of banks Saturday afternoon and the flood gauge showed it to be 18 feet at the bridge in Old Hansford. The creek was just under the bridge at Morse, also. Many trees and debris were washed down the creek.

Plainsman Aerial Photo, Plane courtesy Wilson McClellan

Hail Strikes Many Fields

Damage from Friday night's tornado, rain and hail was much more widespread and damaging than first believed. The damage covered a much longer area along the Hansford and Hutchinson County line south of Spearman.

Rainfall in Spearman was measured at .98 Friday morning and 1.53 Saturday morning by weather observer Mrs. Pat Cates. Sunday night another .22 fell here.

Heavier amounts were measured in other areas. Between two and three inches were measured along the county line Friday night.

Sunday night a heavy wind storm, rain and hail struck between Morse and Sunray. Deputy Sheriff Coy Thompson was in the storm and he said the wind forced him off the road twice and rain and hail obscured visibility.

Sheriff J. B. Cooke was caught in a windstorm five miles north of Stinnett Sunday night and his car and a truck sideswiped.

The sheriff and the trucker both reported seeing a funnel dip out of the clouds.

The heaviest building damage Friday was reported at the Leland Close farm where the storm ripped away the top of one barn and shed, destroyed two old barracks and blew a couple of large tanks around.

Some windows were broken in the house and shingles taken from the roof.

Two miles north at the Allen Pierce farm the windows in one side of the house were beat out by hail. Crops between Pierce and Close were heavily damaged by hail.

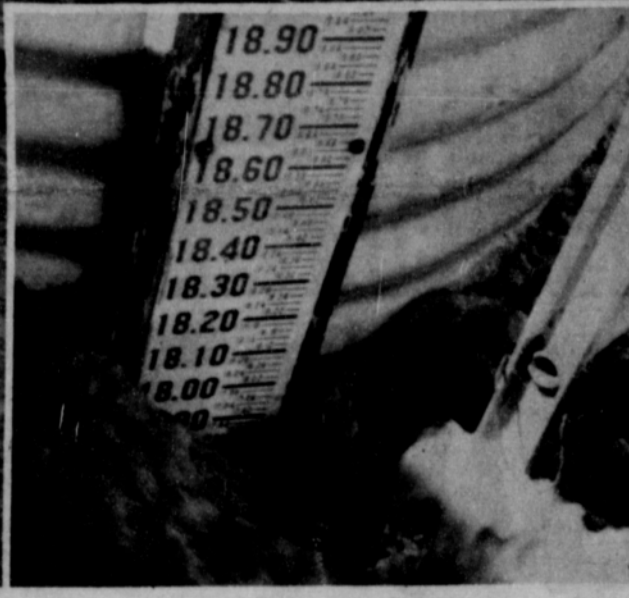
Probably the heaviest single loss was suffered by David Lewter of Periyton. He had a workover rig blown over at a location two miles north of the Nolan Holt farm.

Lewter said the rig fell on a butane tank and bent it up much more than if it had gone over in the wind.

Hail damage in various amounts were reported on wheat crops all along the county line.

Damage to the roof of the house was reported at the Irvin Hester farm 13 miles southwest of town just off highway 15.

The first damage was reported at the J. B. Buchanan farm where a grainery was blown over, at the Tom Jarvis farm where a trailer house was wrecked and of the Fay Lynch farm where a windmill was blown down.



Jaycees Sponsoring Sporty Fourth

A July Fourth week-end of tennis and golf competition will begin here tomorrow with the opening of the Jaycee District Tennis Tournament. July 4 and 5 the Jaycees will sponsor a 36-hole golf tournament at the local course.

There will be three division in the Tennis tournament for boys and girls 18 and under in singles and doubles, 16 and under singles and doubles and 14 and under singles and doubles.

There will be a \$2.50 entry fee. There are five flights in the golf tournament; Championship, A, B, C and D. Saturday night the tournament will be opened with a Mexican supper at the Home Demonstration Club Room. The supper will start at 6:30 and last until 8:30 p.m. The price is \$1.50 for adults and \$1 for children under 12.

Entry fee for the golf tournament is \$3 for those not attending the supper and \$2. for those attending the supper. Monday night the week-end will be concluded with a Donkey ballgame between the Jaycees and the Gruver Lions Club. Tickets are \$1 for adults 50 cents for children or a group ticket that admits five for \$2.50.

Tickets for all events may be purchased from any Jaycee.

County Raises Valuations For Taxes

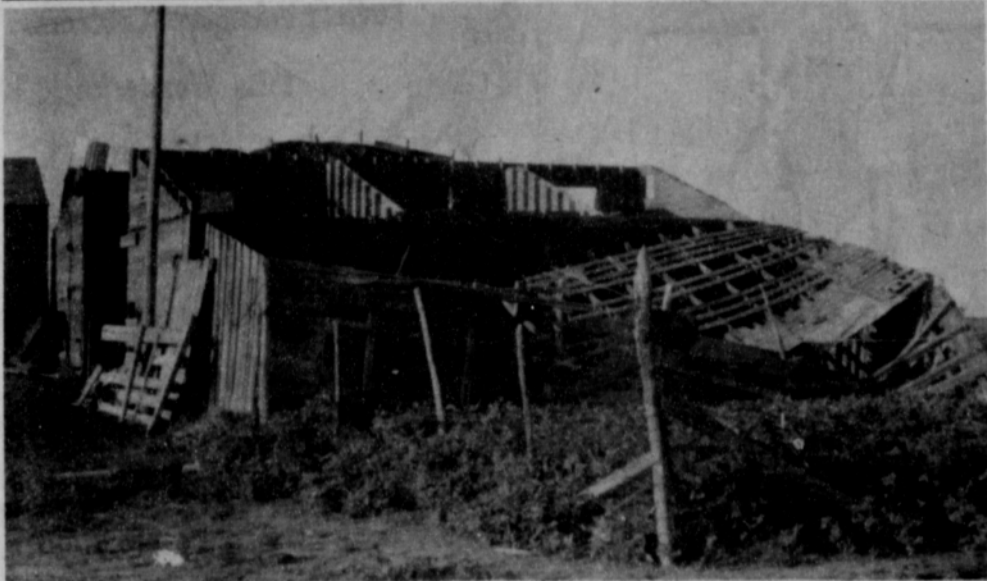
Evaluations for taxes on Hansford County farm land and oil and gas production were raised this week by action of the Commissioners Court.

The raise in valuations figures between 20 and 25 percent according to County Judge Johnnie Lee.

This increase raises the valuation on the best farm land to \$9 per acre. Other land was raised accordingly.

There were no increases on city property.

The tax rate remains the same for next year. Precinct three is the only precinct still paying a road tax on indebtedness and it will be paid off next year.



ROOF GONE--The roof of the barn at the Leland Close farm 13 miles south of Spearman was ripped off by the windstorm. This was just one of the buildings destroyed at the farm.

Plainsman Photo

Three Injured in Two-Car Wreck

Three persons were injured in a two-car rear end collision in the Oslo community Tuesday afternoon.

Injured were Mr. and Mrs. Tom Balvin and Bessie Prucell, all of Hutchinson, Kan. They are being treated in Guymon Hospital for possible

neck, back and leg injuries. Investigating officers said the three were injured when the car in which they were riding was struck in the rear by a car driven by James Levi Dahl of Oslo.

Dahl was wearing a seatbelt and was not hurt in the

smash-up. Both cars were heavily damaged. Officers said the force of the collision broke the back of the front seat in the Balvin car.

Officers said the two cars were traveling in the same direction on a dirt road.

The Way I See It

Robert Cordes, Pastor
Oslo Lutheran Church Faith Lutheran Church

God works through His Holy Spirit, using the Word and Sacraments. The purpose is to get man, dead in trespasses and sin, to see his lost condition, to accept God's grace and be saved. Then the Holy Spirit helps the child of God to grow in grace.

First, the Holy Spirit must awaken the sinner and call him to repentance. Unless a person sees his lost condition he will not look for help in Christ.

So the Law must be preached for in it the Spirit tries to awaken man's conscience. When the sinner sees his lost condition because he has broken God's Holy Law, he becomes alarmed. It is then that the Spirit calls us by the Gospel. The Spirit invites the sinner to seek the grace or forgiveness in Christ.

Let us beware lest we make simply breaking some rules set up by man as sin. Too often we say only dancing, drinking, smoking are wrong. Actually the Bible doesn't say in these areas. But the Bible does state when we think and do evil thoughts and deeds, we cannot be with God unless we are cleansed.

So God in His Law awakens us as sinners and we obey the call of God to repent. We admit our guilt. We feel sorry we have offended God. We confess our sin to God and ask

for forgiveness. We believe that God, for the sake of Jesus Christ, forgives all our sins. Thus we want to turn from our sinful ways and allow the power of God in us to lead us in new paths of righteousness.

Thus the Holy Spirit through the Law awakens us and shows us our condition. That we by nature are not Gods. Then the Spirit calls us to seek Christ. We repent, are sorry we have sinned and want to live a different life. We thus are converted by the Spirit. This is not the work of man. We often forget this and try to change our own life.

Thus we have had a new change take place in us, the new birth. It is done by God's Word alone. More on this next time.

Mrs. Adamson Hosts Circle

The Naydene Brewer Circle met June 23 at the church with Wanda Adamson, hostess.

Barbara Reger read the prayer calendar followed with prayer.

Reba Ooley displayed some interesting books for Mission Study.

Joy Moore was nominated for program chairman for July Training Circle test books

Jaycee Tennis Tournney Set July 2 and 3

The Spearman Jaycee district tennis tournament will be held here July 2nd and 3rd. All residents of Hansford County are eligible to compete. The tournament will be divided into three divisions for both boys and girls. 18 and under singles and doubles, 16 and under singles and doubles 14 and under singles and doubles. An entry fee of \$2.50 will be charged. This fee entitles players to play both singles and doubles. All participants must notify Perry Coursey at 510 Barkley or call 2315. The winner of this tournament will be eligible to compete in the State Jaycee tournament which will be held on the campus of Texas A&M. USLTA Ruler will govern the tourney.

The Plainsman wants your news. Call 3258 or 2466.

were filled in by the group.

Attending were - Joy Moore, Wanda Adamson, Wanda Widener, Ann Archer, Darryl Animons, Donna Helms, Barbara Reger and two guests Mary Harrison of Houston, a sister of Donna Helms, and Denise Irby of Alamogordo, who is a niece of Wanda Widener.

Longhorn Cavern State Park Offers Visitors Unique Sights

Holiday visitors to the Highland Lakes area may shake off the Fourth of July heat amidst the chill 64° weather of Texas Longhorn Cavern, and one of the big drawing cards for this occasion is the Liberty Bell, a strange dome-like depression formed by nature.

Other depressions have pitted the ceiling of the cavern Dome Room, but none is as deep or well-shaped as the Liberty Bell formation.

The cavern is unique among the great caves of the world because of the variety of its formations; the result of thousands of years of water movement through the diverse Texas rock structure in which it was cut. The vast chambers are all different, although each has some distinguishing feature.

The Chandelier Room has elaborate stalactites hanging like weird chandeliers from the ceiling. Stalactites and stalagmites are still being formed in the cave by the dripping water, but experts have estimated that it takes about 100 years to form a cubic inch of the flow-stone beautifully carved by nature.

Marble-like dolomite can be seen in the Hall of Marble Crystallized calcite in the fabulous Hall of Diamonds makes the walls sparkle as though they were covered with precious stone. Iron oxide gives a rich red color to the

walls in many parts of the cavern. Other walls show outcroppings of chert, a cheap grade of flint used by the Indians of the region for their arrowheads.

The cavern, winding deep beneath the rugged Central Texas hills, is the hub of a new playground composed of state parks and sparkling lakes. Modern motels and recrea-

tional facilities have been built to accommodate the thousands of vacationers that flock to the region for swimming, fishing, hunting, boating and camping.

Longhorn Cavern is located just off U.S. Highway 281 in Longhorn Cavern State Park, between Burnet and Marble Falls.

Underground Irrigation Service

High Quality Irrigation Lines
-Water & Gas-
-COMPLETE INSTALLATION-

FULLY INSURED

13 years experience on High Plains farms with
PERSONAL SUPERVISION
on every job.

A PERMANENT DIVISION

Dimmitt Ditching Service

GEORGE OWEN, MGR.

659-2934 — old Horizon Bldg. — Gruver Hwy.

WE'RE CLEARING OUT...IT'S YOUR CHANCE TO CLEAN UP

MID-SUMMER SALE



Swimsuits

Priced Originally From \$18.00 To \$26.00

30% off

Sale Priced From \$12.60 To \$18.20

Peignoir Sets

Originally \$16.95 to \$28.00
Now priced at \$11.86 to \$19.60

Robes

Originally \$6.95 to \$11.95
now priced at \$4.86 to \$8.36

Blouses

30% off

Originally \$5.95 to \$11.95
now priced at \$4.16 to \$8.36



Rejuvenate your summer wardrobe and save money, too. Come to our Mid-Summer fashion clearance for bargains galore in cool, exciting summer fashions.

Your choice of our

flattering hats

1/2 PRICE !!



30% off Dresses 30% off

\$14.95-----now----\$10.46
\$18.95-----now----\$13.26
\$22.95-----now----\$16.17
\$29.95-----now----\$20.97
\$37.95-----now----\$26.27
\$49.95-----now----\$35.00

Many beautiful summer dresses for you to choose from !

Suits

\$32.95-----now----\$23.07
\$66.95-----now----\$46.87

Countless Other Suits Priced Originally Between \$32.95 and \$66.95

30% off



30% off Skirts 30% off

\$ 7.95 -----now----\$ 5.56
\$ 8.95 -----now----\$ 6.26
\$11.95 -----now----\$ 8.36

Pants 30% off

\$7.95 To \$14.95

Sale Priced From

\$5.56 To \$10.46



Maternity Clothes

30% off

Bags

Originally \$5.95 to \$16.95
now priced at \$4.16 to \$11.86

Lady Fair

Plains Shopping Center

Our Big Summer SALE

SHOP NOW

Is Now
In Progress!

SHOP NOW

FOR AMAZING

FURNITURE BUYS!

Boody FURNITURE CO.

PLAINS SHOPPING CENTER

659-3044

HANSFORD HOSPITAL NEWS

In the hospital are Harvey Kyle, Nina Miller, Mary Katherine Parrish, W. A. Ellsworth, Verna Strawn.

Dismissed were Sharon Wilson, Ola Mae Thompson, Maxine Buskirk and son, Eula Pierce, Betty Cotter and daughter, Eva Becker, Bert Harrison, Sheryl Calliham, Addie Eastbrook, Kathy Robinson, Alma Jean Slaughter and son, Jaunita Boxford, Pearl Williams, Bob Hayes, Zelma Denison and son, Colleen Johnson, W. B. Hayworth Judy Henderson and daughter, Faye Miller, Janette Choate, Kay Carnes, Eva Holt and Beth Holt.

Future Readers of

The Plainsman

Mr. and Mrs. John Everett Cotter of Gruver are the parents of a daughter Kathryn Darlene born June 22 and weighing 6 lbs. 7 1/2 ozs.

Mr. and Mrs. Walter E. Denison of Spearman are the parents of a son Walter Edward born June 23 and weighing 5 lb. 9 1/4 oz.

Mr. and Mrs. Kenneth R. Slaughter of Perryton are the parents of a son Howard Lee born June 25 and weighing 5 lbs. 14 1/2 oz.

Mr. and Mrs. Robert A. Parris of Spearman are the parents of a daughter Mary Nicole born June 25 and weighing 6 lbs. 9 1/2 ozs.

Mr. and Mrs. Curtis Leonard Henderson are the parents of a daughter Barbara Ann born June 27 and weighing 7 lbs. 14 1/2 oz.

School Calendar Issued With '65-'66 Activities

Activity in the new school year will begin in Spearman at 9 a.m., Aug. 26 and school will close May 27, 1966, according to the school calendar.

The first day's activity will be a general faculty meeting in the high school auditorium followed by a principals and teachers meeting.

On Aug. 27 students from grade one through eight with registration from 9 a.m. until 11 a.m. buses will run.

High school students will

register the same day. Classes begin Aug. 30. There are 178 days of classes scheduled.

School holidays will be Sept. 6, Labor Day; Nov. 25 through 28, Thanksgiving; Dec. 26 through Jan. 2, Christmas; March 11, TSTA District IX meeting in Amarillo and April 8 through 11, Easter.

High School Baccalaureate will be May 22, Junior High Graduation will be May 26 and High School Graduation will be May 27.

Too Late To Classify

FOR SALE--Hesson Pick-up Reel. Fits all combines. \$125 Jack Whitson. 659-2925. 72-1-c

Hansford Plainsman

Publishers Inc.

Jim O. Davis
Burl G. McClellan



County-wide independent newspaper published every Thursday and Sunday at 209 Main in Spearman, Texas. Second class postage paid in Spearman, Texas. Editor Burl McClellan

PAIN...
the early warning system

Pain functions as the body's early warning system. When an external injury occurs, the brain receives the pain "alarm". Blood is routed to the main internal organs. This happens at once, but pain often lingers on. Because of this, modern medicine is continuing its fight against prolonged pain. The next time your doctor prescribes for you, rely on our Rexall Pharmacist to fill your prescription accurately and promptly.

YOUR **Rexall** PHARMACY

SPEARMAN REXALL DRUG

NOW! SAVE BIG... AT OUR JULY CLEARANCE



Ladies Dresses Reduced 30%

Values From \$11.95 to \$70.00!

- \$11.95 Values now \$ 8.36
- \$14.95 Values now \$10.46
- \$22.95 Values now \$16.06
- \$34.95 Values now \$24.46
- \$69.95 Values now \$49.97

ALL FABRICS REDUCED

Was \$.98 yd. now \$.69

was \$1.29 yd. now \$.89

Was \$1.69 yd. now \$1.19

Was \$1.99 yd. now \$1.39

Was \$2.39 yd. now \$1.69

You'll find a wide variety of beautiful piece goods- all on sale!

30% OFF Sportswear 30% OFF

Catalina & Fem Form Sportswear

Darlene & Catalina Swim Suits

\$16.00 Values now \$11.16
\$20.00 Values now \$13.96
\$26.00 Values now \$18.16

Girls' Sportswear, Dresses & Swimsuits 30% OFF

Ladies & Childrens SHOES 30% OFF



CHAMBERS

MAIN STREET-SPEARMAN



SOME FUN--The farmers did not like the flooding, but the farm dogs did. These two dogs belonging to Curt Harbour found swimming in the road ditches fun.
Plainsman Photo

Texas Offers Much For Sightseeing

If your sightseeing tastes run to deer, wild turkey, great blue heron, collared peccary, caracara--or several hundred other types of wildlife--then the Aransas Wildlife Refuge should be on your list of Texas places to visit this year.

This National Wildlife Refuge covers 47,261 acres on Blackjack Peninsula, about 75 miles north and slightly east of Corpus Christi off State Highway 35. The Refuge was established in 1937 for the protection and production of all forms of wildlife. It is administered by the Bureau of Sport Fisheries and Wildlife under the U. S. Department of Interior.

Visitors are asked to register at Refuge headquarters, located eight miles southeast of Austwell, Texas (Refugio County).

Summer visitors are encouraged to plan visits for late afternoon when more wildlife can be observed from the Refuge's 25 miles of shell surfaced roads. Visiting hours are from 8:00 a. m. to sunset, daily.

Occupants of vehicles bearing a Land and Water Conservation Fund sticker are admitted free. For all other persons over 16 years of age, there is a 25¢ fee, effective about June 1, 1965. Picnic areas are available in the Refuge.

For complete information on the area, you may write to Refuge Manager, Aransas National Wildlife Refuge, Austwell, Texas 77950, or Director, Bureau of Sport Fisheries and Wildlife, Washington, D. C. 10240.



WRECKED TRAILER--This 30-foot trailer owned by Joe Tremmel of Portales, N. M., was wrecked when the windstorm hit the Tom Jarvis farm 15 miles southwest of Spearman Friday. No one was in the trailer when it moved about 200 feet and crashed into the fence.
Plainsman Photo

Five Local Youths Win in Tournament

All five Spearman youths attending the Tennis Camp at Texas A&M last week placed in the tournament at the end of the camp.

They were presented with awards at the banquet Saturday night. Frank Wilmeth and P. A. Lyon, III, won second in their division of doubles.

Richard Booth took a second in doubles and a second in singles.

Karen Baggerly won consolation in doubles and Gary Cates won consolation in doubles.

Mr. and Mrs. Slim Cates and Mr. and Mrs. John Booth attended the banquet.

There were 120 youngsters from ages 10 through 18 years old attending the camp.

The camp is operated by Clarence Mabry of San Antonio, Tut Bartz of Fort Worth and 18 staff members.

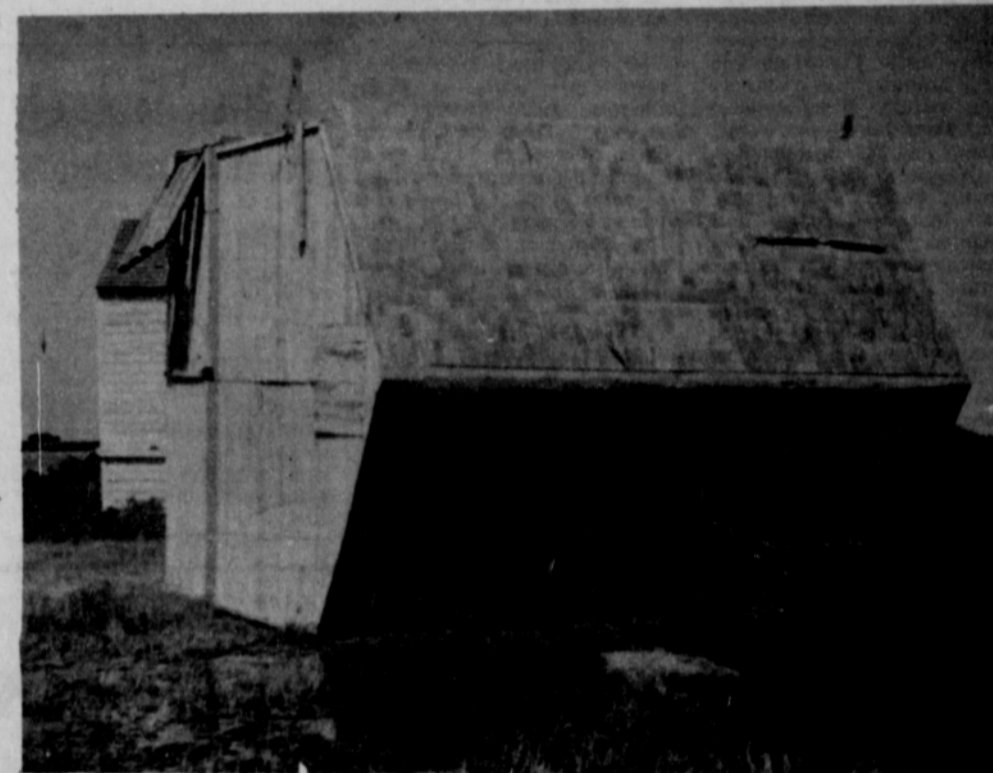
Twenty-one boys and 49 girls attended the camp.

Rogers Attacks Decision Of Court on Brown Case

Archie Brown, an open and avowed Communist for more

than a quarter of a century, served on the executive board of Local 10 of the ILWU in 1959, 1960, and 1961. In 1961 he was indicted for "knowingly and wilfully serving as a member of an executive board of a labor organization... while a member of the Communist Party, in wilful violation of Title 29, United States Code Section 504."

A jury found Archie guilty and he was sentenced to six months' imprisonment. The Court of Appeals held that Section 504 of Title 29 USC violated the First and Fifth Amendments to the Constitution, and reversed the conviction. The case was presented to the Supreme Court.



GRAINERY DUMPED--This grainery on the J. B. Buchanan farm 14 miles southwest of Spearman was moved about 25 feet and tipped over on its side by the wind Friday night. Only one corner of the grainery was on the ground as it moved.
Plainsman Photo

That Court, in an opinion written by Chief Justice Warren on June 7, 1965, held that the statute was a bill of attainder and therefore violated Article I, Section 9, of the Constitution, and affirmed the decision of the Court of Appeals setting aside the conviction.

This was a split decision, being five for setting aside

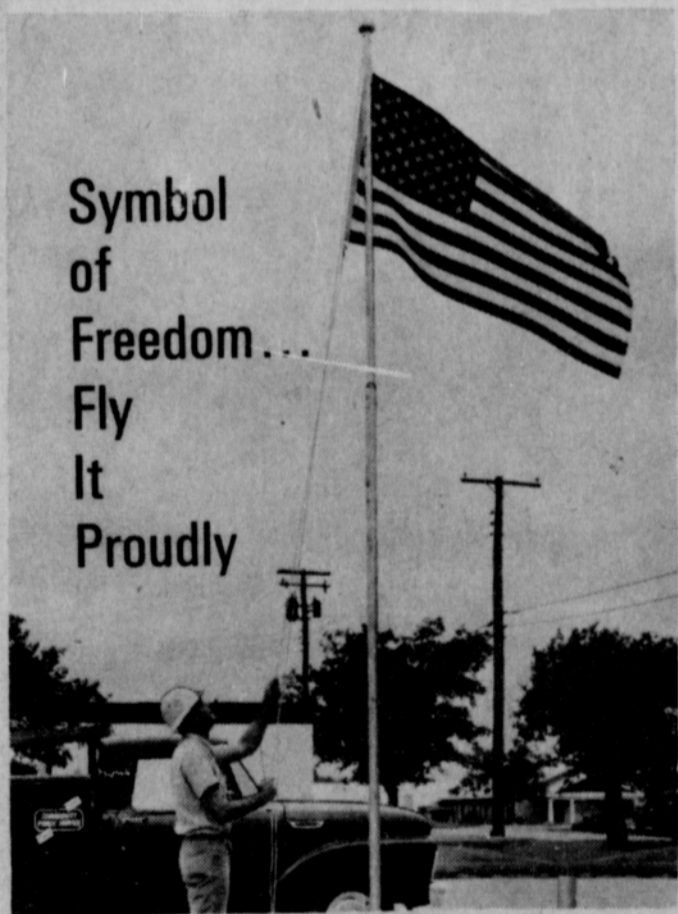
the conviction and four dissenting. The following Justices White, Clark, Harlan, and Stewart, disagree with the conclusions of Chief Justice Warren and the other four members of the Court.

The Archie Brown decision will, in my opinion, go down in the history of this country as one of the most infamous decisions rendered by the Supreme Court. It will, I hope, create enough furor throughout the country to force remedial action.

Those of us in the Congress who have long challenged the advisability of the absolute power in the Supreme Court to declare acts of Congress unconstitutional look upon this decision as a perfect example of the tragedy against which we have long warned. The decision in this case, to set free a well-known and avowed Communist who had openly

and flagrantly violated a Federal law, was based primarily on a misconstruction and a misinterpretation of the term "bill of attainder." I have long argued that, if this can be done, there is no limit to the power of the Supreme Courts of the United States. Such decisions are final and not appealable.

It is interesting to note that the Court stated: "We do not hold today that Congress cannot weed dangerous persons out of the labor movement, and more than the Court held in Lovett that subversives must be permitted to hold sensitive government positions. Rather, we make again the point made in Lovett; that Congress must accomplish such results by rules of general applicability. It cannot specify the people upon whom the sanction it prescribes is to be levied."



Symbol of Freedom... Fly It Proudly

The sight of our country's flag, straining eagerly against a fresh morning breeze, reaches out to touch the spirit of every freedom-loving American. It brings to mind the heritage of a proud past... gives us courage to face today's troubled world... represents hope for a better future. Fly the flag proudly this Fourth of July. It's our symbol of freedom and independence... hard-won, easily lost.

COMMUNITY PUBLIC SERVICE
Your Electric Light & Power Company



PROTECT YOUR BIGGEST INVESTMENT WITH THE BEST PAINT...



White House Lumber Co.

For The Best In Aerial Weed & Insect Control

We use modern equipment and are radio controlled

Phone Perryton Day 5-3727

Night 5-5213

or see Tom Penn or Buster Hendrickson



Engagement Announced

Mr. and Mrs. C. A. Lorts of Denton announce the engagement and approaching marriage of their daughter, Sharon Kaye Simmons to Lanny Joe Brewer, son of Mr. and Mrs. Joe T. Brewer of O'Donnell, Texas. The wedding will be solemnized in the First Methodist Church of O'Donnell, July 31, at 4 p.m. Sharon is a senior student at North Texas State University majoring in Home Economics. She is a member of Alpha Delta Pi sorority.

Lanny graduated from Texas Tech with a BS in Agriculture and was a member of Pi Kappa Alpha fraternity. He is now a student at North Texas State University.

Day by Day

The new feminine fashions for fall are out and the newest shape is supposed to be the dirndl which if you remember has a close-fitting bodice and full skirt gathered at the waistline. The new silhouette is described as closer to the body; almost all skirts are fuller and all kinds of pleats are the rage. For the first time in years, blouses will be tucked inside skirts again. (What! you never did quit tucking your shirttail in?)

Newest fall colors are, first and foremost, brown, especially with black; something called amethyst wood violet; a deep Puritan grey replacing black; orange-toned mandarin red; poison green and neon shades of blue. Pale delicate blue will continue as a top color this winter and other colors making the switch from summer to winter are pale green, lightened greys and beiges. Paisley will be seen everywhere and houndstooth checks will be very, very good.

So there, don't say I'm not right up with the times.

I received a very nice compliment on this column from Mrs. A. L. Jackson this week and I mention it to tell you she insists I run a picture of Jean and Jan (our twin nieces, in case you'd forgotten). So... I just wanted to tell the world that when I run their pictures- it's partly because I was requested to do so.

I wonder how many picnickers, boat enthusiasts and the like are planning a Fourth of July trip to Lake Meredith.

We were down there a week or so ago for a look-see and even after all we'd heard, found it hard to believe a lake could fill that much so soon.

Of course though, this isn't exactly what we'd call an ordinary summer, is it!

If you're not one of the Metrecal for lunch bunch and yet you're sick and tired of dieting, here's Earl Wilson's diet that's made to order:

1. Nothing sweet but dreams.
2. Half a slice is better than one.
3. Have yourself a small tomato, Erroll Flynn used to live on them.
4. Eat a lot of bacon, but not a lot of bakin'.
5. Remember it's the first day of a diet that's the hardest. Because, by the second day you're not on it.

Someone I saw last week suggested it was about time for another recipe. However, my cooking ability and know-how are really very limited. If you'd like to help me by contributing a favorite recipe, it would be most welcome.

Officers Installed By B & PW Club

The Business and Professional Women's Club met on Thursday evening June 24 at the Hospitality Room of the First State Bank for the installation of officers.

A candlelight salad supper catered by the ladies of the Assembly of God Church was served at 7:00 p.m.

A color scheme of green and gold was carried out. The tables were covered with white with a green streamer running down the center. The speaker table was centered with a white and gold mum arrangement flanked on either side with gold candles in crystal candleabra. Bowls of floating mums decorated the remaining tables.

Miss Pat Massad entertained the group with a reading and was presented a gift as a token of their appreciation.

The Welcome address was given by outgoing President Mae Bretz. She also presented membership certificates to all new members coming into the club during the past year.

Mrs. Bretz then introduced the District Director Ruth Graham of Borger who installed the new officers in a beautiful flower garden service. Installed were President Mary Lou Wysong; Vice Pres. Leona King; Recording secretary Lil Turner; Treasurer Muriel Fryer; Corresponding secretary Mildred Roles; Parliamentarian Sammy Bishop; and Reporter June Galbreath. Two officers were unable to be present, they were 2nd vice president Ola Mae Henry and Historian Dorothy Roden.

After the installation Mary Lou Wysong the new president presented Mae Bretz outgoing president with a past president's pin.

Present for the meeting were Mae Bretz, Mary Lou Wysong, Muriel Fryer, Lil Turner, Sammy Bishop, June Galbreath, Leona King, Mable Jameson, Lura Belle Crawford, Lou Howerton, Jennie Massad, Rhoda Overton, Mae Floyd, Mildred Roles, Ludie Mae Lovett, guests Ruth Graham, her daughter Dr. White and her granddaughter Miss White,

all of Borger and Miss Pat Massad.

Women Change Golf Time

The tee off time for the Women's Golf Association has been changed from 9 o'clock to 8 o'clock on Tuesday morning.

Mrs. Leta Laurence, Vicki and Craig of Perryton were Sunday evening guests of Mr. and Mrs. A. F. Holland.

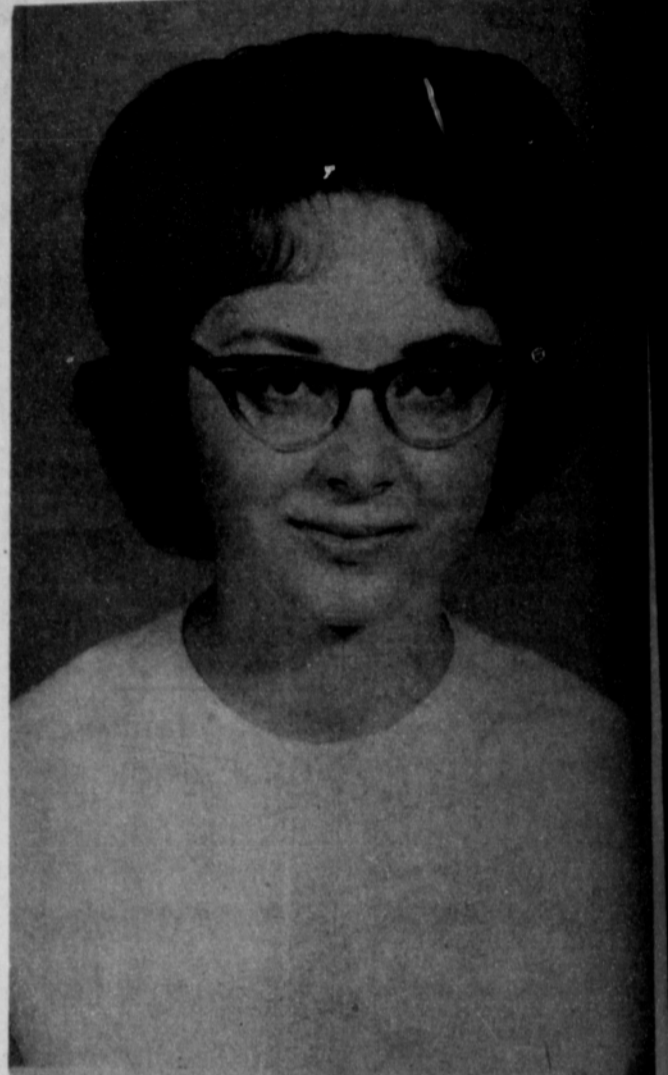
Mr. and Mrs. Ray Devers arrived home on Tuesday after spending the weekend in Oklahoma visiting her mother Mrs. Cora Allen at Ponca City and his parents Mr. and Mrs. O. A. Devers at Luther.

Mrs. Robert Adamson and boys took her mother Mrs. Betty Killian to her home at Antler, Okla. on June 17 and visited with her till Robert came last week. Mrs. Killian kept the Adamson boys while their parents attended a Square Dance Convention held in Dallas on June 24-26. The Adamsons returned to Spearman on Monday.

Mr. and Mrs. Hubert Hays and Paul, spent the weekend in Oklahoma City where they saw the parade and wagon train on Saturday. They also attended the dedication of the Cowboy Hall of Fame and visited relatives and members of the wagon train before returning to Spearman Sunday evening.

Mrs. George Farris of Shamrock and her daughter-in-law, Mrs. Nancy Dakil and Susan of Dumas visited Thursday with Mrs. Farris' sister, Mrs. Frank Massad.

Mr. and Mrs. Richard Fancher and children spent the weekend at Pampa with her parents Mr. and Mrs. Ray Roles.



Recent Bride

Mr. and Mrs. Clyde Hacker of Spearman announce the marriage of their daughter, Reta Gean to Gary Ronald Hopson, son of Mr. and Mrs. Virgil Hopson of Maynsville, Okla., Wed., June 23, in Guymon. The bride is a 1963 graduate of Spearman High School and attended PAMC, Goodwell, Okla. She is currently enrolled in beauty school in Guymon. He is a senior at PAMC, majoring in Business Administration. The couple is at home in Guymon.

Homemaking Notes

by Linda Webb
Home Demonstration Agent

Lawn disease problems have increased in several areas of the state due to heavy rains and cooler weather this spring although lawn and garden diseases (and insects!) are problems all year long.

Area Plant Pathologist, Dr. Robert Berry, will be in Spearman, Tuesday, July 6 in the County Agent's office. He will be there to hold individual consultations with you about problems you may have

in your lawn care landscape plants, to help you solve these problems. He will have available information particularly on disease and insect control.

The consultations will be held 10:00 to 12:00 noon. Anyone is invited to come in and visit with Dr. Berry.

At 1:30 p.m., a tour of some lawn problems will be conducted, in which all interested persons are invited to participate. The tour will leave from the courthouse.

People faced with decisions of what to give the bride-to-be can use this helpful kitchen equipment list.

Pieces of equipment used most often in the kitchen are one set of measuring cups, a set of measuring spoons and a set of mixing bowls. Oven glass mixing bowls can double as refrigerator dishes, baking dishes, or salad bowls.

Other necessary equipment includes one each of these items: a perforated mixing spoon, spatula, rubber scraper, paring knife, butcher knife, vegetable peeler, and vegetable brush. Also, one small strainer, a large strainer that can substitute as a sifter, an egg beater, rolling pin, can opener, pancake turner, long-handled fork, and a grater.

After the basic essentials have been provided, you will find these first additions helpful: a cookie sheet, cooling rack, cake tube pan, two nine-inch pie plates, two round cake pans, a muffin pan, teakettle, salad or pudding molds, potato masher, wooden spoon, utility knife, and carving knife.

A breakfast idea for something "different"-stir sugar coated cereal into vanilla ice cream, top with banana slices and blueberries. That should whet anyone's appetite!



New B & PW Officers

Officers of the Spearman Business and Professional Women's Club were installed in a candlelight service Thursday evening at the hospitality room of the bank. They are (left-right) Mrs. Bill Turner, recording secretary; Mrs. Bud King, vice president; Mrs. Sam Wysong, president; Mrs. Mae Bretz, outgoing president; District Director Ruth Graham of Borger; Mildred Roles, corresponding secretary; and Mrs. John Bishop, parliamentarian.

Plainsman Photo

The Morse Code

Sam Schick of Shattuck, Okla., died of a heart attack at his home on Saturday. He was a brother of Dave and Walter of Morse.

The Bryon Clemons family of Purdue, Ind., were visitors in town on Tuesday. They had lunch with Mrs. Mack Dortch. He was a former pastor of the Community Church. Ray and Gretchen Alexander spent the weekend in Farmington, New Mexico with her mother. They picked up their daughter, Becky, who has spent a month visiting her grandmother.

Evelyn and Carson McCloy and family of Lajunta were weekend visitors of his mother, Mrs. M. W. McCloy. They report the moisture in Colo. is plentiful following the recent rains.

Elaine Kelly returned home Sunday from Houston where she attended the State 4-H Council. She is writing a brief resume of her experiences while in Houston and it will be in the news next week.

Mrs. Jessie Cartwright and Mrs. Emmitt Ryan of Sunray were visitors in the home of Mrs. Mack Dortch last week.

Deryl and Dallen Henderson of Flagler, Colo., were Sunday guests of his mother, Mrs. Besse Henderson. Their daughter, Kathy, who had spent a month with her grandmother, returned home with them. On the way to Morse, the Hendersons were forced to delay their trip three hours in Lamar, Colo., due to the flood waters.

Mrs. Ella Parks and Lynn Parks went to Hugoton, Kans. on Tuesday to visit with the Charles Thompson family.

Mr. and Mrs. L. L. Cook and Mickey returned home

from visiting relatives near Dallas last week and brought their three grandchildren home with them for a visit.

Miss Peggy Giblin was hostess for a farewell slumber party Friday night honoring Myrna Nye who will soon be moving from the community. Guests were Patricia Henderson, Sylvia Parks, Judy Reising, Suzanne Dixon, Elaine Schick, the honoree and hostess.

Included in the group going to Boiling Springs, Okla., on Friday to pick up the girls at Scout Camp were Mmes. Damon Gregg, Ray Lackey, Harold Crooks, Robert Hall, Jim Davidson and Eddie Read.

Guests of Mr. and Mrs. Lee Keys Thursday and Friday of last week were her aunt and uncle Mr. and Mrs. William Chapman and their daughter-in-law Mrs. Scott Chapmar of Midwest, Wyo.

Mr. and Mrs. John Booth spent last week in Lake Charles, La., visiting his brother, Si Booth and children. They returned by Texas A&M attended the awards banquet Saturday night and brought Frank Wilmeth, P. A. Lyon III, and their son, Richard, home from the Tennis Camp.

Card of Thanks

We wish to take this means to express our thanks and appreciation for flowers to our late mother, Zelpha Galbreath also for cards and words of sympathy in the loss of our beloved mother. May God richly bless each of you.
The Carl Galbreath family



TOO DEEP — Curt Harbour heads his horse back to dry ground after finding the lake on the T. I. Harbour farm too deep to ride through. The lake got into the Monte Harbour house, shown in the background.
Plainsman photo

Bible Club Has Meeting At Park

A Good News Bible Club meeting was held in the open-air of the Spearman Park on Saturday, June 26th from 4 until 5 in the afternoon. Teaching the songs and memory work was Mrs. Desmond Kelly; Mrs. Tom Dortch both of Morse gave the Bible lesson from the Wordless Book explaining the Gospel to the boys and girls who gathered around the board and easel.

Those attending from Spearman were: Angel, Esther, Mary, Genoro, Tito, and Cookie Martinez, Rosa Cavazo and Aramando Cavazos and Mike and Tina Marie Byers and adults, Mesdames: Byers, Susie Current and Marteniz.

Attending from Morse were: Sherry and Kathy Alexander, Bo, P. T. and Mary Lou Cator Kurt Aaron, Teresa and Vicki Dortch, Sam, Clifford, and Charis Fleming and David Hall. Adults attending were Mesdames: Carole Hall, Tom Dortch and Desmond Kelly.

Refreshments of cookies and punch were served at the close of the meeting and games played. This was sponsored by the Child Evangelism Fellowship. Further classes will be resumed this fall as this meeting concluded the teaching of a four week club in the home of Mrs. Martinez.

THE LAST NOTE:—Most of us can stand an occasional crisis. What grinds you down is the frequency of the occasions.

H. M. Thompson of Fargo, N. D. and Miss Luanna Olsen of Amarillo; two brothers, four sisters and 16 grandchildren.

Monday Will Be Partial Holiday

Monday will be only a partial holiday in Spearman in observance of July 4, which is Sunday.

The Post Office, all county and city offices and businesses not related to harvest are planning to close.

The grocery stores, farm related businesses and service stations will be open. The bank will also be open for business; since it is normally closed on Saturday, it does not close on Monday for Sunday holidays.

Rites Held Wednesday For Former Commissioner

Final rites for a former Hansford County Commissioner were held Wednesday in Oslo.

Services for Gustav A. Olsen of Shattuck, Okla., were held at 2:30 p.m. Wednesday in the Oslo Lutheran Church. Burial was in the Oslo cemetery.

With the Post Office closed, there will be no city or rural mail deliveries.

Mr. Olsen died Sunday in Shattuck, Okla.. He had lived there since 1952. He was a farmer in the Oslo community before moving to Oklahoma.

He served as a County Commissioner for several terms during the late 1930's. He is survived by his wife Dean; daughters, Mrs. H. H. Miller of Dawn, Mrs. Billy Hill of Canyon, Mrs.

HERE'S THE ANSWER!

PUT A CASE 1200 IN YOUR STUBBLE

A Case 1200 and One Man Does The Work Of Two and Two Tractors

The Case 1200 has a big 451 cubic inch turbocharged Case diesel proved by millions of hours of hard use in giant Case industrial wheel loaders. A big power increased torque by true 4-wheel drive design. A heavy-duty, 6-speed transmission provides gear speeds from 2 to 7 MPH, plus two road speeds up to 16 MPH. A 7-gallon pump provides plenty of power for two remote ranges. 3-point hitch, PTO and 3rd available.



McCLELLAN & SONS, INC.

The Morse Code

Sam Schick of Shattuck, Okla., died of a heart attack at his home on Saturday. He was a brother of Dave and Walter of Morse.

The Bryon Clemons family of Purdue, Ind., were visitors in town on Tuesday. They had lunch with Mrs. Mack Dortch. He was a former pastor of the Community Church.

Ray and Gretchen Alexander spent the weekend in Farmington, New Mexico with her mother. They picked up their daughter, Becky, who has spent a month visiting her grandmother.

Evelyn and Carson McCloy and family of LaJunta were weekend visitors of his mother, Mrs. M. W. McCloy. They report the moisture in Colo. is plentiful following the recent rains.

Elaine Kelly returned home Sunday from Houston where she attended the State 4-H Council. She is writing a brief resume of her experiences while in Houston and it will be in the news next week.

Mrs. Jessie Cartwright and Mrs. Emmitt Ryan of Sunray were visitors in the home of Mrs. Mack Dortch last week. Deryl and Dallen Henderson of Flagler, Colo., were Sunday guests of his mother, Mrs. Besse Henderson. Their daughter, Kathy, who had spent a month with her grandmother, returned home with them. On the way to Morse, the Hendersons were forced to delay their trip three hours in Lamar, Colo., due to the flood waters.

Mrs. Ella Parks and Lynn Parks went to Hugoton, Kans. on Tuesday to visit with the Charles Thompson family.

Mr. and Mrs. L. L. Cook and Mickey returned home

from visiting relatives near Dallas last week and brought their three grandchildren home with them for a visit.

Miss Peggy Giblin was hostess for a farewell slumber party Friday night honoring Myrna Nye who will soon be moving from the community. Guests were Patricia Henderson, Sylvia Parks, Judy Reising, Suzanne Dixon, Elaine Schick, the honoree and hostess.

Included in the group going to Boiling Springs, Okla., on Friday to pick up the girls at Scout Camp were Mmes. Damon Gregg, Ray Lackey, Harold Crooks, Robert Hall, Jim Davidson and Eddie Read.

Guests of Mr. and Mrs. Lee Keys Thursday and Friday of last week were her aunt and uncle Mr. and Mrs. William Chapman and their daughter-in-law Mrs. Scott Chapman of Midwest, Wyo.

Mr. and Mrs. John Booth spent last week in Lake Charles, La., visiting his brother, Si Booth and children. They returned by Texas A&M attended the awards banquet Saturday night and brought Frank Wilmeth, P. A. Lyon III, and their son, Richard, home from the Tennis Camp.

Card of Thanks

We wish to take this means to express our thanks and appreciation for flowers to our late mother, Zelpha Galbreath also for cards and words of sympathy in the loss of our beloved mother. May God richly bless each of you.

The Carl Galbreath family



TOO DEEP — Curt Harbour heads his horse back to dry ground after finding the lake on the T. I. Harbour farm too deep to ride through. The lake got into the Monte Harbour house, shown in the background. Plainsman photo

Bible Club Has Meeting At Park

A Good News Bible Club meeting was held in the open-air of the Spearman Park on Saturday, June 26th from 4 until 5 in the afternoon. Teaching the songs and memory work was Mrs. Desmond Kelly; Mrs. Tom Dortch both of Morse gave the Bible lesson from the Wordless Book explaining the Gospel to the boys and girls who gathered around the board and easel.

Those attending from Spearman were: Angel, Esther, Mary, Genoro, Tito, and Cookie Martinez, Rosa Cavazo and Aramando Cavazos and Mike and Tina Marie Byers and adults, Mesdames; Byers, Susie Current and Marteniz.

Attending from Morse were: Sherry and Kathy Alexander, Bo, P. T. and Mary Lou Cator Kurt Aaron, Teresa and Vicki Dortch, Sam, Clifford, and Charis Fleming and David Hall. Adults attending were Mesdames: Carole Hall, Tom Dortch and Desmond Kelly.

Refreshments of cookies and punch were served at the close of the meeting and games played. This was sponsored by the Child Evangelism Fellowship. Further classes will be resumed this fall as this meeting concluded the teaching of a four week club in the home of Mrs. Martinez.

THE LAST NOTE:—Most of us can stand an occasional crisis. What grinds you down is the frequency of the occasions.

H. M. Thompson of Fargo, N. D. and Miss Luanna Olsen of Amarillo; two brothers, four sisters and 16 grandchildren.

Monday Will Be Partial Holiday

Monday will be only a partial holiday in Spearman in observance of July 4, which is Sunday.

The Post Office, all county and city offices and businesses not related to harvest are planning to close.

The grocery stores, farm related businesses and service stations will be open. The bank will also be open for business; since it is normally closed on Saturday, it does not close on Monday for Sunday holidays.

Rites Held Wednesday For Former Commissioner

Final rites for a former Hansford County Commissioner were held Wednesday in Oslo.

Services for Gustav A. Olsen of Shattuck, Okla., were held at 2:30 p.m. Wednesday in the Oslo Lutheran Church. Burial was in the Oslo cemetery.

With the Post Office closed, there will be no city or rural mail deliveries.

Mr. Olsen died Sunday in Shattuck, Okla. He had lived there since 1952. He was a farmer in the Oslo community before moving to Oklahoma.

He served as a County Commissioner for several terms during the late 1930's. He is survived by his wife Dean; daughters, Mrs. H. H. Miller of Dawn, Mrs. Billy Hill of Canyon, Mrs.

HERE'S THE ANSWER!

PUT A CASE 1200 IN YOUR STUBBLE

A Case 1200 and One Man Does The Work Of Two and Two Tractors

The Case 1200 has a big 451 cubic inch turbocharged Case diesel proved by millions of hours of hard use in giant Case industrial wheel loaders. Its big power comes from the true 4-wheel drive design. A heavy-duty, 6-speed transmission provides gear field speeds from 2 to 7 MPH, plus two road speeds up to 16 MPH. A 37-hp pump provides plenty of power for two remote rams. 3-point hitch, RTO and PTO available.



McCLELLAN & SONS INC

Combat Veteran and His Mother Are Counting Days Until His Return from South Viet Nam Combat Zone

The Vietnamese call him "Eve's" and he is very effective in destroying the Viet Cong. But, he is counting the days until he leaves Da Nang, Viet Nam.

He is not the only one counting the days, Mrs. C. C. Miller, mother of Major Robert E. Ley, is also counting the days until he leaves the combat zone where he has served almost a year.

Hal Boyle, an Associated Press writer, quoted Major Miller as saying, "the bullets seem to hit closer all the time but you can't afford to get overcautious. That's more dangerous than being reckless."

Boyle wrote that the bullets have been close during combat. One bullet went through the sole of Ley's boot and recently a sniper shot a package of cigarets out of his pants pocket.

"It was the only package I had with me," Ley told Boyle. Ley got his nickname because of his piercing green eyes. He is a slender, former tank officer who graduated from West Point in 1954.

He told Boyle that 12 of his classmates have been killed in Viet Nam.

When Ley went to Viet Nam, he and two other officers and eight enlisted men were given the task of helping organize the safety of a 150-w-quare mile sector. It included Da Nang and its airbase.

They had six Vietnamese companies strung around the perimeter and two in reserve. There were an equal and more experienced number of Viet Cong opposing them.

Ley's people did not wait, they went after the Viet Cong. They went on innumerable patrols and 42 assaults of company size. In one operation they moved 700 men by helicopter to hit an enemy grouping.

During the time they killed 400 Viet Cong, captured a like number and took about 100 weapons. They had only 25 killed, and 60 wounded. None were captured nor defected.

They did not have an American wounded or captured. "Men won't fight unless they are well led. Our Vietnamese officers are fine," Ley told the Associated Press writer.

Ley thinks there are about 200 Viet Cong left in the area. It is only a matter of hunting them down and shooting them, he commented.

He likes going on operations. He has killed three Viet Cong and has been awarded the Vietnamese Gallantry Medal with Silver Star.

Fighting for the South is natural for Major Ley. His great-grandfather, a Choctaw Indian from Georgia, lost a leg when he was 13 fighting for the Confederacy in the Battle of Chickamauga.

The Easy Life

Man cannot live and survive in the easy, soft life he has been seeking since the beginning of recorded history. He has sought it always and always such a life has been his destruction.

In Genesis 3:19, God tells Adam and Eve, "In the sweat of your face you shall eat bread till you return to the ground for out of it you were taken; you are dust, and to dust you shall return."

Eversince God cast Adam and Eve out of the Garden of Eden, man has attempted to create such a place and has failed. Historians tell us there have been 21 great civilizations and 19 have disappeared.

As long as a nation's rulers have led the people in building for the betterment of all its people and the people have labored honestly, it has been pleasing unto God and the nation has prospered. When the people became lazy, working only for self and were ruled by those seeking only self-glorification, the nation has been destroyed.

Israel under Solomon became rich and powerful, but when Solomon's and the peoples' desires exceeded their abilities and they began living only for self-satisfaction, Israel was destroyed.

Rome, although heathen, built a great empire on the idea of freedom and rights of man. However, when these ideals were sacrificed in the quest of greater wealth and pleasure, Rome was destroyed.

Americans have built a mighty and wealthy nation on the ideas of freedom and worship of God. It has taken many years of sweat, blood and sacrifices.

Where do we stand today?

Church Services

Apostolic Faith Church
V. E. (Hap) Blythe, Pastor
Sunday School 10:00 a.m.
Morning Worship 11:00 a.m.
Evening Worship 7:00 p.m.

Assembly of God Church
Rev. T. J. Taylor, Jr.
Sunday School 9:45 a.m.
Morning Worship 11:00 a.m.
Evening Worship 7:30 p.m.
Wed. Bible Study 7:30 p.m.

Church of Christ
Charles Milner, Minister
Sunday School 10:00 a.m.
Worship 11:00 a.m.
Worship 7:00 a.m.
Wed. Ladies Bible Class 9:30 a.m.
Wed. Bible Study 7:30 p.m.

Fellowship Baptist Church
W. S. Herring, Pastor
Sunday School 10:00 a.m.
Preaching Service 11:00 a.m.
Sunday Evening Service 7:30 p.m.
Wed. Evening Service 7:30 p.m.

First Christian Church
Rev. W. Graham Pugh, Minister
Sunday School 9:45 a.m.
Morning Worship 11:00 a.m.
Youth Meetings 6:00 p.m.
Evening Worship 7:30 p.m.
Wed. Choir Practice 7:30 p.m.

First Baptist Church
The Rev. Luther M. Berry, Pastor
Sunday School 9:45 a.m.
Morning Worship 10:45 a.m.
Training Union 5:30 p.m.
(Oct. 1-Apr. 30)
Training Union 6:00 p.m.
(May 1-Sept. 30)
Evening Worship 6:30 p.m.
(Oct. 1-Apr. 30)
Evening Worship 7:00 p.m.
(May 1-Sept. 30)
Wed. Evening Prayer Hour 7:30
Thurs. Choir Rehearsal 7:00 p.m.

Oslo Lutheran Church
18 mi. N.W. of Gruver
Robert L. Cordes, Pastor
Sunday School 9:45 a.m.
(includes adults)
Worship Services 11:00 a.m.

First Methodist Church
Brother Wesley Daniel, Minister
Sunday School 9:45 a.m.
Morning Worship 11:00 a.m.
M. Y. T. 6:30 p.m.
Evening Worship 7:30 p.m.
Women's Society of Christian Serv. Wednesday 3:00 p.m.
Choir Rehearsal 7:30 p.m.

First United Presbyterian Church
Everett H. Cain, Jr., Pastor
Sunday Church School 9:45 a.m.
Morning Worship 11:00 a.m.
Evening Study Group 7:30 p.m.
Wed. Choir Practice 7:30 p.m.

Pentecostal Church
Sunday School 9:45 a.m.
Morning Worship 11:00 a.m.
Evening Worship 7:30 p.m.

Sacred Heart Catholic Church
Rev. Ludislaus Walko
Sundays 10:00 a.m.
Catechism Classes 11:00 a.m.
Week Days
Mon., Tues., Fri., Sat. 8:00 a.m.
Holy Days of Obligation 7:30 a.m.
First Friday of Month 7:00 a.m.

Faith Lutheran Church
Farm Bureau Bldg.
Robert Cordes, Pastor
Worship Services 9:00 a.m.
Sunday School 10:00 a.m.

Union Full Gospel Church
Rev. George R. Bollinger, Pastor
Sunday School 10:00 a.m.
Morning Worship 11:00 a.m.
Bible Classes, Sunday 6:45 p.m.
Evening Worship 7:30 p.m.
Wed. Bible Study 7:30 p.m.

Waka Church of the Brethren
Lawrence Lehman, Pastor
Sunday School 10 a.m.
Morning Worship 11 a.m.
Evening Service 7 p.m.
Choir Practice . . . Wed. 7 p.m.
Adult Bible Study . Wed. 8 p.m.

JOHNSON FENCE COMPANY

Now has a retail outlet in Perryton to serve the Texas and Oklahoma Panhandle. Twenty-eight years experience in this field assures you of expert installation on any fence.

Chain link steel for homes, cemeteries or farm estates gives permanent beauty and protection for pets and children with no upkeep.

Redwood and Stockade for privacy plus beauty and landscaping.

-Satisfaction Guaranteed-

Free Estimates Anywhere
Nothing Down--36 Months To Pay
Payments As Low As \$10.00 Monthly.

CLYDE STEPHENS

1017 S. Baylor Perryton

CALL 435-2235 COLLECT- DAY or NIGHT

We need a local representative for Spearman

You'll find many WISE BUYS at our ANNUAL SUMMER SALE!

* \$359.50 Early Am. Red Quilted Sofa by Town & Country--\$229.50

* \$298.50 Early Am. Green Sleeper by Ennis---\$198.50

* \$259.50 Modern Beige Hide-A-Bed by Simmons \$189.50

* \$119.50 Quilted Chairs by Pullman now \$98.50

\$ 79.50 Pine Tea Cart by MaLeck.. \$ 49.59

\$ 79.95 Continental table by Butler.. \$ 56.50

\$86.50 Curio Cabinet by Butler \$49.95

Close-Out On All Outdoor Furniture 20% Off

All Wall Accessories Reduced 20% Or More

Reg. \$179.50 Roll Top Desk by Brandt Priced At \$98.50

Bedroom

Reg. \$319.50 Walnut Double Dresser, Mirror, Double Bed & Chest by United Now Only \$209.50

\$339.00 Early American Rock Maple Double Dresser, Mirror & Double Bed by Tell City.....\$229.50

\$254.95 Solid Oak Double Dresser, Mirror & Twin Beds by Williams.....\$198.50

\$389.50 French Provincial Fruitwood Double Dresser Mirror, Double Bed & Chest by Bassett.....\$289.50

Reg. \$296.50 Walnut Triple Dresser, Mirror, Double Bed & 1 Night Stand by United

Now Only \$198.50

Reg. \$329.50 Brown Tufted-Back Sofa by Pullman

Only \$198.50

\$259.50 Early American Gold sofa by Kenline

\$169.50

Lamps Reduced 20% to 50%

Bedsprads 30% off

Countless other sale items Too Numerous to Mention

Reg. \$829.50 8-Piece Solid Pecan Dining Room Suite by Willet

Amazing Priced At \$449.50



FURNITURE CO.

PLAINS SHOPPING CENTER

SHOP NOW

659-3044

Sponsored by these Progressive Merchants

R.L. McClellan Grain Co., Inc.

First State Bank

Member F.D.I.C.

B & B Grain Co., Inc.

EDITORIAL

EDITORIAL PAGE

Dr. Robert Berry

Mosquitoes

The annual summer invasion of mosquitoes and flies is raising the cry for the city spray machine and relief from the pests. But until property owners bring the weed problem under control, the spraying will do little good.

Heavy rains have brought up weed seeds that have been lying idle for years. The weeds are growing everywhere and provide a perfect shelter and breeding ground for mosquitoes.

Mosquitoes are a health menace. Every year there are outbreaks of sleeping sickness spread by the mosquito. Controlling the mosquitoes should be a major project of the city government, but they must have our help.

Until the weeds are cut or killed in alleys, on vacant lots and at empty houses and in undeveloped areas of town, spraying will give little if any relief.

Cut your own weeds and if those around you will not cooperate there is a city weed ordinance requiring property owners to keep weeds cut. Then, spraying will give us relief from the mosquitoes.

printed envelopes.

We printers who are also newspaper publishers have always been a little reticent about opposing the Post Office printing editorially, since to do so leaves us open to suspicion of trying to force businesses to pay our necessarily-higher prices for printed envelopes...but it isn't very comforting to have our suspicions confirmed that our "official" competition is contributing substantially to the Post Office deficit and has been doing so for many years. --Canadian Record

Help Wanted

More than 45,000 American troops in Viet Nam! 20,000 plus shunted in and out of the Dominican Republic. X thousands in Korea, Berlin and other trouble spots! (Some 325,000 in the whole of Europe.) Our Naval forces are scattered around the globe! How many more "brushfire" wars will the Communists have to ignite before our "limited war" forces are spread too thin to be effective?

The recent Dominican action demonstrated the speed with which our forces can be placed at a new scene of crisis...and withdrawn as well. But as things stand now, forces must be kept at ready for speedy return.

Not long ago the Secretary of Defense, and others, were assuring us that the United States is fully prepared to cope with any level of military threat or conflict. More recently, Mr. McNamara is reported to have told a group of U. S. Senators that we should be prepared to see as many as 300,000 Americans sent to Viet Nam.

We are already running short of trained men and equipment required to cope with these "brushfire" situation. We are in short supply, for example, of planes and pilots of the types and skills required in Vietnam. The Navy is pleading with men due for release to extend their tours.

Whether our limited warfare shortages are due to miscalculations by Mr. McNamara and his computers is now somewhat beside the point. We should not in any case try to put out all the brushfires by ourselves. There are others, such as the Nationalist Chinese, who would be only too glad to help us, if only our Government would let them.

Also, Soviet and Red Chinese leaders might not be so eager to stir up trouble elsewhere, if their own domains were subject to some harassment. This, too, our Formosan allies are ready and eager to do.

Indeed, those Communist arsonists had better take care. Just one or a few more brushfires may compel President Johnson to withdraw from the Formosan straits those U.S. forces which have for years been protecting the Red Chinese regime from the Nationalist forces on Taiwan. --Graham Leader

Mr. and Mrs. Gordon Parrish went to Lubbock on Saturday where they are visiting their son Jerry Parrish and family. Gordon returned to Spearman on Sunday but Mrs. Parrish and Mrs. Jerry Parrish and children left Monday for Reswell where they will visit

Mr. and Mrs. James Maxwell, the former Estelle Parrish. James is stationed with the air force in Roswell.

Choose Hallmark Cards... when you care enough to send the VERY BEST. Plainsman Office Supply.

Lawn Expert Will Be Here July 6

Dr. Robert W. Berry, Area Plant Pathologist from the Lubbock South Plains Research and Extension Center, will be in Spearman Tuesday, July 6 to help county residents with lawn and landscape plant problems.

Individual consultations will be held by Dr. Berry in the County Agent's office in Spearman, from 10:00 to 12:00 a.m. Anyone interested in consulting Dr. Berry about plant problems, diseases and insect control are asked to stop by the office, and, if possible, bring specimens of the diseased plants at that time.

A tour of selected yards in Spearman will be made at 1:30 p.m., July 6, where problems will be discussed.

Everyone who is interested is invited to attend this tour, and to come for individual consultations that morning.

Dr. Berry is a graduate of Texas A&M. After serving two years in the U.S. Army he was transferred to Dickens County in 1955 as county agent where he served until he resigned in 1958 to do graduate work. At the University of Wisconsin from 1960 to 1963 he was a research assistant studying genetics of corn rust. He was named to his present position of Feb. 1 1963.

Dr. Berry's primary responsibility is the training of county agricultural agents in the 84 county area of West Texas in plant disease subject matter. He also works with other organizations and groups interested in plant disease problems and is available as a consultant and for diagnostic work.

If you have a particular lawn or plant disease problem which would be of interest on the tour, please contact either the County Agent's office or the Home Demonstrations Agent's office immediately, so the tour can be planned to include your yard.

Prison Rodeo Reservations Available

Although the 34th Annual Texas Prison Rodeo is three months away, many fans are already ordering advance reserved seat tickets for the five Sunday performances in Oct. Included in the advance ticket sales report is one from about 150 members of the 17th Annual Texas Air Tour, who plan to attend the opening performance of the 1965 Prison Rodeo series on Sunday October 3rd.

According to E. M. Anderson Jr. of Medina, president of Air Tour, Inc., the pilots and their guests will land 60 planes at the Huntsville Municipal Airport, where the visitors will be greeted by a special committee headed by Huntsville City Councilman, Neil D. Cox, who is also a member of the aviation committee of the Huntsville-Walker County Chamber of Commerce.

Following a barbecue lunch in one of the airport's new hangars, the guests will be transported to the Prison Rodeo arena in time for the 2 p.m. opener.

Anderson said that Huntsville was included as one of the major stops on the tour because of improved airport facilities and the Prison Rodeo as an added attraction.

He said the group will spend Sunday night in Huntsville before taking off for Palestine Sulphur Springs, the Dallas area and Arlington, where they will spend Monday night.

The air tour begins in Temple, October 2nd, and ends in Austin, October 9th, Anderson stated. The tour will cover 40 cities for a total of 4,000 miles.

Anderson said that about half of the group are from other Southwestern states.

Prison officials said that the Prison Rodeo will again feature top-flight guest stars, plus thrilling inmate contests and a host of inmate entertainment highlights.

Reserved seat tickets, priced at \$2.40, \$3.75, \$4.40 and \$4.95, may be obtained by sending a check or money order to Rodeo Ticket Office Huntsville, Texas, 77340. Net proceeds from ticket sales are earmarked for inmate rehabilitative services not allocated by the Texas legislature.

Mr. and Mrs. J. D. Helm and boys, also Mrs. Helms sisters, parents and grandparents attended the Allison school reunion at Allison, on Saturday night. She and her sisters attended school there. Her mother was a teacher and children of her grandparents had also attended school at Allison. Approximately 200 attended the reunion.

Scott Walker of Chillicothe was a guest last week of his sister Mrs. Kate Gray and his niece Frances Sim. On Tuesday of this week Mrs. Gray and Mrs. Sim took him to Walsh, Colorado, to visit Mr. and Mrs. Ora Schroder and family. They also visited a nephew Bob Schroder and family while in Walsh before returning home on Wednesday

ACROSS the DESK

What Other Editors Say

Big Loss

Newspapers publishers, particularly those in small-towns across the country who are also in the business of printing, have long felt that the United States Post Office Department has been engaging in unfair competition with private business by printing return addresses on envelopes at prices that are below cost for the private printers.

We in the printing business have been fairly certain, for that matter, that the Post Office Department envelope prices have also been sold at less than their cost to the government, also...but the Department has always insisted otherwise, although when Congressional pressure threatened an investigation a few years ago, the Department raised its printing prices substantially, bringing them close to private competition.

Now the General Accounting Office, the "watch-dog" department of the federal government, has looked into the situation and reports that the P. O. has been selling stamped envelopes "at a substantial loss" for at least four years. The GAO estimates that the Post Office has lost about \$7.5 million on its envelope business in the four fiscal years through 1963. GAO not only charges the Post Office Department with improper accounting procedures, but also discovered a plain mathematica error in the PO's own figuring of \$4.1 million. The Postmaster General has conceded the multi-dollar error and announced new accounting procedures would be adopted...but so far has indicated no change in the price of the

WHAT DO YOU NEED?

New Scout —
New Pickup —

International Gives
Value and Economy.



New Buick —
New Pontiac —
You'll Find Many
Models & Colors!

NORTH PLAINS TRUCK & IMPLT. INC.

Highway 15

Phone 659-2421

WE WILL BE OPEN MONDAY, JULY 5th

Tendercrust Cluster Pak of 8 buns

SUPER FOOD BUYS

These Star-Spangled Values are real Banner Buys for the Fourth. All your fun-feasting favorites for sparkling holiday meals are here - and all at sparkling SAVINGS, too.



Hamburger Or

Hot Dog Buns 19¢

Liptons Brisk 1 2 lb. box

TEA 73¢

All Flavors reg. 5¢ pkg.

Kool Aid 3 for 10¢

Tendercrust Creme Filled Assorted 1 lb. 14 oz. size

Cookies 45¢

J. & L. Farms Grade A Large

Eggs Dozen 39¢

Coppertone Reg. \$1.50 Size

Lotion 98¢

ICE CREAM

Bordens Glazier Club



Half Gallon 49¢

Johnston's Frozen Large Size Extra Fruit Filled

FRUIT PIES Each 49¢

Shurfine Shopping List

Values good thru July 3

- Shurfine Salad Dressing Pt.2/5 .49
- Shurfine Shortening 3 Lbs.\$.69
- Softin Toilet Tissue Asst'd. Colors 10 Roll Pak.\$.69
- Viking Aluminum Foil 25 Ft.4/\$1.00
- Shurfine Apple Sauce 25 oz.4/\$1.00
- Shurfine Asparagus Spears-Green Cut-3004/\$1.00
- Shurfine Beets Cut 3039/\$1.00
- Shurfresh Biscuits Sweet-Buttermilk 8 oz.13/\$1.00
- Shurfine Cake Mixes Asst'd. Flavors 19 oz.4/\$1.00
- Shurfine Cherries RSP 3035/\$1.00
- Shurfine Coffee Regular or Drip 1 Lb.\$.69
- Shurfine Cucumber Chips Fr. Pak 16 oz.4/\$1.00
- Shurfine Flour 10 Lb. Paper Bag\$.79
- Shurfine Frosting Mix Chocolate/Whit. 13 1/2 oz.4/\$1.00
- Shurfine Grape Jam 18 oz.3/\$1.00
- Shurfine Grape Juice 24 oz.3/\$1.00
- Shurfine Grapefruit Sections 3034/\$1.00
- Shurfine Green Beans Whole B.L. 2 Sv. 3034/\$1.00
- Shurfine Macaroni or Spaghetti 2 Lbs.3/\$1.00
- Shurfresh Margarine 1 Lb.5/\$1.00
- Shurfine Milk Tall Can8/\$1.00
- Shurfine Mustard 16 oz.2/\$.39
- Shurfresh Oil 74 oz.\$.39
- Shurfresh Orange Slices 28 oz.\$.39
- Shurfine Peanut Butter 12 oz.3/\$1.00

Black Pepper 33¢

Barbecue Sauce 49¢

Pork & Beans 10 for \$1.



Shurfine Tomato Catsup 6 for \$1.

SHURFINE CANNED POP ALL FLAVORS & DIETETIC

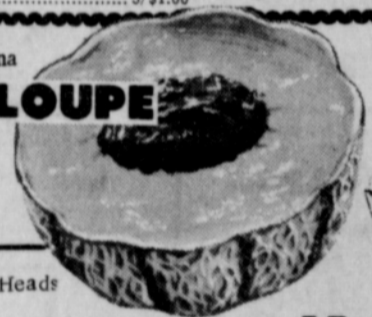
SODA 12 for \$1.

NAPKINS 2 for 55¢

Treet 39¢

Lemonade 11 for \$1.

CANTALOUPE 10¢ lb.



Lettuce 15¢ lb.

Tomatoes 29¢ lb.

Celery Hearts 39¢ each



CHEESE SLICES 2 for 49¢

Let's have a COOK-OUT



Franks 49¢

Hens 39¢ lb.

CHARCOAL

Energy Briquets

2 for \$1.

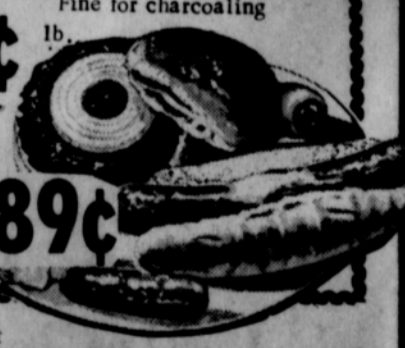
SUGAR 39¢

Imperial Pure Cane 5 lb. bag Thereafter 49¢ With \$2.50 purchase or over

GROUND BEEF 49¢

USDA CHOICE Tender 1b.

Rib Steaks 89¢



Pickles \$1.

Olives 3 for \$1.

MIRACLE WHIP 39¢

With \$2.50 purchase or over Thereafter . . . 49¢

Ajax 59¢



Cut Rate GROCERY