

HANSFORD COUNTY'S LEADING NEWSPAPER



The

SUNDAY Hansford Plainsman



VOLUME VII., NUMBER 7

SPEARMAN, HANSFORD COUNTY, TEXAS 79081

SUNDAY, NOVEMBER 14, 1965



FIFTH GENERATION- The Rev. Bill Clarke of Austin is the fifth generation of his family to be either a pastor or lay leader in the Baptist Churches of Texas. The Rev. Clarke is organist for the Christ for All Crusade being held in Spearman through Sept. 21.

PLAINSMAN PHOTO

Organist Is Fifth Generation Baptist Leader In Texas Work

From the war of "Minnie-balls" to rockets-to-the-moon, the Clarke family has been preaching and working in the Baptist Churches of Texas.

When the Rev. Bill Clarke, organist for the Christ for All Crusade, sold his wholesale grocery business in Cleburne and began studying for the ministry, he was following a family tradition.

Clarke's great-great-grandfather came to Northeast Texas from Georgia before the Civil War. He was a Baptist preacher and church builder. He founded several Baptist Churches in Northeast Texas and was pastor of the Baptist Church in Tyler during the

Civil War.

After the war, he founded the First Baptist Church in Cleburne and his family has been in the church since it was founded 100 years ago.

Baptist church work and the grocery business are a part of the Clarke family. Before World War II, the five largest independent grocery stores in Cleburne were owned by Clarks.

"Some people thought the Clarke cousins worked together in the grocery business, but they were big business rivals," Clark said.

Young Bill Clark followed his family into the church and grocery business. He began studying music when he was

five. He studied piano until he was 13, then added organ to his studies. When he was 13 he became organist for the church and continued until he graduated from high school and joined the navy in World War II.

After the war he returned to the church organ and joined his father in the grocery business.

Things followed a family pattern. He married, his grocery business was successful and he expanded into the wholesale grocery business. He was also a Sunday School officer and was ordained as a Deacon in the church.

In 1956 he came home from

(Con't. on back page.)

Lynx Close Football Season By Beating Shamrock 24-7

Second and fourth quarter scoring sprees carried the Spearman Lynx to a 24-7 season finale over the Shamrock Irish on Lynx Field Friday night.

The win put Spearman in third place in the final standings of the district behind Dalhart and Stinnett. Shamrock finished the season with a 2-8 record.

It was a rough and tumble game with the officials having to use the red flag heavily to try and keep things going according to the rules. Spearman was penalized 100 yards and Shamrock, 70 yards. Both teams had a player ejected on separate offenses.

Seniors Ken Shufeldt and Clayton Cochran ripped the Shamrock defenses as the offensive line opened doors for them. Shufeldt gained 165 yards on 27 carries. Cochran gained 101 on 20 carries.

Shufeldt scored the two touchdowns in the second quarter, the first on a run of five yards after shaking off a shoulder tackle. He picked up the second one on a 15-yard pass from quarterback Charles Shieldknight.

In the fourth quarter, Cochran got his first one on a two yard dive after setting it up with a 32-yard run. He got the second one just a few minutes later on a one yard blast at his own right tackle.

Shamrock got its lone score in the last seconds of the third quarter when fullback H.L. Waldrop scored from one yard out to cap a 75-yard drive.

Leading the Lynx defense into the Irish backfield on numerous occasions were Skipper Robinson, Jerry Holton, Mike Babbs and Lynn Buzard. Rennie Berry, Gary Cates, Shufeldt and Babbs were tough on pass defense. Robinson and Holton were

very discourteous to Irish Quarterback Ike Shipman. They harassed him all night and on numerous occasions put him on his back with driving tackles.

Shamrock made the first threat on the goal line in the first quarter when they drove from the Spearman 41 to the nine before a flag and an incomplete pass stopped them.

Larry Flowers and Shipman lugged the ball downfield and with a third and three at the nine, Shipman went to the three. A flag for backfield in motion rubbed out the play and put Shamrock on the 14.

End Jessie Terry then dropped a Shipman pass in the end zone and the threat died on the next play when Johnny Copeland picked up seven when he needed eight for the first down.

At the seven with time running out in the first quarter, Spearman mounted a drive

that was to carry for 83 yards and a touchdown.

All the Irish could see were the shoulders and knees of Shufeldt and Cochran as they bulled the ball up field. At midfield, quarterback Dave Clement faked to the workhorse, then rolled out for 23 yards.

STATISTICS

Spearman	Shamrock
286	yards rushing 105
24	yards passing 65
16	first downs 10
8-100	penalties 6-70
7-3	passes 18-3
1	passes in. 0
3-43	punts 4-39
2	fumbles 1
1	Opp. fum. rec. 2

★ ★ ★

Four plays later, Shufeldt shook off an Irishman who tried to horse-collar him behind the line of scrimmage and went the last five for the score. Cochran was stopped short on the try for extra points and the score was 6-0. Spearman was quickly handed another chance for a touchdown but almost muffed it. Shamrock got the kick-off at the Irish 16 and on the first play fumbled it. Robinson tried to pick up the ball and batted it down field. He finally tried to fall on it at the four, but it scooted on toward the goal where Gary Cates finally fell on it in the end zone.

The officials, however, had ruled the ball recovered at the four. On the first play Shufeldt could not find the handle on a pitch-out and lost six. Then a five yard penalty put Spearman back on the 15.

Clement had a pass go incomplete out of bounds. Then Shieldknight found Shufeldt alone on the right side and hit him with a strike. Clement's

(Con't. on back page.)

Berry Has Knee Surgery

One of Spearman's 11 seniors ended his football career Friday night and was injured for the first time after six years of junior high and high school competition.

Rennie Berry received a knee injury in the third quarter of the Shamrock game. The little end and defensive half-back was injured in the middle of a pile-up as he was blocked when he tackled the Irish ball-carrier.

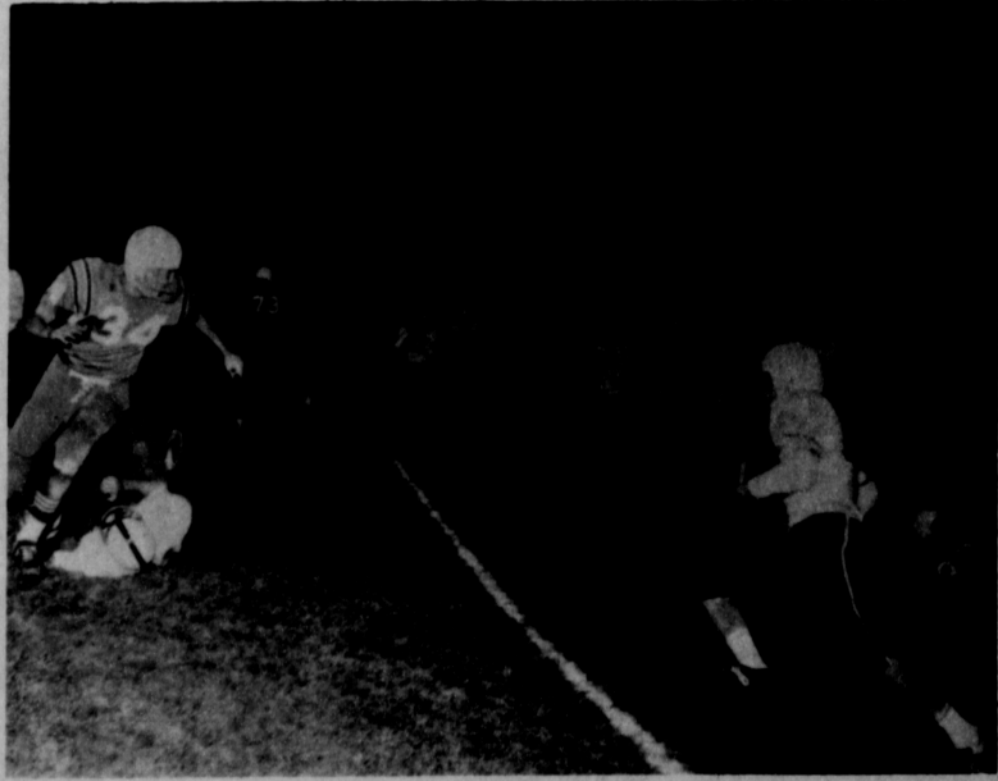
Berry was taken to Oklahoma City to have surgery on Saturday.

He had a ligament torn loose in the knee and was taken to Oklahoma City Friday night after the game.



RIBBON CLIPPING- Spearman Mayor Bob Vaughn clips the ribbon marking the formal opening of the Young Fashion Shop. Watching are store owners Mrs. Jim Thomas, at left, and Mrs. L. C. Owens, Chamber of Commerce Manager Don Floyd and Chamber President J. L. Brock.

PLAINSMAN PHOTO



BIG GAINER- Quarterback Dave Clement scoots for 23 yards for the big gainer in a Lynx scoring drive Friday night. Spearman went on to beat the Shamrock Irish 24-7 in the final game of the year.

PLAINSMAN PHOTO

**Buy, Sell, Trade
Hire, Rent, Find
THROUGH THE**

WANT ADS

Mr. and Mrs. Tom Sutton attended homecoming at PAMC last weekend. Their daughter Noreen is attending college at Goodwell.

KNAPP SHOES

KENNETH BAILEY

212 N. James

Phone 659-2458

Spearman, Texas

For Cushioned Comfort

Charlene Bulls

INTERIOR

DECORATOR

Draperies Furniture

Carpet

659-3202

1105 Townsend

Spearman, Texas

FOR SALE

FOR SALE - One bedroom house at 321 S. Endicott, concrete drive, paving, curb and gutter, fenced, storage house, Corner 659-2946, Johnnie Close. 100-4p

FOR SALE - 95 acres southeast of Spearman, irrigation water, 1/2 minerals, Industrial lots and acreage. Financing available, Cecil Crawford. Phone 659-2409. 49-tfc

See Ray McCammond for prairie hay, caliche and gravel. Two bob tail trucks haul anything any place. 3-8c

FOR SALE - 8 ft. Frigidaire deep freeze. Call 659-2350. 95-tfc

FOR SALE - One bedroom house and two bedroom house Reasonable-Choice Location. No down Payment. Pay like rent. Contact Raymond Sparks at Sparks Laundry. 77-tfc

FOR SALE - 1964 Newport Chrysler. Low mileage, like new. \$2500. Phone 2831. 4-tfc

FOR SALE - 3 bedroom brick, 2 baths, large built-in kitchen and dining area, utility room and storage room, double garage, double lot, fenced, 301 W. 12th. Phone 659-2725. 92-tfc

FOR SALE - 3 bedroom brick, attached garage, low equity. 401 S.W. 12th. 96-tfc

Bowling Beat

STRIKE OUT LEAGUE

TEAM	WON	LOST
Corner Serv.	26	10
Behre Electric	24	12
Super Serv.	9	17
Ideal	17 1/2	18 1/2
B&B Sales	15 1/2	20 1/2
Berry's Cleaners	6	30
HIGH TEAM GAME		
Ideal	850	
Super Serv.	848	
Corner Service	836	
HIGH TEAM SERIES		
Ideal	2476	
Corner Service	2412	
Super Service	2400	
HIGH INDIVIDUAL GAME		
Leon Underwood	214	
Tommy White	212	
Lloyd Gilley	210	
HIGH INDIVIDUAL SERIES		
Lloyd Gilley	566	
Leon Underwood	556	
Tommy White	554	

Mr. and Mrs. Dude Brown, Bruce and Kathy were weekend guests of their daughter and husband, Mr. and Mrs. Jerry Taylor of Amarillo.

The Needlework Nook
IS NOW OPEN
IN WAKA 1/2 BLOCKS
SOUTH OF EQUITY
Spinnerin & Fleisher
Yarns
Crewel & Needlepoint
Christmas Kits

FOR SALE -- 1963 Cushman Eagle motor scooter low mileage, excellent condition fully equipped. Phone 2458. Kenneth Bailey. 77-tfc.

FOR SALE - 7 room, 2 bath, good sturdy built house, 301 N. Hoskins, Sam Condo. Call 659-2368. 1-tfc

FOR SALE - 3 bedroom home, excellent location, carpeted and fenced. 904 S. Dessen. Call 659-2178. 56-tfc

Stock water hauling. Dependable service. Olin Sheets. 659-3167. 4-tfc

FOR SALE - 3 bedroom house, carpeted, fenced, landscaped, G.E. built-in oven and range top, ceramic tile bath with glass enclosure shower tub. 1010 S. Haney. Call 3103 daytime or 2754 at night. 91-tfc

FOR SALE - 1959 Gleaner Baldwin combine on butane with maize attachment, 1955 2 ton Chevrolet truck on butane, 9.00 x 20 rear tires, 8.25-20 front, 16 ft. steel bed and hoist. Clinton Nesmith, Phone-CH3-2048, Rte. 3, Mangum, Okla. 96-6p

FOR SALE - 3 bedroom brick, fenced, carpet and drapes. Phone 2261, 1006 S. Barkley. 4-81

FOR SALE - 1959 Model 18 ft. John Deere 95 Combine and 1961 Model 22 ft. John Deere 105 Combine. Contact Royal Jackson 338-6006 or 338-3557 or Robert Jackson 338-7096, Box 548, Guyton, Okla. 2-1c

Hallmark Autumn and Thanksgiving party items at Plainsman Office Supply.

SERVICES

Amarillo Daily News & Globe Times home delivery. Call 2685. T14-tfc

Pluto, the most remote of the nine planets, was not discovered until 1930. Though many astronomers suspected for years the existence of another planet, Clyde Tombaugh of the Lowell Observatory in Flagstaff, Ariz., was the first to pinpoint its location while examining photographic plates he had exposed in a telescope.

CANADA CALLING

Canadians average 613 phone conversations per person each year, more than any other people.

Cummings

Refrigeration

HEATING

AIR CONDITIONING

SALES & SERVICE

SPECIALIST

659-2721

SPEARMAN

SERVICE - Ditches from 3-12 inches, any desired depth. S. D. Jones 659-2809, Harold Shaver 659-3474. T17-tfc

WANTED - Will coach elementary grade school children. 659-2356. 6-4p

Complete land leveling with Hancock Carryalls, Chisels and Land Plane. Land Plane for rent. Willis Sheets, 659-2256. 93-tfc

Portable Steam, Sand Blasting, Painting and Welding, radio & TV Towers, Fully Insured. Call Stinnett TR8-2015 or Borger BR3-7249. 2-16c

FOR LIFETIME MUFFLERS - Clarence Pettitt Garage. No premium prices.

FOR RENT

FOR RENT - New furnished brick apartment. Phone 2274. 46-tfc.

FOR RENT - 2 bedroom house, unfurnished 201 1/2 N. Hazelwood. Call 2764. 100-tfc

FOR RENT - One bedroom furnished apartment. Phone 2274. 102-6c

FOR RENT - Four room furnished apartment. 821 S. Haney. Phone 659-2084. 2-tfc

FOR RENT - Downtown Apts. Nicely furnished, bills paid, 2 bedroom. \$80. Call 659-2269. 7-tfc

FOR RENT - small 4 room house. Phone 2941. 5-tfc

LOST

STRAYED - lightweight steer, branded HC on left shoulder. Harold Crooks. 659-2068. 4-tfc

LOST - Boys Lynx Jacket. Call 659-3081. 6-2p

"Better Food For Less"

IDEAL

FOOD STORES

DEL MONTE FANCY

FRUIT COCKTAIL

3 ^{2 1/2} CANS \$1.00

DEL MONTE HAWAIIAN

PINEAPPLE JUICE

3 ^{46-OZ} CANS \$1.00

DEL MONTE BLUELAKE

CUT GREEN BEANS

4 ³⁰³ CANS 89¢

Free This Week...

TEFLON PROTECTING "LUSTROWARE" DUPONT NYLON

Cutter Spatula

WITH IDEAL MAILER COUPON NO 3 AND \$5.00 OR MORE PURCHASE.

REDEEM A COUPON EACH WEEK TIL YOUR SET OF 7 NYLON KITCHEN TOOLS IS COMPLETE.



CARNATION
CHUCK TUNA
4 ^{6 1/2-OZ} CANS \$1.00

FOOD CLUB
PINEAPPLE JUICE
12-OZ CAN 10¢

PRICES EFFECTIVE
TUES. &
WED.
LIMIT
RIGHTS
RESERVED



ELLIS NEW CROP
Pecan Meats
10-OZ PKG. 59¢

FOOD CLUB SEEDLESS
Raisins
1 1/2-OZ PKGS. 19¢

D.A.K. SPICED
Lunch Meats
2 12-OZ CANS 69¢

ELNA RED PITTED
Pie Cherries
6 ³⁰³ CANS \$1.00

FRESH LEAN

GROUND BEEF

lb. 49¢

EXTRA LEAN
GROUND CHUCK lb. 59¢

CHUCK WAGON HICKORY SMOKE
SLICED BACON 1-lb. PKG. 79¢

FANCY YOUNG
BEEF LIVER lb. 39¢

COUNTRY KITCHEN POTATO OIL
MACARONI SALAD PINT CTN. 39¢

IDEAL'S
CINNAMON BARS
49¢ PKG. 45¢

IDEAL SLICED
WHITE BREAD
2 1-lb. LOAVES 35¢

IDEAL'S
STUFFIN BREAD
1-lb. LOAF 19¢

FANCY RED
EMPEROR GRAPES lb. 10¢

EXTRA FANCY RED YORK
APPLES 2 lbs. 29¢

DIAMOND
WALNUTS 3 lbs. \$1.00

REGULAR

KOOL-AID ALL FLAVORS 10 PKGS. 39¢

PRE-SWEETENED KOOL-AID...ALL FLAVORS... 4.29

SKINNER'S RAINBOW BLEACH...CLEANS AS IT BLEACHES... 33¢

SKINNER'S SMALL CUT OR LARGE ELBO
Macaroni 2 7-OZ PKGS. 25¢

SKINNER'S WIDE, MED. OR FINE
Egg Noodles 14-OZ PKG. 27¢

DIAMOND
Walnut Meats 79¢

JOHNSONS
Glocoat 26-OZ CAN 99¢

JOHNSONS FURNITURE WAX
Pledge 14-OZ BTL. \$1.49

LYSOL SPRAY
Disinfectant 14-OZ CAN \$1.59

This is "Let's Go Hunting" Month!

BEFORE YOU SHOOT THE WORKS

on any car, come in and see and try one of these clean, handsome



BUICK
DOUBLE-CHECKED
USED CARS

1964 PONTIAC

Star Chief 4 Door Sedan--Loaded

\$2600

1963 BONNEVILLE

4-Door Hardtop Loaded

\$2100

1963 STAR CHIEF

4-Door Sedan Loaded

\$1950

1962 OLDSMOBILE

Super 88 Loaded

\$1550

1962 CRYSLER

New Yorker-4 Door Power Brakes, Power Steering & Air Conditioning, Electric Windows and Seat

\$1450

1961 BUICK

LeSabre-4-Door Hardtop-Loaded

\$1250

1962 PONTIAC

Tempest Stationwagon

\$850

1964 CHEVROLET 1/2 TON PICK UP

\$1350

NORTH PLAINS TRUCK & IMPLT. CO.

Lynx Hopefuls Start Basketball Monday

Spearman Lynx basketball hopefuls drew equipment Saturday and will begin Monday preparing for their first game Friday night here with Sunray.

Coach Dean Weese will begin building his varsity around five returning lettermen. Returning are Dave Clement, Larry Butts, Ken Shufeldt, Carl Close and Harrell Adkinson.

Close is the only letterman returning who can look down on the six foot mark. James Schnell who was on the B-team last year is over the magic mark and sophomore Hal Shufeldt is on the top side of six feet.

Weese said he was expecting help from juniors Monte Black, Schnell and Gary Cates. Randy Moore is out with a broken ankle and Weese did not know when he will be back.

The mentor Thursday said there were several juniors on the B-team last year, but he would not know how many of them were planning to play basketball this year until they drew equipment Saturday.

Sophomores Charles Shield-knight, Mike Hendricks, Car-

roll Day, Shufeldt and Gary Faries are expected to make strong bids for places on the varsity.

In looking at the district this year Weese picked Stinnett, Phillips and Sanford-Fritch to be strong. Shamrock could be tough if they get a couple of their bigger boys to clicking.

Mrs. Sheppard Has Program

The Susannah Wesley Circle of WSCS met at the church for their regular meeting Wednesday morning.

Mrs. Doug Grimes presided in the absence of the chairman, Mrs. Richard Baxter, and the devotional was given by Mrs. Hubert Hays.

The program "Automation and Leisure" was given by Mrs. Bert Sheppard.

Attending were Mmes. Perry Coursey, Jim McLain, Doug Grimes, Hubert Hays, Ray Martin and Bert Sheppard.



KICK-OFF RETURN - Safety Gary Cates (22) and Irishman Jessie Terry prepare for an abrupt introduction as Cates runs back a Shamrock kick-off. Lynn Buzzard (64) is heading up-field, Irish hunting.

PLAINSMAN PHOTO

Lynxettes Play Tuesday

Regular season basketball action for the Spearman Lynxettes begin Tuesday night at 6:30 when they meet the tough White Deer Does.

Lynxette boss Dean Weese says White Deer is going to be one of the toughest teams in the Panhandle this year. They have their starting team back intact. This is the third year for the girls to play together.

They beat us last year, Weese recalled, and they may be too tough for us again.

Spearman scrimmaged Tyrone, Okla., a team that went to the Oklahoma state tournament, Tuesday. Spearman outscored the Tyrone six by some 20 points.

Weese was pleased with his girls. They scored over 50 points with tall Barbara Wilde sidelined with an injured ankle. The Spearman defense held Tyrone to 25 points.

Teaming with forwards Susan Hutchison and Karen Gibson was Nancy McCullough. Weese said she did a good job.

The defensive combination of Robbie Ownbey, Bethany Donnell and Kathi Pattison stopped the Tyrone girls.

"My starting guards are some of the best," Weese said, "but I am still hunting for some tough second line defenders."

Too Late To Classify

FOR SALE: Registered Angus Bull, 13 months old. Call 659-3181. 7-2p

Hansford Plainsman Publishers Inc.

Jim O. Davis
Burl G. McClellan



County-wide independent newspaper published every Thursday and Sunday at 209 Main St., Box 668, Spearman, Texas 79081. Second Class postage paid in Spearman, Texas 79081.

MODEL K

SELECTATILTH® GEARBOX

540 or 1000 P.T.O. for 5 PLOW TRACTORS
CENTRALLY MOUNTED
3 POINT, 2 POINT
OR TRAILER



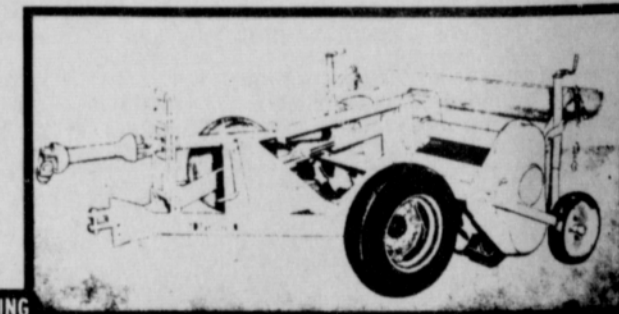
K-80 MODEL—preparing corn ground for winter wheat.

HOWARD ROTAVATOR

● The Model K Rotavator, designed for today's 5 plow tractors, will handle all forms of tillage in a wide variety of soil types and crops. This model is mostly used in corn, beans, cotton, rice, alfalfa and other crops grown in large scale operations. A planter hitch is available to pull a planter or drill immediately behind the Rotavator for one pass, till and plant operations. Special shields available as extras enable it to be used for bedding and cultivating work.

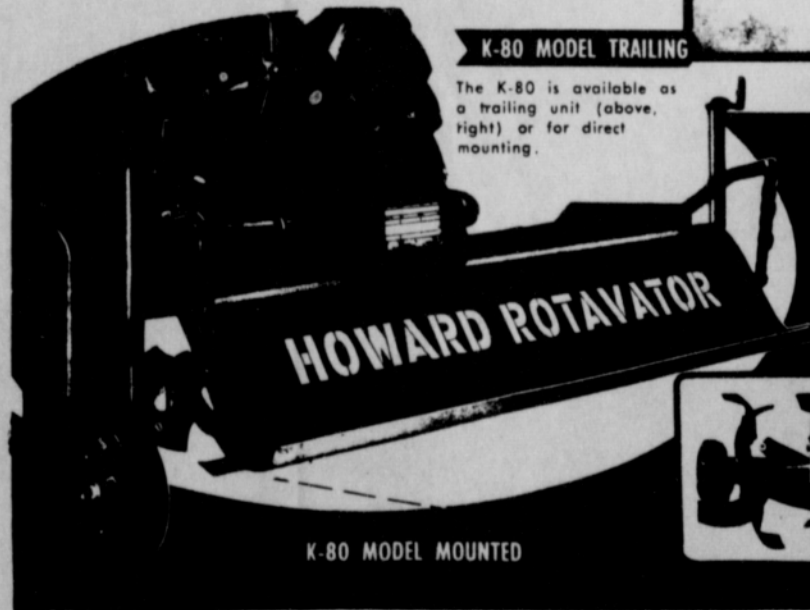


Howard's exclusive Selectatilt transmission makes it possible to change the rotor speed in minutes in the field. Just take off the cover and switch gears on the shafts, or change with the pair inside the cover. No wrenches are required.



K-80 MODEL TRAILING

The K-80 is available as a trailing unit (above, right) or for direct mounting.



K-80 MODEL MOUNTED

EXCLUSIVE BLADE DESIGN—Howard's exclusive rotor and blade design for smooth running and even power requirement.



R.L. McClellan & Sons, Inc.

"Your Complete Farm Machinery Store"

GSPA Says Milo Crop Is Worth \$10 Million

Grain sorghum, the largest cash crop in Hansford County, promises to pour over ten million dollars into the economy of Hansford County this year, according to the Grain Sorghum Producers Association.

This figures value to the County can be multiplied several times because very little of it will remain in the farmers bank account, but will be used to defray production cost such as equipment, seed, fertilizer, and irrigation expenses, according to Rudie Tate of the Grain Sorghum Producers Association North Plains Service Center.

Few of those even directly engaged in production of marketing of grain sorghum have stopped long enough to take note of the rapid change

in grain sorghum value to Hansford County.

Tate pointed out that only two years ago Hansford County boasted a 36,000 acre grain sorghum crop valued at some three million dollars as compared to the expected 1965 crop of 110,000 acres with the ten million dollar price tag.

This has been brought about by improved hybrids adapted to the North Plains area, increased fertilizer use, increased irrigation, better water use and conservation practices and improved production methods.

Production is not the only factor involved, Tate pointed out. The increased tonnage would have little value without a strong demand through increased local feeding and

Sue Holt Is Circle Hostess

The Naydene Brewer Circle met Wednesday morning at the First Baptist Church with Sue Holt as hostess.

Wanda Widener called the meeting to order and presided at the business meeting. The prayer calendar was read by Wanda Adamson who also led in prayer.

The secretary's report was given by Reba Ooley.

Mrs. Ray Devers, WMU president, gave a talk to the group on the duties of WMU officers.

The program leader was Sue Holt. Her subject was "My Church, Hearing and Obeying." She was assisted by Reba Ooley, Wanda Adamson and Barbara Reger.

Attending were Mmes. Widener, Adamson, Ooley, Holt, Ann Archer, Reger and Devers.

Third Week's Leaders



Buddy Dossett



Peggy Jo Floyd

SPEARMAN REXALL'S BOYS and GIRLS CONTEST

Vote for your Candidate with each purchase

Any boy or girl under 16 may register and become a candidate **MANY PRIZES TO WIN**

This week's top six

Boys

- BUDDY DOSSETT
- JAMES HUDSON
- BUDDY HOPPER
- BILLY GILES
- DAVID MARTIN
- STEVE WIDENER

Girls

- PEGGY JO FLOYD
- PATTY SUE MATHIS
- MARY LOU DeARMOND
- BELINDA TANNER
- SUE SLOAN
- LINDA HAMELTON

Winners To Be Announced Dec. 23, 1965

GIVE YOURSELF a BREAK TRY LISTENING TO

98.3 kbmf-fm

YOU DESERVE IT-AND IT MIGHT GET TO BE A HABIT!

JEST A MINUTE

If people learn by their mistakes, some folks are getting a fantastically broad education.

commercial outlets such as the West Coast market and exports.

Two dollar grain sorghum maintained through a combination of free market price, commodity payments and a voluntary program was the key that sparked the Hansford County grain sorghum expansion and made irrigation water worth pumping, fertilizer worth spreading and a basis for more readily available farm credit, according to Tate.

EVERYONE WINS!!

Be a **GRAND PRIZE** winner!

get your "NEW ROUND" grand prize punch card **TODAY!**

"WIN UP TO 25,000 BUCCANEER STAMPS"

Ellis "New Crop"

PECAN MEATS 10 oz. Pkg.

57¢



Sweet Juicy Texas	5 lb. Bag	47¢
Fresh Golden Cello Pak.	2 Pkgs.	15¢
Ruby Red Rome	1b.	13¢

Chili Wolf Brand 303 size can "no beans" **45¢**

Facial Tissue All Colors Large Size 300 2 ply **KLEENEX 3 for \$1.**

JELLO All Flavors Gelatin **4 for 29¢**

COFFEE Shurfine "Full Flavor" 1b. Can **67¢**

Shurfresh **CHEESE SPREAD** 2 lb. Box **65¢**

Top 'O' Texas Sliced 1b. **Bologna 49¢**

Pinkneys Picnic Pak 3 lbs. **Franks \$1.09**

USDA Choice Beef 1b. **Rib Steak 79¢**

Sunshine Creme Filled 12 1/4 oz. pkg. **Cookies VIENNA FINGERS 33¢**

- Shurfine Frozen Cut 10 oz. OKRA . . . pkg. . . 17¢
- Hunts 46 oz. can TOMATO JUICE . . . 25¢
- Shurfine Frozen 1 1/2 lb. bag Fully Cooked TATER NUGGETS . . . 39¢
- Welchs Frozen 6 oz. cans GRAPE JUICE . . . 19¢

Lanes Party Time **Mellorine** Half Gallon **35¢**

ORANGE DRINK Hi-C 46 oz. Can **3 for 77¢**



- Shurfine Evaporated Tall Can MILK 3 FOR 39¢
- 24 oz. Bottle CRISCO OIL . . . 48¢
- Blue Giant Box CHEER 69¢

Shurfresh Milk Enriched with Vitamin D

Tendercrust King Size Loaf Reg. 29¢ size **Bread 23¢** Cello Wrapped

"Fresh Daily" Libbys All Meat VIENNA SAUSAGES 6 CANS \$1.00

Gerbers Strained Baby Food FRUITS & VEGETABLES Glass Pak 10 FOR 98¢

Cut Rate GROCERY

Music Club Meets With Mrs. Sutton

The Music Club met Tuesday evening Nov. 9 in the home of Mrs. Tom Sutton with Mrs. Russell Townsend as co-hostess.

Mrs. Sutton presided at the business session at which time she gave her report of the District convention held in Oct.

Melinda Pearson, guest, sang two numbers "Green Pastures" by Sanderson and

"My Heart Is a Silent Violin" by Fox.

Chapter eleven of the study course "What To Listen For In Music" was given by Mrs. Rue Sanders.

Present were Mmes. Will Douglas, J.D. Helms, Don Knox, Billie Miller, Rue Sanders, J.D. Wilbanks, Miss Linda Webb and the hostesses.

East Texas Cattlemen To Upgrade Beef Cattle

Cattlemen over the state are keeping close watch on a beef cattle improvement program launched in Tyler last week. If the plan to upgrade quality of East Texas cattle meets with success, it may set a precedent for cattlemen in other areas.

The plan was initiated by the East Texas Farm and Ranch Club, Tyler and the Build East Texas (BET) coordinators. BET is an improvement program itself--for all East Texans.

The beef improvement program is aimed ultimately toward the BET goal of 500 pounds of beef calf weaned per acre each year. The beef plan is centered around crossbred cattle producers and specifically 3 groups in the crossbred cattle industry. They are:

1. Pure-bred breeders or registered herd owners. E.O. Doggett, president of the Farm and Ranch Club, says, "Registered herd owners must furnish top quality cattle with records on their gainability, weaning weights, milk production and other traits that are highly heritable. If the program is to succeed,"

2. The F-1, or first cross, heifer producers (registered parents on both sides). The plan asks that the F-1 producers use only high quality registered or pure-bred parents (Probably purchased from number 1 above) to produce the heifers. Then, says Doggett, since it has been established by research done at Texas A&M and other universities that F-1 heifers make the best mothers, the F-1 heifers should be sold to ranchers, who make up the third group.

3. Slaughter and stocker calf producers. In the beef improvement program, these are the last link in the chain and will use the F-1 heifers to produce calves with hybrid vigor. "Note how the 3 groups complement each other," said Doggett.

To push the program along, Doggett said there will be an all-breeds bull sale in January 1966. Then, in the fall of 1966, there will be a sale of F-1 heifers, heifers from registered or pure-bred parents

will be given a certificate before the sale--others judged to meet rigid standards may also be sold.

In a kickoff meeting, Doggett noted three problems faced by the producing groups. The main problem is reducing cost of raising cattle; second, producing for a market; and third, increasing efficiency. With an emphasis on record keeping, and strict culling for each of the 3 groups, all problems can be lessened, said Doggett.

There is some feeling that the beef improvement plan may eventually evolve into a marketing coop, but Doggett is quick to say, "If East Texans will raise good quality crossbred cattle, there will be plenty of demand for them." In the meantime, cattlemen in other areas are watching, and waiting to see what happens.

Mrs. Roy Jones Hosts WSCS

The Mary Martha Circle of the WSCS met in the Methodist church parlor Wednesday afternoon with Mrs. Roy Jones as hostess.

In the absence of the chairman, Freda Sheets, Mrs. Jones conducted the business session.

Mrs. P.A. Lyon gave the lesson titled "Automation". Many interesting points were brought out with a discussion of the meaning and effects of automation on society and how many times a second career serves as one of the rewards.

Present were Mary Samsing, Dorcas Collard, Eleanor Crooks, Bertha Tarbox, Minnie Jones and Grace Lyon.

Guests of Mr. and Mrs. Richard Baxter and family this week are her parents, Mr. and Mrs. William Reiswig of Thomas, Okla.

Presbyterian Women Meet At Baggerlys'

The Max Baggerly home was the meeting place for the Presbyterian Women Wednesday morning, Nov. 10.

The hostess served coffee, muffins and coffee cake as the members arrived.

Mrs. Nelson Turnbull presided at the business meeting followed by the lesson from the study book "A Reluctant Missionary". Mrs. Ben McIntyre was lesson leader. The study comes from the book of Jonah.

Present were Mmes. Everett Cain, Ben McIntyre, Walter Spoonmore, Glen Bohanan, Dwight Hutchison, Henry Cornelius, Chalmers Porter, J.W. Davis, Jim Cherry, Leland Wood, W.H. Neilson, Wiles Burgess, Nelson Turnbull and the hostess.

Dorcas Class Has Meeting In George Home

The Dorcas Sunday School Class met on Tuesday evening for a business meeting and social hour in the home of Mrs. Viola George.

Mrs. Florene Devers gave the devotional and spoke on the subject "Woman's Missionary Union."

Melba Rook, vice president, presided at the business and plans for the class project were discussed. Plans were also made for the Christmas party at which time a toy shower will be held for the nursery.

The yearbooks were handed out and the monthly report was given by Viola George.

Class was dismissed with prayer by Donna Helms.

Attending were Ann Frye, Melba Rook, Donna Helms, a visitor, Betty Davis, the speaker, Florene Devers and the hostess.

Training Circle Has Meeting

The newly organized training circle was held Wednesday morning in the home of Eleanor Douglas.

Donna Helms, leader, called the meeting to order and presided during the business.

The prayer calendar for missionaries was read by Mary Lovett and Vicki Adkison led in prayer.

Plans were discussed and concluded to send homemade cookies and candy to boys in the service, this to be done at the next meeting.

Two workers from this circle, Rose McClengon and Donna Helms, will help in the nursery during the Crusade.

Garry Jones gave an interesting summary of articles on "Converted Viet Cong."

Donna Helms had the book display and Peggy Archer gave the program on Community Missions.

Eleanor Douglas dismissed the meeting with prayer.

Attending were Mmes. Garry Jones, Rosalynn McClengon, Viola George, Sharon Freeman, Donna Helms, Peggy Archer and the hostess.

JEST A MINUTE

A sign of advancing years is not getting worked up when your football team loses.

Lost Alumni

There are more than eight million "united" alumni of colleges and universities in the United States, out of touch with their alma maters.

Kingsley Is Dorm Aid

Patsy Marie Kingsley, daughter of Mr. and Mrs. R. F. Kingsley, has been selected as a dormitory counselor at Lubbock Christian College.

Miss Kingsley is a freshman this fall, having graduated from Spearman High School in May of 1965. She is a business major and a member of one of LCC's six women's social clubs.

She is one of 33 girls selected by Mrs. Audean Baldwin, Dean of Women, to serve as counselor.

Duties of these girls include checking rooms each night, advising girls who have problems, serving on the dormitory council and helping to make regulations for all residents to follow. They also plan special activities for the dormitory.

"We are indeed fortunate to have girls of Patsy's caliber in school here," said Mrs. Baldwin. "I know she will do a good job."

ORIGINAL OLD GLORY

The original Star Spangled Banner is the centerpiece of the Smithsonian Institution's new Museum of History and Technology in Washington. The flag is unfurled in the rotunda. It is protected by a heavy linen backing. A soft current of filtered air keeps it free of dust.

Warm lemons in an oven for a few minutes before squeezing and see how much more juice you get from them.

Gift Box

Memo :

Attention puzzle fans! We now have the world's hardest jigsaw puzzle. It is an abstract painting by Jackson Pollack. When you finish this one you can say you are one of the best.

For those who want to go just a little daft working on jigsaw puzzles we have a new shipment of round puzzles. Some of these are beautiful religious scenes.

Of all the beautiful candles we've had, we now have the prettiest. These are imported from Germany and have a beautiful Nativity Scene molded and painted on the candle.

There is something new everyday in our stock. Drop in and browse.

The GIFT BOX

SO THEY SAY



the answer to getting good value in TV, Radio, Stereo or Hi-Fi. Just go to Burton's TV," she said. "They Service What They Sell".



318 DAVIS • SPEARMAN, TEX.

MORNING MUSIC
ON THE Morning Show
9:05 to 12:00
ON
98.3 kbmf-fm 98.3

IRRIGATION MUNICIPAL
CHLOR-O-CLEAN
INDUSTRIAL DOMESTIC
PAT PENDING

NORTH PLAINS WATER WELL CHLORINATION SERVICE
WATER WELL CLEANING STERILIZATION
We Can Rid Your Well of All Organic Growth such as Algae to
INCREASE PRODUCTION

412 N. DUMAS AVE. NELSON
P. O. BOX 986 LEWIS N. MACARTY
PHONE 935 2929 MANAGER
DUMAS TEXAS 79029 RES. PHONE 935 2055

T.G.&Y. FABULOUS COUPON SPECIALS CLIP 'N SAVE

Spearmen Store Hours: Monday-Friday: 8:30a.m. - 6p.m. Saturday: 8:30a.m. - 8p.m. We Reserve The Right To Limit Quantities

Specials Good Nov. 15-16-17 - Mon., -Tues., -Wed.

Good Nov. 15-16-17
CHRISTMAS CARDS
50 Count
Top Value \$1.00 Value
Limit 1
47¢ With Coupon

Good Nov. 15-16-17
Aqua Net or Just Wonderful
13 oz. can Hair Spray 98¢ Value Limit 2
47¢ With Coupon

Good Nov. 15-16-17
Monster & Wierd-o Hobby Kits
Reg. 98¢ & \$1.00
57¢ With Coupon
Limit 2

MATERIAL
TG&Y Discount Price
VALUES to \$1.98
77¢ Yd.
1 pt. 4 oz. Reg. \$1.29 Size - Discount Price
MICRIN ORAL ANTISEPTIC \$1.16
Shampoo, Lotion, Bath Oil Your Choice \$1.99 Value
Creme Rinse 1 1/2 Gal. Sizes Discount Price **99¢**

JUST ARRIVED: Hallmark gift wraps and matching tags in a beautiful selection of designs. Come in tomorrow . . . our supply is limited. PLAINSMAN OFFICE SUPPLY, 209 Main Street, Spearman.

Bridal Shower Given For Miss Dorinda Brown

A bridal shower honoring Miss Dorinda Brown, bride-elect of Glenn Crain was held Saturday afternoon, Nov. 6 in the home of Mrs. Leroy Smith. Hostesses for the courtesies were Mes. J.O. Hollar, L. S. McLain, Richard Gaines, Orville Brummett, Irvin Dav-

is, Frank Buzzard, Leroy Smith, Don True, Ralph Patison and Otis Kizziar.

The honoree was presented a corsage of blue and white carnations by the hostess. The color scheme was further carried out in the table decorations with an arrangement of white mums and blue carnations centering the table laid with white net over blue taffeta. Barbara True presided, serving the coffee and punch. Cakes, nuts and mints were also served.

Kristy and Melinda Brown, sisters of the bride-to-be, registered the guests.

Mrs. Brown assisted her daughter in opening her gifts.

VANITY FAIR



\$15.00 per set

Red Skylark

Lay-Away Now FOR CHRISTMAS

Lady Fair

Plains Shopping Center

Lynx . . .

(Con't. from page 1.)

kick was no good. The Lynx led 12-0.

Late in the third quarter Shamrock mounted a 75 yard drive that saw lots of action and a touchdown. On the second play from the 25, Flowers picked up 10 yards and then got another 15 when Clement was ejected from the game to give Shamrock a first down at midfield.

From there, Shamrock punched the ball on in to score with Waldrop making the last yard. Tackle Dean Pepper added the extra point.

Spearman took the kick-off as the quarter ended.

The Lynx and the fourth quarter started fast. Cochran and Shufeldt marched down the field with Cochran getting the big 32 yard jump. Three plays later, he scored from the two by carrying three Irishmen with him.

Shamrock got the ball at the 19 and Robinson and Holton dropped Shipman for two successive losses. On fourth down Terry punted out to the Spearman 45.

Cochran, Holton and Ken and Hal Shufeldt took only seven plays to score. Ken Shufeldt got 24 of the yards in two carries. Cochran went over from the one. Shield-knight's pass for two points was no good. Irishman Flowers was ejected from the game during the drive.

Babbs and Cates broke up the

Irish passing attack, but the Spearman freshmen and B-team could only hold the ball three plays before Terry got a Spearman fumble at the Irish 45.

The Irish were driving against the second unit and Cope-land gained 20 yards and a first down on the Lynx nine when the buzzer ended the game.

Organist . . .

(Con't. from page 1.)

work one day and told his wife he was going into the ministry.

"It was not a sudden decision. I had been mulling it over for a year, but I had said nothing to my wife. It was a decision I had to make alone," the pastor recalled.

"My business was successful and the change would mean changes for my wife and two daughters, however, we found we gave up nothing but have gained many blessings," he said.

Rev. Clarke was wondering



ALL ALONE - Lynx Ken Shufeldt (20) and Irishman Terry Hardy are having their own contest as Hardy brings Shufeldt to a half after he picked up a first down. PLAINSMAN PHOTO

how he would do in college after being out of school for 16 years. His doubts were unfounded. He completed his college work in 27 months and graduated Cum Laude with a BA degree.

"I would go to class from 8 a. m. until noon, then drive like mad to get to my office

by 3 p. m. My secretary would have appointments for me from then until the evening," he recalled.

After four years in Lockhart, he was called to the Harris Memorial Baptist Church in Austin, two blocks from the University of Texas.

He feels the University com-

munity is a great missionary field. There is much atheism in the community. Many of the people in his community tell Rev. Clarke that the Bible is a good book, has some good philosophy and Jewish history, but is nothing else.

SEARS

Floor Specials!

	WAS	NOW
Water Purifier	\$29.95	\$16.95
Wagon Grill	\$27.88	\$19.88
Ice Cream Freezer ..	\$17.99	\$10.99
Electric Knife (4 ONLY)	\$13.47	\$9.95
Gas Classic Range ..	\$339.88	\$299.88
Wringer Washer	\$99.95	\$89.95
Gas Dryer	\$194.95	\$155.95
Gas Dryer	\$148.88	\$125.88
Broiler Rotisserie . . .	\$28.95	\$18.95
Portable Fans	\$49.88	\$30.88
2 Evap. Coolers ^{47,000} CFM	\$139.95	\$99.88
Air Conditioner	\$313.00	\$280.00
4 Yds. Material	\$1.66	\$1.15

ALL MERCHANDISE IN STOCK - PLUS TAX & FRT.

-We Service What We Sell-

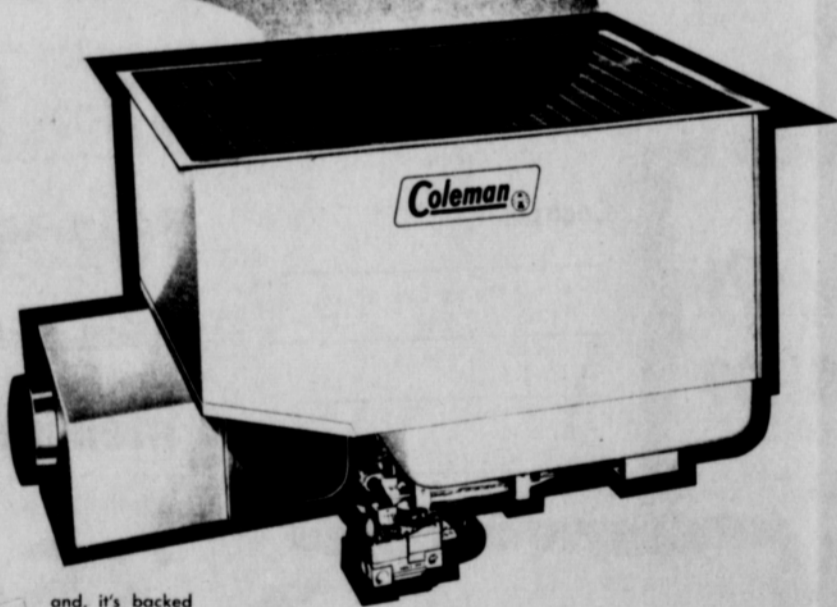
SEARS ROEBUCK AND CO.

659-2573

Plains Shopping Center

AERO-DYNAMIC DESIGN gives you

more HEAT more COMFORT



and, it's backed by the Coleman exclusive \$500 Warranty Bond

with the NEW

Coleman SHALLOFLOW AUTOMATIC GAS FLOOR FURNACE

White House Lumber Co.