

Burglar Kills Gruver Merchant

Hansford County Library xxx
Spearman, Texas

Two Suspects Questioned

A Gruver businessman was killed Friday night in his store when he surprised a burglar in Westerfield Dry Goods.

P. H. (Micky) Westerfield died from a single .22 caliber gunshot wound after dialing a telephone operator and telling her he had been shot.

Sheriff J. B. Cooke said Westerfield apparently died between 9 and 9:15 p.m. He was found lying on the floor by the phone. The phone is about midway of the store.

Cooke said it was impossible to tell where in the store Westerfield was shot, because there were no blood stains or other signs of struggle anywhere in the building.

Cooke said the store owner went to his store about 9 p.m. to check his store and entered by the rear door.

Apparently the burglar heard the owner enter the building, hid himself and shot the man from ambush.

Investigating officers said nothing had been disturbed in the store. One file drawer was open, but nothing was disturbed.

The burglar had earlier entered Bob's Sales and Service two doors south of Westerfield's. Nothing was taken there. The burglar then apparently tried to enter McMillan's Variety Store through a near window.

**FAVORITE FOODS
WINNERS**
(top, left-right)
Rebecca Hutchison
Janice Trindle
(bottom, left-right)
Cindy Hutchison
Genna Green
Valorie Uptergrove
-Plainsman photos



HANSFORD COUNTY'S LEADING NEWSPAPER



The Hansford Plainsman



VOLUME VI., NO. 37

SPEARMAN, HANSFORD COUNTY, TEXAS 79081

SUNDAY, FEBRUARY 28, 1965

Bi-District

Lynxettes Meet Iowa Park Tuesday Night in Childress

Spearman's Lynxettes will meet a mystery team Tuesday night at 7:30 p.m. in the Childress High School gym when they go against Iowa Park for the bi-district title.

Coach Dean Weese has searched for information about his opponents, but has been able to learn little. It is not good.

"The Olney Coach told me that Iowa Park has a forward who is six feet tall and has been averaging 40 points per game this year," Weese said. Weese said he was unable to learn what kind of season record Iowa Park had.

The Olney coach said Iowa

Park beat them rather bad. However, for the three teams in the district to have ended in a three-way-tie, Iowa Park had to have been beaten in district play.

Spearman will go into the game with 29 wins and six losses, and being undefeated in district play.

During the past few weeks the Lynxettes have suffered through some hot and cold spells, but closed the pre-bi-district season Thursday night with a strong effort in beating Vega 46-39.

The big, pre-season problem of a lack of experienced guards has been solved with four de-

fenders, Kathi Pattison, Susan Hutchison, Robbie Ownbey and Bethany Donnell developing into four of the toughest defenders in Lynxette history.

They are backed up by good reserve strength in Linda Lesly and Linda Smith.

At the forward end, Phyllis Patterson and Vicki Wilde lead an attack that is as strong on inside as outside scoring. These two veteran seniors are aided by Barbara Wilde and Johnny Vernon both of whom score regularly, and steady Karen Gibson, who plays both forward and guard.

This will be the fifth consecutive year the Lynxettes have advanced to the bi-district contest. In 1961 they went on to the finals of the state tournament before losing to Buna.

The next two years the Lynxettes were stopped in bi-district and last year they went to the regional tournament.

Callaway Files For Re-Election

The third incumbent has filed for a place on the Spearman City Council this week.

E.J. Callaway Jr., filed for re-election this week as a candidate for the City Council. The other two incumbents Robert Skinner and Jimmy Hicks had filed earlier.

Callaway is a building contractor and has served on the council since 1959.

The deadline for filing for city office is March 6 and the election will be Tuesday, April 6.



CROSSBREED- Archie Smith of the Spearman FFA Chapter pets his crossbred steer which will be shown in the County Show in March. This has been National FFA Week. Plainsman photo

BULLETIN

Two men had been picked up for questioning but no charges had been filed at 6:30 p.m. Saturday.

but failed to pry it open. The burglar broke a window, reached through and opened the rear window on the Westerfield store and entered.

Paul Herman Westerfield, 62, was born Jan. 4, 1903 in Harper County, Kan., the son of Mr. and Mrs. Ulysses Westerfield.

He came to Hansford County in 1923 from Glazer and worked in Bill Russell's store. He moved to Gruver in 1928 and opened a store there.

Survivors are his wife, Rebecca; two sons, Paul and Pat of Gruver; three brothers, Rex of Oklahoma City, V. L. of Roswell, N. M., and Earl of Amarillo; and two sisters, Mrs. A. G. Hatley of Amarillo and Mrs. M. L. McFarland of Happy.

He was a member of the Community Bible Church of Gruver, of the Khiva Shrine Temple and the Gruver Masonic Lodge. He was a former mayor and city councilman of Gruver.

Services will be held this afternoon (Sunday) at 3 p.m. in the Community Bible Church with the Rev. W. L. Porterfield, pastor, officiating, assisted by the Rev. J. W. Doak, pastor of the First Christian Church in Guymon, Okla.

Burial will be in the Gruver Cemetery.

Hounds Beat Farwell; Advance to Finals

Gruver's hustling Greyhounds rolled to the finals of the Class A Regional tournament in Lubbock Saturday morning with a 67-59 win over Farwell.

Sam Tipton led the Hounds to the victory with a 34 point scoring spree, many of the points coming in the final quarter.

Billy Lieb was the pressure man for the Hounds with some great outside shooting at times when the Farwell Steers were breathing down the Hounds neck. Lieb scored 12 points and most of them were when the Steers had cut the lead to one or two points.

Gruver got a good effort from Matthews and Lieb on rebounds. The Hounds were carrying a big foul load at the end of the game, but only Royce Matthews left the game on fouls.

Farwell had two boys to foul out. Tipton fouled out one boy late in the game when the Steer kept trying to take the ball away from Tipton on a dribble. These three fouls and Tipton's scoring pushed the game out of Farwell's reach.

Gruver took the lead early and managed to hold on the rest of the game, but several times in the third quarter the lead was cut to two and at one time to one point.

Tipton had 12 points in the first half, then had some trouble hitting in the third quarter, along with the rest of the Hounds, but turned on the scores in the final stanza to clinch the victory.

Gruver was to play Aspermont or Big Lake in the finals at 7 p.m. Saturday.

Two More File for Board

Two more candidates filed this week as candidates for the Spearman Independent School Board.

Candidates filing this week are incumbent Jack Lovett and Marvin Jones.

This brings the total number of candidates to eight. All three incumbents, Lovett, Lloyd Buzzard and Dr. D.E.

Hackley have filed.

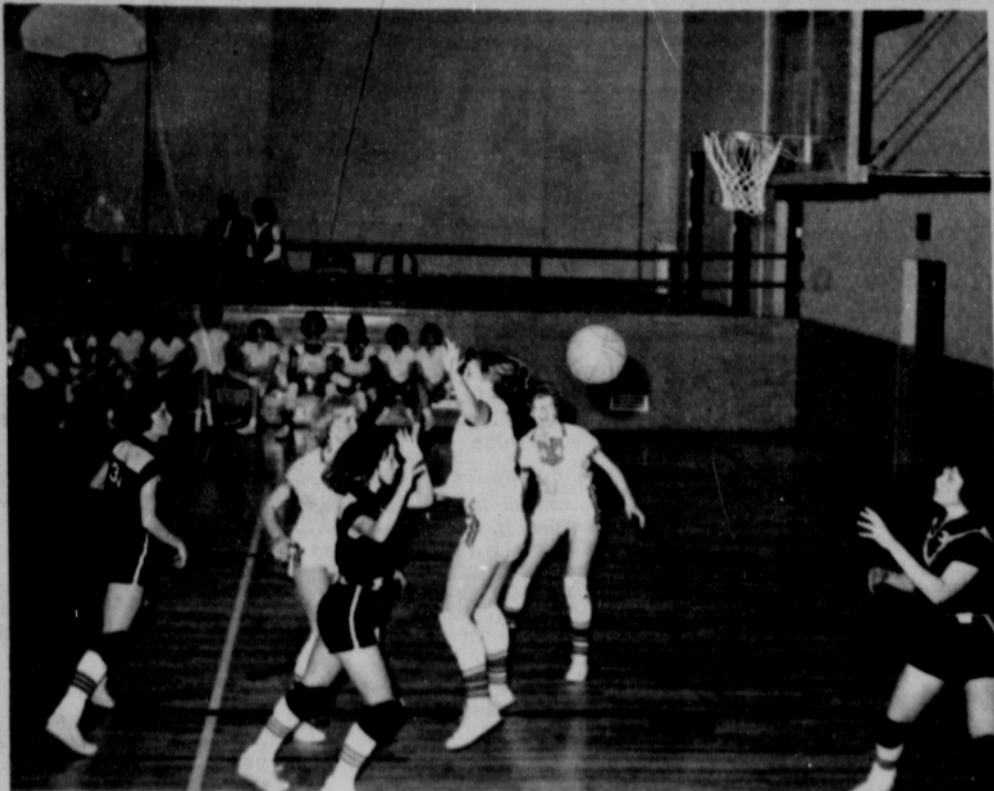
New candidates include Jones, Carl Archer, Bill Massie, Edward Dear, and James Lair.

While on the board Lovett has been a strong supporter of an improved course of study and a strong balanced athletic

(Con't on back page.)

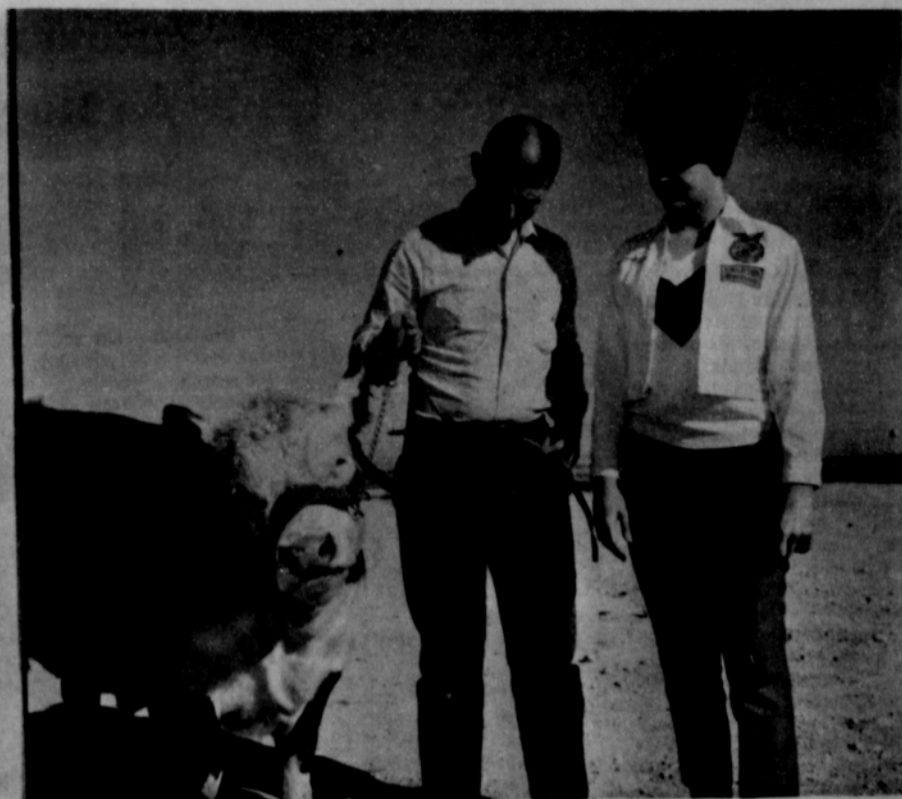
Back-to-School Night Is Monday

The public is invited to Back-to-School Night after the P-TA meeting Monday night at the elementary and junior high buildings. The teachers will be in their rooms and the children's work will be on display. Joel Lackey is in charge of arrangements for refreshments. The night is held in conjunction with Texas Public School Week, March 1-5.



NEAR MISS— Lynxette guard Linda Lesly just missed an interception on this Vega pass in Panhandle Thursday night. Other guards in the picture are Susan Hutchison and Linda Smith. Spearman won the game 46-39.

PLAINSMAN PHOTO



DEMONSTRATION — Spearman FFA member Jimmy McLeod shows Spearman FFA Sweetheart Kyra Crum the way to train a show steer to respond to the lead chain. This past week has been National FFA Week.

PLAINSMAN PHOTO

Iowa Park Next

Lynxettes Top Vega In Last Practice Game

A strong team effort Thursday night in Panhandle gave the Spearman Lynxettes a 46-39 win over Vega.

The Lynxettes had a 10 point bulge over the losers with less than a minute to play when Coach Dean Weese sent in his freshman unit. Vega was able to cut the lead by three points

against the rookies.

Great strength on the defensive end of the court and hustle and teamwork by the team spelled victory for the Lynxettes.

Vega forced the game all night with speed and aggressive defensive and offensive play, but had trouble hitting the bucket.

Although the Lynxettes were outscored from the floor 15 field goals to 14, the Lynxettes hit 18 of 23 free throws. Vega hit nine of 21 attempts at the free throw line.

Holding up wild Vega attack were guards Robbie Ownbey, Susan Hutchison, Bethany Donnell and Kathi Pattison.

Phyllis Patterson and Vicki Wilde again teamed to lead the scoring attack with some fancy passing and ball handling around the basket. Patterson had 22 points and Wilde 19.

At the end of the game the Lynxette freshmen tied the ball three times at the jump circle, then tied it up twice under the Vega basket.

	fg	ft	f tp
Patterson	5	12	0 22
Wilde, V.	7	5	2 19
Wilde, B.	0	0	3 0
Vernon	2	0	1 4
Gibson	0	1	1 1
Brock			1
Lyon			1
Donnell			2
Ownbey			2
Hutchison			3
Pattison			1
Totals	14	18	17 46
V Totals	15	9	15 39

YWA's Are Organized

Several young women met Wednesday, Feb. 17 in the home of Mrs. Donald Tanner to organize a YWA.

This is a WMU sponsored group and Mrs. Tanner is the director.

A nominating committee was appointed and the group decided to hold their meetings each Wednesday evening from 6:30 to 7:30. Any girl in the age group from 16 to 24 is eligible to belong.

The next meeting will be Feb. 24 in the home of Carla Archer.

Refreshments were served to Peggy Devers, Sue Bradford, Kate Kilgore, Carla Archer, Kay Schroeder and Linda Spoonemore.

Vaughn Is Speaker For H.D. Club

Mrs. Virgil Floyd was hostess to the Hansford Home Demonstration Club in her home Monday, Feb. 22.

Mrs. Clyde Whitehead, president, presided at the business meeting and also gave the devotional. Roll call was answered by "What I Like About This Town."

Mrs. L.W. Rosenbaum was elected as a representative for a delegate to the district meeting to be held at Canyon April 8.

Mayor Bob Vaughn gave a talk on city government.

Refreshments were served to Mmes. Flavel Ayers, Herb Howe, Bob Crawford, Clyde Whitehead, Gordon Parrish, the guest speaker Bob Vaughn by the hostess.

Mrs. Walker Is HD Hostess

Mrs. Gwen Walker was hostess to the Gruver Home Demonstration Club at her home Feb. 19 at 2 p.m.

President Nell Chockley presided at the business meeting.

The devotional was by Mrs. Walker.

Mrs. Nell Chockley gave an interesting talk on city government.

Refreshments were served to Mmes. Bonnie Shaef, Mary TeBeest, Nancy Barber, Nell Chockley, Esther Dahl by the hostess.

The next meeting will be on March 5 in the home of Mrs. Jennie TeBeest northwest of Gruver.

Tea Honors County FTA

The Hansford County Future Teachers were honored at a reception given recently by the Alpha Delta Kappa.

The tables were decorated with flowers carrying out the Washington traditions. Favors were presented to each guest. Cartoons depicting favorite school scenes were displayed.

Mr. Tilford's group entertained with some minstrel selections.

Refreshments of decorated cakes, punch and coffee were served.

Teachers and sponsors helping at the occasion were Mmes. Theis, Sheets, Whitson, Entrekkin, West, Deere, Archer, Fowler, Goodall, Smith, Jones, Chisum and Messrs. Tilford, Maston and Day.

Mrs. Lewis Is Bridge Hostess

The Bid-A-Bit Dinner Bridge Club met Feb. 25 in the home of Mrs. Winfred Lewis.

Helen Watson had high score and Lucile Lewis had second high.

Attending were Mmes. Mary Lee, Lemmie Russell, Vi Whitson, Mable Jameson, Nicki Cotter, and guests Helen Watson, and Elizabeth Holton.

Club Meets In Pierce Home

The Thursday Afternoon Bridge Club met Feb. 18 in the home of Mrs. Wayne Pierce. Co-hostess was Texie Fisher.

Attending were Verna Strawn, Judy Wilmeth, Sheryl Meek, Deloris Guthrie, Charlene Jackson, Betty Brummett and the hostesses.

Mrs. Nollner Is Hostess

For Rho Rho

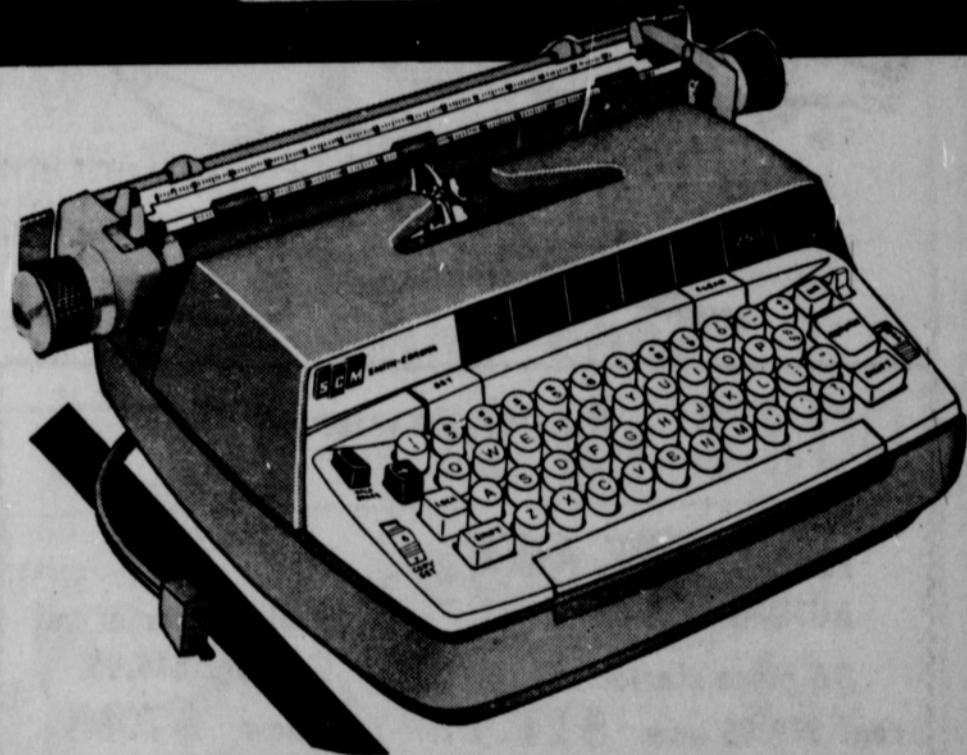
Kay Nollner was hostess in her home Thursday afternoon to Rho Rho Chapter of Beta Sigma Phi.

The business meeting was conducted by Pat Dear, president.

Marva Hohertz presented the program "The Artist's Landscape."

Refreshments were served by the hostess to Dolores Healer, Dodie Beedy, Jeanette Allen, Janet Hutto, Deloris Guthrie, Pat Dear, Beth Fox, Barbara Schnell, Verna Strawn, Ola Mae Henry, Judy Martin, Marva Hohertz, Bobbie Novak, Beverly Sparks, Charlene Bulls and Linda Davis.

BREAKING THE PRICE BARRIER IN ELECTRIC OFFICE TYPEWRITERS



INTRODUCES THE NEW SMITH-CORONA COMPACT 250

FOR \$250 PLUS F.T.

A full-featured, fully electric office typewriter available at the price of a manual.

- Full-size keyboard • King-size carriage • Selection of colors
- Automatic carriage return • Automatic repeat characters
- Electric back-space key • Choice of type styles • Half-space key

Engineered compactness cuts weight and bulk but never sacrifices ease, speed and quality performance of electric typing. See this rare combination of price and performance at

Plainsman Office Supply

209 Main

Toward New Horizons Is Theme for FHA Banquet

"Toward New Horizons" set the scene for the 1965 F.H.A. Sweetheart Banquet held Feb. 19 at Sands Restaurant at Borg-er. Marcus Connelly, F.H.A. Beau was honored at the ban-

quet and presented a lapel pin by Linda Lesley, president of F.H.A.

Mr. Jerry Jackson was the guest speaker for the evening.

After the banquet the group attended a movie in Borg-er.

Members, dates and guests were Linda Lesley, Kenneth Shu-feldt, Kyra Crum, Bill Cator, Shirley Ayers, Allen Saltzman, Betty Brown, Lynn Buzzard, Janie Beck, Gary Cates, Debra Brock, Carrol Day, Terry Hud-son, Skipper Campbell, Linda McElreath, Wayne Cummings, Marcus Connelly, Stephanie Patton, Linn Robinson, Jock

Lee, Patsy Kingsley, Ralph Jackson, Messrs. and Mmes. Flavel Ayers, T.O. Lesley, Jerry Jackson and Dick Hudson.

Mrs. Lee Speaks On Africa

The Hansford County Shrine Club met here Feb. 18 in the local lodge hall for Ladies Night.

About 40 Nobles and wives heard Mrs. R. E. Lee speak on her trip to a part of Africa.

There were five visitors at- tending the meeting. They were Noble and Mrs. Leonard Riley, Noble and Mrs. Bill Campbell and Mrs. Maurice Bentley, all of the Borg-er Shrine Club.

JEST A MINUTE

Anyone who has to be led into temptation shouldn't be allowed to enjoy it.



IDEAL PROUDLY INVITES YOU TO

GET ACQUAINTED WITH Food Club Quality!

Mid-Week Value

Food Club

We believe so completely in the exciting quality standards and consistent savings offered by Food Club Canned Fruits and Vegetables that we guarantee you **DOUBLE YOUR MONEY BACK** if not completely satisfied with your purchase! We urge you to try "Food Club" today. You'll be so glad you did!

Better Food For Less
IDEAL
FOOD STORES

PRICES EFFECTIVE THRU WEDNESDAY, MARCH 3, 1965. LEGAL RIGHTS RESERVED.

FOOD CLUB
SWEET PEAS
6 ³⁰⁵/_{CANS} 1.

FOOD CLUB
PRUNE JUICE
QUART 39¢



FOOD CLUB SLICED OR HALVES
CLING PEACHES

4 ^{2 1/2}/_{CANS} 1.00



FOOD CLUB
TOMATO JUICE

4 ^{46 OZ}/_{CANS} 1.00

FOOD CLUB WHOLE, CUT OR FRENCH STYLE
GREEN BEANS

5 ³⁰⁵/_{CANS} 1.00



FOOD CLUB DEVILS FOOD, WHITE, YELLOW OR...
CAKE MIXES

4 ^{16-OZ}/_{PKGS.} 1.00

FOOD CLUB SWEET OR BUTTERMILK
BISCUITS 4 ^{8-OZ.}/_{CANS} 29¢

Double Your Money Back Guarantee on All Topco Household Products.
TOPCO LIQUID BLEACH 1/2 GAL. PLASTIC 29¢
TOPCO LIQUID FOR DISHES DETERGENT 22-OZ. SIZE 89¢
SAVE UP TO 25¢



IT'S MAILER WEEK AT IDEAL!

THAT MEANS EXTRA SAVINGS THROUGHOUT THE STORE! CHECK YOUR SPECIAL SALE CIRCULAR NOW AND SAVE!

GOLDEN RIPE
BANANAS

Ripe And Ready!
10¢
Lb.

IDEAL BAKERY SPECIALS

... FROM Ideal's Own Modern Bakery Ovens ...

IDEAL 100%
Whole Wheat Bread 1-Lb. Loaf 23¢

Ideal loaf or Slice
Raisin Bread 1-Lb. Loaf 25¢

Ideal, Reg. or Thin Sliced
Sandwich Bread 1 1/2-Lb. Loaf 27¢

Ideal's Large
Angel Food Cakes 43¢

Ideal's German
Chocolate Cakes 9¢ Value 89¢

DOLD F.W.D.
COOKED HAM

SHANK PORTION HOCK REMOVED 45¢
BUTT PORTION MORE CENTER SLICING 49¢
Lb.

CENTER CUT HAM SLICES Lb. 89¢

DOLD "BUTCHER BOY" FULLY COOKED
BONELESS HAM Lb. 89¢

SWIFT'S PREMIUM
SLICED BACON 1-Lb. Pkg. 59¢

PRACTICALLY BONELESS, BOSTON BUTT STYLE
PORK ROASTS Lb. 39¢

LEAN, TENDER
Pork Steaks Lb. 49¢
ROLLED AND TIED
Boneless Pork Roast Lb. 55¢
DOLD ALL MEAT
Skinless Franks 2 12-oz. Pkg. 89¢
DOLD ALL MEAT
Jumbo Bologna Lb. 39¢

IDEAL'S HOME PACK SLICED
American Cheese Lb. 69¢
SWIFT'S BROOKFIELD
Longhorn Cheese Lb. 69¢
IDEAL'S "COUNTRY KITCHEN"
Whipped Desserts 10-oz. Cn. 35¢
LIGHTLY BREADED
Gorton's Fish Steaks 1-Lb. Pkg. 65¢

FOOD CLUB
MARGARINE Deluxe Margarine 25¢ Corn Oil Margarine 29¢

DONALD DUCK FROZEN
ORANGE JUICE 6 oz. cans 5 1.00

TOP FROST FROZEN - MIX OR MATCH
VEGETABLE SALE
16-WARRANTS TO CHOOSE FROM
6 10 oz. pkgs. 1.00

A SURE SIGN OF Spring Savings

SHURFINE SALE GOOD THROUGH MARCH 6



NOW FILL YOUR BARE CUPBOARD FOR LESS!

sure sign of Spring SAVINGS!

Shurfine YOUNG MOTHER HUBBARD SALE

COFFEE

REGULAR or DRIP SHURFINE 2 LB. CAN \$1.39

SHURFINE **FLOUR** \$1.79

25 LB. PRINT BAG

SHURFINE 20 OZ. **CATSUP** 4 FOR \$1.

15 OZ. WITH BEANS SHURFINE **CHILI** 5 FOR \$1.

SHURFINE CRUSHED 2 CAN **PINEAPPLE**

4 FOR \$1.

SHURFINE 12 OZ. LUNCHEON

MEAT

3 FOR \$1.

SPAGHETTI OR MACARONI SHURFINE ELBO 12 OZ. 2 FOR 29¢

SHORTENING SHURFINE 3 LB. CAN 69¢ | **PEACHES** SHURFINE HALVES or SLICES Y.C. 2 1/2 CAN 4 FOR \$1.

SALAD DRESSING SHURFINE QT. 39¢

DOUBLE BUCCANEER STAMPS WEDNESDAY

SHURFRESH SWEETMILK OR BUTTERMILK 8 OZ. 13 FOR \$1.

SHURFINE FROZEN CUT 10 OZ. **OKRA** 5 FOR \$1.

SHURFINE ASST'D. FLAVORS 19 OZ. **CAKE MIXES** 4 FOR \$1.

SHURFINE 303 CAN **FRUIT COCKTAIL** 5 FOR \$1.

SHURFINE CUT GREEN SPEARS 300 CAN **ASPARAGUS** 4 FOR \$1.

SHURFINE 303 CAN **SPINACH** 7 FOR \$1.

SHURFINE 303 CAN **SAUER KRAUT** 7 FOR \$1.

SHURFINE 4 OZ. **VIENNA SAUSAGE** 5 FOR \$1.

SHURFINE 12 OZ. **PEANUT BUTTER** 2 FOR 79¢

SHURFINE FRESH PACK 16 OZ. **CUCUMBER CHIPS** 4 FOR \$1.

SHURFRESH 2 LBS. **CHEESE SPREAD** 69¢

SHURFINE FROZEN KRINKLE CUT 37 OZ. **POTATOES** 2 FOR \$1.

SHURFINE 303 CAN **APPLE SAUCE** 6 FOR \$1.

SHURFINE HALVES BARTLETT 303 CANS **PEARS** 4 FOR \$1.

SHURFINE 300 CAN **PORK & BEANS** 9 FOR \$1.

SHURFINE EARLY HARVEST SWEET 303 CAN **PEAS** 5 FOR \$1.

SHURFINE SOLID PAK 303 CAN **TOMATOES** 5 FOR \$1.

SHURFINE STRAWBERRY 18 OZ. **PRESERVES** 2 FOR 89¢

SHURFINE QUART **WAFFLE SYRUP** 2 FOR 79¢

ROXEY TALL CANS **DOG FOOD** 13 FOR \$1.

SHURFINE FROZEN CHOPPED 10 OZ. **BROCCOLI** 7 FOR \$1.

SHURFINE TALL CAN **MILK** 8 FOR \$1.

SHURFINE R.S.P. 303 CAN **CHERRIES** 5 FOR \$1.

SHURFINE 24 OZ. **GRAPE JUICE** 3 FOR \$1.

SHURFINE VAC-PAK W.K. GOLDEN 12 OZ. **CORN** 6 FOR \$1.

SHURFINE WHOLE 3 SQUAT CAN **SWEET POTATOES** 3 FOR \$1.

SHURFINE CHUNK STYLE 6 1/2 OZ. **TUNA** 4 FOR \$1.

SHURFINE 18 OZ. **GRAPE JELLY** 3 FOR \$1.

SHURFINE WHOLE SWEET 22 OZ. **PICKLES** 2 FOR 89¢

ENERGY 1/2 GAL. **BLEACH** 3 FOR \$1.

Golden Ripe **Bananas** 1b. 13¢

Fresh Green **Onions** Bunch 5¢

Fresh Firm Green Heads **Cabbage** 1b. 5¢

Gerbers Fruits & Vegetables Strained **Baby Food** 10 for \$1.00

Glass Pak

Pecan Meats 49¢

Ellis Shelled 6 oz. pkg.

Ground Chuck Fresh lean lb. 59¢

Wilsons Corn King Sliced **Bacon** 1b. 53¢

Fresh Dressed **Fryers** 1b. 29¢

Kraft's Cheddar 10 oz. Cubes **CRACKER BARREL**

Cheese

MILD 43¢

MELLOW 47¢

SHARP 49¢

EXTRA SHARP . 59¢

Shurfresh Saltines **CRACKERS** 1b. Box 19¢

shurfresh **VITAMIN D MILK**

Shurfresh Milk Is Going Great Guns . . Always Fresh & Good ! in the handy gallon or half gallon carton

CUT RATE GROCERY

AFFILIATED

Fitz Speaks To Members Of Xi Zeta

Xi Zeta Upsilon Chapter of Beta Sigma Phi met with Dord Fitz and members of his Spearman Art Class Monday night at the hospitality room of the bank. Fitz spoke to the group, showing a part of his art collection and later commenting on the paintings of his students. Vera Beth Hicks and Ruth Skinner, members of both groups, were hostesses for the meeting. Ruth introduced the speaker to Xi Zeta Upsilon members.

Following the program refreshments of dips, pickles, olives, cracker, coffee and brownies were served by the hostesses.

After this, members of Xi Zeta Upsilon went to the home of Elsie Mathews, president, for the business meeting. Attending were Helen Watson, Dorcas Collard, Mona Beth Windom, Elsie Mathews, Day McClellan, Elaine Floyd, Betty Brown, Ola Sparks, Mary Brock and Rho Rho guest, Pat Dear.

Others attending the art class portion of the meeting were Nelda Sheets, Vera Beth Hicks, Ruth Skinner, Rho Rho guest, Marva Hohertz and members of the art class who are from Spearman, Perryton and Gruver.

Gilbert Mize Is Speaker At B&PW Club Meeting

The Business and Professional Women's Club met Feb. 25 in the hospitality room of the bank.

Mae Bretz presided at the business meeting. Rhoda Overton and Belle Crawford will be the hostesses for the club sponsored monthly birthday observation to be held at Pioneer Manor in March.

Mrs. Ludie Mae Lovett was program chairman and introduced Gilbert Mize, superintendent of the Perryton schools who showed slides and gave a very interesting talk on his trip to Russia.

Present for the meeting were Mmes. Sammy Bishop, Harold Howerter, Belle Crawford, Rhoda Overton, Mable Edwards, Altha Groves, Mae Bretz, Ludie Mae Lovett, Fred Hoskins and Miss Vera Campbell.

Renfroe Gives Program On Conservation

Fine Arts Division of the Twentieth Century Club met Feb. 18 in the home of Mrs. Fred Hoskins.

Mrs. Bill Massie presided at the business session.

The program was in charge of Mmes. John Allen and C.U. Pope and the topic was "Water Conservation in Hansford County." Darrell Renfroe of the local conservation office gave the talk.

Attending were Mmes. Woodville Jarvis, Deta Blodgett, Jimmie Davis, D.E. Spoonmore, Tom Sutton, John Allen, Jack McWhirter, Bill Massie, Pete Fisher, C.U. Pope, V.N. King, Wesley Garnett, Olin Sheets and the hostess.

Stripped Onions

Serving onions with steak? Give the onions plenty of time to cook! Cut them into thin strips and turn into melted butter in a skillet; cover the pan; long slow cooking, with a stir now and again, will make them golden-brown and very tender.

Cole Slaw Flavor

Celery seeds do wonders for spoons to enough slaw for six portions.

Parasol Favors

Gather a 9-inch length of nylon net around a pipe cleaner, hiding a cotton ball under the top that holds sachet. Bend pipe holder in the shape of a handle and you have attractive parasol favors for a bride's shower.

BUY WANT ADS SELL

FOR SALE

DECORATED CAKES-For All Occasions. Call 659-2295, Mrs. J. V. Barker. 29-tfc

FOR SALE-8 x 48 ft. 1957 Great Lake 2 bedroom trailer home. Call 659-2657. 36-tfc

FOR SALE-3 bedroom bath and half brick home at 1103 Dressen. Carpets, drapes, fenced, many other extras. Selling because we have purchased a larger home. Call Emmett Sanders, 2516 or 2601. 36-tfc

FOR SALE: 10 ft. windmill, 180 feet, 2 inch well casing, 1200 gallon storage tank, propane tank. Collard Real Estate. 23 tfc

FOR SALE-3 bedroom home. 623 S. Bernice. Call 659-2887, Daniel Sheets. 30-tfc

FOR SALE - Industrial lots and acreage. Financing available. Cecil Crawford. Two good lots in town. Phone 659-2409. T43-tfc

FOR SALE: New Lake Pump and Aluminum pipe, Pat Westfield, Gruver, F17-2700. S44-T43-tfc

FOR SALE-Four houses. Nothing down on two and small payment on two. \$50, \$60.

Cheese and Chicken

Grated Parmesan cheese added to seasoned flour makes an excellent coating for chicken that is to be oven-fried.

Choice Salad Meat

To have choice meat for chicken salad, simmer whole chicken breasts in seasoned water until tender.

Charlene Bulls

INTERIOR DECORATOR

659-3202

1105 Townsend

Spearman, Texas

and \$70 payments. Call at 206 Main or Phone 2464 at night. L.S. McLain. 32-8c

FOR SALE-1957 Ford Pickup, 4-speed, V-8, Western Auto. Phone 659-3344. 32-tfc

FOR SALE-Adorable white toy poodle puppies, 8 weeks, registered AKC, papers furnished. 428 S. Bernice. 34-tfc

FOR SALE-A 1962 Hay Baler with rake, mower and tractor. Rake like new. All John Deere equipment. \$2500.00. See or call Mrs. Cora Helton, Briscoe, Texas, Ph. DR5-2317. 34-tfc

FOR SALE-3 bedroom brick. Available June 1. Phone 659-3459. 36-tfc

FOR SALE: Three bedroom brick fenced backyard, corner lot. Phone 2578 or 2903. 35 tfc

SERVICES

FOR LIFETIME MUFFLERS-Clarence Pettitt Garage. No premium prices.

Amarillo Daily News & Globe Times home delivery. Call 2685. T14-tfc

Alterations, replacing zippers, machine made buttonholes and belts. Mrs. F.S. Ayers, 1001 S. Bernice, 659-3052. 26-tfc

SERVICE-Ditches from 3-12 inches, any desired depth. S. D. Jones 659-2809. Harold Shaver 659-3474. T17-s18-tfc

POODLE GROOMING by appointment. See Mrs. Burke at 117 Townsend after 4 p.m. 11-tfc

Land Leveling to SCS specifications. General dirt work

Lime and Apricot

Add lime juice to apricot nectar and pour into glasses over ice cubes. Fill with carbonated water for a refreshing drink.

Replace While Damp

Replace the ironing board cover you have laundered while it is still damp. It will shrink tight and smooth on the board

with Hancock carryalls. Willi Sheets, 659-2256. T46-S46-tfc

Rotary tilling, yards and gardens. Phone 659-3119. 37-tfc

FOR RENT

FOR RENT-Nice redecorated apt. Carpeted. Large closet Bills paid. Call 2082. 34-tfc

FOR RENT-New brick apartment, furnished. 6th & Hazelwood. Call Gus McLain at 2274. 36-tfc

FOR RENT: Furnished efficiency apartment. Call 3074 or 2747. 35-3p

Study Made On Toil Water For Hansford County

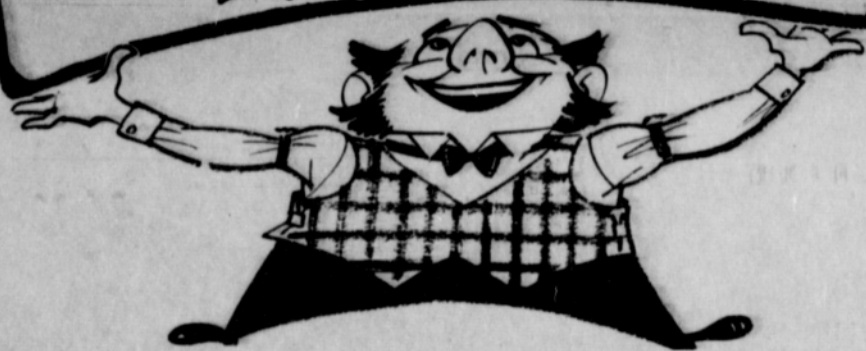
According to the High Plains Underground Water Conservation District tail water studies were made on 75 farms in Palmer County. Actually records show that their was an average loss of 100 gallons per minute per irrigation well. Loss from 1-800 gallons per minute will be 6000 gallons of tail water per hour. This loss over one season, with 4 irrigation wells amounts to 37 acre feet of tail water.

According to Darrel Renfroe, North Plains Water District, there are 630 producing irrigation wells in Hansford County. Using the above figures he estimates that potential tail water loss in Hansford County could amount to 23,000 acre feet per year. This amount of water would allow a 12" application on 23,000 additional acres of land.

Realizing that many farmers are not losing excessive amounts of tail water, the tail water losses are nevertheless staggering.

Personnel of the North Plains Water District encourage all irrigation farmers to take a close look at their irrigation system and consider the feasibility of a tailwater recovery system. Remember what Ogallala Slim says "You never miss the water till the well goes dry."

CLOSE-OUT ON FAMOUS FRANCISCAN - 7 Patterns -



Earthenware

DUET FRUIT	40% OFF	SNOWCREST	50% OFF
AUTUMN	example	16 piece starter set	reg. \$14.95
16 piece starter set		now \$7.48	
reg. \$19.95 now \$11.97			

Whitestone

CLOUD NINE FAN TAN MERRY-GO-ROUND
40% OFF

These prices by the piece or set

HURRY . . . WE HAVE A LIMITED STOCK OF THESE PATTERNS & THEY WILL NOT BE RESTOCKED!

ALL SILVERCRAFT & STAINLESS DINNERWARE & SERVING PIECES 50% OFF

BEEDY GIFT GALLERY
Plains Shopping Center

NEW SERVICE AVAILABLE

WE ARE NOW AFFILIATED WITH JERRY PERRY TYPEWRITER AND ADDER COMPANY OF PAMPA, SELLING SMITH-CARONA ELECTRIC TYPEWRITERS AND VARIOUS OTHER TYPEWRITERS AND ADDING MACHINES.

Complete Cleaning & Repair Service

We'll loan you a new machine while yours is being cleaned or repaired.

PLAINSMAN OFFICE SUPPLY

209 Main Street

659-2466

KNAPP SHOES

KENNETH BAILEY

212 N. James

Phone 659-2458

Spearman, Texas

FOR CUSHIONED COMFORT

Cummings

Refrigeration

HEATING

AIR CONDITIONING

REFRIGERATION

SPECIALIST

SALES & SERVICE

659-2721

SPEARMAN

Drouth Depletes Rangelands ; Time To Begin Reseeding

The drouthy conditions of the past two years and the overuse of our rangeland has seriously depleted our better range grasses and have allowed undesirable vegetation to take over many ranges.

Now that we have an appreciable amount of moisture in the ground, it is time to start reseeding these ranges.

Different grasses like different field crops are best suited to certain soils and climatic conditions. A combination of these two are known as range sites, and here in Hansford County we have eight range sites ranging from tight soils (Pullman silty clay loam) to porous soils (Potter Soils). The combination of plants that originally grew on these sites (climax grasses) vary from blue grama and sideoats grama to little bluestem, western wheatgrass, and switchgrass.

A number of farmers and ranchers in Hansford County assisted by the Soil Conserva-

tion Service Work Unit in Spearman are reseeding or will be reseeding deteriorated ranges and cropland to climax grasses in the very near future.

On the T.J. Bergin ranch south of Gruver, approximately 117 acres of loamy bottomland will be swept to kill the influx of undesirable vegetation and will be drilled to Switchgrass, Indian grass, Western Wheatgrass and Mixed Bluestem grasses. On the slopes above the bottomland, the land will be seeded to Blue Grama and Sideoats Grama. Bergin will also plant Midland Bermuda grass and Switchgrass on irrigated land to supplement native rangeland.

On the H.H. Hudson Estate, in the southwestern part of Hansford County, about 30 acres of sideoats grama and blue grama will be planted. Orville Mathews, the operator of the Hudson farm, has previously planted this combination of grass to 54 acres of the section and is very enthusiastic about the stand and quality of forage produced. The 30 acres to be planted is now in cropland surrounding two lakes. The location of the site to be planted has been subjected to periodic inundation and severe washing due to heavy rains and uncontrolled tail water.

This new grass will not only prevent soil erosion but will provide grazing where heretofore crops were frequently lost.

Mathews will plant a dead litter crop of sorghum this spring. Then he plans to mow or shred the maize and drill the grass seed on the cover this fall.

Bergin and Mathews have

both planned a systematic program of seeding rangeland and cropland to produce more and better forage and to protect land from erosion.

The Great Plains Conservation Program provides cost sharing and technical assistance to farmers and ranchers interested in reseeding rangeland and/or seeding of cropland to range grasses.

Persons interested in seeding cropland to range grasses or reseeding rangeland should contact the Soil Conservation Service Work Unit in Spearman for technical assistance and cost sharing information.

C. A. Gibner Is Chairman Of NFIB

Announcement of the appointment of C.A. Gibner of the First State Bank as Chairman of the Spearman Chapter of the National Federation of Independent Business, was made today by Jack Downing, District Manager of the Federation in this area.

Each business and professional man member of this organization maintains a voting membership, and is polled by ballots regularly throughout the year on bills and issues that affect independent enterprise at the national and state levels.

In an effort to do everything possible to maintain the American way of life, and keep our free competitive system of business, the businessmen express their own personal opinion on the ballots each month and turn them over to C.A. Gibner, who makes tabulations of the total number and the manner in which they voted.

These tabulations are sent, with the underlying signed ballots, directly to the desk of Congressman Walter Rogers at Washington, D.C., and to State Senator Grady Hazelwood. They are the only means whereby independent business



SPEARMAN FFA — students have a variety of projects, some of which are these pigs at the local ag farm. Last week was National FFA Week with emphasis on the FFA program's policy of promoting good citizenship, developing leadership, encouraging cooperation, inspiring patriotism and teaching sound farming methods.



SHARE CROPPERS LEAGUE

2-22-65

TEAM	WON	LOST
First State Bank	23	9
Northern Natural	21	11
Heath Food	18	14
Riley Bros. TV	17	15
Gruver Farm Bank	15	17
Gruver Farm Sup.	13	19
B&C Pump	11	1/2 20 1/2
Hansford Imp.	9	1/2 22 1/2

HIGH TEAM GAME

B&C Pump	861
Northern Natural	844
First State Bank	843

HIGH TEAM SERIES

Gruver Farm Supply	2408
Northern Natural	2388
B&C Pump	2381

HIGH INDIVIDUAL GAME

Gene Duryee	123
Les Barkley	208
Pinkerton	205

HIGH INDIVIDUAL SERIES

Pinkerton	576
Gene Duryee	556
Brown	541

BALL & CHAIN LEAGUE

2-24-65

TEAM	WON	LOST
Taylor-Evans	16	8
Spearman Grain	14	10
Gordon's Drug	12	12
Gruver-Texaco	12	12
The Duds	11	13
Cates Menswear	7	17

HIGH TEAM GAME

Taylor-Evans	602
Spearman Grain	595
Cates Menswear	583
Spearman Grain	583

HIGH TEAM SERIES

Spearman Grain	1692
Taylor-Evans	1638
Cates Menswear	1634

HIGH INDIVIDUAL GAME

Bob Pieratt	193
Owen Montgomery	180
Herb Shields	178

HIGH INDIVIDUAL SERIES

Bob Pieratt	498
Herb Shields	482
Owen Montgomery	476

NIGHT OWL LEAGUE

2-15-65

TEAM	WON	LOST
Harvey's Aerial	60	24
Rexall Drug	57	27
Beedy Furniture	46	38
Universal Oil	44	40
Hansford Grain	35	49
M&M Shamrock	9	75

HIGH TEAM GAME

Rexall Drug	796
Harvey's Aerial	688
Universal Oil	676

HIGH TEAM SERIES

Rexall Drug	2150
Harvey's Aerial	1920
Universal Oil	1849

HIGH INDIVIDUAL GAME

Creacy	179
Arrington	178
Kingsley	170

HIGH INDIVIDUAL SERIES

Kingsley	471
Arrington	455
Spoonmore	437

Chambers Is Man of Year

A native of Spearman and nephew of Marvin Chambers has been named Lubbock's Outstanding Young Man for 1964 by the Lubbock Junior Chamber of Commerce.

The honor went to J.C. Chambers, 33, son of Mr. and Mrs. Charles Chambers of Dalhart. The young man was born in Spearman and lived here with his family until he was a year old.

Chambers was ill and could not attend the banquet to accept the award. Fred McClain, general agent for Massachusetts Mutual Life Insurance Co., for whom Chambers is an agent, accepted the award for Chambers.

The Outstanding Young Man is a graduate of Texas Tech and Lubbock High School. He served as president of the student bodies for both schools and in 1962 was president of the Tech ex-students organization.

He is qualified for the Million Dollar Round Table of the National Association of Life Underwriters and for membership in his firm's President's Club.

He was president last year of the South Plains Association of Life Underwriters. He serves on the board of West Texas Museum Assn., YMCA, Lubbock Boys Club and United Fund and is a member of the official board of the First Methodist Church.

He is a director of Briercroft Saving and Loan Assn., and is a member of the executive committee of Texas Law Enforcement Foundation. He is also a member of the Mayor's Committee on Mental Retardation, and Lubbock Water Resources Board and Southwest Rotary Club.

He and his wife, Patricia, and children, Teresa, Lisa, Jeffrey and John live at 4911 43rd Street in Lubbock.

Winners Selected In 4-H Favorite Food Show

Three Spearman and one Gruver 4-H Club members took top honors in the Hansford County 4-H Favorite Foods Contest held Saturday in the Home Demonstration Clubroom.

Winners in the Senior Division were Janice Trindle and Rebecca Hutchison. Junior Division winners were Cindy Hutchison, Genna

Green of Gruver and Valorie Uptergrove.

Janice Trindle won the senior Fruit-Vegetable group with a cherry salad entry. Rebecca Hutchison won the bread and cereal division with a carrot cake.

In Junior competition Cindy Hutchison won the Fruit-Vegetable division with a strawberry delight and Genna Green won the Meat Group with a broiled weiner sandwich.

The fifth girl competing was Valorie Uptergrove who won a red ribbon in the junior milk group with a banana milk shake.

Janice Trindle, Rebecca Hutchison, Cindy Hutchison and Genna Green will represent the county in the District 4-H Favorite Food contest in Canyon April 3.

Mule Train Trip Delayed

The dedication of the Cowboy Hall of Fame in Oklahoma City has been delayed and the Rolling Plains Mule Train of Spearman will be delaying their Oklahoma City trip.

Gerald Hoffman said Saturday that the Hall of Fame directors had just notified the Mule Train that a delay in getting materials for finishing the building has forced a postponement of the opening.

Hoffman said the train would be notified of the new date after the board meets March 11.

Jazz It Up

When you are serving a chicken curry, you may enjoy adding an embellishment to the accompanying rice. To do so, soak raisins in orange juice and stir into the hot cooked rice along with a little grated orange rind.

Parents and Friends Invited To Join Students for Lunch

During Texas Public School Week Mr. Bramlett, Superintendent of Spearman Public Schools cordially invites parents of school children to eat in the lunchroom with their

children. All friends and patrons of the Spearman Public Schools are extended an invitation to eat in the lunchroom during Texas Public School Week, whether you have a child in

school or not.

Due to the schedule that has to be followed, the following schedule has been set up in order to take care of the number we do feed each day.

Monday, March 1, 6th and 7th at 11:55-12:15, 8th grade 12:50-1:20, Tuesday, March 2-4th, 5th grade 11:40-12:00, Wednesday March 3-3rd & 2nd grade 11:25-11:50, Thursday, March 4-1st Grade 11:00 to 11:30; Friday March 5-Anyone who would like to eat on this date 11:00-12:15.

If you plan on eating with your child, we would appreciate a two days notice in order that the dietician can plan the menu for that day. In the Jr. High grades 5 thru 8, call 2563. Grade one thru four the Home Room Teacher will be asking for the number that will be eating.

The cost of the meal will be 35¢.

Mr. Cockrell, Principal of the High School, cordially invites parents of High School students and patrons of the Spearman School district to eat in the lunchroom at High School any day during Texas Public School Week.

Ever add a tablespoon of chocolate syrup to a glass of iced coffee? Good in all weather!

Mr. and Mrs. H.M. Shedeck were called to Yukon, Okla. due to the death of his brother, Frank who passed away at an Oklahoma City Hospital Tuesday. He had suffered a stroke 10 days ago. The Shedecks had only returned home Sunday before being called back Tuesday.

Scout Week Observance

National Girl Scout Week will be observed here March 7-11, local Girl Scout officials announced this week.

There will be three displays put up in store windows, showing Scout work. At Neely's the display will be on International Friendship. Cates Men and Boys Wear will have the display entitled "Bridge to the Future" and at C&B Studio, the Brownies will have a display.

Two...

(Con't. from page 1.)

program with a tax rate high enough to meet the needs of the school. He is employed by Northern Natural Gas Co.

Jones is a graduate of Baylor University. He lives and farms 11 miles south of Spearman. He has two boys and a girl in Spearman schools.

The filing deadline is March 3.

Hansford Plainsman

Hansford Plainsman Publishers Inc.

JIM O. DAVIS
BURL G. McCLELLAN

County-wide independent newspaper published every Thursday and Sunday at 209 Main in Spearman, Texas. Second class postage paid in Spearman, Texas.

TEXAS 1964 AVERAGE STATE SALES TAX TABLE

This table is based on the Texas general sales tax of 2 percent. It may be used when deducting sales tax on Form 1040. If the table is not used, sales tax deductions must be itemized and substantiated. Deductible sales tax on the purchase of automobiles and gasoline (at 5 cents a gallon) are not included in the table and must be itemized separately.

Income as shown on line 9, page 1, Form 1040	Family Size (Persons)			
	1 & 2	3 & 4	5	Over 5
Under \$1,000	\$ 7	\$10	\$10	\$10
\$1,000-1,499	13	15	14	14
\$1,500-1,999	18	18	18	18
\$2,000-2,499	16	19	21	21
\$2,500-2,999	19	22	24	24
\$3,000-3,499	21	25	27	27
\$3,500-3,999	23	28	30	30
\$4,000-4,499	25	31	33	33
\$4,500-4,999	27	34	36	36
\$5,000-5,499	29	36	39	39
\$5,500-5,999	31	38	42	42
\$6,000-6,499	33	40	45	45
\$6,500-6,999	35	42	47	48
\$7,000-7,499	37	44	49	50
\$7,500-7,999	39	46	51	52
\$8,000-8,499	41	48	53	54
\$8,500-8,999	43	50	55	56
\$9,000-9,499	45	52	57	58
\$9,500-9,999	46	54	59	60
\$10,000-10,999	48	56	63	64
\$11,000-11,999	52	60	67	68
\$12,000-12,999	56	64	71	72
\$13,000-13,999	59	68	75	76
\$14,000-14,999	62	72	79	80
\$15,000-15,999	65	75	83	84
\$16,000-16,999	68	78	87	88
\$17,000-17,999	71	81	91	92
\$18,000-18,999	74	84	95	96
\$19,000-19,999	77	87	98	100
\$20,000 & over	80	90	101	104