

Junior Play Is Monday Night

The Junior Class of Spearman High School will present its annual class play Monday night, May 17 in the High School Auditorium. Curtain time is 7 p. m.
The play is entitled "Out of This World" by Paul S. McCoy. Worley Smith is directing the play.
Admission is \$1. for adults and 75 cents for students.

HANSFORD COUNTY'S LEADING NEWSPAPER



SUNDAY The Hansford Plainsman



VOLUME VI., NO. 59

SPEARMAN, HANSFORD COUNTY, TEXAS, 79081

SUNDAY, MAY 16, 1965

Long Awaited Moisture Comes To Hansford County



PROPER OPENING -- Seldom has a movie had such proper opening conditions as the one which opened Thursday at the Lyric Theatre. The title fit the situation perfectly. Spear-

man officially received 6.35 inches of rain in 12 hours Thursday. The flood ended several months of drouth which had local residents wondering if it were ever going to rain again.

Spearman Gets 6.35 Inches

Spearman's long awaited rain came in record breaking volume Thursday, doing some damage as it ended a crop destroying drouth of many months.

Spearman's official rainfall for the 12 hours was 6.35. This was measured by Mrs. Pat Cates, official observer. There were unofficial reports in other areas of town of over seven inches.

There were, also, unofficial reports of near nine inches in the Pringle area and on the headwaters of the Palo Duro creek northwest of Morse.

Horse creek, a mile west of Spearman, went on a rampage damaging a home, a new business and roads and fences that cross it.

Streets in Spearman were flooded and several home reported damage from flooded basements.

Heavy hail damage to wheat was reported in a small area 14 miles southwest of Spearman in the Holt community. The damage was from 50 to 100 percent in spots.

Highways and roads all over the area were blocked by water. Highway 282 from Spearman to Gruver was under water in many places. Erosion to the shoulders was heavy for several miles west of Horse creek.

Road shoulders and fill around the bridge on Horse creek north of Spearman on the new FM road were eroded and the guard rails leading onto the bridge were washed out.

Water from the rampaging Horse creek got into F. B. Shubert's home, causing damage. It also did heavy damage at the National Salvage Co.

All but one side of a cyclone fence was washed away at the salvage yard, a cliche yard about a block in size was washed away. Part of the dirt fill under the foundation of the metal building was eroded away.

A water truck which was

stuck at the south edge of the yard was washed across the salvage yard.

The creek covered the highway and bridge. It was about 300 yards wide at its highest point.

James Roy Patterson was almost swept into the churning creek when he tried to wade across the submerged highway and bridge.

Cars were stranded in many places along the road and some people who work in Gruver had to stay there overnight.

Severe damage to the wheat crop was in an eight or nine section block 14 miles southwest of Spearman in the Holt community.

The block was bounded on the east by O. C. Holt and on the west by Ira Harbour. Allen Pierce was the northern edge of the damage and it went south to Kiffie White's.

Palo Duro creek crossed the highway in only one small place in the two rises that came down it.

Tommy Gooch was on top of Hansford Hill when the rise came down Palo Duro.

"It was just a wall of water until it got out of the canyon, then it spread out and did not go over the road.

Bill Hutton, who lives near the creek, said there was a second rise late in the day.

A small amount of hail fell during the day, but only light damage was reported around Spearman to any wheat.

Farmers believe that the rain was early enough to help the dryland wheat. It will also allow them to plant milo without pre-watering.

Spearman has now officially received 7.99 inches of rain, according to Mrs. Pat Cates.

March was the biggest previous month with .85 inches.

Spearman received 14.1 inches in 1964 and 13.7 in 1963.

Women Injured In Turnover

Two women were injured early Thursday morning when their lightweight pick-up turned over on Hansford Hill.

Injured were the driver, Mrs. Margaret Rodriguez and Mrs. Rosa Rodriguez of Gruver.

The women's injuries were not believed to be serious.

Investigating officers said apparently wind current caught the pick-up as it went down the hill and the driver lost control.

The pick-up turned over once or more as it went off the road.

Barkley Brothers Win Shindig

The Barkley brothers, Rod, Dayton and Les, won the Jaycee Shindig here Friday night.

"The Embers," headed by Steve Mathews, placed second and "The Kingsmen Trio" won third.

Others in the musical contest were: Bruce Ayres, Jerry and Herk, "The Mojos" and "The Rogues."

This was the opening event of the Spring Festival in Spearman.

Eighteen girls competed Saturday night for the title of Miss Hansford County.

Because of the flood Thursday the FFA Rodeo was postponed until next week-end.

Choir Sets Concert Tuesday

The first public performance by the Spearman High School Choir will be at 7:30 p. m. Tuesday in the High School Auditorium.

In this Spring Festival of Song music will also be by the Junior High and fifth and sixth grade choirs.

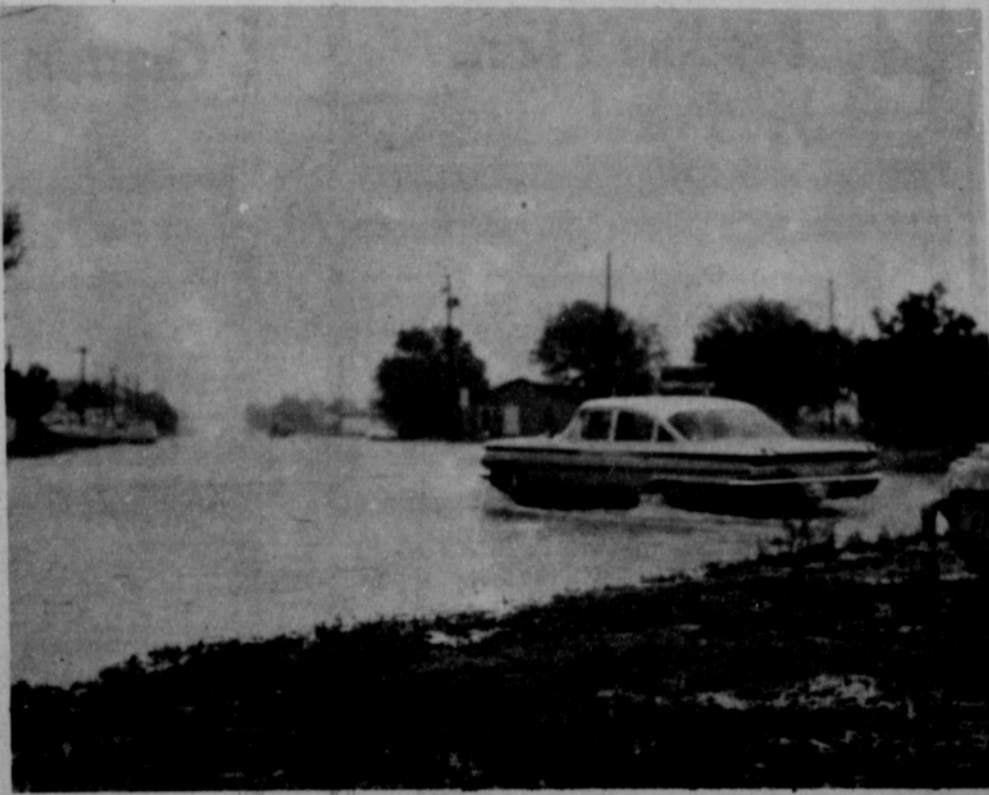
Three groups from the high school choir will also sing. They are the Lynx Minstrels, Missing Lynx (girls sextette) and the Lynx Boys' Quartet.

All of the groups will be under the direction of Lewis Tilford.

Included in the program will

be eight numbers by the high school choir. They include "Battle Hymn," "God of Our Fathers," spirituals, contest numbers and others.

Admission is \$1 for adults and 50 cents for students. Under school age children are admitted free.



CANAL CITY -- No one would have been surprised to see a board coming up the streets of Spearman Thursday at 6.35 inches of rain fell in 12 hours and turned streets into canals or rivers. This is East Kenneth looking east from the Courthouse.

Murder Trial Postponed By Judge Max Boyer

Judge Max Boyer postponed the murder trial of John Lincoln Grissam, 34, in a hearing Friday afternoon here in 84th District Court.

Judge Boyer postponed the trial on a motion for continuance by defense lawyers Don Reavis of Perryton and Charles Ballman of Borger.

In testimony to support their motion, the defense attorneys testified they needed more time to prepare a proper defense for a capital case.

In granting the postponement Judge Boyer told the court that within the next 60 days he will make an announcement as to the date of the new trial.

The court has excused all prospective jurors and witnesses summoned to appear Monday until further notice.

In their testimony the defense attorneys pointed out that because the defendant was an indigent there are no funds to use in preparing a defense.

They pointed out a need for medical and psychiatric examinations of the defendant.

Results of these examinations could be an important part of the defense, the lawyers pointed out.

They said they had doubts about Grissam's ability to read and understand any confessions he might have signed immediately after his arrest.

Also, the lawyers pointed out that they have not been able to secure signed affidavits to support a motion for a change of venue on the grounds that Grissam cannot get a fair trial in this county.

Under Texas law there must be signed affidavits to support such a motion.

The defense attorneys said in their opinions Grissam had been pre-tried by most of the residents of Hansford County because of the wide newspaper and television coverage of the case.

Mrs. Lee Reviews Book For Joint WSCS Meeting

Mrs. R.E. Lee was hostess to a general meeting of WSCS at the First Methodist Church May 5. Mrs. Lee also reviewed the book "Seven Tall Men" by Ben Lamberg.

As a surprise to Coise Gates the group sang "Happy Birthday" and presented her with a birthday cake.

Coffee and doughnuts were served in Fellowship Hall to Mmes. Ray Martin, P.A. Lyon, Harold Shaver, F.B. Schubert, George Collard, Roy Jones, George Buzzard, Russell

Townsend, John Sell, John Trindle, Charles Gates, Doug Grimes, T.D. Sansing, W.A. Tarbox, Richard Baxter, Bill Strawn, Robert Adamson, Bert Sheppard, and guests, Mmes. D.D. Stalder, J.R. Patterson, Leroy McCalman and Roy Bulls.

Recently elected officers for the WSCS for the coming year are President-Myra Grimes, Vice President-Margaret Adamson, Recording Secretary-Verna Strawn, Treasurer-Grace Lyon, Secretary of Promotion-Judy Martin, Missionary Education and Service-Virginia Trindle; Christian Social Relations-Patty Sheppard, Student Work-Marie Hays, Spiritual Life-Marie Beck, Program Material-Frances Williams, Supply-Frances Sell, Local Church Activities-Minnie Jones with co-chairman, Virginia Head.

An officers training meeting will be held Wednesday, May 19 at 9 a.m. Installation and pledge service will be May 26.

Charlene Bulls
INTERIOR DECORATOR
659-3202
1105 Townsend
Spearman, Texas

Mrs. Archer Is Circle Hostess

The Louise Mitchell Circle of the First Baptist Church met May 12 at the home of Mrs. Carl Archer.

The program "Expressing Missionary Concern" was led by Mrs. Jerry Jackson assisted by Mmes. Joe Novak and Archer.

Attending were Mmes. Novak, Eva Adkison, R.L. Baley, Eddie Read, G.L. Kilgore, Jackson, a guest, Mrs. Bill West and the hostess.

Mrs. McAlister Gives Lesson

The Kezzie Mae Seawright Circle met Wednesday May 12 with Betty Uptergrove.

The calendar of prayer was read by Mrs. Uptergrove and followed with prayer.

The mission study was given by Linda McAlister from the book "Go Home and Tell".

Attending were Mmes. Dana Hazelwood, Viola Hutton, Wanda McIver, Alma Bradford, Roscoe Nelson, McAlester and the hostess.

Waka Officers At P-TA Meet

Six newly elected committee chairman and officers of the Waka Parent-Teacher Unit heard Mrs. John Toombs of Irving, State Vice President of this area at a meeting in Perryton, May 12.

Attending were Mrs. Herman Wiebe, Publications Chairman; Mrs. Clyde Yeary, Program Chairman; Mrs. J.R. Stump, Historian; Mrs. Dean Leighnor, Health and Safety; Mrs. B.J. Turner, Treasurer; Mrs. David Wilson, Secretary.

Roundtable Meets In Sanders Home

The Roundtable met Thursday morning in the home of Mrs. Rex Sanders.

Mrs. Eddie Read gave the book review "I See Their Faces" by Ben Hayden.

Attending were Mmes. Eddie Gates, Woodville Jarvis, Glen Hiller, Richard Fancher, Jerry Jackson, J.D. Helms, Don Jones, the speaker, Mrs. Read and the hostess.

Mr. and Mrs. W.R. Morrison and Bill of Pampa spent Mother's Day with their daughter and family, Mr. and Mrs. Don Jones.



★ ACCURACY
★ DEPENDABILITY
★ DEDICATION

Proud passwords of our profession
We are guided by these principles throughout every working day. This is one reason for our personal interest in your good health. Bring your prescriptions to us with the understanding you will receive only the best in products and service.

Your **Rexall** Pharmacist

SPEARMAN REXALL DRUG

For Sale:
Chain Link Fences
Now Sale Priced At
SEARS
FREE ESTIMATES
COMPLETE
INSTALLATION
Phone 2352
Plains Shopping Center
Spearman, Texas



Beauty Fritch Brikrete

Phone 3441

Fritch, Texas



SACKS OF SAVINGS
ON TOP QUALITY FOODS

Shurfine Fancy "Every Cup Guaranteed" lb. can

COFFEE 49¢

with \$2.50 purchase and over, thereafter69¢

Lanes Mardi Gras

ICE CREAM 59¢
Half Gallon



California
Cauliflower 29¢
lb.

bunch
Radishes 5¢

Bananas 10¢
lb.

Shurfine Chopped Frozen 10 oz. pkg.

Broccoli 3 For 39¢

Libbys Whole Kernal or Cream Golden - 303 size

Corn 3 For 49¢

Hi C Grape or 46 oz. cans

Orange Drink 79¢
3 For

Fresh Ramirez
12 oz. pkgs.

Tortillas 2 for 25¢

Fresh lb.
Ground Beef 49¢

A. F. Brand
Sausage 39¢
lb.

Van Camps

Pork & Beans 2 for 29¢
No. 2 Can

Shurfine Crushed No. 2 can

Pineapple 25¢

Arrow brand 2 lb. bag

Pinto Beans 27¢

Hunts Tall Can

Tomato Juice 3 For 29¢

- TASTE
- QUALITY
- FRESHNESS



SHURFRESH MILK

Morton's All Varieties Your Choice

T.V. DINNERS 37¢

Gold Medal 5 lb. bag

Flour 49¢

SAVE VALUABLE SPORTS COUPONS

Food King
CHEESE SPREAD 53¢
2 lb. loaf

Carnations Dog Meal - 5 lb. bag

Friskies Mix 47¢

SoftIn Fancy Paper 200 count pkg.

Napkins 27¢

ONE SPORTS EQUIPMENT COUPON
SAVE THIS VALUABLE COUPON & RECEIVE, ABSOLUTELY FREE, SPORTS EQUIPMENT FOR THE ENTIRE FAMILY. A PERFECT WAY FOR A TEAM OR CLUB TO OBTAIN EQUIPMENT. NO AGE LIMIT. ASK ALL YOUR FRIENDS TO SAVE THESE COUPONS FOR YOU. 1 COUPON WITH EACH 1 1/2 LB. LOAF OF TENDER CRUST OR SHURFRESH WHITE BREAD & 1/2 GALLON OF SHURFRESH MILK. 2 COUPONS WITH EACH GALLON OF SHURFRESH MILK.

Free M Free

Midweek Values for Tuesday & Wednesday May 18th & 19th



Cut Rate GROCERY

Years Cotton Outlook Is Not Encouraging

A Texas A&M University agricultural economist sees few encouraging signs in his spring review of the outlook for cotton.

John G. McHaney, economist for the Texas Agricultural Extension Service, says the carryover for U.S. upland cotton on August 1, 1965, is expected to reach 13.4 million bales, up 1.3 million bales from last year. And, he adds, this is the fourth consecutive year the carryover has increased. The record carryover of 14.4 million bales was set in 1966.

Despite a rise in domestic mill consumption, the total disappearance of upland cot-

ton for the 1964-65 year is well below the production for 1964, the economist said. Exports, which play a very important role in total disappearance of cotton, have declined sharply this year, McHaney said.

The economist listed three major factors behind the expected 21 percent drop in exports. They are the record production of cotton in foreign free-world countries; the reduced free-world trade with Communist countries because of their near record production and the working down of cotton stocks in importing countries.

Foreign free-world consumption of cotton is expected to total a record 25 million bales. Production in these same countries also set a new record of 22.5 million bales for the 1964-65 year. The sharpest increases were in Central America and Africa, McHaney said.

In order to make U.S. cotton available for export and at competitive world prices, the U.S. Department of Agriculture has announced that the initial rate for payment in kind for the 1965-66 crop year under the Cotton Equalization Program will be approximately 5.75 cents per pound.

Texas cotton growers should continue to strive to produce cotton at the least possible cost per pound. This means the use of the latest findings from research and demonstration farms covering all phases of cotton production, says McHaney.

STEAM CLEAN

Irrigation Engines,
Tractors & Farm
Equipment On The
Farm

Portable
Steam
Cleaner

- See Us For Details -

SPEARMAN
TEXACO

29 Highway 15

Phone 659-9973

- Murl Pearson -

Fruit From Ponds

CHIPLEY, Fla. — Mayhaws are ripe in the Florida Panhandle but harvesting is difficult because of high water.

The mayhaw is an exotically flavored native fruit that grows wild in the Gulf Coast area, in water-logged flats and shallow ponds.

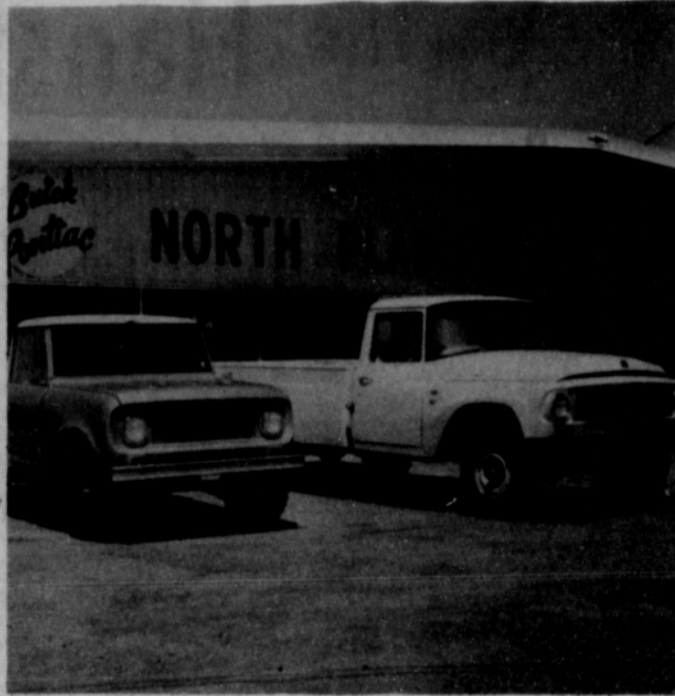
The water level is higher than usual this season and prevents pickers from walking or wading directly to the trees.

The best way to harvest now is to let the ripe fruit drop into the water and be wafted to shore by the breeze, to be scooped up in nets.

Did You Wade Mud Thursday?

You Could Have Rode In An

International Pickup Or Scout With 4-Wheel Drive



INTERNATIONAL 4-wheel Drive Pickup has an 8 1/2 foot Bonus Load Box, Cabs designed, trimmed and equipped to please and last. There are optional V-8's with either 154.8 or big 193.1 engines. Something else you'll like is a wide engine compartment that makes for easy servicing.

INTERNATIONAL'S SCOUT Is Engineered To Go ANYWHERE! The Comanche 4-cylinder engine was designed for the Scout. The Scout is built to last and it is built to look good. It makes a good runabout in any kind of weather and you'll like its riding and handling ease.

These Are Ready To Go!

We Have Them In Stock. We Are Ready To Make You A Good Trade!

Buick-Pontiac-International Truck And Tractor

North Plains Truck & Imp. Co. Inc.

T.G. & Y.
5¢ TO \$1.00 STORES

Spearman Store Hours:
Monday-Friday: 8:30 a.m. - 6 p.m.
Saturday: 8:30 a.m. - 8 p.m.
We Reserve The Right To Limit Quantities

Shop For These
Extra-Low Priced

COUPON SPECIALS!

COUPON PRICES GOOD THIS WEEK WHILE QUANTITIES LAST! CLIP 'N SAVE SPECIALS

CLIP THIS COUPON
Reg. 9¢ to 29¢
Bedding Plants
1/2 Price! WITH COUPON
T.G. & Y.

CLIP THIS COUPON
Branch Choc. Covered
12 oz. Box 59¢ Value
Cherries 3 Boxes 67¢
Limit 3 Boxes
WITH COUPON
T.G. & Y.

CLIP THIS COUPON
White Reg. 5/\$1.00 in pkg. Limit 1 Pkg.
Men's Work Socks 57¢
or Ladies White Anklets Reg. 4/\$1.00
WITH COUPON
T.G. & Y.

CLIP THIS COUPON
Cotton & Acetates Reg. 77¢
No Layaways
Piece Goods 88¢
2 Yds.
WITH COUPON
T.G. & Y.

CLIP THIS COUPON
Teflon Coated
By Anchor Hocking Reg. \$1.77
Oven Ware \$1.17
WITH COUPON Limit 1
T.G. & Y.

CLIP THIS COUPON
Branch Choc. Value to 79¢ lb.
Chocolate Candy 27¢
Limit 3
WITH COUPON
T.G. & Y.

you can't Stop...

HAIL

But you can protect yourself
against LOSS with a...

Cimarron Hail Policy

It's collect on my
Cimarron Policy



CIMARRON INSURANCE CO., INC.
CIMARRON, KANSAS

Largest Writers of Crop-Hail
Insurance in the Nation

Represented By

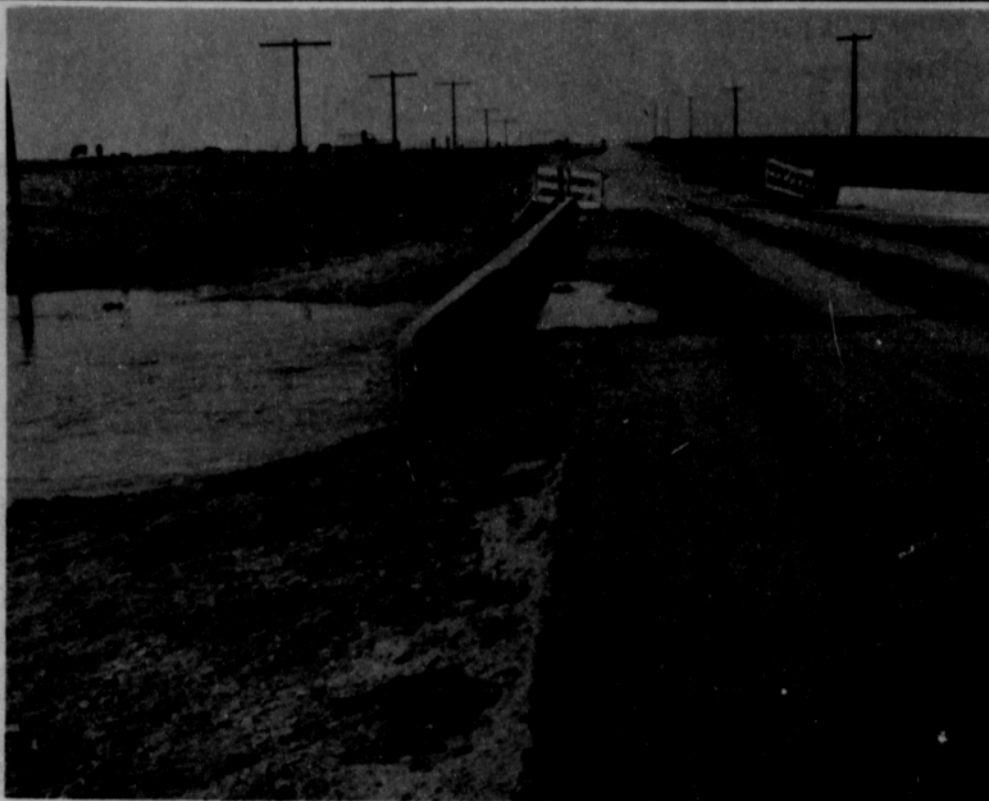
JAMES F. (JIMMY) GREENE

Phone 659-3196

Box 5 Spearman, Texas

LOUISVILLE, Ky. — Police found a new weapon to frustrate a purse snatcher. Two small boys told officers the suspected thief was empty handed when he passed them in an alley. Police sent the boys crawling through a hole in a nearby garage where they found a purse and \$45 belonging to Mrs. Emma Crady.

LOUISVILLE, Ky. Mrs. James Peak Jr. wondered why the thief had been in such a hurry to return her wallet. It was returned recently via air mail. The theft occurred 21 years ago. The sender also included \$50 although he took \$63 from the wallet when it was snatched while Mrs. Peak was in a grocery store.



AFTERMATH -- Flood water on Horse creek cut away the roadbed and fill around the bridge on the FM Road north of Spearman Thursday afternoon. The raging water was just beginning to erode the dirt fill at each end of the bridge when the water went back in banks. Plainsman Photo

Sign Castor Bean Contracts Now

Berry Grain Co. Of Waka Now Has Contracts For The 1965 Castor Bean Crop.

Berry Grain Co. Is The Agent For Baker Castor Oil Co. Of Plainview.

A GOOD SUPPLY OF CERTIFIED HINN SOYBEAN SEED

Box 25- Waka

Phone 435-5377

Cars in East Germany

BERLIN — Communist East Germany reckons to have a million automobiles by 1970, a private Western intelligence agency reported.

Information Bureau West was quoting a report of the Transport Ministry. The ministry experts also estimated that the

number would double by 1980.

A million autos would be one for every 17 inhabitants compared with one for every 8 inhabitants of West Germany now.

Low production and sky-high prices make autos difficult to buy in East Germany, which has some of the emptiest roads in Europe.



SCRATCH LEAGUE 5-11-65

TEAM	WON	LOST
#6	9	3
#4	7	5
#2	7	5
#3	6	6
#5	6	6
#7	5	7
#8	4	8
#1	4	8

HIGH INDIVIDUAL GAME

Tommie Arbsland	190
Sheryl Meek	182
Lou Harvey	176

HIGH INDIVIDUAL SERIES

Tommie Arbsland	528
Sheryl Meek	480
Kate Faries	449

HIGH TEAM GAME

#3	616
#4	600
#6	598

HIGH TEAM SERIES

#3	1737
6 & 1	1645
4	1619

Mrs. Kopke Is Circle Hostess

The Faith Lutheran Circle met Wednesday May 12 with Mrs. Harold Kopke as hostess.

The devotional was given by Mrs. Wade Tackitt. The lesson titled "Abiding in Love" Jno. 15 was given by Mrs. Kopke.

Mrs. Jewel Ward conducted the business session. Plans were made for the Vacation Bible School to be held in the Community Building from May 31 to June 4.

Attending were Mmes. Jack Barker, Jim Johnson, Jack Oakes, Wendell Reneau, Oscar Schneider, Wade Tackitt, Jewel Ward and the hostess.

Mrs. Ronald Schaefer is in Amarillo to be with her father, Robert Blackburn, who is a patient at St. Anthony's Hospital.

Gifts For Graduation

It's graduation time again and we have a wonderful assortment of gifts for the graduate in all price ranges.

She'll appreciate beautiful fold-away luggage, shoe tote or travel accessories, padded hangers for her closet or a hostess case. She'll also be pleased with our pretty boutique items.

The masculine graduate is easy to please. We have travel clocks, suit hangers, travel kits, attache cases and men's jewelry among many other gift items.

Stop in and choose all your graduation gifts now. We'll be glad to gift wrap them beautifully for you and your gift will be one that the graduate will long remember.

Our gift selections are endless. We have gifts for everyone in a variety of prices. When you need a gift... think first of

THE Gift Box

I Have Purchased

Excel Body Shop

And Will Continue My Radiator Shop.

FRED BUCK WILL BE OUR SHOP FOREMAN

We will strive to give excellent workmanship and courteous service.

—24 HOUR WRECKER SERVICE—

FREE ESTIMATES

—WE WANT YOUR BUSINESS—

EXCEL BODY SHOP

DOYLE McBRIDE
OWNER

Decorate this MORNING



Entertain TONIGHT

use Super MASQUE a new ACRYLIC INTERIOR FINISH



SATIN FINISH
DRIES IN 20 MINUTES
SCHEMATIC
16 COLORS
12 INTERMIXES
A STUNNING 12 STAR PRODUCT

STERLING PAINT

White House Lumber Co.

LOUISVILLE, Ky. — A first-grade teacher met a youngster who had been in her room last year. "Gee," the little girl sighed, "I wish you knew enough to teach the second grade — we could have so much fun."

LEXINGTON, Ky. Sign on a Lexington drive-in car wash: "Grime does not pay." The victory of New Orleans in 1814 made a popular hero out of Andrew Jackson.

Mrs. Davis Is Hostess For Salad Supper

Mrs. Jim O. Davis was hostess in her home for Rho Rho Chapter of Beta Sigma Phi when they met Thursday evening at 7 p.m. for a salad supper. After the supper a business meeting was conducted by Pat Dear and the program "Substance for the Art of Life-Be True" was given by Caulene Mason. An installation of officers followed the program. Attending were two honorary members, Lucille Lewis and Jane Meek and members Dodie Beedy, Charlene Bulls, Pat Dear, Beth Fox, Deloris Healer, Ola Mae Henry, Marva Hertz, Caulene Mason, Kay Nollner, Barbara Schnell, Beverly Sparks, Deloris Guthrie, Janet Allen, Verna Strawn and the hostess, Linda Davis.

Mrs. Lackey Is Circle Hostess

The Alma Reed Circle met with Mrs. Major Lackey Wednesday morning. Mrs. Fred Holt gave the program "Go Home and Tell" by Bertha Smith. Attending were Mrs. Don Denham, Luther Berry, Lottin, John Brown, Holt, Jones, and the hostess.

BUY WANT ADS SELL

FOR SALE

FOR SALE-Rebuilt lawn mowers also repairing and sharpening. 824 S. Haney. D.M. Jones. 54-8c

FOR SALE-8 x 48 ft. 1957 Great Lake 2 bedroom trailer home. Call 659-2657. 36-tfc

FOR SALE-3 bedroom home. 623 S. Bernice. Call 659-2887. Daniel Sheets. 30-tfc

FOR SALE-3 bedroom, 1 3/4 baths, brick home at 1108 S. Barkley. Carpet, drapes, Low equity. Call 659-2243 after 4 weekdays. 58-tfc

FOR SALE-10' x 48' furnished trailer home, 2 bedroom, carpeted, washer and air conditioner. Call 2497. 47-tfc

FOR SALE-58 Chevrolet pickup 1/2 ton w/4 speed. Call 659-2684 after 5 p.m. 53-tfc-c

FOR SALE-3 bedroom 1 and 3/4 baths, carpeted throughout, dishwasher, built-in range and disposal, corner lot and garage. Phone 2268. 57-tfc

FOR SALE-95 acres southeast of Spearman, irrigation water, 1/2 minerals. Industrial lots and acreage. Financing available, Cecil Crawford. Phone 659-2409. 49-tfc

FOR SALE-3 bedroom bath & half brick home at 1103 Dressen. Carpets, Drapes, fenced, many other extras. Selling because we have purchased a larger home. Call Emmett Sanden 2516 or 2601. 45-tfc

FOR SALE-Two party dresses and two formals. All size 12. 659-2857. 56-tfc

FOR SALE-3 bedroom home, excellent location, carpeted and fenced. 904 S. Dressen. Call 659-2173. 56-tfc

Upright piano, good condition, needs tuning, \$100. Jerry Day, phone 3415. 58-2c

SERVICES

FOR LIFETIME MUFFLERS-Clarence Pettitt Garage. No premium prices.

Rotary tilling yards and gardens. Phone 659-3119. 42-tfc

New yards a speciality. Worked, leveled, seeded and fertilized. Phone 659-2850. 50-tfc

WANTED-Rototilling, yards or gardens. Call 2627. 42-tfc

Amarillo Daily News & Globe Times home delivery. Call 2685. T14-tfc

Land Leveling to SCS specifications. General dirt work with Hancock carryalls. Willis Sheets, 659-2256. 59-tfc

SERVICE-Ditches from 3-12 inches, any desired depth. S. D. Jones 659-2809. Harold Shaver 659-3474. 59-tfc

ONE WAY PLOWING, Jack Kemper, 903 S. Dressen, Phone 3475. 59-tfc

FOR RENT

FOR RENT-New furnished brick apartment. Phone 2274. 46-tfc.

WANTED

WANTED-Women that would like to earn extra money and learn the latest beauty aids by becoming a Vivian Woodward Cosmetics Consultant. Contact Mrs. Tommie White, 659-2188 or come by 303 S. Barkley. 58-tfc

Not responsible for credit or checks other than my own. Harold E. Fickling 58-2c

MAYFIELD, Ky. — Everett Stunson, a 72-year-old steeplejack, has no thought of retiring.

He recently painted the courthouse tower, some 100 feet high. "How does it feel to swing on ropes with only air beneath?" he was asked. "I feel high," Stunson replied.



For The Graduate- For Home

VALUES EXCEPTIONALLY LOW PRICED even for SEARS and now in stock!

FM Radios... Were \$19.50 Now \$11.88

Table Model AM-FM As Low As \$28.95

Enjoy static-free FM-clear toned AM with 4 speakers

Portable Stereos As Low As \$77.50

2 removable speakers - 4 speed with long life transistors

Entertainment Center Was \$379.95

Black & White Stereo AM-FM Radio Now \$319.95

Phone 659-2573 Plains Shopping Center

"WE SERVICE WHAT WE SELL"

Regardless of the weather you can shop at home by phone

Research Shows

It Pays To Plant The Best

Quality Proven



B-52 HYBRID SORGHUM

We Also Have High-Yielding FRONTIER Hybrid Seeds.

* Certified 7078
* Other Open Pollinated Varieties

WE ALSO

HAVE THESE

OTHER VARIETIES OF EXCEL

* 505- A good producer on dryland

* 606- A good irrigated producer, immuned to head smut & has good standability

* 707- High-yielding irrigated hybrid sorghum comparable to Texas 660

Chowmaker-

A sorghum sudan grass hybrid for grazing, silage & green chop

—WE APPRECIATE THE OPPORTUNITY OF SERVING YOU—

R. L. McCLELLAN GRAIN CO., INC.

A GOOD BALANCE IS THE ANSWER!



For Best Protection In Your Insurance Program

WITH A BALANCED INSURANCE PROGRAM YOU WILL HAVE PROPER COVERAGE ON YOURSELF, YOUR FAMILY, YOUR PROPERTY & LIABILITY.

When You Let One Experienced Agent

handle all your insurance... he knows how much protection you have... and what you need.

THE RAIN HAS HELPED THE

Wheat Crop Protect It With Crop Hail Insurance

John R. Collard Jr.

407 Davis

659-2501

Don't Have Green Thumb? Try Planting Roses

You don't need a green thumb to grow lovely roses. According to the American Association of Nurserymen, a rose bed may be about as simple as you wish it. A reasonably fertile soil is the main ingre-

redient. Next to that is regular watering of the plants, around the roots. Should your soil be poor, either heavy clay, or excessively sandy, work in organic material—peat moss, well-rotted manure or the like. On top of the soil provide a four-inch mulch, which conserves moisture, eliminates weeding and cultivation of the soil.

Be sure to obtain quality plants from an established nurseryman, because this is important.

KNAPP SHOES

KENNETH BAILEY
212 N. James
Phone 659-2458
Spearman, Texas

FOR CUSHIONED COMFORT



AT THE HEIGHT--Horse creek was roaring over the bridge of the FM road north of Spearman Thursday afternoon. Only the post at one end can be seen. The big rapid in the middle of the flood was being caused by trash and debris piling up on the bridge railings.
Plainsman Photo



Beauty Underfoot



Terracrete puts the beauty of color into walks, patios, terraces, sun porches, vestibules, and many other underfoot areas—both exterior and interior.

TERRACRETE

Color range includes red, brown, green, gold, tan, etc. Can be used singly on stepping stones, or laid in a variety of patterns. Two sizes 12 x 16", 8 x 12". Easy to lay. Costs little. Call, write or phone for literature.

Cummings

Refrigeration

HEATING

AIR CONDITIONING

SALES & SERVICE

SPECIALIST

659-2721
SPEARMAN

White House
Lumber Co.

Food Values

Values Good May 18-19

BABY FOOD 6 for 50¢

Gerbers Strained

Hunts No. 2 1/2 Cans Peaches 2/59¢

Del Monte Sugar 8 ozs. Peas 6/\$1.

Pillsbury or Ballard 8 oz. cans Biscuits 3/29¢

Swift's Proten lb. Round Steak 89¢

Swift's Proten lb. Sirloin Steak 89¢

Swift's Proten lb. T-Bone Steak 98¢

lb. Rump Roast 69¢

Ideal's Country Kitchen 16 oz. ctn. Potato Salad 39¢

LOOK

BUDGET SAVERS

Skylark CHERRY OR APPLE
Instant 22 oz.

PIE FILLING

3 for \$1.

Mayflower No. 2 1/2 can Elberta Peaches 4/\$1.

Carefilled No. 2 1/2 Cans Purple Plums 4/\$1.

California Valencia Oranges 5 lbs. 59¢

Florida Golden Full Ears Sweet Corn 5 for 49¢

"Better Food For Less"

IDEAL

FOOD STORES

For The Best In Aerial Weed & Insect Control

We use modern equipment and are radio controlled

Phone Perryton Day 5-3727
Night 5-5213

or see Tom Penn or Buster Hendrickson



Early Harvest

Along with big yields, you want an earlier, earlier harvest. And that's just what DeKalb Sorghum Breeders had in mind. That's part of the "why" of DeKalb's big, open head. That's why DeKalb Hybrids were selected to produce dry, ripe grain on green stalks. Multiply early harvest by other bred-in DeKalb extras: fast growth and disease resistance; open heads and stiff stalks; big, quality grain yields and easy combining, and you see why it pays to plant ALL DEKALB.

DEKALB HYBRID Sorghum

Planted by More Farmers Than Any Other Brand

"DEKALB" is a Registered Brand Name. Members are worthy designations.

DOUG MOORE

R. L. PORTER GRAIN CO.