

HANSFORD COUNTY'S LEADING NEWSPAPER



The

# SUNDAY The Hansford Plainsman



VOLUME VII., NUMBER 57

SPEARMAN, HANSFORD COUNTY, TEXAS 79081

SUNDAY, MAY 8, 1966

## RONNIE WEST KILLED IN CRASH



CAUSED BY A FLY? — This three car smash-up was caused by a buzzing fly in the car driven by Gary Gray. The fly distracted the attention of Gray, causing him to hit the rear of the pick-up, knocking it into another car. The pick-up is owned by Alton Ellsworth and the car belongs to his son, Gary. About \$1,200 was the estimate of the damage to the three vehicles. Plainsman photo

A Spearman man was among the six men killed in the crash of a skydiving plane at Pottstown, Pa., Saturday morning. Killed in the crash was Navy Airman Ronnie West, son of Mr. and Mrs. A. F. West of

1103 S. Townsend in Spearman. Mr. and Mrs. West were returning from Borger when the news of the death of their son was broadcast on radio. They were officially notified by the

Fifty members of the 500-member club were jumping at Pottstown, Pa., when the accident happened. One plane of jumpers had already gone up and jumped. The plane in which West was riding got about 1,000 feet up, then plunged back to earth, according to witnesses. It burst into flames on impact.

One jumper managed to get out and his chute opened at 300 feet. He was injured. Another jumped just 100 feet from the ground, but witnesses said his chute caught in the tail section and he died in the crash.

Airman West was a 1964 graduate of Spearman High School and attended West Texas State University for a year. He joined the Navy Oct. 13, 1965. He was the outstanding recruit in Navy Recruit Training at San Diego.

He was attending Navy parachute rigging school at Lakehurst Naval Air Station in New Jersey and was second in his class.

His father said funeral arrangements were pending, awaiting more information from the Navy.

Besides his parents, the youth is survived by one brother, Tommy West, of Spearman.



RONNIE WEST

Navy about 1:30 p.m. Saturday.

Airman West was a member of the Lakehurst Skydiving Club, a private club at the Naval Air Station in Lakehurst, N.J.

### 50% Need To Sign for Program

One half of the farmers in Hansford County are in a position to lose their government payments and loans under the government wheat program, County ASC Office Manager Ellzey Vanderburg said Friday. At the close of business Friday, 50 percent of the farmers in the county had not reported their wheat acreage to the local ASC office.

Vanderburg said all farmers must bring in the maps that were mailed to them. The maps of their farms must have the acreage designated on them and the total acres figured.

Also, farmers with wheat overseeded on soil bank farms must report the disposition of the excess acres.

Also, farmers who used the ASC office's measuring service must come in and sign their reports.

Just because a farmer signed up to take part in the program, Vanderburg said, he will not be eligible for the payments and loans if he has not reported his acreage and turned in his maps.

There are going to be lines of people waiting to get signed up, so it is going to take time, but if a farmer does not report before May 15, he is out of the program, the manager commented.

### Population Now Stable; Trend Shows Steady Growth

Spearman's population has changed from a transit population to a stable town, according to figures compiled on electric service connections by the Community Public Service.

At the end of April, 1961, there were 900 electric resi-

dential connections inside the city limits of Spearman, according to Community Public Service Manager Charles Gilliam. Of this total, approximately 200 were individual mobil home connections.

Five years later at the end (Con't. on back page)

### Collard, Bollinger and Berry Win State Speech Titles

Spearman High School entries are state champions in prose interpretation and girls' debate. They won the titles in the State University Interscholastic competition in Austin Friday and Saturday.

Rennie Berry took the first state title Friday when he won the prose interpretation.

A freshman and a junior took the second title Saturday morning when Lennie

Bollinger and D'dee Collard won the debate title.

Their instructor, Mrs. Frank Porter, said the debate team had tough competition against two seniors and won the title on a 2-1 decision by the judges.

This is the second year of competition for Berry and Collard who advanced to Re-

gional last year, but this is the first year of competition for Bollinger.

A fourth Spearman student was in the state competition. James Ownbey was competing in the science division. The results of his competition were not known at press time Saturday.

### Musicians Bring Home Honors from Enid Festival

The final results were not announced until Saturday night but the chances of Spearman High School's music department for a stack of honors at the Tri-State Music Festival look good Saturday morning.

Some results on the choir competition were known Saturday morning. The choir earned a first in concert, and the girls chorus and the mixed chorus each received a first division.

The choir received a second division rating in sightreading but it was the only choir in its class to enter this competition.

Two of the ensemble groups for the choir received second division ratings, but the rest of the ensembles received first division ratings.

According to a story in the Daily Oklahoman Friday, the band won a first division rating in marching. The best marching band was announced Saturday night.

Other results are not known, but it was learned that the

band was forced to move out of its regularly scheduled time (Con't. on back page)

### Weese To Be Coach for All-Star Game

Lynxette Coach Dean Weese has been selected as the offensive and head coach for the North All-Star in the annual North-South Girls Basketball All-Star game and coaching clinic in Duncanville, June 21-23.

Weese was selected by balloting of all the coaches who are members of the girls' basketball coaching association in the state.

Assisting him will be Bud Roberts, coach of the Tulia Hornets, AAA state champ-

(Con't. on back page)

### HD Building Open House This Afternoon

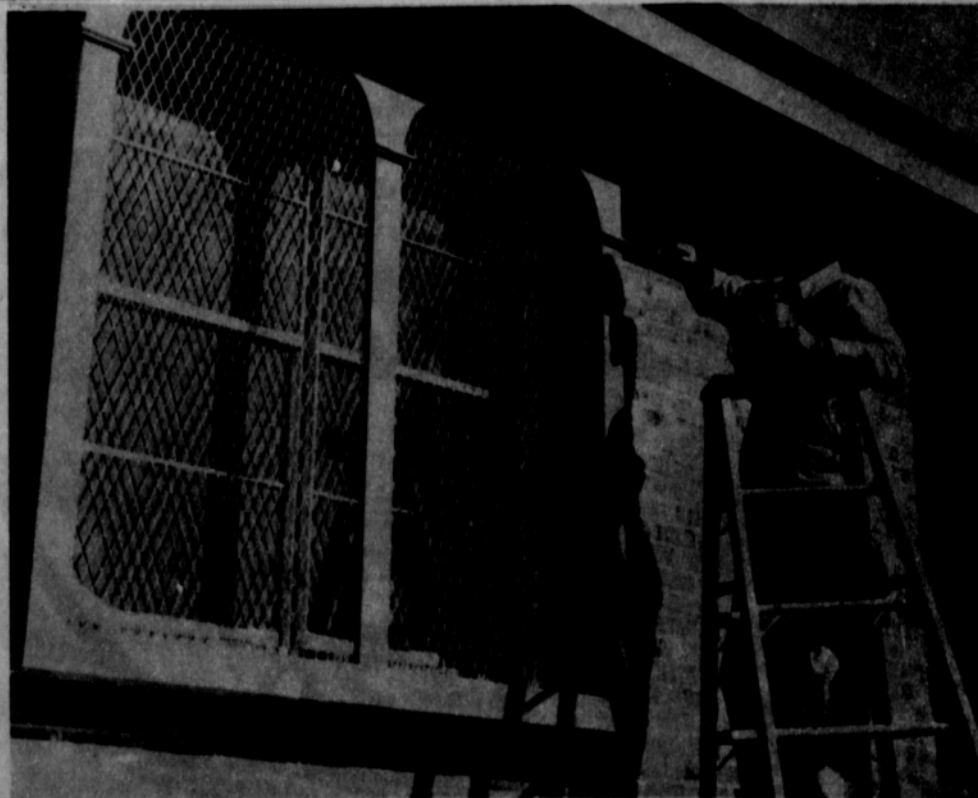
The enlarged and redecorated Home Demonstration Club Room on N. Bernice will be open to the public for an Open House this afternoon, (Sunday).

The size of the building has been doubled by the remodeling project and the kitchen facilities have been enlarged.

This is the first time the building has been enlarged since it was built in 1950. The building was the old Blodgett Community School house and was moved to Spearman and remodeled in 1950.

The Home Demonstration Clubs of the county have operated the building for the past 16 years. It has been the site of many community meetings, club meetings and family gatherings and parties.

Club members feel the larger building and better facilities will make it even more useful to the community.



FINISHING -- A painter puts the finishing touches on a new home in Spearman. A ten year home building boom in Spearman has changed the town from a city of mobil homes to a growing town of permanent residents.

Plainsman Photo

**PERFECT PILLS**



Drug capsules are rotated slowly on this special conveyor belt so that the quality control inspector can spot flaws or defects, according to the Pharmaceutical Manufacturers Association. Imperfect capsules are whisked up through the vacuum hose.

Nuclear power under optimum control is foreseen as being a super-tool in the dredging of harbors, removal of rapids that prevent navigation on big rivers, cutting channels to link the ocean with below-sea-level regions in deserts.

The egg came before the chicken. Birds are an offshoot of reptile stock that was laying eggs millions of years before the first prehistoric bird flew, the National Geographic says.

Kansas Wesleyan and Tabor College played a foul-infested basketball game. Tabor won 93-85 but referees called 78 personal fouls, 40 on Wesleyan and 38 on Tabor.

**New Officers Installed  
By Xi Zeta Upsilon**

Mrs. Deta Blodgett, honorary member, was hostess Wednesday evening, May 4 for the installation of officers of Xi Zeta Upsilon Chapter of Beta Sigma Phi.

Joyce Lackey was installed as president for the coming year. Her slate of officers includes Barbara McClellan, vice-president; Elaine Floyd, recording secretary; Ruby Lair, corresponding secretary; Caulene Mason, treasurer and Helen Watson, civil defense officer. New officers were installed by outgoing president, Mona Beth Windom in an impressive candlelight ceremony. During the business session Joan McClellan, R.N. presented information concerning the group's service project, helping purchase equipment for Hansford Hospital. The program was given by

Mary Lee, honorary member, on her trip to Russia. She showed slides of the country following a brief lecture and a question and answer session was held at the close of the program.

The Blodgett home was decorated with several arrangements of spring flowers. Refreshments of caramel and pineapple cream puffs and coffee were served from hand painted china to two guests, Dodie Beedy of Rho Rho Chapter, and Joan McClellan, honorary member Mary Lee and to members including Dorcas Collard, Elvonna Davis, Joyce Lackey, Ruby Lair, Day McClellan, Ola Sparks, Altha Townsend, Mona Beth Windom, Charlene Bulls, Pat Dear, Marva Hohertz, Caulene Mason, Barbara Schnell, and the hostess, Deta Blodgett.

**Those Poor Agronomists**

NEW YORK —A new spike for golf shoes caused considerably less damage to putting greens than the conventional spike in tests conducted by the green section of the United States Golf Association.

The significant feature of the new type is a recessed flange or shoulder, so that only the spike protrudes outside the shoe sole. The spike in common use has a flange outside the sole. The flange is usually blamed by agronomists for causing

undue compaction of the soil, which in turn can destroy grass.

The damage caused by three types of spike was studied in tests conducted under the supervision of Dr. Marvin H. Ferguson, national research coordinator of the USGA green section, last summer at College Station, Texas. Standard spikes were compared with two new models having recessed flanges.

The giant clam inhabiting the Pacific is four-feet across and the meat from one clam would provide a tasty meal for 20 persons.

**Want To Build a New Home, Remodel or Repair Your Home ?**

**CALL R. L. UPTERGROVE**

659-2877

Out of Town, Call Collect

Spearmian

**For Sale :**

3 Bedroom House-Several Lots-2 Commercial Buildings

*elegance...*

*the look*

by

**Vanity Fair**

fabulous extravagance of double layer sheer, banded in luxurious nylon satin. Dramatic in its simplicity, it's the elegant answer to what to wear over any number of things, especially mermaids and Kaleidostripes.

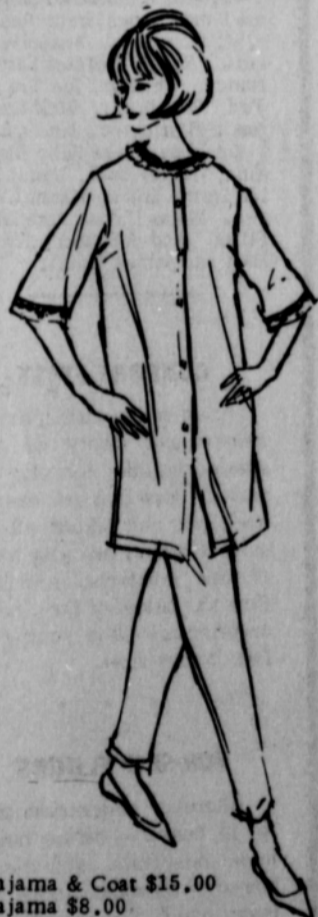
Priced at \$18.00



**GIFTS**  
FOR FAVORITE GRADS

GOING PLACES... this pretty pajama set with its slender coat of opaque tricot, rimmed with Val and double sheer.

**Vanity Fair**



Pajama & Coat \$15.00  
Pajama \$8.00

*Lady Fair*

Plains Shopping Center

**CASH SAVERS!**

PURE GRANULATED  
**CANE OR BEET SUGAR**  
5-lb. Bag  
**44¢**  
With \$5.00 or more purchase

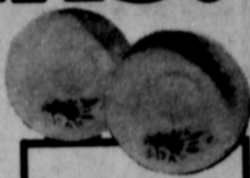


Beautiful Mountain Rose  
**DINNERWARE**

ON IDEAL'S EXCLUSIVE 9¢ PLAN

THIS WEEK: SAUCERS

ONLY **9¢** WITH EACH \$7.50 PURCHASE  
(2 for 18¢ with \$15 Purchase, etc.)



BEAUTIFUL COMPLETE PIECES FOR ONLY 29¢ AND 69¢ EACH... NO OTHER PURCHASE REQUIRED

Better Food For Less

**IDEAL FOOD STORES**

ELLIS  
**VIENNA SAUSAGE**  
4 oz. Cans  
**5 \$1.00**

ELLIS  
**CORN BEEF HASH**  
2 300 Cans  
**89¢**

ELLIS BEANS AND MEAT BALLS	NO. 300 Can	29¢	ELLIS SPAGHETTI AND MEAT BALLS	2 NO. 300 CANS	69¢
ELLIS LIMA BEANS & HAM	No. 300 Can	39¢	ELLIS BEEF RAVIOLI	2 300 Cans	69¢
ELLIS BEEF STEW	24 oz. Can	49¢	ELLIS BEEF STEW	No. 300 Can	39¢

MARYLAND CLUB  
**COFFEE**  
1 lb. Can  
**73¢**

FOOD CLUB CHUNK STYLE  
**TUNA**  
4 6 1/2-oz Cans  
**\$1.00**

BAKE-RITE PURE WHITE  
**SHORTENING**  
3-lb. Can  
**69¢**

Prices Effective Tues. & Wed. May 10 & 11. Limit Rights Reserved



U.S.D.A. GRADE A FRESH

**FRYERS**

WHOLE **33¢** CUT-UP FRYERS 37¢  
lb.

IDEAL'S REGULAR 45¢	Angel Food Cakes	4	43¢
IDEAL'S FOIL OR CELLO WRAPPED	French Bread	1-lb. Loaf	21¢
TENDER	Green Giant Peas	4 303 CANS	89¢
AMERICAN BEAUTY INSTANT	Mashed Potatoes	1-lb. Pkg.	59¢
GEHARDT'S CHILI	Hot Dog Sauce	No. 1 Can	25¢
MEADOWDALE	Grape Juice	24 oz. Btl.	39¢
WITH CHEESE	Jeno's Pizza	15 1/2-oz. Pkg.	49¢
FOOD CLUB	Gelatin Desserts	3 3-oz. PKGS.	25¢
TOWIE MANZANILLA	Stuffed Olives	7-oz. Jar	59¢
TOWIE	Salad Olives	2 8-oz. Jars	89¢
TOPCO	Fabric Softener	33 oz. Plastic	39¢

FRESH FRYING CHICKEN PARTS

BREASTS, LEGS AND THIGHS  
Pick of the Chick  
ALL TENDER WHITE MEAT  
**Fryer Breasts** 1-b. 59¢

FRESH, PLUMP, MEATY  
**Fryer Legs** 1-b. 55¢

FRESH, TENDER, PLUMP  
**Fryer Thighs** 1-b. 59¢

SWIFT'S PREMIUM  
**SKINLESS FRANKS**  
ALL MEAT  
1-lb. Pkg. **59¢**

FRESH GOLDEN BANTAM  
**SWEET CORN**  
5 Full Ears **29¢**

SUGAR LOAF  
**PINEAPPLES** 3 for 79¢

"Mid Week Values for Tuesday & Wednesday May 10 & 11th"

GRADUATE TO...

**BIGGER**

**FOOD**

**SAVINGS**



6 OZ. TUMBLER  
IN THE NEW  
AVOCADO COLOR

For Only  
WITH EACH  
\$5.00 PURCHASE

**9** each

- TUMBLER Fruit Juice 6 oz. **2 FOR 25¢**
- TUMBLER On-the-Rocks 9 oz. **2 FOR 29¢**
- Beverage TUMBLER 12 oz. **2 FOR 35¢**
- Beverage PITCHER 64 oz. **79¢**
- Assorted **ASH TRAYS**
- 4 1/4 in. **21¢** 6 1/4 in. **49¢** 8 in. **95¢**
- Deep Square 6 1/2 x 6 1/2 or 6 5/8 x 6 5/8 **35¢**
- DISHES**
- CHIP & DIP Large **\$2.19**

**Ice Cream** 68¢  
Lanes "Old Fashioned"  
Half Gallon

**Jello** 33¢  
All Flavors Gelatin  
3 oz. Box  
4 for **33¢**

**Shortening** 67¢  
Shurfine Pure Vegetable  
3 lb. can

Shurfine Crushed

**Pineapple** 2 for 29¢  
Flat Can

Armours Luncheon Meat

**Treet** 49¢  
12 oz. Can

**HAMBURGER Buns** 15¢  
Tendercrust 6 Pak.

**Tea** 49¢  
Shurfine Fancy 1/2 lb. Box

**Tea Bags** 49¢  
Shurfine Fancy 48 Count Box

**Awake** 89¢  
Birdseye Frozen Orange Drink 9 oz. Can  
3 FOR

**TOMATOES** 37¢  
Hunts Solid Pac  
Whole

**FLOUR** 99¢  
Gold Medal  
10 lb. Cloth Bag

**FRUIT COCKTAIL** 2 for 39¢  
Libbys 303 size

**ORANGE JUICE** 35¢  
Shurfine 46 oz. Can

**PRUNE JUICE** 43¢  
Sunsweet Quart Bottle

**CATSUP** 2 for 39¢  
Heinz Tomato 14 oz. Bottle



**SMOKED PICNICS** 39¢  
WRIGHT'S "READY TO EAT"

**SAUSAGE** 79¢  
TOP O' TEXAS 2 LB. ROLL



**SIRLOIN**

**STEAK** 89¢  
BEEF 1 lb.

**T-BONE Steak** 98¢  
USDA Choice BEEF 1 lb.

**DELSEY** 39¢  
Bathroom Tissue 4 roll Pak.



**CAN-A-POP** 6 for 39¢  
Beverage "All Flavors" 10 oz. Bottle  
"No Deposit"



**POTATOES** 79¢  
COLORADO RED 20 lb. bag

**ORANGES** 39¢  
CALIFORNIA NAVAL 4 lb. bag

**CUCUMBERS** 17¢  
FRESH TENDER SLICING 1 lb.

**SQUASH** 17¢  
FRESH TENDER YELLOW 1 lb.

**CANDY BARS** 33¢  
Hersheys 10 bar pak

**GRAHAM CRACKERS** 35¢  
Supreme Honey 1 lb.

**KRAFT DINNERS** 37¢  
Macaroni & Cheese 2 for

**POP-UPS** 43¢  
Post Breakfast Treat pkg.



**Cut Rate GROCERY**

Hansford Plainsman Publishers Inc.

Jim O. Davis  
Burl G. McClellan



County-wide independent newspaper published every Thursday and Sunday at 209 Main St., Box 668, Spearman, Texas 79081. Second Class postage paid in Spearman, Texas 79081. Editor . . . Burl McClellan

**Fly Causes**

**3-Car Smash**

A buzzing fly heavily damaged three cars about 8 a.m. Saturday morning at 313 S. Bernice.

The fly distracted the attention of driver Gary Gray and his 1959 model car hit the rear of a pick-up truck owned by Alton Ellsworth, knocking it into the rear of a car owned by Ellsworth's son, Gary, according to investigating officers.

Gray was not injured, but damage to his car was estimated at \$800 by police investigating the accident. Damage to the pick-up and car were estimated at about \$200 each.

**Indians Lead LL Standing**

Little League results for the first week of play ending April 29 were Jets 12; Astros 10; Dodgers 19; Astros 10; Indians 19, Yankees 5; Indians 8, Dodgers 4; Yankees 17, Jets 0.

Highlight of the week was a no hitter Friday night pitched by Ricky Driscoll against the Jets.

STANDINGS	WON	LOST
Indians	2	0
Dodgers	1	1
Jets	1	1
Yankees	1	1
Astros	0	2

**Scouts Learn To Make Trail**

Troop No. 253 of Junior Girl Scouts met May 3 at the scout house. The girls learned how to make and mark a trail.

Refreshments were served by Karen Stafford to Marcia Larson, Debra Davis, Linda Sutton, Monette Slater, Debra Johnson, Pam Frye, and leaders, Jo Larson, Betty Davis and Barbara Stafford.

**For Quick Courteous Service**

- Ch-vron Gasolines
- Atlas Tires & Accessories
- Washing-Greasing

**QUICK, COURTEOUS SERVICE**

Loren Simmons

**SIMMONS CHEVRON SERVICE**

Phone 659-9985  
Plains Shopping Center

Buy, Sell, Trade  
Hire, Rent, Find  
THROUGH THE

# WANT ADS

**— FOR SALE —**

FOR SALE-1963 American Westwood 2 bedroom mobile home. Excellent condition. 119 N. Brandt, Phone 659-2454 after 6 p.m. 24-tfc

FOR SALE 3 bedroom on corner lot, low equity, low payments. 112 Wanda Drive. Phone 659-3308.

FOR SALE-White & cream toy poodle puppies. AKC registered. Phone 659-2855. 117 Townsend. Mrs. Richard Burke. 53-tfc

FOR SALE-1962 Bonneville Pontiac 2 dr. loaded. Phone 659-2441, after 6 p.m. 659-2408. 40-tfc

FOR SALE-60' lot, 1007 S. Archer, Call 659-3448 after 5 p.m. 51-tfc

FOR SALE-3 bedroom brick, bath & 3/4, den, double car garage, carpeted. Phone 659-2462, 1118 S. Barkley. 51-tfc

FOR SALE-3 bedroom house, redwood fenced backyard. 1010 S. Haney. Call 659-3103 or 659-2754. 25-tfc

FOR SALE-3 bedroom house, Blodgett Linn addition, one bath. Phone Mrs. Wilburn McGuire 659-2441, after 6 p.m. 659-2408. 40-tfc

FOR SALE-Two bedroom house, corner lot, excellent location. Phone Mrs. Wilburn McGuire 2359 after 5:30 p.m. 29-tfc

FOR SALE by owner, 3 joining lots including 1 corner lot. Paved front and sides, lot 4-5-6, Block 54, Corner 2nd & Brandt. \$2,250.00. Call 659-2668 after 5:30. 40-tfc

FOR SALE-1-7000 rpm Tack, \$20; '60 El Camino 283 Auto, \$800; '57 Buick Century \$600, 2-45 Amp Gen Delco \$25 each, 1 late Air Cond. Comp. needs repair \$20, 1 Single Coleman Lamp \$10, 1 dog house new \$10, 1 GE Roaster \$15, 1 22 Marlin Magnum New \$65; 1 7 x 35 Field Glasses \$20, Power Saw \$30, Jig Saw \$20, 1 3/4 Ton Ref. Air Cond. \$30. 659-3229 after 6 p.m. 118 S. Brandt St. 56-4c

FOR SALE-4000 CFM, 1/3 HP mobilhome water cooler, used 2 months, \$60. 418 S. Endicott. 54-8c

ROSS CATERING SERVICE-Suppers, luncheons, teas, children's parties. Phone 659-3227. 55-tfc

**— SERVICES —**

Amarillo Daily News & Globe Times home delivery. Call 2685. 14-tfc

SERVICE-Ditches from 3-12 inches, any desired depth. S. D. Jones 659-2809. Harold Shaver 659-3474. 17-tfc

Irrigation gas meter repair and testing. Monthly billing service for irrigation customers on co-op line. Phone 659-2297. 1004 S. Haney. J.A. Morris. 52-tfc

Trees and Hedges Trimmed. Reasonable. Bill Hand, 315 S. Townsend. Phone 2967. 57-4p

**- WANTED -**

WANTED-Yard and garden rototilling. Peewee Klzziar, 310 S. Brandt. Call 2163. 44-ttc

WANTED-Retired person to assume responsibility for home and care of male semi-invalid in Perryton, Dan Nitschke. Live in, living expenses furnished, plus salary. Apply in writing giving personal background, Box 197, Perryton. 51-8p

LOST OR STRAYED-2 heifers and 1 steer branded E- on left hip. Contact Warren Jeffries, Phone FI7-2670, Gruver. 54-4c

**- FOR RENT -**

FOR RENT OR LEASE-Brick Building, 100 N. Bernice, formerly Dorch Body Shop. Collard Real Estate. Phone 659.2501. 53-tfc

FOR RENT-2 bedroom furnished apartment. \$80. Call 2269 or 3175. 51-tfc

**- FOR SALE -**

FOR SALE: 3 bedroom house, one bath, reasonable equity, low payments, would consider good car for equity. Phone 659-3059 50-1c

**LAND AUCTION**  
Tuesday, May 10, 1966 at 10 a.m., LaRue Norris, receiver, will sell at public auction the surface only of the West 213 acres, more or less, of the North half of Section 140, Block 4T, T&NO Ry. Co. Survey, Ochiltree, County, Texas, located 9 miles south of Waka, Texas or 8 miles east of Spearman, Texas on F.M. 759 and 4 miles south.  
Good level land, ideal for irrigation, in 10 inch water area.  
Sale to be held at the land. Terms: 10% escrow, balance upon closing, terms of possession announced at sale. For further details contact LaRue Norris, Phone 435-2136. 54-3c

**Roots in Piping Can Be Problem**

Big, healthy trees are nice to have around the home. But when thirsty roots find their way into underground waste and sewage piping, the home owner has a genuine problem. Only sure way to avoid a root problem in waste lines is to make certain the lines are of top quality, watertight, permanent material. Once there is a leak or break in inferior piping, moisture-seeking tree roots will find it. Correcting the problem when it occurs requires the knowledge and tools of a plumbing contractor. Using a special, flexible auger that can be reeled into waste lines, the contractor can cleanly cut away invading roots.

**Gift Box Memo :**

It is time to think about graduation gifts, also. We have many items just right for the graduate, male or female. All graduates like photo albums and scrapbooks in which to file all of those High School memories. These are loose leaf models that can be enlarged. For the person who likes to read in bed, we have the clip-on light. It actually clips on to your books, so you can read and your light will bother no one. For those who want to record each day, we have diaries. You will find many gifts in our store and remember we also have guaranteed watch repair service.

**The GIFT BOX**

YOU'RE INVITED

# GRAND OPENING

## MAY 13-14

COME REGISTER FOR DOOR PRIZES

### BRAND NAMES WE STOCK

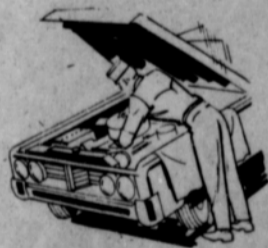
Delco Remy  
Delco Batteries  
Hastings Rings  
McQuay Rings  
Monore  
A C  
Fram  
EIS  
DuPont Paint  
Gates  
Walker  
Victor

Imperial  
Stewart Warner  
McQuay Hard Parts  
Standard Ignition  
Murphy  
Precision  
Champion  
Auto Lite  
Timken  
New Departure  
Hygrade

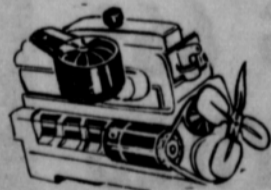
OUR INVENTORY IS ENLARGED EVERY DAY

## MOTOR PARTS OF SPEARMAN

THE PARTS YOU NEED  
ARE THE PARTS WE SELL



BILL McBRIDE



NIGHT PHONE 659-3400



CARL KEMP

# AUTOMOTIVE MACHINE SHOP

PHONE 659-2554

GRIND DRUMS & SHOES, MILL HEADS

KNURL PISTONS

GRIND VALVES

INSTALL SEATS

**FREE** Lubrication  
From  
**Red Byrd's**

# TEXACO

659-9970

Offer Good With  
The Cash or  
Credit Card  
Purchase  
OF  
Wash, Oil &  
Oil Filter  
OPEN 7 Till 9  
7 Days A Week  
Please present this adv.  
Offer Expires May 31, 1966

Highway  
15

Mrs. L.S. McLain left Monday to spend some time with her daughter, Mr. and Mrs. Don May of San Angelo. The May's are the parents of a new daughter, Dianne Elaine born April 30. The May's have two other children.

### Annual Tourney For Oil Field Set In Borger

On May 21 and 22, 1966, the 14th Annual Panhandle Petroleum Handicap Golf Tournament will be held at the Huber Golf Course, Borger, Texas. The

tournament is open to members of the sponsoring organizations: Panhandle Association of Petroleum Landman, Panhandle Oil Scouts Association, Amarillo Society of Petroleum Engineers, Panhandle Geological Society, and all guests related to the exploration and production of petroleum.

As in the past, there will be 12 flights with trophies and prizes for all flights, in addition to numerous other prizes.

Registration will be from 7:00 a. m. to 1:00 p. m. Saturday, May 21. Entry fee will be \$5.50 for members and \$5.00 for non-members. Flight trophies and door prizes will be restricted to members. All other prizes are open to all participants.

Classifieds Gets Results

### Luncheon May 2 Honors Bridal Shower Hostesses

Hostesses for a bridal shower for Mrs. Larry Rahmel, nee Nickie Keyser, were honored at a luncheon May 2 in the home of Mrs. Howard Keyser. A buffet luncheon was served

from a table covered with white linen and centered with an arrangement of white daisies in a blue container.

Guests included Mmes. Doris Weston, Jesse Francis, E.E. Martin, Ed Dear, Danny Jackson, James Martin, J.H. Martin, R.E. Martin and James Martin.

### Mrs. Allen Is Hostess

Mrs. Garrett Allen was hostess May 2 to the Dahlia Flower Club.

Mrs. Olin Sheets presided at the business session and also presented the program "Room Service". She illustrated her talk with slides on re-decorating.

Susan Delk won first with her flower arrangement.

Attending were Mmes. Ethel Baley, Carrie Clement, Mattie Davis, Ethel Healer, Hazel Loftin, Hollie Riley, Margaret Shedeck, Frankie Walker, Ruth Shaver, Edith Sheets, Verna Hutchison, Susan Delk and the hostess.

### Mrs. Evans Has Club Program

Maylynn Schubert was hostess for the Happy Homes HD Club meeting Thursday in her home.

The president, Nell Cummings, presided at the business session with Maylynn Schubert giving the devotional.

The program was a study from the Texas State Drivers Manual given by Margaret Evans.

Attending were Wanda Schubert, Norma Curtis, Dorothy Groves, Nell Cummings, Rose Cummings, Margaret Evans, Patty Sheppard, Vaye West, Adalyn Barnes, Rita Reed and the hostess.

### HOSPITAL News

Patients in Hansford Hospital are Emma Bruce, Irene Reeves, J.W. Lowrey, Anson Ward, Luis Reyes, Delores Lavato, Nancy Phillips, Joe Trayler, Ted Woodward, Dick Smith, Jessie Harrington, Jane Quinn.

Dismissed were Ruby McAdams, James Hash, Donald Ellis, Emma Bruce, Karen Countiss, Marie Davis, Rose Marie Elliot and daughter, Thelma Hart and James Smith.

### COMFORT FIRST

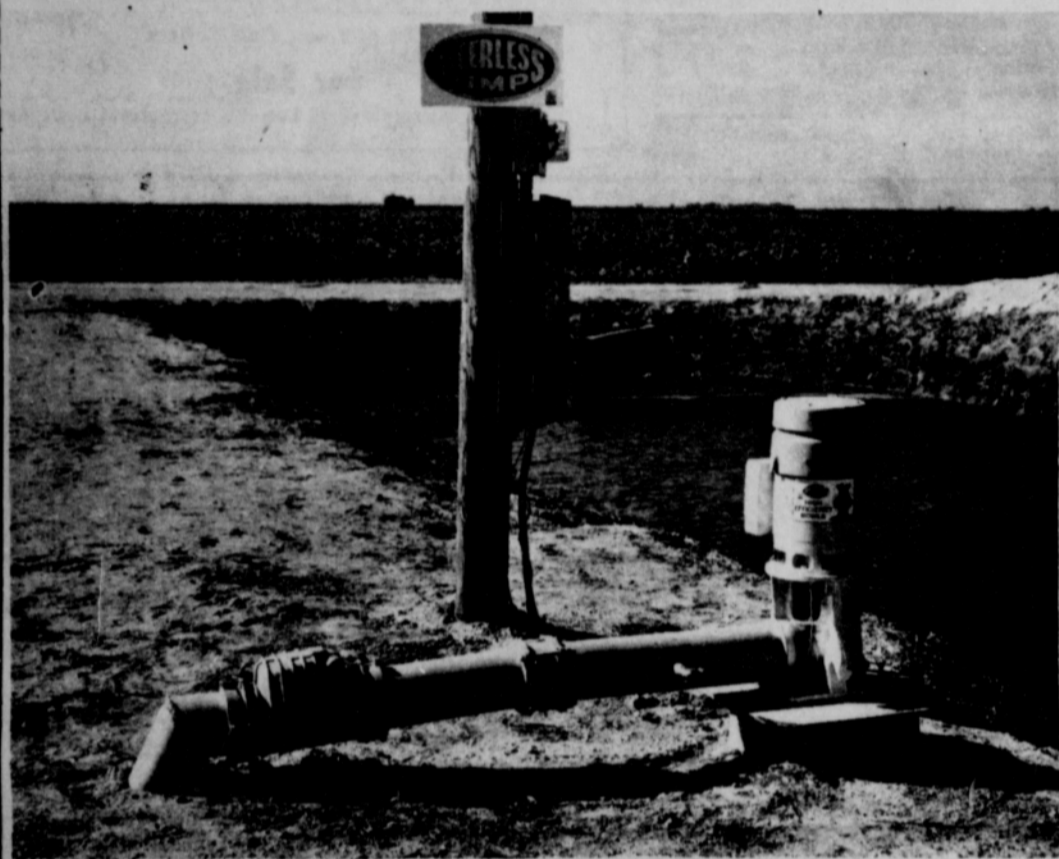
Apartments with spacious rooms and plenty of play space outside, non-slip terrazzo floors that are easy to walk on, and tinted all-climate windows are just a few of the comforts, resulting from the belief of the "new" architecture that your comfort comes first.

### NON-SLIP FLOORS

Wherever pedestrian traffic is heavy - office buildings, hospitals, schools - non-slip terrazzo floors are being used. The warmth and beauty of terrazzo, in addition to its safety and durability factors, are further reasons for its wide acceptance wherever people gather.

# SALVAGE WASTE WATER!

## ... SAVE YOUR MONEY!



### CLARENCE R. BYRD WHO FARMS SOUTH OF KRESS

Irrigated 20 acres of grain sorghum and 60 acres of cotton - - each three times from this tailwater installation

## Grain Yielded 5,200 Lbs. Per Acre And Cotton Made 102 Bales - All Without Fertilizer!

### MR. BYRD STATES

"In 1964, without using my tailwater, I made only 3500 lbs. of grain per acre and 57 bales of cotton on the same ground. The system paid for itself in one year and I plan to install another Peerless Tailwater Pump in 1966."

## "My Cost To Irrigate With My Peerless Tailwater Pump Was 10¢ Per Acre."

Only Peerless Builds A Pump Especially Designed To Reclaim Irrigation Tailwater

\*100 to 1200 GPM

\*Never needs priming

\*Cannot freeze

\*Available in electric or engine drive

\*ADJUSTABLE FLOW impellers are set for amount of water entering pit or lake

See Your Underground Pipe Distributor Or

# PEERLESS PUMP

AMARILLO HWY. -PLAINVIEW



# Mrs. Haner Kindergarten Pupils Hostess Celebrate Birthdays

The Gladiola Flower Club met Thursday morning in the home of Dorothy Haner, where Danish rolls and coffee were served as members gathered.

Mrs. Jackie Banks presided at the business session. Speeches were brought by Betty Davis and Sherry Partidge. Mrs. Davis won first prize with her white iris. Dorothy Haner displayed two arrangements, winning with her bordered arrangement of purple and yellow iris in an oriental style.

Judith Johnnie Lee was the guest speaker, and spoke on "The Defense, telling of new protection from radiation and fallout."

The next meeting will be May 19 with Dorothy Baggerly. Attending were Mmes. Perkins, Wanda Brown, Darlene Perry, Jo Larson, Partridge, Patricia Robertson, Gwen Smith, Patty Spoonemore, Bill Haner, Carolyn Wood, a new member, Sylvia Cranford and hostess.

Mrs. J.E. Womble, teacher of a kindergarten in Spearman, recently gave the last birthday party of the year for all the children in the class who have birthdays during the summer months.

Birthday kings and queens were Scotty Boyd and Gerri Lynn Kendrick, Quinn Banister, Tammy Robertson, Bobby Perkins and Kimberly Keyser. Chosen as the prince and princesses were Leslie Williamson and Kim Townsend. The other children were fairies and skipped around the honored group singing "Happy Birthday".

Refreshments of ice cream and cakes baked in cones and topped with a birthday candle were brought by Mmes. Robert Perkins and R.C. Banister. Mrs. Howard Keyser brought a gift for each child present.

After refreshments the children entertained their guests with a number of songs learned during the year.

Attending were Mmes. Keyser, Perkins, Debbie and Penny, Banister and John, Francis Perkins and Joe Francis, Guy Remy and granddaughter, Tammi Jo Kendrick.

Children in the class are Tammy Robertson, Kim Townsend, Stacy Perkins, Lonnie Easley, Gary McCalman, Jan Fowler, Gerri Lynn Kendrick, Bobbie Perkins, Mickey Gates, Scotty Boyd, Leslie Williams,

Leslie Ann Groves, Quinn Banister and Kimberly Keyser.

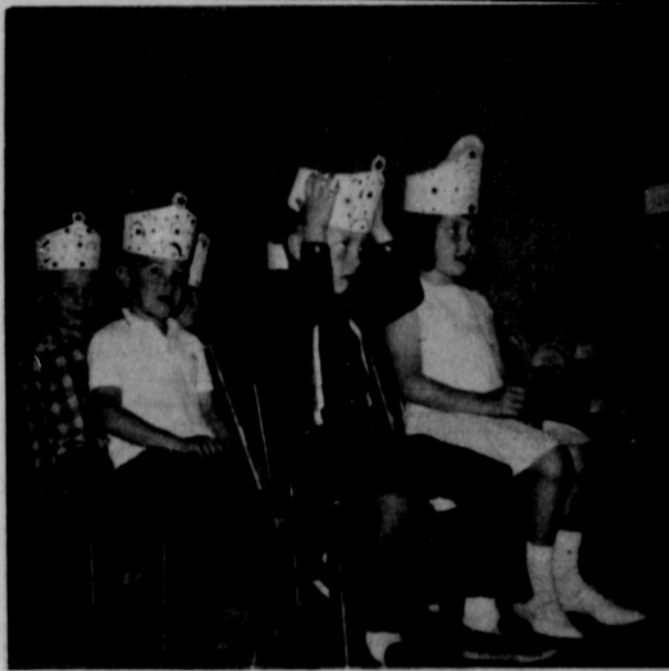
Mrs. Womble started the school year with 21 children. Seven families have moved since that time.

A school picnic was held Tuesday at the swimming pool park with the mothers attending and all enjoying games and dinner together. School closed Friday, May 6.

## Waka Planning Annual Trip

The Waka Parent-Teacher Association's Trip Committee is making final plans for the annual school trip, May 13, 1966, Cheyenne, Oklahoma, which has had much historical drama enacted there has been selected. The committee, Mr. and Mrs. Paul Shipman, Mr. and Mrs. Harold Marshall, and Mr. and Mrs. Eldon Gurley, urge all parents and school patrons to make plans now to go.

Each family is to bring enough food for its members and dinner will be spread together at the noon hour. Drinks will be furnished by the P.T.A. Final details will be announced later.



HONOREES - at a recent birthday party at Mrs. Womble's Kindergarten are (left to right) Bobby Perkins, Quinn Banister, Scotty Boyd and Jerri Kendrick. Not shown in the photo but also celebrating birthdays were Stacy Perkins and Kim Keyser.



PARTY - Mrs. Jesse Womble is shown with members of her kindergarten and their guests at a recent birthday party honoring pupils whose birthdays are this summer. Shown (from left) are a visitor (not identified) Debbie and Penny Perkins, Bobby Perkins, Kim Keyser, Leslie Groves, Jan Fowler, Mickey Gates and another unidentified little girl.

## WSCS Plans Supper for Senior Class

The WSCS met in a joint meeting Wednesday morning at the First Methodist Church.

During the short business session the group decided to have a salad supper for the senior class of the high school on May 19 at 7 p.m.

The program "The Political Structure" was given by J.D. Helms. This talk was in conjunction with the study being given by Patty Sheppard.

Attending were Sherry Partidge, Jan McIntire, Marie Hays, Carolyn Messer, Lucille Lewis, Patty Sheppard, Maylynn Schubert, Rita Reed, Nellie Buchanan, Frances Rhodes, Pat Reeves, Freda Sheets, Verna Strawn, Linda McLain, Donna Baxter, Linda Umphress, Margaret Adamson, Mary Lee, Myra Grimes, Virginia Head, Margaret She-deck, Beth Daniel, Minnie Jones and Virginia Trindle.

## For Gardening

Helpful tips for indoor and outdoor gardening are offered in the booklet, "How Does Your Garden Grow?" by Lucille Bush, consumer education director of Johnson Wax. Suggestions concerning safe and proper use of sprays, other garden chemicals are included.

To obtain the booklet, write Consumer Education Department, Dept. B-5, Johnson Wax, Racine, Wis.

## Cummings Refrigeration

HEATING  
AIR CONDITIONING  
SALES & SERVICE

SPECIALIST

659-2721  
SPEARMAN

# T.G.&Y.

5¢ TO 51¢ STORES

STORE HOURS  
Mon.-Fri. - 8:30-6:00  
Sat. - 8:30-8:00

LOOK AT THESE FABULOUS T.G.&Y. DISCOUNT PRICES!

PRICES GOOD May 9, 10, 11 - WHILE QUANTITIES LAST!!  
SALE...SALE...SALE...SALE...SALE...SALE...SALE...SALE...SALE

PUNCH-O  
**Balls** Reg. 39¢ Discount Price **33¢**  
14" Size-Assorted Colors

Plastic  
**Housewares** Values to 39¢ Discount Price **5¢**

9" White Paper - 100 per pkg. 90¢ value  
**Paper Plates** Discount Price **83¢**

White Paper - 200 per pkg. 35¢ Value  
**Napkins** Discount Price **27¢**

Cherokee Chef Charcoal 10 lb. bag 69¢ Value  
**Briquets** Discount Price **47¢**

12's Reg. Super and Junior 45¢ Value  
**Kotex** Discount Price **26¢**

Hair Dressing 3 1/2 oz. size tube Reg. 79¢  
**Wild Root "360"** **53¢**

Tip Top Magnetic - with Hair Clips 4 sizes \$1.00 Value  
**Hair Rollers** Discount Price **57¢**

Babe Ruth, always the showman, hit seven home runs and batted .455 in 15 opening day games for the New York Yankees.

Among Naga tribesmen, the sign of beauty is in the calf tions her beautiful brown eyes, but tells her "You've got mighty fine calf muscles."

Former major league manager Buckey Harris scouts for the Washington Senators.

### BUILDING TIPS

You can match your fireplace, or provide a room's focal point with a stone "backdrop" or room divider. A new idea in interior decoration, are thin sheets of pre-cut building stone which can be installed on a surface with a screwdriver.

### SO THEY SAY



Looking for Stereo bargains. Then right here at Burton's TV they found the set they liked, at the price they liked, and after-the-sale service that would keep them happy.

**Burton's TV**  
Your PHILCO Dealer  
106 E. Kenneth  
Spearman, Texas  
Phone 659-2121

**Got High Net Profits with PIONEER Sorghums**

Proved yield champions in farmers' fields and Texas A & M tests!

**B & B GRAIN**

The San Francisco Giants have missed the National League title of five games.

The Chicago Cubs won two season series in 1965. They beat the New York Mets 11-7 and St. Louis Cardinals 10-8.

## Livestock Feeders Meet May 12 at Texas Tech

LUBBOCK--- Texas Tech Animal Husbandry Head Dr. George F. Ellis Jr. said Wednesday "preliminary indications point to a good turnout" for Tech's Livestock Feeders Conference on May 12.

Ranchers and cattle feeders from throughout the South Plains and Eastern New Mexico are expected to attend the one-day event sponsored by Tech's Ani-

mal Husbandry Department. Registration fee of \$5 per person includes a luncheon and a printed copy of the conference proceedings.

C.G. "Charlie" Scruggs of Dallas, vice president and editor of the "Progressive Farmer" will be the principal speaker. He will talk at 10:20 a.m. in the Tech Union on the "Changing Agricultural Situation: Its Future Outlook."

Dr. Ellis will report on "Livestock Research at Tech" at 9:10 a.m. followed by a discussion of "The Application of Research Findings to Commercial Beef Production," by Spur rancher O. J. Barron Jr.

## Peace Officers Slate Meeting At Boys Ranch

Law enforcement officers from a four-state area are expected to attend the 12th annual meeting and barbeque of the United Peace Officers of America at Cal Farley's Boys Ranch, Thursday, May 12.

Registration will begin at 9 a. m. followed by a program of entertainment at 10 a. m. Several door prizes will be presented by the UPOA directors.

Two singing groups from Pampa — "The Climbers" and "The Squeaky Door Four" — are scheduled to appear on the program.

## Consult Bank

When the money for renovating is not in hand, the homeowner can find a wide variety of loans for improving his property available at most full-service banks. Before he takes the plunge, his banker can advise him on the following points:

1. Whether the proposed investment is realistic in proportion to the value of the property. (There is little point, for example, in adding a \$3,000 greenhouse to a \$10,000 summer bungalow.)

2. The approximate price range of the proposed improvement. (Contractors' offers differ. The bank will be able to give a reliable range, and may even supply the names of reputable contracting firms.)

3. The probability of a loan which will cover cost of improvement. (This depends upon credit rating and expandable income — that is, the amount of money left over after fixed living expenses are covered.)

## Dr. Hackley Attends Osteopathic Meeting

Dr. D.E. Hackley of Spearman attended the Board of Trustees' meeting of the Texas Association of Osteopathic Physicians and Surgeons at the Robert Driscoll Hotel May 2-3 in Corpus Christi.

The meeting was held in conjunction with the 21st annual convention and meeting of the House of Delegates.

Approximately 350 osteopathic physicians and guests attended the convention.

Program topics of the scientific sessions included immunization and vaccination, bacterial diseases and the common cold and medical transplanting to correct defective organs.

Featured scientific speakers included Dr. William T. Butler of the National Institute of Health and Dr. Jerome A. Gold, Director of Clinical Research, Infectious Diseases Department of Smith Kline and French Laboratories.

Dr. Wesley B. Larsen, Chicago, president of the American Osteopathic Association,

and Mrs. C.W. Millard, Hillsdale, Mich. president of the Auxiliary to the American Osteopathic Association also addressed the meeting.

## Mrs. Lynch Is Bridge Hostess

Mrs. Faye Lynch was hostess for the Hi-Lo Bridge Club Thursday evening.

High score was won by Carrie Marie Berry, low by Mary Lee and the traveling prize by Ruth Bryan.

Attending were members Mary Lee, Carrie Marie Berry, Mabel Jameson, Kubah Gandy, Ruth Bryan, guests, Mmes. Gwenfred Lackey, Lemmie Russell and the hostess.

If you want really coarse sugar for sprinkling over cookie dough, just crush some cubes of sugar with a rolling pin.



**New  
Breakthru  
Hybrid  
for the  
Great Plains  
DEKALB  
F-65**

NEW DeKalb F-65 Yield Breakthru variety is a short-stalked, full-season irrigation hybrid for the Southern Great Plains area. It is especially adapted to Texas High Plains irrigated conditions. Has bred-in smut tolerance—is short-stalked and produces big heads of dark, red grain. It's a dandy. Order yours today!

**DEKALB  
HYBRID  
SORGHUM**

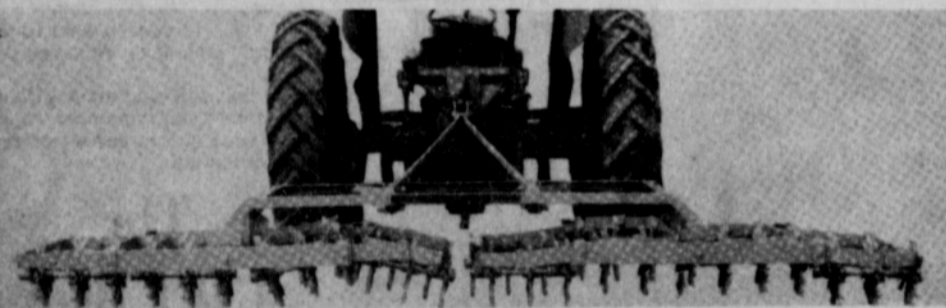
"DEKALB" is a Registered Brand Name. Numbers are Variety Designations.

Planted by More Farmers Than Any Other Brand

**TROY SLOAN**  
659-2954

**RAY MOORE**  
659-2886

## When you think of Hoing Beds, think of Caldwell Rotary Hoes



The Caldwell ROTARY HOE is made in three-point hitch and pull types. Two and four-row models available. Each has complete flexibility. For Cleaner Fields, Better Crops and more Farm Profits buy one soon.

will give you  
**Cleaner Fields  
Better Crops  
More Profit**

### Breaks Crust, Flips Weeds, Mulches

Your crop gets a faster weed-free start when you work your fields with a Caldwell Rotary Hoe:

■ In blind cultivation the hoe's gentle action breaks the top crust so seedlings can emerge. If plants are up, the soil around them is worked without damaging them.

■ As the Rotary Hoe rolls down the rows the "in-and-out" action of the hoe wheel tines loosen and flip out young weeds before they are rooted in. This means less work when crop is in advanced stage.

■ The land surface is mulched to help it retain rainfall. Air and warmth can penetrate the soil to stimulate growth. Erosion by wind or water is retarded.

### USEFUL FOR PACKING LAND

The two- or four-row implement can be pulled backwards when its necessary to pack the land after planting. It also works well as a clod breaker when pulled backwards.

**R.L. McClellan & Sons**



**PAG 665  
IS YIELD  
PROVEN!**



It is a proven fact. According to the High Plains Research Foundation at Halfway, the five year average for PAG 665 for 1960-64 was 7,256 pounds per acre. It is uniform in height, medium height, sturdy stalk with large semi-compact heads with bright red, quality grain. Very resistant to head smut and milo disease.

PLANT PAG 665 FOR EXTRA PROFITS

**Strawn Farm & Ranch Supply**

**Relative of Shark**

The skate belongs to a family of rays and is related to the shark.

Today there are thousands of different sizes, styles, and colors in cotton sheets.

**R. L. Ooley**

**J. F. Ooley**

**SPEARMAN CUSTOM CABINETS**

Millwork-Furniture-Formica Drainboard-Bar & Counter Tops

Tub & Shower Enclosures

**Gruver Highway - 659-2782**

Residential-Commercial

Expert Workmanship, Satisfaction Guaranteed,

Work From Your Ideas or Ours

**Musicians. . . .**

(Con't. from page 1.) and place for its concert contest Friday morning and had to move to a new location for the concert. Festival officials changed the time without notifying Spearman so the Hale Center band could play and then let some its members fly to Austin for state competition in literary events. The band and choir were both trying to retire trophies at the Festival.

Americans traveling abroad spend \$3.5 billion a year.

**Weese. . . .**

(Con't. from page 1.) ions, Roberts will be in charge of the defense.

The successful Lynxette mentor had been invited earlier to speak to the coaching convention on defense. It was his defensive maneuvers that carried his small, low scoring Lynxettes to the state AA championship.

When asked to discuss the zone defense his team used in the state tournament, Weese said:

"We weren't using a zone, is what is funny. When you give away as much height as we did in those two games, you just have your girls standing around out there and hope they are standing in the right place."

Susan Hutchison, the senior Lynxette all-state guard, has been selected to play in the all-star game. The senior hand-girl had played both guard and forward in her four-year career. She went back into guard regularly last season when starter Bethany Donnell was injured in the last district game.

With Weese being selected to coach the offense, he will be allowed to take a senior forward with him to play in the all-star game.

Weese had a record of 225 wins and 57 losses in his girls' coaching career. He has had one state championship team, one state runner-up, two regional champions, four bi-district champions and six consecutive district champions.

Forwards selected for the North team are Donnie Pruitt of Slidell, Janet Rushing of Tulia, Cindy Wilson of Petersburg, Shirley Ranier of Floydada, Pat Ramsey of Chapel Hill, Jolene Dean of Sundown and Pat Thurman of Tulia.

Guards besides Hutchison are Ruth Ann Yates of Deport, Lula Thompson of Rivercrest, Mona Daniels of Duncanville, Cindy Shadden of Abernathy, Dianna Gregory of Springlake and Candy Rockenbaugh of Carroll High in Grapevine.

**FOOD PRODUCTION**

The Far East, including China, grows 27.8 per cent of the world's food; Europe, 22.7 per cent; North America, 21.8 per cent; Soviet Russia, 11.5 per cent; Africa and Near East, 8.5 per cent; Latin America, 6.4 per cent; Oceania, 1.3 per cent.

**Rites Held**

**Here for**

**Mrs. Riley**

Funeral services for a county pioneer, Mrs. Orlene Elizabeth Riley, 83, were conducted at 10 a.m. Saturday in the First Methodist Church of Spearman.

The Rev. Wesley Daniel, pastor, and the Rev. Luther Berry, pastor of the First Baptist Church, conducted the services. Burial was in the Holt Cemetery with Boxwell's in charge of arrangements.

Mrs. Riley lived at 118 S. Barkley in Spearman. She came to Hansford County in 1909, just two years after she married Jess Riley. He died in 1962.

She was born May 9, 1882 in Bell County, Texas, the daughter of Mr. and Mrs. Daniel Robbins. She was a member of the Methodist Church in Spearman.

Survivors include a sister, Mrs. Bell Parks of Oklahoma City; a number of nephews and nieces among whom are Jack Taylor of Spearman, Mrs. Jack Hodges of Denton and Elizabeth Parks of Oklahoma City.

Pallbearers were Paul Hazelwood, Medlin Patterson, Oris Patterson, Kenneth Williams, Olin Sheets and Freeman Barkley.

Honorary pallbearers were Clay Gibner, Bob Hays, Roy Russell, Bob Vaughn, Bill Russell, Floyd Hays and Dr. R. L. Kleeberger.

**Acreeage Increase**

**Does Not Cause**

**Much Excitement**

President Lyndon Johnson's announcement of a 15 per cent increase in wheat acreage for this year did not cause too much excitement in local wheat producing circles.

Among most grain circles, the feeling is that a price increase would do more for production than an increase in acreage.

County ASC Office Manager Ellzey Vanderburg said the increase would put the county acreage back to about the

**Population. . . .**

(Con't. from page 1.)

of April, 1966, there were a total of 977 electric connections in the city limits and very few of these were for mobil homes. Also, most of the mobil homes here now are permanent.

The figures this April are down from the high of 1002 at the end of March. Gilliam credited the decrease in connections to the fact that the pipeline construction crew moved out in early April.

Last year at the end of April the total connections in the city was 977. This year shows an increase of 11 over 1965.

Gilliam said the number of connections moves up and down almost every month, but the trend has been for a steady growth.

Gilliam also said that many connections in some of the smaller, less desirable houses have also been out of service since more and better housing has been available.

Workers on the pipeline this year reversed the trend of a loss in connections in February and March that has been evident in past years. Gilliam said lots of people move around the mid-term of school.

This year the January connections were 973, February 990, March 1002, and April 988.

In 1965 the January figures were 973, February 963, March 968 and April 977. In 1961 the figures were 902 for January, 891 for February, 892, March and 900 in April.

Total electric connections in Spearman, residential and commercial in 1961 were 1147, in 1965 they were 1240 and this year the total was 1252.

Economy-minded builders are using more and more terrazzo flooring in their constructions. The life of terrazzo is often measured better in decades than in years. Once it is properly installed, terrazzo flooring requires a minimum of upkeep effort and expense.

point where it was before the Wheat Stabilization Act began.

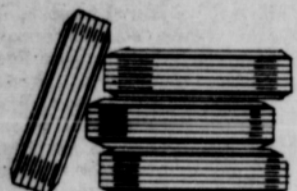
He said this year's allotment was 200,546.4 acres and with the increase it will probably be back to 224 to 230 thousand acres.

Under the current wheat program, farmers get about \$2 per bushel on 45 percent of their crop through the market price and payments for diverting acres and certificates. The rest of the crop goes for about \$1.25 or what the market is.

According to some producers the \$1.25 per bushel is just a break-even price and there is very little if any money to be made irrigating and fertilizing wheat.

Some farmers say that wheat is no longer a money crop. They are looking for other crops for a higher net profit.

Vanderburg stressed that this is just estimating on his part, he has received nothing on increasing allotments from the state ASC office.



**SAVE MONEY TIRES**

**On Dunlop**

**Dunlap Elite Tires**

**40% OFF** MANUFACTURER'S LIST PRICE

DOUBLE STRIPPED TIRES

7.75 X 14 List \$55.56	Now	<b>\$33.33</b>
8.25 X 14 List \$60.76	Now	<b>\$36.45</b>
8.55 X 14 List \$66.74	Now	<b>\$40.04</b>

PLUS TAX AND RECAPABLE TIRE

ALL DUNLAP ELITE TIRES 40% OFF

**Dunlop Gold Seal C-60**

**35% OFF** MANUFACTURER'S LIST PRICE

LOW PROFILE TIRES

7.75 X 14 List Price \$38.72	Now	<b>\$25.16</b>
8.25 X 14 List Price \$42.44	Now	<b>\$27.58</b>
8.55 X 14 List Price \$44.63	Now	<b>\$30.30</b>

PLUS TAX AND RECAPABLE TIRE

ALL GOLD SEAL C-60 TIRES 35% OFF

**FREE MOUNTING & BALANCING**  
**FREE ROTATING EVERY 5,000 MILES**

**FIRESTONE TRACTOR TIRES ARE PRICED RIGHT!**

**Field Tractor Tire Service**

**KNOW YOUR LICENSE NUMBER:**

**BPJ-296**

If this is your license number and you bring your car and this advertisement to our station before closing time on Tuesday, May 10, 1966, you will get a free tank of gasoline!

**Snider - Pearson Texaco**

701 Collard

YOUR BUSINESS APPRECIATED

659-9972



to **KBMF-FM**  
*"the fun station"*  
**98.3** on your dial

**TOMMY GOOCH AGENCY**  
FARM BUREAU INSURANCE  
Spearman, Texas

**MOONLIGHT TV**  
Specializing in Minor TV Repair.  
EVENINGS & SATURDAY  
Sorry-No Sunday Call  
Phone 659-2792 or 659-3321  
Service Calls - \$5.00