

11th annual Radio-Thon is Thursday . . .

Fund raiser benefits Golden Spread Center

Spearman's radio waves will be full of local entertainment this coming Thursday as the Golden Spread Center holds its 11th Annual Radio-Thon to help raise money for the senior citizen's program in this Hansford County city.

As many as 50 local acts -- from choirs to duets and piano recitals to comedic sketches -- are on tap for the annual fund raiser which is aired each year on KRDF-FM Radio in Spearman.

Telephone lines are kept busy throughout that day as volunteers take pledges from local citizenry to help fund the Golden Spread Center.

Money which is donated to the Center is utilized to keep their building going throughout the year -- used partially in the operating fund, for upkeep on the building and the Center's van, maintenance, insurance and a host of other needs.

"Without this money coming in, we simply wouldn't have a Golden Spread Center," notes board chairperson, Marsha Murphy. "The people of Spearman have always been so gracious in their giving. Without them, none of this would be possible."

Plans have been underway for this year's edition of the Golden

Spread Radio-Thon for several months now with a planning committee of five which includes Murphy, Pearl Pierce -- the Center director -- George Young of KRDF and Pete and Brenda Wall.

Pete and Brenda have been in charge of getting together the local entertainment which will be featured in the Radio-Thon. The special day of local talent will begin at 9 a.m. Thursday and will run until 5 o'clock that afternoon.

Money raised over the years has been used for various needs of the Golden Spread Center. And the most money ever raised -- a total just over \$17,000 -- was in the first Radio-Thon which was held in 1978.

That money was used as a down payment on their current building which is located in the 100 block of South Haney.

Since buying it, the Golden Spread Center has completely renovated the structure both inside and out so that it no longer even resembles the service garage it once was.

The 3,200 square foot building now is the home-away-from-home for some 110 active, dues-paying members who utilize the facility on a day to day basis throughout the week.

The center is open from 9 to 5

Monday through Friday and activities are going on each day with quiltings, covered dish luncheons, card and domino games, arts and crafts as well as a host of other items on the agenda each and every month.

When it's not serving as the center of activity, then the Golden Spread Center serves as the focal point for an outing which may be anything from a simple visit to the doctor to museum visits and scenic trips for those who wish to go as a group.

Blood pressures are taken at the center twice each month and the Golden Spread Center also serves as the site of the annual Spearman Health Fair which is held each October.

The center's director, Pearl Pierce, has been with the group for the past 10 years and serves in whatever capacity she can.

Perhaps her most rewarding work comes from her interaction See "FUND" p-3



MAKING PLANS for the 1988 Golden Spread Radio-Thon are committee members [l-r] George Young, Marsha Murphy, Pearl Pierce, Brenda Wall and Pete Wall. The annual event will be held this Thursday with some 50 local participants in the talent portion of the annual fund raiser.

SISD to consider final JH bid specs, changes

A final look at bid specifications and changes on the junior high building program will be viewed by Spearman ISD board members at their regular meeting Monday evening.

That meeting will begin at 7 p.m. in the board room at Spearman high school.

Architects were sent back to the drawing board when the school was informed that special handling of asbestos flooring would be required on the east wing of the building before the structure could be demolished.

School officials, however, are still optimistic about an early June start on construction at the junior high-elementary campus at Fifth and Townsend.

"We will probably award bids in May," notes SISD superintendent Larry Butler. "And construction should start by early June. We're still on schedule."

In other action Monday, the board will meet in executive session to discuss the business manager's position.

That position came open when long-time SISD business manager Orville Latham announced his retirement.

Currently, Butler has some nine

applications for the position, however, the school board is not expected to take any action at Monday's meeting.

Absentee voting dates will be established by the board for the upcoming May 7 trustee election. Absentee ballots will be cast from April 18 through May 3.

Trustees will also consider changing the meeting time to coincide with Daylight Savings Time.

They will hear reports from librarians and counselors and will look at what property evaluations they may be looking at for the upcoming fiscal year.

Courthouse trees may be removed

At least three trees at the Hansford county courthouse have gone to the birds -- literally -- and Hansford county commissioners have decided to take care of the 'messy' problem by eliminating the birds' roost -- three tall pine trees which stand in front of the courthouse.

"Nobody in West Texas likes to cut down trees," notes county judge R.L. McClellan. "But the problem with the birds has gotten out of hand."

The three trees on the elimination edict have grown large enough that bird droppings are beginning to mar the face of the courthouse.

Efforts to discourage the birds from using the trees has largely met with failure, according to the Hansford county judge.

"We've tried just about everything," he notes. "Even using shot guns to kill some of them."

The commissioner's court is hoping to get feedback from county residents as to the bird -- and now, tree -- problem.

According to Judge McClellan, the trees will be replaced once they are cut down . . . but with trees placed further out from the building proper.



GOING TO THE BIRDS . . . these stately pines may find themselves on the wrong end of a lumber axe if county commissioner's can't figure out how to rid the Hansford courthouse of a 'messy' bird problem. Plans now are to cut the trees down this fall and plant new ones . . . further out from the courthouse proper.

The Hansford Plainsman

25¢
Per Copy

6 Pages

Volume 17, No. 23
YOUR HOMETOWN NEWSPAPER
Sunday, April 10, 1988

For Democratic, Republican races . . . Primary runoff balloting Tuesday

Active campaigning between Republican opponents for the 84th district attorney's race has stirred some interest in Tuesday's primary runoff election with 19 absentee ballots cast there as of noon Friday, according to the Hansford county clerk's office.

Meanwhile, the Democratic absentee ballot had only two absentee votes cast for the single runoff race there.

A pair of Borger attorneys, Phil Black and Stephen F. "Steve" Cross are vying for the Republican nomination and the right to meet Democratic challenger John LaGrone in the November general election for 84th District Attorney.

The two men were the top vote getters in the March 8 primary elections which saw incumbent 84th DA, Gene Compton, eliminated from the race.

Cross received the most votes of all three men, receiving 400 votes from Hansford county and 1,117 from Hutchinson county for a total of 1,517.

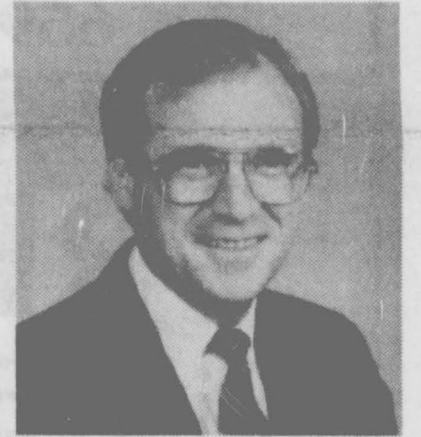
Black was second in Hansford county with 222. His 994 votes in Borger gave him a 67-vote edge over Compton who received only 94 votes in Hansford and 1,055 in Hutchinson county for a total of 1,149.



PHIL BLACK

This is the only local campaign in either the Republican or Democratic primary runoff.

The only Democratic runoff race pits former Amarillo district judge H. Bryan Poff against Mel



STEVE CROSS

Phillips, also of Amarillo, for the Texas State Senator nomination.

The winner of that race will meet Republican Teel Bivins in the November general election.

See "PRIMARY" p-2

To control density of animals in certain areas . . . City to consider animal ordinance

Spearman city commissioners will consider an amendment to an existing ordinance which would limit the number of animals which may be kept in a 4,000 square foot area within certain zones of the city.

Tuesday's meeting will open at 8 p.m. in the Spearman city hall board room.

Under existing ordinances, livestock within residential areas of the city are prohibited.

However, livestock may be kept

in zones which are designated as light or heavy industrial or general agriculture usage.

The amendment would limit the number of animals which would be kept in the three non-residential zones to one fowl or animal per 4,000 square feet.

Councilmen will also consider a resolution to support implementation of an enhanced 9-1-1 emergency telephone number.

Should they approve the resolution, they will then consider implementation of a 9-1-1 fee and surcharge and provide for an effective date.

According to state statutes, the fee and surcharge may not be more than 50 cents per telephone customer nor more than 1/2 of one percent surcharge on long distance service for each customer receiving intrastate calls.

In other matters, councilmen will award a contract for the purchase of a new electronic telephone system for both the city hall and police department.

Will consider a contract with the Hansford county Y for the 1988 summer operation of the municipal swimming pool.

Will hear a report from city manager Jim Murray concerning amendments to the safe drinking water act of 1974.

Will consider the monthly reports from the fire, ambulance, police, municipal court and animal control departments.

And will consider monthly bills payable and current cash position of the city.

Davis to play in cager senior all star games

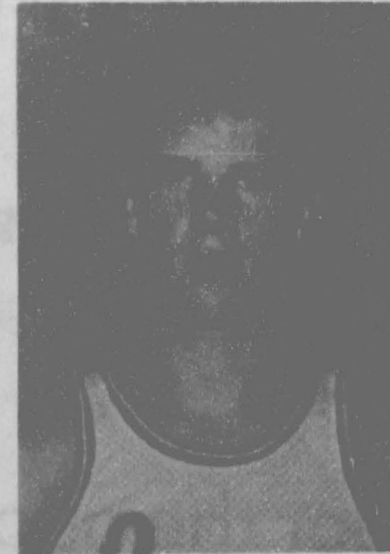
Brett Davis will be on the Texas Golden Spread High School All Star East Team during a special All Star tournament which will run off April 21-23 at the East Texas State University fieldhouse in Canyon.

The talented Spearman cager was a member of the district 1-AA championship Lynx team this year and has played varsity basketball for the past three seasons.

The Golden Spread high school all star tourney is utilized to recognize the talents and contributions of the top area high school seniors, to support the basketball programs of area colleges and university and generally to promote basketball in the Golden Spread area.

The games are organized and conducted by the board of directors of a non-profit trust. Games are funded by donations solicited from area businesses, service organizations and individuals.

All funds raised by the games are donated to the basketball pro-



... On East All Star Team BRETT DAVIS

grams of area colleges and universities.

The first game on tap for the All See "DAVIS" p-2

The Hansford Report

by JAMES JARRETT



The rumors have been rampant the past few weeks and it's time they were laid to rest. Yes, James Jarrett is leaving the Spearman Reporter.

As many know, I have been living in Spearman during the week, then going to Dumas on the weekends to be with my family. This is a situation which has existed for the past year.

Beginning Monday, April 25, I will be associated with an Amarillo publication called Fun Country News. My duties will cover an area from Tahoka on up to the top counties of Texas -- Hansford included.

Because I'll be spending most of my time on the road, I'll be able to stay in Dumas -- with my family.

Meanwhile, Texas Independent

Newspapers -- the owner of this paper -- is busy interviewing prospective editors. And they have a good selection to choose from.

However nice it will be to be back with my family every evening, I have to admit to a small pang in my chest at the thought of leaving both Spearman and Hansford County.

People, I will miss you. I have been blessed through my association with the newspapers here of meeting, coming to know and liking a great number of people.

Oh, we've had our ups and downs, you and I. Most of it has been due to misunderstanding. Some because I don't run the same type newspaper that our friend, Billy Miller, did.

However, I am leaving Spear-

man a much richer man than I came. Simply because my living here has enriched my life greatly.

I trust that many of you will return fond memories of our too short time together. I know that Spearman will always hold a deep and dear part of my heart.

And, I'll be in touch from time to time with many of the people whom I've come to know and enjoy. I'll be in Spearman every so often as I gather stories and information for print in my new publication.

And, just because I'm leaving now doesn't mean that I'll never be back -- assuming of course, the public will have me back.

There is a bright side to all this, you know. Think back over the last year at the number of people who have been the brunt of my particularly offbeat sense of humor.

Many of these people promised to get even. Of course, everyone knows what a respectable person I am.

So, these secret longings of walking up to these fine people, sticking my thumbs in my ears, waving my hands and yelling "Nyah, Nyah" will just have to remain secret longings. In my position, I simply can't afford to look ridiculous.

Let's see, that would be Jimmy Shieldknight, Roxie Evans, Jim Ivey, Worley Smith, Ronda Buster, JoLynn Griffin, Mike Cudd, Jack Hansen, John Bishop, Al La Rochelle.

And the list goes on with such notables as Billy Miller, Jeff Beedy, Father Patrick Walsh, Jim Evans, Don Townsen, Joe Bynum, Joe Clement, Alton Ellsworth, Ron Dunaway.

We even got one on Karen Goodman, George Young, Orville Latham, Ken Rutherford, Don Mullins, David Steele, Lonnie Bradley, John Haltom, Okies in general, mothers-in-law everywhere and politicians of all sizes, shapes and dispositions.

Sorry, people. It's just too late now to get even!

Of course, there does have to be a serious side. Frankly, I will miss Spearman. The people of this community have been very kind. And I know they will be kind to whomever takes over where I leave off.

THE HANSFORD PLAINSMAN

continued from p-1

PRIMARY

Other Republican races will have former 13th congressional district U.S. Representative Beau Boulter meeting Wes Gilbreath of Houston to decide that party's nominee for U.S. Senator.

The winner of that race will face long-time incumbent Lloyd Bentzen for one of Texas' senate seats in the U.S. Congress.

Bob Price of Pampa and Larry Milner of Amarillo will meet in the Republican race for U.S. Representative, the seat being vacated by Boulter. The winner here will meet Bill Sarpaulius in the general election.

Other contested offices in Tuesday's runoff election will be between P.S. Sam Ervin of Dallas and Ed Emmett of the Austin area for the Republican nomination for Texas Railroad Commissioner.

And the Justice of the Supreme Court, Place 2 nomination will be decided between Ronal S. Black of Missouri City and Nathan Hecht of Carrollton on the Republican ticket.

Polls will open at 7 p.m. and will close at 7 p.m. Tuesday. The only restrictions which apply to the runoff election are that voters who cast ballots in the primary must vote in the same primary runoff.

Otherwise, all registered voters are eligible to cast ballots in either party's runoff election.

A list of both Democratic and Republican polling places follows.

REPUBLICAN

Voting Precinct	Polling Place
1	Courthouse
2	*GCBC
3	*GCBC
4	Gr. Co. Barn
5	Spm c. Barn
6	Spearman HS
7	*GCBC
9	Pr-Ms School
DEMOCRATIC	
1	Courthouse
2	Spearman HS
3	*GCBC
4	Gr. Co. Barn
6	Spearman HS
7	*GCBC
9	Gr. Co. Barn
* Gruver Community Bible Church	

The Hansford

Plainsman

Your Hometown Newspaper

USPS 2346-6000

Spearman, Tx 79081

213 Main, Box 458, 659-3434

Published Weekly at
213 Main, Spearman, Texas

Owned and Operated by:

Texas Independent Newspapers, Inc.

19906 Encino Grove, San Antonio, Tx 78259

Second class postage paid at Spearman, Texas 79081.

Any erroneous reflection upon the character of any person or firm appearing in these pages will be gladly and promptly corrected upon being brought to the attention of the management.

PUBLISHER

James C. Jarrett

Subscription Rate: Hansford, adjoining counties, combination with the Spearman Reporter, \$19.95; non-adjoining counties, \$24.95 annually.

Postmaster: Send address changes to Hansford Plainsman, Box 458, Spearman, Tx. 79081.

The publisher reserves the right to revise or reject at its option, any advertisement which it deems objectionable, either in subject or phraseology, or which it may deem detrimental to its business.

continued from p-1

DAVIS

Star East boys squad will pit them against the North quad at 8:30 p.m. April 22.

Saturday's games will open with consolation games, the girls at 2:30 that afternoon with the boys game at 4:30.

The boys championship contest will begin Saturday evening at 6:30 and will be followed by the girls championship contest at 8:30.

Davis has been a stand out performer for the Lynx, not only in basketball, but in football as well.

He has also participated in golf and track, was active in his youth of the Spearman swim team. He has been a member of the Fellowship of Christian Athletes, a Boy Scout and on the student council at Spearman junior high school.

Davis has also coached YMCA ball teams and refereed Y games as well. He is the son of Curtis and Marlene Davis of Spearman.

weekly rates starting at '75

daily rates starting at '15

"Your home away from home"

Ranchouse
MOTEL

1513 S. Main

Perryton, Tx 79070

806/435-5441

Colored Cable TV w/Free HBO & Playboy

Air Conditioning -Clean Rooms -Roll-A-Way beds available

REVIVAL

First Baptist Church

123 Bernice, Spearman

April 10 - 15

Sunday - 11 a.m. Morning Worship

7 p.m. Evening Worship

Mon. - Fri. - Noon Meal & Message

7:30 p.m. Evening Service

Rev. Ed Floyd

Evangelist

Lynn Garrett

Musician

"Come hear the good news of
God's love for you!"

IF YOU DON'T GO VOTE
ON APRIL 12th
WE COULD END UP
WITH A CONGRESSMAN
THAT DOESN'T GIVE
A HOOT ABOUT
SPEARMAN!

EVERYBODY CAN VOTE IN THIS REPUBLICAN RUN-OFF
EXCEPT THOSE WHO VOTED IN THE DEMOCRATIC PRIMARY.

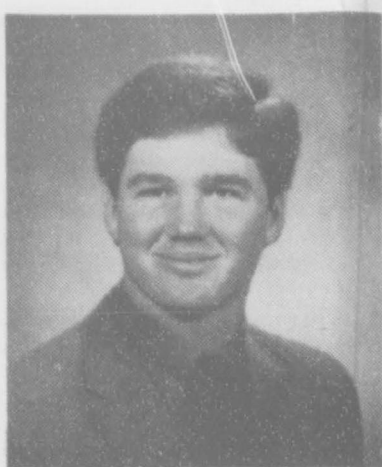
BOB PRICE NEEDS YOUR VOTE APRIL 12

Bob Price Can Represent Every Person
And Every Town In This District. Not Just Amarillo

Price for Congress Comm. Billy B. Davis Trasn., Box 758, Pampa, TX



IT BRINGS OUT THE LITTLE KID in all of us . . . pretty spring weather, that is. Mix that with a pair of roller skates and it's understandable why these three young Spearman lasses are out on the sidewalks. Pictured here are [l-r] Misti Vera, Nichole Buster and Dynell Vera.



JODY BRADFORD
... Stonewall Extension Agent

Gruver grad named senior county agent

A Gruver high school graduate, Jody Bradford, has been named as senior extension agent in Stonewall County, announces District Extension Director Ed Garnett and Stonewall county commissioners.

Bradford is also a graduate of Texas Tech University and moves to his new position after serving as Wilbarger county extension agent since 1985.

Garnett praised the contribution Bradford has made to the Wilbarger county 4-H program during his 3-year tenure, citing the exchange program and other projects he initiated in conjunction with county agent Pam Prather.

"He's done some real interesting things during the time that he's been here and made some good additions to the 4-H program," Garnett said. "He's been a real asset to the county and has done an outstanding job."

As Wilbarger extension agent, Bradford's primary responsibility was to give leadership to the 4-H and youth agricultural program and work jointly with other agents in developing educational programs through the Wilbarger county program building committee.

While at Tech, he was a member of the Saddle and Siroin Club and the Texas Tech Saddle Tramps.

He was also on the Tech wool judging team and senior and junior livestock judging teams.

Bradford was on the dean's list and received the King Ranch Scholarship in Animal science. He worked as a student assistant in the Tech Animal Science Department and the Texas Tech Horse Center.

He is the son of Van and Lee Bradford of Gruver and is married to the former Eadie Clemmons of Spearman.

School Menu

JR AND ELEM

- Monday**
Tasty pizza
Green beans
Macaroni/cheese
Fruit cup
Milk
- Tuesday**
Rib B Que/bun
Fries
Blackeyed peas
Lime jello/pears
Milk
- Wednesday**
Spaghetti/meat sauce
Early june peas
Cole slaw
Garlic bread
Peaches
Milk
- Thursday**
Fried chicken
Potatoes/gravy
Bread
Milk
- Friday**
Hamburger/bun
French fries
Shredded lettuce
onion/pickles
Cookie

HIGH SCHOOL

- Monday**
Pizza
Salad bar
Macaroni/cheese
Fruit cup
Milk
- Tuesday**
Rib B Que/bun
Fries
Salad bar
Lime jello
Milk
- Wednesday**
Spaghetti/meat sauce
Cole slaw
Garlic bread
Peaches
Milk
- Thursday**
Fried chicken
Potatoes/gravy
Salad bar
Hot bread
Honey
Milk
- Friday**
Hamburger/bun
French fries
Salad bar
Onion/pickle
Cookie

continued from p-1

FUND

with the many friends she has made over those years of working at the center.

Pearl operates as a friend, a confidant, an information center -- just whatever it takes to get the job done.

She also helps members out with their medicare and medicaid forms and is here to answer questions whenever one is asked.

"I don't always know the answers," she laughs. "But when I don't, I generally know where to go to get the answer."

The Radio-Thon is also the highlight of the year for two very special people at the center.

The annual fund raiser is also the time the Golden Spread Center recognizes both its volunteers and members with a pair of special awards.

The 11th Annual Radio-Thon will be no different with the naming of the 1988 Volunteer of the Year and the Center's Senior Citizen of the Year. Those awards will be given on Thursday.

All in all, the 1988 edition of the Golden Spread Center Radio-Thon promises to be still another great enterprise for both the Center and Spearman residences.

Borrowing a phrase from another well-known fund raising enterprise -- Together, it works for all of us.



About 2,500 years ago, the Chinese used hollow bamboo to pipe natural gas and water.

YOUR BEST SOURCE . . . by a country mile

Newspapers Enjoy Huge Leadership In Political News

Vast majority of people in a recent survey chose newspapers by a 2-to-1 margin over the nearest rival as the "major source of information about political issues."

Best for political issues:

Newspapers	61%
TV	31.5%
Radio	6.8%

* * * *

Best about candidates:

Newspapers	73%
TV	21.6%
Radio	6.7%

(SOURCE: Media Research Bureau of the Missouri School of Journalism. These findings reflect results of many similar surveys throughout the country.)

Prepared by Texas Newspaper Advertising Bureau (TNAB)
An affiliate of the Texas Press Association

NEWSPAPERS No. 1

ATTENTION BUSINESS OWNERS!

The most sweeping tax changes in history affect tax returns to be filed this year. We understand the tax laws that relate to small businesses. If there's ever a time for H&R Block, it's now.



DON'T FACE THE NEW TAX LAWS ALONE.
111 S. Main Perryton ph. 435-5616
Fri. 9-5 Sat.

...better sorghum hybrids
...new pricing programs.

Helping you choose the right set of sorghum hybrids at the right price is exactly what your neighborhood Pioneer representative is trained to do.

For the High Plains
8493 • 8333



Get Together

with...

Billy Logsdon
Spearman
733-2803

Andy Watley
Spearman
659-3970



AUCTION APR. 16 1988 - 10:00 a.m.

TxS-028-006829 Howard Swink

Swink & Cook Auction Co.
"Pound for Pound the Best Team Around"
1401 Hwy. 15 W. P. O. Box 906 Perryton, Texas 79070
Phone: (806) 435-7279 or (806) 435-4265 Mobile: (806) 435-743E
Licensed, Bonded & Insured

JACK ROBERTS ESTATE

LOCATION: East side of Booker, TX, intersection of Hwy. 15 & FM 23 (Next to John Deere Dealer) Booker is located 15 mi. east of Perryton, TX.

Auctioneer's Note: Due to the death of Jack Roberts, this clean line of equipment will be sold at Auction.

Lunch Available Wheatheart Shriners Any Announcements on Auction Day Supersede Any Other Previous Advertising Cash & Checks Only No Drafts Accepted

TRACTORS & COMBINES

- 1 - JD 4640 Tractor w/quadrange, cab, air, 3 pt. duals, hyd's, SN4640H014129R (Nice) 3874 hrs. (shedded)
- 1 - JD 8630 Tractor w/8640 motor (app. 1000 hrs.) New trans. & Rear End (app. 300 hrs.) 4 new tires, SN8630H005350R, 3192 hrs. (nice) (shedded)
- 1 - Set Duals for 4640
- 1 - Quick Hitch (Cat 3)
- 1 - Gleaner "L2" w 24' Header & Straw Chopper 698 hrs. (Very Nice) (shedded)

- 1 - 2 Drill Hitch
- 1 - Set Press wheels for JD Drill
- 4 - JD LZ 8' - 12" Drills w/marker
- 1 - Apollo Hyd. Drill Hitch & Mover for JD LZ 8-12" Drills
- 1 - 21' Springtooth Fertilizer Rig
- 1 - Krause 25' Chisel Model 723 A
- 2 - JD Onway's
- 1 - 3 pt. 500 gal. Wylie Sprayer w/40' Floating Booms, & Triple Elec. Switch (Nice)
- 1 - Krause 14' Chisel

- 1 - Lot wire Panels
- 1 - Lot Galvanized Round Bottom Feed Bunks
- 1 - Lot Round Bale Feeders
- 1 - Lot Square Bale Feeders
- 1 - Lot Elec. Fence Posts
- 1 - Lot Fence Chargers
- 1 - John Bean Cattle Sprayer
- 1 - 4 Bale Trailer (for large round bales)
- 1 - 5 Bale Trailer (for large round bales)
- 1 - 3 pt. Graves Brs. Mover
- 1 - 3 pt. Graves loader w/Hyd.
- 1 - 1200 Gal. tank on Gooseneck water trailer
- 1 - 1000 gal. water tank on Trailer

TRUCKS & PICKUPS

- 1 - 1982 Ford 1/2 ton Pickup, 6 cyl. LWB
- 1 - 1976 Chevy 1/2 ton Pickup w/tool boxes & Headache rack, dual tanks, Good Rubber
- 1 - 1976 Chevy 1/2 ton 4x4 Dual Fuel Tanks. Good Rubber
- 1 - 1972 Ford 700 Truck w/16' Bed & Hoist Dual Tanks, Good Rubber
- 1 - 1960 Ford 600 Truck w/13' Bed & Hoist
- 1 - Chev. Feed Truck w/BJM Mixer & Scales

- 1 - Brushless A.C. Generator 3 phase 1800 RPM 230/460 Volts (to run sprinkler)
- 1 - Randolf 4.3 Gearhead 200 HP model 200 SN152148
- 2 - Sets Chrysler 413 Twin Irr. Motors
- 1 - New Chrysler 413 Irr. Motor
- 2 - Chrysler 413 Irr. Motors

MISCELLANEOUS

- 1 - 4 wheel Pickup - Fuel Wagon
- 1 - 300 gal. fuel tank
- 4 - 500 gal. fuel tanks
- 1 - Lot new 5' Sweeps
- 1 - 210 gal. fuel tank
- 2 - 16' Elec. Drill Bit Augers
- 1 - 150 gal. fuel tank for Pickup
- 1 - Elec. fuel pump
- 1 - Set car Ramps
- 1 - 12' truck Bed
- 1 - Lot tools
- 1 - Lot Sweeps, Shanks, & Chisels
- 1 - Large tool box
- 1 - Old Ice Box

EQUIPMENT

- 1 - Flex-King 9x5 Sweep Plow w/Richardson Pickers & Fert. Attachments
- 1 - Sunflower 5x5 Sweep Plow w/Richardson Pickers & Fert. Attachments
- 1 - Crustbuster 50' Foldup - Spring Tooth w/Harrows
- 1 - Krause 30' Fold-up Double Offset Disk
- 2 - JD DRA Disk Drills

UPCOMING AUCTIONS

MAY 7 - CHUCK PRICE ESTATE & IMEL SEAGO - Swink & Cook Auction Yard
MAY 21 - ANNUAL CONSIGNMENT - Swink & Cook Auction Yard
MAY ?? - GUS BIRDWELL ESTATE - Spearman, Texas

REPRESENTATIVES:

RICK RIGGINS - (806) 659-3819 - Spearman, TX
JIM HAMB - (806) 323-5740 - Canadian, TX

Second round play coming . . .

Lynxettes 2nd in district

The Spearman Lynxettes golf team and a pair of Spearman high school linksters stand in good shape for making regional golf competition after the first round of district golf competition this week.

The Spearman girls team carded a 470 to put them in second place after first round competition, just behind Panhandle with 469.

Nancy Ivey and Pat Shields are tied for medalist honors and a berth to individual regional competition in golf after the first round.

Shields scored 85 in 18 holes at Stratford this past week, giving him and five other district 1-AA golfers a shot at one of three medalist berths to regional competition.

Miss Ivey's 115 for the 18-hole course at Panhandle has her in a group of five whose scores range from 107 to 115 for medalist honors there.

Blustery winds which gusted up to 50 mph saw high scores posted by both boys and girls golf teams at the first round of district 1AA golf

competition.

In boys action, however, Gruver posted their best team score of the year despite the inclement winds and stand in solid shape to make the regionals if they can repeat that effort this Monday in Panhandle.

The Gruver A team won the event with a 343, nine strokes better than Panhandle A who carded a team total 352.

Panhandle B finished in third place with a 375, West Texas High A was fourth with a 380.

Spearman A team dropped to eighth with a team total of 424, West Texas B was ninth with a 432.

Stratford B carded a 441 for tenth place and the Spearman B team was eleventh with a team total of 458.

Individual showings saw Gruver's Brent Wagner and Stefan Dorman each stroking an 85 while Todd Shapley carded an 86. All three of these Greyhounds are in line for medalist honors as well.

Justin Harris scored an 87 while Kyle Irwin hit a 107 to wrap up

Gruver A's team scoring.

Spearman A was led by Shields' 85, and followed by Kevin Nelson with a 98, Matt Jones with a 99, Keith Clark with a 105 and Carson Womble with a 106.

The Spearman B team saw Lane Loomis score a 117, Chance Jackson a 135, Brooks Beck a 119, Lance Harnish a 101 and Tracy Thompson a 121 at Stratford.

In the girls meet at Panhandle, Ivey's 115 led Spearman while Carly Shieldknight was just one stroke off her pace at 116.

Jennifer Turner hit a 119, March Womble scored a 120 and Sunshine Smith carded a 122 to round out Spearman's scoring.

Only the top two teams and top three medalists will gain entry to regional golf competition.

The final round of district 1-AA golf play will come Monday when the boys go to Panhandle and the girls go to Stratford for competition there.

City poet gets 2nd award

Spearman poet Lometa Sparks has been awarded a second honorable mention Award of Merit from the world of poetry organization in California, this time for her work entitled, "Life" the Potter.

Mrs. Sparks was informed this week of her award-winning entry and was given a certificate suitable for framing.

Her poem reads as follows:

She walks into the "slip of life".
Whirls for a while on the potters wheel,
"Gaily" -
And is formed by life's pressures.
Whether she comes from the Kiln an
Empty shell of terra-cotta
Shaped like a flower pot or a beautiful
Form of Porcelain - depends greatly on the
Quality of the slip and her relation to the
Pressures of the potter and her own inner
Strength and purpose.



Japan has, on average, three earthquakes a day.

Club News

CHAMBER OF COMMERCE

By Cora Queener

The first meeting of the Spearman chamber of commerce President's Council was held Wednesday afternoon at the chamber office.

Chairman Pat Dear welcomed 17 representatives from Spearman clubs and organizations.

Agenda included the organization of a community calendar of events to be published monthly by the chamber staff. All items to be included must be at the Chamber office by the 25th of the current month to be included in the following month's calendar.

Handouts were available to each person present on Alternate Sources of Funding. Chamber manager Cora Queener attended a seminar at the Borger chamber of commerce March 30.

The Borger c of c has created the Northern Panhandle Foundation (NORPAN) to help organizations in locating alternate sources of funding.

NORPAN has two jobs to do. One was the creation of a resource center and the other is to hold seminars to help their neighbors utilize the center to find funds.

There are over 25,000 private foundations in the U.S. and almost 1,500 in Texas. Recently one of these Texas foundations gave the city of Anson \$115,000. The same foundation gave the City of Stinnett over \$37,000 for a new ambulance.

One only needs to know where to look and how to ask for it. That is where NORPAN comes in. It has created a basic resource center and will continue to add information.

Most important, it has scheduled the first public seminar on "Alternate Sources of Funding" for Tuesday, April 19. It will run from 9:30 until 3:30.

The seminar will feature one speaker from the Panhandle Regional Planning Commission talking about government grants and loans. You will also spend time in the resource center learning how to get the most out of it.

Part of the program will also cover writing letters and applications for private grants.

Any person who has successfully completed one of the seminars offered by NORPAN will have unlimited access to the resource center during normal office hours.

Identification cards will be given to participants at the end of the seminar. The cards are for that person only and are not transferable.

Facilities are limited, so participants will be taken of a "first come, first served" basis. Applications are available at the Spearman chamber of commerce. If you have any questions call Cora at the Chamber office 659-5555.

Those attending were Elsie Mathews of Laurate Gamma

Gamma, Mae Wofford of Women's Division, Ann Flowers of Gladioa Flower Club, Ray Ortega of Jaycees;

Harry Stumpf of Moose Lodge, Jaunita Pierce of Museum Board, Helen Boyd of Station Master House Museum, Joyce Byers of Rainbows & Ranglers Square Dance Club;

Joyce Vanderburg of Rho Rho Sorority, Tima Wilmeth of Rho Rho Sorority, Teresa Kirk of PTA, Sheryl Meek of Perceptor Epsilon Zeta;

Gary Ellsworth of Families in Action, Robert Queener of Ambassadors & Lions Club, Pearl Pierce of Golden Spread Center, Troy Morris of Rotary Club;

Pat Dear, Chairman of President's Council and Cora Queener, Manager of Spearman C of C.

THE DAHLIA FLOWER CLUB

By Jewel Turner

The Dahlia Flower Club met in regular session Monday with Jewel Turner, Margorie Curtis, Vice President presided at the meeting in the absence of President Myrna Biggers and led the group with the Pledge to the flag and the club Collect.

Minutes of the last meeting were read and approved.

Treasurers report followed and committee reports were given roll call was answered with "A Fun Rhyme for 1988".

The program was given by Lometa Sparks, who demonstrated in oils, a still life painting.

The meeting adjourned and flowers judged. Louise placed first with her arrangement of yellow jonquils and Sada with her jonquil specimen.

Refreshments were served to guest Lometa Sparks and members; Karen Babitzke, Marjori Curtis, Sammie Bishop, Louis Archer, Ora Sanders, Sada Hoskins Wanda Smith, Ruth Mary Whitson and Jewel Turner.

Next meeting will be April 18 with Sada Hoskins.

GLADIOLA FLOWER CLUB

By Dorothy Haner

The Gladiola Flower Club met Thursday morning in the home of Jo Larson.

Ann Flowers, president, called the meeting to order. Roll was called and answered with "A Thought For Today".

After a short business meeting, Jo Larson introduced her guest speaker, Michelle Davis, Hansford county paramedic. Davis presented a talk on "The Basic Risk Factors of a Heart Attack".

Jo Larson was winner in the arrangement of flowers category for her borrowed arrangement of white lilacs.

Charlsie Baker won the specimen category with a yellow Jonquil.

The following members enjoyed refreshments of cake, nuts and coffee; Mrs. Dickie Allen, Mrs.

SUNDAY, APRIL 10, 1988
Charlsie Baker, Mrs. Myra Berner, Mrs. Wanda Brown, Mrs. Dorothy Buzzard;

Mrs. Rose Cummings, Mrs. Betty Jean Davis, Mrs. Ann Flowers, Mrs. Dorothy Haner, Mrs. Virginia Hea, Mrs. Mike Hergert;

Mrs. June Jackson, Mrs. Gwen Smith, Mrs. Kathleen Sutton and guest, Mrs. Michelle Davis.

MEN'S CIRCUIT TRAINING

By Wanda Archer

The new men's circuit training class being led by Joe Archer will begin this Monday evening, April 11, at 6:15. It will last 45 minutes. It will be held in the weight room at the Hansford and vicinity "Y". There will be 2 classes a week, Monday and Thursday. It will consist of a warm up, alternate aerobic (for heart and lungs) activities, and light weight lifting (for other muscles), and a cool down with stretches. The working heart rate will be closely monitored during the class. There is still some room for a few more "out-of-shape" men. Call the "Y" 659-2591 to sign up today.

FINAL "Y" DANCE CLASS

By Wanda Archer

The last session of the country/western dance lessons being offered at the Hansford county and vicinity "y" will be Tuesday night. A graduation dance for the students will be held on Friday, April 15, from 8 to 12. This dance will be open to anyone who wants to do some "boot-scootin'". Charge for non-students will be \$4 single, \$5 couple. Music will be "Uncle Ed"-Edwin Pearson. Cokes may be purchased from the "Y". Absolutely no alcohol will be allowed. Forget "income tax day" by puttin' on your jeans and boots and plan on havin' a good time at the "Y" on Friday, April 15.

NEW "Y" DANCE CLASS

By Wanda Archer

Because of demand, another country/western dance class of 5 lessons will be offered beginning on Tuesday, April 19. They will be from 7:30 to 9 each Tuesday for 5 Tuesdays. Charge will be \$10 for a single, \$20 for a couple. Half the charge will be donated to the Hansford county and vicinity "Y", where the lessons will be held. Call the "Y", 659-2591, to sign up for these lessons. You'll learn the cotton-eyed joe, schottische, polka, salty dog rag, Dallas freeze, waltz, cowboy 2-step and fun line dances. Circle Tuesday, April 19, on your calendar and come down havin' fun learnin' boot-scootin' dancin'.

continued from p-5

DISTRICT

her from district play in straight sets, 0-6 and 0-6.

The Spearman girls doubles team of Jenifer Reimer and Anna Hutchison opened with a win over Panhandle's Parker and Harper with straight sets of 6-0 and 6-0.

But they lost to Stratford's Harison and Blake, 2-6, 2-6, to drop out of district competition.

PLEASE REMEMBER
TO
VOTE APRIL 12TH



STEPHEN F. "STEVE" CROSS

YOU KNOW HE WILL WORK HARD

YOU KNOW HE IS THE MOST EXPERIENCED CANDIDATE

YOU KNOW HE HAS PERSONALLY TRIED HUNDREDS OF CASES

YOU KNOW HE CARES ABOUT HANSFORD COUNTY

ELECT CROSS D.A.

YOU KNOW HE WILL DO A GOOD JOB

REPUBLICAN PRIMARY

Pol Advt. Pd. by Stephen F. Cross, 1603 Primrose, Borger, Texas 79007

Announcing

REX B. KARE, M.D.

Diplomate, American Board of Urology

Will see urology patients at Hansford Hospital beginning April 20, 1988.

Office hours: 2 p.m to 5 p.m.

To schedule an appointment,

call 659-2535.



THAD REID

...Receives National Award

Thad Reid named as U.S. awardee

Thad Reid of Morse has been named a United States National Award winner for all around academics and will appear in the United States Achievement Academy Official Yearbook, the academy announced this week.

According to the academy release, the award is a prestigious honor very few students can ever hope to attain.

Reid, who is a junior at Wayland Baptist University, was nominated for the national award by Dr. Bill Hardage, dean of education at the Wayland University.

"Recognizing and supporting our youth is more important than ever before in America's history. Certainly United States Achievement Academy award winners should be congratulated and appreciated for their dedication to excellence and achievement," said Dr. George Stevens, Executive Director of the group.

The academy selects winners upon the exclusive recommendation of teachers, coaches, counselors or other school sponsors and upon the standards of selection set forth by the academy.

The criteria for selection are a student's academic performance, interest and aptitude, leadership qualities, responsibility, enthusiasm, motivation to learn and improve, citizenship, attitude and cooperative spirit, dependability and recommendation from a teacher or director.

He is the son of Mr. and Mrs. David Reid of Morse. Grandparents are Mr. and Mrs. Robin Giblin, also of Morse.

Reid is pursuing a degree in accounting and plans to work toward his CPA designation.



SPRINGTIME ISN'T ALL PLAY as Spearman's Fern Porter discovers when she goes to wash her vehicle. The latest round of snows may be a dim memory as spring settles into the Panhandle.

Final beef referendum rules issued by USDA

Final rules governing procedures for conducting the Beef Referendum as authorized by the 1985 Beef Promotion and Research Act have been issued by the United States Department of Agriculture.

Voting in the referendum will take place in county Extension offices during normal business hours on May 10.

Producers and beef importers who are unable to vote in person may request an absentee ballot by writing or visiting Dr. Milo Shult, Beef Referendum State Extension Coordinator, at Texas A&M University's System Building, College Station, Texas 77843.

Absentee ballots will be available from April 1 until the close of

business on April 29. The absentee ballots must be marked and returned to the county Extension office serving the county of voter residence by the close of business on May 3.

Eligible voters are all producers and importers of cattle who owned or acquired cattle, beef or beef products during the period of Oct. 1, 1986 through March 31 of 1988. This includes 4-H, FFA and other youth who owned cattle during the designated period of time.

Ballots will be counted by the Agricultural Stabilization and Conservation Service. The ASCS also will determine eligibility of challenged voters and ballots, and report referendum results.

Urban-Beeson win district

Carl Urban and Alan Beeson captured first place in boys doubles while Cam Butts placed second in girls singles at district 1-AA tennis competition this week, gaining all three SHS athletes entrance to the regional track tournament April 29-30 at Big Springs.

Urban and Beeson had a bye in the opening round, then went on to beat their next three opponents to win the district boys doubles title.

Miss Butts also opened with a bye, beat her next two opponents, but lost her finals match to district winner Cindy Barkley of Gruver.

Urban and Beeson got their first win over White Deer's Martinez and Cross in straight sets, 6-0 and 6-0.

They came back to down Stratford's Lane and Smith, also in straight sets, 6-2 and 6-2.

In the finals, they wasted little time with Stratford's Pittman and Johnson to claim the 1-AA title, downing them in straight sets, 6-3 and 6-3.

In the finals match, however, she was unable to match the senior competition offered by Gruver's Barkley as she bowed out, 1-6 and 0-6.

In other action, the girls doubles team of Ginger Pearson and Jan Crawford placed third in district competition while boys doubles team Tim Woolley and Slaid Jones placed fourth there.

Pearson and Crawford opened the district competition while boys doubles team Tim Woolley and Slaid Jones placed fourth there.

Pearson and Crawford opened the district tourney with a bye, then downed Gruver's McCloy and

Potts, 6-3, 6-2.

They dropped their next match of Stratford's Morris and Smith with scores of 1-6 and 0-6. They downed Gruver's Logsdon and Brown for their third place finish with scores of 7-6 and 6-4.

Spearman's Chris Porter was eliminated in boys singles play in the opening rounds as he fell to Brad McBryde of Stratford, 2-6 and 1-6.

Mac Sheppard was unable to advance when he dropped his opener to Ray Cruz of West Texas High, 0-6 and 1-6.

Brandi Schneider got one district win under her belt when she dropped Highland Park's Stephanie Cotter in the opener, 6-1, 6-3. But she was unable to advance when Gruver's Barkley eliminated

See "DISTRICT" p-4

VOTE PHIL BLACK



Dear Voter,

Criminal activity has grown in our nation, while punishment for criminals has become less and less. As your District Attorney I will seek the maximum punishment possible in each particular case. I believe in your rights to live a safe and secure life, and if elected, I want to send a message that if criminals commit crimes in Hansford County they will face the severest of consequences.

I have the utmost respect for you, the citizens of Hansford County. You deserve a District Attorney you can respect and be proud of. **Vote for Phil Black, a District Attorney** you will be proud of.

Sincerely,

Phil Black
Phil Black

Pol. Ad. Pd. By Phil Black, 311 N. Cedar, Borger, Texas 79007

Your Home Is Full Of Hidden Dollars



Turn idle items into cash fast with a Want Ad

Call 659-3434

NOTICE
Wallace Monument Co. Monuments, Curbing, Grave Covers
Local Representative
LEONARD JAMESON
Spearman, Texas

ALCOHOLICS ANONYMOUS MEETING
Hansford County Library
122 Main - Spearman
Open Meeting 2nd Tuesday
AL ANON
TUESDAY
8:00 P.M.

OSGOOD MONUMENT CO.
Amarillo, Texas
Dealers of Rock of Ages Granite, as well as all colored granites, marble and bronze memorials.
represented by
BOXWELL BROS. FUNERAL HOME
519 S. Evans
659-3802

Real Estate

FOR SALE: Nice small 3 bedroom home. Fenced, carport, close to school. Great rental property or starter home. 1010 Dressen. Call 1-669-9765, Pampa. S18-rtn

ABANDONED HOMES - Take over payments on 2 and 3 bedroom homes. **Qualify by phone.** (806) 381-1352. Call collect. S46-rtn

FOR SALE: nice 3 bedroom brick home, approx. 1300 sq. ft.; single garage. Priced in 30's. Good neighborhood! Call 659-2263 after 5:00 rtn

Business Opportunity

FOR SALE: Well established carpet cleaning and disaster restoration business. Complete training, equipment and vehicle included. Covers ten counties top of Texas. Excellent opportunity. Well known international company. Call 659-2272 after 6:00. S20S-rtn-Only

For Rent

FOR RENT: Bachelor's apartment, furnished. Call 659-2764. S18S-rtn

TRAILER SPACE FOR RENT: Fenced yards, underground utilities, concrete walks and patio. Close to high school and swimming pool. Call 435-6640 or 435-5080. S19S-rtn

For Sale

FOR SALE: 16-ft fiberglass V-hull boat with tilt trailer, skies, life jackets, depth finder, \$1600, also a extra clean 1981 Ford XLT 150 pick-up with matching fiberglass topper \$3500. Call 733-2380. S23-2tc

PRICED TO SELL: 1982 Mobile Home with satellite dish. 14 x 50, 2 bedroom, 1 bath. Must sell due to job transfer by 4-19-88. Call 659-2381. S23S-2tp

MUST SELL: Mobile Home - 14 x 80, 2 bath, 3 bedrooms, fireplace. \$16,700 or \$1000 down and take up payments. Call 659-3311 days or 659-5036. S23S-2tp

FOR SALE: 6.2 Diesel Engine, complete, running, in good running condition. 65,000 miles. Call 659-5201 or 659-5036. S23S-2tp

FOR SALE: Solitaire Mobile Home 14 x 82, 2 bedroom, 2 bath, central air. In Lubbock, 5 minutes from Tech. Days call (806)249-6524; after 5 p.m. 249-4870, Dalhart. S23S-6tc

FOR SALE: Slick, Clean older Travel Trailer, air cond., TV antenna, bath, refrigerator, cook stove, sink, heating stove, holding tank. Sleeps six. Pulls great. \$2,100. Call 659-3657 leave message. S23S-1tp

NOTICE OF TRUSTEE ELECTION

The Spearman Independent School District Board of Trustees hereby gives notice of an election to be held on May 7, 1988, for the purpose of electing trustees to full three year terms.

ABSENTEE VOTING by personal appearance will begin on 18th, April, 1988, and continue through 3rd, May 1988, from 8:00 a.m. to 4:30 p.m. on each day which is not a Saturday, Sunday, or an official state holiday.

Absentee voting in person shall be conducted at School Business Office 403 East 11th, Spearman, Texas. Applications for absentee ballots by mail should be mailed to School Business Office 403 East 11th, Spearman, Texas 79081.

The **POLLING PLACES** designated below will be open from 7 a.m. to 7 p.m. on the day of the election.

Pct. No. Location
all High School Bldg.
S-1tc

AVISO DE ELECCION DE REGENTES

Por la presente la junta de regentes del distrito escolar independiente da aviso que se llevara a cabo una eleccion el dia 7 de mayo de 1988 con el proposito de elegir regentes a un termino completo de tres anos.

VOTACION POR AUSENCIA en persona comencera el 18 de abril de 1988 y continuara hasta el 3 de mayo de 1988 desde las 8 a.m. hasta las 4:30 p.m. en todos los dias que no sean sabado, domingo, o dia oficial de vacaciones estatales.

Votando por ausencia personal va ser condecido acerca de la oficina de negocios escolar, 402

calle 11, Spearman, Tx.

Solicitudes para una boleta de ausencia por correo deben dar vuelta por correo al la oficina de negocios escolar, 403 calle 11, Spearman, Tx.

Los sitios de votacion indicados abajo se abrian desde las 7 a.m. to 7 p.m. el dia de la eleccion.
Num. de precinto Colocacion todos escuela secundaria

NOTICE TO BIDDERS

The Hansford County Hospital District will accept bids for employee group insurance providing term life, accidental death and dismemberment, and major medical benefits. A separate bid will be accepted for dental insurance. Bids must be received no later than 5 p.m. on May 23, 1988.

Bid specifications may be picked up from the Business Office, Hansford Hospital, 707 S. Roland, Spearman, Tx, 79081.

Bids will be treated as sealed bids, and no information will be released with the exception of the Hospital Administrator and the Board of Directors.

Hansford County Hospital District Board of Directors reserves the right to accept or reject any or all bids, and to accept the bid deemed to be the most advantageous to the Hospital District.

All bids shall be noted on the envelope as "Bid for Insurance" and sent to the attention of:
Albert La Rochelle
Hansford Hospital
707 S. Roland
Spearman, Texas 79081

Employee census sheets will be provided with all specifications as to number of employees, sex, date of birth, and number of dependents currently covered on present insurance.

SERVICES

REYNOLDS TRIM & AUTOMOTIVE. Truck seats our specialty, car seat upholstery - original replacement. REasonable prices, one day service. 815 N. Cedar, Borger. Call 274-2230. S22-9t

REPAIR on vacuum cleaners and appliances. Call 659-3301. S19S-rtn

CESSPOOLS \$250. Trash holes \$275. Big Hole Drilling. (806)372-8060 or 383-2424. S-Ap&M

L & M Body Works
1501 Hwy. 15
659-2775
Tailpipes - \$29.95
Mufflers - \$39.95
Most Duals - \$160.00 complete

WANTED
Natural Gas Production to buy, drill or contract call Ronnie Madison
Energy Sources Inc.
S22S-4tp (806)747-0404

Among the Neighbors

By Helen Fisher

Friends of Sheri and Steve Benton are sympathetic in the passing of her mother, Mrs. Juancy Cannefax, after a lengthy illness.

The services were held in Abilene on Monday.

In addition to Mr. and Mrs. Benton and family, others from Spearman attending were Mr. and Mrs. Buddy Benton, Mr. and Mrs. Kent Benton and Mr. and Mrs. Roy Harbour.

Kellie McWhirter, in order to attend her grandmother's funeral, drove over from Waco where she is a student at Baylor.

Shari and Steve are most grateful and appreciative of all the expressions of sympathy and condolences offered by the people of Spearman.

The residents of Hansford Manor had a "fun" time one evening last week when Jody Harnish took them in the Manor van to Guymon. After a meal at K-Bobs, they attended the Plummer Family Concert at the school.

Assisting on the trip were Shane Harnish, Sheila Stevens and Ada Ruth Diggs. Those attending were:

Myrlie Farrington, Mabel Edwards, Edna Bayless, Grace Bennett, Bertha Forrester, Nina Evans, Phoebe Fox and Maxie Stayton.

On Tuesday evening at 6:30, the members of the Preceptor Upsilon Zeta Sorority entertained all the residents with a bingo party. They also were treated to refreshments.

Renewing her Easter egg hiding technique during the Easter weekend was Betty Pugh. She left Wednesday and went by Dimmitt to pick-up her mother, Annie Hargrove. They spent the rest of the weekend at Azle with the family of her daughter, Cindy and Mike Patterson, and three little children.

Easter guests of Mary Alice Gibner were Stinson and Thuy Gibner of Altadena, Cal. They flew in, and after several days returned by car. He is working on his Ph. D. at Cal Tech.

Lea Ann Gibner, a student at A&M, also spent the holidays with her mother.

Patti and Bert Shepperd were pleased to have their daughter, Debbie and Mike Cook, and son

Chase from Strawn, over the Easter holiday.

Rory, their son of Amarillo, came over and brought a guest, Janet Wygant for the weekend.

To make sure no Easter eggs remained hidden, Bobbie and Dixie Smith and children drove out from town to be with them.

Mr. and Mrs. Norman Brack drove to Tulia last Thursday and spent the night with their daughter and family, the Caci Jones and three daughters.

On Friday they went to Lawton for the Easter weekend and returned on Sunday. They were guests of Mr. and Mrs. Lynn Brack and son, Kyle.

Betty and F.W. Thomas had an interesting 5-day vacation trip to Leavenworth, Kan. over the Easter holidays. Their daughter, Debbie, and Craig Carter and 4 grandchildren have lived there two years but it is the Thomas' first trip to that part of Kansas, which is near Kansas City.

The area is rich in history and scenery and they visited several places of interest.

Many relatives and friends have been anxiously awaiting the arrival of VIP Andrew Lee Brown. He made his appearance on April 7 at the Methodist Hospital in Lubbock, weighing 7 lbs 15 oz.

His proud parents are Coach

Hospital Report

Patients in the hospital are Gertrude Martin, Alene Hyman, Juanita Jackson, Jack Williams and Mark Hyardick.

Patients dismissed from the hospital are Thelma Wright, Raymond Tonips, Rickie Dowdy and Marguerite Jenkins.

Markets

WHEAT	\$2.60
MILO	\$3.12
CORN	\$2.12

Mike and Stacey Brown of Whiteface. He is the first grandchild of Penny and Jim Thomas, Spearman and Bill and Juanell Brown of Amarillo.

He has two great grandparents, Nelson Atchley, Spearman and Ruth Thomas, Elk City, Ok.

Penny Thomas is helping him to get settled in Whiteface and will be for a few more days.

Mr. and Mrs. Ira Harbour will long remember this special Easter weekend. They were in the home of their son, Ted and family, at Rockwall. They were very impressed by the Easter service at the First Baptist Church there as their grandson, 7 year old Austin was baptised.

This church was established in 1852 and has a most interesting history.



ROBIN AND LEOTA GIBLIN
... Celebrate 50th Anniversary

50th anniversary party to honor Robin Giblins

A reception honoring Robin and Leota Giblin on their 50th wedding anniversary will be held next Sunday in the Morse community building.

The special reception will run from 2 to 5 o'clock that afternoon and is being hosted by the couple's children.

Peggy Stegemann of Amarillo and Robbie Reid of Morse,

daughters of the couple, are hostesses for the reception.

The Hansford county natives were married April 15, 1938 in Amarillo.

Mrs. Giblin is the former Leota Harbour, daughter of Hansford pioneer family T.L. and Ollie Harbour.

He is the son of Hansford county pioneers Jim and Lula Giblin.

Light agenda Monday for commissioners

A light agenda will face Hansford County commissioners at their regular meeting Monday with only a pair of resolutions outside of routine court matters to discuss.

One of the resolutions deals with support of an enhanced 9-1-1 emergency telephone service, an item which also appears on the city of Spearman agenda for Tuesday evening.

The emergency 9-1-1 service in its basic form is already available in Spearman. While it offers the convenience of utilizing only a 3-digit number to make emergency calls, it is limited in its scope.

Under the basic version, the caller is identified by telephone number and address at the telephone company's office in Spearman.

Access to the number, however, is limited to telephone company employees. After hours, an employee would have to be called from his home to access the number.

Under the enhanced 9-1-1 service, the calling number and address would be available on a computer screen at the central receiving office for emergency

calls.

The area 9-1-1 service is being proposed by the Panhandle Regional Planning Commission and they are asking Panhandle area counties and cities to pass resolutions in support of the enhanced program.

In order to pay for the service, a charge of not more than 50 cents per customer and a surcharge on long distance calls not to exceed 1/2 of one percent of all interstate calls could be assessed telephone customers.

That would also have to be voted on by county commissioners as well as an effective date for the assessment.

The Hansford court is also being asked to sign an interlocal agreement with the Panhandle Regional Narcotics Trafficking Task Force.

This special force was agreed to in principle by county commissioners earlier. The force is a special division of the Amarillo Police Department and is set up under the auspices of the PRPC.

The interlocal agreement would allow the Narcotics Task Force jurisdiction in Hansford county in certain cases only.

DECISIONS

DECISIONS

DECISIONS

You have enough to worry about, just trying to decide which item on your want list to fit in next and where to get the best deal for your dollar.

You don't need problems when it comes to financing.

We make it our policy to process your loan as quickly and as effortlessly as possible. If you're thinking about a vacation trip, new boat, or any of your special want list items, see us first.

You'll find out why First National Bank in Spearman makes banking ...

Enjoy our great weekend weather by attending the annual Spearman Invitational Track meet in progress all day Saturday at Lynx Stadium.

Hours: Mon. - Fri. 7:30 to 3:00
open Thursdays 4 p.m. - 6 p.m.

First National Bank of Spearman

VOTE

April 12

PHIL BLACK

District Attorney

"We need a tough prosecutor who will be your District Attorney"

First and Foremost:

- Honest ● Dedicated
- Experienced
- Capable ● Skilled

Pol. Advt. Pd. for by Phil Black, 311 N. Cedar St., Borger, Tx. 79007