

# For Sale: 'Payment-in-kind' wheat, corn, sorghum by the bushel, by the cwt.

In Hansford County -- which went overwhelmingly for the federal government's new "PIK" program -- that program can mean, in dollars and cents to Hansford farmers, whatever 1,878,354 bushels of wheat; 329,279 bushels of corn and 1,090,061 cwt. of grain sorghum can be sold for once it is in the hands of the PIK-participating farmer.

At press time no marketing people were willing to commit themselves even to a "guestimate" of the dollar value to Hansford County.

According to Kieth Martin, ASCS director at Spearman, the program in Hansford County is concerned with only wheat, corn and grain sorghums for those are the "money crops" here and payment is to be made "in kind."

Of the county's 690 farms, 603 in wheat production were committed to the PIK program and 471 of the corn and grain sorghum producing farms were signed up.

ASCS director Martin explained that the bushel and cwt figures were calculated on 95 percent of wheat yield and 80 percent of yield for corn and grain sorghums. He further explained these bushels and cwt figures were "unadjusted".

"Bushel or hundred-weight allotment will be decided at the time of delivery of payment-in-kind to the farmer based on the quality of the grain he is receiving," Martin explained. "Delivery measure will be adjusted up or down according to quality at that time."

"Payment in Kind" -- PIK -- is another in a line of formulas to take acreage out of production

in the guise of helping the folks who live by the land... except in the case of this latest -- PIK -- the farmer generates his own money for his "set-aside."

It was one of the designs of the present administration to, ostensibly, help the farmer without paying dollars out of the U.S. treasury. At the same time, it is supposed to reduce the surplus of farm commodities.

While it is still confusion to the man-in-the-street and not totally understood by farmers -- and we will try to over-simplify here -- farmers across the land met the "sign-up" deadline in overwhelming numbers.

Until all tabulations are done, the unofficial national participation level is 83 percent!

In Hansford County it was even higher when you consider the ASCS acreage reduction program (ARP) is still underway.

Of the total of Hansford County farms, 63 wheat producing units were committed to the ARP program of ASCS along with 42 corn and grain sorghum producing units.

Now, the acreage dedicated to PIK and ARP cannot lie fallow. It must be put to conservation use and is referred to in the alphabetical shorthand of bureaucracy as CUA -- conservation use acreage.

Participation limit for each farmer was set at 45 percent of acreage normally under cultivation. This would be 45 percent of each dedicated farm taken out of production. Actually, when deadline figures were tabulated, Hansford had a little more than that but it did not violate the 45 percent limit because it was divided between the two programs. ARP participation is 20 per-

cent and PIK participation could run as high as 30 percent.

ASCS Director Martin said it was already a definite 27.5 percent for PIK.

Wheat acres dedicated to the PIK program total 59,481 while corn and grain sorghum acreage adds up to 24,165.

Reduced to its simplest formula, the farmer is paid for his PIK set-aside acreage from grain "in-kind" grown on acreage in production and stored unsold.

According to Martin, payment-in-kind will be made to Hansford County farmers from storage based roughly on a line from Hansford County to Houston.

A hypothetical case: a Hansford County farmer is paid with X-number of bushels stored at Abilene. He has five months to dispose of that grain for whatever price he can get. ASCS picks up the tab for a generous amount of the storage cost but if the farmer leaves the grain there the full five months, he will have some storage to pay.

Why leave it that long? --In order to "hedge" against futures.

So... If under the PIK program, you set aside wheat acreage, you will receive so many bushels of wheat somewhere in storage to sell on the market in addition to your regular wheat production.

What you make from that sale will be your payment for the set-aside acres.

The same with corn or grain sorghum or cotton -- which does not affect our area here. Questions hang over the program concept:

--Will the farmer be able to realize significant income from payment-in-kind sale?

--What will be the future of the payment-in-kind grain after its first sale from storage? --Is it possible for the payment-in-kind grain to be placed back in storage by its purchaser thus reducing the PIK program impact on grain surplus?

Some 83 percent of U.S. farmers signed up to find out!

## THE Hansford PLAINSMAN Sunday

Spearman (Hansford County) Texas

March 27, 1983

Volume 13

Number 20

### City Manager authorized to take bids on new city hall

A giant step was taken Tuesday night toward actual reconstruction of Spearman's fire-ravaged city hall when the council in regular session authorized City Manager Jim Murray to take sealed bids on the project.

The first action item was to grant General Telephone Company of the Southwest a franchise to operate as a telephone company within the city of Spearman. This move was necessary because months ago when the first confrontation came between the city and GTE over a rate increase request and very poor phone service to the city, the council at that time refused to renew the franchise.

This action was a token gesture expressing through governing channels the city's displeasure with service at that time and with prospective higher costs for the poor service.

Actually, as City Manager Murray pointed out, it did not affect the company's operation in Spearman so long as they were certified by the utilities commission for such operation.

On the other hand--for reasons not understood in Texas--bond-rating people look askance at a company operating within a city without a franchise. So, the council felt there was a strong likelihood a better bond rating could hold down the amount of additional revenues the company would have to glean from Spearman customers.

A contract for the coming year was quickly ratified with the Hansford County Ap-

praisal District for property assessment and the collection of ad valorem taxes. This past year was the first time the city had used the appraisal district and despite a slow start--because of creating the agency from "scratch"--city leaders were well-pleased with the results of that first year.

The panel then considered the purchase of two pieces of equipment, by bids, that was made necessary because of the fire at city hall.

The first was a copying machine. Members of the council agreed that, in the case of this unit, more factors entered in to establishing a low bid than just the base purchase price. There were two base prices on the Minolta machine finally accepted: \$5,295 and \$5,795. The latter unit had a reducing capacity additionally. Either price reflected a generous allowance for the city's smoke-damaged machine. Then there was an annual service policy of \$660--almost 50 percent less than the next service policy quote. Too, there would be no mileage charge for any trip to service the machine--and the number of copies per month was far and away more than the nearest bid.

The new unit was purchased from Stamford, an Amarillo firm from which the unit that was damaged had been purchased. The company had been supplying an interim machine rent-free pending purchase action by the city.

The council noted that only one bid had been submitted for the four-channel base radio station to replace one damaged

by the fire at city hall. Motorola offered a selling price of \$2,126.68 plus a \$200 allowance for the smoke-damaged set.

A bidding form had been submitted to General Electric but it was noted that GE did not return the bid.

Of course, the main focus of interest centered around the move to restore city hall. As consultants, the architectural firm of Ensign and Tunnell has been employed. Pat Tunnell was present at the meeting. He explained that the first move would be to ascertain there was no damage to the walls of the building. A large area of vulnerability here is mortar that has been exposed to intense heat.

Once the strength of the basic structure has been verified, bids will be taken on four stages of reconstruction. The first will be to put it back just as it was prior to the fire. The next will be to utilize the empty space that was the old fire station. The other two will be variations on a drive-up facility where customers can pay their bills from their cars. important: only ONE drive-up facility will be built. Two are being viewed for access and cost.

Equally important: despite recurring rumors, city hall WILL be reconstructed at the PRESENT location.

Following routine items of business, the meeting adjourned.

### Dallas Cowboys Coming April 6

The Dallas Cowboy Hoopsters are coming to Spearman Wednesday night, April 6th, to meet the Spearman-Gruver all-stars in one of the finest basketball exhibitions in the history of Hansford County.

The game will be played at the Spearman High School Gym at 7:30, April 6th. You can purchase tickets at The Bunkhouse, J.G.'s, A&L Printing and Hansford Imple-

ment. Ticket prices are Adults \$6 and Children, \$4.00 (12 and under).

This game is sponsored by the Spearman Jaycees. Some of the players coming for the big game representing the Dallas Cowboys are Drew Pearson, Doug Cosby, Everson Walls, Doug Donley, Jay Saldi, Ron Springs, Ron Fellows, Angelo King, Michael Downs and Dexter

Clinksdale.

This Cowboy team will be meeting the outstanding basketball players in the State of Texas when they play Spearman and Gruver exes including: Tommy Barber, Victor Schumann, Charles Shield-knight, Kip Keplin, Jim Richardson, Norlan Winegarner, Johnny Williams, Randy Carland, Andy Hoel and Mike McLain.

### Helen Yeary Services Held

Mrs. Helen Jeane Yeary of Waka died March 24 in Hansford Hospital. She was born July 29, 1908 in Temple, Okla.

Memorial services were held Saturday, March 26 at the First Christian Church here with Rev. Martin Foster, officiating.

She was a retired school-teacher, a member of the First Christian Church in Spearman, Delta Kappa Gamma sorority and Eastern Star.

She was married in 1938 to Bill Pattison, who died in 1952. She married Clyde Yeary in 1961 at Clayton, N.M.

Survivors include her husband, Clyde; daughters, Phyllis Ragle, Boytheville, Ark.; Kathryn Davidson, Wambu, Saudi Arabia, a son, Pat Pattison of San Diego, Calif.; 4 sisters, Louise Archer and Teena Jacobs of Spearman; Margaret Ayres of Baton Rouge, La.; and Mattie Rhea Martin of Payette, Idaho; a brother, T.C. Harvey, Jr. of Phoenix, Ariz. and 10 grandchildren.

The family asks that memorials be made to the American Cancer Society.

### HOSPITAL

Patients in Hansford Hospital are Dee Jackson, Vera Harris, Peggy Dillow, Cindy Peters and son, Elva Barkley, Ann O'Laughlin, Sheila Chappell and daughter, Joe Larson, Cheryl Freeman and son, Minerva Vela, Ann Sanders, Martin McMillan, Jo Nell Grayson, Nell Burke, Mattie Layton.

Dismissed were Roger Simpson, W.E. Jones, Sheila Watley, Relda Smallwood, James Haskin, Pete Lieb, Charles Asbil and Opal Jones.



HONORED--Marilyn Cline was named "Volunteer of the Year", Rosalee Butt, received a special appreciation plaque from the board of Golden Spread Center for all her work during the year for the

center, and Dora Womble was named "Senior Citizen of the Year" at the Golden Spread Center Telethon Thursday.

### Telethon raises over \$9,000

Once again, the volunteer effort in behalf of the Golden Spread Center has paid off.

According to Pearl Pierce, director of the center, they raised \$8684 during the telethon Thursday and expect the figure to come to over \$9,000 when all pledges come in. They raised \$9200 last year, and due to the economy, they are quite pleased with the

figure this year. This money is used to make the payment on the center and for operating expenses during the year.

Dora Womble was named "Senior Citizen of the Year" and Marilyn Cline was named "Volunteer of the Year".

Rosalee Butt was awarded a plaque of appreciation from the board of the center.

The center has many activities that our senior citizens participate in. They make handmade items for the Bazaar which is held in conjunction with Hansford Roundup each year. They also have parties, play games, take trips in the center van, and many other activities.

The center is open to anyone over 55.

### Springer in revival at Union

Calvin Springer, a well known former pastor of Spearman Union Church will be ministering the Word of God in revival at Spearman Union Church 31 S. Endicott, April 10-15th.

Calvin traveled in Evangelistic Crusades as song leader from 1949-51. He began his preaching ministry in April of 1951 traveling in tent revivals until July of 1953 at which time he assumed his pastorate at Union Church in Spearman,

Texas from 1953-59. In August of 1959 he moved to Wichita, Kansas as pastor of Full Gospel Evangelistic Chapel. In June of 1973, Calvin resigned this pastorate of almost 14 years. Since that time he has traveled as an Evangelist ministering in Youth Camps, Conventions, Camp Meetings and Evangelistic Crusades throughout the United States as far north as Alaska and south into Mexico, Nicaragua and the Bahamas. He served 4

years as Vice-President and 7 years as President of Full Gospel Evangelistic Association, headquartered in Houston, Texas. He and his wife, Doris, and daughter, LeAnn now reside in Waco, Texas, his headquarters from which he works traveling in Evangelistic Crusades.

We at Union Church invite you to come and receive the Word of God and to Worship

Continued on page 2



FAREWELL--Oma Lee Brillhart, longtime Spearman resident and employee of B & B Sales Co. and Cattleman's Restaurant is leaving to make her home in Louisiana with her mother. She is being honored with a farewell party Sunday, March 27, from 3 to 5 at Cattleman's Restaurant. All her friends are cordially invited to attend.

### Farewell party to honor

#### Oma Lee Brillhart

A farewell party honoring Oma Lee Brillhart will be held at Cattleman's Restaurant, Sunday, March 27 from 3 to 5 p.m.

Oma Lee has been a longtime employee of Cattleman's, and had worked at Martin's Steak Garden before then. She also has held a full

time job with B&B Sales for many years.

Oma Lee is leaving Spearman and moving to Louisiana to be closer to her mother.

All of Oma Lee's friends are invited to the come and go party in her honor Sunday afternoon.

### EMT Course to begin

An Emergency Medical Technician (EMT) course will be offered beginning April 5, 1983. The course will be offered by H&S EMS and Frank Phillips College.

The course will consist of 100 hours classroom and 40 hours of ambulance and hospital internship. The cost of the course will be \$25 tuition, plus cost of the text book, which will be approximately \$15.

The course will begin Tuesday, April 5, at 7:00 p.m.

### MARKETS

CORN	\$3.19
WHEAT	3.54
MILO	5.25

### First Baptist Church Easter Cantata

The 40 member choir of the First Baptist Church will be presenting their Easter Cantata at 7 p.m. March 27. The title is "Living Witnesses" by Rich Cook and Allene Bledsoe.

Director is Travis Angel. The public is cordially invited to attend.

Continued from page 1

with us. Sunday Morning Service is at 10:45. The Sunday Evening Service will be at 6:30. Monday-Friday Services will begin at 7:30. There will be a Noon Luncheon Monday-Wednesday at 11:45. A nursery will be provided.

### Family Living Seminar Set

Tips on housing, financial planning and family relations will highlight the annual Family Living Seminar of the Panhandle Economic Program to be held in Amarillo Tuesday, March 29.

The evening workshop this year will look at "Your Future: A Sleeper, a Creeper or a Leaper," said Karen Harruff, Hansford County Extension Agent. It will address concerns of special interest to families in the Texas Panhandle and offer ideas which can help make difficult decisions a little easier, Harruff said.

The seminar will be held at the Texas A&M University Agricultural Research and Extension Center, 6500 Amarillo Blvd. West, in Amarillo. It will begin at 7 p.m. with a welcome by Mrs. G.C. Davis of Pampa, chairman of the PEP Family Living and Youth task force. It will conclude at 9:30 p.m.

A look at financial futures by Dr. Jim Owens, professor of finance at West Texas State University, will open the seminar. He will focus on futuristic thinking and new trends in banking.

Trends in housing and new family structures will be examined by Greg Glenn, broker and owner of Ada Realtors. Carolyn Allison with Financial Management, Inc., will discuss financial planning. She will cover such topics as

income fluctuations, joblessness, child care options, financial counseling and planning for medical costs.

Ways to get more work from your dollars will be explained by Dayle Tipton, vice president of Amarillo National Bank. He will discuss individual retirement accounts (IRAs), Social Security, tax management and other options.

The part your attitude plays in your future will be examined by Dick Merceer, minister of Central Church of Christ in Amarillo. He will look at family strengths, time stresses, skills in coping, and support systems.

The program will conclude with a period in which the audience can address questions to the speakers.

PEP is a regional organization sponsored by the Texas Agricultural Extension Service to promote economic growth and development and improved family living in the Panhandle.

EDUCATIONAL PROGRAMS CONDUCTED BY THE AGRICULTURAL EXTENSION SERVICE SERVE PEOPLE OF ALL AGES, REGARDLESS OF SOCIO-ECONOMIC LEVEL, COLOR, SEX, RACE, RELIGION, HANDICAPPED, OR NATIONAL ORIGIN.

## The Hansford Plainsman

PUBLICATION (USPS 2346-6000)  
SPEARMAN, TEXAS 79081  
213 Main Box 458 659-3434  
Published Weekly at 213 Main Street  
Spearman, Texas 79081

Owner-Publisher.....William M. Miller  
Editor.....Faye Lunch  
Second Class Postage paid at Spearman,  
Texas 79081

Any erroneous reflection upon the character of any person or firm appearing in these columns will be gladly and promptly corrected upon being brought to the attention of the management.

POSTMASTER: Send address changes to Hansford Plainsman, Box 458, Spearman, Tx. 79081.

SUBSCRIPTION RATE: Hansford, adjoining counties, combination with the Spearman Reporter, \$15.00.  
Other points, \$20.00.

MEMBER  
**TEXAS PRESS ASSOCIATION**



**Golden Gleams**  
The first day of April,  
You may send a fool  
whither you will.  
-Thomas Fuller.

Watch for Mini Fest coming April 16th.

REPORT OIL FIELD THIEVES  
CALL  
**1-800-OIL-COPS**  
1-800-645-2677  
TOLL FREE.....REWARD

*Baker & Taylor Drilling Company*

## LOOMIX

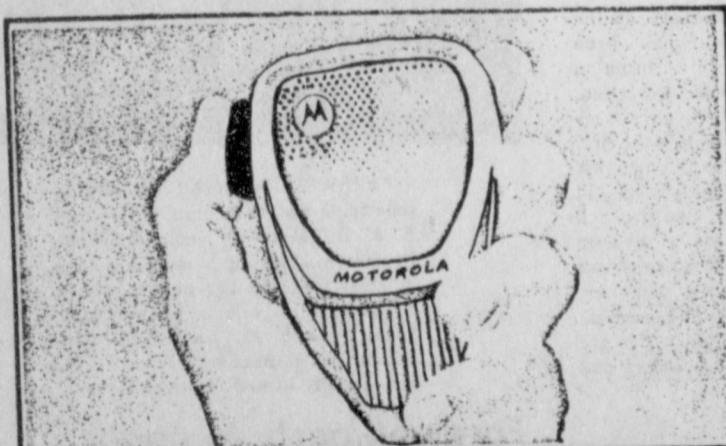
### Liquid Feed Supplement --with Bloat Guard

controls bloat and supplies needed phosphorous, trace minerals and vitamins.

**COOPER FEED CO.**

BOX 309 PHONE 806-733-2402  
GRUVER, TEXAS 79040

--Or call Loyall Turner, 806-659-3134



**BUY NOW! SAVE NOW!  
LIMITED TIME OFFER!**

**Motorola 2-Way Radio  
SPRING SAVINGS SALE  
FM Mobile Radios  
AS LOW AS \$27500**

Since 1972, vehicle operating costs have jumped 174%. And now—for a limited time only—Motorola has reduced two-way radio to less than 1972 prices! New VHF and UHF models. Savings start on lowest priced units. Full factory warranty—direct from Motorola to you.

**We rolled back prices! You roll back inflation!**

To take advantage of this \$275 offer or similar offers on selected mobile and portable models, ACT NOW! Call your local Motorola office at: **806-355-9905**.  
OR dial 1-800-FM-RADIO, operator 5



**MOTOROLA**

Communications and Electronics Inc.

Motorola are trademarks of Motorola Inc.

## To Give Away Christmas Trees

The Agriculture Committee of the Spearman Chamber of Commerce is giving away Christmas Trees to the Third Grade Class of Spearman Elementary School, according to Brice McRee, Chairman.

The students must write a letter telling why they would like to have their very own Christmas Tree and how they will take care of it.

These are Blue Eldarica Christmas Trees and they are relatively new to the United States. Many farmers are now planting this crop because it is so much more profitable than any other crop they are growing. The return is \$4-6,000 per acre per year for a local Choose and Cut Christmas Tree Farm.

The Southwest Grown Christmas Trees supplied the trees free of charge for this project. If you would like some information on growing Christmas Trees for a crop contact the Chamber of Commerce office and they will put you in touch with the Christmas Tree people.



Watch for Mini Fest coming April 16th.



**We're the First Place you call.**

## Get The First Place Advantage

### What's The First Place Advantage?

It means you've got more people, with more financial know-how, working for you. You get the advantage of straight forward advice, with honest answers, when you need money to finance your business. You get quick response when you want help with an investment.

### What's The Difference Between First Place And Any Other Place?

There are some big differences, like our excellent roomy facilities, designed to give you a warm, comfortable place to bank. Like our convenient location, with easy access from any part of the area. Like the talented, friendly people who take care of your business and make you feel like a "First Place Friend."

### The Bigger We Are, The More We Can Do.

A big advantage is our size. We're big enough to give you specialists when you need them. First Place has a wire transfer department to move money thousands of miles instantly. There's a real estate loan area making interim construction loans. A trust department to help with estate planning. We can write letters of credit, make inventory and accounts receivable loans. The larger we've grown, the more you get for your money.

### Take Advantage of Us.

See for yourself what we mean. Take advantage of us — every one of the sixty people who open First Place for you each morning. We want your business. We'll work for you, and give the financial help you want. Call or come see us today.



**When You Want the Advantage,  
Call Us First.**

**Call  
659-3434**

# BUY, SELL, TRADE OR RENT THROUGH THE CLASSIFIED ADS

**SERVICES**

Hansford County  
Planned Parenthood  
26 S. Haney  
659-2483  
Spearman  
Mon.-Fri.  
8:30-12:30

**NOTICE**  
Wallace Monument Co.  
Monuments, Curbing,  
Grave Covers  
Local Representative  
**LEONARD JAMESON**  
Spearman, Texas  
35sRTN

**STEAM RINSE & VAC**  
Steam Rinse-and-vac Sham-  
poers; \$10.95 for up to 24  
hrs. available at Gordon's  
Drug; also at Freddie Lar-  
gent's 716 Cotter Dr. after 4  
p.m. and Saturdays and  
Sundays.

**SERVICE:** Pits cleaned, wet  
or dry. Dragline or loader.  
Also, dozer, grader, carry-  
all service. Lee Roy Mitch-  
ell, 806-733-2384, Gruver,  
Texas 79040.  
12-rtm

New to area?  
Give us a try  
Call your local  
**USED COW DEALER**  
As soon as Possible.  
659-3544  
659-3545  
1-800-692-4043  
175-rtm

**MONUMENTS**  
Save Agents and  
Undertakers Profits  
If it is inconvenient for  
you to visit our large  
display, please phone col-  
lect (405) 327-0626 or write  
and we will call on you.  
**ALVA MONUMENT  
WORKS, INC.**  
Alva OK 73717

**SPEARMAN ELECTRIC**  
Licensed and Bonded  
New work and rework  
Phone 659-2636  
11-rtm

**OSGOOD  
MONUMENT CO.**  
Amarillo, Texas  
Dealers of Rock of Ages  
Granite as well as all  
colored granites, marble  
and bronze memorials.  
represented by  
**BOXWELL BROS.  
FUNERAL HOME**  
519 S. EVANS  
659-3802

**LAWN/YARD SERVICE:** Call  
Rick Morris 659-3855 or Paul  
Reimer 659-3003 after 5:00.  
18-6tc

**BEGINNER GUITAR LES-  
SONS:** Call 9-5095.  
20-2tc

**FARMERS UNION ANNUAL  
CONSIGNMENT SALE**  
April 8, 1983  
CONTACT:  
Joe Morris  
733-2132  
Burton Shubert  
659-2667  
Jesse Francis  
659-2454  
11S-16tc

**Lost & Found**

**LOST:** Man's billfold. Approx-  
imately \$60, Driver's License  
and Credit Cards. Can have  
money, just return the billfold  
with credit cards. 526 S.  
Townsend.  
20S-3tp

**MISCELLANEOUS  
FOR SALE**

**FOR SALE:** Kirby vacuum  
cleaner, 2 years old, all  
attachments, \$200. Call Joy  
Henderson, 733-2517.  
18-rtm nc

**FOR SALE:** 1981 Kawasaki  
motorcycle 440 LTD. Electric  
start, belt driven, 1800 miles.  
Call 733-2924.  
19-rtm

**FOR SALE:** To be moved  
Cent-Tex 12' X 24' Portable  
Building-small down pay-  
ments. Framed from top grade  
SP1B Southern yellow pine-  
Covered with twin rib Kaiser  
Lifetime Aluminum-3 1/2" Fi-  
berglass insulation. Call  
659-3821 or 659-2859.  
17S-rtm

**FOR SALE:** Approximately  
200 feet heavy gauge chain  
link fence. 75 cents a foot.  
Claude Sheets, Jr. 659-2085.  
20S-4tc

**FOR SALE:** Octagon shaped  
aquarium with stand and all  
accessories. \$25.00. Call  
659-3949 after 6 p.m.  
20-1tc

**MOBILE HOMES  
FOR SALE**

**FOR SALE:** Housetrailer-May-  
flower 8 x 35. \$8500, firm bid.  
Call 659-5011.  
19-4tc

**FOR SALE:** 1980 14 X 74 ft.  
Bella Vista Mobile Home, 3  
bedroom, 2 bath, excellent  
condition. Call 659-3623.  
20-rtm

**FOR SALE:** 1969 12' x 56' 2  
bedroom trailer house, fur-  
nished.  
10' x 20' portable office,  
wired, insulated and paneled.  
Call 659-3642 or 659-3402 after  
6:00 p.m.  
11S-rtm

**DEALER REPO**  
3 bedroom, 2 bath, wood  
siding, carpeted, air unit,  
washer and dryer, storm  
windows, etc. \$312.00 on fi-  
nance company repossession.  
**First Quality Homes**  
Highway 60 West  
Pampa, Tx.  
Phone 665-0715  
20S-12tc

**WE TAKE TRADES:  
ANYTHING OF VALUE**  
(Used cars, boats, mobile  
homes, real-estate, etc.) Large  
selection of 2 and 3 bedroom  
name brand mobile homes.  
Easy terms.  
**First Quality Homes**  
Highway 60 West  
Pampa, Tx.  
Phone 665-0715  
20S-12tc

**REAL ESTATE  
FOR SALE**  
1114 S. Haney--  
Great location. Clean 3 bed-  
room, 1 bath, 1 car garage  
with fenced in backyard. Bond  
money financing 10.34% for  
first home owners. Hoover &  
Hoover-435-6873.  
19S-RTN S only

**FOR SALE:** Nice 2 bedroom, 1  
bath home with closed in  
garage, and large fenced  
backyard. Priced low 20's. Call  
659-3861 or 659-3590 after 6:00  
p.m.  
20-4tp

**TWO BEDROOM HOUSE  
FOR SALE** with Rent Apt. in  
back. See by appointment. 709  
Archer, 806-659-3292.  
18-6tc

**DON'T BE FOOLED--By**  
the exterior that is, the  
inside will surprise you. A  
lot of home for the money.  
On Corner Lot. 3 Bedrooms,  
2 Bath Home, Carpeting,  
Drapes, Central Heat and  
Air, Den with Fireplace,  
Separate Diningroom,  
Large Living Area, Numer-  
ous Amenities. Excellent  
location. In the mid 50's.  
Shown by appointment  
only. Please call 659-2435, if  
no answer call 659-2685.  
20-rtm

**FOR SALE:** Chev. Crew Cab  
(low mileage) complete with  
Koenig Serv-All Service Body.  
Call 659-3821 or 659-2859.  
17S-RTN

**FOR SALE:** '74 Olds Station  
Wagon, 659-3526.  
4s-rtm nc

**AUTOMOBILES  
FOR SALE**

**FOR SALE:** 1976 GMC pickup  
new paint job, chrome, wheels  
dual-tanks, extra clean, can  
be seen at 506 S. Endicott after  
5:00 p.m.  
19-6tp

**FOR SALE:** 1980 Ford 4-dr.  
Fairmont--only \$3,150.00. Call  
733-2817 or Richie Fletcher at  
733-5061, daytime.  
19s-rtm

**FOR SALE:** 1979 Cutlass Su-  
preme Oldsmobile. Very  
clean. See to appreciate. Call  
659-3475 after 5.  
18-rtm

**BUSINESS  
OPPORTUNITIES**

**GOVERNMENT JOBS:** Thou-  
sands of vacancies must be  
filled immediately. \$17,634 to  
\$50,112. Call 716-842-6000.  
Ext. 4009.  
19-3tp

**JOBS OVERSEAS:** Big money  
fast. \$20,000 to \$50,000 plus  
per year. Call 1-216-494-2900.  
Ext. 1090.  
19-3tp

**LEARN WHILE YOU EARN!**  
Looking for a job? We're  
interested in helping you find  
a job or training you in a  
vocational skill.  
For more information con-  
tact your county Judge or call:  
**EMPLOYMENT & TRAINING**  
(806) 273-2751-Collect if ne-  
cessary.

**FOR RENT**

**FOR RENT OR SALE:** 4  
bedroom 14 x 56 trailer house  
Nearly new furniture or un-  
furnished as preferred. Call  
435-2193.  
18S-6tc

**FOR RENT:** Nicely furnished 1  
bedroom and 2 bedroom freshly  
painted apartment. Call after-  
noons or evenings at 659-3471.  
19-rtm

**Public Notices**

**I WILL NOT** be responsible for  
any debts but my own. Wesley  
T. Brown.  
20S-2tp

**REPORT OIL FIELD THEVES  
CALL 1-800-OIL-COPS  
TOLL FREE  
LAW UP TO  
\$5000 REWARD**  
PETROLEUM INDUSTRY SECURITY COUNCIL

**NEWS  
VIEWS**

**Lawton Chiles, Senator,  
(D-Fla.),** on delay on  
defense vote:  
"I am concerned the  
president is going to the  
country to seek support for  
his budget."

**Rudolph Lubbers, Dutch  
Prime Minister:**  
"The Soviets have to  
understand that Geneva  
talks have to become now  
Geneva negotiations."

**John R. Block, Agricul-  
ture Secretary,** on col-  
lecting 50 cents per  
100 pounds on milk  
sold:  
"It would be fiscally  
irresponsible if this ad-  
ministration decided to  
ignore the \$60 million per  
month that can be secured  
as a result of this assess-  
ment."

**Allen Sinai, vice presi-  
dent, Data Resources,  
Inc.:**  
"Interest rates have to  
come down some more for  
a good second-half  
recovery."

**Useful**  
No one is completely  
useless--you can always  
serve as a bad example.  
-Jax Air News.

**Rather**  
Bachelor--A man who  
would rather wash a pair  
of socks than a pan full of  
dishes.

**Wise Bunnies**  
We have never known  
a rabbit that was super-  
stitious enough to carry  
the left hind foot of a man.  
-Enquirer, Cincinnati.

**Definition**  
Propaganda: The  
other side presented so  
convincingly it makes you  
mad.  
-Chronicle, San Francisco.

**John Bode, Deputy As-  
sistant Agriculture  
Secretary,** on Rea-  
gan's workfare pro-  
gram:  
"Food stamp reci-  
pients would have a way  
to return something to the  
community for the sup-  
port provided."

**John Bode, Deputy As-  
sistant Agriculture  
Secretary,** on Rea-  
gan's workfare pro-  
gram:  
"Food stamp reci-  
pients would have a way  
to return something to the  
community for the sup-  
port provided."

**Allen Sinai, vice presi-  
dent, Data Resources,  
Inc.:**  
"Interest rates have to  
come down some more for  
a good second-half  
recovery."

**Useful**  
No one is completely  
useless--you can always  
serve as a bad example.  
-Jax Air News.

**Rather**  
Bachelor--A man who  
would rather wash a pair  
of socks than a pan full of  
dishes.

**BUSINESS  
OPPORTUNITIES**

**GOVERNMENT JOBS:** Thou-  
sands of vacancies must be  
filled immediately. \$17,634 to  
\$50,112. Call 716-842-6000.  
Ext. 4009.  
19-3tp

**JOBS OVERSEAS:** Big money  
fast. \$20,000 to \$50,000 plus  
per year. Call 1-216-494-2900.  
Ext. 1090.  
19-3tp

**LEARN WHILE YOU EARN!**  
Looking for a job? We're  
interested in helping you find  
a job or training you in a  
vocational skill.  
For more information con-  
tact your county Judge or call:  
**EMPLOYMENT & TRAINING**  
(806) 273-2751-Collect if ne-  
cessary.

**FOR RENT**

**FOR RENT OR SALE:** 4  
bedroom 14 x 56 trailer house  
Nearly new furniture or un-  
furnished as preferred. Call  
435-2193.  
18S-6tc

**FOR RENT:** Nicely furnished 1  
bedroom and 2 bedroom freshly  
painted apartment. Call after-  
noons or evenings at 659-3471.  
19-rtm

**Public Notices**

**I WILL NOT** be responsible for  
any debts but my own. Wesley  
T. Brown.  
20S-2tp

**REPORT OIL FIELD THEVES  
CALL 1-800-OIL-COPS  
TOLL FREE  
LAW UP TO  
\$5000 REWARD**  
PETROLEUM INDUSTRY SECURITY COUNCIL

**NEWS  
VIEWS**

**Lawton Chiles, Senator,  
(D-Fla.),** on delay on  
defense vote:  
"I am concerned the  
president is going to the  
country to seek support for  
his budget."

**Rudolph Lubbers, Dutch  
Prime Minister:**  
"The Soviets have to  
understand that Geneva  
talks have to become now  
Geneva negotiations."

**John R. Block, Agricul-  
ture Secretary,** on col-  
lecting 50 cents per  
100 pounds on milk  
sold:  
"It would be fiscally  
irresponsible if this ad-  
ministration decided to  
ignore the \$60 million per  
month that can be secured  
as a result of this assess-  
ment."

**Allen Sinai, vice presi-  
dent, Data Resources,  
Inc.:**  
"Interest rates have to  
come down some more for  
a good second-half  
recovery."

**Useful**  
No one is completely  
useless--you can always  
serve as a bad example.  
-Jax Air News.

**Rather**  
Bachelor--A man who  
would rather wash a pair  
of socks than a pan full of  
dishes.

**Wise Bunnies**  
We have never known  
a rabbit that was super-  
stitious enough to carry  
the left hind foot of a man.  
-Enquirer, Cincinnati.

**Definition**  
Propaganda: The  
other side presented so  
convincingly it makes you  
mad.  
-Chronicle, San Francisco.

**John Bode, Deputy As-  
sistant Agriculture  
Secretary,** on Rea-  
gan's workfare pro-  
gram:  
"Food stamp reci-  
pients would have a way  
to return something to the  
community for the sup-  
port provided."

**John Bode, Deputy As-  
sistant Agriculture  
Secretary,** on Rea-  
gan's workfare pro-  
gram:  
"Food stamp reci-  
pients would have a way  
to return something to the  
community for the sup-  
port provided."

**Allen Sinai, vice presi-  
dent, Data Resources,  
Inc.:**  
"Interest rates have to  
come down some more for  
a good second-half  
recovery."

**Useful**  
No one is completely  
useless--you can always  
serve as a bad example.  
-Jax Air News.

**Rather**  
Bachelor--A man who  
would rather wash a pair  
of socks than a pan full of  
dishes.

**CITY OF SPEARMAN  
AGENDA  
MONDAY, MARCH 28, 1983  
2:00 p.m.**

1. Call to Order.
  2. Consideration of Executive Session under Article 6252. 17G V.T.C.S. for the discussion of personnel matter.
  3. Other.
  4. Adjourn.
- Jim Murray, City Manager

**NOTICE OF  
SPECIAL MEETING  
THE STATE OF TEXAS  
COUNTY OF HANSFORD  
CITY OF SPEARMAN**

TO THE MEMBERS OF THE  
CITY COUNCIL, THE CITY  
SECRETARY AND THE AT-  
TORNEY FOR THE CITY OF  
SPEARMAN, TEXAS:  
NOTICE is hereby given that a  
special meeting of the City  
Council of the City of Spear-  
man, Texas, will be held at the  
City Hall, within said city, at  
2:00 p.m. on the 28th day of  
March, 1983, for the purpose  
of considering and taking  
official action on the Agenda  
attached hereto.  
DATED THIS 25th day of  
March, 1983.

MAYOR  
C. RALPH BLODGETT  
ATTENT:  
DONNA THOMAS,  
CITY SECRETARY  
20s-1tc

**Wise Bunnies**  
We have never known  
a rabbit that was super-  
stitious enough to carry  
the left hind foot of a man.  
-Enquirer, Cincinnati.

**Definition**  
Propaganda: The  
other side presented so  
convincingly it makes you  
mad.  
-Chronicle, San Francisco.

**John Bode, Deputy As-  
sistant Agriculture  
Secretary,** on Rea-  
gan's workfare pro-  
gram:  
"Food stamp reci-  
pients would have a way  
to return something to the  
community for the sup-  
port provided."

**Allen Sinai, vice presi-  
dent, Data Resources,  
Inc.:**  
"Interest rates have to  
come down some more for  
a good second-half  
recovery."

**Useful**  
No one is completely  
useless--you can always  
serve as a bad example.  
-Jax Air News.

**Rather**  
Bachelor--A man who  
would rather wash a pair  
of socks than a pan full of  
dishes.

**Wise Bunnies**  
We have never known  
a rabbit that was super-  
stitious enough to carry  
the left hind foot of a man.  
-Enquirer, Cincinnati.

**Definition**  
Propaganda: The  
other side presented so  
convincingly it makes you  
mad.  
-Chronicle, San Francisco.

**John Bode, Deputy As-  
sistant Agriculture  
Secretary,** on Rea-  
gan's workfare pro-  
gram:  
"Food stamp reci-  
pients would have a way  
to return something to the  
community for the sup-  
port provided."

**Allen Sinai, vice presi-  
dent, Data Resources,  
Inc.:**  
"Interest rates have to  
come down some more for  
a good second-half  
recovery."

**Useful**  
No one is completely  
useless--you can always  
serve as a bad example.  
-Jax Air News.

**Rather**  
Bachelor--A man who  
would rather wash a pair  
of socks than a pan full of  
dishes.

**Wise Bunnies**  
We have never known  
a rabbit that was super-  
stitious enough to carry  
the left hind foot of a man.  
-Enquirer, Cincinnati.

**Definition**  
Propaganda: The  
other side presented so  
convincingly it makes you  
mad.  
-Chronicle, San Francisco.

**John Bode, Deputy As-  
sistant Agriculture  
Secretary,** on Rea-  
gan's workfare pro-  
gram:  
"Food stamp reci-  
pients would have a way  
to return something to the  
community for the sup-  
port provided."

**Allen Sinai, vice presi-  
dent, Data Resources,  
Inc.:**  
"Interest rates have to  
come down some more for  
a good second-half  
recovery."

**Useful**  
No one is completely  
useless--you can always  
serve as a bad example.  
-Jax Air News.

**Rather**  
Bachelor--A man who  
would rather wash a pair  
of socks than a pan full of  
dishes.

**FARM & RANCLAND -- ALSO  
3,840 ACRES MINERALS IN TEXAS COUNTY,  
OKLAHOMA**

**AUCTION SALE**

For -- **THE JOHN BERGNER TRUST -- Owner**  
**(MONDAY) APRIL 18, 1983** Starting At 2:00 P.M.

SALE WILL BE CONDUCTED IN THE TEXAS COUNTY ACTIVITY CENTER, GUYMON, OKLA.

- ✓ Nine (9) individual Tracts offered separately and also in combination.
- ✓ 1,739 acres cultivated cropland, 1,800 acres grass, 290 acres alfalfa.
- ✓ Minerals offered with each and every Tract (Some Producing - Some Open)
- ✓ Minerals open for leasing will be offered separately. Also with surface.
- ✓ ASC Cropland bases on all tracts are signed 30% PIK for 1983.
- ✓ Immediate possession to fallow ground for spring planting.

**OFFERING**  
**REAL ESTATE: -- ALL SITUATE IN TEXAS COUNTY, OKLAHOMA**

**TRACT #1** Section 34, Township 2 North, Range 10 E.C.M. (640 acres, more or less) MINERALS: All minerals are intact and open for leasing. They will be offered separately and also together with the surface. ASC shows 326.9 acres as cultivated cropland, 130 acres as alfalfa, 86.6 acres as Conservation Reserve sowed grass, and the balance as native grassland pasture. Base acres are: Wheat 123.6, Milo 47.2, CROP: 130 acre circle of alfalfa. Balance is fallow. IMPROVEMENTS: Some fencing - Windmill & tank on NW 1/4 - 8 inch irrigation well with pump & gearhead on SE 1/4 - Underground Pipe from well to east, north, and west edges of the quarter to supply those pivots on adjoining quarters.

**TRACT #2** Section 35, Township 2 North, Range 10 E.C.M. (640 acres, more or less) MINERALS: All minerals are intact and open for leasing. They will be offered separately and also together with the surface. ASC shows 393 acres as cropland and balance as native grassland pasture, dormant cropland and improvement site. Base acres are: Wheat 148.6, Milo 56.7, CROP: All cropland is fallow - some prepared but never sowed. IMPROVEMENTS: One 2 bedroom frame house - Barn with Corrals & Working Pens - livestock Water Well with submersible pump - some Fencing.

**TRACT #3** Section 26 and The SE 1/4 of 23 and the South 1/2 of the SW 1/4 of 23, and the SE 1/4 of 27, ALL in Township 2 North, Range 10 E.C.M. (1,040 acres, more or less) MINERALS: Minerals on 1,000 acres in this tract are intact. They will be offered separately and also together with the surface. ASC shows the entire tract as native grassland pasture. IMPROVEMENTS ARE: Perimeter fencing - Stockwater Well & Windmill - earth fill Dam backing large pond at south side of Section 26.

**TRACT #4** The West 1/2 of Section 35, Township 2 North, Range 11 E.C.M. (320 acres, more or less) MINERALS: An undivided one-half (1/2) of all minerals are included with the sale of the surface. Phillips produces gas well. ASC shows 285.2 acres as cropland, 30 acres as alfalfa. Base acres are: Wheat 107.8, Milo 41.1, CROP: 30 acres ASC designated alfalfa. All the remaining cropland is fallow and open for planting. IMPROVEMENTS: One 8 inch irrigation Well with pump & gearhead on west side. Also - One 5 inch Well with pump & gearhead located near center of SW 1/4 section - underground pipe line connecting this well to center pivots of both quarter-sections comprising this tract.

**TRACT #5** The South 1/2 of Section 34, Township 1 North, Range 11 E.C.M. (320 acres, more or less) MINERALS: Minerals are intact and all are included with the sale of the surface. ASC shows 181.8 acres as cultivated cropland, 130 acres as alfalfa. Base acres are: Wheat 137.3, Milo 4.3, CROP: 151.9 acres are sown to wheat, 130 acres are in alfalfa, balance is fallow. IMPROVEMENTS: One 8 inch irrigation well with pump & gearhead located near center of SW 1/4 section - underground pipe line connecting this well to center pivots of both quarter-sections comprising this tract.

**TRACT #6** The North 1/2 of Section 33, Township 1 North, Range 11 E.C.M. (320 acres, more or less) MINERALS: All minerals are intact and are included with the sale of the surface. Phillips produces gas well. ASC shows 316.8 acres as cropland. Base acres are: Wheat 119.8, Milo 45.7, CROP: None. All is fallow. The east half of this tract has been plowed, west 1/2 is '82 wheat stubble. IMPROVEMENTS: One 8 inch irrigation well with pump & gearhead in SW corner of NE 1/4 - 12" underground pipe line from well to north side and also west along south side to within 140' of west side of tract.

**TRACT #7** The SW 1/4 of Section 27 and The West 1/2 of the NW 1/4 of Section 34, All in Township 1 North, Range 11 E.C.M. (240 acres, more or less) MINERALS: All minerals are intact and included with the sale of the surface. Getty is producer for SW 1/4 and Phillips for 80 in 34. ASC shows 236.8 acres as cropland. Base acres are: Wheat 89.6, Milo 34.2, CROP: The southwest 1/4 of 27 (155 acres) is sown to wheat and the west 1/2 of the NW 1/4 of 34 is fallow. IMPROVEMENTS: One 8 inch well with pump and gearhead in SW corner of SW 1/4 of 27 with 12" underground pipe line extending east and also south under the road and along west edge of the west 1/2 of NW 1/4 of 34 - Tailwater Pit and underground return to south side of SW 1/4 of 27.

**TRACT #8** The NE 1/4 and the North 1/2 and SW 1/4 of the SE 1/4, All in Section 28, Township 1 North, Range 11 E.C.M. (280 acres, more or less) MINERALS: Minerals are intact and all are included with the sale of the surface. Phillips produces gas well. ASC shows 107.7 acres as cropland and the balance as grassland. Base acres are: Wheat 48.8, Milo 18.6, CROP: None, all cropland open fallow. IMPROVEMENTS: One 8 inch well with pump & gearhead located on west side with underground pipe line extending south to road then along south

# Jan's Nearly-New Fashions will move to Mall April 1

Spearman's newest business—Jan's Nearly-New Fashions—is moving...to the Mall.

It has been several busy, busy months but it seems only yesterday the bright yellow mobile home was put in place across from M&M Grocery, new sidewalks laid and an entirely new concept for Spearman was opened to the public.

It is based on two responses from the public.

The very existence of Jan's Nearly-New Fashions depended on area residents reaching into their closets for garments that no longer fit or were no longer worn, replaced by a change of colors or cut.

Respond they did, bringing garments in as required—cleaned, pressed and on hangers. This became the inventory of Jan's Nearly-New Fashions on consignment. Garments were priced in ratio to similar garments in new condition and the season and upon their sale, those who consigned them shared a very fair and lucrative profit with Jan.

--And sell they did beyond

any concept prior to the opening of this business.

Repeated requests for them brought men's garments into the inventory.

Then costume jewelry and Christmas decorations joined the variety.

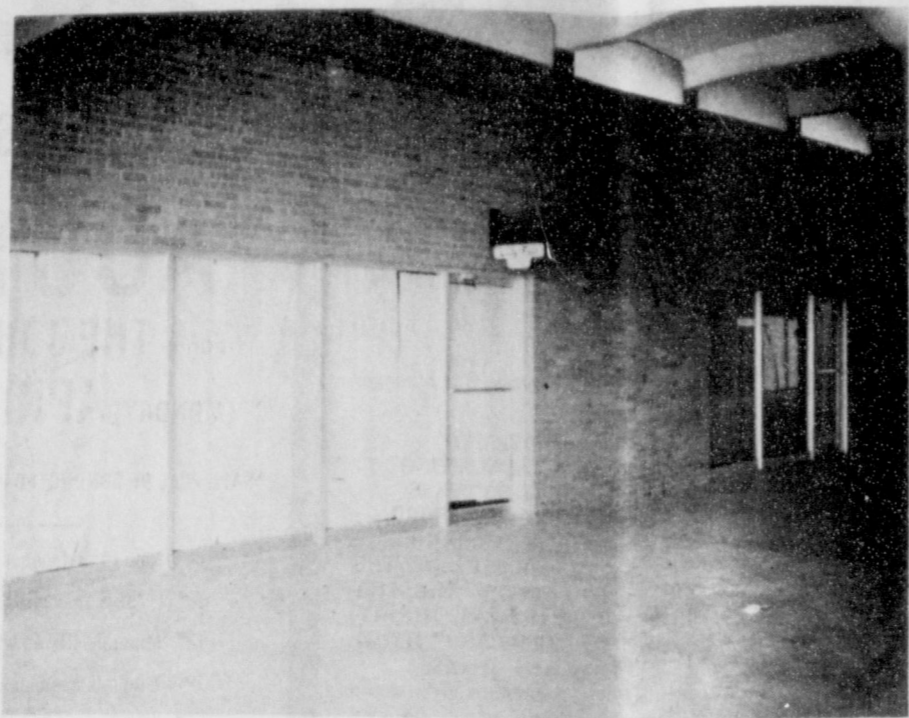
Jan deals in two areas of new merchandise: mini-blinds, general window design and decoration and bedroom decor.

But nearly-new fashions are the thing and the reason this new business must already move into larger quarters in the Mall.

When consignees walk in and lay their consignment garments down, each person becomes a number so far as garments and their buyers area concerned.

April 1—No foolin'! as Jan says—Jan's Nearly-New Fashions will open in the old Lady Fair location in the Mall. It will be a gala day with refreshments and comfortable shopping room around an enlarged selection of fresh fashions.

Jan's Nearly-New Fashions, another new business alive and well in Spearman.



## TSTI Enrollment Scholarships

Up 15%

AMARILLO—The Admissions and Records Office at TSTI-Amarillo reports a 15% increase in student enrollment for Spring quarter 1983 classes. A total of 1,036 students enrolled in 22 vocational or technical programs of study. Nine hundred and four (904) students attended classes for the 1982 Spring quarter.

Junior and senior class high school students who are interested in applying for \$1,000 college scholarships should request applications by March 15, 1983 from the Educational Communications Scholarship Foundation, 721 N. McKinley Road, Lake Forest, Illinois 60045. To receive an application, students should send a self-addressed, stamped envelope with a note stating their name, address, city, state and zip code and approximate grade point average. Fifty award winners will be selected on the basis of academic performance, involvement in extracurricular activities and need for financial aid.

## Soak Seeds

One can get a jump on spring, and help insure germination, by soaking seeds before planting a spring garden. It's helpful to let many soaking seeds sprout before planting.

A 24 or 48 hour warm water soak does wonders; even after planting, if the ground is cold a soaking with warm water in the mornings continues the process.

Put potato eyes in a south window for a week before planting. Peas—in a shallow soup bowl barely covered with water—will be ready for planting in 24 hours. So will onions, squash, beets, chard, and turnips—all of which should be handled carefully while planting.

USDA to resume collecting fee from dairies.

Reagan sends anti-crime bill to Congress.

SUNDAY 3/27/83

CABLE	(2) ESPN	(3) OETA	(4) KAMR CH.4	(5) TMC	(7) KVII CH.7	(8) CBN	(9) WGN CH.9	(10) KFDA CH.10	(11) WTBS CH.17	(12) CNN
AM	Sports Network	Oklahoma City	Amarillo	Movie Channel	Amarillo	Christian Netw	Chicago	Amarillo	Atlanta	Cable News Net
7:00	ESPN SportsCenter		James Robison Amazing Grace Bible Class	Movie: 'Barry Lyndon'	Gospel Jubilee	Zola Levitt Lesson	Prog Cont'd	Faith for Today Dr. Robert Schuler	Cartoon Carnival	News/Sports/Weather Crossfire
8:00	Future Sport		Day of Discovery Larry Jones Ministry		Big Blue Marble Kidsworld	Kenneth Copeland		Telephone: 1983 Easter Seals	Lost In Space	News/Sports/Weather Evans and Novak
9:00	Basketball Championship from Springfield	Life On Earth	World Tomorrow Oral Roberts		Grizzly Adams	Let God Love You Larry Jones Ministry			Lighter Side Movie: 'Marooned'	News Update Cooking/Kerr Newsmaker Sunday
10:00	MA Fishin' Hole	Nature	Baptist Church	Movie: 'Tarzan, the Ape Man'	Tarzan	Jimmy Swaggart				News Update Health Week Sports Week-end Review
11:00	NCAA Division I Hockey Championship from Grand	Nova	Jimmy Swaggart		This Week with David Brinkley	Dr. James Kennedy Religion				News/Sports/Weather Crossfire
12:00	Forks, North Dakota - Final	Washington Week/Review Wall Street Week	Movie: 'The Four Horsemen of the Apocalypse'	Movie: 'I Ought To Be in Pictures'	Jack Anderson Confidential USFL Football	Special American Trail			Movie: 'Operation'	News/Sports/Weather Money Week
1:00		Firing Line			Teams to be Announced	Beyond the Horizon			Petticoat	News Update Sports Week Style With E-isa Klensch
2:00	Top Rank Boxing from Worcester, MA	Mirage		Movie: 'Ticket to Heaven'						News Update Media Watch Big Story
3:00		Constitution: That Delicate Balance	SportsWorld			Wagon Train		Telephone: 1983 Easter Seals	Movie: 'Pincocchio In Outer Space'	News Update Health Week Evans and Novak
4:00				Movie: 'Barry Lyndon'	Sports	Movie: 'Nighttime in Nevada'				News/Sports/Weather Newsmaker Sunday
5:00	ESPN SportsCenter NBA Tonight	Tony Brown's Journal Candid Campus	News NBC News		ABC News News	Travelers World American Trail				News/Sports/Weather Inside Business
6:00	NBA Basketball: Portland at Kansas City	Austin City Limits	Voyager	Prog Cont'd	Ripley's Believe It or Not	Flying House Swiss Family Robinson	Odd Couple Jesters	Prog Cont'd	Best of World Championship Wrestling	News Update Sports Sunday
7:00		Life On Earth	Movie: 'King Kong'	Movie: 'I Ought To Be in Pictures'	Thorn Birds Part 1	Whale Hunters of Fayal	In Search of... Wall Street Journal	Archie Bunker's Place Gloria	Nashville Alive	News/Sports/Weather
8:00		Making of 'Gandhi'				In Touch	Fight Back	Jeffersons Newhart	Week In Review	News Freeman Reports
9:00	ESPN SportsCenter	Legislative Week in Review		Movie: 'Wolfen'		Changed Lives	News	Trapper John, M.D.	TBS Weekend	News/Sports/Weather
10:00	NBA Basketball: Houston at Los Angeles	Sign Off	News		News ABC News Movie: 'The	The King is Coming Contact	Saturday Night	700 Club	Jerry Falwell	Sports Inside Business
11:00		the Bermuda Triangle	Movie: 'Ticket to Heaven'		Pleasure of His Company	Larry Jones Ministry LaHayes on Family Life		Movie: 'The Four Horse-	Open Up	News/Sports/Weather Style With E-isa Klensch
12:00	Int'l Surfing Championship 1984 Games	Sign Off				Zola Levitt Jewish Voice	man of the Apocalypse	Entertainment This Week	Movie: 'Enchanted Forest'	News Update People Now With Bill Tush

## Dear Editor

Mrs. Carol Ellis  
21 Linden Close  
Aldeburgh  
Suffolk, IP15 5J.L.  
England

Dear Sir,

Is there a lady in Spearman, single or married, perhaps with a family who would like to write to me?

I am married with a 2 year old daughter and live on the coast in Suffolk, about 50 miles from London.

I would love to write to someone who is interested in England for any reason and maybe one day is contemplating a visit, as it would be nice to meet and show them around.

I do hope that you will publish my letter and look forward to a reply.

Yours faithfully,  
Mrs. Carolann Ellis

## "Cancer: The Winners" Cable TV Special Thursday

On Thursday, March 31st—the eve of the 1983 Cancer Crusade—the ACS, the National Cable Television Association and Turner Broadcasting Systems will once again join forces to present a very important program, a 60-minute TV special entitled "Cancer: The Winners". The show will be telecast live during prime time (7:05-8:05 p.m., for Hansford County area cable viewers) on cable channels all over the country.

"Superstation" WTBS of Atlanta will originate the program and carry it via satellite to cable operators throughout the country.

Three Americans who survived cancer to regain active lives will be the subject of "Cancer: The Winners." The program, which is the third annual to be sponsored by the American Cancer Society, the National Cable Television Association and Turner Broadcasting systems, will also air several other national cable systems during the first week of April.

Profiled will be Cleveland radio personality Rena Blumberg; mountain guide Glenn Exum; and American League umpire Bill Kunkel. Blumberg had a mastectomy five years ago, followed by two years of intensive chemotherapy when it was discovered that the breast cancer had metastasized. Exum, in his 70's, climbed the Grand Tetons again, one year after surgery for prostate cancer, on the 50th anniversary of his first ascent. Bill Kunkel was operated on for colorectal cancer in the fall of 1981 and was back behind the plate for the 1982 season. Their stories, told through filmed reports and in-studio interviews, are examples of the advances being made in treating and rehabilitating cancer patients today.

The show will be hosted by Bob Neal, WTBS broadcast personality. Joining Neal in the interview segments will be Willis J. Taylor, M.D., president of the American Cancer Society and head of Radiation Oncology at the Virginia Mason Hospital and Mason Clinic in Seattle, Washington. Members of a studio audience will be able to ask questions also.

The show will be hosted by Bob Neal, WTBS broadcast personality. Joining Neal in the interview segments will be Willis J. Taylor, M.D., president of the American Cancer Society and head of Radiation Oncology at the Virginia Mason Hospital and Mason Clinic in Seattle, Washington. Members of a studio audience will be able to ask questions also.

## Carolyn Winter of Amarillo will be joining the staff of Evelyn's Beauty Shop

March 30

She will work Wednesday, Thursday and Friday.

Call 9-2813

for an appointment.

Herman Smith Owner Danon Smith Owner

## ATTENTION HOMEOWNERS

It is time to make those necessary improvements to your home.

ASK YOUR NEIGHBORS ABOUT OUR WORKMANSHIP AND DEPENDABILITY.

B.E. Ball  
Granville Boyd  
Gayle Brown  
James Cook  
Robert Eaton  
John Gaither  
B.J. Grayson  
Carroll Harper

Marcus Larson  
Fontella McKee  
Betty Perry  
Don Schmehr  
Tildon Scroggs  
Bill Hand  
Worley Smith  
Garland Head

Then Call

## H&I Home Improvement Co.

311 S. Bivins - Amarillo, Texas 79104  
Collect 806-359-3466 or 806-355-3912

Siding, Insulation, Storm Windows, Storm Doors, Replacement Windows.

Free Estimates

New Lifetime - Non-Prorated warranty - Steel Siding.

Do Your Business In Texas

Spearman—A free offer of special interest to those who have trouble hearing has been announced by Beltone. A non-operating model of the smallest Beltone hearing aid of its kind will be given absolutely free to anyone requesting one.

Send for this free model, put it on and wear it in the privacy of your own home. This model will show you how tiny and inconspicuous modern hearing help can be.

While not everyone with a hearing loss can be helped with a hearing aid, many can be helped. And the actual aid weighs less than a quarter of an ounce, even with the battery!

Again, these non-working models are free, so we suggest you ask for yours today. Thousands have already been mailed, so write today to Beltone Hearing Aid Service, Amarillo, Tx. If you prefer, call 352-8961 and your free hearing aid model will be sent to you right away. Write to 28-B Medical Drive, Amarillo, Tx. 79106.

199 ma Po the fir int Tr res que are be C 198 a.m ed t a re invc offi obsr be: qua vehi that park resc and was retui mort MOI CA P 10 11 12 TUESI CABI PN 6 7 8 9 10 11 12 ON lmn thro 2 fu form offi 20 rece apa goes

# Police Report

**INCIDENT REPORTS**  
 On Monday, March 14, 1983, at 8:23 p.m., a Spearman resident entered the Police Department to report that some unknown person(s) fired three .22 calibre bullets into the right front tire on a Truck-Tractor belonging to the resident. The individual requested that the vehicle and area surrounding the vehicle be patrolled.

On Tuesday, March 15, 1983, at approximately 7:40 a.m., an officer was dispatched to a residence to investigate a reported hit and run accident involving one vehicle. The officer arrived at the scene and observed that the vehicle had been damaged in the left rear quarter. The owner of the vehicle related to the officer that the vehicle had been parked in the driveway of the residence on March 14, 1983 and at that time, the vehicle was not damaged. Upon returning to the vehicle on the morning of March 15, 1983,

the damage was discovered. The owner advised that the vehicle had not been moved to the best of her knowledge. The officer investigated the area for evidence. At this time, there is no more information to report.

On Tuesday, March 15, 1983, at 10:15 p.m., this office received a telephone report of a prowler. An officer was dispatched and arrived at the scene and was unable to locate anyone after searching for the prowler. The individual that reported the prowler advised the officer that this had been occurring for approximately 2 weeks and decided to report it to the Police. The officer advised the complainant to call again if there were any more problems.

On Thursday, March 17, 1983, while on routine patrol, an officer observed an individual that had an outstanding warrant issued from the Municipal Court. The individual was arrested and transported

to the Police Department, where payment was received for the fines associated with the warrant were paid. The individual was released.

On Friday, March 18, 1983, an officer received a telephone call from an individual reporting that his vehicle had been hit. The officer met the complainant at his place of business and observed that the vehicle had been hit in the left rear quarter (bumper). The complainant telephoned this office and advised that the vehicle had been parked at his residence the night before and the damage was not discovered until March 18, 1983. It is believed that Snider's vehicle was struck by a vehicle traveling in the opposite direction of the parked vehicle.

On Friday, March 18, 1983, an officer arrested an individual on an outstanding warrant issued by the Municipal Court of Spearman. The fines associated with the warrant were paid and the individual was released.

On Sunday, March 20, 1983, at 10:00 a.m., a Spearman resident entered the Police

Department to report the theft of his wedding ring and his wife's diamond earring studs. The complainant advised an officer that his wife's engagement ring was missing two weeks ago and that they had thought that the wife had lost this ring. The complainant related they had discovered these other items missing along with \$40.00 dollars taken from a dresser drawer. On Tuesday, March 22, 1983, the complainant telephoned this office and advised that the wedding and engagement rings had been found, but that the earrings and money were still missing.

**ACCIDENT REPORT**  
 An accident was reported Thursday, March 24, 1983 at 9:21 a.m. There were no injuries in the two vehicle collision. An officer was dispatched to investigate. The individuals involved related that one vehicle backed into the other vehicle when the driver heard the train whistle while waiting for the traffic light to change at "Crazy Corner." Both vehicles were Eastbound from Highway 15

West when the accident occurred.  
 D.J. Alberts  
 Chief of Police

## Social Security Rep Visits Scheduled

A representative of the Guymon Social Security Office will be in Spearman at the Courthouse from 10 to 11:30 a.m. on Tuesday, April 5, 26, May 3, 24 and June 7, 28. This individual will be glad to assist you in filling an application for Social Security Retirement, Survivors, Disability, Medicare, or Supplemental Security Income benefits.

If you are unable to visit personally, you may call 338-6527 Monday thru Friday between 9 a.m. and 4:45 p.m. except for national holidays.

A representative is available to meet with your club or group for a talk or to answer questions. If desired, write or phone the Social Security office.

## Students to compete in UIL Contest

WTSU -- West Texas State University will host about 2,000 students competing in University Interscholastic League academic and literary contests on Friday, April 8, and Saturday, April 9.

Students from 30 junior high schools and high schools in four Texas Panhandle and South Plains districts will compete in contests in speech and drama, journalism, math, English and business areas beginning at 12:30 p.m. on April 8 at the Classroom Center.

Contests and coordinators at WTSU are debate, prose interpretation, poetry interpretation, informative speaking and persuasive speaking, Guy Yates, assistant professor of speech; journalism including headline writing, editorial writing, news writing and feature writing, Mona Williams Statter, part-time instructor in journalism; number sense, David Patterson, assistant professor of mathematics; shorthand, Sue Bryan, instructor in administrative services, and Mildred Simpson, assistant professor of administrative

services; and ready writing, Dr. Sue Park, head of the Department of Language, Literature and Journalism.

Others are science, Dr. Ronnie Waide, professor of education; typewriting, Dr. Roland Johnson, professor of business education, and Dr. Karon Cunningham, assistant professor of business education; spelling and plain writing, Dr. Pat Sullivan, professor of English; and calculator applications, Dr. Miguel Tarab, associate professor of mathematics.

Gene Parker, director of placement, is director of the UIL spring contests at WTSU. Competition will begin at 12:30 p.m. on Friday with students from District 1-AAA, which includes Boys Ranch High School, Canadian High School, Dalhart High School, Highland Park Independent School District at Amarillo, Perryton High School, SPEARMAN HIGH SCHOOL and Amarillo River Road High School.

Also participating on Friday will be students from District 5-AA high schools at Bovina

Farwell, Hart Kress, Olton and Springlake-Earth.

On Saturday, contests will begin at 9 a.m. for high school students in District 1-AAAA schools at Borger, Brownfield, Canyon, Dumas, Dunbar-Struggs at Lubbock, Lubbock Estacado, Levelland and Pampa.

District 3-AAAAA schools also will compete on Saturday. Schools represented will be Amarillo High School; Caprock High School, Amarillo; Coronado High School, Lubbock; Hereford High School; Lubbock High School; Monterey High School, Lubbock; Palo Duro High School, Amarillo; Plainview High School; and Tascosa High School, Amarillo.

Each student who competes will pay an entry fee of \$1.75 per entry.

First, second and third winners in each category will advance to regional competition at Lubbock or Odessa and are eligible to compete for advancement to the state meet at Austin. Top three finishers in each contest receive medals.

Watch for Mini Fest coming April 16th

### MONDAY

MONDAY 3/28/83

CABLE	[2]	[3]	[4]	[5]	[7]	[8]	[9]	[10]	[11]	[12]
PM	ESPN	OETA	KAMR	TMC	KVII	CBN	WGN	KFDA	WTBS	CNN
	Sports Network	Oklahoma City	CH.4 Amarillo	Movie Channel	CH.7 Amarillo	Christian Network	Chicago	CH.10 Amarillo	Atlanta	Cable News Ntwr
6:00	ESPN's Horse Racing Wkly. Report	MacNeil-Lehrer Report	News	Prog Cont'd	News	Prog Cont'd	Barney Miller	News	Carol Burnett	Moneyline
6:30	ESPN SportsCenter	MacNeil-Lehrer Report	M*A*S*H	Family Feud	Jeffersons	Entertainment Tonight	Bob Newhart Show	Crossfire		
7:00	2nd Annual Legendary Pocket Billiard Stars	Capitol Open Line	Love, Sidney	Movie: 'Charlots of Fire'	That's Incredible!	I Spy	Solid Gold	Archie Bunker's Place Foot in the Door	It's a Long Way to October, Part I	Prime News
7:30			Family Ties							
8:00	USFL Football: Oakland at Denver	Great Performances	Movie: 'Prom Night'	Thom Birds Part 2	700 Club	Best Of The Midnight Special	Alice	One Day at a Time		
8:30										
9:00										
9:30										
10:00										
10:30										
11:00										
11:30										
12:00										

### TUESDAY

TUESDAY 3/29/83

CABLE	[2]	[3]	[4]	[5]	[7]	[8]	[9]	[10]	[11]	[12]
PM	ESPN	OETA	KAMR	TMC	KVII	CBN	WGN	KFDA	WTBS	CNN
	Sports Network	Oklahoma City	CH.4 Amarillo	Movie Channel	CH.7 Amarillo	Christian Network	Chicago	CH.10 Amarillo	Atlanta	Cable News Ntwr
6:00	This Week In the NBA	MacNeil-Lehrer Report	News	Prog Cont'd	News	Prog Cont'd	Barney Miller	News	Carol Burnett	Moneyline
6:30	ESPN SportsCenter	MacNeil-Lehrer Report	M*A*S*H	Family Feud	Jeffersons	Entertainment Tonight	Bob Newhart Show	Crossfire		
7:00	NCAA Division I Hockey Championship from Grand	Nova	A Team	Movie: 'The Jericho Mile'	Happy Days	I Spy	Movie: 'The Pejama Game'	Ace Crawford Gun Shy	It's a Long Way to October, Part II	Prime News
7:30										
8:00	Forks, North Dakota Final	American Playhouse								
8:30										
9:00										
9:30										
10:00										
10:30										
11:00										
11:30										
12:00										

## Easter Cantata

The Easter Cantata, ALIVE! by Joe E. Parks, will be presented by the Chancel Choir of the First United Methodist Church, Spearman, at the worship hour, 11 a.m. on Sunday, March 27th.

Everyone is most cordially invited to attend. There will be a nursery provided if it is desired.

Solos, duets, and trios will be presented by Trudye Schneider, Eulalia Blankenship, Verna Strawn, Lynanne Maize, Verlan Winegarner, Peggy Lindley, Judy Nelson and Kent Guthrie. The Chancel Choir will provide the major emphasis of this exciting Easter message.

Judy Nelson is the Narrator and the Chancel Choir is under the direction of Betty Womble.

## Fish orders being accepted

Farmers and ranchers, are you interested in stocking fish in your tailwater pit or pond this spring? If so, contact the Ochiltree Soil & Water Conservation District in Perryton.

At the present we are trying to get enough orders placed so we can arrange for delivery of the fish in late April or early May. Orders are being taken for bass (Florida & Native), Channel Catfish, Bluegill, Hybrid sunfish and fathead minnows. This spring we will also be taking orders for red-ear perch which are much better suited for muddy waters and small ponds of this area than the Blue gill. Along with Ochiltree County orders will also be accepted from the surrounding counties of Lipscomb and Hansford.

All orders must be placed by April 29. For more information, contact the Soil Conservation Service office in Perryton at 101 S.W. 4th Street or call 435-4322.

**PLEADS GUILTY**  
 LOS ANGELES -- Dorothy Woods, 40, the mother of 12 children, who lived in an 18-room mansion with a Rolls-Royce and five other luxury cars in her garage has pleaded guilty to bilking the government of \$377,500 in welfare payments.

## 1983 Cancer Crusade Chairmen announced

**ON MIAS**  
 BANGKOK, THAILAND -- U.S. officials flew to Hawaii recently with bone fragments and documents they said may help shed light on the fate of American servicemen listed as missing in action in Indochina.

**GODFREY DEAD**  
 NEW YORK -- Arthur Godfrey, the red-haired ukulele player who greeted his millions of radio and television fans with a cherry "Howa'ya, howa'ya," and won fame for his homespun humor and conversation, died recently at age 79.

Hardworking 1983 Chairmen for the American Cancer Society have been announced by the Unit Chairman, Mrs. Pat Holt of Gruver and include Mrs. Irvin (Betty) Davis of Spearman; Mrs. Medford (Ruth) De Camp of Hitchland, Mrs. James (Ada Joyce) Stedje of the Oslo Community; and Mrs. Lynn (Martha) Davis of Morse.

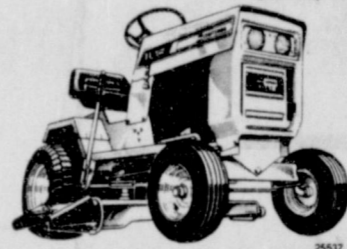
These women will be rounding up their door-to-door volunteers this next week in anticipation of the annual Cancer Crusade which is scheduled in Hansford County April 5th through April 20th. This is an important year in

cancer control because the Society has launched a massive study concerning the relation of lifestyles and the environment to cancer--everyone needs to take action against cancer.

Join the C-Days volunteers! For information call Mrs. Davis, 733-2280; Mrs. Irvin Davis in Spearman, 659-3188; Mrs. De Camp for the Hitchland community, 733-2645; Mrs. James Stedje for the Oslo Community, 733-2237; Mrs. Lynn Davis, for Morse, 733-2164.

# sears CARNIVAL OF VALUES

"THE GREATEST PRODUCT SHOW ON EARTH"  
 Join us for a live demonstration (insert date) from (time) to (time).



Cut \$300  
 11-HP Gear Drive Lawn Tractor  
 WAS 1249.99  
 NOW 949.99

- Electric start
- 5-speed transaxle
- 36-in. attached mower



Cut \$500  
 18-HP Gear Drive Garden Tractor  
 WAS 2099.99  
 NOW 1599.99

- Heavy duty 6-speed transaxle
- Electric start
- 32x55x44 44-in 3-blade rotary mower



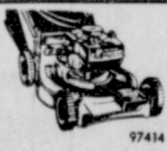
Cut \$300  
 10-HP Lawn Tractor  
 WAS 1399.99  
 NOW 1099.99

- Electric start
- 150-V8 engine mounts
- 36-in. attached mower



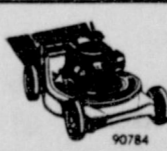
Cut \$250  
 10-HP Riding Lawn Mower  
 WAS 1149.99  
 NOW 899.99

- Electric start
- 6 forward speeds, 1 reverse
- 32CD3411 6-HP recoil start riding mower. Save \$190. Now \$79.99



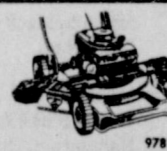
Cut \$70  
 Craftsman Rear Bagging Mower  
 WAS 369.99  
 NOW 299.99

- 4.0 reserve power engine
- Deluxe Eager-I engine



Cut \$50  
 Craftsman Rear Discharge Mower  
 WAS 249.99  
 NOW 199.99

- 3.5 reserve power engine
- Solid state ignition



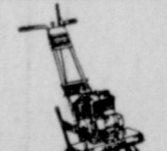
Cut \$40  
 Craftsman Side Discharge Mower  
 WAS 279.99  
 NOW 239.99

- 3.5 reserve power engine
- Standard Eager-I engine



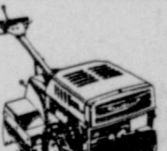
Cut \$40  
 Craftsman Push-Type Mower  
 WAS 219.99  
 NOW 179.99

- 3.5 reserve power engine
- Solid-state ignition



Cut \$50  
 5 HP Tiller  
 WAS 379.99  
 NOW 329.99

- 12-in. tines cut 12, 22, 24-in wide swath



Cut \$460  
 6 HP Task Handler Tiller  
 WAS 1299.99  
 NOW \$839

- Counter rotating 12-in. diameter tines



Cut \$80  
 Craftsman Gas Chain Saw  
 WAS 369.99  
 NOW 289.99

- 16-in. Lo Kick guide bar



Cut \$30  
 Craftsman Gas Chain Saw  
 WAS 399.99  
 NOW 169.99

- 16-in. Lo Kick guide bar
- #25366 Chain saw Cut \$20. WAS 179.99. NOW 159.99

EACH OF THESE ITEMS IS READILY AVAILABLE FOR SALE AS ADVERTISED. PRICES ARE CATALOG, SHIPPING, DELIVERY AND INSTALLATION ARE EXTRA. PRICES LISTED FROM THE "LO" AND "CD" MEDIA. SEARS HAS A CREDIT PLAN TO SUIT MOST EVERY NEED.

Satisfaction Guaranteed or Your Money Back

Most merchandise available for pick-up within a few days

**Sears** 517 S. Hwy. 207 Spearman, Texas

## CHECK OUT THESE LAWN AND GARDEN VALUES

	WAS	NOW	SAVE
6 H.P. C.R.T. Tiller	\$1299.99	\$839.99	\$460.00
8 H.P. C.R.T. Tiller	\$1499.99	\$939.99	\$560.00

John & Charlotte Beasley - Brokers

# First Realty

David Goolsby

7 S.W. 3rd  
435-4064

## ONE OF A KIND:

Immaculate in appearance with quality throughout-CUSTOM BUILT. Four bedrooms, 2 full baths, 2 1/2 baths, 2 large living areas, formal dining room, large country kitchen, office. EXCELLENT LOCATION.

## 203 N. BERNICE

2 bedroom, 3/4 bath home with new carpet, recently remodeled-includes one bedroom apartment upstairs with good income. Furniture goes with home.



Perryton

## 217 N. BRANDT

-Excellent starter home-priced right-  
 -2 bedroom, 1 bath with one car detached garage. Furniture goes with home.

Established business with long record of success. Excellent opportunity for the right person.

## All Tech Medical Students Accepted For Residency

All 17 medical students scheduled to graduate from Texas Tech School of Medicine at Amarillo in the first week of June have been accepted by the schools or hospitals of their choice for residency training, the school's associate dean has announced.

"That means our students are good enough to take their specialized training at the school or hospital of their choice," said Dr. Gerald H. Holman, Tech's associate dean for the medical school at Amarillo.

The Amarillo school also filled 17 of 19 slots available for residencies at Amarillo.

"If a large percentage of graduating students are accepted by the schools where they want to do resident training, it means you have produced good students," Holman said. "And if all your slots for new residents are filled quickly, it means graduating students want to come to your school to receive specialized training. We did well in both."

Holman explained that senior medical students apply to the National Residents and Interns Matching Program (NRIMP) for schools or hospitals where they wish to do their resident training. Also, each school or hospital submits to NRIMP the number of slots they have to fill. The students then visit the schools in which they have expressed an interest and are interviewed by the school's faculty.

Following the visits, students rank the schools they visited in order of preference as first, second or third. The schools also rank the students in order of preference for acceptance. Then a computer "matches" residents with schools of their choice in cases where students ranked the school high on their preference list and the school ranked the same prospective residents high.

"Results of the matching program usually place about 20 percent of a school's listed preferences," said Holman. "We'll get 75-80 percent of our preferences, and 95 percent of our students will get their preferences."

The Amarillo medical school will receive first-year resident physicians next year for specialty training in family medicine, internal medicine and obstetrics & gynecology.

The 17 Amarillo graduates will train in Amarillo, other parts of Texas and five other states.

Joe Bryan and Joan Riker will remain at Texas Tech Medical School at Amarillo for a residency in internal medicine.

Rod Caldwell will remain at Amarillo for residency training in family medicine.

Relda Setliff will take her residency training in internal medicine at Texas Tech Medical School in Lubbock, and David Hampton will go to Tech Medical School in Lubbock for a residency in orthopedic surgery.

Both Johnny Bowen and Barry Oswalt will take specialty training at the University of Texas Health Sciences Center at San Antonio. Bowen in pediatrics, and Oswalt in general surgery.

Laura Fisher and George Young, who are husband and wife, will train at the Ochsner Clinic in New Orleans. Fisher will do her residency in psychiatry, and Young will do his in internal medicine.

Other Amarillo graduates to enter residency programs are Bridget Heinen will train at St. Joseph's Hospital in Houston; Karen Henry, pediatrics, Scott & White Memorial Clinic in Temple; Larry Lipscomb, family medicine, Andrews Air Force Base, District of Columbia; Chris Lux, internal medicine, Oklahoma Memorial Hospital, Oklahoma City; Oscar Milanes, internal medicine University of California at Los Angeles; Edee Pennal Harvey, psychiatry, St. Luke's Hospital in New York City; Brooks Trotter, internal medicine, St. Paul's Hospital, Dallas; and Rona Nakamoto, anesthesiology, Youngstown, Ohio.

All 17 Amarillo graduates will receive their MD degrees in June and will be eligible for license to practice medicine. The additional training in residency programs is advanced training in medical specialties.

### Trinidad horse races rained out

The Horse Racing scheduled for March 19-20 at Trinidad, Colo. was rained out.

The races will be held March 26-27 and April 1-2-3 at the Las Animas County Fairgrounds. April 1 races start at 1:30 p.m. Post time for the other races is 1 p.m.

There will be eight races run on April 1.

## FARM PONDS



POND - Livestock Pond on R.E. Lee farm.

Ponds and reservoirs are bodies of water created by constructing an embankment across a water course.

Water is as important as the forage in the production of livestock. Adequate water will give a better distribution of grazing in a pasture.

A pond should be a size that will meet the needs of all livestock that will use the surrounding grazing area. Ponds are also utilized by fish and wildlife.

Ponds that are constructed and managed properly may yield from 100 to 300 lbs. of fish annually for each surface

acre. Ponds can provide recreation such as swimming and boating for family and friends.

Farm ponds also are used to control erosion and prevent silting and pollution of streams and rivers by reducing erosion.

For further information on farm ponds, contact the Soil Conservation Service Office in Spearman.

Pope: social & economic reforms in El Salvador.

Reagan still wants all troops out of Lebanon.

Watch for Mini Fest coming April 16th.

REPORT OIL FIELD THEVES  
CALL 1-800-OIL-COPS  
TOLL FREE  
EARN UP TO  
**\$5000 REWARD**  
PETROLEUM INDUSTRY SECURITY COUNCIL

**Baker & Taylor Drilling Company**

Items Available At TG&Y Family Centers

521 HWY 207 SOUTH SPEARMAN, TEXAS 659-3742

Better Stuff  
Lower Prices!

The stuff that leisure time is made of!

31.97

**Malibu Chaise Lounge** Relax comfortably this spring in your new chaise lounge! Tubular aluminum frame with PVC strapping. So soft, it conforms to the contours of your body. Molded plastic arms. Vanilla with brown/terra cotta. Reg. 35.97

17.97

**Malibu Lawn Chair** Complete your outdoor seating with the coordinating lawn chair! Comfortable PVC strapping supported by sturdy, tubular aluminum frame. Vanilla with brown/terra cotta. Reg. 19.97

7.97

**Keller Web Chair** Great for extra seating for outdoor activities! Sturdy, aluminum tubular framing with nylon webbing. Hurry in today and stock up for spring! Reg. 8.97

.99

**Triple Tomato Ring** Adds extra support to your tomato plants! Galvanized steel. 3 rings, 33" height. #8212B

1.57

**General Electric Light Bulbs.** Soft white. 60, 75, or 100 watts. Package of 4. Limit 2 pkg.

2.96

**Lawn Edging** Black vinyl will not rot, rust or lose its shape. Safe to mow over, tool 4"x20". #LE-425

8.88

**Garden Hose** 100% vinyl reinforced with nylon. 3/4"x50'. Reg. 9.97

.57

**Super Values on Double Knit.** Reg. 97¢ yd.

7.97

**Malibu Lawn Chair** Complete your outdoor seating with the coordinating lawn chair! Comfortable PVC strapping supported by sturdy, tubular aluminum frame. Vanilla with brown/terra cotta. Reg. 19.97

31.97

**Malibu Chaise Lounge** Relax comfortably this spring in your new chaise lounge! Tubular aluminum frame with PVC strapping. So soft, it conforms to the contours of your body. Molded plastic arms. Vanilla with brown/terra cotta. Reg. 35.97

7.97

**Keller Web Chair** Great for extra seating for outdoor activities! Sturdy, aluminum tubular framing with nylon webbing. Hurry in today and stock up for spring! Reg. 8.97

.99

**Triple Tomato Ring** Adds extra support to your tomato plants! Galvanized steel. 3 rings, 33" height. #8212B

1.57

**General Electric Light Bulbs.** Soft white. 60, 75, or 100 watts. Package of 4. Limit 2 pkg.

2.96

**Lawn Edging** Black vinyl will not rot, rust or lose its shape. Safe to mow over, tool 4"x20". #LE-425

8.88

**Garden Hose** 100% vinyl reinforced with nylon. 3/4"x50'. Reg. 9.97

.57

**Super Values on Double Knit.** Reg. 97¢ yd.

7.97

**Malibu Lawn Chair** Complete your outdoor seating with the coordinating lawn chair! Comfortable PVC strapping supported by sturdy, tubular aluminum frame. Vanilla with brown/terra cotta. Reg. 19.97

31.97

**Malibu Chaise Lounge** Relax comfortably this spring in your new chaise lounge! Tubular aluminum frame with PVC strapping. So soft, it conforms to the contours of your body. Molded plastic arms. Vanilla with brown/terra cotta. Reg. 35.97

### Food Habits Change

COLLEGE STATION--Numbers mean a lot when it comes to marketing. Farmers keep a weather eye out for these numbers. The more people who like and eat their products, the better.

While numbers will always be important, producers would do well to pay more attention to the types of people who eat what they produce, says Jim Smith, county Extension agent with the Texas Agricultural Extension Service, Texas A&M University System.

"Foods are somewhat like people--the are known by the friends they make and keep. Over time, they don't keep all their friends, so every product has a continuing job of making friends. Who these friends are makes a lot of difference," Smith contends.

When a food product is popular with a segment of people who are expected to become more numerous in the future, then its prospects are bright. If it is popular among people who will make up only a small part of the future population, its future is less promising, Smith says.

Present trends indicate that there will be more large cities in the future. Urban people don't necessarily buy the same foods that residents of smaller cities and farmers buy. But, as people move to the larger cities, they tend to adopt food habits of the people already living there.

The kinds of friends a food product has can determine whether that product will be around in the future, Smith says.

Unless some products are remodeled to get attention from more people, they are apt to fade from the scene, the agent says.

London: Thatcher receives another letter bomb.

### SCHOOL MENU

#### ELEMENTARY & JR. HIGH SCHOOL MENU

##### MONDAY, MARCH 28

Tony's P.H.D. Pizza  
Buttered Whole Corn  
Macaroni & Tomato  
Bread Slice/Butter  
Chilled Fruit  
Milk

##### TUESDAY, MARCH 29

Pig in a Poke  
Brown Pinto Beans  
Sliced Spinach  
Dill Spears  
Pudding  
Milk

##### WEDNESDAY, MARCH 30

Hamburger/Bun  
French Fries  
Pickles & Onion Slice  
Lettuce & Tomato Chips  
Cookie

##### THURSDAY, MARCH 31

STUDENT HOLIDAY!!  
TEACHER IN-SERVICE  
FRIDAY, APRIL 1  
NO SCHOOLIN!!  
NO FOOLIN!!

#### EASTER HOLIDAY

#### HIGH SCHOOL SCHOOL MENU

##### MONDAY, MARCH 28

Juicy Burger/Bun  
Beefy Cut Fries  
Salad Bar  
Cookie  
Milk

##### TUESDAY, MARCH 29

Mexican Dumplings/Cheese  
Chili Beans  
Salad Bar  
Fruit  
Milk

##### WEDNESDAY, MARCH 30

Hamburger/Bun  
French Fries  
Salad Bar  
Peach Pie  
Milk

##### THURSDAY, MARCH 31

STUDENT HOLIDAY!!  
TEACHER IN-SERVICE  
FRIDAY, APRIL 1  
NO FOOLIN!!  
NO SCHOOLIN!!  
EASTER HOLIDAY!!

### June wedding planned



Mr. and Mrs. Robert Elliott announce the engagement of their daughter Charlotte to Mark Sheets, son of Mr. and Mrs. Claude Sheets, Jr. A June 25th wedding is planned.

### News from Hansford Manor



Mr. John Lackey

The manor held its March birthday party this week on St. Patrick's Day. The birthday honorees this month were John Lackey, Anson Ward and Fred Close.

Betty Davis, Gwen Smith and Virginia Trindell made the birthday cakes. Helen Etter made the punch.

The Methodist Bible Bozos came and entertained the residents and it was greatly enjoyed by all.

The residents played bingo this week. Gwenfred Lackey won first, Mable Edwards came in second and Pauline Johnson placed third.

Residents attending besides the 3 place winners were Belle Dyer, Keese Richardson, Vida Townsend, Thelma Mitchell, Mary Gillispie, Donnie Moyer and Leon Easley.

We had a double feature movie this week. "Hoosier Cow" and "The Beaver" were enjoyed with lemonade and popcorn being served. Twelve residents attended.

Helping in the beauty shop this week were Geraldine Lovingood, Maxine Little, June Kelp, and Linda Lieb.

Bob and Opal Cator from Sunray were here visiting Gertrude Archer last week.

Dale Moyer and family visited Donnie Moyer Friday and Monday.

Mary Gillispie enjoyed a visit from her daughters Sue McCloy and Nell Henderson.

Allie Bentley had visits from Bertha Applegate, Gail Miller and Mr. and Mrs. T.A. Blanton this week.

Jewel Brandt enjoyed visits from Jewel Kenyon, Kay Dean and Jodie Smith Sunday.

Ruby Lieb had visits from Linda Lieb, Mr. and Mrs. T.A. Blanton, and James and John Lieb.

The Bible Bozos from the Methodist Church visited all the residents on Thursday.

Gay Bowen came and visited Mable Edwards Sunday.

Mrs. Gruver held church services this week and twenty residents attended.

### Faye's Daze

I have been anxiously awaiting the arrival of Spring, but the way it looks, I may have to just wait awhile. I am writing this on another gloomy day, Thursday, and although the sun has peeped thru the clouds a few times this afternoon, it still doesn't look or feel much like Spring. I don't know what the weatherman says, I've quit listening to him, and am just hoping for some nice weather.

Word is that we're climbing up out of the recession right? Well if that doesn't happen to be the case for you here are a collection of clever tidbits about the uplifting topics of inflation, recession and depression...good day.

Inflation is like getting stuck in a traffic jam. You find you are part of the problem, but you can't figure out what to do about it.

Yesterday's nest egg will hardly buy today's bird house.

Recession--when the man next door loses his job.

Depression--when you lose your job.

Panic--when your wife loses her job too.

A budget is a family's attempt to live below its yearnings.

I've tried to put up with this inflation. But I'm going to lose my endurance.

If I have to sell my car to pay for my Auto Insurance.

If we could catch up paying from where we've been.

Some people have to "moon-light" to see "daylight."

Recession is a period in which you have to tighten your belt.

A Depression is when you have no belt to tighten.

And when you have no pants to hold up--it's a Panic.

To feel rich count the things that you have that money cannot buy.

### Engagement Announced



The engagement of Lori Leigh Webb and Douglas Lee Steele has been announced by the parents of the bride-elect, Mrs. Greta Ann Webb of 4620 S. Rusk and Clifford R. Webb of 3712 Paramount, Amarillo, Texas. Steele is the son of Mr. and Mrs. Charles C. Steele of Boys Ranch. The couple plans to be married on May 28 in the Chapel of the First Baptist Church.

Miss Webb attended Amarillo College and West Texas State University. She is currently employed in New Accounts at the Amarillo National Bank. Steele graduated Cum Laude from Panhandle State University in Goodwell, Okla. with a bachelors degree in animal science/agri business. He is currently employed by the Texas Agricultural Extension Service as a Potter County Extension Agent.

### Arts & Craft Guild Meets

The Arts & Craft Guild met Friday, March 18 in the home of Aileen White. Attending were Lemmie Russell, Deta Blodgett, Annie

Allen, Athalee Traylor, Jewel Turner and Margaret Gibner. Jewel Turner was the hostess for the Friday, March 25 meeting.

### Town & Country Extension

The Town & Country Extension Homemakers met Tuesday, March 15 in the home of Debi Rogers. President Peggy Winegarner called the meeting to order and a beautiful devotional was read by Janie Kunselman. Roll call was answered to "your family origins." Minutes of the last meeting were read and approved. The treasurer's report was given by Peggy.

One communication was read from the Gruver PTA. It was an invitation to the rape seminar which will be held at the Gruver High School auditorium on March 21 at 6:30 p.m. Everyone is urged to attend. Everyone is reminded of the food they were responsible for taking to the county livestock show. Discussion was also held on the Minifest which will be held by the Servitors on April 16. This

will be further discussed at the next meeting.

An interesting program on family history was given by County Extension Agent, Karen Harruff. Refreshments were served to: Sammy Goehring, Denise Harbour, Cindy Holton, Janie Kunselman, Nancy Kemp, Delinda McLaughlin, Jeanie Laughlin, Lisa Pipkin, Lynna Renner, Debi Rogers, Dixie Smith, Peggy Winegarner, Emily Ann McCullough, and Karen Harruff.

The residents played bingo this week. Gwenfred Lackey won first, Mable Edwards came in second and Pauline Johnson placed third.

Residents attending besides the 3 place winners were Belle Dyer, Keese Richardson, Vida Townsend, Thelma Mitchell, Mary Gillispie, Donnie Moyer and Leon Easley.

We had a double feature movie this week. "Hoosier Cow" and "The Beaver" were enjoyed with lemonade and popcorn being served. Twelve residents attended.

**10 DAYS ONLY — MARCH 20 THRU 29**  
**TWO SPECIALS ON SIDING AND ROOM ADDITIONS. WILL NOT BE REPEATED.**

#### SIDING SPECIAL

U.S. Steel or Revere Steel Siding. Installed over exterior walls of average 3 bedroom home. This is what we do.

- (1) Breather foil and steel siding.
- (2) Wrap all door trim and window trim with steel.

**ONLY \$3590.00**

Nothing Down — \$88.41 Per Month.  
60 Monthly Payments — 16% A.P.R.

#### ROOM ADDITION — SPECIAL 12 Ft. by 12 Ft. FOR DO-IT-YOURSELFERS

We build shell room addition and give you materials to finish interior.

**ONLY \$3690.00**

Nothing Down — 60 Monthly Payments  
\$90.87 Per Month — 16% A.P.R.

This is what we build. 12 feet by 12 feet room addition with:

- (1) Pier foundation. (2) 2X6 sills — floor joists, ceiling joist — roof rafters — 16 inch on center. Studs 2X4 — 16 inch on center. (3) Half inch roof deck 4'X8' sheets 1/2 inch plywood, felt and composition roof. (4) Masonite on exterior walls. (5) Sub floor 3/4 inch plywood. (6) Two windows single hung aluminum or horizontal sliders. (7) One interior door. (8) Insulation 3 1/2 inch medium batts in walls and 6 inch batts in ceiling with 1"x4" installed 12" o.c. in ceiling for ceiling tiles.

#### NOW THIS IS WHAT WE FURNISH

For You To Finish Interior:

- (1) 12 — 4'X8' sheets of paneling — sanitary base. Cove mould, inside corners, trim for windows and door trim, nails. (2) Ceiling tiles. (3) Floor tiles, flood adhesive and underlayment to go over sub floor.

No electrical or plumbing included at this price. Additional charge for electrical and plumbing. Also no painting of overhang.

We pour concrete driveways or patios.

#### GUARANTEE BUILDERS & SUPPLY

806 W. 7th  
Amarillo, Texas 79101  
Phone A/C 806-372-8572  
Call Today — Call Collect.

Mail Insert: Guarantee Builders & Supply  
806 W. 7th — Amarillo, Tx 79101

NAME: .....  
ADDRESS: .....  
PHONE: .....  
CITY: .....

### Bridge Club

Verna Gail Keim was hostess for the Bid-A-Bit Bridge Club Thursday evening in her home.

Enjoying a delicious dinner and bridge were members, Gertrude Archer, Nina Hefner, Carrie Marie Berry, Mabel Jameson, Rosalee Butt, Faye Lynch, and a guest, Martha Haden, and the hostess.

Gertrude Archer had high score, Verna Gail Keim had second high and Rosalee Butt had low.

### Borger Church

#### Easter presentation

Once again, the First Baptist Church choir of Borger, Texas will present "Joy Comes In The Morning." This dramatic Easter presentation is a beautifully portrayed musical of the events leading up to the crucifixion of Christ as well as the crucifixion itself. It is free and all the public is invited to attend. A full orchestra will accompany the choir. Tickets for "Joy" are now available. Please contact the First Baptist Church office requesting tickets for "Joy" to reserve a seat for the performance you plan to attend. Reservations can be made during the week of March 28 during the following times: 10:00 a.m. to 12:00 noon and 1:00 to 3:00 p.m.

The office telephone number is 273-5621. Performances will be Sat. April 2 at 6:00 p.m. and 8:00 p.m. There will also be one Sunday, April 3, at 7:00 p.m.

The presentation will be held at the Borger High School auditorium in order to serve a greater number of people. We know this will be an exciting event you won't want to miss.

REPORT OIL FIELD THIEVES  
1-800-OIL-COPS  
TOLL FREE • REWARD

Baker & Taylor  
Drilling  
Company

### Tristate Twosomes meeting held

Dr. Charlotte Sego, a pediatrician from Liberal, KS., gave a very interesting program on twins at the March meeting of the Tristate Twosomes. Dr. Sego had some interesting facts and statistics on twins and twin births. Her program also included experiences of hers in her practice and a question and answer period that all mothers took advantage of.

Our March 10th meeting was enjoyed by 13 women. There were 4 new members and we're still looking for more.

Diana Wick, Hugoton, KS.,

was the newest mother of twins. Her girls were 11 weeks old.

The April meeting will be held Thursday the 14th in the Reddy Room, 501 N. Ellison, Guymon, OK., at 7:30. We will have a business meeting to elect officers, form our constitution, and schedule this years programs.

Anyone is invited to attend our meetings. They are held every second Thursday evening of the month. If you need further information or have a suggestion on programs please contact Melyn Johnson at 806-339-7109.

## "Our God Reigns"

April 10th-15th

at

## UNION CHURCH A Church For All Believers

### Calvin Springer

A well known former pastor of Spearman Union Church. He is now involved in Evangelistic Crusades. He will be ministering the Word of God.



CALVIN SPRINGER

### Schedule of Services

April 10th-15th

Sunday Morning ..... 10:45  
Sunday Evening ..... 6:30  
Monday thru Friday  
Evening Services ..... 7:30  
Monday thru Wednesday  
Noon Luncheon ..... 11:45

Nursery Provided

**Pre-Enrollment held at PSU**



Pictured above are students from the Texas Panhandle, who attended the Panhandle State University Freshman Pre-enrollment Clinic. These students have completed their class schedules for the fall semester. Pictured left to right, are: Lynette Sims, Sunray; Jose Hermosillo, Spearman; Connie Terry, and Deborah Walker, of Dumas.

Forty-two high school seniors representing the five state area surrounding Panhandle State University have participated in the first pre-enrollment clinic of the year. Three more clinics are to follow. Students from high schools in Oklahoma, Texas, Kansas, New Mexico, and Colorado, were present for the half-day registration and informational seminar held at Panhandle State University in Goodwell, Oklahoma.

Pre-enrollment clinics afford incoming college freshman the opportunity to select their class schedules for the fall semester. The advantages of enrolling early include: a better selection of courses, a choice of instructors, and a more desirable schedule to fit individual time needs.

Panhandle State University faculty members are present at all freshman pre-enrollment clinics. They are on hand to assist with scheduling. This

gives new students the opportunity to meet with major area professors and advisors to establish a strong faculty-student relationship.

Three more dates remain for

freshman to select for pre-enrollment clinics. The next clinic will be held Thursday, April 28, at 9:00 AM. The remaining two clinics are scheduled in June and July. All prospective students are asked to contact the Panhandle State University Office of Admissions and request a pre-enrollment clinic. Classes for the fall semester will begin August 23.

For additional information, contact the Office of Admissions, Panhandle State University, P.O. Box 430, Goodwell, Oklahoma 79339, or call (405) 349-2611 EXT 274.

**WIFE hosts reception**

Texas WIFE (Women Involved in Farm Economics) hosted a reception for the state executives, state legislators, members of the Texas Department of Agriculture, and all their wives Tuesday, March 15, 5:00 p.m., at the Stephen F. Austin Building.

WIFE was organized in December, 1976, as a non-profit agricultural association of women for the purpose of developing and promoting agriculture in the United States. It is open to all women who are involved in or are interested in agriculture. WIFE—the only women's farm organization in Texas—is not an auxiliary of any organization, but is an

entity of its own.

Thirty or more members from Texas WIFE chapters will convene in Austin Monday, March 14, 7:00 p.m., in the Capital Ramada Inn for a State Steering Meeting. This will be the first state meeting for the four newly organized chapters. June Saylor, National WIFE President, of Muleshoe, Texas, also plans to attend. Guy Finstead, Agriculture Aide for Senator Bill Sarpalus, will discuss upcoming agricultural legislation.

Tuesday morning the women will visit with their district senators and representatives and will lobby concerning some pending farm legislation. Early Tuesday afternoon, they will visit the Texas Department of Agriculture. This will include a tour of the facilities and a slide presentation showing the function of the department. In particular, the department will explain its efforts and plans to develop and increase exports of Texas agricultural products. Then the women go on the reception.

Further information about the Texas WIFE organization can be obtained by contacting President Elva Reeves, So. Sedan Rt. Box 552, Dalhart, Texas 79022. Phone 806-377-6160.

**Annual career day planned**

The 15th Annual Career Day, sponsored by the Liberal Chamber of Commerce, Liberal Area Vocational-Technical School and Seward County Community College will begin at 9:00 a.m. with registration March 30 at both the vo-tech and the college.

Senior high school students from 5 states will have the opportunity to meet with a variety of professionals in the areas of each student's choice. (The 5 states are: Kansas, Oklahoma, Colorado, Texas and New Mexico).

Career areas represented at the vo-tech will be: Ag Production/Crop Technician, Auto Parts Management, Carpentry, Drafting, Masonry, Welding, Air Conditioning and Refrigeration, Office Occupations, Communications Technology, Microprocessor Technology, Auto Mechanics, Auto Machine Shop, Diesel Technology and Medical Assistant.

Areas represented at SCC will be Criminal Justice, Data Processing, Accounting, Engineering, Pharmacy, Nuclear Medicine, Medical Laboratory Technician Education, Home Economics, Music, Agriculture, Psychology, Counseling, Business Administration, Nursing, Physician, Barber-Beautician, Lawyer, Social

Work, Art, Drama and Speech, Mid-Management, Word Processing, Secretarial, Fish and Wildlife Officer, Physical Therapy, X-ray Technician, Veterinarian, Airline Careers, Journalism, Coaching and pro sports. With Cooperative Counseling, it is possible for a student to attend both schools. Anyone from the 5 state

area is invited to attend any of the sessions and meet with Liberal representatives.

Any Senior interested in attending the Career Day activities, please contact your school counselor NOW!!

Watch for Mini Fest coming April 16th.

**WHY FARMERS SHOULD BUY CROP-HAIL INSURANCE EARLY IN THE SEASON...**

- It's good business to know the exact cost of Crop-Hail insurance in your operational budget.
- You won't overlook coverage until it's too late in the spring rush.
- The premium is the same today as it would be the day before harvest.
- You have the option to revise coverage according to crop conditions in spring.
- By using different deductibles, coverage can be tailored to your individual operation.

ELROY E. WISIAN

Plains Shopping Center  
P.O. Box 486  
Spearman, Texas 79081  
Office: (806) 659-3875

National Farmers Union Insurance Companies

**GUYMON LIVESTOCK AUCTION**  
SALE EVERY WEDNESDAY  
Starting 12:00 P. M.  
We sell both cattle & hogs  
"A FAST GROWING MARKET"  
Phone us about your consignment office 405-338-3378  
For out of state call Toll Free 1-800-338-5871  
WE ARE ALWAYS WORKING FOR THE STOCKMENS' INTEREST  
Gary Cobb  
Cattle & General Manager  
Res. Phone 405-545-3470  
Clif Augustine  
Cattle & Public Relations  
Res. Phone 303-336-2512

**The Cupboard Menu**  
502 Davis  
WEEK OF MARCH 28 - APRIL 1  
Special \$5.00 with Drink and Dessert  
Ham & Turkey Sandwich every day.  
Home made white & wheat bread or cornbread and home made pies everyday.

**MONDAY**  
Corn Chowder  
Layered Pea Salad  
Coleslaw  
Swiss Steak  
Carrots  
Maple Nut Pie  
**TUESDAY**  
Senate Bean Soup  
Pickled Beets  
Potato Salad  
Ham Roulade  
Broccoli & Rice  
Pecan Pie  
**WEDNESDAY**  
Driskell Hotel Cheese Soup  
Deviled Eggs  
Apricot Salad  
Roast & Vegetables  
Essie's Fruit Cobbler  
**THURSDAY**  
Cream of Broccoli  
Marinated Carrots  
Fruit Salad  
Chicken Casserole  
Green Beans Bundles  
Ice Box Pie  
**FRIDAY**  
Chicken Gumbo Soup  
Broccoli & Cauliflower Salad  
Topsy Fruit Cup  
Rueben Sandwich  
Sour Cream Raisin Pie

Announcing... A New Arrival!  
Now Open To Serve You!  
**WORLD OF COLOR**  
HANDLING QUALITY DEVOE PAINTS

World of Color is a new and complete store with paints and all the accessories for painting work, owned and operated by people who know the painting business. We invite you to come in for supplies, for help we can provide for your job -- and to visit!

**DEVOE - SINCE 1754**  
Devoe... if it's worth doing right!

- Excellent covering quality
- Excellent ease of applications
- Excellent ease of clean-up
- Excellent durability.

**1600 Colors to Choose From**

**OPENING SPECIAL:** **10% OFF** On All Purchases With This Coupon  
Good thru March 26

For all your painting and dry wall needs... It's

**Watch for Grand Opening Soon!**

**WORLD OF COLOR**  
Telephone 806-935-4114 Dumas, Texas  
213 North Dumas Avenue - Adjoining Windmill Realty  
MONDAY THRU FRIDAY - 7 a.m. to 5 p.m.  
SATURDAY - 7 a.m. to 12:30 p.m.

The will The in t Rela TI part Mee Vars Rich ler a tive! getti the I the f an. 1 8th g This comp ders. the b Distri it will row fi that a Distri team grade togeth they I Distri gals t hustle a char

**B**

The began 28. at are lox Coach ( sbpervi The their Gc man Gc Gruver March 2 River Canada the Go Team. 1 the Dist

Ther Driving man ot four (4 6:00 - the cov arrand of 8 hc be helc the Ha Any the cla



# Track Girls to compete at Fritch

This next week, the boys will not have a Track Meet. The girls will be participating in the Sanford-Fritch Eagle Relays on March 31.

The girls that will be participating in the Track Meet will be the 7th, 8th and Varsity Lynettes, coached by Richard Trantham, John Roller and Ralph Newton, respectively. All these coaches are getting their teams ready for the District Meet to be played the following week at Canadian. The Varsity girls have an excellent Track Team as do the 8th graders and 7th graders. This is the first year of Track competition for the 7th graders. The 8th grade girls have the best chance of winning the District Crown, and if they do, it will be the second year in a row for that. These same girls that are in Track were in the District Basketball 8th grade team of this year. The 8th grade girls, if they play together as a team the way they have been, will win the District Crown. The 7th grade girls have a fine team. They hustle and so forth. They have a chance to winning, also. As

for the Varsity gals, they have speed and quickness. With the likes of Jean and Jan Davis, Sara Avila, Lee Barnes, Brenda Esquibel, Julie Jones, Lana Paul and Ciria Vela—their quickness is something else. Then the strength of Nita Baker, Shelley Dunnihoo, Dana Irlbeck, Andrea Mires, Traci White and Janet Reed. By the way, Janet, Shelly Cook, Andi Hager, Linda Huynh, Tiki Jackson, have also lots of quickness, so Coach Newton has himself a good club, indeed. What kind of experience does this Lady Lynx Track Team have? Well, Jan Davis has been to State the past three years, Jean the past two. **NOTE FROM SPORTS DESK: Jan and Jean Davis are two of the quickest if not the quickest twins in the State of Texas. They have been successful with Coach Newton by their side all the way to the State Finals. Jan and Jean plan to go to State this year and dedicate this year to their coach, their only coach Ralph Newton.** Other with experience include Shelly Cook, Tiki Jackson, Lana Paul,

Janet Reed—all who went to the Regionals last year. There are a few missing, for their own reasons, that went to Regionals last year, Robbie Heinrich, Kim Elbert, Cindy Ivey and Cathy Sullivan—all these gals had fine speed. But Coach Newton is looking at his new talent in the likes of Sara Avila, Nita Baker, Lee Barnes, Kelli Crawford, Shelley Dunnihoo, Brenda Esquibel, Andi Hager, Linda Huynh, Julie Jones, Alicia Langston, Ciria Vela and Traci White—they all have talent, the kind needed to be a Lynxette Tracker!!

So as you can see, the Spearman 7th, 8th and Varsity Lynette Track Team are all pretty well ready for this week's Fritch Track Meet. It will be held on Thursday, March 31. Getting ready for the District Track Meet to be held at Canadian on April 8 & 9. Hopefully the weather will be good on March 31, so that the Track Meet at Fritch can be completed and the Lady Lynx Tracksters can compete and get ready for the District Track Meet the following week!!

## Boys & Girls Golf to host Meets this week

The Boys and Girls Golf began today, Friday—March 25, at Canadian. The teams are looking very well with Coach Gary Rambo right there supervising the action.

The Girls will be hosting their Golf Meet at the Spearman Golf Course, going down Gruver way, this Monday, March 28. Teams like Dalhart, River Road, Perryton and Canadian will be involved in the Golf Meet. The Girls Team, last year, in 1982, won the District Meet and went to

Regionals, where they did fine. Coach Rambo is optimistic of this year's team also. Don't forget, the girls will be hosting their Golf Meet this Monday, March 28 at the Spearman Golf Course, going down Gruver way. Do try and make it.

The Boys will host their Golf Meet on Wednesday, March 30, at the Spearman Golf Course. The boys had a fine team last year, but it was young, mainly Freshmen. So

this year, Coach Rambo is optimistic about this year's boys' team. Do try and make it to the Golf course this week, first on Monday, March 28, beginning at 9:30 a.m. for the Girls Golf Meet, and then the other day will be Wednesday, March 30 for the boys golf meet, also beginning at 9:30 a.m.

The Boys and Girls Golf Teams are very talented, so don't y'all miss the Meets!!

### Defensive Driving Course Set

There will be a Defensive Driving Course held in Spearman on March 31 and April 5, four (4) hours each night from 6:00 - 10:00 p.m. To complete the course, an individual must attend both classes for a total of 8 hours. These classes will be held in the upstairs room of the Hansford County Library.

Anyone wishing to attend the class can contact John R.

Collard, Jr. at 659-2501 or contact the Spearman Police Department at 659-3707 or J.L. Brock Insurance Agency at 659-2514.

**Painful**  
A perfectionist is someone who takes great pains and gives them to other people.  
—Record, Columbia, S.C.

William D. Ruckelshaus appointed head of EPA.

Newest nuclear sub USS—Minneapolis—St. Paul sails.

REPORT OIL FIELD THIEVES CALL  
1-800-OIL-COPS  
1-800-645-2677  
TOLL-FREE.....REWARD

**Baker & Taylor**  
Drilling Company

## Tennis Teams to host Fritch

The Tennis Teams, boys and girls will host the Sanford-Fritch on Tuesday, March 29, for their Tennis Meet. The Meet will begin at 4:00 p.m.

The Tennis teams have lots of excellent players with the likes of Kelli Crawford, Susan Davis, Andrea Mires, Ross Donahue, Mark Pearson, Greg Meek, Mack McLain, Bob Cook, Jay Pack, and lots of

others. So the Tennis program is really off to a good start. The Tennis Meet on Tuesday will be here at the Spearman Tennis Courts beginning at 4:00 p.m., so don't y'all miss it.

Then on Friday and Saturday, April 1 and 2, the Tennis teams will be competing in the Annual Amarillo Relays. Making the Tennis teams pretty busy this coming week.

## Holy Week Services set

Holy Week Services will be presented each day at noon, Monday, March 28, through April 1st, by the Spearman Ministerial Alliance.

The services will be at the First United Methodist Church. A nursery will be provided for all services.

Soup and sandwiches will be served by the women of the First United Methodist Church, so that it will be possible to go to the church at 12 noon, eat, share in the service and return to work by 1 p.m.

There will be a special Good Friday Service at 7 p.m. in the Sanctuary and the message will be brought by Martin Foster, pastor of the First Christian Church.

To bring the daily message will be: Monday—David Nuck-

les, pastor, Assembly of God; Tuesday—Steve Baily, pastor, Brethren Church, Waka; Wednesday—Bruno Gaskamp, pastor, Faith Lutheran; Thursday—Steve Rogers, pastor, Union Fellowship; Friday—Leland Grimmer, pastor, Apostolic Fellowship; Friday evening, 7 p.m.—Martin Foster, pastor, First Christian Church.

Singing will be led by Betty Womble and the Chancel Choir of the First United Methodist Church will present the special music on Friday evening.

These services are for the total community. Refreshments will be served for a fellowship following the evening service.

### Paula Ochoa dies at Rio Hondo

Mrs. Paula Ochoa, 80 years old, died Friday in Rio Hondo, Texas.

She is survived by five sons, David of Spearman, Juan of Waka, Jesus, Selestino, and

Isreal; daughters Josephine, Emilia, Herminia, Celia and Enriquita, a number of grandchildren and great-grandchildren.

## Scanner project nearing completion

Newman Memorial Hospital's EMI 5005 C.T. Scanner project in Shartuck, Oklahoma, is nearing completion and April 1, 1983, is still projected as the date for operation to begin. The CAT Scan is one of the major portions of the larger NMH Diagnostic Center project. March 17th marked the testing of the slow scan television system that will allow Radiologists with the Springs Radiology Group in Enid, Oklahoma, to view the scan by telephone/video transmission of images. Dr. Dan Mitchell reported to NMH staff members that images and communications were being received with excellent clarity.

Another phase of the installation nearing completion is the programming of the computer that is the mechanical brain behind this sophisticated x-ray machine. The OMNI Field Supervisor from Houston who is in charge of the CAT Scan's installation reports that the computer backing up the NMH equipment has capabilities in several areas including biopsy work that will allow NMH physicians to have an excellent diagnostic resource at this facility.

Although the CAT Scan will be operational by April, the final completion of the NMH Diagnostic Center will not be until May. At that time an open house is planned to allow area physicians and citizens to view the completed project.

## Calendar Of Events

MARCH 24—Ag Mechanic Contest at T.S.T.I. in Amarillo.

MARCH 25-26—The 7, 8, and Varsity Girls and Boys Track Meet in Spearman.

MARCH 28—Girls Golf Team travels to Stratford. An Activity Meeting beginning at 11:30 a.m.

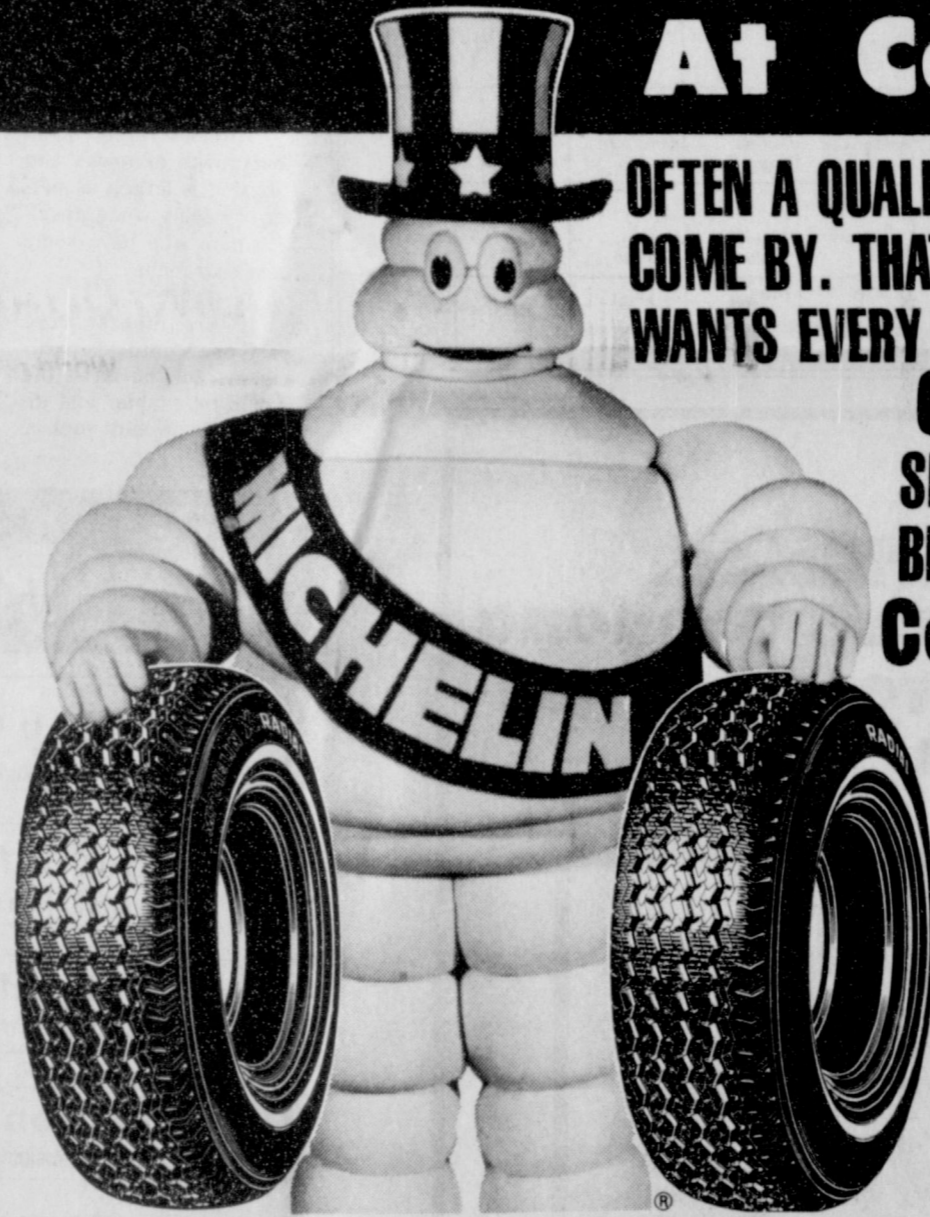
MARCH 29—The Boys Golf Team travels to Phillips. The Band Concert beginning at 8:00 p.m. in the Auditorium.

MARCH 30—The Band Contest at Panhandle High School in Panhandle, Texas.

MARCH 31—The 7, 8 & Varsity Girls Track Meet at Fritch.

MARCH 31 - APRIL 4—The Easter Holidays.

# In Spearman, Texas SMART DRIVERS JOIN THE MOVE TO MICHELIN At Consumers



OFTEN A QUALITY PRODUCT IS RARE TO COME BY. THAT'S WHY **Co-op** WANTS EVERY DRIVER IN **Hansford County** TO OWN A SET OF MICHELIN STEEL-BELTED RADIALS.

**Consumers KNOWS THAT MICHELIN BUILDS QUALITY INTO EVERY TIRE THEY MAKE. DRIVE IN FOR A SET TODAY. FOR QUALITY YOU CAN DEPEND ON!!!**

## Consumers Sales Co.

421 W. Kenneth

Spearman, Texas

659-2012



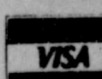
Size	Reg.	Sale	F.E.T.
P195/75R14XWW	121.23	78.47	2.24
P205/75R14XWW	129.38	96.55	2.51
P205/75R15XA	131.63	98.02	2.53
P215/75R15XWW	137.15	101.58	2.68
P225/75R15XWW	141.73	101.75	2.86
P235/75R15XWW	148.63	109.02	3.21

**MICHELIN**

You don't have to be a member. Everyone welcome.



Visa & Master Charge Welcome



To My Beautiful Doll

Happy Birthday

Christa Sims

Love,  
Daddy

