

Lucille Hagerman raises eight children . . .

# Labor Day is every day for woman



LUCILLE HAGERMAN

. . . A quick smile and a willing hand.

It became in the hey-day of the American revolution as a private observance and was first recognized in 1882 in New York. Over the ensuing years the first Monday in September gained state-wide, then nationwide popularity as Labor Day.

Today, Labor Day is the traditional end of summer holidays, the start of school and the beginning of fall business activities. Yet it remains as a token of appreciation to the American worker -- the backbone of a successful nation.

Perhaps nowhere is the American worker better epitomized than here in Hansford County through the pretty smile and willing efforts of Lucille Hagerman who has

raised eight children -- five of them on her own.

At the age of 51, Lucille has managed to raise, educate and love her children but not without a good deal of work both at and away from home.

It takes a special kind of dedication to raise eight children anyway but Mrs. Hagerman managed to find ways to keep her brood around her and work during the summer even when the children had a father at home.

During those times, she and her kids would work at roguing maize during the summer, an activity they could all participate in and still remain together as a group.

"We did it to make money for

school clothes," she remembers with a smile. "It wasn't anything special."

Her dedication to her family and her willingness to work carried the family through when she wound up as sole support of her brood with five of them still at home.

By the time the youngest, Larry, was in school, she had picked up a part time job in the Spearman school cafeteria. Over the years it grew into a full time job.

When she found herself alone as the breadwinner of her family, Lucille was able to take on the custodial work of the United Methodist Church in Spearman as well as handling baby-sitting for the church during Sunday services.

"Most of the time I was just thankful the good Lord was taking care of us," she declares. "I could always look around and find somebody in worse shape than we were."

But the school cafeteria job didn't provide a salary during three long summer months and finally, eight years ago, she was able to get on full time at Thriftway in Spearman.

She had already worked there on a part-time basis, working Saturdays and holidays to earn extra money.

When she was offered a full time position in the meat department, it

See "LABOR", p-2



The Hansford  
**Plainsman**

25¢  
Per Copy

6 Pages

Volume 18 No. 44      YOUR HOMETOWN NEWSPAPER      Sunday, September 6, 1987

## Purple Pride unleash big plays . . .

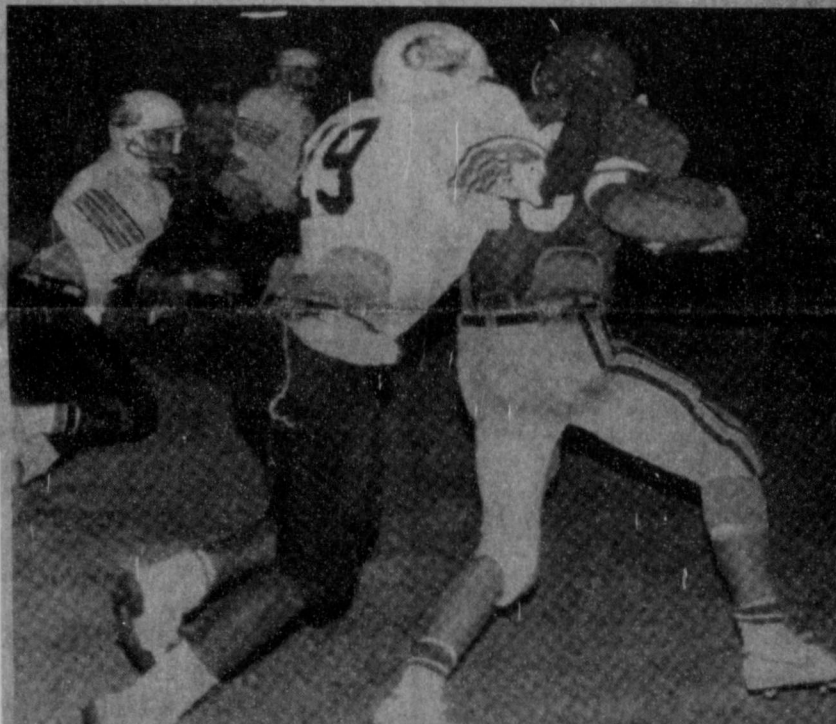
# Lynx unwind Cyclones, 25-12

The 1-AA Spearman Lynx played rainmaker Friday evening, utilizing thunderclap breakaway plays to inundate the Memphis Cyclones of district 2-AA, 25-12, in a season debut which was almost the reverse of two prior year's openers.

It appeared the Lynx had borrowed the Cyclone play book as they ripped off three breakaway TD plays of 55, 68 and 61 yards enroute to their first win of the 1987 season.

Revenge was sweet for the Lynx who had bowed out to visiting Memphis, 60-0 and 41-0 in the opening game encounters the past two years.

Head rainmaker for the torrential



HAULED IN FROM BEHIND. . . Lynx workhorse runningback Haskell Garrett is hauled in by Cyclone defender Jeff Richardson during Friday night's season opening win. Photo courtesy Earnest Newcombe

Lynx scoring flood was senior signal caller Brent Davis who connected on touchdown passes of 55 and 21 yards, then scampered for a 68-yard punt return to paydirt in leading the Spearman rout of Memphis.

But the real heroes of Friday night's Texas schoolboy football gridiron battle were the Lynx offensive and defensive line.

Spearman defenders contained the potent Memphis attack all through the night, limiting them to only 81 yards in the first half.

The Cyclones highly touted fullback Johnny Scott finished the night with only 44 yards on 14 carries while speedy quarterback Jeff Richardson was limited to 44 yards on 11 carries.

Meanwhile, Spearman workhorse runningback Haskell Garrett ripped off 154 yards on 20 carries with Stan

Brandt carrying 10 times for 88 yards to pace the Lynx.

The first quarter of 1987 gridiron action saw Spearman dominate the line both defensively and offensively as Memphis ran only six offensive plays during the entire 12 minutes of play.

The Lynx -- while unable to score in that frame -- racked up four first downs and ran off 18 offensive plays.

But the score was deadlocked at 0-0 when the gun sounded ending the first quarter and the Lynx were on the long end of a third down and 21 yards needed for a first down from their own 45.

The cloud burst on the first play from scrimmage in the second quarter when Davis dropped back to heft a screen pass to Brandt who caught the ball in full stride then galloped to the

end zone for the opening score of the game.

With only 13 seconds ticked off the second stanza clock, Spearman had jumped out front with a 6-0 lead.

Matt Tucker toed the PAT to put the Lynx on top with a 7-0 count.

Following the kickoff, Memphis managed to eke out their first first down of the ball game, only to see Richardson sacked on a pass attempt for a 10-yard loss on third and seven. The Cyclones punted from the Lynx 44 and Davis cornered the punt on his own 16-yard line, then raced upfield to the 33.

A late hit on the Spearman ball carrier saw another 15 yards tacked on against Memphis and the Lynx set up shop at their own 48.

In just 12 plays, Davis guided his offensive machine down the field only to have the drive seemingly bog down at the Cyclone 23-yard line.

A facemask penalty saw the Lynx march backwards to set them up with

See "LYNX", p-2

## Boulter visits Spearman for town meeting

U.S. Congressman Beau Boulter (R-Amarillo) will be in Spearman next Saturday for a special town hall meeting, reports Roy Bulls, Republican chairman for Hansford County.

The meeting will be held at 2 p.m. next Saturday in the community room of the First State Bank in Spearman.

Congressman Boulter will be on hand to receive input from his constituents and to answer any questions area residents may have, notes Bulls.

## 10 high school youths escape serious injury

A Thursday noon motor vehicle accident saw 10 Spearman high school students escape serious injury when the vehicles they were driving collided at Ninth and Roland in Spearman.

According to police reports, a pickup driven by Clinton DeArmond was following a car driven by Carly Shieldknight north on Roland when both vehicles attempted to make a left turn onto Ninth from Roland.

The pickup struck the Shieldknight car, pushing it up over the curb into a parking lot on the corner. The pickup continued on, striking a base system valve and knocking over a row of mailboxes on the west side of the street.

There were two occupants in the pickup and eight in the car, notes Spearman police chief, Joe Raper who is investigating the accident.

All but one of the occupants were treated and released from Hansford Hospital with minor injuries, he reports.

The tenth occupant, Camela Butts, was held overnight for observation, but was released from Hansford Hospital Friday morning according to Hospital records.



10 HANSFORD YOUTHS escaped serious injury Thursday when this pickup collided with a car at the intersection of Ninth and Roland. All but one of the Spearman High School students were treated and released at Hansford Hospital with one kept overnight for observation and released Friday morning.

## Police investigate hit-run accident

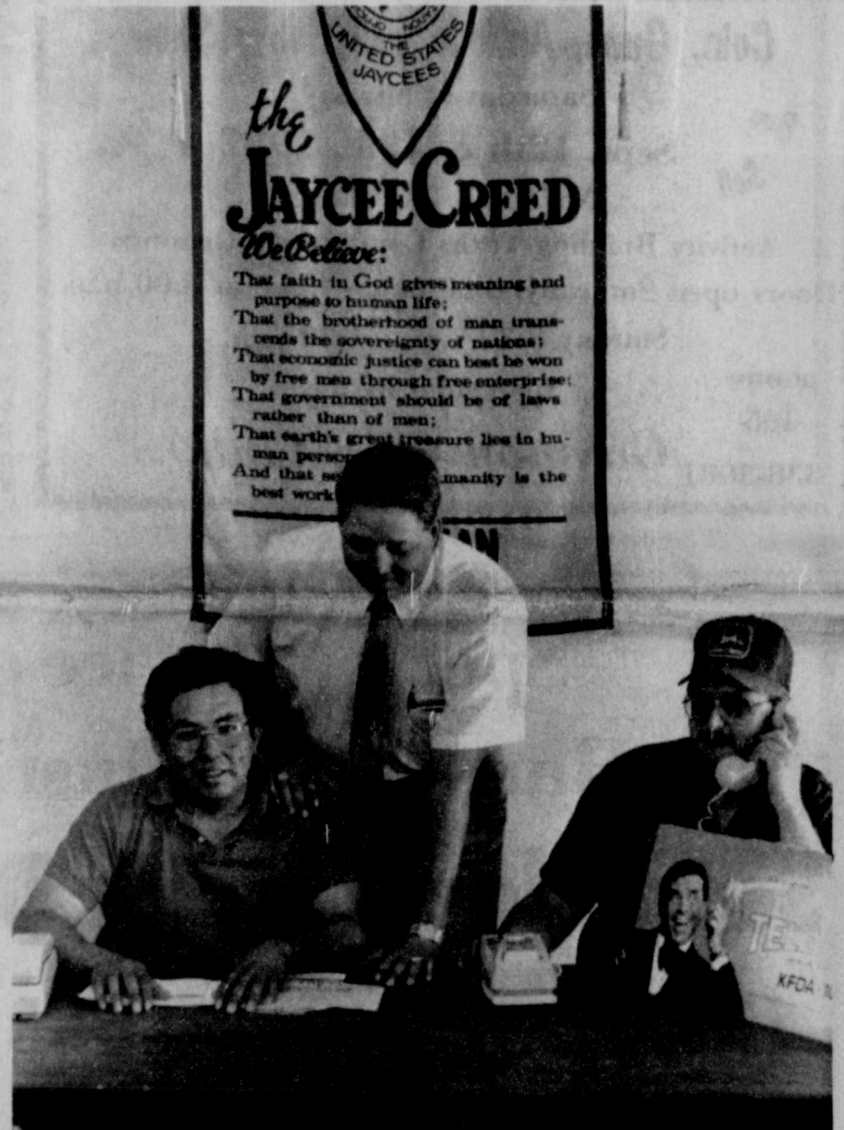
Spearman police are checking into a hit and run accident which occurred Thursday evening at Fifth and Hwy 207 S. in Spearman.

Steven Lee George, 32, of Spearman was knocked from his motorcycle by a small size pickup in the 500 block of South Hwy 207, reports investigating officer Dale Gable.

The pickup continued on but witnesses were able to get the tag number on the license, reports the Spearman PD.

George was uninjured in the accident and the motorcycle sustained damages in excess of \$250, the officer's report notes.

The cyclist, however, was ticketed for not having a license to drive a motorcycle.



READY FOR THE TELATHON . . . Spearman Jaycees get ready to man the phone for the annual Jerry Lewis Muscular Dystrophy Telathon which begins Sunday evening and runs through Monday. Pictured are club secretary Ray Ortega (left), director Kelly Mahanay (center) and president Jimmy Nicholson.

# Hospital tax rate set at 40.9 cents

District board of directors made the 1987-88 tax rate official Thursday evening, voting to set the rate at 40.9 cents per \$100 valuation during a special board meeting held at the hospital.

In a unanimous vote with all members present except Rosa Lee Butts, board members adopted the new tax rate which will have 13.4 cents set aside for dept payment on bonds for the Hansford Manor while the remaining 27.5 cents will be utilized to help fund maintenance and operations on both the hospital and nursing home facilities.

Need for the increased tax rate -- it was 26.2 cents for the current taxing year which ends this month -- came about when the district was unable to overcome a \$375,000 deficit from last year's budget.

That, combined with higher than expected medicare and indigent care losses in the current tax year, left the district almost \$875,000 short on a proposed budget for the upcoming tax year.

"Nobody likes having their taxes raised, not even me," declared hospital administrator Al La Rochelle. "But to balance the budget and get over the deficit, this is what we'll have to do."

Several Hansford residents were

meeting, most asking questions concerning the state of the hospital's financial situation.

"Don't get me wrong, I don't care if the rate goes up 200 percent, I'll vote for it," Hansford County resident Don Maize told directors Thursday evening. "I just want to know why we're needing the increase and what we can expect in the future."

Board president Jack Oakes explained the current situation to those present and noted that "if our revenue projections are met, it's possible we'll even be able to lower the tax rate next year."

The key will be meeting expected revenues for the 1987-88 tax year with occupancy rates of 26 percent estimated for the hospital and 90 percent estimated for the Hansford Manor.

The Manor currently has 53 residents out of a possible 84 with the resident census climbing steadily from 39 when the new portion was opened to the public in late July.

The hospital has 28 beds and to maintain an overall 26 percent occupancy rate must have between seven and eight patients at all times. The Manor's occupancy will have to reach 76 to meet projections there.



continued from p-1

**LYNX**

a first and 20-yards needed for a first down from the Memphis 32.

Four plays later, on a fourth down and nine yards needed from the Memphis 21, Davis found end Keith Benson in the end zone and the rangy Lynx end outjumped a Cyclone defender to haul in the 21-yard strike for the second Spearman TD of the evening.

With only 2:22 remaining on the scoreboard clock before intermission, Spearman owned a 13-0 lead. When

**LaLeche league to sponsor CPR course**

The Spearman/Perryton La Leche League Groups will be sponsoring a CPR course taught by Michele Davis of Spearman. This meeting will be held on Thursday, September 10, from 9:30 - 3:00, at the First Christian Church of Perryton, 901 S. Jefferson. There will be special emphasis on infant CPR. There is no charge for the course and children are welcome to attend. No child care will be provided.

The Spearman and Perryton Groups will combine this month for the regular series meeting. They will meet on Friday, September 11, at 619 Haney, at 10:00 a.m., in Spearman. The meeting topic will be the "How-To's" of Breast-feeding. For further information call 659-2794.

the snap for the PAT was mishandled, the Lynx were unable to score, but held a dominating position with that 13-point edge.

Memphis may have been down, but they weren't out and quickly proved it as they took the ensuing kickoff 62 yards in seven plays to score their first points of the night.

Utilizing a pair of time outs and a roughing the passer call, Richardson proved too much to handle as he masterminded the Cyclone TD.

With 32 seconds remaining before the half, the speedy Memphis quarterback brushed past Lynx defenders to put his crew on the board. A 2-point conversion attempt was thwarted by the Lynx and the game stood at a 13-6 count at halftime.

Memphis took the opening kick of the second half but was unable to move the ball and punted from their own 35. Lynx field general Davis proved his talents again as he snagged the punt on the Spearman 32, then threaded the needle to double stripe territory with 10:19 remaining in the third quarter.

The shell-shocked Cyclones watched as Tucker's kick went wide left on the PAT, but Spearman held a commanding 19-6 lead.

Garrett provided the icing on the cake for the Lynx's victory celebration

**THE HANSFORD PLAINSMAN**

continued from p-1

**LABOR**

didn't take her long to accept. Lucille saw her last daughter take off from the nest this summer, but she still hasn't slowed down.

In all her years of working, the dedicated mother of eight has taken only two weeks of vacation -- one week at a time -- and has never taken a 2-week long vacation at one time in her life.

Those two separate weeks of vacation would even have to be categorized as working vacations -- one was to prepare for her daughter's wedding. She even went and cleaned the church right before it so it would be spotless for that special day.

score into the lockers.

**GAME STATS**

	SPM	MEM
First Downs	15	12
Rush Yds	259	141
Pass Yds	115	63
Total Yds	374	204
Pass Attmp	6	10
Pass Comp	4	8
Int. By	1	1
Fum. Lost	0	1
Pen/Yds	9/86	2/10

when he ripped off a 61-yard blast following two exchanges of the ball.

The junior halfback came through the line from the Lynx 39 to hit paydirt with 3:12 remaining in the third stanza to push Spearman ahead by a 25-6 count.

Again the PAT snap was muffed, but the Lynx were in control by that 19-point margin.

Memphis took the kickoff to set up shop at their own 33 and in a quarter-spanning march used 11 plays to score the final TD of the night.

Richardson again proved the big gun, completing two passes and running for 30 yards in three plays, capping the 87-yard drive on a 3-yard plunge with 11:23 remaining in the game.

From there on it was time consuming marches by the Lynx which thwarted the Cyclones and sterling defensive plays by the likes of Tucker, Benson, Will Black, Shawn Cook, John Hughes, James Tindell and literally a host of others.

Tindell killed one Cyclone drive with a fumble recovery on the Lynx 29, then Brandt destroyed all Memphis hopes with a late - game interception to end the final Memphis possession.

When the gun sounded ending the game, Spearman owned their first win over the Memphis Cyclones in the last three season openers, carrying a 25-12

**Lynx jv beat Stratford, 14-6**

A spearman jv defense which proved rigid inside their own 20-yard line teamed up with an

opportunistic offense to eke out a 14-6 win over their Stratford counterparts Thursday evening in Stratford.

The Spearman jv wound up with their defense on the field during the bulk of the night and the defensive unit provided Spearman with their winning edge, jumping on a Stratford fumble near the end of the third frame to set up the final touchdown of the evening.

Spearman drew first blood, taking the ball on their own 45-yard line midway through the second quarter of junior varsity play.

From there they marched 55 yards to paydirt in only six plays with a 14-yard toss from jv quarterback Edward Mayfield to end Cody Reynolds capping the drive.

With 2:38 remaining before halftime, Reynolds toed the PAT kick to put the Spearman jv Lynx at 7-0.

That drive was highlighted by a 20-yard run off the heels of halfback Scott Wilkerson and another 25-yard pass play, this one a Mayfield to Chris Porter combo.

Stratford was unable to mount an offensive drive before the half and when the gun sounded to announce halftime intermission, Spearman still owned the scoreboard by that 7-0 count.

Stratford came out determined in the third quarter and, after an exchange of punts, punched over double line territory for their only TD of the evening.

But a try for a go-ahead 2-point conversion was killed by that tenacious Spearman jv defense and, with 4:28 remaining in the third stanza, Spearman still held a slim 1-point lead, 7-6.

The defense provided their Spearman jv offense with the perfect opportunity when they recovered a Stratford fumble deep in Elk jv territory near the close of the third quarter.

Moving from the Stratford 22, Spearman ran off four plays with Edgar Nova scampering the final 12 yards to paydirt to ice the win for the Lynx jv.

Still early in the final quarter of play, Reynolds kicked his second PAT of the night to put Spearman out in front for good, 14-6. Spearman finished the night with six first downs and 158 yards total offense, 101 of that rushing and 57 passing.

Stratford, meanwhile, had five first downs with 99 yards rushing. They did not complete a single pass that night.

For Spearman, Chris Porter hauled in two catches for 43 yards while Reynolds lone catch for 14 yards scored a touchdown.

Scott Wilkerson finished the night with 55 yards on 11 carries, Mayfield had three carries for 28 yards and Nova finished with 18 yards on eight carries, including one TD.

"Our defense played an excellent game," declares jv coach James Mireles. "And Terry Thompson did an exceptional job for us at center."

Thompson played at center in place of Greg Gilbreath who was sidelined with an injured elbow. Mireles noted Thompson's handling of deep snaps on punting situations.

The Spearman Lynx will be in Gruver next Thursday for their second game of the 1987 season.

The other week's vacation came when her son, Steve's baby was born last summer. She went to stay and help out with his family.

Lucille's family consists of Paula who is now 32, Steven who is 31, Leon who is 30, Verla who is 28, Robert who is 27, Valerie who is 25, Kathy who is 23 and Larry who is now 21.

While it hasn't been easy, she doesn't begrudge one minute of the time she has spent over the years.

"If I had to do anything different, I would have become more involved with the Lord instead of just raising the kids," she smiles.

The thing that seems to stand out most for her over those trying years isn't the work -- it's just having to raise eight kids in a 3-bedroom house . . . "with only one bath!" she emphasizes by raising her index finger and pointing up.

Today, work still remains not only her livelihood, but her hobby as well. When she's not working, she's out in the yard, or helping a neighbor or something.

Labor Day . . . well, there are all kinds of labor. For Lucille Hagerman of Spearman it's obviously been a labor of love.

**Hospital Report**

Patients in the Hansford Hospital are Elden Boese, Tania Hollingsworth, Tony Pacheco and Camela Butts.

Dismissals from the Hansford Hospital was Camela Butts.

**The Hansford Plainsman**

PUBLICATION [USPS 2346-6000] SPEARMAN, TEXAS 79081

213 main Box 458 659-3434

OWNED AND OPERATED BY Texas Independent Newspapers Inc.



Second Class postage paid at Spearman, Texas 79081.

Any erroneous reflection upon the character of any person or firm appearing in these columns will be gladly and promptly corrected upon being brought to the attention of the management.

**PUBLISHER**

JAMES C. JARRETT

Advertising Director

Kirby McAdams

SUBSCRIPTION RATE: Hansford, adjoining counties, combination with the Spearman Reporter, \$19.95 out of county \$24.95.

POSTMASTER: Send address changes to Hansford Plainsman, Box 458, Spearman, Texas 79081.

WHEAT	Markets	\$2.20
MILO		\$2.85
CORN		\$1.82
BARLEY		\$1.45

**Coin, Guns, Antique and Hobby Show**  
 Saturday & Sunday  
 Sept. 12th & 13th, 1987  
 No Admission Charge  
 Activity Building-Texas County Fair Grounds  
 Doors open Saturday, 8:30 a.m. - Close at 6:00 p.m.  
 Sunday 8:30 a.m. - 4:30 p.m.  
 phone 405  
 338-3081  
 Sponsored by the  
**Guymon Coin Club**

**Special Service of Hansford Plainsman Saturday Carrier Delivery**

*All through the 1987 Football Season*

In order to get Friday's football results in the Sunday paper, the Hansford Plainsman will not be mailed until late each Saturday.

This will mean your a paper will not come to your home until Monday. As a special service to subscribers, the Hansford Plainsman will be thrown each Saturday to your home address.

**But Only If You Request It!**



Call 659-3434 TODAY!

Give your name and street Address

**THE HANSFORD PLAINSMAN**

DON MOORE OWNER STEVE MOORE  
**GOLDEN SPREAD CARPET CLEANING**  
 Carpet & Upholstery Cleaning  
 Carpet Installation  
 225 N. HAZELWOOD • SPEARMAN, TX 79081 • 806-659-3068

**19** WALLET SIZE COLOR PHOTOS  
 WE USE KODAK PAPER **99¢**  
 No limit on this offer  
 AT Kids' Stuff  
 719 West 7th  
 Fri. Sept. 11  
 COME MEET OUR NEW PHOTOGRAPHER  
 Ask about our FREE 8 x 10 offer  
**Shugart's inc.**  
 Group charge 99¢ per person per 19 wallets  
 Kodak paper. For a Good Look at the Times of Your Life. TM

**We Will be Closed Monday, September 7, 1987**

**LABOR DAY**

FDIC

**F.S.B. First State Bank**

One NE Court Spearman, TX 79081



## Among the Neighbors

By Helen Fisher

Gloria Knox spent from Saturday thru Monday with their sons, Mr. and Mrs. Danny Knox and children who live in Odessa, and from there she spent the night at Hart with the David Knox family.

A gathering of old friends brought back many memories in the home of Peggy and Alton Ellsworth last week-end. Peggy's brother and sister, Robert and Martha Gabel of Amarillo and the Harold Sanders of Wichita, Ks. came for a reunion with a childhood neighbor whom they had not seen in 30 years. Bill Black and wife Wanda of Wichita Falls spent the weekend with the Ellsworths.

Others attending Sunday dinner with them were Archie and Gayle Smith, Kacey and Kallie and Gary Ellsworth.

Mason and Lucille Tindell of Deming, N.M. have been guests of

his brother the Ira Tindells this week. They are here for the Martin family reunion to be held on Sunday.

The neighbors are always pleased to share in the joy of the arrival of a new family member. Betty Pugh, of the Texas New Mexico Power Company, has a new granddaughter, Rebecca Dione who arrived on August 27. She is the daughter of Cindy and Mike Patterson of Azle, Tx. and has a brother, R.J., and a sister, Misty.

Spearman is welcoming new residents, Don and Pam Ledge-wood who have resided at 732 Cotter Dr. since last Monday.

They came here from Liberal, Ks. but were originally from the San Antonio area.

He is the new O&M supervisor for Northern Natural Gas Company. They have two children, 10

year old Crystal and 6 year old Jeremy. Both have enrolled in school and are enthusiastic about the coming year.

Mr. Ledgewood is pleased with the local golf course as he enjoys golfing, hunting and fishing. His wife also plays golf and enjoys yard work and handicrafts.

They are members of the Baptist Church.

Gertrude Archer returned Tuesday from a week in Red River and Taos. She accompanied Reba and Johnny Huffines of Amarillo. They enjoyed scenic drives, shopping and relaxing.

The reunion of the family of the late Mr. and Mrs. Carl Tucker was held in Amarillo on the 29 and 30 at the Boat and Ski Club.

On Sunday after a bountiful meal, pictures and videos were made, followed by a variety of games and conversation.

Of the ten surviving children, all but Bobby were able to attend.

Those present were: Mr. and Mrs. Bill Sloss, Mr. and Mrs. Jack Sloss and three children, Jackie

## Girl Scouts to host ice cream social

An ice cream social next Saturday will act as an organizational meeting, registration and fund drive kickoff for the Spearman Girl Scout Council.

Sloss, Mickael Loyd, Mr. and Mrs. Billy Sloss and two children, Bob Stultz, Mr. and Mrs. Pat Tucker, all of Amarillo.

Sue Sloan, Tammie and Kevin and Betty Resch of Canyon.

Mr. and Mrs. W.R. Tucker, Mr. and Mrs. Roger Cypert, with Clint and Chance, Rick Tucker of Ralls, Tx.

Mr. and Mrs. A.C. Shelton, Mr. and Mrs. Carl Shelton, Mr. and Mrs. Ronnie Alexander and girls, of Dumas.

Mr. and Mrs. Ricky Webb and girls, Morton, Tx.

From Spearman, Mr. and Mrs. Al Tucker, Mr. and Mrs. Mike Tucker, Justin and Tyson, Mr. and Mrs. Buck Tucker and Matt, Carla Beezley and Kelcee, Millard Tucker and Vi Hornsby.

The ice cream social will begin at 3 p.m. next Saturday at the Swimming Pool Park and girls interested in joining Brownies, Juniors, Cadettes and Senior Girl Scouts will be registering for the upcoming year.

In addition, 5-year old girls in kindergarten will be registering for Daisy Scouts -- the first time this program has been offered in Spearman.

Spearman Girl Scouts observed the 75th anniversary of Girl Scouting this past spring. The Spearman organization itself dates back to at least 1943, reports one of the local leaders.

The annual fund drive will be used to support the Spearman Girl Scouts "Little House" which has served as the Girl Scouts home since 1963 when it was donated to the local organization by Rose Porter.

Money raised from the drive is used to purchase insurance and pay utility costs for the building.

Money is needed this year for painting and general fix up around the Girl Scout home, notes its supporters.

The Sustaining fund drive will begin next Saturday and will run through October 2 with volunteers contacting Spearman clubs and merchants for donations.

"All money from the drive will stay in Spearman and will be used to fix up the Little House," notes Carolyn Cummings, a Girl Scout leader. "It'll be used for general repairs, painting, fixing the stucco, the windows and ceiling in the house."

At Saturday's registration, mothers who would be interested in helping with a group of girls are asked to volunteer for work there, she notes.

Anyone wishing to make a donation may do so by sending it to Little House, Box 342, Spearman or may call Myrna Biggers, Carolyn Cummings, Gayle Smith or Kathy Biggs.

# COMMUNITY SERVICE



Bill Pittman

## Involved in our community . . .

A bank is more than just a building with money inside. It's first of all . . . people! And our people are involved in our community.

Take Bill Pittman, chairman of the board here at First National. A native of Hansford county, Bill has, over the years, been involved in numerous activities and civic groups which work day in and day out to make our county community a better place to live, work and play.

Currently, he's president of the Spearman Chamber of Commerce and a director of the Spearman Industrial Plan.

He's also been a board member of the Hansford Y, served at one time as a Spearman city councilman and on the Hansford Library board of directors. In addition, Bill has been in and out of the Hansford financial services scene since 1969. And, he's a member of the United Methodist Church in Spearman.

You'll find our staff throughout the town in civic clubs, religious organizations or wherever there's a need for service.

Our bank is people, working to help other people. After all, a bank should do more than just keep your money.

Quality of life. We want to do our part to make it . . .

**CLOSED**  
MONDAY, SEPTEMBER 7, 1987  
**LABOR DAY**

**FNBANK**  
First National Bank of Spearman

FDIC

**Good for You**  
and Hansford County Tool



## Claude Lions host 8-K run

An 8-K and 2-mile fun run will highlight the Armstrong County Fair in Claude next Saturday with competition open in both men's and women's divisions along with age brackets for the two events.

Entry fee for the run is \$7 prior to the Saturday running. On Saturday, entry fees climb to \$12 per individual.

Age brackets include 14-and under, 15-19, 20-29, 30-39, 40-49, and 50-and over for men; 14-and under, 15-24, 25-34 and 35-and over for women in the 8-K competition.

In the 2-mile fun run, age groups are 11-and under, 12-14, 15-24 and 25 and over for both men and women's runs.

Trophies will be given to the first three finishers in all divisions while all entries will receive a special

## Holt attends cadet academy

HARLINGEN, TX -- Marine Military Academy Cadet Lance Corporal Michael Thomas Holt, 14, son of Mr. and Mrs. Michael Holt, from Spearman, Texas, attended leadership school at the Academy from August 9th through August 15th.

At graduation ceremonies held in the Florence E. King Athletic Center on Saturday, August 15th, Cadet Holt was assigned as a Fire Team Leader for "C" Company. This year he will be a freshman at the Academy.

The marine Military Academy is a private, military, college preparatory boarding school for young men in grades 9 through 12, plus a post graduate program. It is located in T-shirt.

The event is sponsored by the Claude Lions Club and is an annual event.

Harlingen, Tx., and is the only school in the world which offers military leadership training based on the proven traditions and customs of the U.S. Marine Corps. The Academy is dedicated to the mission of producing self-disciplined scholars who are mentally alert, physically fit, and responsible citizens.

### Birth announced

Jack and Debbie Crowl of the Pringle-Morse area announce the birth of their newest daughter, DeNelle Kaye, born August 26 at Golden Plains Hospital in Borger.

DeNelle Kaye weighed seven pounds, seven and one-half ounces at birth. She joins sister, Amber, who is three.

Grandparents are Mr. and Mrs. Owen Crowl of the Pringle-Morse community.

## 4 Hansford men earn Kansas state titles

A pair of Hansford County pistol shooters walked away with Kansas State Championship titles and another pair took state rankings there during a 2-day pistol meet held this past week in Ulysses, Kan.

Mickey Cook and Worley Smith captured the Kansas State titles in their respective divisions during the 2-day, 240-round competition which was for combination scores in both hunter's pistol and small hunter's pistol.

Cook's title came in class A competition while Smith's was in class B competition.

Max Taylor took a runnerup spot in the Kansas State meet, second only to teammate Cook in class A

Storytime for 4-year olds will begin at Hansford County Library on Wednesday, September 16. The half-hour programs will be held at the library each Wednesday morning from 10:30 to 11.

Librarian Rita Curtis will conduct each Storytime session using combinations of storybooks, flannelboard stories, poetry, fingerplays, films and filmstrips.

Her primary concentration will be on books. She will encourage competition.

And Danny Carthel of Gruver, shooting in the prestigious class AA events, claimed sixth in overall competition during the 2-day meet.

the children to look and listen to stories, check books out of the library, and learn proper care of books, the library reports.

Parents will need library cards in order for their preschoolers to check out library books.

There will be 12 Wednesday Storytime sessions held this year. They will begin on September 16 and end December 9. No Storytime will be held on November 25, the day before Thanksgiving.

Parents are encouraged to come by the library at 122 Main Street, Spearman, and enroll their children, in Storytime, states Mrs. Curtis. Children must be four years old to attend.

### PUBLIC NOTICE BRIEF EXPLANATORY STATEMENTS OF PROPOSED CONSTITUTIONAL AMENDMENTS SPECIAL ELECTION NOVEMBER 3, 1987

#### PROPOSITION NO. 1 ON THE BALLOT

House Joint Resolution 104 proposes a constitutional amendment to allow the legislature to provide a guarantee for the Texas grain warehouse self-insurance fund. The guarantee of the fund may not exceed \$5 million, and when the fund reaches \$5 million, the guarantee will cease.

The proposed amendment will appear on the ballot as follows:

"The constitutional amendment to provide for the surety of a grain warehouse fund to be established by the grain industry for the protection of farmers and depositors of grain in public warehouse facilities."

#### PROPOSITION NO. 2 ON THE BALLOT

House Joint Resolution 60 proposes a constitutional amendment to permit rural fire prevention districts in counties with populations over 400,000 to levy a tax at a rate not to exceed six cents (\$.06) per \$100 property valuation for the district, if the voters of the district approve the tax.

The proposed amendment will appear on the ballot as follows:

"The constitutional amendment to raise the maximum property tax rate that may be adopted by certain rural fire prevention districts, but only if approved by the districts' residents."

#### PROPOSITION NO. 3 ON THE BALLOT

House Joint Resolution 48 proposes a constitutional amendment to extend the school ad valorem tax exemption for elderly persons to the surviving spouse of a person receiving the exemption. If a surviving spouse is at least 55 years old at the time of death of the person receiving the exemption, ad valorem public school taxes could not be increased as long as the homestead remained the residence homestead of the surviving spouse.

The proposed amendment will appear on the ballot as follows:

"The constitutional amendment to limit school tax increases on the residence homestead of the surviving spouse of an elderly person if the surviving spouse is at least 55 years of age."

#### PROPOSITION NO. 4 ON THE BALLOT

House Joint Resolution 5 proposes a constitutional amendment to allow the legislature to create programs and make loans and grants of money for development and diversification of the economy, elimination of unemployment and underemployment, stimulation of agricultural innovation, promotion of agricultural enterprises, and development of transportation and commerce. Bonds or other obligations payable from ad valorem taxes must be approved by the voters in the political subdivision seeking such funding sources.

The proposed amendment will appear on the ballot as follows:

"The constitutional amendment authorizing the legislature to provide assistance to encourage economic development in the state."

#### PROPOSITION NO. 5 ON THE BALLOT

House Joint Resolution 65 proposes a constitutional amendment to permit the State Department of Highways and Public Transportation to contract with the Texas Turnpike Authority and to contribute money to the costs of turnpikes, toll roads and toll bridges of the Authority. The amendment would authorize the governing body of a county with a population over 400,000, a county adjoining such county, and any city or district located in or partially in such county to make agreements with the Texas Turnpike Authority and levy ad valorem taxes to pay part or all of the principal and interest on Turnpike Authority bonds and to pay maintenance and operating expenses of the Turnpike Authority, if the voters approve the tax.

The proposed amendment will appear on the ballot as follows:

"The constitutional amendment authorizing agreements between the State Department of Highways and Public Transportation and the Texas Turnpike Authority and the governing bodies of counties with a population of more than 400,000, adjoining counties, and cities and districts located in those counties to aid turnpikes, toll roads, and toll bridges by guaranteeing bonds issued by the Texas Turnpike Authority."

#### PROPOSITION NO. 6 ON THE BALLOT

House Joint Resolution 4 proposes a constitutional amendment to allow the legislature to establish three separate development funds. A Texas product development fund could be established to aid in the development and production of new or improved products in the state. The amendment would authorize the issuance of up to \$15 million of general obligation bonds to provide initial funding for the program. A Texas small business incubator fund could be established to foster and stimulate the development of small businesses in the state. Small businesses operating under the program would be exempt from ad valorem taxation. The amendment would authorize the issuance of up to \$10 million in general obligation bonds to provide initial funding for the program. A Texas agricultural fund could be established to promote the production, processing and marketing of agricultural products produced primarily in Texas by small Texas agricultural businesses. The amendment would authorize the issuance of general obligation bonds in the amount of \$100 million outstanding at one time to carry out the agricultural fund program. The legislature could require review and approval of the issuance of bonds and the use of bond proceeds.

The proposed amendment will appear on the ballot as follows:

"The constitutional amendment authorizing the legislature to provide for state financing of the development and production of Texas products and businesses."

#### PROPOSITION NO. 7 ON THE BALLOT

Senate Joint Resolution 55 proposes a constitutional amendment to authorize the legislature to provide for the issuance of \$400 million in general obligation bonds to be used for loans to local governments for acquisition, construction, repair, renovation, and equipment of public facilities or for grants to local governments for planning public facilities. The amendment would also permit the issuance of revenue bonds for the same purposes to be repaid from excess revenue from repayments of loans made under the amendment and from other revenues pledged to the retirement of revenue bonds. The amendment also authorizes the legislature to provide for review and approval of the issuance of the bonds and the use of the bond proceeds.

The proposed amendment will appear on the ballot as follows:

"The constitutional amendment providing for the issuance of general obligation bonds to finance certain local public facilities."

#### PROPOSITION NO. 8 ON THE BALLOT

Senate Joint Resolution 56 proposes a constitutional amendment to allow the legislature to authorize the issuance of up to \$500 million in general obligation bonds to be used to acquire, construct, and equip new correctional institutions and mental health and mental retardation institutions or to repair existing institutions. The amendment also authorizes the legislature to provide for review and approval of the issuance of the bonds and the projects to be financed by the bond proceeds.

The proposed amendment will appear on the ballot as follows:

"The constitutional amendment authorizing the issuance of general obligation bonds for projects relating to corrections institutions

and mental health and mental retardation facilities."

#### PROPOSITION NO. 9 ON THE BALLOT

Senate Joint Resolution 9 proposes a constitutional amendment to provide that a state legislator is eligible to serve in another state office even if the compensation of the office was increased during his legislative term or even if the appointment is made in whole or in part (including Senate confirmation) by the legislature. The legislator could not, however, receive the increased compensation approved during his legislative term.

The proposed amendment will appear on the ballot as follows:

"The constitutional amendment to provide that a member of the legislature is eligible to be elected or appointed and to serve in a different state office but may not receive an increase in compensation granted to that office during the legislative term to which he was elected."

#### PROPOSITION NO. 10 ON THE BALLOT

Section 1, Subsections (f) and (g) of Senate Joint Resolution 12 propose a constitutional amendment to exempt from ad valorem taxation goods, wares, merchandise, and ores other than oil, gas and petroleum products. These items would be exempt from taxation only if they originated outside the state and were located in the state for a period of 175 days or less for purposes of assembly, storage, manufacture, processing, or fabrication. Such property could be taxed by a county, school district, or municipality if the governing body of the political subdivision took official action to provide for the taxation of the items while they were located in the political subdivision. If the governing body of a political subdivision took official action to tax the items before January 1, 1988, the tax would be effective for the 1988 tax year. If the action were taken after January 1, 1988, and before April 1, 1988, the tax would become effective January 1, 1989.

The proposed amendment will appear on the ballot as follows:

"The constitutional amendment providing for the exemption from ad valorem taxation of certain property that is located in the state for only a temporary period of time."

#### PROPOSITION NO. 11 ON THE BALLOT

Subsections (d) and (e) of Section 1 of Senate Joint Resolution 12 propose a constitutional amendment to allow the legislature to exempt from ad valorem taxation all tangible personal property except structures which are used as residential dwellings and property held or used for the production of income. This exemption would be in addition to the personal property homestead exemption already established by the constitution. If the legislature authorizes the exemption of additional personal property from taxation, under this amendment, local political subdivisions may pass resolutions providing for taxation of such property unless the property is exempt from ad valorem taxation under another law.

The proposed amendment will appear on the ballot as follows:

"The constitutional amendment to allow the legislature to exempt from ad valorem taxation certain personal property not held or used for the production of income."

#### PROPOSITION NO. 12 ON THE BALLOT

Senate Joint Resolution 35 proposes a constitutional amendment to allow a married couple to agree in writing that all or part of their community property will become the property of the surviving spouse if one spouse dies.

The proposed amendment will appear on the ballot as follows:

"The constitutional amendment permitting spouses to hold community property with right of survivorship."

#### PROPOSITION NO. 13 ON THE BALLOT

Senate Joint Resolution 27 proposes a constitutional amendment to allow the legislature to provide for the creation, operation, and financing of jail districts. The commissioners court in a county participating in a district could, upon approval of the voters, levy an ad

valorem tax of up to ten cents (\$.10) per \$100 valuation of the property located in the district.

The proposed amendment will appear on the ballot as follows:

"The constitutional amendment to allow for the creation and establishment, by law, of special districts to provide emergency services."

#### PROPOSITION NO. 14 ON THE BALLOT

Senate Joint Resolution 34 proposes a constitutional amendment to allow the state a limited right to appeal criminal cases. Under current law, only criminal defendants are allowed to appeal. This proposed amendment would allow the legislature to pass laws granting state prosecutors the right to appeal in limited circumstances.

The proposed amendment will appear on the ballot as follows:

"The constitutional amendment giving the state a limited right to appeal in criminal cases."

#### PROPOSITION NO. 15 ON THE BALLOT

House Joint Resolution 35 proposes a constitutional amendment to abolish the office of county treasurer in Gregg County and transfer the duties of that office to the county auditor or an elected official designated by the commissioners court. The amendment would also abolish the office of county treasurer in Fayette and Nueces counties if a majority of the voters in those counties vote in favor of the amendment. In Fayette County, the functions of the treasurer would be transferred to the county auditor or the officer succeeding to the auditor's functions. In Nueces County, the powers, duties, and functions of the treasurer would be transferred to the county clerk.

The proposed amendment will appear on the ballot as follows:

"The constitutional amendment to provide for the abolition of the office of county treasurer in Gregg, Fayette, and Nueces counties."

#### PROPOSITION NO. 16 ON THE BALLOT

Senate Joint Resolution 6 proposes a constitutional amendment to allow the commissioners court in a county with a population of more than 150,000 to establish more than one Justice of the Peace court in each Justice of the Peace precinct, i.e., to provide for the election of more than one Justice of the Peace in each Justice of the Peace precinct.

The proposed amendment will appear on the ballot as follows:

"The constitutional amendment providing that certain justice precincts may contain more than one justice of the peace court."

#### PROPOSITION NO. 17 ON THE BALLOT

Senate Joint Resolution 26 proposes a constitutional amendment to allow the legislature to define by law those municipal functions that are governmental and those that are proprietary. This authorization would apply to laws passed by the 70th Legislature, 1987, and by future legislatures in regular or special session. A municipality is liable for damages arising out of acts committed under its proprietary functions, but not its governmental functions. Definition of such functions by the legislature would clarify the liability of a municipality in civil lawsuits filed against it.

The proposed amendment will appear on the ballot as follows:

"The constitutional amendment authorizing the legislature to define for all purposes the governmental and proprietary functions of a municipality."

#### PROPOSITION NO. 18 ON THE BALLOT

House Joint Resolution 18 proposes a constitutional amendment to authorize the legislature to provide for the creation, operation, and financing of jail districts. Financing of a jail district could be accomplished through the issuance of bonds and other obligations, or by levy of an ad valorem tax on property located in the district if the qualified electors of a district approve an ad valorem tax or bonds secured by a property tax.

The proposed amendment will appear on the ballot as follows:

"The constitutional amendment relating to the creation, operation, and financing of jail districts."

#### PROPOSITION NO. 19 ON THE BALLOT

House Joint Resolution 88 proposes a constitutional amendment to authorize the issuance of \$500 million in general obligation bonds, the proceeds of which will be used to establish a superconducting super collider fund. The fund would be used to provide economic incentives for the superconducting super collider research facility, and the agency administering the fund would be authorized to grant land or property to the United States government for undertakings related to the facility.

The proposed amendment will appear on the ballot as follows:

"The constitutional amendment authorizing the issuance of general obligation bonds to fund undertakings related to a superconducting super collider research facility sponsored or authorized by the United States government, and to make appropriate grants for such undertakings."

#### PROPOSITION NO. 20 ON THE BALLOT

House Joint Resolution 96 proposes a constitutional amendment to allow the legislature to provide ad valorem tax relief for mobile offshore oil and gas well drilling equipment. The tax relief would be limited to equipment that is being stored while not in use in a county that is adjacent to the Gulf of Mexico or on a body of water that is adjacent to the Gulf of Mexico.

The proposed amendment will appear on the ballot as follows:

"The constitutional amendment to provide ad valorem tax relief for certain offshore drilling equipment that is not in use."

#### PROPOSITION NO. 21 ON THE BALLOT

Senate Joint Resolution 17 proposes a constitutional amendment to provide for legislative involvement in the executive branch of government by permitting the legislature to include the speaker of the house of representatives in the membership of an agency or committee that includes officers of the executive branch of government and performs executive functions. Under current law, the legislature is not allowed to exercise any powers in executive matters under Article II of the Texas Constitution, which provides for the "separation of powers" into three distinct departments.

The proposed amendment will appear on the ballot as follows:

"The constitutional amendment permitting the legislature to include the speaker of the house of representatives or the speaker's appointee in the membership of an executive agency or committee."

#### PROPOSITION NO. 22 ON THE BALLOT

Senate Joint Resolution 53 proposes a constitutional amendment to allow the legislature to limit the term of office of a gubernatorial appointee to a vacancy in a state or district office to a partial, temporary term if the appointment is made on or after November 1 of the last year of the governor's term and the governor is not reelected. Under this amendment, the legislature may provide that the tenure of such an appointee would end sooner than the term would normally expire.

The proposed amendment will appear on the ballot as follows:

"The constitutional amendment to allow the legislature to limit the authority of a governor to fill vacancies in state and district offices during the end of the governor's term if the governor is not reelected."

#### PROPOSITION NO. 23 ON THE BALLOT

Senate Joint Resolution 54 proposes a constitutional amendment to authorize the Texas Water Development Board to issue an additional \$400 million in water development bonds. Of the \$400 million authorized, \$200 million would be designated for conservation and development of water resources, \$150 million would be designated for water quality enhancement, and \$50 million would be designated for flood control. The amendment also authorizes the legislature to provide

issuance of the bonds and the use of the bond proceeds.

The proposed amendment will appear on the ballot as follows:

"The constitutional amendment to authorize the issuance of an additional \$400 million of Texas Water Development Bonds for water supply, water quality, and flood control purposes."

#### PROPOSITION NO. 24 ON THE BALLOT

House Joint Resolution 83 proposes a constitutional amendment to allow a county to use county equipment and personnel to perform work, without compensation, for another governmental entity if the commissioners court finds that the work will not interfere with the performance of county work and approves performance of the work. The governmental entity must be located wholly or partly in the county, and the governing body of the governmental entity must file a written work request with the commissioners court.

The proposed amendment will appear on the ballot as follows:

"The constitutional amendment to permit a county to perform work, without compensation, for another governmental entity."

#### PROPOSITION NO. 25 ON THE BALLOT

Senate Joint Resolution 5 proposes a constitutional amendment to allow the Legislature to authorize Randall County to levy a tax for the benefit of the Amarillo Hospital District. Any such tax could be levied only on property located outside the City of Amarillo and outside the South Randall County Hospital District. The tax could not be more than 75¢ per \$100 property valuation and would be effective only upon approval by the voters in the area to be taxed. If the tax is authorized by the Legislature and approved by voters, the Amarillo Hospital District is to serve residents of part of Randall County. If a tax is levied under this provision, Randall County must repay the State for the cost of publication of this amendment.

The proposed amendment also permits the legislature to authorize a hospital district to change its boundaries or jurisdiction if the district was created or authorized by a constitutional provision that includes a description of the boundaries or jurisdiction of the district. Any change in the boundaries or jurisdiction of such a hospital district would become effective only upon approval of the voters in the district.

The proposed amendment will appear on the ballot as follows:

"The constitutional amendment authorizing the legislature to permit the Amarillo Hospital District to serve certain residents of Randall County, to authorize Randall County to provide financial assistance to the district, and to authorize certain hospital districts to change their boundaries or jurisdiction with voter approval."

#### EXPLANATORY STATEMENT FOR STATEWIDE REFERENDUM NO. 1

Senate Bill 86 submits to the voters the question of whether the 15 members of the State Board of Education should be appointed instead of elected. If the proposition passes, the Governor will appoint a member of the board for each district, with the consent of the Senate. If the proposition fails, the members will be elected from these districts.

The referendum will appear on the ballot as follows:

"The State Board of Education shall be composed of members who are appointed from districts instead of elected, with equal representation throughout the State of Texas."

#### EXPLANATORY STATEMENT FOR STATEWIDE REFERENDUM NO. 2

The Texas Racing Act submits to the voters the question of whether pari-mutuel wagering should be legal in Texas on a county-by-county local option basis. If pari-mutuel wagering is adopted by the voters statewide, a county must also pass a separate proposition on pari-mutuel wagering at an election held in the county before any such wagering may be conducted in that county.

The referendum will appear on the ballot as follows:

"The legalization of pari-mutuel wagering under the Texas Racing Act on a county-by-county local option basis."



# McClellan-Holston wedding held

Jean Ann McClellan, daughter of Judge and Mrs. Roy L. McClellan and Stephan Kary Holston, son of Reverend and Mrs. Wilton Holston of Bay St. Louis, Mississippi were married at the First United Methodist Church in Spearman Saturday, August 29 at 7:00 p.m.

The father of the groom officiated at the ceremony, assisted by the Reverend Steve Moore, director of the Wesley Foundation at Texas Tech University, Lubbock, Tx.

Becky Madison of Amarillo, sister of the bride, was Matron of Honor. Maid of Honor was Jill Havens, Dennison, Tx. Bridesmaids were Tamara Knapp, Wellsville, N.Y.; Deanne Latham, Kingfisher, Ok.; and sisters of the groom Lisa Sanders, Jackson, Ms. and Eva Lynn Seal, Amory, Ms.

Sidney Holston of Canoga Park, Ca. stood as best man for his brother. Groomsmen were Keith Brock, Daryl Busbin and Sam Magee all of Tylertown, Ms.; John Fowler, Utica, Ky. and James Kemp, Long Beach, Ms.

Ushers were Dr. David McClellan, Temple, Tx. and Dr. Bill McClellan, Port Lavaca, Tx. brothers of the bride; James Madison, Amarillo, brother-in-law of the bride; James Seal, Amory, Ms. brother-in-law of the groom and Scott Stinson, Tylertown, Ms.

Musicians were Sammie Davenport, Carrollton, Tx., vocalist; Jean Gwin, Angel Fire, N.M., violinist; Wilma Clark, oraganist; and Sheryl Meek, pianist.

Tammy Ligon and Toni Richardson, both of Lubbock, Tx. registered the guests.

The bride wore a traditional wedding gown of ivory satin and lace fashioned with puffed sleeves and a short train. Small seed pearls decorated the bodice, sleeves and collar. The short bridal veil was attached to a narrow brimmed hat made of the same satin, lace and was decorated with the same small pearls.

She wore pearls that belonged to her paternal grandmother, Vera B. McClellan and a dinner ring loaned



Mrs. Steve Holston nee Jeanie McClellan

to her by her maternal grandmother, Mildred Daily. The ring was made of stones from a wedding set that had belonged to her maternal great grandmother, Margaret Clark Nash.

A floral cotton print was used to fashion tea length dresses for the bridesmaids and the maid and matron of honor.

The groom and all the men in the wedding party wore grey tuxedos.

Mrs. McClellan, mother of the bride, wore a cream colored chiffon tea length dress with a toast colored tunic overlay.

Mrs. Holston, mother of the groom, wore an aqua chiffon tea

length dress decorated with diagonal ruffles from shoulder to waist. Guests were invited to a garden reception immediately following the ceremony at the home of the brides parents.

A dinner was held after the rehearsal on Friday evening at the home of Mrs. Junior Lusby for the wedding party and members of both families. It was hosted by the grooms parents, Rev. and Mrs. Holston and by the aunt and uncle and cousins of the bride, Mr. and Mrs. Don Floyd, Mr. and Mrs. Ronnie Lusby and Mr. and Mrs. Gary Culp.

Jeanie was honored with a bridal shower on August 8 in Spearman

# United in Marriage



Mrs. Larry Byrd

Sherri Lea Hall, daughter of Jim Hall and Shirley Akins, both of Borger and Larry Byrd, son of Mr. and Mrs. Larry Byrd of Borger were united in marriage in a double ring ceremony Friday, August 28 at 7:30 p.m. in the First Baptist Church of Electric City. Sherri is the granddaughter of

Mrs. Aaron Love of Spearman. The couple plan to make their home in Borger.



## Airman Hale completes AF basic training

Airman Shannon C. Hale recently completed her Air Force Basic Training at Lackland Air Force Base in San Antonio and is currently at Loury Air Force Base in Denver for eight weeks of school.

Upon completion of school Airman Hale will be visiting family before going to her duty station at McCord Air Force Base in Tacoma, Wash.

Airman Hale is the daughter of Mr. and Mrs. Ron Burchammer of Amarillo. She is the granddaughter of Mr. and Mrs. Red Byrd of Spearman.

## FREIGHT AGENT WANTED

A. M. Deliveries ● 4-5 hrs. daily

● good second job ● Commission

● 650-850 per month

● Good Driving Record, light Paper work.

**MERCHANTS**

659-3232 or come by beginning 8-7-87.

# Your Home Is Full Of Hidden Dollars

Call 659-3434

Turn idle items into cash fast with a Want Ad

### CLASSIFIED RATES

Regular... Per Word \$0.13  
Display... Per col. Inch \$4.20  
Double rate for blind ads  
Minimum charges  
Cash... \$4.00  
Charge... \$4.50

### CASH IN ADVANCE ADS

• Work wanted • Trailers for Sale • Business Opportunities • No longer Responsible • Political Advertising • Child Care • Baby sitting • Garage Sales • Out-of-county Ads unless advertiser has established credit with • The Spearman Reporter •

### DEADLINES

To place or cancel ads  
Friday - 12:00 p.m. ... Sunday edition.

Tuesday - 12:00 p.m. ... Thursday edition

The Spearman Reporter reserves the right to reject, edit, revise and properly classify all advertising submitted for publication. The Spearman Reporter also reserves the right to cancel any advertisement at any time.  
**THE SPEARMAN REPORTER**  
213 Main, P.O. Box 458  
Spearman, Texas 79081

### ALCOHOLICS ANONYMOUS MEETING

Hansford County Library (Upstairs)  
122 Main-Spearman

Open meeting 2nd Tuesday

### AL ANON

Tuesday  
8:00 P.M.

### L&M Body Works

1501 Hwy 15  
659-2775

Tailpipes - \$29.95  
Mufflers - \$39.95  
Most Duals \$160.00 complete

STEAM RINSE & VAC- Rinse and Vac Shampooer for rent at Gordons Drug. \$10.95 up to 24 hours.

APPLIANCE REPAIR- Call Jim Nobles at 659-3528.

### HANSFORD COUNTY Planned Parenthood

412 Davis  
659-2483  
Spearman, Tx.  
Monday - Friday  
8:30 - 12:30

Texas Carpet Cleaners - for free estimates on carpet, upholstery, cars, R.V.'s, and Suburbans. Scotch Guard. Call 733-2612 or 733-2046.  
42-rtn 38-rtn

### NOTICE

Wallace Monument Co. Monuments, Curbing, Grave Covers  
Local Representative  
**LEONARD JAMESON**  
Spearman, Texas

**WEIGHT WATCHERS:** meets each Monday at 6:00 p.m. at the Home Demonstration Building, Spearman Texas.

**PANHANDLE CRISIS CENTER:** 101 S.W. Forth, Perryton, Texas 79070, 806-435-5013. Help is available at no charge for domestic violence and sexual assault. Call Panhandle Crisis Center, receive support during a difficult time. Counselors on call 24 hours a day. Call for help.

**TOPS 1245, SP** meets every Tuesday night at 7:30 p.m. at the Girl Scout House located at 22 S. Endicott. Drop by and join TOPS.

**Buying Aluminum Cans** Copper, brass, radiators, aluminum and batteries. Romo's Garage Corner of 1st and Miller, Dumas. Mon. - Sat. s44-2tp

### For Rent

**WHY RENT,** when you can own this 14 x 80 3 bedroom, 2 bath Westchester Mobile Home for under \$220.00 per month. Central air/heat, 2 ceiling fans, all kitchen appliances. Owner will carry papers. Call 659-2162. s43-6tc

**FOR RENT: BACK TO SCHOOL SPECIAL.** No more driving your children to school! Neat 3 bedroom, 2 bath across from school. 708 Townsend \$350. plus deposit. Call 659-3448 or 435-6794. s-rtn

**FOR RENT:** Small 3 bedroom home Fenced - carport. Call 659-5297. s44-rtn

### Mobile Homes

**FOR RENT:** Trailer space in Spearman. All utilities, fenced and concrete walk ways. Call 435-5080. 42rtn

**FOR SALE:** 1983 Bonneville Mobile Home, 16 x 80, 3 bedroom, 2 full bath. replace, spacious bi-level kitchen. Skirting and stairs go with it. Must see to appreciate. Call 659-2354 after 5:30 p.m. s42-9tc

**FOR SALE:** \$99 total down payment. For 1987 double wide 3 bedroom, 2 bath, delivered to your location. 120 months. 11.0% A.P.R. \$333. per month. Call Art 806-376-5630. s44s-7t

**FOR SALE:** New 3 bed, 2 bath, Tiffany for only \$203. per month. Fully furnished & free delivery. 240 months. at 13.5% A.P.R. at 1,628 down payment. A-1 Mobile Homes. 806-376-5363. s44s-7t

**FOR SALE:** \$198 monthly for new 1988 double wide 3 bed, 2 bath, free delivery & set up. 13% A.P.R. 1,630 down payment at 240 months. Ask for Frank. 806-376-8611. s44s-7t

**FOR SALE:** \$130. monthly payment for 14' wide mobile home remodeled and ready for delivery 12.77% A.P.R. \$500 down for 60 months. Ask for Don. 806-376-4612 s44s-7t

### Special Notice

**SPECIAL NOTICE:** Dr. Sangalang's office will open on the 1st & 3rd Saturdays of the month beginning 9/5/87 through 5/88 Office hours: 8:30 a.m. - 12:00 noon. No appointments necessary on Saturday. 659-5551. s44-2tc

**SERVICES: Spinkler Systems** We will design and install your systems. Should you already have a system call us for any repairs. 806/435-3585 Tx. Lic. 2729 Guaranteed work. s41-13tc

### For Sale

**FOR SALE:** 1982 Harley Davidson FXWG 9500 miles. \$5,500. Call 659-3111 between 8:00 - 6:00. After 6:00 - 659-3934. s-rtn

**FOR SALE:** Subaru Stationwagon with four wheel drive. Call 659-2272. s43rtn

**FOR SALE:** Certified seed wheat TAM101 & TAM105. Call 733-2203. s4012trtn

**FOR SALE:** New crop of prairie hay in stack. \$2.20 a bail. Call Sheets bailing. 659-2085. s41 10tc

**FOR SALE:** Pontiac Grand Prix Brougham auto, air, tilt, cruise, elec. seats & windows & locks. Excellent condition. Call: 659-2354 after 5:30 p.m. s42-9tc

### Help Wanted

**GOOD WORKING CONDITIONS AND GOOD PAY:** Couple or single person needed to care for elderly couple full time in their home. You must be experienced in geriatric care. No tobacco or alcohol. Send resume and references to Velma De Wese - 215 Lometa - Plainview, Tx. 79072. This position is in Gruver. s44s-1tc

**HELP WANTED: BORED! Broke! Blue!** Sell candles, and accessories. Fun job. Party plan. Free kit. Eall Debbie 273-9701. 44s-2tc

**HELP WANTED: EARN EXTRA MONEY** in Home Assembly work. Jewelry, Toys & others. FT&PT avail. **CALL TODAY!** 1-518-459-3546. (Toll-Refundable) DEPT B8017 24 hrs. s43-sonly3tp

**WANTED:** Ironings to do - Call 659-3623 afternoons or evenings. s44-4tp

### Lots and Acreage

**\$\$\$REPOSS** Colorado Mountains, 40 acre ranch, trees, views. Low down, assume. Ellis, 303-846-9824, 303-846-4004, SOUTHERN COLORADO REALTY. S44-8tp

### NOTICE TO BIDDERS

Hansford County Hospital District will be taking sealed bids for repairs to the roof, facia and gyp decking of the Gruver Medical Clinic, located at 201 East Broadway, Gruver, Texas, 79040. All bids must be made according to the following specifications:

1. Remove existing roof down to deck.
2. Replace up to 200 square feet of gyp deck.
3. Install #28 fiberglass base sheet nailed with tubelock nails.
4. Apply 2(two) layers of #15 fiberglass roof felt mopped in hot asphalt.
5. Seal edges with 12 inch strips of glass cap mineral surface roofing. Install 7 new metal roof jacks and caps.
6. While asphalt is hot, embed 3/8 inch pea gravel on final surface.
7. Bid with 5 year guarantee.
8. Repair facia by removing existing in back to repair front and sides, then replace back with near match as possible.
9. Entry-remove and re-deck, felt, asphalt and gravel. Save interior ceiling.
10. Any deviations from specifications will cause bid to be rejected.

Hansford County Hospital District reserves the right to refuse any or all bids.

All bids must be turned in no later than September 8, 1987.

Send all bids to:  
Hansford County Hospital District  
Attn: Al LaRoche  
707 South Roland  
Spearman, Texas 79081  
For further information, contact Al LaRoche at (806)659-2535.

### OSGOOD MONUMENT CO.

Amarillo, Texas  
Dealers of Rock of Ages Granite, as well as all colored granites, marble and bronze memorials.

represented by  
**BOXWELL BROS. FUNERAL HOME**

519 S. Evans  
659-3802



## Methodist church in 4-day Revival

A 4-day revival will begin at the First United Methodist Church in Spearman next Sunday with J. Stanley Cosby, a well-traveled area evangelist, delivering the special messages and renowned gospel singing artist Johnny Ray Watson on hand to lead the singing.

The revival will begin with morning worship services at 11 a.m. next Sunday, then again Sunday evening during the 7 p.m. service.

Highlighting the day will be a special fellowship luncheon at the church fellowship hall beginning around noon, immediately after morning worship.

Fellowship luncheons will also be held Monday through Wednesday at the church with Brother

Cosby on hand. Evening revival services will begin at 7:30 each night.

A native of Canyon, Rev. Cosby graduated from Panhandle High School and has a BA in religion from McMurry College with a Master's from Asbury Theological Seminary.

He was ordained as a deacon in the Methodist Church in 1974 and as an elder in 1977. He has pastored churches from Blackwell, Tx. to London, Ken, and Tulsa, Ok. in addition to his evangelical work.

Rev. Cosby has preached in numerous revivals, youth camps and conferences. For three years he served as Director of the Senior High "One Way" Camp and Ceta Canyon in the Northwest Texas

Conference.

He currently serves as a member of the Board of Evangelism of the Oklahoma Annual Conference as the Spiritual Director of the "Green Country" Emmaus Community.

Rev. Cosby is also enrolled in the Doctor of Ministry program at Oral Roberts University.

Gospel vocalist Johnny Ray Watson will also share his Christian witness during Revival Services. He has served as a full time minister of music in evangelistic circles since 1972.

Not only blessed with a good voice, the gospel singer has strong talent on the piano as well.

## School Menu

ELEMENTARY & JR. HIGH

TUESDAY, SEPT. 8

CORN DOG  
MACARONI/CHEESE  
CHOPPED SPINACH  
APPLE COBBLER  
MILK

WEDNESDAY, SEPT. 9

STEAK FINGERS  
MASHED POTATOES/GRAVY  
WHOLE KERNAL CORN  
HOT ROLLS/HONEY  
MILK

THURSDAY, SEPT. 10

HAMBURGER/BUN  
SHREDDED LETTUCE  
TATOR TOTS  
PICKLE/ONION  
COOKIE  
MILK

FRIDAY, SEPT. 11

RIB B QUE  
TOASTED BUN  
PINTO BEANS  
DICED CARROTS  
PUDDING POP  
MILK

SCHOOL LUNCH MENU

HIGH SCHOOL

TUESDAY, SEPT. 8

CORN DOGS  
MACARONI/CHEESE  
SALAD BAR  
APPLE COBBLER  
MILK

WEDNESDAY, SEPT. 9

STEAK FRITTER  
MASHED POTATOES/GRAVY  
SALAD BAR

HOT ROLLS/HONEY

MILK

THURSDAY, SEPT. 10

HAMBURGER/BUN

SALAD BAR

TATOR TOTS

PICKLE/ONION

## Booster club has Tuesday meeting

The Spearman Lynx and Lynxette Booster Club will host their weekly game film review this Tuesday evening at the Spearman High School.

The meeting will begin at 8 o'clock that night in the home economics room with food and refreshments to be served.

The public is invited to attend.

COOKIE

MILK

FRIDAY, SEPT. 11

RIB B QUE

TOASTED BUN

SALAD BAR

FRIED OKRA

PUDDING POP

MILK

# Shop Spearman U. S. A.

## WHERE YOUR DOLLARS MAKE CENTS!

Register to Win Our  
Back to School  
Survival Kits to be given away

Sept 11 at our Back to School Sale

Free-Perm  
Free-Meal  
Free-Tan  
Free-Clothing

All Jewelry  
50-70% off  
Clothing  
25-50% off

Hotel Royal 502 Davis

## Monday Night Catfish Dinner Special Notice

Our Catfish will be Killed and dressed MONDAY MORNING

for the most fresh fish available anywhere!!!!!!!



Served inside or to go

Family Owned and Operated

## ANY ONE OF OUR SAVINGS PLANS ADD UP.



How can we help you save?



Interstate Savings

AND LOAN ASSOCIATION

Member Federal Savings and Loan Insurance Corporation  
Member Savings and Loan Foundation, Inc.

**Blackburns Flower Basket**

222 HANCOCK  
SPEARMAN, TX 79081  
PHONES: (806) 659-2212  
or (806) 659-3329

"Our Flowers Say It Best"



Grandparents Day  
September 13, 1987

**Clair's FREE TANNING**

SEPT. 9th 7:30 a.m. - 6:00 p.m.

TANNERY

Call today for an appointment.  
659-2199  
Pittman-Shieldknight Bld.  
511 SW 11th, Spearman.

**REDUCED Tanning Fees:**

1 Session - was \$4.00 now \$3.00  
5 sessions - was \$17.00 now \$15.00  
10 session - was \$28.00 now \$25.00  
Unlimited sessions - was \$35.00 per mo. now \$30.00

High School Seniors coming in will receive 3 additional sessions  
**FREE** no obligations



**SAM'S SHOE CLINIC**  
BOOT & SHOE REPAIR

Custom Hand Made Boots  
by  
Sammy C.

8:30 - 11:30  
12:30 - 5:30  
M-F

**Closed Labor Day**

SAMMY C. PIERSON  
BUS: (806) 659-3234

P.O. BOX 1074  
307 W. DAVIS  
SPEARMAN, TX 79081



MICHAEL J. FOX  
GENA ROWLANDS JOAN JETT

RENT THE SUPERSTAR MOVIE...  
AND ENTER THE LIGHT OF DAY  
SUPERSTAR SWEEPSTAKES!

You could win a 1987 Dodge Raider or one of over 1,000 other prizes!

**THE KNACK SHOPPE**

Open Daily  
9 a.m. - 11 p.m.

Crocodile Winners 1st Zac Franklin  
2nd Chris Stewart 3rd Tiffany Ross



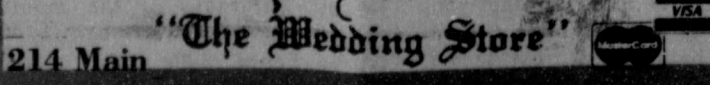
**Something New**

THE THYMES LIMITED

Bath and Soap Collection

**Cha-Lor's**  
"The Wedding Store"

214 Main



**Open Labor Day**

7 Star, Flat Latex Wall Paint  
Reg. \$15.00 Now \$9.00

7 Star Latex House Paint  
Reg. \$17.00 Now \$10.00

All Paint Items  
20-30% off

**Spearman Auto Supply**

HWY 207 S. 659-2588