

# Beef Can Prevent Cancer



Sandy Hill, Freshman Lynxette, scored 20 points against Perryton during the Perryton Tournament Jan. 4 & 5.



Kari Schneider, Freshman Lynxette, pictured in action against Perryton at the Perryton Tournament.

## THE Hansford PLAINSMAN

24 hr. prayer  
service 659-2911

Volume 15, Number 10

The Hansford Plainsman, Spearman, Texas 75081

Sunday, January 13, 1985

# Oil industry employs 396 in Hansford Co.

THE SALE OF CRUDE OIL AND NATURAL GAS from Hansford County wells made an important contribution to the county's economy in 1983 and accounted for \$80.4-million of the \$38.3-billion wellhead value of Texas petroleum production last year.

In its annual survey of the economic impact of oil and gas industry operations in the significant producing counties of Texas, Texas Mid-Continent Oil & Gas Association reported that the county ranked 115th among Texas' 254 counties on the basis of the value of its marketing petroleum production. These production figures included condensate and casinghead gas.

The county's wells produced 557,569 barrels of crude oil, valued at \$16.3-million, and 28.5-billion cubic feet of natural gas,

valued at \$64.1-million. Owners of royalty in the county received \$10.1-million as their share of the output, the Association noted.

The chairman of the Association, J.C. Walter, Jr., of Houston, said: "These figures give evidence that again last year the petroleum industry was of great importance to the economies of those counties throughout the state with significant production."

In addition to paying property taxes to cities, counties, and school districts, producers in the county supported state government through production tax payments estimated at \$5.6-million, according to the Association survey. Crude oil taxes amounted to \$749,183, while natural gas levies totaled \$4.8-million.

Based on Texas Employment Commission figures, some 396 oil and gas industry employees in the county received wages of about \$10.6-million in 1983.

In the search for new petroleum reserves in the county, oil and gas producers spent a reported \$17.9-million in the drilling of 30 wells, including one wildcat, or exploratory, well. This effort resulted in the successful completion of eight oil wells and 11 gas wells, although some \$6.6-million was lost in the drilling of 11 dry holes. As of April 1, 1984, there were 910 producing wells in the county; 201 oil and 709 gas.

Petroleum processing also contributed to the county economy, with three natural gasoline processing plants, having a total daily capacity of 339.9-million cubic feet of natural gas, in operation.

## Studies Show Beef Can Prevent Cancer

For 20 years, scientists have debated the cancer risk of chemicals in cooked beef. Now a University of Wisconsin, Madison, professor has experimental results that turn that debate around. He says he has found chemicals in fried beef that actually protect against cancer.

Dr. Michael W. Pariza made his announcement at a meeting of the International Chemical Congress of Pacific Basin Societies (PAC CHEM '84). He says that chemicals isolated in fried ground beef prevented formation of tumors in mice exposed to a known cancer-causing compound called DMBA. (DMBA is the standard carcinogen for a well-studied and widely-accepted cancer model.)

Dr. Pariza notes that this is the first time chemicals that actively protect against cancer have been found in meat or any other animal tissue. The findings are some what surprising because initially Dr. Pariza was looking for cancer-causing, or carcinogenic, compounds.

"There's been a lot of interest in carcinogens in beef since 1964 when eating a well-done charcoal-broiled steak was equated to smoking 600 cigarettes," he says. "Though it was found that those cancer-causing compounds were formed by fat dripping on hot coals, a problem you can solve by putting aluminum foil between the meat and the coals, other researchers started looking into the subject.

"They found potential carcinogens were formed even in beef fried away from charcoal, though the levels were very low. We were continuing research on this topic, actually looking for cancer-

causing chemicals, when we found the chemicals that protect against cancer."

The protecting chemicals, which have been only partially purified, appear to work by interfering with the biological processes that activate the known cancer-causing chemical. That is, the beef chemicals apparently do not allow the cancer-causing chemical to be changed into a form that leads to cancer. Normal body processes then remove the cancer-causing chemical before it causes trouble.

"There's no question that the beef chemicals prevent cancer in the mice, but the process of tumor prevention hasn't been demonstrated yet," Dr. Pariza says. "We plan to investigate that after we isolate and identify the specific chemicals involved."

While the levels of carcinogens in hamburger are not considered significant by most scientists, Dr. Pariza notes that, based on activity, the levels of protecting chemicals are high. He says "Very dramatic results" were obtained from extracts of even small amounts of beef.

The protecting chemicals also differ from the carcinogens in their origin. The protecting chemicals appear to be present in the beef before it's cooked, according to Dr. Pariza, while the carcinogens are formed as the beef is cooked.

"At the least, we have some good news to balance out the bad news about fried hamburger," Dr. Pariza says. "At the most, we may come up with recommendations on more healthful ways of preparing food and leads on new drugs to treat cancer patients."

## Ex-Student Association to hold meeting

The Spearman High School Ex-Students Association will meet in the Spearman High School Library at 7:00 p.m., Monday January 21, 1985 to make more plans for the second all-school reunion.

Joe Lackey, President of the Association encourages each class to have a representative present at this planning meeting, to help get the activities worked out. The representatives can then report back to each class to help keep them informed. The date for the reunion has been set for July 5 & 6, 1985.

## Generals Coming to Spearman

Johnnie Lee, manager of the PDWA, announced that two generals will come to Spearman, Monday, January 21, to look at the PDWA dam site north of Spearman.

The generals had originally planned to be in Spearman at an earlier date to view the proposed dam site.

Johnnie Lee announced that he would meet with the Moore County Commissioners on Monday, January 14. Moore County will vote on the Palo Duro Dam, January 19, to see if they want to come into the water authority. He also met with Stinnett this past week, and they will also be voting on whether or not to join the Palo Duro Water Authority.

Two officials from the Corps of Engineers out of Tulsa were here Tuesday of last week to view the Palo Duro Dam Site.

## Will Play Drums

The All-State Band Try-outs will be held this Saturday, January 12, at Lubbock. David Sorgl, who was 1st Chair at the all region try out, will play the snare drums, xylophone, and marimba.

# Equity to hold Expo

Spearman Equity has announced plans for a big, special One-Day-Only EXPO SALE to be held January 24 from 10:00 a.m. to 3:00 p.m. at Hansford County barn in Spearman.

Jim Turner, manager of the Spearman Equity, and all of the Equity personnel extend an invitation to all area farmers and ranchers to come out to the sale, check out the bargains offered, see demonstrations and hear talks by Ag-business experts in various fields, visit with Company sale

representatives and enjoy lunch free of charge.

The special sale will include bargains on Fertilizer, Chemicals, Feed, and Fencing supplies and many other supplies. An action paced agenda is planned. There will be demonstrations, talks on topics of interest to the Agricultural Community and Chemical Company representatives will be on hand to answer any and all questions farmers and ranchers may have.

Animal health products, Fencing Material, COOP Feed, Banvel Herbicide, COOP ORO Hybrids, Roundup Herbicide, COOP balanced mineral feed, Ragro implants, Texas sadderly, Anhydrous Ammonia, Dupont, COOP Fertilizer, and Ag Chemicals, Pay-Master seeds, Pioneer brand seed, ASGROW, Milo guard, BLOAT GUARD, AATREX Nine-O, and many other interesting displays.

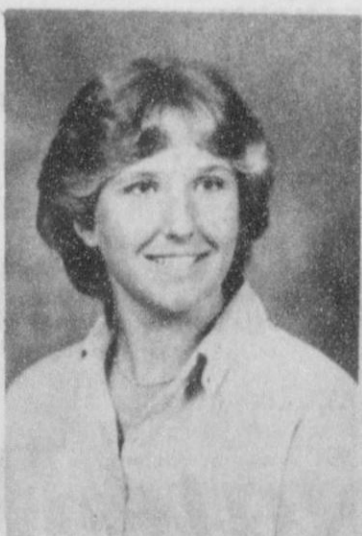
Jim Turner, local manager, urges you to attend this EXPO sale on Thursday, January 24.

# Anne Sheets is finalist

Miss Anne Renea Sheets, age 15, daughter of Mr. and Mrs. Claude Sheets, Jr. of Spearman, Texas, has been selected to be a FINALIST in the 1985 MISS WEST TEXAS NATIONAL TEEN-AGER PAGEANT to be held at the MIDLAND CENTER in Midland, Tx., March 29, 30, 31, 1985. The MIDLAND HILTON will be the host hotel for this three-day event.

The Miss West Texas National Teen-Ager Pageant is the Official Regional Pageant to the 14th Annual Miss Texas National Teen-Ager Pageant to held at Texas Christian University, Fort Worth, Texas on June 7, 8, 9, 1985.

The winner of the Miss West Texas National Teen-Ager Pageant will receive a \$500 Cash Award, a full Four-Year Tuition Scholarship to Oklahoma City University, a \$2,400 Scholarship to Wayland Baptist University,



ANNE SHEETS

Plainview, Texas, among other prizes. The newly crowned West Texas queen will be attending the State Pageant in Fort Worth along

with the 1st and 2nd runners-up. Kimberly Koonce of Midland, Texas, the reigning 1984 Miss West Texas National Teen-Ager, will crown the new queen on Saturday evening.

Each contestant will be judged on scholastic achievement and leadership, poise and personality and appearance. There is no swimsuit competition. Talent may be presented or an oral essay given on the subject "What's Right About America".

Kimberly Norris of Idabel, Oklahoma is the reigning Miss National Teen-Ager. She was recently crowned at the National Pageant in Fort Myers, Florida. She won over \$40,000 in cash, scholarships and other prizes, including a new MAZDA automobile.

Miss Anne Sheets is being sponsored in the 1985 Pageant by SPEARMAN AUTO SUPPLY, THRIFTWAY-Pete Fisher, SPEARTEX GRAIN-Carl Archer, BROWN, GRAHAM, & CO., and SHEETS ENTERPRISES.

Her hobbies include singing, playing the piano & clarinet, composing songs, cooking, reading, and waterskiing.

The Spearman Lion's Club will have their annual Pancake Supper on Friday evening, January 18 in the Elementary School Dining Hall. They will be serving pancakes from 5:00-8:00 P.M. Tickets for the Pancake Supper are \$3.50 for adults and \$1.75 for children. All proceeds go into the Lion's Service Account to help support the Lion's Eye Bank, Girl's Town, the Boy Scouts, and other community and club service projects. Come and enjoy the pancakes during a break from the Spearman/Stinnett Basketball Games. Or just for the pancakes at the annual Lion's Club Pancake Supper, Friday evening, January 18, from 5:00 - 8:00 P.M. in the Elementary School Dining Hall.

## HOSPITAL

Patients in Hansford Hospital are: Reba Bennett, Opal Beck, Ann Bell Guzman and daughter, Larry Yancey, Ruth Kirkland, Sharon Reynolds, Barbara Cook, Grace Bennett, Samuel Balderama, Joy Wydrick, Phial Jenkins, Benjamin Arthur, Jake Phillips.

Dismissed were: Owen Montgomery, Bertha Forester, Ofelia Vela, Ella Hull, Randy Lowe.

## Services held for Mrs. Mackie

Funeral services for Mrs. Hattie Mackie, 92, were held Thursday, January 10 at 1:00 p.m. at the First Baptist Church. Rev. Russ Gibbs officiated. Burial was at the Fairview Cemetery at Pampa at 3:00 p.m.

Mrs. Mackie was born November 15, 1892. She married William L. Mackie in Hickory, N.C. in 1908. She moved to Spearman from Pampa in 1930.

Mrs. Mackie was preceded in

death by her husband and by four daughters.

Mrs. Mackie is survived by two sons, Albert and Glen, both of Spearman; and by six daughters, Willie Clement of Spearman, Fay Christian of Stinnett, Elsie Womble of Amarillo, Geneva Ogle of Borger, Margie Kelly of Grand Prairie and Joan Roberts of Norman, Oklahoma; 27 grandchildren, 53 great grandchildren, and 4 great-great-grandchildren.

The cheese and butter distribution will be Wednesday, January 16 from 1:00 p.m. until 5:00 p.m. at Judge McClellan's office in the courthouse, Spearman, Texas.

### City receives sales tax payment

State Comptroller Bob Bullock Monday sent checks totaling \$51.6 million in local tax payments to the 997 cities that levy the one-percent local sales tax.

"Statewide payments are up more than 15 percent over last January's checks, mostly because of the new items brought under the sales tax by the Legislature last summer," Bullock said. Bullock cautioned city governments not to expect similar increases for the rest of 1985. "The cuts we've had to make in expected state revenues are coming from the slump in the oil industry and reduced receipts from oil companies aren't yet reflected in these payments," Bullock added that sales taxes from a disappointing Christmas retail season are due in payments to cities next month.

January checks represent taxes

collected on sales in November and reported to the Comptroller by December 20.

Gruber's net payment for this period was \$1,742.00 compared to last year's \$2,113.79. 1985 payments to date are \$1,742.00 compared to last year's \$2,113.79. The percentage change to date is -17.59%

Spearman's net payment this period is \$14,290.19, compared to last year's \$10,240.43. The 1985 payments to date are \$14,290.19 compared to last year's \$10,240.43. Percent change to date 39.55%

Hansford County was sent a net payment for this period of \$16,032.19, compared to last year's \$12,354.22. 1985 payments to date are \$16,032.19 compared to last year's \$12,354.22. Percent change to date of 29.77%.

### WDCC to hold first meeting

The Women's Division of the Spearman Chamber of Commerce will have their first meeting of the year Wednesday, January 16th, 1985 at Cattleman's Restaurant at 12:00 Noon. Plans will be discussed for the Chamber Banquet to be held February 23, 1985. The

program will be by Sharon McCarrell, a stockbroker with Kidder, Peabody & Co. (a member of the New York Stock Exchange) in Amarillo, Texas. She will speak on tax free income and tax advantaged investments. Annual dues of \$10.00 are also due at this meeting.

### Museum needs your help

Stationmaster's House Museum has had lots of hustle-bustle of late. Museum Auxillary members have made some progress on furnishing the bedroom. Mrs. Idella Close Randall furnished the 1900's iron bedstead; Rubyjo Wilbanks fitted it with springs and mattress. Virginia Barkley furnished a beautiful counterpane and pillow cover made and used by her mother while her parents

(Judge A.F. Barkley) lived at Old Hansford.

**MUSEUM NEEDS**

- wash stand
- pitcher and bowl set
- bedside tables
- library table
- dresser
- oil lamp
- pictures for wall

Call Buena Lyon 659-3462 (or) Sybil Miller, 659-2338.

### Glass Slipper baby competition

Glass Slipper Cinderella Baby Competition to be held Saturday, Jan. 26, 1985 at White Deer High School Auditorium, White Deer, Texas.

Babies ages 0 to 12 months, 1 year olds, and 2 year olds invited to enter - Competition open to all babies from all towns and states - Girls may compete in a dress for beauty or enter a picture for photogenic. Entry Deadline - Tuesday, Jan. 15, 1985. All contestants will receive a trophy. For information contact: Diana Tekell, Diana's Dance Studio, 215 N. Hedgecoke, Borger, Tx. 79007. Phone: 274-3960, 857-3845 or 273-9963.



Eight Junior High Band students attended All-Regional try-outs at Phillips Saturday, January 5. Pictured are those attending the tryouts. They were Front row, left to right, Amanda Loomis, Jennifer Reimer, Maria Gomez and Rhonda Stevens. Back row, left to right were Tony Pacheco, Mark Garcia, Jennifer Turner and Clint Patterson.



The star is the most common symbol to appear on the flags of the world.



Incoming president Bob Pearson on the left and outgoing president Robert Elliott on the right.



Jennifer Yarbrough, Jr. Varsity Lynxette played well during JV game against Borger.



Maria Gomez made the All Regional Band with her performance on the bells at Phillips Saturday, Jan. 5.

# SAVE

# 30%-50%

## GATES

## JANUARY

## CLEARANCE

## SALE

221 MAIN SPEARMAN, TX.

## For Your Banking

## Convenience Our Drive



## Up Hours Have Been

## Extended Beginning

### January 2, 1984

### 7:30 A.M. to 4:30 P.M.

## First State Bank

SPEARMAN, TEXAS 79081

**WE'RE STANDING BY YOU**

1 NE Court  
659-5565

# BUY, SELL, TRADE OR RENT THROUGH THE CLASSIFIED ADS

**Call  
659-3434**

**SERVICES**

**MONUMENTS**

**Save Agents and Undertakers Profits**  
If it is inconvenient for you to visit our large display, please phone collect (405) 327-0626 or write and we will call on you.  
**ALVA MONUMENT WORKS, INC.**  
Alva, OK 73717

New to area?  
Give us a try  
Call your local  
**USED COW DEALER**  
As soon as Possible  
659-3544  
659-3545  
1-800-692-4043  
175-rtn

**NOTICE**  
**Wallace Monument Co.**  
Monuments, Curbing,  
Grave Covers  
Local Representative  
**LEONARD JAMESON**  
Spearman, Texas  
355-RTN

**OSGOOD MONUMENT CO.**  
Amarillo, Texas  
Dealers of Rock of Ages  
Granite as well as all  
colored granites, marble  
and bronze memorials.  
**represented by**  
**BOXWELL BROS. FUNERAL HOME**  
**519 S. EVANS**  
**659-3802**

CONCERT QUALITY piano tuning and repair. Free estimates. Write Elson Clark, Box 1016, Dalhart, TX 79022 or call collect 806-249-2783.  
2-8tp-rtn

Hansford County  
Planned Parenthood  
412 Davis  
659-2483  
Spearman  
Mon.-Fri.  
8:30-12:30

Home Baked Goods!!! Baked to order by the Spearman High School Cheerleaders. We will bake anything! To place an order call 659-2807. We will appreciate your support.

**STEAM RINSE & VAC /**  
Rinse and Vac Shampooer for rent at Gordons Drug. \$10.95 up to 24 hours.

**SEARS BLOWN-IN ATTIC INSULATION.** Completely installed. For FREE Estimate at your convenience dial 659-2373. Sears, Roebuck and Co., 517 S. Hwy. 207. 45S-rtn

**FOR RENT**

FOR RENT furnished apt. on 608 Bernice St. Call 659-3384. 7-rtn

FOR RENT: 3 bedroom mobil home, partially furnished; 3 bedroom house, partially furnished; 2 bedroom house. 659-2392. 9s-rtn

FOR RENT-2 bedroom mobile home, furnished. 659-3833 or 659-5161. 10s-2tc

FOR RENT: Nicely furnished 2 bedroom apartment. Also 1 bedroom furnished apartment. Call 659-3471 afternoons or evenings. No pets. 10-rtn

**REAL ESTATE**

House for sale: moving out-of-town. 3 bdrms., new carpet throughout, new kitchen. Easily assumed mortgage. 9-5177, 9-2591, 9-3823. 5-rtn

FOR SALE: nice 3 bedroom, 1 bath, brick house with carport. 1,080 sq. ft., fenced backyard, 8x10 storage building. \$31,500 9-3292. 10s-rtn

FOR SALE OR RENT: 3 bedroom, 1 1/4 bath house with 2 car garage at 1118 Barkley. Call 249-6673. rtn

HOUSE FOR SALE-3 bedroom, 1 bath, 1 car garage, fenced backyard. 659-5101. 9-rtn

House For Sale: 1018 S. Evans, 3 bedroom, 1 3/4 bath, new paint on trim, ceiling fan. 9s-8tc

**MISC. FOR SALE**

FOR SALE: Pies, desserts, breads and birthday cakes. New novelty pans available. Cabbage Patch, Rainbow Brits. Also "MR. T." pattern, for cakes. Plan special novelty cakes for Christmas-place orders early. Call Joy at 733-2517. 2s-nc

**Piano For Sale**  
Wanted: Responsible party to assume small monthly payments on piano. See locally. Write: [include phone] Credit Manager, P.O. Box 327, Carlyle, Illinois or call Mr. Powers, 618-594-4242. 8S-2tp-4tc

FOR SALE: Caloric 30" gas range and hood. Harvest Gold excellent condition. Gold swivel rocker. Call 659-3993. 10-2tc

FOR SALE: 1981 Delta 88 Royal Brougham. Extra clean \$6,500 evening after 5:00 p.m. 733-2817. 10s-2tc

**MOBILE HOMES FOR SALE**

**DEALER REPO!**  
3 bedroom mobile home, 2 baths, wood siding, storm windows, garden tub, etc. Assume payments of \$270.62 with approved credit. Includes delivery and insurance.

**WE TAKE TRADES- ANYTHING OF VALUE! QUALITY AFFORDABLE MOBILE HOMES HWY 60 WEST PAMPA, TEXAS 665-0714**

7S-9tc  
FOR SALE-1964 10X55 mobil home, appliances included \$2,800. Call 659-5269 after 5 p.m. 9s-rtn

**PUBLIC NOTICE**

Guymon Elks Supper Club is open to the public. Our hours are Wednesday-Thursday 6-10 p.m. Friday-Saturday 6-10:30 p.m. We have a Prime Rib Special every Friday. 46s-rtn

The COWBOY SUB-CHAPTER of the F.C.A. meets the fourth Saturday of every month at 7:30 p.m. at the Home Demonstration Building, Spearman, Texas.

WEIGHT WATCHERS meets each Monday at 6:00 p.m. at the Home Demonstration Building, Spearman, Texas.

COMING SOON: The Spearman Chamber of Commerce Banquet, February 23, 1985. Watch for details later.



Toothbrush bristles were the first commercial product made of nylon, which was patented in 1937.

**TO GIVE AWAY**

**PUPPIES: To Give Away.**  
Call 659-2165. 8-6tc

**TO GIVE AWAY: Black Puppies-8 weeks old.** Mother is full Weimaraner. Call 659-5171. 10s-2tc

**HELP WANTED**

**ELECTRICIAN NEEDED.** Apply at Anthony Electric, Inc. 10-4tc

Management Trainee with high school education. Contact Jim at 659-2420. 10s-rtn

**LIVESTOCK**

Breaking and training horses. Jeff Chase 435-5239. 10s-18tc

**WANTED**

Housecleaning: Weekly or monthly. Dependable. Reasonable rates. Odd Jobs. 659-2008 or 659-5038. 10-2tc

Will do carpenter work inside and out. Plumbing or any kind of work. Call Steve Lopez at 659-2845. 10-1tp

**SERVICES**

GOING SKIING? Professional ski tuning at the Prairie Chalet. See Dale. 659-5240. 9s-4tp.

**LEGALS**

**NOTICE TO BIDDERS**

Sealed proposals for insurance coverage as listed below will be received by the City of Spearman, Texas, at the office of the City Manager up until 10:00 a.m., March 1, 1985, and then publicly opened and read. The City is seeking bids on the following insurance coverage: General Liability, Auto Liability, Workers Compensation, Casualty Insurance, Public Officials Liability, and Umbrella Policy.

The City reserves the right to reject any or all bids, to waive informalities, and to accept the bid deemed to be the most advantageous to the City. All bids received after the above closing hour will be returned unopened.

All bids shall be sealed and marked on the outer envelope "Insurance Bid".

Specifications and bidding documents may be secured from the office of the City Manager, P.O. Box 37, Spearman, Texas, 79081. 10-2tc

**CARD OF THANKS**

I would like to thank Dr. McClellan and the nurses for their kind care while I was in the hospital. I would also like to thank everyone for their visits and calls during my stay in the hospital.  
Mrs. A. L. Adkisons

**LOST**

**Head Injury Foundation, Panhandle Chapter To Meet**

The Panhandle Chapter of the Texas Head Injury Foundation will meet on Saturday, January 19, 1985, at 10:00 A.M. at the Amarillo Speech & Hearing Center, 1300 Wallace Boulevard, Amarillo, Texas.

Rolf Habersang, M.D. will present the program on "Health Promotion of the Head Injured Child with Disabilities".

Dr. Habersang is Chairman of the Pediatric Department at the Texas Tech Health Sciences Center. He is a General Pediatrician with special training in therapeutics and intensive care and is Medical Director of the Pediatric Intensive Care Unit at Northwest Texas Hospital.

In the United States this year, over 250,000 children will be admitted to the hospital with a head injury and 15,000 children will require prolonged care; 50 percent of those comatose for more than twenty-four hours will die or have a serious permanent neurological deficit.

The causes of head injury in children include automobile accidents as both passengers and pedestrians, motorcycle accidents, falls, moving objects striking the stationary head, child abuse, near drowning, and birth injury. Many children are needlessly injured while riding in cars because they are not secured by seat belts. More than 40 percent of patients who die as a result of automobile accident do so as a primary result of head injury.

Head injury, whether it be a child or adult is devastating to the victim and their family. The ability to adjust to a difficult situation or life change requires empathy from others far more than it does sympathy. In support groups there can be a special bond among people who share the same troubling experience. Knowing that someone truly understands, realizing that you are not alone and someone cares, shares the sorrows, fears and frustrations; from there they can begin to communicate more openly, view their problems more objectively, and find more effective coping strategies.

For further information you may call 806-359-6652. Anyone interested is invited to attend the monthly meetings.

**THE Hansford Plainsman**

PUBLICATION (USPS 2346-6000)  
SPEARMAN, TEXAS 79081

213 Main Box 458 659-3434

Published Weekly at 213 Main Street

Spearman, Texas 79081

Owner-Publisher.....William M. Miller  
Editor.....Faye Lynch  
Second Class postage paid at Spearman, Texas 79081

Any erroneous reflection upon the character of any person or firm appearing in these columns will be gladly and promptly corrected upon being brought to the attention of the management.

POSTMASTER: Send address changes to Hansford Plainsman, Box 458, Spearman, Tx. 79081.

SUBSCRIPTION RATE: Hansford, adjoining counties, combination with the Spearman Reporter, \$25.00. Other points, \$30.00.

**MEMBER**

**texas press association**



Charlene Bryan, new president Pittman, Vice President; and directors Marilyn Cline and Ed Garner.



Frances Loftin receives an award for her outstanding work with the Chamber of Commerce during the past several years.

**Complete**

**Janitorial Service of Spearman**  
Floor and Carpet Care  
P.O. Box 305  
Farnsworth, Texas 79033  
Phone 435-3043 or 659-5014

**H & R BLOCK SIMPLIFIES FARM & RANCH TAX RETURNS**

H & R Block Tax Preparers are specially trained to help Farmers and Ranchers with the new tax laws and regulations. The Block personal interview assures quality and accuracy backed by the Worldwide Block name.

Block stresses early filing for Farmers and Ranchers with depreciable items listed. Block also prepares returns for farm employees. No tax return is too large or too small and you will receive every deduction to which you are entitled.

If you have questions on investment credit, oil and gas leases, unearned income, crops or livestock, or other farm related tax items, see or call H & R Block today. For one low fee, H & R Block offers accurate tax preparation assistance year round, with or without an appointment. H & R Block offices are located throughout Texas.

307 W. DAVIS  
SPEARMAN, TEXAS 79081.  
PHONE 806-659-2310.

**j. Winston**

WOMEN'S FASHION  
MORE THAN TRADITIONAL  
2701 PARAMOUNT - AMARILLO

## Wawaka Talk by Mary-Ann Hooper

Do you remember the old fairy tale that goes "Simple Simon met a pieman, going to the fair"? Well, I would like to tell a different kind of pieman fairy tale. Let's call our pieman Mr. Richard and Mr. Ed, and let's place our tale at a basketball tournament instead of a fair.

It seems that after the tourney was over and the last team went home, the PTA crew was clearing up the shambles that always occurs, when they discovered one coconut (count it...1") pie. Now Mr. Richard and Mr. Ed both "dearly loved" coconut pie. Both men hollered "I'll buy it" and flipped their money out on the counter at the same time.

The PTA crew, always ready to make a buck for their projects, took the money and said "Decide among you, who gets the pie!" And so it was that Mr. Ed and Mr. Richard had a decision to make. Cleaning continued and while Mr. Ed wasn't looking Mr. Richard hid the pie.

But soon, Mr. Ed discovered the pie and hid it. A "Talk" ensued and finally the pie was unearthed. Neither man wanted to "wear" the pie, so, they decided, being fair men, that they should play Solomon and cut the pie in half. They also thought that they would each look dumb taking home half a pie to Mrs. Richard and Mrs. Ed (plus they might have to share it with their beautiful daughters,) they would just eat the pie there.

And so it happened that the pie was cut and Mr. Ed and Mr. Richard dug in. Now as all fairy tales go, they all lived happily ever after, except for maybe the peculiar green faces of Mr. Ed and Mr. Richard, who had already eaten cheeseburgers, nachos and frito pies.

### Dates to Remember

Birthdays:  
Jan. 13th-20th:  
Jan. 18-Mike Way  
Jan. 20-Lori Hooper

### Waka School Board Meets

Waka Independent School Board met at 7:00 p.m. on January 8, 1985 at the Waka School for their first meeting of the new year. President Roy Wiebe called the meeting to order and minutes of the previous meeting were read and approved. Monthly expenditures were approved. Additions to the substitute teacher list were approved by the board.

The Board then went into executive session to evaluate the superintendent. After the executive session, the board extended the superintendent's contract to July 1987.

The final action of the night was the Board adopted a resolution calling for the School Trustee Election on Saturday, April 6, 1985. Two positions will be open which are now held by Roy Wiebe and Matt Trevino. The first day for filing for the school board is Monday, February 4, 1985. The last day for filing will be Wednesday, March 6, 1985.

Meeting was adjourned and refreshments were served. The members attending the meeting were: Roy Wiebe, Matt Trevino, Richard Burger, Wayne Hooper, Waldo Buschman, Kenneth Word, Jim Collinsworth and the superintendent Ed Gilliland.

### Super Bowl Sunday

First Assembly of God located at 403 North Bernice Street, will be having a SUPER BOWL SUNDAY on Jan. 20. Reverend Neil Unwin, the West Texas District Council Secretary of the Assemblies of God, will be the Speaker for both morning and evening services. Rev. Unwin will be ministering in song, as well as from the Word of God. Pastor Nuckels and the congregation of the First Assembly of God invite everyone that doesn't attend church on a regular basis, to attend Sunday School and Church with them, and have a SUPER BOWL SUNDAY.

Service Times: Sunday School 9:45; Morning Service 10:45; and Evening Service at 7:00 p.m.

## Two-Bit Sermons

by James D. Jones, Pastor Fellowship Baptist Church

### "SALT"

Matthew 5:13 states that the born again Christians are the salt of the earth. Most of us realize that salt has been used in order to preserve different things. In past history salt was used as a unit of exchange or as money. Salt plays a very large role in even our everyday lives. God, after we were saved left us here as a preserving agent for this earth. In Genesis when Noah was the only salt left God destroyed the world. We as Christians need to realize the importance of our position in our world.

Yet our Lord also said that salt that has "lost its savor" is good for nothing. We seldom stop to think that we must might be the last opportunity for someone to be saved.

Jesus never intended for us to do nothing while we were left here awaiting his return. Paul always encouraged us to run a good race, or fight the good fight of the faith. While James wrote in his epistle that faith without works is a dead faith. Peter tells us to be ready to give answers to men who may ask of you. Then John tells us to declare the gospel which we have in our hearts.

The work of salt is to preserve. We know that all men will one day die. We must be willing, ready, and waiting for the opportunity to preserve the soul of the man who

is looking for the opportunity to know Christ but, doesn't know how. When was the last time you told someone how to be saved? That my friend, is the work of SALT.

### History book may be republished

Volume I of Hansford County History, published under the auspices of the Hansford County Historical Commission in 1979-80, is being considered for reprint in a small number, if there is enough response. Cost per book will be \$60.00, and must be ordered and paid in advance by Feb. 15, 1985, no later. Date of delivery will be about 60 days following that deadline, probably in May.

Those reading this who may know of anyone interested in Hansford County History are urged to relay the message of the reprint of Volume I Hansford History.

Books may be ordered by sending checks/money orders to: Hansford County Historical Commission 30 S. Townsend, Spearman, TX 79081. (If there is not enough response, money will be returned to those ordering.)

### MARKETS

WHEAT	\$3.22
MILK	4.25
CORN	2.95

## Auditions to be held

CANYON, TEXAS, January 7, 1985...The Directors of the "TEXAS" Musical Drama are announcing auditions for the 1985 production at: Austin, January 26, Dallas, January 27, Albuquerque, February 3, Lubbock, February 10, and Canyon, February 17.

Rehearsals begin May 19. Performances are nightly except Sundays, June 12 through August 24. A company of 140 actors, singers, dancers, technicians, instrumentalists, and hospitality crew are employed. Performers must be available for the entire season.

Actors should prepare a memorized scene, not to exceed three minutes. The directors will be looking for outdoor voice and presence. Singers should prepare an art song, aria, or something from a musical show. An accompanist will be furnished. Dancers should have ballet or modern dance training, and should bring work-out clothing. Instrumentalists needed include two violins, upright string bass, standard guitar, banjo, and accordion. Stage, costume, sound and light technicians, and hospitality crew applicants will be interviewed.

All applicants should bring a photo, addresses, phone numbers, and references.

"TEXAS" furnishes a never-to-be-forgotten experience. A summer of improving techniques under the direction of professional teachers and directors.

## Kelly McWhirter will try out

The All-State Choir tryouts will be held Saturday, January 12, at Odessa, Texas. Kelli McWhirter will try out in the all state competition. Kelli is the local Lions Club Sweetheart and has an outstanding voice.

### WEATHER

DATE	HI	LOW	PREC.
JAN. 1	22	14	.00
JAN. 2	37	7	.02
JAN. 3	44	21	.02
JAN. 5	55	30	.00
JAN. 5	60	23	.00
JAN. 6	55	26	.00
JAN. 7	56	23	.00
JAN. 8	46	34	.00
JAN. 9	47	20	.07
JAN. 10	36	13	.02



Jan Crawford, 8th grade player, watches for her chance in the game against Panhandle.

## WE WOULD LIKE TO SET THE RECORD STRAIGHT...

### "ABOUT HOME SATELLITE SYSTEMS..."

There Have Been Many Questions Asked About The Legality And The Problem Of Scrambling ...

**FACT:**

On October 30, 1984, President Reagan Signed Public Law 98-549 Making It Perfectly Legal To Own and Operate A Home Satellite TV System...

**FACT:**

During The Week Of December 16 thru 22 There were 258 FREE Movies Available On Satellite TV. Of Those HBO & Cinemax Offered Only 50.

**FACT:**

Of The 173 Channels Currently Being Broadcast On Satellites, Only 19 Are Scrambled.

**FACT:**

Of The Stations That Are Scrambled, The Largest Percentage Of Those Are Canadian Satellites, And Many Are Broadcast In French.

**FACT:**

Vice President Of Engineering Of CNN says "At This Time We Have NO Plans To Scramble Our Signal"

**FACT:**

Rosa Cratti, Vice President Of Public Relations For ESPN says "ESPN Has Considered Scrambling In The Past, But Has NO Definite Plans To Scramble In The Future."

**FACT:**

Should Individual Programmers Scramble Their Signals, Decoders Would Be Available Through SATELLITE DEALERS, As Well As Cable Companies.

**FACT:**

The Pleasure Channel And Fantasy Channel which are partially scrambled, Are Adult Oriented Channels Showing X Rated Movie

**FACT:**

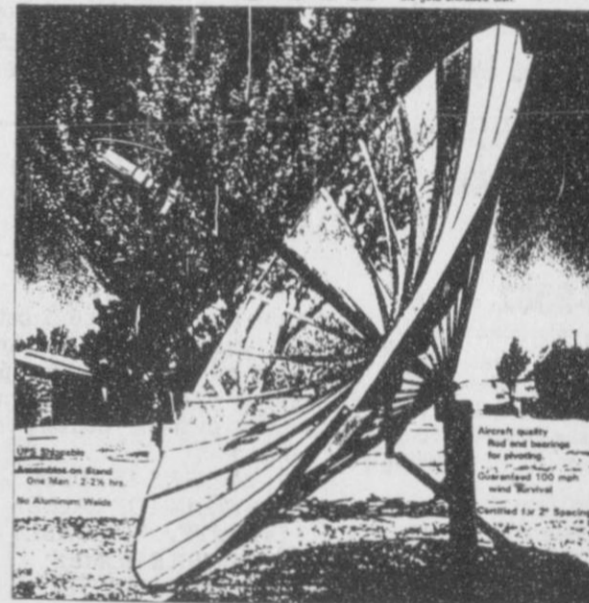
There Are 23 Stereo Radio Channels Available On Satellite That Range From Religious To Country, From Easy-Listening To Rock and From Classical To Jazz.

## Bob's Antennas

North on airport road, Spearman

659-3863 Bob & Teresa Brown, owners

### Introducing Texas Gold



## CERTIFICATE OF MEMBERSHIP



This is to Certify That  
**Bob's Antennas**  
is a member of  
the Society for Private and Commercial Earth Stations (SPACE)  
an organization dedicated to promoting the development  
and use of satellite earth stations

Effective Nov 19, 1984 Thru Nov 18, 1985

Charles C. Hewitt  
Executive Vice President





Bedknobs and Broomsticks have nothing on Hansford Hospital. Stephanie Brock was asked to paint the nursery, labor room and delivery room with eye-catching murals to furnish focal points for mothers using the LaMaze method of child-delivery, and to brighten up the halls, etc. for the newborns, guests and workers.

"Stephanie has done a fantastic job" says Kay McFarlin of the hospital staff who requested the painting. Her teddy bears, giraffes, elephants, etc. are supreme. Every one loves the little Lynx's and Greyhound's, too. We are very grateful to Stephanie for brightening up our working areas."

The first knitting machine was invented in 1589.

"A loafer always has the correct time. Kin Hubbard

### The Waldowski's to be In Concert, Jan. 13

First Christian Church, Spearman, will present Toby and Barb Waldowski in concert January 13, at 7:00 p.m. at the church, 29 S. Bemica, Spearman, TX.

In August of 1977, Toby and Barb Waldowski began touring American and have since given 1,500 concerts. They have been seen on the Hour of Power with Dr. Robert Schuller since 1976 and were guest soloists with the Billy Graham Tacoma, Washington Crusade, May 16 and 17, 1983.

Toby is well-known as a composer, pianist, and singer as his numerous compositions have been heard on national television, radio, and recordings.

Barb sings from her heart as she shares the love of God that changed her life for the better. "I was at the end of my rope and asked God to take my life before I took my own. All my life I wanted the success and glory of show business thinking fame and fortune would do it for me. Through Toby's actions I saw how obvious God's grace to forgive me was and decided there was no other choice to make. Praise God I came to my senses. I wouldn't have it any other way."

Toby and Barb were married in 1975 and have been through difficult times. Toby discovered cancer while they were undergoing tests for infertility. "Doctors

told us we probably would never have our own children," Toby reveals. "Three weeks after my final radiation therapy treatment Barb was pregnant!" Their son Jesse travels with them.

Don't miss this inspirational concert. They have more to share than this!

Available after the concert will be their five recordings, tapes, and songbooks and a chance to talk with them. Bring your children too! Nursery care is provided.

#### BRIDAL SHOWER HONORING

JANET REED WALSER

Sunday, Jan. 13th  
2:00-5:00 p.m.

at  
Cattlemen's Supper Club  
Hostesses

Rita Underwood Jeanie Nollner  
Georgia Chevalier Beth Baker  
Trevia Cook Avo Gray  
JoLynn Griffin Debbie Hagerman  
10-2tc



President James Madison's repeal of the Embargo Act prompted the first newspaper cartoon, in the "Federal Republican" in 1814.

### Cross Stitch Corner is now open

- ★ Complete line of DMC Floss.
- ★ Large selection of evenweave fabric.
- ★ Books, Books, Books!!
- ★ Lots of finishing accessories.
- ★ Supplies for all your counted Cross Stitch needs.

Located in the country home of Marilyn Cline 1 mile east of the High School in Spearman Call for directions if you need to!

Open Tuesdays, Thursdays and Saturdays or any evening by calling first. 10 a.m. - 6 p.m. 659-2480

## EDWARDS

# HD 912 DRILL HOE

Edwards Drills are engineered with extra STRENGTH and CLEARANCE for the toughest conditions. They are manufactured in 7 ft. (2.134 m) widths providing MAXIMUM FLEXIBILITY over the roughest terrain. HITCHES for 2-7 Drills are available. They are also DESIGNED TO hitch with NOBLE DK5 DRILLS to enlarge your present units.

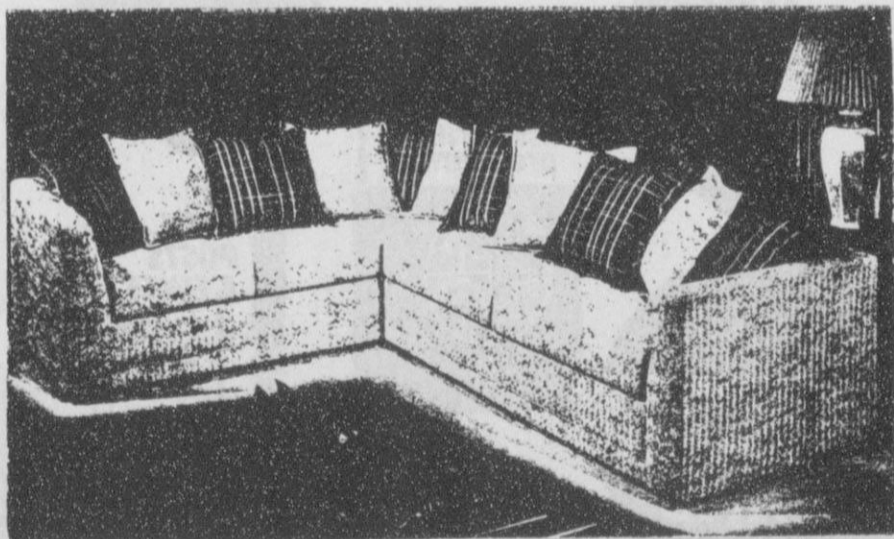
**Morse Implement and & Auto Supply**  
Morse, Texas  
Tom Dortch (806) 733-2688

# MID WINTER CLEARANCE SALE

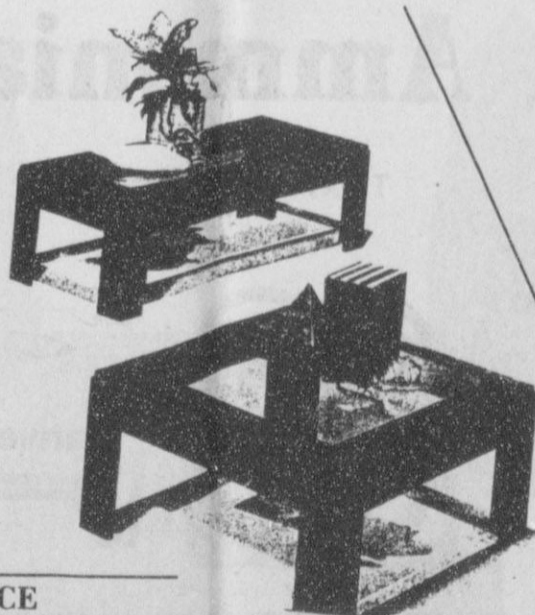
## 30%-40%-50% off on almost every item in our store.

**Sale starts Wednesday, January 16,  
thru Saturday, January 19.**

**Open 9 a.m. until 6 p.m. regular hours.  
Open until 9 p.m. Thursday.**



SOFAS & LOVE SEATS STARTING AT \$499<sup>95</sup>



5 PIECE  
BEDROOM SUITES  
REG. \$2,495<sup>95</sup>  
SALE PRICE \$1995<sup>00</sup>



ACTION LANE  
RECLINERS REG. \$329<sup>00</sup>  
SALE \$279<sup>00</sup>

#### Stately Curio

All your treasures have a home in Boyhill's dramatic curio. This lovely glass curio with mirror back is yours in a fashionable pecan finish. See it now and save.

AS  
LOW  
AS  
\$195<sup>95</sup>



ROLL TOP DESKS  
-REG. \$699<sup>95</sup>  
SALE \$469<sup>95</sup>

EXECUTIVE DESK  
REG. \$799<sup>95</sup>  
SALE \$535<sup>95</sup>

TABLES 30 - 50% off

LAMPS 30% to 50% off

BROYHILL SWIVEL  
ROCKERS REG. \$299<sup>95</sup>  
SALE \$208<sup>95</sup>

GUN CABINETS  
6 GUN REG. \$359<sup>95</sup>  
SALE \$299<sup>95</sup>

10 GUN REG. \$469<sup>95</sup>  
\$372<sup>95</sup>



## Bob's Antennas

Complete antenna systems start at \$1495.

Bobby & Teresa Brown, Owners

North on airport road Spearman

## Browns Furniture Showroom

659-3863

# Sports Roundup

The Junior Varsity Lynx played Panhandle here Tuesday night.

The Lynx led in the first quarter 13 to 9 and extended the lead by half time to a score of 24 to 18. During the third quarter Spearman scored only six points but held Panhandle to four points for a score of 30 to 22. The Lynx won with a score of 38 to 28.

Individual scoring (Field Goal, Free Throws, Fouls, Total Points): Michael Lopez (6-1-2-13); Trevor Pool (4-1-0-9); Monte Morris (2-3-1-7); Dusty Hill (3-1-2-7); Dean Green (1-0-0-2); Jeff Vanlandingham (1-0-2-2); Mike Pearson (0-0-0-0); Mark Garnett (0-0-0-0); Chris York (0-0-0-0); Monte Beck (0-0-0-0) and Terry Phillips (0-0-0-0).

The Varsity Lynxettes played Panhandle here Tuesday.

The Lynxettes lost to Panhandle with a final score of 37-51.

Score by quarters: (1st quarter) Spearman 10- Panhandle 16; (2nd quarter) Spearman 16- Panhandle 22; (3rd quarter) Spearman 28- Panhandle 38; (Final) Spearman 37- Panhandle 51.

Individual scoring (F.G., F.T., F, TP): Jill McLain (4-3-3-11); Shannon Jenkins (4-2-4-10); Carrie

Guthrie (0-6-3-6); Tiki Jackson (2-0-4-4); Cayla Eaton (0-2-0-2); Michelle Savage (1-0-0-2); Julie Jones (0-1-1-1); Kerrie Holt (0-1-1-1); and Ceria Vela (0-0-0-0).

Teresa Tindell was out of Tuesday's games following a knee injury Monday during practice. Varsity player Rhonda Gibson is out for the season also due to knee injury.

The Varsity Lynx played here Tuesday night against Panhandle.

The Lynx led 16 to 7 in the first quarter and continued to hold their lead throughout the game. Second Quarter score was Spearman 35- Panhandle 19. Third Quarter score was Spearman 49- Panhandle 29. Final score was Spearman 63- Panhandle 41.

Individual scoring was (FG, FT, F, TP): Ross Donahue (9-3-2-21); Steve Burke (7-2-4-16); Mark Pearson (6-1-1-13); Thad Reid (3-1-1-7); Tim Willis (2-0-1-4); Damon Goodheart (1-0-2-2); Jeff Graves (0-0-4-0); Mack McLain (0-0-1-1); Jerry Garcia (0-0-0-0); and Bob Cook (0-0-0-0).

The Junior Varsity Teams and Varsity Teams played Friday at Stratford.



Shooting for two is Michelle Graham in the 8th grade game against Panhandle.



MRS. JOHN LACKEY

Turnip Queen, Mrs. John Lackey, of Spearman, brought this 5 1/2 pound turnip in to the Reporter office this week.



April Graham, 7th grader, is one of the finer Lynxette's to be coming up to fill in the upper ranks.



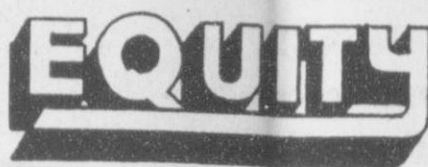
Rita Curtis, Bob Pearson, Mike Cudd and Bill Pittman being sworn in by Mayor Ralph Blodgett.



Retiring President Robert Elliott and Mrs. Elliott.

## You're Invited To SPEARMAN EQUITY'S Expo

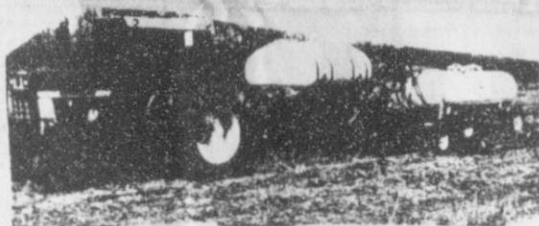
Discounts On...



-Bearings and Seals



2,4-D Herbicides



Fertilizer/ Ag Chemicals



At your service.



ANIMAL HEALTH PRODUCTS



Ralgro implants

Anhydrous Ammonia



TEXAS SADDLERY



HYBRIDS...better every year

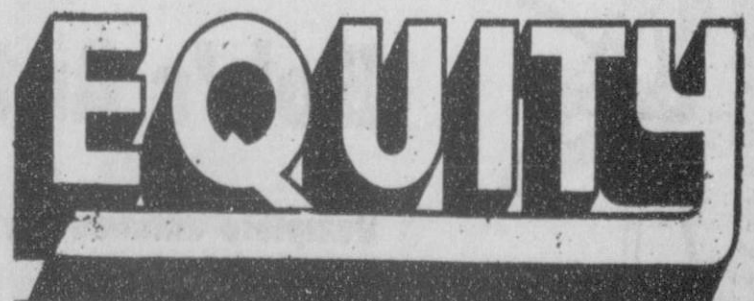


Feed

COUNTY BARN  
January 24th

10 a.m. to 3 p.m.  
Lunch Will Be Provided

Lunch Will Be Provided  
Free Of Charge



# Display of the month

The gray graniteware collection of Deborah Stenulson is the Display of the Month at the Hansford County Library.

Graniteware was the name given all enamelware made from 1870-1930. It was lightweight, easy to clean and use, and came in a multitude of colors that were marbled, speckled and swirled. Although porcelain enamelware is still being produced, graniteware lost its popular appeal when aluminum became the rage in the 1930's.

Deborah has filled three of the library display cases with her colanders, coffee pots, funnels, cake pans, mugs, lunch pails, dishpans, cooking pots, and yes, even bedpans and pots!

Deborah began collecting graniteware only two years ago. She claims she was interested in collecting something unbreakable, useful, and unpretentious--something that had a flavor of history and pioneers to it. She became hooked on graniteware after having seen a few pieces decoratively displayed by Corretta Ralston of Gruver. Debroah has acquired her graniteware in Wisconsin, her homestate, N. Mex., Tx., Okla., Washington, Ark., and Nebraska.

Deborah is the wife of Al Stenulson. They have a son, Aaron Jon and a lop-eared rabbit named Thumper.

## Police Report

On January 4, 1985 the Spearman Police Department investigated one (1) report of vandalism.

On January 5, 1985 the Spearman Police Department arrested one (1) subject.

On January 6, 1985 the Spearman Police Department investigated one (1) report of a dog attack.

On January 7, 1985 the Spearman Police Department investigated one (1) report of criminal mischief.

On January 8, 1985 the Spearman Police Department investigated one (1) report of burglary of a motor vehicle.

On January 11, 1985 the Spearman Police Department arrested one (1) subject.

The Spearman Police Department received 240 calls for assistance.

D.J. Alberts  
Chief of Police

## New Daughter

Mr. and Mrs. Johnny Pletcher of Farnsworth announce the birth of their daughter, Lani Nicole on December 30, 1984 at Ochiltree General Hospital in Perryton. She weighed 8 lbs. 2 ozs. and was 21 inches long.

Maternal grandparents are Mr. and Mrs. Tommy Russell of Spearman, Texas and her paternal grandparents are Mr. and Mrs. Danny Pletcher of Farnsworth, Texas.

### SPEARMAN CHAMBER OF COMMERCE CITIZEN OF THE YEAR

award

#### NOMINATION BLANK:

1. Name \_\_\_\_\_
2. Address \_\_\_\_\_
3. Individuals nominated for Citizen of the Year should be cited for activities OUTSIDE THOSE DUTIES CONNECTED with HIS OR HER EMPLOYMENT.
4. Friend of those in need.
5. Citizen of the Spearman School District.
6. Above all must be of outstanding character, dependability and reliability.
7. Achievements and nature of service: (LIST and EXPLAIN in detail the achievements, nature of service, nature of participation and leadership; bearing in mind the following basis for judging.)
  - A. Contribution to community welfare
  - B. Participation in community affairs
  - C. Evidence of lasting contribution
  - D. Exhibition of leadership ability
  - E. Evidence of personal and business progress

Nominations must be submitted by letter or form only. No petition or phone calls will be accepted. Use the form from the newspaper or stop by the Chamber of Commerce 211 Main, and pick one up.

Please return your entry to the Chamber of Commerce office by February 1, 1985. The decision of the judges will be final. The award will be presented at the Annual Banquet, Saturday, February 23, 1985.

### SPEARMAN CHAMBER OF COMMERCE CITIZEN OVER THE YEARS AWARD

#### NOMINATION BLANK:

1. Name \_\_\_\_\_
2. Address \_\_\_\_\_
3. Individuals nominated for Citizen over the Years should be cited for activities OUTSIDE THOSE DUTIES CONNECTED with HIS OR HER EMPLOYMENT.
4. Friend of those in need.
5. Citizen of the Spearman School District.
6. Above all must be of outstanding character, dependability and reliability.
7. Achievements and nature of service: (LIST and EXPLAIN in detail the achievements, nature of service, nature of participation and leadership; bearing in mind the following basis for judging.)
  - A. Contribution to community welfare
  - B. Participation in community affairs
  - C. Evidence of lasting contribution
  - D. Exhibition of leadership ability
  - E. Evidence of personal and business progress

Nominations must be submitted by letter or form only. No petition or phone calls will be accepted. Use the form from the newspaper or stop by the Chamber of Commerce 211 Main, and pick one up.

Please return your entry to the Chamber of Commerce office by February 1, 1985. The decision of the judges will be final. The award will be presented at the Annual Banquet, Saturday, February 23, 1985.

## Pancake Supper

The Spearman Lion's Club will have their annual Pancake Supper on Friday evening, January 18

## MENU

### HIGH SCHOOL MENU JANUARY 14 - 18

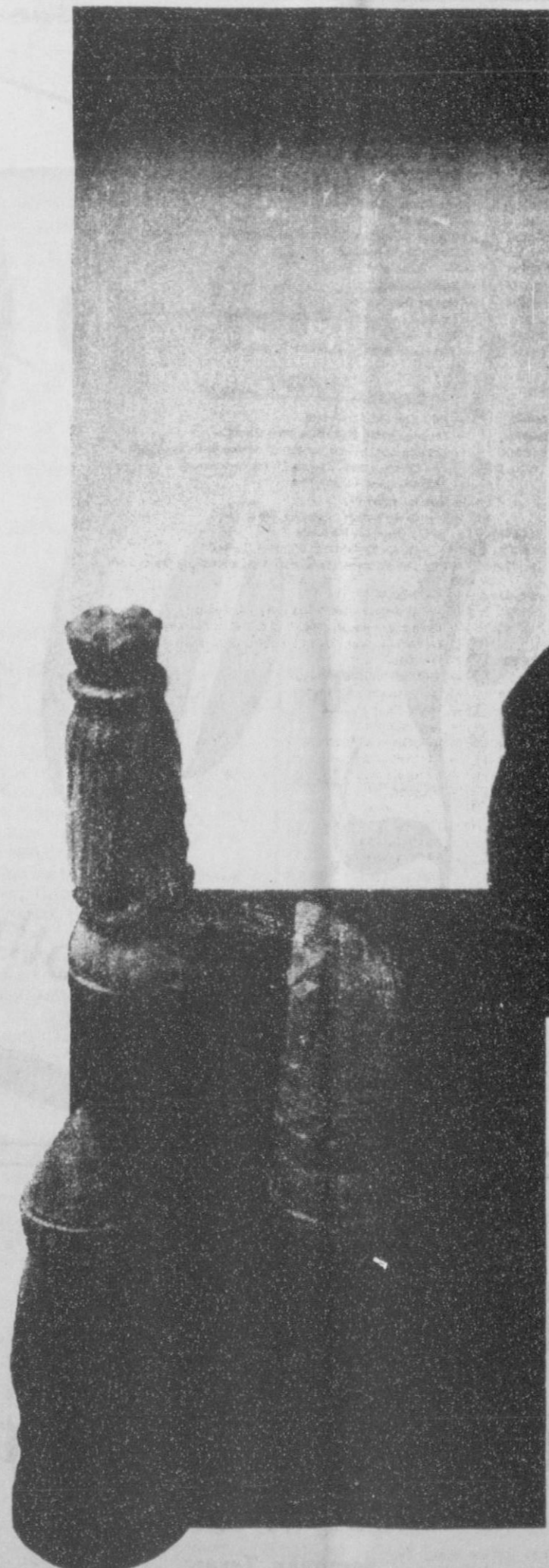
- Monday, Jan. 14  
Steak Fritter  
Salad Bar  
Potatoes/Gravy  
Hot Rolls  
Peanut Butter Blend  
Milk
- Tuesday, Jan. 15  
2 Corn Dogs  
Macaroni & Cheese  
Salad Bar  
Dill Spear  
Fruit  
Milk
- Wednesday, Jan. 16  
Ham Sandwich/Bun  
Beefy Cut Fries  
Salad Bar  
Cobbler  
Milk
- Thursday, Jan. 17  
Cheesburger/Bun  
Salad Bar  
Crinkle Cut Fries  
Chocolate Pudding  
Milk
- Friday, Jan. 18  
PICNIC IN JANUARY!!!  
Fried Chicken  
Baked Beans  
Potato Salad  
Bread Slice  
Cookie  
Milk

### ELEMENTARY & JR HIGH JANUARY 14 - 18

- Monday, Jan. 14  
Pig in a Blanket  
Tator Tots  
Macaroni & Tomatoes  
Fruit Slice  
Milk
- Tuesday, Jan. 15  
Juicy Burger/Bun  
Pinto Beans  
Chopped Spinach  
Red Jello  
Milk
- Wednesday, Jan. 16  
Steak Fingers  
Potatoes/Gravy  
Whole Kernel Corn  
Hot Rolls/Butter  
Chocolate Pudding  
Milk
- Thursday, Jan. 17  
Hamburger/Bun  
French Fries  
Pickle & Onion Slice  
Chopped Lettuce  
Spice Cake  
Milk
- Friday, Jan. 18  
Fried Chicken  
Potatoes/Gravy  
Green Beans  
Bread Slice  
Mixed Fruit  
Milk

# STRATEGIES

A financial game plan for retirement.



## DEVELOPING A PLAN

There is an important way you can help your financial strategy now and at retirement time.

It's with an IRA. Individual Retirement Account from First National Bank in Perryton.

You can help now because it's the biggest tax break ever. Every wage earner can subtract up to \$2,000 yearly from your gross annual income with an IRA. Married couples with a non-working spouse may deduct up to \$2,250 or when both work up to \$4,000.

## PROTECT YOUR INVESTMENT

Of course, at the First National Bank in Perryton your IRA is protected up to \$100,000 by the FDIC. And, we charge no maintenance fee.

## REACH YOUR GOAL

Then an IRA helps you later because your money draws interest at the highest rates available until you start making withdrawals at retirement. It is remarkable how much momentum an IRA can gather as you head towards retirement. If you start before 30 it can accumulate more than a million dollars.

**First National Bank**  
Perryton, Texas  
201 S. Main  
P.O. Box 929  
Perryton, Texas 79070  
806 / 435-3676

If you have a business, ask us about Keogh and SEP.



Incoming president Bob Pearson, Chamber manager Mary Lou

Wysong and outgoing president Robert Elliott.



Mrs. Bob Pearson, Bob Pearson and Mayor Blodgett during the

1985 Chamber of Commerce installation ceremonies.



Another award to President Robert Elliott from new President Bob Pearson.

**Pre-registration for TSTI to be January 28 through February 1**

TSTI - Amarillo will be holding pre-registration for the Spring Quarter January 28 thru February 1, 1985, from 8:30 p.m. to 3:30 p.m., in the Resource Center on campus.

Programs enrolling new students will be: Aircraft Mechanics, Auto Body Repair, Auto Mechanics Technology, Boot and Shoe Operations, Commercial Art in

Advertising, Computer Electronics Technology, Computer Science Technology, Construction Technology, Cosmetology, Diesel Mechanics Technology, Drafting and Design Technology, Industrial Instrumentation Technology, Interior Design Technology, Laser Electro-Optics Technology, Machine Shop Operations, Meat

anical Electrical Technology, Professional Truck Operations, Saddle and Tack Making, Technical Office Training, Transport Refrigeration Technology and Welding and Fabrication.

For more information contact the Admissions Office, 806-335-2316, ext. 268.

J & M Boot/Shoe Repair  
307 W. Davis

In the Farm Bureau Building, the West door. Right across the street, South of White House Lumber. Women's work, shoe dyeing. Everything from shoe shines to saddle repair, some tack supplies. Prompt Service.

Open 8:00 - 5:30  
659-3113

**GUYMON LIVESTOCK AUCTION**  
**WE SELL BOTH CATTLE & HOGS**  
**"A FAST GROWING MARKET"**

**PRIVATE TREATY EVERY DAY**  
**FRESH CALVES OFFERED**  
**SALE WEDNESDAY AT 10:00 a.m.**  
**SALE THURSDAY AT 1:00 p.m.**

Phone us about your consignments

Office 1-405-338-3378

Out of State 1-800-338-5871

Gary Cobb - General Manager

Res. Phone 1-405-545-3470

Bill Blackmore - Field Representative

Res. Phone 1-405-349-2254

**Art Classes**

**Tom Beasley art classes**

begin

**Tuesday, January 15 at 7:30 p.m.**

**at Gruver Library.**



K. Dale Johnson, D.D.S., Inc.  
3102 Garrett Drive  
Perryton, Texas 79070

as low as

**1/2 off**

throughout both stores

**All Fall**  
**and**  
**Winter**  
**merchandise**

**SAVE -**

**Sale starts at**  
**10:00 a.m.**  
**Monday,**  
**January 14.**

**Annual Half Price Sale**

for **Lady Fair & Kid's Stuff**

719 W. 7th  
Spearman, Texas



CITY OF SPEARMAN

JANUARY 8, 1985

AGENDA

SPEARMAN I.S.D. BOARD OF TRUSTEES Jan. 14, '85 7:00 p.m.

MINUTES OF REGULAR CITY COUNCIL MEETING

THE CITY COUNCIL OF THE CITY OF SPEARMAN, TEXAS, MET IN REGULAR SESSION IN COUNCIL CHAMBERS OF CITY HALL, 30 S. W. COURT, ON JANUARY 8, 1985, MAYOR C. RALPH BLODGETT PRESIDING.

PLEDGE AND INVOCATION.

AT 7:30 P.M. MAYOR BLODGETT DECLARED A QUORUM PRESENT AND CALLED THE MEETING TO ORDER.

CONSIDERATION OF THE MINUTES OF REGULAR CITY COUNCIL MEETING HELD ON DECEMBER 11, 1984.

MOTION WAS MADE BY GARNER TO APPROVE THE MINUTES OF REGULAR CITY COUNCIL MEETING HELD ON DECEMBER 11, 1984, AS WRITTEN.

CONSIDERATION OF APPOINTING VARIOUS CITIZENS TO THE FOLLOWING BOARDS: PLANNING AND ZONING COMMISSION AND THE ELECTRICAL BOARD.

MOTION WAS MADE BY NICHOLSON TO APPOINT VARIOUS CITIZENS TO THE FOLLOWING BOARDS:

PLANNING AND ZONING COMMISSION

E. J. COPELAND 1-16-87 HELEN ETTER 1-16-87 VICKY BULLARD 1-16-87

ELECTRICAL BOARD

L. L. ANTHONY 1-16-87 VERLIN BEHNE 1-16-87

SECOND BY GARNER. MOTION UNANIMOUSLY CARRIED.

CONSIDERATION OF AWARDED PURCHASE CONTRACTS FOR VARIOUS PUBLIC SAFETY EQUIPMENT.

MOTION WAS MADE BY PEARSON TO AWARD PURCHASE CONTRACTS FOR VARIOUS PUBLIC SAFETY EQUIPMENT TO THE LOWEST RESPONSIBLE BIDDERS AS LISTED BELOW:

Table with columns: BIDDER, QUANTITY, ITEM, PRICE, TOTAL. Lists items like Audio Visual, Firefighter's Turn Out Coats, Fire Extinguisher, etc.

SECOND BY GARNER. MOTION UNANIMOUSLY CARRIED.

PAGE 2 MINUTES OF REGULAR CITY COUNCIL MEETING JANUARY 8, 1985

CONSIDERATION OF FINAL PAYMENT TO BERNE CONSTRUCTION COMPANY FOR WATER LINE IMPROVEMENTS TO BE PAID OUT OF THE TEXAS DEPARTMENT OF COMMUNITY AFFAIRS COMMUNITY DEVELOPMENT FUNDS.

MOTION WAS MADE BY GARNER TO APPROVE FINAL PAYMENT TO BERNE CONSTRUCTION COMPANY FOR WATER LINE IMPROVEMENTS TO BE PAID OUT OF THE TEXAS DEPARTMENT OF COMMUNITY AFFAIRS COMMUNITY DEVELOPMENT FUNDS IN THE AMOUNT OF \$48,934.90.

CONSIDERATION OF A CONTRACT WITH HANSFORD COUNTY TO FURNISH JAIL DETENTION SERVICES FOR THE CITY OF SPEARMAN'S POLICE DEPARTMENT.

MOTION WAS MADE BY PEARSON TO APPROVE A CONTRACT WITH HANSFORD COUNTY TO FURNISH JAIL DETENTION SERVICES FOR THE CITY OF SPEARMAN'S POLICE DEPARTMENT.

CONSIDERATION OF MONTHLY FIRE, AMBULANCE, POLICE, MUNICIPAL COURT, AND ANIMAL CONTROL REPORTS.

MOTION WAS MADE BY PEARSON TO APPROVE THE MONTHLY FIRE, AMBULANCE, POLICE, MUNICIPAL COURT, AND ANIMAL CONTROL REPORTS AS PRESENTED.

CONSIDERATION OF MONTHLY BILLS PAYABLE AND CURRENT CASH POSITION.

MOTION WAS MADE BY NICHOLSON TO APPROVE THE MONTHLY BILLS PAYABLE IN THE AMOUNT OF \$243,824.74 AND CURRENT CASH POSITION.

OTHER.

NO ACTION WAS TAKEN.

ADJOURN.

MOTION WAS MADE BY GARNER TO ADJOURN. MAYOR BLODGETT DECLARED THE MEETING ADJOURNED AT 8:00 P.M.

ATTEST:

CHARLOTTE SHEETS, CITY SECRETARY

- I. Establish quorum
II. Hearing of any group wishing to come before the board.
III. Reading of minutes
IV. Business manager's report
V. Communications
VI. Old Business
VII. New Business
VIII. Superintendent's Report



Amy Runyan, one of our finest Lynxettes.

FIRESTORM, A COSMIC LIGHT STORM OPENS

Sophisticated light techniques, optics, lasers and special effects will bring music to life during "FIRESTORM, A COSMIC LIGHT SHOW."

Starscape Science Exhibit To Premiere For Media

Media preview of "STARSCAPE," a scientific light sculpture created by physicist/artist Bill Parker. A clear glass sphere which represents pure energy and contains miniscule amounts of 22 rare and exotic gases...

These gases come together in a process called gas ionization, creating what is known as the fourth state of matter - plasma. Plasma defies the laws of solids, liquids and gases and the exhibit is one of a limited edition of plasma globes.

The exhibit will be on display Friday, January 18, 1985 from 5:30 to 8:00 p.m. in the Don Harrington Discovery Center, 1200 Streit Dr., Amarillo, Texas...

Representatives of the print and electronic media are invited to attend. Press kits will be available, as well as color slides, black and white photographs.

FILM CREWS wishing to film the exhibit prior to opening are asked to set up a time with Melody Parker before 4:00 p.m. Friday, January 18, 1985.

THE CUPBOARD 502 DAVIS SPEARMAN, TEXAS 659-2767

For the week of Jan. 14-18

- MONDAY Stir-Fry Pepper Steak over Wild Rice
TUESDAY Steak Soup
WEDNESDAY Chicken Fried Steak
THURSDAY Mashed Potatoes-Pan Gravy
FRIDAY Mexican Casserole

For the week of Jan. 21-25

- MONDAY Spaghetti & Meatballs
TUESDAY Eclair Cake
WEDNESDAY Stuffed Potatoes
THURSDAY Cabbage Rolls
FRIDAY Texas Style Chili

Our meals include salad bar, coffee or tea for \$4.95. We also offer sandwiches and homemade soups daily.

"The Cupboard" menu will only be printed once every two weeks. Clip and save!

Hansford Hospital Board Meeting

The Regular Meeting of the Board of Directors of Hansford County Hospital District was held on Jan. 10, 1985 at 7:00 A.M. in the Hospital Board Room.

Present: Jack Oakes, President; Leslie Barkley, Sec.-Tres.; Dwight Hutchinson, John Trindle.

Administration: Albert LaRochelle, Hosp. Adm.; Ray Wasil, Manor Adm.; Dan Powers, Y.D.P.

Medical Staff: David McClellan, M.D.

Guest: Mrs. Mary Arnold, Mr. Perry Arnold, Mr. John Hutchinson.

Absent: Alton Ellsworth, Vice-Pres.; Jerry Hunt.

The meeting was called to order by Jack Oakes.

The minutes of December 13, 1984 were read and approved in a motion made by Leslie Barkley and seconded by John Trindle.

Mrs. Arnold addressed the Board on a personal matter concerning patient care. The Board members thanked Mrs. Arnold for her input and will take the appropriate action.

Mr. John Hutchinson gave the Board an update of the Jason Frye Lawsuit. After a general discussion, John Trindle made a motion that John Hutchinson be instructed to file a suit against Jason Frye for Breach of Contract.

The monthly financial statement was presented for the Board's consideration. Dwight Hutchinson moved to approve the bills for payment.

Next submitted to the Board was two different proposals for Hansford Hospital and Manor on its Professional Liability.

There being no further business the meeting was adjourned.

other from Brock Insurance Agency. Leslie Barkley made a motion to accept the proposal from Brock Insurance. Seconded by Dwight Hutchinson and passed by all present.

A general discussion as to the possibility of expansion of Hansford Manor was held next. No definitive action taken at this meeting.

A Medical Staff recommendation was submitted to the Board. After review of Dr. Stanton Cobb's staff application and letters of reference Dr. Earl Novak made a motion that Dr. Cobb be accepted to the Medical Staff of Hansford Hospital.

Dwight Hutchinson made a motion to accept the recommendation of the Medical Staff, seconded by John Trindle, and passed by all members present.

Next on the agenda was the Hospital update. The Board was advised of the necessity of having to cut the staff of Hansford Hospital due to the low census during the past three months.

Mr. Ray Wasil gave the progress update on the current affairs of Hansford Manor.

There being no further business the meeting was adjourned.

Appraisal District Meets

The Board of Directors of the Hansford County Appraisal District met in regular session Wednesday, January 9, 1985, at 9:00 a.m., in the conference room of the appraisal district offices located at 13 West Kenneth Avenue, Spearman, Texas.

Chairman Shieldknight called the meeting to order and presented the Agenda for the meeting.

- 1. Call to Order.
2. Approve Minutes.
3. Organize Board for 1985.
4. New Business: a. Appoint One ARB Member. b. Establish Resolution Adopting \$1000 Minimum Value on Notice of Appraised Value.

Minutes of the regular meeting held December 12, 1984, were approved as read.

Each director reaffirmed his oath of office for his 1985 term which was administered by Chief Appraiser Alice Pedy.

Nominations for the 1985 officers were as follows: Motion was made by Lynn Hart and seconded by Thane McCloy to elect Roy Bulls as chairman by acclamation. Motion carried 3-0.

Motion was made by Jimmy Shieldknight and seconded by Thane McCloy to elect Lynn Hart as vice-chairman. Motion carried 3-0.

Motion was made by Lynn Hart and seconded by Jimmy Shieldknight to elect Thane McCloy as secretary. Motion carried 3-0.

Motion was made by Lynn Hart and seconded by Thane McCloy to amend Resolution #1 to authorize the chief appraiser to co-sign vouchers with any one of the following directors: Roy Bulls, Chairman; Lynn Hart, Vice-Chairman; Thane McCloy, Secretary; Jimmy Shieldknight, Director. Motion carried 4-0.

Two bids on the telephone system were opened and read aloud from Panhandle Telecommunication Systems Inc. and General Telephone Company. The bids were as follows: PTS \$3,521.25 and \$181.35 second year maintenance.

A discussion was held on the advantages of purchasing equipment from a locally operated company and the nominal difference in the two bids. Motion was made by Jimmy Shieldknight and seconded by Lynn

Hart to award the bid to General Telephone Company in the amount of \$3,668.15. Motion carried 4-0.

Motion was made by Thane McCloy and seconded by Lynn Hart to appoint Austell Burrus as a member of the appraisal review board for 1985-86. Motion carried 4-0.

Motion was made by Jimmy Shieldknight and seconded by Thane McCloy to adopt Resolution #14 to dispense with the notice of appraised value if the amount of increase is \$1,000 or less according to the provisions of Chapter 25, Section 25.19 (g), Property Tax Code. Motion carried 4-0.

Motion was made by Jimmy Shieldknight and seconded by Lynn Hart to approve the 1984 accounts payable in the amount of \$80,132.42 as per attachment to the Minutes of this meeting. Motion carried 4-0.

Motion was made by Thane McCloy and seconded by Jimmy Shieldknight to approve the budget reports as presented by Chief Appraiser Alice Pedy. Motion carried 4-0.

Chief Appraiser Alice Pedy reported on the current collections and progress of construction.

There being no further business to bring before the Board, meeting adjourned at 10:00 a.m.

Birthing bed to be demonstrated

There will be a demonstration at Hansford Hospital Wednesday, Jan. 16 on a birthing bed. The demonstration will be given by Dick Beledsoe. It will be from 12:00 noon to 2:30 p.m. Everyone is invited to attend.

Fund raising projects will be started in the near future for a birthing bed. Watch the paper for further details.



Echo Farms Dairy Co. of New York introduced the milk bottle in 1879.

Regional Chiropractic Center Dr. Darrell B. Duke Complete Chiropractic and nutritional services. Open Mon.-Fr. 9:00-4:30 221 Sanders 659-5585



Ernie Newcomb discovered this "little beauty" lately looking over a program, but couldn't remember her name. He would like to

give her parents this picture if they would come in and identify her.



Chamber members listen to Mayor Blodgett.



Robert Queener on the left, Frances Loftin and Mike Schnell receive plaques for their service to the Chamber and the community during the year.



Mayor Blodgett and Mary Lou Wysong, two of Spearman's finest citizens. Mary Lou is retiring in June of this year from 21 years as Spearman Chamber of Commerce manager. We do appreciate her many, many accomplishments.

## SPEARMAN CHURCH DIRECTORY

**APOSTOLIC FAITH CHURCH:**  
Leland Grimmer, Pastor  
824 South Dressen  
Sunday School: 10:00  
Morning Worship 11:00  
Evening Worship 7:00  
Wednesday Service 7:30  
659-2870

**CHURCH OF THE BRETHREN:**  
Milton Robinson, Pastor  
Waka, Texas  
Sunday School 10:00  
Morning Worship 11:00  
No Evening Services  
435-4598

**CHURCH OF CHRIST:**  
Gaylord Cook & David Fultz,  
Co-ministers  
121 South Haney  
Sunday School: 9:45  
Morning Worship 10:35  
Evening Worship 6:00  
Wednesday Service 7:30  
659-3244

**FAITH LUTHERAN CHURCH:**  
William Schardin, Pastor  
1101 South Bernice  
Sunday School 9:45  
Morning Worship 10:45  
No Evening Worship  
659-2252

**FELLOWSHIP BAPTIST CHURCH**  
Jim Jones, Pastor  
1102 South Archer  
Sunday School 10:00  
Morning Worship 11:00  
Evening Worship 7:00  
Wednesday Service 7:30  
659-2782

**FIRST ASSEMBLY OF GOD:**  
David Nuckels, Pastor  
401 North Bernice  
Sunday School 9:45  
Morning Worship 11:00  
Evening Worship 7:00  
Wednesday Service 7:00  
659-2295

**FIRST BAPTIST CHURCH**  
[SOUTHERN BAPTIST]:  
Russ Gibbs, Pastor  
Jerry Don Davis,  
Minister of Youth  
123 South Bernice  
Sunday School 9:45

**FIRST CHRISTIAN CHURCH:**  
[DISCIPLES OF CHRIST]:  
Martin Foster, Pastor  
29 South Bernice  
Sunday School 9:30  
Morning Worship 10:50  
Evening Worship 6:30  
659-2036

**SACRED HEART CATHOLIC CHURCH:**  
Father Raymond Crozier, Priest  
Saturday Evening Mass 7:00  
Friday Mass 8:30 AM  
Sunday Mass 8:00 AM  
Thursday Mass 6:30 PM  
659-2166

**FIRST UNITED PRESBYTERIAN CHURCH:**  
Leland McCullough, Pastor  
1021 Cotter  
Sunday School 9:45  
Morning Worship 11:00  
No Evening Services  
659-2033

**FIRST UNITED METHODIST CHURCH:**  
Lane Boyd, Pastor  
407 South Haney  
Sunday School 9:45  
Morning Worship 11:00  
Evening Worship 7:00  
659-3220

**SPEARMAN UNION CHURCH:**  
(Inter-Denominational):  
Steve Rogers, Pastor  
31 South Endicott  
Sunday School 9:45  
Morning Worship 10:45  
Evening Service 6:30  
Wednesday Service 7:30  
659-2644

**SPEARMAN-GRUBER SPANISH BAPTIST MISSION:**  
Romeo Reyes, Pastor  
502 E. 7th  
Sunday School 9:45  
Morning Worship 11:00  
Church Training 6:00  
Evening Worship 7:00  
Wednesday Service 7:00  
659-3948

Morning Worship 11:00  
Church Training 6:00  
Evening Worship 7:00  
Wednesday Service 7:00  
659-5557  
Intercessory Prayer Line 659-2911

# WHO CANNOT SEW



## The Traveling Salesman

Sunday morning in Buffalo—and a button falls off my last clean shirt: "Sorry, sir, valet service does not answer!"

Little girls can sew on buttons. Tailors can sew on buttons. My tough old sergeant could sew on buttons. But not me! I never got around to it.

I'm going to church *anyway*. Long time ago I realized that it may take a bit of effort, and some determination, and quite a lot of experience to become a regular church-goer. But life is full of *real* crises that demand faith and courage and a Source of guidance. There isn't much comfort in discovering that others can overcome such crises—while *you* never got around to it.

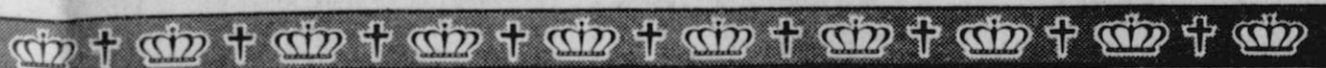
So any Sunday . . . in Buffalo, Rochester, Syracuse or Troy . . . you'll be seeing me in church. (I'm the stocky fellow, with the red hair—and the button missing from his shirt!)

Copyright 1973 Keister Advertising Service, Inc., Strasburg, Virginia

Scriptures selected by the American Bible Society



Sunday	Monday	Tuesday	Wednesday	Thursday	Friday	Saturday
Ephesians 6:11-18 James 4:7	Job 1:6-22	Job 34:22-34	Job 42:1-10	Isaiah 42:1-9	Lamentations 3:22-36	Job 9:1-9



Church page  
compliments of:

**BOXWELL BROTHERS**  
519 Evans Spearman 659-2212

**INTERSTATE SAVINGS & LOAN**  
322 Main Spearman 659-2559

**THE HANSFORD PLAINSMAN**

**1st NATIONAL BANK**  
201 S. Main Perryton 435-3676

**BAKER & TAYLOR**  
Gruber Hwy. Spearman 659-2503