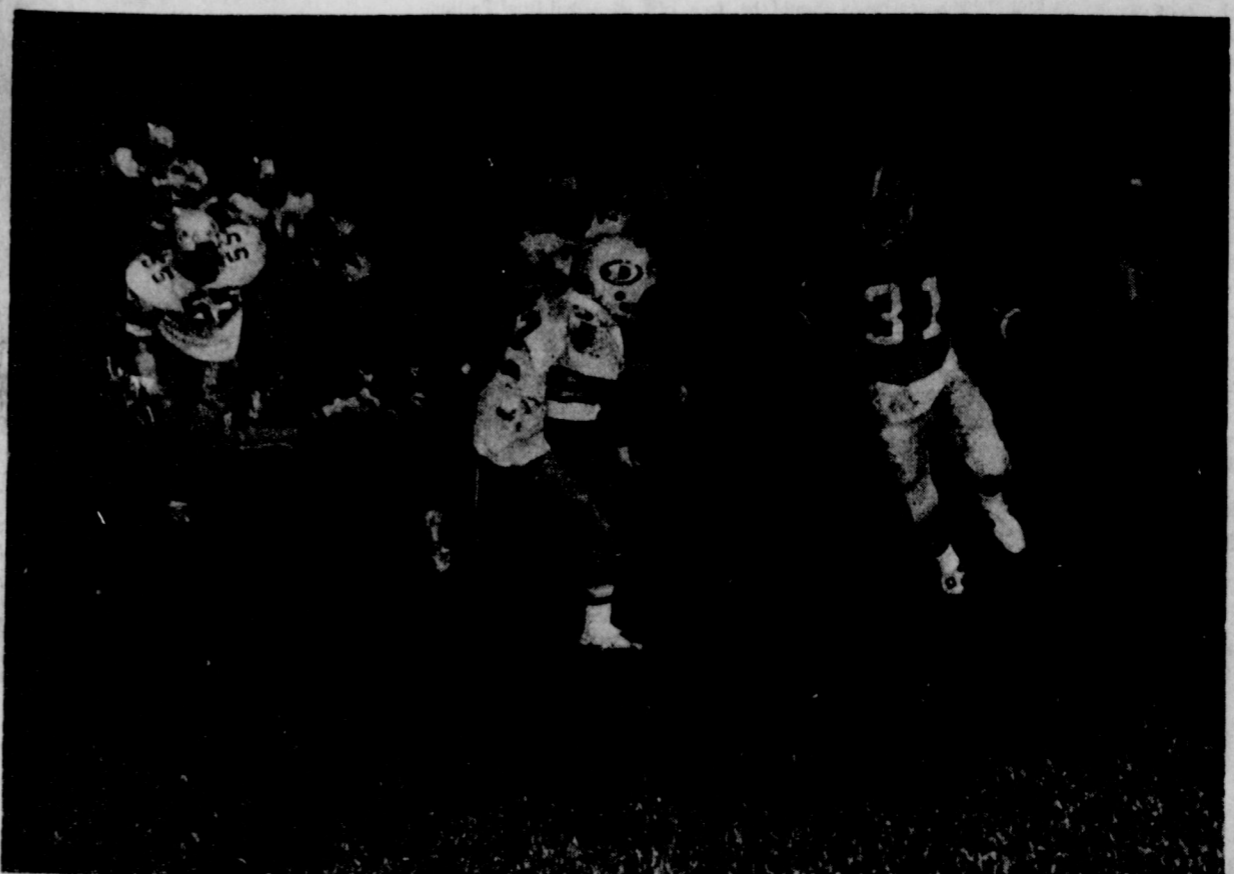


# Fighting Lynx lose thriller 21-14



## THE HANSFORD PLAINSMAN

THE HANSFORD PLAINSMAN, SPEARMAN, TEXAS 79081

SUNDAY, NOVEMBER 25, 1978

The district 1-AA Spearman Lynx lost a thriller to Childress, at Pampa Harvester Field Friday night, 21-14. The Lynx jumped into the lead in the first quarter, on a 7 yard touchdownrun by Zane Newton, and it looked like a repeat of the last 2 meetings against the Bobcats; and it was! For the 3rd time in a row, the Lynx have whipped the classy Cats in the first half, only to come back, and lose the play-off game in the 2nd half. But, this year was the most thrilling game of all, and the Lynx, after taking the first quarter lead, saw the Bobcats score 3 touchdowns in the 2nd and 3rd quarters, and then the Lynx came back and scored in the 4th and the game was in doubt until the last play of the 4th quarter.

Trailing 21-7, late in the 4th quarter, Zane Newton threw an option half-back pass to Martin who was literally "pushed down" in the end zone and caught the ball for a touchdown. The try for extra point was good and the Lynx were trailing by 21-14. Childress drove the ball to the Lynx 17 yard line and the Lynx took over on downs with some 34 seconds left in the game. From the 17 yard line the Lynx drove into Childress territory, only to have time run out on them, as they picked up some 20 yards on a pass play, plus 15 for a roughing penalty. All the Lynx needed to win the game, was a "little more time" as they had the momentum to upset the No. 4 team in the state!

College scouts in the press box, were very impressed with several of the players on both teams, and expressed interest in Newton and Martin from Spearman, along with several of the Childress players.

	Lynx	B'cats
First downs	12	22
Net yards rushing	114	251
Net yard passing	57	71
Total yards gained	171	322
Passes attempted	16	14
Passes comp.	6	6
Passes Int. by	2	1
Punt average	37.7	39.7
Opp. fumb. recov.	2	1
No. penalties	2	5
Yds. penalized	33	47

**SPORTS BULLETIN:** The Spearman basketball teams will journey to Gruver Monday night... Tuesday nite they will play at Stratford, Thursday, Friday and Saturday they will be in the Suntray tourney!



Hansford County's new County Extension agent Layton Barton has taken up residence in Spearman and says he really feels at home in a small town. He hails from Arnette, Okla.

### Y.M.C.A. Director Search Continues

Hansford County Y.M.C.A. Directors are continuing their search for a Director for the new Y.M.C.A., nearing completion in Spearman. Extensive remodeling has been taking place at the site of the two story facility. Members and guests will soon be able to enjoy Saunas and whirlpool baths while young people will be able to enjoy various games such as ping pong, volleyball, juke box dancing, among many other recreational activities. Several members of the Board of Directors will be meeting in Roswell N. M. this next week at a regional conference dealing with Staff assignments and responsibilities. Jim McClain, Local President of the Y.M.C.A., Board and spear-

head for the new family center, will lead the group. The search for a Director, meanwhile, continues. Several Interviews have taken place and a Director hopefully will be employed and on the job early in 1979. McClain said that almost \$30,000 had been raised by the community for the initial operations with fund raising continuing. This paper will print a larger and more comprehensive story in the next several weeks along with a pictorial summary of progress. Hansford County can well be proud of those who during the past year have worked to make a dream come true...the dream that a beautiful Y.M.C.A. facility can be developed to serve the youth and families of Hansford County...another giant step of progress!!

### Police Dept. Busy

Spearman Police Chief Steve Wisniewski says that his department is investigating the theft of a purse from an unlocked vehicle at the First Christian Church. The purse belonged to Jane Henton. A suspect is under investigation. An illegal alien, Raymond Ruiz has been arrested by local officers and turned over to the Border Patrol. In two Municipal court cases, Perry & GeorgeAnn Washington have been found guilty of allowing animals to run at large and have been assessed a fine of \$60.00 and costs. In another Jury Trial, Kelly Lee Burch was found to be guilty of exhibition of acceleration and was assessed a fine of \$200.00 plus sixty days probation. A fine of \$200.00 and sixty days probation was assessed Marcelino Zambrano Jr., following a guilty plea before the County Judge on a charge of Driving while Intoxicated. Spearman Police are investigating the theft of \$20.00 cash and a chain saw from Marvin Blankenship. A suspect has been named and local police say he reportedly is en route to Houston. Police officers investigated a two vehicle mishap in the 500 Block of West 5th. The cars were driven by Walter Pursley of Slaton and Robert Skinner of Spearman. Only minor damage resulted...and no injuries reported.

### Officer Sara Norton A Sharpshooter!

Spearman's pretty police officer Sara Norton has to be a sharpshooter! While at the six week course of study at the Amarillo Police Academy she amassed a score of 98 out of a possible 100 in Pistol shooting!! Placing second out of the entire class of Panhandle officers, our officer Norton also graduated close to the top of her class. Already Officer Norton is serving her city effectively. Police reports indicate she was instrumental in the apprehension of two subjects who recently allegedly stole a Pick-Up truck from Gruver. On Sunday, Officer Norton observed two subjects and a strange Pick-Up truck at the Allsup's gas pumps

...She asked the Allsup's clerk about the incident and learned that the two matched the description of two subjects provided by the Gruver Police Department. Ascertaining that the two subjects were heading towards Liberal, Kansas, Officer Norton radioed the Gruver Police Department who in turn alerted the Liberal Police Department who later apprehended the two subjects. Explained Officer Sara Norton later "If I had just known about the situation sooner, I'd have caught them myself!!! Congratulations Officer Norton...Spearman is a safer and better place because of your ability!!!"

### 2 Suspects Returned To Hansford County

Two Missouri subjects wanted in connection with the theft of a pick up truck in Hansford County have now been returned to Hansford County after having been arrested in Liberal, Kansas. The two, wanted also by Missouri authorities in connection with possible theft of a motor vehicle were arrested in Liberal early Monday morning in a stolen pick up truck belonging to Leon Bagwell of Gruver. They had gone to Kansas late Sunday after having been stopped by Gruver Police Chief Jim Ratliffe, after the law enforce-

ment officer became suspicious of their activities. However a check by Police Chief Ratliffe with the National Crime computer failed at that time to show that the vehicle from Missouri in which they were riding was stolen. The two have been identified as John Michael Evans, 17 and Larry Delano, 17 both of Montette, Mo. The two were arrested by Kansas authorities when an alert was dispatched to the Kansas officials by Chief Ratliffe and Hansford County Sheriff's officers. The alert was issued after the report was received that the pick up in

### Commissioners Meet Monday

Hansford County Commissioners have scheduled their regular meeting Monday Nov. 27th at 10 A.M. Among items on the agenda will be consideration concerning digging a sanitation pit for the city of Spearman. The commissioners will also take action on salary matters for the Judicial District Secretary and a salary adjustment for a deputy.

### Rain Drops Keep Falling... The Maize Waits!

Hansford County farmers know that "somewhere the sun is shining" but so far this week it simply hasn't shone on the local Maize harvest! It all started about a week ago: first, freezing drizzle accompanied by showers kept would be harvesters away from the fields. Local ag people kept their fingers crossed...and their prayers going strong, hopeful that the

weight of the accumulated ice would not damage seriously the maize still in the fields. Luckily no other storms developed...but the fog rolled in...visibility was lessened and the moisture persisted. Just about the time the fog rolled away, more showers came...and although the showers were not particularly heavy, they again prevented work in the fields.

### Trio Injured In Thanksgiving Eve Mishap

Three residents of Hansford County sustained injuries Wednesday night shortly after 10:00 P.M. when the pick-up truck in which they were riding struck and killed a calf three miles West of Spearman on Highway 15. Hansford County Chief Deputy Sheriff John Mull said that the pick-up was driven by 19 year old Darrell Wayne West went out of control after it struck a calf and then struck a culvert. West was admitted to Hansford Hospital with undetermined injuries while two passengers Vicki Britt 21, of Gruver and Donna Riley, 21, of Gruver apparently sustained serious injuries and were transferred by ambulance to Amarillo. The pick-up was totally demolished.

### Markets

WHEAT	\$3.10
MILO	\$3.85
CORN	\$2.46
SOYBEANS	\$6.01
BARLEY	\$1.85

WEATHER			
HI	LO	PREC.	
11-16-78	37	29	.02
11-17-78	50	23	.05
11-18-78	56	28	
11-19-78	53	31	
11-20-78	40	27	
11-21-78	38	25	
11-22-78	58	37	
11-23-78	60	44	

### Luella Rook Services Held

Memorial services for Mrs. Luella Mae Rook, 82, were held at 2 p.m. Wednesday in First Baptist Church. The Rev. Russell Pogue, pastor, officiated. Burial was in Hansford County Cemetery by Boxwell Brothers Funeral Directors. Mrs. Rook died Tuesday. She was born in Miller County, Mo., and moved to Spearman in 1928. She was a member of First Baptist Church.

Survivors include three sons, Otho of Borger, Victor of Fritch, and George Jr. of Spearman; two daughters, Mrs. Leona McKinney of Amarillo and Mrs. Clorene Taylor of Borger; three sisters, Mrs. Leona Wilson, Mrs. Stella Stickney and Mrs. Edna Foster, all of Eldon, Mo.; 11 grandchildren; 20 great-grandchildren and two great-great-grandchildren.

### Hospital News

Patients in Hansford Hospital are Joe Morrison, Jose Gomez, Annie Hollis, Glenna McMullan, Inez Bennett and Dorothy Wyatt. Dismissed were Robert Gray, Reba Bennett, Maria Anchondo, Christopher Brooks, Darrell West, Darla Riley, Vicki Britt, Debra Walker, Bill Watts, Elmer Allsup and Roy Bulls.

## Insurance Corner

### Terror in the Tub

John Glen, or first man in space, orbited the earth unharmed, but was seriously injured slipping in his own bathtub. Tubs can be deadlier than outer space. Here's some helpful hints:

Smooth, non-porous surfaces and soapy water are a slippery combination. To make your footing more secure, use a suction-cup rubber mat or rough-surfaced adhesive strips.

If you're planning to install a new bathtub, some are now manufactured with slip-resistant surfaces.

There should be at least two grab-bars securely mounted on the wall next to a tub, at different heights, and one in every shower stall to prevent falls.

Accessories—towel rings, towel racks, shower curtain

This information has been brought to you as a public service by John R. Collard, Jr., your one stop answer to complete business and personal insurance protection. Life, home, auto, group insurance, and profit-sharing plans. See John R. Collard, Jr., 405 Davis St., Telephone 659-2501.

## Reger Is Named To Who's Who Honor

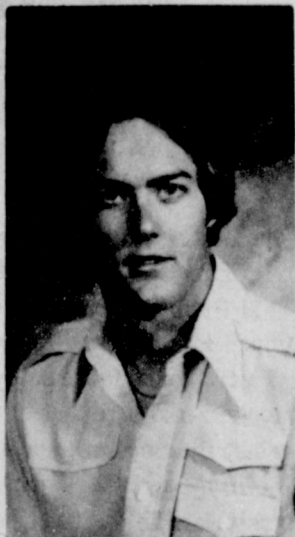
Recently selected to be included in the 1978-79 edition of "Who's Who Among Students in American Junior Colleges" is Dale Reger, a 1977 graduate of Stinnett High. Dale is a sophomore student at South Plains College in Levelland.

Dale is among 39 students from South Plains College who have been selected on the basis of outstanding campus leadership.

Campus nominating committees and editors of the annual Who's Who directory have included the names of these students based on their academic achievement, service to the community, leadership in extracurricular activities and future potential.

They join an elite group of students selected from more than 700 institutions of higher learning in all 50 states, the District of Columbia and Puerto Rico, according to H. Pettus Randall, director, Headquarters to Who's Who are in Tuscaloosa, Ala.

Outstanding students have been honored in the annual directory since it was first published in 1966. Biographical information on each student will be included in the directory. Students also will be



**DALE REGER** awarded certificates of membership in Who's Who Among Students in American Junior Colleges.

Dale was listed on the Dean's Honor Roll both semesters of his freshman year. He was a candidate for Homecoming King for 1978-79. An outstanding member of the South Plains tract team he participates in the triple jump and high jump events.

## Alpha Delta Kappa News

"What's Your Bid?" was the topic of the Saturday evening meeting in the Booker cafeteria of the Delta Kappa Gamma Society International, Eta Alpha Chapter.

Members, their husbands and other guests enjoyed a covered dish dinner followed by an auction of hand-made arts and crafts, plants and baked goods. Money from the auction provides a scholarship to be given to a student majoring in education. J. C. Harris of Gruver, assisted by Mrs. James Love of Perryton, provided entertaining auctioneering for everyone present.

Hostesses for the affair were Mrs. Fred Gustin, Ms. Sandra Branch, Mrs. Florence Nance, Mrs. Irene Hollister, Mrs. Lee Kirksey, and Mrs. Nell Lemons.

Members attending with their guests were: Mrs. Clifford Meek, Mrs. Carrie Knight, Mrs. James Hoy, Mrs. Don Clark, Mrs. Dick Hudson, Miss Dorothy Roden, Mrs. Jess Brownlee, Mrs. Joe Champion, Mrs. Norman Crum, Miss Darlene Day, Mrs. E. N. Flathers, Mrs. Hannon, Mrs. Nellie Knox, Mrs. James Love, Mrs. Robert Langford, Mrs. Joyce Scott, Mrs. Allison Unruh, Mrs. Dugan Wilson, Ms. Branch, Mrs. Gustin, Mrs. Nance, Mrs. Hollister, Mrs. Kirksey, and Mrs. Kay Robinson.

The next meeting of The Delta Kappa Gamma Society International, Eta Alpha Chapter will be at Spearman High School on Saturday, January 20, at 2:00. At this meeting all charter members will be honored guests.



THE INFLUENZA VIRUS seems to travel faster than a jet.

## MONDAY, NOV. 27 BREAKFAST

Orange Juice  
Dry Cereal  
Milk

## LUNCH

Cubed Beef & Gravy  
Buttered Rice  
Green Beans  
Combination Salad-Dressing  
Peaches  
Hot Rolls-Butter  
Milk

## HIGH SCHOOL CHOICE

Breaded Beef Patties

## TUESDAY, NOV. 28 BREAKFAST

Mixed Fruit  
French Toast & Syrup  
Milk

## LUNCH

BBQ Franks  
Potato Salad  
Pinto Beans  
Sweet Pickle Chips  
Chocolate Chip Cookie Bar  
Cornbread-Butter  
Milk

## HIGH SCHOOL CHOICE

BBQ Beef

## WEDNESDAY, Nov. 29 BREAKFAST

Apple Juice  
Sweet Roll  
Milk

## LUNCH

Oven Baked Fish-Tartar Sauce  
Mashed Potatoes  
Seasoned Green Peas  
Celery Sticks  
Lemon Gelatin  
Hot Rolls-Butter  
Milk

## HIGH SCHOOL CHOICE

Fried Chicken

## THURSDAY, NOV. 30 BREAKFAST

Peaches  
Egg Pattie-Toast  
Milk

## LUNCH

Meat Balls  
Spaghetti in Sauce  
Whole Kernel Corn  
Cole Slaw  
Birthday Cake  
Yeasts Batter Bread-Butter  
Milk

## HIGH SCHOOL CHOICE

Corn-dogs-Mustard

## FRIDAY, DEC. 1 BREAKFAST

Orange Juice  
Buttered Rice-Toast  
Milk

## LUNCH

Hamburger or Ham Salad  
Sandwich  
French Fries-Catsup  
Shredded Lettuce-Dressing  
Chopped Onion  
Dill Slices  
Apple Cobbler  
Milk

## 4-H-er's learn about first aid



Mr. Jerry Morris and Mr. Ralph Bynum as they teach Spearman 4-H Community Club members First Aid.

By Andrea Archer

The monthly 4-H meeting was held November 13 at the Spearman County Barn. Mary Kenney led the Pledge of Allegiance. Kelly McWhirter led the 4-H Pledge and Motto. Chad Guthrie gave the inspiration.

We decided to paint 4-H Welcome Signs for our Citizenship project. Kerri Holt volunteered to donate a string of lights for the Community Christmas Tree. The Club members decided to donate baked goods, leather craft and wooden items to the Bruce Stinson Day November 18.

The program was given by Mr. Jerry Morris and Mr. Ralph Bynum about first aid. The 4-H members took a tour through the Spearman Ambulance and Mr. Bynum answered ques-

tions. Mrs. Mike Holt and Mrs. Verlin Beck served the refreshments.

We also discussed our Christmas Party.

We congratulate our Spearman 4-H Club Members for their great participation in the Hansford County 4-H Food Show. Mark Garnett, Teresa Tindell, Mary Kenney and Karen Kenney will represent us at the District 4-H food show December 2nd in Amarillo. 30 of our club members entered the food show. Seven of these were boys from the 4-H Bachelor's cooking group. Cristie Black and Travis Patterson were selected as alternates in their divisions.

Julie Farr, our club president, was honored at the 4-H Gold Star Banquet November 18 in Amarillo.

## What does CHRISTMAS mean?



to a lonely man  
... a meal.

## STATEMENT OF FINANCIAL CONDITION OF HANSFORD COUNTY

### 1. RECONCILIATION WITH DEPOSITORY BANK AS OF NOVEMBER 1, 1978

Funds	Book Balance	Outstanding Checks	Bank Balance
Jury	4,144.20	765.50	4,909.70
General	50,469.70	13,582.99	64,052.69
Cemetery	2,395.89		2,395.89
Road & Bridge, General			
Precinct No. 1	6,834.72	2,293.29	9,128.01
Precinct No. 2	2,130.07	2,634.33	4,764.40
Precinct No. 3	1,670.46	1,305.30	2,975.76
Precinct No. 4	1,565.30	1,780.78	3,346.08
Road & Bridge, Sinking			
Precinct No. 1	11,301.56		11,301.56
Precinct No. 2	44.31		44.31
Precinct No. 3	288.49		288.49
Precinct No. 4	15,173.02		15,173.02
Revenue Sharing	50,341.30	950.00	51,291.30

### 2. SUMMARY OF RECEIPTS AND DISBURSEMENTS

Funds	Balance Aug. 1, 1978	Receipts	Disbursements	Balance Nov. 1, 1978
Jury	-2,290.65	10,191.82	3,756.97	4,144.20
General	31,015.51	140,871.73	121,417.54	50,469.70
Cemetery	2,355.53	40.36		2,395.89
Road & Bridge, General				
Precinct No. 1	50,989.02	17,408.01	61,562.31	6,834.72
Precinct No. 2	43,623.95	10,200.46	51,694.34	2,130.07
Precinct No. 3	35,241.20	7,040.73	40,611.47	1,670.46
Precinct No. 4	40,290.77	9,364.60	48,090.07	1,565.30
Road & Bridge, Sinking				
Precinct No. 1	794.24	40,507.32	30,000.00	11,301.56
Precinct No. 2	2,621.67	422.64	3,000.00	44.31
Precinct No. 3	13,656.71	31.78	13,400.00	288.49
Precinct No. 4	15,126.22	46.80		15,173.02
Revenue Sharing	51,730.04	20,637.00	22,025.74	50,341.30

### 3. INVESTMENTS

Prec. 4, Fund 11	\$25,000.00
Prec. 2, Fund 13	\$27,000.00
Prec. 4, Fund 15	\$25,000.00
Rev. Sharing Fund 25	\$45,000.00

### INDEBTEDNESS

Prec. 3, Fund 14	\$21,750.00
------------------	-------------

## History Book Meeting

A meeting will be held Monday, Nov. 27 at 7:30 p.m. at Martin's Steak Garden to form a Hansford Book Committee. Judy Cotton, Representative of Craftsman Printers of Lubbock, will be the speaker and the organizer.

The committee will consist of Chairperson, Publicity Chairperson, Bookkeeper and several Field Representatives. The Field Representatives job will be to talk about the book to citizens and organizations.

You are urged to attend this meeting if you are interested in helping form a history book for Hansford County.

## Comptroller Toll-free Number

AUSTIN, Tex.—Thousands of Texans apparently believe the telephone company's slogan, "Let your fingers do the walking," if telephone records at State Comptroller Bob Bullock's office are any indication.

During the last fiscal year, which ended August 31, 1978, some 164,292 persons called in on the Comptroller's toll-free number to seek tax information and discuss tax matters.

That represents a 39 percent increase over the previous year, Bullock said.

"The toll-free number is a speedy, convenient way to get to the heart of a tax matter," Bullock said.

The Sales Tax Division received 15 percent of the calls. The figures do not reflect local calls or long distance calls, which are not measured.

Cost of the service decreased from 87-cents a call in 1977 to 84-cents a call in 1978.

The toll-free number from anywhere in Texas is 1-800-252-5555.



Pal meaning friend is from the gypsy word for brother.

# WANT ADS

**CAPROCK MONUMENT CO.**  
Dealers of Georgia Granite, Georgia Marble, Colored Granite, & Drains.  
represented by  
**BOXWELL BROS. FUNERAL HOME**  
519 S. EVANS  
659-3802

Hansford County Planned Parenthood  
265. Haney  
659-2483  
Spearman  
Mon.-Fri.  
8 a.m. to 12 noon  
30S-rtm

## SERVICES

**SERVICE:** Pits cleaned, wet or dry. Dragline or loader. Also, dozer, grader, carry-all service. Lee Roy Mitchell, 806-733-2384, ver. Texas, 79040.

**PEE WEE'S PLUMBING & Appliance Service.** Roto-roooter. 659-2811 or 659-3781.  
26-rtm

**KIRBY SALES & SERVICE** of Spearman, 912 S. Bernice. 659-2797.  
30-rtm

**SPECIAL FOR OCT. AND NOV. ONLY**  
5.95 PER DAY PER HOUSEHOLD  
**STEAM RINSEVAC RUG SHAMPOOER**  
Call Gordon's Drug  
659-2141 or  
after 7 p.m. & Sundays  
call **FREDDIE LARGENT:**  
659-3437

**NOTICE**  
**Wallace Monument Co.**  
Monuments, Curbing, Grave Covers  
Local Representative  
**LEONARD JAMESON**  
659-3406  
20-rtm

Alcoholic Anonymous meeting 8 p.m. Friday, Home Demonstration Club building, 305 N. Bernice. Phone 659-3181 for information.  
\*\*\*  
Al-Anon meetings 8 p.m. Friday, Home Demonstration Club building, 305 N. Bernice in back room. Phone 659-3181 for information. Ask for Al-Anon.

**CUSTOM HAY BALING.** Jerry D. Virden, Gruver, Texas. Call 733-2236.  
29-rtm

Now Hauling Manure from Caprock Pens #1 & 2. Check my low Prices before you trade with anyone.  
Call or see Clois (Billy) Baker. 659-3642.  
51S-rtm

**H & H HEATING & SERVICE CO.**  
Heating, Air Conditioning & Refrigeration Work, Complete Central Heating & Air Conditioning Installation & Service Work, 24 hour. 659-3579 or Hwy 207 South, Spearman, Texas.  
52-rtm

For advance appointments for your dog's Christmas grooming, call Carmon, 659-2105 or Dolores, 659-3210.  
51S-rtm

**CATTLE HAULING**  
Call Fred Van Buskirk - 2680 or Willis Randall - 2041.

**CARPET SHAMPOOING:** Dry foam method. Vinyl Repairs. Free estimates. Call 435-4305 after 5 p.m.  
**LESTER LEATHERMAN**  
Perryton, Texas 52-rtm

**MISCELLANEOUS FOR SALE**  
**SPECIAL SALE:** Turquoise jewelry. Lay away now for Christmas. Call 659-2317.  
45-T only

**FOR SALE-** AKC Registered, Salt & Pepper miniature Schnauzers. Call 2105 for more information.  
4T-C

**FOR SALE:** Texas R.R.C. Permit, Livestock and Livestock Feed. Legal to load or unload in Amarillo. Furniture, exempt commodities. C. L. Vandover, 731 North Dwight, Pampa, Texas, or call from 7 A.M. to 11 A.M. 806-665-8268.

**FOR SALE-Firewood.** Burton Schubert 659-2667.  
47S-rtm

**SAVE!! \$300.00 to \$1,000.00** on your Cedar Shingles or Shakes. No Delivery Charge. Write Lakeside Wholesalers, Drawer L. Fritch, Texas 79035 or Call 806-857-2411.  
25-10c

**FOR SALE:** 1976 - 350 Honda. Good condition. Call 2327 anytime. Reasonable. See at 103 S. Barkley.  
25-rtm

**Need to sell one Ford diesel tractor and a pick-up camper** frame made of steel tubing. Will sell both very reasonable. Come by 706 Steele or call 659-3867.  
49S-rtm

Pole barns custom built, color or galvanized steel siding. Nov. special 20 x 30 \$1800; 24 x 30, \$2300; 30 x 40, \$3400; 40 x 60, \$6200. Custom Builders, 6345 Canyon Drive, Amarillo, Texas. 806-355-8749.  
52-7c

Shade & fruit trees, Evergreens, junipers and pines. Plant this fall for early spring growth. Ochiltree growers, 8 miles south of Perryton on Hwy. 70.  
51-8c

**FOR SALE-** 1976 Chevette, low mileage, deluxe interior, op rack, Michelin tires, CB radio, good mileage. Call 806-733-2384.  
51-rtm

Frank Phillips College Livestock Judging Team is now selling, for a limited time only, delicious Longhorn whole hams. They are dry cured, hickory smoked, no water added hams at only 1.90 per pound.  
The hams make excellent Christmas gifts.  
Please call your order in to Carmon Laird at 659-2105 and help out her team. The delivery dates are November 21st and December 12th. Discounts to those who order over 10 hams.  
8T-C

Ideal Christmas gift for the sportsman or gun collector. **NEW** hard to get, Smith & Wesson, Model 27 Nickel Plated 357 Magnum 3/4 barrel in presentation case. **WILL CONSIDER TRADE.** After 4:30 at 204 S. Archer.  
2-2tp

**FOR SALE-Nice doublewide** mobilhome, \$15,000. Call 659-3292 for appointment.  
47-rtm

**FOR SALE-1975 Hillcrest** Mobile Home 12 x 54 \$6000.00. 1975 Chevy Van, \$1500.00. Call 659-2201.  
52-rtm

**FOR SALE-** Pickup camper, paneled, nice small cabinets, in very good condition. Can be seen at 30 S. Dressen.  
or call 659-3051.

Do your Christmas Shopping La Casita Room - Dec. 4, 1978 9-5  
Many Home-Made Items  
25-2tp

**FOR SALE:** 1978 Ford F-150, Air Conditioned, Cruise Control, tilt steering, dual tanks. Call after 5 p.m. 659-3409, 908 S. Bernice.  
25-rtm

## WANTED

Water Hauling Wanted, Jack Kemper, 612 S. Evans, Call 659-3475 after 5.  
48S-rtm

Want to do babysitting in my home. 3 years experience. 659-3283, 52S-6tc

Would like housework. Experienced. Call 3912.  
15-4tp

## HELP WANTED

**TRUCK DRIVER NEEDED**  
Must Have Commercial License phone 659-3642 Clois (Billy) Baker  
52S-rtm

**Part time employment.** All day Tuesday and Wednesday, excellent opportunity for a mature organized individual to assist in an orthodontic practice in Perryton with emphasis of assisting the doctor at the chair. Must be pleasant and neat. No previous experience necessary. Please send resume to Dr. Philip J. Corbin, 1921 Brunson #4, Houston, Tx. 77030.  
2-2tc

## REAL ESTATE FOR SALE

**FOR SALE** approximately 1 1/2 acres on corner of Kenneth & FM 760. Property has partially framed 25 x 30 shop, now has sewer, and is reduced in price. Call 659-3867 or 659-3880.  
49S-rtm

**FOR SALE:** Residential Lots, 115 ft. wide. Extra deep. Excellent neighborhood. 1100 Block S. Archer. All utilities available. Too good to pass up. Call 659-3021 or write Box 522, Spearman.  
50-rtm

## FOR RENT

**FOR RENT:** LBL Trailer Space. 659-3627.  
39S-rtm

Furnished apartments for rent. Handyman could work out part rent. 303 Davis St.  
49S-rtm

## TOO LATE TO CLASSIFY

**FOR SALE:** Black Powder Single Action Colt. 41 Long Cal. Grips of Elephant Ivory. Made in 1888. \$850.00. Call 659-2241.  
25-rtm

*Hope... the Best Christmas Present of all.*

Over three million people are helped during the holiday season by The Salvation Army. Some of the families who need toys for their children, or a good dinner, learn that The Salvation Army offers more than a Christmas "handout". Its skilled counsellors help quarrelling families sort out their differences. Start talking to each other again. Bridge the generation gap. Counsel the job seeker. Teach budgeting. Steer overburdened parents to other Salvation Army resources - day care centers or after-school recreation. The goal: to help the family become self-sufficient, able to manage its own affairs, not dependent on charity.  
The best Christmas present of all - hope for a better new year.

**ED WHEELER REAL ESTATE**

**HOMES-FARM COMMERCIAL**

904 Haney - 3 bedrooms, single bath, fenced, storage shed for car, pool, extra nice.  
\*\*\*  
905 Haney St. 2 bedroom, 1 bath, attached garage, fenced backyard.  
\*\*\*  
906 King, Gruver, 3 bedroom, 1 bath, detached garage, fenced yard.  
\*\*\*  
1121 S. Dressen, 3 bedroom, 2 bath, corner lot, fenced backyard.  
\*\*\*  
706 Steele Drive. 3 bedroom, den, 1 1/2 baths, fenced backyard.  
\*\*\*  
1114 S. Haney - 3 bedroom, 1 bath with garage and fenced yard. Priced to sell.

Jerry Gee 659-3664  
Doris Beck 659-2618 659-2074

**HELP WANTED**

We are now taking applications for a waitress and a night cook.

Apply at  
**Martin's Steak Garden**  
Hwy 207 South, Spearman, Tex.

**The Hansford Plainsman**

PUBLICATION NO. 234660  
SPEARMAN, TEXAS 79081  
213 Main Box 458 659-3434  
Published Weekly at 213 Main Street  
Spearman, Texas 79081  
Owner-Publisher.....William M. Miller  
Second Class Postage paid at Spearman, Texas 79081

Any erroneous reflection upon the character of any person or firm appearing in these columns will be gladly and promptly corrected upon being brought to the attention of the management.

SUBSCRIPTION RATE: Hansford, adjoining counties, combination with the Spearman Reporter, \$10.40.  
Other points, \$14.40.

**MEMBER TEXAS PRESS ASSOCIATION**

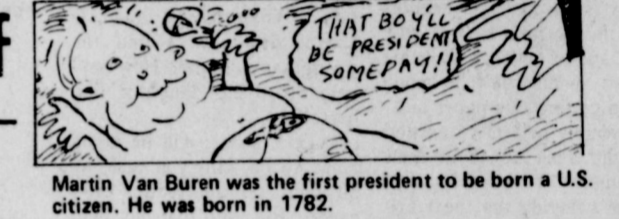
Golden Spread Club

Sustaining Membership

Name \_\_\_\_\_  
Address \_\_\_\_\_  
Telephone \_\_\_\_\_

Mail to: Golden Spread Club  
Box 817  
Spearman, Texas 79081

Sustaining memberships are \$25.00 for individuals, and \$50.00 for businesses. Members of the Golden Spread Club sustaining membership committee are Frances Loftin, Chairperson, Bob Boxwell and Lenis Simpson. Persons or businesses wishing to become sustaining members are asked to mail the information to Box 817, Spearman.



# Salvation Army Fund Drive Kick Off

A goal of \$1,500.00 has been set for the Spearman Salvation Army Service Unit Fund Drive which will kick off on Nov. 28, 1978, as announced by J.C. Lee, Service Unit Committee Chairman.

Funds collected in the drive will be used to pay for the Salvation Army's services to the underprivileged in Spearman through the current fiscal year.

The committee, composed of business and civic leaders, carries out a year-around program to help people with emergency needs. In the name of The Salvation Army whom it represents, the committee pays for food, lodgings, utilities and such basic necessities that families or individuals may require in a temporary crisis.

The Service Unit also acts as liaison for The Salvation Army's state-wide program which includes summer outings for boys at Camp Hoblitzelle, care for pre-delinquent girls and unwed mothers, help for paroled prisoners, relief in major disasters and other services.

Members of the committee are: Allen Alford, J.W. Gibner, C.A. Gibner, E.R. Sanders, Mrs. Dickie Allen, Mrs. Elsie Mathews, R.L. McFarlin, A. Ellsworth.

**\$4,000**

The committee for the Bruce Stinson Day and flea market held Saturday, Nov. 18 reported that as of this date a total of \$3968.43 was raised during the day Saturday.

The committee wishes to give special thanks to the Rotary Club for their donation, to Bob Skinner for the use of his building and to the entire community for their help and donations.

An extra big "thank you" to the sophomore football boys and a couple of junior high boys and girls.

Mrs. Lozano wants to thank the following for helping with the tamales: Mmes. Ben McIntyre, Gus Renner, Don Allen, Paul Lopez, Benazadez, Caroline Murphy and Gus McLain.

An electric hot water was donated to the Flea Market and is still for sale. The man that donated it will honor the warranty. Anyone interested in buying the heater may contact Bobbie Novak at 2284. Asking price is \$50.00, retail value is approximately \$119.00.

## EMT Course

### To Be Offered

Beginning January 8, 1979, you will have the opportunity of life. You could begin training to be an emergency medical technician. Instruction will be given in cardio-pulmonary resuscitation (CPR), airway management, bandaging, splinting, and how to save a choking person by the Heimlich Manuver, and childbirth.

You will learn extensive procedures in basic life support to help save lives until a physician can be obtained. Being an EMT does not require you to serve on an ambulance, however, you could if you wished. The Spearman Fire Department is sponsoring this EMT course to help you help others. Before deciding that you do not have the time: THINK of your family and friends and remember it might be their life that you as an EMT would save.

This course is offered to all 18 years of age and older for \$20.00. The course is 120 hours of which; 16 hours are in the Northwest Texas Hospital Emergency Room and 24 hours in local hospitals. The remaining 80 hours are classroom instruction in everything stated earlier and much, much more.

The classes will begin, Monday, January 8 and will be every Monday and Wednesday nights beginning at 7 p.m.

If you would like to sign up for this course, contact: Ronnie Antalek 659-3598 or 3363, Steven Slater 659-2844, or Vicky Bullard 5659-3319.

**LEARN THE WAYS TO SAVE LIVES THROUGH BASIC LIFE SUPPORT.**



**FALL CLEARANCE**

We hope every farmer gets top yields and prices. The farmers are cutting maize and

**We are cutting prices**

**We have over a dozen 79 GMC pickups in stock right now.**

**And more are coming in shortly**

**We have 2 new GMC tandem grain trucks rigged and ready to work**

**We have a fine selection of 79 models Pontiacs, and Buicks....With many more coming in**

**We have a few 78 models left....**

**Better hurry ....We also have some of the nicest used car and trucks we have ever traded for.**

**We know with the trades we are making that we will be trading for a lot more, too**

**Come on out, we are looking forward to doing business with you!**

**HERGERT**  
**Pontiac, Buick, GMC**  
"The Best For Sales, Service & Body Shop"  
WE APPRECIATE YOUR PATRONAGE!!!  
So. Hwy. 207  
Spearman, Texas

Faye's Daze

Our Thanksgiving was very pleasant this year but was much different than in year's past.

There is an enjoyable Sunday Church School class for you every Sunday at 9:45 a.m. with a loving, caring teacher with a well prepared, interesting Bible lesson designed to meet your spiritual needs.

Speaking of Christmas, it will certainly be nice to have a Christmas tree on Main Street this year.

My Christmas preparations are not coming along too well, guess I better get in gear and get something done, the time seems to be flying by.

Today, Friday seems like Monday.

Billy is on pins and needles about the big game between the Lynx and Childress Bobcats tonight.

Here's hoping that next Friday the Lynx will still be playing football.

WE ALL MAY BE ABLE TO GET MORE ENERGY FOR LESS MONEY if a solar home experiment is successful.

Presbyterian Church News

There is an enjoyable Sunday Church School class for you every Sunday at 9:45 a.m. with a loving, caring teacher with a well prepared, interesting Bible lesson designed to meet your spiritual needs.

The Session will meet on Wednesday, November 29 at 7:30 p.m.

One pastor sat for several minutes in silence with an elderly woman of his congregation.

Lord, I'm tired--so very tired. Please, Lord, I don't want any advice. I've heard enough of that over the years.

Never cut what you can untie. Joseph Joubert

NOV 1978

Calendar table for November 1978 showing days of the week and dates.

- MONDAY, November 27 Blue Monday Bridge Club - Second Grade Brownies - Brownie Hut Rotary Club - Martin's Steak Garden

CFW Christmas Bazaar Dec. 2

It's almost the Christmas season again, and why not get in the Christmas spirit in style this year?

Rho Rho Raffle Tickets For Trip

Members of Rho Rho Chapter of Beta Sigma Phi are selling raffle tickets for a trip for two to Las Vegas.

UMW Meets

United Methodist Women served hot beef stew and cornbread to ten men and thirty-seven women at the Golden Spread Center on Tuesday.

Bridge Club

The Tuesday Bridge Club met Tuesday, November 21 in the home of Mrs. Joel Lackey.

HD Club News

The Holt Home Demonstration Club met Nov. 20 in the home of Mrs. Fred Holt.

The hostess served refreshments to one guest, Mrs. JoElla Jones and the following members: Marie Harbour (Mrs. Monty), Mrs. Marvin Jones, Mrs. W. C. Jackson, Mrs. Nolan Holt, Mrs. Michael Holt, Mrs. Fred Holt, Mrs. Doyle Jackson, Mrs. Verlin Beck, Mrs. Major Lackey, Mrs. Britt Jarvis, Mrs. Raymond Kirk, Mrs. Lloyd Poole, Mrs. O. C. Holt and Mrs. Rex McCloy.

You are cordially invited to a

bridal shower honoring

Judy Mounts

bride-elect of

Carl Dean Robinson

at the Fellowship Hall of

First Baptist Church

Spearman, Texas

Saturday, December 2, 1978

2:30 to 4:00 p.m.

Hostesses: Mmes.

Orville Latham Paul Hazelwood Eddy Clemmons R. L. Upergrove Marshall Benton Orville Brummett

R. C. Porter Jerry George Robert Graham Troy Sloan Don Denham

Christmas Open House Saturday, December 2nd from 9 to 5 p.m. BOXWELL BROTHERS FLOWER SHOP 519 EVANS SPEARMAN, TEXAS Register For \$25.00 Gift Certificate

Spearman Music Club Meets

The Spearman Music Club will meet on Tuesday, November 28, 1978 at 7:30 p.m. for rehearsal of Christmas Music.

Girl Scout News

Cadet Troop #120 met Wednesday, November 15 in the Brownie Hut.

AUCTION

TUESDAY, NOVEMBER 28, 1978

SALE TIME: 10:30 A.M. c.s.t.

LOCATION: 1/2 MI. S. of Spearman, Tex. on Hwy. 207 Then 1/2 MI. W. on Caliche Rd. (This Being 1/2 MI. W. of John Deere House)

CLIP THIS AD & TUNE IN RADIO STATIONS IN CASE OF STORM DATE

All our sales broadcast on Radio KDDD - 800 - Dumas, Texas and KGYN - 1210 - Guymon, Oklahoma

BUZZ FARM & RANCH - OWNER 806/659-3731 OR 806/659-3968

As We Have Sold Our Farm The Following Will Be Sold At Public Auction:

- TRACTORS 1-1972 JD 4620 Diesel Tractor, Power Shift, Cab, Air, Htr., 20.8 X 38 Tires



need money?

WHO DOESN'T NEED MONEY?

Ever heard that old cliché? Unfortunately, the people that really need money don't have the money to secure a loan of the type they need, nor do they know where to go to get that much needed financing.

FINDING MONEY - THAT'S OUR BUSINESS

Worldwide Finance Exchange have the sources and we will share them with you for only pennies each. You can finance almost any venture, expand your business, or lease now and purchase later for as little as one dollar.

LISTED BELOW ARE JUST A FEW MAJOR FIELDS MONEY IS AVAILABLE FOR

REAL ESTATE

NEED CAPITAL FOR FIRST AND SECOND MORTGAGES, SALE LEASE-BACKS, REFINANCING OR JOINT VENTURES AND PARTNERSHIPS?

Names and address of over 200 firms that will loan or invest in: warehouses, apartments, shopping centers, office buildings, recreation facilities, mobile home parks, nursing homes, hospitals and agricultural.

VENTURE CAPITAL

NEED CAPITAL FOR A NEW BUSINESS OR EXPANSION OF YOUR PRESENT BUSINESS IN CONSTRUCTION, TECHNOLOGY, MOVIES, MANUFACTURING, OIL & GAS AND OTHER ENERGY RELATED PROJECTS.

Names and addresses of over 300 firms that will loan or invest in proposed ventures or present businesses, including several that specialize in loans to minorities.

BUSINESS EXPANSION

NEED WORKING CAPITAL FOR EXPANSION OF YOUR PRESENT BUSINESS?

Names and address of over 100 firms that will loan you capital on: equipment, inventories, account receivables, factoring, time sales contracts, and Redis couvables.

LEASING

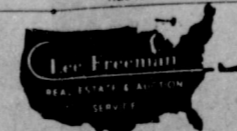
NEED CAPITAL FOR EQUIPMENT, MACHINERY, OFFICE FURNITURE, COMPUTERS?

Names and addresses of 400 firms that will buy your equipment for you and lease it to you with the option to buy for as little as one dollar at the end of lease term.

HELPING YOU SECURE FINANCING IS OUR BUSINESS TOO.

We'll share our sources with you for less than 5¢ each. Not only will we give you their names, addresses and telephone numbers, we'll include the person to contact. We will even introduce you personally if you need it.

Worldwide Finance Exchange Box 2952 Tulsa, Oklahoma 74101. Please send the lists I have indicated: Leasing - \$25.00, Real Estate - \$25.00, etc.



FOR INFORMATION, BROCHURES OR ANY TYPE ACTIVITY, CALL LEE W. FREEMAN TXG-019-0193 P.O. BOX 453 - 118 BELLAIRE DUMAS, TEXAS 79029 PHONE: 806-935-2419

# Christmas Surprises

COMMUNITY CHRISTMAS  
TREE LIGHTING  
THURSDAY, NOVEMBER 30  
6:30 p.m.  
DAVIS & MAIN ST.

Spearman 1st thru 3rd Grades  
Gruver 5th & 6th Grades and  
Spearman Music Club will sing  
Christmas Carols

Candy Canes for the Children



Participating merchants have a  
Treasure Chest with \$25.00 Gift  
or Gift Certificate for you if  
you select the key that unlocks  
the Treasure Chest 1 try per  
visit Must be 16 or older

One gift per business  
will be given away each  
week for three weeks,  
beginning Thursday,  
November 30, 1978

### Participating Businesses

- |                              |                             |
|------------------------------|-----------------------------|
| Spearman Electronics         | Cates Men & Boys Wear       |
| Consumers Sales Company      | Spearman Reporter           |
| Lady Fair                    | Berry Cleaners              |
| Country Store                | Gift Box                    |
| Thriftway                    | God's Corner                |
| Anthony Electric             | Interstate Savings & Loan   |
| Western Stamp Store          | B & B Sales                 |
| T.G. & Y.                    | Crawford Implement          |
| Reed's Family Shoes          | First State Bank            |
| Sacks Third Ave.             | Hergert Pontiac Buick & GMC |
| Spearman Rexall Drug         | Excel Chevrolet Olds        |
| Bakers Department Store      | A-1 Automotive              |
| J.G.'s                       | Lil Lynx Shoppe             |
| The Bunkhouse                | Gordon's Drug               |
| Spearman Jewelry             | Nelson's Building Supply    |
| Whites Auto                  | Massad's                    |
| Etc. Shop                    | Spearman Auto Supply        |
| General Store                | Hansford Implement          |
| Earl's TV                    | Ideal Food Store            |
| Evelyn's Merle Norman Studio | Beedy Furniture             |

Plan now to attend the big  
Christmas Tree Lighting!



## Community Christmas Tree Lighting Set Angel's Jet Rail Throws A Party

A large Christmas Tree load-  
ed with colorful lights will be  
placed in the middle of the  
intersection of Davis and Main.  
A community Christmas Tree  
Lighting will be held Thursday,  
November 30, 1978. The lights  
will be turned on at 6:30 p.m. to  
officially start the Christmas  
Season. Kent Guthrie will be  
Master of Ceremonies. Rev.  
Knuckles will give the invoca-  
tion. The first thru third grades  
from Spearman, fourth and  
fifth from Gruver, and the  
Spearman Music Club will sing  
Christmas Carols and all the  
children in attendance will be  
given candy canes by Santa's  
Elves. Rho Rho Sorority will  
have their drawing for a trip to  
Las Vegas.

The stores will be open late  
on this night for your conven-  
ience. The Treasure Hunt will  
also begin immediately follow-  
ing the program. A \$25.00 gift  
certificate or gift will be placed  
in a treasure chest at each  
participating business. You  
may select one key from a  
container of 25 or more keys to  
see if you can unlock the  
Treasure Chest. There may be  
one try per visit at each partic-  
ipating business, which will give  
one gift away weekly for three  
weeks. You must be 16 or older  
to participate.

Make your plans now to  
attend the big Christmas tree  
lighting and see if you might  
unlock a Treasure Chest!

Merchants participating are:  
Spearman Electronics, Lady  
Fair, Country Store, Thriftway,  
Anthony Electric, Western  
Stamp Store, T.G. & Y. Store,  
Reed's Family Shoes, Sacks  
Third Ave., Spearman Rexall  
Drug, Bakers Dept. Store,  
J.G.'s, The Bunkhouse, Spear-  
man Jewelry, Whites Auto  
Store, The Etc. Shop, General  
Store, Earl's TV, Cates Mens  
Wear, Spearman Reporter, Ber-  
ry's Cleaners, The Gift Box,  
God's Corner, Interstate Sav-  
ings and Loan, B & B Sales,  
Crawford Imp., First State  
Bank, Hergert-GMC-Buick-  
Olds, Excel Chevrolet Olds, Lil'  
Lynx Shoppe, Gordon's Drug,  
Nelson's Building Supply, Cut  
Rate Grocery, Massads, Spear-  
man Auto Supply, Hansford  
Implement, Ideal Food Store,  
A-1 Automotive, Consumer  
Sales, Beedy Furniture and  
Evelyn's Merle Norman Studio.

### Veterans News

An increase from \$17,500 to  
\$25,000 as the maximum guar-  
anty for Veterans Administra-  
tion home loans is one of several  
important features of the "Vet-  
erans Housing Benefits Act of  
1978," according to Jack Coker,  
Director of the Waco VA Reg-  
ional Office.

The Legislation, which was  
signed on October 18, by Presi-  
dent Carter, also permits cer-  
tain severely disabled veterans  
to obtain a VA grant of up to  
\$30,000 to buy or adapt a  
residence to meet their special  
needs, Coker said.

VA grants for these so-called  
"wheelchair homes" were  
formerly limited to \$25,000.

Coker pointed out that the  
new bill should be of special  
benefit to an estimated 168,000  
Vietnam Era veterans because  
it reduces the length of active  
duty service required for eli-  
gibility for VA home, condomin-  
ium or mobile home loan guar-  
anty benefits.

Vietnam Era veterans now  
need to have served only 90  
days on active duty—one day of  
which must have been during  
the period of August 5, 1964, to  
May 7, 1975—to be eligible for  
these VA benefits.

"The new law brings the  
eligibility requirements for  
Vietnam veterans in line with  
those for World War II and  
Korean Conflict veterans,"  
Coker said.

In addition, the law author-  
izes VA to guarantee loans for  
converted condominiums as of  
July 1, 1979. The agency  
currently is authorized to guar-  
antee condominium loans in  
buildings constructed and sold  
as this type of dwelling.

Coker said another significant  
section of the legislation res-  
tructures VA's mobile home  
loan program—setting a \$17,500  
loan maximum and extending  
the maximum loan term for  
single-wide mobile homes to 15  
years, an increase of 36 months.

Coker said veterans may ob-  
tain complete details of the  
expanded loan guaranty pro-  
gram at any VA regional office.

mand, and Cecil Grubbs.  
Showing some very special  
horses were Jim and Carol  
Lamb who brought out their  
Paint horses-Moon Mount,  
Moon Mount Offspring and  
Gentleman Jim owned by  
Thomas G. Newton.

Attending the occasion from  
out-of-state were those from  
Nebraska, Kansas, New Mex-  
ico, Oklahoma, Arizona, Colo-  
rado, and one from Aberdeen,  
Scotland—making it an inter-  
national affair—and worthy of  
the name for it was a tremen-  
dous day of excellent food,  
entertainment, show, and fel-  
lowship—all thanks to Angel's  
Jet Rail!

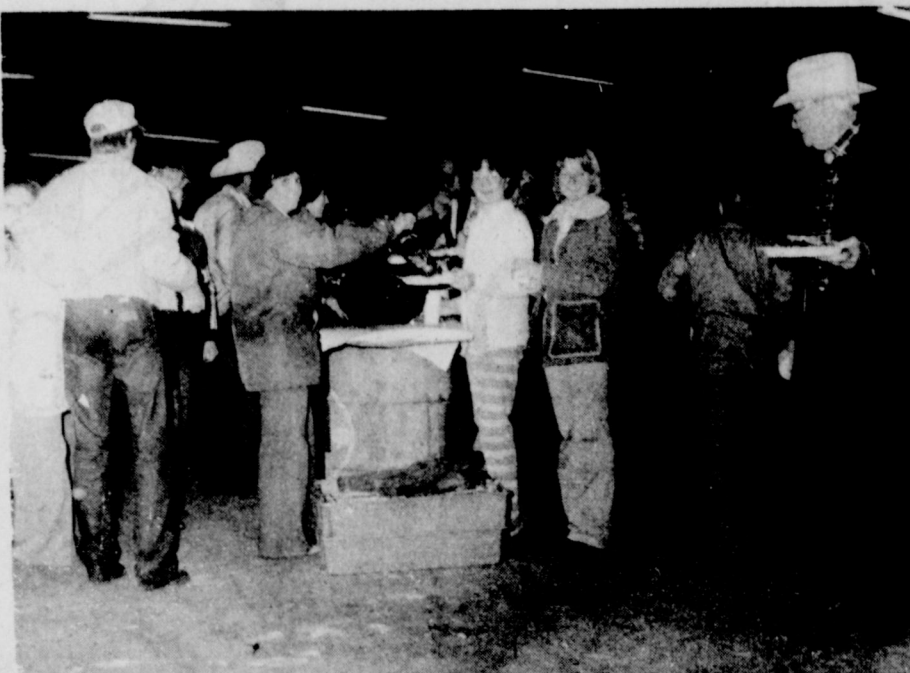
More beauties included Boog-  
ilou Jet, owned by Thomas  
Barber; Catch an Angel owned  
by Bob Dahnke; Angel Orphan  
Angel, owned by Bobby Hicks;  
Wonder Missy, owned by  
Sparks Bros.  
Dot, and Miss Angel Farrah, all  
owned by Pat Patterson.

Two colts, not Angel's Jet  
Rail's included Fleet Moon who  
was all dressed for the occasion  
with special white and purple  
pom poms signifying the No. 1  
Lynx, shown and owned by  
Scarlett Jackson and Heap O'  
Bug owned by Dick and Helen  
Teichgraber.

Showing the horses were  
Rodney Sewell, Janice Ham-  
mond, Delmar (Zeke) Ham-



freshman year at stud and sired  
thirteen of the 15 colts shown.  
Amber Herod was next in the  
ring, a T.B. stallion, stakes  
winner of \$156,000.00 owned by  
The Syndicate. Keeping the



When Angel's Jet Rail Throws A Party, it becomes an international  
affair, complete with delectable home-cooked (in pit) bar-b-que,  
and all of the trimmings along with a showing of the Panhandle Training  
Center prize colts, music, fellowship and fun.



★ Feeder Cattle ★ Custom Cattle Feeding  
★ Feed Financing ★ Locally Owned  
★ Our objective is to furnish  
the best service available

## Palo Duro Feeders

Penny Brooks, Manager

10 Mi. S. of Gruver Hiway 136  
PHONE 733-2416  
and 733-2417



Main Office  
514 Collard  
Phone 659-3711

**Speartex  
Grain  
Co.**

**Spearman-  
Perryton  
Redi-Mix**

659-2323

**H & H  
Water  
Well Service  
Inc.**

Gruber Hwy.

Phone 659-2242

Clothes  
for the  
family at the  
Family Store!

Full line of Boys clothes by Denmore

**BAKERS'  
Dept. Store**

Phone 3213 Spearman, Texas

**Consumers  
Sales Co.**



421 W Kenneth Ave  
Phone 659-2021



**FOOTBALL**

**Congratulations**

**District 1-AA**

**Champs**

We are Proud  
**OF YOU**

Support  
The  
Advertisers  
Who  
Support  
The

A Time To Pause And  
Reflect And To Say

**"Thank You"**

... your hard work and dedication

**LYNX**

has become a Tradition!

**Farm Bureau  
Of  
Hansford County**

307 W. Davis  
Phone 659-3133

**Hansford  
Impl. Co.**



SALES & SERVICE  
Hwy. 207 Spearman  
Phone 659-2712

**Brock  
Insurance  
Agency**

Phone 659-2514  
206 Main

**Dairy  
Queen**

BE WITH THE  
"IN" CROWD  
&  
'LIVE A LITTLE'

700  
Stinnott Hwy  
Phone 3324

**TG&Y**

Your best buy is at TG&Y!

521 Hwy 207 S.  
Phone 659-3741



**Hi Plains Auto  
& Conoco**



118 N. Main  
Phone 659-2506  
415 Collard  
Phone 659-3555

**Lil'Lynx Shoppe**

321 Main  
Phone 659-2608

**Berry Grain**

Waka  
435-5377



**Jr. Lusby  
Cats**



W. Gruber Hwy  
Phone 659-3766