

# Railroad brings Hansford County into third decade

by Jean Ann Behney

**Editor's note:** This is the third article of a ten-part Centennial Series on Hansford County's history and covers roughly the period of 1910-1920. The length of this article is such that we will be publishing it over two weeks. This week's half of the 1910-1920 decade deals with the coming of the Santa Fe Railroad and the murder of Sheriff R.E. Martin in 1911. Next week's half of this article features changes in the world of agriculture, World War I, the move from Old Hansford to Spearman and anecdotes from early school teachers.

"I was impressed by the appearance of our prairie country. I, who loved the trees, the creeks and meadows, was amazed and awed by the vastness of our surroundings. It looked like an ocean of billowing grass..."

These are the words "Aunt" Susan Wilbanks, pioneer wife of Floyd Wilbanks, used to describe her new home upon the Wilbanks' arrival to Hansford County in 1902-03. Within the next ten years, however, there were to be great changes on the face of this land. The county's third decade experienced the coming of the railroad and increasingly mechanized farming, World War I and the untimely "death" of the county seat, Old Hansford.

Hansford County settlers realized by early 1900 that the railroad was necessary for freighting their grain to market and bringing back the mail and supplies, but several Panhandle counties remained without train service until 1920, in spite of the Texas State government's economic enticements to the railroads.

Ochiltree and Hansford Counties had attempted to finance their own railroad spur starting in 1908, but their proposed EO & W Railroad was never realized and many investors ended up losing their money in this project. After this unfortunate experience, the prevailing attitude of the day seemed to be "If we're going to get a railroad, have the railroad companies build it!"

The Santa Fe Railroad bought up lots in various counties with the future plan for a spur from Shattuck, Oklahoma, through what were to become the new Panhandle towns of Follett, Booker, Perryton, Spearman and Morse. The land purchased at the site of Spearman was chosen deliberately by the railroad's surveyors and officials, because the law at that time required a railroad within six miles of a county seat to pass through that town. The Santa Fe, as well as the other railroad companies of this era, generally avoided established towns in order to re-sell, at a huge profit, the land they had already purchased. In this manner, the railroads had tremendous power and influence over the settlement patterns in the United States' Southwest.

It should be noted that the Santa Fe had already established extensive lines in other parts of the Panhandle and the state of Texas by the end of the nineteenth century. As its rails were hammered down over the miles, the Santa Fe Railroad brought about

the birth of many towns and even a county, Lipscomb, and tolled the death knell of pre-existing communities it by-passed.

As local old-timers expressed it to me, Hansford County was clamoring for the railroad years before it came. Trains, they explain, had as great an effect on a society as airplanes, cars and radios did later in history. The railroad offered farmers and travelers, for the first time, an inexpensive form of overland transportation that was "little affected" by severe weather and capable of moving large volumes of goods and people. Population statistics gleaned from **Panhandle Pilgrimage**, by Pauline Durrett Robertson and R.L. Robertson, clearly spell out the incredible influence railroads had on the settlement of the Panhandle. Only three counties in the Panhandle were established before the advent of the railroad in this region. These were Wheeler, Oldham and Donley. Between 1887 and 1902, however, the remaining 23 counties were organized. The following population statistics, taken from this same source, reveal the railroad's effects on settlement:

YEAR	PANHANDLE POPULATION
1880	1,607
1890	9,442
1900	21,264

The five Panhandle counties which had no rail service in 1900, of which Hansford was one, were the slowest-growing counties of the region. In fact, the average number of settlers in the counties with rail service was more than twice the average of those counties left without rail service. Immigrants tended to settle in areas where rail service was available, and the railroad companies themselves invited this settlement.

All of this background is necessary to illustrate the importance of the county finally acquiring a railroad in 1919-1920. Although the town of Spearman was platted out and lots were sold at a big all-day barbeque party in May of 1917, the timing of World War I, with its steel shortages, caused delays in the actual laying of the railroad tracks. Perhaps this "stop and start" progress is why this reporter could not find anyone in Spearman or Gruver who remembers the actual day the first scheduled train came through to Spearman. J.B. Buchanan remembers the smaller work trains in Spearman as the rails were being laid, but not any red-letter day of fanfare welcoming the first train. Those questioned were unsure of the year the trains began coming regularly, some suggesting it was as early as 1919 and others insisting that it couldn't have been before 1921.

Nevertheless, the Santa Fe finally arrived and vast quantities of wheat and other produce were soon being exported from our county to various markets. As P.A. Lyon recalls, a great many cattle were shipped out by train as well. He also explains that the typical train coming to Spearman had a mail car and a passenger car, but that most of it was

comprised of freight cars. Lumber and other building materials were some of the main imports brought by train, he says.

Prior to the railroad, days and days could pass before rural settlers got national news, such as the death of Teddy Roosevelt. After 1920, trains were getting newspapers and mail from as far away as New York City to the Panhandle in 72 hours!

As the Robertsons say in **Panhandle Pilgrimage**, "Not only did the Panhandle become part of a wider world because of the railroads, but the wider world moved right into the Panhandle and became part of it."

Jessie Spivey, a pioneer of this county presently residing in Gruver, vividly recalls her first train ride from Liberal to Hooker. Her family had taken some bales of broomcorn to sell in Liberal and as a special treat, her daddy bought train tickets with some of the profit money. "I was excited to death!" she exclaims, remembering. "I will never forget that day." Another early county settler, Vera Lackey Worten, had the same reaction upon first seeing train smoke as she drove across the prairie towards a Panhandle railroad town. She could not take her eyes from that wondrous plume of smoke in the sky, she later admitted, knowing that she would see her first train in a few miles.

The railroad was almost a decade in the future when Hans-

ford County jumped into its third decade, however, and a much-remembered event of 1911 must first be mentioned. It was in this year that Sheriff R.E. ("Bob") Martin was shot to death by a homesteader named Phil Fifer. Those who know Martin claim he was a wonderful peace-keeper, a fair man, and a good father to his family of nine children. Fifer had been involved in an earlier claims dispute over some land, which had been settled in the favor of the other homesteader in an Amarillo court.

As the established facts have it, Martin went out to ensure that Fifer had moved back within his own homestead's boundaries, taking a federal marshal with him. The men arrived to find Fifer away from home. They waited at a neighboring place until they saw lights go on at Fifer's that evening. Arriving at the Fifer homestead, Martin called for him to come out for a talk. Apparently Fifer ran into a nearby cowshed, making it clear he was not in the mood for a discussion. Since Martin knew Fifer well and saw no reason to fear him, he approached a door to the shed and lit a match so he could see the homesteader. As soon as the match was lit, shots rang out and the sheriff was mortally wounded in the abdomen.

At this alarming turn of events, see **THIRD DECADE**, p.2



A stitch in time . . . Gruver resident Jessie Spivey shows off her 1940's Singer sewing machine. This delightful octogenarian's early memories of Hansford County will be included in our Centennial series over the next three weeks.

The Hansford

# Plainsman

25¢  
Per Copy

Volume 19, No. 24

YOUR HOMETOWN NEWSPAPER

Sunday, April 16, 1989

6 Pages

## Radiothon yields \$6500 for Center

The Golden Spread Center and KRDF Radio Station "Radiothon" took place Thursday, April 13 with local talent participating. The Radiothon was organized as a means for raising money to fund the activities of members of the Golden Spread Senior Citizens Center. With figures still being tallied, the Radiothon this year has brought in an estimated

\$6,500. Pete and Brenda Wall of Spearman, were in charge of arranging local talent to perform on the six hour program. Talents included comedy bits, singing and instrumental music.

A special guest, Amber Pennington, also sang for the program. She is the ten-year-old girl from Stinnett who has sung at

such places as the Grand Ole Opry and the Texas State Democratic Convention.

Two special awards were also presented during the Radiothon. Paula Clemmons was awarded "Volunteer of the Year" for her work in arts and crafts donated to the Center. Mrs. Susan Delk was awarded a plaque as "Senior Citizen of the Year." She was

noted for donating her time to benefit the Center including the quilt making she and other Golden Spread Quilters have made and donated to the Center over the past 12 years.

The Center did not match the over \$9,000 raised last year, but the totals are not final, and they are still accepting donations. Center director, Pearl Pierce commented, "The Center would not be possible without the donations of these fine people. We appreciate everyone who has contributed. This yearly fundraiser helps pay operating expenses for the Center throughout the year."

## Provisions allow tax exemptions and tax deferral benefits to over-65 homeowners

Texas homeowners 65 and older can benefit from special provisions in the law designed to reduce the property tax bills on their homes. Tax exemptions and a tax deferral are available to help minimize the impact of rising taxes on the elderly.

**Tax Exemptions**  
Homestead exemptions allow a portion of the home's value to be exempt from property taxes. To qualify, the over-65 person must own and live in the homestead on January 1, whether it's a traditional house, mobile home, townhouse, or condominium, or duplex. Up to 20 acres can qualify if it's used for residential purposes. The exemption application should be filed with the appraisal district by May 1. However, homestead exemptions may be filed up to one year after taxes on the homestead were paid or became delinquent, whichever is earlier.

School districts grant a \$10,000 homestead exemption to homeowners 65 and older in addition to the \$5,000 homestead exemption they grant to all homeowners.

A taxing unit may offer a local-option homestead exemption to senior citizens. When a unit offers this exemption, at least \$3,000 of the home's value won't be taxed by that unit.

**Tax Ceiling**  
A special benefit for older homeowners is the tax ceiling or "freeze" that accompanies the school's \$10,000 exemption.

School taxes won't be increased after the owner qualifies for the over-65 homestead exemption. However, if there's an improvement added (such as a pool, patio, new room) the tax ceiling will be increased to include the taxes on the value the improvement adds to the house.

If the over-65 spouse dies and the surviving spouse is at least 55, the homestead tax ceiling on school taxes stays in effect as long as the survivor owns and continues to occupy the homestead.

**Tax Deferral**  
Another tax benefit for older homeowners is tax deferral. They can postpone suits to collect delinquent property taxes on their homesteads by signing a deferral affidavit at the Hansford County Appraisal District office. Homeowners at least 65 may file the affidavit.

After the form is signed and filed with the appraisal district, taxing units can't foreclose on the home of an over-65 person to collect property taxes. The protection lasts as long as the person lives in the home and claims it as his or her residence homestead.

Tax deferral only postpones paying taxes. "Penalties and interest will accumulate, along with taxes," Alice Petty said. "When the elderly taxpayer no longer owns or lives in the home, taxing units can then sue to collect all the deferred tax, penalty, and interest."

Homestead exemption forms and forms for claiming a tax deferral are available at the

appraisal district office. For more information or for assistance completing any of these forms, taxpayers may contact the Hansford County Appraisal District at 709 W. 7th, Spearman or call 659-5575.

### Comptroller's office

### reports rebates

The State Comptroller's office reported Friday that statewide sales tax rebates for the first four months of 1989 were up 13.4 percent over last year's tax allocations for the same period. But the rebates for Hansford County were down for this period, on the average, for filers who reported to the Comptroller's office by March 20.

In Gruver, the net payment for this period was \$3,562.93 compared to \$2,931.77 last year, which represented a 21.53% increase. The same period in Spearman showed a \$10,026.87 payment for this period, compared to a \$11,354.70 net payment for the prior year. This showed an 11.69% decrease this period. Overall Hansford County showed a 4.88% decrease.

State Comptroller, Bob Bullock warned that the monthly comparisons in this month's report are skewed because merchants collected and reported an extra day's worth of sales taxes in February 1988, which was a leap year.

## Swim team seeks members

The Spearman Swim Team met on Sunday, April 9. Anyone interested in becoming a member can contact Kim or Stephanie Brock at 659-3933 or Robert Queener at 659-3903. A meeting for new members will be held soon.

## First Baptist Church to present musical

Son Company of First Baptist will present its Spring musical on Sunday April 23 at 7 p.m. It is called "A Heart to Change the World." Appearing as Psalty will be Billy Brown and Pastor Smith will be played by Bill Howell.

The children singing in the production are: Kristin Beedy, Chrissy Bensing, Janna Brock, Jordan Brock, Ashley Brown, Brandi Burch, Natasha Burch, Texana Clyburn, Matthew Davis, Misha Davis, Leah DeArmond, Jason Geen, Bethany Cline, Lindsey Donnell, Ryan Gibbs, Chuck Grayson;

Leslie Holton, Chester Hutchison, Derek Keuhl, Mason Keuhl, Crosbie Lair, Lana Martin, Dan McCown, Loren Queener, Amanda Schneider, Lisa Swink, Earl Watter, and Leslie Widenor.

## Deteriorating wheat crop blamed on hard freezes

Over the last couple of weeks, there has been much speculation by producers, consultants, and Extension and Experiment Station specialists over the cause of the deteriorating wheat crop. Following evaluation of numerous wheat fields throughout the area by agronomists, plant pathologists, and entomologists, the general consensus is that no factor can be blamed for this year's poor wheat crop. Most of the damage can be traced back to the hard freezes experienced in February. These freezes were preceded by unseasonably warm temperatures causing the wheat to lose some of its winter dormancy, thus making it more susceptible to freeze injury.

Many producers felt that their wheat was beginning to green up following the last freeze, but then deteriorated rapidly following irrigation. Why this occurred is somewhat of a mystery. However, it is generally felt that the irrigation stimulated growth that the plant was unable to sustain due to injury and/or poor root development. In some cases the wheat crown has been injured by

the fungus *Bipolaris sorokiniana* which causes common root rot. This is not a new fungus to the Texas Panhandle, but seems to be more prevalent this year due to our unseasonably dry warm fall.

There are many factors that influenced the degree to which a given wheat field was hurt by the freeze. The two most important being dry warm weather and heavy greenbug infestations this fall. When wheat is planted in dry soil, secondary roots will not develop until adequate moisture is available. Greenbugs also tend to cause poor root development. In general, those fields that were sprayed for greenbugs are in better shape than those that were not.

Any additional stress placed on the wheat, such as rust or heavy grazing, further weakened the wheat plant making it more susceptible to freeze and root rot injury. Other factors such as planting date, planting depth, row vs flat planting, and timing of irrigation, also played a role in determining a given wheat field's susceptibility.



# Hansford County "on the line":

## A Timeline of Historical Events

1910-1920 Irrigation era begins in county

1911 Masonic Lodge estab. in county

1st irrigation in county, using Palo Duro River

1912 Louise and Lucile Buchanan, county's 1st twins, born

1st grain office estab. by Bert Cator and Bum Douglas

1913-1918 World War I. (U.S. involved last 18 months)

1917 Spearman post office estab. out: lots sold

1917 Town of Spearman platted

1919-1920 Old Hansford moves to Spearman

1920 1st movie theatre estab. in Spearman

American Legion estab. in Spearman

First Baptist Church estab. in Spearman

War creates demand for wheat and grain tractors, combines, and trucks

1915-1920's Development of tractors, combines, and trucks

1911 Sheriff R.E. Martin murdered by Phil Fifer

1910-1920 Panhandle's 1st Masonic Lodge estab. in county

1st irrigation in county, using Palo Duro River

1912 Louise and Lucile Buchanan, county's 1st twins, born

1st grain office estab. by Bert Cator and Bum Douglas

1913-1918 World War I. (U.S. involved last 18 months)

1917 Spearman post office estab. out: lots sold

1917 Town of Spearman platted

1919-1920 Old Hansford moves to Spearman

1920 1st movie theatre estab. in Spearman

American Legion estab. in Spearman

First Baptist Church estab. in Spearman

War creates demand for wheat and grain tractors, combines, and trucks

1915-1920's Development of tractors, combines, and trucks

1911 Sheriff R.E. Martin murdered by Phil Fifer



R.E. Martin

train drawing from the book Iron Horse

### Quiz Time!

### Quiz Time!

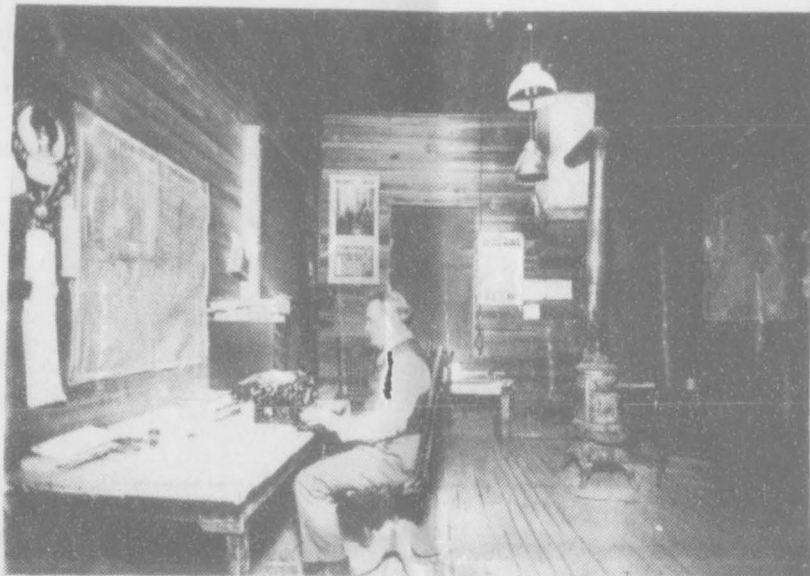
Each week we are publishing two Quiz Questions relating to Hansford County's history. Readers are invited to call into the Spearman Reporter (659-3434) with their answers within the week that the questions were published. Correct respondents will be named and answers given in the following week's newspaper.

**This week's QUIZ QUESTIONS:**  
 "Short Answer" Question: Who sold the first combines in Hansford County?  
 "Think About It" Question: How or why did Spearman become the county seat?

**LAST WEEK'S QUESTIONS:**  
 "Short Answer" Question: For what or whom was Bernice Street named? Bernice was the name of Mr. Thomas Spearman's wife. Mr. Spearman was a surveyor for

the Santa Fe railroad and our town was named after him. (Interestingly enough, Mrs. Bernice Spearman wrote a letter to our town in the 1960's, which she had never seen except as an empty, platted-out place around 1917. In her letter, she modestly mentions that she had been told one of the streets was named Bernice, in her honor, but that she was sure that street name no longer existed since "Bernice is not a very good name for a street!!")  
 "Think About It" Question: Which of the following innovations had the greatest importance in terms of Hansford County's economic growth—the automobile, the windmill, or the telephone? The windmill wins, hands down! Water is what made Hansford County habitable, after all. Coming in as a close second would be neither the automobile nor the telephone, but the railroad.  
 Respondants to these questions

were: J.B. Buchanan, Wren Holt and P.A. Lyon. These numbers are a definite improvement over last week's response, but this is hardly representative of the great minds in Hansford County, is it? We would love to hear from... YOU!



A.F. Barkley is pictured at his typewriter in the Hansford Abstract Office in Old Hansford in 1914. P.A. Lyon Sr. later purchased the company, which is today one of the county's oldest continuously-run businesses. Barkley was also a county judge.

The Hansford **Plainsman**  
 Your Hometown Newspaper  
 USPS 2346-6000 Spearman, Tx. 79081  
 213 Main, Box 458, 659-3434  
 Published Weekly at  
 213 Main, Spearman, Texas

Owned and Operated by:  
**Texas Independent Newspapers, Inc.**  
 19906 Encino Grove, San Antonio, Tx 78259  
 Second class postage paid at Spearman, Texas 79081.  
 Any erroneous reflection upon the character of any person or firm appearing in these pages will be gladly and promptly corrected upon being brought to the attention of the management.  
 PUBLISHER - Karen Goodman

Subscription Rate: Spearman, adjoining counties, combination with the **Spearman Reporter**, \$19.95; non-adjointing counties, \$24.95 annually.  
**Postmaster:** Send address changes to **Hansford Plainsman** Box 458, Spearman, Tx. 79081.  
 The publisher reserves the right to revise or reject at its option any advertisement which it deems objectionable, either in subject or phrasing, or which it may deem detrimental to its business.

## Buchanan's book depicts decade

**Reporter's Note:** J.B. Buchanan's autobiography, *Buchanan Odyssey*, has done more to give me the "flavor" of early Hansford County than has any other written source in my research. For this reason, I recommend this delightful book to one and all [available at Hansford County Library] and take this opportunity, with J.B.'s gracious permission, to print two excerpts from *Buchanan Odyssey*.

### The Threshing Crew Comes To Town

"A threshing rig coming through town was excitement for all the kids and dogs. The black smoke boiling out of the engine, along with the whistle, reminded us of a train. After the steaming black engine came the big grain separator, then the car wagon, then the water wagon. Next came the coal wagon, the junk wagon, and last but not least the cook shack, with the threshing crew riding all over the outfit like a bunch of birds, and holding their pitchforks." J.B. goes on to write, Mrs. Hale, "a rather nervous lady," gave the kids permission to watch it go by but warned, "Boys, don't get too close! And stay out of the black smoke. I read the other day in a magazine that black smoke will make your hair come out...so watch it." J.B. comments, "That smoke story may have been true, but it took forty years to have its full effect on my head."

### World War I Declared

"On this cloudy spring evening a sense of uneasiness seemed to be in the atmosphere. Farm and ranch folks were speaking quietly,

as they gathered a few supplies and waited for the mail hack, while the big walnut Edison played Irish lullaby recordings. A few girls in their split riding skirts were admiring the soft music when the mail hack arrived. The driver set his brake and shouted, "We're in war!! President Wilson declared war on Germany yesterday!" Folks came pouring out of the store, stunned for a minute, although not too surprised. "That's all I know. They sunk one of our ships, and German submarines have been sighted off the Coast. It's gonna be a terrible thing, I tell ya!" Evidently a saddle horse which was tied to a porch support pole took it to heart. Raring up, he pulled the support out, and off he ran for safer places. In a few minutes, the folks took on a rather sad and determined look, sorta prayerful, like after a pioneer gets his crops hailed out, and the Mrs.' garden and chickens are all gone."

Hansford County Historical Trivia...Did you know that Halloween was more a holiday known for tricks than for treats or dressing up in Old Hansford? On October 31st, "normal mischievous boys" (Susan Wilbanks' kind description!) would pull all sorts of pranks, including turning over outdoor toilets, putting saddles on backwards, changing wheels on wagons and buggies, and placing cockleburrs under saddle blankets. One memorable Halloween, the townspeople awoke on Nov. 1st to discover an old buggy on top of the bank building's porch!

### THIRD DECADE, from p.1

the federal marshal fled on horseback and Fifer ran to some friends and confessed that he had killed the sheriff in his panic. He was rounded up that same night or the next day (facts start getting muddled in the record here) and eventually jailed and tried for the murder in a federal court, after which he served a six-year prison term in another county.

Martin's death rocked the entire county. The news was quickly spread by means of the telephone, whose switchboard was operated by Mrs. Caldwell in Old Hansford. Martin, who had epitomized for Hansfordites the heroic qualities of the cowboy, the lawkeeper, and the good neighbor, is to this day the only Hansford County sheriff ever killed in the line of duty. A monument commemorating Sheriff Martin stands in the county courthouse yard today.

**Reporter's Note:** I wish to credit the following sources for their help in the research I did for this article: Pauline Durrett Robertson and R.L. Robertson's *Panhandle Pilgrimage, Panhandle-Plains Historical Review*, Vol XXXIII (1960) and Vol. XLVI (1973), Dotty Jones' *A Search for Opportunity, the Hansford County history* (Volumes I. and II.), Susan Dacus' "The Story of Susan Wilbanks," newspaper articles from the *Spearman Reporter* and the *Hansford Plainsman*, J.B. Buchanan's *Buchanan Odyssey*, the Stationmaster's House Museum, J.B. Buchanan, Faye Wilbanks Klutts, P.A. Lyon, Jessie Spivey, O.C. Holt, Wren Holt, Dorothy Hudson, Margarette Wilbanks Evans, George Freeman Barkley, Ruby Jo Wilbanks, Vi McNabb Whitson, and Herb Kirk.

I will be researching the years 1920-30 in the next week. Anyone who wishes to contribute information on this time period is cordially invited to contact me at the *Spearman Reporter* (telephone: 659-3434). If you know the answers to this week's Quiz Questions (see page 2), be sure to call them in to us!



This trainload of unassembled combines was unloaded in Spearman in 1926, heralding the years of bumper crops to come. The foreground of this photo is where the Lyric Theatre and Brock's Insurance building stand today. [See related Quiz Questions on this page]

## NORTH PLAINS ELECTRIC COOPERATIVE, INC.

45th Annual Membership Meeting  
 MONDAY, APRIL 17, 1989  
 6:30 P.M. - RANGERETTE CENTER  
 PERRYTON HIGH SCHOOL

# ARCING DEMONSTRATION

See and hear the power of electricity. An arcing demonstration will be presented by the Texas A&M University Extension Service.



- GRAND PRIZE**
- 1800 Watts/120 Volts with 7 Ft. Grounded Cord
  - 400 Square Inch Dual Level Cooking Area
  - Heavy Cast Aluminum Housing
  - Porcelain on Steel Cooking Grid
  - Broil-View Window
  - Twin Gray Wood Side Shelves
  - Fold-Down Front Shelf
  - U.L. Listed

Registration begins at 6:30 P.M. A free barbecue meal will be served to members and guests. Be sure to register for the prize drawings! Business session will begin at 7:30 P.M.; and directors will be elected for Districts 2, 4, and 5.



Make Plans to attend the  
 45th Annual Membership Meeting  
 Monday, April 17, 1989  
 6:30 P.M. - Rangerette Center  
 Perryton High School

Attendance Gifts  
 Barbecue

Fellowship  
 Prize Drawings

The meeting will be held in the Rangerette Center located on the South end of the Perryton High School, 1102 South Jefferson, Perryton, Texas. Look for the Cooperative's big bucket truck displaying the United States flag and the Texas flag.



**Some sound advice:**

There's a sound exam we recommend for anyone who values their hearing. It involves using this simple instrument, as well as listening for a series of tones at various levels. A qualified professional conducts this painless test in minutes.

If you have hearing problems, our professionals can explain hearing loss and also tell you about the latest advances in hearing aids. They're now very lightweight, small and inconspicuous as well as longer lasting and more trouble-free! We think you'll like what you hear.

**HIGH PLAINS HEARING AID CENTER**

will conduct **FREE HEARING EVALUATIONS** at the Golden Spread Senior Center, 14 S. Haney in Spearman, Tx on the second and fourth Tuesday of every month. If you have any questions please call our Amarillo office at 1-800-333-4504.



# Oslo Community celebrates history

by Melyn Johnson

"Ja, vi elsker dete landet . . . Og den Sagnet, Som saenker dromme paa vo jord." These words, taken from the Norwegian national anthem, translate into "Yes, we love this land of ours . . . Love it dearly, ever thinking of our fathers' strife." Appropriate words, when talking about the early 1900's and the Oslo Community in the northwestern corner of Hansford County.

Nicolay A. Grevstad was a prominent Norwegian-American newspaperman and diplomat. His son-in-law, Anders L. Mordt, had come to America in 1904 and turned to the real estate business. Mordt, with backing from his father-in-law, arrived in Guymon, Okla., in May 1908, and announced he had secured rights to sell almost 100 sections of land across the border in Hansford County, Tex. This land belonged to brothers-in-law R.M. Thomson and R.T. Anderson. Apparently, Mordt's land company was to receive one-third of the selling price for his promotional activities.

Mordt wanted to draw Norwegians living in the United States who could be attracted to Texas and its land prices. At that time selling an average 40-acre farm in Iowa, could purchase 240 acres in Texas. Mordt placed ads in several leading Norwegian language publications. Generally, he designated a certain date for an "excursion" to Oslo. He would then meet the excursion in Chicago, Kansas City, or another designated city, and escort the party to Guymon via the Rock Island Railroad. At Guymon, he put them up in a hotel and furnished transportation for the 12-mile trip to Oslo. Excerpts from an August 26, 1909 *Skandinavian* stated:

. . . The land cost is from \$6.00 to \$18.50 per acre. One-fourth down, the remainder on a five-year loan at six percent interest - buy before it goes high in price. . . Some sections can be sold for one-fourth cash down payment and the rest by crop payment. . . Church and school house are ready. . . About 20,000 acres have already been sold to Norwegians



Eric Stone pictured in his horse and buggy. Wonder where he found the tree!

and more land is reserved for Norwegians, about 160,000 in all

George S. Baker was the first to buy land from Mordt, in 1904. The first families to settle in the Panhandle were Kittle C. Rostad, George S. Baker (Bakke in Norwegian), Lewis J. Johnson (Sonnesund in Norway), Marthinus J. Vehm, Rolf Person Bjorngaard, John Wilkins (Wilkenes), Theodore Thronsdon, Chris Sagen, Hans P. Egedal, A.L. Helgerson, and Hans P. Helgerson. Hans Helgerson was a blacksmith who set up shop in 1910 where the town of Oslo was to be.

John Olson Dahl (whose Norwegian name was Johannes Olson Hunsdal), a typical Oslo settler, came to America from Norway on the steamship "Oscar the Second" on Nov. 17, 1903. He lived in Iowa until he visited the Texas Panhandle in 1909. He then bought 240 acres for \$3,840. In 1913, Mr. Dahl brought his bride, Jensine Christine Rasmussen, to the Oslo settlement. Mrs. Dahl had also come to the U.S. aboard "Oscar the Second," an immigrant from Denmark, in Aug. 1911. Mrs. Dahl was disappointed when she first saw the "treeless sea of grass and the small two-room house that was to be my home." The large brick home that their son, John Olaf Dahl, and

daughter, Ingeborg Sogn, still live in today stands near the spot where the original house was built.

Mordt envisioned a town, named Oslo (after the ancient capital of Norway,) and had T.O. James survey and plat the town-site of Oslo. The survey was completed Oct. 3, 1908. It was filed at Hansford County Courthouse on Oct. 12, 1909. The plat has several interesting facets. Street names include Nilsen, Olsen, Hansen, Storthing, Per Gynt, Norcap, Haaken, Olav, Mickelsen, Grieg, Stat, Ole Bull, Dovre, and Lindesaenes. The town had 38 blocks platted with the Denver and Gulf Railroad running through the center. Mary Elizabeth Park, an area equal to four city blocks, bordered on the east by Coldwater Creek, included a water well and lake. Each person who bought land from the Anders L. Mordt Land Co. was given a town lot. The town was to be located 2.5 miles south of today's church.

Mordt began a "weekly" newspaper, the *Oslo Posten*, on May 20, 1910. The *Posten* was one of the few foreign language papers ever published for residents of the Texas Panhandle. The articles were written mostly by Mordt, in Norwegian, with English copy taken from the Guymon newspaper for filler. The paper was printed on the *Guymon Herald* presses.

Mordt understood the necessity of having a school and a Lutheran church. The schoolhouse was built by Mordt on the southeast

corner of Section 191. The first teacher was Mary Pendleton for the school year 1909-10. May Rose was the second teacher and in 1911-1912 Harriet Thomas, later Mrs. John R. Collard of Spearman, was the third teacher. The first six grades were taught at the Oslo school. Later the schoolhouse was moved to the northwest corner of Section 190 and finally it was placed in the southeast corner of Section 192.

Ingeborg Sogn, the eldest daughter of John Olson Dahl, began school at Oslo in 1920. Retah Roper, later Retah Gibbs of Stratford, was the teacher. Ingeborg recalls how the schoolhouse was the meeting place for everything in the community: quilting bees, Bible School, Young People's Society, church, dinners, programs, and etc.

Ingeborg attended school only five months her first year in school and the following year, 1921-22, the Oslo school did not have enough money to open so the Oslo children attended the Doyle school, now for nine months during the year. Nella Beth O'Brien, later Mrs. Robert Alexander, was the teacher at the Doyle school. Oslo managed to open again for the 1922-23 year and was not closed until 1962. Mrs. Joe (Skeet) Ellison was the last teacher in the Oslo school, from 1950-62.

For the building of a church, Mordt designated 40 acres for church property and donated \$800 annually for a minimum of two years for a Lutheran minister. Because the school house had been built first, church was held in the school in the beginning. The first church service was on Nov. 10, 1909. In December 1909 the church constitution was completed and plans were underway to

organize the church.

Pastor Christian Heltne, from Iowa, called the first annual meeting on Jan. 4, 1910. The first church council members included pastor Heltne, M.J. Vehn, Theodor Thronsdon, John Wilkins, Rolf Person, L.J. Johnson, K.C. Rostad, H.P. Egedal, and G.S. Baker. The congregation's business meetings and religious services were conducted in Norwegian. Morris Trogstad was the first to be baptized, on Aug. 20, 1909. The first Oslo wedding united Theodor Thronsdon and Josephine Johnson in 1911.

The foundation for a church building was begun on July 19, 1911, by Gus Olsen, Jr., Peter Sagen, and Olia Fadnes. The first worship service to be held in the yet uncompleted church was on Sept. 24, 1911. Mordt commissioned a Mr. Odegaard from Norway to paint an altar painting for the new church. The painting depicted Jesus walking on the water. Odegaard was paid 15 Kroner, about \$5 American money. This painting was shipped (and sunk) on the ill-fated *Titanic*. Mordt commissioned Odegaard to paint a second version of his altar painting. This painting hung above the altar until the Oslo church burned in 1950.

Another church treasure, the 36-inch copper bell imported from Sweden, was installed in the summer of 1913. The bell was dedicated "in remembrance of (Galena) Mrs. Sagen . . . June 10, 1913." Mrs. Sagen was critically injured in a runaway horse accident in Guymon. In October 1912, she was the first person buried in the Oslo Cemetery.

The dedication of the Oslo Norwegian Lutheran Church was held on Sept. 14, 1913. In that same month the Mordt Land

Company went bankrupt, following an extreme drought in the Texas Panhandle. This also meant the end of the weekly *Oslo Posten*. The Denver and Gulf Railroad bypassed Oslo, causing the death of the town of Oslo, but not of the Norwegian agricultural community and church.

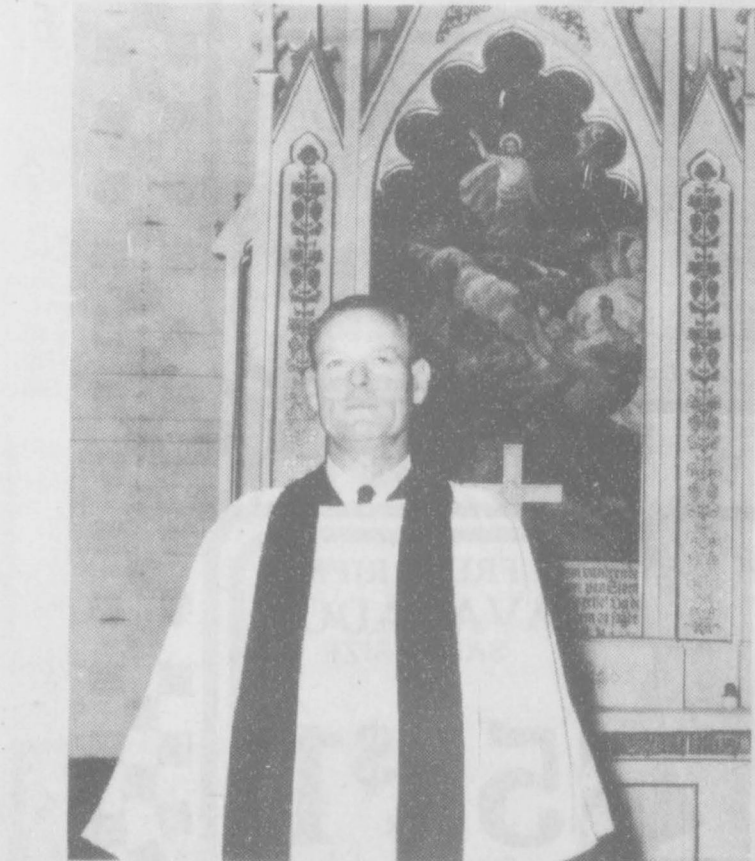
Although many people were leaving Oslo because of the drought, the Torris Knutson family came in 1914. The Edward Stavlos of South Dakota moved to Oslo in 1917. The Jens Stedjes arrived in 1922, the Alexanders arrived in the 1920's, and the 30's blew in several TeBeests.

On May 17, 1981, a historical marker dedicated to the pioneers that settled the community was placed at Oslo Lutheran Church. May 17 (Syttende Mai) was chosen for the dedication because it was on this date that Norwegians won their independence from Sweden, a holiday very similar to our 4th of July. Many Syttende Mai's have been celebrated in Oslo throughout its history. One in the early 1900's drew more than 500 celebrants.

Today these early pioneers comprise a tightly-knit community that still centers around its church as it did in the early 1900's.



This picture depicts the first Oslo Lutheran Church next to the new Austin stone church that burned down later.



J.P. Knudson, pastor at Oslo Lutheran 1945-1958 is standing in front of the second painting of Odegaard's commissioned by Anders Mordt. This painting was destroyed in the 1950 fire. The first painting sank with the *Titanic*.

## Panhandle Crisis Center

MARY FRANCES EILZEY

It occurs to me that, because of those who are new in the community, and those others who are not well acquainted with the services offered by the Center, a recapitulation of our services might be in order. So here goes:

1. The Panhandle Crisis Center emphasizes absolute confidentiality.
2. We provide a Shelter, which is an attractive, comfortable house where abused women and their children can be assured a place of safety. The address of the Shelter is unknown to anyone but the staff, those clients who have used its services, and the Police Department. The Shelter may be used as a residence for up to six weeks. Occasionally it may be used longer.

The Shelter is overseen by the Shelter Supervisor, who can provide individual counseling, and who conducts the Support Groups that are mandatory for clients living in the Shelter.

3. We provide an Office Manager, who is warm-hearted and supportive.
4. We provide a comfortable office, where the clients may have:
  - a. Private, safe visits with their family, or even, if they wish, with their abuser.
  - b. Private, face-to-face counseling with her specially trained, personal counselor. This is a service for those clients who do not wish to go to the Shelter.

c. Conveniently scheduled support groups for those clients who are not in the Shelter. Attendance at these groups is voluntary.

The support groups apprise the clients of their options, encourage them in their potentials, help them to develop the strength to do whatever needs to be done. This primarily entails helping the clients to develop the ability to take charge of their own lives, whether through learning marketable skills, obtaining a GED, attending college or its equivalent, discovering how to cope with physical or psychological abuse, or, if that is indicated, how to cope with divorce.

5. We provide an Advocate who will inform her of the legal procedures that are available to her and her situation, and will help her to get in touch with a lawyer, or a doctor, or whatever else she needs.

6. Our emphasis is on SAFETY, CONFIDENTIALITY, and DEVELOPING SELF RESPECT AND SELF SUFFICIENCY.

In addition, the Panhandle Crisis Center freely gives information and/or referrals to whoever calls for it. Remember, the telephone number is 435-5008.

Be sure to call us if you need us, even if you want only to inquire about how to help a friend.

1- 10x13 (Wall Photo)  
1- 8x10  
2- 5x7  
2- 3x5  
16- King Size Wallets  
8- Regular Size Wallets

**30** Color Photos

99¢ Deposit  
**\$10.00** Due at Pick up (plus tax)

**\$10.99**

WE USE KODAK PAPER

AT  
**Kids' Stuff**  
719 West 7th  
Fri. April 21

**Shugart's inc.**

Group charge 99¢ per person

**Kodak PAPER**  
FOR CREATIVE COLOR PORTRAITS

**Perryton Optical**

Will have an independent Doctor of Optometry located next door to Optical

April 26, 27 & 28

Call for Appointment 435-5966

402 Amherst Suite 5  
Perryton, Texas 79070

Walk Ins Welcome Hours 9:30 - 5:30 p.m.



WE GIVE S&H GREEN SEALS EVERYDAY • ONE SEAL ISSUED FOR EVERY \$5 EXCLUDING TOBACCO PRODUCTS

**DOUBLE SEALS ON WEDNESDAY**

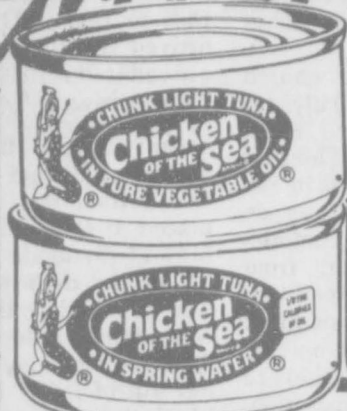


# UNITED Supermarket

**Valuable Coupon**  
Worth \$1.00 Off  
your purchase of \$10.00 or more, excluding tobacco products  
Good at United in Perryton  
April 16th thru April 22nd

## Grocery Spring Savings Spree!

PRICES GOOD THRU APRIL 22ND IN PERRYTON ONLY



CHICKEN OF THE SEA  
**TUNA**  
IN WATER OR OIL  
6.5 OZ.  
**.59**



TEXSUN  
**GRAPEFRUIT JUICE**  
46 OZ.  
**\$1.19**



**GOLD MEDAL FLOUR**  
5 LB. BAG  
**.89**

GENERAL MILLS CEREALS  
• CHEERIOS • LUCKY CHARMS 15 OZ.  
• HONEY NUT CHEERIOS 14 OZ.  
**\$1.99**

**COKE'S**  
2 LITER  
**\$1.09**

BETTY CROCKER HAMBURGER HELPER ASST.  
**\$1.19**

FINE FARE MACARONI AND CHEESE  
7.25 OZ.  
**4 \$1** FOR

RAINBO WHITE BREAD  
1 1/2 LB. LOAF  
**.89**

FRANCO AMERICAN RAVIOLI  
• SPAGHETTI WITH MEATBALLS • SPAGHETTI WITH FRANKS • SPAGHETTI WITH MEATBALLS  
15 OZ.  
**.69**

KOOL AID REG. 2 QT. **6 FOR \$1**  
CRYSTAL LIGHT REG. 8 QT. **\$2.39**

POP SECRET MICROWAVE POPCORN ASST. 10.5 OZ.  
**\$1.19**

BETTY CROCKER SPECIALTY POTATOES ASST.  
**.79**

### Meat

DOUBLE COUPONS UP TO & INCLUDING 75 CENTS ON THURSDAY



UNITED TRU TENDR OR USDA CHOICE SUPER VALUE PAK BONELESS TOP SIRLOIN STEAK  
SINGLE PAK \$2.68  
LB.  
**\$2.58**

DECKER MEAT FRANKS 12 OZ. PKG.  
**.88**



UNITED TRU TENDR OR USDA CHOICE BONELESS BRISKETS (MARKET TRIMMED)  
LB.  
**\$1.98**



UNITED PREMIUM QUALITY SMOKED SAUSAGE MEAT OR BEEF  
LB.  
**\$1.68**

DECKER COOKED HAM 1 LB. PKG.  
**\$2.78**

SUPER VALU PAK LEAN GROUND BEEF REG. PAK LB. \$1.78  
LB.  
**\$1.78**

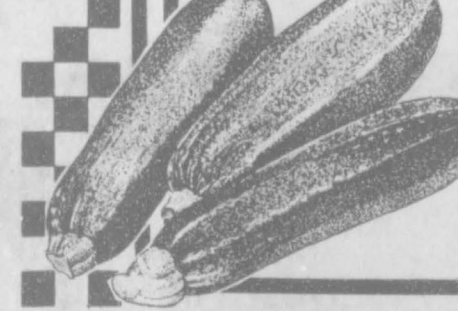


FINE FARE HALF MOON CHEESE CHEDDAR OR COLBY  
8 OZ. PKG.  
**\$1.18**

### Produce

POSTAGE STAMPS AVAILABLE

NO SALES TO DEALERS • QUANTITY RIGHTS RESERVED



ZUCCHINI SQUASH  
2 LBS.  
**\$1**



FRESH ASPARAGUS  
LB.  
**.98**



FRESH RIPE AVACADOS SALAD SIZE  
5 FOR  
**\$1**

### Frozen

EL CHARRITO BURRITOS 4 FOR \$1 ASST. 4 OZ.

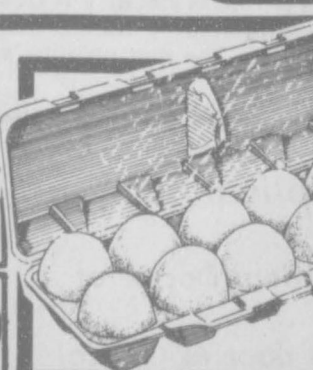
PET RITZ CREAM PIES .99 ASST. 14 OZ.



CITRUS HILL • ORANGE JUICE REG. OR WITH CALCIUM • GRAPEFRUIT WITH CALCIUM  
12 OZ.  
**.89**

PLAINS BUTTERMILK .89 1/2 GAL.

FINE FARE MARGARINE .89 3 LB. TUB



UNITED PREMIUM QUALITY GRADE A EXTRA LARGE EGGS  
DOZ.  
**.79**

### Health & Beauty



SURE SOLID DEODORANT WIDE OR ROUND  
2 OZ.  
**\$2.19**



CLOROX BLEACH 5¢ OFF LABEL  
GAL. **.99**  
LIQUID CLOROX 2 64 OZ. **\$2.59**  
CLOROX PRE WASH 16 OZ. **\$1.39**



SURF DETERGENT \$1.50 OFF LABEL 147 OZ.  
**\$5.69**



# Classifieds

## For Sale

**FOR SALE:** 1981 - 650 Maxim Motorcycle, \$500. Call 659-2764. S21S-RTN

**FOR SALE:** '83 El Camino in good condition. Call 659-3956. S21S RTN

**FOR SALE:** Boles Arrow Camper Trailer 8 X 28 park model. 405-487-3827. S23S 4tp

**FOR SALE:** 14 X 80 Green Briar Mobile Home. 3 Bedroom, 2 Bath. \$4900.00. Call 659-2176 after 5 p.m. S24-4tp

**FOR SALE:** 6 room House to be moved. \$500 or fill in and level site. Call 659-2286. S24-2tp

**FOR SALE:** 3 BDR, 1 bath, farm house to be moved. Call 435-6836. S23S 4tc SUN ONLY

**FOR SALE:** Brick house on 2 acres in Gruver, 3 Bdr, 2 full baths, & 2 large water heaters, 4 car garage, large shop, horse barn & lots of trees, \$70,000. 205 E 10th. Call 733-2129, 733-2002, or Norma Swink at 733-2421 or 733-2136 nights. S19 RTN

**USED AUTO PARTS FOR SALE:** Located 4 miles west of Hooker, Ok. on highway 54. Muss Cat Auto Salvage. (405)652-2400. S10-rtm

## Miscellaneous

**FENCE REPAIR:** New or old. Call after 6 p.m. 659-2118. S23S 4tp

**FOUND:** Glasses in a brown glass case in front of Knack Shoppe. Owner may claim by inquiring inside. S24-1tf

**MITCHELL GARAGE DOOR REPAIR & INSTALLATION:** Residential and commercial. Also will install electric openers. Experienced. Call after 5 p.m. 323-8210 or 435-3033. s10-rtm

**TO GIVE AWAY:** Looking for a good home with kids to play with - 6 wks. old - long hair - black & white puppy - Call: 659-3039 or come by 711 Steele. S24S - 2tp

**NOTICE**  
Wallace Monument Co.  
Monuments, Curbing,  
Grave Covers  
Local Representative  
**LEONARD JAMESON**  
Spearman, Texas

**OSGOOD MONUMENT CO.**  
Amarillo, Texas  
Dealers of Rock of Ages Granite, as well as all colored granites, marble and bronze memorials.  
represented by  
**BOXWELL BROS.**  
**FUNERAL HOME**  
519 S. Evans  
659-3802

**ALCOHOLICS ANONYMOUS MEETING**  
8:00 p.m. upstairs  
Hansford County Library  
on Tuesday evenings  
**AL ANON**

## For Rent

**FOR RENT:** Small 2 bedroom furnished apartment for rent. Call: 659-3491 S24S - rtn

**FOR RENT:** Nice large 2 bedroom mobile home. Dishwasher and washer/dryer. \$275.00 a month plus utilities. \$100.00 deposit. Call Sue Gerardy at 659-5196. S23S-3tp

**FOR RENT:** Trailer space in Spearman, fenced yard, underground utilities, close to High School and swimming pool. Call 435-5080. S23-RTN

## Help Wanted

**HELP WANTED:** Patton Motel is taking applications for maids. Call: 659-2227 or see Betty at Patton Motel - Hwy. 207. S24S - 1tp

**HELP WANTED:** Full time office help, computer experience helpful. Must be able to meet public. Apply in person at Earl's TV, 106 E. Kenneth, Spearman. S23-rtm

**'ATTENTION-HIRING!** Government jobs - your area. Many immediate openings without waiting list or test. \$17,840-\$69,485. Call 1-602-838-8885. EXT R4514. S24S 4tp

## Legal Notices

### NOTICE OF GENERAL ELECTION

### [AVISO DE ELECCION GENERAL]

To the Registered Voters of the City of SPEARMAN, Texas: (A los votantes registrados del Ciudad de SPEARMAN, Texas:)

Notice is hereby given that the polling places listed below will be open from 7:00 a.m. to 7:00 p.m., on MAY 6, 1989, for voting in a general election to elect THREE (3) ALDERMEN FOR TWO YEAR TERMS.

(Notifiquese, por las presente, que las casillas electorales sitados abajo se abrirán desde las 7:00 a.m. hasta las 7:00 p.m. el 6 de MAYO de 1989 para votar en la Elección General para elegir TRES CONCEJEROS POR UN PERIODO DE DOS ANOS.)

LOCATION(S) OF POLLING PLACES (DIRECCION(ES) DE LAS CASILLAS ELECTORALES)

PRECINCTS 1, 5 & 6  
SPEARMAN HIGH SCHOOL  
403 W. 11TH

Absentee voting by personal appearance will be conducted each weekday at CITY HALL, 30 S.W. COURT, SPEARMAN, TEXAS (La votación en ausencia en persona se llevará a cabo de lunes a viernes en) LAS OFICINAS DE LA CIUDAD LOCALIZADAS EN 30, S.W. COURT, SPEARMAN, TEXAS (location)(sitio)

between the hours of 8:00 a.m. and 5:00 p.m. beginning on APRIL 17, 1989 (entre las 8:00 de la mañana y las 5:00 de la tarde empezando el 17 DE ABRIL DE 1989 (fecha)

and ending on MAY 2, 1989. (y terminando el 2 DE MAYO DE 1989.) (fecha)

Applications for ballot by mail shall be mailed to: (Las solicitudes para boletas que se votarán en ausencia por correo deberán enviarse a:)

CHERYL GIBSON  
(Name of Absentee Voting Clerk) (Nombre del Secretario de la Votación En Ausencia)  
P.O. BOX 37  
(Address) (Dirección)  
SPEARMAN, TEXAS 79081-0037  
(City) (Ciudad) (Zona Postal)

Applications for ballots by mail must be received no later than the close of business on APRIL 28, 1989.

(Las solicitudes para boletas que se votarán en ausencia por correo deberán recibirse para el fin de las horas de negocio el) 28 DE ABRIL DE 1989 (fecha)

Issued this the 24TH day of JANUARY, 1989. (Emitado este día 24TH de EMERO, 1989.)

Bob Pearson  
(Signature of Mayor) (Firma del Alcalde)

## SERVICE MASTER

Mike Simpson is managing

Service Master again.

If your carpet is in need of attention, give us a call at 659-5101.

If we are unable to answer, please leave a message on our machine.

## NATURAL GAS COMPRESSOR TECHNICIANS & TRAINEES

Due to our rapid growth and our expansion plans, Energy Industries is seeking applicants. We are interested in both experienced Gas Compressor Technicians and those with no experience, but who are willing and able to learn.

Interested candidates must have:  
•High School Diploma  
•Stable Job History  
•Willingness to relocate and to attend a 6-8 week training course in Corpus Christi, Tx.  
Strong Mechanical Aptitude

Energy Industries offers an attractive benefits package:

- Health, Life, Disability and Dental Insurance
- Profit Sharing
- 401 (k) Plan
- Paid vacation and holidays
- Sick Leave
- Credit Union

Interested candidates need to apply in person or call to request an application. An Equal Opportunity Employer M/F

**ENERGY INDUSTRIES**  
606 S. Juniper P.O. Box 536  
Perryton, Tx. 79070 806-435-9636

## School Menu

### JR. HIGH-ELEMENTARY MENU

APRIL 17-APRIL 21  
JUMBO CORNDOG  
MACARONI CHEESE  
BREADED OKRA  
PINEAPPLE UPSIDE DOWN  
CAKE

**TUESDAY**  
CHARCO-BURGER  
FRIES  
LETTUCE/TOMATO  
PICKLE/ONION  
COOKIE

**WEDNESDAY**  
BIEROX  
CREAM STYLE CORN  
TATOR TOTS  
DILL PICKLE SPEAR  
CHOCOLATE PUDDING

**THURSDAY**  
CHICKEN PATTIE  
MASHED POTATOES/GRAVY  
SEASONED GREEN BEANS  
HOT ROLLS/BUTTER  
PEACHES

**FRIDAY**  
BURRITOS  
PINTO BEANS  
COLE SLAW  
CORNBREAD/BUTTER  
MIXED FRUIT

### HIGH SCHOOL MENU

MONDAY  
2 CORNDOGS  
MACARONI CHEESE  
SALAD BAR  
PINEAPPLE UPSIDE DOWN  
CAKE  
MILK

**TUESDAY**  
CHARCO-BURGER  
FRIES  
SALAD BAR  
COOKIE  
MILK

**WEDNESDAY**  
BIEROX  
TATOR TOTS  
SALAD BAR  
LEMON CHIFFON PIE  
MILK

**THURSDAY**  
CHICKEN PATTIE  
MASHED POTATOES/GRAVY  
SALAD BAR  
HOT ROLLS  
MILK

**FRIDAY**  
BURRITOS  
PINTO BEANS  
SALAD BAR  
CORNBREAD/BUTTER  
PLUMS

**THE GOOD NEWS IS YOU HAVE HIGH BLOOD PRESSURE.**

Finding out you've got high blood pressure is half the battle. With a plan for exercise, weight control, salt reduction and medication, the rest is easy.

If you have high blood pressure, get on a good program and stick with it. And do what your doctor says. Then there probably won't be any bad news.

**American Heart Association**  
WERE FIGHTING FOR YOUR LIFE



Thursday, April 20, 1989 - 10 a.m.

Stan Dudley & others - Equipment & Real Estate

For more information call (806) 323-8231

LOCATION: From Canadian, TX, 17 miles NE on Hwy. 83 to intersection 25 & 83, N. 1 1/2 miles on 23 and then 3 1/2 miles E. on paved road.  
From Booker, TX, 27 1/2 miles S. on Hwy. 23 & 3 1/2 E. on paved road.  
From Perryton, TX, 34 miles SE on Hwy. 83 and 1 1/2 N. on 23 & 3 1/2 E. on paved road. Watch for Auction Signs.

Real Estate sells at 12 noon; cattle sells following Real Estate.  
Real Estate - W. half of section 202, lot 43, Lipscomb, County, 5 bedroom brick home, over 3000 sq. ft. w/4 basement. Very well built w/gum paneling throughout, large fireplace, 40x60 roundtop, nice set of corral, approx. 90' shed. 1 set of 20,000 lbs. scales w/digital read out, 43'x65' hay shed, Approximately 130 acres of Plains Blue Stem Grass, under Circle Irr. (Grass not in government program). Balance in native grass, 30 acres in dryland in Plain Grass. Oppt. lease on east half, 180 acres farm land w/balance in native grass w/stock water well. Real estate offered in several tracts & then altogether. Seller reserves the right to refuse or accept any or all bids. All taxes paid up to date of Auction.

Auctioneer's Note - Mr. Dudley is moving to Casper, Wyo. Don't miss this excellent Ranch, Clean Equipment and Cattle.

TERMS OF SALE - 10% of Sales Price in escrow Day of Sale with signing of Standard Real Estate Contract and Balance upon closing.

Closing: Within 30 days if possible

Possession: Upon Closing

Taxes - 1989 Taxes to be Prorated to Day of Closing with ALL prior taxes paid in full.

## THE SMITH AGENCY REALTORS - WHEELER, TEXAS 79096

RUTH SMITH, Broker  
TREL # 264105-08  
OFFICE: (806) 826-5541

GREG SMITH, Salesman & Auctioneer  
TREL # 335378-06 TXE - 038-007264  
HOME: (806) 826 - 3238

Associated With

## SWINK & COOK AUCTION CO. - P.O. Box 906 - Perryton, Texas 79070

"Pound for Pound the Best Team Around"

Phone: (806) 435-7279 or (806) 435-4265  
Mobile: (806) 435-7435

All Announcements on Sale Day  
Supersedes Any Other Written or Oral Announcements



TxS-029-006829 - Howard Swink

TxS-039-007165 - Bobby Cook

## Stan Dudley & Others Saturday, April 22, 1989 - 10:00 a.m. Canadian, Texas

Lunch Available By the Smoke Stack Any Announcements on Auction Day Supersedes Any Other Previous Advertising Cash & Checks Only No Drafts Accepted

- |   |  |  |
|---|--|--|
| <p><b>CATTLE - 22 HEAD</b></p> <ul style="list-style-type: none"> <li>1 - 2 yr. old Reg. Limousin Bull w/papers</li> <li>1 - 1200 lb. cow w/350 lb. calf</li> <li>7 - 800 lb. 1st bred heifers</li> <li>1 - 1000 lb. 2nd. calf bred heifer</li> </ul> <p>Cows will be Brucellosis &amp; prog. tested. Bull will be Brucellosis &amp; fertility tested. Bull has not been w/hollowing lot of heifers.</p> <ul style="list-style-type: none"> <li>6 - Heifers, 550 lbs.</li> <li>4 - Heifers, 400 lbs.</li> <li>1 - Heifer, 350 lbs.</li> </ul> <p>All weights approximate</p> <p><b>TRACTORS, LOADERS &amp; COMBINE</b></p> <ul style="list-style-type: none"> <li>1 - 1979 JD-4440, Quad Range Tractor, cab &amp; air &amp; Dual, 3pt, SN-4440H-011921R, 2577 Hrs.</li> <li>1 - JD 1020w/JD no. 48 Front End Loader SN-020517W, 3pt, PTO, 960 lbs.</li> <li>1 - Westendorf Front End Loader (It's 4440)</li> <li>1 - 1967, 4020 Cab Jpt, dual Hpts, P/T'S Trans.</li> <li>1 - 1973 JD 7700 Combine with 20' Header, 2600 hrs. (New)</li> <li>1 - JD 70 Tractor (New)</li> </ul> <p><b>TRUCKS, CARS &amp; PICKUPS</b></p> <ul style="list-style-type: none"> <li>1 - 1984, Nissan PU, 5 speed w/air</li> <li>1 - 1981, Mazda, PU 5 speed</li> <li>1 - 1980, Eldorado Cadillac, (loaded, NICE)</li> <li>1 - 1979, Sedan Cadillac (loaded, NICE)</li> <li>1 - 1977, Dodge Adventurer 200 4x4 PU</li> <li>1 - 1961, GMC, 3500 Truck w/14' Bed &amp; Hook</li> <li>48,518 actual mi.</li> <li>1 - 1947, Chevy Winch Truck</li> </ul> <p><b>EQUIPMENT</b></p> <ul style="list-style-type: none"> <li>1 - 25' Mobile Sweeney wrecker</li> <li>3 - Noble DK-5 Drills (2 sets)</li> <li>1 - 6' Blade</li> <li>1 - 5' Bush Hog Mower</li> <li>1 - Big 12,400 lbs. Grain Cart (shedded)</li> <li>1 - Danuser Post Hole Digger (blue new)</li> <li>1 - Spade w/elec. winch Round Bale Mover</li> <li>2 - 6 Section Rotary Hoes.</li> <li>1 - 6 Row Lateral w/markers</li> <li>1 - Overhead Baler Cubes on Wheat apt. 800 lbs.</li> <li>1 - 500 gal. Butane Tank</li> <li>1 - Homemade Grass Seed Cleaner (works real well)</li> <li>1 - 4 Row Cultivator</li> <li>1 - Dumpster Drill</li> <li>1 - Eversman Carryall</li> <li>1 - Caldwell 18' Fold-up Mower</li> <li>1 - Antique 3 Bottom Wood Board</li> <li>1 - JD 14' Van Brunt Disc Drill</li> <li>1 - Hoemr 14' Disc</li> <li>1 - JD 500 Cultivator (old)</li> <li>1 - 2 Drill Hoes</li> <li>1 - 16' Krause Offset Disc</li> <li>3 - Driveways</li> <li>2 - JD 15' Springtooth</li> <li>1 - Terracing Machine (old)</li> </ul> | <ul style="list-style-type: none"> <li>1 - 27' 8" Grain Loader, w/elec motor</li> <li>1 - Shop made Grass Stripper</li> <li>1 - 5 sec. Drag Harrow</li> <li>1 - 20 Utility Trailer (New) Tandem Axle</li> </ul> <p><b>IRRIGATION</b></p> <ul style="list-style-type: none"> <li>1 - 125 HP Electric Motor (US Motors) run 1 yr. since being rewound</li> <li>1 - 90 HP American Gearhead 3 - 2 Ratio App. 50 hrs.</li> <li>1 - 413 Chrysler Ir. Motor (app. 500 hrs. since overhaul)</li> <li>1 - 125 HP Randolph Gearhead (3 - 2 Ratio)</li> <li>1 - 8' Tower Raines Low Pressure Sprinkler - App. 6 yrs. old (Elec. Dr.) Model 680 Electrojet</li> </ul> <p><b>LIVESTOCK EQUIPMENT</b></p> <ul style="list-style-type: none"> <li>1 - Lot wire panels</li> <li>1 - Lot metal panels</li> <li>1 - 12' Cattle Guard</li> <li>1 - Lot High Line Post</li> <li>1 - W W Squeeze Chute (old)</li> <li>1 - Set Pickup Stock Racks</li> <li>1 - 1000 lb. Bar &amp; Cake Dispenser</li> <li>1 - Deer E2 Wire Roller</li> <li>1 - Lot Fence Chargers</li> <li>1 - Mayers Cable Sprayer on Trailer</li> </ul> <p><b>MISCELLANEOUS</b></p> <ul style="list-style-type: none"> <li>2 - Hd Pipe Racks</li> <li>2 - 900 gal. Fuel Tanks</li> <li>1 - 400 gal. Fuel Tank</li> <li>1 - 300 gal. Fuel Tank</li> <li>1 - 5.5 295 Amp. Welder</li> <li>1 - Hyd. Cyl.</li> <li>1 - Elec. Air Compressor</li> <li>1 - Lot Hyd. Jacks</li> <li>1 - Jack for Porta Power</li> <li>1 - Lot Elec. Drills</li> <li>1 - Dayton Bench Grinder</li> <li>1 - Vice</li> <li>1 - Craftsman Mechanics Tool Box</li> <li>1 - Lot new bearings</li> <li>1 - Lot hand tools</li> <li>1 - Sun Turner Cart (works)</li> <li>1 - 125 gal. Fuel Tank</li> <li>1 - Old Press</li> <li>1 - Cherry Picker - 3 ton</li> <li>1 - Lot Trns &amp; Wheels</li> <li>1 - Oil Suction Pump</li> <li>App. 800 lbs. Plain Blue Steam Grass Seed</li> <li>1 - Old Pot Belly Stove</li> <li>1 - Anvil on Metal Stand</li> <li>1 - Old Tractor Seat on Stand</li> <li>1 - Lot Hpt. Hoses</li> <li>1 - Lot Air Hoses</li> <li>1 - Cutting Torch &amp; Hoses</li> <li>1 - Bolt Tap &amp; Bolt</li> <li>1 - 25 Extension Ladder</li> </ul> | <p><b>HOUSEHOLD</b></p> <ul style="list-style-type: none"> <li>1 - Refrigerator</li> <li>1 - Washer &amp; Dryer (Electric) Kenmore</li> <li>1 - Exercise Bike</li> <li>2 - Chairs</li> <li>1 - Stairs</li> <li>3 - Piece Bedroom set</li> <li>1 - Portable Sewing Machine</li> <li>1 - Evaporator Air Conditioner</li> <li>1 - Metal Desk</li> </ul> <p><b>ANTIQUES</b></p> <ul style="list-style-type: none"> <li>6 - Chairs</li> <li>2 - Drop Leaf Tables</li> <li>1 - Iron &amp; Gas) Iron</li> <li>1 - Library Table &amp; 1 Chair</li> <li>1 - Set Georgian Dishes (Pomer Laughlin)</li> <li>1 - Set Persian dishes, 22K gold</li> <li>1 - Secularist desk</li> <li>1 - Lot Antique Jute Squeezers, Dishes &amp; Household Goods</li> <li>4 - Hammered House Dishes</li> <li>1 - Book Case</li> </ul> |
|---|--|--|

### Winch Truck Available on Day of Sale

### REPRESENTATIVES:

**RICK RIGGINS**  
(806) 659-3819

**Jim Nash**  
(806) 323-5740

**Larry Money**  
(806) 435-9927

Auctioneer Reserves The Right To Refuse To Issue A Buyer's Number To Anyone

### UP COMING AUCTIONS

- April 30, 1989 All Household Contents of 3 Bedroom Home - Borger, Texas
- May 4, 1989 Cliff Taylor - Truck Parts & Vehicles - Canadian, Texas
- May 6, 1989 Basil Duke Jr. - Farm Auction - Booker, Texas
- May 7, 1989 Horse Auction - Perryton Livestock Sale Barn
- May 20, 1989 Annual Consignment - Perryton, Texas

LIMITED CONSIGNMENTS WELCOME





These members of "Son Company," the youth choir from First Baptist Church of Spearman, participated in the Golden Spread Center fundraiser, Radiothon, Thursday, April 13. They seemed to be one of the

more popular talents of the program and brought in a lot of money in pledges. The group will also present a Spring Musical at the FBC on April 23 at 7 p.m. The public is invited to attend.

### Goodman makes president's list

Clinton Keith Goodman of Spearman recently made the president's list after achieving a 4.0 grade point average in automotive technology for the winter quarter at Texas State Technical Institute-Amarillo.

### Birth Announcement

Ashley Nicole Curtis was born to Quinton Gregory and Edwinna Curtis of Spearman on April 7 in Perryton. She weighed ten-pounds, eight-ounces.

She was welcomed home by her two-year-old brother, Grant, and one-year-old sister, Chavon.

Maternal grandparents are Donald and Marilyn Schurkamp of Dorr, Mich., and paternal grandparents, the late Quinton and Coralee Curtis of Telephone, Tx.



A reception honoring Sam and Helen Watson, former Spearman residents, will be held Sunday, April 16 from 2 to 4 p.m. at St. Andrews Methodist Church, 100 Amaryllis, Borger, Tx. Sam Watson married the former Helen Taylor on April 16, 1949 in Portales, N. Mex. Sam was director of bands for the Spearman I.S.D. from 1951-1967. He retired in 1987, and the Watsons now reside in Pampa. Friends from Spearman and the local area are invited to attend the reception.

### Club News

#### RAINBOWS & RANGLERS SQUARE DANCE CLUB

Five squares participated in the Plus Dance last Thursday night called by Murry Beasley of Texhoma.

Visitors were: Lester and Peggy Miller of Goodwell, Okla.; Cecil and Maudie Stewart of Elkhart, Kan.; Ali and Fay Gokmen and Don and Carol Gillaspie, of Liberal Kan.; Ross and Robba Bryan of Guymon, Okla.; Garland and Ginger Smith, Bailey and Jerry Woody, and Ray and Wilma Pershall of Dumas, Tx.; Harry and Mary Reynolds, and Bob and Lural Enns of Dalhart;

Shorty and Leola Albert of Fritch; Jack Clarke, and Clyde and Jody Bechthold of Booker; June Kindy, Violet Helker, Howard and Nancy Barkley, Billy Johnson, Laura Johnson, and James and Norma Burris of Perryton; Stanley and Carolyn Hicks of St. Louis, Mo.;

Members present were: Joe and Wanda Archer, Benny and Joyce Byers, Danny and Debbie Herrington, Sonny and Marlane Nollner, Delbert and Louise Timmons, and Johnny and Virginia White.

### Among the Neighbors

by Helen Fisher

Mr. and Mrs. Roscoe Nelson returned this week from a visit in Missouri. They were in Green Ridge and visited her mother, Mrs. Mary Ulmer, as well as her sister, Virginia White, and family. Then they went to Sedalia to be with his brother, Raymond Nelson, and family.

While they were in Green Ridge, their daughter and family, Rhonda and Jeff Burress, with Randy and Amanda, came over from Evansville, Ind. and spent several days with them.

Ervin and Lila Belle Hollis, of Texhoma, visited the Paul Hazelwoods and Lillie Palmer one day last week. They were enroute to Paducah.

Guests for a week of Mr. and Mrs. Bill Whitford were his three sisters, Virginia Garule and Laura Mason of Omaha, Neb. and Marie Behne of Atlantic, Ia. They left Thursday morning for Tucson, and expect to stop in Spearman again on their return trip.

Belated word of the passing of a former Spearman resident has been received by friends. Josephine (Mrs. A.G. Brant) 81, had been living in the Eastern Star Retirement Home at Arlington. Services were held in Grand Prairie and interment was at Odessa.

Among her survivors were her son and two daughters, Guy Brant and Bobby June O'Neal of Breckenridge. Josephine was a 58-year-member of the Order of the Eastern Star.

Jo and Marcus Larson and Dickie and Newell Allen returned



Staunch conservatives in Dallas might be shocked to know that their city was built on the site of the only communistic colony in Texas. In April, 1854, a French socialist named Prosper Victor Considérant established La Reunion, four miles away from the site of the present Dallas County Courthouse. Every household was assigned a plot of community-owned land to cultivate and after the crops were sold and the bills paid, the profits were divided among the families. Meals were served in the communal dining hall where prices were based on age and sex, not on the size of the portion eaten. After squabbles about this rule and several others, the colony disbanded in 1867.



**CARMON'S CANINE CLIP - JOINT**  
Dog & cat grooming and boarding. Clipper blade sharpening. 314 Industrial Road, Perryton 435-2569  
Office 9-5 Mon. thru Fri. 435-2121 Home.  
S23S 4tc

Donald and Vivian Flowers and son Trubert, and Theresa, Perryton; and the following from Spearman area: Verlin and Audene Beck, Dale and Mae Wofford, Doyle and June Jackson, Tom and Kathleen Sutton, Tom and Linda Latta, Pastor Leland and Edna Lee Grimmer, Wayman and June Edwards, E.W. and Helen Dickson, Myra and Ed Berner and honoree Wally Berner.

The occasion was hosted by Myra and Wally's two daughters and their families: Cindy and Ronny Smith and daughters, Keisha, Shea and Brynn of Amarillo and Denise and David Kellum and family, Desley, Derek, Dean and D'Anna of Silverton.

**BABY SHOWER**  
honoring  
Emily Jo  
daughter of  
Carrie (Clark) Tidwell  
Sun. April 23  
2:00 - 3:30 p.m.  
at Jackie Graham home  
1115 S. Bernice  
Given by Hostesses

HAVE YOUR HEARING TESTED BY A PROFESSIONALLY TRAINED BELTONE HEARING AID SPECIALIST TODAY!

**FREE HEARING TESTS**

Come To:  
Hansford Manor  
707 S. Roland  
Spearman, Texas

**Beltone**  
Better Hearing Through Professional Care

Charlene Blalock

**How to earn this much — insured!\***

4 mo.-9.90%  
1 yr.-9.95%  
3 yrs.-9.65%  
7 yrs.-9.40%  
10 yrs.-9.40%

Ask Dean Witter about an EasyCash™ CD and earn high interest with safety and liquidity. These CDs are issued by banks and savings institutions and are FDIC or FSLIC insured. They sell in denominations of \$1,000 and offer a wide range of maturities. Best of all, EasyCash CDs are currently negotiable in the secondary market. You can sell them before maturity and without penalty. The price you receive could be more or less than you originally paid depending on market conditions at time of sale. For a free booklet explaining our CDs, just ask.

\*Current yield as of 4-4-89

Gary J. Turner  
1-800-527-2696

A member of the  
Sears Financial Network  
**DEAN WITTER**



**AUCTION**

**SWINK & COOK AUCTION CO.** P.O. Box 906 - Perryton, Texas 79070

"Pound for Pound the Best Team Around"

Phone: (806) 435-7279 or (806) 435-4265  
Mobile: (806) 435-7435

All Announcements on Sale Day  
Supersede Any Other Written or Oral Announcements

TxS-029-006829 — Howard Swink      TxS-039-007165 — Bobby Cook

**Troy Sloan & Others**      Thursday April 20, 1989 10 a.m. - Spearman, Texas  
**LOCATION:** 1 Block West of Railroad Tracks on Hwy. 15 Spearman, Texas.

Lunch Available By the Smoke Shack      Any Announcements on Auction Day Supersedes Any Other Previous Advertising      Cash & Checks Only No Drafts Accepted

**TRACTORS, LOADERS AND COMBINE**

- 1 - Case 2590 Diesel Tractor, Cab-AC Powertrain transmission 3pt. PTO, 3 Hyd. QH-20.8x42 Duals, 4100 hrs. Clean Tractor
- 1 - IHC 806 Diesel Tractor w/2000 IHC Front End Loader
- 1 - Case 800 Case-A-Matic LP Tractor w/Fourth Brothers Grain Auger For Loading Trucks
- 1 - JD 4020 LP PowerShift, Cab, Hyd., 3pt. PTO
- 1 - 941 Ford LP Tractor, 3pt., PTO
- 1 - L3 Gleaner Combine, Hydrostatic Trans., 24' Header, 6 row, 40' Cornhead, Clean Machine 1050 hours

**TRUCKS, CARS & PICKUPS**

- 1 - 1985 Chevy PU 4x4 LWB, V8, Good Rubber, Auto Trans 1/2 ton
- 1 - 1984 Chevy PU, 1/2 ton LWB, 4 spd
- 1 - 1983 Chevy PU, 1/2 ton LWB, Auto, Trans.
- 1 - 1982 Chevy 1 Ton, V8, 4 spd. w/utility bed
- 1 - 1982 Ford 1 Ton, 4 spd. Welding Bed-Miller Welder - Poles & Elec. Winch
- 1 - 1971, C-60 Chevy Truck Tractor 427, V-8 5 spd. Trans. 54,000 miles
- 1 - 40' Keystone Flat Cattle Trailer
- 1 - 1980 GMC PU, 1/2 Ton V-8, 4 spd.
- 1 - 1978 Ford 1/2 Ton F 250 Custom 4 door Crew Cab PU
- 1 - 1966 Chevy 2 Ton Grain Truck w/metal bed & hoist, 6 cyl., 4 spd.
- 1 - 1964 C-60 Chevy, Single 2 spd. Axle, 4 spd. trans. w/20' sliding drop implement metal bed & winch
- 1 - 1965 Chevy 1/2 Ton PU, V-8, 4 spd.
- 1 - 1965 Ford V-8 Grain Truck 2 ton w/metal bed & hoist
- 1 - 1948 Chevy Grain Truck
- 1 - 1982 Cadillac Fleetwood Broughman Loaded
- 1 - 1983 Crown Victoria LTD Ford Car
- 1 - 1981 Caprice Classic Diesel Station Wagon
- 1 - 1979 Ford Van (rough)
- 1 - 1977 Cadillac, Sedan DeVille, 4 door, water pump out
- 1 - 1978 Tornado (clean)

**RIDING MOWERS**

- 1 - JD 111 Riding Mower, 38" Cut and Rear Bagger
- 1 - IHC, 1250, Hydrostatic trans. 42" cut on mower

**EQUIPMENT**

- 1 - 48' Flex King Rodweeder (new teeth)
- 1 - 42' Noble 7x6 Sweep Plow - coultter pickers (nice)
- 1 - 32' IHC 490 Tandem Disk
- 1 - 30' Case Tandem Disk
- 1 - 25' JD 330 Double Offset Disk
- 1 - 18' Miller 3 bar Offset Disk
- 1 - 20' Miller 3 bar Offset Disk
- 2 - JD 8200 Grain Drills 16x10 Single Disk w/BLM Hyd. Hitch
- 1 - Richardson 5x5 Sweep Plow w/Pickers
- 1 - Big 12 Grain Cart 400 Bushel
- 1 - JD 6 row Double row Milo Planter - 4x7 bar
- 2 - Yancy built Drag Roats w/hyd. wheels
- 1 - IHC # 10 16x10 Single disk Grain drill
- 1 - JD DR 16x10 Single disk Grain Drill
- 1 - 6 row Lilliston Chicken Picker
- 2 - Pull Type Spray Tanks and Spray Nozzles
- 4 - Dempster # 21 Grain Drills (Good)
- 2 - Type 6 row Grain Drills (1 double row Milo)
- 1 - JD DRA 20x8 Single Disk Grain Drill
- 1 - 200 gal Skid Mounted Spray Rig
- 1 - 3 bottom JD Rollover Plow
- 1 - 4 row Lister w/G. Wheels and Hyd. markers
- 1 - 4 row Hyd. Rodweeder w/ G. Wheels
- 1 - 24' Noble Cool Tire Harrows
- 1 - IHC 2400 Round Baler
- 1 - New 20'x6" Hyd. Grain Auger
- 1 - 100 Horse 3 Phase Elec. Motor
- 1 - 28' 2 Rank of Teeth Springtooth
- 1 - set Case Dual Wheels and Spacers for 18 4x38 Duals
- 1 - 500 Gal Fuel Wagon and Tool Box
- 1 - Meyer V-Ditcher
- 3 - 6 FT. 3pt. Rear Blades
- 1 - 8N Ford Tractor Equipment 2 row Lister, Disk, ect.

**LIVESTOCK EQUIPMENT**

- 1 - 16' W W Stock Trailers
- 1 - Sidam 1 Horse Intine Trailer, padded, mat, side boxes
- 1 - McQuery 2 Horse Side by Side Trailer padded, mats, radial tires
- 1 - Shogmade 20' Gooseneck Stock Trailer, 2 1/2' treated floor
- 1 - 16x6 Stock Trailer w/1/2 top (like new)
- 1 - Wetmore model 888 Grinder-Mixer 130 bu. Haytable, (nice)
- 3 - Stock Saddles - 2 new
- 1 - Lot Electric Fence Post
- 1 - Lot Electric Fence Wire
- 1 - 16' Bunk Hay Feeders
- 2 - Round Bale Feeders
- 1 - EZ Roll Wire Roller
- 1 - 560 Gal. Water Tank on 4 Wheel Trailer
- 2 - 16' Portable Cattle Feeders
- 1 - Dip-O-Matic Cattle Oiler
- 1 - Self Waterer w/Elec. Heater
- 2 - 16' Feeders on Skids w/New Bottoms

**IRRIGATION**

- 1 - Approx. 1 mi. 10" pipe 20 & 30' its. Screw and Slide Gates 40' Centers
- 1 - lg. lot Approx. 75 its. 6" 20 - 30 - 40' pipe 40' Centers
- 1 - Approx. 30 its. 8" 20' 40' Centers pipe
- 1 - Approx. 30 its. 8" 30' 40' Centers Pipe
- 1 - Lg. lot T's, L's, Hyd. Plugs for 6-8 10" fittings
- 2 - Pipe Trailers
- 7 - Drive Lines for Irr. Motors

**TANKS**

- 2 - 800 gal. Fuel Tanks
- 1 - 5000 gal. Fuel Tank
- 3 - Overhead 500 gal. Fuel Tanks & Stands
- 1 - 500 gal. Fuel Tank
- 3 - 100 gal Fuel Tanks for PU beds w/pumps

**MISCELLANEOUS**

- 1 - Lot Grain Fill Augars
- 1 - Lot Dempster Parts
- 1 - Lot Hand Tools
- 1 - Drill Press
- 1 - Cutting Torch on 2 wheel cart
- 1 - 440 Ski-Doo Snowmobile
- 1 - Manual Tire Machine
- 1 - Jensen Pump Jack
- 1 - Elec. Grinder
- 1 - Motorola Maxar 80 Base Radio w/micro phone
- 2 - Standard Mobile Radios w/antennas
- 1 - 110 to 12 volt converter
- 1 - Base Antenna on 35' Pole Tower

**REPRESENTATIVES:**

**RICK RIGGINS**  
(806) 659-3819

**Jim Hash**  
(806) 323-5740

**Larry Money**  
(806) 435-9927

Winch Truck Available on Day of Sale

**UP COMING AUCTIONS**

April 30, 1989 All Household Contents of 3 Bedroom Home - Borger, Texas

May 4, 1989 Cliff Taylor - Truck Parts & Vehicles - Canadian, Texas

May 6, 1989 Basil Duke Jr. - Farm Auction - Booker, Texas

May 7, 1989 Horse Auction - Perryton Livestock Sale Barn

May 20, 1989 Annual Consignment - Perryton, Texas

LIMITED CONSIGNMENTS WELCOME