



# HANSFORD PLAINSMAN

VOL. 11, NO. 35

THE HANSFORD PLAINSMAN, SPEARMAN, TEXAS 79081

SUNDAY, JUNE 21, 1981

## Firefighters Demonstrate

# 'Jaws of Life' Unit In Use If Needed

It looked and sounded like a "popper" cooker turning out spaghetti with strands ending up at the strangest knife and fork you ever saw!

It was the new Hurst "Jaws of Life" unit of Spearman Volunteer Fire Department and it--and the firefighters--were the center of attraction Tuesday night at a local salvage yard where the public was treated to a demonstration of its part in saving auto crash victims.

The first simulated rescue of the evening involved a Lincoln Continental four-door sedan of early sixties vintage. Fire Chief Ronnie Antalek acted as master of ceremonies for the lay audience gathered and as quarterback for the drills.

The could-be rescue operation began with the theory the doors on the driver side of the car were jammed by an accident and that there were victims to be removed from both front and rear seats of the vehicle.

A power unit not much larger than a firefighter's helmet was started and the exhaust note immediately identified it as a two-cycle motor. Power transmission is selective going to the "jaws" through a set of yellow flex hoses and to a scissor-like knife unit through white flex tubing.

A firefighter inserted the closed jaws in the opening edge of the car's front door, applied power and the latch was broken and the door swung open giving access to the front passenger compartment.

The rear door was the "suicide" type opening back from the front. This cramped rescue space and the power tools were immediately applied to the task of removing the door. The hinge attacked by the machine was cast iron rather than the softer metals of later models but the unit was up to the task and the door was completely removed allowing wide access for rescue

of any injured.

Chief Antalek told the audience it was possible to execute even more drastic "surgery" on the vehicle is victim injury and position danger of fire demanded it. In short order, the steering column was bent out of the passenger compartment over the hood, the knife unit snipped roof metal at four points, a firefighter jumped on the top of the car just over the rear window making a "crease" that allowed the roof to be laid back like opening a sardine can.

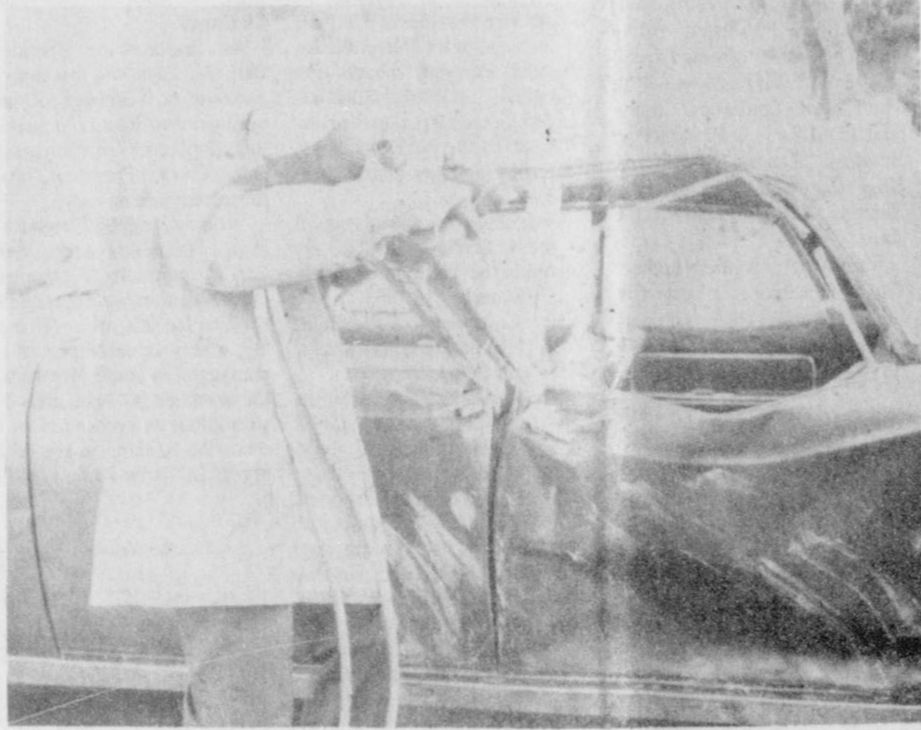
For an encore, firefighters tackled a 1957 model Buick sedan that had the top crushed in to the point where the window openings were only inches high allowing no rescue space. Here again was an older vehicle but the jaws were up to the task.

It was noted that gasoline is present at all auto accidents and often rescue time is short in the face of possible fire or explosion. Chief Antalek pointed out that some ruptured or "squeezed" door latches could require as much as 5,000 pounds to pull open--a task impossible in a short time with an ordinary pry bar and a force of firefighters straining at it.

The jaws of life is equal to the task and places only one man operating with the rest of the force standing by to clear away parts pried off by the jaws and effect their rescues.

The Jaws-of-life unit was purchased by Baker & Taylor Drilling Co. and presented to the fire department. The company has cloaked the move in much modesty but the account making the rounds is that a super-quick emergency response to one of the company's operational sites averted a potentially more serious situation.

Supposedly, in response to comment on the record run someone with much pride in the



SPEARMAN PERFORMANCE OF 'JAWS' -- An unidentified firefighter of the local volunteer department uses the new "Jaws of Life" rescue unit to break door latches in a simulated wreck-rescue operation during a public demonstration at a local salvage yard this past week.

## 3000 fans saw 1930 game!

volunteer fire department said only a jaws-of-life unit was needed to pit Spearman's firefighters against any department in the state for training and skill and the dedication with which they use it.

Firefighters hope the only use they ever have for the unit are the practice drills to "fine tune" their skill but they are ready if the real thing demands it--thanks to the dedication of an industry to its community that matches that of the men of the Spearman Volunteer Fire Department.

### FRIDAY'S DEFEAT ELIMINATED RANGERS FROM INTERSCHOLASTIC LEAGUE RACE

THREE THOUSAND PEOPLE SAW THE TILT; 1,000 CAME FROM PERRYTON; SPEARMAN CLOSED UP SHOP AND LINED UP SOLID BEHIND THEIR LYNX TEAM

In one of the greatest exhibitions of football ever witnessed in the North Plains, the mighty Spearman Lynx downed the fast and furious Perryton Rangers

(play by play-1930 game)

on Lynx field last Friday afternoon, by the score of 19 to 6.

Three thousand people lined up around the field to witness the great battle, the result of which eliminated the Rangers from the Interscholastic League contests of District No. 1, and placed the Spearman Lynx one long step nearer the championship of this district. They Lynx now are champions of Division A, Section District 1, Interscholastic League of Texas.

Both teams have been in preparation for the game ever since the beginning of the season and were in fine fettle. Coach Jarvis had given his Lynx the very ball he had, and they in turn doubtless played the best game they ever played in all their football experience. Errors were made by both the Lynx and the Rangers, but neither team was lacking in fighting spirit. Also, the spirit of fore play prevailed on both sides. It was a fight to the finish in which the best team won a glorious victory, of which all Spearman and the Spearman country is just as proud.

Messrs. Hopkins, Elliott and Walker were sent from Amarillo by Interscholastic League officials to serve as big bosses of the contest. Hopkins was umpired by Elliott head linesman, and Walker was referee. Their work was entirely satisfactory. The gentleman met many North Plains people which here and spoke very complimentary of both the Lynx and Ranger football teams.

Spearman and the Spearman country attended the game. The business section of the town was gaily decorated in the high school colors, purple and white, and there was football in the air. Practically every place of business in the town closed for the game. And behind the Rangers were 1,000 enthusiastic fans from Perryton, who backed their team to the very limit. It was a real football game; no doubt about it.

### WHITEDEER NEXT

The defeat of the Perryton Rangers by such a decisive score has put additional pep into Coaches Jarvis and Gunn and the entire football squad of Spearman High. The boys have their hearts set on a district

## Spearman Up 23 %

# Retail Sales Up

The office of State Comptroller Bob Bullock has released what purports to be THE TOTAL of the one percent sales tax rebated to Spearman, Gruver and other Texas cities collecting it for the first six months of 1981:

\$310.7-million . . . up from \$266.9-million for the same period last year.

Then a credibility gap appears in the report. It quotes Comptroller Bullock as saying JUNE SALES TAX REBATES to cities TOTALED \$28.3-million.

The news release was dated JUNE 11, 1981.

There has always been a scattering of cities in the report showing a decrease in rebates received from the same period last year but they have not been many and any familiarity with them tells the story.

This report shows some 200 cities--including Gruver--to have lost ground in the first six months of this year. A similar situation with figures not so drastic occurred with the December, 1980 report which was dated some 10 or 12 days before Christmas and could not have included that season's sales . . . --Which is the name of the

game. This is the cue for our monthly economic sales tax, represents one dollar spent in purchasing goods and services from the business establishments of the city.

For example, the \$15,909 rebated to the city of Gruver in the first six months of 1980 represents \$159,090 in across-the-counter sales. This does not include all the transactions made there for some are tax exempt but it is a good business barometer.

--When it works! However, it shows Gruver down some 8.8 percent for the first six months of this year. Not to worry! The same thing happened last December to almost that same figure but in January, 1981 . . . sales tax rebates--with corresponding retail sales--went up a whopping 15-plus percent!

There was NO December receipts listed for Gruver.

There were NO JUNE, 1981 receipts listed for Gruver.

Business is NOT slow in Gruver; calculation is at Austin! There were June, 1981 figures in the report for Spearman but they could not possibly tell the total June business story with a cut-off date sometime previous of June 11. June sales

should certainly reflect the beginning of harvest--especially with the new money coming in via custom cutting crews buying lodgings, food and fuel.

EDITOR'S NOTE: Now it can be told! Bothered by June figures--or the lack of them in the case of Gruver, we did some investigation and it was worth it. The cut-off date for the current comptroller's six months report was JUNE 4. June figures for Gruver had not reached the controller's office when compilation of the report started. However, figures for Spearman for the FIRST FOUR DAYS of June--all business days--reflect some \$78,900 in taxable retail sales or about \$20,000 per day not counting tax-exempt transactions.)

There are some interesting figures for neighboring cities in the area. The huge increase for Perryton in the previous comptroller's report was pared down--even with some June figures included--to a 35.8 percent increase which is a quite respectable show of prosperity.

According to the comptroller, Perryton ended 1980 with a 28 percent increase. Spearman was shown with a 32 percent gain over 1979.

Dumas seems to be holding its ground ending 1980 with a 16 percent increase and credited with a 7.6 percent gain this year to date of the report.

You have to look for it but there is drama in the world of stark facts and figures. Fritch, near Borger and Skellytown, near Pampa, are classic examples. Fritch ended 1980 with a 13 percent increase in taxable business. For the first six months of 1981, it has posted an 82.24 increase.

Skellytown ended last year with a 70 percent increase and has racked up a 38.03 percent gain for the first six months this year indicated it may exceed the fantastic figure of last year.

--Then, there is Avinger. A small Deep East Texas town, it compares to Lefors with a bank. Its nearest neighbor is six miles away with three more thriving cities within 25 mile radius. The new year 1980 dawned with one third of its residential housing vacant including some substantial brick dwellings.

It ended 1980 down 38 percent from 1979 sales tax

rebates and their representative retail sales.

At the time of the current report, its nearest neighbor, Hughes Springs, is up 44.9 percent; its county seat town 15 miles away showed the greatest gain ever while the nearby steel mill towns of Daingerfield and Lone Star have upheld boom-town reputations for half a decade.

At the time of the current report, Avinger is credited with the greatest sales tax rebate-cum sales gain record of any participating Texas city: 144.4 percent!

## Hospital news

Patients at Hansford Hospital are Neoma Wilkerson, Claude Newell, Charles O'Loughlin, Claudine Laxton, Bessy Swan, Viola Fite, Gertrude Archer, Dulces Vigil, and Dot Jenkins.

Dismissed from Hansford Hospital were Winnie Urban, Lisa Simpler and son, Glen Mackie, Scott Slater, Florene Deviers, Jason Harnish, S.T. Dozier, Maria Cruz and daughter, and Betty Farmer.

## Housing Needed

### For Ex-Students

Nell Patterson of the Housing Committee for the All-School Reunion reports that all motels are full and housing is needed for those coming to reunion. If you can open your home to some of these ex-students, call her at 659-2144.

## Mrs. Novak's

### Brother Dies

Joe Atherton, 67, of 1551 Fisk, died Tuesday.

Services are pending with N.S. Griggs & Sons Funeral Directors.

Mr. Atherton was born in Childress and had lived in Amarillo 16 years.

He was an oil field worker and a Baptist.

Survivors include two sons, Anthony Atherton of Plano and Joe M. Atherton of Amarillo; a sister, Addie Novak of Spearman; and four grandchildren.

## 1930 Football Team



A feature of the July 3-4 all-school Spearman Homecoming, 1981

The 1930 Football Team: (Top Row) Elmer Gunn, Coach; Ike Vernon; R.B. Archer; Cloyd Tip Windom; Walter Broadhurst; Earl Riley; and Billy Jarvis, Coach.

(Middle Row) Philip Jenkins; Francis Reed; Clyde Longley; Emma Reeves, Football Queen;

Carl Owens; and John Schubert.

(Front Row) Newton Holt; Jarvis Witt; Z.T. Monroe; John Walker; Marian Gaylor; and Orville Rippy. They lost one game on penetration.

In 1930--Won District--all teams in the same class. (Basketball)



Left to right: Mike Brown and James Cook of Spearman, Willy Stringer and Wayne Norton of Mustang, Okla. This is just part of over 200 fish caught in 1 week at Fort Cobb, Okla. These range from 3 to 6 pounds.

### 4-H Fashion Revue

The 1981 Hansford County 4-H Fashion Revue will be held Tuesday, July 7 in the First Baptist Church, Spearman.

4-H youth from Spearman, Gruver and Morse will display their skills in clothing construction, modeling and fashion coordination according to Hansford County Extension Agent, Peggy Winegarner.

Judging will begin at 9:30 a.m. in the Fellowship Hall.

A fashion show for all parents, leaders and friends will be held at 2:00 p.m. in the auditorium of the First Baptist Church, with awards and refreshments following.

#### MARKETS

Barley	\$2.50
Corn	3.30
Wheat	3.63
Soybeans	4.83
Milo	5.20

#### AGENDA

TUESDAY JUNE 23, 1981 8:00 p.m.

1. Pledge and Invocation.
2. Consideration of approval of the minutes of the Regular City Council Meeting held on June 9, 1981.
3. Opening and consideration bids on the New Animal Control Shelter.
4. Consideration of Review and Comment on the Housing Authority of the City of Spearman for a comprehensive improvement program.
5. Status report on a Mobile Home subdivision for the City of Spearman.
6. Other.
7. Adjourn.

Jim Murray, City Manager I certify that the above Notice of meeting was posted on the Bulletin Board at City Hall on June 19, 1981 at 5:00 p.m.

Donna Thomas, Deputy City Secretary

## Residential Service Virtually Unaffected GTSW Gets Token Hike

When the fireworks were over, Wednesday, General Telephone of the Southwest (GTSW) was granted a token \$2-million rate increase that, probably, will not effect residential subscribers.

At the outset there was a strong language from all factions involved in the action, Wednesday. Beside the Public Utilities Commission (PUC) there was the PUC's hearing examiners, the Texas Municipal League (TML) aligned with some 75 cities including Spearman and the telephone company.

At 1:05 Wednesday, the PUC voted three to nothing on the recommendation of its staff that the phone company get no rate increase. It also voted to keep the \$4-million annual penalty for poor service in effect pending a hearing in December on service improvement, if any.

At this point, it put the issue on "dead center."

Following a rate increase granted in October, 1980, less than requested and less the \$4-million penalty couched on a February, 1981 assessment of service improvements, General Telephone of the Southwest came back in January, 1981 with another rate increase request of \$45.3-million.

This touched off a number of responses including an order from the PUC to its staff telephone engineer, Roland Curry, to proceed with the quality-of-service examination disregarding the February deadline.

The Texas Municipal League and the 75 cities-including Spearman--it assisted in opposing the October, 1980 increase joined in the fray.

TML and the participating cities maintained that service was so poor that GTSW rates should be decreased instead of granting an increase.

PUC staff members, both engineering and legal, were highly critical of both the quality of service still existing and the speed with which the company returned for an increase.

GTSW Vice President F.E. Hightower maintained, in effect, the present situation was the sole fault of the PUC for not allowing an adequate increase in October, 1980.

Wednesday, some time between the 1:05 vote and 3:27 that afternoon, some proceedings not made public at deadline caused the PUC to vote a minuscule increase of \$2-million--which will almost be nullified if GTSW cannot increase service quality by the December deadline and come out from under the \$4-million penalty burden.

The nearest the increase will come to residential subscribers

is the allowed \$10-dollar service fee for rewiring new homes. This formerly was a free service. This was more or less dictated by a change in accounting procedures dictated by the Federal Communications Commission (FCC) for various services in this category. This order from FCC came during the current arguments but not a part of the controversy.

The other areas affected by the .52-million increase are

mobile telephone service and local call service to nearby cities that would otherwise be toll calls.

So, it is back to the old drawing board on quality of service while GRSW President R.W. Britt is already holding the other shoe in the air ready to drop, witnessed by his statement that the current decision will result in another rate hike request "sometime in the near future."

### 4-H'ers Place at District

Hansford County 4-H'ers were the second High Point County at the District Horse Show held at the Bill Cody Arena in Amarillo on June 17 and 18. They qualified five out of the 20 eligible to go to the State Horse Show July 14, 15, and 16 in Waco.

Those qualifying for the State Horse Show were: Jon Garnett riding Holey's Pattern-Reserve High Point, 3rd in Western Pleasure, 2nd Western Horsemanship, 3rd Reining; Andrea Archer riding Red Tyler DeGrand Champion Gelding, 1st Registered Gelding Under 5, 10th Showmanship, 9th Western Pleasure, 10th Hunt Seat, 7th Hunt Seat Equitation; Travis Patterson riding Regers Agent-4th Western Horsemanship, 10th Registered Geldings over 5; D'Lynn Orr riding Mr. Jumping Jack-2nd Registered Geldings Under 5, 7th Western Pleasure; Will Jarvis riding Lightning Seven-2nd Registered Geldings Over 5, Hunt Seat Equitation 4th and placed in Hunt Seat.

Other entering the District Show and their placings were: Tammy Savage on Serria Red Chief-7th Registered Geldings Over 5, 8th Western Pleasure; Shelly Dunning riding Alabama Lady Dee-3rd Registered

Mares Under 5; Mark Garnett riding Two Fox Shannon-4th Registered Mares Over 5, 9th Hunt Seat, 5th Hunt Seat Equitation; J Garnett riding Just Otoo-9th Registered Geldings Over 5, 7th Hunt Seat, 10th Hunt Seat Equitation; Diana Martin on Bar's O Pat-6th Pole Bending; Donna Martin on King Dandy Socks, 2nd Pole Bending, also qualified for state.

Jon Garnett, Andrea Archer, Travis Patterson, D'Lynn Orr and Will Jarvis will be competing in the State Horse Show July 14, 15, and 16 in Waco.



Soybeans -- grown as long ago as 3000 B.C. -- didn't become a cash crop in the United States until the early 1920s. Nevertheless, the soybean is one of the most versatile legumes. Some types of soybeans are edible, served fresh as a vegetable or in salads. They're used for bean sprouts in chow mein, can be roasted like peanuts, and are also made into soy sauce.

### Ellis Joins First National Bank

Carl W. Ellis has joined First National Bank in Perryton as Senior Vice President. Ellis, age 37, is a native of Perryton. He attended Perryton schools and graduated in 1961. Ellis attended Texas Christian University, served the Phi Delta Theta Fraternity and graduated from TCU in 1966.

Carl Ellis was commissioned in the U.S. Navy in '66. He served in the Philippine Islands until discharged in 1969.

He is married to Julie Ellis. Their children are Amy, Kevin, Brian and Courtney.

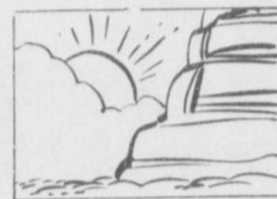
His business interests in Perryton have included farming, insurance and oil field interests. Ellis has been very actively involved in the Perryton community. He is a Chamber of Commerce member, having served as Board President. He is a current YMCA member, and a past board member. He was a part of the budget committee for United Fund. Ellis currently an elder at First Christian Church. He has served several years on the Board of Directors, First National Bank.

Carl W. Ellis is the third generation of Ellis family members to be associated with First National Bank in Perryton. His grandfather, Carl Ellis was for many years the President and

Chairman. His father, Drew Ellis, is the current Board Chairman.

As Senior Vice President, Carl W. Ellis will be actively working in commercial and agribusiness loans. In making this important announcement, John Cluck, President, made these comments:

"We are indeed fortunate to bring Carl Ellis to the bank. Carl's community background, his business experience, and his concern for this area will make him a very valuable part of our management team. His work in the commercial loan area will strengthen us even more as we serve the banking needs of the northeast Texas Panhandle."



El Capitan, guardian of the entrance to Yosemite Valley, is the largest visible granite rock in the world. It shoots 3700 feet up from the floor of the valley.

### Police: Two Suffer Dog Bites

The Spearman Police Department activity for the week of June 12 through 18, included the following:

OFFENSE REPORTS: June 15, Mrs. Douglas reported the theft of gasoline from a tank at 121 South Dressen.

Mrs. Curtis Henderson reported a vicious dog had bitten a child in the 600 block of South Bernice.

June 16, a small child was treated for a canine bite which occurred in the 1000 block of South Dressen.

ACCIDENT REPORTS: June 14, an accident occurred, involving a motorcycle operated by David Rodriguez in the 1000 block of South Evans. Injuries were reported.

### PSU Has Early Enrollment Clinics

Two freshmen early enrollment clinics remain before the regular enrollment day, Thursday, August 20, at Panhandle State University. Saturday, July 18 and Monday, July 27 are the remaining dates set aside to provide special attention for incoming freshmen.

Early enrollments offer freshmen an opportunity for a better selection of courses, a choice of instructors, and a more desirable schedule. The two remaining sessions will begin at 9:30 a.m. in room 128 Sewell-Loofbourrow, the administration building.

Freshmen are presented material about admissions, housing and financial aids prior to the actual class scheduling. Each student is helped by a representative of the major area he or she has chosen. This advisement by the faculty will help begin strong student-faculty relationships.

Any person needing more information or wishing to reserve space and time at either of the freshman clinics should contact Candi Kelly, Coordina-

### Friday's Defeat -- from p-one

championship, and arguing to fight for it to the last ditch. Their next battle is with White Deer on Friday, November 21. This fight will take place at White Deer, as that game has come here for a game this season and now is entitled to a return game. A meeting of coaches, teachers and others interested from Spearman and White Deer, was held at Stinnett on Monday of this week. The object of this meet was to talk over the arrangements for the next big conference battle, and also to see whether arrangements of the next big conference battle, and also to see whether arrangements could be made to play the game at Spearman on Armistice Day, during the great Legion celebration. This arrangement could not be made. The game will be played at White Deer on November 21. The Lynx defeated White Deer 6-0 in a game here early in the season.

PLAY GUYMON FRIDAY On tomorrow afternoon, Friday, November 14, the Guymon team comes here for a game. Guymon has a strong team and the game will be a good one. However, this writer has an idea that the Lynx second string will carry the big end of the load in this battle. The big boys will be there alright, but Coach Jarvis will not likely run the risk of having any of his "old reliables" battered up, with a conference game only one week away.

A play by play account of Lynx-Ranger game appears on another page of this issue.

tor of School and University Relations, Panhandle State University, P.O. Box 430, Goodwell, Oklahoma 73939 or call (405) 349-2611 EXT 212.

Nell Patterson of the Housing Committee for the All-School Reunion reports that all motels are full and housing is needed for those coming to reunion. If you can open your home to some of these ex-students, call her at 659-2144.

# STORE WIDE

## SUMMER

# clearance Sale

### Sale Starts

### Tuesday, June 23, 1981

### ALL

### SUMMER

### MERCHANDISE Reduced

## Up To 50%

# Lady Fair

We will be closed Monday, June 22, to prepare for the sale

Swim Suits  
Tops

Blouses  
Dresses

Shorts

Coordinate  
Sportswear  
Groups







**SPEARMAN**  
659-2514

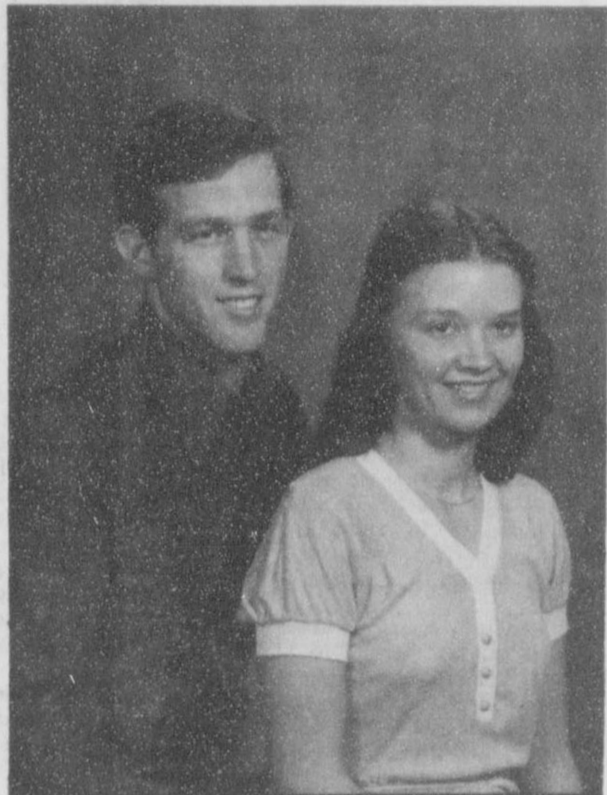
**BROCK**  
**AGENCY**

H's

**HAIL**

**INSURANCE**  
**TIME**

**July Wedding Planned**



Mr. and Mrs. Robert W. Stewart, formerly of Spearman, announce the engagement of their daughter, Janice, to Monte Rowell, son of Mr. and Mrs. Kenneth Rowell of Ninnekah, Okla. The bride-elect is a teacher at Ninnekah Elementary Schools. The prospective bridegroom is employed by Eason Oil Co. The couple will exchange wedding vows July 10, in the First Baptist Church at Ninnekah.

**Fashion Scents Seminar**

Focus on Fragrance will be the lead off program for an area fashion seminar Wednesday, July 1 in Perryton, starting at 10:00 a.m. in the First Baptist Church Fellowship Hall, 415 S. Baylor. Visual Poise, Hair Care and the Use of Hair Care Appliances, Modeling Techniques and a Style Show of Jeans will complete the seminar.

Participants from Hansford, Ochiltree, Lipscomb and Hemphill counties are asked to bring a sack lunch; drinks will be provided. The seminar is free and open to all youth, parents, and friends regardless of race, color, national origin, sex or religion. For more information contact Peggy Winegarner, County Extension Agent at 659-2030 or 733-2901.

**Attending Girls State**

Shelley Mitchell and Denae Baker are now attending the 1981 session of the American Legion Auxiliary Bluebonnet Girls State being held June 16-26 at Texas Lutheran College in Sequin. They are sponsored by the Spearman High School Student Council. A total of 560 girls throughout Texas are participating this year.

Those chosen for the intensive training in citizenship and government are selected by the Student Council and approved by the faculty based on character, involvement in school and academics.

Girls State is non-partisan, non-political program designed to teach youth to make "Americanism" belong to them. Girls State is a school government from which the highest type of girl will reap the greatest benefit for herself, her school and her community.

The Council appreciates the contributions which various citizens and businesses make in order that the Council can sponsor this exceptional training program each year.

Shelley is the daughter of Mr. and Mrs. Dewayne Mitchell and Denae is the daughter of Mr. and Mrs. Albert Baker.

**La Leche League**

If you have considered breastfeeding your baby, but have questions about this womanly art, contact the Spear-La Leche League. This month's meeting will be held on Tuesday, June 23, 10:00 at Virginia Barfield's, Crawford Addition. (Call 659-2794 or 659-5444 for directions.) The discussions for the morning will include encouragement and information on how to establish a happy nursing relationship. For further information call 659-2794.

**Engagement Announced**



Mr. Albert E. Harrison, Ellijay, Georgia, announces the engagement of his daughter, Marianne Rebecca, to Dr. James Linus Ownbey, son of Mrs. Jenna V. Ownbey, Amarillo, Texas, and the late Mr. Robert J. Ownbey, Spearman, Texas.

The bride-elect, daughter of the late Mrs. Marian J. Harrison, Ellijay, Georgia, is a 1971 Gilmer High School graduate, a 1973 Reinhardt College graduate, where she earned a Bachelor of Arts degree in Psychology. She served in the United States Army as a physical therapy technician.

The groom-elect is a 1966 graduate of Spearman High School, and a 1970 graduate cum laude with honors of the University of Texas at Austin, where he earned a Bachelor of Science Degree in Chemistry. He was graduated from the San Antonio University of Allied Health Sciences in 1974 and completed residency in Pathology in 1978. He presently serves in the United States Army as a Major.

The grandparents of the bride-to-be are the late Mr. and Mrs. Paul P. Harrison, Hartwell, Georgia, and the late Mr. and Mrs. Austin E. Smith, San Bernardino, California. The grandparents of the groom-to-be are the late Rev. and Mrs. Linus Eaker, Sedalia, Missouri, and the late Mr. and Mrs. James Bly Ownbey, Spearman, Texas.

Upcoming nuptials take place at Watkins Memorial Methodist Church in Ellijay, Georgia, on the eighth of August, 1981.

After the wedding the couple will reside in Denver, Colorado.

**Social Security Visit Schedule**

A representative of the Pampa Social Security Office will be in Spearman at the courthouse from 10 to 11:30 a.m. on July 9, 23, August 13, 27, and September 10, 14.

The representative will be glad to assist you in filing an application for Social Security Retirement, Survivors, Disability, Medicare or Supplemental Security Income benefits. If you are unable to visit personally you may call 806/669-3381 to conduct any Social Security business. The Pampa Social Security office is open every weekday, Monday through Friday, except national holidays, between the hours of 9 a.m. and 4:30 p.m.

For information, please call toll free number 1-800/392-1603.

A representative is available to meet with your club or group for a talk or to answer questions. If services are desired, please write or telephone the Social Security Office.

**Swimming Pool Hours**

The swimming pool hours are as follows:

**Recreational Swims:** Monday-Saturday 1:00-5:00 p.m.; **Recreational Swims:** Sundays 1:30-5:30 p.m.; **Family Swims:** Mondays from 6:00-7:30 p.m.; **Teen Swims:** Wednesdays from 9:00-11:00 p.m.; **Ladies Swims:** Monday-Saturday 11:00 a.m. - 1:00 p.m.; **Water Exercise Classes:** Monday-Wednesday-Friday 11:00 a.m. - 1:00 p.m.; **Water Exercise Classes:** Tuesday & Thursday 6:00-7:00 p.m. **POOL RENTALS OTHER HOURS WEEKDAYS AND WEEKENDS AT \$25.00 PER HOUR!!**

Take Dad to the Movies on his day, Fathers' Day Sunday, June 21,

**Completes Course**

Thalua Garner, Trust Administrative Officer at First National Bank in Perryton, has completed the Texas School of Trust Banking. She attended the school from May 31 to June 5 at the University of Texas at Arlington. All facets of trust banking were presented, including estate planning, federal estate and gift tax, Texas inheritance tax, and Texas community property law. Only 60 trust officers from throughout the state were accepted for the school.

Mrs. Garner has been with First National Bank, in the Trust Department, since she joined the bank in 1973. Formerly she was with the law firm of Allen, Gaines and Julian. She is married to Alton Garner and has one daughter, Jennifer Morgan in Amarillo.

Nell Patterson of the Housing Committee for the All-School Reunion reports that all motels are full and housing is needed for those coming to reunion. If you can open your home to some of these ex-students, call her at 659-2144.

**Optima Lake**

**Lots FOR SALE**

Choice Optima Lake Homesites  
Permanent Homesites — Cabin Sites

Excellent Lake View  
Frontage Lots  
Joins Prairie Dog Point

State Health Dept. Approved  
Utility Easements  
1 Acre Minimum Lots

\* TWO SUB-DIVISIONS NOW OPEN ---

**NEFF Land & Livestock**  
BOSS & BUD NEFF — Owners  
P.O. Box 13  
Hardesty, OK 73944 405-888-4451

**OIL & GAS WELL SERVICE EQUIPMENT OPERATORS**

With the urgent search for oil and gas, we need career-oriented, promotable people to drive, maintain and operate Dowell cementing and well servicing equipment or handle materials at our warehouse facility. Requires energetic, hard-working men and women.

- Guaranteed Salary Plus Overtime
- Insurance, Vacation and Other Benefits
- Expenses Paid While in the Field
- Outstanding Promotion Potential for Capable Workers

Must be at least 21 years of age, should have high school education and must meet Department of Transportation qualifications. **REQUIRES RELOCATION TO PERRYTON, TEXAS OR BORGER**

Call collect 806-435-5436 in Perryton or 806-273-5619 in Borger. June 23rd interviews in Borger, Texas at the Villa Motel on 3rd Street--8:00 a.m. to 6:00 p.m. June 25th interviews in Perryton, Texas at the Dutch Inn Motel--711 North Main--8:00 a.m. to 6:00 p.m.

An equal opportunity employer  
DOWELL DIVISION OF DOW CHEMICAL U.S.A.  
TALLAHASSEE, FLORIDA  
AN OPERATING UNIT OF THE DOW CHEMICAL COMPANY

**BINGO**

BINGO is a new activity at the Golden Spread Center, to be played each Wednesday from 2:00 to 3:30 p.m. All people fifty-five years of age or older are invited and encouraged to come join in the fun. There will be a small fee of 25 cents for the afternoon for those who are members of the Center and 10 cents a game for non-Center members. There will be nice prizes to choose from and a "bonus" game for a very special prize.

**The Dahlia Flower Club**

The Dahlia Flower Club met in regular session June 15th in the home of Mrs. Hazel Loftin. Roll call was answered by What I'd do with a 25th hour. Hollie Riley gave the program on Gold.

In observance of Mrs. Loftin's 90th birthday the club gave her a card shower and a small piece of hand-painted china, and all joined in singing "Happy Birthday."

Nelle led the group in flowers, Jewel won first with her arrangement of gloriosa daisies and Cleo won with her specimen of a rose. Meeting adjourned with the reading of the Club Collect.

A tasty refreshment plate was served by the hostess, Mrs. Loftin, to one guest, her daughter, Mrs. Cooksey and members, Allen, Archer, Biggers, Bishop, Blodgett, Denman, Evans, Hoskins, Riley, Sanders, Shedeck, Turner, and Whitson.

The club will meet on June 29th with Nelle Evans, with guest speaker Paul Hoff, DPS.

Nell Patterson of the Housing Committee for the All-School Reunion reports that all motels are full and housing is needed for those coming to reunion. If you can open your home to some of these ex-students, call her at 659-2144.

**LISA THOMPSON**

Graduate of Texas Christian University with 8 years of piano teaching is offering

**PIANO, VOICE AND VIOLIN LESSONS**

for students from five years through adult. Lessons will include a thorough foundation in the basic fundamentals of music history and theory.

Applications for lessons should be made by mail. Please include name, address and phone number.

Rt. 1 Box 35A  
Spearman, Texas, 79081

**Public Notice**      **Aviso Público**

Southwestern Bell, in accordance with the rules of the Public Utility Commission of Texas, hereby gives notice of the company's intent to implement a new schedule of telephone rates in Texas effective July 21, 1981, unless otherwise determined by the Commission.

It is expected that the requested rate schedule will furnish a 15.8 percent increase in the company's intrastate revenues.

A complete copy of the new rate schedule is on file with the Public Utility Commission at Austin, Texas, and with each affected municipality served by Southwestern Bell, and is available for inspection in each of the company's public business offices in Texas.

**Notice to Customers of Other Telephone Companies**

The filing includes, but is not limited to, proposals to increase rates for interexchange private line and foreign exchange (FX) service. Changes in such rates would also affect customers of other telephone companies because such companies provide interexchange private line and foreign exchange service in accordance with rates specified in Southwestern Bell's tariffs.

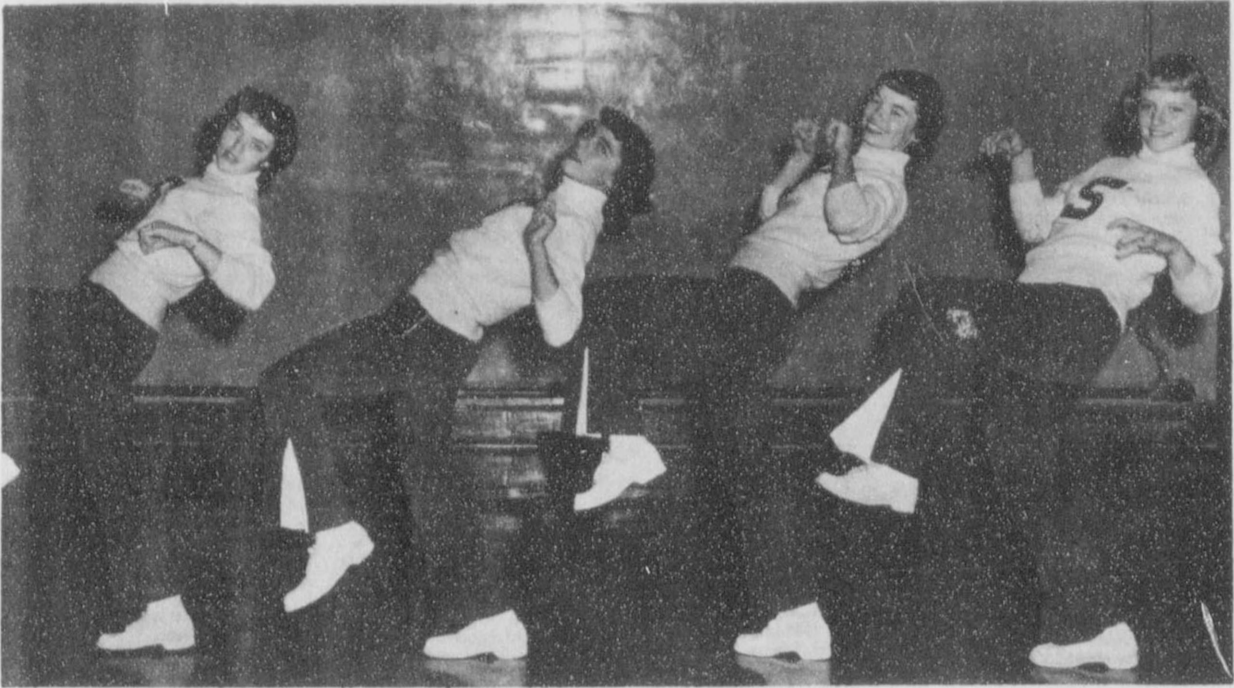
Southwestern Bell, en conformidad a las reglas del Public Utility Commission (Comisión de Servicios Públicos) de Texas, por la presente hace saber su intención de establecer un nuevo arancel para servicio de teléfono en Texas con vigencia a partir del 21 de Julio de 1981, a menos que la Comisión haga otra determinación.

Se espera que el nuevo arancel que se ha solicitado rendirá un aumento de 15.8 por ciento en los ingresos intraestatales de la compañía.

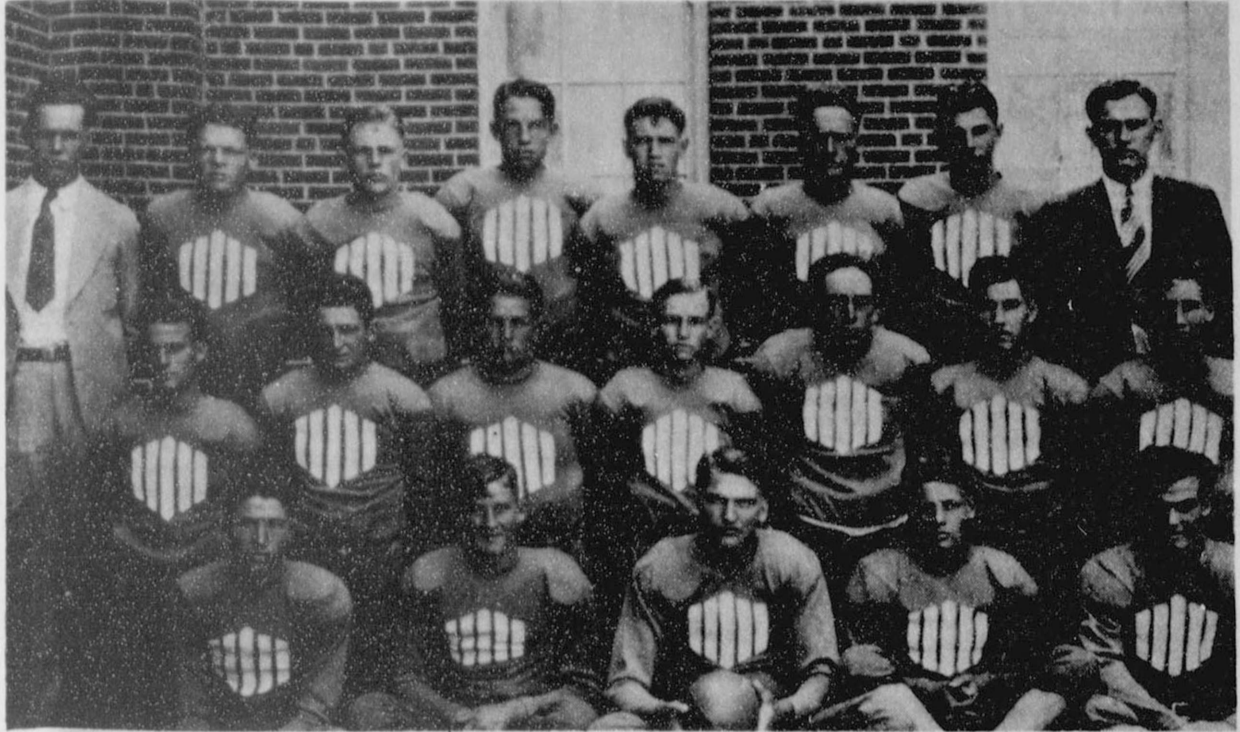
Una copia completa del nuevo arancel se ha archivado en las oficinas del Public Utility Commission en Austin, Texas, al igual que en cada municipalidad afectada y servida por Southwestern Bell, y cada una de las oficinas de la compañía para negocios con el público en Texas tiene una copia para lectura pública.

**Aviso a los Clientes de Otras Compañías de Teléfono**

El registro incluye, pero no se limita a, propuestas para aumentar las tarifas para servicio de línea privada entre centrales telefónicas (interexchange private line) y servicio de central telefónica extranjera (foreign exchange FX). Cambios en dichas tarifas de servicio también afectarían a clientes de otras compañías de teléfono porque dichas compañías proveen los servicios ya mencionados en conformidad a tarifas especificadas por Southwestern Bell.



1954 CHEERLEADERS Nell Close, Rose Marie Coury, Janis Blanford and Judy Meek



Top Row (Left to Right)--this is the Football team of 1934. Coach John T. Morris, Daily Easley, Richard Holton, Oran Ross Kelly, A.J. Curtis, Hershel Ooley, Ruben Deering, Coach Elma Gunn. Middle Row, (Left to Right): Arthur

(Shine) Haines, Rodney Harmond, Elmon Jacobs, Willard Davis, Paul Buchanan, H.L. Wilbanks, W.C. Robertson. Front Row, (Left to Right): Oliver Leverton, Paul Robertson, Sam Patterson, Dick Vernon, C.D. Haines.

### Faye's Daze

Persons who have been busy this past six months or so organizing the first all school reunion set for July 3,4 have evidently done a great job.

I was talking with Mary Schumann and she reported that she had about a 1000 reservations for the noon barbecue on the 4th, and Nell Patterson of the housing committee is asking that residents open their homes for some of the ex-students coming in as motels are all full for that weekend.

It looks like the 4th of July will be a memorable occasion for all ex-students of Spearman High School, and for other residents as well, as the YMCA and the Chamber of Commerce have a full day of activities planned as well as a fireworks exhibition in the evening.

We have enjoyed publishing the pictures of the classes, football teams, and basketball teams and hope to have more in the short time remaining until the big reunion is held.

Now if the weather will cooperate we will all have a good time.

**THOUGHT FOR THE DAY**-There are 10 things for which no one has ever been sorry; for doing good to all; for speaking evil to no one; for hearing before judging; for thinking before speaking; for holding an angry tongue; for being kind to the distressed for asking pardon for all wrongs; for being patient toward everybody; for stopping the ear to the tale bearer; for disbelieving the most of the evil reports.

I saw the perfect coffee mug for me in Sacks today, it is inscribed "I think I am allergic to mornings".

Nell Patterson of the Housing Committee for the All-School Reunion reports that all motels are full and housing is needed for those coming to reunion. If you can open your home to some of these ex-students, call her at 659-2144.

# All-School Reunion

Plans are almost complete for the all-school reunion July 3rd and 4th. A list of the activities planned so far is enclosed.

For those of you who will need rooms here are the address of the hotel and motels available:

- Baker Hotel, 420 Davis, Telephone No. 659-3446
- Patton Motel, Highway 207, Telephone No. 659-2227
- Nursanickel Motel, Highway 207, Telephone No. 659-3737

If you need additional help in finding rooms contact Nell Patterson, Rt. 1, Box 41, Spearman, Telephone No. 659-2144.

If you will need baby-sitting on Saturday, please contact Cindy Schneider, 715 S. Steele, Spearman, Telephone No., 659-3025. Plans are being made to keep the children at the "Y"

if there is a need to justify this, so let Cindy know as soon as possible, please.

Tickets to the noon barbecue on the 4th will be \$4.00. You do not need to purchase your tickets now but in order to know how many to plan for, please contact Mary Schumann, Rt. 1, Box 20A, Spearman, Telephone No., 659-2178 and tell her how many in your family plan to attend.

The dance Saturday night will be at B&B Farm Industries Building, 703 Collard. Tickets will be \$10.00 per couple and will be purchased at the door.

The High School Library and the Home Making Rooms will be open all day Saturday for relaxing and visiting if your class has no other activities planned.

See you at the reunion!!!!

#### Schedule for the Spearman All-School Reunion, July 3, 4, 1981

Registration at the High School July 4th at 9:30 a.m.; Assembly in the auditorium at 10:30 a.m.;

Barbeque at noon in the cafeteria; Reception at 7:30 p.m. at B&B Farm Industries Bldg., and dance at 9 p.m.

The following individual class activities have been planned:

Classes of 1922 thru 1934--The upstairs art room at the Hansford County Library Friday and Saturday afternoon.

Class of 1931--The Home Demonstration Club Bldg., Saturday afternoon.

Class of 1935--Fellowship Hall of Methodist Church Friday at 7 p.m.

Classes of 1936 & 1937--B&B Farm Industries Bldg., Friday at 7:30 p.m.

Class of 1938--Hospitality Room of First State Bank Friday at 7:30 p.m.

Class of 1940--The P.A. Lyon, Jr. residence Saturday afternoon after the barbecue.

Class of 1941--The Frances Cudd home, 717 Gibner Drive at 7 p.m. Friday evening.

Classes of 1942 & 1944--The Lloyd Buzzard home Friday evening at 7:30 p.m. A light buffet will be served.

Class of 1945--Saturday afternoon at the Roy L. McClellan home.

Class of 1946--The Sheildknight Bldg., Saturday afternoon from 2 - 4.

Classes of 1948, 1949, 1950 & 1951--A picnic at the Joel Lee Lackey Ranch Friday at 7:30 p.m.

Class of 1954--The Meeting room of the Nursanickel Motel Saturday afternoon from 2 - 5.

Class of 1955--Front room upstairs at Hansford Library Friday at 7 p.m.

Class of 1956--plans pending

Classes of 1961, 1962, 1964, 1965 & 1966--A picnic at the Steve Mathews Ranch Friday evening.

Class of 1966--The Loyall Turner farm Saturday afternoon at 3 p.m.

Class of 1967--The Glen Bloodgett farm Friday evening.

Class of 1968--Saturday afternoon at Busters Dusters.

Class of 1971--Friday night party at the County Barn.

Class of 1973--Picnic at Womble Park Saturday evening at 6 - 8:30 p.m.

Class of 1974--At Lynn Sheets barn at 8 p.m. Friday evening for cokes & chips; Saturday afternoon at same place at 5:30 for hamburgers.

Class of 1975--The Steve Benton residence, 1103 Townsend at 7 p.m. Saturday.

Class of 1976--The L.C. Owens residence, 1017 Wilmeth Drive at 7:30 p.m. Friday.

Class of 1979--Roy Flowers' home, 12 Glover Place, Friday at 7:30 p.m.

## 4th of July Fun Run Planned

A 4th of July YMCA Fun Run is being planned. Starting time is 8 a.m. with registration beginning at 7:15 a.m.

Contestants will start at Thriftway Grocery. Entry Fee is \$5.00. Proceeds will go to the YMCA. There will be a 6.0 mile run and a 3.2 mile run. The divisions for men and

women may vary, according to the number of entrants in each division.

Divisions for men in the 6 mile run and the 3.2 mile run are 0-20, 21-30, 31-40, 41-50, and 50 up.

The divisions for women in the 3.2 mile run are 0-20, 21-30, 31-40, 41-50, and 50 up.

The women 6.0 mile run will be open.

## ENTRY BLANK

Entry Blank for the Fun Run:

Name	Age
Address	
Circle one:	
Men	Women
3.2 Run	3.2 Run
6.0 Run	6.0 Run

Send your registration form, along with your \$5.00 entry fee to Stephanie Brock, 206 Main, Spearman, Texas 79081.

Nell Patterson of the Housing Committee for the All-School Reunion reports that all motels are full and housing is needed for those coming to reunion. If you can open your home to some of these ex-students, call her at 659-2144.

## EAGLES Summer FunDays SALE

**JUNE**

MX 80G	\$ 549.
MX 100G	\$ 699.
MX 175G	\$ 939.
YT 125G	\$ 939.
DT 125G	\$ 995.
DT 175G	\$1099.
XT 250G	\$1379.
TT 500G	\$1749.
YZ 250F	\$1495.
YZ 400F	\$1595.
SR 250G	\$1299.
XS1100F	\$3295.

**YAMAHA**  
THE WAY IT SHOULD BE.

**MANY OTHER SPECIALS ALSO!**

### EAGLE CYCLE SHOP

717 S. Main  
435-3594  
Perryton, Texas

## Calling All FARMERS...

See the TR™ 85 and TR™ 95 Twin Rotor Combines with ...

### NEW 970 Grain Headers - 24 & 30 FT

- 24" Diameter Auger
- Dual Sickle Drive
- Adjustable Cutter Bar
- Plus Many Other Options

**NOW IN STOCK!**

**Come by for an extra special deal!**

## SPERRY NEW HOLLAND

Hwy. 15 West & Loop 143 N.      OF PERRYTON

435-5473

