



The Hansford Plainsman



VOLUME 6, NO. 19

THE HANSFORD PLAINSMAN, SPEARMAN, TEXAS 79081

SUNDAY, MARCH 9, 1975

County Livestock Show Is Scheduled

The annual Hansford County Livestock Show will be held March 14 and 15, 1975 at the Hansford County Agricultural-Recreation Building in Spearman.

The show schedule is as follows: Friday, March 14 at 2 p.m., lamb show followed by the hog show. Saturday, March 15 at 10 a.m. will be the steer show followed by the heifer show.

The auction sale will begin at 6 p.m. Saturday.

The Hansford County Stock Show Board would like to welcome everyone to the two day show and sale and would also like to thank all the businesses and individuals who have supported our young men and women in the past years by buying animals, trophies and in other areas and to invite them to attend again this year. They urge other businessmen, and individuals to come out and watch the show and support our young people in any manner they might chose.

Members of the Hansford County Stock Show Board of Directors are Chairman

Dr. Tom Latta, Vice-Chairman, Bob Ferguson, Secretary-Treasurer, Joe VanZandt, and John Armes, Carl Cooper, Lynn Davis, Ed Dear, Mike Garnett, Jimmy Greene, Monty Harbour, J.C. Harris, Buddy Murrell, Sonny Patterson, Frank Pittman, Charles Reid, Phillip Reiner, Troy Sloan, Raymond Walker and Jerry Williams.

Advisors to the board include Herman Boone, Joe VanZandt, Burt Williams of Spearman and Oran Burton of Gruver, Boone, Williams and Burton are ag teachers and VanZandt is the county agent.

1975 Hansford County Stock Show trophy donors were Grand Champion Lamb-Dairy Queen; Reserve Grand Champion Lamb-J.L. Brock Ins. Agency; Reserve Grand Champion Hog-Spearhead Pork Producers; Showmanship Steer-First State Bank; Champion Gilt-Davis Oil Co.; Reserve Champion Gilt-Equity Elevators; Grand Champion Steer-Gruver State Bank; Reserve Grand Champion Steer-Caprock Industries, Inc.; Grand Champion Hog- Hansford Co. Parts & Supply; Showmanship-Lamb-Double D Ag Center; Showmanship- Hog-Gruver Lumber Co.; Champion Heifer-Gruver Tractor & Equip.; Reserve Champion Heifer-Gruver Farm Supply.

Sunday Dinner guests in the home of Mr. and Mrs. Jeff Hawkins and Jana Jo was Mrs. E.N. Wilbanks of Spearman, Mrs. Loretta Boyd and Mrs. Joyce Shockley, both of Amarillo and Marcia Larson and Vicki Crawford, both of Canyon.



Janzen Wins Scholarship

Randy Janzen, a senior at Spearman High School won the \$250.00 scholarship given by the North Plains Water Conservation District, Dumas, Texas for the best essay on "Why the Importance of Water Conservation." 2nd place winner of the \$150.00 scholarship was Darcy Henry, a student at Gruver High School. The awards will be presented by Gaston Wells, President of the Board of Directors of the North Plains Water District. The presentation will be broadcast by Channel 4 KAMR TV Amarillo on the Farm and Home show.

Library News

The Happy Homes Home Demonstration Club has donated to Hansford Library two books on Abortion. They are "Abortion and Social Justice" by Thomas W. Higgers and "Handbook on Abortion" by Dr. and Mrs. J.C. Willike.

Other new books at the library are Kite Craft, the history and processes of kitemaking throughout the world by Lee Scott Newman and Jay Hartley Newnan. There are 357 photographs, 84 drawings and 18 color plates in this book; and "Kissinger" by Marvin and Bernard Kalb, which is an a study of this singular personality and of the world events that he helped shape. The authors have spent years studying and traveling with the secretary, have seen the public and the private Kissinger as few other men have, and their lively, shrewdly incisive work gives a penetrating portrait of his life and career.

The copy machine has had a complete overhaul and is now working just beautiful. Don't forget we have tape players that can be checked out to people of 18 years and over. Due to the cost of these machines we cannot check out to children unless they are under the supervision of their parents. The Master Lens (Magnifier) is back and can be checked out also. If you have trouble reading books, papers and whatever this can help you. There is no charge for the Master Lens or the Tape Players.

Two Fire Calls

Thursday

Spearman's Volunteer Fire Department made quick work extinguishing two fires Thursday.

The first call was at 12:30 p.m. at the Jimmy Shield-knight farm. A barn had caught on fire but was quickly put under control by the fire department despite high winds. Damage was kept to a minimum to the barn.

About 4:30 p.m. firemen were called to a residence at 419 S. Hazelwood where a fence was on fire. This fire was also quickly extinguished.

Hospital News

Patients in Hansford County Hospital are Walker Tyler, Clarence Pettit, Jo Carrell, Mattie Forrest, Blanche Fuller, Marilyn Groves, Jackie Sparks, Opal Stockdale, Florene Devers, Mary Cowan and son.

Dismissed were Clyde Tice Jr., Ronald Diggs, Joe Reed, Ella Parke, Juliet Boyd, Lemmie Russell, Emma Lopez, Roxanne Schenk and daughter, Ethel Cookston, Juanity Brillhart, Ashby Cookston, Ophelia Vela and Nina Evan.

Market

Wheat	\$3.34
Corn	2.52
Milo	3.34

Spearman's Davis Signs With Buffs

Scatback Donnie Davis, who led Spearman to the Texas Class AA finals in 1974, has signed a national letter of intent to attend West Texas State University on a football scholarship.

Head coach and athletic director, Gene Mayfield, made the announcement Thursday. Davis' signing brings to 20 the number of high school stars announced as casting their lot with the Missouri Valley conference Buffaloes.

Davis led District 1-AA in rushing, total offense and scoring for the league champions. He carried the ball 131 times for 1,967 yards, an average of 8.6 per carry. He scored 19 touchdowns and added three,

two-point conversions for a 120-point total.

After losing their season opener, coach Greg Sherwood's Lynx won 13 straight games before falling to Newton in the Class AA finals.

Davis' biggest asset is his speed. The 5-10, 158-pounder has been timed in 4.4 seconds over 40 yards and he won a special high school 60-yard dash during a WT indoor meet recently in 6.3.

Davis played both tailback and safety for Spearman but Mayfield indicated that he would be primarily tried at running back in the Buffaloes wishbone offense.

Davis is the second Spearman gridders to sign with WT. Earlier this year, the Buff's signed Don Cooper, a 6-2, 210-pound guard.

Little League Officers Elected

Signup and Troutout Dates Set

New officers were elected Thursday evening at the organizational meeting of Little League held in the hospitality room of the First State Bank.

Officers elected were president Trudy Goodheart; 1st vice president-Bob Driscoll; 2nd vice president-J.L. Brock; secretary and treasurer-Nancy Phillips; player agent-Alien A Ford; umpire in Chief-Clay Fewell.

Boys and girls age 8 thru 12 must sign up between March 17 and 22 at Cates Men & Boys Wear on Main Street. Troutouts will be held March 24 & 25 at 4:30 at Little League Park.

Practice will begin on April 7th with the first games scheduled for April 21. The Little League season will end June 13.

Anyone (men and women) interested in coaching a Little League team is asked to call the president Trudy Goodheart. Several teams are without coaches at the present time. Teams needing coaches are the Yankees, Sox, Cardinals, and Pirates. Those team who have coaches include Jets-Bob Speck and Albert Clark; Indians-Calvin Bodey; Astros-Eugene Yarbrough; Dodgers-James Umphress; and Braves-Ken Guthrie.



TRUDY GOODHEART-- is the newly elected president of Little League for Spearman. Mrs. Goodheart was president of the Little League Women's Auxiliary last year and has been very active in Little League for several years along with her husband, Earl.

Ellsworth Files For Re-election

Aron Ellsworth filed for city councilmen late Wednesday joining five others who had filed previously. Others who are seeking the three positions open on the council are incumbent J.K. Hicks, Don Denham, Jim Nicholson, James Brown and James Jackson. Terms expiring on the council are those of Ellsworth, Hicks and Dan Desimone.

A check with the business office at the high school shows that no one else has filed for the school board. Incumbents Bill Partridge and George Jackson have filed for re-election.

In the county school board race, Eril Pittman and Robin Giblin have filed for Precinct 4, Miles Sedje for Prec. 3 and a petition was presented for C.J. Renner for Precinct 1.

Renner has not been contacted at this time and it is not known whether or not his name will appear on the ballot. The terms up for election are for 2 years. Other members of the county school board are chairman Freeman Barkley and Charles Brillhart of Precinct 2.

Absentee voting will be conducted at city hall and the school business office from March 17 to April 1, 1975.

Those who may vote absentee include any qualified voter of Texas who expects to be absent from the county of his or her residence on the day of election or who because of sickness, physical disability or religious belief cannot appear at the polling place in the election, may cast his vote absentee

4th Annual Missionary Conference Set

The First United Methodist Church has scheduled its 4th Annual Missionary Conference for March 21-22-23. Rev. Fred Yazzi and Rev. William Mayo will be at the local church for the conference.

More details will be forthcoming next week on the conference.

Free Bar-B-Q & Meeting

Area farmers are invited to a free Bar-B-Q and cultural meeting on corn and sorghum production Mon., March 10 at 7:30 p.m. at the Hansford County Barn in Spearman.

The meeting is sponsored by DeKalb Ag Research, Ceiba-Geigy, Davis Oil, Sparks Bros., Buster's Duster's, and Tom Penn, Inc.

George Services Held Saturday

Services were held at 3 p.m. Saturday in the First United Methodist Church of Gruver for Mrs. Mary Jo George, 55, who died Thursday in Hansford Hospital. The Rev. Milton Jochev, pastor, and the Rev. John Vavroch officiated. Burial was in Gruver Cemetery by Boxwell Brothers Funeral Home of Spearman.

Mrs. George was born in Lockney and had spent most of her life in Gruver. She was a member of the First United Methodist Church of Gruver and the Gruver chapter of the Order of the Eastern Star. She married Clifford George in 1938 in Borger.

She is survived by the widower, Clifford; three daughters, Mrs. Joanne Thompson of Gruver, Mrs. Sandra Colzer, Chocataw, Okla., and Mrs. Larice Daniel of Longview; and six grandchildren.

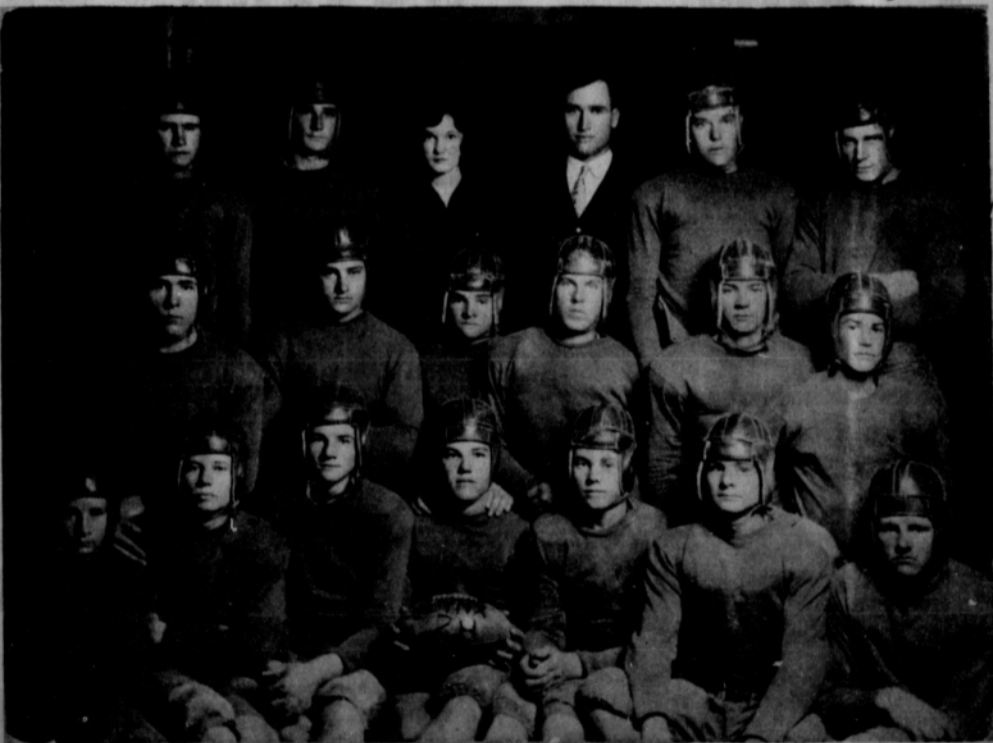
City Council Agenda

- REGULAR CITY COUNCIL MEETING, MARCH 10, 1975
1. Pledge of Allegiance
 2. Invocation
 3. Minutes of February 24, 1975, Regular City Council Meeting
 4. Park Board - Mrs. Richard Courzins
 5. Discussion of Refuse and Sewer Charges - Mrs. James Thomas
 6. Meter Deposit Policy
 7. Resolution to State Highway Department, Regarding Improvements to 560 and 569 Farm to Market.
 8. Discussion of Water Well Work
 9. Report on P R P C and Other Governmental Units
 10. Report on Status of High Plains Gas Case Before The Railroad Commission
 11. Purchase of Solid Waste Containers.
 12. Monthly Fire, Ambulance, Municipal Court, Police & Animal Control Reports
 13. Discussion of Garner's Building
 14. Bills Payable & Cash Position
 15. Executive Session - Personnel
 16. Other
 17. Adjourn

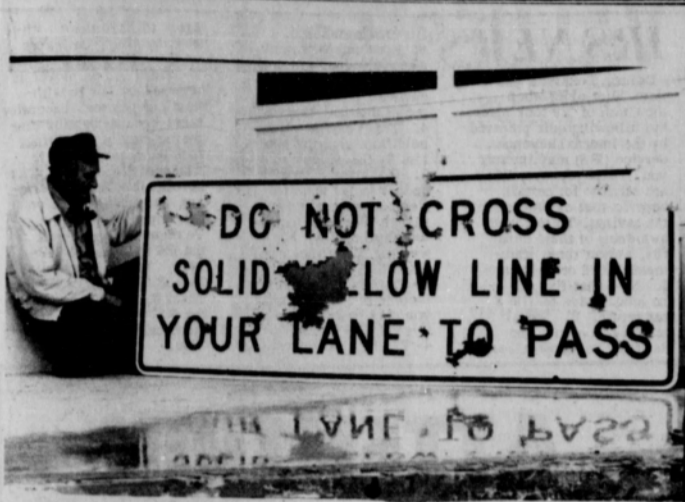
Morse Incumbents File

Two men have filed for election to the board of trustees for the Morse Independent School Board according to Supt. of School's Wallace Price. They are incumbents Charles Reid and David Reid

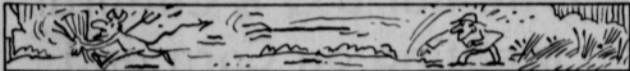
The election will be held on April 5, 1975 at the Morse school in conjunction with the county school board election. Eril Pittman and Robin Giblin have filed for the county school board post from Precinct 4.



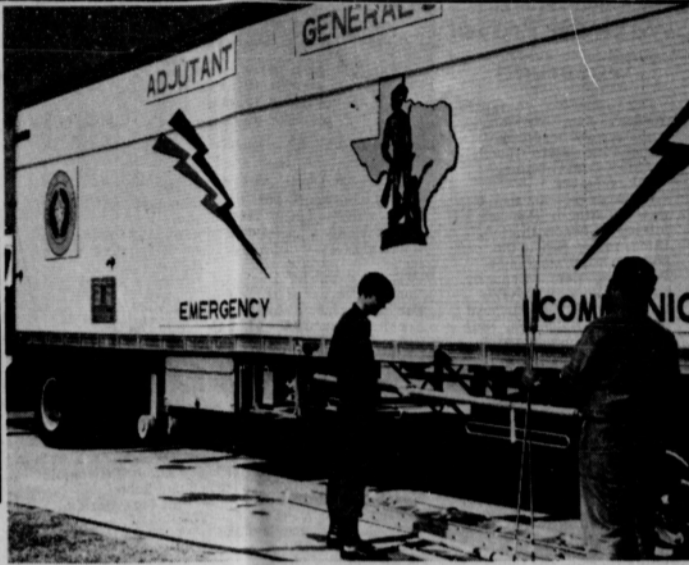
SPEARMAN FOOTBALL TEAM OF 1928---From left to right. Back Row--W.R. Greever, Wilson Buchanan, Earline Darrs, Billy Jarvis, Wesley Jenkins, and Monroe Buchanan. Second Row--Randolph McClellan, Garland Thorne, Carl Owens, Clarence Gill, Roy Nollner and Thomas Tindell. Bottom Row--Frances Reed, Harold Collier, Leo Moore, Gorden Parks, Ikey Vernon Claude Owens, and Raymond Kirk.



NEITHER WOODPECKERS nor erosion did it. The discovery of more than 50 shotgun shells nearby alleges that vandals were responsible for this barbarism. Examined above by Gordon S. Taylor of Pampa, Highway Department maintenance foreman for Gray County, this sign was located on State Highway 273 about 1 1/2 miles south of McLean. Besides being a waste of more than \$7 in shotgun shells the vandalism cost taxpayers more than \$100 in labor and materials to replace the partially illegible signboard. A motorists' inability to read the sign could contribute to an accident. Such 3 x 8 foot traffic regulatory signs are made of plastic-faced marine plywood 5/8ths of an inch thick.



In Brittany, if a worker in the fields sees the hay lifted by the wind, he throws a knife or a haying fork at it, otherwise, the Devil will make away with it.



Texas Guard Communications Exercises Set—This communications van, operated by the State Adjutant General's Department, will be in the Panhandle, High Plains and West Texas during the spring to train members of the Texas State Guard in emergency communications procedures. Training sessions are scheduled for Amarillo, Lubbock, El Paso and Midland.

Special Emergency Communications Training Set

AUSTIN—Major General Thomas S. Bishop, Adjutant General of Texas, announced today that special emergency communications training is to be made available to Texas

State Guardsmen in the Panhandle, High Plains and West Texas. Bishop, who heads the National Guard and State

Guard in Texas, said the Adjutant General's Department emergency communications van would be sent to Amarillo on March

8, Lubbock on March 9, and El Paso on April 27. It will be in Midland on May 3.

State Guardsmen in the Austin area will be utilized during each period to operate the Adjutant General's communications center at Camp Mabry in the Capital City.

Major General William O. Green, the State Guard's commander, said Guardsmen to receive training and practice in operation of the equipment will be drawn from units in each geographical area. The purpose of the project is to establish a pool of trained communications personnel in each area of Texas should the emergency van be needed in the event of a major disaster or other serious emergency.

Similar programs were conducted during the summer in Dallas, Fort Worth, Beaumont, Houston, Corpus Christi, and the Rio Grande Valley.

Green said the Texas State Guard, unlike the National Guard, is totally under State control. Small State Guard units exist at each Army National Guard Armory, and have a mission to reinforce or replace the Texas National Guard, and to assist local authorities in emergencies not serious enough to require mobilization of National Guard units.

Members of the Texas State Guard furnish their own uniforms and ordi-

arily serve without pay. Guardsmen participating in the communications training will each receive one day's military pay to defray their travel expenses.

Funds for the program were appropriated by the Texas Legislature.

OF HEALTH

FOR DIETS: VITAMIN E

If you have always eaten foods rich in vegetable oils or polyunsaturated fats, you may need a vitamin E supplement.

Laboratory experiments with animals and an experimental study involving man, have shown that the dietary need for vitamin E increases as one increases his or her intake of polyunsaturated fats.



Increasingly, doctors are recommending diets high in polyunsaturated fats, rather than animal fats. This could necessitate an increase in the need for vitamin E.

In such cases, note scientists from Hoffmann-La Roche, a leading vitamin producer, vitamin E supplements may be advisable following the change in diet.

TG & Y SEW for FABRIC SHOPS SPRING



100% POLYESTER
DOUBLE KNIT
58-60" Wide

Choose from the season's latest colors and weaves. Do exciting things with knit. Ideal fabric for every look. All easy care, no iron first quality on full bolts. Machine wash, tumble dry.

REG. \$1.57 YARD

\$1.27
Yard

EYELET EMBROIDERY
BATISTE
44-45" Wide

White only. Get sewing now for spring. Perfect for blouses, dresses, trim and lounge wear. 65% Polyester and 35% Cotton. Machine wash. Permanent press. Save now on another great buy.

2 YARDS FOR \$5.00



McCalls #4360

McCalls #3485

SHEER DELITE PRINTS

50% Fortrel® Polyester, 50% cotton. Machine wash, tumble dry. Great for dresses or blouses. 45" wide.

\$1.59
Yard

100% Polyester
DOUBLE KNIT
Flat Fold

REG. \$1.97 YARD

\$1.27
Yard

CALICO MAGIC PRINTS

Permanent press lightweight print. 100% Cotton. Machine wash, tumble dry. 45" wide.

\$1.69
Yard

DANCHECK WOVEN GINGHAM

45" wide. 65% Celanese® Fortrel® Polyester, 35% Cotton. Machine wash, dry. Permanent press.

98c
Yard

TG&Y 521 S. HWY. 207 SPEARMAN
OPEN

9-9 MONDAY - SATURDAY

We Will Be Happy To Refund Your Money If You Are Not Satisfied With Your Purchase

A great day for savers. Everyday.



Great Day Savings Accounts

Save at Everybody's Bank, and your money rises with the sun every day! We pay interest in a great big way here—high interest, compounded daily. But that's just one reason our savings plans are Great Day accounts. Greater days lie ahead, if you keep adding to your bundle. Your regular deposits plus our day-by-day interest assure a brilliant future. And today's a great day to get started!



SPEARMAN, TEXAS 79081



'74 Ag Receipts Down

The record books will show 1974 as a "not so good" agricultural year in Texas but there were some bright spots, according to current estimates of agricultural cash receipts by the Texas Agricultural Extension Service.

"Our estimates show that cash receipts from agriculture will be down about \$900 million to \$5.6 billion in 1974 compared to the record \$6.5 billion in 1973," points out Charles Baker, Extension Service economist.

"The big drop, to nobody's surprise, is in total cash receipts from livestock. Here our estimated cash receipts total about \$2.5 billion, down more than \$1.1 billion from 1973. The drop in cash receipts from beef accounts for almost all of this decrease."

Cash receipts from poultry and poultry products are estimated down more than \$100 million.

Baker's figures show more than \$3 billion in total cash receipts from all crops, an increase of more than \$200 million over 1973 totals. Feed grains--corn and sorghum--account for most of this increase. Higher receipts are also estimated for rice, soy-

beans, peanuts, pecans, flax, sugarcane, sugar beets and hay while cotton took the sharpest plunge as far as crop receipts are concerned. Cash receipts from wheat are also down.

Agriculturally related income is estimated up more than \$175 million over 1973. This includes cash receipts from timber, fish farming, hunting and fishing, horses and other types of farm-based recreational activities, points out Baker.

"As everybody knows by now, the plunge in cattle prices is the main reason for the big drop in cash receipts from livestock," explains Baker. "On the crop side, cotton was hammered by both low prices and terrible weather conditions."

What does 1975 hold in store for Texas agriculture?

"Much depends on the overall economy of this country and the market situation for agricultural commodities," says Baker. "Crop production should be up except for cotton. Livestock production should also continue at high levels although pork and poultry production may be down some."

TG&Y

family centers

Prices good thru Wed. 521 S. Hwy 207 Spearman

GOLDEN "T" ROTARY PUSH MOWER



22" blade, 3 1/2 H.P. Briggs & Stratton® engine, featuring easy recoil start. Manual 4-position cutting heights. 8" wheels, chrome "T" style handle and mounted throttle. Action-Gard safety features!

\$7988 EACH

#W0905

GOLDEN "T" SELF-PROPELLED LAWN MOWER



22" blade, 3 1/2 H.P. Briggs & Stratton® engine, with easy rewind starter. Deep deck with safety side discharge. 4-position cutting height. "T" style handle with handle-activated front wheel drive.

\$11988 EACH

#P2605

DUPONT LUCITE WALL PAINT

Thick, dripsless latex paint in lively decorator colors. Never needs stirring.

\$799 GALLON

DUPONT LUCITE HOUSE PAINT

Built-in primer. Dries to tough protective sheet. Won't let weather in, but lets moisture out!

\$899 GALLON

Save on these great LUCITE® Paints!

- Excellent coverage
- Dries fast
- Soap and water cleanup

EASTER GRASS

2 1/2 oz. bag, non-flammable. Comes in Green, Orchid, Pink or Yellow.

BUY NOW 43¢ PKG.

BUNTE JELLY BIRD EGGS



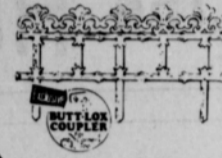
Great for filling Easter baskets. 10 Oz. Bag.

47¢ BAG

HOME IMPROVEMENT VALUES for SPRING!

OPEN MON. THRU SAT. 9 - 9

NORTH STATES® BORDER FENCE



Attractive wrought iron styling. Durable white or black polystyrene. Safe... no sharp points. 36" sections with "But-Lox" couplers.

67¢

Black & Decker®

ELECTRIC GRASS TRIMMER

#8200
DOUBLE INSULATED. Built-in cord connector, full circle blade guard. 3/4" blade.

\$1088 EACH

Black & Decker® Electric Grass SHEARS

Quick-charge... Recharges in 3 to 5 hours. Automatic locking safety switch.

#8272 Recharger included.

\$2499 EACH

Texas Receives New Cancer Research Grants

Dr. Richard H. Jesse, President of the Texas Division of the American Cancer Society, announced today that 12 more Texas physicians have been granted American Cancer Society research grants. The 12 new grants, effective January 1, 1975 total \$685,916.

New grants have been made to: Dr. Janet S. Butel, \$8,087; Dr. William A. Coty, \$22,145; Dr. Anthony R. Means, \$50,000; Dr. Sheldon M. Steiner, \$124,984, all of Baylor College of Medicine, Houston; Dr. Myron K. Jacobson, \$86,951, North Texas State University, Denton; Emanuel J. Murgola, \$68,750; Dr. Naguib A. Samaan, \$30,424; Dr. Grady F. Saunders, \$29,170; Dr. Evan M. Hersh, \$104,132; all of M. D. Anderson Hospital, Houston; Dr. Guy A. Thompson, \$14,184 and Dr. James R. Walker, \$80,471, from the University of Texas at Austin; and Dr. Marvin Stone, \$66,618, University of Texas Southwestern Medical School at Dallas.

ed to: Dr. Vance W. Bryan, Jr., Baylor University Medical Center, Dallas; Dr. Dennis R. Carlyle, University of Texas M. D. Anderson Hospital, Houston; Dr. Herman J. Cestero, University of Texas Southwestern Medical School, Dallas; Dr. Robert Gary Gagliano, University of Texas Medical Branch, Galveston.

Also among the fellowships were those awarded to: Dr. Linda Anne Anderson Hayman, Baylor College of Medicine, Houston; Dr. Demetrius F. Loukas, Jr., University of Texas Medical Branch, Galveston; Dr. James D. Richardson, University of Texas Health Science Center, San Antonio; and Dr. Jin-Tze Wu, University of Texas Medical Branch, Galveston.

Complaints Aired About "Civil Service" Schools

Complaints and inquiries are being received from local residents concerning the current operations of so-called "Civil Service" schools. Mr. William H. Rima, Director of the U.S. Civil Service Commission's Dallas Region, said today.

No "Civil Service" school, Mr. Rima said, is connected with the Civil Service Commission. No branch of the Federal government gives coaching courses in preparation for civil service examinations or has agents who offer such courses.

Also, no school can obtain special advantage for its students in civil service examinations or appointments. Schools that give special preparation for civil service examinations are not given any advance or special information that is not available to the general public without cost.

No fee is charged for securing Federal employment. It is not necessary to secure the services of a "Civil Service" school or complete a correspondence course to compete in civil service examinations.

Any person in the North Texas area who wishes information about civil service positions may call (toll free) 1-800-492-4400. Civil service job information and pamphlets will be furnished on request.

One in three preschoolers in the 1968-69 Texas Nutrition Survey was at significant nutritional risk. Source: "The Darkest Side of Childhood," published in 1974 by the Texas Department of Community Affairs, Office of Early Childhood Development.

6 Pc. TOOL KIT

6 Pieces: 2 regular screw drivers, 1 Phillips screw driver, 1 punch, 1 master handle, 1 crescent wrench, and plastic carrying pouch.

FISHERMAN'S PLIERS

6" Long-nosed. Fine quality drop-forged steel, polished nickel finish. By Dura-Pak®.

SNELLED HOOKS

Bait holder and regular hooks, with nylon snells. Assorted popular sizes, by Dura-Pak®. 72 ct. pkg.

SWIVELS & SNAP SWIVELS

Assorted brass barrel swivels and snap swivels in most popular sizes, by Dura-Pak®. 30 ct. pkg.

CRAPPIE JIGS & SPINNERS

JIGS: Equally deadly on pan-fish and game fish alike. Assorted popular colors, by Dura-Pak® 7 ct. pkg.
SPINNERS: Bright, Flashy, Tantalizing fish catchers. Assorted sizes, by Dura-Pak®. 6 ct. pkg.

88¢ EACH YOUR CHOICE

ASHBY® 16 FT. EXTENSION LADDER

Aluminum with strong 1 1/2" V-shaped, flat surfaced rungs. Interlocking I-beam construction. U.L. listed. 13' useable length. 200 Lb. duty rating.

\$1888 EACH Limit 1

ASHBY® 5-FT. STEP LADDER

Aluminum with 3" side rail and steps. Channel construction on front and rear legs. Utility shelf slotted to hold tools. Folds flat. U.L. listed. 200 Lb. duty rating.

\$1188 EACH Limit 1

#8116 #0105

We Will Be Happy To Refund Your Money If You Are Not Satisfied With Your Purchase

Bamboo EASTER BASKETS

Make up your own Easter Baskets for the kids this year... make great gifts!

ROUND 8" x 7" x 4" 49¢ Ea.

OVAL 8" x 3 1/2" 59¢ Ea.

UMW NEWS

The Susannah Wesley Circle of the U.M.W. met Wed., March 5th at the First United Methodist Church.

TEXAS TALK



By Vance Snider

CBS Television in their regular program called '60 Minutes' took some time last month to talk about grass-fed cattle.

659-2506 Hi-Plains Auto Supply Spearman

Booker.

The Study on Jonah was led by Mrs. Dennis Nelson. Those present were Mmes. Stan Hudson, Dennis Nelson, Jack Lasater, Ed Garner, Monty Blackman, Gary Woolley, Jimmy Sheldknight, Kerr Guthrie, Larry Holt and Dick Cousins.

The Mary Martha Circle of the U.M.W. met Wed. March 5th at the First Methodist Church.

Chairman, Mrs. J.B. Buchanan presided over the meeting. The meeting was opened with prayer by Mrs. Owen Mobley.

Mrs. Buchanan presented the thought for the day. The lesson on the Book of Jonah was led by Mrs. Bert Sheppard.

Girl Scout Leaders Meet

The Girl Scout Leaders Neighborhood meeting was held Tuesday, March 4th in the Girl Scout House with President, Mrs. Johnny Crawford presiding.

Mark Twain once was asked by an admirer if he believed in luck. 'Certainly,' he said, 'How else can you explain the success of those you detest?'

Week Of Prayer Observed

The Baptist Women-Baptist Young Women met Monday, Tuesday, and Wednesday at the First Baptist Church for the Annie Armstrong Week of Prayer.

Monday's program theme was 'Hearing is Hope-Rejoicing for Reconciliation.' Ladies taking part in the program were Mesdames: Don Jones, Marcus Connelly, Bobby Vallery, Woodville Jarvis, Jimmy Kunkel, Boyd Dean, John Hutchison, Neil Pack, Russell Pogue and Lowell Denman.

Those present Monday were Mesdames: John Hutchison, Ed Hutton, Carl Kizzlar, Arthur Addison, R.E. Vaughn, Marcus Connelly, A.F. Loftin, Charles Eaton, Glen Hiller, Boyd Dean, F.J. Hoskins, Mable Edwards, Russell Pogue, Jerry Stafford, Neil Pack, Bobby Vallery, Woodville Jarvis, Lowell Denman, Roscoe Nelson, Jimmy Kunkel, and Don Jones.

Tuesday's program theme was entitled 'Hearing is Hope Salvation For Everyone.' Those taking part in the program were Mesdames: Don Jones, Jerry Stafford, Mable Edwards, Arthur Addison, R.E. Vaughn, Bruce Womble, L.L. Anthony, Charles Eaton, Glen Hiller, and Woodville Jarvis.

Those present Tuesday were Mesdames: Dennis Stowers, Bruce Womble, Carl Kizzlar, Arthur Addison, R.E. Vaughn, L.L. Anthony, A.F. Loftin, Charles Eaton, Jerry Stafford, Glen Hiller, Bob Bailey, Marcus Connelly, Lowell Denman, Mable Edwards, Roscoe Nelson, Russell Pogue, Woodville Jarvis and Don Jones.

Wednesday's program was entitled 'Hearing is Hope: For Eternity.' Those presenting the program were Mesdames: Don Jones, Marcus Connelly, Jerry Stafford, F.J. Hoskins, Dennis Stowers, Russell Pogue and Gary Gumfory.

Ladies attending Wednesday's meeting were Mesdames: F.J. Hoskins, Fred Holt, A. F. Loftin, Ed Hutton, Gary Gumfory, Arthur Addison, R.E. Vaughn, Glen Hiller, Lowell Denman, Carl Kizzlar, Dennis Stowers, Bobby Vallery, Boyd Dean, Russell Pogue, Marcus Connelly, Woodville

Calendar grid for March 1975 showing days of the week and dates.

Calendar Of Events

MONDAY, MARCH 10 Junior Troop #76 - Girl Scout House Den #1 - Home of Mrs. Burton Schubert Rotary Club - Martin's Steal Garden Dahlia Flower Club - Home of Mrs. A.F. Loftin Hansford Lodge #1040 A.F. & A.M. - Hansford Lodge Hall

TUESDAY, MARCH 11 Den #2 - Home of Mrs. Dwight Sumner Den #3 - Home of Mrs. Gee Jenkins Tuesday Bridge Club - Martin's Steal Garden Union Church Missionary Ladies - Union Church Girl Scout Leader's Neighborhood Meeting - Girl Scout House

WEDNESDAY, MARCH 12 Junior Troop #3 - Girl Scout House Mary Martha Circle of the U.M.W. - First United Methodist Church Baptist Women Study Group - Home of Mrs. F.J. Hoskins Baptist Young Women - Home of Mrs. Bruce Womble Library Board Meeting - Library Board Room Spearman Presbyterian Women - First Presbyterian Church

THURSDAY, MARCH 13 Den #5 - Home of Mrs. Earl Hillock Brownie Troop #120 - Girl Scout House Spearman Jaycees - County Barn Rho Rho Sorority - Home of Mrs. Phil Sanders XI Zeta Upsilon - Home of Mrs. Roy Bulls

FRIDAY, MARCH 14 Brownie Troop #65 - Girl Scout House Den #4 - Home of Mrs. Larry Cross Spearman Home Demonstration Club - Home of Mrs. B.J. Garnett Friday Night Bridge Club - Home of Mr. and Mrs. Roy Flowers Arts and Crafts Guild

Jarvis, Mable Edwards and Don Jones. The Baptist Women will meet March 12th in the home of Mrs. F.J. Hoskins.

Jaycee Wives Club Met The Spearman Jaycee Wives Club met Thurs. March 6th in the home of Mrs. Rusty Tindell.

Ruth Class Has Social The Ruth Sunday School Class met Tuesday, March 4th in the home of Mrs. Willie Wallis. The opening prayer and devotional was given by Mrs. Joe Novak.

IRS NEWS

Dallas, Texas--If you were 19 or older when the Crash of '29 took place, the following quiz prepared by the Internal Revenue Service (IRS) may interest you. Taxpayers over 65 are eligible for certain benefits that can mean tax savings.

elect to have taxes withheld by giving the payer an IRS Form W-4P; 5 - TRUE (An employer is required by law to withhold and pay social security taxes even though the employee may be receiving such benefits already.)

ATTENTION FARMERS! You Are Invited To a Free Bar-B-Q & Cultural Meeting on Corn and Sorghum Production, Monday, March 10 at 7:30 P.M. Plan To Attend. Hansford County Barn, Spearman SPONSORED BY: DEKALB AG RESEARCH, CEIBA-GEIGY, DAVIS OIL CO., SPARKS BROS., BUSTER'S DUSTERS & TOM PENN INC.



The Old Rocking Chair has got the teacher, but these kindergarten students are really living it up at Spearman's kindergarten class. Teacher, Mrs. Lewis, and her class are typical of the kindergarten classes in the country.



Typical of our seniors this year are Cheryl Gibson, Kathy Garner and Mike Tucker. These fine students represent our graduating seniors and are typical Spearman High School products. They are great, and we are proud to recognize them during back-to-school week.

Baker & Taylor Drilling Company



We Don't Want To Get Bigger,

We Want To Get Better.

From the start to the finish the Spearman School system gives the quality education that is needed today.

We are proud of the local school system, including the faculty and other personnel needed to maintain the schools, and give our children the quality education needed to enrich their lives.

National Student Organization

Proud Past — Bright Future

One of the best examples of youth in action on the American scene today is the FFA, the national organization for students studying vocational agriculture in the public high schools. It is an organization run by the student-members under adult guidance.

Soon after vocational agriculture became a subject in many of the nation's high schools in 1917, instructors became aware of the need to provide practical training beyond the traditional classroom approach. Their idea was to make the instruction more interesting by making practical work experience, competitive livestock judging, and agricultural leadership development activities part of the instruction. Vocational agriculture instructors and students eagerly accepted the learn by doing principle.

The FFA was founded nationally in 1928 after similar organizations had started in several states. Right from the beginning, the FFA has stressed leadership, cooperation and citizenship—

all vital to success in modern agriculture. Today the FFA has a membership of over 450,000 with chapters in approximately 8,000 high schools throughout the nation. The organization has state associations in all states, except Alaska, and in Puerto Rico.

Vocational agriculture or agribusiness programs are funded in part by the National Vocational Education Acts through the U. S. office of Education, state departments of education and the local school systems. The FFA operates under a federal charter granted by an Act of Congress in 1950 (Public Law 740, 81st Congress). The charter provides for a national board of directors and a board of student officers elected from the membership.

FFA activities are specifically designed to be a part of the instructional program in vocational agriculture. Members learn through active participation how to conduct and take part in public meetings, how to speak in public, and how to take a leadership role in their school and community.

Each local chapter and each state association elects its own officers each year. In all cases the teacher of vocational agriculture is the advisor of the local FFA chapter and the State supervisor of agricultural education is the advisor of the state association.

FFA members have full opportunity to practice the principles of democracy in conducting the affairs of their organization by exercising their privilege to vote at chapter meetings, serve on committees, and otherwise assist in carrying on the work of their organization. Elected delegates to the state and national conventions, held each year, are asked to decide on major issues facing the organization.

Advancement through the degrees in the organization from the Green Hand through the Chapter Farmer, State Farmer, and American Farmer or Agribusinessman is based on achievement in farming, ranching, or agribusiness careers.

Nearly 8,000 public high schools have FFA chapters. One of the requirements for membership in FFA is that a student be enrolled in vocational agriculture. Students may retain their membership until they are 21. Competition is a key element of the FFA from the chapter to the national level. Each year the FFA recognizes more than 80,000 members at local, state and national levels for outstanding achievement in activities, related to agriculture career and leadership development.

Funds for awards are provided by more than 700 businesses, organizations, and individuals that sponsor FFA programs through the National FFA Foundation, Inc. The Foundation provides nearly half a million dollars to make the incentive awards available to deserving FFA members in the following award programs: Star Farmer and Star Agribusinessman awards, 19 agricultural proficiency awards, public speaking, national chapter awards, national chapter safety, Building Our American Communities Awards, national judging contests, establishment in agriculture awards, and through state initiated programs for improving agricultural leadership.

Recent food shortages in this country have reaffirmed the need for continuing a strong program of vocational agriculture and the FFA. Thus there is a bright future for trained agriculturists ready to serve America.

A boastful golfer on the pro tour, accused of magnifying his triumphs, explained, "I'm not a liar, sir. I just remember big!"

Consumer Market Report

Fewer trips to the grocery store will result in a lower food bill. Plan the shopping list carefully so that a once-a-week trip to the grocery store is all that's necessary, suggests Sally Springer, foods and nutrition specialist with the Texas Agricultural Extension Service, the Texas A&M University System. A thoughtful addition to a home sewn gift is a care label. The appropriate care label is available when the fabric is bought and can be sewn right into the garment, Margret Ann Vanderpoorten, clothing specialist with the Texas Agricultural Extension Service, The Texas A&M University System, notes.

Undesirable home environments characterized by neglect, abuse or continual parental arguments have contributed to the 450,000 alcoholic children in the U. S., according to Mrs. Ilene Miller, family life education specialist with the Texas Agricultural Extension Service, The Texas A&M University System.

If the purchase price for an item offered by a door-to-door salesman is \$25 or more, consumers have three days to reconsider even after signing a contract. Be sure the salesman offers the form to cancel, Mrs. Doris Myers, family resource management specialist with the Texas Agricultural Extension Service, The Texas A&M University System, says.

The amount of milk in all forms that U. S. consumers used last year was down 14 pounds from 1973, according to Mrs. Gwendolyn Clyatt, consumer marketing information specialist with the Texas Agricultural Extension Service, the Texas A&M University System. This drop from 556 pounds in 1973 to 542 pounds in 1974 is the sharpest drop in milk use since 1967. The per person use of low fat field milk and cheese is up, while the per person use of butter, whole milk, canned milk and nonfat dry milk is down.

Corn Symposium Scheduled

A corn production symposium has been set for March 11, 1975 at the Southwestern Great Plains Research Center at Bushlan. The program is scheduled to start at 1:15 p. m. and close shortly after 4:00 p. m. Topics to be discussed include cultural practices, hybrid selection, irrigation, weed control, and control and management of the southwestern corn borer and other insects. The symposium is sponsored by the U. S. D. A., the Texas Agricultural Experiment Station, the Texas Agricultural Extension Service and Texas A&M University in support of the goals of the Panhandle Economic Program.

Corn acreage has increased rapidly in the High Plains of Texas in recent years, and is contributing substantially to the agricultural income of the area. There are many producers planning to grow corn for the first time and previous producers who may be encountering new production problems.

This symposium has been planned help producers get off to a good start on the 1975 corn crop.

Some of the speakers include Dr. Kenneth Porter, Dr. Steven Wimer, Dr. John Shipley, Dr. Allen F.

Wiese, Norris Daniels of the Texas Agricultural Experiment Station, and Dr. Frank Petr, and Dr. Bill Clymer of the Texas Agricultural Extension Service.

YOUR HOME TEAM HAS OPENINGS.



In your local Army Reserve unit, you work with home-town people. You'll be serving your country, helping your community, and bringing home a good extra income.

THE ARMY RESERVE. IT PAYS TO GO TO MEETINGS.

Growing old is only a state of mind... brought on by gray hair, false teeth, wrinkles, a big belly short breath, and an all-over feeling of being constantly and totally pooped.



That scientific term "astronaut" is rather romantic in the original Greek. *Astōn* means star and *nautes* sailor, so an "astronaut" is one who sails among the stars.



Next meeting will be March 13th in the Girl Scout House.

Junior Troop #3 met Wed. March 5th in the Girl Scout House with leader Mrs. Curtis Davis. The girls worked on their Indian Lore Badges.

Troop elections were held D'Ann Cummings was elected Secretary and Kellianne Bynum was elected Treasurer.

Refreshments were served by Kellianne Bynum to members, D'Ann Cummings, Marietta Davis, Teresa Morrison and Laurie Swann.

Next meeting will be March 12th in the Scout House.

The Texas Egg Law is administered by the Texas Department of Agriculture. According to Agriculture Commissioner John C. White, enforcement assures purchasers that the eggs are labeled correctly and are of the quality stated on the package.

CATTLE BUYERS NEEDED NOW

No buying experience necessary. Train to buy cattle, hogs and sheep. The growing livestock industry needs qualified buyers. A good aptitude is required for today's competitive markets.

You should have a farm or agricultural background. Must enjoy working with livestock. Good earnings... secure future... for those who qualify.

Write today with your personal background and qualifications. Include: name, age, address & phone number. We will arrange an interview for you, near your home town. No phone calls, please.

NATIONAL LIVESTOCK CO. 5105 North 40th Street Phoenix, Arizona 85018

TOM PENN INC. Aerial Spraying

(Serving The Area Over 20 Years)

IT IS TIME TO START SPRAYING

Call 659-3539

WEED SPRAYING

\$2⁴⁵ ACRE

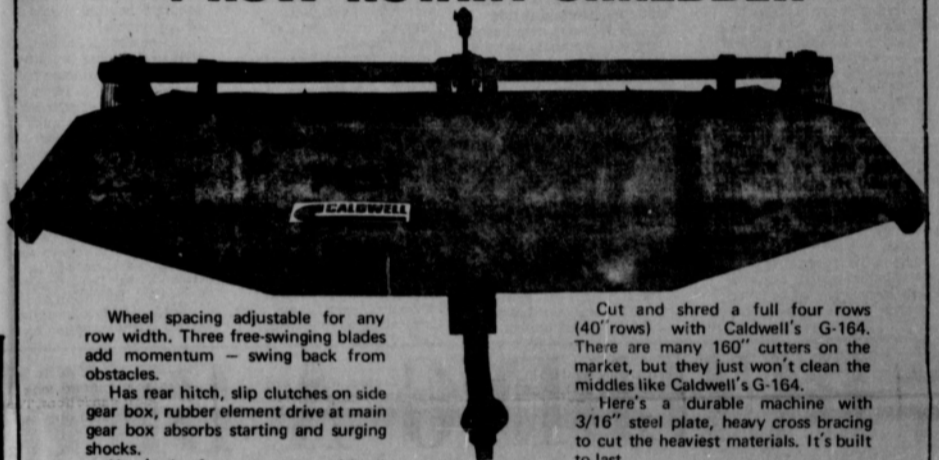
GREEN BUGS

\$2⁴⁵ ACRE

OWNERS

Jack Terhune Harry Langolf

G-164 4 ROW ROTARY SHREDDER



Wheel spacing adjustable for any row width. Three free-swinging blades add momentum — swing back from obstacles.

Has rear hitch, slip clutches on side gear box, rubber element drive at main gear box absorbs starting and surging shocks.

Here's the four row cutter with all the features.

Cut and shred a full four rows (40" rows) with Caldwell's G-164. There are many 160" cutters on the market, but they just won't clean the middles like Caldwell's G-164.

Here's a durable machine with 3/16" steel plate, heavy cross bracing to cut the heaviest materials. It's built to last.

Adjustable cutting height lets you adjust for cutting with deep middles.

DISC-BEDDER



Throws up a fine uniform bed. Renews old beds — Rebeds 6-row and 4-row models

- Disc gangs attach securely to 4 x 7 tool bar. 3 point hitch is bolted to tool bar.
- Disc gangs have on 16" disc and one 18" disc with tri-ply sealed double ball bearings permanently lubricated.
- Disc blades are heat-treated heavy gauge steel.

- Heavy duty gauge wheels with screw jack... adaptable for hydraulic cylinders available as option.
- Heat treated bolts throughout.
- Fits tractors with three point hitch category II and III.

BE SURE AND ATTEND THE ANNUAL HANSFORD COUNTY JR. LIVESTOCK SHOW AND SALE MARCH 14th & 15th. AT THE COUNTY BARN IN SPEARMAN.

R L McCLELLAN & SONS

"Your Farm Equipment Dealer"

659-2343

Spearman

WANTED

Boxwell Bros.
Funeral Home and Flower Shop
Day-Night Phone 659-2212
Spearman, Texas

Listen To Harvest Time
9:00 A.M. SUNDAY KBMF

United Pentecostal Church Sponsor

Cummings
Refrigeration And Air Conditioning
Phone 659-2721
GORDON CUMMINGS

Hansford Lodge
1040 A.F.&A.M.
2nd & 4th Mondays
MM Degrees
MARCH 14, 1975
8:00 P.M.

Britt Jarvis, W.M.
Cecil Batton, Socy.

SERVICES
YOUR LOCAL USED COW DEALER: Spearman B-Products. Seven days a week dead stock removal. Please call as soon as possible. 659-3544. 8-rtm

KIRBY SALES & SERVICE of Spearman, 912 E. Bernice, 659-2797. 30-rtm-T

Alcoholics Anonymous Meeting every Tuesday, 8:00 p.m. at the Girl Scout Little House, 22 S. Endicott. Call 3394 or 2762 for information. 45-rtm

Hansford County Planned Parenthood 26 S. Haney 659-2483 Spearman Mon.-Fri. 8:00 A.M. to 12 Noon 305-rtm

MARY KAY COSMETICS, Call 659-2119, Malolah Fullbright. 32S-rtm

Custom Farming Wanted. Jack McWhirter, 659-2249 or 3308. 4-rtm

Have Anvil Will Travel---Custom Horseshoeing and corrective shoeing. Call 659-2415 after 6 p.m. 16-rtm

Custom fertilizing and any type of farming. W. B. BARNES 659-3638

OSCOME TAX SERVICE - Call 659-8175 after five and weekends. 130-rtm

For Sarah Coventry Parties and orders call Sharon Hall, 436-2089. 138-rtm

Portable Dish Washing Kenneth Pearson, Farmworth 436-8888 189-rtm

FOR SALE
GARAGE SALE: 100 S. Haney, Monday, Tuesday and Wednesday. 130-rtm

FOR SALE: Black and white brindle English bull dog with a black mask, male, 20 months old. After 5:30 P.M., 733-2859, Gruver. 16S-ltc

FOR SALE: 1974 Honda 250 Elsinore MX will take best offer. Call 659-2865, mornings or after 7 p.m. 16-rtm

FOR SALE: Tony Lama Ladies Gold Tone Boots, bought on sale--too small, \$25. 659-3038.

FOR SALE: Windmill with or without tower. Dick O'orman. 878-3034 W-2tc

FOR RENT
FOR RENT: Trailer Space any size trailer 32 N. James 659-3349 15S-3tp

Furnished Apartment, central air conditioning and heating, 303 Davis 659-3792. 13-rtm

FOR RENT: LBL Trailer Park spaces on N. James Call 659-2257. 14-rtm

FOR RENT - One 2 bedroom furnished apartment Call 2652. 16-2tc

REAL ESTATE
FOR SALE: Nice brick home near elementary school, 3 bedrooms, utility, double garages, 2 baths, den and living room, carpets, central heat and air, fireplace, lots of storage, tool shed, patio, fenced yard, 100 ft. lot. Shown by appointment. 659-2309. 16-rtm

FOR SALE-3 bedroom home, 1105 Townsend, fully carpeted, central heat and air, patio, storm windows, outside metal storage building, completely fenced, west front, nicest part of town. Maximum financing available. Call 659-3438 or 435-5020. 52-rtm

FOR SALE: 3 room house on 50 foot lot. 29 South Endicott. Call 733-2508 12S-rtm

HELP WANTED
HELP WANTED: For inside workers and machinist. Apply in person at Roger's Sales and Service, Waka, Texas. 16-rtm

Operator Needed. Cinderella Beauty Shop. Call 659-3413. 10S-rtm

Wanted - Electrician. York Electric, Gruver Highway. 659-3625 8S-rtm

TO GIVE AWAY
TO GIVE AWAY- Young female red Merle Australian Shepherd. Call 659-2954 or 659-2437. 16-2tc

FOR SALE: 3 Bedroom Brick, Central Heat and Air, 1 3/4 baths, garage, fenced, extra nice. 32S-rtm

Country home, 3 acres, 2924 sq. Feet, 4 bedrooms, 2 3/4 baths, living room, large den, office, shake roof, central heat and air, paved circle drive, barn, sheds, walls, steel pens, 4 miles from Spearman. Must see to appreciate.

1567 sq. feet, single garage, 1 1/2 bath, 75 ft. lot, brick, carpet, beautiful home.

Trailer House: 14x65, Central air and heat, Extremely nice, ready to move in.

ED WHEELER REAL ESTATE
Phone 659-2613 (day) or 659 2981 (nigt)

Offered By
EMMETT R. SANDERS REALTOR

FOR SALE: Don't overlook this Nice 2 bedroom home with cozy fireplace, fenced yard and attached garage in good residential area.

NICE 3 bedroom, 2 bath brick home with attached garage in Hitchland, Tex. Central heat and air, Quality carpet throughout, electric kitchen including dishwasher and disposal, built-in oven and cooktop, breakfast bar, roomy dining area. Shown by appointment.

FOR SALE: Corner lot East Third and James, zoned for mobile home. 325 ft. highway frontage on East Kenneth St., 385 ft. on South Braxst St., 162 ft. depth. 5521 ft. on South James St., 162 ft. depth.

Nice residential lot SW Spearman. Tracts facing paved county road south of 12th St. 3 acre tract, residential zone, SW Spearman.

Land is the basis of all wealth..
EMMETT R. SANDERS REALTOR

FOR SALE: Phone 659-2516 Night 659-2601 Weekdays call 806-874-2663

IS ALCOHOL A PROBLEM IN YOUR FAMILY?
AL-ANON FOR FAMILIES OF PROBLEM DRINKERS
In this Fellowship you can:
..Meet others who share your problem
..Learn about alcoholism as an illness
..Encourage the alcoholic to seek help
..Replace despair with hope
..Improve the family atmosphere
..Rebuild your self-confidence
For Further Information Write to:
Spearman AL-ANON 22 So. Endicott Or Call: 659-3394, 2762, 3181 Every Tuesday & Saturday - 8:00 p.m.

Pantyhose make the fashion scene in lacy, herringbone, check and striped designs. Patterns show off when combined with the longer skirts in solid colors, according to Margret Ann Vanderpoorten, clothing specialist with the Texas Agricultural Extension Service, The Texas A&M University System.

The Hansford Plainsman

Spearman, Texas 79081
213 Main Box 458 659-3434
Published weekly at 213 Main Street, Spearman, Tex.
Second Class Postage Paid at Spearman, Tex.
Owner-Publisher.....William M. Miller

Any erroneous reflection upon the character of any person or firm appearing in these columns will be gladly and promptly corrected upon being brought to the attention of the management.

SUBSCRIPTION RATE -- Hansford, adjoining counties, combination with The Spearman Reporter \$7.00
Other points \$9.00 year

TEXAS PRESS ASSOCIATION
MEMBER 1975

Weed Control Boosts Wheat Grain Profits

Windshield surveys do not show it, yet most wheat fields are full of weeds. Closer observation shows that all fields have some weeds and many fields have heavy populations of ten or more plants per square foot. Grain yield in these fields will be severely reduced if weeds are not controlled in the next two weeks according to Joe VanZandt, Hansford County Agricultural Extension Agent. Tansy and treacle mustard are the winter annual weed pests causing the problem. These weeds are most prevalent in years with good fall rains or if farmers irrigate wheat for emergence according to Dr. Frank Petr, Area Agronomist, Texas Agricultural Extension Service. Presently both weeds are in the rosette stage. Small tansy mustard are a tuft of fern-like lacy gray-green leaves. Later on in the season the foliage on larger plants resembles carrot leaves. Flowers are yellow and small orange seeds are borne in long cylindrical pods. Rosettes of treacle mustard look like small dandelions. The leaves are about one half inch wide and are deeply lobed. Seed stalks bearing yellow flowers arise from the rosettes in early spring and sometimes grow to a height of 1.5 feet. The seed pods are shorter and broader than those on a tansy mustard. The mature plant and pods develop a characteristic reddish purple color.

Research at the USDA Research Center at Bushland shows that one weed per square foot can reduce wheat yields up to 10 percent. That's two bushels per acre in a field with twenty bushels per acre yield potential according to Dr. Petr. Spending two to three dollars per acre for control will pay big dividends. On irrigated fields with yield potentials of 50 bushels per acre or in fields with more weeds, returns for control may be up to

twenty-five dollars per acre. Control of tansy mustard can be accomplished by applying 0.5 pound per acre of 2, 4-D ester before March 15. Weeds will deprive wheat of valuable moisture if allowed to grow during warm weather in late March or early April. Treacle mustard infestations are worse north of the Canadian river and in the Hereford area. Treacle mustard is a new pest and producers have had more difficulty controlling this weed than tansy mustard. To solve this problem chemical weed control experiments were started in 1967 in Moore County on the Dale Coleman, Jim Clements and Jim Dowdy farms by Dr. A.F. Wiese, Texas Agricultural Experiment Station scientist located at Bushland. Results over the years indicate that one pound per acre of 2, 4-D or MCPA esters will control the

while tansy mustard is usually most prevalent in the drier well-drained sites. Producers should observe their fields carefully to determine if a higher rate of 2, 4-D is needed to get good control of the treacle mustard. Where treacle mustard is present in only a small proportion of the field two passes with the aerial or ground rig may be preferable to doubling the application rate for the entire field. "Careful checking of fields

for these pests and prompt control measures will be profitable for the wheat producer" Dr. Petr emphasized. Science has gone too far in electronics. We just read a frightening story. It was an office party in a completely automated office. The computer had too much to drink and tried to undo the ribbon the electric typewriter.



Pictured above is Darl Hergert, head of the body shop at Hergert Pontiac, Buick, Inc. in Spearman. Darl received his degree in Business Administration from Wichita State University. He and his wife, Judy, have a son, Tyce, 6 months old.

GIBSON'S DISCOUNT CENTER
WHERE YOU ALWAYS BUY THE BEST FOR LESS
317 MAIN Spearman Prices Effective Thur. Mar 12th
Open Weekdays 9 am. -6 P.M. Closed Sundays

SECRET Spray Deodorant 7-oz. 99¢	MOP & GLO 32 oz. \$1.09	POLISH REMOVER Cutex Lemon 6 oz. 53¢ Retail 85¢
24's KOTEX FEMININE NAPKINS 93¢	Platinum Plus Blades Gillette 10's \$1.27 Retail \$1.99	BAYER ASPIRIN 50's Retail 79¢ 49¢
Suave Shampoo 16 oz. 77¢ Retail \$1.11	Suave Creme Rinse 16 oz. 77¢ Retail \$1.19	UNIPAZ ALL-IN-ONE IRONING BOARD SET #555 3-Piece \$1.47
Protein 29 AEROSOL 7-oz. 79¢ Retail \$1.11	TOOL BOX #84455 \$3.97	OIL CAN SPOUT NO. C015 39¢ 7 1/2" long. Triple chrome plated. For 1 to 5 quart cans.

A COMPLETE PRINTING SERVICE

We Print It the Way You Want It... Exactly

Whatever your printing needs, you can confidently bring the job to us. The bigger, the better we like it!

THE SPEARMAN REPORTER

Problem?
DIAL 1-800-692-4458 (TOLL FREE)
WE CARE
Suicide Prevention-Crisis Intervention Operation Drug Alert



BITS OF THIS AND THAT

By Nita Stewart
 Viola Graves stopped by to tell us she, Mildred Chamberlain, Maude Rosson are going on a tour to Florida and Nassau set up by Continental bus line. Viola is looking forward to the tour and the three day boat ride to Nassau. They will be gone seven days. Have a good time Viola, Mildred and Maude.

Mr. and Mrs. Gene Rauscher have moved from Spearman to make their home in Amarillo, where Gene will be working as a security guard.

Good luck Gene and Vee. Come see us when your in town.

How about Thursday's wind? I don't know what it was clocked at but it tore our big wooden sign apart and the big pieces of plywood blew down 207 and almost hit a windshield of a van before coming to rest at the Patton Motel. We also had a report from Mr. Townsend of T.G.&Y that a new trailer where he lives on North James had the roof torn off. Also the big window at Northern Natural up the street from us was blown out so Mr. Townsend reported to us. It also snapped the power lines at A&W. Of course Bill and Garland can put out all that good food, lights or no lights.

I don't know what was worse, the wind or the darn dust, but anyway both were bad.

Dave and I always feel honored when Betty and Lewis of Perryton stops by for gas, soft drink and chat. Betty works for the Welfare Dept. with children. She's such a nice person and we enjoy our visits very much. Her secretary is Francis Wright of Spearman. Come back and see us again Betty.

Remember Spearman Scrambles Sunday March 9th at 2 p.m. W.O. Groves farm south on Roland.

Entry forms available at Nita's Flats.

anyone can come look over the manor at any time. She welcomes this. Mrs. Byrd said they've cleaned it up and have happy patients. Lets hope these fine folks can keep the manor open. If we can be of any help newswise let us know Mrs. Byrd. Thank for dropping by.

Sorry to hear Jerry Younger is in High Plains Hospital in Amarillo. Jerry had back surgery March 7th. Get well soon Jerry, your missed in Spearman. God Bless You all.

XIT Relays Set For March 14-15

The 2nd Annual XIT Relays are set for Friday, March 14th and Saturday, March 15th at Dalhart. The meet will start at 1:00 P.M. Friday with preliminaries in all running events and finals in the field events, finals for running events are to begin at 1:00 P.M. Saturday. This is the second year for Dalhart's new Resolute track facility.

The meet is sponsored by the Dalhart Lions Club under the direction of the Dalhart coaching staff, with Dalhart Track Coach Earl Smith serving as Meet Director. Local Lions Club members will assist in conducting the track meet.

There are 25 schools representing 4 states entered in two divisions this year. Schools entered in Division I are: Amarillo Caprock, Amarillo Caprock JV, Borger, Dumas, Perryton, Hereford, Guymon and Liberal. Division II schools are: Wills Ranch, Spearman, Higgins, Surray, Hooker, Texline, Boise City, Hartley, Booker, Stratford, Stinnett, Keyes, Adrian, Texhoma, Vega, Tucumcari, and host Dalhart.

The really well adjusted man is one who can enjoy the scenery when he has to take a detour.

HD Club News

The Old Hansford Home Demonstration Club met Tues., March 4th in the Home Demonstration Club Room.

President, Mrs. Ellzey Vanderburg presided over the meeting. The devotional was given by Mrs. Jim Strawn.

Roll Call was answered to "Three Reasons I'm in Club today."

Mrs. Irvin Delk gave the Council Report.

The Old Hansford Home Demonstration Club will sponsor the March "Time for Fun Party." The club will also help furnish refreshments for the Stock Show March 14th and 15th.

Home Demonstration Agent, Nelle Evans presented the program entitled "Raising, Preserving and Using Herbs and Spices." Delicious refreshments were served by Mrs. Jim Strawn to members.

Mrs. Mesdames: Irvin Delk, Gordon Parrish, Harold Howerter, Ellzey Vanderburg, G.I. Brown, Roscoe Nelson and Agent Nelle Evans.

Next meeting will be March 18th in the home of Mrs. Roscoe Nelson.

The Town and Country Home Demonstration Club met Monday, March 3rd in the Home Demonstration Club Room.

President, Mrs. Jerry Younger presided over the meeting.

Mrs. Dwight Sumner and Mrs. Bob Farr presented the program entitled "The Right to Life", which included a film presentation entitled "Abortion: A Women's Decision."

Mrs. Bobby Everson was elected to fill the position as Club Secretary.

Discussion was held on the Stock Show to be held this weekend.

Refreshments were served by Mrs. Dan Ralston to guests, Mrs. Bob Farr and Mrs. Dwight Sumner and to members, Mesdames: David Collins, Jerry Holton, Darl Hergert, Charles Shieldknight, Omar Surton, Jerry Younger, Bobby Everson, Carl Kunselman and Vernon Pipkin.

Next meeting will be March 18th with Mrs. David Collins as hostess.

The Happy Homes Home Demonstration Club met

March 6th in the home of Mrs. Bernard Barnes.

President, Mrs. Richard Laird presided over the meeting.

The opening devotional was given by Mrs. Barges. Roll Call was answered to "Three reasons I'm in club today."

One new member, Mrs. Judy Speck was welcomed to the club.

The club Enchilida Supper was set for April 17th in the Home Demonstration Club Room.

Mrs. Richard Laird gave the program on "Herbs and Spices."

Refreshments of pineapple cake, tea and coffee was served by Mrs. Barnes to guests, Mrs. James Sterling and Mrs. Billy Morrison and to Mesdames: Dwight Sumner, Richard Laird, Judy Speck, James Nicholson, Charles Hall, Gordon Cummings, and Larry Cross.

Next meeting will be March 20th in the home of Mrs. Larry Cross and the program will be on Health Foods and Vitamins.

The Holt Home Demonstration Club met Tues. March 4th in the home of Mrs. O.C. Holt.

President, Mrs. Jon Jarvis presided over the meeting.

Roll Call was answered to "A helpful household hint."

Members donated money for the Hutchinson County Association for Retarded Children.

Hutchinson County Home Demonstration Agent, Miss Geraldine Mayes presented the program on "Rugs and Carpets."

Refreshments were served by Mrs. O.C. Holt to guest Mrs. Mayes and to members, Mesdames: Mike Holt, Phil Jenkins, Richard Kirk, Fred Holt, Britt Jarvis, W.C. Jackson, Jon Jarvis, Nolan Holt, Wallace Berner, Larry Holt, and Raymond Kirk.

Next meeting will be March 18th in the home of Mrs. Larry Porter.

An authorization to purchase \$29,928,000 worth of rice under Public Law 480 has been issued to Bangladesh, Agriculture Commissioner John C. White said recently.

CWF News

The C.W.F. met Wed. March 6th in the Fellowship Hall of the First Christian Church.

President, Mrs. Kenneth Evans presided over the meeting. Minutes of the previous meeting were read and approved.

Announcement was made about the World Day of Prayer March 7th.

Mrs. James Kenney prepared the worship table with a gold cross, praying hands and an open Bible.

"Shalom-Through Worship and Work" was presented by Mrs. Jimmy Vernon.

Refreshments of coffee and donuts were served by Mrs. Kenneth Evans to members, Jimmy Vernon, Charlie West, Eleanor Reed, Darl Hergert, Bill K. Jackson and Irvin Davis.

Next meeting will be April 2nd at 8:00 P.M. at the church. Mrs. J.L. Brock will present the program, Mrs. Dave Hand will be in charge of the worship and Mrs. Paul Reimer will be hostess.

P.A. Lyon Ins. 28 12

Cable TV	22	18
Wardrobe	22	18
Pan. Eastern	18	20
Ideal	15	25
KBMF	13	27
B & W Weights 11	28	
HIGH SERIES TEAM		
Cates	2231	
Ideal	2217	
P.A. Lyon Ins.	2209	
HIGH SERIES MEN		
Tom Reger	532	
Verlin Behne	523	
Millard Tucker	517	
HIGH SERIES WOMEN		
Rita Reed	497	
Jane Meek	435	
Reta Wenge	434	
HIGH GAME TEAM		
Ideal	319	
P. A. Lyon Ins.	808	
Cates	780	
HIGH GAME MEN		
Millard Tucker	201	
Jim Nicholson	192	
Tommy Reger		
& Mark Neff	187	
HIGH GAME WOMEN		
Rita Reed	181	
Rita Reed	175	
Pat Donnell	159	
FRIDAY MORNING PIN		
BENDERS 3-7-75	Won	Lost
Brook Ins.	69	27
Golden Thimble	65	31
Farm Bur.	63	33
McClellan Gr.	48	47
Bowl Mor	45	50
Baker & Tay.	37	59
BWIM	32	64
Vernon's	28	68
HIGH TEAM GAME		
Golden Thimble	1469	
Brook Insurance	1444	
Bowl Mor	1251	
HIGH SERIES		
June Lee	218	
June Lee	191	
Joyce Frost	184	
HIGH IND GAME		
June Lee	574	
Joyce Frost	526	
Melie Craig	457	

Another Role

While many people know of the American Cancer Society's part in supporting research, the Society has another role—service to the cancer patient. Your contribution to the ACS during its April fund-raising Crusade will help continue this important work.

Refreshments were served by Mrs. O.C. Holt to guest Mrs. Mayes and to members, Mesdames: Mike Holt, Phil Jenkins, Richard Kirk, Fred Holt, Britt Jarvis, W.C. Jackson, Jon Jarvis, Nolan Holt, Wallace Berner, Larry Holt, and Raymond Kirk.

Next meeting will be March 18th in the home of Mrs. Larry Porter.

BOWLING NEWS



MONDAY EVENING SCATTER PINS 3-3-75

	Won	Lost
Equity	76	20
Co-op	64	36
Alsup's	56	40
Baker & Tay	49	47
Anthony Elec	47	49
Spear, App.	41	55
Burton's TV	28	67
Excel	22	73
HIGH GAME TEAM		
Baker & Taylor	1811	
Equity	1799	
Alsup's	1781	
HIGH SERIES		
Sheryl Meek	542	
Melie Craig	479	
Judy Black	476	
HIGH IND GAME		
Judy Black	190	
Sheryl Meek	188	
Melie Craig	186	

WEDNESDAY MIXED DOUBLES LEAGUE 3-5-75

	Won	Lost
Cates	30	9

That's Right . . .
We're Tootin' Our Horn
ABOUT THE
HANSFORD COUNTY
STOCK SHOW
March 14th & 15th

AT THE COUNTY SHOW BARN SPEARMAN, TEXAS

WE SALUTE...

Our FFA and 4-H People
 See The Great Job
 They Are Doing...
 Attend The
 Livestock Show And Sale.

Sale Time
 Is 6:00 P.M.
 Friday



NORTH PLAINS ELECTRIC

PERRYTON, TEXAS
 SERVING THE NORTH PLAINS





Library Receives New Book

An Anthology of Poetry, titled SWEET SEVENTIES ANTHOLOGY has recently been published and the company selected three poems written by Susie Dacus Allen for the edition.

Susie Allen, a former Spearman resident and a well known writer and poet, sent the book to Mrs. Billy Miller to be placed in Hansford Library in memory of her parents Mr. and Mrs. L. D. Pierce Sr. The Pierce family were pioneer residents of Hansford.

Mrs. Allen, of Amarillo, will have a book of her own published in the near future and some of the selections in this book will be Historical poems of Hansford County Life.

Mrs. Miller presented the book to Librarian Celestine Thompson Wednesday of this week and it is now available to the public.

Veterans

The Veterans Administration Regional Office in Waco, Texas, is processing applications for veteran education loans for veterans attending school under the GI Bill. The loans, up to a maximum of \$600 in one academic year, were established by the Vietnam-era Veterans Readjustment Assistance Act of 1974, enacted by Congress last December.

Regional Office Director, Jack Coker, said the effective date for the loan was January 1. However, he added that all eligible veterans, wives, widows and children will be considered for initial loans based upon the full amount of their tuition and all other costs of attendance anticipated for the entire 1974-75 academic year. This is considered to have started about September 1.

Under the new law those granted loans will be required to execute promissory notes agreeing to repayment of principal plus 8 percent interest. Repayment of principal and interest will be deferred while the student is attending classes at least on a half-time basis.

Installment payments must start nine months after the student ceases at least half-time enrollment, with full payment within 10 years and nine months after that date. Part or all of the loan may be prepaid without penalty. Interest will not accrue on the loan balance until the required beginning date of repayment.

A 3 percent loan fee will be deducted from the approved loan amount to provide a fund to insure against defaults under the loan program. Defaults will be considered overpayments and recovered in the same manner as other debts due the government.

The new measure provides that applicants must have exhausted all efforts to obtain student loans administered by the Department of Health, Education and Welfare. The student must list all lenders applied to,

with dates notified of final decisions. If denied a guaranteed student loan, copies of denial statements from two lenders must accompany the VA application.

All financial resources must be reported by the student, including other educational loans, grants, scholarships, VA educational assistance and cash assets. The year in which the loan application is submitted will be the base year for reporting income.

Coker also said the school must certify the student's course of study and tuition and fees for all students and any room and board charges.

No loan may be approved for intersession or other enrollment periods of less than 10 weeks.

A legal secretary told her amorous boyfriend: "Stop and/or I'll slap your face."

Increased In Food Stamp Purchase Requirement Rescinded

The U. S. Department of Agriculture (USDA) will amend food stamp regulations to rescind the previously announced amendments which would have increased food stamp purchase requirements to a flat 30 percent of net monthly income on March 1.

These amendments were published in the Federal Register of Jan. 22 (for the 48 contiguous states) and Feb. 7 (for Alaska, Hawaii, Guam, Puerto Rico, and the Virgin Islands).

The action came after President Ford announced on Feb. 13 that he would allow H.R. 1589 to become law without his signature, and it became effective (P. L. 94-4) on Feb. 20. This law continues the current method of determining food stamp purchase requirements through 1975. Secretary of Agriculture Earl L. Butz rescinded the earlier announced increases immediately after the President's announcement.

Today's announcement means that current purchase

prices for food stamps (effective Jan. 1, 1975) will remain the same. Coupon allotments will not change until the semi-annual adjustment required by law on July 1, 1975.

The rescission of the amendments increasing food stamp purchase prices will be published in the Federal Register of Wednesday, March 5, and was effective February 13.

Mother rabbit to her small bunny: "A magician pulled you out of a hat -- now stop asking questions."

Booming Bargains Sale Planned

A TEXAS-SIZE garage sale is coming to Amarillo this week.

The Junior League of Amarillo announces that they are sponsoring a Booming Bargains Sale on March 15-16. The big sale will be located at the old Fedway Store in downtown Amarillo at 9th and Tyler.

The hours will be Sat. from 9:00 a.m. until 7:00 p.m. and Sunday from 1:00 p.m. until 8:00 p.m. or until sold out.

Featured in the bargains sale will be furniture, garden supplies, sports equip., clothing for the entire family, toys, jewelry, linens, books, records and home improvements.

Customers will also find a large selection of household goods including washers, dryers, stoves and tele-

visions. A special boutique will be set up with fashion apparel for ladies and children and with fine gift items.

The Junior League of Amarillo is undertaking this project to insure continuing support to Amarillo and the area. Currently Junior League funds are benefitting the Discovery Center, now under construction for use by Amarillo and area students and adults; the Art Center located on the campus of Amarillo College; and Amarillo Day Nurseries. Recipients of help in recent years have included Killgore Children's Psychiatric Center and Hospital, Children's Rehabilitation Center and Speech and Hearing Center.

In 1970 the Junior League staged a similar project

which netted \$30,000. Mrs. Warren J. Freeman, Jr. and Mrs. John C. Chambers, co-chairmen for Booming Bargains 1975, are working toward an even bigger success with the help of all members of the Junior League, merchants and many friends.

Chairing committees for the sale are Mesdames Charles Schmidt, Joe Howell, Carlton Clemens, Keith Taylor, Tom Cambridge, Jim Prowell, Jr., Don Curtis, Leon Swift, John Banastik, Thomas Bunkley, Bob Jolley, on Marsh, Roy Northrup, and Jack Fyfe, Jr.

Mrs. Jim W. Walker, president of the Junior League, urges everyone to be present, not only to find outstanding buys, but to assist the League with its service to Amarillo and the surrounding communities.

OUR PROFESSIONAL PHOTOGRAPHER
WILL MAKE 6 TO 8 DIFFERENT POSES FOR YOU TO CHOOSE FROM

Portrait Specials
SATISFACTION GUARANTEED

LARGE WALL SIZE 11x14.
Only \$149
Compare With \$149 VALUE

LIFE SIZE 16x20
Only \$269
Compare With \$249 VALUE

★ Silvertone Bust Vignette
★ One Per Subject ★ No Age Limit
★ Groups \$1.00 per person extra, either size

FREE 11x14 Silvertone Portrait to EVERYONE OVER 60!

This Very Special Offer is presented as an expression of our thanks for your patronage.

Gibson's Discount Center
10 A.M. - 5 P.M. Tuesday, March 11
Lowe's Studio Water Valley, Ms.

BUILDING A BETTER TOMORROW... WITH THE YOUTH OF TODAY



Support the 1975 Junior



Livestock Show and Our Youth by your Attendance

A SALUTE TO OUR COMMUNITY.

In Backing All Of Our 4-H and F.F.A. Activities! We Are Proud To Be A Part.

Friday, March 14 & Saturday, March 15

COUNTY SHOW BARN Spearman, Texas

LIVESTOCK SALE SATURDAY AT 6:00 P.M.

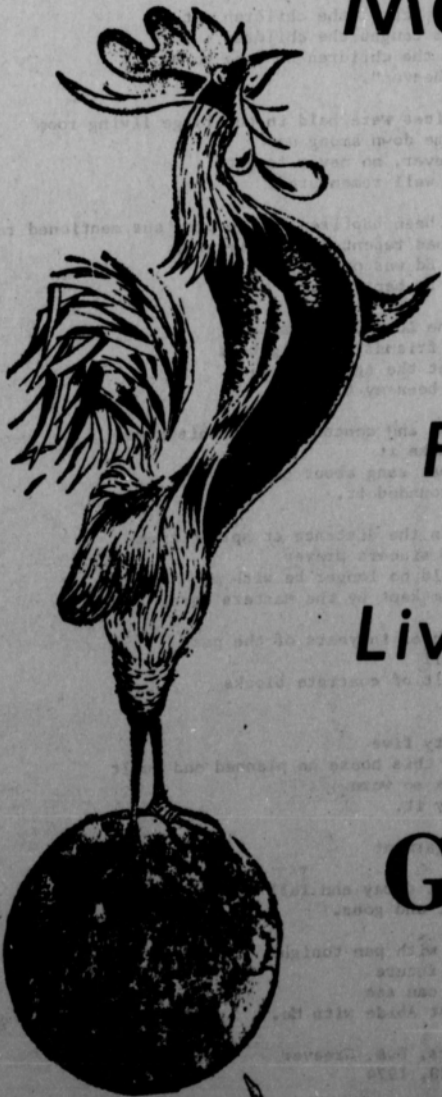
R. L. McCLELLAN GRAIN CO., INC.

HANSFORD COUNTY STOCK SHOW

SOMETHING... TO Crow About!

At The New
County
Show Barn
Spearman, Texas

Fri & Sat
March 14th
& 15th



Support the Future
Farmers of America
and 4-H Clubs
Livestock Show and Sale

GRUVER STATE BANK

Gruver, Texas

Member F. D. I. C.

Hightower To Be Guest Speaker

Congressman Jack Hightower will be the guest speaker for the second annual Panhandle Regional Institute on Alcohol and Drug Abuse dinner banquet, March 21.

Hightower will address the issue of current health legislation, and, in particular, legislation relating to alcohol and drug abuse.

Sponsored by the Panhandle Regional Planning Commission, the Institute on Alcohol and Drug Abuse will be held at the West Texas State University's Activity center, March 21 and 22.

Speakers for the opening session include K.E. Beahan, Director of the Texas Commission on Alcoholism, speaking on the general impact of alcohol on American society, and A.S. "Jack" Baylor, Director of State planning on drug abuse, will speak on the general impact of drug abuse on American society.

The Institute is designed to provide pre-service and in-service training for professionals, para-professionals and volunteers working in programs with the alcoholic or alcohol abuser and the addictive personality within the Panhandle Region, according to Betty O'Rourke, Coordinator, Alcohol/Drug Abuse.

Four tracks have been planned to address the criminal justice system professionals, public school system administrators and guidance counselors, nursing professionals and community and social services agency personnel. Training emphasis is directed to both the social-physiological and medical issues.

Track program speakers include Judge George Downen, 18th Judicial District, L. Walter Bull, Amarillo Police Department; Dr. Frank Lawlis, Psychology Department, Texas Tech University; Mr. James Taylor, National Clearinghouse on Criminal Justice Planning; Mr. Carl Williams, Texas Commission on Law Enforcement; and Mr. Larry McLendon, Texas Department of Public Safety.

Other panelists are Bud Nelson, Ruben Bates, Rudy Arendondo, Dr. Orene Peddicord, and Dr. R.L. Weddige of the Department of Psychiatry, Texas Tech School of Medicine; Dr. Paul Zehert, University of Alberta, Department of Psychology, Edmonton, Alberta; Dr. Myron Dees, Dr. A.J. Luquette, and Tom Cannon, West Texas State University; Peggy Daniels, Pampa Independent School District; Alfredo Ramirez, Amarillo MHMR; Kerry Knopp, District Attorney's Office, Amarillo; Louise Dooley, T.E.A. Office; and Dr. Joe Garris, Amarillo.

Judge Warren Jenks, Chairman of the Panhandle Regional Planning Commission; Dr. Lloyd Watkins, President, West Texas State University; and Dr. Myron Dees, West Texas State University will give the welcoming addresses.

Certificates will be presented to those enrolled, upon completion of the Institute.

The Consumer Alert

by John L. Hill
Attorney General

AUSTIN--Some consumers are economizing by deciding to have older major appliances repaired rather than replacing them with new models when trouble develops.

But, having made a decision to save the cost of a new appliance such as a television, a number of persons have been dismayed to learn that their repair bill was far higher than they expected.

It's not only the repair bill that consumers complain about, however. Frequent sources of customer dissatisfaction are lengthy waiting periods for repair service, unauthorized repairs, unnecessary replacement of parts and subsequent charges, and unsatisfactory work.

The attorney general's Consumer Protection Division received numerous complaints about television repair service from unhappy consumers. Our records show, though, that some complaints are valid and others are not.

Some problems are due to the fact that the consumer is unaware of how to make simple adjustments to obtain the best picture. Other problems are caused by faulty antennas or improper cable hook-ups, rather than poor repair service.

Still, some complaints about television repair service are justified. In a recent study conducted by the Federal Trade Commission, new television sets with no problems other than one burned-out tube were sent for repairs in several cities.

Cost for repairs on the sets varied by as much as 400 per cent between the lowest and highest charges in one city. And "parts fraud," the unnecessary replacing of parts or charging for parts not actually replaced, was reported in each city studied.

But the study also indicated that one especially alert repairman charged nothing for replacing the faulty tube. He had noted a date code on the tube indicating that it was still under manufacturer's warranty and realized that he would be reimbursed for replacing it.

No doubt there are many such scrupulously honest and observant television repairmen. But there still is a small minority of inept repairmen, as well as unscrupulous repairmen who may attempt to take advantage of a consumer's lack of knowledge about television electronics.

And it's doubly frustrating for a person who is trying to economize to feel that perhaps he or she has been "taken" by such a repairman. In order to avoid possible problems with television repairs or repair charges, our Consumer Protection Division recommends following these guidelines:

1. When you purchase a television set, always read the owner's manual to learn how to make simple adjustments yourself. This is especially important with color television sets. This simple step could save you a service call later.
2. If a repair seems needed, first check to see if your TV is covered by warranty. If so, perhaps the repairs will be paid by the manufacturer.
3. If your warranty has already expired, always get three estimates from reliable, established local repairmen. Try to get recommendations from friends or relatives who have had good service. And always check in advance to determine if there is a charge for a service call.
4. Always get estimates in writing and make sure they spell out the following items: any minimum charge for the estimate or initial service call, cost of the work that's needed, completion date, and an agreement that if more work is needed than that covered in the estimate you will be called to authorize the work before it's performed.
5. When the repair work is done, ask for an itemized list of all replaced parts and all repairs. And have all old, replaced parts returned to you so you can be sure they really were defective.

If you have a consumer complaint, contact the

Attorney General's Consumer Protection Division, your county or district attorney, or your local Better Business Bureau.

If you have a trash compactor, operate it less frequently by saving up garbage until you have a full bag. This will save small amounts of electricity--but it will add up over a year's time.

YOUR MILITARY EXPERIENCE CAN GIVE YOU AN EXTRA INCOME.

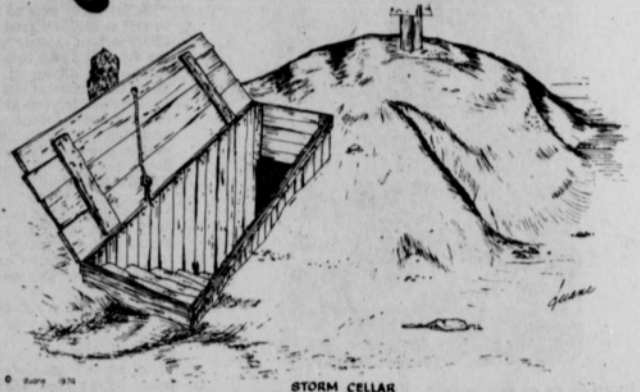


Putting in one weekend a month can give you a steady extra income. Plus important retirement benefits.

THE ARMY RESERVE. IT PAYS TO GO TO MEETINGS.

REMEMBERING...

By BILL D. BROOKS



STORM CELLAR

At one time the storm cellar played an important role at many homesteads across our land. Serving a dual purpose, they were a welcomed refuge from threatening storm clouds and were useful storage places for canned goods and other supplies.

In its simplest form it was nothing more than a hole dug in the ground, timbers and boards or tin placed across the top, covered over with a mound of soil. It usually had a door of some sort which could be closed and latched from the inside. More resourceful persons sometimes plastered the dirt walls of their cellars and some folks even went so far as to construct theirs entirely of concrete, though there weren't many people living close to us that had that kind of money.

All cellars, whether dirt, plaster, or concrete, had the same forbidding odor. This was probably one reason, among other things such as possible snakes, assorted spiders, etc. why children

were not allowed to play in them. The atmosphere of the dark chamber coupled with the fact that it was usually taboo to play in it made the cellar a perfect hideout when playing cowboys. Three youngsters, I heard about, pretended the cellar was a wild-west saloon and sam-

pled some of the jars of "whiskey" (sour plum juice stored there for who knows what purpose). Of course none of them would admit the stuff tasted terrible though the fact became very clear within a few hours.

Some cellars are still being used for the same purposes they were always used though most are now being made of concrete. At abandoned homesites remains of the old dirt type can still be found, usually caved in, giving some substance to parent's reasons for not wanting their children to play in them.

Play GAMERAMA!!

It's Free...It's Easy...Win Up To \$1,000

THRIF-T BABY BEEF SALE

THRIF-T BABY BEEF Chuck Roasts
BLADE CUTS OF BEEF CHUCK
LB. **54¢**

THRIF-T BABY BEEF Round Steaks
CENTER CUTS OF BEEF ROUND
LB. **79¢**

100 PERCENT PURE BEEF Ground Beef
IN 3-LB. PKGS. OR MORE
LB. **59¢**

THRIF-T BABY BEEF Pork Roast
7-8 OZ. CUTS
LB. **64¢**

THRIF-T BABY BEEF Sirloin Steaks
BEEF LOIN
LB. **79¢**

3-LB. PKGS. OR MORE Ground Chuck..... **99¢**

FRESH PORK SHOULDER PICNICS

Pork Roast..... **59¢**

WHOLE 6 TO 8-LB. AVERAGE

CENTER CUT Pork Roast
PORK SHOULDER PICNIC
LB. **69¢**

MACARONI & CHEESE

Kraft Dinner..... **24¢**

LIMIT 2 WITH \$10 OR MORE PURCHASE

7 1/2 - OZ. BOX

FARM-FRESH FRYER PARTS

Box-O-Chicken
CONTAINS 2 BREAST QUARTERS, 2 LEG QUARTERS, 2 WINGS, 2 GIBLETS
LB. **39¢**

3-4 LB. PKGS.

ODDS CHART

PRIZE	NO. OF PRIZES	ODDS FOR ONE STAMP	ODDS FOR 10 STAMPS	ODDS FOR 100 STAMPS
\$1,000	1	100,000 to 1	10,000 to 1	1,000 to 1
\$500	2	50,000 to 1	5,000 to 1	500 to 1
\$250	4	25,000 to 1	2,500 to 1	250 to 1
\$100	10	10,000 to 1	1,000 to 1	100 to 1
\$50	20	5,000 to 1	500 to 1	50 to 1
\$25	40	2,500 to 1	250 to 1	25 to 1
\$10	80	1,000 to 1	100 to 1	10 to 1
\$5	160	500 to 1	50 to 1	5 to 1
\$2	320	250 to 1	25 to 1	2 to 1
\$1	640	125 to 1	12 to 1	1 to 1

CAMELOT SALAD DRESSING
32-OZ. JAR **\$1.08**

IRREGULAR Camelot Pears
25-OZ. CAN **62¢**

SEVEN SEAS Salad Dressings
GREEN GODDESS, CAESAR OR CREAMY ITALIAN
2 8-OZ. BTL. **97¢**

THRIF-T Frozen Foods

JENO'S PIZZAS
SALISAGE, HAM-BURGER, CHEESE OR PEPPERONI
13 1/2 - OZ. PKG. **68¢**

ALL FLAVORS
Fairmont Sherbet..... **\$1.15**

MEADOWDALE FROZEN FLORIDA
Orange Juice..... **5 8-OZ. CANS \$1**

JENO'S Pizza Roll Tray..... **99¢**

ONE 10 1/2 OZ. POTATOES
Hash Browns..... **66¢**

WESTERN BRAND BREAKFAST DRINKS
54-OZ. BTL. **58¢**

CREAM SANDWICH COOKIES

Nabisco Oreo's..... **82¢**

CAMELOT **Fruit Cocktail**..... **34¢**

HEINZ SWEET CUCUMBER **Sliced Pickles**..... **68¢**

THRIF-T Dairy Foods

AMERICAN SLICES
CAMELOT INDIVIDUALLY WRAPPED
12-OZ. PKG. **72¢**

QUARTERED MARGARINE
Blue Bonnet..... **63¢**

FAIRMONT TOPPING **Real Cream**..... **63¢**

DISPOSABLE DIAPERS
Pampers Daytime..... **\$1.08**

THRIF-T PRICED

WILSON'S BAKE-RITE SHORTENING
3-LB. CAN **\$1.28**

WITH BEANS

Wilson's Chili..... **88¢**

JENO'S DOUBLE SIZE **Cheese Pizza Mix**..... **96¢**

MEADOWDALE CUT **Green Beans**..... **4 16-OZ. CANS \$1**

HOUSEHOLD ITEMS

LIQUID FLOOR CLEANER
Mop & Glo..... **\$1.65**

DISINFECTANT
Lysol Spray..... **\$1.48**

THRIF-T PRICED **Lysol Cleaner**..... **79¢**

ALL-PURPOSE CLEANER
COMET..... **28¢**

CAMELOT LIGHT Chunk Tuna..... **46¢**

BETTY CROCKER **TUNA HELPERS**..... **56¢**

LIMIT 2 CANS WITH \$5.00 OR MORE PURCHASE

RED RIPE SALAD

Tomatoes
3 \$1.00

LBS.

CALIFORNIA **Navel Oranges**..... **5 \$1**

LBS.

TEXAS **Ruby Red Grapefruit**..... **89¢**

5-LB. BAG

\$1,000 Winners...

JERRY THOMPSON
581 Pear
Dumas, Texas

BETTY DAVIDSON
1212 2nd St.
Alva, Okla.

MRS. A. NEIHART
507 SW 2nd
Laverne, Okla.

EDITH M. JONES
Box 184
Jayton, N. Mex.

AND...THIS LATEST \$1,000.00 WINNER:

EDGAR B. VENABLE HOOKER, OKLA.

JAMES WARE 2030 PARKER, AMARILLO, TEX.

\$100 Winners...

ERMA HUBBEL, Ulysses, Ks. — MRS. MAY HOFFMAN, Canyon, Tex. — CARL KAMMERZELL, Woodward, Okla. — LOUISE VAUGHN, Scott City, Ks. — WANDA HABER-THRU, Perryton, Tex. — ZELLA MAYBERRY, Borger, Tex. — CYNTHIA BAY, Shattuck, Okla. — ORPHA HAYS, Shattuck, Okla. — HELEN HENSHAW, Guyton, Okla. — GAYLEEN MUNN, Scott City, Ks. — DIANNE CHESSER, Pampa, Tex. — CHARLES ALLEN, Scott City, Ks. — LAYNE CRUSHA, Liberal, Ks. — PAUL STEVENSON, Canyon, Tex. — VESTA HAMPSTEN, Hooker, Okla. — CLARA RATLIFF, Borger, Tex. — CHAROLD WRIGHT, Ulysses, Ks. — PAM WILSON, Amarillo, Tex. — TRAVIS BARNES, Dumas, Tex. — MRS. DENNIS ECKHOFF, Meade, Ks. — LEONA BARLEY, Dumas, Tex. — PLUS MANY, MANY MORE!!

NEWS OF HEALTH

FOR DIETS: VITAMIN E

If you have always eaten foods rich in vegetable oils or polyunsaturated fats, you may need a vitamin E supplement.

Laboratory experiments with animals and an experimental study involving man, have shown that the dietary need for vitamin E increases as one increases his or her intake of polyunsaturated fats.

Increasingly, doctors are recommending diets high in polyunsaturated fats, rather than animal fats. This could necessitate an increase in the need for vitamin E.

In such cases, *nile* scientists Dr. Hoffmann-La Roche, a leading vitamin producer, vitamin E supplements may be advisable following the change in diet.

If your home has a crawl-space under the foundation, close off vents or other openings to the crawl-space. This will reduce heat loss through the floor and save energy.

New Eyes Are Free For The Blind

NOTE TO READERS: Governor Dolph Briscoe has proclaimed March, 1975 Eye Bank Month in Texas, and added: "The eye banks of our State - as exemplified by the Lions Hi-Plains Eye Bank of District 2-T1 Inc., that serves the Panhandle area - have done much to help combat the problems of sight in Texas by research and assistance in eye surgery".

To the thousands of blind individuals in America today, the best thing that life could offer is the ability to see again. Would you mind if, after your death, your eyes were used to give some totally blind person the precious gift of sight... making it possible for one or more persons to emerge from constant darkness?

That gift is made possible by the 72 Lions Clubs in the Panhandle of Texas by the organization of the Lions

Hi-Plains Eye Bank of District 2-T1, Inc. This is not a drive for financial donations. The eye bank is sponsored and supported by the Lions Clubs in the Panhandle. This is a drive inaugurated by the eye bank to obtain eye donors so that we may provide physicians with the needed eye tissue - to restore vision through corneal transplant surgery.

The quality of your vision makes no difference whatsoever. If the cornea, sclera and vitreous are not diseased, the tissue can be used. Actually, six people can be helped by one pair of eyes. Two corneal transplants can be performed, two sclera (White part of the eye) can be utilized for ruptures, and vitreous (fluid in the eye) can be used for two vitreous implants.

It is not possible to buy or sell eyes. They must be

donated by some generous person to be used at his death. The eyes are furnished to the ophthalmologist and his patient free. Of course there is the usual hospital charges, and the surgeon will charge his usual fee.

More than 30,000 persons in the U.S. remain on physicians waiting list for donated eyes. Many of them will become totally blind unless we can provide the needed tissue. Now, as never before the opportunity exist to help at least a portion of this number to become employed, tax paying citizens.

Since July 1, 1974 the Lions Hi-Plains Eye Bank of District 2-T1 has helped with 17 corneal transplants. Since 1961 - 263 persons have regained their vision as a result of our assistance. We have more than 6200 eye donor pledges on file.

Remember, it costs you nothing to give your fellow person your eyes after death. Call a member of the Spearman Lions Club for eye donation procedures.

DENTAL FACTS

-In London in the 14th century, barbers who specialized in the practice of pulling teeth were called "Tooth Drawers." They wore pointed caps and necklaces of teeth they had pulled.

-The value of practicing oral hygiene procedures was recognized in the ancient Hebrew, Greek, Roman and other civilizations.

-About 1840, oral health in this country began to take on aspects of a profession, with establishment of a dental school, a dental society, and a dental journal.

-Some early toothpastes included highly abrasive minerals. The development of dentifrices has now progressed to the point where toothpastes are available for a variety of purposes: tooth whitening, polishing, fighting cavities and relieving the pain of hypersensitive teeth. The therapeutic dentifrice Sensodyne has been reported to be effective in cleaning and polishing overly-sensitive teeth.

-A specially designed toothbrush for hypersensitive teeth - Sensodyne Gentle - is constructed to make brushing more comfortable.

-Estimates based on current annual toothpaste consumption figures suggest that the average number of toothbrushings per day is less than one per capita.

Editor's Note:

Reproduced below is a Des Moines Register reprint which should be interesting to farmers in the area

Thurs., Feb. 20, 1975 • DES MOINES REGISTER

'A few farmers going broke is healthy,' says USDA official

By GEORGE ANTHAN and JAMES RISSER
Of The Register's Washington Bureau

WASHINGTON, D.C. — A high official of the U.S. Department of Agriculture (USDA) has told farmers that "a few of us (farmers) going broke each year is one of the most healthy things there is."

Kenneth Frick, administrator of the USDA's Agricultural Stabilization and Conservation Service, made the comment while addressing the department's Grain Advisory Committee at a meeting here Friday.



KENNETH FRICK



The Old Country Home of Mr. and Mrs. E.A. Greever
Edwin Adams and Elma Alicia

In this beautiful vast open space in north Texas
Where the Buffalo one day had roamed
Here it was in March nineteen hundred eleven
Ed and I established our "Home Sweet Home."

The first six years of our married life
We were in the home with Ed's parents
Theirs it was, but so soon they departed this life
And from then on just we two shared it.

This was a beautiful home for early day settlers
Ed was the architect, builder and laborer
Little do I know of the toil and care it took
That I could be a recipient of this structure.

This building had six rooms below and four above
With twenty three windows and two full length glass doors.
The lower story made of home made concrete blocks
And through storms of sixty three years has stood the shock.

In making these blocks sand brought from the Canadian River breaks
And to bring it to the level road meant work for man and beast.
For these sandy roads then not what they are today
So this was a task that was far from easy.

Weary teams on a four day trip bringing material o'er many miles
With Ed's labor patience and courage involved
I suppose looking forward to the pleasure of home
Was the way all problems must have been solved.

In early days this place known as "Tamarack Lodge"
For these trees surrounded an earthen reservoir
Among them one day we found a tiny cottonwood
And now all early trees are gone and huge cottonwoods are beside it.

Two children were welcomed born in this home
We felt two wonderful gifts sent us from above
The names we gave them William Robert (W.R.) and Kathleen
And from infancy have filled our hearts with love.

We early Panhandle folk loved our neighbor as ourself
Our homes often shared by weary travelers on their way
Travel so slow, often muddy roads, rains and howling blizzards caught up with them
But with good neighbors were sheltered at the close of day.

It was the home of my mother the last six years of life
And the same length of time for Ed's oldest sister
And for a few years, it was shared by two nieces
Left in the world with no parents, they found it a treasure.

This large ten room home was an ideal meeting place
For any or all relatives of the Greever or Teague family
A resting place for the farm laborer or harvest crew
When the toil of their day was through.

I recall early day Sunday afternoon gatherings of neighbors
Meeting together to mingle their voices in song
As the notes were played many voices were raised
To the giver of life, all praise to Him belongs.

We were many times graciously blessed with "Royal Guests"
Who were carrying Gods wonderful message of love
Evangelists, pastors, prophecy teachers and gospel singers
Who had left all, seeking the city that comes down from above.

The Lords presence I felt for many years in this home
Is the greatest of all I can mention.
Dedicated to him, in his presence was fulness of joy
This is truly beyond my comprehension.

Over twenty years ago a garage was joined to the north side of this home
And for ten years was the place of worship for hungry hearts
We as one large family filled it from wall to wall
And with God's word prayer and praise sought for life's goal.

In different rooms during Bible School the children met
Where they were taught as Jesus taught the children
In God's word we read, "suffer the children to come to me
For of such is the kingdom of heaven".

Prayer meetings and tarry services were held in the large living room
Often the glory of the Lord came down among us
Some things in life we shall never, no never forget
And among them these times are well remembered.

Throughout the years many have been baptised in the previous mentioned reservoir
Young, middle age and old who had repented of their sins.
And at the age of seventy five Ed was one of them
And with Bro. K. Kerr I helped to baptise him.

After all what we can do for the Lord in Jesus name
In the lives of all loved ones friends and neighbors
Is all that will last throughout the ages to come
And this through the years has been my treasure.

How I loved the peace, quietness and contentment of this home.
Yes and everything it took to make it
The flowers, trees and birds that sang about our doors
All things within and that surrounded it.

The gentle cooing of the dove in the distance at spring time
Often brought me to my knees in sincere prayer
But now since my Beloved Ed could no longer be with me
I too have left this home and am kept by the Masters care.

The buildings that were constructed in years of the past
Are all ready to crumble and fall
But this old home Ed wisely built of concrete blocks
Has stood the best of all!

Now at the ripe old age of ninety five
Who through the years treasured this house he planned and built
Has a body and mind that too are so worn
That he no longer knows to enjoy it.

The earth waxeth old as doth a garment
We are told in God's holy word
And our old country home too will decay and fall
As have all during the ages past and gone.

So with a songwriter I rehearse with pen tonight
As I think of past, present and future
Change and decay all about us I can see
And pray, "O Thou who changest not Abide with Me."

Written by Mrs. E.A. Greever
Dec. 30, 1974