

LYNN COUNTY NEWS



WE GIVE
A BIG BASKETFULL
OF GROCERIES
FOR YOUR MONEY

THIS IS BECAUSE WE DO A BIG VOLUME OF GROCERY BUSINESS AND CAN AFFORD TO MAKE THE LITTLE PRICSS.

AND THE QUALITY OF OUR GROCERIES IS THE BEST. WE KNOW IT: YOU WILL KNOW IT WHEN YOU TRY THEM.

GIVE US ALL OF YOUR GROCERY ORDERS NEXT MONTH AND YOU WILL BUY FROM US ALL OF YOUR GROCERIES AND EVERYTHING ELSE YOU NEED IN OUR LINE AS LONG AS YOU LIVE.

Knight & Brashear
Tahoka, - Texas.

County Canning Club at Tahoka June 2nd.

A canning club in every community in Lynn County. Impossible! Not on your life. Listen what another Texas county has done. "Every school house in this county will be a canning factory this summer. At a recent meeting of the county canning club it was decided for every community to buy a canner, (capacity to be according to the population served), and install same at the community school house. All residents of the district will take their surplus perishable eatables there and put them up. The secretary of the club furnished information on several brands of canners, and the names of different firms in Texas handling cans in bulk. Each person who intended canning anything this summer gave the secretary an estimate of the number of cans needed and the entire county placed their order for cans to come in one shipment, thereby securing a quantity price on cans." The above should be considered at the meeting of the Lynn county canning club in Tahoka the second day of next month.

All Men 21 to 30 Inc. Must Register June 5

June the 5th is Registration day. Every male citizen of these United States who has attained his 21st birthday birthday and has not yet attained his 31st birthday must register. No one is exempt from registration: white or otherwise, married or single, sick or well, cripple, maimed or physically fit; everyone must register. Bulletins will be posted at the places of registration giving full instructions as to how to answer the twelve questions that will be asked.

We clip the following statement War Department Official Bulletin:

"The enrolling is done in each voting precinct by a registrar appointed for the purpose. The duties of the registrar are mandatory and are performed under oath. Nothing is left to his discretion. He is liable heavy penalty, imprisonment with no alternative of fine, for making false returns or in any way being a party to or conniving at practices or favoritism or evasion. A like penalty is imposed over the individual who fails to register.

"The later process of selec-



Give them
Furniture.

Dear Mary:

Well, George and Auna are going to get married. I've already decided what we are going to give them - it will be furniture.

I wish papa and mama had given Frank and me furniture when we were married. I think furniture is such a sensible wedding gift. Young couples need it.

Let's buy our presents at the same time. Then we won't both give the same thing. I'll come for you and we'll go to the furniture store tomorrow. How about it? HELEN.

P. S. The place is

Myers & Davis
Furniture Company

Notice To Tax Payers

In obedience to an order passed by the Commissioners Court of Lynn County, Texas, you are notified that said Court will meet on a board of equalization on the second Tuesday in June 1917, the same being the 12th day of said month, for the purpose of equalizing the taxes assessed upon property in Lynn County, Texas, for the year 1917. Said meeting to be held in the County Judges office in the town of Tahoka at 9:30 a. m.

P. H. Northcross,
Ex-Officio Clerk of the Commissioners Court of Lynn County, Texas.

Ladies, Don't be afraid to send us your Sunday-Go-To-Meeting Gown. We will do them up right. We go get them, clean and press them, and take them back. Phone 159.
PAUL DRAPER.

Buy It Made In Lynn Co.

Patronize home industry and keep money in Lynn County. Why buy packing house beef when you can buy Lynn county beef and pork for less money at the Sanitary Market. Every pound of beef and pork slaughtered in Lynn county means money kept at home.

Hot Barbecue at B & H Market.

BEST CANDY MADE SINCE THE WORLD BEGAN IS PUT IN THE SHADE BY THIS CANDY MAN. HIS BUSINESS HE KNOWS, AS HIS CANDIES SHOWS.

NATURE NEEDS A HELPING HAND TO CURE AN ACHÉ OR PAIN; ASSISTED BY THE PUREST DRUGS SHE'LL MAKE YOU WELL AGAIN.

**Try Us
Barnes Drug Co.**

OPENING OF THE NEW MERCANTILE STORE

Thanks to the Public for Their Appreciation of Our Beautiful New Store

I wish to extend my sincere thanks to the people of Tahoka for the splendid manner in which they have shown their appreciation of my New Store and especially my coming to their town.

We are deeply grateful for the many kind expressions of congratulations that have been showered upon us the few days only that we have been here; it is indeed a source of great satisfaction to know that our efforts thus far have been thoroughly appreciated.

With a feeling of deep gratitude to our many new friends (which we hope to be our Customers) we approach the MID SUMMER with every good wish for one and all.

JEALOUS of our reputation, we insist that salesmen and clerks in our employ adhere unqualifiedly to the truth, not only as a matter of principals, but as a matter of good sound business policy.

UNTIRING in our efforts to give perfect service, we try to study the individual requirements of each customer, remembering at all times that each separate customer presents a distinct and different problem from every other customer.

MANY HOUSES give only passing attention to details, we aim; however, to secure absolute correctness in style, accuracy and uniformity, in our merchandise, to the end that it may

serve perfectly the purpose for which it is intended.

I want my store and name to signify something more than merely General Merchandise—we aim to secure such a high standard of quality, uniformity and dependability in our Merchandise that we may demand the respect of competitors as well as of customers.

Believing that the good will of those we may serve is our greatest asset, we try to make as moderate charge for our services as may be consistent with fairness, both as a matter of honest and because we know repeat orders are the very life blood of our business and success.

OF IMPORTANT interest to trade is the fact that we are always fair; frank and open, in any dealings we may have with our customers regarding financial matters. We extend credit, where such assistance is required and offer such courtesies and facilities in matters of this kind as may be consistent with fairness and with good sound business judgement.

We are anxious to become better acquainted with you, both in a social and business way, and at any time you have an opportunity to visit us, we shall be glad to have you as our guest.

Accept our thanks in advance for the liberal business we hope to receive, and for your continued success, I remain,
adv. H. M. McCORMACK.

Don't you need things for milking and Butter making?
See our churns and Cream Separators.



TURN THE DAIRY PART OF YOUR FARM INTO A BIG MONEY MAKER BY INSTALLING A LABOR- SAVING CREAM SEPARATOR AND OUR NEW DAIRY SET. THE EXTRA MONEY YOU WILL GET FOR YOUR PRODUCT WILL PAY BIG DIVIDENDS ON THE INVESTMENT YOU HAVE MADE.

COME IN. USE OUR HARDWARE; IT STANDS HARDWARE.

Adams Hdwe. Co.
NORTH END OF SHOOK BLOCK

READ THE P. & O. IMPLEMENT AD IN THIS ISSUE OF THE "NEWS"—WE HANDLE THESE HIGH GRADE IMPLEMENTS.

tion will be made by lot from the names entered on the registration rolls. Full information as to exemptions and methods of selection will be published later. For the present it is all important that the primary duty of registration be impressed upon all who is subject to it."

Residents of Lynn county will register in the voting box in the precinct in which you live, which are:

Precinct 1, Tahoka; 2, Wilson; 3, Three Lakes; 4, New Home; 5, Draw; 6, north Tahoka; 7, O'Donnell; 8, Grassland.

Residents of Lynn county within the age limit who expect to be out of the county June 5th must make application to the county clerk for a registration card, fill it out according to instruction and mail it to the registrar of their precinct. The clerk will furnish this address.

If you do not remember the exact day, month, year and place of birth, look it up, write it on a piece of paper and take it with you when you go to register.

WANTED—Fat Cows and Yearlings. What have you got?
SANITARY MARKET.



THE PENALTY OF EYE NEGLECT

There is always a penalty attached where a law of Nature has been disobeyed or disregarded.

Therefore you should by no means neglect "Nature warnings and signals" as shown by symptoms of eyestrain.

Have your eyes examined by our method, void of guessing, without the use of drugs, and thus get proper glasses without delay.

E. B. Gilbert, M. D.
Specialist
Eye, Ear, Nose and Throat
Tahoka, Texas.

"We can all we can and we eat what we can and we can what we can not eat, and we can can if anybody can and our canning can not be beat." The foregoing is the slogan of a certain Texas canning club, and is one worthy of adoption by any club.

Better Safe One Hundred Times Than Sorry Once

This Agency paid out thousands of dollars in 1916. for The Home Insurance Company of New York on Cotton Losses The Lynn County Farmer knows its a Good Company. As long as the Home Ins. Co. remains in Lynn County there is no need for you to speculate about your Insurance.

The Home of Now York is more than twenty times as big as any other company writing Insurance on cotton in Lynn county this year, and in 1916 paid out several times as much money as the total assets of the other companies that are writing hail insurance in competition to the Home this year

This agency is the only agency in Lynn County that has had any experience in the hail insurance business. In this instance we will advise: Avoid trouble by having your insurance written by those who have had experience.

Our Jitney Is Waiting For Us To Answer Your Call

John C. Woodall & Co.
Phone 130 "INSURANCE OF ALL KINDS" Thomas Bldg.

ALL AROUND THE FARM

BROODER IMPORTANT.

Where Large Numbers of Chicks Are Raised It Is Indispensable.

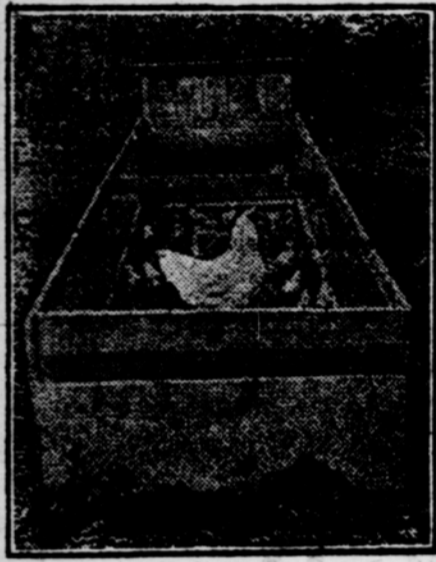
That the importance of the brooder in rearing large numbers of incubator chicks cannot be overestimated is the opinion of N. L. Harris, superintendent of the Kansas State Agricultural college poultry farm.

Some artificial means of brooding chicks must be provided when incubator chicks hatch in cool or cold weather. Where a small flock of birds is to be raised it is not profitable to use either the incubator or brooder, but where large numbers of chickens are handled the brooder becomes a matter of convenience.

Keeping chicks in large flocks minimizes the labor and reduces the cost of houses and yards. Where hens are used for brooders in cold weather only a few chicks can be given to each hen. This requires a large number of coops, and the attendant is compelled to give each group nearly as much attention as would be required for one large flock cared for by the brooder.

A large percentage of the hen brooded chicks suffer from the effects of head lice. These not only are bothersome to the newly hatched chick, but continue to be a source of trouble through the entire season.

Where hens are not available and only a few chicks are to be raised it is possible to construct a homemade



The chicken coop and screened run shown herewith provide safety for the hen and chicks from predatory foes. The wire screen is an effective barrier against hawks, cats, rats and other foes of chicks.

brooder. These usually require considerably more attention than those on the market, but will give fairly good results.

The most common method of heating these homemade brooders is by means of a jug of hot water. A box which contains sufficient room for from 50 to 100 chicks and which is tight on all sides excepting the front is the first requirement. Some method of ventilation should be provided on the top of the box. A two gallon jug of hot water furnishes the heating plant. The jug should be wrapped in burlap to protect the chicks and aid in retaining the heat. This brooder will keep a limited number of chicks perfectly comfortable.

There are nearly as many makes of brooders on the market as there are incubator factories in the country. Many of these brooders are so cheaply constructed as to be in constant danger of fire. Many small brooders are on the market, however, which are practically fireproof and which have a capacity of from 50 to 100 chicks.

Care of Chicks.

Provide the chicks with clean fresh water until they are a month or six weeks old.

After the first few days feed daily cut onions, green alfalfa, sprouted oats or some other suitable green feed unless chicks can get such material on range.

Feed charcoal, grit and bonemeal separately in a suitable feed hopper. Plenty of exercise on range and plenty of green feed and bonemeal will prevent leg weakness.

Toe picking or cannibalism can be prevented by providing plenty of animal food, green feed, exercise and by putting a little salt in the mash, not over one-half of 1 per cent.

Skim milk or buttermilk given the chicks to drink in a sanitary drinking vessel is excellent for promoting uniform and rapid growth and is one of the best preventives of bowel trouble. —Iowa Agricultural College.

TUBERCULOSIS OF CATTLE.

Wisconsin Plans Campaign to Control Spread of Dread Disease.

By C. P. Notgood, commissioner of agriculture, Wisconsin.

The veterinary division of the Wisconsin department of agriculture is planning an active campaign for the next two years to meet the very serious and threatening situation concerning tuberculosis within the state.

The 69,728 cattle tested during 1915-16 show that in the southern end of the state 6.9 per cent reacted in 1914-15 and 8.6 per cent in 1915-16. The disease is affecting hogs seriously. In two of the leading packing plants in Milwaukee 15 and 25 per cent of the hogs, respectively, are afflicted with tuberculosis.

Since the repeal of the compulsory test law of 1911 tuberculosis has greatly increased. The situation is serious. The following measures are proposed by the department of agriculture:

Laugh When People Step On Your Feet

Try this yourself then pass it along to others. It works!

Ouch ! ! ! ! ! This kind of rough talk will be heard less here in town if people troubled with corns will follow the simple advice of this Cincinnati authority, who claims that a few drops of a drug called freezeone when applied to a tender, aching corn stops soreness at once, and soon the corn dries up and lifts right off without pain.

He says freezeone is an ether compound which dries immediately and never inflames or even irritates the surrounding tissue or skin. A quarter of an ounce of freezeone will cost very little at any drug store, but is sufficient to remove every hard or soft corn or callus from one's feet. Millions of American women will welcome this announcement since the inauguration of the high heels.

OPEN NOSTRILS! END A COLD OR CATARRH

How To Get Relief When Head and Nose are Stuffed Up.

Count fifty! Your cold in head or catarrh disappears. Your clogged nostrils will open, the air passages of your head will clear and you can breathe freely. No more snuffing, hawking, mucous discharge, dryness or headache; no struggling for breath at night.

Get a small bottle of Ely's Cream Balm from your druggist and apply a little of this fragrant antiseptic cream in your nostrils. It penetrates through every air passage of the head, soothing and healing the swollen or inflamed mucous membrane, giving you instant relief. Head colds and catarrh yield like magic. Don't stay stuffed-up and miserable. Relief is sure.

Meet the situation. First.—Compulsory pasteurization of byproducts of creameries and cheese factories. The effect of this measure will be to check the spread of tuberculosis from a few tubercular herds in a creamery or cheese factory district to all of the other herds.

Second.—Compulsory testing of herds sold at public auction subject to regulation by the department to make this measure fit the various sections of the state. The public sale is the most prolific distributor of tuberculosis.

Third.—Requiring by July 1, 1918, that no animals be sold from pure bred herds unless the whole herd from which the animals come is tested.

Fourth.—Pay no indemnity for any reacting animal unless the whole herd from which it comes has been tested. Only whole herd tests make progress in the past paying for individual animals has meant only that the state carry insurance for dealers without making any progress for the money invested.

Fifth.—Lawful disposal of products from quarantined herds when properly pasteurized. This most important measure will permit owners to keep their reacting animals at a profit until they can produce others to take their places.

Sixth.—Testing all of the herds in various areas by state tests where farmers all agree to permit such a test to be made, the same being preceded and accompanied by an educational campaign. The effect of this will be to prevent recontamination of herds tested by neighboring herds. It will greatly increase the value of animals and trade in animals in such clean areas.

Seventh.—New laws on paying indemnity. Three measures are now before the legislature.

Eighth.—State accredited tuberculin tested herds and publication of the list of the same. This plan was started a year ago and has met with unqualified approval all over the state. It has been taken up by the United States department of agriculture and many other states throughout the United States.

Controlling Tomato Rot. Blossom end rot of tomatoes cannot be controlled by spraying, but it can be almost entirely controlled by keeping the soil moist all the time the plants are growing. Irrigation is the ideal way of keeping the soil moist, but this method is not practicable in some cases. The next best method is by mulching. This may be done by covering the ground with straw, leaves, hay, etc.

The Color of Gold. Gold is not always the "golden yellow" of the poets, but under certain conditions may appear orange, reddish green or even purple. Addition of copper as an alloy to make the metal hard enough for commercial purposes gives the gold an orange or even red appearance. Silver makes it a pale yellow. If it is beaten into very thin gold leaf it transmits a green light. But if very finely divided gold is suspended in a liquid by precipitation from a solution it appears to be purple. So you cannot always judge gold by its color.—American Boy.

ORCHARD AND GARDEN.

Cut out the old dead wood of the currants and thin out new shoots if they are thick. Leave no more than can have plenty of room to grow.

Every farm home should have a good strawberry bed, seventy-five or more raspberry bushes and a few black, white and red currant bushes.

Give cauliflower, cabbage and celery plants plenty of air.

Has the orchard been sprayed yet?

Plums do well on sandy soil. Apples do best on a loam soil underlaid with clay. Many times a side hill may be made good use of for apples or plums.

Watch the hotbeds and cold frames on warm days. A few minutes of hot sun on a hotbed will raise the temperature to the injury of the crop planted unless air is given.

Milk For Calves.

Calves especially strong at birth may be put on separated milk entirely at two weeks of age, but this should not be attempted with weak ones. Until the calf is in vigorous and thrifty condition no attempt should be made to change to separated milk. This change should always be made gradually.

LADIES! LOOK YOUNG, DARKEN GRAY HAIR

Use the Old-time Sage Tea and Sulphur and Nobody will Know.

Gray hair, however handsome, denotes advancing age. We all know the advantages of a youthful appearance. Your hair is your charm. It makes or mars the face. When it fades, turns gray and looks streaked, just a few applications of Sage Tea and Sulphur enhances its appearance a hundred-fold.

Don't stay gray! Look young! Either prepare the recipe at home or get from any drug store a 50-cent bottle of "Wyeth's Sage and Sulphur Compound," which is merely the old-time recipe improved by the addition of other ingredients. Thousands of folks recommend this ready-to-use preparation, because it darkens the hair beautifully, besides no one can possibly tell, as it darkens so naturally and evenly. You moisten a sponge or soft brush with it, drawing this through the hair, taking one small strand at a time. By morning the gray hair disappears; after another application or two, its natural color is restored and it becomes thick, glossy and lustrous, and you appear years younger.

Wyeth's Sage and Sulphur Compound is a delightful toilet requisite. It is not intended for the cure, mitigation or prevention of disease.

DRINK HOT WATER IF YOU DESIRE A ROSY COMPLEXION

Says we can't help but look better and feel better after an inside bath.

To look one's best and feel one's best is to enjoy an inside bath each morning to flush from the system the previous day's waste, sour fermentations and poisonous toxins before it is absorbed into the blood. Just as coal, when it burns, leaves behind a certain amount of incombustible material in the form of ashes, so the food and drink taken each day leave in the alimentary organs a certain amount of indigestible material, which if not eliminated, form toxins and poisons which are then sucked into the blood through the very ducts which are intended to suck in only nourishment to sustain the body.

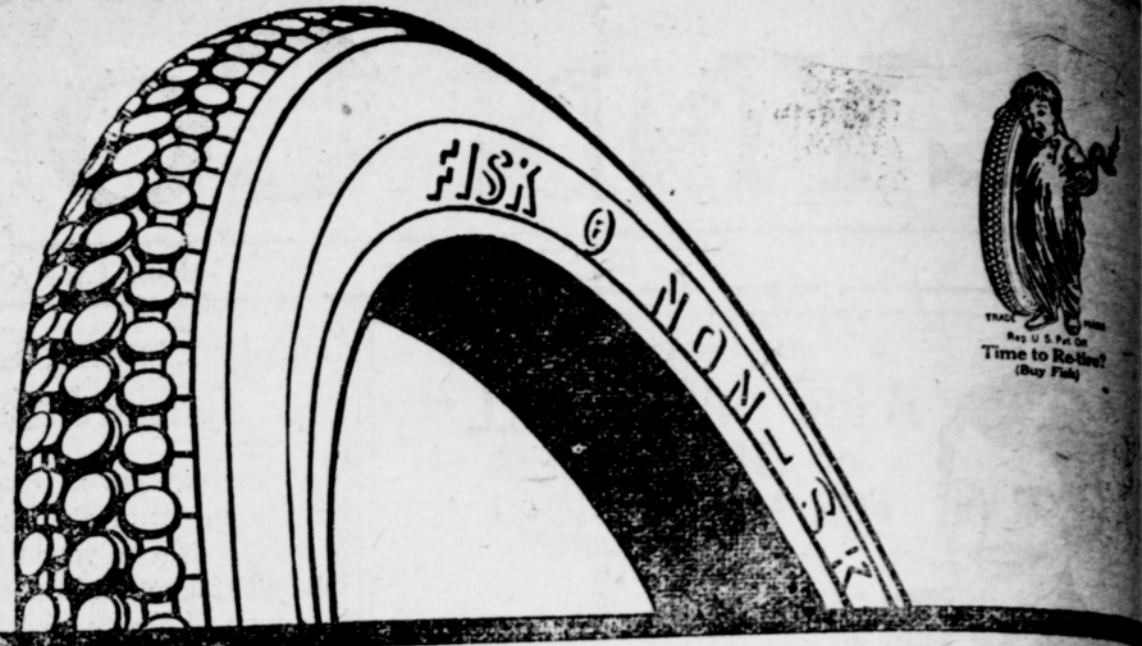
If you want to see the glow of healthy bloom in your cheeks, to see your skin get clearer and clearer, you are told to drink every morning upon arising, a glass of hot water with a teaspoonful of limestone phosphate in it, which is a harmless means of washing the waste material and toxins from the stomach, liver, kidneys and bowels, thus cleansing, sweetening and purifying the entire alimentary tract, before putting more food into the stomach.

Men and women with sallow skins, liver spots, pimples or pallid complexion, also those who wake up with a coated tongue, bad taste, nasty breath, others who are bothered with headaches, bilious spells, acid stomach or constipation should begin this phosphate hot water drinking and are assured of very pronounced results in one or two weeks.

A quarter pound of limestone phosphate costs very little at the drug store but is sufficient to demonstrate that just as soap and hot water cleanses, purifies and freshens the skin on the outside, so hot water and limestone phosphate act on the inside organs. We must always consider that internal sanitation is vastly more important than outside cleanliness, because the skin pores do not absorb impurities into the blood, while the bowel pores do.

Every home can now enjoy a phonograph. \$5 put it in your home and \$1 a week for ten weeks makes it yours. Don't pay more for a phonograph until you have seen and heard one of my machines.—Paul Miller 28tf

ENLIST NOW!



We Sell Nationally Advertised Fisk Tires

Fisk tires are nationally advertised—so are all standard made tires. Big tire concerns keep up a constant, everlasting business getting, common sense advertising campaign in the highest price mediums in the country.

They attract your eye with an artistic illustration, they hold your attention by submitting that you will experience fewer tire troubles by using their products—then they sell you by smashing you with the facts they are quantity producers and have a fair list price.

These big successful concerns do not solicit business direct from the consumer by offering a "cut price," because they know the dealers would not support them—then there would be no free air, no porters to change your tire, in fact No Tire Service at your command.

Instead they sell through responsible garage men and allow them the legitimate discount of 12½ per cent from list and an additional 5 per cent for cash. You can then always get the proper size tire or tube—Day or Night—the dealer "Carries them in Stock."

This also comes under the head of SERVICE. The same policy governs every successful Manufacturer in the United States. Don't you believe this is your own good business judgment for a moment and answer to yourself the following questions:

What talking machine would you buy if in the market—A Victor, Columbia, Edison, or a "Mere Phonograph"?
Do you chew "Spearmint Gum"?
Do you drink "Coca-Cola"?
Have you eaten "Haylers Chocolates"?
What does "Faber Blue Ribbon" suggest to you?
Is your safety razor a "Gillette"?
Who told you about "Bon Ami"?
Is there a bottle of "Lea & Ferrins" at home or any of "Heinz 57 Varieties"?
Is your house lighted with "Edison Mazda Lamps"?
Which tooth paste do you use "Colgate" or "Pebeco"?
Is "Mennen's Dandruff Talcum" wood-borne? Has your boy or brother an "Improved Watch"?
Is "Kodak" in the dictionary. Who sells it for you?
Have you heard of the famous old game "Checkers, Hudson, Packard, etc. Arrows"?

What Is A Fisk Non-Skid?

Why Do You Associate SERVICE with.....SHERROD & GAMB

Catarrh Cannot Be Cured

with LOCAL APPLICATIONS, as they cannot reach the seat of the disease. Catarrh is a blood or constitutional disease, and in order to cure it you must take internal remedies. Hall's Catarrh Cure is taken internally, and acts directly upon the blood and mucous surfaces. Hall's Catarrh Cure is not a quack medicine. It was prescribed by one of the best physicians in this country for years and is a regular prescription. It is composed of the best tonics known, combined with the best blood purifiers, acting directly on the mucous surfaces. The perfect combination of the two ingredients is what produces such wonderful results in curing catarrh. Send for testimonials, free. F. J. CHENEY & CO., Props., Toledo, O. Sold by Druggists, price 75c. Take Hall's Family Pills for constipation.

Asparagus Doesn't Need Salt.

While common salt has long been regarded as of value for the asparagus bed, experience has shown that the practice is unprofitable, says C. W. Rapp of the Oklahoma Agricultural college. The salt adds nothing that is necessary, and as a fertilizer its value is almost negligible. Moreover, the amount of moisture that the salt draws to the asparagus is very small, and its value as a destroyer of weeds is slight. The same amount of money if spent for any nitrogenous fertilizer will give far better returns.

Anyone wanting ice, phone 111

Sweet Potato, Cabbage, Pepper and Tomato plants, in season. see T. C. Leedy. 30-38p

FOR SALE One fifty Light Colts Acetylene plant, Also one instantaneous Hot Water Heater.

See Geo. J. B. Wright, Tinner and Plumber, One block east of A. G. McAdams Lbr. Yard, Tahoka, Tex.

111 FOR ICE 35tc

Best of Service

When your watch is out of fix or you have a piece of jewelry to be repaired, remember J. C. May located at Thomas Bros. Drug Store, can fix either up in first class shape and guarantee his work. 28tf

The Slogan of Lynn County Should Be—



A "LIBERTY LOAN" Bond

"Don't suffer from train headaches"

When traveling, attending a Theatre or some Social Function, or if Shopping, don't forget to have

DR. MILES' - Anti -

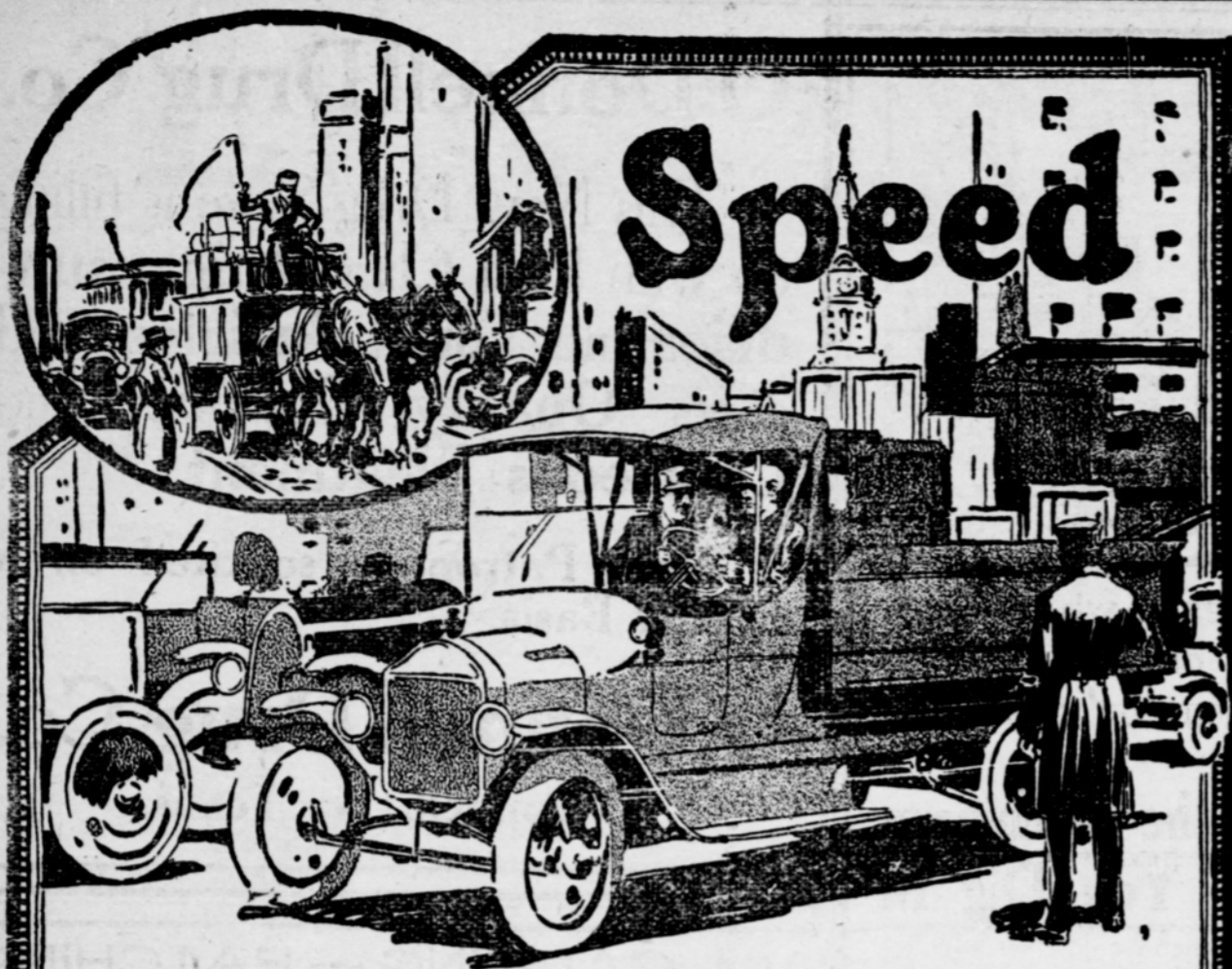
PAIN PILLS

with you. They are invaluable for Headache and all other Pains.

25 Doses, 25 Cents.

IF FIRST BOX IS NOT SATISFACTORY, YOUR MONEY WILL BE REFUNDED.

BRING DESIRED
"I have used Dr. Miles' Pills for some time and an invaluable remedy. I have always taken them in recommending them to my friends, being convinced will bring the desired relief without them. I have used them for all attacks of that they will not fail."
MRS. W.



Save Three Hours out of Every Four Your Horses Work by Using

Smith Form-a-Truck

\$350

F. O. B. Chicago

EDWARDS BROS. Distributors, - Tahoka, Texas

Every minute wasted on the road by slow, inefficient hauling and delivery costs you real money. Horses take from three to four times as long to cover the ground as it will take you when you install Smith Form-a-Trucks in your service.

Three to four miles an hour is the best horses can do with a ton load. Smith Form-a-Truck replaces the slow, time wasting walk of horses with a speed of from ten to fourteen miles an hour under every condition of work.

And it costs no more to buy a Smith Form-a-Truck than it does to buy a good pair of horses equal to the work of hauling a ton load. If your hauling or delivery requires all-day service every working day of the year, you must have at least two teams for every wagon.

The sturdy, efficient, untiring Smith Form-a-Truck never takes time out for rest, never has to lay off the job. It works steadily day in and day out, always maintaining its high speed, always moving its load quickly, easily, and at lower cost than any other form of service you can buy.

Records of service obtained from over 18,000 Smith Form-a-Truck users show a ton mile cost of less than 8 cents. And the first Smith Form-a-Truck ever sold has been in service four years, covered 20,000 miles and cost only \$8 for repairs.

Get a Smith Form-a-Truck, attach it to any Ford, Dodge Bros., Overland, Buick, Chevrolet or Maxwell chassis and end your excessive hauling and delivery costs.

Put your hauling problems up to us. It doesn't cost you a cent to learn just how much money we can put back into your pocket that you are now putting into horses.

CARE OF PASTURES.

The cost of feeding the dairy herd in summer can be greatly reduced by giving to the pasture proper care and management, says H. H. Kildee, Minnesota experiment station. On about 98 per cent of the farms the pasture is the most neglected area, and yet on this very area it is possible to double milk production most easily.

By keeping the cows off until May 10 or 15, adds Mr. Kildee, by sowing a variety of grass seeds and by liberally applying manure the Iowa experiment station carried from forty-five to forty-eight cows on a pasture of nineteen and one-half acres, in addition allowing them from six to nine acres of soiling crops. In spite of the limited acreage these cows were fed an abundance of green stuff, while cows on neighboring farms were allowed from two to three acres of pasture per head and had nothing but brown pastures to roam over.

Growing Tomatoes.

The earlier tomatoes are set in the field, provided they are not hit by a frost, the better. The first two weeks in May sometimes bring a light frost. The best success is obtained by growing the tomato plants in a small flower-pot or paper pot. The plant may then be set out in the open field with a ball of soil, so that there is less danger of breaking the feeding roots. Large plants should be set deeply, and if long and spindling a greater portion of the stem should be placed in the ground. Set the plants a little deeper in the soil than they formerly stood. If water is used, loose soil should be pulled over the puddled portion to prevent evaporation.

Mix Radishes and Parsnips.

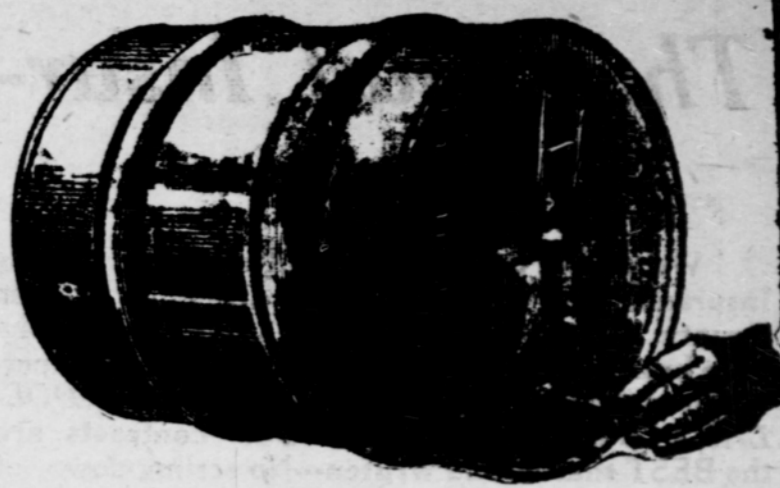
On account of the slow germination of parsnip seed it will be found a good practice to drill some early radishes thinly in the rows, to mark their positions and to assist the parsnip seedlings in getting through the soil. The radishes must be removed promptly when large enough to use, else they will damage the parsnips.—Ohio State University.

Docking Lambs.

There are two methods of docking lambs. One is by cutting off with a sharp knife, and the other is by burning with a docking iron. The latter is preferred, especially if the lamb has a large tail. The hot iron sears over the wound and prevents bleeding. If the lambs are old it is well to tie a string around the stump to prevent bleeding.

Spade Up the Run.

If you are keeping your chicks confined in small runs be sure to either move them frequently or spade over the ground, mixing some slacked lime with the turned over soil. This will prevent the soil from becoming foul.



Order this 15-Gallon Drum of Texaco Motor Oil

It Saves You Money, and It's Mighty Convenient

YOU have oil when you need it, in a leak-proof, dust-proof container.

No cans to spill, no oil wasted and you get a quantity price—that's a real saving.

With the Texaco drum in your garage you start the trip right—with the right oil.

Of course, you know that Texaco Motor Oil cuts down your motor expenses. It keeps the motor running smoothly on less power—meaning lower "gas" bills. It does not leave hard carbon deposits, saves carbon scraping, saves repairs.

Get this 15-gallon drum from The Texas Company agent in your town, or write our nearest office.



THE TEXAS COMPANY
HOUSTON, TEXAS



Hotel St. Clair

L. L. WILLIAMS, PROP.

Cafe in Connection

Rates \$1.50 and \$2.00 per day

Corner of Main and Lockwood
North of Square

Tahoka,

Texas

BE READY TO REGISTER JUNE 5.

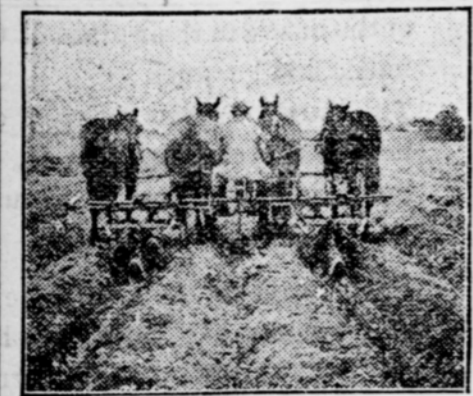
THE WORLD'S TWO BEST TWO-ROW CULTIVATORS

The P. & O. Two-Row Cultivator

covers every essential feature for perfect work, ease of adjustment and adaptability of all conditions of soils. The simplest and strongest Two-Row Cultivator made. "It's the way we build them." Frame as strong as a bridge. Axles of improved construction prevents wheel widening in front; make light draft. Fine depth adjustment; each gang controlled independently. Four levers do the work of six on other styles, as the inside levers control the inside gangs independently, and also raise or lower the gangs in pairs. Easy working adjustable foot levers. The wheels can be pivoted alone or in connection with the lateral gang movement. The pressure springs are center hung, insuring proper tension in all conditions of the ground and in any position of gangs. The parallel movement of gangs insures each shovel cutting the proper width and depth. Furnished with any style gang.



No. 27 2-Row Lister Cultivator



We make a complete line of DRY-FARMING tools, prominent among which is the No. 27 Lister-Cultivator, which has many superior features, consisting of two sets of gangs mounted slidingly on a trussed spreader pipe. Turn table construction evenly distributes weight on the gangs, holding them level and preventing one side from going in deeper. Each gang follows its own row. Roller connection between the gangs and spreader pipe. Gangs can be raised as a unit or shovels can be raised separately. Frame balances with tongue when raising gangs. Easy to change from first to second cultivation. Extra high clearance for large corn, with long shield for small corn. Eight shovel attachments can be furnished when ordered. If your dealer will not supply you it ONLY TAKES A POSTAL to get our new 1917 catalog and special introductory prices.



PARLIN & ORENDORFF IMPLEMENT CO.
DALLAS, TEXAS

Citation by Publication

The State of Texas,
To the Sheriff or any Constable of Lynn county, Greeting:
You are Commanded to Summon W. E. Brewer by making publication of this Citation once in each week for four consecutive weeks previous to the return day hereof, in some newspaper published in your county, if there be a newspaper published therein, but if not then in any newspaper published in the 72nd Judicial District; to appear at the next regular term of the Justice's Court of Precinct No. 1, Lynn county, to be holden at Tahoka, in said county on the 25th day of June A. D. 1917, then and there to answer a petition filed in said court on the 9th day of May A. D. 1917, in a suit numbered on the docket of said court No. 346, where in S. N. McDaniel is Plaintiff and W. E. Brewer is Defendant, and said petition alleging that defendant is indebted to plaintiff on an account of Merchandise sold defendant by plaintiff in the sum of \$67.00.
HEREIN FAIL NOT, but have you before said Court, at its aforesaid regular term, this writ with your return thereon, showing how you have executed the same.
Given under my official signature, at office in Tahoka, this the 9th day of May A. D. 1917.
G. W. Harrison,
36.39 Justice of the Peace.
Precinct No. 1 Lynn County, Texas.

You feel fine in a few moments. Your cold in head or catarrh will be gone. Your clogged nostrils will open. The air passages of your head will clear and you can breathe freely. No more dullness, headache; no hawking, snuffing, mucous discharges or dryness; no struggling for breath at night.
Tell your druggist you want a small bottle of Ely's Cream Balm. Apply a little of this fragrant, antiseptic cream in your nostrils, let it penetrate through every air passage of the head; soothe and heal the swollen, inflamed mucous membrane, and relief comes instantly. It is just what every cold and catarrh sufferer needs. Don't stay stuffed-up and miserable.

Decidedly

Indescret is the man who thinks he is economizing by using Cheap Stationery.

Cheap Printing

Creates an unfavorable impression that no amount of personal influence can overcome.

Job Department LYNN COUNTY NEWS
Thomas Bldg. TAHOKA, TEXAS.

That Hail Insurance---

We passed the experimental stage in writing Insurance long before there was an agency in Lynn County. We employ no hot air in order to influence business. Our companies are under supervision of the state and have **MILLIONS of DOLLARS To PAY All LOSSES**. Our contracts are the **BEST** that can be written---No scrling down of Policies or unsatisfactory settlements. Our service is backed by capability and efficiency which eliminates all trouble in settlements. Buy **YOUR** Insurance from **US** and be **SAFE**.

CRIE & RAMSEY

All Kinds of **INSURANCE**

Dr. Inmon & Turrentine
Physicians and Surgeons
Office in Shook Building
Over Post Office
Tahoka, Texas

M. M. HERRING
Abstracting
&
Farm Loans
Tahoka, Texas

E.E. Callaway Res. Phone 95
C.B. Townes Res. Phone 131
Physicians and Surgeons
Office Phone 45
Office upstairs Thomas Bros. Bldg

Dr. J. R. Singleton
Dentist
Permanently Located
Tahoka, Texas

Dr. J. H. McCoy
Physician and Surgeon
Office at Barnes Drug Store
Office phone 135 Res. phone 108

West Texas Abstract Co.
Abstractors and Conveyancers
Fees 50 cents per page
Satisfaction Guaranteed
Office In County Clerk's Office

C. H. Cain
Lawyer
Office in Guaranty Bank Bldg
Tahoka, Texas

B. P. Maddox
Attorney-At-Law
Practice In All The Courts
Office room 3 Guaranty Bank Bldg
Tahoka, Texas

Arrow Collars, the new ones.
PAUL DRAPER.

Overalls \$1.25.
PAUL DRAPER
The Mans Store.



is a profitable process, which however, requires the power of being able to pay "spot cash" when the opportunity arrives.

A Bank Account Is the Machinery Which Will Help You Dig In

and scoop up some of the bargains which would otherwise remain beyond your reach. We invite the accounts of responsible business men with a view to accommodating them when occasions arise that require immediately **Available Cash**.

The Guaranty State Bank.
The non interest bearing deposits of this bank are protected by the Guaranty Fund of the State of Texas.



Stain and Varnish that

Shabby Furniture

Furniture that has become shabby or wood-work on which the finish has become worn can easily be renewed or made to harmonize with the balance of the room by using

ACME QUALITY
VARNO-LAC

Acme Quality Varno-Lac stains and varnishes at one operation producing popular stain effects and imitations of expensive hardwoods. Can be used for furniture, floors and wood work. It is easy to apply. The Acme Quality Painting Guide Book tells all about staining, varnishing and painting. What materials to use, how much will be required and how the work should be done. Free at our Yard.

A. G. McAdams Lumber Co.
F. L. PARKER, Local Mgr. Tahoka, Texas.

J. A. Moore
Attorney-at-Law
Office in Guaranty State Bank Building, Tahoka, Texas.
COLLECTIONS A SPECIALTY

The Lamesa Sanitarium
Lamesa, Texas
JNO. H. BRICE, M. D., SURGEON IN CHARGE
Surgical, Obstetrical and Selected Medical Cases
Trained Nurse in Attendance

J. N. Williamson, M. D.
Specialist in Chronic Diseases
38 Years Experience
Office Hours: 9 a. m. to 4 p. m.
Suite 10, Guaranty Bank Bldg.
Tahoka, Texas

Seal Pack Union Suits will keep you cool.
PAUL DRAPER
The Mans Store.

Annual Children's Day exercises will be conducted at the Methodist church next Sunday at 10:00 a. m. and will embrace the entire morning service. An excellent program is being prepared, and a cordial welcome awaits all who come.

The Epworth League will render the Parables of the "Talents" and "The Ten Virgins," with costumes, at the evening hour.
Service beginning at 8:30.
R. F. EUNN, Pastor.

Phone 159.
We'll come and get them.
PAUL DRAPER.

J. N. Jones
Dealer In
Furniture
and
Undertakers Supplies

To Be A Hero

To be a hero does not mean To march away at the Sound of the trumpet's call to War's array. It does not mean a lifeless form Neath foeman's dart, To be a hero simply means to Do your part And buy Lynn County Products. **SANITARY MARKET.**

Baggy Britches look bad, dont wear them that way. Let us take the Baggy out.
PAUL DRAPER
Phone 159.

Kill Your Prairie Dogs with our safety gas-ball; simple to use and cheaper than poisons, largest percentage of kills.
Price per gross \$3.00; 6 gross \$13.50; One case 1728 exterminators \$25.50. In 5 case lot's, \$20.50 per case.

JOHN BUNT Pres.
California Chemical Co.
340 Sansome St. San Francisco Cal.

O'Donnell Drug Co

This New Drug Store is filling up with First Class Drugs, sundries and Toilet Articles, and offers **Quality Service** and **Courteous Treatment**.

Your Patronage solicited on **CASH** Basis.

O'Donnell Drug Co
O'Donnell, - Texas.

VULCANIZING --- PATCHING AND INTERLINERS
W. I. CARRINGTON
At Gamble & Sherrod Garage North First National

- Carter Bros. -

Where

Quality is High and the Price is Low

ONE OF THE LARGEST STOCK OF GENERAL MERCHANDISE ON THE SOUTH PLAINS

Fresh, Seasonable Staple and Fancy Groceries

Modern Up-To-Date Dry Goods and Clothing

NEW GOODS ARRIVING

Dr. I. E. Smith, Eye, Ear, Nose & Throat Specialist
Snyder will be in Tahoka, Wednesday May 30, office Stokes Hotel.

TO AVOID A COAL SHORTAGE

We are laying in a large supply of **High Grade Coal**, but we can not stock enough to carry the **Country thru the Winter**.

DO YOUR "BIT"
lay in **your** winters supply **now** when you can **buy for less money**, and help us avoid a coal shortage this winter.

Traffic will be hindered and output of the mine's will be less

Place your order **NOW**
EDWARDS BROS
"If it's not right, WE MAKE IT RIGHT."

The three day Chautauqua enthusiastic in their presence closed last night, and the contract with over forty signers renewal for next fall. The henschaw Opra Company delighted the people in the afternoon of the first day in a missellaneous program, and at night gave a most artistic rendition of the comic opera The Micado. Mhe Appolo Quartet and Da. Bible were the alternatives for the second day- our people were Esworth Plumstead, the popular impersonator, in his inimitable delineation of Old Man characterizations won his way to the hearts of his audience.

Winifred Gale Lee-the reader was most winsom and artistic. Mrs. McCulloch Ferguson, the pianist, than whom there few greater, was greeted with most hearty applause and appreciation by our people. It was a rare treat to hear this noted artist, she being a Texas graduate and her fathrr, Jas. McCulouch, for twenty years mayor of Waco. We are justly proud of her.

music and lectures. The third day was affitt max to the closing. Dr. Sears, in his two popular... The walk on the south side of the square has been... with the exception of the lot on the east end of the This will be laid in a... Work was commenced... day on establishing the level for the walk from... niture store of Meyers... store on the Sante Fe... We are informed that... of laying these walks... commenced today or... The completion of... will give Tahoka another mile of continuous walk... much to that part of the Good cement walks... can make; Let the... go on.

The house of Real Reel Features East Side Main Street

Remember "New York" and "The Test?"

A. H. WOODS Presents

"The CHALLENGE"

With

Montague Love, Charles Gotthold and Helene Chadwick

Don't Miss this Powerful play of Love and Achivement.

See the 14th Episode of the Shielding Shadow Monday Night May 28th.

THEATRE

ADMISSION 15cts

Patriotism And Business

Every good citizen should do his share toward strengthening the Federal reserve System which our Government has created with its billions of dollars of resources to stand back of its members and all of their depositors.

You can contribute directly to the strength of this System, and at the same time secure its protection by depositing your money with us, since part of every dollar you deposit with us goes directly into the new system, where it is always ready for prompt Action.

MEMBER FEDERAL RESERVE SYSTEM

FIRST NATIONAL BANK OF TAHOKA