



Motley County Tribune



"VOICE OF THE FOOTHILLS"

50¢

July 25, 2002

ESTABLISHED 1891

Issue No. 30



Family operated Red Ball Gin is big asset to area farmers

The Red Ball Gin in Roaring Springs is truly a family operation. Tommie Cruse and her late husband, Ray, along with their children, Donnie and Judy Cruse, Darrell and Brenda Cruse, James and Darla Gwinn, Larry and Deidra Clifton, and Derinda Cruse (Patton), purchased the longtime Motley County business from Caldwell and Joyce Smith in May of 1985.

"Ray had visited with Caldwell about the gin several years before it became available for purchase," said Mrs. Cruse.

Mrs. Cruse was no stranger to gin work, having worked at various gins in the Flomot area.

Longtime farmers, the Cruse family felt the purchase of the gin would not only be a benefit to their personal operations, but also to Motley County. The family had been residents of Flomot since 1956 and thought it was important to keep the business locally owned and operated.

"Every member of the family has been very active in the operation and has worked at the gin at some time or another," said Mrs. Cruse.

Although some members of the family no longer live in Motley County, they still keep in touch with operations. Larry and Deidra Clifton recently re-located to Cisco, and Derinda lives in Silverton with her husband, Mark and their four children.

When Mr. Cruse passed away in November of 1996, Mrs. Cruse continued her work at the Gin, part time. "I'm the office manager," she said. "I enjoy this work, and look forward to coming to work," but our new gin manager will now run most of the operations," she continued.

Charles Moraw, a Muleshoe native, was recently employed as the gin's manager. Mr. Moraw has worked in gins all his life and has managed a gin at Muleshoe. "My dad ran a gin all my life, and I've always enjoyed the work," he said.

Mr. Moraw and his wife, Vicki, live in Floydada, but are hoping to move to Matador or Roaring Springs in the very near future. They have four grown children and two grandchild-



RED BALL GIN co-owner, Tommie Cruse, sits behind the counter at the gin office going over some books. Mrs. Cruse is the office manager of the family owned business.

dren.

Mrs. Cruse and Mr. Moraw have seen several changes in gin operations over their years of experience. "Everything used to be done by hand," said Mrs. Cruse. "There were no computers in gin offices, and there was a lot of paperwork," she continued. "Cotton buyers used to come to the gin to buy the cotton. Ray used to enjoy going to gins and looking at the cotton as the ginner opened the bales to display the cotton," said Mrs. Cruse.

"Cotton buying and selling is now completely different," Mr. Moraw continued. "Samples are now sent to government classing offices, and they return the grades by computer. The cotton is listed on the internet to sell," he said. "The selling of the cotton depends on the market, supply and demand," he continued.

Another change in the cotton ginning process that Mr. Moraw and Mrs. Cruse commented on is the fact

that most all of the cotton now comes in by module. The two said that it is now very rare for cotton to come in trailers. Usually the cotton that comes in by trailer is what is left over from the modules.

Red Ball Gin wants to cater to their customers. After both farm stores in the county went out of business, the gin started selling chemicals and planting seed. "We want to accommodate our customers in every way we can," said Mrs. Cruse. The gin recently became a dealership for Roll-A-Cone, a farm equipment business headquartered in Tulia. The gin will now have equipment such as tool bars, shanks, clamps, etc. available.

"We're very proud to be in business in Motley County, and would like to invite everyone to come by, meet Charles, and have a cup of coffee," Mrs. Cruse said.



VERY INTERESTING — Hayden Davey and other Kids' Campers seem to be very interested in the Green Tree Frog this representative from the Science Spectrum of Lubbock, is showing. Kids had the opportunity to learn about and view up-close several types of reptiles, turtles, frogs, and even a large tarantula. This presentation was only one of which camp members were able to enjoy from the Science Spectrum. Approximately 65 kids registered for this year's camp sponsored each year by the Roaring Springs Community Volunteers. The camp will come to an end on Friday when the children will present a program.

Comptroller Rylander sends \$301.3 million in sales tax revenue

Austin -- Texas Comptroller Carole Keeton Rylander sent \$301.3 million in monthly sales tax payments to Texas cities, counties, transit departments and special purpose taxing districts on Friday, July 12.

July sales tax rebates include local sales taxes collected in May and reported to the Comptroller in June. The state's share of sales tax collected during this period was \$1.1 billion, up 1 percent compared to a year ago.

Comptroller Rylander sent sales tax rebates of \$202.7 million to 1,114

Texas cities, up 0.5 percent compared to July 2001. Sales tax rebates of \$17.6 million went to 121 Texas counties, up 0.5 percent compared to one year ago.

In addition, \$8.2 million went to 71 special purpose taxing districts, a 1.5 percent increase compared to last July. Only transit sales tax collections showed a decline. Texas' six metropolitan transit authorities and two city transit departments received \$72.6 million in sales tax revenue, down 3.1 percent compared to a year ago.

Matador, with a current rate of 1.000%, received \$1,995.74, compared to \$1,829.76 last year, a 9.07% change. 2002 payments to date are \$17,638.58, compared to \$16,427.11 for 2001, a 7.31% change.

Roaring Springs, with a current rate of 2.000%, received \$2,755.74, compared to \$2,348.31 last year, a 17.34% change. 2002 payments are \$15,554.82, compared to \$18,126.39 for 2001, a -14.18% change.

The Comptroller's next sales tax allocation will be made on Friday, August 9.

Sales tax holiday set for August 2-4

Austin -- Texas Comptroller Carole Keeton Rylander announced that the annual Sales Tax Holiday is coming up August 2-4.

"Start making your shopping list for school clothes for the kids and new clothes for mom and dad," Comptroller Rylander said. "During the Sales Tax Holiday, most clothes and shoes priced under \$100 are exempt from state and local sales taxes."

Rylander estimates Texans will save \$42 million in sales tax during the three-day Sales Tax Holiday, in-

cluding \$33.2 million in state sales tax and \$8.8 million in local sales taxes.

"I believe Texans will once again take full advantage of this well-deserved tax break to make their dollars go farther as they shop for a new school year," Rylander said. "During the Sales Tax Holiday, shoppers save about \$8 for every \$100 they spend on qualifying clothing and footwear."

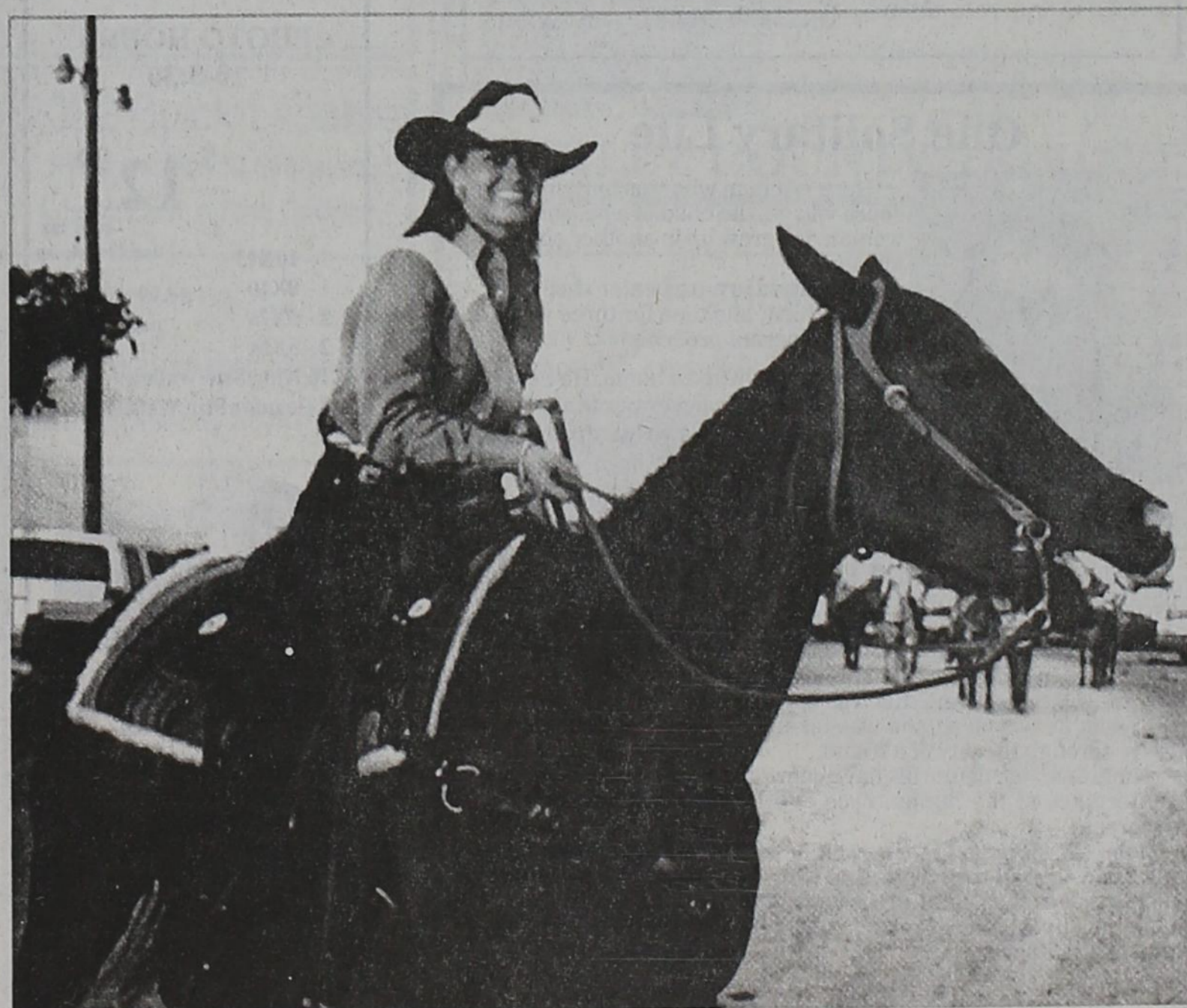
The savings from Texas' three Sales Tax Holidays thus far total approximately \$108.2 million, including an estimated \$85.3 million in state sales tax and an estimated \$22.9 mil-

lion in local sales taxes.

"That's \$108 million that Texans have been able to keep in their pockets for their families' priorities," Comptroller Rylander said.

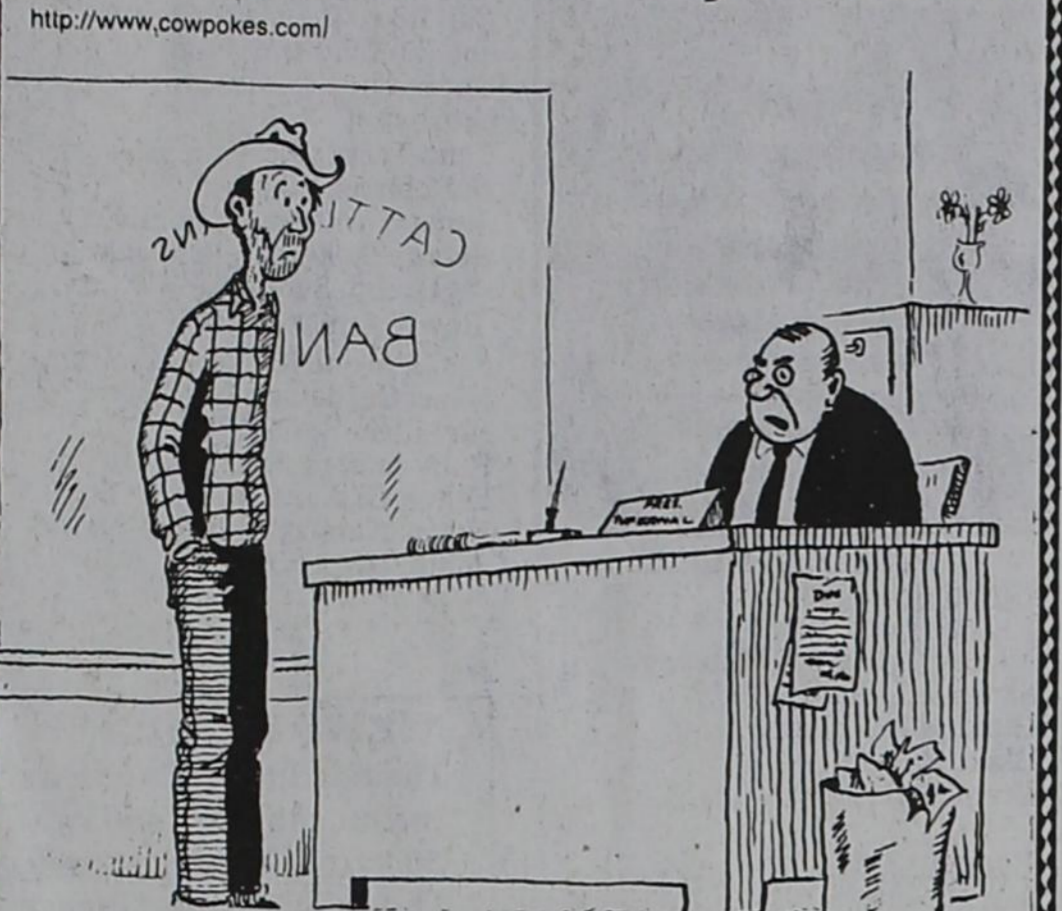
Examples of items that can be purchased tax-free August 2-4 include kids' clothes and school uniforms, adults' clothes and work uniforms, shoes, tennis shoes, slippers, sleepwear and underclothes for the entire family, as long as the items are priced under \$100 each.

continued on page 3



BAR-NONE RODEO QUEEN — Kayla Copp, 18-year-old daughter of Rick and Lana Copp of Matador, was crowned the 2002 Bar-None Rodeo Queen Thursday night, July 18 at the Plainview rodeo performance. Queen contestants were judged in four categories including horsemanship, poise, interview, grooming of horse and rider. Kayla rode in the parade and grand entry each night of the Rodeo. She will represent the rodeo association as the Queen until next July. Kayla is a 2002 graduate of Motley County High School. She will attend Texas A&M University this Fall.

COW POKES® By Ace Reid



"Yes, Jake, I can advise you how to get rich and stay that way. Never buy anything that eats, depreciates, or is subject to death loss."

This feature sponsored by the **First State Bank**
 Matador Member, FDIC
 Your "Hometown" Bank

Bear with each other and forgive whatever grievances you may have against one another. Forgive as the Lord forgave you.

Colossians 3:13

MIDWAY DRIVE-IN
 Friday, Saturday & Sunday
LIKE MIKE
 Rated PG
 Concession Open!
 Drive-In opens at 8:00 p.m. - Movie starts at dark
 Adults - \$4.00 Children 12 & under, \$2.00
 423-1166

ATTENTION COTTON PRODUCER
 ADM - PAYMASTER GIN - QUITAQUE
IS OUT TO GET YOU
 AS A CUSTOMER!
 WE WILL GIN FOR LESS AND DO THE BEST!
 806-455-1440 • 800-443-8702
 JACKIE & RON CARPENTER

FEN-PHEN Pondimin & Redux
LAW SUIT FILING DEADLINES RUNNING SOON!
 HEART PALPITATIONS, RACING HEART, SWELLING IN FEET & ANKLES, SHORTNESS OF BREATH, FATIGUE
 If you took these diet drugs for 2 months or longer AND you are having any of these symptoms, then call for a FREE CONFIDENTIAL CONSULTATION. If eligible, a FREE ECHOCARDIOGRAPHIC TEST (non-invasive) will be set up for you and your test results will be kept confidential.
WILLIS LAW FIRM BOARD CERTIFIED
 DAVID P. WILLIS PERSONAL INJURY
 Attorney at Law TRIAL LAWYER
 Houston, Texas Texas Board of Legal Specialization
 Call 1-800-883-9858 or 713-654-4040

Higginbotham-Bartlett
 We now have **HI-PRO** **Godbold Feeds**
Hi-Pro Feeds
 FEEDS
 Angle Iron, Flat Metal, 4x4 Tubing, C-Purlin
 Hunting & Fishing License - Ammunition - Deer Corn
 Exide Batteries
 — Appliances —
 Washers & Dryers, Stoves, Freezers, Microwaves
 TV's, VCR's, & Stereos
 FARM & RANCH SUPPLIES
 PORT-A-HUT HOG RAISING SYSTEMS
 STORAGE BUILDINGS

 RENTALS: Chop Saw • Roto-Rooter • Ditch Witch • Roto Tiller
 Tandem Trailer • Welder • Steam Cleaner
 STORE HOURS: 7:00 A.M. - 5:00 P.M. MONDAY - FRIDAY & 7-12 SATURDAY
 FREE LOCAL DELIVERY
 FOR YOUR CONVENIENCE AFTER HOURS CALL
 DONNIE, 347-2889

FARM AND RANCH NEWS

COTTON NEWS
 FROM PLAINS COTTON GROWERS, INC.

AG APPROPRIATIONS DEBATE POSTPONED UNTIL SEPT.
 Legislative calendars are never easy to predict and the FY03 Agricultural Appropriations bill continues to be a moving target in terms of nailing down when the House of Representatives will actually begin to debate the measure.
 Drought plagued farmers and ranchers across the nation are watching the progress of the FY03 spending bill closely since it is considered the most likely place to include much needed crop and livestock assistance.
 Originally thought to be up for consideration this week, new information says the measure is now likely to be pushed back until after the August recess and not begin floor debate until September.
 That means Ag Appropriations will join a lengthening line of appropriations measures that Congress must act upon before the end of the scheduled legislative activities this October.

CROP PROGRESS RIGHT ON SCHEDULE
 Crops across the Texas High Plains continue to look good as the end of July approaches. This is a welcome change for many producers who have been hard pressed to have any kind of crop in the last few years.
 To say that the crop is the best ever would be stretching the truth a bit, however, it is not a stretch to note that area-wide the crop is probably looking about as good as many have seen in several years. The primary catalyst for that improved assessment is easily the status of the area's dryland crop.
 The fact that current estimates show better than two-thirds of the

dryland acres actually made it to a stand has been cause for celebration all by itself. Add in the fact that many of these acres have also received timely rains to date and you have significantly improved the chances that dryland cotton will make significant contributions to the 2003 production total.
 Irrigated cotton also looks good across the area. Isolated hailstorms have impacted some acres, but accurate estimates are still not available at this time.
 Whether or not the area's crop eventually lives up to the potential that is there right now will depend on a combination of factors, including weather and the continued arrival of timely, beneficial rains for both dryland and irrigated crops and insects.

Farm Service Agency News
 by Debbie Shaw, CED

CRP EMERGENCY HAYING AND GRAZING APPROVED FOR MOTLEY COUNTY

Motley County has been approved for CRP Emergency Haying and Grazing. Some of the Emergency guidelines are:
 • A request should be made and approved to hay or graze in the FSA office before any haying or grazing takes place.
 • A modified Conservation Plan from NRCS must be obtained.
 • CRP participants shall be assessed a payment reduction of 25% of the annual payment rate per acre, unless the hay or haying or grazing privilege is donated to a livestock producer with a compelling need.
 • The same CRP acreage cannot be hayed and grazed.
 • At least 50% of each field should not be hayed.
 • Producers haying CRP are limited to one cutting.
 • No more than 75% of each field shall be grazed unless stocking rates are reduced.
 • Conditions will be reviewed monthly to determine whether continued haying/grazing is warranted.
 • Only livestock operations located within approved counties are eligible for emergency haying or grazing.
 • CRP hay cannot be sold under any circumstances and must be used by either the CRP participant or an eligible livestock producer who rents or leases the haying privileges.

• CRP participants who rent or lease their haying or grazing privilege to an eligible livestock producer located in another county or State must inform the County Office of the producer's name and identify the acreage on an aerial photocopy.
 • Eligible livestock producers who are renting or leasing eligible acreage from a CRP participant, shall
 • Sign a statement that he or she will not sublease CRP acreage
 • Receive notification of approval, in writing, from COC

TOTAL CROPLAND CERTIFICATION REQUIREMENT

The Farm Security and Rural Investment Act of 2002 requires that producers report all cropland on the farm as a condition for receiving direct payments, counter-cyclical payments, LDP's and marketing assistance loans beginning with the 2002 crop year. Producers who participate in LDP's or marketing assistance loans will be granted an extension for filing an acreage report for all cropland on the farm. In these situations, late-filed fees will not be charged. This information was received following our final certification date of July 15th. If you know you did not report every acre of cropland, please come in and complete the certification to meet the acreage reporting requirement for receiving the Direct and Counter-Cyclical (DCP) payments, LDP's and marketing loans for 2002.

WPS TRACTOR RAFFLE TICKETS AVAILABLE

Women's Protective Services of Lubbock is sponsoring their 3rd Annual Tractor Raffle, August 17 at the Lubbock Memorial Civic Center and time is running out to get your chance to win a John Deere 7810 tractor. Ticket sales are projected to end August 1.
 Only 2,000 tickets will be sold for the event with raffle tickets priced at \$100. Each ticket purchase includes entry in the raffle and entry for two to the main event August 17. The raffle will be conducted through a reverse draw with the last ticket proclaiming the winner.
 The fund-raising event benefits the Lubbock District of Women's Protective Services.
 To purchase tickets, or to find out where tickets are being sold in your area, contact Women's Protective Services at 806-748-5292.

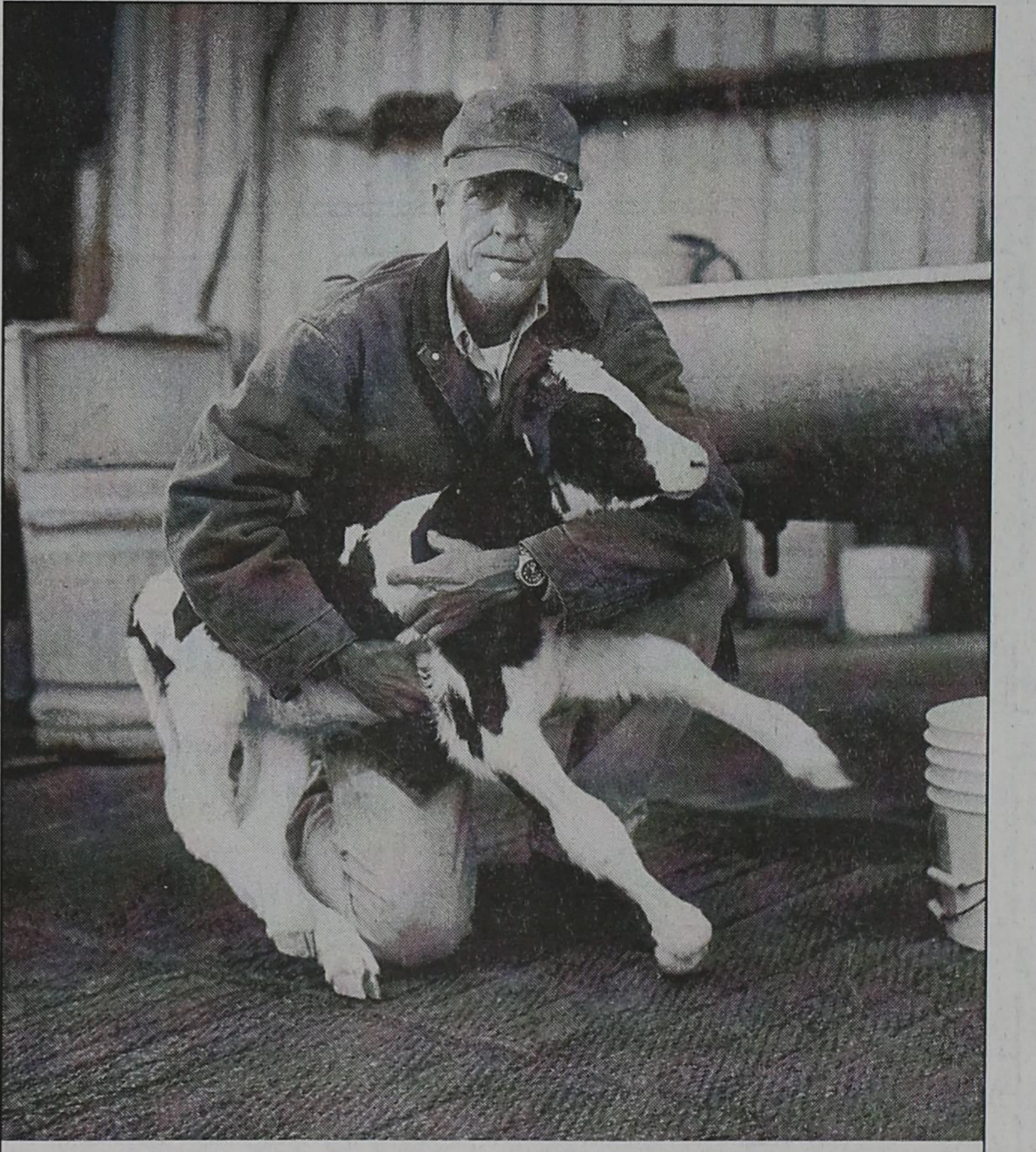
Health Benefits For The Entire Family
 only **\$74 Per Month** (With No Deductible)
 FLAT RATE - GUARANTEED ACCEPTANCE!
 SELF-EMPLOYED OR NOT - NO INCREASE!
 MEDICAL DISCOUNTS ON:
 • DOCTOR • DENTAL • VISION • RX • MORE!
 Call Toll-Free: 1-888-829-8509
* This is a discount and program and not an insurance. Not available in VA.

We Print Business Cards
MOTLEY COUNTY TRIBUNE

WANTED: 5 HOMES TO APPLY VINYL SIDING
 5 homeowners in this general area will be given the opportunity of having new CERTAINTED VINYL SIDING applied to their homes with optional decorative work at a very low cost. This amazing new product has captured the interest of homeowners throughout the United States who are fed up with constant painting and other maintenance cost. Backed with lifetime labor and material warranty, and provides full insulation summer and winter. This product can be installed on every type of home. It comes in a choice of colors and is now being offered to the local market. Your home can be a show place in your vicinity and we will make it worth your while if we can use your home.
 For an appointment please call:
 AzLic#64899 **1-800-510-0577**

Stop by or give us a call
Panhandle-Plains FLBA
 629 Baltimore Plainview, TX
 (806) 296-5579

 Part of the fabric of rural life.



Dairy farmers are a part of our electric co-op.

Lighthouse Electric Cooperative

 Your Touchstone Energy® Cooperative
 The power of human connections

FOR SALE: 1971 Fan Line Travel Trailer, \$1,000. Larry Markham, 806-347-2840.

WILL BUY ANTIQUES and Collectibles; Estates. Call 347-2003.

Real Estate

The Classifieds

Our Accessory Headquarters: Bumpers, grill guards, nerf bards, steps, tool boxes, headache racks, etc.

JULY SUBSCRIPTIONS DUE

Motley County - \$22.50
All others - \$24.50
(Those over 60 may deduct \$1.00)

Please mail payment and address changes to:
Motley County Tribune
P.O. Box 490
Matador, Texas 79244

ELSEWHERE

Dumont Bridge, Plainview
C.W. Starkey, Lockney
J.A. Welch, Lockney
Cap Rock Telephone, Spur
Joe Ike Clay, Quitaque
Caprock Community Action, Crosbyton
Cone Aerial Spraying, Ralls
D. Robbins, Idalou
Annette Wilkerson, Kemp
George Fulkerson, Amarillo
Pat Green, Sinton
Roy W. Amick, Pueblo, CO
Joel & Arline Murphy, San Diego, CA
Hazel Gordanier, Las Vegas, NV
Ray Rice, Reno, NV
Ruby Anders, LaPlace, LA
Felton Gilmore, Morgan City, LA
Norman Harp, Santa Fe, NM
John Fish, Linden, TN

Motley County Tribune
Carla M. Meador - Publisher & Editor

TEXAS PRESS ASSOCIATION AWARD WINNER

PANHANDLE PRESS ASSOCIATION MEMBER

TEXAS PRESS ASSOCIATION MEMBER

The Motley County Tribune, (ISSN: 0897-4322), purchased on September 3, 1996, is published weekly each Thursday, except Christmas week, at Matador, Texas. The office is located at 724 Dundee, telephone number, 806/347-2400. Periodical-class postage paid at Matador, Texas. Postmaster: Send address changes to Motley County Tribune, P.O. Box 490, Matador, Texas 79244. NOTICE: Any erroneous reflection upon the character, firm, or corporation, which may appear in the columns of the Motley County Tribune will gladly be corrected upon being brought to the attention of the Publisher. Only signed letters to the Editor will be considered for publication. PUBLICATION NO.: 333770 SUBSCRIPTION RATES: Motley County - \$22.50; All others, \$24.50 P.O. Box 490, Matador, TX 79244

For Sale

FOR SALE: Singer Sewing reference library, 16 volumes. New! 348-7516.

BUY, SELL & TRADE Used Furniture and Appliances, 347-2350, 10 a.m. - 5 p.m., or 347-2953 after 5 p.m.

FOR SALE: Queen size sofa sleeper. Very good condition. 347-2412.

Bid Notice

BID NOTICE
The City of Roaring Springs is now accepting bids for a 7 ft. Bush-Hog, 540 PTO Shredder. Mail bids to the City of Roaring Springs, P.O. Box 247, Roaring Springs, Texas 79256. Bids must be in the city office no later than noon, August 9, 2002. The city has the right to refuse any or all bids.

Public Notice

DISH PICK-UP
Please come by the First Baptist Church in Matador to pick up dishes left from funerals, etc. Thank you.

EMT CLASS TO BE HELD IN AUGUST
An EMT Basic Class will begin in August. The class will be open to high school seniors and up, and will give 6 hours of college credit through South Plains College. For more information contact Tony Rose at 347-2412 or Seven Alexander at 347-2310.

LEGAL NOTICE
Motley County Independent School District will receive bids for the purchase of:

1. Oil, Gasoline, and Diesel
2. L.P.G.
3. Fleet Insurance
4. Property/General Liability Insurance/Errors & Omission

For the 2002-2003 School Year. All bids are to be submitted to the Superintendent's office by 4:00 p.m. on August 9, 2002. The bids will cover service from September 1, 2002, through August 31, 2003. Please place bids in a sealed envelope, marked "BID". The School Board reserves the right to reject any and all bids. Bids will be opened and awarded at the regular board meeting on August 12, 2002.

NEWS DEADLINE
The deadline for all news and ad copy is Monday, at 5:00 p.m. for inclusion in Thursday's paper. Please observe this deadline. Thank you!

Lost & Found

LOST: White, Male Dog, with big black spot on hip, brown speckles on head, shaved. Very important! If seen please call 347-2023.

Wanted

WANTED: Nice house for hunters and families. Yearly lease. Dickens, Afton, Dumont, Roaring Springs, Matador, Paducah area. 806-689-2006.

Garage Sale

GARAGE SALE: Saturday, 9:00 a.m. - 1:00 p.m., next to Snow Cone Stand. Furniture, Clothes, knick-knacks and more. n/c

"I can do all things through Christ which strengtheneth me."
— Philippians 4:13

WANTED SWATHING & BALING

Large round and small square bales. Quality work at competitive prices. New S.P.N.H. Swather, New J.D. Round Baler, New 575 N.H. Square Baler, Wire tie.

Crawford W. Wesley
806-668-4448, home
806-995-5053, mobile

Help Wanted

HELP WANTED: Attendant needed to work in home of elderly and disabled with light housekeeping and personal care. Please call 1-800-559-6097 and leave message for Janis Davis.

Q.C. TECHNICIAN: This position will be responsible for QC checks and physical testing of polyethylene pipe products. Preferred candidates will have knowledge of proper lab protocol, strong mechanical aptitude and extensive computer skills. We offer competitive pay and an excellent benefits package. Submit resume. RINKER MATERIALS POLYPIPE, 11000 Highway 70 South, Roaring Springs, Texas. Fax: 806-348-7905. EOE.

NOTICE

MATADOR HOUSING AUTHORITY
is now accepting applications for newly rehabilitated one and two bedroom apartments. Applications can be picked up at City Hall between the hours of 8:00 a.m. and 4:00 p.m., Monday - Friday, or for more information call 347-2255.

2tc-30

PUBLIC NOTICE

Texas Education Agency
Division of Career and Technology Education
Notification of Nondiscrimination

1. Motley County ISD offers career and technology programs in Agriculture Science, Home Economics, Micro Computer Applications and Accounting. Admission to these programs are based on interest and aptitude.
2. It is the policy of Motley County ISD not to discriminate on the basis of race, color, national origin, sex, or handicap in its vocational programs, services, or activities as required by Title VI of the Civil Rights Act of 1964, as amended; Title IX of the Education Amendments of 1972, and Section 504 of the Rehabilitation Act of 1973, as amended.
3. It is the policy of Motley County ISD not to discriminate on the basis of race, color, national origin, sex, handicap, or age in its employment practices as required by Title VI of the Civil Rights Act of 1964, as amended; Title IX of the Education Amendments of 1972; the Age Discrimination Act of 1975, as amended; and Section 504 of the Rehabilitation Act of 1973, as amended.
4. Motley County ISD will take steps to assure that lack of English language skills will not be a barrier to admission and participation in all educational and vocational programs. For information about your rights or grievance procedures, contact the Title IX and Section 504 Coordinator, Sonya Herrell, P.O. Box 310, Matador, (806) 347-2676.

FORMA DE MUESTRA

1. Motley County ISD ofrece programas vocacionales en Agricultura Ciencia y Casa Economica, Microordenador aplicacion y Contabilidad. La admission a estos programas se basa en interes, y aptitud.
2. Es norma de Motley County ISD no discriminar por motivos de raza, color, origen nacional, sexo o impedimento, en sus programas, servicios o actividades vocacionales, tal como lo requieren el Titulo VI de la Ley de Derechos Civiles de 1964, segun enmienda; el Titulo IX de las Enmiendas en la Educacion, de 1972, y la Seccion 504 de la Ley de Rehabilitacion de 1973, segun enmienda.
3. Es norma de Motley County ISD no discriminar por motivos de raza, color, origen nacional, sexo, impedimento o edad, en sus procedimientos de empleo, tal como lo requieren el Titulo VI de la Ley de Derechos Civiles de 1964, segun enmienda; el Titulo IX de las Enmiendas en la Educacion, de 1972, la Ley de Discriminacion por Edad, de 1975, segun enmienda, y la Seccion 504 de la Ley de Rehabilitacion de 1973, segun enmienda.
4. Motley County ISD tomara las medidas necesarias para asegurar que la falta de habilidad en el uso de la lengua ingles no sea un obstaculo para la admission y participacion en todos los programas educativos y vocacionales.
5. Para informacion sobre sus derechos o procedimientos para quejas, comuniquese con el Coordinador del Titulo IX y/o El Coordinador de la Seccion 504, Sonya Herrell, P.O. Box 310, Matador, Texas 79244, (806) 347-2676.

NEW IN MATADOR!

Ken's Mini-Storage
1 blk. east of Apartments
347-2290 or 347-2455

Business Review

AUTHORIZED AGENT OF CAPROCK CELLULAR

Caprock Cellular
The Clear Choice

Gillespie Communications

James Gillespie - (806) 347-2208
Land Mobile Radio Sales & Service

Payne Pharmacy
200 S. Main - Floydada, TX 79235
Ph: 983-5111 or 1-800-345-7961
Denise Payne, R.Ph.

M-F, 8:30-6:00; Sat., 8:30-2:00
We will be happy to mail your prescriptions!

MEREDITH Gas & Supply
24-Hour Service
Propane tanks & Supplies

PROPANE
ENERGY FOR THE LIFE YOU LIVE
Roaring Springs (806) 348-7332

★ COOKING
★ HEATING
★ WATER HEATING
★ MOTOR FUEL

Germania Insurance & Lee's Insurance Agency
"A PROUD PAST WITH A SOLID FUTURE"

Turkey Ernie Lee 423-1020
Flomot Ruth Lee 469-5370

"Serving People Like You Since 1975"

MEREDITH CONSTRUCTION
New Construction
Remodeling, Painting & Electrical Work
Complete turn-key work
Concrete Work and All Types of Roofing

(806) 348-7218 348-7528 348-7516

Higginbotham-Bartlett now has Mini-Storage
10' x 15'

Matador - 806-347-2445


Shop (806) 492-2662
Mobile (806) 269-0705

Gilbert's Windshield Service
Auto Glass Installed • Insurance Claims Welcome
Deductible Specialist • Paint & Body Work

James Gilbert
703 9th St. Paducah, TX

Call Day or Night for Propane Service

Marshall Brothers, Incorporated
806-347-2290



DIABETICS!

IF YOU HAVE MEDICARE OR PRIVATE INSURANCE YOU MAY BE ELIGIBLE TO RECEIVE YOUR DIABETIC SUPPLIES AT LITTLE OR NO COST!

FOR INFORMATION, CALL EASY ACCESS MEDICAL SUPPLY, INC
WE ALSO CARRY NEBULIZER MEDICATION & IMPOTENCE PRODUCTS

1-800-679-1623
*CERTAIN RESTRICTIONS MAY APPLY No HMO's Please

Motley County Abstract Company
Ph: 806-492-3573 Fax: 806-469-3574
P.O. Drawer 1, Paducah, TX 79248

Complete Abstracts and Title Insurance for all of Motley County
Nelda Hightower, Owner
Kay Heatly, Manager
W.H. (Bill) Heatly, Attorney

Document Preparation and Closing Services

Thank you for reading the MOTLEY COUNTY TRIBUNE!

For ad info. or prices call 347-2400

SHAKLEE PRODUCTS
Peggy Probasco
983-5246 or 800-536-5246

KEN'S RV PARK
Full Hook-ups Available
Mini Storage Rooms for Rent
Golf Cart Sales
347-2290 or 347-2455

DON'S MUFFLER SHOP
210 W. Calif. - Floydada
FREE ESTIMATES
1-877-212-8222