



NC SYLVAN DIRECTOR SW DUNN
COLLECTION TEXAS TECH BOX 4090
LUBBOCK TX
79409-4020

Voice of the Foothill Country

Motley Co. Tribune

35¢
PER COPY

100TH YEAR

THURSDAY, AUGUST 1, 1991

ISSUE NO. 31

How The County Education Districts Affect Motley County ISD And Its Tax Payers

by Betty Stevens

In an effort to create more equalized funding for Texas school children, the legislature has passed a bill creating 188 County Education Districts (CED) throughout the State. Most CED's have several different school districts assigned to them — Motley County ISD is one of a very few school districts in the State who is the only school district in their assigned CED. Even so, the fact still remains the Motley County CED has to be created and governed according to State laws; and this will have an effect on the tax payers of Motley County.

Below is a brief summary concerning the Motley County Education District and some of the effects it will have on Motley County I.S.D. and its tax payers.

CED Authority: The CED was established for the limited purpose of levying and collecting property taxes. These taxes are then distributed to the school districts within the CED (in our case only Motley County ISD).

Governance: Motley County C.E.D. is composed of 2 trustees elected from the Motley County I.S.D. Board of Trustees. These Trustees are Coy Franks, Chairman and Marisue Potts, Vice-Chairman/Secretary. CEDs are subject to the

Texas Open Meetings Act and the Texas Open Records Act. CED trustees serve for an indefinite term of office. Should an appointed trustee resign or become ineligible to serve on the Board of Trustees, a replacement must be appointed.

Administration: CED trustees have authority to do the following:

- * Enter into contracts and employ personnel, as necessary.
- * Constitute a body corporate.
- * Acquire and hold real and personal property in the name of the CED.
- * Sue and be sued.
- * Receive bequests and donations or other legally acquired money or funds.
- * Prepare and adopt a budget.
- * Deposit and invest money under the School Depository Act.

Levy of Tax: CED trustees must levy a property tax by September 1, or as soon thereafter as practical. The board may contract with an appraisal district or taxing unit to assess and collect taxes. Beginning with the 1991 tax year, each county appraisal district that provides property values to the CED must provide the CED with an approved appraisal roll.

The CED board must levy the amount of property tax necessary to raise its required local share.

The required minimum local share

rates are as follows:

- 1991-1992, 72 cents
- 1992-1993, 82 cents
- 1993-1994, 92 cents
- 1994-1995, \$1

The CED must set a minimum tax rate of 72 cents in 1991-1992, rising to \$1 in 1995.

The total tax levy for the CED is determined by applying the 72-cent rate per \$100 of value to the prior year's taxable value for the CED as established by the SPTB (State Property Tax Board).

For Example:

If Motley County has a total taxable value of 60,000,000 the CED would have to raise \$0.0072 x 60,000,000 or 432,000 as its local share.

August 10th Election: The election will have results/effects both Statewide and Local. Voters will be voting on:

Statewide Constitutional Amendments

1. To allow the voters of a county education district to adopt certain exemptions from the district's ad valorem taxation for residence homesteads and to provide for the taxation of certain tangible personal property

2. Provide for the issuance of general obligation bonds to provide educational loans to students.

Local (CED) Propositions

1. The exemption of 20% of the market value of the residence homestead from ad valorem taxation in Motley County Education District.

2. The taxation of all tangible personal property, other than manufactured homes, in Motley County Education District that is not held or used for the production of income.

3. The exemption of \$10,000 of the market value of the residence homestead of an individual who is disabled and of \$10,000 of the market value of the residence homestead of an individual who is 65 or older from ad valorem taxation in Motley County Education District.

The local tax exemptions are contingent upon the passage of the Statewide constitutional amendment and local voter approval within the CED.

Regardless of the results of the August 10, 1991 election, the state mandated homestead exemptions of \$5,000 and \$10,000 for over 65 or disabled homeowners apply to taxes collected by the CED. The local exemptions in Proposition 1 and Proposition 3 would be in addition to these.

If you have any questions concerning the Motley County CED please call Superintendent of Schools, George Blanch at 347-2677 and please remember to vote August 10th.

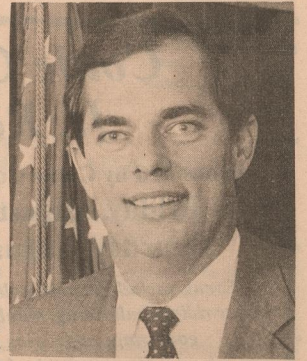
Congressman Sarpalius To Hold Town Meeting

Congressman Bill Sarpalius will have a town hall meeting at 1:30 p.m. on Friday, August 16, at the Motley County Courthouse in Matador.

The congressman said the meeting is designed to give Motley County residents an opportunity to share their views and concerns with him and to ask him questions about the activities of their federal government.

"We are living in momentous times," Sarpalius said. "Congress is going to make some extremely important decisions during the next two years, decisions that could have a big effect on people in Motley County and throughout the 13th Congressional District."

"I want to make sure our voices are heard in Washington, all that's where these town hall meetings can help. It gives everyone a chance to exchange ideas and to decide what is most important to us in our part of Texas. Our government really does work best when we work together."



Congressman Bill Sarpalius

"I look forward to seeing everyone in Motley County on August 16," the congressman said.

Hospital Board To Request Tax Increase

The Motley County Hospital Board met July 30 for their August meeting.

Charley Johnson, President, opened the meeting for board members Ruth Lee, Bob Davis, and James Stanley to discuss the proposed budget for 1992.

Johnson suggested that since the past three years had ended in a deficit, the Board had to raise the taxes to meet the expenses.

They separated the Ambulance fund, Clinic fund and General, the largest expense being approximately \$10,000 for insurance for the Ambulance, etc.

Motion was made and passed to raise the tax from .0832 cents to .10 1/2 cents.

The Board passed the minutes and bills, leaving a balance at present, \$23,063.74.

Tony Rose, EMS Director, explained they had a problem getting all the information needed to get the phone patch system license applied for. He finally has everything needed to send in. Rose also informed the Board they now have all four phones operating.

Also the variance for the Ambulance has been applied for.

No bid for At Risk Insurance had been received.

With no further business, meeting adjourned.

Commissioners Hold Special Session

The Commissioners held a special session Friday, July 26 to revise the precincts population equal. After reviewing the city blocks again, they only had to move the new border three blocks to equalize the population again.

Mike Cline, Representative of SPAG informed the Commissioners Court, that when the court settled the Whiteflat Road dispute, they had thrown the population

count off by 18 people, so the court had to change part of the border inside the city of Matador to equalize the population in each Precinct.

This proposal is now ready to be sent to Washington, D.C. to the Justice Department for approval.

After the approval is made an enlarged copy of the county and city maps will be printed in the paper.

Barbara's Bylines

Well as some of you know your Editor was married on July 14. My new name is Armstrong. Bill and I were married on that Sunday after church. The wedding story will be in a later issue.

On Monday we flew out of DFW via Chicago where we saw the skyline of Chicago as we flew out. Other sights from the air was the skyline of Detroit and Niagara Falls. The Great Lakes and other lakes dot the country as we flew into Syracuse.

Bill's mother, Edna, and a couple of her Senior Citizen friends met us to take us to Richfield Springs, N.Y., by way of the scenic route (not the through way).

The scenic route was just that - the rolling mountains covered with large trees, lush foliage and beautiful flowers. It was breathtaking.

I saw all the large barns with one to five silos standing beside them. A lot of corn fields or open areas where the cattle were grazing on the deep green grass with the egrets (white birds) standing along side them.

As we toured the area all week and saw the sights as well as visited and I met Bill's family, the time flew by much quicker than I wanted it to.

I met Bill's 95 year old grandmother that came straight from Ireland. She still talks with the Irish accent. Everyone was so nice and friendly, I felt right at home

except I was the one who had the different accent. The family enjoyed seeing the video of the wedding. Sure seems like life in the fast lane when you see your own wedding in action right after it happened.

Some of the towns and places we went were: Utica, Mowhawk Valley, Herkimer, Little Falls, Dolgeville, Oneida, St. Johnsville, Van Hornsville, Springfield, Springfield Center, Cherry Valley and Cooperstown. At Little Falls we stopped at Lock #17 on the Erie Canal and saw the lock raise a large cabin cruiser coming from Florida by way of New York's Hudson River to go to Michigan and then let one down that was going from Michigan to Florida. That was most interesting. In Dolgeville we went shopping in the Daniel Green Factory Outlet Store.

The whole state recycles, every home has bins for glass, tin, papers, aluminum and other household trash. On the side-walks in Cooperstown they have trash bins and receptacles for cans.

We toured Cooperstown the day before the "Today" Show honored Joe G. at the Baseball Hall of Fame. We really enjoyed the Hall of Fame and walking down the streets of this quaint New England town. We toured the Fenimore

continued on page 4

Missionary To Speak At Roaring Springs Assembly Of God Church Sunday



Rev. and Mrs. Steve Woodward and children

Reverend Steve Woodward, a recently appointed Assemblies of God missionary to Mexico, will be speaking at the Assembly of God Church in Roaring Springs, on August 4 at 11:00 a.m., according to Reverend Ernest L. Brown, pastor.

While this will be the Woodward's first assignment as full-time missionaries, Steve and his wife, Sheri, were both involved as young people with the Assemblies of God's Ambassadors in Mission (AIM) program. Sheri participated in short-term AIM outreaches in Honduras and Jamaica. Steve went to Mexico with AIM. Together, Steve and Sheri served as sponsors on an AIM mission to Germany. Steve's involvement with Royal Rangers, an Assemblies of God scout organization for boys, also took him to Australia and New Zealand. Most recently, Steve and Sheri worked on a missions construction project in Mexico.

For 10 1/2 years Steve was an associate pastor at First Assembly in Amarillo, Texas. In this capacity, he was involved in Christian education, children's and youth ministries, T.V. production, and a bus outreach. Sheri worked with the church's children and in the music program.

The Woodward's involvement in missions projects as well as their contacts with missionaries through First Assembly has culminated in their appointment to Mexico. Steve and Sheri will be coordinating discipleship training programs in Mexican churches. The Assemblies of God has designated the 1990s as the

"Decade of Harvest." Training Mexican Christians to grow in the Lord and reach their world is an important part of meeting the evangelistic goals for the decade.

Mexico is a land of great need. Most of its 88 million citizens live in poverty. Spiritually, the country is in darkness. While 97% of the people claim Roman Catholicism as their religion, much religious practice is purely traditional. The hearts of the Mexican people need to be reached with the gospel.

The public is invited to hear Steve and Sheri on Sunday, August 4 at 11:00 am. The challenge to evangelize the world can only be met by the collective participation of Christians committed to doing what they can to equip missionaries for service.

"God's Country" Tickets Available

For Don Williams, PhD, "God's Country", Production Director, the challenge is finding and exploiting the hidden talents of some 90 people who have little if any stage experience and developing a cohesive, entertaining show which the audience will enjoy. Williams is a master at managing all of the variables represented by the location, sound, and lighting equipment and about 1000 people who make up the cast, crew and audience at each performance. "It is a labor of love" according to Williams who is Vice President for Academic Affairs and Dean of Liberal Arts of Lubbock Christian University.

Margie Rhoades and her Lieutenant, Rubye Peterson who head the wardrobe department have clocked numerous volunteer hours measuring, cutting and stitching. Their challenges are as numerous as the characters who make up the cast. Costumes created for the 84 member cast create an authentic mood of time and place.

Ticket agents, Reba Brown and Terri Langston, challenges are numerous. Frustration is number one: when two telephones ring and there is only one person in the office; when the computer goes *@%* and all those forms have to be done manually. Without ticket sales, there

would be no audience.

Sometimes the greatest challenge is provided by an Act of God. A windstorm or rainstorm provide their own set of variables which impact everyone: the cast, crew and audience. Two days prior to opening in 1990 a wind shear destroyed several thousand dollars worth of props.

Janice Mitchell, RBHF Chairman issues this invitation: "We expect the challenge to be met in 1991 as it has been in the past. We are hoping for beautiful weather the first two weeks in August and invite everyone to join us for an outing in beautiful Blanco Canyon August 1, 2, 3, 8, 9, 10 for the 1991 production of "God's Country." Call 806-675-2906 or 675-2331 for reservations now.

Early Paper Deadline

The Motley County Tribune will be closed August 12-16. We are asking you, once again, to bring in all news and ad copy early for that edition. Please have these items in our office no later than noon Friday, August 9 for the August 15 edition.

We appreciate your cooperation so very much.

Pictures Needed For Old Settlers Edition

We are asking - again - for special old time pictures for our annual Old Settlers Edition of the Motley County Tribune, which will be out August 22. We are hoping for something a little different, since we just had the special Centennial Edition.

If you have any old time pictures of Motley or Dickens county, i.e. early Old Settlers celebrations, old time Roaring Springs pictures, early day Motley or Dickens County businesses or pioneers,

etc. Or if you have a special old time Old Settlers story you would like to share, please give us a call. Please bring pictures or stories in to our office no later than Thursday, August 8 for this edition.

We appreciate so much your help. And we assure you that we will take very good care of your pictures and return them to you as soon as possible.

Thank you!

Roaring Springs Encourages Float Participants for Old Settlers Parade

The Motley-Dickens County Old Settlers Celebration is nearing. August 22-24 will again be the time for everyone to load in the wagon and shine up their boots and saddles to come to Roaring Springs.

The celebration this year will hold with the Centennial theme, for this is Dickens and Motley County's 100th birth-

day. The committee is asking everyone to dress up, decorate or ride something in the parade on Thursday, August 22 at 10:00 a.m. in downtown Roaring Springs.

So start planning now to participate or come and enjoy celebrating!

Dr. Courtney Listed In Veterinary Who's Who



Dr. Quinn Courtney

Published every four years, Who's Who in Veterinary Science and Medicine contains biographic profiles of men and women who have made contributions within the entire spectrum of the veterinary profession, including private practice, education, research, public health, government and industry.

Nominations for inclusion come from a wide variety of sources, including leaders of professional, civic and social organizations, academia, industry, and from research by the publication's staff

The book serves as an authoritative reference source of information about those people deemed to be of reference interest by virtue of the positions of responsibility they hold, and/or by the contributions, they have made to their profession and/or the institutions, organizations and communities they serve. Inclusion in the book is based upon data evaluated according to criteria approved by a distinguished Board of Advisors. Quinn is the son of Sue Bird and Hal Courtney of Madill, Oklahoma.

Dr. Quinn Courtney has been selected to appear in the 1991-1992 edition of Who's Who in Veterinary Science and Medicine.

4-H'ers Compete In District Fashion Show



Heather Turner

The Rolling Plains District 3-4-H Fashion Show was held in Quanah July 23 at Quanah High School Auditorium. There were 147 contestants participating in this year's event sponsored by West Texas Utilities Company and the Texas Agricultural Extension Service. The

theme of the District Show was "Fashions On Parade The American Way." Hardeman County 4-H leaders hosted the event.

Participants in the District Fashion Show have completed a series of lessons in clothing and textiles and have sewn or bought a garment. The project teaches basic clothing construction, grooming techniques, leadership skills and consumer education.

Representing Motley County was Heather Turner of Matador. Heather was 5th in the Senior Nontailored Daywear Division. She also was second in the Senior Cotton Award Contest. She received a cash award from the Cotton Council.

Christie Pierce of Roaring Springs served as a judge for the Natural Fiber Awards.

4-H is the Youth Development and Leadership Program of the Texas Agricultural Extension Service, a part of the Texas A&M University System.



ROARING SPRINGS HIGH SCHOOL GRADUATES, 55 years ago, have lots to laugh about. Gay Hallford Henson of Amarillo and Rosalyn Mitchell Work of Saratoga, California. They were members of the class of 1936, and attended the Roaring Springs Reunion, held in June.



Cottle County Jr. Rodeo

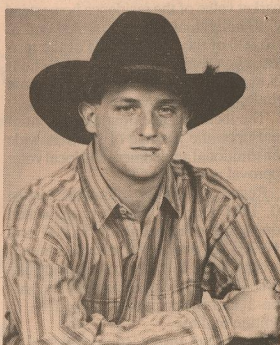
Sponsored by Cottle County 4-H Horse Club
Friday, August 2 - 7:30 p.m.
Saturday, August 3 - 5:00 p.m.

Events include barrels, poles, flag race, calf riding, steer riding, bull riding, bareback riding, steer daubing, goat tying, calf roping, breakaway roping, team roping and ribbon roping. Saddle to high point individual. Buckles to All Arouds and First Place in each event. There will also be an Open Ranch Bronc Riding.

For entries or more information call Sally Piper 596-4475

Rodeo Dance — Saturday Night
9:00 p.m. - 1:00 a.m. at VFW building

Grandson Graduates In El Paso



Jason Hicks

Mr. and Mrs. John M. (Sonny) Russell attended the graduation of their grandson, Jason Hicks, in El Paso during the last part of the school year. Jason graduated from Clint High School. He started school in the Motley County school system and then transferred to Kermit where he was a student until his senior year. He was in an academic honors program in both Kermit and Clint.

In high school, Jason participated in football and was a member of the Honor Society, Fellowship of Christian Athletes, and FFA. He was named the Dekalb Outstanding Senior Agricultural student at Clint High School and received an agriculture related scholarship. During his senior year, Jason served as a writing tutor and has had one of his essays published in the El Paso Herald-Tribune.

Jason will be attending Tarleton State University in Stephenville beginning this fall where he will be majoring in Animal Science.

Public Notice

On April 9, 1991, Southwestern Bell Telephone Company filed an application with the Public Utility Commission of Texas to request that the optional feature "Call Transfer Disconnect" be available to all PLEXAR I customers by including the feature in Southwestern Bell's PLEXAR I tariff. Currently, this optional feature is available only on a customer requested basis.

Call Transfer Disconnect (CTD) is an optional feature that allows PLEXAR I customers the ability to transfer a call to another telephone number within or outside their PLEXAR I system, hang up, and permit the two remaining parties to continue with the call. The PLEXAR I user is then free to place or accept another call. CTD is not intended to be used to avoid toll charges. Therefore, CTD will not be available to PLEXAR I customers subscribing to optional Extended Metropolitan Service or Extended Area Calling Service.

If the company's application is approved, the monthly rate for CTD will be \$4.00 for each PLEXAR I station line. Prior to the June 19, 1991, interim rate approval, Southwestern Bell was billing customers who receive the service \$1.50 for each station line equipped with this feature. In addition, under Southwestern Bell's proposed tariff, every line within the PLEXAR I system must be equipped with this feature. The nonrecurring charge for the additional lines which must be equipped with CTD will be waived for existing CTD customers. The tariffed monthly rate will apply to all existing and future CTD customers.

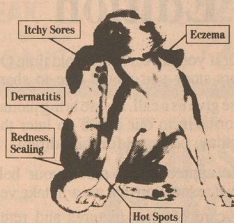
Persons who wish to intervene or otherwise participate in these proceedings should notify the commission as soon as possible. A request to intervene, participate, or for further information should be mailed to the Public Utility Commission of Texas, 7800 Shoal Creek Boulevard, Suite 400N, Austin, Texas 78757. Further information may also be obtained by calling the Public Utility Commission Consumer Affairs Division at (512) 458-0256, or (512) 458-0221, teletypewriter for the deaf.



Southwestern Bell Telephone

God Bless You!

"Quick... get the Sulfodene!"



When the itching gets serious, get the serious skin medication for dogs—SULFODENE. This veterinarian's formula is the only non-prescription medication approved by the U.S. Government for those raw, itchy sores called "hot spots."

SULFODENE stops the suffering fast because it stops the cause of itching. SULFODENE, wherever pet care products are sold.



USE ONLY AS DIRECTED

PRICES EFFECTIVE JULY 31-AUGUST 6

STORE #242, MATADOR



HOMOGENIZED ALLSUP'S MILK GALLON \$1.89

FAMOUS ALLSUP'S BURRITOS 2.89¢ FOR

TORTILLA CHIPS AND JALAPENO CHEESE SAUCE NACHO PRONTO 6 OZ. SIZE \$1.29

ALL VARIETIES HERSEY'S CANDY BARS 3 FOR \$1

ALL TYPES PEPSI-COLA 2 LITER 79¢

SAUSAGE & BISCUIT EACH 59¢
SHURFINE FROZEN ORANGE JUICE 16 OZ. CAN \$1.29
GARDETTO'S SNAK-ENS 6 OZ. PKG. 99¢

ALL FLAVORS OCEAN SPRAY JUICES 10 OZ. BTL. 59¢
BAR-S FRANKS 12 OZ. PKG. 69¢

COOKED FRESH 24 HRS. A DAY	HOT FOODS MENU	AVAILABLE AT ALL ALLSUP'S LOCATIONS
BARBECUE BEEF SANDWICH	99¢	9 PIECE BOX CHICKEN \$4.99
BARBECUE PORK RIBS (LB.)	\$3.99	BEEF & CHEESE CHIMICHANGA \$1.19
BARBECUE WHOLE CHICKEN	\$3.99	CORN DOG (MEAD) 69¢
ALLSUP'S BURRITO	79¢	DELICIOUS HAMBURGER 59¢
BREAKFAST BURRITO	99¢	WILSON HOT LINKS 99¢
BURRITO BEEF & SALSA	\$1.19	SAUSAGE ON A STICK \$1.59
DELICIOUS CHEESEBURGER	79¢	SAUSAGE & BISCUIT 79¢
CHICKEN FRIED STEAK	\$1.59	SAUSAGE, EGG & BISCUIT \$1.09
3 COUNT CHICKEN STRIPS	\$1.49	SAUTEEYA SAUSAGE \$1.09
W/POTATO WEDGES/ CHICKEN (2 PCS) BISCUIT	\$1.99	4 COUNT STEAK FINGERS \$1.00

CALL-IN ORDERS WELCOME

CHECK OUR WEEKLY SPECIALS

Microwavable Cup Soup Campbell's Ramen Noodles 2/\$1.09

MARDI GRAS PAPER TOWELS JUMBO ROLL 69¢

BATHROOM TISSUE ANGEL SOFT 4 ROLL PKG. 99¢

1 gal. Gold Star Fruit Drink 99¢
1/2 gal. Asst. Flavors Allsup's Ice Cream 99¢
Shurfine Asst. Flavors Can case Soft Drinks \$3.99
20 oz. Oreo Cookies \$2.19

\$1000 WINNER WILLIAM HATCHER, ROSWELL, N.M.
\$100 WINNERS GABRIEL MENDOZA, FLOYDADA, TX. LUPE ZAMBRANO, VERNON, TX. MISTY ROSS, LOS LUNAS, N.M. THOMAS FRANKLIN, ALBUQUERQUE, N.M.
GAS FOR A YEAR WINNERS ROCKY SMITH, PADUCAH, TX. JESUS MALDONADO, HEREFORD, TX. JOY HILL JAIL, N.M. SHANNON ROSS, SPRINGTOWN, TX. DEL FRED WAJNEKA, GALLUP, N.M. LISA CLARDY, QUITAQUE, TX.

PLAY TODAY Convenient Cash™ Pick Up Your FREE Instant Win Scratch-Off Game Ticket Over 325,000 Chances to win CASH, FREE PRODUCTS & FREE FOOD Enter Our Second Chance Sweepstakes and Cruise The Caribbean

OR Be one of 9 lucky people who will win FREE GAS FOR A YEAR*! (*8 Gallons a week for 52 weeks)

7 Day Cruise For Two Can Be Yours (a \$5000 Value) With \$300 Spending Money!

Motley Co. Tribune

Barbara Armstrong, Publisher/Editor
Carla M. Jones, Associate Editor, Advertising Mgr., Typesetting
Mary Mason, Proofreading
Amy Woolsey, Proofreading, School Reporter, Composition
Bunni Speed, Mailing Clerk
Jan Jones and Mary Renfro, Photo Developing

The Motley County Tribune, (ISSN: 0897-4322), purchased on Feb. 1, 1986, is the successor to the Matador Tribune, and is published weekly each Thursday, except Christmas week, at Matador, Texas. The office is located on Highway 70 East (1/2 block east of Main Street). Telephone number 806/547-2400. Second-class postage paid at Matador, Texas.
Postmaster: Send address changes to Motley County Tribune, Box 496, Matador, Texas 79244-0496.

NOTICE: Any erroneous reflection upon the character, firm or corporation, which may appear in the columns of the Motley County Tribune, will gladly be corrected upon being brought to the attention of the publisher. Only signed letters to the editor will be considered for publication and should not exceed 250 words in length. Letters may be subject to editing.
PUBLICATION NO. 333700

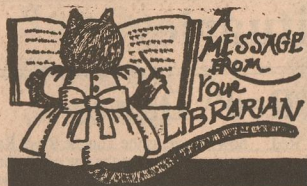
SUBSCRIPTION RATES: Motley \$13.00; All others, \$15.00
Students, 9 months, \$12.00

P.O. Box 490

Persons over 60 years of age may take a \$1.00 discount

Matador, Texas





By
Wilda
Dixon

HOURS

Monday-- 2-5p.m. (open by volunteers)
Tuesday--9-12; 1-4
Wednesday--9-12; 1-4
Thursday--9-12; 1-4
Friday--9-12; 1-4

Camp Wanna-Read was a great success this year with 26 children enrolled in the read-to-me section and 22 enrolled in the older group. I would again like to thank all the parents that made sure their children attended each week and helped them read many hours during this summer.

The following visitors have signed the visitors book recently: Alma Bezanson of Houston, TX; Ina Mae Bennett of Afton, TX; Gail McWilliams King of

DeSoto, TX; Varner and Lenna McWilliams of Lubbock, TX; Richard and Jeffere King of Darmstadt, Germany; Mike and Dixie Riley of Dubuque, Iowa; Ben Hallada of Kayenta, Arizona; Jay Spray of Las Cruces, N.M.; Christy Taylor of Anahuac, TX; Lee Ann Peacock and Dale Peacock of Anahuac, TX. We are very happy to have all of our visitors and hope they enjoy visiting the Library.

Dues for the friends of the Library may be paid at the Library.

Friends of the Library will meet at 2:00p.m. on August 8, 1991.

Everyone is welcome.

Tutor Trainer Workshop

On August 2nd, Margaret Eisenbeck of Texas Adult Literacy Laubach (TALL) of Austin will present a 6-hour workshop at the Mahon Library in Lubbock on Supplemental and Advanced Laubach Materials for Experienced Tutors. The program will cover Books 3 and 4 of the Laubach Way to Reading series; the Challenger series; Focus on Phonics; and other supplemental Laubach materials.

Eisenbeck will repeat the presentation on Saturday, August 3rd at the Ector County Library (Odessa). Registration for each session begins at 9:00 a.m. Call the System office if you need a registration form.

On September 13th and 14th, WTLS will offer an English as a Second Language (ESL) tutor trainer workshop at Midland College. Carol Weaver from the Tom Green County Adult Literacy Council will be the primary presenter. Other ESL trainers will conduct parts of the nine-hour workshop, which will be divided between Friday evening (6 p.m. - 9 p.m.) and Saturday (9 a.m. - 4 p.m.).

Announcement brochures for this program should be in the mail by mid-August.

If interested call the Library at 347-2717 or Opal Johnson, 347-2488.

DON'T MISS THE CLASSIFIEDS.....

You may miss a bargain!



Home Economically Speaking

by Beverly Thomas,
Home Extension Agent - Home Economics

RECYCLE YOUR WARDROBE THIS SEASON.....

Clothing is an investment today, and any profitable investment provides a good return for the money. With clothing prices rising and other expenditures demanding a greater share of the family budget, everyone needs to find ways to increase the useful life of their clothes.

Recycling is a term applied to paper, metal, and numerous other materials today, but it can also relate to clothing. Clothes are a suitable resource for recycling because they seldom wear out entirely. Changing fashion trends, changes in body size, and durable manufactured fibers leave clothes in our closets that are not being worn. In addition to stretching your clothing dollar, recycling will help keep your wardrobe up-to-date and give a feeling of satisfaction from having made something out of nothing.

There are many methods of recycling clothing. You can coordinate your wardrobe and add new things, accessorize or alter existing clothes to fit better. Restyling a garment involves changing only

part of it while makeovers are new garments cut from the fabric of an older one. Sometimes you can remove sleeves of a dress to make a jumper or simply change buttons or trim and create a new look.

When planning to make over a garment into a completely new one, there are a number of points to consider. Do you have the skill to sew the new garment? Do you have the time to do the work? Makeovers can be time consuming, and only you can place a value on that time.

Ask yourself if the fabric is worth the time and effort. It should be sturdy enough to withstand the expected wear of the finished garment. Avoid fabric that looks too old or mature for children. When you add new fabric or trim to a garment, be sure it "belongs" in design and overall effect.

Educational programs conducted by the Texas Agricultural Extension Service are for people of all ages regardless of socio-economic level, race, color, sex, religion, handicap, or national origin.

THOUGHT FOR THE DAY:

Swallow your pride. Occasionally, it's non-fattening.

Look Who's New!

Tanya Montana Starkey

Tawanna and Marvin Starkey announce the arrival of a baby daughter, Tanya Montana who was born at 4:14 a.m., Thursday, July 18 at the Lockney General Hospital. She weighed six pounds, eleven ounces and was 20 1/2 inches long. She has a two and a half year

old brother, Jackie.

Grandparents are Mr. and Mrs. Jack Starkey of Flomot and Mrs. Edna Benton and G.C. Baker of Wellington. Great-grandmothers are Mrs. C.W. Starkey of Flomot and Mrs. Gladys Green of Wellington.

Klay Ross Brock

The Brock Boys, Kolt and Kwait, of Levelland have a new brother, Klay Ross, born July 24, 1991 at St. Mary's Hospital in Lubbock. Klay weighed 7 pounds 12 ounces. The boys are the sons of Kirk and Beverly (Burlson) Brock.

Grandparents are Stanley and Lou Burlson, Floydada and Jerry and Gail Brock of Levelland.

Great-grandparents are Mollie Burlson, Floydada, Ruby Brock, Levelland, and Hershel Belew, Woodward, Okla.

Train up a child in the way he should go: and when he is old, he will not depart from it.

Proverbs 22:6

Amy's Anecdotes

by Amy Woolsey

NOTE: This poem is dedicated to the memory of Clay Lancaster. On August 2, 1988 his life was taken in an automobile accident. He will always be remembered by his family, friends, and the Class of '92.

The Class of '92

by Amy Woolsey

We all came together when we were 6 years old. We were all a little scared, but acted so bold! We didn't know much, except each other's names. We learned to say letters and we played a lot of games! A few more kids joined our clan on into the years. We knew we could always laugh together and share each other's tears.

We all drew closer when we entered Jr. High. Well, the girls, they started liking the guys, The guys, they started to get more mature, And we all had our dreams set for the future! And as that year in eighth grade passed, We held onto our dreams and prayed they'd last! Summertime came and we acted really cool, Because we only had 3 months until we were in High School!

There was a time on into the year, In which we shed a lot of tears! But we all became closer that very sad day, Yes, on August the 2nd, when we lost Clay! We all know that he's smiling and he's happy up there, Yes, because now he's under the Lord's great care! Don't be sad, no don't you cry, Because Clay knows the reason why!

We've had our problems and our doubts, But this was a class that could always work it out! Now that we're Seniors and we're ready to leave, don't be upset, just be relieved! Don't ever forget us, and we'll never forget you, because we are the class of 92!

SAY NO TO DRUGS!

Roy Gene Stephens Pest Control

House & Yard Spraying
Fleas, Spiders, Scorpions, etc.
Also Do Tree Spraying

Matador

347-2449

1991 Property Tax Rates in MOTLEY COUNTY HOSPITAL DISTRICT

This notice concerns 1991 property tax rates for MOTLEY CO HOSPITAL DISTRICT. It presents information about three tax rates. Last year's tax rate is the actual rate the taxing unit used to determine property taxes last year. This year's effective tax rate would impose the same total taxes as last year if you compare properties taxed in both years. This year's rollback tax rate is the highest tax rate the taxing unit can set before taxpayers can start tax rollback procedures. In each case these rates are found by dividing the total amount of taxes by the tax base (the total value of taxable property) with adjustments as required by state law. The rates are given per \$100 of property value.

Last year's tax rate:	
Last year's operating taxes	\$ 48,271.86
Last year's debt taxes	\$ 0
Last year's total taxes	\$ 48,271.86
Last year's tax base	\$ 58,027,187
Last year's total tax rate	\$.832 /\$100

This year's effective tax rate:	
Last year's adjusted taxes (after subtracting taxes on lost property)	\$ 48,271.86
+ This year's adjusted tax base (after subtracting value of new property)	\$ 58,688,880
= This year's effective tax rate	\$.819 /\$100

(In the first year a city or county collects the additional sales tax it must insert the following lines unless it made its first adjustment last year.)

- Sales tax adjustment rate	\$ 0.00 /\$100
= Effective tax rate	\$.819 /\$100

x 1.03 = maximum rate unless unit publishes notices and holds hearing	\$.842 /\$100
---	----------------

This year's rollback tax rate:	
Last year's adjusted operating taxes (after subtracting taxes on lost property)	\$ 48,271.86
+ This year's adjusted tax base	\$ 58,688,880
= This year's effective operating rate	\$.819 /\$100
- .72 for school district (or zero)	\$ 0
x 1.08 (or add \$.08 for schools) = this year's maximum operating rate	\$.883 /\$100
+ This year's debt rate	\$ 0.00 /\$100

(A school district must insert the following lines)

= This year's rollback rate before adjustment	\$.00 /\$100
+ Rate to recoup lost revenue	\$.00 /\$100
= Adjusted rollback rate	\$.00 /\$100
= This year's rollback rate	\$.883 /\$100

(A city or county that collects the additional sales tax (including one that collects the tax for the first time this year) must insert the following lines:)

- Sales tax adjustment rate	\$ 0 /\$100
= Rollback tax rate	\$.883 /\$100

1991 Property Tax Rates in MOTLEY COUNTY

This notice concerns 1991 property tax rates for MOTLEY COUNTY. It presents information about three tax rates. Last year's tax rate is the actual rate the taxing unit used to determine property taxes last year. This year's effective tax rate would impose the same total taxes as last year if you compare properties taxed in both years. This year's rollback tax rate is the highest tax rate the taxing unit can set before taxpayers can start tax rollback procedures. In each case these rates are found by dividing the total amount of taxes by the tax base (the total value of taxable property) with adjustments as required by state law. The rates are given per \$100 of property value.

	General Fund	Farm to Market/ Flood Control Fund	Special Road/ Bridge Fund
Last year's tax rate:			
Last year's operating taxes	\$ 401,790.43	\$ 000	\$ 0000
Last year's debt taxes	\$ 00	\$ 000	\$ 0000
Last year's total taxes	\$ 401,790.43	\$ 0000	\$ 0000
Last year's tax base	\$ 58,238,627	\$ 0000	\$ 0000
Last year's total tax rate	\$.69 /\$100	\$ 000 /\$100	\$ 0000 /\$100

This year's effective tax rate:			
Last year's adjusted taxes (after subtracting taxes on lost property)	\$ 401,790.43	\$ 000	\$ 0000
This year's adjusted tax base (after subtracting value of new property)	\$ 58,688,880	\$ 000	\$ 0000
+ This year's effective tax rate for each fund	\$.6846 /\$100	\$ 0 /\$100	\$ 0 /\$100
= Total effective tax rate	\$.6846 /\$100		

(In the first year a county collects the additional sales tax it must insert the following lines unless it made its first adjustment last year.)

- Sales tax adjustment rate	\$ 000 /\$100
= Effective tax rate	\$.6846 /\$100

x 1.03 = maximum rate unless unit publishes notices and holds hearing	\$.7051
---	----------

This year's rollback tax rate:			
Last year's adjusted operating taxes (after subtracting taxes on lost property)	\$ 401,790.43	\$ 000	\$ 00000
+ This year's adjusted tax base	\$ 58,625,250	\$ 000	\$ 0000
= This year's effective operating rate	\$.6846 /\$100	\$ 0000 /\$100	\$ 00000 /\$100
x 1.08 = this year's maximum operating rate	\$.7393 /\$100	\$ 000 /\$100	\$ 0000 /\$100
+ This year's debt rate	\$ 000 /\$100	\$ 000 /\$100	\$ 0000 /\$100
= This year's rollback rate for each fund	\$.7393 /\$100	\$ 000 /\$100	\$ 0000 /\$100
This year's rollback rate	\$.7393 /\$100		

(A county that collects the additional sales tax (including one that collects the tax for the first time this year) must insert the following lines:)

- Sales tax adjustment rate	\$ 0000 /\$100
= Rollback tax rate	\$.7393 /\$100

In The Rough

by Hazel



TUESDAY SCRAMBLE July 23

The Area Golf West Texas Junior P.G.A. Tournament at Sundown, G.C. Sundown, was held Wednesday, July 24, 7-9 (five holes). 1. Jason Nix, Midland, 27; 2. Clint Fyffs, Floydada, 30; 3. Raleigh Morris, Lubbock, 32.

10-11 (nine holes) Laynce Nix, Midland, 48; 2. Ben Gulley, Andrews, 48; 3. Matthew Garland, Midland, 51.

Laynce Nix and Ben Gulley (tie 48) went to sudden death play and Laynce won on 2nd hole. Jason Nix carried his brother's clubs in the 9 hole play.

West Texas Junior Tour Tournament at Levelland Country Club, Friday, July 26:

10-11 (nine holes) 1. Laynce Nix, Midland, 45.

Young Golfers

Jason, 8 years old and Laynce 11 years old, are sons of Lesly (Alexander) and Laynce Nix, Sr., grandsons of Patti (Pipkin) and Vernard Alexander, and great grandsons of Opal (Mrs. W.N.) Pipkin and the late W.N. (Bill) Pipkin.

Jason received a gold medal and Laynce received two gold medals for their tournament wins. They came from a family of avid golfers (from way back) and are being exposed to the game at early ages. The boys spent most of July in Ruidoso and played golf everyday at Alto Country Club with their grandfather, Vemard.

The grandparents and great-grandmother were interested and proud spectators at these tournaments.

Olivia Barton was closest to the pin on #3, 6' 11".

1st (29) Kenny and Olivia Barton, Billy and Marihelen Wason, Rickey Lawrence.

2nd (30) Alfred and Louise Barton, Charlie and Nancy Long.

3rd (30) M.C. Jones, Randy Barton, Howard Edmondson, Margaret Barnhill.

Others (31) Mike Porter, Brent Marshall, Lucretia Campbell, Tom Yeates.

(31) Kenneth Marshall, Frances Hobbs, Holly Lee, Bill and June Moss.

(31) Rob Francis, Brian Marshall, Billy Wayne Denison, Douglas Campbell.

(32) Mark Wason, Ben Grundy, Mike Hancock, Lawrence Royal.

(32) Joe and Loys Campbell, Wade and Nell Berryman, Greg Lefevre.

(33) Larry Burkes, Johnny Stevens, Laverna Price, Pat Smith, David Alexander.

(35) Billy Osborn, Terry Carson, E.A. Day, Geneva Wilson.

(35) Roncho Grundy, Billy Wason, Bill and Mary Jones.

Thursday, July 25
A.M. players for low net. Louise Barton won the ball. Others playing were LaVoe Thacker, Geneva Wilson, Loys Campbell, Dorothy Day.

TOURNAMENT

Springs Ranch Club is having a Junior Golf Tournament August 6. For more information call Terry and Rex at 348-7267.

Patriotic Bows, Earrings & Pins

USA & Texas

Unique - Handmade

Carla Jones — 806-348-7940, after 7:00 p.m. or 347-2400 at the MC Tribune

Furniture Restoration

If buying new Furniture will upset your budget
CONSIDER COMPLETE RESTORATION

Rush and Cane Seating - Veneering
Old Trunks - Vat Stripping

J.R. Steele
806-823-2097

Silverton, TX 79257
900 Braidfoot Street

Barbara's Bylines

continued from page 1

House (James Fenimore Cooper's area) and the Farmer's Museum. It took two hours to tour the museum of a small village and working farm (on the order of the Ranching Heritage in Lubbock).

In driving the country roads we saw wild day lilies along side the road, honey-suckle with big red berries, two doe deer with a pair of fawns in Glimmerglass State Park, an old Irish Castle, a town populated by Orthodox Russians, a county road named TEXAS and an old cemetery with stones dating in 1700's.

In Mowhawk we saw a Fireman's Field Days Parade and Fair. In a different village every weekend they have Fireman's Field Days all summer. Bill did this when he lived in New York and was a volunteer fireman.

We visited Bill's brother's Blacksmith Shop, where he makes and sells wrought iron items. We visited a dairy farm where I watched the cows come in and line up in their own special stall and be milked by machines. The milk is picked up every

morning in a steel tank truck and taken to be bottled and sold. Each farm has the farm name painted on the front of the barn and/or the silo. This part of New York is between the Adirondack and the Catskill Mountains where there are red maples as well as other large trees.

Our trip also provided good food, seafood as well as sausages and home barbecues with family, even tacos and one cafe that made good Texas hamburgers and fries.

The trip home seemed to go fast except for the three hour wait in Chicago.

My 'small world' story happened in Wichita Falls, going to Ft. Worth. We stopped to change drivers and get coffee and cokes and on the sidewalk of the convenience store I saw a young lady who looked familiar so I said "Michelle". She said, "Barbara" and out of the car came her sister, Connie. These were formerly Lynn's (Linnie and Marianne Lynn's daughters) of Childress and granddaughters of Mrs. L.L. Lynn of Paducah, formerly of Matador. Connie had driven with her two children from Springfield, Mass. to Childress and Michelle and husband had been in Childress for a visit and they were all on their way to Dallas.

All in all it was a very wonderful trip and honeymoon!

Drive safely. Don't wreck your life.

State Department of Highways and Public Transportation.

Robert Hall
Chevrolet-Olds-Geo
Jayton, Texas
806-237-2182

Summer Clearance

Further Reductions

Savings up to 60%

Kristi's

Downtown Plainview

Obituaries

Drew "Red" Dawes

Funeral services for Drew "Red" Dawes, 87, a longtime Motley County resident, were held in the First Baptist Church, Matador, at 2:00 p.m. Saturday, July 20, 1991, with Pastor Gaylon Cox officiating. Burial was in East Mound Cemetery under the direction of Seigler Funeral Home.

Mr. Dawes passed away early Wednesday morning, July 17, at the residence of his grandson, Mark Baker, in Potosi, near Abilene. Justice of the Peace Charles Griffin ruled the death natural causes. Mr. Dawes had been under a doctor's care.

"Red" Dawes was born May 29, 1904 at Decatur, Texas. He retired from Phillips Petroleum Company in 1969 and started working for the Swenson Ranch,

now known as the Tongue River Ranch, retiring in 1985 at the age of 80. He and his wife, Lillian, whom he married in Corpus Christi, Texas, January 2, 1954, moved to Matador to make their home.

Due to illness Mr. Dawes had lived in Amarillo with his daughter for the past year and a half. He was a member of the First Baptist Church, Matador and sang in the church choir.

Survivors are his wife, Lillian of Dumas, Texas; one son, Dean Dawes of Amarillo; one daughter, June Baker of

Bethany, Oklahoma; one sister, Flossie Harris of Oklahoma City, Oklahoma; six grandchildren and twelve great-grandchildren.

Mercy and truth are met together; righteousness and peace have kissed each other.

Psalm 85:10

Matador Floral Wall to Wall 1/2 Price Sale

August 1 - 2 - 3
9:00 a.m. - 5:00 p.m.

Debra Garrison Scott

1-800-299-2241
after 6:00 p.m.

1991 Property Tax Rates in CITY OF MATADOR

This notice concerns 1991 property tax rates for CITY OF MATADOR. It presents information about three tax rates. Last year's tax rate is the actual rate the taxing unit used to determine property taxes last year. This year's effective tax rate would impose the same total taxes as last year if you compare properties taxed in both years. This year's rollback tax rate is the highest tax rate the taxing unit can set before taxpayers can start tax rollback procedures. In each case these rates are found by dividing the total amount of taxes by the tax base (the total value of taxable property) with adjustments as required by state law. The rates are given per \$100 of property value.

Last year's tax rate:	
Last year's operating taxes	\$ 39,000.92
Last year's debt taxes	\$ 0
Last year's total taxes	\$ 39,000.92
Last year's tax base	\$ 6735910
Last year's total tax rate	\$.579 /\$100

This year's effective tax rate:	
Last year's adjusted taxes (after subtracting taxes on lost property)	\$ 39,000.92
+ This year's adjusted tax base (after subtracting value of new property)	\$ 6725430
= This year's effective tax rate	\$.5799 /\$100

(In the first year a city or county collects the additional sales tax it must insert the following lines unless it made its first adjustment last year.)

- Sales tax adjustment rate	\$ 00 /\$100
= Effective tax rate	\$.5799 /\$100

x 1.03 = maximum rate unless unit publishes notices and holds hearing	\$.5972 /\$100
---	-----------------

This year's rollback tax rate:

Last year's adjusted operating taxes (after subtracting taxes on lost property)	\$ 39,000.92
+ This year's adjusted tax base	\$ 6,725,430
= This year's effective operating rate	\$.5799 /\$100
- .72 for school district (or zero)	\$ 0
x 1.08 (or add \$.08 for schools) = this year's maximum operating rate	\$.6262 /\$100
+ This year's debt rate	\$ 00 /\$100

(A school district must insert the following lines)

+ This year's rollback rate before adjustment	\$ /\$100
+ Rate to recoup lost revenue	\$ /\$100
= Adjusted rollback rate	\$ /\$100

= This year's rollback rate \$.6262 /\$100

(A city or county that collects the additional sales tax (including one that collects the tax for the first time this year) must insert the following lines:)

- Sales tax adjustment rate	\$ 000 /\$100
= Rollback tax rate	\$ 0000 /\$100

1991 Property Tax Rates in CITY OF ROARING SPRINGS

This notice concerns 1991 property tax rates for CITY OF ROARING SPRINGS. It presents information about three tax rates. Last year's tax rate is the actual rate the taxing unit used to determine property taxes last year. This year's effective tax rate would impose the same total taxes as last year if you compare properties taxed in both years. This year's rollback tax rate is the highest tax rate the taxing unit can set before taxpayers can start tax rollback procedures. In each case these rates are found by dividing the total amount of taxes by the tax base (the total value of taxable property) with adjustments as required by state law. The rates are given per \$100 of property value.

Last year's tax rate:	
Last year's operating taxes	\$ 17,348.82
Last year's debt taxes	\$ 0
Last year's total taxes	\$ 17,348.82
Last year's tax base	\$ 4,170,390
Last year's total tax rate	\$.4160 /\$100

This year's effective tax rate:	
Last year's adjusted taxes (after subtracting taxes on lost property)	\$ 17,348.82
+ This year's adjusted tax base (after subtracting value of new property)	\$ 4,156,480
= This year's effective tax rate	\$.4173 /\$100

(In the first year a city or county collects the additional sales tax it must insert the following lines unless it made its first adjustment last year.)

- Sales tax adjustment rate	\$ 000 /\$100
= Effective tax rate	\$.4173 /\$100

x 1.03 = maximum rate unless unit publishes notices and holds hearing	\$.4298 /\$100
---	-----------------

This year's rollback tax rate:

Last year's adjusted operating taxes (after subtracting taxes on lost property)	\$ 17,348.82
+ This year's adjusted tax base	\$ 4,170,390
= This year's effective operating rate	\$.4173 /\$100
- .72 for school district (or zero)	\$ 0
x 1.08 (or add \$.08 for schools) = this year's maximum operating rate	\$.4507 /\$100
+ This year's debt rate	\$ 0 /\$100

(A school district must insert the following lines)

+ This year's rollback rate before adjustment	\$ 000 /\$100
+ Rate to recoup lost revenue	\$ 000 /\$100
= Adjusted rollback rate	\$ 000 /\$100

= This year's rollback rate \$.4507 /\$100

(A city or county that collects the additional sales tax (including one that collects the tax for the first time this year) must insert the following lines:)

- Sales tax adjustment rate	\$ 000 /\$100
= Rollback tax rate	\$.4507 /\$100

Southwest Outdoors

with Mel Phillips



WATCH OUT FOR THE CHEATERS

Any fishing tournament, open to the public, that does not have a ploygraph will sooner or later attract a scoundrel who will cheat the honest fishermen. Polygraphs may cost the promoter a little money but, it is one of the best ways to have an honest fishing tournament.

Both Redman and B.A.S.S. have partner-draw-systems that help protect against cheating. Open tournaments for individuals are risky, but handled properly and honestly are great fun. Watch out for those tournaments that do not protect against the cheaters. As the tournament director of Fun Tournaments, I insist on honest competition and wouldn't put my name on any open fishing tournament without a polygraph. Think about it.

The DALLAS COWBOYS are at camp; can dove season be far behind? Early reports indicate that the dove season should be excellent, but count on an early cold front pushing our birds to the south. It happens three out of four years.

One of the best gifts to give a young hunter is a hunter safety course. Effective September 1 of this year, all hunters born between September 2, 1971, through August 31, 1975, must have completed a certified hunter education course to hunt legally in Texas. Call the Texas Parks and Wildlife at 1-800-792-1112 for the nearest safety class.

Don't just send the youngster to the course, take it with him/her. Make it a special event by adding a trip to the gun range to sight in the rifles. The hunter education course will take some 10 hours, but the memories of those first hunts will last a lifetime. Every hunter and fisherman fondly remembers the thrill and anticipation of their early trips. Why not make the end of the safety course even more special by having a victory dinner or presenting the new hunter with the first gun?

If you haven't been to the gun range, it is time to go. While there, check out the newest concept in target shooting: sporting clays. Using a little imagination, the boys at the range can have the clay birds coming at you, going straight up, bouncing on the ground, or can send a daring pair of mini targets that would make even the elusive white wing dove a little jealous. Sporting clays are fun and, by improving your shooting, will make this year's first trip even more productive.

TIP OF THE WEEK - Tired of trying to read the little + or - signs on the old boat battery? A can of red spray paint can make charging the batteries lots easier. Just spray some on the positive post side of the battery. This idea really comes in handy when setting up the charger in the dark of night.



Lacey Parks and her horse, "J.L." won the breast collar, made by Alvin Durham, at Burleson's Memorial Roping, held July 19-21.

Betty's Tax Talk

ABSENTEE VOTING OPENS IN TAX ISSUE ELECTION

Absentee voting has begun at the Motley County Clerk's office here on a pair of state constitutional amendments and a trio of local issues that could have a major effect on property taxes.

The absentee voting is during the clerk's regular hours in preparation for an August 10 election on both sets of issues.

Regular voting will be in the usual voting places: Precinct 1, Ford House; Precinct 6, Courthouse; Precinct 2, Flo-mot; Precinct 3, Church in Northfield; Precinct 4, Depot, Roaring Springs.

Maybe this can help our taxpayers decide how to vote.

LEAGUE OF WOMEN VOTERS OF TEXAS EDUCATION FUND

1212 Guadalupe, Suite 107
Austin, TX 78701-1800
July 9, 1991

PROPOSITION #1 (SJR 42)

WORDING ON BALLOT: *The constitutional amendment to allow the voters of a county education district to adopt certain exemptions from the district's ad valorem taxation for residence homesteads to provide for the taxation of certain tangible personal property.*

EXPLANATION

The school finance law approved by the 72nd Legislature created 188 new county education districts, composed of

single counties or groups of counties. These districts have the limited purpose of levying the required local first-tier tax to raise the equivalent of 72 cents per \$100 of assessed market value and redistributing the proceeds among local school districts within the county education district.

This proposed amendment would authorize the new districts to hold elections to allow voters within the districts to decide whether to grant an exemption on a percentage of the assessed value of residence homesteads; whether to grant an additional exemption on the homesteads of elderly and disabled persons; and whether to impose taxes on certain types of personal property. In the enabling legislation that was passed during the regular session of the legislature, the amount of the homestead exemption was specified at 20 percent and the exemption for elderly and disabled persons was set at \$10,000 exemption on homesteads of elderly and disabled persons, and the freeze on property taxes for elderly and disabled persons.

The enabling legislation also directed the county education districts to present the propositions to their voters in an election to be held on August 10, 1991. The wording of the proposals on local ballots will be identical across the state, but the order may vary. Decisions made by voters in a district only, contingent upon the decision of voters statewide on the proposed constitutional amendment which

authorizes these elections.

Thus, voters who go to the polls on August 10 will be asked to vote simultaneously on a constitutional amendment and to vote on the local tax options authorized by the proposed amendment. If voters approve the proposed amendment statewide, the locally adopted options would go into effect without delay. This is being done in order to enable the new taxing districts to implement voter decisions in the property tax bills scheduled to go out in October.

PROS AND CONS OF PROPOSED CONSTITUTIONAL AMENDMENTS FOR

1. Trustees of the new county education districts are appointed by local school boards rather than being elected by voters, and thus do not have discretionary authority to decide whether or not to grant these exemptions or impose these taxes on personal property. Therefore, the power to make these decisions must rest with voters in the county education districts.

2. This amendment would make it possible for homestead exemptions and personal property taxes to be continued, but at the option of voters rather than by action of the county education district board.

AGAINST

1. Passage of this proposed amendment would shift the tax burden from residential property to businesses. It would affect county education districts across the state very differently. Those that are dependent primarily upon residential property would be forced to raise resi-

dential property taxes more than those that rely on commercial property.

2. Tax exemptions for some property owners would result in higher taxes for others. Only 259 of the more than 1,050 school districts in Texas currently grant the homestead exemption. This amendment could result in a large increase in property tax exemptions statewide, narrowing the property base that must provide the local share of public school funding, which contributes approximately half of all school funding. This would mean higher taxes for the remaining taxpayers in order to maintain the required local funding.

PROS AND CONS OF COUNTY EDUCATION DISTRICT PROPOSITIONS

The propositions below will be presented to voters at the same time as the proposed constitutional amendment above. Although the language of the propositions will be identical statewide, the order in which they appear on the ballot may vary.

WORDING ON BALLOT: *The taxation of all tangible personal property, other than manufactured homes, in Motley County that is not held or used for the production of income.*

"To laugh often and love much; to win the respect of intelligent persons and the affection of children;...to know that even one life has breathed easier because you have lived — this is to have succeeded."

Ralph Waldo Emerson



If we're even this late, your next phone bill is on us.

At GTE, our residential repair service is so good, we're willing to guarantee it. From now on, if we don't have your phone line fixed by the time we promise, we'll give you credit for one full month's local service

charges.* Even if we're only one minute late. In order to make a guarantee this good, GTE has invested millions not only in state of the art telecommunications, but also in our people. And we think both are the best in the

business. So if for some reason, our repair service doesn't measure up, please tell us. Any of our GTE employees would be more than happy to honor this guarantee. It only takes about a minute.



THE POWER IS ON

K-96

KSRW
96.1 FM

KCTX
1510 AM

AND

The Motley County Tribune

Remind you to Shop At Home at one of these hometown business

Higginbotham-Bartlett
Marshall Brother's Electric
Leslie Taylor Welding
Matador Motor Co.
Stanley Pharmacy

Listen to K-96 FM or KCTX 15.10 AM Radio - Childress for advertisement of these businesses

Monday - Friday, 6:30 a.m., Dr. James Dobson
Sunday, 8:00 - 10:00 a.m.
One on One Sunday (music and teaching)
10:00 - 11:00 a.m. - The Best of Dr. James Dobson



KSRW-FM RADIO

The Finney Station!

WE SPECIALIZE IN TRACTOR AND TRUCK FLATS
WE SELL TIRES
24 HOUR ROAD SERVICE
Fast Efficient Service
PROPANE, GASOLINE, DIESEL AND OIL
7:30 A.M. - 6:30 P.M., MONDAY - SATURDAY
WE APPRECIATE YOUR BUSINESS

Phillips 66 Station
Cooper Oil

Matador, Texas

Day, 347-2346 or Night 347-2411

*This credit covers local phone charges, monthly charges and any additional charges for SmartCall Services, unlisted numbers and extra directory listings.

Flomot News

by Earlyne Jameson

SURPRISE BIRTHDAY PARTY FOR MRS. LEONA DEGAN

Mrs. Joe (Leona) Degán whose birthday was Sunday, July 28, was pleasantly surprised when family and friends honored her with a pre-birthday party in her home, Saturday, July 27. She was presented a decorated birthday cake, gifts, cards and received telephone calls. Canapes, cake and nuts were served with coffee, tea and punch.

Those attending the happy birthday besides her husband, Joe were sons and families, Mr. and Mrs. Morris Degán and Kristi of Medicine Mound and Mr. and Mrs. Stanley Degán, Shawna, Shay and Dane of Calgary; sister, Mrs. Mildred Chandler of Plainview; and friends, Mesdames Alfred (Sylvia Lee) Martin, Gordie (Edith) Washington, Howard (B) Rogers, D.M. (Christeen) Gilbert, Doyle (Mary Jo) Calvert and Viola Calvert, local residents.

HOME FROM TRIP

Mr. and Mrs. Wayne Hunter and his father, Horace Hunter of Quitaque returned home Monday night from a vacation trip that included tourist attractions in New Mexico and Colorado.

They visited in Raton, N.M. with Mrs. Hunter's cousin, Mrs. Evelyn Blackburn and her daughter, Mrs. Nelda Gay Segota of Springer, N.M. They met their son, Dr. Randy Hunter of Denton in Alamosa, Colorado and they continued to South Fork, Colorado. Joining them there were her brothers and wives, Mr. and Mrs. Walter Speer of Colorado Springs, Colorado and Mr. and Mrs. Johnny Speer of Floydada.

Visiting last Sunday with Mr. and Mrs. Marvin Starkey, Tanya and Jackie was her family, Mr. and Mrs. James Benton, Devin and Austin of Dallas, Mrs. Debbie Martin, Ashley, Paige and Brook, Mrs. Edna Benton and G.C. Baker, all of Wellington.

Mary Ellen Barton and Viola Stinson attended to business in Plainview, Saturday and enroute home, visited in Floydada with Mrs. Mollie Burleson.

Mark Clay of Fort Worth visited Sunday night with Mrs. Mary Clay and League Clay.

Mr. and Mrs. Gene Davis of Fritch visited Saturday with her parents, Mr. and Mrs. Jack Starkey and accompanied home their sons, Michael and Warren who visited here the past two weeks. They also visited Mr. and Mrs. Marvin Starkey and children and Mrs. C.W. Starkey.

Mr. and Mrs. Orville Lee visited in Mertson from Friday until Sunday and attended the Ely family reunion.

Weekend guests of Mr. and Mrs. Howard Rogers were Mrs. Merl Nall of Amarillo and Shannon, Steven, Denise and Shane Nall of Bushland. Visiting Sunday were Mrs. Stanley Degán and children of Calgary.

Mr. and Mrs. Chip Lee and Clay of Stephenville visited overnight Saturday with Mr. and Mrs. Joe Ike Clay, Tina and Julie. Other visitors Saturday night were Mr. and Mrs. Billy Shannon, local residents.

Joe Degán had recent eye surgery in Plainview. With him during surgery besides his wife, Leona were niece and husband, Mr. and Mrs. Wendell Farley of Quitaque, Mrs. Mildred Chandler of Plainview and Mrs. Howard Rogers of Flomot. He is reported to be doing fine.

Mr. and Mrs. Monty George and Emily of Lubbock and Mr. and Mrs. Allen Matthews of Turkey visited Mr. and Mrs. Jack Starkey, Mrs. C.W. Starkey and Mr. and Mrs. Marvin Starkey and children, Saturday.

Mr. and Mrs. Doyle Calvert and Glen visited in Lubbock, Saturday with Mrs. Gwen Reed and accompanied home her children, Shae Lynn and Dustin who visited here the past two weeks.

Weekend visitors in the home of Mr. and Mrs. Joe Degán were Mr. and Mrs. Morris Degán and Kristi of Medicine Mound and Mr. and Mrs. Stanley Degán and children of Calgary. Other visitors, Sunday were Elton Martin of Quitaque and Donnie Rogers, local resident.

Mrs. Syd Pipkin and Mrs. Denise George of Matador accompanied Leah Cruse, Cara Franks and Dodie Morris of Flomot and Brandi Jameson and Leigh Ann Pipkin of Matador to Canyon, Friday to attend a West Texas Cheerleaders Camp, Saturday held at the West Texas State University.

WELL-TIMED RAINS

Tommy Cruse, National Weather Service Volunteer reported .61 of moisture northeast of Flomot, July 26-27. Mary Ellen Barton, east of Flomot reported over 2.00 inches of rain.

Residents in Whiteflat registered from 1.00 to 2.50 inches of rainfall Saturday and Sunday. The moisture is well-timed with the month of August making its entrance today!

News Around Motley County

Roaring Springs News

by Odessa Mullins

The Myron Bethard family had as guests, Sgt. and Mrs. Myron Bethard, Jr. and their children, Timmy, Christen, and Mark. They arrived at D.F.W. Airport, Sunday the 14th of July, being met by family and friends with banners and flags welcoming them home. Sgt. Bethard had served in Saudi Arabia with the 1st Armored Division as Communications Technician. The family had been stationed in Germany for four and one half years. They visited 9 days in Roaring Springs before returning to Grand Prairie to visit Mrs. Lesa Bethard's family. They will then go to Fort Huachuca, Arizona, his new duty assignment. Other visitors were Mr. and Mrs. Joe Bowden and daughter Desiree of Odessa. Mrs. Bowden is the sister of Myron Jr. Gabriella, also a sister, came with a friend, Diane, for dinner, driving from Lubbock, and visiting a few hours. Other guests for dinner were Mr. and Mrs. Wallace Bethard and children, Nickolas, Kristopher, Larissa and Aaron. All the Myron Bethard Sr. children were present except for Stephanie, (Mrs. Sam Swinnea) and her family of Grand Prairie. Since Ethanice and Lawrence Bowden have been spending the summer with their grandparents, the only Bowden family members missing were Lavenia and Joseph of Arlington.

JIM DYE DESCENDANTS HOLD REUNION

The Dye Reunion, held annually on "Papa" Jim Dye's birthday with the exception of war years and 1948 the year of his death, was held last Sunday in the Senior Citizens Building here. The Ted Kingery family of Silverton hosted the event this year with 46 attending.

The menu consisted of hamburgers, barbeued over mesquite wood on an outside grill, beans, potato salad, fruit cobbler and freezers of vanilla, strawberry, and banana nut ice cream and pink sherbet.

Fellowship, picture taking and 42 games kept everybody entertained before, during, and after lunch.

Those attending were Mrs. Eliza Kin-

gery, Mr. and Mrs. Bill Smelser, Big Spring; Mrs. Minnie Dye; Mr. and Mrs. Newt Dickson, Amarillo; Mr. and Mrs. Carl Brown and 2 sons of Chickasha, OK; Mr. and Mrs. Raymond Dye, Corpus Christi; Mr. and Mrs. Rip Baily, Forsan; Mr. and Mrs. Gaylon Bryan, Hereford; Glen Kingery, Laredo; Merl, Annette, Shalena, and Nathan Rehra, Lockney; Mr. and Mrs. Leon Kingery, Vickie and Leanne Carroll of Lubbock; Mrs. Louise Kimbal of Matador, special guests of Mrs. Bill Smelser; the Clifford Dye family and his mother, Mrs. Moseeta Dye of Merkel; Mr. and Mrs. Ted Kingery and Mr. and Mrs. Anthony Kingery of Silverton; Mr. and Mrs. Rollie McNutt and Ben of Spade; Mr. and Mrs. Alex Hennington and Bonnie Hennington of Sweetwater; Mr. and Mrs. Arnold Ehly and two children of Tulia.

ATTENDS COUSIN REUNION

Mrs. Cleo Watson, accompanied by her son, Larry Watson of Dallas, met with other descendants of brothers, Albert, Dave, and George Yandell, June 20 at Ollie Linder Center in Plainview for a "Cousins Convocation". Close to 100 cousins came from Arizona, California, Mississippi, Oklahoma and Texas. All the families had lived in this county for several years.

FORMER RESIDENT DIES

Micky McDonald, a native of this county, son of Charlie and Jewell McDonald and grandson of Mr. and Mrs. Dave Yandell, died June 13 in Corpus Christi. He was survived by six children and two sisters, Charline White of Arlington and Patsy Vallient of Lamar, Colo. One sister, Betty Blackwell preceded him in death. He and his sisters attended school here.

Bud Bumpass of Paducah spent Saturday night with his aunt, Mrs. Vera Mitchell, and she accompanied him Sunday to attend church services in Dumont, where he teaches a Sunday School class and Chris McCauley is pastor.

Mr. and Mrs. J.T. Swim and Miss Lula Swim were overnight visitors Monday night with their aunt, Mrs. Vera Van Camp in Amarillo. On Tuesday the visitors attended a Justice of the Peace and Clerk Training Session held in Amarillo. J.T. is the recently installed Justice of Peace here.

Rev. and Mrs. Ernie Brown were Lubbock visitors Friday.

Mrs. Vera Mitchell rode the mini-bus to Lubbock Monday to keep her medical check-up appointment.

Mrs. Marie Moore of Big Spring was in town the past weekend, attending to business and visiting friends. She was the guest of Mrs. Minnie Dye Sunday night.

Mrs. Lou Bennett attended the reunion of the Harrises, her mother's family at Azle the past weekend. She drove down Friday and returned late Sunday. There were 65 relatives in attendance, some from as far away as Illinois. Mr. and Mrs. Raymond Harris of McAdoo were among the cousins in attendance.

Mr. and Mrs. W.H. Marshall visited his sister and husband, Mr. and Mrs. Bannister, in Plainview, last Thursday.

Mr. and Mrs. "Mac" McCasland of Spur were visitors in the home of her cousin and husband, Mr. and Mrs. W.H. Marshall last Sunday.

Miss Bess Ferguson and Mrs. Odessa Mullins kept eye appointments in Lubbock Monday.

Whiteflat News

by Earlyne Jameson

OVERHEARD
It is unseemly for politicians who can't balance the budget to raise their salaries. God bless the taxpayer who bears the burden of such poor representation and mismanagement of his money!

VACATION TRIP

Mr. and Mrs. Morris Stephens returned home July 24 from a vacation trip to New Mexico and Colorado.

In Tres Ritos, N.M., they were guests at the Mayfield family reunion and Blue Grass Festival. The Mayfield family celebrated two 40th wedding anniversaries. Mr. and Mrs. Stephens continued to Durango, Colorado where they met friends at the Bar-D Ranch Music Festival. They enjoyed the tourist attractions en route and on return trip home.

Mr. and Mrs. Stuart Dixon attended a Panhandle, New Mexico Beefmaster Breeders' meeting, Saturday in the home of Mr. and Mrs. Don Langston in Woodrow.

Mrs. Juanita Cooper visited from Saturday until Tuesday of last week in Amarillo with her daughter and family, Mr. and Mrs. Ken Dunnam and Kourtney. Mr. and Mrs. Harold Gordon of Post visited her during the weekend. They enjoyed entertainment in Plainview and visited in Floydada with their mother, Mrs. Doll Jameson, Saturday.

Thad Jennings of Abilene and Matthew Jennings of Haskell visited Sunday with their grandparents, Mr. and Mrs. T.W. Jennings. Matthew remained to

visit. Had Lyons of Cherokee, Oklahoma visited last Monday with Mr. and Mrs. Morris Stephens and accompanied home his son, Chad who visited her the past six weeks.

Mr. and Mrs. Billy Jack Spray of Las Cruces, N.M. visited overnight Monday with his mother, Mrs. Jack Spray. They and their son, Jay, who visited here the past week, continued to Dallas to visit their daughter and family, Mr. and Mrs. Carlton Whitlock, Kaitlyn and Brandon.

Mrs. Laverna Sams of Lockney visited from Monday until Friday with her granddaughter and family, Mr. and Mrs. Johnny Turner and Heather. Their son, Coby attended the basketball camp at Wayland Baptist University in Plainview and returned home, Friday. Mrs. Sams, Mrs. Turner and her mother, Mrs. Carolyn Luckenback of Silverton attended the District 4-H Style Show in Quannah, Tuesday where Heather modeled her wrap around skirt and jacket. Heather earned 2nd place in the Cotton Award division of the show and placed 5th in the Style Show.

Art Green of Flomot and Mrs. Kathryn Martin visited in Roaring Springs, Sunday with her mother, Mrs. Ray Martin.

Mr. and Mrs. Ralph Watts and Mr. and Mrs. Morris Stephens enjoyed the annual Panhandle Blue Grass Festival, Saturday and Sunday held in Mobeetie. Mrs. Stephens accompanied Mrs. Joe Stephens of Matador to Lockney, Monday for a medical check-up. She received a good report.

Matador News

Mrs. Howard (Carolyn) Limmer of Snyder visited several days last week with her parents, Mr. and Mrs. Frank Pohl.

Mrs. Edgar Lee returned home last Thursday from a plane trip to Winter Park, Colo., where she spent several days with a nephew and family, Mr. and Mrs. Glenn January and son, Glenn Jr., of Houston, who came by here Saturday on their return trip home. Glenn Jr. remained to visit Mrs. Lee this week. Overnight guests Saturday were a niece, Alicia Johnson and two friends, Chelsea Teltschik and Amy Ellis, all of Eickinson, who were enroute to Plainview, where Miss Teltschik is enrolled at Wayland Baptist University.

Mrs. W.N. Pipkin, with her daughter and family, Mr. and Mrs. Vernard Alexander and Michelle of Freeport, returned Monday of last week from Ruidoso, N.M. where they spent three week. Others joining them during their stay there were the Alexander's daughter Leslie and family, Mr. and Mrs. Laynce Nix and children, Laynce, Jayson and Lyndsey of Midland; and another daughter and husband, Linda

and Ross Williams of Dallas; Mrs. Pipkin's son and family, Mr. and Mrs. Neal Pipkin and Scott of Mesa, Arizona; and a niece and family, Laura and Roger Wallace and children, Amanda and Matthew of Lubbock.

Visitors Sunday in the home of Mr. and Mrs. Billy Donaldson and children, Brant and Britanya, were his parents, Mr. and Mrs. Bob Donaldson, and his brother and wife, Mr. and Mrs. Rob Donaldson of Muleshoe.

Mr. and Mrs. Charlie Renfro and Andy, visited in Haskell last weekend with their daughter and sister, Dena, and family, Mr. and Mrs. Joe Zarate Jr., and daughter, Tasha.

Mr. and Mrs. Jack Willis of Des Moines, Iowa and Mr. and Mrs. W.L. McCarty of Irving visited their sister and husband, Mr. and Mrs. E.D. Lawrence and all attended the annual Truett reunion, Sunday in Idalou. Approximately 105 relatives gathered at the Senior Citizens Center, representing Truett families related to the late Mrs. Willis. Mrs. McCarty and Mrs. Lawrence are the former Johnnie and Rhea Willis.

NOTICE OF PUBLIC HEARING ON TAX INCREASE

The Motley County Hospital District will hold a public hearing on a proposal to increase total tax revenues from properties on the tax roll in Motley County Hospital District by 26 percent. Your individual taxes may increase at a greater or lesser rate, or even decrease, depending on the change in the taxable value of your property in relation to the change in taxable value of all other property.

The public hearing will be held on August 12, 1991 at 8:00 p.m. Motley County Courthouse.

FOR the proposal: Charles Johnson, James Stanley, Bob Davis, Ruth Lee, Tom Bowman

AGAINST the proposal: None

PRESENT and not voting: None

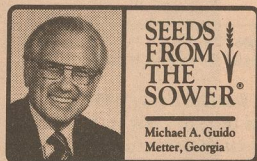
ABSENT: None

The statement above shows the percentage increase the proposed rate represents over the Motley County Hospital 1991 tax rate that the unit published on August 1, 1991. The following table compares taxes on an average home in this taxing unit last year to taxes proposed on the average home this year. Again, your individual taxes may be higher or lower, depending on the taxable value of your property.

	Last Year	This Year
Average home value	10,000	10,000
General exemptions available (amount available on the average home, not including senior citizen's or disabled person's exemptions)	5,000	5,000
Average taxable value	5,000	5,000
Tax rate	.0832	.1050 (proposed)
Tax	4.16	5.25 (proposed)

Under this proposal taxes on the average home would increase by 1.09 or 26 percent compared with last year's taxes.

Comparing tax rates without adjusting for changes in property value, the tax rate would increase by \$.0218 per \$100 of taxable value or 26 percent compared to last year's tax rate. These tax rate figures are not adjusted for changes in the taxable value of property.



Michael A. Guido
Metter, Georgia

A boy fought with his playmates and went home in a huff. "I don't need them," he cried. "I can play by myself."
"Fine," said his father. "Play on a teeter-totter by yourself."
Life is a teeter-totter. Everyone needs friends. And whatever the number of friends you may have, there'll be times when you'll have one too few.

But choose wisely your friends. You're more apt to catch their vices than their virtues, as disease is more contagious than health.

Long ago a wise man said to the Lord, "I am a companion of all them that fear Thee, and of them that keep Thy precepts." Join this company, won't you?



A GOOD NAME

Closely associated with a good conscience is the product of right living - a good name! The wise man wrote: "A good name is rather to be chosen than great riches." (Proverbs 22:1). In the community, when a person's name is known for uprightness and honesty; when that person's name is associated with justice and respect; that person has true riches which money can not buy.

Names always associate themselves with certain characteristics of a person. The name of Abraham brings to mind a great faith. The name Moses is associated with leaders of God's people. Samson, and we think of strength. But we also have a certain picture in our

minds when it is said, "He's a Judas," or "He's a Jonah." By these illustrations one can easily see how important it is that we who wear the name "Christian" conduct ourselves in a manner consistent with the Christ of the Bible.

It was George Washington who said, "Labor to keep alive in your heart that little spark of celestial fire called conscience." It is vitally important that we maintain a good conscience and a good name if we are to be truly rich. A fullness of life is reached only when an inner peace pervades from a pure conscience which brings forth the good name.

You are invited to come and worship with the Matador Church of Christ. We will enjoy having you meet with us.

MATADOR CHURCH OF CHRIST Michael G. Crowley, Sr.

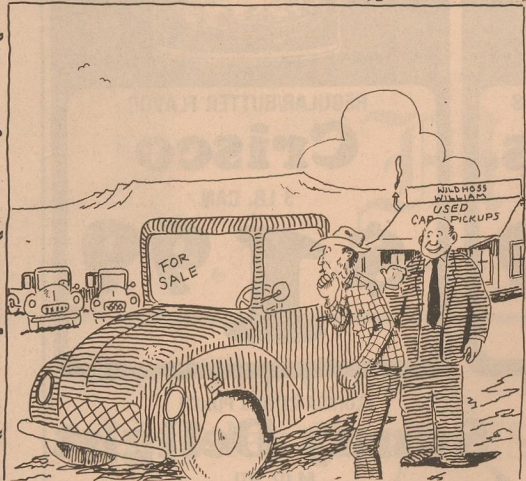
TOMMY'S GARAGE
We do State Inspections
Automotive & Tractor Repairs

Hwy. 70 — Matador 347-2446

THE CLASSIFIEDS

COWPOKES

By Ace Reid



"Now this one has low mileage. The owner drove it only when he could get it started."

This Feature Sponsored By
First State Bank

Matador
Your "Hometown" Bank Member FDIC

We carry all crop chemicals
Roundup, Fusilade, MSMA, etc.
We also have fertilizer and chemical for your wheat crops

New Store Hours for Summer:
8:00 a.m. to 5:00 p.m.
Lawrence Farm Store

Roaring Springs, Texas (806) 348-7271

Germania Insurance
Homeowners, Auto, Personal and Farm
Liability and Life

Lee's Insurance Agency
Flomot, TX 79234 (806) 469-5370

LONG REAL ESTATE
Roaring Springs, Texas

1,2 Bdrm. Stucco Dwg. in Matador
2,82 Ac W/76 Cult. 1 MI. SW Dickens.
3,529 Ac W/140 Cult. 10 MI Spur
4,476 Ac. W/147 Cult. W/3 Bdrm. Dwg. Cross Fenced W/M Pens
5, FR 2 Bdrm. Dwg. Roaring Springs
6, AS 2 Bdrm. Dwg. Roaring Springs
7, FR 1 Bdrm. Dwg. Roaring Springs
8, 2 Bdrm. Ash. Bd Dwg. in Roaring Springs
9, 2 Bdrm. Stucco Dwg. in Matador
10, 4 Bdrm. Vinyl Siding Dwg. in Matador
11, 2 Bdrm. Stucco Dwg. in Matador
12, 3 Bdrm, 2 Bath, Fr. Dwg., Roaring Springs
13, 3 Bdrm., 1 Bath, Fr. Dwg., Roaring Springs
14, 3 Bdrm., 1 Bath, Fr. Dwg., Roaring Springs
15, 2 Bdrm., 1 Bath, Ash. Bd. Dwg., Roaring Springs
16, 2 Bdrm., 1 Bath, Ash. Bd. Dwg., Roaring Springs

CALL
806-348-7531
Night 348-7510
or Night
348-7284

First Assembly of God Church
REV. ERNIE BROWN
Roaring Springs, Texas

"But thanks be to God, who gives us the victory through our Lord Jesus Christ."
(1 Cor. 15:57)

Church - 11:00 a.m., Sunday School - 10:00 a.m., Sunday Night - 6:00 p.m.
Wednesday Prayer Meeting - 7:00 p.m.

Missionettes for girls Royal Rangers for boys

First Assembly of God Church
Rev. Roy Eason, Pastor
Matador, Texas 347-2771

SUNDAY SCHOOL - 10:00 A.M. CHURCH - 11:00 A.M.
SUNDAY NIGHT - 6:00 P.M.
WEDNESDAY NIGHT - 6:30 P.M.
PRAYER AND BIBLE STUDY

Therefore with joy shall ye draw water out of the wells of Salvation.

First United Methodist Church
Rev. Mary Helen Cross
Matador and Roaring Springs
Sunday School, 10:00 a.m. and Church, 11:00 a.m. in Matador
Church services at 9:30 a.m. in Roaring Springs

"Let us go into the house of the Lord"

God Bless You!

Real Estate

HOUSE FOR SALE: 3 bedroom, 1 bath, 2 car garage. All electric with Heat Pump. Fully carpeted. 1725 Eubank. Call 806-856-5906.

ctfn

FOR SALE: Nice house and membership with boat dock at Homer Lake; or will take pickup in trade. Call me at 293-7644.

Specialities

FOR SALE: Used Maytag washers and dryers, rebuilt and guaranteed. THACKER SUPPLY, 348-7216.

ctfn

CESSPOOL PUMPING: 348-7516

lfc-9

MARSHALL ELECTRIC & SUPPLY: Electrical work, cable and phone outlets and tree-trimming. Available full-time, Monday - Friday, 8:00 a.m. - 5:30 p.m. Call 347-2820 or 347-2455 after 5:30 p.m.

ctfn

WELDING, SANDBLASTING & PAINTING for all types of Farm and Ranch equipment. JAYTON FEED & SEED, Ross Hudson, 806-237-3604.

ctfn

ALL TYPES OF EXHAUST WORK

DON'S MUFFLER SHOP
210 W. Calif.
Floydada, Texas 983-2273

ctfi

NOW AVAILABLE AT MATADOR MOTOR AND IMPLEMENT: Professional Windshield Installers are at Matador Motor & Implement every two weeks. Guaranteed not to leak. Call 347-2422.

ADD INSULATION TO YOUR HOME today and cut cooling and heating costs. Fireproof - guaranteed. Serving your area 32 years. MARR INSULATION CO., Shane Jones, Rep., 806-347-2820 or 347-2215 after 6:00 p.m.

ctfn

GET VISA! MASTERCARD! No credit necessary! Genevive Sias, 119 Kennedy Dr., Lafayette, La. 70501

ltp-31

ALL KINDS OF PLUMBING WORK: Call Bennie Meredith, 348-7932.

ltp-25

Joe's Small Engine Repair
118 S. Main, Floydada
983-5050

Joe's Locksmith Service
118 S. Main, Floydada
983-5050

Joe's Snapper Lawn Mower
Sales & Service
118 S. Main, Floydada
983-5050

Don't Drink & Drive!!

COWBOY BOOT & SHOE SHOP
Boots made to order!

Box 317 Matador, TX 79244 806-347-2218

Red Wing Boots D.L. DAMRON

For Sale

FOR SALE: Regulation Size Pool Table. Fully equipped with hanging light. Excellent condition. Telephone 348-7280.

ctfn

PIANO FOR SALE

WANTED: Responsible party to assume small monthly payments on piano. See Locally. Call credit manager 1-800-447-4266.

3tp-31

SALE CONTINUES — 50% OFF all merchandise. Summer dresses, Clam diggers and Short suits. Still have nice selection of Romper Dresses. Open Thursday, Friday and Saturday, 12:00 noon - 5:00 p.m. or for special appointment call 492-2270 for Monday, Tuesday or Wednesday. SOMETHING SPECIAL, Paducah.

lfc-31

FOR YOUR MARY KAY NEEDS, call Wauvel Goodwin, Independent Skin Care Consultant, 1-800-594-0730. 15% off Glamour.

lfc-31

ROARING SPRINGS RANCH CLUB
A family recreational club. Camping Swimming, Golf, Fishing, Hiking. Only 300 memberships left at \$795. Call (806) 348-7292 or write to Box 153, Roaring Springs, TX 79256

Vehicles For Sale

FOR SALE: 1982 Chevrolet Pickup. 3/4 ton. Call 348-7271 or at night, 348-7576.

2tc-31

Garage Sale

BIG BACKYARD SALE: Saturday, 9:30 a.m. - 12:30 p.m. in the backyard of the Tony Rose home. Many items — Kirby Vacuum Cleaner, Antique Bed Frame, shelves, collector's Noah's Ark Animals, country decorating items, framed pictures, clothes (good for school): jeans, blouses, dresses (sizes 7-9), good quality! Kids clothes. Some furniture. Lots and lots of good stuff! NO EARLY BIRDS!

GARAGE SALE: Saturday, 9-1 and Sunday 1-4, at Williams Tire & Battery east of town. Ten Speed, Toys, Electric Drill, Color T.V., Port-a-Crib, Kids & Women's Clothing, Portable Air Gun, Knick-Knacks, etc.

SIDEWALK SALE
Friday & Saturday
at
Matador V&S Variety

Back to School Sale Starts Next Thursday August 8-17

Legal Notices

INVITATION TO BID

The Board of Trustees of Motley County Education District shall be accepting bids from banks in Motley County or contiguous to it, or that have indicated an interest in bidding on the Depository Pledge Contract for the 1991-1993 Biennium in accordance with the enclosed information until 4:00 p.m. on August 14, 1991 in the office of the Superintendent. Please mark bids:

"DEPOSITORY PLEDGE CONTRACT BID" and mail to the below address:

Motley County I.S.D.
Drawer 310
1600 Bundy Street
Matador, Texas 79244 (806) 347-2677
Bid award will be considered by the Board on August 14, 1991.
Motley County I.S.D. reserves the right to accept or reject all or part of the bid, waive minor technicalities, and award the bid to best serve the interest of Motley County Education District.

3tc-32

LEGAL NOTICE

Motley County Independent School District hereby serves notice they are now taking bids on Student Insurance for the 1991-1992 school year.

1. Proposals will be received in the office of the Superintendent, Drawer 310, Matador, Texas until 4:00 p.m. August 7, 1991.

2. Board will consider the proposals and take appropriate action August 14, 1991 at the regular Board Meeting.

3. Additional information may be obtained by calling Bettye Stevens at Motley County I.S.D. (806) 347-2677.

4. Bidders may not withdraw their proposals after the closing time for submission of proposal.

THE MOTLEY COUNTY I.S.D. BOARD OF TRUSTEES RESERVES THE RIGHT TO REJECT ANY OR ALL BIDS.

George Blanch,
Superintendent
Drawer 310
Matador TX 79244

3tc-31

ANNOUNCEMENTS

OLD SETTLERS ARTS & CRAFTS SHOW

An Arts and Crafts show will be sponsored by the Roaring Springs Parks and Recreation Club on August 22, 23 and 24. All exhibitors are invited to attend one day or all three days. Booth charge will be \$10.00 whether you attend one day or all three days. Overnight storage will be available. Contact Pauline Hand at 806-348-7915 or Venita Sedgwick at 806-348-7268.

NOTICE

I, Bud Brinsfield, am not responsible for any debt incurred by Betty Virginia Brinsfield, or anyone else. Only my own.

lfc-31

JR. GOLF TOURNAMENT

The Roaring Springs Golf Course is sponsoring a Jr. Golf Tournament August 6, 1991. For more information call the Pro Shop at 806-348-7267.

2tc-31

SPORTS PHYSICALS

Sports Physicals must be done before August 12. Please call the Clinic for an appointment, 347-2641.

lfc-31

STANLEY PHARMACY
will be closed
Saturday, August 3

Shaklee Products
Peggy Probasco
983-5246

Legal Wrecker Service
Bill Armstrong
Located at the Texaco Bldg.
Hwy. 70 Matador
or call
347-2774
day or night

ADM - PAYMASTER

GINNING SERVICES

QUITAQUE
1-800-443-8702

Sharon Sutton Pigg
ATTORNEY AT LAW
Will be in Matador every Wednesday, 10 a.m. - 4 p.m. in the Motley County Courthouse (Also available for Private Practice during this time)

(806) 823-2520
823-2131
Matador - 347-2334

415 Main Street
P.O. Box 651
Silverton, Texas 79257

LEGAL NOTICE

Motley County I.S.D. hereby serves notice that they are now taking bids on Fleet insurance on Motley County I.S.D. Vehicles.

1. Sealed proposals will be received in the Superintendent's Office, Drawer 310, Matador, Texas until 4:00 p.m. August 7, 1991.

2. Each proposal received shall be in a sealed envelope plainly marked "FLEET INSURANCE PROPOSAL".

3. Proposals will be opened during the regular Board meeting to be held August 14, 1991 at 7:30 p.m. in the Motley County I.S.D. Board room, received after the 4:00 deadline will be returned to the bidder unopened.

4. The Board of Trustees will consider the proposals and take appropriate action August 14, 1991 during regular board meeting.

5. Additional information may be obtained by contacting Bettye Stevens at Motley County I.S.D. (806) 347-2677.

6. Bidders may not withdraw their proposals after the closing time for submission of proposals.

THE MOTLEY COUNTY I.S.D. BOARD OF TRUSTEES RESERVES THE RIGHT TO REJECT ANY OR ALL BIDS.

3tc-31

George Blanch,
Superintendent
Drawer 310
Matador, TX 79244

LEGAL NOTICE

Motley County I.S.D. hereby serves notice that they are now taking bids on Property Insurance on Motley County I.S.D. facilities.

1. Sealed proposals will be received in the office of the Superintendent, Drawer 310, Matador, Texas, until 4:00 p.m. August 7, 1991.

2. Each proposal received shall be in a sealed envelope plainly marked "PROPERTY INSURANCE PROPOSAL".

3. Proposals will be opened during the regular Board meeting to be held August 14, 1991 at 7:30 p.m. in the Motley County I.S.D. board room, Proposals received after the 4:00 p.m. deadline will be returned to the bidder unopened.

4. The Board of Trustees will consider the proposals and take appropriate action August 14, 1991 during the regular Board meeting.


5. Additional information may be obtained by calling Bettye Stevens at Motley County I.S.D. (806) 347-2677.

6. Bidders may not withdraw their proposals after the closing time for submission of proposals.

THE MOTLEY COUNTY I.S.D. BOARD OF TRUSTEES RESERVES THE RIGHT TO REJECT ANY OR ALL BIDS.

3tc-31

George Blanch,
Superintendent
Drawer 310
Matador, TX 79244



**Coca-Cola
Dr. Pepper**
12 PACK, 12 OZ. CANS 2 LITER BTL.
\$3.39 \$1.09



FRITO-LAY BEAN DIP LARGE CAN \$1.49
Fritos Original
CORN CHIPS
Fritos®
REGULAR \$1.99
2 \$3 FOR



HILLS BROS. PERFECT BALANCE 50% COFFEE
HILLS BROS. COFFEE
PERFECT BALANCE/ASST. GRINDS
Hills Bros.
12-13 OZ. CAN
\$1.69



CRISCO
REGULAR/BUTTER FLAVOR
Crisco
3 LB. CAN
\$1.99

LAUNDRY DETERGENT
Ultra Cheer
98 OZ. BOX
\$5.99

ASSTD. BATHROOM TISSUE
Charmin
4 ROLL PKG.
89¢

SNICKERS/3 MUSKETEERS/
MILKY WAY
Ice Cream Bars
6 CT. PKG.
\$1.79

FLORIDA CITRUS PUNCH
Sunny Delight
64 OZ. BTL.
89¢

GROCERY SPECIALS

KELLOGG'S FROSTED FLAKES **\$2.79** 20 OZ. BOX
KELLOGG'S FROOT LOOPS **\$2.79** 15 OZ. BOX

KELLOGG'S FRUITY MARSHMALLOW KRISPIES **\$2.69** 14 OZ. BOX
TEXSUN PINK GRAPEFRUIT JUICE **79¢** 46 OZ. CAN

SYLVANIA 60/75/100 WATT LIGHT BULB **89¢** 2 CT. PACK
SARAN WRAP **\$1.99** 100 FT. ROLL

RAID ANT & ROACH **\$1.99** 9 OZ. CAN
30% OFF LABEL RAID FLYING INSECT **\$2.49** 12 OZ. CAN

RAID WASP & HORNET **\$3.69** 14 OZ. CAN
ASSORTED DOG FOOD REWARD **2.97¢** 6 OZ. CANS

JOLLY TIME YELLOW POPCORN **97¢** 2 LB. BAG
ASST. OCEAN SPRAY CRANBERRY JUICES/DRINKS **\$1.99** 48 OZ. BTL.

MAZOLA NO STICK **\$1.69** 5 OZ. CAN
ASSORTED FURNITURE POLISH PLEDGE **\$1.59** 7 OZ. CAN

PLEDGE DUSTERS **\$1.59** 8 CT. PACK
ASST. GLADE REFILLS FOR PLUG-INS **89¢** 1 CT. PKG.

20% OFF LABEL LIQUID SHOUT **\$1.89** 22 OZ. BTL.
FOR NO WAX FLOORS BRIT **\$1.89** 16 OZ. BTL.
ASSORTED GLADE **99¢** 7 OZ. CAN

AUGUST
Sales

SHELF SPECIALS

FOAM RUG CLEANER GLORY **\$2.99** 22 OZ. CAN
ASSORTED GLADE POTTERY **\$1.69** 1 CT. PACK

POST GRAPENUTS **\$2.69** 24 OZ. BOX
ONE FREE WITH FIVE V-8 **\$1.09** 6 PACK CANS

ONE FREE WITH FIVE CAMPBELL'S TOMATO JUICE **89¢** 6 PACK CANS
PURINA DOG FOOD MAINSTAY **\$4.89** 20 LB. BAG

FAMILY SIZE TEA BAGS LIPTON **\$1.99** 24 CT. BOX
LOW CALORIE SWEETENER EQUAL **\$1.79** 50 CT. BOX

WELCH GRAPE JELLY **\$1.39** 2 LB. JAR
REG/LITE COUNTRY KITCHEN LOG CABIN **\$1.59** 24 OZ. BTL.

HEAVY GRAIN FED BEEF ARM CUT
Boneless Charcoal Steak
FAMILY PACK
\$1.89 LB.
SMALL PACK **\$1.99** LB.

WILSON SLICED MEAT BOLOGNA **89¢** 12 OZ. PKG.

HEAVY GRAIN FED BEEF BONELESS ARM ROAST	LB.	\$1.89	WILSON MEAT FRANKS	12 OZ. PKG.	89¢
GREAT FOR CHICKEN FRY CUBE STEAK	LB.	\$2.99	WILSON SLICED BACON	1 LB. PKG.	\$1.59
WILSON REG/POL/BF/CHS. SMOKED SAUSAGE	LB.	\$2.19	WILSON SLICED JUST FOR US HAM	1 1/2 LB. PKG.	\$6.79

FROZEN FOOD & DAIRY
ASSORTED ULTRA SLIM FAST DINNERS **\$2.69** 12 OZ. PKG.
ASSORTED BUDGET GOURMET ENTREES **\$1.59** 8 TO 10 OZ.

ASSORTED FLAVORS BLUE BUNNY ICE CREAM **\$2.99** 5 QT. BUCKET
SHURFINE BUTTERMILK **99¢** 1/2 GAL. JUG

HEALTH & BEAUTY
TABLETS OR CAPLETS SUDAFED **\$2.19** 10 CT. PKG.
ORIG/SPR. FRESH DEO. BODY POWDER SHOWER TO SHOWER **\$1.99** 8 OZ. SHAKER

TABLETS OR CAPLETS BAYER **\$2.89** 50 CT. BTL.
REG/MAX. STR. CLEANSING PADS STRIDEX **\$2.99** 32 CT. JAR

GARDEN FRESH
Corn
EARS **8 \$1**

SWEET JUICY
PEACHES
LB. **69¢**

PRODUCE SPECIALS
SNO-WHITE CAULIFLOWER **99¢** EACH
JUICY SWEET NECTARINES **79¢** LB.
U.S. NO. 1 BAKING POTATOES **\$1.00** 4 LBS.

TRACER RAZOR **\$1.69** 1 CT. PKG.
TRACER CARTRIDGE **\$1.69** 5 CT. PKG.

PRICES EFFECTIVE MONDAY-SATURDAY, AUGUST 5-10
DOUBLE COUPONS ON MONDAY AND WEDNESDAY
Every Monday and Wednesday your manufacturers "cents off" coupons are worth double at Pay-N-Save No. 21. Limit one coupon for any particular item. No cigarette coupons. Offer limited to manufacturers coupons of \$1.00 value or less. Coupons over \$1.00 will be redeemed at face value. Amount cannot exceed retail of the item. Subject to certain In-Store Policies concerning coupons. Not doubled on advertised specials.

Pay-n-Save
QUALITY AND SERVICE
WE RESERVE THE RIGHT TO LIMIT QUANTITIES

Safeguard Money Orders