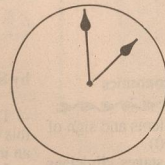




Voice of the Foothill Country



FALL BACK.....
Set your clocks back 1 hour
Sunday, October 30, 2 a.m.

Motley Co. Tribune

50¢
PER COPY

102nd YEAR

THURSDAY, OCTOBER 27, 1994

ISSUE NO. 43

MEET YOUR NEIGHBOR



JO ANN DURHAM

Jo Ann Durham, with her husband Bill, own and operate Jo-Barb-Dee Beauty and Barber Shop in Matador. They have lived in Motley County for 21 years. They have two daughters, Deanna Logan of Ralls, and Barbara Wallace of Matador. They have four grandchildren, Tyler Logan, and Lee-Andrea, Kelsi, and Brett Wallace.

In her spare time, Jo Ann enjoys making crafts and spending time with her grandchildren.

THOUGHT FOR THE WEEK

"If you haven't any charity in your heart, you have the worst kind of heart trouble."

— Bob Hope

Barbara's Bylines

If you have wondered what has happened to KSRW 96.1 FM Radio, last Thursday night during the storm the lightning fried the tower antenna.

The antenna has been sent to California to be repaired.

According to an employee at the Radio Station they hope to be back on the air by the end of next week.

UPCOMING EVENTS

Motley County 4-H Food Show

Saturday, October 29
Judging at 11 a.m.
Awards, Public Viewing
and tasting at 12:30
VFW Memorial 4-H Building
24 Motley County 4-H
members will be participating

HARVEST CARNIVAL IS THIS SATURDAY

The Harvest Carnival will be held Saturday, October 29, 1994 in the old gym. The Spook Parade will begin sharply at 6:30 p.m. All Queen's contestants and their escorts need to be at the old gym by 6:15 p.m. The Queen's contest will begin at 6:45 p.m. The Carnival will begin at 7:00 p.m.

Please come and check out the Auction of new and slightly used items. There will be lots of fun booths. Don't miss it! The happening place to be in Motley County on Saturday night.

M.A.S.H. New Concept Introduced To Motley County I.S.D.

What is M.A.S.H.? Mad About Student Honors.

A new concept at Motley County School is being introduced to increase attendance and place a greater importance on grades in grades pre-kindergarten through 8th grade. This program will not only recognize those students with "A" or "A-B" certificates and media coverage, but will reward the students with a refreshment during the day at a specified time.

Students who meet all the requirements for M.A.S.H. will receive a break from their daily class schedules, one period, one day a six weeks, to relax and enjoy a snack. Other students will continue their regularly scheduled studies. Requirements for the M.A.S.H. program are simple - must be on the "A" or "A-B" honor roll for the six weeks or have perfect attendance for the six weeks.

In grades 9 through 12, another type of reward is being drawn up. A waiver has been presented to T.E.A., which was approved by the Motley County School Board, to allow students with good attendance and high grades in their classes to be exempt from taking semester tests. Also for those students who remain on the "A" or "A-B" honor roll all year, a banquet is being planned for these students at the end of the year. The Banquet is being co-sponsored by our Student Council.

The National Honor Society is also beginning a "Student of the Month" program. This program will recognize a male and female student in grades Pre-K through 12th who exhibit outstanding characteristics in the following categories: Leadership, Citizenship, Cooperation, Sportsmanship, both on and off the field, School Spirit, Positive Attitudes, Honesty, and involvement in outside

activities. There will be three divisions, Elementary (each class, pre-K through 6, will have two representatives), Junior High (7th and 8th), and High School (9th - 12th). Students will be nominated

by their classroom teacher in grades Pre-K through 6th and by the teachers in grades 7-12.

Ways to recognize the youth at Motley County Schools is continually being

looked for. The school is proud of their many accomplishments and this is simply their way of saying, "You're Doing A Great Job, Keep Up The Good Work And Attitude."

Local Judge Attends Seminar

Judge Cora M. Smallwood, was certified at a recent 20-hour Justice of the Peace Seminar held October 18-21 in Lubbock. The seminar was sponsored by the Justice of the Peace and Constables Association and is conducted by the Texas Justice Court Training Center, headquartered at Southwest Texas State University in San Marcos. The seminar is one of many held statewide to allow Justices of the Peace to meet their Continuing Judicial Education requirements as set forth

in Article 27.005 of the Texas Government Code. Judges selected areas of study that closely matched their courts activity.

Topics covered included: New Penal Code Review, Juvenile Law, Forcible Entry and Detainer, Traffic Law, Inquests, Small Claim Procedure, Criminal Trial Procedure, Contempt, Bond Setting, Magistrate Duties, Criminal Law Issues, Good Judging Techniques, Clerkless Court Management, Media Relations, Code of Judicial Conduct.



PUMPKIN PALS — These creatively decorated pumpkins greet passerbys on Hwy. 70 in downtown Matador, in front of the Headstart school. The pumpkins were decorated by the students and their teacher, Mrs. Rose Saldana.

Motley County 4-H Members To Be Honored At District Banquet

Two outstanding 4-H Club members from Motley County will be honored at the Rolling Plains District 3 4-H Gold Star Banquet. The Banquet will be held at 7:30 p.m. on Monday, November 7th at the Haskell Civic Center. The Banquet is sponsored each year by West Texas Utilities Company. Kit Home, Public Relations Manager for WTU, will be on hand to welcome honorees and guests.

Among the top 4-H members in the District being honored will be Darryn Perryman and Kasey Parks. Darryn is the

son of Linda Perryman of Matador. Kasey is the daughter of Harold and Barbara Parks of Roaring Springs.

Both of these 4-H members were recently honored at the Motley County 4-H Award Banquet. During the county banquet, the Gold Star winners were presented a plaque and a watch for their accomplishments. The watches were sponsored by the Motley County Farm Bureau and the Matador Lions Club.

The 4-H Gold Star is the highest honor awarded to a 4-H'er at the county level.

To qualify, a 4-H member must be at least 15 years old, have completed three years of club work and be active in 4-H. The award is intended to stimulate recipients to higher achievement and to encourage other young people to participate in the county 4-H program.

The awards at the District Gold Star Banquet will be presented by Elaine Houston and Scott Durham, District Directors for the Texas Agricultural Extension Service.

Heather Turner, Misty Thomas Named 'I Dare You' Award Recipients

Misty Thomas and Heather Turner were awarded the national I Dare You Leadership Award in recognition of personal integrity, balanced living and potential for leadership. The honor was presented by Janice Brown and Odessa Mullins at the ceremonies held at the Motley County 4-H Awards Banquet on Saturday, October 15.

The I Dare You Leadership Award is made available each year by the American Youth Foundation in cooperation with Principals and County Extension Agents across the country. The Award was first offered in 1941 by William H. Danforth, founder of the Ralston Pruina Company in St. Louis, who dared young people to achieve their highest potential and to influence others through lives of service. The Award takes its name from the book, I DARE YOU, written by Mr. Danforth, in which he commends the balanced life of mental, physical, social and spiritual development as the backbone of leadership.

Each year, over 8,000 schools and 4-H programs participate in the I DARE YOU LEADERSHIP AWARD. This year, Misty and Heather received a plaque and a copy of the "I Dare You" book for their achievements.

Misty Thomas is a 8 year member of Motley County 4-H and a sophomore at Motley County High School. Her 4-H projects have included swine, beef, and food and nutrition. She has attended various teen leadership conferences, including District 4-H Teen Leader Lab and

Electric Camp. Misty is currently Vice-President of the Matador Senior 4-H Club. Her parents are Richard and Darlene Thomas.

Heather Turner is a 10 year member of Motley County 4-H and the daughter of Johnny and Carol Ann Turner. She has participated at the county, district, and

state 4-H level in both clothing and foods and nutrition. Heather has attended numerous leadership conferences and is very active in community service and leadership projects. She is currently the President of the Matador Senior 4-H Club and on District 4-H Council. Heather is a senior at Motley County High School.

Amber Pennington To Perform At Motley County School

NOTE: This article was taken from "Around Town" entertainment section of the Lubbock Avalanche Journal. It was written by William Kerns, Entertainment Editor.

Amber Pennington is a 15-year-old student at Borger High School with almost 10 years of experience singing in front of large audiences. She made her debut at age 6, singing the national anthem prior to Houston Astros and Houston Oilers games at the Astrodome.

On Sunday, Amber celebrated her 16th birthday by headlining a Red Ribbon Week (War on Drugs) concert at the Civic Center Theatre.

The personable teenager has been described as a total professional on stage, but acknowledges that she is shy when not performing. She's too embarrassed to talk about music at school and recalls the

time when, while being bused to Austin for a school function, her friends asked her to sing and she just couldn't do it. "I wasn't sure how they would react," she explained.

When not singing or rehearsing country songs, she hangs out with those friends like any other teenager - going to school football games, attending dances or talking on the phone.

Pennington has been singing "for as long as I can remember," and took voice lessons until she turned 9, eventually stopping because "the drive back and forth from where we lived and where I took (singing) lessons was too long."

She prefers contemporary country and chooses most her own songs.

Amber will perform at the Motley County School, for grades 6-12, at 2:00 p.m. Thursday.

Motorists Are Urged To Use Good Judgement For Halloween Driving

It's nearing the end of October, the leaves are falling, temperatures changing and children getting excited about Halloween. Although private parties have taken over for the traditional door to door "trick or treats", still many young children will be taking to our neighborhoods for that all familiar chant.

Trooper L.B. Snider of the Texas Department of Public Safety said, "many disasters can be prevented this Halloween if parents and motorists will use good judgement." Trooper Snider stated, "small children should be accompanied by older children or adults and trick or treating should be confined to those areas that the parents are familiar with. Costumes should be light in color non-flammable and any type of mask used should not prevent the child from being able to see." Parents should also instruct their children

in some traffic safety tips, insuring they look in all directions before crossing streets and to walk, never run. A flashlight carried by the child can serve as a warning to motorists and children should be instructed to use sidewalks, whenever possible.

Motorists should use extra caution in residential areas and be on the lookout for kids darting into the streets between parked vehicles. Remember, they are excited and pre-occupied with trick or treating. Drivers need to be extra alert.

For those who wish to participate in this upcoming Halloween evening and receive a visit from that little ghost or goblin, it is a good idea to remember to leave that front porch light on and to insure there are no obstructions in this walkways.

Sharp Delivers October Sales Tax Rebates of \$134.4 Million To Texas Cities And Counties

(AUSTIN) — "In keeping with the upward trend that began 13 months ago, employment in Texas grew at a rate of 3 percent or more during August," State Comptroller John Sharp said today.

"The job growth in both Austin and Dallas were once again above 5 percent, and confident consumers in all the major metro areas of Texas were continuing their increased spending," Sharp said, as he delivered a total of \$134.4 million in October sales tax rebates to 998 Texas cities and 11 counties.

The monthly sales tax payments represent a 9.7 percent increase over rebates of \$122.5 million a year ago.

Texas cities received \$120.9 million, up 10.3 percent from the \$109.6 million they received last October. Counties received a total of \$13.4 million, a 4.6 percent increase over their October 1993 rebates of \$12.8 million.

This month's sales tax payments include taxes collected on August sales and reported to the Comptroller in September

by businesses filing monthly tax returns.

Totals for Motley County are as follows:

Matador - current rate, 1.00%; net payment this period, \$1,300.99; comparable payment prior year, \$1,075.48; % change, 20.96%; 1994 payments to date, \$17,385.73; 1993 payments to date, \$17,206.73; % change, 1.04%

Roaring Springs - current rate, 1.00%; net payment this period, \$1,362.94; comparable payment prior year, \$2,636.52; % change, -48.30%; 1994 payments to date, \$14,860.91; 1993 payments to date, \$23,630.03; % change, -37.11%

County total - current rate, 1.00%; net payment this period, \$2,663.93; comparable payment prior year, \$3,712.00; % change, -28.23%; 1994 payments to date, \$32,246.64; 1993 payments to date, \$40,836.76; % change, -21.03%

READER'S COLUMN

Wanted: Role Models - Male or Female

Home Economically Speaking

by Beverly A. Logsdon
Home Extension Agent - Home Economics

THE IMPORTANCE OF WELL-BABY CHECK-UPS

Parents of infants owe it to themselves and to their babies to provide regular medical care. Babies should be seen regularly by a doctor or nurse who is skilled in baby care. At ages 7-10 days, and 2, 4, 6, 9, 12 and 15 to 18 months, the doctor will attend to health concerns.

Weight and height screenings are very important. Tracking gains in length and weight is crucial in helping the doctor or nurse to assess the baby's overall health. The baby's growth is usually assessed through measurements of height, weight and head. Head size is checked because a baby's brain reaches about 70 percent of its eventual size during the first year and 80 percent by the end of the second year (Papalia & Olds, 1982). Growth patterns vary tremendously due to a number of factors:

- Actual length of pregnancy in weeks (40 weeks is average)
- Size of the baby at birth (19 to 21 inches in length and 7.5 pounds in weight is average)
- The baby's body type (thin, stocky, etc)
- Genetic background (size of parent)
- The baby's diet, exercise activity level and general health.

Babies follow their own unique pattern of growth. Most babies grow in spurts, but in predictable sequences. However, only an experienced clinician will be able to determine if the baby's growth is normal or if something seems to be interfering with the baby's growth.

Physical Assessment is another factor. The doctor or nurse will look for problems that may include heart murmurs, abnormal masses in the abdomen,

deafness or vision problems and sign of illness (TDH Staff, 1990)

In the developmental stages, clinicians also look for delayed progress in development. There are various simple tests that the clinic staff will do on a baby and questions they will ask a parent that will help them determine whether the baby is developing normally. The tests are made to measure physical, adaptive, and social development.

The physical aspect entails reflexes, motor skills, hearing and vision, eye control, hand control, sitting and creeping and standing. Adaptive-Social characteristics include crying, language, socializing, feeding and alertness.

It is important for parents to take their baby for these well-baby visits regularly to discover possible problems and find early solutions.

The doctor or nurse will want to see the baby at 7-10 days for observation of his progress and to repeat the newborn screening test done in the hospital.

The doctor or nurse will:

- Check the baby's length, weight and head circumference and do a complete physical and development assessment.
- Observe how the parent holds, feeds, burps, talks to and handles the infant. They will reassure the parents and offer help as needed.
- Determine whether the mother is getting enough support and enough rest.

Educational programs of the Texas Agricultural Extension Service are open to all citizens without regard to race, color, sex, disability, religion, age, or national origin.

THOUGHT FOR THE DAY: Perhaps imagination is only intelligence having fun.

by Shelby West

I'm not going to watch the World Series this year, greedy people have made this an impossibility

In 1956 or 1957 my dad purchased a 21" television set from Thacker Supply. I still remember J.D. Palmer, Charles Owens, Buzz Thacker and possibly Luther Moore, working feverishly erecting the fifty foot pole and antenna that would (depending on the weather) bring reception from the two television stations in Lubbock all the way down the Cap into our living room.

Since that time, I have watched all or part of the World Series. Even though the reception was for the most part very poor, undaunted my older brother and I, watched through a snowy screen, outlines of ball-players, who in our eyes could do no wrong.

They were our role models. In victory or defeat they were our heroes.

Since there isn't any definition of the word role model as one word. The words have to be taken singularly and the definition joined together to get a clarified meaning of the words role model.

The word role means to act out a part in a play or movie. The word model means to model or pose for an artist or sculptor, or a stand-out for imitation or definition.

I thought about these definitions and have come to the conclusion that a true role model would have to, in all reality, possess traits and virtues that I certainly do not have.

Sometimes words become interchangeable over a period of time, such as the words role model and the word hero or heroine.

A hero or heroine would be someone that performs heroic deeds.

In World War I Sergeant York became a hero, and after his service time was expired, he truly was a role model to his generation.

Audie Murphy became the most decorated soldier of World War II because he performed many deeds of heroism. After service he became a movie star thus stepping into the role of role model.

In the field of Christian evangelism, there have been many role models, such as Billy Sunday, Dwight L. Moody, Smith Wigglesworth, and at present, Dr. Billy Graham. Sad to say there have been tragic failures in the field of Christian evangelism, some whom were held in high esteem, crumbled to the pits of depravity never to rise again.

In a high pressure society, it seems that many role models seem to fall, herein lies the problem. No hero or heroine or role model falls alone, other people who have placed these people on pedestals built of glass promises or faded reality, also fall.

Where are the role models of our generation?

It seems that we want to get our role models from the sports world. Many of these sports figures have almost no morals. A role model influences lives. A drug dealer driving a Mercedes, entices many young people to immitate their actions, in

the hope of someday driving a Mercedes.

I have had various role models from time to time. Growing up in the First Baptist Church in Roaring Springs, I loved the revivals that we would have. One in the Spring and one in the Fall. I loved listening to the evangelist, it seemed they had a whole lot of fire in their souls. To bad it doesn't happen anymore.

Mrs. Bertha Stearns was my third grade teacher. She was a role model. Not only was she a fine teacher, but she was also a fine person. She wasn't only interested in our learning our school work, she was interested in our souls. We had silent prayer and one time she asked how many of us were saved. Thanks Mrs. Stearns. Granted this was in the time of our century when people weren't ashamed to profess their beliefs.

When I was 6 or 7 years old there was a man by the name of Casey Jones who owned a pharmacy in Roaring Springs. I don't remember much about Mr. Jones or his business, but I do remember he sold ice cream. My brother and I walked all over town trying to find five empty soft drink bottles to sell at 2¢ a piece. It took us almost all day. We walked into Casey Jones' store and both of us bought one scoop of vanilla in the long pointed cone. I dropped mine as soon as we walked outside before ever taking a lick. Mrs. Jones called me back inside and fixed me another one at no charge. For a long time Mr. Jones was my hero, or role model.

Mrs. Roxie Lewis taught me English from the seventh grade through the eleventh. There weren't any halfway measures in those English classes. Mrs. Lewis' main objective was to make sure her

students knew how to speak proper English. If a student wanted to learn English that was the place to learn. If you passed, you knew English. Thanks Mrs. Lewis. I still study English.

Where are the role models now? How about the pastors in our churches? Try walking a mile in their moccasins. Even the wife of pastors are placed in the position of role models. These are the types of people we need to look up to, these are the people our children need to emulate.


I mentioned praying in school. We hear a lot in the media these days about that very issue. We hear about how the Supreme Court banned prayer in our public schools back in 1963. All the woes of the school system have been blamed on this one issue. I have a question, who banned prayer from the home? Or the work place, or the street corner?

Where are the role models of today? They aren't on television, for television has become nothing more than a giant garbage pile of filthy communication.

Where are the role models of today? Maybe they're at school. Maybe they're living next door. Maybe you waved at one on the way to work this morning.

No article on role models would be complete without mentioning the greatest of them all, Jesus Christ, the son of God. He walked this earth in the flesh. He was a perfect role model. Jesus Christ lived what he taught. Of all the major philosophers of this world, there is only one that hasn't been tried, and that is the philosophy of Jesus Christ. If you want to know what it is, it can be found in God's word, read it for yourself, it works.

In the Rough
by Hazel



TUESDAY SCRAMBLE
October 18
Closest to pin on #6 was Buzz Thacker, 17 3/4.

THURSDAY PLAYDAY
October 20
Players were Mary Lou Grundy, Dorothy Day, Louise Barton, Olivia Barton, Geneva Wilson, LaVoe Thacker.

Look Who's New

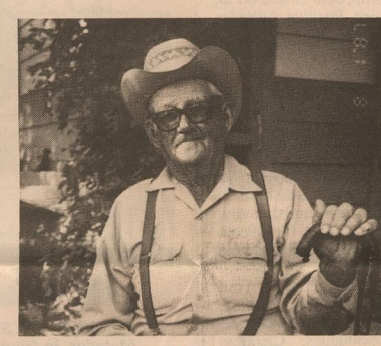


Sunny Shalon Helms

Karla and Kenneth Helms are the proud parents of a baby daughter who arrived at 1:59 p.m., Sunday, October 23, 1994 at St. Mary's Hospital in Lubbock. She weighed seven pounds, fourteen ounces and was 21 inches long.

Welcoming the new arrival is her three year old sister, Callie, grandparents, Mr. and Mrs. Joe Edd Helms of Flomot and Mr. and Mrs. Billy Meyer of Turkey. Great grandparents are Mrs. Annetta Helms of Quitaque, Art Green of Flomot and Mr. and Mrs. Max Schuch of Mason.

Happy Birthday!



Land Sakes Alive, Look Who's 95
JOHN BRYSON BARTON
The celebration will begin
Saturday, October 29, 1994, 3 p.m. - 4 p.m.
Senior Citizens Center — Matador
Louvaine, Bud, Betty Jo & families
No gifts please

Public Notice

Southwestern Bell Telephone Company (SWBT) has filed an application with the Public Utility Commission of Texas (PUC) to restructure the current PLEXAR I and II service offerings. This restructure will significantly change PLEXAR I and II services.

The restructuring of PLEXAR I will, among other things: (1) reduce the maximum line size from 30 to 9; (2) obsolete and grandfather certain optional features; (3) eliminate the requirement to subscribe to Feature Package Two in order to subscribe to certain optional features; (4) reduce the nonrecurring and monthly rates of certain features; and (5) increase the nonrecurring charges for the PLEXAR I System Charge (\$2.10 to \$8.00), Call Transfer Disconnect feature (\$3.00 to \$8.00), and Convenience Dialing I feature (\$6.35 to \$8.00). All current PLEXAR I customers will have the option of keeping their current PLEXAR I service, switching to the new restructured PLEXAR I service, or switching to PLEXAR II service with ten or more lines.

The proposed PLEXAR II restructure will, among other things: (1) change the tariffed offering to serve the market segment of 10-74 stations; (2) create two station pricing structures, one for customers with 10-29 stations, and one for customers with 30-74 stations; (3) reduce the sensitivity for the loop portion of the rate to two price bands: 0-2 miles, and beyond 2 miles; (4) offer a PLEXAR II basic station that can be flexibly configured, from a number of standard features, to meet the individual customer requirements; (5) change the way the termination liability is calculated so the customer is responsible for 65% rather than 56% of the present worth of the remaining monthly payments in the contract; (6) create an option that allows month-to-month customers to convert to long term contracts of at least three years and receive a credit or "contract signing bonus"; and (7) establish a System Subsequent Change Charge which applies per serving central office when changes are made that affect the entire system.

Current PLEXAR II customers will also have the option of keeping their current PLEXAR II service, or switching to the new restructured PLEXAR II service. PLEXAR II customers with at least 75 stations also have the option of switching to PLEXAR Custom service in certain situations.

This application has been assigned Docket Number 13210. Persons who wish to comment on this application should notify the Commission by November 28, 1994. Requests for further information should be mailed to the Public Utility Commission of Texas, 7800 Shoal Creek Boulevard, Suite 400N, Austin, Texas 78757, or you may call the PUC Public Information Office at (512) 458-0256, or (512) 458-0221 teletypewriter for the deaf. For more information about this application, please call your local Southwestern Bell Account Representative.


Southwestern Bell Telephone

THE PEANUT PATCH
GOOD FOOD — UNIQUE GIFTS
NEW CROP PEANUTS NOW AVAILABLE
PIZZA - PASTA - FRESH BAKED GOODS
DINE IN — TAKE OUT
Call For A Special Dining Experience
2nd & Main - Turkey - 423-1051

See it now!

THACKER SUPPLY CO., INC.
800-481-2828

Introducing
RCA
Digital Satellite System



Sharper Picture. Clearer Sound. Greater Choice.

- Laser disc quality picture capability
- CD quality sound
- Great programming choices for the whole family

System prices start at \$699
Professional installation available.

Featuring
UP TO 150 CHANNELS OF PROGRAMMING EXCITEMENT, ALL IN DIGITAL QUALITY!
DIRECTV **USSB**

DSS™ Digital Satellite System:
TV never looked so good.

(1) Quality of picture and sound are dependent upon the audio system and/or television used by consumer. Television also requires S-Video input to realize full capability of DSS receiver.
(2) Total capacity available from two Hughes satellites.
Second satellite scheduled for operation Fall, 1994.
© 1994, DIRECTV™ and DSS™ are official trademarks of DIRECTV, Inc., a unit of GM Hughes Electronics.
© 1994, USSB, Inc., is a subsidiary of Hubbard Broadcasting, Inc.
© 1994, Thomson Consumer Electronics, Inc.

RCA
Changing Entertainment. Again.™

Motley County Tribune

Barbara Armstrong, Publisher/Editor
Carla Meador, Associate Editor, Ad. Mgr., Typesetting, Layout & Composition
Mary Meason, Proofreading
Lindsay Williams, School Reporter, Proofreading, Composition
Davonna & Renee Atkinson, Photo Developing

MEMBER 1994
TEXAS PRESS ASSOCIATION

The Motley County Tribune, (ISSN: 0897-4322), purchased on Feb. 1, 1986, is the successor to the Matador Tribune and is published weekly each Thursday, except Christmas week at Matador, Texas. The office is located on Highway 70 East (1/2 block east of Main Street), Telephone number, 806/347-2400. Second-class postage paid at Matador, Texas. Postmaster: Send address changes to Motley County Tribune, Box 490, Matador, Texas 79244-0490.

NOTICE: Any erroneous reflection upon the character, firm or corporation, which may appear in the columns of the Motley County Tribune will gladly be corrected upon being brought to the attention of the publisher. Only signed letters to the editor will be considered for publication and should not exceed 250 words in length. (Letters PUBLICATION NO. 333700)

SUBSCRIPTION RATES: Motley County, \$15; Texas, \$17; Elsewhere, \$18; 9 Month Student, \$14; over 60, may deduct \$1.00.

P.O. Box 490 Matador, Texas

Motley County School News

Matadors Put Up Hard Fight With Kress, But Lose Close Game, 13-12



ON THE RUN — Matador, Senior, Brandon Blanch, #22, takes off for the run in an attempt to make a touchdown during last Friday night's game with Kress. The Matadors played hard and tough, but lost a close game, 13-12. They will face the Lorenzo Hornets this Friday, there, at 7:30 p.m.

Photo by Davona Atkinson

The Kress Kangaroos held Motley County out of the end zone late in the fourth quarter and left town with a hard earned 13-12 victory over the Matadors. The win gave the Roos a 3-0 district record while Motley County fell to 1-2. Kress scored the first time they had the ball, and then both defenses took over the game. After receiving the opening kickoff, the Roos drove 58 yards with Toby Tomse running the final 38 yards for the touchdown. The point after failed and the score stood at 6-0. That's the way the first quarter would end. The Motley County defense denied Kress on two second quarter scoring

opportunities. First, the Roos drove to the Matador 11 yard line where the defense stiffened. A field goal attempt missed wide right. Later, an interception set the Roos up at the Motley County 12 yard line, but again the defense got tough forcing a fumble which Kevin Ketzl recovered in the end zone for a touch back. Motley County's first half score was set up by Conway Clary's interception and return which gave the Matadors the ball at the Kress 23 yard line. Four plays later, Brandon Blanch crashed over the right side from 9 yards out to tie the game 6-6 at the half. The Matadors drew first blood in the

second half. Jeremy Jones recovered a Kress fumble at the Motley County 39 yard line, and the Matadors began their march toward the Kress goal line. Quarterback Brad Thacker hit Bobby Barton on a 25 yard pass play to give the Matadors a first down at the Kress 31 yard line. Two plays later, Jarrod Brooks set sail around the left side for a 22 yard touchdown run and a 12-6 Matador lead.

Kress quickly got the touchdown back. After returning the Motley County kickoff to their own 29 yard line, the Roos gave the ball to Junior Tijerina who sprinted 71 yards for the score on the first play from scrimmage. The extra point kick would prove to be decisive as Kress held a 13-12 advantage entering the final quarter.

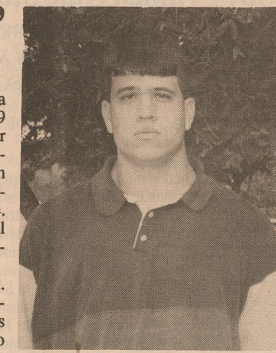
The Matadors threatened to score twice in the fourth quarter. After receiving a Kress punt, Motley County drove deep into Roo territory where they set up first, down and goal to go at the 9 yard line. A Brooks run took the ball to the 3 yard line, but 2 more runs lost 2 yards. Facing fourth down at the 5 yard line, the Matadors could not convert and Kress took over on downs.

The Matador defense rose up and forced Kress to punt out of their own end zone. The punt was downed at the Kress 29 yard line giving Motley County a final chance to pull out the win, but a fumble at that point gave the ball back to the Roos. They were able to run out the clock and claim the hard fought win, 13-12.

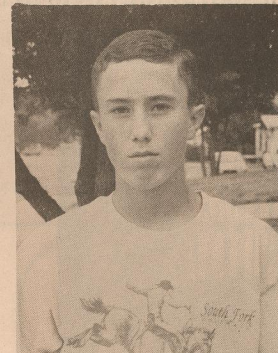
The Matadors will be looking to get back in the win column this Friday as they travel to Lorenzo to battle with the Hornets. Come out and support your team. Game time is 7:30.

MATADOR MADNESS

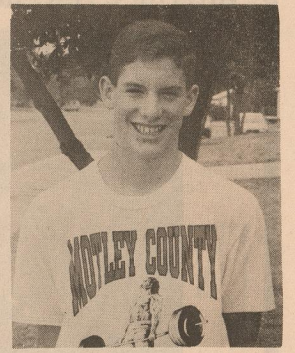
by Lindsey Williams



KYLE BRANDON, #63
Offensive Tackle/Defensive Tackle
Kyle is a Sophomore and the son of Dan and Frances Brandon. He is 6'3" and weighs 198 pounds. He likes sacking the quarterback in football.



COBEY TURNER, #12
Tight End/Defensive Back
Cobey is a Freshman and the son of Johnny and Carol Ann Turner. He is 5'8" and weighs 127 pounds. He enjoys catching the ball in football games.



SCOTT SMITH, #31
Tight End/Defensive End
Scott is a Freshman and the son of Chip and Ellen Smith of Matador. He is 5'10" and weighs 140 pounds. He likes winning football games.



MONDAY, OCTOBER 31

Breakfast: Bacon, Biscuits, Scrambled Eggs, Juice, Milk.
Lunch: Halloween Surprise!!

TUESDAY, NOVEMBER 1

Breakfast: Cereal, Buttered Toast, Fruit.
Lunch: Tostados, Meat, Cheese, Lettuce, Tomato, Refried Beans, Apple-sauce Cake.

WEDNESDAY, NOVEMBER 2

Breakfast: Pancakes, Syrup, Sausage, Fruit.
Lunch: Assorted Sandwiches (Bologna/Cheese, Ham/Cheese, Tuna), Pickle, Lettuce, Tomato, Potato Chips, Apricot Cobbler.

THURSDAY, NOVEMBER 3

Breakfast: Breakfast Burrito, Fruit.
Lunch: Steak, Gravy, Creamed Potatoes, Salad, Hot Rolls, Honey, Dessert.

FRIDAY, NOVEMBER 4

Breakfast: Biscuits, Sausage, Gravy, Orange Juice.
Lunch: Hamburgers, Lettuce, Tomato, Pickle, Onion, French Fries, Cowboy Cookies.



Trick or Treat

On Saturday Night

School officials are suggesting that kids do their Trick or Treating on Saturday night before or after the Harvest Carnival, instead of Monday night, a school night.

YEARBOOKS ARE STILL AVAILABLE

The Motley County Yearbook staff still has several 1994 yearbooks for sale. The price is \$25. Please contact Mrs. Denise Gastineau if you would like to have one.

Mavericks

Defeated by Kress

The Kress Junior High Kangaroos defeated the Motley County Mavericks 42-0 Thursday afternoon. The Mavericks will host the Lorenzo Hornets this Thursday beginning at 5:00. Come out and cheer on your future Matadors.



BOOSTER CLUB DAD OF THE WEEK
Edwin Brooks was named the Booster Club 'Dad of the Week' during last week's game. Mr. Brooks is the dad of Matador, Jarrod Brooks.

WHAT'S HAPPENING.....

Thursday, October 27: ASVAB tests, grades 10, 11 and 12. Amber Pennington concert sponsored by Coca Cola for grades 6-12, 2:00 p.m. Jr. High vs. Lorenzo, 5:00 p.m., here.
Friday, October 28: Matadors vs. Lorenzo, there, 7:30 p.m.
Saturday, October 29: FFA Leadership contest at Clarendon Junior College. Super Conference at Texas Tech. Etemas Study Club Harvest Carnival, 6:30 in the old gym.

JR. HIGH PEP RALLY TIME CHANGE

The Jr. High Pep Rally will be held at 3:15 this Thursday, instead of the normal time of 1:30, due to a special program which will be presented that day.

MAGIC MADE EASY

VANISHING ELASTIC
A rubber band is the article used in this trick; it is slipped around the fingers.

The hand is closed, holding the band.

The hand is opened; the band disappears.

The Secret: Slip the fingers under the band; when the hand is opened the band flies away.

FINGERS UNDER BAND

New Teacher Feature

by Lindsey Williams



BRENDA HUDSON
Brenda Hudson is the new Pre-K aide. She is from Spur and is the daughter of

Richard and Lynda Hudson of Lake Dallas.

She and her husband, Marty Ferguson, have one child, Sarah, who is sixteen months old.

Brenda went to high school at both Spur and Lake Dallas. She graduated in 1989. She moved here because she wanted to work here at the school and she loves kids.

She has also had work experience in day care and she has worked at a Walmart Store. In Pre-K she helps Mrs. Stephens look after the kids. She has lots of fun cutting out things, pasting, and coloring with them, too.

Being with the kids is her favorite thing about her job. She says that they are all wonderful, and I'm sure they all love her as much as she loves them.

Lindsey's Lines

by Lindsey Williams

This year's junior high pep club is a very energetic group. The members are always yelling and can never be seen sitting still.

Kay Graves is their sponsor as well as the Cheerleader's sponsor. There are currently twenty members in pep club. The new officers this year are President, Kristi Williams; Vice President, Stacie Neal; Secretary/Treasurer, Denise Shannon; and Song Leaders, Vanessa Easter and Paige Neal.

For we are God's workmanship, created in Christ Jesus to do good works, which God prepared in advance for us to do.

Ephesians 2:10



PRICES SO LOW- IT'S SCARY

ALLSUP'S

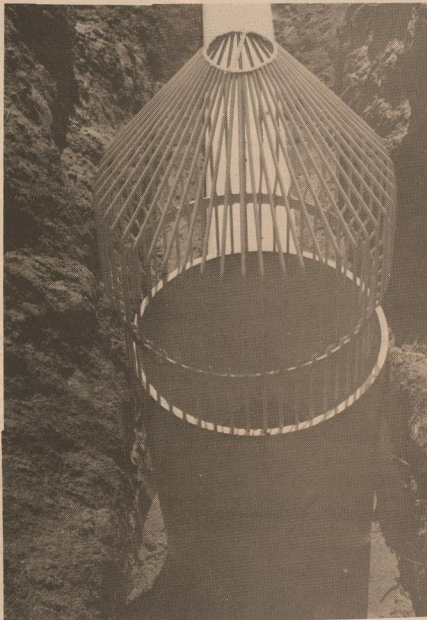
PRICES EFFECTIVE OCT. 26 - NOV. 2
HWY. 70 — MATADOR

HORMEL REG. OR MESQUITE BLACK LABEL BACON 1 LB. PKG. \$1.69	ALLSUP'S BREAKFAST BURRITO FOR ONLY 89¢	ALLSUP'S HOT LINKS FOR ONLY 69¢
WILSON MEAT BOLOGNA 12 OZ. PKG. 79¢	PLAIN OR IODIZED SHURFINE SALT 26 OZ. 49¢	ALL FLAVORS DORITOS® REGULAR/THINS REGULAR \$1.99 \$1.49
ALLSUP'S 1.5 LB. LOAF SANDWICH BREAD 69¢ EACH OR 2 \$1 FOR	ASSTD. FLAVORS PRINGLES CHIPS 6 OZ. CAN \$1.59	WESTERN FAMILY IBUPROFEN PAIN RELIEVER 100 CT. 200 MG. \$2.49
12 OZ. CAN SHURFINE Orange Juice 99¢	ASSORTED BRACH'S BAG CANDY FOR ONLY 2 \$1 FOR	24 FL. OZ. GRIFFIN'S Waffle Syrup \$1.59
SAVE ON PEPSI-COLA Be young. Have fun. Drink Pepsi. 3 LITER BOTTLE \$1.49	Brawny Paper Towels 99¢	42 oz. Shurfine Ultra Power Laundry Detergent \$2.69

ANNUAL REPORT UPPER PEASE SWCD

Directors: H.R. Jameson, James Bearden, Coy Franks, Gale Stafford, Billy Paul Simpson

UPPER PEASE SWCD HIGHLIGHTS AND ACTIVITIES 1994 FISCAL YEAR



Underground outlets such as the one under construction above are installed in Basin, Standard, Parallel and Diversion Terraces to safely discharge runoff. Two of these outlets were installed on farms in Motley County in 1994 protecting about 800 acres of cropland. Standard and parallel terraces constructed last year totaled 150,000 feet and 105,000 feet of Basin Terraces were completed.

SWCD ACTIVITIES INCLUDE:
Sponsored essay contest
Sponsored poster contest
Sponsored windbreak seedling program
Sponsored drip irrigation demonstration and sales
Sponsored soil moisture monitoring equipment sales
Sponsored Soil Stewardship activities
Attended South Plains Association of SWCD's meetings
Co-sponsored county meetings on conservation provisions
Co-sponsored Newsletters with SCS
Participated in state technical assistance funds program
Participated in state Subchapter H funds program
Received maximum state matching funds
Provide clerical assistance to SCS staff
Provide district technician to SCS staff
Supported and participated in area awards program
Sponsor local 4-H awards program
Actively participate in GPCP, ACP, and FAC meetings
100% membership in NACD and state association
Contributed full amount to State SWCD Information program
Provide SCS with high quality equipment:

Laser Level
Office copier
Computer software for publishing newsletters
Participate in the Goodyear awards program
Provide grass drill for producers
Participate in Four Winds RC&D meetings
Sponsor in Four Winds RC&D
Published one annual report
Provided an active information program for cooperators
Sponsored teacher workshop
Represent the cooperators in the district by direct communications with congressmen and senators



WIND STRIPCROPPING

Windstrip cropping is establishing four or more rows of locally adapted grass or high residue crops in conjunction with low residue crop such as cotton and peanuts. Windstrips help to serve as an effective barrier to protect not only the soil but also young seedlings during the months of severe wind erosion. When applied properly the wind stripcropping system will help to conserve soil moisture, save valuable topsoil, and protect seedlings. Permanent grass strips many times serve a dual purpose when planted on terraces. Well established grass on the terrace ridge serves also to protect the terrace and decrease maintenance. Motley County producers established or maintained windstrips on over 40,000 acres of cropland this past year.

ACCOMPLISHMENTS OF THE UPPER PEASE SWCD AND THE SOIL CONSERVATION SERVICE 1994 FISCAL YEAR

Parallel Terraces	53,937 feet
Standard Terraces	95,791 feet
Basin Terraces	105,000 feet
Pipe Outlets	1 - 8" x 15"
Pipe Outlets	1 - 10" x 15"
Fences	3,608 feet
Livestock Pipelines	9,677 feet
Range Seedling	100 acres
Erosion Control Structure	9,932 cubic yards
Great Plains Conservation Program	25 contracts on 16,609 ac.
ACP/LTA Contracts	6 contracts on 4,368 ac.
FSA/FACTA Conservation Plans	526 tracts on 92,878 ac.
Completed conservation systems	254 on over 38,000 ac.
Completed conservation assistance on 32 ACP referrals for ASCS	

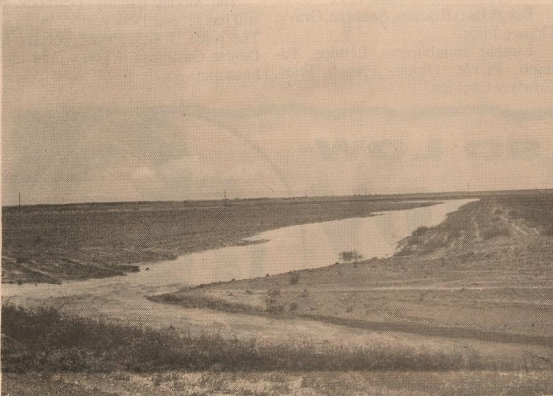
SWCD DIRECTORS ELECTION 4-H BANQUET

Each year the Upper Pease SWCD holds its annual director election immediately following the annual 4-H awards banquet which the SWCD sponsors. The SWCD has been sponsoring the awards banquet for many years as a part of its community development activities and as a part of their effort to promote conservation of natural resources, especially with the youth in the district. The SWCD supports the 4-H program. The election process held by the district is set by state law and says that to hold the position of director you must be actively involved in agriculture, own land in the zone you serve, and live within the district. To be an eligible voter you must be at least 18 years of age, own land in the district, and live in the district. The most recent election was held October 15, 1994 where James Timmons was elected to serve as director from zone 2, and Coy Franks was re-elected to serve as director from zone 1.



GREAT PLAINS CONSERVATION PROGRAM

The Great Plains Conservation Program is a Soil Conservation Service (SCS) cost share program which assists landowners in implementing a complete resource management system on their land. The SCS provides land owners with technical assistance and cost-share funds up to \$35,000 per contract. Motley County currently has 25 active contracts on 16,609 acres totalling \$442,511.70. These funds enable landowners to install conservation practices such as standard and parallel terraces, diversion and basin terraces, waterways, pasture planting, range seedling, brush management, livestock water storage facilities, pipelines, and ponds. Motley County GPCP participants are John Barton, Lucretia Campbell, Darrell Cruse, D&D Cruse, Charles Gwinn (two contracts), Kenneth Hurlley, Horace Jameson, Babe Jones, Jones Murphy, & Price, Gary Lancaster, Carter Luckett, Hal Ray Martin (two contracts), Gladys McDonald, Dean McInroe, A.J. Perkins, Garland Rattan, Pat Sheridan, Billy Paul Simpson, Joel Spray, Leona Terry, Joe Thacker, Craig Turner, and Johnny Turner.



Terrace end closures or end blocks as they are sometimes called are a very important part of all terrace systems. Motley County producers have installed many miles of terraces that have end blocks which often require maintenance. End blocks are designed to discharge excess rainfall and sometimes are damaged in the process. Blocks that are damaged should be repaired as soon as possible after crop harvest. Terrace maintenance is considered an important part of conservation compliance plans. Technical assistance is available from the SCS office, upon request, for terrace repairs and/or maintenance.



COVER CROPS (INTERSEEDING)

A cover crop is a crop of close-growing grasses, legumes, or small grains, such as wheat or rye, grown primarily for seasonal protection of the soil. Motley County producers utilized interseeding on 7,200 acres this past year to control erosion where cotton or peanuts were grown. A cover crop not only protects the soil from wind erosion but also provides organic matter in the soil, improves infiltration, aeration, and soil tilth.



COMMENDATION

Motley County producers are applying some of the best conservation systems in the region. Local producers are very familiar with the conservation provisions of the farm bill and have done an excellent job of implementing those provisions. There is also excellent conservation work being performed on our native rangelands. Local producers (both farmers and ranchers) are doing an excellent job of protecting the environment, conserving our natural resources, and producing food and fiber with production agriculture. THE UPPER PEASE SWCD AND THE MATADOR FIELD OFFICE OF THE SOIL CONSERVATION SERVICE COMMEND OUR LOCAL PRODUCERS FOR THIS EXCELLENT WORK.



Windbreak seedlings are again available for planting by producers in Motley County. Last year 180 bur oak, redb cedar and pine seedlings were purchased from the Upper Pease SWCD. This year's evergreen species includes Redcedar, Afghan pine, Arizona cypress and Austrian pine. Several hardwoods are available including Catalpa, Desert Willow and Little Walnut. Wildlife packets are being offered for use in Motley County to enhance Quail, Pheasant, Deer, Turkey and Squirrel populations. Windbreak seedlings are locally raised and adapted and the success and survival of these seedlings is high.

We Support Soil Conservation:

ROLLING PLAINS PCA

"Farming is everybody's bread and butter"



347-2226
Alan Bingham
Office Manager

FIRST STATE BANK



MATADOR

347-2661

FIRST NATIONAL BANK

QUITAQUE, TEXAS



COURTEOUS SERVICE SINCE 1920



SWCD PERSONNEL
SHERRYL BARCLAY
BRENT WHITAKER

SOIL CONSERVATION SERVICE PERSONNEL
JAMES GILLESPIE — DISTRICT CONSERVATIONIST
PHILLIP SHARP — RANGE CONSERVATIONIST
RODNEY WILLIAMS — SOIL CONSERVATION TECHNICIAN

WTAMU Horse Judging Team Places Second At Solid Gold Contest



WTAMU Horse Judging Team — (Pictured from left to right) Jason Turner, Assistant Coach; Scott Sturgeon, Kim Spring, Mandy Wright, Aaron Callahan, Shad Sullivan, and Coach Dr. John Pipkin; (front l-r) Penny Mars, and Allison Hall. Not pictured is Bobby Bryant.

The West Texas A&M horse judging team placed second overall at the Solid Gold Contest in Springfield, Ill., Sept. 30.

The horse judging team members, competing with 85 contestants representing 24 teams, placed first in the performance category, second in the reasons category, and third in the halter category.

The members of the horse judging team are Bobby Bryant, senior agriculture business major from Amarillo; Aaron Callahan, junior agriculture major from Chatfield, Minn.; Allison Hall, junior agriculture major from Bourbon, Ind.; Penny Mars, senior animal science major from Matador; Kim Spring, junior animal science major from Dimmitt; Scott Sturgeon, junior animal science major from Amarillo; Shad Sullivan, junior agriculture major from Ordway, Colo.; Mandy Wright, senior animal science major from Canadian.

Individually, Hall placed second overall with third place in reasons and fourth place in halter and performance. Spring placed seventh overall with first place in performance and seventh place in reasons.

Callahan placed eighth overall with fourth place in reasons and seventh place in halter.

Sturgeon placed sixth in the performance category.

According to Dr. John Pipkin, director of WTAMU equine industry program and the horse judging team's coach, the members compete in three categories: halter, performance, and reasons.

The students use standardized criteria to evaluate the horses' appearance and performance, then they rank the horses based on their evaluations. The scores are compared to those of an official panel to determine a score for each team member.

In the reasons category, the student must present a two-minute oral justification of their rankings before an official panelist.

"The students learn to think objectively and logically and to reach a decision and defend it in an effective manner," Pipkin said.

According to Pipkin, competing in the horse judging exposes the team members to industry leaders and major events in the horse industry.

The horse judging team competed at the All-American Quarter Horse Congress in Columbus, Ohio, Oct. 18.

According to Pipkin, the competition is considered the national championship of horse judging.

The team will also compete at the AQHA World Championships in Oklahoma City on Nov. 16 and at the National Reining Horse Association in Oklahoma City on Dec. 2.

Scare Up Nutritious Treats For Your Halloween Goblin

Parents can scare up an array of nutritious treats worth 'goblin' this Halloween, says a nutritionist at the USDA's Children's Nutrition Research Center.

Dr. Corinne Montandon, an assistant professor of pediatrics at Baylor College of Medicine, offers the following ideas:

- * Small boxes or packets of nuts or raisins or dried fruit/granola mix.
- * Single-serve sized cartons of 100 percent juice.
- * String cheese or other small low-fat cheese packages.
- * Packages of low-fat crackers with either peanut butter or cheese filling.
- * Sticks of sugarless gum.
- * Small containers of puddings that require no refrigeration.
- * Single-serve boxes of dry cereal.
- * Packaged fruit rolls.
- * Single-serve packets of low-fat

popcorn that can be microwaved later. * Commercially baked and individually wrapped muffins.

Coins, stickers, trading cards, movie coupons, coloring booklets, neon shoes, crayons, pencils, or plastic snakes and spiders also make great substitutions for sweets, she added.

Before the festivities begin, Montandon encourages parents to establish some "goodie guidelines."

When children return from trick-or-treating, parents should sort through the bags of Halloween handouts.

"Separate treats into perishable and non-perishable portions. Carefully examine each item and discard anything that is not properly wrapped or sealed," she said.

"Let children know that they may not eat all the candy in one night. Place treats

in a special bowl and divvy it out throughout the week."

Montandon reminds parents there is no such thing as "bad" foods only bad eating habits.

"Halloween candy as well as other sweets can be a part of children's diets if eaten in moderation," she said.

Letter to the Editor

I would like to comment on Congressman Sarpalius coming to Matador to "woo" the people into voting to re-elect him. I hope the voters will send him packing, because he cast the deciding vote for President Clinton tax bill on raising taxes. If you are unhappy with President Clinton, it is risky to re-elect Gov. Ann Richards. As an incumbent Governor has quiet a bit of influence over the state during a presidential campaign. The reason I oppose a Democrat is they are liberal. I know only one conservative Democrat and that is Congressman Charlie Stenholm. I like him as well as any politician I know.

The Democratic Party, before Franklin Roosevelt was the Conservative Party and the Republican Party was Liberal. This did a complete switch with the Roosevelt administration. They started promoting socialist programs which in time runs into Communism. Have you ever noticed that liberals like President Clinton roll out the "red carpet" for Communist dictators like Nelson Mandela of South Africa? The liberals have always been soft on immorality. To my thinking everything that is wrong in this country, the liberal Democrats have caused it.

One example: Owing to so many liberal laws in a law suit,

wrong wins most of the time - Right seldom wins. Liberals believe in more and more taxes from every angle including the air you breath. I hope you voters do not feel obligated to pay more taxes to trim down the deficit as the liberal congress created it and use it for an excuse to raise taxes to spend more. It will never be paid off with liberals in office. The liberals being soft on crime created more crime and are using it for an excuse to disarm us. The people in Switzerland have more guns per capita and are trained to use them and have less crime than any country in the world. I wonder if President Clinton's business in Haiti is to train soldiers to disarm civilians and use them to disarm our country. Yes, I trust him like I would a snake. When he was talking about jobs, he was talking about more government jobs. Our government is too big on every level. It has damaged our school system with too many regulations and too much intrusion, "calling all the shots." It seems it is useless to have a school board, which we definitely need on the local level. Big government interference and regulations are closing down little businesses, hospitals and small towns all over the nation. It is futile to listen to a liberal talk. They run a government like communism, by deceit. Just watch what they do. People like Dan Rather and the news media support the liberals so it's almost impossible to elect a conservative. It pleases me very

much that our local Motley and Floyd County newspaper think conservatively. What the liberals do best is spend and waste our tax money in communist foreign lands. I think they will break our government deliberately. Some of my closest and dearest friends are beginning to frown on this administration. I would like to tell them, you have been voting for this for many years. It would please me very much to know why.

Harold H. Campbell

WORD of GOD

For Those Who Grieve

I will lift up mine eyes unto the hills, from whence cometh my help.

My help cometh from the Lord, which made heaven and earth.

Psalms 121:1-2

LECTURESHIP

MATADOR CHURCH OF CHRIST

West Hwy. 70

A series of Lessons on the New Testament Church

Monday - Wednesday November 6th - 9th

7:30 p.m. each evening

Sunday Services

Classes 10:00 a.m.
Worship 10:50 p.m.
Evening 6:00 p.m.

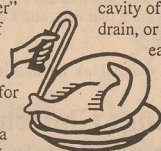
SPEAKERS

Sunday Morning, Edward C. Wharton, Lubbock
Sunday evening, Marice Crowley, Crowell
Monday, William Eudy, Crosbyton
Tuesday, Norman Gipson, Lubbock
Wednesday, Ted Kingery, Silverton

Introducing the amazing "TURKEY GOOSER"!

Lifts the hot, roasting turkey out of the pan in 3 seconds. Turns the turkey in 4 seconds. No drip. No burns. No mess.

The "Turkey Gooser" takes the risk out of turning a hot, dripping turkey in the pan or removing it for carving. It's solid, stainless steel with a sturdy handle and fits any size turkey. Simply insert the pointed end into the large



cavity of the turkey. Lift and drain, or lift and turn. It's that easy. Send \$9.95 plus \$2.50 s&h or order 2 for only \$18.00 plus \$4.00 s&h. Send check or money order to: "Turkey Gooser," 123 South Street, Oyster Bay, NY 11771-2281.

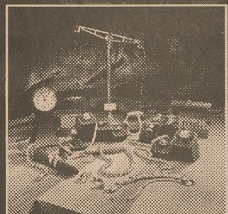
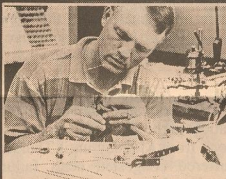
Makes a great gift.

Four Fall Sale

is a special time when we can offer you fantastic savings on our entire inventory. Layaways and special orders are included.



We invite you to come in and take advantage of remarkable custom jewelry at the lowest prices of the year.



COMPARE OUR PRICES

Thacker is a true jewelry manufacturer and we can beat anyone's price in this area. Simply bring their quote or advertisement in for your best price.

\$5,000 SHOPPING SPREE

Register Today for a Fantastic \$5,000 Shopping Spree!

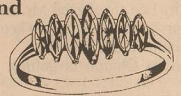
COME IN TODAY FOR DETAILS!

12th annual FALL SALE



Ladies Panda Coin Ring
1/20 th oz. 24K gold Panda coin. A twist design surrounds the coin, 14K gold ring.
SALE PRICE \$89.00

Marquise Anniversary Band



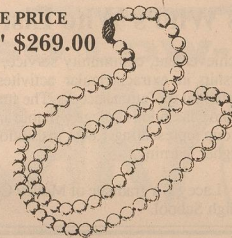
SALE PRICE
7 MQS 1/2 ct \$549.00
7 MQS 1 ct \$999.00

Cultured Pearl Earrings

6 1/4 mm size 14K post & back
SALE PRICE \$24.99

Cultured Pearl Necklace

SALE PRICE
16" \$269.00



Diamond Stud Earrings

Dazzling diamond studs in 14K gold setting. A wide variety of sizes available.



SALE PRICE
1/10ct \$59.95
1/4ct \$169.95
1/2ct \$469.95
1"ct \$1,299.00

Diamond Drop Pendant

A classic brilliant round diamond drop in a 14K gold setting. Many sizes and styles available



SALE PRICE
1/10ct \$64.95, 1/4 ct \$229.95
1/2 ct \$599.00

Ladies 14K Tech Dangle Ring

SALE PRICE
\$49.95



Ladies 1 Carat Solitaire
Specially Priced
\$1,899.00

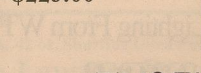
14K Gold Shrimp Earrings

SALE PRICE
\$39.99



14K Diamond Slide

for wide herringbone chain. .28 ct. total weight.
SALE PRICE
\$229.00



7" BRACELET
\$19.99



Tennis Bracelet
1 ct. S-link.
SALE PRICE
\$269.00

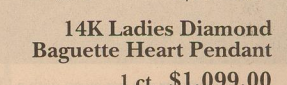
Man's 5 Diamond Ring

.25ct. Wedding Band
SALE PRICE
\$269.00



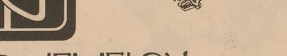
Ladies Diamond Waterfall Ring

19 Diamonds 2 ct. total weight.
SALE PRICE
\$999.00



14K Ladies Diamond Baguette Heart Pendant

1 ct. \$1,099.00



THACKER JEWELRY

LUBBOCK • 82ND & QUAKER • 806/794-7766 • HOURS: MON.-SAT. 10-6
ROARING SPRINGS • 200 BROADWAY • 806/348-7546 • 1-800-237-0918

News Around Motley County

Roaring Springs News

by Odessa Mullins & Roxie Lewis

EX-STUDENTS ASSOCIATION MEETS
The Roaring Springs Ex-Students met October 18 at the Depot. There were nine present. We voted on the one to cater the meal and worked on our schedule. Briefly discussed the letter to be mailed soon. We would like your input, but if you want it to count, come to the meetings.

JoAnn Reagan and son, Bryce of Quitaque and daughter, Natalie Meyer of Canyon visited the weekend with her mother and husband, Mr. and Mrs. Harry Patten.

Odessa Mullins, Lester Mullins, Of Hereford and Bobby Mullins of Plainview attended graveside services for their brother-in-law and uncle, Raydell Mullins of Afton in the Amity Cemetery Tuesday afternoon.

Mr. and Mrs. Wayne Rice and sons, Sam and Dustin, of Plainview visited his aunt, Mrs. Ora Stonecipher Tuesday of last week.

Mrs. Dorothy Lee chauffeured Mr. and Mrs. W.H. Marshall to Floydada to keep a dental appointment last Thursday.

The Methodist Church is getting a new roof.

Miss Lula Swim returned Monday from Bella Vista where she and other Swim-Alderson cousins had met in the Ray McCallum home for one of their regular frequent cousin get-togethers.

Odessa Mullins spent Tuesday night of last week with Mr. and Mrs. Bud Roller in Lubbock. Her son, Lester Mullins, met her Wednesday in Meadow where they attended funeral services for

an aunt, Ethel Young.

MRS. SWIM HOSTS GUILD
Twelve Guild members met with Mrs. J.T. Swim in her home on 3rd street Wednesday of last week. Freda Keahy opened the meeting with a prayer. Lee Peacock brought the Devotional "Woman to Woman". Chelsea Read, study leader, used Matthew chapter 5 in presenting the subject "For God's Sake Be As Christian As You Are". Mrs. Read closed the lesson with a prayer.

Those enjoying the inspirational meeting were Eugenia Bethard, Opal Bradford, JoEtta Bumgardner, Billie Clifton, Freda Keahy, Mary Kelly, Debbie Martin, Pearl Patten, Lee Peacock, Chelsea Read, Imogene Swim, Lula Swim, and Grace Zabielski.

Mrs. Mary Lumsden returned home Monday from a week's stay in Lubbock in the home of her son and wife, Mr. and Mrs. Tommy Largent. Mrs. Lumsden had a heart attack while visiting relatives in Abilene a week ago last Saturday. She was brought to Lubbock where she has been having tests. Her many friends here welcome her home and wish her a quick and complete recovery.

Sympathy is extended to the family of Raydell Mullins of Afton who has lived in this area since his boyhood. He was brother to the late L.A. Mullins, longtime resident of this community.

ROARING SPRINGS HOMECOMING JUNE 17, 1995

Lacey Parks Named To Clarendon Colleges Who's Who List

Clarendon - The 1994 edition of Who's Who among Students in American Junior Colleges will include 27 Clarendon College students.

Lacey Parks, daughter of Mr. and Mrs. Harold Parks of Roaring Springs received this honor.

These outstanding campus leaders were selected based on their academic

achievement, community service, leadership in extracurricular activities and potential for future success. The students from Clarendon College will join an elite group representing 1,800 institutions of higher learning.

Lacey is a graduate of Motley County High School.

Matador News

Keith and Joan Patton and Earline Vaughn made the long Circle Dot Trail Foliage Tour of the Caprock Canyon

Trailway Park Saturday. This and other events were being held in Quitaque to celebrate the fall foliage.

The time to be happy is now, the place to be happy is here, the way to be happy is to make others so.

—Robert Green Ingersoll

This Is A Prowler's Favorite Color.

A prowler can get away with a lot in the dark. Shed some light on the problem with floodlights, guard-lites and post-top lamps from West Texas Utilities. For one low monthly fee, we'll provide normal installation, maintenance, replacement components and electricity. You'll have a lighting system tailored to your needs. Call your local WTU office today (before sundown) for a FREE estimate or more information.

Outdoor Lighting From WTU

WTU

WEST TEXAS UTILITIES COMPANY

Flomot News

by Earlyne Jameson

DELAYED

Mr. and Mrs. Wayne Hunter and her brother and wife, Raymond and Dottie Speer of Seattle, Wash. were dinner guests of John and Joyce Speer in Floydada, Thursday night. They, H.G. Hunter of Quitaque, and Anita Hunter of Lubbock were dinner guests in the home of Mr. and Mrs. Hunter, Saturday night. Anita visited overnight Saturday and the families attended the Open House of Dr. David Martin in Floydada, Sunday.

Mr. and Mrs. Tim Mandrell, Dustin and Shae Lynn of Lubbock visited during the weekend with Mr. and Mrs. Doyle Calvert and Glen Calvert.

Mr. and Mrs. Wayne Hunter were in Floydada, Friday for Mr. Hunter medical treatment. They continued to Lockney where they joined Bro. and Mrs. J.E. Lee of Plainview, Mrs. Emma Thomas of Lockney and Mr. and Mrs. Clayton Bond to conduct religious services at the Lockney Care Center.

Mr. and Mrs. D.M. "Ikie" Gilbert visited in Dalhart, Thursday and Friday with daughter and family, Mr. and Mrs. Lelan Heiskell and children, Christi and Lance, students at Texas Tech in Lubbock. They attended the funeral services of Mr. Heiskell's mother, Mrs. Ellen Heiskell, 85, held Friday morning at First Christian Church.

The Flomot Baptist WMU met Wednesday night for a study of Pioneering Missions in the Former Soviet Union. Those attending were Mr. and Mrs. Clayton Bond, Mrs. Kathy Mulder, Mrs. Alma Shorter and Mrs. Jimmie Hunter.

Mr. Joe Ike Clay has been in Lubbock during the week with her daughter and family, Lori and Kevon Kleibrink and

new baby boy, Kyler.

L.T. Starkey of Ralls accompanied his mother, Mrs. C.W. Starkey to Olton, Sunday to be with her brother and family, Walter Malone, following the death of his wife, Nava Malone. Joining them to attend her funeral services, Tuesday afternoon were Mr. and Mrs. Jack Starkey.

Mr. and Mrs. Wilburn Martin and friend, Mrs. Annie B. Cloyd were in Floydada, Sunday to help with the Grand Opening of their son's, Dr. David Martin, Chiropractic Clinic.

Mary Ellen Barton and Viola Stinson have visited during the week in Floydada with Mrs. Mollie Burleson. They continued to Plainview, Wednesday to attend to business.

Richard Nall of Wellington visited Mary Ellen Barton, Viola Stinson and M.C. Jones, Monday.

Mr. and Mrs. Arnold Johnson were in Amarillo during the weekend to be with his sister, Mrs. Iva Mae Merrell of Claude, a patient in the High Plains Hospital, following surgery, Wednesday.

Luncheon guests of Mr. and Mrs. Joe Edd Helms, Sunday were Paula and Bobby Phillips and Autumn of Lubbock, Kelvey Phillips of McAdoo, Mr. and Mrs. Don Lewis of Vernon, Mrs. Annetta Helms of Quitaque and Art Green of Flomot.

Chris Ann Shorter, Texas Tech student in Lubbock, visited the weekend with her parents, Mr. and Mrs. Clois Shorter.

Viola Stinson and Mary Ellen Barton visited in Paducah, Wednesday with Mr. and Mrs. Elmer Jones.

Whiteflat News

by Earlyne Jameson

OVERHEARD

Destructive wild hogs and raccoons have been "trick AND treating" in peanut, watermelon and etc. fields. *Country Woman* magazine gave this advice: "If animals are feasting in your garden, try serenading them. Play a portable radio there all night to keep them away." If some of those hard rock songs are played, it might keep everything away!

RECENT PATIENT

Mrs. Louvaine Scaff of Matador was a patient in the Methodist Hospital in Lubbock from Monday until Thursday. She suffered congested heart failure. Her daughter, Mrs. Jane Cartwright was with her during her hospitalization.

ANNOUNCEMENT OF GREAT GRANDDAUGHTER
Mr. and Mrs. T.W. Jennings announce

the arrival of a great-granddaughter, Kenzi Mikayla Jennings, born at 3 a.m., Saturday, October 15. She weighed seven pounds, two ounces and was 19 inches long.

Proud parents of their first child are Todd and Holly Jennings of Junction and grandparents are Ted and Mary Jennings of Haskell.

Ray Holcomb of Floydada and Mrs. James (Darla) Gwinn and children, Fannin and Danielle visited from Friday until Monday in Bulverde with Mr. and Mrs. Mike Ebrom. They visited in Taylor, Monday and Tuesday with Mr. and Mrs. Tim Ayers and en route home, visited Mrs. Chad (Regina) Seward in Goldthwaite.

Hal Martin accompanied his mother, Mrs. Kathryn Martin to Lubbock, Monday for medical tests and check-up. Mrs. Martin visited in Roaring Springs, Sunday with her mother, Mrs. Josie Martin and sister and husband, Mr. and Mrs. Wendell Newman of Spur.

Mrs. Morris Stephens was in Floydada, Tuesday, Wednesday and Thursday where she instructed students at the Alternative School. Students from seven area towns attend these classes.

Tim Jennings and son, Matt of Haskell visited during the weekend with his parents, Mr. and Mrs. T.W. Jennings.

Cobey, son of Mr. and Mrs. Johnney Turner, was in Clarendon, Saturday with the Motley County FFA. He and his QUIZ TEAM entered 1st place at the regional LEADER CONTEST.

Mr. and Mrs. H.R. "Skeet" Jameson were in Lubbock during the week where he was a patient at the Methodist Hospital for cardiac tests and treatment.

To report local news call 347-2400 or 347-2774 before noon Tuesday

SIDEWALK SALE

Friday & Saturday Beginning at 10 a.m.

Halloween Supplies



Matador V&S Variety

Obituaries

Raydell Mullins

SPUR (Special) — Services for Raydell Mullins, 81, of Afton were held at 2 p.m. Tuesday, October 25, 1994 at Amity Cemetery with the Rev. C.L. Atkinson officiating.

Burial was at Amity Cemetery under direction of Campbell Funeral Home.

He died Saturday, October 22, 1994 in St. Mary Hospital in Lubbock.

He was born July 9, 1913 in Roxton and moved to Dickens County in 1922. He married Ruby Ellen Joyner in Dickens on June 9, 1930.

He was a construction worker, a self-employed mechanic and a farmer.

Survivors include his wife; two sons, Lewis Ray Mullins of Dickens and Ronnie Mullins of Springtown; two daughters, Doris Hale of Spur and Wanda Richardson of Crosbyton; one brother, Frank Mullins of Lubbock; two sisters, Elsie Roller of Lubbock and Olvis Haney of Muleshoe; six grandchildren; nine great-grandchildren; and one great-great-grandchild.

Pallbearers were Chad Mullins, Tom Hale, Dave Hale, Craig Forbis, Max Bearden and Brian Smithy.

The family suggests memorials to a favorite charity.

Thomas Smith

WALLER (Special) — Services for Thomas Jefferson Smith, 89, of Waller were held at 10 a.m. Tuesday, October 25 in Canon Funeral Home with the Rev. Forrest Wood officiating.

Burial was in Shiloh Cemetery. Smith died Saturday, Oct. 22, 1994, in Waller.

He married Dee Spradlin in 1925. She died in 1965.

He was a longtime cotton ginner in West Texas.

Survivors include a son, Jack of Waller; four daughters, Sarah Granger and Martha Benoit, both of Orangeville, Mary Lou Martin of Roaring Springs and Betty Croak of Vidor; 17 grandchildren; 35 great-grandchildren; and three great-great-grandchildren.

Fern Wilkinson

Graveside services for Fern Wilkinson, 69, of Matador were held at 2 p.m. Tuesday, October 25 in East Mound Cemetery with Bob Mason and David Friend, both of Fort Worth, officiating.

Interment was directed by Seigler Funeral Home.

Mrs. Wilkinson died Saturday, Oct. 22, 1994, in an Amarillo Nursing Home.

She was born on Nov. 17, 1924, in Shamrock. She married Levi R. Wilkinson on June 15, 1954, in Clovis, N.M. She moved to Motley County from Levelland

in 1954. She was a member of the Church of Christ and attended the New Apostolic Church in Amarillo.

She was a beauty operator.

Survivors include her husband; a son, Jimmy Taylor of Amarillo; two brothers, Earl Helvey of Sacramento, Calif., and Thomas Helvey of Abilene; four sisters, Bertie Crisp of Maysville, Okla., Artie Taylor of Levelland, Alice Deviney of Bromide, Okla., and Lily Mae Taylor of Dumas; seven grandchildren; and five great-grandchildren.

Arts & Crafts Club Members Will Make Christmas Wreaths

The Motley County Arts and Crafts club will meet November 7 at the Senior Citizens Center for a workshop on making wreaths made with pine-cones, a lovely addition to any Christmas decor.

Betty Simpson will be instructor for the workshop. Bring your glue gun.

The club members are busy on articles for the Bazaar, which is to be held at the Ford garage, November 12. Many new

and exciting items have been made to add to the display. Come, visit, browse, have a refreshment of cookies and coffee, find the perfect gift for all members of your family, and for the one "who has everything", and get your name in the drawing for a gift certificate. The Bazaar will begin at 9 a.m. See you there!

We will have a covered dish luncheon on November 7th.

O Lord, you are my God; I will exalt you and praise your name, for in perfect faithfulness you have done marvelous things, things planned long ago.

Isaiah 25:1

Texas T's & Floral
is getting ready for Christmas
All Fall Items Are Now On Sale
Thursday, Friday & Saturday

WHAT IF YOU'RE WRONG?

Sometimes being wrong is no big deal. For example, if you wrongly predict the outcome of the Super Bowl race or expect fair weather tomorrow and it rains, no real harm is done. But, of course, being wrong can be tragic - like when you marry the wrong person or take the wrong medicine.

But by far the most serious mistakes that you and I can make are spiritual ones, because spiritual mistakes have eternal consequences.

The Bible says that there is a God who created heaven and earth, and who sent His Son to be the Saviour of the world. It also says that we will all one day stand before this God and be judged according to how we have lived, and that there will be an eternal reward for the righteous and everlasting punishment for the wicked.

However, there are a lot of people who say that there is no God, and that the judgement is just a fable, and that there's no such thing as heaven and hell. Maybe even you think that way, and I wouldn't challenge for a moment your right to do so.

But I would like to ask you to think about this one question: "What if you're wrong?"

Roaring Springs Church of Christ
Michael G. Crowley, Sr.

Bible Study - 10:00 a.m. Worship - 9:00 a.m.



COMPLETE HUNTER SAFETY COURSE — Pictured above are those completing the Hunter Safety Course held recently in Motley County, (front l-r) Keane Cruse, Jason Barton, Jason Clauser, Bert Darsey, David Morren; (middle l-r) Talon Cruse, Michael Miner, Darryn Perryman, Jeremy Smith, Scott Smith; (back l-r) Matt Woolsey, Quintin Brandon, Kyle Brandon, and Mark Brannon. The instructor was Jerry Edwards of Lockney.

James Timmons Elected New Director of Upper Pease SWCD

James Timmons of Northfield and Coy Franks of Flomot were recently elected to the Upper Pease SWCD board of directors. Timmons will represent Zone II of the district, while Franks will represent Zone I. Timmons will replace Billy Paul Simpson and will begin serving as a new director beginning in November. Franks was re-elected and has been serving since October 10, 1979.

The purpose of the Upper Pease SWCD, with the headquarters in Matador, is to promote sound soil and water conservation programs on agricultural lands within the district and to serve as a voice for farmers, ranchers, and local community entities on conservation matters.

The board of directors coordinates the conservation efforts of various local, state and federal agencies and other organizations and has authority to enter into the working agreements with these governmental agencies and private concerns to carry out its purpose.

Five members serving on the district board of directors are responsible for district policies and procedures for carrying out the district program within the framework of the Texas soil conserva-

tion law. In Texas there are 213 soil and water conservation districts. Each is a legal subdivision of the state government organized by local agricultural landowners with the assistance of the Texas State Soil and Water Conservation Board. Unlike most other legal subdivisions of the state government, SWCDs do not have the powers of taxation or of eminent domain. All conservation programs managed by the district are of voluntary nature to the landowner or operator or other potential users of the SWCD's programs.

The loan is designed for those businesses with substantial disaster-related needs and is intended to supplement monies the business owner can provide from other sources.

Loans may be approved for up to \$1,500,000 for actual disaster-related financial needs of the business. Interest rates are four percent (4%) and terms may extend to thirty (30) years, depending upon the repayment ability of the individual applicant. To qualify, businesses must be small by SBA's size standard. Businesses which can meet their financial needs through other sources are not eligible.

Social Security Tips

by Terry Richardson

MOST FREQUENTLY ASKED QUESTIONS ABOUT SSI

Those of us who work at Social Security sometimes assume most people know at least enough about SSI to know when they may be eligible to apply for benefits. Sadly, this is not necessarily the case. Many people have never heard of SSI, and those who have heard of SSI probably don't know enough about SSI to know when they may be eligible. This column will answer basic questions about the SSI program, questions most frequently asked when people first hear about SSI.

What we mean by "SSI"?
SSI is short for "Supplemental Security Income."

Who can get SSI?
The SSI program pays monthly benefits to people who are 65 or older, or blind, or have a disability, and who have little income and few resources that can be turned into cash. Monthly benefits can go to disabled and blind children, too.

Blind means you are either legally blind or have very poor eyesight. Children as well as adults can get benefits because of blindness.

Disabled means you have a physical or mental problem that keeps you from working and is expected to last at least a year or to result in death. (Children as well as adults can get benefits because of

disability). For the purpose of SSI eligibility, how are "income and resources" defined?

"Income" is the money you receive, such as wages, Social Security checks, and pensions. Income also includes certain non-cash items you receive such as food, clothing, or shelter. Resources include items such as real estate, personal belongings, bank accounts, cash, and stocks and bonds. Social Security doesn't count everything you own, however.

How does one sign up for SSI?
Just visit your local Social Security office or call us at 1-800-772-1213 for an

appointment with a Social Security representative who will help sign you up.

You should bring with you when you apply: your Social Security card; your birth certificate; information about the home where you live, such as mortgage or your lease and landlord's name; your checkbook, bank statement, or other documents that show your name and bank account number; your most recent W-2 form, or your tax return if you're self-employed; and your military discharge papers if you had military service.

You must bring or mail the original documents, or certified copies, to the local Social Security office, where they will be photocopied and returned to you.



ASCS News

by Billy Wayne Denison
County Executive Director

Producers are asked to nominate candidates of their choice by October 31 to be on the Motley County ASCS Committee Ballot. ASCS Committees are responsible for managing federal farm programs on the local level, selecting the County Executive Director, and hearing first level appeals and concerns of County farmers and ranchers. In order to be a valid petition, it must be limited to one

nominee, must include written certification that the nominee is willing to serve if elected, must be signed by three eligible voters, and must be received in the county ASCS office by October 31. Nomination petitions are available at the County office for those who wish to nominate a candidate. Come by, or contact us by phone or mail, if you want a petition.

Crosbyton Clinic Hospital

COMMITTED
To The People Of This Region

Over 1,200,000 (Million) Invested In Modern Medical Equipment And Facility Additions/Renovations Over The Past 5 Years.

Over 140 Employees (Jobs).

Over 2 (Million) In Annual Payroll.

Addition Of Home Health, Physical Therapy, E.M.S., Nuclear Medicine, Fitness/Wellness Center, Specialty Clinics, Doctors To Better Meet Your Needs.

Committed To Adding Other Services In The Future. (Under Consideration Childcare, Cardiac Rehabilitation Facility).

Trade With Local Business When Possible.

By Continuing To Utilize The Services Of The Doctors At Crosbyton Clinic Hospital, You Help Insure That The Hospital Will Be Here In The Future To Serve You And Your Family.

"NEIGHBORS HELPING NEIGHBORS"



675-2382

© 1994 by The Crosby County News & Chronicle

Business Review

Quality Discount Outlet

Open daily at 10 a.m.

NEW SHIPMENT HAS ARRIVED!

Furniture, Baby Furniture, Lamps, Clocks, Exercise Equipment, & Much, Much More all at discounted prices



Hwy. 70 — Matador

This Space

Available For Only
\$35.00 Per Month!!

Friday Night Fish Fry

ALL YOU CAN EAT!!

We understand the tight schedule of some of your lunch schedules, so if you will call 347-2343 and place your order about 11:30 we will be glad to have it ready by 12:00

We will cook for special occasions!

Downtown Matador **MC CAFE** David & Sheila Womack

COOPER OIL CO.

For all your Propane needs
Gasoline, Diesel, Tires, & Oil

Call or come by!

Day - 347-2346

Night - 347-2411

Matador

Business Cards

Personalized Stationary

Shower Cards

We can set up and print many different items you may need personally or in your business

MOTLEY COUNTY TRIBUNE

Hwy. 70 E — 806-347-2400

TOMMY'S GARAGE

STATE INSPECTIONS
FULL SERVICE
AUTOMOTIVE REPAIR
LOCAL CUSTOMER TOWING
24 HR. WRECKER SERVICE
PICKUP & DELIVERY

Your Business is appreciated!

309 N. Main

Tommy & Kate Hurt

Phone: 806/347-246

CALL DAY OR NIGHT
FOR PROPANE & ELECTRICAL SERVICE

MARSHALL BROS.

PROPANE 347-2290 ELECTRIC

LONG REAL ESTATE

Roaring Springs

1. 2 Bdrm. Asb. Bd. Dwg. in Roaring Springs
2. 2 Bdrm., 1 Bath, Asb. Bd. Dwg., Roaring Springs

Call 806-348-7531

Night 348-7510 or night 348-7284



Brokers
Appraisers

P.O. Box 5051
Abilene, TX 79608

Don Karr
Agent
Res. (806) 294-5423
Consultants

Farm & Ranch
Real Estate

Off. (915) 698-3374
FAX (915) 698-3381

McAdoo Flying Service, Inc.

30 Years Experience

RANGE & PASTURE SPECIALIST

All your crop needs

806-675-2313

Marvin Tidwell

Bill Tidwell

PAYNE FAMILY PHARMACY

Call 1-800-345-7961

for all your prescription orders

We will mail your prescriptions

Call us for all your prescription needs!

Floydada — 983-5111

Germania Insurance

Homeowners, Auto, Personal, and Farm
Liability and Life

Lee's Insurance Agency

Flomot, Texas 79234

(806) 469-5370

THE CLASSIFIEDS

SPECIALITIES

DID YOU KNOW that your Farm Bureau membership entitles you to a \$500 discount on the purchase of a new Ford pickup. Call your local Farm Bureau office, 347-2880.

cfn

SHAKLEE PRODUCTS
Peggy Probasco
983-5246

ALL TYPES OF EXHAUST WORK

DON'S MUFFLER SHOP
210 W. Calif.
Floydada, Texas
983-2273
1-800-866-3670

Miscellaneous

DID YOU KNOW your Farm Bureau membership offers Accidental Death Benefits on your family. Call your local Farm Bureau office, 347-2880.

OPMLIQUIDATION - We buy and sell Estates. Let us do your appraisals, large or small. Contact David Crawford, 806-271-3546.

4tp-44

SEWING

All types of alterations and repair of clothing from Levis to suits. Hem Levis, \$2.00; Slacks, \$1.50; Dresses, \$2.00; and zippers replaced, \$1.75.

IMAGENE LEFEVRE
347-2306

LOST & FOUND

LOST: Little girl's kitten. Yellow and white, 8-10 weeks old, tom cat. Lost in area of Pat Smith's house. Call Barbara, 347-2774 or Lyndee, 347-2746.

FARMERS & RANCHERS

FOR SALE: Concrete Stock tanks, 640 gallon, \$375. Call Bill after 7 p.m., 806-347-2774.

GRAND OPENING

Generations
Antiques, Collectibles & Gifts
118 W. California
Floydada, Texas 79235
983-6433
Open October 29th, Pumpkin Day,
until 5:00 p.m.

FOR SALE

FOR SALE: Sweet Potatoes. Joe Edd Helms, 6 1/2 miles north of Flomot.

4tc-44

FOR SALE: Used Maytag Washers and Dryers, rebuilt and guaranteed. THACKER SUPPLY, 348-7216.

cfn

FOR SALE: Good, nearly new Portable Dress-maker Sewing Machine. Zig-zag, etc. \$100 or best offer. Call Barbara, 347-2774.

3 ARCH STYLE BUILDINGS, new never erected, can deliver. 40 x 30, was \$5850 now \$2900; 40 x 64 was \$9900 now \$5760; 50 x 100 was \$16,500, now \$9900. Endwalls are available. 1-800-320-2340.

2tp-44

FOR SALE: Nice Ladies Coats. One mid-calf length with leather trim, size 12; one ski jacket, size medium; one hip length wool blend. Call Sherry Rose, 347-2412.

HELP WANTED

MOTLEY COUNTY APPRAISAL DISTRICT is accepting applications for employment.

Position: Chief Appraiser
Requirements: Must have high school diploma and college and/or experience with computers and bookkeeping. Self-motivated, organized and energetic a PLUS. Applications located at Motley County Appraisal District, (806) 347-2273.

OWNER/OPERATORS NEEDED: Bookers. Transportation needs owner/operators to pull meat loads to Texas. Our trailer ratio is 3 to 1. Most loads are drop and hook. Weekly settlements, unloading pay and tag payment programs. Our work is extremely steady and regular. Our operators make money! If you need to make a financial comeback, we can help. Call us for more details at Booker, TX 800-569-4633.

7tp-44

HELP WANTED: Receptionist/Bookkeeper wanted. Computer experience and payroll tax experience needed. Typing, equipment maintenance and general office management. Apply at Gary Lancaster, C.P.A.

GARAGE SALE

ESTATE SALE: Friday and Saturday, 8 a.m. 5th and Jones St., Quitaque. Furniture, pictures, glassware, vases, porcelain wear, wooden boxes, WWII items, books, porcelain signs, lace, tin items, lightning rods, mirrors, lots of misc.

1tc-43

GIGANTIC GARAGE & ESTATE SALE

for Motley County Museum and Arts & Crafts Bazaar
November 12, 10 am - 5 pm
at the old Ford Building.

Donations to sell are welcome

ANNOUNCEMENTS

JUNIOR CLASS FUND RAISER

The Junior Class of Motley County High School is sponsoring a fund raiser and would like to invite your participation. Each Junior class member has been issued a group of \$5 coupons to sell. The purchase of a coupon will entitle you to a beautiful 10 x 13 full-color family portrait, a \$39.95 value printed on Kodak paper. You will have the option of purchasing additional photographs if you are satisfied with the prints. Regardless of your decision you will have a 10 x 13 portrait of your family. Your support is greatly appreciated and will go towards the 1995 Jr.-Sr. Prom. If you are interested and would like more information please contact a Junior Class member or Mrs. Campbell.

ROARING SPRINGS EXES' ADDRESSES NEEDED

Please send any addresses of your family, classmates, or teachers who were Roaring Springs Ex. Students to Billie Clifton, Box 3, Roaring Springs, TX 79256.

TUTORING: I will do tutoring in my home on weekdays after 4:30 p.m. Call Beverly Mars, 347-2806.

Vehicles For Sale

FOR SALE: 1993 Red Plymouth Laser. Sportscar. 27,000 actual miles. Excellent condition. Still has lots of factory warranty. Over 30 miles per gallon. Great car for student. Priced to sell. 423-1167 or 983-1299.

NOTICE

LEGAL NOTICE

Motley County Independent School District hereby serves notice that they are now taking bids on Employee Health Insurance for Motley County I.S.D. employees.

1. Sealed proposals will be received in the office of the Superintendent, George Blanch, P.O. Box 310, Matador, Texas until 4 p.m. on November 7, 1994.

2. Each proposal received shall be in a sealed envelope plainly marked "Health Insurance Proposal".

3. Proposals will be opened in the office of George Blanch, 1600 Bundy St., Matador, Texas at 4 p.m., November 7, 1994. Proposals received after the date and time specified will be returned to the bidder unopened.

4. The Board of Trustees will consider the proposals and take appropriate action on November 9, 1994.

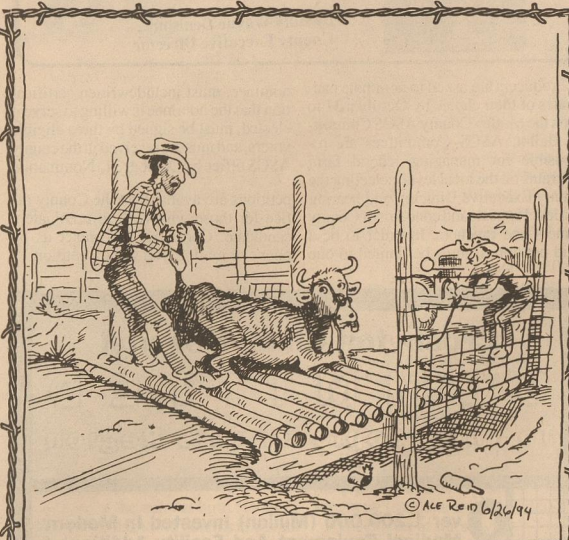
5. Additional information may be obtained from Betty Stevens, at (806) 347-2677.

6. Bidders may not withdraw their proposals after the closing time for submission of proposals.

The Motley County Independent School District Board of Trustees reserves the right to reject any or all bids.

George Blanch, Superintendent
Motley County, I.S.D.
P.O. Box 310
Matador, Texas 79244
(806) 347-2677

2tc-43



"What was that you said about bein' smarter'n this old outlaw hussy?"

This Feature Sponsored By First State Bank

Matador
Your "Hometown" Bank Member FDIC

MOTLEY COUNTY SHERIFF

Office - 806-347-2234
After hours - 806-347-2246 or Mobile 806-347-2728
DEPUTY
806-348-7945



SEEDS FROM THE SOWER

Michael A. Guido
Metter, Georgia

A mother of five was having a troublesome time. Her husband was out of town, the car wouldn't start, and the babies were sick. Disturbed, she called our Dial-A-Prayer, and the line was busy. Exasperated, she called me and

asked, "Can you get through to God for me?"
Anyone can get through to God, from any place, and at any time.

You may sit or stand, fall on your knees or on your face, fold your hands or lift them.
Prayer is a joy-bringer, a need-supplier, an obstacle-remover, a problem-solver, and a victory-gainer.
Our Lord invites, "Call to Me, and I will answer you."

THANK YOU

The family of Fern Wilkinson thanks you for your kindness during her illness and death. The food, flowers, visits, cards, and prayers were all appreciated.

Levi Wilkinson and family
Jimmy Taylor and family

First Assembly of God Church

Rev. Royce Combs

Matador, Texas - 806-347-2771

Sunday School - 10 a.m. Church - 11 a.m.
Sunday Night - 6 p.m. Wednesday Night - 6:30 p.m.

Thou wilt keep him in perfect peace, whose mind is stayed on thee: because he trusteth in thee Isaiah 26:3

First Assembly of God Church

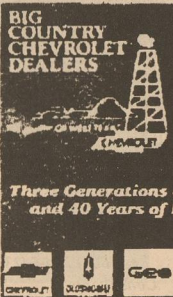
Rev. Rickey Lawrence Roaring Springs, Texas

"Jesus said unto him, if thou canst believe, all things are possible to him that believeth." Mark 9:23

Church - 10:30 am; Sunday School - 9:30 am; Sunday Night - 6:00 pm
Wednesday Prayer Meeting - 7:00 pm
Missionettes for Girls - Royal Rangers for Boys

The primary office of a newspaper is the gathering of news... comment is free, but facts are sacred.

—Charles Prestwick Scott



Robert Hall
Chevrolet-Olds-Geo
Jayton, Texas

1954 1994
40
YEARS OF EXCELLENCE
Robert Hall
Chevrolet-Olds-Geo

806-237-2182

FLOYDADA
FORD-MERCURY
RAILS HIGHWAY
RENTS CARS
Starting at \$19.95
983-3761 or
1-800-945-4260

Check first with First National for all your Banking needs

THE FIRST NATIONAL BANK OF FLOYDADA

P. O. BOX 550 • FLOYDADA, TEXAS 79235

806-983-3717

"Helping you change things for the better"

Member FDIC



Bibles, Christian Books
History Books, Cookbooks
all available at

The Motley County Tribune

FAX SERVICE AVAILABLE
at the Motley County Tribune

\$3.00 to Send for the first page, \$1 for each page thereafter
\$2.00 to receive, \$1 for each page thereafter

WE INVEST IN YOU! ServiceMaster invests in you. The nation's largest professional cleaning company provides the best training, equipment and support, including national advertising. Get started with about \$8,000 down plus working capital. Financing available. For free information, call 1-800-230-2360.

DRIVER-BETTER RESPECT & bigger paycheck! Get home often. Assigned trucks &

TIME SHARE UNITS and campground memberships. Distress sales-cheap! Worldwide selections. Call Vacation Network U.S. and Canada 1-800-543-6172. Free rental information 305-563-5586.

ADOPT: TV JOURNALIST couple offers your newborn a secure home, full of love laughter, grandparents, many cousins and good food. Please call our attorney Suzi 1-800-845-0242. It's illegal to be paid for anything beyond legal/medical expenses.