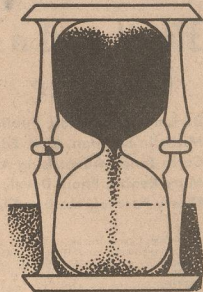


N/C 315  
DUNN, SYLVAN DIRECTOR SW  
COLLECTION TEXAS TECH  
BOX 4090, LUBBOCK, TX  
79409+

# Spring Forward

Sunday, April 5, 1987

Set Your Clocks Up One Hour!



Voice of the Foothill Country

# Matley Co. Tribune

**30¢**  
PER COPY

91st YEAR

THURSDAY, APRIL 2, 1987

ISSUE No. 14

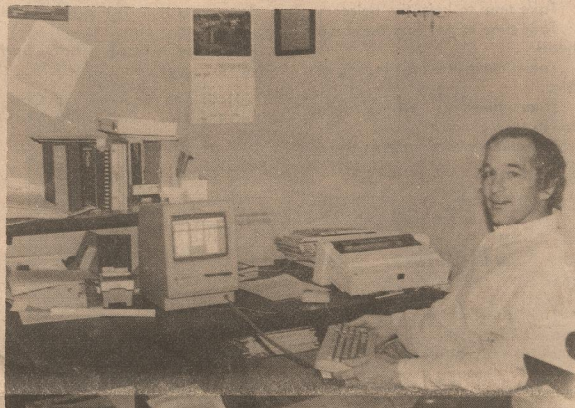


**WHITEFLAT PUBLIC SCHOOL 1910-1911:** Top row: Ruby Day, Annie (Dodd) Gross, Clydie Hines, Edwin Harris, Henry Marvin, Steve Day, Maggie Bryan, Pearl McClendon, Myrtle Wilkinson, Hines girl, Willingham girl, Vinie Dodd Keltz. Second row: Mrs. Amma (Kimball) Bain, Alma Bain, Sanders girl, Zelephorah Holladay, Mary Parsons, Ephemie Hines, Carrie McClendon, Minnie Casey, (next two boys unknown), Lilly Harris, (unknown), Harrison Pope, Tom Tilson, Willie Tilson, High School Teacher, John Parsons. Third row: (unknown), Katie (Harris) Pruitt, (next two unknown), Gertrude Garrison, Ophelia Tilson, Georgie Bain, Annie May Harris, (next six unknown), Dewey Tilson, Demphay Rattan, (unknown boy and girl), Parson's girl, Nanny Hines. (Picture submitted by Mrs. J.E. Edwards).

## Whiteflat Reunion Saturday April 4

WELCOME EXES!!

## High Technology At Home on the Range



Frank Potts at his favorite Macintosh.

by Michelle Bearden

## PCA Stockholders Meeting To Be Held April 3-4

Rolling Plains Production Credit Association's 53rd Annual Stockholders meeting to be held April 3 in Childress and April 4 in Stamford will feature entertainment by "Faith," an inspirational vocal musical group from Rule. Registration will begin at 9:30 a.m. with the meeting to commence promptly at 10:00 a.m. for both sessions.

The City Auditorium will be the site of Childress session, and the VIP Center located one block West of the High School Auditorium will be the Stamford meeting location. A noon barbecue catered by Briarstone Manor of Abilene will be

served immediately following each session.

In the business portion of the meeting, a director representing the Childress Branch Office area will be elected. Nominees for the position are W.J. Boykin of Northfield and Edwin Meyer of Estelline. A director will also be elected to represent the Stamford Branch Office area with nominees for this position being Bill DeBusk of Anson and Darryl Schoonmaker of Avoca.

More information on Stockholders Meeting and cash prizes on page 2.

## Elections Set For Saturday

by Barbara Jameson

The City of Roaring Springs will hold an election, Saturday, April 4 for the purpose of electing three councilmen for three year terms. The election will be held in the Roaring Springs Depot. The polls will be open from 7:00 a.m. - 7:00 p.m. Candidates for these places are Gene Brannon, a 2nd term incumbent. He is the owner and operator of Brannon Gas and Supply. Charlie Long, former City Clerk and fill in term Councilman to 1986. He is owner and operator of Long Insurance Agency and Long Real Estate. Joe M. Thacker, owner of Thacker Jewelry, Inc.

The City of Matador will be holding its election Saturday for the purpose of electing three councilmen. The election will be held in the courthouse lobby. Polls will be opened from 7:00 a.m. - 7:00. Candidates for these places are Lyman B. Campbell, 25 year incumbent, and a Matley Co. rancher; Lewis Bostick, a 25 year incumbent and a truck driver; Joe P. Smith, a 15 year incumbent and retired Restaurant owner.

The Matley County Hospital Board election will be for two places Saturday in the following locations: Matador Courthouse Lobby, Roaring Springs Depot, Flomot School Building and the Northfield Cemetery Building. These candidates are Larry Hoyle, Matador, owner of Matador Motor Co., incumbent of 9 years and past president of the board. Caldwell Smith, Roaring Springs, retired ginner and 7 year incumbent.

The Matley County ISD Board of Trustees has 2 openings for 3 year terms. This election will be in the same place as the Hospital Board Election, with ten candidates running for these positions. Hal Martin, James Palmer, Barbara B. Jameson, Coy Franks, Johnny O. Scott, Lamar Tilson, James M. (Chip) Smith, L.J. Barkley Jr., Ronnie Vandiver, Alvin D. Alexander.

At press time the absentee votes that had been turned in were Matador City Hall, 2; Roaring Springs City Hall, none; and County Clerks Office for School and Hospital Board, 20.

\*\*\*\*\*

## New Matador Business



Brenda Perryman displays her new tanning bed in the newest business to Matador, TEXAS TROPICS, located in a private room in the back of Guys & Gals Department Store. Stop by and see Brenda to set up an appointment. She will be able to help you in determining how to achieve your best tan.



VFW Quartermaster Luther Green, 4-H leader Bob Davis, VFW members Alton Marshall, John Briscoe, Pete Williams and County Agent Ray Minkley in Mr. Minkley's office Monday morning as the VFW gives the deed to the VFW Building to the 4-H Club.

## Announcements

### BLOOD DRIVE

The Eternas Study Club is sponsoring a Blood Drive on Friday, April 3 from 12:00 to 4:30 p.m. at the American Legion Hall. Technicians from United Blood Services of Lubbock will be on hand for those who wish to donate.

Persons 18 years to 65 years of age may donate. Anyone who is 17 years old and want to donate may pick up a parental consent form at school. If you have any questions, call Joyce Creed at 347-2771.

Please be there. Donate blood and help save a life.

### FBC YOUTH NIGHT

First Baptist Church is having Youth Night, Thursday, April 2, after the revival service at 7:30. There will be a fellowship in the basement with games and refreshments. Bill Smith, music director for the week will speak. All youth, grades 7-12 are cordially invited.

We hear alot about diversification these days, but one Matley County rancher has more diversification than most people could stand. Frank Potts and wife, Marisue, run their cow-calf operation on the land that has been in Marisue's family for decades. While the ranching is par for the course for West Texas, particularly around Matador, Frank also designs micro-computer programs for mechanical design analysis chiefly used by mechanical engineers and designers.

Earning a Mechanical Engineering degree from Texas Tech and later a Master's from Stanford University at Palo Alto, Calif., Frank had a solid background for creative technology. Drawing from his experience with the Engineering Mechanics Dept. of General Motors Research Laboratory and an IBM Advanced Technology engineer, Frank had ample knowledge to put together the system of mechanical design analysis by computer evaluation he marketed initially under the name MACE.

Potts set up Mohango, Inc. to market his program in 1983 after working on the project for a year. Frank and Marisue not only worked together on the brochures and ads for the innovative program but the actual marketing as well. Making use of a portable briefcase computer to exhibit the program, Frank soon sold a lease on it to a company in Boston, Mass., to allow distribution of it.

A primary selling point of this program was that it was specifically designed for the microcomputer-putting alot of computer power on the engineer's desk. It allowed such entities as Aerospace companies, nuclear reactor facilities, etc. to have a design station right at engineer's fingertips.

Currently, the MacNeal-Schwendler Corp. of Los Angeles, Calif., produces and markets the program, called the MSC/pal and MSC/pal II which analyzes mechanical systems composed of beams, plates, shells, springs, rigid body masses, and elastic links. This program is used for steel structural analysis and design for buildings; design of mechanical devices,

mechanical packaging design; computer disk file servo vibration analysis; automotive and aircraft strength and vibration analysis; earthquake analysis, and graduate engineering studies.

The road from high technology to raising cattle started in 1973 when Frank moved his family of four sons (and one daughter born in 1975) to Matley County after Marisue's father, long-time rancher W.E. Burleson, became ill and subsequently died. Although Frank had no previous experience in ranching, he felt his wife's ranching heritage should be preserved.

A multi-talented individualist, Frank and his family built their contemporary ranch house perched on the side of a craggy hill. From their living room windows, the Potts have gazing rivetages reaching across miles of open range. The family also went to work building two sturdy barns and an inviting swimming pool.

Frank Potts, although as unlike his ranching neighbors as he could be, expresses a genuine liking and admiration for both the old-time cowman and the business oriented rancher of today with their dogged determination to maintain their way of life. He sees them as rugged, true individualists buffeted by enough bad times to break the ordinary man and yet still hanging in there.

Potts acknowledges that while he and Marisue have the best of two widely divergent worlds, the ranch presents its own set of problems. "Looking at it as a business, there is a really poor return of your investment in ranching," he said. "Ranching will probably eventually be run by oilmen or people with other sources of income."

Frank's goal for the ranch is to run it with an economy of effort, time, and money. Dividing his time between ranching and computer programming, it's necessary to set priorities on every bid for his time. "Obviously, my time is more valuable spent on the computer," Frank noted.

Whether it's the computer that keeps the ranch going or the ranch life that spawns the creativity--it's a system that works for Frank Potts.



# Motley Co. Tribune



Barbara B. Jameson, Publisher/Editor  
Michelle Bearden, Asst. Editor  
Carla Jones, Advertising Art/Typesetting  
Mary Renfro, Photo Developing  
Sherry Paschal, Mailing Clerk

The Motley County Tribune, purchased on February 1, 1986 is the successor to the Matador-Tribune and is published weekly each Thursday at Matador, Motley County, Texas. The office is located on Highway 70 East 1 1/2 block east of Main Street. Telephone number 806/347-2400. Entered at the Post Office at Matador, Texas, as second class mail.  
**NOTICE:** Any erroneous reflection upon the character, firm or corporation, which may appear in the columns of the Motley County Tribune, will gladly be corrected upon being brought to the attention of the publisher. Only signed letters to the editor will be considered for publication and should not exceed 250 words in length. (Letters may be subject to editing.)

PUBLICATION NO. 333700  
SUBSCRIPTION RATES

MOTLEY AND ADJOINING COUNTIES -- \$12.00 ELSEWHERE IN TEXAS -- \$13.00  
OUT-OF-STATE -- \$14.00 PERSONS OVER 65 YEARS OF AGE MAY TAKE A \$1.00 DISCOUNT  
P.O. Box 490, MATADOR, TX 79244

"If all printers were determined not to print anything 'till they were sure it would offend nobody, there would be very little printed." — Benjamin Franklin

## Jo Ann's Jots & Jingles

By Jo Ann Dickson

In this day and age we just don't take time!! We are busy, busy, busy!! But we do have stray moments, occasional intervals and snatches of time. In these small segments let's

Take time to help a friend in need.  
Take time to help the helpless.  
Take time to pat your dog on the head.  
Take time to listen to the song of a bird.  
Take time to participate in community projects.  
Take time to sympathize even if it

is only a touch.  
Take time to thank community leaders.  
Take time to shed tears as the American flag goes by and the national anthem is played.  
Take time to just say, "Well, done."  
Take time to watch a cat bathe and listen to it purr.  
Take time to hold a baby and savor its sweet odor.  
Take time to commune with God. But for heaven's sake -- TAKE TIME!!

## Eternas Study Club To Sponsor Drive for Hospital

The Eternas Study Club is sponsoring a drive for the M.D. Anderson Hospital in Houston on April 13 through the 24th. Club members will be going door to door collecting cash contributions.  
Members will also be collecting items to send to the hospital. Some of the items needed are as follows:  
Wigs, combs/brushes, bud vases, toiletries (perfume, lotion, deodorant, etc.), dishtowels, pot holders, plastic kitchen containers, books, calendars, and craft supplies such as: simple needlepoint, cross stitch and embroidery kits.

any of these articles you may:

- (1) Drop them by the variety store.
- (2) Call Judy Cooper at 347-2338 to have a club member pick them up.
- (3) Drop them by Judy Coopers house.
- (4) Drop them at the American Legion Hall between 12:00 and 4:30 on April 5th during the Eternas Study Club's Blood Drive.

We need your support so please donate an article or a cash contribution when club members ring your doorbell.

## Former Resident Receives Doctor of Philosophy Degree

Joanne Stevens recently received her Doctor of Philosophy degree in the School of Arts and Humanities from the University of Texas in Dallas. The topic of her dissertation was Santos by Twentieth Century

Santeras: Continuation of a Traditional Art Form. Her previous degrees were from Texas Tech University and Angelo State University. Joanne is the daughter of Mrs. Robert Darsey of Matador.

"I am sending you to them to open their eyes and turn from darkness to light and from the power of Satan to God, so that they may receive forgiveness of sins and a place among those who are sanctified by faith in me."

Acts 26:18

## Grass Seed for CRP Program

Competitive Prices

Single Variety & Blended Varieties

Sideoats Bluestem Lovegrass  
Kleingrass Blue-Grama



STOCKMAN'S SUPPLY  
Matador, Texas

## L.J. Barkley, Jr.

Candidate for  
Motley County I.S.D. Board of Trustees

Your vote and influence appreciated

BUT

Even if you do not vote for me

VOTE

April 4, 1987

## "Son Beams"



By June Keltz

My heart is heavy as I hear from the news media of Christians and non-Christians dying with AIDS being involved in sexual promiscuity and participating in extortions. Our spiritual leaders are involved in things that we do not understand. People who were once our role models have let us down and we hear from the world, "See! Religion doesn't work." The alcoholic criticizes the glutton - the glutton, the smoker - the smoker, the gossip - the gossip, the rich - the rich, the poor and on and on. Where is it coming from? Where is the love and trust we once had for one another? Where did we layaside our morals and integrity?

The answer is simple enough - it all began in the Garden of Eden with fallen man. "Therefore, just as through one man, sin entered into the world, and death through sin, and so death spread to all men because all sinned." (Rom 5:12) Man needed a saviour then and he needs one now. It is a fact that "religion" doesn't work, it doesn't change or redeem man, but Jesus does. Christianity is not a religion, it is Jesus in us, our hope of glory. We are reminded once again not

to keep our eyes on man who is subject to weakness and failure. To do so is to open ourselves to discouragement, as well as unbelief. Jesus described world conditions prior to His return and we seem to have arrived. He said that many would fall away, deliver up one another and hate one another. Lawlessness would increase and people's love would grow cold. So how do we cope? Our instructions are found in Romans 13: 11-14. "And this do, knowing the time, that it is already the hour for you to awaken from sleep; for now salvation is nearer to us than when we believed. The night is almost gone, and the day is at hand. Let us therefore lay aside the deeds of darkness and put on the armor of light. Let us behave properly as in the day, not in carousing and drunkenness, not in sexual promiscuity and sensuality, not in strife and jealousy. But put on the Lord Jesus Christ, and make no provision for the flesh in regard to its lust."

Let us remember, also, that for one who has fallen away, there are thousands who have remained true and persevered to the end.



## Library Notes

by Sara Hurt

The Friends of the Library meeting, Tuesday night, was a huge success with many attending. Plans were made for a project to make money for the library. Darla Gwinn gave, much needed, detailed instructions to our library volunteers. From this meeting we have a number of "Friends" who are: June and Bill Moss, the Freddie Wellings, Ava Clyde Crump, Mr. and Mrs. Harold Campbell, Mrs. Bailey Elliot, Evelyn Garrison, Joe and Lays Campbell, Darla Gwinn, Lillian Thacker, Mr. and Mrs. Jay Don Finch, Mrs. Wynona Gilbreath, Mr. and Mrs. Robin Darsey, Judy Renfro, Mr. and Mrs. Frank Pohl.

The Library wishes to thank Homer T. Jenkins for his generous cash donation to our library. We appreciate his support.

Eleanor Traweek has graciously donated to the genealogy section of our library, her book entitled, "A Mama, A Daddy and Three Little Girls." This is a delightful book with stories of Eleanor and her sisters, childhood.

New books in the library are:

**Fine Things** by Danielle Steel.  
**Santorini** by Alistair Maclean.  
Remember the library is now opened on Monday afternoons 2:00 p.m. to 5:00.

## PCA MEETING, Continued from Page 1



PCA entertainment features "Faith", an inspirational vocal musical group from Rule, Texas.

Come enjoy an entertaining program, delicious barbecue and drawings for cash prizes.

Rolling Plains PCA is one of 28 member-owned Production Credit Associations in Texas. Collectively they serve approximately 12,000 of the state's agriculture producers. Last year almost one billion was loaned through Texas PCAs. Rolling Plains PCA is part of the nationwide Farm Credit System providing over \$54 billion in loans to America's farmers, ranchers and ag-related businesses.

During 1986, Rolling Plains Production Credit Association loaned more than \$90 million to approximately 800 member-borrowers in Briscoe, Childress, Collingsworth, Cottle, Dickens, Donley, Foard, Hall, Hardeman, Haskell, Jones, Kent, King, Knox, Motley, Shackelford and Stonewall counties.

## 1987 ANNUAL STOCKHOLDERS MEETING

Members, families and friends are invited to attend the 53rd Annual Stockholders Meeting of Rolling Plains Production Credit Association, which will again be held in two sections.

CHILDRESS - Friday morning, April 3, 1987. Registration begins at 9:30

a.m., Business Session at 10:00. City Auditorium; Barbecue lunch following.

STAMFORD - Saturday morning, April 4, 1987. Registration begins at 9:30 a.m.; Business Session at 10:00. VIP Center (1 Blk. W of High School Auditorium Barbecue Lunch Following.

Entertainment at both sections of this year's Stockholders Meeting will be Faith, an inspirational vocal group, of Rule, Texas.

Your consideration and vote will be directed toward filling two vacancies on your Board of Directors as well as selecting a new Nominating Committee for the upcoming year.

## CASH PRIZE DRAWINGS

The member whose name was drawn at the Childress Section of the 1986 Annual Meeting was not present. Drawing will be held again at the 1987 Stockholders Meeting, and if the Class "B" Stockholder or spouse whose name is drawn is present, a cash prize of \$550 will be claimed at the Childress section. At the 1986 Stamford Section, the prize winner was present; therefore, the cash drawing at the 1987 Stamford Section will be for \$250.



Home  
Economically  
Speaking  
By Carolyn  
Halsell

## MARIGOLDS A GOOD SELECTION FOR LANDSCAPE COLOR

Marigolds are well known for the beautiful color they add to Texas gardens. These flowering annuals are extremely rugged and hold up well against our rough environment. Flowers range in color from near white to deep red and can grow up to 2-3 inches in diameter. Marigolds have a broad use in the landscape but are most frequently used in garden beds, borders and containers.

The "Inca" series of marigolds has been recognized by the Texas Agriculture Extension Service as the

outstanding selection for 1987. These plants have large blooms and a free-flowering habit. Inca's grow to approximately 14-16 inches in height and are available in gold orange and yellow.

Many gardeners prefer short marigolds and to meet this need the "Queen" series has been selected. These plants have large, 2-inch flowers with a very compact growth habit (10-12 inches in height). Varieties include Golden Queen Victoria, Honey Sophia, Orange Sophia, Queen Beatrix and Queen Sophia.

Marigold transplants can be purchased from local garden centers or grown from seed. To start plants at home, sow seed indoors 4-6 weeks before the desired planting date. When they are ready to transplant, space larger varieties 12-18 inches apart in the garden (6-8 inches for dwarf varieties). Marigolds require full sun for best growth and should be planted in a well-drained site.

## Friends of Library Rolling On With Fund-Raising For New Building

The Motley County Friends of the Library met Tuesday, March 24. Twenty friends were present. First order of business was orientation of the library by new volunteer coordinator, Darla Gwinn. Her plan is to leave a calendar at the library for volunteers to come in and place themselves on the days and times they are available to work. If the times are not filled, then she will call for help from the list of volunteers.

Mrs. Gwinn explained library policies as well as various procedures pertaining to the operation of the library.

Treasurer Keith Patton reported that the Friends had a balance of \$2571.88.

A new slate of officers were voted in with Michelle Bearden as president, Ava Crump as vice-president, Keith Patton, treasurer and Earlene Vaughn, secretary.

With a new building in the works, it is more vital than ever for former members of the Friends of the Library to become involved again. Funds already in hand for the new building will just cover the bare essentials. The Friends would like to encourage Memorial Gifts directed to purchasing specific items for the new building as well as for the purchase of books.

The Friends sold desserts at the Bruce Marris sale on March 31 in a recent fund-raising effort. (We apologize for not getting this in the

paper but it was too late to do so before the sale.)

Several ideas have been expressed for the new library that will require additional funding. One example is tentative plans for a mural on the South wall of the new building. Another suggestion has been the placement of stained glass for the high windows above the plate glass windows; another suggestion was brass lamps outside of the building.

This is historical building and every effort will be made to retain the flavor of its original aspects. The original pressed tin ceiling will be left. The tin on the awning is not in good condition and will require either replacement or aggressive treatment. Another idea is to procure wooden library shelves which greatly enhance a library's appearance.

While many of these niceties are not absolute necessities, they will greatly add to this long hoped-for permanent home for our substantial book collection.

The Library Board has also made plans to utilize the back third of the building as a community room. This will need to be furnished as well. All items bought by interested persons can be appropriately identified with the name of the benefactor or the name of the one memorialized.

LOVE SUFFERS LONG, AND IS KIND; LOVE ENVIES NOT; LOVE THINKS NOT OF ITSELF, IS NOT PROUD, DOES NOT ACT UNBECOMINGLY, SEEKS NOT HER OWN, IS NOT EASILY PROVOKED, THINKS NO EVIL; REJOICES NOT IN INIQUITY, BUT REJOICES IN THE TRUTH.

I Cor. 13:4

RED HEN MARKET  
ROARING SPRINGS, TEXAS

TENDERIZED	POUND
<b>ROUND STEAK</b>	<b>\$1.99</b>
42 OZ. BOX DETERGENT <b>SURF</b>	<b>\$1.69</b>
12 OZ. CAN PARADE FROZEN <b>ORANGE JUICE</b>	<b>59¢</b>
10 POUND BAG RUSSET <b>POTATOES</b>	<b>\$1.29</b>

**YOU MAY ALSO SELECT FROM 15 OTHER OUTSTANDING SALE ITEMS WHICH ARE FEATURED EVERY WEEKEND**



## Spring Fashions Displayed At El Progresso Style Show



Mrs. Jeff (Pam) Thacker and daughter Blair model fashions from Guys and Gals Department Store.



LaShae Rose, (right), daughter of Mr. and Mrs. Tony Rose and her cousin Stacia Baxter, daughter of Mr. and Mrs. Don Baxter, model dresses made with fabric from Matador V&S Variety.

by Beverly Vinson

El Progresso Club held their second meeting of March at the Senior Citizens building March 26, 1987 at 7:30 p.m. The scene was a room full of beautiful silk flower arrangements provided by club members. Models were from Guys and Gals, Matador Variety, The Windmill and club members who had made fashions for the Santa Rosa District convention in Memphis earlier this month. DiAnn Campbell and her staff from Guys and Gals provided many beautiful clothes for women and girls of all ages; Sondra Francis and Shane Jones of Matador Variety provided models who had made clothes from materials from their store as well as clothing to be purchased; June Keltz of The Windmill showed beautiful jewelry on models she had secured. Some of the models sported make-up by Artistry from Amway and Oil of Mink.

The evening opened with the club president, Mrs. Douglas (Lila) Meador welcoming the standing-room only group who had come to see what Spring fashions would look like. All chairs were full and for that, the El Progresso Club would like to thank the community for their support. Mrs. Meador thanked the hostess, decorations and arrangements committees and volunteer workers, Mrs. Ted (Bailey) Elliott, Mrs. Bill (Judine) McCaghren, Mrs. W.D. (Vena) Lipscomb, Mrs. Dale (Joetta) Bumgardner, Mrs. J.E. (Marge) Edwards and others who brought cookies for refreshments and helped in any way. She then

introduced Mrs. Bob (Nell) Clem who was narrator for the evening. Mrs. Clem welcomed the large group to "Springtime in West Texas" stating "colors were bold and bright to soft pastels with something for the very young, young at heart and in between." Two able persons who saw that each model entered on cue were Betty Bearden and Mrs. Joetta Baumgardner. Mrs. Clem did "yeoman's service" in her narration as some had not appeared for practice on Wednesday night and with sixty-five models from infants to senior citizens, at times it seemed like pandemonium had broken loose but she kept it running smoothly. There were clothes for playtime to church time with everything in between. Color, colors, colors, bright colors were the "in" thing and pastels of every hue with a shine of silver belts and shoes, beautiful jewelry that tended to be on the bold side at times, then elegant at others highlighted many, many outfits. Shoes and hose were of many colors with pastels in the hose taking the spotlight.

Mrs. Frank Pohl played soft music on the Casio as models entered and when all models were through parading the club served hot spiced punch and many, many homemade cookies to those attending.

Members attending other than those mentioned were Mrs. Harold (Grace) Campbell, Mrs. W.N. (Opal) Pipkin, Mrs. John (Josephine) Hamilton, Mrs. L.B. (Lucretia) Campbell, Mrs. E.A. (Dorothy) Day and Mrs. Furman (Beverly) Vinson.

# Society News



## Shavor-Washburn Vows Said Saturday, March 14

St. Luke's Methodist Church of Lubbock was the scene of a 7 p.m. candlelight wedding Saturday, March 14, 1987, uniting Shauna Gail Shavor and Matthew Nevitt Washburn.

The bride is the daughter of Sid Shavor and Gail Shavor of Lubbock; the bridegroom's parents are Mr. and Mrs. Frank Washburn, also of Lubbock.

Rev. Elroy Wisian performed the double-ring ceremony before an altar setting highlighted by brass candelabras, white tapers, white satin and net bows entwined, with green silk ivy. Aisle markers were of white stain and net bows and silk greenery.

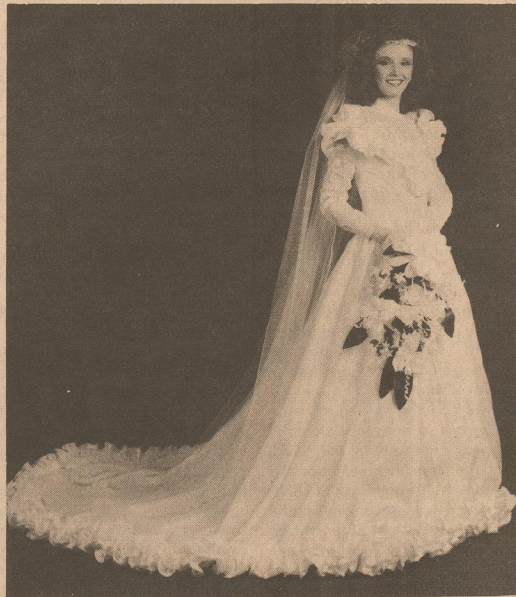
Vocalist Mark Wallney of Lubbock accompanied himself on the guitar as he presented his own original "Reflections" during the lighting of the candles.

Candelighters were Gregg Shavor of Euless, brother of the bride; and Kyle Cranford, Plainview, cousin of the bride, who also served as ushers along with Mike Severe, Lubbock.

Bridesmaids entered on the arms of the groomsmen to the wedding processional by Beverly Eubanks, organist.

The bride was escorted down the aisle by her father, to the beautiful trumpet solo, "Trumpets Voluntare" by Mr. Bob Wert.

She wore a traditional wedding gown of lustrous white taffeta, featuring a high Alencon lace V-line neck leading into an illusion sheer yoke, uniquely patterned with lace appliques and pearl clusters. The fitted bodice was complemented with a delicately edged full double ruffle of taffeta, following the yoke line and falling off-shoulder over close-fitting long sheer sleeves with an overlay of embroidered pearls on lace. The basque waistline featured the unique pattern of lace and pearls also. The full ballroom taffeta skirt was traced at intervals with rows of appliqued Alencon lace and pearl clusters slightly down the front, graduating in the back into the cathedral length train. The bouffant ruffle edged the skirt.



Mrs. Matthew Washburn, (nee Shauna Gail Shavor)

Her taffeta hand-pearled headpiece, a beaded pouf, flowed into a cathedral length veil. She carried a silk cascade arrangement of white lilies and white stephanotis.

Miss Stacy Shavor, sister of the bride was maid of honor. Bridesmaids were Kecia Hall, Debbie Schmitt, Allison Bennett and Jana McKenzie, all of Lubbock. Each wore mauve taffeta strapless gowns, complemented with a huge taffeta rose at the waist.

Miss Sara Purtell, cousin of the groom, served as flower girl.

The bridegroom, his attendants, ushers and ring-bearer were attired in grey tuxedos with satined collars, lapels and cummerbunds.

Robert Giovannetti, Lubbock served as best man. Groomsmen were Michael Washburn, brother of

the groom, Lubbock; Edwin Conners, Fort Worth; Dan Yates, San Antonio, and Warren Stewart, Lubbock. Master Justin Immel, cousin of the groom, was ring bearer.

For her daughter's wedding, Mrs. Shavor wore a formal gown of chiffon over taffeta in wedgewood blue. Mrs. Washburn wore a formal georgette sheer in mauve. Their corsages were white silk roses entwined with blue and mauve florets and baby's breath.

Immediately following the wedding a reception was held in the home of the bride's mother.

Lighted lanterns, tied with large white bows lined the walk to the home where the bride and groom greeted guest in the foyer. Shannon Washburn, sister of the groom,

registered guest.

The bride's table, laid with a linen Battenburg lace cloth, featured a three-tiered wedding cake topped with a "Precious Moments" bride and groom and decorated with white, blue, and mauve roses. The bride's bouquet in a crystal vase centered the table; punch was served from a silver bowl. Michelle Whitaker and Tommie Sue Duncan were attendants.

Kathy Wallney and Cathy Immel attended the grooms table. Coffee and punch were served from gold services along with a German Chocolate cake baked by the grooms father.

Serving in the house party were Melba Mankin, Phyllis Wagoner, Bette Rogers of Lubbock, Janice Cranford and Jane Trent, Paducah.

The bride, a graduate of Texas Tech University, is employed by the Mesquite Independent School District. The bridegroom, a Texas Tech graduate is employed by First Lakewood National Bank of Dallas.

After a wedding trip to Cancun, Mexico, the couple will make their home in Dallas.

The bride's grandparents are Mr. and Mrs. Willard Shavor and Mrs. Clyde Black of Paducah, and her great grandparents are Mrs. Claude Matney of Paducah and the late Claude Matney, both formerly of Matador.

### BRIDAL COURTESIES

Saturday, Feb. 21, the bride was honored with a gift tea in the home of Bette Rogers, Lubbock. For this occasion she wore an eyellet linen suit her mother had worn to her bridal shower in Paducah twenty-seven years ago.

The grooms parents, Mr. and Mrs. Frank Washburn, hosted a rehearsal dinner, Friday, March 13, at the 50-yard line restaurant Lubbock.

Other courtesies included a lingerie shower, a garden party, and a bridesmaid brunch given in Lubbock, and a couple's shower hosted by the groom's associates in Dallas.

## ENGAGEMENT ANNOUNCEMENT

Mr. and Mrs. Lonnie Cagle of Flomot announce the engagement and approaching marriage of their daughter, Kimberly, to Rodney Doran of Matador. Rodney is the son of Lonnie Doran of Matador and Darnell Smith of Plainview.

The couple plans to marry Saturday, April 11 at 3:00 p.m. in the community center in Quitaque. A reception will follow. Friends and relatives of the couple are invited to attend.



## Rolling Plains

Production Credit Association

# 53rd Annual Stockholders Meeting

Friday, April 3

STOCKHOLDERS IN THE MATADOR AND CHILDRESS OFFICES

City Auditorium  
Childress, Texas

Saturday, April 4

STOCKHOLDERS IN THE MUNDAY, SPUR AND STAMFORD OFFICES

VIP Center \*  
Stamford, Texas

\* Located 1 Block West of High School Auditorium

- ★ REGISTRATION — 9:30 A.M.
- ★ BUSINESS SESSION — 10:00 A.M.
- ★ DIRECTOR ELECTION
- ★ ENTERTAINMENT BY MUSICAL GROUP "FAITH" OF RULE
- ★ CASH PRIZE DRAWING
- ★ NOON BARBEQUE

"First Class, First Choice"



## OPTICAL 20/20

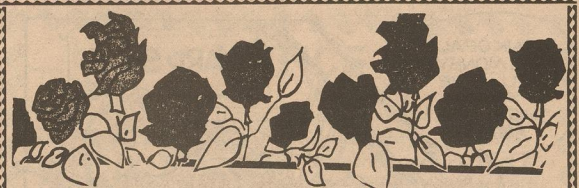
ALL PRESCRIPTIONS FILLED  
Designer Frames

WONETTE OWEN - ALY GWINN - CERTIFIED OPTICIANS -

HOURS  
9:30-5:30 MON-FRI  
SAT 9:00-1:00

745-7999  
2811 S. LOOP 289

NEXT TO THE NEW  
FURR'S CAFETERIA



## Higginbotham Bartlett's Jones-Blair Paint

### SPRING SALE

Receive a FREE rose bush for every 2 gallons of Polyflex House Paint or Polyflex House and Trim Paint. No limit to each customer while supply lasts.

(Also available for sale at \$1.99 each.)

## Higginbotham Bartlett

Matador, Texas



## Social Security Tips

by Terry J. Clements

### NOTICE

The Social Security Representative will be at the First State Bank in Matador on Wednesday, April 22.

\*\*\*\*\*

Although, in general, the earnings test is the same for self-employed people as for wage earners, there are some differences. It's important for people who receive earnings from self-employment to be aware of the differences.

The earnings test places a limit on the amount of money a beneficiary can earn without affecting benefits. In 1987, the limit is \$8,160 for people 65 to 70 and \$6,000 for people under 65. Benefits are reduced \$1 for each \$2 earned over the limit. The earnings test does not apply to people who are 70 and older.

The difference comes during the first year of retirement. During the first year of retirement, wage earners can get a full benefit for any month they don't earn more than 1/12th of the annual limit, regardless of their earnings before

retirement. However, self-employed people can get a full benefit for any month they don't perform substantial services in self-employment regardless of their earnings in any month.

Whether or not services performed in a business are "substantial" depends on a number of factors. They include the amount of time devoted to the business or profession, including time spent planning and managing, the kind of work done, and how the work compares with that the person perviously did.

The more valuable and highly skilled the work performed, the more likely it is to be considered substantial.

In general, more than 45 hours of work devoted to business during the course of a month constitutes substantial service. Less than 15 hours a month is never considered substantial services.

If you need more information on the earnings test you can call us at 293-9623 or come by the office at 1401-B West 5th street. Appointments can be arranged if desired.

## Senior Citizens Report

by Iris Blevins

The Matador Senior Citizens met for their regular fourth Tuesday luncheon, March 24. We had a delicious lunch, and Nora Bell gave the table grace. We are proud of all of our visitors, and invite you to come be with us any time. We missed Duke and Vena Lipscomb, and hope you don't have to miss any more lunches, also the 84 game.

The mini-bus went to Plainview last Thursday with a number of people riding. Some went to visit the sick while others went shopping. It was pretty nice weather and everyone enjoyed getting out of

their cozy corners for a change.

We met Friday evening for games of 84 and 42. We had eleven players. Friday, April 3 will be our next evening to meet and play games. The mini-bus will go to Lubbock again Monday. Two people have Doctor appointments, some go to do shopping. As for me, I like to go visit and enjoy getting out of the house. I enjoy the new faces that I see.

I have mentioned our picnic planning two different times, now and old man winter came blasting back in, so I guess we will have to wait awhile. Just keep it in mind.

## In The Rough

By Hazel



### GOLF LUNCHEON

Thursday, March 26, members of the Ladies Golf Association of Springs Ranch met at Billie Dean's for lunch.

Those present were Opal Pipkin, Lillian Thacker, Louise Barton, LaVoe Thacker, Dorothy Day, Marion Woodruff, Winifred Darsey, Loys Campbell, Olivia Barton, Mary Jones and Hazel.

Olivia, president, conducted the business meeting. Schedules of the planned play days of the season were handed out and explained.

Also, the changes in the course were pointed out and changes in penalties named.

Tea off time will be at 11 a.m. during April and May. On April 2, Play Yourself Tournament begins. Scores will be kept on each day and players can check their improvement through the season.

On every third Thursday of the month will be a luncheon and business meeting.

Thursday was a cool, rainy day, so no golf was played.

Praise the Lord; for the Lord is good; sing praises unto his name; for it is pleasant.

## Furniture Restoration

If buying new furniture will upset your budget

Consider Complete Restoration

Rush and Cane Seating - Veneering  
Old Trunks - Vat Stripping

J.R. STEELE  
806-823-2097

900 Braidfoot Street

Silverton, TX 79257



## Recollections

by Duff Green

### THE OLD CHISM OR CHISHOLM TRAIL

Away back in early trail driving, a man by the name of Jess Chisholm lived in the old Indian territory and drove herds from the Red River north into Kansas and that was a Chisholm trail. Later Texas drovers went North and trapped Jess Chisholm's route at or near Red River, so any place you started from became a part of the Chisholm trail. Later as the trailing swung more to the Northwest and crossed Red River at Doan's Crossing in Wilbarger County, Texas. That route was sometimes called the Chism or Chisholm trail, though it never touched the original trail of Jess Chisholm by a hundred miles at their nearest contact.

Goodnight, Loving, Coffee, Tanksley, Snyders, Reynolds, Hoy, Baker, John Chism and others never drove cattle five hundred miles out of their way just for the fun of it.

Give the natural law of cause and effect a little consideration. Those long, tiresome, devious routes were laid out and became the effect of a definite cause. That definite cause was a real, a genuine cause and no mistaking, and is spelled "Indians."

John Chism, the Jingle-bob man, could have driven a herd north from the Conchos where he ranched, via Albany and to Doan's Crossing in the early sixties, for the Indians still existed, though it is more than doubtful. When John Chism left the Concho, he followed the Goodnight-Loving route by Horsehead crossing and up the Pecos, for the Indians still had every bit of the country North and West from the Government Forts. All the Caprock and Panhandle country was Indian Country, as late as the early seventies and cattlemen respected the fact too and stayed out of it.

Later, after the Indians were harnessed and used to wearing their cruppers, cowmen shortened their drives to conform more to a direct line between any two given points.

One Chism route led up out of the Texas cow country by way of Lubbock or the Yellow House Canyon and into New Mexico to Fort Sumner country, where John Chism actually ranched during the seventies and early eighties.

It is quite plausible when the Indians were removed from the Plains, John Chism used that direct route first; but in the early seventies while he ranched his Jingle-Bob cattle, all up and down the Pecos River in New Mexico, he was also a partner of Charlie Goodnight and handled the southern end of the drive out of Texas and it was always by Horsehead Crossing on the Pecos. That partnership was a side line of John Chism.

This Chism or Chisholm trail found everywhere, from A to Z, is more mythical than real. So many of the boys now days tell about their trail experience over the Chism Trail. They have been up the trail, no doubt, and thought they were on the Chism route.

In some vague and undefinable manner, the Jess Chisholm Trail in the Old Indian Territory has been confused and blended with John Chism, a Texas and New Mexico

Cattle King of remarkable cattle experience, both as a range and trailman.

John Chism seems to be a north Texas man. First ranching between the Red River and the upper reaches of the Trinity, moving Southwest to around Brown and Coleman Counties. A few years later, he continued the same course to the Concho where he ranched so long in Texas which carried him into the latter sixties.

By some, it is claimed that John Chism was a nephew of Isom Chism the "IC" ranchman in Limestone County, Texas; that he resided there and trailed cattle from that section. Whatever the real fact may be, it is beyond any doubt that John Chism bought cattle most everywhere in Texas and drove them out; but the greater part of those drives went West into New Mexico, and not North over the Hydra-headed Chisholm Trail.

As late as the early eighties, herds of rail steers passed Lampasas going Northwest. Were they John Chisms?

The report so goes that old John Chism was camped on the South side of the Concho River near the present town of Paint Rock in 1873, where he was receiving cattle bought of Joe Franks, John Hitson and Sam Gholson who were ranchers in Coleman County. Indians raided Gholson's camp one night and during a battle made way with some sixty saddle horses.

Jess Chisholm of the Indian Territory, John Chism of Texas and New Mexico, Isom Chism of Limestone County and Dick Chisholm, the "HC" man in Gonzales County are a few of the Chism and Chisholms. Dick Chisholm, it is claimed, plowed and located the "Chisholm Trail" from Abilene, Kansas to Red River Station to Valley View, hence to Fort Worth, to Austin and on down into Gonzales County.

Dick Chisholm is also credited with driving his cattle to Dodge City, Kansas by way of Austin, Callahan County and Phantom Hill in Jones County; hence across Red River, one hundred and fifty miles above Red River Station, possibly meaning Doan's Crossing. So there you are! Many, more, most Chisholms. Take your choice and figure out the man that was guilty of establishing the "Chisholm Trail." As you see there are a multiple of Chisms or Chisholms!

From current reports, there were enough John Chisms' to have made an army. John Chism according to devious and sundry reports, reached all the way from Red River to the Gulf of Mexico and laid out enough cattle trails to supply the needs of any and all the ranches in Texas. No matter where you ranched or where you carried your cattle, there was a Chism trail from your ranch to the place you meant to go. And to cap the situation, the trail that John Chism used the most was from Texas to the Pecos Country in and around Fort Sumner and what later became Roswell, N.M.; and that trail is the only cowpath that I know anything about that isn't called the "Chism Trail."

## Burn Safety Program Presented To GFWC Eternas Study Club

The regular meeting for GFWC Eternas Study Club was held March 19, 1987 at the First Baptist Church. The program was open to the public and was a very informative program on "Burn Safety in the Home" presented by Dr. Timothy J. Harmar, assistant professor of surgery at Texas Tech University Medical School and medical director of the Burn Unit of Lubbock General Hospital. Dr. Harmar gave many tips on how to avoid serious burns and also tips on what to do before help arrives.

The business session was called to order by Mrs. Wilda Dixon, president. During the business

meeting, the members discussed our C.I.P. (Community Improvement Project) which is supporting our Motley County Library. Other projects discussed were Little Olympics, the Blood Drive, (to be held April 3, 1987, 12 noon to 4:00 p.m.) and the Easter Egg Hunt.

Mrs. Judy Cooper served as hostess and co-hostess was Mrs. Terree Donaldson. They served refreshments to the following members: Mrs. Bobbie Brown, Mrs. Nailene Bowden, Mrs. Kelli Jackson, Mrs. Gay Lynn Holt, Mrs. Terri Abbott, Mrs. Reneigh Burns and Mrs. Joyce Creed.

And thou shalt love the Lord thy God with all thy heart, and with all thy soul, and with all thy mind, and with all thy strength: this is the first commandment. And the second is like, namely this, Thou shalt love thy neighbour as thyself. There is none other commandment greater than these. (Mark 12: 30, 31)

## Community Development Agriculture Impact

by Michelle Bearden

Stark statistics on the state of farm economics is no surprise to local farmers. Since 1982, agriculture has seen an escalating decrease in income.

Other area farmers are finding they can make money in an off-farm job and still continue to farm. In West Texas, however, farmers are having difficulty finding off-farm employment, so they are leaving the farm completely.

Much of what happens in agriculture today is beyond the control of farmers. Government programs, trade deficits and other political innuendos have direct and major influence on agriculture; to say nothing of the incongruity of the weather and management practices. None of these factors takes into account that the farm family still needs an income to survive on.

Everyone living in a primarily agrarian community is affected by the farmer's financial status no matter what the non-agriculture members of the community are involved in. Communities must have a lively commitment to forestall the year by year drain of farm families who are leaving the area to find jobs. The community as a whole must continue efforts to provide, encourage, reach out for opportunities for off-farm income.

Statistics from the U.S. Dept. of Commerce's Bureau of Economic Analysis in 1982 indicated that in Motley County's farmers and ranchers have seen an average income loss of - 30% since 1978, with an average net income of \$5,975 compared to a regional average of \$10,467. In 1982, statistics show the county had 233 farms and ranches compared to 257 in 1978. This is a 9% loss of farm families. The average size of farms/ranches has increased from 1,989 in '78 to 2,199 in '82. If this trend continues, Motley County can see fewer farmers and bigger

farms.

The average age of Motley County farmers is 52.3 years of age. This indicates that in this area our farmers and ranchers are approaching retirement age and there are all too few young farmers to fill the gap.

There is some cause to establish hope for keeping farm families here in Motley County. Quail Pipe, Thacker Jewelry, the gins and other businesses have provided some jobs that have allowed some of our younger people to continue living in Motley County.

Nonetheless, the demand for jobs far exceeds the availability of them. In addition to this, too many jobs in the county are so low-paying and make it difficult to support a family on. This gives a young family little incentive to establish a home here.

Answers to these problems are not so hopelessly far-fetched to be unfeasible. Although the two small towns in the county are very limited in financial resources, both have made use of the availability of grants successfully. One which was instrumental in procuring a business that provided jobs. This has to be an on-going prospect involving active, interested city councils, county officials and citizens. Allowing things to slip along at status quo rather than aggressively seeking out new possibilities has not only added to community wide financial woes but qualifies for economic suicide.

Every business in Motley County must be actively interested in promoting spirited development of this rural community. Retaining families, being involved in conscious problem solving will ultimately put money in business owner's pockets as well as benefit the rest of the community. Only people with jobs can come into a business and exchange their money for a business' merchandise or services.

## WTU Elects New Director

James M. Parker of Abilene was elected to the Board of Directors of West Texas Utilities Co. during the company's annual stockholders meeting Tuesday. He is president of Parker and Associates of Abilene and is former owner of Super Duper Food Stores, Inc.

As a new WTU director he succeeds Clearly R. Kinard, retired partner of Davis Kinard & Co. of Abilene, who is retiring from the board. Kinard was elected a WTU director in 1969 and had served longer than any current member of the board.

Parker is a native of Roby and is a 1947 graduate of Newman High School in Sweetwater and a 1951 graduate of Hardin-Simmons University.

He serves as a director of First Abilene Bankshares, First National Bank of Abilene, Chaparral Airlines, Abilene Aero, Inc., and of

Westico Energy.

He also is a director of the Abilene Industrial Foundation, a director of Hendrick Medical Foundation and is past-president of the Abilene Chamber of Commerce, the Chamber Foundation and the Better Business Bureau. He is past-chairman of Hendrick Medical Development Corp. and the H-SU Board of Development.

Parker is a member of the Abilene Rotary Club and is a deacon at the First Baptist Church.

Others on the 13-member WTU Board are Robert H. Alvis, Richard Bacon, Glen D. Churchill, Ralph N. Hooks, Jerry Johnson, G.H. King, Randal Meador, Tommy Morris and Don Welch, all of Abilene; F.L. Stephens and Dr. Lloyd D. Vincent of San Angelo; and Durwood Chalker of Dallas.

## 3.9% FINANCING OR CASH REBATES

On Selected Models

Chevrolets:

1 - 1987 Chevrolet Silverado 1/2 ton Pickup

Savings up to \$2016.00

1 - 1987 Chevrolet Custom Delux 3/4 ton 4x4

Savings up to \$954.00

Pontiacs:

1 - 1987 Pontiac Bonneville LE Loaded

Savings up to \$800.00

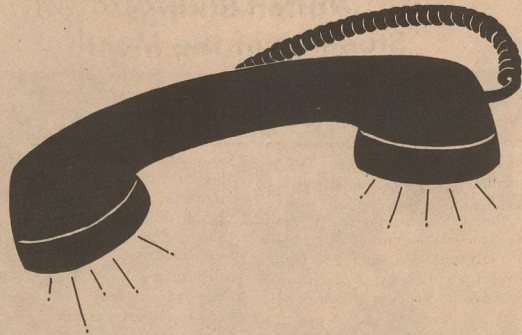
1 - 1987 Bonneville, Power & Air

Savings up to \$500.00

Come In And See The New 1988 Full Size Pickups

Matador Motor & Implement





# County Chit-Chat

## Roaring Springs News

By Odessa Mullins

LCPL Mark Mullins of the Marine Corp, stationed N.A.S. Dallas and Todd Mullins of Lubbock visited their Dad and family, Mr. and Mrs. Bobby Mullins and their grandmother, Odessa Mullins, Saturday.

C.L. Marshall of Lubbock came for his mother, Mrs. Hattie Marshall, Friday and took her to Lubbock for a medical appointment.

Mrs. Amy McElroy is at home after a hospitalization because of pneumonia in Caprock Hospital in Floydada.

Mrs. Bennie Goss of Littlefield was a Wednesday visitor in the home of her mother, Mrs. Vera Mitchell.

Edward and Emily Swim of Abilene, who were here visiting their paternal grandparents Mr. and Mrs. J.T. Swim, accompanied their maternal grandmother, Mrs. Zona Ruth Cammack, to her Matador home Friday for a few days visit.

Mr. and Mrs. Craig Anson and baby daughter visited her father,

Bill J. Dillard and visited her grandmother Mrs. Edna Dillard Friday and Saturday.

Miss Lula Swim kept a dental appointment in Floydada Friday morning.

Mrs. Agnes Meredith was taken to the Caprock Hospital twice last week suffering with acute bronchitis, Monday and Friday for overnight stays.

Bill J. Dillard left Tuesday morning for several days visit with family members and friends in Oklahoma City.

News has reached relatives here that V.I. Case, husband of the former Gaynell Mitchell of Yellville, Arkansas, is critically ill with a bad prognosis.

Rev. and Mrs. Donnie Howell enroute to Arkansas to visit their son, stopped in Whitesboro to visit with Mrs. Emma Miller in the Whitesboro Nursing Home.

Mr. and Mrs. Orval Doak of Lubbock were Sunday visitors with her brother Polk Cooper.

## PRIMITIVE BAPTIST MEETING

Marian Burt of Matador and Carl and Shirley Barton of Roaring Springs attended a special meeting at The Primitive Baptist Church in Crosbyton. Church services were held Saturday morning and Saturday night and Sunday morning. Meals were served both days. There were six visiting ministers from Brownwood, Lubbock, Plainview, Floydada and Paducah. Visiting members from

Memphis, Childress, Brownwood, Brownfield, Lubbock, and Levelland.

Much Fellowship and love was shown in praising our God from which all blessings flow. Our regular Communion Meeting was announced to be held the first Sunday in April with an invitation to all that have a desire to come visit with us. Our pastor is Elder George Johnson of Idalou.

## Matador News

Mr. and Mrs. C.D. Garrison visited last weekend in Smithville with son and family, Mr. and Mrs. Dickie Garrison, Dowell and Dane. Mr. and Mrs. Billy Wason attended an Affiliated Foods, Inc.

meeting in Amarillo, Saturday.

Visiting Dorothy Bird in St. Mary's Hospital Monday were Barbara B. Jameson and Mrs. Edna Dillard. She is in room 504.

## Remember When

By Annie B. Cloyd  
Box 22  
Flomot, TX 79234

Hi Neighbors, it's me again, just thinking about what I heard this morning while I was at the Post Office. It was about old times and the things that happened back a good long time ago.

Seems that when I wrote about the syrup mill and chewing cane and watching the syrup being cooked brought back memories to our friend Art Green. He said that story got him thinking about when his Dad raised Red Topped Cane and had a syrup mill and made syrup. They lived down close to Matador and it was when times were hard so his Dad got folks to work at the Mill and they were glad to take syrup for their pay. Reckon folks would do that this day-in-time?

He said he remembered one time when someone hitched up a team of young horses to the mill and they got scared and started running away - except the only way they could go was round and round and they had a hard time getting them stopped. He said it sure was funny at the time - to the young boys anyway. I bet it wasn't so funny to this Dad.

I wonder if anyone else remembers working at Mr. Green's Mill, I mean anyone outside of Art and his brothers. He said there are some still in Matador that worked there at sometime or other. He talked to someone a while back that had looked for the place where the old Mill had been but didn't find anything. Looks like there would be something left to show where it was. I know that the part that ground or pressed the juice out of the stalks must have had a lot of gears and, altogether, it was a big piece of machinery and had to be good to make as many turns as it had to do in one season of syrup making. I bet there is some of it left somewhere.

We had a good time talking about all of this and remembering. You know, if we just stop and think once in a while, we find out just how good things are now...but...that things were good back then too. People just worked harder at whatever they had to do because there wasn't all the easy-to-use equipment and gadgets then that made work easier. I wonder sometime if all this new, easy way of life is so good for our kids. I'm afraid they may have things too easy and they might not know how to start a job and work from the ground up - so to speak. Now, don't get me wrong, I'm mighty proud of all the things we have that make life better and easier...but we know where they all came from because we had to work for them.

Better stop and get this ready to send to the paper, but I'll be back and we'll remember some more.

Charity suffereth long, and is kind; charity envieth not; charity vaunteth not itself, is not puffed up, Doth not behave itself unseemly, seeketh not her own, is not easily provoked, thinketh no evil; Rejoiceth not in iniquity, but rejoiceth in the truth; Beareth all things, believeth all things, hopeth all things, endureth all things. (I Cor. 13: 4-7)

## Flomot News

By Earlyne Jameson

### APPRECIATION COFFEE

Mrs. Howard Rogers gave an appreciation coffee, Tuesday afternoon, March 17 in her home for hostesses of a recent miscellaneous shower honoring her son and wife, Mr. and Mrs. Donnie Rogers of Flomot.

A vegetable tray, chips, dips and cake were served with fruit punch and coffee. A beautiful designed wall plaque was given to each hostess.

Those attending were Mesdames Joe Degan, Seab Washington, Doyle Calvert, D.M. Gilbert, Coy Franks, Bill Washington, George Pope, Billy Morris and Wayne Hunter. Other guests were Mrs. Stanely Degan, Shawna, Shay and Dane of Calgary.

Mrs. Darrell Cruse, Keane, Leah and Derrick visited in Floydada last Monday with her grandfather, Charlie Lewis.

Visiting Sunday with Mrs. James Monk was her daughter, Mrs. Lewis Cannon of Tulia and son, Don Monk, local resident. They celebrated Mrs. Monk's birthday.

Mr. and Mrs. D.M. "Ikie" Gilbert visited in Lockney, Wednesday with Mrs. Lennie Gilbert.

Guests in the home of Mr. and Mrs. Wendell Morris, Sunday were Mr. and Mrs. Tim Lane, Amy, Drysha and Kiley of Plainview, Mr. and Mrs. Billy Morris, Rebecca and Dodi, Mrs. Doris Morris and Mrs. Hattie Snow, local residents, Mr. Lane was the guest minister at the Sunday morning Flomot Church of Christ services.

Mrs. Darrell Cruse accompanied her daughter, Leah to Lubbock, Saturday where she participated in the Federated Music Contest held in the music building at Texas Tech University. She is a piano student of Mrs. Howard Traweck of Matador.

Mr. and Mrs. Wilburn Martin visited last weekend in Arlington with Mr. and Mrs. Pace Cramer. Mrs. Martin visited in Floydada, Monday with Mrs. Bessie Martin.

Mr. and Mrs. Wayne Hunter were luncheon guests of Mr. and Mrs. H.G. Hunter in Quitaque, Sunday.

Weekend guests of Mrs. Jeff Sperry were Mr. and Mrs. Rodney Stewart, Summer, Destiny, and Brandie and Billy Klinge of Levelland and Mr. and Mrs. Terry Sperry and children, local residents.

## Whiteflat News

By Earlyne Jameson

Mrs. Ken (Kay) Dunnam and daughter, Kourtney of Amarillo visited the weekend with her parents, Mr. and Mrs. Alfred Cooper. They celebrated Kay's birthday, Sunday.

Mr. and Mrs. Johnney Turner, Heather Ann and Cobey attended the Little Dribbler's Basketball Tournament in Paducah, Saturday. Heather Ann played in the tournament.

Mrs. Henry L. Martin visited in Roaring Springs, Sunday with her mother, Mrs. Ray Martin. Her sister, Mrs. David (Doris) Osborn of Odessa, is still hospitalized, but is improving.

Mrs. Stuart Dixon and Mrs. Skeet Jameson accompanied by Mrs. C.D. Garrison, Mrs. Katherine King and Mrs. Bobbie Brown of Matador attended a general, Primary and Political Election School held in Paducah, Thursday night. Allen Bryan, former Whiteflat resident is critically ill. Friends can send cards to 1101 West Vermont Ave. Phoenix, Ariz. 85013.

Arthur Harmon of Amarillo visited from Sunday until

Wednesday with Mr. and Mrs. Alfred Cooper. He also visited in Matador with Mr. and Mrs. Bob Jameson.

Mr. and Mrs. Wilson Barton accompanied Mary Ellen Barton and Viola Stinson of Flomot to Memphis, Thursday night and attended the annual Lighthouse Electric Coop. meeting.

Mr. and Mrs. Shannon Jameson of Abilene visited his parents, Mr. and Mrs. Skeet Jameson, Sunday. They celebrated Shannon's birthday.

### RECORD LOW READINGS

Record low readings of 14 degrees was reported by Flomot and Whiteflat residents, Sunday night, March 29. The arctic air mass and blustery north winds played havoc with the fruit crops, garden and flower plants. At news-time, the skies are sunny, a light breeze and warming temperatures. As Charles Dudley Warner said, "Nature is entirely indifferent to any reform. She perpetuates a fault as persistently as a virtue."

\*\*\*\*\*

May God give you peace and joy today.

## PLANTS ARE IN

- Early Girl - Better Boy - Porter
- Improved Porter - Patio Tomatoo
- Pepper Plants
- Onion Sets
- Trees
- Peach Apple Pecan
- Roses Scrubs & More

**Stockman's Supply**

Matador, Texas

347-2845

## Multi-Peril Crop Insurance...



Deadline Is April 15

## It's Good Business Sense

Today you insure everything on your farm. But are you insuring your ability to help provide for your family if your crops fail? That's the purpose of multi-peril crop insurance. The advantages include:

- Crop income protection
  - Loan collateral
  - Reduces the uncertainties due to crop failure
  - Helps protect your productive assets
  - Income stability
  - Tax advantage
  - Improved financial planning
  - Helps keep the farmer farming
- Talk to a crop insurance specialist: The Omaha All Risk Insurance Services Agent in your area. We go the extra mile to provide you with reliable coverage and fast, dependable service. You'll find that crop insurance is just good business sense.

This multi-peril crop insurance is underwritten by Omaha Property and Casualty Insurance Company, a Mutual of Omaha Company, and reinsured by the Federal Crop Insurance Corporation.

Marketed and Serviced by

### Omaha All Risk Insurance Services

**Mike C. Smith**

Box 713  
Afton, TX 79220  
(806) 689-2343

The Law Office Of

**James M. Morris**

Is pleased to announce the relocation of his office at 820 Backus, Paducah, TX (On the North side of the square) Ready to serve the needs of the people of Motley County

Licensed by the Supreme Court of Texas And the United States District Court, Northern District of Texas

492-3588

## VOTE FOR CHIP SMITH FOR SCHOOL BOARD

This ad paid for by Chip Smith

## NOTICE

There is a vicious rumor going around that we do not sell Phillips 66 Products at our Station and in our business, i.e.: that we have lost our Dealership with Phillips 66 Petroleum Co. NOTHING could be further from the truth. We are still accredited with Phillips 66 Petroleum Company and as far as we can see into the future we will still be. We still supply you with that Super Gas, Diesel and Oil from Phillips 66 Petroleum Company.

Come see us for all your automotive needs. We fix flats. We sell tires. We service your car with Oil Changes, etc. We wash cars. We honor credit cards. We sell Propane. We are a Full Service, Filling Station. We appreciate your business.

## Cooper Oil Co.

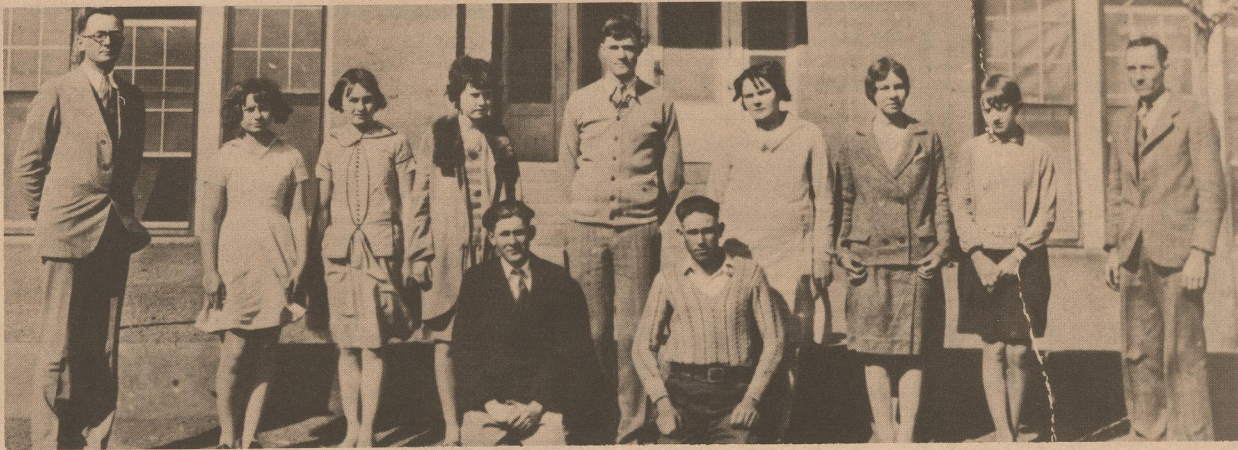
Matador, Texas Phillips 66 347-2346



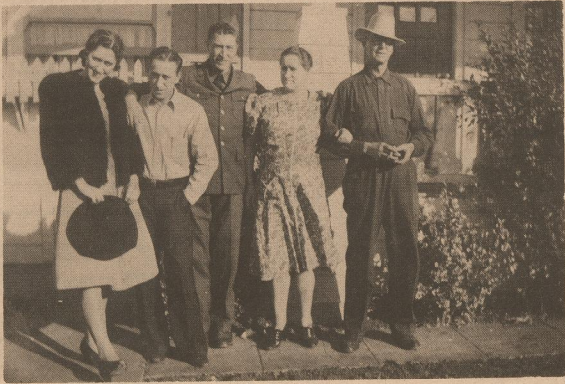




# Whiteflat Memories



WHITEFLAT JUNIOR AND SENIORS 1928-1929: Left to right: G.W. Bennett, Superintendent; Edith Norton, Carrie D. Perkins, Burnam, Duetta Wright Graham, Ralph Bennett, Callie D. Winstead, Claire White, Marguerite Keltz Edwards, Mr. Gordon Bennett, Principal. Seated are the Smelser boy and Charlie Kimbell. (Picture submitted by Mrs. J.E. Edwards)



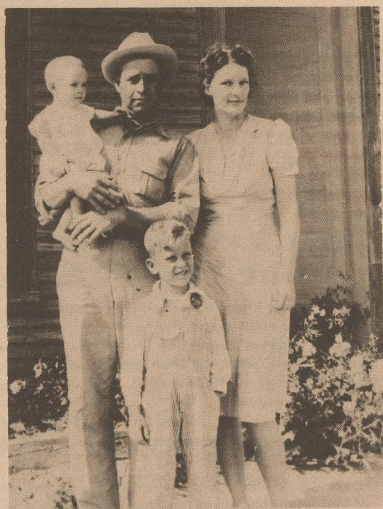
HARCROW FAMILY: Kate Harcrow, Shauds Harcrow, Tutt Harcrow, Mrs. Allie Shauds Harcrow, Finus Harcrow.



Zelma Watson, Catherine Cornell, Velma Watson, Murl Watson in the background.



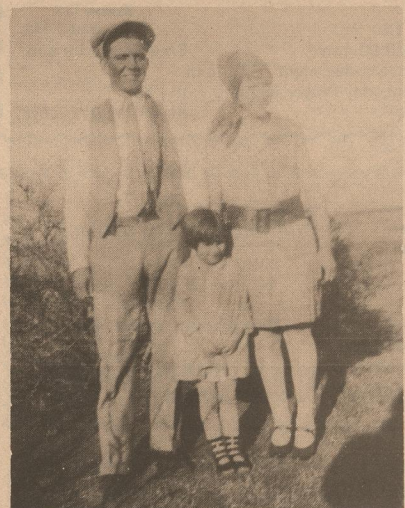
Catherine Cornell, Zelma Watson, Alfred Watson, Alma Cornell, Norman Owens.



Bill, Nora Belle, Kenneth and Ranita Dunning in 1939.



Eugene Watson



Bob Fletcher, Zelma Watson, Ople Watson, cousin.

## Childhood Memories In Whiteflat

by Nora Bell Dunning

The Twelfth Annual Whiteflat Reunion will be held at Matador Senior Citizens Building on April 4th.

We are all looking forward to the visit with former classmates and former neighbors and friends. Several of our teachers plan to be here. We always enjoy eating good food brought by all as well as finding out what each of us have been doing in past years.

We found our former teachers Fred Adams after he left Whiteflat went into the ministry as a First Methodist Church Pastor and he still performs lots of marriages in Ft. Worth Area. Mrs. Laurie Browning Griggs works as a pink lady at Central Plains Hospital Volunteer as well as she works at First Baptist Church. Varner McWilliams worked for the Government for several years after teaching. L.J. Barkley

after he quit teaching started buying cotton. And many others started other business and volunteer work.

It breaks my heart to go out to Whiteflat and see the little town fall apart. At one time there were so many children out in that area as well as more businesses out there than there are in Matador today.

I can remember when I was a little girl that our School bus was a wagon built with benches on each side pulled with two mules or horses and when we finally got an old truck with benches built on each side we thought it was heaven. Some kids had to walk a half a mile or a mile to meet the bus. We sang and played all the way to school. I wonder what our children would think today to have to take as long as we did to go to and from school. I lived 3 1/2 miles from school and it took at least 2 hours either way.

On the days when all our school

lunches were carried in tin buckets, paper sacks or folded up in a newspaper.

In the fall of 1932 and 33, due to the depression, no transportation was furnished. Most children had to walk except the time of year our fathers didn't need the teams for field work. Who ever had transportation picked up the kids between their house and school. Very few people had cars that ran because they couldn't afford to buy gas, much less tires and batteries. We didn't mind walking 4 or 5 miles to all get together for a party. We would walk backward to keep from facing the cold north wind in the winter time. Many of the older boys and girls would carry their little brothers and sisters on their shoulders straddle of their neck.

Very few of us had any money to spend. We knew our parents didn't have money to throw away so we didn't expect it. We could go to the

picture show for 10c, soft drinks were 5c, hot dogs, 6 for 25c. We can't make our children believe things were that cheap.

Can you remember how after working all day, on Saturday night we'd all come to town, go to Dry Goods Store, buy what we had to have, go to the first show at the Theater, come out and stand around by our cars and on the streets and talk until time for the late movie, go to the show and get home about 2:00 a.m. and never thought about not going to Church and Sunday School the next morning. Those were the happy days. We didn't expect a fortune to have a good time.

Come join us for the day and enjoy remembering about our childhood in Whiteflat Homes, Churches and Schools.

This is a very special time of year to me. I enjoy being with old friends so much. We'll see you there.



Zelma Watson, Ruth Watson, Velma Watson.





# GOING PLACES

We make a little go a long way!  
Sell, buy, rent, find and give notice by reading and using the classifieds!



# CLASSIFIED ADS

## COW POKES

By Ace Reid



"Lessee, if I turn loose the rope to grab the horn I'll loose my calf and rope, and if I don't, I'll loose my reputation as a great bronc rider!"

This Feature Sponsored By  
**First State Bank**

Matador

Your "Hometown" Bank

Member FDIC

## CLINT HICKS -- REAL ESTATE AND INS.

3711 - 47th., Lubbock, Texas 79413  
Phone 806-799-4486

### FARMS AND RANCHES

HAVE CASH BUYERS FOR CRP LAND!!

APPRAISALS!!  
LISTING APPRECIATED!! -- 37 YEARS EXPERIENCE

## First Assembly of God Church

REV. EDNA DILLARD

JESUS CHRIST IS THE SAME YESTERDAY, TODAY AND FOREVER.

HEBREWS 13:8

Roaring Springs, TX  
Sunday School - 10:00 a.m. Church - 11:00 a.m.  
Sunday night - 6:00 p.m.  
Wednesday Prayer Meeting 7:00 p.m.  
Missionettes--girls Royal Rangers--boys



Germania Insurance

Homeowners, Auto, Personal and Farm  
Liability and Life.  
Lee's Insurance Agency, (806)469-5370,  
Flomot, Texas 79234

## Matador Automotive & Welding

347-2202 Ricky Joe Carson Matador, Tx

Quality Work at Reasonable Rates



Located N.E. Corner  
of Courthouse Square

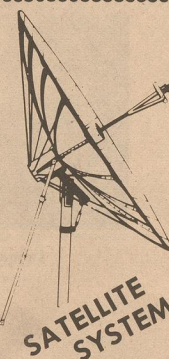
Hours--Monday through Friday  
8:00 a.m. - 6:00 p.m.



TV DIRECT FROM SPACE  
TO YOUR HOME

Motley County  
**SATELLITE  
SYSTEMS**

Contact  
**Tom Bowman**  
Financing Available



System includes 10 1/2' Hastings  
Antenna, 24 channel satellite receiver  
low noise amplifier.

## FOR SALE

**FOR SALE:** 12 ft. Cattle Panels,  
\$32.50 each. Call or see Elmer  
Parks, 348-7243.

ctfn

**FOR SALE:** Lincoln 225 AC Welder.  
One Victor Acetylene torch, 1000  
gal. water tank. 347-2724, E.A.  
Day.

ctfn

**LOW! DOWN! REPOS!** Call collect,  
806-763-4051.

ctfn

**HALF PRICE!** Flashing arrow signs  
\$299! Lighted, non-arrow \$289!  
Unlighted \$249! Free letters! See  
locally. Call today! Factory: 1 (800)  
423-0163, anytime.

1tp-14

**FOR SALE:** 2 Refrigerated air  
conditioner and heating units and  
bedroom furniture. Call after 5:30  
p.m., 347-2455.

ctfn

**FOR SALE:** Hide-a-bed sofa,  
beige background with rust and  
brown design, excellent  
condition, also wine-red velvet  
chair. Call 348-7940 after 6:00  
p.m.

## GARAGE SALE

**THREE FAMILY GARAGE SALE:**  
Window screens, 2 storm doors,  
collectibles, child's pool table,  
books, records, clothes. C.D.  
Garrison home, Saturday 9 a.m. - 4  
p.m.

1tp-14

**GARAGE SALE:** Friday, 10:00 -  
4:30. Ray Thomas house, across  
from Church of Christ on Hwy. 70.

1tc-14

**BACKYARD SALE:** Thursday,  
Friday, Saturday beginning at 9:00  
a.m. and Sunday afternoon at the  
D.C. Baker home.

1tc-14

## VEHICLES FOR SALE

**FOR SALE:** 1978 Ford, F150, V8, 4  
Speed transmission pickup. 8' Cab  
over Red Dale camper, 347-2308.

2tp-14

## WORK WANTED

**WANTED:** Lawns to mow. Call  
Daniel Alexander, 347-2210.

1tc-14

"Reading is to the mind what exer-  
cise is to the body."  
Sir Richard Steele

## HOUSES FOR SALE

### HOUSE FOR SALE

3 bdrm, 1 1/4 bath, lots of storage,  
pecan trees and close to school.  
Assumable 8 3/4% loan and  
equity. Reduced. 915-524-9321  
after 6 p.m. or 347-2836.

ctfn

**FOR SALE:** Three bedroom  
remodeled house. Lots of extras.  
\$27,000 Firm. Call 915-524-3399  
or 347-2603.

ctfn

**TAKE OVER PAYMENTS** two and  
three bedroom homes. Call collect  
806-763-4051.

ctfn

## BUSINESS OPPORTUNITIES

**FOR SALE:** The only grocery store in  
beautiful downtown Roaring  
Springs, 348-7242.

ctfn

## GARDEN SUPPLIES

**LAWN AND GARDEN NEEDS:**  
Plants are in at **STOCKMAN'S  
SUPPLY.**

1tc-14

## HELP WANTED

**TYPIST - \$500 Weekly at  
home!** Write: P.O. Box 975,  
Elizabeth, NJ 07207.

4tp-14

**JEWELRY FINISHER:** Apply at  
Thacker Jewelry, 200 Broadway,  
Roaring Springs, 806-348-7546.

2tc-14

**JANITORIAL WORK:** Three days  
per week. Apply at Thacker  
Jewelry, 200 Broadway, Roaring  
Springs, 806-348-7546.

**GUARANTEED PAY:** Easy work at  
home. No selling, no schemes. Free  
info. Send SASE to Coast  
Enterprises 954 POB 8207 PSL, FL  
33485.

4tp-17

## LIVESTOCK

**FOR SALE:** 86 Brangus Bulls, 12-15  
months old; 6 Brangus Bulls, 2 years  
old; Saul Cattle Company, 806-652-  
3744 or 806-455-1138.

2tc-14

## LOST AND FOUND

**MISSING:** 5 year old red limousine  
bull, brand Y on left hip. REWARD  
OFFERED. Wyonia Gilbreath, 347-  
2247.

2tc-14

## CROP INSURANCE REPLACES

### LOW INTEREST DISASTER LOANS & DISASTER PAYMENTS

Beginning in 1987, the Farm Law  
provides that  
**FARMERS MAY NO LONGER BE  
ELIGIBLE FOR THESE OTHER  
DISASTER PROGRAMS IF THEY  
are eligible for  
MULTIPLE PERIL CROP INSURANCE**

"Don't farm without it"

April 15th Closing Date on Spring Crops

For Crop Insurance Details Contact:

MULTIPLE PERIL CROP INSURANCE CROP, HAIL

WEST TEXAS CROP INSURANCE AGENCY

JOHNNIE HAMILTON, JR.

P.O. BOX 92 MCADOO, TEXAS 79243 TEL 806-697-2419



National Ag Underwriters, Inc.  
National Association of Crop Insurance Agents

Agents providing farmers protection against a crop disaster.

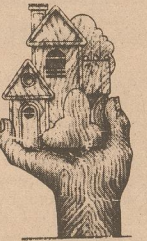
## Classified Rates

10¢ Per Word,  
\$3.50 Minimum  
Card of Thanks  
up to 55 words--\$5.00  
55-100 words--\$10.00

PICTURES  
Wedding, Engagement,  
Anniversary, Brag Corner,  
Birthdays--\$5.00

DEADLINE FOR ADS  
NOON TUESDAY

## I'M STILL HERE



### HOME REMODELING AND REPAIR

Roofing Specials  
Room Additions  
Cement Work

Call Andy Anson  
983-3335

Quality Work - Reasonable Rates

## Caprock-Plains Federal Land Bank Association



Floydada 983-2480  
105 S. Wall Box 130

## PIZZA BOX

Matador, Texas

We are accepting applications for a part time  
waitress. Apply in person. Contact Kimberly  
Sain. Hours 2 p.m. - 5 p.m.

## Card Of Thanks

With heartfelt thanks, we wish to convey our appreciation  
to those who have shown their sympathy by cards, flowers,  
food and prayers during the loss of our loved one. These  
things mean more to us than words can say. We ask the  
Lord's blessing on these friends, and we will remember  
them in our prayers.

The family of Nathan McCleskey

We would like to express our sincere appreciation to each  
of you who donated to the American Heart Association and  
making this another successful year for the Motley County  
Heart Fund Drive. It is because of citizens such as you that  
the AHA has been able to make such outstanding progress in  
cardiovascular research. We thank you for your good  
response and support of this worthwhile organization.  
Remember always, the American Heart Association is  
FIGHTING FOR YOUR LIFE!!

Motley County Heart Assn.  
Debbie Shannon, Faye Slover, Odessa Mullins  
Sandra Barclay, Earlyne Jameson

I would like to thank Donnie and Linda Turner and  
Caprock Gin of Flomot and other donors for their  
contributions on my hog at the Livestock Show.

Lance Barclay

Thank you for the cards, phone calls, the food brought to  
our home and your prayers while I was in the hospital and  
since my return home. Your thoughtfulness will be long  
remembered.

Pete and Dorothy Knight

## LONG REAL ESTATE

Box 98 Roaring Springs, TX

ATTENTION GI'S: TWO TRACTS IN DICKENS COUNTY  
One at 67 acres, one at 82 acres. Also 2 Good Stock Farms,  
one with 3 bedroom dwelling, 540 acres, steel barns and  
corrals. 162 acres cultivated, the other 476 acres. Both  
cross fenced with steel.

Night - 348-7510 Call 806-348-7531 Or Night - 348-7284