

MOTLEY COUNTY TRIBUNE

VOICE OF THE FOOTHILL COUNTRY

Where History is Pride

Flomot Matador Northfield Roaring Springs

\$.75



Thursday, June 17, 2010

ESTABLISHED 1891

Volume 119 Issue No. 24

Two residents speak in Open Forum at Matador City Council

By Carol Campbell

Matador City Council met in regular session at 6:30 p.m. June 10, 2010, at City Hall. Attending the meeting were Councilmen Nathan Shannon, Alvin Alexander, Shane Jones, Kay Bailey; and Mayor Pat Smith, Steve Barton, City Superintendent, and Debra Scott, City Secretary. Councilman Chuck Ream was absent.

In Open Forum, Hotel Matador co-owner Linda Roy, representing the Chamber of Commerce, addressed the council, thanking them for their past support of the Chamber, and requesting funds from the Hotel/Motel Occupancy Tax to help defray advertising costs associated with the first annual Market Matador Day event held on May 1, 2010. The Chamber combined efforts with the planners of the annual Highway-70 Garage Sale to sponsor Matador Market Day, featuring area craftsmen and entrepreneurs.

Also in Open Forum, Carol Campbell addressed the council in behalf of Texas Plains Trail Region (TPTR), requesting \$200.00 from the Hotel/Motel Occupancy Tax fund for the organization's yearly brochure distribution and marketing package that includes Motley County. Campbell distributed a two-page outline highlighting the numerous features of the package, including website presence, brochure distribution, marketing products and projects, tourism and preservation round-up, and other benefits for the region partnerships.

Paying counties get a bigger "bang for their buck," promoting the community, she said.

Following Open Forum, City Superintendent Steve Barton provided an update to the council on the "lift station problem" in north Matador. He reported that the city had been replacing a motor a year, "burning up about \$1,200 a year." The city has now replaced the pumps at the Lift Station for a cost of \$6,200, eliminating potential future problems.

In addition, Barton reported that mosquito spraying was continuing within the city limits, and mowing is cranking up to full speed. Further, work on replacing the oldest meters on North Main continues. "We have replaced eight meters in all," Barton said. Many of the problem meters have registered more than 3-million gallons of water over a span of 20 years or more, Barton said.

City Secretary Debra Scott notified the council that Joel Guerrero had received his Class B Waste Water license; she also announced that a City Park clean-up has been set for Saturday, June 19, 2010, from 9:00 a.m. to noon, in preparation of receiving the new playground equipment purchased with 4-B tax funds. Workers are needed to help paint the existing playground equipment, clean out the flower beds, and "ready" the property for the new equipment, she said.

Additionally, Scott reported that she had talked to Morton Irrigation about the sidewalk deterioration in front of City

Hall. The repair will take about nine yards of concrete, replacing about 22 feet of sidewalk.

In other business, Scott informed the council that the recent survey conducted by the city in order to qualify for assistance through the Texas Commission on Environmental Quality regional solid waste grant program, "did not turn out favorably" for the city. A random sampling of the responses showed that only 34 percent of the households were below the poverty level. The grant requires that 51 percent of the households be below the poverty level. The KSA Engineering firm, recently selected to work with the city on the water grant is re-evaluating the water project, looking for grant alternatives.

In a "no action" discussion, Mayor Smith said he asked County Judge Ed D. Smith if the city could use part of the allocated TxDOT funds to complete a Street Top Coat Project for Matador. Costs of repair on Eubank Street will be reviewed and brought back to the council at the next meeting.

Finally, in the Financial Report, Debra Scott reported that the Waterworks Fund and the General Fund were both well within budget for the fiscal year, beginning April 1, 2010. Municipal Fines collected are now at \$3,061; while the 4-A Tax Account has a balance of \$110,554, and the 4-B Tax Fund now stands at \$59,385.

County to participate in housing program for elderly and disabled

By Carol Campbell

The Motley County Commissioner's Court met on June 14, 2010, in regular session with a quorum consisting of Judge Ed D. Smith, Commissioners Roy Gene Stephens, Franklin Jameson, and Russell Alexander. Absent was Donnie Turner, Commissioner of Precinct 2. Other county employees in attendance were Sheriff Chris Spence, County Attorney Tom Edwards, and Kate Hurt, County and District Clerk.

Also in attendance were Ben Kautz, TxDOT, Stephen Rainbolt, area manager for National Family Care Life; Henry Tarango, South Plains Community Action; Mayor Corky Marshall, Roaring Springs, and Debra Scott, Matador City Secretary.

In the first order of business, Ben Kautz, TxDOT, said he "appreciated the participation" of the county judge at the public hearing in Guthrie, Texas, on June 10, outlining the TxDOT plan for area counties for 2011-2014. In addition to the TxDOT repair of two off-system bridges in Motley County, two other projects were announced: 1) an overlay east from Floyd County line to the east city limits of Matador, beginning September 1, 2011; and 2) redo eight miles of FM94, south of Northfield.

Stephen Rainbolt, National Family Care Life, provided the court with an overview on a "cafeteria plan" which allows

employees to pay for certain expenses, like health insurance or child care, with pre-tax dollars. "Employees buying benefits with pre-tax dollars will give them more take-home pay than if the employee had paid for the benefits with after-tax dollars," he said.

Following this presentation, Henry Tarango, South Plains Community Action, spoke to the court about participating in the Texas Home Investment Partnership Program, a program funded by the Texas Department of Housing and Community Affairs.

"We build new homes for the elderly and disabled," he said. "This area is underserved, and there is a lot of money not being utilized." Currently, there is a total of \$375,000 for grant project funds to provide assistance to a minimum of five households for a housing rehabilitation and reconstruction project.

"This is like an Extreme Makeover," he said, adding, "the old house is demolished, and a new one is built on the footprint." These new 1,100 square-foot, fully bricked homes, also includes a commitment from the county for demolition, disposal, tree removal and site preparation, as an in-kind match to the project.

The court voted unanimously to support a resolution to be placed in competition for the funding. Once the resolution is

submitted and accepted, a public forum will be announced where applications will be made available. The county will then name a selection committee to select participants for the program.

Rick Collett spoke to the court about estimates on repairing the 6,300 square-foot roof on the courthouse. One option would include removing the current gravel roof, repairing the masonry ceiling, and applying 1-1/2 inches of polyurethane coating. Two other options would exclude the removal of the gravel roof, and would consist of 1-inch polyurethane coating applied to the old roof. Commissioner Roy Gene Stephens will take the lead on investigating the estimates, and will report back to the court at the next scheduled meeting.

Dianne Washington, CPA, presented the Annual Financial Report for the Year Ending, September 30, 2008. "Finances improved in 2008," she said, adding, "overall, each fund group had a positive balance."

"While the government's total net assets decreased by \$28,932, as of the close of the 2008 fiscal year, Motley County reported a fund balance of \$389,297, an increase of \$27,947 in comparison with the prior year," Washington reported.

The court voted unanimously to approve the audit for 2008. The Financial Report for 2009 is expected to be presented in July.

Songwriter traveling horseback from California to New Hampshire

By Carol Campbell

Linnny Kenney's online blog reads: "On March 1, 2010, San Francisco based singer/songwriter Linnny Kenney set off with her horse, Sojourner, on a cross country ride starting in CA heading to her childhood home in NH. Linnny is riding in celebration of strong families and as an outreach to families dealing with divorce-related depression. Linnny hopes to gather as many stories as possible along the way about individual experiences with divorce and that crazy mystery we call love. www.linnnykenney.com."

Linnny and her support team, Walter Rowland, arrived in Matador about 11:00 a.m., June 11, 2010. Linnny, 29, has travelled about 1,300 miles horseback from Los Angeles,

CA, and has 2,000 miles to go to her childhood home in Bath, New Hampshire.

They left Floydada yesterday in 100-degree weather, Linnny riding Sojourner, and Walter following behind with the camping gear strapped to the top of their vehicle. There is no horse trailer in site.

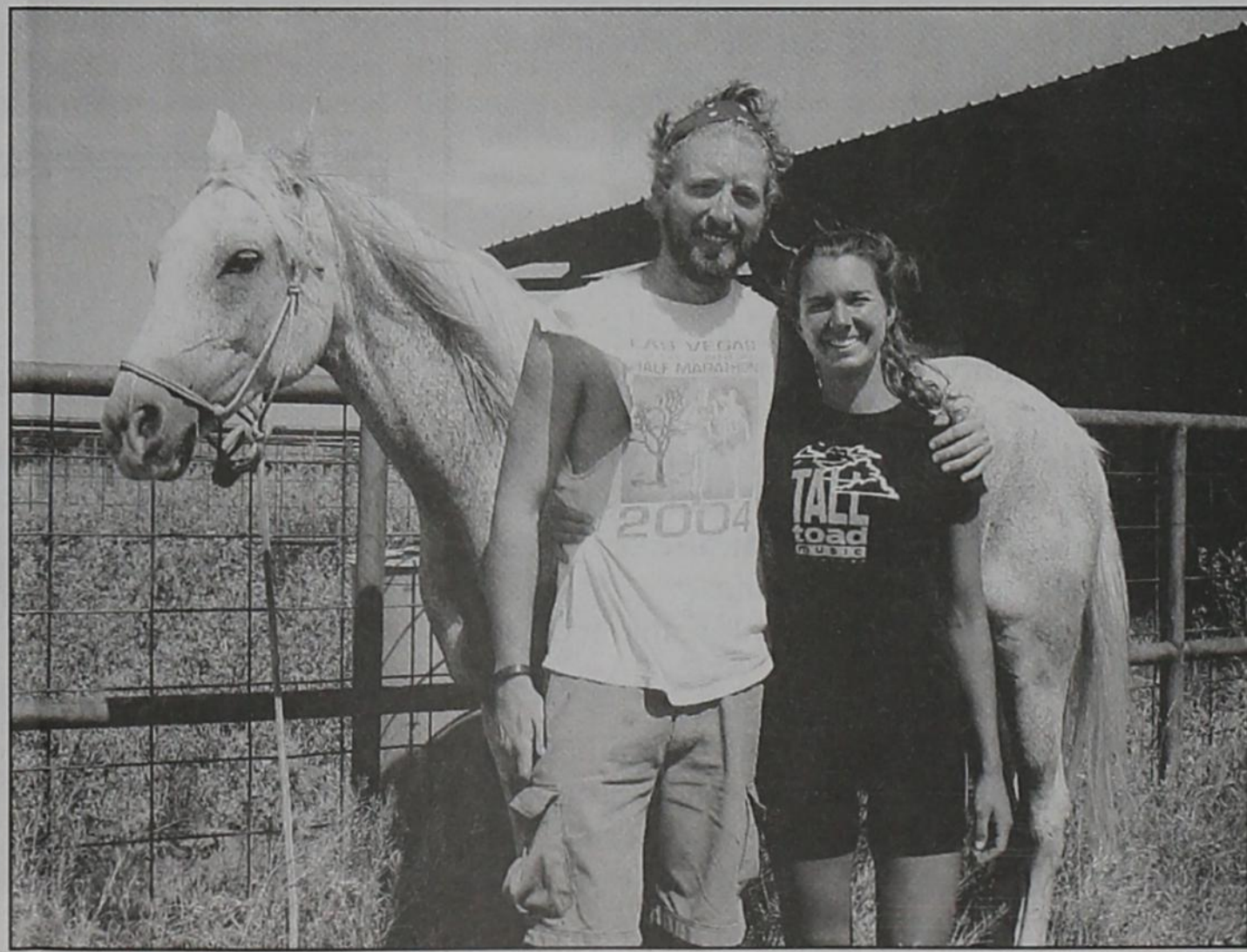
The heat finally derailed them at the 17-mile marker going east. About 8:00 p.m. they stopped at a house on Highway 70, and explained their plight. Following a neighborly call to Wes Campbell who put them in touch with his son, Wesley Campbell, they located a holding pen for Sojourner with water and feed; and then Wesley "put them up" in a bunk house in Dougherty. "We seem to bring out the very best in people," Walter said.

They started early this a.m.

from Dougherty, and now they can rest a day. "This is really our day off," Linnny explained, who was looking forward to a bed and a shower at Billie Deans Motel. "Tom Farris (Floydada) is buying our meals in town today," Walter said.

The travelers have two sponsors: Kent Feed provides Omegatain, a high-powered horse feed that will allow Sojourner to make this 3,000-mile trip to New Hampshire; and Easy Boot, Inc., a company that is supplying Sojourner boots. "Sojourner is barefoot," Linnny said. The Easy Boots protect the horses' feet on the asphalt.

Next stop is Fredrick, Oklahoma, about 135 miles from here, where they have been invited to join a 4th of July parade, then they will cross the Mississippi River to St. Louis.



Pictured (L to R): Walter Rowland and Linnny Kenney with Sojourner, have traveled 1,300 miles from Los Angeles. Their final destination is Bath, New Hampshire -- about 2,000 miles to go. They recently came through Matador, spending an "off day" at Billie Dean's Motel, while Sojourner rested at the FFA Barn, west of Matador.

photo by Carol Campbell

Happy Father's Day

Foothill Country

Connections

Community, Diversity, Art
When you have history, you have pride.

By Laverne Zabielski

Raising kids, taking care of Dad, taking care of Mom, loving grandparents, remembering step parents, savoring uncles and aunts. All the ways we take care of each other.

As the baby boomers go, so goes the country. The degree to which the way we cared for our own children, and the degree to which our parents cared for us will determine the way we care for our aging parents. Every year more and more of us will be making decisions regarding the care of our parents, with no handbook in sight. We will be the writers of that manual.

Just as families have had to find adequate child care as more women began careers, they will now need to negotiate care for their parents. Just as

report cards and parent conferences exist for understanding our children's progress, so will communication need to be developed for understanding our parents' condition.

This week's paper begins a series in learning to develop the kind of relationship needed between families and caregivers for the elderly. Each week we will look at how to implement these ideas.

Be sure to attend the Senior Planning meeting at Hackberry Creek Care Center on July 22 at 6:00 p.m. This will be an informative meeting which will benefit anyone with questions about senior estate planning.

While Sunday may be designated as Father's Day, take time to extend a special hug to all the people in your life who care for you.

WRITING COMMUNITY

A FAVORITE MEMORY

By Corky Marshall

Everyone has a favorite memory,
Mine is about my daddy and me.

Lying out in the back yard on a warm summer night
Looking up in the sky at the beautiful sight,

Daddy would turn to me and say,
"Look there, Son, there above the Milky Way."

"Look at those stars; they're shaped like a car,
Right there Son, under that big brightest star."

Then he'd see some that looked like a man on a horse;
I'd hug his neck and see the same thing of course.

Then he'd see some that spelled my name.
Though I couldn't read, I'd see the same.

Then some that looked like a bird in a tree;
He would say, "Now Son, see what you can see?"

I'd find the Big Dipper right below the car,
He'd say, "Now follow the handle; there's the North Star."

Then he'd explain to me now on the darkest night,

You'd always be looking North when you would see this
star so bright.

Then he would tell me how the sailors could chart their
course;
When they would look and find this God-given source.

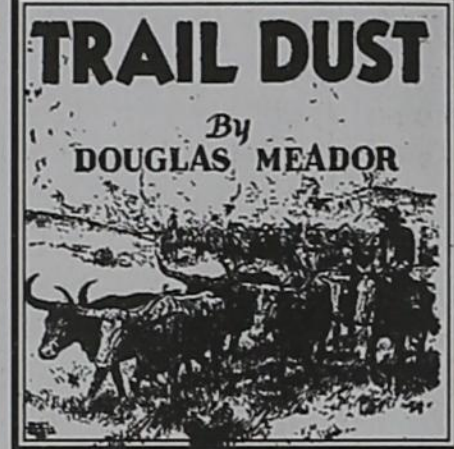
Then he would start a story that rambled on and on;
About his boyhood times on an East Texas farm.

He'd tell me about himself and his dad under the same
star;
And about the time he saw his first real car.

He'd tell about a pack of dogs their neighbor would
keep;
And name them all by name before I fell asleep.

Then I'd feel my eyes trying to close;
He'd say a little prayer and let me doze.

Now the stars are still there, but those days are
gone,
And each night I see them; I remember Daddy, his
stories and home.



Matador Tribune
May 27, 1937

Death was hiding in an old prairie-dog hole on a mesquite flat and the cowboy's companions shot his crippled horse after they had carried the silent rider to the chuck-wagon and pillowed his head on a bed roll beneath the fly. They turned the herd loose the next day and followed a buckboard across the hills to town.

The cowboy's bed-roll and saddle were left with the wagon until one afternoon a saffron-haired girl rode into camp and asked for the things that had belonged to him. There were no tears in her eyes as she unrolled the bed and took a bundle of letters tied with a piece of hobble rope. Her voice was soft

and even as she asked to meet his friends, shaking the hand of every man, then she wrote an address on a wrapper from a coffee package with the request that the bed and saddle be forwarded. Stepping easily into the side-saddle, she rode out across the flat beyond the herd to a secluded spot and burned the letters; a small flame in the cooling furnace of day. When the last ribbon of smoke had vanished, the golden girl stood motionless above the small heap of ashes and looked into the red sunset as dust from the milling cattle drifted above the mesquites. Presently she was gone.

Put June 19 on your calendar as a
workday to clean up
fix and paint at the City Park
Please come Volunteer!

Tips for people with family or friends in a nursing home

The following are some recommendations to help you monitor and document care provided in the nursing facility.

The facility must develop a care plan enabling your loved one to achieve the highest practical level of functioning. This includes all aspects of care and services and identities changes. It is very important for you to be at the initial and follow-up care plan meetings, as regularly scheduled. The meeting should include the medical director, dietitian, physical therapist, pharmacist, nursing director, social director and activities director.

Request to see charts regularly to ensure that proper documentation of activities of daily living (ADLs) are noted as well as any reports you requested to be included such as new bruises, bedsores, etc. Changes in behavior, fever and falls should automatically be included in the chart, as this is required. These records can assist in care planning.

Have a routine of frequently reviewing the nurses' notes contained in the charts.

The facility may require you to designate one person who is allowed to review the chart.

Document whether the nursing home calls to report changes in the condition of the resident, such as any falls encountered, fever, etc. Are these documented in the resident's medical chart?

Federal law requires postings of direct caregivers on each shift. Take notice of it.

Ask about staffing ratios and how many "hours of direct care" the facility's residents receive per day. Be aware that you may be given ratios based on number of staff per number of residents. This could include maintenance, cooks, etc. You want to know hours of direct care, not how many people are employed there.

Visit at irregular times. If staff expects your visits, you may only witness desirable behaviors or treatment of residents.

Follow up/communicate with family and friends who have visited during your absence. Were any changes in condition noticed with the patient?

Keep a journal of your visits. Include the demeanor of the patient, attitude of staff, any unusual bruising, etc.

Become familiar with staff and names of staff, shifts worked, etc.

Review annual inspections of the nursing home. You have the right to do this.

These reports should be in an accessible location on the premises.

Become aware of and document any unpleasant smells in the nursing home, physical obstacles in the hallway, inattentive staff, unanswered call bells or cries for help, etc.

Get to know family members of other residents who visit regularly. Sharing information and concerns is important.

Take photos of suspicious bruises or wounds, etc. Use a reference tool, such as a coin, to place near the affected area to indicate the size of the bruise or wound.

Take photos of good times, too.

Get involved with Family Councils. These councils meet to discuss issues and concerns of the residents. Appoint a family member to take minutes at the meetings instead of relying on nursing home staff. Make copies of reports and complaints you make to any agency.

Ask for copies of medical records if your loved one is sent to a hospital for medical care.

If the problem is not resolved to your satisfaction, you may choose to seek private legal counsel.

PUBLIC NOTICE DEADLINE: FRIDAY NOON
PRIORITY DEADLINE: FRIDAY 5 PM
FINAL DEADLINE: MONDAY NOON

Wake up Wednesday mornings to the
MOTLEY COUNTY TRIBUNE

Email Subscriptions Now Available \$25

Send us your email address
and we'll email you a PDF
of the Motley County Tribune
free for three months!

Got Questions? Suggestions? Call us anytime
Larry 859-351-8099 Laverne 859-576-4625
Office hours: Mon-Tues 9-4 Wed 9-noon
Charli 806-789-3484

MOTLEY COUNTY TRIBUNE

Laverne Zabielski & Larry Vogt, Publishers & Editors
Carol Campbell, Feature Writer
Charli Bigham, Office Manager

TASB Media Honor Roll

Houston Press Club Editorial
Award Winner
West Texas Press Association
Member
Texas Press Association
Member



Award Winner

The Motley County Tribune, (ISSN: 0897-4322), purchased on November 29, 2007, is published weekly each Thursday, except Christmas week, at Matador, Texas. The office is located at 724 Dundee, 806.347.2400. Periodical-class postage paid at Matador, Texas, Postmaster. Send address changes to Motley county Tribune P.O. Box 490, Matador, TX 79244.

NOTICE: Any erroneous reflection upon the character, firm, or corporation, which may appear in the columns of the Motley County Tribune will gladly be corrected upon being brought to the attention of the publisher.

PUBLICATION NO. 333700

Subscription Rates: Motley County, \$30

All others, \$35 Over 60 may deduct \$1.00

Email \$25

P.O. Box 490, Matador, TX 79244

Advertising Rates: \$3.60 per col inch, in county
\$3.85 per col inch, in Texas
\$4.25 per col inch, national

Tear sheet \$2 and publisher's affidavit: additional \$3

Scanned documents additional \$5

Obituary: \$25 minimum, with photo, additional \$5

Thank you notes: \$13 minimum

Birth and Wedding Announcements:

\$25 minimum, with photos additional \$5

Classified: \$6 1st four lines paid in advance, \$7 billed

"A Place to Call Home"



Whether transitioning from hospital to home, needing intensive rehabilitation or skilled nursing services, Hackberry Creek Care Center in Matador has a staff of professionals that specialize in these services.

Hackberry Creek Care Center is a place where you can catch up on old friendships and easily begin new ones. Our residents tell us that the moment they walk through the door, they feel welcome.

- Skilled Medical Services
- Rehabilitation Services
- Physical Therapy
- Occupational Therapy
- Speech Therapy
- Hospice Services

And much more!



**HACKBERRY
CREEK
CARE CENTER**

Matador, Texas • 806-347-2942

Texas Panhandle well represented at recent Wind Power Conference

FLOYDADA, Texas, June 2, 2010 - "We like wind; go get smart on it," is what former President George W. Bush told the Texas Public Utility Commission Chairman, Pat Wood, back when he was the governor of Texas.

At the recent American Wind Energy Association (AWEA) annual WINDPOWER Conference in Dallas the 43rd President of the United States reflected back on key decisions he made that helped make Texas a leader in wind energy development. Bush also noted that if Texas were an independent nation it would be the sixth largest wind producing country.

Texas's success in wind energy made it the ideal location to hold this year's annual meeting of approximately 20,000 attendees and 1,400 exhibitors interested in wind energy, and the Texas Panhandle didn't go unrepresented. Along with Caprock Plains Wind Energy Association, a non-profit group representing those supportive of wind energy throughout Hale, Floyd, Motley and surrounding counties in Texas, several others from the region attended the conference with the hopes of spreading the word that wind energy development is welcome in the region.

Justin Jaworski, Executive Director of the Floydada Economic Development Corporation attended the event in association with The High Ground of Texas. The High Ground is a regional economic development coalition of the 66 counties stretching from the Panhandle through the South Plains and to

the upper Permian Basin.

"The level of representation for this region was incredible considering the size of this event. It was a great opportunity to talk up the region to some of the top developers in the nation," Jaworski said. "We were able to make contact with several companies and remind them of the great wind resources we have and how business friendly we are as well."

This year was David Foster's first time to attend the annual event. Foster, a local landowner, said developers seem to be hesitant to move forward because of current transmission constraints in the region and are looking for areas that have collected meteorological (met) data. Foster said he developed contacts within the industry that could be instrumental in bringing more wind energy development to the South Plains.

"From all the developers I talked to it seemed like collecting met data was the best thing we could do to entice them to our area," Foster said. "With the magnitude of investment that these companies are putting into wind, it really looks like the up and coming thing."


During one of the breakout sessions during the conference, panel speakers recognized the lack of transmission as a major issue for renewable energy development. One speaker noted that the Competitive Renewable Energy Zone (CREZ) transmission build out in Texas is working to put the chicken first, essentially helping to solve the chicken versus the egg scenario with transmission and wind

development in the Texas Panhandle.

Another session featured Ray Perryman of The Perryman Group, an economic and financial analysis firm that recently released a study outlining the impact of CREZ on electricity cost savings and economic development. The Perryman Group found that many areas throughout the state stand to benefit greatly from the CREZ build out, saving the typical Texas residential consumer between \$160 and \$355 annually on electric bills, creating \$30 billion in economic gains, employing thousands and bringing in several billion dollars in state and local taxes. You can find the full report at <http://www.perrymangroup.com>.

Many experts at the conference expressed that extensive wind development is a national challenge that needs top down solutions. AWEA's CEO Denise Bode stated that our nation is essentially competing with one hand tied behind its back until we get a solid national commitment to renewable development. Noted in a session on public acceptance, 89 percent of American voters believe that wind energy is a good idea.

CPWEA is a non-profit association working to connect landowners and local businesses with the wind industry. Our goal is to recruit wind development to the region and help revitalize rural communities. Go to <http://www.caprockplainswind.com> to find out more about our association and how you can help support our cause.



HACKBERRYHAPPENINGS

BY CARLA MEADOR, MARKETING DIRECTOR

LAB WORK OFFERED TO THE PUBLIC

Hackberry Creek Care Center is proud to announce that Precision Lab will now offer outpatient lab blood work to the public at our facility. Anyone wishing to take advantage of this at-home service, without having to drive a hour or more, will be able to do so early Friday mornings. A technician from Precision Lab is at the Center every Friday morning at 4:30 to 5:00 a.m. Please call the Center and speak with Amy or Cindy if you would like to have your blood work done here. You will need an order from your Physician, your social security card, insurance, medicare or medicaid card. Precision Lab will fax your results directly to your doctor. Billing will be done by Precision.

You may have to get up a little early to get your testing done, but save yourself the time and gas involved with having to drive out of town for a test taking a few minutes to administer. And the good thing is you can have your testing done, go home and back to bed.

If you have questions regarding our lab services call John, Amy or Cindy at 347-2942.

EMPLOYEE OF THE QUARTER

Congratulations to Daphne Meredith for being named "Employee of the Quarter" at Hack-



berry. Daphne was rewarded with a \$50 Visa card and a parking space in the front parking lot for a month. She was awarded this honor after receiving the most nominations and votes by co-workers. One of the comments made during the nomination process was, "Daphne is dedicated, hard working and has a loving and caring attitude with the residents."

Daphne is a LVN and has been nursing for 20 years. She began her career as an OB Newborn nurse at the Plainview

Hospital. She also worked as a Pediatrics Nurse for WIC and for Home Health before she began working as the Nurse at Motley County Clinic where she nursed and later also managed the Clinic for 13 years. "I know that God called me into the Nursing profession. I enjoy my career and find it very rewarding. I enjoy working at Hackberry and am honored to receive this award," Daphne stated.

Daphne and her husband, Yancy, have one son, Parker, a student at MC ISD who will begin his Freshman year in the fall. The family lives in Roaring Springs.

Thank you, Daphne, for your hard work and dedication. Hackberry truly appreciates you!

NATIONAL NURSES ASSISTANT WEEK

Hackberry CNA's are so appreciated and have been recognized this week for their tireless work during National Nurses Assistant Week, June 10-17, 2010. CNAs (Certified Nurses Assistants) play an important role in the health care profession. They assist patients with activities such as dressing, feeding, personal hygiene, transferring to and from bed or wheelchairs, and rehabilitative exercises. Some CNAs even accompany patients on visits to the doctor or the grocery store. ADON Amy Cruz said, "Hackberry has some of the best CNAs and we are grateful for the work and dedication they give to our residents."

If you know a CNA give them a hug or a pat on the back. You just may need them someday.

SPRINGS OUTING

On Thursday, June 17, Hackberry residents will enjoy an outing to the Roaring Springs Ranch. The roar of the rolling falls and the cool breeze blowing off the cold water will be a soul soothing treat for those making the trip. Although only a short 10 miles away from Matador, the historic Springs is an oasis at home. Many of our residents can tell tales of hours spent at the Springs in their younger years. Several changes have been made to the site, but the roaring waterfall, the ice cold swimming pool, the trails where Indians once trekked and camped and the corn grinding rock where they prepared their food remain the same and the stories of old are memories kept with some of our residents. Residents and accompanying

staff members will enjoy visiting under the big shade trees and reminiscing. What a wonderfully pleasant outing to make for a great day for Hackberry.

TOWN HALL MEETING

Mark your calendar now and make plans to attend our Town Hall meeting to be held July 22 at 6:00 p.m. The topic will be Senior Planning. This will be a very informative and important meeting which will benefit anyone with questions about senior estate planning.

SR. HEALTH TIPS EMERGENCY PREPAREDNESS TIPS FOR THE ELDERLY PERSON

* Assemble disaster supplies. The following items are recommended for inclusion in your basic disaster supplies kit:

- * Three-day supply of non-perishable food.
- * Three-day supply of water - one gallon of water per person, per day.
- * Portable, battery-powered radio or television and extra batteries.
- * Flashlight and extra batteries
- * First aid kit and manual
- * Sanitation and hygiene items (moist towelettes and toilet paper)
- * Matches and waterproof container
- * Whistle
- * Extra clothing
- * Kitchen accessories and cooking utensils, including a can opener
- * Photocopies of credit and identification cards
- * Cash and coins
- * Special needs items, such as prescription medications, eye glasses, contact lens solutions and hearing aid batteries.
- * Other items to meet your unique family needs.

Just as important as putting your supplies together is maintaining them so they are safe to use when needed.

It is also very important to arrange for someone to check on you. If you have home health care service, plan ahead with your agency for emergency procedures. Keep important papers in a place so that you will have access to take with you if you have to leave your home.

Hackberry Creek Care Center, INC, is an Equal Opportunity provider and employer. To file a complaint of discrimination write USDA, Director, Office of Civil Rights, Room 326-W, Whitton Building, 14th and Independence Avenue, SW, Washington, D.C.

The American Wind Energy Association has new ally

The American Wind Energy Association has a powerful new ally in its quest to increase U.S. wind production: the United Steelworkers Union, whose members make much of the industry's equipment and want to make more. The two groups announced a partnership Thursday "to expand U.S. wind power production and related domestic manufacturing, with programs to build up the domestic supply chain for the growing industry," Jenny Mandel of Environment & Energy Daily reports.

"We jointly recognize that

the deployment of wind energy facilities are vital to this nation's energy security, but that deployment must be linked, to the maximum extent practicable, with the development and utilization of domestically produced materials, original-equipment manufacturers and component parts," the groups said in a joint statement outlining the partnership. As recently as March AWEA had fought legislation that would have punished companies for looking abroad for turbine equipment.

"That collaboration will in-

clude "results-oriented targets" for the growth of existing and new domestic suppliers, the establishment of an inventory of domestic suppliers, identification of supply chain gaps to be filled and jointly developed training programs to ensure that workers have the skills needed for wind-related manufacturing," Mandel writes. Denise Bode, the CEO of AWEA, described the steelworkers as "the wind union," saying, "we're well-positioned to recapture leadership in a brand-new manufacturing sector: wind."

MOTLEY COUNTY TRIBUNE Announces

1st Annual

Douglas Meador Writing Contest

\$300 1st place \$150 2nd place

Stories and Personal Narratives from 1850-1940

Winners to be published in 1st Annual

Old Settlers Trail Dust Anthology

"WRITING WEST"

Deadline: July 5th, 2010

Email mctribune@gmail.com

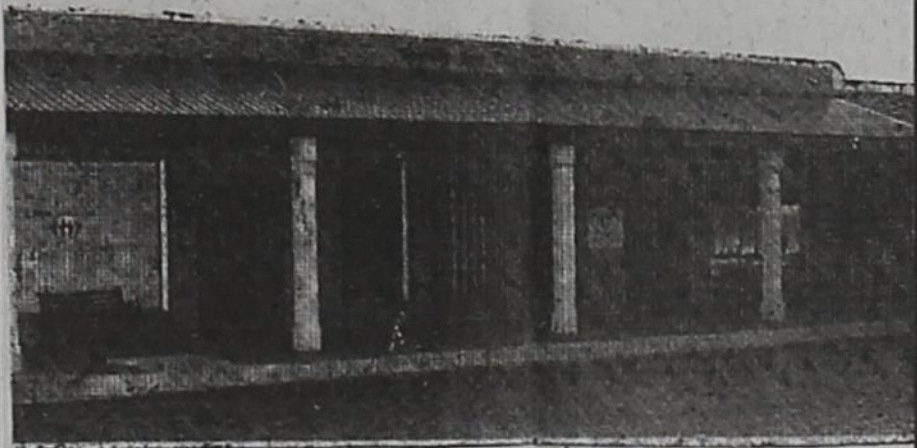
for submission guidelines

Family Eye Care

Blake Avera, M. D.
Ophthalmology - Surgery



Amy Bishop, O. D.
Therapeutic Optometrist



CLINIC FULL SERVICE OPTICAL

COMPREHENSIVE AND CONTACT LENS FITTING

TREATMENT OF EYE DISEASE AND SURGERY OF THE EYE

LOCAL CATARACT SURGERY

AFTER HOURS EMERGENCY CARE

LARGE SELECTION WITH OVER 500 DESIGNER FRAMES

SAME OR NEXT DAY SERVICE ON PRESCRIPTION EYEWEAR INCLUDING:

- *SINGLE VISION
- *BIFOCALS
- *NO LINE PROGRESSIVE TRANSITION LENSES IN MOST CASES
- LARGE VALUE COLLECTION AVAILABLE WITH MULTIPLE PAIR DISCOUNTS

PROVIDING REGIONAL EYE CARE SINCE 1994
125 AVENUE B NW CHILDRESS TEXAS (940) 937-2015

"SIMPLY CHRISTIAN"



There are certainly some private aspects to the Christian's life. Prayer, meditation, reading the Scriptures, memorizing special passages from the Bible, all of these, without controversy, are important activities in the life of a disciple of Jesus Christ.

But, what does it mean to be called a "Christian?" In Acts 11:26 we read about those early disciples being called Christians first at Antioch. In Acts 26:28 King Agrippa speaks to Paul about almost converting him to Christ. 1 Peter 4:16 Peter exhorts those who are "strangers" in this world to not be ashamed if they suffer persecution because of wearing the name "Christian."

There is much more to the Christian Faith than just silent devotion to the Lord. Those early people who were called "Christians" were alive and vibrant with their faith. They were not ashamed of who they were or what they were. Rather, they were engaged in the activity of declaring the Kingdom of God to those around them. From those around them came the name, "Christian." Why? It is obvious. The early disciples were identified by their conduct. They were seen as men and women who resembled Jesus in their actions. Should not our conduct in speech and activities resemble Jesus?

Roaring Springs Church of Christ
Michael G. Crowley, Sr.
BIBLE STUDY 10:00 a.m. Worship 9:00 a.m.

NEWS AROUND MOTLEY COUNTY

Roaring Springs News

By Monta Marshall

On a personal note . . .

I have a correction to make. Joyce Smith's former home has not sold yet. I was given the wrong information. I apologize for the inconvenience and confusion the error has caused. Michelle Smith called yesterday and asked that I print a correction.

In the community . . .

Some news that I misplaced was sent by Karmen Jenkins McCullough letting us know that her granddaughter, Heather Braselton West, graduated from Texas Tech University with a Doctor of Physical Therapy degree on May 22, 2010. Congratulations to Heather and her family. That is quite an accomplishment!

Last Tuesday, June 8, The Roaring Springs Community Volunteers met at the Community Center to hand over the reins to a younger group. Attending the meeting was: Steven Byrd, Timmy Brooks, Bobby Witcher, Gary Simpson, Alex and Jo Crowder, Zella Palmer, Deanette Gullede, Kristi Ward, Barbara Bogart, Jen Charette, Lou Ann Silva, J.N. Fletcher and Corky and Monta Marshall. The new officers of the Roaring Springs Volunteers are Deanette Gullede, president; Krisiti Ward, vice president; Lou Ann Silva, secretary; and Jen Charette, treasurer. For information on the new Roaring Springs Volunteers, contact one of the officers.

The members retiring have offered to help in an advisory capacity or to help when requested, if possible. The retiring members will be helping with the Fourth of July Celebration this year as planned.

Some of the activities planned for the Fourth are: a

parade; doggie show; hilarious hat contest; and the ever popular stick horse races just before the fireworks. Be getting your stick horses ready and trained for the derby, the steeple chase and other races.

This is the big weekend for the Roaring Springs All School Reunion. It will be held at the Roaring Springs Community Center. Registration will begin at 9:00 a.m. A business meeting will be held at 10:00 a.m. and a catered meal served at noon. A program will be presented at 2:00 p.m. Judy Cartwright has headed up the committees preparing for the reunion. We have been getting lots of calls of folks telling us they are planning on coming. Come and catch up on all your school chums and re-live your memories of being a YELLOW JACKET!

On Saturday evening at 5:30 p.m. hamburgers will be served at the Old Settler's grounds preceding a area youth meeting, the "Awakening." There will be musical groups who have been practicing for months and I believe two speakers. Jennifer Brady, 596-4543; Nancy Marshall, 347-2616; Gilbert Guerrero, 348-7121 and Matt Washington, 348-7058 are information contacts.

Diane Carter has returned home from visiting her son in Alaska. Floyd is taking his turn visiting in Alaska; he left this morning to fly up there. He and his son plan to go up to their cabin in the mountains. Diane did not get to go up as there was a fire in the forested area in their vicinity. After much prayer and rain, the fire is almost out and is not spreading more; it is just three miles from their cabin. If conditions improve more they will spend some time there.

Flomot News

By Earlyne Jameson

Overheard

We join countless children here and elsewhere in wishing deserving Dads everywhere a very Happy Father's Day! They have earned it.

Darla Gwinn and daughter, Danielle, attended the Howard College Lamb Camp held in Big Spring from Sunday- Tuesday, June 6-8. They had adult and youth educational classes. Visiting overnight Saturday with Mrs. Mary Jo Calvert and Glen Calvert was Justin Calvert of Dumas. Luncheon guests Sunday in their home were Mrs. Gwen Mandrell and daughter, Peyton, of Lubbock; and Josh Lee and Lee J. Browning of Flomot.

Mrs. Christi Milam of Kiowa Lake visited Wednesday with her parents, Kathy and Clois Shorter, accompanying her daughters, Emily and Haley home, who visited here the past two weeks.

Donna Sue and Stanley Degan of Calgary visited Sunday with her mother, Mrs. B. Rogers and brother, Donnie Rogers. They also visited in Matador at Hackberry Creek Care Center with his mother, Mrs. Leona Degan.

Enjoying a steak dinner Saturday night at the Windmill Cafe in Roaring Springs were Mary Ellen "Dude" Barton and Wilburn Martin of Flomot, Mrs. Judy Renfro of Matador and Marisue and Ralph Powell of Mott Creek Ranch. Mrs. Jackie Davis, Michael and Virginia Davis of Fritch

visited Sunday with her parents, Nada and Jack Starkey. They canned apricots.

Mrs. Brenda Lee of Clarendon visited Ruth and Orville Lee Thursday.

Visiting in the home of Brenda and Darrell Cruse are daughter, Leah Cruse of Amarillo and granddaughter, Reese Cruse of Gillett, Wyoming.

Mrs. Wanda Davey of Plainview has been accompanying her daughter, Mrs. Roger (Shonda) Lee to Lubbock once a week for chemotherapy treatments. May God Bless her.

Wilburn Martin was in Amarillo Thursday for a medical appointment. Mrs. Cindy Calvert and son, Cade, houseguests of her parents, Kathy and Clois Shorter, met her husband, Chad Calvert Sunday at the Lubbock airport who had flown in from Virginia. She accompanied him here to visit her parents and in Turkey with his mother, Mrs. Wanda Calvert.

Electrical Rain Storms

Motley County had constant flashes of lightening followed by clapping thunder with high winds Thursday night June 10 and again Sunday night June 13, in Whiteflat and Flomot. Thursday night rains reported varied from .20 to .50 and in Whiteflat .30 to .50 inches. Sunday night a downpour in Whiteflat dumped 2.00 to 2.80 inches and .50 in Flomot.

Matador News

Dr. Cathy Morton of Lubbock, Janet Corder of Roanoke, and Joan Gore of Plano stayed at Hotel Matador last week. From there they traveled to area schools to provide training for technology coordinators.

Laura and Mark Murphy of Plano; Chris and Brittany Sat-

tel of Denver, CO; Ken and Kim Murphy of Milton, GA; Michael and Laura Murphy of Henderson, NY; were in Matador last week as part of the Murphy family reunion. They stayed at Hotel Matador while the grandchildren stayed with Grandmother Nita Murphy.

Sheriff's Desk

by Chris Spence



For the month of May, the Motley County Sheriff's Office received 38 calls from citizens and drove 3,040 patrol miles.

CASES: Cases solved, 14; Cases under investigation, 2; amount lost to theft or burglary, \$8,638.00; Amount recovered, \$27,000.00; Motor vehicle accidents investigated, 1; Assault, 1; Theft, 3; Burglary, 1; Criminal Mischief, 1; Disorderly Conduct, 0; Livestock Calls, 8; Assist Citizens, 4; Assist outside agency, 6; Civil Standby, 0; Suspicious Person, 5; Telephone Harassment, 0; Family Disturbance, 2; Minor in Possession of Alcohol, 1; Other, 6.

ARRESTS: Misdemeanor, 2; Felony, 1.

PAPER SERVED: District Court, 0; County Court, 1; JP Court, 2; Out of County Court Papers, 0; Bailiff for

Court, 1. **TRAFFIC:** Traffic Citations, 3; Traffic Warnings, 2; Funeral escorts, 1.

CASES UNDER INVESTIGATION: Working with Texas Ranger Foster on the Burglary of Allen Butler Gravel Pit; Possible Minor in Possession of Alcohol; turned over to County Attorney; Aggravated Assault with Deadly Weapon, under investigation.

Note: If you see someone acting with suspicious criminal behavior in our county, please contact the Sheriff's Office. I am on call 24/7 for the citizens of Motley County. For after-hours and holidays, please call the Sheriff's Office phone number, and it will be forwarded to my cell phone number. I still have the same number by calling 806-269-3577.

Thank you.

Motley County Hospital Board meets

The Motley County Hospital Board met Wednesday evening June 9 in the EMS building in Matador. Present were board members Dianne Washington, Charles Johnson, Linda Roy and C. W. Moore. Member Ken Abbott

was absent. The board paid bills and discussed the ongoing problem of achieving rural health clinic status and the difficulty of recruiting medical personnel to staff the clinic. The meeting was adjourned at the end of the discussion.

The Frosty Frog Snow Cones

Open 7 Days A Week
(Inside Matador Floral)

Greenbelt Golf

It's that time of year again when kids from all over the area participate in the Greenbelt Golf. Greenbelt Golf is a junior golf league for kids ages K-12th grade. There are four different age groups for boys and girls. K-3rd play four holes from 150 yards; 4th and 5th grade play five holes from 200 yards; 6th, 7th and 8th play nine holes from the men's and women's tee boxes; and 9th and up, the girls play nine holes from the women's tee box and the boys play 18 holes from the men's tee box.

Each player must carry their own clubs and once play has started they may not be coached by anyone. Even with this rule, this is a family sport. During each tournament you see many parents, grandparents, aunts and uncles at the course to cheer on the kids. Medals are given for 1st - 3rd and points are awarded for 1st - 4th for the overall trophies at the end.

The first Greenbelt golf tournament was Monday, June 7th at Roaring Springs. Seventy five children from around the area came to compete.

K-3rd girls: 1st place, Kenzie Clary, 2nd place, Sierra Jameson, 3rd place, Jayda Jameson.

K-3rd boys: 1st place, Rowdy Duncan, 2nd place, Jeff Engle, 3rd place, Jaron March, 4th place, Seth Bearden.

4th and 5th girls: 1st place, Taitlyn Thompson, 2nd place, Livie Hughes, 3rd place, Ka-

mri Ashmore, 4th place, Bailey Martinez.

4th and 5th boys: 1st place, Hayden Griffen, 2nd place, Ky Markam and Mickey Clary, 4th place, Bryson Elliott.

6th, 7th and 8th girls: 1st place, Cassidy Monzingo, 2nd place, Leslie Mayo, 3rd place, Shelby Elliott, place, 4th place, Shelby Smith.

6th, 7th and 8th boys: 1st place, Korbyn Simpson, 2nd place, Peyton Little, 3rd place, Saylam Maddox, 4th place, Colby Cochran and Sean Wiser.

9th and up girls: 1st place, Mandy Mayo, 2nd place, April Barnett, 3rd place, Jade Watson, 4th place, Kenley Maddox.

9th and up boys: 1st place, Zeke Garcia, 2nd place, Christian Brooks, 3rd place, Austin Taylor, 4th place, Tyson Watson.

On Saturday June 12, 2010, 91 players traveled to Paducah. This course has just reopened and proved to be a tough course for the golfers.

K-3rd girls: 1st place, Sierra Jameson, 2nd place, Kenzie Clary, 3rd place, Haley Hutchinson, 4th place, Jayda Jameson.

K-3rd boys: 1st place, Jeff Engle, 2nd place, Caleb Cates, 3rd place, Seth Bearden, 4th place, Dalton Colbert.

4th and 5th girls: 1st place, Ashley Watts, 2nd place, Mikaela Cates, 3rd place, Taitlyn Thompson, 4th place, Bailey Martinez.

4th and 5th boys: 1st place, Mickey Clary, 2nd place, Kolton King, 3rd place, Pay-

ton Freeman, 4th place, Zane Sloan.

6th, 7th and 8th girls: 1st place, Cassidy Monzingo, 2nd place, Cloe Smith, 3rd place, Leslie Mayo, 4th place, Mattie Brooks.

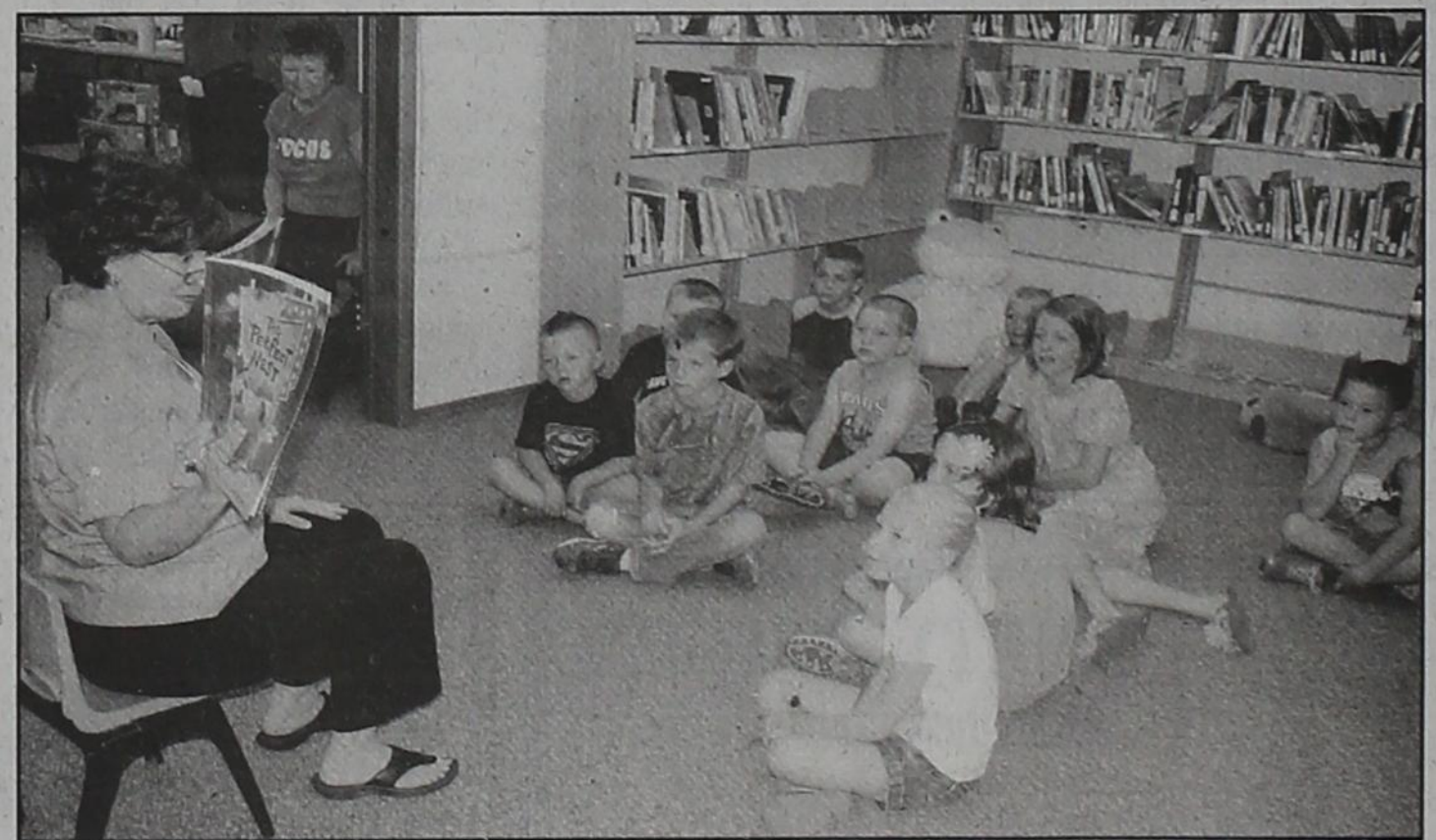
6th, 7th and 8th boys: 1st place, Mason Holcomb, 2nd place, Saylom Maddox, 3rd place, Don Butler, 4th place, Caleb Clary.

9th and up girls: 1st place, April Barnett, 2nd place, Mandy Mayo, 3rd place, Kenley Maddox, 4th place, Megan Monzingo.

9th and up boys: 1st place, Zeke Garcia, 2nd place, Tyson Watson, 3rd place, Christian Brooks, 4th place, Randy Wiggings.

There are five remaining tournaments. The players will travel Monday, June 14 to Quanah; Thursday, June 17 to Shamrock; Monday, June 21 to Wellington, Monday, June 28 to Childress and will finish off the season on Tuesday, July 6th at Memphis.

There are a total of 25 players for Motley County- Christian Brooks, Mattie Brooks, Bryce Brady, Blayne Brady, Kenzie Clary, Bryson Elliott, Eli Marshall, Brazos Washington, Jaxon Edwards, Parker Carson, Reagan Elliott, Shelby Elliott, Rylee Carson, Walker Carson, Mickey Clary, Caleb Clary, Braden Bigham, Austin Taylor, Bryant Taylor, Colby Cochran, Seth Baxter, Mathew Faulks, Logan Jones, Zane Sloan and Tyler Campbell.



Story Time at Motley County Library with Pam Thacker.

This Week's Local Forecast

Thursday Mostly Sunny 96/71	Friday Sunny 97/71	Saturday Sunny 96/70	Sunday Sunny 96/71	Monday Sunny 95/70	Tuesday Mostly Sunny 98/72	Wednesday Partly Cloudy 95/71

<h4 style="text-align: center;">Weather Trivia</h4> <p>What scale is used to rate hurricanes?</p> <p style="text-align: center; font-size: 2em;">?</p> <p style="text-align: center; font-size: 0.8em;">ANSWER: The Saffir-Simpson scale.</p>	<h4 style="text-align: center;">Weather History</h4> <p>June 17, 1882 - A tornado traveled more than 200 miles across the state of Iowa, killing 130 people. The tornado touched down about 90 miles west of Grinnell and struck the town and college around sunset, killing 60 and causing more than half a million dollars in damage.</p>	<h4 style="text-align: center;">Moon Phases</h4> <table style="width: 100%; text-align: center;"> <tr> <td>First 6/18</td> <td>Full 6/26</td> <td>Last 7/4</td> <td>New 7/11</td> </tr> <tr> <td></td> <td></td> <td></td> <td></td> </tr> </table> <p style="text-align: center; font-size: 0.8em;">© 2010, Accessweather.com, Inc.</p>	First 6/18	Full 6/26	Last 7/4	New 7/11				
First 6/18	Full 6/26	Last 7/4	New 7/11							

Matador Motor and Implement

806-347-2422

Motley County Tribune

806-347-2400

Alexander Fuel & Service

806-348-7958

Notes from the Library

By Mary Ann Potts

My first note today is about the library's first Story Time of the summer held on Wed., June 9. Pam Thacker, our featured storyteller, entertained and awed all 10 kids in attendance. Every kid was glued to every word she spoke. Not one made a sound so they could hear every part of her story. Following Story time, all the children joined in creating an animal decorated picture frame. Along with the picture frame, each child's picture was taken to place in the frame and keep as a remembrance.

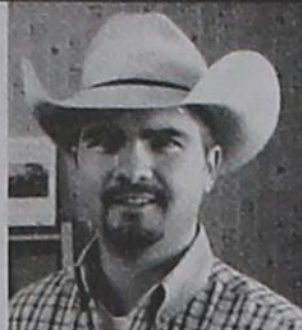
I also want to say a big thank you to Shay Lee Boger for all her help with the crafts. Then came snack time with deliciously baked homemade cookies, courtesy of Friends of the Library. Kids if you missed the last story time, don't worry, Mrs. Alexander will be our storyteller on Wed.,

June 16 at 10:00 a.m. Make sure you mark your calendar.

And if you have requested a book, I have great news! We have received 5 books this week. *Black Orchids/The Silent Speaker* and *Too Many Cooks/Champagne for One* by Rex Stout, both are part of the Nero Wolfe Series. Then there's Charlene Harris' *Dead in the Family*, which is a Sookie Stackhouse Novel, and two books by Robin Jones Gunn, the *Christy Miller Collection* and *Christy & Todd: The College Years* are all ready and waiting for you.

Finally, The Motley County Library is having a Paperback Book Sale through the month of June. These books are at bargain basement prices just 25 cents each! Stop by and browse through our selection. You never know what treasure you'll find.

County Agent's News



by Ryan Martin, Agri LIFE EXTENSION Agent

10 County 4-H Camp to be held in Roaring Springs

A 10 county 4-H Camp will be held on June 22, 2010 at the Roaring Springs Community Center. The camp is open to all 4-H members in Motley, Briscoe, Hall, Cottle, Dickens, Kent, King, Knox, Stonewall, and Foard counties. The cost of the camp is \$10 per member and includes lunch, supper, workshops, swimming and a dance.

Registration will begin at 10:00am and workshops will begin at 11:00am. Participants will also be taken to the Roaring Springs Ranch Club to enjoy swimming after workshop are completed then after supper a dance will held for all 4-Hers.

If you are a 4-H member in one of the 10 counties and would like more information on the 10 County Camp, contact your local county Extension office.

Motley 4-H Members Compete at State Roundup

Jaci Zingerman, Lexi Osborn and Christian Brooks traveled to College Station to compete at State Roundup on June 9-11. They competed in the Safety and Injury Prevention contest where they made a presentation on seat belt safety call "Get Your Buckle On". Although they did an excellent job and should have won, they placed 6th overall in state.

In the photography contest, Shane'a Russell, Jaci Zingerman and Lexi Osborn received a blue ribbon for their photos. Congratulations to these individuals on a job well done!

Texas crop, weather Drought expands further into Texas

COLLEGE STATION -- While the Rolling Plains and other parts of Texas experienced near-perfect conditions for the wheat harvest, other parts of the state became further parched, according to Texas AgriLife Extension Service personnel.

The North, Southeast, Panhandle and nearly all of East Texas remained dry, with dryland crops not growing or stressed due to lack of moisture.

Meanwhile, the National Drought Policy Commission extended its classification of "moderate drought" for about a dozen East Texas counties on May 25 to all of 27 and parts of eight others by June 1, according to Rich Tinker, climatologist with the National Oceanic and Atmospheric Administration's climate prediction center, Washington D.C.

"Moderate drought that was confined close to the Louisiana border the week before has expanded westward to include a larger area, including areas northwest of Houston," Tinker said. "And we introduced some severe drought over a large part of northern Louisiana but not yet extending into Texas."

What is the difference between "moderate drought" and "severe drought?" Tinker said the determination is somewhat subjective, but climatologists try to look at "drought on as many time scales as possible and looking at as many impacts as possible, but certainly emphasizing those impacts that seem more serious at any given time."

On the commission's Drought Portal website at <http://www.drought.gov/>, droughts are classified by number designations. D0 is "abnormally dry," D1 is a "moderate drought," D2 is a "severe" drought, D3 is an "extreme" drought and D4 is an "exceptional" drought, he said.

"The D0 area is generally something that is dry on the scale of a three in 10-year occurrence," Tinker said. "D1 is roughly a two-in-10-year occurrence. D2 roughly one in 10-year occurrence, a D3 is in the order of a one-in-20-year occurrence and a D4 is roughly in the order of a one-in-50-year occurrence."

The U.S. Drought Monitor map of Texas for June 1 can be found online at http://www.drought.unl.edu/dm/pdfs/tx_dm.pdf.

ROLLING PLAINS: Dry weather sped up the wheat harvest. Combines were rolling through fields, and the harvest was expected to be finished soon. Yields ranged from very good to below average. Dryland wheat yields varied greatly, from 20 to 60 bushels, depending upon soil, fertilizer and amount of rust. Cotton farmers were about half finished with planting. Earlier planted cotton was up and growing. Soil moisture levels were quickly dropping with highs of nearly 100 degrees. Grain sorghum looked good. Hay producers took their first cutting of Bermuda grass, and yields ranged from average to a little below. Livestock and pastures looked good. Sudan for hay production was off to a good start.

SOUTH PLAINS: Rainfall ranged from 0.05 inch to 1.5 inches, and temperatures from 90 to 106 degrees. Soil moisture was short to adequate. Field activity included replanting of problem fields, spraying for weeds and cotton thrips, and preparing for irrigation season. Corn was in fair to good condition, showing very good growth with the higher temperatures and good moisture. Irrigated cotton was in fair to good condition, but the dryland crops began to show signs of moisture stress. Sorghum and peanuts were in good condition. Sunflower planting continued. Wheat was in fair to good condition, and was in the hard-dough stage and drying down. Pastures and rangeland were in fair to good condition, but more rain will be needed to maintain large amounts of forage grown due to earlier rainfall events. Livestock were mostly in good condition.

COWPOKES®

By Ace Reid



"Wul Maw, countin' the fertilizer, labor, water and the seeds----we don't have over \$14.65 in this tomatel!"

THIS FEATURE IS SPONSORED BY THE

MATADOR BRANCH
FIRST NATIONAL BANK OF SEYMOUR
 MATADOR, TEXAS
 YOUR "HOMETOWN" BANK Member FDIC

Obituary

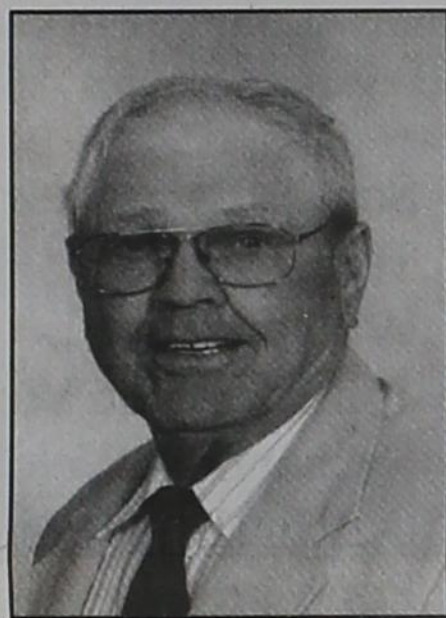
Dean Turner

Graveside services for Dean Turner, 70, Matador, were held at 10:00 a.m. Wednesday, June 16, 2010, at the Flomot Cemetery with Mike Crowley and Riley Turner officiating. Interment was under the direction of Shannon Family Funeral Home of Matador.

Mr. Turner passed away Monday, June 14, 2010, at his residence in Matador. Dean was born October 24, 1939, in Flomot, Texas, to William and Lola Price Turner. He graduated from Flomot High School in 1957. He married Nova Dale Martin on August 31, 1960.

Dean was baptized at an early age and attended the Church of Christ. He was on the Floydada Federal Land Bank board for more than 10 years, Rolling Plains PCA-First Ag Credit now Capital Farm Credit; and active in the Motley County Stock Show and Junior Rodeo Association. He was on the FSA County Committee and worked for the Highway Department from 1961-1977. Mr. Turner's life revolved around his two grandchildren Cassidy and Carley. Dean was a lifelong resident of Motley County and a successful farmer and rancher.

He is survived by his loving wife, Nova Dale Turner, of Matador; one son, Craig Turner



and wife Cathey of Matador; three brothers, Benney Turner of Abernathy, Donnie Turner of Flomot, Texas; and Johnny Turner of Lubbock, Texas; and by his granddaughters Cassidy and Carley Turner of Matador.

The Turner Family suggest memorials be made to the Motley County 4H program or any of the Churches of Christ in Motley County.

Casketbearers were Abel Flores, Darryn Perryman, Kelley Jackson, Rex Johnson, Arnold Johnson, Bob Kilmer, J.D. Russell, Coy Franks, Billy Morris, Roger Vinson, Cobey Turner, Brad Turner, Bobby Grimsley, and Chad Overton.

Honorary pallbearers were the board members and staff of the Rolling Plains PCA and the First Ag Credit.

Arts & Crafts

By Winifred Darsey

By Winifred Darsey

Motley County Arts and Crafts Club met June 5, at the Senior Citizens Center.

President Nova Dale Turner presided over the business meeting at 10:00 a.m. Club Secretary Ray Baxter read the minutes of the previous meeting. New business was an election of officers for the ensuing year. All present officers were re-elected: President, Nova Dale Turner; Vice-president, Ray Baxter; Secretary/Treasurer, Vee Gordon; and Reporter, Winifred Darsey.

Other business consisted of plans for the next year's programs and projects. The next year for Arts and Crafts Club begins in September. The Club was organized in 1968. Jo Trammell was instructor

for a lesson in watercolors. It was a paramount lesson. The painting was a lovely scene of flowering vines at the doorway of a charming home of bright colors and beautiful orchid flowers. The results were pleasing. Watch for these paintings at the Fall Bazaar in November.

The club dined at noon with the Senior Citizens. The food was very good and the friends were nice to see.

Members present were: Joy Archer, Nova Dale Turner, Ray Baxter, Pauline House, Dorothy Knight, Jane Neal, Vee Gordon, Bonnie Vandiver, Joyce Meredith, Jo Trammell, Loretta Thompson, and Winifred Darsey.

Vee Gordon will teach the class in July. See you there!

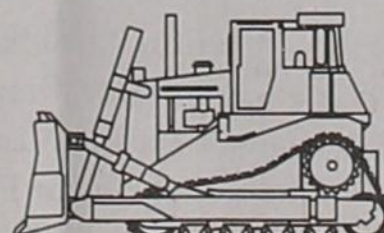
Dozer & Excavator

Boedeker, Inc.

Terry Boedeker
 Quitaque, Texas
 hm: (806) 455-1699
 cell: (806) 269-1799

- Brush Grubbing & Raking
- Stock Tanks & Ponds
- Brush Sculpting
- Fence Lines & Ranch Roads
- Demolition
- Equipment Hauling
- Construction Pads
- Laser Leveling

Ask how we can improve wildlife habitat through brush sculpting!



806.347.2017
 800.915.4559



Serving Motley County Since 1995

Remember
 Father's
 Day

June
 20th

Matador
 Variety

347-2820

The Patton Springs "Project Graduation Drug and Alcohol Free All Night Party"



Picture L-R: Top row left to right: Brett Fletcher, Tanner Norrell, Cody Boyd, Tate Hagar, Aaron Rogers, Marti Walker, Debbie Braselton, Brenda Dennis, Orvin Ellis. 3rd row: Kaitlin Kessler, Whitney Newsom, Sam Zarate, Jeff Braselton, Minnie Collett, Rick Collett. 2nd row: Kim Fletcher, Haley Braselton, Charles Crockett, Billy Goodwin, Valeria Herrera, Anthony Sanchez, Jesus Casado, Connie Durham. Bottom row: Dallan Ellis, Sam Fletcher, Ciara Shaw, LaTosha Sanchez, Tori Simpson, Delynne Collett, Samantha Madrigal, Erin Braselton, Cory Durham

The Patton Springs "Project Graduation Drug and Alcohol Free All Night Party" held after High School graduation on May 28, 2010, was a great success! Everyone ate their fill of Dion's pizza, cookies, treats, and Krispy Kreme donuts and had lots of fun with the Velcro wall, jousting ring, and obstacle course. The Patton Springs PTO greatly appreciates the support of our community as we work to keep our kids safe. Many thanks to the following individuals, businesses, & organizations who generously contributed to this event:

Smith Southern Equipment,
 Jeff and Debbie Braselton
 FNB Seymore- Matador Branch
 Matador Variety
 Thacker Jewelry
 Larry and Christy McClenny
 Jennifer and PJ Schmidt
 Dairy Queen
 Mike and Taelor Norrell
 Connie Durham
 South Plains College
 Brenda Karr

Kim Fletcher
 Rick and Minnie Collett
 Orvin Ellis
 Brenda Dennis
 Debbie Shaw
 Meredith Gas
 Caprock Telephone
 TX Dept. of Transportation
 Duck Creek SWCD
 First Baptist Church Roaring Springs
 Capital Farm Credit
 Spur Security Bank

South Plains Electric Co-op
 Texas Spur
 WTG fuels
 John & Susan Vickrey
 Grusendorf Welding & Supply
 Crosby Co Abstract
 Ponderosa
 Spur Vet Clinic
 Ronnie & Sherry Hill
 Malcom & Buffy Boger
 Texas Tech
 Roaring Springs Full Gospel Church

Summer Youth Baseball Camp



This year's summer youth basketball camp, put on by the Motley County coaching staff, was held Monday, June 7 through Wednesday, June 9. This was the fourth year of the camp. Coach Bigham and Coach Judy Cooper started every morning of the camp at 9 a.m. and it lasted until 2 p.m. While at the camp the younger kids learned basic basketball skills and the older kids learned advanced skills that they will use in a game situation. "Everyone improved and showed great progress over the week," both coaches said. There were 28 total campers this year and each year the camp has grown. The coaching staff would like to thank everyone who participated in the camp this year.

Front Row L to R: Emma Cagle, Autumn Perryman, Ethan Mason, Samantha Quilimaco, Leon Quilimaco, Rivers Marshall and Tatum Guerrero. Second Row: Bryson Elliott, Alycia Silva, Jaci Taylor, Brazos Washington, Tucker Barton, Cameron Stafford, Carley Turner and Blaine Brady. Third Row: Hannah Mason, Meagan Ford, Autumn Woolsey, Thalia Quilimaco, Bryce Brady and Cade Drum. Back Row: Coach Judy Cooper, Shelby Elliott, Bryant Turner, Cassidy Turner, Sage Guerrero and Coach Bigham. Not Pictured: Talon Pollard, Tadley Pollard and Heather Lamm.

photo by Charli Bigham

Conservation Stewardship Program will focus on broad agricultural plans

The Obama administration finalized rules for the long-anticipated Conservation Stewardship Program. The program will "pay farmers for having strong overall conservation plans, rather than focusing federal support on specific conservation practices or plots," Allison Winter of Environment & Energy Daily reports. The program was first authorized in the 2002 farm bill, but has been slow to develop, Winter writes.

There have been years of pent-up demand for this program," Ferd Hoefner of the Sustainable Agriculture Coalition, told Winter. Other U.S. Department of Agriculture conservation programs "pay farmers to idle cropland or offer cost assistance for landowners who build fences, terraces or other structures to improve resource protections," Winter writes. These programs will continue, but lawmakers and advocacy groups have said the \$1 billion Conservation Stewardship Program should play a larger role.

"To participate in the new program, landowners must submit overall conservation plans that outline methods of animal management, fertilizer use and water management," Winter writes. "USDA will award five-year contracts to farms with the best overall plans, based on scores on criteria set by the department; payments will rise or fall with scores." Operation size, type of crops produced and location will not affect producers' eligibility for the program.

Reprinted with permission from *The Rural Blog*.

Ken's RV Park & Mini Storage Matador and Roaring Springs



806-347-2290 806-347-2455
Full Hook-ups Available
Mini Storage Rooms for Rent
Golf Cart Sales

**Application of Wind Energy Transmission Texas, LLC for a Certificate of Convenience and Necessity
for the Panhandle AD to Central B (Cottonwood to Dermott) 345-kV CREZ Transmission Line
in Dickens, Kent, and Scurry Counties**

PUBLIC UTILITY COMMISSION OF TEXAS (PUC) DOCKET NO. 38295

Wind Energy Transmission Texas, LLC (WETT) provides this notice of intent to obtain a Certificate of Convenience and Necessity (CCN) for a new 345 kV transmission line located in Dickens, Kent, and Scurry counties. This project is intended to allow for reliable and cost-effective delivery of power produced from wind generators located in West Texas called Competitive Renewable Energy Zones (CREZ) to load centers throughout the state.

WETT's CCN application includes a route designated by WETT as a "preferred route"; however, any of the proposed routes may be selected by the PUC. During the course of a CCN case, the possibility exists that additional routes may be developed that could affect property in a different manner than the original routes proposed by WETT. If the PUC approves the preferred route or an alternative route, WETT will have the right to build facilities on the approved route.

The estimated cost of this project is \$141,837,664. A map of the project area showing WETT's proposed preferred and alternative routes for the proposed project in this CCN application, along with written descriptions of all route links, appears in this notice. A complete copy of the application, as filed at the PUC, and a large scale map of the project area and WETT's proposed preferred and alternative routes and route links may be viewed at the following locations:

Spur Public Library	Kent County Library	Scurry County Library
412 East Hill	156 W 4th Street	1916 23rd Street
Spur, TX 79370	Jayton, TX 79528	Snyder, TX 79549

Persons with questions about the transmission line may contact Patsy Baynard with WETT at (877) 899-9388. Persons who wish to intervene in the docket or comment on the applicant's application should mail the original and 10 copies of their requests to intervene or their comments to:

Public Utility Commission of Texas
Central Records
Attn: Filing Clerk
1701 N. Congress Avenue
P. O. Box 13326
Austin, Texas 78711-3326

Persons who wish to intervene in the docket must also mail a copy of their request for intervention to all parties in the docket and all persons that have pending motions to intervene, at or before the time the request for intervention is mailed to the PUC. The deadline for intervention in the docket is **July 16, 2010**, and the PUC should receive a letter from anyone requesting intervention by that date.

The PUC has a brochure titled "Landowners and Transmission Line Cases at the PUC for Competitive Renewable Energy Zone (CREZ) Projects." Copies of the brochure are available from Patsy Baynard at (877) 899-9388 or may be downloaded from the PUC's website at www.puc.state.tx.us. To obtain additional information about this docket, you may contact the PUC's Customer Assistance Hotline at (512) 936-7120 or (888) 782-8477. Hearing- and speech-impaired individuals with text telephones (TTY) may contact the PUC's Customer Assistance Hotline at (512) 936-7136 or toll free at (800) 735-2989. In addition to the intervention deadline, other important deadlines may already exist that affect your participation in this docket. You should review the orders and other filings already made in the docket.

Table 1-1 Alternative Routes	
Alternative Route	Route Links
Central	JA, B, G, L, T, Y, RZ, AA, FF, ZA, HH, II, BY, AZ, BZ, RR, UU
Central East	PA, OA, NA, IA, FA, E, UA, H, J, L, T, Y, RZ, AA, BB, GB, GG, FZ, EZ, MZ, QZ, PJ, PZ, PP, PQ, D, SS, TT, TE, MM, UE
Central KK	JA, GA, EA, SA, C, A, M, XA, N, P, V, X, NN, Z, AA, FF, ZA, HH, II, KK, LL, XX, YY, OO, PP, PE, SE, ME, UE
Central Transmission	MC, MA, IA, HA, SA, C, A, M, XA, O, R, CY, GG, XX, YY, OO, PP, PE, QQ, RR, UU
East	JA, B, F, TA, UA, YA, XA, N, P, Y, RZ, Z, EE, VZ, JJ, I, LL, FZ, OZ, QZ, UZ, XZ, LZ, TT, TE, MM, UE
East CZ	QA, RA, C, A, K, J, L, S, X, NN, EE, VA, CZ, I, LL, XX, NZ, HZ, MZ, QZ, UZ, XZ, LZ, TT, TE, DD, UU
East OZ	PA, OA, NA, LA, RA, C, YA, XA, N, Q, R, BR, GB, GG, FZ, OZ, QZ, UZ, YZ, D, QE, QQ, RR, UU
Hybrid	JA, B, G, L, T, Y, RZ, Z, EE, VZ, ZA, HH, II, BY, AZ, BZ, RR, UU
Hybrid - H	PA, OA, MB, MA, IA, FA, E, UA, H, J, L, T, Y, RZ, Z, EE, VZ, ZA, HH, II, BY, AZ, BZ, RR, UU
Spur Dickens	PA, OA, MB, MA, IA, HA, SA, C, A, M, XA, O, R, BR, GB, GG, FZ, EZ, JZ, PJ, UZ, XZ, VV, QE, QQ, RR, UU
West	JA, B, G, GZ, CC, II, BY, AZ, BZ, RR, UU
West IZ	JA, B, G, GZ, ZZ, SZ, TZ, RZ, AA, FF, JJ, I, LL, XX, NZ, KZ, IZ, AY, BZ, RR, UU
West - U	JA, B, G, L, T, V, U, ZZ, CC, II, BY, AZ, BZ, RR, UU

TRANSMISSION LINE LINK DESCRIPTIONS

NARRATIVE DESCRIPTIONS

The following provides a description of each individual transmission line Link evaluated by WETT during the development the Alternative Routes listed in Table 1-1. See Figure 4-1.

Link A

Link A begins at a small Oncor substation located east of State Highway (SH) 70 just north and 0.25 mile east of the SH 70/County Road (CR) 126 intersection in Dickens County, Texas. From this point, Link A follows a southwesterly route paralleling and abutting the west side of an existing 69 kV transmission line for approximately 2.2 miles, crossing to the west side of SH 70 and continuing southwesterly to CR 132. At its intersection with CR 132, Link A turns to the south and remains paralleling and abutting the west side of the transmission line corridor for approximately 4.5 miles, crossing CR 136, CR 144, and CR 148. At the crossing of CR 148, Link A deviates from the transmission line corridor and continues south for approximately 1.3 miles until it reaches its terminus at a point about 1.1 miles northwest of the center of the Town of Dickens, Texas. The total length of this Link is approximately 8.1 miles. Link A interconnects to the north with Links TA, C, and YA, and to the south with Links K and M.

Link B

Link B begins at a point just southwest of the Farm-to-Market Road FM 193/CR 127 intersection in Dickens County, Texas. Link B follows a route due south paralleling and abutting apparent property lines for approximately 1.1 miles to its terminus. The total length of this Link is approximately 1.1 miles. Link B interconnects to the north with Links JA and GA, and to the south with Links G and F.

Link C

Link C begins at a point on the north side of FM 293 about 0.47 mile east of SH 70 in Dickens County, Texas. Link C follows a southerly route paralleling and abutting the west side of an existing 69 kV transmission line corridor for approximately 1.2 miles, terminating at a point located approximately 0.27 mile east of SH 70 and 0.06 mile just north of CR 126. The total length of this Link is approximately 1.2 miles. Link C interconnects to the north with Links SA and RA, and to the south with Links TA, A, and YA.

Link D

Link D begins at a location just on the north side of CR 2148 about 0.18 mile east of FM 1142 in Scurry County, Texas. Link D angles to the southwest paralleling and abutting the east side of an existing 138 kV transmission line (wood frame) corridor for approximately 0.5 mile. At this point, Link D turns to the south and continues paralleling and abutting the existing transmission line corridor for an additional 0.5 mile where it terminates on the east side of FM 1142, just south of the intersection of CR 2127 and FM 1142. The total length of this Link is approximately 1.1 miles. Link D interconnects to the north with Links PQ and YZ, and to the south with Links QE and VV.

Link E

Link E begins at a location just south of FM 193 and approximately 0.5 mile west of SH 70 in Dickens County, Texas. Link E travels due south from this location for approximately 1.2 miles where it terminates at a point just north of CR 126. The total length of this Link is approximately 1.2 miles. Link E interconnects to the north with Links GA, FA, and EA, and to the south with Links UA and TA.

Link F

Link F begins at a point approximately 0.03 mile north of CR 126 and 0.8 mile west of SH 70 in Dickens County, Texas. Link F follows a route to the west paralleling and abutting the north side of CR 126 for approximately 0.7 mile to a point where CR 126 turns to the south. Link F continues to the west for an additional 0.4 mile where it angles slightly to the northwest for approximately 0.4 mile, terminating on the west side of an apparent property line at a point about 1.2 miles south of the FM 193/CR 127 intersection. The total length of this Link is approximately 1.4 miles. Link F interconnects to the west with Links B and G, and to the east with Links H and UA.

Link G

Link G begins at a point approximately 2.4 miles west of SH 70 in Dickens County, Texas, goes south then angles to the southwest for about 1.9 miles. Link G then turns due south and continues for approximately 6.24 miles crossing several unnamed roads to a point about 0.4 mile north of U.S. Highway 82. Here, Link G angles to the southeast for approximately 0.4 mile and then turns to the south, crossing an existing 69 kV transmission line and U.S. Highway 82. After crossing U.S. Highway 82, Link G continues to the south for about 0.5 mile paralleling and abutting the west side of an existing 69 kV transmission line corridor, and CR 421 and terminates at a point just north and west of the CR 421/CR 452 intersection. The total length of this Link is approximately 9.0 miles. Link G interconnects to the north with Links B and F, and to the south with Links GZ, J, and L.

Link H

Link H begins on the north side of CR 126 approximately 0.9 mile west of SH 70 in Dickens County, Texas. Link H follows a route to the south abutting apparent property lines for 3.9 miles, crossing CR 132 and CR 136. Approximately 0.9 mile south of the CR 136/CR 133 intersection, Link H angles to the west across CR 133, then south paralleling and abutting the west side of CR 133 for approximately 2.4 miles to the CR 133/CR 148 intersection. At this point, Link H angles to the southwest for approximately 2.2 miles, ending just north of U.S. Highway 82. The total length of this Link is approximately 8.7 miles. Link H interconnects to the north with Links F, UA, and N, and to the south with Links J and K.

Link I

Link I begins on the east side of FM 1081 approximately 0.4 mile southeast of the CR 221/FM 1081 intersection in Kent County, Texas. Link I follows a southerly route paralleling and abutting the east side of FM 1081 for approximately 4.8 miles to the U.S. Highway 380/FM 1081 intersection. The total length of this Link is approximately 4.8 miles. Link I interconnects to the north with Links CZ and JJ, and to the south with Links LL and KK.

Link J

Link J begins northeast of the intersection of U.S. Highway 82 and CR 427 in Dickens County, Texas. Link J crosses 82 in a southwest direction then follows a westerly route parallel to and abutting the northern side of CR 452 for approximately 0.5 mile. Link J crosses to the south side of CR 452 for about 0.75 mile as the roadway shifts to the south, then returns to the north side of CR 452 for approximately 0.2 mile, crossing CR 421 and an existing 69 kV transmission line and terminating approximately 0.1 mile west of the CR 421/CR 452 intersection. The total length of this Link is approximately 1.8 miles. Link J interconnects to the east with Links H and K, and to the west with Links GZ, G, and L.

Link K

Link K begins at a point approximately 0.6 mile west of SH 70, northwest of the Town of Dickens, in Dickens County, Texas. Link K follows a southwesterly route through undeveloped open land for about 0.6 mile, where it then turns to the west for approximately 1.0 miles where it terminates on the north side of SH 82. The total length of this Link is approximately 1.6 miles. Link K interconnects to the east with Links A and M, and to the west with Links H and J.

Link L

Link L begins on the west side of CR 421 approximately 0.5 mile south of U.S. Highway 82 at the intersection of CR 452 and CR 421 in Dickens County, Texas. Link L follows a southerly route paralleling and abutting the west side of an existing 138 kV transmission line and CR 421 for approximately 2.4 miles, then turns west for approximately 0.5 mile, then south continuing to parallel and abut the west side of the transmission line for 2.5 miles. Link L then turns to the east for approximately 0.1 mile, terminating north of the CR 419/CR 466 intersection. The total length of this Link is approximately 5.5 miles. Link L interconnects to the north with Links GZ, G, and J, and to the south with Links S and T.

Link M

Link M begins at a point approximately 1.2 miles northwest of the Town of Dickens, at an angle in an existing 69 kV transmission line, and 0.5 miles west of SH 70, in Dickens County, Texas. Link M follows a route paralleling and abutting the west side of an existing 138 kV transmission line in a southeasterly direction for 0.7 mile terminating at

a point approximately 0.21 mile north of U.S. Highway 82. The total length of this Link is approximately 0.7 mile. Link M interconnects to the north with Links K and A, and to the south with Links XA and YA.

Link N

Link N begins just south of SH 120 approximately 0.2 mile southwest of the SH 120/SH 70 intersection southwest of the Town of Dickens in Dickens County, Texas. Link N angles to the southwest paralleling and abutting the north side of an existing 69 kV transmission line for approximately 0.5 mile where it turns to the south and remains parallel to and abutting the west side of the existing transmission line for approximately 2.5 miles, crossing CR 458 and CR 460, to its terminus just south of FM 1868. The total length of this Link is approximately 3.0 miles. Link N interconnects to the north with Links XA and O, and to the south with Links P and Q.

Link O

Link O begins just south of SH 120 approximately 0.2 mile southwest of the SH 120/SH 70 intersection southwest of the Town of Dickens in Dickens County, Texas. Link O angles to the southeast for approximately 0.2 mile, crosses SH 70, and then turns south and follows a route paralleling and abutting the east side of SH 70 for approximately 1.0 mile. At this point, Link O angles to the southwest for approximately 0.1 mile across SH 70, then turns south paralleling and abutting the west side of SH 70 for approximately 1.75 miles, crosses CR 360 and proceeds to its terminus just south of FM 1868. The total length of this Link is approximately 3.2 miles. Link O interconnects to the north with Links XA and N, and to the south with Links Q and R.

Link P

Link P begins just south of FM 1868 approximately 0.5 mile west of the FM 1868/SH 70 intersection in Dickens County, Texas. Link P follows a route to the south paralleling and abutting the west side of an existing 69 kV transmission line for approximately 0.5 mile, then turns west for 0.5 mile, then south for 1.5 miles along apparent property lines, crossing to the south side of CR 468. Link P then turns west for approximately 2.6 miles paralleling and abutting the south side of CR 468, which becomes FM 2565, crossing FM 1868, to its terminus on the south side of FM 2565, approximately 0.5 mile west of FM 1868. The total length of this Link is approximately 5.1 miles. Link P interconnects to the north with Links N and Q, and to the south with Links T, V, and Y.

Link Q

Link Q begins just southwest of the CR 362/SH 70 intersection in Dickens County, Texas. Link Q follows a route to the west paralleling and abutting the south side of FM 1868 for approximately 0.5 mile where it terminates on the west side of an existing 69 kV transmission line. The total length of this Link is approximately 0.5 mile. Link Q interconnects to the west with Links N and P, and to the east with Links O and R.

Link R

Link R begins at the southwest corner of the intersection of FM 1868 and SH 70 in Dickens County, Texas and follows a route to the east paralleling and abutting the south side of CR 362 for approximately 1.1 miles. Link R then turns south and follows the west side of a distribution line for approximately 2.9 miles to CR 370. Here Link R angles to the southeast across CR 370/CR 335, and then turns south again parallel to and abutting the east side of CR 335 for 3.5 miles to the intersection of CR 384 and CR 335. Link R then turns to the west across CR 335 and stays parallel to and abuts the north side of CR 384 for approximately 0.3 mile, then turns south across CR 384 and continues for approximately 1.6 miles, crossing SH 70 southeast of the Town of Spur, Texas. At a point approximately 0.4 mile south of SH 70, Link R terminates. The total length of this Link is approximately 9.3 miles. Link R interconnects to the north with Links Q and O, and to the south with Links BR and CY.

Link S

Link S begins just northeast of the CR 466/CR 419 intersection in Dickens County, Texas and follows a southerly route paralleling and abutting the east side of CT 419 for approximately 1.1 miles. Link S terminates at a location just southeast of the intersection of FM 2565/CR 419. The total length of this Link is approximately 1.1 miles. Link S interconnects to the north with Links L and T, and to the south with Links U, V, and X.

Link T

Link T begins just north of the CR 466/CR 419 intersection in Dickens County, Texas and follows a route to the east paralleling and abutting the north side of CR 466 for approximately 0.5 mile. Link T then turns to the south and continues for 1.1 miles parallel to and abutting the east side of a property line and an existing 138 kV transmission line, terminating just south of FM 2565. The total length of this Link is approximately 1.6 miles. Link T interconnects to the north with Links L and S, and to the south with Links V, Y, and P.

Link U

Link U begins southeast of the FM 2565/CR 419 intersection in Dickens County, Texas. Link U follows a westerly route paralleling and abutting the south side of FM 2565 for approximately 1.0 mile and then turns to the south paralleling and abutting the east side of CR 417 for approximately 1.9 miles. Just north of CR 472, Link U turns to the west for approximately 0.4 mile, then turns to the south for 1.0 miles, crossing CR 472 and FM 836, and terminating just north of an unnamed road. The total length of this Link is approximately 4.4 miles. Link U interconnects to the north with Links S, V, and X, and to the south with Links ZZ and SZ.

Link V

Link V begins southeast of the FM 2565/CR 419 intersection in Dickens County, Texas. Link V follows an easterly route paralleling and abutting the south side of FM 2565, crossing a 69kV transmission line, and terminating 0.5 miles to the east of the intersection of FM 2565/CR 419. The total length of this Link is approximately 0.5 mile. Link V interconnects to the west with Links S, U, and X, and to the east with Links T, P, and Y.

Link X

Link X begins at a point southeast of the FM 2565/CR 419 intersection in Dickens County, Texas. Link X follows a route to the south, paralleling and abutting the east side of CR 419 for approximately 0.6 mile where it turns to the southwest, crossing CR 419 and continues to parallel and abut the west side of CR 419 for about 1.2 miles. Just north of CR 472, Link X turns to the southeast, crossing CR 472 and CR 419, and then turns south again paralleling and abutting the east side of CR 419 for approximately 0.9 mile to its terminus. The total length of this Link is approximately 3.0 miles. Link X interconnects to the north with Links U, S, and V, and to the south with Links SZ, NN, and TZ.

Link Y

Link Y begins on the south side of FM 2565 approximately 0.5 mile west of the RR 2565/FM 1868 intersection in Dickens County, Texas. Link Y follows a southerly route parallel to and abutting the east side of an existing 69 kV transmission line for approximately 3.0 miles to its terminus located about 0.8 mile north of FM 836. The total length of this Link is approximately 3.0 miles. Link Y interconnects to the north with Links V, T, and P, and to the south with Links TZ and RZ.

Link Z

Link Z begins approximately 0.7 mile southeast of the FM 2794/CR 419 intersection in Dickens County, Texas. Link Z crosses an existing 69 kV transmission, extends to the west for approximately 0.5 mile, and terminates. The total length of this Link is approximately 0.5 mile. Link Z interconnects to the east with Links RZ and AA, and to the west with Links NN and EE.

Link AA

Link AA begins just northeast of the CR 488/CR 427 intersection in Dickens County, Texas, southwest of the Town of Spur. Link AA follows a route to the west, paralleling and abutting the north side of an existing 69 kV transmission line for approximately 1.6 miles where it terminates on the east side of an existing transmission line approximately 0.7 mile southeast of the FM 2794/CR 419 intersection. The total length of this Link is approximately 1.6 miles. Link AA interconnects to the west with Links Z and RZ, and to the east with Links BB and FF.

Link AY

Link AY begins just west of an apparent property line, immediately southwest of the intersection of FM 1142 and CR 350 in Kent County, Texas. From this beginning point, Link AY runs due south and parallels and abuts FM 1142 for approximately 0.9 mile to just northwest of the intersection of FM 1142 and CR 316/346. At this point, Link AY turns west for approximately 1.0 mile paralleling and abutting the north side of CR 346. Link AY terminates just on the west side of Road P3460. The total length of this Link is approximately 1.9 miles. Link AY interconnects to the north with Link IZ, and to the south with Links AZ and BZ.

Link AZ

Link AZ begins just north of Road P3210 and just west of an apparent property line, approximately 1.7 miles south of U.S. Hwy 380. Link AZ follows a southwesterly route for approximately 2.0 miles across open range and crosses the Double Mountain Fork of the Brazos River in an additional 2.0 miles. About 2.0 miles south of the Brazos River crossing, Link AZ angles due south for approximately 3.2 miles, to its terminus on the north side of CR 346. The total length of this Link is approximately 9.4 miles. Link AZ interconnects to the north with Links B and Y, and to the south with Links BZ and AY.

Link BB

Link BB begins on the east side of an existing 69 kV transmission line and CR 333 approximately 0.8 mile south of the SH 70/CR333 intersection in Dickens County, Texas. Link BB follows a westerly route parallel to and abutting the south side of an apparent property line for about 0.7 mile, where it angles to the northwest for approximately 0.4 mile to the west side of FM 261. Link BB then turns north, paralleling and abutting the west side of FM 261 for 0.3 mile where it angles to the northwest, crossing CR 488 and existing transmission line. Link BB turns to the west paralleling and abutting the north side of the transmission line for 0.9 mile to its terminus just northeast of the CR 427/CR488 intersection. The total length of this Link is approximately 2.5 miles. Link BB interconnects to the west with Links AA and FF, and to the east with Links BR and GB.

Link BR

Link BR begins approximately 0.8 mile due south of the intersection of SH 70 and CR 333, on the east side of CR 333. Link BR then traverses due east for approximately 0.8 mile to its termination point just east of an apparent property line. The total length of this Link is approximately 0.8 mile. Link BR interconnects to the west with Links BB and GB, and to the east with Links R and CY.

Link BY

Link BY begins just north of Road P3210 and just west of an apparent property line, approximately 1.7 miles south of U.S. Hwy 380. From this beginning point, Link BY traverses due west paralleling and abutting the north side of Road P3210 for approximately 0.5 mile. Link BY then turns to the north, largely paralleling and abutting the east side of a private road for approximately 1.3 mile, then turns north-northeast for approximately 1.1 miles across open undeveloped land, then turns back north and crosses U.S. Hwy 380 for approximately 0.1 mile to its termination point just north of U.S. Hwy 380. The total length of this Link is approximately 2.9 miles. Link BY interconnects to the north with Links II and KK, and to the south with Link AZ.

Link BZ

Link BZ begins just north of CR 346 approximately 1.25 miles northwest of the Polar Cemetery in Kent County, Texas. Link BZ follows a southerly route paralleling and abutting the west side of P-3460 for approximately 4.0 miles, crossing CR 342, and the Kent County/Scurry County line. Link BZ continues south into Scurry County for an additional 4.1 miles to its terminus just west of a 90-degree corner on CR 2127. The total length of this Link is approximately 8.1 miles. Link BZ interconnects to the north with Links AZ and AY, and to the south with Links QQ and RR.

Link CC

Link CC begins in an area of open range approximately 6.1 miles northwest of the Town of Spur and 2.0 miles north of FM 2794 in Dickens County, Texas. Link CC traverses south its entire length. Link CC crosses FM 2794 at approximately 2.0 miles south, and crosses CR 496 in 3.0 miles. Continuing south, for 0.8 mile Link CC crosses an existing 69 kV transmission line, continues for 1.3 miles to the Dickens County/Kent County line, and then continues south for approximately 7.5 miles to its terminus just north of the White River. The total length of this Link is approximately 14.6 miles. Link CC interconnects to the north with Links GZ and ZZ, and to the south with Links II and H.

Link CY

Link CY begins just southeast of the intersection of CR 333 and CR 400 in Dickens County, Texas. From this beginning point, Link CY traverses due east paralleling and abutting the south side of CR 400 for approximately 1.0 mile. At this point, Link CY turns due north, and parallels and abuts the west side of CR 396 for approximately 3.0 miles, where it then turns due west paralleling and abutting the south side of an apparent property line for approximately 0.3 mile to its termination point approximately 0.4 mile south of SH 70. The total length for this Link is approximately 3.4 miles. Link CY interconnects to the north with Links BR and R, and to the south with Links GB and GG.

Link CZ

Link CZ begins approximately 0.2 mile north of the FM 1081/CR 229 intersection in Kent County, Texas, west of FM 1081. Link CZ follows a route to the south paralleling and abutting the west side of FM 1081 for approximately 2.69 miles. Link CZ then continues southwest at CR 225 away from FM 1081 to avoid a structure, and then angles to the southeast for approximately 1.3 miles to its terminus on the east side of FM 1081 approximately 0.2 mile southeast of the CR 222/FM 1081 intersection. The total length of this Link is approximately 4.6 miles. Link CZ interconnects to the north with Links HH, VA, and ZA, and to the south with Links JJ and I.

Link DD

Link DD begins at a point about 0.5 mile east of the CR 2127/CR 2136 intersection in Scurry County, Texas. Link DD follows a westerly route for approximately 0.5 mile, terminating just northwest of the intersection of CR 2127/CR 2136. The total length of this Link is approximately 0.5 mile. Link DD interconnects to the east with Links TE and MM, and to the south with Links RR and UU.

Link EA

Link EA begins at a location just south of FM 193 and approximately 0.5 mile west of SH 70 in Dickens County, Texas. Link EA travels to the northeast, crossing FM 193 and ending at a location on the north side of FM 193 about 0.5 mile west of SH 70. The total length of this Link is approximately 0.1 mile. Link EA interconnects to the north with Links HA and SA, and to the south with Links GA, FA, and E.

Link EE

Link EE begins on the east side of CR 419 approximately 0.5 mile south of FM 2794 west of the Town of Spur in Dickens County, Texas. Link EE follows a southerly route paralleling and abutting the east side of CR 419 (also FM 1081) for approximately 3.6 miles where it crosses to the west side of FM 1081 at an intersection with an existing 69 kV transmission line. Link EE continues south paralleling and abutting the west side of FM 1081 for an additional approximately 5.8 miles, crossing into Kent County, Texas and terminating on the west and north side of a curve in FM 1081 approximately 1.8 miles south of the FM 1081/CR 236 intersection. The total length of this Link is approximately 9.4 miles. Link EE interconnects to the north with Links NN and Z, and to the south with Links VA and VZ.

Link EZ

Link EZ begins just north of U.S. Highway 380, approximately 2.8 miles east of the RR1081/U.S. Highway 380 intersection in Kent County, Texas where it follows a southerly route on the west side of an existing pipeline for approximately 3.9 miles. About 0.9 mile north of the Double Mountain Fork of the Brazos River, Link EZ crosses to the east side of the pipeline and continues south across the Double Mountain Fork of the Brazos River, terminating approximately 0.3 mile south of CR 316. The total length of this Link is approximately 5.5 miles. Link EZ interconnects to the north with Links LL, GG, and FZ, and to the south with Links HZ, MZ, and JZ.

Link FA

Link FA begins at a point just north of FM 193 approximately 0.5 mile west of SH70 in Dickens County, Texas. Link FA follows a route due south, crossing FM 193 and ending at a point south of FM 193 approximately 0.5 mile west of SH 70. The total length of this Link is approximately 0.04 mile. Link FA interconnects to the north with Links IA and HA, and to the south with Links GA, E, and EA.

Link FF

Link FF begins just north and east of the CR 488/CR 427 intersection southwest of the Town of Spur in Dickens County, Texas. Link FF follows a southerly route paralleling and abutting the east side of CR 427 and an existing 69 kV transmission line for approximately 4.9 miles where it angles to the southwest, remaining parallel to and abutting the existing 69 kV transmission line for 6.30 miles to its terminus about 1.5 miles southeast of the CR 233/FM 1081 intersection in Kent County, Texas. The total length of this Link is approximately 11.2 miles. Link FF interconnects to the north with Links AA and BB, and to the south with Links VZ, ZA, and JJ.

Link FZ

Link FZ begins just north of U.S. Highway 380, approximately 2.8 miles east of the RR1081/U.S. Highway 380 intersection in Kent County, Texas. This link follows a westerly route paralleling and abutting the north side of U.S. Highway 380 for approximately 1.4 miles to a location just east of an existing 138 kV transmission line. The total length of this Link is approximately 1.4 miles. Link FZ interconnects to the west with Links LL and GG, and to the east with Links OZ and EZ.

Link GA

Link GA begins at a point immediately south of FM 193 and approximately 0.5 mile west of SH 70 in Dickens County, Texas. Link GA continues west for approximately 1.5 miles paralleling and abutting the south side of FM 193 to a point just west of the FM 193/CR 127 intersection where it terminates. The total length of Link GA is approximately 1.5 miles. Link GA interconnects to the east with Links FA, EA, and E, and to the west with Links JA and B.

Link GB

Link GB begins just southeast of the intersection of CR 333 and CR 400 in Dickens County, Texas. From this beginning point, Link GB traverses due north paralleling and abutting the east side of CR 333 and an existing 138kV transmission line for approximately 3.0 miles to its termination point approximately 1.0 mile south of SH 70. The total length of Link GB is approximately 3.0 miles. Link GB interconnects to the north with Links BB and BR, and to the south with Links CY and GG.

Link GG

Link GG begins just southeast of the intersection of CR 333 and CR 400 in Dickens County, Texas. From this beginning point, Link GG follows a southerly route paralleling and abutting the east side of CR 333 and an existing 138 kV transmission line for 0.5 mile, and then continues southwesterly paralleling and abutting the east side of an existing 138 kV transmission line crossing into Kent County. Link GG continues in a southwesterly direction paralleling and abutting the east side of the transmission line across open range, crossing the Salt Fork of the Brazos River to a point approximately 1.2 miles south of FM 2320. Link GG then angles to the southwest, crossing the 138 kV transmission line, then south and then southeast, avoiding transmission line congestion through an active oil/gas field, rejoining the east side of the 138 kV transmission line south of the oil/gas field. The Link continues in a southwesterly direction paralleling and abutting the transmission line for approximately 3.8 miles to its terminus just north of U.S. Highway 380, approximately 2.8 miles east of the RR1081/U.S. Highway 380 intersection. The total length of this Link is approximately 18.1 miles. Link GG interconnects to the north with Links GB and CY, and to the south with Links LL, XX, and FZ.

Link GZ

Link GZ begins just west of the CR 452/CR 421 intersection approximately 3.9 miles west of the Town of Dickens in Dickens County, Texas. Link GZ follows a westerly route through open range for approximately 4.6 miles where it then turns to the south for about 2.0 miles, then angles to the southeast for 1.1 miles, then south again for 1.4 miles to a point approximately 0.8 mile northwest of the CR 413/CR 466 intersection. At this point, Link GZ turns to the west for approximately 0.5 mile, then continues south along the east side of CR 409, across FM 836 and CR 468, and then across open range for approximately 2.0 miles. At this point, Link GZ angles to the southeast for about 1.41 miles, terminating at an unnamed road approximately 2.3 miles west of FM 836. The total length of this Link is approximately 14.6 miles. Link GZ interconnects to the north with Links G, J, and L, and to the south with Links CC and ZZ.

Link HA

Link HA begins on the north side of FM 193 about 0.5 mile west of SH 70, in Dickens County, Texas. Link HA follows a westerly route for approximately 0.05 miles to end on the north side of FM 193 at a point approximately 0.5 mile west of SH 70. The total length of this Link is approximately 0.05 mile. Link HA interconnects to the west with Links IA and FA, and to the east with Links SA and EA.

Link HH

Link HH begins approximately 0.2 mile north of the FM 1081/CR 229 intersection in Kent County, Texas. Link HH follows a westerly route parallel to and abutting the south side of an existing 69 kV transmission line for approximately 1.2 miles before crossing CR 229, and then continues west paralleling and abutting the south side of the transmission line for approximately 0.7 mile to its terminus about 1.9 miles west of the intersection CR 229/FM 1081. The total length of this Link is approximately 1.9 miles. Link HH interconnects to the west with Links CC and II, and to the east with Links VA, ZA, and CZ.

Link HZ

Link HZ begins at a point approximately 0.3 mile southwest of the CR 316 intersection with an unnamed road in Kent County, Texas. Link HZ follows a westerly route for approximately 1.2 miles to its terminus just south of CR 316. The total length of this Link is approximately 1.2 miles. Link HZ interconnects to the east with Links EZ, MZ,

and JZ, and to the west with Links NZ and KZ.

Link IA

Link IA begins at a point approximately 0.4 mile south of CR 112 and 0.54 mile west of SH 70, Link IA follows a route due south for approximately 0.5 mile, terminating at a point just north of FM 193, about 0.5 mile west of SH 70. The total length of this Link is approximately 0.5 mile. Link IA interconnects to the north with Links MA, NA, and LA, and to the south with Links FA and HA.

Link II

Link II begins at a point approximately 1.9 miles west of the junction of FM 1081 and CR 229 in Kent County, Texas. Link II follows a southerly route for 0.5 mile where it crosses the White River and continues south for approximately 2.1 miles, crossing several unnamed roads to CR 225. Link II continues south, crossing the Salt Fork of the Brazos River after approximately 0.8 mile and then continues south for approximately 4.6 miles, crossing several unnamed roads, to its terminus at U.S. Highway 380, approximately 0.3 mile west of the intersection of U.S. Highway 380 and P-3210. The total length of this Link is approximately 7.9 miles. Link II interconnects to the north with Links CC and HH, and to the south with Links BY and KK.

Link IZ

Link IZ begins 0.2 mile south of CR 316, at an angle in an existing 138 kV transmission line in Kent County, Texas. For 0.1 miles, Link IZ proceeds due west then 2.3 miles to the southwest where it crosses CR 316, then continues to FM 1142. Here Link IZ angles due west for a final 1.0 mile to its terminus, located at the southwest side of the FM 1142/CR 350 intersection. The total length of this Link is approximately 4.5 miles. Link IZ interconnects to the north with Links YY, KZ, and OO, and to the south with Link AY.

Link JA

Link JA begins within the Cottonwood Switching Station site at a point approximately 0.4 mile south of CR 112 and just east of CR 127 in Dickens County, Texas. Link JA follows a route due south for approximately 0.4 mile before turning southwest and crossing FM 193. This Link terminates south of FM 193/CR 127 intersection. The total length of this Link is approximately 0.5 mile. Link JA interconnects to the north with the Cottonwood Switching Station, and to the south with Links GA and B.

Link JJ

Link JJ begins at a point approximately 1.4 miles southeast of the FM 1081/CR 233 intersection in Kent County, Texas. Link JJ follows a southerly route for approximately 1.1 miles, then at CR 229 angles to the southwest. Just north of the Salt Fork of the Brazos river, Link JJ continues to the south, crossing the River and CR 221, terminating approximately 0.3 mile south of CR 221 on the east side of FM 1081. The total length of this Link is approximately 5.4 miles. Link JJ interconnects to the north with Links ZA, VZ, and FF, and to the south with Links CZ and I.

Link JZ

Link JZ begins approximately 0.2 mile south of CR 316 and 1.6 miles west of the intersection of CR 316 and SH 208 in Kent County, Texas. Link JZ follows a southwesterly route generally along a private road through rugged terrain for approximately 4.0 miles, then angles to the south for approximately 5.6 miles, crossing and terminating on the west side of SH 208 in Scurry County, Texas approximately 0.6 mile south of the Kent County/Scurry County Line. The total length of this Link is approximately 9.6 miles. Link JZ interconnects to the north with Links HZ, EZ, and MZ, and to the south with Links PZ and PJ.

Link KK

Link KK begins at a point just northeast of the FM 1081/U.S. Hwy 380 intersection in Kent County, Texas. Link KK follows a westerly route paralleling and abutting the north side of U.S. Hwy 380 for approximately 3.8 miles to its terminus approximately 0.3 mile west of the P-3210/U.S. Hwy 380 intersection. The total length of this Link is approximately 3.8 miles. Link KK interconnects to the east with Links I and LL, and to the west with Links II and BY.

Link KZ

Link KZ begins just south of CR 316 approximately 3.0 miles west of SH 208 in Kent County, Texas. Link KZ follows a southwesterly route for approximately 2.0 miles, crossing to the east side of CR 316 and terminating just east of an existing transmission line. The total length of this Link is approximately 2.3 miles. Link KZ interconnects to the north with Links NZ and HZ, and to the south with Links IZ, YY, and OO.

Link LA

Link LA begins at a point approximately 0.54 mile north of FM 293 and 0.5 mile east of SH 70 in Dickens County, Texas. Link LA follows a route to the west for approximately 0.5 mile where it crosses SH 70, and then continues westerly for approximately 0.6 mile to its terminus in an open area about 0.5 mile north of FM 193. The total length of this Link is approximately 1.0 mile. Link LA interconnects to the east with Links QA and RA, and to the west with Links MA, NA, and IA.

Link LL

Link LL begins on the north side of U.S. Highway 380 just east of an existing 138 kV transmission line in Kent County, Texas. Link LL follows a westerly route paralleling and abutting the north side of U.S. Highway 380 for approximately 1.2 miles to its terminus just northeast of the U.S. Highway 380/FM 1081 intersection. The total length of this Link is approximately 1.2 miles. Link LL interconnects to the east with Links GG, FZ and XX, and to the west with Links KK and I.

Link LZ

Link LZ begins at a point just west of SH 208 approximately 1.0 mile south of the SH 208/CR 2148 intersection in Scurry County, Texas. Link LZ follows a southerly route paralleling and abutting the western side of SH 208 for approximately 1.9 miles and then turns west-southwest then due west for approximately 2.9 miles, terminating just east of FM 1142 and an existing 138 kV transmission line and on the north side of the existing Brazos Substation. The total length of this Link is approximately 4.8 miles. Link LZ interconnects to the north with Links VV and XZ, and to the west with Links SS and TT.

Link MA

Link MA begins at a point approximately 0.7 mile diagonally southeast of the intersection of CR 112 and CR 131 in Dickens County, Texas. Link MA follows a route due west paralleling and abutting the north side of an apparent property line for approximately 0.5 mile, where it terminates on the west side of an apparent property line. The total length of this Link is approximately 0.5 mile. Link MA interconnects to the west with Links MC and MB, and to the east with Links NA, LA, and IA.

Link MB

Link MB begins at a point approximately 0.5 mile due south of the intersection of CR 112 and CR 131, just west of an apparent property line, in Dickens County, Texas. Link MB follows a route due north paralleling and abutting the west side of an apparent property line for approximately 0.5 mile, where it terminates just south of CR 112. The total length of this Link is approximately 0.5 mile. Link MB interconnects to the south with Links MC and MA, and to the north with Links OA and NA.

Link MC

Link MC begins at a point approximately 0.5 mile due south of the intersection of CR 112 and CR 131, just west of an apparent property line, in Dickens County, Texas. Link MC follows a route due west paralleling and abutting the north side of an apparent property line for approximately 0.5 mile, where it enters the southeast corner of the Cottonwood Switching Station site. The total length of this Link is approximately 0.5 mile. Link MC interconnects to the east with Links MB and MA, and to the west with the Cottonwood Switching Station.

Link ME

Link ME begins at a point approximately 0.3 mile diagonally northeast of the northeast corner of the Dermott Switching Station site, or approximately 0.7 mile diagonally northwest of the intersection of CR 2128 and CR 2105, in Scurry County, Texas. Link ME continues diagonally northeast for approximately 0.7 mile to its termination point, north of an apparent property line and approximately 1.0 miles north of the intersection of CR 2128 and CR 2105. The total length of this Link is approximately 0.7 mile. Link ME interconnects to the north with Links TE, SE, and TT, and to the south with Links MM and UE.

Link MM

Link MM begins in an open area approximately 0.5 mile east of the CR 2136/CR 2127 intersection in Scurry County, Texas. Link MM follows a southern route for approximately 0.5 mile to its termination point just north of an apparent property line and approximately 0.3 mile diagonally northeast of the northeast corner of Oncor's proposed Dermott Switching Station property. The total length of this Link is approximately 0.5 mile. Link MM interconnects to the north with Links DD and TE, and to the south with Links ME and UE.

Link MZ

Link MZ begins at a point just east of the CR 316/SH 208 intersection in Kent County, Texas. Link MZ follows a westerly route for approximately 1.6 miles, terminating approximately 0.2 mile west of an unnamed road. The total length of this Link is approximately 1.6 miles. Link MZ interconnects to the east with Links OZ and QZ, and to the west with Links HZ, EZ, and JZ.

Link NA

Link NA begins at a point just southwest of the intersection of CR 112 and CR 131 in Dickens County, Texas. Link NA follows a short (about 0.09 mile) route to the northeast, crossing to the north side of CR 112. Just on the west side of CR 131, Link NA turns to the east and follows an easterly route for approximately 0.5 mile. At this point, Link NA turns to the south, crossing CR 212, and continues south for approximately 0.5 mile where it terminates at a point approximately 0.5 miles west of SH 70 and 0.5 miles north of FM 193. The total length of this Link is approximately 1.0 mile. Link NA interconnects to the west with Links OA and MB, and to the east with Links MA, LA and IA.

Link NN

Link NN begins at a point approximately 0.5 mile north of the FM 836/CR 419 intersection in Dickens County, Texas. Link NN follows a southerly route paralleling and abutting the east side of apparent property lines for about 0.5 mile where it crosses FM 836 and continues south paralleling and abutting the east side CR 419 for approximately 2.0 miles to its terminus about 0.5 mile south of the FM 2794/CR 419 intersection. The total length of this Link is approximately 2.5 miles. Link NN interconnects to the north with Links SZ, X, and TZ, and to the south with Links Z and EE.

Link NZ

Link NZ begins just south of CR 316 approximately 2.8 miles west of SH 208 in Kent County, Texas. Link NZ follows a northwest route for approximately 1.2 miles, crossing the Double Mountain Fork Brazos River and terminating just east of an existing transmission line. The total length of this Link is approximately 1.2 miles. Link NZ interconnects to the east with Links HZ and KZ, and to the west with Links XX and YY.

Link OA

Link OA begins at a point just southwest of the intersection of CR 112 and CR 131 in Dickens County, Texas. Link OA follows a westerly route for approximately 0.22 mile, where it terminates in an open area about 0.3 mile west of the CR 112/CR 131 intersection. The total length of this Link is approximately 0.3 mile. Link OA interconnects to the east with Links NA and MB, and to the west with Links QA and PA.

Link OO

Link OO begins just south of CR 316, about 6.6 miles east of the Lake Alan Henry Dam in Kent County, Texas. Link OO follows a route to the southwest, paralleling and abutting the east side of an existing 138 kV transmission line for approximately 7.1 miles to the Kent County/Scurry County line. Link OO continues southwest paralleling and abutting the transmission line, terminating approximately 0.5 mile south of the Scurry County line. The total length of this Link is approximately 7.4 miles. Link OO interconnects to the north with Links IZ, YY, and KZ, and to the south with Links PP and PZ.

Link OZ

Link OZ begins just north and approximately 2.8 miles east of the RR1081/U.S. Highway 380 intersection in Kent County, Texas. Link OZ follows an easterly route paralleling and abutting the north and east side of U.S. Highway 380 for approximately 4.0 miles. Just east of the U.S. Highway 380/SH 208 intersection, Link OZ turns to the south paralleling and abutting the east side of SH 208 for approximately 1.0 mile. Link OZ then continues south, deviating away from the SH 208 corridor and crossing CR 4109, then continues for another 1.0 mile along the eastern side of a corral. At the southeastern corner of the corral, Link OZ angles to the southwest, crossing CR 413, and continuing southwesterly paralleling and abutting the east/south side of SH 208. Link OZ continues paralleling and abutting the south side of SH 208, crossing the Double Mountain Fork of the Brazos River and terminating on the east side of the SH 208/CR 316 intersection. The total length of this Link is approximately 9.0 miles. Link OZ interconnects to the north with Links FZ and EZ, and to the south with Links MZ and QZ.

Link PA

Link PA begins in an open area about 0.3 mile west of the intersection of CR 112 and CR 131 in Dickens County, Texas. Link PA follows a westerly route for approximately 0.2 mile where it enters the Cottonwood Switching Station site. The total length of this Link is approximately 0.2 mile. Link PA interconnects to the east with Links QA and OA, and to the west with the Cottonwood Switching Station.

Link PE

Link PE begins just southwest of the intersection of FM 1142 and CR 2127 and west of an existing 138 kV electric transmission line, in Scurry County, Texas. From this beginning point, Link PE traverses due north for approximately 0.5 mile paralleling and abutting the west side of an existing 69 kV electric transmission line and FM 1142. From this point, Link PE turns slightly north-northeast, crossing FM 1142 but remaining parallel to and abutting the west side of an existing 69 kV electric transmission line, for approximately 1.7 miles, before turning due east for a 0.1 mile and terminating approximately 0.4 mile east of FM 1142 and north of an apparent property line. The total length of this Link is approximately 2.2 miles. Link PE interconnects to the north with Links PP and PQ, and to the south with Links QQ, QE and SE.

Link PJ

Link PJ begins at a point just east of SH 208 and approximately 0.7 mile south of the Scurry County line. Link PJ traverses 0.1 mile to the west-northwest to its termination point approximately 0.1 mile west of SH 208. The total length of this Link is approximately 0.1 mile. Link PJ interconnects to the east with Links QZ and UZ, and to the west with Links PZ and JZ.

Link PQ

Link PQ begins at a location just on the north side of CR 2148 about 0.2 mile east of FM 1142 in Scurry County, Texas. Link PQ angles to the north-northeast for approximately 1.0 mile to its termination point approximately 0.4 mile east of FM 1142 and north of an apparent property line. The total length of this Link is approximately 1.1 miles. Link PQ interconnects to the north with Links PP and PE, and to the south with Links YZ and D.

Link PP

Link PP begins approximately 1.0 mile southeast of the junction of FM 1142 and CR 316 in Scurry County, Texas. Link PP follows a southwesterly route parallel and abutting the eastern side of an existing 138 kV transmission line for approximately 3.0 miles where it terminates approximately 1.2 miles northeast of the FM 1142/CR 2148 intersection. The total length of this Link is approximately 2.0 miles. Link PP interconnects to the north with Links OO and PZ, and to the south with Links PE and PQ.

Link PZ

Link PZ begins 0.1 mile to the east side of SH 208 approximately 0.6 mile south of the Kent County/Scurry County line in Scurry County, Texas. Link PZ follows a westerly route for approximately 2.8 miles parallel and abutting the south side of apparent property lines to its terminus just east of an existing transmission line. The total length of this Link is approximately 2.9 miles. Link PZ interconnects to the east with Links JZ and PJ, and to the west with Links OO and PP.

Link QA

Link QA begins at a point approximately 0.5 mile north of FM 193 and 0.5 mile east of SH 70 in Dickens County, Texas. Link QA follows a route to the north for approximately 0.5 mile, crosses CR 212, and continues north for approximately 0.5 mile. At this point, Link QA turns due west for approximately 0.5 mile, crosses SH 70, and continues parallel to the south side of an apparent property line for approximately 1.0 mile to CR 131. After crossing CR 131, Link QA continues westerly for approximately 0.3 mile and then turns due south for about 0.5 mile, terminating on the south side of CR 112, about 0.3 mile west of the intersection of CR 112 and CR 131. The total length of this Link is approximately 3.2 miles. Link QA interconnects to the east with Links LA and RA, and to the west with Links PA and OA.

Link QE

Link QE is a short connector segment that begins at a point approximately 1.0 mile south of the intersection of FM 1142 and CR 2148. From this point, Link QE traverses due west for approximately 0.1 mile, crossing an existing 69 kV transmission line and FM 1142, to its termination point. The total length of this Link is approximately 0.1 mile. Link QE interconnects to the east with Links D, VV, and SS, and to the west with Links QQ, PE, and SE.

Link QQ

Link QQ begins on the west side of FM 1142 one mile south and slightly west of the intersection of CR 2148 and FM 1142 in Scurry County, Texas. Link QQ follows a westerly route paralleling and abutting the south side of CR 2127 for approximately 2.1 miles, crossing a north-south segment of CR 2127 and terminating just on the west side of CR 2127. The total length of this Link is approximately 2.0 miles. Link QQ interconnects to the east with Links PE and QE, and to the west with Links BZ and RR.

Link QZ

Link QZ begins just east of the junction of CR 316 and SH 208 in Kent County, Texas and follows a route to the southwest paralleling and abutting the east side of SH 208 for approximately 3.4 miles. Link QZ continues paralleling and abutting the east side of SH 208 angling to the southeast for approximately 1.8 miles, then angling back to the southwest for 4.7 miles. Link QZ terminates on the east side of SH 208 approximately 0.6 mile south of the Kent County/Scurry County line. The total length of this Link is approximately 10.0 miles. Link QZ interconnects to the north with Links MZ and OZ, and to the south with Links PJ and UZ.

Link RA

Link RA begins at a point approximately 0.5 mile north of FM 193 and approximately 0.5 mile east of SH 70 in Dickens County, Texas. Link RA follows a route to the south for approximately 0.5 mile paralleling and abutting the west side of an existing transmission line and terminating just north of FM 193. The total length of this Link is approximately 0.5 mile. Link RA interconnects to the north with Links LA and QA, and to the south with Links C and SA.

Link RR

Link RR begins just west of a 90-degree corner on CR 2127 in Scurry County, Texas. Link RR follows a route to the south paralleling and abutting the west side of CR 2127 for approximately 1.1 miles, crosses an existing 138 kV transmission line, and continues south paralleling and abutting CR 2127 for an additional 0.9 mile, terminating just northwest of the junction of CR 2127 and CR 2136. The total length of this Link is approximately 2.0 miles. Link RR interconnects to the north with Links BZ and QQ, and to the south with Links DD and UU.

Link RZ

Link RZ begins approximately 0.8 mile northeast of the junction of FM 836 and CR 419 in Dickens County, Texas. Link RZ follows a southerly route, paralleling and abutting the east side of an existing 69 kV transmission line, crossing FM 836 after approximately 0.7 mile and RR 2794 approximately 1.3 miles further south. Link RZ continues south for an additional 0.46 mile and terminates approximately 0.7 mile southeast of the intersection of CR 419 and RR 2794. The total length of this Link is approximately 2.5 miles. Link RZ interconnects to the north with Links TZ and Y, and to the south with Links Z and AA.

Link SA

Link SA begins at a point just north of FM 193 approximately 0.5 mile east of SH 70 in Dickens County, Texas. Link SA follows a route to the west paralleling and abutting the north side of FM 193 for approximately 1.0 mile. The total length of this Link is approximately 1.0 mile. Link SA interconnects to the east with Links RA and C, and to the west with Links HA and EA.

Link SE

Link SE begins at a point approximately 1.0 mile north of intersection of CR 2128 and CR 2105, north of an apparent property line, in Scurry County, Texas. Link SE traverses diagonally northeast for approximately 1.3 miles to a point just west of an existing 69 kV electric transmission line and FM 1142. At this point, Link SE turns due north paralleling and abutting the west side of ETT Link Segment F, an existing 69 kV electric transmission line, and FM 1142 for approximately 1.0 mile to its termination point just southwest of the intersection of CR 2127 and FM 1142. The total length of this Link is approximately 2.4 miles. Link SE interconnects to the south with Links TE, TT and ME, and to the north with Links QQ, PE, and QE.

Link SS

Link SS begins just east of the FM 1142 and CR 2127 intersection in Scurry County, Texas. Link SS follows a route to the south, paralleling and abutting the east side of an existing 138 kV transmission line and FM 1142 for approximately 1.9 miles to its terminus north of a Brazos Electric Cooperative Substation and approximately 2.1 miles east of the junction of CR 2127 and CR 2136. The total length of this Link is approximately 2.0 miles. Link SS interconnects to the north with Links QE, D, and VV, and to the south with Links TT and LZ.

Link SZ

Link SZ begins at a point approximately 0.5 mile north of the FM 836/CR 419 intersection in Dickens County, Texas. Link SZ follows a westerly route for approximately 1.4 miles, crossing to the west side of FM 836 and continuing to parallel and abut the north side of an unnamed road. Link SZ terminates at a point approximately 0.4 mile west of FM 836. The total length of this Link is approximately 1.4 miles. Link SZ interconnects to the east with Links X, TZ, and NN, and to the west with Links ZZ and U.

Link TA

Link TA begins at a point approximately 0.3 mile east of the intersection of CR 126 and SH 70 in Dickens County, Texas. Link TA follows a westerly route paralleling and abutting the north side of CR 126 for approximately 1.0 mile, terminating in an open area about 0.7 mile west of SH 70. The total length of this Link is approximately 1.0 mile. Link TA interconnects to the east with Links C, YA, and A, and to the west with Links UA and E.

Link TE

Link TE begins in an open area approximately 0.5 mile east of the CR 2136/CR 2127 intersection in Scurry County, Texas. Link TE follows an eastern route paralleling and abutting the north side of an apparent property line for approximately 0.5 mile, to its termination point north of an apparent property line and approximately 1.0 mile north of the intersection of CR 2128 and CR 2105. The total length of this Link is approximately 0.5 mile. Link TE interconnects to the west with Links DD and MM, and to the east with Links SE, TT, and ME.

Link TT

Link TT begins north of a Brazos Electric Cooperative Substation located approximately 2.1 miles east of the junction of CR 2127 and CR 2136 in Scurry County, Texas. Link TT follows a westerly route paralleling and abutting the north side of an existing 138 kV transmission line for approximately 1.1 miles to its terminus about 1.0 mile east of the CR 2127/CR 2136 intersection. The total length of this Link is approximately 1.1 miles. Link TT interconnects to the east with Links SS and LZ, and to the west with Links TE, SE and ME.

Link TZ

Link TZ begins at a point about 0.75 mile northeast of the FM 836/CR 419 intersection in Dickens County, Texas. Link TZ follows a westerly route for approximately 0.5 mile to its terminus approximately 0.5 mile north of the FM 836/CR 419 intersection. The total length of this Link is approximately 0.5 mile. Link TZ interconnects to the east with Links Y and RZ, and to the west with Link SZ.

Link UA

Link UA begins in an open area about 0.7 mile west of SH 70, on the north side of CR 126 in Dickens County, Texas. Link UA follows a westerly route paralleling and abutting the north side of CR 126 for only 0.1 mile. The total length of this Link is approximately 0.1 mile. Link UA interconnects to the east with Links E and TA, and to the west with Links F and H.

Link UE

Link UE begins at the northeast corner of the Dermott Switching Station in Scurry County, Texas and traverses northeast for approximately 0.3 mile to its termination point approximately 0.7 mile diagonally northwest of the intersection of CR 2128 and CR 2105. The total length of this Link is approximately 0.3 mile. Link UE interconnects to the south with the Dermott Switching Station, and to the north with Links MM and ME.

Link UU

Link UU begins just northwest of the CR 2127/CR 2136 intersection in Scurry County, Texas. Link UU follows a southerly route, immediately crossing CR 2136 and continuing south paralleling and abutting the west side of CR 2127 for approximately 0.6 mile. Link UU then turns to the east for approximately 0.1 mile crossing CR 2127 and terminating on the east side of CR 2127 on the north side of Oncor's proposed Dermott Switching Station site. The total length of this Link is approximately 0.6 mile. Link UU interconnects to the north with Links RR and DD, and to the south with the Dermott Switching Station.

Link UZ

Link UZ begins just east of SH 208 in Scurry County, Texas approximately 0.58 mile south of the Kent County/Scurry County line. Link UZ follows a southwesterly route paralleling and abutting the east side of SH 208 for approximately 2.1 miles. At this point, Link UZ angles to the southwest and crosses to the west side of SH 208 to avoid a pump and pipeline crossing. Link UZ then continues south parallel to and abutting the west side of SH 208 for approximately 0.9 mile where it terminates just northwest of the SH 208/CR 2148 intersection. The total length of this Link is approximately 3.0 miles. Link UZ interconnects to the north with Links PJ and QZ, and to the south with Links YZ and XZ.

Link VA

Link VA begins at a point on the northwest side of a curve in FM 1081 approximately 2.5 miles northeast of the FM 1081/CR 233 intersection in Kent County, Texas. Link VA follows a route paralleling and abutting the north side of FM 1081 for approximately 1.0 mile, then turns to the south extending beyond the curve in FM 1081 for approximately 0.75 miles, then follows parallel to and abutting the west side of FM 1081 for an additional 2.4 miles to its terminus at a point about 0.2 mile north of the CR 229/FM 1081 intersection. The total length of this Link is approximately 3.4 miles. Link VA interconnects to the north with Links EE and VZ, and to the south with Links HH, ZA, and CZ.

Link VV

Link VV begins just west of SH 208 approximately 1.1 miles south from the CR 2148/SH 208 intersection north of the FM 1231/Fuller Ranch Road intersection in Scurry County, Texas. Link VV follows a westerly route for approximately 3.0 miles, terminating on the west side of FM 1142 at the CR 2127/FM 1142 intersection. The total length of this Link is approximately 3.0 miles. Link VV interconnects to the east with Links XZ and LZ, and to the west with Links QE, D, and SS.

Link VZ

Link VZ begins approximately 0.9 mile northeast of the FM 1081/CR 233 intersection in Kent County, Texas. Link VZ follows a southerly route from the west, immediately crossing FM 1081 and continuing south for an additional 1.4 miles, crossing an existing 69 kV transmission line and terminating at a point approximately 1.5 miles due south of its origin. The total length of this Link is approximately 1.5 miles. Link VZ interconnects to the north with Links UA and EE, and to the south with Links ZA, FF, and JJ.

Link XA

Link XA begins approximately 0.7 mile northwest of the center of the Town of Dickens in Dickens County, Texas. Link XA follows a southerly route just to the west of an existing 69 kV transmission line, crossing U.S. Highway 82 and SH 120, terminating approximately 0.1 mile south of SH 120. The total length of this Link is approximately 0.7 mile. Link XA interconnects to the north with Links M and YA, and to the south with Links N and O.

Link XX

Link XX begins just north of U.S. Highway 380 approximately 1.2 miles east of the junction of U.S. Highway 380 and FM 1081 in Kent County, Texas. Link XX follows a southwesterly route paralleling and abutting the east side of an existing 138 kV transmission line for approximately 5.2 miles to its terminus approximately 3.8 miles west of the SH 208/CR 316 intersection. The total length of this Link is approximately 5.1 miles. Link XX interconnects to the north with Links LL, GG, and FZ, and to the south with Links YY and NZ.

Link XZ

Link XZ begins just northwest of the SH 208/CR 2148 intersection in Scurry County, Texas. Link XZ follows a southerly route parallel to and abutting the west side of SH 208 for approximately 1.1 miles, terminating approximately 0.7 mile south of the SH 208/CR 2148. The total length of this Link is approximately 1.0 miles. Link XZ interconnects to the north with Links YZ and UZ, and to the south with Links VV and LZ.

Link YA

Link YA begins at a point located east of SH 70 approximately 0.25 mile east of the SH 70/CR 126 intersection in Dickens County, Texas. This Link begins following a southeast route, crossing an existing 69 kV transmission line, and continuing for approximately 0.4 mile where it turns to the south for approximately 2.8 miles. Immediately after the crossing of CR 236, Link YA angles to the southwest for approximately 1.6 miles, crossing SH 70 at the intersection of CR 242. Once on the west side of SH 70, Link YA angles to the south generally following the west side of SH 70 for approximately 4.0 miles where it turns to the west, crossing the 69 kV transmission line, and terminating north of U.S. Highway 82 at a point approximately 0.7 mile northwest of the center of the Town of Dickens, Texas. The total length of this Link is approximately 9.1 miles. Link YA interconnects to the north with Links TA, C, and A, and to the south with Links M and XA.

Link YY

Link YY begins approximately 3.8 miles west of the SH 208/CR 316 intersection in Kent County, Texas. Link YY follows a southerly route for approximately 2.0 miles paralleling and abutting the east side of an existing 138 kV transmission line. Link YY crosses the Double Mountain Fork of the Brazos River and terminates on the south side of CR 316. The total length of this Link is approximately 2.2 miles. Link YY interconnects to the north with Links XX and NZ, and to the south with Links IZ, KZ, and OO.

Link YZ

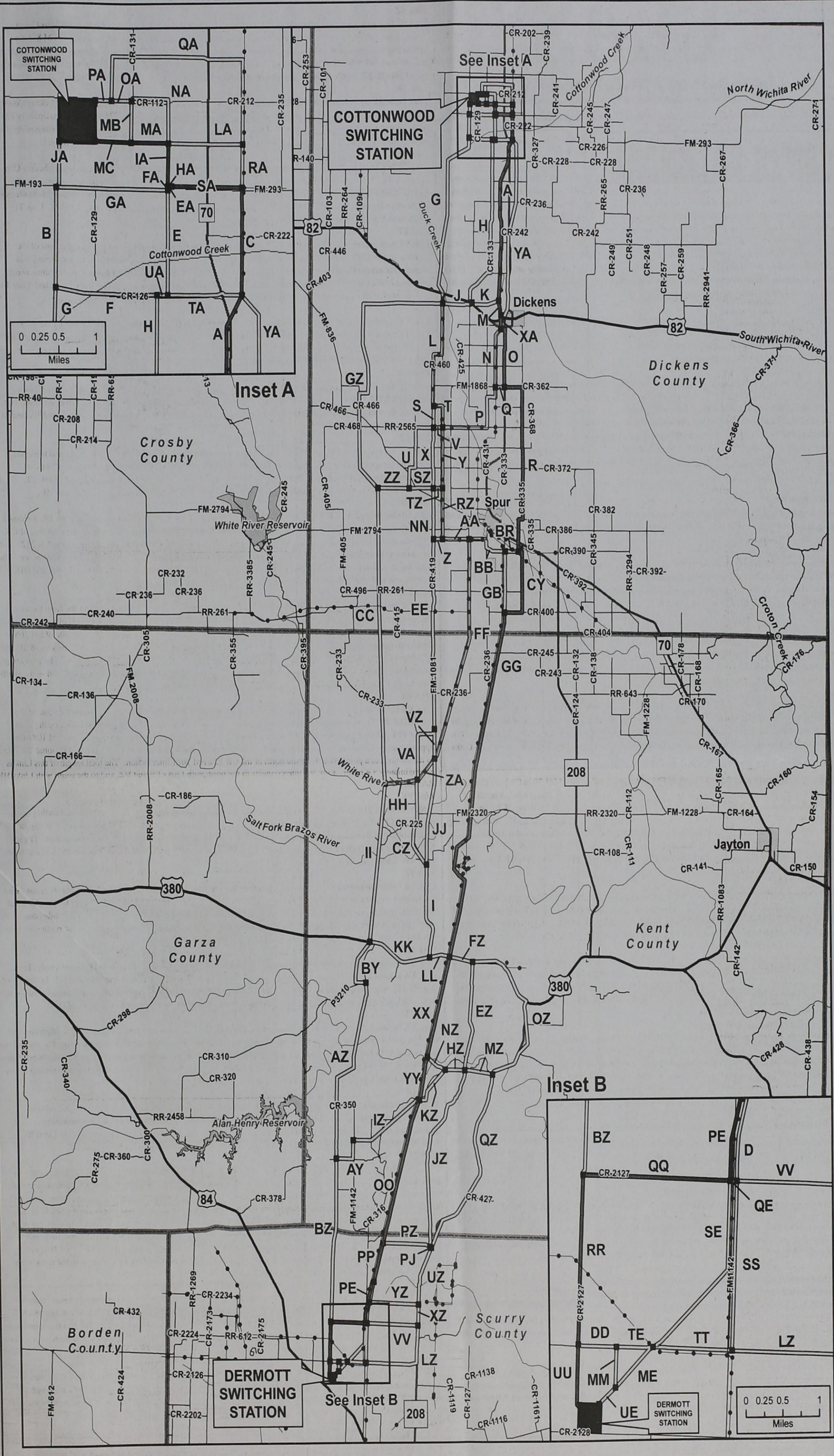
Link YZ begins just northwest of the SH 208/CR 2148 intersection in Scurry County, Texas. Link YZ follows a westerly route paralleling and abutting the north side of CR 2148 for approximately 2.9 miles. The total length of this Link is approximately 2.9 miles. Link YZ interconnects to the east with Links UZ and XZ, and to the west with Links PQ and D.

Link ZA

Link ZA begins at a point approximately 1.5 miles south of the FM 1081/CR 233 intersection in Kent County, Texas. Link ZA follows a southwesterly route paralleling and abutting the south side of an existing 69 kV transmission line for approximately 1.4 miles, and then angles to the west for approximately 0.1 mile and terminates just on the west side of FM 1081. The total length of this Link is approximately 1.5 miles. Link ZA interconnects to the north with Links VZ, FF and JJ, and to the south with Links HH, VA, and CZ.

Link ZZ

Link ZZ begins at a point approximately 0.4 mile west of FM 836, about 1.5 miles northwest of the FM 836/CR 419 intersection in Dickens County, Texas. Link ZZ follows a due west route paralleling and abutting the north side of an unnamed road for approximately 1.8 miles, to its terminus at an unnamed road located approximately 3.2 miles west of the RR 836/CR 419 intersection. The total length of this Link is approximately 1.8 miles. Link ZZ interconnects to the east with Links U and SZ, and to the west with Links GZ and CC.



- Node
- Switching Station
- Preferred Route
- Alternative Route
- County Boundary
- Existing 138 kV Transmission Line
- Existing 69 kV Transmission Line
- U.S. Highway
- State Highway
- Major Road
- Stream
- Water Body
- Municipal Boundary

WETT WIND ENERGY TRANSMISSION TEXAS, LLC
COMPETITIVE RENEWABLE ENERGY ZONES PROGRAM
 Cottonwood to Dermott
 345 kV Transmission Line Project
 Figure 4-1 Alternative Route Links Map

CLASSIFIED

email: mctribune@gmail.com 806-347-2400

June
Subscriptions Due
 Motley County-\$30
 Elsewhere-\$35
 Email-\$25
 Senior Discount \$1
 PO Box 490
 Matador, TX 79244

- ## EVENTS CALENDAR
- June
- 15 Baseball: T-B: Rangers vs Tornados
C-P: Wild Hogs vs Longhorns
S-B: Stampede vs Braves
 - 15 Matador Lions
 - 16 K-2nd grade Story time with Pam Thacker, craft project and snacks at Library. 10:00 - 11:00 a.m.
 - 17 Baseball: T-B: Tornados vs Rangers
C-P: Raiders vs Longhorns
S-B: Braves vs Stampede
 - 17 4-H Golf Challenge in Lubbock
 - 17 Matador Masonic Lodge, 6:30 pm
 - 19 Roaring Springs High School Reunion, Roaring Springs Community Center.
 - 19 Workday to clean up fix and paint at the City Park
 - 19 The Awakening, Free Burgers, 5:30 pm. Service, 6:30 pm. Roaring Springs Old Settlers Grounds
 - 22 10 County Camp in Roaring Springs
 - 22 Baseball: C-P: Longhorns vs Raiders
S-B: Stampede vs Braves
C-P: Wild Hogs vs Longhorns
 - 23 K-2nd grade Story time with Pam Thacker, craft project and snacks at Library. 10:00 - 11:00 a.m.
 - 24 Baseball: T-B: Tornados vs Rangers
C-P: Raiders vs Wild Hogs
S-B: Braves vs Stampede
 - 23-26 - District Horse Show
 - 27 4H State Steer Validation
 - 29 Ten County Camp
 - 29 'Pork & Beef' field day offered in Childress
 - 30 Science Spectrum Program- Restless Natives, Library Annex at 10:00 a.m.
 - 30 K-2nd grade Story time with Pam Thacker,

WANTED

WANTED: Swathing, Bailing, and Hauling. Round bails net wrapped twine tie. Square bails wire tie. Quality Work at competitive rates are on shares. Call Crawford Wesley at 806-668-4448 or cell 806-995-5053. David Wesley at 806-296-3255

Part Time general work. male or female 16 yrs or older. Call Lewis Fair 347-2423 Leave message if no answer. ct24

HELP WANTED

HACKBERRY CREEK CARE CENTER in combination with Workforce Solutions of Plainview is seeking three employees to work 20 hours per week at Hackberry Creek Care Center. Applicants must be at least 55 years old.

Any interested person should contact John Vunk, Administrator, at 806-347-2942 for further qualifications and information.

FOR SALE

Double or full size pillowtop mattress set, NEW!!! with original tags & warranty. \$125. Twin size mattress set, \$120. 806-549-3110

Family friendly chenille (durable) sofa & loveseat set, made in USA., brand new! \$550. 2- pc end table set \$75. 806-549-3110

KING SIZE (ASHLEY k.o.) bedroom suite, includes headboard and bed frame, dresser, mirror, and nightstand, heavy set, brand new. \$690. 806-549-3110

BULLFROG SPA. . . . pick from 17 different jet packs for hydrotherapy needs..last spa you'll ever need. www.bullfrogspas.com local LUBBOCK dealer. 806-535-0835

SLIPCOVERS, to fit Sofa and Loveseat. Linen, very nice. NEW, still in package. \$100. 347-2246.

HOUSE FOR SALE

House for sale in Matador on approx. 1 acre across from the football field. 3 BR 2 Baths. Central Heating/AC less than 2 yrs old. Needs work. \$35,000.00 or best offer. No money for a down payment? We will consider Lease/Purchase terms. Call for more details! 817-319-9329 or 817-980-8734.

A Place to Call Home

HACKBERRY CREEK CARE CENTER
 Matador • 806-347-2942

CNAs NEEDED at HACKBERRY CREEK CARE CENTER, Matador. All shifts. Please call Cindy for more information at 806-347-2942.

Hackberry Creek Care Center, INC, is an Equal Opportunity provider and employer. To file a complaint of discrimination write USDA, Director, Office of Civil Rights, Room 326-W, Whittton Building, 14th and Independence Avenue, SW, Washington, D.C. ctf

PUBLIC NOTICE DEADLINE:
 FRIDAY NOON

PRIORITY DEADLINE: FRIDAY 5 PM

FINAL DEADLINE: MONDAY NOON

NOTICE TO CONTRACTORS OF PROPOSED TEXAS DEPARTMENT OF TRANSPORTATION (TXDOT) CONTRACTS

Sealed proposals for contracts listed below will be received by TXDOT until the date(s) shown below, and then publicly read.

CONSTRUCTION/MAINTENANCE/BUILDING FACILITIES CONTRACT(S)

Dist/Div: Childress
 Contract 0925-18-007 for REPLACE BRIDGE AND APPROACHES IN MOTLEY COUNTY, etc will be opened on July 09, 2010 at 1:00 pm at the State Office.

Plans and specifications are available for inspection, along with bidding proposals, and applications for the TXDOT Prequalified Contractor's list, at the applicable State and/or Dist/Div Offices listed below. If applicable, bidders must submit prequalification information to TXDOT at least 10 days prior to the bid date to be eligible to bid on a project. Prequalification materials may be requested from the State Office listed below. Plans for the above contract(s) are available from TXDOT's website at www.txdot.gov and from reproduction companies at the expense of the contractor.

NFO: 33151

State Office
 Constr./Maint. Division
 200 E. Riverside Dr.
 Austin, Texas 78704
 Phone: 512-416-2540

Dist/Div Office(s)
 Childress District
 District Engineer
 7599 U.S. 287
 Childress, Texas 79201-9705
 Phone: 940-937-2571

Minimum wage rates are set out in bidding documents and the rates will be part of the contract. TXDOT ensures that bidders will not be discriminated against on the grounds of race, color, sex, or national origin.

Roaring Springs High School reunion June 19 Roaring Springs Community Center

- MATADOR**
 Craig Turner
 Ray Baxter
 Joetta Bumgardner
 Capital Farm Credit
 Jim Cooper
 Michael Crowley Sr
 Douglas Campbell
 Jerry Johnson
 Dorothy Day
 Marihelen Wason
 Linda Hess
 Juanita Cooper
- ROARING SPRINGS**
 James Bearden
 JT Swim
 Jeff Thacker
 Bennie Dillard
 Gary Smith
- TEXAS**
 John Thacker, Abilene
 Johnny Ezzell, Abilene
 Kelly Jackson, Lubbock
 Oma Sue Helms, Lubbock
 James Price, Lubbock
 Lou Dunn Diekemper, Lubbock
 Ryan Moore, Lubbock
 Emily Roy, Silverton
 County of Cottle, Paducah
 Sandra Gage, Paducah
 Wes Campbell, Floydada
 Roger Cantwell, Floydada
 Roy Moreno, Floydada
 Zoe Smith, Tulia
 Julie Ramsey, Pampa
 Kay Smallwood, Lapryor
 Stanley Kingery, Austin
 Genell Dewbre Riley, San Angelo
 Herman Ellithorp, Harker Heights
 Danny Perryman, Bowie
 Louis Shorter, FT Worth
 Mickie Hillman, Granbury
 Andrew Simpson, Dallas
 Hal Hines, Sunnyvale
 Neal Harlson, Allen
- ELSEWHERE**
 Vern Jones, CA
 Dwight Clower, NM
 Nina Strong, NM
 Alene Echols, NM
 Slim Durham, OK
 John Fish, TN

Don's Muffler Shop
 210 W. California
 Floydada
 806-983-2273
 FREE ESTIMATES



Meredith Gas & Supply
 348-7332
 Your Locally Owned and Operated Propane Company

Propane & Service

24 hours-7 days a week!
 We welcome new customers!

Tanks & Supplies available
 Propane appliance Services
 Pressure Tests & Leak Test performed upon request

WE ACCEPT VISA & MASTERCARD

Childress Veterinary Hospital
Dr. David Fuston
 Full Service Veterinary Hospital
 Large and Small Animal Needs

940-937-2558
 109 Industrial Circle/287 West, Childress

NEED INSURANCE? GET GOEN!

GOEN & GOEN INSURANCE
 CROP-HOME-AUTO-FARM
 BUSINESS-LIFE-HEALTH

203 BROADWAY, ROARING SPRINGS
 348-7531 800-288-2865

Hotel Matador
 . . . a Bed and Breakfast
 in downtown Matador, Texas

www.hotelmatador.com
 806.347.2939

For all your Ginning, Marketing & Planting needs

JOHNSON'S GIN
 Silverton, Texas

806-823-2224 800-338-3960
 Family Owned & Operated
 Buy USA Grown & Made - It Matters!

WYLIE LP GAS

"Proud to be a part of Motley County"
 Residential-Commercial-Parts & Acc.
 Farm & Highway Diesel CALL 806-347-2290
 Office still locally operated at 1021 Main-Downtown Matador
24 HOUR SERVICE-7 DAYS A WEEK
WE APPRECIATE YOUR BUSINESS! MC & VISA

PAYNE PHARMACY

200 S. Main, Floydada, TX 79235
 806-983-5111 or 800-345-7961
 Denise Payne, R.Ph.

M-F, 8:30-6:00 & Sat., 8:30-1:00
 We will be happy to mail your prescriptions!

Motley County Abstract Company
 P.O. Drawer 1
 Paducah, TX 79248

806-492-3573 Fax 806-492-3574
 Complete Records for Abstracts & Title Insurance in
 Motley County, Texas
 Nelda Hightower-Owner
 Lisa Hightower Wood-Manager

Tom Edwards, Attorney
 806-347-2333

Germania Insurance
Joey & Brenda Lee
 Lee's Insurance

P.O. Box 189
 Clarendon, Texas 79226-0189
 806/874-2130 phone
 806/874-9394 fax
 877/874-2130

HOME • AUTO • LIFE • COMMERCIAL