



# BAILEY COUNTY JOURNAL

"The Community of Opportunity-Where Water Makes the Difference"

VOL. 9 NO. 30

12 PAGES

Published Every Sunday at Muleshoe, Bailey County, Texas - 79347

10 CENTS

SUNDAY, JULY 25, 1971

## Weather

	HIGH	LOW	PRECIP.
July 21	70	58	0.44
July 22	88	62	0.09
July 23	93	65	0.07
July 24	82	62	0.19

MOISTURE  
Total for July 1.72  
Total for year 5.59

# Two Tornadoes Reported Friday

## Sirens Send Citizens To Storm Shelters

# Farm-Ranch Safety Week Tips Given

## around Machinery, Water, Fire, Falls Top List

around muleshoe with the journal staff

Jane Gutierrez, daughter of Mr. and Mrs. Juan Gutierrez, is spending the summer in the home of her parents and attending summer classes at Texas Tech University.

She is a senior student at West Texas State University, Canyon, is serving her second year in the student senate, and is serving in the student house of representatives.

Justice of the Peace and Mrs. Morris Nowlin left Friday afternoon for a trip to Canada.

Nowlin said they would tour parts of Canada and northern states and return to Muleshoe in approximately two weeks.

**Library Meet Set Friday For All Supporters**

A meeting of all library supporters in the area has been set for Friday, July 30, at 8:30 p.m., at the Bailey County Cooperative community room. The meeting is open to all interested persons.

The joint Library Board and Friends of the Library meeting has the goal of completing and setting in motion plans in regard to a busy fall and the completion of the new library building.

The executive boards of both FOL and the Library Board will meet prior to the public meeting at 7:30 p.m., for an important meeting.

**Eight Enter Contest Farm Bureau Queen**

Two more contestants have entered the Bailey County Farm Bureau Queen contest, to bring the total to eight vying for the title for the next two years.

New entrants include Brenda Tiller, 18, daughter of Mrs. Gordon Tiller. Brenda is a 1971 graduate of Muleshoe High School and plans to attend Texas Tech University this fall where she will major in home economics.

She has lived 15 miles south of Muleshoe on a farm all her life. While in school, she was a member of the band her freshman and sophomore years; in Future Homemakers of America, all four years of high school and served in an office her senior year; she was in Future Teachers of America her junior and senior year; and was in Distributive Education her senior year where she served as an officer. Brenda worked at the Farm Bureau office in Muleshoe as a DECA student. She attended the state conventions for FHA, FTA and district convention for DECA.

A member of the Longview Baptist Church, Brenda says she enjoys playing piano, horseback riding, swimming and reading.

Another contestant is Joann Dobbins, 17, daughter of Mr. and Mrs. James Dobbins. She will be a senior at Muleshoe High School this fall and has lived on a farm the last 10 years.

Joann has two sisters, Karen and Christine and the family attends the Circleback Baptist Church.

After she completes high school, Joann plans to take a course in computer training and train to be a bookkeeper.

She says she enjoys outdoor activities and sports and her hobbies are swimming, cooking and sewing.

Other contestants include

"No Texas farm or ranch could operate without water, fire and machinery. Yet these essentials are also the agribusinessman's greatest threat," according to the vice president for Farm and Ranch of the Texas Safety Association, Joe L. Smetana of Waco made the comment while discussing Texas Farm and Ranch Safety Week. Governor Preston Smith has proclaimed the week of July 25-31 as Farm and Ranch Safety Week to call attention to the need for greater efforts in accident prevention in rural areas of the state.

"Last year in Texas, water, fire and machinery accidents claimed the lives of at least 100 persons engaged in agricultural pursuits," Smetana revealed. Other factors accounted for 63 deaths.

Smetana said that accidents involving farm and ranch machinery were the biggest killers among the three. Forty persons died in such accidents in 1970. Nineteen of the deaths involved tractors, six involved shredders, two came in cultivator accidents and two involved mowers.

Six of the deaths occurred when vehicles fell off jacks. Two more occurred when the victims were struck by vehicles in motion, and three deaths resulted when the victims were struck by other machinery.

"The modern agri-businessman must use machinery in his day-to-day operation. But he does not have to become the victim of machines, if he will

follow a few simple rules," added Smetana.

He said that farmers and ranchers should read and follow instructions and manuals for the operation of machinery. The TSA vice president also said that guards and safety devices should be kept in place, and that

Cont'd, on Page 3, Col. 1

Cont'd, on Page 3, Col. 1

**Babe Ruth Plays District At Plainview**

The 13-year old Babe Ruth All-Stars from Muleshoe go into district playoff Saturday when they will take on the winner of the Littlefield-Plainview game which was played Friday.

Led by the firm pitching of Hector Posados, who gave up only one hit in the ball game, the Muleshoe All-Stars defeated Olton-Springlake-Earth, 6-1, in a game played Thursday in Plainview.

The O-S-E single hit came in the last inning of the game, when they also scored their solitary run of the game.

Randy Latham, Earth, was the losing pitcher for his team. Members of the 13-year old Babe Ruth All-Stars are Hector Posados, Gary Herring, Reuben Gonzales, Larry Puckett, Johnny Lopez, David Engelking, Tony Vela, Jimmy Robinson, Gary Davis, Carey Sudduth, Ricky White, Ray Garcia, Robert Shafer, Tommy St. Clair and Trent Stewart. Their manager and coach are Bill Russell and Gary Glover.

Providing two vans to transport the teams and equipment to Plainview for the tournament are Les Glover and Bill Jim St. Clair.

**County Agent Discusses Used Machinery**

Everyone has a few special points they like to consider when buying a used piece of machinery. But, if you are in the market for a good used tractor this summer, take some extra precautions and do some checking first advised Bailey County Agent J.K. Adams.

Note the general appearance of the engine. If bolts and fittings have a "well wrenched" look, the previous owner may have made frequent repairs.

Be extra careful in checking the clutch and transmission, especially if the tractor has over-side, high-compression pistons, turbocharger or other non-factory installed equipment. The drive train may have been weakened by the extra powerful engine, added the county agent.

If the tractor emits a blue exhaust smoke, look out for an oil burner; black smoke indicates carburetor problems.

The PTO operation of the tractor should be smooth. If the shift lever or PTO clutch lever is loose and has a lot of play of tends to jump out of gear -- it can mean trouble before long, Adams warns. Clutch pedals and on-the-go shifts should also operate smoothly.

Conditions of the drawbar and the hitch linkage shows how much use the tractor has had. Another major point to check is the rear axle housing. Creaks and leaky axle seals can create dangerous leaks.

Cont'd, on Page 3, Col. 3



MILK COMPANY GETS FACELIFTING--Workers for E. T. Ford Construction Company were busy Friday morning tearing out windows and taking down signs at Malone Milk Company on West Second Street. Ford said he was bricking in the front of the building and a solid glass door would be installed. This is another of the face-lifting projects being undertaken by local business firms.

# Hardin Extends Aid For Drought Areas

Cotton farmers who have been hard hit by drought or other natural disasters this year are being offered greater income protection by the manner in which their cotton yields will be computed for program payment purposes in 1972, Secretary of Agriculture Clifford Hardin has advised Congressman Bob Price.

The secretary also announced several additional changes in program provisions which will offer greater release to drought-affected farmers. The changes are based on findings from a recent inspection tour of drought-stricken areas by under secretary J. Phil Campbell.

The action on cotton is expected to strengthen income in 1972, added Congressman Price, and subsequent years for cotton farmers in the drought areas of the southwest. An adjustment in the farmer's actual 1971 cotton yield up to 90 percent of his 1971 payment yield--instead of the previous level of 80 percent--will be permitted where this year's yield is reduced by adverse natural conditions.

Additional assistance covered in Price's announcement includes:

1. An extension through

**Tax Board Met Two Days With Area Citizens**

A number of persons who wished to have the new tax rate and system of arriving at tax figures met with the equalization board for the Muleshoe Independent School District Wednesday and Thursday.

Most of the people wished to discuss their taxes or were confused as to what difference the 8.35 percent tax raise would make in their tax payment for this year, said Franklin Mann, school tax assessor-collector.

Very few complaints were received, he said, although the traffic was fairly heavy with curious and puzzled citizens seeking an equalization board hearing.

Board of equalization members Tommy Haley, Arvis Grogan, Bobby G. Free, Horace Hutton and Jim Young scheduled a Saturday morning meeting to further discuss evaluations, tax rates and consider citizen requests.

Failure to comply will mean termination of the issuance of commodities, added Cabrera, as

December 31, 1971 of the emergency Livestock Feed Program and haying-grazing of land diverted under the Crop Land Adjustment and set-aside programs that were originally scheduled to end August 31, 1971.

2. A revision of procedures to allow farmers to use their own conveyance as an additional source of transportation, where other means have caused delays in the delivery of feed grains

Cont'd, on Page 3, Col. 4

# New Manager Named For Commodity Food

A new manager has been named for the Commodity Food Distribution Center in Bailey County, Raymond Cabrera was named to replace Jane Morgan who had been named manager when the distribution center opened here last year. He assumed duties at the Center Tuesday.

Cabrera is the son of Mr. and Mrs. George Cabrera. He and his wife, Theresa, have three children; Penny Lee, four; Raymond Jr., eight and Shelly Lynn, age two. Mrs. Cabrera is a teacher aide at Muleshoe Junior High School.

He announced new hours for the center. Distribution will be made from 8 a.m. - 11:30 a.m. Monday through Friday and review of cases and applications will be done 1-4 Monday through Friday of each week.

During the last four working days of the month, Cabrera said no distribution will be made as government reports will be done during that time.

He added that persons who are seeking application for commodity food distribution should bring verification of all income, property when they initially come to the Center. Established cases are subject to review every three months, he added, as required by USDA.

La nueve hora para distribucion de commodities: Durante lunes a viernes de 8 de la mañana a 11:30, por la tarde de 1 de la tarde a las 4 se revisaran casos y se tomaran aplicaciones.

Los ultimos cuatro dias de trabajo de el mes no abra distribucion. Se requiere verificacion de sus ganancias y de su propiedad para establecer su caso, casos ya establecidos estan sujetos a ser revisados de nuevo cada tres meses como es requerido por el USDA.

Cont'd, on Page 3, Col. 5

Muleshoe citizens, who had wondered if the tornado siren could be heard in various sections of town, got their answer around 9:40 Friday night when the siren was sounded after two tornadoes were spotted north of Muleshoe.

Members of the Bailey County Volunteer Fire Department reported the two tornadoes dangling from clouds north of Muleshoe and moving slowly toward town.

An overflow crowd sought shelter at the Bailey County Law Enforcement Center to wait out the storm which dissipated in approximately an hour without leaving any known damage in the area. Bailey County Judge Glen Williams, who is Civil Defense coordinator, and all dispatchers and office workers at the law enforcement center answered several hundred telephone calls from anxious citizens as well as attempted to direct the large number pouring into the center for shelter.

For approximately an hour, it was impossible to get a telephone line to call outside the center, except on one telephone which was kept free to call the fire department, radio station, National Weather Service and the Department of Public Safety in Lubbock.

The four incoming telephone lines at the law enforcement center did not stop ringing until the all-clear signal was given at 10:40 p.m., despite repeated requests by Judge Williams that persons not call the law enforcement center.

Partially due to the large crowd in the law enforcement center and the many questions asked of the three people manning the radio desk, radio communications were all but blocked out as the radio could not be heard clearly. All city, county and state officers and more than 30 firemen surrounded the cloud as it moved within two miles of Muleshoe, then veered off to the east of Muleshoe, before retracting and moving west back over Muleshoe. When the cloud got over Muleshoe, the disturbance in the cloud had dissipated and a slow rain fell for some time.

Fire Chief Earl Ladd said that as far as physically possible, current weather and cloud conditions will be reported as soon as possible. He stressed that it may be that conditions are right for a tornado, even though there is not a tornado imminent.

Cont'd, on Page 3, Col. 7

lately threatening the area. He added that the sirens are strictly to warn persons that protective measures should be taken.

He asked that any citizens within the city limits of Muleshoe who did not hear the warning sirens Friday night to report this fact to him at Ladd Pontiac or a member of the Bailey County Fire Department.

Cont'd, on Page 3, Col. 7

# Golf Tourney Scheduled For Next Month

Muleshoe Country Club Golf Pro Pearl Ward has announced an Invitational Partnership Golf Tournament which will be held Friday-Sunday, August 6-8. He said the Invitational Tournament will replace the August Invitational held in past years.

The tournament will be 54 holes and will be flighted by the lowest handicap. Ward said there is a 60 team limit, with ten teams in each flight. Partners can either be local or out-of-town and entries are \$40 per team.

Deadline for entering the tournament is noon Thursday, August 5.

# Innoculation 1,000 Horses; Job Incomplete

Dr. Jerry Gleason's office reports that more than 1,000 horses in the Bailey-Parmer County areas have been inoculated with the VEE vaccine and several hundred more are expected to receive the vaccine before completion in this immediate area.

Dr. Gleason is working alone at this time as his assistant, Dr. Jim Tucker is with his father, who is seriously ill at Paducah.

The veterinarian is working in the clinic on northwest Highway 84 during morning hours, then works in the country during the afternoon and evening.

As of this date, there have been no reported confirmed cases of VEE in the area, and the veterinarians hope the vaccinated horses will keep the sleeping sickness from moving in here.



RAIN! RAIN! RAIN!--Mrs. Chester Wilson smiles as she watches large rain drops falling in Muleshoe Thursday afternoon. The rain began after 4 p.m. and marked the third straight day some moisture has been received in the area.

# TWDB Gets Funds For Water Studies

AUSTIN--An increase in appropriations by the Legislature to the Texas Water Development Board for water studies and investigations during the fiscal year starting Sept. 1 assures a continuation of Board studies on the High Plains, Marvin Shurbert, vice chairman of the Board, said today.

While the increased funding of the Board's statewide program was modest---up \$300,000 from the Board's present appropriations of \$1.4 million to \$1.7 million for the new fiscal year,

---important ground water monitoring and water level observation programs, recharge studies and cooperative studies of importation of water to West Texas by the Board, the Bureau of Reclamation and the Corps of Engineers will remain high on the Board's program of work, Shurbert said.

"These programs are important to the Texas Panhandle," the longtime Board official said, "and have a high priority among the Water Development Board's programs.

"I think it important to remember that the Board's water studies and investigations programs are statewide and funding of this program while ample to carry on the programs at the present level, does not permit any major expansion of the program during the next fiscal year."

The Board is working closely with the Corps of Engineers and the Bureau of Reclamation in preparation of data to be compiled for a report to the Congress in 1973 on the im-

portation of water from the Mississippi River to Texas. The Board is providing its computer facilities for multi-basin simulation modeling and analysis. In addition, the Board has completed six preliminary economic and benefit studies to support the proposed delivery of imported water to West Texas---including the High Plains. A review and updating of these studies will be made before the Congressional report is completed.

Shurbert pointed out that he

felt the High Plains would be beneficiaries of several agricultural studies by the Board. These, he said, are a computerized projection of irrigation water requirements; consumptive use of water by phreatophytes; future water requirements for the fast-growing cattle feed lots; and an irrigation inventory by the Board, the Soil Conservation Service and the Texas State Soil and Water Conservation Board.

Shurbert said the purposes of the ground water quality monitoring program are to determine the chemical quality of water stored in each of the major aquifers in the state, and through repetitive sampling observe any significant changes which occur in the underground water.



MULESHOE MOTOR AWARDED--A representative of Ford Motor Company, left, was in Muleshoe this week to present Robert Hooten, right, the 1970 'Distinguished Achievement Award' for Muleshoe Motor Company. He said the award was one of few awarded 6,000 Ford dealers in the United States.

## Achievement Award Given Ford Dealer

Muleshoe Motor Company of Muleshoe has been selected as one of the nation's outstanding Ford dealerships and will receive Ford Motor Company's Distinguished Achievement Award.

The Distinguished Achievement Award is presented "in recognition of progressive management . . . modern sales and service facilities . . . sound merchandising practices . . . high quality standards . . . and continuing interest in rendering superior service to Ford owners."

Robert Hooten has been a Ford dealer in Muleshoe since 1962. The dealership is located at 106 South First Street.

Another report, "A Study of Artificial Recharge in Texas," is being completed and is scheduled for publication during FY72. More than half of the report is concerned with artificial recharge in the Texas Panhandle.

Field work on a three-pronged study by the Water Development Board, the Texas Water Quality Board, and Texas Tech University covering the possible nitrate pollution from commercial cattle feedlot operations in the High Plains is nearing completion, Shurbert said. Results of the study will be published by the Board in FY72.

The study was directed by Dr. William D. Miller, chairman of the Geoscience Department of Texas Tech. Seth Burnitt of the Texas Water Development Board was coordinator of the project.

"The water studies and investigations program is an important function of the Water Development Board," the Board's vice chairman said. "Much meaningful data is obtained through this program. This data is vital as we go forward in the development and protection of our water resources, and it means much to us on the High Plains as we plan the wise use and management of our declining water resources," he concluded.

Rivals in Language: Old Lady (in New York-- "Isn't it wonderful how a single policeman can dam the flow of traffic?" Boy-- "Yes, granny, but you should hear the bus drivers."

# GRAND OPENING

# FABRIC

## SUPER SAVINGS

STARTS MONDAY 8:30 a.m.

SHOP DAILY 'TIL 6:00 p.m.

ON FULL BOLTS FROM A VERY FAMOUS MILL

60" WIDE NO IRON 100% POLYESTER DACRON

## DOUBLE KNITS

BEAUTIFUL SOLIDS & FANCIES FAMOUS MILL

# \$2.99

VALUES TO \$4.99 YD.

VELVETEX CORDUORY

A VARIETY OF PRINTS IN 100% COTTON 44" WIDE

# \$1.69

YD.

REGULAR TO \$1.59 YD. FULL FASHION SELECTION 100% DACRON LININGS POLYESTER

# 77¢

YD.

BOND YOUR OWN MATERIAL WITH NEW STITCH WITCHERY

# 99¢

YD.

HOT PANTS SPECIAL! CRUSHED VELVET LOOK

## VEL PANNE

100% RAYON FACE CLOTH BACK 45" WIDE

# \$1.29

YD.

DESIGNER LENGTHS MACHINE WASHABLE!!

WAVERLY PRINTS DRAPERY

48" WIDE COTTON LINEN

# 99¢

ASST. COLORS YD. VALUES TO \$1.59

NO-IRON CHAMBRAY

50% DACRON POLYESTER 50% COTTON

# 49¢

SOLID COLOR YD.

## FABULOUS FOR FALL SOFT KNITS

HAND WASHABLE

54" WIDE SOLID & PRINTS

# 99¢

VALUES TO \$1.99 GREAT FOR BACK TO SCHOOL YD.

JUST RIGHT FOR BACK-TO-SCHOOL

## KNIT & TUCK

90% ARNEL TRIACETATE 10% NYLON

# \$1.99

HAND WASHABLE ASST. COLORS YD.

PERMANENT PRESS SPORTS WEAR

# 59¢

YD.

100% COTTON 45" WIDE HEAVY DUCK WEIGHTS MACHINE WASH, DRY

# perry's

## FABRIC CENTER

128 MAIN MULESHOE TEXAS

DECORATOR'S SPECIAL ANTIQUE SATIN DRAPERY BEAUTIFUL NUBBY TEXTURE, LARGE SELECTION RICH DECORATOR COLORS

# 39¢

YD.

## CULTIVATE Safety ON THE FARM

Don't Take Chances... Take Care!

A safe farm is a profitable farm. Get the safety habit and harvest lifetime benefits.

FARM SAFETY WEEK

JULY 25-31

## LET'S REDUCE FARM ACCIDENTS AND THEIR ALARMING TOLL OF 7,500 LIVES A YEAR!

Practice Farm Safety, Prevent Farm Accidents...Now And All Year Long!

# First National Bank

MULESHOE MEMBER FDIC

### Safety...

Cont'd from Page 1

machines should always be shut off before anyone attempts to unclog or adjust them.

"Children should be kept away from machinery and all workers should be taught to stay clear of the moving parts of agricultural machines," Smetana warned.

"Tractor overturns accounted for 16 of the deaths involving machinery last year," he continued. He said these deaths might have been avoided if the tractors involved had been equipped with protective frames or protective cabs and safety belts.

"But the best way to prevent this sort of thing is to prevent tractor overturns themselves," Smetana advised.

He explained that agricultural workers could avoid tractor upsets by slowing down for turns, especially on slopes and on rough, muddy ground. Slow speeds should also be used near ditches and embankments, according to the safety expert. He also cautioned tractor operators to watch for hidden hazards and obstacles, and not to overload the vehicle.

"One of the most important rules to follow," commented Smetana, "is to give proper, thorough training to young or inexperienced drivers and workers in the safe operation of all farm machinery."

"One more thought about machines. Operators of slow-moving vehicles need to periodically check the condition of their SMV emblems. Damaged or fading emblems must be replaced. The orange fluorescent centers of the emblems fade and will only last about two years," Smetana continued.

"There are two possible solutions, either the entire emblem can be replaced, or the SMV's center can be covered with an easy-to-apply pressure sensitive triangle overlay," he stated.

Water was the next accident villain discussed by the Texas Safety Association spokesman.

"Water-oriented accidents claimed 31 rural Texas lives last year," he said. "The deaths came in boating, swimming and fishing accidents on Texas farms and ranches. The most important safety step rural families can take in this area is to teach every member of the family how to swim. Stock ponds, streams, and creeks should be properly guarded to protect small children. Twenty

of last year's fatalities were under 19 years of age, seven of those were nine and younger."

Smetana also said that flotation aids should be kept handy near all agricultural water hazards and that family members should know how to administer mouth to mouth resuscitation.

Fire was the next safety hazard discussed by the expert. "Fire destroyed at least one human life on Texas farms and ranches in each month, except October, during 1970," Smetana said.

"Twenty-nine people perished in the blazes."

He said that proper preparation for emergencies such as fire is one way of saving lives. Inspections should be made on regular basis of appliances, electrical wiring, and power tools, and the defects eliminated. Heating systems, portable heaters, and other possible fire hazards should also be checked, according to Smetana.

He urged farm and ranch families to prepare a home fire escape plan and to make assignments for each person for action in case of fire. The plan should be tried during a fire drill.

Smetana said another major cause of farm and ranch deaths in 1970 were falls, and added, fourteen deaths occurred on farms and ranches as a result of falling accidents.

"Falls generally occur when makeshift or broken ladders are used, or when people are too much in a hurry to take the proper amount of time to plan a specific job. Handrails and good lighting can help eliminate falling hazards on stairs and steps. Workers should also remember to scrape mud, grease, snow, and other substances from shoes before climbing ladders on machinery, equipment, or buildings," emphasized Smetana.

"One area of special emphasis during Texas Farm and Ranch Safety Week is agricultural chemicals," he continued.

"Though there were no deaths directly attributed to the use of agricultural chemicals during 1970, there is always an element of danger when pesticides, herbicides and other chemicals are being used," the TSA farm safety expert stated.

"Our advice to agri-businessmen is relatively simple. First, a safe worker always reads the label and follows the directions to the letter. If the protective equipment, such as gloves, respirator, or special clothing is recommended, it

should be used. Children and animals should be kept away from mixing and spraying area.

Chemicals should be stored in their original containers. They should never be placed in food or drink containers. Chemicals should be stored in safe places that are inaccessible to children and animals. Finally, the recommendations of the manufacturer or dealer should be followed when disposing of the empty containers."

"In general," he said, "there is no reason why farm and ranch activities have to result in loss of life, injury or property damage, if all rural residents would simply be more alert to the possible hazards of everyday life."

"Accidents can be prevented, and the annual Texas Farm and Ranch death and accident injury toll can be reduced," Smetana concluded.

### Agent...

Cont'd from Page 1

Other points to keep in mind when considering buying a used tractor include:

Checking the inside of the radiator for signs of liming or plugging. These are indicators that the tractor overheats.

Check the oil dipstick. Water in the oil gives it a milky look. Extra heavy oil means oil consumption in a gasoline engine or diesel combustion problems in diesel engines.

The air cleaner should be clean on the inside, while leaks in air lines to the engine mean rapid wear on moving parts.

Buying a used tractor represents a sizeable investment, so some careful checking before buying is good business, says Adams.

Be charitable, if you can, in your judgement of others; save severity for your own mistakes.

**Bailey County Journal**  
Established March 31, 1953  
Published by Muleshoe Publishing Co., Inc.  
Every Sunday at 204 W. Second St. #49  
Muleshoe, Texas 79347  
Second class postage paid at Muleshoe, Texas  
Muleshoe, Texas, 79347.

**TEXAS PRESS ASSOCIATION**  
Member Since 1971

L.B. Hall, President  
Jeanita Perry Hall, Secretary-Treas.  
L.B. Hall, Publisher & Managing Editor  
Clara Williams, News Reporter  
Doris Fisher, Society Reporter  
SUBSCRIPTIONS:  
Zone I - Bailey-Parmer-Cochran-Lamb counties: \$4.00 per year, \$4.50 per year by carrier. With Thursday Muleshoe Journal, both papers \$9.50 per year; \$4.00 per year by carrier.  
Zone II - Out-of-Territory: \$4.50 per year With Thursday Muleshoe Journal, both papers, \$8.25 per year.  
Monthly by carrier-35¢; single copies-10¢  
Advertising rate card on application

### Drought...

Cont'd from Page 1

into drought areas. Orders for feed grains now can be expedited rapidly by the County ASCS office contacting the Kansas City Commodity Office directly instead of routing requests through state ASCS offices.

3. Cost-sharing for emergency tillage practices that have been previously used only on crop land to prevent wind erosion is now available on pasture and range land. This will also improve water penetration and help prevent runoff.

4. Cost-sharing assistance, under the rural environmental assistance program, is provided for use in building livestock water ponds, in order to catch and store water when rain occurs.

The definition of "crop loss" has been clarified for hog producers in the Livestock Feed Program to include loss of grain or pasture which provided the feed for the hog producers' animals and was lost due to drought.

Every effort is being made

to insure a uniform administration of all emergency programs, and county and state ASCS committees, in following the intent of the law are investigating any reported discrepancies.

Generally, cotton payment yields for the 1972 program are the average of the 1970 program yield and the actual yields for 1970 and 1971. The Agricultural Act of 1970 provides for participating cotton farmers to receive a set-aside payment of at least 15 cents per pound. The payment is computed by multiplying the payment rate per pound times the payment rate established for the farm times the acres planted within the base acreage allotment. The secretary has authority to make adjustments in the actual yield in any year where the farmer's yield is reduced by drought, flood, storm or other natural disaster.

Based on the announcement, farmers who suffered a severe yield reduction as a result of natural disaster in 1971 will receive a higher payment yield for 1972 than they would have under rules previously in effect. This is expected to be

helpful not only to farmers in the southwest, but also to farmers who suffered severely from excessive rains early in the growing season elsewhere in the country.

### Contest...

Cont'd from Page 1

girls to contact the local Farm Bureau office for application forms.

The contest will be held Friday at 8:30 p.m. in the Muleshoe High School cafeteria.

### Food...

Cont'd from Page 1

with infants under the age of one year are allowed an extra can of evaporated milk a day, syrup and baby cereal.

Henry M. Jackson, Senator (D-Wash):

"The administration cannot stand pat on shopworn economic theory while millions of Americans are looking for work."

### Tornadoes...

Cont'd from Page 1

The Journal or Law Enforcement Center. Chief Ladd said they need to know how effective it was and possibly corrective measures to be taken in the future.

Very little rain was recorded in the area during the fourth straight day of general showers in the area. During the showers Friday night, Muleshoe recorded only approximately 1 inch of moisture.

Mrs. John F. Blackman at Bula said they had received only 3 inch of moisture during the past several days; Beene Grocery, Needmore, said showers only, no measurable moisture had fallen and Mrs. Eugene Black, approximately nine miles northwest of Muleshoe said they received possibly one-eighth inch Thursday and Friday.

Birdwell Ranch headquarters, west of Muleshoe, said they had received slightly over an inch of rain during the past several days and no rain was recorded Friday night. Clays Corner

Grocery, ten miles north of Muleshoe, reported .3 inch, very light wind sometime after 9 p.m. Friday and Joe Embry 14 miles northeast of Muleshoe said only sprinkles were received there. Saturday morning, as the paper was going to press, skies were overcast but no moisture had fallen since around 11 p.m. Friday night.

Human progress can be boiled down to the mastery of emotions by men and women.



Observe National Farm Safety Week **JULY 25-31**

How Grim Is Your Reaper?

What will you harvest in your fields this year . . . a bin of grain or a bed of pain? Will you reap the fruits of your labor . . . or the grief of your carelessness? The harvest is to sustain life, not destroy it.

Your harvest can be exceedingly grim if you permit your children to play around or operate farm machinery. A shocking 17 per cent of all deaths involving farm tractors are of children under 10 years old. Youngsters under 19 account for 34 per cent of all deaths in farm machinery accidents.

Permit no young riders on your implements . . . or the Grim Reaper may board by their side. More than 11,300 farm residents are accidentally killed every year. About 950,000 more are injured. There are four times as many accidental deaths in farming than in manufacturing! How grim is your reaper?

**James Glaze Co.**

**U.S. of Affiliated AFFILIATED A Country Within a Country!**

**FOOD SALE**

**DEL MONTE TOMATO CATSUP** 14 oz. 5 FOR \$1

**DEL MONTE YELLOW CLING PEACHES** #2 1/2 CAN 3 FOR \$1

**DEL MONTE CUT GREEN BEANS** #303 CAN 4 FOR \$1

**DEL MONTE FRUIT COCKTAIL** #303 CAN 4 FOR \$1

**DEL MONTE 46oz. CAN PINEAPPLE-GRAPEFRUIT DRINK** 3 FOR \$1

Del Monte Early Garden #303 Sweet PEAS 4 FOR \$1  
Del Monte Golden Cream Style or Whole Kernel #303 CANS CORN 5 FOR \$1  
Del Monte Buffet Size TOMATO SAUCE 10 FOR \$1  
Del Monte 46 oz. can TOMATO JUICE 3 FOR \$1  
Del Monte Tall Can Red SALMON 99¢  
Suave 12 oz. can HAIR SPARY 44¢  
Shurline Big 200 count Bottle ASPIRN 33¢  
Mennens Baby Magic 9 oz. size LOTION 69¢

**WHITE CABBAGE** FRESH FIRM 7¢ Lb.  
**GRAPES** 39¢ Lb.  
**10 Lb. Bag WHITE RUSSETT POTATOES** 45¢ Lb.

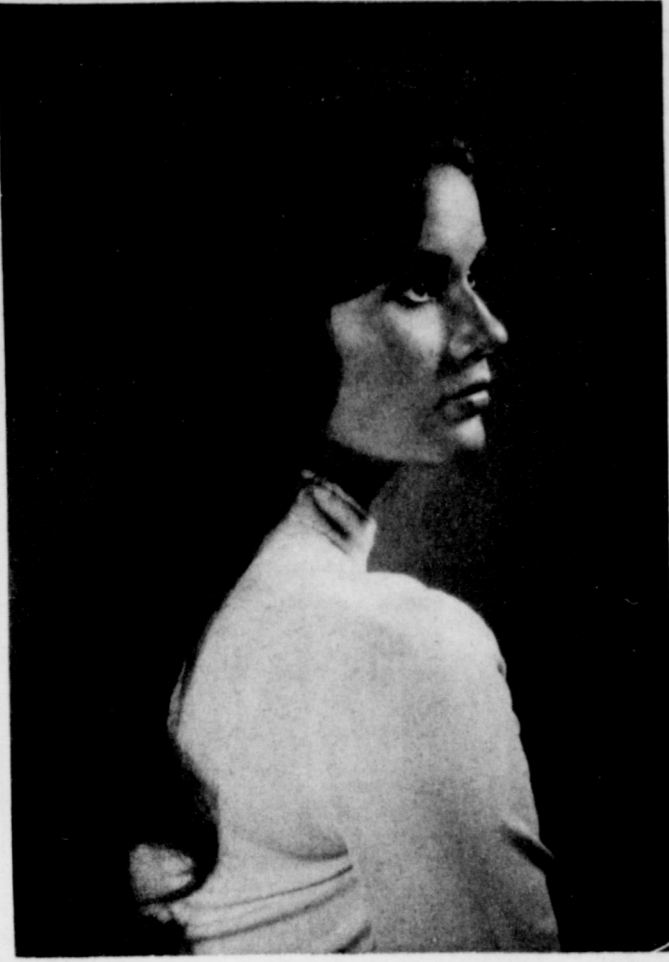
**PANTY HOSE** 2 PAIR 69¢  
**BISCUITS** 10 ct. 5¢  
**BANANAS** 5¢  
**SALAD OIL** 24 oz. BOTTLE 39¢  
**ARRID** 65¢

**Jim's Pay N' Save**  
FRIENDLIEST STORE IN TOWN

QUALITY MERCHANDISE AT LOWEST PRICES

Specials Good Sun. July 25 thru Sat. July 31 8 a.m. till 10 p.m. 6 Days a Week Sundays 9 a.m. till 10 p.m. 201 S. 1st. Street

## Farwell Ceremony Unites Miss Foster, Terry Travis



Miss Nedda Foster became the bride of Terry Travis Saturday, July 10, at 8:00 p.m. in a double ring ceremony performed in the Hamlin Memorial United Methodist Church of Farwell by Rev. B.J. Foster of Knox City, Texas, uncle of the bride.

The bride is the daughter of Mr. and Mrs. Nelson Foster of Farwell. The groom is the son of Mr. and Mrs. Harold Travis also of Farwell.

The ceremony was performed before an altar decorated with two spiral candelabras and palms accented with a center arrangement of red gladiolas and white carnations.

Honorary guests were grandparents of the couple, Mrs. Ethel Brown of Portales, New Mexico, grandmother of the groom, and Mr. and Mrs. W.N. Foster of Farwell and Mrs. Maude Pruitt of Clovis, New Mexico, grandparents of the bride.

Mrs. Donald Christian presented traditional organ selections and accompanied Miss

Ruth Ann Blankenship as she sang "We've Only Just Begun" prior to the entrance of the bride. She also sang "The Wedding Prayer" at the close of the ceremony as the couple knelt at the altar.

Escorted to the altar and given in marriage by her father, the bride wore a fitted A-line empire gown of pure silk organza and Alencon lace with high collar and fitted Elizabethan sleeves. Panels of lace down the front of the gown edged the chapel length detachable train which was of silk organza with Alencon lace trim. Her imported English illusion veil was elbow length caught up with a crown of satin leaves and orange blossoms.

The bride carried white satin covered Bible with a cascade of red roses accented with a white orchid. In keeping with tradition, something old was the Bible given to her by her parents; something new was her bridal attire; something borrowed were her pearl ear-

rings she wore and the traditional garter was something blue.

Miss Camille Hobbs served as maid of honor, with the bride's sister-in-law, Ginger Foster, serving as bridesmatron and Karen Smith serving as bridesmaid.

The attendants wore red empire dresses of butterfly satin. Each carried a nosegay of mums accented with red satin streamers. Their headpieces were made of red net illusion gathered on a red velvet headband with a setting of red organza flowers centered with red stamens. To complete their attire, the attendants wore pearl covered red velvet chokers made by the groom's mother.

Miss Terri Pace and Kirk Foster, cousins of the bride, served as flower girl and ring bearer.

Mike Travis served his brother as best man with Randy Johnson and Randy Crook serving as groomsmen.

Gerald, D.H. and Layndon Foster, all brothers of the bride, and Denny Lunsford were ushers.

The reception was held in the church parlor with Mrs. Randy Johnson, Trummie Christian and Eva Brown at the serving table. Celia Aguilera registered guests as they came into the church. The serving table featured a crocheted tablecloth handmade by the groom's late grandmother, Mrs. Jewell Travis. Cake and punch were served.

Hostesses for the reception were Mrs. Clarence Johnson, Mrs. Smoky Gast, Mrs. H.P. Crook, Mrs. Joel White, Mrs. Lee E. Meeks and Mrs. Glen Phillips.

For a honeymoon trip to Colorado, the bride wore a long sleeved red and beige dress featuring a beige over-jacket trimmed in red. She lifted the orchid from her bouquet to wear on her honeymoon.

The couple will reside at 6001 West 34th Street, Lubbock, where the groom is an engineering major at Texas Tech. The bride is employed at Financial Planner of America, Inc. in Lubbock.

### REHEARSAL DINNER

Following the rehearsal on Friday night, the wedding party was honored with a steak dinner at the LaVilla Steak House in Clovis. The dinner was hosted by the groom's parents, Mr. and Mrs. Harold Travis.



Mr. and Mrs. Terry Travis

## St. Mary's Circle Has Lunch, Work Day

St. Mary's Circle of the Catholic Church met Tuesday, July 20, at 9:30 a.m. in the center for a regular meeting, covered dish luncheon and clean up center work day.

President Mrs. Rudolph Moraw opened the meeting with prayer. Members present were Mrs. Arnold Alcorn, Mrs. Ken Duncan, Mrs. C. J. Feagley, Mrs. Pete Jesko, Mrs. Rudolph Moraw, Mrs. Don Rempe, Mrs. Harry Waddle, Father O'Leary, a new member, Mrs. Lucien Armand, and one Guadalupana member, Mrs. Jesse Ybarra.

Ladies responsible for dusting the church in August are: August 7, Janie Moraw and Wilma Waddle; August 14, Theresa Feagley and Dolores

Littlefield. The circle will have a project at the next meeting for the Levelland Deanery Special Fund.

Father will celebrate Mass for Mrs. B. A. Dearing's sister who is seriously ill in Amarillo.

Dolores Duncan will host the next meeting.

After a meal, the circle members and Mrs. Ybarra cleaned the kitchen, labeled the cupboards and scrubbed the restrooms and hall.

After a meal, the circle members and Mrs. Ybarra cleaned the kitchen, labeled the cupboards and scrubbed the restrooms and hall.

AUGUST CEREMONY PLANNED . . . Mr. and Mrs. Dargin Kirk of Farwell announce the engagement and approaching marriage of their daughter, Donna Kay, to Michael Frank Doshier, son of Mr. and Mrs. Frank Doshier, Jr. of Farwell. The couple will be married August 21 at 8 p.m. in Hamlin Memorial United Methodist Church. The bride-elect is a senior at Texas Tech University and the prospective groom is graduating from AIT at Fort Bliss, Texas.

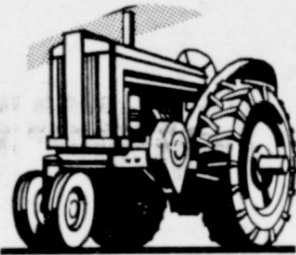
Mrs. Meir sees Soviet gains in Cairo pact. NATO seeks clarification on troop cuts.



Cultivate Good Safety Habits...

ACCIDENTS DON'T ALWAYS HAPPEN TO THE OTHER FELLOW!

JULY 25-31



James Crane Tire Co.



MARRIAGE ANNOUNCED . . . Mr. and Mrs. Charles Wiseman of Sudan announce the marriage of their daughter, Paula Fae, to Don R. Shaw of Canyon. Mr. and Mrs. C. W. Botts of Hereford are the parents of the groom. The wedding ceremony and reception was held July 23 in the home of the bride's parents with Mike White, minister of the Sudan Church of Christ, officiating. Mrs. Charline Kamp of Plainview was matron of honor and Leroy Sisco of Abilene was best man. The couple will be at home at 3110 W. 27th in Amarillo following a trip to Colorado.

**Lucille Cherry SLIM GYM**

1-2-3 PLAN . . . a complete program for physical fitness to use in the privacy of your own home.

1-SLIM GYM exerciser-exercises every inch of your body . . . easy . . . fun

2-JET BATH water bath . . . massaging fingers of warm water bubbles and currents in your very own tub . . . relaxing.

3-RELAX and TRIM body contouring kit . . . a 60 minute wrap and lotion treatment for fatty pones, double chins and waist lines . . . lose 2-7 inches in 60 minutes.

NEW . . . interesting program for clubs, meeting, etc.

CALL your local Slim Gym dealer for more information. Muleshoe Beauty Salon 272-3258 or 272-3632

**Smiths To Be Honored On Anniversary**

Mr. and Mrs. Ira Smith will be honored in their home Sunday, August 1, 1971, from 2 until 5 p.m., with a Golden Wedding Anniversary reception. Hosting the reception will be the neices and nephews of Mr. and Mrs. Smith.

**West Plains Memorial Hospital**

Announces the Association of

**Lucien Armand, M.D.**

in the practice of

**General Surgery**

Muleshoe Texas

**RIDICULOUS**

**COMING THURSDAY 9 a.m.**



IN MULESHOE

ITS WILD FANTASTIC!

ITS A HAPPENING

WE WILL CLOSE WED. 3 p.m. to GET READY FOR THIS EVENT

BE IN MULESHOE 9 a.m. THURSDAY JULY 29th

DON'T MISS IT !!



**WE DON'T MONKEY AROUND ...**



When It Comes To Making Loans---Whether It's For A New Or Used Car--- Maybe Farm Equipment Or A New Home

WE DON'T MONKEY AROUND!

"You'll Like Our Reasonable Rates When You Get A Loan From Us"

**Tri-County Savings & Loan**

MULESHOE

**SATURDAY JULY, 31**

**8 99¢**

KING SIZE WALLET CREATIVE COLOR PORTRAITS FOR ONLY

PHOTO HOURS 9 A.M. TO CLOSING

NO LIMIT

GET PICTURES MADE OF GRANDPA, GRANDMA, DAD, MOM AND ALL THE LITTLE ONES AT THESE SAME LOW PRICES!

**SHUGART COLOR PHOTOS**

Jim's Pay & Save

201 FIRST MULESHOE



Mr. and Mrs. Harvey Bass

## Reception Honors The Harvey Bass'

Friends and relatives joined to celebrate the silver wedding anniversary of Mr. and Mrs. Harvey Bass Sunday, July 18, in their home at 1903 Avenue D. The open house was held from 3 to 5 p.m. Hosting the occasion were their children, Mr. and Mrs. Ronnie Johnson of Dallas and Miss Vina Bass of Muleshoe.

Guests were served from an antique table covered with a white lace cloth and centered with an arrangement of white gladiolae and asters. Atop the anniversary cake was the bride and groom which was used on the wedding cake 25 years ago. Serving the cake and punch were Mrs. Morris Nowlin, Mrs. Joe

Collins, Mrs. Hubert Dyke and Mrs. Olan Burrows. Wedding pictures of the couple were on display during the reception.

## Going Away Party Honors Mrs. Slemmons

Mrs. Margaret Slemmons was honored with a going away party held at the parlor of the First United Methodist Church Thursday night, July 22. Mrs. Slemmons is leaving Muleshoe for health reasons. She will be living in Escondido, California near her son.

The reception was hosted by members of the Wesleyan Service Guild and the Wesleyan class of the Methodist Church and by Kappa Kappa Iota. She was a member of all three organizations. Each organiza-

tion presented her with a gift. The serving table was centered with a money tree, a gift from Kappa Kappa Iota. Cookies and punch were served to the guests. Cut flowers decorated other parts of the parlor. Out of town guests included Dr. Bart Slemmons and son Kent of Jacksonville, Florida; Mrs. Ann Bauder and Debra of Grand Rapids, Minnesota; and Mrs. Jim Bishop and son and daughter, Teed and Letty of Oklahoma City, Oklahoma.



Mrs. Margaret Slemmons

## Market Report

COLLEGE STATION -- No doubt about it! Pennies do count when buying food, says Gwendolyn Clyatt, Extension consumer marketing specialist.

Three to four cents off on a 25 cent can of food is a 10 to 15 percent savings, not bad for pennies, she explains.

She suggests these tips to help save pennies on your grocery bill.

Shop carefully -- advertisements, prices, and the markets. Check particularly for specials on meat, poultry and fish then plan meals accordingly. Meat, poultry and fish can amount to a third of your family's food bill.

Compare brands when you shop, trying the lower priced grades and brands. You may like them as well as more expensive items, the specialist says.

Some stores carry as many as six different brands of canned green beans with prices sometimes varying considerably. Quality and cut may differ, but nutritional values vary little.

By looking for the lowest priced brands in one store, you can save as much as five to seven cents on a six-ounce can of frozen orange juice, five cents on a can of peas, or 20 cents on a pound of bacon.

Check the cost of convenience, Mrs. Clyatt continues. Chances are partially prepared items will cost more than fresh, but not always. Some convenience foods, like frozen concentrated orange juice, frozen green peas, canned orange juice and some cake mixes are often cheaper than fresh choices. Other convenience foods, such as frozen corn-on-the-cob, stuffed baked potatoes, cheese in a spray can and frozen dinners, usually cost you more. But if time is short, you may be willing to pay the cost of convenience.

Common Market sugar issue eases for Britain.

Common Market sugar issue eases for Britain.

Common Market sugar issue eases for Britain.

Common Market sugar issue eases for Britain.

Common Market sugar issue eases for Britain.

Common Market sugar issue eases for Britain.

Common Market sugar issue eases for Britain.

Common Market sugar issue eases for Britain.

Common Market sugar issue eases for Britain.

Common Market sugar issue eases for Britain.

Common Market sugar issue eases for Britain.

Common Market sugar issue eases for Britain.

Common Market sugar issue eases for Britain.

Common Market sugar issue eases for Britain.

Common Market sugar issue eases for Britain.

Common Market sugar issue eases for Britain.

Common Market sugar issue eases for Britain.

Common Market sugar issue eases for Britain.

Common Market sugar issue eases for Britain.

Common Market sugar issue eases for Britain.

Common Market sugar issue eases for Britain.

Common Market sugar issue eases for Britain.

Common Market sugar issue eases for Britain.

Common Market sugar issue eases for Britain.

Common Market sugar issue eases for Britain.

## TOPS News

Muleshoe Jenny TOPS met Thursday night, July 22, at 8:00 p.m. in the Bailey County Electric meeting room. Leader June Vinson called the meeting to order. Members sang the TOPS fellowship song and recited the TOPS pledge.

Anna McDonald called the roll with 26 weighing in. Two visitors, Kim McDonald and Diane Miller, were present.

Queen for the week was Mary Johnson. First runner-up was Myrtle Chambliss and second runner-up was Jewel Peeler.

Next week, the club will have a Big Dress Party and a swimming party if the weather permits.

Mae Provence reported on the new contest that begins this week. Several awards were presented to members for weight loss.

Mae Provence reported on the new contest that begins this week. Several awards were presented to members for weight loss.

Mae Provence reported on the new contest that begins this week. Several awards were presented to members for weight loss.

Mae Provence reported on the new contest that begins this week. Several awards were presented to members for weight loss.

Mae Provence reported on the new contest that begins this week. Several awards were presented to members for weight loss.

Mae Provence reported on the new contest that begins this week. Several awards were presented to members for weight loss.

Mae Provence reported on the new contest that begins this week. Several awards were presented to members for weight loss.

Mae Provence reported on the new contest that begins this week. Several awards were presented to members for weight loss.

Mae Provence reported on the new contest that begins this week. Several awards were presented to members for weight loss.

Mae Provence reported on the new contest that begins this week. Several awards were presented to members for weight loss.

Mae Provence reported on the new contest that begins this week. Several awards were presented to members for weight loss.

Mae Provence reported on the new contest that begins this week. Several awards were presented to members for weight loss.

Mae Provence reported on the new contest that begins this week. Several awards were presented to members for weight loss.

Mae Provence reported on the new contest that begins this week. Several awards were presented to members for weight loss.

Mae Provence reported on the new contest that begins this week. Several awards were presented to members for weight loss.

Mae Provence reported on the new contest that begins this week. Several awards were presented to members for weight loss.

Mae Provence reported on the new contest that begins this week. Several awards were presented to members for weight loss.

Mae Provence reported on the new contest that begins this week. Several awards were presented to members for weight loss.

Mae Provence reported on the new contest that begins this week. Several awards were presented to members for weight loss.

Mae Provence reported on the new contest that begins this week. Several awards were presented to members for weight loss.

Mae Provence reported on the new contest that begins this week. Several awards were presented to members for weight loss.

Mae Provence reported on the new contest that begins this week. Several awards were presented to members for weight loss.

Mae Provence reported on the new contest that begins this week. Several awards were presented to members for weight loss.

Mae Provence reported on the new contest that begins this week. Several awards were presented to members for weight loss.

Mae Provence reported on the new contest that begins this week. Several awards were presented to members for weight loss.

Mae Provence reported on the new contest that begins this week. Several awards were presented to members for weight loss.

Mae Provence reported on the new contest that begins this week. Several awards were presented to members for weight loss.

Mae Provence reported on the new contest that begins this week. Several awards were presented to members for weight loss.

### West Plains Memorial Hospital

Announces the Association of

Gary R. Albertson, D.C.

In General Practice

July 26, 1971

Muleshoe

Texas

**A Good Question**  
Why worry about posterity? Our progenitors worried about us--and what good did it do.  
--Journal, Atlanta.

**And Cheaper**  
The modern girl usually gets along with her mother-in-law because she can't afford to pay a baby-sitter.  
--Dispatch, Norfolk.

**perry's** Two Days Only  
Friday & Saturday

BEAUTIFUL  
8" x 10" LIVING COLOR  
ONLY  
**79¢**

PLUS 50¢ HANDLING  
ONE PER CHILD TWO PER FAMILY  
GROUPS 79¢ PER SUBJECT  
SATISFACTION GUARANTEED

STUDIO HOURS: 10 a.m. - 5 p.m.

GRAVEY ASSOCIATES  
Arlington, Texas

# Summer Sale

## ITEMS REDUCED

LADIES' DRESSES	<b>1/2</b>	MEN'S SPORT COATS & ENSEMBLES
LADIES' SPORTSWEAR		MEN'S CASUAL PANTS
LADIES' HANDBAGS		MEN'S DRESS PANTS
GIRLS' SPORTSWEAR		MEN'S SPORT SHIRTS
BOYS' SUITS & SPORTSWEAR		MEN'S DRESS SHIRTS
		MEN'S PIECE GOODS
<b>PRICE</b>		
<b>BOYS' SPORT SHIRTS</b>		
<b>&amp; Several Other Items Reduced To Clear</b>		<b>Shop Early For Best Selection</b>



**Sanitone**  
Certified Master Drycleaner

**UNFAIR TO MOTHS**

We guarantee our Sanitone Certified Master Drycleaner mothproofing service. And it's free with every order. Free guaranteed mothproofing is one more reason why you should trust the care of your clothes to us... your clothes care authority.

Let Us Store Your Winter Clothing  
**Sanitone.**  
The best drapery and slipcover drycleaning there is.



**Sanitone**  
Certified Master Drycleaner  
Lambert Cleaners

WHERE YOU ALWAYS BUY THE BEST FOR LESS

**GIBSON'S DISCOUNT CENTER**

MULESHOE TEXAS  
Values This Ad Good Thru Wed.

**SECRET SPRAY DEODORANT**  
4 oz. \$1.09  
**57¢** ea.

**PRELL CONCENTRATE SHAMPOO**  
5 oz. \$1.59 val.  
**83¢**

**STYRO-CUPS**  
Keeps Hot drinks-Hot Cold Drinks-Cold  
51 Count 9 oz.  
**43¢** pkg.

**Crest**  
THE CAVITY FIGHTER  
REGULAR & MINT  
Family Size  
**59¢**

**SCOPE MOUTHWASH**  
Super Size \$2.05 Val.  
**87¢** ea.

**PUNCH**  
SOAKS UP WATER  
HANDS OUT DIRT  
Punch King Size  
**\$1.07**

**NESTEA INSTANT TEA**  
3 oz. Jar  
**83¢** ea.

**AJAX CLEANSER**  
Giant Size  
**19¢**

**Downy FABRIC SOFTENER**  
King Size  
**\$1.37**

**EASY-ON SPEED STARCH**  
22 oz. can  
**59¢**

**Sweetheart Lime DISHWASHER LIQUID**  
32 oz.  
**32¢** ea.

**MENS ORLON CREW SOCKS**  
10 to 13 \$1.00 Val.  
**54¢** PR.

**No-Pest Strip**  
Shell  
**\$1.37**

**LISTERINE**  
20 oz.  
**88¢** ea.

**NYLONS**  
GIBSON'S SPECTACULAR SAVINGS.....  
400 NEEDLE - 15 DENIER FIRST QUALITY SEAMLESS NYLONS Plain or Mesh 8 1/2 to 11  
**22¢** pr.

**DISH CLOTHS**  
Waffle Weave 20¢ Val.  
**12¢** ea.

**KITCHEN TOWELS**  
14 x 24 100% Cotton 7 to pkg.  
**99¢** pkg.

## 4 Food Distribution Centers Consolidate

DALLAS, Tex.--Four of the largest food distribution centers in the Southwest have announced that they are combining their buying power in order to lower their prices to their customers. Their new total sales will elevate them to a position of one of the leading retail food distributors in the world.

The four distribution centers are Affiliated Food Stores, Inc. of Dallas, Affiliated Food Inc. of Tulsa, Affiliated Food Stores, Inc. of Amarillo, and Affiliated Food Stores, Inc. of Little Rock. The Arkansas center was formerly known as Associated Grocers.

The combined retail marketing area served by the four distribution centers covers portions of seven states: Arkansas,

Louisiana, Mississippi, New Mexico, Oklahoma, Tennessee and Texas.

"There is no merger of the four distribution centers," said Charles McBeath, General Manager of Affiliated, Amarillo. "What we are doing is combining our buying power to increase savings power for our customers," he said.

In a simultaneous announcement made by the heads of the four distribution centers in their respective cities, it was revealed that their combined retail sales of groceries annually reaches the one-billion dollar mark. Nearly 20 million people reside in the area served by the four centers.

Over two thousand member stores, independently owned by

leaders in their respective communities, will be affected by the new policy.

Also announced was a new advertising and promotion campaign based on the slogan, "United States of Affiliated - A Country Within A Country," to start in all stores July 26.

Speaking in Amarillo, McBeath explained that when the four centers decided to combine certain functions, it was discovered that their new total service area roughly approximated an outline similar to the continental United States. "From this came the idea for the United States of Affiliated," McBeath explained. "A new logo with the words

Affiliated Food Stores printed in red on a white field in a blue outline of the United States will be seen in all future advertising by the four distribution centers," McBeath said.

The new logo will be seen displayed on decals in store windows, on bumper stickers, and on new outdoor signs. All trucks and trailers of the four distribution centers will carry the new design. Each independent member store will soon be displaying the illuminated red, white, and blue sign of the new Affiliated Food Store program.

Store ownership will not be changed. The basic concept of independent ownership, so vital to our nation's economy will remain intact.

By combining their buying power, the new group will have access to its own bakery, ice cream plant, produce packaging machines, and other food processing facilities, said the spokesman.



LITTLE LEAGUE ALL-STARS--John Hayes, back left, was manager of the Little League All-Stars and Sammy Gonzales, right, was coach. Team members include, back row, from left, Hayes, Billy Vinson, Ricky Hayes, Kent Winders, Dean North-

cutt, Nicky Bamert, Mark Washington, Kevin Smith, Johnny Estep, alternate and Gonzales. Front row, left to right, Robert Toscano, Ronald Powell, Danny Wilson, Larry Parker, Terry Mick, and Mike Griffin.

\*\*\*\*\* family spent the weekend at Mr. and Mrs. Elmer Lee and Carlstad Caverns.

## Littlefield To Conduct Art Festival

We, the Women, the women's division of the Littlefield Chamber of Commerce, will conduct their Fourth Annual Side-Walk Art Festival on Friday, August 27, 1971. This Festival is sponsored by We, The Women, in cooperation with the Littlefield Chamber of Commerce, Hart-Thaxton Hardware, Littlefield Glass Works, The Gallery and the Art Associations of Littlefield.

All area artists are invited to come and exhibit their work. The event will be staged on the West side of Phelps Avenue in the 500 Block. In case of inclement weather, a building will be available for the exhibit.

Registration will begin at 4 p.m. There will be no entrance fee or limit to the number of works exhibited, but each exhibitor must furnish his own display stand. There will be only one award per person and paintings and crafts exhibited in the 1970 Festival are not eligible for 1971 awards.

Selection of winners will be by popular vote by the public. Votes will be tabulated until 6 p.m. and announcement of winners will be made shortly thereafter. Exhibits will remain on view until 7 p.m.

There will be two divisions, one for Paintings and one for Arts and Crafts.

## Three Way News

By Mrs. H.W. Garvin

Mrs. Dutch Powell and girls were in Lubbock Monday shopping.

Mr. and Mrs. Tommy Terrell and daughter and Allen Davis left Friday for Shaw Air Base in South Carolina where Terrell will be stationed.

Shawna Wooten, baby daughter of Pam Wooten, is a patient in Methodist Hospital.

We wish to express our sympathy to the Earl Bowers family on the death of his father who was buried Friday in Lorenzo.

Buck Tyson came after his two boys, Toddy and Pistol who had been visiting their grandparents.

Reuel Kirby underwent surgery in Methodist Hospital Tuesday.

Mrs. Charlie Locke was a patient in a Littlefield hospital last week.

Mr. and Mrs. Larry McCain and boys from Bula and Mr. and Mrs. H. G. Maleny from Maricopa, Arizona were supper

visited the R. L. Davis and John Tyson homes Wednesday, the Stuarts were former residents in the community but now live in Fredrick, Okla.

Mrs. Adolph Wittner, Sharyon

and Kathy spent the weekend in Brownwood where Sharyon attended a coaches school.

Mrs. O. C. Poe from Munday spent the past week visiting her daughter and family, the Ronald Bruces.



STEPPING OUT of a protective tractor cab to promote Texas Farm and Ranch Safety Week, July 25-31, is Texas Farm Bureau Queen Harletta Capps of Vernon. The theme for this year's observance of Farm and Ranch Safety Week is "Protection--make it work for safety." Tractor overturns accounted for 60 per cent of the accidental deaths involving tractors in the U.S. in 1970. It is estimated that 90 percent of the lives lost in tractor overturns could have been saved by protective cabs or roll bars and safety belts. Special emphasis on accident prevention in agricultural pursuits are being made during the week by the Texas Safety Association, Texas Farm Bureau, and other agricultural organizations.

# BIG SAVINGS

ON

# AUTOMOBILE LOANS

First National Bank

MEMBER FDIC MULESHOE

## NATIONAL FARM SAFETY WEEK

JULY 25- 31

It's never too early to learn the value of farm safety. Remember, most accidents are preventable if precautions are taken against potential dangers before they strike. So act now to insure your safety and the safety of others.

Make it a point to fix up your buildings and machines. Be careful in handling animals. Use extra caution in working with electricity.

**MAKE EVERY WEEK FARM SAFETY WEEK**

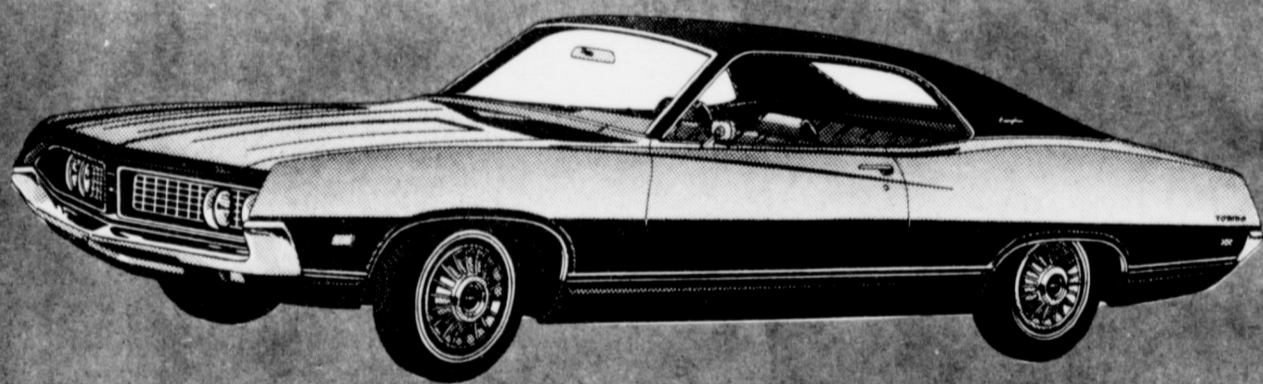
# Cobb's

# COUNTRY CLEARANCE SALE

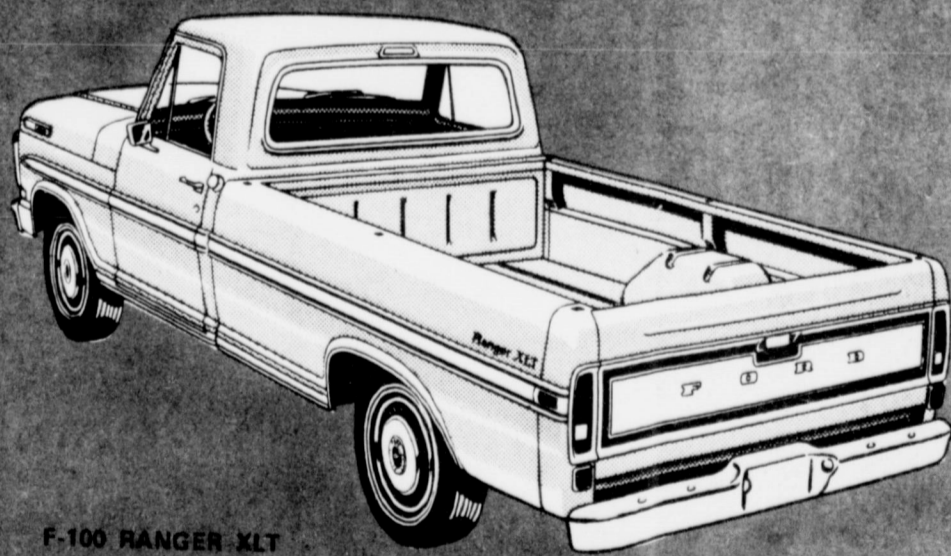
GET REAL

OLD FASHIONED

DEALS



TORINO Brougham  
2-Dr Hardtop



F-100 RANGER KLT



# MULESHOE MOTOR CO.

'CAR CAPITAL OF THE WEST PLAINS'

At The Crossroads

Muleshoe, Texas

Phone 272-4251

**Bula News**

By Mrs. John Blackman

Sergeant Harvey Boleyn and wife Cuc and daughter Cathy, from Fort Eustis, Virginia are here for a 30 day leave and visit with relatives. At Bula he is visiting in the home of his father, Mr. and Mrs. Doc Boleyn, and a brother, Mr. and Mrs. James Boleyn and boys. Harvey has been in the service 11 years with three and a half being spent in Vietnam. He has been stationed for the past 18 months at Fort Eustis, Va.

Mr. and Mrs. D. J. Cox and girls, Jolene and Yvette, also Mr. and Mrs. Jerry Cox and children, Jamie and Denene, attended the birthday dinner and get-together for Mrs. Fannie Whittenburg Sunday given in the home of her son, Roy Whittenburg of Levelland. Mrs. Whittenburg was 82 years old.

Several from the local church attended the Annual Brotherhood supper given Monday evening at the Baptist encampment at Floydada. And were privileged to hear an outstanding speaker in the brotherhood, Rev. Bob Harrington of New Orleans.

Attending were P. R. Pierce, Ronnie Green, Johnnie Hall, Clyde Hogue, Ashel Richardson, Ted Sultz and also Harvey Thompson of Littlefield.

Mr. and Mrs. Cleo Aduddell left Tuesday for their home in Hollister, California after a visit of two weeks with her mother, Mrs. Nettie Blackman, in the Muleshoe Nursing Home; in the home of Mr. and Mrs. Buddy Blackman of Muleshoe and John Blackman and his brother, Mr. and Mrs. John Aduddell of Littlefield.

Coach and Mrs. Lloyd Halbrooks and daughter Cathey

were in Brownwood last week where he attended the coaching clinic at the coliseum. Saturday night they attended the All-Stars Girls Basketball game between the north and south. They were pleased to see the north win the game. Between working hours they enjoyed doing some fishing at the lake.

Mrs. Beatrice Griffin from Amherst is staying with Mrs. Lula Harlan while Mrs. Harlan is gaining her strength from a recent illness.

Recent visitor with Mrs. Pearl Walden were her husband's nieces, Mrs. Irby Lentz from South Gate,

California and Mrs. Marie Murray from Baldwin Park, California.

Mr. and Mrs. Dewayne Clem of Wolforth visited Saturday night and Sunday here with friends, Mr. and Mrs. J.D. Bayless and Mr. and Mrs. J.W. Layton.

Mrs. John Hubbard took Miss Vina Tugman back to Amarillo Monday for a check-up with her eye doctor. He gave her a good report from her recent eye surgery.

The annual B.A. Swanner reunion was held July 9 and 10 in the Littlefield community

center, with 73 in attendance. Seven of the children are living and all were present for the occasion. Also grandchildren and great-grandchildren and other relatives, Mrs. Mattie Hudspeth of Anton, Mrs. J.H. Attaway from Irwin.

Children of the late Mr. and Mrs. B.A. Swanner are J.D. Swanner of Corpus, Rowland Swanner of Roswell, Marvin Swanner of DeLeon, A.C. Swanner of Plainview, Mrs. C. A. Williams of Bula, Mrs. Lowell Walden of Earth and Mrs. W.C. Cooper of Phoenix, Arizona.

Recent company for E.A. Eakes were their children Clyde and George Ann Eakes and children, Leisa and Mark, from Kansas City, Mo. and Jim and Joyce Green and children, Blake and Brad, of Denver, Colo.

Mr. and Mrs. F.L. Simmons received word recently from their daughter-in-law, Polly Simmons, that their son Darmon Simmons of San Diego, Calif. had been admitted to the veterans hospital for x-rays and observation.

Mrs. W.C. Cooper visited several days in the home of her sister, Mrs. C.A. Williams and also with another sister, Mrs. Lowell Walden of Earth. The sisters took her to Lovington Thursday to visit in the home of her son, Mr. and Mrs. Bobby Cooper, before she will fly to her home in Phoenix.

Ted Nehire, student at Wayland College, was guest speaker at both services Sunday at the Baptist Church. He was accompanied by his wife Paula and two boys. They were dinner guests in the Clyde Hogue home.

Earl Huffman returned to his home in San Antonio Wednesday after a visit of several weeks with his grandparents Mr. and Mrs. V.C. Weaver. His father Gene Brannen came for him.

Mr. and Mrs. W.T. Thomas visited Tuesday with her brother, C.M. Woodard at Ralls.

Ronnie Green, Baptist minister, was ordained as a preacher in the Baptist Association, Sunday morning at the Peters-

burg First Baptist Church by Don Olive, professor at Wayland College. Ronnie has been filling in as assistant preacher of the Petersburg church for several months. From Bula attending the ordination service were Mr. and Mrs. P.R. Pierce and Dewitt Tiller.

Terry Blake of Flint, Michigan arrived Tuesday to be with his wife and children who have been here for three weeks visiting in the home of her parents, Mr. and Mrs. C.C. Testerman. They have also visited with his parents Mr. and Mrs. Mickey Blake at Howo, Texas.

Mr. and Mrs. Harvey Bowers of Levelland and their daughter, Mrs. Olga McMurry of Grapevine, were supper guests Friday of the Bowers' son, Mr. and Mrs. Larry Bowers and small son Tye.

Mr. and Mrs. W.C. Risinger and Jim Claunch attended the funeral Wednesday at the First Methodist Church in Wellington for Lewis Morris. Morris was a cousin of Mr. Claunch and a friend for many years of the Risingers.

Mr. and Mrs. Bill Black of Lubbock visited Saturday with his parents, Mr. and Mrs. H.M. Black, and grandmother, Mrs. Margaret Black. They brought fish that they had caught on a recent fishing trip on the Rio Grande and they all enjoyed a big fish fry.

Mr. and Mrs. J.F. Rowland and son Mike of Anilene spent Thursday thru Monday visiting in the homes of Mr. and Mrs. J.D. Rowland and Mr. and Mrs. Weldon Rowland of Littlefield.

Mr. and Mrs. Gary Everett and children, Laura and Scott of Odessa, spent the past week in the home of her parents, the W.C. Risingers.

Mrs. E.W. Black is enjoying a visit this week with her daughter, Mrs. W.H. Zedlitz and daughter Christene from Dallas. They will also visit in the H.M. and Richard Black homes.

Mr. and Mrs. James Fine and children Mike and Judy of Levelland were visitors and supper guests Friday evening of the J.D.

Rowlands.

Al Henley from the Sunset School of Preaching spoke Sunday morning at the Church of Christ. He and his wife and son Allan were dinner company for the J.C. Withrows.

Sunday evening Terry Blake spoke. Terry preached for the Church several years before moving to Wisconsin.

Mrs. Marvin Drake has been spending much time recently with her mother, Mrs. Camp, a patient in the Amherst Hospital.

Mr. and Mrs. Tom Bogardare visiting this week with their daughter, Mr. and Mrs. Delbert Roberts and small son Rance at Houston.

The children of Mrs. Pearl Walden and the late Luke Walden enjoyed a family reunion Sunday, July 11, in the community center in Littlefield. Sixty-seven were in attendance. Mrs. Walden has eight children living, all present but three, besides children, grandchildren and their families, a nephew of Mrs. Walden was present, Mr. and Mrs. Sam Allred of Odessa.

Children of Mrs. Walden are Mrs. Jewel Lynch, California, Mrs. Goldie Nixon, Lubbock, Earnest of Louisiana, Lowell of Earth, Gordon Walden, Littlefield and Clifford Walden of Lubbock.

**SCHEDULE OF EVENTS**

- Tuesday, July 27, 1971
  - 7:30 p.m. Alcoholics Anonymous, South First
  - 8:00 p.m. Rebekahs, IOOF Hall.
- Thursday, July 22, 1971
  - 7:00 p.m. TOPS, Bailey County Electric Meeting Room
- Friday, July 30, 1971
  - 8:30 p.m. Bailey County Beauty Pageant - MHS cafeteria
  - 8:30 p.m. Library meeting, Bailey County Co-op Meeting Room.

Any upcoming community event for Schedule of Events, please report to the Journal office.

**Singleton-Ellis Funeral Home**  
24 Hour Ambulance Service  
Ph. 272-4574 Muleshoe

**DOUBLE S&H GREEN STAMPS every Wednesday... With \$2.50 Purchase or More**

**VALUES GOOD JULY 26, 27 & 28**  
501 W. Amer. Blvd. Muleshoe, Texas

**BONUS SAVING COUPON**

**SAVE 18¢** With This Coupon and Purchase of

**SUZAN SALAD DRESSING**

Limit One WITH THIS COUPON

Quart Jar **25¢**

WITHOUT COUPON **43¢**

Redeemable only in Piggly Wiggly stores operated by Shop Rite Foods, Inc. EXP. 7-28-71

**ROUND STEAK**

USDA Choice Beef, Value-Trimmed, Full Cut, Pound **98¢**

USDA Choice Beef, Value-Trimmed Rump Roast Pound **89¢**

USDA Choice Beef, Value-Trimmed, Excellent for Pan Broiling Sirloin Tip Steak Pound **\$1.38**

USDA Choice Beef, Full Cut, Round Tenderized Steak Pound **\$1.14**

Made Fresh Daily, Excellent for Broiling Chopped Sirloin Pound **98¢**

Farmer Jones, 5 Varieties Cold Cuts 6 Ounce Package **35¢**

Tender-Made, Breaded Chicken, Fried for a Quick Meal Pork Choppettes Pound **89¢**

**SLICED BACON**

Farmer Jones, Thick or Thin, For Breakfast or Sandwiches 2 Pound Package **98¢**

Armour's, USDA Grade A Chicken Livers Pound Package **69¢**

Farmer Jones, Half-Moon, 10 Ounce Longhorn Cheese Package **65¢**

Farmer Jones, Individually Wrapped, American Singles Sliced Cheese 6 Ounce Package **37¢**

Gulf Gem, Alaskan Tidbits Breaded Shrimp Pound Package **89¢**

Gorton's, Breaded Cod Portions, Fish Steaks 11 Ounce Package **55¢**

Gorton's, Heat and Eat Fish Sticks 1 Pound Package **\$1.09**

**Cooked Ham**

Continental, Sliced, Excellent for Sandwiches, 4 Ounce Pkg. **59¢**

Farmer Jones, **ICE CREAM** Selected Flavors, 1/2 Gallon Carton **59¢**

Duncan Hines, **CAKE MIX** Layer Variety, 18 1/2 Ounce Package **2 75¢**

Paper, Viva, **SCOTT TOWELS** Assorted Colors, Large Rolls **3 \$1**

Renown, Cut **GREEN BEANS** 16 Ounce Can **17¢**

**Corn Flakes** Kellogg's Breakfast Cereal, 12 Ounce Box **29¢**

Shop and Compare these Low Prices!

Golden Grain, Spanish Style, Rice-a-Roni 7 Ounce Box **42¢**

Libby's Vienna Sausage 4 Ounce Cans **29¢**

White House Applesauce 16 Ounce Cans **23¢**

15 oz. Can Ranch Style Beans **20¢**

Keenleysers, Coconut, Chocolate Drop, Rich 'N' Chip Cookies 15 Ounce Package **53¢**

Orange or Grape Drink Mix, Tang 18 Ounce Jar **97¢**

Blackburn's Waffle Syrup Quart Bottle **55¢**

Planter Cocktail Peanuts 13 Ounce Can **75¢**

Meadowlake Soft Margarine Lb. Tub **35¢**

Folgers Instant Coffee 6 Ounce Jar **\$1.19**

America's Favorite Lipton's Tea 4 Ounce Box **47¢**

Piggly Wiggly Dollar Values!

Good Hope 11 Ounce Mandarin Oranges 4 Cans **\$1**

O-Bay Frozen Chive, Cheese or Bacon, 12 Oz. Stuffed Potatoes Package 4 for **\$1**

Carol Ann Garden Sweet 16 Ounce Green Peas 5 Cans **\$1**

Carol Ann Peeled 1 1/2 Ounce Whole Tomatoes 4 Cans **\$1**

**FREE! FREE!** 6 Btl. Ctn. **DIET DR. PEPPER** With Purchase Of 6 Btl. Ctn. King Size **DR. PEPPER** Deposit Required On Both Cartons

**Lettuce** Fresh Crisp Heads Pound **15¢**

Tree Ripened Peaches Pound **29¢**

Long Green Cucumbers Pound **15¢**

**FRUIT DRINKS** Stokely, Selected Flavors 4 46 Ounce Cans **\$1**

**DOG FOOD** Twin Pet 15 Ounce Can **7¢**

**Fresh Frozen Foods!**

Frozen, Morton's, **DINNERS** Regular 11 Ounce Package **38¢**

Frozen, Breakfast Treat, **WAFFLES** 5 Ounce Package **10¢**

Slim Jim, Frozen Shoestring Potatoes 4 20 Ounce Poly Bag **\$1**

**PIGGLY WIGGLY**

You Can Save More!

**AN UNWELCOME HARVEST!**

**NATIONAL FARM SAFETY WEEK**

**July 25-31**

**FARM DEATHS**

**Muleshoe Cooperative Gins**

# Texas Farmers Union Levels Charges

The Texas Farmers Union governing board has accused the Department of Agriculture of falsely representing that there is a shortage of cotton.

The eleven-member Executive Committee, meeting in Waco last week, adopted a resolution condemning USDA for "aiding and abetting the cotton trade" in releasing information that would disadvantage cotton producers in planning for the future.

The resolution stated that present conditions do not justify the expansion of cotton production. It pointed out that the parity price of cotton is in excess of fifty cents a pound, while the producer is currently receiving less than fifty percent of parity.

The general farm organization, representing several thousand Texas cotton farmers, protested that textile mill margins indicate increased profits to cotton manufacturers, while cotton farmers are being called upon to sell for less than the cost of production to "preserve markets that are not worth preserving".

"There is no indication that higher cotton prices will put cotton in an unfavorable market position with manmade fibers, and cotton farmers have the responsibility of managing their production so as not to produce in excess of what can be sold at profitable prices," the Farmers Union statement said.

The resolution stated that a "prime function of USDA is to assist farmers in managing their production and to provide accurate information as to supply, demand and commodity pricing." It called upon the secretary of agriculture to direct its officials to "disengage" USDA from the propaganda program in partnership with "organizations that pose as spokesmen for cotton producers but are in fact front organizations for the textile manufacturing and processing industry."

The Farmers Union asked Secretary of Agriculture Hardin to see to it that the officials of USDA carry out their commitments to cotton producers by assisting them in balancing sup-

ply with demand. It also asked that USDA's public affairs and educational agencies such as the Extension Service be directed to accurately portray the true facts relative to cotton prices, supply, textile mill profits, and net cotton producer income.

In further action the Texas Farmers Union Executive Committee protested a regulation in the cotton program which reduces payment yield when a cotton farmer loses a crop because of a drought disaster. "The payment yield reduction provision, presently in the law, is 'punitive and discriminatory' when applied to areas which do not produce a crop because of a drought disaster," according to the resolution adopted.

To feed men and not to love them is to treat them as if they were barnyard cattle. To love them and not to respect them is to treat them as if they were household pets.

-Mencius.

## Chamber

**Corner**  
Jerry Hutton  
C of C  
Manager

Lets consider a few reasons how we help ourselves by shopping in Muleshoe.

1. If you have a fund-raising project, do you go to the Lubbock or Clovis merchants to ask them for donations, or do you ask your Muleshoe merchants?

2. Do the merchants in Lubbock and Clovis support the United Fund, the Chamber of Commerce, or pay taxes here in Muleshoe?

3. When you're shopping out of town, looking for bargains, do you figure the price of gas and mileage cost? Simple economics using the Internal Revenue Services figures, indicates it costs us \$9.10 to make a trip to Clovis and back, and \$18.20 to Lubbock and back. This is just for one trip, and if you must go back for service or repairs, ask yourself, are you really saving money or are you just telling yourself that?

4. If you make your living in Muleshoe, isn't it only fair that you put money back into our local economy? Statistics show that money turns over seven times before it leaves town. If you are working in a department store and you're making your living there, and the owner asks you to buy your goods there, you do so because you know if the store does better, your chances of better wages and job security are increased. The same principle applies about shopping in Muleshoe.

Your Muleshoe merchants are interested and are working toward making Muleshoe a better place to live and shop, so help yourself by helping them. SHOP IN MULESHOE.

Torrid Talk  
"Say, Pa"  
"Well, what is it now?"  
"When deaf mutes say bad words do they get their fingers burned?"



THIRTEEN YEAR OLD BABE RUTH ALL-STARS--Bill Russell, left, back row, is manager of the 13-year old Babe Ruth All-Stars and Gary Glover, right, back row, is coach. Team members include from left, back row--Russell, Gary Herring, Reuben Gonzales, Larry Puckett, Johnny Lopez and Glover. Middle

row, left to right, David Engelking, Tony Vela, Jimmy Robinson, Gary David, Hector Posados and Carey Sudduth. Front row, from left, Ricky White, Ray Garcia, Robert Shafer, Tommy St. Clair and Trent Stewart.

## Court House News

### MARRIAGE LICENSE

Johnny Michael Raney, Muleshoe, and Debra Lou Nuttall, Bovina.

Casimiro M. Covarrubias, Morton, and Rita Lourdes Amaran, Maple.

Jose' Noyola, Muleshoe and Refugia Perales, Robstown, Texas.

Billy Ray VanLeer, Muleshoe, and Glenda Kay Howard, Muleshoe.

Otis Welton Edwards, Lubbock, and Melva Thorne Maberry, Lubbock.

Ernest Veridean Barris, Muleshoe, and Barbara Denise Harper, Muleshoe.

James Arthur Dunnuck, Clovis, and Patricia Karen Rials, Muleshoe.

Louis Trinidad Sanchez, Clovis, and Olivia Sena, Clovis.

### WARRANTY DEEDS

Cleve Bland and wife, Frances Bland, to Raymond Schroeder and wife, Janet Schroeder, all of Lot Number 3, in Block Number 9, Lenau Sub-division to the city of Mule-

shoe, Bailey County, Texas.

Effie Waggoner Evans to Loyd L. Waggoner an undivided 1/5th interest in a tract of land in the form of a rectangle, 140 feet by 35 feet, of Westerly 35 feet of the Southeasterly 70 feet by 17 in Block Number 27 of Muleshoe.

Greta Paul to W. C. Wooley Jr. and wife, Eva Fadine Wooley, a rectangular tract, 100 feet by 140 feet, Easterly 20 feet of Lot Number 149, all of Lot Number 150 and the Westerly 30 feet of Lot Number 151, Richland Hills Addition to Muleshoe.

### NEW CARS

Bennie Claunch, 1971 Chevrolet, Armes Chevrolet Co.

Layman Brothers Butane, 1971 Ford pickup, Muleshoe Motor Co.

Donnie R. Carpenter, 1971 Pontiac, Rierison Pontiac.

Charles A. Haight, 1971 Volkswagen, Hagegantz Volkswagen, Inc.

J. R. Johnson, 1971 Mercury, Muleshoe Motor Co.

Royce L. Garth, 1971 Buick, Brock Motor Co.

C. D. Silbert, 1971 Chevrolet pickup, Crow Chevrolet.

D. G. Ivy, 1971 Ford pickup,

Muleshoe Motor Co.

S. W. Inman, 1971 Chevrolet, Crow Chevrolet.

Melborn Jones, 1971 Ford pickup, Muleshoe Motor Co.

J. Frank Daughterty, 1971 Mercury, Muleshoe Motor Co.

Melborn Jones, 1971 Ford, Muleshoe Motor Co.

Dale H. Hood, 1971 Oldsmobile, Brock Motor Co.

Murray Lemons, 1971 Chevrolet, Crow Chevrolet.

Joe Carroll, 1971 Ford, Muleshoe Motor Co.

Laco Auto Leasing, 1971 Chevrolet pickup, Crow Chevrolet.

Earth Oil and Gas, 1971 Ford pickup, Muleshoe Motor Co.

Travis Venable, 1971 Ford, Muleshoe Motor Co.

Charles L. Glover, 1971 Chevrolet, Crow Chevrolet.

Don Bruns, 1971 Ford pickup, Muleshoe Motor Co.

J. Edward Murray, President-elect, American Society of Newspaper Editors:

"I'm sure, many considerations, including national security, were weighed before a decision to print."

## Obituaries

### Eva Murrah

Mrs. Eva Murrah, 74, died at 5:30 p.m., Friday, July 23, in Lubbock Methodist Hospital where she had undergone surgery several days prior to her death. She had been a resident of Bailey County since 1925, moving to this area from Iowa Park. Mrs. Murrah was born December 3, 1896 in Fannin County and was a member of the Muleshoe Church of Christ.

Funeral services are pending with Singleton-Ellis Funeral Home in Muleshoe.

Survivors include five sons, Dalton, Colorado Springs, Colo.; Gordon, Muleshoe; Claudis, Goodland, Kansas; A. L.; Albuquerque, N. M. and Jessie, Lubbock; two daughters, Miss Jerene Murrah, Muleshoe and Mrs. Dorothy Stark, Levelland; sisters, Mrs. Alvin Ferrell, Lubbock and Mrs. Flora Cawthron, Waco; 16 grandchildren and 14 great-grandchildren.

Rare antelope, in Soviet, damages wheat.

# Announcing

1. All New Olson's Oil-Hydraulics, Self Propelled Circular Sprinkler
2. Vermeer's Giant Boom Sprinkler
3. Wheel Roll Sprinklers.
4. Booster and Lake Pumps, New and Used.
5. Pipe Trailers.
6. New and Used Pipe and a complete Ditching Service
7. "Believe It or Not", Compact, All Terrain Eight Wheel Drive Tractor.

**JULY SALE ON ALL NEW & USED WHEEL**

**MOVE SYSTEMS**



5632 Brownfield Highway  
Lubbock, Texas 79416

Phone: (806)  
792-3894

# NOW... OFFICIAL FORD CO

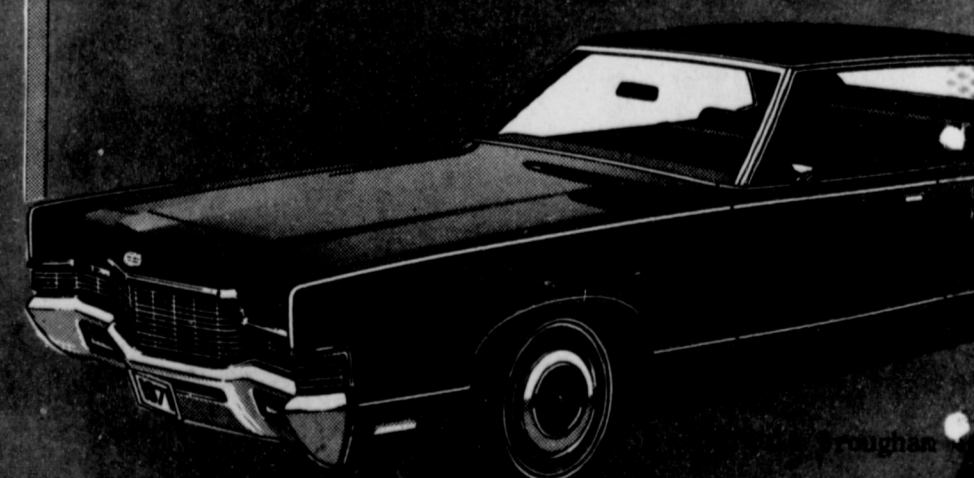
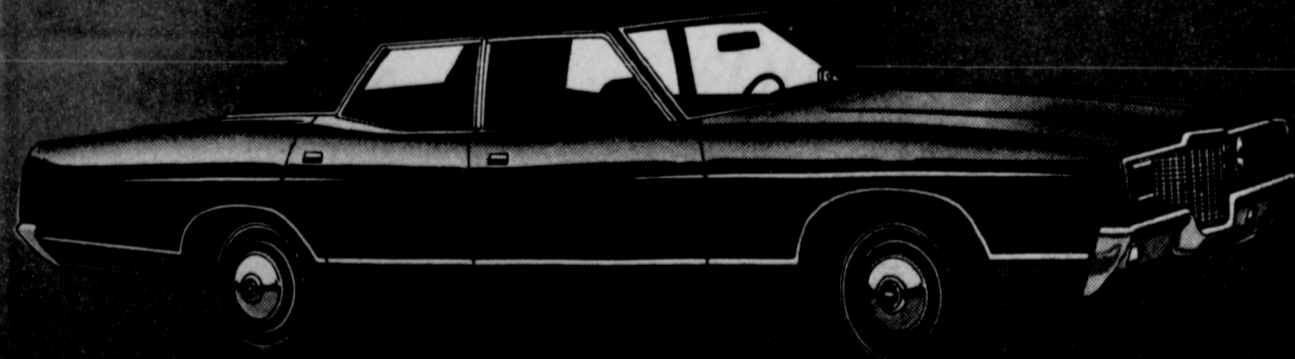


drive

it  
away



HOMETOWN





## Responsibility Act Can Still Apply

AUSTIN--The Texas Department of Public Safety said today the state Safety Responsibility Act still applies under certain circumstances despite a recent federal court ruling preventing driver license suspensions without a finding of fault in accident cases.

In response to many inquiries concerning the effect of the court decision which held unconstitutional that portion of the Safety Responsibility law prohibiting a hearing on the issue of fault prior to suspension after an accident, DPS Director Col. Wilson E. Speir issued the following statement:

"We feel that in fairness to all, it should be made known that the Department of Public Safety is still required to take suspension action under the Safety Responsibility Act if the following circumstances prevail:

"1. In cases where a civil judgment for damages has been rendered by a court, and the judgment has not been satisfied,

"2. In connection with any final conviction carrying an automatic suspension, such as for driving while intoxicated, driving while under the influ-

ence of drugs, aggravated assault with a motor vehicle, and murder with motor vehicle. In such cases, the suspended driver upon termination of the suspension period must comply with the provisions of the Safety Responsibility Act to qualify for reinstatement of his driver license--and to prevent the immediate suspension of registration plates of all vehicles owned by him.

"3. If a Texas resident becomes involved in an accident in another state and is held by that state not to be in compliance with the legal provisions of its Safety Responsibility Act, the reciprocal provision of the Texas law would require departmental action which may include suspension.

"4. Failure to report an accident is still grounds for suspension.

"5. Suspension is required for default on an installment agreement to pay for damage to others resulting from an accident.

"6. If liability insurance has been posted as 'proof of financial responsibility for the future' to meet the requirements of the Safety Responsibility

law, cancellation of such insurance is grounds for suspension."

Under all of the circumstances mentioned, Speir explained, "proof for the future" is for a period of five years, under the Texas law. Such proof can be established by maintenance of the minimum required liability insurance, or by posting a surety bond, or cash, in the amount of \$25,000.

The DPS director emphasized that the Department of Public Safety "is charged by law with the responsibility of administering the provisions of the Safety Responsibility Act, and is therefore obligated to comply with all provisions of the law, except that portion which has been held unconstitutional."

## Big-Seed Weeds Hard To Control With Chemicals

LUBBOCK--Ever wonder why some weeds are hard to kill with chemicals and others aren't? Seed size may be one important factor.

Research supported by the Cotton Producers' Institute has found that some weed species emerge from seed one to 12 inches deep in the soil. At the Texas A&M University Agricultural Research and Extension Center at Lubbock, Dr. Dudley Smith and Wayne Cooley learned that cocklebur, volunteer castor and piemelon emerge at different times as well as different depths throughout the growing season. Both Smith and Cooley conduct weed control research at the Center.

These varied emergence depths and dates result from the built-in survival mechanism in plants. Large-seeded weeds such as these mentioned above have sufficient energy stored in the seed to emerge from extreme depths, say the researchers. Also, cocklebur has two seeds per bur, one germinating early in the growing season and the other, much later.

So, seed dormancy, depth of emergence, and different times of emergence prevents weeds from being easily controlled by chemicals or tillage. Deep tillage should be minimized in areas that are infested with these large-seeded weeds. This practice only places the seed at a depth beyond effective control by soil applied chemicals.

Consequently, preplant and preemergence treatments generally are not of complete solution for controlling cocklebur, volunteer castor and piemelon. Postemergence treatments should be included in a weed control program where these weeds are a problem, advise Smith and Cooley. Keeping the seed production of these weeds down will certainly reduce the weed problem the following crop year.

That's All She Did Diner: What's wrong with these eggs?  
Waitress: Don't ask me I only laid the table.

## South Plains College Offers New Program

A release from the office of Frank Hunt, Dean, Technical-Vocational Division, South Plains College, announces the offering of a new course of study, Fashion Merchandising, through the Department of Business Administration. With the introduction of this specialization, the area of Distribution and Marketing will now offer an Associate in Applied Science degree in Fashion Merchandising in addition to the degree in Mid-Management.

Distribution and Marketing involves the student in an accelerated two-year college-level program designed to develop fundamental skills, knowledge, attitudes, and experiences which will enable him or her to function efficiently in the fields of business sales and management. Each student is required to work four semesters in a regular, paid, part-time job in a sponsoring firm or a minimum of twenty hours per week. Through management training, the student gains experience and is able to adapt theory to practical work at the time it is learned. Evening Division students may

enroll in any of the programs and receive management training credit for an approved full-time job. Further, students who commute to South Plains College may work in their home communities.

Need for the Fashion Merchandising course was determined by a survey conducted by the SPC Department of Business Administration. Area students and businesses expressed genuine interest in fashion programs that would include buying, display and advertising, promotion, selling and stock maintenance (purchasing resulting from experience and forecasts). Special interest was indicated in training the student to better prepare him or her to buy new fashions that area customers would accept. Also, students studying fashion design, a single elective course offered in 1970-71 in the management program, indicated by unanimous response a desire to see the fashion curriculum expanded.

For example, a graduate of SPC with a degree in Mid-Management trained as an assistant buyer in a local store; upon graduation she received several excellent offers. She accepted a position with a leading area department store in San Angelo; her background of experience and training qualified her to accompany their chief buyer to market during the first months of her employment. Further, the president of the firm contacted one of the instructors to indicate that it was a privilege to interview a prospective employee with the qualifications of this young woman.

Following the survey, the Distribution and Marketing Advisory Committee worked with the instructors to prepare the proposed course of study for

presentation to the Texas Education Agency for consideration. Dean Hunt has received approval for the program to be initiated August, 1971. In addition to on-the-job management training and fashion design, specialized courses to be included in the program are fashion buying and textile selection, fashion merchandising and fashion show procedures.

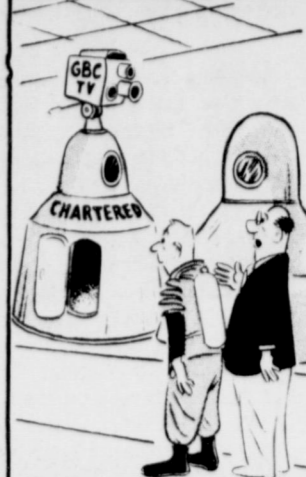
Those serving on the Distribution and Marketing Advisory Committee include Dean Hunt, Miss Paula Bell, Chairman, Department of Business Administration; Charles E. Gobie, Melvin Kunkel, Wade McDaniel,

Mason Polk, George Scott, James Stanley, John Srygley, all of Levelland; Jim Jones of Littlefield; Dean Merrifield and Gary Stacy of Brownfield. Instructors include Leon Harris, Mrs. Carolyn Pults and Mrs. Sycily Lattimore.

Prospective students and interested merchants may contact Dean Hunt or the instructors at the college. With the introduction of Fashion Merchandising, South Plains College is moving forward to meet the occupational needs of students and employers in the area.

Senate proposal on war pull-out to be modified.

## Out of Orbit



THAT'S THE CAPSULE THE PRESS WILL COVER YOUR FLIGHT IN!

## perry's Two Days Only

BEAUTIFUL 8" x 10" LIVING COLOR ONLY 79¢

PLUS 50¢ HANDLING ONE PER CHILD TWO PER FAMILY GROUPS 79¢ PER SUBJECT SATISFACTION GUARANTEED



GUVEY ASSOCIATES Arlington, Texas

## AVOID Farm ACCIDENTS



## Stop Trouble Before It Starts! Plan to Make Safety a Habit

To farm safely, plan properly. Plan to check equipment regularly . . . plan to remove hazards . . . plan to observe all the sound safety rules. Plan . . . then act! You'll avoid accidents, losses, too.

Singleton-Ellis  
Funeral Home MULESHOE

## News of Our SERVICEMEN Phillip Short

USS SARATOGA--Navy Fireman Phillip R. Short, son of Mr. and Mrs. Lee R. Short of Route 1, Muleshoe, is now serving aboard the attack aircraft carrier USS Saratoga with the U. S. Sixth Fleet in the Mediterranean.

The 15-year-old carrier, now on her eleventh deployment to the Mediterranean, spent two days in Greenock, Scotland and is scheduled to visit Spain, Italy, Greece, France and Malta.

His ship is homeported in Mayport, Fla.

## Don Watson

FT. EUSTIS, VA.--Army Captain Don R. Watson, 26, son of Mr. and Mrs. Charlie A. Watson, Muleshoe, recently completed a 30-week transportation officer advanced course at the Army Transportation School, Ft. Eustis, Va.

Students receive instruction in the duties and responsibilities of a transportation officer. The course entails a thorough survey of all modes of military transportation. It is the movement of troops, supplies and equipment which is the primary mission of the transportation corps.

Capt. Watson holds the Distinguished Flying Cross, two awards of the Bronze Star medal and three awards of the Air Medal, one for heroism.

He received a B. S. degree from West Texas State University, Canyon, in 1966.

His wife, Janice, was with him at the fort, during this training.

## MICHELIN 'X' RADIAL TIRES



When You Think Of  
A Premium Tire,  
Think Of  
Michelin

Michelin  
makes  
one grade  
of tire.  
The best.

"Free Mounting & Balancing  
On All New Tires Sold."  
"Free Rotating & Balancing  
Every 5000 Miles On All  
Premium Tires"

40,000 Mile Warranty

This steel belted Radial Tire carries the Michelin Warranty\* for 40,000 miles of tread wear. (Many owners get much more.) Puncture resistant Michelins stop faster, corner better, give more traction on wet surfaces. Yet they cost less per mile of driving than any tire you can buy.

Complete On The  
Farm Tire Service

MICHELIN

"FOR SAFETY'S SAKE"

For West Texas' Best Tire Buy...LOOK TO SHOOK

Shook Tire Co.

301 N. FIRST

MULESHOE

PHONE 272-3420

## FARM SAFETY WEEK

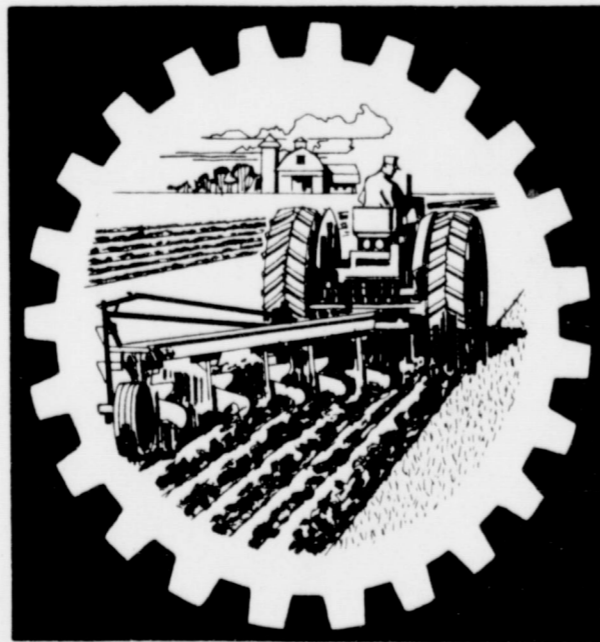
### FARM SAFETY CHECK LIST

Following is only a small sampling of hazards that contribute to accidents. Come up with your own list today and be safe.

- BROKEN FENCING
- FAULTY EQUIPMENT
- OBSOLETE MACHINERY
- UNSAFE ROADS, BRIDGES
- DEFECTIVE STORAGE
- FAULTY WIRING
- OPEN WELLS
- FIRE EXTINGUISHERS

DON'T CULTIVATE  
FARM ACCIDENTS

JULY 25- 31



PRODUCTION CREDIT ASSOCIATION

# DON'T CULTIVATE ACCIDENTS!



Most farm accidents can be avoided by checking machinery and farm grounds for potential safety hazards. Use patience and care while operating farming equipment. Every year needless and costly accidents occur on farms at an alarming rate. You can do your part this year to help keep these statistics down . . . Keep safety in mind at all times!

## NATIONAL FARM SAFETY WEEK • JULY 25-31

<p><b>SHUT OFF POWER</b></p> <p>MANY ACCIDENTS COULD HAVE BEEN PREVENTED IF THE MOTOR IS TURNED OFF WHILE GETTING OBSTRUCTIONS FROM THE MACHINERY, ELECTRIC MOTORS SHOULD BE UNPLUGGED, OR TURNED OFF DURING EQUIPMENT ADJUSTMENTS.</p> <p><b>First Street Conoco</b></p>	<p><b>FAULTY WIRING</b></p> <p>MANY FARM FIRES ARE CAUSED WHEN FIRE BREAKS OUT IN MACHINERY SHEDS OR BARNES DUE TO FAULTY ELECTRICAL WIRING. ALL FARMS IN THIS AREA NOW HAVE ELECTRICITY AND IT WOULD BE WISE TO CHECK THE CONDITION OF THE WIRING AT LEAST ONCE A YEAR.</p> <p><b>Whites Cashway</b></p>	<p><b>DRIVING</b></p> <p>GOOD DRIVING HABITS IN AUTOS PICKUPS, TRUCKS, CERTAINLY APPLIES TO THE RURAL RESIDENT, BE ESPECIALLY OBSERVANT AT BLIND CORNERS IN RURAL INTERSECTIONS WHERE WEEDS OR TREES OBSTRUCT VIEW.</p> <p><b>Black Insurance Agency</b> LIFE FIRE CASUALTY HOSPITAL</p>	<p><b>EQUIPMENT</b></p> <p>KEEP ALL EQUIPMENT IN GOOD REPAIR. KNOW AND USE THE SAFETY RULES IN OPERATING MACHINERY ON THE FARM AND HIGHWAYS.</p> <p><b>W. Wooley-Hurst Inc.</b> 522 W. Blvd. PHONE 272-5514</p>
<p><b>OPEN WELLS</b></p> <p>BOTH WATER AND IRRIGATION WELL ARE OCCASIONALLY ABANDONED IN THIS AREA AND MANY ARE HAZARDS THAT HAVE NOT BEEN PROPERLY COVERED, A SMALL RECESS SHOULD BE DUG AROUND THE HOLE AND METAL OR CONCRETE TOP SECURELY COVERED OVER THE HOLE. A LITTLE LIFE IS WORTH MORE THAN A LITTLE TIME.</p> <p><b>Low Pump Service &amp; Supply</b></p>	<p><b>POWER EQUIPMENT</b></p> <p>BE ESPECIALLY ALERT AROUND IRRIGATION WELL DRIVE SHAFTS AND SHAFTS SHOULD HAVE METAL PROTECTIVE COVERING. POWER TAKE OFF SHAFTS ARE ALSO TO BE OBSERVED CAREFULLY.</p> <p><b>Federal LAND BANK Association</b></p>	<p><b>ANIMALS</b></p> <p>TREAT ANIMALS WITH CAUTION, ALWAYS SPEAK TO AN ANIMAL AS IT IS BEING APPROACHED. A FRIGHTENED ANIMAL CAN BE DANGEROUS.</p> <p><b>John's Custom Mill</b></p>	<p><b>FIRST AID</b></p> <p>LEARN THE METHODS OF FIRST AID, KEEP A KIT HANDY, AND ALWAYS APPLY FIRST AID PROMPTLY WHEN AN ACCIDENT OCCURS.</p> <p><b>West Plains Pharmacy</b></p>
<p><b>CLEANLINESS</b></p> <p>MANY ACCIDENTS CAN BE ELIMINATED BY KEEPING YOUR FARM CLEAN AND NEAT.</p> <p><b>Morris Nowlin</b></p>	<p><b>IRRIGATION PIPE</b></p> <p>BE ESPECIALLY CAREFUL WHEN MOVING SECTIONS OF METAL IRRIGATION PIPE UNDER ELECTRIC HIGH LINE WIRES. MANY PERSONS HAVE LOST THEIR LIVES WHEN PIPE COMES IN CONTACT WITH HOT WIRE.</p> <p><b>Western '66'</b></p>	<p><b>FIRE HAZARDS</b></p> <p>ELIMINATE ALL FIRE HAZARDS AROUND YOUR FARM, AND BE AWARE OF FIRE DANGERS AT ALL TIMES. DON'T SMOKE IN BARNES, OR AROUND COTTON TRAILERS.</p> <p><b>Central Compress &amp; Warehouse Nickels Gins</b></p>	<p><b>CHILDREN</b></p> <p>A WORD OF CAUTION TO USERS OF EVAPORATIVE AIR CONDITIONERS WITH A PLASTIC WATER SUPPLY LINE. YOUR AIR CONDITIONER MUST BE GROUNDED. AIR CONDITIONER MUST BE GROUNDED, TO INSURE SAFETY, IF EITHER THE FAN MOTOR OR THE WATER PUMP SHOULD FAIL. AN ESTIMATED 5,000 CHILDREN ARE ELECTROCUTED EACH YEAR BY PLAYING AROUND AIR CONDITIONERS THAT ARE NOT PROPERLY GROUNDED.</p> <p><b>Dari Delight</b></p>

# WANT ADS DO THE JOB FAST!

**WANT ADS PH. 272-4536**

**CLASSIFIED RATES**

**OPEN RATES**

First insertion, per word-7¢  
Second and additional insertions-5¢

**NATIONAL RATES**

First insertion per word-9¢  
Second and additional insertions-6¢

Minimum charge-75¢

Card on Thanks-\$1.50 Double rate for blind ads

Classified Display-95¢ per col. inch

\$1.05 col. inch for reverses

**DEADLINE FOR INSERTION**

Thursday's Muleshoe Journal-Noon Tuesday  
Sunday's Bailey County Journal-Noon Friday

The Journals reserve the right to classify, revise or reject any classified ad.

Check advertisement and report any error immediately. Journals are not responsible for error after ad has already run once.



**John Tower**  
**United States Senate**  
**COMMITTEE ON ARMED SERVICES**

It seems to me that, ideally, children attending public schools should attend those schools which are nearest to their own homes. In this way, the child progresses naturally from his home environment to his neighborhood surroundings and on into the spectrum of his entire city situation as he progresses through his elementary and secondary education.

It seems logical that school plans should be devised, within the limits of practicability, to enable children to obtain an education at schools which are nearest to their homes. A high quality education should be available for every child regardless of the wealth of his parents and regardless of his heritage.

Many in our nation have been concerned over the quality of education available in our public schools. In some cases, it has been found that children from poorer or minority group homes have not had the opportunity for a quality education. Efforts have been made to insure a high quality education for all.

I also want a high quality education for all our nation's children and young people. But I feel that some have lost sight of the goal of quality education for all, and are working instead merely to assure that children of different back grounds and heritages attend school in the same classroom.

I see no need for expenditure of taxpayer funds not for improved education but simply for buses in which to transport large numbers across towns in opposite directions.

The Supreme Court in numerous decisions has required pairing, zoning, clustering, and massive busing in search of the illusive goals of "racial balance" and the "disestablishment" of the dual school system. Such requirements are resulting in a decline in the overall quality of education.

It occurs to me also that the efforts of the Court and others are diametrically opposed to efforts to insure that all the nation's children obtain a qual-

ity education without regard to race. Some years ago, some school systems assigned pupils to schools based upon their race. That was segregation and that was a contravention of American principles. Ideally, the schools of our nation should be color-blind in the matter of assignment of students to schools.

The American goal is that the opportunity for achievement be made available to all regardless of race, allowing each individual to attain stature and to contribute to the whole society in accordance not with his race but in accordance with his abilities.

Education is a vital ingredient of individual ability and a high quality education should be provided for all.

But massive busing will not improve the quality of education. Education can be improved by employing more and better teachers, by providing the best possible textbooks, by encouraging study, and by providing an overall environment which contributes to the healthy development of the child's social and psychological attitudes. Massive busing requires funds which otherwise might be available for teachers, buildings and books. And it deprives the child of a

full opportunity to participate in the extracurricular activities which nourish the development of social and psychological attitudes.

In the Senate, I have sponsored both a Constitutional Amendment and a Resolution which, if passed, would re-direct the Supreme Court decisions on the issue of forced massive cross-town busing of school children.

The Constitutional Amendment, Senate Joint Resolution 112, would specifically state that children should not be assigned to public schools on the basis of race. The amendment would be wholly within our American principles and it would go a long way toward re-establishing the policy that public schools are primarily the concern of the local school boards and parents of the community. My resolution would tell the Supreme Court that it should more carefully consider the disruptive effects that its ruling have on the educational process in the nation, and that busing of children should not be required as a method of balancing ethnic groups in public schools.

The Constitutional Amendment, as well as my Senate resolution, has been referred to the Senate Judiciary Com-

mittee. Neither has received attention thus far. I am hopeful that the Committee and, in turn, the Senate and the Congress, will act on this important matter. Unfortunately, I cannot hold out that hope as an expectation.

Some Device!

Doctor: Now, madam, place this thermometer between your lips and keep your mouth closed for five minutes.

Husband (aside to the doctor): Where can I get one of those things, Doc?



**Noticias: Mexicanos**

En Clovis Nuevo Mexico Viene

Un programa Mexicano, La Fiesta Mexicana y Variada. Nos dedicamos para enviarles

por media del aire lo mejor en

musica mexicana para su agrado.

Sintonisen a la radio K.M.T.Y. FM

Stereo 99.1, la difusora de potencia superior, transmitiendo cientomil watts.

El dia es Julio uno, de las

nueve hasta las doce de la noche

cada noche. Los envitamos todos que Escuchen

lo mejor en musica mexicana

**Al Salgado**

**TELEX**  
**Hearing Aids**  
**Clovis Hearing Aid Center**  
**Batteries & Molds. Free Tests.**  
**Service All Makes.**  
**416 Mitchell Phone 763-6900**  
Clovis, N.M.

...nothing neater than an **ELECTRIC** WATER HEATER

Electric water heaters are neat because you can put them anywhere . . . in the kitchen, utility room or bath. Installation is simplified because electric water heaters don't have to be vented. And, you get plenty of hot water.

When you have water heater problems, give us a call. We'll take care of everything . . . installation, financing, even the removal of your old water heater. And, we'll guarantee your new electric water heater, too! Call today.

**GOLDEN ANNIVERSARY**  
**Modern ELECTRIC Water Heating**  
1921-1971

**272-4578**

**ELECTRICITY... IT DOES SO MUCH GOOD FOR SO MANY PEOPLE!**

**Jaycees**  
meets every Monday, 12 Noon  
Jeff Smith, Pres.

**Muleshoe Rotary Club**  
Troy Atkinson, President

**VFW**  
Walter A. Moeller  
Post # 8570  
8:30 p.m.  
2nd & 4th Mondays  
Old Pribble Skating Rink  
Don Rempe, Commander

**Masonic Lodge**  
meets the second Tuesday of each month  
practice night each Thursday  
Fred Horn, WM  
Elbert Nowell, Sec.

**Lions Club**  
meets each Wednesday, 12 Noon  
FELLOWSHIP HALL, Methodist Church  
W. T. Millen, President

**Muleshoe Oddfellows**  
meets each Thursday 7:30 p.m.  
Bill Hennessy, Noble Grand

**PERSONALS**  
FOR SALE: RABBITS see J. R. Otwell or phone after 6:00 272-3163. 1-15t-1fp

**Bras. & Girdles By PENNYRICH AT Main Street Beauty Salon**

**Planning a Wedding PHOTOGRAPHY by Oecia**  
For Your Pictures  
Call 385-6083, Littlefield 409 W. 2nd

**WANTED JOB HOUSEKEEPING**  
Write Alda Miller, 1726 W. Ave. C, Muleshoe, Texas for details or call 272-3209 between 8 a.m. and 4 p.m. 3-30s-4tc

**NEEDED IMMEDIATELY: Full or part time hair stylist, Main Street Beauty Salon, Phone 272-3444. 3-34s-4tc**

**WANTED: WAITRESS, apply by person, Corral Restaurant, 3-40s-4tc**

**FARM HELP WANTED:** Two miles west of Muleshoe, dial 272-4842. 3-29t-8tc

**HELP WANTED:** Clerk and checker for local firm in Muleshoe. Write box 449. 3-27t-6tc

**5. APTS. FOR RENT**

**FRIONA APTS:** 1, 2 & 3 bedroom, low rent, utilities paid, 1300 N. Walnut, Friona, Phone 247-3666. 5-13s-4tc

**6. ROOMS FOR RENT**

**FOR RENT:** Bedroom, 807 W. 7th. Call 4166 or 4903.

**8. REAL ESTATE FOR SALE**

**HOLLAND REAL ESTATE**  
\*Have irrigated and drylac farm.  
\*Two and three bedroom homes.  
121 American Blvd. 8-40s-4tc

**LOOK: VETERANS** tracts, Bailey and/or Cochran counties, irrigated. Best buy, 164 acres, classic home. Owner Route 2 Box 99 Phone 927-3775 Morton. 8-22s-4tc

**WE ARE PROUD TO OFFER** one of the areas outstanding farms. Full allotments, well improved and excellent water. Only 25% down and 6% interest will handle this 480 acres. Call or write Stanley P. Simon Realtor, P. O. Box 156, Clovis, New Mexico, (505) 762-4501. 8-30s-4tc

**HOUSE FOR SALE:** In Sudan, 3 bedrooms, 1 3/4 baths, brick, just painted inside and outside. Some remodeling, 9.2 acres. To see call 227-6211. For more information call 659-3642, Spearman. 8-23t-4tc

**HOME FOR SALE BY OWNER:** 1911 W. Ave. F. Call 272-3836 for appointment. 8-26t-4tc

**KREBBS REAL ESTATE**  
\* 80 A. Irrig. on pavement  
\* Lovely 3 bedroom brick home  
\* Small irrigated farm, good terms  
8-23t-4tc

**POOL REAL ESTATE** where you can trade what you have for what you want, LEE POOL, WOODY GOFORTH. Phone 272-4716. 8-24s-4tc

**9. AUTOMOBILES FOR SALE**

**FOR SALE:** 1969 Plymouth Velvedere under 30,000 miles Warranty. Phone 965-2117. 9-29s-4tc

**FOR SALE:** Clean 1966 Ford pickup. Good condition, 272-4182. 220 W. 10th, Muleshoe, Texas. 9-30s-4tp

**FOR SALE:** 1966 Ford Custom 500 Sedan, 4dr. Phone 965-2727. 9-30s-5tp

**10. FARM EQUIP. FOR SALE**

**FOR SALE:** Used farm tractor parts, Bozeman Machinery 122 Idalu Road Lubbock, Texas. Phone (806) 762-5133. 10-25t-5tc

**FOR SALE:** Used and New Trimatics, Pierce Siderolls, some used pipe, Wagner Endrolls, Olson Pivot Systems. Phone 927-3775. 10-22s-4tc

**FOR SALE:** Good used aluminum pipe in sizes from 4" through 8". Also good assortment of all kinds of used fittings -- New systems of all types. We will buy or trade your used aluminum pipe. **STATE LINE IRRIGATION -- LITTLEFIELD and MULESHOE.** 10-47t-4tc

**11. FOR SALE OR TRADE**

**SALE OR TRADE:** 10" irrigation pipe for 6 or 8 or 16 inch casing approximately 280 ft. 10 ft. joints. 11-28s-8tc

**12. HOUSEHOLD GOODS**

**Lost bright carpet colors... restore them with BLUE LUSTRE. Rent electric shampooer \$1. Perry's 128 Main. -12-4t-4tc**

**Brace yourself for a thrill the first time you use BLUE LUSTRE to clean rugs. Rent electric shampooer \$1. Higginbotham-Bartlett, 215 Main. 12-50s-4tc**

**15. MISCELLANEOUS**

**CASH FOR YOUR** wrecked or burned tractor Bozeman Machinery 122 Idalu Road Lubbock, Texas Phone (806) 762-5133. 15-25t-5tc

**FOR SALE:** 1948 Jeep. New tires, hubs, cam, rachs. See at 329 W. Ave. J. Muleshoe, Texas. 15-29s-3tc

**CESSPOOLS** pumped out. 272-3282 or 272-3036. 15-25s-4tc

**FOR SALE:** Several rifles. .17-222 BSA. Bolt action .270 Husqvarna; .243 Mauser; .22-250 Springfield; .222 Rem. model 700. With or without scopes. Loading dies and ammunition for sale with above rifles. 329 W. Ave. J. Muleshoe, Texas. 15-29s-3tc

**FOR LEASE:** Modern Texaco Station in Earth, Texas, Excellent location. Low overhead, small investment will handle. Inquire at Texaco Inc, Muleshoe. 15-27s-7tc

**FOR SALE:** 14 ft. new Jon boat. Flat bottom. Never used. Reg. \$139.95. \$99.95 sacrifice. Call 272-4536 or see at local airport. 15-26t-4tc

**16. LIVESTOCK**

George Edmonds, bonded dealers, specializing in light stocker cattle. Have on hand 40 Holstein steers. Also 375 light No. 1 Okie steers. Also 375 No. 1 Okie steers. Will sell all or in small bunches. 16-27s-8tc

**NEED A HOME LOAN? SEE FIRST FEDERAL! FIRST FEDERAL SAVINGS AND LOAN AND TRUST COMPANY**  
801 Pile St. 762-4417  
Clovis, New Mexico

**WARNING**  
To Whom It May Concern

Corn now being raised on the Bill Jim St. Clair farms located in Bailey and Parmer counties has been sprayed with a systemic chemical which is harmful to humans & livestock if the corn is consumed in the roasting ear stage.



# Food Budget



**CARRY-OUT SERVICE**

Values This Ad Good Monday July 26, Thru Sat. July 31

**BUNTE ORANGE SLICES**  
13-oz. BAG **19¢**

**SCOPE MOUTHWASH**  
24-oz. SIZE **99¢**

**MEN'S Baby Magic LOTION**  
9-oz. SIZE **69¢**

**Protein "21" SHAMPOO**  
7-oz. SIZE **88¢**  
16¢ OFF LABEL

**Del Monte TUNA**  
**CHUNK TUNA**  
No. 1/2 CANS **2 79¢**

**Vaseline LOTION INTENSIVE CARE**  
15-oz. SIZE **88¢**

**SUAVE REG. HARD TO HOLD HAIR SPRAY**  
12 oz. CAN **44¢**

Butterscotch, Vanilla, Chocolate, & Banana Del Monte **PUDDINGS** 4 IN PACK **55¢**

**Shurfine ASPIRIN**  
LARGE 200-COUNT BOTTLE **33¢**

**TOOTH PASTE "SUPER" REGULAR 8 3/4 oz. SIZE**  
**Crest CREST** **77¢**

**RED DEL MONTE SALMON** TALL CAN **99¢**  
ALASKA RED SOCKEYE SALMON

**LADY BEVONI PANTY HOSE**  
2 PAIR **69¢**  
Limit Two Pair Per Family WITH THIS CERTIFICATE  
LOW LOW PRICES  
SAVINGS CERTIFICATE

**ALWAYS FRESH BISCUITS**  
10 ct. 8-oz. CAN **5¢**  
Limit Six Cans WITH THIS CERTIFICATE  
LOW LOW PRICES  
SAVINGS CERTIFICATE

**CENTRAL AMERICAN BANANAS**  
LB. **5¢**  
Limit 3 Pounds WITH THIS CERTIFICATE  
LOW LOW PRICES  
SAVINGS CERTIFICATE

**SHURFRESH SALAD OIL**  
24-oz. BOTTLE **39¢**  
Limit One WITH THIS CERTIFICATE  
LOW LOW PRICES  
SAVINGS CERTIFICATE

**ANTI-PERSPIRANT ARRID EXTRA DRY**  
6-oz. CAN **65¢**  
Limit One Can WITH THIS CERTIFICATE  
LOW LOW PRICES  
SAVINGS CERTIFICATE

## DEL MONTE DOLLAR VALUES!

- ★ **FRUIT COCKTAIL**..... DEL MONTE ..... 4 303 CANS
- ★ **GREEN BEANS**..... CUT OR FRENCH SLICED DEL MONTE ..... 4 303 CANS
- ★ **SWEET PEAS**..... EARLY GARDEN DEL MONTE ..... 4 303 CANS
- ★ **PEACHES**..... YELLOW CLING SLICED DEL MONTE ..... 3 NO. 2 1/2 CANS
- ★ **PEAR HALVES**..... BARTLETT DEL MONTE ..... 3 303 CANS
- ★ **PINEAPPLE**..... SLICED OR CRUSHED DEL MONTE ..... 3 NO. 2 CAN
- ★ **TOMATO JUICE**..... DEL MONTE ..... 3 46-oz CANS
- ★ **WHOLE GREEN BEANS**..... DEL MONTE ..... 4 303 CANS
- ★ **STEWED TOMATOES**..... DEL MONTE ..... 4 303 CANS
- ★ **WHOLE TOMATOES**..... PEELLED DEL MONTE ..... 4 303 CANS
- ★ **TOMATO CATSUP**..... DEL MONTE ..... 4 14-oz 8TLS
- ★ **GOLDEN CORN**..... CREAM STYLE OR WHOLE KERNEL DEL MONTE ..... 5 303 CANS
- ★ **EARLY GARDEN SPINACH**..... DEL MONTE ..... 5 303 CANS
- ★ **TOMATO SAUCE**..... DEL MONTE ..... 10 BUFFET CANS



**WAGNON'S**  
**SAVE 40¢**  
on 3 oz. size **Instant NESTEA**  
100% TEA  
Limit 1 Per Family  
OFFER EXPIRES JULY 31, 1971  
WITHOUT COUPON \$1.09  
WITH COUPON **69¢**

**Wagnon Grocery & Mkt.**  
515 W AMERICAN BLVD. MULESHOE PHONE 272-4406

