

# Motley County Tribune

Voice of the Foothill Country

106 YEARS

THURSDAY, MAY 15, 1997

ISSUE NO. 20

50¢  
per copy



## A Look back in Time

JANUARY 14, 1937

Thunder, Lightning and Sleet Storm  
Accompany Winter's Coldest Spell

"Rattling of sleet against housetops, to the accompaniment of thunder and weird lightning, started retiring Matador residents Thursday night. According to observations made by various townspeople the mercury stood at zero at 7 o'clock Friday morning."

August 2, 1945

Star Okays Slacks

"Slacks for women are here to stay, in the opinion of Ann Sheridan, glamorous movie star. Just be sure you have them tailored properly, girls, to avoid bagginess and drooping, she advises."

## Thought for the week

"You are as young as your faith, as old as your doubts; as young as your self-confidence, as old as your fear; as young as your hope, as old as your despair."  
— Ullman

## Guest Speaker at Roaring Springs First Baptist Church Sunday

Guest minister, Rev. David Allen of Odessa, will be preaching at the Sunday morning services, May 18 at 10:45 a.m. at the First Baptist Church in Roaring Springs.  
Everyone is invited to attend.

## Early Deadline for June 5th Paper

This may seem early to announce, but we felt it necessary to make sure everyone could get their calendars straight, to be sure to have everything in on time for our June 5th edition of the Motley County Tribune.

Due to upcoming surgery and a hospital stay for our Editor, we must have an early deadline for our June 5th edition. Please mark your calendars now, and bring in all news and ad copy for that edition of the paper no later than noon, Wednesday, May 28. If possible, it would be a real big help if it could be brought in maybe even on Tuesday, May 27.

We will have our regular deadline of Tuesday noon, May 27, for the May 29th edition, which will be our graduation paper.

The June 5th edition will be mailed out on its regular day of Wednesday, June 4.

Our office will be closed that week, June 2-6, except on mail out day, Wednesday afternoon, June 4.

This seems to be getting more and more confusing ..... but again we stress, please mark these times and dates now, so as not to be late.

Thank you so much and we very much appreciate your help and cooperation during this time.

## Shannon Davidson Committee & Chamber to hold joint meeting

It is extremely important that ALL Motley County Chamber of Commerce Board Members attend the joint meeting with the Shannon Davidson Pony Express Days Committee on Tuesday, May 20, 1997 at 7 p.m. at the Motley County Library.

Agenda items include the review of incorporation procedures and papers for the Chamber, as well as an update on the Shannon Davidson celebration activities.

## Motley County Honor Students Announced

Motley County ISD has announced honor students for the 1997 graduating classes.

Valedictorian for the class of 1997 is James Cody Timmons, with a GPA of 102.00. Cody is the son of Mr. and Mrs. James Timmons of Northfield, and the grandson of Sibyl Timmons and the late Leland Timmons of Childress, and Mr. and Mrs. Dalton Martin of Childress.

Cody plans to attend college at West Texas A&M University after graduation.

1997 Salutatorian is Leah Breann Cruse with a GPA of 98.74. Leah is the daughter of Mr. and Mrs. Darrell Cruse of Flomot and the granddaughter of Marihelen Wason and the late Billy Wason of Matador and Tommie Cruse and the late Ray Cruse of Flomot.

Leah plans to attend West Texas A&M University after graduation.

8th grade Valedictorian is Ashley Elizabeth Stevens, with a GPA of 95.31. She is the daughter of Mr. and Mrs. Steve Stevens of Matador, and the granddaughter of John V. Stevens and the late Helen Stevens of Matador and Mr. and Mrs. Homer Hamilton of Paducah.

8th grade Salutatorian is Leigha Nicole Burns with a GPA of 95.22. She is the daughter of Mr. and Mrs. Steve Burns of Matador and the granddaughter of Mr. and Mrs. Chig Gwinn of Matador and Bob Burns of Matador and Hallie Burns of Paducah.

Baccalaureate services for the Senior class of 1997 will be held Sunday, May 25, at 7:00 p.m. at the high school gym.

8th grade graduation will be held Friday, May 30 at 7:30 p.m.

Twenty-one Seniors will receive their high school diplomas Saturday, May 31 at 7:30 p.m.

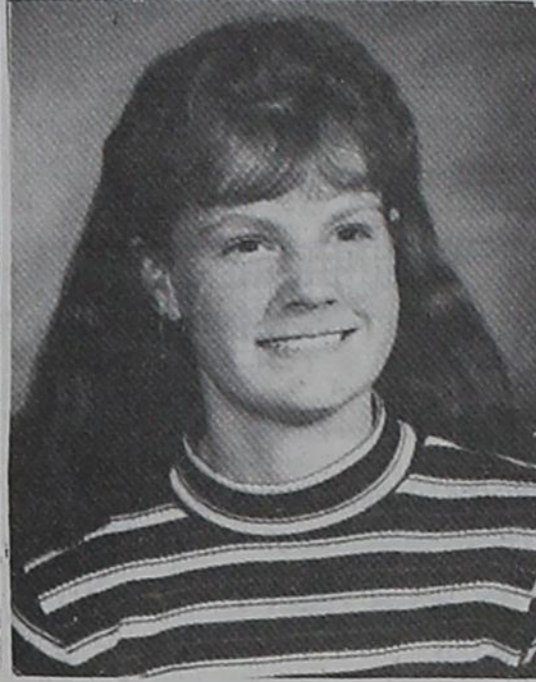
Both graduation ceremonies will be held in the Motley County gym.



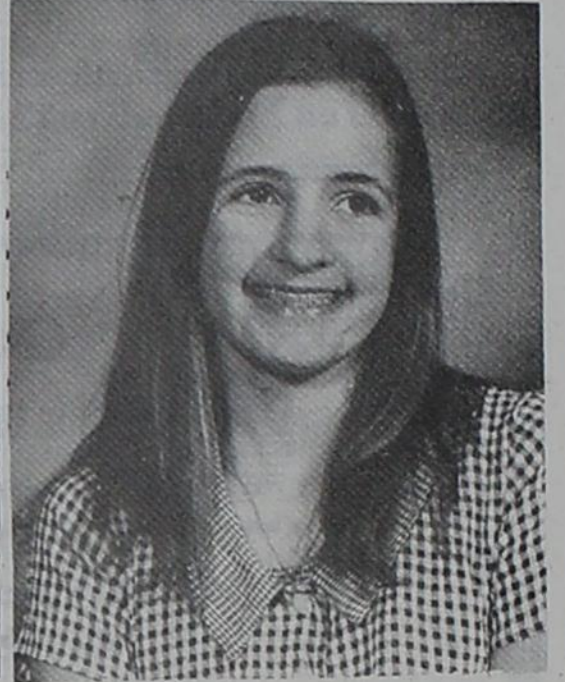
CODY TIMMONS  
Valedictorian



LEAH CRUSE  
Salutatorian



ASHLEY STEVENS  
Valedictorian



LEIGHA BURNS  
Salutatorian

## Students, Teachers Honored At Third Annual Academic Banquet



TEACHER OF THE YEAR — Mrs. Karen Davis was honored as Teacher of the Year at last Thursday night's Academic Banquet. Mrs. Davis teaches first grade.



SUPER TEACHER — Mrs. Kathy Gillespie received the Tandy Technology Math and Science Teacher of the Year Award.



NATIONAL NOMINEE — Kasey Parks received the Heisman Award National Nominee Award and the Coast to Coast All-American Vocational Award.

## Dodie Morris Named Head Cheerleader for Clarendon College



Dodie Morris

Dodie Morris, 1997 Senior at Motley County High School has been chosen as Clarendon College's head cheerleader.

Eight women will serve as cheerleaders for the 1997-98 Clarendon College Bulldog athletic teams. CC Cheerleaders provide school spirit at all Bulldog and Lady Bulldog basketball games and pep rallies.

During tryouts, each individual was required to participate in an interview session, group dance routine and individual cheer, according to CC Cheerleading Adviser, Michelle Schmidt.

Other members of the 1997-98 CC Cheerleading squad are Shana Thompson, Hollis, OK; Heather Shields Clarendon; Christi Holmes, Follett; Mixie Siepel, Lordsburg, N.M.; Karen Taylor, Vernon; Ginger Teague, Childress; and Donna Davis of Channing.

Dodie is the daughter of Billy and Pam Morris of Flomot.

Motley County teachers and students were honored at the third annual Motley County ISD Academic Banquet held Thursday night, May 8 in the multi-purpose room at the school.

Mrs. Karen Davis, first grade teacher was named Teacher of the Year. This honor is voted on by other teachers and is sponsored by West Texas Utilities of Matador.

Mrs. Kathy Gillespie was named the Tandy Technology Math & Science Teacher of the Year.

Regional qualifiers in UIL were recognized and received medals. UIL One Act play participants being named

to the All-Star cast were also recognized and received their medals.

Cody Timmons, son of Mr. and Mrs. James Timmons of Northfield received the Tandy Technology Scholar award for being the highest ranking student in high school. He also received the UIL Scholar award, as did Leah Cruse, daughter of Mr. and Mrs. Darrell Cruse of Flomot. Leah also received the KCBSD Student Athlete award.

Kasey Parks, daughter of Mr. and Mrs. Harold Parks of Roaring Springs received the Wendy's Heisman Award and the Coast to Coast Service Star

All-American Vocational Award.

New members were inducted into the National Honor Society. New members are Kaci Risser, Kandi Keltz, Nesa McFall, Keane Cruse, Kristi Williams, Aaron Binder, and Robert

Gillespie. Other high school students were also recognized for their academic achievements throughout the 1996-97 school year.

for more pictures see page 3

## 4-H Clubs to sponsor Mini-Olympics Saturday

Motley County 4-H is sponsoring a Mini-Olympics for area youth on Saturday, May 17th at the Motley County Football Field in Matador. The track meet will start at 10:00 a.m. and is open to all area youth from 2 years to 6th grade. The youth will compete based on their grade with separate boy and girl divisions in each grade. There will be events for ages 4 and under.

There will be a \$5.00 entry fee per participant. With the \$5.00 entry fee, youth can enter one or all of the events. The events include: 50, 100, 200, and 800 meter dash; 400 and 800 meter relay; long jump; jump rope; and base-

ball throw. There will be a special running event for Moms and Dads.

Awards will be given to first, second, and third places in each event and participation ribbons will be given to all participants. There will be an All-Around award given to the high point boy and girl in three divisions: 4 and under; Pre-K through 3rd; and 4th through 6th grade.

All area youth are invited to attend the Mini-Olympics and enjoy the fun. For an entry form or more information, please call Motley County Extension Office (806) 347-2733 or Barbara Sharp at (806) 347-2784 after 6:00 p.m. Deadline to enter is May 16th.

## Oath of Office Administered to new School Board members

The Motley County ISD School Board met Monday, May 12 at 7:30 p.m. The roll was called and the meeting was called to order.

The oath of office was administered to newly elected Board members. The Board was organized, with Jeff Thacker as President; Gale Stafford, Vice-President; and Bill Luckett, Secretary.

Minutes of the previous meeting were approved.

The list of expenditures was approved and the financial statements were reviewed.

Board discussed the transportation costs for transfer students from Floydada. No decision were made.

continued on page 7

## Matador City Council Discusses Clean-Up Project

The Matador City Council met Thursday, May 8 at 7:30 a.m. Invocation was given by Councilman Rodney Williams. Mayor Gary Lancaster called the meeting to order.

First items on the agenda was to canvass the May 3rd Election results. Newly elected council members were sworn in.

The minutes of the previous meeting were read and approved. Bills were paid.

Matador resident, Glenn Woodruff, met with the Council to present a proposal for a Clean-Up day in Matador and the County for Shannon Davidson Pony Express Days. The City will meet with County Commissioners and set up a clean up day. The City will clean up anything, with the exclusion of appliances and tires, free of charge, if contacted. At the current time there is nowhere to put old appliances, tires, and things such as this, the City Council is checking in to trying to obtaining something for these items. For more

information about this, please contact City Hall, or Steve Barton.

The Council is also trying to secure additional land for the Landfill. Land is needed very soon to expand, as the last pit at the Landfill is currently being used, and at present operation will last only one more year. The City will keep the Landfill open on Saturdays.

The Motley County Appraisal District Budget for the 1997-98 year was approved.

The name of the street which runs in front of the Glenn Woodruff residence was discussed, as to whether the street is named Tilson Avenue or Walton Road. Checking into this street name, it was clarified that the street is actually named Walton Road. When Mrs. Wiley deeded the land to the City, she stipulated the street should be called Walton Road. This street is one block long.

The Street Sign project was discussed. The Council plans to complete

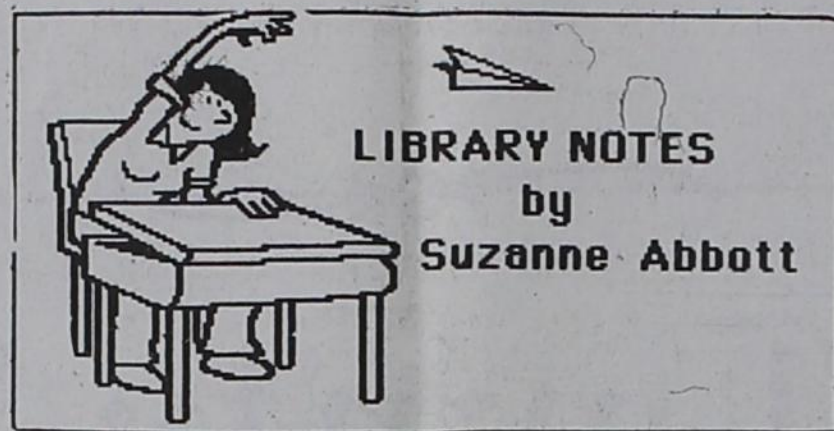
continued on page 6



I hope everyone noticed on the front page the Early Deadline story for our June 5th edition. I know this seems early to announce this, but I want to make sure everyone has plenty of time to plan particular stories, ads, etc. I know this is an inconvenience for everyone and believe me if it were not necessary, I would not set the deadline so early. But the time has come for me to receive some surgery that I have been putting off for the last five years, and my doctor says, no more. I must admit that I dread it, but that's life, I guess.

Anyway, I really appreciate everyone's cooperation with this, and I hope that we'll be back on schedule the following week.

I was told recently that the NIV Bible will soon release a non-gender Bible, which means that God will not be referred to as a man, our Father. I'm sorry, but I think this is really going too far. God is our Heavenly Father. For me that means a man. I don't care if I'm called a non-feminist or what, but my God is my Father.



Next Tuesday, May 20, the Motley County Genealogical Society will travel to the Floyd County Historical Museum and Genealogical Society. The people in the genealogy section are expecting us to be there about 1:00 p.m. The group will gather at the Lamplighter Inn in Floydada at 11:30 for lunch. If you wish to make a reservation for lunch, please call the Library, 347-2717, and give us your name. Anyone interested in genealogy is invited to come along on this excursion.

You have probably been reading about the bill before the Texas Legislature that makes keeping overdue library books a misdemeanor. The Motley County Library lost \$379.72

worth of books in 1996. These are books that have not been returned to the Library and their loss represents over half of the regular book budget for the year.

There will be a Summer Reading Program at the Library for children in grades 1-5. This program, named "The Incredible Dream Machine," will take place during the month of June. Each Thursday during June there will be an activity session for the participants. More information will be available later.

Drop by the Library and see the lovely exhibit of Georgia O'Keeffe materials in the display case. We thank Patricia Green for arranging this exhibit for the Library.



## Family and Consumer Sciences News

by Arla Felts, Extension Agent

An issue related to extending independent living by creating a less cluttered, safer, money saving environment is ENVIROSHOPPING: BUY SMARTER.

Each week, a ritual called "taking out the garbage" is repeated in nearly every household in the land. Placed in neatly tied-up trash bags are unwanted fragments of our daily lives, from stale bread crusts & milk cartons, to broken radios and kitty litter.

Even the kitchen sink becomes waste eventually. Once deposited at curbside or in a dumpster, the garbage (technically called solid waste) is picked up, hauled to a landfill for disposal.

Usually forgotten by those who create it, Texans throw away about 5.8 pounds of garbage per person each day, while the national average is about 3.5 pounds per person per day. All this garbage is "Here Today...Here Tomorrow". We must raise our awareness to become responsible not only for what we consume, but also for what we toss. It all wastes energy and materials. It can release pollutants into the environment.

The environmental impact of goods begins long before it becomes trash. It starts with mining or extraction of raw materials, continues when raw materials are transported to the factory, when products are manufactured, stored, and transported to retail stores.

Pollution can occur at every step. Each incident of pollution may be small, but added together they contribute to the pollution problems that are of so much concern today. Every time you reduce the amount of waste you produce, you contribute to saving energy and reducing pollution.

There are a number of ways to tackle garbage, or "solid waste". One of the ways starts with you and the products you buy. Shop with the environment in mind. Buy products that make best use of energy resources, don't pollute air and water, are reusable or recyclable, are made for renewable or plentiful resources or from recycling materials, use a minimum of materials in design and packaging. When you shop for products like these, you are "Enviroshopping."

Thirty percent of our household waste is packaging. Most of what we buy was wrapped in a package at some time on its way from producer to consumer. Much of it is in several layers of packaging. Is all that really necessary. No, not all of it.

Of course, some packaging is an essential part of our marketing and distribution systems. In the past, the butcher cut meat, the clerk weighed just the right number of three-penny nails, and a salesperson assisted us with our shopping. Much of the shopping in America today is at huge variety stores allow for one-stop shop-

ping, all the meat is PRE-cut for self-help shopping, and nails are PRE-packaged. There are theft-proof packages for unsupervised consumers. Packaging protects food from light, heat, oxygen, natural contamination, tampering. It protects consumer goods from crushing, soiling shoplifting. It protects children from ingesting drugs and hazardous chemicals. It informs consumers of proper use, storage, features, and warranty. It creates easier warehousing, transportation, distribution which can be done with mechanical equipment.

Many packages are designed to provide an extra convenience to the consumer ... ready to eat, single serving, disposable, micro-waveable, heat and eat, no clean-up.

Packaging is often used to give extra boost to sales for the producer - multi-packs encourage quality purchases, eye appeal of packaging draws shopper away from competition, larger size package uses more shelf space attracting consumers.

Most packaging uses materials very efficiently, to minimize energy of production, transportation, and material costs. The packaging industry continues to refine and improve their product even more. Improvements often allow for thinner, lighter-weight materials that reduce material and energy costs, and reduce the amount of garbage going to the landfill. Some improvements are made to make the product more convenient to use, or to improve safety or shelf-life.

Some packaging is excessive wasting energy and valuable materials. These contribute to waste disposal problems. Sometimes when improvements are made for convenience sake or to increase shelf-life, packages produced more materials, or are more difficult or impossible to re-use or recycle.

Many products are available in a wide choice of packaging options. You should choose the type of packaging that has the least environmental impact in terms of energy use, amount of materials used, and recyclability.

The amount of packaging going into the waste stream can be reduced significantly. Your participation will be a positive contribution to the solution of an important problem. You can have a less cluttered, safe environment and improve the quality of life for yourself and our society by adopting environmentally appropriate behavior.

For information about a meeting series "Reduce-Reuse-Recycle," contact Texas Agricultural Extension Agent-Family & Consumer Sciences. Extension programs serve people of all ages regardless of socioeconomic level, race, color, sex, religion, disability, or national origin.

Thank You For Reading The Motley County Tribune!

**Get to know us ....**

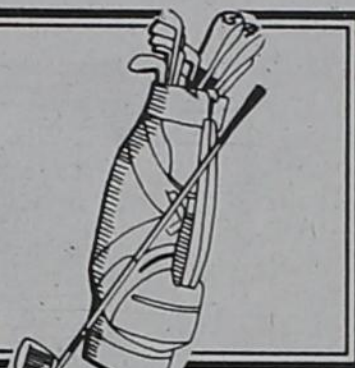
**LOCKNEY CARE CENTER**  
is a Medicare approved facility providing skilled services such as . . .

- Physical Therapy
- Respiratory Therapy
- Occupational Therapy
- I.V. Therapy
- Speech Therapy
- Short Term Rehab

**Contact Steve Hurst for information regarding these services at . . .**  
**(806) 652-3375**

## Pivots & Divots

by Geneva



### Tuesday Scramble

April 29  
Winners, with a score of 29, were Alfred Barton, Louise Barton, Brian White and Rob Francis.

Second, with a score of 31, Alan Bingham, Kay Bingham, Cody Dodson, and Shea Dodson.

Others playing were Van Francis, Larry McClenny, Dee Luteken, Buzz Thacker, LaVoe Thacker, Keith Hewitt, Garland Cartwright, Dot Grundy, Roy Grundy, Mark Brannon, and Gene Brannon.

Van Francis got closest to pin on #3, 36 1/2 ft.

### Thursday Ladies Playday

May 1  
Those playing were LaVoe Thacker, Louise Barton, and Geneva Wilson. We don't know the handicaps yet so don't know who won the ball.

### Tuesday Scramble

May 6  
Winners with a score of 30 were Kenneth Marshall, Cody Dodson and Louise Barton.

Second with a score of 31 were Alan Bingham, Gerald Pipkin, Buzz and LaVoe Thacker.

Others playing were Garland Cartwright, Judy Cartwright, Gene Brannon, Geneva Wilson, Mark Brannon, Kenny C., Kay Bingham, and Tom Stokes.

Alan got closest to pin on #6, 13 ft. 9 in.

### Ladies Playday

May 8  
Those playing were Louise Barton, Geneva Wilson, LaVoe Thacker, and Olivia Barton.

LaVoe won the ball, most rough shots, 8.

## MC Students Visit Museum

Two groups of Motley County Elementary students recently visited the Motley County Museum.

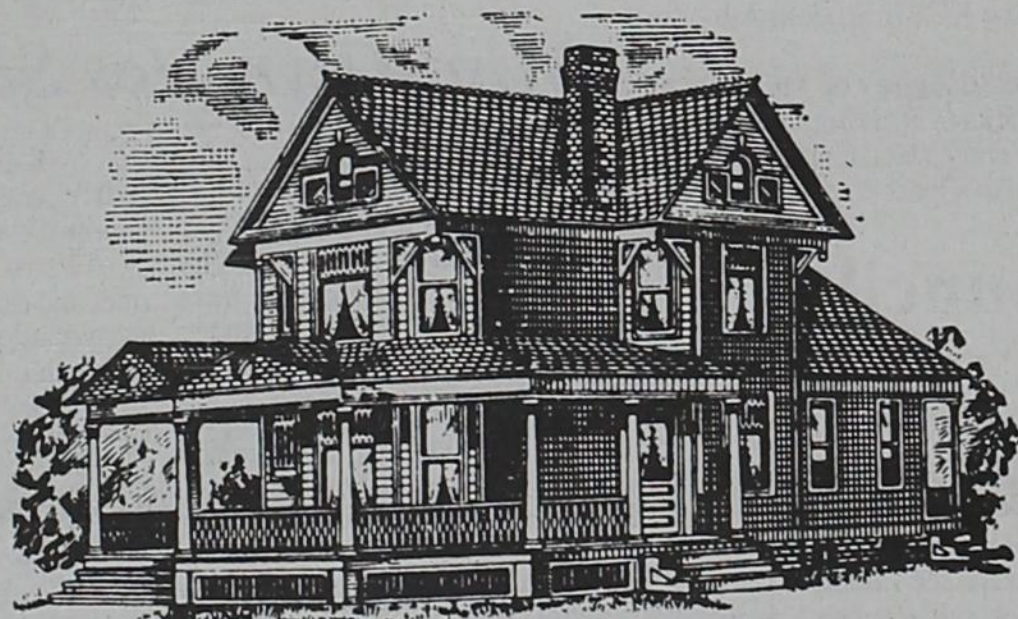
Mrs. Karen Davis, first grade teacher, and Mrs. Donna Hoyle, kindergarten teacher, assisted by Mrs. Ginger Gilmore, brought their students for a visit on April 14. Students in this group consisted of Shane'a, Justin, Cagen, Annie, Joshua, Cade, Kayla, Andrew, Shane, Tamra, Jacob, Jesse, Jasmine, Christy, Savannah, Brady, Danielle, Gracie, Stacy, Bradley, Karrie, Makayla, Mylissa, Isiah, and Hilario. No last names were available.

Students visiting on May 9 were from the fourth, fifth and sixth grades. They were Dumont Darsey, Brady Timmins, Joel Rieger, Deilia Gonzales, Sandra Torres, Brandon Martin, Sammy Gutierrez, Stachia Baxter, Susana Mendoza, Aleda Ross, Kattie Campbell, Emily Hurt, Annie Green, Veronica Mendoza, Sabrina Osborn, Amy Easter, Cody Cooper, Obadiah Saldana, John Stevens, Matt Henzler, Dakota Meyer, Thomas Rice, Kenny Johannes, Clay Cooper, Chantry Meyer, Derrick Cruse, Brenda Gillespie, and Cassie Campbell, and teacher Mrs. Terry Ferguson.

Students are always welcome to tour the Motley County Museum. Some of the comments made by the students were "Cool", "Neat stuff", "Cool Place".

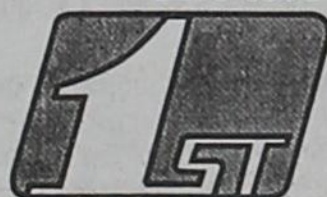
For more information about touring the Motley County Museum, please contact Glenn Woodruff in Matador.

# GET YOUR HOME LOAN HERE!



Friendly as a main street stroll--Strong as a wall street giant.

All the bank you'll ever need



**THE FIRST NATIONAL BANK OF FLOYDADA**

124 South Main • Floydada, TX 79235  
(806) 983-3717

MEMBER FDIC



## Gifts for the Graduate at MATADOR VARIETY

Graduation Cards and many, many great gift ideas.



We have the Motley County 1997 Senior Class gift idea lists!

## STUDY IS ESSENTIAL



For Christians, serious Bible study is essential. Get rid of some nonessentials and set aside a regular, weekly time period for serious Bible study in addition to your daily reading. We find time to see a movie each week, or spend hours playing games, watching T.V., enjoying a hobby, or socializing. Find time to study the Bible no matter what ever else you may have to drop.

While you may be reading this critically saying to yourself, "This guy has no idea how busy my life is, I only wish I had some non-essential activities that I could cut!" Our spiritual life and salvation depends upon our growth in and application of the Word of God. While it may seem impossible at first to make time for such study, you will find that not only will you be able to somehow finish all your tasks in spite of taking out time for God, you will soon learn to depend upon this time. Daily Bible study and prayer teaches daily to focus on the priorities of life, learning to appreciate each day and each person as they come. Try it and see!

"If you abide in My word, then you are truly disciples of Mine; and you shall know the truth, and the truth shall make you free."

John 8: 31-32

## Roaring Springs Church of Christ

Michael G. Crowley, Sr.

Bible Study - 10:00 a.m.

Worship - 9:00 a.m.

# MC hall news



## Senior Spotlight "Class of 1997"



**"A" STUDENTS** — These students were on the "A" Honor Roll every six weeks of the 1996-97 school year. They are pictured left to right, Llan Barkley, Freshman; Ashley Stevens, 8th grade; Tanya Barkley, Junior; Cobey Turner, Junior; Leah Cruse, Senior; and Leigha Burns, 8th grade. Not pictured are Aaron Binder, Junior; and Cody Timmons, Senior.



Cody Timmons received the UIL Scholar Award and the Tandy Technology Scholar Award for the Highest Ranking student. Cody is a Senior.

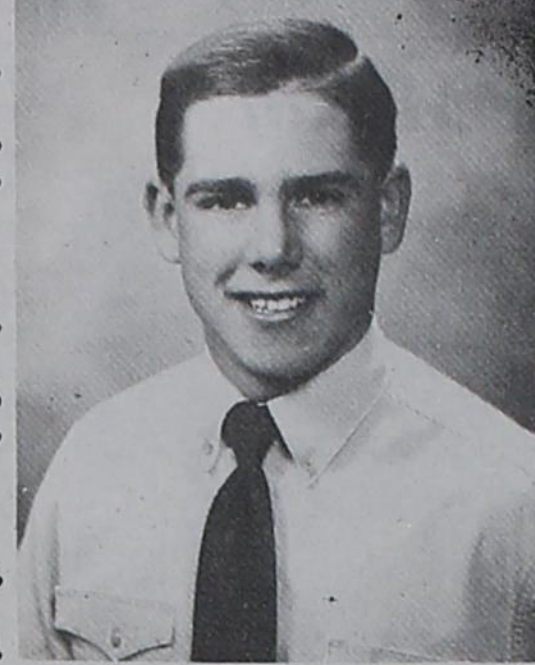
**MONDAY, MAY 19**  
Breakfast: Biscuits, Sausage, Gravy, Juice, Milk.  
Lunch: Spaghetti, Meat Sauce, Salad, Breadsticks, Fruit Cobbler, Milk.

**TUESDAY, MAY 20**  
Breakfast: Cereal, Buttered Toast, Juice, Milk.  
Lunch: Chef Salad (Ham, Egg, Cheese), Crackers, Baked Potato, Dessert, Milk.

**WEDNESDAY, MAY 21**  
Breakfast: Breakfast Pizza, Fruit, Milk.  
Lunch: Steak Fingers, Potatoes, Gravy, Broccoli, Cheese, Hot Rolls, Honey, Milk.

**THURSDAY, MAY 22**  
Breakfast: Cereal, Pop Tarts, Juice, Milk.  
Lunch: Chicken Fajitas, Pepper, Onion, Lettuce, Tomato, Chips, Hot Sauce, Ice Cream Cup, Milk.

**FRIDAY, MAY 23**  
Breakfast: Breakfast Burritos, Fruit, Milk.  
Lunch: Hamburgers, Lettuce, Tomato, Pickle, Onion, Potato Chips, Peanut Butter Brownie, Apple, Milk.



**TALON ORION CRUSE**  
NICKNAME: T.C.  
AGE: 17  
BIRTHDATE: 7-10-79  
BIRTH PLACE: Memphis, TX  
PARENTS: Donnie & Judy Cruse  
BROTHERS & SISTERS: Regina Seward, Brand, Chancy, Roegan.  
FAVORITE COLOR: Black  
FAVORITE SONG: Amarillo by Morning.  
FAVORITE MOVIE: Lonesome Dove  
BEST BOOK EVER READ: Lonesome Dove.  
FAVORITE FOOD: Ribeye Steak  
HOBBIES: Hunting, Fishing, Riding horses.  
BEST ADVICE EVER RECEIVED: Never drink downstream from the herd.  
WORST ADVICE EVER RECEIVED: Do it, it won't hurt for long.  
BEST MEMORY: 1-22-95  
PET PEEVE: People talking too much, School.  
GOALS: Graduate RFO & Ranch.  
PLANS AFTER HIGH SCHOOL: Go to Clarendon College, RFO.  
IF I COULD CHANGE ANYTHING ABOUT MY HIGH SCHOOL YEARS, WHAT WOULD IT BE: I wouldn't have let certain coaches push me around.  
IN MY SPARE TIME: I work for Donnie.  
ANY LAST WORDS FOR YOUR UNDER CLASSMEN: DLYWD-40



**MISTY LYNN EASTER**  
AGE: 17  
BIRTHDATE: July 18, 1979  
BIRTH PLACE: Lubbock, Texas  
PARENTS: Billy & Cory Easter  
BROTHERS & SISTERS: Vanessa, Matthew, Amy, Samantha.  
FAVORITE COLOR: Purple  
FAVORITE SONG: Baby Blue and Amarillo by Morning.  
FAVORITE FOOD: Pizza, Ice Cream.  
HOBBIES: Working  
BEST ADVICE EVER RECEIVED: Don't listen to Talon and Darryn.  
WORST ADVICE EVER RECEIVED: No one will ever know.  
BEST MEMORY: July 4, 1996.  
PET PEEVE: Noisy people.  
GOALS: Become a teacher.  
PLANS AFTER HIGH SCHOOL: Help my Mom and Dad.  
IF I COULD CHANGE ANYTHING ABOUT MY HIGH SCHOOL YEARS, WHAT WOULD IT BE: To have more fun.  
IN MY SPARE TIME: I see Lee and my brother and sisters.  
ANY LAST WORDS FOR YOUR UNDER CLASSMEN: Have fun!



**NATIONAL HONOR SOCIETY** — New members inducted into the National Honor Society at last Thursday night's Academic Banquet were (back l-r) Kandi Keltz, Keane Cruse, Aaron Binder; (front) Kaci Risser, Nesa McFall, Kristi Williams, and Robert Gillespie.



Leah Cruse received the UIL Scholar Award and the KCBD Student Athlete Award at last Thursday night's Academic Banquet. Leah is a Senior.

### SCHOOLWIDE TITLE I PUBLIC MEETING

The Motley County ISD would like to invite you to a Schoolwide Title I public meeting in conjunction with the PTO meeting. The meeting will be held Tuesday, May 27, 1996 in the school cafeteria at 7:00 p.m. Techniques used and progress the students have made during the past year will be discussed. Your attendance, input of ideas and concerns for our school-wide Title I program will be appreciated.

**MC Cheerleaders**  
to sponsor  
**Cheerleading**  
Camp

Once again the Motley County Varsity Cheerleaders will sponsor a Mini-Cheerleading Camp on Thursday and Friday, June 5 and 6 at the school gymnasium from 9:00 a.m. to 5:00 p.m. The camp will be offered to any girl or boy in grades K-8th. A variety of cheers, chants, stunts, jumps, and dances will be taught at this year's camp. Camp members should bring a sack lunch both days. Snacks and drinks will be provided. The cost of the camp will be \$20.00 per camper which includes a Tee-shirt. An exhibition will be given for the parents/relatives on Friday at 5:00 p.m. demonstrating the skills the campers have learned. Early enrollment is required so that we can order the proper T-shirt sizes for the campers. To enroll your child in the Mini-Camp please notify Kay Bingham at (806) 347-2817, or Blair Thacker at (806) 348-7249.



Most national flags use one or more of only seven basic colors—red, white, blue, green, yellow, black and orange.

**Congratulations Academic Winners!**

### Changes in Texas Immunization Requirements for School Age Children

On March 21, 1997 the Texas Board of health voted on proposed changes to the "Immunization Requirements in Texas Elementary and Secondary Schools and Institutions of Higher Education" (Title 25, Health Services, Chapter 97 TAC 97.61-97.77). The most important changes we anticipate are described below. These proposed changes are effective August 1, 1997, unless otherwise specified.

— Two (2) doses of measles vaccine are required for all students age 5 years and older who are born on or after September 2, 1991. Your incoming kindergarten class of school year (SY) 1997-98 will be affected immediately as well as pre-kindergarten (pre-K) students as they reach 5 years of age during SY 97-98. Students born prior

to September 2, 1991 must continue to show proof of two doses of measles vaccine no later than 30 days after their 12th birthday.

— DTaP vaccine will satisfy all DTP immunization requirements at all ages.

— Physician confirmation of prior measles or mumps illness will no longer be acceptable in lieu of vaccination. Only serologic confirmation of measles or mumps illness will be acceptable in lieu of vaccination.

— Effective August 1, 1998, three (3) doses of hepatitis B vaccine are required for all students age 5 years and older who are born on or after September 2, 1992. The kindergarten class of SY 1998-99 will be affected as well as pre-K students as they reach 5 years of age in SY 98-99.

# GREAT SERVICE

# No Gimmicks.

At Digital Cellular there's no gimmicks. We offer the highest quality cellular service at a reasonable price. Digital Cellular - Good as our word from the beginning.

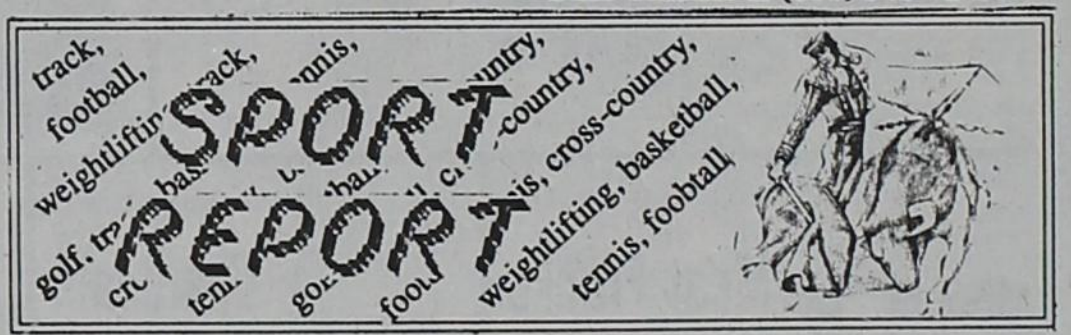
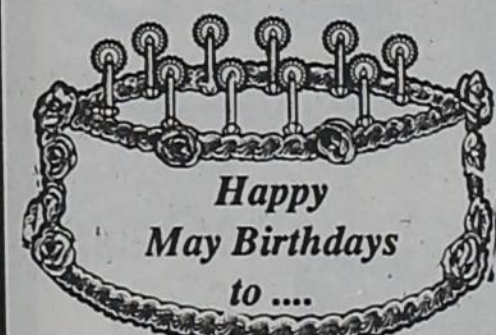
- NO CONTRACTS
- Detailed 6 Second Billing
- New Rates
- New Expanded Home + Area
- 611 Customer Assistance Line
- Expanded Automatic Call Delivery
- Reduced Roaming Rates

For more information, contact your local authorized agent or call Digital Cellular at 1-800-662-8805.

**IN MATADOR:**  
Gillespie Communications • 1309 Bundy Street • 806/347-2208



Box 53118 • Lubbock, Texas 79453 • 1-800-662-8805 • 806-924-5432



Students: Llan Barkley, Quinn Hays, Tommy Hurt, LaShea Rose, Christina Smith, Kyle Cope, Kittie Campbell, Clay Cooper, Cody Cooper, Jasmine Porter, Ashlee Sanders, Brady Brooks, Jacob Blanco, Ryan Langer, Chooch Meyer, Sean Rose, Kaleigh Kerns, Britt Pierce, and Jamie Timmins.  
Staff: Shelli Neely, Carol Ann Turner, and Ginger Gilmore.

### Regional Track Results

by Coach Kim  
The Motley County Regional Track qualifiers represented our school well at the Regional Track Meet held last weekend in Levelland. The meet was canceled on Friday, due to weather, and everything was moved back a day. Saturday was still wet and cold, but the competition continued. In the first event at 10:00 a.m., which was the discus, Kasey Parks placed 5th with a throw of 100'9" and Lanie Barton came in 6th with a 92'11". At noon, was the shotput. Lanie, who qualified in two events, placed an impressive 4th and threw a 34'1". As the day went on everything and everyone just got wetter and wetter. Dodie Morris qualified in the 400 which was at 4:30 p.m. Although she didn't advance into the finals she ran a great time of 66.16.

### Effective May 31 All Medication Records for Bishop-Ramsey Pharmacy will now be located at

### Payne Family Pharmacy

Give us a call for refills or bring by your new prescriptions

"As always working hard to be your Hometown Pharmacy"

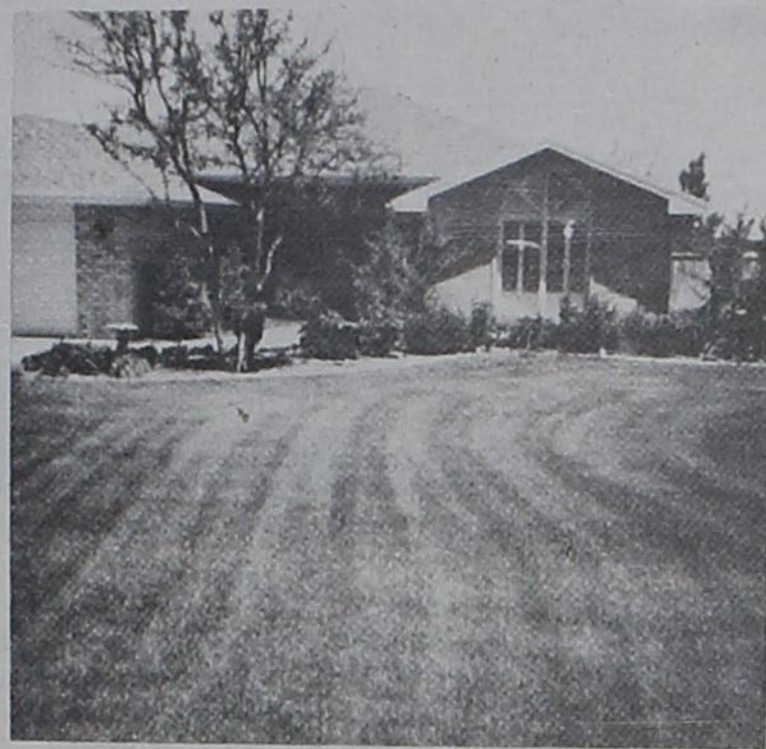
### Payne Pharmacy

983-5111 - 800-345-7961 200 S. Main, Floydada

----- Mail Orders Available -----

# News of Society

## Yard of the Month



**YARD OF THE MONTH**—The beautiful yard of Mr. and Mrs. Charles Keith was chosen as May's Yard of the Month.

## Matador Garden Club Selects May Yard of the Month

The Matador Garden Club met at Main Street April 21, 1997 for refreshments before making a tour of the Wildflowers in the neighborhood. They enjoyed the Bluebonnets on the Northfield road, the cemetery, as well as the yards of Matador. There is a rare form of pink Bluebonnets to be seen at the cemetery, which is worth the time to seek, also seen at an earlier date were the Wisteria and Lilacs in full bloom.

This month the home and yard of Mr. and Mrs. Charles Keith was selected the Home and Yard of the Month for May, as the Modern home.

Last month the home of Mr. and Mrs. Luther Green was selected as the Home of the Month as the version of a Colonial home. Every town needs a lovely Whitehouse. We felt this home filled the bill perfectly for such a home in Matador.

## Wedding Vows Exchanged In March Ceremony

Holly Kay Barkowsky and Bart Larry Bynum were married Saturday, March 8, in Westmont Christian Church in Lubbock.

Celebrant at the double-ring ceremony was Rev. Rick Burkhalter, pastor of St. Matthew United Methodist Church in Lubbock.

The bride is the daughter of Dr. and Mrs. Edward Barkowsky of Snyder, and she is the granddaughter of the late Franz and Anna Barkowsky of Lamesa, and Mossie Lee Self and the late Allie Self.

The groom is the son of Mr. and Mrs. Larry Bynum of Ransom Canyon. His grandparents are Joyce Bynum of Slaton and the late Lledon Bynum, and Bertha Moore and the late Foy Moore of Matador.

Bridal attendants included Lesa Starkins of New York City, sister of the bride, as matron of honor. Bridesmaids were Kani Thompson of Ransom Canyon, sister of the groom; Christi Sibley of Austin; and Jennifer Geyer of Grapevine. Flower girl was Taelor Norrell of Lamesa, cousin of the groom.

Earl Haralson of Lubbock was the best man. Groomsmen were Jarret Thompson of Ransom Canyon, brother-in-law of the groom; Daniel Maberry of Lubbock; and Matt Harrington of Amarillo. Ringbearer was Jon Barkowsky of Lamesa, cousin of the bride.

Serving as ushers were Drew Avinger, Peter Johns, Caroline Bookout, and Leigh Park, all of Lubbock.

Wedding guests were registered by Kellie Schlegel and Robyn Rives of Lubbock. Guests were registered with twin pens of rare pink ivory wood, a gift handcrafted by the bride's father.

The couple exchanged vows before an altar decorated with triple brass

pedestals supporting an arrangement of white Italian spring and champagne roses, orchids, gardenias, lilies, stephanotis, and English ivy. Central to the altar arrangement was a hand-wrought antique brass candle stand originally decorating a cathedral in Mexico.

The bride wore a full-length Renaissance ivory wedding gown of appliqued silk organza. The dress was fashioned with a scoop neckline and three-quarter-length sleeves. Complementing the dress were a cathedral ivory train and illusion veil. Completing the bridal ensemble was an illusion blusher attached to a crown piece of appliqued silk organza matching the bridal gown.

The bride carried a cascade bouquet of stephanotis, white Italian spring roses, champagne roses, orchids, gardenias, and ivy. She wore a blue garter, and in her shoe she carried an English sixpence coin borrowed from her uncle Eugene Barkowsky of Lamesa. The coin had also been carried by her sister Lesa in her wedding in October, 1996.

Bridal attendants were attired in floor-length dresses of burgundy satin moire.

The groom and ringbearer wore black swallowtail coats and black vests. The groom's boutonniere was fashioned from stephanotis.

Groomsmen and male ushers wore traditional black tuxedos with black vests, and female ushers were attired in black tuxedos with floor-length black skirts.

Providing wedding music were soloist Robyn Martyn, organist Lynda Kraus, pianist Peter Johns, and trumpeter Mary Benner, all of Lubbock.

The wedding party attended a rehearsal dinner hosted by the groom's parents at the Hillcrest Country Club, and the wedding reception was held at Westmont Christian Church.

The bride's table was covered with a champagne satin moire cloth and lace topper. The white four-tiered bride's cake was embellished with stephanotis, orchids, Italian roses, gardenias, and greenery.

The groom's table was a glass-topped brass table decorated with an arrangement of white, ivory, and champagne flowers. The groom's chocolate cake was heart-shaped and decorated with stephanotis and greenery.

Guests were served at an elaborate skirted triple buffet table.

Other bridal courtesies in Lubbock included a bridesmaids' luncheon and a lingerie shower.

The bride attended Western Texas College and Southeast Missouri State University, and she is a graduate of Texas Tech University. The groom is a graduate of Texas Tech. Both are associated with Bynum Concepts, Inc., of Lubbock.

Following a wedding trip to Puerto Rico and the British Virgin Islands, the couple reside at Ransom Canyon.



Mr. and Mrs. Bart Bynum

## Texas Federation of Women's Clubs Celebrates 100th Anniversary

The Texas Federation of Women's Clubs was organized in 1897 at Waco and celebrated their 100th anniversary April 30 through May 2, 1997 in Waco. There are three federated clubs in Motley County - the Predicta Club, Roaring Springs; and the Eternas Club, Matador are members of Caprock District; the El Progresso Club of Matador belongs to Santa Rosa District and one of their members, JoAnn Dickson is District President.

There were eight members of Santa Rosa District attending the Convention in Waco, including Jo Ann Dickson and Grace Campbell, mem-

bers of El Progresso Club. Mrs. Dickson won the State Poetry contest and appeared on the program several times in her capacity as District President. She always works with the Historical Foundation Trustees selling her crafts which she contributes the proceeds to the Foundation. Mrs. Campbell appeared on the program dressed as Mrs. Henry Redmond who was president in 1923-25. Mrs. Campbell gave the report of the Texas heritage Department, Historical Place and Things since she was the State Chairman.

## Look Who's New



Conner Ray McKelvey

Mr. and Mrs. Bobby McKelvey, Kellen and Corina are proud to announce the arrival of a son and brother, Conner Ray McKelvey.

Conner was born May 5, 1997 at 8:09 a.m. at Methodist Hospital in Lubbock. He weighed 6 pounds 11

ounces and was 21 inches long.

Grandparents are Mr. and Mrs. Bill McKelvey of Matador and Mr and Mrs. Gary Cox of Oklahoma. Great-grandmother is Mrs. Ola Mae Allen of Lubbock.

## Home Demonstration Club to organize

Attention Ladies of Motley County! Arla Felts, Home Economist, will meet with anyone interested at the Senior Citizens Building on May 21 at 1:30 p.m. All ladies of the county are welcome to attend. If there are enough interested a Home Demonstration Club will be organized.

Bring scissors and a pencil and a few pens. At a previous meeting, Mrs. Felts demonstrated how to make a basket out of fabric.

Mrs. Felts will present several new ideas. Please make plans to attend.

## Thank You

A Special Thanks to all my customers. I couldn't have done it without you!

Matador Floral has been purchased by Sherry Rose

I hope you will give Sherry the same support you've given me.

Thanks again!

Matador Floral  
Kathleen Watson

## Under New Ownership!

Matador Floral  
has been purchased by Sherry Rose

the new name of the business is

# Rose Garden

Sherry invites everyone to stop by and say hello, look around, and see the new changes that are being made.

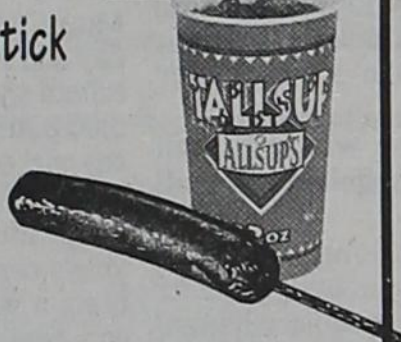
She hopes to serve everyone in the same professional manner they are accustomed to!

347-2711 — DOWNTOWN MATADOR

# ALLSUP'S ALLWAYS Low Prices

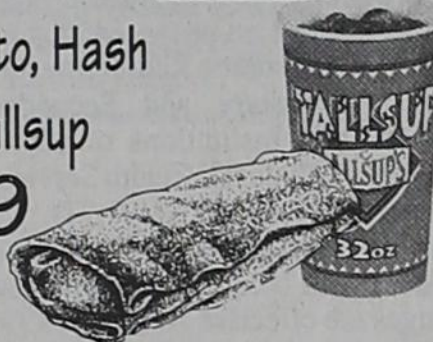
### COMBO MEAL DEAL

Sausage on a Stick  
& a Tallsup  
**\$1.79**



### BREAKFAST COMBO

Breakfast Burrito, Hash  
Brown & a Tallsup  
**\$1.99**

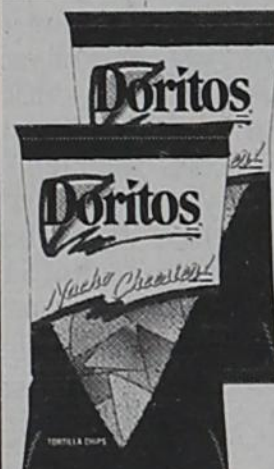


ALL FLAVORS  
Coca-Cola  
6 PK. 12 OZ. CANS  
**\$1.59**

ALLSUP'S  
Homogenized  
Milk  
GALLON  
**\$1.99**



Doritos  
ALL FLAVORS  
Doritos®  
REG. \$2.19 SIZE  
**2 \$3**



BAR'S  
Meat Franks  
12 OZ. PKG.  
**49¢**



SHURFINE  
Charcoal  
Briquets  
10 LB. BAG  
**\$1.69**



BLUE BUNNY  
The Champ!  
Cones  
**2 \$1**



NEW!

ALLSUP'S PREMIUM  
HIGH PERFORMANCE  
Motor Oil  
10 W 30 & 10 W 40  
QUART  
**99¢**



NEW!

ALLWAYS REFRESHING  
Allsup's Water  
1 LITER BTL.  
**69¢**

Valley Fare  
Paper Towels  
2/\$1.00

15 oz. Hormel  
Chili **\$1.29**

48 fl. oz.  
Wesson Oil **\$3.29**

1 gal. Shurfine  
Bleach **99¢**

HWY. 70 — MATADOR

ALLWAYS OPEN • ALLWAYS FAST

PRICES EFFECTIVE MAY 11-MAY 24, 1997

OFFER GOOD WHILE SUPPLIES LAST



# Crosbyton Clinic Hospital

Managed by St. Mary of the Plains Hospital

## MEMORANDUM

**TO:** Families We Serve  
**FROM:** Crosbyton Clinic Hospital  
**Subject:** Local Support of Services

Patients and their families have the right to choose which healthcare provider they want to use (e.g., doctor, hospital, home health agency, home oxygen service, pharmacy, nursing home, etc.).

Crosbyton Clinic Hospital offers a wide spectrum of services. We are committed to providing high quality, patient focused, service directed, cost conscious care. Our staff is composed of over one hundred and forty (140) of your neighbors that live, work and contribute to the communities we serve.

Crosbyton Clinic Hospital and the local doctors are extremely important to this region medically and economically.

**IF YOU OR YOUR FAMILY EVER NEED SERVICES THAT WE OFFER, PLEASE CONTACT CROSBYTON CLINIC HOSPITAL. YOU HAVE A CHOICE.** We hope you choose us. By doing so, you support local jobs and your local high quality, service directed hospital.

Even if you or your loved ones must receive health care services in Lubbock, your doctor may prescribe post hospital care services offered by Crosbyton Clinic Hospital such as Home Health, Home Oxygen, Medical Equipment, Rehabilitation, Fitness/Wellness Training, Skilled Nursing, Etc.

**IF YOUR DOCTOR PRESCRIBES THESE SERVICES, PLEASE ASK HIM/HER TO CONTACT CROSBYTON CLINIC HOSPITAL HOME HEALTH. IT IS YOUR RIGHT TO BE TREATED BY ANY HEALTH CARE PROVIDER. IF YOU SPECIFICALLY ASK TO BE TAKEN CARE OF BY CROSBYTON CLINIC HOSPITAL HOME HEALTH, HOME OXYGEN, AND MEDICAL EQUIPMENT, YOUR DOCTOR WILL/MUST HONOR YOUR REQUEST.** Your choice of what Home Health Agency you request will not reflect your relationship with your doctor.

It is important to let your doctor know that you have selected CROSBYTON CLINIC HOSPITAL HOME HEALTH, HOME OXYGEN, and HOME MEDICAL EQUIPMENT before the Doctor offers to make that choice for you. **IT IS YOUR CHOICE!!**

Thanks for your continued support. We are committed to you, our employees, and the communities we serve.

*Mike Johnson*  
 Administrator/CEO  
 Mike Johnson, RN, MPA, LNFA, CHE

*Leland Branson*  
 Director of Home Health  
 Leland Branson, RN

*Brenda Scheef*  
 Director of Home Oxygen and Home I.V. Therapy Services  
 Brenda Scheef, RN

*Brenda Scheef*  
 Director of Home Medical Equipment  
 Brenda Scheef, RN

*Linda Dewbre*  
 Director of Hospital Nursing  
 Linda Dewbre, RN

*Carolyn Dewbre*  
 Director of Quality Improvement  
 Carolyn Dewbre, RN

*Marquitta Montgomery*  
 Director of Skilled Nursing Facility (SNF)  
 Marquitta Montgomery, RN

*Bill Mammaro*  
 Director of Laboratory Services  
 Bill Mammaro, B.S., M.T., (ASCP)

*Sarah Wiley*  
 Director of Respiratory Services  
 Sarah Wiley, CRTT

*Bill Montgomery*  
 Director of Medical Imaging Services (xray)  
 Bill Montgomery, R.T.

*Debbie Sue*  
 Director of Pharmacy Services  
 Debbie Sue, LVN

*Pat Vasquez*  
 Director of Emergency Medical services (EMS)  
 Pat Vasquez, EMT-P

*Tommy Goff*  
 Director of Physical Therapy and Rehabilitation Services  
 Tommy Goff, P.T.

### NEIGHBORS HELPING NEIGHBORS

710 West Main Street \* Crosbyton, Texas 79322 \* (806) 675-2382

## Endurance Rides Shape Up Shannon Davidson Ride Manager

As the June 21 date of the Shannon Davidson Pony Express Days celebration nears, Ride Manager Jerry Green is shown completing a 50-mile endurance ride near Nacogdoches, Texas last weekend. This was Jerry's second ride, having completed a 25-mile ride in Bandera last month.

Plans are being finalized for a weekend of many and varied activities throughout Motley County, and everyone is encouraged to support the efforts of the Motley County Chamber of Commerce and the various county organizations who are preparing for 2,000 visitors to our area.

For information about how YOU can participate, please call Ride Manager Jerry Green, at 348-7953 or General Chairman Charles Keith at 347-2283.



Jerry Green completing ride near Nacogdoches.

### Letter to the Editor

To the citizens of Senate District 30:

Recently, the Texas Senate voted on a legislative measure, CSHB 4, designed to change the way our schools are funded. As a member of the Senate, I can say with certainty it was probably the most difficult decision legislators have been asked to make in a decade. With this letter, I wanted an opportunity to explain to the good folks of Senate District 30 how I voted and why.

In his State of the Senate address in January, Governor George Bush outlined an ambitious plan to cut growing school property taxes. Through his leadership, lawmakers and citizens alike, were made to confront this problem and to begin a search for solutions. As I was then, I am still convinced that property taxes need to be lowered. Unfortunately, neither of the tax plans that have recently passed the House and Senate, much resembles the Governor's original vision and, in fact, both look more like a tax expansion than a tax cut.

During the course of the session, I have received hundreds of phone calls and letters and talked to many folks that tell me basically the same thing: cut property taxes. Further, my constituents know the best way to do that is by cutting state spending, not simply tax shifting or expanding. Toward that end, I offered an amendment to the Senate plan that would have resulted in a 3% across the board cut in the State budget. My amendment would have moved more than \$1.8 billion to education and resulted in more than \$3 billion in property tax relief. Unfortunately, the Senate decided not to adopt my idea.

Many folks have asked me why we could not simply refund the one billion-dollar budget surplus. If tax relief is the ultimate goal, I believe this question becomes even more relevant. With the one billion dollar surplus, and a sincere effort to reduce state

spending, we could have given the people of District 30 and all of Texas real property tax relief and real reform. However, under the recently passed plans, the property tax cuts are so small, and the increases in other taxes so large, taxes might ultimately go up instead of down.

Another concern is maintaining local control of our schools. The House plan has the Senate providing up to 80% of school funding and the Senate version up to 53%. In light of these numbers, I fail to see how state control will not increase. This is not what the good folks of District 30 want.

I also listened to small business concerns about the expansion of the franchise tax to partnerships under both the Senate and House bills. Many businesses in District 30 and rural Texas are partnerships out of necessity or family connections. These are high volume, low margin business that would be hurt under either plan. When rough economic times come around, and they will, these will be the first casualties.

When I was elected in 1994, I made a commitment to you that I would uphold the basic conservative prin-

ciples of reducing your tax burden and reducing the size of government. I have had to ask myself over the last couple of months if either of these property tax bills accomplishes those goals. I have come to the conclusion that they do not.

Therefore, it is with a heavy heart that I must inform you that I have been unable to support either the House or Senate property tax bills, and did in fact vote against the Senate plan. I feel that the conservative principles that you elected me for, would be severely compromised if I agreed to support either tax plan. If I am to vote for a bill, any bill, I will need to be a good bill that reflects the conservatives principles that permeate our great state. With these tax bills, the easy thing to do would have been to stand with many and simply say YES. Instead, I chose to listen to my constituents, vote my principles, stand with the few, and say NO.

Respectfully,  
 Tom Haywood  
 Texas State Senator  
 District 30

The most dangerous of all falsehoods is a slightly distorted truth.

**New to You**  
 A Quality Clothing Consignment Shop  
 Located inside City Grocery - 211 Broadway, Roaring Springs  
 Annette Hollinsworth - Owner  
**Ladies Skirts, Slacks, & Blouses**  
**BUY 1 - GET ONE FREE!**  
 T-S 10:00 - 6:00 Bring in this ad and receive 10% off! 806-348-7228

# MEGASALE!

Pick Your Vehicle & We'll Special Price It **ON THE SPOT!**

**'97 EXPLORER XLT**  
 4-DOOR, 2WD #NT1073  
**\$399** per mo.  
24 month, RCO, Sale Price: \$24,919, 6% APR, 12,000 miles/yr., \$2,250 total down, TT&L included, Final payment: \$17,779. With approved credit.

**'97 RANGER XLT**  
 Reg. Cab #NT1017  
**\$199** per mo.  
24 month, RCO, Sale Price: \$12,225, 8.85% APR, 12,000 miles/yr., \$1,200 total down, TT&L included, Final payment: \$9,255. With approved credit.

**'97 F-150 SUPERCAB**  
**\$299** per mo.  
24 month, RCO, Sale Price: \$19,500, 8.85% APR, 12,000 miles/yr., \$1,800 total down, TT&L included, Final payment: \$15,297. With approved credit.

**'97 FORD RGR SUPERCAB**  
 Was \$9,995  
 Now \$9,495

**"We Sell Only RISK FREE USED CARS"**

<p>89 FORD ESCORT                  Was \$4,495                  Now \$3,995</p>	<p>88 CHEVY CELEBRITY                  Was \$3,495                  Now \$2,995</p>	<p><b>Ford Credit</b></p>	<p>94 FORD RGR SUPERCAB                  Was \$9,995                  Now \$9,495</p>	<p>95 OLDS CUTLASS                  Was \$12,495                  Now \$11,995</p>
<p>90 DODGE CONV. VAN                  Was \$6,995                  Now \$6,295</p>	<p>92 JEEP CHEROKEE                  Was \$12,995                  Now \$12,195</p>	<p>94 F-150 Reg. Cab 4x4                  Was \$14,495                  Now \$13,995</p>	<p>93 MERCURY GRD. MARQUIS                  Was \$13,495                  Now \$12,995</p>	<p>92 MERCURY GRD. MARQUIS                  Was \$11,495                  Now \$10,995</p>
<p>96 FORD RGR. SUPERCAB                  Was \$14,995                  Now \$14,195</p>	<p>96 FORD RGR. REG. CAB                  Was \$12,995                  Now \$12,195</p>	<p>96 FORD TAURUS                  Was \$14,995                  Now \$14,450</p>	<p>94 MERCURY GRD. MARQUIS                  Was \$15,495                  Now \$14,995</p>	<p>94 F-150 SUPERCAB XL, Auto, 3.02                  Was \$14,995                  Now \$13,995</p>
<p>94 FORD F-350 Crew Cab Dually                  Was \$28,995                  Now \$28,500</p>	<p>96 MERCURY MISTIQUE                  Was \$12,995                  Now \$12,495</p>	<p><b>FLOYDADA FORD Mercury</b></p>		<p>96 FORD ESCORT                  Was \$10,995                  Now \$10,195</p>

**806-983-3761** You make the drive, we'll go the distance! **1-800-945-4260**  
 Ralls Hwy., Floydada, TX



**CALF DRESSING WINNERS** — Lacey Parks Rankin, Dee Perryman and Kasey Parks won the Calf Dressing competition at the recent Clarendon College Rodeo.



**ALL-AROUND WINNERS** — Lacey Parks Rankin and Will Edwards, both Clarendon College students.

## Motley County residents fare well at annual Clarendon College Rodeo

Lacey Parks Rankin, a native of Roaring Springs, was the women's all-around winner at the annual Clarendon College Alumni Rodeo on April 12th. A graduate of CC, Parks beat out more than 40 competitors to win the custom design trophy buckle. Rankin, along with her sister Kasey Parks, and Dee Perryman, wife of Roaring Springs native Darryl Perryman, won the ever-popular Calf Dressing Event. All three women were awarded t-shirts. The annual event is sponsored by Clarendon College's Rodeo Club and is held in conjunction with the Student's Reunion.



## Oil News

**MARCH PERMITS TO DRILL**  
The Commission issued a total of 1,137 original drilling permits in March compared to 1,159 in March 1996. The March total included 873 permits to drill new oil and gas wells, 44 to re-enter existing well bores and 220 for re-completions.

So far in 1997, there have been 3,354 drilling permits issued compared to 2,956 recorded during the same period in 1996.

Permits issued in March included 484 oil, 255 gas, 359 oil and gas, 31 injection, and 8 other permits.

**MARCH OIL AND GAS COMPLETIONS**

In March operators reported 340 oil, 379 gas, 24 injection and two other completions, compared to 373 oil, 335 gas, and 17 injection and other completions during the same month of last year.

Total well completions for 1997 year-to-date is 2,286 up from 2,154 recorded during the same period in 1996.

Operators reported 575 holes plugged and 149 dry holes in March, compared to 1,241 holes plugged and 143 dry holes reported the same period last year.

**JANUARY CRUDE OIL PRODUCTION**

Texas preliminary January, 1997 crude oil production averaged 1,314,009 barrels daily, down from the 1,352,588 barrels daily average of January, 1996.

The preliminary Texas crude oil production figure for January 1997 is 40,734,292 barrels, a decrease from the 41,930,229 barrels reported during January, 1996.

**TOTAL GAS PRODUCTION**

Motley County: total gas production, 476; crude oil production, 7224. Briscoe County: total gas production 0; crude oil production, 0.

Cottle County: total gas production, 286736; crude oil production, 4643.

Dickens County: total gas production, 1051; crude oil production, 57446.

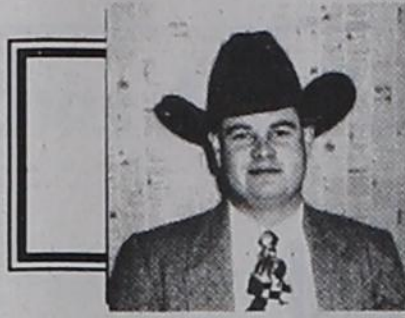
**City Council**

from page 1

this project this summer.

Council went into Executive Session at this time to discuss personnel. No decisions were made.

At this time, the Matador Water District Board met and approved their budget. This board is in charge of the wells in Roaring Springs. Meeting adjourned.



## News from the County Agent

by Motley County Extension Agent - J. Michael Lee

### LAWN FERTILIZATION

Lawn quality is generally measured in terms of color, density and uniformity. Cultural practices, particularly fertilization, largely determine lawn quality. A fertilization program should include timely fertilizer applications in amounts and formulations that meet the requirements of your lawn. Excessive nitrogen applications stimulate production of leaves and stems and increase the mowing requirements. Higher water requirements, increased thatch and increased susceptibility to insects and diseases also result from excessive application of nitrogen. Poor timing of fertilizer applications, such as mid-summer and early fall applications of soluble nitrogen, also increases the likelihood of cinch bug and brownpatch problems in St. Augustine lawns.

The amount and formulation of fertilizer to apply depends on soil test results, grass species, environmental conditions and mowing practices.

Soil tests provide information on the availability of major fertilizer nutrients. Some soils contain phosphorus and/or potassium amounts of

adequate for the maintenance of turfgrasses. Additional applications of these nutrients through fertilization would not improve the quality of the lawn. On the other hand, grass growing on soils deficient in one or more of these nutrients will respond to fertilizers containing these nutrients. Soil tests also suggest the need for lime or other amendments to correct soil acidity, soil salinity or alkali soil conditions.

Grass species differ in fertilizer requirements.

Environmental conditions such as shade, soil type and rainfall also influence fertilization requirements. Moderately or heavily shaded areas should not be fertilized as much as areas in full sunlight. Grass growing in shade is more succulent and has a weaker root system than grass growing in full sunlight. Fertilizer tends to make the grass more succulent and increases its susceptibility to disease, drought and other stresses. Nitrogen fertilizer also stimulate leaf growth at the expense of the root system. St. Augustine growing in moderate to heavy shade should be fertilized in the spring and fall only, at a rate of 1 1/2 pounds of nitrogen per 1,000 square feet.

Bermudagrass lawns require supplemental applications of nitrogen at 45-to-60-day intervals between spring and fall fertilizations. These applications should not exceed 1 pound of nitrogen per 1000 square feet per

application. Occasionally, St. Augustine grass may need a supplemental application of nitrogen to enhance color during the summer. Use organic or slow-release nitrogen sources on lawns during the summer. Summer fertilization of St. Augustine grass growing in moderate shade should be avoided because of increased disease activity.

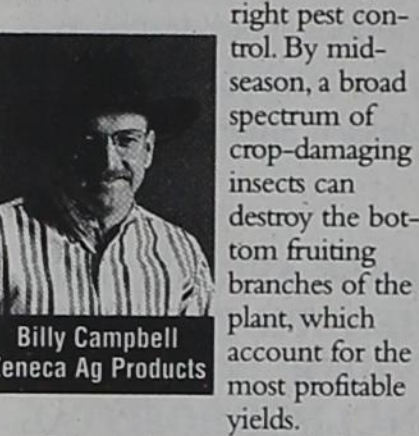
St. Augustine lawns may require periodic applications of iron sulfate or iron chelate to prevent iron chlorosis. A foliar application of iron sulfate at a rate of 6 to 8 ounces per 1,000 square feet effectively eliminates the symptoms of iron chlorosis. These applications may be needed several times during the growing season.

Fertilizers can be distributed with a broadcast (cyclone) or drop-type spreader. Uniform distribution is essential to prevent light and dark streaks across the lawn. For better distribution, divide the fertilizer to be applied into two equal lots. Apply one lot lengthwise and the other crosswise over the lawn.

Choice of the type and grade of fertilizer material to use depends on soil test recommendations. In every fertilizer analysis (such as 12-4-8), the first number represents the percent nitrogen (N), the second number represents the percent phosphorus (P2O5) and the third number represents the percent potassium (K2O).

### Standing Guard Over Cotton

Protecting your business and reputation as a successful cotton grower often means choosing the right pest control.



Billy Campbell  
Zeneca Ag Products

By mid-season, a broad spectrum of crop-damaging insects can destroy the bottom fruiting branches of the plant, which account for the most profitable yields.

Primary cotton pests include bollworms, budworms and boll weevils. These insects can cause terminal growth damage as they feed on fruiting forms and leaf petioles. Secondary pests, such as mites, plant bugs and others, are becoming more economically important as growers try to extract maximum yields and profits.

Protect your cotton from yield-robbing insects by using an insecticide that:

- provides excellent broad-spectrum control of primary pests and suppresses secondary pests
- provides greater residual control
- gives you the most performance for your dollar.

Throughout years of testing, KARATE® insecticide has exhibited unsurpassed bollworm and budworm control on both larvae and eggs. It also provides excellent control of boll weevil, fall armyworm and plant bugs.

A summary of 18 evaluations from five different Zeneca field trials showed that Karate outperformed the competition by controlling nearly 99 percent of the worms after treatment.

Karate shows greater ovicidal activity than any other insecticide, which means further reduction of insect populations. Also, the pest control Karate offers is so complete, tank mixing is often unnecessary.

The fewer pests your cotton crop has to battle, the more lint you'll put through the gin.

For more information about Karate, contact your local ag chem dealer.

©1997, Zeneca Inc. Zeneca Ag Products is a business unit of Zeneca Inc. KARATE® is a trademark of a Zeneca Group Company. Karate is a restricted use pesticide. Farm Safety Always read and follow label directions.

THE  
**ROARING SPRINGS FIRST BAPTIST CHURCH**  
FAMILY  
WOULD LIKE TO CONGRATULATE THEIR PASTOR  
**REV. DON JONES**  
ON HIS GRADUATION FROM  
WAYLAND BAPTIST UNIVERSITY  
ON SATURDAY, MAY 17  
WITH A BS DEGREE IN RELIGION  
AND WOULD LIKE TO INVITE THE COMMUNITY  
TO A RECEPTION BEING HELD IN HIS HONOR  
SUNDAY AFTERNOON, 2:30 P.M., MAY 18  
AT THE CHURCH.

**FRONTIER**  
HYBRIDS  
**C.O. Mucho Sweet**  
Highest Sugar Content - Drought Tolerant  
**Champ I**  
Highest Tonnage  
**Champ II**  
Ideal for Dryland and Set Aside Acres  
**Higginbotham-Bartlett**  
Matador — 347-2445  
Store Hours: 7 to 5, Monday - Friday, 7 to 12, Saturday  
Free Local Delivery  
For Your Convenience After Hours Call  
Donnie at 347-2889 or Fred at 347-2304

**RS Cafe**  
downtown Roaring Springs  
**Open 7 days a week**  
6:00 a.m. - 2:00 p.m. daily  
with full Lunch Buffet  
5:30 - 9:00 p.m. Saturday night Fish Fry

With a  
**Garden book**  
from the  
**MOTLEY COUNTY TRIBUNE**  
The Texas Flowerscape  
1997 Texas Garden Almanac  
The Potting Shed  
Backyard Birdfeeding  
Mary Engelbreit's Garden Companion  
Mary Engelbreit's She Who Loves A Garden  
Secrets of the Garden  
Creating a Butterfly Garden  
Plants For The Dry Garden  
The 20 Minute Gardener  
Saving Seeds  
724 Dundee — Matador — 347-2400

**NEW**  
FOR RENT AT  
**HIGGINBOTHAM-BARTLETT**  
16 ft. Tandem Trailer  
Portable Welder  
Ditch Witch  
Tiller  
Steam Carpet Cleaner  
**WE NOW HAVE VET SUPPLIES!**  
Shade Trees & Fruit Trees  
**Flowers & Plants Have Arrived!**  
Store Hours: 7 to 5 Monday - Friday, 7 to 12 Saturday  
Free Local Delivery  
For Your Convenience After Hours Call  
Donnie at 347-2889 or Fred at 347-2304

Re-opening at old location  
Hwy. 70 West - Matador  
**UNDER NEW MANAGEMENT**  
with Doyle Shannon & Jesse Turner  
**SPECIALS**  
HORSE & MULE FEED ..... \$5.45 bag  
5 x 10 Cattle Stock Panels ..... \$26.00  
50 lb. bag Tridan Haygrazer ..... \$8.88  
6 ft. T-Post 1.33 grade ..... Cash Price \$2.15  
**Stockman's**  
806-347-2845  
"Your Farm & Ranch Headquarters"



